

## **Oracle® Fusion Applications**

Performance and Tuning Guide

11g Release 7 (11.1.7)

**E16686-08**

July 2013

Documentation for administrators that describes how to monitor and optimize performance for Oracle Fusion Applications.

Oracle Fusion Applications Performance and Tuning Guide 11g Release 7 (11.1.7)

E16686-08

Copyright © 2011, 2013, Oracle and/or its affiliates. All rights reserved.

Primary Author: Richard Gugeler

Contributors: Samuel To, Dillip Praharaaj, Avanish Srivatsav, Saul Reyes, Gerard Antony, Mrithiumjay Srinivas

This software and related documentation are provided under a license agreement containing restrictions on use and disclosure and are protected by intellectual property laws. Except as expressly permitted in your license agreement or allowed by law, you may not use, copy, reproduce, translate, broadcast, modify, license, transmit, distribute, exhibit, perform, publish, or display any part, in any form, or by any means. Reverse engineering, disassembly, or decompilation of this software, unless required by law for interoperability, is prohibited.

The information contained herein is subject to change without notice and is not warranted to be error-free. If you find any errors, please report them to us in writing.

If this is software or related documentation that is delivered to the U.S. Government or anyone licensing it on behalf of the U.S. Government, the following notice is applicable:

U.S. GOVERNMENT END USERS: Oracle programs, including any operating system, integrated software, any programs installed on the hardware, and/or documentation, delivered to U.S. Government end users are "commercial computer software" pursuant to the applicable Federal Acquisition Regulation and agency-specific supplemental regulations. As such, use, duplication, disclosure, modification, and adaptation of the programs, including any operating system, integrated software, any programs installed on the hardware, and/or documentation, shall be subject to license terms and license restrictions applicable to the programs. No other rights are granted to the U.S. Government.

This software or hardware is developed for general use in a variety of information management applications. It is not developed or intended for use in any inherently dangerous applications, including applications that may create a risk of personal injury. If you use this software or hardware in dangerous applications, then you shall be responsible to take all appropriate fail-safe, backup, redundancy, and other measures to ensure its safe use. Oracle Corporation and its affiliates disclaim any liability for any damages caused by use of this software or hardware in dangerous applications.

Oracle and Java are registered trademarks of Oracle and/or its affiliates. Other names may be trademarks of their respective owners.

Intel and Intel Xeon are trademarks or registered trademarks of Intel Corporation. All SPARC trademarks are used under license and are trademarks or registered trademarks of SPARC International, Inc. AMD, Opteron, the AMD logo, and the AMD Opteron logo are trademarks or registered trademarks of Advanced Micro Devices. UNIX is a registered trademark of The Open Group.

This software or hardware and documentation may provide access to or information on content, products, and services from third parties. Oracle Corporation and its affiliates are not responsible for and expressly disclaim all warranties of any kind with respect to third-party content, products, and services. Oracle Corporation and its affiliates will not be responsible for any loss, costs, or damages incurred due to your access to or use of third-party content, products, or services.

---

---

# Contents

<b>Preface</b> .....	v
Audience .....	v
Documentation Accessibility .....	v
Related Documents .....	v
Conventions .....	vi
<b>What's New in This Guide</b> .....	vii
New and Changed Features for 11g Release 7 (11.1.7) .....	vii
<b>1 Monitoring and Tuning Oracle Fusion Applications</b>	
1.1 Introduction .....	1-1
1.2 Monitoring and Tuning Oracle Fusion Applications .....	1-1
1.2.1 How to Analyze Host Metrics .....	1-2
1.2.2 How to Check for Network Connectivity Issues .....	1-4
1.2.3 How to Analyze WebLogic Server Metrics .....	1-5
1.2.4 How to Analyze Oracle HTTP Server Metrics .....	1-8
1.2.5 How to Analyze Oracle Business Intelligence Server Metrics .....	1-9
1.2.6 How to Gather Key Identity Management Server Metrics .....	1-9
1.2.7 How to Analyze Key Enterprise Scheduler Metrics .....	1-11
1.2.8 How to Monitor Key SOA Metrics .....	1-12
1.2.9 How to Tune and Troubleshoot Oracle Identity Management .....	1-13
1.3 Tuning Platforms for Oracle Fusion Applications .....	1-17
1.4 Tuning Oracle HTTP Server .....	1-20
<b>2 Troubleshooting Process</b>	
2.1 Introduction to Troubleshooting .....	2-1
2.1.1 How to Troubleshoot Overall System Slowness .....	2-2
2.1.2 How to Find the Slowest JSPX/JSFF Pages .....	2-3
2.1.3 How to Troubleshoot Slow UI Request .....	2-3
2.1.3.1 Troubleshooting Historical Requests .....	2-4
2.1.3.2 Troubleshooting Live Requests .....	2-4
2.1.3.3 Troubleshooting StuckThreads .....	2-4
2.1.3.4 Troubleshooting Slow Requests Using JFR Recording .....	2-6
2.1.3.5 Troubleshooting Memory Leaks and Heap Usage Pressure .....	2-6
2.1.4 How to Troubleshoot Slow Batch Jobs .....	2-7

2.1.4.1	Troubleshooting Jobs That Are in Wait/Ready/Blocked State for a Long Time	2-7
2.1.4.2	Troubleshooting Jobs in Running State for a Long Time .....	2-7
2.1.4.3	Troubleshooting Slow BI Publisher Jobs .....	2-8
2.1.4.4	Troubleshooting Slow SOA Jobs .....	2-8
2.1.4.5	Troubleshooting Slow SQL Jobs .....	2-8
2.1.4.6	Troubleshooting Slow Java Jobs .....	2-9
2.1.5	How to Troubleshoot a Slow BPEL Instance .....	2-9
2.1.5.1	Troubleshooting High Connection Usage .....	2-9
2.1.5.2	Troubleshooting Connection Leaks .....	2-10
2.1.5.3	Troubleshooting Slow Requests Using SQL Trace .....	2-11
2.1.5.4	Troubleshooting Slow Oracle Enterprise Scheduler Jobs of SQL Type.....	2-11
2.1.5.5	Troubleshooting Excessive Activation .....	2-12
2.1.6	How to Troubleshoot Oracle Business Intelligence .....	2-13
2.2	View Detailed Timing Of a Request Using a JRockit Flight Recorder (JFR) File.....	2-15
2.3	Using My Oracle Support for Additional Troubleshooting Information.....	2-18

### 3 Tuning the Database

3.1	Introduction .....	3-1
3.1.1	Monitoring the Oracle Fusion Applications Database .....	3-2
3.2	Tuning the Database .....	3-2
3.2.1	How to Configure the Database for Performance.....	3-4
3.2.2	How to Configure Kernel Parameters .....	3-5
3.2.3	How to Configure the Database Listener .....	3-6
3.2.4	How to Tune the Real Application Cluster (RAC) .....	3-6
3.2.5	How to Optimize SQL Statements .....	3-8
3.2.5.1	Collecting Optimizer Statistics .....	3-8
3.2.5.2	Pinning Packages and Cursors .....	3-10
3.2.6	How to Configure the Database Resource Manager .....	3-11
3.2.6.1	Assigning Connections to Resource Consumer Groups.....	3-11
3.2.6.2	Using the Oracle Database Resource Manager .....	3-11
3.2.6.3	Monitoring the Resource Manager .....	3-14
3.2.7	How to Tune the PS_TXN Table in the FUSION Schema.....	3-14
3.2.8	How to Optimize Maintenance Windows .....	3-15
3.2.8.1	Disabling AUTOTASK.....	3-15
3.2.8.2	Adjusting Default Maintenance Windows .....	3-15

---

---

# Preface

Welcome to the Oracle Fusion Applications *Performance and Tuning Guide*! This guide describes performance and tuning checks and tweaks that are specific to Oracle Fusion Applications.

## Audience

This document is intended for Oracle Fusion Applications administrators and developers who are customizing an application, and operators working in a runtime production environment, and assumes familiarity with Java and SQL.

## Documentation Accessibility

For information about Oracle's commitment to accessibility, visit the Oracle Accessibility Program website at <http://www.oracle.com/pls/topic/lookup?ctx=acc&id=docacc>.

### Access to Oracle Support

Oracle customers have access to electronic support through My Oracle Support. For information, visit <http://www.oracle.com/pls/topic/lookup?ctx=acc&id=info> or visit <http://www.oracle.com/pls/topic/lookup?ctx=acc&id=trs> if you are hearing impaired.

## Related Documents

For more information, see the following documents in the Oracle 11g Fusion Middleware documentation set:

- Oracle Fusion Applications Administrator's Guide
- Oracle Fusion Middleware Administrator's Guide
- Oracle JRockit JDK Tools Guide
- Oracle JRockit Flight Recorder Run Time Guide
- Oracle Fusion Middleware Managing Server Startup and Shutdown for Oracle WebLogic Server
- Oracle Fusion Middleware Configuring and Using the Diagnostics Framework for Oracle WebLogic Server

- 
- Oracle Fusion Middleware Web User Interface Developer's Guide for Oracle Application Development Framework

## Conventions

The following text conventions are used in this document:

<b>Convention</b>	<b>Meaning</b>
<b>boldface</b>	Boldface type indicates graphical user interface elements associated with an action, or terms defined in text or the glossary.
<i>italic</i>	Italic type indicates book titles, emphasis, or placeholder variables for which you supply particular values.
<code>monospace</code>	Monospace type indicates commands within a paragraph, URLs, code in examples, text that appears on the screen, or text that you enter.

---

---

# What's New in This Guide

The following topics introduce the new and changed features of the Oracle Fusion Applications Performance and Tuning Guide 11g Release 7 (11.1.7) and other significant changes that are described in this guide, and provides pointers to additional information.

## **New and Changed Features for 11g Release 7 (11.1.7)**

There are no new features for the Oracle Fusion Applications Performance and Tuning Guide 11g Release 7 (11.1.7).

Recommended database settings have been updated in [Table 3-2](#).





---

---

# Monitoring and Tuning Oracle Fusion Applications

This chapter discusses how to find the information you need to examine so you can tune your system. It includes how to monitor and tune the database and Oracle Fusion Applications, and troubleshooting.

This chapter includes these sections:

- [Section 1.1, "Introduction"](#)
- [Section 1.2, "Monitoring and Tuning Oracle Fusion Applications"](#)
- [Section 1.3, "Tuning Platforms for Oracle Fusion Applications"](#)
- [Section 1.4, "Tuning Oracle HTTP Server"](#)

## 1.1 Introduction

Every system of hardware and installed applications is different. Even though Oracle Fusion Applications are written and installed using industry-standard best practices, you can custom tailor your system to improve how it supports your environment.

But to tune your system, you need to locate and examine data. This chapter will explain what data you need to examine, and what tools you will use to gather the data.

## 1.2 Monitoring and Tuning Oracle Fusion Applications

In general, most of the settings that come default in Oracle Fusion Applications are already tuned.

These guidelines are provided to help ensure your Oracle Fusion Applications instance runs optimally. Note that all metrics listed are from Oracle Enterprise Manager Cloud Control.

- Monitor the key host metrics, shown in [Table 1-1](#), to ensure the underlying server hosts are healthy. Rather than constantly checking the metric values, you can set up alert thresholds in Cloud Control and receive notification when thresholds are exceeded. For more information, see "Creating Monitoring Templates" in the *Oracle Fusion Applications Administrator's Guide*.
- Monitor the key component metrics, such as WebLogic server metrics, to ensure each component is healthy.
- Monitor the number of incidents and logs to ensure the application is configured properly and not constantly wasting resources generating error messages. Review log levels to ensure they are not set too low. See "Troubleshooting Oracle Fusion

Applications Using Incidents, Logs, QuickTrace, and Diagnostic Tests" in the *Oracle Fusion Applications Administrator's Guide* for more information

- Monitor the database to ensure it is operating optimally. Follow the guidelines in [Chapter 3, "Tuning the Database,"](#) to make sure that statistics are being collected.

**Table 1–1 Key Host Metrics**

Metric Category	Metric Name	Warning Threshold	Critical Threshold	Comments
Disk Activity	Disk Device Busy	>80%	>95%	
Filesystems	Filesystem Space Available	<20%	<5%	
Load	CPU in I/O wait	>60%	>80%	
	CPU Utilization	>80%	>95%	
	Run Queue (5 min average)	>2	>4	The run queue is normalized by the number of CPU cores.
	Swap Utilization	>75%	>90%	
	Total Processes	>15000	>25000	
	Logical Free Memory %	<20	<10	
	CPU in System Mode	>20%	>40%	
Network Interfaces Summary	All Network Interfaces Combined Utilization	>80%	>95%	
Switch/Swap Activity	Total System Swaps	>3	>5	Value is per second.
Paging Activity	Pages Paged-in (per second)			
	Pages Paged-out (per second)			The combined value of Pages Paged-in and Pages Paged-out should be <=1000

## 1.2.1 How to Analyze Host Metrics

Administrators will find it useful to study these suggestions on further analysis to undertake when a metric value exceeds threshold. The commands provided are for the Linux operating system.

### When logical free memory/swap activity or paging activity is beyond threshold

This usually happens when memory is not sufficient to handle demands from all the running processes.

- Linux: Check `cat /proc/meminfo` and confirm total RAM is expected.  
Windows: Open the Task Manager, click the Performance tab and check the Physical Memory section.
- Check if there are unallocated huge pages. If there are and the WebLogic Server/Oracle instances are not expected to use them, reduce the huge page pool size.
- Linux: Run `top` and sort by resident memory (type **OQ**). Look for processes using the most resident memory and investigate those processes.  
Windows: Open the Task Manager, click the Processes tab and click the Mem Usage column to sort the processes by memory usage.

**When page activity is beyond threshold**

Follow the steps in ["When logical free memory/swap activity or paging activity is beyond threshold"](#) to view and analyze memory usage.

**When Network Interface Error Rates Is Beyond Threshold**

The normal cause is misconfiguration between the host and the network switch. A bad network card or cabling also can cause this error. You can run `/sbin/ifconfig` to identify which interface is having packet errors. Contact network administrator to ensure the host and the switch are using same data rate and duplex mode.

Otherwise, check if cabling or the network card is faulty and replace as appropriate.

**When Packet Loss Rate Is Beyond Threshold**

The normal cause of this error is network saturation of bad network hardware.

- Run `lsof -Pni | grep ESTAM` to determine which network paths are generating the problem.
- Then run `mtr <target host>` or `ping <target host>` and look for packet lost on that segment.

```
20 packets transmitted, 20 received, 0% packet loss, time 18997ms
rtt min/avg/max/mdev = 0.168/0.177/0.200/0.010 ms
```

The packet loss should be 0% and rtt should be less than .5 ms.

- Ask the network monitoring staff to look for saturation or network packet loss from their side.

**When Network Utilization Is Beyond Threshold**

The normal cause is very heavy application load.

- Run `top` or `lsof` to determine which processes are moving a lot of data.
- Use `tcpdump` to sample the network for usage patterns.
- Use `atop`, `iftop`, `ntop` or `pkstat` to see which processes are moving data.

**When CPU Usage or Run Queue Length Is Beyond Threshold**

The normal cause is runaway demand, a poorly performing application, or poor capacity planning.

- Linux: Run `top` to identify which application/process is using time.  
Windows: Open the Task Manager, click the Processes tab and click the CPU column to sort the processes based on CPU usage.
- If top processes are WebLogic Server JVM processes, conduct a basic WebLogic Server health check. That is, review logs to see if there are configuration errors causing excessive exceptions, and review metrics to see if the load has increased. Use JVMD for a more detailed analysis.
- If top processes are Oracle processes, use Enterprise Manager to look for high load SQL.

**When System CPU Usage Is Beyond Threshold**

- High system CPU use could be due to kernel processes looking for pages to swap out during a memory shortage. Follow the steps listed in the ["When logical free memory/swap activity or paging activity is beyond threshold"](#) section to further diagnose the problem.

- High system CPU use is also frequently related to various device failures. Run `{dmesg | less}` and look for repeated messages about errors on some particular device, and also have hardware support personnel check the hardware console to see if there are any errors reported.

### When Filesystem Usage Is Beyond Threshold

The normal cause is an application that is logging excessively or leaving behind temporary files.

- Run `ls -ld 1-99999 | grep REG | sort -nrk 7 | less` to see currently open files sorted by size from largest to smallest. Investigate the large files.
- Run `du -k /mount_point_running_out_of_space > /tmp/sizes` to get space used for directories under the mount point. This may take a long time. While it is running, run `sort -nr /tmp/sizes` and find the directories using most space and investigate those first.

### When Total Processes Is Beyond Threshold

The normal cause is runaway code or a stuck NFS filesystem.

- Linux: Run `ps aux`. If many processes are in status D, run `df` to check for stuck mounts.  
Windows: Run Task Manager, click the Processes tab, and check the list of running processes.  
If there are hundreds or thousands of processes of a particular program, determine why.
- Run `ps o pid,nlwp,cmd | sort -nrk 2 | head` to look for processes with many threads.

### When Disk Device Busy Is Beyond Threshold

- Check for disk drive failure.  
Linux: As root, check `/var/log/messages*` and `/var/log/mcelog` to see if there are any error messages indicating disk failure. For a RAID array, the disk controller needs to be checked. The commands will be specific to the controller manufacturer.  
Windows: Run `perfmon` and look at the Alert logs. Run `chkdsk` to check for disk failure.
- Look for processes that are using the disk. From a shell window, execute `ps aux | grep ' D. '` several consecutive times to look for processes with "stat" D.

## 1.2.2 How to Check for Network Connectivity Issues

Poor performance is a major indicator of network connectivity problems.

- Check for cumulative dropped packets drops for each host.

### Linux

```
netstat -s | grep 'TCP data loss'
  4007 segments retransmited
  3302 TCP data loss events
```

### Windows

```
netstat -s
```

Look for "TCP Statistics for IPv4" and for "Segments Retransmitted."

The counts for Linux and Windows should be 0 or growing very slowly over time.

- Check for realtime dropped packets on specific network paths. The `ping` command is the same for Windows and Linux systems.

```
ping -c 20 other_host
  20 packets transmitted, 20 received, 0% packet loss, time 18997ms
  rtt min/avg/max/mdev = 0.168/0.177/0.200/0.010 ms
```

Packet loss should be 0%.

rtt should be less than .5 ms, except that it can be higher between the browser and load balancer.

In Windows, the command

```
ping -n 20 other_host
```

will show similar output, only with more information:

```
Ping statistics for 123.45.67.89:
Packets: Sent = 20, Received = 20, Lost = 0 (0% loss),
Approximate round trip times in milli-seconds:
Minimum = 96ms, Maximum = 121ms, Average = 104ms
```

- Check for network interface errors.

#### Linux

```
/sbin/ifconfig eth0 | grep errors
  RX packets:842803463 errors:0 dropped:0 overruns:0 frame:0
  TX packets:667946307 errors:0 dropped:0 overruns:0 carrier:0
```

#### Windows

```
ipconfig /all
```

will not show TX or RX packets information. However, Microsoft Network Monitor (free from the Microsoft Download site) will, when it is installed and configured properly.

## 1.2.3 How to Analyze WebLogic Server Metrics

These metrics provide an indication of whether the WebLogic Server is in a healthy state. Performance may degrade if any of the metrics is exceeding its threshold.

[Table 1–2](#) describes the WebLogic Server metrics you should monitor in Cloud Control. See the "Creating Monitoring Templates" section in the *Oracle Fusion Applications Administrator's Guide* to create a monitoring template.

**Table 1–2 WebLogic Server Metrics**

Metric Category	Metric Name	Warning Threshold	Critical Threshold	Comments
Datasource Metrics	Connections in Use	>250	>400	
	Connection Requests that Waited (%)	>10%	>20%	
	Connection Creation Time (ms)			
JVM Garbage Collectors	Garbage Collector - Percent Time spent (elapsed)	>10%	>20%	
JVM Metrics	Heap Usage	>90%	>98%	
Response	Status		=Down	This provides instance availability.
Server Servlet/JSP Metrics	Request Processing Time (ms)	>10s	>15s	
Server Work Manager Metrics	Work Manager Stuck Threads	>5	>10	
JVM Threads	Deadlocked Threads	>2	>5	
Module Metrics By Server	Active Sessions			

#### **When CPU Usage On Host Is Beyond Threshold and WebLogic Server Process Is Identified as Top CPU Consumer**

- Examine the % Time spent in the GC metric to see if JVM is doing excessive GC (>60 percent). If so, follow the process for diagnosing WebLogic Server heap pressure.
- Look for incident creation rate and error logs and see if something is triggering a massive amount of logging/errors.
- In JVMD, select the CPU state filter and look at top methods. Look for threads that are consistently in a CPU state.

#### **When There Is a Spike in Active Web Sessions**

- Check access logs to see if there is a spike in the number of users.
- Check if there are stuck threads, which could cause users to log in again.
- Check session distribution across WebLogic Server managed servers and see if there is a problem with the load balancer.
- Check session timeout in `web.xml`, and see if it is too high or too low.

#### **When There Are Stuck Threads On the System**

- Get the ECID from the stuck thread error in the WebLogic Server log.
- From the Request Monitor, search for the ECID and get details from JVMD.
- Alternatively, use JVMD to search for stuck threads and see the timing breakdown.
- A stuck thread will also result in an incident with a JFR recording. Use Oracle JRockit Mission Control (JRMC) to analyze the recording. JRMC is a set of tools that runs on the Oracle JRockit JVM and deliver advanced, unobtrusive JVM

monitoring and management, suitable for use in development and production environments.

### When There Are Deadlocks Detected On the System

- In JVMD, inspect the threads that are in a blocked state.
- Deadlock threads normally also will be reported as a stuck thread in the WebLogic Server log. Use the Request Monitor to search for the ECID and expand down into JVMD to show the blocking thread.

### When Request Processing Time Is Beyond Threshold

- Examine the % Time spent in GC metric to see if JVM is doing excessive garbage collection
- Look for incident create rate and error logs and see if something is triggering a massive amount of logging/errors.
- In JVMD, look at the thread states and see where most processing time is going.
- Check the metric **Garbage Collection - Invocation Time (ms)** under the **JVM Garbage Collectors** metric category. Sometimes if you run many managed server instances on the same host, you may be able to reduce time spent in garbage collection by reducing the number of garbage collector threads in each JVM. The default is based on the number of CPUs and could be too high if there are multiple active JVMs running on the same machine. In those cases, if you are using JRockit, add the `-XXgcThreads=4` option when starting the JVM. To add the option, edit the `DOMAIN_HOME/bin/fusionapps_start_params.properties` file, look for `-Xgc:genpar` and add the `-XXgcThreads=4` option after it (for example `-Xgc:genpar -XXgcThreads=4`). The value 4 directs the JVM to use four threads to perform garbage collection. You can try different values from 4 to the number of CPU cores and observe if the % Time spent in GC metric improves. For other platforms, see [Section 1.3, "Tuning Platforms for Oracle Fusion Applications."](#)

### When Percent Time Spent in GC Is Beyond Threshold

- Check the session count. If there is a sudden surge of sessions due to user load, the JVM could be short on heap. Increase heap if possible, or add additional managed server instances.
- Look at the stuck threads count. Stuck threads could increase the number of active session, as users could be launching new sessions hoping for a faster response.
- Look at the incident creation rate and error logs and see if something is triggering a massive amount of logging/errors. The incident creation/logging operations could be causing a high amount of object creation and garbage collection stress.
- Generate a heap dump using JVMD and analyze the top retainer of memory.
- Use JRMC to connect and extract a JFR recording. Examine the Memory panel and allocation details to see what is doing a lot of allocations.

### When Percent Connection Requests Waiting Is Beyond Threshold

- Examine the number of sessions and request rate, and see if there is a spike in the load that would account for an increased demand for connections.
- In JVMD, see where time is spent. For example, requests could be running longer due to slow SQLs (and retain the connection longer). In that case, identify and tune slow SQLs.

- Consider increasing the initial capacity setting of the corresponding data source.

## 1.2.4 How to Analyze Oracle HTTP Server Metrics

These metrics provide an indication of whether the Oracle HTTP Server is in a healthy state. Performance may degrade if any of the metrics is exceeding its threshold.

Table 1–3 describes the Oracle HTTP Server metrics you should monitor in Cloud Control. See the "Creating Monitoring Templates" section in the *Oracle Fusion Applications Administrator's Guide* to create a monitoring template. Also see [Section 1.4, "Tuning Oracle HTTP Server,"](#) and "Monitoring the Oracle Fusion Applications Middle Tier" in the *Oracle Fusion Applications Administrator's Guide*.

**Table 1–3 Oracle HTTP Server Metrics**

Metric Category	Metric Name	Warning Threshold	Critical Threshold
OHS Server Metrics	Busy Threads (%)	>85%	>95%
	Request Throughput (requests per second)	TBD	Yes
OHS Response Code Metrics	HTTP 4xx errors		
	HTTP 5xx errors		
OHS Virtual Host Metrics	Request Processing Time for a Virtual Host	>10s	>15s

### When Busy Threads % Is Beyond Threshold

- Check request throughput to see if load has increased. If the increased load is expected and CPU and memory resources on the OHS host has not exceeded threshold, consider increasing `ServerLimit/MaxClients` and `ThreadsPerChild` in `httpd.conf`.
- Check request process time on both OHS and underlying WebLogic Server to see if requests are taking longer. If WebLogic Server response time is increasing, check the key metrics for the WebLogic Server.
- If possible, ensure the client browser cache is enabled to reduce number of requests submitted.
- Check OHS Response Code Metrics. If there is a sudden increase of HTTP 4xx errors or HTTP 5xx errors, check the health of the underlying WebLogic Servers.
- Check and increase the minimum and maximum spare threads for Oracle HTTP Server.

In the `httpd.conf` file located in `instance_home/config/ohs/<ohs_name>/httpd.conf`:

- Increase `MaxSpareThreads` to 800.
- Increase `MinSpareThreads` to 200.

### When Request Processing Time for a Virtual Host Exceeds Threshold

- Check the key host metrics to ensure the OHS host is healthy.
- For each URL requested, OHS will first check `DocumentRoot` before passing the request to WebLogic Server. Check the utilization and health of the disk to which the `DocumentRoot` is pointing. If it is a NFS mount, check the health of the NFS mount point.



- Check the key metrics for the underlying WebLogic Server(s) and see if they are healthy.
- OHS accesses /tmp for each POST request, so check the performance of the /tmp filesystem.

## 1.2.5 How to Analyze Oracle Business Intelligence Server Metrics

These metrics provide an indication of whether the Oracle Business Intelligence Server is in a healthy state.

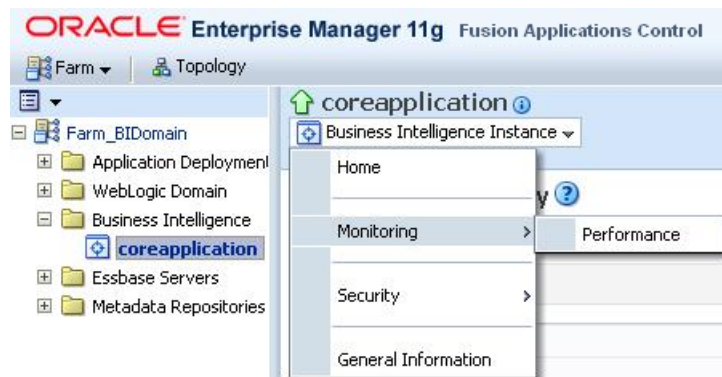
To start monitoring:

1. Log in to Oracle Enterprise Manager Fusion Applications Control. See the "Starting Fusion Applications Control" section in the *Oracle Fusion Applications Administrator's Guide*.

**Note:** Creating a monitoring template for Oracle Business Intelligence Server metric targets is not available in Cloud Control.

2. From the navigation pane, expand the farm, and then Business Intelligence.
3. Click **coreapplication**.
4. From the Business Intelligence Instance menu, choose **Monitoring > Performance**, as shown in [Figure 1-1](#).

**Figure 1-1** Checking Oracle Business Intelligence Performance Metrics



5. Use Fusion Applications Control to configure parameters related to Oracle Business Intelligence Suite Enterprise Edition.

Fusion Applications Control can monitor various BI components, including:

- Weblogic Analytics Application
- Oracle BI Presentation Services
- Oracle BI Server
- Oracle Weblogic Server (administration and managed servers)

## 1.2.6 How to Gather Key Identity Management Server Metrics

Oracle Access Manager and Oracle Identity Manager are both WebLogic Server instances. See [Section 1.2.3, "How to Analyze WebLogic Server Metrics"](#) to monitor their health. See also [Section 1.2.9, "How to Tune and Troubleshoot Oracle Identity Management."](#)

Use Cloud Control to monitor the Oracle Internet Directory and Oracle Identity Manager databases. For information on creating monitoring templates in Cloud Control to obtain metrics, see the "Creating Monitoring Templates" section in the *Oracle Fusion Applications Administrator's Guide*.

See [Table 1–4](#) for Oracle Identity Manager metrics.

**Table 1–4 Oracle Identity Manager Metrics**

Metric Category	Metric Name	Warning Threshold	Critical Threshold
<b>Oracle Identity Manager Cluster</b>			
Provisioning Requests	Completed Provisioning Requests		
	Failed Provisioning Requests		
Reconciliations (Last 24 Hours)	Jobs Completed		
Response	Status		
Role Grant Requests	Completed Role Grant Requests		
	Completed Role Grant Requests Processing Time (per sec)		
	Failed Role Grant Requests		
	Pending Role Grant Requests		
Self Service Requests	Completed Self Service Requests		
	Completed Self Service Requests Processing Time (per sec)		
	Failed Self Service Requests		
	Pending Self Service Requests		
<b>Oracle Identity Manager Server</b>			
Response	Status		
Resource Utilization	CPU Utilization (%)	80	90
	Memory Utilization (%)	80	90
Adapters	Average Adapter Execution Time (ms)		
	Completed Adapter Executions		
	Maximum Adapter Execution Time (ms)		
	Minimum Adapter Execution Time (ms)		

See [Table 1–5](#) for Oracle Internet Directory metrics.

**Table 1–5 Oracle Internet Directory Metrics**

Metric Category	Metric Name	Warning Threshold	Critical Threshold
LDAP Operation Response Time	Bind Operation Response Time		
	Request Processing Time (ms)		
LDAP Server Resource Usage	Total CPU Usage (%)	80	90

**Table 1–5 (Cont.) Oracle Internet Directory Metrics**

<b>Metric Category</b>	<b>Metric Name</b>	<b>Warning Threshold</b>	<b>Critical Threshold</b>
	Total Memory Usage (%)	80	90
Response	Status		
(Critical Events) System Resource Events (3113 Errors)	Number of 3113 Error Occurrences		
(Critical Events) System Resource Events (3114 Errors)	Number of 3114 Error Occurrences		
LDAP Failed Bind Operations Profile	Failed Bind Operations		
LDAP Server Resource Usage	Completed Bind Operations Completed Compare Operations Completed Modify Operations Completed Search Operations Total Operations		
User LDAP Operations Statistics	Failed Base Search Operations  Failed Bind Operations Failed Compare Operations Failed Delete Operations Successful Base Search Operations		

To enable the collection of user LDAP Operation Statistics, edit the configuration using Fusion Applications Control:

1. From the navigation pane, expand the farm and then the Oracle Internet Directory target.
2. From the **Administration** menu, choose **Server Properties**.
3. Click **User Statistics Collection** to enable this feature.
4. Click **Apply** to save your changes.
5. From the **Administration** menu, choose **Shared Properties**.
6. Enter a valid DN (for example, `cn=orcladmin`) to enable user statistics collection for that user.

## 1.2.7 How to Analyze Key Enterprise Scheduler Metrics

The metrics shown in [Table 1–6](#) provide an indication of whether the Enterprise Scheduler instance is performing well. See the "Creating Monitoring Templates" section in the *Oracle Fusion Applications Administrator's Guide*.

**Table 1–6 Key Enterprise Scheduler Metrics**

Metric Category	Metric Name	Warning Threshold	Critical Threshold	Comments
Completed Job Summary	Average Elapsed Time (ms)			You can define different thresholds for different job names.
Long Running Job	Elapsed Time (ms)			
WorkAssignment Metrics aggregated across Group Members	Average Wait Time for Requests in Ready State (seconds)			

**When the Value of Average Elapsed Time for the Completed Jobs Is Higher Than Expected**

- Check the key host and WebLogic Server metrics and see if any component that could be involved in process batch jobs is in an unhealthy state.
- Follow the steps listed in [Section 2.1.4, "How to Troubleshoot Slow Batch Jobs"](#) and analyze several jobs to see if there are any common causes.

**When the Value of Elapsed Time Under the Long Running Job Category Is Higher Than Expected**

- Open the Enterprise Scheduler home page in Oracle Enterprise Manager Fusion Applications Control and examine the Top 10 Long Running Jobs.
- Identify the job of interest, and follow the steps in [Section 2.1.4, "How to Troubleshoot Slow Batch Jobs."](#)

**When Average Wait Time For Requests in Ready State (seconds) Is Higher Than Expected**

Follow the steps in [Section 2.1.4.1, "Troubleshooting Jobs That Are in Wait/Ready/Blocked State for a Long Time."](#)

## 1.2.8 How to Monitor Key SOA Metrics

Monitoring SOA involves monitoring SOA Infrastructure, SOA Composite and SOA servers. See the "Creating Monitoring Templates" section in the *Oracle Fusion Applications Administrator's Guide*.

Use [Table 1–7](#) to locate the key performance metrics for SOA Composite.

**Table 1–7 SOA Composite Metrics**

Metric Category	Metric Name
Mediator Case	Invocation count throughput in last 5 minutes
SOA Composite - Response Metrics	Composite Status
SOA Composite - Component Detail Metrics	Component: Business Faults
	Component: Error Rate (%)
SOA Composite - Services/References Detail Metrics	Service/Reference: Average Incoming Messages Processing Time (ms)
	Service/Reference: Average Outbound Messages Processing Time (ms)

**Table 1–7 (Cont.) SOA Composite Metrics**

Metric Category	Metric Name
	SOA Composite: Error Rate (%)
	SOA Composite: Synchronous Response Time (ms)
	SOA Composite: Total Business

Use [Table 1–8](#) to locate the key performance metrics for SOA Infrastructure.

**Table 1–8 SOA Infrastructure Metrics**

Metric Category	Metric Name
SOA Infra Response	Up Down Status
SOA Infrastructure - Message Detail Metrics	Errors (minute)
SOA Infrastructure - Service Engine Detail Metrics	Service Engine: Error Rate (%)

## 1.2.9 How to Tune and Troubleshoot Oracle Identity Management

Follow the steps in this section to tune Oracle Identity Management specifically for Oracle Fusion Applications.

Most of these settings should be set by default if your environment is newly provisioned. If your environment is upgraded from a previous release, you will need to manually check and adjust the settings.

### Optimize LDAP Search

**Description:** Optimize LDAP search by enabling search filters.

**Solution:**

- Create an ldif file named `searchfilter_oid_tuning.ldif` with this content:

```
dn: cn=dsaconfig, cn=configsets, cn=oracle internet directory
changetype: modify
add: orclinmemfiltprocess;dn:
orclinmemfiltprocess;dn:
cn=Roles, cn=fscm, cn=FusionDomain, cn=JPSContext, cn=FusionAppsPolicies
orclinmemfiltprocess;dn:
cn=Roles, cn=crm, cn=FusionDomain, cn=JPSContext, cn=FusionAppsPolicies
orclinmemfiltprocess;dn:
cn=Roles, cn=hcm, cn=FusionDomain, cn=JPSContext, cn=FusionAppsPolicies
orclinmemfiltprocess;dn: cn=Permission
Sets, cn=fscm, cn=FusionDomain, cn=JPSContext, cn=FusionAppsPolicies
orclinmemfiltprocess;dn: cn=Permission
Sets, cn=hcm, cn=FusionDomain, cn=JPSContext, cn=FusionAppsPolicies
orclinmemfiltprocess;dn: cn=Permission
Sets, cn=crm, cn=FusionDomain, cn=JPSContext, cn=FusionAppsPolicies
orclinmemfiltprocess;dn: cn=Permissions, cn=JAAS
Policy, cn=fscm, cn=FusionDomain, cn=JPSContext, cn=FusionAppsPolicies
orclinmemfiltprocess;dn:
cn=hcm, cn=FusionDomain, cn=JPSContext, cn=FusionAppsPolicies
orclinmemfiltprocess;dn:
cn=crm, cn=FusionDomain, cn=JPSContext, cn=FusionAppsPolicies
orclinmemfiltprocess;dn:
cn=fscm, cn=FusionDomain, cn=JPSContext, cn=FusionAppsPolicies
```

- At the command prompt, run this command:

```
ldapmodify -p portNum -h hostname -D cn=orcladmin -f searchfilter_oid_
tuning.ldif
```

### Log Levels

**Description:** Oracle Identity Management stack WebLogic Server log levels are too fine-grained and need to be set to Severe.

**Solution:** In all WebLogic Servers in the Oracle Identity Management domain, change log levels to SEVERE. This is a two-part process.

- **Part 1:** Manually edit the `logging.xml` file, or by using the Oracle WebLogic Server Administration Console.

Edit the `logging.xml` file that is in each server directory of the Oracle Identity Management Domain domain, such as `OAM_Server1`, `OIM_Server1`, and `SOA`, and set `level='SEVERE'` for all `log_handlers` and `loggers`. The path to each `logging.xml` file will resemble:

```
DOMAIN_HOME/config/fmwconfig/<servername>
```

- **Part 2:** Edit the log levels in the Oracle WebLogic Server Administration Console:

- Log in to the console (`http://hostname:port/console`).
- Click the Servers link.
- Click the desired server.
- Click the **Logging** tab.
- Scroll down and click the **Advanced** link.
- In the Message destination(s) section, change the log levels as shown here:

```
Log file : Severity level: warning
Standard out :Severity level: error
Domain log broadcaster :Severity level: error
Memory buffer: Memory Buffer Severity level: error
```

- Save the changes.
- Repeat this for all WebLogic Servers in the Oracle Identity Management stack, such as `OAM_Server1`, `OIM_Server1`, and `SOA`.
- Click **Activate Changes**.
- Restart the server.

### Tune Two OID Configuration Parameters

**Description:** Two Oracle Internet Directory configuration parameters, `orclmaxcc` and `orclserverprocs`, need to be appropriately tuned.

**Solution:** Change `orclmaxcc` to 10 and tune the number of OID processes:

- Name the sample script `config_oid_tuning.ldif`. You will need to set `cn=oid1` to your component name. In a multi-component environment, this needs to be changed accordingly. You will need to set `orclserverprocs` to the number of cores in the OID server that is used.

```
dn: cn=oid1,cn=osldapd,cn=subconfigsubentry
changetype: modify
replace: orclmaxcc
```

```
orclmaxcc: 10
orclserverprocs: <number of cores>
```

- Apply the script by running this command at the command prompt:

```
ldapmodify -p portNum -h hostname -D cn=orcladmin -f config_oid_tuning.ldif
```

### Enable Timing Logging

**Description:** Add parameters to enable timing logging for OID.

**Solution:**

- Add this entry to the config.xml file in `./oid/user_projects/domains/oid_domain/config/` and the `./oim/user_projects/domains/oim_domain/config/` directories for each WebLogic Server in the Oracle Identity Management domain:

```
<web-server>
  <web-server-log>
    <file-name>logs/access.log.%yyyyMMdd%</file-name>
    <rotation-type>byTime</rotation-type>
    <number-of-files-limited>true</number-of-files-limited>
    <rotate-log-on-startup>true</rotate-log-on-startup>
    <buffer-size-kb>0</buffer-size-kb>
    <logging-enabled>true</logging-enabled>
    <elf-fields>date time time-taken bytes c-ip s-ip sc-status
sc(X-ORACLE-DMS-ECID) cs-method cs-uri
cs(User-Agent) cs(ECID-Context) cs(Proxy-Remote-User)
cs(Proxy-Client-IP)</elf-fields>
    <log-file-format>extended</log-file-format>
    <log-time-in-gmt>false</log-time-in-gmt>
    <log-milli-seconds>true</log-milli-seconds>
  </web-server-log>
</web-server>
```

- To set the access log format, add this string to the `httpd.conf` file in the `/u01/ohsauth/ohsauth_inst/config/OHS/ohs1` path.

```
LogFormat "%h %l %u %t \"%r\" %>s %b %D %{X-ORACLE-DMS-ECID}o" common
```

### Increase Policy Cache Timeout

**Description:** By default, entries in the security policy cache time out every 12 hours. When these entries time out, sporadic slowness may be experienced because they need to be repopulated. To avoid this, increase the timeout value.

**Solution:**

- Open the `DOMAIN_HOME/config/fmwconfig/jps-config.xml` file.
- Add the following entry to the `<serviceInstance name="policystore.ldap" provider="policystore.provider">` section and select a timeout value (in milliseconds):

```
<property name="oracle.security.jps.policystore.refresh.purge.timeout"
value="1296000000"/>
```

This example will set the timeout to 15 days. Adjust the property value as needed.

```
<serviceInstance name="pdp.service" provider="pdp.service.provider">
...
<property name="oracle.security.jps.policystore.refresh.purge.timeout"
value="1296000000"/>
```

**Adjust Connection Settings Between Managed Servers and LDAP Server**

**Description:** Adjust the following LDAP settings to improve system stability and performance.

**Solution:**

- From each Fusion Applications domain, login to the instance of WebLogic Server called the Administration Server.
- Select Security realms and click **myrealm**.
- Click **Providers**.
- Click **OIDAuthenticator**.
- Select the **Provider Specific** tab.
- Check the **Keep Alive Enabled** option.
- Set **Connection Timeout** to 60.
- Set **Parallel Connect Delay** to 1.
- Set **Results Time Limit** to 300000.
- Select the **Ignore Duplicate Membership** option.

**Adjust Connection Pool Sizes to Oracle Access Manager**

**Description:** Increase the connection pool size to Oracle Access Manager to avoid contention when load is high.

**Solution:**

- From each Fusion Applications domain, login to the Administration Server instance of WebLogic Server.
- Select **Security Realms** and click **myrealm**.
- Click **Providers**.
- Click **OAMIdentityAsserter**.
- Select the **Provider Specific** tab.
- Set **Minimum Access Server Connections In Pool** to 10.
- Set **Maximum Access Server Connections In Pool** to 100.
- Set **Connection Timeout** to 60.
- Set **Parallel Connect Delay** to 1.
- Set **Results Time Limit** to 300000.
- Select the **Ignore Duplicate Membership** option.

**Adjust Configuration Settings for Oracle Access Manager Domain**

**Description:** The following setting changes will ensure optimal performance for Oracle Access Manager under typical Oracle Fusion Applications workload.

**Solution:** Edit the settings shown in [Table 1-9](#) in the *OAM Domain Home/config/fmwconfig/oam-config.xml* file and set the recommended values:



**Table 1–9 Recommended Settings for Best Oracle Access Manager Performance**

Location	Parameter	Value
<i>DOMAIN_</i> <i>HOME</i> /config/fmwconfig/oam-config.xml - <Setting Name="UserIdentityStore" Type="htf:map">	SearchTimeLimit	<Setting Name="SearchTimeLimit" Type="xsd:integer">120</Set ting>
<i>DOMAIN_</i> <i>HOME</i> /config/fmwconfig/oam-config.xml - <Setting Name="UserIdentityStore" Type="htf:map">	MIN_CONNECTIONS	<Setting Name="MIN_ CONNECTIONS" Type="xsd:integer">10</Sett ing>
<i>DOMAIN_</i> <i>HOME</i> /config/fmwconfig/oam-config.xml - <Setting Name="UserIdentityStore" Type="htf:map">	MAX_CONNECTIONS	<Setting Name="MAX_ CONNECTIONS" Type="xsd:integer">100</Set ting>
<i>DOMAIN_</i> <i>HOME</i> /config/fmwconfig/oam-config.xml - <Setting Name="Webgate_IDM" Type="htf:map">	cachePragmaHeader	Delete value
<i>DOMAIN_</i> <i>HOME</i> /config/fmwconfig/oam-config.xml - <Setting Name="Webgate_IDM" Type="htf:map">	cacheControlHeader	Delete value
<i>DOMAIN_</i> <i>HOME</i> /config/fmwconfig/oam-config.xml - <Setting Name="Webgate_IDM" Type="htf:map">	numOfConnections	<Setting Name="numOfConnections" Type="xsd:string">10</Setti ng>

## 1.3 Tuning Platforms for Oracle Fusion Applications

If you are using the IBM AIX, Solaris SPARC, or Solaris x64 operating system, Oracle recommends that you incorporate these settings.

### IBM AIX

Incorporate these settings for best performance when using IBM JVM 9:

```
-Xgcpolicy:gencon
-Xcompressedrefs
-XtlhPrefetch
```

### Solaris SPARC

- In *all* the domains, make these changes to the *DOMAIN\_HOME*/bin/fusionapps\_start\_params.properties file:
  - Edit fusion.default.SunOS-sparc.memoryargs and add these arguments:
 

```
-XX:ReservedCodeCacheSize=128m -XX:+UseParallelOldGC
-XX:ParallelGCThreads=4
```
  - Restart all the servers of all domains.
- In *all* the domains, make these changes to the *DOMAIN\_HOME*/bin/fusionapps\_start\_params.properties file:
  - Add the fusion.AdminServer.SunOS-sparc.memoryargs entry with these arguments:
 

```
-XX:PermSize=256m -XX:MaxPermSize=512m -XX:+UseParallelGC
```

```
-XX:+HeapDumpOnOutOfMemoryError -XX:HeapDumpPath=@HEAP_DUMP_PATH@
-XX:+ParallelGCVerbose -XX:ReservedCodeCacheSize=128m
-XX:+UseParallelOldGC -XX:ParallelGCThreads=2
```

- Change @HEAP\_DUMP\_PATH@ to a valid path for the Heap Dump files to be written.
- Restart the Admin servers of all the domains.
- For the BIDomain, make these changes to the \$BIDomain/bin/fusionapps\_start\_params\_bi.properties file:
  - Edit fusion.default.SunOS-sparc.memoryargs and append these arguments:
 

```
-XX:ReservedCodeCacheSize=128m -XX:+UseParallelOldGC
-XX:ParallelGCThreads=4
```
  - Restart all the servers of the BIDomain.
- For the BIDomain, make these changes to the \$BIDomain/bin/fusionapps\_start\_params\_bi.properties file:
  - Add the fusion.AdminServer.SunOS-sparc.memoryargs entry with these arguments:
 

```
-XX:PermSize=256m
-XX:MaxPermSize=512m -XX:+UseParallelGC -XX:+HeapDumpOnOutOfMemoryError
-XX:HeapDumpPath=@HEAP_DUMP_PATH@ -XX:+ParallelGCVerbose
-XX:ReservedCodeCacheSize=128m -XX:+UseParallelOldGC
-XX:ParallelGCThreads=2
```
  - Change @HEAP\_DUMP\_PATH@ to a valid path for the Heap Dump files to be written.
  - Restart the Admin server of the BIDomain.
- For the CommonDomain, make these changes to the \$CommonDomain/bin/fusionapps\_start\_params.properties file:
  - Edit fusion.HelpPortalCluster.SunOS-sparc.memoryargs and add these arguments:
 

```
-XX:ReservedCodeCacheSize=128m -XX:+UseParallelOldGC
-XX:ParallelGCThreads=4
```
  - Restart the HelpPortalCluster servers of the CommonDomain.
- For the ProcurementDomain, make these changes to the \$ProcurementDomain/bin/fusionapps\_start\_params.properties file:
  - Edit fusion.ProcurementCluster.SunOS-sparc.memoryargs to add the arguments:
 

```
-XX:ReservedCodeCacheSize=128m -XX:+UseParallelOldGC
-XX:ParallelGCThreads=4
```
  - Restart the ProcurementCluster of the ProcurementDomain.
- For the ProjectDomain, make these changes to the \$ProjectDomain/bin/fusionapps\_start\_params.properties file:
  - Edit fusion.ProjectsFinancialsCluster.SunOS-sparc.memoryargs and add these arguments:

```
-XX:ReservedCodeCacheSize=128m -XX:+UseParallelOldGC
-XX:ParallelGCThreads=4
```

- Restart the ProjectFinancialCluster of the ProjectDomain.

### Solaris x64

- In *all* domains, make these changes to the `DOMAIN_HOME/bin/fusionapps_start_params.properties` file:
  - Edit `fusion.default.SunOS-i386.memoryargs` to add these arguments:
 

```
-XX:ReservedCodeCacheSize=128m -XX:+UseParallelOldGC
-XX:ParallelGCThreads=4
```
  - Restart all the servers of all the domains.
- In *all* domains, make these changes to the `DOMAIN_HOME/bin/fusionapps_start_params.properties` file:
  - Add the `fusion.AdminServer.SunOS-i386.memoryargs` entry with these arguments:
 

```
-XX:PermSize=256m -XX:MaxPermSize=512m -XX:+UseParallelGC
-XX:+HeapDumpOnOutOfMemoryError -XX:HeapDumpPath=@HEAP_DUMP_PATH@
-XX:+ParallelGCVerbose -XX:ReservedCodeCacheSize=128m
-XX:+UseParallelOldGC -XX:ParallelGCThreads=2
```
  - Change `@HEAP_DUMP_PATH@` to a valid path for the Heap Dump files to be written.
  - Restart the Admin servers of all the domains.
- For the BIDomain, make these changes to the `$BIDomain/bin/fusionapps_start_params.properties` file:
  - Edit `fusion.default.SunOS-i386.memoryargs` and append these arguments:
 

```
-XX:ReservedCodeCacheSize=128m -XX:+UseParallelOldGC
-XX:ParallelGCThreads=4
```
  - Restart all the servers of the BIDomain.
- For the BIDomain, make these changes to the `$BIDomain/bin/fusionapps_start_params.properties` file:
  - Add the `fusion.AdminServer.SunOS-i386.memoryargs` entry with these arguments:
 

```
-XX:PermSize=256m
-XX:MaxPermSize=512m -XX:+UseParallelGC -XX:+HeapDumpOnOutOfMemoryError
-XX:HeapDumpPath=@HEAP_DUMP_PATH@ -XX:+ParallelGCVerbose
-XX:ReservedCodeCacheSize=128m -XX:+UseParallelOldGC
-XX:ParallelGCThreads=2
```
  - Change `@HEAP_DUMP_PATH@` to a valid path for the Heap Dump files to be written.
  - Restart the Admin server of the BIDomain.
- For the CommonDomain, make these changes to the `$CommonDomain/bin/fusionapps_start_params.properties` file:

- Edit `fusion.HelpPortalCluster.SunOS-i386.memoryargs` to add these arguments:
 

```
-XX:ReservedCodeCacheSize=128m -XX:+UseParallelOldGC
-XX:ParallelGCThreads=4
```
- Restart the `HelpPortalCluster` of the `CommonDomain`.
- For the `ProcurementDomain`, make these changes to the `ProcurementDomain/bin/fusionapps_start_params.properties` file:
  - Edit `fusion.ProcurementCluster.SunOS-i386.memoryargs` and add these arguments:
 

```
-XX:ReservedCodeCacheSize=128m -XX:+UseParallelOldGC
-XX:ParallelGCThreads=4
```
  - Restart the `ProcurementCluster` server of the `ProcurementDomain`.

## 1.4 Tuning Oracle HTTP Server

This section lists several Oracle HTTP Server configuration changes that may improve performance. These settings are the default if your environment is newly provisioned. If your environment is upgraded, you will have to manually apply these setting changes.

Follow these steps to tune the Oracle HTTP Server.

- Avoid restarts of `httpd-worker` processes by increasing `MaxSpareThreads` and `MinSpareThreads`.
 

These restarts affect the recreation of connections and threads in Oracle HTTP Server processes during varying load patterns and could negatively affect performance. The recommendation is to increase the minimum and maximum spare threads for Oracle HTTP Server to 200 and 800 respectively.

Edit the `httpd.conf` file located in `instance_home/config/OHS/<ohs_name>/httpd.conf` so it resembles:

```
<IfModule mpm_worker_module>
...
MinSpareThreads 200
MaxSpareThreads 800
...
</IfModule>
```
- Increase the `ThreadsPerChild` setting from 50 to 250. Oracle HTTP Server processes maintain shared resources, such as connection pools to back-end servers, and memory for various purposes such as storing a cache of static files, and storing server information by pinging servers to obtain a dynamic server list from the cluster.

It would be efficient to have more threads created within a process so that they can effectively share the common resources. Setting more threads per process reduces the memory footprint and improves the efficiency of using the connection pool to the back-end servers. To create more threads within a process, change the details in the `<instance_home>/config/ohs/<ohs_name>/httpd.conf` file, as shown here.

```
##<under worker mpm>
<IfModule mpm_worker_module...
StartServers 2
```

```
ThreadLimit 250
ThreadsPerChild 250
...
```

- Increase the Keep Alive timeout between Oracle HTTP Server and WebLogic Servers.

By default, a connection between an Oracle HTTP Server and a WebLogic Server is closed if it is idle for 20 seconds.

Since there is a cost in re-establishing these connections, it is beneficial to increase this timeout to 5 minutes. To do this, the `mod_wl_ohs.conf` and `config.xml` files for the target WebLogic Server domains need to be changed.

Edit the `<instance home>/config/OHS/<ohs name>/mod_wl_ohs.conf` file so it resembles this example:

```
LoadModule weblogic_module ${ORACLE_HOME}/ohs/modules/mod_wl_ohs.so

<IfModule weblogic_module>
  ...
  KeepAliveSecs 300
  ...
</IfModule>
```

Edit the WebLogic Server configuration.

- Login to the WebLogic Server console of the target domain.
- Select **Environment > Servers**.
- Select the server you want to change.
- Select the Protocols tab and then the HTTP subtab.
- Change both the Duration and HTTPS Duration to 300.
- Disable compression for .swf files.

Add this line to the `<instance home>/config/OHS/<ohs name>/moduleconf/mod_deflate.conf` file.

```
SetEnvIfNoCase Request_URI \.(swf)$ no-gzip dont-vary
```

The .swf files are already compressed; there is no need for Oracle HTTP Server to compress them again.

- Set the Expires header for Business Intelligence static resources. Adding the HTTP Expires header for static resources related to business intelligence improves performance by allowing the browser to locally cache those artifacts instead of making repeated requests for them.

Edit the `instance home/config/OHS/ohs name/moduleconf/FusionVirtualHost_bi.conf` file and add the entries noted in [Example 1-1](#).

#### **Example 1-1 Additions to FusionVirtualHost\_bi.conf**

```
#Internal virtual host for BI, replace biprove.domain.host and
biprov.wls.managed.port with appropriate values
```

```
<VirtualHost <OHS_INTERNAL_HOST>:<INTERNAL_PORT> > ServerName http://<INTERNAL_
ENDPOINT_HOST>:<INTERNAL_ENDPOINT_PORT>
```

```
RedirectMatch 301 ^/analytics$ /analytics/
```

```

# Add the following line
RedirectMatch 301 ^/analytics/res$ /analytics/res/

<LocationMatch ^/analytics/>
    SetHandler weblogic-handler
    WeblogicCluster <biprov.domain.host>:<biprov.wls.managed.port>
</LocationMatch>

# Add the following section
<LocationMatch ^/analytics/res/>
    SetHandler weblogic-handler
    WeblogicCluster <biprov.domain.host>:<biprov.wls.managed.port>
    SetOutputFilter DEFLATE
    SetEnvIfNoCase Request_URI \.(?:gif|jpe?g|png)$ no-gzip dont-vary
    ExpiresActive on
    ExpiresDefault "access plus 1 weeks"
    Header set Cache-Control "Public"
</LocationMatch>

#External virtual host for BI

<VirtualHost <OHS_EXTERNAL_HOST>:<EXTERNAL_PORT> > ServerName https://<EXTERNAL_
ENDPOINT_HOST>:<EXTERNAL_ENDPOINT_PORT>

    RedirectMatch 301 ^/analytics$ /analytics/
# Add the followig line
    RedirectMatch 301 ^/analytics/res$ /analytics/res/

    # BI EE
    <LocationMatch ^/analytics/>
        SetHandler weblogic-handler
        WeblogicCluster <biprov.domain.host>:<biprov.wls.managed.port>
            WLProxySSL ON
            WLProxySSLPassThrough ON
            RewriteEngine ON
            RewriteOptions inherit
    </LocationMatch>

# Add the following section
    <LocationMatch ^/analytics/res/>
        SetHandler weblogic-handler
        WeblogicCluster <biprov.domain.host>:<biprov.wls.managed.port>
            WLProxySSL ON
            WLProxySSLPassThrough ON
            RewriteEngine ON
            RewriteOptions inherit
        SetOutputFilter DEFLATE
        SetEnvIfNoCase Request_URI \.(?:gif|jpe?g|png)$ no-gzip dont-vary
        ExpiresActive on
        ExpiresDefault "access plus 1 weeks"
        Header set Cache-Control "Public"
    </LocationMatch>

```

- Add the favicon.ico file to the online help system document root.

Most browsers will attempt to access the `favicon.ico` (favorite icon) file from the root of a web site. The favorite icon is displayed next to the browser's address bar.

If the file does not exist, the browser will attempt to fetch it the next time the browser is started. If the file exists, it will be cached in the browser's cache.

Oracle Fusion Applications does not ship with a `favicon.ico` file. If you inspect the online help system access log, you will see multiple requests for `/favicon.ico` that result in the 404 File Not Found error response.

You can avoid many of these hits by placing a `favicon.ico` file in the location specified by the `DocumentRoot` location in the online help system configuration file. The icon file must be 16x16 pixels in Windows Icon (.ico) file format.

By default, the `DocumentRoot` is configured to be `$ORACLE_INSTANCE/config/$COMPONENT_TYPE/$COMPONENT_NAME/htdocs`. You can put a `favicon.ico` file at that location. If you have multiple online help system instances, you should put the file in the `DocumentRoot` location of each instance.





---

---

## Troubleshooting Process

This chapter discusses the basic process to use to troubleshoot Oracle Fusion Applications, and presents specific steps for the most commonly-seen problems.

This chapter includes these sections:

- [Section 2.1, "Introduction to Troubleshooting"](#)
- [Section 2.2, "View Detailed Timing Of a Request Using a JRockit Flight Recorder \(JFR\) File"](#)
- [Section 2.3, "Using My Oracle Support for Additional Troubleshooting Information"](#)

### 2.1 Introduction to Troubleshooting

This section provides guidelines and a process for using the information in this chapter. Using the following guidelines and process will focus and minimize the time you spend resolving problems.

#### Guidelines

When using the information in this chapter, Oracle recommends:

- After performing any of the solution procedures in this chapter, immediately retrying the failed task that led you to this troubleshooting information. If the task still fails when you retry it, perform a different solution procedure in this chapter and then try the failed task again. Repeat this process until you resolve the problem.
- Making notes about the solution procedures you perform, symptoms you see, and data you collect while troubleshooting. If you cannot resolve the problem using the information in this chapter and you must log a service request, the notes you make will expedite the process of solving the problem.

#### Process

Follow the process outlined in [Table 2-1](#) when using the information in this guide. If the information in a particular section does not resolve your problem, proceed to the next step in this process.

**Table 2–1 Process for Resolving Performance Issues**

Step	Section to Use	Purpose
1	<p><a href="#">Chapter 1, "Monitoring and Tuning Oracle Fusion Applications"</a></p> <p>Oracle Fusion Applications Administrator's Guide:</p> <p>Chapter 9 and Chapter 10 for locating key metrics</p> <p>Chapter 11 for diagnosing Java applications in the middle tier</p> <p>Chapter 12 for monitoring and tuning the Oracle database</p>	<p>Collect symptoms about the performance problem to determine if the problem is related the following:</p> <ul style="list-style-type: none"> <li>■ Response time or throughput</li> <li>■ Widespread or limited to specific users and flows</li> </ul> <p>Determine what changed since the system was last performing well.</p>
2	<p><a href="#">Section 2.1.1</a> through <a href="#">Section 2.1.6</a></p>	<p>Use <a href="#">Section 2.1.1</a> if the problem is widespread. Otherwise, review the problem description in <a href="#">Section 2.1.2</a> through <a href="#">Section 2.1.6</a> to if there is a match</p> <p>These sections describe:</p> <ul style="list-style-type: none"> <li>■ Possible causes of the problems</li> <li>■ Solution procedures corresponding to each of the possible causes</li> </ul>
4	<p><a href="#">Section 2.3</a></p>	<p>Use My Oracle Support to get additional troubleshooting information about Oracle Fusion Applications or performance, scalability, and reliability. My Oracle Support provides access to several useful troubleshooting resources, including Knowledge Base articles and Community Forums and Discussions.</p>
5	<p><a href="#">Section 2.3</a></p>	<p>Log a service request if the information in this chapter and My Oracle Support does not resolve your problem. You can log a service request using My Oracle Support at <a href="https://support.oracle.com">https://support.oracle.com</a>.</p>

In addition to this process, for more information about determining if database cache sizes need to be increased, see the "Automatic Database Performance Monitoring" chapter in the *Oracle Database 2 Day + Performance Tuning Guide* to use Automatic Database Diagnostic Monitor (ADDM) reports

### 2.1.1 How to Troubleshoot Overall System Slowness

To troubleshoot overall system slowness:

- Navigate to the Fusion Applications target in Enterprise Manager.
- Select the application that is having the problem, such as Payables.
- Navigate to the product home page, such as the Payables product home page.
- Select **Monitoring > System Performance** to open the System Performance page.

- Click the name of the target metric name for **Request Processing Time**. A popup is displayed.
- Click **Problem Analysis** to see the related metrics in the problem analysis page. You should be able to see the Source Metric and Related Metrics in the Problem Analysis page.
- Check if any key metrics are beyond threshold, or look for sudden changes.

In particular, check the **heap usage** metrics.

If the heap is constantly close to 100 percent, search using the string `OutOfMemoryErrors` in the Oracle WebLogic Server `server_name.out` in the following directories:

```
(UNIX) DOMAIN_HOME/servers/server_name/logs
(Windows) DOMAIN_HOME\servers\server_name\logs
```

If there are `OutOfMemoryErrors`, a heap dump would have been generated in the directory specified by the `-XX:HeapDumpPath` parameter from the Oracle WebLogic Server startup JVM option. Submit the heap dump to Oracle Support for further analysis of what is retaining memory. In many cases a bounce is needed to resolve the issue.

- Scroll down and you will be able to see the Related Targets at the bottom of the page.
- Select the Related Targets Topology to view the Topology of the target on which the metric is being analyzed.
- Review incidents and logs by clicking the **View Related Log Messages** link at the top right side of the page. The target context, the chart time duration and related targets are chosen to do log search.
- Follow the appropriate triage process depending on which metric is in question.

## 2.1.2 How to Find the Slowest JSPX/JSFF Pages

An administrator would want this information to understand which part of the application has poor performance.

To find the slowest JSPX/JSFF pages:

- Navigate to **Middleware Targets** in Oracle Enterprise Manager Fusion Applications Control.
- Select **Application Dependency and Performance** from the drop-down menu.
- Expand the ADF node in the tree on the left hand side of the screen.
- Click JSF pages and sort by response time.
- Look for the slowest page name, and find that page name in the tree on the left. Click to drill down.
- If applicable, it will show the managed beans for that page.

## 2.1.3 How to Troubleshoot Slow UI Request

A sluggish UI response directly affects each user's experience. Administrators will want to use the suggested troubleshooting methods in this section to track down and fix slow UI response.

### 2.1.3.1 Troubleshooting Historical Requests

These steps are applicable to requests that have completed.

- Find Execution Context Identifiers (ECIDs) submitted by the user and find the slowest requests using server logs. Compare response time as recorded in Oracle HTML Server (OHS) and WebLogic Server access logs. If there is a big gap, check OHS health. Otherwise, look at request details in WebLogic Server.

Find the nodes that serviced the request by searching for the ECID using Request Monitor in Enterprise Manager.

Drill down into the JVM Diagnostics screen.

The data displayed should be in the context of that ECID. Observe the thread state transitions and check the call stacks to find the top methods and top SQL statements.

- Check if slowness is caused by customized code.
- If slowness is caused by lock contention, check the thread that is holding the lock and what it is doing.
- If the request is slow enough to cause a STUCK thread, an incident should have been generated. Search the log file for the incident number. The incident directory would have a WebLogic Server diagnostic image which includes a JRockit Flight Recorder (JFR) recording from running WebLogic Server.
- If there are not enough details in the JVM Diagnostic data, follow instructions in [Section 2.2, "View Detailed Timing Of a Request Using a JRockit Flight Recorder \(JFR\) File"](#) to extract and view JFR recordings.

### 2.1.3.2 Troubleshooting Live Requests

To troubleshoot slow UI requests that are still running, extract and view a JFR recording following instructions in [Section 2.2, "View Detailed Timing Of a Request Using a JRockit Flight Recorder \(JFR\) File"](#) against the server on which the user session is running.

### 2.1.3.3 Troubleshooting StuckThreads

#### Problem

Stuck threads may result if the server is nearing out of memory. If the server is close to out of memory, all requests should slow down. To resolve an out-of-memory issue, see [Section 2.2, "View Detailed Timing Of a Request Using a JRockit Flight Recorder \(JFR\) File."](#)

If a request is taking longer than 10 minutes, the stuck thread is reported to Oracle WebLogic Server `server_name.out` in the following directories:

```
(UNIX) DOMAIN_HOME/servers/server_name/logs
(Windows) DOMAIN_HOME\servers\server_name\logs
```

For example:

```
<Mar 4, 2011 7:44:08 AM PST> <Error> <WebLogicServer> <BEA-000337> <[STUCK]
ExecuteThread: '19' for queue: 'weblogic.kernel.Default (self-tuning)' has been
busy for "600" seconds working on the request
"weblogic.servlet.internal.ServletRequestImpl@18986012[
GET /productManagement/faces/PimDashboardUiShellPage?_afLoop=1398820150000&_
afWindowMode=0&_adf.ctrl-state=a44e7uxcc_13 HTTP/1.1
Accept: image/gif, image/x-xbitmap, image/jpeg, image/pjpeg,
```

```

application/x-shockwave-flash, application/x-ms-application,
application/x-ms-xbap, application/vnd.ms-xpsdocument, application/xhtml+xml,
application/vnd.ms-excel, application/vnd.ms-powerpoint, application/msword, */*
Accept-Language: fr
UA-CPU: x86
...
]", which is more than the configured time (StuckThreadMaxTime) of "600" seconds
. Stack trace:
Thread-164 "[STUCK] ExecuteThread: '19' for queue: 'weblogic.kernel.Default
(self-tuning)'" <alive, in native, suspended, priority=1, DAEMON> {
  jrockit.net.SocketNativeIO.readBytesPinned(SocketNativeIO.java:???)
  jrockit.net.SocketNativeIO.socketRead(SocketNativeIO.java:24)
  java.net.SocketInputStream.socketRead0(SocketInputStream.java:???)
  java.net.SocketInputStream.read(SocketInputStream.java:107)
...

```

In this example, the request has been running longer than the configured 600 seconds. Here is the associated stack trace showing the thread is stuck:

```

Thread-164 "[STUCK] ExecuteThread: '19' for queue: 'weblogic.kernel.Default
(self-tuning)'" <alive, in native, suspended, priority=1, DAEMON> {
jrockit.net.SocketNativeIO.readBytesPinned(SocketNativeIO.java:???)
jrockit.net.SocketNativeIO.socketRead(SocketNativeIO.java:24)
java.net.SocketInputStream.socketRead0(SocketInputStream.java:???)
java.net.SocketInputStream.read(SocketInputStream.java:107)
...

```

### Solution

If the stack shows the thread is waiting for a response from another server, check the status of the other server and see if it has performance problems before proceeding with this solution.

To determine what the stuck thread was doing prior to becoming stuck, perform the following steps:

1. Look at the next few log messages in *server\_name.out* for a message indicating an incident has been created. For example:

```

<Mar 4, 2011 7:44:10 AM PST> <Alert> <Diagnostics> <BEA-320016>
<Creating diagnostic image in DOMAIN_HOME/servers
/ProductManagementServer_1/adr/diag/ofm/SCMDomain/
ProductManagementServer_1/incident/incdir_394 with a lockout minute
period of 1.>

```

The above message may not always appear after each stuck thread reported. It is printed at most four times an hour. If the message does not appear, manually look for the incident directory by checking the *readme* file in the subdirectories under the following directories:

```

(UNIX) DOMAIN_HOME/servers/server_name/adr/diag/ofm/domain_name/server_
name/incident
(Windows) DOMAIN_HOME\servers\server_name\adr\diag\ofm\domain_name\server_
name\incident

```

The incident directory contains a WLDF diagnostic image which contains the JFR recording, and a file containing the thread dump

For more information about diagnosing incidents, see the "Diagnosing Problems" chapter in the *Oracle Fusion Middleware Administrator's Guide*.

2. Review thread dump to see call stack of the thread. If thread is blocked waiting for lock, check what the thread holding the lock is doing.
3. If call stack involves executing JDBC calls, you can go to Grid Control and check the top activity around that time window, and see if there is a session with a matching module and action. See the "Finding the Top SQL Queries" section in the *Oracle Fusion Applications Administrator's Guide*.
4. Review the JRockit flight recording file `JRockitFlightRecorder.jfr` for more details. You will also need the ECID of the request which is recorded in the `readme.txt` file of the incident directory, and also the Oracle WebLogic Server log.
5. Perform the tasks in [Section 2.2, "View Detailed Timing Of a Request Using a JRockit Flight Recorder \(JFR\) File."](#)

Since the ECID of the request that caused the stuck thread is recorded in the error message, you also can follow the steps for troubleshooting slow requests that already have completed as documented in [Section 2.1.3.1, "Troubleshooting Historical Requests."](#)

#### 2.1.3.4 Troubleshooting Slow Requests Using JFR Recording

See [Section 2.2, "View Detailed Timing Of a Request Using a JRockit Flight Recorder \(JFR\) File."](#)

#### 2.1.3.5 Troubleshooting Memory Leaks and Heap Usage Pressure

##### Problem

Application performance degrades over time, heap usage and garbage collection activity increases overtime, sometimes `OutOfMemoryErrors` are seen. There could be memory leaks in the application, which causes the amount of free memory in the JVM to continuously decrease.

##### Solution

To solve this problem, perform the following:

1. Review the `server_name.out` file for `OutOfMemoryErrors` errors, which indicate a heap dump file has been written. The `server_name.out` file is located in the following directories:

```
(UNIX) DOMAIN_HOME/servers/server_name/logs  
(Windows) DOMAIN_HOME\servers\server_name\logs
```

2. Restart the Managed Server.

See the following documentation resources to learn more about other methods for starting and stopping the Managed Servers:

- "Starting Managed Servers with a Startup Script" section in *Oracle Fusion Middleware Managing Server Startup and Shutdown for Oracle WebLogic Server*.
- "Starting Managed Servers with the `java weblogic.Server` Command" section in *Oracle Fusion Middleware Managing Server Startup and Shutdown for Oracle WebLogic Server*.
- "Starting and Stopping Oracle Fusion Middleware" section in *Oracle Fusion Middleware Administrator's Guide*.

- "Start and Stop Servers" and various startup and shutdown procedures in the Cluster section of the *Administration Console Online Help*.

If the problem persists, proceed to Step 3.

3. Open the file with a heap-dump analysis tool that can handle binary HPROF format, such as Eclipse Memory Analyzer.
4. Review what objects and classes are retaining most memory. Send the heap dump file to Oracle Support for further analysis.
5. Sometimes it may be necessary to take several heap dumps to see what objects or classes are consuming and increasing the amount of memory.

To take heap dumps on demand, use the `jrcmd` command-line tool. See the "Running Diagnostic Commands" chapter in the *Oracle JRockit JDK Tools Guide*. Many heap dump analysis tools, such as Eclipse Memory Analyzer, enable you to compare two heap dumps to identify memory growth areas.

Heap dumps provide information on why memory is retained. Sometimes it is necessary to know how memory is allocated to further resolve the issue. For these cases, proceed to Step 6.

6. Use the JRockit Memory Leak Detector tool that is part of JRockit Mission Control Client to understand how memory is allocated.

For more information, see the JRockit Mission Control online help.

## 2.1.4 How to Troubleshoot Slow Batch Jobs

Batch jobs are often critical parts of key business processes. If throughput or execution time is beyond expectation, these steps may help diagnose the root cause.

### 2.1.4.1 Troubleshooting Jobs That Are in Wait/Ready/Blocked State for a Long Time

- Launch Oracle Enterprise Manager Cloud Control and look up the WebLogic Server domain target, or launch Fusion Applications Control for the domain.
- Expand Scheduling Service and select the one to which the job is submitted.
- Select **Job Request > Search Job Request**.
- Enter the appropriate search criteria.
- Expand the display to the request details. The top of the page will have an information block explaining why the job is not yet run.
- If many jobs are in a wait state, check **Performance > Historical Reports > View: Requests Metrics By Work Assignment**.
- Inspect Wait Time versus Processing Time.
  - If Wait Time is high, check several jobs and see why they are in a wait state.
  - If there is spare CPU capacity on the servers where the jobs are running, consider adding more threads to the work assignment.

### 2.1.4.2 Troubleshooting Jobs in Running State for a Long Time

See the "Managing Logging for Oracle Enterprise Scheduler" section in the *Oracle Fusion Applications Administrator's Guide*.

- Sometimes a job could be in a running state even if it had completed. See the ESS Troubleshooting Guide to first determine if the job is still running.

- Otherwise, open the request details page and click **View Log Message** to get the ECID. Go to the Java Diagnostics for the cluster to which the ESS job sends the request, such as for service calls, search for the ECID and see what, if any, Java diagnostics data is recorded.

### 2.1.4.3 Troubleshooting Slow BI Publisher Jobs

See the "Managing Logging for Oracle Enterprise Scheduler" section in the *Oracle Fusion Applications Administrator's Guide*.

- Open the home page of the Oracle Fusion instance, product family, or product in Cloud Control. The **Top Long Running Job Requests** and **Recently Completed Job Requests** region shows the health of ESS jobs. Since BI Publisher jobs are scheduled as ESS jobs, the health of those jobs will be shown in this region.
- Click the request ID link to show the Request Detail page.
- Select **Actions > Request Log** in the right hand side drop down and look for the log entries specific to this job request.
- Select **Actions > JVM Diagnostics** in the right hand side drop down and view the health of this job request from the JVM perspective.
  - The JVM page shows the data pertaining to the ECID corresponding to this job request.
  - Inspect thread, cpu, memory and database diagnostic data for this specific job.

### 2.1.4.4 Troubleshooting Slow SOA Jobs

- Open the home page of the Oracle Fusion product family in Cloud Control. The **Recently Completed SOA Instances** region shows the health of recently-completed SOA jobs in the product family context.
- Click **Composite Name** to show the detailed information about the composite in the home page.
- Click **Dehydration Diagnostics** to view the overall database activity associated with the dehydration store and any abnormal bottlenecks. To view database diagnostics, click individual SQL IDs.
- Click **Faults and Rejected Message** to view more details about faulted SOA instances.
- Select **SOA Composites > Logs > View Log Messages** to view the related log entries.
- Select **SOA Composites > Trace Instance** to trace a particular SOA instance. To display all SOA instances, click **Search** without specifying a filter.
- Click the instance ID to view the complete trace details for this instance.
- Click **JVM Diagnostics** to view the health of this SOA instance from a JVM perspective.
  - The JVM page shows the data pertaining to the ECID corresponding to this job request.
  - Inspect thread, cpu, memory and database diagnostic data for this specific job.

### 2.1.4.5 Troubleshooting Slow SQL Jobs

- From Cloud Control, look up the domain target, or go to Fusion Applications Control.



- Expand Scheduling Service and select the appropriate scheduling service group.
- On the right side, from the drop-down menu, select **Job Requests > Search Job Requests** and search for the job of interest.
- On the job details page, click the eye-glasses icon next to the Execution Type field. This will display a pop-up with the database session ID that was used to process this job.
- From Enterprise Manager, follow these steps to get an ASH report for the session within the relevant time window to inspect top SQL statements and top wait events.
  - On the Performance page in the Average Active Sessions section, click **Run ASH Report**.
  - On the resulting Run ASH Report page, enter the date and time for the start and end of the time period for the report. (Presumably when some transient performance problem occurred.)
  - Click **Generate Report** and wait for the resulting ASH report that will appear under Report Results on the Run ASH Report page.
  - Click **Save to File** if you want to save the report in HTML format for future analysis.

#### 2.1.4.6 Troubleshooting Slow Java Jobs

- Open the request details page and click **View Log Message** to get the ECID.
- Open the Java Diagnostics for the cluster to which the ESS job sends the request, such as for service calls, or the ESS server itself if most of the logic executes there.
- Search for the ECID to view any Java Diagnostics data that is recorded.

### 2.1.5 How to Troubleshoot a Slow BPEL Instance

- From Fusion Applications Control, select the SOA instance under SOA.
- Select **Instances** and search for the instance in question.
- Click the **Instance** link to display the flow trace to obtain the ECID.
- Click the BPEL component to see the audit trail that records the completion time for each step.
- Look for big gaps in the timing.
  - If a gap is due to a service call, use the request monitor and search for the ECID, check JVMD or JRockit Flight Recorder (JFR) to determine why it took so long.

#### 2.1.5.1 Troubleshooting High Connection Usage

##### Problem

The connection usage on the Oracle Database is high, or there is an Oracle process on the database host consuming high amount of CPU.

##### Solution

To find out the source of the connection causing the high CPU on To adjust the reference pool size from Fusion Applications Control:

1. Oracle Fusion Applications set values on a number of `v$session` attributes to indicate how the connection is being used. When looking at a connection consuming high CPU on the database, or when trying to understand what connections are used for what processes, inspect the value of these attributes as follows:

Attribute in <code>v\$session</code>	Value Being Set
<code>Process</code>	Data Source Name (for example, ApplicationDB)
<code>Program</code>	Oracle WebLogic Server Domain plus the Managed Server name, prefixed by DS (for example, DS/FinancialDomain/AccountsReceivableServer_1)
<code>Module</code>	Oracle Application Development Framework: ADF BC application module name Oracle Enterprise Scheduler: <ul style="list-style-type: none"> <li>▪ Java job type: Class name, except <code>oracle.apps</code></li> <li>▪ PLSQL: the package and procedure name (for example, <code>mypkg.myproc</code>)</li> <li>▪ Other jobs: Static: Executable name</li> </ul> Oracle BI Publisher: Name of the report
<code>Action</code>	Oracle Application Development Framework: <code>jspx</code> name Oracle Enterprise Scheduler: Job definition name Oracle BI Publisher, if request is submitted: <ul style="list-style-type: none"> <li>▪ Oracle Enterprise Scheduler: Oracle Enterprise Scheduler job definition name</li> <li>▪ Oracle BI Publisher Scheduler Job: Oracle BI Publisher job name submitted by the user</li> <li>▪ Oracle BI Publisher online: Static string <code>BIP:Online</code></li> <li>▪ Oracle BI Publisher Web services: Name of the web services</li> </ul>
<code>Client_Identifier</code>	Application User Name

2. If the error messages related to connection pool capacity being reached are also seen in Oracle WebLogic Server logs, use the solution for connection leaks described in [Section 2.1.5.2](#).

### 2.1.5.2 Troubleshooting Connection Leaks

#### Problem

When there are errors in the log, and the error message indicates connection pool size has been reached

#### Solution

To resolve this problem:

1. When data source is at maximum capacity and there are errors during connection reservation requests, then there may be connection leaks in the code
2. Enable JDBC profiling from the Oracle WebLogic Server Administration Console:
  - a. In the **Domain Structure**, expand **Services** and then **Data Sources**.

- b. Click on the data source that needs to be profiled, for example, **ApplicationDB**.
  - c. In the Settings page, click on the **Configuration** tab, then click on **Diagnostics** subtab.
  - d. Check the profiles that need to be collected (**PROFILE\_TYPE\_CONN\_USAGE\_STR**).
  - e. Click **Save**.
3. Configure the diagnostic archive where the profiling data is saved from the Oracle WebLogic Server Administration Console:
    - a. In the **Domain Structure**, expand **Services**, **Diagnostics**, and then **Archives**.
    - b. Click on the server where you want to make changes (archives are stored for each server)
    - c. In the Settings page, you can change archive location, size and how to retire data.
    - d. Check the profiles that need to be collected (**PROFILE\_TYPE\_CONN\_USAGE\_STR**).
    - e. Click **Save**.
  4. To retrieve profiling data, use the sample code ([http://download.oracle.com/docs/cd/E15051\\_01/wls/docs103/wldf\\_configuring/access\\_diag\\_data.html#wp1100898](http://download.oracle.com/docs/cd/E15051_01/wls/docs103/wldf_configuring/access_diag_data.html#wp1100898)), with changes to the URL, username and password in the initialize method.
  5. Run the sample code as a standalone program.
  6. The program will capture the stack trace for each request for a connection from that data source. Inspect the callers to see the suspicious stack. This sample program requires connecting to a live Oracle WebLogic Server instance.

The diagnostic archive file under the archive location can also be provided to Oracle Support for further analysis.

Oracle WebLogic Server will not report a leak unless inactive connection timeout connection pool setting is set to a positive value. This cannot be done for Oracle Fusion Applications, as it will break functionality.

### 2.1.5.3 Troubleshooting Slow Requests Using SQL Trace

When a user reports that a specific operation is slow, and the slowness is reproducible and that slow database operations are suspected but the top activity reports did not provide sufficient information for resolving the problem.

To resolve this problem:

1. Enable SQL trace for the user session. See the "Using SQL Tracing" section in the *Oracle Fusion Applications Administrator's Guide*.
2. Ask the user to re-run the problematic flow and collect the SQL trace files and review them.

### 2.1.5.4 Troubleshooting Slow Oracle Enterprise Scheduler Jobs of SQL Type

When the user submits a SQL job type, the job remains in a `RUNNING` state for too long.

**Solution**

To resolve this problem, perform the following steps:

1. Use Fusion Applications Control to find the database session ID that was used to process the job:
  1. Search for the request, as described in the "Searching for Oracle Enterprise Scheduler Job Requests" section in the *Oracle Fusion Applications Administrator's Guide*.
  2. On the Request Details page, in the **Request Properties** section, next to the **Execution Type** field, click the eye glasses icon.

The Spawned Process Details dialog is displayed. This will open a pop-up with the database session ID that was used to process this job
  3. Take note of the value in the **Session Id** field, and then click **OK**.
2. Use Grid Control to ensure the request processor and request dispatcher are running:
  - a. Run an Active Session History (ASH) report for the session within the relevant time window to inspect top SQL statements and top wait events. See the "Resolving Transient Performance Problems" section in the *Oracle Database 2 Day + Performance Tuning Guide*.
  - b. Identify time consuming SQL statements and tune following normal SQL tuning procedures. See the "Finding the Top SQL Queries" section in the *Oracle Fusion Applications Administrator's Guide*.

**2.1.5.5 Troubleshooting Excessive Activation****Problem**

When response time suddenly increases with rising user count, even though there is no memory pressure, it is possible that the reference pool size for key application modules needs to be increased. If there is a JFR recording to review, and you observe many events containing callstacks containing the `activateState` method, you should also try adjusting the reference pool size.

**Solution**

To adjust the reference pool size from Fusion Applications Control:

1. Review the number of web sessions from Performance Summary pages:

For Fusion Applications Control:

  - a. From the navigation pane, expand the farm, **Application Deployments**.
  - b. From the **Applications Deployments** page, select the application.
  - c. From the **Application Deployments** menu, choose **ADF > ADF Performance**.

The ADF Performance page is displayed.
  - d. Click the **Application Module Pools** tab.
  - e. Sort the request by descending order.
  - f. For the top 10 or so application modules, click the application module name to view the **Activations** count.

For Grid Control:

- a. Click the **Targets** tab.
  - b. Click the **Middleware** secondary tab.
  - c. From the **Search** list, select **Oracle WebLogic Server Domain**, and then click **Go**.
  - d. Click on a domain.  
The WebLogic Server Domain home page is displayed.
  - e. In the table on the right-hand side of the page, expand the **Application Deployments** node.
  - f. Click the target application.  
The Application Deployment page is displayed.
  - g. From the **Application Deployments** menu, choose **ADF > ADF Performance**.  
The ADF Performance page is displayed.
  - h. In the **Application Module Pools** table, from the **View** list, select **Total Requests**, and once selected, from the **Total Requests** column, click **Sort Descending**.
  - i. For the top 10 or so application modules, click to see the details of each one.
  - j. After selecting an application module, on the **Requests** graph, from the **Select metric to display in chart** list, select **Passivation** and **Activation** to add to the graph.  
If the activation count is close to passivation and is constantly above 0, then follow Step 2 to adjust.
2. If the activation count constantly increases, increase the application module reference pool size from Fusion Applications Control:
    - a. From the **Application Deployments** menu, choose **ADF > Configure ADF Business Components**.  
The ADF Configuration BC Configurations page is displayed.
    - b. From the **Application Modules** section, click the application module of interest. From the left hand side, select the local by selecting a name that ends in **Local**.
    - c. Click the **Pooling and Scalability** tab, and change the **Reference Pool Size** parameter.

## 2.1.6 How to Troubleshoot Oracle Business Intelligence

The usual indication that you should troubleshoot Oracle BI will be sluggish performance of BI components embedded across various applications. BI components can be in the form of such things as charts, tables, dashboards, and queries. Many of the configuration issues can be detected from the `nqquery.log` and `nqserver.log` log files.

A configuration problem generally will produce an error message. You would examine the same two log files for either sluggish response or an error.

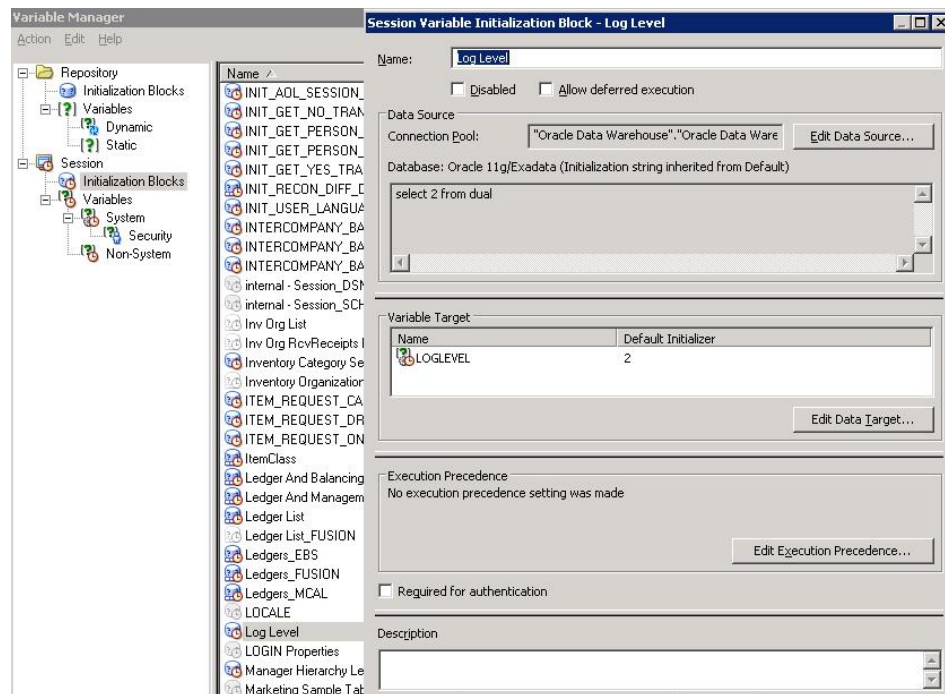
## Oracle BI Query Logging

To debug a query issue, you need to enable query logging. Query logging can be enabled by setting the LOGLEVEL variable to a value from 0 through 7. 0 denotes no logging, and 7 will generate detailed logging.

It is sufficient to use loglevel 2 to obtain logical BI server queries and the corresponding physical database queries in the log file.

Figure 2–1 shows how to use the Variable Manager to set the log level to 2.

**Figure 2–1** Setting the Log Level for Oracle BI



Once you have enabled logs, you can obtain log files from `$ORACLE_INSTANCE/diagnostics/logs/OracleBIServerComponent/coreapplication_obis1/`

Relevant files are:

- `nqquery.log` - Will contain logical SQL, physical SQL and an execution plan chosen by OBIS for the logical SQL.
- `nqserver.log` - Will contain server-related data, such as initialization block-related errors.

Note that a single logical SQL can spawn multiple physical SQL statements.

If you run large queries and logs are being rotated quickly, you can modify parameters in `logconfig.xml` to control the frequency for log rotation. `logconfig.xml` is located at `$ORACLE_INSTANCE/config/OracleBIServerComponent/coreapplication_obis1/logconfig.xml` where `ORACLE_INSTANCE` is a path similar to `/u47/st99/instance/BIInstance`.

Once you have logging enabled, you can search for response time and identify where time is being spent by the query. In this example of a useful search string, logical query execution took 1 second, and physical query execution also took 1 second.

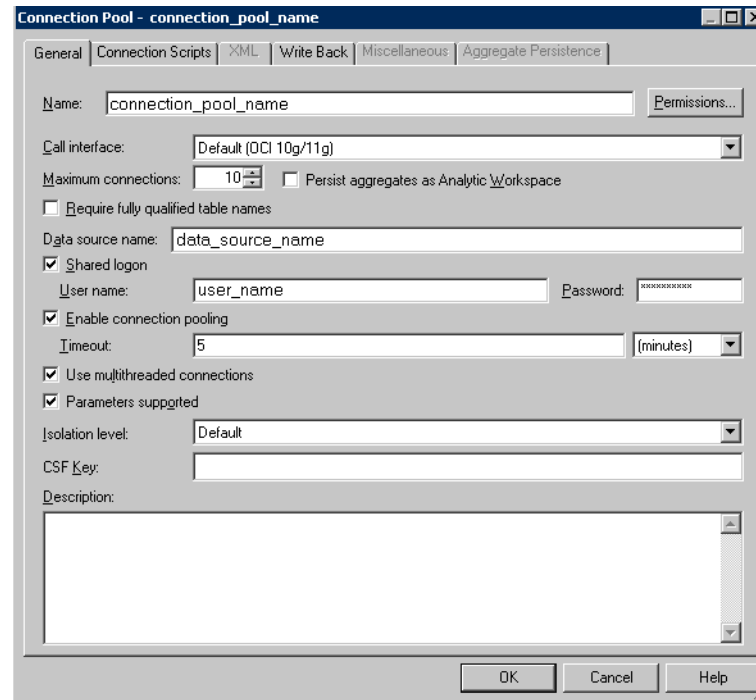
Physical query response time 1 (seconds)

Logical Query Summary Stats: Elapsed time 1, Response time 1, Compilation time 0 (seconds)

### BI Connection Pool Settings

If you anticipate a higher load on a system, you can change the number of **Maximum connections** for various data sources to make resource use more efficient, as shown in [Figure 2-2](#). This change must be propagated if the location of the Business Intelligence metadata is replaced.

**Figure 2-2** Changing the Maximum Number of Connections



## 2.2 View Detailed Timing Of a Request Using a JRockit Flight Recorder (JFR) File

### Problem

Certain requests are slow and there is a need to find out where time is spent

### Solution

The JRockit Flight Recorder (JFR) file contains a record of various events that consume time, and can be used to help understand why a request is taking time

To resolve this problem, create a JFR file:

1. Extract a JFR file from an Oracle WebLogic Server server by running the following command:

```
(UNIX) JROCKIT_HOME/bin/jrcmd jrockit_pid dump_flightrecording recording=1
copy_to_file=path compress_copy=true
(Windows) JROCKIT_HOME\bin\jrcmd.exe jrockit_pid dump_flightrecording
recording=1 copy_to_file=path compress_copy=true
```

See the "Running Diagnostic Commands" chapter in the *Oracle JRockit JDK Tools Guide* for more information about the `jrcmd` command-line tool.

2. To view the file, start the JRockit Mission Control Client from the following directories:

(UNIX) `JAVA_HOME/bin/bin/jrhc`

(Windows) `JAVA_HOME\bin\jrhc.exe`

3. Choose **File > Open File** to select the JFR file.
4. Locate the slowest requests or investigate a specific request:



To locate the slowest requests:	To investigate a specific request:
<ol style="list-style-type: none"> <li>1. In the JRockitFlightRecorder.jfr page, click the <b>Events</b> icon.</li> <li>2. Click the <b>Log</b> tab at the bottom of the page.</li> <li>3. In the <b>Event Type</b> navigation pane on the left, locate <b>Dynamic Monitoring System</b> and then <b>HttpRequest</b>.</li> <li>4. Click <b>HTTP request</b>; de-select all the other event types.</li> <li>5. In the <b>Log</b> tab, in the <b>Event Log</b> section, click the <b>Duration</b> column to sort the duration in descending order.  Each row corresponds to a HTTP Request and the duration column shows the response time for that request.</li> <li>6. Click the row in the table to view the attributes of the requests.</li> <li>7. In the <b>Event Attributes</b> sections, note the start time and the thread that serviced the request.</li> </ol>	<ol style="list-style-type: none"> <li>1. Find the Execution Context Identifier (ECID) of that request.  If the request is related to an incident triggered by a <code>STUCK</code> thread, the incident <code>readme.txt</code> file will contain the ECID.  Alternatively, you can search the Oracle WebLogic Server HTTP <code>access.log</code> for requests from specific users. See the "Viewing and Searching Log Files" section in the <i>Oracle Fusion Middleware Administrator's Guide</i>.</li> <li>2. In the JRockit Mission Control Client, in the JRockitFlightRecorder.jfr page, choose the <b>WebLogic</b> icon, and then  If the <b>Weblogic</b> icon is not available, choose <b>Help &gt; Install Plugins</b> to download the Oracle WebLogic Server plug-in.</li> <li>3. Click the <b>ECIDs</b> tab at the bottom of the page.</li> <li>4. In the <b>ECIDs</b> section, from <b>Filter Column</b> list, select <b>ECID</b>.</li> <li>5. Enter the ECID in the search box and click <b>Enter</b>.</li> <li>6. In the results table, highlight the row with the matching ECID and right-click to bring up the menu.</li> <li>7. Choose <b>Operative Set &gt; Clear</b>, and then <b>Operative Set &gt; Add matching ECID &gt; ECID</b> to add the ECID to the operative set.  This enables users to view only events associated with the operative set.</li> <li>8. Click the <b>Events</b> icon.</li> <li>9. In the Event Type navigation pane on the left, locate <b>Dynamic Monitoring System</b> and then <b>HttpRequest</b>.</li> <li>10. Click <b>HTTP request</b>; de-select all the other event types. <b>**</b></li> <li>11. In the <b>Event Log</b> section, click <b>Show Only Operative Set</b>.  Each row corresponds to the request with the matching ECID</li> <li>12. Click the row in the table to view the attributes of the requests.</li> <li>13. Note the start time and the thread that serviced the request</li> </ol>

5. Once the start time and the thread that serviced the request are identified, in the Logs tab, drag the time selector at the top of the screen to include only the time window for the duration of the request.
6. In the **Event Log** section, perform the following search:
  - a. Deselect **Show Only Operative Set**.
  - b. Enter the thread name in the search box.
  - c. From the **Filter Column** list, select **Thread**.

- d. Choose <Enter>.
7. In the **Event Type** navigation pane on the left, click the events of interest. Typically, these events are located under nodes **Dynamic Monitoring System**, **Java Application**, and **WebLogic > JDBC**.  
The selected events appear in the table in the **Event Log** section.
8. Click the **Start Time** column to sort by the time when these events occur, or click the **Duration** column to view the events that took longest  
The **JDBC Statement Execute** events corresponds to SQL execution. If there are slow SQL statements, the event details give the SQL text. These events do not have callstacks.
9. To see to callstack for slow SQL statements, view the **Socket Read** event that happens right after the **JDBC Statement Execute** event.  
This event corresponds to Oracle WebLogic Server waiting for the SQL results to return, and it has callstack in the event details.
10. Review the callstacks for long **Java Blocked** and **Java Wait** events to see if the cause can be identified. See the "Analyzing Flight Recorder Data in JRockit Mission Control" section in the *Oracle Fusion Middleware Configuring and Using the Diagnostics Framework for Oracle WebLogic Server*.
11. If more details are needed to compare with what is captured in the default recording, and the user can reproduce the slowness, start an explicit recording. See the "Starting an Explicit Recording" section in the *Oracle JRockit Flight Recorder Run Time Guide*.

## 2.3 Using My Oracle Support for Additional Troubleshooting Information

You can use My Oracle Support (formerly MetaLink) to help resolve Oracle Fusion Applications problems. My Oracle Support contains several useful troubleshooting resources, such as:

- Knowledge base articles
- Community forums and discussions
- Patches and upgrades
- Certification information

---

---

**Note:** You can also use My Oracle Support to log a service request.

---

---

You can access My Oracle Support at <https://support.oracle.com>.

---



---

## Tuning the Database

This chapter discusses database tweaks that are specific to Oracle Fusion Applications.

This chapter contains the following sections:

- [Section 3.1, "Introduction"](#)
- [Section 3.2, "Tuning the Database"](#)

### 3.1 Introduction

Oracle Fusion Applications set values on a number of v\$session attributes to indicate how the connection is being used. When looking at a connection consuming high CPU on the database, or when trying to understand what connections are used for what processes, these attribute values may help provide the answer.

**Table 3–1 v\$session Attribute Values**

Attribute in v\$session	Value Being Set
Process	Data Source Name (such as ApplicationDB)
Program	WebLogic Server Domain plus Managed Server name, prefixed by DS (such as DS/FinancialDomain/AccountsReceivableServer_1)
Module	<ul style="list-style-type: none"> <li>■ For ADF: ADF BC application module name</li> <li>■ For ESS: <ul style="list-style-type: none"> <li>■ For Java job type, the class name (minus oracle.apps)</li> <li>■ For PL/SQL, the package and procedure name (such as mypkg.myproc)</li> <li>■ For other job types, the executable name should be passed</li> </ul> </li> <li>■ For BI Publisher: the name of the report</li> </ul>

**Table 3–1 (Cont.) v\$session Attribute Values**

Attribute in v\$session	Value Being Set
Action	<ul style="list-style-type: none"> <li>■ For ADF: jspix name</li> <li>■ For ESS: jobDefinitionName</li> <li>■ For BI Publisher, if request is submitted: <ul style="list-style-type: none"> <li>■ Using ESS scheduler: ESS Job Definition Name</li> <li>■ Using BIP Scheduler Job: BIP Job Name submitted by the user</li> <li>■ Using BIP online: static string "BIP:Online"</li> <li>■ Using BIP Webservices: the name of the webservices</li> </ul> </li> </ul>
Client_Identifier	Application User Name

### 3.1.1 Monitoring the Oracle Fusion Applications Database

See the "Monitoring and Tuning Oracle Database for Oracle Fusion Applications" chapter in the *Oracle Fusion Applications Administrator's Guide*.

## 3.2 Tuning the Database

[Table 3–2](#) provides the database initialization parameter guidelines for Oracle Fusion Applications. Within the Oracle Fusion Applications ecosystem, there exist four types of databases. They are Online Transaction Processing (OLTP) Starter or Production configuration, IDM, and DW. These parameter values are intended to provide a baseline. The database that is installed during Oracle Fusion Applications provisioning is configured with the suggested values. As your deployment and workloads characteristics change, these values may need to be adjusted.

Tuning the database involves adjusting the sizing parameters based on the available resource and load on the database. The `sga_target`, `pga_aggregate_target` and `processes` parameters from [Table 3–2](#) are examples of such parameters that need to be tuned based on SGA and PGA advisories and looking into the number of open processes during peak load.

In addition, you may consider setting a minimum value for `SHARED_POOL_SIZE` and `DB_CACHE_SIZE` to minimize frequent resizing.

**Table 3–2 Common init.ora Parameters**

Parameter Name	Description, Default value and suggested start value
<code>audit_trail</code>	<p>Enables or disables database auditing.</p> <p>Oracle Release 2 (11.2.0.2) default value: DB</p> <p>The suggested value for all Oracle Fusion Applications databases is NONE.</p>
<code>_fix_control</code>	<p>This parameter addresses the dynamic sampling of global temporary tables.</p> <p>Oracle Release 2 (11.2.0.2) default value: N/A</p> <p>The suggested value for an Oracle Fusion Applications Starter or Production database is 5483301:OFF, 6708183:ON</p>

**Table 3–2 (Cont.) Common *init.ora* Parameters**

Parameter Name	Description, Default value and suggested start value
<code>plsql_code_type</code>	<p><code>PLSQL_CODE_TYPE</code> specifies the compilation mode for PL/SQL library units.</p> <p><code>INTERPRETED</code>: PL/SQL library units are compiled to PL/SQL bytecode format. Such modules are executed by the PL/SQL interpreter engine.</p> <p><code>NATIVE</code>: PL/SQL library units are compiled to native (machine) code. Such modules are executed natively without incurring any interpreter impacts.</p> <p>Oracle Release 2 (11.2.0.2) default value is <code>INTERPRETED</code>.</p> <p>The suggested value for all Oracle Fusion Applications databases is <code>NATIVE</code>.</p>
<code>nls_sort</code>	<p><code>NLS_SORT</code> specifies the collating sequence for <code>ORDER BY</code> queries.</p> <ul style="list-style-type: none"> <li>▪ If the value is set to <code>BINARY</code>, the collating sequence for <code>ORDER BY</code> queries is based on the numeric value of characters (a binary sort that requires fewer system resources).</li> <li>▪ If the value is a named linguistic sort, sorting is based on the order of the defined linguistic sort. Most (but not all) languages supported by the <code>NLS_LANGUAGE</code> parameter also support a linguistic sort with the same name.</li> </ul> <p>Oracle Release 2 (11.2.0.2) default value: Derived from <code>NLS_LANGUAGE</code>.</p> <p>The suggested value for all Oracle Fusion Applications databases is <code>BINARY</code>.</p>
<code>open_cursors</code>	<p>Specifies the maximum number of open cursors (handles to private SQL areas) a session can have at once. It is important to set the value of <code>OPEN_CURSORS</code> high enough to prevent your application from running out of open cursors.</p> <p>Oracle Release 2 (11.2.0.2) default value is 50.</p> <p>The suggested value for all Oracle Fusion Applications databases is 500.</p>
<code>session_cached_cursors</code>	<p>Specifies the number of session cursors to cache. Repeated parse calls of the same SQL statement cause the session cursor for that statement to be moved into the session cursor cache. Subsequent parse calls find the cursor in the cache and do not reopen the cursor. Oracle uses a least recently used algorithm to remove entries in the session cursor cache to make room for new entries when needed.</p> <p>This parameter also constrains the size of the PL/SQL cursor cache that PL/SQL uses to avoid having to re-parse as statements are re-executed by a user.</p> <p>Oracle Release 2 (11.2.0.2) default value is 50.</p> <p>The suggested value for all Oracle Fusion Applications databases is 500.</p>
<code>_b_tree_bitmap_plans</code>	<p>This enables use of bitmap access paths for b-tree indexes.</p> <p>Oracle Release 2 (11.2.0.2) default value: <code>TRUE</code></p> <p>The suggested value for all Oracle Fusion Applications databases is <code>FALSE</code>.</p>
<code>processes</code>	<p>Sets the maximum number of operating system processes that can be connected to Oracle concurrently. The value of this parameter must account for Oracle background processes. <code>SESSIONS</code> parameter is deduced from this value.</p> <p>Oracle Release 2 (11.2.0.2) default value: 100</p> <p>The suggested value for an Oracle Fusion Applications DW or IDM database (OID, OIM) is 2500.</p> <p>The suggested value for an Oracle Fusion Applications Starter or Production database is 5000.</p>
<code>sga_target</code>	<p>Setting this parameter to a nonzero value enables Automatic Shared Memory Management. Consider using automatic memory management, both to simplify configuration and to improve performance.</p> <p>Oracle Release 2 (11.2.0.2) default value: 0</p> <p>The suggested value for Oracle Fusion Applications IDM databases (OID, OIM) is 4 GB.</p> <p>The suggested value for an Oracle Fusion Applications Starter database is 9 GB.</p> <p>The suggested value for an Oracle Fusion Applications DW database is 8 GB.</p> <p>The suggested value for an Oracle Fusion Applications Production database is 18 GB (based on reference hardware having 32 GB of physical memory).</p>

**Table 3–2 (Cont.) Common init.ora Parameters**

Parameter Name	Description, Default value and suggested start value
pga_aggregate_target	<p>Specifies the target aggregate Program Global Area (PGA) memory available to all server processes attached to the instance.</p> <p>Oracle Release 2 (11.2.0.2) default value is 0.</p> <p>The suggested value for Oracle Fusion Applications IDM databases (OID, OIM) is 2 GB.</p> <p>The suggested value for an Oracle Fusion Applications Starter database is 4 GB.</p> <p>The suggested value for an Oracle Fusion Applications DW database is 4 GB.</p> <p>The suggested value for an Oracle Fusion Applications Production database is 8 GB (based on reference hardware having 32 GB of physical memory).</p>
star_transformation_enabled	<p>Determines whether a cost-based query transformation will be applied to star queries.</p> <p>Oracle Release 2 (11.2.0.2) default value is FALSE.</p> <p>The suggested value for an Oracle Fusion Applications DW database is TRUE.</p>
query_rewrite_integrity	<p>Determines the degree to which Oracle must enforce query rewriting</p> <p>Oracle Release 2 (11.2.0.2) default value is ENFORCED.</p> <p>The suggested value for an Oracle Fusion Applications DW database is TRUSTED.</p>
PARALLEL_MAX_SERVERS	<p>Specifies the maximum number of parallel execution processes and parallel recovery processes for an instance.</p> <p>Oracle Release 2 (11.2.0.2) default value is Derived.</p> <p>The suggested value for an Oracle Fusion Applications DW database is 16.</p> <p>The suggested value for all Oracle Fusion Applications IDM databases is NUM_CPU_CORES (number of CPU cores on the database server).</p> <p>The suggested value for all Oracle Fusion Applications Production databases is NUM_CPU_CORES (number of CPU cores on the database server).</p>
JOB_QUEUE_PROCESSES	<p>Specifies the maximum number of job slaves per instance that can be created for the execution of DBMS_JOB jobs and Oracle Scheduler (DBMS_SCHEDULER) jobs.</p> <p>Oracle Release 2 (11.2.0.2) default value is 1000.</p> <p>The suggested value for an Oracle Fusion Applications DW database is 10.</p> <p>The suggested value for all Oracle Fusion Applications IDM databases is NUM_CPU_CORES (number of CPU cores on the database server).</p> <p>The suggested value for all Oracle Fusion Applications Production databases is NUM_CPU_CORES (number of CPU cores on the database server).</p>
disk_asynch_io	<p>Controls whether I/O to datafiles, control files, and logfiles is asynchronous.</p> <p>Oracle Release 2 (11.2.0.2) default value is TRUE.</p> <p>The suggested value for all Oracle Fusion Applications databases is TRUE.</p>
filesystemio_options	<p>Specifies I/O on file system files to be asynchronous I/O or direct I/O.</p> <p>Oracle Release 2 (11.2.0.2) default value: This parameter is platform-specific and has a default value that is best for a particular platform.</p> <p>The suggested value for all Oracle Fusion Applications databases is to use a value that is supported by the specific platform. <i>Do not</i> set it to NONE.</p>
DB_SECUREFILE	<p>Specifies whether or not to treat LOB files as SecureFiles.</p> <p>Oracle Release 2 (11.2.0.2) default value is PERMITTED.</p> <p>The suggested value for all Oracle Fusion Applications databases is ALWAYS.</p>

### 3.2.1 How to Configure the Database for Performance

This section contains an overview for configuring a database for performance. Although it is expected that modifications will be made to the database on an ongoing basis to maintain or improve performance, significant benefits can be gained by proper initial configuration of the database.

In addition to tuning the database parameters, the database administrator should properly configure the REDO Logs, and the UNDO and TEMP tablespaces, to meet the demands of the expected or observed database workload. This is an empirical task.

The recommendations in this section are intended to provide initial guidance in these areas.

### **UNDO**

It is recommended that the default mode of automatic undo management be leveraged to maximize performance and efficiency. Oracle Enterprise Manager Fusion Applications Control Automatic Undo Management Advisor should be leveraged to set configuration details for undo tablespace and retention settings. This advisor also provides access to the Undo Advisor that assesses the effect and provides advice of a new undo retention setting. The suggested minimum size for the UNDO tablespace is 6 GB with `auto-extend` enabled.

### **TABLESPACES**

The location of the datafiles should be optimized for I/O performance and growth. Also, Fusion Applications Control Segment Advisor should be leveraged to optimize the use of segment space and assure performance degradation does not occur. The advisor can provide historical growth trends of segments, which can be used to proactively plan for growth.

### **TEMP**

Oracle recommends the use of locally-managed temporary tablespaces with UNIFORM extents and the default size of 1 MB. Some workflows in Oracle Fusion applications can generate a large amount of disk sorts that require high temporary space requirements. Therefore, the use of multiple temporary tablespaces and tablespace groups is recommended to meet these requirements and assure optimal performance. A suggested minimum size for the TEMP tablespace (or tablespace group) assigned to the Oracle Fusion Applications schema owners is 6 GB with `auto-extend` enabled.

### **REDO LOGS**

Under demanding workloads, the size of the redo log files can influence performance. Generally, larger redo log files provide better performance. Undersized log files increase checkpoint activity and reduce performance. You can obtain sizing advice on the Redo Log Groups page of Fusion Applications Control. In addition, depending on your storage configuration and performance characteristics, you may need to redistribute redo logs to optimize I/O performance. The suggested minimum setting for Redo Logs is to have 3 log files of 2 GB each.

## **3.2.2 How to Configure Kernel Parameters**

The parameters listed here are only a subset of the parameters needed to properly configure your database environment. Consult the Oracle Database Installation Guide for your specific operating system to determine the overall requirements for the kernel parameter settings. Installation guides are available in the Oracle Database Documentation Library.

If the current values of these parameters are larger than what is recommended, no change is necessary.

- `SHMMAX` - Set to the larger of either the largest System Global Area (SGA) on the system or half of the physical memory available.
- `SEMMNS` - Set to the larger of either 32000 or twice the sum of the `PROCESSES` initialization parameter for each Oracle database.

- `SHMALL` - Set to the sum of all SGAs divided by the page size (`getconf PAGE_SIZE`).
- `SHMMNI` - Recommended value is 4096.
- `vm.nr_hugepages` - Should be set for SGA larger than 8 GB. The value should be set to the sum of all SGAs.

### 3.2.3 How to Configure the Database Listener

The database listener is responsible for accepting and routing connection requests to the database. The parameters described in this section can change the behavior of the listener and, therefore, need to be examined and changed accordingly to address the needs of your particular database connection load.

#### **SQLNET.EXPIRE\_TIME Parameter**

For Fusion application environments that leverage a firewall between the middle and database tiers, it is recommended to set the database listener setting `SQLNET.EXPIRE_TIME`. This parameter is defined in the `sqlnet.ora` file that is located in the `TNS_ADMIN` location. This parameter is used to set a time interval, in minutes, to determine how often to probe connections to verify their status.

Typically, a firewall is configured to terminate connections after it has been idle for a specified amount of time. Setting `SQLNET.EXPIRE_TIME` to an interval smaller than the firewall's will generate enough traffic within an appropriate interval to prevent the firewall from determining the connections are in an idle state and terminating these connections. A setting of `SQLNET.EXPIRE_TIME = 10` is commonly used.

#### **INBOUND\_CONNECT\_TIMEOUT Parameter**

On occasion, due to network latency, connections can exceed the default timeout of 60 seconds. Typical symptoms of this include observing "TNS-12537: TNS:connection closed" errors in the database alert logs. One of the things that can resolve these issues is to increase the timeout parameters. A suggested value of `INBOUND_CONNECT_TIMEOUT_listenerName = 120` (`listener.ora`) and `SQLNET.INBOUND_CONNECT_TIMEOUT=130` (`sqlnet.ora`) is recommended.

### 3.2.4 How to Tune the Real Application Cluster (RAC)

Oracle Real Application Clusters (RAC) is a cluster database with a shared cache architecture that overcomes the limitations of a traditional shared-nothing approach to provide highly scalable and available database solutions for all business applications.

RAC supports the transparent deployment of a single database across a cluster of servers, providing fault tolerance from hardware failures or planned outages in terms of availability, scalability, and low-cost computing.

RAC provides:

- High Availability  
RAC provides the highest availability for applications by removing the single server as a single point of failure.
- Flexible Scalability  
When more processing power and resources are needed, adding a server to the database cluster without taking users offline will gain horizontal scalability.
- Automatic Workload Management



Application workloads can be individually managed and controlled using managed services. Users connecting to a service are load balanced across the server pool.

### Initial Setting

The network between the nodes of a RAC cluster must be private.

Supported links: Giga-bit Ethernet and InfiniBand

Supported transport protocols: UDP or RDS

Use multiple or dual-ported Network Interface Cards (NICs) for redundancy and increase bandwidth with NIC bonding.

Set these parameters with respect to the ORACLE/OS release for Interconnect performance.

```
net.core.rmem_default = 262144
net.core.rmem_max = 262144
net.core.wmem_default = 262144
net.core.wmem_max = 262144
```

### Troubleshooting

Use this information to identify if proper interconnect is used and picked up by clusterware.

- To identify the interconnect:

```
show parameter cluster_interconnects
or
select name,ip_address,is_public from v$cluster_interconnects
```

The Alert log will have an entry similar to this:

```
Cluster communication is configured to use the following interface(s) for this
instance
 123.45.67.89
cluster interconnect IPC version:Oracle UDP/IP (generic)
```

- Identify network and contention issues.

Check for "gc cr lost blocks" wait event in Automatic Workload Repository (AWR)/sysstats.

If found, check for these errors on the NIC:

- Dropped packets/fragments
- Buffer overflows
- Packet reassembly failures or timeouts
- TX/RX errors

Use these commands to find any errors:

```
netstat -s
Ifconfig -a
ORADEBUG
```

- Identify Interconnect performance from AWR.
  - Under **Global Cache and Enqueue Services - Workload Characteristics**  
Avg global cache cr block receive time (ms): should be <=15 ms

- **Global Cache and Enqueue Services - Messaging Statistics**  
Avg message sent queue time on kxsp (ms): should be <1 ms
- **Under Interconnect Ping Latency Stats**  
Avg Latency 8K msg should be close to Avg Latency 500B msg.
- These wait events from AWR and sysstat can indicate contention related to RAC.
  - GC current block busy
  - GV cr block busy
  - GC current buffer busy
  - GC buffer busy acquire/release

See the *Oracle Real Application Clusters Administration and Deployment Guide* for a complete list.

These wait events in the AWR indicate that there might be a Hot Block that is causing these wait events. From the AWR Segment Statistics, you can find the objects.

```
Enq:TX Index Contention
Gc buffer busy
Gc current block busy
Gc current split
```

This issue will be noticed if multiple sessions are inserting into a single object or are using a sequence, and the indexed column is sequentially increasing. To address the specific issues:

- Identify the indexes and Global Hash Partition them.
- Increase the Sequence Cache if ordering is not a problem.

## 3.2.5 How to Optimize SQL Statements

Oracle Fusion Applications use Cost Based Optimization (CBO) to choose the most efficient execution plan for SQL statements. Using this approach, the optimizer determines the most optimal execution plan by costing available access paths and factoring information based on statistics for the schema objects accessed by the SQL statement.

### 3.2.5.1 Collecting Optimizer Statistics

For the query optimizer to produce an optimal execution plan, the statistics in the data dictionary should accurately reflect the volume and data distribution of the tables and indexes. To this end, database statistics should be refreshed periodically. However, that does not necessarily imply that you should gather statistics frequently. Systems that are close to going live typically experience inserts of a large amount of data, as data from legacy systems is migrated. In that scenario, the statistics would probably need to be refreshed quite frequently (for instance, after each major load), as large loads could change the data distribution significantly. Once the system reaches steady state, the frequency of statistics collection at the schema and database level should be reduced to approximately once a month. However, statistics on some volatile tables can be gathered as frequently as required.

Oracle Fusion Applications has an automated way of gathering the statistics. It uses `DBMS_STATS` with the `AutoTask` feature. For more information about `AutoTask`, see the "Enabling and Disabling Automatic Optimizer Statistics Collection" section in the *Oracle Database Performance Tuning Guide*.

## Gathering Statistics for Cost Based Optimizer

Oracle Fusion Applications use automatic optimizer statistics collection. That is, the database automatically gathers the optimizer statistics. Automatic statistics eliminates any manual intervention, thereby significantly reducing the onus on a system administrator. For a DW database, optimizer statistics are collected as part of ETL and BI apps, so it is recommended not to use automatic statistics gathering.

## Table Statistics and Number of Distinct Values (NDV)

For versions prior to Oracle 12g, a database performance problem can occur by missing a non-popular value in the sample created from the table, leading to a frequency histogram where the number of buckets is less than the number of values.

To work around this problem, set this entry in `init.ora`:

```
_fix_control='5483301:off','6708183:ON';
```

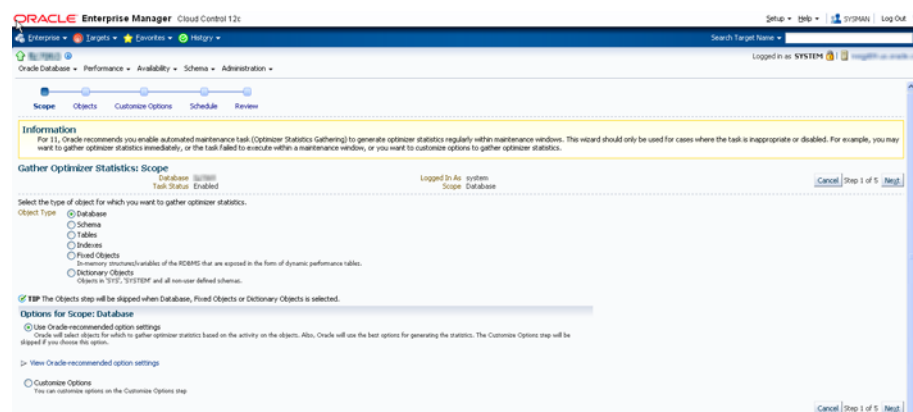
## Manual Statistics Gathering

Automatic optimizer statistics collection is sufficient for most of the database objects, but in a database that is close to going live or for tables that are modified significantly, manual statistic gathering is needed.

In these cases, use the `DBMS_STATS.GATHER_TABLE_STATS` procedure. Do not explicitly set any parameters apart from `owner` and `table_name`.

All the parameters, such as `estimate_percent`, `parallel` degree and `method_opt`, are globally seeded for Oracle Fusion database tables. Therefore, there is no need to use them when manually gathering the statistics. See [Figure 3–1](#).

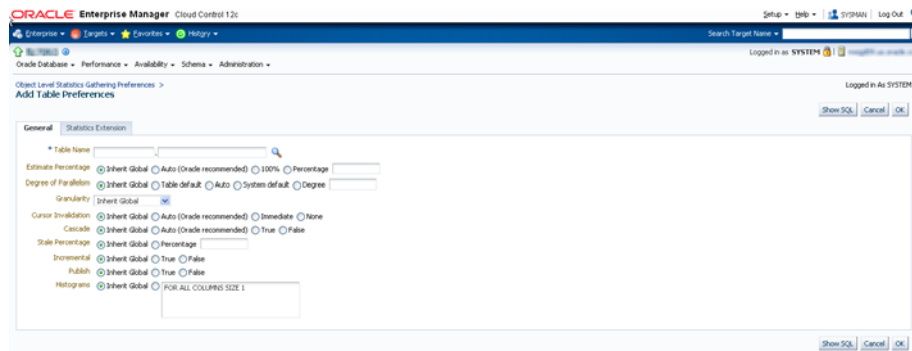
**Figure 3–1 Using the Fusion Applications Control to Gather the Statistics**



## Histograms

All the columns that need a histogram are seeded using `DBMS_STATS.SET_TABLE_PREFS` and the automatic optimizer statistic collection will create histograms for all the pre-identified columns apart from the columns identified by `DBMS_STATS` under `size auto`.

You can use `DBMS_STATS.SET_TABLE_PREFS` to manually seed histograms. See [Figure 3–2](#)

**Figure 3–2 Using Oracle Enterprise Manager Cloud Control**

### MDS DB: Collecting database statistics for optimizing the MDS database repository performance

Ensure `auto-stats` collection is enabled.

In most cases, the first 32 characters of `PATH_FULLNAME` in the `MDS_PATHS` table are the same. You can prevent the database putting them in the same section of the histogram by doing the following:

- Drop the histogram for `PATH_FULLNAME` column by executing the following as `system`.
 

```
execute dbms_stats.delete_column_stats(ownname=>'mdsSchemaOwner',
tabname=>'MDS_PATHS', colname=>'PATH_FULLNAME', col_stat_type=> 'HISTOGRAM');
```
- Set table preferences to exclude collecting histogram for the `PATH_FULLNAME` column.
 

```
execute dbms_stats.set_table_prefs(mdsSchemaOwner, 'MDS_PATHS', 'METHOD_OPT',
'FOR COLUMNS SIZE 1 PATH_FULLNAME');
```

#### 3.2.5.2 Pinning Packages and Cursors

Pinning the objects in the shared pool reduces the possibility of `ora-4031` error messages, and increases the performance of the OLTP applications.

Objects are cached in a library cache that uses a Least Recently Used (LRU) algorithm to flush the objects. The problem worsens if these large library cache objects are executed only infrequently. That is, if they are loaded into the library cache whenever required if they have aged out of the cache. This causes most of the problems leading to `ora-4031` errors and poor performance for UI-specific flows.

Consider a large package, or any object, that has to be loaded into the shared pool. Large PL/SQL objects present particular challenges. The database has to search for free space for the object. If it cannot get enough contiguous space, it will free many small objects to satisfy the request. If several large objects need to be loaded, the database has to throw out many small objects in the shared pool. Finding candidate objects and freeing memory is very costly. These tasks will affect CPU resources.

The same situation applies to SQL statements that are executed occasionally but are very important from a response time perspective. For example, a statement that is part of a CEO's dashboard is executed once every 3 to 4 hours, but it takes a long time for parsing.

A common question asked is how to keep the LRU algorithm from forcing objects out of the shared pool. This is mainly useful in cases where a SQL statement that is very expensive to parse may just be executed once every 12 hours, such as a dashboard SQL

statement. But due to the LRU algorithm, the results are flushed before the next execution. In these cases, you may prefer to pin the cursor so that subsequent parse times are reduced.

The `DBMS_SHARED_POOL` package provides procedures to facilitate this. With this, you have an easy way to ensure that the specified cursors always remain in the Most Recently Used (MRU) end of the cache. This prevents the cursor from being paged out and then re-parsed upon re-load. The `DBMS_SHARED_POOL.KEEP` procedure is used to pin the cursor and `DBMS_SHARED_POOL.UNKEEP` is used to unpin the cursor.

## 3.2.6 How to Configure the Database Resource Manager

To better ensure system stability during periods of high system load and prevent runaway queries, Oracle Database Resource Manager can be enabled on the Oracle Fusion Applications database instance.

For more details about the feature, including an explanation on when enabling this feature is desired, see the "Managing Resources with Oracle Database Resource Manager" chapter in the *Oracle Database Administrator's Guide*.

Use the resource manager to:

- Assign connections to different resource consumer groups.
- Create directives to manage resource allocations for connections in different resource consumer groups.

### 3.2.6.1 Assigning Connections to Resource Consumer Groups

There are multiple ways a connection can be assigned to a resource consumer group. See the *Oracle Database Administrator's Guide* for complete details.

See [Table 3–1](#) for connection attributes settings for Oracle Fusion Applications.

### 3.2.6.2 Using the Oracle Database Resource Manager

This section shows how to use the Oracle Database Resource Manager for Oracle Fusion Applications. Connection attribute mappings, and explicit assignment using a database login trigger are used to assign connections to different resource consumer groups. The plan is enabled by default for a newly-provisioned instance. If you are upgrading from earlier releases, you can run the scripts listed in "[Enabling the Resource Plan](#)" to create the same resource plan that is enabled by default in a freshly-provisioned database. The resource plan is called `FUSIONAPPS_PLAN`.

The plan has two resource consumer groups:

- `FUSIONAPPS_ONLINE_GROUP` - Connections used for servicing ADF UI pages are assigned to this resource group via a login trigger.
- `FUSIONAPPS_BATCH_GROUP` - All other connections used by Fusion Applications are assigned to this group.

#### Resource Directives

These resource directives are defined:

- Connections in `FUSIONAPPS_ONLINE_GROUP` get priority for 45% of the CPU. Parallel query is disabled, and any queries consuming more than 120s of CPU or resulting in more than 10GB of I/O will be canceled.
- Connections in `FUSIONAPPS_BATCH_GROUP` get priority for 35% of the CPU. There are no other resource restrictions.

- Connections used for `sysdba` activities get priority for 15% of the CPU. There are no other resource restrictions.
- All non-Oracle Fusion applications connections get priority for 5% of the CPU.  
Note that if a particular resource group does not consume all its allocated CPU, the unused CPU can be used by other resource consumer groups.

### Mapping Connections

To map connections to resource consumer groups, this approach is used:

- All schemas containing the string `FUSION` are mapped to `FUSIONAPPS_BATCH_GROUP`.
- A login trigger is used to check connections to schema `FUSION_RUNTIME`. If the connection is coming from an ADF server, assign the connection to `FUSIONAPPS_ONLINE_GROUP`.

### Enabling the Resource Plan

To enable this resource plan, follow these steps:

- Run this script using `sqlplus` as `sysdba` to create the resource plan, the resource consumer groups and the resource directives.

```
begin
  DBMS_RESOURCE_MANAGER.CLEAR_PENDING_AREA();
  DBMS_RESOURCE_MANAGER.CREATE_PENDING_AREA();

  begin
    DBMS_RESOURCE_MANAGER.DELETE_PLAN('FUSIONAPPS_PLAN');
  exception
    when others then
      null;
  end;

  begin
    dbms_resource_manager.delete_consumer_group(CONSUMER_GROUP => 'FUSIONAPPS_
ONLINE_GROUP');
  exception
    when others then
      null;
  end;

  begin
    dbms_resource_manager.delete_consumer_group(CONSUMER_GROUP => 'FUSIONAPPS_
BATCH_GROUP');
  exception
    when others then
      null;
  end;

  dbms_resource_manager.create_consumer_group(CONSUMER_GROUP => 'FUSIONAPPS_
ONLINE_GROUP', COMMENT => 'Consumer Group for online users');
  dbms_resource_manager.create_consumer_group(CONSUMER_GROUP => 'FUSIONAPPS_
BATCH_GROUP', COMMENT => 'Consumer Group for batch');

  dbms_resource_manager.create_plan(PLAN => 'FUSIONAPPS_PLAN',
COMMENT => 'Fusion Applications Resource Plan');

  dbms_resource_manager.create_plan_directive(
    plan => 'FUSIONAPPS_PLAN',
```

```

group_or_subplan => 'FUSIONAPPS_ONLINE_GROUP',
comment => 'Online users at level 1',
mgmt_pl => 45,
parallel_degree_limit_pl => 0,
switch_time => 120,
switch_io_megabytes => 10000,
switch_group => 'CANCEL_SQL');

dbms_resource_manager.create_plan_directive(
plan => 'FUSIONAPPS_PLAN',
group_or_subplan => 'FUSIONAPPS_BATCH_GROUP',
comment => 'Batch users at level 1',
mgmt_pl => 35);

dbms_resource_manager.create_plan_directive(
plan => 'FUSIONAPPS_PLAN',
group_or_subplan => 'SYS_GROUP',
comment => 'System administrator group at level 1',
mgmt_pl => 15);

dbms_resource_manager.create_plan_directive(
plan => 'FUSIONAPPS_PLAN',
group_or_subplan => 'OTHER_GROUPS',
comment => 'Other users at level 1',
mgmt_pl => 5);

for rec in (select username from dba_users where username like '%FUSION%')
loop
  if (rec.username <> 'FUSION_READ_ONLY') then
    dbms_resource_manager.set_consumer_group_mapping('ORACLE_
USER',rec.username,'FUSIONAPPS_BATCH_GROUP');
  end if;
end loop;

begin
  dbms_resource_manager.set_consumer_group_mapping('ORACLE_
USER','SEARCHSYS','FUSIONAPPS_BATCH_GROUP');
exception
  when others then
    null;
end;

DBMS_RESOURCE_MANAGER.VALIDATE_PENDING_AREA();
DBMS_RESOURCE_MANAGER.SUBMIT_PENDING_AREA();
DBMS_RESOURCE_MANAGER.CLEAR_PENDING_AREA();
dbms_resource_manager_privs.grant_switch_consumer_group('PUBLIC','FUSIONAPPS_
ONLINE_GROUP',FALSE);
dbms_resource_manager_privs.grant_switch_consumer_group('PUBLIC','FUSIONAPPS_
BATCH_GROUP',FALSE);
end;
/

```

- As sysdba, issue the following command to enable the resource plan:

(if using spfile)

```
ALTER SYSTEM SET RESOURCE_MANAGER_PLAN = FUSIONAPPS_PLAN SCOPE = BOTH;
```

(if not using spfile)

```
ALTER SYSTEM SET RESOURCE_MANAGER_PLAN = FUSIONAPPS_PLAN;
```

- Run this script using sqlplus as sysdba to create the login trigger:

```

CREATE OR REPLACE TRIGGER fusion_resource_trigger
  AFTER logon ON fusion_runtime.schema
declare
login_sid pls_integer;
login_program varchar2(40);
old_plan21   varchar2(44);
  begin

select 'Y' into login_program from dual where exists
(select program from v$session where audsid=userenv('sessionid') and
process like 'ApplicationDB%' and
 ( program is not null and
  program not like 'JDBC Thin Client' and
  program not like '%ess_server%' and
  program not like '%soa_server%' and
  program not like '%SearchServer%' and
  program not like '%search_server%' and
  program not like '%odi_server%' and
  program not like '%bi_server%'
) );

if login_program = 'Y'
then
dbms_session.switch_current_consumer_group('FUSIONAPPS_ONLINE_GROUP',old_
plan21,false);
else
null;
end if;
EXCEPTION
when NO_DATA_FOUND
then
null;
  end;
/

```

- If applicable, change the `init.ora` parameter to enable the resource plan:

```
RESOURCE_MANAGER_PLAN = FUSIONAPPS_PLAN
```

- Bounce all middle tiers.

### 3.2.6.3 Monitoring the Resource Manager

For details, see the *Oracle Database Administrator's Guide*. In particular, `v$src_consumer_groups` provides information on CPU wait time and the number of SQL statements canceled.

"Scripts and Tips for Monitoring CPU Resource Manager", which is note ID 1338988.1 in My Oracle Support, also has information about monitoring CPU usage for different resource consumer groups. If a resource consumer group is spending significant time waiting for CPU, review the resource directives and see if the waits are expected and if any adjustments are needed.

## 3.2.7 How to Tune the PS\_TXN Table in the FUSION Schema

Oracle Fusion Applications use the PS\_TXN table to store the intermediate processing state. When there are many concurrent users, this table receives a high number of inserts and could suffer from concurrency issues. To detect this contention issue, check the wait event "enq: HW contention" in the AWR report of the database.



---

Follow the steps outlined in note ID 1444959.1 in My Oracle Support to alleviate the contention.

## 3.2.8 How to Optimize Maintenance Windows

By default, Oracle enables various AUTOTASK clients and preconfigures maintenance windows that can be optimized to reduce unnecessary overhead.

### 3.2.8.1 Disabling AUTOTASK

Starting with Oracle Release 11.2.0.2, you should evaluate these AUTOTASKs. We recommend that they be disabled if the respective features are not being used.

- AUTO SPACE ADVISOR
- SQL TUNING ADVISOR

### 3.2.8.2 Adjusting Default Maintenance Windows

Starting with Oracle Release 11.2.0.2, various weekday and weekend windows are preconfigured with durations of 4 and 20 hours respectively. You should adjust these windows to run during time frames with minimal application workloads. In addition, you should reduce the weekend windows from the default configuration to a duration lower than the "byhour" value defined in the maintenance window's "repeat interval" settings. These values can be reviewed by querying the `DBA_SCHEDULER_WINDOWS` view. A suggested maintenance window configuration is to enable both the `WEEKNIGHT_WINDOW` and `WEEKEND_WINDOW` with a duration of 4 hours each.

