

Oracle® CRM Gateway for Mobile Devices Technical Reference Manual

RELEASE 11i

August 2000



Oracle® CRM Gateway for Mobile Devices Technical Reference Manual
Release 11i

To order this book, ask for Part No. A86131-01

Copyright © 2000. Oracle Corporation. All rights reserved.

Major Contributors:

Contributors:

This Technical Reference Manual (TRM) in any form, software or printed matter, contains proprietary information of Oracle Corporation; it is provided under an Oracle Corporation agreement containing restrictions on use and disclosure and is also protected by copyright, patent, and other intellectual property law. Restrictions applicable to this TRM include, but are not limited to: (a) exercising either the same degree of care to safeguard the confidentiality of this TRM as you exercise to safeguard the confidentiality of your own most important Confidential Information or a reasonable degree of care, whichever is greater; (b) maintaining agreements with your employees and agents that protect the Confidential Information of third parties such as Oracle Corporation and instructing such employees and agents of these requirements for this TRM; (c) restricting disclosure of this TRM to those of your employees who have a "need to know" consistent with the purposes for which this TRM was disclosed to you; (d) maintaining this TRM at all times on your premises; (e) not removing or destroying any proprietary or confidential legends or markings placed upon this TRM in whatever form, software or printed matter; and (f) not reproducing or transmitting this TRM in any form or by any means, electronic or mechanical, for any purpose, without the express written permission of Oracle Corporation. You should not use this TRM in any form, software or printed matter, to create software that performs the same or similar functions as any Oracle Corporation products.

The information in this TRM is subject to change without notice. If you find any problems in the TRM in any form, software or printed matter, please report them to us in writing. Oracle Corporation does not warrant that this TRM is error-free. This TRM is provided to customer "as-is" with no warranty of any kind. This TRM does not constitute Documentation as that term is defined in Oracle's agreements.

Reverse engineering of the Programs (software and documentation) associated with this TRM are prohibited. The Programs associated with this TRM are not intended for use in any nuclear, aviation, mass transit, medical, or other inherently dangerous applications. It shall be licensee's responsibility to take all appropriate fail-safe, back-up, redundancy and other measures to ensure the safe use of such applications if the Programs are used for such purposes, and Oracle disclaims liability for any damages caused by such use of the Programs. Program Documentation is licensed for use solely to support the deployment of the Programs and not for any other purpose.

Restricted Rights Legend

This TRM and the Programs associated with this TRM delivered subject to the DOD FAR Supplement are 'commercial computer software' and use, duplication and disclosure of the TRM and the Programs associated with this TRM shall be subject to the licensing restrictions set forth in the applicable Oracle license agreement. Otherwise, this TRM and the Programs associated with this TRM delivered subject to the Federal Acquisition Regulations are 'restricted computer software' and use, duplication and disclosure of the TRM and the Programs associated with this TRM shall be subject to the restrictions in FAR 52.227-14, Rights in Data -- General, including Alternate III (June 1987). Oracle Corporation, 500 Oracle Parkway, Redwood City, CA 94065.

Oracle is a registered trademark, and Oracle CRM Gateway for Mobile Devices, CASE*Exchange, Enabling the Information Age, Hyper*SQL, NLS*Workbench, Oracle7, Oracle8, Oracle 8i, Oracle Access, Oracle Application Object Library, Oracle Discoverer, Oracle Financials, Oracle Quality, Oracle Web Customers, Oracle Web Employees, Oracle Work in Process, Oracle Workflow, PL/SQL, Pro*Ada, Pro*C, Pro*COBOL, Pro*FORTRAN, Pro*Pascal, Pro*PL/I, SmartClient, SQL*Connect, SQL*Forms, SQL*Loader, SQL*Menu, SQL*Net, SQL*Plus, and SQL*Report are trademarks or registered trademarks of Oracle Corporation. Other names may be trademarks of their respective owners.



CAUTION

This Technical Reference Manual in any form -- software or printed matter -- contains proprietary, confidential information that is the exclusive property of Oracle Corporation. If you do not have a valid contract with Oracle for the use of this Technical Reference Manual or have not signed a non-disclosure agreement with Oracle covering this Technical Reference Manual, then you received this document in an unauthorized manner and are not legally entitled to possess or read it.

Use, duplication, and disclosure are subject to restrictions stated in your contract with Oracle Corporation.



Contents

| | | |
|------------------|-------------------------------------|--------------|
| Chapter 1 | Introduction | 1 – 1 |
| Chapter 2 | High-Level Design | 2 – 1 |
| | Overview of High-Level Design | 2 – 2 |
| | Database Diagrams | 2 – 8 |
| | Public Table List | 2 – 14 |
| | Multilingual View List | 2 – 16 |
| | Module List | 2 – 17 |
| Chapter 3 | Detailed Design | 3 – 1 |
| | Overview of Detailed Design | 3 – 2 |
| | Table and View Definitions | 3 – 3 |

Oracle Proprietary, Confidential Information--Use Restricted by Contract

Introduction

The *Oracle CRM Gateway for Mobile Devices Technical Reference Manual* provides the information you need to understand the underlying structure of Oracle CRM Gateway for Mobile Devices. After reading this manual, you should be able to convert your existing applications data, integrate your existing applications with Oracle CRM Gateway for Mobile Devices, and write custom reports for Oracle CRM Gateway for Mobile Devices, as well as read data that you need to perform other tasks.

This chapter introduces you to the *Oracle CRM Gateway for Mobile Devices Technical Reference Manual*, and explains how to use it.

Introduction

At Oracle, we design and build applications using Oracle Designer, our systems design technology that provides a complete environment to support developers through all stages of a systems life cycle. Because we use a repository-based design toolset, all the information regarding the underlying structure and processing of our applications is available to us online. Using Oracle Designer, we can present this information to you in the form of a technical reference manual.

This *Oracle CRM Gateway for Mobile Devices Technical Reference Manual* contains detailed, up-to-date information about the underlying structure of Oracle CRM Gateway for Mobile Devices. As we design and build new releases of Oracle CRM Gateway for Mobile Devices, we update our Oracle Designer repository to reflect our enhancements. As a result, we can always provide you with an *Oracle CRM Gateway for Mobile Devices Technical Reference Manual* that contains the latest technical information as of the publication date. Note that after the publication date we may have added new indexes to Oracle CRM Gateway for Mobile Devices to improve performance.

About this Manual

This manual describes the Oracle Customer Relationship Management (CRM) Applications Release 11i data model, as used by Oracle CRM Gateway for Mobile Devices; it discusses the database we include with a fresh install of Oracle CRM Release 11i. If you have not yet upgraded to Release 11i, your database may differ from the database we document in this book.

You can contact your Oracle representative to confirm that you have the latest technical information for Oracle CRM Gateway for Mobile Devices. You can also use Oracle *MetaLink* which is accessible through Oracle's Support Web Center (http://www.oracle.com/support/elec_sup).

Finding the Latest Information

The *Oracle CRM Gateway for Mobile Devices Technical Reference Manual* contains the latest information as of the publication date. For the latest information we encourage you to use Oracle *MetaLink* which is accessible through Oracle's Support Web Center (http://www.oracle.com/support/elec_sup).

Oracle Proprietary, Confidential Information--Use Restricted by Contract

Audience

The *Oracle CRM Gateway for Mobile Devices Technical Reference Manual* provides useful guidance and assistance to:

- Technical End Users
- Consultants
- Systems Analysts
- System Administrators
- Other MIS professionals

This manual assumes that you have a basic understanding of structured analysis and design, and of relational databases. It also assumes that you are familiar with Oracle Application Object Library and Oracle CRM Gateway for Mobile Devices. If you are not familiar with the above products, we suggest that you attend one or more of the training classes available through Oracle Education (see: Other Information Sources: page 1 – 7).

How This Manual is Organized

This manual contains two major sections, High-Level Design and Detailed Design.

High-Level Design

This section, Chapter 2, contains database diagrams and lists each database table and view that Oracle CRM Gateway for Mobile Devices uses. This chapter also has a list of modules.

Detailed Design

This section, Chapter 3, contains a detailed description of the Oracle CRM Gateway for Mobile Devices database design, including information about each database table and view you might need for your custom reporting or other data requirements.

How to Use This Manual

The *Oracle CRM Gateway for Mobile Devices Technical Reference Manual* is a single, centralized source for all the information you need to know about the underlying structure and processing of Oracle CRM Gateway for Mobile Devices. For example, you can use this manual when you need to:

- Convert existing application data
- Integrate your Oracle CRM Gateway for Mobile Devices application with your other applications systems
- Write custom reports
- Define alerts against Oracle Applications tables
- Configure your Oracle Self-Service Web Applications
- Create views for decision support queries using query tools
- Create business views for Oracle Discoverer

You need not read this manual cover to cover. Use the table of contents and index to quickly locate the information you need.

How Not To Use This Manual

Do not use this manual to plan modifications

You should not use this manual to plan modifications to Oracle CRM Gateway for Mobile Devices. Modifying Oracle CRM Gateway for Mobile Devices limits your ability to upgrade to future releases of your Oracle CRM Gateway for Mobile Devices application. In addition, it interferes with our ability to give you the high-quality support you deserve.

We have constructed Oracle CRM Gateway for Mobile Devices so that you can customize it to fit your needs without programming, and you can integrate it with your existing applications through interface tables. However, should you require program modifications, you should contact our support team (see: Other Information Sources: page 1 – 7). They can put you in touch with Oracle Services, the professional consulting organization of Oracle. Their team of experienced applications professionals can make the modifications you need while ensuring upward compatibility with future product releases.

Oracle Proprietary, Confidential Information--Use Restricted by Contract

Do not write data into non-interface tables

Oracle reserves the right to change the structure of Oracle Applications tables, and to change the meaning of, add, or delete lookup codes and data in future releases. Do not write data directly into or change data in non-interface tables using SQL*Plus or other programming tools because you risk corrupting your database and interfering with our ability to support you.

Moreover, this version of the *Oracle CRM Gateway for Mobile Devices Technical Reference Manual* does not contain complete information about the dependencies between Oracle CRM Gateway for Mobile Devices applications tables. Therefore, you should write data into only those tables we identify as interface tables. If you write data into other non-interface tables, you risk violating your data integrity since you might not fulfill all the data dependencies in your Oracle CRM Gateway for Mobile Devices application.

You are responsible for the support and upgrade of the logic within the procedures that you write, which may be affected by changes between releases of Oracle Applications.

Do not rely on upward compatibility of the data model

Oracle reserves the right to change the structure of Oracle CRM Gateway for Mobile Devices tables, and to change the meaning of, add, or delete lookup codes and other data in future releases. We do not guarantee the upward compatibility of the Oracle CRM Gateway for Mobile Devices data model. For example, if you write a report that identifies concurrent requests that end in Error status by selecting directly from Oracle Application Object Library tables, we do not guarantee that your report will work properly after an upgrade.

About Oracle Application Object Library

Oracle Application Object Library is a collection of pre-built application components and facilities for building Oracle Applications and extensions to Oracle Applications. Oracle Application Coding Standards use the Oracle Application Object Library and contains shared components including but not limited to -- forms, subroutines, concurrent programs and reports, database tables and objects, messages, menus, responsibilities, flexfield definitions and online help.



Attention: Oracle does not support *any* customization of Oracle Application Object Library tables or modules, not even

Oracle Proprietary, Confidential Information--Use Restricted by Contract

by Oracle consultants. (Oracle Application Object Library tables generally have names beginning with FND_%.)

Accordingly, this manual does not contain detailed information about most Oracle Application Object Library tables used by Oracle CRM Gateway for Mobile Devices.

A Few Words About Terminology

The following list provides you with definitions for terms that we use throughout this manual:

Relationship

A relationship describes any significant way in which two tables may be associated. For example, rows in the Journal Headers table may have a one-to-many relationship with rows in the Journal Lines table.

Database Diagram

A database diagram is a graphic representation of application tables and the relationships between them.

Module

A module is a program or procedure that implements one or more business functions, or parts of a business function, within an application. Modules include forms, concurrent programs and reports, and subroutines.

Application Building Block

An application building block is a set of tables and modules (forms, reports, and concurrent programs) that implement closely-related database objects and their associated processing. Said another way, an application building block is a logical unit of an application.

QuickCodes

QuickCodes let you define general purpose, static lists of values for window fields. QuickCodes allow you to base your program logic on lookup codes while displaying user-friendly names in a list of values window. QuickCodes simplify name and language changes by letting

you change the names your end users see, while the codes in your underlying programs remain the same.

Form

A form is a module comprised of closely related windows that are used together to perform a task. For example, the Enter Journals form in Oracle General Ledger includes the Enter Journals window, the Batch window, and the More Actions window among others. The Enter Journals window is the main window, and from it, you can use buttons to navigate to other windows in the form. The form name usually corresponds to the main window in the form, and is frequently a window you open directly from the Navigator.

Other Information Sources

Installation and System Administration

Training

Oracle Education offers a complete set of training courses to help you and your staff master Oracle CRM Applications. We can help you develop a training plan that provides thorough training for both your project team and your end users. We will work with you to organize courses appropriate to your job or area of responsibility.

Training professionals can show you how to plan your training throughout the implementation process so that the right amount of information is delivered to key people when they need it the most. You can attend courses at any one of our many Educational Centers, or you can arrange for our trainers to teach at your facility. In addition, we can tailor standard courses or develop custom courses to meet your needs.

Support

From on-site support to central support, our team of experienced professionals provides the help and information you need to keep Oracle CRM Gateway for Mobile Devices working for you. This team includes your Technical Representative, Account Manager, and Oracle's large staff of consultants and support specialists with expertise in your

business area, managing an Oracle server, and your hardware and software environment.

Oracle Proprietary, Confidential Information--Use Restricted by Contract

About Oracle

Oracle Corporation develops and markets an integrated line of software products for database management, applications development, decision support, and office automation, as well as Oracle Applications, an integrated suite of more than 75 software modules for financial management, supply chain management, manufacturing, project systems, human resources, and sales and service management.

Oracle products are available for mainframes, minicomputers, personal computers, network computers, and personal digital assistants, allowing organizations to integrate different computers, different operating systems, different networks, and even different database management systems, into a single, unified computing and information resource.

Oracle is the world's leading supplier of software for information management, and the world's second largest software company. Oracle offers its database, tools, and applications products, along with related consulting, education, and support services, in over 145 countries around the world.

Thank You

Thanks for using Oracle CRM Gateway for Mobile Devices and this technical reference manual!

We appreciate your comments and feedback. After the Table of Contents of this manual is a Reader's Comment Form that you can use to explain what you like or dislike about Oracle CRM Gateway for Mobile Devices or this technical reference manual. Mail your comments to the following address or call us directly at (650) 506-7000.

Oracle CRM Applications Content Development Manager
Oracle Corporation
500 Oracle Parkway
Redwood Shores, California 94065
U.S.A.

Oracle Proprietary, Confidential Information--Use Restricted by Contract

CHAPTER

2

High-Level Design

This chapter presents a high-level design for Oracle CRM Gateway for Mobile Devices that satisfies the business needs we specify during Strategy and Analysis. It contains database diagrams for Oracle CRM Gateway for Mobile Devices application building blocks, lists of database tables and views, and a list of modules.

Overview of High-Level Design

During High-Level Design, we define the application components (tables, views, and modules) we need to build our application. We specify what application components should do without specifying the details of *how* they should do it.

You can refer to this High-Level Design chapter to quickly acquaint yourself with the tables, views, and modules that comprise Oracle CRM Gateway for Mobile Devices applications. And, you can prepare yourself to understand the detailed design and implementation of Oracle CRM Gateway for Mobile Devices.

Database Diagrams

The Database Diagrams section graphically represents all Oracle CRM Gateway for Mobile Devices applications tables and the relationships between them, organized by building block.

Use this section to quickly learn what tables each Oracle CRM Gateway for Mobile Devices application building block uses, and how those tables interrelate. Then, you can refer to the Table and View Definitions sections of Chapter 3 for more detailed information about each of those tables.

Table Lists

The Table List sections list the Oracle CRM Gateway for Mobile Devices applications tables. Because a product might not include at least one table for each type, this Technical Reference Manual might not include each of the following sections.

Public Tables

Use the Public Table List section to quickly identify the tables you are most interested in. Then, you can refer to the Table and View Definitions sections of Chapter 3 for more detailed information about those tables.

In addition, this manual may contain full documentation for one or more of the following Application Object Library tables: FND_DUAL, FND_CURRENCIES, and FND_COMMON_LOOKUPS.

Oracle Proprietary, Confidential Information--Use Restricted by Contract

Internal Tables

This section includes a list of private, internal tables used by Oracle CRM Gateway for Mobile Devices; we do not provide additional documentation for these tables.

View Lists

The View List sections list the Oracle CRM Gateway for Mobile Devices views, with one section for each type of view. Because a product might not include at least one view for each type, this Technical Reference Manual might not include each of the following sections.

Use this section to quickly identify the views you are most interested in. Then, you can refer to the Table and View Definitions sections of Chapter 3 for more detailed information about those views.

Public Views

This section lists views that may be useful for your custom reporting or other data requirements. The list includes a description of the view, and the page in Chapter 3 that gives detailed information about the public view.

Web Views

This section lists views that you may need to configure your Self-Service Web applications. The list includes a description of the view, and the page in Chapter 3 that gives detailed information about the web view.

Internal Views

This section includes each private, internal view that Oracle CRM Gateway for Mobile Devices uses.

Multiple Reporting Currency Views

This list includes views that were created to support the Multiple Reporting Currencies feature.

Module List

The Module List section briefly describes each of the Oracle CRM Gateway for Mobile Devices applications modules. This section lists forms, reports, and concurrent programs.

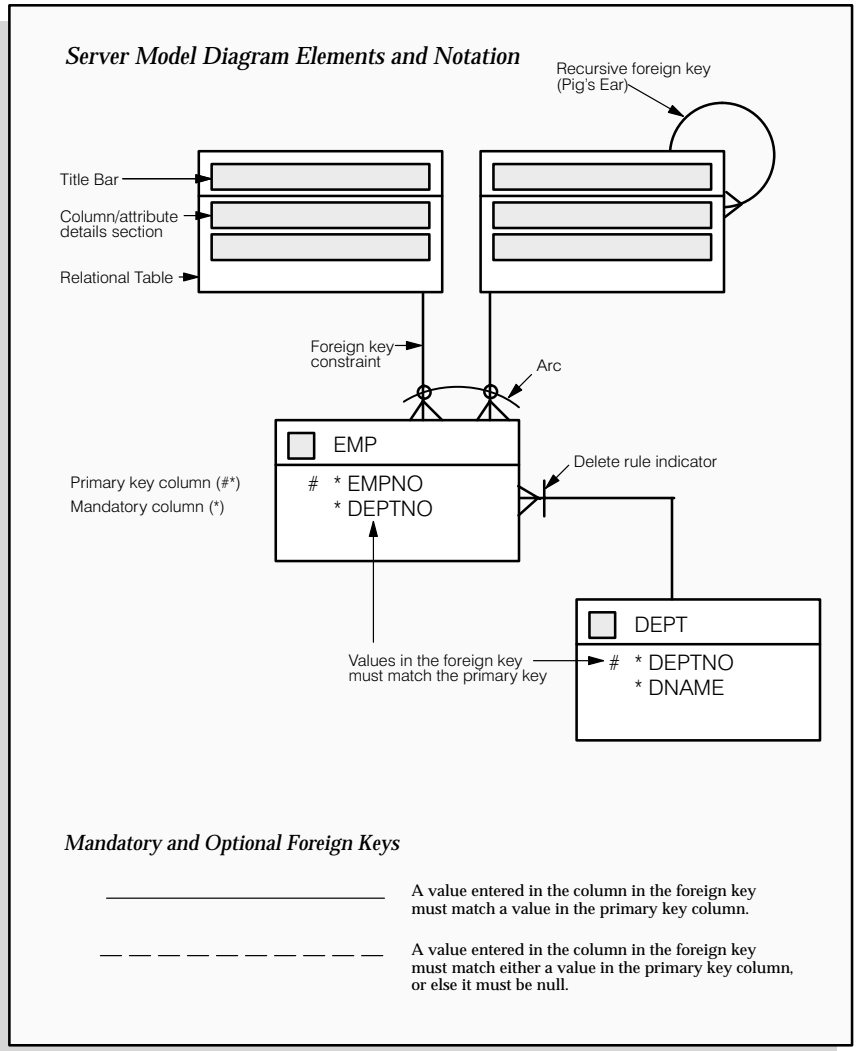
A form is a module comprised of closely related windows that are used together to perform a task. For example, the Enter Journals form in Oracle General Ledger includes the Enter Journals window, the Batch window, and the More Actions window. The Enter Journals window is the main window, and from it, you can use buttons to navigate to other windows in the form. The form name usually corresponds to the main window in the form, and is frequently a window you can open directly from the Navigator.

The Reports and Concurrent Programs lists include processes you can submit from the Submit Requests window or other windows, as well as processes that are submitted automatically by Oracle CRM Gateway for Mobile Devices. Use your user's guide to learn more about reports and concurrent processes.

Database Diagramming Conventions

We use the following notational conventions in our database diagrams:

Figure 2 - 1
Database Diagram
Conventions



Tables – are the basic unit of storage in the database. A hand symbol preceding the title in the table's title bar indicates that the table is not owned by this application but shared with another.

Foreign key constraint – is a type of referential integrity constraint for checking the integrity of data entered in a specific column or set of columns. This specified column or set of columns is known as the foreign key.

Delete rule indicator – determines the action to be taken when an attempt is made to delete a related row in a join table. A line through the foreign key constraint, as shown on the above diagram, indicates that this action is restricted.

Arcs – specify that, for any given row in a table, a value must be entered in one of the arc columns. The remaining columns within the arc must be null.



Database Diagrams

This section graphically represents most of the significant Oracle CRM Gateway for Mobile Devices tables and the relationships between them, organized by building block. Use this section to quickly learn what tables each Oracle CRM Gateway for Mobile Devices application building block uses, and how these tables interrelate. Then, you can refer to the Table and View Definitions sections of Chapter 3 for more detailed information about each of those tables.

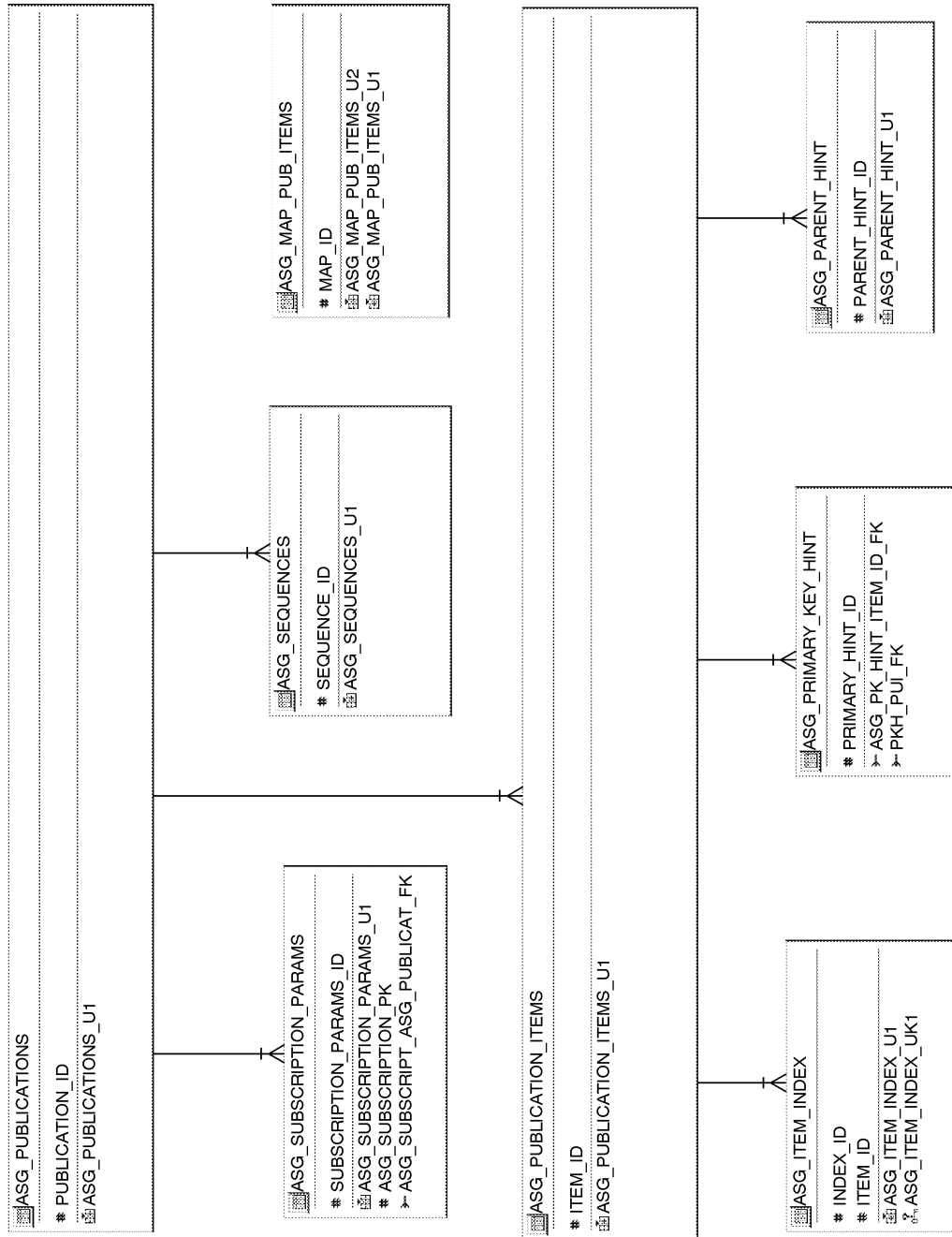
This section contains a database diagram for each of the following Oracle CRM Gateway for Mobile Devices application building blocks:

- Diagram 1: ASG Database Diagram
- Diagram 2: ASG Mobile Gateway #1
- Diagram 3: ASG Mobile Gateway #2

ASG Database Diagram

ASG Mobile Gateway #1

Oracle Proprietary, Confidential Information--Use Restricted by Contract



ASG Mobile Gateway #2

Oracle Proprietary, Confidential Information--Use Restricted by Contract

Public Table List

This section lists each public database table that CRM Gateway for Mobile Devices uses and provides a brief description of each of those tables. The page reference is to the table description in Chapter 3.

Note that "public" tables are not necessarily intended for write access by custom code; Oracle Corporation supports write access using only standard Oracle Applications forms, reports, and programs, or any SQL write access to tables explicitly documented as API tables. For more information, see the How Not To Use This Manual section of this book's Introduction.

CRM Gateway for Mobile Devices uses the following Public tables:

| Table Name | Description |
|----------------------|--|
| ASG_APPLICATIONS_B | Stores all the various mobile application supported (See page 3 – 7) |
| ASG_APPLICATIONS_TL | Stores mobile application names in various languages. Seeded table (See page 3 – 8) |
| ASG_DEVICE_USERS | Stores information of a resource, such as a service engineer or a salesman, related to a mobile application (See page 3 – 9) |
| ASG_ERROR | Stores information of error logs. (See page 3 – 11) |
| ASG_FLASH_MESSAGES | Stores all flash messages (See page 3 – 12) |
| ASG_FLASH_RECIPIENTS | Stores all recipients for all the flash messages (See page 3 – 13) |
| ASG_INCIDENT_ACC | Stores information that indicates whether the gateway server can access a service request. (See page 3 – 14) |
| ASG_ITEM_INDEX | Indexes related to a publication item (See page 3 – 15) |
| ASG_LOCATION_ACC | Stores information that indicates whether the gateway server can access a location. (See page 3 – 16) |
| ASG_MAP_PUB_ITEMS | Defines relationship between publication and items (See page 3 – 17) |
| ASG_PARENT_HINT | Parent hints for Publication items (See page 3 – 18) |
| ASG_PARTY_ACC | Stores information that indicates whether the gateway server can access a party. (See page 3 – 19) |

Oracle Proprietary, Confidential Information--Use Restricted by Contract

| | |
|-------------------------|--|
| ASG_PARTY_SITE_ACC | Stores information that indicates whether the gateway server can access a party site. (See page 3 – 20) |
| ASG_PRIMARY_KEY_HINT | Stores the Primary Key hints for publication items (See page 3 – 21) |
| ASG_PUBLICATIONS | Stores all I-Connect publication names (See page 3 – 22) |
| ASG_PUBLICATION_ITEMS | Stores all I-Connect publication items. (See page 3 – 23) |
| ASG_SEQUENCES | Sequences on Mobile Device (See page 3 – 24) |
| ASG_SERVER_RESOURCES | Stores all users(resources) using a particular middle-tier (See page 3 – 25) |
| ASG_SUBSCRIPTION_PARAMS | subscription parametres (See page 3 – 26) |
| ASG_SYNCH_SERVER | Informating about all the Mobile Device Gateway (See page 3 – 27) |
| ASG_TASK_ACC | Stores information that indicates whether the gateway server can access a task. (See page 3 – 28) |
| ASG_WIRELESS_PARAMETERS | profile values for wireless (See page 3 – 29) |
| FND_USER | Application users (See page NO TAG) |
| JTF_RS_RESOURCE_EXTNS | This is table stores all important information about Resources. These Resources are coming from HR or HZ or Vonder table etc. Primary key is resource_id. Resource_number, user_id sre also unique keys. (See page 3 – 30) |
| JTF_TASKS_B | Base Table JTF_TASKS_B stores general information about a given Task. (See page 3 – 33) |
| JTF_TASK_ASSIGNMENTS | JTF_TASK_ASSIGNMENTS stores information about the resource assignments associated with the task. (See page 3 – 36) |

Multilingual View List

This section lists each MultiLingual database view that Oracle CRM Gateway for Mobile Devices uses. MultiLingual views were created to allow certain seed data to be available in multiple national languages simultaneously.

Oracle CRM Gateway for Mobile Devices uses the following Multilingual views:

- ASG_APPLICATION_VL

Module List

Oracle CRM Gateway for Mobile Devices uses no additional reports, forms, or concurrent programs.

Oracle Proprietary, Confidential Information--Use Restricted by Contract

CHAPTER

3

Detailed Design

This chapter presents a detailed design for implementing Oracle CRM Gateway for Mobile Devices. It contains detailed definitions of tables and views that you may need to reference to write custom reports or use for other data extraction.

Overview of Detailed Design

During Detailed Design, we specify in detail how each applications component should work. We prepare detailed definitions of tables and views.

You can refer to this Detailed Design chapter to gain a detailed understanding of the underlying structure and processing of Oracle CRM Gateway for Mobile Devices that enables you to:

- Convert existing application data
- Integrate your Oracle CRM Gateway for Mobile Devices application with your other applications systems
- Write custom reports
- Define alerts against Oracle Applications tables
- Create views for decision support queries using query tools

Table and View Definitions

The Table and View Definitions section contains a detailed definition of Oracle CRM Gateway for Mobile Devices applications tables. For each table, it provides information about primary keys, foreign keys, QuickCodes, indexes, triggers, and sequences. It also gives you a detailed description of each column and its characteristics. In addition, it provides the SQL statement that defines each view. Review this section to get a detailed understanding of what tables your Oracle CRM Gateway for Mobile Devices application contains, and how it uses them to hold and access the information it needs.

Table and View Definitions

This section contains a detailed description of each Oracle CRM Gateway for Mobile Devices table and view that you may need to reference. For each table, it presents detailed information about:

- Primary keys
- Foreign keys
- Column descriptions
- Indexes
- Oracle sequences
- Triggers
- View derivations

The following sections appear in each table or view description:

Foreign Keys

To help you understand the relationships between tables, we list each foreign key contained in a table. For each foreign key in a table, we list the primary key table name (the table to which a foreign key refers), its corresponding primary key columns, and the foreign key columns that refer to those primary key columns.

When the primary key table has a composite primary key, we list each column of the composite key sequentially.

If a table contains two or more distinct foreign keys that refer to the same primary key table, we repeat the primary key table name and list each of the distinct foreign keys separately.

QuickCodes Columns

When a database column contains a QuickCodes value, which we implement using a foreign key to FND_LOOKUPS, MFG_LOOKUPS, or to some other lookup table, we list the QuickCodes type (lookup type) to which the QuickCodes value must belong and a complete list of QuickCodes values and meanings. Some QuickCodes can be defined by you in the application. These values are designated as User-defined.

Column Descriptions

We list the important characteristics of each column in a table or view. These characteristics include whether the column is part of the table's primary key, whether Oracle8i requires a value for this column, and the data type of the column. We also give you a brief description of how Oracle CRM Gateway for Mobile Devices uses the column.

When a column is part of a table's primary key, we append the notation (PK) to the name of that column.

To help you understand which columns Oracle CRM Gateway for Mobile Devices uses and which columns it does not use, we alert you to any unused column. When no module uses a database column, we show one of the following legends in the Description column:

Not currently used Oracle CRM Gateway for Mobile Devices does not use this column, although the column might be used in a future release.

No longer used Oracle CRM Gateway for Mobile Devices no longer uses this column. AutoInstall installs this column. Subsequent versions of Oracle CRM Gateway for Mobile Devices might not include this column.

No longer installed Oracle CRM Gateway for Mobile Devices no longer uses this column. If you *upgraded* your software from an earlier version, you may still have this column, depending upon whether you chose to delete it during an upgrade process. If you *install* Oracle CRM Gateway for Mobile Devices, you do not have this column.

Standard Who Columns

Most Oracle CRM Gateway for Mobile Devices tables contain standard columns to support \ Row Who. When your program or SQL*Plus command selects a row from a table, use these columns to determine who last updated the row. If your program or SQL*Plus command updates or inserts a row in an interface table, you must populate each of the five standard Who columns:

| | |
|------------------|--|
| LAST_UPDATE_DATE | Date when a user last updated this row |
| LAST_UPDATED_BY | User who last updated this row (foreign key to FND_USER.USER_ID) |

Oracle Proprietary, Confidential Information--Use Restricted by Contract

| | |
|--------------------------|--|
| CREATION_DATE | Date when this row was created |
| CREATED_BY | User who created this row (foreign key to FND_USER.USER_ID) |
| LAST_UPDATE_LOGIN | Operating system login of user who last updated this row (foreign key to FND_LOGINS.LOGIN_ID). You should set this to NULL, or to 0 if NULL is not allowed |

Since every table containing Who columns has several foreign keys to the tables FND_USER and FND_LOGINS, we do not include the foreign key columns LAST_UPDATED_BY, CREATED_BY, or LAST_UPDATE_LOGIN in a table's list of foreign keys.

Additional Who Columns for Concurrent Programs

Some Oracle CRM Gateway for Mobile Devices tables also contain several additional Who columns to distinguish between changes a user makes with a form and changes a concurrent program makes. When a concurrent program updates or inserts a row in a table, the concurrent program populates the following additional Who columns:

| | |
|-------------------------------|---|
| REQUEST_ID | Concurrent request ID of program that last updated this row (foreign key to FND_CONCURRENT_REQUESTS.REQUEST_ID) |
| PROGRAM_APPLICATION_ID | Application ID of program that last updated this row (foreign key to FND_APPLICATION.APPLICATION_ID) |
| PROGRAM_ID | Program ID of program that last updated this row (foreign key to FND_CONCURRENT_PROGRAM.CONCURRENT_PROGRAM_ID) |
| PROGRAM_UPDATE_DATE | Date when a program last updated this row |

Since every table containing these additional Who columns has several foreign keys to the tables FND_CONCURRENT_REQUESTS, FND_APPLICATION, and FND_CONCURRENT_PROGRAM, we do not include the foreign key columns REQUEST_ID, PROGRAM_APPLICATION_ID, or PROGRAM_ID in a table's list of foreign keys.

Indexes

If an Oracle CRM Gateway for Mobile Devices table uses an Oracle8i index, we list the database columns that comprise that index, in sequential order.

Note: The indexes we document in this manual correspond to unique keys we specified during product development and testing. In some cases, we may add additional indexes during the porting process to fine-tune performance on specific platforms; therefore, there may be minor differences between the indexes documented in this book and the indexes for production versions of Oracle CRM Gateway for Mobile Devices.

Sequences

Oracle CRM Gateway for Mobile Devices uses Oracle8i sequence generators to generate unique integers. If any table column gets its value from an Oracle8i sequence generator, we list the name of the corresponding sequence generator and the name of the column that stores the unique integer.

Database Triggers

If a table has one or more active database triggers, we provide a brief explanation of each database trigger and when it fires.

View Derivation

For each Oracle CRM Gateway for Mobile Devices view you may need to reference, we include important elements from the SQL statement that defines or creates a view. By studying this view definition, you can understand exactly how a view derives its contents.

ASG_APPLICATIONS_B

Stores all the various mobile applications supported

Column Descriptions

| Name | Null? | Type | Description |
|----------------------------|----------|--------------|--|
| MOBILE_APPLICATION_ID (PK) | NOT NULL | NUMBER | Mobile application identifier. Primary key |
| LAST_UPDATE_DATE | NOT NULL | DATE | Standard who column |
| LAST_UPDATED_BY | NOT NULL | NUMBER | Standard who column |
| CREATION_DATE | NOT NULL | DATE | Standard who column |
| CREATED_BY | NOT NULL | NUMBER | Standard who column |
| DEVICE_TYPE | NULL | VARCHAR2(30) | Mobile device type such as 'PALM' 'WINCE' 'LAPTOP'. |
| APP_VERSION | NULL | VARCHAR2(30) | Version of mobile application |
| STATUS | NULL | VARCHAR2(1) | Status flag |
| FLASH_MESSAGE_LENGTH | NULL | NUMBER | If the application supports flash messages, the max length of messages |
| APPLICATION_CODE | NOT NULL | VARCHAR2(60) | application code |
| SYNCHRONIZATION_FLAG | NULL | VARCHAR2(1) | Synchronization flag. 'Y' if the application supports synchronization |
| SMS | NULL | VARCHAR2(1) | SMS flag. 'Y' if the application supports SMS |
| EMAIL | NULL | VARCHAR2(1) | Email flag. 'Y' if the application supports email |
| SECURITY_GROUP_ID | NULL | NUMBER | Used in hosted environments |

Indexes

| Index Name | Index Type | Sequence | Column Name |
|-----------------------|------------|----------|-----------------------|
| ASG_APPLICATIONS_B_U1 | UNIQUE | 1 | MOBILE_APPLICATION_ID |

ASG_APPLICATIONS_TL

Stores mobile application names in various languages. Seeded table

Column Descriptions

| Name | Null? | Type | Description |
|----------------------------|----------|---------------|---|
| MOBILE_APPLICATION_ID (PK) | NOT NULL | NUMBER | Mobile application identifier. |
| LANGUAGE (PK) | NOT NULL | VARCHAR2(4) | Specific language in which mobile application name is stored. |
| SOURCE_LANG | NOT NULL | VARCHAR2(4) | Base language in which mobile application name is stored |
| LAST_UPDATE_DATE | NOT NULL | DATE | Standard who column |
| LAST_UPDATED_BY | NOT NULL | NUMBER | Standard who column |
| CREATION_DATE | NOT NULL | DATE | Standard who column |
| CREATED_BY | NOT NULL | NUMBER | Standard who column |
| MOBILE_APPLICATION_NAME | NULL | VARCHAR2(240) | Name of mobile application in the language specified |
| SECURITY_GROUP_ID | NULL | NUMBER | Used in hosted environments |

Indexes

| Index Name | Index Type | Sequence | Column Name |
|------------------------|------------|----------|-----------------------|
| ASG_APPLICATIONS_TL_U1 | UNIQUE | 1 | LANGUAGE |
| | | 2 | MOBILE_APPLICATION_ID |
| | | 3 | SOURCE_LANG |

ASG_DEVICE_USERS

Stores information of a resource, such as salesman or service engineer, related to a mobile application

Foreign Keys

| Primary Key Table | Primary Key Column | Foreign Key Column |
|-----------------------|-----------------------|-----------------------|
| ASG_APPLICATIONS_B | MOBILE_APPLICATION_ID | MOBILE_APPLICATION_ID |
| ASG_SYNCH_SERVER | SERVER_ID | SERVER_ID |
| FND_USER | USER_ID | USER_ID |
| JTF_RS_RESOURCE_EXTNS | RESOURCE_ID | RESOURCE_ID |

Column Descriptions

| Name | Null? | Type | Description |
|----------------------------|----------|---------------|---|
| DEVICE_USER_ID (PK) | NOT NULL | NUMBER | Primary key |
| RESOURCE_ID | NOT NULL | NUMBER | Resource identifier. |
| MOBILE_APPLICATION_ID | NOT NULL | NUMBER | Mobile Application ID. Foreign key to ASG_APPLICATIONS_B |
| CLIENT_NUMBER | NOT NULL | NUMBER | Used by sequences |
| CLIENT_NAME | NOT NULL | VARCHAR2(30) | Mobile client name - Referenced to I-Connect Client ID |
| LAST_UPDATE_DATE | NOT NULL | DATE | who column |
| LAST_UPDATED_BY | NOT NULL | NUMBER | who column |
| CREATION_DATE | NOT NULL | DATE | who column |
| CREATED_BY | NOT NULL | NUMBER | who column |
| ORG_ID | NULL | NUMBER | Organization identifier. Data of a particular org which is downloaded to the device |
| DEVICE_TAG | NULL | VARCHAR2(30) | Device tag |
| USER_ID | NOT NULL | NUMBER | User id (FND_USER) of device user |
| SERVER_ID | NOT NULL | NUMBER | FK to ASG_SYNCH_SERVER |
| LAST_SYNCH_MODE | NULL | NUMBER | Last time synchronization mode. 0 for 'Fast Synch', 1 for 'Complete Synch' |
| ENABLED | NULL | VARCHAR2(1) | Enabled status. |
| UPGRADE | NULL | NUMBER | Force a complete synch the next time |
| REMOTE_DEVICE_NAME | NULL | VARCHAR2(60) | remote device name |
| ADDRESS_DEVICE_TYPE | NULL | VARCHAR2(30) | 'EMAIL', 'PHONE', 'MAN', 'IP', 'EXCHANGE' |
| ADDRESS_DEVICE_NAME | NULL | VARCHAR2(240) | Address of remote PC e.g MAN |
| ONAIR_FLAG | NULL | VARCHAR2(1) | Flag to indicate if the device can be contacted. |
| LAST_SYNC_DATE | NULL | DATE | last time user synched |
| LAST_WIRELESS_CONTACT_DATE | NULL | DATE | last wireless contact with device |
| RETRY_DATE | NULL | DATE | next retry date |
| BYTES_SENT_WIRELESS | NULL | NUMBER | bytes sent wireless |
| BYTES_RECEIVED_WIRELESS | NULL | NUMBER | bytes received wireless |
| DEVICE_LOCKED | NULL | VARCHAR2(1) | Flag to indicate if the device is locked. |
| ACCESS_CODE | NULL | VARCHAR2(240) | email/Phoe number access code in case of flash message |
| LANGUAGE | NULL | VARCHAR2(4) | Preferred language of mobile user |

| | | | |
|--------------------|------|---------------|---|
| FLASH_MESSAGE_FLAG | NULL | VARCHAR2(1) | Flash message flag. 'Y if user is interested in getting flash message |
| COOKIE | NULL | VARCHAR2(240) | Cookie of the wireless client |
| ORGANIZATION_ID | NULL | NUMBER | Organization Identifier |
| NEW_DATA_FLAG | NULL | VARCHAR2(1) | New data flag |
| NEW_DATA_DATE | NULL | DATE | New data date |
| SECURITY_GROUP_ID | NULL | NUMBER | Used in hosted environments |

Indexes

| <u>Index Name</u> | <u>Index Type</u> | <u>Sequence</u> | <u>Column Name</u> |
|---------------------|-------------------|-----------------|-----------------------|
| ASG_DEVICE_USERS_U1 | UNIQUE | 1 | DEVICE_USER_ID |
| ASG_DEVICE_USERS_U2 | UNIQUE | 1 | RESOURCE_ID |
| | | 2 | MOBILE_APPLICATION_ID |
| ASG_DEVICE_USERS_U3 | UNIQUE | 2 | CLIENT_NUMBER |
| ASG_DEVICE_USERS_U4 | UNIQUE | 1 | REMOTE_DEVICE_NAME |
| ASG_DEVICE_USERS_U5 | UNIQUE | 1 | CLIENT_NAME |

Sequences

| <u>Sequence</u> | <u>Derived Column</u> |
|--------------------|-----------------------|
| ASG_DEVICE_USERS_S | DEVICE_USER_ID |

ASG_ERROR

Foreign Keys

| Primary Key Table | Primary Key Column | Foreign Key Column |
|-------------------|--------------------|--------------------|
| ASG_DEVICE_USERS | DEVICE_USER_ID | DEVICE_USER_ID |

Column Descriptions

| Name | Null? | Type | Description |
|----------------------|----------|----------------|---|
| MOBILE_ERROR_ID (PK) | NOT NULL | NUMBER | PK column |
| LAST_UPDATE_DATE | NOT NULL | DATE | who column |
| LAST_UPDATED_BY | NOT NULL | NUMBER | who column |
| CREATION_DATE | NOT NULL | DATE | who column |
| CREATED_BY | NOT NULL | NUMBER | who column |
| DEVICE_USER_ID | NULL | NUMBER | FK to ASG_DEVICE_USERS |
| TYPE | NULL | VARCHAR2(30) | Type. 'E' Error, 'N' Notification |
| PRIORITY | NULL | NUMBER | Severity. |
| STATUS | NULL | VARCHAR2(1) | Status. 'A' = Active, 'I' = InActive |
| APPLICATION_ID | NULL | NUMBER | Associated application |
| RESPONSIBILITY_ID | NULL | NUMBER | responsibility id |
| SYNCHRONOUS_EVENT | NULL | VARCHAR2(1) | Flag to indicate if the event is synchronous. |
| ERROR_DAYS_DEFAULT | NULL | NUMBER | default error days |
| ERROR_TIME_DEFAULT | NULL | VARCHAR2(6) | default error time |
| ERROR_DESCRIPTION | NULL | VARCHAR2(2048) | error description |
| SECURITY_GROUP_ID | NULL | NUMBER | Used in hosted environments |

Indexes

| Index Name | Index Type | Sequence | Column Name |
|--------------|------------|----------|-----------------|
| ASG_ERROR_U1 | UNIQUE | 1 | MOBILE_ERROR_ID |

Sequences

| Sequence | Derived Column |
|-------------|-----------------|
| ASG_ERROR_S | MOBILE_ERROR_ID |

ASG_FLASH_MESSAGES

Column Descriptions

| <u>Name</u> | <u>Null?</u> | <u>Type</u> | <u>Description</u> |
|-----------------------|--------------|---------------|--|
| FLASH_ID | NOT NULL | NUMBER | Primary Key |
| LAST_UPDATE_DATE | NOT NULL | DATE | standard who column |
| LAST_UPDATED_BY | NOT NULL | NUMBER | standard who column |
| CREATION_DATE | NOT NULL | DATE | standard who column |
| CREATED_BY | NOT NULL | NUMBER | standard who column |
| ACTIVE | NULL | VARCHAR2(1) | Active flag. |
| MESSAGE_LENGTH | NULL | NUMBER | length of message |
| CONFIRM_REQUIRED_FLAG | NULL | VARCHAR2(1) | Confirmed flag. 'Y send email if recipient did not receive flash message |
| MESSAGE | NULL | VARCHAR2(240) | message text |
| MESSAGE_TYPE | NULL | VARCHAR2(1) | Message type. |
| SECURITY_GROUP_ID | NULL | NUMBER | Used in hosted environments |

Indexes

| <u>Index Name</u> | <u>Index Type</u> | <u>Sequence</u> | <u>Column Name</u> |
|-----------------------|-------------------|-----------------|--------------------|
| ASG_FLASH_MESSAGES_U1 | UNIQUE | 1 | FLASH_ID |

Sequences

| <u>Sequence</u> | <u>Derived Column</u> |
|----------------------|-----------------------|
| ASG_FLASH_MESSAGES_S | FLASH_ID |

ASG_FLASH_RECIPIENTS

Foreign Keys

| Primary Key Table | Primary Key Column | Foreign Key Column |
|--------------------|--------------------|--------------------|
| ASG_DEVICE_USERS | DEVICE_USER_ID | DEVICE_USER_ID |
| ASG_FLASH_MESSAGES | FLASH_ID | FLASH_ID |

Column Descriptions

| Name | Null? | Type | Description |
|----------------------|----------|-------------|-----------------------------|
| MOBILE_FLASH_SUBS_ID | NOT NULL | NUMBER | Primary Key |
| FLASH_ID | NOT NULL | NUMBER | FK to ASG_FLASH_MESSAGES |
| DEVICE_USER_ID | NOT NULL | NUMBER | FK to ASG_DEVICE_USERS |
| LAST_UPDATE_DATE | NOT NULL | DATE | Standard who column |
| LAST_UPDATED_BY | NOT NULL | NUMBER | Standard who column |
| CREATION_DATE | NOT NULL | DATE | Standard who column |
| CREATED_BY | NOT NULL | NUMBER | Standard who column |
| CONFIRM_FLAG | NULL | VARCHAR2(1) | Confirmed flag. |
| SECURITY_GROUP_ID | NULL | NUMBER | Used in hosted environments |

Indexes

| Index Name | Index Type | Sequence | Column Name |
|-------------------------|------------|----------|----------------------|
| ASG_FLASH_RECIPIENTS_U1 | UNIQUE | 1 | MOBILE_FLASH_SUBS_ID |
| ASG_FLASH_RECIPIENTS_U2 | UNIQUE | 1 | DEVICE_USER_ID |
| | | 2 | FLASH_ID |

Sequences

| Sequence | Derived Column |
|------------------------|----------------------|
| ASG_FLASH_RECIPIENTS_S | MOBILE_FLASH_SUBS_ID |

ASG_INCIDENT_ACC

Foreign Keys

| Primary Key Table | Primary Key Column | Foreign Key Column |
|-------------------|--------------------|--------------------|
| ASG_SYNCH_SERVER | SERVER_ID | SERVER_ID |

Column Descriptions

| Name | Null? | Type | Description |
|-------------------|----------|--------|--|
| INCIDENT_ID (PK) | NOT NULL | NUMBER | Incident identifier |
| SERVER_ID (PK) | NOT NULL | NUMBER | Gateway server identifier |
| LAST_UPDATE_DATE | NOT NULL | DATE | Standard who column |
| LAST_UPDATED_BY | NOT NULL | NUMBER | Standard who column |
| CREATION_DATE | NOT NULL | DATE | Standard who column |
| CREATED_BY | NOT NULL | NUMBER | Standard who column |
| COUNTER | NULL | NUMBER | Number of mobile client can access the record. |
| SECURITY_GROUP_ID | NULL | NUMBER | Used in hosted environments |

Indexes

| Index Name | Index Type | Sequence | Column Name |
|---------------------|------------|----------|-------------|
| ASG_INCIDENT_ACC_U1 | UNIQUE | 1 | INCIDENT_ID |
| | | 5 | SERVER_ID |

ASG_ITEM_INDEX

Indexes related to a publication item

Foreign Keys

| Primary Key Table | Primary Key Column | Foreign Key Column |
|-----------------------|--------------------|--------------------|
| ASG_PUBLICATION_ITEMS | ITEM_ID | ITEM_ID |

Column Descriptions

| Name | Null? | Type | Description |
|-------------------|----------|---------------|-----------------------------|
| INDEX_ID | NOT NULL | NUMBER | Primary Key |
| LAST_UPDATE_DATE | NOT NULL | DATE | Standard who columns |
| LAST_UPDATED_BY | NOT NULL | NUMBER | Standard who columns |
| CREATION_DATE | NOT NULL | DATE | Standard who columns |
| CREATED_BY | NOT NULL | NUMBER | Standard who columns |
| ITEM_ID | NOT NULL | NUMBER | FK to ASG_PUBLICATION_ITEMS |
| INDEX_NAME | NOT NULL | VARCHAR2(60) | Index name |
| Pmode | NOT NULL | VARCHAR2(1) | Type of index |
| COLUMNS | NOT NULL | VARCHAR2(240) | Columns of index |
| SECURITY_GROUP_ID | NULL | NUMBER | Used in hosted environments |
| RELEASE_VERSION | NULL | NUMBER | Release Version |

Indexes

| Index Name | Index Type | Sequence | Column Name |
|-------------------|------------|----------|-------------|
| ASG_ITEM_INDEX_U1 | UNIQUE | 5 | INDEX_ID |

ASG_LOCATION_ACC

Foreign Keys

| Primary Key Table | Primary Key Column | Foreign Key Column |
|-------------------|--------------------|--------------------|
| ASG_SYNCH_SERVER | SERVER_ID | SERVER_ID |

Column Descriptions

| Name | Null? | Type | Description |
|-------------------|----------|--------|--|
| LOCATION_ID (PK) | NOT NULL | NUMBER | Location identifier. |
| SERVER_ID (PK) | NOT NULL | NUMBER | Gateway server identifier. |
| LAST_UPDATE_DATE | NOT NULL | DATE | Standard who column. |
| LAST_UPDATED_BY | NOT NULL | NUMBER | Standard who column. |
| CREATION_DATE | NOT NULL | DATE | Standard who column. |
| CREATED_BY | NOT NULL | NUMBER | Standard who column. |
| COUNTER | NOT NULL | NUMBER | Number of mobile client can access the record. |
| SECURITY_GROUP_ID | NULL | NUMBER | Used in hosted environments |

Indexes

| Index Name | Index Type | Sequence | Column Name |
|---------------------|------------|----------|-------------|
| ASG_LOCATION_ACC_U1 | UNIQUE | 1 | LOCATION_ID |
| | | 5 | SERVER_ID |

ASG_MAP_PUB_ITEMS

Defines relationship between publication and items

Foreign Keys

| Primary Key Table | Primary Key Column | Foreign Key Column |
|-----------------------|--------------------|--------------------|
| ASG_PUBLICATIONS | PUBLICATION_ID | PUBLICATION_ID |
| ASG_PUBLICATION_ITEMS | ITEM_ID | ITEM_ID |

Column Descriptions

| Name | Null? | Type | Description |
|------------------------|----------|----------------|----------------------------------|
| MAP_ID (PK) | NOT NULL | NUMBER | Primary Key |
| LAST_UPDATE_DATE | NOT NULL | DATE | Standard who columns |
| LAST_UPDATED_BY | NOT NULL | NUMBER | Standard who columns |
| CREATION_DATE | NOT NULL | DATE | Standard who columns |
| CREATED_BY | NOT NULL | NUMBER | Standard who columns |
| PUBLICATION_ID | NOT NULL | NUMBER | FK to ASG_PUBLICATIONS |
| ITEM_ID | NOT NULL | NUMBER | FK to ASG_PUBLICATION_ITEMS |
| COLUMNS | NULL | VARCHAR2(240) | New names for columns |
| DISABLED_DML | NULL | VARCHAR2(30) | Updateable/Readonly |
| CONFLICT_RULE | NOT NULL | VARCHAR2(1) | 'S' if server wins in a conflict |
| RESTRICATING_PREDICATE | NULL | VARCHAR2(2000) | High priority query |
| TABLE_WEIGHT | NULL | VARCHAR2(30) | order of refresh |
| SECURITY_GROUP_ID | NULL | NUMBER | Used in hosted environments |
| RELEASE_VERSION | NULL | NUMBER | Release Version |

Indexes

| Index Name | Index Type | Sequence | Column Name |
|----------------------|------------|----------|----------------|
| ASG_MAP_PUB_ITEMS_U1 | UNIQUE | 5 | MAP_ID |
| ASG_MAP_PUB_ITEMS_U2 | UNIQUE | 1 | PUBLICATION_ID |
| | | 2 | ITEM_ID |

ASG_PARENT_HINT

Parent hints for Publication items

Foreign Keys

| Primary Key Table | Primary Key Column | Foreign Key Column |
|-----------------------|--------------------|--------------------|
| ASG_PUBLICATION_ITEMS | ITEM_ID | ITEM_ID |

Column Descriptions

| Name | Null? | Type | Description |
|-------------------|----------|--------------|-----------------------------|
| PARENT_HINT_ID | NOT NULL | NUMBER | PK for table |
| LAST_UPDATE_DATE | NOT NULL | DATE | Standard who columns |
| LAST_UPDATED_BY | NOT NULL | NUMBER | Standard who columns |
| CREATION_DATE | NOT NULL | DATE | Standard who columns |
| CREATED_BY | NOT NULL | NUMBER | Standard who columns |
| ITEM_ID | NOT NULL | NUMBER | FK to ASG_PUBLICATION_ITEMS |
| OWNER_D | NOT NULL | VARCHAR2(60) | owner of base table |
| STORE_D | NOT NULL | VARCHAR2(60) | Base table |
| SECURITY_GROUP_ID | NULL | NUMBER | Used in hosted environments |
| RELEASE_VERSION | NULL | NUMBER | Release version |

Indexes

| Index Name | Index Type | Sequence | Column Name |
|--------------------|------------|----------|----------------|
| ASG_PARENT_HINT_U1 | UNIQUE | 5 | PARENT_HINT_ID |

ASG_PARTY_ACC

Foreign Keys

| Primary Key Table | Primary Key Column | Foreign Key Column |
|-------------------|--------------------|--------------------|
| ASG_SYNCH_SERVER | SERVER_ID | SERVER_ID |

Column Descriptions

| Name | Null? | Type | Description |
|-------------------|----------|--------|--|
| PARTY_ID | NOT NULL | NUMBER | Party identifier. |
| SERVER_ID (PK) | NOT NULL | NUMBER | Gateway server identifier. |
| LAST_UPDATE_DATE | NOT NULL | DATE | Standard who column. |
| LAST_UPDATED_BY | NOT NULL | NUMBER | Standard who column. |
| CREATION_DATE | NOT NULL | DATE | Standard who column. |
| CREATED_BY | NOT NULL | NUMBER | Standard who column. |
| COUNTER | NULL | NUMBER | Number of mobile client can access the record. |
| SECURITY_GROUP_ID | NULL | NUMBER | Used in hosted environments |

Indexes

| Index Name | Index Type | Sequence | Column Name |
|------------------|------------|----------|-------------|
| ASG_PARTY_ACC_U1 | UNIQUE | 1 | PARTY_ID |
| | | 2 | SERVER_ID |

ASG_PARTY_SITE_ACC

Foreign Keys

| Primary Key Table | Primary Key Column | Foreign Key Column |
|-------------------|--------------------|--------------------|
| ASG_SYNCH_SERVER | SERVER_ID | SERVER_ID |

Column Descriptions

| Name | Null? | Type | Description |
|-------------------|----------|--------|--|
| PARTY_SITE_ID | NOT NULL | NUMBER | Party site identifier. |
| SERVER_ID (PK) | NOT NULL | NUMBER | Gateway server identifier. |
| LAST_UPDATE_DATE | NOT NULL | DATE | Standard who column. |
| LAST_UPDATED_BY | NOT NULL | NUMBER | Standard who column. |
| CREATION_DATE | NOT NULL | DATE | Standard who column. |
| CREATED_BY | NOT NULL | NUMBER | Standard who column. |
| COUNTER | NULL | NUMBER | Number of mobile client can access the record. |
| SECURITY_GROUP_ID | NULL | NUMBER | Used in hosted environments |

Indexes

| Index Name | Index Type | Sequence | Column Name |
|-----------------------|------------|----------|---------------|
| ASG_PARTY_SITE_ACC_U1 | UNIQUE | 1 | PARTY_SITE_ID |
| | | 2 | SERVER_ID |

ASG_PRIMARY_KEY_HINT

Stores the Primary Key hints for publication items

Foreign Keys

| Primary Key Table | Primary Key Column | Foreign Key Column |
|-----------------------|--------------------|--------------------|
| ASG_PUBLICATION_ITEMS | ITEM_ID | ITEM_ID |

Column Descriptions

| Name | Null? | Type | Description |
|----------------------|----------|--------------|--|
| PRIMARY_HINT_ID (PK) | NOT NULL | NUMBER | Primary Key |
| LAST_UPDATE_DATE | NOT NULL | DATE | Standard who columns |
| LAST_UPDATED_BY | NOT NULL | NUMBER | Standard who columns |
| CREATION_DATE | NOT NULL | DATE | Standard who columns |
| CREATED_BY | NOT NULL | NUMBER | Standard who columns |
| ITEM_ID | NOT NULL | NUMBER | FK to ASG_PUBLICATION_ITEMS |
| KEY_COLUMN | NOT NULL | VARCHAR2(60) | Primary Key Column in publication item |
| B_OWNER | NOT NULL | VARCHAR2(60) | owner of base table |
| B_STORE | NOT NULL | VARCHAR2(60) | Base table |
| B_COLUMN | NOT NULL | VARCHAR2(60) | Base PK column |
| SECURITY_GROUP_ID | NULL | NUMBER | Used in hosted environments |
| RELEASE_VERSION | NULL | NUMBER | Release Version |

Indexes

| Index Name | Index Type | Sequence | Column Name |
|-------------------------|------------|----------|-----------------|
| ASG_PRIMARY_KEY_HINT_U1 | UNIQUE | 1 | PRIMARY_HINT_ID |
| ASG_PRIMARY_KEY_HINT_U2 | UNIQUE | 1 | ITEM_ID |
| | | 2 | KEY_COLUMN |

ASG_PUBLICATIONS

Column Descriptions

| Name | Null? | Type | Description |
|----------------------|----------|--------------|---|
| PUBLICATION_ID | NOT NULL | NUMBER | Publication identifier. |
| LAST_UPDATE_DATE | NOT NULL | DATE | Who Columns |
| LAST_UPDATED_BY | NOT NULL | NUMBER | Who Columns |
| CREATION_DATE | NOT NULL | DATE | Who Columns |
| CREATED_BY | NOT NULL | NUMBER | Who Columns |
| NAME | NOT NULL | VARCHAR2(60) | Publication Name |
| CLIENT_STORAGE_TYPE | NOT NULL | NUMBER(30) | Integer specifying storage type |
| CLIENT_NAME_TEMPLATE | NOT NULL | VARCHAR2(30) | Olite Database name |
| ENFORCE_RI | NULL | VARCHAR2(1) | Reserved for future use |
| STATUS | NULL | VARCHAR2(1) | Status flag. 'Y' if publication item is valid |
| SECURITY_GROUP_ID | NULL | NUMBER | Used in hosted environments |
| RELEASE_VERSION | NULL | NUMBER | Release Version |
| COMPATIBLE_VERSION | NULL | NUMBER | |

Indexes

| Index Name | Index Type | Sequence | Column Name |
|---------------------|------------|----------|----------------|
| ASG_PUBLICATIONS_U1 | UNIQUE | 1 | PUBLICATION_ID |

Sequences

| Sequence | Derived Column |
|--------------------|----------------|
| ASG_PUBLICATIONS_S | PUBLICATION_ID |

ASG_PUBLICATION_ITEMS

Column Descriptions

| Name | Null? | Type | Description |
|-------------------|----------|----------------|--|
| ITEM_ID | NOT NULL | NUMBER | Primary Key |
| LAST_UPDATE_DATE | NOT NULL | DATE | Standard who columns |
| LAST_UPDATED_BY | NOT NULL | NUMBER | Standard who columns |
| CREATION_DATE | NOT NULL | DATE | Standard who columns |
| CREATED_BY | NOT NULL | NUMBER | Standard who columns |
| NAME | NOT NULL | VARCHAR2(60) | Publication Item Name |
| OWNER | NULL | VARCHAR2(60) | Schema of publication item |
| BASE_OBJECT | NOT NULL | VARCHAR2(60) | Base object of publication item |
| BASE_OWNER | NOT NULL | VARCHAR2(60) | owner schema of base object |
| REFRESH_METHOD | NOT NULL | VARCHAR2(1) | Refresh Method. |
| SELECT1_TEXT | NOT NULL | VARCHAR2(2048) | Publication query |
| SELECT2_TEXT | NULL | VARCHAR2(2048) | Publication query |
| CBK_OWNER | NULL | VARCHAR2(60) | Call back schema |
| CBK_NAME | NULL | VARCHAR2(60) | Call back package name |
| STATUS | NULL | VARCHAR2(1) | Status flag. 'Y if publication item is valid |
| SECURITY_GROUP_ID | NULL | NUMBER | Used in hosted environments |
| RELEASE_VERSION | NULL | NUMBER | Release Version |
| WRAPPER_PREFIX | NULL | VARCHAR2(30) | Publication item call back wrapper package prefix. |

Indexes

| Index Name | Index Type | Sequence | Column Name |
|--------------------------|------------|----------|-------------|
| ASG_PUBLICATION_ITEMS_U1 | UNIQUE | 1 | ITEM_ID |

Sequences

| Sequence | Derived Column |
|-------------------------|----------------|
| ASG_PUBLICATION_ITEMS_S | ITEM_ID |

ASG_SEQUENCES

Foreign Keys

| Primary Key Table | Primary Key Column | Foreign Key Column |
|-------------------|--------------------|--------------------|
| ASG_PUBLICATIONS | PUBLICATION_ID | PUBLICATION_ID |

Column Descriptions

| Name | Null? | Type | Description |
|-------------------|----------|--------------|-----------------------------|
| SEQUENCE_ID | NOT NULL | NUMBER | Primary Key |
| LAST_UPDATE_DATE | NOT NULL | DATE | Standard who columns |
| LAST_UPDATED_BY | NOT NULL | NUMBER | Standard who columns |
| CREATION_DATE | NOT NULL | DATE | Standard who columns |
| CREATED_BY | NOT NULL | NUMBER | Standard who columns |
| SEQUENCE_NAME | NOT NULL | VARCHAR2(60) | Sequence name |
| PUBLICATION_ID | NOT NULL | NUMBER | FK to ASG_PUBLICATIONS |
| B_SCHEMA | NOT NULL | VARCHAR2(30) | Base Schema |
| B_TABLE | NOT NULL | VARCHAR2(30) | Base Table |
| B_COLUMN | NOT NULL | VARCHAR2(30) | Base Column |
| SECURITY_GROUP_ID | NULL | NUMBER | Used in hosted environments |
| RELEASE_VERSION | NULL | NUMBER | Release Version |

Indexes

| Index Name | Index Type | Sequence | Column Name |
|------------------|------------|----------|-------------|
| ASG_SEQUENCES_U1 | UNIQUE | 5 | SEQUENCE_ID |

ASG_SERVER_RESOURCES

Foreign Keys

| Primary Key Table | Primary Key Column | Foreign Key Column |
|-------------------|--------------------|--------------------|
| ASG_SYNCH_SERVER | SERVER_ID | SERVER_ID |

Column Descriptions

| Name | Null? | Type | Description |
|-------------------|----------|--------|-----------------------------|
| SERVER_ID | NOT NULL | NUMBER | Primary Key |
| RESOURCE_ID (PK) | NOT NULL | NUMBER | Primary Key |
| LAST_UPDATE_DATE | NOT NULL | DATE | who column |
| LAST_UPDATED_BY | NOT NULL | NUMBER | who column |
| CREATION_DATE | NOT NULL | DATE | who column |
| CREATED_BY | NOT NULL | NUMBER | who column |
| SECURITY_GROUP_ID | NULL | NUMBER | Used in hosted environments |

Indexes

| Index Name | Index Type | Sequence | Column Name |
|-------------------------|------------|----------|--------------------------|
| ASG_SERVER_RESOURCES_U1 | UNIQUE | 1 4 | RESOURCE_ID SERVER_ID |

ASG_SUBSCRIPTION_PARAMS

subscription parametres

Foreign Keys

| Primary Key Table | Primary Key Column | Foreign Key Column |
|-------------------|--------------------|--------------------|
| ASG_PUBLICATIONS | PUBLICATION_ID | PUBLICATION_ID |

Column Descriptions

| Name | Null? | Type | Description |
|------------------------|----------|--------------|-----------------------------|
| SUBSCRIPTION_PARAMS_ID | NOT NULL | NUMBER | Primary Key |
| LAST_UPDATE_DATE | NOT NULL | DATE | Standard who column |
| LAST_UPDATED_BY | NOT NULL | NUMBER | Standard who column |
| CREATION_DATE | NOT NULL | DATE | Standard who column |
| CREATED_BY | NOT NULL | NUMBER | Standard who column |
| PARAM_NAME | NOT NULL | VARCHAR2(60) | Name of Parameter |
| PUBLICATION_ID | NOT NULL | NUMBER | FK to ASG_PUBLICATIONS |
| SECURITY_GROUP_ID | NULL | NUMBER | Used in hosted environments |
| RELEASE_VERSION | NULL | NUMBER | Release Version |

Indexes

| Index Name | Index Type | Sequence | Column Name |
|----------------------------|------------|----------|------------------------|
| ASG_SUBSCRIPTION_PARAMS_U1 | UNIQUE | 3 | SUBSCRIPTION_PARAMS_ID |

ASG_SYNCH_SERVER

Column Descriptions

| Name | Null? | Type | Description |
|-------------------|----------|----------------|---|
| SERVER_ID (PK) | NOT NULL | NUMBER | Gateway server identifier. |
| LAST_UPDATE_DATE | NOT NULL | DATE | Standard who column. |
| LAST_UPDATED_BY | NOT NULL | NUMBER | Standard who column. |
| CREATION_DATE | NOT NULL | DATE | Standard who column. |
| CREATED_BY | NOT NULL | NUMBER | Standard who column. |
| SNAP_DATABASE | NOT NULL | VARCHAR2(240) | Snapshot database name |
| NETWORK_PROTOCOL | NULL | VARCHAR2(60) | Network protocol |
| HOST_NAME | NULL | VARCHAR2(60) | Machine host name or IP address. |
| PORT_NUMBER | NULL | VARCHAR2(60) | Port number |
| ORACLE_SID | NULL | VARCHAR2(60) | Oracle SID. |
| WIRELESS_FLAG | NULL | VARCHAR2(1) | Flag to indicate if the server supports wireless synchronization. |
| VERSION_ID | NULL | VARCHAR2(30) | Version ID for this Gateway Server |
| CONS_PASSWORD | NULL | VARCHAR2(60) | CONSOLIDATOR password of the gateway server |
| ADMIN_PASSWORD | NULL | VARCHAR2(60) | ADMIN password of the gateway server. |
| ENABLED | NULL | VARCHAR2(1) | Flag to indicates whether the gateway server is built-up. |
| DESCRIPTION | NULL | VARCHAR2(2000) | Description of the gateway server. |
| SECURITY_GROUP_ID | NULL | NUMBER | Used in hosted environments |

Indexes

| Index Name | Index Type | Sequence | Column Name |
|---------------------|------------|----------|-------------|
| ASG_SYNCH_SERVER_U1 | UNIQUE | 1 | SERVER_ID |

Sequences

| Sequence | Derived Column |
|--------------------|----------------|
| ASG_SYNCH_SERVER_S | SERVER_ID |

ASG_TASK_ACC

Foreign Keys

| Primary Key Table | Primary Key Column | Foreign Key Column |
|-------------------|--------------------|--------------------|
| ASG_SYNCH_SERVER | SERVER_ID | SERVER_ID |

Column Descriptions

| Name | Null? | Type | Description |
|-------------------|----------|--------|--|
| TASK_ID | NOT NULL | NUMBER | Task identifier. |
| SERVER_ID (PK) | NOT NULL | NUMBER | Gateway server identifier. |
| LAST_UPDATE_DATE | NOT NULL | DATE | Standard who column. |
| LAST_UPDATED_BY | NOT NULL | NUMBER | Standard who column. |
| CREATION_DATE | NOT NULL | DATE | Standard who column. |
| CREATED_BY | NOT NULL | NUMBER | Standard who column. |
| COUNTER | NULL | NUMBER | Number of mobile client can access the record. |
| SECURITY_GROUP_ID | NULL | NUMBER | Used in hosted environments |

Indexes

| Index Name | Index Type | Sequence | Column Name |
|-----------------|------------|----------|-------------|
| ASG_TASK_ACC_U1 | UNIQUE | 1 | TASK_ID |
| | | 2 | SERVER_ID |

ASG_WIRELESS_PARAMETERS

Foreign Keys

| Primary Key Table | Primary Key Column | Foreign Key Column |
|-------------------|--------------------|--------------------|
| ASG_SYNC_SERVER | SERVER_ID | SERVER_ID |

Column Descriptions

| Name | Null? | Type | Description |
|------------------------|----------|-------------|--|
| WIRELESS_PARAMETERS_ID | NOT NULL | NUMBER | PK for table |
| LAST_UPDATE_DATE | NOT NULL | DATE | Standard who columns |
| LAST_UPDATED_BY | NOT NULL | NUMBER | Standard who columns |
| CREATION_DATE | NOT NULL | DATE | Standard who columns |
| CREATED_BY | NOT NULL | NUMBER | Standard who columns |
| SERVER_ID | NOT NULL | NUMBER | FK to ASG_SYNC_SERVER |
| SERVER_REMOTE_FLAG | NULL | VARCHAR2(1) | Server/remote flag |
| SEND_INTERVAL | NULL | NUMBER | Send Interval between tries |
| SEND_DELAY | NULL | NUMBER | Record not ecited during the delay, the mid tier starts sending the record(60 to 300s) |
| TIME_BETWEEN_RETRIES | NULL | NUMBER | time between retries |
| NUM_OF_RETRIES | NULL | NUMBER | Number of retries. |
| TIME_TO_ACK | NULL | NUMBER | time between acknowlegements |
| OUT_OF_COVERAGE | NULL | NUMBER | used by device to decide whether to inform the MDG |
| REPLICATION_INTERVAL | NULL | NUMBER | interval for replication |
| TRANSACTION_HISTORY | NULL | NUMBER | transaction history |
| SECURITY_GROUP_ID | NULL | NUMBER | Used in hosted environments |

Indexes

| Index Name | Index Type | Sequence | Column Name |
|----------------------------|------------|----------|------------------------|
| ASG_WIRELESS_PARAMETERS_U1 | UNIQUE | 1 | WIRELESS_PARAMETERS_ID |

Sequences

| Sequence | Derived Column |
|---------------------------|------------------------|
| ASG_WIRELESS_PARAMETERS_S | WIRELESS_PARAMETERS_ID |

JTF_RS_RESOURCE_EXTNS

This is table stores all important information about Resources. These Resources are coming from HR or HZ or Vonder table etc. Primary key is resource_id. Resource_number, user_id sre also unique keys.

Foreign Keys

| Primary Key Table | Primary Key Column | Foreign Key Column |
|-------------------|--------------------|--------------------|
| JTF_OBJECTS_B | OBJECT_CODE | CATEGORY |

Column Descriptions

| Name | Null? | Type | Description |
|----------------------|----------|---------------|--|
| RESOURCE_ID (PK) | NOT NULL | NUMBER | Resource Identifier |
| CREATED_BY | NOT NULL | NUMBER | Standard who column - with user_id from FND_USERS |
| CREATION_DATE | NOT NULL | DATE | Standard who column |
| LAST_UPDATED_BY | NOT NULL | NUMBER | Standard who column - with user_id from FND_USERS |
| LAST_UPDATE_DATE | NOT NULL | DATE | Standard who column |
| LAST_UPDATE_LOGIN | NULL | NUMBER | Standard who column |
| CATEGORY | NOT NULL | VARCHAR2(30) | Category of Resource. Validating from JTF_OBJECTS_VL. Allowed values: EMPLOYEE, PARTNER, PARTY, SUPPLIER_CONTACT, OTHER |
| RESOURCE_NUMBER | NOT NULL | VARCHAR2(30) | Resource Number. This is a Unique and shown to user on forms. |
| SOURCE_ID | NULL | NUMBER | Source identifier (foreign key to PER_ALL_PEOPLE_F) or (foreign key to HZ_PARTIES) or (foreign key to PO_VENDOR_CONTACTS) |
| ADDRESS_ID | NULL | NUMBER | Address identifier (foreign key to HZ_PARTY_SITES) |
| CONTACT_ID | NULL | NUMBER | Contact identifier (foreign key to HZ_ORG_CONTACTS) |
| MANAGING_EMPLOYEE_ID | NULL | NUMBER | Managing Employee Identifier |
| START_DATE_ACTIVE | NOT NULL | DATE | Date this Resource becomes active, if limited |
| END_DATE_ACTIVE | NULL | DATE | Date this Resource becomes inactive, if limited |
| TIME_ZONE | NULL | NUMBER | This field is used by Service for time zone information (foreign key to HZ_TIMEZONES) |
| COST_PER_HR | NULL | NUMBER | This field is used by Service for cost per hour of the resource |
| PRIMARY_LANGUAGE | NULL | VARCHAR2(30) | This field is used by Service for the primary language of the resource |
| SECONDARY_LANGUAGE | NULL | VARCHAR2(30) | This field is used by Service for the secondary language of the resource |
| IES_AGENT_LOGIN | NULL | VARCHAR2(240) | Email Center Agent Login |
| SERVER_GROUP_ID | NULL | NUMBER | Server Group Identifier to which this resource is attached. FK to IEO_SVR_GROUPS , used by interaction centers. |
| ASSIGNED_TO_GROUP_ID | NULL | NUMBER | Assigned to User Identifier , Foreign Key to FND_USER. |

Oracle Proprietary, Confidential Information--Use Restricted by Contract

| | | | |
|----------------------------|----------|---------------|---|
| COST_CENTER | NULL | VARCHAR2(30) | Cost Center to which this resource is attached |
| CHARGE_TO_COST_CENTER | NULL | VARCHAR2(30) | Cost center which will be charged for this resource |
| COMPENSATION_CURRENCY_CODE | NULL | VARCHAR2(15) | The currency code in which the resource will be compensated. |
| COMMISSIONABLE_FLAG | NULL | VARCHAR2(1) | Flag indicating whether the resource is commissionable or not |
| HOLD_REASON_CODE | NULL | VARCHAR2(30) | Reason Code why the payment will be hold |
| HOLD_PAYMENT | NULL | VARCHAR2(1) | Flag indicating whether the payment for the resource is on hold or not. |
| COMP_SERVICE_TEAM_ID | NULL | NUMBER | Comp Service Team Id , FK to jtf_rs_teams_vl |
| TRANSACTION_NUMBER | NULL | NUMBER | Transaction Number. This will be used at the time of importing Resources. |
| OBJECT_VERSION_NUMBER | NOT NULL | NUMBER | Sequential number used for database locking control when using HTML as a user interface |
| ATTRIBUTE1 | NULL | VARCHAR2(150) | Descriptive flexfield segment Column |
| ATTRIBUTE2 | NULL | VARCHAR2(150) | Descriptive flexfield segment Column |
| ATTRIBUTE3 | NULL | VARCHAR2(150) | Descriptive flexfield segment Column |
| ATTRIBUTE4 | NULL | VARCHAR2(150) | Descriptive flexfield segment Column |
| ATTRIBUTE5 | NULL | VARCHAR2(150) | Descriptive flexfield segment Column |
| ATTRIBUTE6 | NULL | VARCHAR2(150) | Descriptive flexfield segment Column |
| ATTRIBUTE7 | NULL | VARCHAR2(150) | Descriptive flexfield segment Column |
| ATTRIBUTE8 | NULL | VARCHAR2(150) | Descriptive flexfield segment Column |
| ATTRIBUTE9 | NULL | VARCHAR2(150) | Descriptive flexfield segment Column |
| ATTRIBUTE10 | NULL | VARCHAR2(150) | Descriptive flexfield segment Column |
| ATTRIBUTE11 | NULL | VARCHAR2(150) | Descriptive flexfield segment Column |
| ATTRIBUTE12 | NULL | VARCHAR2(150) | Descriptive flexfield segment Column |
| ATTRIBUTE13 | NULL | VARCHAR2(150) | Descriptive flexfield segment Column |
| ATTRIBUTE14 | NULL | VARCHAR2(150) | Descriptive flexfield segment Column |
| ATTRIBUTE15 | NULL | VARCHAR2(150) | Descriptive flexfield segment Column |
| ATTRIBUTE_CATEGORY | NULL | VARCHAR2(30) | Descriptive flexfield structure defining column |
| USER_ID | NULL | NUMBER | User Id from FND_USER |
| SUPPORT_SITE_ID | NULL | NUMBER | Support Site from Service |
| SECURITY_GROUP_ID | NULL | NUMBER | Column used for Applications Hosting purposes |

Indexes

| Index Name | Index Type | Sequence | Column Name |
|--------------------------|------------|----------|-------------|
| JTF_RS_RESOURCE_EXTNS_U1 | UNIQUE | 1 | RESOURCE_ID |

Oracle Proprietary, Confidential Information--Use Restricted by Contract

| | | | |
|--------------------------|--------|---|-----------------|
| JTF_RS_RESOURCE_EXTNS_U2 | UNIQUE | 1 | RESOURCE_NUMBER |
| JTF_RS_RESOURCE_EXTNS_U3 | UNIQUE | 1 | USER_ID |

Sequences

| <u>Sequence</u> | <u>Derived Column</u> |
|--------------------------|-----------------------|
| JTF_RS_RESOURCE_EXTNS_S | RESOURCE_ID |
| JTF_RS_RESOURCE_NUMBER_S | RESOURCE_NUMBER |
| JTF_RS_TRANSACTION_NUM_S | TRANSACTION_NUMBER |

JTF_TASKS_B

Base Table JTF_TASKS_B stores general information about a given Task. Each line includes details about owner, source object, customer, dates, effort and duration. Also, this table contains multiple flags used by the various consumers of the foundation Task Manager.

Foreign Keys

| Primary Key Table | Primary Key Column | Foreign Key Column |
|-----------------------|--------------------|-------------------------|
| CS_INCIDENTS_ALL_B | INCIDENT_ID | SOURCE_OBJECT_ID |
| FND_CURRENCIES | CURRENCY_CODE | CURRENCY_CODE |
| HZ_CUST_ACCOUNTS | CUST_ACCOUNT_ID | CUST_ACCOUNT_ID |
| HZ_PARTIES | PARTY_ID | SOURCE_OBJECT_TYPE_CODE |
| HZ_PARTIES | PARTY_ID | SOURCE_OBJECT_TYPE_CODE |
| HZ_PARTY_SITES | PARTY_SITE_ID | ADDRESS_ID |
| JTF_OBJECTS_B | OBJECT_CODE | SOURCE_OBJECT_TYPE_CODE |
| JTF_TASKS_B | TASK_ID | PARENT_TASK_ID |
| JTF_TASK_PRIORITIES_B | TASK_PRIORITY_ID | TASK_PRIORITY_ID |
| JTF_TASK_RECUR_RULES | RECURRENCE_RULE_ID | RECURRENCE_RULE_ID |
| JTF_TASK_STATUSES_B | TASK_STATUS_ID | TASK_STATUS_ID |
| JTF_TASK_TYPES_B | TASK_TYPE_ID | TASK_TYPE_ID |

Column Descriptions

| Name | Null? | Type | Description |
|-----------------------|----------|--------------|---|
| TASK_ID (PK) | NOT NULL | NUMBER | Unique task identifier (PK) |
| CREATED_BY | NOT NULL | NUMBER(15) | Standard Who column - with the user id from FND_USER |
| CREATION_DATE | NOT NULL | DATE | Standard Who column |
| LAST_UPDATED_BY | NOT NULL | NUMBER(15) | Standard Who column - with the user id from FND_USER |
| LAST_UPDATE_DATE | NOT NULL | DATE | Standard Who column |
| LAST_UPDATE_LOGIN | | NUMBER(15) | Standard Who column - with the user id from FND_USER |
| OBJECT_VERSION_NUMBER | | NUMBER | Sequential number used for database locking control when using HTML as a user interface |
| TASK_NUMBER | NOT NULL | VARCHAR2(30) | Task Number |
| TASK_TYPE_ID | NOT NULL | NUMBER | Task type (foreign key to JTF_TASK_TYPES) |
| TASK_STATUS_ID | NOT NULL | NUMBER | Task status (foreign key to JTF_TASK_STATUSES) |
| TASK_PRIORITY_ID | | NUMBER | Task priority (foreign key to JTF_TASK_PRIORITIES) |
| OWNER_ID | NOT NULL | NUMBER | Owner of the task |
| OWNER_TYPE_CODE | NOT NULL | VARCHAR2(30) | Resource type identifier of task owner |
| OWNER_TERRITORY_ID | | NUMBER | Territory identifier of the Owner |
| ASSIGNED_BY_ID | | NUMBER | User who assigned the task to current owner |
| CUST_ACCOUNT_ID | | NUMBER | Customer account identifier |
| CUSTOMER_ID | | NUMBER | Customer associated with task |
| ADDRESS_ID | | NUMBER | Address Identifier |
| PLANNED_START_DATE | | DATE | Planned start date |
| PLANNED_END_DATE | | DATE | Planned end date |
| SCHEDULED_START_DATE | | DATE | Scheduled start date |

Oracle Proprietary, Confidential Information--Use Restricted by Contract

| | | |
|-------------------------|-------------------|--|
| SCHEDULED_END_DATE | NULL DATE | Scheduled end date |
| ACTUAL_START_DATE | NULL DATE | Actual start date |
| ACTUAL_END_DATE | NULL DATE | Actual end date |
| SOURCE_OBJECT_TYPE_CODE | NULL VARCHAR2(30) | Type of source object (foreign key to JTF_TASK_OBJECT_TYPES) |
| TIMEZONE_ID | NULL NUMBER | Time zone identifier |
| SOURCE_OBJECT_ID | NULL NUMBER | Internal ID of source object |
| SOURCE_OBJECT_NAME | NULL VARCHAR2(80) | User-visible source object identifier |
| DURATION | NULL NUMBER | Duration of task |
| DURATION_UOM | NULL VARCHAR2(3) | Unit of measure for duration |
| PLANNED_EFFORT | NULL NUMBER | Planned effort |
| PLANNED_EFFORT_UOM | NULL VARCHAR2(3) | Unit of measure for planned effort |
| ACTUAL_EFFORT | NULL NUMBER | Actual amount of effort spent on a task by all assignees |
| ACTUAL_EFFORT_UOM | NULL VARCHAR2(3) | Unit of measure for actual work |
| PERCENTAGE_COMPLETE | NULL NUMBER | Percentage completion of task |
| REASON_CODE | NULL VARCHAR2(30) | Reason for rejecting a task, reassigning a task, etc. |
| PRIVATE_FLAG | NULL VARCHAR2(1) | Indicates whether the task is private or public |
| PUBLISH_FLAG | NULL VARCHAR2(1) | Indicates whether the task should be published. |
| RESTRICT_CLOSURE_FLAG | NULL VARCHAR2(1) | Indicates whether completing the task is necessary for the source object to be deemed complete |
| MULTI_BOOKED_FLAG | NULL VARCHAR2(1) | Indicates whether the task can book resources that are already assigned to other tasks |
| MILESTONE_FLAG | NULL VARCHAR2(1) | Indicates whether the task is a milestone delivery date |
| HOLIDAY_FLAG | NULL VARCHAR2(1) | Indicates whether the task can be performed on holidays |
| BILLABLE_FLAG | NULL VARCHAR2(1) | Indicates whether the task is billable. |
| BOUND_MODE_CODE | NULL VARCHAR2(30) | Used for Scheduling. |
| SOFT_BOUND_FLAG | NULL VARCHAR2(1) | Used for Scheduling. |
| WORKFLOW_PROCESS_ID | NULL NUMBER | Identifier of las workflow process launched for this task |
| NOTIFICATION_FLAG | NULL VARCHAR2(1) | Flag indicating whether notification workflow will be automatically launched. |
| NOTIFICATION_PERIOD | NULL NUMBER | Time before the scheduled start date that a notification is sent to the assignees |
| NOTIFICATION_PERIOD_UOM | NULL VARCHAR2(3) | Unit of measure for notification period |
| PARENT_TASK_ID | NULL NUMBER | Parent Task's ID |
| RECURRENCE_RULE_ID | NULL NUMBER | Recurrence rule identifier |
| ALARM_START | NULL NUMBER | Indicates when the first alarm should be fired |
| ALARM_START_UOM | NULL VARCHAR2(3) | Unit of measure for ALARM_START |
| ALARM_ON | NULL VARCHAR2(1) | Indicates whether the alarm is on |
| ALARM_COUNT | NULL NUMBER | Total number of alarms to fire |
| ALARM_FIRED_COUNT | NULL NUMBER | Number of alarms fired |
| ALARM_INTERVAL | NULL NUMBER | Alarm interval |
| ALARM_INTERVAL_UOM | NULL VARCHAR2(3) | Unit of measure for Alarm Interval |

Oracle Proprietary, Confidential Information--Use Restricted by Contract

| | | | |
|--------------------|------|---------------|---|
| DELETED_FLAG | NULL | VARCHAR2(1) | Flag indicating the task has been deleted |
| PALM_FLAG | NULL | VARCHAR2(1) | Used by Mobile Device |
| WINCE_FLAG | NULL | VARCHAR2(1) | Used by Mobile Device |
| LAPTOP_FLAG | NULL | VARCHAR2(1) | Used by Mobile Device |
| DEVICE1_FLAG | NULL | VARCHAR2(1) | Used by Mobile Device |
| DEVICE2_FLAG | NULL | VARCHAR2(1) | Used by Mobile Device |
| DEVICE3_FLAG | NULL | VARCHAR2(1) | Used by Mobile Device |
| COSTS | NULL | NUMBER | Used by Marketing |
| CURRENCY_CODE | NULL | VARCHAR2(15) | Used by Marketing. |
| ORG_ID | NULL | NUMBER | Operating unit identifier |
| ESCALATION_LEVEL | NULL | VARCHAR2(30) | Escalation Level |
| ATTRIBUTE1 | NULL | VARCHAR2(150) | Descriptive flexfield segment column |
| ATTRIBUTE2 | NULL | VARCHAR2(150) | Descriptive flexfield segment column |
| ATTRIBUTE3 | NULL | VARCHAR2(150) | Descriptive flexfield segment column |
| ATTRIBUTE4 | NULL | VARCHAR2(150) | Descriptive flexfield segment column |
| ATTRIBUTE5 | NULL | VARCHAR2(150) | Descriptive flexfield segment column |
| ATTRIBUTE6 | NULL | VARCHAR2(150) | Descriptive flexfield segment column |
| ATTRIBUTE7 | NULL | VARCHAR2(150) | Descriptive flexfield segment column |
| ATTRIBUTE8 | NULL | VARCHAR2(150) | Descriptive flexfield segment column |
| ATTRIBUTE9 | NULL | VARCHAR2(150) | Descriptive flexfield segment column |
| ATTRIBUTE10 | NULL | VARCHAR2(150) | Descriptive flexfield segment column |
| ATTRIBUTE11 | NULL | VARCHAR2(150) | Descriptive flexfield segment column |
| ATTRIBUTE12 | NULL | VARCHAR2(150) | Descriptive flexfield segment column |
| ATTRIBUTE13 | NULL | VARCHAR2(150) | Descriptive flexfield segment column |
| ATTRIBUTE14 | NULL | VARCHAR2(150) | Descriptive flexfield segment column |
| ATTRIBUTE15 | NULL | VARCHAR2(150) | Descriptive flexfield segment column |
| ATTRIBUTE_CATEGORY | NULL | VARCHAR2(150) | Descriptive flexfield structure defining column |
| SECURITY_GROUP_ID | NULL | NUMBER | Used in hosted environments |

Indexes

| Index Name | Index Type | Sequence | Column Name |
|--------------|------------|----------|---|
| JTF_TASKS_N1 | NOT UNIQUE | 5 10 | SOURCE_OBJECT_TYPE_CODE SOURCE_OBJECT_ID |
| JTF_TASKS_U1 | UNIQUE | 1 | TASK_ID |

Sequences

| Sequence | Derived Column |
|-----------------------------|---------------------|
| JTF_TASKS_S | TASK_ID |
| JTF_TASK_NUMBER_S | TASK_NUMBER |
| JTF_TASK_WORKFLOW_PROCESS_S | WORKFLOW_PROCESS_ID |

Oracle Proprietary, Confidential Information--Use Restricted by Contract

JTF_TASK_ASSIGNMENTS

JTF_TASK_ASSIGNMENTS stores information about the resource assignments associated with the task. RESOURCE_TYPE_CODE identifier stores the resource category which is a foreign key to JTF_OBJECT_TYPES. For each resource assignment, this table stores duration and distance used by the Oracle Scheduler . Also, every assigned resource can have contact details.

Foreign Keys

| Primary Key Table | Primary Key Column | Foreign Key Column |
|-------------------|--------------------|--------------------|
| JTF_OBJECTS_B | OBJECT_CODE | RESOURCE_TYPE_CODE |
| JTF_TASKS_B | TASK_ID | TASK_ID |

Column Descriptions

| Name | Null? | Type | Description |
|---------------------------|----------|---------------|---|
| TASK_ASSIGNMENT_ID (PK) | NOT NULL | NUMBER | Unique task assignment identifier |
| CREATED_BY | NOT NULL | NUMBER | Standard Who column - with the user id from FND_USER |
| CREATION_DATE | NOT NULL | DATE | Standard Who column |
| LAST_UPDATED_BY | NOT NULL | NUMBER | Standard Who column - with the user id from FND_USER |
| LAST_UPDATE_DATE | NOT NULL | DATE | Standard Who column |
| LAST_UPDATE_LOGIN | NULL | NUMBER | Standard Who column |
| OBJECT_VERSION_NUMBER | NOT NULL | NUMBER | Sequential number used for database locking control when using HTML as a user interface |
| TASK_ID | NOT NULL | NUMBER | Task ID (foreign key to JTF_TASKS_ALL) |
| RESOURCE_TYPE_CODE | NOT NULL | VARCHAR2(30) | Resource type identifier |
| RESOURCE_ID | NOT NULL | NUMBER | Resource ID |
| ASSIGNMENT_STATUS_ID | NOT NULL | NUMBER | Status identifier of the assignee |
| ACTUAL_EFFORT | NULL | NUMBER | Actual amount of effort spent on a task |
| RESOURCE_TERRITORY_ID | NULL | NUMBER | Territory identifier of the assignee |
| ACTUAL_EFFORT_UOM | NULL | VARCHAR2(3) | Unit of measure for actual effort |
| SCHEDULE_FLAG | NULL | VARCHAR2(1) | Indicates whether the resource should be scheduled by the Scheduler |
| ALARM_TYPE_CODE | NULL | VARCHAR2(30) | A lookup code that indicates how alarms should be sent to the resource., e.g., 'EMAIL', 'PAGER', 'PHONE' |
| ALARM_CONTACT | NULL | VARCHAR2(200) | Contact information for sending alarms, this field may store email address, pager number, or phone number |
| SHIFT_CONSTRUCT_ID | NULL | NUMBER | Shift construct identifier for the assignment |
| SCHED_TRAVEL_DISTANCE | NULL | NUMBER | Scheduled Travel Distance |
| SCHED_TRAVEL_DURATION | NULL | NUMBER | Scheduled Travel Duration |
| SCHED_TRAVEL_DURATION_UOM | NULL | VARCHAR2(3) | Unit of measure for Scheduled Travel Duration |

Oracle Proprietary, Confidential Information--Use Restricted by Contract

| | | | |
|----------------------------|------|---------------|---|
| ACTUAL_TRAVEL_DISTANCE | NULL | NUMBER | Actual Travel Duration |
| ACTUAL_TRAVEL_DURATION | NULL | NUMBER | Actual Travel Duration |
| ACTUAL_TRAVEL_DURATION_UOM | NULL | VARCHAR2(3) | Unit of Measure for Actual Travel Duration |
| ACTUAL_START_DATE | NULL | DATE | Actual start date |
| ACTUAL_END_DATE | NULL | DATE | Actual end date |
| PALM_FLAG | NULL | VARCHAR2(1) | Used by Mobile Device |
| WINCE_FLAG | NULL | VARCHAR2(1) | Used by Mobile Device |
| LAPTOP_FLAG | NULL | VARCHAR2(1) | Used by Mobile Device |
| DEVICE1_FLAG | NULL | VARCHAR2(1) | Used by Mobile Device |
| DEVICE2_FLAG | NULL | VARCHAR2(1) | Used by Mobile Device |
| DEVICE3_FLAG | NULL | VARCHAR2(1) | Used by Mobile Device |
| ATTRIBUTE1 | NULL | VARCHAR2(150) | Descriptive flexfield segment column |
| ATTRIBUTE2 | NULL | VARCHAR2(150) | Descriptive flexfield segment column |
| ATTRIBUTE3 | NULL | VARCHAR2(150) | Descriptive flexfield segment column |
| ATTRIBUTE4 | NULL | VARCHAR2(150) | Descriptive flexfield segment column |
| ATTRIBUTE5 | NULL | VARCHAR2(150) | Descriptive flexfield segment column |
| ATTRIBUTE6 | NULL | VARCHAR2(150) | Descriptive flexfield segment column |
| ATTRIBUTE7 | NULL | VARCHAR2(150) | Descriptive flexfield segment column |
| ATTRIBUTE8 | NULL | VARCHAR2(150) | Descriptive flexfield segment column |
| ATTRIBUTE9 | NULL | VARCHAR2(150) | Descriptive flexfield segment column |
| ATTRIBUTE10 | NULL | VARCHAR2(150) | Descriptive flexfield segment column |
| ATTRIBUTE11 | NULL | VARCHAR2(150) | Descriptive flexfield segment column |
| ATTRIBUTE12 | NULL | VARCHAR2(150) | Descriptive flexfield segment column |
| ATTRIBUTE13 | NULL | VARCHAR2(150) | Descriptive flexfield segment column |
| ATTRIBUTE14 | NULL | VARCHAR2(150) | Descriptive flexfield segment column |
| ATTRIBUTE15 | NULL | VARCHAR2(150) | Descriptive flexfield segment column |
| ATTRIBUTE_CATEGORY | NULL | VARCHAR2(30) | Descriptive flexfield structure defining column |
| SECURITY_GROUP_ID | NULL | NUMBER | Used in hosted environments |

Indexes

| Index Name | Index Type | Sequence | Column Name |
|-------------------------|------------|----------|--------------------|
| JTF_TASK_ASSIGNMENTS_U1 | UNIQUE | 2 | TASK_ASSIGNMENT_ID |

Sequences

| Sequence | Derived Column |
|------------------------|--------------------|
| JTF_TASK_ASSIGNMENTS_S | TASK_ASSIGNMENT_ID |

Oracle Proprietary, Confidential Information--Use Restricted by Contract

Index

A

Application Building Block, 1 – 6

C

Column descriptions, 3 – 4

Columns, Who, 3 – 4

Concurrent Program List. *See* Concurrent Program Definitions

D

Database Diagram, 1 – 6

ASG Database Diagram, 2 – 8

Database Diagrams

ASG Mobile Gateway #1, 2 – 10

ASG Mobile Gateway #2, 2 – 12

database diagrams, conventions, 2 – 5

Database triggers, 3 – 6

F

Foreign keys, 3 – 3

Form, 1 – 7

Form List. *See* Form Definitions

I

Indexes, 3 – 6

important note about, 3 – 6

L

Lookup types. *See* QuickCodes

M

Module List, 2 – 17

See also Module Definitions

Modules, 1 – 6

MultiLingual View List, 2 – 16

O

Oracle8 sequences. *See* Sequences

P

Public Table List, 2 – 14

Q

QuickCodes, 1 – 6

Columns that contain, 3 – 3

R

Relationship, 1 – 6

Report List. *See* Report Definitions

S

Sequences, 3 – 6

T

Table and View Definitions

- ASG_APPLICATION_VL, 2 – 16
- ASG_APPLICATIONS_B, 3 – 8
- ASG_APPLICATIONS_TL, 3 – 9
- ASG_DEVICE_USERS, 3 – 10
- ASG_ERROR, 3 – 12
- ASG_FLASH_MESSAGES, 3 – 13
- ASG_FLASH_RECIPIENTS, 3 – 14
- ASG_INCIDENT_ACC, 3 – 15
- ASG_ITEM_INDEX, 3 – 16
- ASG_LOCATION_ACC, 3 – 17
- ASG_MAP_PUB_ITEMS, 3 – 18
- ASG_PARENT_HINT, 3 – 19
- ASG_PARTY_ACC, 3 – 20
- ASG_PARTY_SITE_ACC, 3 – 21
- ASG_PRIMARY_KEY_HINT, 3 – 22
- ASG_PUBLICATION_ITEMS, 3 – 24
- ASG_PUBLICATIONS, 3 – 23

- ASG_SEQUENCES, 3 – 25
- ASG_SERVER_RESOURCES, 3 – 26
- ASG_SUBSCRIPTION_PARAMS, 3 – 27
- ASG_SYNCH_SERVER, 3 – 28
- ASG_TASK_ACC, 3 – 29
- ASG_WIRELESS_PARAMETERS, 3 – 30
- JTF_RS_RESOURCE_EXTNS, 3 – 31
- JTF_TASK_ASSIGNMENTS, 3 – 37
- JTF_TASKS_B, 3 – 34

Tables

- See also* Table and View Definitions
- Column descriptions, 3 – 4
- Foreign keys, 3 – 3
- Indexes. *See* Indexes
- Primary Keys, 3 – 4
- QuickCodes Columns, 3 – 3
- Who columns, 3 – 4, 3 – 5

V

View Definitions. *See* Table and View Definitions

Views

- See also* Table and View Definitions; View List
- Derivation, 3 – 6

Reader's Comment Form

Oracle CRM Gateway for Mobile Devices Technical Reference Manual A86131-01

Oracle Corporation welcomes your comments and suggestions on the quality and usefulness of this publication. Your input is an important part of the information we use for revision.

- Did you find any errors?
- Is the information clearly presented?
- Do you need more information? If so, where?
- Are the examples correct? Do you need more examples?
- What features did you like most about this manual? What did you like least about it?

If you find any errors or have any other suggestions for improvement, please indicate the topic, chapter, and page number below:

Please send your comments to:

Oracle CRM Content Development Manager
Oracle Corporation
500 Oracle Parkway
Redwood Shores, CA 94065 USA
Phone: (650) 506-7000 Fax: (650) 506-7200

If you would like a reply, please give your name, address, and telephone number below:

Thank you for helping us improve our documentation.

