

Oracle[®] TeleSales Technical Reference Manual

RELEASE *11i*

August 2000

ORACLE[®]

Oracle® TeleSales Technical Reference Manual
Release 11i

To order this book, ask for Part No. A86211-01

Copyright © 2000. Oracle Corporation. All rights reserved.

Major Contributors:

Contributors:

This Technical Reference Manual (TRM) in any form, software or printed matter, contains proprietary information of Oracle Corporation; it is provided under an Oracle Corporation agreement containing restrictions on use and disclosure and is also protected by copyright, patent, and other intellectual property law. Restrictions applicable to this TRM include, but are not limited to: (a) exercising either the same degree of care to safeguard the confidentiality of this TRM as you exercise to safeguard the confidentiality of your own most important Confidential Information or a reasonable degree of care, whichever is greater; (b) maintaining agreements with your employees and agents that protect the Confidential Information of third parties such as Oracle Corporation and instructing such employees and agents of these requirements for this TRM; (c) restricting disclosure of this TRM to those of your employees who have a "need to know" consistent with the purposes for which this TRM was disclosed to you; (d) maintaining this TRM at all times on your premises; (e) not removing or destroying any proprietary or confidential legends or markings placed upon this TRM in whatever form, software or printed matter; and (f) not reproducing or transmitting this TRM in any form or by any means, electronic or mechanical, for any purpose, without the express written permission of Oracle Corporation. You should not use this TRM in any form, software or printed matter, to create software that performs the same or similar functions as any Oracle Corporation products.

The information in this TRM is subject to change without notice. If you find any problems in the TRM in any form, software or printed matter, please report them to us in writing. Oracle Corporation does not warrant that this TRM is error-free. This TRM is provided to customer "as-is" with no warranty of any kind. This TRM does not constitute Documentation as that term is defined in Oracle's agreements.

Reverse engineering of the Programs (software and documentation) associated with this TRM are prohibited. The Programs associated with this TRM are not intended for use in any nuclear, aviation, mass transit, medical, or other inherently dangerous applications. It shall be licensee's responsibility to take all appropriate fail-safe, back-up, redundancy and other measures to ensure the safe use of such applications if the Programs are used for such purposes, and Oracle disclaims liability for any damages caused by such use of the Programs.

Program Documentation is licensed for use solely to support the deployment of the Programs and not for any other purpose.

Restricted Rights Legend

This TRM and the Programs associated with this TRM delivered subject to the DOD FAR Supplement are 'commercial computer software' and use, duplication and disclosure of the TRM and the Programs associated with this TRM shall be subject to the licensing restrictions set forth in the applicable Oracle license agreement. Otherwise, this TRM and the Programs associated with this TRM delivered subject to the Federal Acquisition Regulations are 'restricted computer software' and use, duplication and disclosure of the TRM and the Programs associated with this TRM shall be subject to the restrictions in FAR 52.227-14, Rights in Data -- General, including Alternate III (June 1987). Oracle Corporation, 500 Oracle Parkway, Redwood City, CA 94065.

Oracle is a registered trademark, and Oracle Customer Intelligence, CASE*Exchange, Enabling the Information Age, Hyper*SQL, NLS*Workbench, Oracle7, Oracle8, Oracle 8i, Oracle Access, Oracle Application Object Library, Oracle Discoverer, Oracle Financials, Oracle Quality, Oracle Web Customers, Oracle Web Employees, Oracle Work in Process, Oracle Workflow, PL/SQL, Pro*Ada, Pro*C, Pro*COBOL, Pro*FORTRAN, Pro*Pascal, Pro*PL/I, SmartClient, SQL*Connect, SQL*Forms, SQL*Loader, SQL*Menu, SQL*Net, SQL*Plus, and SQL*Report are trademarks or registered trademarks of Oracle Corporation. Other names may be trademarks of their respective owners.



CAUTION

This Technical Reference Manual in any form -- software or printed matter -- contains proprietary, confidential information that is the exclusive property of Oracle Corporation. If you do not have a valid contract with Oracle for the use of this Technical Reference Manual or have not signed a non-disclosure agreement with Oracle covering this Technical Reference Manual, then you received this document in an unauthorized manner and are not legally entitled to possess or read it.



Contents

	Contents	v
Chapter 1	Introduction	1 – 1
Chapter 2	High-Level Design	2 – 1
	Overview of High-Level Design	2 – 2
	Database Diagrams	2 – 7
	Public Table List	2 – 9
	Public View List	2 – 10
	Internal View List	2 – 11
	Single Organization View List	2 – 12
	Module List	2 – 13
Chapter 3	Detailed Design	3 – 1
	Overview of Detailed Design	3 – 2
	Table and View Definitions	3 – 3
	Index	

Oracle Proprietary, Confidential Information--Use Restricted by Contract

CHAPTER

1

Introduction

The *Oracle TeleSales Technical Reference Manual* provides the information you need to understand the underlying structure of Oracle TeleSales. After reading this manual, you should be able to convert your existing applications data, integrate your existing applications with Oracle TeleSales, and write custom reports for Oracle TeleSales, as well as read data that you need to perform other tasks.

This chapter introduces you to the *Oracle TeleSales Technical Reference Manual*, and explains how to use it.

Introduction

At Oracle, we design and build applications using Oracle Designer, our systems design technology that provides a complete environment to support developers through all stages of a systems life cycle. Because we use a repository-based design toolset, all the information regarding the underlying structure and processing of our applications is available to us online. Using Oracle Designer, we can present this information to you in the form of a technical reference manual.

This *Oracle TeleSales Technical Reference Manual* contains detailed, up-to-date information about the underlying structure of Oracle TeleSales. As we design and build new releases of Oracle TeleSales, we update our Oracle Designer repository to reflect our enhancements. As a result, we can always provide you with an *Oracle TeleSales Technical Reference Manual* that contains the latest technical information as of the publication date. Note that after the publication date we may have added new indexes to Oracle TeleSales to improve performance.

About this Manual

This manual describes the Oracle Customer Relationship Management (CRM) Applications Release 11i data model, as used by Oracle TeleSales; it discusses the database we include with a fresh install of Oracle CRM Applications Release 11i. If you have not yet upgraded to Release 11i, your database may differ from the database we document in this book.

You can contact your Oracle representative to confirm that you have the latest technical information for Oracle TeleSales. You can also use Oracle *MetaLink* which is accessible through Oracle's Support Web Center (http://www.oracle.com/support/elec_sup).

Finding the Latest Information

The *Oracle TeleSales Technical Reference Manual* contains the latest information as of the publication date. For the latest information we encourage you to use Oracle *MetaLink* which is accessible through Oracle's Support Web Center (http://www.oracle.com/support/elec_sup).

Audience

The *Oracle TeleSales Technical Reference Manual* provides useful guidance and assistance to:

- Technical End Users
- Consultants
- Systems Analysts
- System Administrators
- Other MIS professionals

This manual assumes that you have a basic understanding of structured analysis and design, and of relational databases. It also assumes that you are familiar with Oracle Application Object Library and Oracle TeleSales. If you are not familiar with the above products, we suggest that you attend one or more of the training classes available through Oracle Education (see: Other Information Sources: page 1 – 7).

How This Manual is Organized

This manual contains two major sections, High-Level Design and Detailed Design.

High-Level Design

This section, Chapter 2, contains database diagrams and lists each database table and view that Oracle TeleSales uses. This chapter also has a list of modules.

Detailed Design

This section, Chapter 3, contains a detailed description of the Oracle TeleSales database design, including information about each database table and view you might need for your custom reporting or other data requirements.

How to Use This Manual

The *Oracle TeleSales Technical Reference Manual* is a single, centralized source for all the information you need to know about the underlying structure and processing of Oracle TeleSales. For example, you can use this manual when you need to:

- Convert existing application data
- Integrate your Oracle TeleSales application with your other applications systems
- Write custom reports
- Define alerts against Oracle Applications tables
- Configure your Oracle Self-Service Web Applications
- Create views for decision support queries using query tools
- Create business views for Oracle Discoverer

You need not read this manual cover to cover. Use the table of contents and index to quickly locate the information you need.

How Not To Use This Manual

Do not use this manual to plan modifications

You should not use this manual to plan modifications to Oracle TeleSales. Modifying Oracle TeleSales limits your ability to upgrade to future releases of your Oracle TeleSales application. In addition, it interferes with our ability to give you the high-quality support you deserve.

We have constructed Oracle TeleSales so that you can customize it to fit your needs without programming, and you can integrate it with your existing applications through interface tables. However, should you require program modifications, you should contact our support team (see: Other Information Sources: page 1 – 7). They can put you in touch with Oracle Services, the professional consulting organization of Oracle. Their team of experienced applications professionals can make the modifications you need while ensuring upward compatibility with future product releases.

Oracle Proprietary, Confidential Information--Use Restricted by Contract

Do not write data into non-interface tables

Oracle reserves the right to change the structure of Oracle Applications tables, and to change the meaning of, add, or delete lookup codes and data in future releases. Do not write data directly into or change data in non-interface tables using SQL*Plus or other programming tools because you risk corrupting your database and interfering with our ability to support you.

Moreover, this version of the *Oracle TeleSales Technical Reference Manual* does not contain complete information about the dependencies between Oracle TeleSales applications tables. Therefore, you should write data into only those tables we identify as interface tables. If you write data into other non-interface tables, you risk violating your data integrity since you might not fulfill all the data dependencies in your Oracle TeleSales application.

You are responsible for the support and upgrade of the logic within the procedures that you write, which may be affected by changes between releases of Oracle Applications.

Do not rely on upward compatibility of the data model

Oracle reserves the right to change the structure of Oracle TeleSales tables, and to change the meaning of, add, or delete lookup codes and other data in future releases. We do not guarantee the upward compatibility of the Oracle TeleSales data model. For example, if you write a report that identifies concurrent requests that end in Error status by selecting directly from Oracle Application Object Library tables, we do not guarantee that your report will work properly after an upgrade.

About Oracle Application Object Library

Oracle Application Object Library is a collection of pre-built application components and facilities for building Oracle Applications and extensions to Oracle Applications. Oracle Application Coding Standards use the Oracle Application Object Library and contains shared components including but not limited to -- forms, subroutines, concurrent programs and reports, database tables and objects, messages, menus, responsibilities, flexfield definitions and online help.



Attention: Oracle does not support *any* customization of Oracle Application Object Library tables or modules, not even

by Oracle consultants. (Oracle Application Object Library tables generally have names beginning with FND_%.)

Accordingly, this manual does not contain detailed information about most Oracle Application Object Library tables used by Oracle TeleSales.

A Few Words About Terminology

The following list provides you with definitions for terms that we use throughout this manual:

Relationship

A relationship describes any significant way in which two tables may be associated. For example, rows in the Journal Headers table may have a one-to-many relationship with rows in the Journal Lines table.

Database Diagram

A database diagram is a graphic representation of application tables and the relationships between them.

Module

A module is a program or procedure that implements one or more business functions, or parts of a business function, within an application. Modules include forms, concurrent programs and reports, and subroutines.

Application Building Block

An application building block is a set of tables and modules (forms, reports, and concurrent programs) that implement closely-related database objects and their associated processing. Said another way, an application building block is a logical unit of an application.

QuickCodes

QuickCodes let you define general purpose, static lists of values for window fields. QuickCodes allow you to base your program logic on lookup codes while displaying user-friendly names in a list of values window. QuickCodes simplify name and language changes by letting

you change the names your end users see, while the codes in your underlying programs remain the same.

Form

A form is a module comprised of closely related windows that are used together to perform a task. For example, the Enter Journals form in Oracle General Ledger includes the Enter Journals window, the Batch window, and the More Actions window among others. The Enter Journals window is the main window, and from it, you can use buttons to navigate to other windows in the form. The form name usually corresponds to the main window in the form, and is frequently a window you open directly from the Navigator.

Other Information Sources

Installation and System Administration

Training

Oracle Education offers a complete set of training courses to help you and your staff master Oracle CRM Applications. We can help you develop a training plan that provides thorough training for both your project team and your end users. We will work with you to organize courses appropriate to your job or area of responsibility.

Training professionals can show you how to plan your training throughout the implementation process so that the right amount of information is delivered to key people when they need it the most. You can attend courses at any one of our many Educational Centers, or you can arrange for our trainers to teach at your facility. In addition, we can tailor standard courses or develop custom courses to meet your needs.

Support

From on-site support to central support, our team of experienced professionals provides the help and information you need to keep Oracle TeleSales working for you. This team includes your Technical Representative, Account Manager, and Oracle's large staff of consultants and support specialists with expertise in your business

area, managing an Oracle server, and your hardware and software environment.

About Oracle

Oracle Corporation develops and markets an integrated line of software products for database management, applications development, decision support, and office automation, as well as Oracle Applications, an integrated suite of more than 75 software modules for financial management, supply chain management, manufacturing, project systems, human resources, and sales and service management.

Oracle products are available for mainframes, minicomputers, personal computers, network computers, and personal digital assistants, allowing organizations to integrate different computers, different operating systems, different networks, and even different database management systems, into a single, unified computing and information resource.

Oracle is the world's leading supplier of software for information management, and the world's second largest software company. Oracle offers its database, tools, and applications products, along with related consulting, education, and support services, in over 145 countries around the world.

Thank You

Thanks for using Oracle TeleSales and this technical reference manual!

We appreciate your comments and feedback. After the Table of Contents of this manual is a Reader's Comment Form that you can use to explain what you like or dislike about Oracle TeleSales or this technical reference manual. Mail your comments to the following address or call us directly at (650) 506-7000.

Oracle CRM Applications Content Development Manager
Oracle Corporation
500 Oracle Parkway
Redwood Shores, California 94065
U.S.A.

Oracle Proprietary, Confidential Information--Use Restricted by Contract

CHAPTER

2

High-Level Design

This chapter presents a high-level design for Oracle TeleSales that satisfies the business needs we specify during Strategy and Analysis. It contains database diagrams for Oracle TeleSales application building blocks, lists of database tables and views, and a list of modules.

Overview of High-Level Design

During High-Level Design, we define the application components (tables, views, and modules) we need to build our application. We specify what application components should do without specifying the details of *how* they should do it.

You can refer to this High-Level Design chapter to quickly acquaint yourself with the tables, views, and modules that comprise Oracle TeleSales applications. And, you can prepare yourself to understand the detailed design and implementation of Oracle TeleSales.

Database Diagrams

The Database Diagrams section graphically represents all Oracle TeleSales applications tables and the relationships between them, organized by building block.

Use this section to quickly learn what tables each Oracle TeleSales application building block uses, and how those tables interrelate. Then, you can refer to the Table and View Definitions sections of Chapter 3 for more detailed information about each of those tables.

Table Lists

The Table List sections list the Oracle TeleSales applications tables. Because a product might not include at least one table for each type, this Technical Reference Manual might not include each of the following sections.

Public Tables

Use the Public Table List section to quickly identify the tables you are most interested in. Then, you can refer to the Table and View Definitions sections of Chapter 3 for more detailed information about those tables.

In addition, this manual may contain full documentation for one or more of the following Application Object Library tables: FND_DUAL, FND_CURRENCIES, and FND_COMMON_LOOKUPS.

Internal Tables

This section includes a list of private, internal tables used by Oracle TeleSales; we do not provide additional documentation for these tables.

View Lists

The View List sections list the Oracle TeleSales views, with one section for each type of view. Because a product might not include at least one view for each type, this Technical Reference Manual might not include each of the following sections.

Use this section to quickly identify the views you are most interested in. Then, you can refer to the Table and View Definitions sections of Chapter 3 for more detailed information about those views.

Public Views

This section lists views that may be useful for your custom reporting or other data requirements. The list includes a description of the view, and the page in Chapter 3 that gives detailed information about the public view.

Web Views

This section lists views that you may need to configure your Self-Service Web applications. The list includes a description of the view, and the page in Chapter 3 that gives detailed information about the web view.

Internal Views

This section includes each private, internal view that Oracle TeleSales uses.

Multiple Reporting Currency Views

This list includes views that were created to support the Multiple Reporting Currencies feature.

Module List

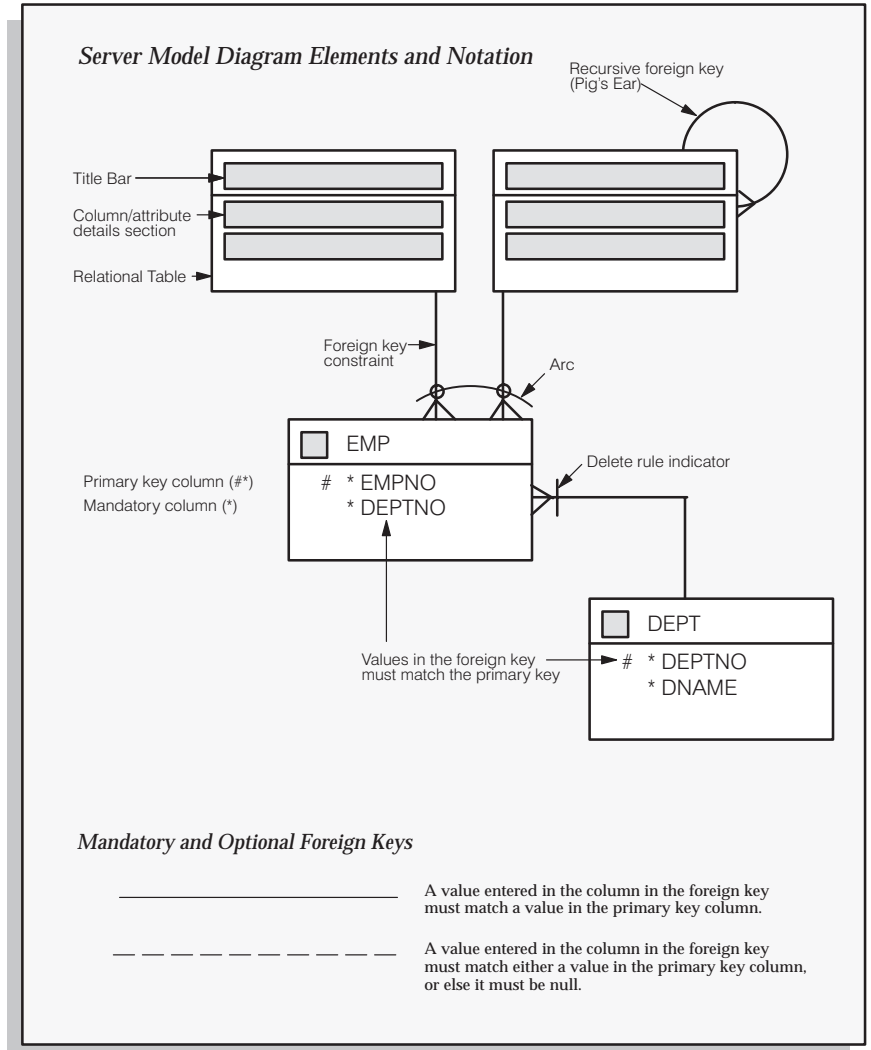
The Module List section briefly describes each of the Oracle TeleSales applications modules. This section lists forms, reports, and concurrent programs.

A form is a module comprised of closely related windows that are used together to perform a task. For example, the Enter Journals form in Oracle General Ledger includes the Enter Journals window, the Batch window, and the More Actions window. The Enter Journals window is the main window, and from it, you can use buttons to navigate to other windows in the form. The form name usually corresponds to the main window in the form, and is frequently a window you can open directly from the Navigator.

The Reports and Concurrent Programs lists include processes you can submit from the Submit Requests window or other windows, as well as processes that are submitted automatically by Oracle TeleSales. Use your user's guide to learn more about reports and concurrent processes.

Database Diagramming Conventions

Figure 2 - 1
Database Diagram
Conventions



Tables – are the basic unit of storage in the database. A hand symbol preceding the title in the table's title bar indicates that the table is not owned by this application but shared with another.

Foreign key constraint – is a type of referential integrity constraint for checking the integrity of data entered in a specific column or set of columns. This specified column or set of columns is known as the foreign key.

Delete rule indicator – determines the action to be taken when an attempt is made to delete a related row in a join table. A line through the foreign key constraint, as shown on the above diagram, indicates that this action is restricted.

Arcs – specify that, for any given row in a table, a value must be entered in one of the arc columns. The remaining columns within the arc must be null.

Public Table List

This section lists each public database table that Telesales uses and provides a brief description of each of those tables. The page reference is to the table description in Chapter 3.

Note that "public" tables are not necessarily intended for write access by custom code; Oracle Corporation supports write access using only standard Oracle Applications forms, reports, and programs, or any SQL write access to tables explicitly documented as API tables. For more information, see the How Not To Use This Manual section of this book's Introduction.

Telesales uses the following Public tables:

Table Name	Description
AMS_CAMPAIGNS_ALL_B	Base table to store the details of a campaign. (See page 3 – 7)
AST_GRP_CAMPAIGNS	This table stores the information for the mapping of resource groups to campaigns (See page 3 – 16)
AST_RS_CAMPAIGNS	Used for assigning Campaigns to Resources (See page 3 – 17)
JTF_RS_GROUPS_B	Base Table JTF_RS_GROUPS_B stores general information about a given Group. (See page 3 – 23)
JTF_RS_RESOURCE_EXTNS	This is table stores all important information about Resources. These Resources are coming from HR or HZ or Vonder table etc. Primary key is resource_id. Resource_number, user_id sre also unique keys. (See page 3 – 27)

Public View List

This section lists each public database view that Oracle TeleSales uses and provides a brief description of each of those views. These views may be useful for your custom reporting or other data requirements. The page reference is to the detailed view description in Chapter 3.

Oracle TeleSales uses the following public views:

View Name	Description
AMS_P_CAMPAIGNS_V	This public view returns all marketing campaigns and related information. (See page 3 – 11)
JTF_RS_EMPLOYEES_VL	This view has the list of all Employees that can be imported or is already present in Resource Manager (See page 3 – 18)
JTF_RS_EMP_DTLS_VL	This view has the details of all the resources whose category='EMPLOYEE' (See page 3 – 20)
JTF_RS_GROUPS_VL	MLS View for JTF_RS_GROUPS_B and JTF_RS_GROUPS_TL. (See page 3 – 25)

Internal View List

This section lists each private, internal view that Oracle TeleSales uses.



Warning: Oracle Corporation does not support access to Oracle Applications data using these views, except from standard Oracle Applications forms, reports, and programs.

Oracle TeleSales uses the following internal views:

- AST_ACCOUNT_PARTIES_V
- AST_ACCT_RELATIONSHIP_V
- AST_ACCT_SITE_USES_V
- AST_ACTIVITIES_V
- AST_AGENT_SCRIPTS_V
- AST_BILLING_PREFERENCES_V
- AST_CONTACT_POINTS_V
- AST_CUST_ACCOUNTS_ROLES_V
- AST_CUST_ACCT_OVERVIEW_V
- AST_CUST_ACCT_SITES_V
- AST_CUST_PROFILE_CREDIT_V
- AST_CUST_SITE_USES_V
- AST_EDUCATION_V
- AST_EMPLOYMENT_HISTORY_V
- AST_ENTY_ATTR_VAL_V
- AST_EVENT_DELIVERABLES_V
- AST_EVENT_ENROLLEES_V
- AST_EVENT_ENROLL_HIST_V
- AST_GRP_CAMPAGNS_V
- AST_IH_CAMPAGNS_RESULTS_VL
- AST_IH_CAMP_RESULT_REASONS_VL
- AST_IH_OUTCOMES_CAMPAGNS_VL
- AST_ITEM_RELATIONSHIPS_V
- AST_LEAD_PSS_LINES_V
- AST_LOOKUPS

Oracle Proprietary, Confidential Information--Use Restricted by Contract

- AST_LS_CAMPAGNS_V
- AST_LS_CONSUMERS_V
- AST_LS_CONTACTS_V
- AST_LS_DELIVERABLES_V
- AST_LS_EVENTS_V
- AST_LS_OPPORTUNITIES_V
- AST_LS_ORGANIZATIONS_V
- AST_LS_QUOTES_V
- AST_LS_SALES_LEADS_V
- AST_L_CONTACT_ADDR_V
- AST_L_CONTACT_POINTS_V
- AST_L_PARTY_PEOPLE_V
- AST_OPPORTUNITY_BRIEF_V
- AST_OPPORTUNITY_LINES_V
- AST_OPPORTUNITY_V
- AST_ORG_PARTIES_V
- AST_PARTY_LOCATIONS_V
- AST_PARTY_RELATIONSHIPS_V
- AST_PERSON_INTEREST_V
- AST_PERSON_PARTIES_V
- AST_PHONE_ASSISTS_V
- AST_PURCHASE_LINES_V
- AST_PURCH_LINES_V
- AST_RS_CAMPAGNS_V
- AST_RS_GRP_VALID_V
- AST_RS_VALID_V
- AST_SALES_CREDITS_V
- AST_SALES_CREDITS_V
- AST_SUSPENSION_ACTIVITY_V
- AST_WEB_ASSIST_DETAILS_V

Oracle Proprietary, Confidential Information--Use Restricted by Contract

- AST_WEB_SWITCH_DETAILS_V
- AST_WKQ_CONTACTS_V
- AST_WKQ_PHONES_V

Module List

This section lists each form, report and concurrent program comprising Telesales.

Oracle Proprietary, Confidential Information--Use Restricted by Contract

CHAPTER

3

Detailed Design

This chapter presents a detailed design for implementing Oracle TeleSales. It contains detailed definitions of tables and views that you may need to reference to write custom reports or use for other data extraction.

Overview of Detailed Design

During Detailed Design, we specify in detail how each applications component should work. We prepare detailed definitions of tables and views.

You can refer to this Detailed Design chapter to gain a detailed understanding of the underlying structure and processing of Oracle TeleSales that enables you to:

- Convert existing application data
- Integrate your Oracle TeleSales application with your other applications systems
- Write custom reports
- Define alerts against Oracle Applications tables
- Create views for decision support queries using query tools

Table and View Definitions

The Table and View Definitions section contains a detailed definition of Oracle TeleSales applications tables. For each table, it provides information about primary keys, foreign keys, QuickCodes, indexes, triggers, and sequences. It also gives you a detailed description of each column and its characteristics. In addition, it provides the SQL statement that defines each view. Review this section to get a detailed understanding of what tables your Oracle TeleSales application contains, and how it uses them to hold and access the information it needs.

Table and View Definitions

This section contains a detailed description of each Oracle TeleSales table and view that you may need to reference. For each table, it presents detailed information about:

- Primary keys
- Foreign keys
- Column descriptions
- Indexes
- Oracle sequences
- Triggers
- View derivations

The following sections appear in each table or view description:

Foreign Keys

To help you understand the relationships between tables, we list each foreign key contained in a table. For each foreign key in a table, we list the primary key table name (the table to which a foreign key refers), its corresponding primary key columns, and the foreign key columns that refer to those primary key columns.

When the primary key table has a composite primary key, we list each column of the composite key sequentially.

If a table contains two or more distinct foreign keys that refer to the same primary key table, we repeat the primary key table name and list each of the distinct foreign keys separately.

QuickCodes Columns

When a database column contains a QuickCodes value, which we implement using a foreign key to FND_LOOKUPS, MFG_LOOKUPS, or to some other lookup table, we list the QuickCodes type (lookup type) to which the QuickCodes value must belong and a complete list of QuickCodes values and meanings. Some QuickCodes can be defined by you in the application. These values are designated as User-defined.

Column Descriptions

We list the important characteristics of each column in a table or view. These characteristics include whether the column is part of the table's primary key, whether Oracle8i requires a value for this column, and the data type of the column. We also give you a brief description of how Oracle TeleSales uses the column.

When a column is part of a table's primary key, we append the notation (PK) to the name of that column.

To help you understand which columns Oracle TeleSales uses and which columns it does not use, we alert you to any unused column. When no module uses a database column, we show one of the following legends in the Description column:

Not currently used	Oracle TeleSales does not use this column, although the column might be used in a future release.
No longer used	Oracle TeleSales no longer uses this column. AutoInstall installs this column. Subsequent versions of Oracle TeleSales might not include this column.
No longer installed	Oracle TeleSales no longer uses this column. If you <i>upgraded</i> your software from an earlier version, you may still have this column, depending upon whether you chose to delete it during an upgrade process. If you <i>install</i> Oracle TeleSales, you do not have this column.

Standard Who Columns

Most Oracle TeleSales tables contain standard columns to support \ **Row Who**. When your program or SQL*Plus command selects a row from a table, use these columns to determine who last updated the row. If your program or SQL*Plus command updates or inserts a row in an interface table, you must populate each of the five standard Who columns:

LAST_UPDATE_DATE	Date when a user last updated this row
LAST_UPDATED_BY	User who last updated this row (foreign key to FND_USER.USER_ID)
CREATION_DATE	Date when this row was created

Oracle Proprietary, Confidential Information--Use Restricted by Contract

CREATED_BY	User who created this row (foreign key to FND_USER.USER_ID)
LAST_UPDATE_LOGIN	Operating system login of user who last updated this row (foreign key to FND_LOGINS.LOGIN_ID). You should set this to NULL, or to 0 if NULL is not allowed

Since every table containing Who columns has several foreign keys to the tables FND_USER and FND_LOGINS, we do not include the foreign key columns LAST_UPDATED_BY, CREATED_BY, or LAST_UPDATE_LOGIN in a table's list of foreign keys.

Additional Who Columns for Concurrent Programs

Some Oracle TeleSales tables also contain several additional Who columns to distinguish between changes a user makes with a form and changes a concurrent program makes. When a concurrent program updates or inserts a row in a table, the concurrent program populates the following additional Who columns:

REQUEST_ID	Concurrent request ID of program that last updated this row (foreign key to FND_CONCURRENT_REQUESTS.REQUEST_ID)
PROGRAM_APPLICATION_ID	Application ID of program that last updated this row (foreign key to FND_APPLICATION.APPLICATION_ID)
PROGRAM_ID	Program ID of program that last updated this row (foreign key to FND_CONCURRENT_PROGRAM.CONCURRENT_PROGRAM_ID)
PROGRAM_UPDATE_DATE	Date when a program last updated this row

Since every table containing these additional Who columns has several foreign keys to the tables FND_CONCURRENT_REQUESTS, FND_APPLICATION, and FND_CONCURRENT_PROGRAM, we do not include the foreign key columns REQUEST_ID, PROGRAM_APPLICATION_ID, or PROGRAM_ID in a table's list of foreign keys.

Indexes

If an Oracle TeleSales table uses an Oracle8i index, we list the database columns that comprise that index, in sequential order.

Note: The indexes we document in this manual correspond to unique keys we specified during product development and testing. In some cases, we may add additional indexes during the porting process to fine-tune performance on specific platforms; therefore, there may be minor differences between the indexes documented in this book and the indexes for production versions of Oracle TeleSales.

Sequences

Oracle TeleSales uses Oracle8i sequence generators to generate unique integers. If any table column gets its value from an Oracle8i sequence generator, we list the name of the corresponding sequence generator and the name of the column that stores the unique integer.

Database Triggers

If a table has one or more active database triggers, we provide a brief explanation of each database trigger and when it fires.

View Derivation

For each Oracle TeleSales view you may need to reference, we include important elements from the SQL statement that defines or creates a view. By studying this view definition, you can understand exactly how a view derives its contents.

AMS_CAMPAIGNS_ALL_B

This is the container for all marketing campaigns created by various CRM products. General details of a campaign like dates, priority, type, channel are stored in this table. The campaign type decides the medium in which the campaign is run. The hierarchical structure of the campaigns can be constructed using the PARENT_CAMPAIGN_ID. This table also stores the general details of Trade promotions and Plans.

Foreign Keys

Primary Key Table	Primary Key Column	Foreign Key Column
AMS_CAMPAIGNS_ALL_B	CAMPAIGN_ID	PARENT_CAMPAIGN_ID
AMS_EVENT_HEADERS_ALL_B	EVENT_HEADER_ID	CHANNEL_ID
AMS_EVENT_OFFERS_ALL_B	EVENT_OFFER_ID	CHANNEL_ID
AMS_MEDIA_B	MEDIA_ID	MEDIA_ID
AMS_MEDIA_CHANNELS	MEDIA_CHANNEL_ID	CHANNEL_ID
AMS_USER_STATUSES_B	USER_STATUS_ID	USER_STATUS_ID
FND_APPLICATION	APPLICATION_ID	APPLICATION_ID
IES_DEPLOYED_SCRIPTS	DSCRIPT_NAME	DSCRIPT_NAME
JTF_RS_RESOURCE_EXTNS	RESOURCE_ID	OWNER_USER_ID
OZF_FUNDS_ALL_B	FUND_ID	FUND_SOURCE_ID
QP_LIST_HEADERS_B	LIST_HEADER_ID	QP_LIST_HEADER_ID

Column Descriptions

Name	Null?	Type	Description
CAMPAIGN_ID	NOT NULL	NUMBER	Unique identifier
LAST_UPDATE_DATE	NOT NULL	DATE	Standard WHO Column
LAST_UPDATED_BY	NOT NULL	NUMBER(15)	Standard WHO Column
CREATION_DATE	NOT NULL	DATE	Standard WHO Column
CREATED_BY	NOT NULL	NUMBER(15)	Standard WHO Column
LAST_UPDATE_LOGIN	NULL	NUMBER(15)	Standard WHO Column
OBJECT_VERSION_NUMBER	NULL	NUMBER(9)	This column is used for locking purposes
OWNER_USER_ID	NOT NULL	NUMBER	Campaign owner identifier
USER_STATUS_ID	NOT NULL	NUMBER	User status identifier
STATUS_CODE	NOT NULL	VARCHAR2(30)	System status code
STATUS_DATE	NOT NULL	DATE	Date when the campaign status was last updated
ACTIVE_FLAG	NOT NULL	VARCHAR2(1)	Flag that indicates if the campaign is enabled.
PRIVATE_FLAG	NOT NULL	VARCHAR2(1)	Flag that indicates if the campaign is private
PARTNER_FLAG	NOT NULL	VARCHAR2(1)	Flag that indicates if the campaign has partners
TEMPLATE_FLAG	NOT NULL	VARCHAR2(1)	Flag that indicates if the campaign is the template
CASCADE_SOURCE_CODE_FLAG	NOT NULL	VARCHAR2(1)	Flag that indicates if the source code will be cascaded to campaign schedules
INHERIT_ATTRIBUTES_FLAG	NOT NULL	VARCHAR2(1)	Flag that indicates if the basic attributes will be inherited from parent
SOURCE_CODE	NOT NULL	VARCHAR2(30)	Campaign source code
ROLLUP_TYPE	NOT NULL	VARCHAR2(30)	Campaign rollup type
CAMPAIGN_TYPE	NULL	VARCHAR2(30)	Campaign purpose

Oracle Proprietary, Confidential Information--Use Restricted by Contract

MEDIA_TYPE_CODE	NULL	VARCHAR2(30)	Campaign activity type
PRIORITY	NULL	VARCHAR2(30)	Campaign priority
FUND_SOURCE_TYPE	NULL	VARCHAR2(30)	Campaign fund source type
FUND_SOURCE_ID	NULL	NUMBER	Identifier of the campaign fund source
PARENT_CAMPAIGN_ID	NULL	NUMBER	Identifier of the parent campaign
APPLICATION_ID	NOT NULL	NUMBER	Application identifier
QP_LIST_HEADER_ID	NULL	NUMBER	Identifier of the price list header
ORG_ID	NULL	NUMBER(32)	Organization identifier
MEDIA_ID	NULL	NUMBER	Identifier of the media used by the campaign
CHANNEL_ID	NULL	NUMBER	Identifier of the channel used by this campaign
EVENT_TYPE	NULL	VARCHAR2(30)	Event type
ARC_CHANNEL_FROM	NULL	VARCHAR2(30)	Indicates if the channel is an event or a media channel
DSRIPT_NAME	NULL	VARCHAR2(256)	The deployed script name
TRANSACTION_CURRENCY_CODE	NULL	VARCHAR2(15)	Transactional currency code
FUNCTIONAL_CURRENCY_CODE	NULL	VARCHAR2(15)	Functional currency code
BUDGET_AMOUNT_TC	NULL	NUMBER	Budget amount in the transactional currency
BUDGET_AMOUNT_FC	NULL	NUMBER	Budget amount in the functional currency
FORECASTED_PLAN_START_DATE	NULL	DATE	Forecasted planning start date
FORECASTED_PLAN_END_DATE	NULL	DATE	Forecasted planning end date
FORECASTED_EXEC_START_DATE	NULL	DATE	Forecasted execution start date
FORECASTED_EXEC_END_DATE	NULL	DATE	Forecasted execution end date
ACTUAL_PLAN_START_DATE	NULL	DATE	Actual planning start date
ACTUAL_PLAN_END_DATE	NULL	DATE	Actual planning end date
ACTUAL_EXEC_START_DATE	NULL	DATE	Actual execution start date
ACTUAL_EXEC_END_DATE	NULL	DATE	Actual execution end date
INBOUND_URL	NULL	VARCHAR2(120)	Inbound URL
INBOUND_EMAIL_ID	NULL	VARCHAR2(120)	Inbound email id
INBOUND_PHONE_NO	NULL	VARCHAR2(25)	Inbound phone no
DURATION	NULL	NUMBER(15)	Campaign duration
DURATION_UOM_CODE	NULL	VARCHAR2(3)	Unit of the duration
FF_PRIORITY	NULL	VARCHAR2(30)	Fulfillment priority
FF_OVERRIDE_COVER_LETTER	NULL	NUMBER	Fulfillment override cover letter
FF_SHIPPING_METHOD	NULL	VARCHAR2(30)	Fulfillment shipping method
FF_CARRIER	NULL	VARCHAR2(120)	Fulfillment carrier
CONTENT_SOURCE	NULL	VARCHAR2(120)	Content source
CC_CALL_STRATEGY	NULL	VARCHAR2(30)	Call strategy to be used by the call center for contacting customers
CC_MANAGER_USER_ID	NULL	NUMBER(15)	Resource id of the person who manages the call center
FORECASTED_REVENUE	NULL	NUMBER(15)	Forecasted revenue
ACTUAL_REVENUE	NULL	NUMBER(15)	Actual revenue
FORECASTED_COST	NULL	NUMBER(15)	Forecasted cost
ACTUAL_COST	NULL	NUMBER(15)	Actual cost
FORECASTED_RESPONSE	NULL	NUMBER(15)	Forecasted response
ACTUAL_RESPONSE	NULL	NUMBER(15)	Actual response
TARGET_RESPONSE	NULL	NUMBER(15)	Target response
COUNTRY_CODE	NULL	VARCHAR2(30)	Country code
LANGUAGE_CODE	NULL	VARCHAR2(30)	Language code
ATTRIBUTE_CATEGORY	NULL	VARCHAR2(30)	Descriptive flexfiled structure defining column

Oracle Proprietary, Confidential Information--Use Restricted by Contract

ATTRIBUTE1	NULL	VARCHAR2(150)	Descriptive flexfield segment
ATTRIBUTE2	NULL	VARCHAR2(150)	Descriptive flexfield segment
ATTRIBUTE3	NULL	VARCHAR2(150)	Descriptive flexfield segment
ATTRIBUTE4	NULL	VARCHAR2(150)	Descriptive flexfield segment
ATTRIBUTE5	NULL	VARCHAR2(150)	Descriptive flexfield segment
ATTRIBUTE6	NULL	VARCHAR2(150)	Descriptive flexfield segment
ATTRIBUTE7	NULL	VARCHAR2(150)	Descriptive flexfield segment
ATTRIBUTE8	NULL	VARCHAR2(150)	Descriptive flexfield segment
ATTRIBUTE9	NULL	VARCHAR2(150)	Descriptive flexfield segment
ATTRIBUTE10	NULL	VARCHAR2(150)	Descriptive flexfield segment
ATTRIBUTE11	NULL	VARCHAR2(150)	Descriptive flexfield segment
ATTRIBUTE12	NULL	VARCHAR2(150)	Descriptive flexfield segment
ATTRIBUTE14	NULL	VARCHAR2(150)	Descriptive flexfield segment
ATTRIBUTE13	NULL	VARCHAR2(150)	Descriptive flexfield segment
ATTRIBUTE15	NULL	VARCHAR2(150)	Descriptive flexfield segment
VERSION_NO	NULL	NUMBER(3)	Version Number of the campaign. A campaign can have many versions before it goes active.
CAMPAIGN_CALENDAR	NULL	VARCHAR2(15)	Calendar used for campaign planning. Refers to the General Ledger calendar.
START_PERIOD_NAME	NULL	VARCHAR2(15)	Starting period name within the campaign calendar
END_PERIOD_NAME	NULL	VARCHAR2(15)	End period name within the campaign calendar
CITY_ID	NULL	NUMBER	City where the campaign was created
GLOBAL_FLAG	NULL	VARCHAR2(1)	Flag to indicate if the campaign is run globally.
CUSTOM_SETUP_ID	NULL	NUMBER	Custom setup used to create the campaign
SHOW_CAMPAIGN_FLAG	NULL	VARCHAR2(1)	Indicates if the campaign has to be visible. All active versions of a campaign will have this flag set to 'Y'.
SECURITY_GROUP_ID	NULL	NUMBER	Used in hosted environments
BUSINESS_UNIT_ID	NULL	NUMBER(15)	Identifier of the Business Unit this campaign belongs to

Indexes

Index Name	Index Type	Sequence	Column Name
AMS_CAMPAIGNS_ALL_B_N1	NOT UNIQUE	5	PARENT_CAMPAIGN_ID
AMS_CAMPAIGNS_ALL_B_N10	NOT UNIQUE	5	QP_LIST_HEADER_ID
AMS_CAMPAIGNS_ALL_B_N11	NOT UNIQUE	5	OWNER_USER_ID
AMS_CAMPAIGNS_ALL_B_N12	NOT UNIQUE	5	DSCRIPT_NAME
AMS_CAMPAIGNS_ALL_B_N2	NOT UNIQUE	5	MEDIA_ID
AMS_CAMPAIGNS_ALL_B_N3	NOT UNIQUE	5	ORG_ID
AMS_CAMPAIGNS_ALL_B_N4	NOT UNIQUE	5	STATUS_CODE
AMS_CAMPAIGNS_ALL_B_N5	NOT UNIQUE	5	USER_STATUS_ID
AMS_CAMPAIGNS_ALL_B_N6	NOT UNIQUE	2	ARC_CHANNEL_FROM
		5	CHANNEL_ID
AMS_CAMPAIGNS_ALL_B_N7	NOT UNIQUE	5	CAMPAIGN_TYPE
AMS_CAMPAIGNS_ALL_B_N8	NOT UNIQUE	5	FUND_SOURCE_ID
AMS_CAMPAIGNS_ALL_B_N9	NOT UNIQUE	5	APPLICATION_ID
AMS_CAMPAIGNS_ALL_B_U1	UNIQUE	5	CAMPAIGN_ID
AMS_CAMPAIGNS_ALL_B_U2	UNIQUE	5	SOURCE_CODE

Sequences

<u>Sequence</u>	<u>Derived Column</u>
-----------------	-----------------------

AMS_CAMPAGNS_ALL_B_S	CAMPAGN_ID
----------------------	------------

Oracle Proprietary, Confidential Information--Use Restricted by Contract

AMS_P_CAMPAIGNS_V

This view is created for the general information about marketing campaigns.

View Definition

```
CREATE VIEW AMS_P_CAMPAIGNS_V
as SELECT
    CAM.CAMPAIGN_ID,
    CAM.CAMPAIGN_NAME,
    CAM.DESCRPTION,
    CAM.CAMPAIGN_TYPE CAMPAIGN_PURPOSE,
    CAM.ROLLUP_TYPE,
    CAM.STATUS_CODE,
    CAM.STATUS_DATE,
    CAM.SOURCE_CODE,
    CAM.OWNER_USER_ID,
    CAM.CASCADE_SOURCE_CODE_FLAG,
    CAM.PARTNER_FLAG,
    CAM.PARENT_CAMPAIGN_ID,
    CAM.PRIORITY,
    CAM.DSCRIPT_NAME INBOUND_SCRIPT_NAME,
    CAM.APPLICATION_ID,
    CAM.FUND_SOURCE_TYPE,
    CAM.FUND_SOURCE_ID,
    CAM.ACTUAL_EXEC_START_DATE,
    CAM.ACTUAL_EXEC_END_DATE,
    CAM.MEDIA_ID,
    MED.MEDIA_NAME,
    MED.MEDIA_TYPE_CODE,
    MED.MEDIA_TYPE_NAME,
    CAM.ARC_CHANNEL_FROM CHANNEL_SOURCE,
    CAM.CHANNEL_ID,
    CHL.CHANNEL_NAME,
    CHL.CHANNEL_TYPE,
    CHL.OUTBOUND_FLAG CHANNEL_OUTBOUND_FLAG,
    CHL.INBOUND_FLAG CHANNEL_INBOUND_FLAG,
    CAM.INBOUND_URL,
    CAM.INBOUND_EMAIL_ID,
    CAM.INBOUND_PHONE_NO,
    CAM.FF_PRIORITY,
    CAM.FF_OVERRIDE_COVER_LETTER,
    CAM.FF_SHIPPING_METHOD,
    CAM.CONTENT_SOURCE,
    CAM.CC_CALL_STRATEGY,
    CAM.CC_MANAGER_USER_ID,
    CAM.VERSION_NO,
    CAM.CAMPAIGN_CALENDAR,
    CAM.START_PERIOD_NAME,
    CAM.END_PERIOD_NAME,
    CAM.CITY_ID,
    CAM.GLOBAL_FLAG,
    CAM.CUSTOM_SETUP_ID,
    CAM.BUSINESS_UNIT_ID
from AMS_CAMPAIGNS_VL CAM, AMS_CHANNELS_VL CHL, AMS_MEDIA_VL MED
```

Oracle Proprietary, Confidential Information--Use Restricted by Contract

```

Where CAM.ROLLUP_TYPE = 'ECAM'
and CAM.PRIVATE_FLAG = 'N'
and CAM.TEMPLATE_FLAG = 'N'
and CAM.ACTIVE_FLAG = 'Y'
and CAM.ARC_CHANNEL_FROM = 'CHLS'
and CAM.CHANNEL_ID = CHL.CHANNEL_ID
and CAM.MEDIA_ID = MED.MEDIA_ID
and CAM.SHOW_CAMPAIGN_FLAG = 'Y'
UNION ALL
select CAM.CAMPAIGN_ID,
CAM.CAMPAIGN_NAME,
CAM.DESCRPTION,
CAM.CAMPAIGN_TYPE CAMPAIGN_PURPOSE,
CAM.ROLLUP_TYPE,
CAM.STATUS_CODE,
CAM.STATUS_DATE,
CAM.SOURCE_CODE,
CAM.OWNER_USER_ID,
CAM.CASCADE_SOURCE_CODE_FLAG,
CAM.PARTNER_FLAG,
CAM.PARENT_CAMPAIGN_ID,
CAM.PRIORITY,
CAM.DSCRIPT_NAME INBOUND_SCRIPT_NAME,
CAM.APPLICATION_ID,
CAM.FUND_SOURCE_TYPE,
CAM.FUND_SOURCE_ID,
CAM.ACTUAL_EXEC_START_DATE,
CAM.ACTUAL_EXEC_END_DATE,
NVL(CAM.MEDIA_ID, 0),
NULL,
CAM.MEDIA_TYPE_CODE,
LKP2.MEANING MEDIA_TYPE_NAME,
CAM.ARC_CHANNEL_FROM CHANNEL_SOURCE,
CAM.CHANNEL_ID,
EVEH.EVENT_HEADER_NAME,
LKP1.MEANING EVENT_TYPE,
NULL,
NULL,
CAM.INBOUND_URL,
CAM.INBOUND_EMAIL_ID,
CAM.INBOUND_PHONE_NO,
CAM.FF_PRIORITY,
CAM.FF_OVERRIDE_COVER_LETTER,
CAM.FF_SHIPPING_METHOD,
CAM.CONTENT_SOURCE,
CAM.CC_CALL_STRATEGY,
CAM.CC_MANAGER_USER_ID,
CAM.VERSION_NO,
CAM.CAMPAIGN_CALENDAR,
CAM.START_PERIOD_NAME,
CAM.END_PERIOD_NAME,
CAM.CITY_ID,
CAM.GLOBAL_FLAG,
CAM.CUSTOM_SETUP_ID,
CAM.BUSINESS_UNIT_ID
from AMS_CAMPAIGNS_VL CAM, AMS_EVENT_HEADERS_VL EVEH, AMS_LOOKUPS LKP1,
AMS_LOOKUPS LKP2

```

Oracle Proprietary, Confidential Information--Use Restricted by Contract

```

where CAM.ROLLUP_TYPE = 'ECAM'
and     CAM.PRIVATE_FLAG = 'N'
and     CAM.TEMPLATE_FLAG = 'N'
and     CAM.ACTIVE_FLAG = 'Y'
and     CAM.ARC_CHANNEL_FROM = 'EVEH'
and     CAM.CHANNEL_ID = EVEH.EVENT_HEADER_ID
and     LKP1.LOOKUP_TYPE = 'AMS_EVENT_TYPE'
and     LKP1.LOOKUP_CODE = CAM.EVENT_TYPE
and     LKP2.LOOKUP_TYPE = 'AMS_MEDIA_TYPE'
and     LKP2.LOOKUP_CODE = CAM.MEDIA_TYPE_CODE
and     CAM.SHOW_CA
        MPAIGN_FLAG = 'Y'
UNION ALL
select  CAM.CAMPAIGN_ID,
        CAM.CAMPAIGN_NAME,
        CAM.DESCRPTION,
        CAM.CAMPAIGN_TYPE      CAMPAIGN_PURPOSE,
        CAM.ROLLUP_TYPE,
        CAM.STATUS_CODE,
        CAM.STATUS_DATE,
        CAM.SOURCE_CODE,
        CAM.OWNER_USER_ID,
        CAM.CASCADE_SOURCE_CODE_FLAG,
        CAM.PARTNER_FLAG,
        CAM.PARENT_CAMPAIGN_ID,
        CAM.PRIORITY,
        CAM.DSCRIPT_NAME      INBOUND_SCRIPT_NAME,
        CAM.APPLICATION_ID,
        CAM.FUND_SOURCE_TYPE,
        CAM.FUND_SOURCE_ID,
        CAM.ACTUAL_EXEC_START_DATE,
        CAM.ACTUAL_EXEC_END_DATE,
        NVL(CAM.MEDIA_ID, 0),
        NULL,
        CAM.MEDIA_TYPE_CODE,
        LKP2.MEANING      MEDIA_TYPE_NAME,
        CAM.ARC_CHANNEL_FROM      CHANNEL_SOURCE,
        CAM.CHANNEL_ID,
        EVEO.EVENT_OFFER_NAME,
        LKP1.MEANING      EVENT_TYPE,
        NULL,
        NULL,
        CAM.INBOUND_URL,
        CAM.INBOUND_EMAIL_ID,
        CAM.INBOUND_PHONE_NO,
        CAM.FF_PRIORITY,
        CAM.FF_OVERRIDE_COVER_LETTER,
        CAM.FF_SHIPPING_METHOD,
        CAM.CONTENT_SOURCE,
        CAM.CC_CALL_STRATEGY,
        CAM.CC_MANAGER_USER_ID,
        CAM.VERSION_NO,
        CAM.CAMPAIGN_CALEDAR,
        CAM.START_PERIOD_NAME,
        CAM.END_PERIOD_NAME,
        CAM.CITY_ID,
        CAM.GLOBAL_FLAG,

```

```

        CAM.CUSTOM_SETUP_ID,
        CAM.BUSINESS_UNIT_ID
from AMS_CAMPAIGNS_VL CAM, AMS_EVENT_OFFERS_VL EVEO, AMS_LOOKUPS LKP1,
        AMS_LOOKUPS LKP2
where CAM.ROLLUP_TYPE = 'ECAM'
and     CAM.PRIVATE_FLAG = 'N'
and     CAM.TEMPLATE_FLAG = 'N'
and     CAM.ACTIVE_FLAG = 'Y'
and     CAM.ARC_CHANNEL_FROM = 'EVEO'
and     CAM.CHANNEL_ID = EVEO.EVENT_OFFER_ID
and     LKP1.LOOKUP_TYPE = 'AMS_EVENT_TYPE'
and     LKP1.LOOKUP_CODE = CAM.EVENT_TYPE
and     LKP2.LOOKUP_TYPE = 'AMS_MEDIA_TYPE'
and     LKP2.LOOKUP_CODE = CAM.MEDIA_TYPE_CODE
and     CAM.SHOW_CAMPAIGN_FLAG = 'Y'

```

Column Descriptions

Name	Null?	Type	Description
CAMPAIGN_ID	NULL	NUMBER	Unique Identifier
CAMPAIGN_NAME	NULL	VARCHAR2(240)	Campaign name
DESCRIPTION	NULL	VARCHAR2(4000)	Description
CAMPAIGN_PURPOSE	NULL	VARCHAR2(30)	Campaign purpose
ROLLUP_TYPE	NULL	VARCHAR2(30)	Campaign rollup type
STATUS_CODE	NULL	VARCHAR2(30)	System status code
STATUS_DATE	NULL	DATE	Date when the campaign status was last updated
SOURCE_CODE	NULL	VARCHAR2(30)	Campaign source code
OWNER_USER_ID	NULL	NUMBER	Campaign owner identifier
CASCADE_SOURCE_CODE_FLAG	NULL	VARCHAR2(1)	Flag that indicates if the source code will be cascaded to campaign schedules
PARTNER_FLAG	NULL	VARCHAR2(1)	Flag that indicates if the campaign has partners
PARENT_CAMPAIGN_ID	NULL	NUMBER	Identifier of the parent campaign
PRIORITY	NULL	VARCHAR2(30)	Campaign priority
INBOUND_SCRIPT_NAME	NULL	VARCHAR2(256)	The deployed script name
APPLICATION_ID	NULL	NUMBER	Application identifier
FUND_SOURCE_TYPE	NULL	VARCHAR2(30)	Campaign fund source type
FUND_SOURCE_ID	NULL	NUMBER	Identifier of the campaign fund source
ACTUAL_EXEC_START_DATE	NULL	DATE	Actual execution start date
ACTUAL_EXEC_END_DATE	NULL	DATE	Actual execution end date
MEDIA_ID	NULL	NUMBER	Identifier of the media used by the campaign
MEDIA_NAME	NULL	VARCHAR2(120)	Name of the media used by the campaign
MEDIA_TYPE_CODE	NULL	VARCHAR2(30)	Campaign activity type
MEDIA_TYPE_NAME	NULL	VARCHAR2(80)	Campaign activity name
CHANNEL_SOURCE	NULL	VARCHAR2(30)	Indicates if the channel is an event or a media channel
CHANNEL_ID	NULL	NUMBER	Identifier of the channel used by this campaign
CHANNEL_NAME	NULL	VARCHAR2(240)	Name of the channel used by this campaign
CHANNEL_TYPE	NULL	VARCHAR2(80)	Type of the channel used by this campaign

Oracle Proprietary, Confidential Information--Use Restricted by Contract

CHANNEL_OUTBOUND_FLAG	NULL	VARCHAR2(1)	Flag indicating whether the channel is outbound or not.
CHANNEL_INBOUND_FLAG	NULL	VARCHAR2(1)	Flag indicating whether the channel is inbound or not.
INBOUND_URL	NULL	VARCHAR2(120)	Inbound URL
INBOUND_EMAIL_ID	NULL	VARCHAR2(120)	Inbound email id
INBOUND_PHONE_NO	NULL	VARCHAR2(25)	Inbound phone no
FF_PRIORITY	NULL	VARCHAR2(30)	Fulfillment priority
FF_OVERRIDE_COVER_LETTER	NULL	NUMBER	Fulfillment override cover letter
FF_SHIPPING_METHOD	NULL	VARCHAR2(30)	Fulfillment shipping method
CONTENT_SOURCE	NULL	VARCHAR2(120)	Content source
CC_CALL_STRATEGY	NULL	VARCHAR2(30)	Call strategy to be used by the call center for contacting customers
CC_MANAGER_USER_ID	NULL	NUMBER(15)	Resource id of the person who manages the call center
VERSION_NO	NULL	NUMBER(3)	Version Number of the campaign. A campaign can have many versions before it goes active.
CAMPAIGN_CALENDAR	NULL	VARCHAR2(15)	Calendar used for campaign planning. Refers to the GL calendar.
START_PERIOD_NAME	NULL	VARCHAR2(15)	Starting period name within the campaign calendar
END_PERIOD_NAME	NULL	VARCHAR2(15)	End period name within the campaign calendar
CITY_ID	NULL	NUMBER	City where the campaign was created
GLOBAL_FLAG	NULL	VARCHAR2(1)	Flag to indicate if the campaign is run globally.
CUSTOM_SETUP_ID	NULL	NUMBER	Custom setup used to create the campaign
BUSINESS_UNIT_ID	NULL	NUMBER(15)	Identifier indicates which business group this campaign belongs to

AST_GRP_CAMPAIGNS

Foreign Keys

Primary Key Table	Primary Key Column	Foreign Key Column
AMS_CAMPAIGNS_ALL_B	CAMPAIGN_ID	CAMPAIGN_ID
JTF_RS_GROUPS_B	GROUP_ID	GROUP_ID

Column Descriptions

Name	Null?	Type	Description
GROUP_CAMPAIGN_ID (PK)	NOT NULL	NUMBER	Primary identifier for the table
GROUP_ID	NOT NULL	NUMBER	Foreign Key to JTF_RS_GROUPS_B
CAMPAIGN_ID	NOT NULL	NUMBER	Foreign Key to AMS_P_Campaigns
START_DATE	NULL	DATE	Start date for the assignment
END_DATE	NULL	DATE	
ENABLED_FLAG	NOT NULL	VARCHAR2(1)	
LAST_UPDATE_DATE	NOT NULL	DATE	Standard WHO Column
SECURITY_GROUP_ID	NULL	NUMBER	Hosting Standard Column
LAST_UPDATED_BY	NOT NULL	NUMBER(15)	Standard WHO Column
LAST_UPDATE_LOGIN	NULL	NUMBER(15)	Standard WHO Column
CREATED_BY	NOT NULL	NUMBER(15)	Standard WHO Column
CREATION_DATE	NOT NULL	DATE	Standard WHO Column

Indexes

Index Name	Index Type	Sequence	Column Name
AST_GRP_CAMPAIGNS_N1	NOT UNIQUE	5	CAMPAIGN_ID
AST_GRP_CAMPAIGNS_N2	NOT UNIQUE	5	GROUP_ID
AST_GRP_CAMPAIGNS_U1	UNIQUE	5	GROUP_CAMPAIGN_ID

Sequences

Sequence	Derived Column
AST_GRP_CAMPAIGNS_S	GROUP_CAMPAIGN_ID

AST_RS_CAMPAIGNS

This table stores the mapping between the resource Id defined in resource manager to the source Id defined in Oracle Marketing

Foreign Keys

Primary Key Table	Primary Key Column	Foreign Key Column
AMS_CAMPAIGNS_ALL_B	CAMPAIGN_ID	CAMPAIGN_ID
JTF_RS_RESOURCE_EXTNS	RESOURCE_ID	RESOURCE_ID

Column Descriptions

Name	Null?	Type	Description
RS_CAMPAIGN_ID (PK)	NOT NULL	NUMBER	
RESOURCE_ID	NOT NULL	NUMBER	
CAMPAIGN_ID	NOT NULL	NUMBER	
START_DATE	NULL	DATE	
END_DATE	NULL	DATE	
STATUS	NOT NULL	VARCHAR2(1)	
ENABLED_FLAG	NOT NULL	VARCHAR2(1)	
SECURITY_GROUP_ID	NULL	NUMBER	Hosting Standard Column
CREATED_BY	NOT NULL	NUMBER(15)	
CREATION_DATE	NOT NULL	DATE	
LAST_UPDATED_BY	NOT NULL	NUMBER(15)	
LAST_UPDATE_DATE	NOT NULL	DATE	
LAST_UPDATE_LOGIN	NULL	NUMBER	

Indexes

Index Name	Index Type	Sequence	Column Name
AST_RCA_CAMPAIGN_ID_N2	NOT UNIQUE	5	CAMPAIGN_ID
AST_RCA_CAMPAIGN_RESOURCEID_U1	UNIQUE	5	RS_CAMPAIGN_ID
AST_RCA_RESOURCE_ID_N1	NOT UNIQUE	5	RESOURCE_ID

Sequences

Sequence	Derived Column
AST_RS_CAMPAIGNS_S	RS_CAMPAIGN_ID

JTF_RS_EMPLOYEES_VL

This view has the list of all Employees that can be imported or is already present in Resource Manager

View Definition

```
CREATE VIEW JTF_RS_EMPLOYEES_VL
  as SELECT
    ppl.person_id PERSON_ID
  , ppl.first_name FIRST_NAME
  , ppl.last_name LAST_NAME
  , PPL.MIDDLE_NAMES MIDDLE_NAME
  , PPL.FULL_NAME FULL_NAME
  , ppl.employee_number EMPLOYEE_NUMBER
  , ppl.work_telephone phone
  , ppl.email_address EMAIL
  , null JOB_TITLE
  , asg.SUPERVISOR_ID MANAGER_PERSON_ID
  , emp.full_name MANAGER_NAME
  , ppl.effective_start_date EFFECTIVE_START_DATE
  , ppl.effective_end_date EFFECTIVE_END_DATE
  , null EMP_CATEGORY
  ,null EMP_STATUS
  ,ppl.business_group_id ORG_ID
  ,org.name ORG_NAME
from per_people_f ppl
  , per_assignments_f asg
  , per_employees_x emp
  , per_periods_of_service psr
  , hr_all_organization_units org
  Where asg.person_id = ppl.person_id
and asg.period_of_service_id = psr.period_of_service_id
and trunc(sysdate) between ppl.effective_start_date and ppl.effective_end_date
and asg.effective_start_date <= (select max(nvl(f2.actual_termination_date,trunc(sysdate)))
                                from per_periods_of_service f2
                                where f2.person_id = asg.person_id
                                and f2.date_start <= trunc(sysdate))
and asg.effective_end_date >= (select max(nvl(f2.actual_termination_date,trunc(sysdate)))
                                from per_periods_of_service f2
                                where f2.person_id = asg.person_id
                                and f2.date_start <= trunc(sysdate))

and ppl.employee_number is not null
and asg.supervisor_id = emp.employee_id(+)
and asg.primary_flag = 'Y'
and asg.assignment_type = 'E'
and ppl.business_group_id = org.organization_id
```

Column Descriptions

Name	Null?	Type	Description
PERSON_ID	NOT NULL	NUMBER(10)	Person (Employee) identifier FK to Pe_people_f
FIRST_NAME		NULL VARCHAR2(20)	First Name of Employee
LAST_NAME	NOT NULL	VARCHAR2(40)	last name of the employee

Oracle Proprietary, Confidential Information--Use Restricted by Contract

MIDDLE_NAME	NULL	VARCHAR2(60)	Middle Name of Employee
FULL_NAME	NULL	VARCHAR2(240)	Full Name of Employee
EMPLOYEE_NUMBER	NULL	VARCHAR2(30)	Employee Number
PHONE	NULL	VARCHAR2(4000)	Phone of Employee
EMAIL	NULL	VARCHAR2(240)	email of employee
JOB_TITLE	NULL	VARCHAR2(240)	The value for this field will be null for performcae reasons
MANAGER_PERSON_ID	NULL	NUMBER(10)	Person id of manager of employee
MANAGER_NAME	NULL	VARCHAR2(240)	Manager's Name
EFFECTIVE_START_DATE	NOT NULL	DATE	Date on which This person becomes active in HR
EFFECTIVE_END_DATE	NOT NULL	DATE	Date after which This person becomes inactive in HR
EMP_CATEGORY	NULL	VARCHAR2(80)	Value is null for performance reasons
EMP_STATUS	NULL	VARCHAR2(30)	Value is null for performance reasons
ORG_ID	NOT NULL	NUMBER(15)	Employee's Organization ID
ORG_NAME	NULL	VARCHAR2(60)	Employee's Organization Name

JTF_RS_EMP_DTLS_VL

This view has the details of all the resources whose category='EMPLOYEE'

View Definition

```
CREATE VIEW JTF_RS_EMP_DTLS_VL
  as SELECT
    rsc.RESOURCE_ID
  ,rsc.resource_number RESOURCE_NUMBER
  ,rsc.source_id          SOURCE_ID
  ,rsc.address_id        ADDRESS_ID
  ,rsc.contact_id        CONTACT_ID
  ,rsc.START_DATE_ACTIVE
  ,rsc.END_DATE_ACTIVE
  , rsc.TIME_ZONE
  ,rsc.COST_PER_HR
  ,rsc.PRIMARY_LANGUAGE
  ,rsc.SECONDARY_LANGUAGE
  ,rsc.SUPPORT_SITE_ID
  ,rsc.IES_AGENT_LOGIN
  ,rsc.SERVER_GROUP_ID
  ,rsc.ASSIGNED_TO_GROUP_ID
  ,rsc.COST_CENTER
  ,rsc.CHARGE_TO_COST_CENTER
  ,rsc.COMPENSATION_CURRENCY_CODE
  ,rsc.COMMISSIONABLE_FLAG
  ,rsc.HOLD_REASON_CODE
  ,rsc.HOLD_PAYMENT
  ,rsc.COMP_SERVICE_TEAM_ID
  ,rsc.TRANSACTION_NUMBER
  , emp.FIRST_NAME
  , emp.LAST_NAME
  , emp.MIDDLE_NAME
  , emp.FULL_NAME
  , emp.EMPLOYEE_NUMBER
  , emp.PHONE     PHONE
  , emp.EMAIL
  , emp.JOB_TITLE
  , emp.MANAGER_PERSON_ID
  , emp.MANAGER_NAME
  , emp.EFFECTIVE_START_DATE
  , emp.EFFECTIVE_END_DATE
  , emp.EMP_CATEGORY
  , emp.EMP_STATUS
  , emp.ORG_ID
  , emp.ORG_NAME
  ,rsc.user_id          USER_ID
from jtf_rs_resource_extns rsc
    , jtf_rs_employees_vl emp
  Where rsc.category = 'EMPLOYEE'
    and rsc.source_id = emp.person_id
```

Oracle Proprietary, Confidential Information--Use Restricted by Contract

Column Descriptions

Name	Null?	Type	Description
RESOURCE_ID	NOT NULL	NUMBER	Unique Resource Identifier.
RESOURCE_NUMBER	NOT NULL	VARCHAR2(30)	Another Unique identifier for resource , visible to user.
SOURCE_ID	NULL	NUMBER	Source identifier (foreign key to PER_ALL_PEOPLE_F)
ADDRESS_ID	NULL	NUMBER	Address identifier (foreign key to HZ_PARTY_SITES)
CONTACT_ID	NULL	NUMBER	Contact identifier (foreign key to HZ_ORG_CONTACTS)
START_DATE_ACTIVE	NOT NULL	DATE	Date on which this resource become active.
END_DATE_ACTIVE	NULL	DATE	The date after which this resource will become inactive.
TIME_ZONE	NULL	NUMBER	Time Zone in which this Resource lives in,used by service
COST_PER_HR	NULL	NUMBER	Time Zone in which this Resource lives in,used by service
PRIMARY_LANGUAGE	NULL	VARCHAR2(30)	Primary language , the resource speak.
SECONDARY_LANGUAGE	NULL	VARCHAR2(30)	Secondary language of Resource
SUPPORT_SITE_ID	NULL	NUMBER	Support_site_id to which this resource belongs to. Foreign Key to HZ_PARTY_SITES
IES_AGENT_LOGIN	NULL	VARCHAR2(240)	Ies Agent login used by interaction center.
SERVER_GROUP_ID	NULL	NUMBER	Server Group Identifier to which this resource is attached. FK to IEO_SVR_GROUPS
ASSIGNED_TO_GROUP_ID	NULL	NUMBER	Assigned to User Identifier , Foreign Key to FND_USER.
COST_CENTER	NULL	VARCHAR2(30)	Cost Center to which this resource is attached
CHARGE_TO_COST_CENTER	NULL	VARCHAR2(30)	Cost center which will be charged to this resource
COMPENSATION_CURRENCY_CODE	NULL	VARCHAR2(15)	The currency code in which ther resource will be compensated.
COMMISSIONABLE_FLAG	NULL	VARCHAR2(1)	Flag which indicates whether the resource is commissionable or not.
HOLD_REASON_CODE	NULL	VARCHAR2(30)	Reason Code for hold payment
HOLD_PAYMENT	NULL	VARCHAR2(1)	Flag indicating whther the payment for the resource is on hold or not.
COMP_SERVICE_TEAM_ID	NULL	NUMBER	Comp service team identifier FK to jtf_rs_teams_vl
TRANSACTION_NUMBER	NULL	NUMBER	Transaction Number. This will use at the time of import Resources.
FIRST_NAME	NULL	VARCHAR2(20)	Resource (Employee) First Name
LAST_NAME	NOT NULL	VARCHAR2(40)	last name of the Resource (Employee)
MIDDLE_NAME	NULL	VARCHAR2(60)	Middle Name of Resource (Employee)
FULL_NAME	NULL	VARCHAR2(240)	Full Name of Resource (Employee)
EMPLOYEE_NUMBER	NULL	VARCHAR2(30)	Resource's Employee Number
PHONE	NULL	VARCHAR2(4000)	Phone of Resource (Employee)

EMAIL	NULL	VARCHAR2(240)	Phone number of Resource (Employee)
JOB_TITLE	NULL	VARCHAR2(240)	Job Title of Resource (Employee)
MANAGER_PERSON_ID	NULL	NUMBER(10)	Person id of manager of Resource (employee)
MANAGER_NAME	NULL	VARCHAR2(240)	Resource (Employee) Manager's Name
EFFECTIVE_START_DATE	NOT NULL	DATE	Date on which This person (Resource) becomes active in HR
EFFECTIVE_END_DATE	NOT NULL	DATE	Date after which This person (Employee) becomes inactive in HR
EMP_CATEGORY	NULL	VARCHAR2(80)	Employment Category of Resource (Temporary,full time, part time etc)
EMP_STATUS	NULL	VARCHAR2(30)	Employment status of Resource like active, transferred,retired
ORG_ID	NOT NULL	NUMBER(15)	Resource's (Employee) Organization ID
ORG_NAME	NULL	VARCHAR2(60)	Resource's (Employee) Organization Name
USER_ID	NULL	NUMBER	User Id attached to this resource (Employee), FK to FND_USER

JTF_RS_GROUPS_B

Base Table JTF_RS_GROUPS_B stores general information about a given Group.

Column Descriptions

Name	Null?	Type	Description
GROUP_ID (PK)	NOT NULL	NUMBER	Resource group unique identifier
GROUP_NUMBER	NOT NULL	VARCHAR2(30)	Group Number
CREATED_BY	NOT NULL	NUMBER	Standard Who column - with the user id from FND_USER
CREATION_DATE	NOT NULL	DATE	Standard Who column
LAST_UPDATED_BY	NOT NULL	NUMBER	Standard Who column - with the user id from FND_USER
LAST_UPDATE_DATE	NOT NULL	DATE	Standard Who column
LAST_UPDATE_LOGIN	NULL	NUMBER	Standard Who column
EXCLUSIVE_FLAG	NULL	VARCHAR2(1)	Indicates whether the group is exclusive
START_DATE_ACTIVE	NULL	DATE	Date before which the group is not enabled
END_DATE_ACTIVE	NULL	DATE	Date after which the group is not enabled
ACCOUNTING_CODE	NULL	VARCHAR2(80)	Account code, used by Sales
ATTRIBUTE1	NULL	VARCHAR2(150)	Descriptive flexfield segment Column
ATTRIBUTE2	NULL	VARCHAR2(150)	Descriptive flexfield segment Column
ATTRIBUTE3	NULL	VARCHAR2(150)	Descriptive flexfield segment Column
ATTRIBUTE4	NULL	VARCHAR2(150)	Descriptive flexfield segment Column
ATTRIBUTE5	NULL	VARCHAR2(150)	Descriptive flexfield segment Column
ATTRIBUTE6	NULL	VARCHAR2(150)	Descriptive flexfield segment Column
ATTRIBUTE7	NULL	VARCHAR2(150)	Descriptive flexfield segment Column
ATTRIBUTE8	NULL	VARCHAR2(150)	Descriptive flexfield segment Column
ATTRIBUTE9	NULL	VARCHAR2(150)	Descriptive flexfield segment Column
ATTRIBUTE10	NULL	VARCHAR2(150)	Descriptive flexfield segment Column
ATTRIBUTE11	NULL	VARCHAR2(150)	Descriptive flexfield segment Column
ATTRIBUTE12	NULL	VARCHAR2(150)	Descriptive flexfield segment Column
ATTRIBUTE13	NULL	VARCHAR2(150)	Descriptive flexfield segment Column
ATTRIBUTE14	NULL	VARCHAR2(150)	Descriptive flexfield segment Column
ATTRIBUTE15	NULL	VARCHAR2(150)	Descriptive flexfield segment Column
ATTRIBUTE_CATEGORY	NULL	VARCHAR2(30)	Descriptive flexfield structure defining column
EMAIL_ADDRESS	NULL	VARCHAR2(240)	Email Address of Group
OBJECT_VERSION_NUMBER	NOT NULL	NUMBER	Sequential number used for database locking control

Oracle Proprietary, Confidential Information--Use Restricted by Contract

SECURITY_GROUP_ID

NULL NUMBER

Column used for Applications
Hosting purposes

Indexes

<u>Index Name</u>	<u>Index Type</u>	<u>Sequence</u>	<u>Column Name</u>
JTF_RS_GROUPS_B_U1	UNIQUE	1	GROUP_ID

Sequences

<u>Sequence</u>	<u>Derived Column</u>
JTF_RS_GROUPS_S	GROUP_ID
JTF_RS_GROUP_NUMBER_S	GROUP_NUMBER

JTF_RS_GROUPS_VL

MLS View for JTF_RS_GROUPS_B and JTF_RS_GROUPS_TL.

View Definition

```
CREATE VIEW JTF_RS_GROUPS_VL
as SELECT
    B.ROWID ROW_ID,
    B.ATTRIBUTE1,
    B.ATTRIBUTE2,
    B.ATTRIBUTE3,
    B.ATTRIBUTE4,
    B.ATTRIBUTE5,
    B.ATTRIBUTE6,
    B.ATTRIBUTE7,
    B.ATTRIBUTE8,
    B.ATTRIBUTE9,
    B.ATTRIBUTE10,
    B.ATTRIBUTE11,
    B.ATTRIBUTE12,
    B.ATTRIBUTE13,
    B.ATTRIBUTE14,
    B.ATTRIBUTE15,
    B.ATTRIBUTE_CATEGORY,
    B.GROUP_ID,
    B.GROUP_NUMBER,
    B.EMAIL_ADDRESS,
    B.CREATED_BY,
    B.CREATION_DATE,
    B.LAST_UPDATED_BY,
    B.LAST_UPDATE_DATE,
    B.LAST_UPDATE_LOGIN,
    B.EXCLUSIVE_FLAG,
    B.START_DATE_ACTIVE,
    B.END_DATE_ACTIVE,
    B.ACCOUNTING_CODE,
    B.OBJECT_VERSION_NUMBER,
    T.GROUP_NAME,
    T.GROUP_DESC
from JTF_RS_GROUPS_TL T, JTF_RS_GROUPS_B B
Where B.GROUP_ID = T.GROUP_ID
and T.LANGUAGE = userenv('LANG')
```

Column Descriptions

Name	Null?	Type	Description
ROW_ID	NULL	ROWID	Rowid for original row from jtf_rs_group_b table
ATTRIBUTE1	NULL	VARCHAR2(150)	Descriptive flexfield segment Column
ATTRIBUTE2	NULL	VARCHAR2(150)	Descriptive flexfield segment Column
ATTRIBUTE3	NULL	VARCHAR2(150)	Descriptive flexfield segment Column

Oracle Proprietary, Confidential Information--Use Restricted by Contract

ATTRIBUTE4	NULL	VARCHAR2(150)	Descriptive flexfield segment Column
ATTRIBUTE5	NULL	VARCHAR2(150)	Descriptive flexfield segment Column
ATTRIBUTE6	NULL	VARCHAR2(150)	Descriptive flexfield segment Column
ATTRIBUTE7	NULL	VARCHAR2(150)	Descriptive flexfield segment Column
ATTRIBUTE8	NULL	VARCHAR2(150)	Descriptive flexfield segment Column
ATTRIBUTE9	NULL	VARCHAR2(150)	Descriptive flexfield segment Column
ATTRIBUTE10	NULL	VARCHAR2(150)	Descriptive flexfield segment Column
ATTRIBUTE11	NULL	VARCHAR2(150)	Descriptive flexfield segment Column
ATTRIBUTE12	NULL	VARCHAR2(150)	Descriptive flexfield segment Column
ATTRIBUTE13	NULL	VARCHAR2(150)	Descriptive flexfield segment Column
ATTRIBUTE14	NULL	VARCHAR2(150)	Descriptive flexfield segment Column
ATTRIBUTE15	NULL	VARCHAR2(150)	Descriptive flexfield segment Column
ATTRIBUTE_CATEGORY	NULL	VARCHAR2(30)	Descriptive flexfield structure defining column
GROUP_ID	NOT NULL	NUMBER	Descriptive flexfield structure defining column
GROUP_NUMBER	NOT NULL	VARCHAR2(30)	Group Number
EMAIL_ADDRESS	NULL	VARCHAR2(240)	Email Address of Group
CREATED_BY	NOT NULL	NUMBER	Standard Who column
CREATION_DATE	NOT NULL	DATE	Standard Who column
LAST_UPDATED_BY	NOT NULL	NUMBER	Standard Who column
LAST_UPDATE_DATE	NOT NULL	DATE	Standard Who column
LAST_UPDATE_LOGIN	NULL	NUMBER	Standard Who column
EXCLUSIVE_FLAG	NULL	VARCHAR2(1)	Indicates whether the group is exclusive
START_DATE_ACTIVE	NOT NULL	DATE	Date before which the group is not enabled
END_DATE_ACTIVE	NULL	DATE	Date after which the group is not enabled
ACCOUNTING_CODE	NULL	VARCHAR2(80)	Account code, used by Sales
OBJECT_VERSION_NUMBER	NOT NULL	NUMBER	Sequential number used for database locking control
GROUP_NAME	NOT NULL	VARCHAR2(30)	Group Name
GROUP_DESC	NULL	VARCHAR2(80)	Group description

JTF_RS_RESOURCE_EXTNS

This is table stores all important information about Resources. These Resources are coming from HR or HZ or Vonder table etc. Primary key is resource_id. Resource_number, user_id sre also unique keys.

Foreign Keys

Primary Key Table	Primary Key Column	Foreign Key Column
JTF_OBJECTS_B	OBJECT_CODE	CATEGORY

Column Descriptions

Name	Null?	Type	Description
RESOURCE_ID (PK)	NOT NULL	NUMBER	Resource Identifier
CREATED_BY	NOT NULL	NUMBER	Standard who column - with user_id from FND_USERS
CREATION_DATE	NOT NULL	DATE	Standard who column
LAST_UPDATED_BY	NOT NULL	NUMBER	Standard who column - with user_id from FND_USERS
LAST_UPDATE_DATE	NOT NULL	DATE	Standard who column
LAST_UPDATE_LOGIN	NULL	NUMBER	Standard who column
CATEGORY	NOT NULL	VARCHAR2(30)	Category of Resource. Validating from JTF_OBJECTS_VL. Allowed values: EMPLOYEE, PARTNER, PARTY, SUPPLIER_CONTACT, OTHER
RESOURCE_NUMBER	NOT NULL	VARCHAR2(30)	Resource Number. This is a Unique and shown to user on forms.
SOURCE_ID	NULL	NUMBER	Source identifier (foreign key to PER_ALL_PEOPLE_F) or (foreign key to HZ_PARTIES) or (foreign key to PO_VENDOR_CONTACTS)
ADDRESS_ID	NULL	NUMBER	Address identifier (foreign key to HZ_PARTY_SITES)
CONTACT_ID	NULL	NUMBER	Contact identifier (foreign key to HZ_ORG_CONTACTS)
MANAGING_EMPLOYEE_ID	NULL	NUMBER	Managing Employee Identifier
START_DATE_ACTIVE	NOT NULL	DATE	Date this Resource becomes active, if limited
END_DATE_ACTIVE	NULL	DATE	Date this Resource becomes inactive, if limited
TIME_ZONE	NULL	NUMBER	This field is used by Service for time zone information (foreign key to HZ_TIMEZONES)
COST_PER_HR	NULL	NUMBER	This field is used by Service for cost per hour of the resource
PRIMARY_LANGUAGE	NULL	VARCHAR2(30)	This field is used by Service for the primary language of the resource
SECONDARY_LANGUAGE	NULL	VARCHAR2(30)	This field is used by Service for the secondary language of the resource
IES_AGENT_LOGIN	NULL	VARCHAR2(240)	Email Center Agent Login
SERVER_GROUP_ID	NULL	NUMBER	Server Group Identifier to which this resource is attached. FK to IEO_SVR_GROUPS , used by interaction centers.
ASSIGNED_TO_GROUP_ID	NULL	NUMBER	Assigned to User Identifier , Foreign Key to FND_USER.

Oracle Proprietary, Confidential Information--Use Restricted by Contract

COST_CENTER	NULL	VARCHAR2(30)	Cost Center to which this resource is attached
CHARGE_TO_COST_CENTER	NULL	VARCHAR2(30)	Cost center which will be charged for this resource
COMPENSATION_CURRENCY_CODE	NULL	VARCHAR2(15)	The currency code in which the resource will be compensated.
COMMISSIONABLE_FLAG	NULL	VARCHAR2(1)	Flag indicating whether the resource is commissionable or not
HOLD_REASON_CODE	NULL	VARCHAR2(30)	Reason Code why the payment will be hold
HOLD_PAYMENT	NULL	VARCHAR2(1)	Flag indicating whether the payment for the resource is on hold or not.
COMP_SERVICE_TEAM_ID	NULL	NUMBER	Comp Service Team Id , FK to jtf_rs_teams_v1
TRANSACTION_NUMBER	NULL	NUMBER	Transaction Number. This will be used at the time of importing Resources.
OBJECT_VERSION_NUMBER	NOT NULL	NUMBER	Sequential number used for database locking control when using HTML as a user interface
ATTRIBUTE1	NULL	VARCHAR2(150)	Descriptive flexfield segment Column
ATTRIBUTE2	NULL	VARCHAR2(150)	Descriptive flexfield segment Column
ATTRIBUTE3	NULL	VARCHAR2(150)	Descriptive flexfield segment Column
ATTRIBUTE4	NULL	VARCHAR2(150)	Descriptive flexfield segment Column
ATTRIBUTE5	NULL	VARCHAR2(150)	Descriptive flexfield segment Column
ATTRIBUTE6	NULL	VARCHAR2(150)	Descriptive flexfield segment Column
ATTRIBUTE7	NULL	VARCHAR2(150)	Descriptive flexfield segment Column
ATTRIBUTE8	NULL	VARCHAR2(150)	Descriptive flexfield segment Column
ATTRIBUTE9	NULL	VARCHAR2(150)	Descriptive flexfield segment Column
ATTRIBUTE10	NULL	VARCHAR2(150)	Descriptive flexfield segment Column
ATTRIBUTE11	NULL	VARCHAR2(150)	Descriptive flexfield segment Column
ATTRIBUTE12	NULL	VARCHAR2(150)	Descriptive flexfield segment Column
ATTRIBUTE13	NULL	VARCHAR2(150)	Descriptive flexfield segment Column
ATTRIBUTE14	NULL	VARCHAR2(150)	Descriptive flexfield segment Column
ATTRIBUTE15	NULL	VARCHAR2(150)	Descriptive flexfield segment Column
ATTRIBUTE_CATEGORY	NULL	VARCHAR2(30)	Descriptive flexfield structure defining column
USER_ID	NULL	NUMBER	User Id from FND_USER
SUPPORT_SITE_ID	NULL	NUMBER	Support Site from Service
SECURITY_GROUP_ID	NULL	NUMBER	Column used for Applications Hosting purposes

Indexes

Index Name	Index Type	Sequence	Column Name
JTF_RS_RESOURCE_EXTNS_U1	UNIQUE	1	RESOURCE_ID

Oracle Proprietary, Confidential Information--Use Restricted by Contract

JTF_RS_RESOURCE_EXTNS_U2	UNIQUE	1	RESOURCE_NUMBER
JTF_RS_RESOURCE_EXTNS_U3	UNIQUE	1	USER_ID

Sequences

<u>Sequence</u>	<u>Derived Column</u>
JTF_RS_RESOURCE_EXTNS_S	RESOURCE_ID
JTF_RS_RESOURCE_NUMBER_S	RESOURCE_NUMBER
JTF_RS_TRANSACTION_NUM_S	TRANSACTION_NUMBER

Oracle Proprietary, Confidential Information--Use Restricted by Contract

A

Application Building Block, 1 – 6

C

Column descriptions, 3 – 4

Columns, Who, 3 – 4

Concurrent Program List. *See* Concurrent Program Definitions

D

Database Diagram, 1 – 6

database diagrams, conventions, 2 – 5

Database triggers, 3 – 6

F

Foreign keys, 3 – 3

Form, 1 – 7

Form List. *See* Form Definitions

I

Indexes, 3 – 6

important note about, 3 – 6

Internal View List, 2 – 9

L

Lookup types. *See* QuickCodes

M

Module List, 2 – 12

See also Module Definitions

Modules, 1 – 6

O

Oracle8 sequences. *See* Sequences

P

Public Table List, 2 – 7

Public View List, 2 – 8

Q

QuickCodes, 1 – 6

Columns that contain, 3 – 3

R

Relationship, 1 – 6

Report List. *See* Report Definitions

S

Sequences, 3 – 6

T

Table and View Definitions

AMS_CAMPAIGNS_ALL_B, 3 – 7

AMS_P_CAMPAIGNS_V, 3 – 11

AST_ACCOUNT_PARTIES_V, 2 – 9

AST_ACCT_RELATIONSHIP_V, 2 – 9

AST_ACCT_SITE_USES_V, 2 – 9

AST_ACTIVITIES_V, 2 – 9

AST_AGENT_SCRIPTS_V, 2 – 9

AST_BILLING_PREFERENCES_V, 2 – 9

AST_CONTACT_POINTS_V, 2 – 9

AST_CUST_ACCOUNTS_ROLES_V, 2 – 9

AST_CUST_ACCT_OVERVIEW_V, 2 – 9

AST_CUST_ACCT_SITES_V, 2 – 9

AST_CUST_PROFILE_CREDIT_V, 2 – 9

AST_CUST_SITE_USES_V, 2 – 9

AST_EDUCATION_V, 2 – 9

AST_EMPLOYMENT_HISTORY_V, 2 – 9

AST_ENTY_ATTR_VAL_V, 2 – 9

AST_EVENT_DELIVERABLES_V, 2 - 9
 AST_EVENT_ENROLL_HIST_V, 2 - 9
 AST_EVENT_ENROLLEES_V, 2 - 9
 AST_GRP_CAMPAIGNS, 3 - 16
 AST_GRP_CAMPAIGNS_V, 2 - 9
 AST_IH_CAMP_RESULT_REASONS_VL, 2
 - 9
 AST_IH_CAMPAIGNS_RESULTS_VL, 2 - 9
 AST_IH_OUTCOMES_CAMPAIGNS_VL, 2
 - 9
 AST_ITEM_RELATIONSHIPS_V, 2 - 9
 AST_L_CONTACT_ADDR_V, 2 - 10
 AST_L_CONTACT_POINTS_V, 2 - 10
 AST_L_PARTY_PEOPLE_V, 2 - 10
 AST_LEAD_PSS_LINES_V, 2 - 9
 AST_LOOKUPS, 2 - 9
 AST_LS_CAMPAIGNS_V, 2 - 10
 AST_LS_CONSUMERS_V, 2 - 10
 AST_LS_CONTACTS_V, 2 - 10
 AST_LS_DELIVERABLES_V, 2 - 10
 AST_LS_EVENTS_V, 2 - 10
 AST_LS_OPPORTUNITIES_V, 2 - 10
 AST_LS_ORGANIZATIONS_V, 2 - 10
 AST_LS_QUOTES_V, 2 - 10
 AST_LS_SALES_LEADS_V, 2 - 10
 AST_OPPORTUNITY_BRIEF_V, 2 - 10
 AST_OPPORTUNITY_LINES_V, 2 - 10
 AST_OPPORTUNITY_V, 2 - 10
 AST_ORG_PARTIES_V, 2 - 10
 AST_PARTY_LOCATIONS_V, 2 - 10
 AST_PARTY_RELATIONSHIPS_V, 2 - 10
 AST_PERSON_INTEREST_V, 2 - 10
 AST_PERSON_PARTIES_V, 2 - 10
 AST_PHONE_ASSISTS_V, 2 - 10

AST_PURCH_LINES_V, 2 - 10
 AST_PURCHASE_LINES_V, 2 - 10
 AST_RS_CAMPAIGNS, 3 - 17
 AST_RS_CAMPAIGNS_V, 2 - 10
 AST_RS_GRP_VALID_V, 2 - 10
 AST_RS_VALID_V, 2 - 10
 AST_SALES_CREDITS_V, 2 - 10
 AST_SUSPENSION_ACTIVITY_V, 2 - 10
 AST_WEB_ASSIST_DETAILS_V, 2 - 10
 AST_WEB_SWITCH_DETAILS_V, 2 - 11
 AST_WKQ_CONTACTS_V, 2 - 11
 AST_WKQ_PHONES_V, 2 - 11
 JTF_RS_EMP_DTLS_VL, 3 - 20
 JTF_RS_EMPLOYEES_VL, 3 - 18
 JTF_RS_GROUPS_B, 3 - 23
 JTF_RS_GROUPS_VL, 3 - 25
 JTF_RS_RESOURCE_EXTNS, 3 - 27

Tables

See also Table and View Definitions
 Column descriptions, 3 - 4
 Foreign keys, 3 - 3
 Indexes. *See* Indexes
 Primary Keys, 3 - 4
 QuickCodes Columns, 3 - 3
 Who columns, 3 - 4, 3 - 5

V

View Definitions. *See* Table and View Definitions

Views

See also Table and View Definitions; View List
 Derivation, 3 - 6

Reader's Comment Form

Oracle TeleSales Technical Reference Manual A86211-01

Oracle Corporation welcomes your comments and suggestions on the quality and usefulness of this publication. Your input is an important part of the information we use for revision.

- Did you find any errors?
- Is the information clearly presented?
- Do you need more information? If so, where?
- Are the examples correct? Do you need more examples?
- What features did you like most about this manual? What did you like least about it?

If you find any errors or have any other suggestions for improvement, please indicate the topic, chapter, and page number below:

Please send your comments to:

CRM Content Development Manager
Oracle Corporation
500 Oracle Parkway
Redwood Shores, CA 94065 USA
Phone: (650) 506-7000 Fax: (650) 506-7200

If you would like a reply, please give your name, address, and telephone number below:

Thank you for helping us improve our documentation.

