

Oracle® Supplier Scheduling

Technical Reference Manual

Release 11i

CAUTION!

This document contains proprietary,
confidential information that is the exclusive
property of Oracle Corporation.

**See back cover for
important information.**

**KEEP
UNDER
LOCK &
KEY**

Oracle[®] Supplier Scheduling Technical Reference Manual

RELEASE 11i

December 1999



Oracle® Supplier Scheduling Technical Reference Manual
Release 11i

To order this book, ask for Part No. A80899-01

Copyright © 1998, 1999. Oracle Corporation. All rights reserved.

Major Contributors: Rachel Haas, Raghav Keshav, Vijay Pawar, Carol Borison

Contributors: John Chan, Janis Greenberg, Elizabeth Looney, Martin Ertel, Zoe Mitchell

This Technical Reference Manual (TRM) in any form, software or printed matter, contains proprietary information of Oracle Corporation; it is provided under an Oracle Corporation agreement containing restrictions on use and disclosure and is also protected by copyright, patent, and other intellectual property law. Restrictions applicable to this TRM include, but are not limited to: (a) exercising either the same degree of care to safeguard the confidentiality of this TRM as you exercise to safeguard the confidentiality of your own most important Confidential Information or a reasonable degree of care, whichever is greater; (b) maintaining agreements with your employees and agents that protect the Confidential Information of third parties such as Oracle Corporation and instructing such employees and agents of these requirements for this TRM; (c) restricting disclosure of this TRM to those of your employees who have a "need to know" consistent with the purposes for which this TRM was disclosed to you; (d) maintaining this TRM at all times on your premises; (e) not removing or destroying any proprietary or confidential legends or markings placed upon this TRM in whatever form, software or printed matter; and (f) not reproducing or transmitting this TRM in any form or by any means, electronic or mechanical, for any purpose, without the express written permission of Oracle Corporation. You should not use this TRM in any form, software or printed matter, to create software that performs the same or similar functions as any Oracle Corporation products.

The information in this TRM is subject to change without notice. If you find any problems in the TRM in any form, software or printed matter, please report them to us in writing. Oracle Corporation does not warrant that this TRM is error-free. This TRM is provided to customer "as-is" with no warranty of any kind. This TRM does not constitute Documentation as that term is defined in Oracle's agreements.

Reverse engineering of the Programs (software and documentation) associated with this TRM are prohibited. The Programs associated with this TRM are not intended for use in any nuclear, aviation, mass transit, medical, or other inherently dangerous applications. It shall be licensee's responsibility to take all appropriate fail-safe, back-up, redundancy and other measures to ensure the safe use of such applications if the Programs are used for such purposes, and Oracle disclaims liability for any damages caused by such use of the Programs.

Restricted Rights Legend

This TRM and the Programs associated with this TRM delivered subject to the DOD FAR Supplement are 'commercial computer software' and use, duplication and disclosure of the TRM and the Programs associated with this TRM shall be subject to the licensing restrictions set forth in the applicable Oracle license agreement. Otherwise, this TRM and the Programs associated with this TRM delivered subject to the Federal Acquisition Regulations are 'restricted computer software' and use, duplication and disclosure of the TRM and the Programs associated with this TRM shall be subject to the restrictions in FAR 52.227-14, Rights in Data --- General, including Alternate III (June 1987). Oracle Corporation, 500 Oracle Parkway, Redwood City, CA 94065.

Oracle is a registered trademark, and CASE*Exchange, DDE Manager, Enabling the Information Age, Hyper*SQL, NLS*Workbench, Oracle7, Oracle8, Oracle Access, Oracle Alert, Oracle Alliance, Oracle Application Object Library, Oracle Discoverer, Oracle Financials, Oracle Quality, Oracle Work in Process, Oracle Workflow, PL/SQL, Pro*Ada, Pro*C, Pro*COBOL, Pro*FORTRAN, Pro*Pascal, Pro*PL/I, SmartClient, SQL*Connect, SQL*Forms, SQL*Loader, SQL*Menu, SQL*Net, SQL*Plus, SQL*Report, and SQL*TextRetrieval are trademarks or registered trademarks of Oracle Corporation.

All other company or product names are mentioned for identification purposes only, and may be trademarks of their respective owners.



CAUTION

This Technical Reference Manual in any form -- software or printed matter -- contains proprietary, confidential information that is the exclusive property of Oracle Corporation. If you do not have a valid contract with Oracle for the use of this Technical Reference Manual or have not signed a non-disclosure agreement with Oracle covering this Technical Reference Manual, then you received this document in an unauthorized manner and are not legally entitled to possess or read it.

Use, duplication, and disclosure are subject to restrictions stated in your contract with Oracle Corporation.



Contents

- Chapter 1** **Introduction** **1 – 1**

- Chapter 2** **High-Level Design** **2 – 1**
 - Overview of High-Level Design 2 – 2
 - Summary Database Diagram 2 – 5
 - Public Table List 2 – 9
 - Forms and Table View List 2 – 10
 - Internal View List 2 – 11
 - Module List 2 – 12

- Chapter 3** **Detailed Design** **3 – 1**
 - Overview of Detailed Design 3 – 2
 - Table and View Definitions 3 – 3

- Index**

Oracle Proprietary, Confidential Information--Use Restricted by Contract

CHAPTER

1

Introduction

The Oracle Supplier Scheduling Technical Reference Manual provides the information you need to understand the underlying structure of Oracle Supplier Scheduling. After reading this manual, you should be able to convert your existing applications data, integrate your existing applications with Supplier Scheduling, and write custom reports for Supplier Scheduling, as well as read data that you need to perform other tasks.

This chapter introduces you to the Oracle Supplier Scheduling Technical Reference Manual, and explains how to use it.

Introduction

At Oracle, we design and build applications using Oracle Designer, our systems design technology that provides a complete environment to support developers through all stages of a systems life cycle. Because we use a repository-based design toolset, all the information regarding the underlying structure and processing of our applications is available to us online. Using Oracle Designer, we can present this information to you in the form of a technical reference manual.

This Oracle Supplier Scheduling Technical Reference Manual contains detailed, up-to-date information about the underlying structure of Oracle Supplier Scheduling. As we design and build new releases of Oracle Supplier Scheduling, we update our Oracle Designer repository to reflect our enhancements. As a result, we can always provide you with an Oracle Supplier Scheduling Technical Reference Manual that contains the latest technical information as of the publication date. Note that after the publication date we may have added new indexes to Oracle Supplier Scheduling to improve performance.

About this Manual

This manual describes the Oracle Applications Release 11i data model, as used by Supplier Scheduling; it discusses the database we include with a fresh install of Oracle Applications Release 11i. If you have not yet upgraded to Release 11i, your database may differ from the database we document in this book.

If you have upgraded from a previous release, you might find it helpful to use this manual with the appropriate *Oracle Applications Product Update Notes* manual. The product update notes list database changes and seed data changes in Oracle Supplier Scheduling between releases. The *Oracle Applications Product Update Notes Release 11* manual describes the changes between Release 10.7 and Release 11, and the *Oracle Applications Product Update Notes Release 11i* manual describes the changes between Release 11 and Release 11i.

You can contact your Oracle representative to confirm that you have the latest technical information for Supplier Scheduling. You can also use *Oracle MetaLink* which is accessible through Oracle's Support Web Center (http://www.oracle.com/support/elec_sup).

Finding the Latest Information

The Oracle Supplier Scheduling Technical Reference Manual contains the latest information as of the publication date. For the latest information we encourage you to use Oracle *MetaLink* which is accessible through Oracle's Support Web Center (http://www.oracle.com/support/elec_sup).

Audience

The Oracle Supplier Scheduling Technical Reference Manual provides useful guidance and assistance to:

- Technical End Users
- Consultants
- Systems Analysts
- System Administrators
- Other MIS professionals

This manual assumes that you have a basic understanding of structured analysis and design, and of relational databases. It also assumes that you are familiar with Oracle Application Object Library and Supplier Scheduling. If you are not familiar with the above products, we suggest that you attend one or more of the training classes available through Oracle Education (see: Other Information Sources: page 1 – 8).

How This Manual is Organized

This manual contains two major sections, High-Level Design and Detailed Design.

High-Level Design

This section, Chapter 2, contains database diagrams and lists each database table and view that Supplier Scheduling uses. This chapter also has a list of modules.

Detailed Design

This section, Chapter 3, contains a detailed description of the Supplier Scheduling database design, including information about each database table and view you might need for your custom reporting or other data requirements.

How to Use This Manual

The Oracle Supplier Scheduling Technical Reference Manual is a single, centralized source for all the information you need to know about the underlying structure and processing of Supplier Scheduling. For example, you can use this manual when you need to:

- Convert existing application data
- Integrate your Supplier Scheduling application with your other applications systems
- Write custom reports
- Define alerts against Oracle Applications tables
- Configure your Oracle Self-Service Web Applications
- Create views for decision support queries using query tools
- Create business views for Oracle Discoverer

You need not read this manual cover to cover. Use the table of contents and index to quickly locate the information you need.

How Not To Use This Manual

Do not use this manual to plan modifications

You should not use this manual to plan modifications to Supplier Scheduling. Modifying Oracle Supplier Scheduling limits your ability to upgrade to future releases of your Supplier Scheduling application. In addition, it interferes with our ability to give you the high-quality support you deserve.

We have constructed Supplier Scheduling so that you can customize it to fit your needs without programming, and you can integrate it with your existing applications through interface tables. However, should you require program modifications, you should contact our support team (see: Other Information Sources; page 1 – 8). They can put you in touch with Oracle Services, the professional consulting organization of Oracle. Their team of experienced applications professionals can make the modifications you need while ensuring upward compatibility with future product releases.

Do not write data into non-interface tables

Oracle reserves the right to change the structure of Oracle Applications tables, and to change the meaning of, add, or delete lookup codes and data in future releases. Do not write data directly into or change data in non-interface tables using SQL*Plus or other programming tools because you risk corrupting your database and interfering with our ability to support you.

Moreover, this version of the Oracle Supplier Scheduling Technical Reference Manual does not contain complete information about the dependencies between Supplier Scheduling applications tables. Therefore, you should write data into only those tables we identify as interface tables. If you write data into other non-interface tables, you risk violating your data integrity since you might not fulfill all the data dependencies in your Supplier Scheduling application.

You are responsible for the support and upgrade of the logic within the procedures that you write, which may be affected by changes between releases of Oracle Applications.

Do not rely on upward compatibility of the data model

Oracle reserves the right to change the structure of Oracle Supplier Scheduling tables, and to change the meaning of, add, or delete lookup codes and other data in future releases. We do not guarantee the upward compatibility of the Oracle Supplier Scheduling data model. For example, if you write a report that identifies concurrent requests that end in Error status by selecting directly from Oracle Application Object Library tables, we do not guarantee that your report will work properly after an upgrade.

About Oracle Application Object Library

The Oracle Supplier Scheduling Technical Reference Manual may contain references to tables that belong to Oracle Application Object Library. Oracle Application Object Library is a collection of pre-built application components and facilities for building Oracle Applications and extensions to Oracle Applications. Oracle Application Coding Standards use the Oracle Application Object Library and contains shared components including but not limited to -- forms, subroutines, concurrent programs and reports, database tables and objects, messages, menus, responsibilities, flexfield definitions and online help.

Oracle Proprietary, Confidential Information--Use Restricted by Contract



Attention: Oracle does not support *any* customization of Oracle Application Object Library tables or modules, not even by Oracle consultants. (Oracle Application Object Library tables generally have names beginning with FND_%.)

Accordingly, this manual does not contain detailed information about most Oracle Application Object Library tables used by Supplier Scheduling.

A Few Words About Terminology

The following list provides you with definitions for terms that we use throughout this manual:

Relationship

A relationship describes any significant way in which two tables may be associated. For example, rows in the Journal Headers table may have a one-to-many relationship with rows in the Journal Lines table.

Database Diagram

A database diagram is a graphic representation of application tables and the relationships between them.

Summary Database Diagram

A summary database diagram shows the most important application tables and the relationships between them. It omits tables and relationships that contribute little to the understanding of the application data model. Typically, a summary database diagram shows tables that contain key reference and transaction data.

Module

A module is a program or procedure that implements one or more business functions, or parts of a business function, within an application. Modules include forms, concurrent programs and reports, and subroutines.

Application Building Block

An application building block is a set of tables and modules (forms, reports, and concurrent programs) that implement closely-related

Oracle Proprietary, Confidential Information--Use Restricted by Contract

database objects and their associated processing. Said another way, an application building block is a logical unit of an application.

QuickCodes

QuickCodes let you define general purpose, static lists of values for window fields. QuickCodes allow you to base your program logic on lookup codes while displaying user-friendly names in a list of values window. QuickCodes simplify name and language changes by letting you change the names your end users see, while the codes in your underlying programs remain the same.

Form

A form is a module comprised of closely related windows that are used together to perform a task. For example, the Enter Journals form in Oracle General Ledger includes the Enter Journals window, the Batch window, and the More Actions window among others. The Enter Journals window is the main window, and from it, you can use buttons to navigate to other windows in the form. The form name usually corresponds to the main window in the form, and is frequently a window you open directly from the Navigator.

Other Information Sources

There are additional information sources, including other documentation, training and support services, that you can use to increase your knowledge and understanding of Oracle Designer, Oracle Application Object Library, and Supplier Scheduling. We want to make these products easy for you and your staff to understand and use.

Oracle Designer Online Documentation

The online help for Oracle Designer describes how you can use Oracle Designer for your development needs.

Oracle Applications Developer's Guide

This guide contains the coding standards followed by the Oracle Applications development staff. It describes the Oracle Application Object Library components needed to implement the Oracle Applications user interface described in the *Oracle Applications User Interface Standards*. It also provides information to help you build your

Oracle Proprietary, Confidential Information--Use Restricted by Contract

custom Developer forms so that they integrate with Oracle Applications.

Oracle Applications User Interface Standards

This manual contains the user interface (UI) standards followed by the Oracle Applications development staff. It describes the UI for the Oracle Applications products and how to apply this UI to the design of an application built using Oracle Forms 6.

Oracle Supplier Scheduling User Guide

Your user guide provides you with all the information you need to use your Release 11i Supplier Scheduling application. Each user guide is organized for fast, easy access to detailed information in a function- and task-oriented organization.

Oracle Self-Service Web Applications Online Documentation

This documentation describes how Oracle Self-Service Web Applications enable companies to provide a self-service and secure Web interface for employees, customers, and suppliers. Employees can change their personal status, submit expense reports, or request supplies. Customers can check on their orders, and suppliers can share production schedules with their trading partners. This documentation is available in HTML only.

Oracle Applications Flexfields Guide

This guide provides flexfields planning, setup and reference information for the Supplier Scheduling implementation team, as well as for users responsible for the ongoing maintenance of Oracle Applications product data. This manual also provides information on creating custom reports on flexfields data.

Oracle Workflow Guide

This manual explains how to define new workflow business processes as well as customize existing Oracle Applications-embedded workflow processes. You also use this guide to complete the setup steps necessary for any Oracle Applications product that includes workflow-enabled processes.

Oracle Alert User Guide

This manual explains how to define periodic and event alerts to monitor the status of your Oracle Applications data.

Multiple Reporting Currencies in Oracle Applications

If you use the Multiple Reporting Currencies feature to report and maintain accounting records in more than one currency, use this manual before implementing Supplier Scheduling. This manual details additional steps and setup considerations for implementing Supplier Scheduling with this feature.

Multiple Organizations in Oracle Applications

If you use the Oracle Applications Multiple Organization Support feature to use multiple sets of books for one Supplier Scheduling installation, use this guide to learn about setting up and using Supplier Scheduling with this feature. This book describes the Oracle Applications organization model, which defines business units and the relationships between them in an arbitrarily complex enterprise. Functional and technical overviews of multiple organizations are presented, as well as information about how to set up and implement this feature set in the relevant Oracle Applications products.

Oracle Manufacturing, Distribution, Sales and Service Open Interfaces Manual

This manual contains up-to-date information about integrating with other Oracle Manufacturing applications and with your other systems. This documentation includes open interfaces found in Oracle Manufacturing.

Oracle Applications Messages Manual

The Oracle Applications Messages Manual contains the text of numbered error messages in Oracle Applications. (Oracle Applications messages begin with the prefix "APP-".) It also provides information on the actions you take if you get a message. Note: This manual is available only in HTML format.

Installation and System Administration

Oracle Applications Installation Release Notes

This manual contains a road map to the components of the release, including instructions about where to access the Release 11i documentation set.

Oracle Applications Concepts

Designed to be the first book the user reads to prepare for an installation of Oracle Applications. It explains the technology stack, architecture, features and terminology for Oracle Applications Release 11i. This book also introduces the concepts behind and major uses of Applications-wide features such as MRC, BIS, languages and character sets (NLS, MLS), BIS, Self-Service Web Applications and so on.

Installing Oracle Applications

Describes the One-Hour Install process, the method by which Release 11i will be installed. This manual includes all how-to steps, screen shots and information about Applications-wide post-install tasks.

Using the AD Utilities

This manual contains how-to steps, screen shots and other information required to run the various AD utilities such as AutoInstall, AutoPatch, AD Administration, AD Controller, Relink and so on. It also contains information about when and why you should use these utilities.

Upgrading Oracle Applications

This manual contains all the product specific pre- and post-upgrade steps that are required to upgrade products from Release 10.7 (NCA, SC and character-mode) or Release 11 of Oracle Applications. This manual also contains an overview chapter that describes all the tasks necessary to prepare and complete a upgrade of Oracle Applications.

Oracle Applications System Administrator's Guide

This manual provides planning and reference information for the Oracle Applications System Administrator. It contains information on how to define security, customize menus and manage concurrent processing.

Oracle Applications Product Update Notes

This book contains a summary of each new feature we added since Release 11, as well as information about database changes and seed data changes that may affect your operations or any custom reports you have written. If you are upgrading from Release 10.7 you also need to read *Oracle Applications Product Update Notes Release 11*.

Oracle Self-Service Web Applications Implementation Manual

This manual describes the setup steps for Oracle Self-Service Web Applications and the Web Applications Dictionary.

Oracle Applications Implementation Wizard User Guide

If you are implementing more than one Oracle product, you can use the Oracle Applications Implementation Wizard to coordinate your setup activities. This guide describes how to use the wizard.

Other Information

Training

Oracle Education offers a complete set of training courses to help you and your staff master Oracle Applications. We can help you develop a training plan that provides thorough training for both your project team and your end users. We will work with you to organize courses appropriate to your job or area of responsibility.

Training professionals can show you how to plan your training throughout the implementation process so that the right amount of information is delivered to key people when they need it the most. You can attend courses at any one of our many Educational Centers, or you can arrange for our trainers to teach at your facility. In addition, we can tailor standard courses or develop custom courses to meet your needs.

Support

From on-site support to central support, our team of experienced professionals provides the help and information you need to keep Supplier Scheduling working for you. This team includes your Technical Representative, Account Manager, and Oracle's large staff of consultants and support specialists with expertise in your business

Oracle Proprietary, Confidential Information--Use Restricted by Contract

area, managing an Oracle server, and your hardware and software environment.

About Oracle

Oracle Corporation develops and markets an integrated line of software products for database management, applications development, decision support, and office automation, as well as Oracle Applications, an integrated suite of more than 75 software modules for financial management, supply chain management, manufacturing, project systems, human resources, and sales and service management.

Oracle products are available for mainframes, minicomputers, personal computers, network computers, and personal digital assistants, allowing organizations to integrate different computers, different operating systems, different networks, and even different database management systems, into a single, unified computing and information resource.

Oracle is the world's leading supplier of software for information management, and the world's second largest software company. Oracle offers its database, tools, and applications products, along with related consulting, education, and support services, in over 145 countries around the world.

Thank You

Thanks for using Oracle Supplier Scheduling and this technical reference manual!

We appreciate your comments and feedback. At the back of this manual is a Reader's Comment Form that you can use to explain what you like or dislike about Supplier Scheduling or this technical reference manual. Mail your comments to the following address or call us directly at (650) 506-7000.

Oracle Applications Documentation Manager
Oracle Corporation
500 Oracle Parkway
Redwood Shores, California 94065
U.S.A.

Or, send electronic mail to appsdoc@us.oracle.com.

Oracle Proprietary, Confidential Information--Use Restricted by Contract

CHAPTER

2

High-Level Design

This chapter presents a high-level design for Oracle Supplier Scheduling that satisfies the business needs we specify during Strategy and Analysis. It contains database diagrams for Oracle Supplier Scheduling application building blocks, lists of database tables and views, and a list of modules.

Overview of High-Level Design

During High-Level Design, we define the application components (tables, views, and modules) we need to build our application. We specify what application components should do without specifying the details of *how* they should do it.

You can refer to this High-Level Design chapter to quickly acquaint yourself with the tables, views, and modules that comprise Supplier Scheduling applications. And, you can prepare yourself to understand the detailed design and implementation of Oracle Supplier Scheduling.

Summary Database Diagram

The Summary Database Diagram section graphically represents the most important application tables and the relationships between them. It omits tables and relationships that contribute little to the understanding of the application data model. Typically, a summary database diagram shows tables that contain key reference and transaction data.

We prepare a summary database diagram to describe, at a conceptual level, the key information on which our business depends. Later, we refine this summary database diagram, breaking it into multiple database diagrams (generally, one per application building block) to represent all the tables and relationships we need to implement our application in the database.

Review the Summary Database Diagram section to see at a glance the major tables and relationships on which your Supplier Scheduling application depends.

Database Diagrams

The Database Diagrams section graphically represents all Supplier Scheduling applications tables and the relationships between them, organized by building block.

Use this section to quickly learn what tables each Supplier Scheduling application building block uses, and how those tables interrelate. Then, you can refer to the Table and View Definitions sections of Chapter 3 for more detailed information about each of those tables.

Oracle Proprietary, Confidential Information--Use Restricted by Contract

Table Lists

The Table List sections list the Supplier Scheduling applications tables. Because a product might not include at least one table for each type, this Technical Reference Manual might not include each of the following sections.

Public Tables

Use the Public Table List section to quickly identify the tables you are most interested in. Then, you can refer to the Table and View Definitions sections of Chapter 3 for more detailed information about those tables.

In addition, this manual may contain full documentation for one or more of the following Application Object Library tables: FND_DUAL, FND_CURRENCIES, and FND_COMMON_LOOKUPS.

Internal Tables

This section includes a list of private, internal tables used by Supplier Scheduling; we do not provide additional documentation for these tables.

View Lists

The View List sections list the Supplier Scheduling views, with one section for each type of view. Because a product might not include at least one view for each type, this Technical Reference Manual might not include each of the following sections.

Use this section to quickly identify the views you are most interested in. Then, you can refer to the Table and View Definitions sections of Chapter 3 for more detailed information about those views.

Public Views

This section lists views that may be useful for your custom reporting or other data requirements. The list includes a description of the view, and the page in Chapter 3 that gives detailed information about the public view.

Web Views

This section lists views that you may need to configure your Self-Service Web applications. The list includes a description of the view, and the page in Chapter 3 that gives detailed information about the web view.

Internal Views

This section includes each private, internal view that Supplier Scheduling uses.

Multiple Reporting Currency Views

This list includes views that were created to support the Multiple Reporting Currencies feature.

Module List

The Module List section briefly describes each of the Supplier Scheduling applications modules. This section lists forms, reports, and concurrent programs.

A form is a module comprised of closely related windows that are used together to perform a task. For example, the Enter Journals form in Oracle General Ledger includes the Enter Journals window, the Batch window, and the More Actions window. The Enter Journals window is the main window, and from it, you can use buttons to navigate to other windows in the form. The form name usually corresponds to the main window in the form, and is frequently a window you can open directly from the Navigator.

The Reports and Concurrent Programs lists include processes you can submit from the Submit Requests window or other windows, as well as processes that are submitted automatically by Supplier Scheduling. Use your user's guide to learn more about reports and concurrent processes.

Summary Database Diagram

This Summary Database Diagram graphically represents the most important Supplier Scheduling applications tables and the relationships between them. It describes, at a conceptual level, the key information on which your Supplier Scheduling application depends.

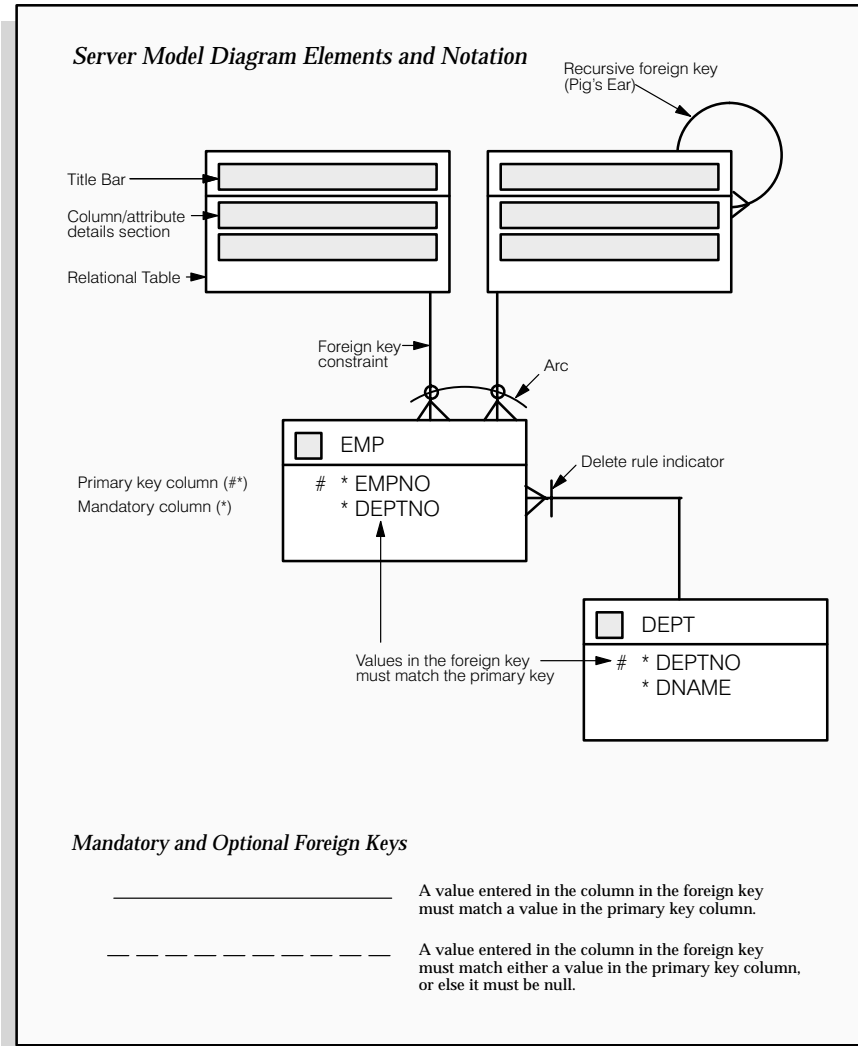
This diagram does not represent the complete database implementation of Supplier Scheduling applications tables. It shows tables that contain key reference and transaction data, and omits tables and relationships that contribute little to the understanding of the Supplier Scheduling applications data model. For example, a foreign key relationship shown between two tables may actually be implemented by an intervening table, not shown in this diagram.

For more detailed graphical representations of Supplier Scheduling applications tables and the relationships between them, see the Database Diagrams section in this chapter.

Database Diagramming Conventions

We use the following notational conventions in our database diagrams:

Figure 2 – 1
Database Diagram
Conventions



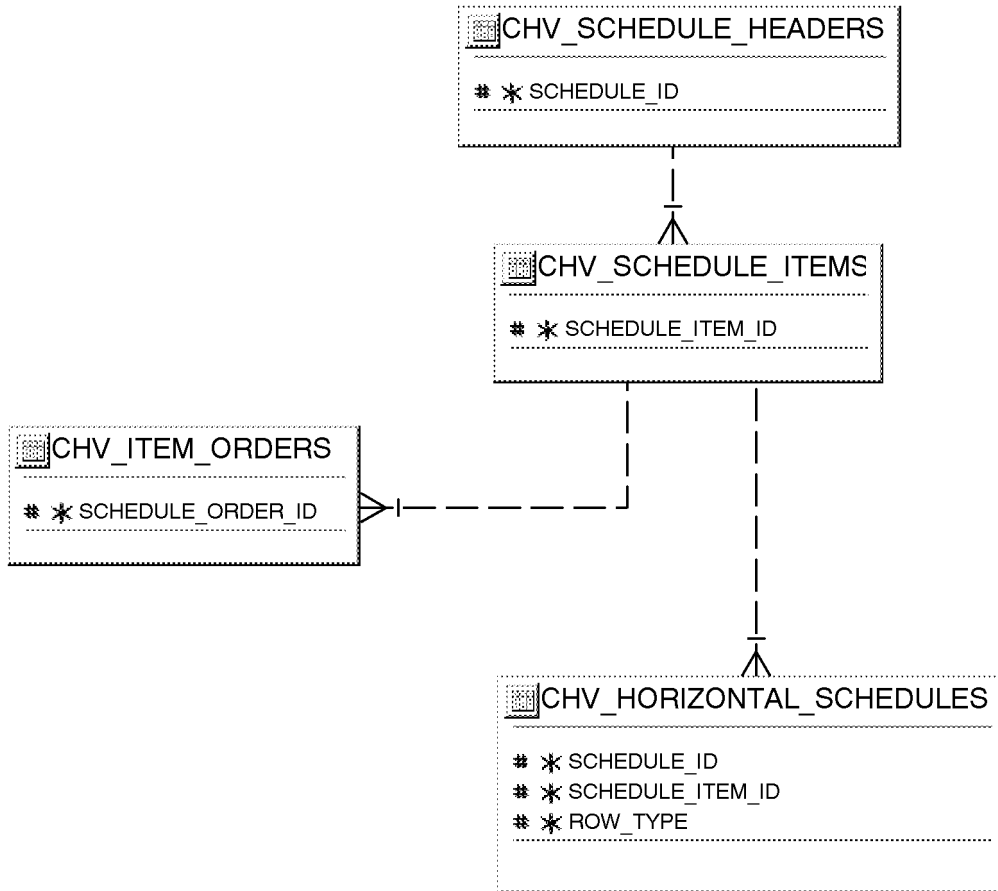
Tables – are the basic unit of storage in the database. A hand symbol preceding the title in the table’s title bar indicates that the table is not owned by this application but shared with another.

Foreign key constraint – is a type of referential integrity constraint for checking the integrity of data entered in a specific column or set of columns. This specified column or set of columns is known as the foreign key.

Delete rule indicator – determines the action to be taken when an attempt is made to delete a related row in a join table. A line through the foreign key constraint, as shown on the above diagram, indicates that this action is restricted.

Arcs – specify that, for any given row in a table, a value must be entered in one of the arc columns. The remaining columns within the arc must be null.

Supplier Scheduling Summary Database Diagram



Oracle Proprietary, Confidential Information--Use Restricted by Contract

Public Table List

This section lists each public database table that Oracle Supplier Scheduling uses and provides a brief description of each of those tables. The page reference is to the table description in Chapter 3.

Note that "public" tables are not necessarily intended for write access by custom code; Oracle Corporation supports write access using only standard Oracle Applications forms, reports, and programs, or any SQL write access to tables explicitly documented as API tables. For more information, see the How Not To Use This Manual section of this book's Introduction.

Oracle Supplier Scheduling uses the following Public tables:

Table Name	Description
CHV_AUTHORIZATIONS	Authorizations table (See page 3 – 7)
CHV_BUCKET_PATTERNS	Bucket patterns table (See page 3 – 9)
CHV_CUM_ADJUSTMENTS	CUM adjustments table (See page 3 – 10)
CHV_CUM_PERIODS	CUM periods table (See page 3 – 11)
CHV_CUM_PERIOD_ITEMS	Not currently used (See page 3 – 12)
CHV_HISTORY_CUM_PERIODS	Table containing historical information of CUM periods (See page 3 – 13)
CHV_HISTORY_SCHEDULES	Table containing historical information of schedules (See page 3 – 14)
CHV_HORIZONTAL_SCHEDULES	Horizontal schedule table (See page 3 – 15)
CHV_ITEM_ORDERS	Item orders table (See page 3 – 17)
CHV_ORG_OPTIONS	Organization options table (See page 3 – 19)
CHV_PURGE_CUM_LIST	CUM periods candidates for purge table (See page 3 – 20)
CHV_PURGE_SCHEDULE_LIST	Supplier schedule candidates for purge table (See page 3 – 21)
CHV_SCHEDULE_HEADERS	Schedule headers table (See page 3 – 22)
CHV_SCHEDULE_ITEMS	Schedule items table (See page 3 – 24)
CHV_SCHEDULE_ORGANIZATIONS	Schedule organizations table (See page 3 – 26)

Forms and Table View List

This section lists supplementary views that are not essential to the Release 11i data model, but simplify coding or improve performance of Developer. For example, many of these views are used as base tables in Supplier Scheduling forms.



Warning: We do not recommend you query or alter data using these views. Furthermore, these views may change dramatically in subsequent minor or major releases of Supplier Scheduling.

Supplier Scheduling uses the following Forms and Table views:

- CHV_AUTHORIZATIONS_V
- CHV_AUTHORIZATION_HEADERS_V
- CHV_BUCKET_PATTERNS_VAL_V
- CHV_CUM_ITEMS_HISTORY_V
- CHV_CUM_ITEMS_V
- CHV_HORIZ_BKT_SCHEDULES_V
- CHV_HORIZ_DATE_SCHEDULES_V
- CHV_HORIZ_QTY_SCHEDULES_V
- CHV_ITEM_ORDERS_V
- CHV_ORG_OPTIONS_V
- CHV_OWNERS_ALL_V
- CHV_PLANNERS_ALL_V
- CHV_PLANNERS_VAL_V
- CHV_SCHEDULERS_ALL_V
- CHV_SCHEDULERS_VAL_V
- CHV_SCHEDULE_HEADERS_ALL_V
- CHV_SCHEDULE_HEADERS_V
- CHV_SCHEDULE_HEADERS_VAL_V
- CHV_SCHEDULE_ITEMS_V

Internal View List

This section lists each private, internal view that Supplier Scheduling uses.



Warning: Oracle Corporation does not support access to Oracle Applications data using these views, except from standard Oracle Applications forms, reports, and programs.

Supplier Scheduling uses the following internal views:

- CHV_RECEIVING_TRANSACTIONS_V

Module List

This section lists each form, report and concurrent program comprising Oracle Supplier Scheduling.

Forms

CHVSSCUM	Define CUM Periods
CHVSSDEP	Define Bucket Patterns
CHVSSOPT	Supplier Scheduling Options
CHVSSWKB	Scheduler's Workbench
POXSCASL	Approved Supplier List

Reports

CHVCUHIS	CUM History Report
CHVPRSBB	AutoSchedule
CHVPRSCH	Printed Planning Schedule Report
CHVSHSCH	Printed Shipping Schedule
POASLUPG	

CHAPTER

3

Detailed Design

This chapter presents a detailed design for implementing Oracle Supplier Scheduling. It contains detailed definitions of tables and views that you may need to reference to write custom reports or use for other data extraction.

Overview of Detailed Design

During Detailed Design, we specify in detail how each applications component should work. We prepare detailed definitions of tables and views.

You can refer to this Detailed Design chapter to gain a detailed understanding of the underlying structure and processing of Oracle Supplier Scheduling that enables you to:

- Convert existing application data
- Integrate your Supplier Scheduling application with your other applications systems
- Write custom reports
- Define alerts against Oracle Applications tables
- Create views for decision support queries using query tools
- Configure your Oracle Self-Service Web Applications

Table and View Definitions

The Table and View Definitions section contains a detailed definition of Supplier Scheduling applications tables. For each table, it provides information about primary keys, foreign keys, QuickCodes, indexes, triggers, and sequences. It also gives you a detailed description of each column and its characteristics. In addition, it provides the SQL statement that defines each view. Review this section to get a detailed understanding of what tables your Supplier Scheduling application contains, and how it uses them to hold and access the information it needs.

Table and View Definitions

This section contains a detailed description of each Oracle Supplier Scheduling table and view that you may need to reference. For each table, it presents detailed information about:

- Primary keys
- Foreign keys
- Column descriptions
- Indexes
- Oracle sequences
- Triggers
- View derivations

Because Oracle does not support customization of Oracle Application Object Library tables, we do not provide you with detailed information about them. Consequently, this section does not document all the FND_% tables Supplier Scheduling uses.

The following sections appear in each table or view description:

Foreign Keys

To help you understand the relationships between tables, we list each foreign key contained in a table. For each foreign key in a table, we list the primary key table name (the table to which a foreign key refers), its corresponding primary key columns, and the foreign key columns that refer to those primary key columns.

When the primary key table has a composite primary key, we list each column of the composite key sequentially.

If a table contains two or more distinct foreign keys that refer to the same primary key table, we repeat the primary key table name and list each of the distinct foreign keys separately.

QuickCodes Columns

When a database column contains a QuickCodes value, which we implement using a foreign key to FND_LOOKUPS, MFG_LOOKUPS, or to some other lookup table, we list the QuickCodes type (lookup

Oracle Proprietary, Confidential Information--Use Restricted by Contract

type) to which the QuickCodes value must belong and a complete list of QuickCodes values and meanings. Some QuickCodes can be defined by you in the application. These values are designated as User-defined.

Column Descriptions

We list the important characteristics of each column in a table or view. These characteristics include whether the column is part of the table's primary key, whether Oracle8i requires a value for this column, and the data type of the column. We also give you a brief description of how Supplier Scheduling uses the column.

When a column is part of a table's primary key, we append the notation (PK) to the name of that column.

To help you understand which columns Supplier Scheduling uses and which columns it does not use, we alert you to any unused column. When no module uses a database column, we show one of the following legends in the Description column:

Not currently used	Supplier Scheduling does not use this column, although the column might be used in a future release.
No longer used	Supplier Scheduling no longer uses this column. AutoInstall installs this column. Subsequent versions of Supplier Scheduling might not include this column.
No longer installed	Supplier Scheduling no longer uses this column. If you <i>upgraded</i> your software from an earlier version, you may still have this column, depending upon whether you chose to delete it during an upgrade process. If you <i>install</i> Supplier Scheduling, you do not have this column.

Standard Who Columns

Most Oracle Supplier Scheduling tables contain standard columns to support \ **Row Who**. When your program or SQL*Plus command selects a row from a table, use these columns to determine who last updated the row. If your program or SQL*Plus command updates or

inserts a row in an interface table, you must populate each of the five standard Who columns:

<code>LAST_UPDATE_DATE</code>	Date when a user last updated this row
<code>LAST_UPDATED_BY</code>	User who last updated this row (foreign key to <code>FND_USER.USER_ID</code>)
<code>CREATION_DATE</code>	Date when this row was created
<code>CREATED_BY</code>	User who created this row (foreign key to <code>FND_USER.USER_ID</code>)
<code>LAST_UPDATE_LOGIN</code>	Operating system login of user who last updated this row (foreign key to <code>FND_LOGINS.LOGIN_ID</code>). You should set this to NULL, or to 0 if NULL is not allowed

Since every table containing Who columns has several foreign keys to the tables `FND_USER` and `FND_LOGINS`, we do not include the foreign key columns `LAST_UPDATED_BY`, `CREATED_BY`, or `LAST_UPDATE_LOGIN` in a table's list of foreign keys.

Additional Who Columns for Concurrent Programs

Some Oracle Supplier Scheduling tables also contain several additional Who columns to distinguish between changes a user makes with a form and changes a concurrent program makes. When a concurrent program updates or inserts a row in a table, the concurrent program populates the following additional Who columns:

<code>REQUEST_ID</code>	Concurrent request ID of program that last updated this row (foreign key to <code>FND_CONCURRENT_REQUESTS.REQUEST_ID</code>)
<code>PROGRAM_APPLICATION_ID</code>	Application ID of program that last updated this row (foreign key to <code>FND_APPLICATION.APPLICATION_ID</code>)
<code>PROGRAM_ID</code>	Program ID of program that last updated this row (foreign key to <code>FND_CONCURRENT_PROGRAM.CONCURRENT_PROGRAM_ID</code>)
<code>PROGRAM_UPDATE_DATE</code>	Date when a program last updated this row

Since every table containing these additional Who columns has several foreign keys to the tables FND_CONCURRENT_REQUESTS, FND_APPLICATION, and FND_CONCURRENT_PROGRAM, we do not include the foreign key columns REQUEST_ID, PROGRAM_APPLICATION_ID, or PROGRAM_ID in a table's list of foreign keys.

Indexes

If an Oracle Supplier Scheduling table uses an Oracle8i index, we list the database columns that comprise that index, in sequential order.

Note: The indexes we document in this manual correspond to unique keys we specified during product development and testing. In some cases, we may add additional indexes during the porting process to fine-tune performance on specific platforms; therefore, there may be minor differences between the indexes documented in this book and the indexes for production versions of Supplier Scheduling.

Sequences

Supplier Scheduling uses Oracle8i sequence generators to generate unique integers. If any table column gets its value from an Oracle8i sequence generator, we list the name of the corresponding sequence generator and the name of the column that stores the unique integer.

Database Triggers

If a table has one or more active database triggers, we provide a brief explanation of each database trigger and when it fires.

View Derivation

For each Oracle Supplier Scheduling view you may need to reference, we include important elements from the SQL statement that defines or creates a view. By studying this view definition, you can understand exactly how a view derives its contents.

Oracle Proprietary, Confidential Information--Use Restricted by Contract

CHV_AUTHORIZATIONS

CHV_AUTHORIZATIONS stores all references to authorizations within Supplier Scheduling. For each reference type (e.g. the ASL or a Schedule Item), a row is created for each authorization. For example, if 4 authorization codes and associated time fences are assigned to an item in the ASL, 4 rows for this ASL record are added to this table -- one for each authorization code. CHV_AUTHORIZATIONS was designed to 1) facilitate the display of authorizations to the user and 2) allow for extensibility in the event that we decide to allow for more than authorizations.

Column Descriptions

Name	Null?	Type	Description
REFERENCE_ID	NOT NULL	NUMBER	Authorization reference unique identifier. Options include IDs from the ASL, Schedule Items, and CUM Periods.
REFERENCE_TYPE	NOT NULL	VARCHAR2(25)	Reference type. Options include ASL, SCHEDULE_ITEM, CUM_PERIODS
AUTHORIZATION_CODE	NOT NULL	VARCHAR2(25)	Authorization code
AUTHORIZATION_SEQUENCE	NOT NULL	NUMBER	Authorization sequence
LAST_UPDATE_DATE	NOT NULL	DATE	Standard Who column
LAST_UPDATED_BY	NOT NULL	NUMBER	Standard Who column
CREATION_DATE	NOT NULL	DATE	Standard Who column
CREATED_BY	NOT NULL	NUMBER	Standard Who column
PRIMARY_UNIT_OF_MEASURE	NULL	VARCHAR2(25)	Primary unit of measure
PURCHASING_UNIT_OF_MEASURE	NULL	VARCHAR2(25)	Purchasing unit of measure
TIMEFENCE_DAYS	NULL	NUMBER	Time fence associated with each authorization. For reference type of ASL or CUM_PERIODS
CUTOFF_DATE	NULL	DATE	Authorization end date associated with given schedule horizon start date. Used for reference type SCHEDULE_ITEM
SCHEDULE_QUANTITY_PRIMARY	NULL	NUMBER	Primary authorization quantity. Used with reference type SCHEDULE_ITEM
SCHEDULE_QUANTITY	NULL	NUMBER	Purchasing authorization quantity. Used with reference type SCHEDULE_ITEM
HIGH_AUTH_QTY_PRIMARY	NULL	NUMBER	Primary high authorization quantity. Used with reference type CUM_PERIODS.
HIGH_AUTH_QUANTITY	NULL	NUMBER	Purchasing high authorization quantity. Used with reference type CUM_PERIODS.
HIGH_AUTH_SCHEDULE_ITEM_ID	NULL	NUMBER	High authorization schedule item ID. Used with reference type CUM_PERIODS.
ATTRIBUTE_CATEGORY	NULL	VARCHAR2(30)	Descriptive Flexfield segment
ATTRIBUTE1	NULL	VARCHAR2(150)	Descriptive Flexfield segment
ATTRIBUTE2	NULL	VARCHAR2(150)	Descriptive Flexfield segment
ATTRIBUTE3	NULL	VARCHAR2(150)	Descriptive Flexfield segment
ATTRIBUTE4	NULL	VARCHAR2(150)	Descriptive Flexfield segment
ATTRIBUTE5	NULL	VARCHAR2(150)	Descriptive Flexfield segment

Oracle Proprietary, Confidential Information--Use Restricted by Contract

Column Descriptions (Continued)

Name	Null?	Type	Description
ATTRIBUTE6	NULL	VARCHAR2(150)	Descriptive Flexfield segment
ATTRIBUTE7	NULL	VARCHAR2(150)	Descriptive Flexfield segment
ATTRIBUTE8	NULL	VARCHAR2(150)	Descriptive Flexfield segment
ATTRIBUTE9	NULL	VARCHAR2(150)	Descriptive Flexfield segment
ATTRIBUTE10	NULL	VARCHAR2(150)	Descriptive Flexfield segment
ATTRIBUTE11	NULL	VARCHAR2(150)	Descriptive Flexfield segment
ATTRIBUTE12	NULL	VARCHAR2(150)	Descriptive Flexfield segment
ATTRIBUTE13	NULL	VARCHAR2(150)	Descriptive Flexfield segment
ATTRIBUTE14	NULL	VARCHAR2(150)	Descriptive Flexfield segment
ATTRIBUTE15	NULL	VARCHAR2(150)	Descriptive Flexfield segment
LAST_UPDATE_LOGIN	NULL	NUMBER	Standard Who column
REQUEST_ID	NULL	NUMBER	Standard Who column
PROGRAM_APPLICATION_ID	NULL	NUMBER	Standard Who column
PROGRAM_ID	NULL	NUMBER	Standard Who column
PROGRAM_UPDATE_DATE	NULL	DATE	Standard Who column
USING_ORGANIZATION_ID	NULL	NUMBER	Organization ID if local; -1 if global

Indexes

Index Name	Index Type	Sequence	Column Name
CHV_AUTHORIZATIONS_U1	UNIQUE	1	REFERENCE_ID
		2	USING_ORGANIZATION_ID
		3	REFERENCE_TYPE
		4	AUTHORIZATION_CODE

CHV_BUCKET_PATTERNS

CHV_BUCKET_PATTERNS holds user-defined, variable bucket patterns comprised of days, weeks, months, and quarters.

Column Descriptions

Name	Null?	Type	Description
BUCKET_PATTERN_ID	NOT NULL	NUMBER	Bucket pattern unique identifier
BUCKET_PATTERN_NAME	NOT NULL	VARCHAR2(25)	Bucket pattern name
NUMBER_DAILY_BUCKETS	NOT NULL	NUMBER	Number of daily buckets
NUMBER_WEEKLY_BUCKETS	NOT NULL	NUMBER	Number of weekly buckets
NUMBER_MONTHLY_BUCKETS	NOT NULL	NUMBER	Number of monthly buckets
NUMBER_QUARTERLY_BUCKETS	NOT NULL	NUMBER	Number of quarterly buckets
LAST_UPDATE_DATE	NOT NULL	DATE	Standard Who column
LAST_UPDATED_BY	NOT NULL	NUMBER	Standard Who column
CREATION_DATE	NOT NULL	DATE	Standard Who column
CREATED_BY	NOT NULL	NUMBER	Standard Who column
WEEK_START_DAY	NULL	VARCHAR2(25)	Day that week should begin on
DESCRIPTION	NULL	VARCHAR2(80)	Bucket pattern description
INACTIVE_DATE	NULL	DATE	Inactive date
ATTRIBUTE_CATEGORY	NULL	VARCHAR2(30)	Descriptive Flexfield segment
ATTRIBUTE1	NULL	VARCHAR2(150)	Descriptive Flexfield segment
ATTRIBUTE2	NULL	VARCHAR2(150)	Descriptive Flexfield segment
ATTRIBUTE3	NULL	VARCHAR2(150)	Descriptive Flexfield segment
ATTRIBUTE4	NULL	VARCHAR2(150)	Descriptive Flexfield segment
ATTRIBUTE5	NULL	VARCHAR2(150)	Descriptive Flexfield segment
ATTRIBUTE6	NULL	VARCHAR2(150)	Descriptive Flexfield segment
ATTRIBUTE7	NULL	VARCHAR2(150)	Descriptive Flexfield segment
ATTRIBUTE8	NULL	VARCHAR2(150)	Descriptive Flexfield segment
ATTRIBUTE9	NULL	VARCHAR2(150)	Descriptive Flexfield segment
ATTRIBUTE10	NULL	VARCHAR2(150)	Descriptive Flexfield segment
ATTRIBUTE11	NULL	VARCHAR2(150)	Descriptive Flexfield segment
ATTRIBUTE12	NULL	VARCHAR2(150)	Descriptive Flexfield segment
ATTRIBUTE13	NULL	VARCHAR2(150)	Descriptive Flexfield segment
ATTRIBUTE14	NULL	VARCHAR2(150)	Descriptive Flexfield segment
ATTRIBUTE15	NULL	VARCHAR2(150)	Descriptive Flexfield segment
LAST_UPDATE_LOGIN	NULL	NUMBER	Standard Who column
REQUEST_ID	NULL	NUMBER	Standard Who column
PROGRAM_APPLICATION_ID	NULL	NUMBER	Standard Who column
PROGRAM_ID	NULL	NUMBER	Standard Who column
PROGRAM_UPDATE_DATE	NULL	DATE	Standard Who column

Indexes

Index Name	Index Type	Sequence	Column Name
CHV_BUCKET_PATTERNS_U1	UNIQUE	1	BUCKET_PATTERN_ID

CHV_CUM_ADJUSTMENTS

CHV_CUM_ADJUSTMENTS stores manual CUM adjustment information for all ASL items whose ship-to organization is tracking CUMs.

Column Descriptions

Name	Null?	Type	Description
CUM_TRANSACTION_ID	NOT NULL	NUMBER	CUM transaction unique identifier
ORGANIZATION_ID	NOT NULL	NUMBER	Ship-to organization
VENDOR_ID	NOT NULL	NUMBER	Supplier
VENDOR_SITE_ID	NOT NULL	NUMBER	Supplier site
ITEM_ID	NOT NULL	NUMBER	Item
CUM_PERIOD_ID	NOT NULL	NUMBER	CUM period
PURCHASING_UNIT_OF_MEASURE	NOT NULL	VARCHAR2(25)	Purchasing unit of measure
PRIMARY_UNIT_OF_MEASURE	NOT NULL	VARCHAR2(25)	Primary unit of measure
ADJUSTMENT_QUANTITY	NOT NULL	NUMBER	Adjustment quantity in purchasing UOM
PRIMARY_ADJUST_QUANTITY	NOT NULL	NUMBER	Adjustment quantity in primary UOM
LAST_UPDATE_DATE	NOT NULL	DATE	Standard Who column
LAST_UPDATED_BY	NOT NULL	NUMBER	Standard Who column
CREATION_DATE	NOT NULL	DATE	Standard Who column
CREATED_BY	NOT NULL	NUMBER	Standard Who column
REASON_ID	NULL	NUMBER	Transaction reason
COMMENTS	NULL	VARCHAR2(240)	Comments
ATTRIBUTE_CATEGORY	NULL	VARCHAR2(30)	Descriptive Flexfield segment
ATTRIBUTE1	NULL	VARCHAR2(150)	Descriptive Flexfield segment
ATTRIBUTE2	NULL	VARCHAR2(150)	Descriptive Flexfield segment
ATTRIBUTE3	NULL	VARCHAR2(150)	Descriptive Flexfield segment
ATTRIBUTE4	NULL	VARCHAR2(150)	Descriptive Flexfield segment
ATTRIBUTE5	NULL	VARCHAR2(150)	Descriptive Flexfield segment
ATTRIBUTE6	NULL	VARCHAR2(150)	Descriptive Flexfield segment
ATTRIBUTE7	NULL	VARCHAR2(150)	Descriptive Flexfield segment
ATTRIBUTE8	NULL	VARCHAR2(150)	Descriptive Flexfield segment
ATTRIBUTE9	NULL	VARCHAR2(150)	Descriptive Flexfield segment
ATTRIBUTE10	NULL	VARCHAR2(150)	Descriptive Flexfield segment
ATTRIBUTE11	NULL	VARCHAR2(150)	Descriptive Flexfield segment
ATTRIBUTE12	NULL	VARCHAR2(150)	Descriptive Flexfield segment
ATTRIBUTE13	NULL	VARCHAR2(150)	Descriptive Flexfield segment
ATTRIBUTE14	NULL	VARCHAR2(150)	Descriptive Flexfield segment
ATTRIBUTE15	NULL	VARCHAR2(150)	Descriptive Flexfield segment
LAST_UPDATE_LOGIN	NULL	NUMBER	Standard Who column
REQUEST_ID	NULL	NUMBER	Standard Who column
PROGRAM_APPLICATION_ID	NULL	NUMBER	Standard Who column
PROGRAM_ID	NULL	NUMBER	Standard Who column
PROGRAM_UPDATE_DATE	NULL	DATE	Standard Who column

Indexes

Index Name	Index Type	Sequence	Column Name
CHV_CUM_ADJUSTMENTS_U1	UNIQUE	1	CUM_TRANSACTION_ID

Oracle Proprietary, Confidential Information--Use Restricted by Contract

CHV_CUM_PERIODS

CHV_CUM_PERIODS stores one row for every CUM period that is defined for a ship-to organization that has CUM Management enabled in the Supplier Scheduling Options window.

Column Descriptions

Name	Null?	Type	Description
CUM_PERIOD_ID	NOT NULL	NUMBER	CUM period unique identifier
CUM_PERIOD_NAME	NOT NULL	VARCHAR2(25)	CUM period name
ORGANIZATION_ID	NOT NULL	NUMBER	Ship-to organization
CUM_PERIOD_START_DATE	NOT NULL	DATE	CUM period start date
LAST_UPDATE_DATE	NOT NULL	DATE	Standard Who column
LAST_UPDATED_BY	NOT NULL	NUMBER	Standard Who column
CREATION_DATE	NOT NULL	DATE	Standard Who column
CREATED_BY	NOT NULL	NUMBER	Standard Who column
CUM_PERIOD_END_DATE	NULL	DATE	CUM period end date
ATTRIBUTE_CATEGORY	NULL	VARCHAR2(30)	Descriptive Flexfield segment
ATTRIBUTE1	NULL	VARCHAR2(150)	Descriptive Flexfield segment
ATTRIBUTE2	NULL	VARCHAR2(150)	Descriptive Flexfield segment
ATTRIBUTE3	NULL	VARCHAR2(150)	Descriptive Flexfield segment
ATTRIBUTE4	NULL	VARCHAR2(150)	Descriptive Flexfield segment
ATTRIBUTE5	NULL	VARCHAR2(150)	Descriptive Flexfield segment
ATTRIBUTE6	NULL	VARCHAR2(150)	Descriptive Flexfield segment
ATTRIBUTE7	NULL	VARCHAR2(150)	Descriptive Flexfield segment
ATTRIBUTE8	NULL	VARCHAR2(150)	Descriptive Flexfield segment
ATTRIBUTE9	NULL	VARCHAR2(150)	Descriptive Flexfield segment
ATTRIBUTE10	NULL	VARCHAR2(150)	Descriptive Flexfield segment
ATTRIBUTE11	NULL	VARCHAR2(150)	Descriptive Flexfield segment
ATTRIBUTE12	NULL	VARCHAR2(150)	Descriptive Flexfield segment
ATTRIBUTE13	NULL	VARCHAR2(150)	Descriptive Flexfield segment
ATTRIBUTE14	NULL	VARCHAR2(150)	Descriptive Flexfield segment
ATTRIBUTE15	NULL	VARCHAR2(150)	Descriptive Flexfield segment
LAST_UPDATE_LOGIN	NULL	NUMBER	Standard Who column
REQUEST_ID	NULL	NUMBER	Standard Who column
PROGRAM_APPLICATION_ID	NULL	NUMBER	Standard Who column
PROGRAM_ID	NULL	NUMBER	Standard Who column
PROGRAM_UPDATE_DATE	NULL	NUMBER	Standard Who column

Indexes

Index Name	Index Type	Sequence	Column Name
CHV_CUM_PERIODS_U1	UNIQUE	1	CUM_PERIOD_ID

CHV_CUM_PERIOD_ITEMS

Not currently used.

Column Descriptions

Name	Null?	Type	Description
CUM_PERIOD_ITEM_ID	NOT NULL	NUMBER	CUM period item unique identifier
CUM_PERIOD_ID	NOT NULL	NUMBER	CUM period item unique identifier
ORGANIZATION_ID	NOT NULL	NUMBER	Ship-to organization
VENDOR_ID	NOT NULL	NUMBER	Supplier
VENDOR_SITE_ID	NOT NULL	NUMBER	Supplier site
ITEM_ID	NOT NULL	NUMBER	Item
LAST_UPDATE_DATE	NOT NULL	DATE	Standard Who column
LAST_UPDATED_BY	NOT NULL	NUMBER	Standard Who column
CREATION_DATE	NOT NULL	DATE	Standard Who column
CREATED_BY	NOT NULL	NUMBER	Standard Who column
ATTRIBUTE_CATEGORY	NULL	VARCHAR2(30)	Descriptive flexfield segment
ATTRIBUTE1	NULL	VARCHAR2(150)	Descriptive flexfield segment
ATTRIBUTE2	NULL	VARCHAR2(150)	Descriptive flexfield segment
ATTRIBUTE3	NULL	VARCHAR2(150)	Descriptive flexfield segment
ATTRIBUTE4	NULL	VARCHAR2(150)	Descriptive flexfield segment
ATTRIBUTE5	NULL	VARCHAR2(150)	Descriptive flexfield segment
ATTRIBUTE6	NULL	VARCHAR2(150)	Descriptive flexfield segment
ATTRIBUTE7	NULL	VARCHAR2(150)	Descriptive flexfield segment
ATTRIBUTE8	NULL	VARCHAR2(150)	Descriptive flexfield segment
ATTRIBUTE9	NULL	VARCHAR2(150)	Descriptive flexfield segment
ATTRIBUTE10	NULL	VARCHAR2(150)	Descriptive flexfield segment
ATTRIBUTE11	NULL	VARCHAR2(150)	Descriptive flexfield segment
ATTRIBUTE12	NULL	VARCHAR2(150)	Descriptive flexfield segment
ATTRIBUTE13	NULL	VARCHAR2(150)	Descriptive flexfield segment
ATTRIBUTE14	NULL	VARCHAR2(150)	Descriptive flexfield segment
ATTRIBUTE15	NULL	VARCHAR2(150)	Descriptive flexfield segment
LAST_UPDATE_LOGIN	NULL	NUMBER	Descriptive flexfield segment
REQUEST_ID	NULL	NUMBER	Standard Who column
PROGRAM_APPLICATION_ID	NULL	NUMBER	Standard Who column
PROGRAM_ID	NULL	NUMBER	Standard Who column
PROGRAM_UPDATE_DATE	NULL	NUMBER	Standard Who column

Indexes

Index Name	Index Type	Sequence	Column Name
CHV_CUM_PERIOD_ITEMS_U1	UNIQUE	1	CUM_PERIOD_ITEM_ID

Oracle Proprietary, Confidential Information--Use Restricted by Contract

CHV_HISTORY_CUM_PERIODS

Historical information of CUM periods deleted by the Purge routine are stored in this table.

Column Descriptions

Name	Null?	Type	Description
CUM_PERIOD_ID	NOT NULL	NUMBER	CUM period unique identifier
CUM_PERIOD_NAME	NULL	VARCHAR2(25)	CUM period name
ORGANIZATION_ID	NULL	NUMBER	Ship-to organization
CUM_PERIOD_START_DATE	NULL	DATE	CUM period start date
CUM_PERIOD_END_DATE	NULL	DATE	CUM period end date
CREATION_DATE	NULL	DATE	Standard Who column
RTV_UPDATE_CUM_FLAG	NULL	VARCHAR2(1)	RTV transactions included in CUM
PURGE_NAME	NULL	VARCHAR2(15)	Name of the process that purged the CUM period
REQUEST_ID	NULL	NUMBER	Standard Who column
PROGRAM_APPLICATION_ID	NULL	NUMBER	Standard Who column
PROGRAM_ID	NULL	NUMBER	Standard Who column
PROGRAM_UPDATE_DATE	NULL	DATE	Standard Who column

Indexes

Index Name	Index Type	Sequence	Column Name
CHV_HISTORY_CUM_PERIODS_N1	NOT UNIQUE	2	CUM_PERIOD_START_DATE

CHV_HISTORY_SCHEDULES

Historical information about the schedules deleted by the Purge routine are stored in this table.

Column Descriptions

Name	Null?	Type	Description
SCHEDULE_ID	NOT NULL	NUMBER	Schedule unique identifier
VENDOR_ID	NULL	NUMBER	Supplier unique identifier
VENDOR_SITE_ID	NULL	NUMBER	Supplier site unique identifier
SCHEDULE_TYPE	NULL	VARCHAR2(25)	Planning or shipping schedule
SCHEDULE_SUBTYPE	NULL	VARCHAR2(25)	Type of planning or shipping schedule
SCHEDULE_HORIZON_START	NULL	DATE	Schedule horizon start date
BUCKET_PATTERN_ID	NULL	NUMBER	Bucket pattern for schedule
CREATION_DATE	NULL	DATE	Standard Who column
SCHEDULE_NUM	NULL	VARCHAR2(20)	Schedule number
SCHEDULE_REVISION	NULL	NUMBER	Schedule revision
SCHEDULE_STATUS	NULL	VARCHAR2(25)	Confirmed status
ITEM_ID	NULL	NUMBER	Item
ORGANIZATION_ID	NULL	NUMBER	Schedule organization
PURGE_NAME	NULL	VARCHAR2(15)	Name of the process that purged the schedule
REQUEST_ID	NULL	NUMBER	Standard Who column
PROGRAM_APPLICATION_ID	NULL	NUMBER	Standard Who column
PROGRAM_ID	NULL	NUMBER	Standard Who column
PROGRAM_UPDATE_DATE	NULL	DATE	Standard Who column

Indexes

Index Name	Index Type	Sequence	Column Name
CHV_HISTORY_SCHEDULES_N1	NOT UNIQUE	2	ITEM_ID
CHV_HISTORY_SCHEDULES_N2	NOT UNIQUE	2	VENDOR_ID
CHV_HISTORY_SCHEDULE_N3	NOT UNIQUE	2	SCHEDULE_HORIZON_START

CHV_HORIZONTAL_SCHEDULES

CHV_HORIZONTAL_SCHEDULES stores the horizontal, bucketed representation of schedule item orders. Designed for direct selection into the Workbench and reports.

Column Descriptions

Name	Null?	Type	Description
SCHEDULE_ID (PK)	NOT NULL	NUMBER	Schedule header unique identifier
SCHEDULE_ITEM_ID (PK)	NOT NULL	NUMBER	Schedule item unique identifier
ROW_SELECT_ORDER	NOT NULL	NUMBER	Sequence order for display: BUCKET_DESCRIPTOR, BUCKET_START_DATE, RELEASE_QUANTITY, FORECAST_QUANTITY, TOTAL_QUANTITY, CUM_QUANTITY, BUCKET_END_DATE
ROW_TYPE (PK)	NOT NULL	VARCHAR2(25)	Record type options: RELEASE_QUANTITY, FORECAST_QUANTITY, CUM_QUANTITY, TOTAL_QUANTITY, BUCKET_DESCRIPTOR, BUCKET_START_DATE, BUCKET_END_DATE
LAST_UPDATE_DATE	NOT NULL	DATE	Standard Who column
LAST_UPDATED_BY	NOT NULL	NUMBER	Standard Who column
CREATION_DATE	NOT NULL	DATE	Standard Who column
CREATED_BY	NOT NULL	NUMBER	Standard Who column
COLUMN1	NULL	VARCHAR2(25)	Bucket value
COLUMN2	NULL	VARCHAR2(25)	Bucket value
COLUMN3	NULL	VARCHAR2(25)	Bucket value
COLUMN4	NULL	VARCHAR2(25)	Bucket value
COLUMN5	NULL	VARCHAR2(25)	Bucket value
COLUMN6	NULL	VARCHAR2(25)	Bucket value
COLUMN7	NULL	VARCHAR2(25)	Bucket value
COLUMN8	NULL	VARCHAR2(25)	Bucket value
COLUMN9	NULL	VARCHAR2(25)	Bucket value
COLUMN10	NULL	VARCHAR2(25)	Bucket value
COLUMN11	NULL	VARCHAR2(25)	Bucket value
COLUMN12	NULL	VARCHAR2(25)	Bucket value
COLUMN13	NULL	VARCHAR2(25)	Bucket value
COLUMN14	NULL	VARCHAR2(25)	Bucket value
COLUMN15	NULL	VARCHAR2(25)	Bucket value
COLUMN16	NULL	VARCHAR2(25)	Bucket value
COLUMN17	NULL	VARCHAR2(25)	Bucket value
COLUMN18	NULL	VARCHAR2(25)	Bucket value
COLUMN19	NULL	VARCHAR2(25)	Bucket value
COLUMN20	NULL	VARCHAR2(25)	Bucket value
COLUMN21	NULL	VARCHAR2(25)	Bucket value
COLUMN22	NULL	VARCHAR2(25)	Bucket value
COLUMN23	NULL	VARCHAR2(25)	Bucket value
COLUMN24	NULL	VARCHAR2(25)	Bucket value
COLUMN25	NULL	VARCHAR2(25)	Bucket value
COLUMN26	NULL	VARCHAR2(25)	Bucket value
COLUMN27	NULL	VARCHAR2(25)	Bucket value
COLUMN28	NULL	VARCHAR2(25)	Bucket value

Oracle Proprietary, Confidential Information--Use Restricted by Contract

Column Descriptions (Continued)

Name	Null?	Type	Description
COLUMN29	NULL	VARCHAR2(25)	Bucket value
COLUMN30	NULL	VARCHAR2(25)	Bucket value
COLUMN31	NULL	VARCHAR2(25)	Bucket value
COLUMN32	NULL	VARCHAR2(25)	Bucket value
COLUMN33	NULL	VARCHAR2(25)	Bucket value
COLUMN34	NULL	VARCHAR2(25)	Bucket value
COLUMN35	NULL	VARCHAR2(25)	Bucket value
COLUMN36	NULL	VARCHAR2(25)	Bucket value
COLUMN37	NULL	VARCHAR2(25)	Bucket value
COLUMN38	NULL	VARCHAR2(25)	Bucket value
COLUMN39	NULL	VARCHAR2(25)	Bucket value
COLUMN40	NULL	VARCHAR2(25)	Bucket value
COLUMN41	NULL	VARCHAR2(25)	Bucket value
COLUMN42	NULL	VARCHAR2(25)	Bucket value
COLUMN43	NULL	VARCHAR2(25)	Bucket value
COLUMN44	NULL	VARCHAR2(25)	Bucket value
COLUMN45	NULL	VARCHAR2(25)	Bucket value
COLUMN46	NULL	VARCHAR2(25)	Bucket value
COLUMN47	NULL	VARCHAR2(25)	Bucket value
COLUMN48	NULL	VARCHAR2(25)	Bucket value
COLUMN49	NULL	VARCHAR2(25)	Bucket value
COLUMN50	NULL	VARCHAR2(25)	Bucket value
COLUMN51	NULL	VARCHAR2(25)	Bucket value
COLUMN52	NULL	VARCHAR2(25)	Bucket value
COLUMN53	NULL	VARCHAR2(25)	Bucket value
COLUMN54	NULL	VARCHAR2(25)	Bucket value
COLUMN55	NULL	VARCHAR2(25)	Bucket value
COLUMN56	NULL	VARCHAR2(25)	Bucket value
COLUMN57	NULL	VARCHAR2(25)	Bucket value
COLUMN58	NULL	VARCHAR2(25)	Bucket value
COLUMN59	NULL	VARCHAR2(25)	Bucket value
COLUMN60	NULL	VARCHAR2(25)	Bucket value
LAST_UPDATE_LOGIN	NULL	NUMBER	Standard Who column
REQUEST_ID	NULL	NUMBER	Standard Who column
PROGRAM_APPLICATION_ID	NULL	NUMBER	Standard Who column
PROGRAM_ID	NULL	NUMBER	Standard Who column
PROGRAM_UPDATE_DATE	NULL	DATE	Standard Who column

Indexes

Index Name	Index Type	Sequence	Column Name
CHV_HORIZONTAL_SCHEDULES_N1	NOT UNIQUE	1	SCHEDULE_ID
CHV_HORIZONTAL_SCHEDULES_N2	NOT UNIQUE	2	SCHEDULE_ITEM_ID

CHV_ITEM_ORDERS

CHV_ITEM_ORDERS stores the order information (unimplemented planned orders, approved requisitions, and approved releases) for items associated with supplier schedules. It has a child relationship to CHV_SCHEDULE_ITEMS.

Column Descriptions

Name	Null?	Type	Description
SCHEDULE_ID	NOT NULL	NUMBER	Schedule header unique identifier
SCHEDULE_ITEM_ID	NOT NULL	NUMBER	Schedule item unique identifier
SCHEDULE_ORDER_ID (PK)	NOT NULL	NUMBER	Schedule item order unique identifier
SUPPLY_DOCUMENT_TYPE	NOT NULL	VARCHAR2(25)	Supply document type. Options include planned order, requisition, or release
ORDER_QUANTITY	NOT NULL	NUMBER	Quantity ordered in purchasing UOM
ORDER_QUANTITY_PRIMARY	NOT NULL	NUMBER	Quantity ordered in primary UOM
PURCHASING_UNIT_OF_MEASURE	NOT NULL	VARCHAR2(25)	Purchasing unit of measure
PRIMARY_UNIT_OF_MEASURE	NOT NULL	VARCHAR2(25)	Primary unit of measure
DUE_DATE	NOT NULL	DATE	Order due date
LAST_UPDATE_DATE	NOT NULL	DATE	Standard Who column
LAST_UPDATED_BY	NOT NULL	NUMBER	Standard Who column
CREATION_DATE	NOT NULL	DATE	Standard Who column
CREATED_BY	NOT NULL	NUMBER	Standard Who column
DOCUMENT_HEADER_ID	NULL	NUMBER	Supply document unique identifier
DOCUMENT_LINE_ID	NULL	NUMBER	Supply document line unique identifier
DOCUMENT_SHIPMENT_ID	NULL	NUMBER	Supply document shipment unique identifier
ATTRIBUTE_CATEGORY	NULL	VARCHAR2(30)	Descriptive Flexfield segment
ATTRIBUTE1	NULL	VARCHAR2(150)	Descriptive Flexfield segment
ATTRIBUTE2	NULL	VARCHAR2(150)	Descriptive Flexfield segment
ATTRIBUTE3	NULL	VARCHAR2(150)	Descriptive Flexfield segment
ATTRIBUTE4	NULL	VARCHAR2(150)	Descriptive Flexfield segment
ATTRIBUTE5	NULL	VARCHAR2(150)	Descriptive Flexfield segment
ATTRIBUTE6	NULL	VARCHAR2(150)	Descriptive Flexfield segment
ATTRIBUTE7	NULL	VARCHAR2(150)	Descriptive Flexfield segment
ATTRIBUTE8	NULL	VARCHAR2(150)	Descriptive Flexfield segment
ATTRIBUTE9	NULL	VARCHAR2(150)	Descriptive Flexfield segment
ATTRIBUTE10	NULL	VARCHAR2(150)	Descriptive Flexfield segment
ATTRIBUTE11	NULL	VARCHAR2(150)	Descriptive Flexfield segment
ATTRIBUTE12	NULL	VARCHAR2(150)	Descriptive Flexfield segment
ATTRIBUTE13	NULL	VARCHAR2(150)	Descriptive Flexfield segment
ATTRIBUTE14	NULL	VARCHAR2(150)	Descriptive Flexfield segment
ATTRIBUTE15	NULL	VARCHAR2(150)	Descriptive Flexfield segment
LAST_UPDATE_LOGIN	NULL	NUMBER	Standard Who column
REQUEST_ID	NULL	NUMBER	Standard Who column
PROGRAM_APPLICATION_ID	NULL	NUMBER	Standard Who column
PROGRAM_ID	NULL	NUMBER	Standard Who column
PROGRAM_UPDATE_DATE	NULL	DATE	Standard Who column

Indexes

Index Name	Index Type	Sequence	Column Name
CHV_ITEM_ORDERS_N1	NOT UNIQUE	1	SCHEDULE_ID
CHV_ITEM_ORDERS_N3	NOT UNIQUE	1	DUE_DATE
CHV_ITEM_ORDERS_U1	UNIQUE	1	SCHEDULE_ORDER_ID
CHV_ITEM_ORDERS_U2	NOT UNIQUE	1	SCHEDULE_ITEM_ID

Oracle Proprietary, Confidential Information--Use Restricted by Contract

CHV_ORG_OPTIONS

CHV_ORG_OPTIONS stores Supplier Scheduling options and defaults for a ship-to organization.

Column Descriptions

Name	Null?	Type	Description
ORGANIZATION_ID	NOT NULL	NUMBER	Schedule organization unique identifier
ENABLE_CUM_FLAG	NOT NULL	VARCHAR2(1)	CUM tracking enabled
RTV_UPDATE_CUM_FLAG	NOT NULL	VARCHAR2(1)	RTV transactions included in CUM.
LAST_UPDATE_DATE	NOT NULL	DATE	Standard Who column
LAST_UPDATED_BY	NOT NULL	NUMBER	Standard Who column
CREATION_DATE	NOT NULL	DATE	Standard Who column
CREATED_BY	NOT NULL	NUMBER	Standard Who column
PLAN_BUCKET_PATTERN_ID	NULL	NUMBER	Default plan schedule bucket pattern
SHIP_BUCKET_PATTERN_ID	NULL	NUMBER	Default ship schedule bucket pattern
PLAN_SCHEDULE_TYPE	NULL	VARCHAR2(25)	Default plan schedule sub-type
SHIP_SCHEDULE_TYPE	NULL	VARCHAR2(25)	Default ship schedule sub-type
MRP_COMPILE_DESIGNATOR	NULL	VARCHAR2(10)	Default MRP plan
MPS_SCHEDULE_DESIGNATOR	NULL	VARCHAR2(10)	Default MPS plan
DRP_COMPILE_DESIGNATOR	NULL	VARCHAR2(10)	Default DRP plan
ATTRIBUTE_CATEGORY	NULL	VARCHAR2(30)	Descriptive Flexfield segment
ATTRIBUTE1	NULL	VARCHAR2(150)	Descriptive Flexfield segment
ATTRIBUTE2	NULL	VARCHAR2(150)	Descriptive Flexfield segment
ATTRIBUTE3	NULL	VARCHAR2(150)	Descriptive Flexfield segment
ATTRIBUTE4	NULL	VARCHAR2(150)	Descriptive Flexfield segment
ATTRIBUTE5	NULL	VARCHAR2(150)	Descriptive Flexfield segment
ATTRIBUTE6	NULL	VARCHAR2(150)	Descriptive Flexfield segment
ATTRIBUTE7	NULL	VARCHAR2(150)	Descriptive Flexfield segment
ATTRIBUTE8	NULL	VARCHAR2(150)	Descriptive Flexfield segment
ATTRIBUTE9	NULL	VARCHAR2(150)	Descriptive Flexfield segment
ATTRIBUTE10	NULL	VARCHAR2(150)	Descriptive Flexfield segment
ATTRIBUTE11	NULL	VARCHAR2(150)	Descriptive Flexfield segment
ATTRIBUTE12	NULL	VARCHAR2(150)	Descriptive Flexfield segment
ATTRIBUTE13	NULL	VARCHAR2(150)	Descriptive Flexfield segment
ATTRIBUTE14	NULL	VARCHAR2(150)	Descriptive Flexfield segment
ATTRIBUTE15	NULL	VARCHAR2(150)	Descriptive Flexfield segment
LAST_UPDATE_LOGIN	NULL	NUMBER	Standard Who column
REQUEST_ID	NULL	NUMBER	Standard Who column
PROGRAM_APPLICATION_ID	NULL	NUMBER	Standard Who column
PROGRAM_ID	NULL	NUMBER	Standard Who column
PROGRAM_UPDATE_DATE	NULL	DATE	Standard Who column

Indexes

Index Name	Index Type	Sequence	Column Name
CHV_ORG_OPTIONS_U1	UNIQUE	1	ORGANIZATION_ID

CHV_PURGE_CUM_LIST

This table will be populated with a list of CUM periods that are purge candidates. When the purge is confirmed, all the CUM periods in the list and their associated schedules will be deleted.

Foreign Keys

Primary Key Table	Primary Key Column	Foreign Key Column
CHV_CUM_PERIODS	CUM_PERIOD_ID	CUM_PERIOD_ID

Column Descriptions

Name	Null?	Type	Description
CUM_PERIOD_ID (PK)	NOT NULL	NUMBER	CUM period unique identifier
PURGE_NAME	NOT NULL	VARCHAR2(15)	Name of the process that purged the CUM list
DOUBLE_CHECK_FLAG	NULL	VARCHAR2(1)	Indicates whether or not the CUM list is still purgeable during confirmation
REQUEST_ID	NULL	NUMBER	Standard Who column
PROGRAM_APPLICATION_ID	NULL	NUMBER	Standard Who column
PROGRAM_ID	NULL	NUMBER	Standard Who column
PROGRAM_UPDATE_DATE	NULL	DATE	Standard Who column

Indexes

Index Name	Index Type	Sequence	Column Name
CHV_PURGE_CUM_LIST_U1	UNIQUE	2	CUM_PERIOD_ID

CHV_PURGE_SCHEDULE_LIST

This table will be populated with a list of planning and shipping schedules that are purge candidates. When the purge is confirmed, the schedules in this list and all its related records will be deleted.

Foreign Keys

Primary Key Table	Primary Key Column	Foreign Key Column
CHV_SCHEDULE_ITEMS	SCHEDULE_ITEM_ID	SCHEDULE_ITEM_ID

Column Descriptions

Name	Null?	Type	Description
SCHEDULE_ITEM_ID (PK)	NOT NULL	NUMBER	Schedule item unique identifier
PURGE_NAME	NOT NULL	VARCHAR2(15)	Name of the process that purged the schedule list
DOUBLE_CHECK_FLAG	NOT NULL	VARCHAR2(1)	Indicates whether or not the schedule list is still purgeable during confirmation
REQUEST_ID	NULL	NUMBER	Standard Who column
PROGRAM_APPLICATION_ID	NULL	NUMBER	Standard Who column
PROGRAM_ID	NULL	NUMBER	Standard Who column
PROGRAM_UPDATE_DATE	NULL	DATE	Standard Who column

Indexes

Index Name	Index Type	Sequence	Column Name
CHV_PURGE_SCHEDULE_LIST_U1	UNIQUE	2	SCHEDULE_ITEM_ID

CHV_SCHEDULE_HEADERS

CHV_SCHEDULE_HEADERS stores supplier and schedule header information for every supplier schedule built, using either AutoSchedule or the Supplier Scheduling Workbench.

Column Descriptions

Name	Null?	Type	Description
SCHEDULE_ID (PK)	NOT NULL	NUMBER	Schedule unique identifier
VENDOR_ID	NOT NULL	NUMBER	Supplier unique identifier
VENDOR_SITE_ID	NOT NULL	NUMBER	Supplier site unique identifier
BATCH_ID	NOT NULL	NUMBER	Batch unique identifier
SCHEDULE_TYPE	NOT NULL	VARCHAR2(25)	Planning or Shipping schedule
SCHEDULE_SUBTYPE	NOT NULL	VARCHAR2(25)	Type of planning or shipping schedule
SCHEDULE_HORIZON_START	NOT NULL	DATE	Schedule horizon start date
SCHEDULE_HORIZON_END	NOT NULL	DATE	Schedule horizon end date
BUCKET_PATTERN_ID	NOT NULL	NUMBER	Bucket pattern for schedule
SCHEDULE_OWNER_ID	NOT NULL	NUMBER	Employee who created schedule
LAST_UPDATE_DATE	NOT NULL	DATE	Standard Who column
LAST_UPDATED_BY	NOT NULL	NUMBER	Standard Who column
CREATION_DATE	NOT NULL	DATE	Standard Who column
CREATED_BY	NOT NULL	NUMBER	Standard Who column
SCHEDULE_NUM	NULL	VARCHAR2(20)	Schedule number
SCHEDULE_REVISION	NULL	NUMBER	Schedule revision
ORGANIZATION_ID	NULL	NUMBER	Schedule organization
CONFIRM_DATE	NULL	DATE	Confirmed date
MPS_SCHEDULE_DESIGNATOR	NULL	VARCHAR2(10)	MPS plan name
MRP_COMPILE_DESIGNATOR	NULL	VARCHAR2(10)	MRP plan name
DRP_COMPILE_DESIGNATOR	NULL	VARCHAR2(10)	DRP plan name
SCHEDULE_STATUS	NULL	VARCHAR2(25)	Confirmed status
INQUIRY_FLAG	NULL	VARCHAR2(1)	Simulation schedule
INCLUDE_FUTURE_RELEASES_FLAG	NULL	VARCHAR2(1)	Future releases included
COMMUNICATION_CODE	NULL	VARCHAR2(25)	Communication code options include BOTH, NONE, EDI, PRINT
PRINT_COUNT	NULL	NUMBER	Print count
LAST_PRINT_DATE	NULL	DATE	Last print date
EDI_COUNT	NULL	NUMBER	EDI count
LAST_EDI_DATE	NULL	DATE	Last EDI date
ATTRIBUTE_CATEGORY	NULL	VARCHAR2(30)	Descriptive Flexfield segment
ATTRIBUTE1	NULL	VARCHAR2(150)	Descriptive Flexfield segment
ATTRIBUTE2	NULL	VARCHAR2(150)	Descriptive Flexfield segment
ATTRIBUTE3	NULL	VARCHAR2(150)	Descriptive Flexfield segment
ATTRIBUTE4	NULL	VARCHAR2(150)	Descriptive Flexfield segment
ATTRIBUTE5	NULL	VARCHAR2(150)	Descriptive Flexfield segment
ATTRIBUTE6	NULL	VARCHAR2(150)	Descriptive Flexfield segment
ATTRIBUTE7	NULL	VARCHAR2(150)	Descriptive Flexfield segment
ATTRIBUTE8	NULL	VARCHAR2(150)	Descriptive Flexfield segment
ATTRIBUTE9	NULL	VARCHAR2(150)	Descriptive Flexfield segment
ATTRIBUTE10	NULL	VARCHAR2(150)	Descriptive Flexfield segment
ATTRIBUTE11	NULL	VARCHAR2(150)	Descriptive Flexfield segment
ATTRIBUTE12	NULL	VARCHAR2(150)	Descriptive Flexfield segment
ATTRIBUTE13	NULL	VARCHAR2(150)	Descriptive Flexfield segment
ATTRIBUTE14	NULL	VARCHAR2(150)	Descriptive Flexfield segment
ATTRIBUTE15	NULL	VARCHAR2(150)	Descriptive Flexfield segment

Oracle Proprietary, Confidential Information--Use Restricted by Contract

Column Descriptions (Continued)

Name	Null?	Type	Description
LAST_UPDATE_LOGIN	NULL	NUMBER	Standard Who column
REQUEST_ID	NULL	NUMBER	Standard Who column
PROGRAM_APPLICATION_ID	NULL	NUMBER	Standard Who column
PROGRAM_ID	NULL	NUMBER	Standard Who column
PROGRAM_UPDATE_DATE	NULL	DATE	Standard Who column
EDI_PROCESSED_FLAG	NULL	VARCHAR2(1)	EDI processed
EDI_PROCESSED_STATUS	NULL	VARCHAR2(10)	EDI processed status

Indexes

Index Name	Index Type	Sequence	Column Name
CHV_SCHEDULE_HEADERS_N1	NOT UNIQUE	1	VENDOR_ID
CHV_SCHEDULE_HEADERS_N2	NOT UNIQUE	1	VENDOR_SITE_ID
CHV_SCHEDULE_HEADERS_N3	NOT UNIQUE	1	SCHEDULE_HORIZON_START
CHV_SCHEDULE_HEADERS_N4	NOT UNIQUE	1	SCHEDULE_HORIZON_END
CHV_SCHEDULE_HEADERS_N5	NOT UNIQUE	1	ORGANIZATION_ID
CHV_SCHEDULE_HEADERS_N6	NOT UNIQUE	1	SCHEDULE_OWNER_ID
CHV_SCHEDULE_HEADERS_N7	NOT UNIQUE	1	BATCH_ID
CHV_SCHEDULE_HEADERS_U1	UNIQUE	1	SCHEDULE_ID

CHV_SCHEDULE_ITEMS

CHV_SCHEDULE_ITEMS stores the item detail information associated with supplier schedules. It has a child relationship to CHV_SCHEDULE_HEADERS.

Column Descriptions

Name	Null?	Type	Description
SCHEDULE_ID	NOT NULL	NUMBER	Schedule header unique identifier
SCHEDULE_ITEM_ID (PK)	NOT NULL	NUMBER	Schedule item unique identifier
ORGANIZATION_ID	NOT NULL	NUMBER	Ship to organization
ITEM_ID	NOT NULL	NUMBER	Item
ITEM_PLANNING_METHOD	NULL	VARCHAR2(25)	Item planning method when schedule was built
PO_HEADER_ID	NULL	NUMBER	Oldest open supply agreement
PO_LINE_ID	NULL	NUMBER	Oldest open supply agreement line
LAST_UPDATE_DATE	NOT NULL	DATE	Standard Who column
LAST_UPDATED_BY	NOT NULL	NUMBER	Standard Who column
CREATION_DATE	NOT NULL	DATE	Standard Who column
CREATED_BY	NOT NULL	NUMBER	Standard Who column
REBUILD_FLAG	NULL	VARCHAR2(1)	Item marked for rebuild
ITEM_CONFIRM_STATUS	NULL	VARCHAR2(25)	Item confirmation status
STARTING_CUM_QUANTITY	NULL	NUMBER	CUM at schedule generation in purchasing UOM
STARTING_AUTH_QUANTITY	NULL	NUMBER	Past due quantity plus CUM to-date in purchasing UOM
STARTING_CUM_QTY_PRIMARY	NULL	NUMBER	CUM at schedule generation in primary UOM
STARTING_AUTH_QTY_PRIMARY	NULL	NUMBER	Past due quantity plus CUM period to-date in primary UOM
LAST_RECEIPT_TRANSACTION_ID	NULL	NUMBER	Last receipt transaction at schedule generation
PURCHASING_UNIT_OF_MEASURE	NULL	VARCHAR2(25)	Purchasing unit of measure
PRIMARY_UNIT_OF_MEASURE	NULL	VARCHAR2(25)	Primary unit of measure
ATTRIBUTE_CATEGORY	NULL	VARCHAR2(30)	Descriptive Flexfield segment
ATTRIBUTE1	NULL	VARCHAR2(150)	Descriptive Flexfield segment
ATTRIBUTE2	NULL	VARCHAR2(150)	Descriptive Flexfield segment
ATTRIBUTE3	NULL	VARCHAR2(150)	Descriptive Flexfield segment
ATTRIBUTE4	NULL	VARCHAR2(150)	Descriptive Flexfield segment
ATTRIBUTE5	NULL	VARCHAR2(150)	Descriptive Flexfield segment
ATTRIBUTE6	NULL	VARCHAR2(150)	Descriptive Flexfield segment
ATTRIBUTE7	NULL	VARCHAR2(150)	Descriptive Flexfield segment
ATTRIBUTE8	NULL	VARCHAR2(150)	Descriptive Flexfield segment
ATTRIBUTE9	NULL	VARCHAR2(150)	Descriptive Flexfield segment
ATTRIBUTE10	NULL	VARCHAR2(150)	Descriptive Flexfield segment
ATTRIBUTE11	NULL	VARCHAR2(150)	Descriptive Flexfield segment
ATTRIBUTE12	NULL	VARCHAR2(150)	Descriptive Flexfield segment
ATTRIBUTE13	NULL	VARCHAR2(150)	Descriptive Flexfield segment
ATTRIBUTE14	NULL	VARCHAR2(150)	Descriptive Flexfield segment
ATTRIBUTE15	NULL	VARCHAR2(150)	Descriptive Flexfield segment
LAST_UPDATE_LOGIN	NULL	NUMBER	Standard Who column
REQUEST_ID	NULL	NUMBER	Standard Who column
PROGRAM_APPLICATION_ID	NULL	NUMBER	Standard Who column
PROGRAM_ID	NULL	NUMBER	Standard Who column

Oracle Proprietary, Confidential Information--Use Restricted by Contract

Column Descriptions (Continued)

<u>Name</u>	<u>Null?</u>	<u>Type</u>	<u>Description</u>
PROGRAM_UPDATE_DATE	NULL	DATE	Standard Who column
ITEM_CONFIRM_FLAG	NULL	VARCHAR2(1)	Item confirmation status
ITEM_PURGE_STATUS	NULL	VARCHAR2(25)	Flag to indicate whether this schedule line is purged

Indexes

<u>Index Name</u>	<u>Index Type</u>	<u>Sequence</u>	<u>Column Name</u>
CHV_SCHEDULE_ITEMS_N1	NOT UNIQUE	1	SCHEDULE_ID
CHV_SCHEDULE_ITEMS_N2	NOT UNIQUE	1	ITEM_ID
CHV_SCHEDULE_ITEMS_U1	UNIQUE	1	SCHEDULE_ITEM_ID

CHV_SCHEDULE_ORGANIZATIONS

CHV_SCHEDULE_ORGANIZATIONS stores temporary organizations associated with a schedule. Once the schedule is built, the information in this table is no longer needed

Column Descriptions

Name	Null?	Type	Description
BATCH_ID	NOT NULL	NUMBER	Batch unique identifier
ORGANIZATION_ID	NOT NULL	NUMBER	Organization
LAST_UPDATE_LOGIN	NULL	NUMBER	Standard Who column
REQUEST_ID	NULL	NUMBER	Standard Who column
PROGRAM_APPLICATION_ID	NULL	NUMBER	Standard Who column
PROGRAM_ID	NULL	NUMBER	Standard Who column
PROGRAM_UPDATE_DATE	NULL	DATE	Standard Who column

Indexes

Index Name	Index Type	Sequence	Column Name
CHV_SCHEDULE_ORGANIZAITONS_U1	UNIQUE	1	BATCH_ID
		2	ORGANIZATION_ID

Index

A

Application Building Block, 1 – 7

C

Column descriptions, 3 – 4

Columns, Who, 3 – 4

Concurrent Program List. *See* Concurrent Program Definitions

D

Database Diagram, 1 – 7

 Summary Database Diagram, 1 – 7

database diagrams

 conventions, 2 – 6

 summary, 2 – 5

Database triggers, 3 – 6

F

Foreign keys, 3 – 3

Form, 1 – 8

Form List, 2 – 12

See also Form Definitions

Forms and Table View List, 2 – 10

I

Indexes, 3 – 6

 important note about, 3 – 6

Internal View List, 2 – 11

L

Lookup types. *See* QuickCodes

M

Module List, 2 – 12

See also Module Definitions

Modules, 1 – 7

O

Oracle8 sequences. *See* Sequences

P

Public Table List, 2 – 9

Q

QuickCodes, 1 – 8

 Columns that contain, 3 – 3

R

Relationship, 1 – 7

Report List, 2 – 12

See also Report Definitions

S

Sequences, 3 – 6
summary database diagram. *See* database diagrams

T

Table and View Definitions

CHV_AUTHORIZATION_HEADERS_V, 2 – 10
CHV_AUTHORIZATIONS, 3 – 7
CHV_AUTHORIZATIONS_V, 2 – 10
CHV_BUCKET_PATTERNS, 3 – 9
CHV_BUCKET_PATTERNS_VAL_V, 2 – 10
CHV_CUM_ADJUSTMENTS, 3 – 10
CHV_CUM_ITEMS_HISTORY_V, 2 – 10
CHV_CUM_ITEMS_V, 2 – 10
CHV_CUM_PERIOD_ITEMS, 3 – 12
CHV_CUM_PERIODS, 3 – 11
CHV_HISTORY_CUM_PERIODS, 3 – 13
CHV_HISTORY_SCHEDULES, 3 – 14
CHV_HORIZ_BKT_SCHEDULES_V, 2 – 10
CHV_HORIZ_DATE_SCHEDULES_V, 2 – 10
CHV_HORIZ_QTY_SCHEDULES_V, 2 – 10
CHV_HORIZONTAL_SCHEDULES, 3 – 15
CHV_ITEM_ORDERS, 3 – 17
CHV_ITEM_ORDERS_V, 2 – 10
CHV_ORG_OPTIONS, 3 – 19
CHV_ORG_OPTIONS_V, 2 – 10
CHV_OWNERS_ALL_V, 2 – 10
CHV_PLANNERS_ALL_V, 2 – 10
CHV_PLANNERS_VAL_V, 2 – 10

CHV_PURGE_CUM_LIST, 3 – 20
CHV_PURGE_SCHEDULE_LIST, 3 – 21
CHV_RECEIVING_TRANSACTIONS_V, 2 – 11
CHV_SCHEDULE_HEADERS, 3 – 22
CHV_SCHEDULE_HEADERS_ALL_V, 2 – 10
CHV_SCHEDULE_HEADERS_V, 2 – 10
CHV_SCHEDULE_HEADERS_VAL_V, 2 – 10
CHV_SCHEDULE_ITEMS, 3 – 24
CHV_SCHEDULE_ITEMS_V, 2 – 10
CHV_SCHEDULE_ORGANIZATIONS, 3 – 26
CHV_SCHEDULERS_ALL_V, 2 – 10
CHV_SCHEDULERS_VAL_V, 2 – 10

Tables

See also Table and View Definitions
Column descriptions, 3 – 4
Foreign keys, 3 – 3
Indexes. *See* Indexes
Primary Keys, 3 – 4
QuickCodes Columns, 3 – 3
Who columns, 3 – 4, 3 – 5

V

View Definitions. *See* Table and View Definitions

Views

See also Table and View Definitions; View List
Derivation, 3 – 6

Reader's Comment Form

Oracle Supplier Scheduling Technical Reference Manual A80899-01

Oracle Corporation welcomes your comments and suggestions on the quality and usefulness of this publication. Your input is an important part of the information we use for revision.

- Did you find any errors?
- Is the information clearly presented?
- Do you need more information? If so, where?
- Are the examples correct? Do you need more examples?
- What features did you like most about this manual? What did you like least about it?

If you find any errors or have any other suggestions for improvement, please indicate the topic, chapter, and page number below:

Please send your comments to:

Oracle Applications Documentation Manager
Oracle Corporation
500 Oracle Parkway
Redwood Shores, CA 94065 USA
Phone: (650) 506-7000 Fax: (650) 506-7200

If you would like a reply, please give your name, address, and telephone number below:

Thank you for helping us improve our documentation.



CAUTION!

This document contains proprietary, confidential information that is the exclusive property of Oracle Corporation.

If you are an Oracle customer, this numbered copy is registered in your site's name. Use, duplication, and disclosure are severely restricted and subject to restrictions stated in your contract with Oracle Corporation.

If you are an Oracle employee, this numbered copy is registered in your name and must be returned if you leave the company. It is your responsibility not to disclose this information to anyone outside of Oracle who is not licensed to use this product. If you have a prospect who needs to see this information, contact mailid APPSAPP to obtain a special nondisclosure agreement.

If you are neither an Oracle customer with a valid contract for the use of this document nor an Oracle employee, then you received this document in an unauthorized manner and are not legally entitled to possess or read it. Please return it immediately to Oracle. You may call collect to the office of the Executive Vice President Applications Division, to arrange its return.

Copy #

