

# Oracle® Depot Repair Technical Reference Manual

RELEASE 11*i*

April 2000



Oracle® Depot Repair Technical Reference Manual  
Release 11i

To order this book, ask for Part No. A83686-01

Copyright © 2000. Oracle Corporation. All rights reserved.

Major Contributors:

Contributors:

This Technical Reference Manual (TRM) in any form, software or printed matter, contains proprietary information of Oracle Corporation; it is provided under an Oracle Corporation agreement containing restrictions on use and disclosure and is also protected by copyright, patent, and other intellectual property law. Restrictions applicable to this TRM include, but are not limited to: (a) exercising either the same degree of care to safeguard the confidentiality of this TRM as you exercise to safeguard the confidentiality of your own most important Confidential Information or a reasonable degree of care, whichever is greater; (b) maintaining agreements with your employees and agents that protect the Confidential Information of third parties such as Oracle Corporation and instructing such employees and agents of these requirements for this TRM; (c) restricting disclosure of this TRM to those of your employees who have a "need to know" consistent with the purposes for which this TRM was disclosed to you; (d) maintaining this TRM at all times on your premises; (e) not removing or destroying any proprietary or confidential legends or markings placed upon this TRM in whatever form, software or printed matter; and (f) not reproducing or transmitting this TRM in any form or by any means, electronic or mechanical, for any purpose, without the express written permission of Oracle Corporation. You should not use this TRM in any form, software or printed matter, to create software that performs the same or similar functions as any Oracle Corporation products.

The information in this TRM is subject to change without notice. If you find any problems in the TRM in any form, software or printed matter, please report them to us in writing. Oracle Corporation does not warrant that this TRM is error-free. This TRM is provided to customer "as-is" with no warranty of any kind. This TRM does not constitute Documentation as that term is defined in Oracle's agreements.

Reverse engineering of the Programs (software and documentation) associated with this TRM are prohibited. The Programs associated with this TRM are not intended for use in any nuclear, aviation, mass transit, medical, or other inherently dangerous applications. It shall be licensee's responsibility to take all appropriate fail-safe, back-up, redundancy and other measures to ensure the safe use of such applications if the Programs are used for such purposes, and Oracle disclaims liability for any damages caused by such use of the Programs.

Program documentation is licensed for use solely to support the deployment of the Programs and not for any other purpose.

#### Restricted Rights Legend

This TRM and the Programs associated with this TRM delivered subject to the DOD FAR Supplement are 'commercial computer software' and use, duplication and disclosure of the TRM and the Programs associated with this TRM shall be subject to the licensing restrictions set forth in the applicable Oracle license agreement. Otherwise, this TRM and the Programs associated with this TRM delivered subject to the Federal Acquisition Regulations are 'restricted computer software' and use, duplication and disclosure of the TRM and the Programs associated with this TRM shall be subject to the restrictions in FAR 52.227-14, Rights in Data — General, including Alternate III (June 1987). Oracle Corporation, 500 Oracle Parkway, Redwood City, CA 94065.

Oracle is a registered trademark, and Oracle Depot Repair, CASE\*Exchange, Enabling the Information Age, Hyper\*SQL, NLS\*Workbench, Oracle7, Oracle8, Oracle 8i, Oracle Access, Oracle Application Object Library, Oracle Discoverer, Oracle Financials, Oracle Quality, Oracle Web Customers, Oracle Web Employees, Oracle Work in Process, Oracle Workflow, PL/SQL, Pro\*Ada, Pro\*C, Pro\*COBOL, Pro\*FORTRAN, Pro\*Pascal, Pro\*PL/I, SmartClient, SQL\*Connect, SQL\*Forms, SQL\*Loader, SQL\*Menu, SQL\*Net, SQL\*Plus, and SQL\*Report are trademarks or registered trademarks of Oracle Corporation. Other names may be trademarks of their respective owners.



# CAUTION

**T**his Technical Reference Manual in any form — software or printed matter — contains proprietary, confidential information that is the exclusive property of Oracle Corporation. If you do not have a valid contract with Oracle for the use of this Technical Reference Manual or have not signed a non-disclosure agreement with Oracle covering this Technical Reference Manual, then you received this document in an unauthorized manner and are not legally entitled to possess or read it.

Use, duplication, and disclosure are subject to restrictions stated in your contract with Oracle Corporation.





# Contents

- Chapter 1**                    **Introduction** ..... 1–1
  
- Chapter 2**                    **High-Level Design** ..... 2–1
  - Overview of High-Level Design ..... 2–2
  - Database Diagrams ..... 2–9
  - Public Table List ..... 2–13
  - Public View List ..... 2–15
  - Forms and Table View List ..... 2–16
  - Multilingual View List ..... 2–17
  - Module List ..... 2–18
  
- Chapter 3**                    **Detailed Design** ..... 3–1
  - Overview of Detailed Design ..... 3–2
  - Table and View Definitions ..... 3–3

**Oracle Proprietary, Confidential Information—Use Restricted by Contract**

# Introduction

**T**he *Oracle Depot Repair Technical Reference Manual* provides the information you need to understand the underlying structure of Oracle Depot Repair. After reading this manual, you should be able to convert your existing applications data, integrate your existing applications with Oracle Depot Repair, and write custom reports for Oracle Depot Repair, as well as read data that you need to perform other tasks.

This chapter introduces you to the *Oracle Depot Repair Technical Reference Manual*, and explains how to use it.

---

## Introduction

At Oracle, we design and build applications using Oracle Designer, our systems design technology that provides a complete environment to support developers through all stages of a systems life cycle. Because we use a repository-based design toolset, all the information regarding the underlying structure and processing of our applications is available to us online. Using Oracle Designer, we can present this information to you in the form of a technical reference manual.

This *Oracle Depot Repair Technical Reference Manual* contains detailed, up-to-date information about the underlying structure of Oracle Depot Repair. As we design and build new releases of Oracle Depot Repair, we update our Oracle Designer repository to reflect our enhancements. As a result, we can always provide you with an *Oracle Depot Repair Technical Reference Manual* that contains the latest technical information as of the publication date. Note that after the publication date we may have added new indexes to Oracle Depot Repair to improve performance.

### About this Manual

---

This manual describes the Oracle Customer Relationship Management (CRM) Applications Release 11i data model, as used by Oracle Depot Repair; it discusses the database we include with a fresh install of Oracle CRM Release 11i. If you have not yet upgraded to Release 11i, your database may differ from the database we document in this book.

You can contact your Oracle representative to confirm that you have the latest technical information for Oracle Depot Repair. You can also use *OracleMetaLink* which is accessible through Oracle's Support Web Center ([http://www.oracle.com/support/elec\\_sup](http://www.oracle.com/support/elec_sup)).

---

## Finding the Latest Information

The *Oracle Depot Repair Technical Reference Manual* contains the latest information as of the publication date. For the latest information we encourage you to use *OracleMetaLink* which is accessible through Oracle's Support Web Center ([http://www.oracle.com/support/elec\\_sup](http://www.oracle.com/support/elec_sup)).

---

## Audience

The *Oracle Depot Repair Technical Reference Manual* provides useful guidance and assistance to:

- Technical End Users
- Consultants
- Systems Analysts
- System Administrators
- Other MIS professionals

This manual assumes that you have a basic understanding of structured analysis and design, and of relational databases. It also assumes that you are familiar with Oracle Application Object Library and Oracle Depot Repair. If you are not familiar with the above products, we suggest that you attend one or more of the training classes available through Oracle Education (see: Other Information Sources: page 1 – 7).

---

## How This Manual is Organized

This manual contains two major sections, High–Level Design and Detailed Design.

### **High–Level Design**

---

This section, Chapter 2, contains database diagrams and lists each database table and view that Oracle Depot Repair uses. This chapter also has a list of modules.

### **Detailed Design**

---

This section, Chapter 3, contains a detailed description of the Oracle Depot Repair database design, including information about each database table and view you might need for your custom reporting or other data requirements.

---

## How to Use This Manual

The *Oracle Depot Repair Technical Reference Manual* is a single, centralized source for all the information you need to know about the underlying structure and processing of Oracle Depot Repair. For example, you can use this manual when you need to:

- Convert existing application data
- Integrate your Oracle Depot Repair application with your other applications systems
- Write custom reports
- Define alerts against Oracle Applications tables
- Configure your Oracle Self-Service Web Applications
- Create views for decision support queries using query tools
- Create business views for Oracle Discoverer

You need not read this manual cover to cover. Use the table of contents and index to quickly locate the information you need.

---

## How Not To Use This Manual

### **Do not use this manual to plan modifications**

You should not use this manual to plan modifications to Oracle Depot Repair. Modifying Oracle Depot Repair limits your ability to upgrade to future releases of your Oracle Depot Repair application. In addition, it interferes with our ability to give you the high-quality support you deserve.

We have constructed Oracle Depot Repair so that you can customize it to fit your needs without programming, and you can integrate it with your existing applications through interface tables. However, should you require program modifications, you should contact our support team (see: Other Information Sources: page 1 – 7). They can put you in touch with Oracle Services, the professional consulting organization of Oracle. Their team of experienced applications professionals can make the modifications you need while ensuring upward compatibility with future product releases.

### **Do not write data into non-interface tables**

Oracle reserves the right to change the structure of Oracle Applications tables, and to change the meaning of, add, or delete lookup codes and data in future releases. Do not write data directly into or change data in non-interface tables using SQL\*Plus or other programming tools because you risk corrupting your database and interfering with our ability to support you.

Moreover, this version of the *Oracle Depot Repair Technical Reference Manual* does not contain complete information about the dependencies between Oracle Depot Repair applications tables. Therefore, you should write data into only those tables we identify as interface tables. If you write data into other non-interface tables, you risk violating your data integrity since you might not fulfill all the data dependencies in your Oracle Depot Repair application.

You are responsible for the support and upgrade of the logic within the procedures that you write, which may be affected by changes between releases of Oracle Applications.

### **Do not rely on upward compatibility of the data model**

Oracle reserves the right to change the structure of Oracle Depot Repair tables, and to change the meaning of, add, or delete lookup codes and other data in future releases. We do not guarantee the upward compatibility of the Oracle Depot Repair data model. For example, if you write a report that identifies concurrent requests that end in Error status by selecting directly from Oracle Application Object Library tables, we do not guarantee that your report will work properly after an upgrade.

---

## **About Oracle Application Object Library**

The *Oracle Depot Repair Technical Reference Manual* may contain references to tables that belong to Oracle Application Object Library. Oracle Application Object Library is a collection of pre-built application components and facilities for building Oracle Applications and extensions to Oracle Applications. Oracle Application Coding Standards use the Oracle Application Object Library and contains shared components including but not limited to — forms, subroutines, concurrent programs and reports, database tables and objects, messages, menus, responsibilities, flexfield definitions and online help.



**Attention:** Oracle does not support *any* customization of Oracle Application Object Library tables or modules, not even by Oracle consultants. (Oracle Application Object Library tables generally have names beginning with FND\_%.)

Accordingly, this manual does not contain detailed information about most Oracle Application Object Library tables used by Oracle Depot Repair.

---

## A Few Words About Terminology

The following list provides you with definitions for terms that we use throughout this manual:

### **Relationship**

---

A relationship describes any significant way in which two tables may be associated. For example, rows in the Journal Headers table may have a one-to-many relationship with rows in the Journal Lines table.

### **Database Diagram**

---

A database diagram is a graphic representation of application tables and the relationships between them.

### **Module**

---

A module is a program or procedure that implements one or more business functions, or parts of a business function, within an application. Modules include forms, concurrent programs and reports, and subroutines.

### **Application Building Block**

---

An application building block is a set of tables and modules (forms, reports, and concurrent programs) that implement closely-related database objects and their associated processing. Said another way, an application building block is a logical unit of an application.

### **QuickCodes**

---

QuickCodes let you define general purpose, static lists of values for window fields. QuickCodes allow you to base your program logic on lookup codes while displaying user-friendly names in a list of values

**Oracle Proprietary, Confidential Information—Use Restricted by Contract**

window. QuickCodes simplify name and language changes by letting you change the names your end users see, while the codes in your underlying programs remain the same.

### **Form**

---

A form is a module comprised of closely related windows that are used together to perform a task. For example, the Enter Journals form in Oracle General Ledger includes the Enter Journals window, the Batch window, and the More Actions window among others. The Enter Journals window is the main window, and from it, you can use buttons to navigate to other windows in the form. The form name usually corresponds to the main window in the form, and is frequently a window you open directly from the Navigator.

---

## **Other Information Sources**

### **Installation and System Administration**

#### **Training**

---

Oracle Education offers a complete set of training courses to help you and your staff master Oracle CRM Applications. We can help you develop a training plan that provides thorough training for both your project team and your end users. We will work with you to organize courses appropriate to your job or area of responsibility.

Training professionals can show you how to plan your training throughout the implementation process so that the right amount of information is delivered to key people when they need it the most. You can attend courses at any one of our many Educational Centers, or you can arrange for our trainers to teach at your facility. In addition, we can tailor standard courses or develop custom courses to meet your needs.

#### **Support**

---

From on-site support to central support, our team of experienced professionals provides the help and information you need to keep Oracle Depot Repair working for you. This team includes your Technical Representative, Account Manager, and Oracle's large staff of consultants and support specialists with expertise in your business

area, managing an Oracle server, and your hardware and software environment.

---

## About Oracle

Oracle Corporation develops and markets an integrated line of software products for database management, applications development, decision support, and office automation, as well as Oracle Applications, an integrated suite of more than 75 software modules for financial management, supply chain management, manufacturing, project systems, human resources, and sales and service management.

Oracle products are available for mainframes, minicomputers, personal computers, network computers, and personal digital assistants, allowing organizations to integrate different computers, different operating systems, different networks, and even different database management systems, into a single, unified computing and information resource.

Oracle is the world's leading supplier of software for information management, and the world's second largest software company. Oracle offers its database, tools, and applications products, along with related consulting, education, and support services, in over 145 countries around the world.

---

## Thank You

Thanks for using Oracle Depot Repair and this technical reference manual!

We appreciate your comments and feedback. After the Table of Contents of this manual is a Reader's Comment Form that you can use to explain what you like or dislike about Oracle Depot Repair or this technical reference manual. Mail your comments to the following address or call us directly at (650) 506-7000.

Oracle CRM Applications Content Development Manager  
Oracle Corporation  
500 Oracle Parkway  
Redwood Shores, California 94065  
U.S.A.

**Oracle Proprietary, Confidential Information—Use Restricted by Contract**

CHAPTER

# 2

## High-Level Design

**T**his chapter presents a high-level design for Oracle Depot Repair that satisfies the business needs we specify during Strategy and Analysis. It contains database diagrams for Oracle Depot Repair application building blocks, lists of database tables and views, and a list of modules.

---

## Overview of High-Level Design

During High-Level Design, we define the application components (tables, views, and modules) we need to build our application. We specify what application components should do without specifying the details of *how* they should do it.

You can refer to this High-Level Design chapter to quickly acquaint yourself with the tables, views, and modules that comprise Oracle Depot Repair applications. And, you can prepare yourself to understand the detailed design and implementation of Oracle Depot Repair.

---

## Summary Database Diagram

The Summary Database Diagram section graphically represents the most important application tables and the relationships between them. It omits tables and relationships that contribute little to the understanding of the application data model. Typically, a summary database diagram shows tables that contain key reference and transaction data.

We prepare a summary database diagram to describe, at a conceptual level, the key information on which our business depends. Later, we refine this summary database diagram, breaking it into multiple database diagrams (generally, one per application building block) to represent all the tables and relationships we need to implement our application in the database.

Review the Summary Database Diagram section to see at a glance the major tables and relationships on which your Oracle Depot Repair application depends.

---

## Database Diagrams

The Database Diagrams section graphically represents all Oracle Depot Repair applications tables and the relationships between them, organized by building block.

Use this section to quickly learn what tables each Oracle Depot Repair application building block uses, and how those tables interrelate. Then, you can refer to the Table and View Definitions sections of Chapter 3 for more detailed information about each of those tables.

**Oracle Proprietary, Confidential Information—Use Restricted by Contract**

---

## Table Lists

The Table List sections list the Oracle Depot Repair applications tables. Because a product might not include at least one table for each type, this Technical Reference Manual might not include each of the following sections.

### Public Tables

---

Use the Public Table List section to quickly identify the tables you are most interested in. Then, you can refer to the Table and View Definitions sections of Chapter 3 for more detailed information about those tables.

In addition, this manual may contain full documentation for one or more of the following Application Object Library tables: FND\_DUAL, FND\_CURRENCIES, and FND\_COMMON\_LOOKUPS.

### Internal Tables

---

This section includes a list of private, internal tables used by Oracle Depot Repair; we do not provide additional documentation for these tables.

---

## View Lists

The View List sections list the Oracle Depot Repair views, with one section for each type of view. Because a product might not include at least one view for each type, this Technical Reference Manual might not include each of the following sections.

Use this section to quickly identify the views you are most interested in. Then, you can refer to the Table and View Definitions sections of Chapter 3 for more detailed information about those views.

### Public Views

---

This section lists views that may be useful for your custom reporting or other data requirements. The list includes a description of the view, and the page in Chapter 3 that gives detailed information about the public view.

## **Web Views**

---

This section lists views that you may need to configure your Self-Service Web applications. The list includes a description of the view, and the page in Chapter 3 that gives detailed information about the web view.

## **Forms and Table Views**

---

This section lists supplementary views that are not essential to the Release 11i data model, but simplify coding or improve performance for Oracle Developer.

## **Internal Views**

---

This section includes each private, internal view that Oracle Depot Repair uses.

## **Single-Organization Views**

---

This section lists the Oracle Depot Repair views that we added to take the place of various tables that are now partitioned by operating unit, to support multiple sets of books within a single installation of Oracle Depot Repair.

## **Multiple Reporting Currency Views**

---

This list includes views that were created to support the Multiple Reporting Currencies feature.

## **MultiLingual Views**

---

This section lists views that were created to allow certain seed data to be available in multiple national languages simultaneously.

---

## **Module List**

The Module List section briefly describes each of the Oracle Depot Repair applications modules. This section lists forms, reports, and concurrent programs.

A form is a module comprised of closely related windows that are used together to perform a task. For example, the Enter Journals form in Oracle General Ledger includes the Enter Journals window, the Batch

**Oracle Proprietary, Confidential Information—Use Restricted by Contract**

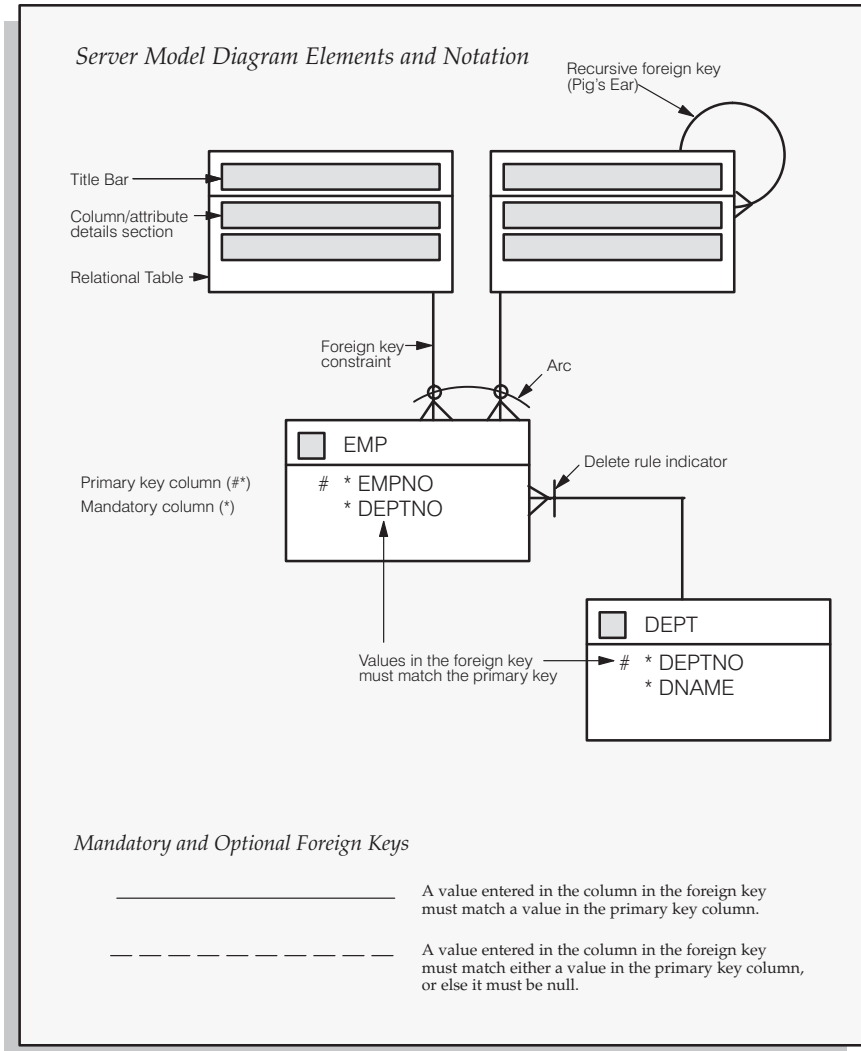
window, and the More Actions window. The Enter Journals window is the main window, and from it, you can use buttons to navigate to other windows in the form. The form name usually corresponds to the main window in the form, and is frequently a window you can open directly from the Navigator.

The Reports and Concurrent Programs lists include processes you can submit from the Submit Requests window or other windows, as well as processes that are submitted automatically by Oracle Depot Repair. Use your user's guide to learn more about reports and concurrent processes.

# Database Diagramming Conventions

We use the following notational conventions in our database diagrams:

Figure 2 – 1  
Database Diagram  
Conventions



**Tables** – are the basic unit of storage in the database. A hand symbol preceding the title in the table’s title bar indicates that the table is not owned by this application but shared with another.

**Foreign key constraint** – is a type of referential integrity constraint for checking the integrity of data entered in a specific column or set of columns. This specified column or set of columns is known as the foreign key.

**Delete rule indicator** – determines the action to be taken when an attempt is made to delete a related row in a join table. A line through the foreign key constraint, as shown on the above diagram, indicates that this action is restricted.

**Arcs** – specify that, for any given row in a table, a value must be entered in one of the arc columns. The remaining columns within the arc must be null.

---

# Oracle Depot Repair Summary Database Diagram

Oracle Proprietary, Confidential Information—Use Restricted by Contract

---

## Database Diagrams

This section graphically represents most of the significant Oracle Depot Repair tables and the relationships between them, organized by building block. Use this section to quickly learn what tables each Oracle Depot Repair application building block uses, and how these tables interrelate. Then, you can refer to the Table and View Definitions sections of Chapter 3 for more detailed information about each of those tables.

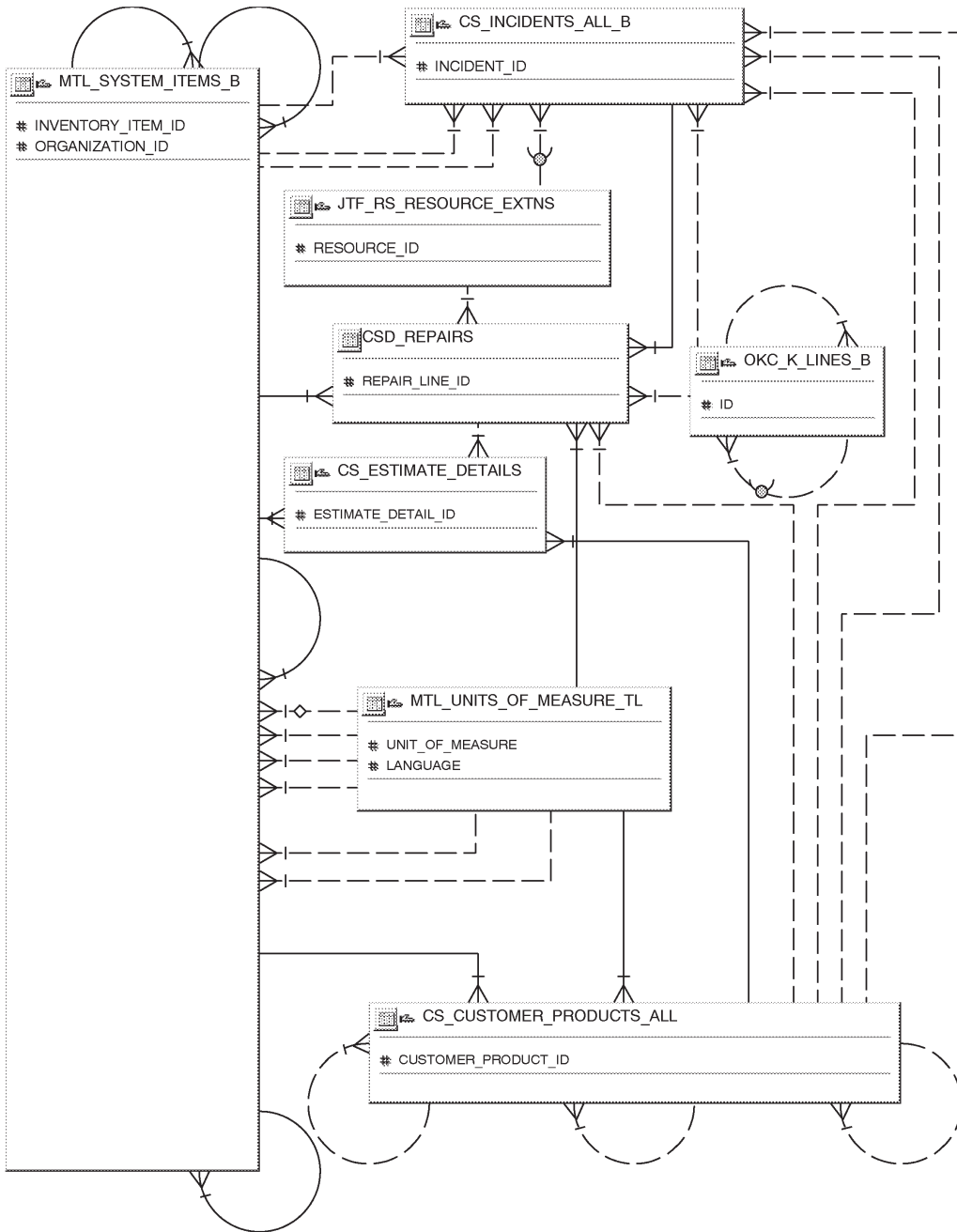
This section contains a database diagram for each of the following Oracle Depot Repair application building blocks:

- Diagram 1: Repair Orders
- Diagram 2: Repair Jobs and History

Some tables, especially important reference tables, appear in more than one database diagram. When several building blocks use a table, we show that table in each appropriate database diagram.

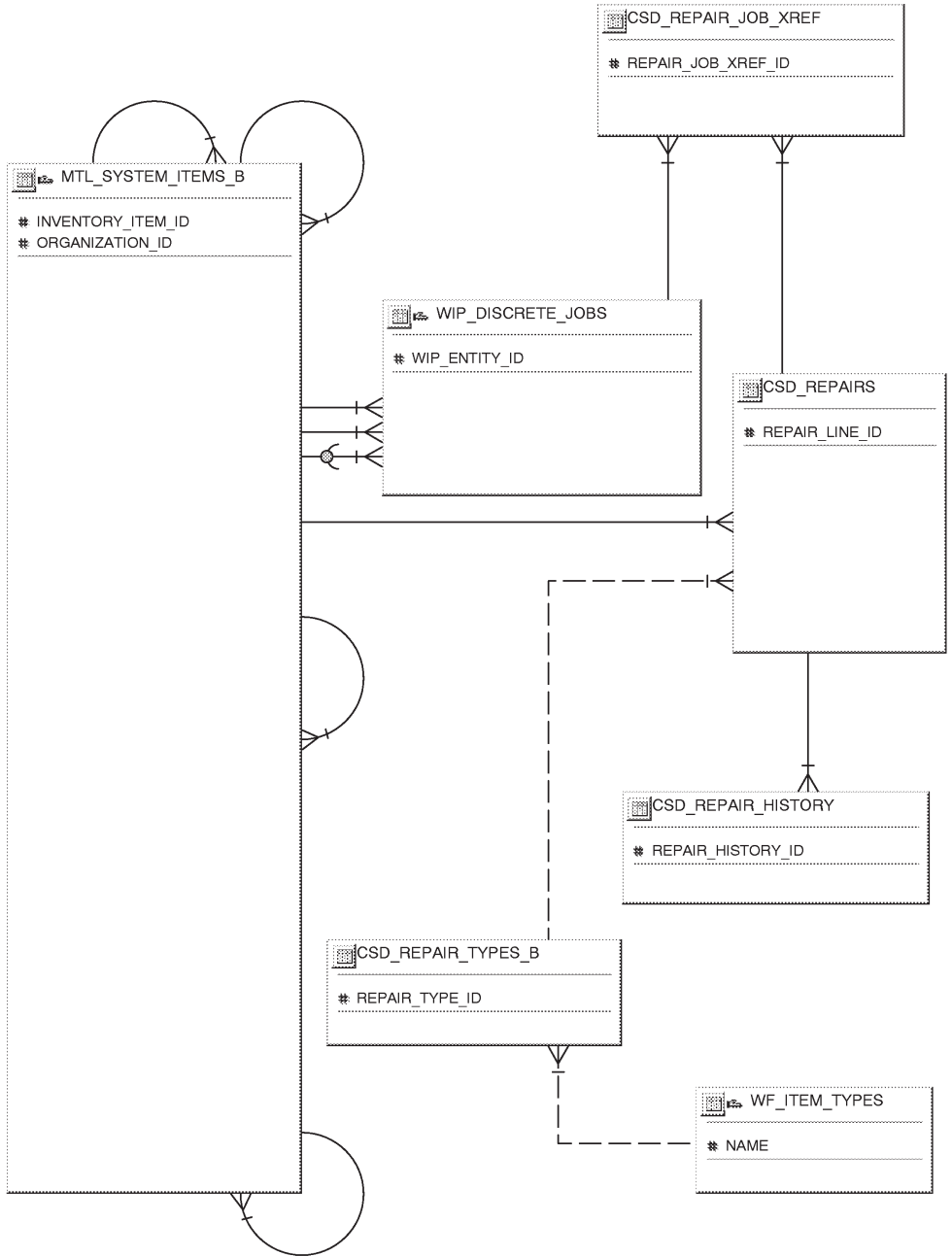
---

## Repair Orders



---

## Repair Jobs and History



## Public Table List

This section lists each public database table that Depot Repair uses and provides a brief description of each of those tables. The page reference is to the table description in Chapter 3.

Note that “public” tables are not necessarily intended for write access by custom code; Oracle Corporation supports write access using only standard Oracle Applications forms, reports, and programs, or any SQL write access to tables explicitly documented as API tables. For more information, see the How Not To Use This Manual section of this book’s Introduction.

Depot Repair uses the following Public tables:

<b>Table Name</b>	<b>Description</b>
CSD_REPAIRS	This table holds all the repair orders. (See page 3 – 9)
CSD_REPAIR_HISTORY	This table stores all the events (e.g. Broken Product Received, Job Created, Product Shipped) associated with a repair order. (See page 3 – 16)
CSD_REPAIR_JOB_XREF	This table holds all the jobs submitted for a repair order. (See page 3 – 22)
CSD_REPAIR_TYPES_B	This table stores all the repair types. (See page 3 – 27)
CSD_REPAIR_TYPES_TL	This is the translation table for the repair type table CSD_REPAIR_TYPES_B. (See page 3 – 29)
CS_CP_REVISIONS	Revision information about products in the installed base (See page 3 – 32)
CS_CUSTOMER_PRODUCTS_ALL	The installed base Products information. (See page 3 – 34)
CS_CUSTOMER_PRODUCT_STATUSES	Statuses that can be assigned to products in the installed base (See page 3 – 38)
CS_ESTIMATE_DETAILS	Items Required for service Billing (See page 3 – 40)
CS_INCIDENTS_ALL_B	This table stores non–translated information about service requests. (See page 3 – 47)
FND_LANGUAGES	National dialects (See page NO TAG)
FND_LOOKUP_VALUES	QuickCode values (See page NO TAG)

JTF_RS_RESOURCE_EXTNS	This is table stores all important information about Resources. These Resources are coming from HR or HZ or Vonder table etc. Primary key is resource_id. Resource_number, user_id sre also unique keys. (See page 3 – 61)
MTL_SYSTEM_ITEMS_B	Inventory item definitions (See page 3 – 64)
MTL_UNITS_OF_MEASURE_TL	Unit of measure definitions (See page 3 – 83)
OKC_K_LINES_B	Deliverable ITEMS grouped into a logical set usually defined by unitary price, delivery or some other classification. (See page 3 – 85)
WF_ITEM_TYPES	Item type definition (See page 3 – 88)
WIP_DISCRETE_JOBS	Discrete jobs (See page 3 – 89)
WIP_ENTITIES	Information common to jobs and schedules (See page 3 – 95)

## Public View List

This section lists each public database view that Oracle Depot Repair uses and provides a brief description of each of those views. These views may be useful for your custom reporting or other data requirements. The page reference is to the detailed view description in Chapter 3.

Oracle Depot Repair uses the following public views:

<b>View Name</b>	<b>Description</b>
ASO_I_ITEM_UOMS_V	This is a view on MTL_ITEMS_UOMS_VIEW which gets valid UOMs for items, considering the conversions that are defined (See page 3 – 8)
CSD_REPAIRS_V	The view for getting repair orders. (See page 3 – 12)
CSD_REPAIR_HISTORY_V	The view for getting repair order history. (See page 3 – 19)
CSD_REPAIR_JOB_XREF_V	The view for getting repair order jobs. (See page 3 – 24)
CSD_REPAIR_TYPES_VL	This is the VL view of the Repair Types. (See page 3 – 30)
CS_INCIDENTS_V	Service requests and their attributes. This view is used by the main service request form. (See page 3 – 52)
FND_LOOKUPS	Oracle Application Object Library QuickCodes (See page 3 – 60)
MFG_LOOKUPS	(See page NO TAG)
MTL_SYSTEM_ITEMS_VL	System Items multilingual view with concatenated segments column (See page NO TAG)
MTL_UNITS_OF_MEASURE_VL	(See page NO TAG)

---

## Forms and Table View List

This section lists supplementary views that are not essential to the Release 11i data model, but simplify coding or improve performance of Developer. For example, many of these views are used as base tables in Oracle Depot Repair forms.



**Warning:** We do not recommend you query or alter data using these views. Furthermore, these views may change dramatically in subsequent minor or major releases of Oracle Depot Repair.

Oracle Depot Repair uses the following Forms and Table views:

- CSD\_CP\_REFERENCE\_V
- CSD\_INCIDENTS\_V
- CSD\_REPAIR\_JOBS\_V

---

## Multilingual View List

This section lists each MultiLingual database view that Oracle Depot Repair uses. MultiLingual views were created to allow certain seed data to be available in multiple national languages simultaneously.

Oracle Depot Repair uses the following Multilingual views:

- WF\_ITEM\_TYPES\_VL

---

## Module List

This section lists each form, report and concurrent program comprising Depot Repair.

---

### Forms

CSDCRJOB	Submitting Repair Jobs
CSDREPLN	Repair Orders Maintenance
CSDRTSET	Repair Types Maintenance



**Oracle Proprietary, Confidential Information—Use Restricted by Contract**

CHAPTER

# 3

## Detailed Design

**T**his chapter presents a detailed design for implementing Oracle Depot Repair. It contains detailed definitions of tables and views that you may need to reference to write custom reports or use for other data extraction.

---

## Overview of Detailed Design

During Detailed Design, we specify in detail how each applications component should work. We prepare detailed definitions of tables and views.

You can refer to this Detailed Design chapter to gain a detailed understanding of the underlying structure and processing of Oracle Depot Repair that enables you to:

- Convert existing application data
- Integrate your Oracle Depot Repair application with your other applications systems
- Write custom reports
- Define alerts against Oracle Applications tables
- Create views for decision support queries using query tools
- Configure your Oracle Self-Service Web Applications

---

### Table and View Definitions

The Table and View Definitions section contains a detailed definition of Oracle Depot Repair applications tables. For each table, it provides information about primary keys, foreign keys, QuickCodes, indexes, triggers, and sequences. It also gives you a detailed description of each column and its characteristics. In addition, it provides the SQL statement that defines each view. Review this section to get a detailed understanding of what tables your Oracle Depot Repair application contains, and how it uses them to hold and access the information it needs.

---

## Table and View Definitions

This section contains a detailed description of each Oracle Depot Repair table and view that you may need to reference. For each table, it presents detailed information about:

- Primary keys
- Foreign keys
- Column descriptions
- Indexes
- Oracle sequences
- Triggers
- View derivations

Because Oracle does not support customization of Oracle Application Object Library tables, we do not provide you with detailed information about them. Consequently, this section does not document all the FND\_% tables Oracle Depot Repair uses.

The following sections appear in each table or view description:

---

### Foreign Keys

To help you understand the relationships between tables, we list each foreign key contained in a table. For each foreign key in a table, we list the primary key table name (the table to which a foreign key refers), its corresponding primary key columns, and the foreign key columns that refer to those primary key columns.

When the primary key table has a composite primary key, we list each column of the composite key sequentially.

If a table contains two or more distinct foreign keys that refer to the same primary key table, we repeat the primary key table name and list each of the distinct foreign keys separately.

---

### QuickCodes Columns

When a database column contains a QuickCodes value, which we implement using a foreign key to FND\_LOOKUPS, MFG\_LOOKUPS, or to some other lookup table, we list the QuickCodes type (lookup

**Oracle Proprietary, Confidential Information—Use Restricted by Contract**

type) to which the QuickCodes value must belong and a complete list of QuickCodes values and meanings. Some QuickCodes can be defined by you in the application. These values are designated as User-defined.

---

## Column Descriptions

We list the important characteristics of each column in a table or view. These characteristics include whether the column is part of the table's primary key, whether Oracle8i requires a value for this column, and the data type of the column. We also give you a brief description of how Oracle Depot Repair uses the column.

When a column is part of a table's primary key, we append the notation (PK) to the name of that column.

To help you understand which columns Oracle Depot Repair uses and which columns it does not use, we alert you to any unused column. When no module uses a database column, we show one of the following legends in the Description column:

<b>Not currently used</b>	Oracle Depot Repair does not use this column, although the column might be used in a future release.
<b>No longer used</b>	Oracle Depot Repair no longer uses this column. AutoInstall installs this column. Subsequent versions of Oracle Depot Repair might not include this column.
<b>No longer installed</b>	Oracle Depot Repair no longer uses this column. If you <i>upgraded</i> your software from an earlier version, you may still have this column, depending upon whether you chose to delete it during an upgrade process. If you <i>install</i> Oracle Depot Repair, you do not have this column.

### Standard Who Columns

---

Most Oracle Depot Repair tables contain standard columns to support \ Row Who. When your program or SQL\*Plus command selects a row from a table, use these columns to determine who last updated the row. If your program or SQL\*Plus command updates or inserts a row in an

interface table, you must populate each of the five standard Who columns:

LAST_UPDATE_DATE	Date when a user last updated this row
LAST_UPDATED_BY	User who last updated this row (foreign key to FND_USER.USER_ID)
CREATION_DATE	Date when this row was created
CREATED_BY	User who created this row (foreign key to FND_USER.USER_ID)
LAST_UPDATE_LOGIN	Operating system login of user who last updated this row (foreign key to FND_LOGINS.LOGIN_ID). You should set this to NULL, or to 0 if NULL is not allowed

Since every table containing Who columns has several foreign keys to the tables FND\_USER and FND\_LOGINS, we do not include the foreign key columns LAST\_UPDATED\_BY, CREATED\_BY, or LAST\_UPDATE\_LOGIN in a table's list of foreign keys.

### **Additional Who Columns for Concurrent Programs**

---

Some Oracle Depot Repair tables also contain several additional Who columns to distinguish between changes a user makes with a form and changes a concurrent program makes. When a concurrent program updates or inserts a row in a table, the concurrent program populates the following additional Who columns:

REQUEST_ID	Concurrent request ID of program that last updated this row (foreign key to FND_CONCURRENT_REQUESTS.REQUEST_ID)
PROGRAM_APPLICATION_ID	Application ID of program that last updated this row (foreign key to FND_APPLICATION.APPLICATION_ID)
PROGRAM_ID	Program ID of program that last updated this row (foreign key to FND_CONCURRENT_PROGRAM.CONCURRENT_PROGRAM_ID)
PROGRAM_UPDATE_DATE	Date when a program last updated this row

Since every table containing these additional Who columns has several foreign keys to the tables FND\_CONCURRENT\_REQUESTS, FND\_APPLICATION, and FND\_CONCURRENT\_PROGRAM, we do not include the foreign key columns REQUEST\_ID, PROGRAM\_APPLICATION\_ID, or PROGRAM\_ID in a table's list of foreign keys.

### **Columns Reserved for Country-Specific Localizations**

---

Some tables have GLOBAL\_ATTRIBUTE columns which support additional features added to Oracle Depot Repair to meet statutory requirements and common business practices in your country or region. For details on these columns, refer to the Appendix in *Oracle Financials Regional Technical Reference Manual*. To read more about the features that these columns support, look for a User Guide appropriate to your country; for example, see the *Oracle Financials for the Czech Republic User Guide*.

---

## **Indexes**

If an Oracle Depot Repair table uses an Oracle8i index, we list the database columns that comprise that index, in sequential order.

**Note:** The indexes we document in this manual correspond to unique keys we specified during product development and testing. In some cases, we may add additional indexes during the porting process to fine-tune performance on specific platforms; therefore, there may be minor differences between the indexes documented in this book and the indexes for production versions of Oracle Depot Repair.

---

## **Sequences**

Oracle Depot Repair uses Oracle8i sequence generators to generate unique integers. If any table column gets its value from an Oracle8i sequence generator, we list the name of the corresponding sequence generator and the name of the column that stores the unique integer.

---

## Database Triggers

If a table has one or more active database triggers, we provide a brief explanation of each database trigger and when it fires.

---

## View Derivation

For each Oracle Depot Repair view you may need to reference, we include important elements from the SQL statement that defines or creates a view. By studying this view definition, you can understand exactly how a view derives its contents.

## ASO\_I\_ITEM\_UOMS\_V

This is a view with all the columns selected from MTL\_ITEMS\_UOMS\_VIEW which gets valid UOMs for items, considering the conversions that are defined. MTL\_ITEM\_UOMS\_VIEW is used to show all the valid uom based on the allowed uom type (ie, item specific, standard, item specific and standard) of an item. This view can be used to replace the UOM quick pick logic in the transaction forms.

### View Definition

```
CREATE VIEW ASO_I_ITEM_UOMS_V
  as SELECT
    ORGANIZATION_ID
  ,INVENTORY_ITEM_ID
  ,UOM_TYPE
  ,UOM_CODE
  ,UNIT_OF_MEASURE
  ,DESCRIPTION
  ,UOM_CLASS
  FROM MTL_ITEM_UOMS_VIEW
```

### Column Descriptions

Name	Null?	Type	Description
ORGANIZATION_ID	NULL	NUMBER	Organization identifier
INVENTORY_ITEM_ID	NULL	NUMBER	Inventory item identifier
UOM_TYPE	NULL	NUMBER	Allowed unit of measure conversion type
UOM_CODE	NULL	VARCHAR2(3)	Abbreviated unit of measure code
UNIT_OF_MEASURE	NULL	VARCHAR2(25)	Unit of measure name
DESCRIPTION	NULL	VARCHAR2(50)	Unit of measure description
UOM_CLASS	NULL	VARCHAR2(10)	Unit of measure class





ATTRIBUTE5	NULL	VARCHAR2(150)	Descriptive flexfield segment column
ATTRIBUTE6	NULL	VARCHAR2(150)	Descriptive flexfield segment column
ATTRIBUTE7	NULL	VARCHAR2(150)	Descriptive flexfield segment column
ATTRIBUTE8	NULL	VARCHAR2(150)	Descriptive flexfield segment column
ATTRIBUTE9	NULL	VARCHAR2(150)	Descriptive flexfield segment column
ATTRIBUTE10	NULL	VARCHAR2(150)	Descriptive flexfield segment column
ATTRIBUTE11	NULL	VARCHAR2(150)	Descriptive flexfield segment column
ATTRIBUTE12	NULL	VARCHAR2(150)	Descriptive flexfield segment column
ATTRIBUTE13	NULL	VARCHAR2(150)	Descriptive flexfield segment column
ATTRIBUTE14	NULL	VARCHAR2(150)	Descriptive flexfield segment column
ATTRIBUTE15	NULL	VARCHAR2(150)	Descriptive flexfield segment column

*Indexes*

<u>Index Name</u>	<u>Index Type</u>	<u>Sequence</u>	<u>Column Name</u>
CSD_REPAIRS_N1	NOT UNIQUE	5	INCIDENT_ID
CSD_REPAIRS_N2	NOT UNIQUE	5	CUSTOMER_PRODUCT_ID
CSD_REPAIRS_N3	NOT UNIQUE	5	INVENTORY_ITEM_ID
CSD_REPAIRS_U1	UNIQUE	5	REPAIR_LINE_ID
CSD_REPAIRS_U2	UNIQUE	5	REPAIR_NUMBER

*Sequences*

<u>Sequence</u>	<u>Derived Column</u>
CSD_REPAIRS_S1	REPAIR_LINE_ID
CSD_REPAIRS_S2	REPAIR_NUMBER

## CSD\_REPAIRS\_V

The view for getting repair orders.

### *View Definition*

```
CREATE VIEW CSD_REPAIRS_V
  as SELECT
    dra.rowid,
    dra.repair_line_id,
    dra.request_id,
    dra.program_id,
    dra.program_application_id,
    dra.program_update_date,
    dra.created_by,
    dra.creation_date,
    dra.last_updated_by,
    dra.last_update_date,
    dra.last_update_login,
    dra.repair_number,
    dra.incident_id,
    sr.incident_number,
    sr.customer_id,
    dra.inventory_item_id,
    items.concatenated_segments,
    items.description item_desc,
    dra.unit_of_measure,
    uom.unit_of_measure_tl,
    dra.quantity,
    nvl(dra.quantity_in_wip, 0),
    nvl(dra.quantity_rcvd, 0),
    nvl(dra.quantity_shipped, 0),
    dra.project_id,
    dra.task_id,
    dra.contract_line_id,
    dra.customer_product_id,
    cp.reference_number,
    cp.lot_number,
    cps.name,
    rev.revision,
    decode(dra.customer_product_id, '', dra.serial_number, cp.current_serial_number),
    dra.resource_id,
    per.full_name,
    per.job_title,
    dra.repair_type_id,
    drtv1.name,
    dra.instance_id,
    dra.approval_required_flag,
    dra.approval_status,
    fnd11.meaning,
    dra.status,
    fnd12.meaning,
    dra.date_closed,
    dra.promise_date,
    dra.attribute_category,
    dra.attribute1,
```

Oracle Proprietary, Confidential Information—Use Restricted by Contract

```

dra.attribute2,
dra.attribute3,
dra.attribute4,
dra.attribute5,
dra.attribute6,
dra.attribute7,
dra.attribute8,
dra.attribute9,
dra.attribute10,
dra.attribute11,
dra.attribute12,
dra.attribute13,
dra.attribute14,
dra.attribute15
from
jtf_rs_employees_vl per,
jtf_rs_resource_extns res,
cs_incidents_all_vl sr,
fnd_lookups fndl1,
fnd_lookups fndl2,
csd_repair_types_vl drtv1,
cs_customer_products_all cp,
cs_customer_product_statuses cps,
cs_cp_revisions rev,
mtl_system_items_vl items,
mtl_units_of_measure_vl uom,
csd_repairs dra
  Where dra.repair_type_id = drtv1.repair_type_id(+)
and dra.incident_id = sr.incident_id
and dra.resource_id = res.resource_id(+)
and res.category(+) = 'EMPLOYEE'
and res.source_id = per.person_id(+)
and dra.customer_product_id = cp.customer_product_id(+)
and cp.current_cp_revision_id = rev.cp_revision_id(+)
and cp.customer_product_status_id = cps.customer_product_status_id(+)
and dra.approval_status = fndl1.lookup_code (+)
and fndl1.lookup_type (+) = 'CSD_APPROVAL_STATUS'
and dra.status = fndl2.lookup_code
and fndl2.lookup_type = 'CSD_REPAIR_STATUS'
and dra.inventory_item_id = items.inventory_item_id
and items.organization_id = cs_std.get_item_valdn_orgzn_id
and dra.unit_of_measure = uom.uom_code

```

*Column Descriptions*

<u>Name</u>	<u>Null?</u>	<u>Type</u>	<u>Description</u>
ROW_ID	NULL	ROWID	ROWID from CSD_REPAIRS
REPAIR_LINE_ID	NOT NULL	NUMBER(15)	Unique repair order identifier
REQUEST_ID	NULL	NUMBER(15)	Request identifier of last concurrent program to update this row in the table
PROGRAM_ID	NULL	NUMBER(15)	Identifier of last concurrent program to update this record
PROGRAM_APPLICATION_ID	NULL	NUMBER(15)	Application identifier of last concurrent program to update this record



ATTRIBUTE2	NULL	VARCHAR2(150)	Descriptive flexfield segment column
ATTRIBUTE3	NULL	VARCHAR2(150)	Descriptive flexfield segment column
ATTRIBUTE4	NULL	VARCHAR2(150)	Descriptive flexfield segment column
ATTRIBUTE5	NULL	VARCHAR2(150)	Descriptive flexfield segment column
ATTRIBUTE6	NULL	VARCHAR2(150)	Descriptive flexfield segment column
ATTRIBUTE7	NULL	VARCHAR2(150)	Descriptive flexfield segment column
ATTRIBUTE8	NULL	VARCHAR2(150)	Descriptive flexfield segment column
ATTRIBUTE9	NULL	VARCHAR2(150)	Descriptive flexfield segment column
ATTRIBUTE10	NULL	VARCHAR2(150)	Descriptive flexfield segment column
ATTRIBUTE11	NULL	VARCHAR2(150)	Descriptive flexfield segment column
ATTRIBUTE12	NULL	VARCHAR2(150)	Descriptive flexfield segment column
ATTRIBUTE13	NULL	VARCHAR2(150)	Descriptive flexfield segment column
ATTRIBUTE14	NULL	VARCHAR2(150)	Descriptive flexfield segment column
ATTRIBUTE15	NULL	VARCHAR2(150)	Descriptive flexfield segment column

## CSD\_REPAIR\_HISTORY

This table stores all the events (e.g. Broken Product Received, Job Created, Product Shipped) associated with a repair order. This table has 10 number, 10 character, 10 date parameters. Parameters hold the necessary information about the event e.g. for Job Created event one number parameter holds the inventory organization id.

### Foreign Keys

Primary Key Table	Primary Key Column	Foreign Key Column
CSD_REPAIRS	REPAIR_LINE_ID	REPAIR_LINE_ID
FND_LOOKUP_VALUES	LOOKUP_CODE	EVENT_CODE

### QuickCodes Columns

Column	QuickCodes Type	QuickCodes Table
EVENT_CODE	CSD_EVENT	FND_LOOKUPS
	A	Customer Approved
	CR	Charges Recorded
	DIA	Diagnosed
	DROC	Depot Repair Owner Changed
	JC	Repair Job Completed
	JS	Repair Job Created
	PDC	Promise Date Changed
	PS	Shipment
	R	Customer Rejected
	RC	Repair Order Opened
	RE	RMA Created
	RO	Replace Order Created
	RR	RMA Received
	SC	Status Changed
	SLT	Repair Order Split
	SOC	Sales Order Created
	TBR	Ready to be Returned

### Column Descriptions

Name	Null?	Type	Description
REPAIR_HISTORY_ID	NOT NULL	NUMBER (15)	Unique repair history record identifier (PK)
REQUEST_ID	NULL	NUMBER (15)	Request identifier of last concurrent program to update this row in the table
PROGRAM_ID	NULL	NUMBER (15)	Identifier of last concurrent program to update this record
PROGRAM_APPLICATION_ID	NULL	NUMBER (15)	Application identifier of last concurrent program to update this record
PROGRAM_UPDATE_DATE	NULL	DATE	Last update date of this record by a concurrent program
CREATED_BY	NOT NULL	NUMBER (15)	Standard WHO column - with the user id from FND_USER
CREATION_DATE	NOT NULL	DATE	Standard WHO column
LAST_UPDATED_BY	NOT NULL	NUMBER (15)	Standard WHO column - with the user id from FND_USER
LAST_UPDATE_DATE	NOT NULL	DATE	Standard WHO column

Oracle Proprietary, Confidential Information—Use Restricted by Contract



ATTRIBUTE9	NULL	VARCHAR2(150)	Descriptive flexfield segment column
ATTRIBUTE10	NULL	VARCHAR2(150)	Descriptive flexfield segment column
ATTRIBUTE11	NULL	VARCHAR2(150)	Descriptive flexfield segment column
ATTRIBUTE12	NULL	VARCHAR2(150)	Descriptive flexfield segment column
ATTRIBUTE13	NULL	VARCHAR2(150)	Descriptive flexfield segment column
ATTRIBUTE14	NULL	VARCHAR2(150)	Descriptive flexfield segment column
ATTRIBUTE15	NULL	VARCHAR2(150)	Descriptive flexfield segment column

*Indexes*

<u>Index Name</u>	<u>Index Type</u>	<u>Sequence</u>	<u>Column Name</u>
CSD_REPAIR_HISTORY_N1	NOT UNIQUE	5	REPAIR_LINE_ID
CSD_REPAIR_HISTORY_U1	UNIQUE	5	REPAIR_HISTORY_ID

*Sequences*

<u>Sequence</u>	<u>Derived Column</u>
CSD_REPAIR_HISTORY_S1	REPAIR_HISTORY_ID

---

## CSD\_REPAIR\_HISTORY\_V

The view for getting repair order history.

### *View Definition*

```
CREATE VIEW CSD_REPAIR_HISTORY_V
  as SELECT
    drh.rowid,
    drh.repair_history_id,
    drh.request_id,
    drh.program_id,
    drh.program_application_id,
    drh.program_update_date,
    drh.created_by,
    drh.creation_date,
    drh.last_updated_by,
    drh.last_update_date,
    drh.last_update_login,
    drh.repair_line_id,
    drh.event_code,
    lookups.meaning,
    drh.event_date,
    drh.quantity,
    drh.paramn1,
    drh.paramn2,
    drh.paramn3,
    drh.paramn4,
    drh.paramn5,
    drh.paramn6,
    drh.paramn7,
    drh.paramn8,
    drh.paramn9,
    drh.paramn10,
    drh.paramc1,
    drh.paramc2,
    drh.paramc3,
    drh.paramc4,
    drh.paramc5,
    drh.paramc6,
    drh.paramc7,
    drh.paramc8,
    drh.paramc9,
    drh.paramc10,
    drh.paramd1,
    drh.paramd2,
    drh.paramd3,
    drh.paramd4,
    drh.paramd5,
    drh.paramd6,
    drh.paramd7,
    drh.paramd8,
    drh.paramd9,
    drh.paramd10,
    drh.attribute_category,
    drh.attribute1,
```

```

drh.attribute2,
drh.attribute3,
drh.attribute4,
drh.attribute5,
drh.attribute6,
drh.attribute7,
drh.attribute8,
drh.attribute9,
drh.attribute10,
drh.attribute11,
drh.attribute12,
drh.attribute13,
drh.attribute14,
drh.attribute15
from
fnd_lookups lookups,
csd_repair_history drh
  Where drh.event_code = lookups.lookup_code
and lookups.lookup_type = 'CSD_EVENT'

```

#### Column Descriptions

Name	Null?	Type	Description
ROW_ID	NULL	ROWID	ROWID from CSD_REPAIR_HISTORY
REPAIR_HISTORY_ID	NOT NULL	NUMBER (15)	Unique repair history record identifier
REQUEST_ID	NULL	NUMBER (15)	Request identifier of last concurrent program to update this row in the table
PROGRAM_ID	NULL	NUMBER (15)	Identifier of last concurrent program to update this record
PROGRAM_APPLICATION_ID	NULL	NUMBER (15)	Application identifier of last concurrent program to update this record
PROGRAM_UPDATE_DATE	NULL	DATE	Last update date of this record by a concurrent program
CREATED_BY	NOT NULL	NUMBER (15)	Standard WHO column - with the user id from FND_USER
CREATION_DATE	NOT NULL	DATE	Standard WHO column
LAST_UPDATED_BY	NOT NULL	NUMBER (15)	Standard WHO column - with the user id from FND_USER
LAST_UPDATE_DATE	NOT NULL	DATE	Standard WHO column
LAST_UPDATE_LOGIN	NULL	NUMBER (15)	Standard WHO column
REPAIR_LINE_ID	NOT NULL	NUMBER (15)	Unique repair order identifier
EVENT_CODE	NOT NULL	VARCHAR2 (30)	Event code associated with the history record
EVENT_MEANING	NOT NULL	VARCHAR2 (80)	Event meaning associated with the history record
EVENT_DATE	NOT NULL	DATE	Date when the event has happened
QUANTITY	NULL	NUMBER (15)	Quantity associated with the event
PARAMN1	NULL	NUMBER (15)	Number parameter
PARAMN2	NULL	NUMBER (15)	Number parameter
PARAMN3	NULL	NUMBER (15)	Number parameter
PARAMN4	NULL	NUMBER (15)	Number parameter
PARAMN5	NULL	NUMBER (15)	Number parameter
PARAMN6	NULL	NUMBER (15)	Number parameter
PARAMN7	NULL	NUMBER (15)	Number parameter

**Oracle Proprietary, Confidential Information—Use Restricted by Contract**



# CSD\_REPAIR\_JOB\_XREF

This table holds all the jobs submitted for a repair order.

## Foreign Keys

Primary Key Table	Primary Key Column	Foreign Key Column
CSD_REPAIRS	REPAIR_LINE_ID	REPAIR_LINE_ID
WIP_DISCRETE_JOBS	WIP_ENTITY_ID	WIP_ENTITY_ID

## Column Descriptions

Name	Null?	Type	Description
REPAIR_JOB_XREF_ID	NOT NULL	NUMBER(15)	Unique job reference identifier (PK)
CREATED_BY	NOT NULL	NUMBER(15)	Standard WHO column - with the user id from FND_USER
CREATION_DATE	NOT NULL	DATE	Standard WHO column
LAST_UPDATED_BY	NOT NULL	NUMBER(15)	Standard WHO column - with the user id from FND_USER
LAST_UPDATE_DATE	NOT NULL	DATE	Standard WHO column
LAST_UPDATE_LOGIN	NULL	NUMBER(15)	Standard WHO column
REPAIR_LINE_ID	NOT NULL	NUMBER(15)	Repair order for which the job is submitted (foreign key from CSD_REPAIRS)
WIP_ENTITY_ID	NOT NULL	NUMBER(15)	Job identifier (foreign key from WIP_DISCRETE_JOBS)
GROUP_ID	NOT NULL	NUMBER(15)	Job group identifier
ORGANIZATION_ID	NOT NULL	NUMBER(15)	WIP organization identifier
QUANTITY	NOT NULL	NUMBER(15)	Quantity for the job
QUANTITY_COMPLETED	NULL	NUMBER(15)	Quantity completed for the job
ATTRIBUTE_CATEGORY	NULL	VARCHAR2(30)	Descriptive flexfield structure defining column
ATTRIBUTE1	NULL	VARCHAR2(150)	Descriptive flexfield segment column
ATTRIBUTE2	NULL	VARCHAR2(150)	Descriptive flexfield segment column
ATTRIBUTE3	NULL	VARCHAR2(150)	Descriptive flexfield segment column
ATTRIBUTE4	NULL	VARCHAR2(150)	Descriptive flexfield segment column
ATTRIBUTE5	NULL	VARCHAR2(150)	Descriptive flexfield segment column
ATTRIBUTE6	NULL	VARCHAR2(150)	Descriptive flexfield segment column
ATTRIBUTE7	NULL	VARCHAR2(150)	Descriptive flexfield segment column
ATTRIBUTE8	NULL	VARCHAR2(150)	Descriptive flexfield segment column
ATTRIBUTE9	NULL	VARCHAR2(150)	Descriptive flexfield segment column
ATTRIBUTE10	NULL	VARCHAR2(150)	Descriptive flexfield segment column
ATTRIBUTE11	NULL	VARCHAR2(150)	Descriptive flexfield segment column
ATTRIBUTE12	NULL	VARCHAR2(150)	Descriptive flexfield segment column
ATTRIBUTE13	NULL	VARCHAR2(150)	Descriptive flexfield segment column
ATTRIBUTE14	NULL	VARCHAR2(150)	Descriptive flexfield segment column

Oracle Proprietary, Confidential Information—Use Restricted by Contract

ATTRIBUTE15

NULL VARCHAR2(150) Descriptive flexfield segment  
column

*Indexes*

<u>Index Name</u>	<u>Index Type</u>	<u>Sequence</u>	<u>Column Name</u>
CSD_REPAIR_JOB_XREF_N1	NOT UNIQUE	5	REPAIR_LINE_ID
CSD_REPAIR_JOB_XREF_U1	UNIQUE	5	REPAIR_JOB_XREF_ID

*Sequences*

<u>Sequence</u>	<u>Derived Column</u>
CSD_REPAIR_JOB_XREF_S1	REPAIR_JOB_XREF_ID

## CSD\_REPAIR\_JOB\_XREF\_V

The view for getting repair order jobs.

### *View Definition*

```
CREATE VIEW CSD_REPAIR_JOB_XREF_V
  as SELECT
    drj.rowid,
    drj.repair_job_xref_id,
    drj.created_by,
    drj.creation_date,
    drj.last_updated_by,
    drj.last_update_date,
    drj.last_update_login,
    drj.repair_line_id,
    drj.wip_entity_id,
    entity.wip_entity_name,
    drj.group_id,
    jobs.organization_id,
    hou.name,
    drj.quantity,
    drj.quantity_completed,
    jobs.status_type,
    lookups.meaning,
    jobs.routing_reference_id,
    items.concatenated_segments,
    items.description,
    jobs.alternate_routing_designator,
    alt.description,
    drj.attribute_category,
    drj.attribute1,
    drj.attribute2,
    drj.attribute3,
    drj.attribute4,
    drj.attribute5,
    drj.attribute6,
    drj.attribute7,
    drj.attribute8,
    drj.attribute9,
    drj.attribute10,
    drj.attribute11,
    drj.attribute12,
    drj.attribute13,
    drj.attribute14,
    drj.attribute15
  from
    wip_discrete_jobs jobs,
    wip_entities entity,
    hr_organization_units hou,
    mfg_lookups lookups,
    bom_alternate_designators alt,
    mtl_system_items_vl items,
    csd_repair_job_xref drj
  Where drj.wip_entity_id = entity.wip_entity_id
  and drj.wip_entity_id = jobs.wip_entity_id
```

**Oracle Proprietary, Confidential Information—Use Restricted by Contract**



ATTRIBUTE12	NULL	VARCHAR2(150)	Descriptive flexfield segment column
ATTRIBUTE13	NULL	VARCHAR2(150)	Descriptive flexfield segment column
ATTRIBUTE14	NULL	VARCHAR2(150)	Descriptive flexfield segment column
ATTRIBUTE15	NULL	VARCHAR2(150)	Descriptive flexfield segment column



*Indexes*

<u>Index Name</u>	<u>Index Type</u>	<u>Sequence</u>	<u>Column Name</u>
CSD_REPAIR_TYPES_B_N1	NOT UNIQUE	5	WORKFLOW_ITEM_TYPE
CSD_REPAIR_TYPES_B_U1	UNIQUE	5	REPAIR_TYPE_ID

*Sequences*

<u>Sequence</u>	<u>Derived Column</u>
CSD_REPAIR_TYPES_B_S1	REPAIR_TYPE_ID

## CSD\_REPAIR\_TYPES\_TL

This is the translation table for the repair type table  
CSD\_REPAIR\_TYPES\_B.

### Foreign Keys

Primary Key Table	Primary Key Column	Foreign Key Column
CSD_REPAIR_TYPES_B	REPAIR_TYPE_ID	REPAIR_TYPE_ID
FND_LANGUAGES	LANGUAGE_CODE	LANGUAGE

### Column Descriptions

Name	Null?	Type	Description
REPAIR_TYPE_ID	NOT NULL	NUMBER(15)	Unique repair type identifier (part of PK)
LANGUAGE	NOT NULL	VARCHAR2(4)	Language of text. The language to which texts are translated. Part of PK.
CREATED_BY	NOT NULL	NUMBER(15)	Standard WHO column - with the user id from FND_USER
CREATION_DATE	NOT NULL	DATE	Standard WHO column
LAST_UPDATED_BY	NOT NULL	NUMBER(15)	Standard WHO column - with the user id from FND_USER
LAST_UPDATE_DATE	NOT NULL	DATE	Standard WHO column
LAST_UPDATE_LOGIN	NULL	NUMBER(15)	Standard WHO column
SOURCE_LANG	NOT NULL	VARCHAR2(4)	Language from which texts are translated
NAME	NOT NULL	VARCHAR2(80)	Repair type name
DESCRIPTION	NULL	VARCHAR2(240)	Description of the repair type

### Indexes

Index Name	Index Type	Sequence	Column Name
CSD_REPAIR_TYPES_TL_U1	UNIQUE	5	REPAIR_TYPE_ID
		6	LANGUAGE

## CSD\_REPAIR\_TYPES\_VL

This is the VL view of the Repair Types.

### View Definition

```
CREATE VIEW CSD_REPAIR_TYPES_VL
  as SELECT
    b.rowid,
    b.repair_type_id,
    b.created_by,
    b.creation_date,
    b.last_updated_by,
    b.last_update_date,
    b.last_update_login,
    b.workflow_item_type,
    wf.display_name,
    b.start_date_active,
    b.end_date_active,
    b.attribute_category,
    b.attribute1,
    b.attribute2,
    b.attribute3,
    b.attribute4,
    b.attribute5,
    b.attribute6,
    b.attribute7,
    b.attribute8,
    b.attribute9,
    b.attribute10,
    b.attribute11,
    b.attribute12,
    b.attribute13,
    b.attribute14,
    b.attribute15,
    t.description,
    t.name
  from
    csd_repair_types_tl t,
    csd_repair_types_b b,
    wf_item_types_vl wf
  where b.repair_type_id = t.repair_type_id
  and t.language = userenv('LANG')
  and b.workflow_item_type = wf.name(+)
```

### Column Descriptions

Name	Null?	Type	Description
ROW_ID	NULL	ROWID	ROWID from CSD_REPAIR_TYPES_B
REPAIR_TYPE_ID	NOT NULL	NUMBER(15)	Unique repair type identifier
CREATED_BY	NOT NULL	NUMBER(15)	Standard WHO column - with the user id from FND_USER
CREATION_DATE	NOT NULL	DATE	Standard WHO column
LAST_UPDATED_BY	NOT NULL	NUMBER(15)	Standard WHO column - with the user id from FND_USER
LAST_UPDATE_DATE	NOT NULL	DATE	Standard WHO column

**Oracle Proprietary, Confidential Information—Use Restricted by Contract**

LAST_UPDATE_LOGIN	NULL	NUMBER(15)	Standard WHO column
WORKFLOW_ITEM_TYPE	NULL	VARCHAR2(8)	Workflow item type associated with the repair type
WORKFLOW_ITEM_TYPE_NAME	NULL	VARCHAR2(80)	Display name of workflow item type
START_DATE_ACTIVE	NULL	DATE	Date the repair type becomes active
END_DATE_ACTIVE	NULL	DATE	Date the repair type becomes inactive
ATTRIBUTE_CATEGORY	NULL	VARCHAR2(30)	Descriptive flexfield structure defining column
ATTRIBUTE1	NULL	VARCHAR2(150)	Descriptive flexfield segment column
ATTRIBUTE2	NULL	VARCHAR2(150)	Descriptive flexfield segment column
ATTRIBUTE3	NULL	VARCHAR2(150)	Descriptive flexfield segment column
ATTRIBUTE4	NULL	VARCHAR2(150)	Descriptive flexfield segment column
ATTRIBUTE5	NULL	VARCHAR2(150)	Descriptive flexfield segment column
ATTRIBUTE6	NULL	VARCHAR2(150)	Descriptive flexfield segment column
ATTRIBUTE7	NULL	VARCHAR2(150)	Descriptive flexfield segment column
ATTRIBUTE8	NULL	VARCHAR2(150)	Descriptive flexfield segment column
ATTRIBUTE9	NULL	VARCHAR2(150)	Descriptive flexfield segment column
ATTRIBUTE10	NULL	VARCHAR2(150)	Descriptive flexfield segment column
ATTRIBUTE11	NULL	VARCHAR2(150)	Descriptive flexfield segment column
ATTRIBUTE12	NULL	VARCHAR2(150)	Descriptive flexfield segment column
ATTRIBUTE13	NULL	VARCHAR2(150)	Descriptive flexfield segment column
ATTRIBUTE14	NULL	VARCHAR2(150)	Descriptive flexfield segment column
ATTRIBUTE15	NULL	VARCHAR2(150)	Descriptive flexfield segment column
DESCRIPTION	NULL	VARCHAR2(240)	Description of the repair type
NAME	NOT NULL	VARCHAR2(80)	Repair type name

## CS\_CP\_REVISIONS

CS\_CP\_REVISIONS stores information about revisions of products in the installed base that have shipped on sales orders in Oracle Order Entry/Shipping. Each product has at least one revision record associated with it in CS\_CP\_REVISIONS.

Until the time a revision is shipped (if shippable), SHIPPED\_FLAG is set to "N". If "Pick Release" is an action in the order cycle for the originating order in Order Entry/Shipping, then DELIVERED\_FLAG is also set to "N"; otherwise it is set to "Y".

When a revision ships, both SHIPPED\_FLAG as well as DELIVERED\_FLAG are set to "Y".

COMPONENT\_FROZEN\_FLAG applies to revisions whose configuration contains non-shippable included items. It indicates whether a configuration's included items, if any, have been frozen in Order Entry/Shipping.

The primary key for this table is CP\_REVISION\_ID.

### Foreign Keys

Primary Key Table	Primary Key Column	Foreign Key Column
CS_CUSTOMER_PRODUCTS_ALL	CUSTOMER_PRODUCT_ID	CUSTOMER_PRODUCT_ID
CS_LINE_INST_DETAILS	LINE_INST_DETAIL_ID	LINE_SERVICE_DETAIL_ID
MTL_SYSTEM_ITEMS_B	INVENTORY_ITEM_ID	INVENTORY_ITEM_ID

### Column Descriptions

Name	Null?	Type	Description
CP_REVISION_ID (PK)	NOT NULL	NUMBER (15)	Revision identifier
CUSTOMER_PRODUCT_ID	NOT NULL	NUMBER (15)	Customer product identifier
INVENTORY_ITEM_ID	NOT NULL	NUMBER (15)	Product identifier
SERIAL_NUMBER	NULL	VARCHAR2 (30)	Serial number
REVISION	NULL	VARCHAR2 (15)	Revision
SHIPPED_FLAG	NULL	VARCHAR2 (1)	Flag indicating whether the revision has been shipped
DELIVERED_FLAG	NULL	VARCHAR2 (1)	See table description
ORDER_LINE_ID	NOT NULL	NUMBER (15)	Order line identifier in Oracle Order Entry/Shipping
LINE_SERVICE_DETAIL_ID	NULL	NUMBER (15)	Installation detail identifier in Order Entry/Shipping
SHIPPED_DATE	NULL	DATE	Date the revision was shipped
LOT_NUMBER	NULL	VARCHAR2 (30)	Lot number
START_DATE_ACTIVE	NULL	DATE	Date since which the record is active
END_DATE_ACTIVE	NULL	DATE	Date till which the record is active
OBJECT_VERSION_NUMBER	NOT NULL	NUMBER	Sequential number used for database locking control
LAST_UPDATE_DATE	NOT NULL	DATE	Standard Who column
LAST_UPDATED_BY	NOT NULL	NUMBER (15)	Standard Who column
CREATION_DATE	NOT NULL	DATE	Standard Who column

Oracle Proprietary, Confidential Information—Use Restricted by Contract

CREATED_BY	NOT NULL	NUMBER(15)	Standard Who column
LAST_UPDATE_LOGIN	NULL	NUMBER(15)	Standard Who column
ATTRIBUTE1	NULL	VARCHAR2(150)	Descriptive flexfield segment
ATTRIBUTE2	NULL	VARCHAR2(150)	Descriptive flexfield segment
ATTRIBUTE3	NULL	VARCHAR2(150)	Descriptive flexfield segment
ATTRIBUTE4	NULL	VARCHAR2(150)	Descriptive flexfield segment
ATTRIBUTE5	NULL	VARCHAR2(150)	Descriptive flexfield segment
ATTRIBUTE6	NULL	VARCHAR2(150)	Descriptive flexfield segment
ATTRIBUTE7	NULL	VARCHAR2(150)	Descriptive flexfield segment
ATTRIBUTE8	NULL	VARCHAR2(150)	Descriptive flexfield segment
ATTRIBUTE9	NULL	VARCHAR2(150)	Descriptive flexfield segment
ATTRIBUTE10	NULL	VARCHAR2(150)	Descriptive flexfield segment
ATTRIBUTE11	NULL	VARCHAR2(150)	Descriptive flexfield segment
ATTRIBUTE12	NULL	VARCHAR2(150)	Descriptive flexfield segment
ATTRIBUTE13	NULL	VARCHAR2(150)	Descriptive flexfield segment
ATTRIBUTE14	NULL	VARCHAR2(150)	Descriptive flexfield segment
ATTRIBUTE15	NULL	VARCHAR2(150)	Descriptive flexfield segment
CONTEXT	NULL	VARCHAR2(30)	Descriptive flexfield structure defining column

*Indexes*

<u>Index Name</u>	<u>Index Type</u>	<u>Sequence</u>	<u>Column Name</u>
CS_CP_REVISIONS_N1	NOT UNIQUE	1	CUSTOMER_PRODUCT_ID
CS_CP_REVISIONS_N2	NOT UNIQUE	1	INVENTORY_ITEM_ID
CS_CP_REVISIONS_N3	NOT UNIQUE	1	ORDER_LINE_ID
CS_CP_REVISIONS_U1	UNIQUE	1	CP_REVISION_ID

*Sequences*

<u>Sequence</u>	<u>Derived Column</u>
CS_CP_REVISIONS_S	CP_REVISION_ID

## CS\_CUSTOMER\_PRODUCTS\_ALL

CS\_CUSTOMER\_PRODUCTS\_ALL stores information about products that customers own. Each row holds information about a single customer product. Sales order information is brought over by interface programs and stored in this table as customer product records.

PARENT\_CP\_ID points to the earliest grandparent in a set of related products (upgrades, replacements, etc.). For example, if product A was upgraded to product B which was then upgraded to product C, there would be three records in this table, all of which have PARENT\_CP\_ID pointing to product A.

ORIGINAL\_ORDER\_LINE\_ID holds the link from this record to the original order. Prior to this release, some of the order information used to be stored in this table. However, we have now normalized the information by removing all the order data from this table. All the order information can now be obtained from the corresponding "order management" system. The ORIGINAL\_ORDER\_LINE\_ID field has hence become a mandatory field.

RMA\_LINE\_ID and RETURN\_BY\_DATE are set for some related products (replacements, loaners, etc.) based on the charge details specified in Depot Repair for such transactions. ACTUAL\_RETURNED\_DATE is set when the product is actually returned.

CONFIG\_ENABLED\_FLAG, CONFIG\_START\_DATE, CONFIG\_END\_DATE, CONFIG\_ROOT\_ID, CONFIG\_PARENT\_ID, and CONFIG\_TYPE are columns for the configuration management functionality. CONFIG\_ENABLED\_FLAG is set to 'Y' when a particular customer product is configuration management enabled. A customer product can be of one of the five pre-defined types: AS\_ORDERED, AS\_BUILT, AS\_SHIPPED, AS\_INSTALLED, and AS\_MAINTAINED, or user defined types.

ORG\_ID partitions data in this table by organization in a multi-organization environment.

The primary key for this table is CUSTOMER\_PRODUCT\_ID.

### Foreign Keys

Primary Key Table	Primary Key Column	Foreign Key Column
CSS_DEF_PLAT_VERSIONS	PLATFORM_VERSION_ID	PLATFORM_VERSION_ID

**Oracle Proprietary, Confidential Information—Use Restricted by Contract**

CS_CP_REVISIONS	CP_REVISION_ID	CURRENT_CP_REVISION_ID
CS_CUSTOMER_PRODUCTS_ALL	CUSTOMER_PRODUCT_ID	PARENT_CP_ID
CS_CUSTOMER_PRODUCTS_ALL	CUSTOMER_PRODUCT_ID	CONFIG_PARENT_ID
CS_CUSTOMER_PRODUCTS_ALL	CUSTOMER_PRODUCT_ID	CONFIG_ROOT_ID
CS_CUSTOMER_PRODUCT_STATUSES	CUSTOMER_PRODUCT_STATUS_ID	CUSTOMER_PRODUCT_STATUS_ID
CS_LINE_INST_DETAILS	LINE_INST_DETAIL_ID	ORIGINAL_LINE_SERV_DETAIL_ID
CS_SYSTEMS_ALL_B	SYSTEM_ID	SYSTEM_ID
HZ_CUST_ACCOUNTS	CUST_ACCOUNT_ID	CUSTOMER_ID
HZ_CUST_ACCT_SITES_ALL	CUST_ACCT_SITE_ID	BILL_TO_SITE_USE_ID
HZ_PARTY_SITES	PARTY_SITE_ID	SHIP_TO_SITE_USE_ID
HZ_PARTY_SITES	PARTY_SITE_ID	INSTALL_SITE_USE_ID
MTL_SYSTEM_ITEMS_B	INVENTORY_ITEM_ID	INVENTORY_ITEM_ID
MTL_UNITS_OF_MEASURE_TL	UNIT_OF_MEASURE	UNIT_OF_MEASURE_CODE

QuickCodes Columns

Column	QuickCodes Type	QuickCodes Table
TYPE_CODE	CUSTOMER_PRODUCT_TYPE	CS_LOOKUPS

Column Descriptions

Name	Null?	Type	Description
CUSTOMER_PRODUCT_ID (PK)	NOT NULL	NUMBER	Unique identifier for a product in the installed base.
CUSTOMER_ID	NOT NULL	NUMBER	Identifier of the customer account.
INVENTORY_ITEM_ID	NOT NULL	NUMBER	Product identifier.
LOT_NUMBER	NULL	VARCHAR2(30)	Lot number of product shipped
CREATED_MANUALLY_FLAG	NOT NULL	VARCHAR2(1)	Flag indicating whether record was created manually or imported from an "order management" system.
MOST_RECENT_FLAG	NOT NULL	VARCHAR2(1)	Flags the most recent of a set of related (i.e., upgraded, etc.) customer products
CURRENT_CP_REVISION_ID	NOT NULL	NUMBER(15)	Identifies the current revision.
CURRENT_SERIAL_NUMBER	NULL	VARCHAR2(30)	Serial number of product shipped
TYPE_CODE	NULL	VARCHAR2(30)	Product type
SYSTEM_ID	NULL	NUMBER	Identifies the system to which the product belongs
PRODUCT_AGREEMENT_ID	NULL	NUMBER	Product agreement identifier.
INSTALLATION_DATE	NULL	DATE	Date of installation of product at customer site
ORIGINAL_ORDER_LINE_ID	NULL	NUMBER	Holds the link to the sales order information.
ORIGINAL_LINE_SERV_DETAIL_ID	NULL	NUMBER	The identifier of the installation details record from the sales order.
ORIGINAL_NET_AMOUNT	NULL	NUMBER(28,5)	The amount of the product in the Installed Base. Maybe different from the amount in the order line in case of splits, etc.
ORIGINAL_ORDER_CURRENCY_CODE	NULL	VARCHAR2(15)	Currency code of the amount of product in Installed Base
PURCHASE_ORDER_NUM	NULL	VARCHAR2(50)	The purchase order number for this product.
SHIP_TO_SITE_USE_ID	NULL	NUMBER	Identifies the location to which product was shipped

BILL_TO_SITE_USE_ID	NULL	NUMBER	Identifies the location to which product was invoiced
INSTALL_SITE_USE_ID	NULL	NUMBER	Identifies the location where product is installed
QUANTITY	NULL	NUMBER	Quantity of product.
SHIPPED_FLAG	NULL	VARCHAR2(1)	Flag indicating whether product has been shipped
DELIVERED_FLAG	NULL	VARCHAR2(1)	Flag indicating whether product has reached the customer
UNIT_OF_MEASURE_CODE	NOT NULL	VARCHAR2(25)	unit of measure of product
PARENT_CP_ID	NULL	NUMBER	See table description
CUSTOMER_PRODUCT_STATUS_ID	NOT NULL	NUMBER	Status identifier of a customer product
SHIPPED_DATE	NULL	DATE	Date product shipped to customer
ORG_ID	NULL	NUMBER	Operating unit identifier
REFERENCE_NUMBER	NULL	NUMBER	Unique reference for a customer product
RETURN_BY_DATE	NULL	DATE	The date by which the product should be returned
ACTUAL_RETURNED_DATE	NULL	DATE	The actual date on which the product was returned
RMA_LINE_ID	NULL	NUMBER(15)	Identifies the RMA line created for the return of the product
SPLIT_FLAG	NULL	VARCHAR2(1)	Flag that gets set if the product has been split from/into another product(s)
PROJECT_ID	NULL	NUMBER(15)	Project identifier
TASK_ID	NULL	NUMBER(15)	Task identifier
CONFIG_ENABLED_FLAG	NULL	VARCHAR2(1)	Determines if Configuration Management is enabled
CONFIG_START_DATE	NULL	DATE	The date when a configuration type becomes active
CONFIG_END_DATE	NULL	DATE	The date when a configuration type becomes inactive
CONFIG_ROOT_ID	NULL	NUMBER	The customer product ID of the top most parent of the tree that includes the current product
CONFIG_PARENT_ID	NULL	NUMBER	The customer product ID of the immediate parent customer product
CONFIG_TYPE	NULL	VARCHAR2(30)	The configuration type of the customer product
PLATFORM_VERSION_ID	NULL	NUMBER	Applicable only for software products in the installed base. Identifier of the platform version on which this product exists in the installed base.
START_DATE_ACTIVE	NULL	DATE	Effective from
END_DATE_ACTIVE	NULL	DATE	Effective till
OBJECT_VERSION_NUMBER	NOT NULL	NUMBER	Sequential number used for database locking control
MERCHANT_VIEW_FLAG	NULL	VARCHAR2(1)	Flag to indicate whether the product is viewed by a Merchant
CUSTOMER_VIEW_FLAG	NULL	VARCHAR2(1)	Flag to indicate whether the product is viewed by a Customer
ATTRIBUTE1	NULL	VARCHAR2(150)	Descriptive flexfield segment
ATTRIBUTE2	NULL	VARCHAR2(150)	Descriptive flexfield segment
ATTRIBUTE3	NULL	VARCHAR2(150)	Descriptive flexfield segment
ATTRIBUTE4	NULL	VARCHAR2(150)	Descriptive flexfield segment
ATTRIBUTE5	NULL	VARCHAR2(150)	Descriptive flexfield segment
ATTRIBUTE6	NULL	VARCHAR2(150)	Descriptive flexfield segment

Oracle Proprietary, Confidential Information—Use Restricted by Contract

ATTRIBUTE7	NULL	VARCHAR2(150)	Descriptive flexfield segment
ATTRIBUTE8	NULL	VARCHAR2(150)	Descriptive flexfield segment
ATTRIBUTE9	NULL	VARCHAR2(150)	Descriptive flexfield segment
ATTRIBUTE10	NULL	VARCHAR2(150)	Descriptive flexfield segment
ATTRIBUTE11	NULL	VARCHAR2(150)	Descriptive flexfield segment
ATTRIBUTE12	NULL	VARCHAR2(150)	Descriptive flexfield segment
ATTRIBUTE13	NULL	VARCHAR2(150)	Descriptive flexfield segment
ATTRIBUTE14	NULL	VARCHAR2(150)	Descriptive flexfield segment
ATTRIBUTE15	NULL	VARCHAR2(150)	Descriptive flexfield segment
CONTEXT	NULL	VARCHAR2(30)	Descriptive flexfield structure defining column
LAST_UPDATE_DATE	NOT NULL	DATE	Standard Who column
LAST_UPDATED_BY	NOT NULL	NUMBER(15)	Standard Who column
CREATION_DATE	NOT NULL	DATE	Standard Who column
CREATED_BY	NOT NULL	NUMBER(15)	Standard Who column
LAST_UPDATE_LOGIN	NULL	NUMBER(15)	Standard Who column

#### Indexes

Index Name	Index Type	Sequence	Column Name
CS_CUSTOMER_PRODUCTS_N1	NOT UNIQUE	2	CUSTOMER_ID
CS_CUSTOMER_PRODUCTS_N13	NOT UNIQUE	5	INSTALL_SITE_USE_ID
CS_CUSTOMER_PRODUCTS_N14	NOT UNIQUE	1	CONFIG_PARENT_ID
CS_CUSTOMER_PRODUCTS_N15	NOT UNIQUE	1	CONFIG_ROOT_ID
CS_CUSTOMER_PRODUCTS_N16	NOT UNIQUE	1	BILL_TO_SITE_USE_ID
CS_CUSTOMER_PRODUCTS_N17	NOT UNIQUE	1	SHIP_TO_SITE_USE_ID
CS_CUSTOMER_PRODUCTS_N2	NOT UNIQUE	2	INVENTORY_ITEM_ID
CS_CUSTOMER_PRODUCTS_N3	NOT UNIQUE	2	SYSTEM_ID
CS_CUSTOMER_PRODUCTS_N4	NOT UNIQUE	2	PARENT_CP_ID
CS_CUSTOMER_PRODUCTS_N5	NOT UNIQUE	4	ORIGINAL_ORDER_LINE_ID
CS_CUSTOMER_PRODUCTS_N6	NOT UNIQUE	1	CURRENT_SERIAL_NUMBER
CS_CUSTOMER_PRODUCTS_N8	NOT UNIQUE	2	PRODUCT_AGREEMENT_ID
CS_CUSTOMER_PRODUCTS_N9	NOT UNIQUE	1	CURRENT_CP_REVISION_ID
CS_CUSTOMER_PRODUCTS_U1	UNIQUE	2	CUSTOMER_PRODUCT_ID
CS_CUSTOMER_PRODUCTS_U2	UNIQUE	1	REFERENCE_NUMBER

#### Sequences

Sequence	Derived Column
CS_CUSTOMER_PRODUCTS_S	CUSTOMER_PRODUCT_ID



CONTEXT NULL VARCHAR2(30) Descriptive flexfield structure defining column

*Indexes*

<u>Index Name</u>	<u>Index Type</u>	<u>Sequence</u>	<u>Column Name</u>
CS_CUSTOMER_PRODUCT_STATUS_N1	NOT UNIQUE	1	CANCELLED_FLAG
CS_CUSTOMER_PRODUCT_STATUS_N2	NOT UNIQUE	1	TERMINATED_FLAG
CS_CUSTOMER_PRODUCT_STATUS_N3	NOT UNIQUE	1	SEEDED_FLAG
CS_CUSTOMER_PRODUCT_STATUS_U1	UNIQUE	1	CUSTOMER_PRODUCT_STATUS_ID
CS_CUSTOMER_PRODUCT_STATUS_U2	UNIQUE	1	NAME

*Sequences*

<u>Sequence</u>	<u>Derived Column</u>
CS_CUSTOMER_PRODUCT_STATUSES_S	CUSTOMER_PRODUCT_STATUS_ID

## CS\_ESTIMATE\_DETAILS

CS\_ESTIMATE\_DETAILS stores billing information about a Depot repair/service request/Debrief record once the repair has been received, the service request has been created or Field Service Report(FSR) has been created. For each record in CSD\_REPAIRS\_ALL, CS\_INCIDENTS\_B\_ALL, CSF\_DEBRIEF\_LINES CS\_ESTIMATE\_DETAILS holds multiple records. INCIDENT\_ID specifies the service request that was created for repair or FSR CONTRACT\_ID specifies the contract which the customer may have purchased, to be used while estimating the repair charges. BUSINESS\_PROCESS\_ID associates the charge with a business process. LINE\_TYPE\_ID and PRICE\_LIST\_ID are associated with the Oracle Order Entry/Shipping information for Line\_Type and price list respectively. The bill-to and ship-to information is stored in INVOICE\_TO\_SITE\_USE\_ID and SHIP\_TO\_SITE\_USE\_ID.

TRANSACTION\_TYPE\_ID stores the transaction type for the charged line and decides whether material, labor or expense is used. Installed base attributes, such as CUSTOMER\_PRODUCT\_ID, INSTALLED\_CP\_RETURN\_BY\_DATE, NEW\_CP\_RETURN\_BY\_DATE, and SYSTEM\_ID are used for certain transactions like loaners, advance replacements.

ORDER\_HEADER\_ID, ORDER\_LINE\_ID hold order-specific information for the line in Order Entry/Shipping. SELLING\_PRICE holds the unit price as obtained from the price list. AFTER\_WARRANTY\_COST holds the final amount to charge, after all contracts/discounts have been applied.

The primary key of this table is ESTIMATE\_DETAIL\_ID.

### Foreign Keys

Primary Key Table	Primary Key Column	Foreign Key Column
CSD_REPAIRS	REPAIR_LINE_ID	SOURCE_ID
CSF_DEBRIEF_LINES	DEBRIEF_LINE_ID	ORIGINAL_SOURCE_ID
CS_BUS_PROCESS_TXNS	BUSINESS_PROCESS_ID	BUSINESS_PROCESS_ID
CS_CUSTOMER_PRODUCTS_ALL	CUSTOMER_PRODUCT_ID	CUSTOMER_PRODUCT_ID
CS_INCIDENTS_ALL_B	INCIDENT_ID	INCIDENT_ID
CS_TXN_BILLING_TYPES	TXN_BILLING_TYPE_ID	TXN_BILLING_TYPE_ID
HZ_CUST_ACCT_SITES_ALL	CUST_ACCT_SITE_ID	INVOICE_TO_ORG_ID
HZ_PARTY_SITES	PARTY_SITE_ID	SHIP_TO_ORG_ID
MTL_SYSTEM_ITEMS_B	INVENTORY_ITEM_ID	INVENTORY_ITEM_ID
QP_LIST_HEADERS_B	LIST_HEADER_ID	PRICE_LIST_HEADER_ID

Column Descriptions

Name	Null?	Type	Description
ESTIMATE_DETAIL_ID (PK)	NOT NULL	NUMBER	Unique identifier for the charge record
BUSINESS_PROCESS_ID	NOT NULL	NUMBER(15)	Transaction group for the charge
INCIDENT_ID	NOT NULL	NUMBER(15)	Unique identifier for service request
ORIGINAL_SOURCE_ID	NOT NULL	VARCHAR2(15)	Original source ID for the charge line eg - Debrief, Depot Repair
ORIGINAL_SOURCE_CODE	NOT NULL	VARCHAR2(10)	Original source Code for the charge line eg - Debrief, Depot Repair
SOURCE_ID	NULL	NUMBER(15)	Current source ID for the charge line eg - Debrief, Depot Repair
SOURCE_CODE	NULL	VARCHAR2(10)	Current Source Code for the charge line eg - Debrief, Depot Repair
CONTRACT_ID	NULL	NUMBER	Identifier for the contract
COVERAGE_ID	NULL	NUMBER	Coverage identifier
COVERAGE_TXN_GROUP_ID	NULL	NUMBER	Coverage Transaction Group Id
INVOICE_TO_ORG_ID	NULL	NUMBER(15)	Bill-to Information
SHIP_TO_ORG_ID	NULL	NUMBER(15)	Ship-To Information
PURCHASE_ORDER_NUM	NULL	VARCHAR2(50)	Purchase Order Number in Order Management
ORDER_HEADER_ID	NOT NULL	NUMBER	Order Management information for sales order created
LINE_TYPE_ID	NOT NULL	NUMBER	Identifier of Line Type In Order Management
LINE_CATEGORY_CODE	NULL	VARCHAR2(30)	Line Category Code in Order Management . It can have return or Order
CURRENCY_CODE	NULL	VARCHAR2(15)	Currency code
CONVERSION_RATE	NULL	NUMBER(15)	Conversion Rate
CONVERSION_TYPE_CODE	NULL	VARCHAR2(30)	Conversion Type Code
CONVERSION_RATE_DATE	NULL	DATE	Conversion Date
RETURN_REASON_CODE	NULL	VARCHAR2(30)	Reason for return
ORDER_LINE_ID	NOT NULL	NUMBER	Order Line Information for Sales Order in Order Management
PRICE_LIST_HEADER_ID	NULL	NUMBER	Price List identifier
LINE_NUMBER	NOT NULL	NUMBER	Line number of the charge
INVENTORY_ITEM_ID	NULL	NUMBER(15)	Product used in inventory by the charge line
SERIAL_NUMBER	NULL	VARCHAR2(30)	Serial number of the returned product
TXN_BILLING_TYPE_ID	NULL	NUMBER(15)	Transaction Billing Type
QUANTITY_REQUIRED	NULL	NUMBER	Quantity of the product used
UNIT_OF_MEASURE_CODE	NULL	VARCHAR2(3)	UOM of the product
SELLING_PRICE	NULL	NUMBER	Selling price of product in Order Management
AFTER_WARRANTY_COST	NULL	NUMBER	Cost after applying contract coverages or manual discounts
FUNC_CURR_AFT_WARR_COST	NULL	NUMBER(15)	Cost in Functional Currency if the currency code selected is not a functional currency
CUSTOMER_PRODUCT_ID	NOT NULL	NUMBER(15)	Installed base reference, if any, for the product chosen; needed for certain transactions
ORIG_SYSTEM_REFERENCE	NULL	VARCHAR2(50)	Not Used
ORIG_SYSTEM_LINE_REFERENCE	NULL	VARCHAR2(50)	Not Used

Oracle Proprietary, Confidential Information—Use Restricted by Contract

INSTALLED_CP_RETURN_BY_DATE	NULL DATE	Expected return date for the installed product
NEW_CP_RETURN_BY_DATE	NULL DATE	Expected return date for the new product
INTERFACE_TO_OE_FLAG	NULL VARCHAR2(1)	Indicates whether line has been interfaced to Order Entry/Shipping for sales order creation
ROLLUP_FLAG	NULL VARCHAR2(1)	Indicates whether the item used should be rolled up to an item defined in a profile option for that item type- Material, Labor, Expense
ADD_TO_ORDER_FLAG	NULL VARCHAR2(1)	Indicates whether the line is to be added to an existing order or a new order
PRICING_CONTEXT	NULL VARCHAR2(30)	Pricing Attributes descriptive flexfield structure defining column
COVERAGE_BILL_RATE_ID	NULL NUMBER(15)	Bill rate for the coverage being used. Only in conjunction with contracts
EXCEPTION_COVERAGE_USED	NULL VARCHAR2(1)	Flag which identifies whether exception coverage is used
PRICING_ATTRIBUTE1	NULL VARCHAR2(150)	Pricing Attributes descriptive flexfield segment
PRICING_ATTRIBUTE2	NULL VARCHAR2(150)	Pricing Attributes descriptive flexfield segment
PRICING_ATTRIBUTE3	NULL VARCHAR2(150)	Pricing Attributes descriptive flexfield segment
PRICING_ATTRIBUTE4	NULL VARCHAR2(150)	Pricing Attributes descriptive flexfield segment
PRICING_ATTRIBUTE5	NULL VARCHAR2(150)	Pricing Attributes descriptive flexfield segment
PRICING_ATTRIBUTE6	NULL VARCHAR2(150)	Pricing Attributes descriptive flexfield segment
PRICING_ATTRIBUTE7	NULL VARCHAR2(150)	Pricing Attributes descriptive flexfield segment
PRICING_ATTRIBUTE8	NULL VARCHAR2(150)	Pricing Attributes descriptive flexfield segment
PRICING_ATTRIBUTE9	NULL VARCHAR2(150)	Pricing Attributes descriptive flexfield segment
PRICING_ATTRIBUTE10	NULL VARCHAR2(150)	Pricing Attributes descriptive flexfield segment
PRICING_ATTRIBUTE11	NULL VARCHAR2(150)	Pricing Attributes descriptive flexfield segment
PRICING_ATTRIBUTE12	NULL VARCHAR2(150)	Pricing Attributes descriptive flexfield segment
PRICING_ATTRIBUTE13	NULL VARCHAR2(150)	Pricing Attributes descriptive flexfield segment
PRICING_ATTRIBUTE14	NULL VARCHAR2(150)	Pricing Attributes descriptive flexfield segment
PRICING_ATTRIBUTE15	NULL VARCHAR2(150)	Pricing Attributes descriptive flexfield segment
ATTRIBUTE1	NULL VARCHAR2(150)	Descriptive flexfield segment
ATTRIBUTE2	NULL VARCHAR2(150)	Descriptive flexfield segment
ATTRIBUTE3	NULL VARCHAR2(150)	Descriptive flexfield segment
ATTRIBUTE4	NULL VARCHAR2(150)	Descriptive flexfield segment
ATTRIBUTE5	NULL VARCHAR2(150)	Descriptive flexfield segment
ATTRIBUTE6	NULL VARCHAR2(150)	Descriptive flexfield segment
ATTRIBUTE7	NULL VARCHAR2(150)	Descriptive flexfield segment
ATTRIBUTE8	NULL VARCHAR2(150)	Descriptive flexfield segment
ATTRIBUTE9	NULL VARCHAR2(150)	Descriptive flexfield segment

Oracle Proprietary, Confidential Information—Use Restricted by Contract

ATTRIBUTE10	NULL	VARCHAR2 (150)	Descriptive flexfield segment
ATTRIBUTE11	NULL	VARCHAR2 (150)	Descriptive flexfield segment
ATTRIBUTE12	NULL	VARCHAR2 (150)	Descriptive flexfield segment
ATTRIBUTE13	NULL	VARCHAR2 (150)	Descriptive flexfield segment
ATTRIBUTE14	NULL	VARCHAR2 (150)	Descriptive flexfield segment
ATTRIBUTE15	NULL	VARCHAR2 (150)	Descriptive flexfield segment
CONTEXT	NULL	VARCHAR2 (30)	Descriptive flexfield structure defining column
TAX_CODE	NULL	VARCHAR2 (30)	
EST_TAX_AMOUNT	NULL	NUMBER (15)	
LAST_UPDATE_DATE	NOT NULL	DATE	Standard Who column
LAST_UPDATE_LOGIN	NULL	NUMBER (15)	Standard Who column
LAST_UPDATED_BY	NOT NULL	NUMBER (15)	Standard Who column
CREATION_DATE	NOT NULL	DATE	Standard Who column
CREATED_BY	NOT NULL	NUMBER (15)	Standard Who column
OBJECT_VERSION_NUMBER	NOT NULL	NUMBER	Object Version Number
PRICING_ATTRIBUTE16	NULL	VARCHAR2 (150)	Pricing Attributes descriptive flexfield segment
PRICING_ATTRIBUTE17	NULL	VARCHAR2 (150)	Pricing Attributes descriptive flexfield segment
PRICING_ATTRIBUTE18	NULL	VARCHAR2 (150)	Pricing Attributes descriptive flexfield segment
PRICING_ATTRIBUTE19	NULL	VARCHAR2 (150)	Pricing Attributes descriptive flexfield segment
PRICING_ATTRIBUTE20	NULL	VARCHAR2 (150)	Pricing Attributes descriptive flexfield segment
PRICING_ATTRIBUTE21	NULL	VARCHAR2 (150)	Pricing Attributes descriptive flexfield segment
PRICING_ATTRIBUTE22	NULL	VARCHAR2 (150)	Pricing Attributes descriptive flexfield segment
PRICING_ATTRIBUTE23	NULL	VARCHAR2 (150)	Pricing Attributes descriptive flexfield segment
PRICING_ATTRIBUTE24	NULL	VARCHAR2 (150)	Pricing Attributes descriptive flexfield segment
PRICING_ATTRIBUTE25	NULL	VARCHAR2 (150)	Pricing Attributes descriptive flexfield segment
PRICING_ATTRIBUTE26	NULL	VARCHAR2 (150)	Pricing Attributes descriptive flexfield segment
PRICING_ATTRIBUTE27	NULL	VARCHAR2 (150)	Pricing Attributes descriptive flexfield segment
PRICING_ATTRIBUTE28	NULL	VARCHAR2 (150)	Pricing Attributes descriptive flexfield segment
PRICING_ATTRIBUTE29	NULL	VARCHAR2 (150)	Pricing Attributes descriptive flexfield segment
PRICING_ATTRIBUTE30	NULL	VARCHAR2 (150)	Pricing Attributes descriptive flexfield segment
PRICING_ATTRIBUTE31	NULL	VARCHAR2 (150)	Pricing Attributes descriptive flexfield segment
PRICING_ATTRIBUTE32	NULL	VARCHAR2 (150)	Pricing Attributes descriptive flexfield segment
PRICING_ATTRIBUTE33	NULL	VARCHAR2 (150)	Pricing Attributes descriptive flexfield segment
PRICING_ATTRIBUTE34	NULL	VARCHAR2 (150)	Pricing Attributes descriptive flexfield segment
PRICING_ATTRIBUTE35	NULL	VARCHAR2 (150)	Pricing Attributes descriptive flexfield segment
PRICING_ATTRIBUTE36	NULL	VARCHAR2 (150)	Pricing Attributes descriptive flexfield segment
PRICING_ATTRIBUTE37	NULL	VARCHAR2 (150)	Pricing Attributes descriptive flexfield segment
PRICING_ATTRIBUTE38	NULL	VARCHAR2 (150)	Pricing Attributes descriptive flexfield segment

PRICING_ATTRIBUTE39	NULL	VARCHAR2(150)	Pricing Attributes descriptive flexfield segment
PRICING_ATTRIBUTE40	NULL	VARCHAR2(150)	Pricing Attributes descriptive flexfield segment
PRICING_ATTRIBUTE41	NULL	VARCHAR2(150)	Pricing Attributes descriptive flexfield segment
PRICING_ATTRIBUTE42	NULL	VARCHAR2(150)	Pricing Attributes descriptive flexfield segment
PRICING_ATTRIBUTE43	NULL	VARCHAR2(150)	Pricing Attributes descriptive flexfield segment
PRICING_ATTRIBUTE44	NULL	VARCHAR2(150)	Pricing Attributes descriptive flexfield segment
PRICING_ATTRIBUTE45	NULL	VARCHAR2(150)	Pricing Attributes descriptive flexfield segment
PRICING_ATTRIBUTE46	NULL	VARCHAR2(150)	Pricing Attributes descriptive flexfield segment
PRICING_ATTRIBUTE47	NULL	VARCHAR2(150)	Pricing Attributes descriptive flexfield segment
PRICING_ATTRIBUTE48	NULL	VARCHAR2(150)	Pricing Attributes descriptive flexfield segment
PRICING_ATTRIBUTE49	NULL	VARCHAR2(150)	Pricing Attributes descriptive flexfield segment
PRICING_ATTRIBUTE50	NULL	VARCHAR2(150)	Pricing Attributes descriptive flexfield segment
PRICING_ATTRIBUTE51	NULL	VARCHAR2(150)	Pricing Attributes descriptive flexfield segment
PRICING_ATTRIBUTE52	NULL	VARCHAR2(150)	Pricing Attributes descriptive flexfield segment
PRICING_ATTRIBUTE53	NULL	VARCHAR2(150)	Pricing Attributes descriptive flexfield segment
PRICING_ATTRIBUTE54	NULL	VARCHAR2(150)	Pricing Attributes descriptive flexfield segment
PRICING_ATTRIBUTE55	NULL	VARCHAR2(150)	Pricing Attributes descriptive flexfield segment
PRICING_ATTRIBUTE56	NULL	VARCHAR2(150)	Pricing Attributes descriptive flexfield segment
PRICING_ATTRIBUTE57	NULL	VARCHAR2(150)	Pricing Attributes descriptive flexfield segment
PRICING_ATTRIBUTE58	NULL	VARCHAR2(150)	Pricing Attributes descriptive flexfield segment
PRICING_ATTRIBUTE59	NULL	VARCHAR2(150)	Pricing Attributes descriptive flexfield segment
PRICING_ATTRIBUTE61	NULL	VARCHAR2(150)	Pricing Attributes descriptive flexfield segment
PRICING_ATTRIBUTE62	NULL	VARCHAR2(150)	Pricing Attributes descriptive flexfield segment
PRICING_ATTRIBUTE63	NULL	VARCHAR2(150)	Pricing Attributes descriptive flexfield segment
PRICING_ATTRIBUTE64	NULL	VARCHAR2(150)	Pricing Attributes descriptive flexfield segment
PRICING_ATTRIBUTE65	NULL	VARCHAR2(150)	Pricing Attributes descriptive flexfield segment
PRICING_ATTRIBUTE66	NULL	VARCHAR2(150)	Pricing Attributes descriptive flexfield segment
PRICING_ATTRIBUTE67	NULL	VARCHAR2(150)	Pricing Attributes descriptive flexfield segment
PRICING_ATTRIBUTE68	NULL	VARCHAR2(150)	Pricing Attributes descriptive flexfield segment
PRICING_ATTRIBUTE69	NULL	VARCHAR2(150)	Pricing Attributes descriptive flexfield segment
PRICING_ATTRIBUTE70	NULL	VARCHAR2(150)	Pricing Attributes descriptive flexfield segment
PRICING_ATTRIBUTE71	NULL	VARCHAR2(150)	Pricing Attributes descriptive flexfield segment

**Oracle Proprietary, Confidential Information—Use Restricted by Contract**

PRICING_ATTRIBUTE72	NULL	VARCHAR2(150)	Pricing Attributes flexfield segment	descriptive
PRICING_ATTRIBUTE73	NULL	VARCHAR2(150)	Pricing Attributes flexfield segment	descriptive
PRICING_ATTRIBUTE74	NULL	VARCHAR2(150)	Pricing Attributes flexfield segment	descriptive
PRICING_ATTRIBUTE75	NULL	VARCHAR2(150)	Pricing Attributes flexfield segment	descriptive
PRICING_ATTRIBUTE76	NULL	VARCHAR2(150)	Pricing Attributes flexfield segment	descriptive
PRICING_ATTRIBUTE77	NULL	VARCHAR2(150)	Pricing Attributes flexfield segment	descriptive
PRICING_ATTRIBUTE78	NULL	VARCHAR2(150)	Pricing Attributes flexfield segment	descriptive
PRICING_ATTRIBUTE79	NULL	VARCHAR2(150)	Pricing Attributes flexfield segment	descriptive
PRICING_ATTRIBUTE80	NULL	VARCHAR2(150)	Pricing Attributes flexfield segment	descriptive
PRICING_ATTRIBUTE81	NULL	VARCHAR2(150)	Pricing Attributes flexfield segment	descriptive
PRICING_ATTRIBUTE82	NULL	VARCHAR2(150)	Pricing Attributes flexfield segment	descriptive
PRICING_ATTRIBUTE83	NULL	VARCHAR2(150)	Pricing Attributes flexfield segment	descriptive
PRICING_ATTRIBUTE84	NULL	VARCHAR2(150)	Pricing Attributes flexfield segment	descriptive
PRICING_ATTRIBUTE85	NULL	VARCHAR2(150)	Pricing Attributes flexfield segment	descriptive
PRICING_ATTRIBUTE86	NULL	VARCHAR2(150)	Pricing Attributes flexfield segment	descriptive
PRICING_ATTRIBUTE87	NULL	VARCHAR2(150)	Pricing Attributes flexfield segment	descriptive
PRICING_ATTRIBUTE88	NULL	VARCHAR2(150)	Pricing Attributes flexfield segment	descriptive
PRICING_ATTRIBUTE89	NULL	VARCHAR2(150)	Pricing Attributes flexfield segment	descriptive
PRICING_ATTRIBUTE90	NULL	VARCHAR2(150)	Pricing Attributes flexfield segment	descriptive
PRICING_ATTRIBUTE91	NULL	VARCHAR2(150)	Pricing Attributes flexfield segment	descriptive
PRICING_ATTRIBUTE92	NULL	VARCHAR2(150)	Pricing Attributes flexfield segment	descriptive
PRICING_ATTRIBUTE93	NULL	VARCHAR2(150)	Pricing Attributes flexfield segment	descriptive
PRICING_ATTRIBUTE94	NULL	VARCHAR2(150)	Pricing Attributes flexfield segment	descriptive
PRICING_ATTRIBUTE95	NULL	VARCHAR2(150)	Pricing Attributes flexfield segment	descriptive
PRICING_ATTRIBUTE96	NULL	VARCHAR2(150)	Pricing Attributes flexfield segment	descriptive
PRICING_ATTRIBUTE97	NULL	VARCHAR2(150)	Pricing Attributes flexfield segment	descriptive
PRICING_ATTRIBUTE98	NULL	VARCHAR2(150)	Pricing Attributes flexfield segment	descriptive
PRICING_ATTRIBUTE99	NULL	VARCHAR2(150)	Pricing Attributes flexfield segment	descriptive
PRICING_ATTRIBUTE100	NULL	VARCHAR2(150)	Pricing Attributes flexfield segment	descriptive
PRICING_ATTRIBUTE60	NULL	VARCHAR2(150)	Pricing Attributes flexfield segment	descriptive

*Indexes*

<u>Index Name</u>	<u>Index Type</u>	<u>Sequence</u>	<u>Column Name</u>
CS_ESTIMATE_DETAILS_N1	NOT UNIQUE	10	INCIDENT_ID
CS_ESTIMATE_DETAILS_N2	NOT UNIQUE	2	ORIG_SYSTEM_REFERENCE
CS_ESTIMATE_DETAILS_U1	UNIQUE	2	ESTIMATE_DETAIL_ID

*Sequences*

<u>Sequence</u>	<u>Derived Column</u>
CS_ESTIMATE_DETAILS_S	ESTIMATE_DETAIL_ID

## CS\_INCIDENTS\_ALL\_B

CS\_INCIDENTS\_ALL\_B stores information about service requests. A service request can be logged against any product, any product in inventory, or any product in the install base. Each row contains information about a single service request. This table is partitioned by ORG\_ID in a multi-organizational environment. This is the multi-language support base table and contains all of the fields from this table that are not translatable.

### Foreign Keys

Primary Key Table	Primary Key Column	Foreign Key Column
CSS_DEF_LANGUAGES	LANGUAGE_ID	LANGUAGE_ID
CSS_DEF_PLATFORMS	PLATFORM_ID	PLATFORM_ID
CSS_DEF_PLAT_VERSIONS	PLATFORM_VERSION_ID	PLATFORM_VERSION_ID
CS_CP_REVISIONS	CP_REVISION_ID	CP_COMPONENT_VERSION_ID
CS_CP_REVISIONS	CP_REVISION_ID	CP_SUBCOMPONENT_VERSION_ID
CS_CP_REVISIONS	CP_REVISION_ID	CP_REVISION_ID
CS_CP_SERVICES_ALL_OBSOLETE	CP_SERVICE_ID	CONTRACT_SERVICE_ID
CS_CUSTOMER_PRODUCTS_ALL	CUSTOMER_PRODUCT_ID	CUSTOMER_PRODUCT_ID
CS_CUSTOMER_PRODUCTS_ALL	CUSTOMER_PRODUCT_ID	CP_COMPONENT_ID
CS_CUSTOMER_PRODUCTS_ALL	CUSTOMER_PRODUCT_ID	CP_SUBCOMPONENT_ID
CS_INCIDENT_SEVERITIES_B	INCIDENT_SEVERITY_ID	INCIDENT_SEVERITY_ID
CS_INCIDENT_STATUSES_B	INCIDENT_STATUS_ID	INCIDENT_STATUS_ID
CS_INCIDENT_TYPES_B	INCIDENT_TYPE_ID	INCIDENT_TYPE_ID
CS_INCIDENT_URGENCIES_B	INCIDENT_URGENCY_ID	INCIDENT_URGENCY_ID
CS_TIME_ZONES	TIME_ZONE_ID	TIME_ZONE_ID
FND_LOOKUP_VALUES	LOOKUP_CODE	PROBLEM_CODE
FND_LOOKUP_VALUES	LOOKUP_CODE	RESOLUTION_CODE
HZ_CUST_ACCOUNTS	ORG_ID	ORG_ID
	CUST_ACCOUNT_ID	ACCOUNT_ID
HZ_CUST_ACCOUNTS	CUST_ACCOUNT_ID	ACCOUNT_ID
HZ_CUST_SITE_USES_ALL	SITE_USE_ID	BILL_TO_SITE_USE_ID
HZ_CUST_SITE_USES_ALL	SITE_USE_ID	SHIP_TO_SITE_USE_ID
HZ_CUST_SITE_USES_ALL	SITE_USE_ID	INSTALL_SITE_USE_ID
HZ_PARTIES	PARTY_ID	CUSTOMER_ID
HZ_PARTIES	PARTY_ID	BILL_TO_CONTACT_ID
HZ_PARTIES	PARTY_ID	SHIP_TO_CONTACT_ID
HZ_PARTY_SITE_USES	PARTY_SITE_ID	SITE_ID
HZ_PARTY_SITE_USES	PARTY_SITE_ID	CUSTOMER_SITE_ID
HZ_TIMEZONES	TIMEZONE_ID	TIME_ZONE_ID
JTF_RESOURCES_V	RESOURCE_NUMBER	INCIDENT_OWNER_ID
JTF_RESOURCE_SUBTYPES_B	RESOURCE_SUBTYPE_ID	RESOURCE_SUBTYPE_ID
JTF_RS_GROUPS_B	GROUP_ID	INCIDENT_OWNER_ID
JTF_RS_RESOURCE_EXTNS	RESOURCE_ID	INCIDENT_OWNER_ID
JTF_RS_TEAMS_B	TEAM_ID	INCIDENT_OWNER_ID
JTF_TERR_RSC_ALL	RESOURCE_ID	INCIDENT_OWNER_ID
	TERR_ID	TERRITORY_ID
MTL_SYSTEM_ITEMS_B	INVENTORY_ITEM_ID	INVENTORY_ITEM_ID
MTL_SYSTEM_ITEMS_B	INVENTORY_ITEM_ID	INV_COMPONENT_ID
MTL_SYSTEM_ITEMS_B	INVENTORY_ITEM_ID	INV_SUBCOMPONENT_ID
OKC_K_LINES_B	ID	CONTRACT_SERVICE_ID
PER_ALL_PEOPLE_F	PERSON_ID	EMPLOYEE_ID
QA_PLANS	PLAN_ID	QA_COLLECTION_ID

Oracle Proprietary, Confidential Information—Use Restricted by Contract



INCIDENT_ATTRIBUTE_1	NULL	VARCHAR2(150)	Descriptive flexfield segment column
INCIDENT_ATTRIBUTE_2	NULL	VARCHAR2(150)	Descriptive flexfield segment column
INCIDENT_ATTRIBUTE_3	NULL	VARCHAR2(150)	Descriptive flexfield segment column
INCIDENT_ATTRIBUTE_4	NULL	VARCHAR2(150)	Descriptive flexfield segment column
INCIDENT_ATTRIBUTE_5	NULL	VARCHAR2(150)	Descriptive flexfield segment column
INCIDENT_ATTRIBUTE_6	NULL	VARCHAR2(150)	Descriptive flexfield segment column
INCIDENT_ATTRIBUTE_7	NULL	VARCHAR2(150)	Descriptive flexfield segment column
INCIDENT_ATTRIBUTE_8	NULL	VARCHAR2(150)	Descriptive flexfield segment column
INCIDENT_ATTRIBUTE_9	NULL	VARCHAR2(150)	Descriptive flexfield segment column
INCIDENT_ATTRIBUTE_10	NULL	VARCHAR2(150)	Descriptive flexfield segment column
INCIDENT_ATTRIBUTE_11	NULL	VARCHAR2(150)	Descriptive flexfield segment column
INCIDENT_ATTRIBUTE_12	NULL	VARCHAR2(150)	Descriptive flexfield segment column
INCIDENT_ATTRIBUTE_13	NULL	VARCHAR2(150)	Descriptive flexfield segment column
INCIDENT_ATTRIBUTE_14	NULL	VARCHAR2(150)	Descriptive flexfield segment column
INCIDENT_ATTRIBUTE_15	NULL	VARCHAR2(150)	Descriptive flexfield segment column
INCIDENT_CONTEXT	NULL	VARCHAR2(30)	Descriptive flexfield structure defining column
RECORD_IS_VALID_FLAG	NULL	VARCHAR2(1)	Flag to denote if the service request is verified or not
RESOLUTION_CODE	NULL	VARCHAR2(50)	Problem resolution quick code
ORG_ID	NULL	NUMBER	Operating unit identifier
ORIGINAL_ORDER_NUMBER	NULL	NUMBER	Order number for the product if installed base is not used
WORKFLOW_PROCESS_ID	NULL	NUMBER	Sequence number used for this action's last workflow process
CLOSE_DATE	NULL	DATE	Date the service request is closed
PUBLISH_FLAG	NULL	VARCHAR2(1)	Flag to denote whether the service request is published or not.
INTERFACED_TO_DEPOT_FLAG	NULL	VARCHAR2(1)	Flag to denote service request is linked to repairs
QA_COLLECTION_ID	NULL	NUMBER	Foreign key to Quality results table
CONTRACT_SERVICE_ID	NULL	NUMBER	Service line unique identifier
KB_TYPE	NULL	VARCHAR2(15)	Not used.
KB_SOLUTION_ID	NULL	VARCHAR2(240)	External knowledge base solution identifier.
TIME_ZONE_ID	NULL	NUMBER(15)	This field stores the time zone id of the time zone specified in the field service request form
TIME_DIFFERENCE	NULL	NUMBER	GMT offset of the contact person's time.
CUSTOMER_PO_NUMBER	NULL	VARCHAR2(50)	Customers Purchase Order number.
OWNER_GROUP_ID	NULL	NUMBER	Not used

CUSTOMER_TICKET_NUMBER	NULL	VARCHAR2(50)	Customer's internal helpdesk tracking number.
OBLIGATION_DATE	NULL	DATE	Obligation Date
SITE_ID	NULL	NUMBER	Identifier for Support Site.
CUSTOMER_SITE_ID	NULL	NUMBER	Identifier for Customer Site.
CALLER_TYPE	NOT NULL	VARCHAR2(30)	Type of the Calling Party. It could be an Organization, Person, Employee.
PLATFORM_VERSION_ID	NULL	NUMBER	Identifier for Platform Version.
OBJECT_VERSION_NUMBER	NULL	NUMBER(9)	Sequential number used for database locking control when using HTML as a user interface
CP_COMPONENT_ID	NULL	NUMBER	Identifier for Installed Base Component.
CP_COMPONENT_VERSION_ID	NULL	NUMBER	Identifier for Installed Base Component Revision.
CP_SUBCOMPONENT_ID	NULL	NUMBER	Identifier for Installed Base Subcomponent.
CP_SUBCOMPONENT_VERSION_ID	NULL	NUMBER	Identifier for Installed Base Subcomponent Revision.
PLATFORM_ID	NULL	NUMBER	Identifier for Platform.
LANGUAGE_ID	NULL	NUMBER	Identifier for the Product's Language.
TERRITORY_ID	NULL	NUMBER	Identifier for the Territory of the Service Request.
CP_REVISION_ID	NULL	NUMBER	Identifier for Installed Base Product Revision.
INV_ITEM_REVISION	NULL	VARCHAR2(3)	Identifier for the Item Revision for a product not in Installed Base.
INV_COMPONENT_ID	NULL	NUMBER	Identifier for the Component for a product not in Installed Base.
INV_COMPONENT_VERSION	NULL	VARCHAR2(3)	Identifier for the Component Revision for a product not in Installed Base.
INV_SUBCOMPONENT_ID	NULL	NUMBER	Identifier for the Subcomponent for a product not in Installed Base.
INV_SUBCOMPONENT_VERSION	NULL	VARCHAR2(3)	Identifier for the Subcomponent Revision for a product not in Installed Base.
PROJECT_ID	NULL	NUMBER	This column is not currently used.
TASK_ID	NULL	NUMBER	This column is not currently used.
INV_ORGANIZATION_ID	NULL	NUMBER	This field stores the inventory organization id based on the profile AS_PRODUCT_ORGANIZATION_ID.

#### Indexes

Index Name	Index Type	Sequence	Column Name
CS_INCIDENTS_N1	NOT UNIQUE	4	INVENTORY_ITEM_ID
CS_INCIDENTS_N12	NOT UNIQUE	2	CLOSE_DATE
		5	EXPECTED_RESOLUTION_DATE
CS_INCIDENTS_N13	NOT UNIQUE	2	EXPECTED_RESOLUTION_DATE
		5	CLOSE_DATE
CS_INCIDENTS_N2	NOT UNIQUE	2	CUSTOMER_ID
CS_INCIDENTS_N3	NOT UNIQUE	2	INCIDENT_OWNER_ID
CS_INCIDENTS_N4	NOT UNIQUE	1	INCIDENT_STATUS_ID

Oracle Proprietary, Confidential Information—Use Restricted by Contract

CS_INCIDENTS_N5	NOT UNIQUE	1	INCIDENT_TYPE_ID
CS_INCIDENTS_N6	NOT UNIQUE	1	INCIDENT_URGENCY_ID
CS_INCIDENTS_N7	NOT UNIQUE	1	INCIDENT_SEVERITY_ID
CS_INCIDENTS_N8	NOT UNIQUE	1	CUSTOMER_PRODUCT_ID
CS_INCIDENTS_N9	NOT UNIQUE	1	INCIDENT_DATE
CS_INCIDENTS_U1	UNIQUE	5	INCIDENT_ID
CS_INCIDENTS_U2	UNIQUE	2	INCIDENT_NUMBER

*Sequences*

<u>Sequence</u>	<u>Derived Column</u>
CS_INCIDENTS_S	INCIDENT_ID
CS_INCIDENTS_NUMBER_S	INCIDENT_NUMBER
CS_WF_PROCESS_ID_S	WORKFLOW_PROCESS_ID

## CS\_INCIDENTS\_V

This view shows all service requests and their corresponding attributes.

### *View Definition*

```
CREATE VIEW CS_INCIDENTS_V
as SELECT
    INC.ROWID ROW_ID,
    INC.INCIDENT_ID,
    INC.ORG_ID,
    INC.LAST_UPDATE_DATE,
    INC.LAST_UPDATED_BY,
    INC.CREATION_DATE,
    INC.CREATED_BY,
    INC.LAST_UPDATE_LOGIN,
    INC.INCIDENT_NUMBER,
    TO_NUMBER(INC.INCIDENT_NUMBER) INCIDENT_NUMBER_N,
    INC.INCIDENT_STATUS_ID,
    INC.INCIDENT_TYPE_ID,
    INC.INCIDENT_URGENCY_ID,
    INC.INCIDENT_SEVERITY_ID,
    TL.SUMMARY,
    INC.INCIDENT_OWNER_ID,
    INC.RESOURCE_TYPE,
    INC.RESOURCE_SUBTYPE_ID,
    INC.INVENTORY_ITEM_ID,
    INC.SHIP_TO_SITE_USE_ID,
    INC.SHIP_TO_CONTACT_ID,
    INC.BILL_TO_SITE_USE_ID,
    INC.BILL_TO_CONTACT_ID,
    INC.INSTALL_SITE_USE_ID,
    INC.PROBLEM_CODE,
    INC.EXPECTED_RESOLUTION_DATE,
    INC.ACTUAL_RESOLUTION_DATE,
    INC.INCIDENT_DATE,
    INC.CUSTOMER_PRODUCT_ID,
    INC.INCIDENT_ATTRIBUTE_1,
    INC.INCIDENT_ATTRIBUTE_2,
    INC.INCIDENT_ATTRIBUTE_3,
    INC.INCIDENT_ATTRIBUTE_4,
    INC.INCIDENT_ATTRIBUTE_5,
    INC.INCIDENT_ATTRIBUTE_6,
    INC.INCIDENT_ATTRIBUTE_7,
    INC.INCIDENT_ATTRIBUTE_8,
    INC.INCIDENT_ATTRIBUTE_9,
    INC.INCIDENT_ATTRIBUTE_10,
    INC.INCIDENT_ATTRIBUTE_11,
    INC.INCIDENT_ATTRIBUTE_12,
    INC.INCIDENT_ATTRIBUTE_13,
    INC.INCIDENT_ATTRIBUTE_14,
    INC.INCIDENT_ATTRIBUTE_15,
    INC.INCIDENT_CONTEXT,
    INC.RECORD_IS_VALID_FLAG,
    INC.RESOLUTION_CODE,
```

**Oracle Proprietary, Confidential Information—Use Restricted by Contract**

```

INC.INTERFACED_TO_DEPOT_FLAG,
TYPE.NAME INCIDENT_TYPE,
SEV.NAME SEVERITY,
STATUS.NAME STATUS_CODE,
URGENCY.NAME URGENCY,
FND.USER_NAME CREATED_BY_NAME,
R.REVISION PRODUCT_REVISION,
INC.FILED_BY_EMPLOYEE_FLAG,
INC.CUSTOMER_ID,
INC.ACCOUNT_ID,
INC.EMPLOYEE_ID,
FND2.FULL_NAME EMPLOYEE_NAME,
CP.CURRENT_SERIAL_NUMBER CURRENT_SERIAL_NUMBER,
INC.CURRENT_SERIAL_NUMBER CURRENT_SERIAL_NUMBER_NV,
CP.SYSTEM_ID SYSTEM_ID,
SYS.NAME SYSTEM_NAME,
CP.INSTALL_SITE_USE_ID CP_INSTALL_SITE_USE_ID,
CP.REFERENCE_NUMBER,
CP.CUSTOMER_PRODUCT_STATUS_ID,
CPS.NAME CUSTOMER_PRODUCT_STATUS,
CP.CUSTOMER_ID PRODUCT_SUPPORT_CUSTOMER_ID,
INC.PURCHASE_ORDER_NUM,
INC.ORIGINAL_ORDER_NUMBER,
CPS.INCIDENT
T_ALLOWED_FLAG,
LOOK3.MEANING PROBLEM_CODE_MEANING,
LOOK3.DESCRPTION PROBLEM_CODE_DESCRIPTION,
LOOK4.MEANING RESOLUTION_CODE_MEANING,
LOOK4.DESCRPTION RESOLUTION_CODE_DESCRIPTION,
INC.WORKFLOW_PROCESS_ID,
DECODE(NVL(INC.WORKFLOW_PROCESS_ID, -999), -999,'N',
        CS.WORKFLOW_PKG.IS_SERVEREQ_ITEM_ACTIVE(INC.INCIDENT_NUMBER,
        INC.WORKFLOW_PROCESS_ID)) ACTIVE_WF_PROCESS ,
DECODE(TL.SR_CREATION_CHANNEL,'WEB',TYPE.WEB_WORKFLOW,TYPE.WORKFLOW)
        WORKFLOW_PROCESS_NAME ,
CS.WORKFLOW_PKG.GET_WORKFLOW_DISP_NAME('SERVEREQ',
        DECODE(TL.SR_CREATION_CHANNEL,'WEB',TYPE.WEB_WORKFLOW,TYPE.WORKFLOW))
        WF_PROCESS_NAME_DISPLAY,
CS_SR_UTIL_PKG.GET_LAST_UPDATE_DATE(INC.INCIDENT_ID, INC.LAST_UPDATE_DATE)
        LAST_INCIDENT_UPDATE_DATE_V ,
CS_SR_UTIL_PKG.GET_RELATED_STATUSES_CNT(TYPE.INCIDENT_TYPE_ID)
        RELATED_STATUSES_CNT_V,
INC.CLOSE_DATE DATE_CLOSED,
FND.USER_NAME LOGGED_BY_NAME,
NVL(STATUS.CLOSE_FLAG, 'N') CLOSED_FLAG,
INC.PUBLISH_FLAG,
INC.QA_COLLECTION_ID,
INC.CONTRACT_SERVICE_ID,
INC.TIME_ZONE_ID,
INC.CUSTOMER_PO_NUMBER,
INC.CUSTOMER_TICKET_NUMBER,
INC.OBLIGATION_DATE,
INC.SITE_ID,
TL.SR_CREATION_CHANNEL,
INC.PLATFORM_VERSION_ID,
PARTY.party_number CUSTOMER_NUMBER,
INC.CALLER_TYPE,

```

```

    INC.CP_COMPONENT_ID,
    INC.CP_COMPONENT_VERSION_ID,
    INC.CP_SUBCOMPONENT_ID,
    INC.CP_SUBCOMPONENT_VERSION_ID,
    INC.CP_REVISION_ID,
    INC.INV_ITEM_REVISION,
    INC.INV_COMPONENT_ID,
    INC.INV_COMPONENT_VERSION,
    INC.INV_SUBCOMPONENT_ID,
    INC.INV_SUBCOMPONENT_VERSION,
    INC.INV_ORGANIZATION_ID ,
    INC.PLATFORM_ID,
    INC.LANGUAGE_ID,
    INC.TERRITORY_ID,
    INC.TIME_DIFFERENCE,
    KJV.CONCATENATED_SEGMENTS PRODUCT_NAME,
    KJV.DESCRPTION PRODUCT_DESCRIPTION,
    OWN.RESOURCE_NAME OWNER,
    PARTY.PARTY_NAME COMPANY_NAME,
    PARTY_CONT.PERSON_FIRST_NAME,
    PARTY_CONT.PERSON_LAST_NAME,
    PARTY_CONT.PERSON_FIRST_NAME || ' ' || PARTY_CONT.PERSON_LAST_NAME CONTACT_NAME,
    PARTY_CONT.COUNTRY_CODE,

PARTY_CONT.AREA_CODE,
    PARTY_CONT.PHONE_NUMBER ,
    PARTY_CONT.COUNTRY_CODE || decode(PARTY_CONT.AREA_CODE,','', '-' ||
PARTY_CONT.AREA_CODE || '-') || PARTY_CONT.PHONE_NUMBER PHONE,
    PARTY_CONT.EXTENSION EXT,
    PARTY_CONT.EMAIL_ADDRESS EMAIL,
    PARTY_CONT.CONTACT_POINT_TYPE PHONE_TYPE,
    PARTY_CONT.TIME_ZONE_NAME,
    SR_CONT.PARTY_ID CONTACT_PARTY_ID,
    SR_CONT.CONTACT_POINT_ID,
    ACCOUNT.ACCOUNT_NUMBER,
        INC.KB_SOLUTION_ID,
        INC.CUSTOMER_SITE_ID
FROM FND_USER FND,
    CS_INCIDENT_TYPES_VL TYPE,
    CS_INCIDENT_SEVERITIES_VL SEV,
    CS_INCIDENT_STATUSES_VL STATUS,
    CS_INCIDENT_URGENCIES_VL URGENCY,
    FND_LOOKUPS LOOK3,
    FND_LOOKUPS LOOK4,
    CS_CP_REVISIONS R,
    CS_CUSTOMER_PRODUCT_STATUSES CPS,
    PER_ALL_PEOPLE_F FND2,
    CS_SYSTEMS SYS,
    CS_CUSTOMER_PRODUCTS CP,
    CS_INCIDENTS_ALL_B INC,
    CS_INCIDENTS_ALL_TL TL,
    MTL_SYSTEM_ITEMS_KJV KJV,
    CS_SR_OWNERS_V OWN,
    JTF_PARTIES_ALL_V PARTY,
    JTF_CONTACT_POINTS_V PARTY_CONT,
    JTF_PARTY_ACCOUNTS_V ACCOUNT,
    CS_HZ_SR_CONTACT_POINTS SR_CONT

```

Oracle Proprietary, Confidential Information—Use Restricted by Contract



RESOURCE_TYPE	NULL	VARCHAR2(30)	Identifier for the owner type of the service request. The owner type could be an Employee, a Group or a Team.
RESOURCE_SUBTYPE_ID	NULL	NUMBER	Not used.
INVENTORY_ITEM_ID	NULL	NUMBER(15)	Item identifier
SHIP_TO_SITE_USE_ID	NULL	NUMBER(15)	Identifier for ship- to site use
SHIP_TO_CONTACT_ID	NULL	NUMBER(15)	Ship-to contact identifier
BILL_TO_SITE_USE_ID	NULL	NUMBER(15)	Identifier for bill-to site use
BILL_TO_CONTACT_ID	NULL	NUMBER(15)	Bill-to contact identifier
INSTALL_SITE_USE_ID	NULL	NUMBER(15)	Identifier for installed site use
PROBLEM_CODE	NULL	VARCHAR2(50)	Problem code
EXPECTED_RESOLUTION_DATE	NULL	DATE	Expected date for the problem resolution
ACTUAL_RESOLUTION_DATE	NULL	DATE	Actual date of resolution
INCIDENT_DATE	NULL	DATE	Service request date
CUSTOMER_PRODUCT_ID	NULL	NUMBER(15)	Customer product identifier
INCIDENT_ATTRIBUTE_1	NULL	VARCHAR2(150)	Descriptive flexfield segment column.
INCIDENT_ATTRIBUTE_2	NULL	VARCHAR2(150)	Descriptive flexfield segment column
INCIDENT_ATTRIBUTE_3	NULL	VARCHAR2(150)	Descriptive flexfield segment column
INCIDENT_ATTRIBUTE_4	NULL	VARCHAR2(150)	Descriptive flexfield segment column
INCIDENT_ATTRIBUTE_5	NULL	VARCHAR2(150)	Descriptive flexfield segment column
INCIDENT_ATTRIBUTE_6	NULL	VARCHAR2(150)	Descriptive flexfield segment column
INCIDENT_ATTRIBUTE_7	NULL	VARCHAR2(150)	Descriptive flexfield segment column
INCIDENT_ATTRIBUTE_8	NULL	VARCHAR2(150)	Descriptive flexfield segment column
INCIDENT_ATTRIBUTE_9	NULL	VARCHAR2(150)	Descriptive flexfield segment column
INCIDENT_ATTRIBUTE_10	NULL	VARCHAR2(150)	Descriptive flexfield segment column
INCIDENT_ATTRIBUTE_11	NULL	VARCHAR2(150)	Descriptive flexfield segment column
INCIDENT_ATTRIBUTE_12	NULL	VARCHAR2(150)	Descriptive flexfield segment column
INCIDENT_ATTRIBUTE_13	NULL	VARCHAR2(150)	Descriptive flexfield segment column
INCIDENT_ATTRIBUTE_14	NULL	VARCHAR2(150)	Descriptive flexfield segment column
INCIDENT_ATTRIBUTE_15	NULL	VARCHAR2(150)	Descriptive flexfield segment column
INCIDENT_CONTEXT	NULL	VARCHAR2(30)	Descriptive flexfield structure defining column
RECORD_IS_VALID_FLAG	NULL	VARCHAR2(1)	Flag to denote if the service request is verified or not
RESOLUTION_CODE	NULL	VARCHAR2(50)	Problem resolution quick code
INTERFACED_TO_DEPOT_FLAG	NULL	VARCHAR2(1)	Flag to denote service request is linked to repairs
INCIDENT_TYPE	NOT NULL	VARCHAR2(30)	Incident Type name
SEVERITY	NOT NULL	VARCHAR2(30)	Severity Name
STATUS_CODE	NOT NULL	VARCHAR2(30)	Status name
URGENCY	NULL	VARCHAR2(30)	Urgency Name
CREATED_BY_NAME	NOT NULL	VARCHAR2(100)	Name of the identity who created the Service Request

**Oracle Proprietary, Confidential Information—Use Restricted by Contract**

PRODUCT_REVISION	NULL	VARCHAR2(15)	Revision of the product
FILED_BY_EMPLOYEE_FLAG	NULL	VARCHAR2(1)	Indicates whether the request was made by an employee
CUSTOMER_ID	NULL	NUMBER(15)	Customer identifier
ACCOUNT_ID	NULL	NUMBER	Account Identifier
EMPLOYEE_ID	NULL	NUMBER(15)	Identifier for the employee if the service request is made by an employee
EMPLOYEE_NAME	NULL	VARCHAR2(240)	Name of the Employee
CURRENT_SERIAL_NUMBER	NULL	VARCHAR2(30)	Serial Number for an Installed Base product
CURRENT_SERIAL_NUMBER_NV	NULL	VARCHAR2(30)	Serial Number for a product that is not in Installed Base
SYSTEM_ID	NULL	NUMBER	Not used
SYSTEM_NAME	NULL	VARCHAR2(50)	System Name
CP_INSTALL_SITE_USE_ID	NULL	NUMBER	Identifier for installed site use
REFERENCE_NUMBER	NULL	NUMBER	Unique reference for a customer product
CUSTOMER_PRODUCT_STATUS_ID	NULL	NUMBER	Status identifier of a customer product
CUSTOMER_PRODUCT_STATUS	NULL	VARCHAR2(30)	Customer Product Status name
PRODUCT_SUPPORT_CUSTOMER_ID	NULL	NUMBER	Not Used
PURCHASE_ORDER_NUM	NULL	VARCHAR2(50)	The purchase order number for a product.
ORIGINAL_ORDER_NUMBER	NULL	NUMBER	Original Sales Order Number
INCIDENT_ALLOWED_FLAG	NULL	VARCHAR2(1)	Incident Allowed Flag
PROBLEM_CODE_MEANING	NULL	VARCHAR2(80)	Meaning of the Problem Code
PROBLEM_CODE_DESCRIPTION	NULL	VARCHAR2(240)	Description for the Problem Code
RESOLUTION_CODE_MEANING	NULL	VARCHAR2(80)	Meaning of the Resolution Code
RESOLUTION_CODE_DESCRIPTION	NULL	VARCHAR2(240)	Description for the Resolution Code
WORKFLOW_PROCESS_ID	NULL	NUMBER	Sequence number used for this action's last workflow process
ACTIVE_WF_PROCESS	NULL	VARCHAR2(4000)	Indicates whether the current workflow process is an active one or not.
WORKFLOW_PROCESS_NAME	NULL	VARCHAR2(30)	Name of the Workflow Process
WF_PROCESS_NAME_DISPLAY	NULL	VARCHAR2(4000)	Name of the Workflow Process that is displayed
LAST_INCIDENT_UPDATE_DATE_V	NULL	DATE	Date when the Service Request was last updated.
RELATED_STATUSES_CNT_V	NULL	NUMBER	Count of the Related Statuses for a given Incident Type.
DATE_CLOSED	NULL	DATE	Date when the Service Request closed.
LOGGED_BY_NAME	NOT NULL	VARCHAR2(100)	Name by whom the Service Request by logged.
CLOSED_FLAG	NULL	VARCHAR2(1)	Flag to denote whether the service request is closed or not.
PUBLISH_FLAG	NULL	VARCHAR2(1)	Flag to denote whether the service request is published or not.
QA_COLLECTION_ID	NULL	NUMBER	Foreign key to Quality results table
CONTRACT_SERVICE_ID	NULL	NUMBER	Service line unique identifier
TIME_ZONE_ID	NULL	NUMBER(15)	This field stores the time zone id of the time zone specified in the service request form



PHONE_NUMBER	NULL VARCHAR2(40)	Number of the contact's phone
PHONE	NULL VARCHAR2(62)	Contact's phone number
EXT	NULL VARCHAR2(20)	Contact's phone extension
EMAIL	NULL VARCHAR2(2000)	Contact's email address
PHONE_TYPE	NULL VARCHAR2(30)	Communication type for the Contact. e.g. Phone/Fax/Cell
TIME_ZONE_NAME	NULL VARCHAR2(80)	This field stores the time zone name of the time zone specified in the service request form
CONTACT_PARTY_ID	NULL NUMBER	Contact Identifier
CONTACT_POINT_ID	NULL NUMBER	Unique identifier of this contact point
ACCOUNT_NUMBER	NULL VARCHAR2(30)	Account Number
KB_SOLUTION_ID	NULL VARCHAR2(240)	External knowledge base solution identifier.
CUSTOMER_SITE_ID	NULL NUMBER	Identifier for Customer Site.

## FND\_LOOKUPS

FND\_LOOKUPS is a view of selected columns from the table FND\_LOOKUP\_VALUES. This view contains information about the available QuickCodes in the language under which Oracle Applications is currently running at your site. Oracle Application Object Library uses this view to display information for LOVs.

### View Definition

```
CREATE VIEW FND_LOOKUPS
as SELECT
    LOOKUP_TYPE,
    LOOKUP_CODE,
    MEANING,
    DESCRIPTION,
    ENABLED_FLAG,
    START_DATE_ACTIVE,
    END_DATE_ACTIVE
from FND_LOOKUP_VALUES LV
    Where LANGUAGE = userenv('LANG')
and VIEW_APPLICATION_ID = 0
and SECURITY_GROUP_ID =
    fnd_global.lookup_security_group(LV.LOOKUP_TYPE, LV.VIEW_APPLICATION_ID)
```

### Column Descriptions

Name	Null?	Type	Description
LOOKUP_TYPE	NOT NULL	VARCHAR2(30)	QuickCode lookup type
LOOKUP_CODE	NOT NULL	VARCHAR2(30)	QuickCode code
MEANING	NOT NULL	VARCHAR2(80)	QuickCode meaning
DESCRIPTION	NULL	VARCHAR2(240)	Description
ENABLED_FLAG	NOT NULL	VARCHAR2(1)	Enabled flag
START_DATE_ACTIVE	NULL	DATE	The date when the QuickCode becomes active
END_DATE_ACTIVE	NULL	DATE	The date when the QuickCode becomes inactive





*Sequences*

<u>Sequence</u>	<u>Derived Column</u>
JTF_RS_RESOURCE_EXTNS_S	RESOURCE_ID
JTF_RS_RESOURCE_NUMBER_S	RESOURCE_NUMBER
JTF_RS_TRANSACTION_NUM_S	TRANSACTION_NUMBER

---

## MTL\_SYSTEM\_ITEMS\_B

MTL\_SYSTEM\_ITEMS\_B is the definition table for items. This table holds the definitions for inventory items, engineering items, and purchasing items. You can specify item-related information in fields such as: Bill of Material, Costing, Purchasing, Receiving, Inventory, Physical attributes, General Planning, MPS/MRP Planning, Lead times, Work in Process, Order Management, and Invoicing.

You can set up the item with multiple segments, since it is implemented as a flexfield. Use the standard 'System Items' flexfield that is shipped with the product to configure your item flexfield. The flexfield code is MSTK.

The primary key for an item is the INVENTORY\_ITEM\_ID and ORGANIZATION\_ID. Therefore, the same item can be defined in more than one organization.

Each item is initially defined in an item master organization. The user then assigns the item to other organizations that need to recognize this item; a row is inserted for each new organization the item is assigned to. Many columns such as MTL\_TRANSACTIONS\_ENABLED\_FLAG and BOM\_ENABLED\_FLAG correspond to item attributes defined in the MTL\_ITEM\_ATTRIBUTES table. The attributes that are available to the user depend on which Oracle applications are installed. The table MTL\_ATTR\_APPL\_DEPENDENCIES maintains the relationships between item attributes and Oracle applications.

Two unit of measure columns are stored in MTL\_SYSTEM\_ITEMS table. PRIMARY\_UOM\_CODE is the 3-character unit that is used throughout Oracle Manufacturing. PRIMARY\_UNIT\_OF\_MEASURE is the 25-character unit that is used throughout Oracle Purchasing.

Items now support multilingual description. MLS is implemented with a pair of tables: MTL\_SYSTEM\_ITEMS\_B and MTL\_SYSTEM\_ITEMS\_TL. Translations table (MTL\_SYSTEM\_ITEMS\_TL) holds item descriptions in multiple languages. DESCRIPTION column in the base table (MTL\_SYSTEM\_ITEMS\_B) is for backward compatibility and is maintained in the installation base language only.







ENG_ITEM_FLAG	YES_NO N Y	FND_LOOKUPS No Yes
EQUIPMENT_TYPE	SYS_YES_NO 1 2	MFG_LOOKUPS Yes No
EVENT_FLAG	YES_NO N Y	FND_LOOKUPS No Yes
EXPENSE_BILLABLE_FLAG	YES_NO N Y	FND_LOOKUPS No Yes
INDIVISIBLE_FLAG	YES_NO N Y	FND_LOOKUPS No Yes
INSPECTION_REQUIRED_FLAG	YES_NO N Y	FND_LOOKUPS No Yes
INTERNAL_ORDER_ENABLED_FLAG	YES_NO N Y	FND_LOOKUPS No Yes
INTERNAL_ORDER_FLAG	YES_NO N Y	FND_LOOKUPS No Yes
INVENTORY_ASSET_FLAG	YES_NO N Y	FND_LOOKUPS No Yes
INVENTORY_ITEM_FLAG	YES_NO N Y	FND_LOOKUPS No Yes
INVENTORY_PLANNING_CODE	MTL_MATERIAL_PLANNING 1 2 6	MFG_LOOKUPS Reorder point planning Min-max planning Not planned
INVOICEABLE_ITEM_FLAG	YES_NO N Y	FND_LOOKUPS No Yes
INVOICE_ENABLED_FLAG	YES_NO N Y	FND_LOOKUPS No Yes
ITEM_TYPE	ITEM_TYPE AOC ATO BMW FG I K M OC OO OP P PF	FND_COMMON_LOOKUPS ATO Option Class ATO Model BMW Type Finished Good Inventory Type Kit Model Option Class Outside Operation Outside Processing Item Purchased item Product Family

Oracle Proprietary, Confidential Information—Use Restricted by Contract

















POSITIVE_MEASUREMENT_ERROR	NULL	NUMBER	Percent error above measured quantity
NEGATIVE_MEASUREMENT_ERROR	NULL	NUMBER	Percent error below measured quantity
ENGINEERING_ECN_CODE	NULL	VARCHAR2(50)	Engineering ECN code
ENGINEERING_ITEM_ID	NULL	NUMBER	Engineering implemented item identifier
ENGINEERING_DATE	NULL	DATE	Engineering implementation date
SERVICE_STARTING_DELAY	NULL	NUMBER	Days after shipment that service begins
VENDOR_WARRANTY_FLAG	NOT NULL	VARCHAR2(1)	Flag indicating service for the item is provided by a supplier
SERVICEABLE_COMPONENT_FLAG	NULL	VARCHAR2(1)	Indicates whether the item is serviceable by other service-type items and whether it can be referenced as the component of another item
SERVICEABLE_PRODUCT_FLAG	NOT NULL	VARCHAR2(1)	Indicates whether the item is serviceable by other service-type items and can have service requests reported against it
BASE_WARRANTY_SERVICE_ID	NULL	NUMBER	Base warranty identifier
PAYMENT_TERMS_ID	NULL	NUMBER	Payment terms identifier
PREVENTIVE_MAINTENANCE_FLAG	NULL	VARCHAR2(1)	Flag indicating whether item can be a preventive maintenance service item
PRIMARY_SPECIALIST_ID	NULL	NUMBER	Primary service specialist
SECONDARY_SPECIALIST_ID	NULL	NUMBER	Secondary service specialist
SERVICEABLE_ITEM_CLASS_ID	NULL	NUMBER	Serviceable item class identifier
TIME_BILLABLE_FLAG	NULL	VARCHAR2(1)	Flag indicating service labor hours are billable
MATERIAL_BILLABLE_FLAG	NULL	VARCHAR2(30)	Flag indicating service material is billable
EXPENSE_BILLABLE_FLAG	NULL	VARCHAR2(1)	Flag indicating service expenses are billable
PRORATE_SERVICE_FLAG	NULL	VARCHAR2(1)	Flag indicating cost of service may be prorated
COVERAGE_SCHEDULE_ID	NULL	NUMBER	Coverage schedule identifier
SERVICE_DURATION_PERIOD_CODE	NULL	VARCHAR2(10)	Period code for default service duration
SERVICE_DURATION	NULL	NUMBER	Default service duration
WARRANTY_VENDOR_ID	NULL	NUMBER	Service supplier identifier
MAX_WARRANTY_AMOUNT	NULL	NUMBER	Monetary value of service costs covered by the item
RESPONSE_TIME_PERIOD_CODE	NULL	VARCHAR2(30)	Period code for service response time
RESPONSE_TIME_VALUE	NULL	NUMBER	Default response time
NEW_REVISION_CODE	NULL	VARCHAR2(30)	Indicates how to notify customers of new revisions of the item
INVOICEABLE_ITEM_FLAG	NOT NULL	VARCHAR2(1)	Flag indicating item may appear on invoices
TAX_CODE	NULL	VARCHAR2(50)	Tax code
INVOICE_ENABLED_FLAG	NOT NULL	VARCHAR2(1)	Indicates whether the item can be invoiced
MUST_USE_APPROVED_VENDOR_FLAG	NOT NULL	VARCHAR2(1)	Flag indicating purchases restricted to approved supplier
REQUEST_ID	NULL	NUMBER	Standard Who column
PROGRAM_APPLICATION_ID	NULL	NUMBER	Standard Who column
PROGRAM_ID	NULL	NUMBER	Standard Who column
PROGRAM_UPDATE_DATE	NULL	DATE	Standard Who column

Oracle Proprietary, Confidential Information—Use Restricted by Contract

OUTSIDE_OPERATION_FLAG	NOT NULL	VARCHAR2 (1)	Flag indicating item may appear on outside operation purchase order
OUTSIDE_OPERATION_UOM_TYPE	NULL	VARCHAR2 (25)	Outside operation unit of measure
SAFETY_STOCK_BUCKET_DAYS	NULL	NUMBER	Safety stock bucket days
AUTO_REDUCE_MPS	NULL	NUMBER (22)	Automatically deletes MPS entries within a time period
COSTING_ENABLED_FLAG	NOT NULL	VARCHAR2 (1)	Flag indicating cost information is maintained
AUTO_CREATED_CONFIG_FLAG	NOT NULL	VARCHAR2 (1)	Flag indicating configuration item automatically created
CYCLE_COUNT_ENABLED_FLAG	NOT NULL	VARCHAR2 (1)	Flag indicating item may be cycle counted
ITEM_TYPE	NULL	VARCHAR2 (30)	User-defined item type
MODEL_CONFIG_CLAUSE_NAME	NULL	VARCHAR2 (10)	(not currently used)
SHIP_MODEL_COMPLETE_FLAG	NULL	VARCHAR2 (1)	Flag indicating model must be complete to ship
MRP_PLANNING_CODE	NULL	NUMBER	MRP Planning option
RETURN_INSPECTION_REQUIREMENT	NULL	NUMBER	RMA inspection requirement
ATO_FORECAST_CONTROL	NULL	NUMBER	Type of forecast control for ATO
RELEASE_TIME_FENCE_CODE	NULL	NUMBER	Flag to indicate if this item is auto releasable by MRP
RELEASE_TIME_FENCE_DAYS	NULL	NUMBER	Number of days within which this item should be auto released
CONTAINER_ITEM_FLAG	NULL	VARCHAR2 (1)	Flag indicating if the item is a container. Used for shipping sales orders
VEHICLE_ITEM_FLAG	NULL	VARCHAR2 (1)	Indicates if the item is a vehicle or not. Used for shipping sales orders
MAXIMUM_LOAD_WEIGHT	NULL	NUMBER	Maximum load weight of a container or a vehicle that can be used for shipping sales orders
MINIMUM_FILL_PERCENT	NULL	NUMBER	Minimum fill condition under which the container or vehicle should be used
CONTAINER_TYPE_CODE	NULL	VARCHAR2 (30)	Container type code for container items. Container types are user defineable
INTERNAL_VOLUME	NULL	NUMBER	Internal volume for container items. Used by Shipping to calculate container capacity restrictions
WH_UPDATE_DATE	NULL	DATE	Warehouse update date for tracking changes relevant to data collected in Data Warehouse
PRODUCT_FAMILY_ITEM_ID	NULL	NUMBER	If the item is product family member, stores the product family identifier. Used in Production Planning
GLOBAL_ATTRIBUTE_CATEGORY	NULL	VARCHAR2 (150)	Global descriptive flexfield structure defining column
GLOBAL_ATTRIBUTE1	NULL	VARCHAR2 (150)	Global descriptive flexfield segment
GLOBAL_ATTRIBUTE2	NULL	VARCHAR2 (150)	Global descriptive flexfield segment
GLOBAL_ATTRIBUTE3	NULL	VARCHAR2 (150)	Global descriptive flexfield segment
GLOBAL_ATTRIBUTE4	NULL	VARCHAR2 (150)	Global descriptive flexfield segment

**Oracle Proprietary, Confidential Information—Use Restricted by Contract**

GLOBAL_ATTRIBUTES5	NULL	VARCHAR2(150)	Global descriptive flexfield segment
GLOBAL_ATTRIBUTE6	NULL	VARCHAR2(150)	Global descriptive flexfield segment
GLOBAL_ATTRIBUTE7	NULL	VARCHAR2(150)	Global descriptive flexfield segment
GLOBAL_ATTRIBUTES8	NULL	VARCHAR2(150)	Global descriptive flexfield segment
GLOBAL_ATTRIBUTE9	NULL	VARCHAR2(150)	Global descriptive flexfield segment
GLOBAL_ATTRIBUTE10	NULL	VARCHAR2(150)	Global descriptive flexfield segment
PURCHASING_TAX_CODE	NULL	VARCHAR2(50)	Purchasing tax code
OVERCOMPLETION_TOLERANCE_TYPE	NULL	NUMBER	Overcompletion tolerance type
OVERCOMPLETION_TOLERANCE_VALUE	NULL	NUMBER	Overcompletion tolerance value
EFFECTIVITY_CONTROL	NULL	NUMBER	Effectivity control code. Indicates if the item is under Date Effectivity or Model/Unit Number Effectivity control.
CHECK_SHORTAGES_FLAG	NULL	VARCHAR2(1)	Flag indicating material shortages should be checked for this item
OVER_SHIPMENT_TOLERANCE	NULL	NUMBER	Over shipment tolerance
UNDER_SHIPMENT_TOLERANCE	NULL	NUMBER	Under shipment tolerance
OVER_RETURN_TOLERANCE	NULL	NUMBER	Over return tolerance
UNDER_RETURN_TOLERANCE	NULL	NUMBER	Under return tolerance
EQUIPMENT_TYPE	NULL	NUMBER	Flag indicating item is equipment
RECOVERED_PART_DISP_CODE	NULL	VARCHAR2(30)	Indicates return is required for recovered pars, scrap in field, which is used for spare parts
DEFECT_TRACKING_ON_FLAG	NULL	VARCHAR2(1)	Specifies whether a defect or bug can be filed against the product
USAGE_ITEM_FLAG	NULL	VARCHAR2(1)	Flag indicating an item represents usage. Usage items can be sold as a use of something
EVENT_FLAG	NULL	VARCHAR2(1)	Identifies item as an event
ELECTRONIC_FLAG	NULL	VARCHAR2(1)	Flag indicating an item exists only in electronic format and not physical
DOWNLOADABLE_FLAG	NULL	VARCHAR2(1)	Flag indicating an item is downloadable
VOL_DISCOUNT_EXEMPT_FLAG	NULL	VARCHAR2(1)	Indicates an item does not contribute to volume discount for any order
COUPON_EXEMPT_FLAG	NULL	VARCHAR2(1)	Indicates an item is excluded from coupons even if it is part of the group that any coupon applies
COMMS_NL_TRACKABLE_FLAG	NULL	VARCHAR2(1)	Identifies an item as network logistics trackable
ASSET_CREATION_CODE	NULL	VARCHAR2(30)	Used to specify when an asset should be created
COMMS_ACTIVATION_REQD_FLAG	NULL	VARCHAR2(1)	Indicates an item requires activation on a network
ORDERABLE_ON_WEB_FLAG	NULL	VARCHAR2(1)	Indicates whether an item is orderable on the web or not. iStore will only sell items with this flag to be true
BACK_ORDERABLE_FLAG	NULL	VARCHAR2(1)	If ATP failed, can item be back ordered

WEB_STATUS	NULL VARCHAR2(30)	Specifies item web status, which can be web enabled, web published, or neither
INDIVISIBLE_FLAG	NULL VARCHAR2(1)	Item unit is indivisible

#### Indexes

Index Name	Index Type	Sequence	Column Name
MTL_SYSTEM_ITEMS_B_N1	NOT UNIQUE	1 2	ORGANIZATION_ID SEGMENT1
MTL_SYSTEM_ITEMS_B_N2	NOT UNIQUE	1 2	ORGANIZATION_ID DESCRIPTION
MTL_SYSTEM_ITEMS_B_N3	NOT UNIQUE	1	INVENTORY_ITEM_STATUS_CODE
MTL_SYSTEM_ITEMS_B_N4	NOT UNIQUE	1 2	ORGANIZATION_ID AUTO_CREATED_CONFIG_FLAG
MTL_SYSTEM_ITEMS_B_N5	NOT UNIQUE	2	WH_UPDATE_DATE
MTL_SYSTEM_ITEMS_B_N6	NOT UNIQUE	2 4	ITEM_CATALOG_GROUP_ID CATALOG_STATUS_FLAG
MTL_SYSTEM_ITEMS_B_N7	NOT UNIQUE	2 4	PRODUCT_FAMILY_ITEM_ID ORGANIZATION_ID
MTL_SYSTEM_ITEMS_B_U1	UNIQUE	1 2	INVENTORY_ITEM_ID ORGANIZATION_ID

#### Sequences

Sequence	Derived Column
MTL_SYSTEM_ITEMS_B_S	INVENTORY_ITEM_ID

#### Database Triggers

```

Trigger Name      : MTL_SYSTEM_ITEMS_B_T2_IBE
Trigger Time      : AFTER
Trigger Level     : ROW
Trigger Event     : DELETE

```

This trigger calls iStore procedures to update relationships, section-items and search tables that depend on MTL\_SYSTEM\_ITEMS\_B table.

```

Trigger Name      : MTL_SYSTEM_ITEMS_B_T3_IBE
Trigger Time      : AFTER
Trigger Level     : ROW
Trigger Event     : UPDATE

```

This trigger calls iStore procedures to update relationships and section-items tables that depend on MTL\_SYSTEM\_ITEMS\_B table.

```

Trigger Name      : MTL_SYSTEM_ITEMS_T6_BOM
Trigger Time      : AFTER
Trigger Level     : ROW
Trigger Event     : INSERT

```

This trigger creates categories corresponding to product family items being created. It also assigns product family items to their corresponding categories. The trigger uses data that has been stored in the BOM\_PFI\_PVT package PL/SQL tables by the row level trigger.

Oracle Proprietary, Confidential Information—Use Restricted by Contract

Trigger Name : MTL\_SYSTEM\_ITEMS\_T1\_BOM  
Trigger Time : BEFORE  
Trigger Level : ROW  
Trigger Event : INSERT

This trigger stores product family item identifier used later by the statement level trigger for creation of the corresponding category when a new product family item is defined. It makes calls to the BOM\_PFI\_PVT package procedures.

Trigger Name : MTL\_SYSTEM\_ITEMS\_B\_T2\_BOM  
Trigger Time : BEFORE  
Trigger Level : ROW  
Trigger Event : DELETE

This trigger stores corresponding category identifier that is used later by the statement level trigger for deletion of the category when the product family item is deleted. It makes calls to BOM\_PFI\_PVT package procedures.

Trigger Name : MTL\_SYSTEM\_ITEMS\_T3\_BOM  
Trigger Time : BEFORE  
Trigger Level : ROW  
Trigger Event : UPDATE

This trigger performs the following functions depending on conditions: 1. Creates product family category when item attribute BOM\_ITEM\_TYPE is updated to 5. 2. When the item attribute BOM\_ITEM\_TYPE is changed from 5 to any other value, the trigger stores corresponding category identifier for later deletion of the category by the statement level trigger. 3. Removes an item assignment to the corresponding product family category when the PRODUCT\_FAMILY\_ITEM\_ID column of that item is changed. 4. When the PRODUCT\_FAMILY\_ITEM\_ID column is changed to non-null, stores category ID in the BOM\_PFI\_PVT package PL/SQL table for an item assignment to that category later by the statement-level trigger.

Trigger Name : MTL\_SYSTEM\_ITEMS\_T4\_BOM  
Trigger Time : AFTER  
Trigger Level : STATEMENT  
Trigger Event : UPDATE

This trigger performs the following functions depending on updates of the BOM\_ITEM\_TYPE and PRODUCT\_FAMILY\_ITEM\_ID columns: 1. Creates categories corresponding to product family items. 2. Assigns new product family items to their corresponding categories. 3. Deletes product family categories. The trigger uses data that has been stored in the BOM\_PFI\_PVT package PL/SQL tables by the row level trigger.

Trigger Name : MTL\_SYSTEM\_ITEMS\_T5\_BOM  
Trigger Time : AFTER  
Trigger Level : ROW  
Trigger Event : DELETE

This trigger deletes categories corresponding to product family items being deleted. The trigger uses data that has been stored in the BOM\_PFI\_PVT package PL/SQL tables by the row level trigger.

Trigger Name : MTL\_SYSTEM\_ITEMS\_T1  
Trigger Time : BEFORE  
Trigger Level : ROW  
Trigger Event : UPDATE

The trigger is executed when the `COSTING_ENABLED_FLAG` field in the `MTL_SYSTEM_ITEMS` table is modified from Yes to No or vice versa. Before updating `COSTING_ENABLED_FLAG` field, the trigger performs the following tasks for each record that is modified:

- Insert a record into `CST_ITEM_COSTS` table if `COSTING_ENABLED_FLAG` field is changed from No to Yes.
- Delete a record from `CST_ITEM_COSTS` table if `COSTING_ENABLED_FLAG` field is changed from Yes to No.

## MTL\_UNITS\_OF\_MEASURE\_TL

MTL\_UNITS\_OF\_MEASURE\_TL is the definition table for both the 25-character and the 3-character units of measure. The `base_uom_flag` indicates if the unit of measure is the primary unit of measure for the `uom_class`. Oracle Inventory uses this table to keep track of the units of measure used to transact an item. This table is also used by Oracle Purchasing, Oracle Order Management and Oracle Shipping Execution.

### Foreign Keys

Primary Key Table	Primary Key Column	Foreign Key Column
MTL_UOM_CLASSES_TL	UOM_CLASS	UOM_CLASS

### Column Descriptions

Name	Null?	Type	Description
UNIT_OF_MEASURE (PK)	NOT NULL	VARCHAR2(25)	Unit of measure name
UOM_CODE	NOT NULL	VARCHAR2(3)	Abbreviated unit of measure code
UOM_CLASS	NOT NULL	VARCHAR2(10)	Unit of measure class
BASE_UOM_FLAG	NOT NULL	VARCHAR2(1)	Base unit of measure flag
UNIT_OF_MEASURE_TL	NOT NULL	VARCHAR2(25)	Unit of measure name translation
LAST_UPDATE_DATE	NOT NULL	DATE	Standard Who column
LAST_UPDATED_BY	NOT NULL	NUMBER	Standard Who column
CREATED_BY	NOT NULL	NUMBER	Standard Who column
CREATION_DATE	NOT NULL	DATE	Standard Who column
LAST_UPDATE_LOGIN		NUMBER	Standard Who column
DISABLE_DATE		DATE	Date when the unit can no longer be used to define conversions
DESCRIPTION		VARCHAR2(50)	Unit of measure description
LANGUAGE (PK)	NOT NULL	VARCHAR2(4)	
SOURCE_LANG	NOT NULL	VARCHAR2(4)	
ATTRIBUTE_CATEGORY		VARCHAR2(30)	Descriptive flexfield structure defining column
ATTRIBUTE1		VARCHAR2(150)	Descriptive flexfield segment
ATTRIBUTE2		VARCHAR2(150)	Descriptive flexfield segment
ATTRIBUTE3		VARCHAR2(150)	Descriptive flexfield segment
ATTRIBUTE4		VARCHAR2(150)	Descriptive flexfield segment
ATTRIBUTE5		VARCHAR2(150)	Descriptive flexfield segment
ATTRIBUTE6		VARCHAR2(150)	Descriptive flexfield segment
ATTRIBUTE7		VARCHAR2(150)	Descriptive flexfield segment
ATTRIBUTE8		VARCHAR2(150)	Descriptive flexfield segment
ATTRIBUTE9		VARCHAR2(150)	Descriptive flexfield segment
ATTRIBUTE10		VARCHAR2(150)	Descriptive flexfield segment
ATTRIBUTE11		VARCHAR2(150)	Descriptive flexfield segment
ATTRIBUTE12		VARCHAR2(150)	Descriptive flexfield segment
ATTRIBUTE13		VARCHAR2(150)	Descriptive flexfield segment
ATTRIBUTE14		VARCHAR2(150)	Descriptive flexfield segment
ATTRIBUTE15		VARCHAR2(150)	Descriptive flexfield segment
REQUEST_ID		NUMBER	Standard Who column
PROGRAM_APPLICATION_ID		NUMBER	Standard Who column
PROGRAM_ID		NUMBER	Standard Who column

Oracle Proprietary, Confidential Information—Use Restricted by Contract

PROGRAM\_UPDATE\_DATE

NULL DATE

Standard Who column

*Indexes*

Index Name	Index Type	Sequence	Column Name
MTL_UNITS_OF_MEASURE_TL_U1	UNIQUE	1	UNIT_OF_MEASURE
		2	LANGUAGE
MTL_UNITS_OF_MEASURE_TL_U2	UNIQUE	1	UOM_CODE
		2	LANGUAGE

## OKC\_K\_LINES\_B

A CONTRACT LINE is a supertype of CLIN (contract line item number), SUBCLIN and LINE DETAIL which group a set of deliverable ITEMS into a logical set usually defined by unitary price, delivery or some other classification. It also provides an association point for any specific RULES governing the performance of that particular delivery. LINES are hierarchical. A LINE may have children and may belong to one parent line. The topmost line (called the top line) has no LINE as its parent, but belongs to the CONTRACT HEADER. A RULE or PARTY association for a LINE flows down to all child lines until overridden. Each CONTRACT LINE must be of a specified LINE STYLE. This controls from where the LINE may source its data and what types of lines it may have as its children. Different SUBCLASSES of contracts may have different LINE STYLE hierarchies.

### Foreign Keys

Primary Key Table	Primary Key Column	Foreign Key Column
FND_CURRENCIES	CURRENCY_CODE	CURRENCY_CODE
FND_LOOKUP_VALUES	LOOKUP_CODE	TRN_CODE
OKC_K_HEADERS_B	ID	CHR_ID
OKC_K_LINES_B	ID	CLE_ID
OKC_K_LINES_B	ID	CLE_ID_RENEWED
OKC_LINE_STYLES_B	ID	LSE_ID
OKC_STATUSES_B	CODE	STS_CODE

### QuickCodes Columns

Column	QuickCodes Type	QuickCodes Table
EXCEPTION_YN	YES_NO	FND_LOOKUPS
	N	No
	Y	Yes
HIDDEN_IND	YES_NO	FND_LOOKUPS
	N	No
	Y	Yes
INVOICE_LINE_LEVEL_IND	YES_NO	FND_LOOKUPS
	N	No
	Y	Yes
PRICE_LEVEL_IND	YES_NO	FND_LOOKUPS
	N	No
	Y	Yes

### Column Descriptions

Name	Null?	Type	Description
ID (PK)	NOT NULL	NUMBER	Primary key column.
LINE_NUMBER	NOT NULL	VARCHAR2(150)	Sequential line number.
CHR_ID	NULL	NUMBER	Foreign key to OKC_K_HEADERS_B.
CLE_ID	NULL	NUMBER	Surrogate key used for primary unique identifiers.
CLE_ID_RENEWED	NULL	NUMBER	Surrogate key used for primary unique identifiers.

DNZ_CHR_ID	NOT NULL	NUMBER	Contract ID. Denormalized for performance.
DISPLAY_SEQUENCE	NOT NULL	NUMBER(7)	Order of line within parent.
STS_CODE	NOT NULL	VARCHAR2(30)	Line status code defined in FND_LOOKUPS.
TRN_CODE		NULL VARCHAR2(30)	Line termination code as defined in FND_LOOKUPS.
LSE_ID	NOT NULL	NUMBER	Foreign key to OKC_LINE_STYLES_B.
EXCEPTION_YN	NOT NULL	VARCHAR2(3)	Yes/No flag denoting contract line exception.
OBJECT_VERSION_NUMBER	NOT NULL	NUMBER(9)	Sequential number set at 1 on insert and incremented on update. Used by APIs to ensure current record is passed.
CREATED_BY	NOT NULL	NUMBER(15)	Standard Who column.
CREATION_DATE	NOT NULL	DATE	Standard Who column.
LAST_UPDATED_BY	NOT NULL	NUMBER(15)	Standard Who column.
LAST_UPDATE_DATE	NOT NULL	DATE	Standard Who column.
HIDDEN_IND		NULL VARCHAR2(3)	Yes/No field to Indicate whether the line is visible on the contract or hidden and only visible in the contract management system.
PRICE_NEGOTIATED		NULL NUMBER	The calculated or manually adjusted rollup extended price all sublines.
PRICE_LEVEL_IND		NULL VARCHAR2(3)	Yes / No field Indicating whether extended value is to be calculated and displayed at this level.
PRICE_UNIT		NULL NUMBER	Price per unit.
PRICE_UNIT_PERCENT		NULL NUMBER(6,2)	Price unit percent.
INVOICE_LINE_LEVEL_IND		NULL VARCHAR2(3)	Yes/No field to Indicate if a single invoice line is to be generated at this level for all sublines.
DPAS_RATING		NULL VARCHAR2(24)	DPAS rating.
TEMPLATE_USED		NULL VARCHAR2(150)	Name of template used.
PRICE_TYPE		NULL VARCHAR2(30)	Contract price type.
CURRENCY_CODE		NULL VARCHAR2(15)	Currency code as defined in FND_CURRENCIES.
LAST_UPDATE_LOGIN		NULL NUMBER(15)	Standard Who column.
DATE_TERMINATED		NULL DATE	Date contract was terminated.
START_DATE		NULL DATE	The beginning of the active period, one second after midnight on the date indicated.
END_DATE		NULL DATE	The end of the active period, one second before midnight on the date indicated.
ATTRIBUTE_CATEGORY		NULL VARCHAR2(90)	Descriptive flexfield category column.
ATTRIBUTE1		NULL VARCHAR2(450)	Descriptive flexfield column.
ATTRIBUTE2		NULL VARCHAR2(450)	Descriptive flexfield column.
ATTRIBUTE3		NULL VARCHAR2(450)	Descriptive flexfield column.
ATTRIBUTE4		NULL VARCHAR2(450)	Descriptive flexfield column.
ATTRIBUTE5		NULL VARCHAR2(450)	Descriptive flexfield column.
ATTRIBUTE6		NULL VARCHAR2(450)	Descriptive flexfield column.
ATTRIBUTE7		NULL VARCHAR2(450)	Descriptive flexfield column.
ATTRIBUTE8		NULL VARCHAR2(450)	Descriptive flexfield column.
ATTRIBUTE9		NULL VARCHAR2(450)	Descriptive flexfield column.
ATTRIBUTE10		NULL VARCHAR2(450)	Descriptive flexfield column.

Oracle Proprietary, Confidential Information—Use Restricted by Contract

ATTRIBUTE11	NULL	VARCHAR2(450)	Descriptive flexfield column.
ATTRIBUTE12	NULL	VARCHAR2(450)	Descriptive flexfield column.
ATTRIBUTE13	NULL	VARCHAR2(450)	Descriptive flexfield column.
ATTRIBUTE14	NULL	VARCHAR2(450)	Descriptive flexfield column.
ATTRIBUTE15	NULL	VARCHAR2(450)	Descriptive flexfield column.

*Indexes*

<u>Index Name</u>	<u>Index Type</u>	<u>Sequence</u>	<u>Column Name</u>
OKC_K_LINES_B_N1	NOT UNIQUE	1	CHR_ID
OKC_K_LINES_B_N2	NOT UNIQUE	2	DNZ_CHR_ID
OKC_K_LINES_B_U1	UNIQUE	10	ID

## WF\_ITEM\_TYPES

The WF\_ITEM\_TYPES table defines an item that is transitioning through a workflow process.

### Column Descriptions

Name	Null?	Type	Description
NAME (PK)	NOT NULL	VARCHAR2(8)	Internal name of the item type
PROTECT_LEVEL	NOT NULL	NUMBER	Level at which the data is protected
CUSTOM_LEVEL	NOT NULL	NUMBER	Level of user who last updated the row
WF_SELECTOR	NULL	VARCHAR2(240)	Selector function
READ_ROLE	NULL	VARCHAR2(30)	Not currently used
WRITE_ROLE	NULL	VARCHAR2(30)	Not currently used
EXECUTE_ROLE	NULL	VARCHAR2(30)	Not currently used
PERSISTENCE_TYPE	NOT NULL	VARCHAR2(8)	Indicates whether item type is temporary or permanent
PERSISTENCE_DAYS	NULL	NUMBER	Number of days until purge if persistence is temporary

### Indexes

Index Name	Index Type	Sequence	Column Name
WF_ITEM_TYPES_PK	UNIQUE	1	NAME

## WIP\_DISCRETE\_JOBS

WIP\_DISCRETE\_JOBS stores discrete job information. Each row represents a discrete job, and contains information about the assembly being built, the revision of the assembly, the job quantity, the status of the job, the material control method, accounting information, and job schedule dates. Oracle Work in Process uses this information to control discrete production.

### Foreign Keys

Primary Key Table	Primary Key Column	Foreign Key Column
BOM_BILL_OF_MATERIALS	BILL_SEQUENCE_ID	COMMON_BOM_SEQUENCE_ID
BOM_OPERATIONAL_ROUTINGS	ROUTING_SEQUENCE_ID	COMMON_ROUTING_SEQUENCE_ID
GL_CODE_COMBINATIONS	CODE_COMBINATION_ID	MATERIAL_ACCOUNT
GL_CODE_COMBINATIONS	CODE_COMBINATION_ID	MATERIAL_OVERHEAD_ACCOUNT
GL_CODE_COMBINATIONS	CODE_COMBINATION_ID	RESOURCE_ACCOUNT
GL_CODE_COMBINATIONS	CODE_COMBINATION_ID	OUTSIDE_PROCESSING_ACCOUNT
GL_CODE_COMBINATIONS	CODE_COMBINATION_ID	MATERIAL_VARIANCE_ACCOUNT
GL_CODE_COMBINATIONS	CODE_COMBINATION_ID	RESOURCE_VARIANCE_ACCOUNT
GL_CODE_COMBINATIONS	CODE_COMBINATION_ID	OUTSIDE_PROC_VARIANCE_ACCOUNT
GL_CODE_COMBINATIONS	CODE_COMBINATION_ID	STD_COST_ADJUSTMENT_ACCOUNT
GL_CODE_COMBINATIONS	CODE_COMBINATION_ID	OVERHEAD_ACCOUNT
GL_CODE_COMBINATIONS	CODE_COMBINATION_ID	OVERHEAD_VARIANCE_ACCOUNT
MTL_ITEM_LOCATIONS	INVENTORY_LOCATION_ID ORGANIZATION_ID	COMPLETION_LOCATOR_ID ORGANIZATION_ID
MTL_ITEM_REVISIONS	INVENTORY_ITEM_ID ORGANIZATION_ID REVISION	PRIMARY_ITEM_ID ORGANIZATION_ID BOM_REVISION
MTL_ITEM_SUB_INVENTORIES	INVENTORY_ITEM_ID ORGANIZATION_ID SECONDARY_INVENTORY	PRIMARY_ITEM_ID ORGANIZATION_ID COMPLETION_SUBINVENTORY
MTL_KANBAN_CARDS	KANBAN_CARD_ID	KANBAN_CARD_ID
MTL_RTG_ITEM_REVISIONS	INVENTORY_ITEM_ID ORGANIZATION_ID PROCESS_REVISION	PRIMARY_ITEM_ID ORGANIZATION_ID ROUTING_REVISION
MTL_SECONDARY_INVENTORIES	SECONDARY_INVENTORY_NAME ORGANIZATION_ID	COMPLETION_SUBINVENTORY ORGANIZATION_ID
MTL_SECONDARY_LOCATORS	INVENTORY_ITEM_ID ORGANIZATION_ID SECONDARY_LOCATOR	PRIMARY_ITEM_ID ORGANIZATION_ID COMPLETION_LOCATOR_ID
MTL_SYSTEM_ITEMS_B	INVENTORY_ITEM_ID ORGANIZATION_ID	PRIMARY_ITEM_ID ORGANIZATION_ID
MTL_SYSTEM_ITEMS_B	INVENTORY_ITEM_ID ORGANIZATION_ID	BOM_REFERENCE_ID ORGANIZATION_ID
MTL_SYSTEM_ITEMS_B	INVENTORY_ITEM_ID ORGANIZATION_ID	ROUTING_REFERENCE_ID ORGANIZATION_ID
PJM_UNIT_NUMBERS	UNIT_NUMBER	END_ITEM_UNIT_NUMBER
WIP_ACCOUNTING_CLASSES	CLASS_CODE ORGANIZATION_ID	CLASS_CODE ORGANIZATION_ID
WIP_ENTITIES	WIP_ENTITY_ID	WIP_ENTITY_ID

### QuickCodes Columns

Column	QuickCodes Type	QuickCodes Table
FIRM_PLANNED_FLAG	SYS_YES_NO 1 2	MFG_LOOKUPS Yes No

Oracle Proprietary, Confidential Information—Use Restricted by Contract

JOB_TYPE	WIP_DISCRETE_JOB	MFG_LOOKUPS
	1	Standard
	3	Non-standard
STATUS_TYPE	WIP_JOB_STATUS	MFG_LOOKUPS
	1	Unreleased
	10	Pending Routing Load
	11	Failed Routing Load
	12	Closed
	13	Pending - Mass Loaded
	14	Pending Close
	15	Failed Close
	3	Released
	4	Complete
	5	Complete - No Charges
	6	On Hold
	7	Cancelled
	8	Pending Bill Load
	9	Failed Bill Load
WIP_SUPPLY_TYPE	WIP_SUPPLY	MFG_LOOKUPS
	1	Push
	2	Assembly Pull
	3	Operation Pull
	4	Bulk
	5	Supplier
	6	Phantom
	7	Based on Bill

*Column Descriptions*

Name	Null?	Type	Description
WIP_ENTITY_ID (PK)	NOT NULL	NUMBER	WIP Job Identifier
ORGANIZATION_ID	NOT NULL	NUMBER	Organization Identifier
LAST_UPDATE_DATE	NOT NULL	DATE	Standard Who column
LAST_UPDATED_BY	NOT NULL	NUMBER	Standard Who column
CREATION_DATE	NOT NULL	DATE	Standard Who column
CREATED_BY	NOT NULL	NUMBER	Standard Who column
LAST_UPDATE_LOGIN	NULL	NUMBER	Standard Who column
REQUEST_ID	NULL	NUMBER	Enhanced Who column
PROGRAM_APPLICATION_ID	NULL	NUMBER	Enhanced Who column
PROGRAM_ID	NULL	NUMBER	Enhanced Who column
PROGRAM_UPDATE_DATE	NULL	DATE	Enhanced Who column
SOURCE_LINE_ID	NULL	NUMBER	Identifier of the source system that generated the job record
SOURCE_CODE	NULL	VARCHAR2(30)	Code of the process that generated the job record(null if created by Oracle Work In Process)
DESCRIPTION	NULL	VARCHAR2(240)	Descriptive text
STATUS_TYPE	NOT NULL	NUMBER	Status of job
PRIMARY_ITEM_ID	NULL	NUMBER	Inventory item Identifier for the assembly the job creates
FIRM_PLANNED_FLAG	NOT NULL	NUMBER	Control for MRP rescheduling
JOB_TYPE	NOT NULL	NUMBER	Type of discrete job
WIP_SUPPLY_TYPE	NOT NULL	NUMBER	Method of material consumption within WIP
CLASS_CODE	NOT NULL	VARCHAR2(10)	Accounting class associated with job

**Oracle Proprietary, Confidential Information—Use Restricted by Contract**

MATERIAL_ACCOUNT	NULL	NUMBER	General Ledger account to accumulate material charges for a job
MATERIAL_OVERHEAD_ACCOUNT	NULL	NUMBER	General Ledger account to accumulate material overhead charges for a job
RESOURCE_ACCOUNT	NULL	NUMBER	General Ledger account to accumulate resource charges for a job
OUTSIDE_PROCESSING_ACCOUNT	NULL	NUMBER	General Ledger account to accumulate outside processing charges for a job
MATERIAL_VARIANCE_ACCOUNT	NULL	NUMBER	General Ledger account to accumulate material variances for a job
RESOURCE_VARIANCE_ACCOUNT	NULL	NUMBER	General Ledger account to accumulate resource variances for a job
OUTSIDE_PROC_VARIANCE_ACCOUNT	NULL	NUMBER	General Ledger account to accumulate outside processing variances for a job
STD_COST_ADJUSTMENT_ACCOUNT	NULL	NUMBER	General Ledger account to accumulate standard cost variances for a job
OVERHEAD_ACCOUNT	NULL	NUMBER	General Ledger account to accumulate overhead charges for a job
OVERHEAD_VARIANCE_ACCOUNT	NULL	NUMBER	General ledger account to accumulate overhead variances for a job
SCHEDULED_START_DATE	NOT NULL	DATE	Date on which job is scheduled to start
DATE_RELEASED	NULL	DATE	Date on which job is released
SCHEDULED_COMPLETION_DATE	NOT NULL	DATE	Last unit scheduled completion date
DATE_COMPLETED	NULL	DATE	Last unit actual completion date
DATE_CLOSED	NULL	DATE	Date on which job was closed
START_QUANTITY	NOT NULL	NUMBER	Job start quantity
QUANTITY_COMPLETED	NOT NULL	NUMBER	Current job quantity completed
QUANTITY_SCRAPPED	NOT NULL	NUMBER	Number of units scrapped on the current job
NET_QUANTITY	NOT NULL	NUMBER	Number of assemblies netted to supply by MRP
BOM_REFERENCE_ID	NULL	NUMBER	Assembly identifier used as bill of material reference for explosions of nonstandard job
ROUTING_REFERENCE_ID	NULL	NUMBER	Assembly identifier used as routing reference for explosions of nonstandard job
COMMON_BOM_SEQUENCE_ID	NULL	NUMBER	Bill of material identifier when a common bill is used
COMMON_ROUTING_SEQUENCE_ID	NULL	NUMBER	Routing identifier when a common routing is used
BOM_REVISION	NULL	VARCHAR2(3)	BOM revision for the primary assembly
ROUTING_REVISION	NULL	VARCHAR2(3)	Short code that uniquely identifies the Routing revision
BOM_REVISION_DATE	NULL	DATE	Date of assembly item revision used to explode the bills of material used in the job
ROUTING_REVISION_DATE	NULL	DATE	Routing revision date
LOT_NUMBER	NULL	VARCHAR2(30)	Default lot number to assign to assemblies completed from the job

Oracle Proprietary, Confidential Information—Use Restricted by Contract

ALTERNATE_BOM_DESIGNATOR	NULL	VARCHAR2(10)	Alternate bill of material used in a job
ALTERNATE_ROUTING_DESIGNATOR	NULL	VARCHAR2(10)	Alternate routing used in a job
COMPLETION_SUBINVENTORY	NULL	VARCHAR2(10)	Default completion subinventory for assemblies completed by the job
COMPLETION_LOCATOR_ID	NULL	NUMBER	Default completion locator identifier for assemblies completed by the job
MPS_SCHEDULED_COMPLETION_DATE	NULL	DATE	Date used by MRP to relieve the MPS for the job (used by MRP only)
MPS_NET_QUANTITY	NULL	NUMBER	Quantity used by MRP to relieve MPS for the job (used by MRP only)
DEMAND_CLASS	NULL	VARCHAR2(30)	Type of demand the job satisfies
SCHEDULE_GROUP_ID	NULL	NUMBER	Identifier for the job schedule group
BUILD_SEQUENCE	NULL	NUMBER	Build sequence
LINE_ID	NULL	NUMBER	Production line Identifier
PROJECT_ID	NULL	NUMBER	Project Identifier
TASK_ID	NULL	NUMBER	Project task Identifier
KANBAN_CARD_ID	NULL	NUMBER	Identifier for production kanban replenished by the job
OVERCOMPLETION_TOLERANCE_TYPE	NULL	NUMBER	Unit of OVERCOMPLETION_TOLERANCE_VALUE (percent or amount)
OVERCOMPLETION_TOLERANCE_VALUE	NULL	NUMBER	Percent or amount above start quantity that this job is allowed to complete
END_ITEM_UNIT_NUMBER	NULL	VARCHAR2(30)	Assembly unit number identifier to support Project Manufacturing in Model Unit Effectivity.
ATTRIBUTE_CATEGORY	NULL	VARCHAR2(30)	Descriptive flexfield structure defining column
ATTRIBUTE1	NULL	VARCHAR2(150)	Descriptive Flexfield segment
ATTRIBUTE2	NULL	VARCHAR2(150)	Descriptive Flexfield segment
ATTRIBUTE3	NULL	VARCHAR2(150)	Descriptive Flexfield segment
ATTRIBUTE4	NULL	VARCHAR2(150)	Descriptive Flexfield segment
ATTRIBUTE5	NULL	VARCHAR2(150)	Descriptive Flexfield segment
ATTRIBUTE6	NULL	VARCHAR2(150)	Descriptive Flexfield segment
ATTRIBUTE7	NULL	VARCHAR2(150)	Descriptive Flexfield segment
ATTRIBUTE8	NULL	VARCHAR2(150)	Descriptive Flexfield segment
ATTRIBUTE9	NULL	VARCHAR2(150)	Descriptive Flexfield segment
ATTRIBUTE10	NULL	VARCHAR2(150)	Descriptive Flexfield segment
ATTRIBUTE11	NULL	VARCHAR2(150)	Descriptive Flexfield segment
ATTRIBUTE12	NULL	VARCHAR2(150)	Descriptive Flexfield segment
ATTRIBUTE13	NULL	VARCHAR2(150)	Descriptive Flexfield segment
ATTRIBUTE14	NULL	VARCHAR2(150)	Descriptive Flexfield segment
ATTRIBUTE15	NULL	VARCHAR2(150)	Descriptive Flexfield segment
PO_CREATION_TIME	NOT NULL	NUMBER	PO Creation Time for Outside Processing
PRIORITY	NULL	NUMBER	Priority of this job
DUE_DATE	NULL	DATE	Due date of this job
EST_SCRAP_ACCOUNT	NULL	NUMBER	Estimated Scrap account
EST_SCRAP_VAR_ACCOUNT	NULL	NUMBER	Estimated Scrap variance account
EST_SCRAP_PRIOR_QTY	NULL	NUMBER	Estimated quantity completed for calculation of operation yield

Oracle Proprietary, Confidential Information—Use Restricted by Contract

## Indexes

Index Name	Index Type	Sequence	Column Name
WIP_DISCRETE_JOBS_N1	NOT UNIQUE	1	PRIMARY_ITEM_ID
WIP_DISCRETE_JOBS_N2	NOT UNIQUE	2	BOM_REFERENCE_ID
		4	ORGANIZATION_ID
WIP_DISCRETE_JOBS_N3	NOT UNIQUE	2	ROUTING_REFERENCE_ID
		4	ORGANIZATION_ID
WIP_DISCRETE_JOBS_N4	NOT UNIQUE	1	CLASS_CODE
		2	ORGANIZATION_ID
		3	ATTRIBUTE1
		4	ATTRIBUTE2
WIP_DISCRETE_JOBS_N5	NOT UNIQUE	1	FIRM_PLANNED_FLAG
		2	STATUS_TYPE
WIP_DISCRETE_JOBS_N6	NOT UNIQUE	2	SCHEDULE_GROUP_ID
		4	BUILD_SEQUENCE
WIP_DISCRETE_JOBS_N7	NOT UNIQUE	1	STATUS_TYPE
		4	ORGANIZATION_ID
		5	SCHEDULED_START_DATE
		6	ATTRIBUTE1
		8	ATTRIBUTE2
		10	ATTRIBUTE3
WIP_DISCRETE_JOBS_N8	NOT UNIQUE	2	LINE_ID
		4	ORGANIZATION_ID
WIP_DISCRETE_JOBS_U1	UNIQUE	1	WIP_ENTITY_ID
		2	ORGANIZATION_ID

## Database Triggers

```

Trigger Name      : WIP_DISCRETE_JOBS_T5
Trigger Time      : BEFORE
Trigger Level     : ROW
Trigger Event     : UPDATE

```

WIP\_DISCRETE\_JOBS\_T5 calls PJM\_PROJECT\_LOCATOR.GET\_JOB\_PROJECTSUPPLY in order to update the locator for the project, if any, that is associated with the job being updated.

```

Trigger Name      : WIP_DISCRETE_JOBS_BRU
Trigger Time      : BEFORE
Trigger Level     : ROW
Trigger Event     : UPDATE

```

WIP\_DISCRETE\_JOBS\_BRU calls the procedure WIP\_MRP\_RELIEF.WIP\_DISCRETE\_JOBS\_PROC if the status\_type of the job is (or was) < 7 and the job is a standard discrete job. This procedure inserts rows into the table MRP\_RELIEF\_INTERFACE to do MPS relief.

```

Trigger Name      : WIP_DISCRETE_JOBS_BRD
Trigger Time      : BEFORE
Trigger Level     : ROW
Trigger Event     : DELETE

```

WIP\_DISCRETE\_JOBS\_BRD calls the procedure WIP\_MRP\_RELIEF.WIP\_DISCRETE\_JOBS\_PROC if the status\_type of the job was < 7 and the job is a standard discrete job. This procedure inserts rows into the table MRP\_RELIEF\_INTERFACE to do MPS relief.

```

Trigger Name      : WIP_DISCRETE_JOBS_T4
Trigger Time      : BEFORE
Trigger Level     : ROW
Trigger Event     : INSERT

```

WIP\_DISCRETE\_JOBS\_T4 calls PJM\_PROJECT\_LOCATOR.GET\_JOB\_PROJECTSUPPLY in order to find a locator for the project, if any, that is associated with the job being created.

# WIP\_ENTITIES

WIP\_ENTITIES stores information about jobs, repetitive assemblies, and flow schedules. Each row includes a unique entity name, the entity type, and the assembly being built. Oracle Work in Process uses this information to control production activities and to ensure that entities with duplicate names are not created.

## Foreign Keys

Primary Key Table	Primary Key Column	Foreign Key Column
MTL_SYSTEM_ITEMS_B	INVENTORY_ITEM_ID ORGANIZATION_ID	PRIMARY_ITEM_ID ORGANIZATION_ID
WIP_PARAMETERS	ORGANIZATION_ID	ORGANIZATION_ID

## QuickCodes Columns

Column	QuickCodes Type	QuickCodes Table
ENTITY_TYPE	WIP_ENTITY	MFG_LOOKUPS
	1	Discrete job
	2	Repetitive assembly
	3	Closed discrete job
	4	Flow schedule

## Column Descriptions

Name	Null?	Type	Description
WIP_ENTITY_ID (PK)	NOT NULL	NUMBER	Job or schedule Identifier
ORGANIZATION_ID	NOT NULL	NUMBER	Organization Identifier
LAST_UPDATE_DATE	NOT NULL	DATE	Standard Who column
LAST_UPDATED_BY	NOT NULL	NUMBER	Standard Who column
CREATION_DATE	NOT NULL	DATE	Standard Who column
CREATED_BY	NOT NULL	NUMBER	Standard Who column
LAST_UPDATE_LOGIN	NULL	NUMBER	Standard Who column
REQUEST_ID	NULL	NUMBER	Enhanced Who column
PROGRAM_APPLICATION_ID	NULL	NUMBER	Enhanced Who column
PROGRAM_ID	NULL	NUMBER	Enhanced Who column
PROGRAM_UPDATE_DATE	NULL	DATE	Enhanced Who column
WIP_ENTITY_NAME	NOT NULL	VARCHAR2(240)	WIP job or repetitive assembly name or flow schedule reference code
ENTITY_TYPE	NOT NULL	NUMBER	WIP entity type code
DESCRIPTION	NULL	VARCHAR2(240)	Description of the discrete job or repetitive assembly
PRIMARY_ITEM_ID	NULL	NUMBER	Inventory item Identifier for the assembly the job or schedule creates

## Indexes

Index Name	Index Type	Sequence	Column Name
WIP_ENTITIES_N1	NOT UNIQUE	2	PRIMARY_ITEM_ID
		4	ORGANIZATION_ID
WIP_ENTITIES_U1	UNIQUE	1	WIP_ENTITY_ID
WIP_ENTITIES_U2	UNIQUE	3	WIP_ENTITY_NAME
		4	ORGANIZATION_ID

*Sequences*

<u>Sequence</u>	<u>Derived Column</u>
WIP_ENTITIES_S	WIP_ENTITY_ID

---



**Oracle Proprietary, Confidential Information—Use Restricted by Contract**

# Index

## A

Application Building Block, 1 – 6

## C

Column descriptions, 3 – 4

Columns, Who, 3 – 4

Concurrent Program List. *See* Concurrent Program Definitions

country-specific localizations, 3 – 6

## D

Database Diagram, 1 – 6

Database Diagrams

Repair Jobs and History, 2 – 11

Repair Orders, 2 – 9, 2 – 11

database diagrams, conventions, 2 – 6

Database triggers, 3 – 7

## F

Foreign keys, 3 – 3

Form, 1 – 7

Form List, 2 – 18

*See also* Form Definitions

Forms and Table View List, 2 – 16

## G

GLOBAL\_ATTRIBUTE columns, 3 – 6

## I

Indexes, 3 – 6

important note about, 3 – 6

## L

Lookup types. *See* QuickCodes

## M

Module List, 2 – 18

*See also* Module Definitions

Modules, 1 – 6

MultiLingual View List, 2 – 17

## O

Oracle8 sequences. *See* Sequences

## P

Public Table List, 2 – 13

Public View List, 2 – 15

## Q

QuickCodes, 1 – 6  
Columns that contain, 3 – 3

## R

Relationship, 1 – 6  
Report List. *See* Report Definitions

## S

Sequences, 3 – 6

## T

Table and View Definitions  
ASO\_I\_ITEM\_UOMS\_V, 3 – 8  
CS\_CP\_REVISIONS, 3 – 32  
CS\_CUSTOMER\_PRODUCT\_STATUSES, 3 –  
38  
CS\_CUSTOMER\_PRODUCTS\_ALL, 3 – 34  
CS\_ESTIMATE\_DETAILS, 3 – 40  
CS\_INCIDENTS\_ALL\_B, 3 – 47  
CS\_INCIDENTS\_V, 3 – 52  
CSD\_CP\_REFERENCE\_V, 2 – 16  
CSD\_INCIDENTS\_V, 2 – 16  
CSD\_REPAIR\_HISTORY, 3 – 16  
CSD\_REPAIR\_HISTORY\_V, 3 – 19  
CSD\_REPAIR\_JOB\_XREF, 3 – 22  
CSD\_REPAIR\_JOB\_XREF\_V, 3 – 24

CSD\_REPAIR\_JOBS\_V, 2 – 16  
CSD\_REPAIR\_TYPES\_B, 3 – 27  
CSD\_REPAIR\_TYPES\_TL, 3 – 29  
CSD\_REPAIR\_TYPES\_VL, 3 – 30  
CSD\_REPAIRS, 3 – 9  
CSD\_REPAIRS\_V, 3 – 12  
FND\_LOOKUPS, 3 – 60  
JTF\_RS\_RESOURCE\_EXTNS, 3 – 61  
MTL\_SYSTEM\_ITEMS\_B, 3 – 64  
MTL\_UNITS\_OF\_MEASURE\_TL, 3 – 83  
OKC\_K\_LINES\_B, 3 – 85  
WF\_ITEM\_TYPES, 3 – 88  
WF\_ITEM\_TYPES\_VL, 2 – 17  
WIP\_DISCRETE\_JOBS, 3 – 89  
WIP\_ENTITIES, 3 – 95

### Tables

*See also* Table and View Definitions  
Column descriptions, 3 – 4  
Foreign keys, 3 – 3  
Indexes. *See* Indexes  
Primary Keys, 3 – 4  
QuickCodes Columns, 3 – 3  
Who columns, 3 – 4, 3 – 5

## V

View Definitions. *See* Table and View  
Definitions

### Views

*See also* Table and View Definitions; View  
List  
Derivation, 3 – 7

# Reader's Comment Form

## Oracle Depot Repair Technical Reference Manual A83686-01

Oracle Corporation welcomes your comments and suggestions on the quality and usefulness of this publication. Your input is an important part of the information we use for revision.

- Did you find any errors?
- Is the information clearly presented?
- Do you need more information? If so, where?
- Are the examples correct? Do you need more examples?
- What features did you like most about this manual? What did you like least about it?

If you find any errors or have any other suggestions for improvement, please indicate the topic, chapter, and page number below:

---

---

---

---

---

---

---

---

---

---

Please send your comments to:

CRM Content Development Manager  
Oracle Corporation  
500 Oracle Parkway  
Redwood Shores, CA 94065 USA  
Phone: (650) 506-7000 Fax: (650) 506-7200

If you would like a reply, please give your name, address, and telephone number below:

---

---

---

Thank you for helping us improve our documentation.

