

Oracle® Field Service Technical Reference Manual

RELEASE 11i

August 2000



Oracle® Field Service Technical Reference Manual
Release 11i

To order this book, ask for Part No. A86128-01

Copyright © 2000. Oracle Corporation. All rights reserved.

Major Contributors:

Contributors:

This Technical Reference Manual (TRM) in any form, software or printed matter, contains proprietary information of Oracle Corporation; it is provided under an Oracle Corporation agreement containing restrictions on use and disclosure and is also protected by copyright, patent, and other intellectual property law. Restrictions applicable to this TRM include, but are not limited to: (a) exercising either the same degree of care to safeguard the confidentiality of this TRM as you exercise to safeguard the confidentiality of your own most important Confidential Information or a reasonable degree of care, whichever is greater; (b) maintaining agreements with your employees and agents that protect the Confidential Information of third parties such as Oracle Corporation and instructing such employees and agents of these requirements for this TRM; (c) restricting disclosure of this TRM to those of your employees who have a "need to know" consistent with the purposes for which this TRM was disclosed to you; (d) maintaining this TRM at all times on your premises; (e) not removing or destroying any proprietary or confidential legends or markings placed upon this TRM in whatever form, software or printed matter; and (f) not reproducing or transmitting this TRM in any form or by any means, electronic or mechanical, for any purpose, without the express written permission of Oracle Corporation. You should not use this TRM in any form, software or printed matter, to create software that performs the same or similar functions as any Oracle Corporation products.

The information in this TRM is subject to change without notice. If you find any problems in the TRM in any form, software or printed matter, please report them to us in writing. Oracle Corporation does not warrant that this TRM is error-free. This TRM is provided to customer "as-is" with no warranty of any kind. This TRM does not constitute Documentation as that term is defined in Oracle's agreements.

Reverse engineering of the Programs (software and documentation) associated with this TRM are prohibited. The Programs associated with this TRM are not intended for use in any nuclear, aviation, mass transit, medical, or other inherently dangerous applications. It shall be licensee's responsibility to take all appropriate fail-safe, back-up, redundancy and other measures to ensure the safe use of such applications if the Programs are used for such purposes, and Oracle disclaims liability for any damages caused by such use of the Programs.

Program Documentation is licensed for use solely to support the deployment of the Programs and not for any other purpose.

Restricted Rights Legend

This TRM and the Programs associated with this TRM delivered subject to the DOD FAR Supplement are 'commercial computer software' and use, duplication and disclosure of the TRM and the Programs associated with this TRM shall be subject to the licensing restrictions set forth in the applicable Oracle license agreement. Otherwise, this TRM and the Programs associated with this TRM delivered subject to the Federal Acquisition Regulations are 'restricted computer software' and use, duplication and disclosure of the TRM and the Programs associated with this TRM shall be subject to the restrictions in FAR 52.227-14, Rights in Data -- General, including Alternate III (June 1987). Oracle Corporation, 500 Oracle Parkway, Redwood City, CA 94065.

Oracle is a registered trademark, and Oracle Field Service, CASE*Exchange, Enabling the Information Age, Hyper*SQL, NLS*Workbench, Oracle7, Oracle8, Oracle 8i, Oracle Access, Oracle Application Object Library, Oracle Discoverer, Oracle Financials, Oracle Quality, Oracle Web Customers, Oracle Web Employees, Oracle Work in Process, Oracle Workflow, PL/SQL, Pro*Ada, Pro*C, Pro*COBOL, Pro*FORTRAN, Pro*Pascal, Pro*PL/I, SmartClient, SQL*Connect, SQL*Forms, SQL*Loader, SQL*Menu, SQL*Net, SQL*Plus, and SQL*Report are trademarks or registered trademarks of Oracle Corporation. Other names may be trademarks of their respective owners.



CAUTION

This Technical Reference Manual in any form -- software or printed matter -- contains proprietary, confidential information that is the exclusive property of Oracle Corporation. If you do not have a valid contract with Oracle for the use of this Technical Reference Manual or have not signed a non-disclosure agreement with Oracle covering this Technical Reference Manual, then you received this document in an unauthorized manner and are not legally entitled to possess or read it.

Use, duplication, and disclosure are subject to restrictions stated in your contract with Oracle Corporation.



Contents

Chapter 1	Introduction	1 – 1
Chapter 2	High-Level Design	2 – 1
	Overview of High-Level Design	2 – 2
	Database Diagrams	2 – 8
	Public Table List	2 – 20
	Public View List	2 – 24
	Forms and Table View List	2 – 25
	Internal View List	2 – 26
	Module List	2 – 27
Chapter 3	Detailed Design	3 – 1
	Overview of Detailed Design	3 – 2

Oracle Proprietary, Confidential Information--Use Restricted by Contract

CHAPTER

1

Introduction

The *Oracle Field Service Technical Reference Manual* provides the information you need to understand the underlying structure of Oracle Field Service. After reading this manual, you should be able to convert your existing applications data, integrate your existing applications with Oracle Field Service, and write custom reports for Oracle Field Service, as well as read data that you need to perform other tasks.

This chapter introduces you to the *Oracle Field Service Technical Reference Manual*, and explains how to use it.

Introduction

At Oracle, we design and build applications using Oracle Designer, our systems design technology that provides a complete environment to support developers through all stages of a systems life cycle. Because we use a repository-based design toolset, all the information regarding the underlying structure and processing of our applications is available to us online. Using Oracle Designer, we can present this information to you in the form of a technical reference manual.

This *Oracle Field Service Technical Reference Manual* contains detailed, up-to-date information about the underlying structure of Oracle Field Service. As we design and build new releases of Oracle Field Service, we update our Oracle Designer repository to reflect our enhancements. As a result, we can always provide you with an *Oracle Field Service Technical Reference Manual* that contains the latest technical information as of the publication date. Note that after the publication date we may have added new indexes to Oracle Field Service to improve performance.

About this Manual

This manual describes the Oracle Customer Relationship Management (CRM) Applications Release 11i data model, as used by Oracle Field Service; it discusses the database we include with a fresh install of Oracle CRM Release 11i. If you have not yet upgraded to Release 11i, your database may differ from the database we document in this book.

You can contact your Oracle representative to confirm that you have the latest technical information for Oracle Field Service. You can also use Oracle *MetaLink* which is accessible through Oracle's Support Web Center (http://www.oracle.com/support/elec_sup).

Finding the Latest Information

The *Oracle Field Service Technical Reference Manual* contains the latest information as of the publication date. For the latest information we encourage you to use Oracle *MetaLink* which is accessible through Oracle's Support Web Center (http://www.oracle.com/support/elec_sup).

Audience

The *Oracle Field Service Technical Reference Manual* provides useful guidance and assistance to:

- Technical End Users
- Consultants
- Systems Analysts
- System Administrators
- Other MIS professionals

This manual assumes that you have a basic understanding of structured analysis and design, and of relational databases. It also assumes that you are familiar with Oracle Application Object Library and Oracle Field Service. If you are not familiar with the above products, we suggest that you attend one or more of the training classes available through Oracle Education (see: Other Information Sources: page 1 – 7).

How This Manual is Organized

This manual contains two major sections, High-Level Design and Detailed Design.

High-Level Design

This section, Chapter 2, contains database diagrams and lists each database table and view that Oracle Field Service uses. This chapter also has a list of modules.

Detailed Design

This section, Chapter 3, contains a detailed description of the Oracle Field Service database design, including information about each database table and view you might need for your custom reporting or other data requirements.

How to Use This Manual

The *Oracle Field Service Technical Reference Manual* is a single, centralized source for all the information you need to know about the underlying structure and processing of Oracle Field Service. For example, you can use this manual when you need to:

- Convert existing application data
- Integrate your Oracle Field Service application with your other applications systems
- Write custom reports
- Define alerts against Oracle Applications tables
- Configure your Oracle Self-Service Web Applications
- Create views for decision support queries using query tools
- Create business views for Oracle Discoverer

You need not read this manual cover to cover. Use the table of contents and index to quickly locate the information you need.

How Not To Use This Manual

Do not use this manual to plan modifications

You should not use this manual to plan modifications to Oracle Field Service. Modifying Oracle Field Service limits your ability to upgrade to future releases of your Oracle Field Service application. In addition, it interferes with our ability to give you the high-quality support you deserve.

We have constructed Oracle Field Service so that you can customize it to fit your needs without programming, and you can integrate it with your existing applications through interface tables. However, should you require program modifications, you should contact our support team (see: Other Information Sources: page 1 – 7). They can put you in touch with Oracle Services, the professional consulting organization of Oracle. Their team of experienced applications professionals can make the modifications you need while ensuring upward compatibility with future product releases.

Oracle Proprietary, Confidential Information--Use Restricted by Contract

Do not write data into non-interface tables

Oracle reserves the right to change the structure of Oracle Applications tables, and to change the meaning of, add, or delete lookup codes and data in future releases. Do not write data directly into or change data in non-interface tables using SQL*Plus or other programming tools because you risk corrupting your database and interfering with our ability to support you.

Moreover, this version of the *Oracle Field Service Technical Reference Manual* does not contain complete information about the dependencies between Oracle Field Service applications tables. Therefore, you should write data into only those tables we identify as interface tables. If you write data into other non-interface tables, you risk violating your data integrity since you might not fulfill all the data dependencies in your Oracle Field Service application.

You are responsible for the support and upgrade of the logic within the procedures that you write, which may be affected by changes between releases of Oracle Applications.

Do not rely on upward compatibility of the data model

Oracle reserves the right to change the structure of Oracle Field Service tables, and to change the meaning of, add, or delete lookup codes and other data in future releases. We do not guarantee the upward compatibility of the Oracle Field Service data model. For example, if you write a report that identifies concurrent requests that end in Error status by selecting directly from Oracle Application Object Library tables, we do not guarantee that your report will work properly after an upgrade.

About Oracle Application Object Library

Oracle Application Object Library is a collection of pre-built application components and facilities for building Oracle Applications and extensions to Oracle Applications. Oracle Application Coding Standards use the Oracle Application Object Library and contains shared components including but not limited to -- forms, subroutines, concurrent programs and reports, database tables and objects, messages, menus, responsibilities, flexfield definitions and online help.



Attention: Oracle does not support *any* customization of Oracle Application Object Library tables or modules, not even

by Oracle consultants. (Oracle Application Object Library tables generally have names beginning with FND_%.)

Accordingly, this manual does not contain detailed information about most Oracle Application Object Library tables used by Oracle Field Service.

A Few Words About Terminology

The following list provides you with definitions for terms that we use throughout this manual:

Relationship

A relationship describes any significant way in which two tables may be associated. For example, rows in the Journal Headers table may have a one-to-many relationship with rows in the Journal Lines table.

Database Diagram

A database diagram is a graphic representation of application tables and the relationships between them.

Module

A module is a program or procedure that implements one or more business functions, or parts of a business function, within an application. Modules include forms, concurrent programs and reports, and subroutines.

Application Building Block

An application building block is a set of tables and modules (forms, reports, and concurrent programs) that implement closely-related database objects and their associated processing. Said another way, an application building block is a logical unit of an application.

QuickCodes

QuickCodes let you define general purpose, static lists of values for window fields. QuickCodes allow you to base your program logic on lookup codes while displaying user-friendly names in a list of values window. QuickCodes simplify name and language changes by letting

you change the names your end users see, while the codes in your underlying programs remain the same.

Form

A form is a module comprised of closely related windows that are used together to perform a task. For example, the Enter Journals form in Oracle General Ledger includes the Enter Journals window, the Batch window, and the More Actions window among others. The Enter Journals window is the main window, and from it, you can use buttons to navigate to other windows in the form. The form name usually corresponds to the main window in the form, and is frequently a window you open directly from the Navigator.

Other Information Sources

Installation and System Administration

Training

Oracle Education offers a complete set of training courses to help you and your staff master Oracle CRM Applications. We can help you develop a training plan that provides thorough training for both your project team and your end users. We will work with you to organize courses appropriate to your job or area of responsibility.

Training professionals can show you how to plan your training throughout the implementation process so that the right amount of information is delivered to key people when they need it the most. You can attend courses at any one of our many Educational Centers, or you can arrange for our trainers to teach at your facility. In addition, we can tailor standard courses or develop custom courses to meet your needs.

Support

From on-site support to central support, our team of experienced professionals provides the help and information you need to keep Oracle Field Service working for you. This team includes your Technical Representative, Account Manager, and Oracle's large staff of consultants and support specialists with expertise in your business

area, managing an Oracle server, and your hardware and software environment.

Oracle Proprietary, Confidential Information--Use Restricted by Contract

About Oracle

Oracle Corporation develops and markets an integrated line of software products for database management, applications development, decision support, and office automation, as well as Oracle Applications, an integrated suite of more than 75 software modules for financial management, supply chain management, manufacturing, project systems, human resources, and sales and service management.

Oracle products are available for mainframes, minicomputers, personal computers, network computers, and personal digital assistants, allowing organizations to integrate different computers, different operating systems, different networks, and even different database management systems, into a single, unified computing and information resource.

Oracle is the world's leading supplier of software for information management, and the world's second largest software company. Oracle offers its database, tools, and applications products, along with related consulting, education, and support services, in over 145 countries around the world.

Thank You

Thanks for using Oracle Field Service and this technical reference manual!

We appreciate your comments and feedback. After the Table of Contents of this manual is a Reader's Comment Form that you can use to explain what you like or dislike about Oracle Field Service or this technical reference manual. Mail your comments to the following address or call us directly at (650) 506-7000.

Oracle CRM Applications Content Development Manager
Oracle Corporation
500 Oracle Parkway
Redwood Shores, California 94065
U.S.A.

Oracle Proprietary, Confidential Information--Use Restricted by Contract

CHAPTER

2

High-Level Design

This chapter presents a high-level design for Oracle Field Service that satisfies the business needs we specify during Strategy and Analysis. It contains database diagrams for Oracle Field Service application building blocks, lists of database tables and views, and a list of modules.

Overview of High-Level Design

During High-Level Design, we define the application components (tables, views, and modules) we need to build our application. We specify what application components should do without specifying the details of *how* they should do it.

You can refer to this High-Level Design chapter to quickly acquaint yourself with the tables, views, and modules that comprise Oracle Field Service applications. And, you can prepare yourself to understand the detailed design and implementation of Oracle Field Service.

Database Diagrams

The Database Diagrams section graphically represents all Oracle Field Service applications tables and the relationships between them, organized by building block.

Use this section to quickly learn what tables each Oracle Field Service application building block uses, and how those tables interrelate. Then, you can refer to the Table and View Definitions sections of Chapter 3 for more detailed information about each of those tables.

Table Lists

The Table List sections list the Oracle Field Service applications tables. Because a product might not include at least one table for each type, this Technical Reference Manual might not include each of the following sections.

Public Tables

Use the Public Table List section to quickly identify the tables you are most interested in. Then, you can refer to the Table and View Definitions sections of Chapter 3 for more detailed information about those tables.

In addition, this manual may contain full documentation for one or more of the following Application Object Library tables: FND_DUAL, FND_CURRENCIES, and FND_COMMON_LOOKUPS.

Internal Tables

This section includes a list of private, internal tables used by Oracle Field Service; we do not provide additional documentation for these tables.

View Lists

The View List sections list the Oracle Field Service views, with one section for each type of view. Because a product might not include at least one view for each type, this Technical Reference Manual might not include each of the following sections.

Use this section to quickly identify the views you are most interested in. Then, you can refer to the Table and View Definitions sections of Chapter 3 for more detailed information about those views.

Public Views

This section lists views that may be useful for your custom reporting or other data requirements. The list includes a description of the view, and the page in Chapter 3 that gives detailed information about the public view.

Web Views

This section lists views that you may need to configure your Self-Service Web applications. The list includes a description of the view, and the page in Chapter 3 that gives detailed information about the web view.

Internal Views

This section includes each private, internal view that Oracle Field Service uses.

Multiple Reporting Currency Views

This list includes views that were created to support the Multiple Reporting Currencies feature.

Module List

The Module List section briefly describes each of the Oracle Field Service applications modules. This section lists forms, reports, and concurrent programs.

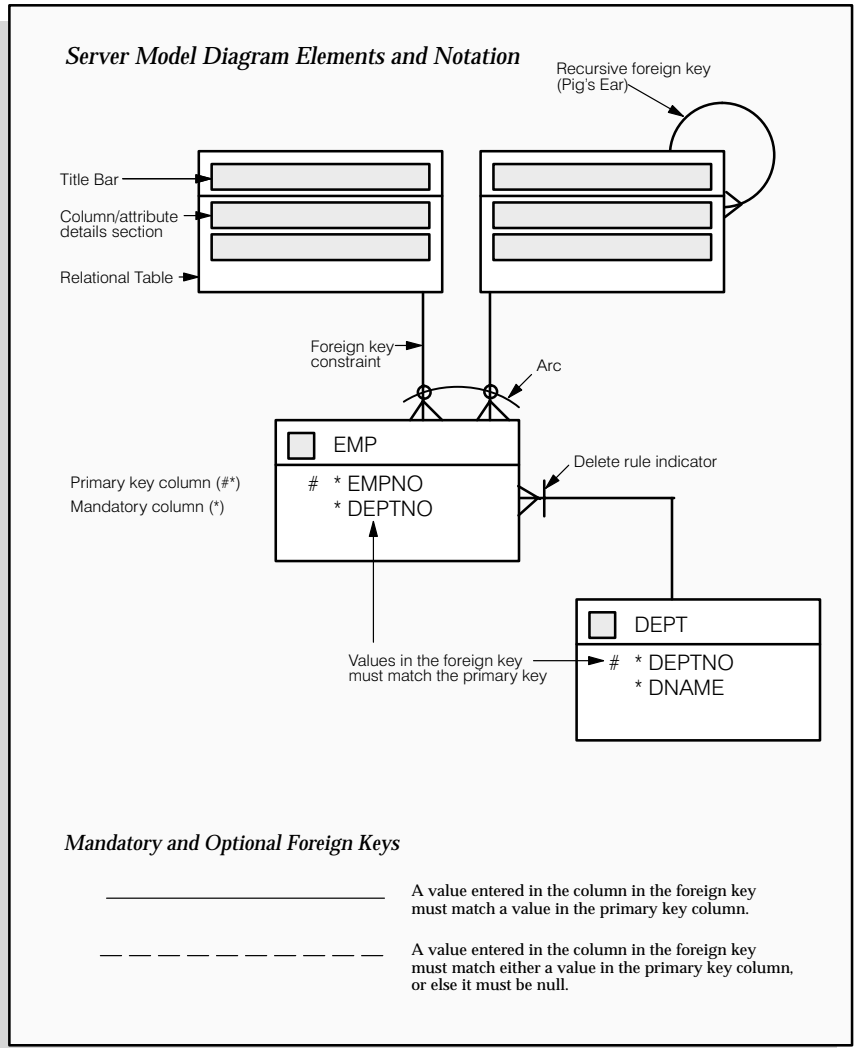
A form is a module comprised of closely related windows that are used together to perform a task. For example, the Enter Journals form in Oracle General Ledger includes the Enter Journals window, the Batch window, and the More Actions window. The Enter Journals window is the main window, and from it, you can use buttons to navigate to other windows in the form. The form name usually corresponds to the main window in the form, and is frequently a window you can open directly from the Navigator.

The Reports and Concurrent Programs lists include processes you can submit from the Submit Requests window or other windows, as well as processes that are submitted automatically by Oracle Field Service. Use your user's guide to learn more about reports and concurrent processes.

Database Diagramming Conventions

We use the following notational conventions in our database diagrams:

Figure 2 - 1
Database Diagram
Conventions



Tables – are the basic unit of storage in the database. A hand symbol preceding the title in the table's title bar indicates that the table is not owned by this application but shared with another.

Foreign key constraint – is a type of referential integrity constraint for checking the integrity of data entered in a specific column or set of columns. This specified column or set of columns is known as the foreign key.

Delete rule indicator – determines the action to be taken when an attempt is made to delete a related row in a join table. A line through the foreign key constraint, as shown on the above diagram, indicates that this action is restricted.

Arcs – specify that, for any given row in a table, a value must be entered in one of the arc columns. The remaining columns within the arc must be null.



Database Diagrams

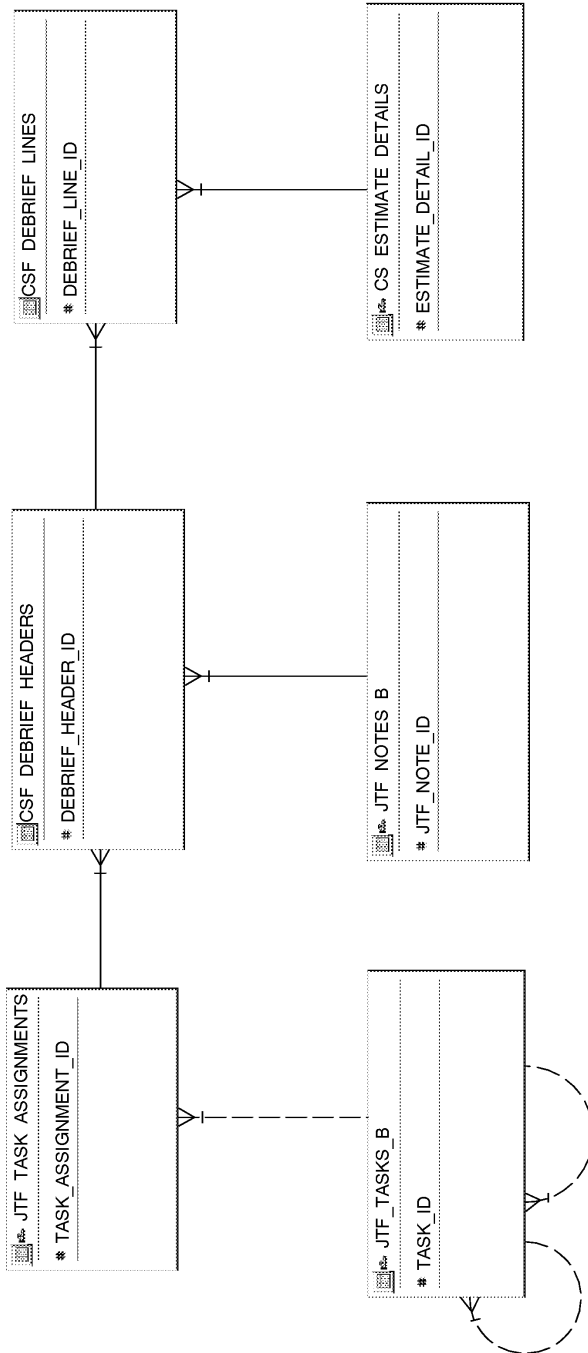
This section graphically represents most of the significant Oracle Field Service tables and the relationships between them, organized by building block. Use this section to quickly learn what tables each Oracle Field Service application building block uses, and how these tables interrelate. Then, you can refer to the Table and View Definitions sections of Chapter 3 for more detailed information about each of those tables.

This section contains a database diagram for each of the following Oracle Field Service application building blocks:

- Diagram 1: DBF Field Service Report
- Diagram 2: FSR Field Service Report
- Diagram 3: Map Display
- Diagram 4: Planner Groups
- Diagram 5: TDs
- Diagram 6: Location Finder

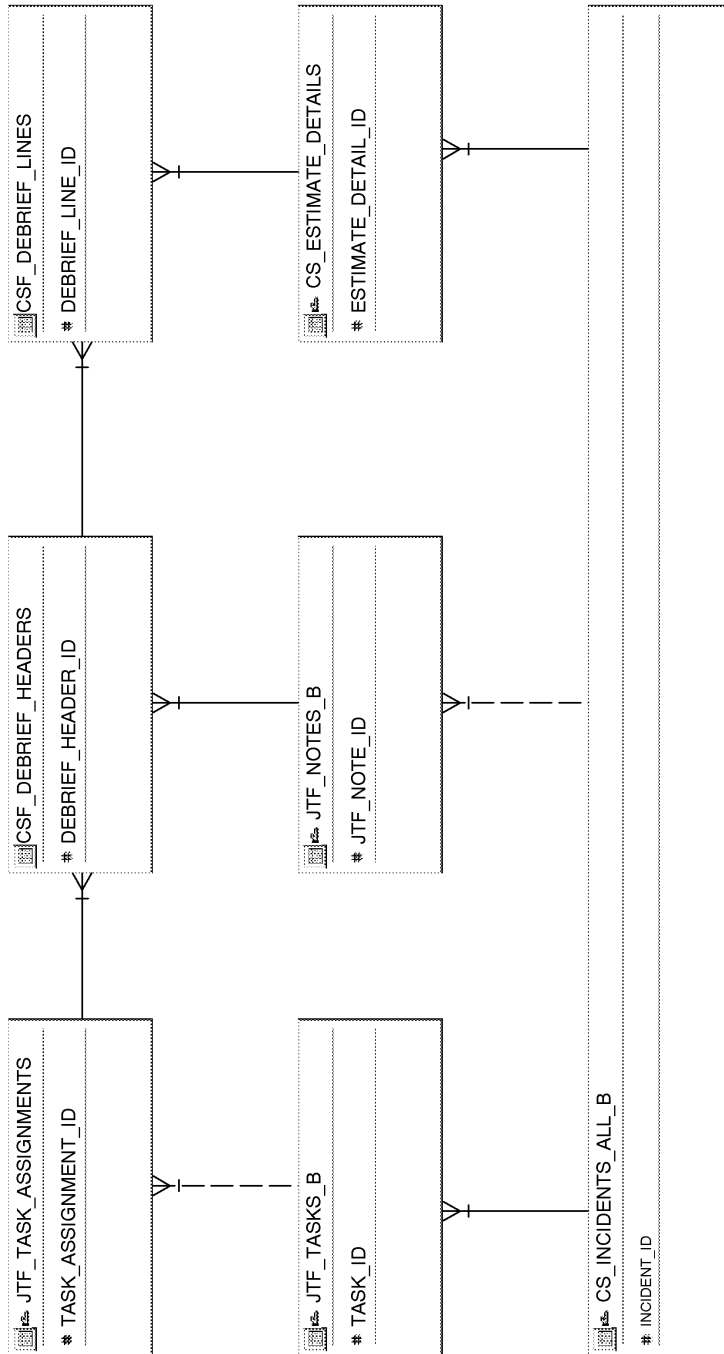
Some tables, especially important reference tables, appear in more than one database diagram. When several building blocks use a table, we show that table in each appropriate database diagram.

DBF Field Service Report



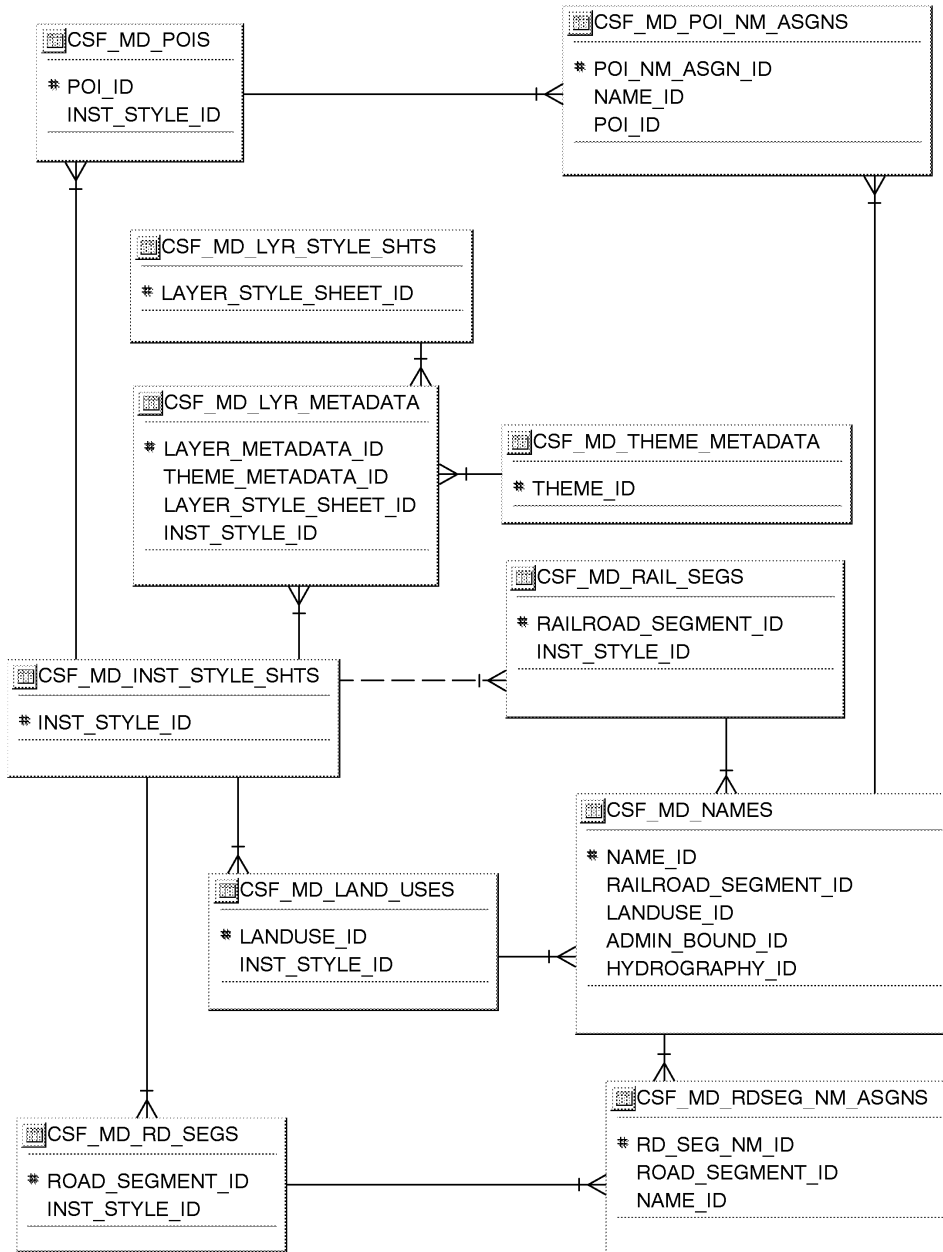
FSR Field Service Report

Oracle Proprietary, Confidential Information--Use Restricted by Contract



Map Display

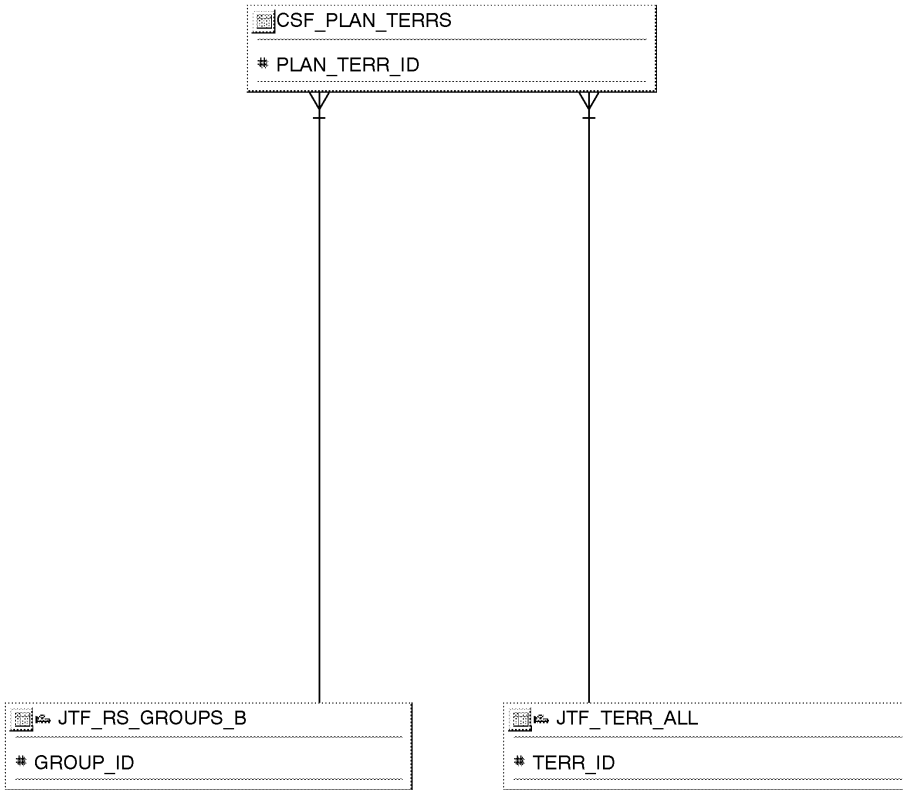
Oracle Proprietary, Confidential Information--Use Restricted by Contract



Oracle Proprietary, Confidential Information--Use Restricted by Contract

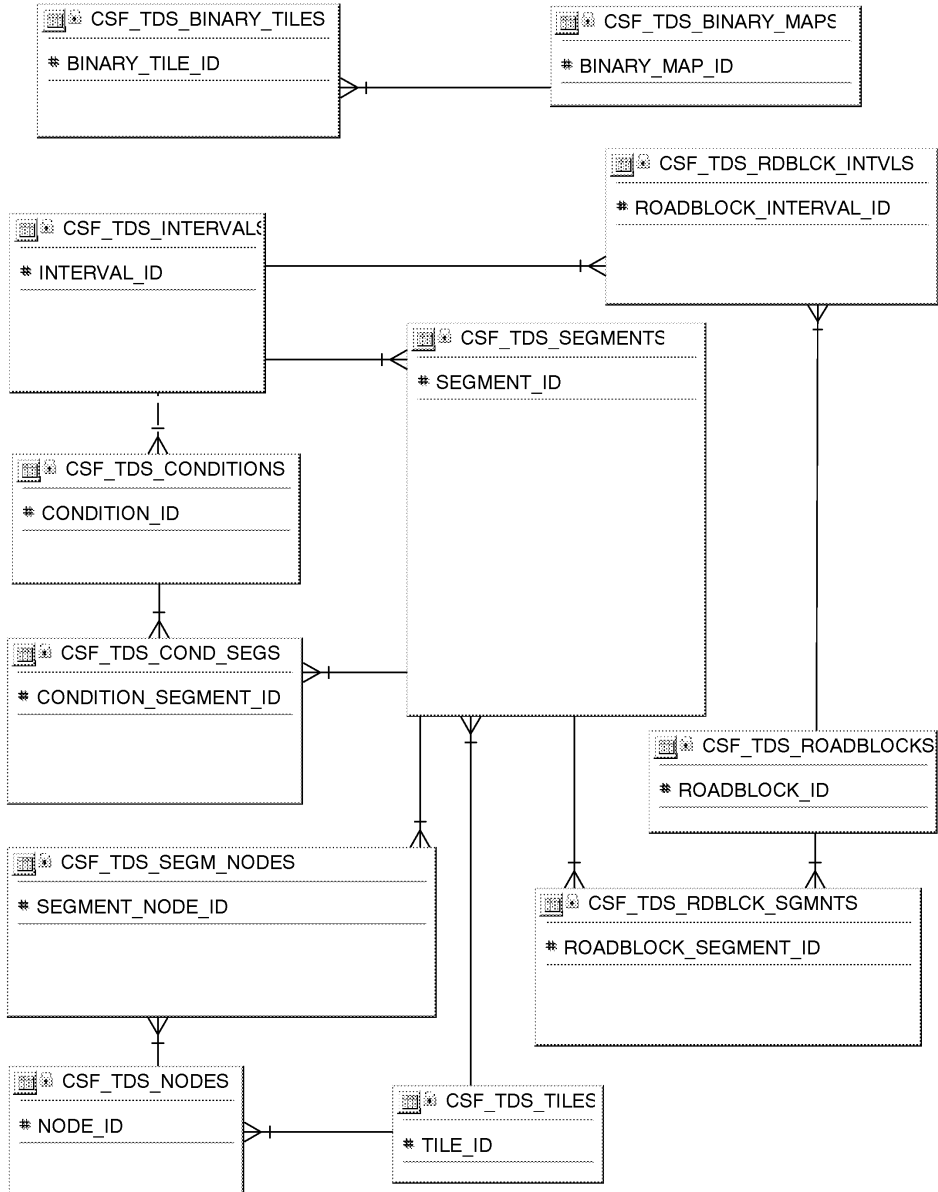
Planner Groups

Oracle Proprietary, Confidential Information--Use Restricted by Contract



TDs

Oracle Proprietary, Confidential Information--Use Restricted by Contract



Location Finder

Oracle Proprietary, Confidential Information--Use Restricted by Contract

Public Table List

This section lists each public database table that Field Service uses and provides a brief description of each of those tables. The page reference is to the table description in Chapter 3.

Note that "public" tables are not necessarily intended for write access by custom code; Oracle Corporation supports write access using only standard Oracle Applications forms, reports, and programs, or any SQL write access to tables explicitly documented as API tables. For more information, see the How Not To Use This Manual section of this book's Introduction.

Field Service uses the following Public tables:

Table Name	Description
CSF_DEBRIEF_HEADERS	Field Service Report header information (See page 3 – 7)
CSF_DEBRIEF_LINES	Field Service Report lines information (See page 3 – 9)
CSF_LF_BLOCKS	Defines the available address range for a segment (See page 3 – 11)
CSF_LF_NAMES	Stores all Name information for the Location Finder (See page 3 – 12)
CSF_LF_PLACES	Contains all Administrative areas and Zones (See page 3 – 13)
CSF_LF_PLACE_NAMES	Defines relation between Place and Name (See page 3 – 14)
CSF_LF_PLACE_POSTCS	Defines relation between Place and Postcode tables (See page 3 – 15)
CSF_LF_POIS	Stores POI (points of interests) in the roadnetwork that are known by the name for LF (See page 3 – 16)
CSF_LF_POI_NAMES	Defines the relation between POI and Name tables (See page 3 – 17)
CSF_LF_POSTCODES	Stores the Postcode information and the centroid of each Postcode area (See page 3 – 18)
CSF_LF_ROADSEGMENTS	Stores roadsegments with their navigable attributes (See page 3 – 19)
CSF_LF_ROADSEGM_NAMES	Defines the relation between roadsegments and the name table (See page 3 – 20)

Oracle Proprietary, Confidential Information--Use Restricted by Contract

CSF_LF_ROADSEGM_PLACES	Defines relation between Roadsegments and Places (See page 3 – 21)
CSF_LF_ROADSEGM_POSTS	Defines relation between Roadsegment and Postcodes (See page 3 – 22)
CSF_L_AGENDALAYOUTS	Agenda Layout on the Laptop (See page 3 – 23)
CSF_L_QUERIES	List of Queries (See page 3 – 24)
CSF_L_QUERYREQUESTS	Requests for executing Queries (See page 3 – 25)
CSF_L_SODS	Service Order Description (See page 3 – 26)
CSF_L_SOTS	Service Order Types (See page 3 – 27)
CSF_MD_ADM_BOUNDS	Defines an administrative boundary defined in a country. (See page 3 – 28)
CSF_MD_HYDROS	Defines a hydrographic feature. (See page 3 – 29)
CSF_MD_INST_STYLE_SHTS	Defines map instance style sheets (See page 3 – 30)
CSF_MD_LAND_USES	Defines the geometry of various land usages (See page 3 – 31)
CSF_MD_LYR_METADATA	Defines map display layer metadata (See page 3 – 32)
CSF_MD_LYR_STYLE_SHTS	Defines the visual display characteristics of a map layer (See page 3 – 33)
CSF_MD_NAMES	Defines the name of the given geographic entities in the model. (See page 3 – 34)
CSF_MD_POIS	This table defines POI (point of interest) for Map Display (See page 3 – 36)
CSF_MD_POI_NM_ASGNS	Defines the relationship between the MD NAME and the MD NAMES and MD POI tables. (See page 3 – 37)
CSF_MD_RAIL_SEGS	Defines an individual line segment representing a railroad. (See page 3 – 38)
CSF_MD_RDSEG_NM_ASGNS	Defines the relation between the road segments and names table. (See page 3 – 39)
CSF_MD_RD_SEGS	Defines a navigable feature. (See page 3 – 40)
CSF_MD_THEME_METADATA	Defines the version information of an entire theme. (See page 3 – 43)

Oracle Proprietary, Confidential Information--Use Restricted by Contract

CSF_PARAMS	Parameters for Laptop and Palm (See page 3 – 44)
CSF_PLAN_TERRS	Associative (relationship) table to map between the territory and resource group tables (See page 3 – 45)
CSF_SDM_CTRY_PROFILES	Defines country profiles (See page 3 – 46)
CSF_TDS_BINARY_MAPS	Defines the digital roadmap for route calculation. (See page 3 – 47)
CSF_TDS_BINARY_TILES	Defines a spatial index to a digital map. (See page 3 – 48)
CSF_TDS_CONDITIONS	This table stores the conditions for the TDS. (See page 3 – 49)
CSF_TDS_COND_SEGS	Intersection table for condition and segments (See page 3 – 51)
CSF_TDS_INTERVALS	The intervals table (See page 3 – 52)
CSF_TDS_NODES	The nodes table (See page 3 – 54)
CSF_TDS_RDBLCK_INTVLS	Intersection table for Roadblocks and intervals (See page 3 – 55)
CSF_TDS_RDBLCK_SGMNTS	The relation between RoadBlocks and Segments (See page 3 – 56)
CSF_TDS_ROADBLOCKS	Defines a travel duration delay for a segment. (See page 3 – 57)
CSF_TDS_SEGMENTS	Defines a connection between two nodes. (See page 3 – 58)
CSF_TDS_SEGM_NODES	Defines the relation between the segments and the nodes table (See page 3 – 61)
CSF_TDS_TILES	Defines the result of spatial index creation (tiling). (See page 3 – 62)
CS_ESTIMATE_DETAILS	Items Required for service Billing (See page 3 – 63)
CS_INCIDENTS_ALL_B	This table stores non-translated information about service requests. (See page 3 – 70)
JTF_IH_INTERACTIONS	A contact point between a customer, customer system or potential customer and a single human or automated agent (Handler and Handler Resource). An Interaction can be timed and has an outcome and result that can be tracked. MultipleIntera (See page 3 – 75)

Oracle Proprietary, Confidential Information--Use Restricted by Contract

JTF_NOTES_B	Non-translated base table for Notes module. (See page 3 – 78)
JTF_RS_GROUPS_B	Base Table JTF_RS_GROUPS_B stores general information about a given Group. (See page 3 – 80)
JTF_RS_RESOURCE_EXTNS	This is table stores all important information about Resources. These Resources are coming from HR or HZ or Vonder table etc. Primary key is resource_id. Resource_number, user_id sre also unique keys. (See page 3 – 82)
JTF_TASKS_B	Base Table JTF_TASKS_B stores general information about a given Task. (See page 3 – 85)
JTF_TASK_ASSIGNMENTS	JTF_TASK_ASSIGNMENTS stores information about the resource assignments associated with the task. (See page 3 – 88)
JTF_TERR_ALL	Stores the definition of the territories. There are 3 categories of territories, Standard, Escalation and Template. Information stored in this table also includes comment about this territory, effective dates, and what type of territory it is. (See page 3 – 90)

Public View List

This section lists each public database view that Oracle Field Service uses and provides a brief description of each of those views. These views may be useful for your custom reporting or other data requirements. The page reference is to the detailed view description in Chapter 3.

Oracle Field Service uses the following public views:

View Name	Description
CSF_DEBRIEF_EXP_LINES_V	Field Service Report Expense lines information
CSF_DEBRIEF_HEADERS_V	Field Service Report Headers summary information
CSF_DEBRIEF_LAB_LINES_V	Field Service Report Labor line information
CSF_DEBRIEF_MAT_LINES_V	Field service Report Material Lines information

Forms and Table View List

This section lists supplementary views that are not essential to the Release 11i data model, but simplify coding or improve performance of Developer. For example, many of these views are used as base tables in Oracle Field Service forms.



Warning: We do not recommend you query or alter data using these views. Furthermore, these views may change dramatically in subsequent minor or major releases of Oracle Field Service.

Oracle Field Service uses the following Forms and Table views:

- CSF_CT_TASKS
- CSF_CT_TASK_ASSIGNMENTS
- CSF_L_SODS_V
- CSF_PLAN_TERRS_V
- CSF_RES_INV_ASSIGNMENTS_V

Internal View List

This section lists each private, internal view that Oracle Field Service uses.



Warning: Oracle Corporation does not support access to Oracle Applications data using these views, except from standard Oracle Applications forms, reports, and programs.

Oracle Field Service uses the following internal views:

- CSF_SELECTED_RESOURCES_V

Module List

This section lists each form, report and concurrent program comprising Field Service.

Forms

CSFCMLAY	Define Agenda Layout
CSFCMPAR	Define Configuration Parameters
CSFCMQRY	Define User Defined Queries
CSFCMRSL	Define Resource Subinventories Assignment
CSFCMWFM	Define Field Service Report Management
CSFCMWFT	Define Field Service Report Types
CSFCTDBR	Commit schedule
CSFCTFOG	Control Tower common objects – referenced form only
CSFCTGNT	Control Tower tabpage Gantt – referenced form only
CSFCTMAI	Field Service Control Tower
CSFCTMAP	Control Tower tabpage Map – referenced form only
CSFCTPLB	Control Tower tabpage Planboard – referenced form only
CSFCTSPA	Control Tower tabpage Spares – referenced form only
CSFCTSTA	Control Tower tabpage Statistics – referenced form only
CSFCTTKS	Control Tower task block – referenced form only
CSFSEPLT	Setup Resource Groups / Territories
CSFTESEL	Select territories

Concurrent Programs

CSF_SHIFT_TASKS_PVT	Creates departure/arrival tasks for resources on basis of shifts
---------------------	--

Oracle Proprietary, Confidential Information--Use Restricted by Contract

CHAPTER

3

Detailed Design

This chapter presents a detailed design for implementing Oracle Field Service. It contains detailed definitions of tables and views that you may need to reference to write custom reports or use for other data extraction.

Overview of Detailed Design

During Detailed Design, we specify in detail how each applications component should work. We prepare detailed definitions of tables and views.

You can refer to this Detailed Design chapter to gain a detailed understanding of the underlying structure and processing of Oracle Field Service that enables you to:

- Convert existing application data
- Integrate your Oracle Field Service application with your other applications systems
- Write custom reports
- Define alerts against Oracle Applications tables
- Create views for decision support queries using query tools

Table and View Definitions

The Table and View Definitions section contains a detailed definition of Oracle Field Service applications tables. For each table, it provides information about primary keys, foreign keys, QuickCodes, indexes, triggers, and sequences. It also gives you a detailed description of each column and its characteristics. In addition, it provides the SQL statement that defines each view. Review this section to get a detailed understanding of what tables your Oracle Field Service application contains, and how it uses them to hold and access the information it needs.

Table and View Definitions

This section contains a detailed description of each Oracle Field Service table and view that you may need to reference. For each table, it presents detailed information about:

- Primary keys
- Foreign keys
- Column descriptions
- Indexes
- Oracle sequences
- Triggers
- View derivations

The following sections appear in each table or view description:

Foreign Keys

To help you understand the relationships between tables, we list each foreign key contained in a table. For each foreign key in a table, we list the primary key table name (the table to which a foreign key refers), its corresponding primary key columns, and the foreign key columns that refer to those primary key columns.

When the primary key table has a composite primary key, we list each column of the composite key sequentially.

If a table contains two or more distinct foreign keys that refer to the same primary key table, we repeat the primary key table name and list each of the distinct foreign keys separately.

QuickCodes Columns

When a database column contains a QuickCodes value, which we implement using a foreign key to FND_LOOKUPS, MFG_LOOKUPS, or to some other lookup table, we list the QuickCodes type (lookup type) to which the QuickCodes value must belong and a complete list of QuickCodes values and meanings. Some QuickCodes can be defined by you in the application. These values are designated as User-defined.

Column Descriptions

We list the important characteristics of each column in a table or view. These characteristics include whether the column is part of the table's primary key, whether Oracle8i requires a value for this column, and the data type of the column. We also give you a brief description of how Oracle Field Service uses the column.

When a column is part of a table's primary key, we append the notation (PK) to the name of that column.

To help you understand which columns Oracle Field Service uses and which columns it does not use, we alert you to any unused column. When no module uses a database column, we show one of the following legends in the Description column:

Not currently used	Oracle Field Service does not use this column, although the column might be used in a future release.
No longer used	Oracle Field Service no longer uses this column. AutoInstall installs this column. Subsequent versions of Oracle Field Service might not include this column.
No longer installed	Oracle Field Service no longer uses this column. If you <i>upgraded</i> your software from an earlier version, you may still have this column, depending upon whether you chose to delete it during an upgrade process. If you <i>install</i> Oracle Field Service, you do not have this column.

Standard Who Columns

Most Oracle Field Service tables contain standard columns to support \ Row Who. When your program or SQL*Plus command selects a row from a table, use these columns to determine who last updated the row. If your program or SQL*Plus command updates or inserts a row in an interface table, you must populate each of the five standard Who columns:

LAST_UPDATE_DATE	Date when a user last updated this row
LAST_UPDATED_BY	User who last updated this row (foreign key to FND_USER.USER_ID)
CREATION_DATE	Date when this row was created

Oracle Proprietary, Confidential Information--Use Restricted by Contract

CREATED_BY	User who created this row (foreign key to FND_USER.USER_ID)
LAST_UPDATE_LOGIN	Operating system login of user who last updated this row (foreign key to FND_LOGINS.LOGIN_ID). You should set this to NULL, or to 0 if NULL is not allowed

Since every table containing Who columns has several foreign keys to the tables FND_USER and FND_LOGINS, we do not include the foreign key columns LAST_UPDATED_BY, CREATED_BY, or LAST_UPDATE_LOGIN in a table's list of foreign keys.

Additional Who Columns for Concurrent Programs

Some Oracle Field Service tables also contain several additional Who columns to distinguish between changes a user makes with a form and changes a concurrent program makes. When a concurrent program updates or inserts a row in a table, the concurrent program populates the following additional Who columns:

REQUEST_ID	Concurrent request ID of program that last updated this row (foreign key to FND_CONCURRENT_REQUESTS.REQUEST_ID)
PROGRAM_APPLICATION_ID	Application ID of program that last updated this row (foreign key to FND_APPLICATION.APPLICATION_ID)
PROGRAM_ID	Program ID of program that last updated this row (foreign key to FND_CONCURRENT_PROGRAM.CONCURRENT_PROGRAM_ID)
PROGRAM_UPDATE_DATE	Date when a program last updated this row

Since every table containing these additional Who columns has several foreign keys to the tables FND_CONCURRENT_REQUESTS, FND_APPLICATION, and FND_CONCURRENT_PROGRAM, we do not include the foreign key columns REQUEST_ID, PROGRAM_APPLICATION_ID, or PROGRAM_ID in a table's list of foreign keys.

Indexes

If an Oracle Field Service table uses an Oracle8i index, we list the database columns that comprise that index, in sequential order.

Note: The indexes we document in this manual correspond to unique keys we specified during product development and testing. In some cases, we may add additional indexes during the porting process to fine-tune performance on specific platforms; therefore, there may be minor differences between the indexes documented in this book and the indexes for production versions of Oracle Field Service.

Sequences

Oracle Field Service uses Oracle8i sequence generators to generate unique integers. If any table column gets its value from an Oracle8i sequence generator, we list the name of the corresponding sequence generator and the name of the column that stores the unique integer.

Database Triggers

If a table has one or more active database triggers, we provide a brief explanation of each database trigger and when it fires.

View Derivation

For each Oracle Field Service view you may need to reference, we include important elements from the SQL statement that defines or creates a view. By studying this view definition, you can understand exactly how a view derives its contents.

CSF_DEBRIEF_HEADERS

CSF_DEBRIEF_HEADERS contains the header information about the Field service report ie the information that a field service engineer records during a field visit . The primary key is CS_DEBRIEF_HEADER_ID and this is a foreign key into CS_DEBRIEF_LINES. Each Task has resource assignments and each such task resource assignment is associated with a Field Service Report . Every Field service report header indicates an interaction with the customer.

Foreign Keys

Primary Key Table	Primary Key Column	Foreign Key Column
JTF_TASK_ASSIGNMENTS	TASK_ASSIGNMENT_ID	TASK_ASSIGNMENT_ID

Column Descriptions

Name	Null?	Type	Description
DEBRIEF_HEADER_ID (PK)	NOT NULL	NUMBER	The unique identifier for header
DEBRIEF_NUMBER	NOT NULL	VARCHAR2(50)	The unique number for field service report
DEBRIEF_DATE	NOT NULL	DATE	The field service report date
DEBRIEF_STATUS_ID	NULL	NUMBER	The Field Service Report status identifier
TASK_ASSIGNMENT_ID	NOT NULL	NUMBER	The task assignment unique identifier
CREATED_BY	NOT NULL	NUMBER	Standard who column
CREATION_DATE	NOT NULL	DATE	Standard who column
LAST_UPDATED_BY	NOT NULL	NUMBER	Standard who column
LAST_UPDATE_DATE	NOT NULL	DATE	Standard who column
LAST_UPDATE_LOGIN	NULL	NUMBER	Standard who column
ATTRIBUTE1	NULL	VARCHAR2(150)	Descriptive Flexfield segment for attribute 1
ATTRIBUTE2	NULL	VARCHAR2(150)	Descriptive flexfield segment for attribute 2
ATTRIBUTE3	NULL	VARCHAR2(150)	Descriptive Flexfield segment for attribute 3
ATTRIBUTE4	NULL	VARCHAR2(150)	Descriptive Flexfield segment for attribute 4
ATTRIBUTE5	NULL	VARCHAR2(150)	Descriptive Flexfield segment for attribute 5
ATTRIBUTE6	NULL	VARCHAR2(150)	Descriptive Flexfield segment for attribute 6
ATTRIBUTE7	NULL	VARCHAR2(150)	Descriptive Flexfield segment for attribute 7
ATTRIBUTE8	NULL	VARCHAR2(150)	Descriptive Flexfield segment for attribute 8
ATTRIBUTE9	NULL	VARCHAR2(150)	Descriptive Flexfield segment for attribute 9
ATTRIBUTE10	NULL	VARCHAR2(150)	Descriptive Flexfield segment for attribute 10
ATTRIBUTE11	NULL	VARCHAR2(150)	Descriptive Flexfield segment for attribute 11
ATTRIBUTE12	NULL	VARCHAR2(150)	Descriptive Flexfield segment for attribute 12

ATTRIBUTE13	NULL	VARCHAR2(150)	Descriptive Flexfield segment for attribute 13
ATTRIBUTE14	NULL	VARCHAR2(150)	Descriptive Flexfield segment for attribute 14
ATTRIBUTE15	NULL	VARCHAR2(150)	Descriptive Flexfield segment for attribute 15
ATTRIBUTE_CATEGORY	NULL	VARCHAR2(30)	Descriptive flexfield structure defining column

Indexes

<u>Index Name</u>	<u>Index Type</u>	<u>Sequence</u>	<u>Column Name</u>
CSF_DEBRIEF_HEADERS_U1	UNIQUE	1	DEBRIEF_NUMBER

CSF_DEBRIEF_LINES

CSF_DEBRIEF_LINES is a table that contains line information for a Field Service report. ie the information that a field service engineer records during a field visit . The primary key is CS_DEBRIEF_LINE_ID . Each Field Service Report can have multiple report lines that report material, labour and expenses incurred during a field service visit. This information is used to upload to Charges , Installed Base and Spares Inventory modules. Field Service Report data from mobile devices is also stored in here via public APIs.

Foreign Keys

Primary Key Table	Primary Key Column	Foreign Key Column
CSF_DEBRIEF_HEADERS	DEBRIEF_HEADER_ID	DEBRIEF_HEADER_ID

Column Descriptions

Name	Null?	Type	Description
DEBRIEF_LINE_ID (PK)	NOT NULL	NUMBER	The unique line identifier for each field service report line
DEBRIEF_HEADER_ID	NOT NULL	NUMBER	The primary key for the field service headers.
DEBRIEF_LINE_NUMBER	NULL	NUMBER	The Field service line number
SERVICE_DATE	NOT NULL	DATE	Service date
TXN_BILLING_TYPE_ID	NOT NULL	NUMBER	The transaction billing type identifier
INVENTORY_ITEM_ID	NOT NULL	NUMBER	The inventory item identifier
ISSUING_INVENTORY_ORG_ID	NULL	NUMBER	The issuing out inventory org identifier
RECEIVING_INVENTORY_ORG_ID	NULL	NUMBER	Receiving inventory org identifier.
ISSUING_SUB_INVENTORY_CODE	NULL	VARCHAR2(10)	Issuing sub inventory code
RECEIVING_SUB_INVENTORY_CODE	NULL	VARCHAR2(10)	Receiving sub inventory code
ISSUING_LOCATOR_ID	NULL	NUMBER	Issuing locator identifier
RECEIVING_LOCATOR_ID	NULL	NUMBER	The receiving locator identifier
PARENT_PRODUCT_ID	NULL	NUMBER(15)	The parent product identifier for the removed out item
REMOVED_PRODUCT_ID	NULL	NUMBER(15)	The product identifier for the removed item
STATUS_OF_RECEIVED_PART	NULL	VARCHAR2(30)	The status of the received part
ITEM_SERIAL_NUMBER	NULL	VARCHAR2(30)	Serial number of the item
ITEM_REVISION	NULL	VARCHAR2(3)	Revision of the item
ITEM_LOTNUMBER	NULL	VARCHAR2(30)	Item lot number
UOM_CODE	NULL	VARCHAR2(3)	The uom code of the item
QUANTITY	NULL	NUMBER	The quantity of the item
RMA_HEADER_ID	NULL	NUMBER	The order identifier
DISPOSITION_CODE	NULL	VARCHAR2(30)	The item disposition code
MATERIAL_REASON_CODE	NULL	VARCHAR2(30)	The material line reason code
LABOR_REASON_CODE	NULL	VARCHAR2(30)	The labor line reason code
EXPENSE_REASON_CODE	NULL	VARCHAR2(30)	The expense line reason code
LABOR_START_DATE	NULL	DATE	The labor start date
LABOR_END_DATE	NULL	DATE	The labor end date
STARTING_MILEAGE	NULL	NUMBER	The starting mileage
ENDING_MILEAGE	NULL	NUMBER	The ending mileage

Oracle Proprietary, Confidential Information--Use Restricted by Contract

EXPENSE_AMOUNT	NULL	NUMBER	The expense amount
CURRENCY_CODE	NULL	VARCHAR2(15)	The currency code
DEBRIEF_LINE_STATUS_ID	NULL	NUMBER	The line status identifier
CHANNEL_CODE	NULL	VARCHAR2(30)	The channel code of the line
CHARGE_UPLOAD_STATUS	NULL	VARCHAR2(30)	Charge update interface status
CHARGE_UPLOAD_MSG_CODE	NULL	VARCHAR2(30)	Charge update message code
CHARGE_UPLOAD_MESSAGE	NULL	VARCHAR2(240)	Charge update message
IB_UPDATE_STATUS	NULL	VARCHAR2(30)	Installed base update interface status
IB_UPDATE_MSG_CODE	NULL	VARCHAR2(30)	Installed base update interface message code
IB_UPDATE_MESSAGE	NULL	VARCHAR2(240)	Installed base update interface message
SPARE_UPDATE_STATUS	NULL	VARCHAR2(30)	Inventory update interface status
SPARE_UPDATE_MSG_CODE	NULL	VARCHAR2(30)	Inventory update interface message code
SPARE_UPDATE_MESSAGE	NULL	VARCHAR2(240)	Inventory update interface message
CREATED_BY	NOT NULL	NUMBER(15)	The standard who column
CREATION_DATE	NOT NULL	DATE	The standard who column
LAST_UPDATED_BY	NOT NULL	NUMBER(15)	The standard who column
LAST_UPDATE_DATE	NOT NULL	DATE	The standard who column
LAST_UPDATE_LOGIN	NULL	NUMBER(15)	The standard who column
ATTRIBUTE1	NULL	VARCHAR2(150)	Descriptive flexfield segment for attribute1
ATTRIBUTE2	NULL	VARCHAR2(150)	Descriptive flexfield segment for attribute2
ATTRIBUTE3	NULL	VARCHAR2(150)	Descriptive flexfield segment for attribute 3
ATTRIBUTE4	NULL	VARCHAR2(150)	Descriptive flexfield segment for attribute 4
ATTRIBUTE5	NULL	VARCHAR2(150)	Descriptive flexfield segment for attribute 5
ATTRIBUTE6	NULL	VARCHAR2(150)	Descriptive flexfield segment for attribute 6
ATTRIBUTE7	NULL	VARCHAR2(150)	Descriptive flexfield segment for attribute 7
ATTRIBUTE8	NULL	VARCHAR2(150)	Descriptive flexfield segment for attribute 8
ATTRIBUTE9	NULL	VARCHAR2(150)	Descriptive flexfield segment for attribute 9
ATTRIBUTE10	NULL	VARCHAR2(150)	Descriptive flexfield segment for attribute 10
ATTRIBUTE11	NULL	VARCHAR2(150)	Descriptive flexfield segment for attribute 11
ATTRIBUTE12	NULL	VARCHAR2(150)	Descriptive flexfield segment for attribute 12
ATTRIBUTE13	NULL	VARCHAR2(150)	Descriptive flexfield segment for attribute 13
ATTRIBUTE14	NULL	VARCHAR2(150)	Descriptive flexfield segment for attribute 14
ATTRIBUTE15	NULL	VARCHAR2(150)	Descriptive flexfield segment for attribute 15
ATTRIBUTE_CATEGORY	NULL	VARCHAR2(30)	Descriptive flexfield structure defining column

CSF_LF_BLOCKS

DEFINITION The Block table includes available address ranges for a certain roadsegment. Typically a block record describes the Start and End house number, both on the Left and Right side of the road segment.

EXAMPLE MISCELLANEOUS One roadsegment can have multiple blocks (e.g. commercial vs. base address range).

Foreign Keys

Primary Key Table	Primary Key Column	Foreign Key Column
CSF_LF_ROADSEGMENTS	ROADSEGMENT_ID	ROADSEGMENT_ID

Column Descriptions

Name	Null?	Type	Description
BLOCK_ID (PK)	NOT NULL	NUMBER(30)	Surrogate key used for primary unique identifiers
LEFT_ADDRESS_FORMAT	NOT NULL	VARCHAR2(1)	Address format (numeric, alphanumeric, unaddressed) for road segment
LEFT_ADDRESS_SCHEME	NULL	VARCHAR2(1)	Address scheme (Odd, Even, Mixed) at Left Side of road segment
START_LEFT_ADDRESS	NULL	VARCHAR2(10)	Left House Number at Reference Node
END_LEFT_ADDRESS	NULL	VARCHAR2(10)	Left House Number at non-Reference node
RIGHT_ADDRESS_FORMAT	NOT NULL	VARCHAR2(1)	Address format (numeric, alphanumeric, unaddressed) for road segment
RIGHT_ADDRESS_SCHEME	NULL	VARCHAR2(1)	Address scheme (Odd, Even, Mixed) at Right Side of road segment
START_RIGHT_ADDRESS	NULL	VARCHAR2(10)	Right House Number at Reference Node
END_RIGHT_ADDRESS	NULL	VARCHAR2(10)	Right House Number at Non-Reference Node
ADDRESS_TYPE	NULL	VARCHAR2(1)	Type of block (base, commercial etc.)
ROADSEGMENT_ID	NOT NULL	NUMBER(30)	Permanent identifier for RoadSegment (=GDF3.0 Edge ID)

Sequences

Sequence	Derived Column
CSF_LF_BLOCKS_S1	BLOCK_ID

CSF_LF_NAMES

DEFINITION The Name Table includes all Name information for: RoadSegment, POI and Place. **EXAMPLE MISCELLANEOUS** The Name table will have multiple entries when an entity has multiple names. Therefore the Name table includes all available Official, Alternate, Stale, Vanity names for entities.

QuickCodes Columns

Column	QuickCodes Type	QuickCodes Table
EXIT_NUMBER	YES_NO	FND_LOOKUPS
	N	No
	Y	Yes
JUNCTION_NAME	YES_NO	FND_LOOKUPS
	N	No
	Y	Yes
STREET_TYPE_ATTACHED	YES_NO_NEVER	FND_LOOKUPS
STREET_TYPE_BEFORE_BASE	YES_NO_NEVER	FND_LOOKUPS

Column Descriptions

Name	Null?	Type	Description
NAME_ID (PK)	NOT NULL	NUMBER(30)	Unique key for Name
NAME	NOT NULL	VARCHAR2(70)	Actual name of the entity (Streetname, POI name, Place name)
LANGUAGE_CODE	NOT NULL	VARCHAR2(3)	3 letter MARC language code for name
JUNCTION_NAME	NULL	VARCHAR2(3)	Is Name a Junction Name?
EXIT_NUMBER	NULL	VARCHAR2(3)	Is Name an Exit Number?
ROUTE_TYPE	NULL	NUMBER	Indication of Route Number level (only for Route Nrs.)
PREFIX	NULL	VARCHAR2(1)	Prefix for Street Name (e.g. E, W; US only)
BASE_NAME	NULL	VARCHAR2(240)	Base Name of Street Name (e.g. 'High' in High Street)
STREET_TYPE	NULL	VARCHAR2(35)	Street Type of Street Name (e.g. 'Street' in High Street)
STREET_TYPE_ATTACHED	NULL	VARCHAR2(1)	Street Type attached to Base Name?
STREET_TYPE_BEFORE_BASE	NULL	VARCHAR2(1)	Street Type before Base Name?
SUFFIX	NULL	VARCHAR2(1)	Suffix of Street Name (e.g. N, W; US only)

Sequences

Sequence	Derived Column
CSF_LF_NAMES_S1	NAME_ID

Oracle Proprietary, Confidential Information--Use Restricted by Contract

CSF_LF_PLACES

DEFINITION A place represents an administrative level. The administrative levels included differ per country. At a minimum the following administrative levels are included: – Settlement (also referred to as the built up area) – Municipality – Country Depending on the country, additional admin levels could be included. **EXAMPLE** Utrecht, Deutschland, Chicago, Illinois, Firenze, E17, La Defense

MISCELLANEOUS

QuickCodes Columns

Column	QuickCodes Type	QuickCodes Table
PLACE_USAGE_ADMIN	YES_NO	FND_LOOKUPS
	N	No
	Y	Yes
PLACE_USAGE_ZONE	YES_NO	FND_LOOKUPS
	N	No
	Y	Yes

Column Descriptions

Name	Null?	Type	Description
PLACE_ID (PK)	NOT NULL	NUMBER(30)	Unique key that identifies the place
PLACE_USAGE_ADMIN	NOT NULL	VARCHAR2(3)	Identifies if the Place represents an Administrative unit
PLACE_PARENT_LEVEL	NULL	NUMBER	Defines level of the parent admin unit (e.g. Municipality, Province)
PLACE_USAGE_ZONE	NOT NULL	VARCHAR2(3)	Identifies if the Place represents a Zone
PARENT_PLACE_ID	NULL	NUMBER(30)	The parent place id for the place table

Sequences

Sequence	Derived Column
CSF_LF_PLACES_S1	PLACE_ID

CSF_LF_PLACE_NAMES

DEFINITION Intersection table required since one place can have many names (e.g. Exonyms, Synonyms) and one Name can be used by multiple Places (e.g. Utrecht city, municipality and province).

EXAMPLE MISCELLANEOUS

Foreign Keys

Primary Key Table	Primary Key Column	Foreign Key Column
CSF_LF_NAMES	NAME_ID	NAME_ID
CSF_LF_PLACES	PLACE_ID	PLACE_ID

Column Descriptions

Name	Null?	Type	Description
PLACE_NAME_ID (PK)	NOT NULL	NUMBER(30)	Surrogate key used for primary unique identifiers
NAME_TYPE	NOT NULL	VARCHAR2(1)	Indication if Name represents Official or Alternate name for Place.
PLACE_ID	NOT NULL	NUMBER(30)	Unique key that identifies the place
NAME_ID	NOT NULL	NUMBER(30)	Unique key for Name

Sequences

Sequence	Derived Column
CSF_LF_PLACE_NAMES_S1	PLACE_NAME_ID

CSF_LF_PLACE_POSTCS

DEFINITION Intersection table required since one Postcode can be located in multiple Places, and one Place can have multiple Postcodes.
EXAMPLE MISCELLANEOUS The information is retrieved from the GDF3.0 relations 1018 and 1009. Relation Place–Postcode will only be available for Settlement and Municipality Place level.

Foreign Keys

Primary Key Table	Primary Key Column	Foreign Key Column
CSF_LF_PLACES	PLACE_ID	PLACE_ID
CSF_LF_POSTCODES	POSTAL_CODE_ID	POSTAL_CODE_ID

Column Descriptions

Name	Null?	Type	Description
PLACE_POSTCODE_ID (PK)	NOT NULL	NUMBER(30)	Unique identifier for the Place Postcode table
PLACE_ID	NOT NULL	NUMBER(30)	Unique key that identifies the place
POSTAL_CODE_ID	NOT NULL	NUMBER(30)	Primary key for the Postal Code table

Sequences

Sequence	Derived Column
CSF_LF_PLACE_POSTCS_S1	PLACE_POSTCODE_ID

CSF_LF_POIS

DEFINITION Points Of Interest (POI) are single points in the road network database that are typically known by their name, e.g. City Centres, Airports, Hotels. **EXAMPLE** Hotel Mayfair, Luchthaven Schiphol, Tour Eiffel, Buckingham Palace, New Orleans, Tai Chek
MISCELLANEOUS

Foreign Keys

Primary Key Table	Primary Key Column	Foreign Key Column
CSF_LF_PLACES	PLACE_ID	PLACE_ID
CSF_LF_ROADSEGMENTS	ROADSEGMENT_ID	ROADSEGMENT_ID

Column Descriptions

Name	Null?	Type	Description
POI_ID (PK)	NOT NULL	NUMBER(30)	Unique identifier for POI Table
FEATURE_CODE	NOT NULL	NUMBER	Describes type of POI
POI_ADDRESS	NULL	VARCHAR2(240)	Full address of the POI (Streetname and HouseNr)
TELEPHONE_NUMBER	NULL	VARCHAR2(240)	Phone number of the POI
CHAIN_NAME	NULL	VARCHAR2(240)	Chain where the POI is part of
FOOD_TYPE	NULL	VARCHAR2(240)	Type of food served in Restau
IMPORTANCE	NOT NULL	NUMBER	Indication if POI is of National Importance
POPULATION	NULL	NUMBER	Estimated population for City Centre POI
ROADSEGMENT_ID	NOT NULL	NUMBER(30)	Permanent identifier for RoadSegment (=GDF3.0 Edge ID)
PLACE_ID	NOT NULL	NUMBER(30)	Foreign key to place table

Sequences

Sequence	Derived Column
CSF_LF_POIS_S1	POI_ID

CSF_LF_POI_NAMES

DEFINITION Intersection table required since one POI can have multiple names (i.e. Exonyms, Synonyms) and one Name can be shared by multiple POIs (e.g. Shell, Holiday Inn). **EXAMPLE MISCELLANEOUS**

Foreign Keys

Primary Key Table	Primary Key Column	Foreign Key Column
CSF_LF_NAMES	NAME_ID	NAME_ID
CSF_LF_POIS	POI_ID	POI_ID

Column Descriptions

Name	Null?	Type	Description
POI_NAME_ID (PK)	NOT NULL	NUMBER(30)	Surrogate key used for primary unique identifiers
NAME_TYPE	NOT NULL	VARCHAR2(1)	Indication if name is used as Official or Alternate Name for POI
POI_ID	NOT NULL	NUMBER(30)	Unique identifier for POI Table
NAME_ID	NOT NULL	NUMBER(30)	Unique key for Name

Sequences

Sequence	Derived Column
CSF_LF_POI_NAMES_S1	POI_NAME_ID

CSF_LF_POSTCODES

DEFINITION Defines postal code that is valid for a RoadSegment or POI and represents the official numeric or alphanumeric postal code present in that country. **EXAMPLE MISCELLANEOUS** The PostCode table is related to the Place Table for retrieving Country ID. Postal Codes could be duplicated between countries, therefore the Country ID is required.

Column Descriptions

Name	Null?	Type	Description
POSTAL_CODE_ID (PK)	NOT NULL	NUMBER(30)	Primary key for the Postal Code table
POSTAL_CODE	NOT NULL	VARCHAR2(240)	Actual numeric or alphanumeric Postal Code
COUNTRY_CODE	NOT NULL	VARCHAR2(240)	The country for which the postcode is.

Sequences

Sequence	Derived Column
CSF_LF_POSTCODES_S1	POSTAL_CODE_ID

CSF_LF_ROADSEGMENTS

DEFINITION A Road Segment is a navigable feature such as a Road, Ferry or Walkway. Road Segments make up the navigable road network. A Road Segment is always bounded by two nodes. A road segment will have various attributes associated with it. **EXAMPLE MISCELLANEOUS**

Column Descriptions

Name	Null?	Type	Description
ROADSEGMENT_ID (PK)	NOT NULL	NUMBER(30)	Permanent identifier for RoadSegment (=GDF3.0 Edge ID)
ROADSEGMENT_LENGTH	NOT NULL	NUMBER	Length of road segment
TIME_ZONE	NULL	NUMBER	The time zone for this road segment

Sequences

Sequence	Derived Column
CSF_LF_ROADSEGMENTS_S1	ROADSEGMENT_ID

CSF_LF_ROADSEGM_NAMES

DEFINITION Intersection table since one roadsegment can have multiple names (e.g. E34 and A12) and one name can be used by multiple roadsegments. **EXAMPLE MISCELLANEOUS** Some roadsegments do not have a name in reality (so called 'Valid Unnamed'). For these roadsegment no entry exist in the Roadsegment Name table.

Foreign Keys

Primary Key Table	Primary Key Column	Foreign Key Column
CSF_LF_NAMES	NAME_ID	NAME_ID
CSF_LF_ROADSEGMENTS	ROADSEGMENT_ID	ROADSEGMENT_ID

Column Descriptions

Name	Null?	Type	Description
ROADSEGMENT_NAME_ID (PK)	NOT NULL	NUMBER(30)	Unique identifier for RoadSegment Name table
NAME_TYPE	NOT NULL	VARCHAR2(1)	Indication if RoadSegment's Name represents Official, Alternate, Stale or Vanity Name'
ROADSEGMENT_ID	NOT NULL	NUMBER(30)	Permanent identifier for RoadSegment (=GDF3.0 Edge ID)
NAME_ID	NOT NULL	NUMBER(30)	Unique key for Name

Sequences

Sequence	Derived Column
CSF_LF_ROADSEGM_NAMES_S1	ROADSEGMENT_NAME_ID

CSF_LF_ROADSEGM_PLACES

DEFINITION Intersection table required since one Segment can be located in multiple places (e.g. road on admin boundary) and one place contains multiple segments. EXAMPLE MISCELLANEOUS

Foreign Keys

Primary Key Table	Primary Key Column	Foreign Key Column
CSF_LF_PLACES	PLACE_ID	PLACE_ID
CSF_LF_ROADSEGMENTS	ROADSEGMENT_ID	ROADSEGMENT_ID

Column Descriptions

Name	Null?	Type	Description
ROADSEGM_PLACE_ID (PK)	NOT NULL	NUMBER(30)	Surrogate key used for primary unique identifiers
PLACE_SIDE	NULL	VARCHAR2(1)	Specifies side of roadsegment to which Place belongs
ROADSEGMENT_ID	NOT NULL	NUMBER(30)	Permanent identifier for RoadSegment (=GDF3.0 Edge ID)
PLACE_ID	NOT NULL	NUMBER(30)	Unique key that identifies the place

Sequences

Sequence	Derived Column
CSF_LF_ROADSEGM_PLACES_S1	ROADSEGM_PLACE_ID

CSF_LF_ROADSEGM_POSTS

DEFINITION Intersection table since one Roadsegment can contains multiple Postal Codes (e.g. roadsegment on postcode boundary --> left / right different Postal Code), and one Postal Code will be shared by multiple RoadSegments. **EXAMPLE MISCELLANEOUS**

Foreign Keys

Primary Key Table	Primary Key Column	Foreign Key Column
CSF_LF_POSTCODES	POSTAL_CODE_ID	POSTAL_CODE_ID
CSF_LF_ROADSEGMENTS	ROADSEGMENT_ID	ROADSEGMENT_ID

Column Descriptions

Name	Null?	Type	Description
ROADSEGMENT_POSTCODE_ID (PK)	NOT NULL	NUMBER(30)	Surrogate key used for primary unique identifiers
POSTCODE_SIDE	NULL	VARCHAR2(1)	Post Code exits on Left (L), Right (R) or Both (B) sides
ROADSEGMENT_ID	NOT NULL	NUMBER(30)	Permanent identifier for RoadSegment (=GDF3.0 Edge ID)
POSTAL_CODE_ID	NOT NULL	NUMBER(30)	Primary key for the Postal Code table

Sequences

Sequence	Derived Column
CSF_LF_ROADSEGM_POSTS_S1	ROADSEGMENT_POSTCODE_ID

CSF_L_AGENDALAYOUTS

This table stores the agenda layout for the Engineers.

Column Descriptions

Name	Null?	Type	Description
AGENDALAYOUT_ID (PK)	NOT NULL	NUMBER(15)	Unique identifier
LAST_UPDATE_DATE	NOT NULL	DATE	Standard Who column
LAST_UPDATED_BY	NOT NULL	NUMBER(15)	Standard Who column
CREATION_DATE	NOT NULL	DATE	Standard Who column
CREATED_BY	NOT NULL	NUMBER(15)	Standard Who column
LAST_UPDATE_LOGIN	NOT NULL	NUMBER(15)	Standard Who column
COL	NOT NULL	NUMBER(15)	Col# in agenda
FIELDNAME	NOT NULL	VARCHAR2(50)	FieldName
USERFIELDNAME	NOT NULL	VARCHAR2(50)	Header Column name
VISIBLE	NOT NULL	NUMBER(15)	If Visible
ATTRIBUTE_CATEGORY	NULL	VARCHAR2(30)	Descriptive flexfield structure defining column
ATTRIBUTE1	NULL	VARCHAR2(150)	Descriptive flexfield segment
ATTRIBUTE2	NULL	VARCHAR2(150)	Descriptive flexfield segment
ATTRIBUTE3	NULL	VARCHAR2(150)	Descriptive flexfield segment
ATTRIBUTE4	NULL	VARCHAR2(150)	Descriptive flexfield segment
ATTRIBUTE5	NULL	VARCHAR2(150)	Descriptive flexfield segment
ATTRIBUTE6	NULL	VARCHAR2(150)	Descriptive flexfield segment
ATTRIBUTE7	NULL	VARCHAR2(150)	Descriptive flexfield segment
ATTRIBUTE8	NULL	VARCHAR2(150)	Descriptive flexfield segment
ATTRIBUTE9	NULL	VARCHAR2(150)	Descriptive flexfield segment
ATTRIBUTE10	NULL	VARCHAR2(150)	Descriptive flexfield segment
ATTRIBUTE11	NULL	VARCHAR2(150)	Descriptive flexfield segment
ATTRIBUTE12	NULL	VARCHAR2(150)	Descriptive flexfield segment
ATTRIBUTE13	NULL	VARCHAR2(150)	Descriptive flexfield segment
ATTRIBUTE14	NULL	VARCHAR2(150)	Descriptive flexfield segment
ATTRIBUTE15	NULL	VARCHAR2(150)	Descriptive flexfield segment

Sequences

Sequence	Derived Column
CSF_L_AGENDALAYOUTS_S	AGENDALAYOUT_ID

CSF_L_QUERIES

The Queries table stores all user defined queries that are used on the Mobile Device. The FORMNAME indicates where the queries is to be used in the system.

Column Descriptions

Name	Null?	Type	Description
QUERY_ID (PK)	NOT NULL	NUMBER(15)	Unique identifier
LAST_UPDATE_DATE	NOT NULL	DATE	Standard Who column
LAST_UPDATED_BY	NOT NULL	NUMBER(15)	Standard Who column
CREATION_DATE	NOT NULL	DATE	Standard Who column
CREATED_BY	NOT NULL	NUMBER(15)	Standard Who column
LAST_UPDATE_LOGIN	NOT NULL	NUMBER(15)	Standard Who column
QUERYFOR	NOT NULL	VARCHAR2(20)	Query for which column
FORMNAME	NOT NULL	VARCHAR2(20)	Query for which form
SQLTITEL	NOT NULL	VARCHAR2(20)	Titel of query
SQLSTRING	NOT NULL	VARCHAR2(2000)	The Query
RUNREMOTE	NULL	NUMBER(15)	Query executable on Remote PC
REFRESHRATE	NULL	NUMBER(15)	Refresh rate
ATTRIBUTE_CATEGORY	NULL	VARCHAR2(30)	Descriptive flexfield structure defining column
ATTRIBUTE1	NULL	VARCHAR2(150)	Descriptive flexfield segment
ATTRIBUTE2	NULL	VARCHAR2(150)	Descriptive flexfield segment
ATTRIBUTE3	NULL	VARCHAR2(150)	Descriptive flexfield segment
ATTRIBUTE4	NULL	VARCHAR2(150)	Descriptive flexfield segment
ATTRIBUTE5	NULL	VARCHAR2(150)	Descriptive flexfield segment
ATTRIBUTE6	NULL	VARCHAR2(150)	Descriptive flexfield segment
ATTRIBUTE7	NULL	VARCHAR2(150)	Descriptive flexfield segment
ATTRIBUTE8	NULL	VARCHAR2(150)	Descriptive flexfield segment
ATTRIBUTE9	NULL	VARCHAR2(150)	Descriptive flexfield segment
ATTRIBUTE10	NULL	VARCHAR2(150)	Descriptive flexfield segment
ATTRIBUTE11	NULL	VARCHAR2(150)	Descriptive flexfield segment
ATTRIBUTE12	NULL	VARCHAR2(150)	Descriptive flexfield segment
ATTRIBUTE13	NULL	VARCHAR2(150)	Descriptive flexfield segment
ATTRIBUTE14	NULL	VARCHAR2(150)	Descriptive flexfield segment
ATTRIBUTE15	NULL	VARCHAR2(150)	Descriptive flexfield segment

Sequences

Sequence	Derived Column
CSF_L_QUERIES_S	QUERY_ID

CSF_L_QUERYREQUESTS

Requests for executing queries from remote on the server side

Column Descriptions

Name	Null?	Type	Description
QUERYREQUEST_ID (PK)	NOT NULL	NUMBER(15)	Unique identifier
LAST_UPDATE_DATE	NOT NULL	DATE	Standard Who column
LAST_UPDATED_BY	NOT NULL	NUMBER(15)	Standard Who column
CREATION_DATE	NOT NULL	DATE	Standard Who column
CREATED_BY	NOT NULL	NUMBER(15)	Standard Who column
LAST_UPDATE_LOGIN	NOT NULL	NUMBER(15)	Standard Who column
EMPLID	NOT NULL	VARCHAR2(20)	Employee ID
REQUESTDATE	NOT NULL	DATE	Date Request
QUERY_ID	NOT NULL	NUMBER(15)	ID of Query
QUERYINPUT	NULL	VARCHAR2(255)	Parameter values
ATTRIBUTE_CATEGORY	NULL	VARCHAR2(30)	Descriptive flexfield structure defining column
ATTRIBUTE1	NULL	VARCHAR2(150)	Descriptive flexfield segment
ATTRIBUTE2	NULL	VARCHAR2(150)	Descriptive flexfield segment
ATTRIBUTE3	NULL	VARCHAR2(150)	Descriptive flexfield segment
ATTRIBUTE4	NULL	VARCHAR2(150)	Descriptive flexfield segment
ATTRIBUTE5	NULL	VARCHAR2(150)	Descriptive flexfield segment
ATTRIBUTE6	NULL	VARCHAR2(150)	Descriptive flexfield segment
ATTRIBUTE7	NULL	VARCHAR2(150)	Descriptive flexfield segment
ATTRIBUTE8	NULL	VARCHAR2(150)	Descriptive flexfield segment
ATTRIBUTE9	NULL	VARCHAR2(150)	Descriptive flexfield segment
ATTRIBUTE10	NULL	VARCHAR2(150)	Descriptive flexfield segment
ATTRIBUTE11	NULL	VARCHAR2(150)	Descriptive flexfield segment
ATTRIBUTE12	NULL	VARCHAR2(150)	Descriptive flexfield segment
ATTRIBUTE13	NULL	VARCHAR2(150)	Descriptive flexfield segment
ATTRIBUTE14	NULL	VARCHAR2(150)	Descriptive flexfield segment
ATTRIBUTE15	NULL	VARCHAR2(150)	Descriptive flexfield segment

Sequences

Sequence	Derived Column
CSF_L_QUERYREQUESTS_S	QUERYREQUEST_ID

CSF_L_SODS

List of Description of Service Orders

Column Descriptions

Name	Null?	Type	Description
SOD_ID (PK)	NOT NULL	NUMBER(15)	Unique identifier
LAST_UPDATE_DATE	NOT NULL	DATE	Standard Who column
LAST_UPDATED_BY	NOT NULL	NUMBER(15)	Standard Who column
CREATION_DATE	NOT NULL	DATE	Standard Who column
CREATED_BY	NOT NULL	NUMBER(15)	Standard Who column
LAST_UPDATE_LOGIN	NOT NULL	NUMBER(15)	Standard Who column
SOT_ID	NOT NULL	NUMBER(15)	ID of Service Order Type
SODTYPE	NOT NULL	VARCHAR2(20)	Type of Service Order Description
SODDESCR	NOT NULL	VARCHAR2(50)	Description of the Service Order Description
FILENAMEHDR	NOT NULL	VARCHAR2(255)	ALX file name for the Header of the section
FILENAMEFTR	NULL	VARCHAR2(255)	ALX file name for the Footer of the section
DEFSOD_ID	NOT NULL	NUMBER(15)	Default Service Order Description ID
TASK_TYPE_ID	NULL	NUMBER	ID of Task Type
ITEM_PATTERN	NULL	VARCHAR2(240)	Item Pattern
ATTRIBUTE_CATEGORY	NULL	VARCHAR2(30)	Descriptive flexfield structure defining column
ATTRIBUTE1	NULL	VARCHAR2(150)	Descriptive flexfield segment
ATTRIBUTE2	NULL	VARCHAR2(150)	Descriptive flexfield segment
ATTRIBUTE3	NULL	VARCHAR2(150)	Descriptive flexfield segment
ATTRIBUTE4	NULL	VARCHAR2(150)	Descriptive flexfield segment
ATTRIBUTE5	NULL	VARCHAR2(150)	Descriptive flexfield segment
ATTRIBUTE6	NULL	VARCHAR2(150)	Descriptive flexfield segment
ATTRIBUTE7	NULL	VARCHAR2(150)	Descriptive flexfield segment
ATTRIBUTE8	NULL	VARCHAR2(150)	Descriptive flexfield segment
ATTRIBUTE9	NULL	VARCHAR2(150)	Descriptive flexfield segment
ATTRIBUTE10	NULL	VARCHAR2(150)	Descriptive flexfield segment
ATTRIBUTE11	NULL	VARCHAR2(150)	Descriptive flexfield segment
ATTRIBUTE12	NULL	VARCHAR2(150)	Descriptive flexfield segment
ATTRIBUTE13	NULL	VARCHAR2(150)	Descriptive flexfield segment
ATTRIBUTE14	NULL	VARCHAR2(150)	Descriptive flexfield segment
ATTRIBUTE15	NULL	VARCHAR2(150)	Descriptive flexfield segment

Sequences

Sequence	Derived Column
CSF_L_SODS_S	SOD_ID

Oracle Proprietary, Confidential Information--Use Restricted by Contract

CSF_L_SOTS

List of Types of Service Order

Column Descriptions

Name	Null?	Type	Description
SOT_ID (PK)	NOT NULL	NUMBER(15)	Unique identifier
LAST_UPDATE_DATE	NOT NULL	DATE	Standard Who column
LAST_UPDATED_BY	NOT NULL	NUMBER(15)	Standard Who column
CREATION_DATE	NOT NULL	DATE	Standard Who column
CREATED_BY	NOT NULL	NUMBER(15)	Standard Who column
LAST_UPDATE_LOGIN	NOT NULL	NUMBER(15)	Standard Who column
DESCR	NOT NULL	VARCHAR2(50)	Description
ATTRIBUTE_CATEGORY	NULL	VARCHAR2(30)	Descriptive flexfield structure defining column
ATTRIBUTE1	NULL	VARCHAR2(150)	Descriptive flexfield segment
ATTRIBUTE2	NULL	VARCHAR2(150)	Descriptive flexfield segment
ATTRIBUTE3	NULL	VARCHAR2(150)	Descriptive flexfield segment
ATTRIBUTE4	NULL	VARCHAR2(150)	Descriptive flexfield segment
ATTRIBUTE5	NULL	VARCHAR2(150)	Descriptive flexfield segment
ATTRIBUTE6	NULL	VARCHAR2(150)	Descriptive flexfield segment
ATTRIBUTE7	NULL	VARCHAR2(150)	Descriptive flexfield segment
ATTRIBUTE8	NULL	VARCHAR2(150)	Descriptive flexfield segment
ATTRIBUTE9	NULL	VARCHAR2(150)	Descriptive flexfield segment
ATTRIBUTE10	NULL	VARCHAR2(150)	Descriptive flexfield segment
ATTRIBUTE11	NULL	VARCHAR2(150)	Descriptive flexfield segment
ATTRIBUTE12	NULL	VARCHAR2(150)	Descriptive flexfield segment
ATTRIBUTE13	NULL	VARCHAR2(150)	Descriptive flexfield segment
ATTRIBUTE14	NULL	VARCHAR2(150)	Descriptive flexfield segment
ATTRIBUTE15	NULL	VARCHAR2(150)	Descriptive flexfield segment

Sequences

Sequence	Derived Column
CSF_L_SOTS_S	SOT_ID

CSF_MD_ADM_BOUNDS

DEFINITION A MD ADMIN BOUND defines an administrative boundary defined in a country. EXAMPLE MISCELLANEOUS The entity can be both linear and and polygon.

Foreign Keys

Primary Key Table	Primary Key Column	Foreign Key Column
CSF_MD_INST_STYLE_SHTS	INST_STYLE_ID	INST_STYLE_ID

Column Descriptions

Name	Null?	Type	Description
ADMIN_BOUND_ID (PK)	NOT NULL	NUMBER(30)	The ADMIN BOUND ID 's unique identifier.
ADMIN_LEVEL	NOT NULL	NUMBER	The ADMIN LEVEL defines the administrative level represented by this cartographic entity.
FEATURE_CODE	NOT NULL	NUMBER	The FEATURE CODE defines the type of administrative level.
INST_STYLE_ID	NOT NULL	NUMBER(30)	Generic unique identifier for an entity
AREA	NULL	NUMBER	Defines the surface in square units.

Sequences

Sequence	Derived Column
CSF_MD_ADM_BOUNDS_S1	ADMIN_BOUND_ID

CSF_MD_HYDROS

DEFINITION A MD HYDROGRAPHY defines hydrographic cartographic feature. EXAMPLE MISCELLANEOUS

Foreign Keys

Primary Key Table	Primary Key Column	Foreign Key Column
CSF_MD_INST_STYLE_SHTS	INST_STYLE_ID	INST_STYLE_ID

Column Descriptions

Name	Null?	Type	Description
HYDROGRAPHY_ID (PK)	NOT NULL	NUMBER(30)	The HYDROGRAPHY ID defines the unique identifier of the entity.
FEATURE_CODE	NOT NULL	NUMBER	The FEATURE CODE defines the type of hydrography.
INST_STYLE_ID	NOT NULL	NUMBER(30)	Generic unique identifier for an entity
WATER_TYPE	NULL	NUMBER	Defines type of water feature stored
AREA	NULL	NUMBER	Defines the surface in square units.

Sequences

Sequence	Derived Column
CSF_MD_HYDROS_S1	HYDROGRAPHY_ID

CSF_MD_INST_STYLE_SHTS

DEFINITION EXAMPLE MISCELLANEOUS

Column Descriptions

Name	Null?	Type	Description
INST_STYLE_ID (PK)	NOT NULL	NUMBER(30)	Generic unique identifier for an entity
STYLE_TYPE	NOT NULL	VARCHAR2(8)	Style type
COLOR	NOT NULL	NUMBER	Color
DISPLAY_PRIORITY	NOT NULL	NUMBER	Priority which style sheet has to displayed first.
ISS_SIZE	NOT NULL	NUMBER	Size style
PATTERN	NOT NULL	NUMBER	pattern
XOR_MODE	NOT NULL	NUMBER	Map drawing mode.
XOR_COLOR	NOT NULL	NUMBER	Map drawing mode.
LINE_MULTIPASS_STYLE	NOT NULL	NUMBER	Map drawing line characteristic
LINE_CAP_STYLE	NOT NULL	NUMBER	Map drawing line characteristic
LINE_JOIN_STYLE	NOT NULL	NUMBER	Map drawing line characteristic
LINE_NODE_STYLE	NOT NULL	NUMBER	Map drawing line characteristic
AREA_ALPHA	NOT NULL	NUMBER	Defines the area alpha style
AREA_BORDER_STYLE	NOT NULL	NUMBER	Defines the map area border style
MARKER_TYPE	NOT NULL	NUMBER	Indicates the map marker type.
MARKER_TEXT_MBR	NOT NULL	NUMBER	Indicates the minimum bounding rectangle of the marker
TEXT_BACK_COLOR	NOT NULL	NUMBER	Map text characteristic
TEXT_FONT_HINT	NOT NULL	NUMBER	Map text characteristic
TEXT_BOLD	NOT NULL	NUMBER	Map text characteristic
TEXT_COLOR	NOT NULL	NUMBER	Map text characteristic
TEXT_HALO	NOT NULL	NUMBER	Map text characteristic
TEXT_ITALIC	NOT NULL	NUMBER	Map text characteristic
TEXT_SIZE	NOT NULL	NUMBER	Map text characteristic
TEXT_UNDERLINE	NOT NULL	NUMBER	Map text characteristic
TEXT_X_OFFSET	NOT NULL	NUMBER	Map text characteristic
TEXT_Y_OFFSET	NOT NULL	NUMBER	Map text characteristic
TEXT_ORIENTATION	NOT NULL	NUMBER	Map text characteristic
LABELING_ENABLED	NULL	VARCHAR2(1)	Indicate if labeling is enable in this style sheet.
LABEL_TEXT_SIZE	NULL	NUMBER	Label drawing characteristic
LABEL_COLOR	NULL	NUMBER	Label drawing characteristic

Sequences

Sequence	Derived Column
CSF_MD_INST_STYLE_SHTS_S1	INST_STYLE_ID

CSF_MD_LAND_USES

DEFINITION A LAND USE defines the geometry of various land usages. **EXAMPLE** Some examples of land usages are: Parks, Forest, Industrial complex, Airport, Island, Military base, Reservations, etc.
MISCELLANEOUS

Foreign Keys

Primary Key Table	Primary Key Column	Foreign Key Column
CSF_MD_INST_STYLE_SHTS	INST_STYLE_ID	INST_STYLE_ID

Column Descriptions

Name	Null?	Type	Description
LANDUSE_ID (PK)	NOT NULL	NUMBER(30)	Generic unique identifier for an entity
FEATURE_CODE	NOT NULL	NUMBER	The FEATURE CODE defines the type of land usage.
INST_STYLE_ID	NOT NULL	NUMBER(30)	Generic unique identifier for an entity
PARK_TYPE	NULL	NUMBER	Defines type of Park, sub-attribute for Feature Code 7170
AREA	NULL	NUMBER	Specifies the surface in square units.

Sequences

Sequence	Derived Column
CSF_MD_LAND_USES_S1	LANDUSE_ID

CSF_MD_LYR_METADATA

DEFINITION EXAMPLE MISCELLANEOUS

Foreign Keys

Primary Key Table	Primary Key Column	Foreign Key Column
CSF_MD_INST_STYLE_SHTS	INST_STYLE_ID	INST_STYLE_ID
CSF_MD_LYR_STYLE_SHTS	LAYER_STYLE_SHEET_ID	LAYER_STYLE_SHEET_ID
CSF_MD_THEME_METADATA	THEME_ID	THEME_METADATA_ID

Column Descriptions

Name	Null?	Type	Description
LAYER_METADATA_ID	NOT NULL	NUMBER(30)	Defines the unique identifier
THEME_METADATA_ID	NOT NULL	NUMBER(30)	Foreign key to theme metadata
LAYER_NAME	NULL	VARCHAR2(32)	The name of the map layer
LAYER_DB_LINK	NULL	VARCHAR2(32)	Database name for layer data
LAYER_OWNER	NULL	VARCHAR2(32)	Owner name of layer data
LAYER_TABLE	NULL	VARCHAR2(32)	Table name that contains geometric data for a layer.
LAYER_WHERE_CLAUSE	NULL	VARCHAR2(1024)	Spatial where clause for retrieving geometric data for a layer
LAYER_VERSION	NULL	VARCHAR2(32)	Version string of a layer
CREATION_DATE	NULL	DATE	Date layer metadata was created
COPYRIGHT_DATE	NULL	DATE	Copyright date for layer metadata
LAST_EDIT_DATE	NULL	DATE	Date last edited
CHAR_SET	NULL	VARCHAR2(32)	Character set to use for display
LAYER_STYLE_SHEET_ID	NOT NULL	NUMBER(30)	Foreign key to style sheet of given layer metadata
INST_STYLE_ID	NOT NULL	NUMBER(30)	Foreign key to instance style sheet
LAYER_TABLE_2	NULL	VARCHAR2(32)	Secondary table name for display data
LAYER_TABLE_3	NULL	VARCHAR2(32)	Third table name for display data
LAYER_WHERE_CLAUSE_2	NULL	VARCHAR2(1024)	Secondary where clause for geometric data query
GEOMETRY_COLUMN_NAME	NULL	VARCHAR2(240)	Column name containing geometric data
ID_COLUMN_NAME	NULL	VARCHAR2(240)	Unique id column name of table containing geometric data
ITEM_NAME_COLUMN_NAME	NULL	VARCHAR2(240)	Column name contain item name for geometric data

Sequences

Sequence	Derived Column
CSF_MD_LYR_METADATA_S1	LAYER_METADATA_ID

CSF_MD_LYR_STYLE_SHTS

DEFINITION A MD LAYER STYLE SHEET defines the visual display characteristics of a map layer. EXAMPLE MISCELLANEOUS

Column Descriptions

Name	Null?	Type	Description
LAYER_STYLE_SHEET_ID (PK)	NOT NULL	NUMBER(30)	Unique layer style sheet identifier
MIN_SCALE	NOT NULL	NUMBER	Minimum scale of give layer style sheet
MAX_SCALE	NOT NULL	NUMBER	Maximum scale of given layer style sheet
DEFAULT_SCALE	NOT NULL	NUMBER	Default scale for given layer style sheet
DISPLAY_PRIORITY	NOT NULL	NUMBER	Display priority for given layer style sheet

Sequences

Sequence	Derived Column
CSF_MD_LYR_STYLE_SHTS_S1	LAYER_STYLE_SHEET_ID

CSF_MD_NAMES

DEFINITION The MD NAME defines the name of the given geographic entities in the model. **EXAMPLE** Name of administrative boundaries, Points of interest, Road/road-segments, etc. **MISCELLANEOUS**

Foreign Keys

Primary Key Table	Primary Key Column	Foreign Key Column
CSF_MD_ADM_BOUNDS	ADMIN_BOUND_ID	ADMIN_BOUND_ID
CSF_MD_HYDROS	HYDROGRAPHY_ID	HYDROGRAPHY_ID
CSF_MD_LAND_USES	LANDUSE_ID	LANDUSE_ID
CSF_MD_RAIL_SEGS	RAILROAD_SEGMENT_ID	RAILROAD_SEGMENT_ID

QuickCodes Columns

Column	QuickCodes Type	QuickCodes Table
ROAD_EXIT_NUMBER	YES_NO	FND_LOOKUPS
	N	No
	Y	Yes
ROAD_JUNCTION_NAME	YES_NO	FND_LOOKUPS
	N	No
	Y	Yes

Column Descriptions

Name	Null?	Type	Description
NAME_ID (PK)	NOT NULL	NUMBER(30)	The NAME ID defines the unique identifier of the name.
NAME	NOT NULL	VARCHAR2(70)	The full name of the entity.
NAME_TYPE	NOT NULL	VARCHAR2(1)	The NAME TYPE defines if the name is an official name, stale name, vanity name. etc.
LANGUAGE_CODE	NOT NULL	VARCHAR2(3)	The LANGUAGE CODE defines the language in which the name is written.
ROUTE_TYPE	NULL	NUMBER	The ROUTE TYPE defines the classification of route numbers by importance and regional function.
ROAD_JUNCTION_NAME	NULL	VARCHAR2(3)	The ROAD JUNCTION NAME defines if the name represents a motorway junction.
ROAD_EXIT_NUMBER	NULL	VARCHAR2(3)	The ROAD EXIT NUMBER defines if the name represents a road exit number.
RAILROAD_SEGMENT_ID	NULL	NUMBER(30)	Generic unique identifier for an entity
LANDUSE_ID	NULL	NUMBER(30)	Generic unique identifier for an entity
ADMIN_BOUND_ID	NULL	NUMBER(30)	The ADMIN BOUND ID 's unique identifier.
HYDROGRAPHY_ID	NULL	NUMBER(30)	The HYDROGRAPHY ID defines the unique identifier of the entity.

Oracle Proprietary, Confidential Information--Use Restricted by Contract

Sequences

<u>Sequence</u>	<u>Derived Column</u>
-----------------	-----------------------

CSF_MD_NAMES_S1	NAME_ID
-----------------	---------

CSF_MD_POIS

DEFINITION This table defines POI (point of interest) for Map Display
EXAMPLE Holiday Inn, Shell petrol station, etc. MISCELLANEOUS

Foreign Keys

Primary Key Table	Primary Key Column	Foreign Key Column
CSF_MD_INST_STYLE_SHTS	INST_STYLE_ID	INST_STYLE_ID

QuickCodes Columns

Column	QuickCodes Type	QuickCodes Table
IMPORTANCE	YES_NO	FND_LOOKUPS
	N	No
	Y	Yes

Column Descriptions

Name	Null?	Type	Description
POI_ID (PK)	NOT NULL	NUMBER(30)	A unique identifier for the POI.
FEATURE_CODE	NOT NULL	NUMBER	The FEATURE CODE defines the type the POI.
FOOD_TYPE	NULL	VARCHAR2(240)	The FOOD TYPE defines the type of food served in restaurants.
IMPORTANCE	NOT NULL	VARCHAR2(3)	The IMPORTANCE defines if the POI if of local or national importance.
POI_ADDRESS	NULL	VARCHAR2(240)	The POI ADDRESS defines the streetname and house number of the POI.
TELEPHONE_NUMBER	NULL	VARCHAR2(240)	The POI telephone number
POPULATION	NULL	NUMBER(25)	The POPULATION defines the estimated number of inhabitants of the city.
CHAIN_NAME	NULL	VARCHAR2(240)	The CHAIN NAME defines the name of the chain to which the POI belongs to.
INST_STYLE_ID	NOT NULL	NUMBER(30)	Generic unique identifier for an entity

Sequences

Sequence	Derived Column
CSF_MD_POIS_S1	POI_ID

Oracle Proprietary, Confidential Information--Use Restricted by Contract

CSF_MD_POI_NM_ASGNS

DEFINITOIN A MD POI NAMES ASGN defines the M:M relationship between the MD NAME and the MD POI NAMES ASGN entity.
EXAMPLE MISCELLANEOUS

Foreign Keys

Primary Key Table	Primary Key Column	Foreign Key Column
CSF_MD_NAMES	NAME_ID	NAME_ID
CSF_MD_POIS	POI_ID	POI_ID

Column Descriptions

Name	Null?	Type	Description
POI_NM_ASGN_ID (PK)	NOT NULL	NUMBER(30)	The POI NM ASGN ID defines the unique identifier of the entity.
NAME_TYPE	NOT NULL	VARCHAR2(1)	The NAME TYPE defines type of the name given to the POI.
NAME_ID	NOT NULL	NUMBER(30)	The NAME ID defines the unique identifier of the name.
POI_ID	NOT NULL	NUMBER(30)	A unique identifier for the POI.

Sequences

Sequence	Derived Column
CSF_MD_POI_NM_ASGNS_S1	POI_NM_ASGN_ID

CSF_MD_RAIL_SEGS

DEFINITION A RAIL SEGMENT defines an individual line segment representing a railroad. EXAMPLE MISCELLANEOUS

Foreign Keys

Primary Key Table	Primary Key Column	Foreign Key Column
CSF_MD_INST_STYLE_SHTS	INST_STYLE_ID	INST_STYLE_ID

Column Descriptions

Name	Null?	Type	Description
RAILROAD_SEGMENT_ID (PK)	NOT NULL	NUMBER(30)	Generic unique identifier for an entity
FEATURE_CODE	NOT NULL	NUMBER	Surrogate key used for primary unique identifiers
INST_STYLE_ID	NULL	NUMBER(30)	Generic unique identifier for an entity

Sequences

Sequence	Derived Column
CSF_MD_RAIL_SEGS_S1	RAILROAD_SEGMENT_ID

CSF_MD_RDSEG_NM_ASGNS

DEFINITION A MD RDSEG NAME ASGN defines the M:M relationship between the MD NAME and MD ROAD SEGMENT entity.
EXAMPLE MISCELLANEOUS

Foreign Keys

Primary Key Table	Primary Key Column	Foreign Key Column
CSF_MD_NAMES	NAME_ID	NAME_ID
CSF_MD_RD_SEGS	ROAD_SEGMENT_ID	ROAD_SEGMENT_ID

Column Descriptions

Name	Null?	Type	Description
RD_SEG_NM_ID (PK)	NOT NULL	NUMBER(30)	Generic unique identifier for an entity
NAME_TYPE	NOT NULL	VARCHAR2(1)	The NAME TYPE defines the type of the name given to the road segment.
ROAD_SEGMENT_ID	NOT NULL	NUMBER(30)	The ROAD SEGMENT ID defines the unique identifier for a road segment.
NAME_ID	NOT NULL	NUMBER(30)	The NAME ID defines the unique identifier of the name.

CSF_MD_RD_SEGS

DEFINITION A MD ROAD SEGMENT defines a navigable feature. Elements in the MD ROAD SEGMENT a part of the navigable road network. **EXAMPLE** Some examples of navigable features are: Roads, Ferries, Walkway **MISCELLANEOUS**

Foreign Keys

Primary Key Table	Primary Key Column	Foreign Key Column
CSF_MD_INST_STYLE_SHTS	INST_STYLE_ID	INST_STYLE_ID

QuickCodes Columns

Column	QuickCodes Type	QuickCodes Table
ACCESS_BICYCLE	YES_NO	FND_LOOKUPS
	N	No
ACCESS_BUS	YES_NO	FND_LOOKUPS
	N	No
ACCESS_CAR	YES_NO	FND_LOOKUPS
	N	No
ACCESS_CARPOOL	YES_NO	FND_LOOKUPS
	N	No
ACCESS_DELIVERY	YES_NO	FND_LOOKUPS
	N	No
ACCESS_EMERGENCY	YES_NO	FND_LOOKUPS
	N	No
ACCESS_PEDESTRIAN	YES_NO	FND_LOOKUPS
	N	No
ACCESS_TAXI	YES_NO	FND_LOOKUPS
	N	No
ACCESS_TRUCK	YES_NO	FND_LOOKUPS
	N	No
PAVED	YES_NO	FND_LOOKUPS
	N	No
TOLL_ROAD	YES_NO	FND_LOOKUPS
	N	No

Oracle Proprietary, Confidential Information--Use Restricted by Contract

Column Descriptions

Name	Null?	Type	Description
ROAD_SEGMENT_ID (PK)	NOT NULL	NUMBER(30)	The ROAD SEGMENT ID defines the unique identifier for a road segment.
FUNCTIONAL_CLASS	NOT NULL	NUMBER	The FUNCTIONAL CLASS defines the level of importance of the road.
CONSTRUCTION_STATUS	NULL	NUMBER	The CONSTRUCTION STATUS determines if a road segment is currently under construction .
FORM_OF_WAY	NULL	NUMBER	The FORM OF WAY determines the physical characteristics of the road segment.
SPEED_CATEGORY	NULL	NUMBER	The SPEED CATEGORY defines the legal speed that applies to the road segment.
LANE_CATEGORY	NULL	NUMBER	The LANE CATEGORY defines the number of lanes of the road segment.
ONEWAY_DIRECTION	NOT NULL	NUMBER	The ONEWAY DIRECTORY determines in which end the road can be entered. The direction is specified using the start and end node.
TOLL_ROAD	NOT NULL	VARCHAR2(3)	The TOLL ROAD defines if toll fee needs to be paid for using the road.
PAVED	NULL	VARCHAR2(3)	The PAVED attribute defines if a road is paved or unpaved.
FEATURE_CODE	NOT NULL	NUMBER	The FEATURE CODE determines the type of road segment. Currently only one type is in use. In a later release this column will determine the aggregation state of a road segment.
FERRY_TYPE	NULL	VARCHAR2(240)	Date and time this occurrence ceases being active for user access
ACCESS_CAR	NOT NULL	VARCHAR2(3)	The ACCESS CAR determines if the road segment is accessible for cars.
ACCESS_CARPOOL	NOT NULL	VARCHAR2(3)	The ACCESS CARPOOL determines if the road segment is accessible for carpool vehicles.
ACCESS_DELIVERY	NOT NULL	VARCHAR2(3)	The ACCESS DELIVERY determines if the road segment is accessible for delivery vehicles.
ACCESS_TAXI	NOT NULL	VARCHAR2(3)	The ACCESS TAXI determines if the road segment is accessible for taxies.
ACCESS_PEDESTRIAN	NOT NULL	VARCHAR2(3)	The ACCESS PEDESTRIAN determines if the road segment is accessible for pedestrians.
ACCESS_BUS	NOT NULL	VARCHAR2(3)	The ACCESS BUS determines if the road segment is accessible for busses.
ACCESS_BICYCLE	NOT NULL	VARCHAR2(3)	The ACCESS BICYCLE determines if the road segment is accessible for bicycles.
ACCESS_EMERGENCY	NOT NULL	VARCHAR2(3)	The ACCESS EMERGENCY determines if the road segment is accessible for emergency vehicles.

Oracle Proprietary, Confidential Information--Use Restricted by Contract

ACCESS_TRUCK	NOT NULL VARCHAR2(3)	The ACCESS TRUCK determines if the road segment is accessible for trucks.
INST_STYLE_ID	NOT NULL NUMBER(30)	Generic unique identifier for an entity

Sequences

<u>Sequence</u>	<u>Derived Column</u>
CSF_MD_RD_SEGS_S1	ROAD_SEGMENT_ID

CSF_MD_THEME_METADATA

DEFINITION A MD THEME METADATA defines the version information of an entire theme. EXAMPLE MISCELLANEOUS

Column Descriptions

Name	Null?	Type	Description
THEME_ID (PK)	NOT NULL	NUMBER(30)	Unique identifier of theme metadata
THEME_NAME	NOT NULL	VARCHAR2(32)	The name of the theme
THEME_CODE	NOT NULL	NUMBER	Theme code
THEME_VERSION	NOT NULL	VARCHAR2(32)	The version string of a given theme
CREATION_DATE	NULL	DATE	Theme creation date
COPYRIGHT_DATE	NULL	DATE	Theme copyright date
LAST_EDIT_DATE	NULL	DATE	Date the theme was last edited

Sequences

Sequence	Derived Column
CSF_MD_THEME_METADATA_S1	THEME_ID

CSF_PARAMS

Stored Parameters voor Laptop and Palm

Column Descriptions

Name	Null?	Type	Description
PARAM_ID (PK)	NOT NULL	NUMBER(15)	Unique identifier
LAST_UPDATE_DATE	NOT NULL	DATE	Standard Who column
LAST_UPDATED_BY	NOT NULL	NUMBER(15)	Standard Who column
CREATION_DATE	NOT NULL	DATE	Standard Who column
CREATED_BY	NOT NULL	NUMBER(15)	Standard Who column
LAST_UPDATE_LOGIN	NOT NULL	NUMBER(15)	Standard Who column
NAME	NOT NULL	VARCHAR2(50)	Parameter Name
VALUE	NOT NULL	VARCHAR2(2000)	Parameter Value
ATTRIBUTE_CATEGORY	NULL	VARCHAR2(30)	Descriptive flexfield structure defining column
ATTRIBUTE1	NULL	VARCHAR2(150)	Descriptive flexfield segment
ATTRIBUTE2	NULL	VARCHAR2(150)	Descriptive flexfield segment
ATTRIBUTE3	NULL	VARCHAR2(150)	Descriptive flexfield segment
ATTRIBUTE4	NULL	VARCHAR2(150)	Descriptive flexfield segment
ATTRIBUTE5	NULL	VARCHAR2(150)	Descriptive flexfield segment
ATTRIBUTE6	NULL	VARCHAR2(150)	Descriptive flexfield segment
ATTRIBUTE7	NULL	VARCHAR2(150)	Descriptive flexfield segment
ATTRIBUTE8	NULL	VARCHAR2(150)	Descriptive flexfield segment
ATTRIBUTE9	NULL	VARCHAR2(150)	Descriptive flexfield segment
ATTRIBUTE10	NULL	VARCHAR2(150)	Descriptive flexfield segment
ATTRIBUTE11	NULL	VARCHAR2(150)	Descriptive flexfield segment
ATTRIBUTE12	NULL	VARCHAR2(150)	Descriptive flexfield segment
ATTRIBUTE13	NULL	VARCHAR2(150)	Descriptive flexfield segment
ATTRIBUTE14	NULL	VARCHAR2(150)	Descriptive flexfield segment
ATTRIBUTE15	NULL	VARCHAR2(150)	Descriptive flexfield segment

Sequences

Sequence	Derived Column
CSF_PARAMS_S	PARAM_ID

CSF_PLAN_TERRS

This table maps territories to resource groups, thus making the resource group a planner group for those territories. This information is used for UI reasons. It limits the available number of resources in the Control Tower.

Foreign Keys

Primary Key Table	Primary Key Column	Foreign Key Column
JTF_RS_GROUPS_B	GROUP_ID	GROUP_ID
JTF_TERR_ALL	TERR_ID	TERR_ID

Column Descriptions

Name	Null?	Type	Description
PLAN_TERR_ID (PK)	NOT NULL	NUMBER	Unique identifier
LAST_UPDATE_DATE	NOT NULL	DATE	Standard Who column
LAST_UPDATED_BY	NOT NULL	NUMBER	Standard Who column
CREATION_DATE	NOT NULL	DATE	Standard Who column
CREATED_BY	NOT NULL	NUMBER	Standard Who column
LAST_UPDATE_LOGIN	NULL	NUMBER	Standard Who column
OBJECT_VERSION_NUMBER	NOT NULL	NUMBER	Sequential number used for database locking control
TERR_ID	NOT NULL	NUMBER	Foreign key to JTF_TERR_ALL
GROUP_ID	NOT NULL	NUMBER	Foreign key to JTF_RS_GROUPS_B

Indexes

Index Name	Index Type	Sequence	Column Name
CSF_PLAN_TERRS_U1	UNIQUE	0	TERR_ID
		0	GROUP_ID

Sequences

Sequence	Derived Column
CSF_PLAN_TERRS_S	PLAN_TERR_ID

CSF_SDM_CTRY_PROFILES

DEFINITION EXAMPLE MISCELLANEOUS

Column Descriptions

Name	Null?	Type	Description
COUNTRY_PROFILE_ID (PK)	NOT NULL	NUMBER(30)	Unique identifier for given country profile
COUNTRY_NAME	NULL	VARCHAR2(60)	The name of the country
COUNTRY_ID	NULL	NUMBER(30)	ISO numeric country code
COUNTRY_CODE_A3	NULL	VARCHAR2(3)	3 letter country code
NATIONAL_LANG_CODE	NULL	VARCHAR2(3)	ISO language code
NATIONAL_LANG_CODE2	NULL	VARCHAR2(3)	ISO language code
DRIVING_SIDE	NULL	VARCHAR2(1)	Driving side
HOUSE_NUMBER_POS	NULL	VARCHAR2(1)	House number position
NUMBER_ADMIN_LEVELS	NULL	NUMBER	Number of administrative levels
ORDER_1_AREA_SIGNIFICANT	NULL	VARCHAR2(3)	Order 1 area significance
ORDER_2_AREA_SIGNIFICANT	NULL	VARCHAR2(3)	Order 2 area significance
ORDER_3_AREA_SIGNIFICANT	NULL	VARCHAR2(3)	Order 3 area significance
ORDER_4_AREA_SIGNIFICANT	NULL	VARCHAR2(3)	Order 4 area significance
ORDER_8_AREA_SIGNIFICANT	NULL	VARCHAR2(3)	Order 8 area significance
ORDER_9_AREA_SIGNIFICANT	NULL	VARCHAR2(3)	Order 9 area significance
MIN_MUNICIPAL_LEVEL	NULL	NUMBER	Country's minimum municipality level
PLACE_ID	NULL	NUMBER(30)	Place id
DEFAULT_DISPLAY_WIDTH	NULL	NUMBER	Default display width

Sequences

Sequence	Derived Column
CSF_SDM_CTRY_PROFILES_S1	COUNTRY_PROFILE_ID

CSF_TDS_BINARY_MAPS

DEFINITION A TDS BINARY MAP defines the digital roadmap (stored in blobs) upon which route calculations will be performed. EXAMPLE MISCELLANEOUS

Column Descriptions

Name	Null?	Type	Description
BINARY_MAP_ID	NOT NULL	NUMBER(30)	Unique identifier for a binary map.
DRIVING_SIDE	NULL	VARCHAR2(1)	Determines the driving side for the given map.
VERSION	NULL	VARCHAR2(10)	The version string for the given map.
NAME	NULL	VARCHAR2(120)	A name string describing the given map.
CONFIG	NULL	CLOB	Contains TDS configuration data
ROADBLOCKS	NULL	BLOB	BLOB holding binary roadblock data.
CONDITIONS	NULL	BLOB	BLOB holding binary driving condition data.
TIMEINTERVALS	NULL	BLOB	BLOB holding condition time interval data.

Sequences

Sequence	Derived Column
CSF_TDS_BINARY_MAPS_S1	BINARY_MAP_ID

CSF_TDS_BINARY_TILES

DEFINITION A BINARY TILE defines an spatial index to a digital map.
EXAMPLE MISCELLANEOUS

Foreign Keys

Primary Key Table	Primary Key Column	Foreign Key Column
CSF_TDS_BINARY_MAPS	BINARY_MAP_ID	BINARY_MAP_ID

Column Descriptions

Name	Null?	Type	Description
BINARY_TILE_ID	NOT NULL	NUMBER(30)	Unique identifier for a binary tile.
BINARY_MAP_ID	NOT NULL	NUMBER(30)	Unique identifier to the map this tile belongs to.
SEGMENTS	NULL	BLOB	BLOB holding road network segment data.
NODES	NULL	BLOB	BLOB holding road network node data.

Sequences

Sequence	Derived Column
CSF_TDS_BINARY_TILES_S1	BINARY_TILE_ID

CSF_TDS_CONDITIONS

DEFINITION A Condition defines a specific restriction that applies to a road segment or to a combination of road segments. It can include Vehicles type for which the condition applies and time constraints for a condition. **EXAMPLE** Turn Restriction, access limited by a Gate, temporary change in Oneway information, Construction on a road during certain period of time. **MISCELLANEOUS**

Foreign Keys

Primary Key Table	Primary Key Column	Foreign Key Column
CSF_TDS_INTERVALS	INTERVAL_ID	INTERVAL_ID

QuickCodes Columns

Column	QuickCodes Type	QuickCodes Table
ACCESS_BICYCLE	YES_NO	FND_LOOKUPS
	N	No
	Y	Yes
ACCESS_BUS	YES_NO	FND_LOOKUPS
	N	No
	Y	Yes
ACCESS_CARPOOL	YES_NO	FND_LOOKUPS
	N	No
	Y	Yes
ACCESS_CARS	YES_NO	FND_LOOKUPS
	N	No
	Y	Yes
ACCESS_DELIVERY	YES_NO	FND_LOOKUPS
	N	No
	Y	Yes
ACCESS_EMERGENCY	YES_NO	FND_LOOKUPS
	N	No
	Y	Yes
ACCESS_PEDESTRIAN	YES_NO	FND_LOOKUPS
	N	No
	Y	Yes
ACCESS_TAXI	YES_NO	FND_LOOKUPS
	N	No
	Y	Yes
ACCESS_THROUGH_TRAFFIC	YES_NO	FND_LOOKUPS
	N	No
	Y	Yes
ACCESS_TRUCK	YES_NO	FND_LOOKUPS
	N	No
	Y	Yes

Column Descriptions

Name	Null?	Type	Description
CONDITION_ID (PK)	NOT NULL	NUMBER(30)	Unique identifier for Condition Table

Oracle Proprietary, Confidential Information--Use Restricted by Contract

ACCESS_BUS	NOT NULL	VARCHAR2(3)	does condition apply to public buses?
ACCESS_BICYCLE	NOT NULL	VARCHAR2(3)	does condition apply to bicycles?
ACCESS_CARS	NOT NULL	VARCHAR2(3)	does condition apply to passenger cars?
ACCESS_TAXI	NOT NULL	VARCHAR2(3)	does condition apply to taxis?
ACCESS_CARPOOL	NOT NULL	VARCHAR2(3)	does condition apply to carpool cars?
ACCESS_DELIVERY	NOT NULL	VARCHAR2(3)	does condition apply to delivery trucks?
ACCESS_TRUCK	NOT NULL	VARCHAR2(3)	does condition apply to trucks?
ACCESS_EMERGENCY	NOT NULL	VARCHAR2(3)	does condition apply to emergency vehicles?
ACCESS_PEDESTRIAN	NOT NULL	VARCHAR2(3)	does condition apply to pedestrians?
ACCESS_THROUGH_TRAFFIC	NOT NULL	VARCHAR2(3)	can segment be used for through traffic?
BIN_INDEX	NULL	NUMBER	used to generate segment index for binary TDS file
CONDITION_TYPE	NOT NULL	NUMBER(1)	Defines the type of Conditions
NR_SEGMENT_INVOLVED	NOT NULL	NUMBER(2)	specifies how many roadsegment are involved in the condition
CONSTRUCTION_STATUS	NULL	NUMBER(1)	specifies the type of construction (open or closed)
DIRECTION_OF_TRAFFIC	NULL	NUMBER(1)	specifies the oneway information for a segment
INTERVAL_ID	NULL	NUMBER(30)	Unique identifier for the Interval entity

Sequences

<u>Sequence</u>	<u>Derived Column</u>
CSF_TDS_CONDITIONS_S1	CONDITION_ID

CSF_TDS_COND_SEGS

DEFINITION Intersection table required since one segment can be part of multiple conditions and one condition can be composed of multiple segments. **EXAMPLE MISCELLANEOUS** The sequence number in the Condition Segment table defines where in the condition the segment occurs.

Foreign Keys

Primary Key Table	Primary Key Column	Foreign Key Column
CSF_TDS_CONDITIONS	CONDITION_ID	CONDITION_ID
CSF_TDS_SEGMENTS	SEGMENT_ID	SEGMENT_ID

QuickCodes Columns

Column	QuickCodes Type	QuickCodes Table
JUNC_NODE_FLAG	YES_NO	FND_LOOKUPS
	N	No
	Y	Yes

Column Descriptions

Name	Null?	Type	Description
CONDITION_SEGMENT_ID (PK)	NOT NULL	NUMBER(30)	Unique identifier for the Condition Segment Table
SEQUENCE_NUMBER	NOT NULL	NUMBER(1)	Defines sequence of Segment in Condition
CONDITION_ID	NOT NULL	NUMBER(30)	Unique identifier for Condition Table
SEGMENT_ID	NOT NULL	NUMBER(30)	Unique identifier for Segment Table
JUNC_NODE_FLAG	NULL	VARCHAR2(3)	Indicates that condition segment is part of a junction.

Sequences

Sequence	Derived Column
CSF_TDS_COND_SEGS_S1	CONDITION_SEGMENT_ID

CSF_TDS_INTERVALS

DEFINITION The INTERVAL table define the Time period during which a certain Condition, Roadblock or Daylight Saving Period is valid. **EXAMPLE MISCELLANEOUS** The Time period is defined as composite time-units (year, month, week, day, hour, minute). The Time period includes a start time and a period of duration.

Column Descriptions

Name	Null?	Type	Description
INTERVAL_ID (PK)	NOT NULL	NUMBER(30)	Unique identifier for the Interval entity
S_INTERVAL_TYPE	NOT NULL	NUMBER	Defines the start period of the Time Interval as a certain Interval Type.
S_YEAR	NULL	NUMBER	Defines the Start time of the Interval as a precise Year.
S_MONTH_OF_YEAR	NULL	NUMBER	Defines the End time of the Interval as a Month of the Year.
S_DAY_OF_YEAR	NULL	NUMBER	Defines specific day in year at which time interval starts.
S_DAY_OF_MONTH	NULL	NUMBER	Defines the Start time of the Interval as a fixed day of the Month.
S_DAY_OF_WEEK	NULL	NUMBER	Defines the Start time of the Interval as a fixed day in the Week.
S_HOUR_OF_DAY	NULL	NUMBER	Specifies the exact hour within the day at which the time interval starts.
S_MINUTE_OF_HOUR	NULL	NUMBER	Specifies the exact minute within the hour at which the time interval starts.
E_INTERVAL_TYPE	NOT NULL	NUMBER	Defines the ending period of the Time Interval as a certain Interval Type.
E_YEAR	NULL	NUMBER	Defines the End time of the Interval as a precise Year.
E_MONTH_OF_YEAR	NULL	NUMBER	Defines the End time of the Interval as a Month of the Year.
E_WEEK_OF_YEAR	NULL	NUMBER	Defines the End time of the Interval as a Week of the Year.
E_DAY_OF_MONTH	NULL	NUMBER	Defines the End time of the Interval as a fixed day of the Month.
E_DAY_OF_WEEK	NULL	NUMBER	Defines the End time of the Interval as a fixed day in the Week.
E_HOUR_OF_DAY	NULL	NUMBER	Specifies the exact hour within the day at which the time interval ends.
E_MINUTE_OF_HOUR	NULL	NUMBER	Specifies the exact minute within the hour at which the time interval starts.
BIN_INDEX	NULL	NUMBER	used to generate the segment index in the Binary TDS file
E_WEEK_OF_MONTH	NULL	NUMBER	Defines week within month at which interval ends

Oracle Proprietary, Confidential Information--Use Restricted by Contract

S_WEEK_OF_YEAR	NULL	NUMBER	Defines the Start time of the Interval as a Week of the Year.
E_DAY_OF_YEAR	NULL	NUMBER	Defines specific day in year at which time interval ends.
S_WEEK_OF_MONTH	NULL	NUMBER	Defines week within month at which interval starts
GDF_TIME_DOMAIN_STRING	NULL	VARCHAR2(500)	Holds the GDF time domain string defining a condition interval.

Sequences

<u>Sequence</u>	<u>Derived Column</u>
CSF_TDS_INTERVALS_S1	INTERVAL_ID

CSF_TDS_NODES

DEFINITION A TDS NODE defined a junctions in a road network.

EXAMPLE MISCELLANEOUS A node is always a start-/end point of a segment.

Foreign Keys

Primary Key Table	Primary Key Column	Foreign Key Column
CSF_TDS_TILES	TILE_ID	TILE_ID

Column Descriptions

Name	Null?	Type	Description
NODE_ID (PK)	NOT NULL	NUMBER(30)	The TDS NODE ID defines the unique identifier of the entity.
BIN_INDEX	NULL	NUMBER(10)	value used to generate segment index in binary TDS file
TILE_ID	NULL	NUMBER(30)	The TILE ID defines the unique identifier of the entity.

Sequences

Sequence	Derived Column
CSF_TDS_NODES_S1	NODE_ID

CSF_TDS_RDBLCK_INTVLS

DEFINITION Intersection table required since one Roadblock can have multiple time restrictions and one interval (time restriction) can be shared by multiple roadblocks. EXAMPLE MISCELLANEOUS

Foreign Keys

Primary Key Table	Primary Key Column	Foreign Key Column
CSF_TDS_INTERVALS	INTERVAL_ID	INTERVAL_ID
CSF_TDS_ROADBLOCKS	ROADBLOCK_ID	ROADBLOCK_ID

Column Descriptions

Name	Null?	Type	Description
ROADBLOCK_INTERVAL_ID (PK)	NOT NULL	NUMBER(30)	unique identifier for Roadblock Interval entity
ROADBLOCK_ID	NOT NULL	NUMBER(30)	Generic unique identifier for an entity
INTERVAL_ID	NOT NULL	NUMBER(30)	Unique identifier for the Interval entity

Sequences

Sequence	Derived Column
CSF_TDS_RDBLCK_INTVLS_S1	ROADBLOCK_INTERVAL_ID

CSF_TDS_RDBLCK_SGMNTS

DEFINITION The TDS RDBLCK SGMNT defines the M:M relationship between the TDS SEGMENT and TDS ROADBLOCK entity. **EXAMPLE MISCELLANEOUS**

Foreign Keys

<u>Primary Key Table</u>	<u>Primary Key Column</u>	<u>Foreign Key Column</u>
CSF_TDS_ROADBLOCKS	ROADBLOCK_ID	ROADBLOCK_ID
CSF_TDS_SEGMENTS	SEGMENT_ID	SEGMENT_ID

Column Descriptions

<u>Name</u>	<u>Null?</u>	<u>Type</u>	<u>Description</u>
ROADBLOCK_SEGMENT_ID (PK)	NOT NULL	NUMBER(30)	Generic unique identifier for an entity
ROADBLOCK_ID	NOT NULL	NUMBER(30)	Generic unique identifier for an entity
SEGMENT_ID	NOT NULL	NUMBER(30)	The SEGMENT ID defines the unique identifier for the entity.

Sequences

<u>Sequence</u>	<u>Derived Column</u>
CSF_TDS_RDBLCK_SGMNTS_S1	ROADBLOCK_SEGMENT_ID

CSF_TDS_ROADBLOCKS

DEFINITION A TDS ROADBLOCK defines a travel duration delay for a segment. EXAMPLE MISCELLANEOUS

Column Descriptions

Name	Null?	Type	Description
ROADBLOCK_ID (PK)	NOT NULL	NUMBER(30)	Generic unique identifier for an entity
TRB_DELAY	NOT NULL	NUMBER	The DELAY defined the delay factor (as percentage) caused by the roadblock
BIN_INDEX	NULL	NUMBER	Value used to generate segment index in binary TDS file
CREATED_BY	NULL	NUMBER(15)	User id of roadblock creator
CREATION_DATE	NULL	DATE	Date roadblock created on.
LAST_UPDATED_BY	NULL	NUMBER(15)	User id of last updatore
LAST_UPDATE_DATE	NULL	DATE	Data last updated
LAST_UPDATE_LOGIN	NULL	NUMBER(15)	Last update login

CSF_TDS_SEGMENTS

DEFINITION A TDS SEGMENT defines a connection between two nodes. **EXAMPLE MISCELLANEOUS** A segment is the smallest entity representing a road. A road is made up of several segments.

Foreign Keys

Primary Key Table	Primary Key Column	Foreign Key Column
CSF_TDS_INTERVALS	INTERVAL_ID	INTERVAL_ID
CSF_TDS_TILES	TILE_ID	TILE_ID

QuickCodes Columns

Column	QuickCodes Type	QuickCodes Table
ACCESS_BICYCLE	YES_NO	FND_LOOKUPS
	N	No
	Y	Yes
ACCESS_BUS	YES_NO	FND_LOOKUPS
	N	No
	Y	Yes
ACCESS_CARPOOL	YES_NO	FND_LOOKUPS
	N	No
	Y	Yes
ACCESS_CARS	YES_NO	FND_LOOKUPS
	N	No
	Y	Yes
ACCESS_DELIVERY	YES_NO	FND_LOOKUPS
	N	No
	Y	Yes
ACCESS_EMERGENCY	YES_NO	FND_LOOKUPS
	N	No
	Y	Yes
ACCESS_PEDESTRIAN	YES_NO	FND_LOOKUPS
	N	No
	Y	Yes
ACCESS_TAXI	YES_NO	FND_LOOKUPS
	N	No
	Y	Yes
ACCESS_THROUGH_TRAFFIC	YES_NO	FND_LOOKUPS
	N	No
	Y	Yes
ACCESS_TRUCK	YES_NO	FND_LOOKUPS
	N	No
	Y	Yes

Column Descriptions

Name	Null?	Type	Description
SEGMENT_ID (PK)	NOT NULL	NUMBER(30)	Generic unique identifier for an entity
FUNCTIONAL_CLASS	NOT NULL	NUMBER(1)	The FUNCTIONAL CLASS defines the importance level of the road for routing.

Oracle Proprietary, Confidential Information--Use Restricted by Contract

LENGTH	NOT NULL	NUMBER	The LENGTH defines the length of the segment in meters.
LANE_CATEGORY		NULL NUMBER(1)	The LANE CATEGORY defines the number of lanes available in the segment.
ONEWAY_DIRECTION	NOT NULL	NUMBER(1)	The ONEWAY DIRECTION defines the allowed direction of the traffic flow.
ROAD_CONDITION		NULL NUMBER(1)	The ROAD CONDITION defines if a road is paved or not.
SPECIAL_RESTRICTIONS		NULL NUMBER(1)	The SPECIAL RESTRICTIONS defines if a segment is publicly accessible.
TIME_ZONE		NULL NUMBER	The TIME_ZONE defines the GMT offset of the segment.
BRUNNEL_TYPE		NULL NUMBER(1)	The BRUNNEL TYPE defines if the segment is either a bridge or a tunnel.
AVERAGE_SPEED		NULL NUMBER(3)	The AVERAGE SPEED defines the legal speed limit for a roadsegment in kilometers per hours.
BIN_INDEX		NULL NUMBER	Used to generate an index for Segments in the Binary file
TOLL_ROAD	NOT NULL	NUMBER(1)	The TOLL ROAD defines if the segment is or is part of a toll road.
FERRY_TYPE		NULL NUMBER(1)	The FERRY TYPE defines the type of transport of the ferry.
DIVIDED_ROAD_ELEMENT	NOT NULL	NUMBER(1)	The DIVIDED ROAD ELEMENT defines if the segment is divided in terms of accessibility.
DIVIDER_TYPE		NULL NUMBER(1)	The DIVIDER TYPE determines if the segment/road divider is either a legal or hysical barrier.
ACCESS_CARS		NULL VARCHAR2(3)	Specifies if a road is accessible by regular passenger cars.
ACCESS_BUS		NULL VARCHAR2(3)	Specifies if a roadsegment is accessible by Public Buses.
ACCESS_TAXI		NULL VARCHAR2(3)	Specifies if a roadsegment is accessible by Taxis.
ACCESS_DELIVERY		NULL VARCHAR2(3)	Specifies if a roadsegment is accessible by (small) Delivery Trucks.
ACCESS_TRUCK		NULL VARCHAR2(3)	Specifies if a roadsegment is accessible by larger Trucks.
ACCESS_EMERGENCY		NULL VARCHAR2(3)	Specifies is a roadsegment is accessible by Emergency Vehicles.
ACCESS_PEDESTRIAN		NULL VARCHAR2(3)	Specifies if the roadsegment is accessible by Pedestrians.
ACCESS_BICYCLE		NULL VARCHAR2(3)	Specifies is a roadsegment is accessible by Bicycles.
ACCESS_CARPOOL		NULL VARCHAR2(3)	Specifies if a roadsegment is accessible by High Occupancy Vehicles (i.e. passenger cars where a certain minimum number of passengers is required).

ACCESS_THROUGH_TRAFFIC	NULL VARCHAR2(3)	The THROUGH TRAFFIC defines if the segment can be used for ongoing traffic. THROUGH TRAFFIC = N means that the road is only accessible for local resident that live in this area, and can not be used for transit traffic.
TILE_ID	NULL NUMBER(30)	The TILE ID defines the unique identifier of the entity.
INTERVAL_ID	NULL NUMBER(30)	Unique identifier for the Interval entity

Sequences

<u>Sequence</u>	<u>Derived Column</u>
CSF_TDS_SEGMENTS_S1	SEGMENT_ID

CSF_TDS_SEGM_NODES

DEFINITION Intersection table required since one Node can be part of multiple segments and one Segment is composed of two node.

EXAMPLE MISCELLANEOUS

Foreign Keys

Primary Key Table	Primary Key Column	Foreign Key Column
CSF_TDS_NODES	NODE_ID	NODE_ID
CSF_TDS_SEGMENTS	SEGMENT_ID	SEGMENT_ID

Column Descriptions

Name	Null?	Type	Description
SEGMENT_NODE_ID (PK)	NOT NULL	NUMBER(30)	Unique identifier for Segment Node table
SEGM_NODE_TYPE	NOT NULL	NUMBER(1)	Defines wether a node Starting = 0 or Ending = 1
NODE_ID	NOT NULL	NUMBER(30)	The TDS NODE ID defines the unique identifier of the entity.
SEGMENT_ID	NOT NULL	NUMBER(30)	Unique identifier to segment

Sequences

Sequence	Derived Column
CSF_TDS_SEGM_NODES_S1	SEGMENT_NODE_ID

CSF_TDS_TILES

DEFINITION A TDS TILE defines the result of spatial index creation (tiling). **EXAMPLE MISCELLANEOUS** Rather a a rectangular region in the network containing nodes and edges (segments). A tile can be loaded separately into memory.

Column Descriptions

Name	Null?	Type	Description
TILE_ID (PK)	NOT NULL	NUMBER(30)	The TILE ID defines the unique identifier of the entity.
SUCC_TILE_1	NULL	NUMBER	The SUCC TILE 1 defines a reference to the first successive tile.
SUCC_TILE_2	NULL	NUMBER	The SUCC TILE 2 defines a reference to the second successive tile.
SUCC_TILE_3	NULL	NUMBER	The SUCC TILE 3 defines a reference to the third successive tile.
SUCC_TILE_4	NULL	NUMBER	The SUCC TILE 4 defines a reference to the fourth successive tile.
BIN_INDEX	NULL	NUMBER	Numeric value used to generate index for Segment in Binary TDS file

Sequences

Sequence	Derived Column
CSF_TDS_TILES_S1	TILE_ID

CS_ESTIMATE_DETAILS

CS_ESTIMATE_DETAILS stores billing information about a Depot repair/service request/Debrief record once the repair has been received, the service request has been created or Field Service Report(FSR) has been created. For each record in CSD_REPAIRS_ALL, CS_INCIDENTS_B_ALL, CSF_DEBRIEF_LINES CS_ESTIMATE_DETAILS holds multiple records. INCIDENT_ID specifies the service request that was created for repair or FSR CONTRACT_ID specifies the contract which the customer may have purchased, to be used while estimating the repair charges. BUSINESS_PROCESS_ID associates the charge with a business process. LINE_TYPE_ID and PRICE_LIST_ID are associated with the Oracle Order Entry/Shipping information for Line_Type and price list respectively. The bill-to and ship-to information is stored in INVOICE_TO_SITE_USE_ID and SHIP_TO_SITE_USE_ID.

TRANSACTION_TYPE_ID stores the transaction type for the charge line and decides whether material, labor or expense is used. Installed base attributes, such as CUSTOMER_PRODUCT_ID, INSTALLED_CP_RETURN_BY_DATE, NEW_CP_RETURN_BY_DATE, and SYSTEM_ID are used for certain transactions like loaners, advance replacements.

ORDER_HEADER_ID, ORDER_LINE_ID hold order-specific information for the line in Order Entry/Shipping. SELLING_PRICE holds the unit price as obtained from the price list. AFTER_WARRANTY_COST holds the final amount to charge, after all contracts/discounts have been applied.

The primary key of this table is ESTIMATE_DETAIL_ID.

Foreign Keys

Primary Key Table	Primary Key Column	Foreign Key Column
CSD_REPAIRS	REPAIR_LINE_ID	SOURCE_ID
CSF_DEBRIEF_LINES	DEBRIEF_LINE_ID	ORIGINAL_SOURCE_ID
CS_BUS_PROCESS_TXNS	BUSINESS_PROCESS_ID	BUSINESS_PROCESS_ID
CS_CUSTOMER_PRODUCTS_ALL	CUSTOMER_PRODUCT_ID	CUSTOMER_PRODUCT_ID
CS_INCIDENTS_ALL_B	INCIDENT_ID	INCIDENT_ID
CS_TXN_BILLING_TYPES	TXN_BILLING_TYPE_ID	TXN_BILLING_TYPE_ID
HZ_CUST_ACCT_SITES_ALL	CUST_ACCT_SITE_ID	INVOICE_TO_ORG_ID
HZ_PARTY_SITES	PARTY_SITE_ID	SHIP_TO_ORG_ID
MTL_SYSTEM_ITEMS_B	INVENTORY_ITEM_ID	INVENTORY_ITEM_ID
QP_LIST_HEADERS_B	LIST_HEADER_ID	PRICE_LIST_HEADER_ID

Column Descriptions

Name	Null?	Type	Description
ESTIMATE_DETAIL_ID (PK)	NOT NULL	NUMBER	Unique identifier for the charge record
BUSINESS_PROCESS_ID	NOT NULL	NUMBER(15)	Transaction group for the charge
INCIDENT_ID	NOT NULL	NUMBER(15)	Unique identifier for service request
ORIGINAL_SOURCE_ID	NOT NULL	VARCHAR2(15)	Original source ID for the charge line eg - Debrief, Depot Repair
ORIGINAL_SOURCE_CODE	NOT NULL	VARCHAR2(10)	Original source Code for the charge line eg - Debrief, Depot Repair
SOURCE_ID	NULL	NUMBER(15)	Current source ID for the charge line eg - Debrief, Depot Repair
SOURCE_CODE	NULL	VARCHAR2(10)	Current Source Code for the charge line eg - Debrief, Depot Repair
CONTRACT_ID	NULL	NUMBER	Identifier for the contract
COVERAGE_ID	NULL	NUMBER	Coverage identifier
COVERAGE_TXN_GROUP_ID	NULL	NUMBER	Coverage Transaction Group Id
INVOICE_TO_ORG_ID	NULL	NUMBER(15)	Bill-to Information
SHIP_TO_ORG_ID	NULL	NUMBER(15)	Ship-To Information
PURCHASE_ORDER_NUM	NULL	VARCHAR2(50)	Purchase Order Number in Order Management
ORDER_HEADER_ID	NOT NULL	NUMBER	Order Management information for sales order created
LINE_TYPE_ID	NOT NULL	NUMBER	Identifier of Line Type In Order Management
LINE_CATEGORY_CODE	NULL	VARCHAR2(30)	Line Category Code in Order Management . It can have return or Order
CURRENCY_CODE	NULL	VARCHAR2(15)	Currency code
CONVERSION_RATE	NULL	NUMBER(15)	Conversion Rate
CONVERSION_TYPE_CODE	NULL	VARCHAR2(30)	Conversion Type Code
CONVERSION_RATE_DATE	NULL	DATE	Conversion Date
RETURN_REASON_CODE	NULL	VARCHAR2(30)	Reason for return
ORDER_LINE_ID	NOT NULL	NUMBER	Order Line Information for Sales Order in Order Management
PRICE_LIST_HEADER_ID	NULL	NUMBER	Price List identifier
LINE_NUMBER	NOT NULL	NUMBER	Line number of the charge
INVENTORY_ITEM_ID	NULL	NUMBER(15)	Product used in inventory by the charge line
SERIAL_NUMBER	NULL	VARCHAR2(30)	Serial number of the returned product
TXN_BILLING_TYPE_ID	NULL	NUMBER(15)	Transaction Billing Type
QUANTITY_REQUIRED	NULL	NUMBER	Quantity of the product used
UNIT_OF_MEASURE_CODE	NULL	VARCHAR2(3)	UOM of the product
SELLING_PRICE	NULL	NUMBER	Selling price of product in Order Management
AFTER_WARRANTY_COST	NULL	NUMBER	Cost after applying contract coverages or manual discounts
FUNC_CURR_AFT_WARR_COST	NULL	NUMBER(15)	Cost in Functional Currency if the currency code selected is not a functional currency
CUSTOMER_PRODUCT_ID	NOT NULL	NUMBER(15)	Installed base reference, if any, for the product chosen; needed for certain transactions
ORIG_SYSTEM_REFERENCE	NULL	VARCHAR2(50)	Not Used
ORIG_SYSTEM_LINE_REFERENCE	NULL	VARCHAR2(50)	Not Used

Oracle Proprietary, Confidential Information--Use Restricted by Contract

INSTALLED_CP_RETURN_BY_DATE	NULL	DATE	Expected return date for the installed product
NEW_CP_RETURN_BY_DATE	NULL	DATE	Expected return date for the new product
INTERFACE_TO_OE_FLAG	NULL	VARCHAR2(1)	Indicates whether line has been interfaced to Order Entry/Shipping for sales order creation
ROLLUP_FLAG	NULL	VARCHAR2(1)	Indicates whether the item used should be rolled up to an item defined in a profile option for that item type- Material, Labor, Expense
ADD_TO_ORDER_FLAG	NULL	VARCHAR2(1)	Indicates whether the line is to be added to an existing order or a new order
PRICING_CONTEXT	NULL	VARCHAR2(30)	Pricing Attributes descriptive flexfield structure defining column
COVERAGE_BILL_RATE_ID	NULL	NUMBER(15)	Bill rate for the coverage being used. Only in conjunction with contracts
EXCEPTION_COVERAGE_USED	NULL	VARCHAR2(1)	Flag which identifies whether exception coverage is used
PRICING_ATTRIBUTE1	NULL	VARCHAR2(150)	Pricing Attributes descriptive flexfield segment
PRICING_ATTRIBUTE2	NULL	VARCHAR2(150)	Pricing Attributes descriptive flexfield segment
PRICING_ATTRIBUTE3	NULL	VARCHAR2(150)	Pricing Attributes descriptive flexfield segment
PRICING_ATTRIBUTE4	NULL	VARCHAR2(150)	Pricing Attributes descriptive flexfield segment
PRICING_ATTRIBUTE5	NULL	VARCHAR2(150)	Pricing Attributes descriptive flexfield segment
PRICING_ATTRIBUTE6	NULL	VARCHAR2(150)	Pricing Attributes descriptive flexfield segment
PRICING_ATTRIBUTE7	NULL	VARCHAR2(150)	Pricing Attributes descriptive flexfield segment
PRICING_ATTRIBUTE8	NULL	VARCHAR2(150)	Pricing Attributes descriptive flexfield segment
PRICING_ATTRIBUTE9	NULL	VARCHAR2(150)	Pricing Attributes descriptive flexfield segment
PRICING_ATTRIBUTE10	NULL	VARCHAR2(150)	Pricing Attributes descriptive flexfield segment
PRICING_ATTRIBUTE11	NULL	VARCHAR2(150)	Pricing Attributes descriptive flexfield segment
PRICING_ATTRIBUTE12	NULL	VARCHAR2(150)	Pricing Attributes descriptive flexfield segment
PRICING_ATTRIBUTE13	NULL	VARCHAR2(150)	Pricing Attributes descriptive flexfield segment
PRICING_ATTRIBUTE14	NULL	VARCHAR2(150)	Pricing Attributes descriptive flexfield segment
PRICING_ATTRIBUTE15	NULL	VARCHAR2(150)	Pricing Attributes descriptive flexfield segment
ATTRIBUTE1	NULL	VARCHAR2(150)	Descriptive flexfield segment
ATTRIBUTE2	NULL	VARCHAR2(150)	Descriptive flexfield segment
ATTRIBUTE3	NULL	VARCHAR2(150)	Descriptive flexfield segment
ATTRIBUTE4	NULL	VARCHAR2(150)	Descriptive flexfield segment
ATTRIBUTE5	NULL	VARCHAR2(150)	Descriptive flexfield segment
ATTRIBUTE6	NULL	VARCHAR2(150)	Descriptive flexfield segment
ATTRIBUTE7	NULL	VARCHAR2(150)	Descriptive flexfield segment
ATTRIBUTE8	NULL	VARCHAR2(150)	Descriptive flexfield segment
ATTRIBUTE9	NULL	VARCHAR2(150)	Descriptive flexfield segment

Oracle Proprietary, Confidential Information--Use Restricted by Contract

ATTRIBUTE10	NULL	VARCHAR2(150)	Descriptive flexfield segment
ATTRIBUTE11	NULL	VARCHAR2(150)	Descriptive flexfield segment
ATTRIBUTE12	NULL	VARCHAR2(150)	Descriptive flexfield segment
ATTRIBUTE13	NULL	VARCHAR2(150)	Descriptive flexfield segment
ATTRIBUTE14	NULL	VARCHAR2(150)	Descriptive flexfield segment
ATTRIBUTE15	NULL	VARCHAR2(150)	Descriptive flexfield segment
CONTEXT	NULL	VARCHAR2(30)	Descriptive flexfield structure defining column
TAX_CODE	NULL	VARCHAR2(30)	
EST_TAX_AMOUNT	NULL	NUMBER(15)	
LAST_UPDATE_DATE	NOT NULL	DATE	Standard Who column
LAST_UPDATE_LOGIN	NULL	NUMBER(15)	Standard Who column
LAST_UPDATED_BY	NOT NULL	NUMBER(15)	Standard Who column
CREATION_DATE	NOT NULL	DATE	Standard Who column
CREATED_BY	NOT NULL	NUMBER(15)	Standard Who column
OBJECT_VERSION_NUMBER	NOT NULL	NUMBER	Object Version Number
PRICING_ATTRIBUTE16	NULL	VARCHAR2(150)	Pricing Attributes descriptive flexfield segment
PRICING_ATTRIBUTE17	NULL	VARCHAR2(150)	Pricing Attributes descriptive flexfield segment
PRICING_ATTRIBUTE18	NULL	VARCHAR2(150)	Pricing Attributes descriptive flexfield segment
PRICING_ATTRIBUTE19	NULL	VARCHAR2(150)	Pricing Attributes descriptive flexfield segment
PRICING_ATTRIBUTE20	NULL	VARCHAR2(150)	Pricing Attributes descriptive flexfield segment
PRICING_ATTRIBUTE21	NULL	VARCHAR2(150)	Pricing Attributes descriptive flexfield segment
PRICING_ATTRIBUTE22	NULL	VARCHAR2(150)	Pricing Attributes descriptive flexfield segment
PRICING_ATTRIBUTE23	NULL	VARCHAR2(150)	Pricing Attributes descriptive flexfield segment
PRICING_ATTRIBUTE24	NULL	VARCHAR2(150)	Pricing Attributes descriptive flexfield segment
PRICING_ATTRIBUTE25	NULL	VARCHAR2(150)	Pricing Attributes descriptive flexfield segment
PRICING_ATTRIBUTE26	NULL	VARCHAR2(150)	Pricing Attributes descriptive flexfield segment
PRICING_ATTRIBUTE27	NULL	VARCHAR2(150)	Pricing Attributes descriptive flexfield segment
PRICING_ATTRIBUTE28	NULL	VARCHAR2(150)	Pricing Attributes descriptive flexfield segment
PRICING_ATTRIBUTE29	NULL	VARCHAR2(150)	Pricing Attributes descriptive flexfield segment
PRICING_ATTRIBUTE30	NULL	VARCHAR2(150)	Pricing Attributes descriptive flexfield segment
PRICING_ATTRIBUTE31	NULL	VARCHAR2(150)	Pricing Attributes descriptive flexfield segment
PRICING_ATTRIBUTE32	NULL	VARCHAR2(150)	Pricing Attributes descriptive flexfield segment
PRICING_ATTRIBUTE33	NULL	VARCHAR2(150)	Pricing Attributes descriptive flexfield segment
PRICING_ATTRIBUTE34	NULL	VARCHAR2(150)	Pricing Attributes descriptive flexfield segment
PRICING_ATTRIBUTE35	NULL	VARCHAR2(150)	Pricing Attributes descriptive flexfield segment
PRICING_ATTRIBUTE36	NULL	VARCHAR2(150)	Pricing Attributes descriptive flexfield segment
PRICING_ATTRIBUTE37	NULL	VARCHAR2(150)	Pricing Attributes descriptive flexfield segment
PRICING_ATTRIBUTE38	NULL	VARCHAR2(150)	Pricing Attributes descriptive flexfield segment

Oracle Proprietary, Confidential Information--Use Restricted by Contract

PRICING_ATTRIBUTE39	NULL	VARCHAR2(150)	Pricing Attributes flexfield segment	descriptive
PRICING_ATTRIBUTE40	NULL	VARCHAR2(150)	Pricing Attributes flexfield segment	descriptive
PRICING_ATTRIBUTE41	NULL	VARCHAR2(150)	Pricing Attributes flexfield segment	descriptive
PRICING_ATTRIBUTE42	NULL	VARCHAR2(150)	Pricing Attributes flexfield segment	descriptive
PRICING_ATTRIBUTE43	NULL	VARCHAR2(150)	Pricing Attributes flexfield segment	descriptive
PRICING_ATTRIBUTE44	NULL	VARCHAR2(150)	Pricing Attributes flexfield segment	descriptive
PRICING_ATTRIBUTE45	NULL	VARCHAR2(150)	Pricing Attributes flexfield segment	descriptive
PRICING_ATTRIBUTE46	NULL	VARCHAR2(150)	Pricing Attributes flexfield segment	descriptive
PRICING_ATTRIBUTE47	NULL	VARCHAR2(150)	Pricing Attributes flexfield segment	descriptive
PRICING_ATTRIBUTE48	NULL	VARCHAR2(150)	Pricing Attributes flexfield segment	descriptive
PRICING_ATTRIBUTE49	NULL	VARCHAR2(150)	Pricing Attributes flexfield segment	descriptive
PRICING_ATTRIBUTE50	NULL	VARCHAR2(150)	Pricing Attributes flexfield segment	descriptive
PRICING_ATTRIBUTE51	NULL	VARCHAR2(150)	Pricing Attributes flexfield segment	descriptive
PRICING_ATTRIBUTE52	NULL	VARCHAR2(150)	Pricing Attributes flexfield segment	descriptive
PRICING_ATTRIBUTE53	NULL	VARCHAR2(150)	Pricing Attributes flexfield segment	descriptive
PRICING_ATTRIBUTE54	NULL	VARCHAR2(150)	Pricing Attributes flexfield segment	descriptive
PRICING_ATTRIBUTE55	NULL	VARCHAR2(150)	Pricing Attributes flexfield segment	descriptive
PRICING_ATTRIBUTE56	NULL	VARCHAR2(150)	Pricing Attributes flexfield segment	descriptive
PRICING_ATTRIBUTE57	NULL	VARCHAR2(150)	Pricing Attributes flexfield segment	descriptive
PRICING_ATTRIBUTE58	NULL	VARCHAR2(150)	Pricing Attributes flexfield segment	descriptive
PRICING_ATTRIBUTE59	NULL	VARCHAR2(150)	Pricing Attributes flexfield segment	descriptive
PRICING_ATTRIBUTE61	NULL	VARCHAR2(150)	Pricing Attributes flexfield segment	descriptive
PRICING_ATTRIBUTE62	NULL	VARCHAR2(150)	Pricing Attributes flexfield segment	descriptive
PRICING_ATTRIBUTE63	NULL	VARCHAR2(150)	Pricing Attributes flexfield segment	descriptive
PRICING_ATTRIBUTE64	NULL	VARCHAR2(150)	Pricing Attributes flexfield segment	descriptive
PRICING_ATTRIBUTE65	NULL	VARCHAR2(150)	Pricing Attributes flexfield segment	descriptive
PRICING_ATTRIBUTE66	NULL	VARCHAR2(150)	Pricing Attributes flexfield segment	descriptive
PRICING_ATTRIBUTE67	NULL	VARCHAR2(150)	Pricing Attributes flexfield segment	descriptive
PRICING_ATTRIBUTE68	NULL	VARCHAR2(150)	Pricing Attributes flexfield segment	descriptive
PRICING_ATTRIBUTE69	NULL	VARCHAR2(150)	Pricing Attributes flexfield segment	descriptive
PRICING_ATTRIBUTE70	NULL	VARCHAR2(150)	Pricing Attributes flexfield segment	descriptive
PRICING_ATTRIBUTE71	NULL	VARCHAR2(150)	Pricing Attributes flexfield segment	descriptive

Oracle Proprietary, Confidential Information--Use Restricted by Contract

PRICING_ATTRIBUTE72	NULL	VARCHAR2(150)	Pricing Attributes descriptive flexfield segment
PRICING_ATTRIBUTE73	NULL	VARCHAR2(150)	Pricing Attributes descriptive flexfield segment
PRICING_ATTRIBUTE74	NULL	VARCHAR2(150)	Pricing Attributes descriptive flexfield segment
PRICING_ATTRIBUTE75	NULL	VARCHAR2(150)	Pricing Attributes descriptive flexfield segment
PRICING_ATTRIBUTE76	NULL	VARCHAR2(150)	Pricing Attributes descriptive flexfield segment
PRICING_ATTRIBUTE77	NULL	VARCHAR2(150)	Pricing Attributes descriptive flexfield segment
PRICING_ATTRIBUTE78	NULL	VARCHAR2(150)	Pricing Attributes descriptive flexfield segment
PRICING_ATTRIBUTE79	NULL	VARCHAR2(150)	Pricing Attributes descriptive flexfield segment
PRICING_ATTRIBUTE80	NULL	VARCHAR2(150)	Pricing Attributes descriptive flexfield segment
PRICING_ATTRIBUTE81	NULL	VARCHAR2(150)	Pricing Attributes descriptive flexfield segment
PRICING_ATTRIBUTE82	NULL	VARCHAR2(150)	Pricing Attributes descriptive flexfield segment
PRICING_ATTRIBUTE83	NULL	VARCHAR2(150)	Pricing Attributes descriptive flexfield segment
PRICING_ATTRIBUTE84	NULL	VARCHAR2(150)	Pricing Attributes descriptive flexfield segment
PRICING_ATTRIBUTE85	NULL	VARCHAR2(150)	Pricing Attributes descriptive flexfield segment
PRICING_ATTRIBUTE86	NULL	VARCHAR2(150)	Pricing Attributes descriptive flexfield segment
PRICING_ATTRIBUTE87	NULL	VARCHAR2(150)	Pricing Attributes descriptive flexfield segment
PRICING_ATTRIBUTE88	NULL	VARCHAR2(150)	Pricing Attributes descriptive flexfield segment
PRICING_ATTRIBUTE89	NULL	VARCHAR2(150)	Pricing Attributes descriptive flexfield segment
PRICING_ATTRIBUTE90	NULL	VARCHAR2(150)	Pricing Attributes descriptive flexfield segment
PRICING_ATTRIBUTE91	NULL	VARCHAR2(150)	Pricing Attributes descriptive flexfield segment
PRICING_ATTRIBUTE92	NULL	VARCHAR2(150)	Pricing Attributes descriptive flexfield segment
PRICING_ATTRIBUTE93	NULL	VARCHAR2(150)	Pricing Attributes descriptive flexfield segment
PRICING_ATTRIBUTE94	NULL	VARCHAR2(150)	Pricing Attributes descriptive flexfield segment
PRICING_ATTRIBUTE95	NULL	VARCHAR2(150)	Pricing Attributes descriptive flexfield segment
PRICING_ATTRIBUTE96	NULL	VARCHAR2(150)	Pricing Attributes descriptive flexfield segment
PRICING_ATTRIBUTE97	NULL	VARCHAR2(150)	Pricing Attributes descriptive flexfield segment
PRICING_ATTRIBUTE98	NULL	VARCHAR2(150)	Pricing Attributes descriptive flexfield segment
PRICING_ATTRIBUTE99	NULL	VARCHAR2(150)	Pricing Attributes descriptive flexfield segment
PRICING_ATTRIBUTE100	NULL	VARCHAR2(150)	Pricing Attributes descriptive flexfield segment
PRICING_ATTRIBUTE60	NULL	VARCHAR2(150)	Pricing Attributes descriptive flexfield segment

Oracle Proprietary, Confidential Information--Use Restricted by Contract

Indexes

<u>Index Name</u>	<u>Index Type</u>	<u>Sequence</u>	<u>Column Name</u>
CS_ESTIMATE_DETAILS_N1	NOT UNIQUE	10	INCIDENT_ID
CS_ESTIMATE_DETAILS_N2	NOT UNIQUE	2	ORIG_SYSTEM_REFERENCE
CS_ESTIMATE_DETAILS_U1	UNIQUE	2	ESTIMATE_DETAIL_ID

Sequences

<u>Sequence</u>	<u>Derived Column</u>
CS_ESTIMATE_DETAILS_S	ESTIMATE_DETAIL_ID

CS_INCIDENTS_ALL_B

CS_INCIDENTS_ALL_B stores information about service requests. A service request can be logged against any product, any product in inventory, or any product in the install base. Each row contains information about a single service request. This table is partitioned by ORG_ID in a multi-organizational environment. This is the multi-language support base table and contains all of the fields from this table that are not translatable.

Foreign Keys

Primary Key Table	Primary Key Column	Foreign Key Column
CSS_DEF_LANGUAGES	LANGUAGE_ID	LANGUAGE_ID
CSS_DEF_PLATFORMS	PLATFORM_ID	PLATFORM_ID
CSS_DEF_PLAT_VERSIONS	PLATFORM_VERSION_ID	PLATFORM_VERSION_ID
CS_CP_REVISIONS	CP_REVISION_ID	CP_COMPONENT_VERSION_ID
CS_CP_REVISIONS	CP_REVISION_ID	CP_SUBCOMPONENT_VERSION_ID
CS_CP_REVISIONS	CP_REVISION_ID	CP_REVISION_ID
CS_CP_SERVICES_ALL_OBSOLETE	CP_SERVICE_ID	CONTRACT_SERVICE_ID
CS_CUSTOMER_PRODUCTS_ALL	CUSTOMER_PRODUCT_ID	CUSTOMER_PRODUCT_ID
CS_CUSTOMER_PRODUCTS_ALL	CUSTOMER_PRODUCT_ID	CP_COMPONENT_ID
CS_CUSTOMER_PRODUCTS_ALL	CUSTOMER_PRODUCT_ID	CP_SUBCOMPONENT_ID
CS_INCIDENT_SEVERITIES_B	INCIDENT_SEVERITY_ID	INCIDENT_SEVERITY_ID
CS_INCIDENT_STATUSES_B	INCIDENT_STATUS_ID	INCIDENT_STATUS_ID
CS_INCIDENT_TYPES_B	INCIDENT_TYPE_ID	INCIDENT_TYPE_ID
CS_INCIDENT_URGENCIES_B	INCIDENT_URGENCY_ID	INCIDENT_URGENCY_ID
CS_TIME_ZONES	TIME_ZONE_ID	TIME_ZONE_ID
FND_LOOKUP_VALUES	LOOKUP_CODE	PROBLEM_CODE
FND_LOOKUP_VALUES	LOOKUP_CODE	RESOLUTION_CODE
HZ_CUST_ACCOUNTS	ORG_ID	ORG_ID
HZ_CUST_ACCOUNTS	CUST_ACCOUNT_ID	ACCOUNT_ID
HZ_CUST_ACCOUNTS	CUST_ACCOUNT_ID	ACCOUNT_ID
HZ_CUST_SITE_USES_ALL	SITE_USE_ID	BILL_TO_SITE_USE_ID
HZ_CUST_SITE_USES_ALL	SITE_USE_ID	SHIP_TO_SITE_USE_ID
HZ_CUST_SITE_USES_ALL	SITE_USE_ID	INSTALL_SITE_USE_ID
HZ_PARTIES	PARTY_ID	CUSTOMER_ID
HZ_PARTIES	PARTY_ID	BILL_TO_CONTACT_ID
HZ_PARTIES	PARTY_ID	SHIP_TO_CONTACT_ID
HZ_PARTY_SITE_USES	PARTY_SITE_ID	SITE_ID
HZ_PARTY_SITE_USES	PARTY_SITE_ID	CUSTOMER_SITE_ID
HZ_TIMEZONES	TIMEZONE_ID	TIME_ZONE_ID
JTF_RESOURCES_V	RESOURCE_NUMBER	INCIDENT_OWNER_ID
JTF_RESOURCE_SUBTYPES_B	RESOURCE_SUBTYPE_ID	RESOURCE_SUBTYPE_ID
JTF_RS_GROUPS_B	GROUP_ID	INCIDENT_OWNER_ID
JTF_RS_RESOURCE_EXTNS	RESOURCE_ID	INCIDENT_OWNER_ID
JTF_RS_TEAMS_B	TEAM_ID	INCIDENT_OWNER_ID
JTF_TERR_RSC_ALL	RESOURCE_ID	INCIDENT_OWNER_ID
JTF_TERR_RSC_ALL	TERR_ID	TERRITORY_ID
MTL_SYSTEM_ITEMS_B	INVENTORY_ITEM_ID	INVENTORY_ITEM_ID
MTL_SYSTEM_ITEMS_B	INVENTORY_ITEM_ID	INV_COMPONENT_ID
MTL_SYSTEM_ITEMS_B	INVENTORY_ITEM_ID	INV_SUBCOMPONENT_ID
OKC_K_LINES_B	ID	CONTRACT_SERVICE_ID
PER_ALL_PEOPLE_F	PERSON_ID	EMPLOYEE_ID
QA_PLANS	PLAN_ID	QA_COLLECTION_ID

Oracle Proprietary, Confidential Information--Use Restricted by Contract

QuickCodes Columns

Column	QuickCodes Type	QuickCodes Table
PROBLEM_CODE	REQUEST_PROBLEM_CODE	CS_LOOKUPS
RESOLUTION_CODE	REQUEST_RESOLUTION_CODE	CS_LOOKUPS

Column Descriptions

Name	Null?	Type	Description
INCIDENT_ID (PK)	NOT NULL	NUMBER(15)	Service request identifier
LAST_UPDATE_DATE	NOT NULL	DATE	Standard Who column
LAST_UPDATED_BY	NOT NULL	NUMBER(15)	Standard Who column - with the user id from FND_USER
CREATION_DATE	NOT NULL	DATE	Standard Who column
CREATED_BY	NOT NULL	NUMBER(15)	Standard Who column - with the user id from FND_USER
LAST_UPDATE_LOGIN		NUMBER(15)	Standard Who column
INCIDENT_NUMBER	NOT NULL	VARCHAR2(64)	Service request number
INCIDENT_DATE		DATE	Service request date
INCIDENT_STATUS_ID	NOT NULL	NUMBER(15)	Identifier for service request status
INCIDENT_TYPE_ID	NOT NULL	NUMBER(15)	Identifier for service request type
INCIDENT_URGENCY_ID		NUMBER(15)	Identifier for service request urgency
INCIDENT_SEVERITY_ID	NOT NULL	NUMBER(15)	Identifier for service request severity
INCIDENT_OWNER_ID	NOT NULL	NUMBER(15)	Identifier for the owner of the service request
RESOURCE_TYPE		VARCHAR2(30)	Identifier for the owner type of the service request. The owner type could be an Employee, a Group or a Team.
RESOURCE_SUBTYPE_ID		NUMBER	Not used.
INVENTORY_ITEM_ID		NUMBER(15)	Item identifier
CUSTOMER_ID		NUMBER(15)	Customer identifier
ACCOUNT_ID		NUMBER	Account Identifier
BILL_TO_SITE_USE_ID		NUMBER(15)	Identifier for bill-to site use
PURCHASE_ORDER_NUM		VARCHAR2(50)	Purchase order number
EMPLOYEE_ID		NUMBER(15)	Identifier for the employee if the service request is made by an employee
FILED_BY_EMPLOYEE_FLAG		VARCHAR2(1)	Indicates whether the request was made by an employee
SHIP_TO_SITE_USE_ID		NUMBER(15)	Identifier for ship- to site use
PROBLEM_CODE		VARCHAR2(50)	Problem code
EXPECTED_RESOLUTION_DATE		DATE	Expected date for the problem resolution
ACTUAL_RESOLUTION_DATE		DATE	Actual date of resolution
CUSTOMER_PRODUCT_ID		NUMBER(15)	Customer product identifier
INSTALL_SITE_USE_ID		NUMBER(15)	Identifier for installed site use
BILL_TO_CONTACT_ID		NUMBER(15)	Bill-to contact identifier
SHIP_TO_CONTACT_ID		NUMBER(15)	Ship-to contact identifier
CURRENT_SERIAL_NUMBER		VARCHAR2(30)	Product serial number for product not in installed base
CUSTOMER_NUMBER		VARCHAR2(30)	Customer number for non-verified requests
SYSTEM_ID		NUMBER(15)	Not used

INCIDENT_ATTRIBUTE_1	NULL	VARCHAR2(150)	Descriptive flexfield segment column
INCIDENT_ATTRIBUTE_2	NULL	VARCHAR2(150)	Descriptive flexfield segment column
INCIDENT_ATTRIBUTE_3	NULL	VARCHAR2(150)	Descriptive flexfield segment column
INCIDENT_ATTRIBUTE_4	NULL	VARCHAR2(150)	Descriptive flexfield segment column
INCIDENT_ATTRIBUTE_5	NULL	VARCHAR2(150)	Descriptive flexfield segment column
INCIDENT_ATTRIBUTE_6	NULL	VARCHAR2(150)	Descriptive flexfield segment column
INCIDENT_ATTRIBUTE_7	NULL	VARCHAR2(150)	Descriptive flexfield segment column
INCIDENT_ATTRIBUTE_8	NULL	VARCHAR2(150)	Descriptive flexfield segment column
INCIDENT_ATTRIBUTE_9	NULL	VARCHAR2(150)	Descriptive flexfield segment column
INCIDENT_ATTRIBUTE_10	NULL	VARCHAR2(150)	Descriptive flexfield segment column
INCIDENT_ATTRIBUTE_11	NULL	VARCHAR2(150)	Descriptive flexfield segment column
INCIDENT_ATTRIBUTE_12	NULL	VARCHAR2(150)	Descriptive flexfield segment column
INCIDENT_ATTRIBUTE_13	NULL	VARCHAR2(150)	Descriptive flexfield segment column
INCIDENT_ATTRIBUTE_14	NULL	VARCHAR2(150)	Descriptive flexfield segment column
INCIDENT_ATTRIBUTE_15	NULL	VARCHAR2(150)	Descriptive flexfield segment column
INCIDENT_CONTEXT	NULL	VARCHAR2(30)	Descriptive flexfield structure defining column
RECORD_IS_VALID_FLAG	NULL	VARCHAR2(1)	Flag to denote if the service request is verified or not
RESOLUTION_CODE	NULL	VARCHAR2(50)	Problem resolution quick code
ORG_ID	NULL	NUMBER	Operating unit identifier
ORIGINAL_ORDER_NUMBER	NULL	NUMBER	Order number for the product if installed base is not used
WORKFLOW_PROCESS_ID	NULL	NUMBER	Sequence number used for this action's last workflow process
CLOSE_DATE	NULL	DATE	Date the service request is closed
PUBLISH_FLAG	NULL	VARCHAR2(1)	Flag to denote whether the service request is published or not.
INTERFACED_TO_DEPOT_FLAG	NULL	VARCHAR2(1)	Flag to denote service request is linked to repairs
QA_COLLECTION_ID	NULL	NUMBER	Foreign key to Quality results table
CONTRACT_SERVICE_ID	NULL	NUMBER	Service line unique identifier
KB_TYPE	NULL	VARCHAR2(15)	Not used.
KB_SOLUTION_ID	NULL	VARCHAR2(240)	External knowledge base solution identifier.
TIME_ZONE_ID	NULL	NUMBER(15)	This field stores the time zone id of the time zone specified in the field service request form
TIME_DIFFERENCE	NULL	NUMBER	GMT offset of the contact person's time.
CUSTOMER_PO_NUMBER	NULL	VARCHAR2(50)	Customers Purchase Order number.
OWNER_GROUP_ID	NULL	NUMBER	Not used

Oracle Proprietary, Confidential Information--Use Restricted by Contract

CUSTOMER_TICKET_NUMBER	NULL	VARCHAR2(50)	Customer's internal helpdesk tracking number.
OBLIGATION_DATE	NULL	DATE	Obligation Date
SITE_ID	NULL	NUMBER	Identifier for Support Site.
CUSTOMER_SITE_ID	NULL	NUMBER	Identifier for Customer Site.
CALLER_TYPE	NOT NULL	VARCHAR2(30)	Type of the Calling Party. It could be an Organization, Person, Employee.
PLATFORM_VERSION_ID	NULL	NUMBER	Identifier for Platform Version.
OBJECT_VERSION_NUMBER	NULL	NUMBER(9)	Sequential number used for database locking control when using HTML as a user interface
CP_COMPONENT_ID	NULL	NUMBER	Identifier for Installed Base Component.
CP_COMPONENT_VERSION_ID	NULL	NUMBER	Identifier for Installed Base Component Revision.
CP_SUBCOMPONENT_ID	NULL	NUMBER	Identifier for Installed Base Subcomponent.
CP_SUBCOMPONENT_VERSION_ID	NULL	NUMBER	Identifier for Installed Base Subcomponent Revision.
PLATFORM_ID	NULL	NUMBER	Identifier for Platform.
LANGUAGE_ID	NULL	NUMBER	Identifier for the Product's Language.
TERRITORY_ID	NULL	NUMBER	Identifier for the Territory of the Service Request.
CP_REVISION_ID	NULL	NUMBER	Identifier for Installed Base Product Revision.
INV_ITEM_REVISION	NULL	VARCHAR2(3)	Identifier for the Item Revision for a product not in Installed Base.
INV_COMPONENT_ID	NULL	NUMBER	Identifier for the Component for a product not in Installed Base.
INV_COMPONENT_VERSION	NULL	VARCHAR2(3)	Identifier for the Component Revision for a product not in Installed Base.
INV_SUBCOMPONENT_ID	NULL	NUMBER	Identifier for the Subcomponent for a product not in Installed Base.
INV_SUBCOMPONENT_VERSION	NULL	VARCHAR2(3)	Identifier for the Subcomponent Revision for a product not in Installed Base.
PROJECT_ID	NULL	NUMBER	This column is not currently used.
TASK_ID	NULL	NUMBER	This column is not currently used.
INV_ORGANIZATION_ID	NULL	NUMBER	This field stores the inventory organization id based on the profile AS_PRODUCT_ORGANIZATION_ID.

Indexes

Index Name	Index Type	Sequence	Column Name
CS_INCIDENTS_N1	NOT UNIQUE	4	INVENTORY_ITEM_ID
CS_INCIDENTS_N12	NOT UNIQUE	2	CLOSE_DATE
		5	EXPECTED_RESOLUTION_DATE
CS_INCIDENTS_N13	NOT UNIQUE	2	EXPECTED_RESOLUTION_DATE
		5	CLOSE_DATE
CS_INCIDENTS_N2	NOT UNIQUE	2	CUSTOMER_ID
CS_INCIDENTS_N3	NOT UNIQUE	2	INCIDENT_OWNER_ID
CS_INCIDENTS_N4	NOT UNIQUE	1	INCIDENT_STATUS_ID

Oracle Proprietary, Confidential Information--Use Restricted by Contract

CS_INCIDENTS_N5	NOT UNIQUE	1	INCIDENT_TYPE_ID
CS_INCIDENTS_N6	NOT UNIQUE	1	INCIDENT_URGENCY_ID
CS_INCIDENTS_N7	NOT UNIQUE	1	INCIDENT_SEVERITY_ID
CS_INCIDENTS_N8	NOT UNIQUE	1	CUSTOMER_PRODUCT_ID
CS_INCIDENTS_N9	NOT UNIQUE	1	INCIDENT_DATE
CS_INCIDENTS_U1	UNIQUE	5	INCIDENT_ID
CS_INCIDENTS_U2	UNIQUE	2	INCIDENT_NUMBER

Sequences

<u>Sequence</u>	<u>Derived Column</u>
CS_INCIDENTS_S	INCIDENT_ID
CS_INCIDENTS_NUMBER_S	INCIDENT_NUMBER
CS_WF_PROCESS_ID_S	WORKFLOW_PROCESS_ID

JTF_IH_INTERACTIONS

A contact point between a customer, customer system or potential customer and a single human or automated agent (Handler and Handler Resource). An Interaction can be timed and has an outcome and result that can be tracked. Multiple Interaction Activities can occur during an Interaction. A single Interaction can be can include multiple forms of communications (Media Items) between the customer and agent. An Interaction can be related to Customers, Campaigns, Users, Orders, Quotes, etc

Foreign Keys

Primary Key Table	Primary Key Column	Foreign Key Column
AMS_SOURCE_CODES	SOURCE_CODE_ID	SOURCE_CODE_ID
FND_APPLICATION	APPLICATION_ID	HANDLER_ID
HZ_PARTIES	PARTY_ID	PARTY_ID
JTF_IH_INTERACTION_INTERS	INTERACT_INTERACTION_ID	INTERACTION_INTERS_ID
JTF_IH_OUTCOMES_B	OUTCOME_ID	OUTCOME_ID
JTF_IH_REASONS_B	REASON_ID	REASON_ID
JTF_IH_RESULTS_B	RESULT_ID	RESULT_ID
JTF_IH_SCRIPTS	SCRIPT_ID	SCRIPT_ID
JTF_RS_RESOURCE_EXTNS	RESOURCE_ID	RESOURCE_ID

Column Descriptions

Name	Null?	Type	Description
INTERACTION_ID (PK)	NOT NULL	NUMBER(15)	Unique Interaction Identifier
OBJECT_VERSION_NUMBER	NULL	NUMBER(9)	Sequential number used for database locking control when using HTML as a user interface.
CREATION_DATE	NOT NULL	DATE	Standard Who column
CREATED_BY	NOT NULL	NUMBER(15)	Standard Who column - with the user id from FND_USER.
LAST_UPDATE_DATE	NOT NULL	DATE	Standard Who column
LAST_UPDATED_BY	NOT NULL	NUMBER(15)	Standard Who column - with the user id from FND_USER
LAST_UPDATE_LOGIN	NULL	NUMBER(15)	Standard Who column
INTERACTION_INTERS_ID	NULL	NUMBER	Links Interactions
OBJECT_ID	NULL	NUMBER	The Primary Key for the Oracle Marketing table relating to the object type.
OBJECT_TYPE	NULL	VARCHAR2(30)	Oracle Marketing type of source code.
SOURCE_CODE	NULL	VARCHAR2(30)	Source Code provided by the customer
SOURCE_CODE_ID	NULL	NUMBER	Unique identifier for Marketing Source Code
REFERENCE_FORM	NULL	VARCHAR2(1000)	Legacy column for 3i Interaction Manager
DURATION	NULL	NUMBER	The number of seconds that the interaction was active
END_DATE_TIME	NULL	DATE	The date and time the interaction ended
FOLLOW_UP_ACTION	NULL	VARCHAR2(80)	Legacy column for 3i Interaction Manager

Oracle Proprietary, Confidential Information--Use Restricted by Contract

NON_PRODUCTIVE_TIME_AMOUNT	NULL	NUMBER	The number of seconds the agent was considered non-productive since the end of the last interaction and end of the current interaction.
RESULT_ID	NULL	NUMBER(15)	Result Identifier
REASON_ID	NULL	NUMBER(15)	Reason Identifier
START_DATE_TIME	NULL	DATE	The date and time the interaction started
OUTCOME_ID	NOT NULL	NUMBER(15)	Outcome Identifier
PREVIEW_TIME_AMOUNT	NULL	NUMBER	The number of seconds the agent previewed the interaction item before initiating the interaction
PRODUCTIVE_TIME_AMOUNT	NULL	NUMBER	The number of seconds the agent was considered productive since the end of the last interaction and end of the current interaction.
HANDLER_ID	NOT NULL	NUMBER	Handler Identifier from FND_APPLICATION
INTER_INTERACTION_DURATION	NULL	NUMBER	The number of seconds between the end of the last interaction and the beginning of the current interaction
WRAP_UP_TIME_AMOUNT	NULL	NUMBER	The number of seconds that agent spent on the interaction from the closing of the last media item to the conclusion of the interaction.
SCRIPT_ID	NULL	NUMBER(15)	Script Identifier
PARTY_ID	NOT NULL	NUMBER(15)	Party Identifier for Customer
RESOURCE_ID	NOT NULL	NUMBER	Resource Identifier for Agent
METHOD_CODE	NULL	VARCHAR2(30)	Legacy column for 3i Interaction Manager
ORG_ID	NULL	NUMBER(32)	Multi-Org
ATTRIBUTE_CATEGORY	NULL	VARCHAR2(30)	Descriptive Flexfield Structure Defining Column
ATTRIBUTE1	NULL	VARCHAR2(150)	Descriptive Flexfield Segment Column
ATTRIBUTE2	NULL	VARCHAR2(150)	Descriptive Flexfield Segment Column
ATTRIBUTE3	NULL	VARCHAR2(150)	Descriptive Flexfield Segment Column
ATTRIBUTE4	NULL	VARCHAR2(150)	Descriptive Flexfield Segment Column
ATTRIBUTE5	NULL	VARCHAR2(150)	Descriptive Flexfield Segment Column
ATTRIBUTE6	NULL	VARCHAR2(150)	Descriptive Flexfield Segment Column
ATTRIBUTE7	NULL	VARCHAR2(150)	Descriptive Flexfield Segment Column
ATTRIBUTE8	NULL	VARCHAR2(150)	Descriptive Flexfield Segment Column
ATTRIBUTE9	NULL	VARCHAR2(150)	Descriptive Flexfield Segment Column
ATTRIBUTE10	NULL	VARCHAR2(150)	Descriptive Flexfield Segment Column
ATTRIBUTE11	NULL	VARCHAR2(150)	Descriptive Flexfield Segment Column
ATTRIBUTE12	NULL	VARCHAR2(150)	Descriptive Flexfield Segment Column
ATTRIBUTE13	NULL	VARCHAR2(150)	Descriptive Flexfield Segment Column

Oracle Proprietary, Confidential Information--Use Restricted by Contract

ATTRIBUTE14	NULL	VARCHAR2(150)	Decriptive Flexfield Segment Column
ATTRIBUTE15	NULL	VARCHAR2(150)	Decriptive Flexfield Segment Column
ACTIVE	NOT NULL	VARCHAR2(1)	Used for Interaction History caching.

Indexes

<u>Index Name</u>	<u>Index Type</u>	<u>Sequence</u>	<u>Column Name</u>
JTF_IH_INTERACTIONS_N1	NOT UNIQUE	1	RESULT_ID
JTF_IH_INTERACTIONS_N2	NOT UNIQUE	1	HANDLER_ID
JTF_IH_INTERACTIONS_N3	NOT UNIQUE	1	REASON_ID
JTF_IH_INTERACTIONS_N4	NOT UNIQUE	1	OUTCOME_ID
JTF_IH_INTERACTIONS_N5	NOT UNIQUE	1	SCRIPT_ID
JTF_IH_INTERACTIONS_U1	UNIQUE	1	INTERACTION_ID

Sequences

<u>Sequence</u>	<u>Derived Column</u>
JTF_IH_INTERACTIONS_S1	INTERACTION_ID

JTF_NOTES_B

JTF_NOTES_B stores all non-translated information about Notes. Notes may be created for any object mapped for object usage in JTF_OBJECTS; the JTF_OBJECT that the note is linked to is stored as the source_object_code and source_object_id. The actual text of the note, which is stored in the JTF_NOTES_TL, is split into two parts under columns NOTES and NOTE_DETAILS. Typically, the NOTES should hold the short form or the first part of the note. NOTE_DETAILS for added details, or whenever the note is longer than the 2000 character limit for the NOTES column. The NOTE_STATUS flags the note as being personal (P), Internal (I), or Publish(E).

Foreign Keys

Primary Key Table	Primary Key Column	Foreign Key Column
AS_LEADS_ALL	LEAD_ID	SOURCE_OBJECT_ID
AS_SALES_LEADS	SALES_LEAD_ID	SOURCE_OBJECT_ID
CS_INCIDENTS_ALL_B	INCIDENT_ID	SOURCE_OBJECT_ID
FND_LOOKUP_VALUES	LOOKUP_CODE	NOTE_TYPE
JTF_NOTES_B	JTF_NOTE_ID	PARENT_NOTE_ID
JTF_OBJECTS_B	OBJECT_CODE	SOURCE_OBJECT_CODE

Column Descriptions

Name	Null?	Type	Description
JTF_NOTE_ID (PK)	NOT NULL	NUMBER	Unique Note identifier (PK)
PARENT_NOTE_ID	NULL	NUMBER	Note id of the parent of the current note
SOURCE_OBJECT_ID	NOT NULL	NUMBER	Primary Key of the source form.
SOURCE_OBJECT_CODE	NOT NULL	VARCHAR2(240)	Identifies the source. Linked to the lookup code in the fnd lookups table where lookup_type = 'JTF_OBJECT_SOURCE_TYPE'
LAST_UPDATE_DATE	NOT NULL	DATE	Standard WHO column
LAST_UPDATED_BY	NOT NULL	NUMBER(15)	Standard WHO column
CREATION_DATE	NOT NULL	DATE	Standard WHO column
CREATED_BY	NOT NULL	NUMBER(15)	Standard WHO column
LAST_UPDATE_LOGIN	NULL	NUMBER(15)	Standard WHO column
NOTE_STATUS	NULL	VARCHAR2(1)	This flag determines whether the note is allowed to be published in the web or not.
ENTERED_BY	NOT NULL	NUMBER(15)	The person who entered the note.
ENTERED_DATE	NOT NULL	DATE	The date on which the note was entered.
NOTE_TYPE	NULL	VARCHAR2(30)	The type of the note. Normally user defined from the setup screen. Stored in fnd_lookups for the lookup type of JTF_NOTE_TYPE
ATTRIBUTE1	NULL	VARCHAR2(150)	Standard flex Field Column
ATTRIBUTE2	NULL	VARCHAR2(150)	Standard flex Field Column
ATTRIBUTE3	NULL	VARCHAR2(150)	Standard flex Field Column
ATTRIBUTE4	NULL	VARCHAR2(150)	Standard flex Field Column
ATTRIBUTE5	NULL	VARCHAR2(150)	Standard flex Field Column
ATTRIBUTE6	NULL	VARCHAR2(150)	Standard flex Field Column

Oracle Proprietary, Confidential Information--Use Restricted by Contract

ATTRIBUTE7	NULL	VARCHAR2(150)	Standard flex Field Column
ATTRIBUTE8	NULL	VARCHAR2(150)	Standard flex Field Column
ATTRIBUTE9	NULL	VARCHAR2(150)	Standard flex Field Column
ATTRIBUTE10	NULL	VARCHAR2(150)	Standard flex Field Column
ATTRIBUTE11	NULL	VARCHAR2(150)	Standard flex Field Column
ATTRIBUTE12	NULL	VARCHAR2(150)	Standard flex Field Column
ATTRIBUTE13	NULL	VARCHAR2(150)	Standard flex Field Column
ATTRIBUTE14	NULL	VARCHAR2(150)	Standard flex Field Column
ATTRIBUTE15	NULL	VARCHAR2(150)	Standard flex Field Column
CONTEXT	NULL	VARCHAR2(30)	Standard flex Field Column

Indexes

<u>Index Name</u>	<u>Index Type</u>	<u>Sequence</u>	<u>Column Name</u>
CC_JT_FK_I	NOT UNIQUE	1	JTF_NOTE_ID
JTF_NOTES_N1	NOT UNIQUE	10	SOURCE_OBJECT_CODE
		15	SOURCE_OBJECT_ID

Sequences

<u>Sequence</u>	<u>Derived Column</u>
JTF_NOTES_S	JTF_NOTE_ID

JTF_RS_GROUPS_B

Base Table JTF_RS_GROUPS_B stores general information about a given Group.

Column Descriptions

Name	Null?	Type	Description
GROUP_ID (PK)	NOT NULL	NUMBER	Resource group unique identifier
GROUP_NUMBER	NOT NULL	VARCHAR2(30)	Group Number
CREATED_BY	NOT NULL	NUMBER	Standard Who column - with the user id from FND_USER
CREATION_DATE	NOT NULL	DATE	Standard Who column
LAST_UPDATED_BY	NOT NULL	NUMBER	Standard Who column - with the user id from FND_USER
LAST_UPDATE_DATE	NOT NULL	DATE	Standard Who column
LAST_UPDATE_LOGIN	NULL	NUMBER	Standard Who column
EXCLUSIVE_FLAG	NULL	VARCHAR2(1)	Indicates whether the group is exclusive
START_DATE_ACTIVE	NULL	DATE	Date before which the group is not enabled
END_DATE_ACTIVE	NULL	DATE	Date after which the group is not enabled
ACCOUNTING_CODE	NULL	VARCHAR2(80)	Account code, used by Sales
ATTRIBUTE1	NULL	VARCHAR2(150)	Descriptive flexfield segment Column
ATTRIBUTE2	NULL	VARCHAR2(150)	Descriptive flexfield segment Column
ATTRIBUTE3	NULL	VARCHAR2(150)	Descriptive flexfield segment Column
ATTRIBUTE4	NULL	VARCHAR2(150)	Descriptive flexfield segment Column
ATTRIBUTE5	NULL	VARCHAR2(150)	Descriptive flexfield segment Column
ATTRIBUTE6	NULL	VARCHAR2(150)	Descriptive flexfield segment Column
ATTRIBUTE7	NULL	VARCHAR2(150)	Descriptive flexfield segment Column
ATTRIBUTE8	NULL	VARCHAR2(150)	Descriptive flexfield segment Column
ATTRIBUTE9	NULL	VARCHAR2(150)	Descriptive flexfield segment Column
ATTRIBUTE10	NULL	VARCHAR2(150)	Descriptive flexfield segment Column
ATTRIBUTE11	NULL	VARCHAR2(150)	Descriptive flexfield segment Column
ATTRIBUTE12	NULL	VARCHAR2(150)	Descriptive flexfield segment Column
ATTRIBUTE13	NULL	VARCHAR2(150)	Descriptive flexfield segment Column
ATTRIBUTE14	NULL	VARCHAR2(150)	Descriptive flexfield segment Column
ATTRIBUTE15	NULL	VARCHAR2(150)	Descriptive flexfield segment Column
ATTRIBUTE_CATEGORY	NULL	VARCHAR2(30)	Descriptive flexfield structure defining column
EMAIL_ADDRESS	NULL	VARCHAR2(240)	Email Address of Group
OBJECT_VERSION_NUMBER	NOT NULL	NUMBER	Sequential number used for database locking control

Oracle Proprietary, Confidential Information--Use Restricted by Contract

Indexes

<u>Index Name</u>	<u>Index Type</u>	<u>Sequence</u>	<u>Column Name</u>
JTF_RS_GROUPS_B_U1	UNIQUE	1	GROUP_ID

Sequences

<u>Sequence</u>	<u>Derived Column</u>
JTF_RS_GROUPS_S	GROUP_ID
JTF_RS_GROUP_NUMBER_S	GROUP_NUMBER

JTF_RS_RESOURCE_EXTNS

This is table stores all important information about Resources. These Resources are coming from HR or HZ or Vonder table etc. Primary key is resource_id. Resource_number, user_id sre also unique keys.

Foreign Keys

Primary Key Table	Primary Key Column	Foreign Key Column
JTF_OBJECTS_B	OBJECT_CODE	CATEGORY

Column Descriptions

Name	Null?	Type	Description
RESOURCE_ID (PK)	NOT NULL	NUMBER	Resource Identifier
CREATED_BY	NOT NULL	NUMBER	Standard who column - with user_id from FND_USERS
CREATION_DATE	NOT NULL	DATE	Standard who column
LAST_UPDATED_BY	NOT NULL	NUMBER	Standard who column - with user_id from FND_USERS
LAST_UPDATE_DATE	NOT NULL	DATE	Standard who column
LAST_UPDATE_LOGIN	NULL	NUMBER	Standard who column
CATEGORY	NOT NULL	VARCHAR2(30)	Category of Resource. Validating from JTF_OBJECTS_VL. Allowed values: EMPLOYEE, PARTNER, PARTY, SUPPLIER_CONTACT, OTHER
RESOURCE_NUMBER	NOT NULL	VARCHAR2(30)	Resource Number. This is a Unique and shown to user on forms.
SOURCE_ID	NULL	NUMBER	Source identifier (foreign key to PER_ALL_PEOPLE_F) or (foreign key to HZ_PARTIES) or (foreign key to PO_VENDOR_CONTACTS)
ADDRESS_ID	NULL	NUMBER	Address identifier (foreign key to HZ_PARTY_SITES)
CONTACT_ID	NULL	NUMBER	Contact identifier (foreign key to HZ_ORG_CONTACTS)
MANAGING_EMPLOYEE_ID	NULL	NUMBER	Managing Employee Identifier
START_DATE_ACTIVE	NOT NULL	DATE	Date this Resource becomes active, if limited
END_DATE_ACTIVE	NULL	DATE	Date this Resource becomes inactive, if limited
TIME_ZONE	NULL	NUMBER	This field is used by Service for time zone information (foreign key to HZ_TIMEZONES)
COST_PER_HR	NULL	NUMBER	This field is used by Service for cost per hour of the resource
PRIMARY_LANGUAGE	NULL	VARCHAR2(30)	This field is used by Service for the primary language of the resource
SECONDARY_LANGUAGE	NULL	VARCHAR2(30)	This field is used by Service for the secondary language of the resource
IES_AGENT_LOGIN	NULL	VARCHAR2(240)	Email Center Agent Login
SERVER_GROUP_ID	NULL	NUMBER	Server Group Identifier to which this resource is attached. FK to IEO_SVR_GROUPS , used by interaction centers.
ASSIGNED_TO_GROUP_ID	NULL	NUMBER	Assigned to User Identifier , Foreign Key to FND_USER.

Oracle Proprietary, Confidential Information--Use Restricted by Contract

COST_CENTER	NULL	VARCHAR2(30)	Cost Center to which this resource is attached
CHARGE_TO_COST_CENTER	NULL	VARCHAR2(30)	Cost center which will be charged for this resource
COMPENSATION_CURRENCY_CODE	NULL	VARCHAR2(15)	The currency code in which the resource will be compensated.
COMMISSIONABLE_FLAG	NULL	VARCHAR2(1)	Flag indicating whether the resource is commissionable or not
HOLD_REASON_CODE	NULL	VARCHAR2(30)	Reason Code why the payment will be hold
HOLD_PAYMENT	NULL	VARCHAR2(1)	Flag indicating whether the payment for the resource is on hold or not.
COMP_SERVICE_TEAM_ID	NULL	NUMBER	Comp Service Team Id , FK to jtf_rs_teams_vl
TRANSACTION_NUMBER	NULL	NUMBER	Transaction Number. This will be used at the time of importing Resources.
OBJECT_VERSION_NUMBER	NOT NULL	NUMBER	Sequential number used for database locking control when using HTML as a user interface
ATTRIBUTE1	NULL	VARCHAR2(150)	Descriptive flexfield segment Column
ATTRIBUTE2	NULL	VARCHAR2(150)	Descriptive flexfield segment Column
ATTRIBUTE3	NULL	VARCHAR2(150)	Descriptive flexfield segment Column
ATTRIBUTE4	NULL	VARCHAR2(150)	Descriptive flexfield segment Column
ATTRIBUTE5	NULL	VARCHAR2(150)	Descriptive flexfield segment Column
ATTRIBUTE6	NULL	VARCHAR2(150)	Descriptive flexfield segment Column
ATTRIBUTE7	NULL	VARCHAR2(150)	Descriptive flexfield segment Column
ATTRIBUTE8	NULL	VARCHAR2(150)	Descriptive flexfield segment Column
ATTRIBUTE9	NULL	VARCHAR2(150)	Descriptive flexfield segment Column
ATTRIBUTE10	NULL	VARCHAR2(150)	Descriptive flexfield segment Column
ATTRIBUTE11	NULL	VARCHAR2(150)	Descriptive flexfield segment Column
ATTRIBUTE12	NULL	VARCHAR2(150)	Descriptive flexfield segment Column
ATTRIBUTE13	NULL	VARCHAR2(150)	Descriptive flexfield segment Column
ATTRIBUTE14	NULL	VARCHAR2(150)	Descriptive flexfield segment Column
ATTRIBUTE15	NULL	VARCHAR2(150)	Descriptive flexfield segment Column
ATTRIBUTE_CATEGORY	NULL	VARCHAR2(30)	Descriptive flexfield structure defining column
USER_ID	NULL	NUMBER	User Id from FND_USER
SUPPORT_SITE_ID	NULL	NUMBER	Support Site from Service

Indexes

Index Name	Index Type	Sequence	Column Name
JTF_RS_RESOURCE_EXTNS_U1	UNIQUE	1	RESOURCE_ID
JTF_RS_RESOURCE_EXTNS_U2	UNIQUE	1	RESOURCE_NUMBER
JTF_RS_RESOURCE_EXTNS_U3	UNIQUE	1	USER_ID

Oracle Proprietary, Confidential Information--Use Restricted by Contract

Sequences

<u>Sequence</u>	<u>Derived Column</u>
JTF_RS_RESOURCE_EXTNS_S	RESOURCE_ID
JTF_RS_RESOURCE_NUMBER_S	RESOURCE_NUMBER
JTF_RS_TRANSACTION_NUM_S	TRANSACTION_NUMBER

Oracle Proprietary, Confidential Information--Use Restricted by Contract

JTF_TASKS_B

Base Table JTF_TASKS_B stores general information about a given Task. Each line includes details about owner, source object, customer, dates, effort and duration. Also, this table contains multiple flags used by the various consumers of the foundation Task Manager.

Foreign Keys

Primary Key Table	Primary Key Column	Foreign Key Column
CS_INCIDENTS_ALL_B	INCIDENT_ID	SOURCE_OBJECT_ID
FND_CURRENCIES	CURRENCY_CODE	CURRENCY_CODE
HZ_CUST_ACCOUNTS	CUST_ACCOUNT_ID	CUST_ACCOUNT_ID
HZ_PARTIES	PARTY_ID	SOURCE_OBJECT_TYPE_CODE
HZ_PARTIES	PARTY_ID	SOURCE_OBJECT_TYPE_CODE
HZ_PARTY_SITES	PARTY_SITE_ID	ADDRESS_ID
JTF_OBJECTS_B	OBJECT_CODE	SOURCE_OBJECT_TYPE_CODE
JTF_TASKS_B	TASK_ID	PARENT_TASK_ID
JTF_TASK_PRIORITIES_B	TASK_PRIORITY_ID	TASK_PRIORITY_ID
JTF_TASK_RECUR_RULES	RECURRENCE_RULE_ID	RECURRENCE_RULE_ID
JTF_TASK_STATUSES_B	TASK_STATUS_ID	TASK_STATUS_ID
JTF_TASK_TYPES_B	TASK_TYPE_ID	TASK_TYPE_ID

Column Descriptions

Name	Null?	Type	Description
TASK_ID (PK)	NOT NULL	NUMBER	Unique task identifier (PK)
CREATED_BY	NOT NULL	NUMBER(15)	Standard Who column - with the user id from FND_USER
CREATION_DATE	NOT NULL	DATE	Standard Who column
LAST_UPDATED_BY	NOT NULL	NUMBER(15)	Standard Who column - with the user id from FND_USER
LAST_UPDATE_DATE	NOT NULL	DATE	Standard Who column
LAST_UPDATE_LOGIN		NUMBER(15)	Standard Who column - with the user id from FND_USER
OBJECT_VERSION_NUMBER		NUMBER	Sequential number used for database locking control when using HTML as a user interface
TASK_NUMBER	NOT NULL	VARCHAR2(30)	Task Number
TASK_TYPE_ID	NOT NULL	NUMBER	Task type (foreign key to JTF_TASK_TYPES)
TASK_STATUS_ID	NOT NULL	NUMBER	Task status (foreign key to JTF_TASK_STATUSES)
TASK_PRIORITY_ID		NUMBER	Task priority (foreign key to JTF_TASK_PRIORITIES)
OWNER_ID	NOT NULL	NUMBER	Owner of the task
OWNER_TYPE_CODE	NOT NULL	VARCHAR2(30)	Resource type identifier of task owner
OWNER_TERRITORY_ID		NUMBER	Territory identifier of the Owner
ASSIGNED_BY_ID		NUMBER	User who assigned the task to current owner
CUST_ACCOUNT_ID		NUMBER	Customer account identifier
CUSTOMER_ID		NUMBER	Customer associated with task
ADDRESS_ID		NUMBER	Address Identifier
PLANNED_START_DATE		DATE	Planned start date
PLANNED_END_DATE		DATE	Planned end date
SCHEDULED_START_DATE		DATE	Scheduled start date

Oracle Proprietary, Confidential Information--Use Restricted by Contract

SCHEDULED_END_DATE	NULL DATE	Scheduled end date
ACTUAL_START_DATE	NULL DATE	Actual start date
ACTUAL_END_DATE	NULL DATE	Actual end date
SOURCE_OBJECT_TYPE_CODE	NULL VARCHAR2(30)	Type of source object (foreign key to JTF_TASK_OBJECT_TYPES)
TIMEZONE_ID	NULL NUMBER	Time zone identifier
SOURCE_OBJECT_ID	NULL NUMBER	Internal ID of source object
SOURCE_OBJECT_NAME	NULL VARCHAR2(80)	User-visible source object identifier
DURATION	NULL NUMBER	Duration of task
DURATION_UOM	NULL VARCHAR2(3)	Unit of measure for duration
PLANNED_EFFORT	NULL NUMBER	Planned effort
PLANNED_EFFORT_UOM	NULL VARCHAR2(3)	Unit of measure for planned effort
ACTUAL_EFFORT	NULL NUMBER	Actual amount of effort spent on a task by all assignees
ACTUAL_EFFORT_UOM	NULL VARCHAR2(3)	Unit of measure for actual work
PERCENTAGE_COMPLETE	NULL NUMBER	Percentage completion of task
REASON_CODE	NULL VARCHAR2(30)	Reason for rejecting a task, reassigning a task, etc.
PRIVATE_FLAG	NULL VARCHAR2(1)	Indicates whether the task is private or public
PUBLISH_FLAG	NULL VARCHAR2(1)	Indicates whether the task should be published.
RESTRICT_CLOSURE_FLAG	NULL VARCHAR2(1)	Indicates whether completing the task is necessary for the source object to be deemed complete
MULTI_BOOKED_FLAG	NULL VARCHAR2(1)	Indicates whether the task can book resources that are already assigned to other tasks
MILESTONE_FLAG	NULL VARCHAR2(1)	Indicates whether the task is a milestone delivery date
HOLIDAY_FLAG	NULL VARCHAR2(1)	Indicates whether the task can be performed on holidays
BILLABLE_FLAG	NULL VARCHAR2(1)	Indicates whether the task is billable.
BOUND_MODE_CODE	NULL VARCHAR2(30)	Used for Scheduling.
SOFT_BOUND_FLAG	NULL VARCHAR2(1)	Used for Scheduling.
WORKFLOW_PROCESS_ID	NULL NUMBER	Identifier of las workflow process launched for this task
NOTIFICATION_FLAG	NULL VARCHAR2(1)	Flag indicating whether notification workflow will be automatically launched.
NOTIFICATION_PERIOD	NULL NUMBER	Time before the scheduled start date that a notification is sent to the assignees
NOTIFICATION_PERIOD_UOM	NULL VARCHAR2(3)	Unit of measure for notification period
PARENT_TASK_ID	NULL NUMBER	Parent Task's ID
RECURRENCE_RULE_ID	NULL NUMBER	Recurrence rule identifier
ALARM_START	NULL NUMBER	Indicates when the first alarm should be fired
ALARM_START_UOM	NULL VARCHAR2(3)	Unit of measure for ALARM_START
ALARM_ON	NULL VARCHAR2(1)	Indicates whether the alarm is on
ALARM_COUNT	NULL NUMBER	Total number of alarms to fire
ALARM_FIRED_COUNT	NULL NUMBER	Number of alarms fired
ALARM_INTERVAL	NULL NUMBER	Alarm interval
ALARM_INTERVAL_UOM	NULL VARCHAR2(3)	Unit of measure for Alarm Interval

DELETED_FLAG	NULL	VARCHAR2(1)	Flag indicating the task has been deleted
PALM_FLAG	NULL	VARCHAR2(1)	Used by Mobile Device
WINCE_FLAG	NULL	VARCHAR2(1)	Used by Mobile Device
LAPTOP_FLAG	NULL	VARCHAR2(1)	Used by Mobile Device
DEVICE1_FLAG	NULL	VARCHAR2(1)	Used by Mobile Device
DEVICE2_FLAG	NULL	VARCHAR2(1)	Used by Mobile Device
DEVICE3_FLAG	NULL	VARCHAR2(1)	Used by Mobile Device
COSTS	NULL	NUMBER	Used by Marketing
CURRENCY_CODE	NULL	VARCHAR2(15)	Used by Marketing.
ORG_ID	NULL	NUMBER	Operating unit identifier
ESCALATION_LEVEL	NULL	VARCHAR2(30)	Escalation Level
ATTRIBUTE1	NULL	VARCHAR2(150)	Descriptive flexfield segment column
ATTRIBUTE2	NULL	VARCHAR2(150)	Descriptive flexfield segment column
ATTRIBUTE3	NULL	VARCHAR2(150)	Descriptive flexfield segment column
ATTRIBUTE4	NULL	VARCHAR2(150)	Descriptive flexfield segment column
ATTRIBUTE5	NULL	VARCHAR2(150)	Descriptive flexfield segment column
ATTRIBUTE6	NULL	VARCHAR2(150)	Descriptive flexfield segment column
ATTRIBUTE7	NULL	VARCHAR2(150)	Descriptive flexfield segment column
ATTRIBUTE8	NULL	VARCHAR2(150)	Descriptive flexfield segment column
ATTRIBUTE9	NULL	VARCHAR2(150)	Descriptive flexfield segment column
ATTRIBUTE10	NULL	VARCHAR2(150)	Descriptive flexfield segment column
ATTRIBUTE11	NULL	VARCHAR2(150)	Descriptive flexfield segment column
ATTRIBUTE12	NULL	VARCHAR2(150)	Descriptive flexfield segment column
ATTRIBUTE13	NULL	VARCHAR2(150)	Descriptive flexfield segment column
ATTRIBUTE14	NULL	VARCHAR2(150)	Descriptive flexfield segment column
ATTRIBUTE15	NULL	VARCHAR2(150)	Descriptive flexfield segment column
ATTRIBUTE_CATEGORY	NULL	VARCHAR2(150)	Descriptive flexfield structure defining column

Indexes

<u>Index Name</u>	<u>Index Type</u>	<u>Sequence</u>	<u>Column Name</u>
JTF_TASKS_U1	UNIQUE	1	TASK_ID

Sequences

<u>Sequence</u>	<u>Derived Column</u>
JTF_TASKS_S	TASK_ID
JTF_TASK_NUMBER_S	TASK_NUMBER
JTF_TASK_WORKFLOW_PROCESS_S	WORKFLOW_PROCESS_ID

JTF_TASK_ASSIGNMENTS

JTF_TASK_ASSIGNMENTS stores information about the resource assignments associated with the task. RESOURCE_TYPE_CODE identifier stores the resource category which is a foreign key to JTF_OBJECT_TYPES. For each resource assignment, this table stores duration and distance used by the Oracle Scheduler . Also, every assigned resource can have contact details.

Foreign Keys

Primary Key Table	Primary Key Column	Foreign Key Column
JTF_OBJECTS_B	OBJECT_CODE	RESOURCE_TYPE_CODE
JTF_TASKS_B	TASK_ID	TASK_ID

Column Descriptions

Name	Null?	Type	Description
TASK_ASSIGNMENT_ID (PK)	NOT NULL	NUMBER	Unique task assignment identifier
CREATED_BY	NOT NULL	NUMBER	Standard Who column - with the user id from FND_USER
CREATION_DATE	NOT NULL	DATE	Standard Who column
LAST_UPDATED_BY	NOT NULL	NUMBER	Standard Who column - with the user id from FND_USER
LAST_UPDATE_DATE	NOT NULL	DATE	Standard Who column
LAST_UPDATE_LOGIN	NULL	NUMBER	Standard Who column
OBJECT_VERSION_NUMBER	NOT NULL	NUMBER	Sequential number used for database locking control when using HTML as a user interface
TASK_ID	NOT NULL	NUMBER	Task ID (foreign key to JTF_TASKS_ALL)
RESOURCE_TYPE_CODE	NOT NULL	VARCHAR2(30)	Resource type identifier
RESOURCE_ID	NOT NULL	NUMBER	Resource ID
ASSIGNMENT_STATUS_ID	NOT NULL	NUMBER	Status identifier of the assignee
ACTUAL_EFFORT	NULL	NUMBER	Actual amount of effort spent on a task
RESOURCE_TERRITORY_ID	NULL	NUMBER	Territory identifier of the assignee
ACTUAL_EFFORT_UOM	NULL	VARCHAR2(3)	Unit of measure for actual effort
SCHEDULE_FLAG	NULL	VARCHAR2(1)	Indicates whether the resource should be scheduled by the Scheduler
ALARM_TYPE_CODE	NULL	VARCHAR2(30)	A lookup code that indicates how alarms should be sent to the resource., e.g., 'EMAIL', 'PAGER', 'PHONE'
ALARM_CONTACT	NULL	VARCHAR2(200)	Contact information for sending alarms, this field may store email address, pager number, or phone number
SHIFT_CONSTRUCT_ID	NULL	NUMBER	Shift construct identifier for the assignment
SCHED_TRAVEL_DISTANCE	NULL	NUMBER	Scheduled Travel Distance
SCHED_TRAVEL_DURATION	NULL	NUMBER	Scheduled Travel Duration
SCHED_TRAVEL_DURATION_UOM	NULL	VARCHAR2(3)	Unit of measure for Scheduled Travel Duration

Oracle Proprietary, Confidential Information--Use Restricted by Contract

ACTUAL_TRAVEL_DISTANCE	NULL	NUMBER	Actual Travel Duration
ACTUAL_TRAVEL_DURATION	NULL	NUMBER	Actual Travel Duration
ACTUAL_TRAVEL_DURATION_UOM	NULL	VARCHAR2(3)	Unit of Measure for Actual Travel Duration
ACTUAL_START_DATE	NULL	DATE	Actual start date
ACTUAL_END_DATE	NULL	DATE	Actual end date
PALM_FLAG	NULL	VARCHAR2(1)	Used by Mobile Device
WINCE_FLAG	NULL	VARCHAR2(1)	Used by Mobile Device
LAPTOP_FLAG	NULL	VARCHAR2(1)	Used by Mobile Device
DEVICE1_FLAG	NULL	VARCHAR2(1)	Used by Mobile Device
DEVICE2_FLAG	NULL	VARCHAR2(1)	Used by Mobile Device
DEVICE3_FLAG	NULL	VARCHAR2(1)	Used by Mobile Device
ATTRIBUTE1	NULL	VARCHAR2(150)	Descriptive flexfield segment column
ATTRIBUTE2	NULL	VARCHAR2(150)	Descriptive flexfield segment column
ATTRIBUTE3	NULL	VARCHAR2(150)	Descriptive flexfield segment column
ATTRIBUTE4	NULL	VARCHAR2(150)	Descriptive flexfield segment column
ATTRIBUTE5	NULL	VARCHAR2(150)	Descriptive flexfield segment column
ATTRIBUTE6	NULL	VARCHAR2(150)	Descriptive flexfield segment column
ATTRIBUTE7	NULL	VARCHAR2(150)	Descriptive flexfield segment column
ATTRIBUTE8	NULL	VARCHAR2(150)	Descriptive flexfield segment column
ATTRIBUTE9	NULL	VARCHAR2(150)	Descriptive flexfield segment column
ATTRIBUTE10	NULL	VARCHAR2(150)	Descriptive flexfield segment column
ATTRIBUTE11	NULL	VARCHAR2(150)	Descriptive flexfield segment column
ATTRIBUTE12	NULL	VARCHAR2(150)	Descriptive flexfield segment column
ATTRIBUTE13	NULL	VARCHAR2(150)	Descriptive flexfield segment column
ATTRIBUTE14	NULL	VARCHAR2(150)	Descriptive flexfield segment column
ATTRIBUTE15	NULL	VARCHAR2(150)	Descriptive flexfield segment column
ATTRIBUTE_CATEGORY	NULL	VARCHAR2(30)	Descriptive flexfield structure defining column

Indexes

<u>Index Name</u>	<u>Index Type</u>	<u>Sequence</u>	<u>Column Name</u>
JTF_TASK_ASSIGNMENTS_U1	UNIQUE	2	TASK_ASSIGNMENT_ID

Sequences

<u>Sequence</u>	<u>Derived Column</u>
JTF_TASK_ASSIGNMENTS_S	TASK_ASSIGNMENT_ID

JTF_TERR_ALL

Stores the definition of the territories. There are 3 types of territories, Standard, Escalation and Template. Information stored in this table also includes comment about this territory, effective dates, and what type of territory it is.

Foreign Keys

Primary Key Table	Primary Key Column	Foreign Key Column
JTF_TERR_ALL	TERR_ID	ESCALATION_TERRITORY_ID
JTF_TERR_ALL	TERR_ID	TEMPLATE_TERRITORY_ID
JTF_TERR_ALL	TERR_ID	PARENT_TERRITORY_ID
JTF_TERR_TYPES_ALL	TERR_TYPE_ID	TERRITORY_TYPE_ID

Column Descriptions

Name	Null?	Type	Description
TERR_ID (PK)	NOT NULL	NUMBER	Territory Identifier (Oracle Sequence).
LAST_UPDATE_DATE	NOT NULL	DATE	Standard who column.
LAST_UPDATED_BY	NOT NULL	NUMBER	Standard who column.
CREATION_DATE	NOT NULL	DATE	Standard who column.
CREATED_BY	NOT NULL	NUMBER	Standard who column.
LAST_UPDATE_LOGIN	NOT NULL	NUMBER	Standard who column.
REQUEST_ID	NULL	NUMBER	Request identifier of last concurrent program to update record.
PROGRAM_APPLICATION_ID	NULL	NUMBER	Application identifier of last concurrent program to update record.
PROGRAM_ID	NULL	NUMBER	Identifier of last concurrent program to update record.
PROGRAM_UPDATE_DATE	NULL	DATE	Last date concurrent program updated record.
APPLICATION_SHORT_NAME	NOT NULL	VARCHAR2(50)	Application short name of last concurrent program to update record.
NAME	NOT NULL	VARCHAR2(2000)	The name of the territory.
ENABLED_FLAG	NOT NULL	VARCHAR2(1)	Flag to indicate whether the territory is enabled.
START_DATE_ACTIVE	NULL	DATE	Date this territory becomes active, if limited.
END_DATE_ACTIVE	NULL	DATE	Date this territory becomes inactive, if limited.
PLANNED_FLAG	NULL	VARCHAR2(1)	Not used.
PARENT_TERRITORY_ID	NULL	NUMBER	Foreign key to JTF_TERR_ALL table. Identifier of the parent territory.
TERRITORY_TYPE_ID	NULL	NUMBER	Foreign key to JTF_TERR_TYPES_ALL table.
TEMPLATE_TERRITORY_ID	NULL	NUMBER	Foreign key to JTF_TERR_ALL table. Identifier of the template territory.
TEMPLATE_FLAG	NULL	VARCHAR2(1)	Flag to indicate if this territory is being used as a territory template.
ESCALATION_TERRITORY_ID	NULL	NUMBER	Foreign key to JTF_TERR_ALL table. Identifier of the escalation territory.

Oracle Proprietary, Confidential Information--Use Restricted by Contract

ESCALATION_TERRITORY_FLAG	NULL	VARCHAR2(1)	Flag to indicate if this territory is being used as an escalation territory.
OVERLAP_ALLOWED_FLAG	NULL	VARCHAR2(1)	Indicates whether this territory allows its qualifier values to overlap with that of another territory.
RANK	NULL	NUMBER	The ranking for this territory.
DESCRIPTION	NULL	VARCHAR2(240)	Description of this territory.
UPDATE_FLAG	NULL	VARCHAR2(1)	Not Used.
AUTO_ASSIGN_RESOURCES_FLAG	NULL	VARCHAR2(1)	Not Used.
ATTRIBUTE_CATEGORY	NULL	VARCHAR2(30)	Descriptive flexfield structure defining column.
ATTRIBUTE1	NULL	VARCHAR2(150)	Descriptive flexfield segment column.
ATTRIBUTE2	NULL	VARCHAR2(150)	Descriptive flexfield segment column.
ATTRIBUTE3	NULL	VARCHAR2(150)	Descriptive flexfield segment column.
ATTRIBUTE4	NULL	VARCHAR2(150)	Descriptive flexfield segment column.
ATTRIBUTE5	NULL	VARCHAR2(150)	Descriptive flexfield segment column.
ATTRIBUTE6	NULL	VARCHAR2(150)	Descriptive flexfield segment column.
ATTRIBUTE7	NULL	VARCHAR2(150)	Descriptive flexfield segment column.
ATTRIBUTE8	NULL	VARCHAR2(150)	Descriptive flexfield segment column.
ATTRIBUTE9	NULL	VARCHAR2(150)	Descriptive flexfield segment column.
ATTRIBUTE10	NULL	VARCHAR2(150)	Descriptive flexfield segment column.
ATTRIBUTE11	NULL	VARCHAR2(150)	Descriptive flexfield segment column.
ATTRIBUTE12	NULL	VARCHAR2(150)	Descriptive flexfield segment column.
ATTRIBUTE13	NULL	VARCHAR2(150)	Descriptive flexfield segment column.
ATTRIBUTE14	NULL	VARCHAR2(150)	Descriptive flexfield segment column.
ATTRIBUTE15	NULL	VARCHAR2(150)	
ORG_ID	NULL	NUMBER	Operating unit which performed this transaction.

Indexes

Index Name	Index Type	Sequence	Column Name
JTF_TERR_N1	NOT UNIQUE	2	END_DATE_ACTIVE
		4	START_DATE_ACTIVE
		6	ENABLED_FLAG
		8	APPLICATION_SHORT_NAME
JTF_TERR_N2	NOT UNIQUE	5	PARENT_TERRITORY_ID
JTF_TERR_N3	NOT UNIQUE	5	TERRITORY_TYPE_ID
JTF_TERR_N4	NOT UNIQUE	5	TEMPLATE_TERRITORY_ID
JTF_TERR_N5	NOT UNIQUE	5	ESCALATION_TERRITORY_ID
JTF_TERR_U1	UNIQUE	5	TERR_ID

Sequences

Sequence	Derived Column
JTF_TERR_S	TERR_ID

Oracle Proprietary, Confidential Information--Use Restricted by Contract

Oracle Proprietary, Confidential Information--Use Restricted by Contract

Index

A

Application Building Block, 1 – 6

C

Concurrent Program List, 2 – 27
See also Concurrent Program Definitions

D

Database Diagram, 1 – 6
Database Diagrams
 DBF Field Service Report, 2 – 8
 FSR Field Service Report, 2 – 10
 LF, 2 – 18
 MD, 2 – 12
 Planner Groups, 2 – 14
 TDs, 2 – 16
database diagrams, conventions, 2 – 5, 3 – 3

F

Form, 1 – 7
Form List, 2 – 27
See also Form Definitions
Forms and Table View List, 2 – 25

I

Internal View List, 2 – 26

M

Module List, 2 – 27
See also Module Definitions
Modules, 1 – 6

P

Public Table List, 2 – 20
Public View List, 2 – 24

Q

QuickCodes, 1 – 6

R

Relationship, 1 – 6
Report List. *See* Report Definitions

T

Table and View Definitions
 CS_ESTIMATE_DETAILS, 3 – 61
 CS_INCIDENTS_ALL_B, 3 – 68
 CSF_CT_TASK_ASSIGNMENTS, 2 – 25
 CSF_CT_TASKS, 2 – 25
 CSF_DEBRIEF_HEADERS, 3 – 5
 CSF_DEBRIEF_LINES, 3 – 7
 CSF_L_AGENDALAYOUTS, 3 – 21
 CSF_L_QUERIES, 3 – 22

CSF_L_QUERYREQUESTS, 3 – 23
 CSF_L_SODS, 3 – 24
 CSF_L_SODS_V, 2 – 25
 CSF_L_SOTS, 3 – 25
 CSF_LF_BLOCKS, 3 – 9
 CSF_LF_NAMES, 3 – 10
 CSF_LF_PLACE_NAMES, 3 – 12
 CSF_LF_PLACE_POSTCS, 3 – 13
 CSF_LF_PLACES, 3 – 11
 CSF_LF_POI_NAMES, 3 – 15
 CSF_LF_POIS, 3 – 14
 CSF_LF_POSTCODES, 3 – 16
 CSF_LF_ROADSEGM_NAMES, 3 – 18
 CSF_LF_ROADSEGM_PLACES, 3 – 19
 CSF_LF_ROADSEGM_POSTS, 3 – 20
 CSF_LF_ROADSEGMENTS, 3 – 17
 CSF_MD_ADM_BOUNDS, 3 – 26
 CSF_MD_HYDROS, 3 – 27
 CSF_MD_INST_STYLE_SHTS, 3 – 28
 CSF_MD_LAND_USES, 3 – 29
 CSF_MD_LYR_METADATA, 3 – 30
 CSF_MD_LYR_STYLE_SHTS, 3 – 31
 CSF_MD_NAMES, 3 – 32
 CSF_MD_POI_NM_ASGNS, 3 – 35
 CSF_MD_POIS, 3 – 34
 CSF_MD_RAIL_SEGS, 3 – 36
 CSF_MD_RD_SEGS, 3 – 38
 CSF_MD_RDSEG_NM_ASGNS, 3 – 37
 CSF_MD_THEME_METADATA, 3 – 41
 CSF_PARAMS, 3 – 42
 CSF_PLAN_TERRS, 3 – 43
 CSF_PLAN_TERRS_V, 2 – 25
 CSF_RES_INV_ASSIGNMENTS_V, 2 – 25
 CSF_SDM_CTRY_PROFILES, 3 – 44
 CSF_SELECTED_RESOURCES_V, 2 – 26
 CSF_TDS_BINARY_MAPS, 3 – 45
 CSF_TDS_BINARY_TILES, 3 – 46
 CSF_TDS_COND_SEGS, 3 – 49
 CSF_TDS_CONDITIONS, 3 – 47
 CSF_TDS_INTERVALS, 3 – 50
 CSF_TDS_NODES, 3 – 52
 CSF_TDS_RDBLCK_INTVLs, 3 – 53
 CSF_TDS_RDBLCK_SGMNTS, 3 – 54
 CSF_TDS_ROADBLOCKS, 3 – 55
 CSF_TDS_SEGM_NODES, 3 – 59
 CSF_TDS_SEGMENTS, 3 – 56
 CSF_TDS_TILES, 3 – 60
 JTF_IH_INTERACTIONS, 3 – 73
 JTF_NOTES_B, 3 – 76
 JTF_RS_GROUPS_B, 3 – 78
 JTF_RS_RESOURCE_EXTNS, 3 – 80
 JTF_TASK_ASSIGNMENTS, 3 – 86
 JTF_TASKS_B, 3 – 83
 JTF_TERR_ALL, 3 – 88

Reader's Comment Form

Oracle Field Service Technical Reference Manual A86128-01

Oracle Corporation welcomes your comments and suggestions on the quality and usefulness of this publication. Your input is an important part of the information we use for revision.

- Did you find any errors?
- Is the information clearly presented?
- Do you need more information? If so, where?
- Are the examples correct? Do you need more examples?
- What features did you like most about this manual? What did you like least about it?

If you find any errors or have any other suggestions for improvement, please indicate the topic, chapter, and page number below:

Please send your comments to:

Oracle CRM Content Development Manager
Oracle Corporation
500 Oracle Parkway
Redwood Shores, CA 94065 USA
Phone: (650) 506-7000 Fax: (650) 506-7200

If you would like a reply, please give your name, address, and telephone number below:

Thank you for helping us improve our documentation.

