

Oracle® Network Logistics Technical Reference Manual

RELEASE 11i

August 2000



Oracle® Network Logistics Technical Reference Manual
Release 11i

To order this book, ask for Part No. A86267-01

Copyright © 2000. Oracle Corporation. All rights reserved.

Major Contributors:

Contributors:

This Technical Reference Manual (TRM) in any form, software or printed matter, contains proprietary information of Oracle Corporation; it is provided under an Oracle Corporation agreement containing restrictions on use and disclosure and is also protected by copyright, patent, and other intellectual property law. Restrictions applicable to this TRM include, but are not limited to: (a) exercising either the same degree of care to safeguard the confidentiality of this TRM as you exercise to safeguard the confidentiality of your own most important Confidential Information or a reasonable degree of care, whichever is greater; (b) maintaining agreements with your employees and agents that protect the Confidential Information of third parties such as Oracle Corporation and instructing such employees and agents of these requirements for this TRM; (c) restricting disclosure of this TRM to those of your employees who have a "need to know" consistent with the purposes for which this TRM was disclosed to you; (d) maintaining this TRM at all times on your premises; (e) not removing or destroying any proprietary or confidential legends or markings placed upon this TRM in whatever form, software or printed matter; and (f) not reproducing or transmitting this TRM in any form or by any means, electronic or mechanical, for any purpose, without the express written permission of Oracle Corporation. You should not use this TRM in any form, software or printed matter, to create software that performs the same or similar functions as any Oracle Corporation products.

The information in this TRM is subject to change without notice. If you find any problems in the TRM in any form, software or printed matter, please report them to us in writing. Oracle Corporation does not warrant that this TRM is error-free. This TRM is provided to customer "as-is" with no warranty of any kind. This TRM does not constitute Documentation as that term is defined in Oracle's agreements.

Reverse engineering of the Programs (software and documentation) associated with this TRM are prohibited. The Programs associated with this TRM are not intended for use in any nuclear, aviation, mass transit, medical, or other inherently dangerous applications. It shall be licensee's responsibility to take all appropriate fail-safe, back-up, redundancy and other measures to ensure the safe use of such applications if the Programs are used for such purposes, and Oracle disclaims liability for any damages caused by such use of the Programs.

Program Documentation is licensed for use solely to support the deployment of the Programs and not for any other purpose.

Restricted Rights Legend

This TRM and the Programs associated with this TRM delivered subject to the DOD FAR Supplement are 'commercial computer software' and use, duplication and disclosure of the TRM and the Programs associated with this TRM shall be subject to the licensing restrictions set forth in the applicable Oracle license agreement. Otherwise, this TRM and the Programs associated with this TRM delivered subject to the Federal Acquisition Regulations are 'restricted computer software' and use, duplication and disclosure of the TRM and the Programs associated with this TRM shall be subject to the restrictions in FAR 52.227-14, Rights in Data -- General, including Alternate III (June 1987). Oracle Corporation, 500 Oracle Parkway, Redwood City, CA 94065.

Oracle is a registered trademark, and Oracle Network Logistics, CASE*Exchange, Enabling the Information Age, Hyper*SQL, NLS*Workbench, Oracle7, Oracle8, Oracle 8i, Oracle Access, Oracle Application Object Library, Oracle Discoverer, Oracle Financials, Oracle Quality, Oracle Web Customers, Oracle Web Employees, Oracle Work in Process, Oracle Workflow, PL/SQL, Pro*Ada, Pro*C, Pro*COBOL, Pro*FORTRAN, Pro*Pascal, Pro*PL/I, SmartClient, SQL*Connect, SQL*Forms, SQL*Loader, SQL*Menu, SQL*Net, SQL*Plus, and SQL*Report are trademarks or registered trademarks of Oracle Corporation. Other names may be trademarks of their respective owners.



CAUTION

This Technical Reference Manual in any form -- software or printed matter -- contains proprietary, confidential information that is the exclusive property of Oracle Corporation. If you do not have a valid contract with Oracle for the use of this Technical Reference Manual or have not signed a non-disclosure agreement with Oracle covering this Technical Reference Manual, then you received this document in an unauthorized manner and are not legally entitled to possess or read it.

Use, duplication, and disclosure are subject to restrictions stated in your contract with Oracle Corporation.



Contents

| | | |
|------------------|-------------------------------------|--------------|
| Chapter 1 | Introduction | 1 – 1 |
| Chapter 2 | High-Level Design | 2 – 1 |
| | Overview of High-Level Design | 2 – 2 |
| | Database Diagrams | 2 – 8 |
| | Public Table List | 2 – 10 |
| | Public View List | 2 – 12 |
| | Forms and Table View List | 2 – 13 |
| | Internal View List | 2 – 14 |
| | Module List | 2 – 15 |
| Chapter 3 | Detailed Design | 3 – 1 |
| | Overview of Detailed Design | 3 – 2 |
| | Table and View Definitions | 3 – 3 |

Oracle Proprietary, Confidential Information--Use Restricted by Contract

CHAPTER

1

Introduction

The *Oracle Network Logistics Technical Reference Manual* provides the information you need to understand the underlying structure of Oracle Network Logistics. After reading this manual, you should be able to convert your existing applications data, integrate your existing applications with Oracle Network Logistics, and write custom reports for Oracle Network Logistics, as well as read data that you need to perform other tasks.

This chapter introduces you to the *Oracle Network Logistics Technical Reference Manual*, and explains how to use it.

Introduction

At Oracle, we design and build applications using Oracle Designer, our systems design technology that provides a complete environment to support developers through all stages of a systems life cycle. Because we use a repository-based design toolset, all the information regarding the underlying structure and processing of our applications is available to us online. Using Oracle Designer, we can present this information to you in the form of a technical reference manual.

This *Oracle Network Logistics Technical Reference Manual* contains detailed, up-to-date information about the underlying structure of Oracle Network Logistics. As we design and build new releases of Oracle Network Logistics, we update our Oracle Designer repository to reflect our enhancements. As a result, we can always provide you with an *Oracle Network Logistics Technical Reference Manual* that contains the latest technical information as of the publication date. Note that after the publication date we may have added new indexes to Oracle Network Logistics to improve performance.

About this Manual

This manual describes the Oracle Customer Relationship Management (CRM) Applications Release 11i data model, as used by Oracle Network Logistics; it discusses the database we include with a fresh install of Oracle CRM Release 11i. If you have not yet upgraded to Release 11i, your database may differ from the database we document in this book.

You can contact your Oracle representative to confirm that you have the latest technical information for Oracle Network Logistics. You can also use Oracle *MetaLink* which is accessible through Oracle's Support Web Center (http://www.oracle.com/support/elec_sup).

Finding the Latest Information

The *Oracle Network Logistics Technical Reference Manual* contains the latest information as of the publication date. For the latest information we encourage you to use Oracle *MetaLink* which is accessible through Oracle's Support Web Center (http://www.oracle.com/support/elec_sup).

Oracle Proprietary, Confidential Information--Use Restricted by Contract

Audience

The *Oracle Network Logistics Technical Reference Manual* provides useful guidance and assistance to:

- Technical End Users
- Consultants
- Systems Analysts
- System Administrators
- Other MIS professionals

This manual assumes that you have a basic understanding of structured analysis and design, and of relational databases. It also assumes that you are familiar with Oracle Application Object Library and Oracle Network Logistics. If you are not familiar with the above products, we suggest that you attend one or more of the training classes available through Oracle Education (see: Other Information Sources: page 1 – 7).

How This Manual is Organized

This manual contains two major sections, High-Level Design and Detailed Design.

High-Level Design

This section, Chapter 2, contains database diagrams and lists each database table and view that Oracle Network Logistics uses. This chapter also has a list of modules.

Detailed Design

This section, Chapter 3, contains a detailed description of the Oracle Network Logistics database design, including information about each database table and view you might need for your custom reporting or other data requirements.

How to Use This Manual

The *Oracle Network Logistics Technical Reference Manual* is a single, centralized source for all the information you need to know about the underlying structure and processing of Oracle Network Logistics. For example, you can use this manual when you need to:

- Convert existing application data
- Integrate your Oracle Network Logistics application with your other applications systems
- Write custom reports
- Define alerts against Oracle Applications tables
- Configure your Oracle Self-Service Web Applications
- Create views for decision support queries using query tools
- Create business views for Oracle Discoverer

You need not read this manual cover to cover. Use the table of contents and index to quickly locate the information you need.

How Not To Use This Manual

Do not use this manual to plan modifications

You should not use this manual to plan modifications to Oracle Network Logistics. Modifying Oracle Network Logistics limits your ability to upgrade to future releases of your Oracle Network Logistics application. In addition, it interferes with our ability to give you the high-quality support you deserve.

We have constructed Oracle Network Logistics so that you can customize it to fit your needs without programming, and you can integrate it with your existing applications through interface tables. However, should you require program modifications, you should contact our support team (see: Other Information Sources: page 1 – 7). They can put you in touch with Oracle Services, the professional consulting organization of Oracle. Their team of experienced applications professionals can make the modifications you need while ensuring upward compatibility with future product releases.

Oracle Proprietary, Confidential Information--Use Restricted by Contract

Do not write data into non-interface tables

Oracle reserves the right to change the structure of Oracle Applications tables, and to change the meaning of, add, or delete lookup codes and data in future releases. Do not write data directly into or change data in non-interface tables using SQL*Plus or other programming tools because you risk corrupting your database and interfering with our ability to support you.

Moreover, this version of the *Oracle Network Logistics Technical Reference Manual* does not contain complete information about the dependencies between Oracle Network Logistics applications tables. Therefore, you should write data into only those tables we identify as interface tables. If you write data into other non-interface tables, you risk violating your data integrity since you might not fulfill all the data dependencies in your Oracle Network Logistics application.

You are responsible for the support and upgrade of the logic within the procedures that you write, which may be affected by changes between releases of Oracle Applications.

Do not rely on upward compatibility of the data model

Oracle reserves the right to change the structure of Oracle Network Logistics tables, and to change the meaning of, add, or delete lookup codes and other data in future releases. We do not guarantee the upward compatibility of the Oracle Network Logistics data model. For example, if you write a report that identifies concurrent requests that end in Error status by selecting directly from Oracle Application Object Library tables, we do not guarantee that your report will work properly after an upgrade.

About Oracle Application Object Library

The *Oracle Network Logistics Technical Reference Manual* may contain references to tables that belong to Oracle Application Object Library. Oracle Application Object Library is a collection of pre-built application components and facilities for building Oracle Applications and extensions to Oracle Applications. Oracle Application Coding Standards use the Oracle Application Object Library and contains shared components including but not limited to -- forms, subroutines, concurrent programs and reports, database tables and objects, messages, menus, responsibilities, flexfield definitions and online help.



Attention: Oracle does not support *any* customization of Oracle Application Object Library tables or modules, not even by Oracle consultants. (Oracle Application Object Library tables generally have names beginning with FND_%.)

Accordingly, this manual does not contain detailed information about most Oracle Application Object Library tables used by Oracle Network Logistics.

A Few Words About Terminology

The following list provides you with definitions for terms that we use throughout this manual:

Relationship

A relationship describes any significant way in which two tables may be associated. For example, rows in the Journal Headers table may have a one-to-many relationship with rows in the Journal Lines table.

Database Diagram

A database diagram is a graphic representation of application tables and the relationships between them.

Module

A module is a program or procedure that implements one or more business functions, or parts of a business function, within an application. Modules include forms, concurrent programs and reports, and subroutines.

Application Building Block

An application building block is a set of tables and modules (forms, reports, and concurrent programs) that implement closely-related database objects and their associated processing. Said another way, an application building block is a logical unit of an application.

QuickCodes

QuickCodes let you define general purpose, static lists of values for window fields. QuickCodes allow you to base your program logic on lookup codes while displaying user-friendly names in a list of values

Oracle Proprietary, Confidential Information--Use Restricted by Contract

window. QuickCodes simplify name and language changes by letting you change the names your end users see, while the codes in your underlying programs remain the same.

Form

A form is a module comprised of closely related windows that are used together to perform a task. For example, the Enter Journals form in Oracle General Ledger includes the Enter Journals window, the Batch window, and the More Actions window among others. The Enter Journals window is the main window, and from it, you can use buttons to navigate to other windows in the form. The form name usually corresponds to the main window in the form, and is frequently a window you open directly from the Navigator.

Other Information Sources

Installation and System Administration

Training

Oracle Education offers a complete set of training courses to help you and your staff master Oracle CRM Applications. We can help you develop a training plan that provides thorough training for both your project team and your end users. We will work with you to organize courses appropriate to your job or area of responsibility.

Training professionals can show you how to plan your training throughout the implementation process so that the right amount of information is delivered to key people when they need it the most. You can attend courses at any one of our many Educational Centers, or you can arrange for our trainers to teach at your facility. In addition, we can tailor standard courses or develop custom courses to meet your needs.

Support

From on-site support to central support, our team of experienced professionals provides the help and information you need to keep Oracle Network Logistics working for you. This team includes your Technical Representative, Account Manager, and Oracle's large staff of consultants and support specialists with expertise in your business

area, managing an Oracle server, and your hardware and software environment.

About Oracle

Oracle Corporation develops and markets an integrated line of software products for database management, applications development, decision support, and office automation, as well as Oracle Applications, an integrated suite of more than 75 software modules for financial management, supply chain management, manufacturing, project systems, human resources, and sales and service management.

Oracle products are available for mainframes, minicomputers, personal computers, network computers, and personal digital assistants, allowing organizations to integrate different computers, different operating systems, different networks, and even different database management systems, into a single, unified computing and information resource.

Oracle is the world's leading supplier of software for information management, and the world's second largest software company. Oracle offers its database, tools, and applications products, along with related consulting, education, and support services, in over 145 countries around the world.

Thank You

Thanks for using Oracle Network Logistics and this technical reference manual!

We appreciate your comments and feedback. After the Table of Contents of this manual is a Reader's Comment Form that you can use to explain what you like or dislike about Oracle Network Logistics or this technical reference manual. Mail your comments to the following address or call us directly at (650) 506-7000.

Oracle CRM Applications Content Development Manager
Oracle Corporation
500 Oracle Parkway
Redwood Shores, California 94065
U.S.A.

Oracle Proprietary, Confidential Information--Use Restricted by Contract

CHAPTER

2

High-Level Design

This chapter presents a high-level design for Oracle Network Logistics that satisfies the business needs we specify during Strategy and Analysis. It contains database diagrams for Oracle Network Logistics application building blocks, lists of database tables and views, and a list of modules.

Overview of High-Level Design

During High-Level Design, we define the application components (tables, views, and modules) we need to build our application. We specify what application components should do without specifying the details of *how* they should do it.

You can refer to this High-Level Design chapter to quickly acquaint yourself with the tables, views, and modules that comprise Oracle Network Logistics applications. And, you can prepare yourself to understand the detailed design and implementation of Oracle Network Logistics.

Database Diagrams

The Database Diagrams section graphically represents all Oracle Network Logistics applications tables and the relationships between them, organized by building block.

Use this section to quickly learn what tables each Oracle Network Logistics application building block uses, and how those tables interrelate. Then, you can refer to the Table and View Definitions sections of Chapter 3 for more detailed information about each of those tables.

Table Lists

The Table List sections list the Oracle Network Logistics applications tables. Because a product might not include at least one table for each type, this Technical Reference Manual might not include each of the following sections.

Public Tables

Use the Public Table List section to quickly identify the tables you are most interested in. Then, you can refer to the Table and View Definitions sections of Chapter 3 for more detailed information about those tables.

In addition, this manual may contain full documentation for one or more of the following Application Object Library tables: FND_DUAL, FND_CURRENCIES, and FND_COMMON_LOOKUPS.

Oracle Proprietary, Confidential Information--Use Restricted by Contract

Internal Tables

This section includes a list of private, internal tables used by Oracle Network Logistics; we do not provide additional documentation for these tables.

View Lists

The View List sections list the Oracle Network Logistics views, with one section for each type of view. Because a product might not include at least one view for each type, this Technical Reference Manual might not include each of the following sections.

Use this section to quickly identify the views you are most interested in. Then, you can refer to the Table and View Definitions sections of Chapter 3 for more detailed information about those views.

Public Views

This section lists views that may be useful for your custom reporting or other data requirements. The list includes a description of the view, and the page in Chapter 3 that gives detailed information about the public view.

Web Views

This section lists views that you may need to configure your Self-Service Web applications. The list includes a description of the view, and the page in Chapter 3 that gives detailed information about the web view.

Forms and Table Views

This section lists supplementary views that are not essential to the Release 11i data model, but simplify coding or improve performance for Oracle Developer.

Internal Views

This section includes each private, internal view that Oracle Network Logistics uses.

Multiple Reporting Currency Views

This list includes views that were created to support the Multiple Reporting Currencies feature.

Module List

The Module List section briefly describes each of the Oracle Network Logistics applications modules. This section lists forms, reports, and concurrent programs.

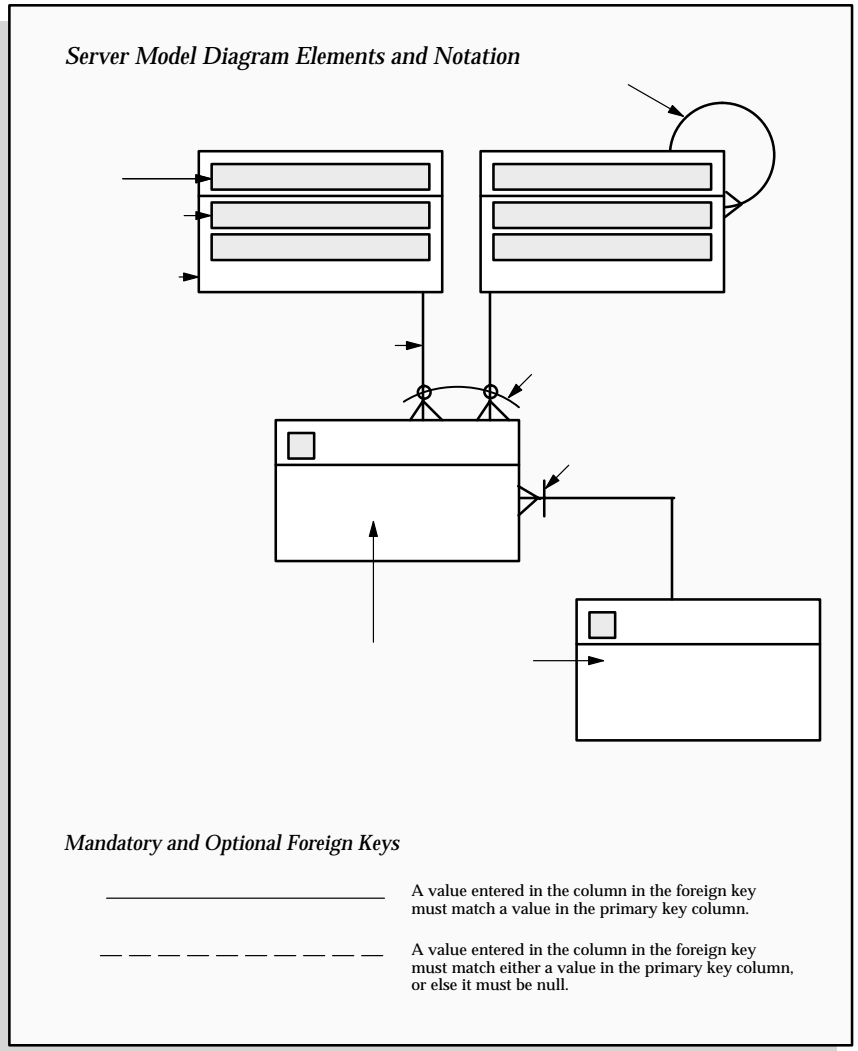
A form is a module comprised of closely related windows that are used together to perform a task. For example, the Enter Journals form in Oracle General Ledger includes the Enter Journals window, the Batch window, and the More Actions window. The Enter Journals window is the main window, and from it, you can use buttons to navigate to other windows in the form. The form name usually corresponds to the main window in the form, and is frequently a window you can open directly from the Navigator.

The Reports and Concurrent Programs lists include processes you can submit from the Submit Requests window or other windows, as well as processes that are submitted automatically by Oracle Network Logistics. Use your user's guide to learn more about reports and concurrent processes.

Database Diagramming Conventions

We use the following notational conventions in our database diagrams:

Figure 2 - 1
Database Diagram
Conventions



Tables – are the basic unit of storage in the database. A hand symbol preceding the title in the table's title bar indicates that the table is not owned by this application but shared with another.

Foreign key constraint – is a type of referential integrity constraint for checking the integrity of data entered in a specific column or set of columns. This specified column or set of columns is known as the foreign key.

Delete rule indicator – determines the action to be taken when an attempt is made to delete a related row in a join table. A line through the foreign key constraint, as shown on the above diagram, indicates that this action is restricted.

Arcs – specify that, for any given row in a table, a value must be entered in one of the arc columns. The remaining columns within the arc must be null.



Database Diagrams

This section graphically represents most of the significant Oracle Network Logistics tables and the relationships between them, organized by building block. Use this section to quickly learn what tables each Oracle Network Logistics application building block uses, and how these tables interrelate. Then, you can refer to the Table and View Definitions sections of Chapter 3 for more detailed information about each of those tables.

This section contains a database diagram for each of the following Oracle Network Logistics application building blocks:

- Diagram 1: Network Logistics

Some tables, especially important reference tables, appear in more than one database diagram. When several building blocks use a table, we show that table in each appropriate database diagram.

Network Logistics

Public Table List

This section lists each public database table that Oracle Network Logistics uses and provides a brief description of each of those tables. The page reference is to the table description in Chapter 3.

Note that "public" tables are not necessarily intended for write access by custom code; Oracle Corporation supports write access using only standard Oracle Applications forms, reports, and programs, or any SQL write access to tables explicitly documented as API tables. For more information, see the How Not To Use This Manual section of this book's Introduction.

Oracle Network Logistics uses the following Public tables:

| Table Name | Description |
|-------------------------------|----------------------------------------------------------------------------------------------|
| CUN_EQUIPMENT_CODES | Manufacturer equipment codes (See page 3 – 8) |
| CUN_EQUIPMENT_CODES_INTERFACE | Manufacturer equipment code interface table (See page 3 – 9) |
| CUN_ERROR_LOG | Error log table (See page 3 – 10) |
| CUN_INIT_LOAD_INTERFACE | Initial load interface table (See page 3 – 11) |
| CUN_LOCATIONS | Network Logistics location mapping table (See page 3 – 12) |
| CUN_NON_SERIALIZED_UNITS | Non-serialized unit table (See page 3 – 13) |
| CUN_REDO_LOG | Redo log table (See page 3 – 15) |
| CUN_SERIALIZED_UNITS | Serialized unit table (See page 3 – 16) |
| CUN_TRANSACTIONS | Transaction history table (See page 3 – 18) |
| CUN_TRANS_ERRORS | Internal table that holds transaction errors from the source systems (See page 3 – 21) |
| CUN_TRANS_TEMP | Internal table that holds temporary transaction information (See page 3 – 22) |
| FA_DISTRIBUTION_HISTORY | Employee, location, and Accounting Flexfield values assigned to each asset (See page 3 – 23) |
| FA_LOCATIONS | Location flexfield segment value combinations (See page 3 – 26) |
| FND_LOOKUP_TYPES | Oracle Application Object Library QuickCodes |

Oracle Proprietary, Confidential Information--Use Restricted by Contract

FND_LOOKUP_VALUES

QuickCode values

MTL_MATERIAL_TRANSACTIONS

Material transaction table (See page 3 – 28)

MTL_SYSTEM_ITEMS_B

Inventory item definitions (See page 3 – 35)

Public View List

This section lists each public database view that Oracle Network Logistics uses and provides a brief description of each of those views. These views may be useful for your custom reporting or other data requirements. The page reference is to the detailed view description in Chapter 3.

Oracle Network Logistics uses the following public views:

| View Name | Description |
|------------------|-------------------------------------------------------------------------------------------------------|
| CUN_LOCATIONS_V | CUN_LOCATIONS_V is created based on CUN_LOCATIONS table, HR_LOCATIONS view and FA_LOCATIONS_KFV view. |

Forms and Table View List

This section lists supplementary views that are not essential to the Release 11i data model, but simplify coding or improve performance of Developer. For example, many of these views are used as base tables in Oracle Network Logistics forms.



Warning: We do not recommend you query or alter data using these views. Furthermore, these views may change dramatically in subsequent minor or major releases of Oracle Network Logistics.

Oracle Network Logistics uses the following Forms and Table views:

- CUN_ASSET_ADDITIONS_UNITS_V
- CUN_ASSET_UNITS_V
- CUN_ITEMS_V
- CUN_ITEM_NETWORK_UNITS_V
- CUN_ITEM_SUMMARY_V
- CUN_PROJECT_SHIPMENT_V
- CUN_REDO_LOG_V
- CUN_SERIALIZED_UNITS_V
- CUN_TRANSACTIONS_V
- CUN_TRANSACTION_HIST_V

Internal View List

This section lists each private, internal view that Oracle Network Logistics uses.



Warning: Oracle Corporation does not support access to Oracle Applications data using these views, except from standard Oracle Applications forms, reports, and programs.

Oracle Network Logistics uses the following internal views:

- CUN_AP_PA_INVOICES_V

Module List

This section lists each form, report and concurrent program comprising Network Logistics.

Forms

| | |
|----------|-----------------------------|
| CUNADJST | Adjustment |
| CUNCLEIC | Manufacturer Equipment Code |
| CUNINQRY | Inquiry |
| CUNNILOC | Network Location |
| CUNTOMAI | Move Order |

Reports

| | |
|----------|------------------|
| CUNBOFLD | Bill of Lading |
| CUNERRLG | Error Log |
| CUNLOSDR | Loss Rate Report |
| CUNRDOLG | Redo Log Report |

Oracle Proprietary, Confidential Information--Use Restricted by Contract

CHAPTER

3

Detailed Design

This chapter presents a detailed design for implementing Oracle Network Logistics. It contains detailed definitions of tables and views that you may need to reference to write custom reports or use for other data extraction.

Overview of Detailed Design

During Detailed Design, we specify in detail how each applications component should work. We prepare detailed definitions of tables and views.

You can refer to this Detailed Design chapter to gain a detailed understanding of the underlying structure and processing of Oracle Network Logistics that enables you to:

- Convert existing application data
- Integrate your Oracle Network Logistics application with your other applications systems
- Write custom reports
- Define alerts against Oracle Applications tables
- Create views for decision support queries using query tools

Table and View Definitions

The Table and View Definitions section contains a detailed definition of Oracle Network Logistics applications tables. For each table, it provides information about primary keys, foreign keys, QuickCodes, indexes, triggers, and sequences. It also gives you a detailed description of each column and its characteristics. In addition, it provides the SQL statement that defines each view. Review this section to get a detailed understanding of what tables your Oracle Network Logistics application contains, and how it uses them to hold and access the information it needs.

Table and View Definitions

This section contains a detailed description of each Oracle Network Logistics table and view that you may need to reference. For each table, it presents detailed information about:

- Primary keys
- Foreign keys
- Column descriptions
- Indexes
- Oracle sequences
- Triggers
- View derivations

Because Oracle does not support customization of Oracle Application Object Library tables, we do not provide you with detailed information about them. Consequently, this section does not document all the FND_% tables Oracle Network Logistics uses.

The following sections appear in each table or view description:

Foreign Keys

To help you understand the relationships between tables, we list each foreign key contained in a table. For each foreign key in a table, we list the primary key table name (the table to which a foreign key refers), its corresponding primary key columns, and the foreign key columns that refer to those primary key columns.

When the primary key table has a composite primary key, we list each column of the composite key sequentially.

If a table contains two or more distinct foreign keys that refer to the same primary key table, we repeat the primary key table name and list each of the distinct foreign keys separately.

QuickCodes Columns

When a database column contains a QuickCodes value, which we implement using a foreign key to FND_LOOKUPS, MFG_LOOKUPS, or to some other lookup table, we list the QuickCodes type (lookup

Oracle Proprietary, Confidential Information--Use Restricted by Contract

type) to which the QuickCodes value must belong and a complete list of QuickCodes values and meanings. Some QuickCodes can be defined by you in the application. These values are designated as User-defined.

Column Descriptions

We list the important characteristics of each column in a table or view. These characteristics include whether the column is part of the table's primary key, whether Oracle8i requires a value for this column, and the data type of the column. We also give you a brief description of how Oracle Network Logistics uses the column.

When a column is part of a table's primary key, we append the notation (PK) to the name of that column.

To help you understand which columns Oracle Network Logistics uses and which columns it does not use, we alert you to any unused column. When no module uses a database column, we show one of the following legends in the Description column:

| | |
|----------------------------|----------------------------------------------------------------------------------------------------------------------------------------------------------------------------------------------------------------------------------------------------------------------------------------------------------|
| Not currently used | Oracle Network Logistics does not use this column, although the column might be used in a future release. |
| No longer used | Oracle Network Logistics no longer uses this column. AutoInstall installs this column. Subsequent versions of Oracle Network Logistics might not include this column. |
| No longer installed | Oracle Network Logistics no longer uses this column. If you <i>upgraded</i> your software from an earlier version, you may still have this column, depending upon whether you chose to delete it during an upgrade process. If you <i>install</i> Oracle Network Logistics, you do not have this column. |

Standard Who Columns

Most Oracle Network Logistics tables contain standard columns to support \ **Row Who**. When your program or SQL*Plus command selects a row from a table, use these columns to determine who last updated the row. If your program or SQL*Plus command updates or

inserts a row in an interface table, you must populate each of the five standard Who columns:

| | |
|--------------------------------|--------------------------------------------------------------------------------------------------------------------------------------------------------------------------|
| <code>LAST_UPDATE_DATE</code> | Date when a user last updated this row |
| <code>LAST_UPDATED_BY</code> | User who last updated this row (foreign key to <code>FND_USER.USER_ID</code>) |
| <code>CREATION_DATE</code> | Date when this row was created |
| <code>CREATED_BY</code> | User who created this row (foreign key to <code>FND_USER.USER_ID</code>) |
| <code>LAST_UPDATE_LOGIN</code> | Operating system login of user who last updated this row (foreign key to <code>FND_LOGINS.LOGIN_ID</code>). You should set this to NULL, or to 0 if NULL is not allowed |

Since every table containing Who columns has several foreign keys to the tables `FND_USER` and `FND_LOGINS`, we do not include the foreign key columns `LAST_UPDATED_BY`, `CREATED_BY`, or `LAST_UPDATE_LOGIN` in a table's list of foreign keys.

Additional Who Columns for Concurrent Programs

Some Oracle Network Logistics tables also contain several additional Who columns to distinguish between changes a user makes with a form and changes a concurrent program makes. When a concurrent program updates or inserts a row in a table, the concurrent program populates the following additional Who columns:

| | |
|-------------------------------------|-------------------------------------------------------------------------------------------------------------------------------|
| <code>REQUEST_ID</code> | Concurrent request ID of program that last updated this row (foreign key to <code>FND_CONCURRENT_REQUESTS.REQUEST_ID</code>) |
| <code>PROGRAM_APPLICATION_ID</code> | Application ID of program that last updated this row (foreign key to <code>FND_APPLICATION.APPLICATION_ID</code>) |
| <code>PROGRAM_ID</code> | Program ID of program that last updated this row (foreign key to <code>FND_CONCURRENT_PROGRAM.CONCURRENT_PROGRAM_ID</code>) |
| <code>PROGRAM_UPDATE_DATE</code> | Date when a program last updated this row |

Since every table containing these additional Who columns has several foreign keys to the tables FND_CONCURRENT_REQUESTS, FND_APPLICATION, and FND_CONCURRENT_PROGRAM, we do not include the foreign key columns REQUEST_ID, PROGRAM_APPLICATION_ID, or PROGRAM_ID in a table's list of foreign keys.

Indexes

If an Oracle Network Logistics table uses an Oracle8i index, we list the database columns that comprise that index, in sequential order.

Note: The indexes we document in this manual correspond to unique keys we specified during product development and testing. In some cases, we may add additional indexes during the porting process to fine-tune performance on specific platforms; therefore, there may be minor differences between the indexes documented in this book and the indexes for production versions of Oracle Network Logistics.

Sequences

Oracle Network Logistics uses Oracle8i sequence generators to generate unique integers. If any table column gets its value from an Oracle8i sequence generator, we list the name of the corresponding sequence generator and the name of the column that stores the unique integer.

Database Triggers

If a table has one or more active database triggers, we provide a brief explanation of each database trigger and when it fires.

View Derivation

For each Oracle Network Logistics view you may need to reference, we include important elements from the SQL statement that defines or

Oracle Proprietary, Confidential Information--Use Restricted by Contract

creates a view. By studying this view definition, you can understand exactly how a view derives its contents.

CUN_EQUIPMENT_CODES

CUN_EQUIPMENT_CODES stores the equipment codes from the manufacturer and the equipment codes will also be loaded into the MTL_LOT_NUMBERS table as lot numbers.

Column Descriptions

| Name | Null? | Type | Description |
|----------------------------------|----------|--------------|----------------------------------------|
| ITEM_ID (PK) | NOT NULL | NUMBER | Inventory item identifier |
| ORGANIZATION_ID (PK) | NOT NULL | NUMBER | Inventory organization identifier |
| MANUFACTURER_EQUIPMENT_CODE (PK) | NOT NULL | VARCHAR2(30) | Manufacturer equipment code |
| VENDOR_ID | NULL | NUMBER | Vendor identifier |
| MANUFACTURER_NAME | NULL | VARCHAR2(80) | Manufacturer name |
| MODEL_NUMBER | NULL | VARCHAR2(80) | Manufacturer model number |
| EXPIRATION_DATE | NULL | DATE | Expiration date for the equipment code |
| CREATION_DATE | NOT NULL | DATE | Standard Who column |
| CREATED_BY | NOT NULL | NUMBER | Standard Who column |
| LAST_UPDATE_DATE | NOT NULL | DATE | Standard Who column |
| LAST_UPDATED_BY | NOT NULL | NUMBER | Standard Who column |
| LAST_UPDATE_LOGIN | NOT NULL | NUMBER | Standard Who column |

Indexes

| Index Name | Index Type | Sequence | Column Name |
|------------------------|------------|----------|-----------------------------|
| CUN_EQUIPMENT_CODES_U1 | UNIQUE | 1 | ITEM_ID |
| | | 2 | ORGANIZATION_ID |
| | | 3 | MANUFACTURER_EQUIPMENT_CODE |

CUN_EQUIPMENT_CODES_INTERFACE

CUN_EQUIPMENT_CODES_INTERFACE is the interface table for loading equipment codes from external systems into Network Logistics.

Column Descriptions

| Name | Null? | Type | Description |
|----------------------------------|----------|---------------|----------------------------------------|
| ITEM_ID (PK) | NOT NULL | NUMBER | Inventory item identifier |
| ORGANIZATION_ID (PK) | NOT NULL | NUMBER | Inventory organization identifier |
| MANUFACTURER_EQUIPMENT_CODE (PK) | NOT NULL | VARCHAR2(30) | Manufacturer equipment code |
| VENDOR_ID | NULL | NUMBER | Vendor identifier |
| MANUFACTURER_NAME | NULL | VARCHAR2(80) | Manufacturer name |
| MODEL_NUMBER | NULL | VARCHAR2(80) | Manufacturer model number |
| EXPIRATION_DATE | NULL | DATE | Expiration date for the equipment code |
| CREATION_DATE | NOT NULL | DATE | Standard Who column |
| CREATED_BY | NOT NULL | NUMBER | Standard Who column |
| LAST_UPDATE_DATE | NOT NULL | DATE | Standard Who column |
| LAST_UPDATED_BY | NOT NULL | NUMBER | Standard Who column |
| LAST_UPDATE_LOGIN | NOT NULL | NUMBER | Standard Who column |
| PROCESS_FLAG | NOT NULL | VARCHAR2(1) | Process flag |
| ERROR_CODE | NULL | VARCHAR2(30) | Error code |
| ERROR_DESC | NULL | VARCHAR2(240) | Error description |

CUN_ERROR_LOG

CUN_ERROR_LOG stores the information for all errors occurred during the processing of Network Logistics event messages.

Column Descriptions

| Name | Null? | Type | Description |
|----------------------|----------|----------------|--------------------------------------|
| ERROR_LOG_ID (PK) | NOT NULL | NUMBER | Error log unique identifier |
| ERROR_MESSAGE_NUMBER | NOT NULL | VARCHAR2(30) | Error message code |
| ERROR_DESCRIPTION | NOT NULL | VARCHAR2(2000) | Error description |
| MESSAGE_ID | NOT NULL | NUMBER | Network Logistics message identifier |
| CREATION_DATE | NOT NULL | DATE | Standard Who column |
| CREATED_BY | NOT NULL | NUMBER | Standard Who column |
| LAST_UPDATE_DATE | NOT NULL | DATE | Standard Who column |
| LAST_UPDATED_BY | NOT NULL | NUMBER | Standard Who column |
| LAST_UPDATE_LOGIN | NOT NULL | NUMBER | Standard Who column |

Indexes

| Index Name | Index Type | Sequence | Column Name |
|------------------|------------|----------|--------------|
| CUN_ERROR_LOG_U1 | UNIQUE | 1 | ERROR_LOG_ID |

CUN_INIT_LOAD_INTERFACE

CUN_INIT_LOAD_INTERFACE is the table for loading items or asset units from external systems into Network Logistics. You use the Initial Load process to validate and import the data into the Network Logistics tables.

Column Descriptions

| Name | Null? | Type | Description |
|-------------------------|----------|---------------|--------------------------------------------------------------------------------------------------------------|
| INIT_LOAD_ID (PK) | NOT NULL | NUMBER | Initial load unit identifier |
| ITEM_ID | NOT NULL | NUMBER | Inventory item identifier |
| ORGANIZATION_ID | NOT NULL | NUMBER | Inventory organization identifier |
| QUANTITY | NOT NULL | NUMBER | Unit quantity |
| STATUS | NULL | VARCHAR2(30) | Network logistics unit status |
| SUBINVENTORY | NULL | VARCHAR2(30) | Subinventory code |
| LOCATOR_ID | NULL | NUMBER | Inventory locator identifier |
| REVISION | NULL | VARCHAR2(30) | Inventory item revision code |
| SERIAL_NUMBER | NULL | VARCHAR2(30) | Inventory serial number |
| VENDOR_SERIAL_NUMBER | NULL | VARCHAR2(30) | Vendor serial number |
| LOT_NUMBER | NULL | VARCHAR2(30) | Inventory lot number |
| FA_DISTRIBUTION_ID | NULL | NUMBER | Fixed asset distribution identifier |
| HZ_LOCATION_ID | NULL | NUMBER | HZ location identifier. This refers to the CUN_LOCATION_ID column in the CUN_LOCATIONS table in Release 11i. |
| PROJECT_ID | NULL | NUMBER | Project identifier |
| TASK_ID | NULL | NUMBER | Project task identifier |
| NETWORK_NUMBER | NULL | VARCHAR2(30) | Reserved for future use |
| VENDOR_ID | NULL | NUMBER | Vendor identifier |
| ASSET_GROUPING_ELEMENT1 | NULL | VARCHAR2(150) | Asset grouping element 1 |
| ASSET_GROUPING_ELEMENT2 | NULL | VARCHAR2(150) | Asset grouping element 2 |
| ASSET_GROUPING_ELEMENT3 | NULL | VARCHAR2(150) | Asset grouping element 3 |
| UTILIZATION | NULL | NUMBER | Reserved for future use |
| UTILIZATION_UOM | NULL | VARCHAR2(30) | Reserved for future use |
| CIRCUIT_ID | NULL | NUMBER | Reserved for future use |
| CAPACITY | NULL | NUMBER | Reserved for future use |
| REFERENCE_DATA | NULL | VARCHAR2(8) | Reserved for future use |
| LAST_TRANSACTION_ID | NULL | NUMBER | Transaction identifier for the last transaction |
| LOAD_FLAG | NOT NULL | VARCHAR2(1) | Indicates if this record has already been loaded into Network Logistics |
| CREATION_DATE | NOT NULL | DATE | Standard Who column |
| CREATED_BY | NOT NULL | NUMBER | Standard Who column |
| LAST_UPDATE_DATE | NOT NULL | DATE | Standard Who column |
| LAST_UPDATE_BY | NOT NULL | NUMBER | Standard Who column |
| LAST_UPDATE_LOGIN | NOT NULL | NUMBER | Standard Who column |

Indexes

| Index Name | Index Type | Sequence | Column Name |
|------------------|------------|----------|--------------|
| CUN_INIT_LOAD_U1 | UNIQUE | 1 | INIT_LOAD_ID |

CUN_LOCATIONS

CUN_LOCATIONS stores information for the mapping of network locations and locations in HR_LOCATIONS to asset locations.

Foreign Keys

| Primary Key Table | Primary Key Column | Foreign Key Column |
|-------------------|--------------------|--------------------|
| FA_LOCATIONS | LOCATION_ID | FA_LOCATION_ID |

Column Descriptions

| Name | Null? | Type | Description |
|-----------------------|----------|----------------|---------------------------------------------------------------------|
| CUN_LOCATION_ID (PK) | NOT NULL | NUMBER | System generated unique location identifier |
| FA_LOCATION_ID | NOT NULL | NUMBER | Fixed asset location flexfield identification number |
| NETWORK_LOCATION_CODE | NULL | VARCHAR2(60) | Network location code or the CLLI code |
| LOCATION_ID | NULL | NUMBER | Location identifier from the HR_LOCATIONS view |
| DESCRIPTION | NULL | VARCHAR2(2000) | Description of the network or HR location |
| ENABLED_FLAG | NOT NULL | VARCHAR2(240) | Indicates whether the location is enabled or not. Either 'Y' or 'N' |
| CREATION_DATE | NOT NULL | DATE | Standard Who column |
| CREATED_BY | NOT NULL | NUMBER | Standard Who column |
| LAST_UPDATE_DATE | NOT NULL | DATE | Standard Who column |
| LAST_UPDATED_BY | NOT NULL | NUMBER | Standard Who column |
| LAST_UPDATE_LOGIN | NOT NULL | NUMBER | Standard Who column |

Indexes

| Index Name | Index Type | Sequence | Column Name |
|------------------|------------|----------|--------------------------------------|
| CUN_LOCATIONS_N1 | NOT UNIQUE | 1 2 | LOCATION_ID NETWORK_LOCATION_CODE |
| CUN_LOCATIONS_U1 | UNIQUE | 1 | CUN_LOCATION_ID |

CUN_NON_SERIALIZED_UNITS

CUN_NON_SERIALIZED_UNITS is a repository containing information about the non-serialized units stored in Network Logistics. Each row in this table represents a unique state of the non-serialized units including the status, inventory, asset, and project information. When you perform a transaction on a Network Logistics trackable non-serialized unit, Network Logistics inserts a row into this table for a new state of the unit or updates the status and the corresponding information for the existing unit.

Foreign Keys

| Primary Key Table | Primary Key Column | Foreign Key Column |
|-------------------------|--------------------------------------|----------------------------|
| CUN_EQUIPMENT_CODES | MANUFACTURER_EQUIPMENT_CODE | LOT_NUMBER |
| CUN_LOCATIONS | CUN_LOCATION_ID | HZ_LOCATION_ID |
| CUN_TRANSACTIONS | TRANSACTION_ID | LAST_TRANSACTION_ID |
| FA_DISTRIBUTION_HISTORY | DISTRIBUTION_ID | FA_DISTRIBUTION_ID |
| MTL_SYSTEM_ITEMS_B | INVENTORY_ITEM_ID ORGANIZATION_ID | ITEM_ID ORGANIZATION_ID |

QuickCodes Columns

| Column | QuickCodes Type | QuickCodes Table |
|---------|-----------------|--------------------------|
| STATUS | UNIT_STATUS | FND_LOOKUPS |
| | INSTALLED | Equipment installed |
| | IN_INVENTORY | In inventory |
| | IN_INV_DEPR | In depreciable inventory |
| | IN_SERVICE | In service |
| | IN_TRANSIT | In transit |
| | ISSUED | Issued to project |
| | MISC_ISSUED | Miscellaneous issued |
| | OUT_OF_SERVICE | Out of service |
| RETIRED | Retired | |

Column Descriptions

| Name | Null? | Type | Description |
|-----------------------------|----------|---------------|--------------------------------------------------------------------------------------------------------------|
| NON_SERIALIZED_UNIT_ID (PK) | NOT NULL | NUMBER | Unique non-serialized unit identifier |
| ITEM_ID | NOT NULL | NUMBER | Inventory item identifier |
| ORGANIZATION_ID | NOT NULL | NUMBER | Inventory organization identifier |
| QUANTITY | NOT NULL | NUMBER | Non-serialized unit quantity |
| STATUS | NULL | VARCHAR2(240) | Network Logistics unit status |
| SUBINVENTORY | NULL | VARCHAR2(30) | Subinventory code |
| LOCATOR_ID | NULL | NUMBER | Inventory locator identifier |
| REVISION | NULL | VARCHAR2(3) | Inventory item revision code |
| LOT_NUMBER | NULL | VARCHAR2(30) | Inventory lot number |
| FA_DISTRIBUTION_ID | NULL | NUMBER | Fixed asset distribution identifier |
| HZ_LOCATION_ID | NULL | NUMBER | HZ location identifier. This refers to the CUN_LOCATION_ID column in the CUN_LOCATIONS table in Release 11i. |
| PROJECT_ID | NULL | NUMBER | Project identifier |

Oracle Proprietary, Confidential Information--Use Restricted by Contract

| | | | |
|-------------------------|----------|---------------|-------------------------------------------------|
| TASK_ID | NULL | NUMBER | Project task identifier |
| NETWORK_NUMBER | NULL | VARCHAR2(30) | Reserved for future use |
| VENDOR_ID | NULL | NUMBER | Vendor identifier |
| ASSET_GROUPING_ELEMENT1 | NULL | VARCHAR2(150) | Asset grouping element 1 |
| ASSET_GROUPING_ELEMENT2 | NULL | VARCHAR2(150) | Asset grouping element 2 |
| ASSET_GROUPING_ELEMENT3 | NULL | VARCHAR2(150) | Asset grouping element 3 |
| UTILIZATION | NULL | NUMBER | Reserved for future use |
| UTILIZATION_UOM | NULL | VARCHAR2(30) | Reserved for future use |
| CIRCUIT_ID | NULL | NUMBER | Reserved for future use |
| CAPACITY | NULL | NUMBER | Reserved for future use |
| REFERENCE_DATA | NULL | VARCHAR2(8) | Reserved for future use |
| LAST_TRANSACTION_ID | NOT NULL | NUMBER | Transaction identifier for the last transaction |
| CREATION_DATE | NOT NULL | DATE | Standard Who column |
| CREATED_BY | NOT NULL | NUMBER | Standard Who column |
| LAST_UPDATE_DATE | NOT NULL | DATE | Standard Who column |
| LAST_UPDATED_BY | NOT NULL | NUMBER | Standard Who column |
| LAST_UPDATE_LOGIN | NOT NULL | NUMBER | Standard Who column |

Indexes

| <u>Index Name</u> | <u>Index Type</u> | <u>Sequence</u> | <u>Column Name</u> |
|-----------------------------|-------------------|-----------------|------------------------|
| CUN_NON_SERIALIZED_UNITS_N2 | NOT UNIQUE | 1 | ITEM_ID |
| | | 2 | ORGANIZATION_ID |
| | | 3 | STATUS |
| | | 4 | SUBINVENTORY |
| CUN_NON_SERIALIZED_UNITS_N3 | NOT UNIQUE | 1 | FA_DISTRIBUTION_ID |
| CUN_NON_SERIALIZED_UNITS_N6 | NOT UNIQUE | 1 | LAST_TRANSACTION_ID |
| CUN_NON_SERIALIZED_UNITS_U1 | UNIQUE | 1 | NON_SERIALIZED_UNIT_ID |

CUN_REDO_LOG

CUN_REDO_LOG contains information about the Network Logistics event messages and the corresponding unit records which need to be reprocessed due to processing errors or pending transactions.

Foreign Keys

| Primary Key Table | Primary Key Column | Foreign Key Column |
|--------------------------|------------------------|--------------------|
| CUN_NON_SERIALIZED_UNITS | NON_SERIALIZED_UNIT_ID | CUN_UNIT_ID |
| CUN_SERIALIZED_UNITS | SERIALIZED_UNIT_ID | CUN_UNIT_ID |

Column Descriptions

| Name | Null? | Type | Description |
|-------------------|----------|--------|----------------------------------------------------------------|
| REDO_LOG_ID (PK) | NOT NULL | NUMBER | Redo log unique identifier |
| CUN_UNIT_ID | NOT NULL | NUMBER | Identifies the Network Logistics unit record to be reprocessed |
| MESSAGE_ID | NOT NULL | NUMBER | Network Logistics message identifier |
| CREATION_DATE | NOT NULL | DATE | Standard Who column |
| CREATED_BY | NOT NULL | NUMBER | Standard Who column |
| LAST_UPDATE_DATE | NOT NULL | DATE | Standard Who column |
| LAST_UPDATED_BY | NOT NULL | NUMBER | Standard Who column |
| LAST_UPDATE_LOGIN | NOT NULL | NUMBER | Standard Who column |

Indexes

| Index Name | Index Type | Sequence | Column Name |
|-----------------|------------|----------|-------------|
| CUN_REDO_LOG_N1 | NOT UNIQUE | 1 | CUN_UNIT_ID |
| CUN_REDO_LOG_N2 | NOT UNIQUE | 1 | MESSAGE_ID |
| CUN_REDO_LOG_U1 | UNIQUE | 1 | REDO_LOG_ID |

CUN_SERIALIZED_UNITS

CUN_SERIALIZED_UNITS is a repository containing information about the serialized units stored in Network Logistics. Each row in this table represents a unique state of the serialized units including the status, inventory, asset, and project information. When you perform a transaction on a Network Logistics trackable serialized unit, Network Logistics inserts a row into this table for the new unit or updates the status and the corresponding information for the existing unit.

Foreign Keys

| Primary Key Table | Primary Key Column | Foreign Key Column |
|-------------------------|--------------------------------------|----------------------------|
| CUN_EQUIPMENT_CODES | MANUFACTURER_EQUIPMENT_CODE | LOT_NUMBER |
| CUN_LOCATIONS | CUN_LOCATION_ID | HZ_LOCATION_ID |
| CUN_TRANSACTIONS | TRANSACTION_ID | LAST_TRANSACTION_ID |
| FA_DISTRIBUTION_HISTORY | DISTRIBUTION_ID | FA_DISTRIBUTION_ID |
| MTL_SYSTEM_ITEMS_B | INVENTORY_ITEM_ID ORGANIZATION_ID | ITEM_ID ORGANIZATION_ID |

QuickCodes Columns

| Column | QuickCodes Type | QuickCodes Table |
|--------|-----------------|--------------------------|
| STATUS | UNIT_STATUS | FND_LOOKUPS |
| | INSTALLED | Equipment installed |
| | IN_INVENTORY | In inventory |
| | IN_INV_DEPR | In depreciable inventory |
| | IN_SERVICE | In service |
| | IN_TRANSIT | In transit |
| | ISSUED | Issued to project |
| | MISC_ISSUED | Miscellaneous issued |
| | OUT_OF_SERVICE | Out of service |
| | RETIRED | Retired |

Column Descriptions

| Name | Null? | Type | Description |
|-------------------------|----------|---------------|--------------------------------------------------------------------------------------------------------------|
| SERIALIZED_UNIT_ID (PK) | NOT NULL | NUMBER | Unique serialized unit identifier |
| ITEM_ID | NOT NULL | NUMBER | Inventory item identifier |
| ORGANIZATION_ID | NOT NULL | NUMBER | Inventory organization identifier |
| QUANTITY | NULL | NUMBER | Serialized unit quantity |
| STATUS | NULL | VARCHAR2(240) | Network Logistics unit status |
| SUBINVENTORY | NULL | VARCHAR2(30) | Subinventory code |
| LOCATOR_ID | NULL | NUMBER | Inventory locator identifier |
| REVISION | NULL | VARCHAR2(3) | Inventory item revision code |
| SERIAL_NUMBER | NOT NULL | VARCHAR2(30) | Inventory serial number |
| VENDOR_SERIAL_NUMBER | NULL | VARCHAR2(30) | Vendor serial number |
| LOT_NUMBER | NULL | VARCHAR2(30) | Inventory lot number |
| FA_DISTRIBUTION_ID | NULL | NUMBER | Fixed asset distribution identifier |
| HZ_LOCATION_ID | NULL | NUMBER | HZ location identifier. This refers to the CUN_LOCATION_ID column in the CUN_LOCATIONS table in Release 11i. |

Oracle Proprietary, Confidential Information--Use Restricted by Contract

| | | | |
|-------------------------|----------|---------------|-------------------------------------------------|
| PROJECT_ID | NULL | NUMBER | Project identifier |
| TASK_ID | NULL | NUMBER | Project task identifier |
| NETWORK_NUMBER | NULL | VARCHAR2(30) | Reserved for future use |
| VENDOR_ID | NULL | NUMBER | Vendor identifier |
| ASSET_GROUPING_ELEMENT1 | NULL | VARCHAR2(150) | Asset grouping element 1 |
| ASSET_GROUPING_ELEMENT2 | NULL | VARCHAR2(150) | Asset grouping element 2 |
| ASSET_GROUPING_ELEMENT3 | NULL | VARCHAR2(150) | Asset grouping element 3 |
| UTILIZATION | NULL | NUMBER | Reserved for future use |
| UTILIZATION_UOM | NULL | VARCHAR2(30) | Reserved for future use |
| CIRCUIT_ID | NULL | NUMBER | Reserved for future use |
| CAPACITY | NULL | NUMBER | Reserved for future use |
| REFERENCE_DATA | NULL | VARCHAR2(8) | Reserved for future use |
| LAST_TRANSACTION_ID | NOT NULL | NUMBER | Transaction identifier for the last transaction |
| CREATION_DATE | NOT NULL | DATE | Standard Who column |
| CREATED_BY | NOT NULL | NUMBER | Standard Who column |
| LAST_UPDATE_DATE | NOT NULL | DATE | Standard Who column |
| LAST_UPDATED_BY | NOT NULL | NUMBER | Standard Who column |
| LAST_UPDATE_LOGIN | NOT NULL | NUMBER | Standard Who column |

Indexes

| Index Name | Index Type | Sequence | Column Name |
|-------------------------|------------|----------|---------------------|
| CUN_SERIALIZED_UNITS_N1 | NOT UNIQUE | 1 | ITEM_ID |
| | | 2 | ORGANIZATION_ID |
| | | 3 | STATUS |
| | | 4 | SERIAL_NUMBER |
| | | 5 | SUBINVENTORY |
| CUN_SERIALIZED_UNITS_N2 | NOT UNIQUE | 1 | FA_DISTRIBUTION_ID |
| CUN_SERIALIZED_UNITS_N3 | NOT UNIQUE | 1 | LAST_TRANSACTION_ID |
| CUN_SERIALIZED_UNITS_U1 | UNIQUE | 1 | SERIALIZED_UNIT_ID |
| CUN_SERIALIZED_UNITS_U2 | UNIQUE | 1 | ITEM_ID |
| | | 2 | ORGANIZATION_ID |
| | | 3 | SERIAL_NUMBER |

CUN_TRANSACTIONS

CUN_TRANSACTIONS contains the transaction history of both non-serialized and serialized units. Each row in this table stores the transaction state of Network Logistics trackable units including the transaction date, transaction type, transaction status, inventory, asset, and project information.

Foreign Keys

| Primary Key Table | Primary Key Column | Foreign Key Column |
|-------------------|--------------------|------------------------|
| CUN_TRANSACTIONS | TRANSACTION_ID | RELATED_TRANSACTION_ID |
| CUN_TRANSACTIONS | TRANSACTION_ID | LAST_TRANSACTION_ID |

QuickCodes Columns

| Column | QuickCodes Type | QuickCodes Table |
|-----------------------|------------------------|------------------------------------|
| TRANSACTION_STATUS | TRANSACTION STATUS | FND_LOOKUPS |
| | C | Complete |
| | E | Error |
| | I | Incomplete |
| TRANSACTION_TYPE | R | Pending for recovery |
| | TRANSACTION TYPE | FND_LOOKUPS |
| | ADJUSTMENT_ADD | Adjustment add |
| | ADJUSTMENT_UPDATE | Adjustment update |
| | AP_ADJUSTMENT | AP invoice adjustment |
| | AP_INVOICE | AP invoice payment |
| | INITIAL_LOAD | Initial load |
| | INSTALLED | Installed |
| | INTERORG_TRANSFER | Inter Organization Transfer |
| | IN_SERVICE | In service |
| | ISSUE_TO_PROJECT | Issued to Project |
| | ITEM_MOVE | Item move |
| | MISC_ISSUE | Miscellaneous Issue |
| | MISC_RECEIPT | Miscellaneous receipt |
| | OUT_OF_SERVICE | Out of service |
| | RECEIPT_INTO_INVENTORY | Receipt into inventory |
| | RECEIPT_INTO_INV_DEPR | Receipt into depreciable inventory |
| RECEIPT_INTO_PROJECT | Receipt ino project | |
| REINSTATEMENT | Asset reinstatement | |
| RETIREMENT | Asset retirement | |
| SUBINVENTORY_TRANSFER | Subinventory transfer | |

Column Descriptions

| Name | Null? | Type | Description |
|----------------------|----------|---------------|----------------------------------------------------|
| TRANSACTION_ID (PK) | NOT NULL | NUMBER | Unique transaction identifier |
| TRANSACTION_DATE | NOT NULL | DATE | Transaction date |
| TRANSACTIONED_BY | NOT NULL | NUMBER | Indicates the person who performed the transaction |
| TRANSACTION_TYPE | NOT NULL | VARCHAR2(240) | Indicates the type of transaction |
| TRANSACTION_QUANTITY | NOT NULL | NUMBER | Transaction quantity |
| TRANSACTION_STATUS | NULL | VARCHAR2(240) | Indicates the transaction processing status |

Oracle Proprietary, Confidential Information--Use Restricted by Contract

| | | | |
|----------------------------|----------|--------------------|--------------------------------------------------------------------------------------------------------------|
| ITEM_ID | NOT NULL | NUMBER | Inventory item identifier |
| ORGANIZATION_ID | NOT NULL | NUMBER | Inventory organization identifier |
| QUANTITY_INVOICED | | NULL NUMBER | Item quantity that has been invoiced |
| STATUS | | NULL VARCHAR2(30) | Network Logistics unit status |
| SUBINVENTORY | | NULL VARCHAR2(30) | Subinventory code |
| LOCATOR_ID | | NULL NUMBER | Inventory locator identifier |
| REVISION | | NULL VARCHAR2(3) | Inventory item revision code |
| SERIAL_NUMBER | NOT NULL | VARCHAR2(30) | Inventory serial number |
| VENDOR_SERIAL_NUMBER | | NULL VARCHAR2(30) | Vendor serial number |
| LOT_NUMBER | | NULL VARCHAR2(30) | Inventory lot number |
| FA_DISTRIBUTION_ID | NOT NULL | NUMBER | Fixed asset distribution identifier |
| PO_DISTRIBUTION_ID | | NULL NUMBER | Purchase order distribution identifier |
| HZ_LOCATION_ID | NOT NULL | NUMBER | HZ location identifier. This refers to the CUN_LOCATION_ID column in the CUN_LOCATIONS table in Release 11i. |
| PROJECT_ID | | NULL NUMBER | Project identifier |
| TASK_ID | | NULL NUMBER | Project task identifier |
| WORK_ORDER_NUMBER | | NULL VARCHAR2(30) | Work order identifier |
| RELATED_TRANSACTION_ID | NOT NULL | NUMBER | Transaction identifier of the related transfer transaction |
| LAST_TRANSACTION_ID | | NULL NUMBER | Transaction identifier for the last transaction |
| PO_HEADER_ID | | NULL NUMBER | Purchase order header identifier |
| PO_LINE_ID | | NULL NUMBER | Purchase order line identifier |
| RECEIPT_LINE_ID | | NULL NUMBER | Receipt line identifier |
| EXPENDITURE_ITEM_ID | | NULL NUMBER | Expenditure item identifier |
| AP_INVOICE_ID | | NULL NUMBER | Invoice identifier |
| AP_INVOICE_DISTRIBUTION_ID | | NULL NUMBER | Invoice distribution identifier |
| VENDOR_ID | | NULL NUMBER | Vendor identifier |
| RCV_TRANSACTION_ID | | NULL NUMBER | Receiving transaction identifier |
| MTL_TRANSACTION_ID | | NULL NUMBER | Material Transaction identifier |
| RTV_REASON_CODE | | NULL VARCHAR2(30) | Reserved for future use |
| RMA_NUMBER | | NULL VARCHAR2(240) | Reserved for future use |
| SHIPMENT_HEADER_ID | | NULL NUMBER | Shipment header identifier |
| SHIPPED_DATE | | NULL DATE | Shipment date |
| RECEIPT_DATE | | NULL DATE | Receipt date |
| RECEIPT_SOURCE_CODE | | NULL VARCHAR2(30) | Source type of the shipment |
| INSTALLED_DATE | | NULL DATE | Indicates the date when the equipment is installed |
| IN_SERVICE_DATE | | NULL DATE | Indicates the date when the equipment is placed in service |
| EFFECTIVE_DATE | | NULL DATE | Effective Date |
| RETIRED_DATE | | NULL DATE | Indicates the date when the asset is retired |
| NETWORK_NUMBER | | NULL VARCHAR2(30) | Reserved for future use |
| FREIGHT_CARRIER_CODE | | NULL VARCHAR2(25) | Reserved for future use |
| WAYBILL_AIRBILL_NUM | | NULL VARCHAR2(20) | Reserved for future use |
| MESSAGE_ID | | NULL NUMBER | Network Logistics message identifier |
| ASSET_GROUPING_ELEMENT1 | | NULL VARCHAR2(150) | Asset grouping element 1 |
| ASSET_GROUPING_ELEMENT2 | | NULL VARCHAR2(150) | Asset grouping element 2 |
| ASSET_GROUPING_ELEMENT3 | | NULL VARCHAR2(150) | Asset grouping element 3 |
| UTILIZATION | | NULL NUMBER | Reserved for future use |

Oracle Proprietary, Confidential Information--Use Restricted by Contract

| | | | |
|-----------------|------|--------------|-------------------------|
| UTILIZATION_UOM | NULL | VARCHAR2(30) | Reserved for future use |
| CIRCUIT_ID | NULL | NUMBER | Reserved for future use |
| CAPACITY | NULL | NUMBER | Reserved for future use |
| REFERENCE_DATA | NULL | VARCHAR2(8) | Reserved for future use |

Indexes

| Index Name | Index Type | Sequence | Column Name |
|---------------------|------------|----------|----------------------------|
| CUN_TRANSACTIONS_N1 | NOT UNIQUE | 1 | FA_DISTRIBUTION_ID |
| CUN_TRANSACTIONS_N2 | NOT UNIQUE | 1 | PO_DISTRIBUTION_ID |
| CUN_TRANSACTIONS_N3 | NOT UNIQUE | 1 | AP_INVOICE_DISTRIBUTION_ID |
| CUN_TRANSACTIONS_N4 | NOT UNIQUE | 1 | EXPENDITURE_ITEM_ID |
| CUN_TRANSACTIONS_N5 | NOT UNIQUE | 1 | LAST_TRANSACTION_ID |
| CUN_TRANSACTIONS_N6 | NOT UNIQUE | 1 | RCV_TRANSACTION_ID |
| CUN_TRANSACTIONS_N7 | NOT UNIQUE | 1 | MTL_TRANSACTION_ID |
| CUN_TRANSACTIONS_U1 | UNIQUE | 1 | TRANSACTION_ID |

CUN_TRANS_ERRORS

CUN_TRANS_ERRORS captures information for the transaction errors from the source systems. This table is for internal use only.

Column Descriptions

| Name | Null? | Type | Description |
|-------------------|----------|----------------|---------------------------------|
| ID (PK) | NOT NULL | VARCHAR2(240) | Transaction source identifier |
| ERROR_PROCEDURE | NULL | VARCHAR2(100) | Procedure that causes the error |
| ERROR_CODE | NULL | NUMBER | Error code |
| ERROR_MESSAGE | NULL | VARCHAR2(2000) | Error message |
| CREATION_DATE | NULL | DATE | Standard Who Column |
| CREATED_BY | NULL | NUMBER | Standard Who Column |
| LAST_UPDATE_DATE | NULL | DATE | Standard Who Column |
| LAST_UPDATED_BY | NULL | NUMBER | Standard Who Column |
| LAST_UPDATE_LOGIN | NULL | NUMBER | Standard Who Column |

CUN_TRANS_TEMP

CUN_TRANS_TEMP contains the temporary transaction information from the source systems. This table is for internal use only.

Column Descriptions

| Name | Null? | Type | Description |
|-------------------|----------|--------|-------------------------------|
| ID (PK) | NOT NULL | NUMBER | Transaction source identifier |
| CREATION_DATE | NULL | DATE | Standard Who Column |
| CREATED_BY | NULL | NUMBER | Standard Who Column |
| LAST_UPDATE_DATE | NULL | DATE | Standard Who Column |
| LAST_UPDATED_BY | NULL | NUMBER | Standard Who Column |
| LAST_UPDATE_LOGIN | NULL | NUMBER | Standard Who Column |

FA_DISTRIBUTION_HISTORY

FA_DISTRIBUTION_HISTORY contains information about the employee, location, and Accounting Flexfield values you assign to your assets. The depreciation program uses this information to allocate depreciation expense and the Transfers form uses it to maintain an audit trail of asset transfers.

When you initially assign distributions to an asset using the Transfers form, Oracle Assets inserts one row into this table for each distribution. Whenever you transfer, retire, reinstate, or reclassify an asset, Oracle Assets marks the appropriate rows as obsolete and creates new rows that reflect changes in assigned units, employees, general ledger depreciation expense account, or location.

Oracle Assets terminates a row by setting the DATE_INEFFECTIVE and TRANSACTION_HEADER_ID_OUT to the DATE_EFFECTIVE and TRANSACTION_HEADER_ID_IN of the new row. This means you can identify rows affected by the same transaction because they have the same DATE_EFFECTIVE / DATE_INEFFECTIVE and TRANSACTION_HEADER_ID_IN / TRANSACTION_HEADER_ID_OUT pairs. For new rows, TRANSACTION_HEADER_ID_IN is the same as TRANSACTION_HEADER_ID of the row inserted into FA_TRANSACTION_HEADERS for the transaction, and DATE_EFFECTIVE is the system date.

When you perform a full retirement, Oracle Assets updates the asset's current distribution lines with the RETIREMENT_ID from FA_RETIREMENTS so you can easily determine which retirement affected the rows. Oracle Assets stores the number of units retired as a negative number in TRANSACTION_UNITS. The sum of TRANSACTION_UNITS for the retired distribution lines matches the UNITS column in FA_RETIREMENTS, except the signs are opposite.

When you perform a partial unit retirement, Oracle Assets updates only the rows affected by the retirement. For any distribution lines that have units remaining after the retirement, Oracle Assets inserts new rows into this table where UNITS_ASSIGNED is reduced by the units retired, and terminates the old rows.

Partial cost retirements do not affect this table.

If you reinstate a full retirement, Oracle Assets inserts new rows that are the same as those that were active when you retired the asset, except that they have a different DISTRIBUTION_ID, TRANSACTION_HEADER_ID_IN and DATE_EFFECTIVE. If you reinstate a partial unit retirement, Oracle Assets inserts new rows that

are the same as those that were active except UNITS_ASSIGNED increases by the units retired and the rows have a new DISTRIBUTION_ID, TRANSACTION_HEADER_ID_IN and DATE_EFFECTIVE.

Oracle Assets terminates the previous rows by setting TRANSACTION_HEADER_ID_OUT to the TRANSACTION_HEADER_ID of the reinstated transaction.

RETIREMENT_ID identifies all the rows affected by a retirement.

TRANSACTION_UNITS is the number of units affected by each retirement, reinstatement, transfer, addition or reclassification transaction.

Foreign Keys

| Primary Key Table | Primary Key Column | Foreign Key Column |
|------------------------|--------------------------|---------------------------|
| FA_ADDITIONS_B | ASSET_ID | ASSET_ID |
| FA_BOOKS | TRANSACTION_HEADER_ID_IN | TRANSACTION_HEADER_ID_IN |
| FA_BOOK_CONTROLS | BOOK_TYPE_CODE | BOOK_TYPE_CODE |
| FA_LOCATIONS | LOCATION_ID | LOCATION_ID |
| FA_RETIREMENTS | RETIREMENT_ID | RETIREMENT_ID |
| FA_TRANSACTION_HEADERS | TRANSACTION_HEADER_ID | TRANSACTION_HEADER_ID_IN |
| FA_TRANSACTION_HEADERS | TRANSACTION_HEADER_ID | TRANSACTION_HEADER_ID_OUT |
| GL_CODE_COMBINATIONS | CODE_COMBINATION_ID | CODE_COMBINATION_ID |

Column Descriptions

| Name | Null? | Type | Description |
|---------------------------|----------|--------------|---------------------------------------------------------------------------------------------------------------------------------------------------------------------------------------------|
| DISTRIBUTION_ID (PK) | NOT NULL | NUMBER(15) | Unique distribution identification number |
| BOOK_TYPE_CODE | NOT NULL | VARCHAR2(15) | Book name |
| ASSET_ID | NOT NULL | NUMBER(15) | Asset identification number |
| UNITS_ASSIGNED | NOT NULL | NUMBER | Number of units assigned to the distribution |
| DATE_EFFECTIVE | NOT NULL | DATE | Date the distribution became active |
| CODE_COMBINATION_ID | NOT NULL | NUMBER(15) | Depreciation expense account identification number |
| LOCATION_ID | NOT NULL | NUMBER(15) | Location flexfield identification number |
| TRANSACTION_HEADER_ID_IN | NOT NULL | NUMBER(15) | Identifies the transaction that created the distribution |
| LAST_UPDATE_DATE | NOT NULL | DATE | Standard Who column |
| LAST_UPDATED_BY | NOT NULL | NUMBER(15) | Standard Who column |
| DATE_INEFFECTIVE | NULL | DATE | Date the distribution became inactive |
| ASSIGNED_TO | NULL | NUMBER(15) | Employee identification number |
| TRANSACTION_HEADER_ID_OUT | NULL | NUMBER(15) | Identifies the transaction that made the distribution obsolete |
| TRANSACTION_UNITS | NULL | NUMBER | Number of units involved in the transaction. Negative for the row from which the units were transferred away or retired. Positive for the row to which the units were transferred or added. |
| RETIREMENT_ID | NULL | NUMBER(15) | Identifies a retirement |

Oracle Proprietary, Confidential Information--Use Restricted by Contract

LAST_UPDATE_LOGIN

NULL NUMBER(15)

Standard Who column

Indexes

| <u>Index Name</u> | <u>Index Type</u> | <u>Sequence</u> | <u>Column Name</u> |
|----------------------------|-------------------|-----------------|---------------------------|
| FA_DISTRIBUTION_HISTORY_N1 | NOT UNIQUE | 1 | TRANSACTION_HEADER_ID_IN |
| FA_DISTRIBUTION_HISTORY_N2 | NOT UNIQUE | 1 | ASSET_ID |
| | | 2 | BOOK_TYPE_CODE |
| FA_DISTRIBUTION_HISTORY_N3 | NOT UNIQUE | 1 | TRANSACTION_HEADER_ID_OUT |
| FA_DISTRIBUTION_HISTORY_N4 | NOT UNIQUE | 1 | RETIREMENT_ID |
| | | 2 | BOOK_TYPE_CODE |
| FA_DISTRIBUTION_HISTORY_N5 | NOT UNIQUE | 1 | CODE_COMBINATION_ID |
| FA_DISTRIBUTION_HISTORY_N6 | NOT UNIQUE | 1 | LOCATION_ID |
| FA_DISTRIBUTION_HISTORY_N7 | NOT UNIQUE | 1 | ASSIGNED_TO |
| FA_DISTRIBUTION_HISTORY_U1 | UNIQUE | 1 | DISTRIBUTION_ID |

Sequences

| <u>Sequence</u> | <u>Derived Column</u> |
|---------------------------|-----------------------|
| FA_DISTRIBUTION_HISTORY_S | DISTRIBUTION_ID |

FA_LOCATIONS

FA_LOCATIONS stores valid location flexfield segment value combinations. Oracle Assets uses this table for responsibility reporting and to prevent you from transferring assets to invalid locations.

Segment values are stored in the SEGMENT columns. The segment columns that Oracle Assets uses are not guaranteed to be in any order. The Application Object Library table FND_ID_FLEX_SEGMENTS stores information about which column in this table is used for each segment.

QuickCodes Columns

| Column | QuickCodes Type | QuickCodes Table |
|--------------|-----------------|------------------|
| ENABLED_FLAG | YESNO | FA_LOOKUPS |
| | NO | NO |
| | YES | YES |
| SUMMARY_FLAG | YESNO | FA_LOOKUPS |
| | NO | NO |
| | YES | YES |

Column Descriptions

| Name | Null? | Type | Description |
|-------------------|----------|---------------|---------------------------------------------------------------------|
| LOCATION_ID (PK) | NOT NULL | NUMBER(15) | Unique identification number for each location defined in the table |
| SEGMENT1 | NULL | VARCHAR2(30) | Key flexfield segment |
| SEGMENT2 | NULL | VARCHAR2(30) | Key flexfield segment |
| SEGMENT3 | NULL | VARCHAR2(30) | Key flexfield segment |
| SEGMENT4 | NULL | VARCHAR2(30) | Key flexfield segment |
| SEGMENT5 | NULL | VARCHAR2(30) | Key flexfield segment |
| SEGMENT6 | NULL | VARCHAR2(30) | Key flexfield segment |
| SEGMENT7 | NULL | VARCHAR2(30) | Key flexfield segment |
| SUMMARY_FLAG | NOT NULL | VARCHAR2(1) | Used by Application Object Library for flexfield definition |
| ENABLED_FLAG | NOT NULL | VARCHAR2(1) | Indicates whether this location is still active |
| START_DATE_ACTIVE | NULL | DATE | Date the location becomes active |
| END_DATE_ACTIVE | NULL | DATE | Date the location becomes inactive |
| LAST_UPDATE_DATE | NOT NULL | DATE | Standard Who column |
| LAST_UPDATED_BY | NOT NULL | NUMBER(15) | Standard Who column |
| LAST_UPDATE_LOGIN | NULL | NUMBER(15) | Standard Who column |
| ATTRIBUTE1 | NULL | VARCHAR2(150) | Descriptive flexfield segment |
| ATTRIBUTE2 | NULL | VARCHAR2(150) | Descriptive flexfield segment |
| ATTRIBUTE3 | NULL | VARCHAR2(150) | Descriptive flexfield segment |
| ATTRIBUTE4 | NULL | VARCHAR2(150) | Descriptive flexfield segment |
| ATTRIBUTE5 | NULL | VARCHAR2(150) | Descriptive flexfield segment |
| ATTRIBUTE6 | NULL | VARCHAR2(150) | Descriptive flexfield segment |
| ATTRIBUTE7 | NULL | VARCHAR2(150) | Descriptive flexfield segment |
| ATTRIBUTE8 | NULL | VARCHAR2(150) | Descriptive flexfield segment |
| ATTRIBUTE9 | NULL | VARCHAR2(150) | Descriptive flexfield segment |
| ATTRIBUTE10 | NULL | VARCHAR2(150) | Descriptive flexfield segment |

Oracle Proprietary, Confidential Information--Use Restricted by Contract

| | | | |
|-------------------------|------|---------------|-------------------------------------------------|
| ATTRIBUTE11 | NULL | VARCHAR2(150) | Descriptive flexfield segment |
| ATTRIBUTE12 | NULL | VARCHAR2(150) | Descriptive flexfield segment |
| ATTRIBUTE13 | NULL | VARCHAR2(150) | Descriptive flexfield segment |
| ATTRIBUTE14 | NULL | VARCHAR2(150) | Descriptive flexfield segment |
| ATTRIBUTE15 | NULL | VARCHAR2(150) | Descriptive flexfield segment |
| ATTRIBUTE_CATEGORY_CODE | NULL | VARCHAR2(30) | Descriptive flexfield structure defining column |

Indexes

| <u>Index Name</u> | <u>Index Type</u> | <u>Sequence</u> | <u>Column Name</u> |
|-------------------|-------------------|-----------------|--------------------|
| FA_LOCATIONS_N1 | NOT UNIQUE | 1 | SEGMENT1 |
| FA_LOCATIONS_N2 | NOT UNIQUE | 1 | SEGMENT2 |
| FA_LOCATIONS_N3 | NOT UNIQUE | 1 | SEGMENT3 |
| FA_LOCATIONS_N4 | NOT UNIQUE | 1 | SEGMENT4 |
| FA_LOCATIONS_N5 | NOT UNIQUE | 1 | SEGMENT5 |
| FA_LOCATIONS_N6 | NOT UNIQUE | 1 | SEGMENT6 |
| FA_LOCATIONS_N7 | NOT UNIQUE | 1 | SEGMENT7 |
| FA_LOCATIONS_U1 | UNIQUE | 1 | LOCATION_ID |

Sequences

| <u>Sequence</u> | <u>Derived Column</u> |
|-----------------|-----------------------|
| FA_LOCATIONS_S | LOCATION_ID |

MTL_MATERIAL_TRANSACTIONS

MTL_MATERIAL_TRANSACTIONS stores a record of every material transaction or cost update performed in Inventory.

Records are inserted into this table either through the transaction processor or by the standard cost update program. The columns TRANSACTION_TYPE_ID, TRANSACTION_ACTION_ID, TRANSACTION_SOURCE_TYPE_ID, TRANSACTION_SOURCE_ID and TRANSACTION_SOURCE_NAME describe what the transaction is and against what entity it was performed.

All accounting journal entries for a given transaction are stored in MTL_TRANSACTION_ACCOUNTS, joined by the column TRANSACTION_ID.

If the item is under lot control then the lot records are stored in MTL_TRANSACTION_LOT_NUMBERS, joined by the column TRANSACTION_ID. If the item is under serial control then the serial records are stored in MTL_UNIT_TRANSACTIONS, joined by the column TRANSACTION_ID. The Item revision and locator control are stored in the columns REVISION and LOCATOR_ID respectively.

Transfer transactions are represented as two single records in the table. They are related through the column TRANSFER_TRANSACTION_ID, which contains the TRANSACTION_ID of the other transaction in the transfer.

The index MTL_MATERIAL_TRANSACTIONS_UPGD is used only during install and upgrade, and will be dropped during the course thereof, but is included here for completeness.

Foreign Keys

| Primary Key Table | Primary Key Column | Foreign Key Column |
|---------------------------|--------------------------|-----------------------------|
| CST_COST_GROUPS | COST_GROUP_ID | TRANSFER_COST_GROUP_ID |
| CST_COST_GROUPS | COST_GROUP_ID | COST_GROUP_ID |
| GL_CODE_COMBINATIONS | CODE_COMBINATION_ID | TRANSFER_COST_DIST_ACCOUNT |
| GL_CODE_COMBINATIONS | CODE_COMBINATION_ID | TRANSPORTATION_DIST_ACCOUNT |
| GL_CODE_COMBINATIONS | CODE_COMBINATION_ID | DISTRIBUTION_ACCOUNT_ID |
| GL_CODE_COMBINATIONS | CODE_COMBINATION_ID | ENCUMBRANCE_ACCOUNT |
| GL_DAILY_CONVERSION_TYPES | CONVERSION_TYPE | CURRENCY_CODE |
| MTL_CYCLE_COUNT_ENTRIES | CYCLE_COUNT_ENTRY_ID | CYCLE_COUNT_ID |
| MTL_ITEM_LOCATIONS | INVENTORY_LOCATION_ID | LOCATOR_ID |
| | ORGANIZATION_ID | ORGANIZATION_ID |
| MTL_ITEM_REVISIONS | REVISION | REVISION |
| | ORGANIZATION_ID | ORGANIZATION_ID |
| | INVENTORY_ITEM_ID | INVENTORY_ITEM_ID |
| MTL_PHYSICAL_ADJUSTMENTS | ADJUSTMENT_ID | PHYSICAL_ADJUSTMENT_ID |
| MTL_SECONDARY_INVENTORIES | SECONDARY_INVENTORY_NAME | SUBINVENTORY_CODE |
| | ORGANIZATION_ID | ORGANIZATION_ID |
| MTL_SO_RMA_INTERFACE | RMA_LINE_ID | RMA_LINE_ID |
| MTL_SO_RMA_INTERFACE | RMA_LINE_ID | TRX_SOURCE_LINE_ID |

Oracle Proprietary, Confidential Information--Use Restricted by Contract

| | | |
|-------------------------|--------------------------------------|---------------------------------------------|
| MTL_SYSTEM_ITEMS_B | INVENTORY_ITEM_ID ORGANIZATION_ID | INVENTORY_ITEM_ID ORGANIZATION_ID |
| MTL_TRANSACTION_REASONS | REASON_ID | REASON_ID |
| MTL_TRANSACTION_TYPES | TRANSACTION_TYPE_ID | TRANSACTION_TYPE_ID |
| MTL_TXN_REQUEST_LINES | HEADER_ID | TRANSACTION_SOURCE_ID |
| MTL_TXN_REQUEST_LINES | LINE_ID | MOVE_ORDER_LINE_ID |
| MTL_TXN_SOURCE_TYPES | TRANSACTION_SOURCE_TYPE_ID | TRANSACTION_SOURCE_TYPE_ID |
| MTL_UNITS_OF_MEASURE_TL | UOM_CODE | TRANSACTION_UOM |
| ORG_ACCT_PERIODS | ACCT_PERIOD_ID ORGANIZATION_ID | ACCT_PERIOD_ID ORGANIZATION_ID |
| RCV_TRANSACTIONS | TRANSACTION_ID | RCV_TRANSACTION_ID |
| WIP_DISCRETE_JOBS | WIP_ENTITY_ID | TRANSACTION_SOURCE_ID |
| WIP_FLOW_SCHEDULES | WIP_ENTITY_ID | TRANSACTION_SOURCE_ID |
| WIP_MOVE_TRANSACTIONS | TRANSACTION_ID | MOVE_TRANSACTION_ID |
| WIP_REPETITIVE_ITEMS | WIP_ENTITY_ID LINE_ID | TRANSACTION_SOURCE_ID REPETITIVE_LINE_ID |

QuickCodes Columns

| Column | QuickCodes Type | QuickCodes Table |
|-----------------------|------------------------|-------------------------------|
| TRANSACTION_ACTION_ID | MTL_TRANSACTION_ACTION | MFG_LOOKUPS |
| | 1 | Issue from stores |
| | 12 | Intransit receipt |
| | 2 | Subinventory transfer |
| | 21 | Intransit shipment |
| | 24 | Cost update |
| | 27 | Receipt into stores |
| | 28 | Staging transfer |
| | 29 | Delivery adjustments |
| | 3 | Direct organization transfer |
| | 30 | WIP scrap transaction |
| | 31 | Assembly completion |
| | 32 | Assembly return |
| | 4 | Cycle count adjustment |
| | 8 | Physical inventory adjustment |

Column Descriptions

| Name | Null? | Type | Description |
|------------------------|----------|--------------|---------------------------------|
| TRANSACTION_ID (PK) | NOT NULL | NUMBER | Transaction identifier |
| LAST_UPDATE_DATE | NOT NULL | DATE | Standard Who column |
| LAST_UPDATED_BY | NOT NULL | NUMBER | Standard Who column |
| CREATION_DATE | NOT NULL | DATE | Standard Who column |
| CREATED_BY | NOT NULL | NUMBER | Standard Who column |
| LAST_UPDATE_LOGIN | NULL | NUMBER | Standard Who column |
| REQUEST_ID | NULL | NUMBER | Standard Who column |
| PROGRAM_APPLICATION_ID | NULL | NUMBER | Standard Who column |
| PROGRAM_ID | NULL | NUMBER | Standard Who column |
| PROGRAM_UPDATE_DATE | NULL | DATE | Standard Who column |
| INVENTORY_ITEM_ID | NOT NULL | NUMBER | Inventory item identifier |
| REVISION | NULL | VARCHAR2(3) | Inventory item revision |
| ORGANIZATION_ID | NOT NULL | NUMBER | Organization identifier |
| SUBINVENTORY_CODE | NULL | VARCHAR2(10) | Transaction secondary inventory |
| LOCATOR_ID | NULL | NUMBER | Locator id for stock locators |
| TRANSACTION_TYPE_ID | NOT NULL | NUMBER | Transaction type identifier |
| TRANSACTION_ACTION_ID | NOT NULL | NUMBER | Transaction action identifier |

Oracle Proprietary, Confidential Information--Use Restricted by Contract

| | | | |
|-----------------------------|----------|---------------|--------------------------------------------------------------------------------|
| TRANSACTION_SOURCE_TYPE_ID | NOT NULL | NUMBER | Transaction source type identifier |
| TRANSACTION_SOURCE_ID | NULL | NUMBER | Transaction source identifier |
| TRANSACTION_SOURCE_NAME | NULL | VARCHAR2(30) | Transaction source identifier |
| TRANSACTION_QUANTITY | NOT NULL | NUMBER | Transaction quantity |
| TRANSACTION_UOM | NOT NULL | VARCHAR2(3) | Transaction unit of measure |
| PRIMARY_QUANTITY | NOT NULL | NUMBER | Transaction quantity in terms of primary uom of the item |
| TRANSACTION_DATE | NOT NULL | DATE | Transaction date |
| VARIANCE_AMOUNT | NULL | NUMBER | Used for average cost update transactions |
| ACCT_PERIOD_ID | NULL | NUMBER | Accounting period identifier |
| TRANSACTION_REFERENCE | NULL | VARCHAR2(240) | Transaction reference code |
| REASON_ID | NULL | NUMBER | Transaction reason identifier |
| DISTRIBUTION_ACCOUNT_ID | NULL | NUMBER | Distribution account identifier |
| ENCUMBRANCE_ACCOUNT | NULL | NUMBER | Encumbrance account identifier for PO transactions |
| ENCUMBRANCE_AMOUNT | NULL | NUMBER | Total encumbrance amount |
| COST_UPDATE_ID | NULL | NUMBER | Cost identifier |
| COSTED_FLAG | NULL | VARCHAR2(1) | Costed flag to mark if the transactions are costed or not |
| TRANSACTION_GROUP_ID | NULL | NUMBER | Transaction group identifier for distribution processing by the cost processor |
| INVOICED_FLAG | NULL | VARCHAR2(1) | Invoiced flag to mark if the transactions are invoiced |
| ACTUAL_COST | NULL | NUMBER | Actual cost |
| TRANSACTION_COST | NULL | NUMBER | The cost entered by the user during a transaction |
| PRIOR_COST | NULL | NUMBER | Item cost before the transaction |
| NEW_COST | NULL | NUMBER | Item cost after the transaction processing |
| CURRENCY_CODE | NULL | VARCHAR2(10) | Currency conversion code |
| CURRENCY_CONVERSION_RATE | NULL | NUMBER | Currency conversion rate |
| CURRENCY_CONVERSION_TYPE | NULL | VARCHAR2(30) | Currency conversion type |
| CURRENCY_CONVERSION_DATE | NULL | DATE | Currency conversion date |
| USSGL_TRANSACTION_CODE | NULL | VARCHAR2(30) | ussgl transaction code |
| QUANTITY_ADJUSTED | NULL | NUMBER | Standard cost quantity adjusted |
| EMPLOYEE_CODE | NULL | VARCHAR2(10) | Transaction requestor |
| DEPARTMENT_ID | NULL | NUMBER | Department identifier |
| OPERATION_SEQ_NUM | NULL | NUMBER | Operation sequence number within a routing |
| MASTER_SCHEDULE_UPDATE_CODE | NULL | VARCHAR2(10) | Master schedule update code |
| RECEIVING_DOCUMENT | NULL | VARCHAR2(10) | Receiving document |
| PICKING_LINE_ID | NULL | NUMBER | Picking line id |
| TRX_SOURCE_LINE_ID | NULL | NUMBER | Line level transaction source id |
| TRX_SOURCE_DELIVERY_ID | NULL | NUMBER | Sales order delivery identifier |
| REPETITIVE_LINE_ID | NULL | NUMBER | Repetitive line id |
| PHYSICAL_ADJUSTMENT_ID | NULL | NUMBER | Physical adjustment identifier |
| CYCLE_COUNT_ID | NULL | NUMBER | Cycle count identifier |
| RMA_LINE_ID | NULL | NUMBER | Rma line identifier |
| TRANSFER_TRANSACTION_ID | NULL | NUMBER | Transaction id of the opposing transfer transaction |
| TRANSACTION_SET_ID | NULL | NUMBER | Transaction group identifier |
| RCV_TRANSACTION_ID | NULL | NUMBER | Receiving transaction cross reference |
| MOVE_TRANSACTION_ID | NULL | NUMBER | Move transaction cross reference |

Oracle Proprietary, Confidential Information--Use Restricted by Contract

| | | | |
|-----------------------------|------|---------------|---------------------------------------------------------------------------------------------------|
| COMPLETION_TRANSACTION_ID | NULL | NUMBER | Completion transaction cross reference |
| SHORTAGE_PROCESS_CODE | NULL | NUMBER | Flag indicating workflow notifications should be provided for this transaction if shortage exists |
| SOURCE_CODE | NULL | VARCHAR2(30) | User- entered source code for outside transactions |
| SOURCE_LINE_ID | NULL | NUMBER | User entered source line identifier for outside transactions |
| VENDOR_LOT_NUMBER | NULL | VARCHAR2(30) | Supplier lot number |
| TRANSFER_ORGANIZATION_ID | NULL | NUMBER | Transfer opposing organization id |
| TRANSFER_SUBINVENTORY | NULL | VARCHAR2(10) | Transfer transaction opposing subinventory |
| TRANSFER_LOCATOR_ID | NULL | NUMBER | Transfer transaction opposing locator id |
| SHIPMENT_NUMBER | NULL | VARCHAR2(30) | Intransit shipment identifier |
| TRANSFER_COST | NULL | NUMBER | Transfer cost specified for inter-org transfers |
| TRANSPORTATION_DIST_ACCOUNT | NULL | NUMBER | Transfer transportation distribution account |
| TRANSPORTATION_COST | NULL | NUMBER | Transfer transportation cost |
| TRANSFER_COST_DIST_ACCOUNT | NULL | NUMBER | Transaction transfer cost distribution account |
| WAYBILL_AIRBILL | NULL | VARCHAR2(20) | Airbill / waybill number |
| FREIGHT_CODE | NULL | VARCHAR2(25) | Intransit shipment freight code |
| NUMBER_OF_CONTAINERS | NULL | NUMBER | Number of containers |
| VALUE_CHANGE | NULL | NUMBER | Total value change for average cost update |
| PERCENTAGE_CHANGE | NULL | NUMBER | Percentage average cost change for average cost update |
| ATTRIBUTE_CATEGORY | NULL | VARCHAR2(30) | Descriptive flexfield structure defining column |
| ATTRIBUTE1 | NULL | VARCHAR2(150) | Descriptive flexfield segment |
| ATTRIBUTE2 | NULL | VARCHAR2(150) | Descriptive flexfield segment |
| ATTRIBUTE3 | NULL | VARCHAR2(150) | Descriptive flexfield segment |
| ATTRIBUTE4 | NULL | VARCHAR2(150) | Descriptive flexfield segment |
| ATTRIBUTE5 | NULL | VARCHAR2(150) | Descriptive flexfield segment |
| ATTRIBUTE6 | NULL | VARCHAR2(150) | Descriptive flexfield segment |
| ATTRIBUTE7 | NULL | VARCHAR2(150) | Descriptive flexfield segment |
| ATTRIBUTE8 | NULL | VARCHAR2(150) | Descriptive flexfield segment |
| ATTRIBUTE9 | NULL | VARCHAR2(150) | Descriptive flexfield segment |
| ATTRIBUTE10 | NULL | VARCHAR2(150) | Descriptive flexfield segment |
| ATTRIBUTE11 | NULL | VARCHAR2(150) | Descriptive flexfield segment |
| ATTRIBUTE12 | NULL | VARCHAR2(150) | Descriptive flexfield segment |
| ATTRIBUTE13 | NULL | VARCHAR2(150) | Descriptive flexfield segment |
| ATTRIBUTE14 | NULL | VARCHAR2(150) | Descriptive flexfield segment |
| ATTRIBUTE15 | NULL | VARCHAR2(150) | Descriptive flexfield segment |
| MOVEMENT_ID | NULL | NUMBER | Movement statistics cross reference |
| TASK_ID | NULL | NUMBER(15) | Task identifier |
| TO_TASK_ID | NULL | NUMBER(15) | "To" task identifier |
| PROJECT_ID | NULL | NUMBER(15) | project identifier |
| TO_PROJECT_ID | NULL | NUMBER(15) | "To" project identifier |
| SOURCE_PROJECT_ID | NULL | NUMBER | Source project identifier |
| PA_EXPENDITURE_ORG_ID | NULL | NUMBER | Oracle Projects related expenditure organization identifier |
| SOURCE_TASK_ID | NULL | NUMBER | Source task identifier |

Oracle Proprietary, Confidential Information--Use Restricted by Contract

| | | | |
|--------------------------------|------|---------------|--------------------------------------------------------------------------------------------------------|
| EXPENDITURE_TYPE | NULL | VARCHAR2(30) | Oracle Projects related expenditure type |
| ERROR_CODE | NULL | VARCHAR2(240) | Error Code |
| ERROR_EXPLANATION | NULL | VARCHAR2(240) | Error explanation |
| PRIOR_COSTED_QUANTITY | NULL | NUMBER | Costed quantity before this transaction |
| TRANSFER_PRIOR_COSTED_QUANTITY | NULL | NUMBER | Transfer quantity costed before this transaction |
| FINAL_COMPLETION_FLAG | NULL | VARCHAR2(1) | Indicates if job costs need to be flushed out for this discrete jobcompletion |
| PM_COST_COLLECTED | NULL | VARCHAR2(1) | Specifies whether the row has been interfaced to Oracle Projects |
| PM_COST_COLLECTOR_GROUP_ID | NULL | NUMBER | Group identifier used by cost collector to process group of records. |
| SHIPMENT_COSTED | NULL | VARCHAR2(1) | Indicates if the shipment transaction has been processed by the cost worker |
| TRANSFER_PERCENTAGE | NULL | NUMBER | Percentage of value to attribute to transfer costs in an Inter-Orgtransfer |
| MATERIAL_ACCOUNT | NULL | NUMBER | Specifies the material account |
| MATERIAL_OVERHEAD_ACCOUNT | NULL | NUMBER | Specifies the material overhead account |
| RESOURCE_ACCOUNT | NULL | NUMBER | Specifies the resource account |
| OUTSIDE_PROCESSING_ACCOUNT | NULL | NUMBER | Specifies the account to be charged for outside processing |
| OVERHEAD_ACCOUNT | NULL | NUMBER | Specifies the overhead account |
| COST_GROUP_ID | NULL | NUMBER | Cost group identifier |
| TRANSFER_COST_GROUP_ID | NULL | NUMBER | Transfer cost group identifier |
| FLOW_SCHEDULE | NULL | VARCHAR2(1) | Specifies whether the WIP transaction is a flow or a schedule type transaction |
| QA_COLLECTION_ID | NULL | NUMBER | Quality Results Identifier |
| OVERCOMPLETION_TRANSACTION_QTY | NULL | NUMBER | Overcompletion transaction quantity |
| OVERCOMPLETION_PRIMARY_QTY | NULL | NUMBER | Overcompletion Primary quantity |
| OVERCOMPLETION_TRANSACTION_ID | NULL | NUMBER | Overcompletion transaction Identifier |
| MVT_STAT_STATUS | NULL | VARCHAR2(240) | Flag to indicate that the transaction is updated/processed/new |
| COMMON_BOM_SEQ_ID | NULL | NUMBER | BOM identifier of common bill |
| COMMON_ROUTING_SEQ_ID | NULL | NUMBER | Routing identifier of common routing |
| ORG_COST_GROUP_ID | NULL | NUMBER | organization's cost group id |
| COST_TYPE_ID | NULL | NUMBER | cost type id |
| PERIODIC_PRIMARY_QUANTITY | NULL | NUMBER | transaction quantity converted to primary uom of the transfer organization in case of periodic costing |
| MOVE_ORDER_LINE_ID | NULL | NUMBER | The move order line that this transaction line is tied to |
| TASK_GROUP_ID | NULL | NUMBER | Task group identifier for this task |
| RESERVATION_ID | NULL | NUMBER | Reservation identifier |
| PICK_SLIP_NUMBER | NULL | NUMBER | Pick Slip number for the transaction line |

Oracle Proprietary, Confidential Information--Use Restricted by Contract

Indexes

| Index Name | Index Type | Sequence | Column Name |
|-------------------------------|------------|----------|----------------------------|
| MTL_MATERIAL_TRANSACTIONS_N1 | NOT UNIQUE | 1 | INVENTORY_ITEM_ID |
| | | 2 | ORGANIZATION_ID |
| | | 3 | TRANSACTION_DATE |
| MTL_MATERIAL_TRANSACTIONS_N10 | NOT UNIQUE | 1 | COSTED_FLAG |
| | | 3 | TRANSACTION_GROUP_ID |
| | | | |
| MTL_MATERIAL_TRANSACTIONS_N11 | NOT UNIQUE | 2 | INVOICED_FLAG |
| MTL_MATERIAL_TRANSACTIONS_N12 | NOT UNIQUE | 1 | TRANSACTION_SET_ID |
| MTL_MATERIAL_TRANSACTIONS_N13 | NOT UNIQUE | 2 | PM_COST_COLLECTED |
| | | 4 | PM_COST_COLLECTOR_GROUP_ID |
| MTL_MATERIAL_TRANSACTIONS_N14 | NOT UNIQUE | 2 | COMPLETION_TRANSACTION_ID |
| MTL_MATERIAL_TRANSACTIONS_N15 | NOT UNIQUE | 1 | TRANSACTION_ACTION_ID |
| | | 2 | TRANSACTION_TYPE_ID |
| | | 3 | TRANSACTION_SOURCE_TYPE_ID |
| | | 4 | TRANSACTION_DATE |
| MTL_MATERIAL_TRANSACTIONS_N2 | NOT UNIQUE | 1 | TRANSACTION_SOURCE_ID |
| | | 2 | ORGANIZATION_ID |
| | | 3 | TRANSACTION_DATE |
| MTL_MATERIAL_TRANSACTIONS_N3 | NOT UNIQUE | 1 | SUBINVENTORY_CODE |
| | | 2 | ORGANIZATION_ID |
| | | 3 | TRANSACTION_DATE |
| MTL_MATERIAL_TRANSACTIONS_N4 | NOT UNIQUE | 1 | VENDOR_LOT_NUMBER |
| MTL_MATERIAL_TRANSACTIONS_N5 | NOT UNIQUE | 1 | ORGANIZATION_ID |
| | | 2 | TRANSACTION_DATE |
| MTL_MATERIAL_TRANSACTIONS_N6 | NOT UNIQUE | 1 | SHIPMENT_NUMBER |
| MTL_MATERIAL_TRANSACTIONS_N7 | NOT UNIQUE | 1 | ACCT_PERIOD_ID |
| | | 2 | ORGANIZATION_ID |
| MTL_MATERIAL_TRANSACTIONS_N8 | NOT UNIQUE | 1 | TRANSACTION_SOURCE_TYPE_ID |
| | | 2 | ORGANIZATION_ID |
| | | 3 | TRANSACTION_DATE |
| | | 4 | TRANSACTION_SOURCE_NAME |
| MTL_MATERIAL_TRANSACTIONS_N9 | NOT UNIQUE | 1 | TRANSACTION_ACTION_ID |
| | | 2 | ORGANIZATION_ID |
| | | 3 | TRANSACTION_TYPE_ID |
| | | 4 | TRANSACTION_DATE |
| MTL_MATERIAL_TRANSACTIONS_U1 | UNIQUE | 1 | TRANSACTION_ID |
| MTL_MATERIAL_TRANSACTIONS_U2 | UNIQUE | 1 | TRANSACTION_ACTION_ID |
| | | 2 | TRANSACTION_TYPE_ID |
| | | 3 | TRANSACTION_SOURCE_TYPE_ID |
| | | 4 | TRANSACTION_ID |

Sequences

| Sequence | Derived Column |
|-----------------------------|----------------|
| MTL_MATERIAL_TRANSACTIONS_S | TRANSACTION_ID |

Database Triggers

Trigger Name : AX_MTL_MAT_TRANS_AR11
 Trigger Time : AFTER
 Trigger Level : ROW
 Trigger Event : INSERT

This trigger captures information needed to create subledger accounting events when Oracle Inventory and the set of books used is defined as a subledger in the Global Accounting Engine application. This trigger captures accounting events related to Oracle Inventory cost updates. It fires right after the cost update program create a cost update for an inventory transaction. This trigger populates the AX_EVENTS table.

Trigger Name : AX_MTL_MAT_TRANS_BRU1
Trigger Time : BEFORE
Trigger Level : ROW
Trigger Event : UPDATE

This trigger captures information needed to create subledger accounting events when Oracle Inventory and the set of books used is defined as a subledger in the Global Accounting Engine application. This trigger captures accounting events related to Oracle Inventory material transactions. It executes when the inventory transaction is processed by the cost processor. This trigger populates the AX_EVENTS table.

Trigger Name : JA_AU_LOCAL_ACCOUNTING
Trigger Time : AFTER
Trigger Level : ROW
Trigger Event : UPDATE

This trigger is on the COSTED_FLAG column of MTL_MATERIAL_TRANSACTIONS. It calls a PL/SQL package to update MTL_TRANSACTION_ACCOUNTS.REFERENCE_ACCOUNT with the value in MTL_MATERIAL_TRANSACTIONS.DISTRIBUTION_ACCOUNT_ID. This trigger is installed and active only if you have installed Asia/Pacific Localizations (JA).

MTL_SYSTEM_ITEMS_B

MTL_SYSTEM_ITEMS_B is the definition table for items. This table holds the definitions for inventory items, engineering items, and purchasing items. You can specify item-related information in fields such as: Bill of Material, Costing, Purchasing, Receiving, Inventory, Physical attributes, General Planning, MPS/MRP Planning, Lead times, Work in Process, Order Management, and Invoicing.

You can set up the item with multiple segments, since it is implemented as a flexfield. Use the standard 'System Items' flexfield that is shipped with the product to configure your item flexfield. The flexfield code is MSTK.

The primary key for an item is the INVENTORY_ITEM_ID and ORGANIZATION_ID. Therefore, the same item can be defined in more than one organization.

Each item is initially defined in an item master organization. The user then assigns the item to other organizations that need to recognize this item; a row is inserted for each new organization the item is assigned to. Many columns such as MTL_TRANSACTIONS_ENABLED_FLAG and BOM_ENABLED_FLAG correspond to item attributes defined in the MTL_ITEM_ATTRIBUTES table. The attributes that are available to the user depend on which Oracle applications are installed. The table MTL_ATTR_APPL_DEPENDENCIES maintains the relationships between item attributes and Oracle applications.

Two unit of measure columns are stored in MTL_SYSTEM_ITEMS table. PRIMARY_UOM_CODE is the 3-character unit that is used throughout Oracle Manufacturing. PRIMARY_UNIT_OF_MEASURE is the 25-character unit that is used throughout Oracle Purchasing.

Items now support multilingual description. MLS is implemented with a pair of tables: MTL_SYSTEM_ITEMS_B and MTL_SYSTEM_ITEMS_TL. Translations table (MTL_SYSTEM_ITEMS_TL) holds item descriptions in multiple languages. DESCRIPTION column in the base table (MTL_SYSTEM_ITEMS_B) is for backward compatibility and is maintained in the installation base language only.

Foreign Keys

| Primary Key Table | Primary Key Column | Foreign Key Column |
|-----------------------------|---------------------------------------------|-----------------------------------------------|
| AP_TAX_CODES_ALL | NAME | PURCHASING_TAX_CODE |
| AR_VAT_TAX_ALL_B | TAX_CODE | TAX_CODE |
| ENG_ENGINEERING_CHANGES | CHANGE_NOTICE ORGANIZATION_ID | ENGINEERING_ECN_CODE ORGANIZATION_ID |
| FA_CATEGORIES_B | CATEGORY_ID | ASSET_CATEGORY_ID |
| GL_CODE_COMBINATIONS | CODE_COMBINATION_ID | COST_OF_SALES_ACCOUNT |
| GL_CODE_COMBINATIONS | CODE_COMBINATION_ID | SALES_ACCOUNT |
| GL_CODE_COMBINATIONS | CODE_COMBINATION_ID | EXPENSE_ACCOUNT |
| GL_CODE_COMBINATIONS | CODE_COMBINATION_ID | ENCUMBRANCE_ACCOUNT |
| MRP_PLANNING_EXCEPTION_SETS | EXCEPTION_SET_NAME | PLANNING_EXCEPTION_SET |
| MTL_ATP_RULES | RULE_ID | ATP_RULE_ID |
| MTL_ITEM_CATALOG_GROUPS | ITEM_CATALOG_GROUP_ID | ITEM_CATALOG_GROUP_ID |
| MTL_ITEM_LOCATIONS | INVENTORY_LOCATION_ID ORGANIZATION_ID | WIP_SUPPLY_LOCATOR_ID ORGANIZATION_ID |
| MTL_ITEM_STATUS | INVENTORY_ITEM_STATUS_CODE | INVENTORY_ITEM_STATUS_CODE |
| MTL_PARAMETERS | ORGANIZATION_ID | ORGANIZATION_ID |
| MTL_PARAMETERS | ORGANIZATION_ID | SOURCE_ORGANIZATION_ID |
| MTL_PARAMETERS | ORGANIZATION_ID | DEFAULT_SHIPPING_ORG |
| MTL_PICKING_RULES | PICKING_RULE_ID | PICKING_RULE_ID |
| MTL_PLANNERS | PLANNER_CODE ORGANIZATION_ID | PLANNER_CODE ORGANIZATION_ID |
| MTL_SECONDARY_INVENTORIES | SECONDARY_INVENTORY_NAME ORGANIZATION_ID | SOURCE_SUBINVENTORY SOURCE_ORGANIZATION_ID |
| MTL_SECONDARY_INVENTORIES | SECONDARY_INVENTORY_NAME ORGANIZATION_ID | WIP_SUPPLY_SUBINVENTORY ORGANIZATION_ID |
| MTL_SYSTEM_ITEMS_B | INVENTORY_ITEM_ID ORGANIZATION_ID | ENGINEERING_ITEM_ID ORGANIZATION_ID |
| MTL_SYSTEM_ITEMS_B | INVENTORY_ITEM_ID ORGANIZATION_ID | BASE_ITEM_ID ORGANIZATION_ID |
| MTL_SYSTEM_ITEMS_B | INVENTORY_ITEM_ID ORGANIZATION_ID | BASE_WARRANTY_SERVICE_ID ORGANIZATION_ID |
| MTL_SYSTEM_ITEMS_B | ORGANIZATION_ID INVENTORY_ITEM_ID | ORGANIZATION_ID PRODUCT_FAMILY_ITEM_ID |
| MTL_UNITS_OF_MEASURE_TL | UNIT_OF_MEASURE | PRIMARY_UNIT_OF_MEASURE |
| MTL_UNITS_OF_MEASURE_TL | UOM_CODE | VOLUME_UOM_CODE |
| MTL_UNITS_OF_MEASURE_TL | UOM_CODE | WEIGHT_UOM_CODE |
| MTL_UNITS_OF_MEASURE_TL | UNIT_OF_MEASURE | UNIT_OF_ISSUE |
| MTL_UNITS_OF_MEASURE_TL | UOM_CODE | PRIMARY_UOM_CODE |
| MTL_UNITS_OF_MEASURE_TL | UOM_CODE | SERVICE_DURATION_PERIOD_CODE |
| PO_HAZARD_CLASSES_B | HAZARD_CLASS_ID | HAZARD_CLASS_ID |
| PO_UN_NUMBERS_B | UN_NUMBER_ID | UN_NUMBER_ID |
| RA_RULES | RULE_ID | ACCOUNTING_RULE_ID |
| RA_RULES | RULE_ID | INVOICING_RULE_ID |
| RA_TERMS_B | TERM_ID | PAYMENT_TERMS_ID |
| RCV_ROUTING_HEADERS | ROUTING_HEADER_ID | RECEIVING_ROUTING_ID |

QuickCodes Columns

| Column | QuickCodes Type | QuickCodes Table |
|-----------------------------|---------------------|---------------------------------|
| ALLOWED_UNITS_LOOKUP_CODE | MTL_CONVERSION_TYPE | MFG_LOOKUPS |
| | 1 | Item specific |
| | 2 | Standard |
| | 3 | Both standard and item specific |
| ALLOW_EXPRESS_DELIVERY_FLAG | YES_NO | FND_LOOKUPS |
| | N | No |

Oracle Proprietary, Confidential Information--Use Restricted by Contract

| | | |
|--------------------------------|--------------------------|----------------------------|
| | Y | Yes |
| ALLOW_ITEM_DESC_UPDATE_FLAG | YES_NO | FND_LOOKUPS |
| | N | No |
| | Y | Yes |
| ALLOW_SUBSTITUTE_RECEIPTS_FLAG | YES_NO | FND_LOOKUPS |
| | N | No |
| | Y | Yes |
| ALLOW_UNORDERED_RECEIPTS_FLAG | YES_NO | FND_LOOKUPS |
| | N | No |
| | Y | Yes |
| ATO_FORECAST_CONTROL | MRP_ATO_FORECAST_CONTROL | MFG_LOOKUPS |
| | 1 | Consume |
| | 2 | Consume and derive |
| | 3 | None |
| ATP_COMPONENTS_FLAG | YES_NO | FND_LOOKUPS |
| | N | No |
| | Y | Yes |
| ATP_FLAG | YES_NO | FND_LOOKUPS |
| | N | No |
| | Y | Yes |
| AUTO_CREATED_CONFIG_FLAG | YES_NO | FND_LOOKUPS |
| | N | No |
| | Y | Yes |
| AUTO_REDUCE_MPS | MRP_AUTO_REDUCE_MPS | MFG_LOOKUPS |
| | 1 | None |
| | 2 | Past due |
| | 3 | Within demand time fence |
| | 4 | Within planning time fence |
| BACK_ORDERABLE_FLAG | YES_NO | FND_LOOKUPS |
| | N | No |
| | Y | Yes |
| BOM_ENABLED_FLAG | YES_NO | FND_LOOKUPS |
| | N | No |
| | Y | Yes |
| BOM_ITEM_TYPE | BOM_ITEM_TYPE | MFG_LOOKUPS |
| | 1 | Model |
| | 2 | Option class |
| | 3 | Planning |
| | 4 | Standard |
| | 5 | Product Family |
| BUILD_IN_WIP_FLAG | YES_NO | FND_LOOKUPS |
| | N | No |
| | Y | Yes |
| CATALOG_STATUS_FLAG | YES_NO | FND_LOOKUPS |
| | N | No |
| | Y | Yes |
| CHECK_SHORTAGES_FLAG | YES_NO | FND_LOOKUPS |
| | N | No |
| | Y | Yes |
| COLLATERAL_FLAG | YES_NO | FND_LOOKUPS |
| | N | No |
| | Y | Yes |

Oracle Proprietary, Confidential Information--Use Restricted by Contract

| | | |
|--------------------------------|-----------------------------------------------------|-------------------------------------------------------------------------------------------------------------------------------------------------------|
| COMMS_ACTIVATION_REQD_FLAG | YES_NO N Y | FND_LOOKUPS No Yes |
| COMMS_NL_TRACKABLE_FLAG | YES_NO N Y | FND_LOOKUPS No Yes |
| CONTAINER_ITEM_FLAG | YES_NO N Y | FND_LOOKUPS No Yes |
| CONTAINER_TYPE_CODE | CONTAINER_ITEM_TYPE | FND_COMMON_LOOKUPS |
| COSTING_ENABLED_FLAG | YES_NO N Y | FND_LOOKUPS No Yes |
| COUPON_EXEMPT_FLAG | YES_NO N Y | FND_LOOKUPS No Yes |
| CUSTOMER_ORDER_ENABLED_FLAG | YES_NO N Y | FND_LOOKUPS No Yes |
| CUSTOMER_ORDER_FLAG | YES_NO N Y | FND_LOOKUPS No Yes |
| CYCLE_COUNT_ENABLED_FLAG | YES_NO N Y | FND_LOOKUPS No Yes |
| DEFAULT_INCLUDE_IN_ROLLUP_FLAG | YES_NO N Y | FND_LOOKUPS No Yes |
| DEFECT_TRACKING_ON_FLAG | YES_NO N Y | FND_LOOKUPS No Yes |
| DEMAND_TIME_FENCE_CODE | MTL_TIME_FENCE 1 2 3 4 | MFG_LOOKUPS Cumulative total lead time Cumulative manufacturing lead time Total lead time User-defined time fence |
| DOWNLOADABLE_FLAG | YES_NO N Y | FND_LOOKUPS No Yes |
| ELECTRONIC_FLAG | YES_NO N Y | FND_LOOKUPS No Yes |
| ENABLED_FLAG | YES_NO N Y | FND_LOOKUPS No Yes |
| END_ASSEMBLY_PEGGING_FLAG | ASSEMBLY_PEGGING_CODE A B I N X Y | FND_LOOKUPS Full Pegging End Assembly/Full Pegging Net by Project/Ignore Excess None Net by Project/Net Excess End Assembly Pegging |

Oracle Proprietary, Confidential Information--Use Restricted by Contract

| | | |
|-----------------------------|-----------------------|-------------------------|
| ENG_ITEM_FLAG | YES_NO | FND_LOOKUPS |
| | N | No |
| | Y | Yes |
| EQUIPMENT_TYPE | SYS_YES_NO | MFG_LOOKUPS |
| | 1 | Yes |
| | 2 | No |
| EVENT_FLAG | YES_NO | FND_LOOKUPS |
| | N | No |
| | Y | Yes |
| EXPENSE_BILLABLE_FLAG | YES_NO | FND_LOOKUPS |
| | N | No |
| | Y | Yes |
| INDIVISIBLE_FLAG | YES_NO | FND_LOOKUPS |
| | N | No |
| | Y | Yes |
| INSPECTION_REQUIRED_FLAG | YES_NO | FND_LOOKUPS |
| | N | No |
| | Y | Yes |
| INTERNAL_ORDER_ENABLED_FLAG | YES_NO | FND_LOOKUPS |
| | N | No |
| | Y | Yes |
| INTERNAL_ORDER_FLAG | YES_NO | FND_LOOKUPS |
| | N | No |
| | Y | Yes |
| INVENTORY_ASSET_FLAG | YES_NO | FND_LOOKUPS |
| | N | No |
| | Y | Yes |
| INVENTORY_ITEM_FLAG | YES_NO | FND_LOOKUPS |
| | N | No |
| | Y | Yes |
| INVENTORY_PLANNING_CODE | MTL_MATERIAL_PLANNING | MFG_LOOKUPS |
| | 1 | Reorder point planning |
| | 2 | Min-max planning |
| | 6 | Not planned |
| INVOICEABLE_ITEM_FLAG | YES_NO | FND_LOOKUPS |
| | N | No |
| | Y | Yes |
| INVOICE_ENABLED_FLAG | YES_NO | FND_LOOKUPS |
| | N | No |
| | Y | Yes |
| ITEM_TYPE | ITEM_TYPE | FND_COMMON_LOOKUPS |
| | AOC | ATO Option Class |
| | ATO | ATO Model |
| | BMW | BMW Type |
| | FG | Finished Good |
| | I | Inventory Type |
| | K | Kit |
| | M | Model |
| | OC | Option Class |
| | OO | Outside Operation |
| | OP | Outside Processing Item |
| | P | Purchased item |
| | PF | Product Family |

Oracle Proprietary, Confidential Information--Use Restricted by Contract

| | | |
|-------------------------------|---------------------------|--------------------------------------------------|
| | PH | Phantom item |
| | PL | Planning |
| | POC | PTO Option Class |
| | PTO | PTO model |
| | REF | Reference item |
| | SA | Subassembly |
| | SI | Supply item |
| LOCATION_CONTROL_CODE | MTL_LOCATION_CONTROL | MFG_LOOKUPS |
| | 1 | No locator control |
| | 2 | Prespecified locator control |
| | 3 | Dynamic entry locator control |
| | 4 | Locator control determined at subinventory level |
| | 5 | Locator control determined at item level |
| LOT_CONTROL_CODE | MTL_LOT_CONTROL | MFG_LOOKUPS |
| | 1 | No lot control |
| | 2 | Full lot control |
| MATERIAL_BILLABLE_FLAG | MTL_SERVICE_BILLABLE_FLAG | CS_LOOKUPS |
| | E | Expense |
| | L | Labor |
| | M | Material |
| MRP_CALCULATE_ATP_FLAG | YES_NO | FND_LOOKUPS |
| | N | No |
| | Y | Yes |
| MRP_PLANNING_CODE | MRP_PLANNING_CODE | MFG_LOOKUPS |
| | 3 | MRP planning |
| | 4 | MPS planning |
| | 6 | Not planned |
| | 7 | MRP and DRP planning |
| | 8 | MPS and DRP planning |
| | 9 | DRP planning |
| MRP_SAFETY_STOCK_CODE | MTL_SAFETY_STOCK_TYPE | MFG_LOOKUPS |
| | 1 | Non-MRP planned |
| | 2 | MRP planned percent |
| MTL_TRANSACTIONS_ENABLED_FLAG | YES_NO | FND_LOOKUPS |
| | N | No |
| | Y | Yes |
| MUST_USE_APPROVED_VENDOR_FLAG | YES_NO | FND_LOOKUPS |
| | N | No |
| | Y | Yes |
| ORDERABLE_ON_WEB_FLAG | YES_NO | FND_LOOKUPS |
| | N | No |
| | Y | Yes |
| OUTSIDE_OPERATION_FLAG | YES_NO | FND_LOOKUPS |
| | N | No |
| | Y | Yes |
| PICK_COMPONENTS_FLAG | YES_NO | FND_LOOKUPS |
| | N | No |
| | Y | Yes |
| PLANNING_MAKE_BUY_CODE | MTL_PLANNING_MAKE_BUY | MFG_LOOKUPS |
| | 1 | Make |
| | 2 | Buy |

Oracle Proprietary, Confidential Information--Use Restricted by Contract

| | | |
|-------------------------------|-------------------------------|---------------------------------------------------|
| PLANNING_TIME_FENCE_CODE | MTL_TIME_FENCE | MFG_LOOKUPS |
| | 1 | Cumulative total lead time |
| | 2 | Cumulative manufacturing lead time |
| | 3 | Total lead time |
| PREVENTIVE_MAINTENANCE_FLAG | YES_NO | FND_LOOKUPS |
| | N | No |
| | Y | Yes |
| | 4 | User-defined time fence |
| PRORATE_SERVICE_FLAG | YES_NO | FND_LOOKUPS |
| | N | No |
| | Y | Yes |
| PURCHASING_ENABLED_FLAG | YES_NO | FND_LOOKUPS |
| | N | No |
| | Y | Yes |
| PURCHASING_ITEM_FLAG | YES_NO | FND_LOOKUPS |
| | N | No |
| | Y | Yes |
| RECEIPT_REQUIRED_FLAG | YES_NO | FND_LOOKUPS |
| | N | No |
| | Y | Yes |
| RELEASE_TIME_FENCE_CODE | MTL_RELEASE_TIME_FENCE | MFG_LOOKUPS |
| | 1 | Cumulative total lead time |
| | 2 | Cumulative manufacturing lead time |
| | 3 | Item total lead time |
| | 4 | User-defined time fence |
| | 5 | No not autorelease |
| 6 | Kanban Item (Do Not Release) | |
| REPETITIVE_PLANNING_FLAG | YES_NO | FND_LOOKUPS |
| | N | No |
| | Y | Yes |
| REPLENISH_TO_ORDER_FLAG | YES_NO | FND_LOOKUPS |
| | N | No |
| | Y | Yes |
| RESERVABLE_TYPE | MTL_RESERVATION_CONTROL | MFG_LOOKUPS |
| | 1 | Reservable |
| | 2 | Not reservable |
| RESTRICT_LOCATORS_CODE | MTL_LOCATOR_RESTRICTIONS | MFG_LOOKUPS |
| | 1 | Locators restricted to pre-defined list |
| | 2 | Locators not restricted to pre-defined list |
| RESTRICT_SUBINVENTORIES_CODE | MTL_SUBINVENTORY_RESTRICTIONS | MFG_LOOKUPS |
| | 1 | Subinventories restricted to pre-defined list |
| | 2 | Subinventories not restricted to pre-defined list |
| RETURNABLE_FLAG | YES_NO | FND_LOOKUPS |
| | N | No |
| | Y | Yes |
| RETURN_INSPECTION_REQUIREMENT | MTL_RETURN_INSPECTION | MFG_LOOKUPS |
| | 1 | Inspection required |
| | 2 | Inspection not required |

Oracle Proprietary, Confidential Information--Use Restricted by Contract

| | | |
|----------------------------|-------------------|------------------------------------|
| REVISION_QTY_CONTROL_CODE | MTL_ENG_QUANTITY | MFG_LOOKUPS |
| | 1 | No under revision quantity control |
| | 2 | Under revision quantity control |
| RFQ_REQUIRED_FLAG | YES_NO | FND_LOOKUPS |
| | N | No |
| | Y | Yes |
| ROUNDING_CONTROL_TYPE | MTL_ROUNDING | MFG_LOOKUPS |
| | 1 | Round order quantities |
| | 2 | Do not round order quantities |
| SERIAL_NUMBER_CONTROL_CODE | MTL_SERIAL_NUMBER | MFG_LOOKUPS |
| | 1 | No serial number control |
| | 2 | Predefined serial numbers |
| | 5 | Dynamic entry at inventory receipt |
| | 6 | Dynamic entry at sales order issue |
| SERVICEABLE_COMPONENT_FLAG | YES_NO | FND_LOOKUPS |
| | N | No |
| | Y | Yes |
| SERVICEABLE_PRODUCT_FLAG | YES_NO | FND_LOOKUPS |
| | N | No |
| | Y | Yes |
| SERVICE_ITEM_FLAG | YES_NO | FND_LOOKUPS |
| | N | No |
| | Y | Yes |
| SHELF_LIFE_CODE | MTL_SHELF_LIFE | MFG_LOOKUPS |
| | 1 | No shelf life control |
| | 2 | Item shelf life days |
| | 4 | User-defined expiration date |
| SHIPPABLE_ITEM_FLAG | YES_NO | FND_LOOKUPS |
| | N | No |
| | Y | Yes |
| SHIP_MODEL_COMPLETE_FLAG | YES_NO | FND_LOOKUPS |
| | N | No |
| | Y | Yes |
| SOURCE_TYPE | MTL_SOURCE_TYPES | MFG_LOOKUPS |
| | 1 | Inventory |
| | 2 | Supplier |
| SO_TRANSACTIONS_FLAG | YES_NO | FND_LOOKUPS |
| | N | No |
| | Y | Yes |
| STOCK_ENABLED_FLAG | YES_NO | FND_LOOKUPS |
| | N | No |
| | Y | Yes |
| SUMMARY_FLAG | YES_NO | FND_LOOKUPS |
| | N | No |
| | Y | Yes |
| TAXABLE_FLAG | YES_NO | FND_LOOKUPS |
| | N | No |
| | Y | Yes |
| TIME_BILLABLE_FLAG | YES_NO | FND_LOOKUPS |

Oracle Proprietary, Confidential Information--Use Restricted by Contract

| | | |
|-------------------------------|----------------------------|--------------------------------------|
| | N | No |
| | Y | Yes |
| USAGE_ITEM_FLAG | YES_NO | FND_LOOKUPS |
| | N | No |
| | Y | Yes |
| VEHICLE_ITEM_FLAG | YES_NO | FND_LOOKUPS |
| | N | No |
| | Y | Yes |
| VENDOR_WARRANTY_FLAG | YES_NO | FND_LOOKUPS |
| | N | No |
| | Y | Yes |
| VOL_DISCOUNT_EXEMPT_FLAG | YES_NO | FND_LOOKUPS |
| | N | No |
| | Y | Yes |
| WIP_SUPPLY_TYPE | WIP_SUPPLY | MFG_LOOKUPS |
| | 1 | Push |
| | 2 | Assembly Pull |
| | 3 | Operation Pull |
| | 4 | Bulk |
| | 5 | Supplier |
| | 6 | Phantom |
| | 7 | Based on Bill |
| ENFORCE_SHIP_TO_LOCATION_CODE | RECEIVING CONTROL LEVEL | PO_LOOKUP_CODES |
| | NONE | No Receiving Control Enforced |
| | REJECT | Prevent Receipt of Goods or Services |
| | WARNING | Display Warning Message |
| OUTSIDE_OPERATION_UOM_TYPE | OUTSIDE OPERATION UOM TYPE | PO_LOOKUP_CODES |
| | ASSEMBLY | Assembly Unit of Measure |
| | RESOURCE | Resource Unit of Measure |
| QTY_RCV_EXCEPTION_CODE | RECEIVING CONTROL LEVEL | PO_LOOKUP_CODES |
| | NONE | No Receiving Control Enforced |
| | REJECT | Prevent Receipt of Goods or Services |
| | WARNING | Display Warning Message |
| RECEIPT_DAYS_EXCEPTION_CODE | RECEIVING CONTROL LEVEL | PO_LOOKUP_CODES |
| | NONE | No Receiving Control Enforced |
| | REJECT | Prevent Receipt of Goods or Services |
| | WARNING | Display Warning Message |

Column Descriptions

| Name | Null? | Type | Description |
|------------------------|----------|-------------|--------------------------------|
| INVENTORY_ITEM_ID (PK) | NOT NULL | NUMBER | Inventory item identifier |
| ORGANIZATION_ID (PK) | NOT NULL | NUMBER | Organization identifier |
| LAST_UPDATE_DATE | NOT NULL | DATE | Standard Who column |
| LAST_UPDATED_BY | NOT NULL | NUMBER | Standard Who column |
| CREATION_DATE | NOT NULL | DATE | Standard Who column |
| CREATED_BY | NOT NULL | NUMBER | Standard Who column |
| LAST_UPDATE_LOGIN | NULL | NUMBER | Standard Who column |
| SUMMARY_FLAG | NOT NULL | VARCHAR2(1) | Flexfield summary flag |
| ENABLED_FLAG | NOT NULL | VARCHAR2(1) | Flexfield segment enabled flag |

Oracle Proprietary, Confidential Information--Use Restricted by Contract

| | | | |
|----------------------|----------|---------------|---------------------------------------------------------------------------------------------------------------------------------------------------------------|
| START_DATE_ACTIVE | NULL | DATE | Flexfield segment start date |
| END_DATE_ACTIVE | NULL | DATE | Flexfield segment end date |
| DESCRIPTION | NULL | VARCHAR2(240) | Item description is maintained in the installation base language only. Translations table (MTL_SYSTEM_ITEMS_TL) holds item descriptions in multiple languages |
| BUYER_ID | NULL | NUMBER(9) | Buyer identifier |
| ACCOUNTING_RULE_ID | NULL | NUMBER | Accounting rule identifier |
| INVOICING_RULE_ID | NULL | NUMBER | Invoicing rule identifier |
| SEGMENT1 | NULL | VARCHAR2(40) | Key flexfield segment |
| SEGMENT2 | NULL | VARCHAR2(40) | Key flexfield segment |
| SEGMENT3 | NULL | VARCHAR2(40) | Key flexfield segment |
| SEGMENT4 | NULL | VARCHAR2(40) | Key flexfield segment |
| SEGMENT5 | NULL | VARCHAR2(40) | Key flexfield segment |
| SEGMENT6 | NULL | VARCHAR2(40) | Key flexfield segment |
| SEGMENT7 | NULL | VARCHAR2(40) | Key flexfield segment |
| SEGMENT8 | NULL | VARCHAR2(40) | Key flexfield segment |
| SEGMENT9 | NULL | VARCHAR2(40) | Key flexfield segment |
| SEGMENT10 | NULL | VARCHAR2(40) | Key flexfield segment |
| SEGMENT11 | NULL | VARCHAR2(40) | Key flexfield segment |
| SEGMENT12 | NULL | VARCHAR2(40) | Key flexfield segment |
| SEGMENT13 | NULL | VARCHAR2(40) | Key flexfield segment |
| SEGMENT14 | NULL | VARCHAR2(40) | Key flexfield segment |
| SEGMENT15 | NULL | VARCHAR2(40) | Key flexfield segment |
| SEGMENT16 | NULL | VARCHAR2(40) | Key flexfield segment |
| SEGMENT17 | NULL | VARCHAR2(40) | Key flexfield segment |
| SEGMENT18 | NULL | VARCHAR2(40) | Key flexfield segment |
| SEGMENT19 | NULL | VARCHAR2(40) | Key flexfield segment |
| SEGMENT20 | NULL | VARCHAR2(40) | Key flexfield segment |
| ATTRIBUTE_CATEGORY | NULL | VARCHAR2(30) | Descriptive flexfield structure defining column |
| ATTRIBUTE1 | NULL | VARCHAR2(150) | Descriptive flexfield segment |
| ATTRIBUTE2 | NULL | VARCHAR2(150) | Descriptive flexfield segment |
| ATTRIBUTE3 | NULL | VARCHAR2(150) | Descriptive flexfield segment |
| ATTRIBUTE4 | NULL | VARCHAR2(150) | Descriptive flexfield segment |
| ATTRIBUTE5 | NULL | VARCHAR2(150) | Descriptive flexfield segment |
| ATTRIBUTE6 | NULL | VARCHAR2(150) | Descriptive flexfield segment |
| ATTRIBUTE7 | NULL | VARCHAR2(150) | Descriptive flexfield segment |
| ATTRIBUTE8 | NULL | VARCHAR2(150) | Descriptive flexfield segment |
| ATTRIBUTE9 | NULL | VARCHAR2(150) | Descriptive flexfield segment |
| ATTRIBUTE10 | NULL | VARCHAR2(150) | Descriptive flexfield segment |
| ATTRIBUTE11 | NULL | VARCHAR2(150) | Descriptive flexfield segment |
| ATTRIBUTE12 | NULL | VARCHAR2(150) | Descriptive flexfield segment |
| ATTRIBUTE13 | NULL | VARCHAR2(150) | Descriptive flexfield segment |
| ATTRIBUTE14 | NULL | VARCHAR2(150) | Descriptive flexfield segment |
| ATTRIBUTE15 | NULL | VARCHAR2(150) | Descriptive flexfield segment |
| PURCHASING_ITEM_FLAG | NOT NULL | VARCHAR2(1) | Flag indicating purchasing item |
| SHIPPABLE_ITEM_FLAG | NOT NULL | VARCHAR2(1) | Flag indicating shippable item |
| CUSTOMER_ORDER_FLAG | NOT NULL | VARCHAR2(1) | Flag indicating customer orderable item |
| INTERNAL_ORDER_FLAG | NOT NULL | VARCHAR2(1) | Flag indicating internally orderable item |
| SERVICE_ITEM_FLAG | NOT NULL | VARCHAR2(1) | Flag indicating service item |
| INVENTORY_ITEM_FLAG | NOT NULL | VARCHAR2(1) | Flag indicating inventory item |
| ENG_ITEM_FLAG | NOT NULL | VARCHAR2(1) | Flag indicating engineering item |

Oracle Proprietary, Confidential Information--Use Restricted by Contract

| | | | |
|--------------------------------|----------|--------------|---------------------------------------------------------------------------|
| INVENTORY_ASSET_FLAG | NOT NULL | VARCHAR2(1) | Flag indicating item is an inventory asset |
| PURCHASING_ENABLED_FLAG | NOT NULL | VARCHAR2(1) | Flag indicating item is purchasable |
| CUSTOMER_ORDER_ENABLED_FLAG | NOT NULL | VARCHAR2(1) | Flag indicating item is customer orderable |
| INTERNAL_ORDER_ENABLED_FLAG | NOT NULL | VARCHAR2(1) | Flag indicating item is internally orderable |
| SO_TRANSACTIONS_FLAG | NOT NULL | VARCHAR2(1) | Sales order transactions flag |
| MTL_TRANSACTIONS_ENABLED_FLAG | NOT NULL | VARCHAR2(1) | Flag indicating item is transactable |
| STOCK_ENABLED_FLAG | NOT NULL | VARCHAR2(1) | Flag indicating item is stockable |
| BOM_ENABLED_FLAG | NOT NULL | VARCHAR2(1) | Flag indicating item may appear on a BOM |
| BUILD_IN_WIP_FLAG | NOT NULL | VARCHAR2(1) | Flag indicating item may be built in WIP |
| REVISION_QTY_CONTROL_CODE | NULL | NUMBER | Revision quantity control code |
| ITEM_CATALOG_GROUP_ID | NULL | NUMBER | Item catalog group identifier |
| CATALOG_STATUS_FLAG | NULL | VARCHAR2(1) | Flag indicating item catalog complete |
| RETURNABLE_FLAG | NULL | VARCHAR2(1) | Flag indicating whether item is returnable |
| DEFAULT_SHIPPING_ORG | NULL | NUMBER | Default shipping organization |
| COLLATERAL_FLAG | NULL | VARCHAR2(1) | Flag indicating item is collateral item |
| TAXABLE_FLAG | NULL | VARCHAR2(1) | Flag indicating whether item is taxable |
| QTY_RCV_EXCEPTION_CODE | NULL | VARCHAR2(25) | Over tolerance receipts processing method code |
| ALLOW_ITEM_DESC_UPDATE_FLAG | NULL | VARCHAR2(1) | Allow item description updates on PO lines |
| INSPECTION_REQUIRED_FLAG | NULL | VARCHAR2(1) | Flag indicating whether inspection is required upon receipt |
| RECEIPT_REQUIRED_FLAG | NULL | VARCHAR2(1) | Flag indicating supplier receipt is required before payment |
| MARKET_PRICE | NULL | NUMBER | Purchasing market price |
| HAZARD_CLASS_ID | NULL | NUMBER | Purchasing hazard identifier |
| RFQ_REQUIRED_FLAG | NULL | VARCHAR2(1) | Flag indicating whether an RFQ (request for quotation) is required |
| QTY_RCV_TOLERANCE | NULL | NUMBER | Maximum acceptable over-receipt percentage |
| LIST_PRICE_PER_UNIT | NULL | NUMBER | Unit list price - purchasing |
| UN_NUMBER_ID | NULL | NUMBER | Purchasing UN (United Nations) number |
| PRICE_TOLERANCE_PERCENT | NULL | NUMBER | Purchase price tolerance percentage |
| ASSET_CATEGORY_ID | NULL | NUMBER | Fixed asset category identifier (foreign key FA asset category flexfield) |
| ROUNDING_FACTOR | NULL | NUMBER | Rounding factor used to determine order quantity |
| UNIT_OF_ISSUE | NULL | VARCHAR2(25) | Unit of issue |
| ENFORCE_SHIP_TO_LOCATION_CODE | NULL | VARCHAR2(25) | Require receipt location to match ship-to location |
| ALLOW_SUBSTITUTE_RECEIPTS_FLAG | NULL | VARCHAR2(1) | Flag indicating substitute receipts allowed |
| ALLOW_UNORDERED_RECEIPTS_FLAG | NULL | VARCHAR2(1) | Flag indicating unordered receipts allowed |

| | | | |
|------------------------------|------|--------------|--------------------------------------------------------------------|
| ALLOW_EXPRESS_DELIVERY_FLAG | NULL | VARCHAR2(1) | Flag indicating express delivery allowed |
| DAYS_EARLY_RECEIPT_ALLOWED | NULL | NUMBER | Days before planned receipt that item may be received |
| DAYS_LATE_RECEIPT_ALLOWED | NULL | NUMBER | Days after the planned receipt that item may be received |
| RECEIPT_DAYS_EXCEPTION_CODE | NULL | VARCHAR2(25) | Exception processing for early/late receipts |
| RECEIVING_ROUTING_ID | NULL | NUMBER | Default receipt routing |
| INVOICE_CLOSE_TOLERANCE | NULL | NUMBER | Invoice close tolerance |
| RECEIVE_CLOSE_TOLERANCE | NULL | NUMBER | Receipt close tolerance |
| AUTO_LOT_ALPHA_PREFIX | NULL | VARCHAR2(30) | Item-level prefix for lot numbers |
| START_AUTO_LOT_NUMBER | NULL | VARCHAR2(30) | Next auto assigned lot number |
| LOT_CONTROL_CODE | NULL | NUMBER | Lot control code |
| SHELF_LIFE_CODE | NULL | NUMBER | Shelf life code |
| SHELF_LIFE_DAYS | NULL | NUMBER | Length of shelf life days |
| SERIAL_NUMBER_CONTROL_CODE | NULL | NUMBER | Serial number control code |
| START_AUTO_SERIAL_NUMBER | NULL | VARCHAR2(30) | Next auto assigned serial number |
| AUTO_SERIAL_ALPHA_PREFIX | NULL | VARCHAR2(30) | Item-level alpha prefix for serial numbers |
| SOURCE_TYPE | NULL | NUMBER | Inventory or supplier source type |
| SOURCE_ORGANIZATION_ID | NULL | NUMBER | Organization to source items from |
| SOURCE_SUBINVENTORY | NULL | VARCHAR2(10) | Subinventory to source items from |
| EXPENSE_ACCOUNT | NULL | NUMBER | Expense account |
| ENCUMBRANCE_ACCOUNT | NULL | NUMBER | Encumbrance account |
| RESTRICT_SUBINVENTORIES_CODE | NULL | NUMBER | Subinventory restrictions type |
| UNIT_WEIGHT | NULL | NUMBER | Conversion between weight unit of measure and base unit of measure |
| WEIGHT_UOM_CODE | NULL | VARCHAR2(3) | Weight unit of measure code |
| VOLUME_UOM_CODE | NULL | VARCHAR2(3) | Volume unit of measure code |
| UNIT_VOLUME | NULL | NUMBER | Conversion between volume unit of measure and base unit of measure |
| RESTRICT_LOCATORS_CODE | NULL | NUMBER | Locators restrictions type |
| LOCATION_CONTROL_CODE | NULL | NUMBER | Stock locator control code |
| SHRINKAGE_RATE | NULL | NUMBER | Planned shrinkage rate |
| ACCEPTABLE_EARLY_DAYS | NULL | NUMBER | Days an order may be early before rescheduling is recommended |
| PLANNING_TIME_FENCE_CODE | NULL | NUMBER | Planning time fence code |
| DEMAND_TIME_FENCE_CODE | NULL | NUMBER | Demand time fence code |
| LEAD_TIME_LOT_SIZE | NULL | NUMBER | Lead time lot size |
| STD_LOT_SIZE | NULL | NUMBER | Standard lot size |
| CUM_MANUFACTURING_LEAD_TIME | NULL | NUMBER | Cumulative manufacturing lead time |
| OVERRUN_PERCENTAGE | NULL | NUMBER | MRP repetitive acceptable overrun rate |
| MRP_CALCULATE_ATP_FLAG | NULL | VARCHAR2(1) | Calculate ATP flag (y/n) for MRP planning routine |
| ACCEPTABLE_RATE_INCREASE | NULL | NUMBER | MRP repetitive acceptable rate increase |
| ACCEPTABLE_RATE_DECREASE | NULL | NUMBER | MRP repetitive acceptable rate decrease |
| CUMULATIVE_TOTAL_LEAD_TIME | NULL | NUMBER | Cumulative total lead time |
| PLANNING_TIME_FENCE_DAYS | NULL | NUMBER | Planning time fence days |

Oracle Proprietary, Confidential Information--Use Restricted by Contract

| | | | |
|--------------------------------|----------|--------------|----------------------------------------------------------------------|
| DEMAND_TIME_FENCE_DAYS | NULL | NUMBER | Demand time fence days |
| END_ASSEMBLY_PEGGING_FLAG | NULL | VARCHAR2(1) | End assembly pegging flag for MRP |
| REPETITIVE_PLANNING_FLAG | NULL | VARCHAR2(1) | Flag indicating item to be planned as repetitive schedule |
| PLANNING_EXCEPTION_SET | NULL | VARCHAR2(10) | Exception control set |
| BOM_ITEM_TYPE | NOT NULL | NUMBER | Type of item |
| PICK_COMPONENTS_FLAG | NOT NULL | VARCHAR2(1) | Flag indicating whether all shippable components should be picked |
| REPLENISH_TO_ORDER_FLAG | NOT NULL | VARCHAR2(1) | Assemble to Order flag |
| BASE_ITEM_ID | NULL | NUMBER | Base item identifier |
| ATP_COMPONENTS_FLAG | NOT NULL | VARCHAR2(1) | Flag indicating whether item may have components requiring ATP check |
| ATP_FLAG | NOT NULL | VARCHAR2(1) | Flag indicating ATP must be checked when item is ordered |
| FIXED_LEAD_TIME | NULL | NUMBER | Fixed portion of the assembly's lead time |
| VARIABLE_LEAD_TIME | NULL | NUMBER | Variable portion of an assembly's lead time |
| WIP_SUPPLY_LOCATOR_ID | NULL | NUMBER | Supply locator for WIP transactions |
| WIP_SUPPLY_TYPE | NULL | NUMBER | Source of WIP material supply |
| WIP_SUPPLY_SUBINVENTORY | NULL | VARCHAR2(10) | Supply subinventory for WIP transactions |
| PRIMARY_UOM_CODE | NULL | VARCHAR2(3) | Primary unit of measure code |
| PRIMARY_UNIT_OF_MEASURE | NULL | VARCHAR2(25) | Primary stocking unit of measure for the item |
| ALLOWED_UNITS_LOOKUP_CODE | NULL | NUMBER | Allowed unit of measure conversion type |
| COST_OF_SALES_ACCOUNT | NULL | NUMBER | Cost of sales account |
| SALES_ACCOUNT | NULL | NUMBER | Sales account |
| DEFAULT_INCLUDE_IN_ROLLUP_FLAG | NULL | VARCHAR2(1) | Default value for include in cost rollup |
| INVENTORY_ITEM_STATUS_CODE | NOT NULL | VARCHAR2(10) | Material status code |
| INVENTORY_PLANNING_CODE | NULL | NUMBER | Inventory planning code |
| PLANNER_CODE | NULL | VARCHAR2(10) | Planner code |
| PLANNING_MAKE_BUY_CODE | NULL | NUMBER | Indicates whether item is planned as manufactured or purchased |
| FIXED_LOT_MULTIPLIER | NULL | NUMBER | Fixed lot size multiplier |
| ROUNDING_CONTROL_TYPE | NULL | NUMBER | Rounding control code |
| CARRYING_COST | NULL | NUMBER | Annual carrying cost |
| POSTPROCESSING_LEAD_TIME | NULL | NUMBER | Post-processing lead time |
| PREPROCESSING_LEAD_TIME | NULL | NUMBER | Pre-processing lead time |
| FULL_LEAD_TIME | NULL | NUMBER | Full lead time |
| ORDER_COST | NULL | NUMBER | Order cost |
| MRP_SAFETY_STOCK_PERCENT | NULL | NUMBER | Safety stock percentage |
| MRP_SAFETY_STOCK_CODE | NULL | NUMBER | Safety stock code |
| MIN_MINMAX_QUANTITY | NULL | NUMBER | Minimum minmax order quantity |
| MAX_MINMAX_QUANTITY | NULL | NUMBER | Maximum minmax order quantity |
| MINIMUM_ORDER_QUANTITY | NULL | NUMBER | Minimum order quantity |
| FIXED_ORDER_QUANTITY | NULL | NUMBER | Fixed order quantity |
| FIXED_DAYS_SUPPLY | NULL | NUMBER | Fixed days supply |
| MAXIMUM_ORDER_QUANTITY | NULL | NUMBER | Maximum order quantity |
| ATP_RULE_ID | NULL | NUMBER | Available to promise rule to be used for this item |
| PICKING_RULE_ID | NULL | NUMBER | Picking rule code |
| RESERVABLE_TYPE | NULL | NUMBER | Hard reservations allowed flag |

| | | | |
|-------------------------------|----------|--------------|-----------------------------------------------------------------------------------------------------------------------------------------|
| POSITIVE_MEASUREMENT_ERROR | NULL | NUMBER | Percent error above measured quantity |
| NEGATIVE_MEASUREMENT_ERROR | NULL | NUMBER | Percent error below measured quantity |
| ENGINEERING_ECN_CODE | NULL | VARCHAR2(50) | Engineering ECN code |
| ENGINEERING_ITEM_ID | NULL | NUMBER | Engineering implemented item identifier |
| ENGINEERING_DATE | NULL | DATE | Engineering implementation date |
| SERVICE_STARTING_DELAY | NULL | NUMBER | Days after shipment that service begins |
| VENDOR_WARRANTY_FLAG | NOT NULL | VARCHAR2(1) | Flag indicating service for the item is provided by a supplier |
| SERVICEABLE_COMPONENT_FLAG | NULL | VARCHAR2(1) | Indicates whether the item is serviceable by other service-type items and whether it can be referenced as the component of another item |
| SERVICEABLE_PRODUCT_FLAG | NOT NULL | VARCHAR2(1) | Indicates whether the item is serviceable by other service-type items and can have service requests reported against it |
| BASE_WARRANTY_SERVICE_ID | NULL | NUMBER | Base warranty identifier |
| PAYMENT_TERMS_ID | NULL | NUMBER | Payment terms identifier |
| PREVENTIVE_MAINTENANCE_FLAG | NULL | VARCHAR2(1) | Flag indicating whether item can be a preventive maintenance service item |
| PRIMARY_SPECIALIST_ID | NULL | NUMBER | Primary service specialist |
| SECONDARY_SPECIALIST_ID | NULL | NUMBER | Secondary service specialist |
| SERVICEABLE_ITEM_CLASS_ID | NULL | NUMBER | Serviceable item class identifier |
| TIME_BILLABLE_FLAG | NULL | VARCHAR2(1) | Flag indicating service labor hours are billable |
| MATERIAL_BILLABLE_FLAG | NULL | VARCHAR2(30) | Flag indicating service material is billable |
| EXPENSE_BILLABLE_FLAG | NULL | VARCHAR2(1) | Flag indicating service expenses are billable |
| PRORATE_SERVICE_FLAG | NULL | VARCHAR2(1) | Flag indicating cost of service may be prorated |
| COVERAGE_SCHEDULE_ID | NULL | NUMBER | Coverage schedule identifier |
| SERVICE_DURATION_PERIOD_CODE | NULL | VARCHAR2(10) | Period code for default service duration |
| SERVICE_DURATION | NULL | NUMBER | Default service duration |
| WARRANTY_VENDOR_ID | NULL | NUMBER | Service supplier identifier |
| MAX_WARRANTY_AMOUNT | NULL | NUMBER | Monetary value of service costs covered by the item |
| RESPONSE_TIME_PERIOD_CODE | NULL | VARCHAR2(30) | Period code for service response time |
| RESPONSE_TIME_VALUE | NULL | NUMBER | Default response time |
| NEW_REVISION_CODE | NULL | VARCHAR2(30) | Indicates how to notify customers of new revisions of the item |
| INVOICEABLE_ITEM_FLAG | NOT NULL | VARCHAR2(1) | Flag indicating item may appear on invoices |
| TAX_CODE | NULL | VARCHAR2(50) | Tax code |
| INVOICE_ENABLED_FLAG | NOT NULL | VARCHAR2(1) | Indicates whether the item can be invoiced |
| MUST_USE_APPROVED_VENDOR_FLAG | NOT NULL | VARCHAR2(1) | Flag indicating purchases restricted to approved supplier |
| REQUEST_ID | NULL | NUMBER | Standard Who column |
| PROGRAM_APPLICATION_ID | NULL | NUMBER | Standard Who column |
| PROGRAM_ID | NULL | NUMBER | Standard Who column |
| PROGRAM_UPDATE_DATE | NULL | DATE | Standard Who column |

Oracle Proprietary, Confidential Information--Use Restricted by Contract

| | | | |
|-------------------------------|----------|---------------|---------------------------------------------------------------------------------------------------------|
| OUTSIDE_OPERATION_FLAG | NOT NULL | VARCHAR2(1) | Flag indicating item may appear on outside operation purchase order |
| OUTSIDE_OPERATION_UOM_TYPE | NULL | VARCHAR2(25) | Outside operation unit of measure |
| SAFETY_STOCK_BUCKET_DAYS | NULL | NUMBER | Safety stock bucket days |
| AUTO_REDUCE_MPS | NULL | NUMBER(22) | Automatically deletes MPS entries within a time period |
| COSTING_ENABLED_FLAG | NOT NULL | VARCHAR2(1) | Flag indicating cost information is maintained |
| AUTO_CREATED_CONFIG_FLAG | NOT NULL | VARCHAR2(1) | Flag indicating configuration item automatically created |
| CYCLE_COUNT_ENABLED_FLAG | NOT NULL | VARCHAR2(1) | Flag indicating item may be cycle counted |
| ITEM_TYPE | NULL | VARCHAR2(30) | User-defined item type |
| MODEL_CONFIG_CLAUSE_NAME | NULL | VARCHAR2(10) | (not currently used) |
| SHIP_MODEL_COMPLETE_FLAG | NULL | VARCHAR2(1) | Flag indicating model must be complete to ship |
| MRP_PLANNING_CODE | NULL | NUMBER | MRP Planning option |
| RETURN_INSPECTION_REQUIREMENT | NULL | NUMBER | RMA inspection requirement |
| ATO_FORECAST_CONTROL | NULL | NUMBER | Type of forecast control for ATO |
| RELEASE_TIME_FENCE_CODE | NULL | NUMBER | Flag to indicate if this item is auto releasable by MRP |
| RELEASE_TIME_FENCE_DAYS | NULL | NUMBER | Number of days within which this item should be auto released |
| CONTAINER_ITEM_FLAG | NULL | VARCHAR2(1) | Flag indicating if the item is a container. Used for shipping sales orders |
| VEHICLE_ITEM_FLAG | NULL | VARCHAR2(1) | Indicates if the item is a vehicle or not. Used for shipping sales orders |
| MAXIMUM_LOAD_WEIGHT | NULL | NUMBER | Maximum load weight of a container or a vehicle that can be used for shipping sales orders |
| MINIMUM_FILL_PERCENT | NULL | NUMBER | Minimum fill condition under which the container or vehicle should be used |
| CONTAINER_TYPE_CODE | NULL | VARCHAR2(30) | Container type code for container items. Container types are user defineable |
| INTERNAL_VOLUME | NULL | NUMBER | Internal volume for container items. Used by Shipping to calculate container capacity restrictions |
| WH_UPDATE_DATE | NULL | DATE | Warehouse update date for tracking changes relevant to data collected in Data Warehouse |
| PRODUCT_FAMILY_ITEM_ID | NULL | NUMBER | If the item is product family member, stores the product family identifier. Used in Production Planning |
| GLOBAL_ATTRIBUTE_CATEGORY | NULL | VARCHAR2(150) | Global descriptive flexfield structure defining column |
| GLOBAL_ATTRIBUTE1 | NULL | VARCHAR2(150) | Global descriptive flexfield segment |
| GLOBAL_ATTRIBUTE2 | NULL | VARCHAR2(150) | Global descriptive flexfield segment |
| GLOBAL_ATTRIBUTE3 | NULL | VARCHAR2(150) | Global descriptive flexfield segment |
| GLOBAL_ATTRIBUTE4 | NULL | VARCHAR2(150) | Global descriptive flexfield segment |

Oracle Proprietary, Confidential Information--Use Restricted by Contract

| | | | |
|--------------------------------|------|---------------|---------------------------------------------------------------------------------------------------------------------|
| GLOBAL_ATTRIBUTE5 | NULL | VARCHAR2(150) | Global descriptive flexfield segment |
| GLOBAL_ATTRIBUTE6 | NULL | VARCHAR2(150) | Global descriptive flexfield segment |
| GLOBAL_ATTRIBUTE7 | NULL | VARCHAR2(150) | Global descriptive flexfield segment |
| GLOBAL_ATTRIBUTE8 | NULL | VARCHAR2(150) | Global descriptive flexfield segment |
| GLOBAL_ATTRIBUTE9 | NULL | VARCHAR2(150) | Global descriptive flexfield segment |
| GLOBAL_ATTRIBUTE10 | NULL | VARCHAR2(150) | Global descriptive flexfield segment |
| PURCHASING_TAX_CODE | NULL | VARCHAR2(50) | Purchasing tax code |
| OVERCOMPLETION_TOLERANCE_TYPE | NULL | NUMBER | Overcompletion tolerance type |
| OVERCOMPLETION_TOLERANCE_VALUE | NULL | NUMBER | Overcompletion tolerance value |
| EFFECTIVITY_CONTROL | NULL | NUMBER | Effectivity control code. Indicates if the item is under Date Effectivity or Model/Unit Number Effectivity control. |
| CHECK_SHORTAGES_FLAG | NULL | VARCHAR2(1) | Flag indicating material shortages should be checked for this item |
| OVER_SHIPMENT_TOLERANCE | NULL | NUMBER | Over shipment tolerance |
| UNDER_SHIPMENT_TOLERANCE | NULL | NUMBER | Under shipment tolerance |
| OVER_RETURN_TOLERANCE | NULL | NUMBER | Over return tolerance |
| UNDER_RETURN_TOLERANCE | NULL | NUMBER | Under return tolerance |
| EQUIPMENT_TYPE | NULL | NUMBER | Flag indicating item is equipment |
| RECOVERED_PART_DISP_CODE | NULL | VARCHAR2(30) | Indicates return is required for recovered pars, scrap in field, which is used for spare parts |
| DEFECT_TRACKING_ON_FLAG | NULL | VARCHAR2(1) | Specifies whether a defect or bug can be filed against the product |
| USAGE_ITEM_FLAG | NULL | VARCHAR2(1) | Flag indicating an item represents usage. Usage items can be sold as a use of something |
| EVENT_FLAG | NULL | VARCHAR2(1) | Identifies item as an event |
| ELECTRONIC_FLAG | NULL | VARCHAR2(1) | Flag indicating an item exists only in electronic format and not physical |
| DOWNLOADABLE_FLAG | NULL | VARCHAR2(1) | Flag indicating an item is downloadable |
| VOL_DISCOUNT_EXEMPT_FLAG | NULL | VARCHAR2(1) | Indicates an item does not contribute to volume discount for any order |
| COUPON_EXEMPT_FLAG | NULL | VARCHAR2(1) | Indicates an item is excluded from coupons even if it is part of the group that any coupon applies |
| COMMS_NL_TRACKABLE_FLAG | NULL | VARCHAR2(1) | Identifies an item as network logistics trackable |
| ASSET_CREATION_CODE | NULL | VARCHAR2(30) | Used to specify when an asset should be created |
| COMMS_ACTIVATION_REQD_FLAG | NULL | VARCHAR2(1) | Indicates an item requires activation on a network |
| ORDERABLE_ON_WEB_FLAG | NULL | VARCHAR2(1) | Indicates whether an item is orderable on the web or not. iStore will only sell items with this flag to be true |
| BACK_ORDERABLE_FLAG | NULL | VARCHAR2(1) | If ATP failed, can item be back ordered |

Oracle Proprietary, Confidential Information--Use Restricted by Contract

| | | |
|------------------|-------------------|--------------------------------------------------------------------------------|
| WEB_STATUS | NULL VARCHAR2(30) | Specifies item web status, which can be web enabled, web published, or neither |
| INDIVISIBLE_FLAG | NULL VARCHAR2(1) | Item unit is indivisible |

Indexes

| Index Name | Index Type | Sequence | Column Name |
|-----------------------|------------|----------|----------------------------------------------|
| MTL_SYSTEM_ITEMS_B_N1 | NOT UNIQUE | 1 2 | ORGANIZATION_ID SEGMENT1 |
| MTL_SYSTEM_ITEMS_B_N2 | NOT UNIQUE | 1 2 | ORGANIZATION_ID DESCRIPTION |
| MTL_SYSTEM_ITEMS_B_N3 | NOT UNIQUE | 1 | INVENTORY_ITEM_STATUS_CODE |
| MTL_SYSTEM_ITEMS_B_N4 | NOT UNIQUE | 1 2 | ORGANIZATION_ID AUTO_CREATED_CONFIG_FLAG |
| MTL_SYSTEM_ITEMS_B_N5 | NOT UNIQUE | 2 | WH_UPDATE_DATE |
| MTL_SYSTEM_ITEMS_B_N6 | NOT UNIQUE | 2 4 | ITEM_CATALOG_GROUP_ID CATALOG_STATUS_FLAG |
| MTL_SYSTEM_ITEMS_B_N7 | NOT UNIQUE | 2 4 | PRODUCT_FAMILY_ITEM_ID ORGANIZATION_ID |
| MTL_SYSTEM_ITEMS_B_U1 | UNIQUE | 1 2 | INVENTORY_ITEM_ID ORGANIZATION_ID |

Sequences

| Sequence | Derived Column |
|----------------------|-------------------|
| MTL_SYSTEM_ITEMS_B_S | INVENTORY_ITEM_ID |

Database Triggers

Trigger Name : MTL_SYSTEM_ITEMS_B_T2_IBE
 Trigger Time : AFTER
 Trigger Level : ROW
 Trigger Event : DELETE

This trigger calls iStore procedures to update relationships, section-items and search tables that depend on MTL_SYSTEM_ITEMS_B table.

Trigger Name : MTL_SYSTEM_ITEMS_B_T3_IBE
 Trigger Time : AFTER
 Trigger Level : ROW
 Trigger Event : UPDATE

This trigger calls iStore procedures to update relationships and section-items tables that depend on MTL_SYSTEM_ITEMS_B table.

Trigger Name : MTL_SYSTEM_ITEMS_T6_BOM
 Trigger Time : AFTER
 Trigger Level : ROW
 Trigger Event : INSERT

This trigger creates categories corresponding to product family items being created. It also assigns product family items to their corresponding categories. The trigger uses data that has been stored in the BOM_PFI_PVT package PL/SQL tables by the row level trigger.

Trigger Name : MTL_SYSTEM_ITEMS_T1_BOM
Trigger Time : BEFORE
Trigger Level : ROW
Trigger Event : INSERT

This trigger stores product family item identifier used later by the statement level trigger for creation of the corresponding category when a new product family item is defined. It makes calls to the BOM_PFI_PVT package procedures.

Trigger Name : MTL_SYSTEM_ITEMS_B_T2_BOM
Trigger Time : BEFORE
Trigger Level : ROW
Trigger Event : DELETE

This trigger stores corresponding category identifier that is used later by the statement level trigger for deletion of the category when the product family item is deleted. It makes calls to BOM_PFI_PVT package procedures.

Trigger Name : MTL_SYSTEM_ITEMS_T3_BOM
Trigger Time : BEFORE
Trigger Level : ROW
Trigger Event : UPDATE

This trigger performs the following functions depending on conditions: 1. Creates product family category when item attribute BOM_ITEM_TYPE is updated to 5. 2. When the item attribute BOM_ITEM_TYPE is changed from 5 to any other value, the trigger stores corresponding category identifier for later deletion of the category by the statement level trigger. 3. Removes an item assignment to the corresponding product family category when the PRODUCT_FAMILY_ITEM_ID column of that item is changed. 4. When the PRODUCT_FAMILY_ITEM_ID column is changed to non-null, stores category ID in the BOM_PFI_PVT package PL/SQL table for an item assignment to that category later by the statement-level trigger.

Trigger Name : MTL_SYSTEM_ITEMS_T4_BOM
Trigger Time : AFTER
Trigger Level : STATEMENT
Trigger Event : UPDATE

This trigger performs the following functions depending on updates of the BOM_ITEM_TYPE and PRODUCT_FAMILY_ITEM_ID columns: 1. Creates categories corresponding to product family items. 2. Assigns new product family items to their corresponding categories. 3. Deletes product family categories. The trigger uses data that has been stored in the BOM_PFI_PVT package PL/SQL tables by the row level trigger.

Trigger Name : MTL_SYSTEM_ITEMS_T5_BOM
Trigger Time : AFTER
Trigger Level : ROW
Trigger Event : DELETE

This trigger deletes categories corresponding to product family items being deleted. The trigger uses data that has been stored in the BOM_PFI_PVT package PL/SQL tables by the row level trigger.

Trigger Name : MTL_SYSTEM_ITEMS_T1
Trigger Time : BEFORE
Trigger Level : ROW
Trigger Event : UPDATE

Oracle Proprietary, Confidential Information--Use Restricted by Contract

The trigger is executed when the `COSTING_ENABLED_FLAG` field in the `MTL_SYSTEM_ITEMS` table is modified from Yes to No or vice versa. Before updating `COSTING_ENABLED_FLAG` field, the trigger performs the following tasks for each record that is modified:

- Insert a record into `CST_ITEM_COSTS` table if `COSTING_ENABLED_FLAG` field is changed from No to Yes.
- Delete a record from `CST_ITEM_COSTS` table if `COSTING_ENABLED_FLAG` field is changed from Yes to No.

Oracle Proprietary, Confidential Information--Use Restricted by Contract

Index

A

Application Building Block, 1 – 6

C

Column descriptions, 3 – 4

Columns, Who, 3 – 4

Concurrent Program List. *See* Concurrent Program Definitions

D

Database Diagram, 1 – 6

Database diagrams, Network Logistics, 2 – 8

database diagrams, conventions, 2 – 5

Database triggers, 3 – 6

F

Foreign keys, 3 – 3

Form, 1 – 7

Form List, 2 – 15

See also Form Definitions

Forms and Table View List, 2 – 13

I

Indexes, 3 – 6

important note about, 3 – 6

Internal View List, 2 – 14

L

Lookup types. *See* QuickCodes

M

Module List, 2 – 15

See also Module Definitions

Modules, 1 – 6

O

Oracle8 sequences. *See* Sequences

P

Public Table List, 2 – 10

Public View List, 2 – 12

Q

QuickCodes, 1 – 6

Columns that contain, 3 – 3

R

Relationship, 1 – 6

Report List, 2 – 15
See also Report Definitions

S

Sequences, 3 – 6

T

Table and View Definitions

CUN_AP_PA_INVOICES_V, 2 – 14
CUN_ASSET_ADDITIONS_UNITS_V, 2 – 13
CUN_ASSET_UNITS_V, 2 – 13
CUN_EQUIPMENT_CODES, 3 – 8
CUN_EQUIPMENT_CODES_INTERFACE,
3 – 9
CUN_ERROR_LOG, 3 – 10
CUN_INIT_LOAD_INTERFACE, 3 – 11
CUN_ITEM_NETWORK_UNITS_V, 2 – 13
CUN_ITEM_SUMMARY_V, 2 – 13
CUN_ITEMS_V, 2 – 13
CUN_LOCATIONS, 3 – 12
CUN_NON_SERIALIZED_UNITS, 3 – 13
CUN_PROJECT_SHIPMENT_V, 2 – 13
CUN_REDO_LOG, 3 – 15
CUN_REDO_LOG_V, 2 – 13
CUN_SERIALIZED_UNITS, 3 – 16

CUN_SERIALIZED_UNITS_V, 2 – 13
CUN_TRANS_ERRORS, 3 – 21
CUN_TRANS_TEMP, 3 – 22
CUN_TRANSACTION_HIST_V, 2 – 13
CUN_TRANSACTIONS, 3 – 18
CUN_TRANSACTIONS_V, 2 – 13
FA_DISTRIBUTION_HISTORY, 3 – 23
FA_LOCATIONS, 3 – 26
MTL_MATERIAL_TRANSACTIONS, 3 – 28
MTL_SYSTEM_ITEMS_B, 3 – 35

Tables

See also Table and View Definitions
Column descriptions, 3 – 4
Foreign keys, 3 – 3
Indexes. *See* Indexes
Primary Keys, 3 – 4
QuickCodes Columns, 3 – 3
Who columns, 3 – 4, 3 – 5

V

View Definitions. *See* Table and View
Definitions

Views

See also Table and View Definitions; View
List
Derivation, 3 – 6

Reader's Comment Form

Oracle Network Logistics Technical Reference Manual A86267-01

Oracle Corporation welcomes your comments and suggestions on the quality and usefulness of this publication. Your input is an important part of the information we use for revision.

- Did you find any errors?
- Is the information clearly presented?
- Do you need more information? If so, where?
- Are the examples correct? Do you need more examples?
- What features did you like most about this manual? What did you like least about it?

If you find any errors or have any other suggestions for improvement, please indicate the topic, chapter, and page number below:

Please send your comments to:

Oracle CRM Content Development Manager
Oracle Corporation
500 Oracle Parkway
Redwood Shores, CA 94065 USA
Phone: (650) 506-7000 Fax: (650) 506-7200

If you would like a reply, please give your name, address, and telephone number below:

Thank you for helping us improve our documentation.



CAUTION!

This document contains proprietary, confidential information that is the exclusive property of Oracle Corporation.

If you are an Oracle customer, this numbered copy is registered in your site's name. Use, duplication, and disclosure are severely restricted and subject to restrictions stated in your contract with Oracle Corporation.

If you are an Oracle employee, this numbered copy is registered in your name and must be returned if you leave the company. It is your responsibility not to disclose this information to anyone outside of Oracle who is not licensed to use this product. If you have a prospect who needs to see this information, contact mailid APPSAPP to obtain a special nondisclosure agreement.

If you are neither an Oracle customer with a valid contract for the use of this document nor an Oracle employee, then you received this document in an unauthorized manner and are not legally entitled to possess or read it. Please return it immediately to Oracle. You may call collect to the office of the Executive Vice President Applications Division, to arrange its return.

Copy #

