

Oracle[®] iMarketing Technical Reference Manual

RELEASE 11i

August 2000



To order this book, ask for Part No. A86138-01

Copyright © 2000. Oracle Corporation. All rights reserved.

Major Contributors:

Contributors:

This Technical Reference Manual (TRM) in any form, software or printed matter, contains proprietary information of Oracle Corporation; it is provided under an Oracle Corporation agreement containing restrictions on use and disclosure and is also protected by copyright, patent, and other intellectual property law. Restrictions applicable to this TRM include, but are not limited to: (a) exercising either the same degree of care to safeguard the confidentiality of this TRM as you exercise to safeguard the confidentiality of your own most important Confidential Information or a reasonable degree of care, whichever is greater; (b) maintaining agreements with your employees and agents that protect the Confidential Information of third parties such as Oracle Corporation and instructing such employees and agents of these requirements for this TRM; (c) restricting disclosure of this TRM to those of your employees who have a "need to know" consistent with the purposes for which this TRM was disclosed to you; (d) maintaining this TRM at all times on your premises; (e) not removing or destroying any proprietary or confidential legends or markings placed upon this TRM in whatever form, software or printed matter; and (f) not reproducing or transmitting this TRM in any form or by any means, electronic or mechanical, for any purpose, without the express written permission of Oracle Corporation. You should not use this TRM in any form, software or printed matter, to create software that performs the same or similar functions as any Oracle Corporation products.

The information in this TRM is subject to change without notice. If you find any problems in the TRM in any form, software or printed matter, please report them to us in writing. Oracle Corporation does not warrant that this TRM is error-free. This TRM is provided to customer "as-is" with no warranty of any kind. This TRM does not constitute Documentation as that term is defined in Oracle's agreements.

Reverse engineering of the Programs (software and documentation) associated with this TRM are prohibited. The Programs associated with this TRM are not intended for use in any nuclear, aviation, mass transit, medical, or other inherently dangerous applications. It shall be licensee's responsibility to take all appropriate fail-safe, back-up, redundancy and other measures to ensure the safe use of such applications if the Programs are used for such purposes, and Oracle disclaims liability for any damages caused by such use of the Programs.

Program Documentation is licensed for use solely to support the deployment of the Programs and not for any other purpose.

Restricted Rights Legend

This TRM and the Programs associated with this TRM delivered subject to the DOD FAR Supplement are 'commercial computer software' and use, duplication and disclosure of the TRM and the Programs associated with this TRM shall be subject to the licensing restrictions set forth in the applicable Oracle license agreement. Otherwise, this TRM and the Programs associated with this TRM delivered subject to the Federal Acquisition Regulations are 'restricted computer software' and use, duplication and disclosure of the TRM and the Programs associated with this TRM shall be subject to the restrictions in FAR 52.227-14, Rights in Data -- General, including Alternate III (June 1987). Oracle Corporation, 500 Oracle Parkway, Redwood City, CA 94065.

Oracle is a registered trademark, and iMarketing, CASE*Exchange, Enabling the Information Age, Hyper*SQL, NLS*Workbench, Oracle7, Oracle8, Oracle 8i, Oracle Access, Oracle Application Object Library, Oracle Discoverer, Oracle Financials, Oracle Quality, Oracle Web Customers, Oracle Web Employees, Oracle Work in Process, Oracle Workflow, PL*SQL, Pro*Ada, Pro*C, Pro*COBOL, Pro*FORTRAN, Pro*Pascal, Pro*PL/I, SmartClient, SQL*Connect, SQL*Forms, SQL*Loader, SQL*Menu, SQL*Net, SQL*Plus, and SQL*Report are trademarks or registered trademarks of Oracle Corporation. Other names may be trademarks of their respective owners.



CAUTION

This Technical Reference Manual in any form -- software or printed matter -- contains proprietary, confidential information that is the exclusive property of Oracle Corporation. If you do not have a valid contract with Oracle for the use of this Technical Reference Manual or have not signed a non-disclosure agreement with Oracle covering this Technical Reference Manual, then you received this document in an unauthorized manner and are not legally entitled to possess or read it.

Use, duplication, and disclosure are subject to restrictions stated in your contract with Oracle Corporation.

| | | |
|------------------|-------------------------------------|--------------|
| Chapter 1 | Introduction | 1 – 1 |
| Chapter 2 | High-Level Design | 2 – 1 |
| | Overview of High-Level Design | 2 – 2 |
| | Database Diagrams | 2 – 7 |
| | Public Table List | 2 – 15 |
| | Public View List | 2 – 18 |
| | Internal View List | 2 – 19 |
| | Multilingual View List | 2 – 20 |
| Chapter 3 | Detailed Design | 3 – 1 |
| | Overview of Detailed Design | 3 – 2 |
| | Table and View Definitions | 3 – 3 |

Introduction

The *Oracle iMarketing Technical Reference Manual* provides the information you need to understand the underlying structure of Oracle iMarketing. After reading this manual, you should be able to convert your existing applications data, integrate your existing applications with Oracle iMarketing, and write custom reports for Oracle iMarketing, as well as read data that you need to perform other tasks.

This chapter introduces you to the *Oracle iMarketing Technical Reference Manual*, and explains how to use it.

Introduction

At Oracle, we design and build applications using Oracle Designer, our systems design technology that provides a complete environment to support developers through all stages of a systems life cycle. Because we use a repository-based design toolset, all the information regarding the underlying structure and processing of our applications is available to us online. Using Oracle Designer, we can present this information to you in the form of a technical reference manual.

This *Oracle iMarketing Technical Reference Manual* contains detailed, up-to-date information about the underlying structure of Oracle iMarketing. As we design and build new releases of Oracle iMarketing, we update our Oracle Designer repository to reflect our enhancements. As a result, we can always provide you with an *Oracle iMarketing Technical Reference Manual* that contains the latest technical information as of the publication date. Note that after the publication date we may have added new indexes to Oracle iMarketing to improve performance.

About this Manual

This manual describes the Oracle Customer Relationship Management (CRM) Applications Release 11i data model, as used by Oracle iMarketing; it discusses the database we include with a fresh install of Oracle CRM Release 11i. If you have not yet upgraded to Release 11i, your database may differ from the database we document in this book.

You can contact your Oracle representative to confirm that you have the latest technical information for Oracle iMarketing. You can also use Oracle *MetaLink* which is accessible through Oracle's Support Web Center (http://www.oracle.com/support/elec_sup).

Finding the Latest Information

The *Oracle iMarketing Technical Reference Manual* contains the latest information as of the publication date. For the latest information we encourage you to use Oracle *MetaLink* which is accessible through Oracle's Support Web Center (http://www.oracle.com/support/elec_sup).

Audience

The *Oracle iMarketing Technical Reference Manual* provides useful guidance and assistance to:

- Technical End Users
- Consultants
- Systems Analysts
- System Administrators
- Other MIS professionals

This manual assumes that you have a basic understanding of structured analysis and design, and of relational databases. It also assumes that you are familiar with Oracle Application Object Library and Oracle iMarketing. If you are not familiar with the above products, we suggest that you attend one or more of the training classes available through Oracle Education (see: Other Information Sources: page 1 – 7).

How This Manual is Organized

This manual contains two major sections, High-Level Design and Detailed Design.

High-Level Design

This section, Chapter 2, contains database diagrams and lists each database table and view that Oracle iMarketing uses. This chapter also has a list of modules.

Detailed Design

This section, Chapter 3, contains a detailed description of the Oracle iMarketing database design, including information about each database table and view you might need for your custom reporting or other data requirements.

How to Use This Manual

The *Oracle iMarketing Technical Reference Manual* is a single, centralized source for all the information you need to know about the underlying structure and processing of Oracle iMarketing. For example, you can use this manual when you need to:

- Convert existing application data
- Integrate your Oracle iMarketing application with your other applications systems
- Write custom reports
- Define alerts against Oracle Applications tables
- Configure your Oracle Self-Service Web Applications
- Create views for decision support queries using query tools
- Create business views for Oracle Discoverer

You need not read this manual cover to cover. Use the table of contents and index to quickly locate the information you need.

How Not To Use This Manual

Do not use this manual to plan modifications

You should not use this manual to plan modifications to Oracle iMarketing. Modifying Oracle iMarketing limits your ability to upgrade to future releases of your Oracle iMarketing application. In addition, it interferes with our ability to give you the high-quality support you deserve.

We have constructed Oracle iMarketing so that you can customize it to fit your needs without programming, and you can integrate it with your existing applications through interface tables. However, should you require program modifications, you should contact our support team (see: Other Information Sources: page 1 – 7). They can put you in touch with Oracle Services, the professional consulting organization of Oracle. Their team of experienced applications professionals can make the modifications you need while ensuring upward compatibility with future product releases.

Oracle Proprietary, Confidential Information--Use Restricted by Contract

Do not write data into non-interface tables

Oracle reserves the right to change the structure of Oracle Applications tables, and to change the meaning of, add, or delete lookup codes and data in future releases. Do not write data directly into or change data in non-interface tables using SQL*Plus or other programming tools because you risk corrupting your database and interfering with our ability to support you.

Moreover, this version of the *Oracle iMarketing Technical Reference Manual* does not contain complete information about the dependencies between Oracle iMarketing applications tables. Therefore, you should write data into only those tables we identify as interface tables. If you write data into other non-interface tables, you risk violating your data integrity since you might not fulfill all the data dependencies in your Oracle iMarketing application.

You are responsible for the support and upgrade of the logic within the procedures that you write, which may be affected by changes between releases of Oracle Applications.

Do not rely on upward compatibility of the data model

Oracle reserves the right to change the structure of Oracle iMarketing tables, and to change the meaning of, add, or delete lookup codes and other data in future releases. We do not guarantee the upward compatibility of the Oracle iMarketing data model. For example, if you write a report that identifies concurrent requests that end in Error status by selecting directly from Oracle Application Object Library tables, we do not guarantee that your report will work properly after an upgrade.

About Oracle Application Object Library

Oracle Application Object Library is a collection of pre-built application components and facilities for building Oracle Applications and extensions to Oracle Applications. Oracle Application Coding Standards use the Oracle Application Object Library and contains shared components including but not limited to -- forms, subroutines, concurrent programs and reports, database tables and objects, messages, menus, responsibilities, flexfield definitions and online help.



Attention: Oracle does not support *any* customization of Oracle Application Object Library tables or modules, not even

by Oracle consultants. (Oracle Application Object Library tables generally have names beginning with FND_%.)

Accordingly, this manual does not contain detailed information about most Oracle Application Object Library tables used by Oracle iMarketing.

A Few Words About Terminology

The following list provides you with definitions for terms that we use throughout this manual:

Relationship

A relationship describes any significant way in which two tables may be associated. For example, rows in the Journal Headers table may have a one-to-many relationship with rows in the Journal Lines table.

Database Diagram

A database diagram is a graphic representation of application tables and the relationships between them.

Module

A module is a program or procedure that implements one or more business functions, or parts of a business function, within an application. Modules include forms, concurrent programs and reports, and subroutines.

Application Building Block

An application building block is a set of tables and modules (forms, reports, and concurrent programs) that implement closely-related database objects and their associated processing. Said another way, an application building block is a logical unit of an application.

QuickCodes

QuickCodes let you define general purpose, static lists of values for window fields. QuickCodes allow you to base your program logic on lookup codes while displaying user-friendly names in a list of values window. QuickCodes simplify name and language changes by letting

you change the names your end users see, while the codes in your underlying programs remain the same.

Form

A form is a module comprised of closely related windows that are used together to perform a task. For example, the Enter Journals form in Oracle General Ledger includes the Enter Journals window, the Batch window, and the More Actions window among others. The Enter Journals window is the main window, and from it, you can use buttons to navigate to other windows in the form. The form name usually corresponds to the main window in the form, and is frequently a window you open directly from the Navigator.

Other Information Sources

Installation and System Administration

Training

Oracle Education offers a complete set of training courses to help you and your staff master Oracle CRM Applications. We can help you develop a training plan that provides thorough training for both your project team and your end users. We will work with you to organize courses appropriate to your job or area of responsibility.

Training professionals can show you how to plan your training throughout the implementation process so that the right amount of information is delivered to key people when they need it the most. You can attend courses at any one of our many Educational Centers, or you can arrange for our trainers to teach at your facility. In addition, we can tailor standard courses or develop custom courses to meet your needs.

Support

From on-site support to central support, our team of experienced professionals provides the help and information you need to keep Oracle iMarketing working for you. This team includes your Technical Representative, Account Manager, and Oracle's large staff of consultants and support specialists with expertise in your business

area, managing an Oracle server, and your hardware and software environment.

About Oracle

Oracle Corporation develops and markets an integrated line of software products for database management, applications development, decision support, and office automation, as well as Oracle Applications, an integrated suite of more than 75 software modules for financial management, supply chain management, manufacturing, project systems, human resources, and sales and service management.

Oracle products are available for mainframes, minicomputers, personal computers, network computers, and personal digital assistants, allowing organizations to integrate different computers, different operating systems, different networks, and even different database management systems, into a single, unified computing and information resource.

Oracle is the world's leading supplier of software for information management, and the world's second largest software company. Oracle offers its database, tools, and applications products, along with related consulting, education, and support services, in over 145 countries around the world.

Thank You

Thanks for using Oracle iMarketing and this technical reference manual!

We appreciate your comments and feedback. After the Table of Contents of this manual is a Reader's Comment Form that you can use to explain what you like or dislike about Oracle iMarketing or this technical reference manual. Mail your comments to the following address or call us directly at (650) 506-7000.

Oracle CRM Applications Content Development Manager
Oracle Corporation
500 Oracle Parkway
Redwood Shores, California 94065
U.S.A.

Oracle Proprietary, Confidential Information--Use Restricted by Contract

CHAPTER

2

High-Level Design

This chapter presents a high-level design for Oracle iMarketing that satisfies the business needs we specify during Strategy and Analysis. It contains database diagrams for Oracle iMarketing application building blocks, lists of database tables and views, and a list of modules.

Overview of High-Level Design

During High-Level Design, we define the application components (tables, views, and modules) we need to build our application. We specify what application components should do without specifying the details of *how* they should do it.

You can refer to this High-Level Design chapter to quickly acquaint yourself with the tables, views, and modules that comprise Oracle iMarketing applications. And, you can prepare yourself to understand the detailed design and implementation of Oracle iMarketing.

Database Diagrams

The Database Diagrams section graphically represents all Oracle iMarketing applications tables and the relationships between them, organized by building block.

Use this section to quickly learn what tables each Oracle iMarketing application building block uses, and how those tables interrelate. Then, you can refer to the Table and View Definitions sections of Chapter 3 for more detailed information about each of those tables.

Table Lists

The Table List sections list the Oracle iMarketing applications tables. Because a product might not include at least one table for each type, this Technical Reference Manual might not include each of the following sections.

Public Tables

Use the Public Table List section to quickly identify the tables you are most interested in. Then, you can refer to the Table and View Definitions sections of Chapter 3 for more detailed information about those tables.

In addition, this manual may contain full documentation for one or more of the following Application Object Library tables: FND_DUAL, FND_CURRENCIES, and FND_COMMON_LOOKUPS.

Internal Tables

This section includes a list of private, internal tables used by Oracle iMarketing; we do not provide additional documentation for these tables.

View Lists

The View List sections list the Oracle iMarketing views, with one section for each type of view. Because a product might not include at least one view for each type, this Technical Reference Manual might not include each of the following sections.

Use this section to quickly identify the views you are most interested in. Then, you can refer to the Table and View Definitions sections of Chapter 3 for more detailed information about those views.

Public Views

This section lists views that may be useful for your custom reporting or other data requirements. The list includes a description of the view, and the page in Chapter 3 that gives detailed information about the public view.

Web Views

This section lists views that you may need to configure your Self-Service Web applications. The list includes a description of the view, and the page in Chapter 3 that gives detailed information about the web view.

Internal Views

This section includes each private, internal view that Oracle iMarketing uses.

Multiple Reporting Currency Views

This list includes views that were created to support the Multiple Reporting Currencies feature.

Module List

The Module List section briefly describes each of the Oracle iMarketing applications modules. This section lists forms, reports, and concurrent programs.

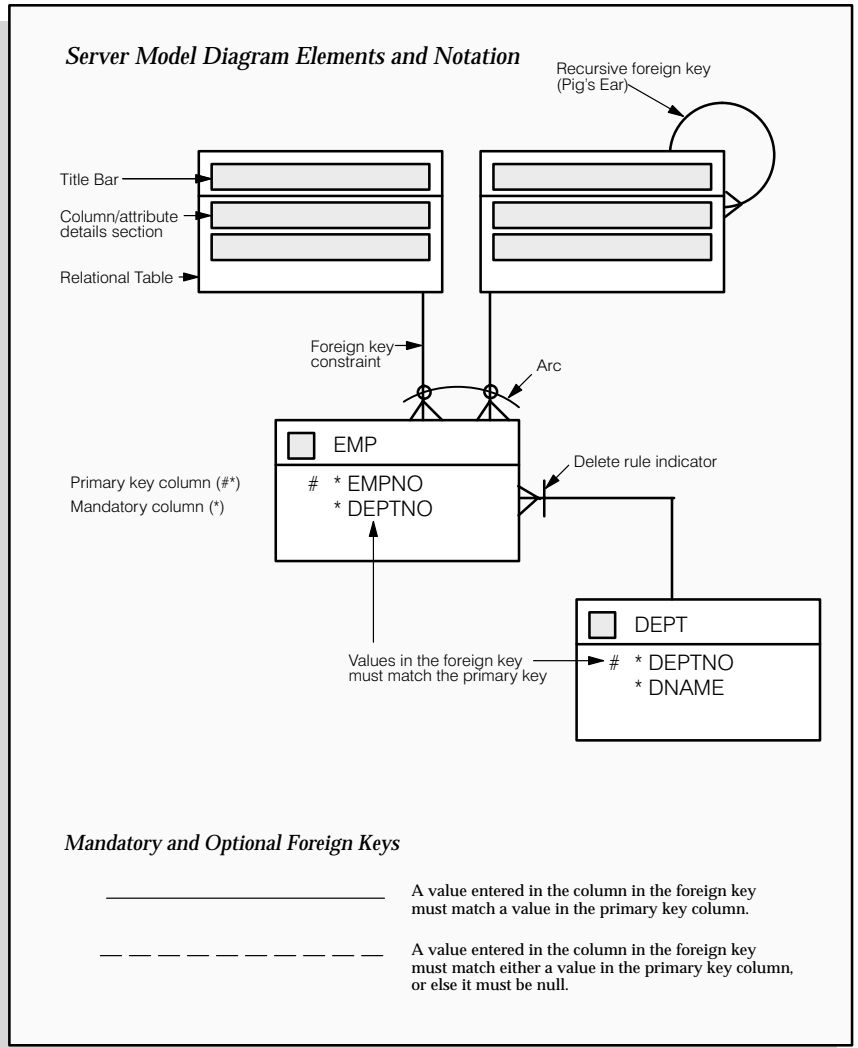
A form is a module comprised of closely related windows that are used together to perform a task. For example, the Enter Journals form in Oracle General Ledger includes the Enter Journals window, the Batch window, and the More Actions window. The Enter Journals window is the main window, and from it, you can use buttons to navigate to other windows in the form. The form name usually corresponds to the main window in the form, and is frequently a window you can open directly from the Navigator.

The Reports and Concurrent Programs lists include processes you can submit from the Submit Requests window or other windows, as well as processes that are submitted automatically by Oracle iMarketing. Use your user's guide to learn more about reports and concurrent processes.

Database Diagramming Conventions

We use the following notational conventions in our database diagrams:

Figure 2 - 1
Database Diagram
Conventions



Tables – are the basic unit of storage in the database. A hand symbol preceding the title in the table's title bar indicates that the table is not owned by this application but shared with another.

Foreign key constraint – is a type of referential integrity constraint for checking the integrity of data entered in a specific column or set of columns. This specified column or set of columns is known as the foreign key.

Delete rule indicator – determines the action to be taken when an attempt is made to delete a related row in a join table. A line through the foreign key constraint, as shown on the above diagram, indicates that this action is restricted.

Arcs – specify that, for any given row in a table, a value must be entered in one of the arc columns. The remaining columns within the arc must be null.

Database Diagrams

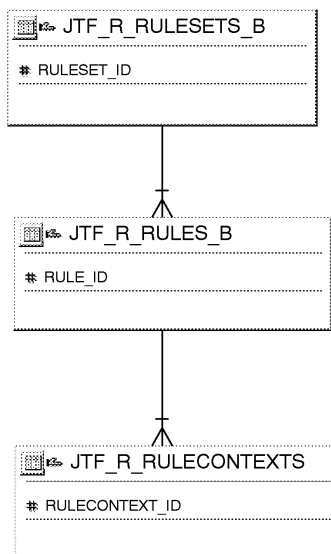
This section graphically represents most of the significant Oracle iMarketing tables and the relationships between them, organized by building block. Use this section to quickly learn what tables each Oracle iMarketing application building block uses, and how these tables interrelate. Then, you can refer to the Table and View Definitions sections of Chapter 3 for more detailed information about each of those tables.

This section contains a database diagram for each of the following Oracle iMarketing application building blocks:

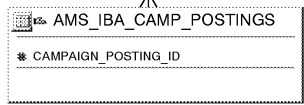
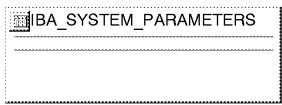
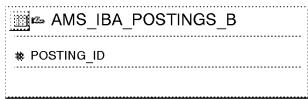
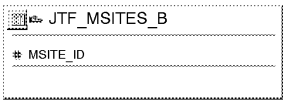
- Diagram 1: IBA Rules
- Diagram 2: IBA Postings
- Diagram 3: IBA Campaigns
- Diagram 4: IBA Affiliate Registration

Some tables, especially important reference tables, appear in more than one database diagram. When several building blocks use a table, we show that table in each appropriate database diagram.

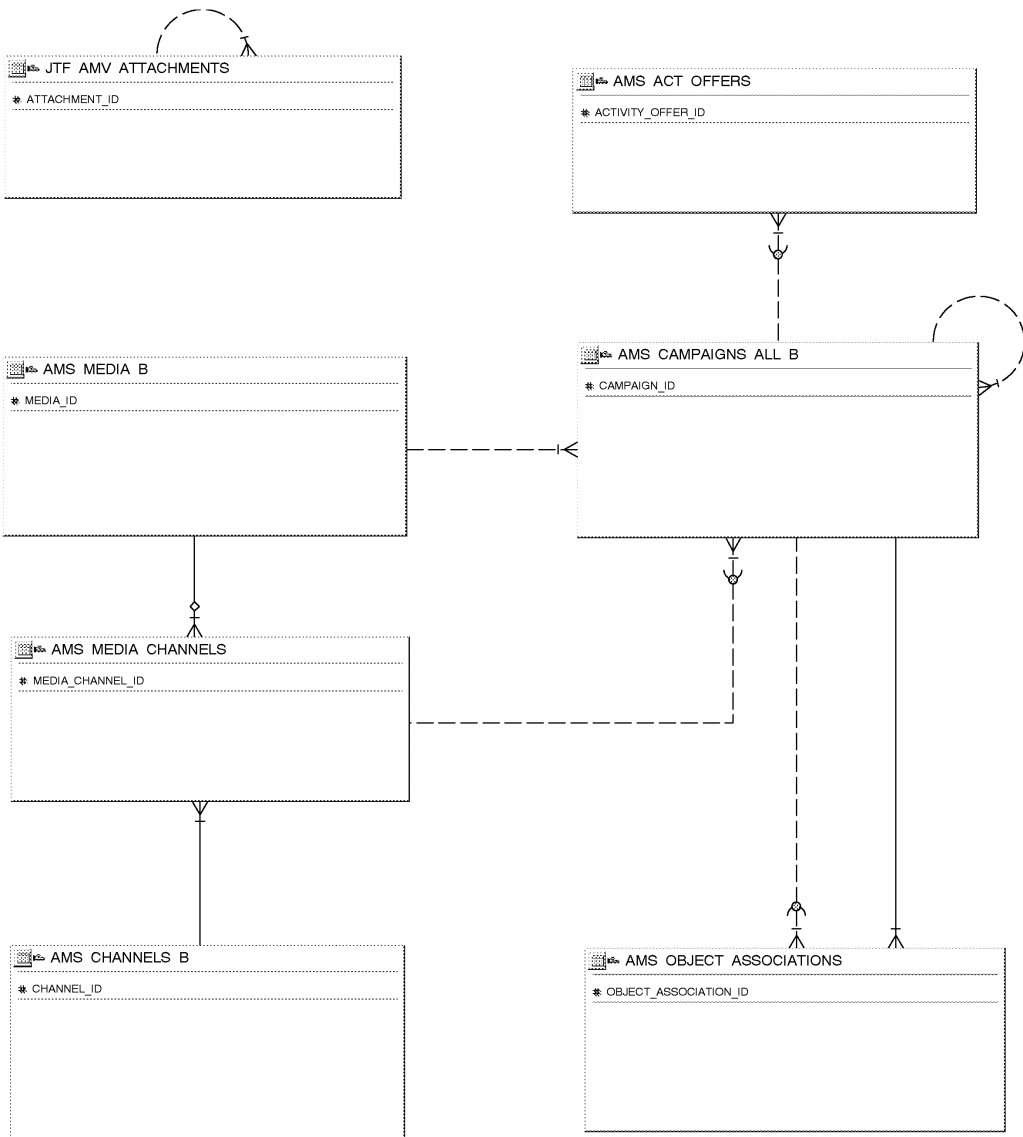
IBA Rules



IBAPostings

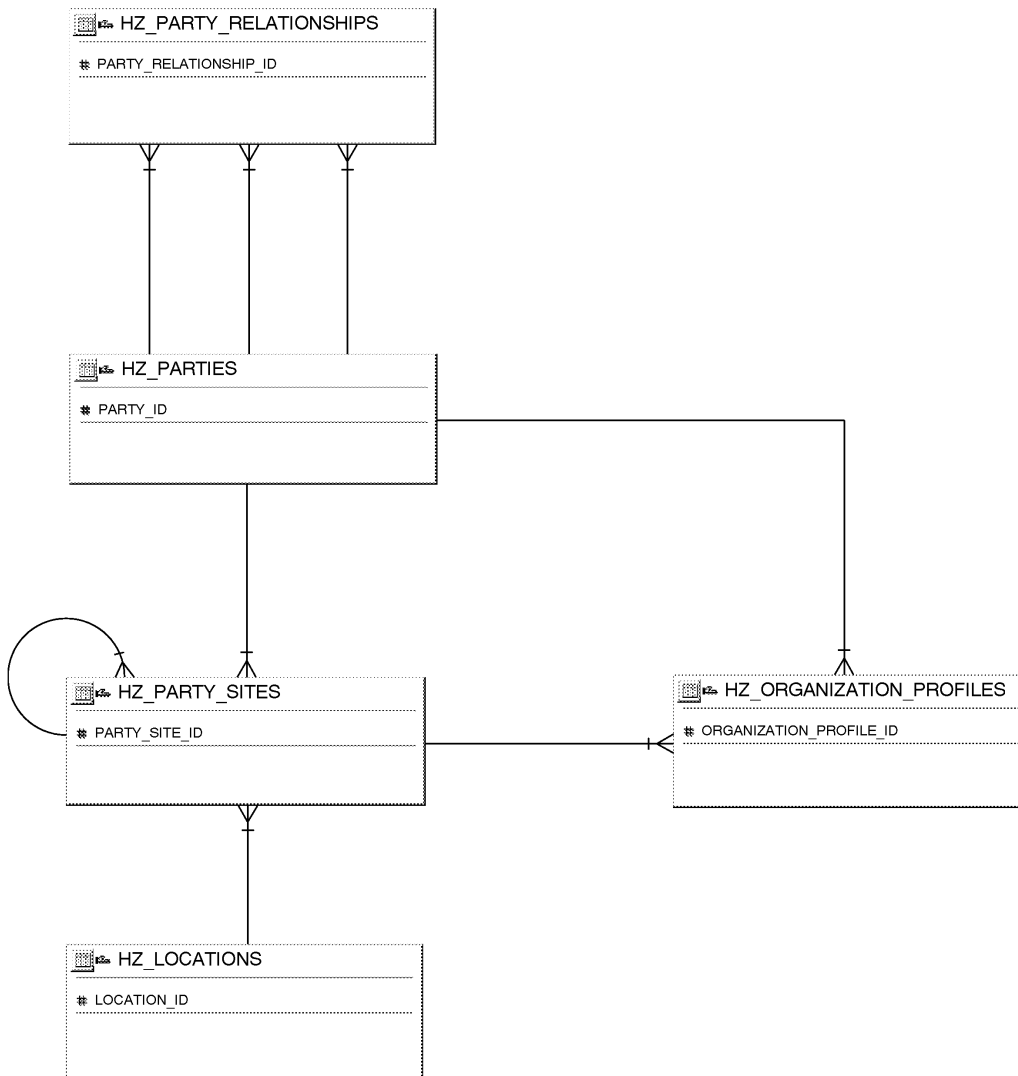


IBA Campaigns



Oracle Proprietary, Confidential Information--Use Restricted by Contract

IBA Affiliate Registration



Public Table List

This section lists each public database table that iMarketeing uses and provides a brief description of each of those tables. The page reference is to the table description in Chapter 3.

Note that "public" tables are not necessarily intended for write access by custom code; Oracle Corporation supports write access using only standard Oracle Applications forms, reports, and programs, or any SQL write access to tables explicitly documented as API tables. For more information, see the How Not To Use This Manual section of this book's Introduction.

iMarketeing uses the following Public tables:

| Table Name | Description |
|-------------------------|--|
| AMS_ACT_MARKET_SEGMENTS | Stores what Market Segment are used by what Activity. (See page 3 – 7) |
| AMS_ACT_OFFERS | Holds the high level details of promotional offers related to a campaign (See page 3 – 9) |
| AMS_ACT_PRODUCTS | Stores information about the products that are promoted as part of a promotion event. (See page 3 – 11) |
| AMS_CAMPAIGNS_ALL_B | Base table to store the details of a campaign. (See page 3 – 13) |
| AMS_CELLS_ALL_B | This table stores the definition of marketing cells (Segments). A cell is made up of one to many discoverer workbooks/worksheets. It is better known as Segments in Oracle Marketing. (See page3 – 17) |
| AMS_CELLS_ALL_TL | This table stores all translated columns for marketing Cells definition. (See page 3 – 18) |
| AMS_CHANNELS_B | This table stores the details about what Media Channels are available to be used in Oracle Marketing. (See page 3 – 19) |
| AMS_DELIVERABLES_ALL_B | This table stores the details about marketing deliverables/collaterals, collaterals are uniquely identified by deliverable name, language and version. (See page 3 – 21) |
| AMS_IBA_POSTINGS_B | Storing affiliate posting information (See page 3 – 24) |

| | |
|---------------------------|---|
| AMS_IBA_POSTINGS_TL | Table for storing affiliate posting translatable fields (See page 3 – 26) |
| AMS_MEDIA_B | Specifies all different media that can be used by an activity. (See page 3 – 27) |
| AMS_MEDIA_CHANNELS | Stores what channel can handle what kind of media. (See page 3 – 28) |
| AMS_OBJECT_ASSOCIATIONS | AMS_OBJECT_ASSOCIATIONS is the cross reference between the Campaigns or Events or Creatives that are running. (See page 3 – 29) |
| AMS_PARTY_MARKET_SEGMENTS | This is an intersection table to allow a party to be associated to multiple market segments. (See page 3 – 31) |
| AMS_SETUP_TYPES | This table stores the set types required by custom setups. (See page 3 – 32) |
| AMS_SOURCE_CODES | This table records the source codes for all objects in the system. (See page 3 – 33) |
| AMS_USER_STATUSES_B | Stores User status information (See page 3 – 34) |
| HZ_LOCATIONS | Information about physical addresses (See page 3 – 35) |
| HZ_ORGANIZATION_PROFILES | Detailed information about organizations (See page 3 – 40) |
| HZ_PARTIES | Information about parties such as organizations, people, and groups (See page 3 – 46) |
| HZ_PARTY_RELATIONSHIPS | Relationships between parties (See page 3 – 52) |
| HZ_PARTY_SITES | Links information about parties to the information about physical locations (See page 3 – 55) |
| IBA_SYSTEM_PARAMETERS | This table is used to define iMarketing related system parameters. (See page 3 – 58) |
| JTF_AMV_ATTACHMENTS | Stores the document attachment information for JTF_AMV_ITEMS_B (See page 3 – 59) |
| JTF_MSITES_B | Stores Mini Site (Specialty Stores) Information. (See page 3 – 61) |
| JTF_R_RULECONTEXTS | Store Rule Definition name, and description (See page 3 – 63) |
| JTF_R_RULESETS_B | group a set of rules into an application unit (See page 3 – 64) |

Oracle Proprietary, Confidential Information--Use Restricted by Contract

| | |
|-------------------|---|
| JTF_R_RULESETS_TL | Translated table to store description of rule set information (See page 3 – 65) |
| JTF_R_RULES_B | name and describes the condition and action of a rule (See page 3 – 66) |
| JTF_R_RULES_TL | rule definition translation table (See page 3 – 67) |
| JTF_STORES_B | Stores details of a WEB store. (See page 3 – 68) |

Public View List

This section lists each public database view that Oracle iMarketing uses and provides a brief description of each of those views. These views may be useful for your custom reporting or other data requirements. The page reference is to the detailed view description in Chapter 3.

Oracle iMarketing uses the following public views:

| View Name | <u>Description</u> |
|------------------|--|
| AMS_CELLS_VL | This view returns the cells (segment) information. (See page NO TAG) |

Internal View List

This section lists each private, internal view that Oracle iMarketing uses.



Warning: Oracle Corporation does not support access to Oracle Applications data using these views, except from standard Oracle Applications forms, reports, and programs.

Oracle iMarketing uses the following internal views:

- AMS_ACT_PRODUCTS_V
- AMS_CAMPAIGNS_V
- AMS_CAMPAIGN_TEAM_V
- AMS_CUSTOM_SETUP_SCR_V
- AMS_IBA_RULESETS_V
- IBA_AFFILIATE_V
- JTF_R_RULESETS_V
- JTF_R_RULES_V

Multilingual View List

This section lists each MultiLingual database view that Oracle iMarketing uses. MultiLingual views were created to allow certain seed data to be available in multiple national languages simultaneously.

Oracle iMarketing uses the following Multilingual views:

- AMS_ACT_MKT_SEGMENTS_VL
- AMS_CAMPAGNS_VL
- AMS_CHANNELS_VL
- AMS_CUSTOM_SETUPS_VL
- AMS_IBA_POSTINGS_RUN_VL
- AMS_IBA_POSTINGS_VL
- AMS_MEDIA_CHANNELS_VL
- AMS_MEDIA_VL
- JTF_R_RULESETS_VL
- JTF_R_RULES_VL

CHAPTER

3

Detailed Design

This chapter presents a detailed design for implementing Oracle iMarketing. It contains detailed definitions of tables and views that you may need to reference to write custom reports or use for other data extraction.

Overview of Detailed Design

During Detailed Design, we specify in detail how each applications component should work. We prepare detailed definitions of tables and views.

You can refer to this Detailed Design chapter to gain a detailed understanding of the underlying structure and processing of Oracle iMarketing that enables you to:

- Convert existing application data
- Integrate your Oracle iMarketing application with your other applications systems
- Write custom reports
- Define alerts against Oracle Applications tables
- Create views for decision support queries using query tools

Table and View Definitions

The Table and View Definitions section contains a detailed definition of Oracle iMarketing applications tables. For each table, it provides information about primary keys, foreign keys, QuickCodes, indexes, triggers, and sequences. It also gives you a detailed description of each column and its characteristics. In addition, it provides the SQL statement that defines each view. Review this section to get a detailed understanding of what tables your Oracle iMarketing application contains, and how it uses them to hold and access the information it needs.

Table and View Definitions

This section contains a detailed description of each Oracle iMarketing table and view that you may need to reference. For each table, it presents detailed information about:

- Primary keys
- Foreign keys
- Column descriptions
- Indexes
- Oracle sequences
- Triggers
- View derivations

The following sections appear in each table or view description:

Foreign Keys

To help you understand the relationships between tables, we list each foreign key contained in a table. For each foreign key in a table, we list the primary key table name (the table to which a foreign key refers), its corresponding primary key columns, and the foreign key columns that refer to those primary key columns.

When the primary key table has a composite primary key, we list each column of the composite key sequentially.

If a table contains two or more distinct foreign keys that refer to the same primary key table, we repeat the primary key table name and list each of the distinct foreign keys separately.

QuickCodes Columns

When a database column contains a QuickCodes value, which we implement using a foreign key to FND_LOOKUPS, MFG_LOOKUPS, or to some other lookup table, we list the QuickCodes type (lookup type) to which the QuickCodes value must belong and a complete list of QuickCodes values and meanings. Some QuickCodes can be defined by you in the application. These values are designated as User-defined.

Column Descriptions

We list the important characteristics of each column in a table or view. These characteristics include whether the column is part of the table's primary key, whether Oracle8i requires a value for this column, and the data type of the column. We also give you a brief description of how Oracle iMarketing uses the column.

When a column is part of a table's primary key, we append the notation (PK) to the name of that column.

To help you understand which columns Oracle iMarketing uses and which columns it does not use, we alert you to any unused column. When no module uses a database column, we show one of the following legends in the Description column:

| | |
|----------------------------|--|
| Not currently used | Oracle iMarketing does not use this column, although the column might be used in a future release. |
| No longer used | Oracle iMarketing no longer uses this column. AutoInstall installs this column. Subsequent versions of Oracle iMarketing might not include this column. |
| No longer installed | Oracle iMarketing no longer uses this column. If you <i>upgraded</i> your software from an earlier version, you may still have this column, depending upon whether you chose to delete it during an upgrade process. If you <i>install</i> Oracle iMarketing, you do not have this column. |

Standard Who Columns

Most Oracle iMarketing tables contain standard columns to support \ **Row Who**. When your program or SQL*Plus command selects a row from a table, use these columns to determine who last updated the row. If your program or SQL*Plus command updates or inserts a row in an interface table, you must populate each of the five standard Who columns:

| | |
|------------------|--|
| LAST_UPDATE_DATE | Date when a user last updated this row |
| LAST_UPDATED_BY | User who last updated this row (foreign key to FND_USER.USER_ID) |
| CREATION_DATE | Date when this row was created |

Oracle Proprietary, Confidential Information--Use Restricted by Contract

| | |
|--------------------------|--|
| CREATED_BY | User who created this row (foreign key to FND_USER.USER_ID) |
| LAST_UPDATE_LOGIN | Operating system login of user who last updated this row (foreign key to FND_LOGINS.LOGIN_ID). You should set this to NULL, or to 0 if NULL is not allowed |

Since every table containing Who columns has several foreign keys to the tables FND_USER and FND_LOGINS, we do not include the foreign key columns LAST_UPDATED_BY, CREATED_BY, or LAST_UPDATE_LOGIN in a table's list of foreign keys.

Additional Who Columns for Concurrent Programs

Some Oracle iMarketing tables also contain several additional Who columns to distinguish between changes a user makes with a form and changes a concurrent program makes. When a concurrent program updates or inserts a row in a table, the concurrent program populates the following additional Who columns:

| | |
|-------------------------------|---|
| REQUEST_ID | Concurrent request ID of program that last updated this row (foreign key to FND_CONCURRENT_REQUESTS.REQUEST_ID) |
| PROGRAM_APPLICATION_ID | Application ID of program that last updated this row (foreign key to FND_APPLICATION.APPLICATION_ID) |
| PROGRAM_ID | Program ID of program that last updated this row (foreign key to FND_CONCURRENT_PROGRAM.CONCURRENT_PROGRAM_ID) |
| PROGRAM_UPDATE_DATE | Date when a program last updated this row |

Since every table containing these additional Who columns has several foreign keys to the tables FND_CONCURRENT_REQUESTS, FND_APPLICATION, and FND_CONCURRENT_PROGRAM, we do not include the foreign key columns REQUEST_ID, PROGRAM_APPLICATION_ID, or PROGRAM_ID in a table's list of foreign keys.

Indexes

If an Oracle iMarketing table uses an Oracle8i index, we list the database columns that comprise that index, in sequential order.

Note: The indexes we document in this manual correspond to unique keys we specified during product development and testing. In some cases, we may add additional indexes during the porting process to fine-tune performance on specific platforms; therefore, there may be minor differences between the indexes documented in this book and the indexes for production versions of Oracle iMarketing.

Sequences

Oracle iMarketing uses Oracle8i sequence generators to generate unique integers. If any table column gets its value from an Oracle8i sequence generator, we list the name of the corresponding sequence generator and the name of the column that stores the unique integer.

Database Triggers

If a table has one or more active database triggers, we provide a brief explanation of each database trigger and when it fires.

View Derivation

For each Oracle iMarketing view you may need to reference, we include important elements from the SQL statement that defines or creates a view. By studying this view definition, you can understand exactly how a view derives its contents.

AMS_ACT_MARKET_SEGMENTS

AMS_ACT_MARKET_SEGMENTS is the intersection table that stores what Market Segment are used by what Activity (Promotion etc.) stores all the market segments that a party belongs to. A party can belong to more than one market segment (eg. A party can live in california as well as a sports enthusiast). This information is useful in identifying the promotions that can be applied to the party.

Foreign Keys

| Primary Key Table | Primary Key Column | Foreign Key Column |
|-------------------------|--------------------|-------------------------------|
| AMS_CAMPAIGNS_ALL_B | CAMPAIGN_ID | ACT_MARKET_SEGMENT_USED_BY_ID |
| AMS_CELLS_ALL_B | CELL_ID | MARKET_SEGMENT_ID |
| AMS_EVENT_HEADERS_ALL_B | EVENT_HEADER_ID | ACT_MARKET_SEGMENT_USED_BY_ID |
| AMS_EVENT_OFFERS_ALL_B | EVENT_OFFER_ID | ACT_MARKET_SEGMENT_USED_BY_ID |

Column Descriptions

| Name | Null? | Type | Description |
|--------------------------------|----------|---------------|---|
| ACTIVITY_MARKET_SEGMENT_ID | NOT NULL | NUMBER | Unique Identifier |
| LAST_UPDATE_DATE | NOT NULL | DATE | Standard WHO Column |
| LAST_UPDATED_BY | NOT NULL | NUMBER(15) | Standard WHO Column |
| CREATION_DATE | NOT NULL | DATE | Standard WHO Column |
| CREATED_BY | NOT NULL | NUMBER(15) | Standard WHO Column |
| MARKET_SEGMENT_ID | NOT NULL | NUMBER | Identifier of Market Segment |
| ACT_MARKET_SEGMENT_USED_BY_ID | NOT NULL | NUMBER | Unique activity code used across systems. |
| ARC_ACT_MARKET_SEGMENT_USED_BY | NOT NULL | VARCHAR2(30) | Unique activity type used across systems. |
| SEGMENT_TYPE | NULL | VARCHAR2(30) | Type of Segment |
| EXCLUDE_FLAG | NULL | VARCHAR2(1) | Flag to indicate if the specified Market is to be included or excluded. |
| ELIGIBILITY_TYPE | NULL | VARCHAR2(30) | Type of the eligibility. Market Segment/Geo Area/Territories |
| TERR_HIERARCHY_ID | NULL | NUMBER | Identifier indicating the hierarchy of the Territory. |
| LAST_UPDATE_LOGIN | NULL | NUMBER(15) | Standard WHO Column |
| OBJECT_VERSION_NUMBER | NULL | NUMBER(9) | This column is used for locking purposes . |
| ATTRIBUTE_CATEGORY | NULL | VARCHAR2(30) | Descriptive flexfiled structure defining column. |
| ATTRIBUTE1 | NULL | VARCHAR2(150) | Descriptive flexfield segment. |
| ATTRIBUTE2 | NULL | VARCHAR2(150) | Descriptive flexfield segment. |
| ATTRIBUTE3 | NULL | VARCHAR2(150) | Descriptive flexfield segment. |
| ATTRIBUTE4 | NULL | VARCHAR2(150) | Descriptive flexfield segment. |
| ATTRIBUTE5 | NULL | VARCHAR2(150) | Descriptive flexfield segment. |
| ATTRIBUTE6 | NULL | VARCHAR2(150) | Descriptive flexfield segment. |
| ATTRIBUTE7 | NULL | VARCHAR2(150) | Descriptive flexfield segment. |
| ATTRIBUTE8 | NULL | VARCHAR2(150) | Descriptive flexfield segment. |
| ATTRIBUTE9 | NULL | VARCHAR2(150) | Descriptive flexfield segment. |
| ATTRIBUTE10 | NULL | VARCHAR2(150) | Descriptive flexfield segment. |
| ATTRIBUTE11 | NULL | VARCHAR2(150) | Descriptive flexfield segment. |
| ATTRIBUTE12 | NULL | VARCHAR2(150) | Descriptive flexfield segment. |
| ATTRIBUTE13 | NULL | VARCHAR2(150) | Descriptive flexfield segment. |
| ATTRIBUTE14 | NULL | VARCHAR2(150) | Descriptive flexfield segment. |

Oracle Proprietary, Confidential Information--Use Restricted by Contract

Column Descriptions (Continued)

| <u>Name</u> | <u>Null?</u> | <u>Type</u> | <u>Description</u> |
|-------------------|--------------|---------------|--------------------------------|
| ATTRIBUTE15 | NULL | VARCHAR2(150) | Descriptive flexfield segment. |
| SECURITY_GROUP_ID | NULL | NUMBER | Used in hosted environments |

Indexes

| <u>Index Name</u> | <u>Index Type</u> | <u>Sequence</u> | <u>Column Name</u> |
|----------------------------|-------------------|-----------------|--------------------------------|
| AMS_ACT_MARKET_SEGMENTS_N1 | NOT UNIQUE | 5 | MARKET_SEGMENT_ID |
| AMS_ACT_MARKET_SEGMENTS_U1 | UNIQUE | 5 | ACTIVITY_MARKET_SEGMENT_ID |
| AMS_ACT_MARKET_SEGMENTS_U2 | UNIQUE | 5 | ARC_ACT_MARKET_SEGMENT_USED_BY |
| | | 7 | ACT_MARKET_SEGMENT_USED_BY_ID |
| | | 9 | MARKET_SEGMENT_ID |

Sequences

| <u>Sequence</u> | <u>Derived Column</u> |
|---------------------------|----------------------------|
| AMS_ACT_MARKET_SEGMENTS_S | ACTIVITY_MARKET_SEGMENT_ID |

AMS_ACT_OFFERS

AMS_ACT_OFFERS_B describes the bundling of promotional components for a Campaign. All the details are stored in pricing tables. This table stores a reference to that. An example offer could be 'Internet access for 1\$ a month for the first 3 months if signing a two year contract'.

Foreign Keys

| Primary Key Table | Primary Key Column | Foreign Key Column |
|---------------------|--------------------|----------------------|
| AMS_CAMPAIGNS_ALL_B | CAMPAIGN_ID | ACT_OFFER_USED_BY_ID |
| QP_LIST_HEADERS_B | LIST_HEADER_ID | QP_LIST_HEADER_ID |

Column Descriptions

| Name | Null? | Type | Description |
|-----------------------|----------|---------------|--|
| ACTIVITY_OFFER_ID | NOT NULL | NUMBER | Unique Identifier. |
| LAST_UPDATE_DATE | NOT NULL | DATE | Standard WHO Column |
| LAST_UPDATED_BY | NOT NULL | NUMBER(15) | Standard WHO Column |
| CREATION_DATE | NOT NULL | DATE | Standard WHO Column |
| CREATED_BY | NOT NULL | NUMBER(15) | Standard WHO Column |
| LAST_UPDATE_LOGIN | NULL | NUMBER(15) | Standard WHO Column |
| OBJECT_VERSION_NUMBER | NULL | NUMBER(9) | This column is used for locking purposes. |
| ACT_OFFER_USED_BY_ID | NOT NULL | NUMBER | Id of the Activity using this offer .For example Campaign Id. |
| ARC_ACT_OFFER_USED_BY | NOT NULL | VARCHAR2(30) | Indicates whether the Activity is used by Campaigns or Events. |
| PRIMARY_OFFER_FLAG | NOT NULL | VARCHAR2(1) | Indicates whether this Offer is the Primary offer of this Activity. There can be only one Primary Offer per activity. |
| OFFER_TYPE | NULL | VARCHAR2(30) | Indicates whether the offer is a Simple discount or Accrual or Order Value discount, Promotional Goods or Lumpsum Discount |
| OFFER_CODE | NULL | VARCHAR2(30) | Unique code given for the offer. |
| ACTIVE_PERIOD_SET | NULL | VARCHAR2(240) | Refers to General Ledger period sets. Example values are Accounting, fiscal. |
| ACTIVE_PERIOD | NULL | VARCHAR2(30) | Refers to General Ledger periods. Used in conjunction with the period set to denote if it is a financial quarter, fiscal month and like. |
| START_DATE | NULL | DATE | Date offer is valid from |
| END_DATE | NULL | DATE | Date the offer is valid till. |
| ORDER_DATE_FROM | NULL | DATE | Start of the order dates the offer is valid from |
| ORDER_DATE_TO | NULL | DATE | Endind order date the offer is valid till. |
| SHIP_DATE_FROM | NULL | DATE | Offer will be valid if the order is shipped from this date |
| SHIP_DATE_TO | NULL | DATE | Offer will be valid if the order is shipped before this date |

Column Descriptions (Continued)

| Name | Null? | Type | Description |
|----------------------|----------|--------------|---|
| PERF_DATE_FROM | NULL | DATE | Performance measurement dates for the retailer |
| PERF_DATE_TO | NULL | DATE | Performance measurement dates for the retailer |
| STATUS_CODE | NULL | VARCHAR2(30) | Status of the offer |
| STATUS_DATE | NULL | DATE | Date of the last status change |
| OFFER_AMOUNT | NULL | NUMBER(15) | Lumpsum offer amount, Used for Offer Type - Lumpsum |
| LUMPSUM_PAYMENT_TYPE | NULL | VARCHAR2(30) | The lumpsum payment type |
| QP_LIST_HEADER_ID | NOT NULL | NUMBER | List header id of the QP_LIST_HEADERS_VL |
| SECURITY_GROUP_ID | NULL | NUMBER | Used in hosted environments |

Indexes

| Index Name | Index Type | Sequence | Column Name |
|-------------------|------------|----------|-----------------------|
| AMS_ACT_OFFERS_N1 | NOT UNIQUE | 5 | ARC_ACT_OFFER_USED_BY |
| | | 7 | ACT_OFFER_USED_BY_ID |
| AMS_ACT_OFFERS_N2 | NOT UNIQUE | 5 | QP_LIST_HEADER_ID |
| AMS_ACT_OFFERS_U1 | UNIQUE | 5 | ACTIVITY_OFFER_ID |

Sequences

| Sequence | Derived Column |
|------------------|-------------------|
| AMS_ACT_OFFERS_S | ACTIVITY_OFFER_ID |

AMS_ACT_PRODUCTS

AMS_ACT_PRODUCTS stores products that are promoted as part of a Promotion.

Foreign Keys

| Primary Key Table | Primary Key Column | Foreign Key Column |
|-------------------------|--------------------|------------------------|
| AMS_CAMPAIGNS_ALL_B | CAMPAIGN_ID | ACT_PRODUCT_USED_BY_ID |
| AMS_CATEGORIES_B | CATEGORY_ID | CATEGORY_ID |
| AMS_EVENT_HEADERS_ALL_B | EVENT_HEADER_ID | ACT_PRODUCT_USED_BY_ID |
| AMS_EVENT_OFFERS_ALL_B | EVENT_OFFER_ID | ACT_PRODUCT_USED_BY_ID |
| MTL_ITEM_CATEGORIES | CATEGORY_SET_ID | CATEGORY_SET_ID |
| | INVENTORY_ITEM_ID | INVENTORY_ITEM_ID |
| | ORGANIZATION_ID | ORGANIZATION_ID |
| MTL_SYSTEM_ITEMS_B | INVENTORY_ITEM_ID | INVENTORY_ITEM_ID |
| | ORGANIZATION_ID | ORGANIZATION_ID |

Column Descriptions

| Name | Null? | Type | Description |
|--------------------------|----------|---------------|--|
| ACTIVITY_PRODUCT_ID (PK) | NOT NULL | NUMBER | Unique Identifier |
| LAST_UPDATE_DATE | NOT NULL | DATE | Standard WHO Column |
| LAST_UPDATED_BY | NOT NULL | NUMBER(15) | Standard WHO Column |
| CREATION_DATE | NOT NULL | DATE | Standard WHO Column |
| CREATED_BY | NOT NULL | NUMBER(15) | Standard WHO Column |
| LAST_UPDATE_LOGIN | NULL | NUMBER(15) | Standard WHO Column |
| OBJECT_VERSION_NUMBER | NULL | NUMBER(9) | This column is used for locking purposes |
| ACT_PRODUCT_USED_BY_ID | NOT NULL | NUMBER | Unique activity code used across systems. |
| ARC_ACT_PRODUCT_USED_BY | NOT NULL | VARCHAR2(30) | Unique activity product type used across systems. |
| PRODUCT_SALE_TYPE | NULL | VARCHAR2(30) | The sale type for this product . |
| PRIMARY_PRODUCT_FLAG | NOT NULL | VARCHAR2(1) | Indicates whether primary product is active. |
| ENABLED_FLAG | NOT NULL | VARCHAR2(1) | Indicates whether promotion product is active. |
| INVENTORY_ITEM_ID | NULL | NUMBER(38) | Unique key that stores the inventory item id |
| ORGANIZATION_ID | NULL | NUMBER(32) | Stores the organization id that this product belongs to. |
| CATEGORY_ID | NULL | NUMBER | Unique category id across the system for this product. |
| CATEGORY_SET_ID | NULL | NUMBER | Category set id of this product |
| ATTRIBUTE_CATEGORY | NULL | VARCHAR2(30) | Descriptive flexfiled structure defining column. |
| ATTRIBUTE1 | NULL | VARCHAR2(150) | Descriptive flexfield segment. |
| ATTRIBUTE2 | NULL | VARCHAR2(150) | Descriptive flexfield segment. |
| ATTRIBUTE3 | NULL | VARCHAR2(150) | Descriptive flexfield segment. |
| ATTRIBUTE4 | NULL | VARCHAR2(150) | Descriptive flexfield segment. |
| ATTRIBUTE5 | NULL | VARCHAR2(150) | Descriptive flexfield segment. |
| ATTRIBUTE6 | NULL | VARCHAR2(150) | Descriptive flexfield segment. |
| ATTRIBUTE7 | NULL | VARCHAR2(150) | Descriptive flexfield segment. |
| LEVEL_TYPE_CODE | NULL | VARCHAR2(30) | Stores the level type code for this product. |
| ATTRIBUTE8 | NULL | VARCHAR2(150) | Descriptive flexfield segment. |
| ATTRIBUTE9 | NULL | VARCHAR2(150) | Descriptive flexfield segment. |

Oracle Proprietary, Confidential Information--Use Restricted by Contract

Column Descriptions (Continued)

| Name | Null? | Type | Description |
|-------------------|-------|---------------|--|
| ATTRIBUTE10 | NULL | VARCHAR2(150) | Descriptive flexfield segment. |
| ATTRIBUTE11 | NULL | VARCHAR2(150) | Descriptive flexfield segment. |
| ATTRIBUTE12 | NULL | VARCHAR2(150) | Descriptive flexfield segment. |
| ATTRIBUTE13 | NULL | VARCHAR2(150) | Descriptive flexfield segment. |
| ATTRIBUTE14 | NULL | VARCHAR2(150) | Descriptive flexfield segment. |
| ATTRIBUTE15 | NULL | VARCHAR2(150) | Descriptive flexfield segment. |
| EXCLUDED_FLAG | NULL | VARCHAR2(1) | Flag to indicate if the specified Product is to be included or excluded. |
| SECURITY_GROUP_ID | NULL | NUMBER | Used in hosted environments |

Indexes

| Index Name | Index Type | Sequence | Column Name |
|---------------------|------------|----------|---|
| AMS_ACT_PRODUCTS_N1 | NOT UNIQUE | 5 10 | INVENTORY_ITEM_ID ORGANIZATION_ID |
| AMS_ACT_PRODUCTS_N2 | NOT UNIQUE | 4 10 | ARC_ACT_PRODUCT_USED_BY ACT_PRODUCT_USED_BY_ID |
| AMS_ACT_PRODUCTS_N3 | NOT UNIQUE | 5 | CATEGORY_SET_ID |
| AMS_ACT_PRODUCTS_N4 | NOT UNIQUE | 5 | CATEGORY_ID |
| AMS_ACT_PRODUCTS_U1 | UNIQUE | 5 | ACTIVITY_PRODUCT_ID |

Sequences

| Sequence | Derived Column |
|--------------------|---------------------|
| AMS_ACT_PRODUCTS_S | ACTIVITY_PRODUCT_ID |

AMS_CAMPAIGNS_ALL_B

This is the container for all marketing campaigns created by various CRM products. General details of a campaign like dates, priority, type, channel are stored in this table. The campaign type decides the medium in which the campaign is run. The hierarchical structure of the campaigns can be constructed using the PARENT_CAMPAIGN_ID. This table also stores the general details of Trade promotions and Plans.

Foreign Keys

| Primary Key Table | Primary Key Column | Foreign Key Column |
|-------------------------|--------------------|--------------------|
| AMS_CAMPAIGNS_ALL_B | CAMPAIGN_ID | PARENT_CAMPAIGN_ID |
| AMS_EVENT_HEADERS_ALL_B | EVENT_HEADER_ID | CHANNEL_ID |
| AMS_EVENT_OFFERS_ALL_B | EVENT_OFFER_ID | CHANNEL_ID |
| AMS_MEDIA_B | MEDIA_ID | MEDIA_ID |
| AMS_MEDIA_CHANNELS | MEDIA_CHANNEL_ID | CHANNEL_ID |
| AMS_USER_STATUSES_B | USER_STATUS_ID | USER_STATUS_ID |
| FND_APPLICATION | APPLICATION_ID | APPLICATION_ID |
| IES_DEPLOYED_SCRIPTS | DSCRIPT_NAME | DSCRIPT_NAME |
| JTF_RS_RESOURCE_EXTNS | RESOURCE_ID | OWNER_USER_ID |
| OZF_FUNDS_ALL_B | FUND_ID | FUND_SOURCE_ID |
| QP_LIST_HEADERS_B | LIST_HEADER_ID | QP_LIST_HEADER_ID |

Column Descriptions

| Name | Null? | Type | Description |
|--------------------------|----------|--------------|---|
| CAMPAIGN_ID | NOT NULL | NUMBER | Unique identifier |
| LAST_UPDATE_DATE | NOT NULL | DATE | Standard WHO Column |
| LAST_UPDATED_BY | NOT NULL | NUMBER(15) | Standard WHO Column |
| CREATION_DATE | NOT NULL | DATE | Standard WHO Column |
| CREATED_BY | NOT NULL | NUMBER(15) | Standard WHO Column |
| LAST_UPDATE_LOGIN | NULL | NUMBER(15) | Standard WHO Column |
| OBJECT_VERSION_NUMBER | NULL | NUMBER(9) | This column is used for locking purposes |
| OWNER_USER_ID | NOT NULL | NUMBER | Campaign owner identifier |
| USER_STATUS_ID | NOT NULL | NUMBER | User status identifier |
| STATUS_CODE | NOT NULL | VARCHAR2(30) | System status code |
| STATUS_DATE | NOT NULL | DATE | Date when the campaign status was last updated |
| ACTIVE_FLAG | NOT NULL | VARCHAR2(1) | Flag that indicates if the campaign is enabled. |
| PRIVATE_FLAG | NOT NULL | VARCHAR2(1) | Flag that indicates if the campaign is private |
| PARTNER_FLAG | NOT NULL | VARCHAR2(1) | Flag that indicates if the campaign has partners |
| TEMPLATE_FLAG | NOT NULL | VARCHAR2(1) | Flag that indicates if the campaign is the template |
| CASCADE_SOURCE_CODE_FLAG | NOT NULL | VARCHAR2(1) | Flag that indicates if the source code will be cascaded to campaign schedules |
| INHERIT_ATTRIBUTES_FLAG | NOT NULL | VARCHAR2(1) | Flag that indicates if the basic attributes will be inherited from parent |
| SOURCE_CODE | NOT NULL | VARCHAR2(30) | Campaign source code |
| ROLLUP_TYPE | NOT NULL | VARCHAR2(30) | Campaign rollup type |
| CAMPAIGN_TYPE | NULL | VARCHAR2(30) | Campaign purpose |

Oracle Proprietary, Confidential Information--Use Restricted by Contract

Column Descriptions (Continued)

| Name | Null? | Type | Description |
|----------------------------|----------|---------------|--|
| MEDIA_TYPE_CODE | NULL | VARCHAR2(30) | Campaign activity type |
| PRIORITY | NULL | VARCHAR2(30) | Campaign priority |
| FUND_SOURCE_TYPE | NULL | VARCHAR2(30) | Campaign fund source type |
| FUND_SOURCE_ID | NULL | NUMBER | Identifier of the campaign fund source |
| PARENT_CAMPAIGN_ID | NULL | NUMBER | Identifier of the parent campaign |
| APPLICATION_ID | NOT NULL | NUMBER | Application identifier |
| QP_LIST_HEADER_ID | NULL | NUMBER | Identifier of the price list header |
| ORG_ID | NULL | NUMBER(32) | Organization identifier |
| MEDIA_ID | NULL | NUMBER | Identifier of the media used by the campaign |
| CHANNEL_ID | NULL | NUMBER | Identifier of the channel used by this campaign |
| EVENT_TYPE | NULL | VARCHAR2(30) | Event type |
| ARC_CHANNEL_FROM | NULL | VARCHAR2(30) | Indicates if the channel is an event or a media channel |
| DSCRIPT_NAME | NULL | VARCHAR2(256) | The deployed script name |
| TRANSACTION_CURRENCY_CODE | NULL | VARCHAR2(15) | Transactional currency code |
| FUNCTIONAL_CURRENCY_CODE | NULL | VARCHAR2(15) | Functional currency code |
| BUDGET_AMOUNT_TC | NULL | NUMBER | Budget amount in the transactional currency |
| BUDGET_AMOUNT_FC | NULL | NUMBER | Budget amount in the functional currency |
| FORECASTED_PLAN_START_DATE | NULL | DATE | Forecasted planning start date |
| FORECASTED_PLAN_END_DATE | NULL | DATE | Forecasted planning end date |
| FORECASTED_EXEC_START_DATE | NULL | DATE | Forecasted execution start date |
| FORECASTED_EXEC_END_DATE | NULL | DATE | Forecasted execution end date |
| ACTUAL_PLAN_START_DATE | NULL | DATE | Actual planning start date |
| ACTUAL_PLAN_END_DATE | NULL | DATE | Actual planning end date |
| ACTUAL_EXEC_START_DATE | NULL | DATE | Actual execution start date |
| ACTUAL_EXEC_END_DATE | NULL | DATE | Actual execution end date |
| INBOUND_URL | NULL | VARCHAR2(120) | Inbound URL |
| INBOUND_EMAIL_ID | NULL | VARCHAR2(120) | Inbound email id |
| INBOUND_PHONE_NO | NULL | VARCHAR2(25) | Inbound phone no |
| DURATION | NULL | NUMBER(15) | Campaign duration |
| DURATION_UOM_CODE | NULL | VARCHAR2(3) | Unit of the duration |
| FF_PRIORITY | NULL | VARCHAR2(30) | Fulfillment priority |
| FF_OVERRIDE_COVER_LETTER | NULL | NUMBER | Fulfillment override cover letter |
| FF_SHIPPING_METHOD | NULL | VARCHAR2(30) | Fulfillment shipping method |
| FF_CARRIER | NULL | VARCHAR2(120) | Fulfillment carrier |
| CONTENT_SOURCE | NULL | VARCHAR2(120) | Content source |
| CC_CALL_STRATEGY | NULL | VARCHAR2(30) | Call strategy to be used by the call center for contacting customers |
| CC_MANAGER_USER_ID | NULL | NUMBER(15) | Resource id of the person who manages the call center |
| FORECASTED_REVENUE | NULL | NUMBER(15) | Forecasted revenue |
| ACTUAL_REVENUE | NULL | NUMBER(15) | Actual revenue |
| FORECASTED_COST | NULL | NUMBER(15) | Forecasted cost |
| ACTUAL_COST | NULL | NUMBER(15) | Actual cost |
| FORECASTED_RESPONSE | NULL | NUMBER(15) | Forecasted reponse |
| ACTUAL_RESPONSE | NULL | NUMBER(15) | Actual response |
| TARGET_RESPONSE | NULL | NUMBER(15) | Target reponse |
| COUNTRY_CODE | NULL | VARCHAR2(30) | Country code |

Oracle Proprietary, Confidential Information--Use Restricted by Contract

Column Descriptions (Continued)

| Name | Null? | Type | Description |
|--------------------|-------|---------------|--|
| LANGUAGE_CODE | NULL | VARCHAR2(30) | Language code |
| ATTRIBUTE_CATEGORY | NULL | VARCHAR2(30) | Descriptive flexfield structure defining column |
| ATTRIBUTE1 | NULL | VARCHAR2(150) | Descriptive flexfield segment |
| ATTRIBUTE2 | NULL | VARCHAR2(150) | Descriptive flexfield segment |
| ATTRIBUTE3 | NULL | VARCHAR2(150) | Descriptive flexfield segment |
| ATTRIBUTE4 | NULL | VARCHAR2(150) | Descriptive flexfield segment |
| ATTRIBUTE5 | NULL | VARCHAR2(150) | Descriptive flexfield segment |
| ATTRIBUTE6 | NULL | VARCHAR2(150) | Descriptive flexfield segment |
| ATTRIBUTE7 | NULL | VARCHAR2(150) | Descriptive flexfield segment |
| ATTRIBUTE8 | NULL | VARCHAR2(150) | Descriptive flexfield segment |
| ATTRIBUTE9 | NULL | VARCHAR2(150) | Descriptive flexfield segment |
| ATTRIBUTE10 | NULL | VARCHAR2(150) | Descriptive flexfield segment |
| ATTRIBUTE11 | NULL | VARCHAR2(150) | Descriptive flexfield segment |
| ATTRIBUTE12 | NULL | VARCHAR2(150) | Descriptive flexfield segment |
| ATTRIBUTE14 | NULL | VARCHAR2(150) | Descriptive flexfield segment |
| ATTRIBUTE13 | NULL | VARCHAR2(150) | Descriptive flexfield segment |
| ATTRIBUTE15 | NULL | VARCHAR2(150) | Descriptive flexfield segment |
| VERSION_NO | NULL | NUMBER(3) | Version Number of the campaign. A campaign can have many versions before it goes active. |
| CAMPAIGN_CALENDAR | NULL | VARCHAR2(15) | Calendar used for campaign planning. Refers to the General Ledger calendar. |
| START_PERIOD_NAME | NULL | VARCHAR2(15) | Starting period name within the campaign calendar |
| END_PERIOD_NAME | NULL | VARCHAR2(15) | End period name within the campaign calendar |
| CITY_ID | NULL | NUMBER | City where the campaign was created |
| GLOBAL_FLAG | NULL | VARCHAR2(1) | Flag to indicate if the campaign is run globally. |
| CUSTOM_SETUP_ID | NULL | NUMBER | Custom setup used to create the campaign |
| SHOW_CAMPAIGN_FLAG | NULL | VARCHAR2(1) | Indicates if the campaign has to be visible. All active versions of a campaign will have this flag set to 'Y'. |
| SECURITY_GROUP_ID | NULL | NUMBER | Used in hosted environments |
| BUSINESS_UNIT_ID | NULL | NUMBER(15) | Identifier of the Business Unit this campaign belongs to |

Indexes

| Index Name | Index Type | Sequence | Column Name |
|-------------------------|------------|----------|--------------------|
| AMS_CAMPAIGNS_ALL_B_N1 | NOT UNIQUE | 5 | PARENT_CAMPAIGN_ID |
| AMS_CAMPAIGNS_ALL_B_N10 | NOT UNIQUE | 5 | QP_LIST_HEADER_ID |
| AMS_CAMPAIGNS_ALL_B_N11 | NOT UNIQUE | 5 | OWNER_USER_ID |
| AMS_CAMPAIGNS_ALL_B_N12 | NOT UNIQUE | 5 | DSCRIPT_NAME |
| AMS_CAMPAIGNS_ALL_B_N2 | NOT UNIQUE | 5 | MEDIA_ID |
| AMS_CAMPAIGNS_ALL_B_N3 | NOT UNIQUE | 5 | ORG_ID |
| AMS_CAMPAIGNS_ALL_B_N4 | NOT UNIQUE | 5 | STATUS_CODE |
| AMS_CAMPAIGNS_ALL_B_N5 | NOT UNIQUE | 5 | USER_STATUS_ID |
| AMS_CAMPAIGNS_ALL_B_N6 | NOT UNIQUE | 2 | ARC_CHANNEL_FROM |
| | | 5 | CHANNEL_ID |
| AMS_CAMPAIGNS_ALL_B_N7 | NOT UNIQUE | 5 | CAMPAIGN_TYPE |
| AMS_CAMPAIGNS_ALL_B_N8 | NOT UNIQUE | 5 | FUND_SOURCE_ID |
| AMS_CAMPAIGNS_ALL_B_N9 | NOT UNIQUE | 5 | APPLICATION_ID |

Oracle Proprietary, Confidential Information--Use Restricted by Contract

Indexes (Continued)

| <u>Index Name</u> | <u>Index Type</u> | <u>Sequence</u> | <u>Column Name</u> |
|------------------------|-------------------|-----------------|--------------------|
| AMS_CAMPAIGNS_ALL_B_U1 | UNIQUE | 5 | CAMPAIGN_ID |
| AMS_CAMPAIGNS_ALL_B_U2 | UNIQUE | 5 | SOURCE_CODE |

Sequences

| <u>Sequence</u> | <u>Derived Column</u> |
|-----------------------|-----------------------|
| AMS_CAMPAIGNS_ALL_B_S | CAMPAIGN_ID |

AMS_CELLS_ALL_B

AMS_CELLS_ALL_B stores all cells definitions. A cell is made up of one to many discoverer workbooks/worksheets and is by definition only a number of sql statements that identify a group(cell) of people.

Foreign Keys

| Primary Key Table | Primary Key Column | Foreign Key Column |
|-----------------------|--------------------|--------------------|
| AMS_CELLS_ALL_B | CELL_ID | PARENT_CELL_ID |
| JTF_RS_RESOURCE_EXTNS | RESOURCE_ID | OWNER_ID |

Column Descriptions

| Name | Null? | Type | Description |
|-----------------------|----------|--------------|--|
| CELL_ID | NOT NULL | NUMBER | Unique identifier |
| LAST_UPDATE_DATE | NOT NULL | DATE | Standard WHO Column |
| LAST_UPDATED_BY | NOT NULL | NUMBER(15) | Standard WHO Column |
| CREATION_DATE | NOT NULL | DATE | Standard WHO Column |
| CREATED_BY | NOT NULL | NUMBER(15) | Standard WHO Column |
| LAST_UPDATE_LOGIN | NULL | NUMBER(15) | Standard WHO Column |
| OBJECT_VERSION_NUMBER | NULL | NUMBER(9) | This column is used for locking purposes |
| CELL_CODE | NOT NULL | VARCHAR2(30) | Cell source code |
| MARKET_SEGMENT_FLAG | NOT NULL | VARCHAR2(1) | Flag that indicates this is the top most cell. |
| OWNER_ID | NOT NULL | NUMBER | Cell owner identifier |
| ENABLED_FLAG | NOT NULL | VARCHAR2(1) | Indicates whether the cell is still in use. |
| ORIGINAL_SIZE | NULL | NUMBER(15) | Original size of this cell |
| PARENT_CELL_ID | NULL | NUMBER | Reference to the parent cell. |
| ORG_ID | NULL | NUMBER(32) | Operating Unit Identifier |
| SECURITY_GROUP_ID | NULL | NUMBER | Used in hosted environments |

Indexes

| Index Name | Index Type | Sequence | Column Name |
|--------------------|------------|----------|----------------|
| AMS_CELLS_ALL_B_N1 | NOT UNIQUE | 5 | PARENT_CELL_ID |
| AMS_CELLS_ALL_B_U1 | UNIQUE | 5 | CELL_ID |
| AMS_CELLS_ALL_B_U2 | UNIQUE | 5 | CELL_CODE |

Sequences

| Sequence | Derived Column |
|-------------------|----------------|
| AMS_CELLS_ALL_B_S | CELL_ID |

AMS_CELLS_ALL_TL

AMS_CELLS_ALL_TL provides multi-lingual support (MLS) for each Cell that you define in Oracle Marketing. MLS enables you to store and print data that you define in multiple languages.

Foreign Keys

| Primary Key Table | Primary Key Column | Foreign Key Column |
|-------------------|--------------------|--------------------|
| AMS_CELLS_ALL_B | CELL_ID | CELL_ID |

Column Descriptions

| Name | Null? | Type | Description |
|-------------------|----------|----------------|--|
| CELL_ID | NOT NULL | NUMBER | Unique identifier |
| LANGUAGE | NOT NULL | VARCHAR2(4) | Language of the current Record |
| LAST_UPDATE_DATE | NOT NULL | DATE | Standard WHO Column |
| LAST_UPDATED_BY | NOT NULL | NUMBER(15) | Standard WHO Column |
| CREATION_DATE | NOT NULL | DATE | Standard WHO Column |
| CREATED_BY | NOT NULL | NUMBER(15) | Standard WHO Column |
| LAST_UPDATE_LOGIN | NULL | NUMBER(15) | Standard WHO Column |
| SOURCE_LANG | NOT NULL | VARCHAR2(4) | The language the text will mirror. If text is not yet translated into LANGUAGE then any changes to the text in the source language row will be reflected here as well. |
| CELL_NAME | NOT NULL | VARCHAR2(120) | Cell name. |
| DESCRIPTION | NULL | VARCHAR2(4000) | Description of this cell. |
| SECURITY_GROUP_ID | NULL | NUMBER | Used in hosted environments |

Indexes

| Index Name | Index Type | Sequence | Column Name |
|---------------------|------------|----------|-------------|
| AMS_CELLS_ALL_TL_N1 | NOT UNIQUE | 5 | CELL_NAME |
| | | 7 | LANGUAGE |
| AMS_CELLS_ALL_TL_U1 | UNIQUE | 5 | CELL_ID |
| | | 10 | LANGUAGE |

AMS_CHANNELS_B

AMS_CHANNELS_B stores information about what Media Channels are available to be used in Oracle Marketing. Some examples: 'Newspaper X', 'TV Channel Y', 'Radio Station Z', 'Call Center W'. For every Channels set up there will be flags to specify if the Channel can be used for inbound and/or outbound communication with the Customer.

Foreign Keys

| Primary Key Table | Primary Key Column | Foreign Key Column |
|-------------------|--------------------|----------------------|
| FND_USER | USER_ID | MANAGED_BY_PERSON_ID |
| HZ_PARTIES | PARTY_ID | PARTY_ID |

Column Descriptions

| Name | Null? | Type | Description |
|-----------------------|----------|---------------|--|
| CHANNEL_ID | NOT NULL | NUMBER | Unique identifier. |
| LAST_UPDATE_DATE | NOT NULL | DATE | Standard WHO Column |
| LAST_UPDATED_BY | NOT NULL | NUMBER(15) | Standard WHO Column |
| CREATION_DATE | NOT NULL | DATE | Standard WHO Column |
| CREATED_BY | NOT NULL | NUMBER(15) | Standard WHO Column |
| LAST_UPDATE_LOGIN | NULL | NUMBER(15) | Standard WHO Column |
| OBJECT_VERSION_NUMBER | NULL | NUMBER(9) | This column is used for locking purposes . |
| CHANNEL_TYPE_CODE | NOT NULL | VARCHAR2(30) | Channel type like internal or external. |
| ORDER_SEQUENCE | NULL | NUMBER(15) | This column is used for upgrade purposes only. |
| MANAGED_BY_PERSON_ID | NULL | NUMBER(15) | Reference to the person who manages the channel. |
| OUTBOUND_FLAG | NOT NULL | VARCHAR2(1) | Flag indicates whether the channel is an outbound channel. |
| INBOUND_FLAG | NOT NULL | VARCHAR2(1) | Flag indicates whether the channel is an inbound channel. |
| ACTIVE_FROM_DATE | NULL | DATE | OM Upgrade purposes only. |
| ACTIVE_TO_DATE | NULL | DATE | OM Upgrade purposes only. |
| RATING | NULL | VARCHAR2(30) | Rating of the channel. |
| PREFERRED_VENDOR_ID | NULL | NUMBER | Reference to the preferred vendor. |
| PARTY_ID | NULL | NUMBER(15) | Identifier of the Party associated with the channel ,coming from hz_parties. |
| ATTRIBUTE_CATEGORY | NULL | VARCHAR2(30) | Descriptive flexfield structure defining column. |
| ATTRIBUTE1 | NULL | VARCHAR2(150) | Descriptive flexfield segment. |
| ATTRIBUTE2 | NULL | VARCHAR2(150) | Descriptive flexfield segment. |
| ATTRIBUTE3 | NULL | VARCHAR2(150) | Descriptive flexfield segment. |
| ATTRIBUTE4 | NULL | VARCHAR2(150) | Descriptive flexfield segment. |
| ATTRIBUTE5 | NULL | VARCHAR2(150) | Descriptive flexfield segment. |
| ATTRIBUTE6 | NULL | VARCHAR2(150) | Descriptive flexfield segment. |
| ATTRIBUTE7 | NULL | VARCHAR2(150) | Descriptive flexfield segment. |
| ATTRIBUTE8 | NULL | VARCHAR2(150) | Descriptive flexfield segment. |
| ATTRIBUTE9 | NULL | VARCHAR2(150) | Descriptive flexfield segment. |
| ATTRIBUTE10 | NULL | VARCHAR2(150) | Descriptive flexfield segment. |
| ATTRIBUTE11 | NULL | VARCHAR2(150) | Descriptive flexfield segment. |

Oracle Proprietary, Confidential Information--Use Restricted by Contract

Column Descriptions (Continued)

| <u>Name</u> | <u>Null?</u> | <u>Type</u> | <u>Description</u> |
|-------------------|--------------|---------------|--------------------------------|
| ATTRIBUTE12 | NULL | VARCHAR2(150) | Descriptive flexfield segment. |
| ATTRIBUTE13 | NULL | VARCHAR2(150) | Descriptive flexfield segment. |
| ATTRIBUTE14 | NULL | VARCHAR2(150) | Descriptive flexfield segment. |
| ATTRIBUTE15 | NULL | VARCHAR2(150) | Descriptive flexfield segment. |
| SECURITY_GROUP_ID | NULL | NUMBER | Used in hosted environments |

Indexes

| <u>Index Name</u> | <u>Index Type</u> | <u>Sequence</u> | <u>Column Name</u> |
|-------------------|-------------------|-----------------|---------------------|
| AMS_CHANNELS_B_N1 | NOT UNIQUE | 5 | PREFERRED_VENDOR_ID |
| AMS_CHANNELS_B_N2 | NOT UNIQUE | 5 | PARTY_ID |
| AMS_CHANNELS_B_U1 | UNIQUE | 5 | CHANNEL_ID |

Sequences

| <u>Sequence</u> | <u>Derived Column</u> |
|------------------|-----------------------|
| AMS_CHANNELS_B_S | CHANNEL_ID |

AMS_DELIVERABLES_ALL_B

AMS_DELIVERABLES_ALL_B stores promotional or marketing collateral produced. A Deliverable is unique by Name, Language and Version. They are instances of material, media and fulfilment items produced as part of an Promotion. – Materials items include brochures, booklets etc. – Media items include TV and Radio Commercials, questionnaires etc. – Fulfillment items include cuddly toys, brochures, letters etc. These will be sent to the distribution channels, internal and external for delivery to the customers. Some examples could be: Letters
 – Personal – Standard in red colours Brochures Calling
 Cards Envelopes Promotional Items – Key ring TV
 Commercials – "True Voice" – "Sprint Sense"

Foreign Keys

| Primary Key Table | Primary Key Column | Foreign Key Column |
|------------------------|--------------------|-----------------------------|
| AMS_CATEGORIES_B | CATEGORY_ID | CATEGORY_SUB_TYPE_ID |
| AMS_CATEGORIES_B | CATEGORY_ID | CATEGORY_TYPE_ID |
| AMS_DELIVERABLES_ALL_B | DELIVERABLE_ID | REPLACED_BY_DELIVERABLE_ID |
| AMS_USER_STATUSES_B | USER_STATUS_ID | USER_STATUS_ID |
| FND_APPLICATION | APPLICATION_ID | APPLICATION_ID |
| FND_CURRENCIES | CURRENCY_CODE | CHARGEBACK_AMOUNT_CURR_CODE |
| FND_LANGUAGES | LANGUAGE_CODE | LANGUAGE_CODE |
| FND_USER | USER_ID | DEFAULT_APPROVER_ID |
| JTF_AMV_ATTACHMENTS | ATTACHMENT_ID | JTF_AMV_ITEM_ID |
| JTF_RS_RESOURCE_EXTNS | RESOURCE_ID | OWNER_USER_ID |
| MTL_SYSTEM_ITEMS_B | INVENTORY_ITEM_ID | INVENTORY_ITEM_ID |

Column Descriptions

| Name | Null? | Type | Description |
|-----------------------|----------|--------------|---|
| DELIVERABLE_ID | NOT NULL | NUMBER | Unique identifier |
| LAST_UPDATE_DATE | NOT NULL | DATE | Standard WHO Column |
| LAST_UPDATED_BY | NOT NULL | NUMBER(15) | Standard WHO Column |
| CREATION_DATE | NOT NULL | DATE | Standard WHO Column |
| CREATED_BY | NOT NULL | NUMBER(15) | Standard WHO Column |
| LAST_UPDATE_LOGIN | NULL | NUMBER(15) | Standard WHO Column |
| OBJECT_VERSION_NUMBER | NULL | NUMBER(9) | This column is used for locking purposes |
| LANGUAGE_CODE | NOT NULL | VARCHAR2(4) | The language code of the language which the translatable fields are translated to |
| VERSION | NULL | VARCHAR2(10) | Version of this deliverable item. |
| APPLICATION_ID | NOT NULL | NUMBER | Application identifier |
| USER_STATUS_ID | NULL | NUMBER | User status identifier |
| STATUS_CODE | NULL | VARCHAR2(30) | Status code |
| STATUS_DATE | NULL | DATE | Date status was set |
| ACTIVE_FLAG | NOT NULL | VARCHAR2(1) | Flag that indicates if the deliverable is active |
| PRIVATE_FLAG | NOT NULL | VARCHAR2(1) | Flag that indicates if the deliverable is private |
| OWNER_USER_ID | NOT NULL | NUMBER(15) | Deliverable owner identifier |
| ORG_ID | NULL | NUMBER(32) | Operating Unit Identifier |

Oracle Proprietary, Confidential Information--Use Restricted by Contract

Column Descriptions (Continued)

| Name | Null? | Type | Description |
|-----------------------------|-------|--------------|---|
| FUND_SOURCE_ID | NULL | NUMBER | Fund source identifier. |
| FUND_SOURCE_TYPE | NULL | VARCHAR2(30) | Fund source type. |
| CATEGORY_TYPE_ID | NULL | NUMBER | Deliverable category type identifier |
| CATEGORY_SUB_TYPE_ID | NULL | NUMBER | Deliverable sub category type identifier |
| KIT_FLAG | NULL | VARCHAR2(1) | Flag that indicates if the deliverable is a kit, which contains other deliverable items |
| INVENTORY_FLAG | NULL | VARCHAR2(1) | Flag that indicates if the deliverable item is stored in inventory. |
| INVENTORY_ITEM_ID | NULL | NUMBER(38) | Item Identifier in Inventory. |
| INVENTORY_ITEM_ORG_ID | NULL | NUMBER(32) | Operating Unit Identifier of an Inventory item in inventory. |
| PRICELIST_HEADER_ID | NULL | NUMBER | Pricelist Header ID of the Base Pricelist generated for this Event Offering. |
| PRICELIST_LINE_ID | NULL | NUMBER | Ties in with the Pricelist Header ID. |
| NON_INV_CTRL_CODE | NULL | VARCHAR2(30) | Number of inventory control code |
| NON_INV_QUANTITY_ON_HAND | NULL | NUMBER(15) | Quantity on hand of this deliverable |
| NON_INV_QUANTITY_ON_ORDER | NULL | NUMBER(15) | Quantity on order of this deliverable |
| NON_INV_QUANTITY_ON_RESERVE | NULL | NUMBER(15) | Quantity on reserve of this deliverable |
| REPLACED_BY_DELIVERABLE_ID | NULL | NUMBER | This is a superceded deliverable. Another deliverable has replaced this item. |
| CAN_FULFILL_ELECTRONIC_FLAG | NULL | VARCHAR2(1) | Flag that indicates this deliverable can be fulfilled in electronic format. |
| CAN_FULFILL_PHYSICAL_FLAG | NULL | VARCHAR2(1) | Flag that indicates this deliverable can be fulfilled physically. |
| JTF_AMV_ITEM_ID | NULL | NUMBER | Item identifier in jtf_amv_item. This deliverable is stored in electronic format and is associated with jtf_amv_item. |
| TRANSACTION_CURRENCY_CODE | NULL | VARCHAR2(15) | Transactional currency code |
| FUNCTIONAL_CURRENCY_CODE | NULL | VARCHAR2(15) | Functional currency code |
| BUDGET_AMOUNT_TC | NULL | NUMBER | Budget amount in the transactional currency |
| BUDGET_AMOUNT_FC | NULL | NUMBER | Budget amount in the functional currency |
| ACTUAL_AVAIL_FROM_DATE | NULL | DATE | Actual available date for this deliverable |
| ACTUAL_AVAIL_TO_DATE | NULL | DATE | Actual available end date for this deliverable |
| FORECASTED_COMPLETE_DATE | NULL | DATE | Forecasted date for deliverable creation completion. |
| ACTUAL_COMPLETE_DATE | NULL | DATE | Actual date for deliverable creation completion. |
| CHARGEBACK_AMOUNT | NULL | NUMBER(15) | Charge back amount of this deliverable |
| CHARGEBACK_UOM | NULL | VARCHAR2(3) | Unit of measure of this chargeback amount |

Oracle Proprietary, Confidential Information--Use Restricted by Contract

Column Descriptions (Continued)

| Name | Null? | Type | Description |
|-----------------------------|-------|---------------|--|
| CHARGEBACK_AMOUNT_CURR_CODE | NULL | VARCHAR2(15) | chargeback amount currency code |
| DELIVERABLE_CODE | NULL | VARCHAR2(100) | For backward compatibility only |
| DELIVERABLE_PICK_FLAG | NULL | VARCHAR2(1) | Flag that indicates this deliverable is picked by other objects. |
| CURRENCY_CODE | NULL | VARCHAR2(15) | Currency code |
| FORECASTED_COST | NULL | NUMBER(15) | Forecasted cost of this deliverable |
| ACTUAL_COST | NULL | NUMBER(15) | Actual cost of this deliverable |
| FORECASTED_RESPONSES | NULL | NUMBER(15) | Forecasted response number |
| ACTUAL_RESPONSES | NULL | NUMBER(15) | Actual response number |
| COUNTRY | NULL | VARCHAR2(240) | Country |
| DEFAULT_APPROVER_ID | NULL | NUMBER(15) | Default approver user identifier for this deliverable. |
| ATTRIBUTE_CATEGORY | NULL | VARCHAR2(30) | Descriptive flexfield structure defining column |
| ATTRIBUTE1 | NULL | VARCHAR2(150) | Descriptive flexfield segment |
| ATTRIBUTE2 | NULL | VARCHAR2(150) | Descriptive flexfield segment |
| ATTRIBUTE3 | NULL | VARCHAR2(150) | Descriptive flexfield segment |
| ATTRIBUTE4 | NULL | VARCHAR2(150) | Descriptive flexfield segment |
| ATTRIBUTE5 | NULL | VARCHAR2(150) | Descriptive flexfield segment |
| ATTRIBUTE6 | NULL | VARCHAR2(150) | Descriptive flexfield segment |
| ATTRIBUTE7 | NULL | VARCHAR2(150) | Descriptive flexfield segment |
| ATTRIBUTE8 | NULL | VARCHAR2(150) | Descriptive flexfield segment |
| ATTRIBUTE9 | NULL | VARCHAR2(150) | Descriptive flexfield segment |
| ATTRIBUTE10 | NULL | VARCHAR2(150) | Descriptive flexfield segment |
| ATTRIBUTE11 | NULL | VARCHAR2(150) | Descriptive flexfield segment |
| ATTRIBUTE12 | NULL | VARCHAR2(150) | Descriptive flexfield segment |
| ATTRIBUTE13 | NULL | VARCHAR2(150) | Descriptive flexfield segment |
| ATTRIBUTE14 | NULL | VARCHAR2(150) | Descriptive flexfield segment |
| ATTRIBUTE15 | NULL | VARCHAR2(150) | Descriptive flexfield segment |
| SECURITY_GROUP_ID | NULL | NUMBER | Used in hosted environments |

Indexes

| Index Name | Index Type | Sequence | Column Name |
|---------------------------|------------|----------|-----------------------------|
| AMS_DELIVERABLES_ALL_B_N1 | NOT UNIQUE | 5 | STATUS_CODE |
| AMS_DELIVERABLES_ALL_B_N2 | NOT UNIQUE | 5 | ORG_ID |
| AMS_DELIVERABLES_ALL_B_N4 | NOT UNIQUE | 5 | LANGUAGE_CODE |
| AMS_DELIVERABLES_ALL_B_N5 | NOT UNIQUE | 5 | CHARGEBACK_AMOUNT_CURR_CODE |
| AMS_DELIVERABLES_ALL_B_N6 | NOT UNIQUE | 5 | CATEGORY_SUB_TYPE_ID |
| AMS_DELIVERABLES_ALL_B_N7 | NOT UNIQUE | 5 | CATEGORY_TYPE_ID |
| AMS_DELIVERABLES_ALL_B_N8 | NOT UNIQUE | 5 | OWNER_USER_ID |
| AMS_DELIVERABLES_ALL_B_N9 | NOT UNIQUE | 5 | USER_STATUS_ID |
| AMS_DELIVERABLES_ALL_B_U1 | UNIQUE | 5 | DELIVERABLE_ID |

Sequences

| Sequence | Derived Column |
|--------------------------|----------------|
| AMS_DELIVERABLES_ALL_B_S | DELIVERABLE_ID |

AMS_IBA_POSTINGS_B

Storing iMarketing Affiliate Postings information

Column Descriptions

| Name | Null? | Type | Description |
|-----------------------------|----------|----------------|---|
| POSTING_ID (PK) | NOT NULL | NUMBER | Unique identifier |
| LAST_UPDATE_DATE | NOT NULL | DATE | Standard WHO Column |
| LAST_UPDATED_BY | NOT NULL | NUMBER(15) | Standard WHO Column |
| CREATION_DATE | NOT NULL | DATE | Standard WHO Column |
| CREATED_BY | NOT NULL | NUMBER(15) | Standard WHO Column |
| LAST_UPDATE_LOGIN | NULL | NUMBER(15) | Standard WHO Column |
| OBJECT_VERSION_NUMBER | NULL | NUMBER(9) | Used for locking purposes |
| CUSTOMER_PARTY_ID | NULL | NUMBER | customer party id - not used in this version |
| AVAILABLE_ON_OBJECT_TYPE | NULL | VARCHAR2(30) | Distinguishes if id in available_on_object_id is a channel_id or the store_id |
| AVAILABLE_ON_OBJECT_ID | NULL | NUMBER | channel_id or store_id determined by available_on_object_id |
| AFFILIATE_PARTY_ID | NULL | NUMBER | affiliate party id - not used in this version |
| DEFAULT_CAMPAIGN_ID | NULL | NUMBER | default campaign id - not used in this version |
| DELIVERABLE_ID | NULL | NUMBER | deliverable id - not used in this version |
| OWNER_ID | NULL | NUMBER | foreign key to hz_parties party_id |
| POSTING_WIDTH | NULL | NUMBER | posting width - not used in this version |
| POSTING_HEIGHT | NULL | NUMBER | posting height - not used in this version |
| DISPLAY_RULE_ID | NULL | NUMBER | foreign key to jtf_rs_rulesets ruleset id |
| EFFECTIVE_START_DATE | NULL | DATE | start date |
| EFFECTIVE_END_DATE | NULL | DATE | end date |
| AFFILIATE_NUMBER | NULL | VARCHAR2(30) | affiliate number - not used in this version |
| SEND_FOR_PREVIEW_FLAG | NOT NULL | VARCHAR2(1) | send for preview flag - not used in this version |
| DIRECTION | NULL | VARCHAR2(5) | direction - not used in this version |
| PRESENTATION_URL | NULL | VARCHAR2(2000) | presentation url - not used in this version |
| CONTENT_SITE | NULL | VARCHAR2(5) | Determines if content is hosted on own site or affiliate site |
| AFFILIATE_STYLE_SHEET | NULL | VARCHAR2(2000) | style sheet |
| DISPLAY_PROGRAM | NULL | VARCHAR2(240) | display program - not used in this version |
| IMPRESSION_COUNT | NULL | NUMBER | Current number of impressions |
| MAX_IMPRESSION_COUNT | NULL | NUMBER | Target number of impressions |
| CAMPAIGN_TYPE | NULL | VARCHAR2(30) | campaign type - not used in this version |
| POSTING_TYPE | NULL | VARCHAR2(30) | type of posting |
| CHARGEBACK_UOM | NULL | VARCHAR2(3) | Chargeback unit of measure |
| CHARGEBACK_AMOUNT_CURR_CODE | NULL | VARCHAR2(15) | Charge back currency |
| CHARGEBACK_AMOUNT | NULL | NUMBER | chargeback amount |

Oracle Proprietary, Confidential Information--Use Restricted by Contract

Column Descriptions (Continued)

| <u>Name</u> | <u>Null?</u> | <u>Type</u> | <u>Description</u> |
|-----------------------|--------------|--------------|--|
| SEGMENT_OVERRIDE_FLAG | NOT NULL | VARCHAR2(1) | segment override flag - not used in this version |
| MAX_CAMPAIGNS | NULL | NUMBER | max campaigns - not used in this version |
| STATUS_CODE | NULL | VARCHAR2(30) | Status code |
| ORG_ID | NULL | NUMBER | organization id - not used in this version |
| ENABLED_FLAG | NOT NULL | VARCHAR2(1) | Enables record |
| SECURITY_GROUP_ID | NULL | NUMBER | Used in hosted environments |

Indexes

| <u>Index Name</u> | <u>Index Type</u> | <u>Sequence</u> | <u>Column Name</u> |
|-----------------------|-------------------|-----------------|--------------------|
| AMS_IBA_POSTINGS_B_U1 | UNIQUE | 5 | POSTING_ID |

Sequences

| <u>Sequence</u> | <u>Derived Column</u> |
|----------------------|-----------------------|
| AMS_IBA_POSTINGS_B_S | POSTING_ID |

AMS_IBA_POSTINGS_TL

Table to store translatable description and name information for an affiliate posting

Foreign Keys

| Primary Key Table | Primary Key Column | Foreign Key Column |
|--------------------|--------------------|--------------------|
| AMS_IBA_POSTINGS_B | POSTING_ID | POSTING_ID |

Column Descriptions

| Name | Null? | Type | Description |
|-----------------------|----------|----------------|-----------------------------|
| POSTING_ID (PK) | NOT NULL | NUMBER | Unique identifier |
| LANGUAGE (PK) | NOT NULL | VARCHAR2(4) | Language |
| CREATED_BY | NOT NULL | NUMBER(15) | Created by |
| CREATION_DATE | NOT NULL | DATE | Creation date of record |
| LAST_UPDATED_BY | NOT NULL | NUMBER(15) | Record last updated by |
| LAST_UPDATE_DATE | NOT NULL | DATE | Last updated date |
| LAST_UPDATE_LOGIN | NULL | NUMBER(15) | Last update login |
| OBJECT_VERSION_NUMBER | NULL | NUMBER | For locking purposes |
| SOURCE_LANG | NOT NULL | VARCHAR2(4) | Source Language |
| POSTING_NAME | NOT NULL | VARCHAR2(240) | Name of Posting |
| DESCRIPTION | NULL | VARCHAR2(4000) | Description of posting |
| SECURITY_GROUP_ID | NULL | NUMBER | Used in hosted environments |

Indexes

| Index Name | Index Type | Sequence | Column Name |
|------------------------|------------|----------|--------------|
| AMS_IBA_POSTINGS_TL_N1 | NOT UNIQUE | 5 | POSTING_NAME |
| AMS_IBA_POSTINGS_TL_U1 | UNIQUE | 4 | LANGUAGE |
| | | 5 | POSTING_ID |

AMS_MEDIA_B

AMS_MEDIA_B specifies all different media that can be used by an activity. Some examples would be: Newspaper, TV, Radio.

Column Descriptions

| Name | Null? | Type | Description |
|-----------------------|----------|---------------|---|
| MEDIA_ID | NOT NULL | NUMBER | Unique Identifier. |
| LAST_UPDATE_DATE | NOT NULL | DATE | Standard WHO Column |
| LAST_UPDATED_BY | NOT NULL | NUMBER(15) | Standard WHO Column |
| CREATION_DATE | NOT NULL | DATE | Standard WHO Column |
| CREATED_BY | NOT NULL | NUMBER(15) | Standard WHO Column |
| LAST_UPDATE_LOGIN | NULL | NUMBER(15) | Standard WHO Column |
| OBJECT_VERSION_NUMBER | NULL | NUMBER(9) | This column is used for locking purposes. |
| MEDIA_TYPE_CODE | NOT NULL | VARCHAR2(30) | Indicates type of the media. For example Broadcast, Direct Marketing. |
| INBOUND_FLAG | NOT NULL | VARCHAR2(1) | Indicates whether any Response is received for this Media. |
| ENABLED_FLAG | NOT NULL | VARCHAR2(1) | Indicates whether the Mdia is Active. |
| ATTRIBUTE_CATEGORY | NULL | VARCHAR2(30) | Descriptive Flexfield structure defining column. |
| ATTRIBUTE1 | NULL | VARCHAR2(150) | Descriptive Flexfield structure |
| ATTRIBUTE2 | NULL | VARCHAR2(150) | Descriptive Flexfield structure |
| ATTRIBUTE3 | NULL | VARCHAR2(150) | Descriptive Flexfield structure |
| ATTRIBUTE4 | NULL | VARCHAR2(150) | Descriptive Flexfield structure |
| ATTRIBUTE5 | NULL | VARCHAR2(150) | Descriptive Flexfield structure |
| ATTRIBUTE6 | NULL | VARCHAR2(150) | Descriptive Flexfield structure |
| ATTRIBUTE7 | NULL | VARCHAR2(150) | Descriptive Flexfield structure |
| ATTRIBUTE8 | NULL | VARCHAR2(150) | Descriptive Flexfield structure |
| ATTRIBUTE9 | NULL | VARCHAR2(150) | Descriptive Flexfield structure |
| ATTRIBUTE10 | NULL | VARCHAR2(150) | Descriptive Flexfield structure |
| ATTRIBUTE11 | NULL | VARCHAR2(150) | Descriptive Flexfield structure |
| ATTRIBUTE12 | NULL | VARCHAR2(150) | Descriptive Flexfield structure |
| ATTRIBUTE13 | NULL | VARCHAR2(150) | Descriptive Flexfield structure |
| ATTRIBUTE14 | NULL | VARCHAR2(150) | Descriptive Flexfield structure |
| ATTRIBUTE15 | NULL | VARCHAR2(150) | Descriptive Flexfield structure |
| SECURITY_GROUP_ID | NULL | NUMBER | Used in hosted environments |

Indexes

| Index Name | Index Type | Sequence | Column Name |
|----------------|------------|----------|-----------------|
| AMS_MEDIA_B_N1 | NOT UNIQUE | 5 | MEDIA_TYPE_CODE |
| AMS_MEDIA_B_U1 | UNIQUE | 5 | MEDIA_ID |

Sequences

| Sequence | Derived Column |
|---------------|----------------|
| AMS_MEDIA_B_S | MEDIA_ID |

AMS_MEDIA_CHANNELS

AMS_MEDIA_CHANNELS stores what channel can handle what kind of media. A specific vendor that will execute on part of a media. For example, for a media 'Business Magazine', possible channels could be Business Week, Forbes and Fortune. In the case of response media, the channels are to be used by field customer responses. This is reference data used to control list of response venues which can be used in activities like a Promotion. Examples could be: Tele Center X can handle outbound 'Call Center' Media as well as inbound.

Foreign Keys

| Primary Key Table | Primary Key Column | Foreign Key Column |
|-------------------|--------------------|--------------------|
| AMS_CHANNELS_B | CHANNEL_ID | CHANNEL_ID |
| AMS_MEDIA_B | MEDIA_ID | MEDIA_ID |

Column Descriptions

| Name | Null? | Type | Description |
|-----------------------|----------|------------|---|
| MEDIA_CHANNEL_ID (PK) | NOT NULL | NUMBER | Unique Identifier. |
| LAST_UPDATE_DATE | NOT NULL | DATE | Standard WHO Column |
| LAST_UPDATED_BY | NOT NULL | NUMBER(15) | Standard WHO Column |
| CREATION_DATE | NOT NULL | DATE | Standard WHO Column |
| CREATED_BY | NOT NULL | NUMBER(15) | Standard WHO Column |
| LAST_UPDATE_LOGIN | NULL | NUMBER(15) | Standard WHO Column |
| OBJECT_VERSION_NUMBER | NULL | NUMBER(9) | This column is used for locking purposes. |
| MEDIA_ID | NOT NULL | NUMBER | Indicates the Media. |
| CHANNEL_ID | NOT NULL | NUMBER | Indicates the channels used by media. |
| ACTIVE_FROM_DATE | NOT NULL | DATE | Active from date for the Media. |
| ACTIVE_TO_DATE | NULL | DATE | Active to date for the Media. |
| SECURITY_GROUP_ID | NULL | NUMBER | Used in hosted environments |

Indexes

| Index Name | Index Type | Sequence | Column Name |
|-----------------------|------------|----------|------------------|
| AMS_MEDIA_CHANNELS_N1 | NOT UNIQUE | 5 | CHANNEL_ID |
| AMS_MEDIA_CHANNELS_U1 | UNIQUE | 5 | MEDIA_CHANNEL_ID |
| AMS_MEDIA_CHANNELS_U2 | UNIQUE | 5 | MEDIA_ID |
| | | 10 | CHANNEL_ID |

Sequences

| Sequence | Derived Column |
|----------------------|------------------|
| AMS_MEDIA_CHANNELS_S | MEDIA_CHANNEL_ID |

Oracle Proprietary, Confidential Information--Use Restricted by Contract

AMS_OBJECT_ASSOCIATIONS

AMS_OBJECT_ASSOCIATIONS is the cross reference between the Deliverables (ads, collateral etc.) and the Promotions or Events we are running. As part of the Promotion set-up the Promotion manager must decide on what deliverables are required for the Promotion. If a Deliverable is created for a specific Activity (Promotion, Event) the CREATED_FOR will be used as value for column USAGE_TYPE. Hence, all costs accrued for creating the Deliverable will be carried by the Activity. The activity can set a max value it is prepared to accept. If an activity is only using an existing Deliverable, USED_BY will be the value for column USAGE_TYPE. Some examples could be 'Whitney Houston ad for True Voice' created for Promotion X, 'Garth Brooks ad in Radio' created for Event Y, 'Brochure Z for Mailings' used by Promotion Channel 'Mail House W'.

Foreign Keys

| Primary Key Table | Primary Key Column | Foreign Key Column |
|-------------------------|--------------------|------------------------|
| AMS_CAMPAIGNS_ALL_B | CAMPAIGN_ID | MASTER_OBJECT_ID |
| AMS_CAMPAIGNS_ALL_B | CAMPAIGN_ID | USING_OBJECT_ID |
| AMS_DELIVERABLES_ALL_B | DELIVERABLE_ID | USING_OBJECT_ID |
| AMS_EVENT_HEADERS_ALL_B | EVENT_HEADER_ID | MASTER_OBJECT_ID |
| AMS_EVENT_HEADERS_ALL_B | EVENT_HEADER_ID | USING_OBJECT_ID |
| AMS_EVENT_OFFERS_ALL_B | EVENT_OFFER_ID | MASTER_OBJECT_ID |
| AMS_EVENT_OFFERS_ALL_B | EVENT_OFFER_ID | USING_OBJECT_ID |
| FND_CURRENCIES | CURRENCY_CODE | MAX_COST_CURRENCY_CODE |

Column Descriptions

| Name | Null? | Type | Description |
|-----------------------|----------|--------------|--|
| OBJECT_ASSOCIATION_ID | NOT NULL | NUMBER | Unique Identifier. |
| LAST_UPDATE_DATE | NOT NULL | DATE | Standard WHO Column |
| LAST_UPDATED_BY | NOT NULL | NUMBER(15) | Standard WHO Column |
| CREATION_DATE | NOT NULL | DATE | Standard WHO Column |
| CREATED_BY | NOT NULL | NUMBER(15) | Standard WHO Column |
| LAST_UPDATE_LOGIN | NULL | NUMBER(15) | Standard WHO Column |
| OBJECT_VERSION_NUMBER | NULL | NUMBER(9) | This column is used for locking purposes. A way to implement Optimistic locking. |
| MASTER_OBJECT_TYPE | NOT NULL | VARCHAR2(30) | Object Type of the Master Object. The object relationship is FROM this type of object. For example, when an Event Header has to associate Campaigns with it, the Event Header is the MASTER OBJECT TYPE. |
| MASTER_OBJECT_ID | NOT NULL | NUMBER | Object ID of the object defined by Master Object Type. |
| USING_OBJECT_TYPE | NOT NULL | VARCHAR2(30) | Object Type of the Object which is being associated with the Master Object. For example, when we associate Campaigns with an Event Header. Campaign is the Using Object Type. |

Column Descriptions (Continued)

| Name | Null? | Type | Description |
|-------------------------------|----------|---------------|--|
| USING_OBJECT_ID | NOT NULL | NUMBER | Object ID of the type of object defined by Using Object Type. |
| PRIMARY_FLAG | NOT NULL | VARCHAR2(1) | Whether it is the primary association. |
| USAGE_TYPE | NOT NULL | VARCHAR2(30) | Whether the USING_OBJECT was created or just USED_BY the Master Object. Type of usage. |
| QUANTITY_NEEDED | NULL | NUMBER(15) | Quantity of the Using Object needed. |
| QUANTITY_NEEDED_BY_DATE | NULL | DATE | Quantity needed by date. |
| COST_FROZEN_FLAG | NULL | VARCHAR2(1) | Whether the cost is frozen. |
| PCT_OF_COST_TO_CHARGE_USED_BY | NULL | NUMBER(15) | Used for cost apportioning. |
| MAX_COST_TO_CHARGE_USED_BY | NULL | NUMBER(15) | Estimated cost of production |
| MAX_COST_CURRENCY_CODE | NULL | VARCHAR2(15) | Currency Code associated with MAX_COST_TO_CHARGE_USED_BY |
| FULFILL_ON_TYPE_CODE | NULL | VARCHAR2(30) | Fulfill On Type code. The values are seeded. |
| METRIC_CLASS | NULL | VARCHAR2(30) | Metric class of the tracked Metrics. |
| ATTRIBUTE_CATEGORY | NULL | VARCHAR2(30) | Descriptive flexfield structure defining column. |
| ATTRIBUTE1 | NULL | VARCHAR2(150) | Descriptive flexfield segment. |
| ATTRIBUTE2 | NULL | VARCHAR2(150) | Descriptive flexfield segment. |
| ATTRIBUTE3 | NULL | VARCHAR2(150) | Descriptive flexfield segment. |
| ATTRIBUTE4 | NULL | VARCHAR2(150) | Descriptive flexfield segment. |
| ATTRIBUTE5 | NULL | VARCHAR2(150) | Descriptive flexfield segment. |
| ATTRIBUTE6 | NULL | VARCHAR2(150) | Descriptive flexfield segment. |
| ATTRIBUTE7 | NULL | VARCHAR2(150) | Descriptive flexfield segment. |
| ATTRIBUTE8 | NULL | VARCHAR2(150) | Descriptive flexfield segment. |
| ATTRIBUTE9 | NULL | VARCHAR2(150) | Descriptive flexfield segment. |
| ATTRIBUTE10 | NULL | VARCHAR2(150) | Descriptive flexfield segment. |
| ATTRIBUTE11 | NULL | VARCHAR2(150) | Descriptive flexfield segment. |
| ATTRIBUTE12 | NULL | VARCHAR2(150) | Descriptive flexfield segment. |
| ATTRIBUTE13 | NULL | VARCHAR2(150) | Descriptive flexfield segment. |
| ATTRIBUTE14 | NULL | VARCHAR2(150) | Descriptive flexfield segment. |
| ATTRIBUTE15 | NULL | VARCHAR2(150) | Descriptive flexfield segment. |
| SECURITY_GROUP_ID | NULL | NUMBER | Used in hosted environments |

Indexes

| Index Name | Index Type | Sequence | Column Name |
|----------------------------|------------|----------|------------------------|
| AMS_OBJECT_ASSOCIATIONS_N1 | NOT UNIQUE | 5 | MASTER_OBJECT_ID |
| AMS_OBJECT_ASSOCIATIONS_N2 | NOT UNIQUE | 5 | USING_OBJECT_ID |
| AMS_OBJECT_ASSOCIATIONS_N3 | NOT UNIQUE | 5 | MAX_COST_CURRENCY_CODE |
| AMS_OBJECT_ASSOCIATIONS_U1 | UNIQUE | 5 | OBJECT_ASSOCIATION_ID |

Sequences

| Sequence | Derived Column |
|---------------------------|-----------------------|
| AMS_OBJECT_ASSOCIATIONS_S | OBJECT_ASSOCIATION_ID |

Oracle Proprietary, Confidential Information--Use Restricted by Contract

AMS_PARTY_MARKET_SEGMENTS

This is an intersection table to allow a party to be associated to multiple market segments.

Foreign Keys

| Primary Key Table | Primary Key Column | Foreign Key Column |
|-------------------|--------------------|--------------------|
| AMS_CELLS_ALL_B | CELL_ID | MARKET_SEGMENT_ID |
| HZ_PARTIES | PARTY_ID | PARTY_ID |

Column Descriptions

| Name | Null? | Type | Description |
|----------------------------------|----------|-------------|---|
| AMS_PARTY_MARKET_SEGMENT_ID (PK) | NOT NULL | NUMBER | Unique Identifier. |
| LAST_UPDATE_DATE | NOT NULL | DATE | Standard WHO Column |
| LAST_UPDATED_BY | NOT NULL | NUMBER(15) | Standard WHO Column |
| CREATION_DATE | NOT NULL | DATE | Standard WHO Column |
| CREATED_BY | NOT NULL | NUMBER(15) | Standard WHO Column |
| LAST_UPDATE_LOGIN | NULL | NUMBER(15) | Standard WHO Column |
| OBJECT_VERSION_NUMBER | NULL | NUMBER(9) | This column is used for locking purposes. |
| MARKET_SEGMENT_ID | NOT NULL | NUMBER | Unique activity code used across systems. |
| MARKET_SEGMENT_FLAG | NOT NULL | VARCHAR2(1) | Indicates whether the record is a target or market segment. |
| PARTY_ID | NOT NULL | NUMBER | Reference key to the party from which the de-duplication key was created. |
| START_DATE_ACTIVE | NULL | DATE | The date on which this party market segment becomes active. |
| END_DATE_ACTIVE | NULL | DATE | The date until which this party market segment remains active. |
| ORG_ID | NULL | NUMBER(32) | Operating Unit Identifier. Not implemented. |
| SECURITY_GROUP_ID | NULL | NUMBER | Used in hosted environments |

Indexes

| Index Name | Index Type | Sequence | Column Name |
|------------------------------|------------|----------|-----------------------------|
| AMS_PARTY_MARKET_SEGMENTS_U1 | UNIQUE | 5 | AMS_PARTY_MARKET_SEGMENT_ID |

Sequences

| Sequence | Derived Column |
|-----------------------------|-----------------------------|
| AMS_PARTY_MARKET_SEGMENTS_S | AMS_PARTY_MARKET_SEGMENT_ID |

AMS_SETUP_TYPES

This table stores the set type codes required by custom setups. It stores the display sequence of the setup attributes and activity with which these setups can be associated.

Column Descriptions

| Name | Null? | Type | Description |
|-------------------------|----------|---------------|---|
| SETUP_TYPE_ID (PK) | NOT NULL | NUMBER | Setup Type Identifier. |
| LAST_UPDATE_DATE | NOT NULL | DATE | Standard WHO Column |
| LAST_UPDATED_BY | NOT NULL | NUMBER(15) | Standard WHO Column |
| CREATION_DATE | NOT NULL | DATE | Standard WHO Column |
| CREATED_BY | NOT NULL | NUMBER(15) | Standard WHO Column |
| LAST_UPDATE_LOGIN | NULL | NUMBER(15) | Standard WHO Column |
| OBJECT_VERSION_NUMBER | NULL | NUMBER(9) | This column is used for locking purposes. |
| OBJECT_TYPE | NOT NULL | VARCHAR2(30) | Type of activity. |
| ACTIVITY_TYPE_CODE | NULL | VARCHAR2(30) | Media type code. |
| DISPLAY_SEQUENCE_NO | NOT NULL | NUMBER(3) | Display sequence of setup attribute. |
| SETUP_ATTRIBUTE | NOT NULL | VARCHAR2(30) | Setup Attribute code. |
| MANDATORY_FLAG | NOT NULL | VARCHAR2(1) | Mandatory flag which indicates that this setup type is must for the activity for which custom setup is being created. |
| USER_INTERFACE_FUNCTION | NULL | VARCHAR2(240) | User Interface function. |
| SECURITY_GROUP_ID | NULL | NUMBER | Used in hosted environments |

Indexes

| Index Name | Index Type | Sequence | Column Name |
|--------------------|------------|----------|---------------|
| AMS_SETUP_TYPES_N1 | NOT UNIQUE | 5 | OBJECT_TYPE |
| AMS_SETUP_TYPES_U1 | UNIQUE | 5 | SETUP_TYPE_ID |

Sequences

| Sequence | Derived Column |
|-------------------|----------------|
| AMS_SETUP_TYPES_S | SETUP_TYPE_ID |

AMS_SOURCE_CODES

Major marketing objects have source codes defined. After creating a marketing object, its source code will be recorded into this table. Given a source code, the corresponding marketing object can be found out by querying this table.

Column Descriptions

| Name | Null? | Type | Description |
|-----------------------|----------|--------------|--|
| SOURCE_CODE_ID | NOT NULL | NUMBER | Unique identifier |
| LAST_UPDATE_DATE | NOT NULL | DATE | Standard WHO Column |
| LAST_UPDATED_BY | NOT NULL | NUMBER(15) | Standard WHO Column |
| CREATION_DATE | NOT NULL | DATE | Standard WHO Column |
| CREATED_BY | NOT NULL | NUMBER(15) | Standard WHO Column |
| LAST_UPDATE_LOGIN | NULL | NUMBER(15) | Standard WHO Column |
| OBJECT_VERSION_NUMBER | NULL | NUMBER(9) | This column is used for locking purposes |
| SOURCE_CODE | NOT NULL | VARCHAR2(30) | Source code |
| SOURCE_CODE_FOR_ID | NOT NULL | NUMBER | Identifier of the object with this source code |
| ARC_SOURCE_CODE_FOR | NOT NULL | VARCHAR2(30) | Type of the object with this source code |
| ACTIVE_FLAG | NOT NULL | VARCHAR2(1) | Flag to indicate if this source code is active |
| SECURITY_GROUP_ID | NULL | NUMBER | Used in hosted environments |

Indexes

| Index Name | Index Type | Sequence | Column Name |
|---------------------|------------|----------|----------------|
| AMS_SOURCE_CODES_U1 | UNIQUE | 5 | SOURCE_CODE_ID |
| AMS_SOURCE_CODES_U2 | UNIQUE | 5 | SOURCE_CODE |

Sequences

| Sequence | Derived Column |
|--------------------|----------------|
| AMS_SOURCE_CODES_S | SOURCE_CODE_ID |

AMS_USER_STATUSES_B

Stores the User statuses for an Object(Event,Registration,Campaign etc..)

Column Descriptions

| Name | Null? | Type | Description |
|-----------------------|----------|--------------|---|
| USER_STATUS_ID | NOT NULL | NUMBER | Unique identifier |
| LAST_UPDATE_DATE | NOT NULL | DATE | Standard WHO Column |
| LAST_UPDATED_BY | NOT NULL | NUMBER(15) | Standard WHO Column |
| CREATION_DATE | NOT NULL | DATE | Standard WHO Column |
| CREATED_BY | NOT NULL | NUMBER(15) | Standard WHO Column |
| LAST_UPDATE_LOGIN | NULL | NUMBER(15) | Standard WHO Column |
| OBJECT_VERSION_NUMBER | NULL | NUMBER(9) | This column is used for locking purposes |
| SYSTEM_STATUS_TYPE | NOT NULL | VARCHAR2(30) | Status type of the user statuses |
| SYSTEM_STATUS_CODE | NOT NULL | VARCHAR2(30) | Status code of the user statuses |
| ENABLED_FLAG | NOT NULL | VARCHAR2(1) | Flag to indicate if this user status is enabled or disabled |
| DEFAULT_FLAG | NOT NULL | VARCHAR2(1) | Indicates default status |
| START_DATE_ACTIVE | NULL | DATE | Date to show when the current status started |
| END_DATE_ACTIVE | NULL | DATE | Date to show when the current status ends |
| SEEDED_FLAG | NULL | VARCHAR2(1) | Flag to show if this status is seeded. |
| SECURITY_GROUP_ID | NULL | NUMBER | Used in hosted environments |

Indexes

| Index Name | Index Type | Sequence | Column Name |
|------------------------|------------|----------|----------------|
| AMS_USER_STATUSES_B_U1 | UNIQUE | 5 | USER_STATUS_ID |

Sequences

| Sequence | Derived Column |
|-----------------------|----------------|
| AMS_USER_STATUSES_B_S | USER_STATUS_ID |

HZ_LOCATIONS

HZ_LOCATIONS stores information about physical physical locations.

Foreign Keys

| Primary Key Table | Primary Key Column | Foreign Key Column |
|-------------------|----------------------|--------------------|
| FND_LANGUAGES | LANGUAGE_CODE | LANGUAGE |
| FND_TERRITORIES | TERRITORY_CODE | COUNTRY |
| HZ_TIMEZONES | GLOBAL_TIMEZONE_NAME | TIME_ZONE |

Column Descriptions

| Name | Null? | Type | Description |
|------------------------|----------|---------------|---|
| LOCATION_ID (PK) | NOT NULL | NUMBER(15) | Location Identifier |
| LAST_UPDATE_DATE | NOT NULL | DATE | Standard Who column |
| LAST_UPDATED_BY | NOT NULL | NUMBER(15) | Standard Who column |
| CREATION_DATE | NOT NULL | DATE | Standard Who column |
| CREATED_BY | NOT NULL | NUMBER(15) | Standard Who column |
| LAST_UPDATE_LOGIN | NULL | NUMBER(15) | Standard Who column |
| REQUEST_ID | NULL | NUMBER(15) | Request identifier of last concurrent program to update this record |
| PROGRAM_APPLICATION_ID | NULL | NUMBER(15) | Application identifier of last concurrent program to update this record |
| PROGRAM_ID | NULL | NUMBER(15) | Program identifier of last concurrent program to update this record |
| PROGRAM_UPDATE_DATE | NULL | DATE | Last update date of this record by a concurrent program |
| WH_UPDATE_DATE | NULL | DATE | Warehouse update date when record was recorded or changed |
| ATTRIBUTE_CATEGORY | NULL | VARCHAR2(30) | Descriptive Flexfield Structure Defining column |
| ATTRIBUTE1 | NULL | VARCHAR2(150) | Descriptive Flexfield Segment column |
| ATTRIBUTE2 | NULL | VARCHAR2(150) | Descriptive Flexfield Segment column |
| ATTRIBUTE3 | NULL | VARCHAR2(150) | Descriptive Flexfield Segment column |
| ATTRIBUTE4 | NULL | VARCHAR2(150) | Descriptive Flexfield Segment column |
| ATTRIBUTE5 | NULL | VARCHAR2(150) | Descriptive Flexfield Segment column |
| ATTRIBUTE6 | NULL | VARCHAR2(150) | Descriptive Flexfield Segment column |
| ATTRIBUTE7 | NULL | VARCHAR2(150) | Descriptive Flexfield Segment column |
| ATTRIBUTE8 | NULL | VARCHAR2(150) | Descriptive Flexfield Segment column |
| ATTRIBUTE9 | NULL | VARCHAR2(150) | Descriptive Flexfield Segment column |
| ATTRIBUTE10 | NULL | VARCHAR2(150) | Descriptive Flexfield Segment column |
| ATTRIBUTE11 | NULL | VARCHAR2(150) | Descriptive Flexfield Segment column |
| ATTRIBUTE12 | NULL | VARCHAR2(150) | Descriptive Flexfield Segment column |
| ATTRIBUTE13 | NULL | VARCHAR2(150) | Descriptive Flexfield Segment column |

Oracle Proprietary, Confidential Information--Use Restricted by Contract

Column Descriptions (Continued)

| Name | Null? | Type | Description |
|---------------------------|----------|---------------|--|
| ATTRIBUTE14 | NULL | VARCHAR2(150) | Descriptive Flexfield Segment column |
| ATTRIBUTE15 | NULL | VARCHAR2(150) | Descriptive Flexfield Segment column |
| ATTRIBUTE16 | NULL | VARCHAR2(150) | Descriptive Flexfield Segment column |
| ATTRIBUTE17 | NULL | VARCHAR2(150) | Descriptive Flexfield Segment column |
| ATTRIBUTE18 | NULL | VARCHAR2(150) | Descriptive Flexfield Segment column |
| ATTRIBUTE19 | NULL | VARCHAR2(150) | Descriptive Flexfield Segment column |
| ATTRIBUTE20 | NULL | VARCHAR2(150) | Descriptive Flexfield Segment column |
| GLOBAL_ATTRIBUTE_CATEGORY | NULL | VARCHAR2(30) | Reserved for Globalization Functionality |
| GLOBAL_ATTRIBUTE1 | NULL | VARCHAR2(150) | Reserved for Globalization Functionality |
| GLOBAL_ATTRIBUTE2 | NULL | VARCHAR2(150) | Reserved for Globalization Functionality |
| GLOBAL_ATTRIBUTE3 | NULL | VARCHAR2(150) | Reserved for Globalization Functionality |
| GLOBAL_ATTRIBUTE4 | NULL | VARCHAR2(150) | Reserved for Globalization Functionality |
| GLOBAL_ATTRIBUTE5 | NULL | VARCHAR2(150) | Reserved for Globalization Functionality |
| GLOBAL_ATTRIBUTE6 | NULL | VARCHAR2(150) | Reserved for Globalization Functionality |
| GLOBAL_ATTRIBUTE7 | NULL | VARCHAR2(150) | Reserved for Globalization Functionality |
| GLOBAL_ATTRIBUTE8 | NULL | VARCHAR2(150) | Reserved for Globalization Functionality |
| GLOBAL_ATTRIBUTE9 | NULL | VARCHAR2(150) | Reserved for Globalization Functionality |
| GLOBAL_ATTRIBUTE10 | NULL | VARCHAR2(150) | Reserved for Globalization Functionality |
| GLOBAL_ATTRIBUTE11 | NULL | VARCHAR2(150) | Reserved for Globalization Functionality |
| GLOBAL_ATTRIBUTE12 | NULL | VARCHAR2(150) | Reserved for Globalization Functionality |
| GLOBAL_ATTRIBUTE13 | NULL | VARCHAR2(150) | Reserved for Globalization Functionality |
| GLOBAL_ATTRIBUTE14 | NULL | VARCHAR2(150) | Reserved for Globalization Functionality |
| GLOBAL_ATTRIBUTE15 | NULL | VARCHAR2(150) | Reserved for Globalization Functionality |
| GLOBAL_ATTRIBUTE16 | NULL | VARCHAR2(150) | Reserved for Globalization Functionality |
| GLOBAL_ATTRIBUTE17 | NULL | VARCHAR2(150) | Reserved for Globalization Functionality |
| GLOBAL_ATTRIBUTE18 | NULL | VARCHAR2(150) | Reserved for Globalization Functionality |
| GLOBAL_ATTRIBUTE19 | NULL | VARCHAR2(150) | Reserved for Globalization Functionality |
| GLOBAL_ATTRIBUTE20 | NULL | VARCHAR2(150) | Reserved for Globalization Functionality |
| ORIG_SYSTEM_REFERENCE | NOT NULL | VARCHAR2(240) | Address identifier from foreign system |
| COUNTRY | NOT NULL | VARCHAR2(60) | FND_TERRITORY.TERRITORY_CODE |
| ADDRESS1 | NOT NULL | VARCHAR2(240) | First line for address |
| ADDRESS2 | NULL | VARCHAR2(240) | Second line for address |

Oracle Proprietary, Confidential Information--Use Restricted by Contract

Column Descriptions (Continued)

| Name | Null? | Type | Description |
|--------------------------|-------|----------------|--|
| ADDRESS3 | NULL | VARCHAR2(240) | Third line for address |
| ADDRESS4 | NULL | VARCHAR2(240) | Fourth line for address |
| CITY | NULL | VARCHAR2(60) | City |
| POSTAL_CODE | NULL | VARCHAR2(60) | Postal code |
| STATE | NULL | VARCHAR2(60) | State |
| PROVINCE | NULL | VARCHAR2(60) | Province |
| COUNTY | NULL | VARCHAR2(60) | County |
| ADDRESS_KEY | NULL | VARCHAR2(2000) | Derived key created by OSM to facilitate querying |
| ADDRESS_STYLE | NULL | VARCHAR2(30) | Used as context value for Flexible Address Format descriptive flexfield (do not use this column, join to fnd_territories via country = territory_code to retrieve the address style for the country) |
| VALIDATED_FLAG | NULL | VARCHAR2(1) | "Y" if this location has been validated, "N" if not |
| ADDRESS_LINES_PHONETIC | NULL | VARCHAR2(560) | Phonetic or Kana representation of the Kanji address lines (used in Japan) |
| APARTMENT_FLAG | NULL | VARCHAR2(1) | "Y" if the location is an apartment. The default value is 'N' (No) |
| PO_BOX_NUMBER | NULL | VARCHAR2(50) | Post Office Box Number |
| HOUSE_NUMBER | NULL | VARCHAR2(50) | House Number. In an address, (e.g., 121 Any Street #101, Small Town, California, United States of America) the house number is '121'. |
| STREET_SUFFIX | NULL | VARCHAR2(50) | In an address, (e.g., 121 Any Street #101, Small Town, California, United States of America) the street suffix is 'Street'. Other examples include, place, drive, avenue. The suffix could be divided into primary and secondary. In an address line (121 Brigeport Avenue Overpass) the 'Overpass' is a secondary suffix, and Avenue is the primary suffix. |
| APARTMENT_NUMBER | NULL | VARCHAR2(50) | In an address, (e.g., 121 Any Street #101, Small Town, California, United States of America) the apartment number is '101'. |
| SECONDARY_SUFFIX_ELEMENT | NULL | VARCHAR2(240) | In an address line (121 Brigeport Avenue Overpass) the 'Overpass' is a secondary suffix. |
| STREET | NULL | VARCHAR2(50) | In an address, (e.g., 121 Any Street #101, Small Town, California, United States of America) the street is 'Any'. |
| RURAL_ROUTE_TYPE | NULL | VARCHAR2(50) | A United States Postal classification of rural routes. These indicate the type of route (e.g., walking, delivery van etc.). |
| RURAL_ROUTE_NUMBER | NULL | VARCHAR2(50) | A delivery route number assigned by a postal authority. |

Column Descriptions (Continued)

| Name | Null? | Type | Description |
|-------------------------|----------|----------------|--|
| STREET_NUMBER | NULL | VARCHAR2(50) | In an address line (121 Brigeport Avenue Overpass) the '121' is the street number. |
| BUILDING | NULL | VARCHAR2(50) | A number assigned to an entire building within an address. |
| FLOOR | NULL | VARCHAR2(50) | A number or name assigned to a level within a building or within an address. For example, in the address line (121 Brigeport Avenue Overpass, Lower Lobby) the Lower Lobby is a floor. |
| SUITE | NULL | VARCHAR2(50) | A number or name to indicate a number of rooms (therefore termed a suite). |
| ROOM | NULL | VARCHAR2(50) | A number or name for a room within a building. |
| POSTAL_PLUS4_CODE | NULL | VARCHAR2(10) | Four digit extension to the United States Postal ZIP code. |
| TIME_ZONE | NULL | VARCHAR2(50) | A numeric value indicating the number of hours from Greenwich Mean time. |
| OVERSEAS_ADDRESS_FLAG | NULL | VARCHAR2(1) | "Y" if the location is overseas from the point of view of the person creating the address. The default value is 'N' (no). |
| POST_OFFICE | NULL | VARCHAR2(50) | Name of the post office nearest the location |
| POSITION | NULL | VARCHAR2(50) | The primary direction (for example North, East, etc.) by which access to the location is achieved |
| DELIVERY_POINT_CODE | NULL | VARCHAR2(50) | User-assigned identifier for planning delivery sequences |
| LOCATION_DIRECTIONS | NULL | VARCHAR2(640) | Directions to the location |
| ADDRESS_EFFECTIVE_DATE | NULL | DATE | Date when the location is usable. |
| ADDRESS_EXPIRATION_DATE | NULL | DATE | Date when the location can no longer be used |
| ADDRESS_ERROR_CODE | NULL | VARCHAR2(50) | Postal Soft evaluation construct. Records the error type if an error is encountered in address processing |
| CLLI_CODE | NULL | VARCHAR2(60) | Common Language Location Identifier (CLLI) code |
| DODAAC | NULL | VARCHAR2(6) | Department of Defense Activity Address Code. A code, often used for shipping purposes, that specifies a military unit or specific set of activities. |
| TRAILING_DIRECTORY_CODE | NULL | VARCHAR2(60) | Direction Code used in the UK that is added to the end of an address or area |
| LANGUAGE | NULL | VARCHAR2(4) | Operating language of the location. FK to FND_LANGUAGES |
| LIFE_CYCLE_STATUS | NULL | VARCHAR2(30) | The state of the lifecycle for the record |
| SHORT_DESCRIPTION | NULL | VARCHAR2(240) | Short description of the location |
| DESCRIPTION | NULL | VARCHAR2(2000) | An extensive description of the location |
| CONTENT_SOURCE_TYPE | NOT NULL | VARCHAR2(30) | Source of data content. |

Oracle Proprietary, Confidential Information--Use Restricted by Contract

Column Descriptions (Continued)

| Name | Null? | Type | Description |
|------------------------------|-------|--------------|--|
| LOC_HIERARCHY_ID | NULL | NUMBER(15) | Location hierarchy identifier. FK to JTF_LOC_HIERARCHIES_B. |
| SALES_TAX_GEOCODE | NULL | VARCHAR2(30) | US State and Local Tax Jurisdiction code. Use this field to provide either a Vertex GeoCode or Taxware Geocode value for the Point of Order Origin |
| SALES_TAX_INSIDE_CITY_LIMITS | NULL | VARCHAR2(30) | US State and Local Tax, Inside City Limits flag. Default if Null to N. Indicates whether the address is inside the city limits of the associated GEOCODE |
| FA_LOCATION_ID | NULL | NUMBER(15) | FK to FA_LOCATIONS |

Indexes

| Index Name | Index Type | Sequence | Column Name |
|------------------|------------|----------|---------------|
| HZ_LOCATIONS_N1 | NOT UNIQUE | 1 | ADDRESS1 |
| HZ_LOCATIONS_N10 | NOT UNIQUE | 5 | CITY |
| HZ_LOCATIONS_N11 | NOT UNIQUE | 5 | PROVINCE |
| HZ_LOCATIONS_N12 | NOT UNIQUE | 5 | COUNTY |
| HZ_LOCATIONS_N2 | NOT UNIQUE | 1 | CREATION_DATE |
| HZ_LOCATIONS_N3 | NOT UNIQUE | 1 | ADDRESS_KEY |
| HZ_LOCATIONS_N4 | NOT UNIQUE | 1 | POSTAL_CODE |
| HZ_LOCATIONS_N5 | NOT UNIQUE | 1 | COUNTRY |
| | | 4 | STATE |
| HZ_LOCATIONS_N6 | NOT UNIQUE | 1 | CLLI_CODE |
| HZ_LOCATIONS_N7 | NOT UNIQUE | 5 | ADDRESS1 |
| HZ_LOCATIONS_N8 | NOT UNIQUE | 5 | ADDRESS2 |
| HZ_LOCATIONS_N9 | NOT UNIQUE | 5 | POSTAL_CODE |
| HZ_LOCATIONS_U1 | UNIQUE | 1 | LOCATION_ID |

Sequences

| Sequence | Derived Column |
|----------------|----------------|
| HZ_LOCATIONS_S | LOCATION_ID |

HZ_ORGANIZATION_PROFILES

HZ_ORGANIZATION_PROFILES stores credit rating, financial statistics, socio-economic and corporate linkage information for business sites. The primary key for this table is ORGANIZATION_PROFILE_ID.

Foreign Keys

| Primary Key Table | Primary Key Column | Foreign Key Column |
|-------------------|--------------------|--------------------|
| HZ_PARTIES | PARTY_ID | PARTY_ID |

Column Descriptions

| Name | Null? | Type | Description |
|------------------------------|----------|---------------|---|
| ORGANIZATION_PROFILE_ID (PK) | NOT NULL | NUMBER(15) | Primary Key |
| PARTY_ID | NOT NULL | NUMBER(15) | Party identifier. FK to HZ_PARTIES |
| ORGANIZATION_NAME | NOT NULL | VARCHAR2(360) | Organization name |
| ATTRIBUTE_CATEGORY | NULL | VARCHAR2(30) | Descriptive Flexfield Structure Defining column |
| ATTRIBUTE1 | NULL | VARCHAR2(150) | Descriptive Flexfield Segment column |
| ATTRIBUTE2 | NULL | VARCHAR2(150) | Descriptive Flexfield Segment column |
| ATTRIBUTE3 | NULL | VARCHAR2(150) | Descriptive Flexfield Segment column |
| ATTRIBUTE4 | NULL | VARCHAR2(150) | Descriptive Flexfield Segment column |
| ATTRIBUTE5 | NULL | VARCHAR2(150) | Descriptive Flexfield Segment column |
| ATTRIBUTE6 | NULL | VARCHAR2(150) | Descriptive Flexfield Segment column |
| ATTRIBUTE7 | NULL | VARCHAR2(150) | Descriptive Flexfield Segment column |
| ATTRIBUTE8 | NULL | VARCHAR2(150) | Descriptive Flexfield Segment column |
| ATTRIBUTE9 | NULL | VARCHAR2(150) | Descriptive Flexfield Segment column |
| ATTRIBUTE10 | NULL | VARCHAR2(150) | Descriptive Flexfield Segment column |
| ATTRIBUTE11 | NULL | VARCHAR2(150) | Descriptive Flexfield Segment column |
| ATTRIBUTE12 | NULL | VARCHAR2(150) | Descriptive Flexfield Segment column |
| ATTRIBUTE13 | NULL | VARCHAR2(150) | Descriptive Flexfield Segment column |
| ATTRIBUTE14 | NULL | VARCHAR2(150) | Descriptive Flexfield Segment column |
| ATTRIBUTE15 | NULL | VARCHAR2(150) | Descriptive Flexfield Segment column |
| ATTRIBUTE16 | NULL | VARCHAR2(150) | Descriptive Flexfield Segment column |
| ATTRIBUTE17 | NULL | VARCHAR2(150) | Descriptive Flexfield Segment column |
| ATTRIBUTE18 | NULL | VARCHAR2(150) | Descriptive Flexfield Segment column |
| ATTRIBUTE19 | NULL | VARCHAR2(150) | Descriptive Flexfield Segment column |

Oracle Proprietary, Confidential Information--Use Restricted by Contract

Column Descriptions (Continued)

| Name | Null? | Type | Description |
|---------------------------|-------|---------------|---|
| ATTRIBUTE20 | NULL | VARCHAR2(150) | Descriptive Flexfield Segment column |
| GLOBAL_ATTRIBUTE_CATEGORY | NULL | VARCHAR2(30) | Reserved for Globalization Functionality |
| GLOBAL_ATTRIBUTE1 | NULL | VARCHAR2(150) | Reserved for Globalization Functionality |
| GLOBAL_ATTRIBUTE2 | NULL | VARCHAR2(150) | Reserved for Globalization Functionality |
| GLOBAL_ATTRIBUTE3 | NULL | VARCHAR2(150) | Reserved for Globalization Functionality |
| GLOBAL_ATTRIBUTE4 | NULL | VARCHAR2(150) | Reserved for Globalization Functionality |
| GLOBAL_ATTRIBUTE5 | NULL | VARCHAR2(150) | Reserved for Globalization Functionality |
| GLOBAL_ATTRIBUTE6 | NULL | VARCHAR2(150) | Reserved for Globalization Functionality |
| GLOBAL_ATTRIBUTE7 | NULL | VARCHAR2(150) | Reserved for Globalization Functionality |
| GLOBAL_ATTRIBUTE8 | NULL | VARCHAR2(150) | Reserved for Globalization Functionality |
| GLOBAL_ATTRIBUTE9 | NULL | VARCHAR2(150) | Reserved for Globalization Functionality |
| GLOBAL_ATTRIBUTE10 | NULL | VARCHAR2(150) | Reserved for Globalization Functionality |
| GLOBAL_ATTRIBUTE11 | NULL | VARCHAR2(150) | Reserved for Globalization Functionality |
| GLOBAL_ATTRIBUTE12 | NULL | VARCHAR2(150) | Reserved for Globalization Functionality |
| GLOBAL_ATTRIBUTE13 | NULL | VARCHAR2(150) | Reserved for Globalization Functionality |
| GLOBAL_ATTRIBUTE14 | NULL | VARCHAR2(150) | Reserved for Globalization Functionality |
| GLOBAL_ATTRIBUTE15 | NULL | VARCHAR2(150) | Reserved for Globalization Functionality |
| GLOBAL_ATTRIBUTE16 | NULL | VARCHAR2(150) | Reserved for Globalization Functionality |
| GLOBAL_ATTRIBUTE17 | NULL | VARCHAR2(150) | Reserved for Globalization Functionality |
| GLOBAL_ATTRIBUTE18 | NULL | VARCHAR2(150) | Reserved for Globalization Functionality |
| GLOBAL_ATTRIBUTE19 | NULL | VARCHAR2(150) | Reserved for Globalization Functionality |
| GLOBAL_ATTRIBUTE20 | NULL | VARCHAR2(150) | Reserved for Globalization Functionality |
| DUNS_NUMBER | NULL | NUMBER | DUNS number: a unique, nine digit identification number assigned to every business entity by Dun & Bradstreet |
| ENQUIRY_DUNS | NULL | VARCHAR2(15) | Identifier of case enquired upon. Will be the same as DUNS Number unless a trade up from a branch to a headquarters location has taken place. |
| CEO_NAME | NULL | VARCHAR2(240) | Name of CEO |
| CEO_TITLE | NULL | VARCHAR2(240) | Title of CEO |
| PRINCIPAL_NAME | NULL | VARCHAR2(240) | Principle name |
| PRINCIPAL_TITLE | NULL | VARCHAR2(240) | Principal title |
| LEGAL_STATUS | NULL | VARCHAR2(30) | Legal Structure, for example Partnership, Corporation, etc. |
| CONTROL_YR | NULL | NUMBER | Control year |
| EMPLOYEES_TOTAL | NULL | NUMBER | Total number of employees |

Oracle Proprietary, Confidential Information--Use Restricted by Contract

Column Descriptions (Continued)

| Name | Null? | Type | Description |
|-------------------------------|-------|--------------|---|
| HQ_BRANCH_IND | NULL | VARCHAR2(30) | Status of this site. Identifies if HQ, Branch, or Single Location. |
| BRANCH_FLAG | NULL | VARCHAR2(1) | Flag signifying whether this is a branch location |
| OOB_IND | NULL | VARCHAR2(30) | Indicates whether this company is out of business |
| LINE_OF_BUSINESS | NULL | VARCHAR2(30) | Type of business activities performed at this site |
| CONG_DIST_CODE | NULL | VARCHAR2(2) | First congressional district code |
| SIC_CODE | NULL | VARCHAR2(30) | Standard industry classification (SIC) code |
| IMPORT_IND | NULL | VARCHAR2(30) | Indicates whether this company is an importer |
| EXPORT_IND | NULL | VARCHAR2(30) | Indicates whether this company is an exporter |
| LABOR_SURPLUS_IND | NULL | VARCHAR2(30) | Indicates whether this company has a labor surplus |
| DEBARMENT_IND | NULL | VARCHAR2(30) | Indicates whether the company is debarred from business |
| MINORITY_OWNED_IND | NULL | VARCHAR2(30) | Indicates whether this company is owned by minorities |
| MINORITY_OWNED_TYPE | NULL | VARCHAR2(30) | Indicates the type of minority-owned company |
| WOMAN_OWNED_IND | NULL | VARCHAR2(30) | Indicates whether this company is owned by women |
| DISADV_8A_IND | NULL | VARCHAR2(30) | Indicates whether this company is considered disadvantaged under Title 8A |
| SMALL_BUS_IND | NULL | VARCHAR2(30) | Indicates whether this company is considered a small business |
| RENT_OWN_IND | NULL | VARCHAR2(30) | Indicates whether this company owns or rents its place of business. Lookup of values for rent, own, lease, etc. |
| DEBARMENTS_COUNT | NULL | NUMBER | A count of the debarments present |
| DEBARMENTS_DATE | NULL | DATE | The date of the last current debarment filing |
| FAILURE_SCORE | NULL | VARCHAR2(30) | For US the value represents the Failure Risk Class (values 1-5). For Canada the value is the Stability Score indicating risk of business closure (values 1-10). For Australia, this field carries the percentile failure score. |
| FAILURE_SCORE_NATL_PERCENTILE | NULL | VARCHAR2(3) | National percentile that reflects the relative ranking of a company among all the scorable companies in the local country database. |
| FAILURE_SCORE_OVERRIDE_CODE | NULL | VARCHAR2(30) | In Europe, this code indicates the reason for variance between the Dun and Bradstreet Rating and Failure Score. In the US, the code indicates the reason no score was calculated, or that the score is equal to 0. |
| FAILURE_SCORE_COMMENTARY | NULL | VARCHAR2(30) | Indicator explaining failure score. |

Oracle Proprietary, Confidential Information--Use Restricted by Contract

Column Descriptions (Continued)

| Name | Null? | Type | Description |
|----------------------------|-------|----------------|--|
| GLOBAL_FAILURE_SCORE | NULL | VARCHAR2(5) | Global score indicating risk of business default. |
| DB_RATING | NULL | VARCHAR2(5) | Dun and Bradstreet credit rating. |
| CREDIT_SCORE | NULL | VARCHAR2(3) | Credit score. Indicates the risk of delinquent payments. |
| CREDIT_SCORE_COMMENTARY | NULL | VARCHAR2(30) | Lookup. Comments explaining credit score. |
| PAYDEX_SCORE | NULL | VARCHAR2(3) | Paydex score for the last 12 months experiences. |
| PAYDEX_THREE_MONTHS_AGO | NULL | VARCHAR2(3) | Paydex score three months ago. |
| PAYDEX_NORM | NULL | VARCHAR2(3) | Median or average Paydex score for the industry. |
| BEST_TIME_CONTACT_BEGIN | NULL | DATE | Beginning of the best period of time to contact the organization. |
| BEST_TIME_CONTACT_END | NULL | DATE | End of the best period of time to contact the organization. |
| ORGANIZATION_NAME_PHONETIC | NULL | VARCHAR2(320) | Japanese Kana, or phonetic representation of organization name. |
| TAX_NAME | NULL | VARCHAR2(60) | The name for the organization that is recognized by the tax authority |
| TAX_REFERENCE | NULL | VARCHAR2(50) | Taxpayer identification number. |
| GSA_INDICATOR_FLAG | NULL | VARCHAR2(1) | "Y" if the organization is a public sector service agency. |
| JGZZ_FISCAL_CODE | NULL | VARCHAR2(20) | This column is used as the "Fiscal Code" for certain European countries. |
| ANALYSIS_FY | NULL | VARCHAR2(5) | Fiscal Year upon which financial information is based (net worth, number of employees, potential revenue.) |
| FISCAL_YEAREND_MONTH | NULL | VARCHAR2(30) | Month in which fiscal year ends for organization. |
| CURR_FY_POTENTIAL_REVENUE | NULL | NUMBER | Potential revenue this fiscal year for organization. |
| NEXT_FY_POTENTIAL_REVENUE | NULL | NUMBER | Potential revenue next fiscal year for organization. |
| YEAR_ESTABLISHED | NULL | NUMBER(4) | Year in which organization began doing business. |
| MISSION_STATEMENT | NULL | VARCHAR2(2000) | Oracle Sales and Marketing column (corporate charter of organization.) |
| ORGANIZATION_TYPE | NULL | VARCHAR2(30) | User defined organization types such as region, division, and department. |
| BUSINESS_SCOPE | NULL | VARCHAR2(20) | The physical class of business in which a business participates (for example local, national, or international.) |
| CORPORATION_CLASS | NULL | VARCHAR2(60) | Taxation classification for corporation entities (for example, Chapter S in the US.) |
| KNOWN_AS | NULL | VARCHAR2(240) | An alias or other name by which an organization is known. |
| LOCAL_BUS_IDEN_TYPE | NULL | VARCHAR2(30) | Lookup representing main business identification number used in the country. For example, "Taxpayer ID". |

Oracle Proprietary, Confidential Information--Use Restricted by Contract

Column Descriptions (Continued)

| Name | Null? | Type | Description |
|-------------------------------|----------|--------------|--|
| LOCAL_BUS_IDENTIFIER | NULL | VARCHAR2(60) | Primary business ID number assigned to the business by a gov't. agency, Chamber of Commerce, or Association. |
| PREF_FUNCTIONAL_CURRENCY | NULL | VARCHAR2(30) | Organization's default currency code. |
| REGISTRATION_TYPE | NULL | VARCHAR2(30) | Lookup for type of registration, e.g. "NonProfit". |
| TOTAL_EMPLOYEES_TEXT | NULL | VARCHAR2(60) | Total number of personnel employed if can not be mapped to numeric field. |
| TOTAL_EMPLOYEES_IND | NULL | VARCHAR2(30) | Lookup. Qualifies calculation of employees. "A" means subsidiaries are not included; "B" means total (including subsidiaries.) |
| TOTAL_EMP_EST_IND | NULL | VARCHAR2(30) | Lookup. Qualifies calculation of employees. "A" means estimated, "N" means actual. |
| TOTAL_EMP_MIN_IND | NULL | VARCHAR2(30) | Lookup. Qualifies calculation of employees. "A" means minimum, "B" means maximum, and "C" is average. |
| PARENT_SUB_IND | NULL | VARCHAR2(30) | Lookup. Indicates if organization is a parent or subsidiary location. |
| INCORP_YEAR | NULL | NUMBER(4) | Year business was incorporated. |
| PRIMARY_CONTACT_ID | NULL | NUMBER(15) | Primary contact for the party. FK to HZ_ORG_CONTACTS. |
| LAST_UPDATE_DATE | NOT NULL | DATE | Standard Who column |
| LAST_UPDATED_BY | NOT NULL | NUMBER(15) | Standard Who column |
| CREATION_DATE | NOT NULL | DATE | Standard Who column |
| CREATED_BY | NOT NULL | NUMBER(15) | Standard Who column |
| LAST_UPDATE_LOGIN | NULL | NUMBER(15) | Standard Who column |
| WH_UPDATE_DATE | NULL | DATE | Date information is sent to data warehouse |
| REQUEST_ID | NULL | NUMBER(15) | Request identifier of last concurrent program to update this record |
| PROGRAM_APPLICATION_ID | NULL | NUMBER(15) | Application identifier of last concurrent program to update this record |
| PROGRAM_ID | NULL | NUMBER(15) | Program identifier of last concurrent program to update this record |
| PROGRAM_UPDATE_DATE | NULL | DATE | Last date that this record was updated by a concurrent program |
| CONTENT_SOURCE_TYPE | NOT NULL | VARCHAR2(30) | Source of data content. |
| CONTENT_SOURCE_NUMBER | NULL | VARCHAR2(30) | Unique foreign key to data source, e.g. DUNS Number. |
| EFFECTIVE_START_DATE | NOT NULL | DATE | For date tracking capabilities. |
| EFFECTIVE_END_DATE | NULL | DATE | For date tracking capabilities. |
| SIC_CODE_TYPE | NULL | VARCHAR2(30) | Version of Standard Industry Classification |
| PUBLIC_PRIVATE_OWNERSHIP_FLAG | NULL | VARCHAR2(1) | Y if ownership of organization is private, N if ownership is public |
| LOCAL_ACTIVITY_CODE_TYPE | NULL | VARCHAR2(30) | Local Activity Classification Code type identifier |
| LOCAL_ACTIVITY_CODE | NULL | VARCHAR2(30) | Local Activity Classification Code |

Oracle Proprietary, Confidential Information--Use Restricted by Contract

Column Descriptions (Continued)

| <u>Name</u> | <u>Null?</u> | <u>Type</u> | <u>Description</u> |
|----------------------------|--------------|---------------|---|
| EMP_AT_PRIMARY_ADR | NULL | VARCHAR2(10) | Number of employees at the referenced address |
| EMP_AT_PRIMARY_ADR_TEXT | NULL | VARCHAR2(12) | Number of employees at the referenced address which cannot be mapped to a number |
| EMP_AT_PRIMARY_ADR_EST_IND | NULL | VARCHAR2(30) | Qualifies calculation of employees at the primary address |
| EMP_AT_PRIMARY_ADR_MIN_IND | NULL | VARCHAR2(30) | Qualifies calculation of employees at the primary address |
| INTERNAL_FLAG | NULL | VARCHAR2(1) | Indicates whether the organization is internal or external. Y for Internal, N for External. |
| HIGH_CREDIT | NULL | NUMBER | Maximum credit of any payment experience |
| AVG_HIGH_CREDIT | NULL | NUMBER | Average of all high credit experiences |
| TOTAL_PAYMENTS | NULL | NUMBER | Total number of payment experiences |
| KNOWN_AS2 | NULL | VARCHAR2(240) | An alias or other name by which a party is known |
| KNOWN_AS3 | NULL | VARCHAR2(240) | An alias or other name by which a party is known |
| KNOWN_AS4 | NULL | VARCHAR2(240) | An alias or other name by which a party is known |
| KNOWN_AS5 | NULL | VARCHAR2(240) | An alias or other name by which a party is known |

Indexes

| <u>Index Name</u> | <u>Index Type</u> | <u>Sequence</u> | <u>Column Name</u> |
|-----------------------------|-------------------|-----------------|-------------------------|
| HZ_ORGANIZATION_PROFILES_N1 | NOT UNIQUE | 1 | PARTY_ID |
| HZ_ORGANIZATION_PROFILES_N2 | NOT UNIQUE | 5 | PRIMARY_CONTACT_ID |
| HZ_ORGANIZATION_PROFILES_U1 | UNIQUE | 1 | ORGANIZATION_PROFILE_ID |

Sequences

| <u>Sequence</u> | <u>Derived Column</u> |
|----------------------------|-------------------------|
| HZ_ORGANIZATION_PROFILES_S | ORGANIZATION_PROFILE_ID |

HZ_PARTIES

HZ_PARTIES stores information about parties such as organizations, people, and groups, including the identifying address information for the party.

Foreign Keys

| Primary Key Table | Primary Key Column | Foreign Key Column |
|-------------------|--------------------|--------------------|
| FND_LANGUAGES | LANGUAGE_CODE | LANGUAGE_NAME |

Column Descriptions

| Name | Null? | Type | Description |
|------------------------|----------|---------------|--|
| PARTY_ID (PK) | NOT NULL | NUMBER(15) | Party Identifier |
| PARTY_NUMBER | NOT NULL | VARCHAR2(30) | Party number |
| PARTY_NAME | NOT NULL | VARCHAR2(360) | Party name |
| PARTY_TYPE | NOT NULL | VARCHAR2(30) | Type of party. This is limited to person, organization, group or relationship. |
| VALIDATED_FLAG | NULL | VARCHAR2(1) | Y if this party has been validated, N if not |
| LAST_UPDATED_BY | NOT NULL | NUMBER(15) | Standard Who column |
| CREATION_DATE | NOT NULL | DATE | Standard Who column |
| LAST_UPDATE_LOGIN | NULL | NUMBER(15) | Standard Who column |
| REQUEST_ID | NULL | NUMBER(15) | Request identifier of last concurrent program to update this record |
| PROGRAM_APPLICATION_ID | NULL | NUMBER(15) | Application identifier of last concurrent program to update this record |
| CREATED_BY | NOT NULL | NUMBER(15) | Standard Who column |
| LAST_UPDATE_DATE | NOT NULL | DATE | Standard Who column |
| PROGRAM_ID | NULL | NUMBER(15) | Program identifier of last concurrent program to update this record |
| PROGRAM_UPDATE_DATE | NULL | DATE | Last update date of this record by a concurrent program |
| WH_UPDATE_DATE | NULL | DATE | Warehouse update date when record was recorded or changed |
| ATTRIBUTE_CATEGORY | NULL | VARCHAR2(30) | Descriptive Flexfield Structure Defining column |
| ATTRIBUTE1 | NULL | VARCHAR2(150) | Descriptive Flexfield Segment Column |
| ATTRIBUTE2 | NULL | VARCHAR2(150) | Descriptive Flexfield Segment Column |
| ATTRIBUTE3 | NULL | VARCHAR2(150) | Descriptive Flexfield Segment Column |
| ATTRIBUTE4 | NULL | VARCHAR2(150) | Descriptive Flexfield Segment Column |
| ATTRIBUTE5 | NULL | VARCHAR2(150) | Descriptive Flexfield Segment Column |
| ATTRIBUTE6 | NULL | VARCHAR2(150) | Descriptive Flexfield Segment Column |
| ATTRIBUTE7 | NULL | VARCHAR2(150) | Descriptive Flexfield Segment Column |
| ATTRIBUTE8 | NULL | VARCHAR2(150) | Descriptive Flexfield Segment Column |
| ATTRIBUTE9 | NULL | VARCHAR2(150) | Descriptive Flexfield Segment Column |

Oracle Proprietary, Confidential Information--Use Restricted by Contract

Column Descriptions (Continued)

| Name | Null? | Type | Description |
|---------------------------|-------|---------------|--|
| ATTRIBUTE10 | NULL | VARCHAR2(150) | Descriptive Flexfield Segment Column |
| ATTRIBUTE11 | NULL | VARCHAR2(150) | Descriptive Flexfield Segment Column |
| ATTRIBUTE12 | NULL | VARCHAR2(150) | Descriptive Flexfield Segment Column |
| ATTRIBUTE13 | NULL | VARCHAR2(150) | Descriptive Flexfield Segment Column |
| ATTRIBUTE14 | NULL | VARCHAR2(150) | Descriptive Flexfield Segment Column |
| ATTRIBUTE15 | NULL | VARCHAR2(150) | Descriptive Flexfield Segment Column |
| ATTRIBUTE16 | NULL | VARCHAR2(150) | Descriptive Flexfield Segment Column |
| ATTRIBUTE17 | NULL | VARCHAR2(150) | Descriptive Flexfield Segment Column |
| ATTRIBUTE18 | NULL | VARCHAR2(150) | Descriptive Flexfield Segment Column |
| ATTRIBUTE19 | NULL | VARCHAR2(150) | Descriptive Flexfield Segment Column |
| ATTRIBUTE20 | NULL | VARCHAR2(150) | Descriptive Flexfield Segment Column |
| ATTRIBUTE21 | NULL | VARCHAR2(150) | Descriptive Flexfield Segment Column |
| ATTRIBUTE22 | NULL | VARCHAR2(150) | Descriptive Flexfield Segment Column |
| ATTRIBUTE23 | NULL | VARCHAR2(150) | Descriptive Flexfield Segment Column |
| ATTRIBUTE24 | NULL | VARCHAR2(150) | Descriptive Flexfield Segment Column |
| GLOBAL_ATTRIBUTE_CATEGORY | NULL | VARCHAR2(30) | Reserved for Globalization Functionality |
| GLOBAL_ATTRIBUTE1 | NULL | VARCHAR2(150) | Reserved for Globalization Functionality |
| GLOBAL_ATTRIBUTE2 | NULL | VARCHAR2(150) | Reserved for Globalization Functionality |
| GLOBAL_ATTRIBUTE4 | NULL | VARCHAR2(150) | Reserved for Globalization Functionality |
| GLOBAL_ATTRIBUTE3 | NULL | VARCHAR2(150) | Reserved for Globalization Functionality |
| GLOBAL_ATTRIBUTE5 | NULL | VARCHAR2(150) | Reserved for Globalization Functionality |
| GLOBAL_ATTRIBUTE6 | NULL | VARCHAR2(150) | Reserved for Globalization Functionality |
| GLOBAL_ATTRIBUTE7 | NULL | VARCHAR2(150) | Reserved for Globalization Functionality |
| GLOBAL_ATTRIBUTE8 | NULL | VARCHAR2(150) | Reserved for Globalization Functionality |
| GLOBAL_ATTRIBUTE9 | NULL | VARCHAR2(150) | Reserved for Globalization Functionality |
| GLOBAL_ATTRIBUTE10 | NULL | VARCHAR2(150) | Reserved for Globalization Functionality |
| GLOBAL_ATTRIBUTE11 | NULL | VARCHAR2(150) | Reserved for Globalization Functionality |
| GLOBAL_ATTRIBUTE12 | NULL | VARCHAR2(150) | Reserved for Globalization Functionality |
| GLOBAL_ATTRIBUTE13 | NULL | VARCHAR2(150) | Reserved for Globalization Functionality |
| GLOBAL_ATTRIBUTE14 | NULL | VARCHAR2(150) | Reserved for Globalization Functionality |

Column Descriptions (Continued)

| Name | Null? | Type | Description |
|---------------------------|----------|----------------|--|
| GLOBAL_ATTRIBUTE15 | NULL | VARCHAR2(150) | Reserved for Globalization Functionality |
| GLOBAL_ATTRIBUTE16 | NULL | VARCHAR2(150) | Reserved for Globalization Functionality |
| GLOBAL_ATTRIBUTE17 | NULL | VARCHAR2(150) | Reserved for Globalization Functionality |
| GLOBAL_ATTRIBUTE18 | NULL | VARCHAR2(150) | Reserved for Globalization Functionality |
| GLOBAL_ATTRIBUTE19 | NULL | VARCHAR2(150) | Reserved for Globalization Functionality |
| GLOBAL_ATTRIBUTE20 | NULL | VARCHAR2(150) | Reserved for Globalization Functionality |
| ORIG_SYSTEM_REFERENCE | NOT NULL | VARCHAR2(240) | Unique customer identifier from foreign system |
| SIC_CODE | NULL | VARCHAR2(30) | Standard Industry Classification Code |
| HQ_BRANCH_IND | NULL | VARCHAR2(30) | Status of this site. Identifies if HQ, Branch, or Single Location. |
| CUSTOMER_KEY | NULL | VARCHAR2(2000) | Derived key created by Oracle Sales and Marketing to facilitate querying |
| TAX_REFERENCE | NULL | VARCHAR2(50) | Taxpayer identification number |
| JGZZ_FISCAL_CODE | NULL | VARCHAR2(20) | This column is used as the "Fiscal Code" for certain European Countries |
| DUNS_NUMBER | NULL | NUMBER | DUNS Number: a unique, nine digit identification number assigned to business entities by Dun & Bradstreet |
| TAX_NAME | NULL | VARCHAR2(60) | The name for the party that is recognized by the tax authority. |
| PERSON_PRE_NAME_ADJUNCT | NULL | VARCHAR2(30) | Salutary introduction such as Mr., Herr, etc. |
| PERSON_FIRST_NAME | NULL | VARCHAR2(150) | First name of the person |
| PERSON_MIDDLE_NAME | NULL | VARCHAR2(60) | Middle name of the person |
| PERSON_LAST_NAME | NULL | VARCHAR2(150) | Last or surname of the person |
| PERSON_NAME_SUFFIX | NULL | VARCHAR2(30) | Indicates the place in a family structure. For example, in "Tom Jones III", the "III" for third is the suffix. |
| PERSON_TITLE | NULL | VARCHAR2(60) | A professional or family title. For example, 'Don', or 'The Right Honorable'. |
| PERSON_ACADEMIC_TITLE | NULL | VARCHAR2(30) | Academic title that is part of a person's name such as Dr. John Smith. |
| PERSON_PREVIOUS_LAST_NAME | NULL | VARCHAR2(150) | Previous last or surname of the person |
| KNOWN_AS | NULL | VARCHAR2(240) | An alias or other name by which a party is known |
| PERSON_IDEN_TYPE | NULL | VARCHAR2(30) | Lookup representing main person identification number used in country. For example, Social Security Number. |
| PERSON_IDENTIFIER | NULL | VARCHAR2(60) | Identity reference field for things like Social Security, tax identity number, or Driver's License number. |
| GROUP_TYPE | NULL | VARCHAR2(30) | Lookup for group type |

Oracle Proprietary, Confidential Information--Use Restricted by Contract

Column Descriptions (Continued)

| Name | Null? | Type | Description |
|---------------------------|----------|----------------|--|
| COUNTRY | NULL | VARCHAR2(60) | FND_TERRITORY.TERRITORY_CODE for identifying address. (where HZ_PARTY_SITES.IDENTIFYING_ADDR ESS_FLAG = Y) |
| ADDRESS1 | NULL | VARCHAR2(240) | First line identifying address. (where HZ_PARTY_SITES.IDENTIFYING_ADDR ESS_FLAG = Y) |
| ADDRESS2 | NULL | VARCHAR2(240) | Second line for identifying address. (where HZ_PARTY_SITES.IDENTIFYING_ADDR ESS_FLAG = Y) |
| ADDRESS3 | NULL | VARCHAR2(240) | Third line for identifying address. (where HZ_PARTY_SITES.IDENTIFYING_ADDR ESS_FLAG = Y) |
| ADDRESS4 | NULL | VARCHAR2(240) | Fourth line for identifying address. (where HZ_PARTY_SITES.IDENTIFYING_ADDR ESS_FLAG = Y) |
| CITY | NULL | VARCHAR2(60) | City for identifying address. (where HZ_PARTY_SITES.IDENTIFYING_ADDR ESS_FLAG = Y) |
| POSTAL_CODE | NULL | VARCHAR2(60) | Postal Code for identifying address. (where HZ_PARTY_SITES.IDENTIFYING_ADDR ESS_FLAG = Y) |
| STATE | NULL | VARCHAR2(60) | State for identifying address. (where HZ_PARTY_SITES.IDENTIFYING_ADDR ESS_FLAG = Y) |
| PROVINCE | NULL | VARCHAR2(60) | Province for identifying address. (where HZ_PARTY_SITES.IDENTIFYING_ADDR ESS_FLAG = Y) |
| STATUS | NOT NULL | VARCHAR2(1) | Party status flag. |
| COUNTY | NULL | VARCHAR2(60) | County for identifying address. (where HZ_PARTY_SITES.IDENTIFYING_ADDR ESS_FLAG = Y) |
| SIC_CODE_TYPE | NULL | VARCHAR2(30) | Version of Standard Industry Classification |
| TOTAL_NUM_OF_ORDERS | NULL | NUMBER | The total number of orders by the last ordered date |
| TOTAL_ORDERED_AMOUNT | NULL | NUMBER | The total ordered amount by the last ordered date |
| LAST_ORDERED_DATE | NULL | DATE | Last ordered date |
| URL | NULL | VARCHAR2(2000) | Uniform resource locator |
| EMAIL_ADDRESS | NULL | VARCHAR2(2000) | Email address |
| DO_NOT_MAIL_FLAG | NULL | VARCHAR2(1) | Y indicates mail should ot be sent |
| ANALYSIS_FY | NULL | VARCHAR2(5) | Fiscal Year upon which financial information is based on (net worth, number of employees, potential revenue) |
| FISCAL_YEAREND_MONTH | NULL | VARCHAR2(30) | Month in which fiscal year ends for organization |
| EMPLOYEES_TOTAL | NULL | NUMBER | Total number of employees |
| CURR_FY_POTENTIAL_REVENUE | NULL | NUMBER | Potential revenue this fiscal year for organization |
| NEXT_FY_POTENTIAL_REVENUE | NULL | NUMBER | Potential revenue next fiscal year for organization |

Oracle Proprietary, Confidential Information--Use Restricted by Contract

Column Descriptions (Continued)

| Name | Null? | Type | Description |
|----------------------------|-------|----------------|---|
| YEAR_ESTABLISHED | NULL | NUMBER(4) | Year in which organization began doing business |
| GSA_INDICATOR_FLAG | NULL | VARCHAR2(1) | Y if the organization is a public sector service agency |
| MISSION_STATEMENT | NULL | VARCHAR2(2000) | Corporate charter of organization |
| ORGANIZATION_NAME_PHONETIC | NULL | VARCHAR2(320) | Japanese Kana, or phonetic representation of organization name |
| PERSON_FIRST_NAME_PHONETIC | NULL | VARCHAR2(60) | Phonetic representation of the persons first name |
| PERSON_LAST_NAME_PHONETIC | NULL | VARCHAR2(60) | Phonetic representation of the persons last name |
| LANGUAGE_NAME | NULL | VARCHAR2(4) | Standard name for a language |
| CATEGORY_CODE | NULL | VARCHAR2(30) | User-definable category (lookup type= CUSTOMER_CATEGORY) |
| REFERENCE_USE_FLAG | NULL | VARCHAR2(1) | Indicates whether customer has agreed to be a reference (null means No) |
| THIRD_PARTY_FLAG | NULL | VARCHAR2(1) | Tracks whether a customer is a direct customer of the organization using AR or a third party vendor. If Oracle Service is installed, the Third Party field in the Customers window should be mandatory. |
| COMPETITOR_FLAG | NULL | VARCHAR2(1) | Indicates whether organization is a competitor (null means No) |
| SALUTATION | NULL | VARCHAR2(60) | Phrase used to address a party in any correspondence. |
| KNOWN_AS2 | NULL | VARCHAR2(240) | An alias or other name by which a party is known |
| KNOWN_AS3 | NULL | VARCHAR2(240) | An alias or other name by which a party is known |
| KNOWN_AS4 | NULL | VARCHAR2(240) | An alias or other name by which a party is known |
| KNOWN_AS5 | NULL | VARCHAR2(240) | An alias or other name by which a party is known |

Indexes

| Index Name | Index Type | Sequence | Column Name |
|----------------|------------|----------|-----------------------|
| HZ_PARTIES_N1 | NOT UNIQUE | 5 | PARTY_NAME |
| HZ_PARTIES_N10 | NOT UNIQUE | 5 | JGZZ_FISCAL_CODE |
| HZ_PARTIES_N11 | NOT UNIQUE | 5 | TAX_REFERENCE |
| HZ_PARTIES_N12 | NOT UNIQUE | 5 | ORIG_SYSTEM_REFERENCE |
| HZ_PARTIES_N13 | NOT UNIQUE | 5 | PERSON_FIRST_NAME |
| HZ_PARTIES_N14 | NOT UNIQUE | 5 | PERSON_LAST_NAME |
| HZ_PARTIES_N2 | NOT UNIQUE | 5 | PERSON_LAST_NAME |
| HZ_PARTIES_N3 | NOT UNIQUE | 5 | PERSON_FIRST_NAME |
| HZ_PARTIES_N4 | NOT UNIQUE | 10 | CUSTOMER_KEY |
| HZ_PARTIES_N5 | NOT UNIQUE | 5 | PARTY_NAME |
| HZ_PARTIES_N6 | NOT UNIQUE | 5 | PARTY_NAME |
| HZ_PARTIES_N7 | NOT UNIQUE | 5 | PERSON_FIRST_NAME |
| HZ_PARTIES_N8 | NOT UNIQUE | 5 | PERSON_LAST_NAME |
| HZ_PARTIES_N9 | NOT UNIQUE | 5 | PARTY_NAME |
| HZ_PARTIES_U1 | UNIQUE | 1 | PARTY_ID |
| HZ_PARTIES_U2 | UNIQUE | 5 | PARTY_NUMBER |

Oracle Proprietary, Confidential Information--Use Restricted by Contract

Sequences

| <u>Sequence</u> | <u>Derived Column</u> |
|-------------------|-----------------------|
| HZ_PARTIES_S | PARTY_ID |
| HZ_PARTY_NUMBER_S | PARTY_NUMBER |

HZ_PARTY_RELATIONSHIPS

HZ_PARTY_RELATIONSHIPS stores the relationships between parties. A flag allows you to indicate whether the relationship is directional.

Foreign Keys

| Primary Key Table | Primary Key Column | Foreign Key Column |
|-------------------|--------------------|--------------------|
| HZ_PARTIES | PARTY_ID | SUBJECT_ID |
| HZ_PARTIES | PARTY_ID | OBJECT_ID |
| HZ_PARTIES | PARTY_ID | PARTY_ID |

Column Descriptions

| Name | Null? | Type | Description |
|----------------------------|----------|---------------|---|
| PARTY_RELATIONSHIP_ID (PK) | NOT NULL | NUMBER(15) | Party Relationship identifier |
| SUBJECT_ID | NOT NULL | NUMBER(15) | ID of the subject in the relationship |
| OBJECT_ID | NOT NULL | NUMBER(15) | ID of the object in the relationship |
| PARTY_ID | NULL | NUMBER(15) | Party identifier. FK to HZ_PARTIES. |
| PARTY_RELATIONSHIP_TYPE | NOT NULL | VARCHAR2(30) | Lookup: party_relationship_type. |
| DIRECTIONAL_FLAG | NOT NULL | VARCHAR2(1) | Y if this is a directional relationship, N otherwise |
| COMMENTS | NULL | VARCHAR2(240) | User comments |
| START_DATE | NOT NULL | DATE | Date relationship begins |
| END_DATE | NULL | DATE | Date relationship ends |
| LAST_UPDATE_DATE | NOT NULL | DATE | Standard Who column |
| STATUS | NOT NULL | VARCHAR2(1) | Party relationship status flag |
| LAST_UPDATED_BY | NOT NULL | NUMBER(15) | Standard Who column |
| CREATION_DATE | NOT NULL | DATE | Standard Who column |
| CREATED_BY | NOT NULL | NUMBER(15) | Standard Who column |
| LAST_UPDATE_LOGIN | NULL | NUMBER(15) | Standard Who column |
| WH_UPDATE_DATE | NULL | DATE | Date sent to data warehouse |
| REQUEST_ID | NULL | NUMBER(15) | Request identifier of last concurrent program to update this record |
| PROGRAM_APPLICATION_ID | NULL | NUMBER(15) | Application identifier of last concurrent program to update this record |
| PROGRAM_ID | NULL | NUMBER(15) | Program identifier of last concurrent program to update this record |
| PROGRAM_UPDATE_DATE | NULL | DATE | Last update date of this record by a concurrent program |
| ATTRIBUTE_CATEGORY | NULL | VARCHAR2(30) | Descriptive flexfield structure defining column |
| ATTRIBUTE1 | NULL | VARCHAR2(150) | Descriptive flexfield segment column |
| ATTRIBUTE2 | NULL | VARCHAR2(150) | Descriptive flexfield segment column |
| ATTRIBUTE3 | NULL | VARCHAR2(150) | Descriptive flexfield segment column |
| ATTRIBUTE4 | NULL | VARCHAR2(150) | Descriptive flexfield segment column |
| ATTRIBUTE5 | NULL | VARCHAR2(150) | Descriptive flexfield segment column |

Oracle Proprietary, Confidential Information--Use Restricted by Contract

Column Descriptions (Continued)

| Name | Null? | Type | Description |
|---------------------------|-------|---------------|--|
| ATTRIBUTE6 | NULL | VARCHAR2(150) | Descriptive flexfield segment column |
| ATTRIBUTE7 | NULL | VARCHAR2(150) | Descriptive flexfield segment column |
| ATTRIBUTE8 | NULL | VARCHAR2(150) | Descriptive flexfield segment column |
| ATTRIBUTE9 | NULL | VARCHAR2(150) | Descriptive flexfield segment column |
| ATTRIBUTE10 | NULL | VARCHAR2(150) | Descriptive flexfield segment column |
| ATTRIBUTE11 | NULL | VARCHAR2(150) | Descriptive flexfield segment column |
| ATTRIBUTE12 | NULL | VARCHAR2(150) | Descriptive flexfield segment column |
| ATTRIBUTE13 | NULL | VARCHAR2(150) | Descriptive flexfield segment column |
| ATTRIBUTE14 | NULL | VARCHAR2(150) | Descriptive flexfield segment column |
| ATTRIBUTE15 | NULL | VARCHAR2(150) | Descriptive flexfield segment column |
| ATTRIBUTE16 | NULL | VARCHAR2(150) | Descriptive flexfield segment column |
| ATTRIBUTE17 | NULL | VARCHAR2(150) | Descriptive flexfield segment column |
| ATTRIBUTE18 | NULL | VARCHAR2(150) | Descriptive flexfield segment column |
| ATTRIBUTE19 | NULL | VARCHAR2(150) | Descriptive flexfield segment column |
| ATTRIBUTE20 | NULL | VARCHAR2(150) | Descriptive flexfield segment column |
| GLOBAL_ATTRIBUTE_CATEGORY | NULL | VARCHAR2(30) | Reserved for globalization functionality |
| GLOBAL_ATTRIBUTE1 | NULL | VARCHAR2(150) | Reserved for globalization functionality |
| GLOBAL_ATTRIBUTE2 | NULL | VARCHAR2(150) | Reserved for globalization functionality |
| GLOBAL_ATTRIBUTE3 | NULL | VARCHAR2(150) | Reserved for globalization functionality |
| GLOBAL_ATTRIBUTE4 | NULL | VARCHAR2(150) | Reserved for globalization functionality |
| GLOBAL_ATTRIBUTE5 | NULL | VARCHAR2(150) | Reserved for globalization functionality |
| GLOBAL_ATTRIBUTE6 | NULL | VARCHAR2(150) | Reserved for globalization functionality |
| GLOBAL_ATTRIBUTE7 | NULL | VARCHAR2(150) | Reserved for globalization functionality |
| GLOBAL_ATTRIBUTE8 | NULL | VARCHAR2(150) | Reserved for globalization functionality |
| GLOBAL_ATTRIBUTE9 | NULL | VARCHAR2(150) | Reserved for globalization functionality |
| GLOBAL_ATTRIBUTE10 | NULL | VARCHAR2(150) | Reserved for globalization functionality |
| GLOBAL_ATTRIBUTE11 | NULL | VARCHAR2(150) | Reserved for globalization functionality |
| GLOBAL_ATTRIBUTE12 | NULL | VARCHAR2(150) | Reserved for globalization functionality |
| GLOBAL_ATTRIBUTE13 | NULL | VARCHAR2(150) | Reserved for globalization functionality |
| GLOBAL_ATTRIBUTE14 | NULL | VARCHAR2(150) | Reserved for globalization functionality |

Column Descriptions (Continued)

| Name | Null? | Type | Description |
|---------------------|----------|---------------|--|
| GLOBAL_ATTRIBUTE15 | NULL | VARCHAR2(150) | Reserved for globalization functionality |
| GLOBAL_ATTRIBUTE16 | NULL | VARCHAR2(150) | Reserved for globalization functionality |
| GLOBAL_ATTRIBUTE17 | NULL | VARCHAR2(150) | Reserved for globalization functionality |
| GLOBAL_ATTRIBUTE18 | NULL | VARCHAR2(150) | Reserved for globalization functionality |
| GLOBAL_ATTRIBUTE19 | NULL | VARCHAR2(150) | Reserved for globalization functionality |
| GLOBAL_ATTRIBUTE20 | NULL | VARCHAR2(150) | Reserved for globalization functionality |
| CONTENT_SOURCE_TYPE | NOT NULL | VARCHAR2(30) | Source of data content.. |

Indexes

| Index Name | Index Type | Sequence | Column Name |
|---------------------------|------------|----------|-----------------------|
| HZ_PARTY_RELATIONSHIPS_N1 | NOT UNIQUE | 1 | SUBJECT_ID |
| HZ_PARTY_RELATIONSHIPS_N2 | NOT UNIQUE | 1 | OBJECT_ID |
| HZ_PARTY_RELATIONSHIPS_N3 | NOT UNIQUE | 5 | PARTY_ID |
| HZ_PARTY_RELATIONSHIPS_U1 | UNIQUE | 1 | PARTY_RELATIONSHIP_ID |

Sequences

| Sequence | Derived Column |
|--------------------------|-----------------------|
| HZ_PARTY_RELATIONSHIPS_S | PARTY_RELATIONSHIP_ID |

HZ_PARTY_SITES

HZ_PARTY_SITES stores information about the relationship between Parties and Locations. The same party to have multiple party sites. Physical addresses are stored in HZ_LOCATIONS.

Foreign Keys

| Primary Key Table | Primary Key Column | Foreign Key Column |
|-------------------|--------------------|--------------------|
| HZ_LOCATIONS | LOCATION_ID | LOCATION_ID |
| HZ_PARTIES | PARTY_ID | PARTY_ID |

Column Descriptions

| Name | Null? | Type | Description |
|------------------------|----------|---------------|---|
| PARTY_SITE_ID (PK) | NOT NULL | NUMBER(15) | Party site identifier |
| PARTY_ID | NOT NULL | NUMBER(15) | Party identifier and foreign key to HZ_PARTIES. |
| LOCATION_ID | NOT NULL | NUMBER(15) | Location identifier and foreign key to HZ_LOCATIONS. |
| LAST_UPDATE_DATE | NOT NULL | DATE | Standard Who column |
| PARTY_SITE_NUMBER | NOT NULL | VARCHAR2(30) | Party site number |
| LAST_UPDATED_BY | NOT NULL | NUMBER(15) | Standard Who column |
| CREATION_DATE | NOT NULL | DATE | Standard Who column |
| CREATED_BY | NOT NULL | NUMBER(15) | Standard Who column |
| LAST_UPDATE_LOGIN | NULL | NUMBER(15) | Standard Who column |
| REQUEST_ID | NULL | NUMBER(15) | Request identifier of last concurrent program to update this record |
| PROGRAM_APPLICATION_ID | NULL | NUMBER(15) | Application identifier of last concurrent program to update this record |
| PROGRAM_ID | NULL | NUMBER(15) | Program identifier of last concurrent program to update this record |
| PROGRAM_UPDATE_DATE | NULL | DATE | Last update date of this record by a concurrent program |
| WH_UPDATE_DATE | NULL | DATE | Warehouse update date when record was recorded or changed |
| ATTRIBUTE_CATEGORY | NULL | VARCHAR2(30) | Descriptive Flexfield Structure Defining column |
| ATTRIBUTE1 | NULL | VARCHAR2(150) | Descriptive Flexfield Segment column |
| ATTRIBUTE2 | NULL | VARCHAR2(150) | Descriptive Flexfield Segment column |
| ATTRIBUTE3 | NULL | VARCHAR2(150) | Descriptive Flexfield Segment column |
| ATTRIBUTE4 | NULL | VARCHAR2(150) | Descriptive Flexfield Segment column |
| ATTRIBUTE5 | NULL | VARCHAR2(150) | Descriptive Flexfield Segment column |
| ATTRIBUTE6 | NULL | VARCHAR2(150) | Descriptive Flexfield Segment column |
| ATTRIBUTE7 | NULL | VARCHAR2(150) | Descriptive Flexfield Segment column |
| ATTRIBUTE8 | NULL | VARCHAR2(150) | Descriptive Flexfield Segment column |
| ATTRIBUTE9 | NULL | VARCHAR2(150) | Descriptive Flexfield Segment column |

Column Descriptions (Continued)

| Name | Null? | Type | Description |
|---------------------------|-------|---------------|--|
| ATTRIBUTE10 | NULL | VARCHAR2(150) | Descriptive Flexfield Segment column |
| ATTRIBUTE11 | NULL | VARCHAR2(150) | Descriptive Flexfield Segment column |
| ATTRIBUTE12 | NULL | VARCHAR2(150) | Descriptive Flexfield Segment column |
| ATTRIBUTE13 | NULL | VARCHAR2(150) | Descriptive Flexfield Segment column |
| ATTRIBUTE14 | NULL | VARCHAR2(150) | Descriptive Flexfield Segment column |
| ATTRIBUTE15 | NULL | VARCHAR2(150) | Descriptive Flexfield Segment column |
| ATTRIBUTE16 | NULL | VARCHAR2(150) | Descriptive Flexfield Segment column |
| ATTRIBUTE17 | NULL | VARCHAR2(150) | Descriptive Flexfield Segment column |
| ATTRIBUTE18 | NULL | VARCHAR2(150) | Descriptive Flexfield Segment column |
| ATTRIBUTE19 | NULL | VARCHAR2(150) | Descriptive Flexfield Segment column |
| ATTRIBUTE20 | NULL | VARCHAR2(150) | Descriptive Flexfield Segment column |
| GLOBAL_ATTRIBUTE_CATEGORY | NULL | VARCHAR2(30) | Reserved for Globalization Functionality |
| GLOBAL_ATTRIBUTE1 | NULL | VARCHAR2(150) | Reserved for Globalization Functionality |
| GLOBAL_ATTRIBUTE2 | NULL | VARCHAR2(150) | Reserved for Globalization Functionality |
| GLOBAL_ATTRIBUTE3 | NULL | VARCHAR2(150) | Reserved for Globalization Functionality |
| GLOBAL_ATTRIBUTE4 | NULL | VARCHAR2(150) | Reserved for Globalization Functionality |
| GLOBAL_ATTRIBUTE5 | NULL | VARCHAR2(150) | Reserved for Globalization Functionality |
| GLOBAL_ATTRIBUTE6 | NULL | VARCHAR2(150) | Reserved for Globalization Functionality |
| GLOBAL_ATTRIBUTE7 | NULL | VARCHAR2(150) | Reserved for Globalization Functionality |
| GLOBAL_ATTRIBUTE8 | NULL | VARCHAR2(150) | Reserved for Globalization Functionality |
| GLOBAL_ATTRIBUTE9 | NULL | VARCHAR2(150) | Reserved for Globalization Functionality |
| GLOBAL_ATTRIBUTE10 | NULL | VARCHAR2(150) | Reserved for Globalization Functionality |
| GLOBAL_ATTRIBUTE11 | NULL | VARCHAR2(150) | Reserved for Globalization Functionality |
| GLOBAL_ATTRIBUTE12 | NULL | VARCHAR2(150) | Reserved for Globalization Functionality |
| GLOBAL_ATTRIBUTE13 | NULL | VARCHAR2(150) | Reserved for Globalization Functionality |
| GLOBAL_ATTRIBUTE14 | NULL | VARCHAR2(150) | Reserved for Globalization Functionality |
| GLOBAL_ATTRIBUTE15 | NULL | VARCHAR2(150) | Reserved for Globalization Functionality |
| GLOBAL_ATTRIBUTE16 | NULL | VARCHAR2(150) | Reserved for Globalization Functionality |
| GLOBAL_ATTRIBUTE17 | NULL | VARCHAR2(150) | Reserved for Globalization Functionality |
| GLOBAL_ATTRIBUTE18 | NULL | VARCHAR2(150) | Reserved for Globalization Functionality |

Oracle Proprietary, Confidential Information--Use Restricted by Contract

Column Descriptions (Continued)

| Name | Null? | Type | Description |
|--------------------------|----------|---------------|---|
| GLOBAL_ATTRIBUTE19 | NULL | VARCHAR2(150) | Reserved for Globalization Functionality |
| GLOBAL_ATTRIBUTE20 | NULL | VARCHAR2(150) | Reserved for Globalization Functionality |
| ORIG_SYSTEM_REFERENCE | NULL | VARCHAR2(240) | Party site identifier from foreign system |
| START_DATE_ACTIVE | NULL | DATE | Effective start date for party site |
| END_DATE_ACTIVE | NULL | DATE | Effective end date for party site |
| REGION | NULL | VARCHAR2(30) | User-defined geographical region |
| MAILSTOP | NULL | VARCHAR2(60) | A user-defined code to indicate a mail drop point within their organization |
| CUSTOMER_KEY_OSM | NULL | VARCHAR2(255) | Customer key used in Oracle Sales and Marketing matching |
| PHONE_KEY_OSM | NULL | VARCHAR2(255) | Phone key used in Oracle Sales and Marketing matching |
| CONTACT_KEY_OSM | NULL | VARCHAR2(255) | Contact key used in Oracle Sales and Marketing matching |
| IDENTIFYING_ADDRESS_FLAG | NOT NULL | VARCHAR2(1) | Y or N indicates whether this is the identifying address for the party. |
| LANGUAGE | NULL | VARCHAR2(30) | The primary language spoken and written of the party site. |
| STATUS | NOT NULL | VARCHAR2(1) | Party site status flag. |
| PARTY_SITE_NAME | NULL | VARCHAR2(240) | A user defined name for the site |

Indexes

| Index Name | Index Type | Sequence | Column Name |
|-------------------|------------|----------|-------------------|
| HZ_PARTY_SITES_N1 | NOT UNIQUE | 5 | PARTY_ID |
| HZ_PARTY_SITES_N2 | NOT UNIQUE | 5 | LOCATION_ID |
| HZ_PARTY_SITES_U1 | UNIQUE | 1 | PARTY_SITE_ID |
| HZ_PARTY_SITES_U2 | UNIQUE | 5 | PARTY_SITE_NUMBER |

Sequences

| Sequence | Derived Column |
|------------------------|-------------------|
| HZ_PARTY_SITES_S | PARTY_SITE_ID |
| HZ_PARTY_SITE_NUMBER_S | PARTY_SITE_NUMBER |

IBA_SYSTEM_PARAMETERS

Column Descriptions

| Name | Null? | Type | Description |
|-----------------------|----------|----------------|---|
| CREATED_BY | NOT NULL | NUMBER(15) | Standard who column |
| CREATION_DATE | NOT NULL | DATE | Standard who column |
| LAST_UPDATED_BY | NOT NULL | NUMBER(15) | Standard who column |
| LAST_UPDATE_DATE | NOT NULL | DATE | Standard who column |
| LAST_UPDATE_LOGIN | NULL | NUMBER(15) | Standard who column |
| OBJECT_VERSION_NUMBER | NULL | NUMBER | object version number is used to track the updates of the current row |
| AFF_POSTING_URL | NULL | VARCHAR2(2000) | Affiliate posting generator URL |
| DEFAULT_POSTING_ID | NULL | NUMBER | Default Posting Identifier |
| SECURITY_GROUP_ID | NULL | NUMBER | Used in hosted environments |

JTF_AMV_ATTACHMENTS

This table stores the documents that are attached to the JTF_AMV_ITEMS_B table. Attached files are stored in the FND_LOBS.

Foreign Keys

| Primary Key Table | Primary Key Column | Foreign Key Column |
|-------------------|--------------------|-----------------------|
| FND_APPLICATION | APPLICATION_ID | APPLICATION_ID |
| FND_LANGUAGES | LANGUAGE_CODE | LANGUAGE_CODE |
| FND_LOBS | FILE_ID | FILE_ID |
| FND_USER | USER_ID | OWNER_USER_ID |
| JTF_AMV_ITEMS_B | ITEM_ID | ATTACHMENT_USED_BY_ID |

Column Descriptions

| Name | Null? | Type | Description |
|-----------------------------|----------|----------------|--|
| ATTACHMENT_ID (PK) | NOT NULL | NUMBER | Attachment Identifier |
| LAST_UPDATE_DATE | NOT NULL | DATE | Standard WHO Column |
| LAST_UPDATED_BY | NOT NULL | NUMBER(15) | Standard WHO Column |
| CREATION_DATE | NOT NULL | DATE | Standard WHO Column |
| CREATED_BY | NOT NULL | NUMBER(15) | Standard WHO Column |
| LAST_UPDATE_LOGIN | NOT NULL | NUMBER(15) | Standard WHO Column |
| OBJECT_VERSION_NUMBER | NULL | NUMBER(9) | This column is used for locking purposes |
| OWNER_USER_ID | NULL | NUMBER(15) | Owner Identifier |
| ATTACHMENT_USED_BY_ID | NOT NULL | NUMBER | Item Identifier |
| ATTACHMENT_USED_BY | NOT NULL | VARCHAR2(30) | The code name of the document table associated with the attachment. |
| VERSION | NULL | VARCHAR2(20) | The version number used by marketing. |
| ENABLED_FLAG | NULL | VARCHAR2(1) | Indicates whether the attachment is enabled. |
| CAN_FULFILL_ELECTRONIC_FLAG | NULL | VARCHAR2(1) | Indicates whether electronic fulfillment can be made for this attachment. |
| FILE_ID | NULL | NUMBER | The id of the attached file in fnd_lobs. Can be null since some team don't load the attached file to fnd_lobs. |
| FILE_NAME | NULL | VARCHAR2(240) | The name of the attached file. |
| FILE_EXTENSION | NULL | VARCHAR2(20) | The file extension of the attached file. |
| KEYWORDS | NULL | VARCHAR2(240) | The keywords for the attachment. |
| DISPLAY_WIDTH | NULL | NUMBER(15) | The field used by iStore. |
| DISPLAY_HEIGHT | NULL | NUMBER(15) | The field used by iStore. |
| DISPLAY_LOCATION | NULL | VARCHAR2(2000) | The field used by iStore. |
| LINK_TO | NULL | VARCHAR2(2000) | The field used by iStore. |
| LINK_URL | NULL | VARCHAR2(2000) | The field used by iStore. |
| SEND_FOR_PREVIEW_FLAG | NULL | VARCHAR2(1) | The field used by iStore. |
| ATTACHMENT_TYPE | NULL | VARCHAR2(30) | The type of the attachment. Make use it. |
| LANGUAGE_CODE | NULL | VARCHAR2(4) | The language code used by InterMedia. |
| APPLICATION_ID | NOT NULL | NUMBER | The language code used by InterMedia. |

Column Descriptions (Continued)

| Name | Null? | Type | Description |
|---------------------|-------|----------------|---|
| DESCRIPTION | NULL | VARCHAR2(2000) | The description of the attachment |
| DEFAULT_STYLE_SHEET | NULL | VARCHAR2(240) | The default style of the sheet. Marketing use this. |
| DISPLAY_URL | NULL | VARCHAR2(1024) | The field used by iStore. |
| DISPLAY_RULE_ID | NULL | NUMBER | The field used by iStore. |
| DISPLAY_PROGRAM | NULL | VARCHAR2(240) | The field used by iStore. |
| DISPLAY_TEXT | NULL | VARCHAR2(2000) | Field used by iMarketing product |
| ALTERNATE_TEXT | NULL | VARCHAR2(1000) | Field used by iMarketing product |
| ATTACHMENT_SUB_TYPE | NULL | VARCHAR2(30) | Field used by iMarketing product |
| ATTRIBUTE_CATEGORY | NULL | VARCHAR2(30) | Descriptive flexfield structure defining column |
| ATTRIBUTE1 | NULL | VARCHAR2(150) | Descriptive flexfield segment |
| ATTRIBUTE2 | NULL | VARCHAR2(150) | Descriptive flexfield segment |
| ATTRIBUTE3 | NULL | VARCHAR2(150) | Descriptive flexfield segment |
| ATTRIBUTE4 | NULL | VARCHAR2(150) | Descriptive flexfield segment |
| ATTRIBUTE5 | NULL | VARCHAR2(150) | Descriptive flexfield segment |
| ATTRIBUTE6 | NULL | VARCHAR2(150) | Descriptive flexfield segment |
| ATTRIBUTE7 | NULL | VARCHAR2(150) | Descriptive flexfield segment |
| ATTRIBUTE8 | NULL | VARCHAR2(150) | Descriptive flexfield segment |
| ATTRIBUTE9 | NULL | VARCHAR2(150) | Descriptive flexfield segment |
| ATTRIBUTE10 | NULL | VARCHAR2(150) | Descriptive flexfield segment |
| ATTRIBUTE11 | NULL | VARCHAR2(150) | Descriptive flexfield segment |
| ATTRIBUTE12 | NULL | VARCHAR2(150) | Descriptive flexfield segment |
| ATTRIBUTE13 | NULL | VARCHAR2(150) | Descriptive flexfield segment |
| ATTRIBUTE14 | NULL | VARCHAR2(150) | Descriptive flexfield segment |
| ATTRIBUTE15 | NULL | VARCHAR2(150) | Descriptive flexfield segment |
| SECURITY_GROUP_ID | NULL | NUMBER | Used in hosted environments |

Indexes

| Index Name | Index Type | Sequence | Column Name |
|------------------------|------------|----------|-----------------------|
| JTF_AMV_ATTACHMENTS_N1 | NOT UNIQUE | 1 | OWNER_USER_ID |
| JTF_AMV_ATTACHMENTS_N2 | NOT UNIQUE | 1 | ATTACHMENT_USED_BY |
| | | 2 | ATTACHMENT_USED_BY_ID |
| JTF_AMV_ATTACHMENTS_N3 | NOT UNIQUE | 1 | FILE_ID |
| JTF_AMV_ATTACHMENTS_N4 | NOT UNIQUE | 1 | DISPLAY_RULE_ID |
| JTF_AMV_ATTACHMENTS_N5 | NOT UNIQUE | 2 | LANGUAGE_CODE |
| JTF_AMV_ATTACHMENTS_N6 | NOT UNIQUE | 1 | APPLICATION_ID |
| JTF_AMV_ATTACHMENTS_U1 | UNIQUE | 1 | ATTACHMENT_ID |

Sequences

| Sequence | Derived Column |
|-----------------------|----------------|
| JTF_AMV_ATTACHMENTS_S | ATTACHMENT_ID |

Oracle Proprietary, Confidential Information--Use Restricted by Contract

JTF_MSITES_B

JTF_MSITES_B stores the definition of the mini-sites (Specialty Stores). Each mini-site should be associated to a store and a profile, defined in JTF_STORES_B and JTF_PERZ_PROFILE respectively. A root section also need be selected for each mini-site. Only the sections and items under the selected root section will be visible at this mini-site. There is one and only one master mini-site defined in this table. It is identified by MASTER_MSITE_FLAG, 'Y' for master mini-site and 'N' for others. ATP_CHECK_FLAG and WALKIN_ALLOWED_FLAG are defined for each mini-site to indicate if ATP check is enabled or Walking customers are allowed. MSITE_ROOT_SECTION_ID identifies the root section of the hierarchy for this mini-site. Only sections and items under the root section are visible for this mini-site. JTF_MSITES_B also holds information such as default language, default currency, default date format, and default MO Operating Unit for each mini-site.

Foreign Keys

| Primary Key Table | Primary Key Column | Foreign Key Column |
|--------------------|--------------------|-----------------------|
| FND_CURRENCIES | CURRENCY_CODE | DEFAULT_CURRENCY_CODE |
| FND_LANGUAGES | LANGUAGE_CODE | DEFAULT_LANGUAGE_CODE |
| JTF_DSP_SECTIONS_B | SECTION_ID | MSITE_ROOT_SECTION_ID |
| JTF_PERZ_PROFILE | PROFILE_ID | PROFILE_ID |
| JTF_STORES_B | STORE_ID | STORE_ID |

QuickCodes Columns

| Column | QuickCodes Type | QuickCodes Table |
|---------------------|-----------------|------------------|
| ATP_CHECK_FLAG | YES_NO | FND_LOOKUPS |
| | N | No |
| | Y | Yes |
| MASTER_MSITE_FLAG | YES_NO | FND_LOOKUPS |
| | N | No |
| | Y | Yes |
| WALKIN_ALLOWED_FLAG | YES_NO | FND_LOOKUPS |
| | N | No |
| | Y | Yes |

Column Descriptions

| Name | Null? | Type | Description |
|-----------------------|----------|------------|------------------------------------|
| MSITE_ID (PK) | NOT NULL | NUMBER | Mini Site Identifier. |
| OBJECT_VERSION_NUMBER | NOT NULL | NUMBER(9) | Object Version Number for Locking. |
| CREATED_BY | NOT NULL | NUMBER | Standard WHO column |
| CREATION_DATE | NOT NULL | DATE | Standard WHO column |
| LAST_UPDATED_BY | NOT NULL | NUMBER | Standard WHO column |
| LAST_UPDATE_DATE | NOT NULL | DATE | Standard WHO column |
| LAST_UPDATE_LOGIN | | NUMBER | Standard WHO column |
| SECURITY_GROUP_ID | NULL | NUMBER | Security Group Identifier. |
| STORE_ID | NULL | NUMBER(15) | Store Identifier. |
| START_DATE_ACTIVE | NOT NULL | DATE | Start date active |

Oracle Proprietary, Confidential Information--Use Restricted by Contract

Column Descriptions (Continued)

| Name | Null? | Type | Description |
|-----------------------|-------|---------------|--|
| END_DATE_ACTIVE | NULL | DATE | End date active. |
| DEFAULT_LANGUAGE_CODE | NULL | VARCHAR2(4) | Default language supported by this minisite |
| DEFAULT_CURRENCY_CODE | NULL | VARCHAR2(15) | Default currency supported by this minisite |
| DEFAULT_DATE_FORMAT | NULL | VARCHAR2(30) | Default date format |
| DEFAULT_ORG_ID | NULL | NUMBER(15) | Default Organization Identifier. |
| ATP_CHECK_FLAG | NULL | VARCHAR2(3) | Flag to indicate if ATP check should be done for this minisite |
| WALKIN_ALLOWED_FLAG | NULL | VARCHAR2(3) | Flag to indicate if walkin users are allowed |
| MSITE_ROOT_SECTION_ID | NULL | NUMBER | Root section identifier. |
| PROFILE_ID | NULL | NUMBER | Profile identifier (Currently not used) |
| MASTER_MSITE_FLAG | NULL | VARCHAR2(3) | Flag that Identifies the minisite is the master minisite. |
| ATTRIBUTE_CATEGORY | NULL | VARCHAR2(30) | Descriptive flexfield structure defining column |
| ATTRIBUTE1 | NULL | VARCHAR2(150) | Descriptive flexfield segment |
| ATTRIBUTE2 | NULL | VARCHAR2(150) | Descriptive flexfield segment |
| ATTRIBUTE3 | NULL | VARCHAR2(150) | Descriptive flexfield segment |
| ATTRIBUTE4 | NULL | VARCHAR2(150) | Descriptive flexfield segment |
| ATTRIBUTE5 | NULL | VARCHAR2(150) | Descriptive flexfield segment |
| ATTRIBUTE6 | NULL | VARCHAR2(150) | Descriptive flexfield segment |
| ATTRIBUTE7 | NULL | VARCHAR2(150) | Descriptive flexfield segment |
| ATTRIBUTE8 | NULL | VARCHAR2(150) | Descriptive flexfield segment |
| ATTRIBUTE9 | NULL | VARCHAR2(150) | Descriptive flexfield segment |
| ATTRIBUTE11 | NULL | VARCHAR2(150) | Descriptive flexfield segment |
| ATTRIBUTE10 | NULL | VARCHAR2(150) | Descriptive flexfield segment |
| ATTRIBUTE12 | NULL | VARCHAR2(150) | Descriptive flexfield segment |
| ATTRIBUTE13 | NULL | VARCHAR2(150) | Descriptive flexfield segment |
| ATTRIBUTE14 | NULL | VARCHAR2(150) | Descriptive flexfield segment |
| ATTRIBUTE15 | NULL | VARCHAR2(150) | Descriptive flexfield segment |

Indexes

| Index Name | Index Type | Sequence | Column Name |
|-----------------|------------|----------|-------------|
| JTF_MSITES_B_U1 | NOT UNIQUE | 1 | PROFILE_ID |

Sequences

| Sequence | Derived Column |
|-----------------|----------------|
| JTF_MSITES_B_S1 | MSITE_ID |

JTF_R_RULECONTEXTS

Table stored rule expressions, condition and action type of rule expressions. It is grouped by rule level, with the condition in one row, and the action part of the rule in another row. The rule expression are text based, storing rule syntax supported by the oracle rule builder API. The table is to be inserted, deleted or updated via Oracle Rule Ending and/or Oracle Rule Builder API. The real text in Text column should be in a XML format

Foreign Keys

| Primary Key Table | Primary Key Column | Foreign Key Column |
|-------------------|--------------------|--------------------|
| JTF_R_RULES_B | RULE_ID | RULE_ID |

Column Descriptions

| Name | Null? | Type | Description |
|-----------------------|----------|-------------|---|
| RULECONTEXT_ID (PK) | NOT NULL | NUMBER | primary key id generated by sequence |
| CREATED_BY | NOT NULL | NUMBER(15) | user id who created this row, Standard Who column |
| CREATION_DATE | NOT NULL | DATE | creation date, Standard Who Column |
| LAST_UPDATED_BY | NOT NULL | NUMBER(15) | last created by user id, Standard Who Column |
| LAST_UPDATE_DATE | NOT NULL | DATE | last updated date, Standard Who Column |
| LAST_UPDATE_LOGIN | NULL | NUMBER(15) | last update user login, Standard Who Column |
| RULE_ID | NOT NULL | NUMBER(15) | parent rule id, Foreign Key of RULE_IN in JTF_R_RULES_B table |
| LINE_NUM | NOT NULL | NUMBER | line number of the rule expression |
| TEXTTYPE | NULL | VARCHAR2(1) | 'C'ondition or 'A'ction rule expression type |
| RULETEXT | NULL | LONG | rule expression, it should be in XML format |
| OBJECT_VERSION_NUMBER | NULL | NUMBER | object version number is used to track the updates of the current row |
| SECURITY_GROUP_ID | NULL | NUMBER | Used in hosted environments |

Indexes

| Index Name | Index Type | Sequence | Column Name |
|-------------------------|------------|----------|---------------------|
| JTF_R_RULECONTEXTS_B_U1 | UNIQUE | 10 20 | RULE_ID LINE_NUM |

Sequences

| Sequence | Derived Column |
|----------------------|----------------|
| JTF_R_RULECONTEXTS_S | RULECONTEXT_ID |

JTF_R_RULESETS_B

This table is used for grouping rules into a set. Multiple rules belong to an application can be either group into one ruleset, or further divided up into subsets of rules. For example, Marketing rules can be grouped into ruleset called Promotion Rules vs. Non-Promotion Rules, and when the rule engine fires, the application can control whether rules on a ruleset to be active; therefore, reducing rules that are not applicable at run time. Application Id divides the ruleset by different applications, such as iB&P vs. iMarketing. RuleSetId can be used to further divide rules within one application if needed.

Column Descriptions

| Name | Null? | Type | Description |
|-----------------------|----------|--------------|---|
| RULESET_ID (PK) | NOT NULL | NUMBER | primary key rule set id, sequence generated |
| CREATED_BY | NOT NULL | NUMBER(15) | created by user id, Standard Who Column |
| CREATION_DATE | NOT NULL | DATE | creation date, Standard Who Column |
| LAST_UPDATED_BY | NOT NULL | NUMBER(15) | last update user id, Standard Who Column |
| LAST_UPDATE_DATE | NOT NULL | DATE | last updated date, Standard Who Column |
| LAST_UPDATE_LOGIN | NULL | NUMBER(15) | last updated user login, Standard Who Column |
| APPLICATION_ID | NOT NULL | NUMBER(15) | application unique id |
| STATUS | NOT NULL | VARCHAR2(1) | 'A'ctive or 'I'nactive ruleset |
| START_DATE | NULL | DATE | starting effective date |
| END_DATE | NULL | DATE | ending effective date |
| RULESET_CLASS | NULL | BLOB | ruleset java class file |
| RULESET_SER | NULL | LONG | rule set serialized text string |
| OBJECT_VERSION_NUMBER | NULL | NUMBER | object version number is used to track the updates of the current row |
| IBA_SORT_ORDER | NULL | NUMBER | For iMarketing Sort Order numeric code, it is reserved for future release |
| IBA_SORT_BY_CODE | NULL | VARCHAR2(30) | For iMarketing sort by code referencing fnd_lookup, it should be one column of one table, it is reserved for future release |
| SECURITY_GROUP_ID | NULL | NUMBER | Used in hosted environments |

Indexes

| Index Name | Index Type | Sequence | Column Name |
|-------------------|------------|----------|-------------|
| JTF_R_RULESETS_U1 | UNIQUE | 10 | RULESET_ID |

Sequences

| Sequence | Derived Column |
|--------------------|----------------|
| JTF_R_RULESETS_B_S | RULESET_ID |

Oracle Proprietary, Confidential Information--Use Restricted by Contract

JTF_R_RULESETS_TL

This table is secondary table to JTF_R_RULESETS_B base table, in which this has foreign key into the primary table, and stores translatable description of the ruleset. This is intended for User Interface component to utilize the data set in this table for display purpose, and be able to set the language source and language information in here for translation purpose.

Foreign Keys

| Primary Key Table | Primary Key Column | Foreign Key Column |
|-------------------|--------------------|--------------------|
| JTF_R_RULESETS_B | RULESET_ID | RULESET_ID |

Column Descriptions

| Name | Null? | Type | Description |
|-----------------------|----------|---------------|--|
| RULESET_ID (PK) | NOT NULL | NUMBER | primary key of rule set id |
| LANGUAGE (PK) | NOT NULL | VARCHAR2(4) | language code |
| CREATED_BY | NOT NULL | NUMBER(15) | created user id, Standard Who Column |
| CREATION_DATE | NULL | DATE | Standard Who column |
| LAST_UPDATED_BY | NOT NULL | NUMBER(15) | last updated by user id, Standard Who Column |
| LAST_UPDATE_DATE | NOT NULL | DATE | last updated date, Standard Who Column |
| LAST_UPDATE_LOGIN | NULL | NUMBER(15) | last update login, Standard Who Column |
| NAME | NOT NULL | VARCHAR2(80) | Ruleset Name |
| SOURCE_LANG | NOT NULL | VARCHAR2(4) | source language code |
| DESCRIPTION | NULL | VARCHAR2(240) | ruleset short description |
| OBJECT_VERSION_NUMBER | NULL | NUMBER | object version number is used to track the update of the current row |
| SECURITY_GROUP_ID | NULL | NUMBER | Used in hosted environments |

Indexes

| Index Name | Index Type | Sequence | Column Name |
|----------------------|------------|----------|------------------------|
| JTF_R_RULESETS_TL_U1 | UNIQUE | 10 20 | RULESET_ID LANGUAGE |

JTF_R_RULES_B

Table stores rules Id, name and status information, as well as effective start and end date. JTF_R_RULECONTEXTS table has foreign key reference the rule id in this table. When the status is set to 'A', it becomes active, and 'I' to inactivate the rule. If the end_date is expired, the rule becomes inactive regardless of the status value.

Foreign Keys

| Primary Key Table | Primary Key Column | Foreign Key Column |
|-------------------|--------------------|--------------------|
| JTF_R_RULESETS_B | RULESET_ID | RULESET_ID |

Column Descriptions

| Name | Null? | Type | Description |
|-----------------------|----------|-------------|---|
| RULE_ID (PK) | NOT NULL | NUMBER | primary key id generated by sequence |
| CREATED_BY | NOT NULL | NUMBER(15) | created user id, Standard Who Column |
| CREATION_DATE | NOT NULL | DATE | creation date, Standard Who Column |
| LAST_UPDATED_BY | NOT NULL | NUMBER(15) | last updated by user id, Standard Who Column |
| LAST_UPDATE_DATE | NOT NULL | DATE | last updated date, Standard Who Column |
| LAST_UPDATE_LOGIN | NULL | NUMBER(15) | last update user login id, Standard Who Column |
| RULESET_ID | NOT NULL | NUMBER | parent ruleset id |
| STATUS | NOT NULL | VARCHAR2(3) | 'A'ctive or 'I'nactive status |
| START_DATE | NULL | DATE | starting effective date |
| END_DATE | NULL | DATE | ending effective date |
| PRIORITY | NULL | NUMBER | priority number defines the priority of each rule in one ruleset, it should be between 1 and 1000, and higher value means higher priority |
| OBJECT_VERSION_NUMBER | NULL | NUMBER | object version number is used to track the update of the current row |
| SECURITY_GROUP_ID | NULL | NUMBER | Used in hosted environments |

Indexes

| Index Name | Index Type | Sequence | Column Name |
|------------------|------------|----------|-------------|
| JTF_R_RULES_B_U1 | UNIQUE | 10 | RULE_ID |

Sequences

| Sequence | Derived Column |
|-----------------|----------------|
| JTF_R_RULES_B_S | RULE_ID |

JTF_R_RULES_TL

This table contains condition and action short descriptions for each rule. It is intended to provide for translation purposes. Application can use the description information for display use in the translated language. Set the language code into the Language and Source Language fields for each translated language of the rules.

Foreign Keys

| Primary Key Table | Primary Key Column | Foreign Key Column |
|-------------------|--------------------|--------------------|
| JTF_R_RULES_B | RULE_ID | RULE_ID |

Column Descriptions

| Name | Null? | Type | Description |
|-----------------------|----------|---------------|--|
| RULE_ID (PK) | NOT NULL | NUMBER | primary key id as set in JTF_R_RULES_B |
| LANGUAGE (PK) | NOT NULL | VARCHAR2(4) | language code |
| CREATED_BY | NOT NULL | NUMBER(15) | created by user id, Standard Who Column |
| CREATION_DATE | NOT NULL | DATE | creation date, Standard Who Column |
| LAST_UPDATED_BY | NOT NULL | NUMBER(15) | last updated by user id, Standard Who Column |
| LAST_UPDATE_DATE | NOT NULL | DATE | last updated date, Standard Who Column |
| LAST_UPDATE_LOGIN | | NUMBER(15) | last update user login id, Standard Who Column |
| SOURCE_LANG | | VARCHAR2(4) | Source language |
| NAME | NOT NULL | VARCHAR2(80) | rule name |
| COND_DESC | | VARCHAR2(240) | condition short description |
| ACTION_DESC | | VARCHAR2(240) | action short description |
| OBJECT_VERSION_NUMBER | | NUMBER | object version number is used to track the update of the current row |
| SECURITY_GROUP_ID | | NUMBER | Used in hosted environments |

Indexes

| Index Name | Index Type | Sequence | Column Name |
|-------------------|------------|----------|---------------------|
| JTF_R_RULES_TL_U1 | UNIQUE | 10 20 | RULE_ID LANGUAGE |

JTF_STORES_B

JTF_STORES_B stores the definition of a store. A store in this context is a WEB Store. Currently only one store is supported (11.5.1) The row this table and JTF_STORES_TL are seeded. No data should be inserted into (or modified in) this table.

Column Descriptions

| Name | Null? | Type | Description |
|-----------------------|----------|---------------|---|
| STORE_ID (PK) | NOT NULL | NUMBER | Store Identifier. |
| OBJECT_VERSION_NUMBER | NOT NULL | NUMBER(9) | Object version number for Locking. |
| CREATED_BY | NOT NULL | NUMBER | Standard who column |
| CREATION_DATE | NOT NULL | DATE | Standard who column |
| LAST_UPDATED_BY | NOT NULL | NUMBER | Standard who column |
| LAST_UPDATE_DATE | NOT NULL | DATE | Standard who column |
| LAST_UPDATE_LOGIN | NULL | NUMBER | Standard who column |
| SECURITY_GROUP_ID | NULL | NUMBER | Security Group Identifier. |
| ATTRIBUTE_CATEGORY | NULL | VARCHAR2(30) | Descriptive flexfield structure defining column |
| ATTRIBUTE1 | NULL | VARCHAR2(150) | Descriptive flexfield segment |
| ATTRIBUTE2 | NULL | VARCHAR2(150) | Descriptive flexfield segment |
| ATTRIBUTE3 | NULL | VARCHAR2(150) | Descriptive flexfield segment |
| ATTRIBUTE4 | NULL | VARCHAR2(150) | Descriptive flexfield segment |
| ATTRIBUTE5 | NULL | VARCHAR2(150) | Descriptive flexfield segment |
| ATTRIBUTE6 | NULL | VARCHAR2(150) | Descriptive flexfield segment |
| ATTRIBUTE7 | NULL | VARCHAR2(150) | Descriptive flexfield segment |
| ATTRIBUTE8 | NULL | VARCHAR2(150) | Descriptive flexfield segment |
| ATTRIBUTE9 | NULL | VARCHAR2(150) | Descriptive flexfield segment |
| ATTRIBUTE10 | NULL | VARCHAR2(150) | Descriptive flexfield segment |
| ATTRIBUTE11 | NULL | VARCHAR2(150) | Descriptive flexfield segment |
| ATTRIBUTE12 | NULL | VARCHAR2(150) | Descriptive flexfield segment |
| ATTRIBUTE13 | NULL | VARCHAR2(150) | Descriptive flexfield segment |
| ATTRIBUTE14 | NULL | VARCHAR2(150) | Descriptive flexfield segment |
| ATTRIBUTE15 | NULL | VARCHAR2(150) | Descriptive flexfield segment |

Indexes

| Index Name | Index Type | Sequence | Column Name |
|-----------------|------------|----------|-------------|
| JTF_STORES_B_U1 | UNIQUE | 1 | STORE_ID |

Sequences

| Sequence | Derived Column |
|-----------------|----------------|
| JTF_STORES_B_S1 | STORE_ID |

Oracle Proprietary, Confidential Information--Use Restricted by Contract

A

Application Building Block, 1 – 6

C

Column descriptions, 3 – 4

Columns, Who, 3 – 4

Concurrent Program List. *See* Concurrent Program Definitions

D

Database Diagram, 1 – 6

Database Diagrams

IBA Affiliate Registration, 2 – 13

IBA Campaigns, 2 – 11

IBA Postings, 2 – 9

IBA Rules, 2 – 7

database diagrams, conventions, 2 – 5

Database triggers, 3 – 6

F

Foreign keys, 3 – 3

Form, 1 – 7

Form List. *See* Form Definitions

I

Indexes, 3 – 6

important note about, 3 – 6

Internal View List, 2 – 19

L

Lookup types. *See* QuickCodes

M

Module List. *See* Module Definitions

Modules, 1 – 6

MultiLingual View List, 2 – 20

O

Oracle8 sequences. *See* Sequences

P

Public Table List, 2 – 15

Public View List, 2 – 18

Q

QuickCodes, 1 – 6

Columns that contain, 3 – 3

R

Relationship, 1 – 6

Report List. *See* Report Definitions

S

Sequences, 3 – 6

T

Table and View Definitions

AMS_ACT_MARKET_SEGMENTS, 3 – 7

AMS_ACT_MKT_SEGMENTS_VL, 2 – 20

AMS_ACT_OFFERS, 3 – 9

AMS_ACT_PRODUCTS, 3 – 11

AMS_ACT_PRODUCTS_V, 2 – 19

AMS_CAMPAIGN_TEAM_V, 2 – 19

AMS_CAMPAIGNS_ALL_B, 3 – 13

AMS_CAMPAIGNS_V, 2 – 19

AMS_CAMPAIGNS_VL, 2 – 20

AMS_CELLS_ALL_B, 3 – 17

AMS_CELLS_ALL_TL, 3 – 18

AMS_CHANNELS_B, 3 – 19

AMS_CHANNELS_VL, 2 – 20

AMS_CUSTOM_SETUP_SCR_V, 2 – 19
AMS_CUSTOM_SETUPS_VL, 2 – 20
AMS_DELIVERABLES_ALL_B, 3 – 21
AMS_IBA_POSTINGS_B, 3 – 24
AMS_IBA_POSTINGS_RUN_VL, 2 – 20
AMS_IBA_POSTINGS_TL, 3 – 26
AMS_IBA_POSTINGS_VL, 2 – 20
AMS_IBA_RULESETS_V, 2 – 19
AMS_MEDIA_B, 3 – 27
AMS_MEDIA_CHANNELS, 3 – 28
AMS_MEDIA_CHANNELS_VL, 2 – 20
AMS_MEDIA_VL, 2 – 20
AMS_OBJECT_ASSOCIATIONS, 3 – 29
AMS_PARTY_MARKET_SEGMENTS, 3 – 31
AMS_SETUP_TYPES, 3 – 32
AMS_SOURCE_CODES, 3 – 33
AMS_USER_STATUSES_B, 3 – 34
HZ_LOCATIONS, 3 – 35
HZ_ORGANIZATION_PROFILES, 3 – 40
HZ_PARTIES, 3 – 46
HZ_PARTY_RELATIONSHIPS, 3 – 52
HZ_PARTY_SITES, 3 – 55
IBA_AFFILIATE_V, 2 – 19
IBA_SYSTEM_PARAMETERS, 3 – 58
JTF_AMV_ATTACHMENTS, 3 – 59
JTF_MSITES_B, 3 – 61
JTF_R_RULECONTEXTS, 3 – 63

JTF_R_RULES_B, 3 – 66
JTF_R_RULES_TL, 3 – 67
JTF_R_RULES_V, 2 – 19
JTF_R_RULES_VL, 2 – 20
JTF_R_RULESETS_B, 3 – 64
JTF_R_RULESETS_TL, 3 – 65
JTF_R_RULESETS_V, 2 – 19
JTF_R_RULESETS_VL, 2 – 20
JTF_STORES_B, 3 – 68

Tables

See also Table and View Definitions
Column descriptions, 3 – 4
Foreign keys, 3 – 3
Indexes. *See* Indexes
Primary Keys, 3 – 4
QuickCodes Columns, 3 – 3
Who columns, 3 – 4, 3 – 5

V

View Definitions. *See* Table and View Definitions

Views

See also Table and View Definitions; View List
Derivation, 3 – 6

Reader's Comment Form

Oracle iMarketing Technical Reference Manual A86138-01

Oracle Corporation welcomes your comments and suggestions on the quality and usefulness of this publication. Your input is an important part of the information we use for revision.

- Did you find any errors?
- Is the information clearly presented?
- Do you need more information? If so, where?
- Are the examples correct? Do you need more examples?
- What features did you like most about this manual? What did you like least about it?

If you find any errors or have any other suggestions for improvement, please indicate the topic, chapter, and page number below:

Please send your comments to:

CRM Content Development Manager
Oracle Corporation
500 Oracle Parkway
Redwood Shores, CA 94065 USA
Phone: (650) 506-7000 Fax: (650) 506-7200

If you would like a reply, please give your name, address, and telephone number below:

Thank you for helping us improve our documentation.

