

# Oracle® SDP Provisioning Technical Reference Manual

**RELEASE 11i**

**August 2000**



Oracle® SDP Provisioning Technical Reference Manual  
Release 11i

To order this book, ask for Part No. A86198-01

Copyright © 2000. Oracle Corporation. All rights reserved.

Major Contributors:

Contributors:

This Technical Reference Manual (TRM) in any form, software or printed matter, contains proprietary information of Oracle Corporation; it is provided under an Oracle Corporation agreement containing restrictions on use and disclosure and is also protected by copyright, patent, and other intellectual property law. Restrictions applicable to this TRM include, but are not limited to: (a) exercising either the same degree of care to safeguard the confidentiality of this TRM as you exercise to safeguard the confidentiality of your own most important Confidential Information or a reasonable degree of care, whichever is greater; (b) maintaining agreements with your employees and agents that protect the Confidential Information. R



# CAUTION

**T**his Technical Reference Manual in any form -- software or printed matter -- contains proprietary, confidential information that is the exclusive property of Oracle Corporation. If you do not have a valid contract with Oracle for the use of this Technical Reference Manual or have not signed a non-disclosure agreement with Oracle covering this Technical Reference Manual, then you received this document in an unauthorized manner and are not legally entitled to possess or read it.

Use, duplication, and disclosure are subject to restrictions stated in your contract with Oracle Corporation.





# Contents

<b>Chapter 1</b>	<b>Introduction</b> .....	<b>1 – 1</b>
<b>Chapter 2</b>	<b>High-Level Design</b> .....	<b>2 – 1</b>
	Overview of High-Level Design .....	2 – 2
	Database Diagrams .....	2 – 8
	Public Table List .....	2 – 14
	Forms and Table View List .....	2 – 19
	Internal View List .....	2 – 20
	Multilingual View List .....	2 – 21
	Module List .....	2 – 22
<b>Chapter 3</b>	<b>Detailed Design</b> .....	<b>3 – 1</b>
	Overview of Detailed Design .....	3 – 2
	Table and View Definitions .....	3 – 3

**Oracle Proprietary, Confidential Information--Use Restricted by Contract**

CHAPTER

# 1

## Introduction

**T**he *Oracle SDP Provisioning Technical Reference Manual* provides the information you need to understand the underlying structure of Oracle SDP Provisioning. After reading this manual, you should be able to convert your existing applications data, integrate your existing applications with Oracle SDP Provisioning, and write custom reports for Oracle SDP Provisioning, as well as read data that you need to perform other tasks.

This chapter introduces you to the *Oracle SDP Provisioning Technical Reference Manual*, and explains how to use it.

---

## Introduction

At Oracle, we design and build applications using Oracle Designer, our systems design technology that provides a complete environment to support developers through all stages of a systems life cycle. Because we use a repository-based design toolset, all the information regarding the underlying structure and processing of our applications is available to us online. Using Oracle Designer, we can present this information to you in the form of a technical reference manual.

This *Oracle SDP Provisioning Technical Reference Manual* contains detailed, up-to-date information about the underlying structure of Oracle SDP Provisioning. As we design and build new releases of Oracle SDP Provisioning, we update our Oracle Designer repository to reflect our enhancements. As a result, we can always provide you with an *Oracle SDP Provisioning Technical Reference Manual* that contains the latest technical information as of the publication date. Note that after the publication date we may have added new indexes to Oracle SDP Provisioning to improve performance.

### About this Manual

---

This manual describes the Oracle Customer Relationship Management (CRM) Applications Release 11i data model, as used by Oracle SDP Provisioning; it discusses the database we include with a fresh install of Oracle CRM Release 11i. If you have not yet upgraded to Release 11i, your database may differ from the database we document in this book.

You can contact your Oracle representative to confirm that you have the latest technical information for Oracle SDP Provisioning. You can also use Oracle *MetaLink* which is accessible through Oracle's Support Web Center ([http://www.oracle.com/support/elec\\_sup](http://www.oracle.com/support/elec_sup)).

---

## Finding the Latest Information

The *Oracle SDP Provisioning Technical Reference Manual* contains the latest information as of the publication date. For the latest information we encourage you to use Oracle *MetaLink* which is accessible through Oracle's Support Web Center ([http://www.oracle.com/support/elec\\_sup](http://www.oracle.com/support/elec_sup)).

Oracle Proprietary, Confidential Information--Use Restricted by Contract

---

## Audience

The *Oracle SDP Provisioning Technical Reference Manual* provides useful guidance and assistance to:

- Technical End Users
- Consultants
- Systems Analysts
- System Administrators
- Other MIS professionals

This manual assumes that you have a basic understanding of structured analysis and design, and of relational databases. It also assumes that you are familiar with Oracle Application Object Library and Oracle SDP Provisioning. If you are not familiar with the above products, we suggest that you attend one or more of the training classes available through Oracle Education (see: Other Information Sources: page 1 – 7).

---

## How This Manual is Organized

This manual contains two major sections, High-Level Design and Detailed Design.

### **High-Level Design**

---

This section, Chapter 2, contains database diagrams and lists each database table and view that Oracle SDP Provisioning uses. This chapter also has a list of modules.

### **Detailed Design**

---

This section, Chapter 3, contains a detailed description of the Oracle SDP Provisioning database design, including information about each database table and view you might need for your custom reporting or other data requirements.

---

## How to Use This Manual

The *Oracle SDP Provisioning Technical Reference Manual* is a single, centralized source for all the information you need to know about the underlying structure and processing of Oracle SDP Provisioning. For example, you can use this manual when you need to:

- Convert existing application data
- Integrate your Oracle SDP Provisioning application with your other applications systems
- Write custom reports
- Define alerts against Oracle Applications tables
- Configure your Oracle Self-Service Web Applications
- Create views for decision support queries using query tools
- Create business views for Oracle Discoverer

You need not read this manual cover to cover. Use the table of contents and index to quickly locate the information you need.

---

## How Not To Use This Manual

### **Do not use this manual to plan modifications**

---

You should not use this manual to plan modifications to Oracle SDP Provisioning. Modifying Oracle SDP Provisioning limits your ability to upgrade to future releases of your Oracle SDP Provisioning application. In addition, it interferes with our ability to give you the high-quality support you deserve.

We have constructed Oracle SDP Provisioning so that you can customize it to fit your needs without programming, and you can integrate it with your existing applications through interface tables. However, should you require program modifications, you should contact our support team (see: Other Information Sources: page 1 – 7). They can put you in touch with Oracle Services, the professional consulting organization of Oracle. Their team of experienced applications professionals can make the modifications you need while ensuring upward compatibility with future product releases.

**Oracle Proprietary, Confidential Information--Use Restricted by Contract**

### **Do not write data into non-interface tables**

Oracle reserves the right to change the structure of Oracle Applications tables, and to change the meaning of, add, or delete lookup codes and data in future releases. Do not write data directly into or change data in non-interface tables using SQL\*Plus or other programming tools because you risk corrupting your database and interfering with our ability to support you.

Moreover, this version of the *Oracle SDP Provisioning Technical Reference Manual* does not contain complete information about the dependencies between Oracle SDP Provisioning applications tables. Therefore, you should write data into only those tables we identify as interface tables. If you write data into other non-interface tables, you risk violating your data integrity since you might not fulfill all the data dependencies in your Oracle SDP Provisioning application.

You are responsible for the support and upgrade of the logic within the procedures that you write, which may be affected by changes between releases of Oracle Applications.

### **Do not rely on upward compatibility of the data model**

Oracle reserves the right to change the structure of Oracle SDP Provisioning tables, and to change the meaning of, add, or delete lookup codes and other data in future releases. We do not guarantee the upward compatibility of the Oracle SDP Provisioning data model. For example, if you write a report that identifies concurrent requests that end in Error status by selecting directly from Oracle Application Object Library tables, we do not guarantee that your report will work properly after an upgrade.

---

## **About Oracle Application Object Library**

The *Oracle SDP Provisioning Technical Reference Manual* may contain references to tables that belong to Oracle Application Object Library. Oracle Application Object Library is a collection of pre-built application components and facilities for building Oracle Applications and extensions to Oracle Applications. Oracle Application Coding Standards use the Oracle Application Object Library and contains shared components including but not limited to -- forms, subroutines, concurrent programs and reports, database tables and objects, messages, menus, responsibilities, flexfield definitions and online help.



**Attention:** Oracle does not support *any* customization of Oracle Application Object Library tables or modules, not even by Oracle consultants. (Oracle Application Object Library tables generally have names beginning with FND\_%.)

Accordingly, this manual does not contain detailed information about most Oracle Application Object Library tables used by Oracle SDP Provisioning.

---

## A Few Words About Terminology

The following list provides you with definitions for terms that we use throughout this manual:

### **Relationship**

---

A relationship describes any significant way in which two tables may be associated. For example, rows in the Journal Headers table may have a one-to-many relationship with rows in the Journal Lines table.

### **Database Diagram**

---

A database diagram is a graphic representation of application tables and the relationships between them.

### **Module**

---

A module is a program or procedure that implements one or more business functions, or parts of a business function, within an application. Modules include forms, concurrent programs and reports, and subroutines.

### **Application Building Block**

---

An application building block is a set of tables and modules (forms, reports, and concurrent programs) that implement closely-related database objects and their associated processing. Said another way, an application building block is a logical unit of an application.

### **QuickCodes**

---

QuickCodes let you define general purpose, static lists of values for window fields. QuickCodes allow you to base your program logic on lookup codes while displaying user-friendly names in a list of values

**Oracle Proprietary, Confidential Information--Use Restricted by Contract**

window. QuickCodes simplify name and language changes by letting you change the names your end users see, while the codes in your underlying programs remain the same.

### **Form**

---

A form is a module comprised of closely related windows that are used together to perform a task. For example, the Enter Journals form in Oracle General Ledger includes the Enter Journals window, the Batch window, and the More Actions window among others. The Enter Journals window is the main window, and from it, you can use buttons to navigate to other windows in the form. The form name usually corresponds to the main window in the form, and is frequently a window you open directly from the Navigator.

---

## **Other Information Sources**

### **Installation and System Administration**

#### **Training**

---

Oracle Education offers a complete set of training courses to help you and your staff master Oracle CRM Applications. We can help you develop a training plan that provides thorough training for both your project team and your end users. We will work with you to organize courses appropriate to your job or area of responsibility.

Training professionals can show you how to plan your training throughout the implementation process so that the right amount of information is delivered to key people when they need it the most. You can attend courses at any one of our many Educational Centers, or you can arrange for our trainers to teach at your facility. In addition, we can tailor standard courses or develop custom courses to meet your needs.

#### **Support**

---

From on-site support to central support, our team of experienced professionals provides the help and information you need to keep Oracle SDP Provisioning working for you. This team includes your Technical Representative, Account Manager, and Oracle's large staff of consultants and support specialists with expertise in your business

area, managing an Oracle server, and your hardware and software environment.

---

## About Oracle

Oracle Corporation develops and markets an integrated line of software products for database management, applications development, decision support, and office automation, as well as Oracle Applications, an integrated suite of more than 75 software modules for financial management, supply chain management, manufacturing, project systems, human resources, and sales and service management.

Oracle products are available for mainframes, minicomputers, personal computers, network computers, and personal digital assistants, allowing organizations to integrate different computers, different operating systems, different networks, and even different database management systems, into a single, unified computing and information resource.

Oracle is the world's leading supplier of software for information management, and the world's second largest software company. Oracle offers its database, tools, and applications products, along with related consulting, education, and support services, in over 145 countries around the world.

---

## Thank You

Thanks for using Oracle SDP Provisioning and this technical reference manual!

We appreciate your comments and feedback. After the Table of Contents of this manual is a Reader's Comment Form that you can use to explain what you like or dislike about Oracle SDP Provisioning or this technical reference manual. Mail your comments to the following address or call us directly at (650) 506-7000.

Oracle CRM Applications Content Development Manager  
Oracle Corporation  
500 Oracle Parkway  
Redwood Shores, California 94065  
U.S.A.

**Oracle Proprietary, Confidential Information--Use Restricted by Contract**

CHAPTER

# 2

## High-Level Design

**T**his chapter presents a high-level design for Oracle SDP Provisioning that satisfies the business needs we specify during Strategy and Analysis. It contains database diagrams for Oracle SDP Provisioning application building blocks, lists of database tables and views, and a list of modules.

---

## Overview of High-Level Design

During High-Level Design, we define the application components (tables, views, and modules) we need to build our application. We specify what application components should do without specifying the details of *how* they should do it.

You can refer to this High-Level Design chapter to quickly acquaint yourself with the tables, views, and modules that comprise Oracle SDP Provisioning applications. And, you can prepare yourself to understand the detailed design and implementation of Oracle SDP Provisioning.

---

## Database Diagrams

The Database Diagrams section graphically represents all Oracle SDP Provisioning applications tables and the relationships between them, organized by building block.

Use this section to quickly learn what tables each Oracle SDP Provisioning application building block uses, and how those tables interrelate. Then, you can refer to the Table and View Definitions sections of Chapter 3 for more detailed information about each of those tables.

---

## Table Lists

The Table List sections list the Oracle SDP Provisioning applications tables. Because a product might not include at least one table for each type, this Technical Reference Manual might not include each of the following sections.

### **Public Tables**

---

Use the Public Table List section to quickly identify the tables you are most interested in. Then, you can refer to the Table and View Definitions sections of Chapter 3 for more detailed information about those tables.

In addition, this manual may contain full documentation for one or more of the following Application Object Library tables: FND\_DUAL, FND\_CURRENCIES, and FND\_COMMON\_LOOKUPS.

**Oracle Proprietary, Confidential Information--Use Restricted by Contract**

## **Internal Tables**

---

This section includes a list of private, internal tables used by Oracle SDP Provisioning; we do not provide additional documentation for these tables.

---

## **View Lists**

The View List sections list the Oracle SDP Provisioning views, with one section for each type of view. Because a product might not include at least one view for each type, this Technical Reference Manual might not include each of the following sections.

Use this section to quickly identify the views you are most interested in. Then, you can refer to the Table and View Definitions sections of Chapter 3 for more detailed information about those views.

### **Public Views**

---

This section lists views that may be useful for your custom reporting or other data requirements. The list includes a description of the view, and the page in Chapter 3 that gives detailed information about the public view.

### **Web Views**

---

This section lists views that you may need to configure your Self-Service Web applications. The list includes a description of the view, and the page in Chapter 3 that gives detailed information about the web view.

### **Forms and Table Views**

---

This section lists supplementary views that are not essential to the Release 11i data model, but simplify coding or improve performance for Oracle Developer.

### **Internal Views**

---

This section includes each private, internal view that Oracle SDP Provisioning uses.

## **Multiple Reporting Currency Views**

---

This list includes views that were created to support the Multiple Reporting Currencies feature.

---

### **Module List**

The Module List section briefly describes each of the Oracle SDP Provisioning applications modules. This section lists forms, reports, and concurrent programs.

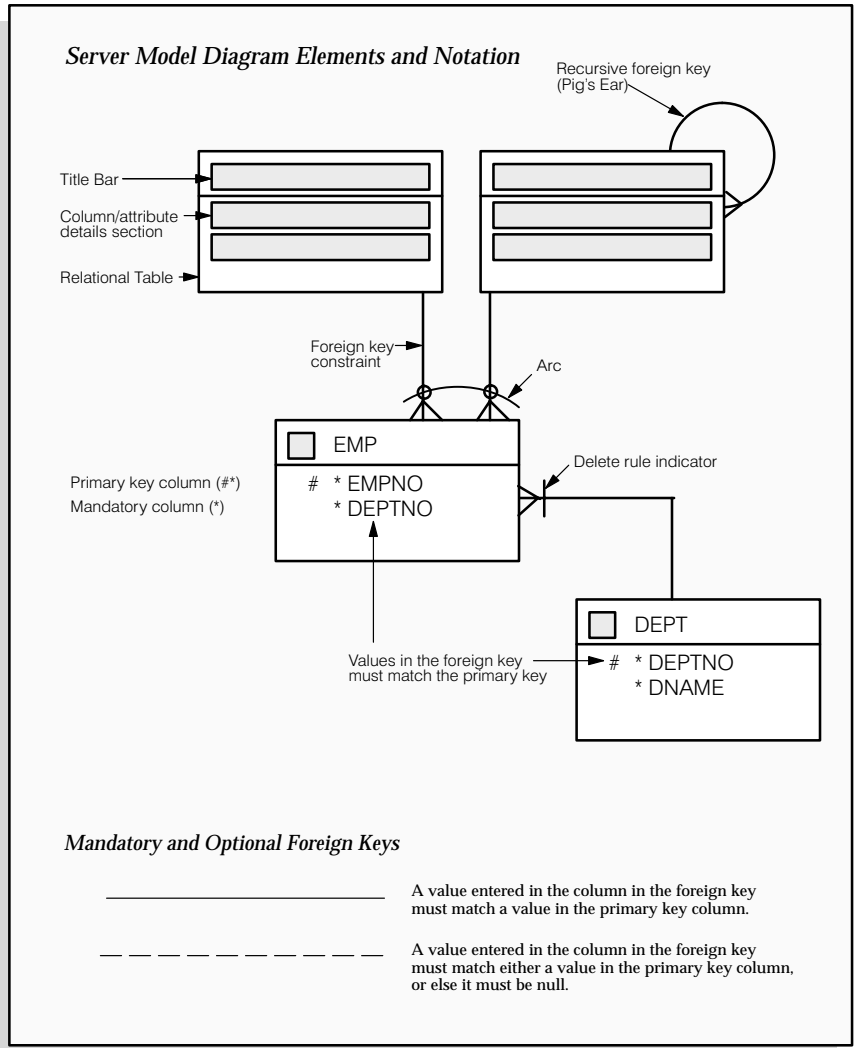
A form is a module comprised of closely related windows that are used together to perform a task. For example, the Enter Journals form in Oracle General Ledger includes the Enter Journals window, the Batch window, and the More Actions window. The Enter Journals window is the main window, and from it, you can use buttons to navigate to other windows in the form. The form name usually corresponds to the main window in the form, and is frequently a window you can open directly from the Navigator.

The Reports and Concurrent Programs lists include processes you can submit from the Submit Requests window or other windows, as well as processes that are submitted automatically by Oracle SDP Provisioning. Use your user's guide to learn more about reports and concurrent processes.

# Database Diagramming Conventions

We use the following notational conventions in our database diagrams:

**Figure 2 - 1**  
**Database Diagram**  
**Conventions**



**Tables** – are the basic unit of storage in the database. A hand symbol preceding the title in the table's title bar indicates that the table is not owned by this application but shared with another.

**Foreign key constraint** – is a type of referential integrity constraint for checking the integrity of data entered in a specific column or set of columns. This specified column or set of columns is known as the foreign key.

**Delete rule indicator** – determines the action to be taken when an attempt is made to delete a related row in a join table. A line through the foreign key constraint, as shown on the above diagram, indicates that this action is restricted.

**Arcs** – specify that, for any given row in a table, a value must be entered in one of the arc columns. The remaining columns within the arc must be null.



---

## Database Diagrams

This section graphically represents most of the significant Oracle SDP Provisioning tables and the relationships between them, organized by building block. Use this section to quickly learn what tables each Oracle SDP Provisioning application building block uses, and how these tables interrelate. Then, you can refer to the Table and View Definitions sections of Chapter 3 for more detailed information about each of those tables.

This section contains a database diagram for each of the following Oracle SDP Provisioning application building blocks:

- Diagram 1: Service Configuration
- Diagram 2: Transaction
- Diagram 3: Runtime

Some tables, especially important reference tables, appear in more than one database diagram. When several building blocks use a table, we show that table in each appropriate database diagram.

---

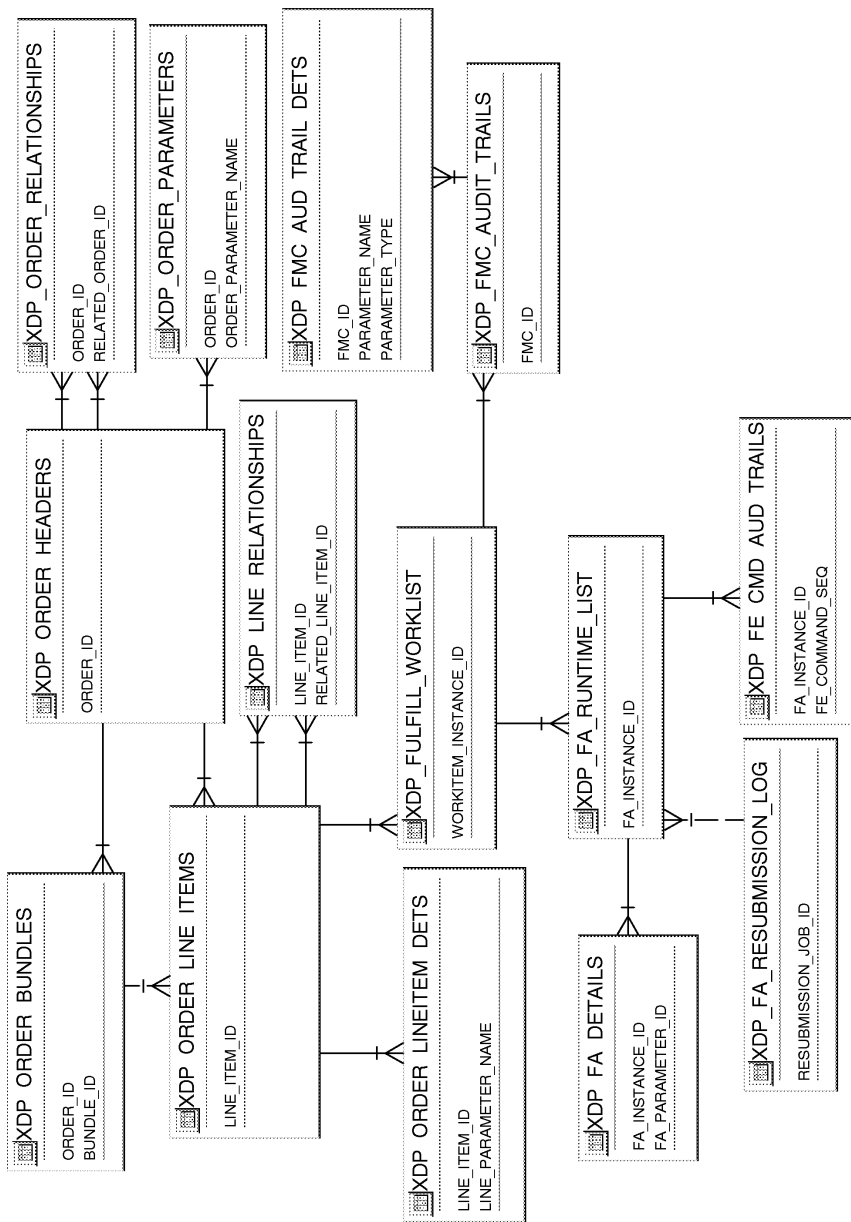
## Service Configuration



---

## Transaction

**Oracle Proprietary, Confidential Information--Use Restricted by Contract**



---

## Runtime

**Oracle Proprietary, Confidential Information--Use Restricted by Contract**

XDP\_ADAPTER\_REG  
# CHANNEL\_NAME

XDP\_ADAPTER\_ADMIN\_REQS  
# REQUEST\_ID

XDP\_ADAPTER\_JOB\_QUEUE  
# JOB\_ID

XDP\_WF\_PROCESS\_COORD  
# WF\_COORDINATION\_ID

XDP\_DQER\_REGISTRATION  
# DQER\_NAME

XDP\_DQ\_CONFIGURATION  
# INTERNAL\_Q\_NAME

## Public Table List

This section lists each public database table that Oracle Provisioning uses and provides a brief description of each of those tables. The page reference is to the table description in Chapter 3.

Note that "public" tables are not necessarily intended for write access by custom code; Oracle Corporation supports write access using only standard Oracle Applications forms, reports, and programs, or any SQL write access to tables explicitly documented as API tables. For more information, see the How Not To Use This Manual section of this book's Introduction.

Oracle Provisioning uses the following Public tables:

<b>Table Name</b>	<b>Description</b>
XDP_ACTION_CODES	Lookup table for service activation action codes (See page 3 – 8)
XDP_ACTION_CODES_TL	Lookup table for service activation action codes (See page 3 – 9)
XDP_ADAPTER_ADMIN_REQS	This table is used for connection management utility (See page 3 – 10)
XDP_ADAPTER_JOB_QUEUE	Job queue for the NEM (See page 3 – 12)
XDP_ADAPTER_REG	Adapter Registration table. (See page 3 – 14)
XDP_DQER_REGISTRATION	Internal table used for registering processes responsible for dequeuing messages from internal queues (See page 3 – 16)
XDP_DQ_CONFIGURATION	Configuration table for application queues (See page 3 – 17)
XDP_DQ_CONFIGURATION_TL	Multi-lingual support table for application queue configuration (See page 3 – 19)
XDP_DQ_EXCEPTIONS	Common table to store queue exceptions (See page 3 – 20)
XDP_FA_DETAILS	XDP_FA_DETAILS contains the runtime FA parameter values. (See page 3 – 21)
XDP_FA_FULFILLMENT_PROC	Fulfillment Element Fulfillment procedures (See page 3 – 22)
XDP_FA_PARAMETERS	This table is used to define parameters for the Fulfillment Procedure. (See page 3 – 24)

**Oracle Proprietary, Confidential Information--Use Restricted by Contract**

XDP_FA_RESUBMISSION_LOG	This table records the resubmission jobs for Oracle SDP Provisioning. The fulfillment elements may be restarted in Order Resubmission mode to resubmit orders to the provisioning workflow. (See page 3 – 25)
XDP_FA_RUNTIME_LIST	This table contains the list of the FAs which need to be executed for a workitem instance. (See page 3 – 26)
XDP_FES	This table holds all the names of the Fulfillment Elements (Network Elements). This data contains the definition of a fulfillment element. (See page 3 – 28)
XDP_FES_TL	Table to hold details of network element instances. (See page 3 – 29)
XDP_FE_ATTRIBUTE_DEF	Fulfillment Element Attribute Definition (See page 3 – 30)
XDP_FE_ATTRIBUTE_DEF_TL	Fulfillment Element Attribute Definition (See page 3 – 31)
XDP_FE_ATTRIBUTE_VAL	FE Attribute Values (See page 3 – 32)
XDP_FE_ATTRIBUTE_VAL_TL	FE Attribute Values (See page 3 – 33)
XDP_FE_CMD_AUD_TRAILS	FE Command Audit Trail (See page 3 – 34)
XDP_FE_GENERIC_CONFIG	Fulfillment Element Generic Config definition. (See page 3 – 35)
XDP_FE_SW_GEN_LOOKUP	Software Generic Lookup (See page 3 – 36)
XDP_FE_SW_GEN_LOOKUP_TL	Software Generic Lookup (See page 3 – 37)
XDP_FE_TYPES	Fulfillment Element Type definition (See page 3 – 38)
XDP_FE_TYPES_TL	Fulfillment Element Type definition (See page 3 – 39)
XDP_FMC_AUDIT_TRAILS	This table stores the responses from the upstream system regarding a service provisioning error (See page 3 – 40)
XDP_FMC_AUD_TRAIL_DETS	This table contains the history of the service parameter value change for a faulty order. (See page 3 – 41)
XDP_FULFILL_ACTIONS	Fulfillment Action definition (See page 3 – 42)
XDP_FULFILL_ACTIONS_TL	MLS (Multi-Language Support) for the XDP_FULFILLMENT_ACTIONS table (See page 3 – 43)
XDP_FULFILL_WORKLIST	This table identifies a list of services that need to be provisioned for the given order (See page 3 – 44)

XDP_LINE_RELATIONSHIPS	XDP_LINE_RELATIONSHIPS table is used to identify whether a line item is part of a package line (See page 3 – 46)
XDP_OE_ORDER_HEADERS	XDP_OE_ORDER_HEADERS contains the order header information for orders generated by Oracle SDP Provisioning –Order Entry Interface. (See page 3 – 47)
XDP_OE_ORDER_LINES	XDP_OE_ORDER_LINES contains all the order line information for an order which is generated by Oracle SDP Provisioning– Order Entry interface. (See page 3 – 49)
XDP_OE_ORDER_LINE_DET	The table XDP_OE_ORDER_LINE_DETAILS contains the order line parameter values for an order which is generated by Oracle SDP Provisioning– Order Entry interface. (See page 3 – 51)
XDP_OE_ORDER_PARAMETERS	XDP_OE_ORDER_PARAMETERS contains all the order parameters for an order which is generated by SDP Provisioning– Order Entry interface. (See page 3 – 52)
XDP_ORDER_BUNDLES	This table stores all Bundles associated with an order. (See page 3 – 53)
XDP_ORDER_HEADERS	Order Headers (See page 3 – 54)
XDP_ORDER_LINEITEM_DET	Order Line Item Details (See page 3 – 57)
XDP_ORDER_LINE_ITEMS	Order Line Items (See page 3 – 58)
XDP_ORDER_PARAMETERS	This table holds all parameters related to the order coming from the upstream system (Customer Care, Order Entry). These parameters are Order level parameters. (See page 3 – 61)
XDP_ORDER_RELATIONSHIPS	This table holds the relationship between orders. (See page 3 – 62)
XDP_PARAMETER_POOL	XDP_PARAMETER_POOL stores the parameter base definition (i.e., name, data type, etc...) for all the parameters which are known to SDP. (See page 3 – 64)
XDP_PARAMETER_POOL_TL	XDP_PARAMETER_POOL_TL is the MLS (Multi–Language Support) table for XDP_PARAMETER_POOL table. (See page 3 – 65)

XDP_PROC_BODY	XDP_PROC_BODY stores the source of all the user defined procedures (See page 3 – 66)
XDP_PROC_BODY_TL	XDP_PROC_BODY_TL is the MLS (Multi-Language Support) table for the XDP_PROC_BODY table (See page 3 – 67)
XDP_SERVICES	XDP_SERVICES holds all services offered by a service provider. A service is also a product and is often used interchangeably (See page 3 – 68)
XDP_SERVICES_TL	XDP_SERVICES_TL is the MLS (Multi-Language Support) table for the XDP_SERVICES table (See page 3 – 69)
XDP_SERVICE_PACKAGES	XDP_SERVICE_PACKAGES is used to identify the packages (See page 3 – 70)
XDP_SERVICE_PACKAGES_TL	XDP_SERVICE_PACKAGES_TL is the MLS (Multi-Language Support) table for the XDP_SERVICE_PACKAGES table (See page 3 – 71)
XDP_SERVICE_PKG_DET	XDP_SERVICE_PKG_DET holds all the services / products contained in a package (See page 3 – 72)
XDP_SERVICE_PKG_DET_TL	XDP_SERVICE_PKG_DET_TL is the MLS (Multi-Language Support) table for the XDP_SERVICE_PKG_DET table (See page 3 – 73)
XDP_SERVICE_VAL_ACTS	XDP_SERVICE_VAL_ACTS is used to define the valid service actions for a given service (See page 3 – 74)
XDP_SERVICE_VAL_ACTS_TL	XDP_SERVICE_VAL_ACTS_TL is the MLS (Multi-Language Support) table for the XDP_SERVICE_VAL_ACTS table (See page 3 – 76)
XDP_SERVICE_WI_MAP	XDP_SERVICE_WI_MAP is used to define the list of work items that need to be executed to fulfill the given service action (See page 3 – 77)
XDP_SERVICE_WI_MAP_TL	XDP_SERVICE_WI_MAP_TL is the MLS (Multi-Language Support) table for the XDP_SERVICE_WI_MAP table (See page 3 – 78)
XDP_WF_PROCESS_COORD	Workflow process coordination (See page 3 – 79)

XDP_WI_FA_MAPPING	XDP_WI_FA_MAPPING defines the list of fulfillment actions to be executed in order to fulfill a work item (See page 3 – 80)
XDP_WI_FA_MAPPING_TL	XDP_WI_FA_MAPPING_TL is the MLS (Multi–Language Support) table for the XDP_WI_FA_MAPPING table (See page 3 – 81)
XDP_WI_PARAMETERS	XDP_WI_PARAMETERS holds all the work item parameters and associated properties for a given work item (See page 3 – 82)
XDP_WI_RELATIONSHIPS	The table XDP_WI_RELATIONSHIPS hold all the relationships of any work item within an order. (See page 3 – 84)
XDP_WORKITEMS	XDP_WORKITEMS is used to define a work item (See page 3 – 85)
XDP_WORKITEMS_TL	XDP_WORKITEMS_TL is the MLS table (Multi–Language Support) for the XDP_WORKITEMS table (See page 3 – 87)
XDP_WORKLIST_DETAILS	Fulfillment Worklist Details (See page 3 – 88)

---

## Forms and Table View List

This section lists supplementary views that are not essential to the Release 11i data model, but simplify coding or improve performance of Developer. For example, many of these views are used as base tables in Oracle SDP Provisioning forms.



**Warning:** We do not recommend you query or alter data using these views. Furthermore, these views may change dramatically in subsequent minor or major releases of Oracle SDP Provisioning.

Oracle SDP Provisioning uses the following Forms and Table views:

- XDP\_ADAPTER\_JOB\_QUEUE\_V
- XDP\_ADAPTER\_SUMMARY\_V
- XDP\_ADAPTER\_TYPE\_V
- XDP\_EVENTS\_V
- XDP\_FA\_PARAMETERS\_DISP\_V
- XDP\_FA\_PARAMETERS\_V
- XDP\_FMC\_V
- XDP\_OE\_ORDER\_DETAILS\_V
- XDP\_ORDER\_DETAILS\_V
- XDP\_ORU\_ORDERS\_V
- XDP\_PEND\_ORDER\_V
- XDP\_READY\_FAS\_V
- XDP\_READY\_FES\_V
- XDP\_READY\_ORDER\_V
- XDP\_READY\_WORKITEM\_V
- XDP\_SUMMARY\_QUEUES\_V
- XDP\_SVE\_PKG\_DET\_DISP\_V
- XDP\_SVE\_VAL\_ACTION\_DISP\_V
- XDP\_SVE\_WI\_MAPPING\_DISP\_V
- XDP\_WAITING\_FES\_V
- XDP\_WI\_FA\_MAPPING\_DISP\_V
- XDP\_WI\_PARAMETERS\_DISP\_V

---

## Internal View List

This section lists each private, internal view that Oracle SDP Provisioning uses.



**Warning:** Oracle Corporation does not support access to Oracle Applications data using these views, except from standard Oracle Applications forms, reports, and programs.

Oracle SDP Provisioning uses the following internal views:

- XDP\_INBOUND\_MESSAGES\_V
- XDP\_OUTBOUND\_MESSAGES\_V

---

## Multilingual View List

This section lists each MultiLingual database view that Oracle SDP Provisioning uses. MultiLingual views were created to allow certain seed data to be available in multiple national languages simultaneously.

Oracle SDP Provisioning uses the following Multilingual views:

- XDP\_ACTION\_CODES\_VL
- XDP\_DQ\_CONFIGURATION\_VL
- XDP\_FES\_VL
- XDP\_FE\_ATTRIBUTE\_DEF\_VL
- XDP\_FE\_ATTRIBUTE\_VAL\_VL
- XDP\_FE\_SW\_GEN\_LOOKUP\_VL
- XDP\_FE\_TYPES\_VL
- XDP\_FULFILL\_ACTIONS\_VL
- XDP\_PARAMETER\_POOL\_VL
- XDP\_PROC\_BODY\_VL
- XDP\_SERVICES\_VL
- XDP\_SERVICE\_PACKAGES\_VL
- XDP\_SERVICE\_PKG\_DET\_VL
- XDP\_SERVICE\_VAL\_ACTS\_VL
- XDP\_SERVICE\_WI\_MAP\_VL
- XDP\_WI\_FA\_MAPPING\_VL
- XDP\_WORKITEMS\_VL

---

## Module List

Oracle SDP Provisioning uses no additional forms, reports, or concurrent programs.

CHAPTER

# 3

## Detailed Design

**T**his chapter presents a detailed design for implementing Oracle SDP Provisioning. It contains detailed definitions of tables and views that you may need to reference to write custom reports or use for other data extraction.

---

## Overview of Detailed Design

During Detailed Design, we specify in detail how each applications component should work. We prepare detailed definitions of tables and views.

You can refer to this Detailed Design chapter to gain a detailed understanding of the underlying structure and processing of Oracle SDP Provisioning that enables you to:

- Convert existing application data
- Integrate your Oracle SDP Provisioning application with your other applications systems
- Write custom reports
- Define alerts against Oracle Applications tables
- Create views for decision support queries using query tools

---

## Table and View Definitions

The Table and View Definitions section contains a detailed definition of Oracle SDP Provisioning applications tables. For each table, it provides information about primary keys, foreign keys, QuickCodes, indexes, triggers, and sequences. It also gives you a detailed description of each column and its characteristics. In addition, it provides the SQL statement that defines each view. Review this section to get a detailed understanding of what tables your Oracle SDP Provisioning application contains, and how it uses them to hold and access the information it needs.

---

## Table and View Definitions

This section contains a detailed description of each Oracle SDP Provisioning table and view that you may need to reference. For each table, it presents detailed information about:

- Primary keys
- Foreign keys
- Column descriptions
- Indexes
- Oracle sequences
- Triggers
- View derivations

Because Oracle does not support customization of Oracle Application Object Library tables, we do not provide you with detailed information about them. Consequently, this section does not document all the FND\_% tables Oracle SDP Provisioning uses.

The following sections appear in each table or view description:

---

### Foreign Keys

To help you understand the relationships between tables, we list each foreign key contained in a table. For each foreign key in a table, we list the primary key table name (the table to which a foreign key refers), its corresponding primary key columns, and the foreign key columns that refer to those primary key columns.

When the primary key table has a composite primary key, we list each column of the composite key sequentially.

If a table contains two or more distinct foreign keys that refer to the same primary key table, we repeat the primary key table name and list each of the distinct foreign keys separately.

---

### QuickCodes Columns

When a database column contains a QuickCodes value, which we implement using a foreign key to FND\_LOOKUPS, MFG\_LOOKUPS, or to some other lookup table, we list the QuickCodes type (lookup

**Oracle Proprietary, Confidential Information--Use Restricted by Contract**

type) to which the QuickCodes value must belong and a complete list of QuickCodes values and meanings. Some QuickCodes can be defined by you in the application. These values are designated as User-defined.

---

## Column Descriptions

We list the important characteristics of each column in a table or view. These characteristics include whether the column is part of the table's primary key, whether Oracle8i requires a value for this column, and the data type of the column. We also give you a brief description of how Oracle SDP Provisioning uses the column.

When a column is part of a table's primary key, we append the notation (PK) to the name of that column.

To help you understand which columns Oracle SDP Provisioning uses and which columns it does not use, we alert you to any unused column. When no module uses a database column, we show one of the following legends in the Description column:

<b>Not currently used</b>	Oracle SDP Provisioning does not use this column, although the column might be used in a future release.
<b>No longer used</b>	Oracle SDP Provisioning no longer uses this column. AutoInstall installs this column. Subsequent versions of Oracle SDP Provisioning might not include this column.
<b>No longer installed</b>	Oracle SDP Provisioning no longer uses this column. If you <i>upgraded</i> your software from an earlier version, you may still have this column, depending upon whether you chose to delete it during an upgrade process. If you <i>install</i> Oracle SDP Provisioning, you do not have this column.

### Standard Who Columns

---

Most Oracle SDP Provisioning tables contain standard columns to support \ **Row Who**. When your program or SQL\*Plus command selects a row from a table, use these columns to determine who last updated the row. If your program or SQL\*Plus command updates or

**Oracle Proprietary, Confidential Information--Use Restricted by Contract**

inserts a row in an interface table, you must populate each of the five standard Who columns:

<b>LAST_UPDATE_DATE</b>	Date when a user last updated this row
<b>LAST_UPDATED_BY</b>	User who last updated this row (foreign key to FND_USER.USER_ID)
<b>CREATION_DATE</b>	Date when this row was created
<b>CREATED_BY</b>	User who created this row (foreign key to FND_USER.USER_ID)
<b>LAST_UPDATE_LOGIN</b>	Operating system login of user who last updated this row (foreign key to FND_LOGINS.LOGIN_ID). You should set this to NULL, or to 0 if NULL is not allowed

Since every table containing Who columns has several foreign keys to the tables FND\_USER and FND\_LOGINS, we do not include the foreign key columns LAST\_UPDATED\_BY, CREATED\_BY, or LAST\_UPDATE\_LOGIN in a table's list of foreign keys.

### **Additional Who Columns for Concurrent Programs**

Some Oracle SDP Provisioning tables also contain several additional Who columns to distinguish between changes a user makes with a form and changes a concurrent program makes. When a concurrent program updates or inserts a row in a table, the concurrent program populates the following additional Who columns:

<b>REQUEST_ID</b>	Concurrent request ID of program that last updated this row (foreign key to FND_CONCURRENT_REQUESTS.REQUEST_ID)
<b>PROGRAM_APPLICATION_ID</b>	Application ID of program that last updated this row (foreign key to FND_APPLICATION.APPLICATION_ID)
<b>PROGRAM_ID</b>	Program ID of program that last updated this row (foreign key to FND_CONCURRENT_PROGRAM.CONCURRENT_PROGRAM_ID)
<b>PROGRAM_UPDATE_DATE</b>	Date when a program last updated this row

Since every table containing these additional Who columns has several foreign keys to the tables FND\_CONCURRENT\_REQUESTS, FND\_APPLICATION, and FND\_CONCURRENT\_PROGRAM, we do not include the foreign key columns REQUEST\_ID, PROGRAM\_APPLICATION\_ID, or PROGRAM\_ID in a table's list of foreign keys.

---

## Indexes

If an Oracle SDP Provisioning table uses an Oracle8i index, we list the database columns that comprise that index, in sequential order.

**Note:** The indexes we document in this manual correspond to unique keys we specified during product development and testing. In some cases, we may add additional indexes during the porting process to fine-tune performance on specific platforms; therefore, there may be minor differences between the indexes documented in this book and the indexes for production versions of Oracle SDP Provisioning.

---

## Sequences

Oracle SDP Provisioning uses Oracle8i sequence generators to generate unique integers. If any table column gets its value from an Oracle8i sequence generator, we list the name of the corresponding sequence generator and the name of the column that stores the unique integer.

---

## Database Triggers

If a table has one or more active database triggers, we provide a brief explanation of each database trigger and when it fires.

---

## View Derivation

For each Oracle SDP Provisioning view you may need to reference, we include important elements from the SQL statement that defines or

**Oracle Proprietary, Confidential Information--Use Restricted by Contract**

creates a view. By studying this view definition, you can understand exactly how a view derives its contents.

## XDP\_ACTION\_CODES

The table XDP\_ACTION\_CODES is used to define your own service provisioning action. For example, PROVIDE, ADD, ACTIVATE, DEACTIVATE, MODIFY.

### Column Descriptions

Name	Null?	Type	Description
ACTION_CODE_ID (PK)	NOT NULL	NUMBER	Unique System Generated Number for Action Code
ACTION_CODE	NOT NULL	VARCHAR2(30)	User-defined service activation or provisioning actions.
CREATED_BY	NOT NULL	NUMBER(15)	Standard Who column
CREATION_DATE	NOT NULL	DATE	Standard Who column
LAST_UPDATED_BY	NOT NULL	NUMBER(15)	Standard Who column
LAST_UPDATE_DATE	NOT NULL	DATE	Standard Who column
LAST_UPDATE_LOGIN	NULL	NUMBER(15)	Standard Who column

### Indexes

Index Name	Index Type	Sequence	Column Name
XDP_ACTION_CODES_U1	UNIQUE	5	ACTION_CODE_ID
XDP_ACTION_CODES_U2	UNIQUE	5	ACTION_CODE

### Sequences

Sequence	Derived Column
XDP_ACTION_CODES_S	ACTION_CODE_ID

## XDP\_ACTION\_CODES\_TL

The table XDP\_ACTION\_CODES\_TL is used for the MLS(Multi-Language Support) for the action code table. You can define the display name as well as the description for a given action in multiple languages.

### Foreign Keys

Primary Key Table	Primary Key Column	Foreign Key Column
XDP_ACTION_CODES	ACTION_CODE_ID	ACTION_CODE_ID

### Column Descriptions

Name	Null?	Type	Description
ACTION_CODE_ID (PK)	NOT NULL	NUMBER	service activation actions.
LANGUAGE (PK)	NOT NULL	VARCHAR2(4)	Language Code
SOURCE_LANG	NOT NULL	VARCHAR2(4)	Source language code
DISPLAY_NAME	NOT NULL	VARCHAR2(80)	Service activation action display name
DESCRIPTION	NULL	VARCHAR2(2000)	Service activation action descriptions
CREATED_BY	NOT NULL	NUMBER(15)	Standard Who cloumn
CREATION_DATE	NOT NULL	DATE	Standard Who cloumn
LAST_UPDATED_BY	NOT NULL	NUMBER(15)	Standard Who cloumn
LAST_UPDATE_DATE	NOT NULL	DATE	Standard Who cloumn
LAST_UPDATE_LOGIN	NULL	NUMBER(15)	Standard Who cloumn

### Indexes

Index Name	Index Type	Sequence	Column Name
XDP_ACTION_CODES_TL_U1	UNIQUE	4	ACTION_CODE_ID
		5	LANGUAGE

## XDP\_ADAPTER\_ADMIN\_REQS

The XDP\_ADAPTER\_ADMIN\_REQS table is used to define maintenance requests for an adapter. The allowable requests are STARTUP, SHUTDOWN, SUSPEND, RESUME, DISCONNECT and CONNECT. You can also schedule periodical maintenance requests by specifying the request frequency.

### QuickCodes Columns

Column	QuickCodes Type	QuickCodes Table
REQUEST_STATUS	XDP_REQUEST_STATUS	XDP_LOOKUPS
	COMPLETED	Completed
	ERROR	Error
	IN PROGRESS	In progress
	PENDING	Pending
REQUEST_TIMEZONE	XDP_TIME_ZONE	XDP_LOOKUPS
	ADT	Atlantic daylight time
	AST	Atlantic standard time
	BDT	Bering daylight time
	BST	Bering standard time
	CDT	Central daylight time
	CST	Central standard time
	EDT	Eastern daylight time
	EST	Eastern standard time
	GMT	Greenwich mean time
	HDT	Alaska-Hawaii daylight time
	HST	Alaska-Hawaii standard time
	MDT	Mountain daylight time
	MST	Mountain standard time
	NST	Newfoundland standard time
	PDT	Pacific daylight time
	PST	Pacific standard time
YDT	Yukon daylight time	
YST	Yukon standard time	
REQUEST_TYPE	XDP_REQUEST_TYPE	XDP_LOOKUPS
	CONNECT	Connect
	DISCONNECT	Disconnect
	RESUME	Resume
	SHUTDOWN	Shutdown
	STARTUP	Startup
	SUSPEND	Suspend

### Column Descriptions

Name	Null?	Type	Description
REQUEST_ID (PK)	NOT NULL	NUMBER	a unique id for this request
CHANNEL_NAME	NOT NULL	VARCHAR2(40)	The NE communication channel id
REQUEST_TYPE	NOT NULL	VARCHAR2(40)	The type of the request, i.e., suspend/resume, shutdown/startup, disconnect/connect.
FE_ID	NOT NULL	NUMBER	Name of the network element
REQUEST_STATUS	NOT NULL	VARCHAR2(40)	Current status for the request

**Oracle Proprietary, Confidential Information--Use Restricted by Contract**

REQUEST_DATE	NOT NULL	DATE	Date/Time this request is scheduled to be processed
REQUEST_TIMEZONE	NULL	VARCHAR2(3)	Timezone that the requested date/time is based on
REQUEST_PRIORITY	NULL	NUMBER	Priority of the Adapter Request
REQUESTED_BY_USER	NULL	VARCHAR2(40)	Name of the user who issued this request
REQUEST_PROCESSED_DATE	NULL	DATE	Timestamp for which the request is processed
REQUEST_FREQUENCY	NULL	NUMBER	How often this request will be processed
ERROR_REF_ID	NULL	NUMBER	Error Message identifier for the Adapter Request
CREATED_BY	NOT NULL	NUMBER(15)	Standard WHO column
CREATION_DATE	NOT NULL	DATE	Standard WHO column
LAST_UPDATED_BY	NOT NULL	NUMBER(15)	Standard WHO column
LAST_UPDATE_DATE	NOT NULL	DATE	Standard WHO column
LAST_UPDATE_LOGIN	NULL	NUMBER(15)	Standard WHO column

*Indexes*

<u>Index Name</u>	<u>Index Type</u>	<u>Sequence</u>	<u>Column Name</u>
XDP_ADAPTER_ADMIN_REQS_U1	UNIQUE	5	REQUEST_ID

*Sequences*

<u>Sequence</u>	<u>Derived Column</u>
XDP_ADAPTER_ADMIN_REQS_S	REQUEST_ID

## XDP\_ADAPTER\_JOB\_QUEUE

This table is used as an internal queue table. When the Fulfillment Action(FA) workflow tries to execute a fulfillment procedure(FP) for provisioning a fulfillment element(FE), the workflow has to first allocate a free adapter for the target FE. If all the adapters are busy, the workflow will register itself in this queue table and suspend itself. When the adapter becomes available, the workflow will be notified and the adapter channel name will be passed to the workflow as it resumes its normal process.

### QuickCodes Columns

Column	QuickCodes Type	QuickCodes Table
CHANNEL_USAGE_CODE	XDP_ADAPTER_USAGE_CODE	XDP_LOOKUPS
	ALL	All types
	MESSAGE	Messaging
	PROV	Provisioning
	RESUBMISSION	Order resubmission
	TEST	Testing

### Column Descriptions

Name	Null?	Type	Description
JOB_ID (PK)	NOT NULL	NUMBER	a unique number for a given NEM job
FE_ID	NOT NULL	NUMBER	Name of the network element
QUEUED_ON	NOT NULL	DATE	Timestamp which is created when the job is placed in the queue
WF_ITEM_TYPE	NOT NULL	VARCHAR2(8)	Item type of the workflow which this job belongs to
WF_ITEM_KEY	NOT NULL	VARCHAR2(240)	Item key of the workflow which this job belongs to
CHANNEL_USAGE_CODE	NOT NULL	VARCHAR2(40)	Internal code representing the use of the Adapter Channel
WF_ACTIVITY_NAME	NULL	VARCHAR2(40)	Activity Name of the workflow which this job belongs to
ORDER_ID	NULL	NUMBER	Order identifier which the Adapter Job belongs to
WORKITEM_INSTANCE_ID	NULL	NUMBER	Work Item instance identifier which the Adapter Job belongs to
FA_INSTANCE_ID	NULL	NUMBER	Fulfillment Action instance identifier which the Adapter Job belongs to
ERROR_REF_ID	NULL	NUMBER	Error Message identifier for the Adapter Request
CREATED_BY	NOT NULL	NUMBER(15)	Standard WHO column
CREATION_DATE	NOT NULL	DATE	Standard WHO column
LAST_UPDATED_BY	NOT NULL	NUMBER(15)	Standard WHO column
LAST_UPDATE_DATE	NOT NULL	DATE	Standard WHO column
LAST_UPDATE_LOGIN	NULL	NUMBER(15)	Standard WHO column

### Indexes

Index Name	Index Type	Sequence	Column Name
XDP_ADAPTER_JOB_QUEUE_U1	UNIQUE	5	JOB_ID

**Oracle Proprietary, Confidential Information--Use Restricted by Contract**

XDP_ADAPTER_JOB_QUEUE_U2	UNIQUE	2	WF_ITEM_TYPE
		5	WF_ITEM_KEY

*Sequences*

<u>Sequence</u>	<u>Derived Column</u>
XDP_ADAPTER_JOB_QUEUE_S	JOB_ID

## XDP\_ADAPTER\_REG

This internal table is used to manage all the adapters in SDP. Whenever an adapter starts up, it registers itself in this table. The channel name of an adapter is the communication channel identifier for the adapter. If the adapter is a database pipe based adapter, the channel name will be the

pipe name assigned by SDP at the adapter startup time. If the adapter is a message based adapter, i.e., in the case of number portability, the adapter actually uses AQ to establish a communication link between the SDP order processor and the FE, the channel name will be the unique identifier of the adapter instance.

### QuickCodes Columns

Column	QuickCodes Type	QuickCodes Table
ADAPTER_STATUS	XDP_ADAPTER_STATUS	XDP_LOOKUPS
	BUSY	Busy
	DISCONNECTED	Disconnected
	ERROR	Error
	IDLE	Idle
	SHUTDOWN	Shutdown
DEBUG_MODE	XDP_DEBUG_MODE	XDP_LOOKUPS
	1	Low
	2	Medium
	3	High
STARTUP_MODE	XDP_STARTUP_MODE	XDP_LOOKUPS
	AUTOMATIC	Startup is automatic
	DISABLED	Startup is prohibited
	MANUAL	Startup is done manually
USAGE_CODE	XDP_ADAPTER_USAGE_CODE	XDP_LOOKUPS
	ALL	All types
	MESSAGE	Messaging
	PROV	Provisioning
	RESUBMISSION	Order resubmission
	TEST	Testing

### Column Descriptions

Name	Null?	Type	Description
CHANNEL_NAME (PK)	NOT NULL	VARCHAR2(40)	NEM communication channel ID
FE_ID	NOT NULL	NUMBER	Name of the network element
ADAPTER_STATUS	NOT NULL	VARCHAR2(40)	Current status of the NEM. Valid status will be IDLE, BUSY, SHUTDOWN, SUSPENDED, DISCONNECTED, and ERROR.
PROCESS_ID	NOT NULL	NUMBER	UNIX process ID for the NEM
USAGE_CODE	NOT NULL	VARCHAR2(40)	Internal Code representing the usage of the adapter
STARTUP_MODE	NOT NULL	VARCHAR2(20)	Internal Code representing the startup mode of the adapter

**Oracle Proprietary, Confidential Information--Use Restricted by Contract**

DEBUG_MODE	NOT NULL	VARCHAR2(40)	Internal Code representing the debug mode of the adapter
STATUS_ACTIVE_TIME	NULL	DATE	The time stamp for NEM when it last has the BUSY status
ADAPTER_NAME	NULL	VARCHAR2(40)	An optional user entered name for the NEM
WF_ITEM_TYPE	NULL	VARCHAR2(8)	Item type of the workflow for the adapter
WF_ITEM_KEY	NULL	VARCHAR2(240)	Item key of the workflow for the adapter
WF_ACTIVITY_NAME	NULL	VARCHAR2(40)	Activity name of the workflow for the adapter
NODE	NULL	VARCHAR2(40)	Node for the Adapter
ERROR_REF_ID	NULL	NUMBER	Error Message identifier for the Adapter
CREATED_BY	NOT NULL	NUMBER(15)	Standard WHO columns
CREATION_DATE	NOT NULL	DATE	Standard WHO columns
LAST_UPDATED_BY	NOT NULL	NUMBER(15)	Standard WHO columns
LAST_UPDATE_DATE	NOT NULL	DATE	Standard WHO columns
LAST_UPDATE_LOGIN	NULL	NUMBER(15)	Standard WHO columns

*Indexes*

<u>Index Name</u>	<u>Index Type</u>	<u>Sequence</u>	<u>Column Name</u>
XDP_ADAPTER_REG_U1	UNIQUE	5	CHANNEL_NAME

## XDP\_DQER\_REGISTRATION

XDP\_DQER\_REGISTRATION table is used for registering processes, generally referred as dqers, which are responsible for dequeuing messages from internal queues.

### Column Descriptions

Name	Null?	Type	Description
DQER_NAME (PK)	NOT NULL	VARCHAR2(40)	Name of the dequeuing process
DQER_PROCESS_ID	NOT NULL	NUMBER	Process id of the dequeuing process
INTERNAL_Q_NAME	NOT NULL	VARCHAR2(40)	Name of queue used for application processing
MODULE_NAME	NOT NULL	VARCHAR2(40)	Not used. For future use
CREATION_DATE	NOT NULL	DATE	Standard Who column
LAST_UPDATE_DATE	NOT NULL	DATE	Standard Who column
CREATED_BY	NOT NULL	NUMBER(15)	Standard Who column - with the user id from FND_USER
LAST_UPDATED_BY	NOT NULL	NUMBER(15)	Standard Who column - with the user id from FND_USER
LAST_UPDATE_LOGIN	NULL	NUMBER(15)	Standard Who column

### Indexes

Index Name	Index Type	Sequence	Column Name
XDP_DQER_REGISTRATION_U1	UNIQUE	5	DQER_NAME

## XDP\_DQ\_CONFIGURATION

XDP\_DQ\_CONFIGURATION is a configuration table for application queues and is populated during the installation process. Number of dequeue processes per queue is user configurable and should only be modified using application user interface – Queue Console.

### QuickCodes Columns

Column	QuickCodes Type	QuickCodes Table
IS_AQ_FLAG	XDP_YES_NO_FLAG_DEFAULT_YES	XDP_LOOKUPS
	N	No
	Y	Yes
STATE	XDP_AQ_STATE	XDP_LOOKUPS
	DISABLED	Disable the queue for dequeuing
	ENABLED	Enable the queue for dequeuing
	SHUTDOWN	Shut down the dequeuer
	SUSPENDED	Suspend the dequeuer from dequeuing

### Column Descriptions

Name	Null?	Type	Description
INTERNAL_Q_NAME (PK)	NOT NULL	VARCHAR2(40)	Name of queue used for application processing
Q_ALIAS	NOT NULL	VARCHAR2(40)	Alias for the queue
QUEUE_TABLE_NAME	NOT NULL	VARCHAR2(40)	Name of table which implements the queue
PAYLOAD_TYPE	NOT NULL	VARCHAR2(40)	Payload type of the queue
NUM_OF_DQER	NOT NULL	NUMBER	User configurable number of dequeue processes for the queue
DQ_PROC_NAME	NOT NULL	VARCHAR2(80)	Name of the procedure which implements dequeue routine for the queue
MODULE_NAME	NOT NULL	VARCHAR2(240)	Not used. For future use
IS_AQ_FLAG	NOT NULL	VARCHAR2(1)	Flag to indicate whether the queue is implemented using Oracle's AQ
STATE	NOT NULL	VARCHAR2(10)	State of the queue. Possible state values are ENABLED, DISABLED, SHUTDOWN and SUSPENDED
DISPLAY_SEQUENCE	NULL	NUMBER	Display sequence of the queue in Queue Console
EXCEPTION_QUEUE_NAME	NULL	VARCHAR2(40)	Name of the exception queue used for the queue
MAX_RETRIES	NULL	NUMBER	Implementation specific retry count after which the message is moved from the queue to the exception queue
CREATION_DATE	NOT NULL	DATE	Standard Who column
LAST_UPDATE_DATE	NOT NULL	DATE	Standard Who column
LAST_UPDATED_BY	NOT NULL	NUMBER(15)	Standard Who column - with the user id from FND_USER
CREATED_BY	NOT NULL	NUMBER(15)	Standard Who column - with the user id from FND_USER
LAST_UPDATE_LOGIN	NULL	NUMBER(15)	Standard Who column

Oracle Proprietary, Confidential Information--Use Restricted by Contract

*Indexes*

<u>Index Name</u>	<u>Index Type</u>	<u>Sequence</u>	<u>Column Name</u>
XDP_DQ_CONFIGURATION_U1	UNIQUE	5	INTERNAL_Q_NAME
XDP_DQ_CONFIGURATION_U2	UNIQUE	5	Q_ALIAS

**Oracle Proprietary, Confidential Information--Use Restricted by Contract**

## XDP\_DQ\_CONFIGURATION\_TL

XDP\_DQ\_CONFIGURATION\_TL is a multi-lingual support table for the application queues and is populated by the installation process.

### Foreign Keys

Primary Key Table	Primary Key Column	Foreign Key Column
XDP_DQ_CONFIGURATION	INTERNAL_Q_NAME	INTERNAL_Q_NAME

### Column Descriptions

Name	Null?	Type	Description
INTERNAL_Q_NAME (PK)	NOT NULL	VARCHAR2(40)	Name of queue used for application processing
LANGUAGE (PK)	NOT NULL	VARCHAR2(4)	Language of Text. The language to which things are translated
SOURCE_LANG	NOT NULL	VARCHAR2(4)	Language from which things are translated
DISPLAY_NAME	NOT NULL	VARCHAR2(80)	Language dependent name of the queue
DESCRIPTION	NULL	VARCHAR2(2000)	Language dependent description of the queue
CREATED_BY	NOT NULL	NUMBER(15)	Standard Who column - with the user id from FND_USER
CREATION_DATE	NOT NULL	DATE	Standard Who column
LAST_UPDATED_BY	NOT NULL	NUMBER(15)	Standard Who column - with the user id from FND_USER
LAST_UPDATE_DATE	NOT NULL	DATE	Standard Who column
LAST_UPDATE_LOGIN	NULL	NUMBER(15)	Standard Who column

### Indexes

Index Name	Index Type	Sequence	Column Name
XDP_DQ_CONFIGURATION_TL_U1	UNIQUE	2	LANGUAGE
		5	INTERNAL_Q_NAME

## XDP\_DQ\_EXCEPTIONS

XDP\_DQ\_EXCEPTIONS table stores exceptions for application queues and is populated by application logic. Queue exceptions can be viewed using Queue Console

### Column Descriptions

Name	Null?	Type	Description
MESSAGE_ID	NULL	RAW	Handle to the message enqueued in the queue
WF_ITEM_TYPE	NULL	VARCHAR2(8)	Type of Workflow item
WF_ITEM_KEY	NULL	VARCHAR2(240)	Workflow item key
CALLER_NAME	NULL	VARCHAR2(40)	Name of the dequeuing process
CALLBACK_TEXT	NULL	VARCHAR2(4000)	Not used. For future use
Q_NAME	NULL	VARCHAR2(40)	Name of the queue
ERROR_REF_ID (PK)	NOT NULL	NUMBER	Reference id of the queue
TIME_STAMP	NULL	DATE	Timestamp at which the exception occurred
CREATED_BY	NOT NULL	NUMBER(15)	Standard Who column - with the user id from FND_USER
CREATION_DATE	NOT NULL	DATE	Standard Who column
LAST_UPDATED_BY	NOT NULL	NUMBER(15)	Standard Who column - with the user id from FND_USER
LAST_UPDATE_DATE	NOT NULL	DATE	Standard Who column
LAST_UPDATE_LOGIN	NULL	NUMBER(15)	Standard Who column - with the user id from FND_USER

### Indexes

Index Name	Index Type	Sequence	Column Name
XDP_DQ_EXCEPTIONS_U1	UNIQUE	5	ERROR_REF_ID

## XDP\_FA\_DETAILS

An order processor table which contains the runtime FA parameter values for an FA instance. The `is_value_evaluated` flag indicates the value stored here may be a result of the FA parameter evaluation procedure call.

### Foreign Keys

Primary Key Table	Primary Key Column	Foreign Key Column
XDP_FA_PARAMETERS	FULFILLMENT_ACTION_ID FA_PARAMETER_ID	FULFILLMENT_ACTION_ID FA_PARAMETER_ID
XDP_FA_RUNTIME_LIST	FA_INSTANCE_ID	FA_INSTANCE_ID

### QuickCodes Columns

Column	QuickCodes Type	QuickCodes Table
IS_VALUE_EVALUATED	XDP_YES_NO_FLAG_DEFAULT_NO N Y	XDP_LOOKUPS No Yes

### Column Descriptions

Name	Null?	Type	Description
FA_INSTANCE_ID (PK)	NOT NULL	NUMBER	Fulfillment Action instance identifier
FA_PARAMETER_ID (PK)	NOT NULL	NUMBER	Fulfillment Action parameter identifier
FULFILLMENT_ACTION_ID	NOT NULL	NUMBER	Fulfillment Action identifier
IS_VALUE_EVALUATED	NOT NULL	VARCHAR2(1)	This field indicates if the value has been evaluated via a user defined procedure or not
PARAMETER_VALUE	NULL	VARCHAR2(4000)	Fulfillment Action parameter value
PARAMETER_REF_VALUE	NULL	VARCHAR2(4000)	Fulfillment Action parameter reference value
CREATED_BY	NOT NULL	NUMBER(15)	Standard Who column - with the user id from FND_USER
CREATION_DATE	NOT NULL	DATE	Standard Who column
LAST_UPDATED_BY	NOT NULL	NUMBER(15)	Standard Who column - with the user id from FND_USER
LAST_UPDATE_DATE	NOT NULL	DATE	Standard Who column
LAST_UPDATE_LOGIN	NULL	NUMBER(15)	Standard Who column

### Indexes

Index Name	Index Type	Sequence	Column Name
XDP_FA_DETAILS_U1	UNIQUE	1	FA_INSTANCE_ID
		2	FA_PARAMETER_ID

## XDP\_FA\_FULFILLMENT\_PROC

XDP\_FA\_FULFILLMENT\_PROC table is used to store the name of the Fulfillment Procedure (FP). The FP is a PL/SQL procedure where you can define your provisioning logic for a given Fulfillment Action (FA). The table allows you to map a Fulfillment Action to a Fulfillment Procedure based on the Fulfillment Element's (FE) software generic and the Adapter Type. For example, FA 'ADD\_ROUTER\_SUBSCRIBER' is used to add a subscriber on a router. Let's say router 4.0 provides JAVA script interface while router 3.0 supports only telnet interface. The table allows you to define two different FPs for the same FA and SDP will execute the appropriate FP at runtime based on the FE to be provisioned

### Foreign Keys

Primary Key Table	Primary Key Column	Foreign Key Column
XDP_FE_SW_GEN_LOOKUP	FE_SW_GEN_LOOKUP_ID	FE_SW_GEN_LOOKUP_ID
XDP_FULFILL_ACTIONS	FULFILLMENT_ACTION_ID	FULFILLMENT_ACTION_ID
XDP_PROC_BODY	PROC_NAME	FULFILLMENT_PROC
XDP_PROC_BODY	PROC_NAME	TEST_PROVISIONING_PROC

### QuickCodes Columns

Column	QuickCodes Type	QuickCodes Table
PROTECTED_FLAG	XDP_YES_NO_FLAG_DEFAULT_NO	XDP_LOOKUPS
	N	No
	Y	Yes

### Column Descriptions

Name	Null?	Type	Description
FA_FULFILLMENT_PROC_ID (PK)	NOT NULL	NUMBER	Fulfillment Action Fulfillment Procedure Identifier.
FULFILLMENT_ACTION_ID	NOT NULL	NUMBER	Fulfillment Action Identifier for which Fulfillment Procedure is defined.
FE_SW_GEN_LOOKUP_ID	NOT NULL	NUMBER	Software Generic Identifier to which the Fulfillment Procedure is defined.
FULFILLMENT_PROC	NULL	VARCHAR2(40)	Fulfillment Procedure Internal Name.
UNDO_PROVISIONING_PROC	NULL	VARCHAR2(40)	Reserved for Future Use.
TEST_PROVISIONING_PROC	NULL	VARCHAR2(40)	Reserved for Future Use.
PROTECTED_FLAG	NOT NULL	VARCHAR2(1)	Flag to Indicate this Fulfillment Procedure is Protected.
CREATION_DATE	NOT NULL	DATE	Standard WHO Column
CREATED_BY	NOT NULL	NUMBER(15)	Standard WHO Column
LAST_UPDATE_DATE	NOT NULL	DATE	Standard WHO Column
LAST_UPDATED_BY	NOT NULL	NUMBER(15)	Standard WHO Column
LAST_UPDATE_LOGIN	NULL	NUMBER(15)	Standard WHO Column

**Oracle Proprietary, Confidential Information--Use Restricted by Contract**

*Indexes*

<u>Index Name</u>	<u>Index Type</u>	<u>Sequence</u>	<u>Column Name</u>
XDP_FULFILLMENT_PROC_N1	NOT UNIQUE	20	TEST_PROVISIONING_PROC
XDP_FULFILLMENT_PROC_N2	NOT UNIQUE	5	UNDO_PROVISIONING_PROC
XDP_FULFILLMENT_PROC_N3	NOT UNIQUE	20	FULFILLMENT_PROC
XDP_FULFILLMENT_PROC_U1	UNIQUE	5	FA_FULFILLMENT_PROC_ID
XDP_FULFILLMENT_PROC_U2	UNIQUE	1	FULFILLMENT_ACTION_ID
		2	FE_SW_GEN_LOOKUP_ID

*Sequences*

<u>Sequence</u>	<u>Derived Column</u>
XDP_FA_FULFILLMENT_PROC_S	FA_FULFILLMENT_PROC_ID

---

## XDP\_FA\_PARAMETERS

XDP\_FA\_PARAMETERS table allows you to define Fulfillment Action (FA) Parameters used in the Fulfillment Procedure. The Evaluation Procedure can be used to specify the business logic for evaluating a given FA Parameter. One example may be an API call to decrypt sensitive data at runtime.

### Foreign Keys

Primary Key Table	Primary Key Column	Foreign Key Column
XDP_FULFILL_ACTIONS	FULFILLMENT_ACTION_ID	FULFILLMENT_ACTION_ID
XDP_PARAMETER_POOL	PARAMETER_ID	FA_PARAMETER_ID
XDP_PROC_BODY	PROC_NAME	EVALUATION_PROCEDURE

### QuickCodes Columns

Column	QuickCodes Type	QuickCodes Table
LOG_IN_AUDIT_TRAIL_FLAG	XDP_YES_NO_FLAG_DEFAULT_YES	XDP_LOOKUPS
	N	No
	Y	Yes

### Column Descriptions

Name	Null?	Type	Description
FULFILLMENT_ACTION_ID (PK)	NOT NULL	NUMBER	Fulfillment Action Identifier Fulwhichy tis

## XDP\_FA\_RESUBMISSION\_LOG

XDP\_FA\_RESUBMISSION\_LOG table records the resubmission jobs for Oracle Provisioning. The Fulfillment Elements may be restarted in Order Resubmission mode to resubmit orders to the provisioning workflow.

### QuickCodes Columns

Column	QuickCodes Type	QuickCodes Table
STATUS_CODE	XDP_STATUS_CODE	XDP_LOOKUPS
	ABORTED	Provisioning aborted
	COMPLETED	Completed successfully
	ERROR	Error
	IN PROGRESS	In progress
	PENDING	Pending
	SUCCESS	Success
SUCCESS_WITH_OVERRIDE	Success with override	

### Column Descriptions

Name	Null?	Type	Description
RESUBMISSION_JOB_ID (PK)	NOT NULL	NUMBER	System generated unique identifier for the resubmission log
FULFILLMENT_ELEMENT_NAME	NOT NULL	VARCHAR2(40)	Name of the fulfillment element
FE_ID	NOT NULL	NUMBER	Unique identifier for the fulfillment element
SUBMITTED_BY	NOT NULL	VARCHAR2(80)	Identification of the order resubmission requestor
TIMESTAMP	NOT NULL	DATE	Date and time for the Order Resubmission request
STATUS_CODE	NOT NULL	VARCHAR2(40)	Status of the resubmission process
START_DATE	NOT NULL	DATE	Start date for the resubmission process
END_DATE	NOT NULL	DATE	Requested end date for the resubmission process
COMPLETION_DATE	NULL	DATE	Actual completion date of the resubmission process
CREATION_DATE	NOT NULL	DATE	Standard Who column
LAST_UPDATED_BY	NOT NULL	NUMBER(15)	Standard Who column
LAST_UPDATE_DATE	NOT NULL	DATE	Standard Who column
CREATED_BY	NOT NULL	NUMBER(15)	Standard Who column
LAST_UPDATE_LOGIN	NULL	NUMBER(15)	Standard Who column

### Indexes

Index Name	Index Type	Sequence	Column Name
XDP_FA_RESUBMISSION_U1	UNIQUE	1	RESUBMISSION_JOB_ID

### Sequences

Sequence	Derived Column
XDP_FA_RESUBMISSION_LOG_S	RESUBMISSION_JOB_ID

## XDP\_FA\_RUNTIME\_LIST

This table contains the list of the FAs which need to be executed for a workitem instance.

### Foreign Keys

Primary Key Table	Primary Key Column	Foreign Key Column
XDP_FA_RESUBMISSION_LOG	RESUBMISSION_JOB_ID	RESUBMISSION_JOB_ID
XDP_FES	FE_ID	FE_ID
XDP_FULFILL_ACTIONS	FULFILLMENT_ACTION_ID	FULFILLMENT_ACTION_ID
XDP_FULFILL_WORKLIST	WORKITEM_INSTANCE_ID	WORKITEM_INSTANCE_ID

### QuickCodes Columns

Column	QuickCodes Type	QuickCodes Table
STATE	XDP_PROCESS_STATE	XDP_LOOKUPS
	CANCELED	Canceled
	COMPLETED	Completed
	HOLD	On hold
	MERGED	Workitem has been merged into another workitem
	PREPROCESS	New
	READY	Ready for processing
STATUS_CODE	XDP_STATUS_CODE	XDP_LOOKUPS
	ABORTED	Provisioning aborted
	COMPLETED	Completed successfully
	ERROR	Error
	IN PROGRESS	In progress
	PENDING	Pending
	SUCCESS	Success
SUCCESS_WITH_OVERRIDE	Success with override	

### Column Descriptions

Name	Null?	Type	Description
FA_INSTANCE_ID (PK)	NOT NULL	NUMBER	Fulfillment Action instance identifier
WORKITEM_INSTANCE_ID	NOT NULL	NUMBER	Associated work item instance identifier
FULFILLMENT_ACTION_ID	NOT NULL	NUMBER	Fulfillment Action identifier
STATUS_CODE	NOT NULL	VARCHAR2(40)	Current provisioning status of the Fulfillment Action instance
STATE	NOT NULL	VARCHAR2(40)	Current provisioning process state of the Fulfillment Action instance
FE_ID	NULL	NUMBER	Identifier of the Fulfillment Element to be provisioning on
FA_RUNTIME_MESSAGE_ID	NULL	RAW	A handle to an AQ runtime message
PROVISIONING_SEQUENCE	NULL	NUMBER	The provisioning sequence number of this Fulfillment Action instance within its associated work item execution
PRIORITY	NULL	NUMBER	Provisioning priority

**Oracle Proprietary, Confidential Information--Use Restricted by Contract**

START_PROVISIONING_DATE	NULL	DATE	Time stamp when the provisioning process starts
COMPLETION_DATE	NULL	DATE	The time stamp when the provisioning completed
CANCEL_PROVISIONING_DATE	NULL	DATE	The time stamp when the provisioning is cancelled
CANCELED_BY	NULL	VARCHAR2(40)	The user ID of who cancelled the provisioning process
HOLD_PROVISIONING_DATE	NULL	DATE	For future use.
HELD_BY	NULL	VARCHAR2(40)	For future use.
RESUME_PROVISIONING_DATE	NULL	DATE	For future use.
RESUMED_BY	NULL	VARCHAR2(40)	For future use.
WF_ITEM_TYPE	NULL	VARCHAR2(8)	Fulfillment action workflow item type
WF_ITEM_KEY	NULL	VARCHAR2(240)	Fulfillment action workflow item key
ERROR_REF_ID	NULL	NUMBER	A handle to the error table
RESUBMISSION_JOB_ID	NULL	NUMBER	Identifier of an order resubmission job if this fulfillment action instance is part of a resubmission job
MSGID	NULL	RAW	A handle to its corresponding process queue
CREATION_DATE	NOT NULL	DATE	Standard Who column
LAST_UPDATE_DATE	NOT NULL	DATE	Standard Who column
LAST_UPDATED_BY	NOT NULL	NUMBER(15)	Standard Who column - with the user id from FND_USER
CREATED_BY	NOT NULL	NUMBER(15)	Standard Who column - with the user id from FND_USER
LAST_UPDATE_LOGIN	NULL	NUMBER(15)	Standard Who column

#### Indexes

Index Name	Index Type	Sequence	Column Name
XDP_FA_RUNTIME_LIST_N1	NOT UNIQUE	1	FA_INSTANCE_ID
		2	STATE
		4	START_PROVISIONING_DATE
XDP_FA_RUNTIME_LIST_N2	NOT UNIQUE	10	FULFILLMENT_ACTION_ID
XDP_FA_RUNTIME_LIST_N3	NOT UNIQUE	20	WORKITEM_INSTANCE_ID
XDP_FA_RUNTIME_LIST_N4	NOT UNIQUE	5	FE_ID
XDP_FA_RUNTIME_LIST_U1	UNIQUE	5	FA_INSTANCE_ID

#### Sequences

Sequence	Derived Column
XDP_FA_RUNTIME_LIST_S	FA_INSTANCE_ID
XDP_FA_RUNTIME_MESSAGE_ID_S	FA_RUNTIME_MESSAGE_ID

## XDP\_FES

XDP\_FES table holds all the names of the Fulfillment Elements (Network Elements). This data contains the definition of a Fulfillment Element. Example: FE or NE is a DMS200, a Cisco CPC, HA Server.

### Foreign Keys

Primary Key Table	Primary Key Column	Foreign Key Column
XDP_FE_TYPES	FETYPE_ID	FETYPE_ID

### Column Descriptions

Name	Null?	Type	Description
FE_ID (PK)	NOT NULL	NUMBER	Fulfillment Element identifier
FETYPE_ID	NOT NULL	NUMBER	Fulfillment Element Type identifier
FULFILLMENT_ELEMENT_NAME	NOT NULL	VARCHAR2(40)	Name of the Fulfillment Element
MAX_CONNECTION	NOT NULL	NUMBER	Maximum number of concurrent connections it allows
MIN_CONNECTION	NOT NULL	NUMBER	Minimum number of concurrent connections it allows
SESSION_CONTROLLER_ID	NULL	NUMBER	Future use.
VALID_DATE	NULL	DATE	Date indicating when the Fulfillment Element is active for use
INVALID_DATE	NULL	DATE	Date indicating when the Fulfillment Element is inactive for use
GEO_AREA_ID	NULL	NUMBER	Geographic area for the Fulfillment Element.
ROLE_NAME	NULL	VARCHAR2(100)	Group to be notified if problem occurs with the object.
NETWORK_UNIT_ID	NULL	NUMBER	Network Unit identifier for the Adapter
CREATION_DATE	NOT NULL	DATE	Standard WHO column
LAST_UPDATED_BY	NOT NULL	NUMBER(15)	Standard WHO column
CREATED_BY	NOT NULL	NUMBER(15)	Standard WHO column
LAST_UPDATE_DATE	NOT NULL	DATE	Standard WHO column
LAST_UPDATE_LOGIN	NULL	NUMBER(15)	Standard WHO column

### Indexes

Index Name	Index Type	Sequence	Column Name
XDP_FES_N1	NOT UNIQUE	10	GEO_AREA_ID
XDP_FES_N2	NOT UNIQUE	5	FETYPE_ID
XDP_FES_U1	UNIQUE	5	FE_ID
XDP_FES_U2	UNIQUE	1	FE_ID
		2	FETYPE_ID
XDP_FES_U3	UNIQUE	5	FULFILLMENT_ELEMENT_NAME

### Sequences

Sequence	Derived Column
XDP_FES_S	FE_ID

Oracle Proprietary, Confidential Information--Use Restricted by Contract

## XDP\_FES\_TL

XDP\_FES\_TL is the MLS (Multi-Language Support) for the XDP\_FES table. You can define the display name as well as the description for a Fulfillment Element Name in multiple languages.

### Foreign Keys

Primary Key Table	Primary Key Column	Foreign Key Column
XDP_FES	FE_ID	FE_ID

### Column Descriptions

Name	Null?	Type	Description
FE_ID (PK)	NOT NULL	NUMBER	Fulfillment Element identifier
LANGUAGE (PK)	NOT NULL	VARCHAR2(4)	Internal Code representing the Language
SOURCE_LANG	NOT NULL	VARCHAR2(4)	Internal Code representing the Source Language
DISPLAY_NAME	NOT NULL	VARCHAR2(80)	Display Name for the Fulfillment Element
DESCRIPTION	NULL	VARCHAR2(2000)	Description
CREATED_BY	NOT NULL	NUMBER(15)	Standard WHO column
CREATION_DATE	NOT NULL	DATE	Standard WHO column
LAST_UPDATED_BY	NOT NULL	NUMBER(15)	Standard WHO column
LAST_UPDATE_DATE	NOT NULL	DATE	Standard WHO column
LAST_UPDATE_LOGIN	NULL	NUMBER(15)	Standard WHO column

### Indexes

Index Name	Index Type	Sequence	Column Name
XDP_FES_TL_U1	UNIQUE	1	FE_ID
		2	LANGUAGE

## XDP\_FE\_ATTRIBUTE\_DEF

XDP\_FE\_ATTRIBUTE\_DEF table contains the data definition for SDP to communicate with a given type of Fulfillment Element. Example: IP address for a Unix Fulfillment Element Type.

### Foreign Keys

Primary Key Table	Primary Key Column	Foreign Key Column
XDP_FE_SW_GEN_LOOKUP	FE_SW_GEN_LOOKUP_ID	FE_SW_GEN_LOOKUP_ID

### QuickCodes Columns

Column	QuickCodes Type	QuickCodes Table
CONCEAL_DATA	XDP_YES_NO_FLAG_DEFAULT_NO	XDP_LOOKUPS
	N	No
	Y	Yes

### Column Descriptions

Name	Null?	Type	Description
FE_ATTRIBUTE_ID (PK)	NOT NULL	NUMBER	Fulfillment Element Attribute Identifier.
FE_SW_GEN_LOOKUP_ID	NOT NULL	NUMBER	Fulfillment Element Software Generic Identifier to which this Attribute belongs to.
FE_ATTRIBUTE_NAME	NOT NULL	VARCHAR2(40)	Attribute Name.
CONCEAL_DATA	NOT NULL	VARCHAR2(1)	Flag to Indicate if the Attribute Value must be hidden in the Table.
DEFAULT_VALUE	NULL	VARCHAR2(1996)	Default value of this Attribute.
DISPLAY_SEQ	NULL	NUMBER	Display Sequence for this Attribute.
CREATION_DATE	NOT NULL	DATE	Standard WHO Column.
LAST_UPDATE_DATE	NOT NULL	DATE	Standard WHO Column.
LAST_UPDATED_BY	NOT NULL	NUMBER(15)	Standard WHO Column.
CREATED_BY	NOT NULL	NUMBER(15)	Standard WHO Column.
LAST_UPDATE_LOGIN	NULL	NUMBER(15)	Standard WHO Column.

### Indexes

Index Name	Index Type	Sequence	Column Name
XDP_FE_ATTRIBUTE_DEF_N1	NOT UNIQUE	2	FE_SW_GEN_LOOKUP_ID
XDP_FE_ATTRIBUTE_DEF_U1	UNIQUE	5	FE_ATTRIBUTE_ID
XDP_FE_ATTRIBUTE_DEF_U2	UNIQUE	4	FE_SW_GEN_LOOKUP_ID
		5	FE_ATTRIBUTE_NAME

### Sequences

Sequence	Derived Column
XDP_FE_ATTRIBUTE_DEF_S	FE_ATTRIBUTE_ID

Oracle Proprietary, Confidential Information--Use Restricted by Contract

## XDP\_FE\_ATTRIBUTE\_DEF\_TL

XDP\_FE\_ATTRIBUTE\_DEF\_TL is the MLS (Multi-Language Support) for the XDP\_FE\_ATTRIBUTE\_DEF table. You can define the display name as well as the description for a given attribute name in multiple languages.

### Foreign Keys

Primary Key Table	Primary Key Column	Foreign Key Column
XDP_FE_ATTRIBUTE_DEF	FE_ATTRIBUTE_ID	FE_ATTRIBUTE_ID

### Column Descriptions

Name	Null?	Type	Description
FE_ATTRIBUTE_ID (PK)	NOT NULL	NUMBER	Fulfillment Element Attribute Identifier.
LANGUAGE (PK)	NOT NULL	VARCHAR2(4)	Language.
SOURCE_LANG	NOT NULL	VARCHAR2(4)	The Language the text will mirror.
DISPLAY_NAME	NOT NULL	VARCHAR2(80)	Display Name for the Attribute.
DESCRIPTION	NULL	VARCHAR2(2000)	Description
CREATED_BY	NOT NULL	NUMBER(15)	Standard WHO Column.
CREATION_DATE	NOT NULL	DATE	Standard WHO Column.
LAST_UPDATED_BY	NOT NULL	NUMBER(15)	Standard WHO Column.
LAST_UPDATE_DATE	NOT NULL	DATE	Standard WHO Column.
LAST_UPDATE_LOGIN	NULL	NUMBER(15)	Standard WHO Column.

### Indexes

Index Name	Index Type	Sequence	Column Name
XDP_FE_ATTRIBUTE_DEF_TL_U1	UNIQUE	1	FE_ATTRIBUTE_ID
		2	LANGUAGE

## XDP\_FE\_ATTRIBUTE\_VAL

XDP\_FE\_ATTRIBUTE\_VAL table contains the configuration data for SDP to communicate with a given Fulfillment Element. Example: 144.126.174.151 is the IP address for the logical name of 'FE 'ROUTER\_NY'.

### Foreign Keys

Primary Key Table	Primary Key Column	Foreign Key Column
XDP_FE_ATTRIBUTE_DEF	FE_ATTRIBUTE_ID	FE_ATTRIBUTE_ID
XDP_FE_GENERIC_CONFIG	FE_GENERIC_CONFIG_ID	FE_GENERIC_CONFIG_ID

### Column Descriptions

Name	Null?	Type	Description
FE_ATTRIBUTE_ID (PK)	NOT NULL	NUMBER	Fulfillment Element Attribute Value identifier
FE_GENERIC_CONFIG_ID (PK)	NOT NULL	NUMBER	Fulfillment Element Generic Configuration identifier to which the Fulfillment Element Attribute belongs to
FE_ATTRIBUTE_VALUE	NULL	VARCHAR2(1996)	Fulfillment Element Attribute value
CREATED_BY	NOT NULL	NUMBER(15)	Standard WHO column
CREATION_DATE	NOT NULL	DATE	Standard WHO column
LAST_UPDATED_BY	NOT NULL	NUMBER(15)	Standard WHO column
LAST_UPDATE_DATE	NOT NULL	DATE	Standard WHO column
LAST_UPDATE_LOGIN	NULL	NUMBER(15)	Standard WHO column

### Indexes

Index Name	Index Type	Sequence	Column Name
XDP_FE_ATTRIBUTE_VAL_N1	NOT UNIQUE	10	FE_ATTRIBUTE_ID
XDP_FE_ATTRIBUTE_VAL_N2	NOT UNIQUE	2	FE_GENERIC_CONFIG_ID
XDP_FE_ATTRIBUTE_VAL_U1	UNIQUE	1	FE_ATTRIBUTE_ID
		2	FE_GENERIC_CONFIG_ID

## XDP\_FE\_ATTRIBUTE\_VAL\_TL

XDP\_FE\_ATTRIBUTE\_VAL\_TL is the MLS (Multi-Language Support) for the XDP\_FE\_ATTRIBUTE\_VAL table. You can define the display name as well as the description for a given Adapter Type in multiple languages.

### Foreign Keys

Primary Key Table	Primary Key Column	Foreign Key Column
XDP_FE_ATTRIBUTE_VAL	FE_ATTRIBUTE_ID FE_GENERIC_CONFIG_ID	FE_ATTRIBUTE_ID FE_GENERIC_CONFIG_ID

### Column Descriptions

Name	Null?	Type	Description
FE_ATTRIBUTE_ID (PK)	NOT NULL	NUMBER	Fulfillment Element Attribute identifier
FE_GENERIC_CONFIG_ID (PK)	NOT NULL	NUMBER	Fulfillment Element Generic Configuration identifier to which the Fulfillment Element Attribute belongs to
LANGUAGE (PK)	NOT NULL	VARCHAR2(4)	Internal Code representing the Language
SOURCE_LANG	NOT NULL	VARCHAR2(4)	Internal Code representing the Source Language
DISPLAY_NAME	NOT NULL	VARCHAR2(80)	Display Name for the Fulfillment Element Attribute value to support MLS
DESCRIPTION	NULL	VARCHAR2(2000)	Description
CREATED_BY	NOT NULL	NUMBER(15)	Standard WHO column
CREATION_DATE	NOT NULL	DATE	Standard WHO column
LAST_UPDATED_BY	NOT NULL	NUMBER(15)	Standard WHO column
LAST_UPDATE_DATE	NOT NULL	DATE	Standard WHO column
LAST_UPDATE_LOGIN	NULL	NUMBER(15)	Standard WHO column

### Indexes

Index Name	Index Type	Sequence	Column Name
XDP_FE_ATTRIBUTE_VAL_TL_U1	UNIQUE	1	FE_ATTRIBUTE_ID
		2	FE_GENERIC_CONFIG_ID
		10	LANGUAGE

## XDP\_FE\_CMD\_AUD\_TRAILS

XDP\_FE\_CMD\_AUDIT\_TRAILS is the audit trail table. All SDP messages sent to an FE will be logged. If a value contained in the message is of a sensitive nature, you are given the ability to flag a parameter value so that it will not be stored in the audit trail. Example: Authentication Key A-Key in Cellular phones, customer's password, etc..

### Foreign Keys

Primary Key Table	Primary Key Column	Foreign Key Column
XDP_FA_RUNTIME_LIST	FA_INSTANCE_ID	FA_INSTANCE_ID

### Column Descriptions

Name	Null?	Type	Description
FA_INSTANCE_ID (PK)	NOT NULL	NUMBER	The SDP workitem ID
FE_COMMAND_SEQ (PK)	NOT NULL	NUMBER	Fulfillment element command sequence number
FULFILLMENT_ELEMENT_NAME	NOT NULL	VARCHAR2(40)	Name of the fulfillment element
FULFILLMENT_ELEMENT_TYPE	NOT NULL	VARCHAR2(40)	Fulfillment element type
SW_GENERIC	NOT NULL	VARCHAR2(40)	Software Generic
COMMAND_SENT	NULL	VARCHAR2(4000)	Command Sent to the Network Element
COMMAND_SENT_DATE	NULL	DATE	Date command sent to NE
RESPONSE	NULL	VARCHAR2(4000)	Response received from NE
USER_RESPONSE	NULL	VARCHAR2(4000)	User Response
RESPONSE_DATE	NULL	DATE	Date of response from the Network Element
MSG_ID	NULL	NUMBER	unique identifier of the message
PROVISIONING_PROCEDURE	NULL	VARCHAR2(40)	The name of the activation procedure which sends this command
CREATED_BY	NOT NULL	NUMBER(15)	Standard Who Clomun
CREATION_DATE	NOT NULL	DATE	Standard Who Clomun
LAST_UPDATED_BY	NOT NULL	NUMBER(15)	Standard Who Clomun
LAST_UPDATE_DATE	NOT NULL	DATE	Standard Who Clomun
LAST_UPDATE_LOGIN	NULL	NUMBER(15)	Standard Who Clomun

### Indexes

Index Name	Index Type	Sequence	Column Name
XDP_FE_CMD_AUD_TRAILS_U1	UNIQUE	1 2	FA_INSTANCE_ID FE_COMMAND_SEQ

### Sequences

Sequence	Derived Column
XDP_FE_CMD_AUD_TRAILS_S	FE_COMMAND_SEQ
XDP_RESPONSE_S	RESPONSE

Oracle Proprietary, Confidential Information--Use Restricted by Contract

## XDP\_FE\_GENERIC\_CONFIG

XDP\_FE\_GENERIC\_CONFIG is used to define all the available Software Generic for a Fulfillment Element. A Fulfillment Element can be running one Software Generic at one given time, but you can define future Software Generic in this table by specifying a future date on the Start Date attribute. SDP will use the most recent Software Generic at the Order process time.

### Foreign Keys

Primary Key Table	Primary Key Column	Foreign Key Column
XDP_FES	FE_ID	FE_ID
XDP_FE_SW_GEN_LOOKUP	FE_SW_GEN_LOOKUP_ID	FE_SW_GEN_LOOKUP_ID
XDP_PROC_BODY	PROC_NAME	SW_START_PROC
XDP_PROC_BODY	PROC_NAME	SW_EXIT_PROC

### Column Descriptions

Name	Null?	Type	Description
FE_GENERIC_CONFIG_ID (PK)	NOT NULL	NUMBER	Fulfillment Element Generic Configurartion identifier
FE_ID	NOT NULL	NUMBER	Fulfillment Element identifier
FE_SW_GEN_LOOKUP_ID	NOT NULL	NUMBER	Fulfillment Element Software Generic Lookup identifier
START_DATE	NOT NULL	DATE	Date by which the Fulfillment Element Generic Configuration is active for use
END_DATE	NULL	DATE	Date by which the Fulfillment Element Generic Configuration is inactive for use
SW_START_PROC	NULL	VARCHAR2(40)	Connection procedure for the Fulfillment Element
SW_EXIT_PROC	NULL	VARCHAR2(40)	Disconnect procedure for the Fulfillment Element
CREATION_DATE	NOT NULL	DATE	Standard WHO column
LAST_UPDATE_DATE	NOT NULL	DATE	Standard WHO column
LAST_UPDATED_BY	NOT NULL	NUMBER(15)	Standard WHO column
CREATED_BY	NOT NULL	NUMBER(15)	Standard WHO column
LAST_UPDATE_LOGIN	NULL	NUMBER(15)	Standard WHO column

### Indexes

Index Name	Index Type	Sequence	Column Name
XDP_FE_GENERIC_CONFIG_N1	NOT UNIQUE	2	FE_SW_GEN_LOOKUP_ID
XDP_FE_GENERIC_CONFIG_N2	NOT UNIQUE	10	SW_EXIT_PROC
XDP_FE_GENERIC_CONFIG_N3	NOT UNIQUE	10	SW_START_PROC
XDP_FE_GENERIC_CONFIG_U1	UNIQUE	5	FE_GENERIC_CONFIG_ID
XDP_FE_GENERIC_CONFIG_U2	UNIQUE	1	FE_ID
		2	FE_SW_GEN_LOOKUP_ID
XDP_FE_GENERIC_CONFIG_U3	UNIQUE	1	FE_ID
		2	START_DATE

### Sequences

Sequence	Derived Column
XDP_FE_GENERIC_CONFIG_S	FE_GENERIC_CONFIG_ID

Oracle Proprietary, Confidential Information--Use Restricted by Contract

## XDP\_FE\_SW\_GEN\_LOOKUP

XDP\_FE\_SW\_GENERIC\_LOOKUP is the definition table for Software Generics. This table holds available Software Generic for a Fulfillment Element Type.

### Foreign Keys

Primary Key Table	Primary Key Column	Foreign Key Column
XDP_FE_TYPES	FETYPE_ID	FETYPE_ID
XDP_PROC_BODY	PROC_NAME	SW_START_PROC
XDP_PROC_BODY	PROC_NAME	SW_EXIT_PROC

### QuickCodes Columns

Column	QuickCodes Type	QuickCodes Table
ADAPTER_TYPE	XDP_ADAPTER_TYPE	XDP_LOOKUPS
	FILE	File Interface
	HTTP	HTTP Interface
	INTERACTIVE	Interactive Session
	JSCRIPT	Java Executable
	SCRIPT	UNIX Executable

### Column Descriptions

Name	Null?	Type	Description
FE_SW_GEN_LOOKUP_ID (PK)	NOT NULL	NUMBER	Fulfillment Element Software Generic Identifier
FETYPE_ID	NOT NULL	NUMBER	Fulfillment Element Type Identifier to which this Software Generic belongs to
SW_GENERIC	NOT NULL	VARCHAR2(40)	Software Generic name
ADAPTER_TYPE	NOT NULL	VARCHAR2(40)	Adapter Type for this Software Generic
SW_START_PROC	NULL	VARCHAR2(40)	Connect Procedure for this Software Generic
SW_EXIT_PROC	NULL	VARCHAR2(40)	Disconnect Procedure for this Software Generic
CREATION_DATE	NOT NULL	DATE	Standard WHO Column
LAST_UPDATE_DATE	NOT NULL	DATE	Standard WHO Column
LAST_UPDATED_BY	NOT NULL	NUMBER(15)	Standard WHO Column
CREATED_BY	NOT NULL	NUMBER(15)	Standard WHO Column
LAST_UPDATE_LOGIN	NULL	NUMBER(15)	Standard WHO Column

### Indexes

Index Name	Index Type	Sequence	Column Name
XDP_FE_SW_GEN_LOOKUP_U1	UNIQUE	5	FE_SW_GEN_LOOKUP_ID
XDP_FE_SW_GEN_LOOKUP_U2	UNIQUE	1	FETYPE_ID
		2	SW_GENERIC
		4	ADAPTER_TYPE

### Sequences

Sequence	Derived Column
XDP_FE_SW_GEN_LOOKUP_S	FE_SW_GEN_LOOKUP_ID

Oracle Proprietary, Confidential Information--Use Restricted by Contract

## XDP\_FE\_SW\_GEN\_LOOKUP\_TL

XDP\_FE\_SW\_GEN\_LOOKUP\_TL is the MLS (Multi-Language Support) table for XDP\_FE\_SW\_GEN\_LOOKUP. You can define the Display Name as well as the description for a given Fulfillment Element Type Software Generic in multiple languages.

### Foreign Keys

Primary Key Table	Primary Key Column	Foreign Key Column
XDP_FE_SW_GEN_LOOKUP	FE_SW_GEN_LOOKUP_ID	FE_SW_GEN_LOOKUP_ID

### Column Descriptions

Name	Null?	Type	Description
FE_SW_GEN_LOOKUP_ID (PK)	NOT NULL	NUMBER	Fulfillment Element Software Generic identifier
LANGUAGE (PK)	NOT NULL	VARCHAR2(4)	Language
SOURCE_LANG	NOT NULL	VARCHAR2(4)	The Language the text will mirror
DISPLAY_NAME	NOT NULL	VARCHAR2(80)	Display Name for the Fulfillment Element Software Generic
DESCRIPTION	NULL	VARCHAR2(2000)	Description
CREATED_BY	NOT NULL	NUMBER(15)	Standard WHO column
CREATION_DATE	NOT NULL	DATE	Standard WHO column
LAST_UPDATED_BY	NOT NULL	NUMBER(15)	Standard WHO column
LAST_UPDATE_DATE	NOT NULL	DATE	Standard WHO column
LAST_UPDATE_LOGIN	NULL	NUMBER(15)	Standard WHO column

### Indexes

Index Name	Index Type	Sequence	Column Name
XDP_FE_SW_GEN_LOOKUP_TL_U1	UNIQUE	2	FE_SW_GEN_LOOKUP_ID
		6	LANGUAGE

## XDP\_FE\_TYPES

XDP\_FE\_TYPES table contains the definition of a Fulfillment Element Type. You can define the type of procedure (e.g. Connect, Disconnect) to be executed by the Provisioning Engine when an Adapter tries to establish a connection to a Fulfillment Element of this Type.

### Column Descriptions

Name	Null?	Type	Description
FETYPE_ID (PK)	NOT NULL	NUMBER	Fulfillment Element Type identifier
FULFILLMENT_ELEMENT_TYPE	NOT NULL	VARCHAR2(40)	Fulfillment Element Type internal name
CREATION_DATE	NOT NULL	DATE	Standard WHO column
LAST_UPDATED_BY	NOT NULL	NUMBER(15)	Standard WHO column
LAST_UPDATE_DATE	NOT NULL	DATE	Standard WHO column
CREATED_BY	NOT NULL	NUMBER(15)	Standard WHO column
LAST_UPDATE_LOGIN	NULL	NUMBER(15)	Standard WHO column

### Indexes

Index Name	Index Type	Sequence	Column Name
XDP_FE_TYPES_U1	UNIQUE	5	FETYPE_ID
XDP_FE_TYPES_U2	UNIQUE	5	FULFILLMENT_ELEMENT_TYPE

### Sequences

Sequence	Derived Column
XDP_FE_TYPES_S	FETYPE_ID

## XDP\_FE\_TYPES\_TL

XDP\_FE\_TYPES\_TL is the MLS (Multi-Language Support) table for XDP\_FE\_TYPES. You can define the Display Name as well as the Description for a given Fulfillment Element Type in multiple languages.

### Foreign Keys

Primary Key Table	Primary Key Column	Foreign Key Column
XDP_FE_TYPES	FETYPE_ID	FETYPE_ID

### Column Descriptions

Name	Null?	Type	Description
FETYPE_ID (PK)	NOT NULL	NUMBER	Fulfillment Element Type identifier
LANGUAGE (PK)	NOT NULL	VARCHAR2(4)	Language
SOURCE_LANG	NOT NULL	VARCHAR2(4)	The Language the text will mirror
DISPLAY_NAME	NOT NULL	VARCHAR2(80)	Display Name of the Fulfillment Element Type
DESCRIPTION	NULL	VARCHAR2(2000)	Description
CREATED_BY	NOT NULL	NUMBER(15)	Standard WHO column
CREATION_DATE	NOT NULL	DATE	Standard WHO column
LAST_UPDATED_BY	NOT NULL	NUMBER(15)	Standard WHO column
LAST_UPDATE_DATE	NOT NULL	DATE	Standard WHO column
LAST_UPDATE_LOGIN	NULL	NUMBER(15)	Standard WHO column

### Indexes

Index Name	Index Type	Sequence	Column Name
XDP_FE_TYPES_TL_U1	UNIQUE	1	FETYPE_ID
		2	LANGUAGE

## XDP\_FMC\_AUDIT\_TRAILS

The table XDP\_FMC\_AUDIT\_TRAIL is used by the Fallout Management Center(FMC) to log all the FMC responses for a given work item instance. This table stores the responses from the upstream system regarding a service provisioning error

### Foreign Keys

Primary Key Table	Primary Key Column	Foreign Key Column
XDP_FULFILL_WORKLIST	WORKITEM_INSTANCE_ID	WORKITEM_INSTANCE_ID

### Column Descriptions

Name	Null?	Type	Description
FMC_ID (PK)	NOT NULL	NUMBER	A sequence number for an FMC response
WORKITEM_INSTANCE_ID	NOT NULL	NUMBER	Identifier to a work item instance
FMC_RESPONSE_CODE	NOT NULL	VARCHAR2(40)	Response codes for a faulty order
WF_ITEM_KEY	NOT NULL	VARCHAR2(240)	Workflow item key for the faulty order
FA_INSTANCE_ID	NULL	NUMBER	Identifier to a Fulfillment Action instance
FE_NAME	NULL	VARCHAR2(40)	Fulfillment Element name where the provisioning error occurs
WF_ITEM_TYPE	NOT NULL	VARCHAR2(8)	Workflow item type for the faulty order
SW_GENERIC	NULL	VARCHAR2(40)	Software generic for the fulfillment element
CREATED_BY	NOT NULL	NUMBER(15)	Standard Who column - with the user id from FND_USER
LAST_UPDATE_DATE	NOT NULL	DATE	Standard Who column
CREATION_DATE	NOT NULL	DATE	Standard Who column
LAST_UPDATED_BY	NOT NULL	NUMBER(15)	Standard Who column - with the user id from FND_USER
LAST_UPDATE_LOGIN	NULL	NUMBER(15)	Standard Who column

### Indexes

Index Name	Index Type	Sequence	Column Name
XDP_FMC_AUDIT_TRAILS_N1	NOT UNIQUE	10	WORKITEM_INSTANCE_ID
XDP_FMC_AUDIT_TRAILS_U1	UNIQUE	5	FMC_ID

### Sequences

Sequence	Derived Column
XDP_FMC_ID_S	FMC_ID

Oracle Proprietary, Confidential Information--Use Restricted by Contract

## XDP\_FMC\_AUD\_TRAIL\_DETS

This table logs all the parameter value changes made in the FMC module. The `PARAMETER_TYPE` column indicates the type of the parameter that is being modified. The valid parameter type definition is as followed: `ORDER` -- The parameter is an order parameter; `WORKITEM` -- The parameter is a workitem parameter; `FA` -- The parameter is a fulfillment action parameter

### Foreign Keys

Primary Key Table	Primary Key Column	Foreign Key Column
XDP_FMC_AUDIT_TRAILS	FMC_ID	FMC_ID

### QuickCodes Columns

Column	QuickCodes Type	QuickCodes Table
PARAMETER_TYPE	XDP_FMC_PARAMETER_TYPE	XDP_LOOKUPS
	FA	Retry parameter is a FA parameter
	ORDER	Retry parameter is an order parameter
	WORKITEM	Retry parameter is a workitem parameter

### Column Descriptions

Name	Null?	Type	Description
FMC_ID (PK)	NOT NULL	NUMBER	Standard Who column - with the user id from FND_USER
PARAMETER_NAME (PK)	NOT NULL	VARCHAR2(40)	Name of the service parameter for the faulty order
PARAMETER_TYPE (PK)	NOT NULL	VARCHAR2(40)	Type of the parameter. Valid values are ORDER, WORKITEM, FA
REFERENCE_VALUE	NULL	VARCHAR2(4000)	Parameter existing reference value in the faulty order
RETRY_REFERENCE_VALUE	NULL	VARCHAR2(4000)	Newly supplied parameter reference value for SDP to retry
VALUE	NULL	VARCHAR2(4000)	Parameter value in the faulty order
RETRY_VALUE	NULL	VARCHAR2(4000)	Newly supplied parameter value for SDP to retry
CREATED_BY	NOT NULL	NUMBER(15)	Standard Who column - with the user id from FND_USER
LAST_UPDATED_BY	NOT NULL	NUMBER(15)	Standard Who column - with the user id from FND_USER
LAST_UPDATE_DATE	NOT NULL	DATE	Standard Who column
CREATION_DATE	NOT NULL	DATE	Standard Who column
LAST_UPDATE_LOGIN	NULL	NUMBER(15)	Standard Who column

### Indexes

Index Name	Index Type	Sequence	Column Name
XDP_FMC_AUD_TRAIL_DETS_N1	NOT UNIQUE	2	FMC_ID
XDP_FMC_AUD_TRAIL_DETS_U1	UNIQUE	1	FMC_ID
		5	PARAMETER_TYPE
		7	PARAMETER_NAME

Oracle Proprietary, Confidential Information--Use Restricted by Contract

## XDP\_FULFILL\_ACTIONS

XDP\_FULFILL\_ACTIONS contains the definition for a provisioning activity on a Fulfillment Element –this is equivalent to a Fulfillment Action. The attribute FE\_ROUTING\_PROC allows you to define the business logic in order to locate the targeted FE for the provisioning activity in a PL/SQL procedure. Example: You can query the network inventory database for a given phone number and the system returns the switch id for this phone number to be provisioned. At runtime, SDP will execute this procedure (based on the FE configuration data) in order to determine the correct Fulfillment Procedure to be used for this FA.

### Foreign Keys

Primary Key Table	Primary Key Column	Foreign Key Column
XDP_PROC_BODY	PROC_NAME	FE_ROUTING_PROC
XDP_PROC_BODY	PROC_NAME	EVALUATE_PARAM_PROC

### Column Descriptions

Name	Null?	Type	Description
FULFILLMENT_ACTION_ID (PK)	NOT NULL	NUMBER	Fulfillment Action identifier
FULFILLMENT_ACTION	NOT NULL	VARCHAR2(40)	Fulfillment Action internal name
VERSION	NOT NULL	VARCHAR2(40)	Version of the Fulfillment Action
FE_ROUTING_PROC	NULL	VARCHAR2(40)	Routing Procedure to locate the targeted Fulfillment Element
EVALUATE_PARAM_PROC	NULL	VARCHAR2(40)	Procedure to evaluate all the Fulfillment Action Parameters
FA_TYPE_CODE	NULL	VARCHAR2(40)	Reserved for future use
ROLE_NAME	NULL	VARCHAR2(100)	Group to be notified if problem occurs with the Fulfillment Action.
CREATION_DATE	NOT NULL	DATE	Standard WHO column
LAST_UPDATE_DATE	NOT NULL	DATE	Standard WHO column
LAST_UPDATED_BY	NOT NULL	NUMBER(15)	Standard WHO column
CREATED_BY	NOT NULL	NUMBER(15)	Standard WHO column
LAST_UPDATE_LOGIN	NULL	NUMBER(15)	Standard WHO column

### Indexes

Index Name	Index Type	Sequence	Column Name
XDP_FULFILL_ACTIONS_N1	NOT UNIQUE	20	EVALUATE_PARAM_PROC
XDP_FULFILL_ACTIONS_N2	NOT UNIQUE	20	FE_ROUTING_PROC
XDP_FULFILL_ACTIONS_U1	UNIQUE	5	FULFILLMENT_ACTION_ID
XDP_FULFILL_ACTIONS_U2	UNIQUE	1	FULFILLMENT_ACTION
		2	VERSION

### Sequences

Sequence	Derived Column
XDP_FULFILL_ACTIONS_S	FULFILLMENT_ACTION_ID

Oracle Proprietary, Confidential Information--Use Restricted by Contract

## XDP\_FULFILL\_ACTIONS\_TL

XDP\_FULFILLMENT\_ACTIONS\_TL is the MLS (Multi-Language Support) table for the XDP\_FULFILLMENT\_ACTIONS table. You can define the display name as well as the description for a given Fulfillment Action in multiple languages.

### Foreign Keys

Primary Key Table	Primary Key Column	Foreign Key Column
XDP_FULFILL_ACTIONS	FULFILLMENT_ACTION_ID	FULFILLMENT_ACTION_ID

### Column Descriptions

Name	Null?	Type	Description
FULFILLMENT_ACTION_ID (PK)	NOT NULL	NUMBER	Fulfillment Action identifier
LANGUAGE (PK)	NOT NULL	VARCHAR2(4)	Language
SOURCE_LANG	NOT NULL	VARCHAR2(4)	The Language the text will mirror
DISPLAY_NAME	NOT NULL	VARCHAR2(80)	Display Name for the Fulfillment Action
DESCRIPTION	NULL	VARCHAR2(2000)	Description
CREATED_BY	NOT NULL	NUMBER(15)	Standard WHO column
CREATION_DATE	NOT NULL	DATE	Standard WHO column
LAST_UPDATED_BY	NOT NULL	NUMBER(15)	Standard WHO column
LAST_UPDATE_DATE	NOT NULL	DATE	Standard WHO column
LAST_UPDATE_LOGIN	NULL	NUMBER(15)	Standard WHO column

### Indexes

Index Name	Index Type	Sequence	Column Name
XDP_FULFILL_ACTIONS_TL_U1	UNIQUE	1	FULFILLMENT_ACTION_ID
		2	LANGUAGE

## XDP\_FULFILL\_WORKLIST

This table contains the list of all the workitems SDP order processor will execute for a given order. Workitems with the lowest provisioning sequence number will be executed first. All workitems in the list that have the same provisioning sequence number will be executed in parallel. It is possible to have workitems sequence number to be executed in parallel or sequential or a combination of both. Example: W1 1, W2 1, W3 2, W4 3, W5 3 => combination of sequential and parallel order execution, W1 and W2 will be executed in parallel and W3 will not execute until W1 and W2 have completed. Then W4 and W5 will be executed

### Foreign Keys

Primary Key Table	Primary Key Column	Foreign Key Column
XDP_ORDER_LINE_ITEMS	LINE_ITEM_ID	LINE_ITEM_ID
XDP_ORDER_LINE_ITEMS	ORDER_ID	ORDER_ID
	LINE_NUMBER	LINE_NUMBER
XDP_WORKITEMS	WORKITEM_ID	WORKITEM_ID

### QuickCodes Columns

Column	QuickCodes Type	QuickCodes Table
STATE	XDP_PROCESS_STATE	XDP_LOOKUPS
	CANCELED	Canceled
	COMPLETED	Completed
	HOLD	On hold
	MERGED	Workitem has been merged into another workitem
	PREPROCESS	New
	READY	Ready for processing
	RUNNING	Running
STATUS_CODE	WAIT	Waiting to be processed
	XDP_STATUS_CODE	XDP_LOOKUPS
	ABORTED	Provisioning aborted
	COMPLETED	Completed successfully
	ERROR	Error
	IN PROGRESS	In progress
	PENDING	Pending
	SUCCESS	Success
SUCCESS_WITH_OVERRIDE	Success with override	

### Column Descriptions

Name	Null?	Type	Description
WORKITEM_INSTANCE_ID (PK)	NOT NULL	NUMBER	Work item instance identifier
LINE_ITEM_ID	NOT NULL	NUMBER	Order line item identifier
ORDER_ID	NOT NULL	NUMBER	Current order ID
LINE_NUMBER	NOT NULL	NUMBER	The index number of the line within the order
WORKITEM_ID	NOT NULL	NUMBER	Work Item identifier
STATUS_CODE	NOT NULL	VARCHAR2(40)	Work Item instance provisioning status

**Oracle Proprietary, Confidential Information--Use Restricted by Contract**

STATE	NOT NULL	VARCHAR2(40)	Work Item instance provisioning state
PROVISIONING_DATE	NOT NULL	DATE	The date when provisioning starts
WI_SEQUENCE	NOT NULL	NUMBER	The optional provisioning sequence among the order work items
WI_RUNTIME_MESSAGE_ID	NULL	RAW	A handle to a runtime AQ message
PRIORITY	NULL	NUMBER	Provisioning priority
DUE_DATE	NULL	DATE	The date when this work item is due
CUSTOMER_REQUIRED_DATE	NULL	DATE	Customer required date for the completion of the order
COMPLETION_DATE	NULL	DATE	The date when the provisioning is completed
CANCEL_PROVISIONING_DATE	NULL	DATE	The date when the order is cancelled
CANCELED_BY	NULL	VARCHAR2(40)	The user ID of who cancelled the order
HOLD_PROVISIONING_DATE	NULL	DATE	For future use
HELD_BY	NULL	VARCHAR2(40)	For future use
RESUME_PROVISIONING_DATE	NULL	DATE	For future use
RESUMED_BY	NULL	VARCHAR2(40)	For future use
WF_ITEM_TYPE	NULL	VARCHAR2(8)	the workflow item type for this work item instance
WF_ITEM_KEY	NULL	VARCHAR2(240)	the workflow item key for this work item instance
ERROR_REF_ID	NULL	NUMBER	A handle to the error table
MSGID	NULL	RAW	A handle to the work item process queue
CREATED_BY	NOT NULL	NUMBER(15)	Standard Who column - with the user id from FND_USER
CREATION_DATE	NOT NULL	DATE	Standard Who column
LAST_UPDATED_BY	NOT NULL	NUMBER(15)	Standard Who column - with the user id from FND_USER
LAST_UPDATE_DATE	NOT NULL	DATE	Standard Who column
LAST_UPDATE_LOGIN	NULL	NUMBER(15)	Standard Who column

#### Indexes

Index Name	Index Type	Sequence	Column Name
XDP_FULFILL_WORKLIST_N1	NOT UNIQUE	20	ORDER_ID
		30	LINE_NUMBER
XDP_FULFILL_WORKLIST_N2	NOT UNIQUE	10	LINE_ITEM_ID
XDP_FULFILL_WORKLIST_N3	NOT UNIQUE	10	WORKITEM_ID
XDP_FULFILL_WORKLIST_U1	UNIQUE	5	WORKITEM_INSTANCE_ID
XDP_FULFILL_WORKLIST_U2	UNIQUE	1	WORKITEM_INSTANCE_ID
		2	WORKITEM_ID

#### Sequences

Sequence	Derived Column
XDP_FULFILL_WORKLIST_S	WORKITEM_INSTANCE_ID

## XDP\_LINE\_RELATIONSHIPS

XDP\_LINE\_RELATIONSHIPS table is used to identify whether a line item is part of a package line. This table tracks the relationship between all of the Line Items associated with a package within an order.

### Foreign Keys

Primary Key Table	Primary Key Column	Foreign Key Column
XDP_ORDER_LINE_ITEMS	LINE_ITEM_ID	LINE_ITEM_ID
XDP_ORDER_LINE_ITEMS	LINE_ITEM_ID	RELATED_LINE_ITEM_ID

### QuickCodes Columns

Column	QuickCodes Type	QuickCodes Table
LINE_RELATIONSHIP	XDP_LINE_RELATION_CODE IS_PART_OF_PACKAGE	XDP_LOOKUPS The service on this line is part of package on related line

### Column Descriptions

Name	Null?	Type	Description
LINE_ITEM_ID (PK)	NOT NULL	NUMBER	Identifier of an order line item
RELATED_LINE_ITEM_ID (PK)	NOT NULL	NUMBER	Identifier of a related order line item
LINE_RELATIONSHIP	NOT NULL	VARCHAR2(40)	The relationship of the two line items.
CREATION_DATE	NOT NULL	DATE	Standard Who column
LAST_UPDATE_DATE	NOT NULL	DATE	Standard Who column
LAST_UPDATED_BY	NOT NULL	NUMBER(15)	Standard Who column - with the user id from FND_USER
CREATED_BY	NOT NULL	NUMBER(15)	Standard Who column - with the user id from FND_USER
LAST_UPDATE_LOGIN	NULL	NUMBER(15)	Standard Who column

### Indexes

Index Name	Index Type	Sequence	Column Name
XDP_LINE_RELATIONSHIPS_N1	NOT UNIQUE	10	RELATED_LINE_ITEM_ID
XDP_LINE_RELATIONSHIPS_U1	UNIQUE	1	LINE_ITEM_ID
		2	RELATED_LINE_ITEM_ID

## XDP\_OE\_ORDER\_HEADERS

XDP\_OE\_ORDER\_HEADERS contains the order header information for orders generated by SDP/ Provisioning –Order Entry Interface.

### QuickCodes Columns

Column	QuickCodes Type	QuickCodes Table
JEOPARDY_ENABLED_FLAG	XDP_YES_NO_FLAG_DEFAULT_NO	XDP_LOOKUPS
	N	No
	Y	Yes
ORDER_TYPE	XDP_ORDER_TYPE	XDP_LOOKUPS
	DRC	Demand Repair Center
	EXTERNAL	External system
	FMC	Fallout Management Center
STATUS	NP	Number Portability
	XDP_STATUS_CODE	XDP_LOOKUPS
	ABORTED	Provisioning aborted
	COMPLETED	Completed successfully
	ERROR	Error
	IN PROGRESS	In progress
	PENDING	Pending
SUCCESS	Success	
SUCCESS_WITH_OVERRIDE	Success with override	

### Column Descriptions

Name	Null?	Type	Description
ORDER_NUMBER	NOT NULL	VARCHAR2(40)	Customer's order number
ORDER_VERSION	NULL	VARCHAR2(40)	Version for the order
PROVISIONING_DATE	NOT NULL	DATE	The date for completing the provisioning process
COMPLETION_DATE	NULL	DATE	Order completion date
ORDER_TYPE	NULL	VARCHAR2(40)	Type of order
ORDER_ACTION	NULL	VARCHAR2(30)	Action for the order
ORDER_SOURCE	NULL	VARCHAR2(40)	Source or origination of order
PRIORITY	NULL	NUMBER	Order priority
STATUS	NULL	VARCHAR2(40)	Order status
SDP_ORDER_ID	NULL	NUMBER	Unique identifier generated by SDP to track the order
DUE_DATE	NULL	DATE	Internal date for the completion of the provisioning proces
CUSTOMER_REQUIRED_DATE	NULL	DATE	The date the customer wants the order to be completed
CUSTOMER_NAME	NULL	VARCHAR2(40)	Customer name
CUSTOMER_ID	NULL	NUMBER	Unique customer identifier
ORG_ID	NULL	NUMBER	Organization identifier
SERVICE_PROVIDER_ID	NULL	NUMBER	Service Provider identifier
TELEPHONE_NUMBER	NULL	VARCHAR2(40)	Customer's phone number
RELATED_ORDER_ID	NULL	NUMBER	Related order id. Useful for tracking bundled orders
ORDER_COMMENT	NULL	VARCHAR2(1996)	Order related comment
JEOPARDY_ENABLED_FLAG	NULL	VARCHAR2(1)	Jeopardy Indicator
ORDER_REF_NAME	NULL	VARCHAR2(80)	Order Reference Name
ORDER_REF_VALUE	NULL	VARCHAR2(300)	Order Reference Value

Oracle Proprietary, Confidential Information--Use Restricted by Contract

SP_ORDER_NUMBER	NULL	VARCHAR2(80)	Service Provider Order Number
SP_USERID	NULL	NUMBER(15)	Service Provider User identifier
CREATION_DATE	NOT NULL	DATE	Standard Who column
LAST_UPDATE_DATE	NOT NULL	DATE	Standard Who column
LAST_UPDATED_BY	NOT NULL	NUMBER(15)	Standard Who column
CREATED_BY	NOT NULL	NUMBER(15)	Standard Who column
LAST_UPDATE_LOGIN	NULL	NUMBER(15)	Standard Who column

*Indexes*

<u>Index Name</u>	<u>Index Type</u>	<u>Sequence</u>	<u>Column Name</u>
XDP_OE_ORDER_HEADERS_U1	UNIQUE	1	ORDER_NUMBER
		2	ORDER_VERSION

## XDP\_OE\_ORDER\_LINES

XDP\_OE\_ORDER\_LINES contains all the order line information for an order which is generated by SDP Provisioning– Order Entry interface.

### Foreign Keys

Primary Key Table	Primary Key Column	Foreign Key Column
XDP_OE_ORDER_HEADERS	ORDER_VERSION ORDER_NUMBER	ORDER_VERSION ORDER_NUMBER

### QuickCodes Columns

Column	QuickCodes Type	QuickCodes Table
IS_WORKITEM_FLAG	XDP_YES_NO_FLAG_DEFAULT_NO	XDP_LOOKUPS
	N	No
JEOPARDY_ENABLED_FLAG	XDP_YES_NO_FLAG_DEFAULT_NO	XDP_LOOKUPS
	N	No
LINE_ITEM_TYPE	XDP_OE_LINE_TYPE	XDP_LOOKUPS
	PACKAGE	Order line item is a package
PROVISIONING_REQUIRED_FLAG	XDP_YES_NO_FLAG_DEFAULT_YES	XDP_LOOKUPS
	N	No
STATUS	XDP_STATUS_CODE	XDP_LOOKUPS
	ABORTED	Provisioning aborted
STATUS	COMPLETED	Completed successfully
	ERROR	Error
STATUS	IN_PROGRESS	In progress
	PENDING	Pending
STATUS	SUCCESS	Success
	SUCCESS_WITH_OVERRIDE	Success with override

### Column Descriptions

Name	Null?	Type	Description
ORDER_NUMBER	NOT NULL	VARCHAR2(40)	Unique number for the order
ORDER_VERSION	NULL	VARCHAR2(40)	Order Version
LINE_NUMBER	NOT NULL	NUMBER	Line number identifies a line within an order
LINE_ITEM_NAME	NOT NULL	VARCHAR2(40)	Name of the line item
LINE_ITEM_VERSION	NULL	VARCHAR2(40)	Line item version
LINE_ITEM_ACTION	NULL	VARCHAR2(30)	Line item action
PROVISIONING_REQUIRED_FLAG	NOT NULL	VARCHAR2(1)	Flag to indicate if provisioning is required for the line item
IS_WORKITEM_FLAG	NULL	VARCHAR2(1)	Work item indicator
LINE_ITEM_TYPE	NULL	VARCHAR2(20)	Line item type
STATUS	NULL	VARCHAR2(40)	Status
PROVISIONING_SEQUENCE	NULL	NUMBER	Provisioning sequence for line item
PRIORITY	NULL	NUMBER	Line Item Priority

Oracle Proprietary, Confidential Information--Use Restricted by Contract

PROVISIONING_DATE	NULL DATE	Provisioning process date
DUE_DATE	NULL DATE	Internal date for the completion of the provisioning process
CUSTOMER_REQUIRED_DATE	NULL DATE	Date by which the customer wants the order provisioned
COMPLETION_DATE	NULL DATE	Actual provisioning completion date
BUNDLE_ID	NULL NUMBER	Unique identifier for bundled orders
BUNDLE_SEQUENCE	NULL NUMBER	Bundle sequence number
JEOPARDY_ENABLED_FLAG	NULL VARCHAR2(1)	Jeopardy flag
STARTING_NUMBER	NULL VARCHAR2(80)	Starting Number
ENDING_NUMBER	NULL VARCHAR2(80)	Ending number
CREATION_DATE	NOT NULL DATE	Standard who column
LAST_UPDATE_DATE	NOT NULL DATE	Standard who column
LAST_UPDATED_BY	NOT NULL NUMBER(15)	Standard who column
CREATED_BY	NOT NULL NUMBER(15)	Standard who column
LAST_UPDATE_LOGIN	NULL NUMBER(15)	Standard who column

*Indexes*

<u>Index Name</u>	<u>Index Type</u>	<u>Sequence</u>	<u>Column Name</u>
XDP_OE_ORDER_LINES_U1	UNIQUE	1	ORDER_NUMBER
		2	ORDER_VERSION
		4	LINE_NUMBER

## XDP\_OE\_ORDER\_LINE\_DET

XDP\_OE\_ORDER\_LINE\_DETAILS contains the order line parameter values for an order which is generated by SDP Provisioning- Order Entry interface.

### Foreign Keys

Primary Key Table	Primary Key Column	Foreign Key Column
XDP_OE_ORDER_LINES	ORDER_NUMBER ORDER_VERSION LINE_NUMBER	ORDER_NUMBER ORDER_VERSION LINE_NUMBER

### Column Descriptions

Name	Null?	Type	Description
ORDER_NUMBER	NOT NULL	VARCHAR2(40)	External identifier for an order
ORDER_VERSION	NULL	VARCHAR2(40)	Order version
LINE_NUMBER	NOT NULL	NUMBER	Order line number
PARAMETER_NAME	NOT NULL	VARCHAR2(40)	Order parameter name
PARAMETER_VALUE	NULL	VARCHAR2(4000)	Parameter value
PARAMETER_REF_VALUE	NULL	VARCHAR2(4000)	Parameter reference value
CREATION_DATE	NOT NULL	DATE	Standard who column
LAST_UPDATE_DATE	NOT NULL	DATE	Standard who column
LAST_UPDATED_BY	NOT NULL	NUMBER(15)	Standard who column
CREATED_BY	NOT NULL	NUMBER(15)	Standard who column
LAST_UPDATE_LOGIN	NULL	NUMBER(15)	Standard who column

### Indexes

Index Name	Index Type	Sequence	Column Name
XDP_OE_ORDER_LINE_DET	UNIQUE	1	ORDER_NUMBER
		2	ORDER_VERSION
		4	LINE_NUMBER
		6	PARAMETER_NAME

---

## XDP\_OE\_ORDER\_PARAMETERS

-

---

---

---

## XDP\_ORDER\_BUNDLES

This table stores all bundles associated with an order. A bundle is a grouping of line items that need to be processed together.

### Foreign Keys

Primary Key Table	Primary Key Column	Foreign Key Column
XDP_ORDER_HEADERS	ORDER_ID	ORDER_ID

### QuickCodes Columns

Column	QuickCodes Type	QuickCodes Table
STATUS	XDP_STATUS_CODE	XDP_LOOKUPS
	ABORTED	Provisioning aborted
	COMPLETED	Completed successfully
	ERROR	Error
	IN PROGRESS	In progress
	PENDING	Pending
	SUCCESS	Success
	SUCCESS_WITH_OVERRIDE	Success with override

### Column Descriptions

Name	Null?	Type	Description
ORDER_ID (PK)	NOT NULL	NUMBER	Unique internal order identifier
BUNDLE_ID (PK)	NOT NULL	NUMBER	Unique bundle identifier defined by the calling system
STATUS	NOT NULL	VARCHAR2(40)	Status of the bundle
CREATION_DATE	NOT NULL	DATE	Standard who column
LAST_UPDATE_DATE	NOT NULL	DATE	Standard who column
LAST_UPDATED_BY	NOT NULL	NUMBER(15)	Standard Who column - with the user id from FND_USER
CREATED_BY	NOT NULL	NUMBER(15)	Standard Who column - with the user id from FND_USER
LAST_UPDATE_LOGIN	NULL	NUMBER(15)	Standard who column

### Indexes

Index Name	Index Type	Sequence	Column Name
XDP_ORDER_BUNDLES_U1	UNIQUE	1	ORDER_ID
		2	BUNDLE_ID

## XDP\_ORDER\_HEADERS

This is the general information of an order that is sent from an upstream system (Customer Care, Order Entry).

### QuickCodes Columns

Column	QuickCodes Type	QuickCodes Table
JEOPARDY_ENABLED_FLAG	XDP_YES_NO_FLAG_DEFAULT_NO	XDP_LOOKUPS
	N	No
	Y	Yes
	XDP_ORDER_TYPE	XDP_LOOKUPS
ORDER_TYPE	DRC	Demand Repair Center
	EXTERNAL	External system
	FMC	Fallout Management Center
	NP	Number Portability
STATE	XDP_PROCESS_STATE	XDP_LOOKUPS
	CANCELED	Canceled
	COMPLETED	Completed
	HOLD	On hold
	MERGED	Workitem has been merged into another workitem
	PREPROCESS	New
	READY	Ready for processing
	RUNNING	Running
	WAIT	Waiting to be processed
STATUS_CODE	XDP_STATUS_CODE	XDP_LOOKUPS
	ABORTED	Provisioning aborted
	COMPLETED	Completed successfully
	ERROR	Error
	IN PROGRESS	In progress
	PENDING	Pending
	SUCCESS	Success
	SUCCESS_WITH_OVERRIDE	Success with override

### Column Descriptions

Name	Null?	Type	Description
ORDER_ID (PK)	NOT NULL	NUMBER	Unique order identifier
EXTERNAL_ORDER_NUMBER	NOT NULL	VARCHAR2(40)	External order number
EXTERNAL_ORDER_VERSION	NULL	VARCHAR2(40)	External order version
STATUS_CODE	NOT NULL	VARCHAR2(40)	Order status code
STATE	NOT NULL	VARCHAR2(40)	State of the order
DATE_RECEIVED	NOT NULL	DATE	Date order is received in SDP
PROVISIONING_DATE	NOT NULL	DATE	Provisioning process date
ACTUAL_PROVISIONING_DATE	NULL	DATE	The actual date when order is provisioned
COMPLETION_DATE	NULL	DATE	Provisioning process completion date
CANCEL_PROVISIONING_DATE	NULL	DATE	Provisioning process cancellation date
CANCELED_BY	NULL	VARCHAR2(40)	Identification of user cancelling the provisioning process
HOLD_PROVISIONING_DATE	NULL	DATE	Future use
HELD_BY	NULL	VARCHAR2(40)	Future use

**Oracle Proprietary, Confidential Information--Use Restricted by Contract**

RESUME_PROVISIONING_DATE	NULL	DATE	Future use
RESUMED_BY	NULL	VARCHAR2(40)	Future use
DUE_DATE	NULL	DATE	Internal date by which the provisioning process must be completed.
CUSTOMER_REQUIRED_DATE	NULL	DATE	Date by which the customer wants the provisioning process to be completed.
ORDER_ACTION	NULL	VARCHAR2(30)	Order action code
ORDER_SOURCE	NULL	VARCHAR2(40)	Source of origin for the order.
CUSTOMER_ID	NULL	NUMBER	Unique identifier for the customer
CUSTOMER_NAME	NULL	VARCHAR2(40)	Customer name
ORG_ID	NULL	NUMBER	Organization id
SERVICE_PROVIDER_ID	NULL	NUMBER	Unique service provider identification
TELEPHONE_NUMBER	NULL	VARCHAR2(40)	Telephone number for the customer.
PRIORITY	NULL	NUMBER	Priority for order. High priority orders are given preference in processing.
RELATED_ORDER_ID	NULL	NUMBER	Related order identifier
ORDER_TYPE	NULL	VARCHAR2(40)	Future use
ERROR_REF_ID	NULL	NUMBER	Error reference identifier
NEXT_ORDER_ID	NULL	NUMBER	Identifier of the order needs to be processed after the completion of the current order
PREVIOUS_ORDER_ID	NULL	NUMBER	Identifier of the order needs to be completed before the execution of the current order
WF_ITEM_TYPE	NULL	VARCHAR2(8)	Workflow item type
WF_ITEM_KEY	NULL	VARCHAR2(240)	Workflow item key
ORDER_COMMENT	NULL	VARCHAR2(1996)	Comment associated with an order.
JEOPARDY_ENABLED_FLAG	NULL	VARCHAR2(1)	Indicator to denote if a jeopardy process is associated with the order.
ORDER_REF_NAME	NULL	VARCHAR2(80)	Order reference name
ORDER_REF_VALUE	NULL	VARCHAR2(300)	Order reference value
SP_ORDER_NUMBER	NULL	VARCHAR2(80)	Service Provider order number
SP_USERID	NULL	NUMBER(15)	Service provider identifier
MSGID	NULL	RAW	Unique message identifier
CREATED_BY	NOT NULL	NUMBER(15)	Standard who column
CREATION_DATE	NOT NULL	DATE	Standard who column
LAST_UPDATED_BY	NOT NULL	NUMBER(15)	Standard who column
LAST_UPDATE_DATE	NOT NULL	DATE	Standard who column
LAST_UPDATE_LOGIN	NULL	NUMBER(15)	Standard who column

#### Indexes

Index Name	Index Type	Sequence	Column Name
XDP_ORDER_HEADERS_N1	NOT UNIQUE	1	ORDER_REF_NAME
		2	ORDER_REF_VALUE
XDP_ORDER_HEADERS_N2	NOT UNIQUE	2	SP_ORDER_NUMBER
XDP_ORDER_HEADERS_U1	UNIQUE	5	ORDER_ID
XDP_ORDER_HEADERS_U2	UNIQUE	1	EXTERNAL_ORDER_NUMBER
		3	EXTERNAL_ORDER_VERSION

*Sequences*

<u>Sequence</u>	<u>Derived Column</u>
-----------------	-----------------------

---

XDP_ORDER_HEADERS_S	ORDER_ID
---------------------	----------

**Oracle Proprietary, Confidential Information--Use Restricted by Contract**

## XDP\_ORDER\_LINEITEM\_DETS

This table holds all the parameters for each line item of an order that is received from the upstream system (Customer Care, Order Entry).

### Foreign Keys

Primary Key Table	Primary Key Column	Foreign Key Column
XDP_ORDER_LINE_ITEMS	LINE_ITEM_ID	LINE_ITEM_ID

### Column Descriptions

Name	Null?	Type	Description
LINE_ITEM_ID (PK)	NOT NULL	NUMBER	Unique identifier for line item
LINE_PARAMETER_NAME (PK)	NOT NULL	VARCHAR2(40)	Line parameter name
PARAMETER_VALUE	NULL	VARCHAR2(4000)	Parameter value
PARAMETER_REFERENCE_VALUE	NULL	VARCHAR2(4000)	Parameter reference value
CREATION_DATE	NOT NULL	DATE	Standard who column
LAST_UPDATE_DATE	NOT NULL	DATE	Standard who column
LAST_UPDATED_BY	NOT NULL	NUMBER(15)	Standard who column
CREATED_BY	NOT NULL	NUMBER(15)	Standard who column
LAST_UPDATE_LOGIN	NULL	NUMBER(15)	Standard who column

### Indexes

Index Name	Index Type	Sequence	Column Name
XDP_ORDER_LINEITEM_DETS_U1	UNIQUE	1	LINE_ITEM_ID
		3	LINE_PARAMETER_NAME

## XDP\_ORDER\_LINE\_ITEMS

This table holds all the liine items for an order which is sent by the upstream system (Customer Care, Order Entry). In addition, SDP will generate virtual line items for each order line that is of a package type. In this case, the IS\_VIRTUAL\_LINE\_FLAG will be set to 'Y' and the relationship between the virtual line and the original order line will be logged into the XDP\_LINE\_RELATIONSHIPS table.

### Foreign Keys

Primary Key Table	Primary Key Column	Foreign Key Column
XDP_ORDER_BUNDLES	ORDER_ID BUNDLE_ID	ORDER_ID BUNDLE_ID
XDP_ORDER_HEADERS	ORDER_ID	ORDER_ID
XDP_SERVICES	SERVICE_NAME VERSION	LINE_ITEM_NAME VERSION
XDP_SERVICE_PACKAGES	PACKAGE_NAME PACKAGE_VERSION	LINE_ITEM_NAME VERSION
XDP_WORKITEMS	WORKITEM_NAME VERSION	LINE_ITEM_NAME VERSION

### QuickCodes Columns

Column	QuickCodes Type	QuickCodes Table
IS_OA_ADDED_FLAG	XDP_YES_NO_FLAG_DEFAULT_NO	XDP_LOOKUPS
	N	No
IS_PACKAGE_FLAG	XDP_YES_NO_FLAG_DEFAULT_NO	XDP_LOOKUPS
	N	No
IS_VIRTUAL_LINE_FLAG	XDP_YES_NO_FLAG_DEFAULT_NO	XDP_LOOKUPS
	N	No
JEOPARDY_ENABLED_FLAG	XDP_YES_NO_FLAG_DEFAULT_NO	XDP_LOOKUPS
	N	No
PROVISIONING_REQUIRED_FLAG	XDP_YES_NO_FLAG_DEFAULT_YES	XDP_LOOKUPS
	N	No
STATUS_CODE	XDP_STATUS_CODE	XDP_LOOKUPS
	ABORTED	Provisioning aborted
	COMPLETED	Completed successfully
	ERROR	Error
	IN PROGRESS	In progress
	PENDING	Pending
	SUCCESS	Success
SUCCESS_WITH_OVERRIDE	Success with override	

### Column Descriptions

Name	Null?	Type	Description
LINE_ITEM_ID (PK)	NOT NULL	NUMBER	Unique internal identifier generated by the system
ORDER_ID	NOT NULL	NUMBER	Unique identifier for the order

**Oracle Proprietary, Confidential Information--Use Restricted by Contract**

LINE_NUMBER	NOT NULL NUMBER	Line Number
LINE_ITEM_NAME	NOT NULL VARCHAR2(40)	Line Item Name
PROVISIONING_REQUIRED_FLAG	NOT NULL VARCHAR2(1)	Indicate if provisioning is required for this line item
STATUS_CODE	NOT NULL VARCHAR2(40)	Status code of the line item
STATE	NOT NULL VARCHAR2(40)	State of the line item
IS_PACKAGE_FLAG	NOT NULL VARCHAR2(1)	Indicator to determine if the line item is part of an order that belongs to a package

XDP_ORDER_LINE_ITEMS_N2	NOT UNIQUE	1	STARTING_NUMBER
		2	ENDING_NUMBER
XDP_ORDER_LINE_ITEMS_U1	UNIQUE	5	LINE_ITEM_ID
XDP_ORDER_LINE_ITEMS_U2	UNIQUE	1	ORDER_ID
		3	LINE_NUMBER

*Sequences*

<u>Sequence</u>	<u>Derived Column</u>
XDP_ORDER_LINE_ITEMS_S	LINE_ITEM_ID

## XDP\_ORDER\_PARAMETERS

This table holds all the parameters related to the order coming from the upstream system (Customer Care, Order Entry). These parameters are Order level parameters.

### Foreign Keys

Primary Key Table	Primary Key Column	Foreign Key Column
XDP_ORDER_HEADERS	ORDER_ID	ORDER_ID

### Column Descriptions

Name	Null?	Type	Description
ORDER_ID (PK)	NOT NULL	NUMBER	Unique order identifier
ORDER_PARAMETER_NAME (PK)	NOT NULL	VARCHAR2(40)	Order parameter name
ORDER_PARAMETER_VALUE	NULL	VARCHAR2(4000)	Parameter value
CREATION_DATE	NOT NULL	DATE	Standard who column
LAST_UPDATE_DATE	NOT NULL	DATE	Standard who column
LAST_UPDATED_BY	NOT NULL	NUMBER(15)	Standard who column
CREATED_BY	NOT NULL	NUMBER(15)	Standard who column
LAST_UPDATE_LOGIN	NULL	NUMBER(15)	Standard who column

### Indexes

Index Name	Index Type	Sequence	Column Name
XDP_ORDER_PARAMETERS_U1	UNIQUE	1	ORDER_ID
		3	ORDER_PARAMETER_NAME

## XDP\_ORDER\_RELATIONSHIPS

This table holds the relationship between orders. The order relationship definition is as followed: Values: Meaning:

XDP\_TYPES.IS\_PREREQUISITE\_OF Related order will not get executed until the current order is completed. If the current order is canceled, the related order will also be canceled.

XDP\_TYPES.COMES\_BEFORE Related order will not get executed until the current order is completed or the current order is canceled.

XDP\_TYPES.COMES\_AFTER Current order will not get executed until the related order is completed or the related order is canceled.

XDP\_TYPES.IS\_CHILD\_OF Current order is the child order of the related order.

### Foreign Keys

Primary Key Table	Primary Key Column	Foreign Key Column
XDP_ORDER_HEADERS	ORDER_ID	RELATED_ORDER_ID
XDP_ORDER_HEADERS	ORDER_ID	ORDER_ID

### QuickCodes Columns

Column	QuickCodes Type	QuickCodes Table
ORDER_RELATIONSHIP	XDP_ORD_RELATIONSHIP	XDP_LOOKUPS
	COMES_AFTER	Current order not exec until related order completed
	COMES_BEFORE	Related order not exec until prereq completes, no cascade
	INDEPENDENT_CHILD_OF	Parent order status independent of child order status
	IS_CHILD_OF	Parent order status depends on child order status, cascade cancel
IS_PREREQUISITE_OF	Related order not executed until prereq completes, cascade..	

### Column Descriptions

Name	Null?	Type	Description
ORDER_ID (PK)	NOT NULL	NUMBER	Unique order identification
RELATED_ORDER_ID (PK)	NOT NULL	NUMBER	Unique identifier for related order
ORDER_RELATIONSHIP	NOT NULL	VARCHAR2(40)	Order relationship
CREATION_DATE	NOT NULL	DATE	Standard who column
LAST_UPDATE_DATE	NOT NULL	DATE	Standard who column
LAST_UPDATED_BY	NOT NULL	NUMBER(15)	Standard who column
CREATED_BY	NOT NULL	NUMBER(15)	Standard who column
LAST_UPDATE_LOGIN	NULL	NUMBER(15)	Standard who column

### Indexes

Index Name	Index Type	Sequence	Column Name
XDP_ORDER_RELATIONSHIPS_N1	NOT UNIQUE	10	RELATED_ORDER_ID

**Oracle Proprietary, Confidential Information--Use Restricted by Contract**

XDP\_ORDER\_RELATIONSHIPS\_U1

UNIQUE

1  
3

ORDER\_ID  
RELATED\_ORDER\_ID

## XDP\_PARAMETER\_POOL

XDP\_PARAMETER\_POOL will store the parameter base definition (i.e., name, data type, etc..) for all the parameters which are known to SDP.

### QuickCodes Columns

Column	QuickCodes Type	QuickCodes Table
DATA_TYPE	XDP_PARAMETER_DATA_TYPE	XDP_LOOKUPS
	DATE	Date
	NUMERIC	Numeric
	STRING	String
PROTECTED_FLAG	XDP_YES_NO_FLAG_DEFAULT_NO	XDP_LOOKUPS
	N	No
	Y	Yes

### Column Descriptions

Name	Null?	Type	Description
PARAMETER_ID (PK)	NOT NULL	NUMBER	Parameter identifier
PARAMETER_NAME	NOT NULL	VARCHAR2(40)	Name of the Parameter
PROTECTED_FLAG	NOT NULL	VARCHAR2(1)	Internal flag to indicate if the Parameter is protected or not (ie Seed Data)
DATA_TYPE	NULL	VARCHAR2(40)	Data Type of the Parameter
DATA_LENGTH	NULL	NUMBER	Data Length of Parameter
DATA_FORMAT_MASK	NULL	VARCHAR2(40)	Format mask of the Parameter
DATA_RANGE_LOW	NULL	VARCHAR2(240)	Low Range indicator for the Parameter
DATA_RANGE_HI	NULL	VARCHAR2(240)	High Range indicator for the Parameter
CREATION_DATE	NOT NULL	DATE	Standard WHO column
LAST_UPDATE_DATE	NOT NULL	DATE	Standard WHO column
LAST_UPDATED_BY	NOT NULL	NUMBER(15)	Standard WHO column
CREATED_BY	NOT NULL	NUMBER(15)	Standard WHO column
LAST_UPDATE_LOGIN	NULL	NUMBER(15)	Standard WHO column

### Indexes

Index Name	Index Type	Sequence	Column Name
XDP_PARAMETER_POOL_U1	UNIQUE	5	PARAMETER_ID
XDP_PARAMETER_POOL_U2	UNIQUE	5	PARAMETER_NAME

### Sequences

Sequence	Derived Column
XDP_PARAMETER_POOL_S	PARAMETER_ID

Oracle Proprietary, Confidential Information--Use Restricted by Contract

## XDP\_PARAMETER\_POOL\_TL

XDP\_PARAMETER\_POOL\_TL is the MLS (Multi-Language Support) table for XDP\_PARAMETER\_POOL table. You can define the display name as well as the description for a given Parameter Name in multiple languages.

### Foreign Keys

Primary Key Table	Primary Key Column	Foreign Key Column
XDP_PARAMETER_POOL	PARAMETER_ID	PARAMETER_ID

### Column Descriptions

Name	Null?	Type	Description
PARAMETER_ID (PK)	NOT NULL	NUMBER	Parameter Pool identifier
LANGUAGE (PK)	NOT NULL	VARCHAR2(4)	Internal Code representing the Language
SOURCE_LANG	NOT NULL	VARCHAR2(4)	Internal Code representing the Source Language
DISPLAY_NAME	NOT NULL	VARCHAR2(80)	Display Name for the Parameter to support MLS
DESCRIPTION	NULL	VARCHAR2(2000)	Description
CREATED_BY	NOT NULL	NUMBER(15)	Standard WHO column
CREATION_DATE	NOT NULL	DATE	Standard WHO column
LAST_UPDATED_BY	NOT NULL	NUMBER(15)	Standard WHO column
LAST_UPDATE_DATE	NOT NULL	DATE	Standard WHO column
LAST_UPDATE_LOGIN	NULL	NUMBER(15)	Standard WHO column

### Indexes

Index Name	Index Type	Sequence	Column Name
XDP_PARAMETER_POOL_TL_U1	UNIQUE	1 3	PARAMETER_ID LANGUAGE

## XDP\_PROC\_BODY

XDP\_PROC\_BODY holds the source code of all the procedures defined for the application. This includes: 1. Fulfillment Procedures 2. Connect/Disconnect Procedures 3. Parameter Evaluation Procedures 4. Fulfillment Element Routing Procedures 5. Service to workitem dynamic mapping procedure 6. Workitem to fulfillment action dynamic mapping procedure 7. Procedure to create process in user defined workflow

### QuickCodes Columns

Column	QuickCodes Type	QuickCodes Table
PROC_TYPE	XDP_PROCEDURE_TYPE	XDP_LOOKUPS
	CONNECT	FE Connect Procedure
	DISCONNECT	FE Disconnect Procedure
	DYNAMIC_FA_MAPPING	Workitem to FA dynamic mapping procedure
	DYNAMIC_WI_MAPPING	Service to workitem dynamic mapping procedure
	EXEC_WI_WORKFLOW	User defined Workflow start-up procedure
	FA_PARAM_EVAL_ALL_PROC	Evaluate all Fulfillment Action Parameters
	FA_PARAM_EVAL_PROC	Fulfillment Action Parameter Evaluation Procedure
	LOCATE_FE	Locate Fulfillment Element procedure
PROTECTED_FLAG	PROVISIONING	Fulfillment procedure
	WI_PARAM_EVAL_PROC	WorkItem parameter evaluation procedure
	XDP_YES_NO_FLAG_DEFAULT_NO	XDP_LOOKUPS
	N	No
	Y	Yes

### Column Descriptions

Name	Null?	Type	Description
PROC_NAME (PK)	NOT NULL	VARCHAR2(40)	Procedure internal name
PROC_SPEC	NOT NULL	VARCHAR2(1996)	Package specification
PROC_BODY	NOT NULL	CLOB	Procedure body
PROC_TYPE	NOT NULL	VARCHAR2(40)	Procedure type
PROTECTED_FLAG	NOT NULL	VARCHAR2(1)	Flag to indicate if the procedure is a seeded procedure or not
CREATION_DATE	NULL	DATE	Standard Who column
LAST_UPDATE_DATE	NOT NULL	DATE	Standard Who column
LAST_UPDATED_BY	NOT NULL	NUMBER(15)	Standard Who column
CREATED_BY	NOT NULL	NUMBER(15)	Standard Who column
LAST_UPDATE_LOGIN	NULL	NUMBER(15)	Standard Who column

### Indexes

Index Name	Index Type	Sequence	Column Name
XDP_PROC_BODY_U1	UNIQUE	5	PROC_NAME

Oracle Proprietary, Confidential Information--Use Restricted by Contract

## XDP\_PROC\_BODY\_TL

XDP\_PROC\_BODY\_TL is the MLS (Multi-Language Support) table for the XDP\_PROC\_BODY table. The user can define the display name as well as the description for a given procedure in multiple languages

### Foreign Keys

Primary Key Table	Primary Key Column	Foreign Key Column
XDP_PROC_BODY	PROC_NAME	PROC_NAME

### Column Descriptions

Name	Null?	Type	Description
PROC_NAME (PK)	NOT NULL	VARCHAR2(40)	Procedure internal name
LANGUAGE (PK)	NOT NULL	VARCHAR2(4)	Language of the text. The language to which things are translated
SOURCE_LANG	NOT NULL	VARCHAR2(4)	Language from which things are translated
DISPLAY_NAME	NOT NULL	VARCHAR2(80)	Language dependent name of the procedure
DESCRIPTION	NULL	VARCHAR2(2000)	Language dependent description of the procedure
CREATED_BY	NOT NULL	NUMBER(15)	Standard Who column
CREATION_DATE	NOT NULL	DATE	Standard Who column
LAST_UPDATED_BY	NOT NULL	NUMBER(15)	Standard Who column
LAST_UPDATE_DATE	NOT NULL	DATE	Standard Who column
LAST_UPDATE_LOGIN	NULL	NUMBER(15)	Standard Who column

### Indexes

Index Name	Index Type	Sequence	Column Name
XDP_PROC_BODY_TL_U1	UNIQUE	1 3	PROC_NAME LANGUAGE

## XDP\_SERVICES

XDP\_SERVICES holds all services offered by a service provider. A service is also a product and is often used interchangeably

### QuickCodes Columns

Column	QuickCodes Type	QuickCodes Table
PROV_REQUIRED_FLAG	XDP_YES_NO_FLAG_DEFAULT_YES	XDP_LOOKUPS
	N	No
	Y	Yes

### Column Descriptions

Name	Null?	Type	Description
SERVICE_ID (PK)	NOT NULL	NUMBER	Service identifier
SERVICE_NAME	NOT NULL	VARCHAR2(40)	Service internal name
VERSION	NOT NULL	VARCHAR2(20)	Service version
PROV_REQUIRED_FLAG	NULL	VARCHAR2(1)	Flag to indicate if the Service is to be used for provisioning
VALID_DATE	NULL	DATE	Date indicating when the Service is active for use
INVALID_DATE	NULL	DATE	Date indicating when the Service is inactive for use
ROLE_NAME	NULL	VARCHAR2(100)	Group to be notified if problem occurs with the Service
CREATION_DATE	NOT NULL	DATE	Standard Who column
LAST_UPDATE_DATE	NOT NULL	DATE	Standard Who column
LAST_UPDATED_BY	NOT NULL	NUMBER(15)	Standard Who column
CREATED_BY	NOT NULL	NUMBER(15)	Standard Who column
LAST_UPDATE_LOGIN	NULL	NUMBER(15)	Standard Who column

### Indexes

Index Name	Index Type	Sequence	Column Name
XDP_SERVICES_U1	UNIQUE	5	SERVICE_ID
XDP_SERVICES_U2	UNIQUE	1	SERVICE_NAME
		3	VERSION

### Sequences

Sequence	Derived Column
XDP_SERVICES_S	SERVICE_ID

## XDP\_SERVICES\_TL

XDP\_SERVICES\_TL is the MLS (Multi-Language Support) table for the XDP\_SERVICES table. The user can define the display name as well as the description for a service in multiple languages

### Foreign Keys

Primary Key Table	Primary Key Column	Foreign Key Column
XDP_SERVICES	SERVICE_ID	SERVICE_ID

### Column Descriptions

Name	Null?	Type	Description
SERVICE_ID (PK)	NOT NULL	NUMBER	Service identifier
LANGUAGE (PK)	NOT NULL	VARCHAR2(4)	Language of the text. The language to which things are translated
SOURCE_LANG	NOT NULL	VARCHAR2(4)	Language from which things are translated
DISPLAY_NAME	NOT NULL	VARCHAR2(80)	Language dependent name of the Service
DESCRIPTION	NULL	VARCHAR2(2000)	Language dependent description of the Service
CREATED_BY	NOT NULL	NUMBER(15)	Standard Who column
CREATION_DATE	NOT NULL	DATE	Standard Who column
LAST_UPDATED_BY	NOT NULL	NUMBER(15)	Standard Who column
LAST_UPDATE_DATE	NOT NULL	DATE	Standard Who column
LAST_UPDATE_LOGIN	NULL	NUMBER(15)	Standard Who column

### Indexes

Index Name	Index Type	Sequence	Column Name
XDP_SERVICES_TL_U1	UNIQUE	1 3	SERVICE_ID LANGUAGE

## XDP\_SERVICE\_PACKAGES

XDP\_SERVICE\_PACKAGES is used to identify all the packages available to order within SDP. A package contains one or more services / products. Note: A service bundle is equivalent to a package in Oracle Provisioning. A bundle of services will be decomposed into multiple Work items

### Column Descriptions

Name	Null?	Type	Description
PACKAGE_ID (PK)	NOT NULL	NUMBER	Unique identification for the package
PACKAGE_NAME	NOT NULL	VARCHAR2(40)	Package name
PACKAGE_VERSION	NOT NULL	VARCHAR2(20)	Package version
VALID_DATE	NULL	DATE	Date when package becomes available
INVALID_DATE	NULL	DATE	Date when package is no longer available to order
CREATED_BY	NOT NULL	NUMBER(15)	Standard Who column
CREATION_DATE	NOT NULL	DATE	Standard Who column
LAST_UPDATED_BY	NOT NULL	NUMBER(15)	Standard Who column
LAST_UPDATE_DATE	NOT NULL	DATE	Standard Who column
LAST_UPDATE_LOGIN	NULL	NUMBER(15)	Standard Who column

### Indexes

Index Name	Index Type	Sequence	Column Name
XDP_SERVICE_PACKAGES_U1	UNIQUE	5	PACKAGE_ID
XDP_SERVICE_PACKAGES_U2	UNIQUE	4	PACKAGE_VERSION
		5	PACKAGE_NAME

### Sequences

Sequence	Derived Column
XDP_SERVICE_PACKAGES_S	PACKAGE_ID

## XDP\_SERVICE\_PACKAGES\_TL

XDP\_SERVICE\_PACKAGES\_TL is the MLS (Multi-Language Support) table for the XDP\_SERVICE\_PACKAGES table. The user can define the display name as well as the description for a product / service package in multiple languages

### Foreign Keys

Primary Key Table	Primary Key Column	Foreign Key Column
XDP_SERVICE_PACKAGES	PACKAGE_ID	PACKAGE_ID

### Column Descriptions

Name	Null?	Type	Description
PACKAGE_ID (PK)	NOT NULL	NUMBER	Unique package identifier
LANGUAGE (PK)	NOT NULL	VARCHAR2(4)	Language of the text. The language to which things are translated
SOURCE_LANG	NOT NULL	VARCHAR2(4)	Language from which things are translated
DISPLAY_NAME	NOT NULL	VARCHAR2(80)	Language dependent name of the package
DESCRIPTION	NULL	VARCHAR2(2000)	Language dependent description of the package
CREATED_BY	NOT NULL	NUMBER(15)	Standard Who column
CREATION_DATE	NOT NULL	DATE	Standard Who column
LAST_UPDATED_BY	NOT NULL	NUMBER(15)	Standard Who column
LAST_UPDATE_DATE	NOT NULL	DATE	Standard Who column
LAST_UPDATE_LOGIN	NULL	NUMBER(15)	Standard Who column

### Indexes

Index Name	Index Type	Sequence	Column Name
XDP_SERVICE_PACKAGES_TL_U1	UNIQUE	1 3	PACKAGE_ID LANGUAGE

## XDP\_SERVICE\_PKG\_DET

XDP\_SERVICE\_PKG\_DET holds all the services / products contained in a package

### Foreign Keys

Primary Key Table	Primary Key Column	Foreign Key Column
XDP_SERVICES	SERVICE_ID	SERVICE_ID
XDP_SERVICE_PACKAGES	PACKAGE_ID	PACKAGE_ID

### QuickCodes Columns

Column	QuickCodes Type	QuickCodes Table
PROV_REQUIRED_FLAG	XDP_YES_NO_FLAG_DEFAULT_YES N Y	XDP_LOOKUPS No Yes

### Column Descriptions

Name	Null?	Type	Description
PACKAGE_ID (PK)	NOT NULL	NUMBER	Unique identifier for package
SERVICE_ID (PK)	NOT NULL	NUMBER	Unique identifier for service
PROV_REQUIRED_FLAG	NOT NULL	VARCHAR2(1)	Flag to indicate if provisioning is required for the service
ACTIVATION_SEQUENCE	NULL	NUMBER	Sequence to be followed in activating the services within a package
CREATION_DATE	NOT NULL	DATE	Standard Who column
LAST_UPDATE_DATE	NOT NULL	DATE	Standard Who column
LAST_UPDATED_BY	NOT NULL	NUMBER(15)	Standard Who column
CREATED_BY	NOT NULL	NUMBER(15)	Standard Who column
LAST_UPDATE_LOGIN	NULL	NUMBER(15)	Standard Who column

### Indexes

Index Name	Index Type	Sequence	Column Name
XDP_SERVICE_PKG_DET_N1	NOT UNIQUE	10	SERVICE_ID
XDP_SERVICE_PKG_DET_U1	UNIQUE	1	PACKAGE_ID
		3	SERVICE_ID

## XDP\_SERVICE\_PKG\_DET\_TL

XDP\_SERVICE\_PKG\_DET\_TL is the MLS (Multi-Language Support) table for the XDP\_SERVICE\_PKG\_DET table. The user can define the description for the mapping of a service / product to a package in multiple languages

### Foreign Keys

Primary Key Table	Primary Key Column	Foreign Key Column
XDP_SERVICE_PKG_DET	PACKAGE_ID SERVICE_ID	PACKAGE_ID SERVICE_ID

### Column Descriptions

Name	Null?	Type	Description
PACKAGE_ID (PK)	NOT NULL	NUMBER	Unique identifier for the package
SERVICE_ID (PK)	NOT NULL	NUMBER	Unique identifier for the service
LANGUAGE (PK)	NOT NULL	VARCHAR2(4)	Language of the text. The language to which things are translated
SOURCE_LANG	NOT NULL	VARCHAR2(4)	Language from which things are translated
DESCRIPTION	NULL	VARCHAR2(2000)	Language dependent description of the service package combination
CREATED_BY	NOT NULL	NUMBER(15)	Standard Who column
CREATION_DATE	NOT NULL	DATE	Standard Who column
LAST_UPDATED_BY	NOT NULL	NUMBER(15)	Standard Who column
LAST_UPDATE_DATE	NOT NULL	DATE	Standard Who column
LAST_UPDATE_LOGIN	NULL	NUMBER(15)	Standard Who column

### Indexes

Index Name	Index Type	Sequence	Column Name
XDP_SERVICE_PKG_DET_TL_U1	UNIQUE	2 4 14	PACKAGE_ID SERVICE_ID LANGUAGE

## XDP\_SERVICE\_VAL\_ACTS

XDP\_SERVICE\_VAL\_ACTS is used to define the valid service actions for a given service. For example, the action 'ADD' for service 'ISDN'. Each service action will then be mapped to a list of workitems. In some cases the list of workitems to be executed can not be determined at configuration time because it may vary based on the order information. The WI\_MAPPING\_PROC column is defined to be used for such case. You can specify the mapping logic in this procedure based on the order information and use XDP\_OA\_UTIL.Add\_WI\_ToLine API to create the workitem mapping at runtime. SDP provisioning engine will then execute this procedure to create the order line fulfillment wok list.

### Foreign Keys

Primary Key Table	Primary Key Column	Foreign Key Column
XDP_ACTION_CODES	ACTION_CODE_ID	ACTION_CODE_ID
XDP_PROC_BODY	PROC_NAME	WI_MAPPING_PROC
XDP_SERVICES	SERVICE_ID	SERVICE_ID

### QuickCodes Columns

Column	QuickCodes Type	QuickCodes Table
WI_MAPPING_TYPE	XDP_FA_MAPPING_TYPE	XDP_LOOKUPS
	DYNAMIC	Dynamic
	STATIC	Static
	WORKFLOW	User defined workflow
	WORKFLOW_PROC	User defined Workflow Procedure

### Column Descriptions

Name	Null?	Type	Description
SERVICE_VAL_ACT_ID (PK)	NOT NULL	NUMBER	Valid service action identifier
SERVICE_ID	NOT NULL	NUMBER	Service identifier to which the action is mapped to
ACTION_CODE_ID	NOT NULL	NUMBER	Action code identifier for the service
VALID_DATE	NULL	DATE	Date indicating when the service action combination is active for use
INVALID_DATE	NULL	DATE	Date indicating when the service action combination is inactive for use
WI_MAPPING_PROC	NULL	VARCHAR2(40)	Dynamic mapping procedure for the service action combination
UNDO_WI_MAPPING_PROC	NULL	VARCHAR2(40)	Undo mapping procedure for the service action combination
WI_MAPPING_TYPE	NULL	VARCHAR2(40)	Type of work item mapping procedure for the service action combination. Valid values are "STATIC" or "DYNAMIC"
USER_WF_ITEM_TYPE	NULL	VARCHAR2(8)	Item type of the workflow for the service action combination

Oracle Proprietary, Confidential Information--Use Restricted by Contract

USER_WF_PROCESS_NAME	NULL	VARCHAR2(80)	Process name of the workflow for the service action combination
USER_WF_ITEM_KEY_PREFIX	NULL	VARCHAR2(240)	Item key prefix of the workflow for the service action combination
WF_EXEC_PROC	NULL	VARCHAR2(240)	Workflow procedure for the service action combination
CREATION_DATE	NOT NULL	DATE	Standard Who column
CREATED_BY	NOT NULL	NUMBER(15)	Standard Who column
LAST_UPDATE_DATE	NOT NULL	DATE	Standard Who column
LAST_UPDATED_BY	NOT NULL	NUMBER(15)	Standard Who column
LAST_UPDATE_LOGIN	NULL	NUMBER(15)	Standard Who column

*Indexes*

<u>Index Name</u>	<u>Index Type</u>	<u>Sequence</u>	<u>Column Name</u>
XDP_SERVICE_VAL_ACTS_N1	NOT UNIQUE	1	ACTION_CODE_ID
XDP_SERVICE_VAL_ACTS_N2	NOT UNIQUE	20	WI_MAPPING_PROC
XDP_SERVICE_VAL_ACTS_U1	UNIQUE	5	SERVICE_VAL_ACT_ID
XDP_SERVICE_VAL_ACTS_U2	UNIQUE	1	SERVICE_ID
		3	ACTION_CODE_ID

*Sequences*

<u>Sequence</u>	<u>Derived Column</u>
XDP_SERVICE_VAL_ACTS_S	SERVICE_VAL_ACT_ID

## XDP\_SERVICE\_VAL\_ACTS\_TL

XDP\_SERVICE\_VAL\_ACTS\_TL is the MLS (Multi-Language Support) table for the XDP\_SERVICE\_VAL\_ACTS table. The user can define the description for the service mapped to an action in multiple languages

### Foreign Keys

Primary Key Table	Primary Key Column	Foreign Key Column
XDP_SERVICE_VAL_ACTS	SERVICE_VAL_ACT_ID	SERVICE_VAL_ACT_ID

### Column Descriptions

Name	Null?	Type	Description
SERVICE_VAL_ACT_ID (PK)	NOT NULL	NUMBER	Valid service action identifier
LANGUAGE (PK)	NOT NULL	VARCHAR2(4)	Language of the text. The language to which things are translated
SOURCE_LANG	NOT NULL	VARCHAR2(4)	Language from which things are translated
DESCRIPTION	NULL	VARCHAR2(2000)	Language dependent description of the service action combination
CREATED_BY	NOT NULL	NUMBER(15)	Standard Who column
CREATION_DATE	NOT NULL	DATE	Standard Who column
LAST_UPDATED_BY	NOT NULL	NUMBER(15)	Standard Who column
LAST_UPDATE_DATE	NOT NULL	DATE	Standard Who column
LAST_UPDATE_LOGIN	NULL	NUMBER(15)	Standard Who column

### Indexes

Index Name	Index Type	Sequence	Column Name
XDP_SERVICE_VAL_ACTS_TL_U1	UNIQUE	2	SERVICE_VAL_ACT_ID
		3	LANGUAGE

## XDP\_SERVICE\_WI\_MAP

XDP\_SERVICE\_WI\_MAP is used define the list of workitems that need to be executed to fulfill the given service action

### Foreign Keys

Primary Key Table	Primary Key Column	Foreign Key Column
XDP_SERVICE_VAL_ACTS	SERVICE_VAL_ACT_ID	SERVICE_VAL_ACT_ID
XDP_WORKITEMS	WORKITEM_ID	WORKITEM_ID

### Column Descriptions

Name	Null?	Type	Description
SERVICE_WI_MAP_ID (PK)	NOT NULL	NUMBER	Service work item mapping identifier
SERVICE_VAL_ACT_ID	NOT NULL	NUMBER	Valid service action identifier for the service work item mapping
WORKITEM_ID	NOT NULL	NUMBER	Work item identifier which is mapped to the service
PROVISION_SEQ	NOT NULL	NUMBER	Provisioning sequence for the work item mapped to the service
MAPPING_TYPE	NOT NULL	VARCHAR2(40)	Type of mapping between the service and the work item
CREATION_DATE	NOT NULL	DATE	Standard Who column
LAST_UPDATE_DATE	NOT NULL	DATE	Standard Who column
LAST_UPDATED_BY	NOT NULL	NUMBER(15)	Standard Who column
CREATED_BY	NOT NULL	NUMBER(15)	Standard Who column
LAST_UPDATE_LOGIN	NULL	NUMBER(15)	Standard Who column

### Indexes

Index Name	Index Type	Sequence	Column Name
XDP_SERVICE_WI_MAP_N1	NOT UNIQUE	10	WORKITEM_ID
XDP_SERVICE_WI_MAP_N2	NOT UNIQUE	5	SERVICE_VAL_ACT_ID
XDP_SERVICE_WI_MAP_U1	UNIQUE	5	SERVICE_WI_MAP_ID

### Sequences

Sequence	Derived Column
XDP_SERVICE_WI_MAP_S	SERVICE_WI_MAP_ID

## XDP\_SERVICE\_WI\_MAP\_TL

XDP\_SERVICE\_WI\_MAP\_TL is the MLS (Multi-Language Support) table for the XDP\_SERVICE\_WI\_MAP table. The user can define the description for the service mapped to a work item in multiple languages

### Foreign Keys

Primary Key Table	Primary Key Column	Foreign Key Column
XDP_SERVICE_WI_MAP	SERVICE_WI_MAP_ID	SERVICE_WI_MAP_ID

### Column Descriptions

Name	Null?	Type	Description
SERVICE_WI_MAP_ID (PK)	NOT NULL	NUMBER	Service work item mapping identifier
LANGUAGE (PK)	NOT NULL	VARCHAR2(4)	Language of the text. The language to which things are translated
SOURCE_LANG	NOT NULL	VARCHAR2(4)	Language from which things are translated
DESCRIPTION	NULL	VARCHAR2(2000)	Language dependent description of the service mapped to a work item
CREATED_BY	NOT NULL	NUMBER(15)	Standard Who column
CREATION_DATE	NOT NULL	DATE	Standard Who column
LAST_UPDATED_BY	NOT NULL	NUMBER(15)	Standard Who column
LAST_UPDATE_DATE	NOT NULL	DATE	Standard Who column
LAST_UPDATE_LOGIN	NULL	NUMBER(15)	Standard Who column

### Indexes

Index Name	Index Type	Sequence	Column Name
XDP_SERVICE_WI_MAP_TL_U1	UNIQUE	5 26	SERVICE_WI_MAP_ID LANGUAGE

## XDP\_WF\_PROCESS\_COORD

The XDP\_WF\_PROCESS\_COORD table holds the information for coordinating workflow processes. It is designed to be used as an enhancement to the standard workflow ContinueFlow/WaitForFlow features. It should only be used internally.

### Column Descriptions

Name	Null?	Type	Description
WF_COORDINATION_ID (PK)	NOT NULL	NUMBER	Identifier of the workflow coordination event
WF_ITEM_TYPE	NOT NULL	VARCHAR2(8)	Parent workflow item type
WF_ITEM_KEY	NOT NULL	VARCHAR2(240)	Parent workflow item key
WF_ACTIVITY_NAME	NOT NULL	VARCHAR2(40)	Parent workflow activity
CHILD_PROCESS_NUM	NOT NULL	NUMBER	Current number of child workflow process to coordinate with
CALLBACK	NULL	VARCHAR2(4000)	For future use
CREATION_DATE	NOT NULL	DATE	Standard Who column
LAST_UPDATE_DATE	NOT NULL	DATE	Standard Who column
LAST_UPDATED_BY	NOT NULL	NUMBER(15)	Standard Who column - with the user id from FND_USER
CREATED_BY	NOT NULL	NUMBER(15)	Standard Who column - with the user id from FND_USER
LAST_UPDATE_LOGIN	NULL	NUMBER(15)	Standard Who column

### Indexes

Index Name	Index Type	Sequence	Column Name
XDP_WF_PROCESS_COORD_U1	UNIQUE	5	WF_COORDINATION_ID

### Sequences

Sequence	Derived Column
XDP_WF_COORDINATION_ID_S	WF_COORDINATION_ID

## XDP\_WI\_FA\_MAPPING

XDP\_WI\_FA\_MAPPING defines the list of fulfillment actions to be executed in order to fulfill a workitem

### Foreign Keys

Primary Key Table	Primary Key Column	Foreign Key Column
XDP_FULFILL_ACTIONS	FULFILLMENT_ACTION_ID	FULFILLMENT_ACTION_ID
XDP_WORKITEMS	WORKITEM_ID	WORKITEM_ID

### Column Descriptions

Name	Null?	Type	Description
WI_FA_MAPPING_ID (PK)	NOT NULL	NUMBER	Work item fulfillment action identifier
WORKITEM_ID	NOT NULL	NUMBER	Work item identifier for the work item fulfillment action mapping
FULFILLMENT_ACTION_ID	NOT NULL	NUMBER	Fulfillment action identifier which is mapped to the work item
PROVISIONING_SEQ	NOT NULL	NUMBER	Provisioning sequence for the fulfillment action mapped to the work item
CREATION_DATE	NOT NULL	DATE	Standard Who column
CREATED_BY	NOT NULL	NUMBER(15)	Standard Who column
LAST_UPDATE_DATE	NOT NULL	DATE	Standard Who column
LAST_UPDATED_BY	NOT NULL	NUMBER(15)	Standard Who column
LAST_UPDATE_LOGIN	NULL	NUMBER(15)	Standard Who column

### Indexes

Index Name	Index Type	Sequence	Column Name
XDP_WI_FA_MAPPING_N1	NOT UNIQUE	10	FULFILLMENT_ACTION_ID
XDP_WI_FA_MAPPING_N2	NOT UNIQUE	10	WORKITEM_ID
XDP_WI_FA_MAPPING_U1	UNIQUE	5	WI_FA_MAPPING_ID

### Sequences

Sequence	Derived Column
XDP_WI_FA_MAPPING_S	WI_FA_MAPPING_ID

## XDP\_WI\_FA\_MAPPING\_TL

XDP\_WI\_FA\_MAPPING\_TL is the MLS (Multi-Language Support) table for the XDP\_WI\_FA\_MAPPING table. The user can define the description for the a work item mapped to a fulfillment action in multiple languages

### Foreign Keys

Primary Key Table	Primary Key Column	Foreign Key Column
XDP_WI_FA_MAPPING	WI_FA_MAPPING_ID	WI_FA_MAPPING_ID

### Column Descriptions

Name	Null?	Type	Description
WI_FA_MAPPING_ID (PK)	NOT NULL	NUMBER	Work item fulfillment action mapping identifier
LANGUAGE (PK)	NOT NULL	VARCHAR2(4)	Language of the text. The language to which things are translated
SOURCE_LANG	NOT NULL	VARCHAR2(4)	Language from which things are translated
DESCRIPTION	NULL	VARCHAR2(2000)	Language dependent description of the work item fulfillment action mapping
CREATED_BY	NOT NULL	NUMBER(15)	Standard Who column
CREATION_DATE	NOT NULL	DATE	Standard Who column
LAST_UPDATED_BY	NOT NULL	NUMBER(15)	Standard Who column
LAST_UPDATE_DATE	NOT NULL	DATE	Standard Who column
LAST_UPDATE_LOGIN	NULL	NUMBER(15)	Standard Who column

### Indexes

Index Name	Index Type	Sequence	Column Name
XDP_WI_FA_MAPPING_TL_U1	UNIQUE	3 14	WI_FA_MAPPING_ID LANGUAGE

## XDP\_WI\_PARAMETERS

XDP\_WI\_PARAMETERS holds all the work item parameters and associated properties for a given work item

### Foreign Keys

Primary Key Table	Primary Key Column	Foreign Key Column
XDP_PARAMETER_POOL	PARAMETER_ID	WI_PARAMETER_ID
XDP_PROC_BODY	PROC_NAME	VALIDATION_PROCEDURE
XDP_PROC_BODY	PROC_NAME	EVALUATION_PROCEDURE
XDP_WORKITEMS	WORKITEM_ID	WORKITEM_ID

### QuickCodes Columns

Column	QuickCodes Type	QuickCodes Table
EVALUATION_MODE	XDP_EVALUATION_MODE	XDP_LOOKUPS
	ON_ORDER_RECEIPT	Upon order receipt
	ON_PROCESS_ORDER	When provisioning order
LOG_IN_AUDIT_TRAIL_FLAG	XDP_YES_NO_FLAG_DEFAULT_YES	XDP_LOOKUPS
	N	No
	Y	Yes
REQUIRED_FLAG	XDP_YES_NO_FLAG_DEFAULT_YES	XDP_LOOKUPS
	N	No
	Y	Yes

### Column Descriptions

Name	Null?	Type	Description
WORKITEM_ID (PK)	NOT NULL	NUMBER	Work item identifier which the parameter is mapped to
WI_PARAMETER_ID (PK)	NOT NULL	NUMBER	Identifier for the parameter mapped to the work item
REQUIRED_FLAG	NOT NULL	VARCHAR2(1)	Flag to indicate if the parameter is mandatory or optional for the work item
LOG_IN_AUDIT_TRAIL_FLAG	NULL	VARCHAR2(1)	Flag to indicate if the parameter is to be audited
VALUE_LOOKUP_SQL	NULL	VARCHAR2(1996)	SQL query internally used to provide a LOV for the parameter
VALIDATION_PROCEDURE	NULL	VARCHAR2(40)	Validation procedure for the parameter. For future use
EVALUATION_MODE	NULL	VARCHAR2(20)	Internal code representing the evaluation mode of the parameter
EVALUATION_SEQ	NULL	NUMBER	Evaluation sequence for the parameter mapped to the work item
EVALUATION_PROCEDURE	NULL	VARCHAR2(40)	Evaluation procedure for the parameter
DISPLAY_SEQ	NULL	NUMBER	Sequence in which the parameter is to be displayed on the UI
DEFAULT_VALUE	NULL	VARCHAR2(4000)	Default value of the parameter
CREATED_BY	NOT NULL	NUMBER(15)	Standard Who column
CREATION_DATE	NOT NULL	DATE	Standard Who column
LAST_UPDATE_DATE	NOT NULL	DATE	Standard Who column
LAST_UPDATED_BY	NOT NULL	NUMBER(15)	Standard Who column
LAST_UPDATE_LOGIN	NULL	NUMBER(15)	Standard Who column

Oracle Proprietary, Confidential Information--Use Restricted by Contract

*Indexes*

<u>Index Name</u>	<u>Index Type</u>	<u>Sequence</u>	<u>Column Name</u>
XDP_WI_PARAMETERS_N1	NOT UNIQUE	20	VALIDATION_PROCEDURE
XDP_WI_PARAMETERS_N2	NOT UNIQUE	20	EVALUATION_PROCEDURE
XDP_WI_PARAMETERS_N3	NOT UNIQUE	10	WI_PARAMETER_ID
XDP_WI_PARAMETERS_U1	UNIQUE	1	WORKITEM_ID
		3	WI_PARAMETER_ID

## XDP\_WI\_RELATIONSHIPS

The table XDP\_WI\_RELATIONSHIPS hold all the relationships of any Workitem within an order. The workitem relationship is defined as followed: Values: Meaning: XDP\_TYPES.MERGED\_INTO  
 Related workitem is merged into the current workitem. If the current workitem is completed, then the related workitem is completed.

### Foreign Keys

Primary Key Table	Primary Key Column	Foreign Key Column
XDP_FULFILL_WORKLIST	WORKITEM_INSTANCE_ID	WORKITEM_INSTANCE_ID
XDP_FULFILL_WORKLIST	WORKITEM_INSTANCE_ID	RELATED_WI_INSTANCE_ID

### QuickCodes Columns

Column	QuickCodes Type	QuickCodes Table
WI_RELATIONSHIP	XDP_WI_RELATIONSHIP_TYPE MERGED_INTO	XDP_LOOKUPS Related workitem is merged into the current workitem

### Column Descriptions

Name	Null?	Type	Description
WORKITEM_INSTANCE_ID (PK)	NOT NULL	NUMBER	Work item instance identifier
RELATED_WI_INSTANCE_ID (PK)	NOT NULL	NUMBER	Related work item instance identifier
WI_RELATIONSHIP	NOT NULL	VARCHAR2(40)	The relationship between the two work items
CREATION_DATE	NOT NULL	DATE	Standard WHO column
LAST_UPDATE_DATE	NOT NULL	DATE	Standard WHO column
LAST_UPDATED_BY	NOT NULL	NUMBER(15)	Standard WHO column
CREATED_BY	NOT NULL	NUMBER(15)	Standard WHO column
LAST_UPDATE_LOGIN	NULL	NUMBER(15)	Standard WHO column

### Indexes

Index Name	Index Type	Sequence	Column Name
XDP_WI_RELATIONSHIPS_N1	NOT UNIQUE	10	RELATED_WI_INSTANCE_ID
XDP_WI_RELATIONSHIPS_U1	UNIQUE	1	WORKITEM_INSTANCE_ID
		3	RELATED_WI_INSTANCE_ID

## XDP\_WORKITEMS

XDP\_WORKITEMS is used to define a work item. A work item can be viewed as a job to fulfill a valid service action offering. A typical work item will consist of a list of fulfillment actions to be executed. The WI\_TYPE\_CODE column is used to identify what type of fulfillment mapping needs to be used for this workitem. The valid values for the mapping type are: STATIC – The list of all fulfillment actions to be executed can be decided at the configuration time. You can configure the work item fulfillment action mapping. DYNAMIC – The list of all fulfillment actions to be executed can only be decided at the runtime when the order arrives. You can define the dynamic mapping logic in a PL/SQL procedure specified by FA\_EXEC\_MAP\_PROC column and use API XDP\_ENG\_UTIL.Add\_FA\_ToWI to create the fulfillment action list for this work item at runtime. WORKFLOW – The list of all fulfillment actions to be executed is conditional based on the execution result for each fulfillment action. You can define your own workflow for this work item. User defined workflow is identified by the columns USER\_WF\_ITEM\_TYPE, USER\_WF\_ITEM\_KEY and USER\_WF\_PROCESS\_NAME which are required to be updated at configuration time. WORKFLOW\_PROC – The list of all fulfillment actions to be executed is conditional based on the execution result of each fulfillment action and can vary on basis of the order information. You may define several workflows for this work item and instruct application about which workflow should be executed at runtime. Column WF\_EXEC\_PROC should be updated at the configuration time with a PL/SQL procedure which will dynamically create the appropriate workflow process at runtime and return the workflow item type, item key and process name to the provisioning engine

### Foreign Keys

Primary Key Table	Primary Key Column	Foreign Key Column
XDP_PROC_BODY	PROC_NAME	FA_EXEC_MAP_PROC
XDP_PROC_BODY	PROC_NAME	WF_EXEC_PROC

### QuickCodes Columns

Column	QuickCodes Type	QuickCodes Table
PROTECTED_FLAG	XDP_YES_NO_FLAG_DEFAULT_NO	XDP_LOOKUPS
	N	No
	Y	Yes
WI_TYPE_CODE	XDP_FA_MAPPING_TYPE	XDP_LOOKUPS
	DYNAMIC	Dynamic
	STATIC	Static
	WORKFLOW	User defined workflow
	WORKFLOW_PROC	User defined Workflow Procedure

### Column Descriptions

Name	Null?	Type	Description
WORKITEM_ID (PK)	NOT NULL	NUMBER	Work item identifier
WORKITEM_NAME	NOT NULL	VARCHAR2(40)	Work item name
VERSION	NOT NULL	VARCHAR2(40)	Work item version
WI_TYPE_CODE	NOT NULL	VARCHAR2(40)	Internal code representing the type of work item
VALID_DATE	NULL	DATE	Date indicating when the work item is active for use
INVALID_DATE	NULL	DATE	Date indicating when the work item is inactive for use
FA_EXEC_MAP_PROC	NULL	VARCHAR2(40)	Dynamic mapping procedure for fulfillment actions for work item
USER_WF_ITEM_TYPE	NULL	VARCHAR2(8)	The item type of the user defined workflow for the work item
USER_WF_ITEM_KEY_PREFIX	NULL	VARCHAR2(240)	The item key prefix of the user defined workflow for the work item
USER_WF_PROCESS_NAME	NULL	VARCHAR2(40)	The process name of the user defined workflow for the work item
WF_EXEC_PROC	NULL	VARCHAR2(40)	Dynamic procedure which initiates appropriate user defined workflow for the work item
TIME_ESTIMATE	NULL	NUMBER	Not used. For future use
PROTECTED_FLAG	NOT NULL	VARCHAR2(1)	Internal flag to indicate if the work item is seeded data or not
ROLE_NAME	NULL	VARCHAR2(100)	Owner role name
CREATION_DATE	NOT NULL	DATE	Standard Who column
LAST_UPDATE_DATE	NOT NULL	DATE	Standard Who column
LAST_UPDATED_BY	NOT NULL	NUMBER(15)	Standard Who column
CREATED_BY	NOT NULL	NUMBER(15)	Standard Who column
LAST_UPDATE_LOGIN	NULL	NUMBER(15)	Standard Who column

### Indexes

Index Name	Index Type	Sequence	Column Name
XDP_WORKITEMS_N1	NOT UNIQUE	20	FA_EXEC_MAP_PROC
XDP_WORKITEMS_N2	NOT UNIQUE	20	WF_EXEC_PROC
XDP_WORKITEMS_U1	UNIQUE	5	WORKITEM_ID
XDP_WORKITEMS_U2	UNIQUE	1	WORKITEM_NAME
		3	VERSION

### Sequences

Sequence	Derived Column
XDP_WORKITEMS_S	WORKITEM_ID

## XDP\_WORKITEMS\_TL

XDP\_WORKITEMS\_TL is the MLS table (Multi-Language Support) for the XDP\_WORKITEMS table. The user can define the display name as well as the description for the work item in multiple languages

### Foreign Keys

Primary Key Table	Primary Key Column	Foreign Key Column
XDP_WORKITEMS	WORKITEM_ID	WORKITEM_ID

### Column Descriptions

Name	Null?	Type	Description
WORKITEM_ID (PK)	NOT NULL	NUMBER	Work item identifier
LANGUAGE (PK)	NOT NULL	VARCHAR2(4)	Language of the text. The language to which things are translated
SOURCE_LANG	NOT NULL	VARCHAR2(4)	Language from which things are translated
DISPLAY_NAME	NOT NULL	VARCHAR2(80)	Language dependent name of the work item
DESCRIPTION	NULL	VARCHAR2(2000)	Language dependent description of the work item
CREATED_BY	NOT NULL	NUMBER(15)	Standard Who column
CREATION_DATE	NOT NULL	DATE	Standard Who column
LAST_UPDATED_BY	NOT NULL	NUMBER(15)	Standard Who column
LAST_UPDATE_DATE	NOT NULL	DATE	Standard Who column
LAST_UPDATE_LOGIN	NULL	NUMBER(15)	Standard Who column

### Indexes

Index Name	Index Type	Sequence	Column Name
XDP_WORKITEMS_TL_U1	UNIQUE	1 3	WORKITEM_ID LANGUAGE

## XDP\_WORKLIST\_DETAILS

The table XDP\_WORKLIST\_DETAILS holds all the parameters associated with a Workitem instance.

### Foreign Keys

Primary Key Table	Primary Key Column	Foreign Key Column
XDP_FULFILL_WORKLIST	WORKITEM_INSTANCE_ID	WORKITEM_INSTANCE_ID
XDP_WI_PARAMETERS	WI_PARAMETER_ID WORKITEM_ID	WI_PARAMETER_ID WORKITEM_ID

### QuickCodes Columns

Column	QuickCodes Type	QuickCodes Table
IS_VALUE_EVALUATED	XDP_YES_NO_FLAG_DEFAULT_NO N Y	XDP_LOOKUPS No Yes

### Column Descriptions

Name	Null?	Type	Description
WORKITEM_INSTANCE_ID (PK)	NOT NULL	NUMBER	Work item instance identifier
WI_PARAMETER_ID (PK)	NOT NULL	NUMBER	Work item parameter internal ID
WORKITEM_ID	NOT NULL	NUMBER	Work item internal ID
IS_VALUE_EVALUATED	NOT NULL	VARCHAR2(1)	Indicator of an evaluated parameter value
PARAMETER_VALUE	NULL	VARCHAR2(4000)	The value of a work item parameter
PARAMETER_REF_VALUE	NULL	VARCHAR2(4000)	The reference value of a work item parameter
CREATION_DATE	NOT NULL	DATE	Standard WHO column
LAST_UPDATE_DATE	NOT NULL	DATE	Standard WHO column
LAST_UPDATED_BY	NOT NULL	NUMBER(15)	Standard WHO column
CREATED_BY	NOT NULL	NUMBER(15)	Standard WHO column
LAST_UPDATE_LOGIN	NULL	NUMBER(15)	Standard WHO column

### Indexes

Index Name	Index Type	Sequence	Column Name
XDP_WORKLIST_DETAILS_N1	NOT UNIQUE	20 22	WORKITEM_ID WI_PARAMETER_ID
XDP_WORKLIST_DETAILS_U1	UNIQUE	1 3	WORKITEM_INSTANCE_ID WI_PARAMETER_ID

# Index

## A

Application Building Block, 1 – 6

## C

Column descriptions, 3 – 4

Columns, Who, 3 – 4

Concurrent Program List. *See* Concurrent Program Definitions

## D

Database Diagram, 1 – 6

Database Diagrams

Runtime, 2 – 12

Service Configuration, 2 – 8

Transaction, 2 – 10

database diagrams, conventions, 2 – 5

Database triggers, 3 – 6

## F

Foreign keys, 3 – 3

Form, 1 – 7

Form List. *See* Form Definitions

Forms and Table View List, 2 – 19

## I

Indexes, 3 – 6

important note about, 3 – 6

Internal View List, 2 – 20

## L

Lookup types. *See* QuickCodes

## M

Module List, 2 – 22

*See also* Module Definitions

Modules, 1 – 6

MultiLingual View List, 2 – 21

## O

Oracle8 sequences. *See* Sequences

## P

Public Table List, 2 – 14

## Q

QuickCodes, 1 – 6

Columns that contain, 3 – 3

## R

Relationship, 1 – 6

Report List. *See* Report Definitions

# S

Sequences, 3 – 6

# T

## Table and View Definitions

XDP\_ACTION\_CODES, 3 – 8  
XDP\_ACTION\_CODES\_TL, 3 – 9  
XDP\_ACTION\_CODES\_VL, 2 – 21  
XDP\_ADAPTER\_ADMIN\_REQS, 3 – 10  
XDP\_ADAPTER\_JOB\_QUEUE, 3 – 12  
XDP\_ADAPTER\_JOB\_QUEUE\_V, 2 – 19  
XDP\_ADAPTER\_REG, 3 – 14  
XDP\_ADAPTER\_SUMMARY\_V, 2 – 19  
XDP\_ADAPTER\_TYPE\_V, 2 – 19  
XDP\_DQ\_CONFIGURATION, 3 – 17  
XDP\_DQ\_CONFIGURATION\_TL, 3 – 19  
XDP\_DQ\_CONFIGURATION\_VL, 2 – 21  
XDP\_DQ\_EXCEPTIONS, 3 – 20  
XDP\_DQER\_REGISTRATION, 3 – 16  
XDP\_EVENTS\_V, 2 – 19  
XDP\_FA\_DETAILS, 3 – 21  
XDP\_FA\_FULFILLMENT\_PROC, 3 – 22  
XDP\_FA\_PARAMETERS, 3 – 24  
XDP\_FA\_PARAMETERS\_DISP\_V, 2 – 19  
XDP\_FA\_PARAMETERS\_V, 2 – 19  
XDP\_FA\_RESUBMISSION\_LOG, 3 – 25  
XDP\_FA\_RUNTIME\_LIST, 3 – 26  
XDP\_FE\_ATTRIBUTE\_DEF, 3 – 30  
XDP\_FE\_ATTRIBUTE\_DEF\_TL, 3 – 31  
XDP\_FE\_ATTRIBUTE\_DEF\_VL, 2 – 21  
XDP\_FE\_ATTRIBUTE\_VAL, 3 – 32  
XDP\_FE\_ATTRIBUTE\_VAL\_TL, 3 – 33  
XDP\_FE\_ATTRIBUTE\_VAL\_VL, 2 – 21  
XDP\_FE\_CMD\_AUD\_TRAILS, 3 – 34  
XDP\_FE\_GENERIC\_CONFIG, 3 – 35  
XDP\_FE\_SW\_GEN\_LOOKUP, 3 – 36  
XDP\_FE\_SW\_GEN\_LOOKUP\_TL, 3 – 37  
XDP\_FE\_SW\_GEN\_LOOKUP\_VL, 2 – 21  
XDP\_FE\_TYPES, 3 – 38  
XDP\_FE\_TYPES\_TL, 3 – 39  
XDP\_FE\_TYPES\_VL, 2 – 21  
XDP\_FES, 3 – 28  
XDP\_FES\_TL, 3 – 29  
XDP\_FES\_VL, 2 – 21  
XDP\_FMC\_AUD\_TRAIL\_DETS, 3 – 41  
XDP\_FMC\_AUDIT\_TRAILS, 3 – 40  
XDP\_FMC\_V, 2 – 19  
XDP\_FULFILL\_ACTIONS, 3 – 42  
XDP\_FULFILL\_ACTIONS\_TL, 3 – 43  
XDP\_FULFILL\_ACTIONS\_VL, 2 – 21  
XDP\_FULFILL\_WORKLIST, 3 – 44  
XDP\_INBOUND\_MESSAGES\_V, 2 – 20  
XDP\_LINE\_RELATIONSHIPS, 3 – 46  
XDP\_OE\_ORDER\_DETAILS\_V, 2 – 19  
XDP\_OE\_ORDER\_HEADERS, 3 – 47  
XDP\_OE\_ORDER\_LINE\_DETS, 3 – 51  
XDP\_OE\_ORDER\_LINES, 3 – 49  
XDP\_OE\_ORDER\_PARAMETERS, 3 – 52  
XDP\_ORDER\_BUNDLES, 3 – 53  
XDP\_ORDER\_DETAILS\_V, 2 – 19  
XDP\_ORDER\_HEADERS, 3 – 54  
XDP\_ORDER\_LINE\_ITEMS, 3 – 58  
XDP\_ORDER\_LINEITEM\_DETS, 3 – 57  
XDP\_ORDER\_PARAMETERS, 3 – 61  
XDP\_ORDER\_RELATIONSHIPS, 3 – 62  
XDP\_ORU\_ORDERS\_V, 2 – 19  
XDP\_OUTBOUND\_MESSAGES\_V, 2 – 20  
XDP\_PARAMETER\_POOL, 3 – 64  
XDP\_PARAMETER\_POOL\_TL, 3 – 65  
XDP\_PARAMETER\_POOL\_VL, 2 – 21  
XDP\_PEND\_ORDER\_V, 2 – 19  
XDP\_PROC\_BODY, 3 – 66  
XDP\_PROC\_BODY\_TL, 3 – 67  
XDP\_PROC\_BODY\_VL, 2 – 21  
XDP\_READY\_FAS\_V, 2 – 19  
XDP\_READY\_FES\_V, 2 – 19  
XDP\_READY\_ORDER\_V, 2 – 19  
XDP\_READY\_WORKITEM\_V, 2 – 19  
XDP\_SERVICE\_PACKAGES, 3 – 70  
XDP\_SERVICE\_PACKAGES\_TL, 3 – 71  
XDP\_SERVICE\_PACKAGES\_VL, 2 – 21  
XDP\_SERVICE\_PKG\_DET, 3 – 72  
XDP\_SERVICE\_PKG\_DET\_TL, 3 – 73  
XDP\_SERVICE\_PKG\_DET\_VL, 2 – 21  
XDP\_SERVICE\_VAL\_ACTS, 3 – 74  
XDP\_SERVICE\_VAL\_ACTS\_TL, 3 – 76  
XDP\_SERVICE\_VAL\_ACTS\_VL, 2 – 21  
XDP\_SERVICE\_WI\_MAP, 3 – 77  
XDP\_SERVICE\_WI\_MAP\_TL, 3 – 78  
XDP\_SERVICE\_WI\_MAP\_VL, 2 – 21

XDP\_SERVICES, 3 – 68  
XDP\_SERVICES\_TL, 3 – 69  
XDP\_SERVICES\_VL, 2 – 21  
XDP\_SUMMARY\_QUEUES\_V, 2 – 19  
XDP\_SVE\_PKG\_DET\_DISP\_V, 2 – 19  
XDP\_SVE\_VAL\_ACTION\_DISP\_V, 2 – 19  
XDP\_SVE\_WI\_MAPPING\_DISP\_V, 2 – 19  
XDP\_WAITING\_FES\_V, 2 – 19  
XDP\_WF\_PROCESS\_COORD, 3 – 79  
XDP\_WI\_FA\_MAPPING, 3 – 80  
XDP\_WI\_FA\_MAPPING\_DISP\_V, 2 – 19  
XDP\_WI\_FA\_MAPPING\_TL, 3 – 81  
XDP\_WI\_FA\_MAPPING\_VL, 2 – 21  
XDP\_WI\_PARAMETERS, 3 – 82  
XDP\_WI\_PARAMETERS\_DISP\_V, 2 – 19  
XDP\_WI\_RELATIONSHIPS, 3 – 84  
XDP\_WORKITEMS, 3 – 85  
XDP\_WORKITEMS\_TL, 3 – 87  
XDP\_WORKITEMS\_VL, 2 – 21

XDP\_WORKLIST\_DETAILS, 3 – 88

## Tables

*See also* Table and View Definitions  
Column descriptions, 3 – 4  
Foreign keys, 3 – 3  
Indexes. *See* Indexes  
Primary Keys, 3 – 4  
QuickCodes Columns, 3 – 3  
Who columns, 3 – 4, 3 – 5

## V

View Definitions. *See* Table and View Definitions

## Views

*See also* Table and View Definitions; View List  
Derivation, 3 – 6



# Reader's Comment Form

## Oracle SDP Provisioning Technical Reference Manual A86198-01

Oracle Corporation welcomes your comments and suggestions on the quality and usefulness of this publication. Your input is an important part of the information we use for revision.

- Did you find any errors?
- Is the information clearly presented?
- Do you need more information? If so, where?
- Are the examples correct? Do you need more examples?
- What features did you like most about this manual? What did you like least about it?

If you find any errors or have any other suggestions for improvement, please indicate the topic, chapter, and page number below:

---

---

---

---

---

---

---

---

---

---

Please send your comments to:

Oracle CRM Content Development Manager  
Oracle Corporation  
500 Oracle Parkway  
Redwood Shores, CA 94065 USA  
Phone: (650) 506-7000 Fax: (650) 506-7200

If you would like a reply, please give your name, address, and telephone number below:

---

---

---

Thank you for helping us improve our documentation.



# CAUTION!

This document contains proprietary, confidential information that is the exclusive property of Oracle Corporation.

If you are an Oracle customer, this numbered copy is registered in your site's name. Use, duplication, and disclosure are severely restricted and subject to restrictions stated in your contract with Oracle Corporation.

If you are an Oracle employee, this numbered copy is registered in your name and must be returned if you leave the company. It is your responsibility not to disclose this information to anyone outside of Oracle who is not licensed to use this product. If you have a prospect who needs to see this information, contact mailid APPSAPP to obtain a special nondisclosure agreement.

If you are neither an Oracle customer with a valid contract for the use of this document nor an Oracle employee, then you received this document in an unauthorized manner and are not legally entitled to possess or read it. Please return it immediately to Oracle. You may call collect to the office of the Executive Vice President Applications Division, to arrange its return.

Copy #

