

Oracle® Activity-Based Management

Release Notes

Release 11i

April 6, 2000

Part No. A87419-01

Introduction

These release notes are meant to provide the user with additional information not included in the Activity Based Management User Guide, or the Activity Based Management Installation Guide. Please read these notes thoroughly before you begin using the application. Throughout this document, Oracle Activity-Based Management may also be referred to as ABM.

Installation Notes

- This document is intended for release with patch number 1588595 of Oracle ABM. Previous production releases of ABM may be upgraded by applying this patch to the existing applications environment. If this is a new ABM installation, the complete Oracle Applications CD pack must be obtained, which includes ABM as a CD in the pack. The ABM CD contains the complete documentation set, VisiBroker Installation files, and the patches for SEM Exchange and ABM Analyzer.
- This release of Oracle ABM is compatible with Oracle Applications release 11.5.1 and 11.5.2, with 11.5.2 as the preferred release. Make sure you have downloaded the latest high priority Oracle Applications patches, and especially, any high priority patches for the AutoPatch utility. (These are patch numbers 1472974 and 1502927.)
- The following components are shipped with the Oracle ABM installation CD:
 1. Oracle Activity-Based Management
 2. Oracle ABM Analyzer
 3. Oracle SEM Exchange

ORACLE®

Copyright © 2001, Oracle Corporation.
All Rights Reserved.

Oracle is a registered trademark, and Oracle Discoverer and Activa are trademarks or registered trademarks of Oracle Corporation. Other names may be trademarks of their respective owners.

4. Documentation included in this release:

- *Oracle Activity Based Management Installation Guide*
- *Oracle Activity Based Management User Guide*
- *Oracle ABM Analyzer - Integrating Oracle ABM with Oracle Discoverer*
- *Oracle SEM Exchange User Guide*
- *Oracle ABM Release Notes*

Note: The *Oracle ABM Installation Guide* includes installation instructions for all of the listed components, and instructions on how to migrate data from Oracle Activa release 3.02, to Oracle ABM release 11i.

- All documentation may be found in the 'docs' directory on the installation CD, including a list of the specific documentation file names.
- **AutoPatch Issues:** You may run into install errors during the AutoPatch run with the driver file d1588595.drv. In particular, install errors may arise during the upload of seed data into the database and may halt the completion of the AutoPatch utility. Please verify the AutoPatch log files for a description of the install error. If the errors are indeed related to the upload of seed data, please have your system administrator perform the following tasks:

1. Source your 8.1.6 database environment file:

In a Bourne shell:

```
$ cd $ORACLE_HOME  
$ . <database>.env
```

2. Set the appropriate environment variable values:

In a Bourne shell:

```
$ CLASSPATH=$ORACLE_HOME/jdbc/lib/classes111.zip:$CLASSPATH  
$ export CLASSPATH  
$ LD_LIBRARY_PATH=$ORACLE_HOME/lib:$LD_LIBRARY_PATH  
$ export LD_LIBRARY_PATH
```

3. Load java security:

In a Bourne shell:

```
$ loadjava -u <username>/<password>[@<database>] -v -r  
$JAVA_TOP/oracle/apps/fnd/jar/fndsec.jar
```

Note: Replace <username>, <password>, and <database> with the appropriate values. Also, if the environment variable \$JAVA_TOP has not been previously set, then follow the same procedure described in Step 2 by setting \$JAVA_TOP to the physical directory pointed by \$OA_JAVA (this value can be obtained after sourcing the appropriate APPL_TOP's environment file in a separate shell).

- **Discoverer and VisiBroker Compatibility:** Discoverer and ABM both use a VisiBroker CORBA server, but are certified with different versions. Because of this, you cannot install the Discoverer VisiBroker server on the same server as the ABM VisiBroker server. For VisiBroker compatibility information, please see the Inprise web site at <http://www.inprise.com/visibroker/>.
- **VisiBroker Certification:** For this release of ABM, you must install the VisiBroker CORBA server on either a Sun Solaris or Windows NT platform only. Please check Metalink for any additional platform certifications.
- **ABM Analyzer Scripts to modify folder item labels:** If you modify the UI labels for ABM, you must run a script against the database so that these new labels are picked up by the ABM folders. (This will allow you to display the changed labels from within ABM Analyzer.) The script included with ABM to perform this process currently fails because of privilege issues related to database objects.

To solve this problem, you must grant access to the EUL_USER for the following objects:

1. ABM_BV_LABEL_MAPPING
2. FEM_LOOKUPS

- **Installing this release if you have a previous release:** A beta version CANNOT be upgraded using this patch.
- **Setting Date, Numeric and Monetary Formats:** In ABM, the date format is set to DD-MMM-YYYY, and does NOT reference the date format selected in your windows control panel.

Patch 1588595 Specific Notes

The content of this patch includes new functionality in ABM to address performance improvements for the selection and display of large data volumes in selected data inspectors and wizards. The following sections explain the specific functional changes included in this patch.

Specific Functionality Changes

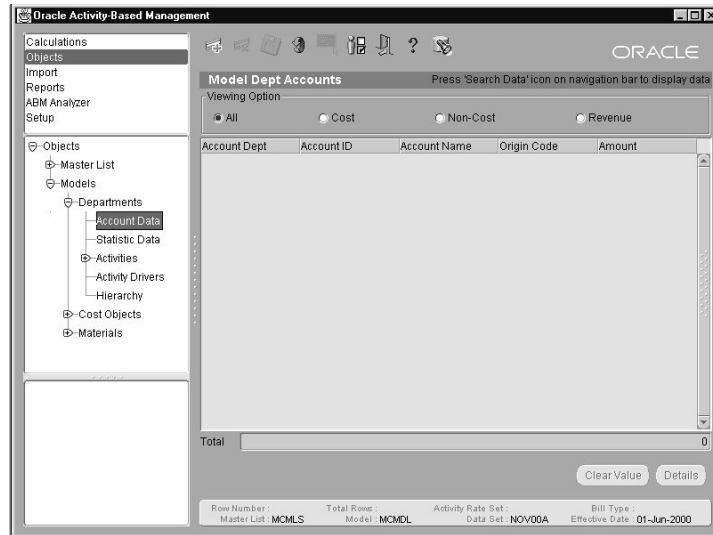
ABM uses a grid control to display model structures and the related data. The selection of a node in the launch pad tree will display all rows for the indicated data grid. The time required to display the result set in the data inspector is directly related to the size of the result set returned by the application. (Large result sets take longer to return than smaller result sets.)

To limit the number of rows returned to the data inspector, ABM includes modifications to provide the user with more control over the result set that is initially displayed in the inspector grid and/or wizard steps. This allows the user to select a subset of the data, which is easier to manage and quicker to display in the data grid.

For selected areas of the application that may result in a large result set, an empty data grid will initially be displayed. From this starting point, the user may either select the "new" button to create a new record with the wizard, or use the "find control" button from the tool bar to enter a search criteria to define and select the desired result set. This functionality is included for the following inspectors:

- Model Department Account Data
- Model Department Statistic Data
- Model Department Activity Account Data
- Model Department Activity Statistic Data

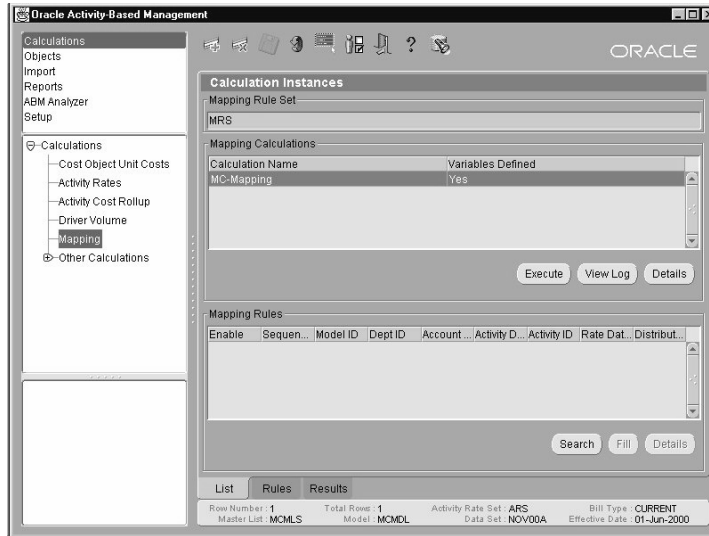
The initial inspector for these areas will look like the following:



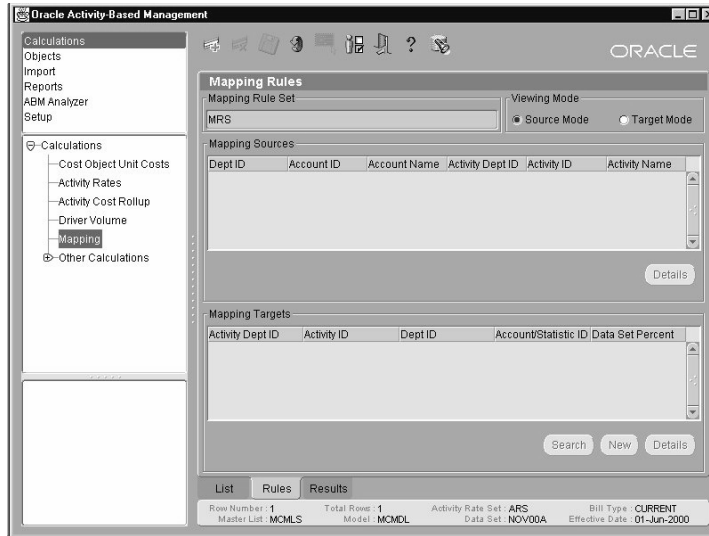
In addition to the set of data inspectors, this functionality is also included as part of the mapping inspector and the mapping wizard.

Mapping Inspector

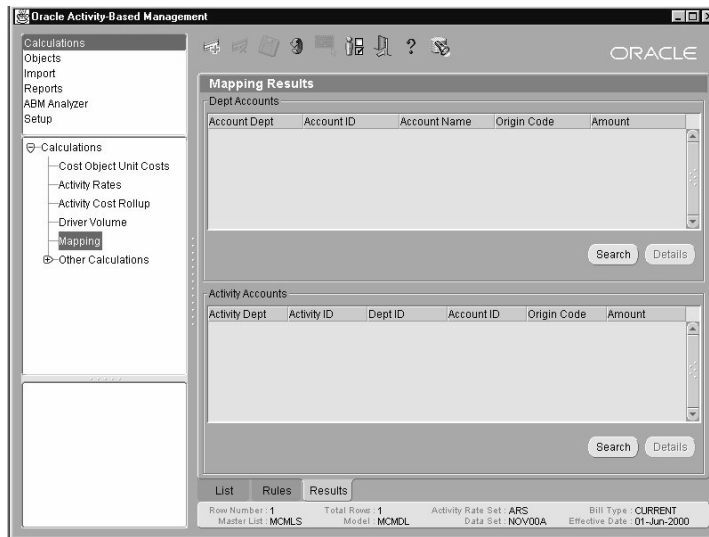
The mapping inspector is divided into three tabs; the list tab, rules tab and results tab. Each tab initially displays a blank screen and includes a find control to manage the selection of records for each inspector tab.



List Tab: The mapping list tab displays the list of calculations in the top inspector, and a blank rules inspector in the lower half. Selecting the search button on the lower inspector will open the find control to allow the entry of a search criteria for the selection of the desired mapping rules for the selected mapping calculation.



Rules Tab: Both inspectors in the rules tab are empty on initial navigation. Selection of the "search data" button in the tool bar will open the find dialog and allow entry and selection of data for the top grid. The display in the lower grid may be further refined by using the "search" button on the lower grid.



Result Tab: A search button is provided for both grids on the result tab.

Mapping Wizard

To enhance the performance of the mapping wizard, the find dialog is implemented on steps 2, 4 and 4a. To open the find dialog, select the "search" button on each of these steps.

Find Control

When using the find control, it is possible to enter a criteria that will return the full result set for the selected inspector. Please remember that the time required to return the selected result set is based on the number of records returned by the find control, and larger sets of data take longer to return than smaller sets of data. Please note that the find dialog must be used to set the selection criteria to see any new rows created with a wizard. The new rows will only be displayed if the filter criteria has been previously set, or a new filter is performed.

Notes:

- **Saved search criteria:** The selection criteria entered in the find dialog is persistent between operations. However, the operator "LIKE" is appended to text entries, and "=" is appended to numeric entries when the find dialog is re-opened for an inspector. Re-running the filter will result in an error if the extra text is not removed from the indicated fields.
- **Sorting on an empty data inspector:** A data inspector may be sorted by the selection of a column header in a data inspector. If the data inspector is empty and a filter has not been applied, this action will result in all rows returned for the inspector.
- **Sequence Number and Enabled Flag as mapping filter criteria:** The mapping rule sequence number and the enabled flag are specific to each calculation for a mapping rule set. Selection using either of these fields for one calculation may not return rows for a different calculation within the selected mapping rule set. This is evident when you use the find control on the mapping list tab, and then select different mapping calculations in the top grid of that tab. Setting a filter on either of these fields, then creating a new mapping calculation, or navigation back into the mapping inspector, will show slower performance than performing these same operations after setting a filter different fields.
- **Details Dialog and Rollback:** The selection of a row in a data inspector, selection of the details button and then selection of the cancel or save button from the details dialog, will cause all rows for that inspector to be returned if you immediately select the "refresh" button from the toolbar as your next action. (After this action, navigation to other previously opened inspectors will also return all rows.) Selection of the details button two times for an inspector will prevent this behavior.

- **Enabled Flag:** To select a mapping rule in the list tab via the enabled flag, use "Y" for enabled and "N" for disabled.
- **Mapping rules and Target Mode:** The functionality to initially display an empty inspector has not been implemented if you select "Target Mode" in the mapping rules inspector.
- **Destination First Mapping Rule Creation:** The selection "Destination First" as the sequence for creating mapping rules will display all related methods for the selected destination, rather than just the destinations that have the same method for each destination. Because of this, the performance of step 4B in the mapping wizard may be slower using "destination first" rather than "method first".

General Notes

- **On-line Help:** Links to the user guides for ABM, ABM Analyzer and SEM Exchange are available from the Self-Service Web Applications (SSWA) framework. A link to the ABM User Guide is also available when you select the help option from within the ABM application. In order to enable help from within the application, you must do the following:
 1. Copy the ABM, ABM Analyzer and SEM Exchange User Guides from the 'DOCS' directory on the installation CD to the /OA_DOC directory.
 2. Configure the profile options within Oracle Applications to specify the location for each user guide. The profile options within Oracle Applications are as follows:
 - ABM: ABM Help
 - ABM: ABM Analyzer Help
 - ABM: SEM Exchange Help.

For example: The profile option for "ABM: ABM Help" may specify /OA_DOC/abmug1118.pdf as the value. Please see the readme.txt file for a complete list of the specific document file names.

Please note that you will need Adobe Acrobat Reader 4.0 in order to view the user guide files for the set of ABM products.

- **User Preferences and Help:** To set user preferences, you must "left-click" on the "tools" icon and then hold the mouse down to display the sub-menu. From this sub-menu, you can select the user "Preferences" option. The same operations must be used to bring up the sub-menu under help.

- **Running ABM using separate Netscape Profiles:** You may experience problems running Netscape, using a profile other than your default profile. If this is the case, make sure you select the default profile when you launch the browser. (This may be "Default" or the profile specific to your user ID.)
- **Re-launching ABM from the same browser session:** In order to launch ABM for a different responsibility, you must completely logout of your browser session and re-launch ABM from the self-service applications page. If you do not do this, you will launch ABM with your previously cached applications ID. You may also run into issues if you launch ABM after exiting from an applications session. Please close previous browser sessions prior to launching ABM.
- **Launching ABM:** Occasionally, you may notice that the application does not load and the browser seems to be unresponsive. (If you have your java console enabled, you will notice that you have stopped downloading files, two files past the gatekeeper connection.) If this is the case, you can usually clear the problem by closing your browser from the task manager and re-launch the application.
- **ABM Web Reports and Internet Explorer:** In some cases, Internet Explorer will cache report instances. Because of this, you will not see changes to your reports if you have changed report parameters and then re-executed the report. This problem does not happen with Netscape.
- **Security Status from the help menu:** In order to see the objects that are secured for a user, you must navigate to the security section of the application. (This is no longer available for the current user from the help drop down menu.)
- **Security in ABM Analyzer:** Security in ABM Analyzer does not reference the securable objects defined in ABM.
- **Status bar row count and selected row:** When navigating between inspectors, you may notice that the status bar does not immediately update the selected row, and the total number of rows. If you click on a row in the inspector, you will trigger the system to update these values in the status bar.
- **Dialogs with OK and Cancel buttons:** In some cases, you will open a dialog, but the OK button will be disabled. Close the form by using the Cancel button, and then reopen. The second time you open the dialog should display an OK button that is enabled.
- **New button in the tools menu:** The "New" button is disabled where a wizard is not available for an inspector. However, the new button is sometimes enabled, but does not launch a wizard when selected.

- **Setting Preferences and parameters:** When you set user preferences or set parameters for reports and calculations, a list of values is provided for your selection. However, the highlighted row in the list of values is not always the current selection from your preferences for the selected parameter.

Data Inspector Notes

- **Hierarchy Tree Controls:** The hierarchy tree controls include an icon to expand and collapse nodes within the hierarchy. When you click on the (+) or (-), the tree will expand or collapse respectively. However, the tree node adjacent to the expand/collapse icon will also become "selected" when you expand/collapse the node. Please note that it is only highlighted, but unless you physically select the node, the inspector grid will not show any data related to the node selected in the hierarchy.
- **ID and Name fields in wizards and details windows:** Across the application, a single field label is provided for ID and Name field combinations on details windows and data entry wizards. Any place you see two adjacent fields, with a label of "ID", represents a field for the Object ID and the Object NAME. (A field label for "Name" is not explicitly displayed)
- **Transaction Details:** If you "cancel" from the transaction details window, the details inspector will reposition to the first row, and subsequently re-display the data in the details inspector. Also - if you use the filter window, and then select a row to display the details, the original rowset will be re-displayed after you save or cancel from the details window. (The filter is not preserved after you open the details window.)
- **Use of Reference Codes:** Reference codes, and multiple "entered" or "interfaced" transactions for a material or cost object are still supported in the application, but the functionality is a little different from the previous version of Activa. (These can only be created as part of the import from staging table function.) You are able to create the entries, but when you view them with the UI, the following rules apply:
 - Any entries made in the details transaction window will only be applied to the "entered" transaction that is displayed at the end of the transaction list.
 - If you select an entered transaction, and then select the delete button, all entered transactions are deleted.
- **Case sensitivity in the find panel:** Searching for non-key fields using the find control is a case-sensitive operation. In order to find a match between the find panel and data in the application, you must enter your

search in the same case as the data in the application. This generally applies to name fields and description fields. We recommend that you enter these fields in a consistent manner across the application to facilitate the user of the find control.

- **Searching for dates using the find dialog:** You are able to search for dates using the find panel, but you must enter your date criteria as yyyy-mm-dd and use all numeric characters. For example, to search for 15-Nov-2000, you would enter 2000-11-15 in the find control.
- **Detail dialog window accessible from wizards:** In the activity rates and bill wizards, you are able to launch a details dialog from the summary page of the wizard. In each case, the subsequent dialog contains an OK and a CANCEL button. However, the cancel button will just close the dialog and not roll back any changes that you have made to your selected data.
- **Issues with hierarchy trees:** The display of the hierarchy tree in the bill inspector, bill wizard and activity hierarchy inspector shows corrupted structures after the following actions:
 - Successful completion of the mapping wizard. If you create a mapping rule and then navigate to the bill inspector, the hierarchy tree will display the nodes for your selected bill incorrectly.
 - Cancel prior to the final step in a relate wizard.

To clear the problem, log out of ABM and then re-launch the application.

Calculation Notes

- **Security on Activity Hierarchies:** Security for activity hierarchies only provides the ability to view or update at a global level - there is no activity hierarchy specific security. This means that you cannot secure an individually named activity hierarchy.
- **Top node of Activity Hierarchies:** The application does not display the rolled up amount for the parent node in the activity hierarchy inspector. In order to view a rolled up amount for the top node in your hierarchy, you must create one more "dummy" node, and add this above the top node in your hierarchy. When you select the top node in the hierarchy, the inspector will display the children of this node, of which is the actual top node. By doing this, you are able to view the rolled up amount associated with the "true" top node.
- **Deleting the calculation log entries:** The functionality to delete calculation log entries is not provided in this release.

- **Running Calculations from the concurrent manager in Applications:** Calculations in ABM may be selected and run as a concurrent program from within Oracle applications. When the calculation is executed, the application uses the Oracle Applications user to determine the related ABM responsibility. The system will then use the user preferences from the ABM responsibility to determine the appropriate master list and model as the basis for running the calculation. So in order to successfully run calculations from the concurrent manager, the user running the calculation must have the correct user preferences defined.

When you select a calculation to run from the concurrent manager, you must pick a calculation from a list of values as a parameter for your calculation. The list of values will display all calculations from ABM, including those that are outside of your model. If you plan to use the concurrent manager to run calculations, make sure that your calculation names are unique across all of your models. This will ensure that the list of values in Applications only includes unique calculation names to select.

Activity Rate Sets and Activity Hierarchy.

- **Deleting Activity Rate Sets from versioning options:** From the activity rate set inspector in the versioning options of the setup section, you can select an activity rate set and then delete all entries. This currently does not work. However, you can still delete rates from a rate set via the inspector panel.
- **Sorting on Columns in the Activity Hierarchy Wizard:** Sorting on columns in the Activity Hierarchy Wizard will produce an error.

Bill Wizard

- **Using the back button in the bill wizard:** In some cases, the use of the back button in the bill wizard will change your selection in earlier steps. In most cases, this occurs when you navigate from the summary page, all the way back to the first step in the wizard.
- **Auto-selection of rows:** In some cases, when you open an inspector in the bill wizard, the application will auto-select the first row in the inspector. When you navigate to the summary step in the wizard, be careful to notice if some selected rows that you do not want, are included in your bill.
- **Mixed bill types:** In the bill wizard, you are able to select from a set of bill types when creating a mixed bill. However, you will see the complete list of bill types, regardless of the security you have defined for bill types. (So you can create a bill with the different bill types, but

you will not be able to select that bill type to actually see the details in the bill inspector.)

- **Hour glass between bill wizard steps:** Within the bill wizard, you may experience situations where you have clicked on a selection, and it seems like the system is not responding. The system is still responding, but it has not changed the mouse from a pointer to an hour-glass to indicate that it is still performing work. Please give the application time to return and then you can proceed to the next step. (You will generally notice this when you select the activity, material and cost object nodes as part of step 2.)

Driver Sources

- **Deleting Driver Sources:** In some cases you may experience problems deleting driver sources. Please make sure you select a row in the bottom grid of the driver source window, and then delete the selected source from the driver.

Import Notes - Spreadsheets

- **Spreadsheet Requirements:** The spreadsheet import function requires spreadsheets created in MS-Excel 97 or higher, or any application that supports this format.
- **Spreadsheet Templates:** Spreadsheet templates are not included with the application. Please create templates by navigating to the appropriate import template within the application, and then save the template to your local or network hard drive.
- **Spreadsheet Import Process:** The first step of the import process is to verify that the template columns are appropriate for the selection from the launch pad menu. If you open the wrong spreadsheet, the import will fail. (The column headings in your spreadsheets must match the templates defined by the application.)
- **Spreadsheet Imports with Attributes:** Attributes are dynamically added to the master list spreadsheet import templates.
- **Java Clipboard:** The Java clipboard is not compatible with the windows clipboard in this version. This means that you cannot cut and paste between the spreadsheet components in ABM 11i and a windows application. (It also means that you cannot cut and paste between an ABM inspector and a windows application.)
- **Sequence Numbers on Bill Items:** Within a bill, you may have multiple occurrences of the same item at the same level. To differentiate these duplicate entries, a field is provided named "Sequence". If you do not include explicit sequence numbers when importing bill items, unique

numbers are generated by the system. So if you include the sequence number "1" on each entry, sequential numbers will be assigned when the rows are imported into the application. We recommend that you include unique sequential numbers for each unique bill that you import.

- **Bill Item Import - Activity Rate Set Begin Date:** The field labeled as "Begin Date" on the Bill Item import is used to verify that the activity included on the bill is effective for the specified activity rate set. However, the "Begin Date" must match exactly to the begin date of the activity, in the activity rate set to be a valid entry. For example, if the begin date of the activity in the rate set is 01-jan-2000, and the begin date in the import is 01-feb-2000, the import of that row will fail, even if 01-feb-2000 is between the begin date and end date of the activity in the rate set. The begin in the import must match exactly to the begin date of the rate in the rate set.
- **Considerations for Activity Hierarchies:** When using the F1J import for activity hierarchies, make sure that the specified nodes for your hierarchy all exist within your selected rate set. You can create a hierarchy that includes nodes for activities that cross rates sets, but this will lead to problems when you are running the cost rollup calculation.
- **Considerations for mapping imports:** An important field included as part of the mapping imports is the "group number". The group number indicates all source accounts that are related to a set of targets. For each source account you should have a unique group number, and different source accounts cannot have the same group number.

Please note that the date format for the mapping imports must be dd-mmm-yyyy. If you use a spreadsheet specific date format other than dd-mmm-yyyy, you may encounter an error indicating that the date you have specified is invalid. To solve this problem, change the cell format in your spreadsheet to "text" and then enter the date in the correct format.

Import Notes - Staging Area

- **Soft Deletes:** The soft delete feature for the staging tables is not supported in this release. If you select a row from a staging table inspector and then delete the row, it will be removed from the table and will not be visible in the inspector.
- **Hold flag:** The hold flag feature is not available in this release.
- **Import reports:** When an import from the staging area completes, the import report will not be created.

- **Import audit trail:** Changes made to staging table rows after they have been "interfaced" from other operational systems are not reflected in the import process. (The SYN_SOURCE* columns are not utilized in this release, so changes made to imported rows will not be reflected in the import status window. Do not populate these columns since they are not used by the import process. The only columns that are used are the exception ID and exception message columns.)
- **Name fields in details dialog:** Once you have populated the staging tables, you are unable to edit the name field by using the details dialog for each inspector. You can delete the row and re-import, or change the name fields for the staging tables in the database.
- **Deletion of rows from staging table inspectors:** Users with view only security for an import source are still able to delete rows from a staging table inspector. Please be aware of this when defining security for import sources.

Mapping

- **Mapped Sources:** When mapping by mapped source, your set of available sources shows all sources regardless of effective date. This is evident when using the mapped sources functionality.
- **Mapping - Target Mode:** In some situations, mapping rules do not show up in the inspector after you create a rule and then select "target mode", as your display option. Click on the refresh icon and the rules will re-display.

Visual Tracing

- **Cross model and mixed bill types:** Tracing is not supported on cost objects from cross model or mixed bill type hierarchies. You can only trace on sub-component cost objects in your bill that are from the same model, or of the same bill type.
- **Dynamic consumption quantities:** Tracing is not available for rows generated from a dynamic consumption quantity calculation.
- **Visual Trace Origin Codes:** Traceable objects may have children rows that include records with different origin codes. In this situation, the parent origin code defaults to "Mix". When you select the parent, and then show the children, the actual origin codes will be shown.
- **Bill items and Yield %:** Yield percentages set at less than 100% are not reflected in the traceable amounts. (A yield % less than 100% will result in an amount that is greater than the base material unit cost, activity rate, or sub-component cost object unit cost. When you trace on one of these rows, your numeric values will not completely reconcile.)

- **Inconsistent Calculation Log:** Visual tracing uses the calculation log to navigate back through the traceable elements in the application. If calculations are executed in an order that changes the audit trail, you will be left with an inconsistent calculation log trail, and visual tracing will be unable to display the correct results. If you experience problems with visual tracing, make sure that the calculation log is consistent. (You can do this by re-running your calculations in the logical order.)
- **Tracing on materials:** When tracing on material unit costs, you may encounter situations where you seem to get into a circular result set. If you only trace down to the desired level, you will see all required data.
- **Trace Details:** The ability to view the details for a row in the visual trace inspector has been removed.
- **Trace results that cross data sets:** When trace results cross data sets, you may encounter situations where the trace results window does not show any entries. Once this occurs you will not be able to close the trace window with the quit button. However, you can close the window if you select a row from the trace stack that has details rows, or by using the close button in the upper right hand corner of the trace dialog.

Web Reports

- **Restrictions for characters in report names:** You should not use the following characters as part of report names that you define in ABM:

%, ", >, <, ^, {, }, [,], í, |, ~, /, #, ?, &, =, \$, (,), :, ;, +, ", *, @, !

Also note that spaces are not allowed in report names. If these characters exist in your report names, you will not be able to use the related links functionality provided with the reports.
- **Department comparison report - accounts:** An error is generated if you close the parameters details dialog window before you enter all required parameters. Please make sure to enter all fields that are required before selecting OK.
- **Cost Object Detail Report:** Within this report, you can dynamically link to other reports and cost objects. However, the linking function will only work if the selected report or link does not contain any spaces in the name. There is an issue with parsing names for links that contain any of the special characters from above.
- **Implications for running reports from Self-Service:** Within ABM, you are able to identify those reports that you want to be accessible from the Oracle Applications self-service framework. To run a report from self service, you only need to select the link, and the report will be executed. However, every user that runs a report from self-service must have a responsibility defined in ABM, with the user preferences appropriate

for running the selected report. (This is similar to running calculations from the concurrent manager.) Prior to granting a user access to running reports from self-service, you must also assign a responsibility in ABM for that user.

- **Max-Min, Suppress Nulls, Suppress Zeros:** The ability to enter values for these report parameters is not provided in the current version. However, labels for these parameters will be displayed on the hard copy report.

Navigator

- **Display of hourglass:** When traversing the nodes within the Navigator, or the steps in the Navigator wizard, the mouse cursor will not change to an hourglass during system wait times.
- **Specifying URL's:** When specifying URL's as nodes within a navigation procedure, you must prefix your entry with "http://", even if your browser does not require this prefix.
- **Shuttle Control:** In some situations, the shuttle control that is used to add steps to your navigation procedure will be disabled. Clicking on the "Proc" tab enables the shuttle control.

Migrating from Activa 3.02 to ABM 11i.

- **BOR Consumption Quantities:** In Activa 3.02, consumption quantities are maintained by bill type, but in ABM 11i, consumption quantities are maintained in a data set. The data migration process will create consumption quantities for each bill type in a single data set.
- **Tracing on migrated data:** Visual tracing requires that a consistent calculation log is available. However, the migration process does not migrate the calculation log, so you must re-run your calculations to create a calculation log in order to utilize the visual trace feature.
- **Database specific sequence numbers:** After the migration process has completed, you must reset the database sequence number for the ABM_BOR_HIER_SEQ within your database. If this is not done, you will receive duplicate key errors creating new bills, or adding items to existing bills.