

Oracle® Collections Technical Reference Manual

RELEASE 11*i*

August 2000

ORACLE®

Oracle® Collections Technical Reference Manual
Release 11i

To order this book, ask for Part No. A86207-01

Copyright © 2000. Oracle Corporation. All rights reserved.

Major Contributors:

Contributors:

This Technical Reference Manual (TRM) in any form, software or printed matter, contains proprietary information of Oracle Corporation; it is provided under an Oracle Corporation agreement containing restrictions on use and disclosure and is also protected by copyright, patent, and other intellectual property law. Restrictions applicable to this TRM include, but are not limited to: (a) exercising either the same degree of care to safeguard the confidentiality of this TRM as you exercise to safeguard the confidentiality of your own most important Confidential Information or a reasonable degree of care, whichever is greater; (b) maintaining agreements with your employees and agents that protect the Confidential Information of third parties such as Oracle Corporation and instructing such employees and agents of these requirements for this TRM; (c) restricting disclosure of this TRM to those of your employees who have a "need to know" consistent with the purposes for which this TRM was disclosed to you; (d) maintaining this TRM at all times on your premises; (e) not removing or destroying any proprietary or confidential legends or markings placed upon this TRM in whatever form, software or printed matter; and (f) not reproducing or transmitting this TRM in any form or by any means, electronic or mechanical, for any purpose, without the express written permission of Oracle Corporation. You should not use this TRM in any form, software or printed matter, to create software that performs the same or similar functions as any Oracle Corporation products.

The information in this TRM is subject to change without notice. If you find any problems in the TRM in any form, software or printed matter, please report them to us in writing. Oracle Corporation does not warrant that this TRM is error-free. This TRM is provided to customer "as-is" with no warranty of any kind. This TRM does not constitute Documentation as that term is defined in Oracle's agreements.

Reverse engineering of the Programs (software and documentation) associated with this TRM are prohibited. The Programs associated with this TRM are not intended for use in any nuclear, aviation, mass transit, medical, or other inherently dangerous applications. It shall be licensee's responsibility to take all appropriate fail-safe, back-up, redundancy and other measures to ensure the safe use of such applications if the Programs are used for such purposes, and Oracle disclaims liability for any damages caused by such use of the Programs. Program documentation is licensed for use solely to support the deployment of the Programs and not for any other purpose.

Restricted Rights Legend

This TRM and the Programs associated with this TRM delivered subject to the DOD FAR Supplement are 'commercial computer software' and use, duplication and disclosure of the TRM and the Programs associated with this TRM shall be subject to the licensing restrictions set forth in the applicable Oracle license agreement. Otherwise, this TRM and the Programs associated with this TRM delivered subject to the Federal Acquisition Regulations are 'restricted computer software' and use, duplication and disclosure of the TRM and the Programs associated with this TRM shall be subject to the restrictions in FAR 52.227-14, Rights in Data — General, including Alternate III (June 1987). Oracle Corporation, 500 Oracle Parkway, Redwood City, CA 94065.

Oracle is a registered trademark, and Oracle Marketing, CASE*Exchange, Enabling the Information Age, Hyper*SQL, NLS*Workbench, Oracle7, Oracle8, Oracle 8i, Oracle Access, Oracle Application Object Library, Oracle Discoverer, Oracle Financials, Oracle Quality, Oracle Web Customers, Oracle Web Employees, Oracle Work in Process, Oracle Workflow, PL/SQL, Pro*Ada, Pro*C, Pro*COBOL, Pro*FORTRAN, Pro*Pascal, Pro*PL/I, SmartClient, SQL*Connect, SQL*Forms, SQL*Loader, SQL*Menu, SQL*Net, SQL*Plus, and SQL*Report are trademarks or registered trademarks of Oracle Corporation. Other names may be trademarks of their respective owners.



CAUTION

This Technical Reference Manual in any form — software or printed matter — contains proprietary, confidential information that is the exclusive property of Oracle Corporation. If you do not have a valid contract with Oracle for the use of this Technical Reference Manual or have not signed a non-disclosure agreement with Oracle covering this Technical Reference Manual, then you received this document in an unauthorized manner and are not legally entitled to possess or read it.

Use, duplication, and disclosure are subject to restrictions stated in your contract with Oracle Corporation.



Contents

- Chapter 1** **Introduction** 1–1

- Chapter 2** **High-Level Design** 2–1
 - Overview of High-Level Design 2–2
 - Public Table List 2–7
 - Public View List 2–9
 - Forms and Table View List 2–10

- Chapter 3** **Detailed Design** 3–1
 - Overview of Detailed Design 3–2
 - Table and View Definitions 3–3

Oracle Proprietary, Confidential Information—Use Restricted by Contract

CHAPTER

1

Introduction

The *Oracle Collections Technical Reference Manual* provides the information you need to understand the underlying structure of Oracle Collections. After reading this manual, you should be able to convert your existing applications data, integrate your existing applications with Oracle Collections, and write custom reports for Oracle Collections, as well as read data that you need to perform other tasks.

This chapter introduces you to the *Oracle Collections Technical Reference Manual*, and explains how to use it.

Introduction

At Oracle, we design and build applications using Oracle Designer, our systems design technology that provides a complete environment to support developers through all stages of a systems life cycle. Because we use a repository-based design toolset, all the information regarding the underlying structure and processing of our applications is available to us online. Using Oracle Designer, we can present this information to you in the form of a technical reference manual.

This *Oracle Collections Technical Reference Manual* contains detailed, up-to-date information about the underlying structure of Oracle Collections. As we design and build new releases of Oracle Collections, we update our Oracle Designer repository to reflect our enhancements. As a result, we can always provide you with an *Oracle Collections Technical Reference Manual* that contains the latest technical information as of the publication date. Note that after the publication date we may have added new indexes to Oracle Collections to improve performance.

About this Manual

This manual describes the Oracle Customer Relationship Management (CRM) Applications Release 11i data model, as used by Oracle Collections; it discusses the database we include with a fresh install of Oracle CRM Release 11i. If you have not yet upgraded to Release 11i, your database may differ from the database we document in this book.

You can contact your Oracle representative to confirm that you have the latest technical information for Oracle Collections. You can also use Oracle *MetaLink* which is accessible through Oracle's Support Web Center (http://www.oracle.com/support/elec_sup).

Finding the Latest Information

The *Oracle Collections Technical Reference Manual* contains the latest information as of the publication date. For the latest information we encourage you to use Oracle *MetaLink* which is accessible through Oracle's Support Web Center (http://www.oracle.com/support/elec_sup).

Audience

The *Oracle Collections Technical Reference Manual* provides useful guidance and assistance to:

- Technical End Users
- Consultants
- Systems Analysts
- System Administrators
- Other MIS professionals

This manual assumes that you have a basic understanding of structured analysis and design, and of relational databases. It also assumes that you are familiar with Oracle Application Object Library and Oracle Collections. If you are not familiar with the above products, we suggest that you attend one or more of the training classes available through Oracle Education (see: Other Information Sources: page 1 – 7).

How This Manual is Organized

This manual contains two major sections, High–Level Design and Detailed Design.

High–Level Design

This section, Chapter 2, contains database diagrams and lists each database table and view that Oracle Collections uses. This chapter also has a list of modules.

Detailed Design

This section, Chapter 3, contains a detailed description of the Oracle Collections database design, including information about each database table and view you might need for your custom reporting or other data requirements.

How to Use This Manual

The *Oracle Collections Technical Reference Manual* is a single, centralized source for all the information you need to know about the underlying structure and processing of Oracle Collections. For example, you can use this manual when you need to:

- Convert existing application data
- Integrate your Oracle Collections application with your other applications systems
- Write custom reports
- Define alerts against Oracle Applications tables
- Configure your Oracle Self-Service Web Applications
- Create views for decision support queries using query tools
- Create business views for Oracle Discoverer

You need not read this manual cover to cover. Use the table of contents and index to quickly locate the information you need.

How Not To Use This Manual

Do not use this manual to plan modifications

You should not use this manual to plan modifications to Oracle Collections. Modifying Oracle Collections limits your ability to upgrade to future releases of your Oracle Collections application. In addition, it interferes with our ability to give you the high-quality support you deserve.

We have constructed Oracle Collections so that you can customize it to fit your needs without programming, and you can integrate it with your existing applications through interface tables. However, should you require program modifications, you should contact our support team (see: Other Information Sources: page 1 – 7). They can put you in touch with Oracle Services, the professional consulting organization of Oracle. Their team of experienced applications professionals can make the modifications you need while ensuring upward compatibility with future product releases.

Oracle Proprietary, Confidential Information—Use Restricted by Contract

Do not write data into non–interface tables

Oracle reserves the right to change the structure of Oracle Applications tables, and to change the meaning of, add, or delete lookup codes and data in future releases. Do not write data directly into or change data in non–interface tables using SQL*Plus or other programming tools because you risk corrupting your database and interfering with our ability to support you.

Moreover, this version of the *Oracle Collections Technical Reference Manual* does not contain complete information about the dependencies between Oracle Collections applications tables. Therefore, you should write data into only those tables we identify as interface tables. If you write data into other non–interface tables, you risk violating your data integrity since you might not fulfill all the data dependencies in your Oracle Collections application.

You are responsible for the support and upgrade of the logic within the procedures that you write, which may be affected by changes between releases of Oracle Applications.

Do not rely on upward compatibility of the data model

Oracle reserves the right to change the structure of Oracle Collections tables, and to change the meaning of, add, or delete lookup codes and other data in future releases. We do not guarantee the upward compatibility of the Oracle Collections data model. For example, if you write a report that identifies concurrent requests that end in Error status by selecting directly from Oracle Application Object Library tables, we do not guarantee that your report will work properly after an upgrade.

About Oracle Application Object Library

Oracle Application Object Library is a collection of pre–built application components and facilities for building Oracle Applications and extensions to Oracle Applications. Oracle Application Coding Standards use the Oracle Application Object Library and contains shared components including but not limited to — forms, subroutines, concurrent programs and reports, database tables and objects, messages, menus, responsibilities, flexfield definitions and online help.



Attention: Oracle does not support *any* customization of Oracle Application Object Library tables or modules, not even

by Oracle consultants. (Oracle Application Object Library tables generally have names beginning with FND_%.)

Accordingly, this manual does not contain detailed information about most Oracle Application Object Library tables used by Oracle Collections.

A Few Words About Terminology

The following list provides you with definitions for terms that we use throughout this manual:

Relationship

A relationship describes any significant way in which two tables may be associated. For example, rows in the Journal Headers table may have a one-to-many relationship with rows in the Journal Lines table.

Database Diagram

A database diagram is a graphic representation of application tables and the relationships between them.

Module

A module is a program or procedure that implements one or more business functions, or parts of a business function, within an application. Modules include forms, concurrent programs and reports, and subroutines.

Application Building Block

An application building block is a set of tables and modules (forms, reports, and concurrent programs) that implement closely-related database objects and their associated processing. Said another way, an application building block is a logical unit of an application.

QuickCodes

QuickCodes let you define general purpose, static lists of values for window fields. QuickCodes allow you to base your program logic on lookup codes while displaying user-friendly names in a list of values window. QuickCodes simplify name and language changes by letting

you change the names your end users see, while the codes in your underlying programs remain the same.

Form

A form is a module comprised of closely related windows that are used together to perform a task. For example, the Enter Journals form in Oracle General Ledger includes the Enter Journals window, the Batch window, and the More Actions window among others. The Enter Journals window is the main window, and from it, you can use buttons to navigate to other windows in the form. The form name usually corresponds to the main window in the form, and is frequently a window you open directly from the Navigator.

Other Information Sources

Training

Oracle Education offers a complete set of training courses to help you and your staff master Oracle CRM Applications. We can help you develop a training plan that provides thorough training for both your project team and your end users. We will work with you to organize courses appropriate to your job or area of responsibility.

Training professionals can show you how to plan your training throughout the implementation process so that the right amount of information is delivered to key people when they need it the most. You can attend courses at any one of our many Educational Centers, or you can arrange for our trainers to teach at your facility. In addition, we can tailor standard courses or develop custom courses to meet your needs.

Support

From on-site support to central support, our team of experienced professionals provides the help and information you need to keep Oracle Collections working for you. This team includes your Technical Representative, Account Manager, and Oracle's large staff of consultants and support specialists with expertise in your business area, managing an Oracle server, and your hardware and software environment.

About Oracle

Oracle Corporation develops and markets an integrated line of software products for database management, applications development, decision support, and office automation, as well as Oracle Applications, an integrated suite of more than 75 software modules for financial management, supply chain management, manufacturing, project systems, human resources, and sales and service management.

Oracle products are available for mainframes, minicomputers, personal computers, network computers, and personal digital assistants, allowing organizations to integrate different computers, different operating systems, different networks, and even different database management systems, into a single, unified computing and information resource.

Oracle is the world's leading supplier of software for information management, and the world's second largest software company. Oracle offers its database, tools, and applications products, along with related consulting, education, and support services, in over 145 countries around the world.

Thank You

Thanks for using Oracle Collections and this technical reference manual!

We appreciate your comments and feedback. After the Table of Contents of this manual is a Reader's Comment Form that you can use to explain what you like or dislike about Oracle Collections or this technical reference manual. Mail your comments to the following address or call us directly at (650) 506-7000.

Oracle CRM Applications Content Development Manager
Oracle Corporation
500 Oracle Parkway
Redwood Shores, California 94065
U.S.A.

Oracle Proprietary, Confidential Information—Use Restricted by Contract

CHAPTER

2

High-Level Design

This chapter presents a high-level design for Oracle Collections that satisfies the business needs we specify during Strategy and Analysis. It contains database diagrams for Oracle Collections application building blocks, lists of database tables and views, and a list of modules.

Overview of High-Level Design

During High-Level Design, we define the application components (tables, views, and modules) we need to build our application. We specify what application components should do without specifying the details of *how* they should do it.

You can refer to this High-Level Design chapter to quickly acquaint yourself with the tables, views, and modules that comprise Oracle Collections applications. And, you can prepare yourself to understand the detailed design and implementation of Oracle Collections.

Database Diagrams

The Database Diagrams section graphically represents all Oracle Collections applications tables and the relationships between them, organized by building block.

Use this section to quickly learn what tables each Oracle Collections application building block uses, and how those tables interrelate. Then, you can refer to the Table and View Definitions sections of Chapter 3 for more detailed information about each of those tables.

Table Lists

The Table List sections list the Oracle Collections applications tables. Because a product might not include at least one table for each type, this Technical Reference Manual might not include each of the following sections.

Public Tables

Use the Public Table List section to quickly identify the tables you are most interested in. Then, you can refer to the Table and View Definitions sections of Chapter 3 for more detailed information about those tables.

In addition, this manual may contain full documentation for one or more of the following Application Object Library tables: FND_DUAL, FND_CURRENCIES, and FND_COMMON_LOOKUPS.

Internal Tables

This section includes a list of private, internal tables used by Oracle Collections; we do not provide additional documentation for these tables.

View Lists

The View List sections list the Oracle Collections views, with one section for each type of view. Because a product might not include at least one view for each type, this Technical Reference Manual might not include each of the following sections.

Use this section to quickly identify the views you are most interested in. Then, you can refer to the Table and View Definitions sections of Chapter 3 for more detailed information about those views.

Public Views

This section lists views that may be useful for your custom reporting or other data requirements. The list includes a description of the view, and the page in Chapter 3 that gives detailed information about the public view.

Web Views

This section lists views that you may need to configure your Self-Service Web applications. The list includes a description of the view, and the page in Chapter 3 that gives detailed information about the web view.

Internal Views

This section includes each private, internal view that Oracle Collections uses.

Multiple Reporting Currency Views

This list includes views that were created to support the Multiple Reporting Currencies feature.

Module List

The Module List section briefly describes each of the Oracle Collections applications modules. This section lists forms, reports, and concurrent programs.

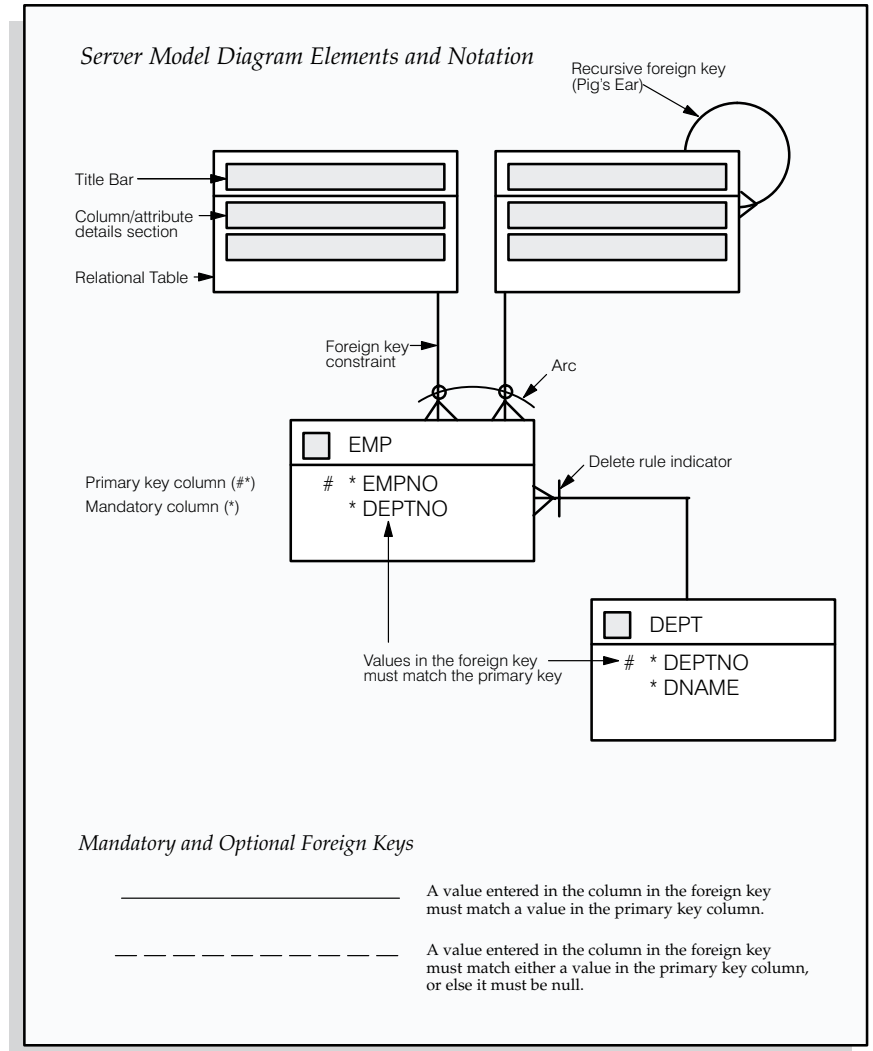
A form is a module comprised of closely related windows that are used together to perform a task. For example, the Enter Journals form in Oracle General Ledger includes the Enter Journals window, the Batch window, and the More Actions window. The Enter Journals window is the main window, and from it, you can use buttons to navigate to other windows in the form. The form name usually corresponds to the main window in the form, and is frequently a window you can open directly from the Navigator.

The Reports and Concurrent Programs lists include processes you can submit from the Submit Requests window or other windows, as well as processes that are submitted automatically by Oracle Collections. Use your user's guide to learn more about reports and concurrent processes.

Database Diagramming Conventions

We use the following notational conventions in our database diagrams:

Figure 2 – 1
Database Diagram
Conventions



Tables – are the basic unit of storage in the database. A hand symbol preceding the title in the table's title bar indicates that the table is not owned by this application but shared with another.

Foreign key constraint – is a type of referential integrity constraint for checking the integrity of data entered in a specific column or set of columns. This specified column or set of columns is known as the foreign key.

Delete rule indicator – determines the action to be taken when an attempt is made to delete a related row in a join table. A line through the foreign key constraint, as shown on the above diagram, indicates that this action is restricted.

Arcs – specify that, for any given row in a table, a value must be entered in one of the arc columns. The remaining columns within the arc must be null.

Public Table List

This section lists each public database table that Collections uses and provides a brief description of each of those tables. The page reference is to the table description in Chapter 3.

Note that “public” tables are not necessarily intended for write access by custom code; Oracle Corporation supports write access using only standard Oracle Applications forms, reports, and programs, or any SQL write access to tables explicitly documented as API tables. For more information, see the How Not To Use This Manual section of this book’s Introduction.

Collections uses the following Public tables:

Table Name	Description
FND_LOOKUP_TYPES	Oracle Application Object Library QuickCodes
FND_LOOKUP_TYPES_TL	Translations for FND_LOOKUP_TYPES
FND_LOOKUP_VALUES	QuickCode values
FND_NEW_MESSAGES	Application messages for Oracle Applications in GUI mode
FND_PROFILE_OPTIONS	User profile options
FND_PROFILE_OPTIONS_TL	Translations for FND_PROFILE_OPTIONS
FND_PROFILE_OPTION_VALUES	Values of user profile options defined at different profile levels
HZ_CONTACT_POINTS	Electronic methods of communicating with entities (See page 3 – 7)
HZ_CUSTOMER_PROFILES	Credit information for customer accounts and customer account sites (See page 3 – 12)
HZ_CUST_ACCOUNTS	Customer accounts information (See page 3 – 17)
HZ_CUST_ACCT_SITES_ALL	Customer sites information (See page 3 – 22)
HZ_CUST_SITE_USES_ALL	Information about site uses or business purposes (See page 3 – 26)
HZ_LOCATIONS	Information about physical addresses (See page 3 – 31)
HZ_PARTIES	Information about parties such as organizations, people, and groups (See page 3 – 36)

HZ_PARTY_SITES	Links information about parties to the information about physical locations (See page 3 – 42)
JTF_NOTES_B	Non–translated base table for Notes module. (See page 3 – 45)
JTF_NOTES_SOURCE_TYPE_MAP	JTF_NOTES_SOURCE_TYPE_MAP is the base table for defining application/object specific note types. (See page 3 – 47)
JTF_NOTES_TL	Translated base table for Notes module. (See page 3 – 48)
JTF_NOTE_CONTEXTS	Base table for Contexts to Notes, which are references to other objects. (See page 3 – 49)

Public View List

This section lists each public database view that Oracle Collections uses and provides a brief description of each of those views. These views may be useful for your custom reporting or other data requirements. The page reference is to the detailed view description in Chapter 3.

Oracle Collections uses the following public views:

View Name	<u>Description</u>
IEX_AGING_BUCKET_LINES_VL	Lists all aging buckets with internationalization!
IEX_ASSISTS_V	Directory Assistance form view
IEX_CALL_HISTORIES_V	Call history form view
IEX_HISTORY_NOTES_V	TO SELECT HISTORY FROM THE NOTES TABLE
IEX_LOCKBX_CURR_XREF_V	View with all lockboxes used by Collections!
IEX_PHONE_ASSISTS_V	Merge between phone assistance and contact points
IEX_PHONE_ASSIST_V	Merge between phone assistance and contact point

Forms and Table View List

This section lists supplementary views that are not essential to the Release 11i data model, but simplify coding or improve performance of Developer. For example, many of these views are used as base tables in Oracle Collections forms.



Warning: We do not recommend you query or alter data using these views. Furthermore, these views may change dramatically in subsequent minor or major releases of Oracle Collections.

Oracle Collections uses the following Forms and Table views:

- IEX_INVOICES_V
- IEX_INVOICE_LINES_V
- IEX_PAY_HISTORIES_V
- IEX_WEB_ASSIST_DETAILS_V
- IEX_WEB_SWITCH_DETAILS_V

CHAPTER

3

Detailed Design

This chapter presents a detailed design for implementing Oracle Collections. It contains detailed definitions of tables and views that you may need to reference to write custom reports or use for other data extraction.

Overview of Detailed Design

During Detailed Design, we specify in detail how each applications component should work. We prepare detailed definitions of tables and views.

You can refer to this Detailed Design chapter to gain a detailed understanding of the underlying structure and processing of Oracle Collections that enables you to:

- Convert existing application data
- Integrate your Oracle Collections application with your other applications systems
- Write custom reports
- Define alerts against Oracle Applications tables
- Create views for decision support queries using query tools

Table and View Definitions

The Table and View Definitions section contains a detailed definition of Oracle Collections applications tables. For each table, it provides information about primary keys, foreign keys, QuickCodes, indexes, triggers, and sequences. It also gives you a detailed description of each column and its characteristics. In addition, it provides the SQL statement that defines each view. Review this section to get a detailed understanding of what tables your Oracle Collections application contains, and how it uses them to hold and access the information it needs.

Table and View Definitions

This section contains a detailed description of each Oracle Collections table and view that you may need to reference. For each table, it presents detailed information about:

- Primary keys
- Foreign keys
- Column descriptions
- Indexes
- Oracle sequences
- Triggers
- View derivations

The following sections appear in each table or view description:

Foreign Keys

To help you understand the relationships between tables, we list each foreign key contained in a table. For each foreign key in a table, we list the primary key table name (the table to which a foreign key refers), its corresponding primary key columns, and the foreign key columns that refer to those primary key columns.

When the primary key table has a composite primary key, we list each column of the composite key sequentially.

If a table contains two or more distinct foreign keys that refer to the same primary key table, we repeat the primary key table name and list each of the distinct foreign keys separately.

QuickCodes Columns

When a database column contains a QuickCodes value, which we implement using a foreign key to FND_LOOKUPS, MFG_LOOKUPS, or to some other lookup table, we list the QuickCodes type (lookup type) to which the QuickCodes value must belong and a complete list of QuickCodes values and meanings. Some QuickCodes can be defined by you in the application. These values are designated as User-defined.

Column Descriptions

We list the important characteristics of each column in a table or view. These characteristics include whether the column is part of the table's primary key, whether Oracle Collections requires a value for this column, and the data type of the column. We also give you a brief description of how Oracle Collections uses the column.

When a column is part of a table's primary key, we append the notation (PK) to the name of that column.

To help you understand which columns Oracle Collections uses and which columns it does not use, we alert you to any unused column. When no module uses a database column, we show one of the following legends in the Description column:

Not currently used	Oracle Collections does not use this column, although the column might be used in a future release.
No longer used	Oracle Collections no longer uses this column. AutoInstall installs this column. Subsequent versions of Oracle Collections might not include this column.
No longer installed	Oracle Collections no longer uses this column. If you <i>upgraded</i> your software from an earlier version, you may still have this column, depending upon whether you chose to delete it during an upgrade process. If you <i>install</i> Oracle Collections, you do not have this column.

Standard Who Columns

Most Oracle Collections tables contain standard columns to support \ Row Who. When your program or SQL*Plus command selects a row from a table, use these columns to determine who last updated the row. If your program or SQL*Plus command updates or inserts a row in an interface table, you must populate each of the five standard Who columns:

LAST_UPDATE_DATE	Date when a user last updated this row
LAST_UPDATED_BY	User who last updated this row (foreign key to FND_USER.USER_ID)
CREATION_DATE	Date when this row was created

Oracle Proprietary, Confidential Information—Use Restricted by Contract

CREATED_BY	User who created this row (foreign key to FND_USER.USER_ID)
LAST_UPDATE_LOGIN	Operating system login of user who last updated this row (foreign key to FND_LOGINS.LOGIN_ID). You should set this to NULL, or to 0 if NULL is not allowed

Since every table containing Who columns has several foreign keys to the tables FND_USER and FND_LOGINS, we do not include the foreign key columns LAST_UPDATED_BY, CREATED_BY, or LAST_UPDATE_LOGIN in a table's list of foreign keys.

Additional Who Columns for Concurrent Programs

Some Oracle Collections tables also contain several additional Who columns to distinguish between changes a user makes with a form and changes a concurrent program makes. When a concurrent program updates or inserts a row in a table, the concurrent program populates the following additional Who columns:

REQUEST_ID	Concurrent request ID of program that last updated this row (foreign key to FND_CONCURRENT_REQUESTS.REQUEST_ID)
PROGRAM_APPLICATION_ID	Application ID of program that last updated this row (foreign key to FND_APPLICATION.APPLICATION_ID)
PROGRAM_ID	Program ID of program that last updated this row (foreign key to FND_CONCURRENT_PROGRAM.CONCURRENT_PROGRAM_ID)
PROGRAM_UPDATE_DATE	Date when a program last updated this row

Since every table containing these additional Who columns has several foreign keys to the tables FND_CONCURRENT_REQUESTS, FND_APPLICATION, and FND_CONCURRENT_PROGRAM, we do not include the foreign key columns REQUEST_ID, PROGRAM_APPLICATION_ID, or PROGRAM_ID in a table's list of foreign keys.

Indexes

If an Oracle Collections table uses an Oracle8i index, we list the database columns that comprise that index, in sequential order.

Note: The indexes we document in this manual correspond to unique keys we specified during product development and testing. In some cases, we may add additional indexes during the porting process to fine-tune performance on specific platforms; therefore, there may be minor differences between the indexes documented in this book and the indexes for production versions of Oracle Collections.

Sequences

Oracle Collections uses Oracle8i sequence generators to generate unique integers. If any table column gets its value from an Oracle8i sequence generator, we list the name of the corresponding sequence generator and the name of the column that stores the unique integer.

Database Triggers

If a table has one or more active database triggers, we provide a brief explanation of each database trigger and when it fires.

View Derivation

For each Oracle Collections view you may need to reference, we include important elements from the SQL statement that defines or creates a view. By studying this view definition, you can understand exactly how a view derives its contents.

HZ_CONTACT_POINTS

HZ_CONTACT_POINTS stores electronic methods of communicating with entities such as parties and party sites. Each record in this table represents a different means of contacting an entity.

Foreign Keys

Primary Key Table	Primary Key Column	Foreign Key Column
HZ_PARTIES	PARTY_ID	OWNER_TABLE_ID
HZ_PARTY_SITES	PARTY_SITE_ID	OWNER_TABLE_ID

Column Descriptions

Name	Null?	Type	Description
CONTACT_POINT_ID (PK)	NOT NULL	NUMBER(15)	Unique identifier of this contact point
CONTACT_POINT_TYPE	NOT NULL	VARCHAR2(30)	Lookup: contact_point_type phone, fax, e-mail, web, telex, edi
STATUS	NOT NULL	VARCHAR2(30)	Lookup: contact_point_status. Typically, active, inactive, delete.
OWNER_TABLE_NAME	NOT NULL	VARCHAR2(30)	Table storing the owner of the contact point
OWNER_TABLE_ID	NOT NULL	NUMBER(15)	FK to OWNER_TABLE_NAME; identifies the owner of the contact point
PRIMARY_FLAG	NULL	VARCHAR2(1)	Y indicates this is the primary contact point of this contact point type for referenced party, site, or location
ORIG_SYSTEM_REFERENCE	NULL	VARCHAR2(240)	Identifier for this record from foreign system.
LAST_UPDATE_DATE	NOT NULL	DATE	Standard Who column
LAST_UPDATED_BY	NOT NULL	NUMBER(15)	Standard Who column
CREATION_DATE	NOT NULL	DATE	Standard Who column
CREATED_BY	NOT NULL	NUMBER(15)	Standard Who column
LAST_UPDATE_LOGIN	NULL	NUMBER(15)	Standard Who column
WH_UPDATE_DATE	NULL	DATE	Date sent to data warehouse
REQUEST_ID	NULL	NUMBER(15)	Request identifier of last concurrent program to update this record
PROGRAM_APPLICATION_ID	NULL	NUMBER(15)	Application identifier of last concurrent program to update this record
PROGRAM_ID	NULL	NUMBER(15)	Program identifier of last concurrent program to update this record
PROGRAM_UPDATE_DATE	NULL	DATE	Last update date of this record by a concurrent program
ATTRIBUTE_CATEGORY	NULL	VARCHAR2(30)	Descriptive flexfield structure defining column
ATTRIBUTE1	NULL	VARCHAR2(150)	Descriptive flexfield segment column
ATTRIBUTE2	NULL	VARCHAR2(150)	Descriptive flexfield segment column
ATTRIBUTE3	NULL	VARCHAR2(150)	Descriptive flexfield segment column
ATTRIBUTE4	NULL	VARCHAR2(150)	Descriptive flexfield segment column

Oracle Proprietary, Confidential Information—Use Restricted by Contract

Column Descriptions (Continued)

Name	Null?	Type	Description
ATTRIBUTE5	NULL	VARCHAR2(150)	Descriptive flexfield segment column
ATTRIBUTE6	NULL	VARCHAR2(150)	Descriptive flexfield segment column
ATTRIBUTE7	NULL	VARCHAR2(150)	Descriptive flexfield segment column
ATTRIBUTE8	NULL	VARCHAR2(150)	Descriptive flexfield segment column
ATTRIBUTE9	NULL	VARCHAR2(150)	Descriptive flexfield segment column
ATTRIBUTE10	NULL	VARCHAR2(150)	Descriptive flexfield segment column
ATTRIBUTE11	NULL	VARCHAR2(150)	Descriptive flexfield segment column
ATTRIBUTE12	NULL	VARCHAR2(150)	Descriptive flexfield segment column
ATTRIBUTE13	NULL	VARCHAR2(150)	Descriptive flexfield segment column
ATTRIBUTE14	NULL	VARCHAR2(150)	Descriptive flexfield segment column
ATTRIBUTE15	NULL	VARCHAR2(150)	Descriptive flexfield segment column
ATTRIBUTE16	NULL	VARCHAR2(150)	Descriptive flexfield segment column
ATTRIBUTE17	NULL	VARCHAR2(150)	Descriptive flexfield segment column
ATTRIBUTE18	NULL	VARCHAR2(150)	Descriptive flexfield segment column
ATTRIBUTE19	NULL	VARCHAR2(150)	Descriptive flexfield segment column
ATTRIBUTE20	NULL	VARCHAR2(150)	Descriptive flexfield segment column
GLOBAL_ATTRIBUTE_CATEGORY	NULL	VARCHAR2(30)	Reserved for globalization functionality
GLOBAL_ATTRIBUTE1	NULL	VARCHAR2(150)	Reserved for globalization functionality
GLOBAL_ATTRIBUTE2	NULL	VARCHAR2(150)	Reserved for globalization functionality
GLOBAL_ATTRIBUTE3	NULL	VARCHAR2(150)	Reserved for globalization functionality
GLOBAL_ATTRIBUTE4	NULL	VARCHAR2(150)	Reserved for globalization functionality
GLOBAL_ATTRIBUTE5	NULL	VARCHAR2(150)	Reserved for globalization functionality
GLOBAL_ATTRIBUTE6	NULL	VARCHAR2(150)	Reserved for globalization functionality
GLOBAL_ATTRIBUTE7	NULL	VARCHAR2(150)	Reserved for globalization functionality
GLOBAL_ATTRIBUTE8	NULL	VARCHAR2(150)	Reserved for globalization functionality
GLOBAL_ATTRIBUTE9	NULL	VARCHAR2(150)	Reserved for globalization functionality
GLOBAL_ATTRIBUTE10	NULL	VARCHAR2(150)	Reserved for globalization functionality
GLOBAL_ATTRIBUTE11	NULL	VARCHAR2(150)	Reserved for globalization functionality
GLOBAL_ATTRIBUTE12	NULL	VARCHAR2(150)	Reserved for globalization functionality
GLOBAL_ATTRIBUTE13	NULL	VARCHAR2(150)	Reserved for globalization functionality

Oracle Proprietary, Confidential Information—Use Restricted by Contract

Column Descriptions (Continued)

Name	Null?	Type	Description
GLOBAL_ATTRIBUTE14	NULL	VARCHAR2(150)	Reserved for globalization functionality
GLOBAL_ATTRIBUTE15	NULL	VARCHAR2(150)	Reserved for globalization functionality
GLOBAL_ATTRIBUTE16	NULL	VARCHAR2(150)	Reserved for globalization functionality
GLOBAL_ATTRIBUTE17	NULL	VARCHAR2(150)	Reserved for globalization functionality
GLOBAL_ATTRIBUTE18	NULL	VARCHAR2(150)	Reserved for globalization functionality
GLOBAL_ATTRIBUTE19	NULL	VARCHAR2(150)	Reserved for globalization functionality
GLOBAL_ATTRIBUTE20	NULL	VARCHAR2(150)	Reserved for globalization functionality
EDI_TRANSACTION_HANDLING	NULL	VARCHAR2(25)	ANSI standard code for EDI transaction type
EDI_ID_NUMBER	NULL	VARCHAR2(30)	EDI trading partner number for the supplier site
EDI_PAYMENT_METHOD	NULL	VARCHAR2(30)	Indicates how a payment is to be made through EDI. Valid methods are ACH and BOP.
EDI_PAYMENT_FORMAT	NULL	VARCHAR2(30)	Indicates type of information being transmitted with the funds if using EDI_PAYMENT_METHOD ACH. Valid values are CCD, CCP, CHZ, CTX, PPD, and PPP.
EDI_REMITTANCE_METHOD	NULL	VARCHAR2(30)	Indicates how remittance advice will be sent to the supplier.
EDI_REMITTANCE_INSTRUCTION	NULL	VARCHAR2(30)	Indicates who will send the remittance advice. Valid values are banks or payables systems.
EDI_TP_HEADER_ID	NULL	NUMBER(15)	EDI transaction header unique identifier
EDI_ECE_TP_LOCATION_CODE	NULL	VARCHAR2(40)	Trading partner location code for EDI Gateway
EMAIL_FORMAT	NULL	VARCHAR2(30)	Indicates the preferred format for e-mail addressed to this address. For example, 'html' or 'ASCII'.
EMAIL_ADDRESS	NULL	VARCHAR2(2000)	Email address
BEST_TIME_TO_CONTACT_START	NULL	DATE	Start time (in the 24 hour format) of the best time to contact range
BEST_TIME_TO_CONTACT_END	NULL	DATE	End time (in the 24 hour format) of best time to contact range
PHONE_CALLING_CALENDAR	NULL	VARCHAR2(30)	The name or code for a calling calendar that is to be used with this telephone number
CONTACT_ATTEMPTS	NULL	NUMBER	A record of the total number of attempts to contact someone at this contact point when the contact was not successful
CONTACTS	NULL	NUMBER	A counter of the total number of attempts to contact someone at this contact point when the contact was successful.
DECLARED_BUSINESS_PHONE_FLAG	NULL	VARCHAR2(1)	Y indicates that this is a business phone; N otherwise
DO_NOT_USE_FLAG	NULL	VARCHAR2(1)	"Y" indicates this contact point should not be used

Oracle Proprietary, Confidential Information—Use Restricted by Contract

Column Descriptions (Continued)

Name	Null?	Type	Description
DO_NOT_USE_REASON	NULL	VARCHAR2(60)	Text description of the reason not to use this contact point
LAST_CONTACT_DT_TIME	NULL	DATE	Date and time of last contact placed to this contact point.
PHONE_PREFERRED_ORDER	NULL	NUMBER	Used to order a number of telephone numbers for the same entity. For example, if a person has three phone numbers, this indicates which phone number should be used first.
PRIORITY_OF_USE_CODE	NULL	VARCHAR2(30)	A user defined code that indicates the role of use (e.g. emergency only) for the contact point.
TELEPHONE_TYPE	NULL	VARCHAR2(30)	Indicates whether this is a fixed or mobile phone.
TIME_ZONE	NULL	NUMBER	Time zone (the number of hours from Greenwich mean).
PHONE_TOUCH_TONE_TYPE_FLAG	NULL	VARCHAR2(1)	Y (the default value is Y) if this is a touch tone phone; N if not
PHONE_AREA_CODE	NULL	VARCHAR2(10)	The area code within a country code.
PHONE_COUNTRY_CODE	NULL	VARCHAR2(10)	Country code for international phone numbers.
PHONE_NUMBER	NULL	VARCHAR2(40)	A telephone number formatted in the local format. The number should not include area code, country code, or extension.
PHONE_EXTENSION	NULL	VARCHAR2(20)	The additional number handled by an internal telephone system that is addressed after contacting the individual's internal telephone system.
PHONE_LINE_TYPE	NULL	VARCHAR2(30)	Lookup code for the type of phone line. For example, general, fax, inbound, outbound.
TELEX_NUMBER	NULL	VARCHAR2(50)	Reference number (usually a telephone number) to which TELEX messages are to be sent.
WEB_TYPE	NULL	VARCHAR2(60)	The prefix class to a web address. Typically this is 'ftp' or 'http'.
URL	NULL	VARCHAR2(2000)	Uniform resource locator.
CONTENT_SOURCE_TYPE	NOT NULL	VARCHAR2(30)	Source of data content
RAW_PHONE_NUMBER	NULL	VARCHAR2(30)	Raw Phone Number

Indexes

Index Name	Index Type	Sequence	Column Name
HZ_CONTACT_POINTS_N1	NOT UNIQUE	1	OWNER_TABLE_ID
HZ_CONTACT_POINTS_N2	NOT UNIQUE	5	OWNER_TABLE_NAME
HZ_CONTACT_POINTS_N3	NOT UNIQUE	5	PHONE_NUMBER
HZ_CONTACT_POINTS_N4	NOT UNIQUE	5	PHONE_AREA_CODE
		10	PHONE_NUMBER
		15	PHONE_EXTENSION
HZ_CONTACT_POINTS_U1	UNIQUE	1	CONTACT_POINT_ID

Oracle Proprietary, Confidential Information—Use Restricted by Contract

Sequences

<u>Sequence</u>	<u>Derived Column</u>
HZ_CONTACT_POINTS_S	CONTACT_POINT_ID

HZ_CUSTOMER_PROFILES

HZ_CUSTOMER_PROFILES stores credit information for your customer accounts and customer account sites.

Foreign Keys

Primary Key Table	Primary Key Column	Foreign Key Column
HZ_CUST_ACCOUNTS	CUST_ACCOUNT_ID	CUST_ACCOUNT_ID
HZ_CUST_PROFILE_CLASSES	PROFILE_CLASS_ID	PROFILE_CLASS_ID
HZ_CUST_SITE_USES_ALL	SITE_USE_ID	SITE_USE_ID

Column Descriptions

Name	Null?	Type	Description
CUST_ACCOUNT_PROFILE_ID (PK)	NOT NULL	NUMBER(15)	Unique identifier of this customer profile
LAST_UPDATED_BY	NOT NULL	NUMBER(15)	Standard Who column
LAST_UPDATE_DATE	NOT NULL	DATE	Standard Who column
LAST_UPDATE_LOGIN	NULL	NUMBER(15)	Standard Who column
CREATED_BY	NOT NULL	NUMBER(15)	Standard Who column
CREATION_DATE	NOT NULL	DATE	Standard Who column
CUST_ACCOUNT_ID	NOT NULL	NUMBER(15)	Customer Account identifier. FK to HZ_CUST_ACCOUNTS
STATUS	NOT NULL	VARCHAR2(1)	Indicates whether the profile is active or inactive
COLLECTOR_ID	NOT NULL	NUMBER(15)	Identifier of the collector associated with this customer profile
CREDIT_ANALYST_ID	NULL	NUMBER(15)	Identifier of the credit analyst associated with this customer profile
CREDIT_CHECKING	NOT NULL	VARCHAR2(1)	Indicates whether a credit check is to be carried out
NEXT_CREDIT_REVIEW_DATE	NULL	DATE	The next date on which credit will be reviewed
TOLERANCE	NOT NULL	NUMBER	Percentage over credit limit that this customer can exceed before action is taken
DISCOUNT_TERMS	NOT NULL	VARCHAR2(1)	Indicates whether to allow discount terms. The default value is 'Y' (Yes).
DUNNING_LETTERS	NOT NULL	VARCHAR2(1)	Indicates whether to send dunning letters to this customer when invoices, debit memos or chargebacks become past due. The default value is 'Y' (Yes).
INTEREST_CHARGES	NOT NULL	VARCHAR2(1)	Indicates whether to charge this customer interest. The default value is 'Y' (Yes).
PREF_FUNCTIONAL_CURRENCY	NULL	VARCHAR2(30)	Customer's preferred functional currency
SEND_STATEMENTS	NOT NULL	VARCHAR2(1)	Indicates whether to send this customer statements. The default value is 'Y' (Yes).
CREDIT_BALANCE_STATEMENTS	NOT NULL	VARCHAR2(1)	Indicates whether to send statements that have a credit balance. The default value is 'Y' (Yes).
CREDIT_HOLD	NOT NULL	VARCHAR2(1)	Indicates whether to put a hold on this customer's credit

Oracle Proprietary, Confidential Information—Use Restricted by Contract

Column Descriptions (Continued)

Name	Null?	Type	Description
PROFILE_CLASS_ID	NULL	NUMBER(15)	Identifier of the customer profile class associated with this customer profile
SITE_USE_ID	NULL	NUMBER(15)	Identifier of the site use record associated with this customer profile. FK to HZ_CUST_SITE_USES_ALL
CREDIT_RATING	NULL	VARCHAR2(30)	List of values choice (CREDIT_RATING)
RISK_CODE	NULL	VARCHAR2(30)	List of values choice (RISK_CODE)
STANDARD_TERMS	NULL	NUMBER(15)	User defined payment terms
OVERRIDE_TERMS	NULL	VARCHAR2(1)	Indicates whether to allow override of standard terms
DUNNING_LETTER_SET_ID	NULL	NUMBER(15)	Identifier of the dunning letter set associated with this customer profile
INTEREST_PERIOD_DAYS	NULL	NUMBER	Number of days to which the interest rate refers
PAYMENT_GRACE_DAYS	NULL	NUMBER	Maximum number of overdue days allowed before action is taken
DISCOUNT_GRACE_DAYS	NULL	NUMBER	Number of days after discount term date that this customer can take discounts
STATEMENT_CYCLE_ID	NULL	NUMBER(15)	Identifier of the statement cycle associated with this customer profile
ACCOUNT_STATUS	NULL	VARCHAR2(30)	User defined account status
PERCENT_COLLECTABLE	NULL	NUMBER	Percentage of this customer's account balance that you expect to collect on a regular basis
AUTOCASH_HIERARCHY_ID	NULL	NUMBER(15)	Identifier of the autocash hierarchy associated with this customer profile
ATTRIBUTE_CATEGORY	NULL	VARCHAR2(30)	Descriptive Flexfield Structure Defining Column
ATTRIBUTE1	NULL	VARCHAR2(150)	Descriptive Flexfield Segment Column
ATTRIBUTE2	NULL	VARCHAR2(150)	Descriptive Flexfield Segment Column
ATTRIBUTE3	NULL	VARCHAR2(150)	Descriptive Flexfield Segment Column
ATTRIBUTE4	NULL	VARCHAR2(150)	Descriptive Flexfield Segment Column
ATTRIBUTE5	NULL	VARCHAR2(150)	Descriptive Flexfield Segment Column
ATTRIBUTE6	NULL	VARCHAR2(150)	Descriptive Flexfield Segment Column
ATTRIBUTE7	NULL	VARCHAR2(150)	Descriptive Flexfield Segment Column
ATTRIBUTE8	NULL	VARCHAR2(150)	Descriptive Flexfield Segment Column
ATTRIBUTE9	NULL	VARCHAR2(150)	Descriptive Flexfield Segment Column
ATTRIBUTE10	NULL	VARCHAR2(150)	Descriptive Flexfield Segment Column
PROGRAM_APPLICATION_ID	NULL	NUMBER(15)	Application identifier of the last concurrent program to update this record
PROGRAM_ID	NULL	NUMBER(15)	Program identifier of the last concurrent program to update this record

Oracle Proprietary, Confidential Information—Use Restricted by Contract

Column Descriptions (Continued)

Name	Null?	Type	Description
PROGRAM_UPDATE_DATE	NULL	DATE	Last update date of this record by a concurrent program
REQUEST_ID	NULL	NUMBER(15)	Request identifier of last concurrent program to update this record
WH_UPDATE_DATE	NULL	DATE	Warehouse update date when record was recorded or changed
ATTRIBUTE11	NULL	VARCHAR2(150)	Descriptive Flexfield Segment Column
ATTRIBUTE12	NULL	VARCHAR2(150)	Descriptive Flexfield Segment Column
ATTRIBUTE13	NULL	VARCHAR2(150)	Descriptive Flexfield Segment Column
ATTRIBUTE14	NULL	VARCHAR2(150)	Descriptive Flexfield Segment Column
ATTRIBUTE15	NULL	VARCHAR2(150)	Descriptive Flexfield Segment Column
AUTO_REC_INCL_DISPUTED_FLAG	NOT NULL	VARCHAR2(1)	Indicates whether to include disputed transactions. Values include Y or N.
TAX_PRINTING_OPTION	NULL	VARCHAR2(30)	Tax printing option
CHARGE_ON_FINANCE_CHARGE_FLAG	NULL	VARCHAR2(1)	Indicates whether to compound finance charges for this customer or site. Values include Y or N.
GROUPING_RULE_ID	NULL	NUMBER(15)	Identifies the default invoice line grouping rule for the customer
CLEARING_DAYS	NULL	NUMBER(5)	This column is used to specify a value for the number of clearing days before receipts that belong to this customer (or site) can be cleared by the Automatic Clearing program. This overrides the value of the payment method / bank account.
JGZZ_ATTRIBUTE_CATEGORY	NULL	VARCHAR2(30)	JG descriptive flexfield
JGZZ_ATTRIBUTE1	NULL	VARCHAR2(150)	JG descriptive flexfield
JGZZ_ATTRIBUTE2	NULL	VARCHAR2(150)	JG descriptive flexfield
JGZZ_ATTRIBUTE3	NULL	VARCHAR2(150)	JG descriptive flexfield
JGZZ_ATTRIBUTE4	NULL	VARCHAR2(150)	JG descriptive flexfield
JGZZ_ATTRIBUTE5	NULL	VARCHAR2(150)	JG descriptive flexfield
JGZZ_ATTRIBUTE6	NULL	VARCHAR2(150)	JG descriptive flexfield
JGZZ_ATTRIBUTE7	NULL	VARCHAR2(150)	JG descriptive flexfield
JGZZ_ATTRIBUTE8	NULL	VARCHAR2(150)	JG descriptive flexfield
JGZZ_ATTRIBUTE9	NULL	VARCHAR2(150)	JG descriptive flexfield
JGZZ_ATTRIBUTE10	NULL	VARCHAR2(150)	JG descriptive flexfield
JGZZ_ATTRIBUTE11	NULL	VARCHAR2(150)	JG descriptive flexfield
JGZZ_ATTRIBUTE12	NULL	VARCHAR2(150)	JG descriptive flexfield
JGZZ_ATTRIBUTE13	NULL	VARCHAR2(150)	JG descriptive flexfield
JGZZ_ATTRIBUTE14	NULL	VARCHAR2(150)	JG descriptive flexfield
JGZZ_ATTRIBUTE15	NULL	VARCHAR2(150)	JG descriptive flexfield
GLOBAL_ATTRIBUTE1	NULL	VARCHAR2(150)	Reserved for Globalization Functionality
GLOBAL_ATTRIBUTE2	NULL	VARCHAR2(150)	Reserved for Globalization Functionality
GLOBAL_ATTRIBUTE3	NULL	VARCHAR2(150)	Reserved for Globalization Functionality
GLOBAL_ATTRIBUTE4	NULL	VARCHAR2(150)	Reserved for Globalization Functionality

Oracle Proprietary, Confidential Information—Use Restricted by Contract

Column Descriptions (Continued)

Name	Null?	Type	Description
GLOBAL_ATTRIBUTES5	NULL	VARCHAR2(150)	Reserved for Globalization Functionality
GLOBAL_ATTRIBUTE6	NULL	VARCHAR2(150)	Reserved for Globalization Functionality
GLOBAL_ATTRIBUTE7	NULL	VARCHAR2(150)	Reserved for Globalization Functionality
GLOBAL_ATTRIBUTES8	NULL	VARCHAR2(150)	Reserved for Globalization Functionality
GLOBAL_ATTRIBUTE9	NULL	VARCHAR2(150)	Reserved for Globalization Functionality
GLOBAL_ATTRIBUTE10	NULL	VARCHAR2(150)	Reserved for Globalization Functionality
GLOBAL_ATTRIBUTE11	NULL	VARCHAR2(150)	Reserved for Globalization Functionality
GLOBAL_ATTRIBUTE12	NULL	VARCHAR2(150)	Reserved for Globalization Functionality
GLOBAL_ATTRIBUTE13	NULL	VARCHAR2(150)	Reserved for Globalization Functionality
GLOBAL_ATTRIBUTE14	NULL	VARCHAR2(150)	Reserved for Globalization Functionality
GLOBAL_ATTRIBUTE15	NULL	VARCHAR2(150)	Reserved for Globalization Functionality
GLOBAL_ATTRIBUTE16	NULL	VARCHAR2(150)	Reserved for Globalization Functionality
GLOBAL_ATTRIBUTE17	NULL	VARCHAR2(150)	Reserved for Globalization Functionality
GLOBAL_ATTRIBUTE18	NULL	VARCHAR2(150)	Reserved for Globalization Functionality
GLOBAL_ATTRIBUTE19	NULL	VARCHAR2(150)	Reserved for Globalization Functionality
GLOBAL_ATTRIBUTE20	NULL	VARCHAR2(150)	Reserved for Globalization Functionality
GLOBAL_ATTRIBUTE_CATEGORY	NULL	VARCHAR2(30)	Reserved for Globalization Functionality
CONS_INV_FLAG	NULL	VARCHAR2(1)	Y or N indicates whether customer will be sent a Consolidated Billing Invoice
CONS_INV_TYPE	NULL	VARCHAR2(30)	Type of Consolidated Billing Invoice sent to customer (SUMMARY or DETAIL)
AUTOCASH_HIERARCHY_ID_FOR_ADR	NULL	NUMBER(15)	Identifies AutoCash rule set for unapplied amount in Post QuickCash
LOCKBOX_MATCHING_OPTION	NULL	VARCHAR2(30)	Lockbox matching option (typically INVOICE, SALES_ORDER, PURCHASE_ORDER)

Indexes

Index Name	Index Type	Sequence	Column Name
HZ_CUSTOMER_PROFILES_N1	NOT UNIQUE	5	CUST_ACCOUNT_ID
HZ_CUSTOMER_PROFILES_N2	NOT UNIQUE	5	CREATION_DATE
HZ_CUSTOMER_PROFILES_N3	NOT UNIQUE	5	SITE_USE_ID
HZ_CUSTOMER_PROFILES_U1	UNIQUE	1	CUST_ACCOUNT_PROFILE_ID
HZ_CUSTOMER_PROFILES_U2	UNIQUE	5	CUST_ACCOUNT_ID
		10	SITE_USE_ID

Sequences

<u>Sequence</u>	<u>Derived Column</u>
HZ_CUSTOMER_PROFILES_S	CUST_ACCOUNT_PROFILE_ID

HZ_CUST_ACCOUNTS

HZ_CUST_ACCOUNTS stores information about customer relationships. If a party becomes a customer, information about the customer account is stored in this table. You can establish multiple customer relationships with a single party, so each party can have multiple customer account records in this table.

Foreign Keys

Primary Key Table	Primary Key Column	Foreign Key Column
HZ_PARTIES	PARTY_ID	PARTY_ID

Column Descriptions

Name	Null?	Type	Description
CUST_ACCOUNT_ID (PK)	NOT NULL	NUMBER(15)	Customer Account Identifier.
PARTY_ID	NOT NULL	NUMBER(15)	A foreign key to the HZ_PARTY table.
LAST_UPDATE_DATE	NOT NULL	DATE	Standard Who column
ACCOUNT_NUMBER	NOT NULL	VARCHAR2(30)	Account Number
LAST_UPDATED_BY	NOT NULL	NUMBER(15)	Standard Who column
CREATION_DATE	NOT NULL	DATE	Standard Who column
CREATED_BY	NOT NULL	NUMBER(15)	Standard Who column
LAST_UPDATE_LOGIN	NULL	NUMBER(15)	Standard Who column
REQUEST_ID	NULL	NUMBER(15)	Request identifier of last concurrent program to update this record
PROGRAM_APPLICATION_ID	NULL	NUMBER(15)	Application identifier of last concurrent program to update this record
PROGRAM_ID	NULL	NUMBER(15)	Program identifier of last concurrent program to update this record
PROGRAM_UPDATE_DATE	NULL	DATE	Last update date of this record by a concurrent program
WH_UPDATE_DATE	NULL	DATE	Warehouse update date when record was recorded or changed
ATTRIBUTE_CATEGORY	NULL	VARCHAR2(30)	Descriptive Flexfield Structure Defining column
ATTRIBUTE1	NULL	VARCHAR2(150)	Descriptive Flexfield Segment column
ATTRIBUTE2	NULL	VARCHAR2(150)	Descriptive Flexfield Segment column
ATTRIBUTE3	NULL	VARCHAR2(150)	Descriptive Flexfield Segment column
ATTRIBUTE4	NULL	VARCHAR2(150)	Descriptive Flexfield Segment column
ATTRIBUTE5	NULL	VARCHAR2(150)	Descriptive Flexfield Segment column
ATTRIBUTE6	NULL	VARCHAR2(150)	Descriptive Flexfield Segment column
ATTRIBUTE7	NULL	VARCHAR2(150)	Descriptive Flexfield Segment column
ATTRIBUTE8	NULL	VARCHAR2(150)	Descriptive Flexfield Segment column
ATTRIBUTE9	NULL	VARCHAR2(150)	Descriptive Flexfield Segment column
ATTRIBUTE10	NULL	VARCHAR2(150)	Descriptive Flexfield Segment column

Oracle Proprietary, Confidential Information—Use Restricted by Contract

Column Descriptions (Continued)

Name	Null?	Type	Description
ATTRIBUTE11	NULL	VARCHAR2(150)	Descriptive Flexfield Segment column
ATTRIBUTE12	NULL	VARCHAR2(150)	Descriptive Flexfield Segment column
ATTRIBUTE13	NULL	VARCHAR2(150)	Descriptive Flexfield Segment column
ATTRIBUTE14	NULL	VARCHAR2(150)	Descriptive Flexfield Segment column
ATTRIBUTE15	NULL	VARCHAR2(150)	Descriptive Flexfield Segment column
ATTRIBUTE16	NULL	VARCHAR2(150)	Descriptive Flexfield Segment column
ATTRIBUTE17	NULL	VARCHAR2(150)	Descriptive Flexfield Segment column
ATTRIBUTE18	NULL	VARCHAR2(150)	Descriptive Flexfield Segment column
ATTRIBUTE19	NULL	VARCHAR2(150)	Descriptive Flexfield Segment column
ATTRIBUTE20	NULL	VARCHAR2(150)	Descriptive Flexfield Segment column
GLOBAL_ATTRIBUTE_CATEGORY	NULL	VARCHAR2(30)	Reserved For Globalization Functionality
GLOBAL_ATTRIBUTE1	NULL	VARCHAR2(150)	Reserved For Globalization Functionality
GLOBAL_ATTRIBUTE2	NULL	VARCHAR2(150)	Reserved For Globalization Functionality
GLOBAL_ATTRIBUTE3	NULL	VARCHAR2(150)	Reserved For Globalization Functionality
GLOBAL_ATTRIBUTE4	NULL	VARCHAR2(150)	Reserved For Globalization Functionality
GLOBAL_ATTRIBUTE5	NULL	VARCHAR2(150)	Reserved For Globalization Functionality
GLOBAL_ATTRIBUTE6	NULL	VARCHAR2(150)	Reserved For Globalization Functionality
GLOBAL_ATTRIBUTE7	NULL	VARCHAR2(150)	Reserved For Globalization Functionality
GLOBAL_ATTRIBUTE8	NULL	VARCHAR2(150)	Reserved For Globalization Functionality
GLOBAL_ATTRIBUTE9	NULL	VARCHAR2(150)	Reserved For Globalization Functionality
GLOBAL_ATTRIBUTE10	NULL	VARCHAR2(150)	Reserved For Globalization Functionality
GLOBAL_ATTRIBUTE11	NULL	VARCHAR2(150)	Reserved For Globalization Functionality
GLOBAL_ATTRIBUTE12	NULL	VARCHAR2(150)	Reserved For Globalization Functionality
GLOBAL_ATTRIBUTE13	NULL	VARCHAR2(150)	Reserved For Globalization Functionality
GLOBAL_ATTRIBUTE14	NULL	VARCHAR2(150)	Reserved For Globalization Functionality
GLOBAL_ATTRIBUTE15	NULL	VARCHAR2(150)	Reserved For Globalization Functionality
GLOBAL_ATTRIBUTE16	NULL	VARCHAR2(150)	Reserved For Globalization Functionality
GLOBAL_ATTRIBUTE17	NULL	VARCHAR2(150)	Reserved For Globalization Functionality
GLOBAL_ATTRIBUTE18	NULL	VARCHAR2(150)	Reserved For Globalization Functionality
GLOBAL_ATTRIBUTE19	NULL	VARCHAR2(150)	Reserved For Globalization Functionality

Oracle Proprietary, Confidential Information—Use Restricted by Contract

Column Descriptions (Continued)

Name	Null?	Type	Description
GLOBAL_ATTRIBUTE20	NULL	VARCHAR2(150)	Reserved For Globalization Functionality
ORIG_SYSTEM_REFERENCE	NOT NULL	VARCHAR2(240)	Unique customer identifier from foreign system
STATUS	NOT NULL	VARCHAR2(1)	Customer status flag. Lookup code for CODE_STATUS
CUSTOMER_TYPE	NULL	VARCHAR2(30)	Receivables lookup code for <input type="checkbox"/> CUSTOMER_TYPE <input type="checkbox"/> (<input type="checkbox"/> I <input type="checkbox"/> for internal customers; <input type="checkbox"/> R <input type="checkbox"/> for external customers)
CUSTOMER_CLASS_CODE	NULL	VARCHAR2(30)	Customer class identifier
PRIMARY_SALESREP_ID	NULL	NUMBER(15)	Primary sales rep identifier
SALES_CHANNEL_CODE	NULL	VARCHAR2(30)	Order Entry lookup code for <input type="checkbox"/> SALES_CHANNEL <input type="checkbox"/>
ORDER_TYPE_ID	NULL	NUMBER(15)	Order type identifier
PRICE_LIST_ID	NULL	NUMBER(15)	Price list identifier
SUBCATEGORY_CODE	NULL	VARCHAR2(30)	User-definable subcategory
TAX_CODE	NULL	VARCHAR2(50)	Tax code for this customer
FOB_POINT	NULL	VARCHAR2(30)	The point in a shipment at which title to the goods is transferred. Examples include, FOB delivered (the title changes hands at the point of delivery).
FREIGHT_TERM	NULL	VARCHAR2(30)	Order Entry lookup code for <input type="checkbox"/> FREIGHT_TERMS <input type="checkbox"/>
SHIP_PARTIAL	NULL	VARCHAR2(1)	Flag if partial shipments can be sent.
SHIP_VIA	NULL	VARCHAR2(25)	Name of shipping firm
WAREHOUSE_ID	NULL	NUMBER(15)	Warehouse identifier
PAYMENT_TERM_ID	NULL	NUMBER(15)	This column is not used by AR. (used by Oracle Order Entry)
TAX_HEADER_LEVEL_FLAG	NULL	VARCHAR2(1)	Tax calculation level (<input type="checkbox"/> Y <input type="checkbox"/> means Header; <input type="checkbox"/> N <input type="checkbox"/> means Line)
TAX_ROUNDING_RULE	NULL	VARCHAR2(30)	Tax amount rounding rule
COTERMINATE_DAY_MONTH	NULL	VARCHAR2(6)	Identifies the date on which services ordered by the customer will end. Values for this column will take the form DD-MON.
PRIMARY_SPECIALIST_ID	NULL	NUMBER(15)	This column is for the service personnel dispatching feature in Incident Tracking and is a foreign key to PER_PEOPLE
SECONDARY_SPECIALIST_ID	NULL	NUMBER(15)	This column is for the service personnel dispatching feature in Incident Tracking and is a foreign key to PER_PEOPLE
ACCOUNT_LIABLE_FLAG	NULL	VARCHAR2(1)	"Y" for Yes , "N" for No
RESTRICTION_LIMIT_AMOUNT	NULL	NUMBER	An amount in the local currency that restricts the usage of this account.
CURRENT_BALANCE	NULL	NUMBER	Balance on the Account
PASSWORD_TEXT	NULL	VARCHAR2(60)	Password text field
HIGH_PRIORITY_INDICATOR	NULL	VARCHAR2(1)	A user assigned flag to indicate that monitoring the balance of the account is a high priority.
ACCOUNT_ESTABLISHED_DATE	NULL	DATE	Date when Account is established
ACCOUNT_TERMINATION_DATE	NULL	DATE	Date when Account is Terminated

Oracle Proprietary, Confidential Information—Use Restricted by Contract

Column Descriptions (Continued)

Name	Null?	Type	Description
ACCOUNT_ACTIVATION_DATE	NULL	DATE	Date When Account is Activated
CREDIT_CLASSIFICATION_CODE	NULL	VARCHAR2(30)	Credit Classification Code
DEPARTMENT	NULL	VARCHAR2(30)	Department
MAJOR_ACCOUNT_NUMBER	NULL	VARCHAR2(30)	Major Account Number
HOTWATCH_SERVICE_FLAG	NULL	VARCHAR2(1)	"Y" for Yes, "N" for No
HOTWATCH_SVC_BAL_IND	NULL	VARCHAR2(30)	Service Balance Indicator
HELD_BILL_EXPIRATION_DATE	NULL	DATE	Held Bill Expiration Date
HOLD_BILL_FLAG	NULL	VARCHAR2(1)	"Y" for Yes, "N" for No do not hold the bill.
HIGH_PRIORITY_REMARKS	NULL	VARCHAR2(80)	High Priority Remarks
PO_EFFECTIVE_DATE	NULL	DATE	The date in which a purchase order is effective.
PO_EXPIRATION_DATE	NULL	DATE	PO Expiration Date
REALTIME_RATE_FLAG	NULL	VARCHAR2(1)	Real time rate flag
SINGLE_USER_FLAG	NULL	VARCHAR2(1)	A value of 'Y' indicates that this account can only be used by a single user. A value of No allows for any number of users. The default is No.
WATCH_ACCOUNT_FLAG	NULL	VARCHAR2(1)	Watch Account Flag
WATCH_BALANCE_INDICATOR	NULL	VARCHAR2(1)	Watch Balance Indicator
GEO_CODE	NULL	VARCHAR2(30)	The geographic location code on the planet.
ACCT_LIFE_CYCLE_STATUS	NULL	VARCHAR2(30)	A state of the account from the point of view of the originator of the account.
ACCOUNT_NAME	NULL	VARCHAR2(240)	A user defined name for the account.
DEPOSIT_REFUND_METHOD	NULL	VARCHAR2(20)	Refund Method
DORMANT_ACCOUNT_FLAG	NULL	VARCHAR2(1)	"Y for Yes, "N" for No
NPA_NUMBER	NULL	VARCHAR2(60)	Identifies an account with a number plan area used in telecommunications.
PIN_NUMBER	NULL	NUMBER(16)	A user defined personal identification number for gaining access to this account.
SUSPENSION_DATE	NULL	DATE	Date of Suspension
WRITE_OFF_ADJUSTMENT_AMOUNT	NULL	NUMBER	Indicates the portion of a write-off that is to be applied as an adjustment to the account balance.
WRITE_OFF_PAYMENT_AMOUNT	NULL	NUMBER	Indicates the portion of a payment that is to be written off. The portion is stated as an amount in the local currency.
WRITE_OFF_AMOUNT	NULL	NUMBER	Write-off Amount in the local currency.
SOURCE_CODE	NULL	VARCHAR2(150)	Promotion that was used to make the party a customer
COMPETITOR_TYPE	NULL	VARCHAR2(150)	A short term that identifies the type of competitor
COMMENTS	NULL	VARCHAR2(240)	Free format information about the customer
DATES_NEGATIVE_TOLERANCE	NULL	NUMBER	Negative tolerance for acceptable dates
DATES_POSITIVE_TOLERANCE	NULL	NUMBER	Positive tolerance for acceptable dates
DATE_TYPE_PREFERENCE	NULL	VARCHAR2(20)	Preference for ship or arrival dates

Oracle Proprietary, Confidential Information—Use Restricted by Contract

Column Descriptions (Continued)

Name	Null?	Type	Description
OVER_SHIPMENT_TOLERANCE	NULL	NUMBER	Percentage tolerance for over shipment
UNDER_SHIPMENT_TOLERANCE	NULL	NUMBER	Percentage tolerance for under shipment
OVER_RETURN_TOLERANCE	NULL	NUMBER	Percentage tolerance for over return
UNDER_RETURN_TOLERANCE	NULL	NUMBER	Percentage tolerance for under return
ITEM_CROSS_REF_PREF	NULL	VARCHAR2(30)	Lookup for item cross reference preference for placing orders
SHIP_SETS_INCLUDE_LINES_FLAG	NULL	VARCHAR2(1)	"Y" if lines should automatically be included in ship sets
ARRIVALSETS_INCLUDE_LINES_FLAG	NULL	VARCHAR2(1)	"Y" if lines should automatically be included in arrival sets
SCHED_DATE_PUSH_FLAG	NULL	VARCHAR2(1)	"Y" if group schedule date should automatically be pushed
INVOICE_QUANTITY_RULE	NULL	VARCHAR2(30)	Rule to indicate whether to invoice for ordered quantity or fulfilled quantity
PRICING_EVENT	NULL	VARCHAR2(30)	Event at which to price orders. For example, at entry, at shipping, or at invoicing.
ACCOUNT_REPLICATION_KEY	NOT NULL	NUMBER(15)	Key used by Mobile Device Gateway products for replication.
STATUS_UPDATE_DATE	NULL	DATE	Last status update date
AUTOPAY_FLAG	NULL	VARCHAR2(1)	Autopay flag
NOTIFY_FLAG	NULL	VARCHAR2(1)	Notify flag
LAST_BATCH_ID	NULL	NUMBER	Last active batch

Indexes

Index Name	Index Type	Sequence	Column Name
HZ_CUST_ACCOUNTS_N1	NOT UNIQUE	1	CREATION_DATE
HZ_CUST_ACCOUNTS_N2	NOT UNIQUE	5	PARTY_ID
HZ_CUST_ACCOUNTS_U1	UNIQUE	1	CUST_ACCOUNT_ID
HZ_CUST_ACCOUNTS_U2	UNIQUE	1	ACCOUNT_NUMBER
HZ_CUST_ACCOUNTS_U3	UNIQUE	1	ORIG_SYSTEM_REFERENCE

Sequences

Sequence	Derived Column
HZ_CUST_ACCOUNTS_S	CUST_ACCOUNT_ID
HZ_ACCOUNT_NUM_S	ACCOUNT_NUMBER
HZ_ACCOUNT_REPLICATION_KEY_S	ACCOUNT_REPLICATION_KEY

HZ_CUST_ACCT_SITES_ALL

HZ_CUST_ACCT_SITES_ALL stores information about customer sites. One customer account can have multiple sites. The address is maintained in HZ_LOCATIONS.

Foreign Keys

Primary Key Table	Primary Key Column	Foreign Key Column
HZ_CUST_ACCOUNTS	CUST_ACCOUNT_ID	CUST_ACCOUNT_ID
HZ_PARTY_SITES	PARTY_SITE_ID	PARTY_SITE_ID
RA_TERRITORIES	TERRITORY_ID	TERRITORY_ID

Column Descriptions

Name	Null?	Type	Description
CUST_ACCT_SITE_ID (PK)	NOT NULL	NUMBER (15)	Customer Site identifier
CUST_ACCOUNT_ID	NOT NULL	NUMBER (15)	Customer Account identifier. FK to HZ_CUST_ACCOUNTS
PARTY_SITE_ID	NOT NULL	NUMBER (15)	Party Site identifier. FK to HZ_PARTY_SITES
LAST_UPDATE_DATE	NOT NULL	DATE	Standard Who column
LAST_UPDATED_BY	NOT NULL	NUMBER (15)	Standard Who column
CREATION_DATE	NOT NULL	DATE	Standard Who column
CREATED_BY	NOT NULL	NUMBER (15)	Standard Who column
LAST_UPDATE_LOGIN	NULL	NUMBER (15)	Standard Who column
REQUEST_ID	NULL	NUMBER (15)	Request identifier of last concurrent program to update this record
PROGRAM_APPLICATION_ID	NULL	NUMBER (15)	Application identifier of last concurrent program to update this record
PROGRAM_ID	NULL	NUMBER (15)	Program identifier of last concurrent program to update this record
PROGRAM_UPDATE_DATE	NULL	DATE	Last update date of this record by a concurrent program
WH_UPDATE_DATE	NULL	DATE	Warehouse update date when record was recorded or changed
ATTRIBUTE_CATEGORY	NULL	VARCHAR2 (30)	Descriptive Flexfield Structure Defining column
ATTRIBUTE1	NULL	VARCHAR2 (150)	Descriptive Flexfield Segment column
ATTRIBUTE2	NULL	VARCHAR2 (150)	Descriptive Flexfield Segment column
ATTRIBUTE3	NULL	VARCHAR2 (150)	Descriptive Flexfield Segment column
ATTRIBUTE4	NULL	VARCHAR2 (150)	Descriptive Flexfield Segment column
ATTRIBUTE5	NULL	VARCHAR2 (150)	Descriptive Flexfield Segment column
ATTRIBUTE6	NULL	VARCHAR2 (150)	Descriptive Flexfield Segment column
ATTRIBUTE7	NULL	VARCHAR2 (150)	Descriptive Flexfield Segment column
ATTRIBUTE8	NULL	VARCHAR2 (150)	Descriptive Flexfield Segment column
ATTRIBUTE9	NULL	VARCHAR2 (150)	Descriptive Flexfield Segment column

Oracle Proprietary, Confidential Information—Use Restricted by Contract

Column Descriptions (Continued)

Name	Null?	Type	Description
ATTRIBUTE10	NULL	VARCHAR2 (150)	Descriptive Flexfield Segment column
ATTRIBUTE11	NULL	VARCHAR2 (150)	Descriptive Flexfield Segment column
ATTRIBUTE12	NULL	VARCHAR2 (150)	Descriptive Flexfield Segment column
ATTRIBUTE13	NULL	VARCHAR2 (150)	Descriptive Flexfield Segment column
ATTRIBUTE14	NULL	VARCHAR2 (150)	Descriptive Flexfield Segment column
ATTRIBUTE15	NULL	VARCHAR2 (150)	Descriptive Flexfield Segment column
ATTRIBUTE16	NULL	VARCHAR2 (150)	Descriptive Flexfield Segment column
ATTRIBUTE17	NULL	VARCHAR2 (150)	Descriptive Flexfield Segment column
ATTRIBUTE18	NULL	VARCHAR2 (150)	Descriptive Flexfield Segment column
ATTRIBUTE19	NULL	VARCHAR2 (150)	Descriptive Flexfield Segment column
ATTRIBUTE20	NULL	VARCHAR2 (150)	Descriptive Flexfield Segment column
GLOBAL_ATTRIBUTE_CATEGORY	NULL	VARCHAR2 (30)	Reserved For Globalization Functionality
GLOBAL_ATTRIBUTE1	NULL	VARCHAR2 (150)	Reserved For Globalization Functionality
GLOBAL_ATTRIBUTE2	NULL	VARCHAR2 (150)	Reserved For Globalization Functionality
GLOBAL_ATTRIBUTE3	NULL	VARCHAR2 (150)	Reserved For Globalization Functionality
GLOBAL_ATTRIBUTE4	NULL	VARCHAR2 (150)	Reserved For Globalization Functionality
GLOBAL_ATTRIBUTE5	NULL	VARCHAR2 (150)	Reserved For Globalization Functionality
GLOBAL_ATTRIBUTE6	NULL	VARCHAR2 (150)	Reserved For Globalization Functionality
GLOBAL_ATTRIBUTE7	NULL	VARCHAR2 (150)	Reserved For Globalization Functionality
GLOBAL_ATTRIBUTE8	NULL	VARCHAR2 (150)	Reserved For Globalization Functionality
GLOBAL_ATTRIBUTE9	NULL	VARCHAR2 (150)	Reserved For Globalization Functionality
GLOBAL_ATTRIBUTE10	NULL	VARCHAR2 (150)	Reserved For Globalization Functionality
GLOBAL_ATTRIBUTE11	NULL	VARCHAR2 (150)	Reserved For Globalization Functionality
GLOBAL_ATTRIBUTE12	NULL	VARCHAR2 (150)	Reserved For Globalization Functionality
GLOBAL_ATTRIBUTE13	NULL	VARCHAR2 (150)	Reserved For Globalization Functionality
GLOBAL_ATTRIBUTE14	NULL	VARCHAR2 (150)	Reserved For Globalization Functionality
GLOBAL_ATTRIBUTE15	NULL	VARCHAR2 (150)	Reserved For Globalization Functionality
GLOBAL_ATTRIBUTE16	NULL	VARCHAR2 (150)	Reserved For Globalization Functionality
GLOBAL_ATTRIBUTE17	NULL	VARCHAR2 (150)	Reserved For Globalization Functionality
GLOBAL_ATTRIBUTE18	NULL	VARCHAR2 (150)	Reserved For Globalization Functionality

Column Descriptions (Continued)

Name	Null?	Type	Description
GLOBAL_ATTRIBUTE19	NULL	VARCHAR2(150)	Reserved For Globalization Functionality
GLOBAL_ATTRIBUTE20	NULL	VARCHAR2(150)	Reserved For Globalization Functionality
ORIG_SYSTEM_REFERENCE	NOT NULL	VARCHAR2(240)	Address identifier from foreign system
STATUS	NOT NULL	VARCHAR2(1)	Customer Status flag (Receivables lookup code for CODE_STATUS)
ORG_ID	NULL	NUMBER(15)	Operating Unit Identifier
BILL_TO_FLAG	NULL	VARCHAR2(1)	Y if the address is a Bill To location; P if the address is a primary Bill To location; N or otherwise null.
MARKET_FLAG	NULL	VARCHAR2(1)	Y if the address is a Marketing location; P if the address is a primary Marketing location; N or null otherwise
SHIP_TO_FLAG	NULL	VARCHAR2(1)	Y if the address is a Ship To location; P if the address is a primary Ship To location; N or null otherwise
CUSTOMER_CATEGORY_CODE	NULL	VARCHAR2(30)	User-definable category (lookup type = CUSTOMER_CATEGORY).
LANGUAGE	NULL	VARCHAR2(4)	Operating language of customer site. FK to FND_LANGUAGES
KEY_ACCOUNT_FLAG	NULL	VARCHAR2(1)	Key account for sales representatives
TP_HEADER_ID	NULL	NUMBER	Trading partner header identifier
ECE_TP_LOCATION_CODE	NULL	VARCHAR2(40)	Stores the EDI location code. It should be unique for a customer. The column accepts free-form text.
SERVICE_TERRITORY_ID	NULL	NUMBER(15)	This column is to track the service territory associated with each customer address. The column is a foreign key to CS_SERVICE_TERRITORIES
PRIMARY_SPECIALIST_ID	NULL	NUMBER(15)	This column is for the service personnel dispatching feature in Incident Tracking. This column is a foreign key to PER_PEOPLE
SECONDARY_SPECIALIST_ID	NULL	NUMBER(15)	This column is for the service personnel dispatching feature in Incident Tracking. This column is a foreign key to PER_PEOPLE
TERRITORY_ID	NULL	NUMBER(15)	Territory Identifier
ADDRESS_TEXT	NULL	CLOB	Address text used for context search
TERRITORY	NULL	VARCHAR2(30)	Territory for this customer account site
TRANSLATED_CUSTOMER_NAME	NULL	VARCHAR2(50)	Translated customer name

Indexes

Index Name	Index Type	Sequence	Column Name
HZ_CUST_ACCT_SITES_N1	NOT UNIQUE	5	PARTY_SITE_ID
HZ_CUST_ACCT_SITES_N2	NOT UNIQUE	5	CUST_ACCOUNT_ID
HZ_CUST_ACCT_SITES_U1	UNIQUE	1	CUST_ACCT_SITE_ID

Oracle Proprietary, Confidential Information—Use Restricted by Contract

Indexes (Continued)

<u>Index Name</u>	<u>Index Type</u>	<u>Sequence</u>	<u>Column Name</u>
HZ_CUST_ACCT_SITES_U2	UNIQUE	1	ORIG_SYSTEM_REFERENCE
		4	ORG_ID
HZ_CUST_ACCT_SITES_U3	UNIQUE	1	TP_HEADER_ID

Sequences

<u>Sequence</u>	<u>Derived Column</u>
HZ_CUST_ACCT_SITES_S	CUST_ACCT_SITE_ID

HZ_CUST_SITE_USES_ALL

HZ_CUST_SITE_USES_ALL stores information about site uses or business purposes. A single customer site can have multiple site uses such as “bill-to” or “ship-to, and each site use is stored as a record in this table.

Foreign Keys

Primary Key Table	Primary Key Column	Foreign Key Column
HZ_CUST_ACCOUNT_ROLES	CUST_ACCOUNT_ROLE_ID	CONTACT_ID
HZ_CUST_ACCT_SITES_ALL	CUST_ACCT_SITE_ID	CUST_ACCT_SITE_ID
RA_TERRITORIES	TERRITORY_ID	TERRITORY_ID

Column Descriptions

Name	Null?	Type	Description
SITE_USE_ID (PK)	NOT NULL	NUMBER (15)	Site use identifier
CUST_ACCT_SITE_ID	NOT NULL	NUMBER (15)	Customer Account Site Identifier. FK to HZ_CUST_ACCT_SITES_ALL
LAST_UPDATE_DATE	NOT NULL	DATE	Standard Who column
LAST_UPDATED_BY	NOT NULL	NUMBER (15)	Standard Who column
CREATION_DATE	NOT NULL	DATE	Standard Who column
CREATED_BY	NOT NULL	NUMBER (15)	Standard Who column
SITE_USE_CODE	NOT NULL	VARCHAR2 (30)	Business Purpose
PRIMARY_FLAG	NOT NULL	VARCHAR2 (1)	Yes/No flag indicates whether site is primary
STATUS	NOT NULL	VARCHAR2 (1)	Site use status flag; lookup code for 'CODE_STATUS'
LOCATION	NOT NULL	VARCHAR2 (40)	Site use identifier
LAST_UPDATE_LOGIN	NULL	NUMBER (15)	Standard Who column
CONTACT_ID	NULL	NUMBER (15)	Contact identifier
BILL_TO_SITE_USE_ID	NULL	NUMBER (15)	Bill to site use identifier
ORIG_SYSTEM_REFERENCE	NULL	VARCHAR2 (240)	Site use identifier from foreign system
SIC_CODE	NULL	VARCHAR2 (30)	Standard Industry Classification code
PAYMENT_TERM_ID	NULL	NUMBER (15)	Payment term identifier
GSA_INDICATOR	NULL	VARCHAR2 (1)	Flag to indicate whether this site is a public sector (Gov.) Service Agency
SHIP_PARTIAL	NULL	VARCHAR2 (1)	A 'Y' (Yes) flag (the default) indicates that the customer will accept partial shipments at this site.
SHIP_VIA	NULL	VARCHAR2 (25)	The name of the preferred shipping company.
FOB_POINT	NULL	VARCHAR2 (30)	Free On Board. The FOB point indicates the point at which title of goods is transferred to the buyer.
ORDER_TYPE_ID	NULL	NUMBER (15)	Order type identifier
PRICE_LIST_ID	NULL	NUMBER (15)	Price list identifier
FREIGHT_TERM	NULL	VARCHAR2 (30)	Order Entry lookup code for FREIGHT_TERMS
WAREHOUSE_ID	NULL	NUMBER (15)	Warehouse identifier
TERRITORY_ID	NULL	NUMBER (15)	Territory identifier

Oracle Proprietary, Confidential Information—Use Restricted by Contract

Column Descriptions (Continued)

Name	Null?	Type	Description
ATTRIBUTE_CATEGORY	NULL	VARCHAR2(30)	Descriptive Flexfield Structure Defining column
ATTRIBUTE1	NULL	VARCHAR2(150)	Descriptive Flexfield Segment column
ATTRIBUTE2	NULL	VARCHAR2(150)	Descriptive Flexfield Segment column
ATTRIBUTE3	NULL	VARCHAR2(150)	Descriptive Flexfield Segment column
ATTRIBUTE4	NULL	VARCHAR2(150)	Descriptive Flexfield Segment column
ATTRIBUTE5	NULL	VARCHAR2(150)	Descriptive Flexfield Segment column
ATTRIBUTE6	NULL	VARCHAR2(150)	Descriptive Flexfield Segment column
ATTRIBUTE7	NULL	VARCHAR2(150)	Descriptive Flexfield Segment column
ATTRIBUTE8	NULL	VARCHAR2(150)	Descriptive Flexfield Segment column
ATTRIBUTE9	NULL	VARCHAR2(150)	Descriptive Flexfield Segment column
ATTRIBUTE10	NULL	VARCHAR2(150)	Descriptive Flexfield Segment column
REQUEST_ID	NULL	NUMBER(15)	Request identifier of last concurrent program to update this record
PROGRAM_APPLICATION_ID	NULL	NUMBER(15)	Application identifier of last concurrent program to update this record
PROGRAM_ID	NULL	NUMBER(15)	Program identifier of last concurrent program to update this record
PROGRAM_UPDATE_DATE	NULL	DATE	Last update date of this record by a concurrent program
TAX_REFERENCE	NULL	VARCHAR2(50)	Taxpayer identification number
SORT_PRIORITY	NULL	NUMBER(5)	Sort priority
TAX_CODE	NULL	VARCHAR2(50)	Tax code associated with this site
ATTRIBUTE11	NULL	VARCHAR2(150)	Descriptive Flexfield Segment column
ATTRIBUTE12	NULL	VARCHAR2(150)	Descriptive Flexfield Segment column
ATTRIBUTE13	NULL	VARCHAR2(150)	Descriptive Flexfield Segment column
ATTRIBUTE14	NULL	VARCHAR2(150)	Descriptive Flexfield Segment column
ATTRIBUTE15	NULL	VARCHAR2(150)	Descriptive Flexfield Segment column
ATTRIBUTE16	NULL	VARCHAR2(150)	Descriptive Flexfield Segment column
ATTRIBUTE17	NULL	VARCHAR2(150)	Descriptive Flexfield Segment column
ATTRIBUTE18	NULL	VARCHAR2(150)	Descriptive Flexfield Segment column
ATTRIBUTE19	NULL	VARCHAR2(150)	Descriptive Flexfield Segment column
ATTRIBUTE20	NULL	VARCHAR2(150)	Descriptive Flexfield Segment column
ATTRIBUTE21	NULL	VARCHAR2(150)	Descriptive Flexfield Segment column
ATTRIBUTE22	NULL	VARCHAR2(150)	Descriptive Flexfield Segment column

Oracle Proprietary, Confidential Information—Use Restricted by Contract

Column Descriptions (Continued)

Name	Null?	Type	Description
ATTRIBUTE23	NULL	VARCHAR2(150)	Descriptive Flexfield Segment column
ATTRIBUTE24	NULL	VARCHAR2(150)	Descriptive Flexfield Segment column
ATTRIBUTE25	NULL	VARCHAR2(150)	Descriptive Flexfield Segment column
LAST_ACCRUE_CHARGE_DATE	NULL	DATE	This is the last date for which accrued finance charges were computed for this site.
SECOND_LAST_ACCRUE_CHARGE_DATE	NULL	DATE	This is the second to the last date when accrued finance charges were computed for this site.
LAST_UNACCRUE_CHARGE_DATE	NULL	DATE	This is the last date when unaccrued finance charges were computed for this site.
SECOND_LAST_UNACCRUE_CHRG_DATE	NULL	DATE	This is the second to last date when unaccrued finance charges were computed for this site.
DEMAND_CLASS_CODE	NULL	VARCHAR2(30)	Demand class (user-defined Lookup used by Oracle Manufacturing)
ORG_ID	NULL	NUMBER(15)	Operating Unit Identifier
TAX_HEADER_LEVEL_FLAG	NULL	VARCHAR2(1)	Used By Oracle Sales Compensation
TAX_ROUNDING_RULE	NULL	VARCHAR2(30)	Tax Rounding Rule: Override System and Customer Tax Rounding Rule
WH_UPDATE_DATE	NULL	DATE	Date Sent to Data Warehouse
GLOBAL_ATTRIBUTE1	NULL	VARCHAR2(150)	Reserved for Globalization Functionality
GLOBAL_ATTRIBUTE2	NULL	VARCHAR2(150)	Reserved for Globalization Functionality
GLOBAL_ATTRIBUTE3	NULL	VARCHAR2(150)	Reserved for Globalization Functionality
GLOBAL_ATTRIBUTE4	NULL	VARCHAR2(150)	Reserved for Globalization Functionality
GLOBAL_ATTRIBUTE5	NULL	VARCHAR2(150)	Reserved for Globalization Functionality
GLOBAL_ATTRIBUTE6	NULL	VARCHAR2(150)	Reserved for Globalization Functionality
GLOBAL_ATTRIBUTE7	NULL	VARCHAR2(150)	Reserved for Globalization Functionality
GLOBAL_ATTRIBUTE8	NULL	VARCHAR2(150)	Reserved for Globalization Functionality
GLOBAL_ATTRIBUTE9	NULL	VARCHAR2(150)	Reserved for Globalization Functionality
GLOBAL_ATTRIBUTE10	NULL	VARCHAR2(150)	Reserved for Globalization Functionality
GLOBAL_ATTRIBUTE11	NULL	VARCHAR2(150)	Reserved for Globalization Functionality
GLOBAL_ATTRIBUTE12	NULL	VARCHAR2(150)	Reserved for Globalization Functionality
GLOBAL_ATTRIBUTE13	NULL	VARCHAR2(150)	Reserved for Globalization Functionality
GLOBAL_ATTRIBUTE14	NULL	VARCHAR2(150)	Reserved for Globalization Functionality
GLOBAL_ATTRIBUTE15	NULL	VARCHAR2(150)	Reserved for Globalization Functionality
GLOBAL_ATTRIBUTE16	NULL	VARCHAR2(150)	Reserved for Globalization Functionality

Oracle Proprietary, Confidential Information—Use Restricted by Contract

Column Descriptions (Continued)

Name	Null?	Type	Description
GLOBAL_ATTRIBUTE17	NULL	VARCHAR2(150)	Reserved for Globalization Functionality
GLOBAL_ATTRIBUTE18	NULL	VARCHAR2(150)	Reserved for Globalization Functionality
GLOBAL_ATTRIBUTE19	NULL	VARCHAR2(150)	Reserved for Globalization Functionality
GLOBAL_ATTRIBUTE20	NULL	VARCHAR2(150)	Reserved for Globalization Functionality
GLOBAL_ATTRIBUTE_CATEGORY	NULL	VARCHAR2(30)	Reserved for Globalization Functionality
PRIMARY_SALESREP_ID	NULL	NUMBER(15)	Identifies a salesperson associated with a business site; also used to default salesrep in the Transactions window. The hierarchy of defaulting would follow from Bill To - Ship To - Customer (if not a multi-org setup).
FINCHRG_RECEIVABLES_TRX_ID	NULL	NUMBER(15)	Identifies receivables activity to be used for finance charges
DATES_NEGATIVE_TOLERANCE	NULL	NUMBER	Negative tolerance for acceptable dates
DATES_POSITIVE_TOLERANCE	NULL	NUMBER	Positive tolerance for acceptable dates
DATE_TYPE_PREFERENCE	NULL	VARCHAR2(20)	Preference for ship or arrival dates
OVER_SHIPMENT_TOLERANCE	NULL	NUMBER	Percentage tolerance for over shipment
UNDER_SHIPMENT_TOLERANCE	NULL	NUMBER	Percentage tolerance for under shipment
ITEM_CROSS_REF_PREF	NULL	VARCHAR2(30)	Lookup for item cross reference preference for placing orders
OVER_RETURN_TOLERANCE	NULL	NUMBER	Percentage tolerance for over return
UNDER_RETURN_TOLERANCE	NULL	NUMBER	Percentage tolerance for under return
SHIP_SETS_INCLUDE_LINES_FLAG	NULL	VARCHAR2(1)	"Y" if lines should automatically be included in ship sets
ARRIVALSETS_INCLUDE_LINES_FLAG	NULL	VARCHAR2(1)	"Y" if lines should automatically be included in arrival sets
SCHED_DATE_PUSH_FLAG	NULL	VARCHAR2(1)	"Y" if group schedule date should automatically be pushed
INVOICE_QUANTITY_RULE	NULL	VARCHAR2(30)	Rule to indicate whether to invoice for ordered quantity or fulfilled quantity
PRICING_EVENT	NULL	VARCHAR2(30)	Event at which to price orders. For example, at entry, at shipping, or at invoicing.
GL_ID_REC	NULL	NUMBER(15)	Code combination ID for the Receivable Account
GL_ID_REV	NULL	NUMBER(15)	Code combination ID for the Revenue Account
GL_ID_TAX	NULL	NUMBER(15)	Code combination ID for the Tax Account
GL_ID_FREIGHT	NULL	NUMBER(15)	Code combination ID for the Freight Account
GL_ID_CLEARING	NULL	NUMBER(15)	Code combination ID for the Clearing Account
GL_ID_UNBILLED	NULL	NUMBER(15)	Code combination ID for the Unbilled Account

Oracle Proprietary, Confidential Information—Use Restricted by Contract

Column Descriptions (Continued)

Name	Null?	Type	Description
GL_ID_UNEARNED	NULL	NUMBER(15)	Code combination ID for the Unearned Account
GL_ID_UNPAID_REC	NULL	NUMBER(15)	Unpaid Bills Receivable Account
GL_ID_REMITTANCE	NULL	NUMBER(15)	Bill Receivable Remittance Account
GL_ID_FACTOR	NULL	NUMBER(15)	Bill Receivable Factoring Account identifier for Spanish requirement.
TAX_CLASSIFICATION	NULL	VARCHAR2(30)	

Indexes

Index Name	Index Type	Sequence	Column Name
HZ_CUST_SITE_USES_N1	NOT UNIQUE	5	CUST_ACCT_SITE_ID
		10	SITE_USE_CODE
HZ_CUST_SITE_USES_N2	NOT UNIQUE	5	REQUEST_ID
HZ_CUST_SITE_USES_U1	UNIQUE	1	SITE_USE_ID

Sequences

Sequence	Derived Column
HZ_CUST_SITE_USES_S	SITE_USE_ID

HZ_LOCATIONS

HZ_LOCATIONS stores information about physical physical locations.

Foreign Keys

Primary Key Table	Primary Key Column	Foreign Key Column
FND_LANGUAGES	LANGUAGE_CODE	LANGUAGE
FND_TERRITORIES	TERRITORY_CODE	COUNTRY
HZ_TIMEZONES	GLOBAL_TIMEZONE_NAME	TIME_ZONE

Column Descriptions

Name	Null?	Type	Description
LOCATION_ID (PK)	NOT NULL	NUMBER(15)	Location Identifier
LAST_UPDATE_DATE	NOT NULL	DATE	Standard Who column
LAST_UPDATED_BY	NOT NULL	NUMBER(15)	Standard Who column
CREATION_DATE	NOT NULL	DATE	Standard Who column
CREATED_BY	NOT NULL	NUMBER(15)	Standard Who column
LAST_UPDATE_LOGIN	NULL	NUMBER(15)	Standard Who column
REQUEST_ID	NULL	NUMBER(15)	Request identifier of last concurrent program to update this record
PROGRAM_APPLICATION_ID	NULL	NUMBER(15)	Application identifier of last concurrent program to update this record
PROGRAM_ID	NULL	NUMBER(15)	Program identifier of last concurrent program to update this record
PROGRAM_UPDATE_DATE	NULL	DATE	Last update date of this record by a concurrent program
WH_UPDATE_DATE	NULL	DATE	Warehouse update date when record was recorded or changed
ATTRIBUTE_CATEGORY	NULL	VARCHAR2(30)	Descriptive Flexfield Structure Defining column
ATTRIBUTE1	NULL	VARCHAR2(150)	Descriptive Flexfield Segment column
ATTRIBUTE2	NULL	VARCHAR2(150)	Descriptive Flexfield Segment column
ATTRIBUTE3	NULL	VARCHAR2(150)	Descriptive Flexfield Segment column
ATTRIBUTE4	NULL	VARCHAR2(150)	Descriptive Flexfield Segment column
ATTRIBUTE5	NULL	VARCHAR2(150)	Descriptive Flexfield Segment column
ATTRIBUTE6	NULL	VARCHAR2(150)	Descriptive Flexfield Segment column
ATTRIBUTE7	NULL	VARCHAR2(150)	Descriptive Flexfield Segment column
ATTRIBUTE8	NULL	VARCHAR2(150)	Descriptive Flexfield Segment column
ATTRIBUTE9	NULL	VARCHAR2(150)	Descriptive Flexfield Segment column
ATTRIBUTE10	NULL	VARCHAR2(150)	Descriptive Flexfield Segment column
ATTRIBUTE11	NULL	VARCHAR2(150)	Descriptive Flexfield Segment column
ATTRIBUTE12	NULL	VARCHAR2(150)	Descriptive Flexfield Segment column
ATTRIBUTE13	NULL	VARCHAR2(150)	Descriptive Flexfield Segment column

Oracle Proprietary, Confidential Information—Use Restricted by Contract

Column Descriptions (Continued)

Name	Null?	Type	Description
ATTRIBUTE14	NULL	VARCHAR2(150)	Descriptive Flexfield Segment column
ATTRIBUTE15	NULL	VARCHAR2(150)	Descriptive Flexfield Segment column
ATTRIBUTE16	NULL	VARCHAR2(150)	Descriptive Flexfield Segment column
ATTRIBUTE17	NULL	VARCHAR2(150)	Descriptive Flexfield Segment column
ATTRIBUTE18	NULL	VARCHAR2(150)	Descriptive Flexfield Segment column
ATTRIBUTE19	NULL	VARCHAR2(150)	Descriptive Flexfield Segment column
ATTRIBUTE20	NULL	VARCHAR2(150)	Descriptive Flexfield Segment column
GLOBAL_ATTRIBUTE_CATEGORY	NULL	VARCHAR2(30)	Reserved for Globalization Functionality
GLOBAL_ATTRIBUTE1	NULL	VARCHAR2(150)	Reserved for Globalization Functionality
GLOBAL_ATTRIBUTE2	NULL	VARCHAR2(150)	Reserved for Globalization Functionality
GLOBAL_ATTRIBUTE3	NULL	VARCHAR2(150)	Reserved for Globalization Functionality
GLOBAL_ATTRIBUTE4	NULL	VARCHAR2(150)	Reserved for Globalization Functionality
GLOBAL_ATTRIBUTE5	NULL	VARCHAR2(150)	Reserved for Globalization Functionality
GLOBAL_ATTRIBUTE6	NULL	VARCHAR2(150)	Reserved for Globalization Functionality
GLOBAL_ATTRIBUTE7	NULL	VARCHAR2(150)	Reserved for Globalization Functionality
GLOBAL_ATTRIBUTE8	NULL	VARCHAR2(150)	Reserved for Globalization Functionality
GLOBAL_ATTRIBUTE9	NULL	VARCHAR2(150)	Reserved for Globalization Functionality
GLOBAL_ATTRIBUTE10	NULL	VARCHAR2(150)	Reserved for Globalization Functionality
GLOBAL_ATTRIBUTE11	NULL	VARCHAR2(150)	Reserved for Globalization Functionality
GLOBAL_ATTRIBUTE12	NULL	VARCHAR2(150)	Reserved for Globalization Functionality
GLOBAL_ATTRIBUTE13	NULL	VARCHAR2(150)	Reserved for Globalization Functionality
GLOBAL_ATTRIBUTE14	NULL	VARCHAR2(150)	Reserved for Globalization Functionality
GLOBAL_ATTRIBUTE15	NULL	VARCHAR2(150)	Reserved for Globalization Functionality
GLOBAL_ATTRIBUTE16	NULL	VARCHAR2(150)	Reserved for Globalization Functionality
GLOBAL_ATTRIBUTE17	NULL	VARCHAR2(150)	Reserved for Globalization Functionality
GLOBAL_ATTRIBUTE18	NULL	VARCHAR2(150)	Reserved for Globalization Functionality
GLOBAL_ATTRIBUTE19	NULL	VARCHAR2(150)	Reserved for Globalization Functionality
GLOBAL_ATTRIBUTE20	NULL	VARCHAR2(150)	Reserved for Globalization Functionality
ORIG_SYSTEM_REFERENCE	NOT NULL	VARCHAR2(240)	Address identifier from foreign system
COUNTRY	NOT NULL	VARCHAR2(60)	FND_TERRITORY.TERRITORY_CODE
ADDRESS1	NOT NULL	VARCHAR2(240)	First line for address
ADDRESS2	NULL	VARCHAR2(240)	Second line for address

Oracle Proprietary, Confidential Information—Use Restricted by Contract

Column Descriptions (Continued)

Name	Null?	Type	Description
ADDRESS3	NULL	VARCHAR2 (240)	Third line for address
ADDRESS4	NULL	VARCHAR2 (240)	Fourth line for address
CITY	NULL	VARCHAR2 (60)	City
POSTAL_CODE	NULL	VARCHAR2 (60)	Postal code
STATE	NULL	VARCHAR2 (60)	State
PROVINCE	NULL	VARCHAR2 (60)	Province
COUNTY	NULL	VARCHAR2 (60)	County
ADDRESS_KEY	NULL	VARCHAR2 (2000)	Derived key created by OSM to facilitate querying
ADDRESS_STYLE	NULL	VARCHAR2 (30)	Used as context value for Flexible Address Format descriptive flexfield (do not use this column, join to <code>find_territories</code> via <code>country = territory_code</code> to retrieve the address style for the country)
VALIDATED_FLAG	NULL	VARCHAR2 (1)	"Y" if this location has been validated, "N" if not
ADDRESS_LINES_PHONETIC	NULL	VARCHAR2 (560)	Phonetic or Kana representation of the Kanji address lines (used in Japan)
APARTMENT_FLAG	NULL	VARCHAR2 (1)	"Y" if the location is an apartment. The default value is 'N' (No)
PO_BOX_NUMBER	NULL	VARCHAR2 (50)	Post Office Box Number
HOUSE_NUMBER	NULL	VARCHAR2 (50)	House Number. In an address, (e.g., 121 Any Street #101, Small Town, California, United States of America) the house number is '121'.
STREET_SUFFIX	NULL	VARCHAR2 (50)	In an address, (e.g., 121 Any Street #101, Small Town, California, United States of America) the street suffix is 'Street'. Other examples include, place, drive, avenue. The suffix could be divided into primary and secondary. In an address line (121 Brigeport Avenue Overpass) the 'Overpass' is a secondary suffix, and Avenue is the primary suffix.
APARTMENT_NUMBER	NULL	VARCHAR2 (50)	In an address, (e.g., 121 Any Street #101, Small Town, California, United States of America) the apartment number is '101'.
SECONDARY_SUFFIX_ELEMENT	NULL	VARCHAR2 (240)	In an address line (121 Brigeport Avenue Overpass) the 'Overpass' is a secondary suffix.
STREET	NULL	VARCHAR2 (50)	In an address, (e.g., 121 Any Street #101, Small Town, California, United States of America) the street is 'Any'.
RURAL_ROUTE_TYPE	NULL	VARCHAR2 (50)	A United States Postal classification of rural routes. These indicate the type of route (e.g., walking, delivery van etc.).
RURAL_ROUTE_NUMBER	NULL	VARCHAR2 (50)	A delivery route number assigned by a postal authority.

Column Descriptions (Continued)

Name	Null?	Type	Description
STREET_NUMBER	NULL	VARCHAR2(50)	In an address line (121 Brigeport Avenue Overpass) the '121' is the street number.
BUILDING	NULL	VARCHAR2(50)	A number assigned to an entire building within an address.
FLOOR	NULL	VARCHAR2(50)	A number or name assigned to a level within a building or within an address. For example, in the address line (121 Brigeport Avenue Overpass, Lower Lobby) the Lower Lobby is a floor.
SUITE	NULL	VARCHAR2(50)	A number or name to indicate a number of rooms (therefore termed a suite).
ROOM	NULL	VARCHAR2(50)	A number or name for a room within a building.
POSTAL_PLUS4_CODE	NULL	VARCHAR2(10)	Four digit extension to the United States Postal ZIP code.
TIME_ZONE	NULL	VARCHAR2(50)	A numeric value indicating the number of hours from Greenwich Mean time.
OVERSEAS_ADDRESS_FLAG	NULL	VARCHAR2(1)	"Y" if the location is overseas from the point of view of the person creating the address. The default value is 'N' (no).
POST_OFFICE	NULL	VARCHAR2(50)	Name of the post office nearest the location
POSITION	NULL	VARCHAR2(50)	The primary direction (for example North, East, etc.) by which access to the location is achieved
DELIVERY_POINT_CODE	NULL	VARCHAR2(50)	User-assigned identifier for planning delivery sequences
LOCATION_DIRECTIONS	NULL	VARCHAR2(640)	Directions to the location
ADDRESS_EFFECTIVE_DATE	NULL	DATE	Date when the location is usable.
ADDRESS_EXPIRATION_DATE	NULL	DATE	Date when the location can no longer be used
ADDRESS_ERROR_CODE	NULL	VARCHAR2(50)	Postal Soft evaluation construct. Records the error type if an error is encountered in address processing
CLLI_CODE	NULL	VARCHAR2(60)	Common Language Location Identifier (CLLI) code
DODAAC	NULL	VARCHAR2(6)	Department of Defense Activity Address Code. A code, often used for shipping purposes, that specifies a military unit or specific set of activities.
TRAILING_DIRECTORY_CODE	NULL	VARCHAR2(60)	Direction Code used in the UK that is added to the end of an address or area
LANGUAGE	NULL	VARCHAR2(4)	Operating language of the location. FK to FND_LANGUAGES
LIFE_CYCLE_STATUS	NULL	VARCHAR2(30)	The state of the lifecycle for the record
SHORT_DESCRIPTION	NULL	VARCHAR2(240)	Short description of the location
DESCRIPTION	NULL	VARCHAR2(2000)	An extensive description of the location
CONTENT_SOURCE_TYPE	NOT NULL	VARCHAR2(30)	Source of data content.

Oracle Proprietary, Confidential Information—Use Restricted by Contract

Column Descriptions (Continued)

<u>Name</u>	<u>Null?</u>	<u>Type</u>	<u>Description</u>
LOC_HIERARCHY_ID	NULL	NUMBER(15)	Location hierarchy identifier. FK to JTF_LOC_HIERARCHIES_B.
SALES_TAX_GEOCODE	NULL	VARCHAR2(30)	US State and Local Tax Jurisdiction code. Use this field to provide either a Vertex GeoCode or Taxware Geocode value for the Point of Order Origin
SALES_TAX_INSIDE_CITY_LIMITS	NULL	VARCHAR2(30)	US State and Local Tax, Inside City Limits flag. Default if Null to N. Indicates whether the address is inside the city limits of the associated GEOCODE
FA_LOCATION_ID	NULL	NUMBER(15)	FK to FA_LOCATIONS

Indexes

<u>Index Name</u>	<u>Index Type</u>	<u>Sequence</u>	<u>Column Name</u>
HZ_LOCATIONS_N1	NOT UNIQUE	1	ADDRESS1
HZ_LOCATIONS_N10	NOT UNIQUE	5	CITY
HZ_LOCATIONS_N11	NOT UNIQUE	5	PROVINCE
HZ_LOCATIONS_N12	NOT UNIQUE	5	COUNTY
HZ_LOCATIONS_N2	NOT UNIQUE	1	CREATION_DATE
HZ_LOCATIONS_N3	NOT UNIQUE	1	ADDRESS_KEY
HZ_LOCATIONS_N4	NOT UNIQUE	1	POSTAL_CODE
HZ_LOCATIONS_N5	NOT UNIQUE	1	COUNTRY
		4	STATE
HZ_LOCATIONS_N6	NOT UNIQUE	1	CLLI_CODE
HZ_LOCATIONS_N7	NOT UNIQUE	5	ADDRESS1
HZ_LOCATIONS_N8	NOT UNIQUE	5	ADDRESS2
HZ_LOCATIONS_N9	NOT UNIQUE	5	POSTAL_CODE
HZ_LOCATIONS_U1	UNIQUE	1	LOCATION_ID

Sequences

<u>Sequence</u>	<u>Derived Column</u>
HZ_LOCATIONS_S	LOCATION_ID

HZ_PARTIES

HZ_PARTIES stores information about parties such as organizations, people, and groups, including the identifying address information for the party.

Foreign Keys

Primary Key Table	Primary Key Column	Foreign Key Column
FND_LANGUAGES	LANGUAGE_CODE	LANGUAGE_NAME

Column Descriptions

Name	Null?	Type	Description
PARTY_ID (PK)	NOT NULL	NUMBER (15)	Party Identifier
PARTY_NUMBER	NOT NULL	VARCHAR2 (30)	Party number
PARTY_NAME	NOT NULL	VARCHAR2 (360)	Party name
PARTY_TYPE	NOT NULL	VARCHAR2 (30)	Type of party. This is limited to person, organization, group or relationship.
VALIDATED_FLAG	NULL	VARCHAR2 (1)	Y if this party has been validated, N if not
LAST_UPDATED_BY	NOT NULL	NUMBER (15)	Standard Who column
CREATION_DATE	NOT NULL	DATE	Standard Who column
LAST_UPDATE_LOGIN	NULL	NUMBER (15)	Standard Who column
REQUEST_ID	NULL	NUMBER (15)	Request identifier of last concurrent program to update this record
PROGRAM_APPLICATION_ID	NULL	NUMBER (15)	Application identifier of last concurrent program to update this record
CREATED_BY	NOT NULL	NUMBER (15)	Standard Who column
LAST_UPDATE_DATE	NOT NULL	DATE	Standard Who column
PROGRAM_ID	NULL	NUMBER (15)	Program identifier of last concurrent program to update this record
PROGRAM_UPDATE_DATE	NULL	DATE	Last update date of this record by a concurrent program
WH_UPDATE_DATE	NULL	DATE	Warehouse update date when record was recorded or changed
ATTRIBUTE_CATEGORY	NULL	VARCHAR2 (30)	Descriptive Flexfield Structure Defining column
ATTRIBUTE1	NULL	VARCHAR2 (150)	Descriptive Flexfield Segment Column
ATTRIBUTE2	NULL	VARCHAR2 (150)	Descriptive Flexfield Segment Column
ATTRIBUTE3	NULL	VARCHAR2 (150)	Descriptive Flexfield Segment Column
ATTRIBUTE4	NULL	VARCHAR2 (150)	Descriptive Flexfield Segment Column
ATTRIBUTE5	NULL	VARCHAR2 (150)	Descriptive Flexfield Segment Column
ATTRIBUTE6	NULL	VARCHAR2 (150)	Descriptive Flexfield Segment Column
ATTRIBUTE7	NULL	VARCHAR2 (150)	Descriptive Flexfield Segment Column
ATTRIBUTE8	NULL	VARCHAR2 (150)	Descriptive Flexfield Segment Column
ATTRIBUTE9	NULL	VARCHAR2 (150)	Descriptive Flexfield Segment Column

Oracle Proprietary, Confidential Information—Use Restricted by Contract

Column Descriptions (Continued)

Name	Null?	Type	Description
ATTRIBUTE10	NULL	VARCHAR2 (150)	Descriptive Flexfield Segment Column
ATTRIBUTE11	NULL	VARCHAR2 (150)	Descriptive Flexfield Segment Column
ATTRIBUTE12	NULL	VARCHAR2 (150)	Descriptive Flexfield Segment Column
ATTRIBUTE13	NULL	VARCHAR2 (150)	Descriptive Flexfield Segment Column
ATTRIBUTE14	NULL	VARCHAR2 (150)	Descriptive Flexfield Segment Column
ATTRIBUTE15	NULL	VARCHAR2 (150)	Descriptive Flexfield Segment Column
ATTRIBUTE16	NULL	VARCHAR2 (150)	Descriptive Flexfield Segment Column
ATTRIBUTE17	NULL	VARCHAR2 (150)	Descriptive Flexfield Segment Column
ATTRIBUTE18	NULL	VARCHAR2 (150)	Descriptive Flexfield Segment Column
ATTRIBUTE19	NULL	VARCHAR2 (150)	Descriptive Flexfield Segment Column
ATTRIBUTE20	NULL	VARCHAR2 (150)	Descriptive Flexfield Segment Column
ATTRIBUTE21	NULL	VARCHAR2 (150)	Descriptive Flexfield Segment Column
ATTRIBUTE22	NULL	VARCHAR2 (150)	Descriptive Flexfield Segment Column
ATTRIBUTE23	NULL	VARCHAR2 (150)	Descriptive Flexfield Segment Column
ATTRIBUTE24	NULL	VARCHAR2 (150)	Descriptive Flexfield Segment Column
GLOBAL_ATTRIBUTE_CATEGORY	NULL	VARCHAR2 (30)	Reserved for Globalization Functionality
GLOBAL_ATTRIBUTE1	NULL	VARCHAR2 (150)	Reserved for Globalization Functionality
GLOBAL_ATTRIBUTE2	NULL	VARCHAR2 (150)	Reserved for Globalization Functionality
GLOBAL_ATTRIBUTE4	NULL	VARCHAR2 (150)	Reserved for Globalization Functionality
GLOBAL_ATTRIBUTE3	NULL	VARCHAR2 (150)	Reserved for Globalization Functionality
GLOBAL_ATTRIBUTE5	NULL	VARCHAR2 (150)	Reserved for Globalization Functionality
GLOBAL_ATTRIBUTE6	NULL	VARCHAR2 (150)	Reserved for Globalization Functionality
GLOBAL_ATTRIBUTE7	NULL	VARCHAR2 (150)	Reserved for Globalization Functionality
GLOBAL_ATTRIBUTE8	NULL	VARCHAR2 (150)	Reserved for Globalization Functionality
GLOBAL_ATTRIBUTE9	NULL	VARCHAR2 (150)	Reserved for Globalization Functionality
GLOBAL_ATTRIBUTE10	NULL	VARCHAR2 (150)	Reserved for Globalization Functionality
GLOBAL_ATTRIBUTE11	NULL	VARCHAR2 (150)	Reserved for Globalization Functionality
GLOBAL_ATTRIBUTE12	NULL	VARCHAR2 (150)	Reserved for Globalization Functionality
GLOBAL_ATTRIBUTE13	NULL	VARCHAR2 (150)	Reserved for Globalization Functionality
GLOBAL_ATTRIBUTE14	NULL	VARCHAR2 (150)	Reserved for Globalization Functionality

Column Descriptions (Continued)

Name	Null?	Type	Description
GLOBAL_ATTRIBUTE15	NULL	VARCHAR2(150)	Reserved for Globalization Functionality
GLOBAL_ATTRIBUTE16	NULL	VARCHAR2(150)	Reserved for Globalization Functionality
GLOBAL_ATTRIBUTE17	NULL	VARCHAR2(150)	Reserved for Globalization Functionality
GLOBAL_ATTRIBUTE18	NULL	VARCHAR2(150)	Reserved for Globalization Functionality
GLOBAL_ATTRIBUTE19	NULL	VARCHAR2(150)	Reserved for Globalization Functionality
GLOBAL_ATTRIBUTE20	NULL	VARCHAR2(150)	Reserved for Globalization Functionality
ORIG_SYSTEM_REFERENCE	NOT NULL	VARCHAR2(240)	Unique customer identifier from foreign system
SIC_CODE	NULL	VARCHAR2(30)	Standard Industry Classification Code
HQ_BRANCH_IND	NULL	VARCHAR2(30)	Status of this site. Identifies if HQ, Branch, or Single Location.
CUSTOMER_KEY	NULL	VARCHAR2(2000)	Derived key created by Oracle Sales and Marketing to facilitate querying
TAX_REFERENCE	NULL	VARCHAR2(50)	Taxpayer identification number
JGZZ_FISCAL_CODE	NULL	VARCHAR2(20)	This column is used as the "Fiscal Code" for certain European Countries
DUNS_NUMBER	NULL	NUMBER	DUNS Number: a unique, nine digit identification number assigned to business entities by Dun & Bradstreet
TAX_NAME	NULL	VARCHAR2(60)	The name for the party that is recognized by the tax authority.
PERSON_PRE_NAME_ADJUNCT	NULL	VARCHAR2(30)	Salutary introduction such as Mr., Herr, etc.
PERSON_FIRST_NAME	NULL	VARCHAR2(150)	First name of the person
PERSON_MIDDLE_NAME	NULL	VARCHAR2(60)	Middle name of the person
PERSON_LAST_NAME	NULL	VARCHAR2(150)	Last or surname of the person
PERSON_NAME_SUFFIX	NULL	VARCHAR2(30)	Indicates the place in a family structure. For example, in "Tom Jones III", the "III" for third is the suffix.
PERSON_TITLE	NULL	VARCHAR2(60)	A professional or family title. For example, 'Don', or 'The Right Honorable'.
PERSON_ACADEMIC_TITLE	NULL	VARCHAR2(30)	Academic title that is part of a person's name such as Dr. John Smith.
PERSON_PREVIOUS_LAST_NAME	NULL	VARCHAR2(150)	Previous last or surname of the person
KNOWN_AS	NULL	VARCHAR2(240)	An alias or other name by which a party is known
PERSON_IDEN_TYPE	NULL	VARCHAR2(30)	Lookup representing main person identification number used in country. For example, Social Security Number.
PERSON_IDENTIFIER	NULL	VARCHAR2(60)	Identity reference field for things like Social Security, tax identity number, or Driver's License number.
GROUP_TYPE	NULL	VARCHAR2(30)	Lookup for group type

Oracle Proprietary, Confidential Information—Use Restricted by Contract

Column Descriptions (Continued)

Name	Null?	Type	Description
COUNTRY	NULL	VARCHAR2 (60)	FND_TERRITORY.TERRITORY_CODE for identifying address. (where HZ_PARTY_SITES.IDENTIFYING_ADDR ESS_FLAG = Y)
ADDRESS1	NULL	VARCHAR2 (240)	First line identifying address. (where HZ_PARTY_SITES.IDENTIFYING_ADDR ESS_FLAG = Y)
ADDRESS2	NULL	VARCHAR2 (240)	Second line for identifying address. (where HZ_PARTY_SITES.IDENTIFYING_ADDR ESS_FLAG = Y)
ADDRESS3	NULL	VARCHAR2 (240)	Third line for identifying address. (where HZ_PARTY_SITES.IDENTIFYING_ADDR ESS_FLAG = Y)
ADDRESS4	NULL	VARCHAR2 (240)	Fourth line for identifying address. (where HZ_PARTY_SITES.IDENTIFYING_ADDR ESS_FLAG = Y)
CITY	NULL	VARCHAR2 (60)	City for identifying address. (where HZ_PARTY_SITES.IDENTIFYING_ADDR ESS_FLAG = Y)
POSTAL_CODE	NULL	VARCHAR2 (60)	Postal Code for identifying address. (where HZ_PARTY_SITES.IDENTIFYING_ADDR ESS_FLAG = Y)
STATE	NULL	VARCHAR2 (60)	State for identifying address. (where HZ_PARTY_SITES.IDENTIFYING_ADDR ESS_FLAG = Y)
PROVINCE	NULL	VARCHAR2 (60)	Province for identifying address. (where HZ_PARTY_SITES.IDENTIFYING_ADDR ESS_FLAG = Y)
STATUS	NOT NULL	VARCHAR2 (1)	Party status flag.
COUNTY	NULL	VARCHAR2 (60)	County for identifying address. (where HZ_PARTY_SITES.IDENTIFYING_ADDR ESS_FLAG = Y)
SIC_CODE_TYPE	NULL	VARCHAR2 (30)	Version of Standard Industry Classification
TOTAL_NUM_OF_ORDERS	NULL	NUMBER	The total number of orders by the last ordered date
TOTAL_ORDERED_AMOUNT	NULL	NUMBER	The total ordered amount by the last ordered date
LAST_ORDERED_DATE	NULL	DATE	Last ordered date
URL	NULL	VARCHAR2 (2000)	Uniform resource locator
EMAIL_ADDRESS	NULL	VARCHAR2 (2000)	Email address
DO_NOT_MAIL_FLAG	NULL	VARCHAR2 (1)	Y indicates mail should ot be sent
ANALYSIS_FY	NULL	VARCHAR2 (5)	Fiscal Year upon which financial information is based on (net worth, number of employees, potential revenue)
FISCAL_YEAREND_MONTH	NULL	VARCHAR2 (30)	Month in which fiscal year ends for organization
EMPLOYEES_TOTAL	NULL	NUMBER	Total number of employees
CURR_FY_POTENTIAL_REVENUE	NULL	NUMBER	Potential revenue this fiscal year for organization
NEXT_FY_POTENTIAL_REVENUE	NULL	NUMBER	Potential revenue next fiscal year for organization

Oracle Proprietary, Confidential Information—Use Restricted by Contract

Column Descriptions (Continued)

Name	Null?	Type	Description
YEAR_ESTABLISHED	NULL	NUMBER(4)	Year in which organization began doing business
GSA_INDICATOR_FLAG	NULL	VARCHAR2(1)	Y if the organization is a public sector service agency
MISSION_STATEMENT	NULL	VARCHAR2(2000)	Corporate charter of organization
ORGANIZATION_NAME_PHONETIC	NULL	VARCHAR2(320)	Japanese Kana, or phonetic representation of organization name
PERSON_FIRST_NAME_PHONETIC	NULL	VARCHAR2(60)	Phonetic representation of the persons first name
PERSON_LAST_NAME_PHONETIC	NULL	VARCHAR2(60)	Phonetic representation of the persons last name
LANGUAGE_NAME	NULL	VARCHAR2(4)	Standard name for a language
CATEGORY_CODE	NULL	VARCHAR2(30)	User-definable category (lookup type= CUSTOMER_CATEGORY)
REFERENCE_USE_FLAG	NULL	VARCHAR2(1)	Indicates whether customer has agreed to be a reference (null means No)
THIRD_PARTY_FLAG	NULL	VARCHAR2(1)	Tracks whether a customer is a direct customer of the organization using AR or a third party vendor. If Oracle Service is installed, the Third Party field in the Customers window should be mandatory.
COMPETITOR_FLAG	NULL	VARCHAR2(1)	Indicates whether organization is a competitor (null means No)
SALUTATION	NULL	VARCHAR2(60)	Phrase used to address a party in any correspondence.
KNOWN_AS2	NULL	VARCHAR2(240)	An alias or other name by which a party is known
KNOWN_AS3	NULL	VARCHAR2(240)	An alias or other name by which a party is known
KNOWN_AS4	NULL	VARCHAR2(240)	An alias or other name by which a party is known
KNOWN_AS5	NULL	VARCHAR2(240)	An alias or other name by which a party is known

Indexes

Index Name	Index Type	Sequence	Column Name
HZ_PARTIES_N1	NOT UNIQUE	5	PARTY_NAME
HZ_PARTIES_N10	NOT UNIQUE	5	JGZZ_FISCAL_CODE
HZ_PARTIES_N11	NOT UNIQUE	5	TAX_REFERENCE
HZ_PARTIES_N12	NOT UNIQUE	5	ORIG_SYSTEM_REFERENCE
HZ_PARTIES_N13	NOT UNIQUE	5	PERSON_FIRST_NAME
HZ_PARTIES_N14	NOT UNIQUE	5	PERSON_LAST_NAME
HZ_PARTIES_N2	NOT UNIQUE	5	PERSON_LAST_NAME
HZ_PARTIES_N3	NOT UNIQUE	5	PERSON_FIRST_NAME
HZ_PARTIES_N4	NOT UNIQUE	10	CUSTOMER_KEY
HZ_PARTIES_N5	NOT UNIQUE	5	PARTY_NAME
HZ_PARTIES_N6	NOT UNIQUE	5	PARTY_NAME
HZ_PARTIES_N7	NOT UNIQUE	5	PERSON_FIRST_NAME
HZ_PARTIES_N8	NOT UNIQUE	5	PERSON_LAST_NAME
HZ_PARTIES_N9	NOT UNIQUE	5	PARTY_NAME
HZ_PARTIES_U1	UNIQUE	1	PARTY_ID
HZ_PARTIES_U2	UNIQUE	5	PARTY_NUMBER

Oracle Proprietary, Confidential Information—Use Restricted by Contract

Sequences

<u>Sequence</u>	<u>Derived Column</u>
HZ_PARTIES_S	PARTY_ID
HZ_PARTY_NUMBER_S	PARTY_NUMBER

HZ_PARTY_SITES

HZ_PARTY_SITES stores information about the relationship between Parties and Locations. The same party to have multiple party sites. Physical addresses are stored in HZ_LOCATIONS.

Foreign Keys

Primary Key Table	Primary Key Column	Foreign Key Column
HZ_LOCATIONS	LOCATION_ID	LOCATION_ID
HZ_PARTIES	PARTY_ID	PARTY_ID

Column Descriptions

Name	Null?	Type	Description
PARTY_SITE_ID (PK)	NOT NULL	NUMBER(15)	Party site identifier
PARTY_ID	NOT NULL	NUMBER(15)	Party identifier and foreign key to HZ_PARTIES.
LOCATION_ID	NOT NULL	NUMBER(15)	Location identifier and foreign key to HZ_LOCATIONS.
LAST_UPDATE_DATE	NOT NULL	DATE	Standard Who column
PARTY_SITE_NUMBER	NOT NULL	VARCHAR2(30)	Party site number
LAST_UPDATED_BY	NOT NULL	NUMBER(15)	Standard Who column
CREATION_DATE	NOT NULL	DATE	Standard Who column
CREATED_BY	NOT NULL	NUMBER(15)	Standard Who column
LAST_UPDATE_LOGIN	NULL	NUMBER(15)	Standard Who column
REQUEST_ID	NULL	NUMBER(15)	Request identifier of last concurrent program to update this record
PROGRAM_APPLICATION_ID	NULL	NUMBER(15)	Application identifier of last concurrent program to update this record
PROGRAM_ID	NULL	NUMBER(15)	Program identifier of last concurrent program to update this record
PROGRAM_UPDATE_DATE	NULL	DATE	Last update date of this record by a concurrent program
WH_UPDATE_DATE	NULL	DATE	Warehouse update date when record was recorded or changed
ATTRIBUTE_CATEGORY	NULL	VARCHAR2(30)	Descriptive Flexfield Structure Defining column
ATTRIBUTE1	NULL	VARCHAR2(150)	Descriptive Flexfield Segment column
ATTRIBUTE2	NULL	VARCHAR2(150)	Descriptive Flexfield Segment column
ATTRIBUTE3	NULL	VARCHAR2(150)	Descriptive Flexfield Segment column
ATTRIBUTE4	NULL	VARCHAR2(150)	Descriptive Flexfield Segment column
ATTRIBUTE5	NULL	VARCHAR2(150)	Descriptive Flexfield Segment column
ATTRIBUTE6	NULL	VARCHAR2(150)	Descriptive Flexfield Segment column
ATTRIBUTE7	NULL	VARCHAR2(150)	Descriptive Flexfield Segment column
ATTRIBUTE8	NULL	VARCHAR2(150)	Descriptive Flexfield Segment column
ATTRIBUTE9	NULL	VARCHAR2(150)	Descriptive Flexfield Segment column

Oracle Proprietary, Confidential Information—Use Restricted by Contract

Column Descriptions (Continued)

Name	Null?	Type	Description
ATTRIBUTE10	NULL	VARCHAR2(150)	Descriptive Flexfield Segment column
ATTRIBUTE11	NULL	VARCHAR2(150)	Descriptive Flexfield Segment column
ATTRIBUTE12	NULL	VARCHAR2(150)	Descriptive Flexfield Segment column
ATTRIBUTE13	NULL	VARCHAR2(150)	Descriptive Flexfield Segment column
ATTRIBUTE14	NULL	VARCHAR2(150)	Descriptive Flexfield Segment column
ATTRIBUTE15	NULL	VARCHAR2(150)	Descriptive Flexfield Segment column
ATTRIBUTE16	NULL	VARCHAR2(150)	Descriptive Flexfield Segment column
ATTRIBUTE17	NULL	VARCHAR2(150)	Descriptive Flexfield Segment column
ATTRIBUTE18	NULL	VARCHAR2(150)	Descriptive Flexfield Segment column
ATTRIBUTE19	NULL	VARCHAR2(150)	Descriptive Flexfield Segment column
ATTRIBUTE20	NULL	VARCHAR2(150)	Descriptive Flexfield Segment column
GLOBAL_ATTRIBUTE_CATEGORY	NULL	VARCHAR2(30)	Reserved for Globalization Functionality
GLOBAL_ATTRIBUTE1	NULL	VARCHAR2(150)	Reserved for Globalization Functionality
GLOBAL_ATTRIBUTE2	NULL	VARCHAR2(150)	Reserved for Globalization Functionality
GLOBAL_ATTRIBUTE3	NULL	VARCHAR2(150)	Reserved for Globalization Functionality
GLOBAL_ATTRIBUTE4	NULL	VARCHAR2(150)	Reserved for Globalization Functionality
GLOBAL_ATTRIBUTE5	NULL	VARCHAR2(150)	Reserved for Globalization Functionality
GLOBAL_ATTRIBUTE6	NULL	VARCHAR2(150)	Reserved for Globalization Functionality
GLOBAL_ATTRIBUTE7	NULL	VARCHAR2(150)	Reserved for Globalization Functionality
GLOBAL_ATTRIBUTE8	NULL	VARCHAR2(150)	Reserved for Globalization Functionality
GLOBAL_ATTRIBUTE9	NULL	VARCHAR2(150)	Reserved for Globalization Functionality
GLOBAL_ATTRIBUTE10	NULL	VARCHAR2(150)	Reserved for Globalization Functionality
GLOBAL_ATTRIBUTE11	NULL	VARCHAR2(150)	Reserved for Globalization Functionality
GLOBAL_ATTRIBUTE12	NULL	VARCHAR2(150)	Reserved for Globalization Functionality
GLOBAL_ATTRIBUTE13	NULL	VARCHAR2(150)	Reserved for Globalization Functionality
GLOBAL_ATTRIBUTE14	NULL	VARCHAR2(150)	Reserved for Globalization Functionality
GLOBAL_ATTRIBUTE15	NULL	VARCHAR2(150)	Reserved for Globalization Functionality
GLOBAL_ATTRIBUTE16	NULL	VARCHAR2(150)	Reserved for Globalization Functionality
GLOBAL_ATTRIBUTE17	NULL	VARCHAR2(150)	Reserved for Globalization Functionality
GLOBAL_ATTRIBUTE18	NULL	VARCHAR2(150)	Reserved for Globalization Functionality

Column Descriptions (Continued)

Name	Null?	Type	Description
GLOBAL_ATTRIBUTE19	NULL	VARCHAR2(150)	Reserved for Globalization Functionality
GLOBAL_ATTRIBUTE20	NULL	VARCHAR2(150)	Reserved for Globalization Functionality
ORIG_SYSTEM_REFERENCE	NULL	VARCHAR2(240)	Party site identifier from foreign system
START_DATE_ACTIVE	NULL	DATE	Effective start date for party site
END_DATE_ACTIVE	NULL	DATE	Effective end date for party site
REGION	NULL	VARCHAR2(30)	User-defined geographical region
MAILSTOP	NULL	VARCHAR2(60)	A user-defined code to indicate a mail drop point within their organization
CUSTOMER_KEY_OSM	NULL	VARCHAR2(255)	Customer key used in Oracle Sales and Marketing matching
PHONE_KEY_OSM	NULL	VARCHAR2(255)	Phone key used in Oracle Sales and Marketing matching
CONTACT_KEY_OSM	NULL	VARCHAR2(255)	Contact key used in Oracle Sales and Marketing matching
IDENTIFYING_ADDRESS_FLAG	NOT NULL	VARCHAR2(1)	Y or N indicates whether this is the identifying address for the party.
LANGUAGE	NULL	VARCHAR2(30)	The primary language spoken and written of the party site.
STATUS	NOT NULL	VARCHAR2(1)	Party site status flag.
PARTY_SITE_NAME	NULL	VARCHAR2(240)	A user defined name for the site

Indexes

Index Name	Index Type	Sequence	Column Name
HZ_PARTY_SITES_N1	NOT UNIQUE	5	PARTY_ID
HZ_PARTY_SITES_N2	NOT UNIQUE	5	LOCATION_ID
HZ_PARTY_SITES_U1	UNIQUE	1	PARTY_SITE_ID
HZ_PARTY_SITES_U2	UNIQUE	5	PARTY_SITE_NUMBER

Sequences

Sequence	Derived Column
HZ_PARTY_SITES_S	PARTY_SITE_ID
HZ_PARTY_SITE_NUMBER_S	PARTY_SITE_NUMBER

JTF_NOTES_B

JTF_NOTES_B stores all non-translated information about Notes. Notes may be created for any object mapped for object usage in JTF_OBJECTS; the JTF_OBJECT that the note is linked to is stored as the source_object_code and source_object_id. The actual text of the note, which is stored in the JTF_NOTES_TL, is split into two parts under columns NOTES and NOTE_DETAILS. Typically, the NOTES should hold the short form or the first part of the note. NOTE_DETAILS for added details, or whenever the note is longer than the 2000 character limit for the NOTES column. The NOTE_STATUS flags the note as being personal (P), Internal (I), or Publish(E).

Foreign Keys

Primary Key Table	Primary Key Column	Foreign Key Column
AS_LEADS_ALL	LEAD_ID	SOURCE_OBJECT_ID
AS_SALES_LEADS	SALES_LEAD_ID	SOURCE_OBJECT_ID
CS_INCIDENTS_ALL_B	INCIDENT_ID	SOURCE_OBJECT_ID
FND_LOOKUP_VALUES	LOOKUP_CODE	NOTE_TYPE
JTF_NOTES_B	JTF_NOTE_ID	PARENT_NOTE_ID
JTF_OBJECTS_B	OBJECT_CODE	SOURCE_OBJECT_CODE

Column Descriptions

Name	Null?	Type	Description
JTF_NOTE_ID (PK)	NOT NULL	NUMBER	Unique Note identifier (PK)
PARENT_NOTE_ID	NULL	NUMBER	Note id of the parent of the current note
SOURCE_OBJECT_ID	NOT NULL	NUMBER	Primary Key of the source form.
SOURCE_OBJECT_CODE	NOT NULL	VARCHAR2(240)	Identifies the source. Linked to the lookup code in the fnd lookups table where lookup_type = 'JTF_OBJECT_SOURCE_TYPE'
LAST_UPDATE_DATE	NOT NULL	DATE	Standard WHO column
LAST_UPDATED_BY	NOT NULL	NUMBER(15)	Standard WHO column
CREATION_DATE	NOT NULL	DATE	Standard WHO column
CREATED_BY	NOT NULL	NUMBER(15)	Standard WHO column
LAST_UPDATE_LOGIN	NULL	NUMBER(15)	Standard WHO column
NOTE_STATUS	NULL	VARCHAR2(1)	This flag determines whether the note is allowed to be published in the web or not.
ENTERED_BY	NOT NULL	NUMBER(15)	The person who entered the note.
ENTERED_DATE	NOT NULL	DATE	The date on which the note was entered.
NOTE_TYPE	NULL	VARCHAR2(30)	The type of the note. Normally user defined from the setup screen. Stored in fnd lookups for the lookup type of JTF_NOTE_TYPE
ATTRIBUTE1	NULL	VARCHAR2(150)	Standard flex Field Column
ATTRIBUTE2	NULL	VARCHAR2(150)	Standard flex Field Column
ATTRIBUTE3	NULL	VARCHAR2(150)	Standard flex Field Column
ATTRIBUTE4	NULL	VARCHAR2(150)	Standard flex Field Column
ATTRIBUTE5	NULL	VARCHAR2(150)	Standard flex Field Column
ATTRIBUTE6	NULL	VARCHAR2(150)	Standard flex Field Column

Oracle Proprietary, Confidential Information—Use Restricted by Contract

Column Descriptions (Continued)

Name	Null?	Type	Description
ATTRIBUTE7	NULL	VARCHAR2(150)	Standard flex Field Column
ATTRIBUTE8	NULL	VARCHAR2(150)	Standard flex Field Column
ATTRIBUTE9	NULL	VARCHAR2(150)	Standard flex Field Column
ATTRIBUTE10	NULL	VARCHAR2(150)	Standard flex Field Column
ATTRIBUTE11	NULL	VARCHAR2(150)	Standard flex Field Column
ATTRIBUTE12	NULL	VARCHAR2(150)	Standard flex Field Column
ATTRIBUTE13	NULL	VARCHAR2(150)	Standard flex Field Column
ATTRIBUTE14	NULL	VARCHAR2(150)	Standard flex Field Column
ATTRIBUTE15	NULL	VARCHAR2(150)	Standard flex Field Column
CONTEXT	NULL	VARCHAR2(30)	Standard flex Field Column
SECURITY_GROUP_ID	NULL	NUMBER	Used in hosted environments

Indexes

Index Name	Index Type	Sequence	Column Name
CC_JT_FK_I	NOT UNIQUE	1	JTF_NOTE_ID
JTF_NOTES_N1	NOT UNIQUE	10	SOURCE_OBJECT_CODE
		15	SOURCE_OBJECT_ID

Sequences

Sequence	Derived Column
JTF_NOTES_S	JTF_NOTE_ID

JTF_NOTES_SOURCE_TYPE_MAP

JTF_NOTES_SOURCE_TYPE_MAP is the base table for defining application/object specific note types. Note types that have a mapping to a source object code (referencing object code from JTF_OBJECTS) indicate that the note type should be used for that object only. Note types that are not mapped are for generic use by any object.

Foreign Keys

Primary Key Table	Primary Key Column	Foreign Key Column
FND_LOOKUP_VALUES	LOOKUP_CODE	NOTE_TYPE
JTF_OBJECTS_B	OBJECT_CODE	SOURCE_OBJECT_CODE

Column Descriptions

Name	Null?	Type	Description
NOTE_SOURCE_TYPE_MAP_ID (PK)	NOT NULL	NUMBER	Primary Key of the table
SOURCE_OBJECT_CODE	NOT NULL	VARCHAR2(30)	Reference to the object code in JTF_OBJECTS that the note type is mapped to.
NOTE_TYPE	NOT NULL	VARCHAR2(30)	From the lookups. The combination of this column and the source object code should be unique in this table
END_DATE	NULL	DATE	Expiration Date
LAST_UPDATE_DATE	NULL	DATE	Standard WHO Column
LAST_UPDATED_BY	NULL	NUMBER(15)	Standard WHO Column
CREATION_DATE	NULL	DATE	Standard WHO Column
CREATED_BY	NULL	NUMBER(15)	Standard WHO Column
LAST_UPDATE_LOGIN	NULL	NUMBER(15)	Standard WHO Column
SECURITY_GROUP_ID	NULL	NUMBER	Used in hosted environments

Indexes

Index Name	Index Type	Sequence	Column Name
JTF_NOTES_STM_U1	UNIQUE	5	SOURCE_OBJECT_CODE
		5	NOTE_TYPE

Sequences

Sequence	Derived Column
JTF_NOTES_S	NOTE_SOURCE_TYPE_MAP_ID

JTF_NOTES_TL

JTF_NOTES_TL stores translated information about Notes. Notes may be created for any object mapped for object usage in JTF_OBJECTS; the JTF_OBJECT that the note is linked to is stored as the source_object_code and source_object_id. The actual text of the note, which is stored in the JTF_NOTES_TL, is split into two parts under columns NOTES and NOTE_DETAILS. Typically, the NOTES should hold the short form or the first part of the note. NOTE_DETAILS for added details, or whenever the note is longer than the 2000 character limit for the NOTES column.

Foreign Keys

Primary Key Table	Primary Key Column	Foreign Key Column
JTF_NOTES_B	JTF_NOTE_ID	JTF_NOTE_ID

Column Descriptions

Name	Null?	Type	Description
JTF_NOTE_ID (PK)	NOT NULL	NUMBER	Primary key
NOTES	NOT NULL	VARCHAR2(2000)	Stores actual note text. Typically will hold the entire note, or up to 2000 characters if the note is very long.
NOTES_DETAIL	NULL	CLOB	Additional detailed text for the note. Will typically hold the remainder of the note beyond the first 2000 characters.
LANGUAGE (PK)	NOT NULL	VARCHAR2(4)	Language.
SOURCE_LANG	NOT NULL	VARCHAR2(4)	The Language the text will mirror. If text is not yet translated into LANGUAGE then any changes to the text in the source language row will be reflected here as well.
CREATION_DATE	NOT NULL	DATE	Standard WHO Column
CREATED_BY	NOT NULL	NUMBER(15)	Standard WHO Column
LAST_UPDATE_DATE	NOT NULL	DATE	Standard WHO Column
LAST_UPDATED_BY	NOT NULL	NUMBER(15)	Standard WHO Column
LAST_UPDATE_LOGIN	NULL	NUMBER(15)	Standard WHO Column
SECURITY_GROUP_ID	NULL	NUMBER	Used in hosted environments

Indexes

Index Name	Index Type	Sequence	Column Name
JTF_NOTES_U1	UNIQUE	5 10	JTF_NOTE_ID LANGUAGE

Sequences

Sequence	Derived Column
JTF_NOTES_S	JTF_NOTE_ID

Oracle Proprietary, Confidential Information—Use Restricted by Contract

JTF_NOTE_CONTEXTS

Base table for Contexts to Notes, which are references to other objects. Where the Note's source object indicate what object created the note, Note contexts allow users to indicate what other objects are related to the note. This relationship is established with NOTE_CONTEXT_TYPE and NOTE_CONTEXT_TYPE_ID, which correspond to JTF_OBJECT code and its select id.

Foreign Keys

Primary Key Table	Primary Key Column	Foreign Key Column
AS_LEADS_ALL	LEAD_ID	NOTE_CONTEXT_TYPE_ID
AS_SALES_LEADS	SALES_LEAD_ID	NOTE_CONTEXT_TYPE_ID
JTF_NOTES_B	JTF_NOTE_ID	JTF_NOTE_ID
JTF_OBJECTS_B	OBJECT_CODE	NOTE_CONTEXT_TYPE

Column Descriptions

Name	Null?	Type	Description
NOTE_CONTEXT_ID (PK)	NOT NULL	NUMBER	Unique Identifier
JTF_NOTE_ID	NULL	NUMBER	Foreign key with the JTF_NOTES
NOTE_CONTEXT_TYPE	NOT NULL	VARCHAR2(240)	The type of the context. Examples are LOC, CONT, EMP
NOTE_CONTEXT_TYPE_ID	NOT NULL	NUMBER	The corresponding ID. Can be party id, site_use_id and employee id and so on
LAST_UPDATE_DATE	NOT NULL	DATE	Standard WHO column
LAST_UPDATED_BY	NOT NULL	NUMBER(15)	Standard WHO column
CREATION_DATE	NOT NULL	DATE	Standard WHO column
CREATED_BY	NOT NULL	NUMBER	Standard WHO column
LAST_UPDATE_LOGIN	NULL	NUMBER	Standard WHO column
SECURITY_GROUP_ID	NULL	NUMBER	Used in hosted environments

Indexes

Index Name	Index Type	Sequence	Column Name
JTF_NOTE_CONTEXTS_N1	NOT UNIQUE	5	NOTE_CONTEXT_TYPE
		10	NOTE_CONTEXT_TYPE_ID
JTF_NOTE_CONTEXTS_N2	NOT UNIQUE	5	NOTE_CONTEXT_TYPE_ID

Sequences

Sequence	Derived Column
JTF_NOTES_S	NOTE_CONTEXT_ID



Index

A

Application Building Block, 1 – 6

C

Column descriptions, 3 – 4

Columns, Who, 3 – 4

Concurrent Program List. *See* Concurrent Program Definitions

D

Database Diagram, 1 – 6

database diagrams, conventions, 2 – 5

Database triggers, 3 – 6

F

Foreign keys, 3 – 3

Form, 1 – 7

Form List. *See* Form Definitions

Forms and Table View List, 2 – 10

I

Indexes, 3 – 6

important note about, 3 – 6

L

Lookup types. *See* QuickCodes

M

Module List. *See* Module Definitions

Modules, 1 – 6

O

Oracle8 sequences. *See* Sequences

P

Public Table List, 2 – 7

Public View List, 2 – 9

Q

QuickCodes, 1 – 6

Columns that contain, 3 – 3

R

Relationship, 1 – 6

Report List. *See* Report Definitions

S

Sequences, 3 – 6

T

Table and View Definitions

HZ_CONTACT_POINTS, 3 – 7

HZ_CUST_ACCOUNTS, 3 – 17
HZ_CUST_ACCT_SITES_ALL, 3 – 22
HZ_CUST_SITE_USES_ALL, 3 – 26
HZ_CUSTOMER_PROFILES, 3 – 12
HZ_LOCATIONS, 3 – 31
HZ_PARTIES, 3 – 36
HZ_PARTY_SITES, 3 – 42
IEX_INVOICE_LINES_V, 2 – 10
IEX_INVOICES_V, 2 – 10
IEX_PAY_HISTORIES_V, 2 – 10
IEX_WEB_ASSIST_DETAILS_V, 2 – 10
IEX_WEB_SWITCH_DETAILS_V, 2 – 10
JTF_NOTE_CONTEXTS, 3 – 49
JTF_NOTES_B, 3 – 45
JTF_NOTES_SOURCE_TYPE_MAP, 3 – 47
JTF_NOTES_TL, 3 – 48

Tables

See also Table and View Definitions
Column descriptions, 3 – 4
Foreign keys, 3 – 3
Indexes. *See* Indexes
Primary Keys, 3 – 4
QuickCodes Columns, 3 – 3
Who columns, 3 – 4, 3 – 5

V

View Definitions. *See* Table and View Definitions

Views

See also Table and View Definitions; View List
Derivation, 3 – 6

Reader's Comment Form

Oracle Collections Technical Reference Manual A86207-01

Oracle Corporation welcomes your comments and suggestions on the quality and usefulness of this publication. Your input is an important part of the information we use for revision.

- Did you find any errors?
- Is the information clearly presented?
- Do you need more information? If so, where?
- Are the examples correct? Do you need more examples?
- What features did you like most about this manual? What did you like least about it?

If you find any errors or have any other suggestions for improvement, please indicate the topic, chapter, and page number below:

Please send your comments to:

CRM Content Development Manager
Oracle Corporation
500 Oracle Parkway
Redwood Shores, CA 94065 USA
Phone: (650) 506-7000 Fax: (650) 506-7200

If you would like a reply, please give your name, address, and telephone number below:

Thank you for helping us improve our documentation.

