

# Oracle® Supply Chain Hub Technical Reference Manual

**RELEASE 6.2**

**April 2001**

A88857-01

**ORACLE®**

Oracle® Supply Chain Hub Technical Reference Manual  
Release 6.2

A88857-01.

Copyright © 2001. Oracle Corporation. All rights reserved.

Major Contributors: Manish Patel, Moshin Lee, Sriram Bala

Contributors: Catherine Bauer, Zoe Mitchell

This Technical Reference Manual (TRM) in any form, software or printed matter, contains proprietary information of Oracle Corporation; it is provided under an Oracle Corporation agreement containing restrictions on use and disclosure and is also protected by copyright, patent, and other intellectual property law. Restrictions applicable to this TRM include, but are not limited to: (a) exercising either the same degree of care to safeguard the confidentiality of this TRM as you exercise to safeguard the confidentiality of your own most important Confidential Information or a reasonable degree of care, whichever is greater; (b) maintaining agreements with your employees and agents that protect the Confidential Information of third parties such as Oracle Corporation and instructing such employees and agents of these requirements for this TRM; (c) restricting disclosure of this TRM to those of your employees who have a "need to know" consistent with the purposes for which this TRM was disclosed to you; (d) maintaining this TRM at all times on your premises; (e) not removing or destroying any proprietary or confidential legends or markings placed upon this TRM in whatever form, software or printed matter; and (f) not reproducing or transmitting this TRM in any form or by any means, electronic or mechanical, for any purpose, without the express written permission of Oracle Corporation. You should not use this TRM in any form, software or printed matter, to create software that performs the same or similar functions as any Oracle Corporation products.

The information in this TRM is subject to change without notice. If you find any problems in the TRM in any form, software or printed matter, please report them to us in writing. Oracle Corporation does not warrant that this TRM is error-free. This TRM is provided to customer "as-is" with no warranty of any kind. This TRM does not constitute Documentation as that term is defined in Oracle's agreements.

Reverse engineering of the Programs (software and documentation) associated with this TRM are prohibited. The Programs associated with this TRM are not intended for use in any nuclear, aviation, mass transit, medical, or other inherently dangerous applications. It shall be licensee's responsibility to take all appropriate fail-safe, back-up, redundancy and other measures to ensure the safe use of such applications if the Programs are used for such purposes, and Oracle disclaims liability for any damages caused by such use of the Programs.

#### Restricted Rights Legend

This TRM and the Programs associated with this TRM delivered subject to the DOD FAR Supplement are 'commercial computer software' and use, duplication and disclosure of the TRM and the Programs associated with this TRM shall be subject to the licensing restrictions set forth in the applicable Oracle license agreement. Otherwise, this TRM and the Programs associated with this TRM delivered subject to the Federal Acquisition Regulations are 'restricted computer software' and use, duplication and disclosure of the TRM and the Programs associated with this TRM shall be subject to the restrictions in FAR 52.227-14, Rights in Data -- General, including Alternate III (June 1987). Oracle Corporation, 500 Oracle Parkway, Redwood City, CA 94065.

Oracle is a registered trademark, and CASE\*Exchange, Enabling the Information Age, Hyper\*SQL, NLS\*Workbench, Oracle7, Oracle8, Oracle 8i, Oracle Access, Oracle Application Object Library, Oracle Discoverer, Oracle Financials, Oracle Quality, Oracle Web Customers, Oracle Web Employees, Oracle Work in Process, Oracle Workflow, PL/SQL, Pro\*Ada, Pro\*C, Pro\*COBOL, Pro\*FORTRAN, Pro\*Pascal, Pro\*PL/I, SmartClient, SQL\*Connect, SQL\*Forms, SQL\*Loader, SQL\*Menu, SQL\*Net, SQL\*Plus, and SQL\*Report are trademarks or registered trademarks of Oracle Corporation. Other names may be trademarks of their respective owners.



# CAUTION

**T**his Technical Reference Manual in any form -- software or printed matter -- contains proprietary, confidential information that is the exclusive property of Oracle Corporation. If you do not have a valid contract with Oracle for the use of this Technical Reference Manual or have not signed a non-disclosure agreement with Oracle covering this Technical Reference Manual, then you received this document in an unauthorized manner and are not legally entitled to possess or read it.

Use, duplication, and disclosure are subject to restrictions stated in your contract with Oracle Corporation.





# Contents

<b>Chapter 1</b>	<b>Introduction</b> .....	<b>1 – 1</b>
<b>Chapter 2</b>	<b>High-Level Design</b> .....	<b>2 – 1</b>
	Overview of High-Level Design .....	2 – 2
	Database Diagrams .....	2 – 8
	Public Table List .....	2 – 9
	Public View List .....	2 – 12
	Forms and Table View List .....	2 – 13
	Internal View List .....	2 – 14
<b>Chapter 3</b>	<b>Detailed Design</b> .....	<b>3 – 1</b>
	Overview of Detailed Design .....	3 – 2
	Table and View Definitions .....	3 – 3
	<b>Index</b>	

**Oracle Proprietary, Confidential Information--Use Restricted by Contract**

# Introduction

**T**he *Oracle Supply Chain Hub Technical Reference Manual* provides the information you need to understand the underlying structure of ORACLE SUPPLY CHAIN HUB. After reading this manual, you should be able to convert your existing applications data, integrate your existing applications with your ORACLE Exchange application, and write custom reports for your ORACLE Exchange application, as well as read data that you need to perform other tasks.

This chapter introduces you to the *Oracle Supply Chain Hub Technical Reference Manual*, and explains how to use it.

---

# Introduction

At Oracle, we design and build applications using Oracle Designer, our systems design technology that provides a complete environment to support developers through all stages of a systems life cycle. Because we use a repository-based design toolset, all the information regarding the underlying structure and processing of our applications is available to us online. Using Oracle Designer, we can present this information to you in the form of a technical reference manual.

This *Oracle Supply Chain Hub Technical Reference Manual* contains detailed, up-to-date information about the underlying structure of ORACLE SUPPLY CHAIN HUB. As we design and build new releases of ORACLE EXCHANGE applications, we update our Oracle Designer repository to reflect our enhancements. As a result, we can always provide you with an *Oracle Supply Chain Hub Technical Reference Manual* that contains the latest technical information as of the publication date. Note that after the publication date we may have added new indexes to ORACLE SUPPLY CHAIN HUB to improve performance.

## About this Manual

---

This manual describes the Oracle Applications Release 11i data model, as used by SUPPLY CHAIN HUB; it discusses the database we include with a fresh install of Oracle Applications Release 11i. If you have not yet upgraded to Release 11i, your database may differ from the database we document in this book.

If you have upgraded from a previous release, you might find it helpful to use this manual with the appropriate *Oracle Applications Product Update Notes* manual. The product update notes list database changes and seed data changes in ORACLE SUPPLY CHAIN HUB between releases. The *Oracle Applications Product Update Notes Release 11* manual describes the changes between Release 10.7 and Release 11, and the *Oracle Applications Product Update Notes Release 11i* manual describes the changes between Release 11 and Release 11i.

You can contact your Oracle representative to confirm that you have the latest technical information for SUPPLY CHAIN HUB. You can also use *OracleMetaLink* which is accessible through Oracle's Support Web Center ([http://www.oracle.com/support/elec\\_sup](http://www.oracle.com/support/elec_sup)).

**Oracle Proprietary, Confidential Information--Use Restricted by Contract**

---

## Finding the Latest Information

The *Oracle Supply Chain Hub Technical Reference Manual* contains the latest information as of the publication date. For the latest information we encourage you to use Oracle *MetaLink* which is accessible through Oracle's Support Web Center ([http://www.oracle.com/support/elec\\_sup](http://www.oracle.com/support/elec_sup)).

---

## Audience

The *Oracle Supply Chain Hub Technical Reference Manual* provides useful guidance and assistance to:

- Technical End Users
- Consultants
- Systems Analysts
- System Administrators
- Other MIS professionals

This manual assumes that you have a basic understanding of structured analysis and design, and of relational databases. It also assumes that you are familiar with Oracle Application Object Library and your ORACLE Exchange application. If you are not familiar with the above products, we suggest that you attend one or more of the training classes available through Oracle Education (see: Other Information Sources: page 1 – 8).

---

## How This Manual is Organized

This manual contains two major sections, High-Level Design and Detailed Design.

### High-Level Design

---

This section, Chapter 2, contains database diagrams and lists each database table and view that SUPPLY CHAIN HUB uses. This chapter also has a list of modules.

## **Detailed Design**

---

This section, Chapter 3, contains a detailed description of the SUPPLY CHAIN HUB database design, including information about each database table and view you might need for your custom reporting or other data requirements.

---

## How to Use This Manual

The *Oracle Supply Chain Hub Technical Reference Manual* is a single, centralized source for all the information you need to know about the underlying structure and processing of your ORACLE Exchange application. For example, you can use this manual when you need to:

- Convert existing application data
- Integrate your SUPPLY CHAIN HUB application with your other applications systems
- Write custom reports
- Define alerts against Oracle Applications tables
- Configure your Oracle Self-Service Web Applications
- Create views for decision support queries using query tools
- Create business views for Oracle Discoverer

You need not read this manual cover to cover. Use the table of contents and index to quickly locate the information you need.

---

## How Not To Use This Manual

### **Do not use this manual to plan modifications**

You should not use this manual to plan modifications to your ORACLE Exchange application. Modifying ORACLE SUPPLY CHAIN HUB limits your ability to upgrade to future releases of your SUPPLY CHAIN HUB application. In addition, it interferes with our ability to give you the high-quality support you deserve.

We have constructed your ORACLE Exchange application so that you can customize it to fit your needs without programming, and you can integrate it with your existing applications through interface tables. However, should you require program modifications, you should contact our support team (see: Other Information Sources: page 1 – 8). They can put you in touch with Oracle Services, the professional consulting organization of Oracle. Their team of experienced applications professionals can make the modifications you need while ensuring upward compatibility with future product releases.

### **Do not write data into non-interface tables**

Oracle reserves the right to change the structure of Oracle Applications tables, and to change the meaning of, add, or delete lookup codes and data in future releases. Do not write data directly into or change data in non-interface tables using SQL\*Plus or other programming tools because you risk corrupting your database and interfering with our ability to support you.

Moreover, this version of the *Oracle Supply Chain Hub Technical Reference Manual* does not contain complete information about the dependencies between SUPPLY CHAIN HUB applications tables. Therefore, you should write data into only those tables we identify as interface tables. If you write data into other non-interface tables, you risk violating your data integrity since you might not fulfill all the data dependencies in your SUPPLY CHAIN HUB application.

You are responsible for the support and upgrade of the logic within the procedures that you write, which may be affected by changes between releases of Oracle Applications.

### **Do not rely on upward compatibility of the data model**

Oracle reserves the right to change the structure of ORACLE EXCHANGE applications tables, and to change the meaning of, add, or delete lookup codes and other data in future releases. We do not guarantee the upward compatibility of the ORACLE EXCHANGE applications data model. For example, if you write a report that identifies concurrent requests that end in Error status by selecting directly from Oracle Application Object Library tables, we do not guarantee that your report will work properly after an upgrade.

---

## **About Oracle Application Object Library**

The *Oracle Supply Chain Hub Technical Reference Manual* may contain references to tables that belong to Oracle Application Object Library. Oracle Application Object Library is a collection of pre-built application components and facilities for building Oracle Applications and extensions to Oracle Applications. Oracle Application Coding Standards use the Oracle Application Object Library and contains shared components including but not limited to -- forms, subroutines, concurrent programs and reports, database tables and objects, messages, menus, responsibilities, flexfield definitions and online help.

**Oracle Proprietary, Confidential Information--Use Restricted by Contract**



**Attention:** Oracle does not support *any* customization of Oracle Application Object Library tables or modules, not even by Oracle consultants. (Oracle Application Object Library tables generally have names beginning with FND\_%.)

Accordingly, this manual does not contain detailed information about most Oracle Application Object Library tables used by your ORACLE Exchange application.

---

## A Few Words About Terminology

The following list provides you with definitions for terms that we use throughout this manual:

### **Relationship**

---

A relationship describes any significant way in which two tables may be associated. For example, rows in the Journal Headers table may have a one-to-many relationship with rows in the Journal Lines table.

### **Database Diagram**

---

A database diagram is a graphic representation of application tables and the relationships between them.

### **Summary Database Diagram**

---

A summary database diagram shows the most important application tables and the relationships between them. It omits tables and relationships that contribute little to the understanding of the application data model. Typically, a summary database diagram shows tables that contain key reference and transaction data.

### **Module**

---

A module is a program or procedure that implements one or more business functions, or parts of a business function, within an application. Modules include forms, concurrent programs and reports, and subroutines.

### **Application Building Block**

---

An application building block is a set of tables and modules (forms, reports, and concurrent programs) that implement closely-related

**Oracle Proprietary, Confidential Information--Use Restricted by Contract**

database objects and their associated processing. Said another way, an application building block is a logical unit of an application.

---

### **QuickCodes**

QuickCodes let you define general purpose, static lists of values for window fields. QuickCodes allow you to base your program logic on lookup codes while displaying user-friendly names in a list of values window. QuickCodes simplify name and language changes by letting you change the names your end users see, while the codes in your underlying programs remain the same.

---

### **Form**

A form is a module comprised of closely related windows that are used together to perform a task. For example, the Enter Journals form in Oracle General Ledger includes the Enter Journals window, the Batch window, and the More Actions window among others. The Enter Journals window is the main window, and from it, you can use buttons to navigate to other windows in the form. The form name usually corresponds to the main window in the form, and is frequently a window you open directly from the Navigator.

---

## **Other Information Sources**

There are additional information sources, including other documentation, training and support services, that you can use to increase your knowledge and understanding of Oracle Designer, Oracle Application Object Library, and your ORACLE Exchange application. We want to make these products easy for you and your staff to understand and use.

---

### **Oracle Designer Online Documentation**

The online help for Oracle Designer describes how you can use Oracle Designer for your development needs.

---

### **Oracle Applications Developer's Guide**

This guide contains the coding standards followed by the Oracle Applications development staff. It describes the Oracle Application Object Library components needed to implement the Oracle Applications user interface described in the *Oracle Applications User*

**Oracle Proprietary, Confidential Information--Use Restricted by Contract**

*Interface Standards.* It also provides information to help you build your custom Developer forms so that they integrate with Oracle Applications.

---

### **Oracle Applications User Interface Standards**

---

This manual contains the user interface (UI) standards followed by the Oracle Applications development staff. It describes the UI for the Oracle Applications products and how to apply this UI to the design of an application built using Oracle Forms 6.

---

### **Oracle Self-Service Web Applications Online Documentation**

---

This documentation describes how Oracle Self-Service Web Applications enable companies to provide a self-service and secure Web interface for employees, customers, and suppliers. Employees can change their personal status, submit expense reports, or request supplies. Customers can check on their orders, and suppliers can share production schedules with their trading partners. This documentation is available in HTML only.

---

### **Oracle Applications Flexfields Guide**

---

This guide provides flexfields planning, setup and reference information for the SUPPLY CHAIN HUB implementation team, as well as for users responsible for the ongoing maintenance of Oracle Applications product data. This manual also provides information on creating custom reports on flexfields data.

---

### **Oracle Workflow Guide**

---

This manual explains how to define new workflow business processes as well as customize existing Oracle Applications-embedded workflow processes. You also use this guide to complete the setup steps necessary for any Oracle Applications product that includes workflow-enabled processes.

---

### **Oracle Alert User Guide**

---

This manual explains how to define periodic and event alerts to monitor the status of your Oracle Applications data.

## **Multiple Reporting Currencies in Oracle Applications**

If you use the Multiple Reporting Currencies feature to report and maintain accounting records in more than one currency, use this manual before implementing SUPPLY CHAIN HUB. This manual details additional steps and setup considerations for implementing SUPPLY CHAIN HUB with this feature.

## **Multiple Organizations in Oracle Applications**

If you use the Oracle Applications Multiple Organization Support feature to use multiple sets of books for one SUPPLY CHAIN HUB installation, use this guide to learn about setting up and using SUPPLY CHAIN HUB with this feature. This book describes the Oracle Applications organization model, which defines business units and the relationships between them in an arbitrarily complex enterprise. Functional and technical overviews of multiple organizations are presented, as well as information about how to set up and implement this feature set in the relevant Oracle Applications products.

## **Oracle Manufacturing, Distribution, Sales and Service Open Interfaces Manual**

This manual contains up-to-date information about integrating with other Oracle Manufacturing applications and with your other systems. This documentation includes open interfaces found in Oracle Manufacturing.

## **Oracle Applications Messages Manual**

The Oracle Applications Messages Manual contains the text of numbered error messages in Oracle Applications. (Oracle Applications messages begin with the prefix "APP-".) It also provides information on the actions you take if you get a message. Note: This manual is available only in HTML format.

## **Installation and System Administration**

### **Oracle Applications Installation Release Notes**

This manual contains a road map to the components of the release, including instructions about where to access the Release 6.2 documentation set.

**Oracle Proprietary, Confidential Information--Use Restricted by Contract**

## **Oracle Applications Concepts**

---

Designed to be the first book the user reads to prepare for an installation of Oracle Applications. It explains the technology stack, architecture, features and terminology for Oracle Applications Release 6.2. This book also introduces the concepts behind and major uses of Applications-wide features such as MRC, BIS, languages and character sets (NLS, MLS), BIS, Self-Service Web Applications and so on.

## **Installing Oracle Applications**

---

Describes the One-Hour Install process, the method by which Release 6.2 will be installed. This manual includes all how-to steps, screen shots and information about Applications-wide post-install tasks.

## **Using the AD Utilities**

---

This manual contains how-to steps, screen shots and other information required to run the various AD utilities such as AutoInstall, AutoPatch, AD Administration, AD Controller, Relink and so on. It also contains information about when and why you should use these utilities.

## **Upgrading Oracle Applications**

---

This manual contains all the product specific pre- and post-upgrade steps that are required to upgrade products from Release 10.7 (NCA, SC and character-mode) or Release 11 of Oracle Applications. This manual also contains an overview chapter that describes all the tasks necessary to prepare and complete a upgrade of Oracle Applications.

## **Oracle Applications System Administrator's Guide**

---

This manual provides planning and reference information for the Oracle Applications System Administrator. It contains information on how to define security, customize menus and manage concurrent processing.

## **Oracle Applications Product Update Notes**

---

This book contains a summary of each new feature we added since Release 11, as well as information about database changes and seed data changes that may affect your operations or any custom reports you have written. If you are upgrading from Release 10.7 you also need to read *Oracle Applications Product Update Notes Release 11*.

## **Oracle Self-Service Web Applications Implementation Manual**

This manual describes the setup steps for Oracle Self-Service Web Applications and the Web Applications Dictionary.

## **Oracle Applications Implementation Wizard User Guide**

If you are implementing more than one Oracle product, you can use the Oracle Applications Implementation Wizard to coordinate your setup activities. This guide describes how to use the wizard.

## **Other Information**

### **Training**

Oracle Education offers a complete set of training courses to help you and your staff master Oracle Applications. We can help you develop a training plan that provides thorough training for both your project team and your end users. We will work with you to organize courses appropriate to your job or area of responsibility.

Training professionals can show you how to plan your training throughout the implementation process so that the right amount of information is delivered to key people when they need it the most. You can attend courses at any one of our many Educational Centers, or you can arrange for our trainers to teach at your facility. In addition, we can tailor standard courses or develop custom courses to meet your needs.

### **Support**

From on-site support to central support, our team of experienced professionals provides the help and information you need to keep your ORACLE Exchange application working for you. This team includes your Technical Representative, Account Manager, and Oracle's large staff of consultants and support specialists with expertise in your business area, managing an Oracle server, and your hardware and software environment.

**Oracle Proprietary, Confidential Information--Use Restricted by Contract**

---

## About Oracle

Oracle Corporation develops and markets an integrated line of software products for database management, applications development, decision support, and office automation, as well as Oracle Applications, an integrated suite of more than 75 software modules for financial management, supply chain management, manufacturing, project systems, human resources, and sales and service management.

Oracle products are available for mainframes, minicomputers, personal computers, network computers, and personal digital assistants, allowing organizations to integrate different computers, different operating systems, different networks, and even different database management systems, into a single, unified computing and information resource.

Oracle is the world's leading supplier of software for information management, and the world's second largest software company. Oracle offers its database, tools, and applications products, along with related consulting, education, and support services, in over 145 countries around the world.

---

## Thank You

Thanks for using ORACLE EXCHANGE applications and this technical reference manual!

We appreciate your comments and feedback. At the back of this manual is a Reader's Comment Form that you can use to explain what you like or dislike about your ORACLE Exchange application or this technical reference manual. Mail your comments to the following address or call us directly at (650) 506-7000.

Oracle Applications Documentation Manager  
Oracle Corporation  
500 Oracle Parkway  
Redwood Shores, California 94065  
U.S.A.

Or, send electronic mail to [appsdoc@us.oracle.com](mailto:appsdoc@us.oracle.com).

**Oracle Proprietary, Confidential Information--Use Restricted by Contract**

CHAPTER

# 2

## High-Level Design

**T**his chapter presents a high-level design for ORACLE SUPPLY CHAIN HUB that satisfies the business needs we specify during Strategy and Analysis. It contains database diagrams for ORACLE SUPPLY CHAIN HUB application building blocks, lists of database tables and views, and a list of modules.

---

## Overview of High-Level Design

During High-Level Design, we define the application components (tables, views, and modules) we need to build our application. We specify what application components should do without specifying the details of *how* they should do it.

You can refer to this High-Level Design chapter to quickly acquaint yourself with the tables, views, and modules that comprise SUPPLY CHAIN HUB applications. And, you can prepare yourself to understand the detailed design and implementation of ORACLE SUPPLY CHAIN HUB.

---

## Summary Database Diagram

The Summary Database Diagram section graphically represents the most important application tables and the relationships between them. It omits tables and relationships that contribute little to the understanding of the application data model. Typically, a summary database diagram shows tables that contain key reference and transaction data.

We prepare a summary database diagram to describe, at a conceptual level, the key information on which our business depends. Later, we refine this summary database diagram, breaking it into multiple database diagrams (generally, one per application building block) to represent all the tables and relationships we need to implement our application in the database.

Review the Summary Database Diagram section to see at a glance the major tables and relationships on which your SUPPLY CHAIN HUB application depends.

---

## Database Diagrams

The Database Diagrams section graphically represents all SUPPLY CHAIN HUB applications tables and the relationships between them, organized by building block.

Use this section to quickly learn what tables each SUPPLY CHAIN HUB application building block uses, and how those tables interrelate. Then, you can refer to the Table and View Definitions sections of Chapter 3 for more detailed information about each of those tables.

**Oracle Proprietary, Confidential Information--Use Restricted by Contract**

---

## Table Lists

The Table List sections list the SUPPLY CHAIN HUB applications tables. Because a product might not include at least one table for each type, this Technical Reference Manual might not include each of the following sections.

### Public Tables

---

Use the Public Table List section to quickly identify the tables you are most interested in. Then, you can refer to the Table and View Definitions sections of Chapter 3 for more detailed information about those tables.

In addition, this manual may contain full documentation for one or more of the following Application Object Library tables: FND\_DUAL, FND\_CURRENCIES, and FND\_COMMON\_LOOKUPS.

### Internal Tables

---

This section includes a list of private, internal tables used by SUPPLY CHAIN HUB; we do not provide additional documentation for these tables.

---

## View Lists

The View List sections list the SUPPLY CHAIN HUB views, with one section for each type of view. Because a product might not include at least one view for each type, this Technical Reference Manual might not include each of the following sections.

Use this section to quickly identify the views you are most interested in. Then, you can refer to the Table and View Definitions sections of Chapter 3 for more detailed information about those views.

### Public Views

---

This section lists views that may be useful for your custom reporting or other data requirements. The list includes a description of the view, and the page in Chapter 3 that gives detailed information about the public view.

## **Web Views**

---

This section lists views that you may need to configure your Self-Service Web applications. The list includes a description of the view, and the page in Chapter 3 that gives detailed information about the web view.

## **Internal Views**

---

This section includes each private, internal view that SUPPLY CHAIN HUB uses.

## **Multiple Reporting Currency Views**

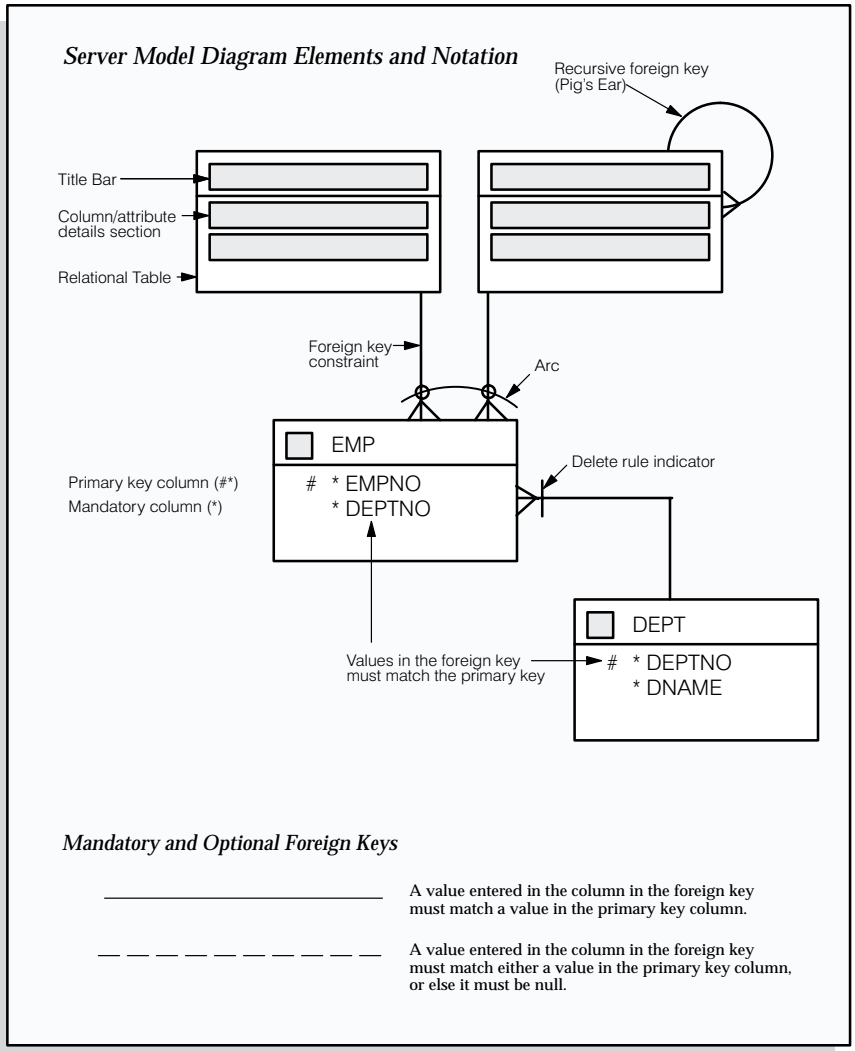
---

This list includes views that were created to support the Multiple Reporting Currencies feature.

# Database Diagramming Conventions

We use the following notational conventions in our database diagrams:

**Figure 2 - 1**  
**Database Diagram**  
**Conventions**



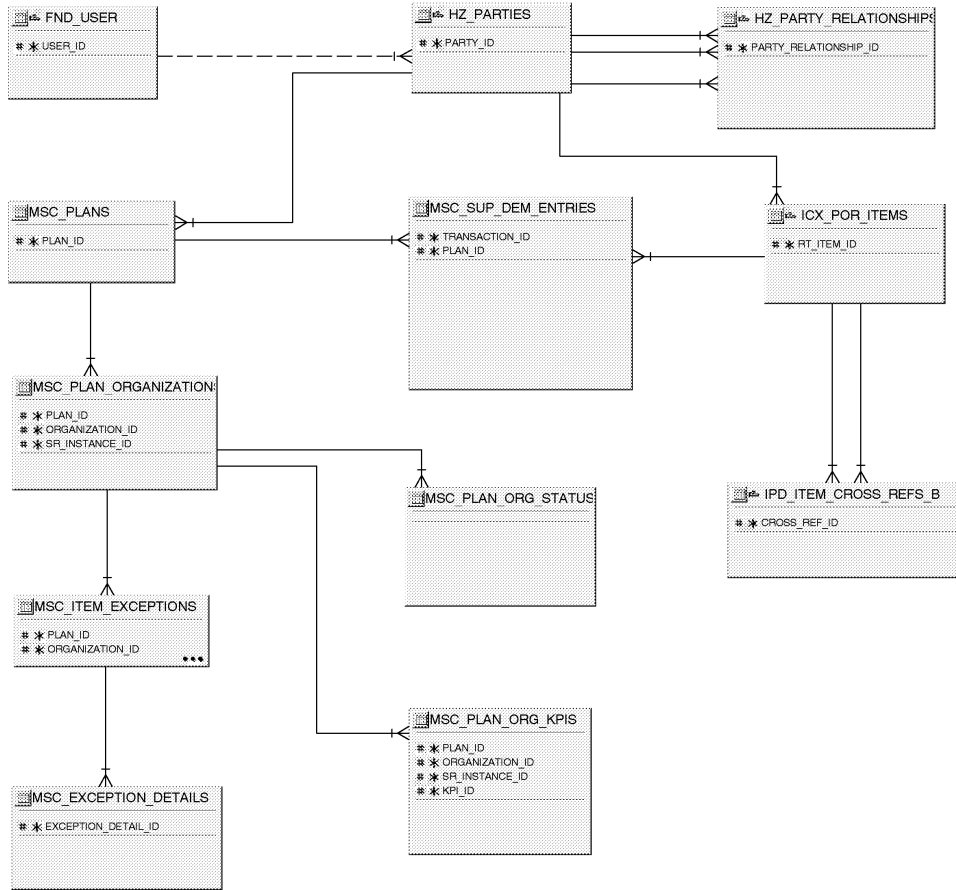
**Tables** – are the basic unit of storage in the database. A hand symbol preceding the title in the table's title bar indicates that the table is not owned by this application but shared with another.

**Foreign key constraint** – is a type of referential integrity constraint for checking the integrity of data entered in a specific column or set of columns. This specified column or set of columns is known as the foreign key.

**Delete rule indicator** – determines the action to be taken when an attempt is made to delete a related row in a join table. A line through the foreign key constraint, as shown on the above diagram, indicates that this action is restricted.

**Arcs** – specify that, for any given row in a table, a value must be entered in one of the arc columns. The remaining columns within the arc must be null.

# SUPPLY CHAIN HUB Summary Database Diagram



---

## Database Diagrams

This section graphically represents most of the significant ORACLE EXCHANGE applications tables and the relationships between them, organized by building block. Use this section to quickly learn what tables each SUPPLY CHAIN HUB application building block uses, and how these tables interrelate. Then, you can refer to the Table and View Definitions sections of Chapter 3 for more detailed information about each of those tables.

### **Supply Chain Hub Summary Database Diagram**

---

This shows the tables and relationships associated with entering and adjusting a supply or demand plan. Related functions include entering item information, item cross-reference information, checking either your supply or demand plan status. The tables store plan names, numbers, items, suppliers, customers, exception information, and other supply or demand plan information.

## Public Table List

This section lists each public database table that Oracle Supply Chain Planning uses and provides a brief description of each of those tables. The page reference is to the table description in Chapter 3.

Note that public tables are not necessarily intended for write access by custom code; Oracle Corporation supports write access using only standard Oracle Applications forms, reports, and programs, or any SQL write access to tables explicitly documented as API tables. For more information, see the How Not To Use This Manual section of this book's Introduction.

Oracle Supply Chain Planning uses the following Public tables:

<b>Table Name</b>	<b>Description</b>
FND_USER	Application users
HZ_PARTIES	Information about parties such as organizations, people, and groups (See page 3 – 8)
ICX_POR_CATEGORIES_TL	Stores information about the categories that exist within a catalog. Categories are used to classify items into groups of related items. (See page 3 – 14)
ICX_POR_CATEGORY_ITEMS	Intersection table creating a relationship between categories and all the items they contain. (See page 3 – 16)
ICX_POR_ITEMS	Stores information and root descriptors for non translatable data for each item in the catalog. Root descriptor columns are in the format Axxxx where xxxx is an integer. Some of the root descriptors are seeded by Oracle while others may be generated through the use of the application. (See page 3 – 17)
ICX_POR_TABLE_OF_CONTENTS_TL	Stores the user-defined hierarchical relationship between navigational categories to create a more traditional hierarchical view of the catalog. (See page 3 – 19)
IPD_ITEM_CROSS_REFS_B	Item Cross References (See page 3 – 20)
MSC_BOM_BOD_INTERFACE	Interface table that contains the BOM/BOD data before validation (See page 3 – 22)
MSC_BOM_COMPONENTS	This table stores Bill of material data for plans in Oracle Advanced Planning and Oracle Supply Chain Hub products. (See page 3 – 23)

**Oracle Proprietary, Confidential Information--Use Restricted by Contract**

MSC_EXCEPTION_DETAILS	This table stores the details of exceptions generated by Oracle Advanced Planning and Scheduling (APS) and Oracle Supply Chain Hub products. (See page 3 – 26)
MSC_FORM_QUERY	Temporary table used in computation of results in Oracle Advanced planning and Oracle Supply Chain Hub products. (See page 3 – 29)
MSC_ITEM_EXCEPTIONS	This table stores a row per exception message against an item for exceptions generated in the Oracle Advanced planning and scheduling (APS) and the Oracle Supply Chain Hub products. (See page 3 – 31)
MSC_ITEM_SOURCING	This table stores sourcing information for an item used in Oracle Advanced Planning and Scheduling. This table is also used to store Sourcing information for in line vehicle sequencing (ILVS) in the Supply Chain Hub product. (See page 3 – 33)
MSC_MATERIAL_PLANS	MSC_MATERIAL_PLANS is a generic table used by forms for querying data. (See page 3 – 35)
MSC_PLANS	This table stores different plans, with their names, and settings in the Oracle Advanced Planning and Scheduling (APS) and Oracle Supply Chain Hub products. (See page 3 – 37)
MSC_PLAN_ORGANIZATIONS	This table stores the parameters relative to organizations that participate to the plan in Oracle Advanced Planning and Scheduling (APS). This table also contains the different companies which are collaborating in a supply or demand plan in Oracle Supply Chain Hub. (See page 3 – 43)
MSC_PLAN_ORG_KPIS	Maintains the key performance indicators and thresholds for plans created on Oracle Supply Chain Hub. (See page 3 – 45)
MSC_PLAN_ORG_STATUS	Maintains the history of statuses of collaborating organizations in a plan. (See page 3 – 46)
MSC_PLAN_SCHEDULES	This table stores master production schedules and master demand schedules for the planning process in an organization. This table is also used to store the input production schedule name for In line vehicle sequencing (ILVS) on Oracle Supply Chain Hub. (See page 3 – 47)

**Oracle Proprietary, Confidential Information--Use Restricted by Contract**

MSC_SUPDEM_HDRS_INTERFACE	Supply demand headers interface table (See page 3 – 49)
MSC_SUPDEM_LINES_INTERFACE	Supply demand lines interface table (See page 3 – 50)
MSC_SUP_DEM_ENTRIES	Contains the supplies and demands posted by collaborating parties on the exchange. (See page 3 – 52)
MSC_WORKBENCH_DISPLAY_OPTIONS	User display preferences for Planner Workbench in APS and horizontal plan screen in Supply Chain Hub. (See page 3 – 57)
HZ_LOCATIONS	Physical addresses (See page 3 – 62)
HZ_PARTY_SITES	Links party to physical locations (See page 3 – 67)
HZ_PARTY_SITE_USES	The way in which a party utilizes a particular site or address (See page 3 – 70)

---

## Public View List

This section lists each public database view that SUPPLY CHAIN HUB uses and provides a brief description of each of those views. These views may be useful for your custom reporting or other data requirements. The page reference is to the detailed view description in Chapter 3.

SUPPLY CHAIN HUB uses the following public views:

<b>View Name</b>	<b>Description</b>
MSC_EXCEPTION_DETAILS_V	No view description
MSC_ITEM_EXCEPTION_V1	No view description
MSC_ITEM_EXCEPTION_V2	No view description

---

## Forms and Table View List

This section lists supplementary views that are not essential to the Release 11i data model, but simplify coding or improve performance of Developer. For example, many of these views are used as base tables in SUPPLY CHAIN HUB forms.



**Warning:** We do not recommend you query or alter data using these views. Furthermore, these views may change dramatically in subsequent minor or major releases of SUPPLY CHAIN HUB.

SUPPLY CHAIN HUB uses the following Forms and Table views:

- MSC\_ITEM\_SOURCING\_V
- HZ\_PARTY\_RELATIONSHIPS
- HZ\_PARTY\_RELATIONSHIP\_V
- HZ\_PARTY\_SITES\_V

---

## Internal View List

This section lists each private, internal view that SUPPLY CHAIN HUB uses.



**Warning:** Oracle Corporation does not support access to Oracle Applications data using these views, except from standard Oracle Applications forms, reports, and programs.

SUPPLY CHAIN HUB uses the following internal views:

- MSC\_EXCEPTION\_DETAILS\_V
- MSC\_ITEM\_EXCEPTION\_V
- MSC\_ITEM\_EXCEPTION\_V1
- MSC\_ITEM\_EXCEPTION\_V2
- MSC\_ITEM\_CROSS\_REFS\_V
- MSC\_X\_EXCEPTION\_DETAILS\_V
- MSC\_X\_ITEM\_EXCEPTIONS\_V

CHAPTER

# 3

## Detailed Design

**T**his chapter presents a detailed design for implementing ORACLE SUPPLY CHAIN HUB. It contains detailed definitions of tables and views that you may need to reference to write custom reports or use for other data extraction.

---

## Overview of Detailed Design

During Detailed Design, we specify in detail how each applications component should work. We prepare detailed definitions of tables and views.

You can refer to this Detailed Design chapter to gain a detailed understanding of the underlying structure and processing of ORACLE SUPPLY CHAIN HUB that enables you to:

- Convert existing application data
- Integrate your SUPPLY CHAIN HUB application with your other applications systems
- Write custom reports
- Define alerts against Oracle Applications tables
- Create views for decision support queries using query tools
- Configure your Oracle Self-Service Web Applications

---

## Table and View Definitions

The Table and View Definitions section contains a detailed definition of SUPPLY CHAIN HUB applications tables. For each table, it provides information about primary keys, foreign keys, QuickCodes, indexes, triggers, and sequences. It also gives you a detailed description of each column and its characteristics. In addition, it provides the SQL statement that defines each view. Review this section to get a detailed understanding of what tables your SUPPLY CHAIN HUB application contains, and how it uses them to hold and access the information it needs.

---

## Table and View Definitions

This section contains a detailed description of each ORACLE SUPPLY CHAIN HUB table and view that you may need to reference. For each table, it presents detailed information about:

- Primary keys
- Foreign keys
- Column descriptions
- Indexes
- Oracle sequences
- Triggers
- View derivations

Because Oracle does not support customization of Oracle Application Object Library tables, we do not provide you with detailed information about them. Consequently, this section does not document all the FND\_% tables your ORACLE Exchange application uses.

The following sections appear in each table or view description:

---

### Foreign Keys

To help you understand the relationships between tables, we list each foreign key contained in a table. For each foreign key in a table, we list the primary key table name (the table to which a foreign key refers), its corresponding primary key columns, and the foreign key columns that refer to those primary key columns.

When the primary key table has a composite primary key, we list each column of the composite key sequentially.

If a table contains two or more distinct foreign keys that refer to the same primary key table, we repeat the primary key table name and list each of the distinct foreign keys separately.

---

### QuickCodes Columns

When a database column contains a QuickCodes value, which we implement using a foreign key to FND\_LOOKUPS, MFG\_LOOKUPS, or to some other lookup table, we list the QuickCodes type (lookup

**Oracle Proprietary, Confidential Information--Use Restricted by Contract**

type) to which the QuickCodes value must belong and a complete list of QuickCodes values and meanings. Some QuickCodes can be defined by you in the application. These values are designated as User-defined.

---

## Column Descriptions

We list the important characteristics of each column in a table or view. These characteristics include whether the column is part of the table's primary key, whether Oracle8i requires a value for this column, and the data type of the column. We also give you a brief description of how your ORACLE Exchange application uses the column.

When a column is part of a table's primary key, we append the notation (PK) to the name of that column.

To help you understand which columns your ORACLE Exchange application uses and which columns it does not use, we alert you to any unused column. When no module uses a database column, we show one of the following legends in the Description column:

<b>Not currently used</b>	Your ORACLE Exchange application does not use this column, although the column might be used in a future release.
<b>No longer used</b>	Your ORACLE Exchange application no longer uses this column. AutoInstall installs this column. Subsequent versions of your ORACLE Exchange application might not include this column.
<b>No longer installed</b>	Your ORACLE Exchange application no longer uses this column. If you <i>upgraded</i> your software from an earlier version, you may still have this column, depending upon whether you chose to delete it during an upgrade process. If you <i>install</i> your ORACLE Exchange application, you do not have this column.

### Standard Who Columns

---

Most ORACLE EXCHANGE applications tables contain standard columns to support \ Row Who. When your program or SQL\*Plus command selects a row from a table, use these columns to determine who last updated the row. If your program or SQL\*Plus command

**Oracle Proprietary, Confidential Information--Use Restricted by Contract**

updates or inserts a row in an interface table, you must populate each of the five standard Who columns:

<code>LAST_UPDATE_DATE</code>	Date when a user last updated this row
<code>LAST_UPDATED_BY</code>	User who last updated this row (foreign key to <code>FND_USER.USER_ID</code> )
<code>CREATION_DATE</code>	Date when this row was created
<code>CREATED_BY</code>	User who created this row (foreign key to <code>FND_USER.USER_ID</code> )
<code>LAST_UPDATE_LOGIN</code>	Operating system login of user who last updated this row (foreign key to <code>FND_LOGINS.LOGIN_ID</code> ). You should set this to <code>NULL</code> , or to 0 if <code>NULL</code> is not allowed

Since every table containing Who columns has several foreign keys to the tables `FND_USER` and `FND_LOGINS`, we do not include the foreign key columns `LAST_UPDATED_BY`, `CREATED_BY`, or `LAST_UPDATE_LOGIN` in a table's list of foreign keys.

### **Additional Who Columns for Concurrent Programs**

---

Some ORACLE EXCHANGE applications tables also contain several additional Who columns to distinguish between changes a user makes with a form and changes a concurrent program makes. When a concurrent program updates or inserts a row in a table, the concurrent program populates the following additional Who columns:

<code>REQUEST_ID</code>	Concurrent request ID of program that last updated this row (foreign key to <code>FND_CONCURRENT_REQUESTS.REQUEST_ID</code> )
<code>PROGRAM_APPLICATION_ID</code>	Application ID of program that last updated this row (foreign key to <code>FND_APPLICATION.APPLICATION_ID</code> )
<code>PROGRAM_ID</code>	Program ID of program that last updated this row (foreign key to <code>FND_CONCURRENT_PROGRAM.CONCURRENT_PROGRAM_ID</code> )
<code>PROGRAM_UPDATE_DATE</code>	Date when a program last updated this row

Since every table containing these additional Who columns has several foreign keys to the tables FND\_CONCURRENT\_REQUESTS, FND\_APPLICATION, and FND\_CONCURRENT\_PROGRAM, we do not include the foreign key columns REQUEST\_ID, PROGRAM\_APPLICATION\_ID, or PROGRAM\_ID in a table's list of foreign keys.

---

## Indexes

If an ORACLE EXCHANGE applications table uses an Oracle8i index, we list the database columns that comprise that index, in sequential order.

**Note:** The indexes we document in this manual correspond to unique keys we specified during product development and testing. In some cases, we may add additional indexes during the porting process to fine-tune performance on specific platforms; therefore, there may be minor differences between the indexes documented in this book and the indexes for production versions of SUPPLY CHAIN HUB.

---

## Sequences

Your ORACLE Exchange application uses Oracle8i sequence generators to generate unique integers. If any table column gets its value from an Oracle8i sequence generator, we list the name of the corresponding sequence generator and the name of the column that stores the unique integer.

---

## Database Triggers

If a table has one or more active database triggers, we provide a brief explanation of each database trigger and when it fires.

---

## View Derivation

For each ORACLE EXCHANGE applications view you may need to reference, we include important elements from the SQL statement that

**Oracle Proprietary, Confidential Information--Use Restricted by Contract**

defines or creates a view. By studying this view definition, you can understand exactly how a view derives its contents.

## HZ\_PARTIES

HZ\_PARTIES stores basic information about parties that can be shared with any relationship that the party might establish with another party. Although a record in HZ\_PARTIES represents a unique party, multiple parties can have the same name. The parties can be one of four types: 1) Organization—for example, Oracle Corporation 2) Person—for example, Jane Doe 3) Group—for example, World Wide Web Consortium 4) Relationship—for example, Jane Doe at Oracle Corporation. Party records can be created and updated using third party data sources such as Dun & Bradstreet's Global Data Products. HZ\_PARTIES contains denormalized information from the HZ\_LOCATIONS, HZ\_PERSON\_PROFILES, HZ\_CONTACT\_POINTS, HZ\_ORGANIZATION\_PROFILES, and HZ\_PERSON\_LANGUAGE tables. The identifying address contained in the HZ\_PARTIES table is denormalized from HZ\_LOCATIONS.

### Foreign Keys

Primary Key Table	Primary Key Column	Foreign Key Column
FND_LANGUAGES	LANGUAGE_CODE	LANGUAGE_NAME
FND_USER	CUSTOMER_ID	PARTY_ID

### QuickCodes Columns

Column	QuickCodes Type	QuickCodes Table
PERSON_PRE_NAME_ADJUNCT	CONTACT_TITLE	AR_LOOKUPS
	MISS	Miss
	MR	Mr.
	MRS	Mrs.
	MS	Ms.
	User defined	
STATUS	CODE_STATUS	AR_LOOKUPS
	A	Active
	I	Inactive

### Column Descriptions

Name	Null?	Type	Description
PARTY_ID (PK)	NOT NULL	NUMBER(15)	Party Identifier
PARTY_NUMBER	NOT NULL	VARCHAR2(30)	Party number
PARTY_NAME	NOT NULL	VARCHAR2(360)	Party name
PARTY_TYPE	NOT NULL	VARCHAR2(30)	Type of party. This is limited to person, organization, group or relationship.
VALIDATED_FLAG	NULL	VARCHAR2(1)	Y if this party has been validated, N if not
LAST_UPDATED_BY	NOT NULL	NUMBER(15)	Standard Who column
CREATION_DATE	NOT NULL	DATE	Standard Who column
LAST_UPDATE_LOGIN	NULL	NUMBER(15)	Standard Who column
REQUEST_ID	NULL	NUMBER(15)	Request identifier of last concurrent program to update this record

**Oracle Proprietary, Confidential Information--Use Restricted by Contract**

PROGRAM_APPLICATION_ID	NULL	NUMBER(15)	Application identifier of last concurrent program to update this record
CREATED_BY	NOT NULL	NUMBER(15)	Standard Who column
LAST_UPDATE_DATE	NOT NULL	DATE	Standard Who column
PROGRAM_ID	NULL	NUMBER(15)	Program identifier of last concurrent program to update this record
PROGRAM_UPDATE_DATE	NULL	DATE	Last update date of this record by a concurrent program
WH_UPDATE_DATE	NULL	DATE	Warehouse update date when record was recorded or changed
ATTRIBUTE_CATEGORY	NULL	VARCHAR2(30)	Descriptive Flexfield Structure Defining column
ATTRIBUTE1	NULL	VARCHAR2(150)	Descriptive Flexfield Segment Column
ATTRIBUTE2	NULL	VARCHAR2(150)	Descriptive Flexfield Segment Column
ATTRIBUTE3	NULL	VARCHAR2(150)	Descriptive Flexfield Segment Column
ATTRIBUTE4	NULL	VARCHAR2(150)	Descriptive Flexfield Segment Column
ATTRIBUTE5	NULL	VARCHAR2(150)	Descriptive Flexfield Segment Column
ATTRIBUTE6	NULL	VARCHAR2(150)	Descriptive Flexfield Segment Column
ATTRIBUTE7	NULL	VARCHAR2(150)	Descriptive Flexfield Segment Column
ATTRIBUTE8	NULL	VARCHAR2(150)	Descriptive Flexfield Segment Column
ATTRIBUTE9	NULL	VARCHAR2(150)	Descriptive Flexfield Segment Column
ATTRIBUTE10	NULL	VARCHAR2(150)	Descriptive Flexfield Segment Column
ATTRIBUTE11	NULL	VARCHAR2(150)	Descriptive Flexfield Segment Column
ATTRIBUTE12	NULL	VARCHAR2(150)	Descriptive Flexfield Segment Column
ATTRIBUTE13	NULL	VARCHAR2(150)	Descriptive Flexfield Segment Column
ATTRIBUTE14	NULL	VARCHAR2(150)	Descriptive Flexfield Segment Column
ATTRIBUTE15	NULL	VARCHAR2(150)	Descriptive Flexfield Segment Column
ATTRIBUTE16	NULL	VARCHAR2(150)	Descriptive Flexfield Segment Column
ATTRIBUTE17	NULL	VARCHAR2(150)	Descriptive Flexfield Segment Column
ATTRIBUTE18	NULL	VARCHAR2(150)	Descriptive Flexfield Segment Column
ATTRIBUTE19	NULL	VARCHAR2(150)	Descriptive Flexfield Segment Column
ATTRIBUTE20	NULL	VARCHAR2(150)	Descriptive Flexfield Segment Column
ATTRIBUTE21	NULL	VARCHAR2(150)	Descriptive Flexfield Segment Column
ATTRIBUTE22	NULL	VARCHAR2(150)	Descriptive Flexfield Segment Column
ATTRIBUTE23	NULL	VARCHAR2(150)	Descriptive Flexfield Segment Column
ATTRIBUTE24	NULL	VARCHAR2(150)	Descriptive Flexfield Segment Column
GLOBAL_ATTRIBUTE_CATEGORY	NULL	VARCHAR2(30)	Reserved for Globalization Functionality

**Oracle Proprietary, Confidential Information--Use Restricted by Contract**

GLOBAL_ATTRIBUTE1	NULL	VARCHAR2(150)	Reserved for Globalization Functionality
GLOBAL_ATTRIBUTE2	NULL	VARCHAR2(150)	Reserved for Globalization Functionality
GLOBAL_ATTRIBUTE4	NULL	VARCHAR2(150)	Reserved for Globalization Functionality
GLOBAL_ATTRIBUTE3	NULL	VARCHAR2(150)	Reserved for Globalization Functionality
GLOBAL_ATTRIBUTE5	NULL	VARCHAR2(150)	Reserved for Globalization Functionality
GLOBAL_ATTRIBUTE6	NULL	VARCHAR2(150)	Reserved for Globalization Functionality
GLOBAL_ATTRIBUTE7	NULL	VARCHAR2(150)	Reserved for Globalization Functionality
GLOBAL_ATTRIBUTE8	NULL	VARCHAR2(150)	Reserved for Globalization Functionality
GLOBAL_ATTRIBUTE9	NULL	VARCHAR2(150)	Reserved for Globalization Functionality
GLOBAL_ATTRIBUTE10	NULL	VARCHAR2(150)	Reserved for Globalization Functionality
GLOBAL_ATTRIBUTE11	NULL	VARCHAR2(150)	Reserved for Globalization Functionality
GLOBAL_ATTRIBUTE12	NULL	VARCHAR2(150)	Reserved for Globalization Functionality
GLOBAL_ATTRIBUTE13	NULL	VARCHAR2(150)	Reserved for Globalization Functionality
GLOBAL_ATTRIBUTE14	NULL	VARCHAR2(150)	Reserved for Globalization Functionality
GLOBAL_ATTRIBUTE15	NULL	VARCHAR2(150)	Reserved for Globalization Functionality
GLOBAL_ATTRIBUTE16	NULL	VARCHAR2(150)	Reserved for Globalization Functionality
GLOBAL_ATTRIBUTE17	NULL	VARCHAR2(150)	Reserved for Globalization Functionality
GLOBAL_ATTRIBUTE18	NULL	VARCHAR2(150)	Reserved for Globalization Functionality
GLOBAL_ATTRIBUTE19	NULL	VARCHAR2(150)	Reserved for Globalization Functionality
GLOBAL_ATTRIBUTE20	NULL	VARCHAR2(150)	Reserved for Globalization Functionality
ORIG_SYSTEM_REFERENCE	NOT NULL	VARCHAR2(240)	Unique customer identifier from foreign system
SIC_CODE	NULL	VARCHAR2(30)	Standard Industry Classification Code
HQ_BRANCH_IND	NULL	VARCHAR2(30)	Status of this site. Identifies if HQ, Branch, or Single Location.
CUSTOMER_KEY	NULL	VARCHAR2(500)	Derived key created by Oracle Sales and Marketing to facilitate querying
TAX_REFERENCE	NULL	VARCHAR2(50)	Taxpayer identification number
JGZZ_FISCAL_CODE	NULL	VARCHAR2(20)	This column is used as the Fiscal Code for certain European Countries
DUNS_NUMBER	NULL	NUMBER	DUNS Number: a unique, nine digit identification number assigned to business entities by Dun & Bradstreet
TAX_NAME	NULL	VARCHAR2(60)	The name for the party that is recognized by the tax authority.
PERSON_PRE_NAME_ADJUNCT	NULL	VARCHAR2(30)	Salutary introduction such as Mr., Herr, etc.
PERSON_FIRST_NAME	NULL	VARCHAR2(150)	First name of the person

**Oracle Proprietary, Confidential Information--Use Restricted by Contract**

PERSON_MIDDLE_NAME	NULL	VARCHAR2(60)	Middle name of the person
PERSON_LAST_NAME	NULL	VARCHAR2(150)	Last or surname of the person
PERSON_NAME_SUFFIX	NULL	VARCHAR2(30)	Indicates the place in a family structure. For example, in "Tom Jones III", the "III" for third is the suffix.
PERSON_TITLE	NULL	VARCHAR2(60)	A professional or family title. For example, 'Don', or 'The Right Honorable'.
PERSON_ACADEMIC_TITLE	NULL	VARCHAR2(30)	Academic title that is part of a person's name such as Dr. John Smith.
PERSON_PREVIOUS_LAST_NAME	NULL	VARCHAR2(150)	Previous last or surname of the person
KNOWN_AS	NULL	VARCHAR2(240)	An alias or other name by which a party is known
PERSON_IDEN_TYPE	NULL	VARCHAR2(30)	Lookup representing main person identification number used in country. For example, Social Security Number.
PERSON_IDENTIFIER	NULL	VARCHAR2(60)	Identity reference field for things like Social Security, tax identity number, or Driver's License number.
GROUP_TYPE	NULL	VARCHAR2(30)	Lookup for group type
COUNTRY	NULL	VARCHAR2(60)	FND_TERRITORY.TERRITORY_CODE for identifying address. (where HZ_PARTY_SITES.IDENTIFYING_ADDRESS_FLAG = Y)
ADDRESS1	NULL	VARCHAR2(240)	First line identifying address. (where HZ_PARTY_SITES.IDENTIFYING_ADDRESS_FLAG = Y)
ADDRESS2	NULL	VARCHAR2(240)	Second line for identifying address. (where HZ_PARTY_SITES.IDENTIFYING_ADDRESS_FLAG = Y)
ADDRESS3	NULL	VARCHAR2(240)	Third line for identifying address. (where HZ_PARTY_SITES.IDENTIFYING_ADDRESS_FLAG = Y)
ADDRESS4	NULL	VARCHAR2(240)	Fourth line for identifying address. (where HZ_PARTY_SITES.IDENTIFYING_ADDRESS_FLAG = Y)
CITY	NULL	VARCHAR2(60)	City for identifying address. (where HZ_PARTY_SITES.IDENTIFYING_ADDRESS_FLAG = Y)
POSTAL_CODE	NULL	VARCHAR2(60)	Postal Code for identifying address. (where HZ_PARTY_SITES.IDENTIFYING_ADDRESS_FLAG = Y)
STATE	NULL	VARCHAR2(60)	State for identifying address. (where HZ_PARTY_SITES.IDENTIFYING_ADDRESS_FLAG = Y)
PROVINCE	NULL	VARCHAR2(60)	Province for identifying address. (where HZ_PARTY_SITES.IDENTIFYING_ADDRESS_FLAG = Y)
STATUS	NOT NULL	VARCHAR2(1)	Party status flag.
COUNTY	NULL	VARCHAR2(60)	County for identifying address. (where HZ_PARTY_SITES.IDENTIFYING_ADDRESS_FLAG = Y)

Oracle Proprietary, Confidential Information--Use Restricted by Contract

SIC_CODE_TYPE	NULL	VARCHAR2(30)	Version of Standard Industry Classification
TOTAL_NUM_OF_ORDERS	NULL	NUMBER	The total number of orders by the last ordered date
TOTAL_ORDERED_AMOUNT	NULL	NUMBER	The total ordered amount by the last ordered date
LAST_ORDERED_DATE	NULL	DATE	Last ordered date
URL	NULL	VARCHAR2(2000)	Uniform resource locator
EMAIL_ADDRESS	NULL	VARCHAR2(2000)	Email address
DO_NOT_MAIL_FLAG	NULL	VARCHAR2(1)	Y indicates mail should ot be sent
ANALYSIS_FY	NULL	VARCHAR2(5)	Fiscal Year upon which financial information is based on (net worth, number of employees, potential revenue)
FISCAL_YEAREND_MONTH	NULL	VARCHAR2(30)	Month in which fiscal year ends for organization
EMPLOYEES_TOTAL	NULL	NUMBER	Total number of employees
CURR_FY_POTENTIAL_REVENUE	NULL	NUMBER	Potential revenue this fiscal year for organization
NEXT_FY_POTENTIAL_REVENUE	NULL	NUMBER	Potential revenue next fiscal year for organization
YEAR_ESTABLISHED	NULL	NUMBER(4)	Year in which organization began doing business
GSA_INDICATOR_FLAG	NULL	VARCHAR2(1)	Y if the organization is a public sector service agency
MISSION_STATEMENT	NULL	VARCHAR2(2000)	Corporate charter of organization
ORGANIZATION_NAME_PHONETIC	NULL	VARCHAR2(320)	Japanese Kana, or phonetic representation of organization name
PERSON_FIRST_NAME_PHONETIC	NULL	VARCHAR2(60)	Phonetic representation of the persons first name
PERSON_LAST_NAME_PHONETIC	NULL	VARCHAR2(60)	Phonetic representation of the persons last name
LANGUAGE_NAME	NULL	VARCHAR2(4)	Standard name for a language
CATEGORY_CODE	NULL	VARCHAR2(30)	User-definable category (lookup type= CUSTOMER_CATEGORY)
REFERENCE_USE_FLAG	NULL	VARCHAR2(1)	Indicates whether customer has agreed to be a reference (null means No)
THIRD_PARTY_FLAG	NULL	VARCHAR2(1)	Tracks whether a customer is a direct customer of the organization using AR or a third party vendor. If Oracle Service is installed, the Third Party field in the Customers window should be mandatory.
COMPETITOR_FLAG	NULL	VARCHAR2(1)	Indicates whether organization is a competitor (null means No)
SALUTATION	NULL	VARCHAR2(60)	Phrase used to address a party in any correspondence.
KNOWN_AS2	NULL	VARCHAR2(240)	An alias or other name by which a party is known
KNOWN_AS3	NULL	VARCHAR2(240)	An alias or other name by which a party is known
KNOWN_AS4	NULL	VARCHAR2(240)	An alias or other name by which a party is known
KNOWN_AS5	NULL	VARCHAR2(240)	An alias or other name by which a party is known

**Oracle Proprietary, Confidential Information--Use Restricted by Contract**

*Indexes*

<u>Index Name</u>	<u>Index Type</u>	<u>Sequence</u>	<u>Column Name</u>
HZ_PARTIES_N1	NOT UNIQUE	5	PARTY_NAME
HZ_PARTIES_N10	NOT UNIQUE	5	JGZZ_FISCAL_CODE
HZ_PARTIES_N11	NOT UNIQUE	5	TAX_REFERENCE
HZ_PARTIES_N12	NOT UNIQUE	5	ORIG_SYSTEM_REFERENCE
HZ_PARTIES_N13	NOT UNIQUE	5	PERSON_FIRST_NAME
HZ_PARTIES_N14	NOT UNIQUE	5	PERSON_LAST_NAME
HZ_PARTIES_N15	NOT UNIQUE	5	DUNS_NUMBER
HZ_PARTIES_N16	NOT UNIQUE	5	EMAIL_ADDRESS
HZ_PARTIES_N2	NOT UNIQUE	5	PERSON_LAST_NAME
HZ_PARTIES_N3	NOT UNIQUE	5	PERSON_FIRST_NAME
HZ_PARTIES_N4	NOT UNIQUE	10	CUSTOMER_KEY
HZ_PARTIES_N5	NOT UNIQUE	5	PARTY_NAME
HZ_PARTIES_N6	NOT UNIQUE	5	PARTY_NAME
HZ_PARTIES_N7	NOT UNIQUE	5	PERSON_FIRST_NAME
HZ_PARTIES_N8	NOT UNIQUE	5	PERSON_LAST_NAME
HZ_PARTIES_N9	NOT UNIQUE	5	PARTY_NAME
HZ_PARTIES_U1	UNIQUE	1	PARTY_ID
HZ_PARTIES_U2	UNIQUE	5	PARTY_NUMBER

*Sequences*

<u>Sequence</u>	<u>Derived Column</u>
HZ_PARTIES_S	PARTY_ID
HZ_PARTY_NUMBER_S	PARTY_NUMBER

## ICX\_POR\_CATEGORIES\_TL

Stores information about the categories that exist within a catalog. Categories are used to classify items into groups of related items. This table uses a flattened version of the base table/translation table structure usually used to support multilingual data. This approach was chosen because the number and relative size of the translatable columns closely matches or exceeds that of the non-translatable columns. Language is included in the unique indexes on this table because ICX\_POR\_CATEGORIES\_TL is a flattened \_TL table with some denormalization of columns. Consequently, unique indexes on the denormalized columns must also be qualified by language.

### Column Descriptions

Name	Null?	Type	Description
RT_CATEGORY_ID (PK)	NOT NULL	NUMBER	Internal identifier for a category.
LANGUAGE (PK)	NOT NULL	VARCHAR2(4)	Defined language for the row
SOURCE_LANG	NOT NULL	VARCHAR2(4)	Actual language for the row
CATEGORY_NAME	NOT NULL	VARCHAR2(250)	Category name
UPPER_CATEGORY_NAME	NOT NULL	VARCHAR2(250)	Category Name in Upper Case
DESCRIPTION	NULL	VARCHAR2(2000)	Category Description
TYPE	NOT NULL	NUMBER	Indicates whether this category is 0 - Root 1 - Navigational 2 - Item/Genus Category 3 - Oracle Template. Note that type 3 is only valid in IP.
KEY	NOT NULL	VARCHAR2(250)	User-defined Key that identifies a Category.
UPPER_KEY	NOT NULL	VARCHAR2(250)	Category Key in Upper Case
TITLE	NULL	VARCHAR2(500)	ID of the originating system data source
ITEM_COUNT	NULL	NUMBER	Number of items in this category.
CREATED_BY	NOT NULL	NUMBER	Standard Who column
CREATION_DATE	NOT NULL	DATE	Standard Who column
LAST_UPDATED_BY	NOT NULL	NUMBER	Standard Who column
LAST_UPDATE_DATE	NOT NULL	DATE	Standard Who column
LAST_UPDATE_LOGIN	NULL	NUMBER	Standard Who column
REQUEST_ID	NULL	NUMBER	Extended Who column
PROGRAM_APPLICATION_ID	NULL	NUMBER	Extended Who column
PROGRAM_ID	NULL	NUMBER	Extended Who column
PROGRAM_UPDATE_DATE	NULL	DATE	Extended Who column
BATCH_JOB_NUM	NULL	NUMBER	Job Number of the job that rebuilds the Intermedia Index due to changes in the Category.
REBUILD_FLAG	NULL	VARCHAR2(1)	Indicates whether the Intermedia Index should be rebuilt due to changes in the Category Definition.
SECTION_MAP	NULL	VARCHAR2(250)	Section Map is a bitmap (0 or 1) indicating which section a searchable descriptor belonging to the category is given while building Intermedia Sections for searching.

Oracle Proprietary, Confidential Information--Use Restricted by Contract

*Indexes*

<u>Index Name</u>	<u>Index Type</u>	<u>Sequence</u>	<u>Column Name</u>
ICX_POR_CATEGORIES_TL_N1	NOT UNIQUE	10	CATEGORY_NAME
		12	TYPE
		20	LANGUAGE
ICX_POR_CATEGORIES_TL_N2	NOT UNIQUE	10	UPPER_CATEGORY_NAME
		12	TYPE
		20	LANGUAGE
ICX_POR_CATEGORIES_TL_N3	NOT UNIQUE	5	UPPER_KEY
		10	TYPE
		15	LANGUAGE
ICX_POR_CATEGORIES_TL_U1	UNIQUE	5	RT_CATEGORY_ID
		10	LANGUAGE
ICX_POR_CATEGORIES_TL_U2	UNIQUE	5	KEY
		7	TYPE
		10	LANGUAGE

## ICX\_POR\_CATEGORY\_ITEMS

Intersection table creating a relationship between categories and all the items they contain. The relationship is many to 1. For every item, an item must belong to one and only one category but a category may contain many items. Items can only belong to categories of type GENUS. The type of the category is stored in the ICX\_POR\_CATEGORIES\_TL table.

### Foreign Keys

Primary Key Table	Primary Key Column	Foreign Key Column
ICX_POR_ITEMS	RT_ITEM_ID	RT_ITEM_ID

### Column Descriptions

Name	Null?	Type	Description
RT_ITEM_ID (PK)	NOT NULL	NUMBER	Internal item identifier within the catalog
RT_CATEGORY_ID (PK)	NOT NULL	NUMBER	Internal category identifier within the catalog

### Indexes

Index Name	Index Type	Sequence	Column Name
ICX_POR_CATEGORY_ITEMS_N1	NOT UNIQUE	5	RT_CATEGORY_ID
ICX_POR_CATEGORY_ITEMS_N2	NOT UNIQUE	5	RT_ITEM_ID
ICX_POR_CATEGORY_ITEMS_U1	UNIQUE	5	RT_ITEM_ID
		6	RT_CATEGORY_ID

## ICX\_POR\_ITEMS

Stores information and root descriptors for non translatable data for each item in the catalog. Root descriptor columns are in the format Axxxx where xxxx is an integer. Some of the root descriptors are seeded by Oracle while others may be generated through the use of the application.

### Foreign Keys

Primary Key Table	Primary Key Column	Foreign Key Column
HZ_PARTIES	PARTY_ID	SUPPLIER_ID

### Column Descriptions

Name	Null?	Type	Description
RT_ITEM_ID	NOT NULL	NUMBER	Internally generated Item identifier
ORC_ITEM_ID	NULL	NUMBER	Item unique identifier in Oracle (IP only)
ORC_ITEM_NUM	NULL	VARCHAR2(700)	Item number in Oracle (IP only)
TITLE	NULL	VARCHAR2(500)	ID of the Originating system data source/publishing entity set to 'Oracle' for Oracle-sourced data
SUPPLIER_ID	NOT NULL	NUMBER	Unique identifier for the supplier owning the item.
BATCH_JOB_NUM	NULL	NUMBER	Batch job number that created/updated the item
QUERY	NULL	VARCHAR2(240)	Not used
TYPE	NULL	NUMBER	Not used
A1	NULL	VARCHAR2(700)	Reserved for Supplier name
A2	NULL	VARCHAR2(700)	Reserved for Supplier ID
A3	NULL	VARCHAR2(700)	Reserved for Supplier Item Number
A4	NULL	VARCHAR2(700)	Reserved for Manufacturer (Not used in WR4)
A5	NULL	VARCHAR2(700)	Reserved for Manufacturer Part Number (Not used in WR4)
A10	NULL	NUMBER	Not used
A11	NULL	VARCHAR2(700)	Not used
A12	NULL	VARCHAR2(700)	Reserved for Internal Item Number (IP only)
A13	NULL	VARCHAR2(700)	Reserved for Picture or Image file name (PICTURE)
A14	NULL	VARCHAR2(700)	Reserved for Picture or image URL (PICTURE_URL)
A15	NULL	VARCHAR2(700)	Reserved for Contract Number (IP only)
A16	NULL	VARCHAR2(700)	Reserved for Contract Line (IP only)
A17	NULL	VARCHAR2(700)	Reserved for Contract Price (IP only)
A18	NULL	VARCHAR2(700)	Reserved for Contract Currency (IP only)
A19	NULL	VARCHAR2(700)	Reserved for Contract Rate Type (IP only)
A20	NULL	VARCHAR2(700)	Reserved for Contract Rate Date (IP Only)

Oracle Proprietary, Confidential Information--Use Restricted by Contract

A21	NULL	VARCHAR2(700)	Reserved for Contract Rate (IP only)
A22	NULL	VARCHAR2(700)	Reserved for attachment URL (ATTACHMENT_URL)
A24	NULL	VARCHAR2(700)	Reserved for UNSPSC code (UNSPSC)
A25	NULL	VARCHAR2(700)	Reserved for Availability
A26	NULL	NUMBER	Reserved for order lead time (LEAD_TIME). specified in days
A27	NULL	VARCHAR2(700)	Reserved for Functional Currency Price (IP only)
A28	NULL	VARCHAR2(700)	Reserved for Functional Currency (IP only)
A29	NULL	VARCHAR2(700)	Reserved for item type (ITEM_TYPE)
CREATED_BY	NOT NULL	NUMBER	Standard Who column
CREATION_DATE	NOT NULL	DATE	Standard Who column
LAST_UPDATED_BY	NOT NULL	NUMBER	Standard Who column
LAST_UPDATE_DATE	NOT NULL	DATE	Standard Who column
LAST_UPDATE_LOGIN	NULL	NUMBER	Standard Who column
REQUEST_ID	NULL	NUMBER	Extended Who column
PROGRAM_APPLICATION_ID	NULL	NUMBER	Extended Who column
PROGRAM_ID	NULL	NUMBER	Extended Who column
PROGRAM_UPDATE_DATE	NULL	DATE	Extended Who column
A30	NULL	VARCHAR2(700)	Reserved for sellable item (SELLABLE_ITEM). Product Development specific attribute. If set to N, the item will not be visible in the standard catalog.
A31	NULL	VARCHAR2(700)	Reserved for development item (DEVELOPMENT_ITEM). Product development specific attribute.
A32	NULL	NUMBER	Reserved for Owner Party Id. Product development specific attribute. Should be populated if A31 is Yes.
A33	NULL	VARCHAR2(700)	Reserved for Minimum Inventory Quantity
A34	NULL	VARCHAR2(700)	Reserved for Maximum Inventory Quantity
A35	NULL	VARCHAR2(700)	Reserved for pricing attributes.
A36	NULL	VARCHAR2(700)	Reserved for pricing attributes.
ACTION	NULL	VARCHAR2(30)	Action last taken on the item. Possible values are ADD and UPDATE.
STATUS	NULL	VARCHAR2(30)	Status of the item relative to publication. Possible values are PUBLISHED and UNPUBLISHED.

#### Indexes

Index Name	Index Type	Sequence	Column Name
ICX_POR_ITEMS_N1	NOT UNIQUE	5	ORC_ITEM_ID
ICX_POR_ITEMS_N2	NOT UNIQUE	5	A3
ICX_POR_ITEMS_N3	NOT UNIQUE	5	A1
ICX_POR_ITEMS_N4	NOT UNIQUE	5	SUPPLIER_ID
ICX_POR_ITEMS_N5	NOT UNIQUE	5	STATUS
ICX_POR_ITEMS_N6	NOT UNIQUE	5	BATCH_JOB_NUM
ICX_POR_ITEMS_U1	UNIQUE	5	RT_ITEM_ID

**Oracle Proprietary, Confidential Information--Use Restricted by Contract**

## ICX\_POR\_TABLE\_OF\_CONTENTS\_TL

Stores the user-defined hierarchical relationship between navigational categories to create a more traditional hierarchical view of the catalog. Despite its name it is not an MLS table. This table simply stores data in 2 columns (RT\_CATEGORY\_ID and CHILD\_CATEGORY\_ID). Navigational categories may be parents of other navigational or genus categories but genus categories cannot be parents of navigational categories. Any category can only have 1 parent.

### Column Descriptions

Name	Null?	Type	Description
RT_CATEGORY_ID (PK)	NOT NULL	NUMBER	Parent Category ID
CHILD (PK)	NOT NULL	NUMBER	Child Category ID
TYPE	NULL	NUMBER	Not used
NAME	NULL	VARCHAR2(128)	Not used
QUERY	NULL	VARCHAR2(500)	Not used
DESCRIPTION	NULL	VARCHAR2(500)	Not used
LANGUAGE	NOT NULL	VARCHAR2(4)	Not used
SOURCE_LANG	NOT NULL	VARCHAR2(4)	Not used
SEQUENCE	NULL	NUMBER	Not used
CREATED_BY	NOT NULL	NUMBER	Standard Who column
CREATION_DATE	NOT NULL	DATE	Standard Who column
LAST_UPDATED_BY	NOT NULL	NUMBER	Standard Who column
LAST_UPDATE_DATE	NOT NULL	DATE	Standard Who column
LAST_UPDATE_LOGIN	NULL	NUMBER	Standard Who column

### Indexes

Index Name	Index Type	Sequence	Column Name
ICX_POR_TABLE_OF_CONTS_TL_N1	NOT UNIQUE	5	RT_CATEGORY_ID
		7	CHILD
ICX_POR_TABLE_OF_CONTS_TL_N2	NOT UNIQUE	5	CHILD

## IPD\_ITEM\_CROSS\_REFS\_B

IPD\_ITEM\_CROSS\_REFS\_B stores the cross references information for all Items. Each row in this table identifies a unique Cross Reference for an Item, and is identified by CROSS\_REF\_ID. Item Cross Reference can be created between items within a company (or) with an item outside the company. Item Id is stored in ITEM\_ID, and Cross Referenced Item Id is stored in REF\_ITEM\_ID. The type of the Cross Reference can be identified by REF\_TYPE. A cross reference can be of type : Identical / Related / Substitute. For 6.1 release of PDX only Identical Cross Reference is supported. Hence an item can be cross referenced to only one item of the outside company.

### Foreign Keys

Primary Key Table	Primary Key Column	Foreign Key Column
ICX_POR_ITEMS	RT_ITEM_ID	ITEM_ID
ICX_POR_ITEMS	RT_ITEM_ID	REF_ITEM_ID

### Column Descriptions

Name	Null?	Type	Description
CROSS_REF_ID (PK)	NOT NULL	NUMBER	Cross Reference unique identifier
ITEM_ID	NOT NULL	NUMBER	Item Id
REF_TYPE	NOT NULL	VARCHAR2(30)	Cross Reference Type
REF_ITEM_ID	NOT NULL	NUMBER	Cross Referenced Item Id
REF_IDENTIFIER	NULL	VARCHAR2(240)	Cross Reference Identifier
RECIPROCAL_FLAG	NOT NULL	VARCHAR2(1)	Indicator whether Item Cross Reference is reciprocal
PREFERENCE_NUMBER	NULL	NUMBER	Preference Number. To indicate the priority for the Cross Reference. Not supported in PDX 6.1 release.
CREATION_DATE	NOT NULL	DATE	Standard Who column
CREATED_BY	NOT NULL	NUMBER	Standard Who column
LAST_UPDATE_DATE	NOT NULL	DATE	Standard Who column
LAST_UPDATED_BY	NOT NULL	NUMBER	Standard Who column
LAST_UPDATE_LOGIN	NULL	NUMBER	Standard Who column
REQUEST_ID	NULL	NUMBER	Standard Who column
PROGRAM_APPLICATION_ID	NULL	NUMBER	Concurrent Who column
PROGRAM_ID	NULL	NUMBER	Concurrent Who column
PROGRAM_UPDATE_DATE	NULL	DATE	Concurrent Who column

### Indexes

Index Name	Index Type	Sequence	Column Name
IPD_ITEM_CROSS_REFS_B_N1	NOT UNIQUE	1	ITEM_ID
		2	REF_TYPE
		3	REF_ITEM_ID
IPD_ITEM_CROSS_REFS_B_N2	NOT UNIQUE	1	REF_ITEM_ID
		2	REF_TYPE
		3	ITEM_ID
IPD_ITEM_CROSS_REFS_B_N3	NOT UNIQUE	1	REF_IDENTIFIER
		2	REF_TYPE
		3	ITEM_ID
IPD_ITEM_CROSS_REFS_B_U1	UNIQUE	1	CROSS_REF_ID

**Oracle Proprietary, Confidential Information--Use Restricted by Contract**

*Sequences*

<u>Sequence</u>	<u>Derived Column</u>
IPD_ITEM_CROSS_REFS_B_S	CROSS_REF_ID

---

## MSC\_BOM\_BOD\_INTERFACE

MSC\_BOM\_BOD\_INTERFACE stages the BOM and sourcing rules uploaded on supply chain exchange prior to validation. This information is required to support production sequencing functionality on supply chain hub. After validation the data is moved to MSC\_BOM\_COMPONENTS and MSC\_ITEM\_SOURCING.

### Column Descriptions

Name	Null?	Type	Description
BOM_BOD_ID	NULL	NUMBER	Generated by the sequence MSC_BOM_BOD_INTF_S
PLAN_ID	NULL	NUMBER	Contains the plan identifier
SR_INSTANCE_ID	NULL	NUMBER	Contains the source instance identifier, defaulted to -1
PARTY_ID	NULL	NUMBER	Contains the party identifier of the publisher
ASSEMBLY_ITEM_ID	NULL	NUMBER	Contains the assembly item identifier
ASSEMBLY_ITEM_NAME	NOT NULL	VARCHAR2(250)	Contains the assembly item name
ASSEMBLY_ITEM_UOM	NOT NULL	VARCHAR2(3)	Contains the unit of measure of the assembly item
INVENTORY_ITEM_ID	NULL	NUMBER	Contains the inventory item identifier
INVENTORY_ITEM_NAME	NOT NULL	VARCHAR2(250)	Contains the inventory item name
INVENTORY_ITEM_UOM	NOT NULL	VARCHAR2(3)	Contains the unit of measure of the inventory item
USAGE_QUANTITY	NOT NULL	NUMBER	Contains the quantity being used
BOM_EFFECTIVITY_DATE	NULL	DATE	Contains the date the BOM becomes effective
BOM_DISABLE_DATE	NULL	DATE	Contains the date BOM is disabled
SUPPLIER_ID	NULL	NUMBER	Contains the party identifier of the supplier
SUPPLIER_NAME	NULL	VARCHAR2(255)	Contains the supplier's name
AVG_TRANSIT_LEAD_TIME	NULL	NUMBER	Contains the average intransit lead time
SOURCING_EFFECTIVITY_DATE	NULL	DATE	Contains the date the sourcing rule becomes effective
SOURCING_DISABLE_DATE	NULL	DATE	Contains the date the sourcing rule is disabled
LAST_UPDATE_DATE	NULL	DATE	Contains the date the record was last updated
LAST_UPDATED_BY	NULL	NUMBER	Contains the user identifier of the person who last updated the record
CREATION_DATE	NULL	DATE	Contains the date the record was created
CREATED_BY	NULL	NUMBER	Contains the user identifier of the person who created the record
ROW_STATUS	NULL	NUMBER	Contains the row status after the validation
ERROR_MSG	NULL	VARCHAR2(240)	Contains the error message in case the record fails validation
BATCH_ID	NULL	NUMBER	Holds the batch identifier

Oracle Proprietary, Confidential Information--Use Restricted by Contract

## MSC\_BOM\_COMPONENTS

This table stores the components used in a bill of material created at source applications. This table is also used to store bill of material information for production sequencing on the supply chain hub.

### Foreign Keys

Primary Key Table	Primary Key Column	Foreign Key Column
MSC_BOMS	BILL_SEQUENCE_ID	BILL_SEQUENCE_ID
	PLAN_ID	PLAN_ID
	SR_INSTANCE_ID	SR_INSTANCE_ID
MSC_SYSTEM_ITEMS	PLAN_ID	PLAN_ID
	ORGANIZATION_ID	ORGANIZATION_ID
	INVENTORY_ITEM_ID	INVENTORY_ITEM_ID
	SR_INSTANCE_ID	SR_INSTANCE_ID

### Column Descriptions

Name	Null?	Type	Description
PLAN_ID	NOT NULL	NUMBER	Plan identifier
COMPONENT_SEQUENCE_ID	NOT NULL	NUMBER	Component identifier on the source application instance
BILL_SEQUENCE_ID	NOT NULL	NUMBER	Identifier of the BOM
SR_INSTANCE_ID	NOT NULL	NUMBER	Source application instance identifier
ORGANIZATION_ID	NOT NULL	NUMBER	Organization identifier
INVENTORY_ITEM_ID	NOT NULL	NUMBER	Identifier of the component item
USING_ASSEMBLY_ID	NULL	NUMBER	Identifier of the item being assembled
COMPONENT_TYPE	NULL	NUMBER	Component (1), Ingredient component (-1), by-product (2)
SCALING_TYPE	NULL	NUMBER	Scaling type
CHANGE_NOTICE	NULL	VARCHAR2(10)	Code for ECO. Use for UI and reporting
REVISION	NULL	VARCHAR2(3)	Inventory item revision code
UOM_CODE	NULL	VARCHAR2(3)	Unit of measure code
USAGE_QUANTITY	NULL	NUMBER	Quantity of the component to build one unit of item
EFFECTIVITY_DATE	NULL	DATE	Date of effectivity for this component
DISABLE_DATE	NULL	DATE	End of effectivity
FROM_UNIT_NUMBER	NULL	VARCHAR2(30)	Effective from this unit number
TO_UNIT_NUMBER	NULL	VARCHAR2(30)	Effective up to this unit number
USE_UP_CODE	NULL	NUMBER	Yes/No flag - if yes this component is effective until the available quantity becomes null
SUGGESTED_EFFECTIVITY_DATE	NULL	DATE	Calculated use-up-date (if Use-up-code is yes)
DRIVING_ITEM_ID	NULL	NUMBER	Item which consumption determine the switch to this component
OPERATION_OFFSET_PERCENT	NULL	NUMBER	Operation offset percent
OPTIONAL_COMPONENT	NULL	NUMBER	Yes/No flag if optional use planning factor to determine demand
OLD_EFFECTIVITY_DATE	NULL	DATE	Old effectivity date

Oracle Proprietary, Confidential Information--Use Restricted by Contract

WIP_SUPPLY_TYPE	NULL	NUMBER	Used mainly for phantoms
PLANNING_FACTOR	NULL	NUMBER	Planning factor for this component (percent)
ATP_FLAG	NULL	NUMBER	Yes/No flag used for ATP
COMPONENT_YIELD_FACTOR	NOT NULL	NUMBER	Factor used to multiply component quantity with to obtain component quantity
REFRESH_NUMBER	NULL	NUMBER	Refresh number populated by the collection program
LAST_UPDATE_DATE	NOT NULL	DATE	Standard Who column
LAST_UPDATED_BY	NOT NULL	NUMBER	Standard Who column
CREATION_DATE	NOT NULL	DATE	Standard Who column
CREATED_BY	NOT NULL	NUMBER	Standard Who column
LAST_UPDATE_LOGIN	NULL	NUMBER	Standard Who column
REQUEST_ID	NULL	NUMBER	Concurrent Who column
PROGRAM_APPLICATION_ID	NULL	NUMBER	Concurrent Who column
PROGRAM_ID	NULL	NUMBER	Concurrent Who column
PROGRAM_UPDATE_DATE	NULL	DATE	Concurrent Who column
ATTRIBUTE_CATEGORY	NULL	VARCHAR2(30)	Descriptive flexfield structure defining column
ATTRIBUTE1	NULL	VARCHAR2(150)	Descriptive Flexfield segment
ATTRIBUTE2	NULL	VARCHAR2(150)	Descriptive Flexfield segment
ATTRIBUTE3	NULL	VARCHAR2(150)	Descriptive Flexfield segment
ATTRIBUTE4	NULL	VARCHAR2(150)	Descriptive Flexfield segment
ATTRIBUTE5	NULL	VARCHAR2(150)	Descriptive Flexfield segment
ATTRIBUTE6	NULL	VARCHAR2(150)	Descriptive Flexfield segment
ATTRIBUTE7	NULL	VARCHAR2(150)	Descriptive Flexfield segment
ATTRIBUTE8	NULL	VARCHAR2(150)	Descriptive Flexfield segment
ATTRIBUTE9	NULL	VARCHAR2(150)	Descriptive Flexfield segment
ATTRIBUTE10	NULL	VARCHAR2(150)	Descriptive Flexfield segment
ATTRIBUTE11	NULL	VARCHAR2(150)	Descriptive Flexfield segment
ATTRIBUTE12	NULL	VARCHAR2(150)	Descriptive Flexfield segment
ATTRIBUTE13	NULL	VARCHAR2(150)	Descriptive Flexfield segment
ATTRIBUTE14	NULL	VARCHAR2(150)	Descriptive Flexfield segment
ATTRIBUTE15	NULL	VARCHAR2(150)	Descriptive Flexfield segment

### Indexes

Index Name	Index Type	Sequence	Column Name
MSC_BOM_COMPONENTS_N1	NOT UNIQUE	2	PLAN_ID
		5	BILL_SEQUENCE_ID
		10	SR_INSTANCE_ID
		15	INVENTORY_ITEM_ID
		20	EFFECTIVITY_DATE
MSC_BOM_COMPONENTS_N2	NOT UNIQUE	2	PLAN_ID
		5	BILL_SEQUENCE_ID
		10	SR_INSTANCE_ID
MSC_BOM_COMPONENTS_N3	NOT UNIQUE	2	PLAN_ID
		3	BILL_SEQUENCE_ID
		5	INVENTORY_ITEM_ID
		10	FROM_UNIT_NUMBER
		15	SR_INSTANCE_ID
MSC_BOM_COMPONENTS_N4	NOT UNIQUE	2	PLAN_ID
		5	BILL_SEQUENCE_ID
		10	SR_INSTANCE_ID
		15	INVENTORY_ITEM_ID
		20	EFFECTIVITY_DATE
		25	FROM_UNIT_NUMBER
MSC_BOM_COMPONENTS_N5	NOT UNIQUE	1	PLAN_ID
		2	SR_INSTANCE_ID
		4	INVENTORY_ITEM_ID
		6	ORGANIZATION_ID

**Oracle Proprietary, Confidential Information--Use Restricted by Contract**

MSC_BOM_COMPONENTS_U1	UNIQUE	5	PLAN_ID
		10	SR_INSTANCE_ID
		12	BILL_SEQUENCE_ID
		16	COMPONENT_SEQUENCE_ID

*Sequences*

<u>Sequence</u>	<u>Derived Column</u>
MSC_BOM_COMPONENTS_S	COMPONENT_SEQUENCE_ID

## MSC\_EXCEPTION\_DETAILS

This table stores the details of exceptions generated by Oracle Advanced Planning and Scheduling (APS) and Oracle Supply Chain Hub products.

### Foreign Keys

Primary Key Table	Primary Key Column	Foreign Key Column
MSC_DEPARTMENT_RESOURCES	PLAN_ID	PLAN_ID
	ORGANIZATION_ID	ORGANIZATION_ID
	SR_INSTANCE_ID	SR_INSTANCE_ID
	RESOURCE_ID	RESOURCE_ID
	DEPARTMENT_ID	DEPARTMENT_ID
MSC_ITEM_EXCEPTIONS	EXCEPTION_TYPE	EXCEPTION_TYPE
	PLAN_ID	PLAN_ID
	ORGANIZATION_ID	ORGANIZATION_ID
	INVENTORY_ITEM_ID	INVENTORY_ITEM_ID
	SR_INSTANCE_ID	SR_INSTANCE_ID
MSC_SYSTEM_ITEMS	ORGANIZATION_ID	ORGANIZATION_ID
	PLAN_ID	PLAN_ID
	INVENTORY_ITEM_ID	INVENTORY_ITEM_ID
	SR_INSTANCE_ID	SR_INSTANCE_ID

### QuickCodes Columns

Column	QuickCodes Type	QuickCodes Table
EXCEPTION_TYPE	MRP_EXCEPTION_CODE_TYPE	MFG_LOOKUPS
	1	Items that are over-committed
	10	Past due orders
	11	Items with negative starting on hand
	12	Items with expired lot
	13	Past due sales orders
	14	Past due forecast
	15	Late supply pegged to sales order
	16	Late supply pegged to forecast
	17	Items with a shortage in a project
	18	Items with excess inventory in a project
	19	Items allocated across projects
	2	Items with a shortage
	20	Items below safety stock
	21	Resource overloaded
	22	Resource underloaded
	23	Late order due to resource shortage
	3	Items with excess inventory
	4	Items with repetitive variance
	5	Items with no activity
	6	Orders to be rescheduled in
	7	Orders to be rescheduled out
	8	Orders to be cancelled

**Oracle Proprietary, Confidential Information--Use Restricted by Contract**

## Column Descriptions

Name	Null?	Type	Description
EXCEPTION_DETAIL_ID	NOT NULL	NUMBER	Exception detail identifier
EXCEPTION_TYPE	NOT NULL	NUMBER	Type of exception resource, material
QUANTITY	NULL	NUMBER	Exception quantity
DATE1	NULL	DATE	Generic date column
DATE2	NULL	DATE	Generic date column
DATE3	NULL	DATE	Generic date column
DATE4	NULL	DATE	Generic date column
NUMBER1	NULL	NUMBER	Generic number column
NUMBER2	NULL	NUMBER	Generic number column
NUMBER3	NULL	NUMBER	Generic number column
NUMBER4	NULL	NUMBER	Generic number column
CHAR1	NULL	VARCHAR2(80)	Generic character column
CHAR2	NULL	VARCHAR2(80)	Generic character column
PLAN_ID	NOT NULL	NUMBER	Plan identifier
ORGANIZATION_ID	NOT NULL	NUMBER	Organization identifier
INVENTORY_ITEM_ID	NOT NULL	NUMBER	Inventory item identifier
RESOURCE_ID	NOT NULL	NUMBER	Resource identifier
DEPARTMENT_ID	NOT NULL	NUMBER	Department identifier or Line identifier
SR_INSTANCE_ID	NOT NULL	NUMBER	Source application instance identifier
LAST_UPDATE_DATE	NOT NULL	DATE	Standard Who column
LAST_UPDATED_BY	NOT NULL	NUMBER	Standard Who column
CREATION_DATE	NOT NULL	DATE	Standard Who column
CREATED_BY	NOT NULL	NUMBER	Standard Who column
LAST_UPDATE_LOGIN	NULL	NUMBER	Standard Who column
REQUEST_ID	NULL	NUMBER	Concurrent Who column
PROGRAM_APPLICATION_ID	NULL	NUMBER	Concurrent Who column
PROGRAM_ID	NULL	NUMBER	Concurrent Who column
PROGRAM_UPDATE_DATE	NULL	DATE	Concurrent Who column
SUPPLIER_ID	NULL	NUMBER	Supplier identifier
SUPPLIER_SITE_ID	NULL	NUMBER	Supplier site identifier
CUSTOMER_ID	NULL	NUMBER	Customer Identifier
CUSTOMER_SITE_ID	NULL	NUMBER	Customer Site Identifier
ORDER_NUMBER	NULL	VARCHAR2(240)	Order number
ORDER_REL_NUMBER	NULL	VARCHAR2(20)	Release Number
ORDER_LINE_NUMBER	NULL	VARCHAR2(20)	Line Number
END_ORDER_NUMBER	NULL	VARCHAR2(240)	End Order Number
END_ORDER_REL_NUMBER	NULL	VARCHAR2(20)	End order release number
END_ORDER_LINE_NUMBER	NULL	VARCHAR2(20)	End order line number
DATE5	NULL	DATE	Generic date column
NUMBER5	NULL	NUMBER	Generic number column

## Indexes

Index Name	Index Type	Sequence	Column Name
MSC_EXCEPTION_DETAILS_N1	NOT UNIQUE	5	PLAN_ID
		6	EXCEPTION_TYPE
		11	ORGANIZATION_ID
		16	SR_INSTANCE_ID
		21	INVENTORY_ITEM_ID
		31	DEPARTMENT_ID
		36	RESOURCE_ID

Oracle Proprietary, Confidential Information--Use Restricted by Contract

MSC_EXCEPTION_DETAILS_U1	UNIQUE	2	PLAN_ID
		3	EXCEPTION_DETAIL_ID
		5	SR_INSTANCE_ID

*Sequences*

<u>Sequence</u>	<u>Derived Column</u>
MSC_EXCEPTION_DETAILS_S	EXCEPTION_DETAIL_ID

## MSC\_FORM\_QUERY

This is a generic query table for inquiry forms in Oracle APS and for the bucketed horizontal view in Oracle Supply Chain Exchange.

### Column Descriptions

Name	Null?	Type	Description
QUERY_ID	NOT NULL	NUMBER	Query identifier
LAST_UPDATE_DATE	NOT NULL	DATE	Standard Who column
LAST_UPDATED_BY	NOT NULL	NUMBER	Standard Who column
CREATION_DATE	NOT NULL	DATE	Standard Who column
CREATED_BY	NOT NULL	NUMBER	Standard Who column
LAST_UPDATE_LOGIN	NULL	NUMBER	Standard Who column
DATE1	NULL	DATE	Generic date column
DATE2	NULL	DATE	Generic date column
DATE3	NULL	DATE	Generic date column
DATE4	NULL	DATE	Generic date column
DATE5	NULL	DATE	Generic date column
DATE6	NULL	DATE	Generic date column
DATE7	NULL	DATE	Generic date column
DATE8	NULL	DATE	Generic date column
NUMBER1	NULL	NUMBER	Generic number column
NUMBER2	NULL	NUMBER	Generic number column
NUMBER3	NULL	NUMBER	Generic number column
NUMBER4	NULL	NUMBER	Generic number column
NUMBER5	NULL	NUMBER	Generic number column
NUMBER6	NULL	NUMBER	Generic number column
NUMBER7	NULL	NUMBER	Generic number column
NUMBER8	NULL	NUMBER	Generic number column
NUMBER9	NULL	NUMBER	Generic number column
NUMBER10	NULL	NUMBER	Generic number column
NUMBER11	NULL	NUMBER	Generic number column
NUMBER12	NULL	NUMBER	Generic number column
NUMBER13	NULL	NUMBER	Generic number column
NUMBER14	NULL	NUMBER	Generic number column
NUMBER15	NULL	NUMBER	Generic number column
REQUEST_ID	NULL	NUMBER	Concurrent Who column
CHAR1	NULL	VARCHAR2(80)	Generic character column
CHAR2	NULL	VARCHAR2(80)	Generic character column
CHAR3	NULL	VARCHAR2(80)	Generic character column
CHAR4	NULL	VARCHAR2(80)	Generic character column
CHAR5	NULL	VARCHAR2(80)	Generic character column
CHAR6	NULL	VARCHAR2(80)	Generic character column
CHAR7	NULL	VARCHAR2(80)	Generic character column
CHAR8	NULL	VARCHAR2(80)	Generic character column
CHAR9	NULL	VARCHAR2(250)	Generic character column
PROGRAM_UPDATE_DATE	NULL	DATE	Concurrent Who column
PROGRAM_APPLICATION_ID	NULL	NUMBER	Concurrent Who column
PROGRAM_ID	NULL	NUMBER	Concurrent Who column
NUMBER16	NULL	NUMBER	Generic number column
CHAR10	NULL	VARCHAR2(80)	Generic character column
CHAR11	NULL	VARCHAR2(80)	Generic character column
CHAR12	NULL	VARCHAR2(80)	Generic character column
CHAR13	NULL	VARCHAR2(80)	Generic character column
CHAR14	NULL	VARCHAR2(80)	Generic character column

Oracle Proprietary, Confidential Information--Use Restricted by Contract

CHAR15

NULL VARCHAR2(80) Generic character column

*Indexes*

<u>Index Name</u>	<u>Index Type</u>	<u>Sequence</u>	<u>Column Name</u>
MSC_FORM_QUERY_N1	NOT UNIQUE	1	QUERY_ID
		2	DATE1

*Sequences*

<u>Sequence</u>	<u>Derived Column</u>
MSC_FORM_QUERY_S	QUERY_ID

## MSC\_ITEM\_EXCEPTIONS

This table stores a row per exception message against an item for exceptions generated in the Oracle Advanced planning and scheduling (APS) and the Oracle Supply chain hub products.

### Foreign Keys

Primary Key Table	Primary Key Column	Foreign Key Column
MSC_DEPARTMENT_RESOURCES	DEPARTMENT_ID	DEPARTMENT_ID
	RESOURCE_ID	RESOURCE_ID
	ORGANIZATION_ID	ORGANIZATION_ID
	PLAN_ID	PLAN_ID
	SR_INSTANCE_ID	SR_INSTANCE_ID
MSC_PROJECTS	PLAN_ID	PLAN_ID
	ORGANIZATION_ID	ORGANIZATION_ID
	PROJECT_ID	PROJECT_ID
	SR_INSTANCE_ID	SR_INSTANCE_ID
MSC_PROJECT_TASKS	ORGANIZATION_ID	ORGANIZATION_ID
	PLAN_ID	PLAN_ID
	PROJECT_ID	PROJECT_ID
	TASK_ID	TASK_ID
MSC_SYSTEM_ITEMS	SR_INSTANCE_ID	SR_INSTANCE_ID
	ORGANIZATION_ID	ORGANIZATION_ID
	PLAN_ID	PLAN_ID
	INVENTORY_ITEM_ID	INVENTORY_ITEM_ID
	SR_INSTANCE_ID	SR_INSTANCE_ID

### QuickCodes Columns

Column	QuickCodes Type	QuickCodes Table
EXCEPTION_TYPE	MRP_EXCEPTION_TYPE	MFG_LOOKUPS
	1	Item is over-committed
	10	Item has past due orders
	11	Items with negative starting on hand
	12	Items with expired lot
	13	Past due sales orders
	14	Past due forecast
	15	Late supply pegged to sales order
	16	Late supply pegged to forecast
	17	Items with a shortage in a project
	18	Items with excess inventory in a project
	19	Items allocated across projects
	2	Item has a shortage
	20	Items below safety stock
	21	Resource over-utilized
	22	Resource under-utilized
	23	Late order due to resource shortage
	3	Item has excess inventory
	4	Item has repetitive variance
	5	Item has no activity
	6	Item has orders to be re-scheduled in

Oracle Proprietary, Confidential Information--Use Restricted by Contract

7	Item has orders to be re-scheduled out
8	Item has orders to be cancelled
9	Item has orders with compression days

*Column Descriptions*

Name	Null?	Type	Description
PLAN_ID (PK)	NOT NULL	NUMBER	Plan identifier
ORGANIZATION_ID (PK)	NOT NULL	NUMBER	Organization identifier
SR_INSTANCE_ID (PK)	NOT NULL	NUMBER	Source instance identifier for the source org
INVENTORY_ITEM_ID (PK)	NOT NULL	NUMBER	Inventory item identifier
PROJECT_ID	NULL	NUMBER	Project identifier
TASK_ID	NULL	NUMBER	Task identifier
VERSION	NULL	NUMBER	Version number of the plan
PLANNING_GROUP	NULL	VARCHAR2(30)	Planning group
EXCEPTION_TYPE (PK)	NOT NULL	NUMBER	Type of exception message
DISPLAY	NULL	NUMBER	Flag to indicate whether to display this exception
EXCEPTION_COUNT	NULL	NUMBER	Number of exception (for this item)
RESOURCE_ID	NULL	NUMBER	Resource identifier
DEPARTMENT_ID	NULL	NUMBER	Department identifier
EXCEPTION_GROUP	NULL	NUMBER	Indicate item exception group
LAST_UPDATE_DATE	NOT NULL	DATE	Standard Who column
LAST_UPDATED_BY	NOT NULL	NUMBER	Standard Who column
CREATION_DATE	NOT NULL	DATE	Standard Who column
CREATED_BY	NOT NULL	NUMBER	Standard Who column
LAST_UPDATE_LOGIN	NULL	NUMBER	Standard Who column
REQUEST_ID	NULL	NUMBER	Concurrent Who column
PROGRAM_APPLICATION_ID	NULL	NUMBER	Concurrent Who column
PROGRAM_ID	NULL	NUMBER	Concurrent Who column
PROGRAM_UPDATE_DATE	NULL	DATE	Concurrent Who column
SUPPLIER_ID	NULL	NUMBER	Supplier identifier
SUPPLIER_SITE_ID	NULL	NUMBER	Supplier site identifier

*Indexes*

Index Name	Index Type	Sequence	Column Name
MSC_ITEM_EXCEPTIONS_N1	NOT UNIQUE	2	PLAN_ID
		5	INVENTORY_ITEM_ID
		10	ORGANIZATION_ID
		15	SR_INSTANCE_ID
		20	EXCEPTION_TYPE
MSC_ITEM_EXCEPTIONS_N2	NOT UNIQUE	5	PLAN_ID
		10	EXCEPTION_TYPE
		20	ORGANIZATION_ID
		25	SR_INSTANCE_ID
		30	INVENTORY_ITEM_ID
MSC_ITEM_EXCEPTIONS_N3	NOT UNIQUE	5	PLAN_ID
		10	ORGANIZATION_ID
		15	SR_INSTANCE_ID
		20	VERSION
MSC_ITEM_EXCEPTIONS_N4	NOT UNIQUE	5	PLAN_ID
		10	ORGANIZATION_ID
		15	SR_INSTANCE_ID
		20	INVENTORY_ITEM_ID
		25	EXCEPTION_TYPE

**Oracle Proprietary, Confidential Information--Use Restricted by Contract**

## MSC\_ITEM\_SOURCING

This table stores sourcing information for an item used in Oracle Advanced Planning and Scheduling. This table is also used to store Sourcing information for in line vehicle sequencing (ILVS) in the supply chain hub product.

### Foreign Keys

Primary Key Table	Primary Key Column	Foreign Key Column
MSC_ASSIGNMENT_SETS	ASSIGNMENT_SET_ID SR_INSTANCE_ID	ASSIGNMENT_SET_ID SR_INSTANCE_ID
MSC_SOURCING_RULES	SOURCING_RULE_ID	SOURCING_RULE_ID
MSC_SR_ASSIGNMENTS	ASSIGNMENT_ID	ASSIGNMENT_ID
MSC_SYSTEM_ITEMS	ORGANIZATION_ID PLAN_ID INVENTORY_ITEM_ID SR_INSTANCE_ID	ORGANIZATION_ID PLAN_ID INVENTORY_ITEM_ID SR_INSTANCE_ID
MSC_TRADING_PARTNERS	SR_TP_ID SR_INSTANCE_ID	SOURCE_ORGANIZATION_ID SR_INSTANCE_ID
MSC_TRADING_PARTNERS	PARTNER_ID	SUPPLIER_ID
MSC_TRADING_PARTNER_SITES	PARTNER_SITE_ID	SUPPLIER_SITE_ID

### Column Descriptions

Name	Null?	Type	Description
PLAN_ID	NOT NULL	NUMBER	Plan identifier
ORGANIZATION_ID	NOT NULL	NUMBER	Organization identifier
SR_INSTANCE_ID	NOT NULL	NUMBER	Instance Id of the destination organization
INVENTORY_ITEM_ID	NOT NULL	NUMBER	Inventory item identifier
SOURCE_ORGANIZATION_ID	NULL	NUMBER	Source organization identifier
SR_INSTANCE_ID2	NULL	NUMBER	Instance id of the source organization
SUPPLIER_ID	NULL	NUMBER	Supplier identifier
SUPPLIER_SITE_ID	NULL	NUMBER	Source supplier identifier
EFFECTIVE_DATE	NULL	DATE	Effective date of this source
DISABLE_DATE	NULL	DATE	Disable date of the source
ALLOCATION_PERCENT	NULL	NUMBER	Percent allocated to the source
RANK	NULL	NUMBER	Rank of the source
SOURCE_TYPE	NULL	NUMBER	Source type
AVG_TRANSIT_LEAD_TIME	NULL	NUMBER	Intransit lead time between two organizations
CONVERSION_FACTOR	NULL	NUMBER	Conversion factor
SOURCING_RULE_ID	NULL	NUMBER	Sourcing rule or bill of distribution identifier
ASSIGNMENT_ID	NOT NULL	NUMBER	Assignment identifier
ASSIGNMENT_SET_ID	NOT NULL	NUMBER	Assignment set identifier
ASSIGNMENT_TYPE	NOT NULL	NUMBER	Sourcing assignment type
SOURCING_RULE_TYPE	NOT NULL	NUMBER	Sourcing rule type
SHIP_METHOD	NULL	VARCHAR2(30)	Ship method
HISTORICAL_ALLOC_QTY	NULL	NUMBER	Total historical allocation to supplier for item
LAST_UPDATE_DATE	NOT NULL	DATE	Standard Who column
LAST_UPDATED_BY	NOT NULL	NUMBER	Standard Who column
CREATION_DATE	NOT NULL	DATE	Standard Who column
CREATED_BY	NOT NULL	NUMBER	Standard Who column
LAST_UPDATE_LOGIN	NULL	NUMBER	Standard Who column

Oracle Proprietary, Confidential Information--Use Restricted by Contract

REQUEST_ID	NULL	NUMBER	Concurrent Who column
PROGRAM_APPLICATION_ID	NULL	NUMBER	Concurrent Who column
PROGRAM_ID	NULL	NUMBER	Concurrent Who column
PROGRAM_UPDATE_DATE	NULL	DATE	Concurrent Who column
ATTRIBUTE_CATEGORY	NULL	VARCHAR2(30)	Descriptive Flexfield structure defining column
ATTRIBUTE1	NULL	VARCHAR2(150)	Descriptive Flexfield segment
ATTRIBUTE2	NULL	VARCHAR2(150)	Descriptive Flexfield segment
ATTRIBUTE3	NULL	VARCHAR2(150)	Descriptive Flexfield segment
ATTRIBUTE4	NULL	VARCHAR2(150)	Descriptive Flexfield segment
ATTRIBUTE5	NULL	VARCHAR2(150)	Descriptive Flexfield segment
ATTRIBUTE6	NULL	VARCHAR2(150)	Descriptive Flexfield segment
ATTRIBUTE7	NULL	VARCHAR2(150)	Descriptive Flexfield segment
ATTRIBUTE8	NULL	VARCHAR2(150)	Descriptive Flexfield segment
ATTRIBUTE9	NULL	VARCHAR2(150)	Descriptive Flexfield segment
ATTRIBUTE10	NULL	VARCHAR2(150)	Descriptive Flexfield segment
ATTRIBUTE11	NULL	VARCHAR2(150)	Descriptive Flexfield segment
ATTRIBUTE12	NULL	VARCHAR2(150)	Descriptive Flexfield segment
ATTRIBUTE13	NULL	VARCHAR2(150)	Descriptive Flexfield segment
ATTRIBUTE14	NULL	VARCHAR2(150)	Descriptive Flexfield segment
ATTRIBUTE15	NULL	VARCHAR2(150)	Descriptive Flexfield segment
MIN_TRANSFER_QTY	NULL	NUMBER	Minimum transfer quantity
MAX_TRANSFER_QTY	NULL	NUMBER	Maximum transfer quantity
TRANSFER_TYPE	NULL	NUMBER	Transfer type
TRANSFER_LOT_MULTIPLE	NULL	NUMBER	Transfer lot multiple
FIXED_TRANSFER_QTY	NULL	NUMBER	Fixed transfer quantity

#### Indexes

Index Name	Index Type	Sequence	Column Name
MSC_ITEM_SOURCING_N1	NOT UNIQUE	5	PLAN_ID
		10	ORGANIZATION_ID
		15	SR_INSTANCE_ID
		20	INVENTORY_ITEM_ID
		25	SOURCE_ORGANIZATION_ID
		30	SR_INSTANCE_ID2
MSC_ITEM_SOURCING_U1	UNIQUE	5	PLAN_ID
		10	ORGANIZATION_ID
		12	SR_INSTANCE_ID
		15	INVENTORY_ITEM_ID
		20	SOURCE_ORGANIZATION_ID
		22	SR_INSTANCE_ID2
		24	SUPPLIER_ID
		28	SUPPLIER_SITE_ID
		33	EFFECTIVE_DATE
		35	SHIP_METHOD

**Oracle Proprietary, Confidential Information--Use Restricted by Contract**

## MSC\_MATERIAL\_PLANS

MSC\_MATERIAL\_PLANS is a generic table used by forms for querying data. This table is used to display material horizontal plan information in the Planner Workbench. QUERY\_ID is the query identifier used while populating the table. The QUANTITY columns contain generic data used in the PL/SQL procedure to select data. This table is also used to generate horizontal bucketed view of supply and demand in Oracle Supply Chain Hub.

### Column Descriptions

Name	Null?	Type	Description
QUERY_ID	NOT NULL	NUMBER	Query identifier
ORGANIZATION_ID	NOT NULL	NUMBER	Organization identifier
SR_INSTANCE_ID	NOT NULL	NUMBER	Source application instance identifier
PLAN_ID	NOT NULL	NUMBER	Plan identifier
PLAN_ORGANIZATION_ID	NULL	NUMBER	Planned organization identifier
PLAN_INSTANCE_ID	NULL	NUMBER	Source application instance identifier for the planned org
ORGANIZATION_CODE	NULL	VARCHAR2(7)	Planned organization code
INVENTORY_ITEM_ID	NOT NULL	NUMBER	Inventory item identifier
ITEM_SEGMENTS	NULL	VARCHAR2(255)	Describe the inventory item
HORIZONTAL_PLAN_TYPE	NULL	NUMBER	Horizontal plan type
BUCKET_TYPE	NOT NULL	NUMBER	Bucket type
BUCKET_DATE	NOT NULL	DATE	Bucket date
LAST_UPDATE_DATE	NOT NULL	DATE	Standard Who column
LAST_UPDATED_BY	NOT NULL	NUMBER	Standard Who column
CREATION_DATE	NOT NULL	DATE	Standard Who column
CREATED_BY	NOT NULL	NUMBER	Standard Who column
HORIZONTAL_PLAN_TYPE_TEXT	NULL	VARCHAR2(80)	Horizontal plan type text
QUANTITY1	NULL	NUMBER	Generic quantity column
QUANTITY2	NULL	NUMBER	Generic quantity column
QUANTITY3	NULL	NUMBER	Generic quantity column
QUANTITY4	NULL	NUMBER	Generic quantity column
QUANTITY5	NULL	NUMBER	Generic quantity column
QUANTITY6	NULL	NUMBER	Generic quantity column
QUANTITY7	NULL	NUMBER	Generic quantity column
QUANTITY8	NULL	NUMBER	Generic quantity column
QUANTITY9	NULL	NUMBER	Generic quantity column
QUANTITY10	NULL	NUMBER	Generic quantity column
QUANTITY11	NULL	NUMBER	Generic quantity column
QUANTITY12	NULL	NUMBER	Generic quantity column
QUANTITY13	NULL	NUMBER	Generic quantity column
QUANTITY14	NULL	NUMBER	Generic quantity column
QUANTITY15	NULL	NUMBER	Generic quantity column
QUANTITY16	NULL	NUMBER	Generic quantity column
QUANTITY17	NULL	NUMBER	Generic quantity column
QUANTITY18	NULL	NUMBER	Generic quantity column
QUANTITY19	NULL	NUMBER	Generic quantity column
QUANTITY20	NULL	NUMBER	Generic quantity column
QUANTITY21	NULL	NUMBER	Generic quantity column
QUANTITY22	NULL	NUMBER	Generic quantity column
QUANTITY23	NULL	NUMBER	Generic quantity column

Oracle Proprietary, Confidential Information—Use Restricted by Contract

QUANTITY24	NULL	NUMBER	Generic quantity column
QUANTITY25	NULL	NUMBER	Generic quantity column
QUANTITY26	NULL	NUMBER	Generic quantity column
QUANTITY27	NULL	NUMBER	Generic quantity column
QUANTITY28	NULL	NUMBER	Generic quantity column
QUANTITY29	NULL	NUMBER	Generic quantity column
QUANTITY30	NULL	NUMBER	Generic quantity column
QUANTITY31	NULL	NUMBER	Generic quantity column
QUANTITY32	NULL	NUMBER	Generic quantity column
QUANTITY33	NULL	NUMBER	Generic quantity column
QUANTITY34	NULL	NUMBER	Generic quantity column
QUANTITY35	NULL	NUMBER	Generic quantity column
QUANTITY36	NULL	NUMBER	Generic quantity column

*Indexes*

<u>Index Name</u>	<u>Index Type</u>	<u>Sequence</u>	<u>Column Name</u>
MSC_MATERIAL_PLANS_N1	NOT UNIQUE	1	QUERY_ID

## MSC\_PLANS

This table stores different plans, with their names, and settings in the Oracle Advanced Planning and Scheduling (APS) and Oracle Supply Chain Hub products.

### Foreign Keys

Primary Key Table	Primary Key Column	Foreign Key Column
HZ_PARTIES	PARTY_ID	ORGANIZATION_ID
MSC_ASSIGNMENT_SETS	ASSIGNMENT_SET_ID	ASSIGNMENT_SET_ID
MSC_DESIGNATORS	ORGANIZATION_ID DESIGNATOR SR_INSTANCE_ID	ORGANIZATION_ID COMPILE_DESIGNATOR SR_INSTANCE_ID
MSC_TRADING_PARTNERS	SR_TP_ID SR_INSTANCE_ID	ORGANIZATION_ID SR_INSTANCE_ID

### QuickCodes Columns

Column	QuickCodes Type	QuickCodes Table
CURR_OVERWRITE_OPTION	MRP_PLAN_OVERWRITE	MFG_LOOKUPS
	1	All
	2	Outside planning time fence
	3	None
CURR_PLAN_TYPE	MRP_PLAN_TYPE	MFG_LOOKUPS
	1	MRP
	2	MPS
	3	DRP
CURR_SCHEDULE_TYPE	MRP_SCHEDULE_TYPE	MFG_LOOKUPS
	1	MDS - master demand schedule
	2	MPS - master production schedule
OVERWRITE_OPTION	MRP_PLAN_OVERWRITE	MFG_LOOKUPS
	1	All
	2	Outside planning time fence
	3	None
PLAN_TYPE	MRP_PLAN_TYPE	MFG_LOOKUPS
	1	MRP
	2	MPS
	3	DRP
SCHEDULE_TYPE	MRP_SCHEDULE_TYPE	MFG_LOOKUPS
	1	MDS - master demand schedule
	2	MPS - master production schedule

### Column Descriptions

Name	Null?	Type	Description
PLAN_ID	NOT NULL	NUMBER	Plan identifier
COMPILE_DESIGNATOR	NOT NULL	VARCHAR2(10)	Name of the plan
SR_INSTANCE_ID	NOT NULL	NUMBER	Source instance id for the org
APPEND_PLANNED_ORDERS	NULL	NUMBER	Flag to indicate whether to create new planned orders - or just redo allocation
ASSIGNMENT_SET_ID	NULL	NUMBER	Assignment set identifier

Oracle Proprietary, Confidential Information--Use Restricted by Contract

CURR_APPEND_PLANNED_ORDERS	NOT NULL	NUMBER	Flag to indicate whether to create new planned orders - or just redo allocation
CURR_ASSIGNMENT_SET_ID	NULL	NUMBER	Current assignment set identifier
CURR_BILL_OF_RESOURCES	NULL	VARCHAR2(10)	Current value of bill of resources
CURR_CONSIDER_PO	NULL	NUMBER	Current value of consider po flag
CURR_CONSIDER_RESERVATIONS	NULL	NUMBER	Current value of consider reservations flag
CURR_CONSIDER_WIP	NULL	NUMBER	Current value of consider wip flag
CURR_CUTOFF_DATE	NOT NULL	DATE	End date of the planning horizon
CURR_DEMAND_TIME_FENCE_FLAG	NOT NULL	NUMBER	Flag to indicate whether to use the demand time fence. The Demand Time Fence is defined at the item level
CURR_HARD_PEGGING_LEVEL	NULL	NUMBER	Current value of hard pegging level
CURR_FULL_PEGGING	NULL	NUMBER	Current value of full pegging flag
CURR_INCLUDED_ITEMS	NULL	NUMBER	Complementary item to decide which item to plan. MRP(1), MRP and DRP(2), MPS(3), MRP and MPS(4), all items(5)
CURR_OPERATION_SCHEDULE_TYPE	NOT NULL	NUMBER	Lead-time offset type
CURR_OVERWRITE_OPTION	NOT NULL	NUMBER	Flag to indicate whether to overwrite existing plan. All(1), Outside planning time fence(2), None(3)
CURR_PART_INCLUDE_TYPE	NULL	NUMBER	What items to plan: all(1), MDS an MPS only(2), or MDS, MPS, and WIP components(3)
CURR_PLANNING_TIME_FENCE_FLAG	NOT NULL	NUMBER	Flag to indicate whether to use the planning time fence. The Planning Time Fence is defined at the item level
CURR_PLAN_CAPACITY_FLAG	NULL	NUMBER	Current flag to indicate whether to plan capacity requirements
CURR_PLAN_SAFETY_STOCK	NULL	NUMBER	Current value of plan safety stock flag
CURR_PLAN_TYPE	NOT NULL	NUMBER	Specify whether the plan is MRP, DRP or MPS plan
CURR_RESERVATION_LEVEL	NULL	NUMBER	Current value of reservation level
CURR_SCHEDULE_DESIGNATOR	NULL	VARCHAR2(10)	Current schedule designator code
CURR_SCHEDULE_TYPE	NULL	NUMBER	MDS(1) or MPS(2). Used for single organization. Option to schedule against only MDS or only MPS
CURR_SIMULATION_SET	NULL	VARCHAR2(10)	Current value of simulation set
CURR_SNAPSHOT_LOCK	NULL	NUMBER	Current value of the flag that determines whether the Snapshot tries to lock tables
CURR_SPLIT_DEMANDS	NULL	NUMBER	Flag to indicate whether to allow demand splitting
CURR_START_DATE	NOT NULL	DATE	Start date of the planning horizon
CUTOFF_DATE	NULL	DATE	End date of the planning horizon

**Oracle Proprietary, Confidential Information--Use Restricted by Contract**

DAILY_CUTOFF_BUCKET	NOT NULL	NUMBER	Daily end date of the planning horizon
DAILY_ITEM_AGGREGATION_LEVEL	NOT NULL	NUMBER	Daily aggregation for material in this term (should be at least as aggregated as the preceding term)
DAILY_MATERIAL_CONSTRAINTS	NOT NULL	NUMBER	Flag to indicate whether to use constraint on material availability
DAILY_RESOURCE_CONSTRAINTS	NOT NULL	NUMBER	Flag to indicate whether to use constraint on resource availability
DAILY_RES_AGGREGATION_LEVEL	NOT NULL	NUMBER	Daily aggregation for resources in this term (should be at least as aggregated as the preceding term)
DAILY_TRANS_CONSTRAINTS	NULL	NUMBER	Flag to indicate whether to use transportation constraints
DATA_COMPLETION_DATE	NULL	DATE	Data completion date
DATA_START_DATE	NULL	DATE	Data start date
DEMAND_TIME_FENCE_FLAG	NULL	NUMBER	Flag to indicate whether to use the demand time fence. The Demand Time Fence is defined at the item level
DESCRIPTION	NULL	VARCHAR2(50)	Textual description of the plan
DMD_LATENESS_PENALTY_COST	NULL	NUMBER	Demand lateness penalty cost
HARD_PEGGING_LEVEL	NULL	NUMBER	Plan level option that determines the pegging granularity of planned orders
FULL_PEGGING	NULL	NUMBER	Full pegging flag
HOURLY_CUTOFF_BUCKET	NULL	NUMBER	End date of the planning horizon in hours
INCLUDED_ITEMS	NULL	NUMBER	Complementary item to decide which item to plan. MRP(1), MRP and DRP(2), MPS(3), MRP and MPS(4), all items(5)
MIN_CUTOFF_BUCKET	NULL	NUMBER	End date of the planning horizon in minutes
MONTHLY_CUTOFF_BUCKET	NULL	NUMBER	Monthly end date of the planning horizon
OBJECTIVE_WEIGHT_1	NULL	NUMBER	Weight of the first objective
OBJECTIVE_WEIGHT_10	NULL	NUMBER	Weight of the tenth objective
OBJECTIVE_WEIGHT_2	NULL	NUMBER	Weight of the second objective
OBJECTIVE_WEIGHT_3	NULL	NUMBER	Weight of the third objective
OBJECTIVE_WEIGHT_4	NULL	NUMBER	Weight of the fourth objective
OBJECTIVE_WEIGHT_5	NULL	NUMBER	Weight of the fifth objective
OBJECTIVE_WEIGHT_6	NULL	NUMBER	Weight of the sixth objective
OBJECTIVE_WEIGHT_7	NULL	NUMBER	Weight of the seventh objective
OBJECTIVE_WEIGHT_8	NULL	NUMBER	Weight of the eighth objective
OBJECTIVE_WEIGHT_9	NULL	NUMBER	Weight of the ninth objective
OPERATION_SCHEDULE_TYPE	NULL	NUMBER	Lead-time offset type
ORGANIZATION_ID	NOT NULL	NUMBER	Organization identifier of the organization owning the plan
ORGANIZATION_SELECTION	NULL	NUMBER	Organization selection flag
OVERWRITE_OPTION	NULL	NUMBER	Flag to indicate whether to overwrite existing plan. All(1), Outside planning time fence(2), None(3)
PART_INCLUDE_TYPE	NULL	NUMBER	What items to plan: all(1), MDS an MPS only(2), or MDS, MPS, and WIP components(3)
PENALTY_COST_1	NULL	NUMBER	Penalty cost for objective 1
PENALTY_COST_10	NULL	NUMBER	Penalty cost for objective 10

**Oracle Proprietary, Confidential Information--Use Restricted by Contract**

PENALTY_COST_2	NULL	NUMBER	Penalty cost for objective 2
PENALTY_COST_3	NULL	NUMBER	Penalty cost for objective 3
PENALTY_COST_4	NULL	NUMBER	Penalty cost for objective 4
PENALTY_COST_5	NULL	NUMBER	Penalty cost for objective 5
PENALTY_COST_6	NULL	NUMBER	Penalty cost for objective 6
PENALTY_COST_7	NULL	NUMBER	Penalty cost for objective 7
PENALTY_COST_8	NULL	NUMBER	Penalty cost for objective 8
PENALTY_COST_9	NULL	NUMBER	Penalty cost for objective 9
PLANNED_REFRESHES	NULL	VARCHAR2(10)	Plan refresh flag
PLANNING_TIME_FENCE_FLAG	NULL	NUMBER	Flag to indicate whether to use the planning time fence. The Planning Time Fence is defined at the item level
PLAN_CAPACITY_FLAG	NULL	NUMBER	Current flag to indicate whether to plan capacity requirements
PLAN_COMPLETION_DATE	NULL	DATE	Plan completion date
PLAN_START_DATE	NULL	DATE	Plan start date
PLAN_TYPE	NULL	NUMBER	Specify whether the plan is MRP, DRP or MPS plan
QTRLY_CUTOFF_BUCKET	NULL	NUMBER	Quarterly end date of the planning horizon
RESERVATION_LEVEL	NULL	NUMBER	Plan level option which indicates at what level MRP will reserve supply against demand
RESOURCE_OVER_UTIL_COST	NULL	NUMBER	Resource overutilization cost
SCHEDULE_DESIGNATOR	NULL	VARCHAR2(10)	Schedule designator
SCHEDULE_TYPE	NULL	NUMBER	MDS(1) or MPS(2). Used for single organization. Option to schedule against only MDS or only MPS
SLACK_ALLOWED_FLAG_1	NULL	NUMBER	Flag to indicate whether Slack allowed for objective 1
SLACK_ALLOWED_FLAG_10	NULL	NUMBER	Flag to indicate whether Slack allowed for objective 10
SLACK_ALLOWED_FLAG_2	NULL	NUMBER	Flag to indicate whether Slack allowed for objective 2
SLACK_ALLOWED_FLAG_3	NULL	NUMBER	Flag to indicate whether Slack allowed for objective 3
SLACK_ALLOWED_FLAG_4	NULL	NUMBER	Flag to indicate whether Slack allowed for objective 4
SLACK_ALLOWED_FLAG_5	NULL	NUMBER	Flag to indicate whether Slack allowed for objective 5
SLACK_ALLOWED_FLAG_6	NULL	NUMBER	Flag to indicate whether Slack allowed for objective 6
SLACK_ALLOWED_FLAG_7	NULL	NUMBER	Flag to indicate whether Slack allowed for objective 7
SLACK_ALLOWED_FLAG_8	NULL	NUMBER	Flag to indicate whether Slack allowed for objective 8
SLACK_ALLOWED_FLAG_9	NULL	NUMBER	Flag to indicate whether Slack allowed for objective 9
SNAPSHOT_LOCK	NULL	NUMBER	Flag to determine whether the Snapshot should try to lock tables
SPLIT_DEMANDS	NULL	NUMBER	Flag to indicate whether to allow demand splitting
START_DATE	NULL	DATE	Start date of the planning horizon
SUPPLIER_CAP_OVER_UTIL_COST	NULL	NUMBER	Supplier capacity overutilization cost
WEEKLY_CUTOFF_BUCKET	NOT NULL	NUMBER	Weekly end date of the planning horizon

**Oracle Proprietary, Confidential Information--Use Restricted by Contract**

WEEKLY_ITEM_AGGREGATION_LEVEL	NOT NULL	NUMBER	Weekly aggregation for material in this term (should be at least as aggregated as the preceding term)
WEEKLY_MATERIAL_CONSTRAINTS	NOT NULL	NUMBER	Material constraints at the weekly level
WEEKLY_RESOURCE_CONSTRAINTS	NOT NULL	NUMBER	Resource constraints at the weekly level
WEEKLY_RES_AGGREGATION_LEVEL	NOT NULL	NUMBER	Weekly aggregation for resources in this term (should be at least as aggregated as the preceding term)
WEEKLY_TRANS_CONSTRAINTS	NULL	NUMBER	Transportation constraints at the weekly level
OPTIMIZE_FLAG	NOT NULL	NUMBER	Optimize flag
SCHEDULE_FLAG	NOT NULL	NUMBER	Schedule flag
ONLINE_PLANNER_START_DATE	NULL	DATE	Online Planner start date and time
ONLINE_PLANNER_COMPLETION_DATE	NULL	DATE	Online Planner completion date and time
TRANSPORT_CAP_OVER_UTIL_COST	NULL	NUMBER	The Penalty cost for transportation capacity
ENFORCE_SL_CONSTRAINTS	NULL	NUMBER	Enforce SL constraints
BILL_OF_RESOURCES	NULL	VARCHAR2(10)	Bill of resource code
SIMULATION_SET	NULL	VARCHAR2(10)	Simulation set identifier
CURR_ENFORCE_SL_CONSTRAINTS	NULL	NUMBER	Current enforce SL constraints
CONSIDER_WIP	NULL	NUMBER	Consider work in process flag
CONSIDER_PO	NULL	NUMBER	Consider purchase orders flag
PLAN_SAFETY_STOCK	NULL	NUMBER	Plan safety stock flag
CONSIDER_RESERVATIONS	NULL	NUMBER	Plan material reservations
CURR_ENFORCE_DEM_DUE_DATES	NOT NULL	NUMBER	Current value of enforce demand due dates
ENFORCE_DEM_DUE_DATES	NULL	NUMBER	Enforce demand due dates
PLANNED_RESOURCES	NULL	NUMBER	Planned resources flag
CURR_PLANNED_RESOURCES	NOT NULL	NUMBER	Current value of planned resource flag
DEM_PRIORITY_RULE_ID	NULL	NUMBER	Demand priority rule identifier
CURR_DEM_PRIORITY_RULE_ID	NULL	NUMBER	Current value of demand priority rule identifier
DAILY_RTG_AGGREGATION_LEVEL	NOT NULL	NUMBER	Daily aggregation for routings
WEEKLY_RTG_AGGREGATION_LEVEL	NOT NULL	NUMBER	Weekly aggregation for routings
PERIOD_RTG_AGGREGATION_LEVEL	NULL	NUMBER	Period aggregation for routings
PERIOD_CUTOFF_BUCKET	NOT NULL	NUMBER	Period cutoff bucket
LOT_FOR_LOT_FLAG	NULL	NUMBER	Lot for lot flag
ENFORCE_CAP_CONSTRAINTS	NULL	NUMBER	Enforce cap constraints flag
CURR_ENFORCE_CAP_CONSTRAINTS	NULL	NUMBER	Current enforce cap constraints
SERVICE_LEVEL	NULL	NUMBER	Service level
BOTTLENECK_RES_GROUP	NULL	VARCHAR2(10)	Bottleneck resource group
CURR_BOTTLENECK_RES_GROUP	NULL	VARCHAR2(30)	Current value of bottleneck resource group
PERIOD_MATERIAL_CONSTRAINTS	NOT NULL	NUMBER	Material constraints at the period level
PERIOD_RESOURCE_CONSTRAINTS	NOT NULL	NUMBER	Period aggregation for resources in this term (should be at least as aggregated as the preceding term)
PERIOD_TRANS_CONSTRAINTS	NULL	NUMBER	Transportation constraints at the period level
PERIOD_ITEM_AGGREGATION_LEVEL	NOT NULL	NUMBER	Period aggregation for material in this term (should be at least as aggregated as the preceding term)

Oracle Proprietary, Confidential Information--Use Restricted by Contract

PERIOD_RES_AGGREGATION_LEVEL	NOT NULL	NUMBER	Period aggregation for resources in this term (should be at least as aggregated as the preceding term)
LAST_UPDATE_DATE	NOT NULL	DATE	Standard Who column
LAST_UPDATED_BY	NOT NULL	NUMBER	Standard Who column
CREATION_DATE	NOT NULL	DATE	Standard Who column
LOT_FOR_LOT		NUMBER(1)	Lot for lot flag
CREATED_BY	NOT NULL	NUMBER	Standard Who column
LAST_UPDATE_LOGIN		NUMBER	Standard Who column
ATTRIBUTE1		VARCHAR2(150)	Descriptive Flexfield segment
ATTRIBUTE2		VARCHAR2(150)	Descriptive Flexfield segment
ATTRIBUTE3		VARCHAR2(150)	Descriptive Flexfield segment
ATTRIBUTE4		VARCHAR2(150)	Descriptive Flexfield segment
ATTRIBUTE5		VARCHAR2(150)	Descriptive Flexfield segment
ATTRIBUTE6		VARCHAR2(150)	Descriptive Flexfield segment
ATTRIBUTE7		VARCHAR2(150)	Descriptive Flexfield segment
ATTRIBUTE8		VARCHAR2(150)	Descriptive Flexfield segment
ATTRIBUTE9		VARCHAR2(150)	Descriptive Flexfield segment
ATTRIBUTE10		VARCHAR2(150)	Descriptive Flexfield segment
ATTRIBUTE11		VARCHAR2(150)	Descriptive Flexfield segment
ATTRIBUTE12		VARCHAR2(150)	Descriptive Flexfield segment
ATTRIBUTE13		VARCHAR2(150)	Descriptive Flexfield segment
ATTRIBUTE14		VARCHAR2(150)	Descriptive Flexfield segment
ATTRIBUTE15		VARCHAR2(150)	Descriptive Flexfield segment
ATTRIBUTE_CATEGORY		VARCHAR2(30)	Descriptive Flexfield structure defining column
REQUEST_ID		NUMBER	Concurrent Who column
PROGRAM_APPLICATION_ID		NUMBER	Concurrent Who column
PROGRAM_ID		NUMBER	Concurrent Who column
PROGRAM_UPDATE_DATE		DATE	Concurrent Who column
MIN_WF_EXCEPT_ID		NUMBER	Minimum workflow exception identifier
MAX_WF_EXCEPT_ID		NUMBER	Maximum workflow exception identifier
ONLINE_REPLAN		NUMBER	Online replan
REFRESH_NUMBER		NUMBER	Refresh number
REVISION		VARCHAR2(30)	Revision
PARENT_PLAN_ID		NUMBER	Parent plan identifier
STATUS		NUMBER	Status
PRODUCTION_FLAG		NUMBER	Production flag
COMPANY_AGG_LEVEL		NUMBER	Company Aggregation level
TP_AGG_LEVEL		NUMBER	Trading partner aggregation level
PRODUCT_AGG_LEVEL		NUMBER	Product aggregation level
PURGE		NUMBER	Purge
MSC_PLANS_PARTY_ID	NOT NULL	NUMBER(15)	

#### Indexes

Index Name	Index Type	Sequence	Column Name
MSC_PLANS_U1	UNIQUE	5	PLAN_ID
MSC_PLANS_U2	UNIQUE	5	ORGANIZATION_ID
		10	COMPILE DESIGNATOR
		15	SR_INSTANCE_ID

**Oracle Proprietary, Confidential Information--Use Restricted by Contract**

## MSC\_PLAN\_ORGANIZATIONS

This table stores the parameters relative to organizations that participate to the plan in Oracle Advanced Planning and Scheduling (APS). This table also contains the different companies which are collaborating in a supply or demand plan in Oracle Supply Chain Hub.

### Foreign Keys

Primary Key Table	Primary Key Column	Foreign Key Column
MSC_PARAMETERS	ORGANIZATION_ID SR_INSTANCE_ID	ORGANIZATION_ID SR_INSTANCE_ID
MSC_PLANS	PLAN_ID	PLAN_ID

### Column Descriptions

Name	Null?	Type	Description
PLAN_ID	NOT NULL	NUMBER	Plan identifier
ORGANIZATION_ID	NOT NULL	NUMBER	Organization identifier
SR_INSTANCE_ID (PK)	NOT NULL	NUMBER	Source instance identifier for the org
ORGANIZATION_CODE	NOT NULL	VARCHAR2(7)	Organization code
NET_WIP	NOT NULL	NUMBER	Flag to indicate whether to allow netting from WIP
NET_RESERVATIONS	NOT NULL	NUMBER	Flag to indicate whether to allow netting from reservations
NET_PURCHASING	NOT NULL	NUMBER	Flag to indicate whether to allow netting from purchase orders
PLAN_SAFETY_STOCK	NOT NULL	NUMBER	Flag to indicate whether to allow netting from safety stock
SIMULATION_SET	NULL	VARCHAR2(10)	Simulation set identifier
BILL_OF_RESOURCES	NULL	VARCHAR2(10)	Bill of resource name
PLAN_LEVEL	NOT NULL	NUMBER	Plan level
ORGANIZATION_DESCRIPTION	NULL	VARCHAR2(250)	Description of the organization
LAST_UPDATE_DATE	NOT NULL	DATE	Standard Who column
LAST_UPDATED_BY	NOT NULL	NUMBER	Standard Who column
CREATION_DATE	NOT NULL	DATE	Standard Who column
CREATED_BY	NOT NULL	NUMBER	Standard Who column
LAST_UPDATE_LOGIN	NULL	NUMBER	Standard Who column
REQUEST_ID	NULL	NUMBER	Concurrent Who column
PROGRAM_APPLICATION_ID	NULL	NUMBER	Concurrent Who column
PROGRAM_ID	NULL	NUMBER	Concurrent Who column
PROGRAM_UPDATE_DATE	NULL	DATE	Concurrent Who column
ATTRIBUTE_CATEGORY	NULL	VARCHAR2(30)	Descriptive Flexfield structure defining column
ATTRIBUTE1	NULL	VARCHAR2(150)	Descriptive Flexfield segment
ATTRIBUTE2	NULL	VARCHAR2(150)	Descriptive Flexfield segment
ATTRIBUTE3	NULL	VARCHAR2(150)	Descriptive Flexfield segment
ATTRIBUTE4	NULL	VARCHAR2(150)	Descriptive Flexfield segment
ATTRIBUTE5	NULL	VARCHAR2(150)	Descriptive Flexfield segment
ATTRIBUTE6	NULL	VARCHAR2(150)	Descriptive Flexfield segment
ATTRIBUTE7	NULL	VARCHAR2(150)	Descriptive Flexfield segment
ATTRIBUTE8	NULL	VARCHAR2(150)	Descriptive Flexfield segment
ATTRIBUTE9	NULL	VARCHAR2(150)	Descriptive Flexfield segment
ATTRIBUTE10	NULL	VARCHAR2(150)	Descriptive Flexfield segment
ATTRIBUTE11	NULL	VARCHAR2(150)	Descriptive Flexfield segment

Oracle Proprietary, Confidential Information—Use Restricted by Contract

ATTRIBUTE12	NULL	VARCHAR2(150)	Descriptive Flexfield segment
ATTRIBUTE13	NULL	VARCHAR2(150)	Descriptive Flexfield segment
ATTRIBUTE14	NULL	VARCHAR2(150)	Descriptive Flexfield segment
ATTRIBUTE15	NULL	VARCHAR2(150)	Descriptive Flexfield segment
COLLAB_ROLE	NULL	NUMBER	Collaboration Role
CONTACT	NULL	VARCHAR2(240)	Collaboration contact
CALENDAR_CODE	NULL	NUMBER	Calendar code used by exchange
INCLUDE_SALESORDER	NULL	NUMBER	Include sales order
PLAN_COMPLETION_DATE	NULL	DATE	Plan completion date for exchange plans

*Indexes*

<u>Index Name</u>	<u>Index Type</u>	<u>Sequence</u>	<u>Column Name</u>
MSC_PLAN_ORGANIZATIONS_U1	UNIQUE	5	PLAN_ID
		10	ORGANIZATION_ID
		15	SR_INSTANCE_ID

## MSC\_PLAN\_ORG\_KPIS

This table maintains the key performance indicators and the thresholds required for generating exceptions for a plan. This table is populated at the time of plan creation during the invitation process and by the supply chain intelligence APIs. The key performance metrics are exception count and resolution latency (i.e., the time taken to resolve the exceptions). The thresholds for supply planning and demand planning are also stored in this table if the plan is used for Demand Planning or Supply Planning. This table is queried while viewing the plan parameters and by the supply chain intelligence views.

### Foreign Keys

Primary Key Table	Primary Key Column	Foreign Key Column
MSC_PLAN_ORGANIZATIONS	ORGANIZATION_ID PLAN_ID SR_INSTANCE_ID	ORGANIZATION_ID PLAN_ID SR_INSTANCE_ID

### Column Descriptions

Name	Null?	Type	Description
PLAN_ID	NOT NULL	NUMBER	Contains the plan identifier
ORGANIZATION_ID	NOT NULL	NUMBER	Stores the owning organization of the plan
SR_INSTANCE_ID	NOT NULL	NUMBER	Contains the source instance identifier, currently defaulted to -1
KPI_ID	NOT NULL	NUMBER	Contains the code of the key performance indicator or threshold
KPI_VALUE	NOT NULL	NUMBER	Contains the KPI or threshold value depending on the KPI_ID

## MSC\_PLAN\_ORG\_STATUS

This table contains the history of the statuses for each organization in the plan. The statuses are maintained to let the collaborating organization know how to respond depending on their current status. The plan status history is also maintained under the dummy organization id of -1. Records are inserted into this table during the plan invitation process, loads, netting runs and plan closure. The parties in the plan receive notifications each time their status gets updated explaining what event caused the status to change and how they must respond to it. The statuses of the collaborating plans and the plan can be viewed in the View Plans user interface of supply chain hub.

### Foreign Keys

Primary Key Table	Primary Key Column	Foreign Key Column
MSC_PLAN_ORGANIZATIONS	ORGANIZATION_ID PLAN_ID SR_INSTANCE_ID	ORGANIZATION_ID PLAN_ID SR_INSTANCE_ID

### Column Descriptions

Name	Null?	Type	Description
PLAN_ID	NOT NULL	NUMBER	Contains the plan identifier
ORGANIZATION_ID	NOT NULL	NUMBER	Contains the party identifier
SR_INSTANCE_ID	NOT NULL	NUMBER	Contains the source instance identifier, currently defaulted to -1
STATUS	NOT NULL	NUMBER	Contains the status code of the organization in the plan
STATUS_DATE	NOT NULL	DATE	Contains the date the record was inserted.

### Indexes

Index Name	Index Type	Sequence	Column Name
MSC_PLAN_ORG_STATUS_N1	NOT UNIQUE	5 10 15 20	PLAN_ID ORGANIZATION_ID SR_INSTANCE_ID STATUS_DATE

## MSC\_PLAN\_SCHEDULES

This table stores master production schedules and master demand schedules for the planning process in an organization. This table is also used to store the input production schedule name for In line vehicle sequencing (ILVS) on Oracle Supply Chain Hub.

### Foreign Keys

Primary Key Table	Primary Key Column	Foreign Key Column
MSC_DESIGNATORS	DESIGNATOR_ID	INPUT_SCHEDULE_ID
MSC_PLAN_ORGANIZATIONS	ORGANIZATION_ID	ORGANIZATION_ID
	PLAN_ID	PLAN_ID
	SR_INSTANCE_ID	SR_INSTANCE_ID

### Column Descriptions

Name	Null?	Type	Description
PLAN_ID	NOT NULL	NUMBER	Plan identifier
ORGANIZATION_ID	NOT NULL	NUMBER	Organization identifier
INPUT_SCHEDULE_ID	NOT NULL	NUMBER	Input schedule identifier
SR_INSTANCE_ID (PK)	NOT NULL	NUMBER	Source application instance identifier
INPUT_TYPE	NOT NULL	NUMBER	Schedule type. MDS or MPS
LAST_UPDATE_DATE	NOT NULL	DATE	Standard Who column
LAST_UPDATED_BY	NOT NULL	NUMBER	Standard Who column
CREATION_DATE	NOT NULL	DATE	Standard Who column
CREATED_BY	NOT NULL	NUMBER	Standard Who column
LAST_UPDATE_LOGIN	NULL	NUMBER	Standard Who column
REQUEST_ID	NULL	NUMBER	Concurrent Who column
PROGRAM_APPLICATION_ID	NULL	NUMBER	Concurrent Who column
PROGRAM_ID	NULL	NUMBER	Concurrent Who column
PROGRAM_UPDATE_DATE	NULL	DATE	Concurrent Who column
ATTRIBUTE_CATEGORY	NULL	VARCHAR2(30)	Descriptive Flexfield structure defining column
ATTRIBUTE1	NULL	VARCHAR2(150)	Descriptive Flexfield segment
ATTRIBUTE2	NULL	VARCHAR2(150)	Descriptive Flexfield segment
ATTRIBUTE3	NULL	VARCHAR2(150)	Descriptive Flexfield segment
ATTRIBUTE4	NULL	VARCHAR2(150)	Descriptive Flexfield segment
ATTRIBUTE5	NULL	VARCHAR2(150)	Descriptive Flexfield segment
ATTRIBUTE6	NULL	VARCHAR2(150)	Descriptive Flexfield segment
ATTRIBUTE7	NULL	VARCHAR2(150)	Descriptive Flexfield segment
ATTRIBUTE8	NULL	VARCHAR2(150)	Descriptive Flexfield segment
ATTRIBUTE9	NULL	VARCHAR2(150)	Descriptive Flexfield segment
ATTRIBUTE10	NULL	VARCHAR2(150)	Descriptive Flexfield segment
ATTRIBUTE11	NULL	VARCHAR2(150)	Descriptive Flexfield segment
ATTRIBUTE12	NULL	VARCHAR2(150)	Descriptive Flexfield segment
ATTRIBUTE13	NULL	VARCHAR2(150)	Descriptive Flexfield segment
ATTRIBUTE14	NULL	VARCHAR2(150)	Descriptive Flexfield segment
ATTRIBUTE15	NULL	VARCHAR2(150)	Descriptive Flexfield segment
DESIGNATOR_TYPE	NOT NULL	NUMBER	Designator type
INTERPLANT_DEMAND_FLAG	NULL	NUMBER	Interplant demand flag
SCENARIO_SET	NULL	NUMBER	Scenario Set
PROBABILITY	NULL	NUMBER	Probability

*Indexes*

<u>Index Name</u>	<u>Index Type</u>	<u>Sequence</u>	<u>Column Name</u>
MSC_PLAN_SCHEDULES_U1	UNIQUE	5	PLAN_ID
		10	ORGANIZATION_ID
		15	SR_INSTANCE_ID
		20	INPUT_SCHEDULE_ID

**Oracle Proprietary, Confidential Information--Use Restricted by Contract**

## MSC\_SUPDEM\_HDRS\_INTERFACE

This is a staging table for incoming data on the exchange. The records in the table contain the header information sent in the uploaded files. The load API validates the header information before it begins processing the line information stored in MSC\_SUPDEM\_LINES\_INTERFACE.

### Column Descriptions

Name	Null?	Type	Description
PLAN_NAME	NULL	VARCHAR2(240)	Contains the plan name for which the data is being posted
ORDER_TYPE	NULL	VARCHAR2(100)	This is not used because this information is sent at the line level
SYNC_INDICATOR	NULL	VARCHAR2(1)	Contains the sync indicator which is used by the load API
HORIZON_START_DATE	NULL	VARCHAR2(40)	Contains the start date of the planning horizon
HORIZON_END_DATE	NULL	VARCHAR2(40)	Contains the end date of the planning horizon
PLAN_DESCRIPTION	NULL	VARCHAR2(240)	Contains the plan description
PUBLISHER_SITE_ID	NULL	VARCHAR2(20)	Contains the party identifier of the company posting the data
DOCUMENT_CREATION_DATE	NULL	VARCHAR2(40)	Contains the date the uploaded document was created
HEADER_ID	NOT NULL	NUMBER	Contains the header identifier of the record. It is generated by the sequence MSC_SUPDEM_HEADERS_S
ROW_STATUS	NULL	NUMBER	Contains the status after the load API has validated the record
ERR_MSG	NULL	VARCHAR2(1000)	Contains the error message string if the record fails validation
CREATION_DATE	NOT NULL	DATE	Contains the date the record was created
CREATED_BY	NOT NULL	NUMBER	Contains the user identifier of person who uploaded the document
LAST_UPDATE_DATE	NOT NULL	DATE	Contains the date the record was last updated
LAST_UPDATED_BY	NOT NULL	NUMBER	Contains the user identifier of the person who last updated the record
LAST_UPDATE_LOGIN	NULL	NUMBER	Not currently used, defaulted to -1
STATUS	NULL	VARCHAR2(240)	Not currently used, but would contain the file status for future use

### Indexes

Index Name	Index Type	Sequence	Column Name
MSC_SUPDEM_HDRS_INTERFACE_N1	NOT UNIQUE	5	HEADER_ID

## MSC\_SUPDEM\_LINES\_INTERFACE

This is a staging table for the line level information in the uploaded document. Multiple lines may belong to a single header. PARENT\_HEADER\_ID column contains the link between this table and MSC\_SUPDEM\_HDRS\_INTERFACE. If the header information is successfully validated the lines are processed, and are moved to MSC\_SUP\_DEM\_ENTRIES if they are validated successfully.

### Column Descriptions

Name	Null?	Type	Description
PARENT_HEADER_ID	NULL	NUMBER	Contains the header id to which the line is associated
LINE_ID	NULL	NUMBER	Contains the line identifier generated by the sequence MSC_SUPDEM_LINES_S
QUANTITY	NULL	NUMBER	Contains the quantity information
UOM	NULL	VARCHAR2(30)	Contains the UOM code
START_DATE	NULL	VARCHAR2(40)	Contains the start date of the uploaded data
END_DATE	NULL	VARCHAR2(40)	Contains the end date of uploaded data
ITEM_NAME	NULL	VARCHAR2(240)	Contains the publisher's item name
PUBLISHER_SITE_ID	NULL	VARCHAR2(20)	Contains the publisher's party identifier on the exchange
SUBSCRIBERS_XREF_NAME	NULL	VARCHAR2(240)	Contains the subscriber's cross reference name
BUCKET_TYPE	NULL	VARCHAR2(20)	Contains the bucket type information
ORDER_IDENTIFIER	NULL	VARCHAR2(240)	Stores the order number of the incoming record
PEGGING_ORDER_IDENTIFIER	NULL	VARCHAR2(240)	Stores the pegged order number
LINE_NUMBER	NULL	VARCHAR2(20)	Contains the line number of the record in the uploaded document
ROW_STATUS	NULL	NUMBER	Contains the status after the load API has validated the record
ERR_MSG	NULL	VARCHAR2(1000)	Contains the error message string if the record fails validation
CREATION_DATE	NOT NULL	DATE	Contains the date the record was created
CREATED_BY	NOT NULL	NUMBER	Contains the user identifier of person who created the record
LAST_UPDATE_DATE	NOT NULL	DATE	Contains the date the record was last updated
LAST_UPDATED_BY	NOT NULL	NUMBER	Contains the user identifier of the person who last updated the record
LAST_UPDATE_LOGIN	NULL	NUMBER	Not currently used defaulted to -1
ORDER_TYPE	NULL	VARCHAR2(240)	Contains the order type of the posted data
COMMENTS	NULL	VARCHAR2(1000)	Contains the comments string
NEW_DOCK_DATE	NULL	VARCHAR2(40)	Contains the date on which the order was received

Oracle Proprietary, Confidential Information--Use Restricted by Contract

NEW_SHIP_DATE	NULL	VARCHAR2(40)	Contains the date the item was shipped
NEW_ORDER_PLACEMENT_DATE	NULL	VARCHAR2(40)	Contains the date the order was created on the exchange
RELEASE_NUMBER	NULL	VARCHAR2(20)	Contains the release number of the order identifier
REF_LINE_NUMBER	NULL	VARCHAR2(20)	Contains the order line number of the pegged order
REF_RELEASE_NUMBER	NULL	VARCHAR2(20)	Contains the release number of the pegged order
PUBLISHER_ADDRESS	NULL	VARCHAR2(240)	Contains the publisher's address
SUBSCRIBER_ADDRESS	NULL	VARCHAR2(240)	Contains the subscriber's address
SHIP_TO_PARTY_NAME	NULL	VARCHAR2(255)	Contains the party's name to whom the shipment is billed
SHIP_TO_PARTY_ADDRESS	NULL	VARCHAR2(240)	Contains the address of the ship to party
SHIP_TO_ADDRESS	NULL	VARCHAR2(240)	Contains the address where the shipment is sent out
SHIP_FROM_PARTY_NAME	NULL	VARCHAR2(255)	Contains the name of the party that sends out the shipment
SHIP_FROM_PARTY_ADDRESS	NULL	VARCHAR2(240)	Contains the sending party's address
CARRIER_CODE	NULL	VARCHAR2(30)	Contains the carrier code
BILL_OF_LADING_NUMBER	NULL	VARCHAR2(30)	Contains the bill of lading number
TRACKING_NUMBER	NULL	VARCHAR2(30)	Contains the order tracking number
VEHICLE_NUMBER	NULL	VARCHAR2(30)	Contains the vehicle number
CONTAINER_TYPE	NULL	VARCHAR2(20)	Contains the container type
CONTAINER_QTY	NULL	NUMBER	Holds the container quantity
END_ORDER_PUBLISHER_NAME	NULL	VARCHAR2(255)	Contains the end customer's name
END_ORDER_TYPE	NULL	VARCHAR2(240)	Contains the order type of the pegged order

#### Indexes

<u>Index Name</u>	<u>Index Type</u>	<u>Sequence</u>	<u>Column Name</u>
MSC_SUPDEM_LINES_INTERFACE_N1	NOT UNIQUE	5 10	PARENT_HEADER_ID LINE_ID

---

## MSC\_SUP\_DEM\_ENTRIES

MSC\_SUP\_DEM\_ENTRIES holds all the demands and supplies posted to the exchange.

The data in MSC\_SUP\_DEM\_ENTRIES consists of exchange plan specific data such as forecasts, supplier capacity, production sequence etc. Such data is stored under a specific plan identifier which is defined between collaborating parties on the exchange.

In addition order visibility data comprising of purchase orders, sales orders, and shipments is stored in this table under plan identifier Global.

The set of order types in this table is confined to the list included in the lookup type 'MSC\_X\_ORDER\_TYPE'.

The data in MSC\_SUP\_DEM\_ENTRIES can be loaded thru Excel files, XML files or manually from the Supply Chain Exchange user interface. Incoming data is validated by an API before records are inserted.

All data loaded in the table are used by the Supply chain hub event management engines to generate exceptions and notifications. In addition, the data in MSC\_SUP\_DEM\_ENTRIES can be viewed from the vertical and horizontal view user interfaces of Supply Chain Hub.

Some of the important columns and their descriptions are shown below PUBLISHER\_ORG\_ID contains the party identifier of the party that posted the data.

SUBSCRIBER\_ORG\_ID contains the party identifier of the party for whom the incoming data is intended. For example if company A posted forecasts for items that company B supplies, then the party identifier of B is stored in the SUBSCRIBER\_ORG\_ID column. Similarly when company B posts supplier capacity for an item required by company A, the party identifier of company A is stored in SUBSCRIBER\_ORG\_ID.

INVENTORY\_ITEM\_ID contains the exchange item identifier. This identifier is generated when a company sets up its items on the exchange. The item name and the identifier and other item specific information is stored in ICX\_POR\_ITEMS.

The information stored in START\_DATE depends on the order type. START\_DATE stores the need by date for purchase orders, expected delivery date for sales orders, ship date for advanced shipment notices,

**Oracle Proprietary, Confidential Information--Use Restricted by Contract**

the date onhands were posted, and the date on which any planning related data posted on the exchange becomes valid. Supply chain netting engine looks at the start\_date for the generation of supply & demand exceptions.

NEW\_SHIP\_DATE contains the date the item was shipped.

ORDER\_PLACEMENT\_DATE contains the date the order was created on the exchange.

NEW DOCK\_DATE contains the date on which the order was received.

QUANTITY stores the quantity information for each record. It is always a positive number.

PUBLISHER\_ORDER\_TYPE contains the lookup code of the order type posted by the publisher. The lookup code belongs to the lookup type 'MSC\_X\_ORDER\_TYPE'.

ORDER\_NUMBER contains the purchase order, sales order or advanced shipment notice number.

RELEASE\_NUMBER contains the release number of the order.

LINE\_NUMBER contains the line number of the record in the order.

END\_ORDER\_NUMBER contains the order number of the pegged order.

END\_RELEASE\_NUMBER contains the release number of the pegged order.

END\_LINE\_NUMBER contains the line number of the pegged order.

*Foreign Keys*

<u>Primary Key Table</u>	<u>Primary Key Column</u>	<u>Foreign Key Column</u>
ICX_POR_ITEMS	RT_ITEM_ID	INVENTORY_ITEM_ID
MSC_PLANS	PLAN_ID	PLAN_ID

*Column Descriptions*

<u>Name</u>	<u>Null?</u>	<u>Type</u>	<u>Description</u>
TRANSACTION_ID (PK)	NOT NULL	NUMBER	Generated by the sequence MSC_SUP_DEM_ENTRIES_S
PLAN_ID (PK)	NOT NULL	NUMBER	Plan identifier obtained from MSC_PLANS

SR_INSTANCE_ID	NOT NULL	NUMBER	This column contains the source instance identifier. It is populated with the default value of -1
PUBLISHER_ORG_ID	NOT NULL	NUMBER	Contains the party identifier of the party that posted the data
SUBSCRIBER_ORG_ID	NOT NULL	NUMBER	Contains the party identifier of the party for whom the incoming data is intended
INVENTORY_ITEM_ID	NOT NULL	NUMBER	INVENTORY_ITEM_ID contains the exchange item identifier
ASSEMBLY_ITEM_ID	NULL	NUMBER	Contains the assembly item identifier for which the item is intended
CATEGORY_ID	NULL	NUMBER	Contains the genus category to which the item belongs
START_DATE	NOT NULL	DATE	Stores the need by date for purchase orders, expected delivery date for sales orders, ship date for advanced shipment notices, the date onhand quantities are posted, and the start date for planning related data
END_DATE	NULL	DATE	No longer used
BUCKET_TYPE	NULL	NUMBER	Contains the bucket type information
NEW_DOCK_DATE	NULL	DATE	Contains the date on which the order was received.
QUANTITY	NOT NULL	NUMBER	Contains the quantity information. Since the only UOM currently supported is EACH. This is the absolute quantity.
PUBLISHER_ORDER_TYPE	NULL	NUMBER	Contains the order type posted by the publisher
SUBSCRIBER_ORDER_TYPE	NULL	NUMBER	This is the order type the subscriber has to post data in response to this record.
LINE_CODE	NULL	VARCHAR2(30)	Contains the line feed information.
PRODUCTION_SEQUENCE	NULL	VARCHAR2(30)	Contains the production sequence number
COMMENTS	NULL	VARCHAR2(1000)	Stores the string of comments pertaining to the record
SEQ_PLAN_COMPLETION_FLAG	NULL	VARCHAR2(1)	This is the production sequence plan completion flag. The default value is 'N'.
INPUT_PLAN_ID	NULL	NUMBER	Contains the plan identifier of the input plan
ORDER_NUMBER	NULL	VARCHAR2(240)	Stores the PO/SO/ASN number
END_ORDER_NUMBER	NULL	VARCHAR2(240)	Stores the pegged order number
LAST_REFRESH_NUMBER	NULL	NUMBER	Contains the refresh number generated by MSC_CL_REFRESH_S
LAST_UPDATE_DATE	NOT NULL	DATE	Stores the date the record was last updated
LAST_UPDATED_BY	NOT NULL	NUMBER	Contains the user identifier of the person who updated the record last
CREATION_DATE	NOT NULL	DATE	Contains the creation date of the record
CREATED_BY	NOT NULL	NUMBER	Contains the user identifier of the person who created the record
LAST_UPDATE_LOGIN	NULL	NUMBER	Not currently used.

**Oracle Proprietary, Confidential Information--Use Restricted by Contract**

ATTRIBUTE1	NULL	VARCHAR2(150)	Decriptive Flexfield segment
ATTRIBUTE2	NULL	VARCHAR2(150)	Decriptive Flexfield segment
ATTRIBUTE3	NULL	VARCHAR2(150)	Decriptive Flexfield segment
ATTRIBUTE4	NULL	VARCHAR2(150)	Decriptive Flexfield segment
ATTRIBUTE5	NULL	VARCHAR2(150)	Decriptive Flexfield segment
ATTRIBUTE6	NULL	VARCHAR2(150)	Decriptive Flexfield segment
ATTRIBUTE7	NULL	VARCHAR2(150)	Decriptive Flexfield segment
ATTRIBUTE8	NULL	VARCHAR2(150)	Decriptive Flexfield segment
ATTRIBUTE9	NULL	VARCHAR2(150)	Decriptive Flexfield segment
ATTRIBUTE10	NULL	VARCHAR2(150)	Decriptive Flexfield segment
ATTRIBUTE11	NULL	VARCHAR2(150)	Decriptive Flexfield segment
ATTRIBUTE12	NULL	VARCHAR2(150)	Decriptive Flexfield segment
ATTRIBUTE13	NULL	VARCHAR2(150)	Decriptive Flexfield segment
ATTRIBUTE14	NULL	VARCHAR2(150)	Decriptive Flexfield segment
ATTRIBUTE15	NULL	VARCHAR2(150)	Decriptive Flexfield segment
REQUEST_ID	NULL	NUMBER	Request identifier
PROGRAM_ID	NULL	NUMBER	Program identifier
PROGRAM_APPLICATION_ID	NULL	NUMBER	Program application identifier
PROGRAM_UPDATE_DATE	NULL	DATE	Program update date
EXCHANGE_ITEM_ID	NULL	NUMBER	Not currently used
END_ASSEMBLY_ITEM_NAME	NULL	VARCHAR2(240)	Contains the end assembly name for which the item is used for
POSTING_PARTY_ID	NULL	NUMBER	Contains the posting party Identifier. It defaults to the PUBLISHER_ORG_ID
NEW_SHIP_DATE	NULL	DATE	Contains the date the item was shipped
NEW_ORDER_PLACEMENT_DATE	NULL	DATE	Contains the date the order was created on the exchange
ORDER_LINE_NUMBER	NULL	VARCHAR2(20)	Contains the Purchase order or Sales order line number
END_ORDER_LINE_NUMBER	NULL	VARCHAR2(240)	Contains the line number of the pegged order
ORDER_REL_NUMBER	NULL	VARCHAR2(20)	Contains the release number of the incoming order
END_ORDER_REL_NUMBER	NULL	VARCHAR2(20)	Contains the release number of the pegged order
PUBLISHER_ADDRESS_ID	NULL	NUMBER	Contains the publisher's address identifier
SUBSCRIBER_ADDRESS_ID	NULL	NUMBER	Contains the subscriber's address identifier
SHIP_TO_PARTY_ID	NULL	NUMBER	Contains the party identifier of the ship to party
SHIP_TO_PARTY_ADDRESS_ID	NULL	NUMBER	Contains the ship to party's address identifier
SHIP_TO_ADDRESS	NULL	VARCHAR2(240)	Holds the ship to party's address
SHIP_FROM_PARTY_ID	NULL	NUMBER	Contains the ship from party's identifier
SHIP_FROM_PARTY_ADDRESS_ID	NULL	NUMBER	Contains the ship from party's address identifier
CARRIER_CODE	NULL	VARCHAR2(30)	Contains the carrier code
VEHICLE_NUMBER	NULL	VARCHAR2(30)	Contains the vehicle number
CONTAINER_TYPE	NULL	VARCHAR2(20)	Contains the container type
CONTAINER_QTY	NULL	NUMBER	Contains the quantity sent in the container
TRACKING_NUMBER	NULL	VARCHAR2(30)	Stores the tracking number of the shipment
BILL_OF_LADING_NUMBER	NULL	VARCHAR2(30)	Contains the bill of lading number

END_ORDER_PUBLISHER_ID	NULL NUMBER	Contains the pegged order's publisher Identifier
END_ORDER_TYPE	NULL NUMBER	Holds the order type of the pegged order

*Indexes*

Index Name	Index Type	Sequence	Column Name
MSC_SUP_DEM_ENTRIES_N1	NOT UNIQUE	1	SR_INSTANCE_ID
		2	PUBLISHER_ORG_ID
		3	PLAN_ID
		4	START_DATE
		5	END_DATE
MSC_SUP_DEM_ENTRIES_N2	NOT UNIQUE	2	SR_INSTANCE_ID
		10	PUBLISHER_ORG_ID
		15	PUBLISHER_ORDER_TYPE
MSC_SUP_DEM_ENTRIES_N3	NOT UNIQUE	2	INVENTORY_ITEM_ID
MSC_SUP_DEM_ENTRIES_N4	NOT UNIQUE	5	SUBSCRIBER_ORG_ID
MSC_SUP_DEM_ENTRIES_U1	UNIQUE	5	TRANSACTION_ID
		10	PLAN_ID

## MSC\_WORKBENCH\_DISPLAY\_OPTIONS

MSC\_WORKBENCH\_DISPLAY\_OPTIONS is a table that stores the user display preferences for the Planner Workbench. This table has a row for every user who has defined and saved the display preferences from the Preferences window of the Planner Workbench. The summary columns control the display of various row types in the Horizontal Plan window of the Planner Workbench. The orders column filter the order types in the Supply, Demand, and Supply/Demand windows. This table also stores the user preferences for display in the horizontal bucketed view for supply and demand planning on the Oracle Supply Chain Hub user interface.

### QuickCodes Columns

Column	QuickCodes Type	QuickCodes Table
GROUP_BY_CODE	MRP_PO_GROUP_BY	MFG_LOOKUPS
	1	All
	2	Item
	3	Buyer
	4	Planner
	5	Vendor
	6	One each
ORDERS_DEFAULT_JOB_STATUS	WIP_JOB_STATUS	MFG_LOOKUPS
	1	Unreleased
	10	Pending Routing Load
	11	Failed Routing Load
	12	Closed
	13	Pending - Mass Loaded
	14	Pending Close
	15	Failed Close
	3	Released
	4	Complete
	5	Complete - No Charges
	6	On Hold
	7	Cancelled
	8	Pending Bill Load
	9	Failed Bill Load

### Column Descriptions

Name	Null?	Type	Description
USER_ID	NOT NULL	NUMBER	User identifier
DEFAULT_FLAG	NULL	NUMBER	Default flag
LAST_UPDATE_DATE	NULL	DATE	Standard Who column
LAST_UPDATED_BY	NULL	NUMBER	Standard Who column
SUMMARY_FIELD_WIDTH	NULL	NUMBER	Horizontal plan field width
CREATION_DATE	NULL	DATE	Standard Who column
CREATED_BY	NULL	NUMBER	Standard Who column
LAST_UPDATE_LOGIN	NULL	NUMBER	Standard Who column
SUMMARY_SALES_ORDERS	NULL	VARCHAR2(1)	Display control for Horizontal Plan

Oracle Proprietary, Confidential Information--Use Restricted by Contract

SUMMARY_FORECAST	NULL	VARCHAR2(1)	Display control for Horizontal Plan
SUMMARY_DEPENDENT_DEMAND	NULL	VARCHAR2(1)	Display control for Horizontal Plan
SUMMARY_SCRAP	NULL	VARCHAR2(1)	Display control for Horizontal Plan
SUMMARY_INDEPENDENT_DEMAND	NULL	VARCHAR2(1)	Display control for Horizontal Plan
SUMMARY_GROSS_REQUIREMENTS	NULL	VARCHAR2(1)	Display control for Horizontal Plan
SUMMARY_SCHEDULED_RECEIPTS	NULL	VARCHAR2(1)	Display control for Horizontal Plan
SUMMARY_PLANNED_ORDERS	NULL	VARCHAR2(1)	Display control for Horizontal Plan
SUMMARY_TOTAL_SUPPLY	NULL	VARCHAR2(1)	Display control for Horizontal Plan
SUMMARY_PAB	NULL	VARCHAR2(1)	Display control for Horizontal Plan
SUMMARY_SS	NULL	VARCHAR2(1)	Display control for Horizontal Plan
SUMMARY_ATP	NULL	VARCHAR2(1)	Display control for Horizontal Plan
SUMMARY_CURRENT_RECEIPTS	NULL	VARCHAR2(1)	Display control for Horizontal Plan
SUMMARY_POH	NULL	VARCHAR2(1)	Display control for Horizontal Plan
SUMMARY_DISPLAY_FACTOR	NULL	NUMBER	Display control for Horizontal Plan
ORDERS_DEFAULT_JOB_STATUS	NULL	NUMBER	Default job status
SUMMARY_DECIMAL_PLACES	NULL	NUMBER	Display control for Horizontal Plan
ORDERS_RELEASE_PHANTOMS	NULL	VARCHAR2(1)	Display control for release phantoms
ORDERS_RELEASE_CONFIGS	NULL	VARCHAR2(1)	Display control for release configs
ORDERS_FOLDER_ID	NULL	NUMBER	Orders folder identifier
SUMMARY_BEGINNING_ON_HAND	NULL	VARCHAR2(1)	Display control for Horizontal Plan
ORDERS_CUTOFF_DATE	NULL	DATE	Orders cutoff date
SUMMARY_WIP	NULL	VARCHAR2(1)	Display control for Horizontal Plan
SUMMARY_PO	NULL	VARCHAR2(1)	Display control for Horizontal Plan
SUMMARY_REQ	NULL	VARCHAR2(1)	Display control for Horizontal Plan
SUMMARY_TRANSIT	NULL	VARCHAR2(1)	Display control for Horizontal Plan
SUMMARY_RECEIVING	NULL	VARCHAR2(1)	Display control for Horizontal Plan
GROUP_BY_CODE	NULL	NUMBER	Group by code
JOB_CLASS_CODE	NULL	VARCHAR2(10)	Job class code
SUMMARY_EXP_LOT	NULL	VARCHAR2(1)	Display control for Horizontal Plan
IND_DEMAND_TYPE	NULL	NUMBER	Independent demand type
SOURCE_LIST	NULL	VARCHAR2(10)	Source list
CRP_PLANNED_ORDERS	NULL	VARCHAR2(1)	Display control for capacity horizontal plan
CRP_NON_STD_JOB_ORDERS	NULL	VARCHAR2(1)	Display control for capacity horizontal plan
CRP_DISCRETE_JOBS	NULL	VARCHAR2(1)	Display control for capacity horizontal plan
CRP_REPETITIVE_SCHEDULES	NULL	VARCHAR2(1)	Display control for capacity horizontal plan

**Oracle Proprietary, Confidential Information--Use Restricted by Contract**

CRP_REQUIRE_HOURS	NULL	VARCHAR2(1)	Display control for capacity horizontal plan
CRP_HOUR_AVAILABLE	NULL	VARCHAR2(1)	Display control for capacity horizontal plan
CRP_NET_HOUR_AVAILABLE	NULL	VARCHAR2(1)	Display control for capacity horizontal plan
CRP_CUM_HOUR_AVAILABLE	NULL	VARCHAR2(1)	Display control for capacity horizontal plan
CRP_ROUTING_CAPACITY_UTIL	NULL	VARCHAR2(1)	Display control for capacity horizontal plan
CRP_CUM_ROUTING_CAPACITY_UTIL	NULL	VARCHAR2(1)	Display control for capacity horizontal plan
CRP_HOURS_REQUIRED_PER_DAY	NULL	VARCHAR2(1)	Display control for capacity horizontal plan
CRP_HOURS_AVAIL_PER_DAY	NULL	VARCHAR2(1)	Display control for capacity horizontal plan
CRP_SUM_OF_CAP_CHANGES	NULL	VARCHAR2(1)	Display control for capacity horizontal plan
CRP_CUM_SUM_OF_CHANGES	NULL	VARCHAR2(1)	Display control for capacity horizontal plan
CRP_RESOURCE_COST	NULL	VARCHAR2(1)	Display control for capacity horizontal plan
CRP_REQUIRED_RATE	NULL	VARCHAR2(1)	Display control for capacity horizontal plan
CRP_AVAILABLE_RATE	NULL	VARCHAR2(1)	Display control for capacity horizontal plan
CRP_NET_AVAILABLE_RATE	NULL	VARCHAR2(1)	Display control for capacity horizontal plan
CRP_CUM_AVAILABLE_RATE	NULL	VARCHAR2(1)	Display control for capacity horizontal plan
CRP_RATE_CAPACITY_UTIL	NULL	VARCHAR2(1)	Display control for capacity horizontal plan
CRP_CUM_RATE_CAPACITY_UTIL	NULL	VARCHAR2(1)	Display control for capacity horizontal plan
CRP_DAILY_REQUIRED_RATE	NULL	VARCHAR2(1)	Display control for capacity horizontal plan
CRP_DAILY_AVAILABLE_RATE	NULL	VARCHAR2(1)	Display control for capacity horizontal plan
CRP_LINE_COST	NULL	VARCHAR2(1)	Display control for capacity horizontal plan
SUMMARY_FLOW_SCHEDULES	NULL	VARCHAR2(1)	Display control for flow schedules
CRP_FLOW_SCHEDULES	NULL	VARCHAR2(1)	Display control for capacity horizontal plan
ORDERS_FIRM_JOBS	NULL	VARCHAR2(1)	Orders firm jobs
SUMMARY_PAYBACK_SUPPLY	NULL	VARCHAR2(1)	Display control for payback supply
SUMMARY_PAYBACK_DEMAND	NULL	VARCHAR2(1)	Display control for payback demand
SUMMARY_DISPLAY_DAYS	NULL	NUMBER	Summary display in days
SUMMARY_DISPLAY_WEEKS	NULL	NUMBER	Summary display in weeks
SUMMARY_DISPLAY_PERIODS	NULL	NUMBER	Summary displays in periods
CATEGORY_SET_ID	NULL	NUMBER	Category set identifier
RECOMMENDATION_DAYS	NULL	NUMBER	Recommendation days
SUPPLIER_PURCHASE_ORDERS	NULL	VARCHAR2(1)	Display control for purchase orders
SUPPLIER_PURCHASE_REQS	NULL	VARCHAR2(1)	Display control for purchase requisitions
SUPPLIER_PLANNED_ORDERS	NULL	VARCHAR2(1)	Display control for planned orders
SUPPLIER_REQUIRED_CAP	NULL	VARCHAR2(1)	Display control for required capacity

SUPPLIER_CAP_AVAIL	NULL	VARCHAR2(1)	Display control for available capacity
SUPPLIER_NET_CAP_AVAIL	NULL	VARCHAR2(1)	Display control for net available capacity
SUPPLIER_CUM_CAP_AVAIL	NULL	VARCHAR2(1)	Display control for cumulative available capacity
SUPPLIER_CAPACITY_UTIL	NULL	VARCHAR2(1)	Display control for capacity utilization
SUPPLIER_CUM_CAPACITY_UTIL	NULL	VARCHAR2(1)	Display control for cumulative capacity utilization
DEFAULT_LEFT_TAB	NULL	VARCHAR2(30)	Default left tab
DEFAULT_RIGHT_TAB	NULL	VARCHAR2(240)	Default right tab
TRANS_WEIGHT_CAPACITY_AVAIL	NULL	VARCHAR2(1)	Display control for transformation weight capacity availability
TRANS_VOLUME_CAPACITY_AVAIL	NULL	VARCHAR2(1)	Display control for transformation volume capacity availability
TRANS_WEIGHT_CAPACITY_REQ	NULL	VARCHAR2(1)	Display control for required transformation weight capacity
TRANS_VOLUME_CAPACITY_REQ	NULL	VARCHAR2(1)	Display control for required transformation volume capacity
TRANS_WEIGHT_LOAD_RATIO	NULL	VARCHAR2(1)	Display control for transformation weight load ratio
TRANS_VOLUME_LOAD_RATIO	NULL	VARCHAR2(1)	Display control for transformation volume load ratio
RETAIN_FOLDER_CRITERIA	NULL	VARCHAR2(1)	Flag indicating whether folder criteria is retained
SHOW_GRAPH	NULL	VARCHAR2(1)	Show Graph
RUNNING_TOTAL_DEMAND	NULL	VARCHAR2(1)	Display control for running total demand
RUNNING_TOTAL_SUPPLY	NULL	VARCHAR2(1)	Display control for running total supply
SUMMARY_SELLER_FORECAST	NULL	VARCHAR2(1)	Display control for seller forecast
NAMED_SET	NULL	VARCHAR2(30)	Named set
DEFAULT_SET	NULL	VARCHAR2(30)	Default set
PROD_SUM_LEVEL	NULL	NUMBER	Level column for aggregation
ORG_SUM_LEVEL_TP	NULL	VARCHAR2(30)	Level column for aggregation
ORG_SUM_LEVEL	NULL	VARCHAR2(30)	Level column for aggregation
SUMMARY_SUPPCAP	NULL	VARCHAR2(1)	Display control for supplier capacity
SUMMARY_ACTUAL_PRODN	NULL	VARCHAR2(1)	Display control for actual production
SUMMARY_COMMITTED_DMD	NULL	VARCHAR2(1)	Display control for committed demand
SORT_BY_FLAG	NULL	VARCHAR2(30)	Sort by flag
SUMMARY_ACT_PROD_FOR_FCST	NULL	VARCHAR2(1)	Display control for actual production for forecast
SUMMARY_ACT_PROD_FOR_DMD	NULL	VARCHAR2(1)	Display control for actual production for demand
SUMMARY_PLANNED_PRODUCTION	NULL	VARCHAR2(1)	Display control for planned production
SUMMARY_PL_PRODN_FOR_FCST	NULL	VARCHAR2(1)	Display control for planned production for forecast
SUMMARY_PL_PRODN_FOR_DMD	NULL	VARCHAR2(1)	Display control for planned production for demand
SUMMARY_HIST_SALES	NULL	VARCHAR2(1)	Display control for summary Historical Sales
RUNNING_TOTAL_FORECAST	NULL	VARCHAR2(1)	Running Total Forecast

**Oracle Proprietary, Confidential Information--Use Restricted by Contract**

RUNNING_TOTAL_HIST_SALES	NULL VARCHAR2(1)	Display control for running total historical sales
BLOCK_ZERO_RES_REQUIREMENTS	NULL VARCHAR2(1)	Block zero resource requirements

## HZ\_LOCATIONS

HZ\_LOCATIONS stores information about a delivery or postal address such as; building number, street address, postal code, and directions to a location. This table provides physical location information about parties (organizations and people) and customer accounts. For example you can store information such as; Building 300, 500 Oracle Parkway, 94065, and "Take the Ralston Avenue exit from highway 101, go east on Twin Dolphins Drive, take a left on Oracle Parkway, watch for the Building 300 sign on your right." Records in HZ\_LOCATIONS can store delivery and postal information about a location through the use of columns such as LOCATION\_DIRECTIONS, POST\_OFFICE, and TIME\_ZONE. HZ\_LOCATIONS can also be used to store latitude and longitude. Data in HZ\_LOCATIONS is also used to determine the appropriate tax authority and tax rates for sales tax and VAT calculations.

### Foreign Keys

Primary Key Table	Primary Key Column	Foreign Key Column
FND_LANGUAGES	LANGUAGE_CODE	LANGUAGE
FND_TERRITORIES	TERRITORY_CODE	COUNTRY
HZ_TIMEZONES	GLOBAL_TIMEZONE_NAME	TIME_ZONE

### Column Descriptions

Name	Null?	Type	Description
LOCATION_ID (PK)	NOT NULL	NUMBER(15)	Location Identifier
LAST_UPDATE_DATE	NOT NULL	DATE	Standard Who column
LAST_UPDATED_BY	NOT NULL	NUMBER(15)	Standard Who column
CREATION_DATE	NOT NULL	DATE	Standard Who column
CREATED_BY	NOT NULL	NUMBER(15)	Standard Who column
LAST_UPDATE_LOGIN	NULL	NUMBER(15)	Standard Who column
REQUEST_ID	NULL	NUMBER(15)	Request identifier of last concurrent program to update this record
PROGRAM_APPLICATION_ID	NULL	NUMBER(15)	Application identifier of last concurrent program to update this record
PROGRAM_ID	NULL	NUMBER(15)	Program identifier of last concurrent program to update this record
PROGRAM_UPDATE_DATE	NULL	DATE	Last update date of this record by a concurrent program
WH_UPDATE_DATE	NULL	DATE	Warehouse update date when record was recorded or changed
ATTRIBUTE_CATEGORY	NULL	VARCHAR2(30)	Descriptive Flexfield Structure Defining column
ATTRIBUTE1	NULL	VARCHAR2(150)	Descriptive Flexfield Segment column
ATTRIBUTE2	NULL	VARCHAR2(150)	Descriptive Flexfield Segment column
ATTRIBUTE3	NULL	VARCHAR2(150)	Descriptive Flexfield Segment column
ATTRIBUTE4	NULL	VARCHAR2(150)	Descriptive Flexfield Segment column

**Oracle Proprietary, Confidential Information--Use Restricted by Contract**

ATTRIBUTE5	NULL	VARCHAR2(150)	Descriptive Flexfield Segment column
ATTRIBUTE6	NULL	VARCHAR2(150)	Descriptive Flexfield Segment column
ATTRIBUTE7	NULL	VARCHAR2(150)	Descriptive Flexfield Segment column
ATTRIBUTE8	NULL	VARCHAR2(150)	Descriptive Flexfield Segment column
ATTRIBUTE9	NULL	VARCHAR2(150)	Descriptive Flexfield Segment column
ATTRIBUTE10	NULL	VARCHAR2(150)	Descriptive Flexfield Segment column
ATTRIBUTE11	NULL	VARCHAR2(150)	Descriptive Flexfield Segment column
ATTRIBUTE12	NULL	VARCHAR2(150)	Descriptive Flexfield Segment column
ATTRIBUTE13	NULL	VARCHAR2(150)	Descriptive Flexfield Segment column
ATTRIBUTE14	NULL	VARCHAR2(150)	Descriptive Flexfield Segment column
ATTRIBUTE15	NULL	VARCHAR2(150)	Descriptive Flexfield Segment column
ATTRIBUTE16	NULL	VARCHAR2(150)	Descriptive Flexfield Segment column
ATTRIBUTE17	NULL	VARCHAR2(150)	Descriptive Flexfield Segment column
ATTRIBUTE18	NULL	VARCHAR2(150)	Descriptive Flexfield Segment column
ATTRIBUTE19	NULL	VARCHAR2(150)	Descriptive Flexfield Segment column
ATTRIBUTE20	NULL	VARCHAR2(150)	Descriptive Flexfield Segment column
GLOBAL_ATTRIBUTE_CATEGORY	NULL	VARCHAR2(30)	Reserved for Globalization Functionality
GLOBAL_ATTRIBUTE1	NULL	VARCHAR2(150)	Reserved for Globalization Functionality
GLOBAL_ATTRIBUTE2	NULL	VARCHAR2(150)	Reserved for Globalization Functionality
GLOBAL_ATTRIBUTE3	NULL	VARCHAR2(150)	Reserved for Globalization Functionality
GLOBAL_ATTRIBUTE4	NULL	VARCHAR2(150)	Reserved for Globalization Functionality
GLOBAL_ATTRIBUTE5	NULL	VARCHAR2(150)	Reserved for Globalization Functionality
GLOBAL_ATTRIBUTE6	NULL	VARCHAR2(150)	Reserved for Globalization Functionality
GLOBAL_ATTRIBUTE7	NULL	VARCHAR2(150)	Reserved for Globalization Functionality
GLOBAL_ATTRIBUTE8	NULL	VARCHAR2(150)	Reserved for Globalization Functionality
GLOBAL_ATTRIBUTE9	NULL	VARCHAR2(150)	Reserved for Globalization Functionality
GLOBAL_ATTRIBUTE10	NULL	VARCHAR2(150)	Reserved for Globalization Functionality
GLOBAL_ATTRIBUTE11	NULL	VARCHAR2(150)	Reserved for Globalization Functionality
GLOBAL_ATTRIBUTE12	NULL	VARCHAR2(150)	Reserved for Globalization Functionality
GLOBAL_ATTRIBUTE13	NULL	VARCHAR2(150)	Reserved for Globalization Functionality
GLOBAL_ATTRIBUTE14	NULL	VARCHAR2(150)	Reserved for Globalization Functionality
GLOBAL_ATTRIBUTE15	NULL	VARCHAR2(150)	Reserved for Globalization Functionality

**Oracle Proprietary, Confidential Information--Use Restricted by Contract**

GLOBAL_ATTRIBUTE16	NULL	VARCHAR2(150)	Reserved for Globalization Functionality
GLOBAL_ATTRIBUTE17	NULL	VARCHAR2(150)	Reserved for Globalization Functionality
GLOBAL_ATTRIBUTE18	NULL	VARCHAR2(150)	Reserved for Globalization Functionality
GLOBAL_ATTRIBUTE19	NULL	VARCHAR2(150)	Reserved for Globalization Functionality
GLOBAL_ATTRIBUTE20	NULL	VARCHAR2(150)	Reserved for Globalization Functionality
ORIG_SYSTEM_REFERENCE	NOT NULL	VARCHAR2(240)	Address identifier from foreign system
COUNTRY	NOT NULL	VARCHAR2(60)	FND_TERRITORY.TERRITORY_CODE
ADDRESS1	NOT NULL	VARCHAR2(240)	First line for address
ADDRESS2	NULL	VARCHAR2(240)	Second line for address
ADDRESS3	NULL	VARCHAR2(240)	Third line for address
ADDRESS4	NULL	VARCHAR2(240)	Fourth line for address
CITY	NULL	VARCHAR2(60)	City
POSTAL_CODE	NULL	VARCHAR2(60)	Postal code
STATE	NULL	VARCHAR2(60)	State
PROVINCE	NULL	VARCHAR2(60)	Province
COUNTY	NULL	VARCHAR2(60)	County
ADDRESS_KEY	NULL	VARCHAR2(500)	Derived key created by OSM to facilitate querying
ADDRESS_STYLE	NULL	VARCHAR2(30)	Used as context value for Flexible Address Format descriptive flexfield (do not use this column, join to fnd_territories via country = territory_code to retrieve the address style for the country)
VALIDATED_FLAG	NULL	VARCHAR2(1)	"Y" if this location has been validated, "N" if not
ADDRESS_LINES_PHONETIC	NULL	VARCHAR2(560)	Phonetic or Kana representation of the Kanji address lines (used in Japan)
APARTMENT_FLAG	NULL	VARCHAR2(1)	"Y" if the location is an apartment. The default value is 'N' (No)
PO_BOX_NUMBER	NULL	VARCHAR2(50)	Post Office Box Number
HOUSE_NUMBER	NULL	VARCHAR2(50)	House Number. In an address, (e.g., 121 Any Street #101, Small Town, California, United States of America) the house number is '121'.
STREET_SUFFIX	NULL	VARCHAR2(50)	In an address, (e.g., 121 Any Street #101, Small Town, California, United States of America) the street suffix is 'Street'. Other examples include, place, drive, avenue. The suffix could be divided into primary and secondary. In an address line (121 Brigeport Avenue Overpass) the 'Overpass' is a secondary suffix, and Avenue is the primary suffix.
APARTMENT_NUMBER	NULL	VARCHAR2(50)	In an address, (e.g., 121 Any Street #101, Small Town, California, United States of America) the apartment number is '101'.

SECONDARY_SUFFIX_ELEMENT	NULL	VARCHAR2(240)	In an address line (121 Brigeport Avenue Overpass) the 'Overpass' is a secondary suffix.
STREET	NULL	VARCHAR2(50)	In an address, (e.g., 121 Any Street #101, Small Town, California, United States of America) the street is 'Any'.
RURAL_ROUTE_TYPE	NULL	VARCHAR2(50)	A United States Postal classification of rural routes. These indicate the type of route (e.g., walking, delivery van etc.).
RURAL_ROUTE_NUMBER	NULL	VARCHAR2(50)	A delivery route number assigned by a postal authority.
STREET_NUMBER	NULL	VARCHAR2(50)	In an address line (121 Brigeport Avenue Overpass) the '121' is the street number.
BUILDING	NULL	VARCHAR2(50)	A number assigned to an entire building within an address.
FLOOR	NULL	VARCHAR2(50)	A number or name assigned to a level within a building or within an address. For example, in the address line (121 Brigeport Avenue Overpass, Lower Lobby) the Lower Lobby is a floor.
SUITE	NULL	VARCHAR2(50)	A number or name to indicate a number of rooms (therefore termed a suite).
ROOM	NULL	VARCHAR2(50)	A number or name for a room within a building.
POSTAL_PLUS4_CODE	NULL	VARCHAR2(10)	Four digit extension to the United States Postal ZIP code.
TIME_ZONE	NULL	VARCHAR2(50)	A numeric value indicating the number of hours from Greenwich Mean time.
OVERSEAS_ADDRESS_FLAG	NULL	VARCHAR2(1)	"Y" if the location is overseas from the point of view of the person creating the address. The default value is 'N' (no).
POST_OFFICE	NULL	VARCHAR2(50)	Name of the post office nearest the location
POSITION	NULL	VARCHAR2(50)	The primary direction (for example North, East, etc.) by which access to the location is achieved
DELIVERY_POINT_CODE	NULL	VARCHAR2(50)	User-assigned identifier for planning delivery sequences
LOCATION_DIRECTIONS	NULL	VARCHAR2(640)	Directions to the location
ADDRESS_EFFECTIVE_DATE	NULL	DATE	Date when the location is usable.
ADDRESS_EXPIRATION_DATE	NULL	DATE	Date when the location can no longer be used
ADDRESS_ERROR_CODE	NULL	VARCHAR2(50)	Postal Soft evaluation construct. Records the error type if an error is encountered in address processing
CLLI_CODE	NULL	VARCHAR2(60)	Common Language Location Identifier (CLLI) code
DODAAC	NULL	VARCHAR2(6)	Department of Defense Activity Address Code. A code, often used for shipping purposes, that specifies a military unit or specific set of activities.

TRAILING_DIRECTORY_CODE	NULL	VARCHAR2(60)	Direction Code used in the UK that is added to the end of an address or area
LANGUAGE	NULL	VARCHAR2(4)	Operating language of the location. FK to FND_LANGUAGES
LIFE_CYCLE_STATUS	NULL	VARCHAR2(30)	The state of the lifecycle for the record
SHORT_DESCRIPTION	NULL	VARCHAR2(240)	Short description of the location
DESCRIPTION	NULL	VARCHAR2(2000)	An extensive description of the location
CONTENT_SOURCE_TYPE	NOT NULL	VARCHAR2(30)	Source of data content.
LOC_HIERARCHY_ID	NULL	NUMBER(15)	Location hierarchy identifier. FK to JTF_LOC_HIERARCHIES_B.
SALES_TAX_GEOCODE	NULL	VARCHAR2(30)	US State and Local Tax Jurisdiction code. Use this field to provide either a Vertex GeoCode or Taxware Geocode value for the Point of Order Origin
SALES_TAX_INSIDE_CITY_LIMITS	NULL	VARCHAR2(30)	US State and Local Tax, Inside City Limits flag. Default if Null to N. Indicates whether the address is inside the city limits of the associated GEOCODE
FA_LOCATION_ID	NULL	NUMBER(15)	FK to FA_LOCATIONS

#### Indexes

Index Name	Index Type	Sequence	Column Name
HZ_LOCATIONS_N1	NOT UNIQUE	1	ADDRESS1
HZ_LOCATIONS_N11	NOT UNIQUE	5	ADDRESS1
HZ_LOCATIONS_N13	NOT UNIQUE	5	ORIG_SYSTEM_REFERENCE
HZ_LOCATIONS_N2	NOT UNIQUE	1	CREATION_DATE
HZ_LOCATIONS_N3	NOT UNIQUE	1	ADDRESS_KEY
HZ_LOCATIONS_N4	NOT UNIQUE	1	POSTAL_CODE
HZ_LOCATIONS_N5	NOT UNIQUE	1	COUNTRY
		4	STATE
HZ_LOCATIONS_N6	NOT UNIQUE	1	CLLI_CODE
HZ_LOCATIONS_U1	UNIQUE	1	LOCATION_ID

#### Sequences

Sequence	Derived Column
HZ_LOCATIONS_S	LOCATION_ID

## HZ\_PARTY\_SITES

HZ\_PARTY\_SITES links a party (see HZ\_PARTIES) and a location (see HZ\_LOCATIONS) and stores location specific party information such as MAILSTOP and ADDRESSEE. One party can optionally have one or more party sites. One location can optionally be used by one or more parties. For example, 500 Oracle Parkway can be specified as a party site for Oracle Corporation. This party site can then be used for multiple customer accounts within the same party.

### Foreign Keys

Primary Key Table	Primary Key Column	Foreign Key Column
HZ_LOCATIONS	LOCATION_ID	LOCATION_ID
HZ_PARTIES	PARTY_ID	PARTY_ID

### QuickCodes Columns

Column	QuickCodes Type	QuickCodes Table
STATUS	CODE_STATUS	AR_LOOKUPS
	A	Active
	I	Inactive

### Column Descriptions

Name	Null?	Type	Description
PARTY_SITE_ID (PK)	NOT NULL	NUMBER(15)	Party site identifier
PARTY_ID	NOT NULL	NUMBER(15)	Party identifier and foreign key to HZ_PARTIES.
LOCATION_ID	NOT NULL	NUMBER(15)	Location identifier and foreign key to HZ_LOCATIONS.
LAST_UPDATE_DATE	NOT NULL	DATE	Standard Who column
PARTY_SITE_NUMBER	NOT NULL	VARCHAR2(30)	Party site number
LAST_UPDATED_BY	NOT NULL	NUMBER(15)	Standard Who column
CREATION_DATE	NOT NULL	DATE	Standard Who column
CREATED_BY	NOT NULL	NUMBER(15)	Standard Who column
LAST_UPDATE_LOGIN	NULL	NUMBER(15)	Standard Who column
REQUEST_ID	NULL	NUMBER(15)	Request identifier of last concurrent program to update this record
PROGRAM_APPLICATION_ID	NULL	NUMBER(15)	Application identifier of last concurrent program to update this record
PROGRAM_ID	NULL	NUMBER(15)	Program identifier of last concurrent program to update this record
PROGRAM_UPDATE_DATE	NULL	DATE	Last update date of this record by a concurrent program
WH_UPDATE_DATE	NULL	DATE	Warehouse update date when record was recorded or changed
ATTRIBUTE_CATEGORY	NULL	VARCHAR2(30)	Descriptive Flexfield Structure Defining column
ATTRIBUTE1	NULL	VARCHAR2(150)	Descriptive Flexfield Segment column
ATTRIBUTE2	NULL	VARCHAR2(150)	Descriptive Flexfield Segment column
ATTRIBUTE3	NULL	VARCHAR2(150)	Descriptive Flexfield Segment column

Oracle Proprietary, Confidential Information--Use Restricted by Contract

ATTRIBUTE4	NULL	VARCHAR2(150)	Descriptive Flexfield Segment column
ATTRIBUTE5	NULL	VARCHAR2(150)	Descriptive Flexfield Segment column
ATTRIBUTE6	NULL	VARCHAR2(150)	Descriptive Flexfield Segment column
ATTRIBUTE7	NULL	VARCHAR2(150)	Descriptive Flexfield Segment column
ATTRIBUTE8	NULL	VARCHAR2(150)	Descriptive Flexfield Segment column
ATTRIBUTE9	NULL	VARCHAR2(150)	Descriptive Flexfield Segment column
ATTRIBUTE10	NULL	VARCHAR2(150)	Descriptive Flexfield Segment column
ATTRIBUTE11	NULL	VARCHAR2(150)	Descriptive Flexfield Segment column
ATTRIBUTE12	NULL	VARCHAR2(150)	Descriptive Flexfield Segment column
ATTRIBUTE13	NULL	VARCHAR2(150)	Descriptive Flexfield Segment column
ATTRIBUTE14	NULL	VARCHAR2(150)	Descriptive Flexfield Segment column
ATTRIBUTE15	NULL	VARCHAR2(150)	Descriptive Flexfield Segment column
ATTRIBUTE16	NULL	VARCHAR2(150)	Descriptive Flexfield Segment column
ATTRIBUTE17	NULL	VARCHAR2(150)	Descriptive Flexfield Segment column
ATTRIBUTE18	NULL	VARCHAR2(150)	Descriptive Flexfield Segment column
ATTRIBUTE19	NULL	VARCHAR2(150)	Descriptive Flexfield Segment column
ATTRIBUTE20	NULL	VARCHAR2(150)	Descriptive Flexfield Segment column
GLOBAL_ATTRIBUTE_CATEGORY	NULL	VARCHAR2(30)	Reserved for Globalization Functionality
GLOBAL_ATTRIBUTE1	NULL	VARCHAR2(150)	Reserved for Globalization Functionality
GLOBAL_ATTRIBUTE2	NULL	VARCHAR2(150)	Reserved for Globalization Functionality
GLOBAL_ATTRIBUTE3	NULL	VARCHAR2(150)	Reserved for Globalization Functionality
GLOBAL_ATTRIBUTE4	NULL	VARCHAR2(150)	Reserved for Globalization Functionality
GLOBAL_ATTRIBUTE5	NULL	VARCHAR2(150)	Reserved for Globalization Functionality
GLOBAL_ATTRIBUTE6	NULL	VARCHAR2(150)	Reserved for Globalization Functionality
GLOBAL_ATTRIBUTE7	NULL	VARCHAR2(150)	Reserved for Globalization Functionality
GLOBAL_ATTRIBUTE8	NULL	VARCHAR2(150)	Reserved for Globalization Functionality
GLOBAL_ATTRIBUTE9	NULL	VARCHAR2(150)	Reserved for Globalization Functionality
GLOBAL_ATTRIBUTE10	NULL	VARCHAR2(150)	Reserved for Globalization Functionality
GLOBAL_ATTRIBUTE11	NULL	VARCHAR2(150)	Reserved for Globalization Functionality
GLOBAL_ATTRIBUTE12	NULL	VARCHAR2(150)	Reserved for Globalization Functionality
GLOBAL_ATTRIBUTE13	NULL	VARCHAR2(150)	Reserved for Globalization Functionality
GLOBAL_ATTRIBUTE14	NULL	VARCHAR2(150)	Reserved for Globalization Functionality

**Oracle Proprietary, Confidential Information--Use Restricted by Contract**

GLOBAL_ATTRIBUTE15	NULL	VARCHAR2(150)	Reserved for Globalization Functionality
GLOBAL_ATTRIBUTE16	NULL	VARCHAR2(150)	Reserved for Globalization Functionality
GLOBAL_ATTRIBUTE17	NULL	VARCHAR2(150)	Reserved for Globalization Functionality
GLOBAL_ATTRIBUTE18	NULL	VARCHAR2(150)	Reserved for Globalization Functionality
GLOBAL_ATTRIBUTE19	NULL	VARCHAR2(150)	Reserved for Globalization Functionality
GLOBAL_ATTRIBUTE20	NULL	VARCHAR2(150)	Reserved for Globalization Functionality
ORIG_SYSTEM_REFERENCE	NULL	VARCHAR2(240)	Party site identifier from foreign system
START_DATE_ACTIVE	NULL	DATE	Effective start date for party site
END_DATE_ACTIVE	NULL	DATE	Effective end date for party site
REGION	NULL	VARCHAR2(30)	User-defined geographical region
MAILSTOP	NULL	VARCHAR2(60)	A user-defined code to indicate a mail drop point within their organization
CUSTOMER_KEY_OSM	NULL	VARCHAR2(255)	Customer key used in Oracle Sales and Marketing matching
PHONE_KEY_OSM	NULL	VARCHAR2(255)	Phone key used in Oracle Sales and Marketing matching
CONTACT_KEY_OSM	NULL	VARCHAR2(255)	Contact key used in Oracle Sales and Marketing matching
IDENTIFYING_ADDRESS_FLAG	NOT NULL	VARCHAR2(1)	Y or N indicates whether this is the identifying address for the party.
LANGUAGE	NULL	VARCHAR2(30)	The primary language spoken and written of the party site.
STATUS	NOT NULL	VARCHAR2(1)	Party site status flag.
PARTY_SITE_NAME	NULL	VARCHAR2(240)	A user defined name for the site
ADDRESSEE	NULL	VARCHAR2(360)	Addressee information

#### Indexes

<u>Index Name</u>	<u>Index Type</u>	<u>Sequence</u>	<u>Column Name</u>
HZ_PARTY_SITES_N1	NOT UNIQUE	5	PARTY_ID
HZ_PARTY_SITES_N2	NOT UNIQUE	5	LOCATION_ID
HZ_PARTY_SITES_N3	NOT UNIQUE	5	ORIG_SYSTEM_REFERENCE
HZ_PARTY_SITES_N4	NOT UNIQUE	5	PARTY_ID
		10	IDENTIFYING_ADDRESS_FLAG
HZ_PARTY_SITES_U1	UNIQUE	1	PARTY_SITE_ID
HZ_PARTY_SITES_U2	UNIQUE	5	PARTY_SITE_NUMBER

#### Sequences

<u>Sequence</u>	<u>Derived Column</u>
HZ_PARTY_SITES_S	PARTY_SITE_ID
HZ_PARTY_SITE_NUMBER_S	PARTY_SITE_NUMBER

## HZ\_PARTY\_SITE\_USES

HZ\_PARTY\_SITE\_USES stores information about how a party site is used. Party sites can have multiple uses such as ship-to and bill-to.

### Foreign Keys

Primary Key Table	Primary Key Column	Foreign Key Column
HZ_PARTY_SITES	PARTY_SITE_ID	PARTY_SITE_ID

### Column Descriptions

Name	Null?	Type	Description
PARTY_SITE_USE_ID (PK)	NOT NULL	NUMBER(15)	Party site use identifier
BEGIN_DATE	NOT NULL	DATE	The planned or actual date in which a party begins the use of a site
COMMENTS	NULL	VARCHAR2(240)	A textual description of the possible use of a site by a party
END_DATE	NULL	DATE	The planned or actual date on which the use of a site by a party is to end
PARTY_SITE_ID	NOT NULL	NUMBER(15)	Party site identifier. FK to HZ_PARTY_SITES
LAST_UPDATE_DATE	NOT NULL	DATE	Standard Who Column
REQUEST_ID	NULL	NUMBER(15)	Request identifier of last concurrent program to update this record
LAST_UPDATED_BY	NOT NULL	NUMBER(15)	Standard Who Column
PROGRAM_APPLICATION_ID	NULL	NUMBER(15)	Application identifier of last concurrent program to update this record
CREATION_DATE	NOT NULL	DATE	Standard Who Column
PROGRAM_ID	NULL	NUMBER(15)	Program identifier of last concurrent program to update this record
CREATED_BY	NOT NULL	NUMBER(15)	Standard Who Column
PROGRAM_UPDATE_DATE	NULL	DATE	Last update date of this record by a concurrent program
LAST_UPDATE_LOGIN	NULL	NUMBER(15)	Standard Who Column
WH_UPDATE_DATE	NULL	DATE	Warehouse update date when record was recorded or changed
SITE_USE_TYPE	NOT NULL	VARCHAR2(30)	Site use type
PRIMARY_PER_TYPE	NULL	VARCHAR2(1)	Flag to indicate if this is the primary site use.
STATUS	NULL	VARCHAR2(1)	

### Indexes

Index Name	Index Type	Sequence	Column Name
HZ_PARTY_SITE_USES_N1	NOT UNIQUE	5	PARTY_SITE_ID
		10	SITE_USE_TYPE
		15	PRIMARY_PER_TYPE
HZ_PARTY_SITE_USES_U1	UNIQUE	1	PARTY_SITE_USE_ID

### Sequences

Sequence	Derived Column
HZ_PARTY_SITE_USES_S	PARTY_SITE_USE_ID

Oracle Proprietary, Confidential Information--Use Restricted by Contract

# Index

## A

Application Building Block, 1-7

## C

Column descriptions, 3-4

Columns, Who, 3-4

## D

Database Diagram, 1-7

    Summary Database Diagram, 1-7

Database Diagrams, Supply Chain Hub  
    summary database diagram, 2-7

database diagrams, conventions, 2-5

Database triggers, 3-6

## F

Foreign keys, 3-3

Form, 1-8

Forms and Table View List, 2-13

## I

Indexes, 3-6

    important note about, 3-6

Internal View List, 2-14

## L

Lookup types. *See* QuickCodes

## M

Modules, 1-7

## O

Oracle8 sequences. *See* Sequences

## P

Public Table List, 2-9

Public View List, 2-12

## Q

QuickCodes, 1-8

    Columns that contain, 3-3

## R

Relationship, 1-7

## S

Sequences, 3-6

## T

Table and View Definitions

    HZ\_LOCATIONS, 3-62

HZ\_PARTIES, 3-8  
HZ\_PARTY\_RELATIONSHIP\_V, 2-13  
HZ\_PARTY\_RELATIONSHIPS, 2-13  
HZ\_PARTY\_SITE\_USES, 3-70  
HZ\_PARTY\_SITES, 3-67  
HZ\_PARTY\_SITES\_V, 2-13  
ICX\_POR\_CATEGORIES\_TL, 3-14  
ICX\_POR\_CATEGORY\_ITEMS, 3-16  
ICX\_POR\_ITEMS, 3-17  
ICX\_POR\_TABLE\_OF\_CONTENTS\_TL,  
3-19  
IPD\_ITEM\_CROSS\_REFS\_B, 3-20  
MSC\_BOM\_BOD\_INTERFACE, 3-22  
MSC\_BOM\_COMPONENTS, 3-23  
MSC\_EXCEPTION\_DETAILS, 3-26  
MSC\_EXCEPTION\_DETAILS\_V, 2-14  
MSC\_FORM\_QUERY, 3-29  
MSC\_ITEM\_CROSS\_REFS\_V, 2-14  
MSC\_ITEM\_EXCEPTION\_V, 2-14  
MSC\_ITEM\_EXCEPTION\_V1, 2-14  
MSC\_ITEM\_EXCEPTION\_V2, 2-14  
MSC\_ITEM\_EXCEPTIONS, 3-31  
MSC\_ITEM\_SOURCING, 3-33  
MSC\_ITEM\_SOURCING\_V, 2-13  
MSC\_MATERIAL\_PLANS, 3-35  
MSC\_PLAN\_ORG\_KPIS, 3-45  
MSC\_PLAN\_ORG\_STATUS, 3-46

MSC\_PLAN\_ORGANIZATIONS, 3-43  
MSC\_PLAN\_SCHEDULES, 3-47  
MSC\_PLANS, 3-37  
MSC\_SUP\_DEM\_ENTRIES, 3-52  
MSC\_SUPDEM\_HDRS\_INTERFACE, 3-49  
MSC\_SUPDEM\_LINES\_INTERFACE, 3-50  
MSC\_WORKBENCH\_DISPLAY\_OPTIONS,  
3-57  
MSC\_X\_EXCEPTION\_DETAILS\_V, 2-14  
MSC\_X\_ITEM\_EXCEPTIONS\_V, 2-14

## Tables

*See also* Table and View Definitions  
Column descriptions, 3-4  
Foreign keys, 3-3  
Indexes. *See* Indexes  
Primary Keys, 3-4  
QuickCodes Columns, 3-3  
Who columns, 3-4, 3-5

## V

View Definitions. *See* Table and View  
Definitions

## Views

*See also* Table and View Definitions; View  
List  
Derivation, 3-6

# Reader's Comment Form

## Oracle Supply Chain Hub Technical Reference Manual A88857-01

Oracle Corporation welcomes your comments and suggestions on the quality and usefulness of this publication. Your input is an important part of the information we use for revision.

- Did you find any errors?
- Is the information clearly presented?
- Do you need more information? If so, where?
- Are the examples correct? Do you need more examples?
- What features did you like most about this manual? What did you like least about it?

If you find any errors or have any other suggestions for improvement, please indicate the topic, chapter, and page number below:

---

---

---

---

---

---

---

---

---

---

Please send your comments to:

Oracle Applications Documentation Manager  
Oracle Corporation  
500 Oracle Parkway  
Redwood Shores, CA 94065 USA  
Phone: (650) 506-7000 Fax: (650) 506-7200

If you would like a reply, please give your name, address, and telephone number below:

---

---

---

Thank you for helping us improve our documentation.

