

# PeopleSoft Enterprise HRMS and Campus Solutions 9.0 Feature Pack March 2011 Installation Guide

---

**March 2011**

Copyright © 2011, Oracle and/or its affiliates. All rights reserved.

### **Trademark Notice**

Oracle is a registered trademark of Oracle Corporation and/or its affiliates. Other names may be trademarks of their respective owners.

### **License Restrictions Warranty/Consequential Damages Disclaimer**

This software and related documentation are provided under a license agreement containing restrictions on use and disclosure and are protected by intellectual property laws. Except as expressly permitted in your license agreement or allowed by law, you may not use, copy, reproduce, translate, broadcast, modify, license, transmit, distribute, exhibit, perform, publish or display any part, in any form, or by any means. Reverse engineering, disassembly, or decompilation of this software, unless required by law for interoperability, is prohibited.

### **Warranty Disclaimer**

The information contained herein is subject to change without notice and is not warranted to be error-free. If you find any errors, please report them to us in writing.

### **Restricted Rights Notice**

If this software or related documentation is delivered to the U.S. Government or anyone licensing it on behalf of the U.S. Government, the following notice is applicable:

#### *U.S. GOVERNMENT RIGHTS*

Programs, software, databases, and related documentation and technical data delivered to U.S. Government customers are “commercial computer software” or “commercial technical data” pursuant to the applicable Federal Acquisition Regulation and agency-specific supplemental regulations. As such, the use, duplication, disclosure, modification, and adaptation shall be subject to the restrictions and license terms set forth in the applicable Government contract, and, to the extent applicable by the terms of the Government contract, the additional rights set forth in FAR 52.227-19, Commercial Computer Software License (December 2007). Oracle USA, Inc., 500 Oracle Parkway, Redwood City, CA 94065.

### **Hazardous Applications Notice**

This software is developed for general use in a variety of information management applications. It is not developed or intended for use in any inherently dangerous applications, including applications which may create a risk of personal injury. If you use this software in dangerous applications, then you shall be responsible to take all appropriate fail-safe, backup, redundancy and other measures to ensure the safe use of this software. Oracle Corporation and its affiliates disclaim any liability for any damages caused by use of this software in dangerous applications.

### **Third Party Content, Products, and Services Disclaimer**

This software and documentation may provide access to or information on content, products and services from third parties. Oracle Corporation and its affiliates are not responsible for and expressly disclaim all warranties of any kind with respect to third party content, products and services. Oracle Corporation and its affiliates will not be responsible for any loss, costs, or damages incurred due to your access to or use of third party content, products or services.



# Contents

## Preface

**About This Documentation..... ix**  
Installing the PeopleSoft HRMS and PeopleSoft Campus Solutions Applications..... ix

## Chapter 1

**Installing PeopleSoft Enterprise HRMS 9.0 Applications..... 1**  
Preparing for the PeopleSoft HRMS Installation..... 1  
    Verifying the Enterprise PeopleTools Version..... 2  
    Verifying the Demo Database Size..... 2  
    Running the HRINSSYS.DMS Script..... 2  
    Running the HC9MAINTLOG\_I.DMS Script..... 3  
    Verifying the EDM Pool Size..... 3  
    Re-Ordering the Steps in Enterprise PeopleTools Installation for DB2 z/OS Only..... 3  
    Reviewing PeopleSoft Campus Solutions COBOL on DB2 z/OS..... 3  
Installing PeopleSoft HRMS for the U.S. Federal Government..... 4  
Installing PeopleSoft HRMS for Education and Government..... 5  
Installing PeopleSoft HRMS for Military Customers..... 6  
Installing PeopleSoft HRMS for Japan..... 8  
    Using Global Search..... 9  
    Configuring Phone and FAX Number Fields..... 9  
    Printing Japanese Characters on SQR Reports..... 9  
Installing PeopleSoft HRMS for Switzerland..... 10  
Installing PeopleSoft Time and Labor..... 10  
    Creating Time Zone Offsets..... 10  
Installing PeopleSoft Absence Management and PeopleSoft Global Payroll Core..... 11  
    Verifying Installation Settings for PeopleSoft Absence Management..... 11  
    Updating Process and Job Definitions for PeopleSoft Packager..... 12  
Installing PeopleSoft HRMS Portal Pack..... 13  
Installing PeopleSoft Talent Acquisition Manager..... 14  
Installing PeopleSoft Global Payroll Country Extensions..... 15  
    Understanding the PeopleSoft Global Payroll Country Extensions Installation..... 15  
    Updating Installation Indicators..... 15  
    Running the GPCESYS.DMS Script to Update Stored Installation Indicators..... 16  
    Running the GPCERATE\_EXP.DMS / GPCERATE\_IMP.DMS Scripts to Copy HR Rate Codes..... 16

Installing PeopleSoft ePay Payslips for PeopleSoft Global Payroll.....	17
Understanding the PeopleSoft ePay Payslips Installation.....	17
Installing the PeopleSoft ePay Payslips Functionality.....	17
Installing Process Schedulers on MVS Platforms.....	19
Modifying the JVM Configuration to Increase Heap Size.....	19
Installing PeopleSoft HR Spain and PeopleSoft Global Payroll Germany/Switzerland PDF Form Files.....	20
Installing PeopleSoft Directory Interface.....	21
Prerequisites.....	21
Verifying the Installation Options for PeopleSoft Directory Interface.....	22
Backing up the Directory Server and Database.....	22
Running PeopleSoft Data Mover Scripts.....	22
Installing PeopleSoft Payroll Interface for ADP Connection.....	22
Verifying the Installation Options for PeopleSoft Payroll Interface for ADP Connection.....	23
Running the PeopleSoft Payroll ADP Connection Installation Script.....	23
Installing PeopleSoft Pay/Bill Management.....	24
Installing Service Handlers.....	24
Installing Configurable Matrices and Metadata.....	26
Installing PeopleSoft Human Resources for French Public Sector.....	26

## Chapter 2

<b>Installing PeopleSoft Campus Solutions 9.0 Applications.....</b>	<b>29</b>
Setting Up Equation Engine Security.....	29
Transferring and Compiling Additional Component COBOL for PeopleSoft Student Administration.....	29
Using Additional Component COBOL for PeopleSoft Student Administration.....	30
Compiling Additional Component COBOL on Microsoft Windows NT/2000.....	31
Compiling Additional Component COBOL on UNIX.....	32
Installing Database Audit Triggers for PeopleSoft Student Records.....	33
Understanding Database Audit Triggers.....	33
Using Audit Triggers.....	33
Installing the Audit Triggers.....	33
Adjusting PeopleTools EDI Manager for Financial Aid Processes.....	34
Updating the ECOUTMAP.SQC File.....	34
Modifying the ECIN0001.SQR File.....	35
Using CPU Space for PeopleSoft Academic Advising.....	36
Running the SFA_ECQUEUE_TABLES_RESET Script.....	36
Configuring Your PeopleBooks Documentation Website.....	36
Using the User Profiles Management Result Table.....	37
Understanding the Audience for this Information.....	37

Using the User Profiles Management Clean Up Pages.....37

Installing PeopleSoft Student Administration Integration Pack.....40

    Setting Up Installation Options.....40

    Installing Additional Database Changes Using PeopleSoft Data Mover.....41

    Running Conversion Programs Using PeopleSoft Application Engine.....41

    Activating PeopleSoft Student Administration Integration Pack Service Operations.....42

    Activating PeopleSoft Student Administration Integration Pack Service Routings.....46

    Activating PeopleSoft Student Administration Integration Pack Queues.....49

Installing PeopleSoft Contributor Relations.....49

**Index .....51**





# About This Documentation

---

## Installing the PeopleSoft HRMS and PeopleSoft Campus Solutions Applications

This document provides supplemental installation instructions for Oracle's PeopleSoft Enterprise Human Resources Management Solutions (HRMS) and Oracle's PeopleSoft Enterprise Campus Solutions (CS) applications.

This document supplements the PeopleSoft Enterprise PeopleTools installation guide for your database platform.



# CHAPTER 1

## Installing PeopleSoft Enterprise HRMS 9.0 Applications

This chapter discusses:

- Preparing for the PeopleSoft HRMS Installation
- Installing PeopleSoft HRMS for the U.S. Federal Government
- Installing PeopleSoft HRMS for Education and Government
- Installing PeopleSoft HRMS for Military Customers
- Installing PeopleSoft HRMS for Japan
- Installing PeopleSoft HRMS for Switzerland
- Installing PeopleSoft Time and Labor
- Installing PeopleSoft Absence Management and PeopleSoft Global Payroll Core
- Installing PeopleSoft HRMS Portal Pack
- Installing PeopleSoft Talent Acquisition Manager
- Installing PeopleSoft Global Payroll Country Extensions
- Installing PeopleSoft ePay Payslips for PeopleSoft Global Payroll
- Installing PeopleSoft HR Spain and PeopleSoft Global Payroll Germany/Switzerland PDF Form Files
- Installing PeopleSoft Directory Interface
- Installing PeopleSoft Payroll Interface for ADP Connection
- Installing PeopleSoft Pay/Bill Management
- Installing Service Handlers
- Installing Configurable Matrices and Metadata
- Installing PeopleSoft Human Resources for French Public Sector

This chapter provides pre-installation considerations, and installation notes and instructions specific to PeopleSoft HRMS applications. Installation notes are tips about a specific issue in a product, whereas installation instructions are step-by-step instructions on how to install a PeopleSoft HRMS product.

---

### Preparing for the PeopleSoft HRMS Installation

This section discusses:

- Verifying the Enterprise PeopleTools Version
- Verifying the Demo Database Size
- Running the HRINSSYS.DMS Script
- Running the HC9MAINTLOG\_I.DMS Script
- Verifying the EDM Pool Size
- Re-Ordering the Steps in Enterprise PeopleTools Installation for DB2 z/OS Only
- Reviewing PeopleSoft Campus Solutions COBOL on DB2 z/OS

## Verifying the Enterprise PeopleTools Version

All new installs of PeopleSoft HRCS 9.0 require Enterprise PeopleTools 8.50.03 or higher. For upgrade customers, please check the Upgrade Home Page for the Enterprise PeopleTools requirements for your specific upgrade path.

---

**Important!** This document is not a stand-alone installation guide. It does not contain Enterprise PeopleTools installation instructions. When installing PeopleSoft HRMS, be sure to use both the Enterprise PeopleTools Installation Guide for your database platform and these supplemental PeopleSoft HRMS installation instructions. The Enterprise PeopleTools Installation Guide is available on My Oracle Support

---

See Enterprise PeopleTools 8.50 Installation for your database platform, available on My Oracle Support.

## Verifying the Demo Database Size

The following table lists the approximate PeopleSoft HRMS 9.0 Demo database size for each RDBMS platform.

RDBMS Platform	Approximate Database Size
Oracle ANSI/Unicode	19.7 GB
DB2/UNIX — ANSI	19.7 GB
DB2/UNIX — Unicode	36 GB
DB2 z/OS Non-Unicode	18.7 GB
DB2 z/OS Unicode	20.9 GB
Sybase ANSI	18 GB
Informix	9.2 GB
Microsoft SQL Server	4.9 GB
Microsoft SQL Server — Unicode	5.4 GB

## Running the HRINSSYS.DMS Script

Use PeopleSoft Data Mover to run this script against the PeopleSoft HRMS SYS database *only*. You can find the HRINSSYS.DMS script in <PS\_HOME>\scripts. You then need to log off all clients, shut down and restart all application servers after running this script.

## Running the HC9MAINTLOG\_I.DMS Script

Run this script using PeopleSoft Data Mover against the PeopleSoft HRMS and Campus Solutions database being installed. This script loads PeopleSoft HRCS 9.0 Multi-Lingual update IDs to the PS\_MAINTENANCE\_LOG table. The HC9MAINTLOG\_I.DMS script is located in <PS\_HOME>/scripts. You do *not* need to log off all clients and shut down all application servers after running this script.

## Verifying the EDM Pool Size

The PeopleSoft installation procedure places all of the tables for the product that you are installing into multiple physical DB2 for z/OS databases using a shared tablespace methodology. The DB2 subsystem should have a minimum EDM pool size of 6 MB for PeopleSoft HRMS.

## Re-Ordering the Steps in Enterprise PeopleTools Installation for DB2 z/OS Only

For DB2/zOS - PeopleSoft HRMS 9.0, the order of steps performed in the "Creating a Database" chapter of the Enterprise PeopleTools installation guide changes if you are installing a demo database.

See *Enterprise PeopleTools 8.50 Installation for DB2 UDB z/OS*, "Creating a Database."

Before performing the task "Running PeopleSoft Data Mover Import Scripts," the <DBNAME>dbo.dms script needs to be edited. Edit the script <DBNAME>dbo.dms and create two different DMS scripts from the original.

---

**Note.** This modification is necessary because the PeopleSoft HRMS Demo database has some duplicate data definitions and indexes that need to be created before loading the Demo database so that duplicates can be avoided.

---

1. Search for the key word `hceng1.log` in <DBNAME>dbo.dms.
2. Cut the portion of the script from the line that contains `hceng1.log` to the end of script and paste it into a different script called <DBNAME>dbo\_2.dms.
3. Save the original <DBNAME>dbo.dms script after removing the portion of script from the line that has the key word `hceng1.log` to the end of the script.
4. At this stage, make sure that the original <DBNAME>dbo.dms script contains only the import from `hceng.db` and that <DBNAME>dbo\_2.dms contains the rest of the import and updates.
5. Run the <DBNAME>dbo.dms script in bootstrap mode.

Perform this step by following the instructions in the task "Running PeopleSoft Data Mover Import Scripts".

See *Enterprise PeopleTools 8.50 Installation for your database platform*, "Creating a Database," available on My Oracle Support.

6. Run the step to create indexes by following the instructions in the task "Creating Indexes."
7. Run the <DBNAME>dbo\_2.dms script by following the instructions in the task "Running PeopleSoft Data Mover Import Scripts."

## Reviewing PeopleSoft Campus Solutions COBOL on DB2 z/OS

PeopleSoft Campus Solutions 9.0 is no longer supported on the IBM z/OS platform. The COBOL programs in the following list are for the PeopleSoft Campus Solutions product, and will not compile successfully for customers running DB2 on the z/OS platform.

- FAPINAS0
- FAPINAS1
- FAPINAS5
- FAPINAS6
- FAPINAS7
- FAPINAS8
- FAPINAS9
- IMPLUS04
- IMPLUS05
- IMPLUS06
- IMPLUS07
- IMPLUS08
- IMPLUS09
- IMPLUS10

DB2 z/OS customers should do one of the following:

- Comment out the JCL compile steps for these programs in the JCLLIB(PSCOB\*) PDS members prior to COBOL compile execution.
- Take no action and simply ignore the COBOL compile errors for the previously listed programs.

---

## Task 1-1: Installing PeopleSoft HRMS for the U.S. Federal Government

This section describes the system data set up process that users of PeopleSoft HRMS for the U.S. Federal Government should run to ensure proper installation of Federal functionality.

To install Federal functionality in a PeopleSoft HRMS Database:

1. Select Set Up HRMS, Product Related, Workforce Administration, Workforce Data USF, Data Federalization.
2. Click the Federalize System Data button to load the contents of the core tables that are to contain Federal Data.
3. Since running the Federalization process induces changes to the Installation Table, you will receive the informational message that follows.

You then need to log off all clients, shut down and restart all application servers, and then log back on to PeopleSoft HRMS for this change to take effect.

**Data Federalization Process**

**Set Federal Data**

The database was federalized at 2006-09-28-09.22.20.000000.  
You must restart the application server for certain values to take affect.

Federalize System Data

**Set Commercial Data**

By clicking this Button, all the data in the following list of tables will be reset to Commercial data.

Commercialize System Data

Table Name	Description
<a href="#">ACTION_TBL</a>	Action Setup Table
<a href="#">ACTN_REASON_TBL</a>	Action/Reason Combinations
<a href="#">BAS_EVT_CLASS</a>	Benefits Administration Event Classification Table
<a href="#">CITIZEN_STS_TBL</a>	Citizen Status Table
<a href="#">COVRG_CD_TBL</a>	Coverage Code Definition Table
<a href="#">COVRG_RULE_TBL</a>	Coverage Code Rule Table
<a href="#">ERN_PROGRAM_TBL</a>	Earnings Program Table Description
<a href="#">ETHNIC_GRP_TBL</a>	Ethnic Group Code Table
<a href="#">INSTALLATION</a>	Site-Specific Install Options
<a href="#">MAJOR_TBL</a>	College Instructional Program Code Table
<a href="#">PSXLATITEM</a>	Translate Value Items

Data Federalization Process page

4. Select Set Up HRMS, Install, Installation Table, and the select the HRMS Options tab.

To verify that the Federal values and settings have been applied, ensure that the Position Management Option radio button is set to Full and the Multi-Step Grade check box in the Compensation Rate Codes group box is selected.

5. Select the Product Specific tab, and confirm that the Default Pay Basis in the Federal Functionality box is set to *Per Annum*.

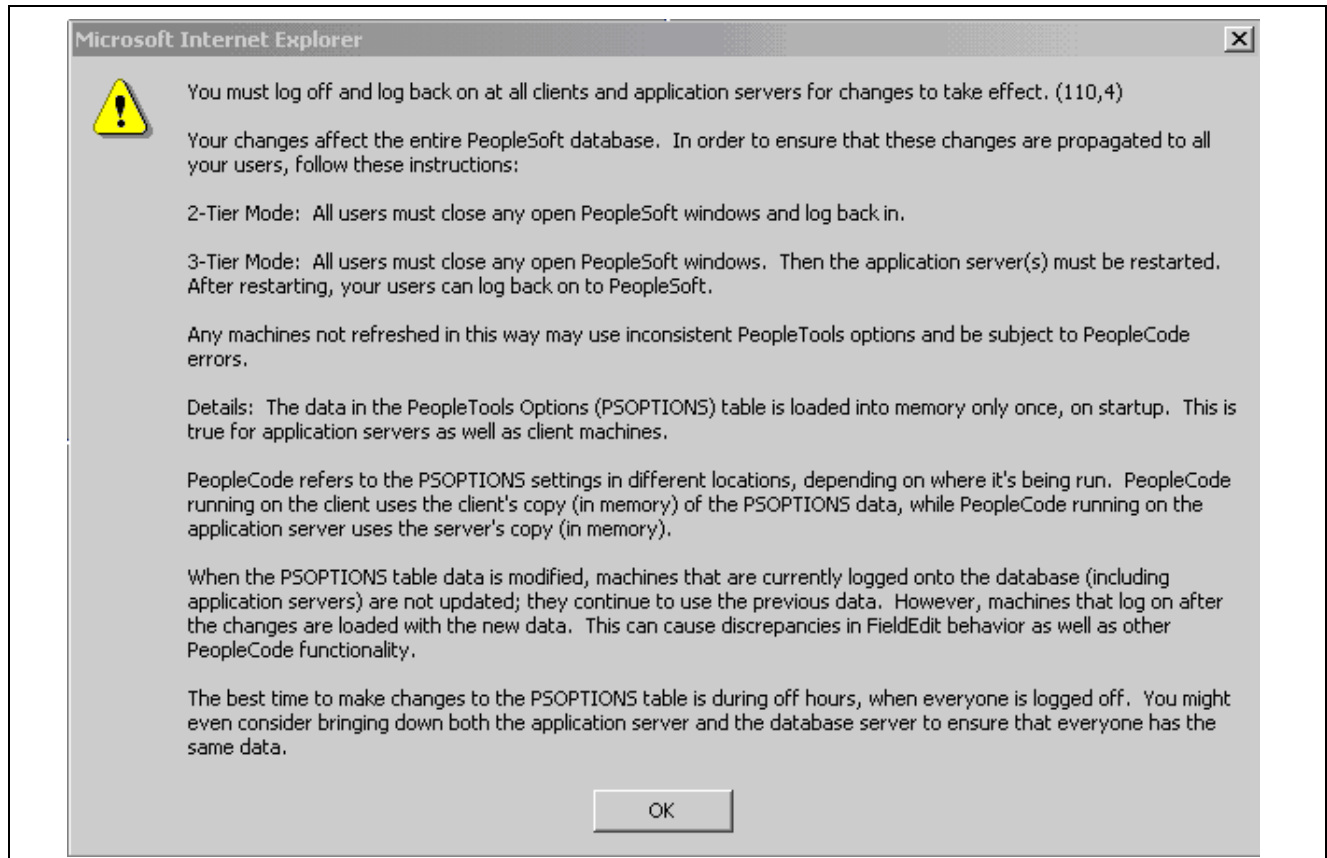
These steps must be run against the SYS and DEMO databases.

## Task 1-2: Installing PeopleSoft HRMS for Education and Government

Human Resources for Education and Government customers should ensure that the Education and Government setting is enabled on the Installation Table in order to have access to specific Education and Government functionality.

Select Set Up HRMS, Install, Installation Table and verify that the Education and Government check box is selected.

If it was necessary to make any changes to the Installation Table, you will receive the informational message that follows. You then need to log off all clients, shut down and restart all application servers, and then log back on to PeopleSoft HRMS for this change to take effect.



Informational message

---

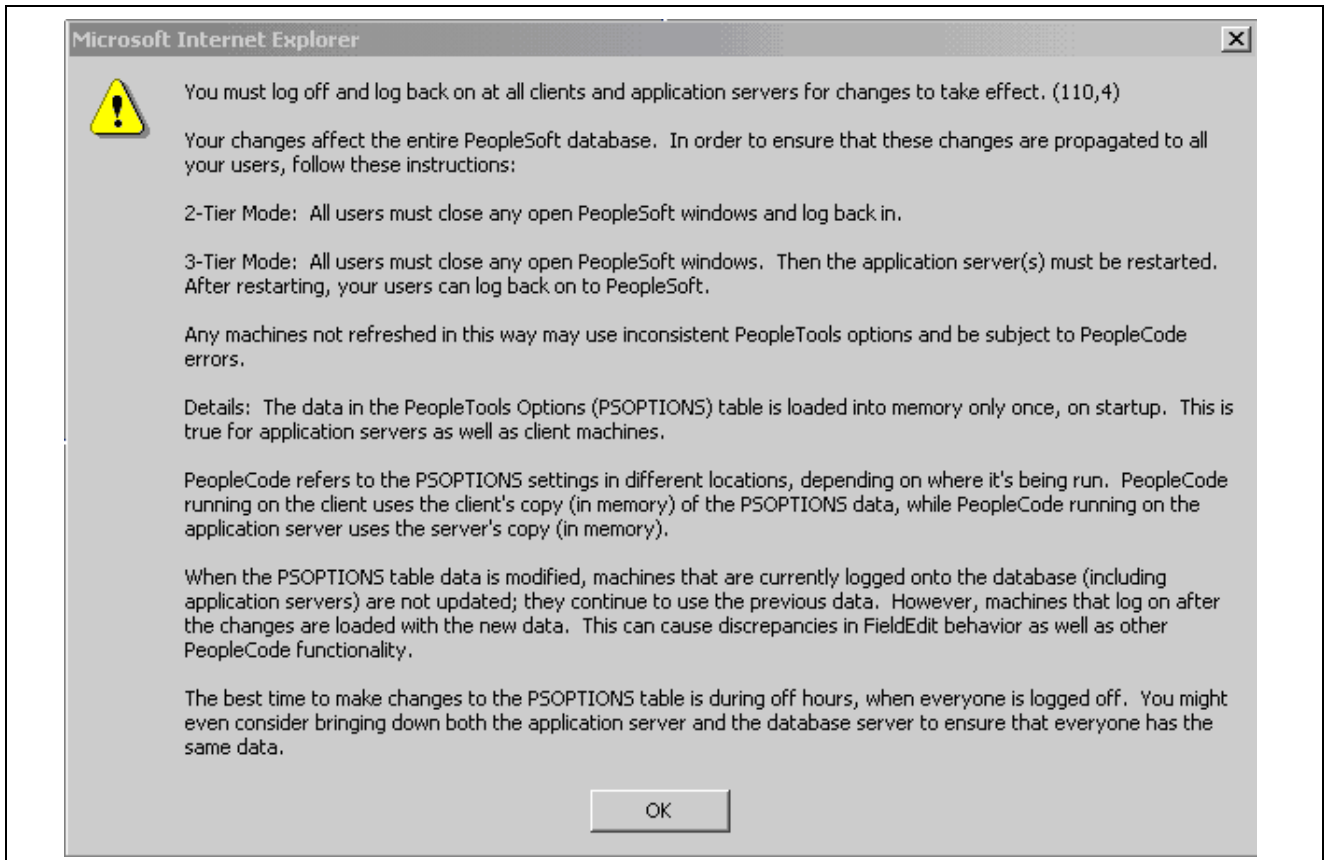
## Task 1-3: Installing PeopleSoft HRMS for Military Customers

PeopleSoft Human Resources for Military customers should ensure that the Military flag setting is enabled on the Installation Table in order to have access to specific Military Rank processing functionality.

Select Set Up HRMS, Install, Installation Table and verify that the Military check box is selected.

If it was necessary to make any changes to the Installation Table, you will receive the informational message that follows. You then need to log off all clients, shut down and restart all application servers, and then log back on to PeopleSoft HRMS for this change to take effect.



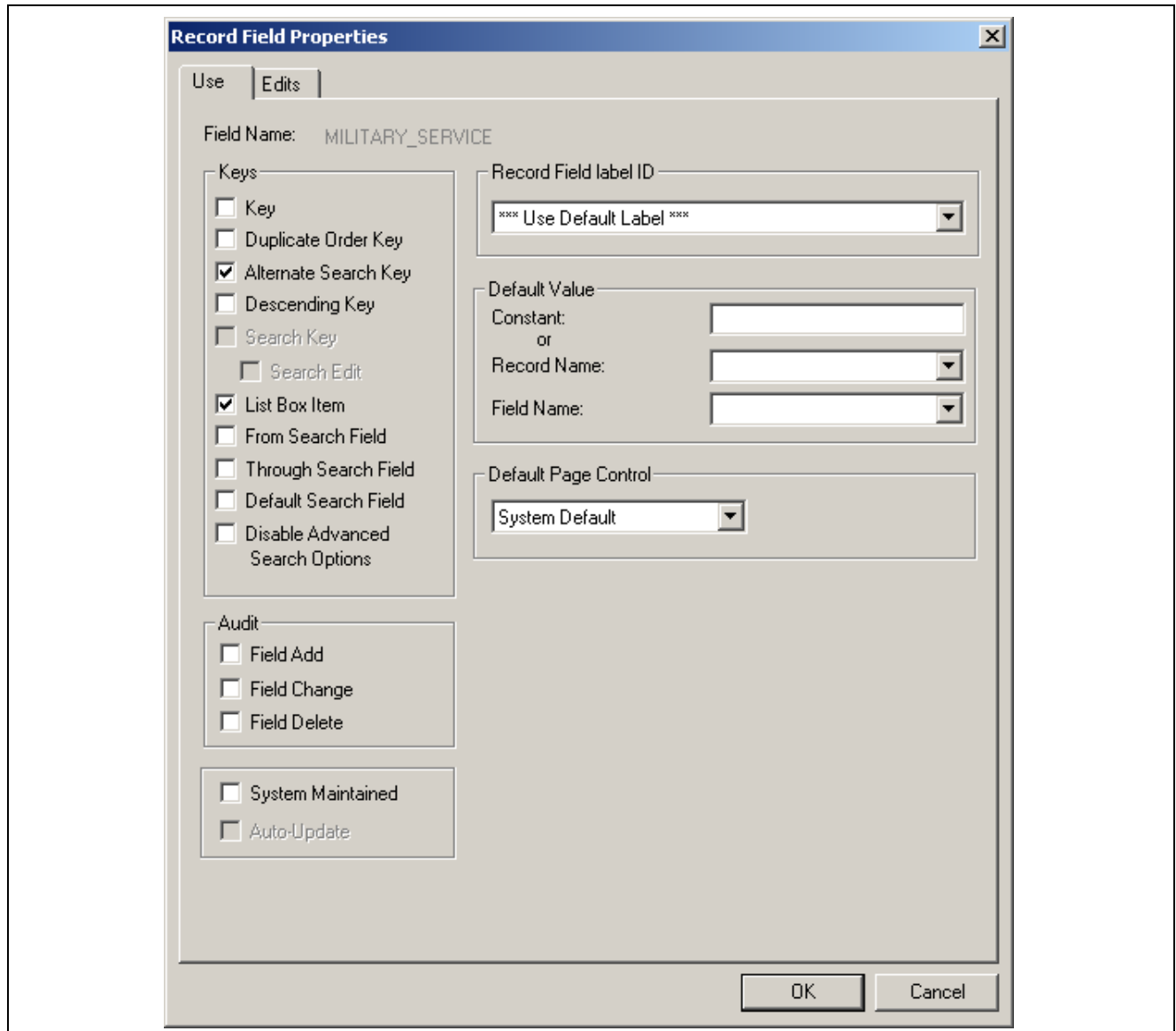


Informational message

To ensure that the Military Specific fields show in the Search Dialogs, perform the following steps:

1. Open up Record MIL\_SRCH\_SBR in PeopleSoft Application Designer.
2. Edit the Record Field Properties for all of the fields in the Record by selecting the Alternate Search Key flag under the Keys grouping.

The List Box Item flag is automatically selected.



Record Field Properties dialog box

3. Save the record.

---

## Task 1-4: Installing PeopleSoft HRMS for Japan

This section discusses:

- Using Global Search
- Configuring Phone and FAX Number Fields
- Printing Japanese Characters on SQR Reports

## Task 1-4-1: Using Global Search

If you want the ability to search by Other ID in the delivered search views, perform the following steps:

1. Open the subrecord SCRTY\_FLD\_SBR and double-click the field OTHER\_ID\_JPN.
2. Select the Alternate Search check box.
3. Save the record.

## Task 1-4-2: Configuring Phone and FAX Number Fields

Phone and fax number fields are custom format fields. If you enter a phone number without any hyphenation like 9256944023, the system automatically reformats the number into the proper format like “925/694-4023.” This works in the US.

In Japan, however, a ten-digit phone number may be formatted in several ways such as 03-1234-5670, 045-123-4567, 0567-21-1234, and so on. Thus, PeopleSoft’s standard custom format feature does not work for Japanese phone numbers.

To solve this issue, if you are a Japanese customer, you can modify the definition of the phone number field just as an ordinary string field so that the data is stored as you entered it without any automatic formatting. You can enter the phone numbers with parentheses or dashes as you like, such as 03(4567)1234 or 03-4567-1234.

1. In PeopleSoft Application Designer, open the following fields:
  - FAX
  - HOME\_PHONE
  - PHONE
  - PHONE1
  - PHONE2
  - POSITION\_PHONE
  - PROXY\_PHONE
  - PT\_CTI\_PHONENUMBER
  - WORK\_PHONE
2. For each field, in the Field Format group box, change the Format Type drop-down list from *Custom* to *Uppercase*.
3. Save the field.

## Task 1-4-3: Printing Japanese Characters on SQR Reports

To print Japanese characters on SQR reports, the following changes need to be made.

In setenv.sqc, uncomment this line:

```
Print Specific Language -#define PRINT_JAPANESE
```

Additional changes to configuration files may also be needed depending on the settings on your operating system. For more information, see the section *PeopleSoft SQR Globalization* in the Global Technology PeopleBook.

See Enterprise PeopleTools 8.50 PeopleBook: Global Technology, “Using Global Reporting and Data Analysis Tools,” for your database platform.

---

## Task 1-5: Installing PeopleSoft HRMS for Switzerland

This section describes how to install Swiss address validation.

To import Swiss address data:

1. Sign on with PeopleSoft Data Mover to the 9.0 application database.
2. Open the PeopleSoft Data Mover script <PS\_HOME>\scripts\CHE\_ADDR.DMS.

---

**Note.** If you are using a Unicode database, use the CHE\_ADDR\_DBCS.DMS file instead of the CHE\_ADDR.DMS file. This imports the Swiss address data in a form that can be used with the double-byte character set.

---

3. Run this script against the 9.0 application database.
4. Close PeopleSoft Data Mover.

---

**Note.** The accented characters in the address data are only visible on databases that support either Unicode or the European character set.

---

---

## Task 1-6: Installing PeopleSoft Time and Labor

This section discusses:

- Creating Time Zone Offsets

This section discusses the installation of PeopleSoft Time and Labor and the creation of time zone offsets.

### Task 1-6-1: Creating Time Zone Offsets

Enterprise PeopleTools stores time/date information in only one time zone—the "Base Time Zone"—that you select at the time of installation and should never change. The base time zone may be set to the time zone of the company's headquarters or perhaps to Greenwich Mean Time (GMT)—also known as UTC (Coordinated Universal Time).

When employees enter the hours they have worked in PeopleSoft Time and Labor, they report time according to the local time zone and Enterprise PeopleTools stores the information in the base time zone. The Time Administration process then converts the base time back to the local time for rules processing.

To do this, the system needs to know the time zone “offsets”, or the differences between the local time and base time. The following procedure explains how to select the base time zone and create time zone offsets.

To select the Base Time Zone and create time zone offsets:

1. Select PeopleTools, Utilities, Administration, PeopleTools Options.
2. In the Base Time Zone field on the PeopleTools Options page, browse and select the time zone in which you want all reported time to be stored.

3. Select PeopleTools, Utilities, International, Time Zones.
4. Change the default settings on the Time Zone Data page and Daylight Savings page, if applicable.  
The Time Zone Data page and Daylight Savings page display the default time zone settings delivered with Enterprise PeopleTools. You can change the settings on these pages if you need to customize the information for your organization.
5. Create time zone offsets using the Time Zone Data page. Click the Generate Query Offsets button on the Time Zone Data page to populate the time zone offsets table with values that represent the differences between the local and base time zones.
6. Enter the Start and End dates for the offset generation.
  - Specify Start Date: Determine 5 years prior to current date and use year begin date as Start Date.
  - Specify End Date: Determine 5 years in the future, from current date and use year end date as End Date.

---

## Task 1-7: Installing PeopleSoft Absence Management and PeopleSoft Global Payroll Core

This section discusses:

- Verifying Installation Settings for PeopleSoft Absence Management
- Updating Process and Job Definitions for PeopleSoft Packager

### Task 1-7-1: Verifying Installation Settings for PeopleSoft Absence Management

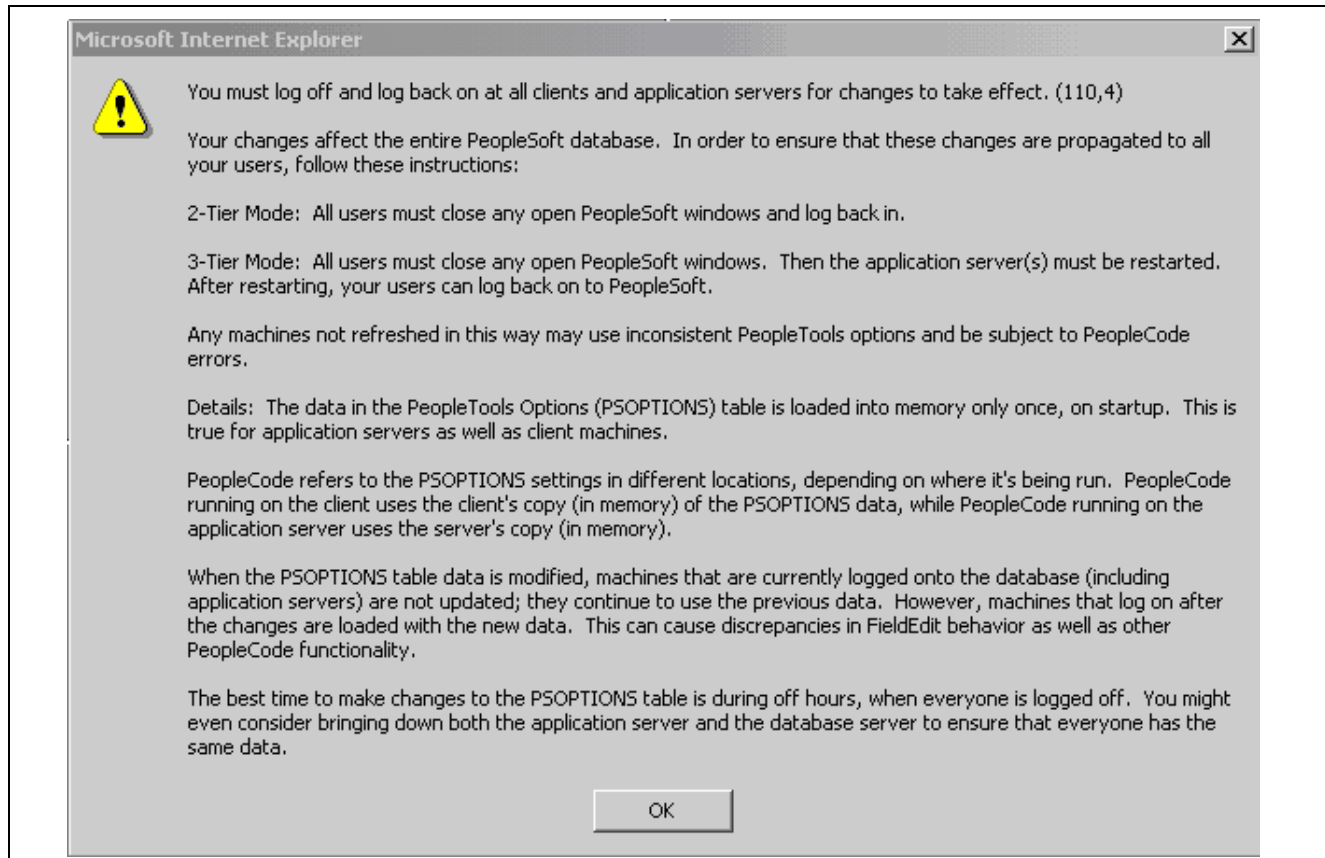
PeopleSoft Absence Management customers who are licensed for PeopleSoft Payroll for North America or PeopleSoft Payroll Interface should ensure that Global Payroll Core is disabled on the Installation Table in order to have access to specific PeopleSoft Absence Management functionality.

PeopleSoft Absence Management customers licensed for PeopleSoft Global Payroll Core, a Country Extension, or who are planning on using PeopleSoft Absence Management as a stand alone product, need to ensure that Global Payroll Core is enabled on the Installation Table.

This step must be run against both the SYS database and the DMO database.

- Select Set Up HRMS, Install, Installation Table and verify that the Global Payroll Core check box is *not* selected if you are using PeopleSoft Payroll for North America or PeopleSoft Payroll Interface.
- Select Set Up HRMS, Install, Installation Table and verify that the Global Payroll Core check box is selected if you are using PeopleSoft Global Payroll Core, a Country Extension or you are planning on using PeopleSoft Absence Management as a stand-alone product.

If any change is needed in the Installation Table, you will receive the informational message that follows. You then need to log off all clients, shut down and restart all application servers, and then log back on to PeopleSoft HRMS for this change to take effect.



Informational message

## Task 1-7-2: Updating Process and Job Definitions for PeopleSoft Packager

This section discusses:

- Understanding Updates for PeopleSoft Packager
- Updating Process Definitions for PeopleSoft Packager
- Updating Job Definitions for PeopleSoft Packager

### Understanding Updates for PeopleSoft Packager

This step must be done by customers who have licensed either PeopleSoft Absence Management or PeopleSoft Global Payroll Core.

The SQR GP00PK01 and the two PeopleSoft Data Mover processes (GP\_EXP, GP\_IMP) have to be run on an NT Process Scheduler. With Release 9.0, Job definitions that combine multiple Packager processes have been delivered in order to streamline the overall process. As a result, the Job definitions that contain either the SQR Report or the PeopleSoft Data Mover processes have to be scheduled to be run on an NT Process Scheduler.

### Updating Process Definitions for PeopleSoft Packager

The following Process definitions need to be run on an NT Process Scheduler:

Process Type	Process Name
SQR Report	GP00PK01
Data Mover	GP_EXP
Data Mover	GP_IMP

To update the previously listed Process Definitions:

1. Access the Processes component by selecting PeopleTools, Process Scheduler, Processes.
2. Click the Advanced Search link on the Search page.
3. Open the component for each of the process types and process names in the previously provided list.
4. Select the Process Definition Options tab.
5. Select the value of the NT Process Scheduler set up at your installation in the Server Name field.

### Updating Job Definitions for PeopleSoft Packager

The following job definitions need to run on an NT Process Scheduler:

- GPCMPRPT — Rules Package Compare Report
- GPCMPRU — Compare & Upgrade with Report
- GPCRSCTE — Create Package & Scripts & Export
- GPEXP — Export Rule Packages
- GPICMP — Import Rule Package & Compare
- GPICMPRU — Import & Compare & Upgrade with Report
- GPICMPU — Import & Compare & Upgrade
- GPIMP — Import Rule Packages
- GPSCTE — Create Scripts & Export Package

To update the previously listed Job Definitions:

1. Access the Jobs component by selecting PeopleTools, Process Scheduler, Jobs.
2. Open the component for each of the previously listed jobs.
3. Select the Job Definition Options tab.  
The Server Name field contains the value *PSNT*.
4. Select the value of the NT Process Scheduler set up at your installation in the 'Server Name field.

---

## Task 1-8: Installing PeopleSoft HRMS Portal Pack

This section describes how to grant access to the homepage personalization.

In order to add, remove, or change the layout of the homepage, the homepage personalization security access must be granted to all non-guest users.

To add the Portal User Role to the user IDs:

1. With PeopleSoft Data Mover sign in to the 9.0 application database.
2. Open the PeopleSoft Data Mover script <PS\_HOME>\scripts\portal\_add\_role.dms.
3. Run this script against the 9.0 application database.
4. Close PeopleSoft Data Mover.

---

**Note.** The PAPP\_USER role should be granted to all new user IDs for access to the homepage personalization. After running this script, the role PAPP\_USER should be manually removed from any GUEST User ID, since the GUEST user should not be personalizing the common homepage.

---

---

## Task 1-9: Installing PeopleSoft Talent Acquisition Manager

This section describes the installation steps for the Resume Processing feature in PeopleSoft Talent Acquisition Manager.

To install Resume Processing functionality:

---

**Note.** Verify prerequisites for Resume Processing. Resume Processing (RP) 9.0 requires a working PeopleSoft HRCS 9.0 Database, Application Server, Process Scheduler, and PeopleSoft Pure Internet Architecture (PIA) Web Server. Detailed instructions for installing these components can be found in the appropriate Enterprise PeopleTools installation guide for your database platform.

---

See Enterprise PeopleTools 8.50 Installation for your database platform, available on My Oracle Support.

1. Configure the Local Gateway.
  - a. Select PeopleTools, Integration Broker, Configuration, Gateways.
  - b. Click the Search button and select the Default Local Gateway.
  - c. In the URL field enter the following:  
`http://<PIA_Webserver>:<Port Number>/PSIGW/PeopleSoftListeningConnector`  
<PIA\_Webserver> refers to the machine name of the web server hosting the gateway. This is usually the same machine that is used to run PeopleSoft PIA (for example, `http://psftweb01.peoplesoft.com:8080/PSIGW/PeopleSoftListeningConnector`). The gateway uses the PeopleSoft listening connector to receive messages from an integration engine node or a remote gateway.
  - d. Click the Load Gateway Connectors button.  
An informational message appears.
  - e. Click OK.
  - f. Click Save.
2. Synchronize counters with your data.
  - a. Select Set Up HRMS, Install, Product and Country Specific, Recruiting Installation and then select the Last Assigned Ids tab.
  - b. Click the Fix Counters button near the bottom of the page.
  - c. Click the Save button.



---

## Task 1-10: Installing PeopleSoft Global Payroll Country Extensions

This section discusses:

- Understanding the PeopleSoft Global Payroll Country Extensions Installation
- Updating Installation Indicators
- Running the GPCESYS.DMS Script to Update Stored Installation Indicators
- Running the GPCERATE\_EXP.DMS / GPCERATE\_IMP.DMS Scripts to Copy HR Rate Codes

### Understanding the PeopleSoft Global Payroll Country Extensions Installation

This section describes the additional installation steps required to install PeopleSoft Global Payroll Country Extensions.

---

**Note.** You only need to complete this section if you are installing one or more PeopleSoft Global Payroll Country Extensions.

---

The following abbreviations and terms are used in this section:

Abbreviation	Global Payroll Terms
CE	Country Extension
GP	Global Payroll
HRDMO	PeopleSoft HRMS Demo database
HRSYS	PeopleSoft HRMS System database

The objects, rules, and data for the PeopleSoft Global Payroll Country Extensions are delivered as part of the HRSYS and HRDMO databases. These additional steps walk you through additional installation actions that are required for PeopleSoft Country Extensions.

### Task 1-10-1: Updating Installation Indicators

Oracle recommends that you update the PeopleSoft Global Payroll Country Extension indicators on the Installation page on both your HRSYS and HRDMO databases so that only the PeopleSoft Country Extensions that you licensed are turned on.

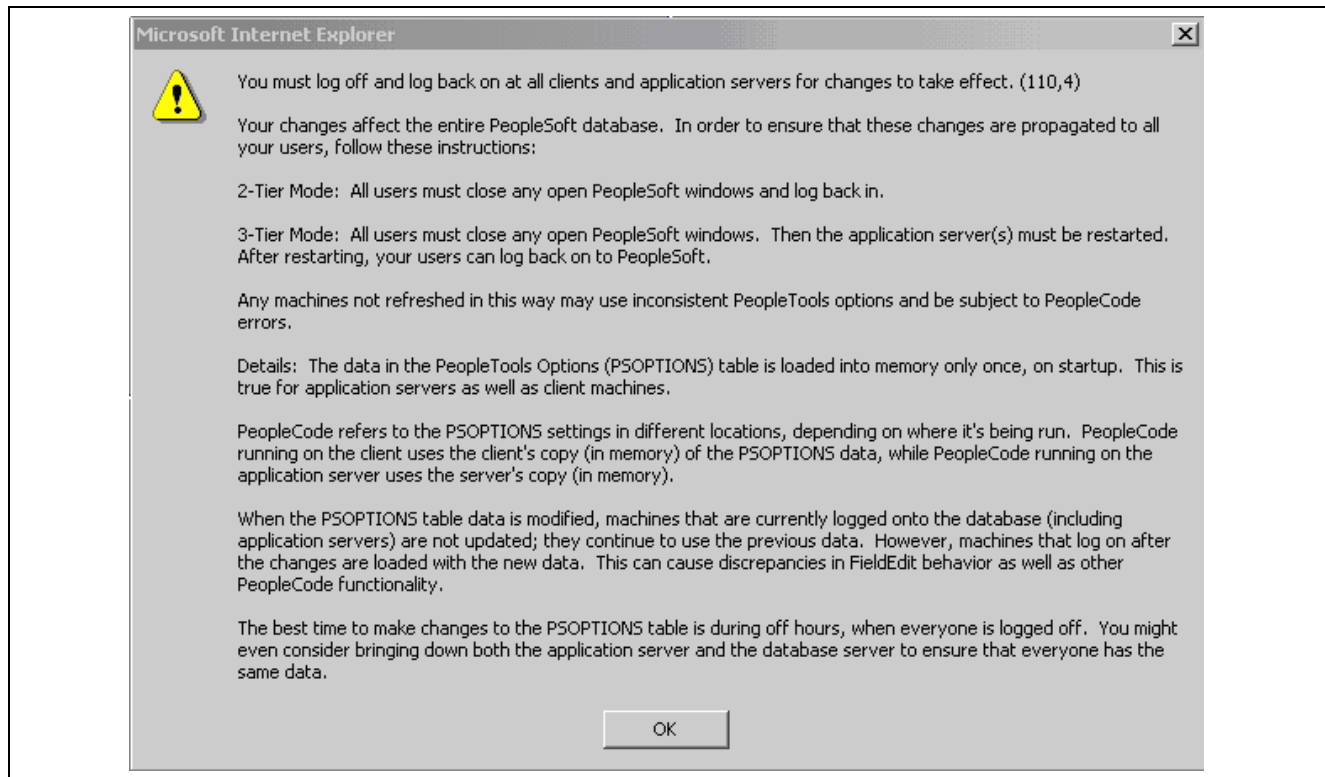
1. Select Set Up HRMS, Install, Installation Table.
2. On the Products page, select the Installed GP Countries link at the bottom to see a list of Countries.
3. Clear the check boxes for all of the Country Extensions that you have *not* licensed (so the only check boxes remaining selected should be for those PeopleSoft Country Extensions that you licensed).

---

**Note.** This is important as these indicators are used later in this task to identify if additional updates should be made (as they are conditional based on which PeopleSoft Country Extensions you licensed).

---

4. If it was necessary to make any changes to the Installation Table, you will receive the informational message that follows. You then need to log off all clients, shut down and restart all application servers, and then log back on to PeopleSoft HRMS for this change to take effect.



Informational message

## Task 1-10-2: Running the GPCESYS.DMS Script to Update Stored Installation Indicators

The `gpcsys.dms` script updates the store indicators for some elements and activates applicable trigger definitions based on the Country Extensions that you licensed. This script should be run by all PeopleSoft Global Payroll customers as the updates are conditional based on the Installation Indicators, as mentioned in the previous section.

Use PeopleSoft Data Mover to run the `gpcsys.dms` script against both the `HRSYS` and `HRDMO` databases. You can find the script in `<PS_HOME>\scripts`.

## Task 1-10-3: Running the GPCERATE\_EXP.DMS / GPCERATE\_IMP.DMS Scripts to Copy HR Rate Codes

GP Rate Code Elements for Country Extensions are delivered in both the `HRSYS` and `HRDMO` databases; however, the HR Rate Codes that are referenced by these elements are only delivered in the `HRDMO` database. If you would like to copy the related HR Rate Code elements directly into your `HRSYS` database for the GP Country Extensions that you licensed, you can use the `gpcerate_exp.dms` and `gpcerate_imp.dms` scripts to do this. These scripts have conditional export/import logic that is based on the Installation Indicators (as previously noted) to only copy the referenced HR Rate Codes that are required for the GP Country Extensions that you licensed.

After you install *both* the HRSYS and HRDMO databases, use PeopleSoft Data Mover to run the `gpccrate_exp.dms` script (which can be found in your `<PS_HOME>\scripts` directory) against your HRDMO database. You then use PeopleSoft Data Mover in bootstrap mode to run the `gpccrate_imp.dms` script (which can be found in your `<PS_HOME>\scripts` directory) against your HRSYS database (using the `dat` file that was just generated).

---

**Note.** DB2 z/OS customers: Follow the instructions in the script `gpccrate_imp.dms` to alter it to work properly in your environment

---

---

**Note.** If you only want to copy HR Rate Codes for a subset of the Country Extensions that you licensed, you should modify the `gpccrate_exp.dms` script before you run and comment out the export logic for the licensed Country Extensions that you do not want to copy (by default, only those for your licensed Country Extensions are exported, based on your Installation Indicators).

---

---

## Task 1-11: Installing PeopleSoft ePay Payslips for PeopleSoft Global Payroll

This section discusses:

- Understanding the PeopleSoft ePay Payslips Installation
- Installing the PeopleSoft ePay Payslips Functionality
- Installing Process Schedulers on MVS Platforms
- Modifying the JVM Configuration to Increase Heap Size

### Understanding the PeopleSoft ePay Payslips Installation

This section describes the installation steps for PeopleSoft ePay Payslips (for PeopleSoft Global Payroll).

---

**Note.** The PeopleSoft Payslips process may throw a `java.lang.OutOfMemoryError` exception when the number of payees in a single payslip print run gets above 4,000. If this occurs, the amount of memory allocated to java can be increased.

---

See *Modifying JVM Configuration to Increase Heap Size*.

### Task 1-11-1: Installing the PeopleSoft ePay Payslips Functionality

To install PeopleSoft ePay Payslips for PeopleSoft Global Payroll:

---

**Note.** PeopleSoft ePay Payslips for PeopleSoft Global Payroll has a dependence on a working FTP server. In the following example, the user ID and password used for logging onto the FTP session is `PSLPUSER/PSLPUSER`.

---

1. To confirm the jar installation, verify that the following two jar files are installed in your `<PS_HOME>\class` directory:
  - `Itxt-1.02b.jar`

- com.peoplesoft.hmcr.exceptions.jar

2. Update URL IDs in the PeopleSoft software to point to the FTP site.

The URL ID is pointing to a virtual directory on the ftp site. You may create this virtual directory “PAYSLIPS” in the ftp root, however the PeopleSoft ePay process creates this folder if it did not exist previously. You may choose to create a directory by any name or structure (you are not limited to using “PAYSLIPS”). If you create a different directory, you must ensure that you reference this directory in the URL ID.

a. Select PeopleTools, Utilities, Administration, URLs.

b. Select the following URL Identifier:

GP\_SS\_PSLP\_FTP

c. Update this URL with your ftp payslip URL; for example:

ftp://PSLPUSER:PSLPUSER@COMPUTERNAME/PAYSLIPS/

3. Check the URL setting in Self Service Payslip Options.

a. Select Set Up HRMS, Product Related, ePay, Self Service Payslip Options.

b. Search for the Global Payroll Country that you are installing PeopleSoft ePay Payslips for and ensure that the URL setting is the URL Identifier from the prior step.

---

**Important!** You may create your own URL ID and update this URL instead of using GP\_SS\_PSLP\_FTP. If you create your own URL ID you must update the Self Service Payslip Options to point to your new URL ID. See *PeopleSoft Enterprise ePay 9.0 PeopleBook*, “*Managing Pay Information for PeopleSoft Enterprise Global Payroll*” for more information regarding Payslip Options.

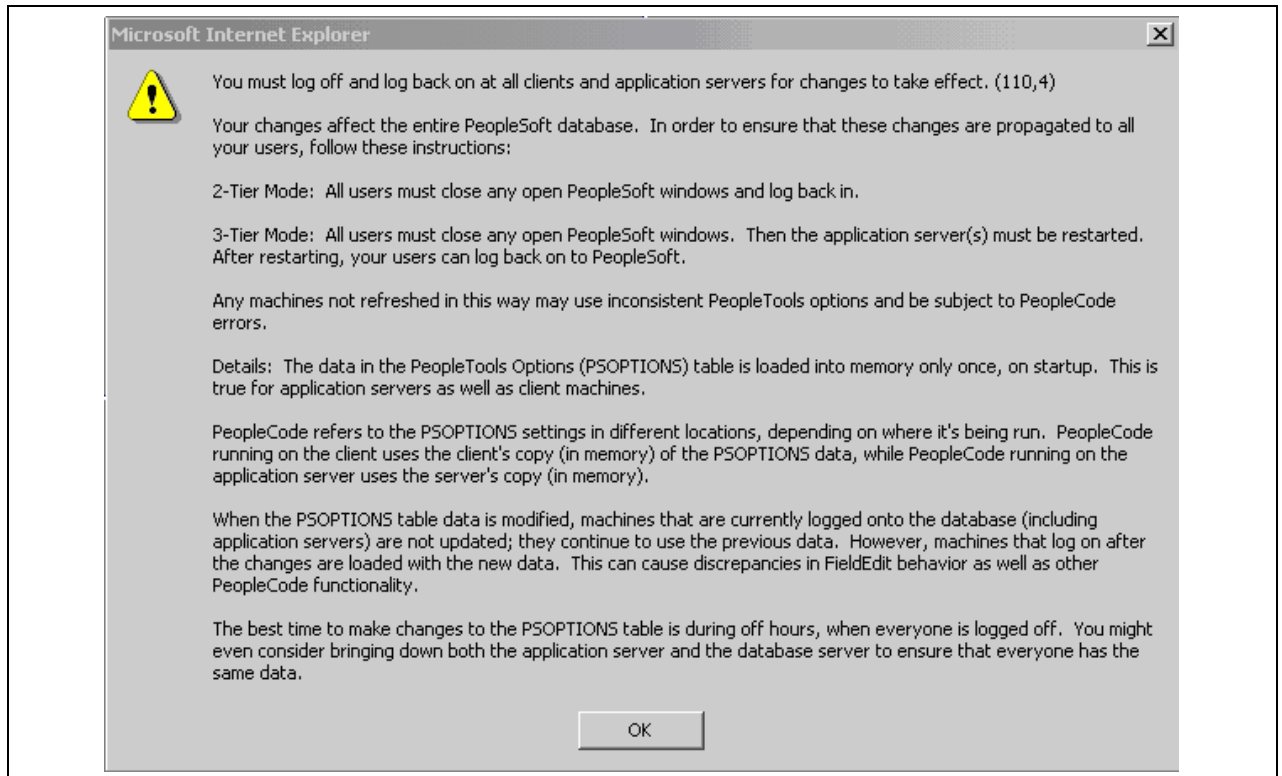
---

4. Check PeopleSoft Installation Table Settings.

a. Select Set Up HRMS, Install, Installation Table.

b. Select the ePay check box on the main Installation Table tab (Products).

c. If it was necessary to make any changes to the Installation Table, you will receive the informational message that follows. You then need to log off all clients, shut down and restart all application servers, and then log back on to PeopleSoft HRMS for this change to take effect.



Informational message

## Task 1-11-2: Installing Process Schedulers on MVS Platforms

This section includes additional installation instructions for Process Schedulers on MVS platforms.

1. Execute this SQL statement:

```
SELECT COUNT(*) FROM PS_GP_SS_PSLP_INST
```

2. If the return value is 1 then run this SQL statement:

```
UPDATE PS_GP_SS_PSLP_INST SET GP_PSLP_XFERMETHOD = '0002'
```

3. If the return value is 0 then run this SQL statement:

```
INSERT INTO PS_GP_SS_PSLP_INST VALUES ('0002')
```

## Task 1-11-3: Modifying the JVM Configuration to Increase Heap Size

When running the payslip report process, the ePay Application Engine process caches the entire payslip report into memory. If Java is not allocated enough memory, the process abends with error: `java.lang.OutOfMemoryError`. To increase the memory for Java edit the `psprcs.cfg` file of each process scheduler server intended to be used for payslip report generation.

Under the `[PSTOOLS]` section in `psprcs.cfg`, modify the JVM configuration option to increase the memory allocated. `Xms` is the minimum and `Xmx` is the maximum memory it would allocate for Java. If a memory error occurred in the payslip process, after the JVM changes are made, reboot the process scheduler. The abended payslip process may then be restarted.

Example of the modified JVM configuration:

```
[PSTOOLS]
;=====
; General settings for PSTOOLS
;=====

;To pass java options to the jvm loaded via JNI, uncomment JavaVM Options=
;and set it equal to the list of parameters you would like to use.
;The options need to be a blank space separated list of valid java options.
;Consult your JRE vendor for valid java options.
;For example, JavaVM Options=-Xmx256m -Xms128m
JavaVM Options=-Xmx512m -Xms32m
```

## Task 1-12: Installing PeopleSoft HR Spain and PeopleSoft Global Payroll Germany/Switzerland PDF Form Files

This section describes how to load the PDF Form Files used in the PeopleSoft HR Spain and PeopleSoft Global Payroll Germany and Switzerland products. You only need to complete this task if you have licensed those products.

Before beginning this procedure, copy the files \*.pdf from the PeopleSoft SQR directory to your local hard drive

- Select the appropriate command for the products that you installed:
  - For PeopleSoft Global Payroll Switzerland, select Set Up HRMS, Product Related, Global Payroll and Absence Mgmt, Reports, Form Definition CHE.
  - For PeopleSoft Global Payroll Germany, select Set Up HRMS, Product Related, Global Payroll and Absence Mgmt, Reports, PDF Form Setup DEU, and then click the Correct History button.
  - For PeopleSoft HRMS Spain, select Set Up HRMS, Product Related, Workforce Administration, Workforce Data ESP, PDF Form Definition, and then click the Correct History button.
- Use the following table to select the Form IDs for your product.

Product	Form ID	Effdt	Filename
Global Payroll Switzerland	LAW-P1	1/1/2004	Form_11-2005-dfi.pdf
	LAW-PIB	1/1/2004	Form_11-2005-dfi-b.pdf
	LAW-P2	1/1/2004	Form_11-2005-dfi_x.pdf
	LAW-C1	1/1/2004	Beteiligungen.pdf
Global Payroll Germany	CT_ARBS	9/01/2007	ARBS032006.pdf
	CT_ERGE	1/1/2006	ERGE012006.pdf
	CT_KRGE	1/1/2006	KRGE012006.pdf
	CT_MUGE	1/1/2006	MUGE112005.pdf
	CT_WOGE	1/1/2006	WOGE112005.pdf
HR Spain	PE-170	1/1/1900	PE-170.pdf
	PE-170	1/1/1980	PE-170_mod.pdf

- For each Form ID, click the Delete button; the Add button appears.

**Form Definition**

Form ID: LAW-P1

**Form Data** Find | View All First 1 of 1 Last

\*Effective Date: 01/01/2004

End Date:

\*Description: LAW Statement - Part 1

Comment:

**Form Details** Customize | Find | View All First 1 of 1 Last

	*Language Code	Default Language	Attached File	View	Delete	Details		
1	German	<input checked="" type="checkbox"/>	Form_11-2005-dfi.pdf	View	Delete	Details	+	-

Form Definition page

- Click Save.
- Click Add.
- Select Form File, select and click Upload.
- Click View to verify that the form is correctly loaded.

## Task 1-13: Installing PeopleSoft Directory Interface

This section discusses:

- Prerequisites
- Verifying the Installation Options for PeopleSoft Directory Interface
- Backing up the Directory Server and Database
- Running PeopleSoft Data Mover Scripts

### Prerequisites

PeopleSoft Directory Interface has dependency on the additional component (third-party) LDAP-enabled directory server. If you have not installed a supported LDAP-enabled directory server already, install it using the installation instructions provided by the vendor. Make sure that PeopleSoft supports the directory server that you install.

If you already have an LDAP-enabled directory server installed, make sure that PeopleSoft supports your directory server vendor and that the directory server is on a supported version.

---

**Note.** Novell NDS is no longer bundled with PeopleSoft. For the most current information on the supported directory servers, refer to the Enterprise PeopleTools Hardware and Software Requirements Guide and the PeopleSoft Platforms site on My Oracle Support.

---

## Task 1-13-1: Verifying the Installation Options for PeopleSoft Directory Interface

PeopleSoft Directory Interface customers should ensure that the Directory Interface setting is enabled on the Installation Table in order to have access to PeopleSoft Directory Interface functionality.

Select Set Up HRMS, Install, Installation Table and verify that the Directory Interface check box is selected.

## Task 1-13-2: Backing up the Directory Server and Database

Before proceeding with the installation, back up all servers and databases that you have set up for the installation. So that you can recover to this point if necessary, do the following:

- Back up any changes you have made to the database server in setting up your PeopleSoft system.
- Back up any changes you have made to your directory server prior to this installation procedure.

## Task 1-13-3: Running PeopleSoft Data Mover Scripts

In this section, you run multiple PeopleSoft Data Mover scripts (DMS scripts) against your database.

The PeopleSoft Directory Interface includes directory schema extensions and sample maps for publishing Human Resources data to the directory. This step describes how to load the sample maps into your PeopleSoft database using PeopleSoft Data Mover.

In addition to the sample maps, you also run PeopleSoft Data Mover scripts that load messages, publishing rules, and LDAP extensions into your database.

1. Launch PeopleSoft Data Mover on the Install Workstation.
2. Select File, Open.
3. Navigate to the \scripts directory on the drive containing the Directory Interface codeline installation.  
For example, <PS\_HOME>\scripts.
4. Open and select File, Run Script to run the following PeopleSoft Data Mover scripts for PeopleSoft HRMS:

```
disehr.dms  
dimaphr.dms
```

---

**Note.** PeopleSoft Directory Interface includes directory schema extensions relevant to the Human Resources application. The extensions add two Object Classes (psftPerson and psftJob) as well as several Attribute Types to your directory. You are not required to use the HR schema extensions. Nevertheless, the sample maps that Oracle provides assume the HR schema extensions have been applied to the directory.

---

---

## Task 1-14: Installing PeopleSoft Payroll Interface for ADP Connection

This section discusses:



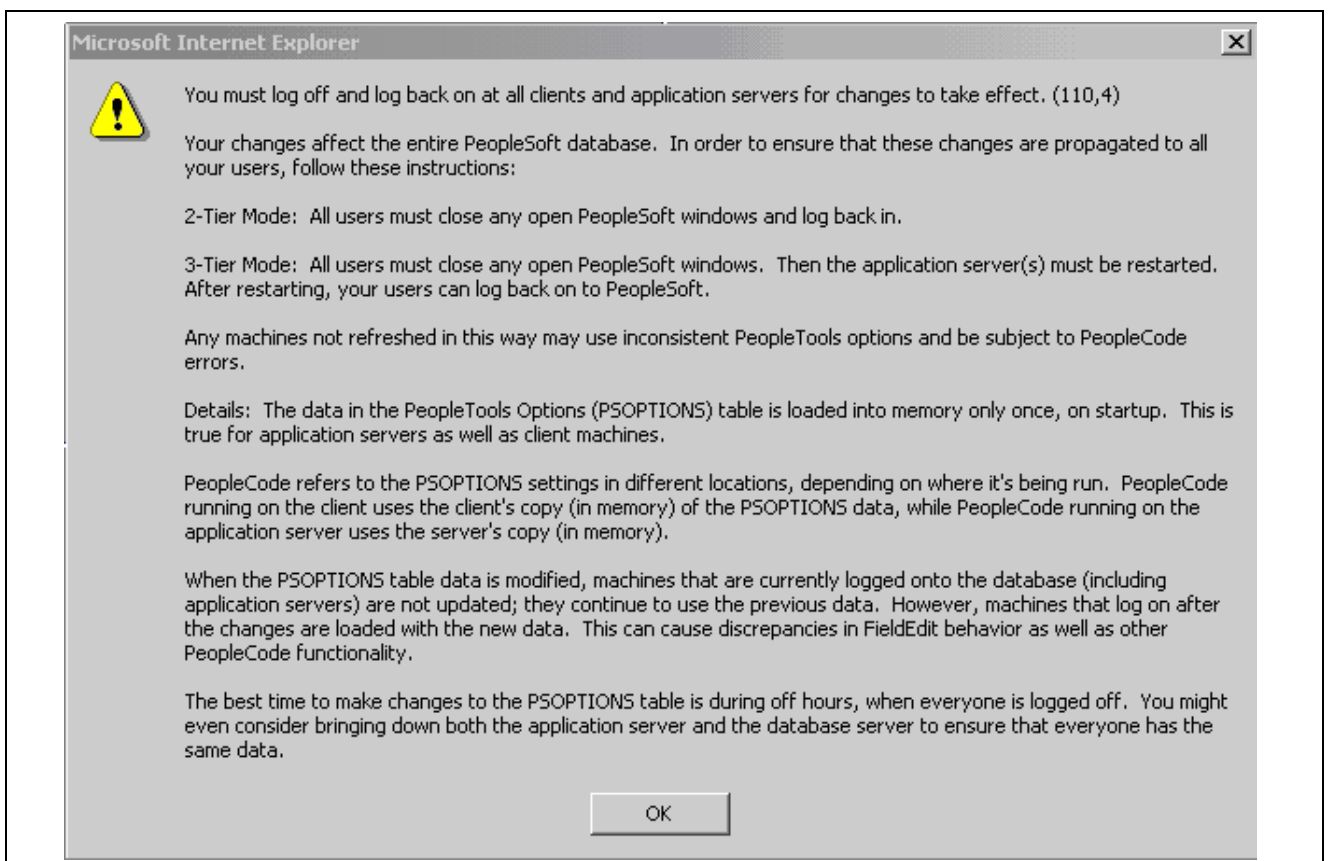
- Verifying the Installation Options for PeopleSoft Payroll Interface for ADP Connection
- Running the PeopleSoft Payroll ADP Connection Installation Script

## Task 1-14-1: Verifying the Installation Options for PeopleSoft Payroll Interface for ADP Connection

This section describes the installation steps for PeopleSoft Payroll Interface for ADP Connection.

Select Set Up HRMS, Install, Installation Table and verify that the Payroll Interface for ADP check box is selected.

If it was necessary to make any changes to the Installation Table, you will receive the informational message that follows. You then need to log off all clients, shut down and restart all application servers, and then log back on to PeopleSoft HRMS for this change to take effect.



Informational message

## Task 1-14-2: Running the PeopleSoft Payroll ADP Connection Installation Script

To install PeopleSoft Payroll Interface for ADP Connection in a PeopleSoft HRMS Database, run the PeopleSoft Payroll Interface for ADP Connection installation script.

Using PeopleSoft Data Mover in bootstrap mode, run the hcpiadpi.dms script, found at <PS\_HOME>\scripts, with the hcpiadpe.dat file to import the PeopleSoft Payroll Interface for ADP Connection setup data.

---

**Note.** For DB2 z/OS users: Update the hcpiadpi.dms script before running to set the current sqldid.

---

## Task 1-15: Installing PeopleSoft Pay/Bill Management

In this section, you activate Service Operations that are required to integrate with the PeopleSoft FSCM 9.0 database. Remember that the PeopleSoft Pay/Bill Management product is only supported on the following database platforms:

- Oracle
- Microsoft SQL Server
- DB2 UDB for Linux, UNIX, and Microsoft Windows

---

**Note.** *For customers on the Oracle platform only:* Please run the following statement against the PeopleSoft HRMS 9.0 database using SQL\*PLUS before running the following script: `ALTER SESSION set NLS_Date_Format = 'YYYY-MM-DD'`

---

1. Using a database query tool (such as iSQL, SQL\*Plus, or DB2 Command Window) log on to the target PeopleSoft HRMS database.
2. Run the following script from the <PS\_HOME>/scripts directory:

```
activate_all_hcm.sql
```

The script reads a project that is contained in your PeopleSoft HRMS 9.0 database named FO\_MESSAGES and based on this, the script activates Service Operations, Routings and Handlers, starts queues, and creates or activates Full Data Publish Rules.

---

## Task 1-16: Installing Service Handlers

Some products have service handlers that need to be activated for the proper working of the database.

See *Enterprise PeopleTools 8.50 PeopleBook: PeopleSoft Integration Broker*.

This step is not performed by the installer but by the implementation team.

1. Logon to Portal, and select PeopleTools, Integration Broker, Integration Setup, Services.
2. For each of the products listed in the following table that have Service Handlers that need to be activated, get a list of the messages, and enter each message name in the Service Name Field and Search.

Product	Has Service Handlers that need to be activated
Absence Management	No
Benefits Administration	No
Campus Community	Optional
Candidate Gateway	No
Directory Interface	Yes
Ebenefits	No

<b>Product</b>	<b>Has Service Handlers that need to be activated</b>
eCompensation	Yes
eCompensation Manager Desktop	Yes
eDevelopment	No
ePay	No
ePerformance	Optional
eProfile	No
Enrollment Services	Optional
Global Payroll — Australia	No
Global Payroll — Brazil (listed as HR Core)	Yes
Global Payroll — Core	Yes
Global Payroll — France	No
Global Payroll — Germany	No
Global Payroll — Hong Kong	No
Global Payroll — India	No
Global Payroll — Italy	No
Global Payroll — Japan (listed as Benefits Administration)	Yes
Global Payroll — Malaysia	No
Global Payroll — Mexico (listed as HR Core)	Yes
Global Payroll — Netherlands	No
Global Payroll — New Zealand	No
Global Payroll — Singapore	No
Global Payroll — Spain	No
Global Payroll — Switzerland	Optional
Global Payroll — UK	No
Global Payroll — United States	No
HRMS for the U.S. Federal Government	No
HRMS for Education and Government	Yes
Human Resources	No
Payroll for North America	Yes
Payroll Interface	No
Pension Administration	No
Stock Administration	No
Student Financial Services	Optional
Talent Acquisition Manager	No
Time and Labor	No
Workforce Compensation Solutions	No

- On the Service details page, select the Service Operation link in the “Existing Operations” grid. The Service Operation details page appears.

4. Select the Handlers tab, and ensure the status is Active for the Handlers.

---

## Task 1-17: Installing Configurable Matrices and Metadata

Configurable Matrices are a special type of lookup table that can be designed and populated by the Compensation Administrator. A matrix can be built to capture market pay information, calculate different pay rates based on employee data, and set increase criteria to be used in the calculation of group budgets.

Configurable Matrices are dependent on metadata definitions that in turn are dependent on the proper installation of java classes. Confirm that the following two jar files are installed in the <PSHOME>\class directory:

- jdom.jar
- com.peoplesoft.hmcr.exceptions.jar

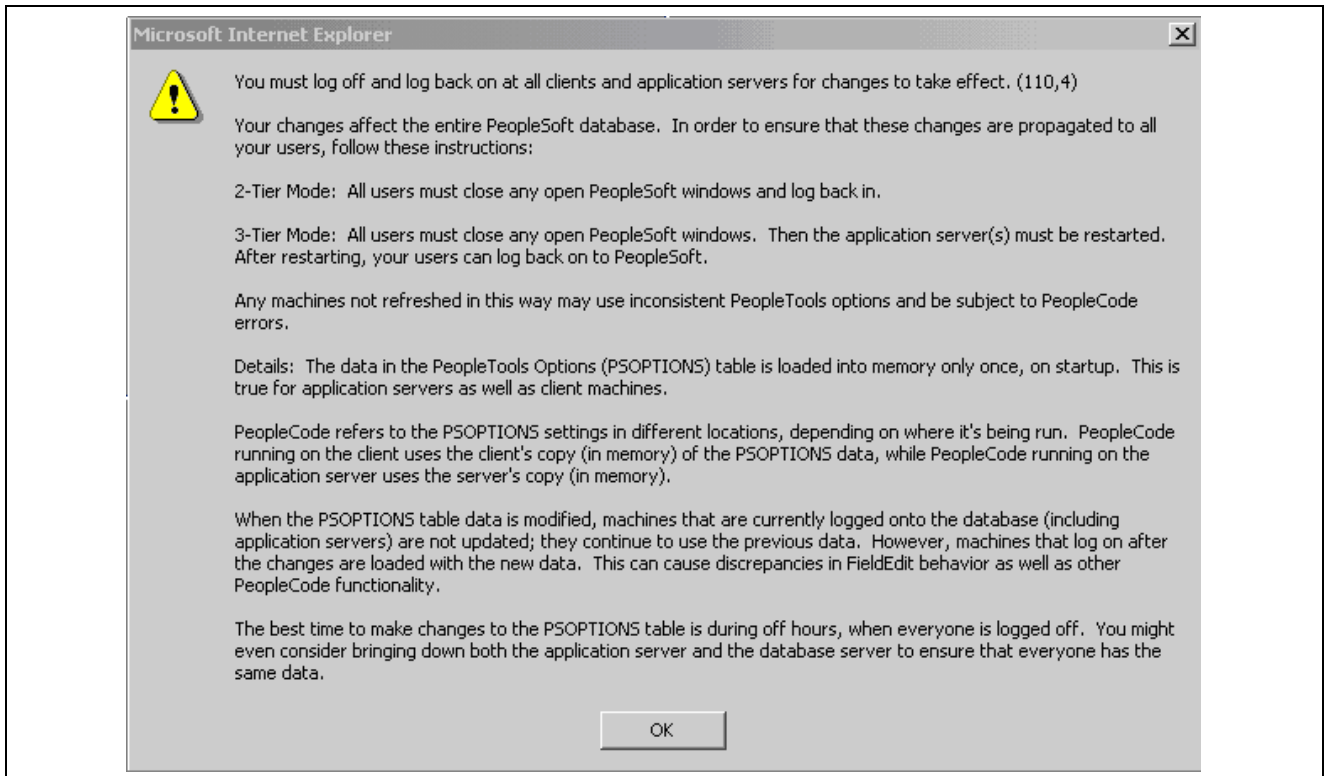
If there is a <PSHOME>\class\OS390 directory, these two files should be there as well.

---

## Task 1-18: Installing PeopleSoft Human Resources for French Public Sector

PeopleSoft Human Resources for French Public Sector customers should ensure that French Public Sector setting is enabled on the Installation Table in order to have access to specific PeopleSoft French Public Sector functionality.

1. Select Set Up HRMS, Install, Installation Table, Products, and verify that the Human Resources and French Public Sector check-boxes are selected.  
If they are not already selected, select them.
2. Go to the Country Specific page, select the Installed HR Countries link and verify that France is selected.  
If it is not selected, select it.
3. If it was necessary to make any changes to the Installation Table, you will receive the message that follows. You then need to log off all clients, shut down and restart all application servers, and then log back on to PeopleSoft HRMS for this change to take effect.



Informational message.

4. Select Set Up HRMS, Install, Product and Country Specific, FPS Installation Parameters.
5. Select the FPS Installation Parameters 2 page and then click the Activate FPS Actions button if you are willing to use the existing action codes.



## CHAPTER 2

# Installing PeopleSoft Campus Solutions 9.0 Applications

This chapter discusses:

- Setting Up Equation Engine Security
- Transferring and Compiling Additional Component COBOL for PeopleSoft Student Administration
- Installing Database Audit Triggers for PeopleSoft Student Records
- Adjusting PeopleTools EDI Manager for Financial Aid Processes
- Using CPU Space for PeopleSoft Academic Advising
- Running the SFA\_ECQUEUE\_TABLES\_RESET Script
- Configuring Your PeopleBooks Documentation Website
- Using the User Profiles Management Result Table
- Installing PeopleSoft Student Administration Integration Pack
- Installing PeopleSoft Contributor Relations

---

### Task 2-1: Setting Up Equation Engine Security

Oracle delivers Equation Security with all public access to all equation objects activated within the authorized equation components. Your institution may not want to provide this level of access to all of your equation users. For example, you may want to limit who can read certain tables and views and who can execute certain equation sql objects. Refer to the sections on equation security in the Equation Engine Programmers Guide for details on how to limit security access. The *Equation Engine Programmers Guide* can be found at the end of the *PeopleSoft Enterprise Campus Solutions 9.0 Application Fundamentals PeopleBook*.

---

### Task 2-2: Transferring and Compiling Additional Component COBOL for PeopleSoft Student Administration

This section discusses:

- Using Additional Component COBOL for PeopleSoft Student Administration
- Compiling Additional Component COBOL on Microsoft Windows NT/2000
- Compiling Additional Component COBOL on UNIX

## Task 2-2-1: Using Additional Component COBOL for PeopleSoft Student Administration

PeopleSoft Student Administration is delivered with additional component COBOL sources referred to as INAS (Institutional Needs Analysis System) that do not compile correctly using the standard PeopleSoft method described in the Enterprise PeopleTools installation guide. The following sections describe how to compile the INAS COBOL's for all operating system platforms.

INAS COBOL sources, which are licensed from the College Board, have a naming standard based upon the academic year to which they apply. The following table lists the names of the INAS COBOL files where “yy” refers to the academic year (for example, FED05.CBL, FED06.CBL, and FED07.CBL).

Academic Aid Year	Copy Books	Programs
2008–2009 (yy = 08)	FEDyy.CBL	FMCALCyy.CBL
2009–2010 (yy = 09)	FEDEXTyy.CBL	FMRJCTyy.CBL
2010–2011 (yy = 10)	FEDORIyy.CBL	FMSNTyy.CBL
	FEDWRKyy.CBL	FMTWEKyy.CBL
	FMCNSTyy.CBL	IMCALCyy.CBL
	FUNCWAYyy.CBL	IMMAPIyy.CBL
	GLOBALyy.CBL	IMMAPOyy.CBL
	IMCNSTyy.CBL	IMMSGEyy.CBL
	INARyy.CBL	IMPLUSyy.CBL
	PLUSWAYyy.CBL	IMTWEKyy.CBL
	PROyy.CBL (yy = 08 or 09)	INAS20yy.CBL
	PROEXTyy.CBL (yy = 08 or 09)	INCOMPyy.CBL
	PROWRKyy.CBL	INFUNCyy.CBL
	TAXPRMyy.CBL	ININARyy.CBL
	IWKGLByy.CBL	INLCLyy.CBL
	IMRyy.CBL (yy = 10 or greater)	INMIGRyy.CBL
	IMREXTyy.CBL (yy = 10 or greater)	INTAXyy.CBL

In a Unicode environment the six COBOLs in the following list fail to compile during the “Compiling COBOL” section of the Enterprise PeopleTools installation guide. The errors occur because required COBOL sources are not copied to the temporary compile directory by cblbld.bat or psdbl.mak while the build runs.

- FAPINAS9
- FAPINAS0
- FAPINAS1



- IMPLUS08
- IMPLUS09
- IMPLUS10

See Enterprise PeopleTools 8.50 Installation for your database platform, available on My Oracle Support.

On UNIX, the errors can be ignored because psobl.mak copies all of the COBOLs that successfully compile to PS\_HOME/cblbin directory. Also, the errors should go away after Task 2-1 is completed so subsequent recompiles should be clean. Task 2-1 describes how to successfully compile the remaining files so that all sources are built.

On Microsoft Windows, cblbld.bat stops after the six errors occur and does not copy the compiled COBOL files to the PS\_HOME\CBLBINU directory. Because of this, the compiled \*.exe's, \*.gnt's, and \*.int's should be manually copied from the compile directory to the PS\_HOME\cblbinu directory after cblbld.bat stops.

See Compiling Additional Component COBOL on Microsoft Windows NT/2000.

In an ANSI environment on Microsoft Windows, the COBOL compiling process described in the Enterprise PeopleTools 8.50 Installation Guide removes all compiled COBOLs from PS\_HOME\cblbina before copying the new files in. This also removes the INAS COBOLs that are created in this task. As a result, you need to repeat Task 2-1 after a PeopleSoft COBOL recompile using cblbld.bat so that the INAS objects are replaced.

## Task 2-2-2: Compiling Additional Component COBOL on Microsoft Windows NT/2000

Using cblbld.bat, as described in the “Compiling COBOL on Microsoft Windows” chapter of the Enterprise PeopleTools installation guide, only compiles sources with a “P” in the 3rd position of the file name, which is the PeopleSoft naming standard for COBOL. The INAS COBOL files do not conform to this naming standard so the following instructions should be used to compile the INAS sources.

See Enterprise PeopleTools 8.50 Installation for your database platform, “Compiling COBOL on Microsoft Windows, available on My Oracle Support.

To compile additional component COBOL on Microsoft Windows NT/2000:

1. Select Start, Run.

Enter cmd.exe and click OK.

2. Enter the following command:

```
SET COBROOT = <Net Express Base directory>
```

For example:

```
SET COBROOT = C:\psoft\NetExpress\Base
```

3. Enter the command:

```
SET PS_HOME = <PS_HOME>
```

For example:

```
SET PS_HOME = c:\psoft\psenv\HR90DEMO
```

4. Enter the command:

```
SET PATH=%PATH%;%PS_HOME%\src\cbl\win32
```

5. Change directory to the COBOL source directory within PS\_HOME, for example:

```
CD %PS_HOME%\src\cbl\base
```

6. Execute the Third-Party INAS compile routine to compile INAS sources for all active academic aid years.

```
INASUNCV <Compile Drive> <\Compile Directory>
```

For example:

```
INASUNCV C: \TEMP\COMPILE
```

This routine should be run using the same run parameters used to run CBLBLD.BAT.

7. Change directory to the temporary COBOL compile directory from step 6.

Compile PeopleSoft Third-Party (additional component) interface programs FAPINAS9.CBL, FAPINAS0.CBL, and FAPINAS1.CBL:

```
CBLMAKE FAPINAS9
```

```
CBLMAKE FAPINAS0
```

```
CBLMAKE FAPINAS1
```

8. If you are in a Unicode environment, you need to manually copy all .GNT, .EXE, and .INT files from the temporary compile directory used by CBLBLD.BAT and INASUNCV.BAT into the %PS\_HOME%\CBLBINU directory.

The temporary compile directory would be c:\temp\compile if cblbld.bat was run as shown in the following example:

```
cblbld.bat c: \temp\compile
```

```
C:\temp\compile>move * D:\PSOFT\PSENV\HR90DMOU\CBLBINU
```

## Task 2-2-3: Compiling Additional Component COBOL on UNIX

Using psobl.mak, as described in the “Compiling COBOL on UNIX” chapter of the Enterprise PeopleTools installation guide, only compiles sources with a “P” in the 3rd position of the file name, which is the PeopleSoft naming standard for COBOL. The INAS COBOL files do not conform to this naming standard. Use the following directions to compile the INAS sources.

See Enterprise PeopleTools 8.50 Installation for your database platform, “Compiling COBOL on UNIX,” available on My Oracle Support.

To compile additional component COBOL on UNIX:

1. Set variables using. `./psconfig.sh`
2. Change directory to \$PS\_HOME/setup, and run these commands:
  - a. `./inasbl08.mak`
  - b. `./inasbl09.mak`
  - c. `./inasbl10.mak`
  - d. `./psrun.mak`

---

## Task 2-3: Installing Database Audit Triggers for PeopleSoft Student Records

This section discusses:

- Understanding Database Audit Triggers
- Using Audit Triggers
- Installing the Audit Triggers

### Understanding Database Audit Triggers

An audit mechanism implemented using database triggers is provided for Grade changes, Degree record changes, and Security table changes. Pages and components are also being delivered to allow a user to search and review the audit records.

#### See Also

*PeopleSoft Enterprise Campus Solutions 9.0 Application Fundamentals PeopleBook*

*PeopleSoft Enterprise Student Records 9.0 PeopleBook*

### Task 2-3-1: Using Audit Triggers

These triggers should be created after the data conversion is completed and the legacy data for an institution is loaded into the application tables. Otherwise, the internal load of the legacy data into the system inserts rows into the audit tables and the data load process runs slower for tables that have triggers.

Triggers are automatically dropped if the table they are defined on is dropped for any reason. If a table is dropped and then re-created, then the appropriate scripts to create the triggers for that table must be executed again.

An example of such a scenario would be as follows. Using PeopleSoft Application Designer, a field is added to one of the tables on which a trigger is defined. The build action generates an alter script which is executed using a query tool to change the table at the database level. The alter script drops the original table and recreates a new one by the same name. This causes the trigger to be dropped. You must then recreate the trigger for this table. This scenario could occur when an institution makes a modification at their site or applies a fix provided by Oracle that alters such a table. In the case of a fix, the instructions for the fix create a note about recreating the trigger.

These tables and the associated triggers are listed in the next section.

### Task 2-3-2: Installing the Audit Triggers

Based on your database platform, find the appropriate trigger files under the Scripts folder and create triggers as listed in the table that follows. These are SQL files and should be run against your database using your query tool of choice. These trigger files have been tested on these databases using the release level specified by Oracle for PeopleSoft release 9.0 and therefore are certified for any database release level that is the same or higher. If you are running on a database release level prior to the one specified in the table, these trigger files may not be applicable. Consult with your database administrator before running these trigger files.

Database	Table	Trigger File
DB2 UNIX	ACAD_DEGR	SSR_DB2_ACAD_DEGR_TR.SQL
	ACAD_DEGR_HONS	SSR_DB2_ACAD_DEGR_HONS_TR.SQL
	ACAD_DEGR_PLAN	SSR_DB2_ACAD_DEGR_PLAN_TR.SQL
	ACAD_DEGR_SPLN	SSR_DB2_ACAD_DEGR_SPLN_TR.SQL
	ES_SECURITY_TBL	SSR_DB2_ES_SEC_TBL_TR.SQL
	ES_SECURITY_DTL	SSR_DB2_ES_SEC_DTL_TR.SQL
	STDNT_ENRL	SSR_DB2_GRADE_TR.SQL
Microsoft SQL Server	ACAD_DEGR	SSR_MSS_ACAD_DEGR_TR.SQL
	ACAD_DEGR_HONS	SSR_MSS_ACAD_DEGR_HONS_TR.SQL
	ACAD_DEGR_PLAN	SSR_MSS_ACAD_DEGR_PLAN_TR.SQL
	ACAD_DEGR_SPLN	SSR_MSS_ACAD_DEGR_SPLN_TR.SQL
	ES_SECURITY_TBL	SSR_MSS_ES_SEC_TBL_TR.SQL
	ES_SECURITY_DTL	SSR_MSS_ES_SEC_DTL_TR.SQL
	STDNT_ENRL	SSR_MSS_GRADE_TR.SQL
Oracle	ACAD_DEGR	SSR_ORA_ACAD_DEGR_TR.SQL
	ACAD_DEGR_HONS	SSR_ORA_ACAD_DEGR_HONS_TR.SQL
	ACAD_DEGR_PLAN	SSR_ORA_ACAD_DEGR_PLAN_TR.SQL
	ACAD_DEGR_SPLN	SSR_ORA_ACAD_DEGR_SPLN_TR.SQL
	ES_SECURITY_TBL	SSR_ORA_ES_SEC_TBL_TR.SQL
	ES_SECURITY_DTL	SSR_ORA_ES_SEC_DTL_TR.SQL
	STDNT_ENRL	SSR_ORA_GRADE_TR.SQL

## Task 2-4: Adjusting PeopleTools EDI Manager for Financial Aid Processes

This section discusses:

- Updating the ECOUTMAP.SQC File
- Modifying the ECIN0001.SQR File

### Task 2-4-1: Updating the ECOUTMAP.SQC File

In 8.x versions of Enterprise PeopleTools, EDI Manager requires some modifications for Financial Aid business processing.

---

**Note.** This task is only necessary when using the CommonLine™ 4 features. This is not necessary to implement if your institution uses Direct Lending or Common Record CommonLine processing.

---

In the following procedure, you use PeopleTools EDI Manager to run a process that updates the base ECOUTMAP.SQC file with the Financial Aid EDI Outbound map definitions. Make sure that the new file replaces the original file of the same name.

To update the ECOUTMAP.SQC file with Financial Aid EDI Outbound map definitions:

1. Select PeopleTools, EDI Manager on your target database.
2. Select Monitor EDI Processing, Prepare Outbound Driver.
3. Enter a Run Control ID of *FA800*. (Add it if you don't have it).
4. Enter the directory path for ECOUTMAP.SQC file, typically <PS\_HOME>\SQR.
5. Select the Transaction IDs that your institution uses by checking the appropriate "Select" box.

---

**Important!** Additional Transaction IDs may appear. *It is important that only the files processed by your Financial Aid office are selected.* Consult with your Financial Aid Office staff for the required EDI transactions.

---

Financial Aid EDI Outbound Map Definitions are:

Transaction ID	Map ID	Description of Files Created
CommonLine Loans		
A004P	CL_ORIG_V4	CommonLine™ 4 Application Send
C004P	CL_CHNG_V4	CommonLine™ 4 Change Send

6. Click Save.
7. Click Run.
8. Select your server name, and click OK.
9. Monitor the execution of the SQR using the Process Monitor.

## Task 2-4-2: Modifying the ECIN0001.SQR File

The ECIN0001.SQR is the PeopleTools EDI Manager Inbound EC Agent process. The default configuration of this file is set to only process individual files containing no more than 2500 rows of data. To allow the SQR to handle larger files, the SQR must be modified.

---

**Note.** This modification may be needed if the Financial Aid Office is importing and exporting large files using the CommonLine™ loan process. This is not needed for Common Record CommonLine (CRC) loan processing. Verify with the Financial Aid Office whether or not this modification is necessary for their business process.

---

To modify the ECIN0001.SQR file:

1. Open the ECIN0001.SQR file using a text editor and find this section:

```

Create-Array name= FILEDATA0 size = 1
  field=ecfilerowid:char:2500
  field=ecqueueinstance:number:2500
  field=filedata:char:2500
  field=luwlinenum:number:2500
  field=ectransid:char:2500
  field=message_set_nbr:number:2500
  field=message_nbr:number:2500
  field=error_misc:char:2500
  field=siblingcount:number:2500=-1    ? number of siblings detected for this parent row

```

Section of ECIN0001.SQR file

2. Modify the section by replacing the value 2500 with 35000.

This modification increases the maximum number of rows allowed in a file to 35,000 rows. You may increase the file row limit up to 64,000, if necessary.

```

Create-Array name= FILEDATA0 size = 1
  field=ecfilerowid:char:35000
  field=ecqueueinstance:number:35000
  field=filedata:char:35000
  field=luwlinenum:number:35000
  field=ectransid:char:35000
  field=message_set_nbr:number:35000
  field=message_nbr:number:35000
  field=error_misc:char:35000
  field=siblingcount:number:35000=-1    ? number of siblings detected for this parent row

```

Modified ECIN0001.SQR file

---

## Task 2-5: Using CPU Space for PeopleSoft Academic Advising

The PeopleSoft Academic Advising process is very CPU intensive. Consult the *PeopleSoft Internet Architecture Performance & Sizing Overview* white paper for more details on this issue. This white paper can be found on My Oracle Support.

---

## Task 2-6: Running the SFA\_ECQUEUE\_TABLES\_RESET Script

For PeopleSoft HRMS and Campus Solutions, use PeopleSoft Data Mover to run this script against the PeopleSoft HRMS and Campus Solutions SYS database only. You can find the `sfa_ecqueue_tables_reset.dms` script in `<PS_HOME>\scripts`. You do not need to log off all clients and shut down application servers after running this script.

---

## Task 2-7: Configuring Your PeopleBooks Documentation Website

Be aware that the *PeopleSoft Enterprise Campus Solutions 9 Application Fundamentals PeopleBook* contains sensitive system information, to include security information. You should review this PeopleBook before you make it available on your documentation website.

---

## Task 2-8: Using the User Profiles Management Result Table

This section discusses:

- Understanding the Audience for this Information
- Using the User Profiles Management Clean Up Pages

### Task 2-8-1: Understanding the Audience for this Information

This section is intended to be available only to the administrator having access to your security tables. It includes sensitive security information about user IDs and passwords that are created by the User Profiles Management process. The information is included here so that it would not be part of the PeopleBooks.

---

**Warning!** The information in this section should *not* be shared with your users.

---

The following sections include information on how to manipulate the user IDs and passwords that are created by the User Profiles Management background process. What is documented here is the clean up process that takes place after the User Profiles Management process is run.

See *PeopleSoft Enterprise Campus Solutions 9.0 Application Fundamentals PeopleBook*, "Creating and Maintaining User Profiles."

### Task 2-8-2: Using the User Profiles Management Clean Up Pages

This table describes the User Profiles Management process:

<b>Usage</b>	Use the User Profile Clean Up Processes page to delete the temporary tables associated with the USERPROFILE processes. You also use this page to delete the result table, which holds user ID and non-encrypted password information.
<b>Object Name</b>	MAINT_USRPROF_DATA
<b>Page Name</b>	User Profile Clean Up Process.
<b>Navigation</b>	Set Up SACR, Security, Secure Student Administration, Process, User Profiles Mgmt - Clean Up.

## User Profile Clean Up Processes

Delete temp tables created by the following processes

Create User Profiles  
 Delete Role in User Profiles  
 Assign Role  
 Assign User Preferences

Delete result table (includes non-encrypted passwords)

Delete rows including:  
 Criteria:  Value: 

Ready to delete  Delete all [Explain](#)

Delete All
 

Ready to delete  Delete all [Explain](#)

User Profile Clean Up Processes page

The section *Delete temp tables created by the following processes* includes the following options:

- |                                     |   |
|-------------------------------------|---|
| <b>Create User Profiles</b>         | Select this check box to delete the temporary table PS_USRPRF_NWID_TMP, which is created by the Create User Profiles process when you run USERPROFILE.        |
| <b>Delete Role in User Profiles</b> | Select this check box to delete the temporary table PS_USRPRF_DEL_TMP, which is created by the Delete Roles in User Profile process when you run USERPROFILE. |
| <b>Assign Role</b>                  | Select this check box to delete the temporary table PS_USRPRF_ASG_TMP, which is created by the Assign Role process when you run USERPROFILE.                  |
| <b>Assign User Preferences</b>      | Select this check box to delete the temporary table PS_ASSN_SETVAL_TMP, which is created by the Assign User Preferences process when you run USERPROFILE.     |

---

**Note.** The clean up process does not delete information from the error log record (PS\_ERR\_LOG\_USRPRF). Use your defined SQL tool to delete information from error log record as needed.

---

Reviewing the section *Delete result table (includes non-encrypted passwords)*:

The fields in the Delete Result Table section of the application page allow you to delete rows of data from the temporary result table (PS\_USRPRF\_LTR\_COMM) that is created if you selected the Create Result Table check box on the User Profile Mass Creation page. This is the only place where the non-encrypted passwords are stored. It is your responsibility to frequently run the cleanup process.

The temporary result table includes a column called Ready To Delete (READY\_TO\_DEL) that is a Y (yes) or N (no) flag for each user ID. When the User Profiles Management process runs and the Create Result Table option is selected in the setup page (Setup SACR, Security, Secure Student Administration, Setup, User Profiles Mass Creation), the User Profiles Management process determines if the flag should be a Y or a N based on the Event ID you selected.



The User Profiles Management process sets the flag to N (meaning not ready to be deleted) when the Assign 3C check box is checked on the User Profile Mass Creation setup page and the Event ID specified includes a letter code set up with the Name SQC equal to CCLTRWOL. This SQC is used by the Letter Generation process to extract the user ID and the password and make the information available to add on a communication. Do not delete rows in this table if the Letter Generation process has not been run yet. After the Letter Generation process is run, the flag changes to Y to indicate that the user ID row is now ready to be deleted.

---

**Note.** Only the Letter Generation process can change the Ready to Delete flag.

---

The section *Delete result table (includes non-encrypted passwords)* includes the following options:

<b>Delete rows including</b>	Select this check box if you want to delete only selected rows in the result table. If you select this check box, select a criterion and value to be used.
<b>Criteria</b>	Select a criterion to be used to delete specific rows in the result table. You can select only one of the following criteria. <ul style="list-style-type: none"> <li>• <i>ID</i>: Select to delete the row for a particular person with the employee ID that you select in the Value field.</li> <li>• <i>Event 3C IDs</i>: Select to delete all rows associated with the event ID that you select in the Value field.</li> <li>• <i>Rolename</i>: Select to delete all rows associated with the role that you select in the Value field.</li> <li>• <i>User ID</i>: Select to delete the row for a particular person with the user ID that you select in the Value field.</li> </ul>
<b>Value</b>	Select the value you want to be used for the criterion that you selected.
<b>Ready to Delete</b>	Select this option if you want to delete only those rows where the READY_TO_DEL field in the temporary result table is set to <i>Yes</i> . This option prevents you from deleting the rows where the Letter Generation process has not yet been run.
<b>Delete all (radio button/option)</b>	Select this option to delete rows in the temporary result table where the READY_TO_DEL field is set to <i>Yes</i> or <i>No</i> . <hr/> <p><b>Warning!</b> If you select this option, you may delete rows for which the Letter Generation process has not run, and you delete the user ID and password information. There is no way to recover this information unless you reset all the passwords manually.</p> <hr/>
<b>Delete All (check box)</b>	Select this check box if you want to delete rows in the temporary result table without specifying any criteria. As previously described, you can also select to delete the rows marked as Ready to delete or Delete all. <hr/> <p><b>Warning!</b> If you select Delete All, you may delete rows for which the Letter Generation process has not run, and you delete the user ID and password information. There is no way to recover this information unless you reset all the passwords manually.</p> <hr/>
<b>Explain</b>	Use these links to see the explanation for the selected check box.

Click the Delete button to delete the selected temp tables and the selected rows in the result table. When you click Delete, you receive a warning message letting you know that you are about to delete data from the system and asking if you want to continue.

---

**Note.** The Ready to Delete and Delete all options work in conjunction with the Delete rows including and Delete All check boxes. For example, if you elect to delete certain rows based on a selected criterion and you select the Delete all option, only the rows selected by the criteria are deleted. Similarly, if you select the Delete All check box and select the Ready to Delete option, only the rows where the READY\_TO\_DEL field is set to *Yes* are deleted.

---

The fields in this area of the application page allow you to delete rows of data from the temporary result table (PS\_USRPRF\_LTR\_COMM) that is created if you selected the Create Result Table check box on the User Profile Mass Creation page. This is the only place where the non-encrypted passwords are stored. It is your responsibility to frequently run the cleanup process.

The temporary result table includes a column called Ready To Delete (READY\_TO\_DEL) that is a Y (yes) or N (no) flag for each user ID. When the User Profiles Management process runs and the Create Result Table option is selected in the setup page (Setup SACR, Security, Secure Student Administration, Setup, User Profiles Mass Creation), the User Profiles Management process determines if the flag should be a Y or a N based on the Event ID you selected.

The User Profiles Management process sets the flag to N (meaning not ready to be deleted) when the Assign 3C check box is checked on the User Profile Mass Creation setup page and the Event ID specified includes a letter code set up with the Name SQC equal to CCLTRWOL. This SQC is used by the Letter Generation process to extract the user ID and the password and make the information available to add on a communication. Do not delete rows in this table if the Letter Generation process has not been run yet. Once the Letter Generation process is run, it changes the flag to Y to indicate the user ID row is now ready to be deleted.

---

## Task 2-9: Installing PeopleSoft Student Administration Integration Pack

This section discusses:

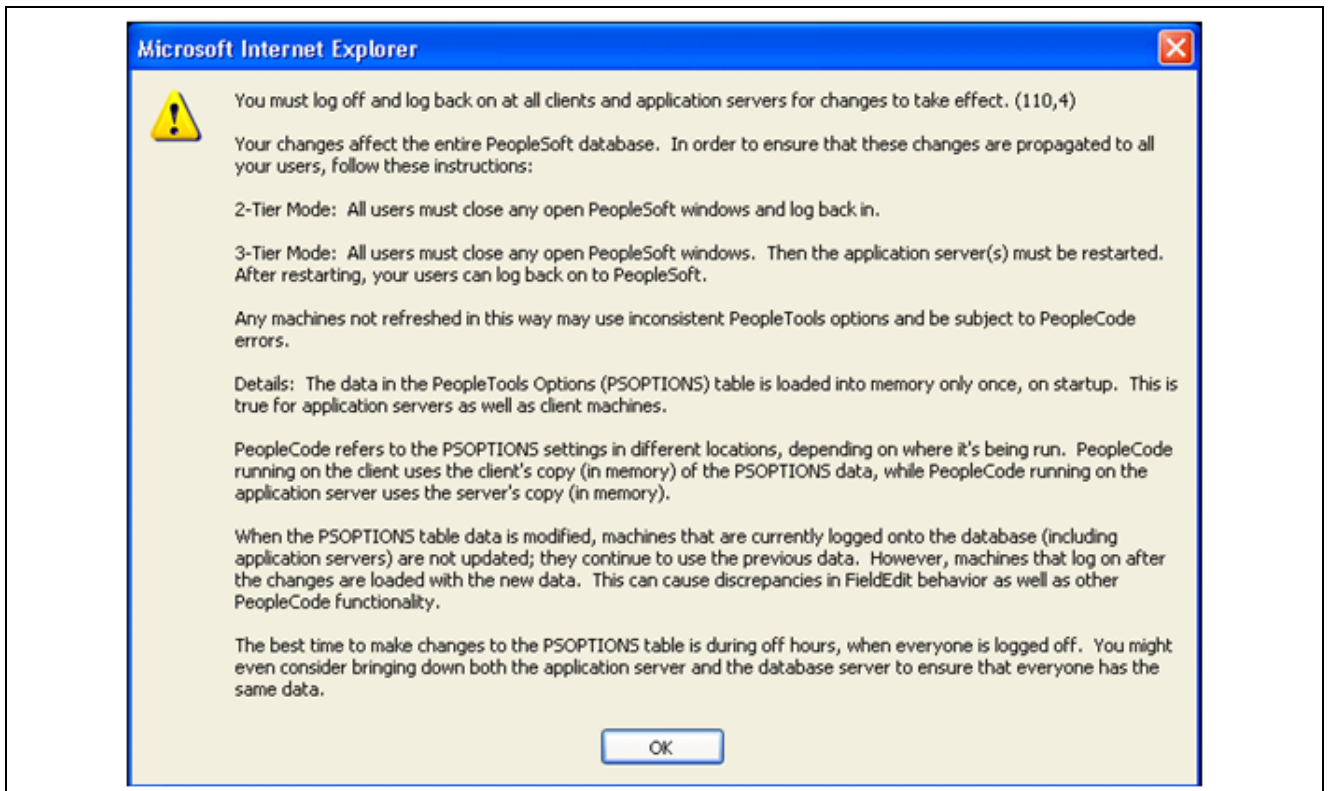
- Setting Up Installation Options
- Installing Additional Database Changes Using PeopleSoft Data Mover
- Running Conversion Programs Using PeopleSoft Application Engine
- Activating PeopleSoft Student Administration Integration Pack Service Operations
- Activating PeopleSoft Student Administration Integration Pack Service Routings
- Activating PeopleSoft Student Administration Integration Pack Queues

### Task 2-9-1: Setting Up Installation Options

Oracle recommends that you update the PeopleSoft Student Administration Integration Pack (SAIP) indicator on the Installation page on both your SYS and DMO databases to ensure that the license for the product is turned on and recognized.

Log in to the PeopleSoft application in a browser and select Set Up HRMS, Install, Installation Table. On the Products page, select the SA Integration Pack check box.

After making changes to the Installation table, you will receive the information message that follows. You then need to log off all clients and shut down and restart all application servers, and then log back on for the change to take effect.



Information Message

See Enterprise PeopleTools PeopleBook, PeopleSoft Integration Broker for your database platform and release.

## Task 2-9-2: Installing Additional Database Changes Using PeopleSoft Data Mover

Run the following scripts in PeopleSoft Data Mover to import the SOA handler setup and initialize the PeopleSoft SAIP set up table.

DMS File Name	Data File	File Description
scc_int_import.dms	scc_int_export.dat	Initialize SOA setup tables.
saip_setup_init.dms	saip_setup_init.dat	Installation tables initialization.

## Task 2-9-3: Running Conversion Programs Using PeopleSoft Application Engine

Run the following scripts to initially synchronize PeopleSoft SAIP extension tables with their corresponding PeopleSoft Campus Solutions tables.

To run PeopleSoft Application Engine, run psae.exe in the directory PS\_HOME\bin\client\winx86.

**Note.** You can also run these conversion programs by logging into PeopleSoft in the browser and selecting PeopleTools, Application Engine, Request AE.

Application Engine Program	Description
SAE_CMBN_EXT	Populates the SAE_CMBN_EXT table based on the SCTN_CMBND table.
SAE_CSEC_EXT	Populates the SAE_CLASS_EXT table based on the CLASS_TBL table.
SAE_CTLG_EXT	Populates the SAE_CRCTLG_EXT tables based on the CRSE_CATALOG table.
SAE_MBRS_EXT	Populates the SAE_INSTR_EXT table based on the CLASS_INSTR table.
SAE_OFFR_EXT	Populates the SAE_CRSOFFER_EXT table based on the CRSE_OFFER table.
SAE_TERM_EXT	Populates the SAE_TERM_EXT table based on the TERM_TBL table.

## Task 2-9-4: Activating PeopleSoft Student Administration Integration Pack Service Operations

Service operations for the PeopleSoft Student Administration Integration Pack (SAIP) are delivered with a status of “Inactive” in order to prevent the accidental transmission of data. In order to make use of these key elements of the PeopleSoft SAIP at the time of implementation, you need to set each of them to a status of “Active”.

To activate service operations:

1. Log into the PeopleSoft application in a browser.
2. Select PeopleTools, Integration Broker, Integration Setup, Service Operations.
3. Select each of the service operations from the table that follows.
4. On the General page, select the Active check box in the Default Service Operation Version group.
5. Select the Handlers page and select the Active check box from the drop-down list for the Status column.
6. Save the page.

**Note.** You need to activate these service operations in order for the PeopleSoft SAIP to be functional. To activate all of the delivered PeopleSoft SAIP service operations, see *Campus Solutions 9.0 Bundle #10 (or the multilingual version)*. To activate service operations manually, follow the preceding steps.

Service Operation	Service
PUBLISHACADORG	SCC_INTEGRATION_SERVICE
PUBLISHACADORTOTARGET	SCC_INTEGRATION_SERVICE
PUBLISHCLASSECTION	SCC_INTEGRATION_SERVICE
PUBLISHCOMBINEDSECTION	SCC_INTEGRATION_SERVICE
PUBLISHCOURSETEMPLATE	SCC_INTEGRATION_SERVICE
PUBLISHINSTITUTION	SCC_INTEGRATION_SERVICE
PUBLISHINSTITUTIONTOTARGET	SCC_INTEGRATION_SERVICE

<b>Service Operation</b>	<b>Service</b>
PUBLISHPERSON	SCC_INTEGRATION_SERVICE
PUBLISHSTDNTCAREERTERM	SCC_INTEGRATION_SERVICE
PUBLISHSTUDENTENROLLMENT	SCC_INTEGRATION_SERVICE
PUBLISHTERM	SCC_INTEGRATION_SERVICE
NOTIFYCLASSESECTION	SAIP_INTEGRATION_SERVICE
NOTIFYCOURSEOFFERING	SAIP_INTEGRATION_SERVICE
NOTIFYCOURSETEMPLATE	SAIP_INTEGRATION_SERVICE
NOTIFYGROUP	SAIP_INTEGRATION_SERVICE
NOTIFYMEMBERSHIP	SAIP_INTEGRATION_SERVICE
NOTIFYPERSON	SAIP_INTEGRATION_SERVICE
NOTIFYSECTIONASSOCIATION	SAIP_INTEGRATION_SERVICE
NOTIFYSNAPSHOTRESPONSE	SNAPSHOTMANAGEMENTSERVICE
ADDCOURSESECTIONID_SYNC	COURSEMANAGEMENTSERVICE
CHANGECOURSESECIDENTIFIER_SYNC	COURSEMANAGEMENTSERVICE
CHANGECRSEOFFERIDENTIFIER_SYNC	COURSEMANAGEMENTSERVICE
CHANGECRSETEMPIDENTIFIER_SYNC	COURSEMANAGEMENTSERVICE
CHANGESECASSOCIDENTIFIER_SYNC	COURSEMANAGEMENTSERVICE
CREATEBYPROXYCOURSESEC_SYNC	COURSEMANAGEMENTSERVICE
CREATEBYPROXYCRSEOFFERING_SYNC	COURSEMANAGEMENTSERVICE
CREATEBYPROXYCRSETEMPLATE_SYNC	COURSEMANAGEMENTSERVICE
CREATEBYPROXYSECASSOC_SYNC	COURSEMANAGEMENTSERVICE
CREATECOURSEOFFERING	COURSEMANAGEMENTSERVICE
CREATECOURSEOFFERING_SYNC	COURSEMANAGEMENTSERVICE
CREATECOURSESECFCS_SYNC	COURSEMANAGEMENTSERVICE
CREATECOURSESECTION	COURSEMANAGEMENTSERVICE
CREATECOURSESECTION_SYNC	COURSEMANAGEMENTSERVICE
CREATECOURSETEMPLATE	COURSEMANAGEMENTSERVICE
CREATECOURSETEMPLATE_SYNC	COURSEMANAGEMENTSERVICE
CREATEOFFERFROMCRSEOFFER_SYNC	COURSEMANAGEMENTSERVICE
CREATESECTIONASSOCIATION	COURSEMANAGEMENTSERVICE
CREATESECTIONASSOCIATION_SYNC	COURSEMANAGEMENTSERVICE
DELETECOURSEOFFERING	COURSEMANAGEMENTSERVICE
DELETECOURSEOFFERING_SYNC	COURSEMANAGEMENTSERVICE
DELETECOURSESECTION	COURSEMANAGEMENTSERVICE
DELETECOURSESECTION_SYNC	COURSEMANAGEMENTSERVICE
DELETECOURSETEMPLATE	COURSEMANAGEMENTSERVICE
DELETECOURSETEMPLATE_SYNC	COURSEMANAGEMENTSERVICE
DELETESECTIONASSOCIATION	COURSEMANAGEMENTSERVICE
DELETESECTIONASSOCIATION_SYNC	COURSEMANAGEMENTSERVICE
DISCOVERCOURSEOFFERINGIDS_SYNC	COURSEMANAGEMENTSERVICE
DISCOVERCOURSESECTIONIDS_SYNC	COURSEMANAGEMENTSERVICE

<b>Service Operation</b>	<b>Service</b>
DISCOVERCOURSETEMPLATEIDS_SYNC	COURSEMANAGEMENTSERVICE
DISCOVERSECTIONASSOCIDS_SYNC	COURSEMANAGEMENTSERVICE
READALACTOFFRIDSFORACDSES_SYNC	COURSEMANAGEMENTSERVICE
READALLCOURSEOFFERINGIDS_SYNC	COURSEMANAGEMENTSERVICE
READALLCOURSESECTIONIDS_SYNC	COURSEMANAGEMENTSERVICE
READALLCOURSETEMPLATEIDS_SYNC	COURSEMANAGEMENTSERVICE
READALLSECTIONASSOCIDS_SYNC	COURSEMANAGEMENTSERVICE
READCOURSEOFFERINGIDSFSP_SYNC	COURSEMANAGEMENTSERVICE
READCOURSEOFFERINGS	COURSEMANAGEMENTSERVICE
READCOURSEOFFERINGSFRSAVEPT	COURSEMANAGEMENTSERVICE
READCOURSEOFFERING_SYNC	COURSEMANAGEMENTSERVICE
READCOURSESECTIONIDSFSP_SYNC	COURSEMANAGEMENTSERVICE
READCOURSESECTIONS	COURSEMANAGEMENTSERVICE
READCOURSESECTIONSFROMSP	COURSEMANAGEMENTSERVICE
READCOURSESECTION_SYNC	COURSEMANAGEMENTSERVICE
READCOURSETEMPLATEIDSFSP_SYNC	COURSEMANAGEMENTSERVICE
READCOURSETEMPLATES	COURSEMANAGEMENTSERVICE
READCOURSETEMPLATESFRSAVEPT	COURSEMANAGEMENTSERVICE
READCOURSETEMPLATE_SYNC	COURSEMANAGEMENTSERVICE
READCRSEOFFERIDSFORTEMP_SYNC	COURSEMANAGEMENTSERVICE
READCRSESECIDSFOROFFER_SYNC	COURSEMANAGEMENTSERVICE
READSECTIONASSOCIATIONS	COURSEMANAGEMENTSERVICE
READSECTIONASSOCIATIONSFRSVPT	COURSEMANAGEMENTSERVICE
READSECTIONASSOCIATION_SYNC	COURSEMANAGEMENTSERVICE
READSECTIONASSOCIDSFSP_SYNC	COURSEMANAGEMENTSERVICE
REMOVECOURSESECTIONID_SYNC	COURSEMANAGEMENTSERVICE
REPLACECOURSEOFFERING_SYNC	COURSEMANAGEMENTSERVICE
REPLACECOURSESECTION_SYNC	COURSEMANAGEMENTSERVICE
REPLACECOURSETEMPLATE_SYNC	COURSEMANAGEMENTSERVICE
REPLACESECTIONASSOCIATION_SYNC	COURSEMANAGEMENTSERVICE
UPDATECOURSEOFFERING_SYNC	COURSEMANAGEMENTSERVICE
UPDATECOURSESECTIONSTATUS_SYNC	COURSEMANAGEMENTSERVICE
UPDATECOURSESECTION_SYNC	COURSEMANAGEMENTSERVICE
UPDATECOURSETEMPLATE_SYNC	COURSEMANAGEMENTSERVICE
UPDATECRSEOFFERINGSTATUS_SYNC	COURSEMANAGEMENTSERVICE
UPDATESECTIONASSOCIATION_SYNC	COURSEMANAGEMENTSERVICE
ADDGROUPRELATIONSHIP_SYNC	GROUPMANAGEMENTSERVICE
CHANGEGROUPIDENTIFIER_SYNC	GROUPMANAGEMENTSERVICE
CREATEBYPROXYGROUP_SYNC	GROUPMANAGEMENTSERVICE
CREATEGROUP	GROUPMANAGEMENTSERVICE
CREATEGROUP_SYNC	GROUPMANAGEMENTSERVICE

<b>Service Operation</b>	<b>Service</b>
DELETEDGROUP	GROUPMANAGEMENTSERVICE
DELETEDGROUP_SYNC	GROUPMANAGEMENTSERVICE
DISCOVERGROUPIDS_SYNC	GROUPMANAGEMENTSERVICE
READALLGROUPIDS_SYNC	GROUPMANAGEMENTSERVICE
READGROUPIDSFORPERSON_SYNC	GROUPMANAGEMENTSERVICE
READGROUPIDSFROMSAVEPOINT_SYNC	GROUPMANAGEMENTSERVICE
READGROUPSFROMSAVEPOINT	GROUPMANAGEMENTSERVICE
READGROUPSMGMT	GROUPMANAGEMENTSERVICE
READGROUP_SYNC	GROUPMANAGEMENTSERVICE
REMOVEGROUPRELATIONSHIP_SYNC	GROUPMANAGEMENTSERVICE
REPLACEGROUP_SYNC	GROUPMANAGEMENTSERVICE
UPDATEGROUP_SYNC	GROUPMANAGEMENTSERVICE
CHANGEPERSONIDENTIFIER_SYNC	PERSONMANAGEMENTSERVICE
CREATEBYPROXYPERSON_SYNC	PERSONMANAGEMENTSERVICE
CREATEPERSON	PERSONMANAGEMENTSERVICE
CREATEPERSON_SYNC	PERSONMANAGEMENTSERVICE
DELETEPERSON_SYNC	PERSONMANAGEMENTSERVICE
DISCOVERPERSONIDS_SYNC	PERSONMANAGEMENTSERVICE
READALLPERSONIDS_SYNC	PERSONMANAGEMENTSERVICE
READPERSONCORE_SYNC	PERSONMANAGEMENTSERVICE
READPERSONIDSFROMSAVPOINT_SYNC	PERSONMANAGEMENTSERVICE
READPERSONS	PERSONMANAGEMENTSERVICE
READPERSONSFROMSAVEPOINT	PERSONMANAGEMENTSERVICE
READPERSON_SYNC	PERSONMANAGEMENTSERVICE
REPLACEPERSON_SYNC	PERSONMANAGEMENTSERVICE
UPDATEPERSON_SYNC	PERSONMANAGEMENTSERVICE
CHANGEMEMBERIDENTIFIER_SYNC	MEMBERSHIPMANAGEMENTSERVICE
CREATEBYPROXYMEMBERSHIP_SYNC	MEMBERSHIPMANAGEMENTSERVICE
CREATEMEMBERSHIP	MEMBERSHIPMANAGEMENTSERVICE
CREATEMEMBERSHIP_SYNC	MEMBERSHIPMANAGEMENTSERVICE
DELETEMEMBERSHIP	MEMBERSHIPMANAGEMENTSERVICE
DELETEMEMBERSHIP_SYNC	MEMBERSHIPMANAGEMENTSERVICE
DISCOVERMEMBERSHIPIDS_SYNC	MEMBERSHIPMANAGEMENTSERVICE
READALLMEMBERSHIPIDS_SYNC	MEMBERSHIPMANAGEMENTSERVICE
READMEMBERSHIPIDSFORCOLL_SYNC	MEMBERSHIPMANAGEMENTSERVICE
READMEMBERSHIPIDSFORPWR_SYNC	MEMBERSHIPMANAGEMENTSERVICE
READMEMBERSHIPIDSFSP_SYNC	MEMBERSHIPMANAGEMENTSERVICE
READMEMBERSHIPIDSPERSON_SYNC	MEMBERSHIPMANAGEMENTSERVICE
READMEMBERSHIPS	MEMBERSHIPMANAGEMENTSERVICE
READMEMBERSHIPSFROMSAVEPOINT	MEMBERSHIPMANAGEMENTSERVICE
READMEMBERSHIP_SYNC	MEMBERSHIPMANAGEMENTSERVICE

Service Operation	Service
REPLACEMEMBERSHIP_SYNC	MEMBERSHIPMANAGEMENTSERVICE
UPDATEMEMBERSHIP_SYNC	MEMBERSHIPMANAGEMENTSERVICE
READOUTCOMES	OUTCOMESERVICE
ANNOUNCEBULKDATAEXCHANGE	BULKDATAEXCHANGEMGMTSERVICE
PERSON_BASIC_SYNC	PERSON_BASIC_SYNC
SCC_URL_ADDRESSES_CHANGE_EVENT	SCC_URL_ADDRESSES

## Task 2-9-5: Activating PeopleSoft Student Administration Integration Pack Service Routings

Routings from the PeopleSoft SAIP are delivered with a status of “Inactive” in order to prevent the accidental transmission of data. In order to make use of these key elements of the PeopleSoft SAIP at implementation time, set each of the key elements to a status of “Active”.

To activate routings:

1. Log in to the PeopleSoft application in a browser.
2. Select PeopleTools, Integration Broker, Integration Setup, Routings.
3. Select each of the routings in the table that follows.
4. On the Routing Definition page, select the Active check box for each routing.
5. Save the page.

**Note.** You need to activate these routings in order for the PeopleSoft SAIP to be functional. To activate all of the delivered PeopleSoft SAIP routings, see *Campus Solutions Bundle #10 (or the multilingual version)*. To activate routings manually, follow the preceding steps.

Routings
ANNOUNCEBULKDATAEXCHANGE
CHANGEMEMBERIDENTIFIER_SYNC
CREATEBYPROXYMEMBERSHIP_SYNC
CREATEMEMBERSHIP_SYNC
DELETEMEMBERSHIP_SYNC
DISCOVERMEMBERSHIPIDS_SYNC
NOTIFYCLASSECTION
NOTIFYCOURSEOFFERING
NOTIFYCOURSETEMPLATE
NOTIFYGROUP NOTIFYMEMBERSHIP
NOTIFYPERSON
NOTIFYSECTIONASSOCIATION
NOTIFYSNAPSHOTRESPONSE
READALLMEMBERSHIPIDS_SYNC
READMEMBERSHIPIDSFORCOLL_SYNC
READMEMBERSHIPIDSFORPWR_SYNC



<b>Routings</b>
READMEMBERSHIPIDSFSP_SYNC
READMEMBERSHIPIDSPERSON_SYNC
READMEMBERSHIP_SYNC
REPLACEMEMBERSHIP_SYNC
SAE_ADDCOURSESECTIONID_SYNC
SAE_ADDGROUPRELATIONSHIP_SYNC
SAE_CHANGEOURSESECIDENTIFIER
SAE_CHANGECRSETEMPIDENT_SYNC
SAE_CHANGEROUPIDENTIFIER_SYNC
SAE_CHANGEOFFERIDENTIFIER_SYNC
SAE_CHANGEPERSONIDENTIFIER_SYNC
SAE_CHANGESECASSOCIDENT_SYNC
SAE_COURSEOFFERINGS_INC_SNAP
SAE_COURSETEMPLATE_INC_SNAP
SAE_CREATEBYPROXYCOURSESEC_SYNC
SAE_CREATEBYPROXYCRSETEMP_SYNC
SAE_CREATEBYPROXYGROUP_SYNC
SAE_CREATEBYPROXYPERSON_SYNC
SAE_CREATEBYPROXYSECASSOC_SYNC
SAE_CREATEBYPRXYCRSEOFFER_SYNC
SAE_CREATECOURSEOFFERING_SYNC
SAE_CREATECOURSESECFCS_SYNC
SAE_CREATECOURSESECTION_SYNC
SAE_CREATECOURSETEMPLATE_SYNC
SAE_CREATEGROUP_SYNC
SAE_CREATEOFFERFROMOFFER_SYNC
SAE_CREATEPERSON_SYNC
SAE_CREATESECTIONASSOC_SYNC
SAE_DELETECOURSEOFFERING_SYNC
SAE_DELETECOURSESECTION_SYNC
SAE_DELETECOURSETEMPLATE_SYNC
SAE_DELETEGROUP_SYNC
SAE_DELETEPERSON_SYNC
SAE_DELETESECTIONASSOC_SYNC
SAE_DISCCRSETEMPLATEIDS_SYNC
SAE_DISCOVERCOURSESECIDS_SYNC
SAE_DISCOVERCRSEOFFERIDS_SYNC
SAE_DISCOVERGROUPIDS_SYNC
SAE_DISCOVERPERSONIDS_SYNC
SAE_DISCOVERSECASSOCIDS_SYNC
SAE_PERSONIDSFROMSAVPOINT_SYNC

<b>Routings</b>
SAE_READALACTOFFRIDSACD_SYNC
SAE_READALLCOURSESECIDS_SYNC
SAE_READALLCRSEOFFERIDS_SYNC
SAE_READALLCRSETEMPIDS_SYNC
SAE_READALLGROUPIDS_SYNC
SAE_READALLPERSONIDS_SYNC
SAE_READALLSECASSOCIDS_SYNC
SAE_READCOURSEOFFERINGS_SNAP
SAE_READCOURSEOFFERING_SYNC
SAE_READCOURSESECIDSFSP_SYNC
SAE_READCOURSESECTIONSFROMSP
SAE_READCOURSESECTIONS_SNAP
SAE_READCOURSESECTION_SYNC
SAE_READCOURSETEMPLATES_SNAP
SAE_READCOURSETEMPLATE_SYNC
SAE_READCRSEOFFERIDSFSP_SYNC
SAE_READCRSETEMPIDSFSP_SYNC
SAE_READGROUPIDSFORPERSON_SYNC
SAE_READGROUPIDSFSP_SYNC
SAE_READGROUPSFROMSAVEPOINT
SAE_READGROUPS_SNAP
SAE_READGROUP_SYNC
SAE_READMEMBERSHIPS_INC_SNAP
SAE_READMEMBERSHIPS_SNAP
SAE_READOFFERIDSFORTEMP_SYNC
SAE_READPERSONCORE_SYNC
SAE_READPERSONS_INC_SNAP
SAE_READPERSONS_SNAP
SAE_READPERSON_SYNC
SAE_READSECASSOCIATIONS_SNAP
SAE_READSECASSOCIDSFSP_SYNC
SAE_READSECIDSFOROFFER_SYNC
SAE_READSECTIONASSOC_SYNC
SAE_REMOVECOURSESECTIONID_SYNC
SAE_REMOVEGROUPRELATIONSHIP
SAE_REPLACECOURSEOFFERING_SYNC
SAE_REPLACECOURSESECTION_SYNC
SAE_REPLACECOURSETEMPLATE_SYNC
SAE_REPLACEGROUP_SYNC
SAE_REPLACEPERSON_SYNC
SAE_REPLACESECTIONASSOC_SYNC

Routings
SAE_SECTIONASSOCIATIONS_INC_SP
SAE_UPDATECOURSEOFFERING_SYNC
SAE_UPDATECOURSESECTIONSTATUS
SAE_UPDATECOURSESECTION_SYNC
SAE_UPDATECOURSETEMPLATE_SYNC
SAE_UPDATECRSEOFFERSTATUS_SYNC
SAE_UPDATEGROUP_SYNC
SAE_UPDATEPERSON_SYNC
SAE_UPDATESECTIONASSOC_SYNC
UPDATEMEMBERSHIP_SYNC
SCC_PERSON
SCC_URL_ADDRESSES_LOCAL

## Task 2-9-6: Activating PeopleSoft Student Administration Integration Pack Queues

Queues for the PeopleSoft SAIP are delivered with a status of “Pause” in order to prevent the accidental transmission of data. In order to make use of these key elements of the PeopleSoft SAIP at implementation time, you need to set each of the key elements to a status of “Run.”

To set run status:

1. Log in to the PeopleSoft application in a browser.
2. Select PeopleTools, Integration Broker, Integration Setup, Queues.
3. Select each of the Queues in the table that follows.
4. For each Queue, select Run from the Queue Status drop-down menu.
5. Save the page.

Queue
PERSON_DATA
SCC_QUEUE
SCC_URL_ADDRESSES
SAE_QUEUE
SAE_SNAPSHOT_QUEUE

---

## Task 2-10: Installing PeopleSoft Contributor Relations

Use PeopleSoft Data Mover in bootstrap mode to run the following script, which will import the SOA handler setup and initialize the PeopleSoft Contributor Relations set up table.

<b>DMS File Name</b>	<b>Data File</b>	<b>File Description</b>
scc_attach_imp.dms	scc_attach_imp.dat	Load attachments framework system data.

# Index

## A

Academic Advising, CPU space 36  
address validation, HRMS for  
Switzerland 10

## C

Campus Solutions COBOL on DB2 z/OS,  
reviewing 3  
CHE\_ADDR\_DBCS.DMS 10  
CHE\_ADDR.DMS 10  
COBOL for Student Administration 29  
CommonLine processing, using for  
Financial Aid 34  
Contributor Relations, installing 49

## D

DB2 z/OS, re-ordering PeopleTools install  
steps 3  
Demo database, approximate sizing 2

## E

EDM pool size 3  
Equation Engine, setting up security 29  
equation security 29

## G

Global search, HRMS for Japan 9  
gpcerate\_exp.dms script 16  
gpcerate\_imp.dms script 16  
gpcesys.dms script 16

## H

HC9MAINTLOG\_I.DMS script 3  
hepiadpi.dms script 23  
HRINSSYS.DMS script 2

## I

Installation Table  
option for Education and  
Government 5  
option for Military customers 6

## J

Japan product, phone and FAX number  
field 9  
Japanese characters, printing 9

## L

LDAP-enabled directory server for  
Directory Interface 21

## P

Packager, updating 12  
Pay/Bill Management, integrating with  
FSCM 24  
PDF form files 20  
PeopleBooks, checking sensitive  
information 36  
phone and FAX numbers in HRMS for  
Japan 9

## R

rate codes, copying 16  
Resume Processing in Talent Acquisition  
Manager, installing 14

## S

Service Operations, activating for Pay/Bill  
Management 24  
SQR reports  
printing Japanese characters 9  
Student Administration 29  
Student Administration Integration Pack,  
installing 40  
Student Administration, activating  
queues 49  
Student Administration, activating service  
operations 42  
Student Administration, activating service  
routings 46  
Student Administration, installation  
options 40  
Student Administration, installing database  
changes 41  
Student Administration, running conversion  
programs 41

Index

**T**

time zone offsets 10

**U**

updating Packager 12

user ID security 37