



Documentation Update for *XML Integration Reference, MidMarket Edition*

Date Published: April 3, 2002

Last Updated: April 3, 2002

This Documentation Update applies to the following version of *XML Integration Reference, MidMarket Edition*.

Document Version: 7.0

Date Published: October 2001

Software Version: Siebel 7 v7.0.3

Chapter 1, Overview

April 3, 2002

Siebel and XML

Page 1-3

Add the following note to the end of the Siebel and XML section:

NOTE: If you do a minimal client install, make sure you check the XML parser option; otherwise, you will encounter the following error when attempting to run any client process that uses the XML parser: Unable to create the Business Service “EAI XML Converter.” The XML parser is included by default in the full install.

Chapter 4, XML Integration Objects and the DTD Wizard

April 3, 2002

Page 4-2

Replace the procedure on page 4-2 with the following:

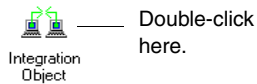
To create an integration object

- 1 Select File > New Object.

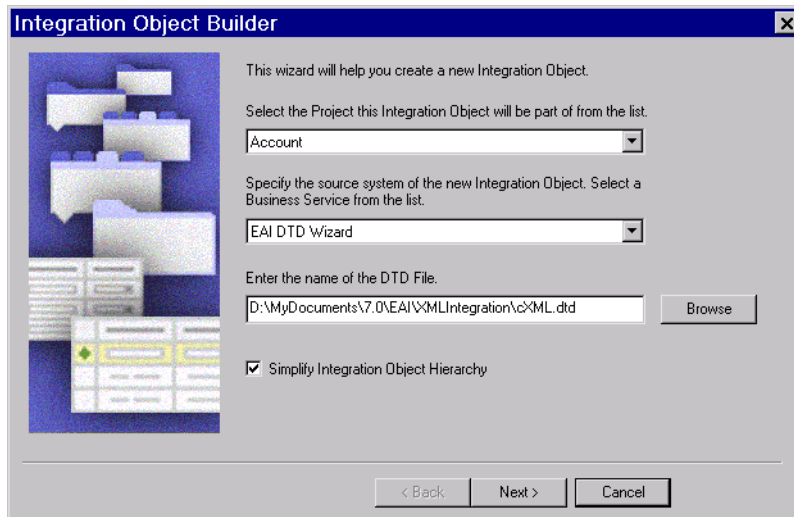
The New Object window appears.

- 2 Select the EAI tab.

- 3 Double-click the Integration Object icon:



The Integration Object Builder wizard appears.

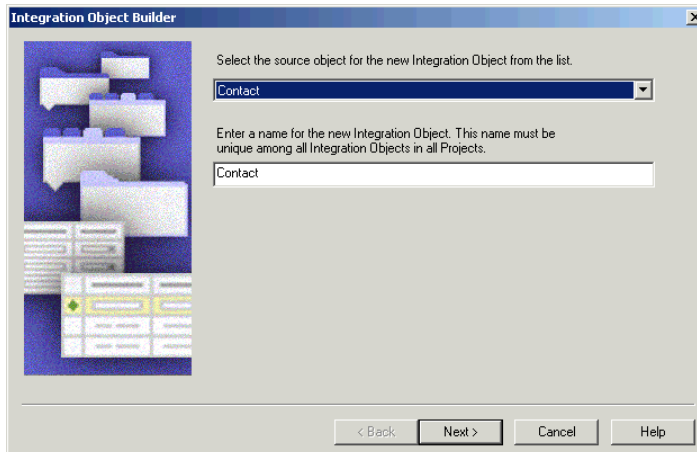


- 4 Complete the Integration Object Builder initial page:
 - a Select the project from the first drop-down list.
 - b Select EAI DTD Wizard as the Business Service.
 - c Browse to, or type in, the path to the location of the DTD or XML file that you want to use as the basis of the DTD.

NOTE: The Simplify Integration Object Hierarchy option creates a simpler and flatter internal representation of the XML integration object. Please note that this does not change the external representation. Having a simpler internal representation makes declarative data mapping easier.

- d Click Next.

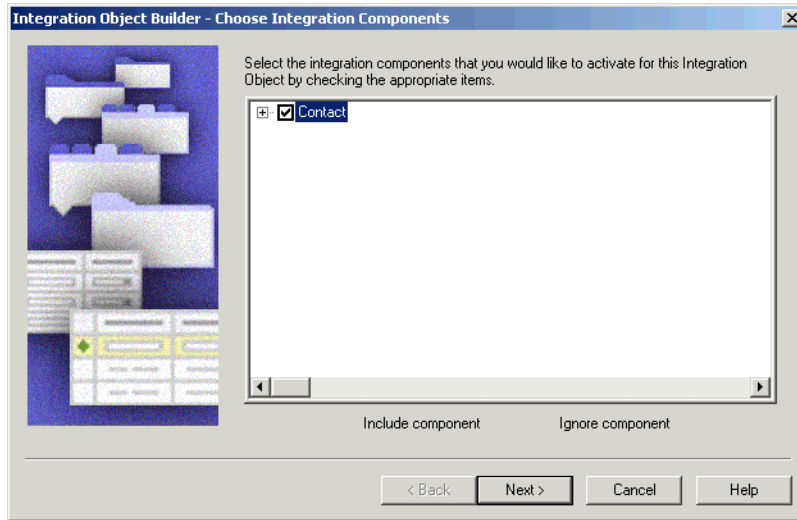
The dialog box changes to the next page, as shown in the following figure.



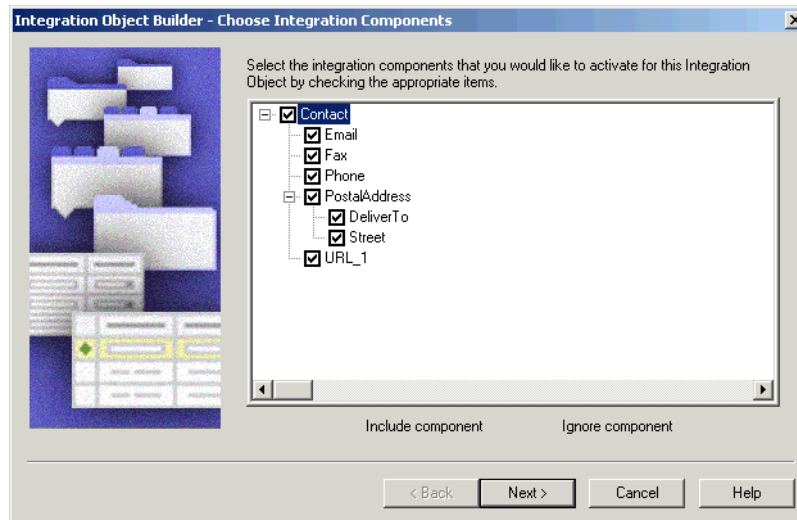
- 5 Select the source object and name it.

6 Click Next.

The dialog box changes, as shown in the following figure.

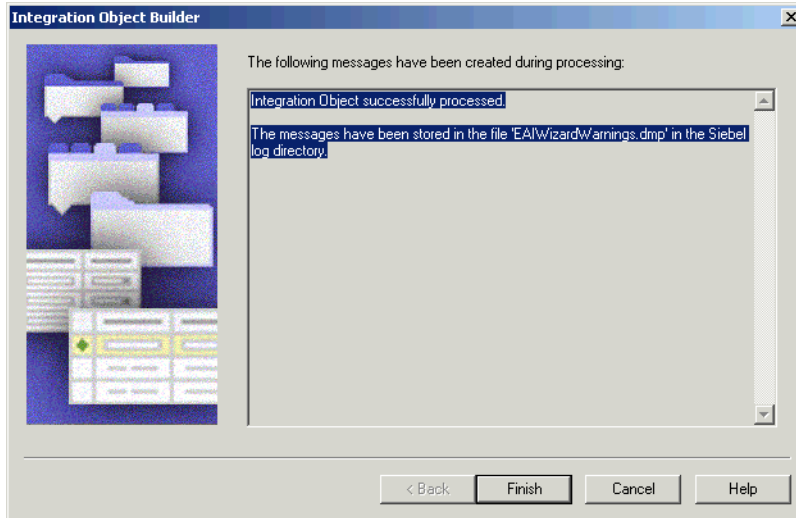


7 Click on the plus sign to expand the list to select and deselect the fields you need from the component, as shown in the following figure.



8 Click Next.

The final page appears, as shown in the following illustration.



9 Click Finish.

You will see the integration object you created in the Integration Objects list, as shown in the following figure.

The screenshot shows a table titled "Integration Objects" with buttons for "Synchronize", "Generate Schema", and "Generate Code". The table has the following data:

W	Name	Changed	Project	Base Object Type	Business Object	External Name	U
>	Contact	✓	Account	XML		Contact	U

NOTE: You must review the integration objects and the integration components created by the Wizard and complete their definitions based on your requirements.

Chapter 5, Siebel XML Converters

April 3, 2002

Table 5-7, 5-9, 5-11, 5-17, 5-21, and 5-24

Remove the IgnoreCharSetConvErrors argument from these tables. This argument is only an input argument.

Property Set To XML Method Arguments

Replace table 5-13 with the following two tables:

Display Name	Name	Data Type	Description
n/a	Child type of the hierarchical process property containing the entire property set, service method arguments, and child property set.	Hierarchical	The entire input property set.

Display Name	Name	Data Type	Description
XML Document	< Value >	String	The name of the output XML document.

XML To Property Set Method Arguments

Replace table 5-14 with the following two tables:

Display Name	Name	Data Type	Description
XML Document	< Value >	String	The name of the input XML document.

Display Name	Name	Data Type	Description
n/a	Child type of the hierarchical process property containing the entire property set, service method arguments, and child property set.	Hierarchical	The entire input property set.

Read Property Set Method Arguments

Remove the last row from Table 5-22 (*Read Property Set Method Input Arguments*) and add the following table for the Read Property Set Method Output Argument:

This table describes the output argument for the Read Property Set method of the EAI XML Read from File business service.

Display Name	Name	Data Type	Description
n/a	Child type of the hierarchical process property containing the entire property set, service method arguments, and child property set.	Hierarchical	The entire input property set.

Appendix A, Using XML Files

April 3, 2002

Inserting File Attachments Using XML

Page A-5

Please replace all three instances of `IsTextData` with `AttachmentIsTextData`.