

---

---

HYPERION® ENTERPRISE®

*RELEASE 6.5.1*

---

EXTRACTION UTILITY GUIDE

**ORACLE**  
ENTERPRISE PERFORMANCE  
MANAGEMENT SYSTEM

Hyperion Enterprise Extraction Utility Guide, 6.5.1

Copyright © 1991, 2009, Oracle and/or its affiliates. All rights reserved.

Authors: EPM Information Development Team

This software and related documentation are provided under a license agreement containing restrictions on use and disclosure and are protected by intellectual property laws. Except as expressly permitted in your license agreement or allowed by law, you may not use, copy, reproduce, translate, broadcast, modify, license, transmit, distribute, exhibit, perform, publish, or display any part, in any form, or by any means. Reverse engineering, disassembly, or decompilation of this software, unless required by law for interoperability, is prohibited. The information contained herein is subject to change without notice and is not warranted to be error-free. If you find any errors, please report them to us in writing.

If this software or related documentation is delivered to the U.S. Government or anyone licensing it on behalf of the U.S. Government, the following notice is applicable:

**U.S. GOVERNMENT RIGHTS:**

Programs, software, databases, and related documentation and technical data delivered to U.S. Government customers are "commercial computer software" or "commercial technical data" pursuant to the applicable Federal Acquisition Regulation and agency-specific supplemental regulations. As such, the use, duplication, disclosure, modification, and adaptation shall be subject to the restrictions and license terms set forth in the applicable Government contract, and, to the extent applicable by the terms of the Government contract, the additional rights set forth in FAR 52.227-19, Commercial Computer Software License (December 2007). Oracle USA, Inc., 500 Oracle Parkway, Redwood City, CA 94065.

This software is developed for general use in a variety of information management applications. It is not developed or intended for use in any inherently dangerous applications, including applications which may create a risk of personal injury. If you use this software in dangerous applications, then you shall be responsible to take all appropriate fail-safe, backup, redundancy, and other measures to ensure the safe use of this software. Oracle Corporation and its affiliates disclaim any liability for any damages caused by use of this software in dangerous applications.

Oracle is a registered trademark of Oracle Corporation and/or its affiliates. Other names may be trademarks of their respective owners.

This software and documentation may provide access to or information on content, products, and services from third parties. Oracle Corporation and its affiliates are not responsible for and expressly disclaim all warranties of any kind with respect to third-party content, products, and services. Oracle Corporation and its affiliates will not be responsible for any loss, costs, or damages incurred due to your access to or use of third-party content, products, or services.

---

# Contents

---

<b>Chapter 1. About the Hyperion Enterprise Extraction Utility</b> .....	5
Prerequisites for the Hyperion Enterprise Extraction Utility .....	5
Installing the Hyperion Enterprise Extraction Utility .....	6
Uninstalling the Hyperion Enterprise Extraction Utility .....	6
Extracting Data for Conversion to Financial Management .....	6
<b>Chapter 2. Extracting Hyperion Enterprise Applications</b> .....	9
The Hyperion Enterprise Application Extraction Process .....	9
Logging on to the Extraction Utility .....	9
Performing the Prevalidation Task .....	11
Setting Extract Options .....	12
Setting Category Options .....	13
Setting Currency Options .....	16
Setting Dimension Mapping Options .....	17
Setting Substructures Options .....	18
Setting Consolidation Method Options .....	20
Viewing the Extraction Progress and Status .....	21



# 1

## About the Hyperion Enterprise Extraction Utility

### In This Chapter

Prerequisites for the Hyperion Enterprise Extraction Utility.....	5
Installing the Hyperion Enterprise Extraction Utility.....	6
Uninstalling the Hyperion Enterprise Extraction Utility.....	6
Extracting Data for Conversion to Financial Management.....	6

Oracle's Hyperion® Enterprise® Extraction Utility enables you to extract Hyperion Enterprise applications to other consolidation product applications.

When you migrate Hyperion Enterprise applications to other consolidation products, the best approach is to redesign the Hyperion Enterprise application to take advantage of features offered in the consolidation products. However, if you want to extract the Hyperion Enterprise application as part of your migration plan, then leverage this utility to hasten the process of migration.

When you extract Hyperion Enterprise applications using this Extraction Utility, some metadata or data may not get extracted. In such cases, you can manually extract it.

This utility enables you to extract metadata, lists, data, journals, and logic files from Hyperion Enterprise applications to other consolidation products.

## Prerequisites for the Hyperion Enterprise Extraction Utility

Before installing this utility, you must install Hyperion Enterprise.

**Note:** For extracting Hyperion Enterprise metadata, lists, data, journals, and logic files, the Hyperion Enterprise and Hyperion Enterprise Extraction Utility must be installed on the same machine.

To install Hyperion Enterprise and this Extraction Utility, see the *Oracle Hyperion Enterprise Installation Guide*. During the Hyperion Enterprise installation, from the component selection dialog box, select the Hyperion Enterprise Extraction Utility component. This Extraction Utility supports only Hyperion Enterprise release 6.5.1.

## Installing the Hyperion Enterprise Extraction Utility

When you install Hyperion Enterprise, you have the option of installing the Hyperion Enterprise Extraction Utility. When selected for installation, the Extraction Utility is installed at:

`<Hyperion Enterprise Installation Directory>\Hyperion Solutions\Hyperion Enterprise.`

Run the Extraction Utility with `EnterpriseEU.exe`.

## Uninstalling the Hyperion Enterprise Extraction Utility

To uninstall the Hyperion Enterprise Extraction Utility, see chapter 7 “Uninstalling Hyperion Enterprise” in the *Oracle Hyperion Enterprise Installation Guide*.

## Extracting Data for Conversion to Financial Management

This utility enables you to extract the following information from the Hyperion Enterprise application. Depending on the application data, some metadata or data may not get extracted. In such cases, you can manually extract it.

The Logic extraction will include only the calculation statements that are convertible by the process. Some logic statements are no longer applicable in Oracle Hyperion Financial Management, Fusion Edition, while other logic statements may not be properly converted to Financial Management rule syntax. Hence, these statements are included as comment lines in the output rule file. You must review the converted logic statements upon extraction.

While this utility facilitates the extraction process to Financial Management, it is not intended to be a full migration. You will need to make additional changes in order to get correct consolidated results in Financial Management. As part of your migration process, you must also consider redesigning the existing Enterprise application to take advantage of the features offered in Financial Management.

It is designed to map the following settings:

- Calendar Settings
- Application Settings
- Security Settings
  - User and Groups
  - Security Class and Access Rights
  - Task Assignment
  - Task Mapping

**Note:** Under task mapping, not all Hyperion Enterprise tasks are mapped to other consolidation products.

- Currency
- Categories
- Accounts
- Sub Accounts
- Intercompany Matching Group
- Entities
- Substructures
- Organization By Period Information
  - Ownership
  - Shares
  - Methods
- Lists
  - Account Lists
  - Entity Lists
- Data
- Journals
- Journals Templates
- Logic
  - Chart Logic Conversion
  - Translation Logic
  - Consolidation Logic
  - Dynamic View Logic
  - Input Logic
  - No Input Logic

This utility does not extract the following data:

- Allocation Rules
- Update Rules
- Custom Functions
- SCE Logic Statements
- Consolidation Details Data
- Parent Entity Data
- Conversion Tables
- Data Entry Schedules
- Hyperion Schedules

- Reports / Sets / Books
- Retrieve Excel
- SmartView
- AutoPilot

# 2

## Extracting Hyperion Enterprise Applications

### In This Chapter

<a href="#">The Hyperion Enterprise Application Extraction Process.....</a>	<a href="#">9</a>
---	-------------------

## The Hyperion Enterprise Application Extraction Process

The utility extracts Hyperion Enterprise metadata, lists, data, journals, and logic files from Hyperion Enterprise to other consolidation products.

In this release, the Extraction Utility supports Financial Management and create extracts for the same. The examples are based on Financial Management scenarios.

The conversion utility includes the following steps:

1. [“Logging on to the Extraction Utility” on page 9](#)
2. [“Performing the Prevalidation Task” on page 11](#)
3. [“Setting Extract Options” on page 12](#)
4. [“Setting Category Options” on page 13](#)
5. [“Setting Currency Options” on page 16](#)
6. [“Setting Dimension Mapping Options” on page 17](#)
7. [“Setting Substructures Options” on page 18](#)
8. [“Setting Consolidation Method Options” on page 20](#)
9. [“Viewing the Extraction Progress and Status” on page 21](#)

## Logging on to the Extraction Utility

To extract applications, you must log on to the Extraction Utility.

**IMPORTANT** - Please read this before using the Enterprise Extraction Utility

The Enterprise Extraction Utility assists you in moving information from your Enterprise applications to other consolidation products. The utility takes the Enterprise application and extracts it to a format that is meant to be an initial step in creating a new consolidation application. The metadata, data mappings, logic, and rules created by the utility may or may not be appropriate for your new consolidation implementation. It is therefore likely that manual modifications to the destination consolidation application will be required.

Oracle highly recommends that you must perform the following instructions:

- Perform the extraction process in a test environment prior to running it in production.
- Carefully review the application after it is rebuilt in the new consolidation product to ensure that the application is set up as desired. If it is not designed as required, manual modification of the destination application will be required.

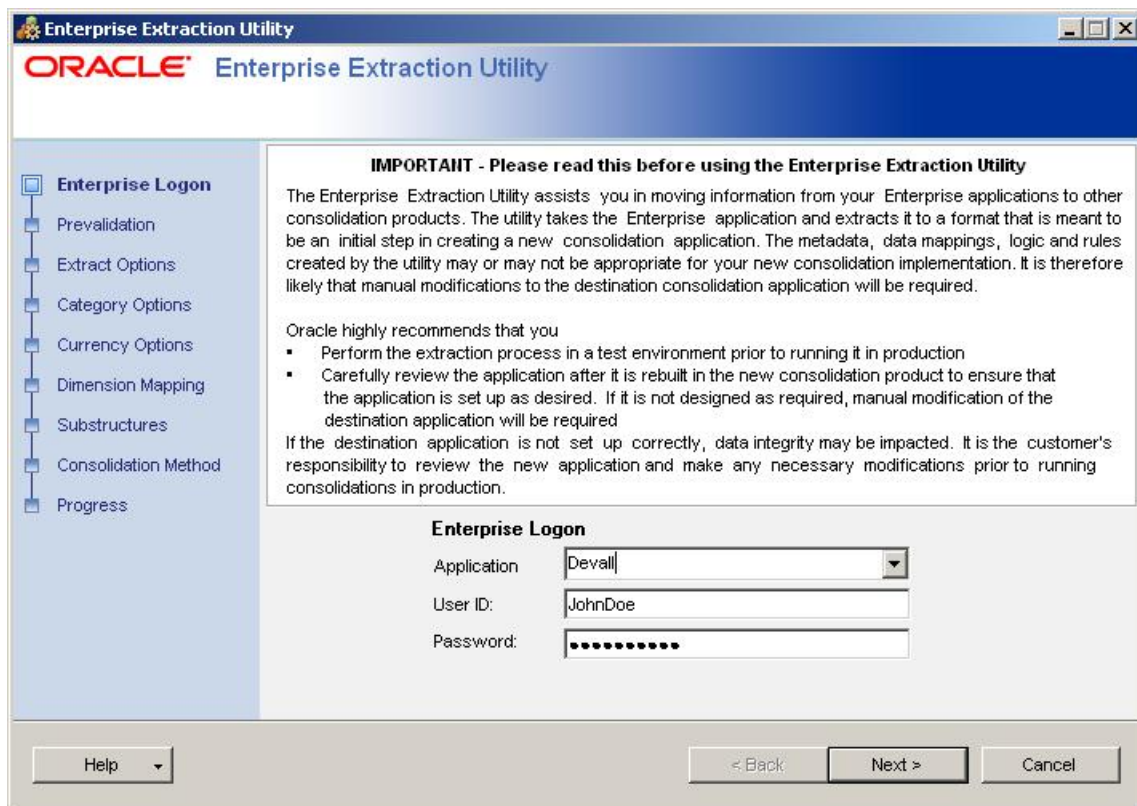
If the destination application is not set up correctly, data integrity may be impacted. It is the customer's responsibility to review the new application and make any necessary modifications prior to running consolidations in production.

► To log on to the Extraction Utility:

**1 Perform either of these actions:**

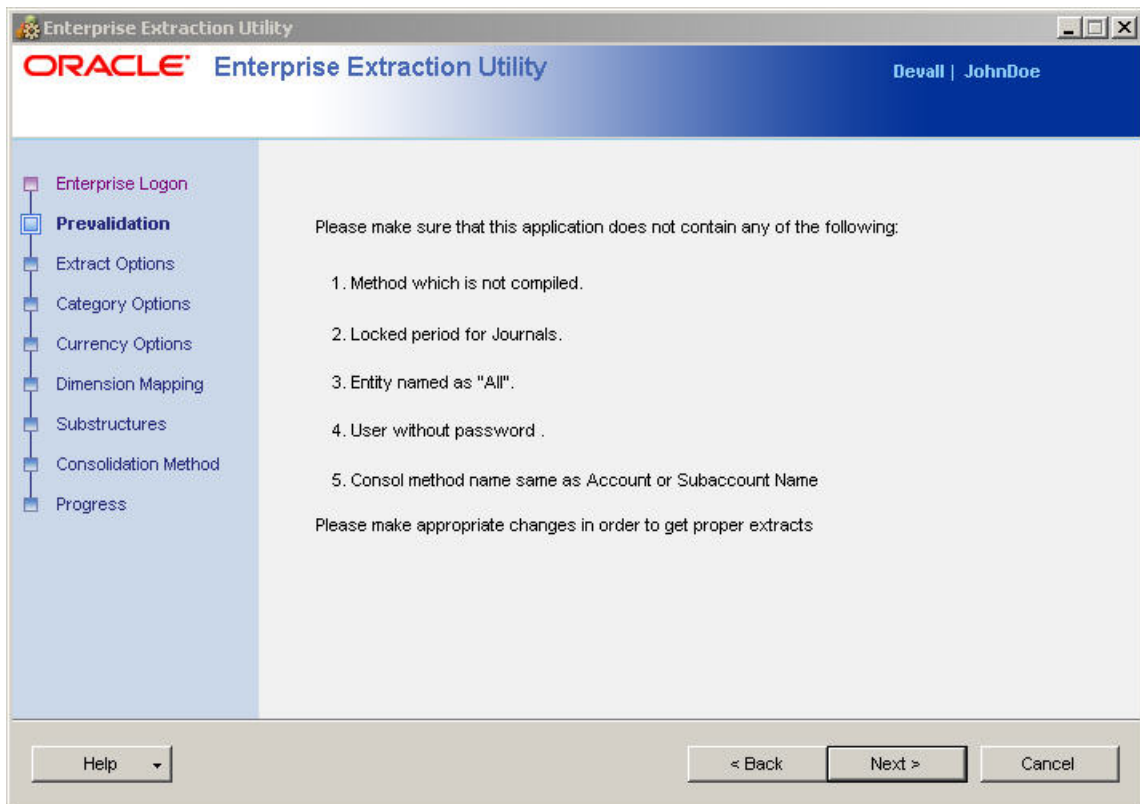
- Select **Start**, then **Programs**, then **Hyperion Solutions**, then **Hyperion Enterprise**, and then **Enterprise Extraction Utility**.
- From *<Hyperion Enterprise Installation Directory>\Hyperion Solutions\Hyperion Enterprise*, select *EnterpriseEU.exe*.

The Enterprise Logon screen is displayed.



**2 In the Enterprise Logon screen, in Application, select the Hyperion Enterprise application that you want to extract; enter the User ID and Password, and then click Next.**

The Prevalidation screen is displayed.



## Performing the Prevalidation Task

In the Prevalidation screen, some of the listed items may cause problems during the extraction process. If Hyperion Enterprise application contains some of the listed items, then the extraction process may output an error or warning message. The error and warning message details are stored in the `<app>Extract.log` file.

**Note:** This Prevalidation screen is only for informational purpose. You must manually check the prevalidation tasks in the Hyperion Enterprise application.

► To perform the prevalidation task:

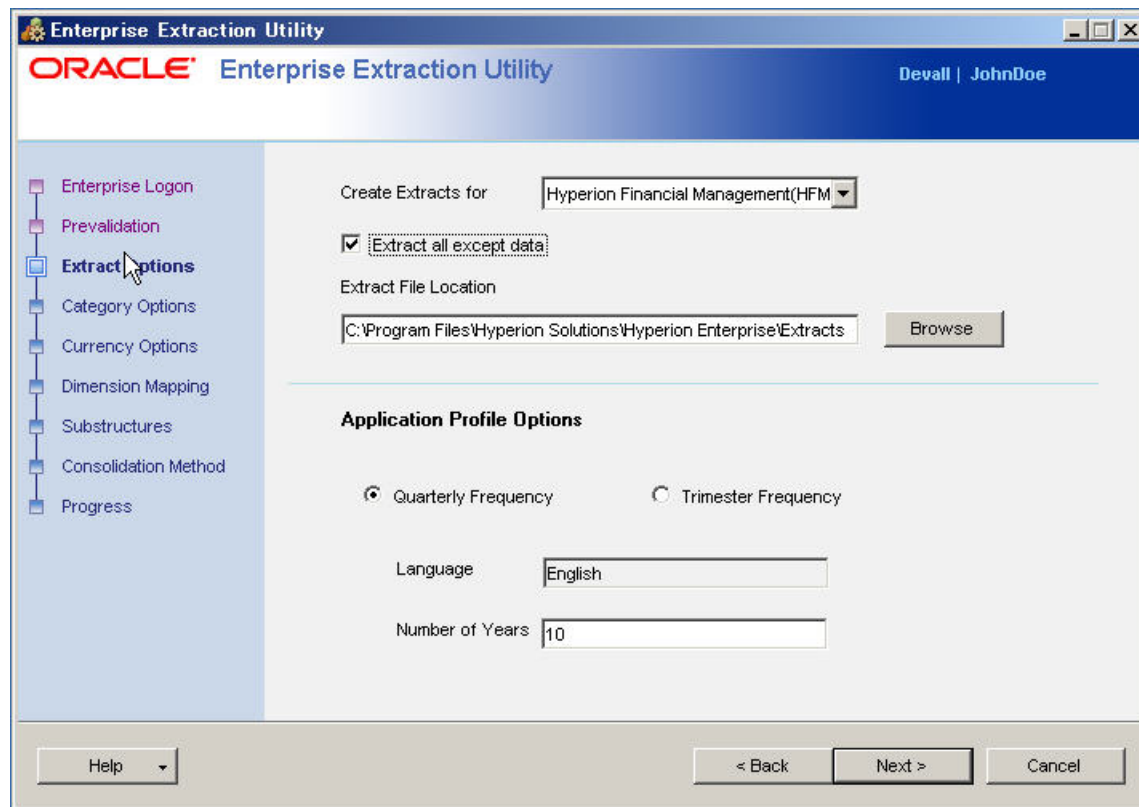
**1** Before running the extraction process, you must manually check the following prevalidation tasks in the Hyperion Enterprise application:

- Check for uncompiled methods.
- Check to see if any locked period for Journals is present. If so, change the status to unlocked.
- Check for Entities named “All.”
- Check for users without password. If so, set a password for those users.
- Check for Consolidation Method, if the methods name duplicates the Account or Subaccount name, then rename the methods.

**Note:** For more information on Checking Methods, see the Hyperion Enterprise Administrator's Guide. For more information on Journals Status, see the Hyperion Enterprise User's Guide.

2 Click **Next**.

The Extract Options screen is displayed.



## Setting Extract Options

► To set extract options:

- 1 In the **Extract Options** screen, in **Create Extracts for**, select the consolidation product to which you want to extract the Hyperion Enterprise application.

For example, if you select Financial Management, the Hyperion Enterprise application is extracted to Financial Management.

- 2 **Optional:** Select **Extract all except data** to extract the following files: metadata, journals, logic, and list—everything except data—from the Hyperion Enterprise application.

**Note:** The extraction of data may take longer time depending on the amount of data. If you do not want to spend time to extract data, then select Extract all except data option. Doing so enables you to extract the following files: metadata, journals, logic, and lists.

- 3 Save files in the default location, or click **Browse** to choose another location.
- 4 Under **Application Profile Options**, select **Quarterly Frequency** or **Trimester Frequency**.

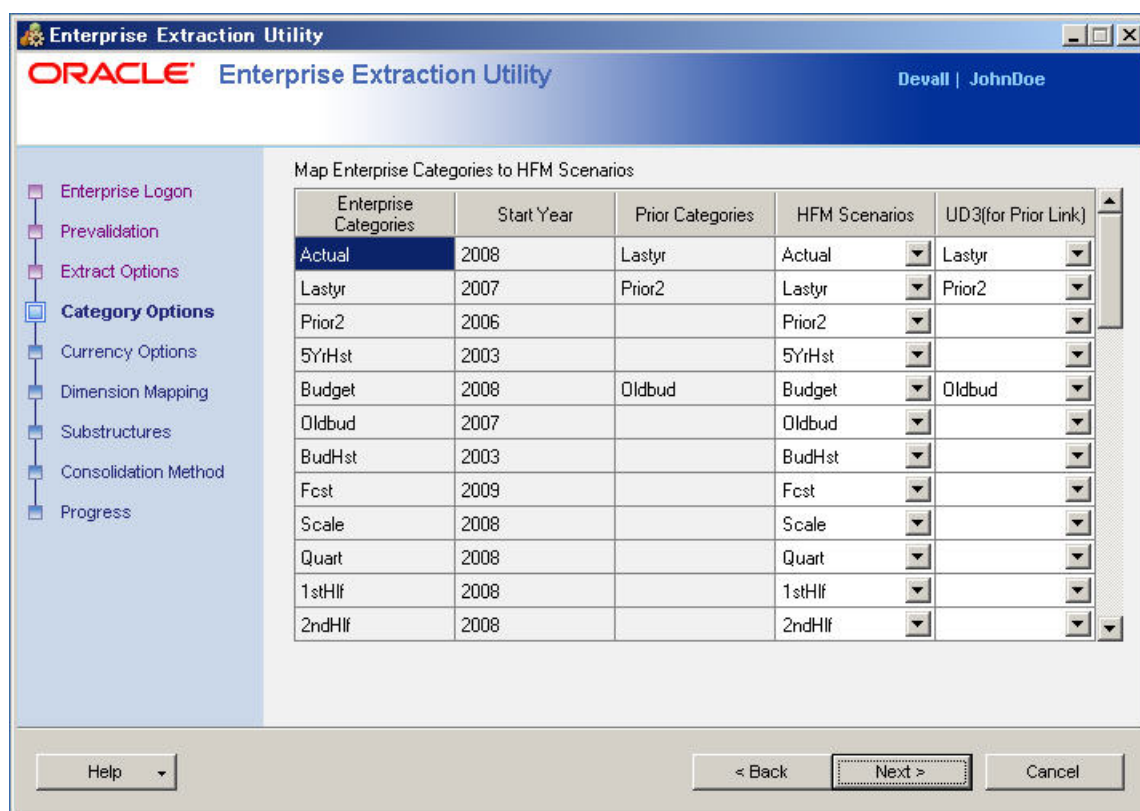
**Note:** Only the categories that reference the frequency option that you selected are extracted. For example, if you selected Financial Management as the other consolidation product, Financial Management supports either Quarterly Frequency or Trimester Frequency in the application. If you select Quarterly Frequency, Trimester Frequency is not applicable in the new application, and categories that reference the Trimester frequency are not extracted.

- 5 By default, the language is English.
- 6 In **Number of Years**, provide the year-span for the extracted application.

For example, if you are extracting the application, in which latest year is 2009 and want to extend the available years till 2019, in **Number of Years**, enter 10.

- 7 Click **Next**.

The Category Options screen is displayed.



## Setting Category Options

In the Category Options screen, you can group Hyperion Enterprise categories together to use in Financial Management. The UD3 field of Financial Management scenario stores the prior category used in Hyperion Enterprise. This information is used when retrieving data for opening balances, while calculation the current period becomes the first period of the category in Hyperion Enterprise.

In Hyperion Enterprise, a category can be linked with a prior category. This linking is used for rollover and for logic when referenced to the previous period.

For example, you can have the category ACTUAL for 2009 with the category LASTYR for 2008 as a prior category.

In the selected consolidation product, a scenario may reference prior data for many years. A category such as ACTUAL may reference two prior years (2008 and 2009). Year may be a separate dimension, so the consolidation product may not support the prior category concept.

If, in the selected consolidation product, the application points to Scenario Actual . Year 2009 . Period Jan, then the prior period is referred to the data derived from Scenario Actual . Year 2008 . Period Dec. Similar data output is derived in Hyperion Enterprise with prior category. (From S#Actual . P#Jan, S#Lastyr . P#Dec is derived.)

In some tasks, the prior category concept must be supported in the consolidation product even though it is not available.

For example, in the BUDGET scenario, data must be retrieved from LASTYR . scenario. In this case, two scenarios exist. In the consolidation product, S#Budget . Y#2009 . P#Jan cannot be represented as P#Prior, because data is from S#Budget . Y#2008 . P#Dec, and not from S#Lastyr . Y#2008 . P#Dec as expected.

To handle the extraction of a Hyperion Enterprise application to another consolidation product, the best approach is to use a Scenario UD3. For example, if UD3 is assigned to a scenario BUDGET with a value of LASTYR (which is the link category), this linking enables dynamic rule writing to retrieve data from the correct scenario. In the consolidation products, if a basic function is available to retrieve the prior category link information, you can retrieve the value of the UD3 assigned to the scenario.

If a category and its prior category can be treated as one category in the consolidation product, provide the UD3 value as *blank*. For example, if LASTYR is the prior category link for ACTUAL, and if these categories can combine in the consolidation product, then the UD3 value is *blank* for ACTUAL and changes the consolidation product category for LASTYR to ACTUAL.

The following table describes the linking of Hyperion Enterprise category to another consolidation product category.

**Table 1** Linking Hyperion Enterprise Category with Other Consolidation Product Category

Hyperion Enterprise Category	Start Year	Prior Category	Other Consolidation Product's Category	UD3 (for prior link)
Actual	1999	Lastyr	Actual	<i>blank</i>
Lastyr	1998		Actual	<i>blank</i>
Budget	1998		Budget	<i>blank</i>
FCST	2000		FCST	<i>blank</i>
WEEKLY	1999		WEEKLY	<i>blank</i>
DAILY	1999		DAILY	<i>blank</i>

**Table 2** Category Display in Hyperion Enterprise

Hyperion Enterprise Category	Start Year	Prior Category
Actual	2008	Lastyr
Lastyr	2007	Prior2
Prior2	2006	<i>blank</i>
Budget	2008	Lastyr
Forecast	2009	Actual

**Table 3** Category Display in the Extraction Utility

Hyperion Enterprise Category	Start Year	Prior Category	Other Consolidation Product's Category	UD3 (for prior link)
Actual	2008	Lastyr	Actual	Lastyr
Lastyr	2007	Prior2	Lastyr	Prior2
Prior2	2006	<i>blank</i>	Prior2	<i>blank</i>
Budget	2008	Lastyr	Budget	Lastyr
Forecast	2009	Actual	Forecast	Actual

**Table 4** Changing Category Groupings in the Extraction Utility

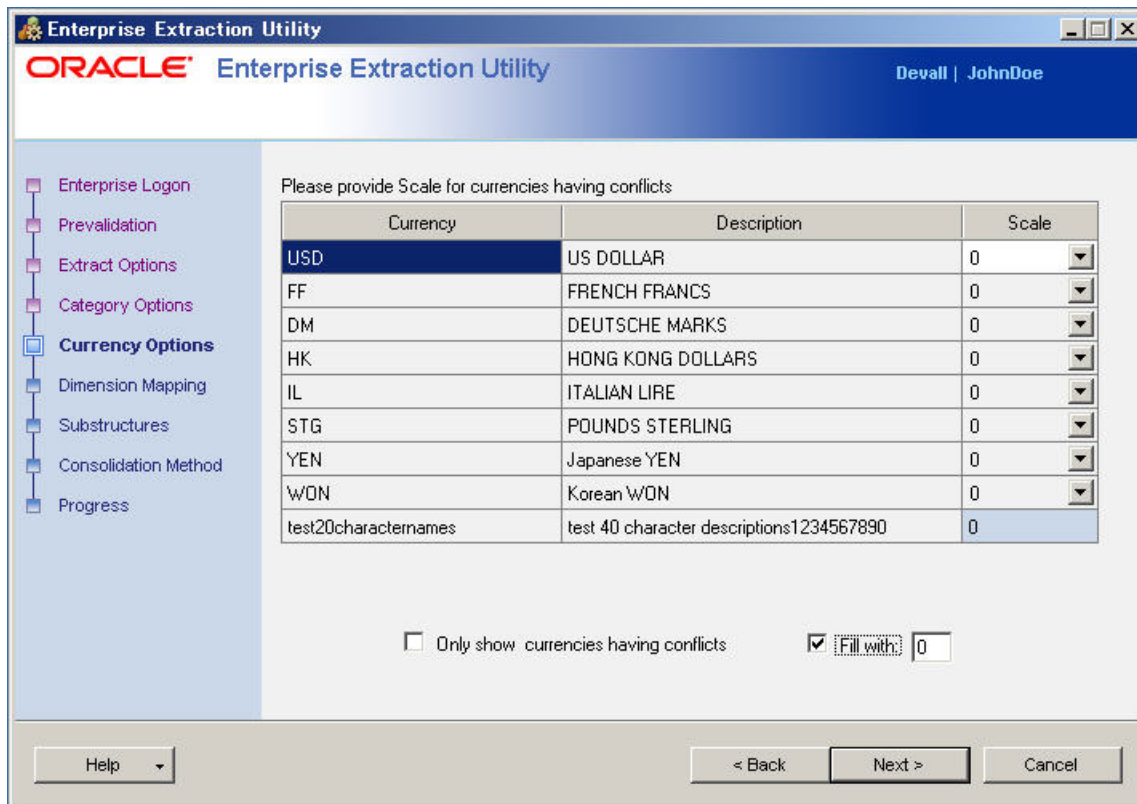
Hyperion Enterprise Category	Start Year	Prior Category	Other Consolidation Product's Category	UD3 (for prior link)
Actual	2008	Lastyr	Actual	<i>blank</i>
Lastyr	2007	Prior2	Actual	<i>blank</i>
Prior2	2006	<i>blank</i>	Actual	<i>blank</i>
Budget	2008	Lastyr	Budget	Actual
Forecast	2009	Actual	Forecast	Actual

**Note:** After grouping, this utility verifies changes and ensures that no years overlap. Also, the UD3 column is optional, and you can make changes based on the prior link for category; however, the change must be a valid consolidation product scenario.

➤ To set the category options:

- 1 Select the consolidation product category that you want to group to the Hyperion Enterprise category.
- 2 In the UD3 column, for Hyperion Enterprise, select the previous year category from which the value is brought forward.
- 3 Click **Next**.

The Currency Options screen is displayed.



## Setting Currency Options

In the Currency Options screen, assign the scale value. The scale value displayed for each currency is based on the scale factor assigned to the entity using that currency in Hyperion Enterprise. For example, if entity CT is assigned a currency of USD with a scale of 3, the utility displays the currency USD with a scale of 3. However, if a conflict exists among entities with the same currency but different scales—for example, entity CT is assigned the currency USD with a scale of 3, and entity MA is assigned the currency USD but with a scale of 0—because of the conflict, the utility selects either one of the scale values in the USD scale column. You can also change the default scale value from the drop down list.

You can define a currency in a Hyperion Enterprise application without assigning the currency to an entity. In the Extraction Utility, for this currency, no scale value is displayed in the scale column. For example, if the currency ECU was created as a currency in the Hyperion Enterprise application but was not assigned to any entities, in the Extraction Utility, the scale value for this currency is *blank*. Assign a scale value from 0 to 9 to any currency with a *blank* scale.

► To set the currency options:

- 1 Select a scale value for each currency.
- 2 **Optional:** Select **Only show currencies having conflicts** to see the scale value conflicts.
- 3 **Optional:** Select **Fill with** and provide a scale value for the currencies which are *blank*.
- 4 Click **Next**.

The Dimension Mapping screen is displayed.

The screenshot shows the Oracle Enterprise Extraction Utility interface. The window title is "Enterprise Extraction Utility" and the user is "Devall | JohnDoe". The left sidebar contains a navigation tree with the following items: Enterprise Logon, Prevalidation, Extract Options, Category Options, Currency Options, Dimension Mapping (selected), Substructures, Consolidation Method, and Progress. The main area is divided into two sections: "Subaccount Mapping" and "Substructure Mapping".

**Subaccount Mapping**

Enterprise Subaccounts: HFM Custom Dimensions

First Level Subaccounts: Custom1

Second Level Subaccounts: Custom2

**Substructure Mapping**

Show Substructures that map to Value Dimension

Substructures: Custom4

At the bottom of the window, there are buttons for "Help", "< Back", "Next >", and "Cancel".

## Setting Dimension Mapping Options

In the Dimension Mapping screen, you map Hyperion Enterprise subaccounts and substructures to assigned custom dimensions.

In Hyperion Enterprise, subaccounts store additional details associated with an account, such as the product, market, channels, types of elimination, and balance sheet movement information. If you are extracting an application to another consolidation product, such as Financial Management, separate custom dimensions are available to store such details. Four custom dimensions are available for mapping (Custom1, Custom2, Custom3, and Custom4). In the Extraction Utility, the first-level subaccounts map to the Custom1 dimension by default. If required, you can change the mapping to other custom dimensions. Second-level subaccounts map to the Custom2 dimension by default. In substructures mapping, the substructures map to the Custom4 dimension by default. You can change the mapping to other available custom dimensions; however, they must be mutually exclusive.

► To set dimension mapping:

- 1 To map subaccounts, select and map custom dimensions to Hyperion Enterprise subaccounts.
- 2 By default, the **Show Substructures that map to Value Dimension** is selected to view those substructures that the utility can map to the Value dimension.

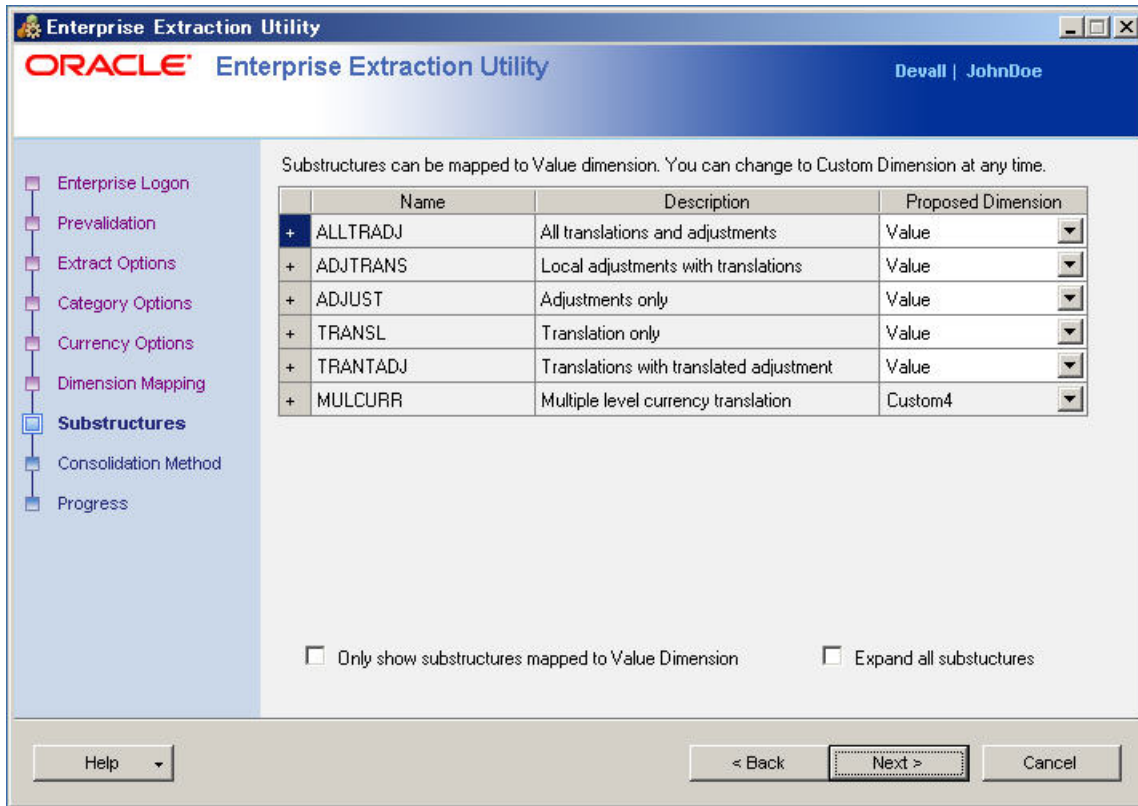
**3 To map substructures, select and map custom dimension values to the Hyperion Enterprise substructures.**

**Note:** The values provided for the level of subaccounts and substructures must be mutually exclusive.

**4 Click Next.**

**Note:** If shared signature is enabled in Hyperion Enterprise application, then during the extraction process all the metadata members in subaccounts containing the same name will have the same attributes; however, some attributes may differ in Hyperion Enterprise. For example: Subaccounts containing the same name can have different override types in Hyperion Enterprise but during migration both the subaccounts will have the attributes of the first subaccount encountered.

The Substructures Options screen is displayed.



## Setting Substructures Options

In the Substructures screen, you map Hyperion Enterprise substructures. In Hyperion Enterprise, substructures often are used to store adjustments or translation or elimination data for the entity. In consolidation products, such as Financial Management, such information is automatically stored in a separate Value dimension. However, some substructures in Hyperion

Enterprise are used to store additional business units or cost center details. For this type of usage, you may want to store such information in separate custom dimensions.

➤ To set substructures options:

1 **Modify the assigned dimensions according to your requirements.**

**Note:** The substructures which are mapped to the Value dimension can be changed to Custom dimension; however, the inverse is not supported.

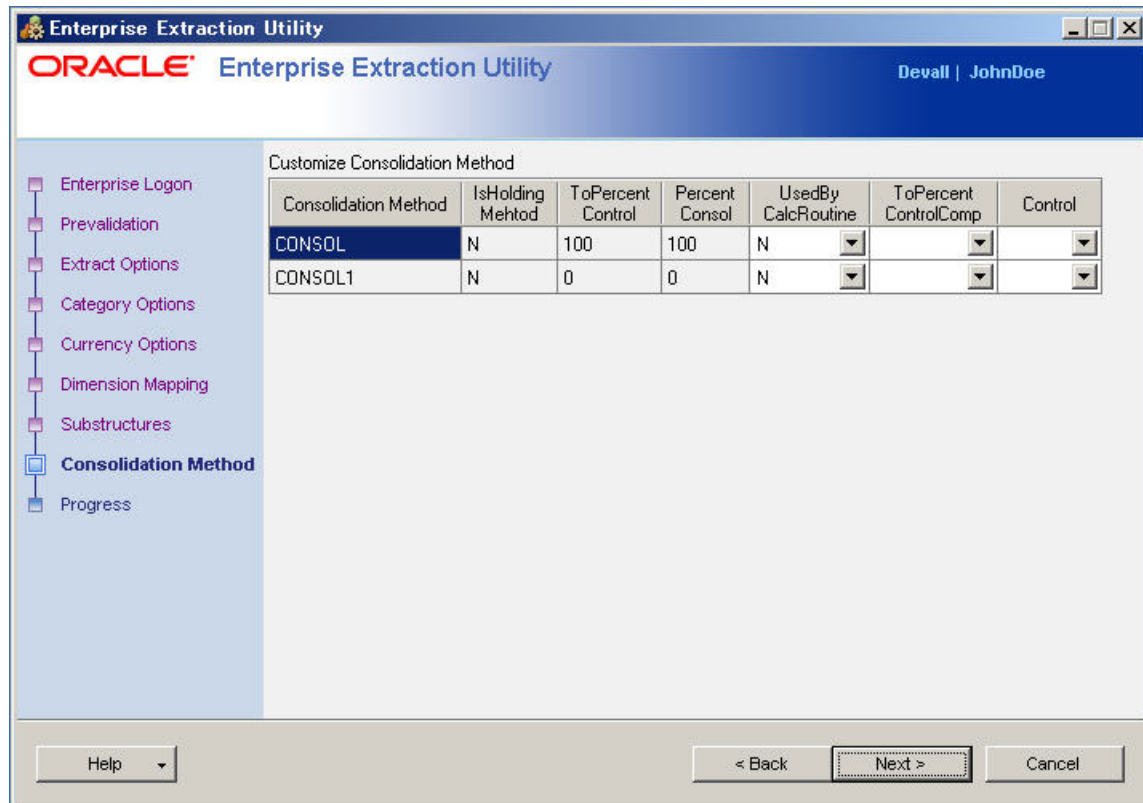
**Note:** The Value dimension represents different types of values stored in your application and can include the input currency, parent currency, adjustments, and consolidation details—proportion, elimination, and contribution. For example, the Entity Currency member stores the value of an entity in its local currency. The Parent Currency member stores the value of an entity translated to the currency of its parent entity.

2 **Optional:** Select **Only show substructures mapped to Value Dimension** to see only Value dimension mappings.

3 **Optional:** Select **Expand all substructures** to see all subtentities with in the substructures in the Hyperion Enterprise application.

4 **Click Next.**

The Consolidation Method screen is displayed.



## Setting Consolidation Method Options

In the Consolidation Method screen displays the list of consolidation methods defined in the Hyperion Enterprise application. If the application is an Organization By Period application, then the consolidation method table can also be used to define ranges of ownership information and method assignment.

► To set the consolidation method:

### 1 In Customize Consolidation Method, select the required attributes options.

- The **UsedByCalcRoutine** attribute specifies whether the method is used for the automatic ownership calculation routine. Select Y to use the method for ownership calculations; select N to not to use the method for ownership calculations.
- The **ToPercentControlComp** attribute specifies whether the upper boundary of the range of percent control is included in the range. Used for the ownership calculation routine with the **ToPercentControl** attribute.

**Note:** The **ToPercentControlComp** is optional if the **UsedByCalcRoutine** attribute is N. Select the “less than” symbol (<) or the “less than or equal to” symbol (<=) for this attribute.

- The **Control** attribute specifies the threshold that corresponds to the type of control to be used by the calculation routine.

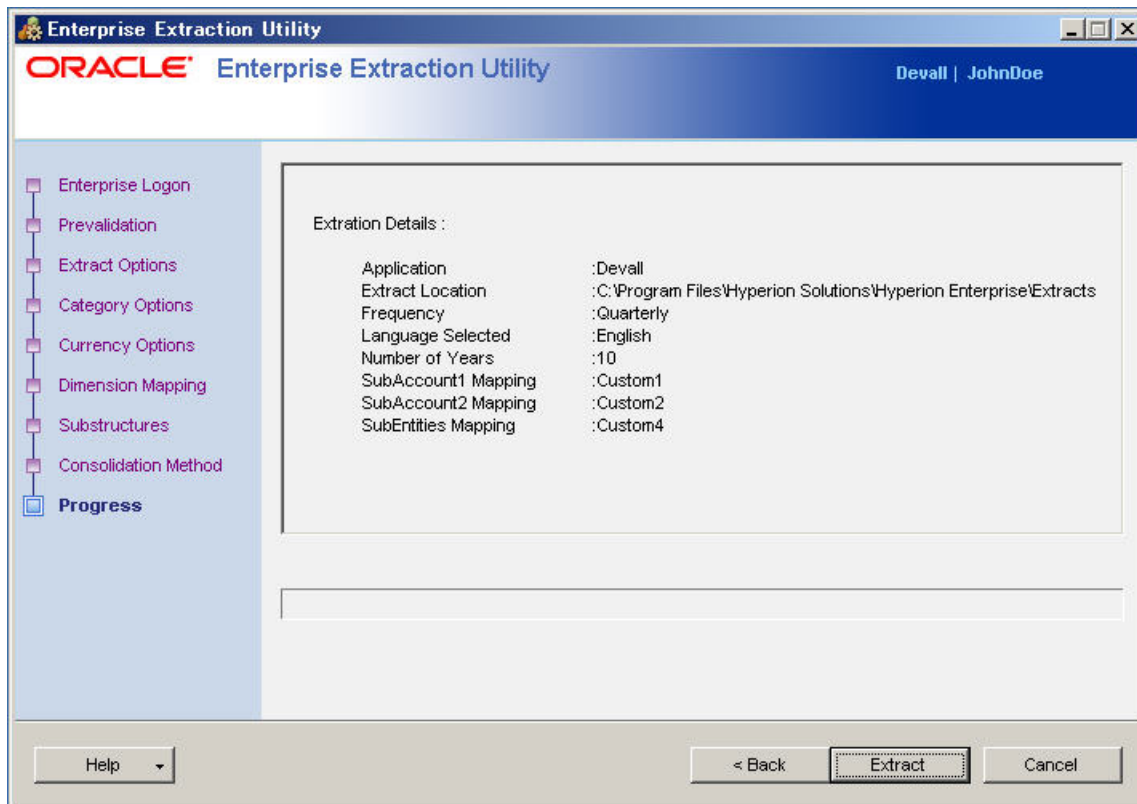
Select a value for the Control attribute:

- Blank
- No
- Limited
- Full

**Note:** In the case of Financial Management, if consolidation methods are used by calculation routine and are not holding methods, then there must be at least one consolidation method for each control type (Full, Limited, and No). If Oracle's Hyperion® Enterprise® application does not satisfy the above criteria, then dummy methods are added during the extraction process to fulfill the above condition.

### 2 Click Next.

The Progress screen is displayed.



## Viewing the Extraction Progress and Status

► To extract the Hyperion Enterprise application:

- 1 In **Progress**, click **Extract**.
- 2 After extraction is complete, Click **Ok**.
- 3 Click **Close** to exit the progress screen.

**Note:** Extracted files are stored at: *<Hyperion Enterprise Installation Directory>\Hyperion Solutions\Hyperion Enterprise\Extracts*. Details of the extraction are in *<app>Extract.log*.

**Note:** You can either view or change the extraction settings, using the Global Selection Frame or click Back. If there are any changes from earlier extraction settings, then you must manually complete the remaining extraction process.

The extracted output contains various file types. For example, metadata files are extracted with the extension `.xml`, profile files are extracted with the extension `.per`, list files are extracted with the extension `.lst`, security files are extracted with the extension `.sec`, data files are extracted with the extension `.dat`, journal files are extracted with the extension `.jlf`, and report files are extracted with the extension `.rpt`.

For more information on the following topics: Creating application, Loading metadata and data, and Rule files to view the converted application in Financial Management. See the Oracle Hyperion Financial Management, Fusion Edition Administrator's Guide.