



iWay 5.5.011 for BEA WebLogic 9.1 Migration Guide

DN3501703.0306

March 13, 2006

EDA, EDA/SQL, FIDEL, FOCCALC, FOCUS, FOCUS Fusion, FOCUS Vision, Hospital-Trac, Information Builders, the Information Builders logo, Parlay, PC/FOCUS, SmartMart, SmartMode, SNAPPack, TableTalk, WALDO, Web390, WebFOCUS and WorldMART are registered trademarks, and iWay and iWay Software are trademarks of Information Builders, Inc.

Due to the nature of this material, this document refers to numerous hardware and software products by their trademarks. In most, if not all cases, these designations are claimed as trademarks or registered trademarks by their respective companies. It is not this publisher's intent to use any of these names generically. The reader is therefore cautioned to investigate all claimed trademark rights before using any of these names other than to refer to the product described.

Copyright © 2006, by BEA Systems, Inc. All rights reserved. Patent Pending. This manual, or parts thereof, may not be reproduced in any form without the written permission of Information Builders, Inc.

Preface

This documentation describes how to migrate an iWay 5.5 installation for BEA WebLogic 8.1 to an iWay 5.5 installation for BEA WebLogic 9.1.

How This Manual Is Organized

The following table lists the numbers and titles of the chapters for this manual with a brief description of the contents of each chapter.

Chapter		Contents
1	Migrating iWay 5.5.006 for BEA WebLogic 8.1 to iWay 5.5.011 for BEA WebLogic 9.1	Describes how to migrate an iWay 5.5.006 installation for BEA WebLogic 8.1 to an iWay 5.5.011 installation for BEA WebLogic 9.1.

Documentation Conventions

The following table lists the conventions that apply in this manual and a description of each.

Convention	Description
<code>THIS TYPEFACE</code> or <code>this typeface</code>	Denotes syntax that you must enter exactly as shown.
<i>this typeface</i>	Represents a placeholder (or variable) in syntax for a value that you or the system must supply.
<u>underscore</u>	Indicates a default setting.
<i>this typeface</i>	Represents a placeholder (or variable) in a text paragraph, a cross-reference, or an important term.
this typeface	Highlights a file name or command in a text paragraph that must be lowercase.
<i>this typeface</i>	Indicates a button, menu item, or dialog box option you can click or select.
Key + Key	Indicates keys that you must press simultaneously.

Convention	Description
{ }	Indicates two or three choices; type one of them, not the braces.
	Separates mutually exclusive choices in syntax. Type one of them, not the symbol.
...	Indicates that you can enter a parameter multiple times. Type only the parameter, not the ellipsis points (...).
. . .	Indicates that there are (or could be) intervening or additional commands.

Contact Us!

Your feedback on the iWay 5.5.011 for BEA WebLogic 9.1 Migration Guide important to us.

Send us e-mail at docsupport@bea.com if you have questions or comments. Your comments will be reviewed directly by the BEA professionals who create and update the iWay 5.5.011 for BEA WebLogic 9.1 Migration Guide.

In your e-mail message, please indicate the version of the iWay 5.5.011 for BEA WebLogic 9.1 Migration Guide you are using.

If you have any questions about this version of iWay 5.5.011 for BEA WebLogic 9.1 Migration Guide, or if you have problems using the iWay 5.5.011 for BEA WebLogic 9.1 Migration Guide, contact BEA Customer Support through BEA WebSUPPORT at www.bea.com. You can also contact Customer Support by using the contact information provided on the Customer Support Card which is included in the product package.

When contacting Customer Support, be prepared to provide the following information:

- Your name, e-mail address, phone number, and fax number
- Your company name and company address
- Your machine type and authorization codes
- The name and version of the product you are using
- A description of the problem and the content of pertinent error messages

Help Us to Serve You Better

To help our consultants answer your questions effectively, please be prepared to provide specifications and sample files and to answer questions about errors and problems.

The following tables list the specifications our consultants require.

Platform	
Operating System	
OS Version	
Product List	
Adapters	
Adapter Deployment	For example, JCA, or Integration Business Services Engine.
Container Version	

The following table lists components. Specify the version in the column provided.

Component	Version
Adapter	
EIS (DBMS/APP)	
HOTFIX / Service Pack	

The following table lists the types of Application Explorer. Specify the version (and platform, if different than listed previously) in the columns provided.

Application Explorer Type	Version	Platform
Swing		
Servlet		
ASP		

In the following table, specify the JVM version and vendor in the columns provided.

Version	Vendor

The following table lists additional questions to help us serve you better.

Request/Question	Error/Problem Details or Information
Provide usage scenarios or summarize the application that produces the problem.	
Did this happen previously?	
Can you reproduce this problem consistently?	
Any change in the application environment : software configuration, EIS/ database configuration, application, and so forth?	
Under what circumstance does the problem <i>not</i> occur?	
Describe the steps to reproduce the problem.	
Describe the problem .	
Specify the error message(s).	

The following table lists error/problem files that might be applicable.

XML schema
XML instances
Other input documents (transformation)
Error screen shots
Error output files
Trace and log files
Log transaction

Contents

1. Migrating iWay 5.5.006 for BEA WebLogic 8.1 to iWay 5.5.011 for BEA WebLogic 9.1	1-1
Overview	1-2
Uninstalling iWay 5.5.006 for BEA WebLogic 8.1	1-3
File Repositories	1-3
iBSE Repositories	1-3
JCA Repositories	1-7
Migrating Event Handling Configurations	1-7
Migrating Schemas	1-12
Undeploying Web Application Modules and Connector Modules	1-12
Running the Uninstall Utility	1-13
Removing CLASSPATH Entries	1-14
Installing iWay 5.5.011 for BEA WebLogic 9.1	1-15
Running the Installation	1-15
Post-Installation Topics and Tasks	1-17

Contents

CHAPTER 1

Migrating iWay 5.5.006 for BEA WebLogic 8.1 to iWay 5.5.011 for BEA WebLogic 9.1

Topics:

- Overview
- Uninstalling iWay 5.5.006 for BEA WebLogic 8.1
- Installing iWay 5.5.011 for BEA WebLogic 9.1

This section describes how to migrate an iWay 5.5.006 installation for BEA WebLogic 8.1 to an iWay 5.5.011 installation for BEA WebLogic 9.1.

Note: The information that is provided in this section is also applicable when migrating from an iWay 5.5.001 (iWay 55 RG1) installation to an iWay 5.5.011 installation for BEA WebLogic 9.1.

Overview

Even though the iWay 5.5.006 and iWay 5.5.011 architectures are similar, and a routine reinstallation will suffice in most cases, performing a proper migration will ensure that your transition from a 5.5.006 configuration to 5.5.011 is successful and that all data is preserved.

The following steps summarize the migration from an iWay 5.5 installation (5.5.006) for BEA WebLogic 8.1 to an iWay 5.5 installation (5.5.011) for BEA WebLogic 9.1.

- 1.** Uninstall iWay 5.5.006. For more information, see *Uninstalling iWay 5.5.006 for BEA WebLogic 8.1* on page 1-3.
 - a.** Backup your existing iBSE or JCA repository.
 - b.** Undeploy Web Application Modules and Connector Modules.
 - c.** Run the uninstallation utility.
 - d.** Remove existing CLASSPATH entries.
 - e.** Reboot your system and restart your BEA WebLogic Server.
- 2.** Install iWay 5.5.011. For more information, see *Installing iWay 5.5.011 for BEA WebLogic 9.1* on page 1-15.
 - a.** Review the requirements and install any required third party components.
 - b.** Run the installation program to install adapters and components.
 - c.** On UNIX, set environment variables.
 - d.** Copy third party adapter-related files into the adapter directory structure.
 - e.** To use Connector for JCA, deploy the Connector for JCA and the JCA Test Tool on your application server.
 - f.** To use the Integration Business Services Engine (iBSE), deploy Servlet iBSE on your application server and optionally set up a database repository.
 - g.** Configure Application Explorer.
 - h.** Perform any adapter-specific post-installation steps described in the documentation for your adapters.

Uninstalling iWay 5.5.006 for BEA WebLogic 8.1

Before uninstalling iWay 5.5.006, you must first backup or migrate your existing JCA or iBSE repositories.

File Repositories

To migrate a File repository to another destination, you copy the ibserepo.xml file from the following path:

```
drive:\Program Files\iWay55\bea\ibse\ibserepo.xml
```

where:

```
drive
```

Is the location of your BEA WebLogic ERP Adapter installation.

You can place the ibserepo.xml file in a new location that is a root directory of the iBSE Web application. For example:

```
drive:\ProductionConfig\bea\ibse\ibserepo.xml
```

iBSE Repositories

The following topic describes how to migrate an iBSE repository that is configured for Oracle. You can follow the same procedure if you want to migrate an iBSE repository that is configured for Microsoft SQL Server 2000, Sybase, or DB2. However, when you are configuring a new environment, you must execute the script that creates the repository tables for your database. In addition, verify that all required files and drivers for your database are in the class path. For more information on configuring repositories, see the *BEA WebLogic ERP Adapter Installation and Configuration* documentation.

Note: The following procedure allows you to migrate only Web services. If migrating event handling information, for example, port or channel configurations, is one of your requirements, you must migrate at the database level. For more information, see *Migrating Event Handling Configurations* on page 1-7.

Procedure How to Migrate an iBSE Repository Configured for Oracle

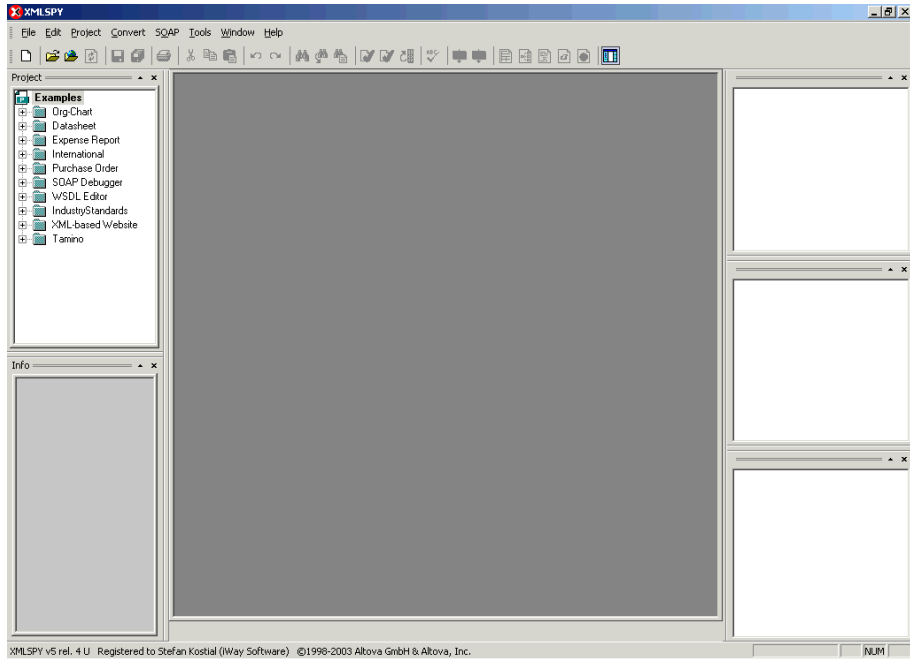
To migrate an iBSE repository that is configured for Oracle:

1. Copy the iBSE configuration service URL, for example:

```
http://localhost:7777/ibse/IBSEServlet/admin/iwconfig.ibs?wsdl
```

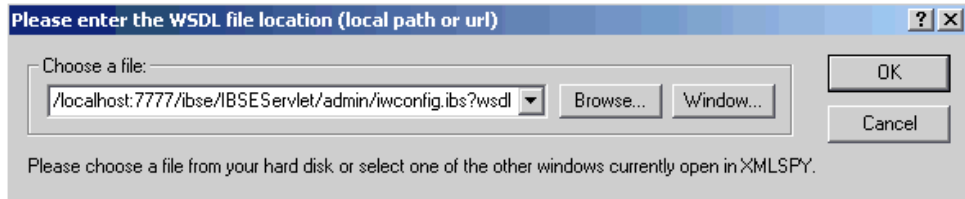
2. Open a third party XML editor, for example, XMLSPY.

The following image shows the XMLSPY window. The upper left has a Project pane that contains a tree of sample files, and the lower left has a blank Info pane. The middle pane is blank. The right side is divided into three blank panes.



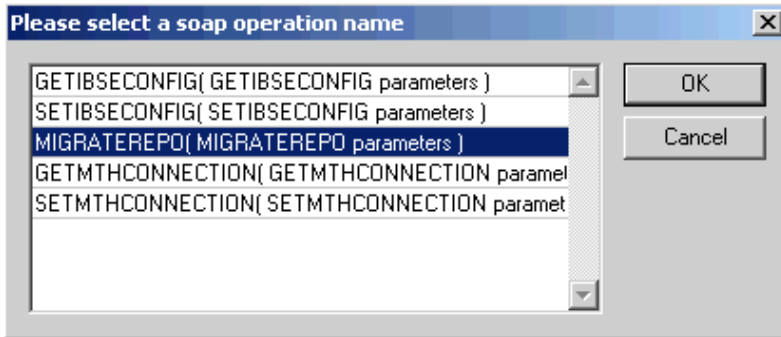
3. From the SOAP menu, select *Create new SOAP request*.

The following image shows the WSDL file location dialog box that opens, where you enter a local path or URL. The dialog includes Browse, Window, OK, and Cancel buttons.



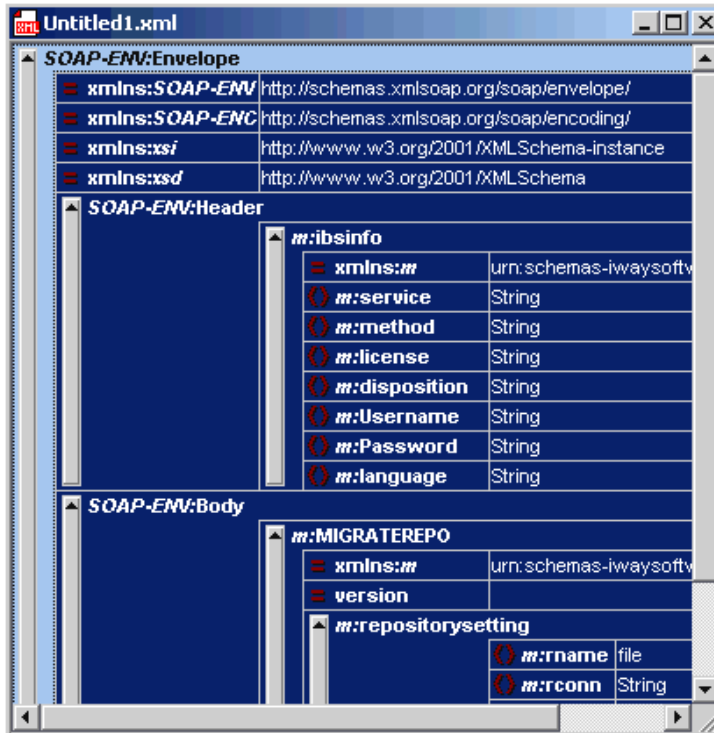
4. In the Choose a file field, paste the iBSE configuration service URL.
5. Click OK.

The following image shows the soap operation name dialog box that opens with a list of available control methods.



6. Select the *MIGRATEREPO(MIGRATEREPO parameters)* control method and click *OK*.

The following image shows a portion of the window that opens with the structure of the SOAP envelope. It includes information about location and schemas.



7. Locate the *Text view* icon in the tool bar.

In the following image, the pointer points to the Text view icon.



8. To display the structure of the SOAP envelope as text, click the *Text view* icon.

The <SOAP-ENV:Header> tag is not required and can be deleted from the SOAP envelope.

9. Locate the following section:

```
<m:MIGRATEREPO xmlns:m="urn:schemas-iwaysoftware-  
com:jul2003:ibse:config" version="">  
<m:repositorysetting>  
<m:rname>oracle</m:rname>  
<m:rconn>String</m:rconn>  
<m:rdriver>String</m:rdriver>  
<m:ruser>String</m:ruser>  
<m:rpwd>String</m:rpwd>  
</m:repositorysetting>  
<m:servicename>String</m:servicename>  
</m:MIGRATEREPO>
```

- a. For the <m:rconn> tag, replace the String placeholder with the repository URL where you want to migrate your existing iBSE repository.

For example, the Oracle repository URL has the following format:

```
jdbc:oracle:thin:@[host]:[port]:[sid]
```

- b. For the <m:rdriver> tag, replace the String placeholder with the location of your Oracle driver.

Note: This is an optional tag. If you do not specify a value, the default Oracle JDBC driver is used.

- c. For the <m:ruser> tag, replace the String placeholder with a valid user name to access the Oracle repository.
- d. For the <m:rpwd> tag, replace the String placeholder with a valid password to access the Oracle repository.

10. Perform one of the following migration options.

If you want to migrate a **single** Web service from the current iBSE repository, enter the Web service name in the <m:servicename> tag, for example:

```
<m:servicename>Service1</m:servicename>
```

If you want to migrate **multiple** Web services from the current iBSE repository, duplicate the <m:servicename> tag for each Web service, for example:

```
<m:servicename>Service1</m:servicename>  
<m:servicename>Service2</m:servicename>
```

If you want to migrate **all** Web services from the current iBSE repository, remove the <m:servicename> tag.

11. From the SOAP menu, select *Send request to server*.

Your iBSE repository and the Web services you specified migrate to the new Oracle repository URL that you specified.

JCA Repositories

The following topic describes how to migrate a JCA repository. For more information on configuring JCA repositories, see the *BEA WebLogic ERP Adapter Installation and Configuration* documentation.

Note: Migrating JCA database repositories from an iWay 5.5.006 installation for BEA WebLogic 8.1 is not applicable since database repositories were not supported in that release for JCA.

Procedure How to Migrate a JCA Repository

To migrate a JCA repository:

1. Navigate to the location of your JCA configuration directory where the repository schemas and other information is stored, for example:

```
C:\Program Files\iway55\config\base
```

The default file system repository for the base configuration on Windows is:

```
C:\Program Files\iway55\config\base\repository.xml
```

The repository.xml file is not created until you access the configuration using Application Explorer or the JCA Test Tool.

2. Locate and copy the *repository.xml* file.
3. Place this file in a new JCA configuration directory to migrate the existing repository.

Your JCA repository migrates to the new JCA configuration directory.

Migrating Event Handling Configurations

This topic describes how to migrate your iBSE repositories at a database level for Microsoft SQL Server 2000, Oracle, Sybase, or DB2. You can use this information to migrate event handling information, for example, port or channel configurations.

Procedure How to Migrate a Microsoft SQL Server 2000 Repository

To migrate a Microsoft SQL Server 2000 repository:

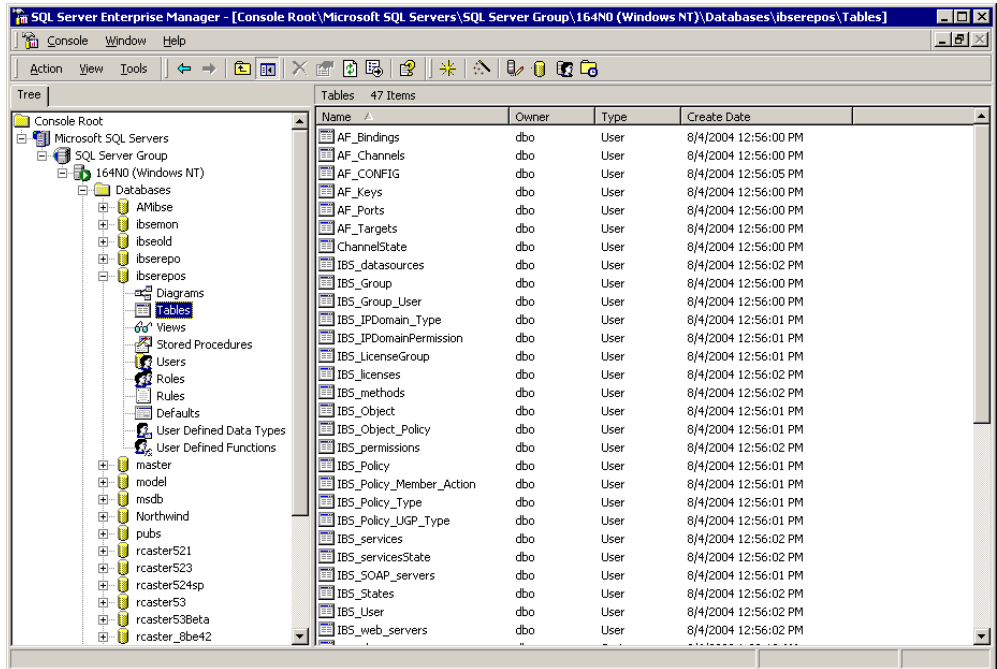
1. Open a command prompt and navigate to the iWay setup directory. The default location on Windows is:

`C:\Program Files\iWay55\etc\setup`

This directory contains SQL to create the repository tables in the following file:

`iwse.sql`

You can use `iwse.sql` to create the database tables that are used by iBSE. For example, the following image shows the tree in the left pane and tables in the right pane. The tables are listed by name in one column with corresponding columns for information about owner, type, and the date the table was created.



For more information on configuring the Microsoft SQL Server 2000 repository, see the *BEA WebLogic ERP Adapter Installation and Configuration* documentation.

2. To migrate the tables that were created by the `iwse.sql` script for iBSE, use your Microsoft SQL Server 2000 database tool set. For more information, consult your database administrator.

Procedure How to Migrate an Oracle Repository

To migrate an Oracle repository:

1. Open a command prompt and navigate to the iWay setup directory. The default location on Windows is:

```
C:\Program Files\iWay55\etc\setup
```

This directory contains SQL to create the repository tables in the following files:

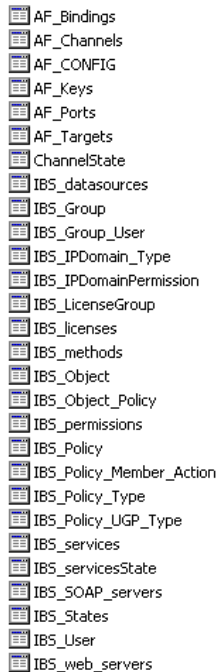
For Oracle 8:

```
iwse.ora
```

For Oracle 9:

```
iwse.ora9
```

2. To create the Oracle database tables that are used by iBSE, use the SQL script as shown in the example in the following image that shows a list of tables.



A screenshot showing a list of Oracle database tables. Each table name is preceded by a small icon representing a table. The list includes:

- AF_Bindings
- AF_Channels
- AF_CONFIG
- AF_Keys
- AF_Ports
- AF_Targets
- ChannelState
- IBS_datasources
- IBS_Group
- IBS_Group_User
- IBS_IPDomain_Type
- IBS_IPDomainPermission
- IBS_LicenseGroup
- IBS_licenses
- IBS_methods
- IBS_Object
- IBS_Object_Policy
- IBS_permissions
- IBS_Policy
- IBS_Policy_Member_Action
- IBS_Policy_Type
- IBS_Policy_UGP_Type
- IBS_services
- IBS_servicesState
- IBS_SOAP_servers
- IBS_States
- IBS_User
- IBS_web_servers

For more information on configuring the Oracle repository, see the *BEA WebLogic ERP Adapter Installation and Configuration* documentation.

3. To migrate the tables that were created by the SQL script for iBSE, use your Oracle database tool set. For more information, consult your database administrator.

Procedure How to Migrate a Sybase Repository

To migrate a Sybase repository:

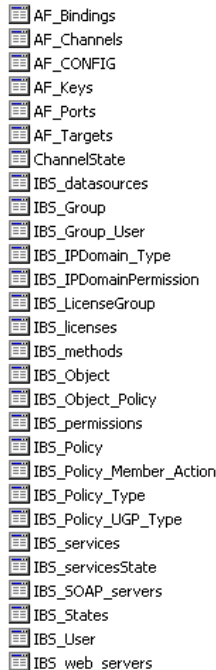
1. Open a command prompt and navigate to the iWay setup directory. The default location on Windows is:

`C:\Program Files\iWay55\etc\setup`

This directory contains SQL to create the repository tables in the following file:

`sybase-iwse.sql`

2. To create the Sybase database tables that are used by iBSE, use the SQL script as shown in the example in the following image that shows a list of tables.



A screenshot of a Sybase Enterprise Central Desktop window showing a list of database tables. The list includes:

- AF_Bindings
- AF_Channels
- AF_CONFIG
- AF_Keys
- AF_Ports
- AF_Targets
- ChannelState
- IBS_datasources
- IBS_Group
- IBS_Group_User
- IBS_IPDomain_Type
- IBS_IPDomainPermission
- IBS_LicenseGroup
- IBS_licenses
- IBS_methods
- IBS_Object
- IBS_Object_Policy
- IBS_permissions
- IBS_Policy
- IBS_Policy_Member_Action
- IBS_Policy_Type
- IBS_Policy_UGP_Type
- IBS_services
- IBS_servicesState
- IBS_SOAP_servers
- IBS_States
- IBS_User
- IBS_web_servers

For more information on configuring the Sybase repository, see the *BEA WebLogic ERP Adapter Installation and Configuration* documentation.

3. To migrate the tables that were created by the SQL script for iBSE, use your Sybase database tool set. For more information, consult your database administrator.

Procedure How to Migrate a DB2 Repository

To migrate a DB2 repository:

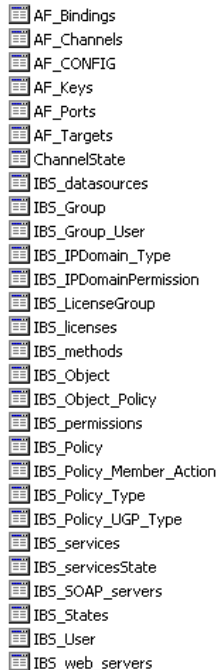
1. Open a command prompt and navigate to the iWay setup directory. The default location on Windows is:

```
C:\Program Files\iWay55\etc\setup
```

This directory contains SQL to create the repository tables in the following file:

```
db2-iwse.sql
```

2. To create the DB2 database tables that are used by iBSE, use the SQL script as shown in the example in the following image that shows a list of tables.



A screenshot of a list of database tables, each preceded by a small icon representing a table. The list includes:

- AF_Bindings
- AF_Channels
- AF_CONFIG
- AF_Keys
- AF_Ports
- AF_Targets
- ChannelState
- IBS_datasources
- IBS_Group
- IBS_Group_User
- IBS_IPDomain_Type
- IBS_IPDomainPermission
- IBS_LicenseGroup
- IBS_licenses
- IBS_methods
- IBS_Object
- IBS_Object_Policy
- IBS_permissions
- IBS_Policy
- IBS_Policy_Member_Action
- IBS_Policy_Type
- IBS_Policy_UGP_Type
- IBS_services
- IBS_servicesState
- IBS_SOAP_servers
- IBS_States
- IBS_User
- IBS_web_servers

For more information on configuring the DB2 repository, see the *BEA WebLogic ERP Adapter Installation and Configuration* documentation.

You can migrate the tables that were created by the SQL script for iBSE using your DB2 database toolset. For more information, consult your database administrator.

Migrating Schemas

Application Explorer stores the schemas it creates in subdirectories under the iWay home directory of the machine where it is installed. The exact location of the schemas differs depending on whether you deploy Application Explorer with an iBSE or a JCA configuration. You can backup your existing schemas before migrating from iWay 5.5.006 to iWay 5.5.011.

When using the adapter with an **iBSE** configuration, the schemas are stored under a \schemas subdirectory of the iWay home directory, for example,

```
C:\Program Files\iway55\bea\ibse\wsdl\schemas\service\adapter\TargetName
```

where:

adapter

Is the name of the adapter you are using.

TargetName

Is the name of the adapter connection as defined in Application Explorer. Under this directory, Application Explorer creates subdirectories containing schemas.

When using the adapter with a **JCA** configuration, the schemas are stored under a \schemas subdirectory of the iWay home directory, for example,

```
C:\Program Files\iWay55\config\base\schemas\adapter\TargetName
```

where:

adapter

Is the name of the adapter you are using.

TargetName

Is the name of the connection to the Siebel system as defined in Application Explorer. Application Explorer stores the schemas in this directory.

Undeploying Web Application Modules and Connector Modules

Once you have migrated your iBSE or JCA repositories, you must undeploy any active iWay 5.5 Web Application Modules or Connector Modules using the WebLogic Console.

Procedure How to Undeploy Web Application Modules and Connector Modules

To undeploy iWay 5.5 application modules:

1. Open the WebLogic Console in a browser at:

`http://hostname:port/console`

where:

`hostname`

Is the hostname of the machine where WebLogic is running.

`port`

Is the port for the domain you are using. The port for the default domain is 7001.

For example:

`http://localhost:7001/console`

A logon page opens. If the page does not open, ensure your domain is started, and you used the correct port.

2. Log on to WebLogic.
3. In the left pane, expand the *Deployments* folder and then, click *Web Application Modules* or *Connector Modules*.

A page appears for deploying and controlling application modules. If other applications are already deployed, they appear.

4. Undeploy the following iWay 5.5 Web Application Modules:
 - Integration Business Services Engine
 - Application Explorer
 - JCA Test Tool
5. Undeploy the following iWay 5.5 Connector Module:
 - iWay Connector for JCA

Running the Uninstall Utility

An uninstall utility is provided to properly remove iWay from your system. You should use the uninstall utility rather than manually deleting directories. Manually removing directories on Windows or UNIX may cause problems if you wish to reinstall at a later time.

For more information on any limitations that pertain to the uninstall utility, see the *Release Notes for BEA WebLogic ERP Adapters* documentation.

Procedure How to Uninstall iWay 5.5.006

To uninstall iWay 5.5.006:

1. If you have deployed iWay components to your application servers, undeploy them.
2. Ensure that your domain is stopped.

Uninstalling iWay 5.5.006 for BEA WebLogic 8.1

3. Copy any files you wish to save out of the iWay55 directories.
4. Execute the uninstall utility.

The utility's location varies depending on your platform and the version of iWay you installed.

On Windows, the file is named *uninstaller.exe*.

```
C:\Program Files\iWay55\etc\uninstall\iwl8sp3\uninstaller.exe
```

On UNIX, the file is named *uninstaller.bin*.

```
iWay55/etc/uninstall/iwl8sp3/uninstaller.bin
```

Removing CLASSPATH Entries

Once you run the uninstaller for iWay 5.5.006, you must manually remove iWay files from the CLASSPATH by:

- Editing the WebLogic Server startup script:
 - **Windows:** startWebLogic.cmd
 - **UNIX:** startWebLogic.sh
- Editing the environment settings script:
 - **Windows:** commEnv.cmd
 - **UNIX:** commEnv.sh

Installing iWay 5.5.011 for BEA WebLogic 9.1

This section describes how to install iWay 5.5.011 for BEA WebLogic 9.1. For more comprehensive information, see the *BEA WebLogic ERP Adapter Installation and Configuration* documentation.

Running the Installation

Use the steps below to install adapters and components.

Procedure How to Install the ERP Adapters

1. Execute the installation program for your platform. The name of this program may vary, for example:

- On Windows:

```
bw19sp0.win32.exe
```

- On UNIX platforms, there are two options:

If you have an X Windows environment, you can use a GUI-based installation by executing the installation program with no options, for example:

```
./bw19sp0.linux.bin
```

If you do not have an X Windows environment, use the text-based installation by executing the installation program with the `-console` option, for example:

```
./bw19sp0.linux.bin -console
```

Note: This procedure follows the GUI installation. The prompts for the text-based installation are almost identical.

The installation begins and the Welcome window opens.

2. Click *Next*.

The License Agreement appears.

3. Review the information, indicate that you accept the terms, and click *Next* to continue.

The Choose Destination Location window opens.

Note: If you previously installed the ERP Adapters or an iWay 5.5 product, you may not be prompted to choose the destination if the previous installation was not uninstalled.

4. Accept the default or click *Browse* to specify a new location and then click *Next*.

The BEA parameters window appears.

5. Complete the *Base Url* and *BEA Home* fields as follows and then click *Next*.

<i>Base Url</i>	Specify the URL (http vs. https, hostname, and port) for accessing your application server, for example: http://hostname:7001
<i>BEA Home</i>	Specify the BEA directory into which WebLogic and other BEA software are installed. If BEA WebLogic Workshop is installed, Swing Application Explorer and the Connector for JCA (CCI) Control are added to it.

The Start Copying Files window appears.

6. Click *Next* to start the installation.

Files are copied to your system in the directory you specified.

Post-Installation Topics and Tasks

Review the remainder of this chapter to determine if any tasks are required for your platform and adapters.

Reference Adapter Directory Structure

After installation, an iWay55 directory is created and contains the following subdirectories:

bea

Contains components to be deployed into your application server.

bin

Contains XML files required for adapters.

config

Contains configuration directories for Connector for JCA. By default, the connector is set to access the base configuration, and connector information is written to the base subdirectory. When additional connector configurations are created, their directories are placed here.

On UNIX, ensure that the user ID your application server runs under has full permissions to the iWay55/config directory and subdirectories. If you installed under a different user ID than the user ID that runs the application server processes, you may need to use `chmod`, `chown`, and/or group ownership.

etc

Contains miscellaneous tools and files to configure additional components.

lib

Contains adapters, drivers, and other files used by adapter components. All components must access this directory. In most cases, after components recognize this location, the adapters and other files are accessible.

Warning: A `license.xml` file appears in the iWay55 directory. Do not delete this file.

