



QuickClip Portlet, BEA WebLogic Edition Installation Guide

Version 6.1
March 2006



Copyright

Copyright © 1995-2005 BEA Systems, Inc. All Rights Reserved.

Restricted Rights Legend

This software is protected by copyright, and may be protected by patent laws. No copying or other use of this software is permitted unless you have entered into a license agreement with BEA authorizing such use. This document is protected by copyright and may not be copied, photocopied, reproduced, translated, or reduced to any electronic medium or machine readable form, in whole or in part, without prior consent, in writing, from BEA Systems, Inc.

Information in this document is subject to change without notice and does not represent a commitment on the part of BEA Systems. THE DOCUMENTATION IS PROVIDED "AS IS" WITHOUT WARRANTY OF ANY KIND INCLUDING WITHOUT LIMITATION, ANY WARRANTY OF MERCHANTABILITY OR FITNESS FOR A PARTICULAR PURPOSE. FURTHER, BEA SYSTEMS DOES NOT WARRANT, GUARANTEE, OR MAKE ANY REPRESENTATIONS REGARDING THE USE, OR THE RESULTS OF THE USE, OF THE DOCUMENT IN TERMS OF CORRECTNESS, ACCURACY, RELIABILITY, OR OTHERWISE.

Trademarks and Service Marks

Copyright © 1995-2005 BEA Systems, Inc. All Rights Reserved. BEA, BEA JRockit, BEA WebLogic Portal, BEA WebLogic Server, BEA WebLogic Workshop, Built on BEA, Jolt, JoltBeans, SteelThread, Top End, Tuxedo, and WebLogic are registered trademarks of BEA Systems, Inc. BEA AquaLogic, BEA AquaLogic Data Services Platform, BEA AquaLogic Enterprise Security, BEA AquaLogic Service Bus, BEA AquaLogic Service Registry, BEA Builder, BEA Campaign Manager for WebLogic, BEA eLink, BEA Liquid Data for WebLogic, BEA Manager, BEA MessageQ, BEA WebLogic Commerce Server, BEA WebLogic Communications Platform, BEA WebLogic Enterprise, BEA WebLogic Enterprise Platform, BEA WebLogic Enterprise Security, BEA WebLogic Express, BEA WebLogic Integration, BEA WebLogic Java Adapter for Mainframe, BEA WebLogic JDriver, BEA WebLogic Log Central, BEA WebLogic Network Gatekeeper, BEA WebLogic Personalization Server, BEA WebLogic Personal Messaging API, BEA WebLogic Platform, BEA WebLogic Portlets for Groupware Integration, BEA WebLogic Server Process Edition, BEA WebLogic SIP Server, BEA WebLogic WorkGroup Edition, Dev2Dev, Liquid Computing, and Think Liquid are trademarks of BEA Systems, Inc. BEA Mission Critical Support, BEA Mission Critical Support Continuum, and BEA SOA Self Assessment are service marks of BEA Systems, Inc.

All other names and marks are property of their respective owners.

Contents

QuickClip Portlet, BEA WebLogic Edition	1
Installation Guide	1
Contents.....	iii
Installation Guide	1
Installing the software	1
Domain Upgrade	2
Portal Project Upgrade	3
Files Installed under the WEB-INF Folder.....	4
Files Installed in the quickclip Folder	4

Installation Guide

This guide describes how to install the BEA WebLogic QuickClip Portlet extension to a BEA WebLogic installation and add the QuickClip Portlet to a given domain and a given portal.

Installing the software

Once you have downloaded the QuickClip Portlet, BEA WebLogic Edition installer, run it. The installer will do two things: install all the necessary files in a BEA WebLogic installation for this to create portals that use the QuickClip Portlet, and install a Kapow RoboSuite 6.1, BEA WebLogic Edition trial version. This version of Kapow's RoboSuite platform consist of a runtime component that may be used in production to run QuickClip portlet request and may additionally be used as for evaluating all the other features that the RoboSuite platform offers.

1. On the first page of the installer press the Next button to start installation process (this does not start the actual installation yet; you need to supply some information first).
2. On the next page of the installer read and accept the License Agreement. If you don't accept, the installer will terminate and nothing will be installed. Press the Next button to continue to the next page of the installer.
3. On this page you must choose a BEA home directory for a BEA WebLogic 8.1 installation to install the QuickClip Portlet files in. This would normally be a directory called `bea` and contain a folder called `weblogic81`. Notice that your WebLogic Home director must be called `weblogic81` for the installation to work correctly¹. Enter the path for your BEA Home or browse for this. When your have done this, press the Next button to continue to the next page of the installer.
4. On the next page of the installation wizard you can choose where to create product icons. This means where you want to create icons to access the components of RoboSuite, for example, RoboServer, which is a requirement for running QuickClip Portlets. If you choose not to create any icons, it will harder for you to get access to starting a RoboServer when you need to run a QuickClip Portlet, so it is recommended that you install the icons.
5. On the next and final page of the installation wizard you will see a summary of how you have configured the installation. Read this and make sure that it contains the correct information and if so press Install to complete the installation.

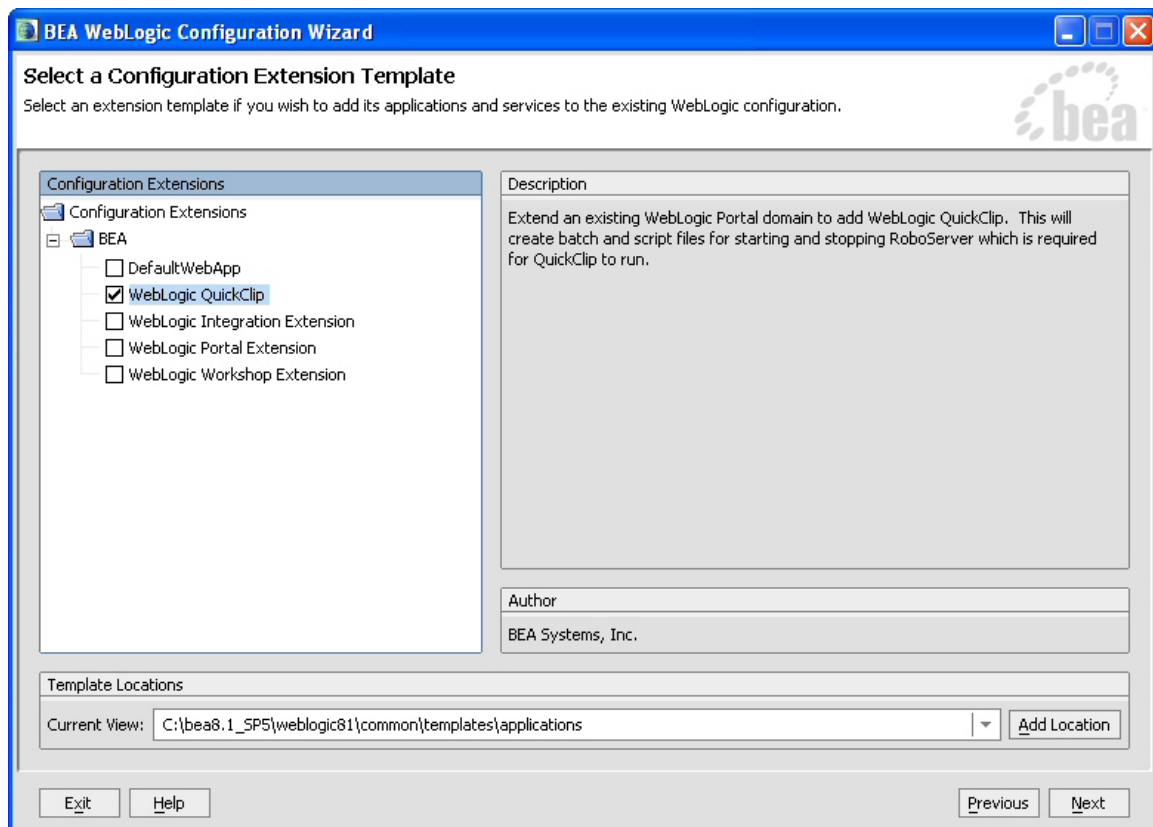
¹ If your WebLogic home is not called `weblogic81` you can still proceed with installation, but then the installer will create folder called `weblogic81` under your BEA home and you must afterwards copy all files in this folder to our own WebLogic home folder afterwards.

Domain Upgrade

In order to run the QuickClip Portlet, your portal domain must have an extension installed that will ensure that when you start or stop your WebLogic Server the runtime system of the QuickClip Portlet will also be started or stopped. To do this, run the Configuration Wizard either from Workshop (**Tools > WebLogic Server > Configuration Wizard**) or from Windows start menu.

1. On the first page of the wizard, choose Extend an Existing WebLogic Configuration and press Next. On the next page select the domain you want to upgrade and go to the next page.
2. On the next page, select the WebLogic QuickClip Extension (see Figure 1) and press Next to continue.

Figure 1: Selecting the WebLogic QuickClip Extension



3. Press Next on all the following pages until you reach the end of the wizard where you press Import.

This will create some scripts into the configuration directory of you domains:

- startRoboServer.cmd (for windows) and startRoboServer.sh (for other systems)
- stopRoboServer.cmd (for windows) and stopRoboServer.sh (for other systems)

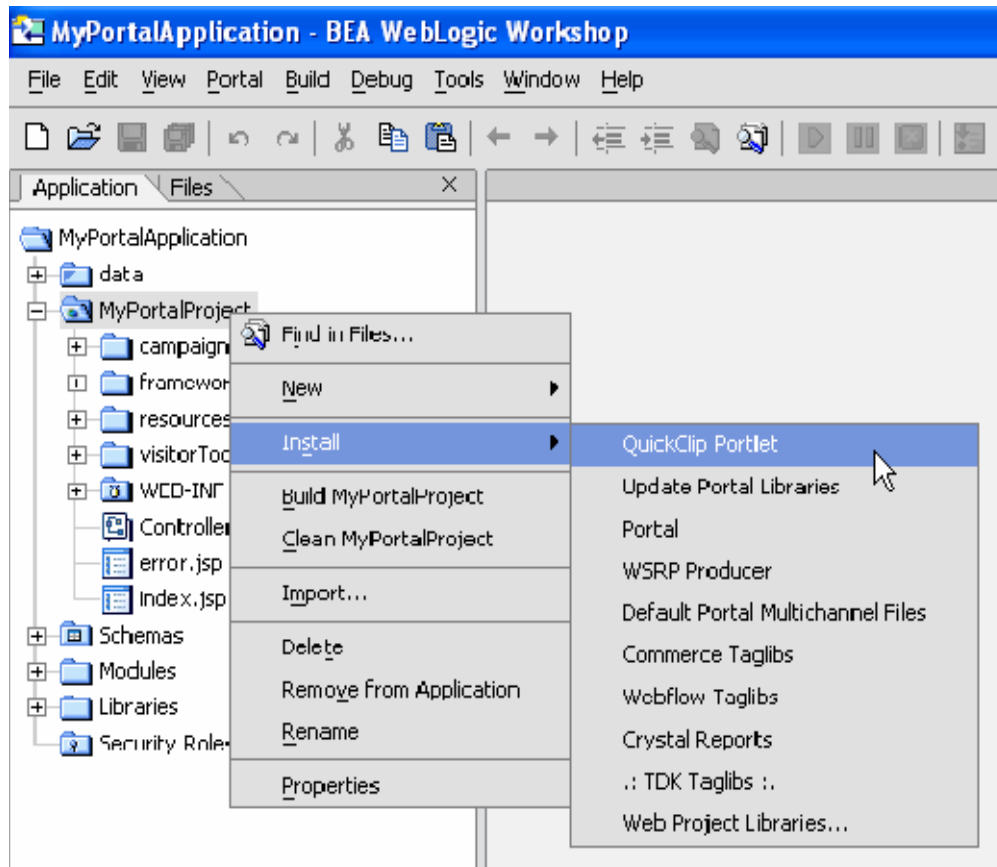
If you want to start and stop a RoboServer every time your WebLogic Server start and stops, you must manually copy the content of these files into the corresponding WebLogic files, such as copying the content of startRoboServer into startWebLogic and copy the content of stopRoboServer into stopWebLogic.

Portal Project Upgrade

In order to use the QuickClip Portlet in an existing Portal application you need to load the application into BEA WebLogic Workshop and add the QuickClip Portlet files to an existing portlet project in that application. In order to use the QuickClip Portlet in a new project, you should just create a new portal project and then follow the procedure described below.

To install the QuickClip Portlet files in a portal project right click on the project in the Application View and select **Install > QuickClip Portlet**. This will install all the necessary files for you to be able to add QuickClip portlets to your portals in the given project.

Figure 2: Installing the QuickClip Portlet in a Portal Project



The installation will create a folder called quickclip in the root folder of your portal project. This folder will contain the most of the files necessary to run the portlet. But since the QuickClip portlet is a Java Portlet, its implementation also contains some Java code (classes) which will be installed in the lib folder of the portals web application, that is in WEB-INF/lib.

You may also choose to install the QuickClip Portlet together with some samples. To do this you right click on your project in the Application View and select install > QuickClip Portlet with Samples.

Important: If you install QuickClip Portlet with Samples, your portlet.xml file (located in WEB-INF) will be overridden. So it would be a good idea to take a copy of this file before you install the samples.

Files Installed under the WEB-INF Folder

The files placed under the WEB-INF folder of the portal projects web application are:

- quickclip.jar – The implementation of the Java portlet.
- robosuite-clip.jar – The code needed to run RoboSuite Clipping. This is used by the code in quickclip.jar.
- robosuite-api.jar – The Java API for RoboSuite which is used by the code in robosuite-clip.jar to access the RoboSuite Server.

Besides these, files the the installation will also update the web.xml file and will overwrite the portlet.xml file of the web application (portlet.xml only if you install with samples).

Files Installed in the quickclip Folder

The files installed in the `quickclip` folder consists of

- JSP files – These files are part of the GUI of the portlets edit and help modes. There are also some JSP files for handling error situations. These files should not be change since this may result in the QuickClip not working correctly.
- A clip configuration file called `quickclip.clip`. This file is an XML-file and configures the web clipping functionality, for example, how to contact the server side component.
- Images files – These are some images used by the JSP files in the images folder in `quickclip`.
- Samples files (only if you install with samples) – These are some sample portlets that demonstrate various ways to configure the QuickClip Portlet. These are found in the `samples` folder under the `quickclip` folder.