



BEA WebLogic Portal™

WebLogic Portlets for SAP Installation Guide

Copyright

Copyright © 2004-2005 BEA Systems, Inc. All Rights Reserved.

Restricted Rights Legend

This software and documentation is subject to and made available only pursuant to the terms of the BEA Systems License Agreement and may be used or copied only in accordance with the terms of that agreement. It is against the law to copy the software except as specifically allowed in the agreement. This document may not, in whole or in part, be copied, photocopied, reproduced, translated, or reduced to any electronic medium or machine readable form without prior consent, in writing, from BEA Systems, Inc.

Use, duplication or disclosure by the U.S. Government is subject to restrictions set forth in the BEA Systems License Agreement and in subparagraph (c)(1) of the Commercial Computer Software-Restricted Rights Clause at FAR 52.227-19; subparagraph (c)(1)(ii) of the Rights in Technical Data and Computer Software clause at DFARS 252.227-7013, subparagraph (d) of the Commercial Computer Software--Licensing clause at NASA FAR supplement 16-52.227-86; or their equivalent.

Information in this document is subject to change without notice and does not represent a commitment on the part of BEA Systems. THE SOFTWARE AND DOCUMENTATION ARE PROVIDED "AS IS" WITHOUT WARRANTY OF ANY KIND INCLUDING WITHOUT LIMITATION, ANY WARRANTY OF MERCHANTABILITY OR FITNESS FOR A PARTICULAR PURPOSE. FURTHER, BEA Systems DOES NOT WARRANT, GUARANTEE, OR MAKE ANY REPRESENTATIONS REGARDING THE USE, OR THE RESULTS OF THE USE, OF THE SOFTWARE OR WRITTEN MATERIAL IN TERMS OF CORRECTNESS, ACCURACY, RELIABILITY, OR OTHERWISE.

Trademarks or Service Marks

BEA, BEA WebLogic Server, Jolt, Tuxedo, and WebLogic are registered trademarks of BEA Systems, Inc. BEA Builder, BEA Campaign Manager for WebLogic, BEA eLink, BEA Liquid Data for WebLogic, BEA Manager, BEA WebLogic Commerce Server, BEA WebLogic Enterprise, BEA WebLogic Enterprise Platform, BEA WebLogic Enterprise Security, BEA WebLogic Express, BEA WebLogic Integration, BEA WebLogic JRockit, BEA WebLogic Personalization Server, BEA WebLogic Platform, BEA WebLogic Portal, BEA WebLogic Server Process Edition, BEA WebLogic Workshop and How Business Becomes E-Business are trademarks of BEA Systems, Inc.

All other trademarks are the property of their respective companies.

Contents

WebLogic Portlets for SAP Installation Guide

Installation Prerequisites for BEA WebLogic Portlets for SAP	1
Hardware Requirements	2
Software Requirements	2
Administrator Privileges	2
Licensing and Encryption	2
About 128-Bit Encryption	3
Installing BEA WebLogic Portlets for SAP	3
Installing BEA WebLogic Portlets for SAP	3
Graphical-Mode Installation on Windows System	3
Graphical-Mode Installation on Unix System	9
Reviewing the Installation	16
Configuring the BEA WebLogic Portal	17
Downloading the Third Party Software	17
Configuration and Settings for BEA WebLogic Portlets for SAP	18
Setting Up SAP Portlets Repository	18
Creating Schema and Importing Metadata	19
Configuring the PORTALnet.properties File	19
Registering Java Data Source	20
Activating the License for BEA WebLogic Portlets for SAP	21
Uninstalling BEA WebLogic Portlets for SAP	21
Troubleshooting	21

WebLogic Portlets for SAP Installation Guide

This document explains how to install the BEA WebLogic Portlets for SAP application.

The BEA WebLogic Portlets for SAP application integrates BEA WebLogic Portal with the SAP R/3 4.6C System.

This guide contains the following sections:

- [Installation Prerequisites for BEA WebLogic Portlets for SAP](#)
- [Installing BEA WebLogic Portlets for SAP](#)
- [Configuring the BEA WebLogic Portal](#)
- [Downloading the Third Party Software](#)
- [Configuration and Settings for BEA WebLogic Portlets for SAP](#)
- [Activating the License for BEA WebLogic Portlets for SAP](#)
- [Uninstalling BEA WebLogic Portlets for SAP](#)
- [Troubleshooting](#)

Installation Prerequisites for BEA WebLogic Portlets for SAP

This section contains the following topics:

- [Hardware Requirements](#)
- [Software Requirements](#)

- [Administrator Privileges](#)
- [Licensing and Encryption](#)

Hardware Requirements

The server should have the following configuration:

- Pentium 4, 1GHz or higher
- 1 GB RAM or more
- 40GB HDD

Software Requirements

The following software must be installed on the server:

- BEA WebLogic Platform 8.1 SP2 or higher
- SAP Version 4.6 C Patch Level 44
- One of the following databases should be available:
 - Oracle 8i or higher
 - MS SQL Server 2000 SP2
- Internet Explorer 6 or higher

Administrator Privileges

You must have BEA WebLogic Platform administrator privileges in order to install and configure the BEA WebLogic Portlets for SAP application.

Licensing and Encryption

The WebLogic Platform software cannot be used without a valid license. You can purchase licenses for the entire WebLogic Platform product or for individual components. For information about the licenses available for WebLogic Platform, contact your sales representative or visit the BEA corporate Web site at <http://www.bea.com>.

About 128-Bit Encryption

Secure sockets layer (SSL) encryption software is available with two levels of encryption: 56-bit and 128-bit. Licenses for the 128-bit client version of SSL are available in the United States and Canada. With proper authorization, customers outside the United States and Canada may also acquire licenses with 128-bit encryption enabled.

A WebLogic Platform license comes with 56-bit encryption enabled by default. Enabling 128-bit encryption for SSL requires that a 128-bit encryption license be present in the `license.bea` file of the target BEA Home directory before you install the WebLogic Platform software.

Installing BEA WebLogic Portlets for SAP

This section includes the following topics:

- [Installing BEA WebLogic Portlets for SAP](#)
- [Reviewing the Installation](#)

Before you start the BEA WebLogic Portlets for SAP installation, make sure you meet the [Installation Prerequisites for BEA WebLogic Portlets for SAP](#).

Installing BEA WebLogic Portlets for SAP

BEA WebLogic Portlets for SAP can be installed on both Unix and Windows operating systems using graphical-mode installation.

Graphical-Mode Installation on Windows System

To start the installation on Windows system:

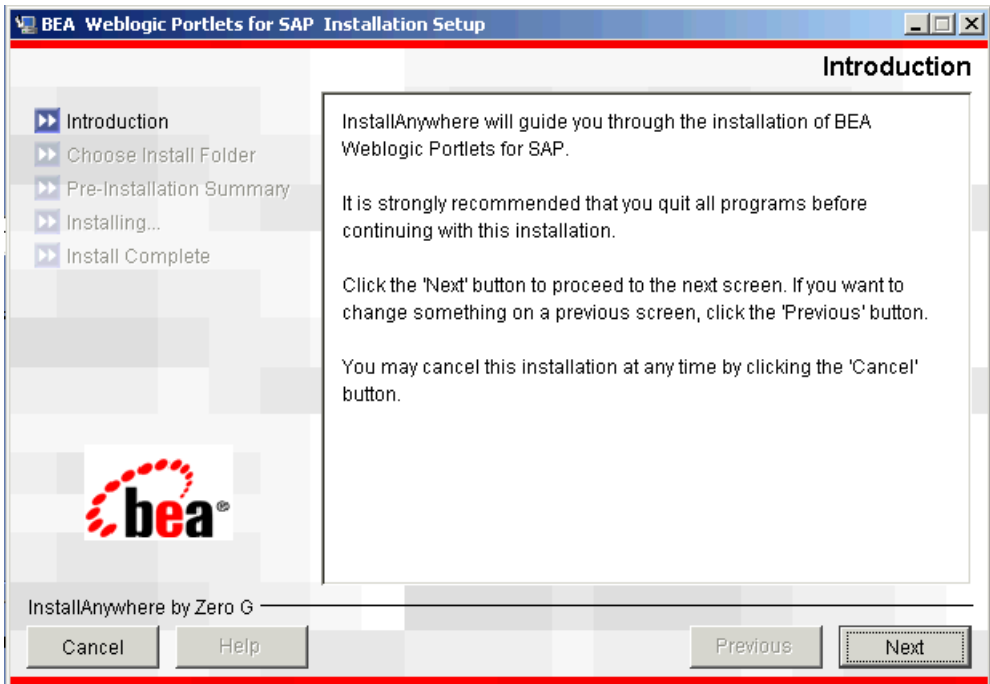
1. Log in to the Windows system.
2. Insert the BEA WebLogic Portlets for SAP CD-ROM into the CD-ROM drive.
3. Navigate to the folder and run the installation file `SAPportlets_win_811.exe`.
4. The program prepares your system for the installation task, as shown in [Figure 1](#).

Figure 1 Installation Initialization Screen



5. The Introduction screen appears, as shown in [Figure 2](#). Click Next to continue.

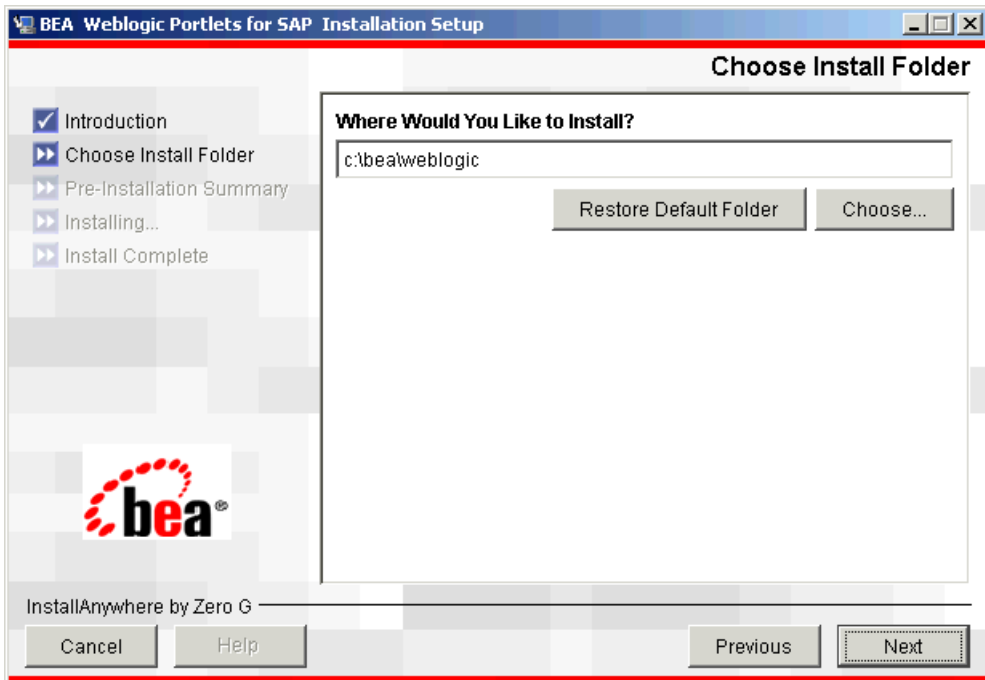
Figure 2 Introduction Screen



6. In the Choose Installation Folder screen (as shown in [Figure 3](#)), specify the path of the installation directory or click Choose to select the `\bea\weblogic<version>` directory. This is the path where BEA WebLogic Portlets for SAP will be installed. Click Next to continue.

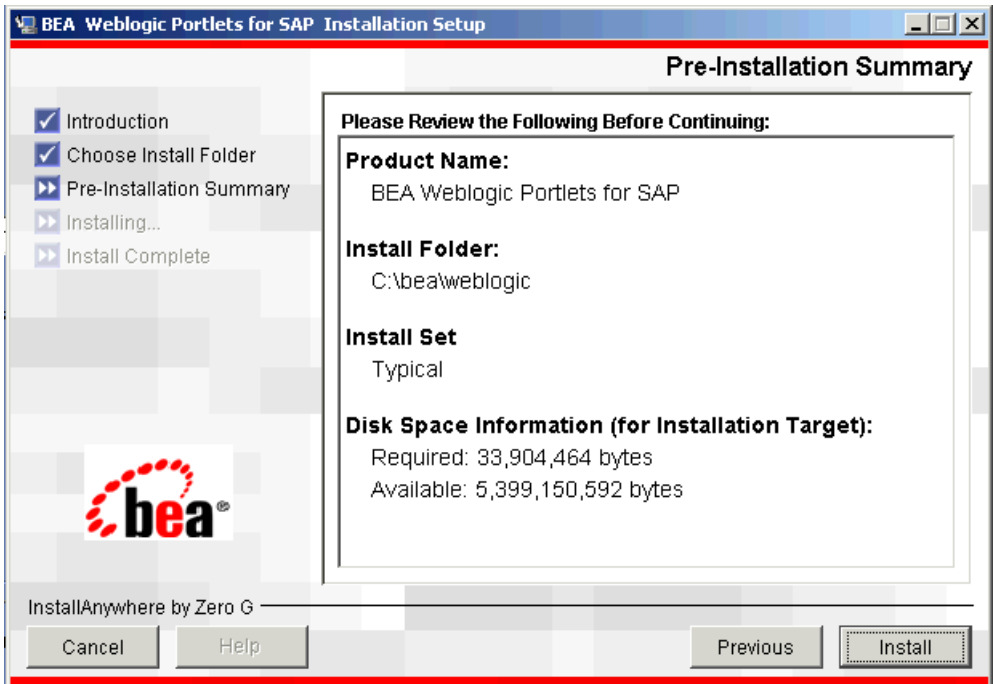
Note: If a folder other than `\bea\weblogic<version>` is selected then you need to manually copy the templates files from `<selected folder>\workshop\templates` to `\bea\weblogic<version>\workshop\templates`.

Figure 3 Choose Installation Folder Screen



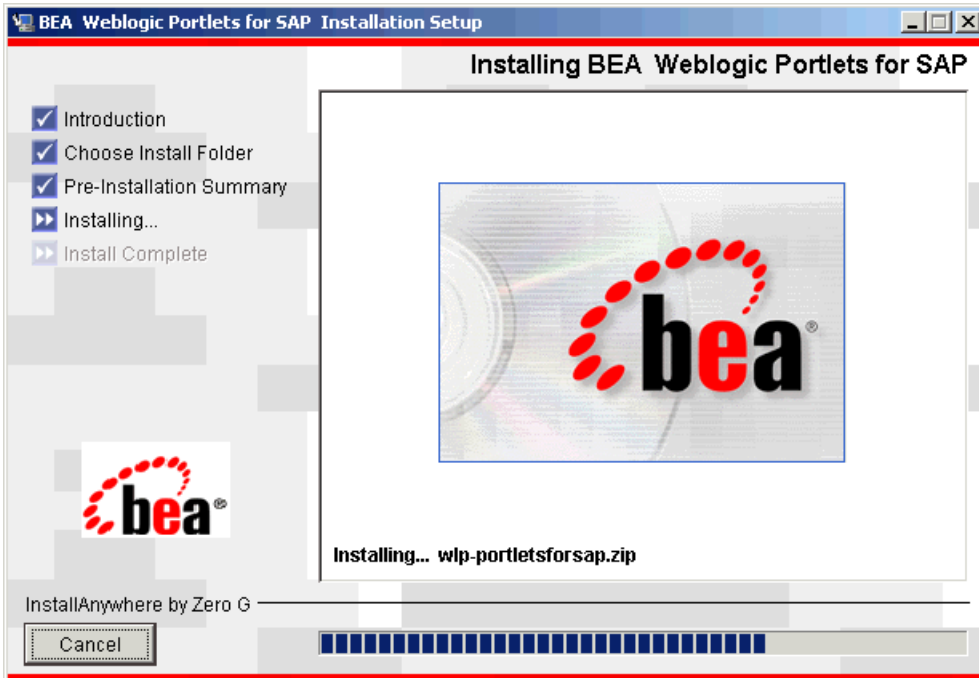
7. The Pre-Installation Summary screen displays your installation preferences, as shown in [Figure 4](#). Click Install to continue.

Figure 4 Pre-installation Summary Screen



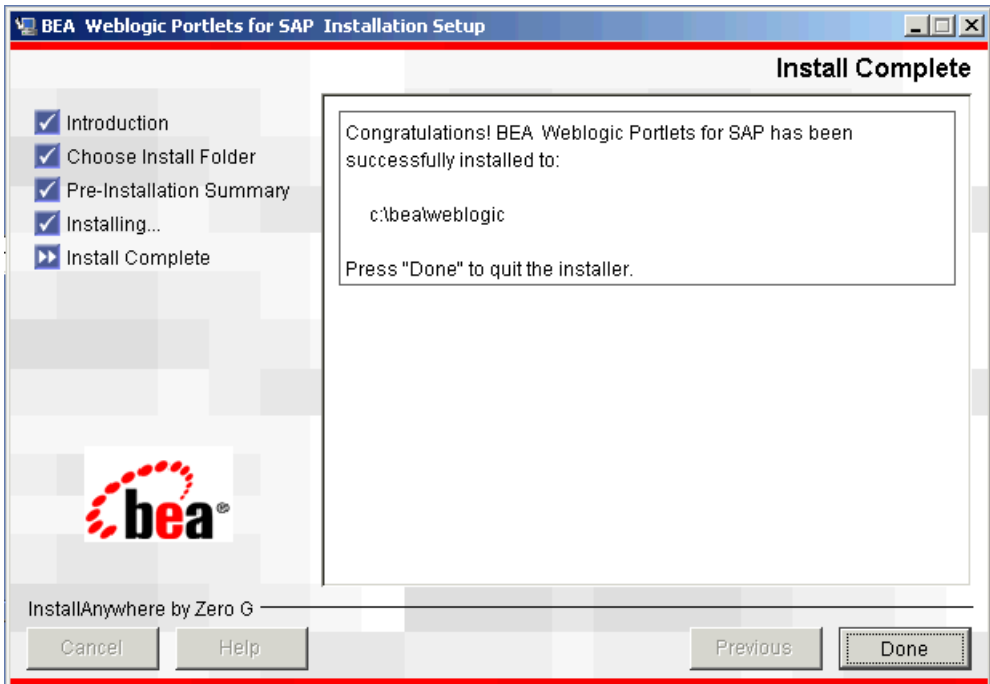
8. The Installing BEA WebLogic Portlets for SAP Installation Setup screen displays the progress of the installation, as shown in [Figure 5](#).

Figure 5 Installation Setup Screen



9. The Install Complete screen confirms that BEA WebLogic Portlets for SAP was installed successfully, as shown in [Figure 6](#). Click Done to complete the installation.

Figure 6 Install Complete Screen



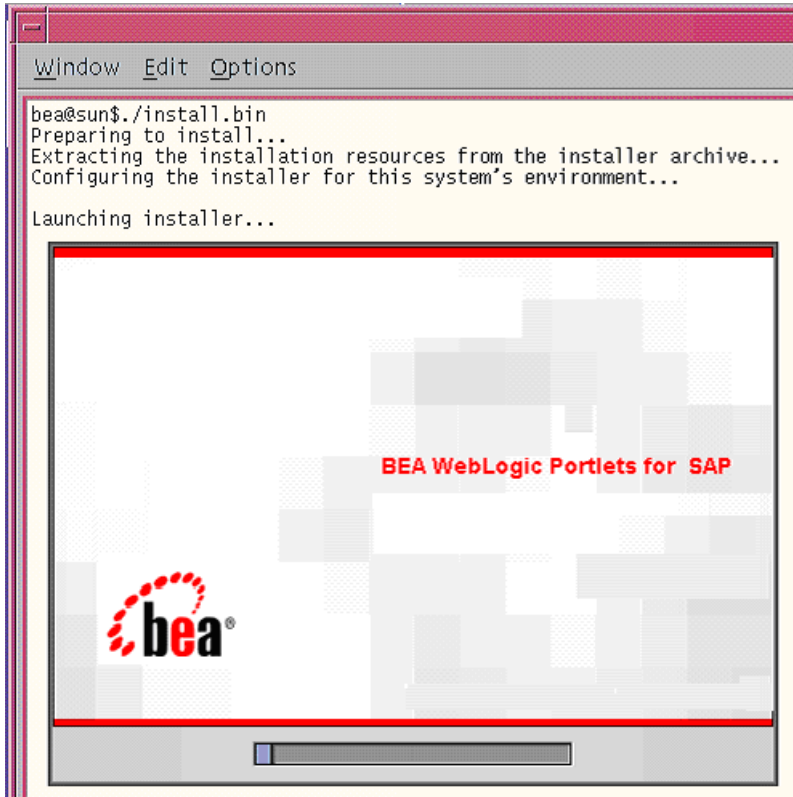
Graphical-Mode Installation on Unix System

To start the installation on Unix system:

1. Log in to the Unix system.
2. Mount the BEA WebLogic Portlets for SAP CD-ROM into the CD-ROM drive.
3. Open a command-line shell.
4. Go to the CD-ROM directory and navigate to the folder for the installation program `SAPportlets_solaris_811.bin`.
5. Invoke the procedure by entering the following command:

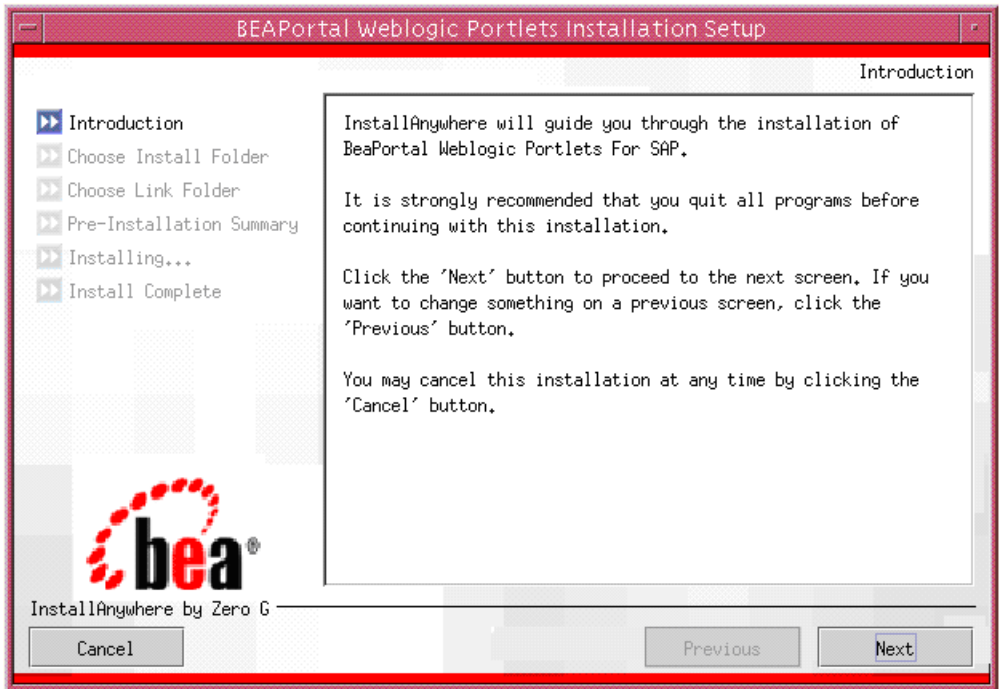

```
./SAPportlets_solaris_811.bin
```
6. The program prepares your system for the installation task, as shown in [Figure 7](#).

Figure 7 Installation Initialization Screen



7. The Introduction screen appears, as shown in [Figure 8](#). Click Next to continue.

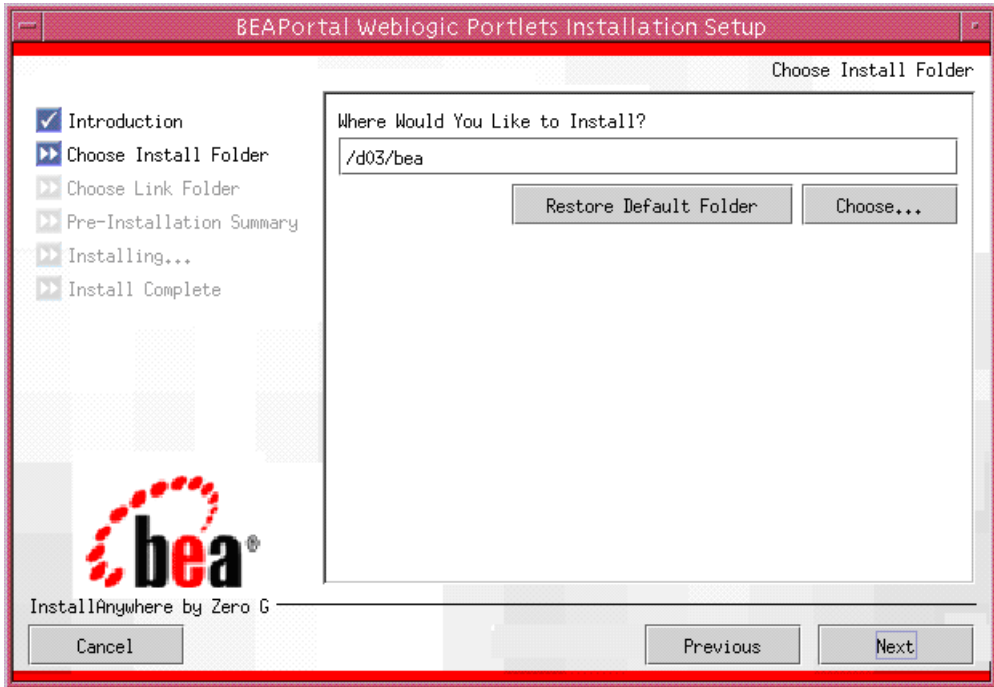
Figure 8 Introduction Screen



8. In the Choose Installation Folder screen (as shown in [Figure 9](#)), specify the path of the installation directory or click Choose to browse for the path where you want to install BEA WebLogic Portlets for SAP. Click Next to continue.

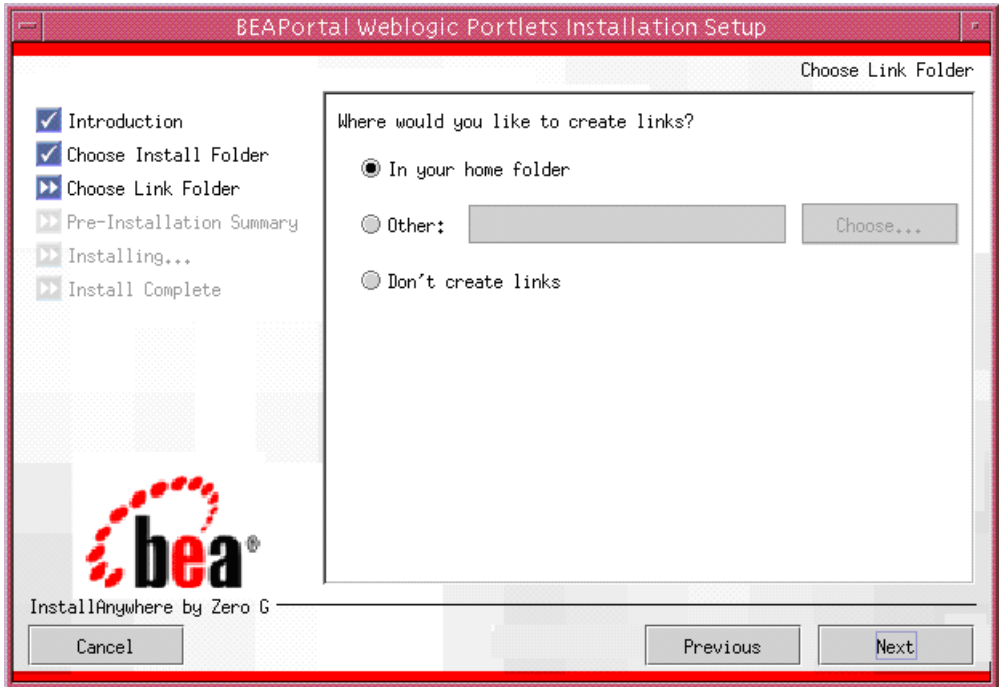
Note: If a folder other than `/bea/weblogic<version>` is selected then you need to manually copy the templates files from `<selected folder>/workshop/templates` to `/bea/weblogic<version>/workshop/templates`.

Figure 9 Choose Installation Folder Screen



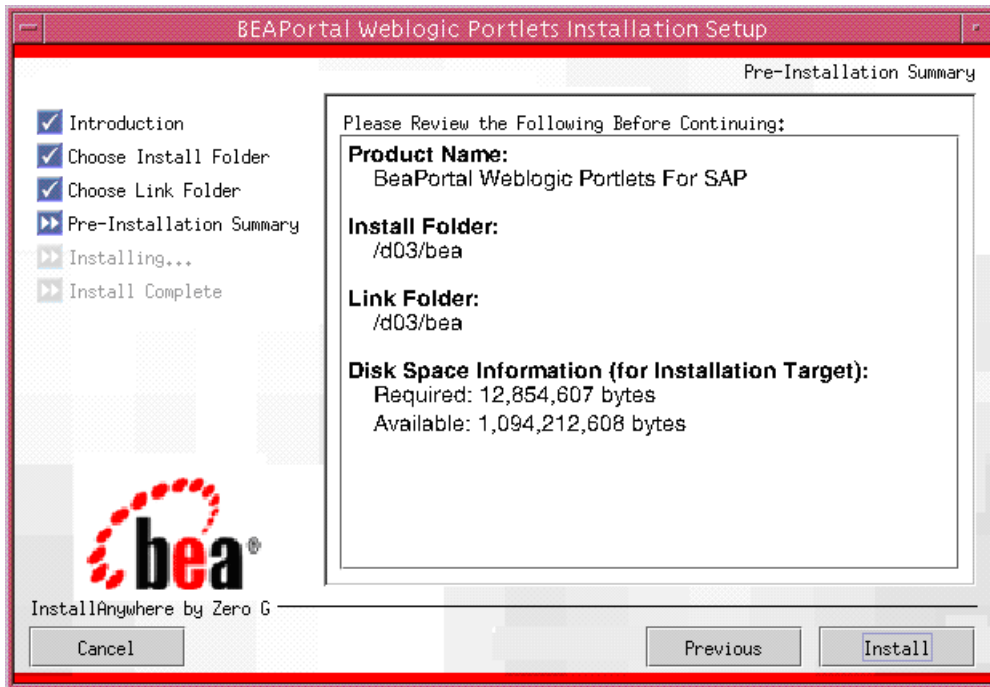
9. In the Choose Link Folder screen, you can create links for the application, as shown in [Figure 10](#). Click Next to continue.

Figure 10 Choose Link Folder Screen



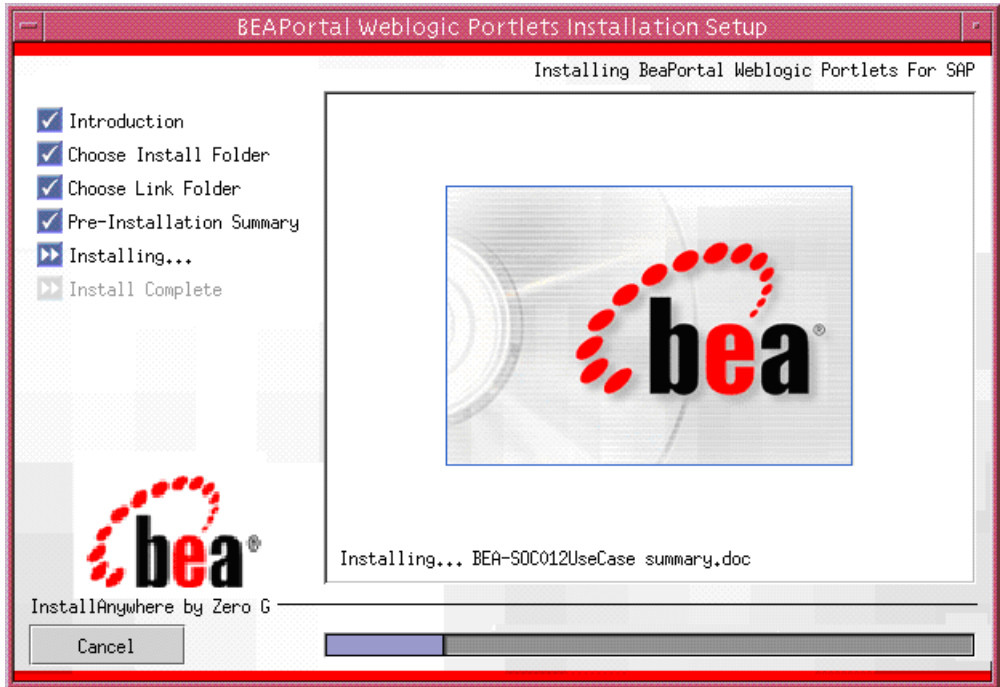
10. The Pre-Installation Summary screen displays your installation preferences, as shown in [Figure 11](#). Click Install to continue.

Figure 11 Pre-installation Summary Screen



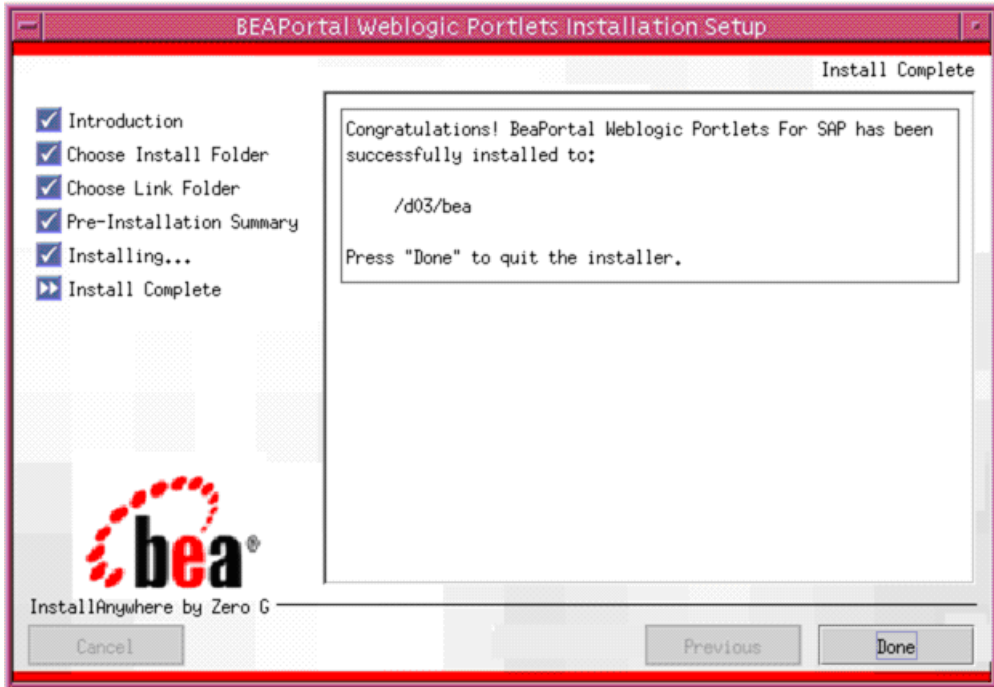
11. The Installing BEA WebLogic Portlets for SAP screen displays the progress of the installation, as shown in [Figure 12](#).

Figure 12 Installing Screen



12. The Install Complete screen confirms that BEA WebLogic Portlets for SAP was installed successfully, as shown in [Figure 13](#). Click Done to complete the installation.

Figure 13 Install Complete Screen



Reviewing the Installation

The installer will install files in the following directories:

- Product Documentation will be copied into a directory at
<%BEA_HOME%>\weblogic<version>\portal\thirdparty\sapportlets\docs
Note: Depending on the type of installation the product documentation might be shipped separately.
- Sample view templates (for .jsp and .jspx files) will be copied into a directory at
<%BEA_HOME%>\weblogic<version>\portal\thirdparty\sapportlets\newportlet
- WebLogic Domain Extension Template – Use the Existing domain or Create Domain using WebLogic Wizard. (See “Creating WebLogic Configurations Using the Configuration Wizard” at <http://edocs.bea.com/platform/docs81/confgwiz/index.html>).

- Workshop Application Template will be copied into
`<%BEA_HOME%>\weblogic<version>\workshop\templates`
- DDL and DML scripts will be copied into a subdirectory of
`<%BEA_HOME%>\weblogic<version>\portal\thirdparty\ sapportlets\scripts`

Configuring the BEA WebLogic Portal

After the installation is completed, perform the following steps using WebLogic Workshop.

For a new portal application:

1. Create a new Basic WebLogic Portal Domain using the Configuration Wizard.
2. Create a new Portal Application in WebLogic Workshop.
3. Create a new Portal Project.
4. In the WebLogic Workshop's Application window, right-click the `data` directory and choose `Install > PortletsForSAPPropertySet`.
5. In the WebLogic Workshop's Application window, right-click the portal project directory and choose `Install > Portlets for SAP`.

Downloading the Third Party Software

Table 1 shows you what to download, where to download it, and where to store it.

Table 1 List of JAR files required for BEA WebLogic Portlets for SAP

JAR file	Component	Download from /Copy From	Directory
xercesImpl.jar xalan.jar xml-apis.jar xmlParserAPIs.jar	XMLhelper	Download from http://xml.apache.org/dist/xerces-j/old_xerces2/	<%BEA_HOME%>\user_projects\application\<portalapplication>\<portalproject>\WEB-INF\lib Example: C:\bea\user_projects\applications\BeaPortalNetApp\beaportal\WEB-INF\lib

Table 1 List of JAR files required for BEA WebLogic Portlets for SAP (Continued)

<p>For Windows: jRFC12.dll librfc32.dll jCO.jar Note: The file names may vary depending on the version.</p>	<p>SAPDataEngine</p>	<p>Download from https://websmp103.sap-ag.de/connectors</p>	<ol style="list-style-type: none"> 1. Copy the jRFC12.dll and librfc32.dll files to C:\WINNT\system32 directory. 2. Copy the jCO.jar to a directory. 3. Open the setDomainEnv.cmd file, located in the domain folder. Modify the CLASSPATH to the directory pointing to the location where the file is copied.
<p>For Linux: librfccm.so libsapjcorfc.so sapjco.jar</p>	<p>SAPDataEngine</p>	<p>Download from https://websmp103.sap-ag.de/connectors</p>	<ol style="list-style-type: none"> 1. Copy the files to a directory. 2. Open the commEnv.sh file, located at the following path <%BEA_HOME%/weblogic<version>/common/bin. Modify the LD_LIBRARY_PATH to the directory where the files are copied. 3. Open the setDomainEnv.sh file located in the domain directory. Modify the CLASSPATH to the directory pointing to the location where the file sapjco.jar is copied.

Configuration and Settings for BEA WebLogic Portlets for SAP

This section contains the following topics:

- [Setting Up SAP Portlets Repository](#)
- [Registering Java Data Source](#)

Setting Up SAP Portlets Repository

This topic contains the following procedures:

- [Creating Schema and Importing Metadata](#)
- [Configuring the PORTALnet.properties File](#)

Creating Schema and Importing Metadata

To create schema and import metadata for BEA WebLogic Portlets for SAP in MS SQL Server run the following scripts in MS SQL Server's Query Analyzer in the order given below:

1. MSSQL_PNET_DROP_TABLE.SQL
2. MSSQL_PNET_CREATE_TABLES.SQL
3. MSSQL_PNET_DROP_FKEYS.SQL
4. MSSQL_PNET_CREATE_FKEYS.SQL
5. MSSQL_PNET_INSERT_SCRIPTS.SQL

To create schema for BEA WebLogic Portlets for SAP in Oracle database run the following scripts in Oracle's SQL Plus in the order given below:

1. ORACLE_PNET_DROP_TABLE.SQL
2. ORACLE_PNET_CREATE_TABLES.SQL
3. ORACLE_PNET_INSERT_SCRIPTS.SQL
4. ORACLE_PNET_DROP_SEQUENCE.SQL
5. ORACLE_PNET_CREATE_SEQUENCE.SQL
6. ORACLE_PNET_DROP_FKEYS.SQL
7. ORACLE_PNET_CREATE_FKEYS.SQL

Configuring the PORTALnet.properties File

To configure the properties file:

1. Open the `PORTALnet.properties` file from the `\bea\user_projects\applications\<application>\<project>\WEB-INF\classes` subfolder for the product installed and change the settings.

For example:

```
C:\bea\user_projects\applications\BeaPortalNetApp\beaportal\WEB-INF\classes
```

2. Modify the repository connection information, DATASOURCE=<datasource_ name>

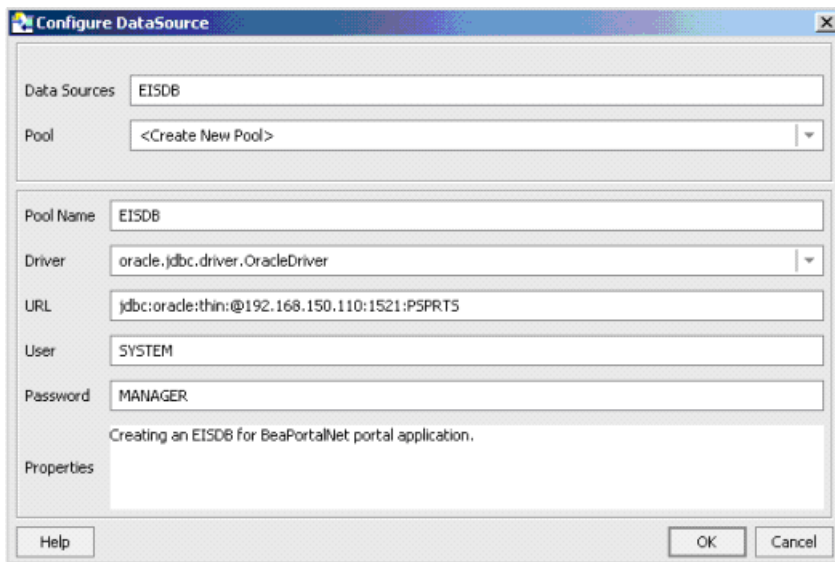
For example: DATASOURCE=EISDB

Registering Java Data Source

To create a Java Data Source:

1. Start the WebLogic Server for your domain.
2. Go to Tools > WebLogic Server > DataSource Viewer. The DataSource Viewer window appears.
3. Click New Data Source to add a new data source. The Configure DataSource window appears, as shown in [Figure 14](#).

Figure 14 Configuring Datasource Screen



4. Enter the Data Sources as EISDB.
5. Select the Pool as <Create New Pool>.
6. Enter the Pool Name as EISDB.
7. Configure the Driver, URL, User, and Password, and click OK.

Activating the License for BEA WebLogic Portlets for SAP

To activate the license for BEA WebLogic Portlets for SAP:

1. Copy the license file `license.bea` into the `<%BEA_HOME%>` directory.
2. Restart the WebLogic Portal server.
3. Log in to BEA WebLogic Portlets for SAP with the `weblogic` account.

Uninstalling BEA WebLogic Portlets for SAP

To uninstall BEA WebLogic Portlets for SAP:

1. Shut down any servers that are running. If any of these servers is configured as a Windows service, you should stop the service(s) before uninstalling the software.
2. Navigate to the directory where BEA WebLogic Portlets for SAP is installed.
3. Navigate to the `Uninstall_Bea Weblogic Portlets for SAP` directory.
4. Run the `BEAPortal Weblogic Portlets Uninstallation Setup.exe` uninstallation program.
5. Click Next to start the uninstall program.
6. Select Complete Uninstall or Uninstall Specific Features option and click Next.
7. Click Done to exit the uninstallation program.

Troubleshooting

Use [Table 2](#) to troubleshoot installation issues.

Table 2 Troubleshooting WebLogic Portlets for SAP

No.	Problem	Cause
1	Running the scripts throws SQL error	Make sure that you run the scripts in the order specified in the installation document.
2	Unable to connect to the database	Check if the JDBC Drivers are configured properly.

Table 2 Troubleshooting WebLogic Portlets for SAP

3	Invalid datasource entry error	Check if the DataSource is configured properly in WebLogic Workshop.
4	Cannot connect to SAP	Verify if the files <code>jRFC12.dll</code> and <code>librfc32.dll</code> are placed under the <code>system32</code> directory.