

**Oracle Enterprise Manager Grid Control – Composite Application Monitor and Modeler (CAMM) 10g
Version 10.2.0.4.2**

Release Notes

December 2008

These release notes contain important information available at the GA release of Oracle CAMM 10.2.0.4.2 (version 10.2.0.4.2). Feature enhancements, installation notes, known limitations, and other late-breaking issues are addressed here. Read this document prior to using CAMM.

This document contains the following sections:

- [What's New in CAMM 10.2.0.4.2](#)
- [Documentation](#)
- [Known Limitations](#)
- [How to Report Problems & Obtain More Information](#)

What's New in CAMM 10.2.0.4.2

This major feature release of CAMM includes the following features and enhancements:

Features	Description
Oracle SOA Suite 10.1.3 Support	<p>As part of this release, CAMM includes support for entirely new SOA architecture. With Oracle SOA Suite support, CAMM can model and monitor BPEL processes and ESB running within the SOA framework.</p> <p>Key underlying features include:</p> <ul style="list-style-type: none">• Topology view for BPEL, ESB, and Web Services provides full visibility into the relationships and interactions between these key components in your SOA architecture.• Functional view provides a full model of your BPEL processes along with critical metrics that allow users to quickly identify performance bottlenecks.

	<ul style="list-style-type: none"> Architectural view of underlying SOA components allows users to quickly drill-down into the underlying infrastructure including the database queries to pinpoint potential performance issues. SOA specific metrics including metrics related to BPEL, ESB, and Web Services Service level objectives (SLOs) can now be set at the BPEL process and ESB level within the entity hierarchy off the navigation tree.
Oracle WebLogic Platform Server 9 and 10 Support	The 10.2.0.4.2 release of Oracle CAMM includes support for the latest Oracle WebLogic Server versions including versions 9 and 10.
Oracle WebLogic Portal Server 9 and 10 Support	In addition to the addition of support for the latest Oracle WebLogic Server, the 10.2.0.4.2 release of Oracle CAMM also includes support for the latest Oracle WebLogic Portal versions including versions 9 and 10.
IBM WebSphere Application Server 6.1 Support	As part of the 10.2.0.4.2 release, support has been added for the latest version (6.1) of IBM WebSphere Application Server.
Custom Dashboards Sharing and Enhancements	With the 10.2.0.4.2 release of Oracle CAMM, users can share their custom dashboards with other users. This feature has also been enabled in the product by default to make it more accessible.
Static Analysis Status	This new feature reports the status of CAMM's static analysis (modeling). By providing this information, users will have a better idea what is happening during CAMM's modeling process.

Enhancement	Description
SQL Filtering	Users of Oracle CAMM can now filter out duplicate SQL statements generated as a result of the use of prepared statements.
Java 6 Applet Plug-in Support	The Oracle CAMM administrator UI now supports the latest browsers including those that run Java 6 as their underlying VM.
Enhanced Help Documentation	HTML based Help support to the UI empowers users to quickly find the guidelines for using the

	Oracle CAMM product.
CAMM Manager and UI Performance Enhancements	Oracle CAMM 10.2.0.4.2 includes performance enhancements to all facets of the application including the UI, agents, and manager in order to ensure users can have continuous and streamlined access to performance metrics.

Documentation

In addition to these release notes, Oracle also provides the following documentation:

CAMM 10.2.0.4 User's Guide
 CAMM 10.2.0.4 Configuration Guide
 CAMM 10.2.0.4.2 Deployment Guide

Known Limitations

- Functional views for Beehive page flow not currently supported
- IBM Java Agents should be used based on JDK version
- WebSphere running on Solaris should use HotSpot Java Agent instead of IBMJagent
- Data Export to File overrides data every 30 min when exporting more than 30 min
- WebSphere Cluster will not show as cluster tree under resources
- Architecture drill down for Axis web services implemented using EJB is not supported
- JRockit MBean reports CPU above 100% - BEA Bug
- Manager needs to be restarted if ConcurrentModificationException found in the Manager log - Rare Occurrence
- Page flow graph not visible from desktop structure view double click if it's used in File Portal

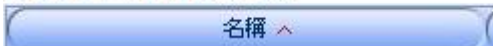
- Dashboard status light will not reflect the SLO's configured for Processes if the SLO has Node or Server selected other than the default value ('*')
- JVM SLO Definition threshold should be configured in KB
- Metrics for WSRP Producer portlets not supported
- Deployer - Disable and remove functionality doesn't work on cluster system
- The JVM graph does not show SLO thresholds because multiple metrics are shown and only one threshold can be displayed at a time.
- CAMM does not collect JMX Metrics if the AdminServer is unavailable
- CAMM does not automatically update its model to reflect changes made to streaming portals running in WebLogic Portal. To update CAMM's model, user must delete darchive directories associated with the changed applications and restart CAMM.
- Metric data may be lost if application structure changes to exclude structures previously monitored. History will not provide the original structure.
- SLO configuration will need to be re-entered for BEA WebLogic Portal if application node is modified that the SLO configuration was bound to.
- WebSphere warnings show up in system out when connecting to WAS6 thru manager and deployer - IBM known issue
- When JavaMIP property "AggregateInsert" is disabled, server-level architecture view is unavailable. Currently, only resource-level architecture view can be rendered.
- Entity not modeled by CAMM cannot support drill down functionality in architecture view.
- ESB discovery will not work with HTTPS

- Oracle CAMM Installs (during deployment step) the Oracle patch for ESB in order to resolve an issue in the discovery phase; this patch will need to be removed manually incase if you uninstall QV.
- If the CAMM Manager is installed on an HPUX Itanium Server, users should use the following JDK instead of the one shipped with QV for better performance
 - java version "1.5.0.03" ; Java(TM) 2 Runtime Environment, Standard Edition (build 1.5.0.03-_13_feb_2006_16_39);Java HotSpot(TM) Server VM (build **1.5.0.03 jinteg:02.13.06-21:25 IA64**, mixed mode)
- CAMM does not process external files for html tags for layout information. Hence, for custom layouts, the layout shown in CAMM will differ from what is seen in Workshop and on the page.
- Please note that application names listed below should not be used as a valid application name as they ALWAYS are excluded from static analysis for filtering reasons using the ComponentProvider.Application.Exclude property in acsera.properties
 - WLI System EJBs
 - WLI-AI Design-time
 - B2BDefaultWebAppApplication
 - WLI Worklist
 - JWSQueueTransport
 - Deployer
 - BEA_WLS_DBMS_ADK
 - Acsera
 - Oracle
 - HttpDeployer
- In some cases, war files containing EJB jars might have their invocation modeling incorrect (war -> war) when Servlets utilize EJB 3.0 annotation to call invoke EJBs. This can be particularly misleading in applications where both non-EJB 3.0 and EJB 3.0 annotations are being utilized.
- Every BPEL process which has .bpel file or .wsdl file will be modeled as Web service in Quick Vision. If there is no BPEL or WSDL descriptor file, QV will not model BPEL Process as Web Service
- CAMM no longer supports the JRE plug-in version 1.4.x

- There are a number of UI strings that will not be translated for the CAMM 10.2.0.4.2 release:

5770 CAMM: NLS PartnerLinkTypeRole not translated in Chinese ve...

程序 PartnerLinkTypeRole



5804 NLS: Strings in MCC config box not translated

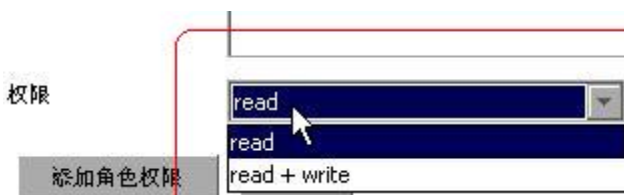
MCC 实体类型



5794 NLS: Untranslated string are found in "Dashboard Editor" ...

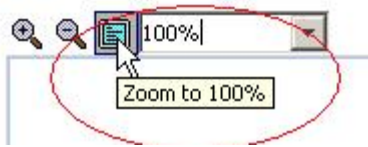


5795 NLS: Untranslated string found in "Share View" page

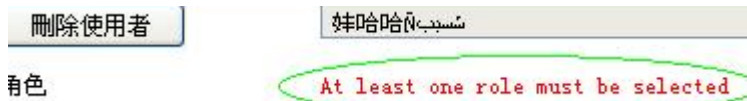


5793 NLS: Some hints in "Topology" page are not translated

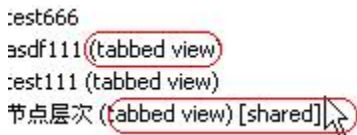
拓扑:



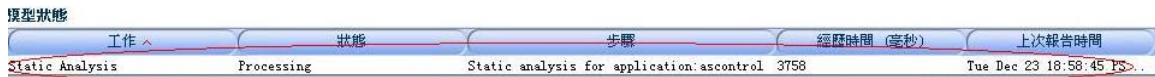
5778 NLS: Untranslated string in add user



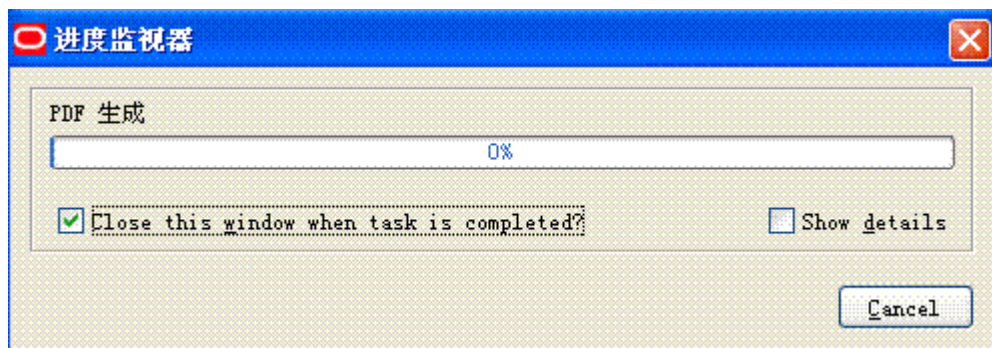
5799 NLS: Untranslated string found in several places



5779 NLS: Untranslated static analysis information and datetim...



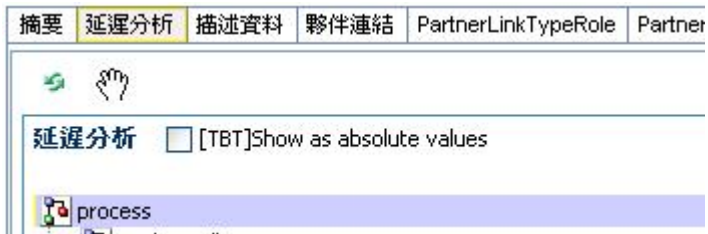
5736 NLS: Untranslated string in pdf generating progress window



5742 NLS: Some untranslated strings



5769 NLS: Process node in the delay analysis not translated



How to Report Problems & Obtain More Information

To report problems or obtain more information, access <http://support.clearapp.com/> or send e-mail to support@clearapp.com.