

Oracle® Documaker Desktop

Importing and Exporting XML Files with PPS

Part number: E16257-01

April 2010

Copyright © 2009, 2010, Oracle and/or its affiliates. All rights reserved.

The Programs (which include both the software and documentation) contain proprietary information; they are provided under a license agreement containing restrictions on use and disclosure and are also protected by copyright, patent, and other intellectual and industrial property laws. Reverse engineering, disassembly, or decompilation of the Programs, except to the extent required to obtain interoperability with other independently created software or as specified by law, is prohibited.

The information contained in this document is subject to change without notice. If you find any problems in the documentation, please report them to us in writing. This document is not warranted to be error-free. Except as may be expressly permitted in your license agreement for these Programs, no part of these Programs may be reproduced or transmitted in any form or by any means, electronic or mechanical, for any purpose.

If the Programs are delivered to the United States Government or anyone licensing or using the Programs on behalf of the United States Government, the following notice is applicable:

U.S. GOVERNMENT RIGHTS

Programs, software, databases, and related documentation and technical data delivered to U.S. Government customers are "commercial computer software" or "commercial technical data" pursuant to the applicable Federal Acquisition Regulation and agency-specific supplemental regulations. As such, use, duplication, disclosure, modification, and adaptation of the Programs, including documentation and technical data, shall be subject to the licensing restrictions set forth in the applicable Oracle license agreement, and, to the extent applicable, the additional rights set forth in FAR 52.227-19, Commercial Computer Software--Restricted Rights (June 1987). Oracle USA, Inc., 500 Oracle Parkway, Redwood City, CA 94065.

The Programs are not intended for use in any nuclear, aviation, mass transit, medical, or other inherently dangerous applications. It shall be the licensee's responsibility to take all appropriate fail-safe, backup, redundancy and other measures to ensure the safe use of such applications if the Programs are used for such purposes, and we disclaim liability for any damages caused by such use of the Programs.

The Programs may provide links to Web sites and access to content, products, and services from third parties. Oracle is not responsible for the availability of, or any content provided on, third-party Web sites. You bear all risks associated with the use of such content. If you choose to purchase any products or services from a third party, the relationship is directly between you and the third party. Oracle is not responsible for: (a) the quality of third-party products or services; or (b) fulfilling any of the terms of the agreement with the third party, including delivery of products or services and warranty obligations related to purchased products or services. Oracle is not responsible for any loss or damage of any sort that you may incur from dealing with any third party.

Oracle, JD Edwards, and PeopleSoft are registered trademarks of Oracle Corporation and/or its affiliates. Other names may be trademarks of their respective owners.

THIRD PARTY SOFTWARE NOTICES

This product includes software developed by Apache Software Foundation (<http://www.apache.org/>).

THIS SOFTWARE IS PROVIDED "AS IS" AND ANY EXPRESS OR IMPLIED WARRANTIES, INCLUDING, BUT NOT LIMITED TO, THE IMPLIED WARRANTIES OF MERCHANTABILITY AND FITNESS FOR A PARTICULAR PURPOSE ARE DISCLAIMED. IN NO EVENT SHALL THE AUTHOR OR CONTRIBUTORS BE LIABLE FOR ANY DIRECT, INDIRECT, INCIDENTAL, SPECIAL, EXEMPLARY, OR CONSEQUENTIAL DAMAGES (INCLUDING, BUT NOT LIMITED TO, PROCUREMENT OF SUBSTITUTE GOODS OR SERVICES; LOSS OF USE, DATA, OR PROFITS; OR BUSINESS INTERRUPTION) HOWEVER CAUSED AND ON ANY THEORY OF LIABILITY, WHETHER IN CONTRACT, STRICT LIABILITY, OR TORT (INCLUDING NEGLIGENCE OR OTHERWISE) ARISING IN ANY WAY OUT OF THE USE OF THIS SOFTWARE, EVEN IF ADVISED OF THE POSSIBILITY OF SUCH DAMAGE.

Copyright © 2000-2009 The Apache Software Foundation. All rights reserved.

This product includes software distributed via the Berkeley Software Distribution (BSD) and licensed for binary distribution under the Generic BSD license.

THIS SOFTWARE IS PROVIDED BY THE COPYRIGHT HOLDERS AND CONTRIBUTORS "AS IS" AND ANY EXPRESS OR IMPLIED WARRANTIES, INCLUDING, BUT NOT LIMITED TO, THE IMPLIED WARRANTIES OF MERCHANTABILITY AND FITNESS FOR A PARTICULAR PURPOSE ARE DISCLAIMED. IN NO EVENT SHALL THE COPYRIGHT OWNER OR CONTRIBUTORS BE LIABLE FOR ANY DIRECT, INDIRECT, INCIDENTAL, SPECIAL, EXEMPLARY, OR CONSEQUENTIAL DAMAGES (INCLUDING, BUT NOT LIMITED TO, PROCUREMENT OF SUBSTITUTE GOODS OR SERVICES; LOSS OF USE, DATA, OR PROFITS; OR BUSINESS INTERRUPTION) HOWEVER CAUSED AND ON ANY THEORY OF LIABILITY, WHETHER IN CONTRACT, STRICT LIABILITY, OR TORT (INCLUDING NEGLIGENCE OR OTHERWISE) ARISING IN ANY WAY OUT OF THE USE OF THIS SOFTWARE, EVEN IF ADVISED OF THE POSSIBILITY OF SUCH DAMAGE.

Copyright © 2009, Berkeley Software Distribution (BSD)

This product includes software developed by the JDOM Project (<http://www.jdom.org/>).

THIS SOFTWARE IS PROVIDED "AS IS" AND ANY EXPRESSED OR IMPLIED WARRANTIES, INCLUDING, BUT NOT LIMITED TO, THE IMPLIED WARRANTIES OF MERCHANTABILITY AND FITNESS FOR A PARTICULAR PURPOSE ARE DISCLAIMED. IN NO EVENT SHALL THE JDOM AUTHORS OR THE PROJECT CONTRIBUTORS BE LIABLE FOR ANY DIRECT, INDIRECT, INCIDENTAL, SPECIAL, EXEMPLARY, OR CONSEQUENTIAL DAMAGES (INCLUDING, BUT NOT LIMITED TO, PROCUREMENT OF SUBSTITUTE GOODS OR SERVICES; LOSS OF USE, DATA, OR PROFITS; OR BUSINESS INTERRUPTION) HOWEVER CAUSED AND ON ANY THEORY OF LIABILITY, WHETHER IN CONTRACT, STRICT LIABILITY, OR TORT (INCLUDING NEGLIGENCE OR OTHERWISE) ARISING IN ANY WAY OUT OF THE USE OF THIS SOFTWARE, EVEN IF ADVISED OF THE POSSIBILITY OF SUCH DAMAGE.

Copyright (C) 2000-2004 Jason Hunter & Brett McLaughlin. All rights reserved.

This product includes software developed by the Massachusetts Institute of Technology (MIT).

THE SOFTWARE IS PROVIDED "AS IS", WITHOUT WARRANTY OF ANY KIND, EXPRESS OR IMPLIED, INCLUDING BUT NOT LIMITED TO THE WARRANTIES OF MERCHANTABILITY, FITNESS FOR A PARTICULAR PURPOSE AND NONINFRINGEMENT. IN NO EVENT SHALL THE AUTHORS OR COPYRIGHT HOLDERS BE LIABLE FOR ANY CLAIM, DAMAGES OR OTHER LIABILITY, WHETHER IN AN ACTION OF CONTRACT, TORT OR OTHERWISE, ARISING FROM, OUT OF OR IN CONNECTION WITH THE SOFTWARE OR THE USE OR OTHER DEALINGS IN THE SOFTWARE.

Copyright © 2009 MIT

This product includes software developed by Jean-loup Gailly and Mark Adler. This software is provided 'as-is', without any express or implied warranty. In no event will the authors be held liable for any damages arising from the use of this software.

Copyright (c) 1995-2005 Jean-loup Gailly and Mark Adler

This software is based in part on the work of the Independent JPEG Group (<http://www.ijg.org/>).

This product includes software developed by the Dojo Foundation (<http://dojotoolkit.org>).

THIS SOFTWARE IS PROVIDED BY THE COPYRIGHT HOLDERS AND CONTRIBUTORS "AS IS" AND ANY EXPRESS OR IMPLIED WARRANTIES, INCLUDING, BUT NOT LIMITED TO, THE IMPLIED WARRANTIES OF MERCHANTABILITY AND FITNESS FOR A PARTICULAR PURPOSE ARE DISCLAIMED. IN NO EVENT SHALL THE COPYRIGHT OWNER OR CONTRIBUTORS BE LIABLE FOR ANY DIRECT, INDIRECT, INCIDENTAL, SPECIAL, EXEMPLARY, OR CONSEQUENTIAL DAMAGES (INCLUDING, BUT NOT LIMITED TO, PROCUREMENT OF SUBSTITUTE GOODS OR SERVICES; LOSS OF USE, DATA, OR PROFITS; OR BUSINESS INTERRUPTION) HOWEVER CAUSED AND ON ANY THEORY OF LIABILITY, WHETHER IN CONTRACT, STRICT LIABILITY, OR TORT (INCLUDING NEGLIGENCE OR OTHERWISE) ARISING IN ANY WAY OUT OF THE USE OF THIS SOFTWARE, EVEN IF ADVISED OF THE POSSIBILITY OF SUCH DAMAGE.

Copyright (c) 2005-2009, The Dojo Foundation. All rights reserved.

This product includes software developed by W3C.

Copyright © 2009 World Wide Web Consortium, (Massachusetts Institute of Technology, Institut National de Recherche en Informatique et en Automatique, Keio University). All Rights Reserved. (<http://www.w3.org/Consortium/Legal/>)

This product includes software developed by Mathew R. Miller (<http://www.bluecreststudios.com>).

Copyright (c) 1999-2002 ComputerSmarts. All rights reserved.

This product includes software developed by Shaun Wilde and distributed via Code Project Open License (<http://www.codeproject.com>).

THIS WORK IS PROVIDED "AS IS", "WHERE IS" AND "AS AVAILABLE", WITHOUT ANY EXPRESS OR IMPLIED WARRANTIES OR CONDITIONS OR GUARANTEES. YOU, THE USER, ASSUME ALL RISK IN ITS USE, INCLUDING COPYRIGHT INFRINGEMENT, PATENT INFRINGEMENT, SUITABILITY, ETC. AUTHOR EXPRESSLY DISCLAIMS ALL EXPRESS, IMPLIED OR STATUTORY WARRANTIES OR CONDITIONS, INCLUDING WITHOUT LIMITATION, WARRANTIES OR CONDITIONS OF MERCHANTABILITY, MERCHANTABLE QUALITY OR FITNESS FOR A PARTICULAR PURPOSE, OR ANY WARRANTY OF TITLE OR NON-INFRINGEMENT, OR THAT THE WORK (OR ANY PORTION THEREOF) IS CORRECT, USEFUL, BUG-FREE OR FREE OF VIRUSES. YOU MUST PASS THIS DISCLAIMER ON WHENEVER YOU DISTRIBUTE THE WORK OR DERIVATIVE WORKS.

This product includes software developed by Chris Maunder and distributed via Code Project Open License (<http://www.codeproject.com>).

THIS WORK IS PROVIDED "AS IS", "WHERE IS" AND "AS AVAILABLE", WITHOUT ANY EXPRESS OR IMPLIED WARRANTIES OR CONDITIONS OR GUARANTEES. YOU, THE USER, ASSUME ALL RISK IN ITS USE, INCLUDING COPYRIGHT INFRINGEMENT, PATENT INFRINGEMENT, SUITABILITY, ETC. AUTHOR EXPRESSLY DISCLAIMS ALL EXPRESS, IMPLIED OR STATUTORY WARRANTIES OR CONDITIONS, INCLUDING WITHOUT LIMITATION, WARRANTIES OR CONDITIONS OF MERCHANTABILITY, MERCHANTABLE QUALITY OR FITNESS FOR A PARTICULAR PURPOSE, OR ANY WARRANTY OF TITLE OR NON-INFRINGEMENT, OR THAT THE WORK (OR ANY PORTION THEREOF) IS CORRECT, USEFUL, BUG-FREE OR FREE OF VIRUSES. YOU MUST PASS THIS DISCLAIMER ON WHENEVER YOU DISTRIBUTE THE WORK OR DERIVATIVE WORKS.

This product includes software developed by PJ Arends and distributed via Code Project Open License (<http://www.codeproject.com>).

THIS WORK IS PROVIDED "AS IS", "WHERE IS" AND "AS AVAILABLE", WITHOUT ANY EXPRESS OR IMPLIED WARRANTIES OR CONDITIONS OR GUARANTEES. YOU, THE USER, ASSUME ALL RISK IN ITS USE, INCLUDING COPYRIGHT INFRINGEMENT, PATENT INFRINGEMENT, SUITABILITY, ETC. AUTHOR EXPRESSLY DISCLAIMS ALL EXPRESS, IMPLIED OR STATUTORY WARRANTIES OR CONDITIONS, INCLUDING WITHOUT LIMITATION, WARRANTIES OR CONDITIONS OF MERCHANTABILITY, MERCHANTABLE QUALITY OR FITNESS FOR A PARTICULAR PURPOSE, OR ANY WARRANTY OF TITLE OR NON-INFRINGEMENT, OR THAT THE WORK (OR ANY PORTION THEREOF) IS CORRECT, USEFUL, BUG-FREE OR FREE OF VIRUSES. YOU MUST PASS THIS DISCLAIMER ON WHENEVER YOU DISTRIBUTE THE WORK OR DERIVATIVE WORKS.

This product includes software developed by Erwin Tratar. This source code and all accompanying material is copyright (c) 1998-1999 Erwin Tratar. All rights reserved.

THIS SOFTWARE IS PROVIDED "AS IS" WITHOUT EXPRESS OR IMPLIED WARRANTY. USE IT AT YOUR OWN RISK! THE AUTHOR ACCEPTS NO LIABILITY FOR ANY DAMAGE/LOSS OF BUSINESS THAT THIS PRODUCT MAY CAUSE.

This product includes software developed by Sam Leffler of Silicon Graphics.

THE SOFTWARE IS PROVIDED "AS-IS" AND WITHOUT WARRANTY OF ANY KIND, EXPRESS, IMPLIED OR OTHERWISE, INCLUDING WITHOUT LIMITATION, ANY WARRANTY OF MERCHANTABILITY OR FITNESS FOR A PARTICULAR PURPOSE.

IN NO EVENT SHALL SAM LEFFLER OR SILICON GRAPHICS BE LIABLE FOR ANY SPECIAL, INCIDENTAL, INDIRECT OR CONSEQUENTIAL DAMAGES OF ANY KIND, OR ANY DAMAGES WHATSOEVER RESULTING FROM LOSS OF USE, DATA OR PROFITS, WHETHER OR NOT ADVISED OF THE POSSIBILITY OF DAMAGE, AND ON ANY THEORY OF LIABILITY, ARISING OUT OF OR IN CONNECTION WITH THE USE OR PERFORMANCE OF THIS SOFTWARE

Copyright (c) 1988-1997 Sam Leffler

Copyright (c) 1991-1997 Silicon Graphics, Inc.

This product includes software developed by Guy Eric Schalnat, Andreas Dilger, Glenn Randers-Pehrson (current maintainer), and others. (<http://www.libpng.org>)

The PNG Reference Library is supplied "AS IS". The Contributing Authors and Group 42, Inc. disclaim all warranties, expressed or implied, including, without limitation, the warranties of merchantability and of fitness for any purpose. The Contributing Authors and Group 42, Inc. assume no liability for direct, indirect, incidental, special, exemplary, or consequential damages, which may result from the use of the PNG Reference Library, even if advised of the possibility of such damage.

This product includes software components distributed by the Cryptix Foundation.

THIS SOFTWARE IS PROVIDED BY THE CRYPTIX FOUNDATION LIMITED AND CONTRIBUTORS "AS IS" AND ANY EXPRESS OR IMPLIED WARRANTIES, INCLUDING, BUT NOT LIMITED TO, THE IMPLIED WARRANTIES OF MERCHANTABILITY AND FITNESS FOR A PARTICULAR PURPOSE ARE DISCLAIMED. IN NO EVENT SHALL THE CRYPTIX FOUNDATION LIMITED OR CONTRIBUTORS BE LIABLE FOR ANY DIRECT, INDIRECT, INCIDENTAL, SPECIAL, EXEMPLARY, OR CONSEQUENTIAL DAMAGES (INCLUDING, BUT NOT LIMITED TO, PROCUREMENT OF SUBSTITUTE GOODS OR SERVICES; LOSS OF USE, DATA, OR PROFITS; OR BUSINESS INTERRUPTION) HOWEVER CAUSED AND ON ANY THEORY OF LIABILITY, WHETHER IN CONTRACT, STRICT LIABILITY, OR TORT (INCLUDING NEGLIGENCE OR OTHERWISE) ARISING IN ANY WAY OUT OF THE USE OF THIS SOFTWARE, EVEN IF ADVISED OF THE POSSIBILITY OF SUCH DAMAGE

Copyright © 1995-2005 The Cryptix Foundation Limited. All rights reserved.

This product includes software components distributed by Sun Microsystems.

This software is provided "AS IS," without a warranty of any kind. ALLEXPRESS OR IMPLIED CONDITIONS, REPRESENTATIONS AND WARRANTIES, INCLUDING ANY IMPLIED WARRANTY OF MERCHANTABILITY, FITNESS FOR A PARTICULAR PURPOSE OR NON-INFRINGEMENT, ARE HEREBY EXCLUDED. SUN AND ITS LICENSORS SHALL NOT BE LIABLE FOR ANY DAMAGES SUFFERED BY LICENSEE AS A RESULT OF USING, MODIFYING OR DISTRIBUTING THE SOFTWARE OR ITS DERIVATIVES. IN NO EVENT WILL SUN OR ITS LICENSORS BE LIABLE FOR ANY LOST REVENUE, PROFIT OR DATA, OR FOR DIRECT, INDIRECT, SPECIAL, CONSEQUENTIAL, INCIDENTAL OR PUNITIVE DAMAGES, HOWEVER CAUSED AND REGARDLESS OF THE THEORY OF LIABILITY, ARISING OUT OF THE USE OF OR INABILITY TO USE SOFTWARE, EVEN IF SUN HAS BEEN ADVISED OF THE POSSIBILITY OF SUCH DAMAGES.

Copyright (c) 1998 Sun Microsystems, Inc. All Rights Reserved.

This product includes software components distributed by Dennis M. Sosnoski.

THIS SOFTWARE IS PROVIDED BY THE COPYRIGHT HOLDERS AND CONTRIBUTORS "AS IS" AND ANY EXPRESS OR IMPLIED WARRANTIES, INCLUDING, BUT NOT LIMITED TO, THE IMPLIED WARRANTIES OF MERCHANTABILITY AND FITNESS FOR A PARTICULAR PURPOSE ARE DISCLAIMED. IN NO EVENT SHALL THE COPYRIGHT OWNER OR CONTRIBUTORS BE LIABLE FOR ANY DIRECT, INDIRECT, INCIDENTAL, SPECIAL, EXEMPLARY, OR CONSEQUENTIAL DAMAGES (INCLUDING, BUT NOT LIMITED TO, PROCUREMENT OF SUBSTITUTE GOODS OR SERVICES; LOSS OF USE, DATA, OR PROFITS; OR BUSINESS INTERRUPTION) HOWEVER CAUSED AND ON ANY THEORY OF LIABILITY, WHETHER IN CONTRACT, STRICT LIABILITY, OR TORT (INCLUDING NEGLIGENCE OR OTHERWISE) ARISING IN ANY WAY OUT OF THE USE OF THIS SOFTWARE, EVEN IF ADVISED OF THE POSSIBILITY OF SUCH DAMAGE.

Copyright © 2003-2007 Dennis M. Sosnoski. All Rights Reserved

It also includes materials licensed under Apache 1.1 and the following XPP3 license

THIS SOFTWARE IS PROVIDED "AS IS" AND ANY EXPRESSED OR IMPLIED WARRANTIES, INCLUDING, BUT NOT LIMITED TO, THE IMPLIED WARRANTIES OF MERCHANTABILITY AND FITNESS FOR A PARTICULAR PURPOSE ARE DISCLAIMED. IN NO EVENT SHALL THE COPYRIGHT OWNER OR CONTRIBUTORS BE LIABLE FOR ANY DIRECT, INDIRECT, INCIDENTAL, SPECIAL, EXEMPLARY, OR CONSEQUENTIAL DAMAGES (INCLUDING, BUT NOT LIMITED TO, PROCUREMENT OF SUBSTITUTE GOODS OR SERVICES; LOSS OF USE, DATA, OR PROFITS; OR BUSINESS INTERRUPTION) HOWEVER CAUSED AND ON ANY THEORY OF LIABILITY, WHETHER IN CONTRACT, STRICT LIABILITY, OR TORT (INCLUDING NEGLIGENCE OR OTHERWISE) ARISING IN ANY WAY OUT OF THE USE OF THIS SOFTWARE, EVEN IF ADVISED OF THE POSSIBILITY OF SUCH DAMAGE.

Copyright © 2002 Extreme! Lab, Indiana University. All Rights Reserved

This product includes software components distributed by CodeProject. This software contains material that is © 1994-2005 The Ultimate Toolbox, all rights reserved.

This product includes software components distributed by Geir Landro.

Copyright © 2001-2003 Geir Landro (drop@destroydrop.com) JavaScript Tree - www.destroydrop.com/hjavadscripts/tree/version0.96

This product includes software components distributed by the Hypersonic SQL Group.

THIS SOFTWARE IS PROVIDED BY THE COPYRIGHT HOLDERS AND CONTRIBUTORS "AS IS" AND ANY EXPRESS OR IMPLIED WARRANTIES, INCLUDING, BUT NOT LIMITED TO, THE IMPLIED WARRANTIES OF MERCHANTABILITY AND FITNESS FOR A PARTICULAR PURPOSE ARE DISCLAIMED. IN NO EVENT SHALL THE COPYRIGHT OWNER OR CONTRIBUTORS BE LIABLE FOR ANY DIRECT, INDIRECT, INCIDENTAL, SPECIAL, EXEMPLARY, OR CONSEQUENTIAL DAMAGES (INCLUDING, BUT NOT LIMITED TO, PROCUREMENT OF SUBSTITUTE GOODS OR SERVICES; LOSS OF USE, DATA, OR PROFITS; OR BUSINESS INTERRUPTION) HOWEVER CAUSED AND ON ANY THEORY OF LIABILITY, WHETHER IN CONTRACT, STRICT LIABILITY, OR TORT (INCLUDING NEGLIGENCE OR OTHERWISE) ARISING IN ANY WAY OUT OF THE USE OF THIS SOFTWARE, EVEN IF ADVISED OF THE POSSIBILITY OF SUCH DAMAGE

Copyright © 1995-2000 by the Hypersonic SQL Group. All Rights Reserved

This product includes software components distributed by the International Business Machines Corporation and others.

THE SOFTWARE IS PROVIDED "AS IS", WITHOUT WARRANTY OF ANY KIND, EXPRESS OR IMPLIED, INCLUDING BUT NOT LIMITED TO THE WARRANTIES OF MERCHANTABILITY, FITNESS FOR A PARTICULAR PURPOSE AND NONINFRINGEMENT. IN NO EVENT SHALL THE AUTHORS OR COPYRIGHT HOLDERS BE LIABLE FOR ANY CLAIM, DAMAGES OR OTHER LIABILITY, WHETHER IN AN ACTION OF CONTRACT, TORT OR OTHERWISE, ARISING FROM, OUT OF OR IN CONNECTION WITH THE SOFTWARE OR THE USE OR OTHER DEALINGS IN THE SOFTWARE.

Copyright (c) 1995-2009 International Business Machines Corporation and others. All rights reserved.

This product includes software components distributed by the University of Coimbra.

University of Coimbra distributes this software in the hope that it will be useful but DISCLAIMS ALL WARRANTIES WITH REGARD TO IT, including all implied warranties of MERCHANTABILITY or FITNESS FOR A PARTICULAR PURPOSE. In no event shall University of Coimbra be liable for any special, indirect or consequential damages (or any damages whatsoever) resulting from loss of use, data or profits, whether in an action of contract, negligence or other tortious action, arising out of or in connection with the use or performance of this software.

Copyright (c) 2000 University of Coimbra, Portugal. All Rights Reserved.

This product includes software components distributed by Steve Souza.

THIS SOFTWARE IS PROVIDED BY THE AUTHOR AND CONTRIBUTORS "AS IS" AND ANY EXPRESS OR IMPLIED WARRANTIES, INCLUDING, BUT NOT LIMITED TO, THE IMPLIED WARRANTIES OF MERCHANTABILITY AND FITNESS FOR A PARTICULAR PURPOSE ARE DISCLAIMED. IN NO EVENT SHALL THE COPYRIGHT OWNER OR CONTRIBUTORS BE LIABLE FOR ANY DIRECT, INDIRECT, INCIDENTAL, SPECIAL, EXEMPLARY, OR CONSEQUENTIAL DAMAGES (INCLUDING, BUT NOT LIMITED TO, PROCUREMENT OF SUBSTITUTE GOODS OR SERVICES; LOSS OF USE, DATA, OR PROFITS; OR BUSINESS INTERRUPTION) HOWEVER CAUSED AND ON ANY THEORY OF LIABILITY, WHETHER IN CONTRACT, STRICT LIABILITY, OR TORT (INCLUDING NEGLIGENCE OR OTHERWISE) ARISING IN ANY WAY OUT OF THE USE OF THIS SOFTWARE, EVEN IF ADVISED OF THE POSSIBILITY OF SUCH DAMAGE.

Copyright © 2002, Steve Souza (admin@jamonapi.com). All Rights Reserved.

This product includes software developed by the OpenSymphony Group (<http://www.opensymphony.com/>.)"

Copyright © 2001-2004 The OpenSymphony Group. All Rights Reserved.

Contents

Importing and Exporting XML Files with PPS

- 2 Modifying INI Files
 - 2 Setting up the XML export format
 - 2 Setting up the XML import format
- 3 Creating an XML Export File
- 5 Example Documaker V2-XML File Format
- 9 Importing a Documaker XML File
- 10 Transforming XML Files
 - 11 Appending output transformations

Importing and Exporting XML Files with PPS

This document discusses importing and exporting XML files while using Documaker Workstation or PPS. This document tells you how to install the XML Import feature and configure your INI files.

These topics are discussed:

- [Modifying INI Files on page 2](#)
- [Creating an XML Export File on page 3](#)
- [Example Documaker V2-XML File Format on page 5](#)
- [Importing a Documaker XML File on page 9](#)
- [Transforming XML Files on page 10](#)

MODIFYING INI FILES

To import and export XML files into Documaker Workstation, you must modify your INI files. In the c:\fap\mstrres\SAMPCO directory, you will find these INI files:

- FSISYS.INI
- FSIUSER.INI

Add the following control group and options to your FSISYS.INI file:

```
< XML_Imp_Exp >
  Ext           = .xml
  File          = export
  Path          = c:\fap\mstrres\SAMPCO
  SuppressDlg  = No
  AppendedExport = No
```

Option	Description
Ext	(Optional) Enter the extension for the output files. The default is XML.
File	(Optional) Enter a file name, such as <i>XMLEXP</i> . If you omit this option the system prompts you to enter the file name.
Path	(Optional) Enter the path, such as <i>\xmlfile</i> . If you omit this option, the system defaults to the current directory.
SuppressDlg	(Optional) Enter Yes to suppress the File Selection window. The default is No.
AppendedExport	Enter Yes to append the current exported transaction to the last one. The default is No.

Setting up the XML export format

Locate the ExportFormats control group and add this line under that control group:

```
< ExportFormats >
  09=;XM;XML Export;WXMW32->WXMExportXML;
```

NOTE: This example assumes that *09* is not already being used in this control group.

Setting up the XML import format

Locate the ImportFormats control group and add this line:

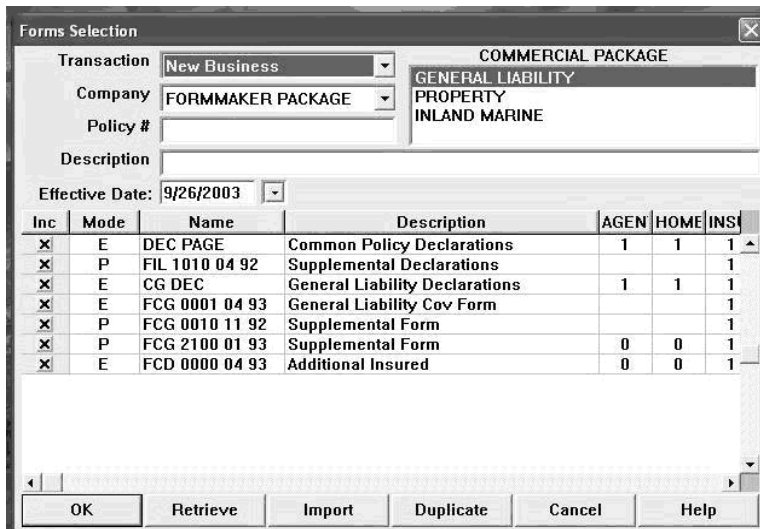
```
< ImportFormats >
  09=;XM;XML Import;WXMW32->WXMImportXML;
```

NOTE: This example assumes that *09* is not already being used in this control group.

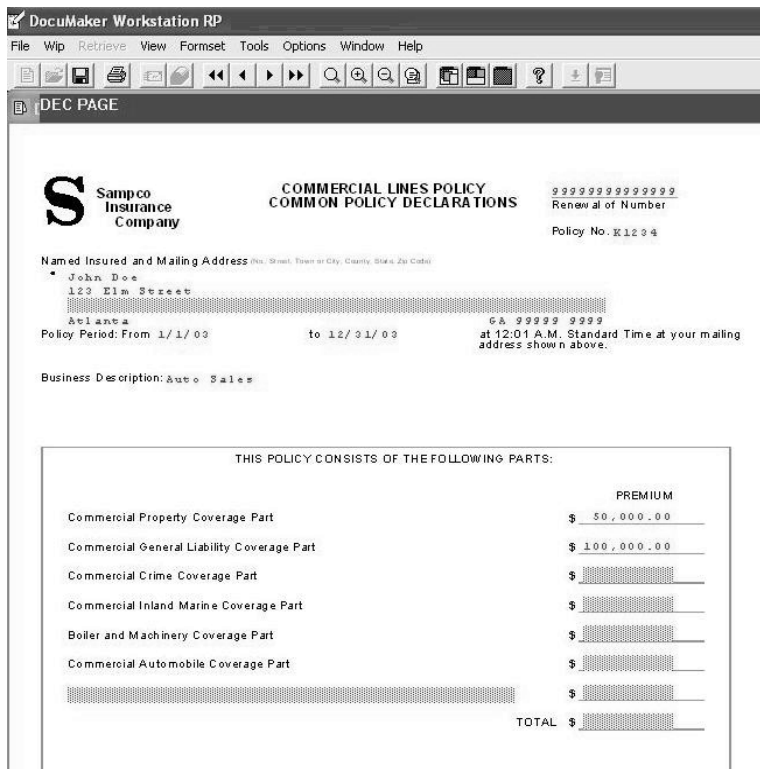
CREATING AN XML EXPORT FILE

Follow these steps:

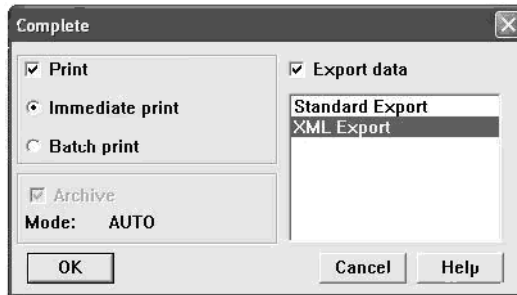
- 1 Start Documaker Workstation (PPS). From the main menu select the File, New option.
- 2 Complete the Form Selection window and press Ok.



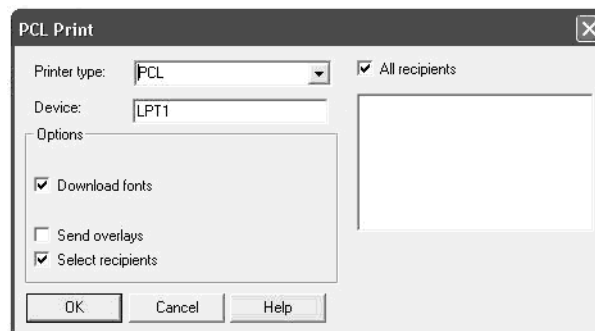
- 3 Enter data on the forms and complete the form set using the File, Complete option.



- 4 Next, check the Print and Export Data fields. Then click XML Export and Ok.

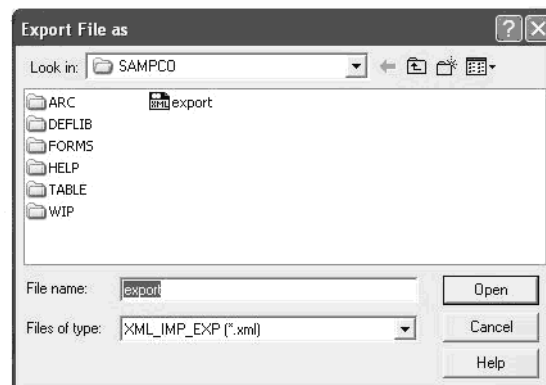


5 Print the form set.



6 Export the data to an XML file.

If the SuppressDlg option is set to No under the XML_Imp_Exp control group, the system displays this window:



The name that appears in the File Name field is the one you specified in the File option in the XML_Imp_Exp control group. If you left that option blank, enter a file name here.

EXAMPLE DOCUMAKER V2-XML FILE FORMAT

The XML file created from Documaker Workstation (PPS) should look similar to the file excerpts shown below.

```
<?xml version="1.0" encoding="UTF-8"?>
<DOCUMENT TYPE="RPWIP" VERSION="10.3">
  <DOCSET NAME="">
    <FXRFILE NAME="rel102sm" />
    <GROUP NAME="" NAME1="DOCUCORP PACKAGE" NAME2="VERSION 103">
      <FORM NAME="Tersub - Basic">
        <DESCRIPTION>Tersub - Basic Paragraph Assem</DESCRIPTION>
        <FIELD NAME="FIELDTwo">8:30 AM</FIELD>
        <FIELD NAME="FIELDThree">5:30PM</FIELD>
        <RECIPIENT NAME="AGENT" COPYCOUNT="1" CODE="" SEQUENCE="1" />
        <RECIPIENT NAME="HOME OFFICE" COPYCOUNT="1" CODE=""
          SEQUENCE="2" />
        <RECIPIENT NAME="INSURED" COPYCOUNT="1" CODE="" SEQUENCE="3" />
        :
      </FORM>
    </GROUP>
  </DOCSET>
</DOCUMENT>
```

This table lists the system-generated tag names and attributes and gives an explanation of each.

Tag Name	Attribute	Explanation
?xml		The XML declaration line
DOCUMENT	TYPE	The Documaker Standard Header. The attribute <i>Type</i> is hard-coded to be exported as <i>RPWIP</i> .
	VERSION	The version of the software being used.
DOCSET	NAME	The name of the document set that contains all forms required to process a single transaction, which is usually the FORM.DAT file.
GROUP	NAME1, NAME2, NAME3	The key names used in the FORM.DAT file to group a set of common forms, such as Key1 = Company, Key2 = LOB, and so on.
FORM	NAME	The name of a single document containing one or more pages.
DESCRIPTION		(Optional) A user-defined description of the form.
FIELD	NAME	(Optional) A field tag can be at the document, form, or section level, depending on the field scope. Fields tags at the... <ul style="list-style-type: none"> Document level will be populated to all identically named variable fields in all sections and all forms in a form set. Form level will be populated to all identically named variable fields in all sections in the current form. Section level will be populated only to the variable field within a single section.
RECIPIENT	NAME	The name used to identify who receives a copy or copies of a form set, or any part of a form set.

Importing and Exporting XML Files with PPS

Tag Name	Attribute	Explanation
	COPYCOUNT	The number of copies for a particular recipient
	CODE	Not required.
	SEQUENCE	(optional) The order in which the recipient copies print.

```

<SHEET>
  <PAGE>
    <SECTION NAME="parasem">
      <FIELD NAME="FIELD">
        <P ALIGN="CENTER">
          <FONT STYLE="FONT-SIZE: 10pt" FACE="Univers ATT">
            <B>Sample Text</B>
          </FONT>
        </P>

        <P STYLE="margin-left: 2.00in">
          <FONT STYLE="FONT-SIZE: 10pt" FACE="Univers ATT">
            Sample text left margin is 2 inches sample text
          </FONT>
        </P>
        <BR>
      :
    </PAGE>
  </SHEET>

```

Tag Name	Attribute	Explanation
SHEET		Used to identify if the form pages are simplex or duplex.
PAGE		Indicates a single sheet of paper.
SECTION	NAME	Indicates a segment of a page or an entire page. (Section Name)
FIELD	NAME	(Optional) The field tag at the section level is data that will be populated only to the variable field within a single section.
P		(Optional) Indicates a paragraph in a text area or multi-line field. <i>P</i> is used when paragraph attributes are needed.
BR		(Optional) Indicates a paragraph break. <i>BR</i> is used when there are no attributes for a paragraph.
	ALIGN	(Optional) Indicates the justification, such as <i>Left</i> , <i>Center</i> , <i>Right</i> , or <i>Left & Right</i> .
	STYLE	(Optional) Indicates the indentation, such as a 2-inch left margin or a 1-inch hanging indent margin. You can indent paragraphs three ways: normal, hanging, and first line. The default is normal.
FONT	STYLE	(Optional) Indicates the point size of the font used.
	FACE	(Optional) Indicates the font family name.
	COLOR	(Optional) Indicates the font color.

Tag Name	Attribute	Explanation
B		(Optional) Indicates bold text.
I		(Optional) Indicates italicized text.
U		(Optional) Indicates underlined text.

```

<P>
  <FONT STYLE="FONT-SIZE: 10pt" FACE="Univers ATT">
    Oracle's customer and technical support personnel
    are available to answer any questions you may having about
    your systems. You can call them between the hours of
    <INPUT NAME="FIELDTwo" VALUE="8:30 AM" SIZE="7" MAXLENGTH="25"
      ACCESSKEY="F" />
      :
  </FONT>
</P>
<BR>
<P>
  <UL TYPE="CIRCLE">
    <LI>
      <FONT STYLE="FONT-SIZE: 10pt" FACE="Univers ATT">Sample Text</
      FONT>
    </LI>
    <LI>
      <FONT STYLE="FONT-SIZE: 10pt" FACE="Univers ATT">Sample Text</
      FONT>
    </LI>
  </UL>
</P>

```

Tag Name	Attributes	Explanation
INPUT	NAME	(Optional) Indicates the name of an embedded variable field.
	VALUE	(Optional) Contains the data in the variable field.
	SIZE	(Optional) Indicates the length of the data.
	MAXLENGTH	(Optional) Indicates the length of the variable field.
	ACCESSKEY	(Optional) Specifies the scope of the field. Enter G (global), F (form global), or L (section local)

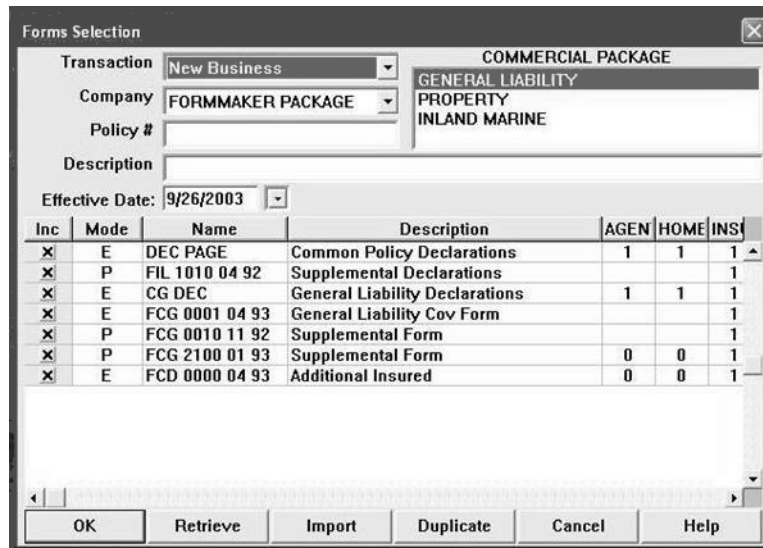
Importing and Exporting XML Files with PPS

Tag Name	Attributes	Explanation
UL	TYPE	(Optional) Indicates an unordered bullet list, such as one using symbol bullets. The type of bullet can be <i>circle</i> , <i>square</i> , or <i>disc</i> .
OL	TYPE	(Optional) Indicates an ordered bullet list, such as a numbered list or an outline. The type can be: <ul style="list-style-type: none">• Arabic number (1, 2, 3, and so on)• Upper case letter (A, B, C, and so on)• Lower case letter (a, b, c, and so on)• Upper case Roman numeral (I, II, III, IV, and so on)• Lower case Roman numeral (i, ii, iii, iv, and so on)
LI		(Optional) Indicates a bullet list item.

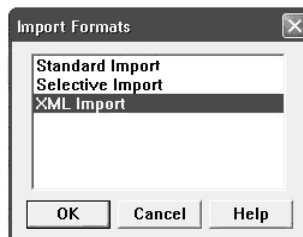
IMPORTING A DOCUMAKER XML FILE

Follow these steps to import a Documaker XML file:

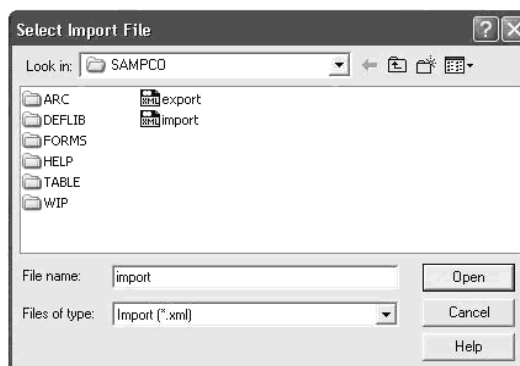
- 1 Start Documaker Workstation (PPS). From the main menu select the File, New option. Then, from the Form Selection window, click Import.



- 2 Click XML Import as the format.



- 3 Select the XML file you want to import.



- 4 Complete the Forms Selection window and click Ok.

Your form set should be populated with data from your XML import file.

TRANSFORMING XML FILES

You can export an XML file with XSLT transformation. This lets you transform the output XML file into another format, such as HTML or text. The final output format is determined by the XSLT template you choose.

The system transforms an export file with the XSLTW32.EXE program using the XSL template you specified with the XSLTName option.

To enable the export, add this option to the ExportFormats control group:

```
< ExportFormats >
  01 =;Mx;Export with XSL;WXMW32->WXMEExportWithXSL
```

Then add these options:

```
< ExportWithXSL >
  XSLTName      =
  Executable    =
  Debug         =
```

Option	Description
XSLTName	The full or relative path and name of the XSLT template.
Executable	(Optional) The full path and name of the program. If omitted, the system looks for the XSLTW32.EXE program in the directory where the AFEMNW32.EXE program is located.
Debug	(Optional) Enter Yes to leave temporary files in place.

NOTE: The default control group used by the WXMEExportWithXSL rule is the ExportWithXSL control group. If you specify another control group and one of its options are missing, the system uses the values from the ExportWithXSL control group.

You can define several INI options in the ExportFormats control group if you want to display multiple output processing options in PPS, each with its own XSL template. Here is an example:

```
< ExportFormats >
  01 =;M1;Export with XSL;WXMW32->WXMEExportWithXSL
  02 =;M2;Export with XSL;WXMW32->WXMEExportWithXSL
```

Each option listed under the ExportFormats control group requires a matching ExportWithXSL control group:

```
< ExportWithXSL:M1 >
  XSLTName      =
  Executable    =
  Debug         =

< ExportWithXSL:M2 >
  XSLTName      =
  Executable    =
  Debug         =
```

Appending output transformations

You can append multiple XSLT output transformations to the same file using this INI option:

```
< ExpFile_CD >
  AppendedExport = Yes
```

This example transforms an XML export into a semicolon-delimited output file you can import into Excel. It also uses the XSLTW32.EXE program for the transformation.

First, you need these INI options:

```
< ExportFormats >
  01 =;M1;Export with XSL;WXMW32->WXMExportWithXSL

< ExportWithXSL:M1 >
  XSLTName = x:\rp\mstrres\aeic\xsl\output1.xsl
  Executable =
  Debug = No
```

And this XSL style sheet:

```
<?xml version="1.0" encoding="UTF-8"?>
<xsl:stylesheet
xmlns:xsl="http://www.w3.org/1999/XSL/Transform"
version="1.0">
<xsl:output method="text" encoding="ISO-8859-1" />
<!-- global variables -->
<xsl:template match="/">
<xsl:call-template name="process"/>
</xsl:template>
<xsl:template name="process">
<xsl:variable name="semicolon" select="';'"/>
<xsl:variable name="root" select="DOCUMENT/DOCSET"/>
<xsl:variable name="policy" select="$root/
FIELD[@NAME='POLICY']"/>
<xsl:variable name="insnam" select="$root/
FIELD[@NAME='INSNAM']"/>
<xsl:variable name="insnam2" select="$root/
FIELD[@NAME='INSNAM2']"/>
<xsl:variable name="insad1" select="$root/
FIELD[@NAME='INSAD1']"/>
<xsl:variable name="insad2" select="$root/
FIELD[@NAME='INSAD2']"/>
<xsl:variable name="inszip" select="$root/
FIELD[@NAME='INSZIP']"/>
<xsl:variable name="agent" select="$root/
FIELD[@NAME='AGENT']"/>
<xsl:variable name="effdte" select="$root/
FIELD[@NAME='EFFDTE']"/>
<xsl:variable name="expdte" select="$root/
FIELD[@NAME='EXPDTE']"/>
<xsl:variable name="cddesc" select="$root/
FIELD[@NAME='CDDESC_BUSDSC']"/>
<xsl:variable name="premo_prop" select="$root/
FIELD[@NAME='PREMO_PROP']"/>
<xsl:variable name="advprem" select="$root/
FIELD[@NAME='ADVPREM']"/>
<xsl:variable name="totpre" select="$root/
FIELD[@NAME='TOTPRE']"/>
```

```
<xsl:variable name="galmt" select="$root/
FIELD[@NAME='GALMT']"/>
<xsl:variable name="prcolmt" select="$root/
FIELD[@NAME='PRCOLMT']"/>
<xsl:variable name="pailmt" select="$root/
FIELD[@NAME='PAILMT']"/>
<xsl:variable name="perocc" select="$root/
FIELD[@NAME='PEROCC']"/>
<xsl:variable name="fdlmt" select="$root/
FIELD[@NAME='FDLMT']"/>
<xsl:variable name="medlmt" select="$root/
FIELD[@NAME='MEDLMT']"/>
<xsl:value-of select="concat($policy, $semicolon)"/>
<xsl:value-of select="concat($insnam, $semicolon)"/>
<xsl:value-of select="concat($insnam2, $semicolon)"/>
<xsl:value-of select="concat($insad1, $semicolon)"/>
<xsl:value-of select="concat($insad2, $semicolon)"/>
<xsl:value-of select="concat($inszip, $semicolon)"/>
<xsl:value-of select="concat($agent, $semicolon)"/>
<xsl:value-of select="concat($effdte, $semicolon)"/>
<xsl:value-of select="concat($expdte, $semicolon)"/>
<xsl:value-of select="concat($cddesc, $semicolon)"/>
<xsl:value-of select="concat($premo_prop, $semicolon)"/>
<xsl:value-of select="concat($advprem, $semicolon)"/>
<xsl:value-of select="concat($totpre, $semicolon)"/>
<xsl:value-of select="concat($galmt, $semicolon)"/>
<xsl:value-of select="concat($prcolmt, $semicolon)"/>
<xsl:value-of select="concat($pailmt, $semicolon)"/>
<xsl:value-of select="concat($perocc, $semicolon)"/>
<xsl:value-of select="concat($fdlmt, $semicolon)"/>
<xsl:value-of select="concat($medlmt, $semicolon)"/>
<xsl:text>&#xA;</xsl:text>
</xsl:template>
</xsl:stylesheet>
```

And this XML export file:

```
<?xml version="1.0" encoding="UTF-8" ?>
- <DOCUMENT TYPE="RPWIP" VERSION="10.3">
- <DOCSET NAME="">
<FIELD NAME="POLICY">A108</FIELD>
<FIELD NAME="INSNAM">SAM MALONE</FIELD>
<FIELD NAME="INSNAM2">CHEERS, INC.</FIELD>
<FIELD NAME="NEW">X</FIELD>
<FIELD NAME="INSAD1">123 MAIN ST</FIELD>
<FIELD NAME="INSAD2">SUITE 100</FIELD>
<FIELD NAME="INSCTY">ATLANTA</FIELD>
<FIELD NAME="INSST">GA</FIELD>
<FIELD NAME="INSZIP">23033</FIELD>
<FIELD NAME="AGENT">12345</FIELD>
<FIELD NAME="AGYNAM">Docucorp Insurance Agency</FIELD>
<FIELD NAME="AGYAD1">2727 Paces Ferry Road S.E.</FIELD>
<FIELD NAME="AGYAD2">Suite II-900</FIELD>
<FIELD NAME="AGYCTY">Atlanta</FIELD>
<FIELD NAME="AGYST">GA</FIELD>
<FIELD NAME="AGYZIP">30339</FIELD>
```

```
<FIELD NAME="PRMSTE">GA</FIELD>
<FIELD NAME="EFFDTE">07/05/2003</FIELD>
<FIELD NAME="EXPDTE">07/05/2004</FIELD>
<FIELD NAME="TERM">366 DAYS</FIELD>
<FIELD NAME="CDESC_BUSDSC">BAR & GRILL</FIELD>
<FIELD NAME="PREMO_PROP">12,000.00</FIELD>
<FIELD NAME="ADVPREM">12,000.00</FIELD>
<FIELD NAME="FEEDESC1">Policy Tax</FIELD>
<FIELD NAME="FEEDESC1 TAX">3%</FIELD>
<FIELD NAME="FEEAMT1">360.00</FIELD>
<FIELD NAME="FEEDESC2">Stamping Fee</FIELD>
<FIELD NAME="FEEAMT2">250.00</FIELD>
<FIELD NAME="OTHCHG">610.00</FIELD>
<FIELD NAME="TOTPRE">12,610.00</FIELD>
<FIELD NAME="CSIGNEDLOC">Atlanta, GA</FIELD>
<FIELD NAME="SIGNED DATE">07/30/2003</FIELD>
<FIELD NAME="SIGNED TIME">09:25:18</FIELD>
<FIELD NAME="OPINIT">DOCUCORP</FIELD>
<FIELD NAME="SIGNATURE">Authorized Representative</FIELD>
<FIELD NAME="GALMT">1,000,000</FIELD>
<FIELD NAME="PRCOLMT">1,000,000</FIELD>
<FIELD NAME="PAILMT">1,000,000</FIELD>
<FIELD NAME="PEROCC">1,000,000</FIELD>
<FIELD NAME="FDLMT">1,000,000</FIELD>
<FIELD NAME="MEDLMT">1,000,000</FIELD>
- <GROUP NAME="" NAME1="American Equity" NAME2="INTERLINE">
- <FORM NAME="FS100 10-2000">
<DESCRIPTION>Schedule of Forms/End</DESCRIPTION>
<FIELD NAME="FORM DESC LINE">Forms Applicable - INTERLINE</FIELD>
<FIELD NAME="FORM DESC LINE #003">A100J 02-1999 Policy Jacket -
AEIC</FIELD>
<FIELD NAME="FORM DESC LINE #004">A100 03-1997 Common Policy Dec -
AEIC</FIELD>
<FIELD NAME="FORM DESC LINE #005">A101 03-1997 Minimum Earned
Premium Endt</FIELD>
<FIELD NAME="FORM DESC LINE #006">A104 10-1998 Service of Suit</
FIELD>
<FIELD NAME="FORM DESC LINE #007">IL0017 11-1998 Common Policy
Conditions</FIELD>
<FIELD NAME="FORM DESC LINE #008">IL0021 04-1998 Nuclear Energy
Liab Excl Endt</FIELD>
<FIELD NAME="FORM DESC LINE #010">Forms Applicable - GENERAL
LIABILITY</FIELD>
<FIELD NAME="FORM DESC LINE #012">CL150 01-2000 General Liab
Coverage Part</FIELD>
<FIELD NAME="FORM DESC LINE #013">L003 03-1997 Amendment of Premium
Condition</FIELD>
<FIELD NAME="FORM DESC LINE #014">L005 01-2000 Contractual Liab
Limitation</FIELD>
<FIELD NAME="FORM DESC LINE #015">L007 07-1998 Ded Liab Ins-w/Costs
per Claim</FIELD>
<FIELD NAME="FORM DESC LINE #016">L150 01-2000 Additional
Exclusions</FIELD>
<FIELD NAME="FORM DESC LINE #017">CG0001 07-1998 Comm General Liab
Cov Form</FIELD>
```

```
<FIELD NAME="FORM DESC LINE #018">CG2160 09-1998 Excl - Year 2000
Computer Prob</FIELD>
<RECIPIENT NAME="EXTRA COPY" COPYCOUNT="1" />
<RECIPIENT NAME="GENERAL AGENT" COPYCOUNT="1" />
<RECIPIENT NAME="HOME OFFICE" COPYCOUNT="1" />
<RECIPIENT NAME="ORIGINAL" COPYCOUNT="1" />
<RECIPIENT NAME="RETAIL AGENT" COPYCOUNT="1" />
- <SHEET>
- <PAGE>
<SECTION NAME="FORMSCHA" />
</PAGE>
</SHEET>
</FORM
</DOCSET>
</DOCUMENT>
```

The output file looks like this:

```
A108;SAM MALONE;CHEERS, INC.;123 MAIN ST;SUITE 100;23033;12345;07/
05/2003;07/05/2004;; 12,000.00;
12,000.00;;1,000,000;1,000,000;1,000,000;1,000,000;1,000,000;1,000,
000;
```

You can import this file into an Excel spreadsheet.