

Content Publisher: Creating a WML Project
10g Release 3 (10.1.3.3.0)

March 2007

Content Publisher: Creating a WML Project, 10g Release 3 (10.1.3.3.0)
Copyright © 2007, Oracle. All rights reserved.

Contributing Authors: Heidi Waterhouse

The Programs (which include both the software and documentation) contain proprietary information; they are provided under a license agreement containing restrictions on use and disclosure and are also protected by copyright, patent, and other intellectual and industrial property laws. Reverse engineering, disassembly, or decompilation of the Programs, except to the extent required to obtain interoperability with other independently created software or as specified by law, is prohibited.

The information contained in this document is subject to change without notice. If you find any problems in the documentation, please report them to us in writing. This document is not warranted to be error-free. Except as may be expressly permitted in your license agreement for these Programs, no part of these Programs may be reproduced or transmitted in any form or by any means, electronic or mechanical, for any purpose.

If the Programs are delivered to the United States Government or anyone licensing or using the Programs on behalf of the United States Government, the following notice is applicable:

U.S. GOVERNMENT RIGHTS Programs, software, databases, and related documentation and technical data delivered to U.S. Government customers are "commercial computer software" or "commercial technical data" pursuant to the applicable Federal Acquisition Regulation and agency-specific supplemental regulations. As such, use, duplication, disclosure, modification, and adaptation of the Programs, including documentation and technical data, shall be subject to the licensing restrictions set forth in the applicable Oracle license agreement, and, to the extent applicable, the additional rights set forth in FAR 52.227-19, Commercial Computer Software--Restricted Rights (June 1987). Oracle USA, Inc., 500 Oracle Parkway, Redwood City, CA 94065.

The Programs are not intended for use in any nuclear, aviation, mass transit, medical, or other inherently dangerous applications. It shall be the licensee's responsibility to take all appropriate fail-safe, backup, redundancy and other measures to ensure the safe use of such applications if the Programs are used for such purposes, and we disclaim liability for any damages caused by such use of the Programs.

Oracle, JD Edwards, PeopleSoft, and Siebel are registered trademarks of Oracle Corporation and/or its affiliates. Other names may be trademarks of their respective owners.

The Programs may provide links to Web sites and access to content, products, and services from third parties. Oracle is not responsible for the availability of, or any content provided on, third-party Web sites. You bear all risks associated with the use of such content. If you choose to purchase any products or services from a third party, the relationship is directly between you and the third party. Oracle is not responsible for: (a) the quality of third-party products or services; or (b) fulfilling any of the terms of the agreement with the third party, including delivery of products or services and warranty obligations related to purchased products or services. Oracle is not responsible for any loss or damage of any sort that you may incur from dealing with any third party.

Table of Contents



Chapter 1: Creating a WML Project

Entering the WML Mode	1-2
Starting a New WML Project	1-2
Application and Project Options	1-5
Element Setup	1-5
Formatting	1-6
Navigation	1-8
Globals	1-10
A Word About File Size	1-11
Translating a Simple Project	1-13
Adding a Reference Page	1-14
The Big Picture	1-17

Appendix A: Third Party Licenses

Apache Software License	A-1
W3C® Software Notice and License	A-2
Zlib License	A-4
General BSD License	A-5
General MIT License	A-5
Unicode License	A-6
Miscellaneous Attributions	A-7

CREATING A WML PROJECT

Site Builder can operate in two modes: HTML and WML. In the WML mode, you can create Web publications consisting of WML output that can be published to a WAP server for accessing via an Internet-enabled device.

When you first start Site Builder, it opens in the HTML mode by default. But you can easily switch to the WML mode, and you can then stay in that mode—or toggle easily between the two modes—as suits your needs.

In an HTML project, you use a copy of the default project file *Default.tcp*. In the WML mode, you use a copy of *DefaultWML.tcp*, a default project file that is designed specially for WML projects. (Both project files are located in the *...\Resources\en* folder of your Content Publisher directory. Copies are available in the Support folder on the Content Publisher distribution media.)

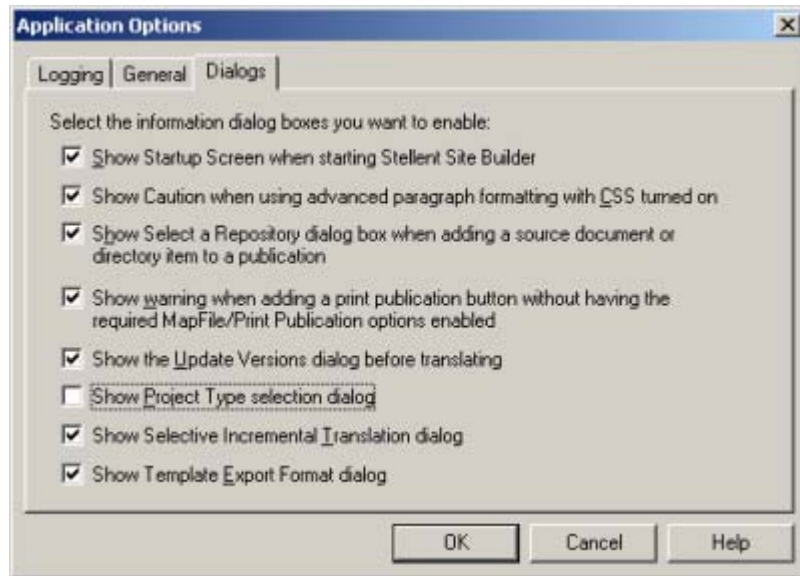
Please note the following:

- ❖ The WML publications you create in Site Builder use templates that target the Nokia micro browsers (which support WML standards 1.1 and 1.2) and the Phone.com micro browser. The behavior of these publications when viewed with any of the numerous other micro browsers currently in use with Internet-enabled devices may not be what you expect.
- ❖ We recommend that you do not add HTML or XML source documents to a WML project, as this will not produce valid WML.
- ❖ The Help topics you view when you click the Help buttons in Site Builder are designed for HTML projects and should be used only as a guide when you are creating WML projects.

ENTERING THE WML MODE

Follow these steps to enter the WML mode:

1. Click **Applications Options** on the **View** menu to open that dialog box.
2. Click **Dialogs** to switch to that tab dialog.



The default settings for the Dialogs tab dialog in Application Options. Once you select Show Project Type selection dialog, the Project Type dialog box will open the next time you start a new project. You can then switch to the WML mode to create WML projects.

3. Select **Show Project Type selection dialog**.
4. Click **OK**.

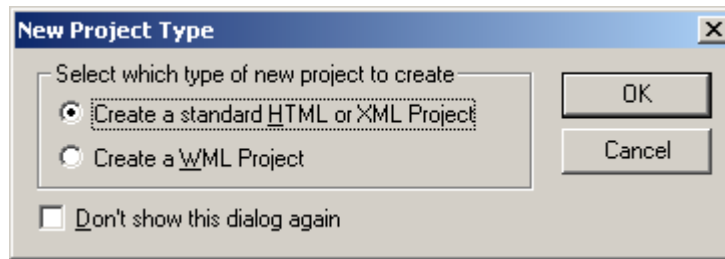
You are now ready to start a WML project.

STARTING A NEW WML PROJECT

Follow these steps to start a new WML project:

1. Click **New** () on the standard toolbar to start a new project.

The New Project Type dialog box opens.



2. Select **Create a WML Project**.


You can also select **Don't show this dialog again** if you plan to stay in the WML mode. If you do, when you're ready to return to the HTML mode, you can return to the Applications Options dialog box (see page 1-5) and select **Show Project Type selection dialog** once again. (Clicking **Don't show this dialog** clears the **Show Project Type selection dialog** check box in Application Options.)

3. Click **OK** to close the New Project Type dialog box.


You have opened a copy of *DefaultWML.tcp*. You will see <Unnamed-WML> in the root of the publication hierarchy and also as the default publication name in the Publication Properties dialog box, which has already opened.

4. You can rename the publication. Select <Unnamed-WML> and type **WMLProject**. Then click **OK**.

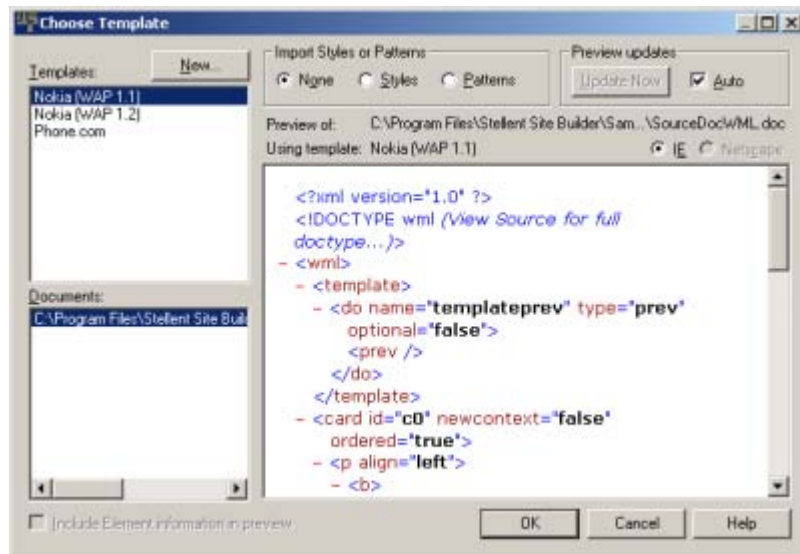
You are now in the WML mode, ready to start your WML project. The differences between the HTML and WML modes may not be immediately apparent.

On the main window, one difference is that the Layout button () on the toolbar is disabled. (You cannot create a frameset, table or custom table layout for a WML publication.) Note, also, the special icon next to the root publication in the Publication Hierarchy pane. As soon as you open any project in Site Builder, you can check the publication icon to identify the project type.

Once you add a document to the project, you will quickly see other differences.

1. Click **Add Document** () on the toolbar and select **SourceDocWML.doc** from the *..\Samples\en\Formatted* folder.

The Choose Template dialog box opens.



There are only three default templates available for the cards (pages) of a WML project. These templates relate to the specific micro browser that will be used to view the WML output.

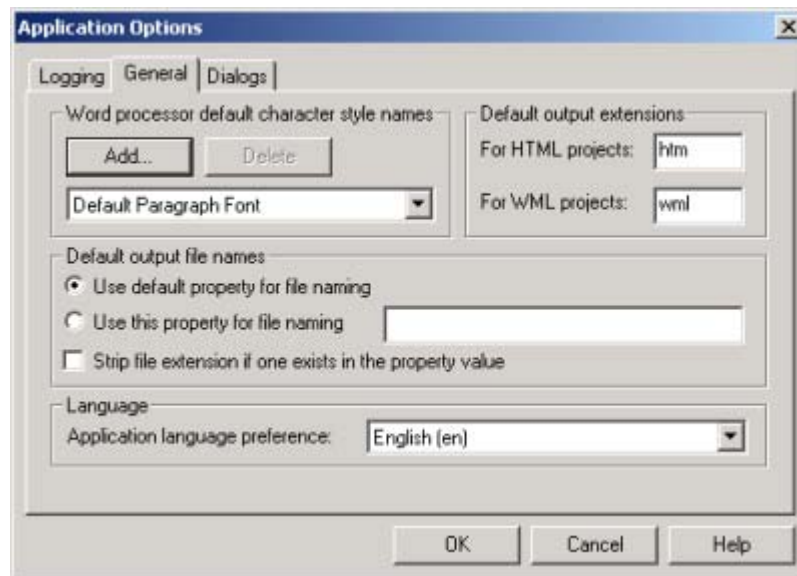
First, you can see that there are only three default templates available for cards (pages) in a WML project. You can select each of the templates, in turn, but you won't see many differences in the Preview window. (Obviously, you can still create new templates, basing them on the default ones.)

Each template supports a different micro browser. The essential difference between Nokia 1.1 and Nokia 1.2, for example, is that the latter (which supports WML standard 1.2) permits use of the <pre> tag for preformatted text. (There was also attribute changes between 1.1 and 1.2.). Your choice of template will depend on the device you want to support.

2. Select **Nokia (WAP 1.1)**.
3. Click **OK** to close Choose Templates and return to the main window. Let's explore the standard features in Site Builder to see the differences between a WML and HTML project. Remember: many of the features you are used to in HTML are simply not available in WML, which is a much simpler format.

APPLICATION AND PROJECT OPTIONS

Let's begin with a quick review of application and project options. The Application Options dialog box (open from the View menu) is essentially the same whether you are in an HTML project or a WML one. However, in addition to the new option in the Dialogs tab dialog for toggling between the two modes (see the following figure), the Default Output Extensions panel in the General tab dialog now includes the **wml** extension, which is used by default for all documents added to a WML project.

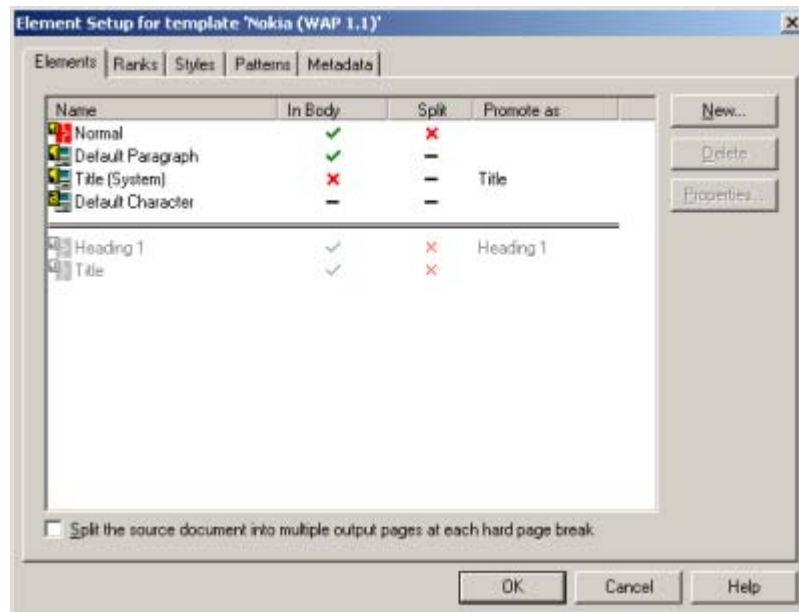


The default *wml* extension is used by default for all WML projects. Like the *htm* extension for HTML projects, you can change this, if you want.

The Project Options dialog box (also from the View menu) displays a greater number of differences when in the WML mode. Gone are the following panels and their options: HTML Generation, Containing Frame Name (there are no frames in WML publications), Print Publishing (you do not print from an Internet-enabled device), and Conditional Disclosure (which isn't relevant).

ELEMENT SETUP

The Element Setup property sheet is usually your first stop when creating any new project. It's usually best to check elements, styles, patterns, and metadata, and to create new elements and map your content, as appropriate, before you begin to format output, set navigation links, and so on.

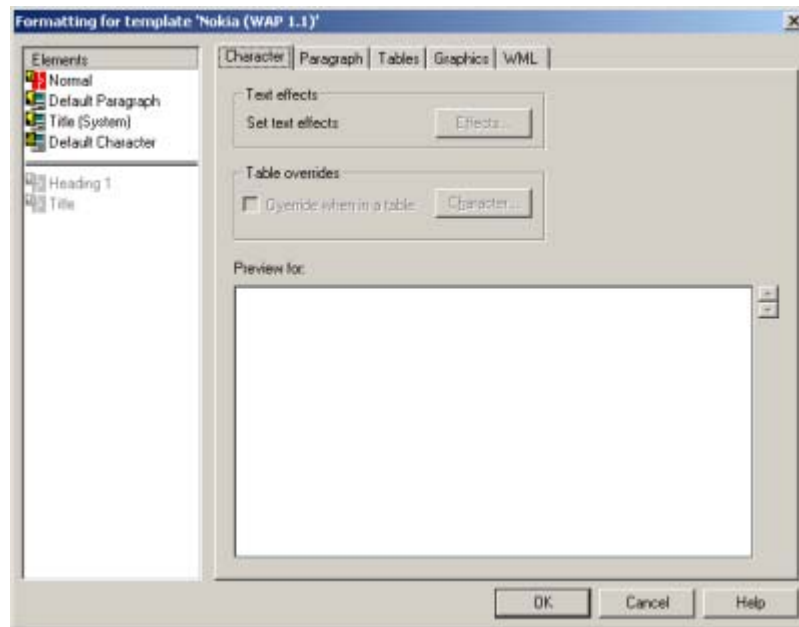


There are fewer default elements in a WML project and no default ranks, styles, patterns, or metadata. But you can still use ranks, styles, patterns, and metadata in your WML project, just as you would in an HTML one. (No styles or patterns are shown here because the source document SourceDocWML.doc is a manually formatted document—all the content is assigned to the Normal style—and the document was imported with the default None selected in the Choose Template dialog box. As a result, all the content was mapped to the Default Paragraph element.)

With one other exception, the options available in an HTML project are available for WML, too. That exception is the absence of a Page TOC, which you cannot create or promote elements to. (To check this, select an element and click Properties. On the General tab dialog you will see that the Include in Page TOC check box is disabled.)

FORMATTING

The Formatting property sheet is significantly different for a WML project. Many of the HTML features and settings are simply not relevant in WML. The next figure shows the reduced number of tab dialogs available. Moreover, there are fewer settings and options available in these tab dialogs.

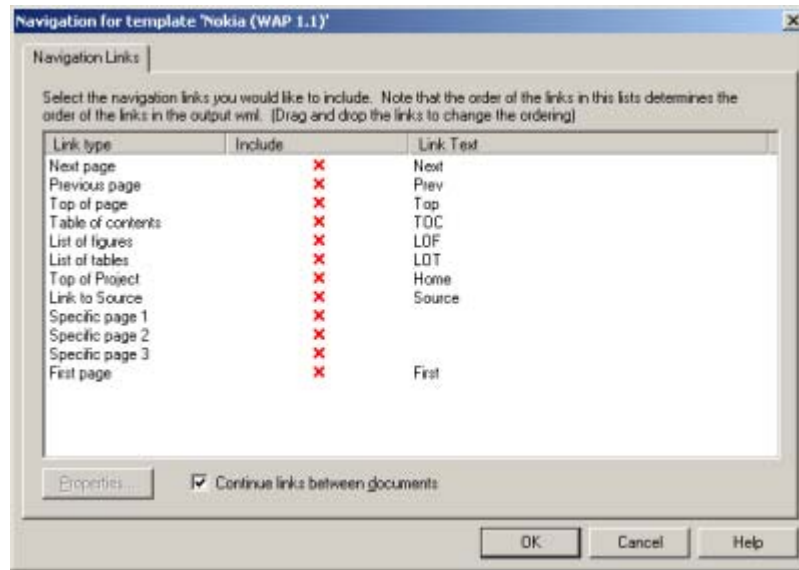


Let's walk through each tab dialog, in turn.

- ❖ **Character**—For WML output, there are no font or font size options, and CSS (cascading style sheets) is not an option. (WML output is obviously very plain, and the font and font size are governed by your micro browser.) You can still have bold and italic text, for example, but there are fewer text effects available. As you can see, Table Overrides is still an option, but your micro browser may not support tables.
- ❖ **Paragraph**—Here, your only choice is alignment.
- ❖ **Tables**—You have similar functionality as for HTML projects, but your micro browser may not support tables.
- ❖ **Graphics**—Note the option to convert to WBMP for an Internet-enabled device. This is the default conversion format when you create a WML project. Three graphics formats—WBMP, BMP, and GIF—can, in fact, be used for WML publications. However, not all WAP-enabled devices support WBMP, and the micro browsers that are targeted by the three default templates do not support a common graphics format. Of course, you must work with much smaller-sized graphics files in a WML project (just as your source documents need to be smaller, too).
- ❖ **WML**—Here, you can insert WML or scripting code before or after the content associated with the selected element (just as you might insert HTML code in the case of an HTML project).

NAVIGATION

There are significant differences between setting up navigation for a WML project versus an HTML project. The following figure shows the complete set of options available for your WML project.



The order of selected links is very important. (The same links are available when you open this dialog box for a reference page.)

Keys to Navigation

To permit navigation through your WML publication, you can assign some of the links shown in the above figure (you're unlikely to want to assign all of them). The links you select will be assigned to the two unmarked buttons on your device (which we'll refer to as the "left blank button" and "right blank button"). How these buttons are used, by default, varies between devices. (For the Phone.com micro browser, for example, the left blank button is used for the Accept or OK command.) By selecting navigation links here, you can override the default settings.

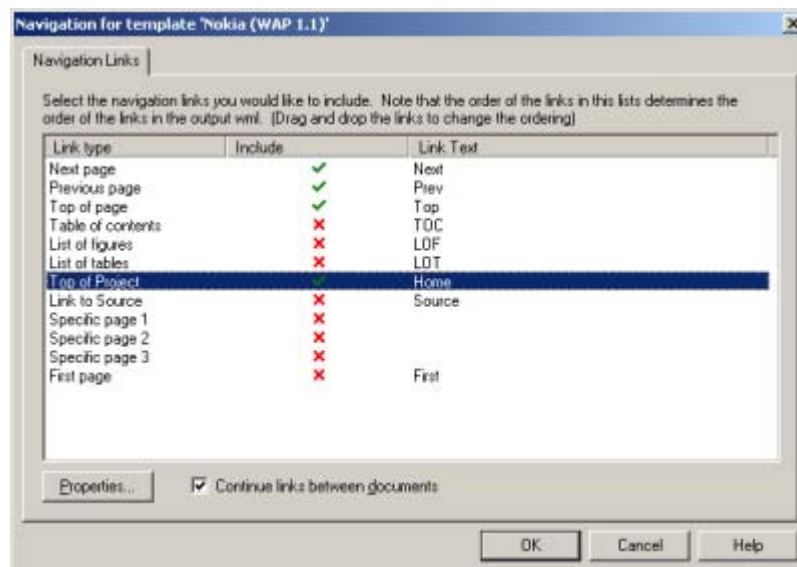
Some pointers:

- ❖ The first navigation link you select in Navigation will be assigned to the left blank button. All others you select will be assigned to the right blank button.

- ❖ If you select three or more navigation links in total, the two or more links that are assigned to the right blank button will appear in a menu in the browser window when you click that button.
- ❖ However, if your TOC, say, has only one card (page), the Next Page link would be redundant. In that event, if you assign the Next Page link, it would drop out completely and the next navigation link you selected would take its place.
- ❖ Likewise, a Previous Page link has no meaning if there is no previous page. So if you are on the first card (page) of a document, the Previous command (link) wouldn't be available. However, it would be available for all successive pages you scroll to.
- ❖ The order of the link types in Navigation is therefore important.
- ❖ You can use drag-and-drop to change the default order of the links. Simply left-click the link type you want to move, and, with the mouse button held down, move the link type up or down the list to reposition it wherever you want it to be. The next figure shows some of the links moved to create a new order.



Note: The assignment of navigation links, as described above, assumes that you are targeting a device that allows for the assignment of links in this fashion. On a Nokia device, for example, all links will appear together on a separate card.

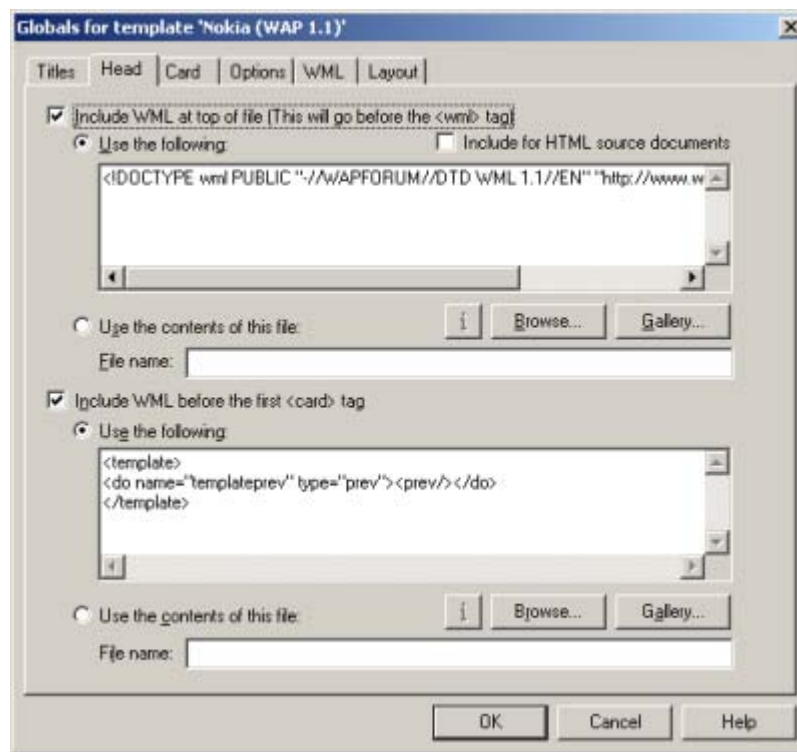


Note that some links have been dragged to the top of the list of links. The key thing is the order in which the selected links appear on the list. With this selection, Next Page will be assigned to the left blank button and the other three to the right blank button of the device.

Note the Link Text column. You can edit this, if you want. Select the link type you want to edit, click the Properties button, and in the Link Properties dialog box, enter the text you want to use. Obviously, a character limit will dictate how long the link text can be (which, again, varies with micro browsers).

GLOBALS

In Globals, again we're working with a reduced number of tab dialogs, and fewer options in some of the tab dialogs that are available.



- ❖ **Titles**—Practically unchanged for WML projects (the page component option isn't available).
- ❖ **Head**—Include WML at Top of File displays the WML declaration for the template that you selected for your project (and therefore the micro browser you are targeting).



Note: Most devices and emulators will not display content if the declaration is missing. However, you can edit the declaration in the event that a new DTD is issued and you want to supply it to your users.

The Include WML Before the First <card> Tag entry contains the “prev” reference that enables the Back button on Internet-enabled devices. You generally shouldn’t change this entry.

The WML declaration (in the top window) is required for your WML output to display in a micro browser. The <prev> reference in the bottom window is generally required or the Back button of your device may not work.

- ❖ **Card**—This is the same as for an HTML project (where the tab dialog is named Body). Here, you can create event handles for a card in your WML output.



Note: In the WML standard, a deck (or file) can contain one or more cards. In Content Publisher, however, the default templates all treat one card as being equal to one page. So in Content Publisher, a deck is the same as a file is the same as a card is the same as a page.

- ❖ **Options**—What’s new here—and a key ingredient in the creation of WML publications—is the Maximum WML File Size. This setting influences the eventual size of your uncompressed WML output. The default is 1397 bytes for each file (card), but you can change this number. See the next section.



Note: The Options tab differs slightly for reference pages (see [Adding a Reference Page](#) (page 1-14)).

- ❖ **WML**—This is essentially the same as the HTML version.
- ❖ **Layout**—There are more limited options here, because inevitably you have fewer layout elements in a WML publication.

A WORD ABOUT FILE SIZE

Each device has certain memory constraints. You must carefully control your WML output if it is to display successfully in an Internet-enabled device. In fact, if an individual file is greater than 1397 bytes (compressed), it won’t display.

It’s important to understand the following:

- ❖ When Site Builder translates your project, it generates uncompressed WML files.
- ❖ The size of these uncompressed WML files is controlled by the following setting in the Options tab dialog of Globals:

Maximum WML file size (bytes):

- ❖ The default WML file size is 1397 bytes. (This figure is simply the lowest common denominator for devices that use a compiled deck. It may be quite conservative in some instances.)
- ❖ Site Builder first splits an output file based on the element you select (the default is Heading 1). It then examines each output page to determine whether it is over the 1397 byte limit. If it is, Site Builder splits the file again, to ensure that no output WML file is greater than the byte-size limit you set.
- ❖ If Site Builder splits a file to meet the 1397 file size maximum, it tries to do so at a space character—but may not succeed. As a result, a file may be split in the middle of a word (and most certainly in the middle of a sentence). This suggests the need to severely “chunk” your source content to make it suitable for WML publishing.
- ❖ Once your WML output is published to a WAP server, it must then pass through a WAP gateway in order for it to reach an Internet-enabled device. The WAP gateway compresses the WML files.
- ❖ It is these compressed files that must be no larger than 1397 bytes (otherwise, the micro browser won’t display them).
- ❖ Suppose the WML files that Site Builder generates compress to 200 bytes. This would leave about 1197 bytes available to the device that you are targeting. (As already noted, the default 1397 byte size may be conservative.)
- ❖ In other words, conceivably you could set the file size limit in the Options tab to be much greater than 1397 bytes (say, 3000 bytes) and still be successful publishing to your target audience. The only thing to do is test, test, test. Try translating with different byte-size settings and see how successful your publishing efforts are. (This is something you obviously can’t test on an emulator.)
- ❖ You may note that your translated WML output may contain certain placeholder comments that cause the file size to be exceeded. During publishing, these comments are removed, thereby meeting the file size constraint.



TRANSLATING A SIMPLE PROJECT

Typically, you'll want to test all your WML output before you publish it to a WAP server and make your content available to your users. Consider using an emulator. The one described here is available from www.openwave.com.



Note: View the behavior of your WML publication in an emulator as simply a guide. In fact, you should generally expect to encounter different behavior between an emulator and the Internet-enabled phone it is designed to emulate. For example, some emulators don't like spaces in folder or file names (though this is unlikely to be a problem with the device itself). You need to test thoroughly.

Follow these steps to translate a simple project:

1. With *WMLProject.tcp* open in Site Builder, click **Translate** () on the toolbar.
2. Click **View** (). What you will see in your browser, of course, is the same WML markup you saw in the Preview window of the Choose Template dialog box when you added the source document to the project (see Figure).

However, with your emulator installed and running, you can easily view the real WML output in the micro browser. Let's say that your translated output resides in *C:\Document\WMLTest*. The first output file will be *SourceDocWML.wml* (you will have several output files because of the default splitting and the restriction on WML file size).

3. In the Go field of your emulator, type:
File://C:/Document/WMLTest/SourceDocWML.wml (note the forward slashes).
4. Press **Enter**.
5. Your WML output will display in the micro browser.

By typing "File://" plus the path for your output WML file on your hard drive in the Go field, you can view your WML output in your micro browser:

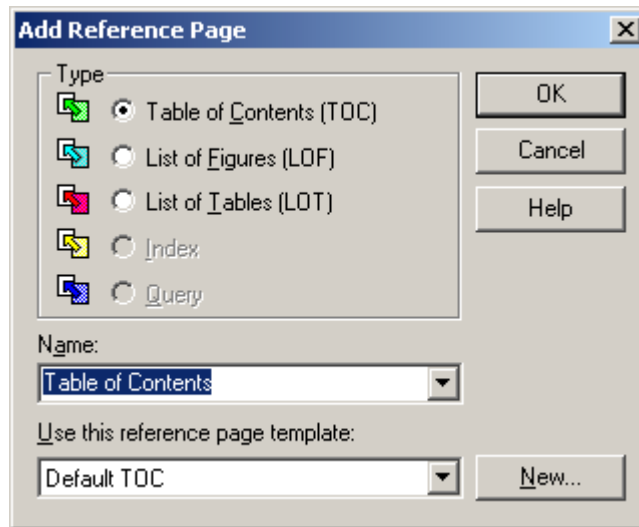


That's one simple test. Once you add a reference page, you can explore some additional features specific to WML projects.

ADDING A REFERENCE PAGE

Follow these steps to add a reference page:

1. With *WMLProject.tcp* still open in Site Builder, click **Add Reference Page** () on the standard toolbar to open the Add Reference Page dialog box.



Index and Query templates are not available for WML projects. You can use Default TOC, but you will have to add a declaration to this template for your published reference page to be viewable.

2. Under **Type**, accept the default, Table of Contents.


Note that Index and Query reference pages are not available for WML. Remember, too, that the TOC, LOF, and LOT template are actually the same template. You can create a TOC with either one. (Three options are available to allow you to build different kinds of reference pages for the same project.)

3. From the Templates drop-down list, select **Nokia TOC (WAP 1.1)**. This reference page template is designed as a companion to the Nokia (WAP 1.1) template that you associated with the source document for cards (pages).

In addition to a companion TOC template for each of the templates used for cards (pages), there is also a Default TOC template available. This might be used for targeting other micro browsers. However, it does not contain a WML declaration (you can check the Head tab dialog of Globals to confirm this), and most emulators and devices will not display any content if the declaration is missing. In order to use Default TOC, therefore, you would have to add a declaration.

4. Click **OK** to return to the main window.
5. In the Contents pane, double-click **Table of Contents.wml** (with a pause between clicks) and change the name of the output file to **TableofContents.wml**.

This is necessary here because the emulator we're using doesn't like spaces in folder and file names (and won't display the page, as a result). It may not be necessary with other emulators and it will not be an issue with any Internet-enabled device you target.


6. Click **Translate** ()
7. In the **Go** field of the emulator, enter:

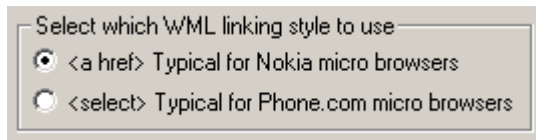
File://C:/Document/WMLTest/TableofContents.wml

You should now see a very simple table of contents for your WML publication, with a single jump to take you to first card (page) of your main WML output, *SourceDocWML.wml*.

You might care to experiment now by adding navigation links to both the *Table of Contents.wml* and *SourceDocWML.wml*. Experiment with the various links available and see how they behave in the emulator that you are using.

Here's one last thing to note:

1. Select **TableofContents.wml** in the Contents pane and click **Globals** () on the toolbar.
2. Click **Options** to open that tab dialog. Note the panel at the bottom of the tab dialog (available only when a reference page is selected).



This setting is used to determine the linking mechanism for navigating between the TOC and your other content. It is yet one more instance where micro browsers vary. The `<a href>` option is designed for Nokia micro browsers (and is selected by default when you choose a Nokia reference page). The alternative `<select>` is suitable for Phone.com micro browsers (and becomes the default when you use the Phone.com reference page).

THE BIG PICTURE

Here are some key points to bear in mind as you begin to create and test WML publications in Site Builder:

- ❖ Test everything thoroughly. Emulators, devices, and micro browsers vary widely in how they interpret WML markup.
- ❖ Depending on your target audience and the number of micro browsers you are seeking to satisfy, you may need to create a project with multiple publications with the same content in each publication but a different template (for a different micro browser) associated with the content.
- ❖ The WML declaration (see the Head tab dialog of Globals) is important, because it defines the “flavor” of WML being targeted.
- ❖ The usability of TOCs varies greatly, depending on the linking mechanism that is employed (see previous section).
- ❖ The <prev> tag should always be defined (see the Head tab dialog of Globals). On some devices, the Back button will not work without it.
- ❖ The file size constraint (the default is 1397 bytes) applies to compressed WML output after you publish. You may be able to set the maximum size much higher.



THIRD PARTY LICENSES

OVERVIEW

This appendix includes a description of the Third Party Licenses for all the third party products included with this product.

- ❖ [Apache Software License](#) (page A-1)
- ❖ [W3C® Software Notice and License](#) (page A-2)
- ❖ [Zlib License](#) (page A-4)
- ❖ [General BSD License](#) (page A-5)
- ❖ [General MIT License](#) (page A-5)
- ❖ [Unicode License](#) (page A-6)
- ❖ [Miscellaneous Attributions](#) (page A-7)

APACHE SOFTWARE LICENSE

```
* Copyright 1999-2004 The Apache Software Foundation.  
* Licensed under the Apache License, Version 2.0 (the "License");  
* you may not use this file except in compliance with the License.  
* You may obtain a copy of the License at  
* http://www.apache.org/licenses/LICENSE-2.0  
*
```

- * Unless required by applicable law or agreed to in writing, software
- * distributed under the License is distributed on an "AS IS" BASIS,
- * WITHOUT WARRANTIES OR CONDITIONS OF ANY KIND, either express or implied.
- * See the License for the specific language governing permissions and
- * limitations under the License.

W3C® SOFTWARE NOTICE AND LICENSE

- * Copyright © 1994-2000 World Wide Web Consortium,
- * (Massachusetts Institute of Technology, Institut National de
- * Recherche en Informatique et en Automatique, Keio University).
- * All Rights Reserved. <http://www.w3.org/Consortium/Legal/>
- *
- * This W3C work (including software, documents, or other related items) is
- * being provided by the copyright holders under the following license. By
- * obtaining, using and/or copying this work, you (the licensee) agree that
- * you have read, understood, and will comply with the following terms and
- * conditions:
- *
- * Permission to use, copy, modify, and distribute this software and its
- * documentation, with or without modification, for any purpose and without
- * fee or royalty is hereby granted, provided that you include the following
- * on ALL copies of the software and documentation or portions thereof,
- * including modifications, that you make:
- *
- * 1. The full text of this NOTICE in a location viewable to users of the
- * redistributed or derivative work.
- *
- * 2. Any pre-existing intellectual property disclaimers, notices, or terms

* and conditions. If none exist, a short notice of the following form
* (hypertext is preferred, text is permitted) should be used within the
* body of any redistributed or derivative code: "Copyright ©
* [\$date-of-software] World Wide Web Consortium, (Massachusetts
* Institute of Technology, Institut National de Recherche en
* Informatique et en Automatique, Keio University). All Rights
* Reserved. <http://www.w3.org/Consortium/Legal/>"
*
* 3. Notice of any changes or modifications to the W3C files, including the
* date changes were made. (We recommend you provide URIs to the location
* from which the code is derived.)
*
* THIS SOFTWARE AND DOCUMENTATION IS PROVIDED "AS IS," AND COPYRIGHT HOLDERS
* MAKE NO REPRESENTATIONS OR WARRANTIES, EXPRESS OR IMPLIED, INCLUDING BUT
* NOT LIMITED TO, WARRANTIES OF MERCHANTABILITY OR FITNESS FOR ANY PARTICULAR
* PURPOSE OR THAT THE USE OF THE SOFTWARE OR DOCUMENTATION WILL NOT INFRINGE
* ANY THIRD PARTY PATENTS, COPYRIGHTS, TRADEMARKS OR OTHER RIGHTS.
*
* COPYRIGHT HOLDERS WILL NOT BE LIABLE FOR ANY DIRECT, INDIRECT, SPECIAL OR
* CONSEQUENTIAL DAMAGES ARISING OUT OF ANY USE OF THE SOFTWARE OR
* DOCUMENTATION.
*
* The name and trademarks of copyright holders may NOT be used in advertising
* or publicity pertaining to the software without specific, written prior
* permission. Title to copyright in this software and any associated
* documentation will at all times remain with copyright holders.
*

ZLIB LICENSE

* zlib.h -- interface of the 'zlib' general purpose compression library
version 1.2.3, July 18th, 2005

Copyright (C) 1995-2005 Jean-loup Gailly and Mark Adler

This software is provided 'as-is', without any express or implied
warranty. In no event will the authors be held liable for any damages
arising from the use of this software.

Permission is granted to anyone to use this software for any purpose,
including commercial applications, and to alter it and redistribute it
freely, subject to the following restrictions:

1. The origin of this software must not be misrepresented; you must not
claim that you wrote the original software. If you use this software
in a product, an acknowledgment in the product documentation would be
appreciated but is not required.
2. Altered source versions must be plainly marked as such, and must not be
misrepresented as being the original software.
3. This notice may not be removed or altered from any source distribution.

Jean-loup Gailly jloup@gzip.org

Mark Adler madler@alumni.caltech.edu

GENERAL BSD LICENSE

Copyright (c) 1998, Regents of the University of California

All rights reserved.

Redistribution and use in source and binary forms, with or without modification, are permitted provided that the following conditions are met:

"Redistributions of source code must retain the above copyright notice, this list of conditions and the following disclaimer.

"Redistributions in binary form must reproduce the above copyright notice, this list of conditions and the following disclaimer in the documentation and/or other materials provided with the distribution.

"Neither the name of the <ORGANIZATION> nor the names of its contributors may be used to endorse or promote products derived from this software without specific prior written permission.

THIS SOFTWARE IS PROVIDED BY THE COPYRIGHT HOLDERS AND CONTRIBUTORS "AS IS" AND ANY EXPRESS OR IMPLIED WARRANTIES, INCLUDING, BUT NOT LIMITED TO, THE IMPLIED WARRANTIES OF MERCHANTABILITY AND FITNESS FOR A PARTICULAR PURPOSE ARE DISCLAIMED. IN NO EVENT SHALL THE COPYRIGHT OWNER OR CONTRIBUTORS BE LIABLE FOR ANY DIRECT, INDIRECT, INCIDENTAL, SPECIAL, EXEMPLARY, OR CONSEQUENTIAL DAMAGES (INCLUDING, BUT NOT LIMITED TO, PROCUREMENT OF SUBSTITUTE GOODS OR SERVICES; LOSS OF USE, DATA, OR PROFITS; OR BUSINESS INTERRUPTION) HOWEVER CAUSED AND ON ANY THEORY OF LIABILITY, WHETHER IN CONTRACT, STRICT LIABILITY, OR TORT (INCLUDING NEGLIGENCE OR OTHERWISE) ARISING IN ANY WAY OUT OF THE USE OF THIS SOFTWARE, EVEN IF ADVISED OF THE POSSIBILITY OF SUCH DAMAGE.

GENERAL MIT LICENSE

Copyright (c) 1998, Regents of the Massachusetts Institute of Technology

Permission is hereby granted, free of charge, to any person obtaining a copy of this software and associated documentation files (the "Software"), to deal in the Software without restriction, including without limitation the rights to use, copy, modify, merge, publish, distribute, sublicense, and/or sell copies of the Software, and to permit persons to whom the Software is furnished to do so, subject to the following conditions:

The above copyright notice and this permission notice shall be included in all copies or substantial portions of the Software.

THE SOFTWARE IS PROVIDED "AS IS", WITHOUT WARRANTY OF ANY KIND, EXPRESS OR IMPLIED, INCLUDING BUT NOT LIMITED TO THE WARRANTIES OF MERCHANTABILITY, FITNESS FOR A PARTICULAR PURPOSE AND NONINFRINGEMENT. IN NO EVENT SHALL THE AUTHORS OR COPYRIGHT HOLDERS BE LIABLE FOR ANY CLAIM, DAMAGES OR OTHER LIABILITY, WHETHER IN AN ACTION OF CONTRACT, TORT OR OTHERWISE, ARISING FROM, OUT OF OR IN CONNECTION WITH THE SOFTWARE OR THE USE OR OTHER DEALINGS IN THE SOFTWARE.

UNICODE LICENSE

UNICODE, INC. LICENSE AGREEMENT - DATA FILES AND SOFTWARE

Unicode Data Files include all data files under the directories <http://www.unicode.org/Public/>, <http://www.unicode.org/reports/>, and <http://www.unicode.org/cldr/data/> . Unicode Software includes any source code published in the Unicode Standard or under the directories <http://www.unicode.org/Public/>, <http://www.unicode.org/reports/>, and <http://www.unicode.org/cldr/data/>.

NOTICE TO USER: Carefully read the following legal agreement. BY DOWNLOADING, INSTALLING, COPYING OR OTHERWISE USING UNICODE INC.'S DATA FILES ("DATA FILES"), AND/OR SOFTWARE ("SOFTWARE"), YOU UNEQUIVOCALLY ACCEPT, AND AGREE TO BE BOUND BY, ALL OF THE TERMS AND CONDITIONS OF THIS AGREEMENT. IF YOU DO NOT AGREE, DO NOT DOWNLOAD, INSTALL, COPY, DISTRIBUTE OR USE THE DATA FILES OR SOFTWARE.

COPYRIGHT AND PERMISSION NOTICE

Copyright © 1991-2006 Unicode, Inc. All rights reserved. Distributed under the Terms of Use in <http://www.unicode.org/copyright.html>.

Permission is hereby granted, free of charge, to any person obtaining a copy of the Unicode data files and any associated documentation (the "Data Files") or Unicode software and any associated documentation (the "Software") to deal in the Data Files or Software without restriction, including without limitation the rights to use, copy, modify, merge, publish, distribute, and/or sell copies of the Data Files or Software, and to permit persons to whom the Data Files or Software are furnished to do so, provided that (a) the above copyright notice(s) and this permission notice appear with all copies of the Data Files or Software, (b) both the above copyright notice(s) and this permission notice appear in associated documentation, and (c) there is clear notice in each modified Data File or in the Software as well as in the documentation associated with the Data File(s) or Software that the data or software has been modified.

THE DATA FILES AND SOFTWARE ARE PROVIDED "AS IS", WITHOUT WARRANTY OF ANY KIND, EXPRESS OR IMPLIED, INCLUDING BUT NOT LIMITED TO THE WARRANTIES OF MERCHANTABILITY, FITNESS FOR A PARTICULAR PURPOSE AND NONINFRINGEMENT OF THIRD PARTY RIGHTS. IN NO EVENT SHALL THE COPYRIGHT HOLDER OR HOLDERS INCLUDED IN THIS NOTICE BE LIABLE FOR ANY CLAIM, OR ANY SPECIAL INDIRECT OR CONSEQUENTIAL DAMAGES, OR ANY DAMAGES WHATSOEVER RESULTING FROM LOSS OF USE, DATA OR PROFITS, WHETHER IN AN ACTION OF CONTRACT, NEGLIGENCE OR OTHER TORTIOUS ACTION, ARISING OUT OF OR IN CONNECTION WITH THE USE OR PERFORMANCE OF THE DATA FILES OR SOFTWARE.

Except as contained in this notice, the name of a copyright holder shall not be used in advertising or otherwise to promote the sale, use or other dealings in these Data Files or Software without prior written authorization of the copyright holder.

Unicode and the Unicode logo are trademarks of Unicode, Inc., and may be registered in some jurisdictions. All other trademarks and registered trademarks mentioned herein are the property of their respective owners

MISCELLANEOUS ATTRIBUTIONS

Adobe, Acrobat, and the Acrobat Logo are registered trademarks of Adobe Systems Incorporated.

FAST Instream is a trademark of Fast Search and Transfer ASA.

HP-UX is a registered trademark of Hewlett-Packard Company.

IBM, Informix, and DB2 are registered trademarks of IBM Corporation.

Jaws PDF Library is a registered trademark of Global Graphics Software Ltd.

Kofax is a registered trademark, and Ascent and Ascent Capture are trademarks of Kofax Image Products.

Linux is a registered trademark of Linus Torvalds.

Mac is a registered trademark, and Safari is a trademark of Apple Computer, Inc.

Microsoft, Windows, and Internet Explorer are registered trademarks of Microsoft Corporation.

MrSID is property of LizardTech, Inc. It is protected by U.S. Patent No. 5,710,835. Foreign Patents Pending.

Oracle is a registered trademark of Oracle Corporation.

Portions Copyright © 1994-1997 LEAD Technologies, Inc. All rights reserved.

Portions Copyright © 1990-1998 Handmade Software, Inc. All rights reserved.

Portions Copyright © 1988, 1997 Aladdin Enterprises. All rights reserved.

Third Party Licenses

Portions Copyright © 1997 Soft Horizons. All rights reserved.

Portions Copyright © 1995-1999 LizardTech, Inc. All rights reserved.

Red Hat is a registered trademark of Red Hat, Inc.

Sun is a registered trademark, and Sun ONE, Solaris, iPlanet and Java are trademarks of Sun Microsystems, Inc.

Sybase is a registered trademark of Sybase, Inc.

UNIX is a registered trademark of The Open Group.

Verity is a registered trademark of Autonomy Corporation plc

Index



A

adding a reference page, 1-14
application options, 1-5

C

considerations, 1-17

E

Element Setup property sheet, 1-5
entering the WML mode, 1-2

F

file size, 1-11
Formatting property sheet, 1-6

G

globals, 1-10

N

navigation, 1-8
new WML project, 1-2

O

options, 1-5

P

project options, 1-5
property sheets
 Formatting, 1-6

R

reference page, 1-14

S

setup of elements, 1-5
starting a new WML project, 1-2

T

translating a WML project, 1-13

W

WML file size, 1-11
WML mode, 1-2
WML projects, 1-1
 starting new --, 1-2

