

# Oracle® Enterprise Manager Ops Center

Quick Start Guide

11g Release 1 (11.1.3.0.0)

E24504-02

November 2011

---

Oracle Enterprise Manager Ops Center is an enterprise-level data center automation software tool. This guide walks you through how to quickly install and configure the software for a basic monitoring setup. After it is configured, you'll be able to add assets for monitoring and edit monitoring rules to generate an alert.

For an overview of the software and features, see the Oracle Enterprise Manager Ops Center Concepts Guide.

## Get Ready

Many configurations are possible, but we've simplified it for a quick start.

You can install Oracle Enterprise Manager Ops Center on an Oracle Solaris or Linux operating system. We have a lightweight utility, called the OCDDoctor, that verifies that your system meets the requirements to successfully install and run the software.

## What You'll Need

You'll need the following:

1. A system to run the software:
  - SPARC or x86 platform that is running a supported Oracle or Linux OS, such as Oracle Solaris 10 9/10 or Oracle Linux 5.5
  - 72 GB of disk space
  - 6 GB Swap Space
  - Root access
  - Make a /var/tmp/OC directory
2. One or more systems to monitor:
  - Root access to a SPARC or x86 platform that is running a recent operating system version, such as Oracle Solaris 10 or Linux 5.5
  - System should be a newer Oracle Sun server (at least 2006)
  - The ssh services are enabled on the OS and know the port number (the default is 22)
3. OCDDoctor utility to test for requirements
  - See [Run the OCDDoctor](#) for where to download the file.
4. The Oracle Enterprise Manager Ops Center 11g software

- See [Get the Software](#) for where to download the software bundle.

## Run the OCDoctor

The OCDoctor quickly identifies potential issues before you download and install the software. In some cases, it provides a fix.

To check the computer compatibility before downloading the software:

1. Go to <http://java.net/projects/oc-doctor> and download the OCDoctor to /var/tmp/OC on the system.
2. Unzip the file and run the utility with the --ec-prereq option.  
./OCDoctor.sh --ec-prereq

```
# cd OCDoctor
# ls
AUTHORS          OCDoctor.sh      pis              tuning
CHANGELOG        agent            post-upgrade.sh version
Debug.nfo        cli              pre-upgrade.sh  whatisblobid
GDD              ec               prereq
LICENSE.txt      functions        proxy
Manifest.txt     howto            toolbox
# ./OCDoctor.sh --ec-prereq
```

The utility checks for conditions and returns an OK or Warning.

3. If you receive any warnings, fix them before installing the software.

For example, a warning appears if you use NIS and you already have a groupip 60 in your NIS group. To temporarily bypass, comment out the NIS entries during the installation.

```
passwd:      files # nis
group:       files # nis
```

## Get the Software

The software bundle is approximately 2.4 GB.

1. Go to <http://www.oracle.com/technetwork/oem/ops-center/oem-ops-center-188778.html>. Read and accept the license at the top of the page.
2. Download the Enterprise Controller for your OS platform.

### Enterprise Manager Ops Center 11g Release 1 (11.1.0.1536)

#### Full Installers

(Enterprise Controller and all supported Agent and Proxy Controllers) FOR New Ops Center Customers and 2.5 Ops Center Customers

#### for Solaris Operating System 10 (SPARC)

[Enterprise Controller](#) and all supported Agent and Proxy Controllers  
[Proxy Controllers](#)

#### for Solaris Operating System 10 (x86)

[Enterprise Controller](#) and all supported Agent and Proxy Controllers  
[Proxy Controllers](#)

3. Save the bundle in /var/tmp/OC on the system and unzip it.

## Install and Configure the Software

The software is easy to install, just launch the script. Once installed, open the application in a browser and answer the configuration questions about how you want to run the software, then you're ready to start adding assets to monitor.

You'll be asked to provide a My Oracle Support (MOS) account during setup. The account is needed to register the software with Oracle, to obtain OS updates, and to file service requests through the software. We'll skip these steps because the account is not required for installation or basic monitoring. If you'd like, you can register and provide a MOS account later in the UI.

### Install

1. Go to `/var/tmp/OC/xvmoc_full_bundle` and run the install script.

```
# ./install
```

2. Press Enter to skip this step. You do not need to enter your e-mail address or My Oracle Support (MOS) credentials to register for this basic installation.

```
# cd xvmoc_full_bundle
# ls
install      Linux_i686   SunOS_i386   xvmoc_update_bundle
license      ocasm        SunOS_sparc
# ./install

Proceeding with Oracle Configuration Manager installation and configuration.

Oracle Enterprise Manager Ops Center installation will follow.
Provide your email address to be informed of security issues, install and
initiate Oracle Configuration Manager. Easier for you if you use your My
Oracle Support Email address/User Name.
Visit http://www.oracle.com/support/policies.html for details.
Email address/User Name: 
```

3. A notice stating that you have not provided an e-mail address for notification of security issues appears. When asked if you want to remain uninformed of security issues, answer Y

Do you wish to remain uninformed of security issues ([Y]es, [N]o) [N]: Y

The script takes about 15 minutes to run. When completed, you'll be asked to log in to the software from a browser window. See Step 1 in [Configure](#).

Ops Center Enterprise Controller Installer  
(version 11.1.0.1536 on SunOS)

1. Check for installation prerequisites.	[Completed]
6. Install prerequisite packages.	[Completed]
7. Install application packages.	[Completed]
8. Run postinstall tasks.	[Completed]
9. Install Expect.	[Completed]
10. Install IPMI tool.	[Completed]
11. Initialize database.	[Completed]
12. Install Service container components.	[Completed]
13. Install Core Channel components.	[Completed]
14. Install Proxy Core components.	[Completed]
15. Install Enterprise Controller components.	[Completed]
16. Install Update Connection - Enterprise.	[Completed]
17. Install Ops Center BUI components.	[Completed]
18. Install OS provisioning components.	[Completed]
19. Initialize and start services.	[Completed]

Ops Center Enterprise Controller installation is complete.

Please point your browser to:

<http://ocbrm-ips13>

to begin using Ops Center Enterprise Controller.

## Configure

Log into the system and the Configuration wizard will take you through the steps to configure the software. The number of steps changes based on your answers. We will skip a number of the more complex configuration options.

1. Go to `https://system-name` and log in as root.
2. The first two steps provide an overview, click **Next** to skip Steps 1 and 2. On Step 3, change the host name from the IP address to the system name, add a description, then click **Next**.

Oracle Enterprise Manager Ops Center - Oracle Enterprise Manager Ops Center Configuration

## Oracle Enterprise Manager Ops Center Configuration

**Steps** Help

1. Introduction
2. Terminology
- 3. Configuration**
4. Deployment Scenarios
5. Deployment Scenarios (Cont.)
6. Choose Deployment
7. Registration
8. Services
9. Summary

The following information describes the Oracle Enterprise Manager Ops Center Enterprise Controller configuration. You can edit the fields.

**Name**

**Description**

**Hostname**

☐ Use an alternative user as Administrative User instead of the currently logged in privileged user. For user operations, Ops Center leverages the system's authentication domain.

**Administrative User**

**Password**

If you require an HTTP proxy for the Enterprise Controller to access the Internet, enter the proxy details.

**Server**

**Port**

**Authorized user name, if the proxy requires authentication**

**User**

**Password**

< Back Next > Cancel

3. Several steps provide an overview of the deployment options. Click Next to skip those steps. On the Choose Deployment step, select the Simple Deployment option.

Oracle Enterprise Manager Ops Center - Oracle Enterprise Manager Ops Center Configuration

## Oracle Enterprise Manager Ops Center Configuration

**Steps** Help

1. Introduction
2. Terminology
3. Configuration
4. Deployment Scenarios
5. Deployment Scenarios (Cont.)
- 6. Choose Deployment**
7. Registration
8. Services
9. Summary

### Choose Deployment

What type of Oracle Enterprise Manager Ops Center deployment do you want to implement?

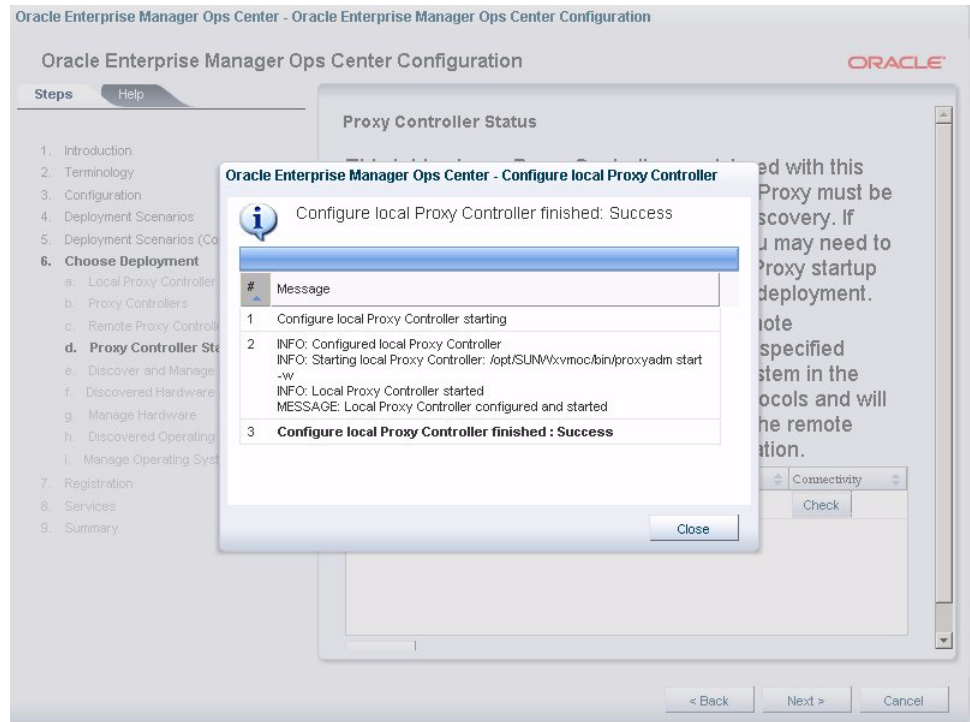
☒ A simple deployment involving managed systems connected through the network to this system running Oracle Enterprise Manager Ops Center.

☐ An advanced deployment involving managed systems secured in a different network that will require one or more remote Proxy Controllers. Also, if your environment involves greater than 250 managed system, an advanced deployment is recommended.

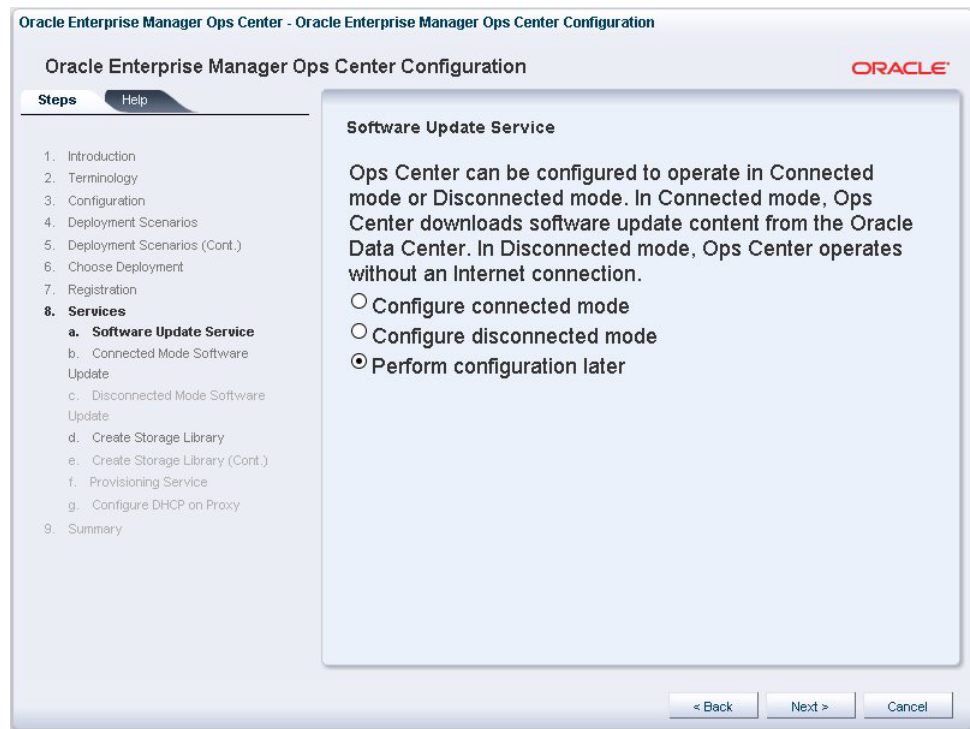
☐ You are familiar with Oracle Enterprise Manager Ops Center deployment and will perform the necessary steps outside of this wizard.

< Back Next > Cancel

4. Close the window when the Proxy Controller configuration is finished.



5. Select **Discover/Manage Systems Later**.
6. Skip the Software Update Service configuration by selecting **Perform configuration later**.



7. Skip the Storage Library step by selecting **Configure library later.**

The screenshot shows the 'Oracle Enterprise Manager Ops Center Configuration' window. On the left, a 'Steps' sidebar lists the configuration process from 1 to 9. Step 8, 'Services', is expanded, and step 8.d, 'Create Storage Library', is the current step. The main area is titled 'Create Storage Library' and contains a text box explaining that a library can be created on the Enterprise Controller or existing NFS storage. Below this, there are two radio button options: 'Configure library now.' and 'Configure library later.', with the latter being selected. At the bottom right, there are three buttons: '< Back', 'Next >', and 'Cancel'.

Oracle Enterprise Manager Ops Center - Oracle Enterprise Manager Ops Center Configuration

Oracle Enterprise Manager Ops Center Configuration

Steps Help

- 1. Introduction
- 2. Terminology
- 3. Configuration
- 4. Deployment Scenarios
- 5. Deployment Scenarios (Cont.)
- 6. Choose Deployment
- 7. Registration
- 8. **Services**
  - a. Software Update Service
  - b. Connected Mode Software Update
  - c. Disconnected Mode Software Update
  - d. **Create Storage Library**
  - e. Create Storage Library (Cont.)
  - f. Provisioning Service
  - g. Configure DHCP on Proxy
- 9. Summary

**Create Storage Library**

You can create a library to store images on the Enterprise Controller or on existing NFS storage. If you create a library, it will be used as the default library for firmware image downloads.

☐ Configure library now.

☒ Configure library later.

< Back Next > Cancel

8. Skip the Provisioning Service step by selecting **Perform Configuration Later.**

The screenshot shows the 'Oracle Enterprise Manager Ops Center Configuration' window. On the left, the 'Steps' sidebar is the same as in the previous screenshot, but step 8.f, 'Provisioning Service', is now the current step. The main area is titled 'Provisioning Service' and contains a text box explaining that to perform OS provisioning, DHCP and subnets must be configured on proxy controllers. Below this, there are two radio button options: 'Perform configuration now.' and 'Perform configuration later, via Ops Center Administration section.', with the latter being selected. At the bottom right, there are three buttons: '< Back', 'Next >', and 'Cancel'.

Oracle Enterprise Manager Ops Center - Oracle Enterprise Manager Ops Center Configuration

Oracle Enterprise Manager Ops Center Configuration

Steps Help

- 1. Introduction
- 2. Terminology
- 3. Configuration
- 4. Deployment Scenarios
- 5. Deployment Scenarios (Cont.)
- 6. Choose Deployment
- 7. Registration
- 8. **Services**
  - a. Software Update Service
  - b. Connected Mode Software Update
  - c. Disconnected Mode Software Update
  - d. Create Storage Library
  - e. Create Storage Library (Cont.)
  - f. **Provisioning Service**
  - g. Configure DHCP on Proxy
- 9. Summary

**Provisioning Service**

In order to perform OS provisioning you will need to configure DHCP and the subnets on your Proxy Controllers. If you have more than one Proxy you will be able to repeat this configuration for each.

☐ Perform configuration now.

☒ Perform configuration later, via Ops Center Administration section.

< Back Next > Cancel

9. Click **Finish.**

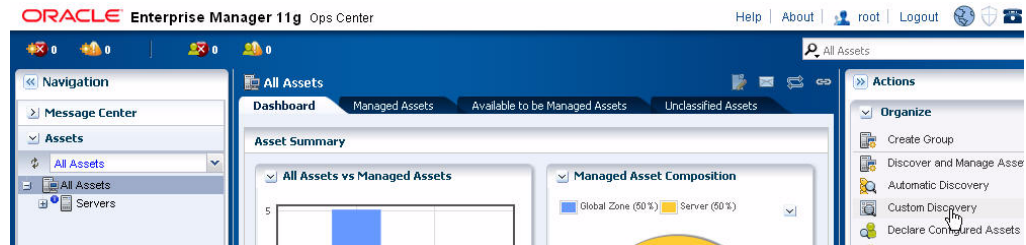


Congratulations! You've completed the installation and configuration. You can now add your systems to the UI and begin monitoring them.

## Add Assets

Several methods are available to add systems, or assets, to the UI. Because we're only adding a few assets, we'll use the Custom Discovery method. Once discovered, we will manage the OS assets to enable monitoring.

1. Click **Assets** in the Navigation pane, then click **Custom Discovery** in the Actions pane.



2. Click the **New Criteria** icon.



- a. Type one or more IP addresses or host names and select **All** in the search.

**Specify Asset Discovery Criteria**

Save Cancel

Targeted Proxy Controller: Automatic

IP Addresses, IP Ranges, or Subnets (separate by commas):

Host Names (separate by commas): ocbrm-ipgs14, ocbrm-ipgs15

Service Tag Optional Controls: Passphrase: Port: Time Out (s):

In addition, Search For Type: All

- b. Enter the SSH root credentials. Click **Save**.



**Specify Asset Discovery Criteria**

Save Cancel

In addition, Search For Type:

All

☐ Also use default credentials

**WARNING:** If performing discovery through operating systems via a multiple login attempts to the same system as the non-privileged user may result in account lock-out if the password is not valid.

Protocol: ☒ SSH Login User: root Password:

SSH Port: 22

### 3. Click Discover Assets.

**Oracle Enterprise Manager Ops Center - Custom Asset Discovery**

You can discover assets by using IP addresses, IP ranges, or subnets. Select the checkbox to save the search criteria for future use. To add assets to the Asset panel, click the Available to Be Managed Asset tab, select the assets, then click the Manage Assets icon.

**Custom Asset Criteria Table**

Criteria Name	IP Addresses	Hostnames	Discovery Criteria Summary
ipgs14		ocbrm-ipgs14, ocbrm-ipgs15	SVCTAG ; SSH=root
		ocbrm-ipgs14	SVCTAG ; SSH=root

**Specify Asset Discovery Criteria**

Save Cancel

Service Tag Optional Controls: Passphrase: Port: Time Out (s):

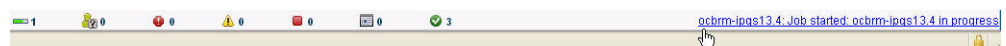
In addition, Search For Type:

☐ Also use default credentials

**WARNING:** If performing discovery through operating systems via a non-privileged user and privileged role, then this may result in multiple login attempts to the same system as the non-privileged user, which, depending upon system administration policies, may result in account lock-out if the password is not valid.

Discover Assets Cancel

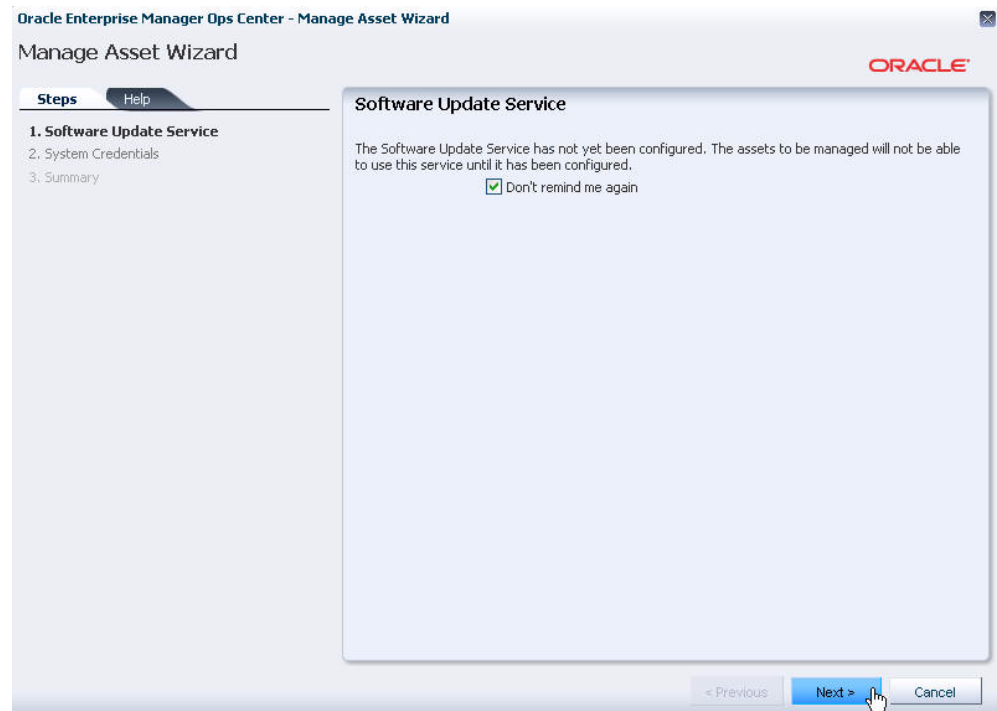
A job is started to locate the asset. The job bar is at the bottom of the page. The status is in the lower left corner.



### 4. When the discovery job completes, click the **Available to be Managed Assets** tab. Select one or more assets, then click the check mark icon to install the Agent.



5. Click through the Manage Asset Wizard.



Oracle Enterprise Manager Ops Center - Manage Asset Wizard

## Manage Asset Wizard

**Steps** Help

1. Software Update Service
- 2. System Credentials**
3. Summary

**System Credentials** \* Indicates Required Field

This wizard collects credentials for the asset you want to manage. Privileged credentials are necessary to provision agency to the remote operating systems. Any non-operating system asset you selected will not require credentials.

☒ Re-use SSH credentials used during discovery for all systems listed. (credentials expire 1 hour after discovery)
   
☐ Use the same SSH credentials for all systems listed.
   
☐ Use individual SSH credentials for all systems listed.

Operating System Assets		
Asset Name	SSH Username	SSH Password
ocbrm-ipgs15		

< Previous **Next >** Cancel

Oracle Enterprise Manager Ops Center - Manage Asset Wizard

## Manage Asset Wizard

**Steps** Help

1. Software Update Service
2. System Credentials
- 3. Summary**

**Summary**

Click "Finish" to manage the selected assets.

Asset Name	Product Name
ocbrm-ipgs15	Solaris 10 Operating System
ocbrm-ipgs15	Sun Fire X4100 M2 Server

< Previous **Finish** Cancel

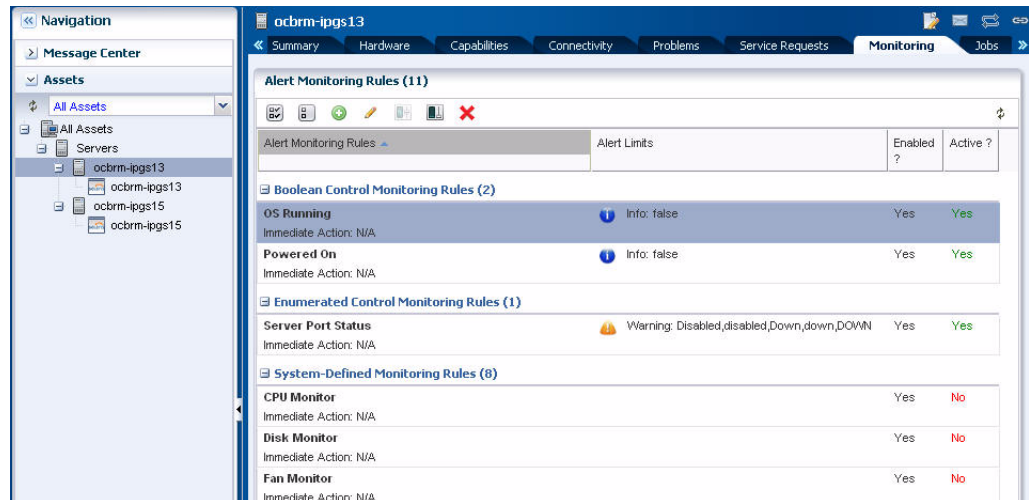
## Monitoring

The software has a set of default monitoring rules for many types of assets. When you discover and manage an asset, such as an OS or system, the software begins monitoring the status based on the default rules.

## How Does Monitoring Work?

Many assets have a default monitoring profile. Different types of monitoring profiles are available, depending on the asset type. Some profiles contain individual monitoring rules, thresholds and alert levels. These alert levels are editable for Critical, Warning, and Informational problem notification. Some profiles, such as system-defined rules, are not editable but you can disable them. You can customize the alerts and monitoring profiles for each asset or group of assets.

To view or edit the default monitoring rules for an asset, click a managed asset from the Assets tree in the Navigation pane, then click the Monitoring tab in the center pane.



The icons at the top of the center pane enable you to add, edit, enable, disable, or delete rules.

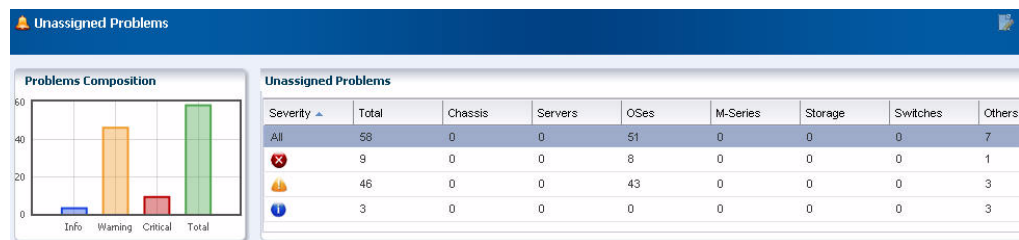
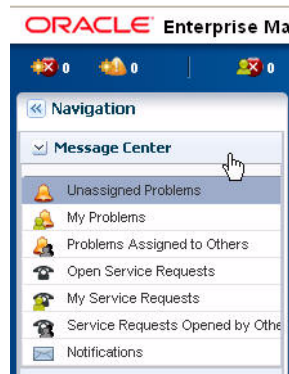
When an asset first meets or exceeds a monitoring threshold or state, an alert and a problem are generated. Subsequent alerts are aggregated under the existing problem.

## How do I Create an Alert and Problem

An easy way to generate an alert and problem is to shutdown a monitored system. The shutdown generates a critical status alert. The System Down problem appears in the Message Center and a red warning badge appears next to the asset in the Asset tree to indicate that there is a critical problem.

## How do I View and Assign Problems?

When a problem is generated, a severity status badge appears next to the asset in the Asset tree. You can see a list of All Problems in the Message Center.



You can also see problems and the associated alerts for each asset in the Problems tab. For more about viewing and managing problems, see the *Oracle Enterprise Manager Ops Center User's Guide* and *Oracle Enterprise Manager Ops Center Advanced User's Guide* at [http://download.oracle.com/docs/cd/E11857\\_01/nav/management.htm](http://download.oracle.com/docs/cd/E11857_01/nav/management.htm).

## Where Do I Go From Here?

For more details on these and other features, see the Oracle Enterprise Manager Ops user documentation. For a more complex installation, see the Site Preparation Guide and Installation Guides. The documentation is available at [http://download.oracle.com/docs/cd/E11857\\_01/nav/management.htm](http://download.oracle.com/docs/cd/E11857_01/nav/management.htm) or from the Help link in the user interface (UI).

Your comments and suggestions are welcome. Please send your feedback to [oc-writers-direct-reports\\_ww@oracle.com](mailto:oc-writers-direct-reports_ww@oracle.com).

## Join the Community

The Oracle Enterprise Manager Ops Center community is a collaborative space to view, ask, and answer questions related to the Oracle Enterprise Manager Ops Center software. Everyone is invited to use the community and add to the knowledgebase.

Join the community at

[https://communities.oracle.com/portal/server.pt/community/oracle\\_enterprise\\_manager\\_ops\\_center](https://communities.oracle.com/portal/server.pt/community/oracle_enterprise_manager_ops_center).

## Documentation Accessibility

For information about Oracle's commitment to accessibility, visit the Oracle Accessibility Program website at

<http://www.oracle.com/pls/topic/lookup?ctx=acc&id=docacc>.

## Access to Oracle Support

Oracle customers have access to electronic support through My Oracle Support. For information, visit <http://www.oracle.com/pls/topic/lookup?ctx=acc&id=info> or visit <http://www.oracle.com/pls/topic/lookup?ctx=acc&id=trs> if you are hearing impaired.

---

Oracle Enterprise Manager Ops Center Quick Start Guide, 11g Release 1 (11.1.3.0.0) <no value>  
E24504-02

Copyright © 2007, 2011, Oracle and/or its affiliates. All rights reserved.

This software and related documentation are provided under a license agreement containing restrictions on use and disclosure and are protected by intellectual property laws. Except as expressly permitted in your license agreement or allowed by law, you may not use, copy, reproduce, translate, broadcast, modify, license, transmit, distribute, exhibit, perform, publish, or display any part, in any form, or by any means. Reverse engineering, disassembly, or decompilation of this software, unless required by law for interoperability, is prohibited.

The information contained herein is subject to change without notice and is not warranted to be error-free. If you find any errors, please report them to us in writing.

If this is software or related documentation that is delivered to the U.S. Government or anyone licensing it on behalf of the U.S. Government, the following notice is applicable:

U.S. GOVERNMENT RIGHTS Programs, software, databases, and related documentation and technical data delivered to U.S. Government customers are "commercial computer software" or "commercial technical data" pursuant to the applicable Federal Acquisition Regulation and agency-specific supplemental regulations. As such, the use, duplication, disclosure, modification, and adaptation shall be subject to the restrictions and license terms set forth in the applicable Government contract, and, to the extent applicable by the terms of the Government contract, the additional rights set forth in FAR 52.227-19, Commercial Computer Software License (December 2007). Oracle America, Inc., 500 Oracle Parkway, Redwood City, CA 94065.

This software or hardware is developed for general use in a variety of information management applications. It is not developed or intended for use in any inherently dangerous applications, including applications that may create a risk of personal injury. If you use this software or hardware in dangerous applications, then you shall be responsible to take all appropriate fail-safe, backup, redundancy, and other measures to ensure its safe use. Oracle Corporation and its affiliates disclaim any liability for any damages caused by use of this software or hardware in dangerous applications.

Oracle and Java are registered trademarks of Oracle and/or its affiliates. Other names may be trademarks of their respective owners.

Intel and Intel Xeon are trademarks or registered trademarks of Intel Corporation. All SPARC trademarks are used under license and are trademarks or registered trademarks of SPARC International, Inc. AMD, Opteron, the AMD logo, and the AMD Opteron logo are trademarks or registered trademarks of Advanced Micro Devices. UNIX is a registered trademark of The Open Group.

This software or hardware and documentation may provide access to or information on content, products, and services from third parties. Oracle Corporation and its affiliates are not responsible for and expressly disclaim all warranties of any kind with respect to third-party content, products, and services. Oracle Corporation and its affiliates will not be responsible for any loss, costs, or damages incurred due to your access to or use of third-party content, products, or services.