

SeeBeyond ICAN Suite

CA-Datacom eWay Intelligent Adapter User's Guide

Release 5.0.1



The information contained in this document is subject to change and is updated periodically to reflect changes to the applicable software. Although every effort has been made to ensure the accuracy of this document, SeeBeyond Technology Corporation (SeeBeyond) assumes no responsibility for any errors that may appear herein. The software described in this document is furnished under a License Agreement and may be used or copied only in accordance with the terms of such License Agreement. Printing, copying, or reproducing this document in any fashion is prohibited except in accordance with the License Agreement. The contents of this document are designated as being confidential and proprietary; are considered to be trade secrets of SeeBeyond; and may be used only in accordance with the License Agreement, as protected and enforceable by law. SeeBeyond assumes no responsibility for the use or reliability of its software on platforms that are not supported by SeeBeyond.

SeeBeyond, e*Gate, e*Way, and e*Xchange are the registered trademarks of SeeBeyond Technology Corporation in the United States and/or select foreign countries. The SeeBeyond logo, SeeBeyond Integrated Composite Application Network Suite, eGate, eWay, eInsight, eVision, eXchange, eView, eIndex, eTL, ePortal, eBAM, and e*Insight are trademarks of SeeBeyond Technology Corporation. The absence of a trademark from this list does not constitute a waiver of SeeBeyond Technology Corporation's intellectual property rights concerning that trademark. This document may contain references to other company, brand, and product names. These company, brand, and product names are used herein for identification purposes only and may be the trademarks of their respective owners.

© 2004 SeeBeyond Technology Corporation. All Rights Reserved. This work is protected as an unpublished work under the copyright laws.

This work is confidential and proprietary information of SeeBeyond and must be maintained in strict confidence.

Version November 18, 2004 5:48 am.

Contents

Chapter 1

Introduction	6
About the Datacom DBMS	6
About the Datacom eWay	7
Design Time	7
Run Time	7
What's New in This Release	8
About This Document	8
What's in This Document	9
Scope	9
Intended Audience	9
Document Conventions	10
Screenshots	10
Related Documents	10
SeeBeyond Web Site	10
SeeBeyond Documentation Feedback	11

Chapter 2

Installing the eWay	12
Supported Operating Systems	12
System Requirements	13
Logical Host Requirements	13
External System Requirements	13
Installation Overview	14
Installing the eXadas Data Integrator	14
Installing the Datacom eWay	14
Required Files	14
Sample Projects	15
Installing the eXadas DataMapper	15

Chapter 3

Setting Properties of Datacom eWay	17
Creating and Configuring an Datacom eWay	17
Configuring the eWay Connectivity Map Properties	18
Configuring the Outbound eWay Properties	19
ClassName	19
Description	20
InitialPoolSize	20
LoginTimeOut	20
MaxIdleTime	20
MaxPoolSize	20
MaxStatements	21
MinPoolSize	21
NetworkProtocol	21
PropertyCycle	21
RoleName	21
Configuring the Inbound eWay Properties	22
Pollmilliseconds	22
PreparedStatement	22
Configuring the Environment Properties	23
Outbound Datacom eWay Environment Properties	24
DatabaseName	24
DataSourceName	24
Delimiter	25
Description	25
DriverProperties	25
Password	25
PortNumber	25
ServerName	26
User	26
Inbound Datacom eWay Environment Properties	27
DatabaseName	27
Password	27
PortNumber	28
ServerName	28
User	28

Chapter 4

Using the OTD Database Wizard	29
Creating the OTD	29
Select Wizard Type	29
Connect to Database	31
Select Tables/Views	32
Add Prepared Statements	35
Specify the OTD Name	37

Chapter 5

Locating, Importing, and Using Sample Projects	39
Sample Project Overview	40
Locating and Importing the Sample Projects	40
Running Sample Projects	41
Setting the eWay Properties	41
Creating the Environment Profile	41
Deploying the Project	42
Running the Sample	42
Using the Sample Project in eInsight	42
The eInsight Engine and Components	42
The Datacom_BPELInbound_project Sample Project	43
The Datacom_BPELSelect_project Sample Project	44
Working with Other Business Process Activities	46
Using the Sample Project in eGate	48
Project Overview	48

Chapter 6

Using Datacom OTDs	50
Overview	50
Using Tables	51
Using the select Method	51
Select Operations	53
Insert Operations	55
Update Operations	58
Delete Operations	61
Using Views	61
Using Prepared Statements	62

Chapter 7

Using eWay Java Methods	66
Index	67

Introduction

This guide explains how to install, configure, and operate SeeBeyond Technology Corporation's™ CA-Datacom eWay Intelligent Adapter, referred to as the Datacom eWay throughout this document.

This chapter provides a brief overview of operations, components, general features, and system requirements of the Datacom eWay.

What's in This Chapter

- [About the Datacom DBMS](#) on page 6
- [About the Datacom eWay](#) on page 7
- [What's New in This Release](#) on page 8
- [About This Document](#) on page 8
- [Related Documents](#) on page 10
- [SeeBeyond Web Site](#) on page 10
- [SeeBeyond Documentation Feedback](#) on page 11

1.1 About the Datacom DBMS

The Advantage CA-Datacom/DB is a production-oriented, web-enabled DBMS that provides high performance multi-user capabilities for databases on OS/390 and z/OS. Datacom databases are accessible through programs written in COBOL, PL/I, Assembler and C.

Datacom supports multiple applications on multiple platforms. For example, browser based applications and Windows based applications can all access data in CA-Datacom databases.

Key features of Datacom include:

- Industry-leading online transaction performance
- Highly scalable
- Symmetrical Multiprocessing
- Multiple Access Methods (SQL, Navigational and Set Processing)
- Application Access From Windows, Unix, Linux, AIX, Sun Solaris, HP/UX and z/OS
- Row-Level Locking
- Integrated Data Dictionary
- Support for Open Systems Access via standard protocols such as ODBC and JDBC
- Data Integrity Management
- Logging and Recovery
- Interfaces to Standard Security Packages

Note: To find out more information about Datacom, go to <http://www3.ca.com>.

1.2 About the Datacom eWay

The Datacom eWay is an inbound/outbound adapter that enables data exchange between ICAN and the external Datacom database.

Design Time

During design-time, the Datacom eWay and other necessary design components such as Services, Topics, Queues, or External Files are displayed in the SeeBeyond Enterprise Designer as icons in a Connectivity Map. These components not only map the flow of data, but also provide access to many of the necessary configuration settings required to setup and optimize the data exchange. The Datacom eWay can exist within a BPEL based business process, or within a standard eGate or Java based Collaboration.

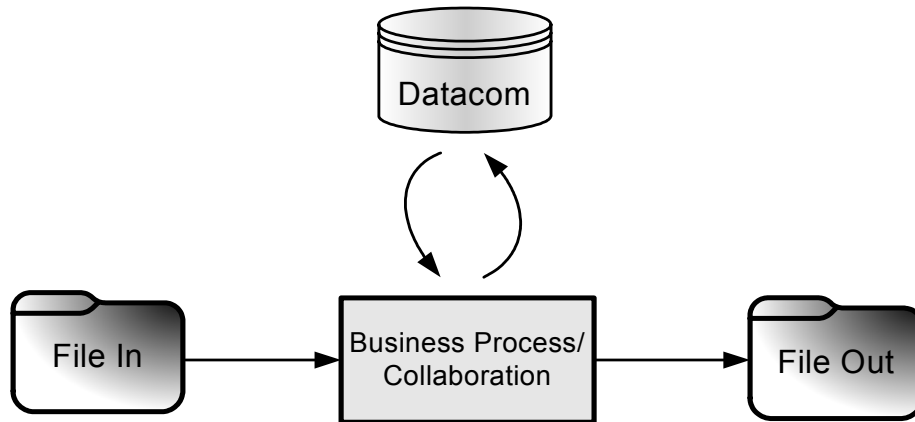
The type of data requested from a Datacom database depends largely on the OTDs created during design time. Database OTDs can specify the Tables or Views to query, or the type of data to gather using select procedures or prepared statements.

Run Time

During run-time, external data passes from an input file to the Business Process/ Collaboration where data transformation is performed. Depending on the web service operation implemented (insert, update, delete, select, etc...), the Datacom eWay then exchanges data with the Datacom database, and creates an output file.

Figure 1 shows an example of a data exchange with a Datacom database in a ICAN project.

Figure 1 Example Data Exchange



1.3 What's New in This Release

This release is supported on eGate 5.0.5.

1.4 About This Document

- [What's in This Document](#) on page 9
- [Scope](#) on page 9
- [Intended Audience](#) on page 9
- [Document Conventions](#) on page 10
- [Screenshots](#) on page 10

1.4.1 What's in This Document

This document includes the following chapters:

- **Chapter 1 “Introduction”** : Provides an overview description of the product as well as high-level information about this document.
- **Chapter 2 “Installing the eWay”** : Describes the system requirements and provides instructions for installing the eGate eWay.
- **Chapter 3 “Setting Properties of Datacom eWay”** : Provides instructions for configuring the eWay to communicate with Datacom DBMS.
- **Chapter 4 “Using the OTD Database Wizard”** : Provides instructions for creating Object Type Definitions to be used with the eGate eWay.
- **Chapter 5 “Locating, Importing, and Using Sample Projects”** : Provides instructions for installing and running the sample Projects.
- **Chapter 6 “Using Datacom OTDs”** : Provides instructions for performing common OTD operations for the Datacom eWay.
- **Chapter 7 “Using eWay Java Methods”** : Provides information about the Datacom eWay Javadocs.

1.4.2 Scope

This document describes the process of installing, configuring, and running the Datacom eWay.

This document does not cover the Java methods exposed by this eWay. For information on the Java methods, download and view the Datacom eWay Javadoc files from the Enterprise Manager.

1.4.3 Intended Audience

This guide is intended for experienced computer users who have the responsibility of helping to set up and maintain a fully functioning ICAN Suite system. This person must also understand any operating systems on which the ICAN Suite will be installed (Windows, UNIX, and/or HP NonStop Server), and must be thoroughly familiar with Windows-style GUI operations.

1.4.4 Document Conventions

The following conventions are observed throughout this document.

Table 1 Document Conventions

Text	Convention	Example
Names of buttons, files, icons, parameters, variables, methods, menus, and objects	Bold text	<ul style="list-style-type: none"> ▪ Click OK to save and close. ▪ From the File menu, select Exit. ▪ Select the logicalhost.exe file. ▪ Enter the timeout value. ▪ Use the getClassName() method. ▪ Configure the Inbound File eWay.
Command line arguments, code samples	Fixed font. Variables are shown in <i>bold italic</i> .	<code>bootstrap -p <i>password</i></code>
Hypertext links	Blue text	See " Document Conventions " on page 10
Hypertext links for Web addresses (URLs) or email addresses	Blue underlined text	http://www.seebeyond.com docfeedback@seebeyond.com

1.4.5 Screenshots

Depending on what products you have installed, and how they are configured, the screenshots in this document may differ from what you see on your system.

1.5 Related Documents

Many of the procedures included in this User's Guide are described in greater detail in the *eGate Integrator User's Guide*. Refer to the *SeeBeyond ICAN Suite Installation Guide* for complete eGate installation instructions.

1.6 SeeBeyond Web Site

The SeeBeyond Web site is your best source for up-to-the-minute product news and technical support information. The site's URL is:

<http://www.seebeyond.com>

1.7 SeeBeyond Documentation Feedback

We appreciate your feedback. Please send any comments or suggestions regarding this document to:

docfeedback@seebeyond.com

Installing the eWay

This chapter explains how to install the Datacom eWay.

What's in This Chapter

- [Supported Operating Systems](#) on page 12
- [System Requirements](#) on page 13
- [External System Requirements](#) on page 13
- [Installation Overview](#) on page 14
- [Installing the eXadas Data Integrator](#) on page 14
- [Installing the Datacom eWay](#) on page 14
- [Installing the eXadas DataMapper](#) on page 15

Open and review the **Readme.txt** file before installation, for any additional requirements. The **Readme.txt** file is located on the installation CD-ROM.

Note: See the *ICAN Installation Guide* for complete eGate installation instructions.

2.1 Supported Operating Systems

The Datacom eWay is available for the following operating systems:

- Windows Server 2003, Windows XP, and Windows 2000
- HP-UX 11.0, 11i (PA-RISC), and 11i v2.0 (11.23)
- IBM AIX 5.1L and 5.2
- Red Hat Linux 8 (Intel x86)
- Red Hat Enterprise Linux AS 2.1 (Intel x86)
- Sun Solaris 8 and 9

2.2 System Requirements

To use the Datacom eWay, you need the following:

- An eGate Logical Host.
- A TCP/IP network connection.
- The eWay supports Datacom versions 9, 10, and 11.

Logical Host Requirements

To set up and run the Datacom eWay with the eGate Enterprise Designer, you need:

- Windows Server 2003, Windows XP, or Windows 2000; this is a requirement for the user interface.
- Microsoft Internet Explorer version 6.0 or later.
- TCP/IP network connection.

If the GUI host machine is executing the Datacom eWay, then that machine must also meet the Logical Host requirements listed in the next section.

Note: You must configure and administer the eWay using the Enterprise Designer.

Web Services

To enable Web services, you must install and configure eInsight Business Process Manager. See the *eInsight Business Process Manager User's Guide* for details.

2.3 External System Requirements

This section lists the eWay's external system requirements.

Additional Windows/UNIX Requirements

To enable eGate Enterprise Designer's editors to communicate with the Datacom file system, you must install the following item on any host machines running the editors:

- CrossAccess eXadas DataMapper

For more information on this application, including installation serial numbers, see [Installing the eXadas DataMapper](#) on page 15.

Note: The standard eGate and Datacom eWay installations automatically installs the CrossAccess JDBC driver for you.

z/OS External Requirements

- CrossAccess eXadas Data Integrator, version 3.0, installed via a 3480 cartridge tape
- The serial number for the installation, shipped with the tape

2.4 Installation Overview

This section provides a brief overview of the eWay's installation components and the order of their installation.

Note: The eXadas Data Integrator and the CrossAccess eXadas Data Integrator are shipped with the eWay, but you must install them separately.

You must install the Datacom eWay and its components in the following order:

- 1 CrossAccess eXadas Data Integrator
- 2 Datacom eWay
- 3 CrossAccess eXadas DataMapper

Note: Once the installation operation is complete, you may choose to pass a small amount of data to ensure a working connection.

2.5 Installing the eXadas Data Integrator

The eXadas Data Integrator installation must be configured for Datacom.

Complete details on how to install and configure the eXadas Data Integrator are located in the CrossAccess *eXadas Data Integrator, Getting Started* manual's mainframe installation chapter.

All eXadas software products, as well as additional information on each product, are available from the CrossAccess Corp. Visit their Web site at:

<http://www.crossaccess.com>

2.6 Installing the Datacom eWay

During the eGate Integrator installation process, the Enterprise Manager, a web-based application, is used to select and upload eWays (eWay.sar files) from the eGate installation CD-ROM to the Repository.

Required Files

Use Enterprise Manager to upload the **eGate.sar** file, then select and upload the following files:

- ♦ **DatacomeWay.sar** (to install the Datacom eWay)
- ♦ **FileeWay.sar** (to install the File eWay, used in the sample Project)
- ♦ **DatacomeWayDocs.sar** (to install the user guide and the sample Projects)

Sample Projects

The Datacom eWay also includes sample Projects for demonstration purposes.

To Download Sample Projects

- 1 In the Enterprise Manager, click the **DOCUMENTATION** tab.
- 2 Click **Datacom eWay**.
- 3 In the right window pane, click **Download Sample**, and select a location to save the .zip file.

Additional information about importing and using sample Projects are found in [“Locating and Importing the Sample Projects” on page 40](#).

Refer to the *ICAN Installation Guide* for additional installation instructions.

2.7 Installing the eXadas DataMapper

This section describes installing eXadas DataMapper for Windows systems. This application must be installed on a Windows system.

Installing eXadas DataMapper

- 1 After installing the eWay, as explained in [Installing the Datacom eWay](#) on page 14, insert the CD-ROM provided for installing the eXadas DataMapper.
The installation process automatically begins, and the **Welcome** dialogue box appears.
- 2 Click **Next**.
The **eXadas DataMapper Registration** dialog box appears.
- 3 Using this dialog box, register the eXadas DataMapper. In the appropriate text box, you must enter the following serial number:
ex58dw43
- 4 Click **Next**.
- 5 A dialog box appears asking you to confirm the information you just entered. Click **Yes**.
- 6 Follow the instructions on each wizard dialog box to complete the installation. When you are done with the final wizard, click **Finish** to complete the eWay installation.

The installation program returns you to the process explained under [Installing the Datacom eWay](#) on page 14.

The eXadas DataMapper installation has the following optional sets of files:

- **Program Files:** The executable files and run-time system for running DataMapper.
- **Help Files:** Make up the online Help system for DataMapper.
- **Sample Files:** Including sample COBOL Copybooks and IMS/DL/I DBDs and IDMS schemas and sub-schemas for testing DataMapper's features. CrossAccess recommends installing all three sets of files. The minimum requirement is installing the program files in option 1.

When installation is complete, a program group named eXadas is created in Windows. The group contains the program items for DataMapper, the DataMapper Help system, and the DataMapper **Readme.txt** file. To start DataMapper, double-click the mouse on the DataMapper icon in the eXadas program group.

Refer to the eXadas DataMapper documentation located on the eGate installation CD-ROM for further instructions.

Setting Properties of Datacom eWay

This chapter explains how to create and configure the Datacom eWay.

What's in This Chapter

- [Creating and Configuring an Datacom eWay](#) on page 17
- [Configuring the eWay Connectivity Map Properties](#) on page 18
- [Configuring the Environment Properties](#) on page 23

3.1 Creating and Configuring an Datacom eWay

All eWays contain a unique set of configuration parameters. After the eWays are established and an Datacom External System is created in the Project's Environment, the eWay parameters are modified for your specific system. The Datacom eWay configuration parameters are modified from two locations:

- From the **Connectivity Map** – which contains parameters specific to the Datacom eWay, and may vary from other eWays (of the same type) in the Project.
- From the **Environment Explorer tree** – which contains global parameters that commonly apply to all eWays in the Project. Saved parameters are shared by all eWays in the Datacom External System window.

Note: You must set the configuration parameters for the Datacom eWay in both locations.

3.2 Configuring the eWay Connectivity Map Properties

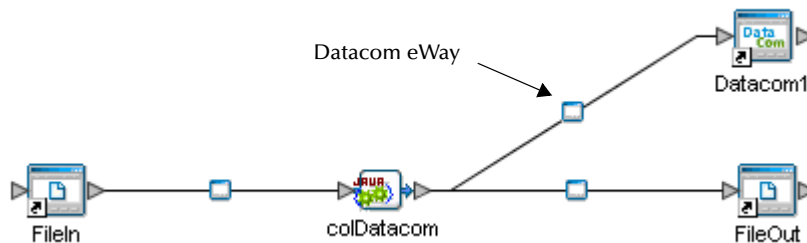
When you connect an external application with a Collaboration, Enterprise Designer automatically assigns an appropriate eWay to the link. Each eWay is supplied with a template containing the default configuration properties for the eWay.

- Outbound Datacom eWay
- Inbound Datacom eWay

To configure the eWay properties:

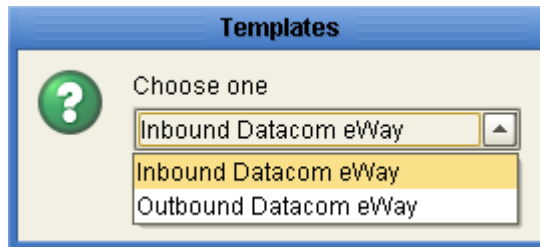
- 1 On the Enterprise Designer's Connectivity Map (see Figure 2), double-click the Datacom eWay icon. The Templates window appears.

Figure 2 Connectivity Map With Components



- 2 Select a parameter from the list and click OK.

Figure 3 Template window

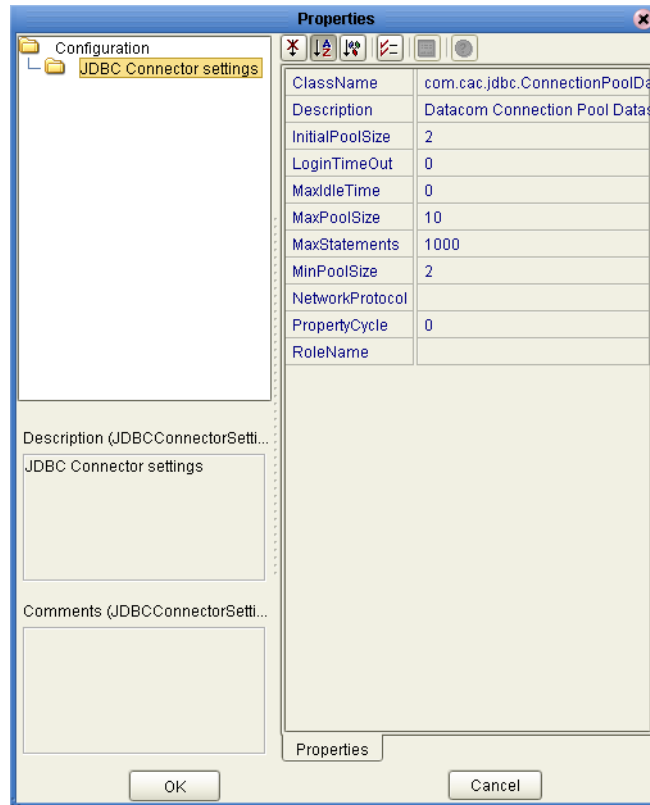


- 3 The Configuration properties window opens, displaying the default properties for the eWay (see Figure 4).

3.2.1 Configuring the Outbound eWay Properties

The Outbound eWay Properties include outbound parameters used by the external database.

Figure 4 Configuration Editor: Datacom outbound eWay



ClassName

Description

Specifies the Java class in the JDBC driver, which is used to implement the **ConnectionPoolDataSource** interface.

Required Values

A valid class name.

The default is **com.cac.jdbc.ConnectionPoolDataSource**.

Description

Description

Specifies a description for the database.

Required Values

A valid string.

The default is **Datacom Connection Pool Datasource**.

InitialPoolSize

Description

Specifies a number for the physical connections that the pool must contain when it is created.

Required Values

A valid numeric value.

The default is **2**.

LoginTimeOut

Description

Specifies the number of seconds the driver waits before attempting to log on to the database before timing out.

Required Values

A valid numeric value.

MaxIdleTime

Description

Specifies the maximum number of seconds that a physical connection can remain unused before it is closed. A 0 (zero) indicates there is no limit.

Required Values

A valid numeric value.

MaxPoolSize

Description

Specifies the maximum number of physical connections the pool must keep available at all times. A 0 (zero) indicates there is no maximum.

Required Values

A valid numeric value.

The default is **10**.

MaxStatements

Description

Specifies the maximum total number of statements the pool must keep open. A 0 (zero) indicates the caching of statements is disabled.

Required Values

A valid numeric value.

The default is **1000**.

MinPoolSize

Description

Specifies the minimum number of physical connections the pool must keep available at all times. A 0 (zero) indicates there are no physical connections in the pool, and the new connections are created as needed.

Required Values

A valid numeric value.

The default is **2**.

NetworkProtocol

Description

Specifies the network protocol used to communicate with the server.

Required Values

The network protocol (string).

PropertyCycle

Description

Specifies the interval, in seconds, which the pool waits before enforcing the current policy defined by the values of the other connection pool properties specified in the eWay's configuration.

Required Values

A valid numeric value.

RoleName

Description

Specifies an initial SQL role name.

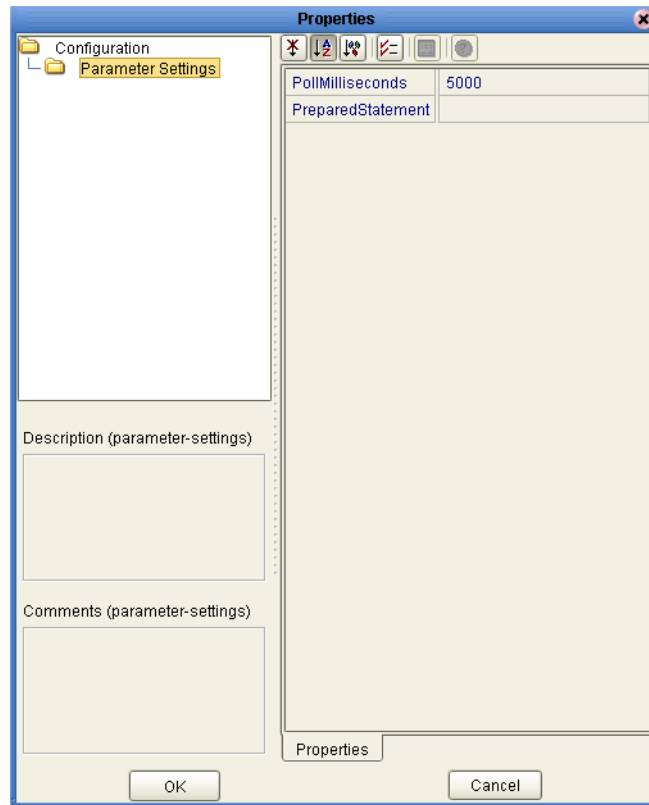
Required Values

a valid initial SQL role name (string).

3.2.2 Configuring the Inbound eWay Properties

The Inbound eWay Properties include outbound parameters used by the external database.

Figure 5 Configuration Editor: Datacom inbound eWay



Pollmilliseconds

Description

Polling interval in milliseconds.

Required Values

A valid numeric value. The default is **5000**.

PreparedStatement

Description

The PreparedStatement used for polling against the database.

Required Values

The PreparedStatement must be the same PreparedStatement you created using the Database OTD Wizard. Only a SELECT Statement is allowed. Additionally, no place holders can be specified. Do not use "?" in the Prepared Query.

3.3 Configuring the Environment Properties

The eWay Environment Configuration properties contain the parameters that define how the eWay connects to and interacts with other eGate components within the Environment.

Available External Systems include:

- Outbound Datacom eWay
- Inbound Datacom eWay

To Configure the Environment Properties:

- 1 In Enterprise Explorer, click the Environment Explorer tab.
- 2 Expand the Environment created for the Datacom Project and locate the Datacom External System.

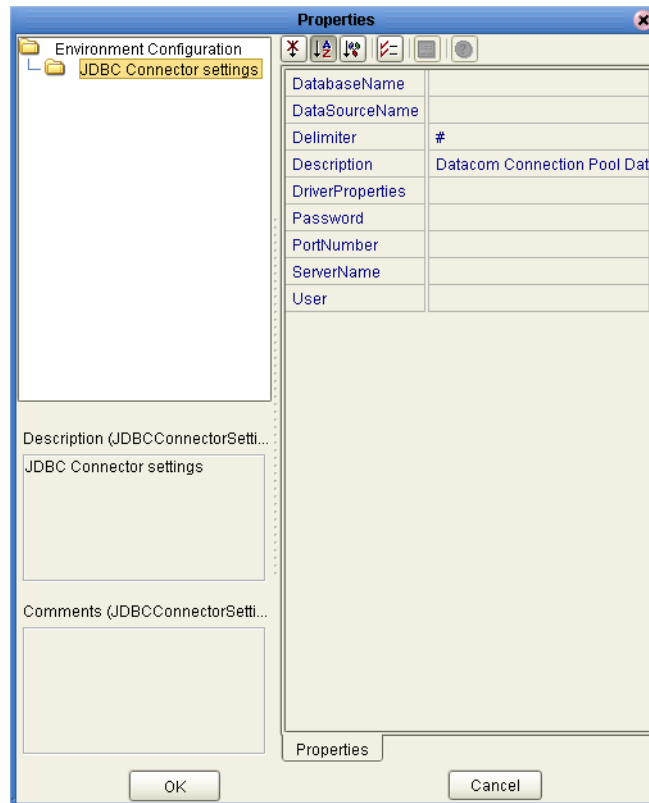
***Note:** For more information on creating an Environment, see the eGate Tutorial.*

- 3 Right-click the Datacom External System and select Properties from the list box. The Environment Configuration Properties window appears.
- 4 Click on any folder to display the default configuration properties for that section.
- 5 Click on any property field to make it editable.
- 6 After modifying the configuration properties, click **OK** to save the changes.

3.3.1 Outbound Datacom eWay Environment Properties

Before deploying your eWay, you will need to set the Environment properties. This section describes the External System properties used by the Inbound eWay.

Figure 6 Environment Configuration outbound properties



DatabaseName

Description

Specifies the name of the database instance.

Required Values

Any valid string.

DataSourceName

Description

Specifies the name of the **ConnectionPoolDataSource** object that the **DataSource** object delegates behind the scenes when connection pooling or distributed transaction management is being done.

Required Values

Optional. In most cases, leave this box empty.

Delimiter

Description

Specifies the delimiter character used in the DriverProperties prompt.

Required Value

The default is #.

Description

Description

Specifies a description for the database.

Required Values

A valid string.

DriverProperties

Description

Allows you to enter the properties for the driver you are using; this property is optional.

You can also use this property to change some driver parameters “on the fly” such as turning on a driver trace (a description box that identifies a driver).

Required Values

Any valid delimiter and/or method as follows:

- **Delimiter:** Valid delimiters are:

```
<method-name-1>#<param-1>#<param-2>##.....<param-n>##<method-  
name-2>#<param-1>#<param-2>#.....<param-n>##.....##
```

- **Method:** For example: to execute the method `setURL()`, give the following method a string for the URL:

```
setURL#<url>##
```

Password

Description

Specifies the password the eWay must use to access the database.

Required Values

A database user password (string).

PortNumber

Description

Specifies the input-output port number on which the server is listening for connection requests.

Required Values

A valid port number.

ServerName

Description

Specifies the host name of the external database server.

Required Values

A valid database server host name (string).

User

Description

Specifies the user name the eWay must use to access the database.

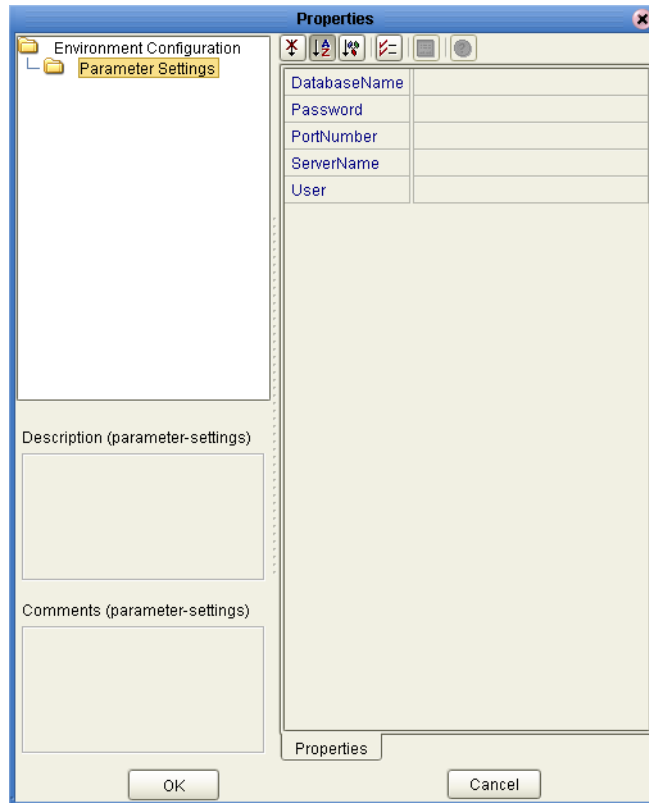
Required Values

A valid database user name (string).

3.3.2 Inbound Datacom eWay Environment Properties

Before deploying your eWay, you will need to set the Environment properties. This section describes the External System properties used by the Inbound eWay.

Figure 7 Environment Configuration outbound properties



DatabaseName

Description

Specifies the name of the database instance.

Required Values

Any valid string.

Password

Description

Specifies the password used to access the database.

Required Values

Any valid string.

PortNumber

Description

Specifies the input-output port number on which the server is listening for connection requests.

Required Values

A valid port number.

ServerName

Description

Specifies the host name of the external database server.

Required Values

Any valid string.

User

Description

Specifies the user name the eWay uses to connect to the database.

Required Values

Any valid string.

Using the OTD Database Wizard

This chapter describes how to build and use Object Type Definitions (OTDs) using the Datacom eWay Database Wizard.

What's in This Chapter

- [Creating the OTD](#) on page 29

4.1 Creating the OTD

OTDs contain the data structure and rules that define an object. The OTD Wizard creates OTDs based on any combination of Tables and Prepared SQL Statements.

Field nodes are added to the OTD based on the Tables in the external data source. Java method and parameter nodes are added to provide the appropriate JDBC functionality. For more information about the Java methods, refer to your JDBC developer's reference.

Note: Database OTDs are not messagable. For more information on messagable OTDs, see the eGate Integrator User's Guide.

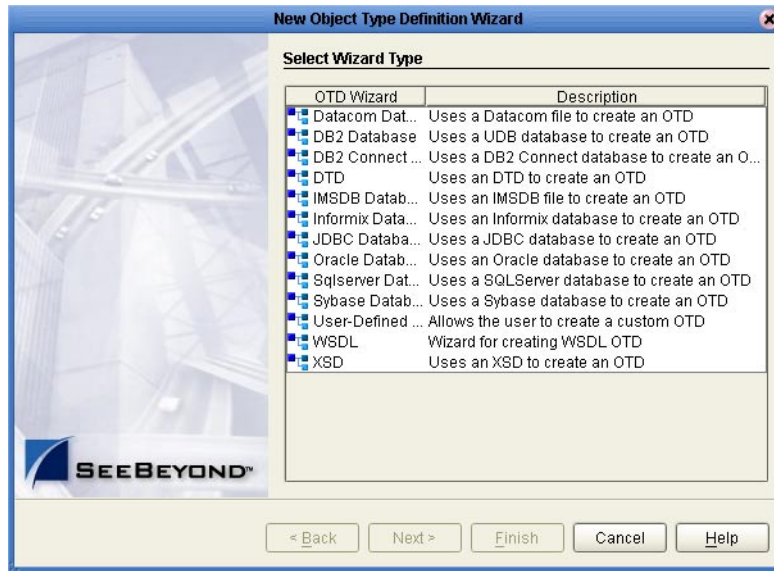
Steps required to create an OTD include:

- [Select Wizard Type](#) on page 29
- [Connect to Database](#) on page 31
- [Select Tables/Views](#) on page 32
- [Add Prepared Statements](#) on page 35
- [Specify the OTD Name](#) on page 37

Select Wizard Type

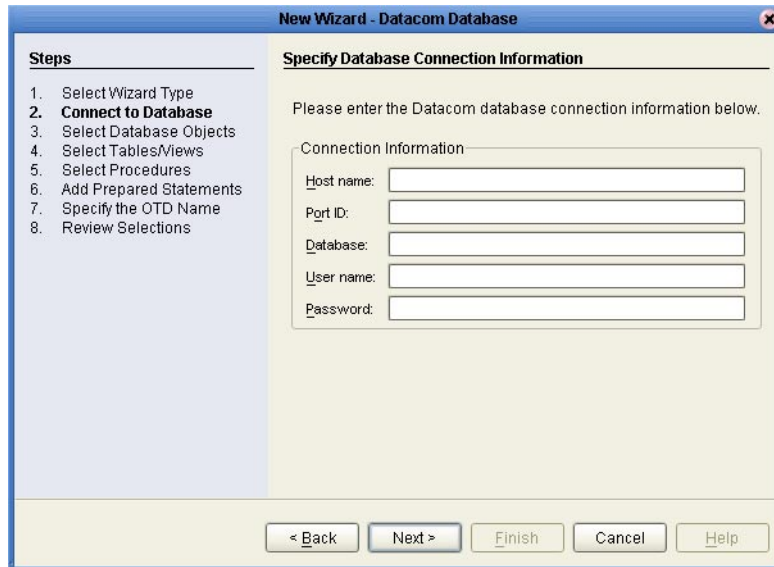
- 1 On the Enterprise Explorer, right click on the Project and select **New > Object Type Definition** from the menu.
- 2 The **Select Wizard Type** window appears, displaying the available OTD wizards. See [Figure 8 on page 30](#).

Figure 8 OTD Wizard Selection



- 3 From the list, select the **Datacom Database OTD** and click **Next**. The **Specify Database Connection Information** window appears.

Figure 9 Database Connection Information



Connect to Database

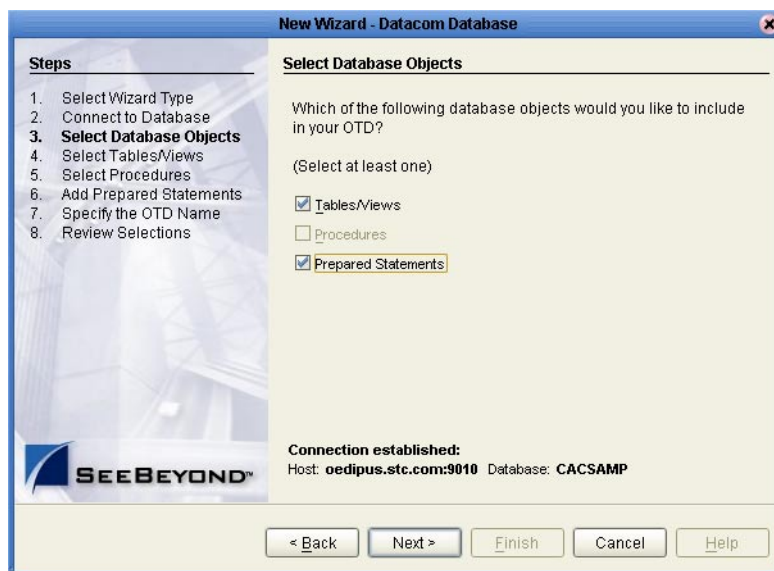
- On the Specify Database Connection Information window, enter the following information:
 - ♦ **Host name:** The name of the host you are connecting to.
 - ♦ **Port ID:** The host port number.
 - ♦ **Database:** The name of the database you are connecting to.
 - ♦ **User name:** Your user ID.
 - ♦ **Password:** Your password.
- Click **Next**. The Select Database Objects window appears.

Note: Views are read-only and are for informational purposes only.

Select Database Objects

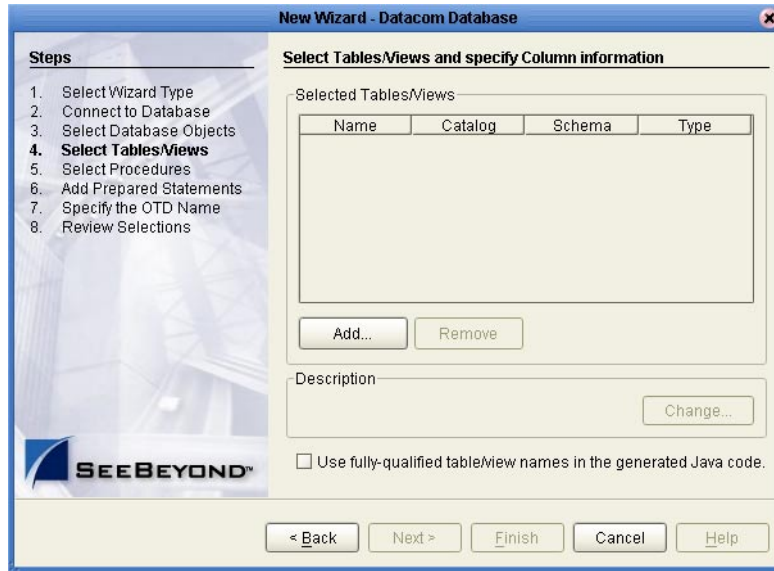
- On the Select Database Objects window, select both the **Tables/Views** and the **Prepared Statements** checkboxes.

Figure 10 Select Database Objects



- Click **Next**. The **Select Tables/Views** window appears. See [Figure 11 on page 32](#).

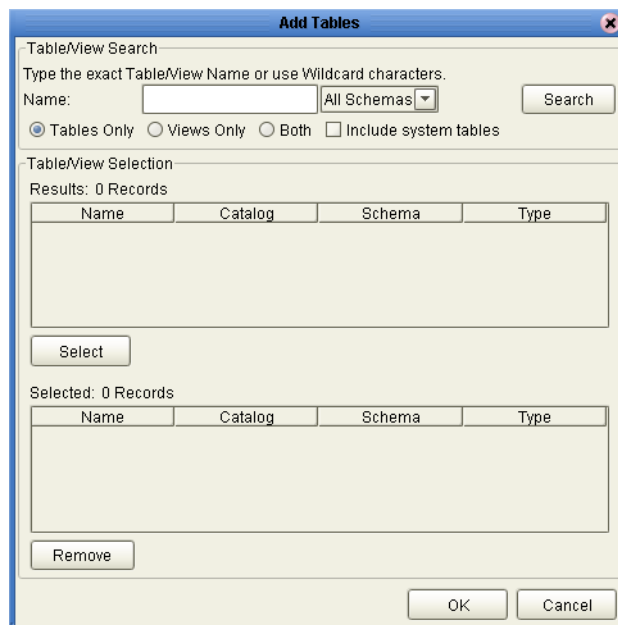
Figure 11 Select Tables/Views



Select Tables/Views

- 1 On the Select Tables/Views window, click the **Add** button. The **Add Tables** window appears.

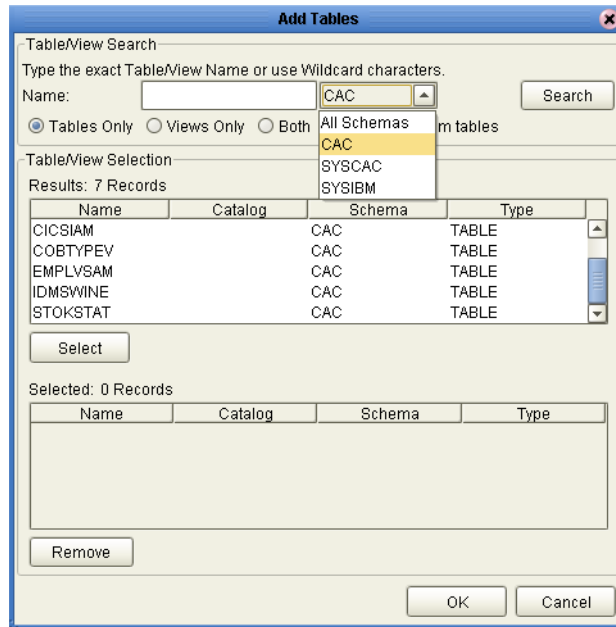
Figure 12 Add Tables window



- 2 In the **Add Tables** window, select if your selection criteria includes table data, view only data, both, and/or system tables.
- 3 From the **Table/View Name** drop-down list, select the location the location of your database table and click **Search**.

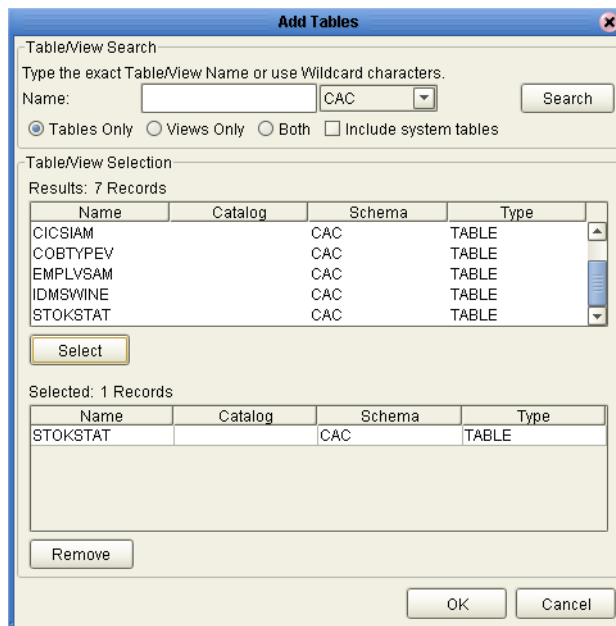
Note: Click **Search** to find the desired table or tables. You can also use wildcard characters to search for a table or view. Available wildcard characters include "?", "_", and "*". For example, you can use "AB?CD", "AB_CD," or "AB*CD". However, do not use "%". Using this character results in nothing being returned.

Figure 13 Database Wizard - Table/View Search



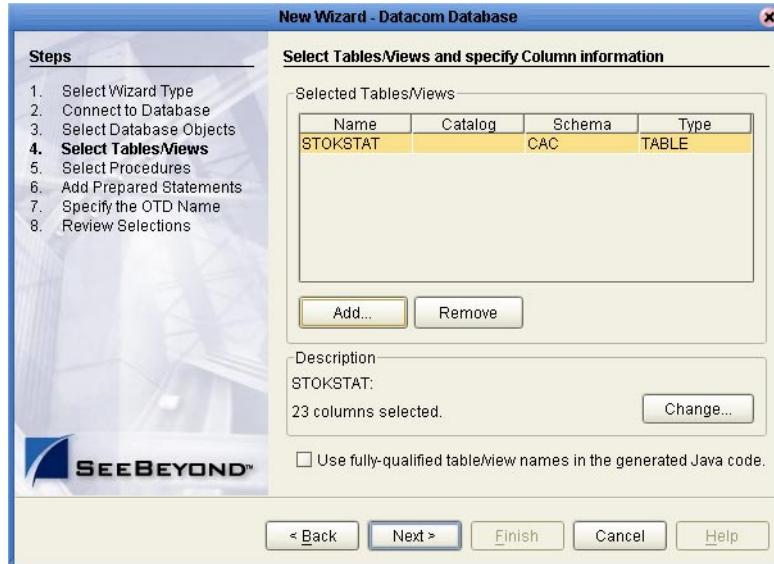
- 4 Choose a table and click **OK**. The selected table is added to the **Selected** window. See [Figure 14 on page 33](#).

Figure 14 Add Tables window with selected table



- 5 On the Selected Tables/Views window, review your selected tables. To make changes to the selected Table or View, click **Change**, or click **Next** if no additional changes are required.

Figure 15 Selected table and column window

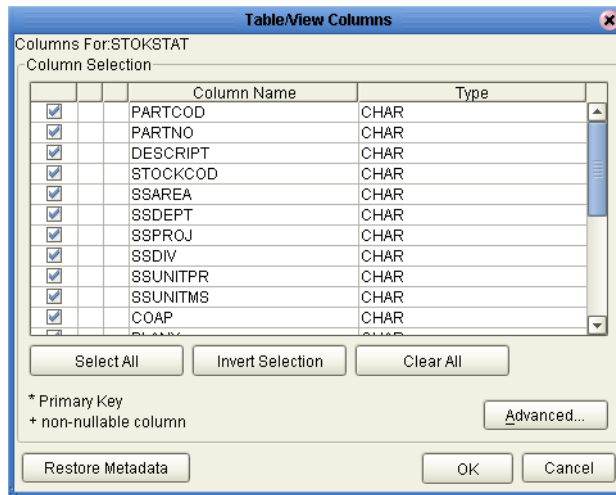


- 6 If you click **Change**, the **Table/View Columns** window appears, allowing you to select or deselect any table columns. You can also change the data type for each table by highlighting the data type and selecting a different data type from the drop-down list.

The buttons in this window operate as follows:

- ♦ **Select All:** Allows you to select all columns.
- ♦ **Invert Selection:** Allows you to invert the order of the selected columns.
- ♦ **Clear All:** Allows you to deselect all columns.
- ♦ **Advanced:** Allows you to perform advanced operations with the columns, including:
 - ♦ **Column:** Allows you to change the name of the column.
 - ♦ **SQL type:** Allows you to change the data type used.
 - ♦ **Precision / length:** Allows you to change the length of each data type.
 - ♦ **Scale:** Allows you to change the scale of each datatype.
- ♦ **Restore Metadata:** Allows you to restore the data to its original state before you made any changes via the wizard; returns you to the **Specify Database Connection** window.

Figure 16 Table/View Columns window

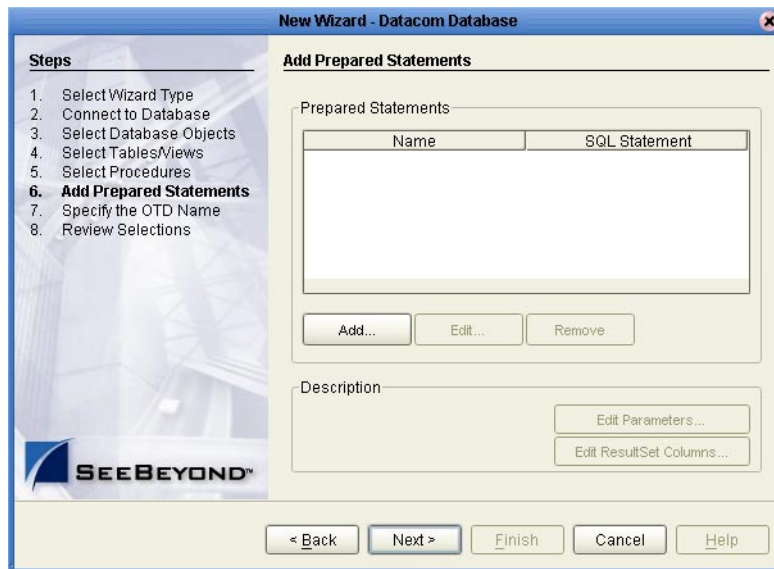


- 7 When you are finished using this window, click **OK** to save your changes and return to the **Select Tables/Views** window.

Add Prepared Statements

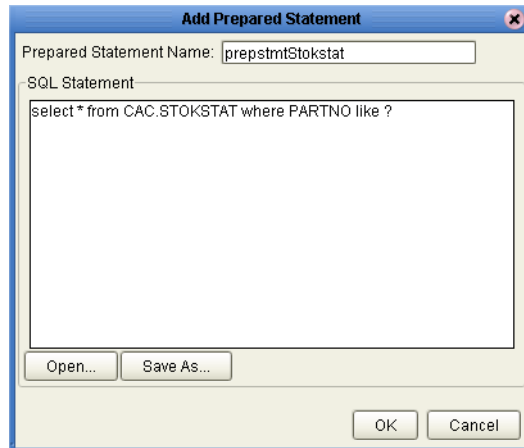
- 1 On the **Add Prepared Statements** window, click **Add**.

Figure 17 Add Prepared Statements window



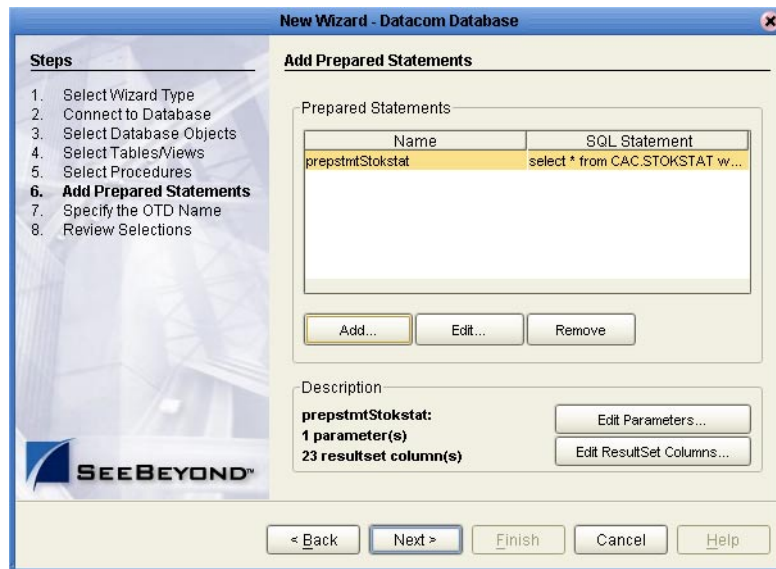
- 2 Enter the name of a Prepared Statement and create a SQL statement using the SQL Statement window.
- 3 After creating the statement, you can click **Save As** to save to a file. This name appears as a node in the OTD.
- 4 Click the **OK** button to exit the window.

Figure 18 Add Prepared Statement - SQL Statement window



The name you assigned to the Prepared Statement appears on the **Add Prepared Statement** window. See [Figure 19 on page 36](#).

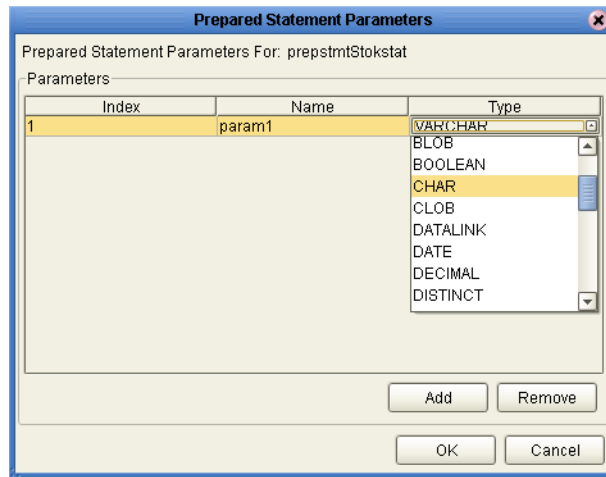
Figure 19 Add Prepared Statement window



- 5 To edit the parameters, click **Edit Parameters**. You can change the datatype by clicking in the **Type** field and selecting a different type from the list.
- 6 Click **Add** if you want to add additional parameters to the Statement or highlight a row and click **Remove** to remove it. Click **OK** to close the window.

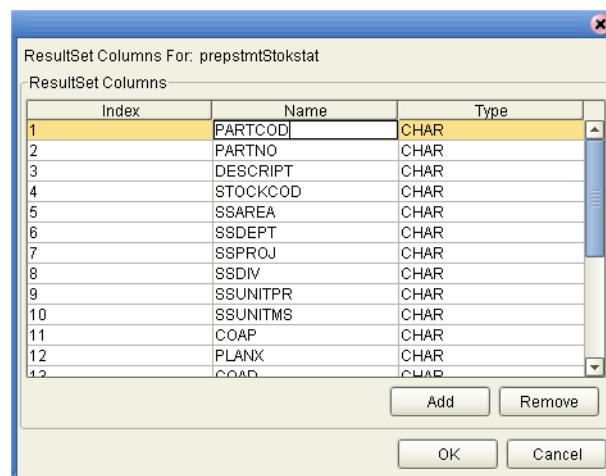
Note: Changing default parameters also requires changing the place holders in the prepared statement.

Figure 20 Prepared Statement Parameters window



- 7 To edit the Resultset Columns, from the **Add Prepared Statements** window, click **Edit Resultset Columns**. Both the Name and Type are editable. Click **OK** to close the window.

Figure 21 ResultSet Columns

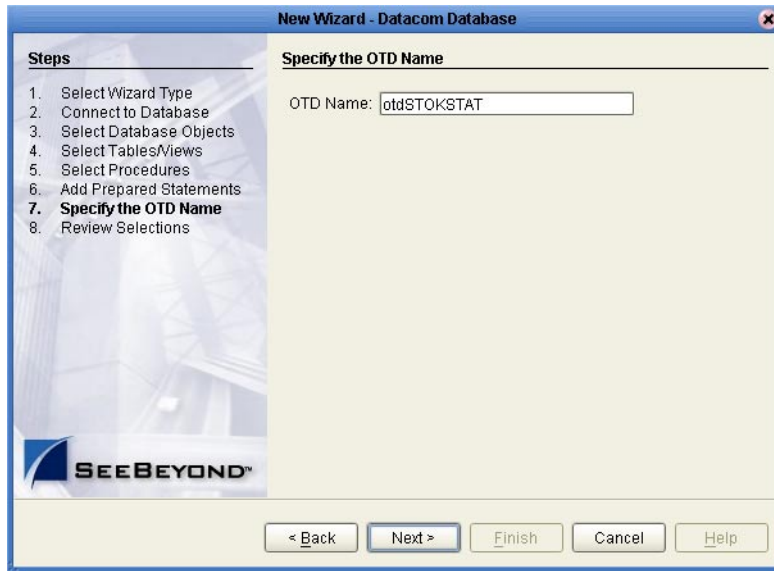


- 8 On the Add Prepared Statements window, click the **OK** button.

Specify the OTD Name

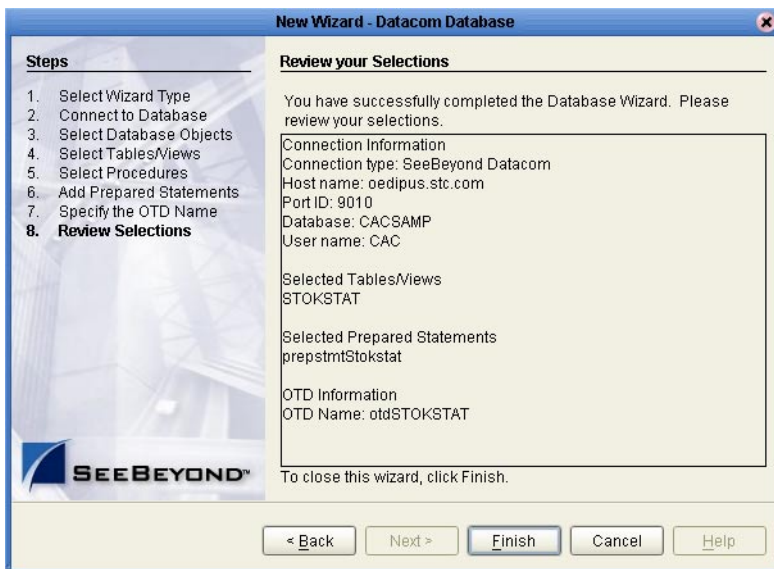
- 1 On the **Specify the OTD Name** window, enter a name for the OTD. The OTD contains the selected tables and the package name of the generated classes.

Figure 22 Specify the OTD window



- 2 View the OTD summary, then click the **Finish** button to generate the OTD. See [Figure 23 on page 38](#).

Figure 23 Review your Selections window



Locating, Importing, and Using Sample Projects

This chapter describes how to use the sample Projects included in the installation CD-ROM package.

What's in This Chapter

- [Sample Project Overview](#) on page 40
- [Locating and Importing the Sample Projects](#) on page 40
- [Running Sample Projects](#) on page 41
- [Using the Sample Project in eInsight](#) on page 42
- [Working with Other Business Process Activities](#) on page 46
- [Using the Sample Project in eGate](#) on page 48

Note: *While several key steps are required to create, activate, and deploy a Project, only steps containing information relevant to the Datacom eWay are included in this chapter. For more detailed information on how to complete a sample Project, see the eGate Integrator Tutorial.*

5.1 Sample Project Overview

Sample Projects are designed to provide an overview of the basic functionality found in the Datacom eWay by detailing how information is passed between eGate and the Datacom database.

Sample Projects Include:

Datacom_BPPELInbound_project – demonstrates an inbound data transfer and transformation of an automotive warehouse stock list requested from a Datacom database using a BPEL based business process.

Datacom_BPPELSelect_Project – demonstrates an outbound data transfer and transformation of an automotive warehouse stock list requested from a Datacom database using a BPEL based business process.

Datacom_JCESelect_Project – demonstrates an outbound data exchange using Java Collaborations in eGate to transform an automotive warehouse stock list that is stored in a Datacom database.

5.2 Locating and Importing the Sample Projects

The eWay sample Projects are included in **DatacomeWayDocs.sar**. This file is uploaded separately from the **DatacomeWay.sar** file during installation. For additional information, refer to [“Installing the Datacom eWay” on page 14](#).

After uploading the **DatacomeWayDocs.sar** to the Repository, you can begin downloading the sample Projects from the **DOCUMENTATION** tab on Enterprise Manager, to a folder of your choosing.

Before using the sample Project, first import it into the Project into SeeBeyond Enterprise Designer using the Enterprise Designer Project Import utility.

To Import the Sample Project:

- 1 From the Enterprise Designer’s Project Explorer pane, right-click the Repository and select **Import**.
- 2 In the **Import Manager** window, browse to the directory that contains the sample Project zip file.
- 3 Select the sample Project zip file and then click **Open**. Sample Project zip files are included in a master zip file called **Datcom_eWay_Samples.zip**. This master zip file contains the following sample Project zip files.
 - ♦ Datacom_BPPEL_Sample.zip
 - ♦ Datacom_BPPELInbound_Sample.zip
 - ♦ Datacom_JCE_Sample.zip
- 4 Click the **Import** button. If the import was successful, then click the **OK** button on the **Import Status** window.

5.3 Running Sample Projects

Steps required to run a sample Project include:

- Setting the eWay Properties
- Creating the Environment Profile
- Deploying the Project
- Running the Sample

5.3.1 Setting the eWay Properties

Sample Projects use an inbound and an outbound File eWay, as well as an outbound Datacom eWay. Use the following information to configure a sample Project eWay. Additional information on eWay property parameters are found in [Setting Properties of Datacom eWay](#) on page 17.

To Configure the File eWays

- 1 On the Connectivity Map, double-click the Inbound File eWay.
- 2 The **Properties** window for the Inbound File eWay opens. Modify any parameter settings necessary for your system, then change the Directory and Input file name to match the location and name of the sample data file.
- 3 Click **OK** to close the **Properties** window.
- 4 On the Connectivity Map, double-click the Outbound File eWay. The **Properties** window for the Outbound File eWay opens. Modify the parameter settings for your system, including the target directory and output file name.
- 5 Click **OK** to close the **Properties** window.

To Configure the Outbound Datacom eWay

- 1 On the Connectivity Map, double-click the **Datacom** eWay.
- 2 The **Properties** window for the Datacom eWay opens. Modify any parameter settings necessary for your system. Click **OK** to close the **Properties** window.

5.3.2 Creating the Environment Profile

An eGate Environment represents the physical system required to implement a Project. A typical Environment contains several components, including Logical Hosts, Integration Servers, Message Servers, and External Systems. Environments are created using the Enterprise Designer's Environment Explorer.

To Create a New Environment

- 1 On the Environment Explorer, select and right-click the eWay profile.
- 2 The **Properties** window for the Datacom eWay opens. Modify any parameter settings necessary for your system and then click **OK** to close the Properties window. For more information, see ["Configuring the Environment Properties" on page 23](#).

5.3.3 Deploying the Project

To deploy a Project, please see the *Gate Integrators User's Guide*.

5.3.4 Running the Sample

For instruction on how to run the Sample Project, see the *eGate Integrator Tutorial*.

After completing the process, the Output file in the target directory—configured in the Outbound File eWay—contains all records retrieved from the database in .xml format.

5.4 Using the Sample Project in eInsight

This section provides an overview of how to use the **Datacom_InboundBPEL_project** sample Project with the SeeBeyond ICAN Suite's eInsight Business Process Manager and its Web Services interface. This section *does not* provide explanation on creating a Project that uses an eInsight business process. For these instructions, you should refer to the eInsight User's Guide.

Before running a sample Project, you must:

- Import the sample Project
- Create an Environment for the sample Project
- Configure the eWay properties for your specific system (see [“Creating and Configuring an Datacom eWay” on page 17](#))
- Create a Deployment Profile

5.4.1 The eInsight Engine and Components

You can deploy an eGate component as an Activity in an eInsight Business Process. Once you have associated the desired component with an Activity, the eInsight engine can invoke it using a Web Services interface. Examples of eGate components that can interface with eInsight in this way are:

- Java Messaging Service (JMS)
- Object Type Definitions (OTDs)
- An eWay
- Collaborations

Using the eGate Enterprise Designer and eInsight, you can add an Activity to a Business Process, then associate that Activity—such as an eWay—with an eGate component. When eInsight runs the Business Process, it automatically invokes that component via its Web Services interface.

5.4.2 The Datacom_BPELINbound_project Sample Project

The **Datacom_BPELINbound_project** sample Project describes how to retrieve an automotive warehouse stock list from the Datacom database using eInsight’s business process engine. In this sample, the ReceiveOne operation triggers a BPEL business process when the presence of a record in the database is found and then retrieved using a prepared statement query. The prepared statement query used in this sample is listed as:

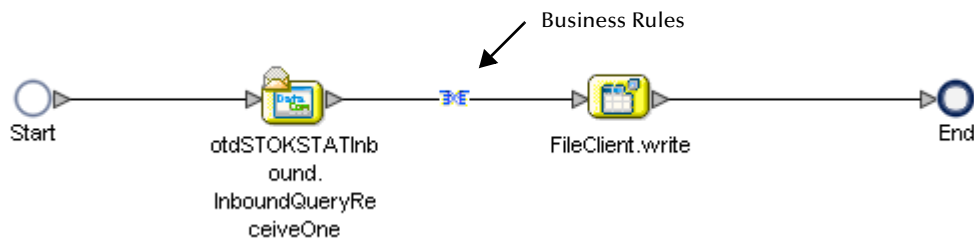
```
select * from CAC.STOKSTAT
```

Note that while the prepared statement can contain wildcard characters, such as the “*”, it cannot contain a whereClause that include wild cards like “?”. You must also be sure to add the exact same prepared statement to the PreparedStatement Parameter Settings in the inbound eWay properties.

BusinessProcess1

The sample Project uses a BPEL business process call **BusinessProcess1** to describe the retrieval of data from the Datacom database using the ReceiveOne web service operation. [Figure 24 on page 43](#) illustrates the business process found in the sample Project.

Figure 24 Sample Project Business Process

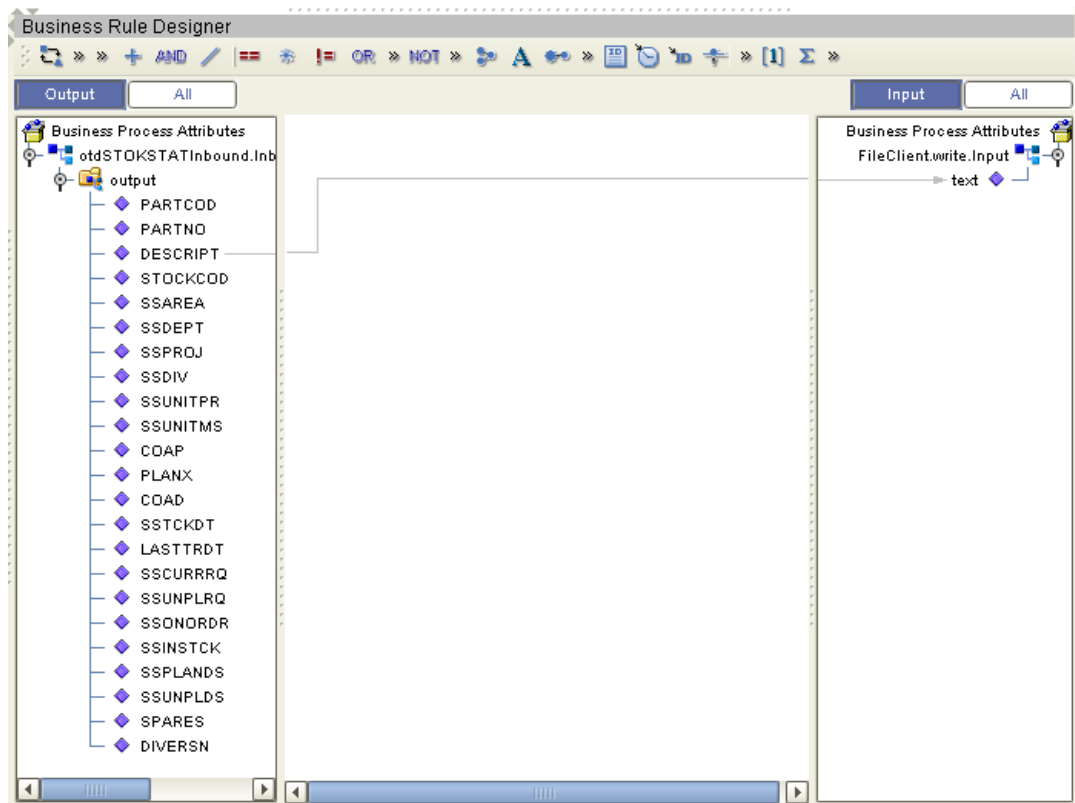


Business rules are defined and configured on the modeling canvas. To review a business rule, double-click the business rule icon located between the business process activities.

Note: Refer to the *eInsight Business Process Manager User’s Guide* for specific information on creating and using a Business Process in eInsight.

The eInsight sample Project business process is set up to pick up an item description from the “DESCRIP” table in the “STOKSTAT” database, and publish the results to the FileClient.write web service. The prepared statement select query created in the OTD ensures that all columns for each record are retrieved. See [Figure 25 on page 44](#).

Figure 25 Copying the Output File

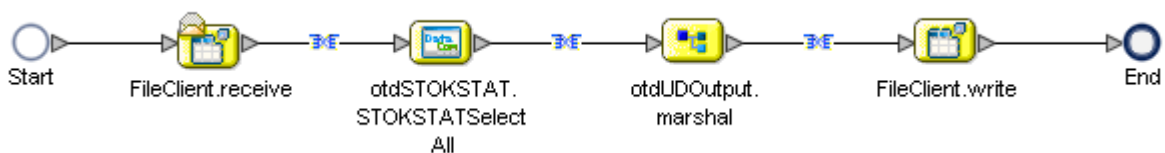


5.4.3 The Datacom_BPELSelect_project Sample Project

The **Datacom_BPELSelect_project** sample Project uses an outbound Datacom eWay to extract an automotive warehouse stock list from the Datacom eWay using eInsight’s business process engine.

Figure 26 on page 44 illustrates the business process found in the sample Project.

Figure 26 Sample Project Business Process

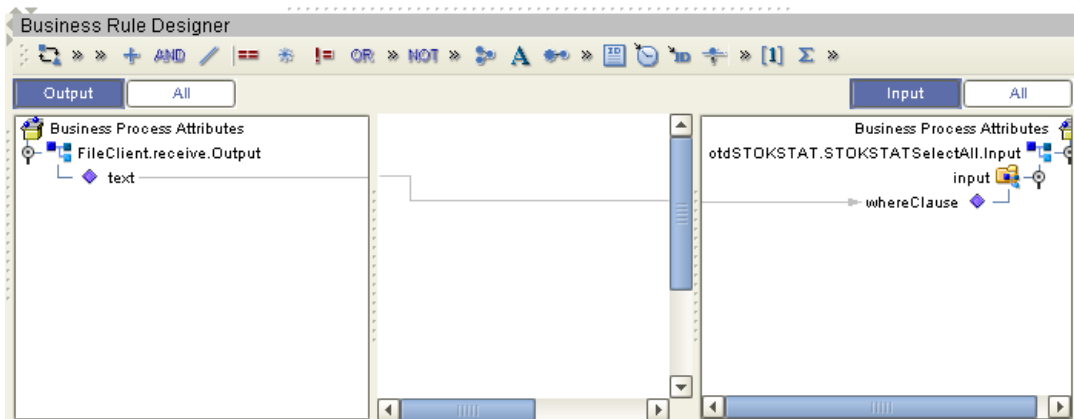


In this sample, an inbound File eWay first polls a target directory for the input file name `input*.txt` which contains the condition:

`SSINSTCK>0`

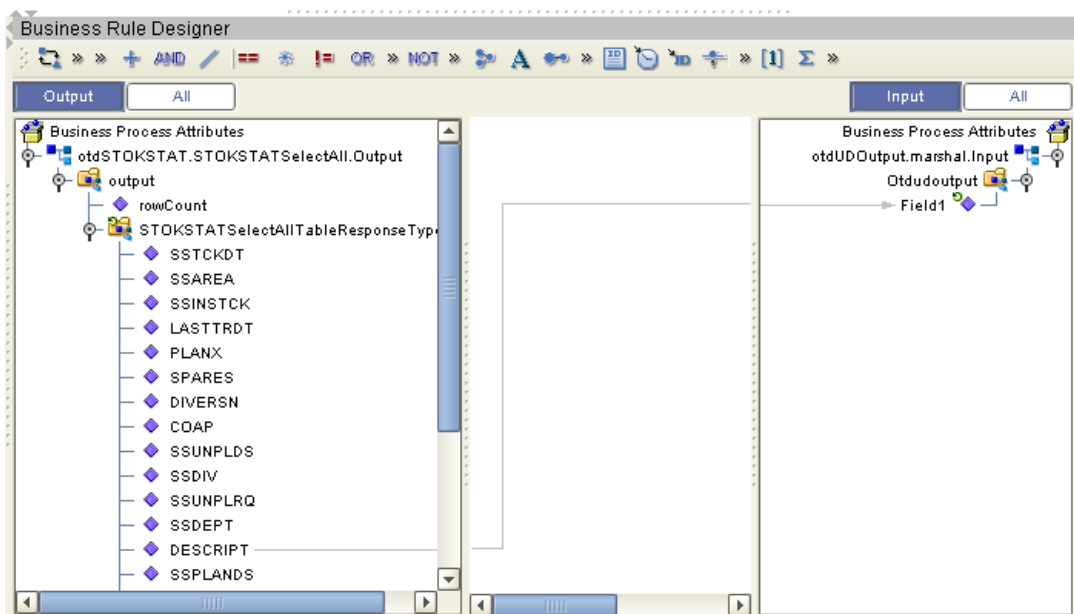
A BPEL business process called BusinessProcess1 then takes the text file and passes it into a whereClause of a SelectAll web service operation which gathers all stock part descriptions that match the condition of the input file listed above. See [Figure 27 on page 45](#).

Figure 27 Copying Text to the SelectAll Operation



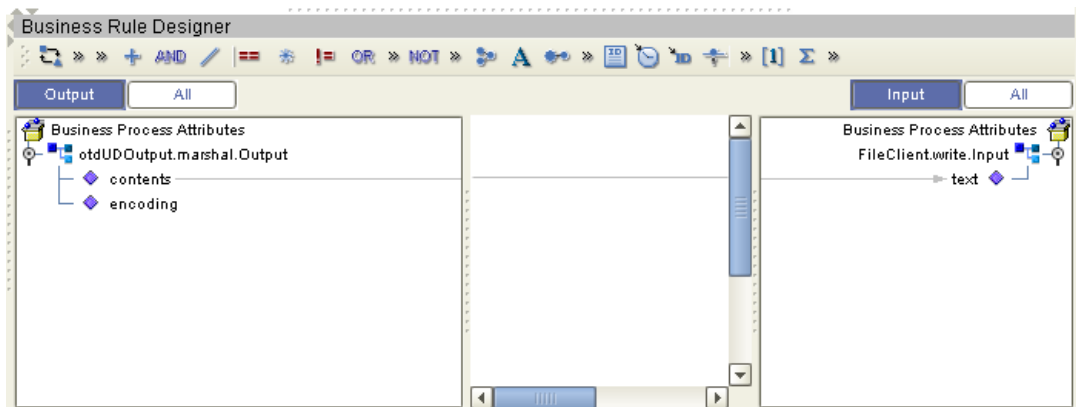
To obtain all available items, a user defined repeating node called Field1 is used to marshal all items from the DESCRPT node. See [Figure 28 on page 45](#).

Figure 28 Part Descriptions to a Repeating Node



The contents of the marshaled data is then written to text node of an input file, where an outbound file eWay can then take this data and create an appropriate output file. See [Figure 29 on page 46](#).

Figure 29 Marshaled Contents to Text



5.5 Working with Other Business Process Activities

You can add Datacom eWay objects to an eInsight Business Process during the system design phase. To make this association, first select an operation under the eWay in the Enterprise Explorer, and then drag it onto the eInsight Business Process canvas.

The following operations are available for Datacom:

- SelectAll
- SelectMultiple
- SelectOne
- Insert
- Update
- Delete

When you drag an operation onto the eInsight Business Process canvas, it automatically changes to an Activity with an icon identifying the type of operation used.

At run time, the eInsight Engine invokes each step in the order you defined in the Business Process. Using the engine's BPEL interface, the Activity then invokes the eWay. Table 1 shows the eInsight Business Process operations available to the Datacom eWay, as well as the inputs and outputs to each of these operations.

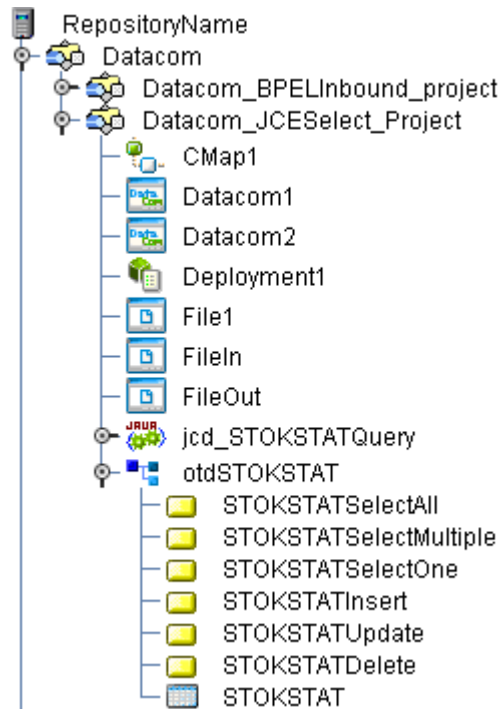
Table 2 Available eInsight Datacom Business Process Operations

eInsight Business Process Operation	Input	Output
Select All	where() clause (optional)	Returns all rows that fit the condition of the where() clause.
Select Multiple	Number of rows where() clause (optional)	Returns the number of rows specifies that fit the condition of the where() clause.
Select One	where() clause (optional)	Returns the first row that fits the condition of the where() clause.
Insert	Definition of new item to be inserted	Returns status of the insert operation.
Update	where() clause	Returns status of the update operation.
Delete	where() clause	Returns status of the delete operation.

Note: You can leave the *where* clause blank for *SelectAll*, *SelectMultiple*, and *SelectOne*. If this clause is imbedded in an input file, the file can contain nothing (empty). If the clause is imbedded in a *Literal*, it can be a blank *Literal*.

Figure 30 on page 48 shows the Enterprise Designer’s **Project Explorer** with all the Datacom eWay Business Process operations exposed under the OTD icon.

Figure 30 Project Explorer with Business Process Operations



5.6 Using the Sample Project in eGate

This section describes how to use the Datacom eWay with the eGate Integrator. This section *does not* provide explanation of how to create a Project. For these instructions, you should refer to the “*eGate Integrators User’s Guide*”.

5.6.1 Project Overview

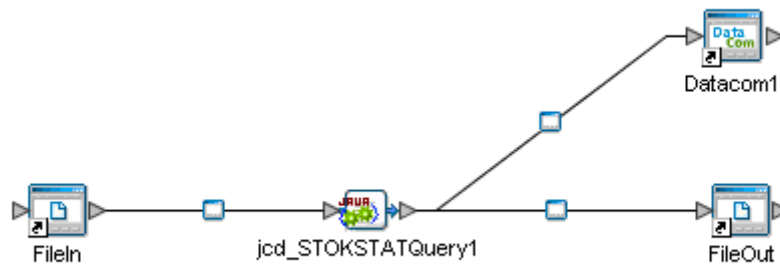
The Datacom_JCESelect_Project sample Project demonstrates an outbound stat exchange using Java Collaborations in eGate to transform commercial items stored in a Datacom database.

Data Exchange in the Collaboration

The data exchange works when an external file (inputDatacom) is picked up by an inbound File eWay (FileIn), triggering the Collaboration (jcd_STOKSTATQuery1). The Collaboration then transforms the data by writing all the values in the DESCRPT table to an outbound File eWay (FileOut) where values in the SSINSTCK table are greater than zero (SSINSTCK>0).

Figure 31 illustrates the flow of data within the sample Project.

Figure 31 Connectivity Map



Using Datacom OTDs

This chapter describes operations you can perform using Datacom Object Type Definitions (OTDs) in eGate.

What's in This Chapter

- [Overview](#) on page 50
- [Using Tables](#) on page 51
- [Using Views](#) on page 61
- [Using Prepared Statements](#) on page 62

6.1 Overview

This section explains the types of Datacom OTDs used with the eWay within the Java Collaboration Editor, including the OTD's methods.

You can use Datacom OTD methods with:

- Tables (table OTD)
- Views (view OTD)
- Prepared statements (prepared statement OTD)

Note: *Views are read-only and for informational purposes only. Use the OTD wizard (see [Chapter 4](#)) to create the Datacom Database OTDs.*

User-defined OTD

You can use the OTD wizard to create an eGate User-defined OTD. See the *eGate Integrator User's Guide* for a complete explanation of how to create a User-defined OTD.

6.2 Using Tables

A table OTD represents a database table. It consists of fields and methods. Fields correspond to the columns of a table, while methods are the operations that you can apply to the OTD. This setup allows you to perform select, query, update, insert, and delete SQL operations in a table.

6.2.1 Using the select Method

The **select** method returns result sets according to a group of predefined defaults. However, you can change these defaults, if desired. In using the **select** method, you can specify the following types of result sets:

- TYPE_FORWARD_ONLY
- TYPE_SCROLL_INSENSITIVE
- TYPE_SCROLL_SENSITIVE

You can also specify the following result sets with a type of concurrency:

- CONCUR_READ_ONLY
- CONCUR_UPDATABLE

To perform an update, insert or delete operation, the type of the result set returned by the **select** method must be CONCUR_UPDATABLE.

Instead of specifying the type of result set and concurrency in the **select** method, you can also use the following methods:

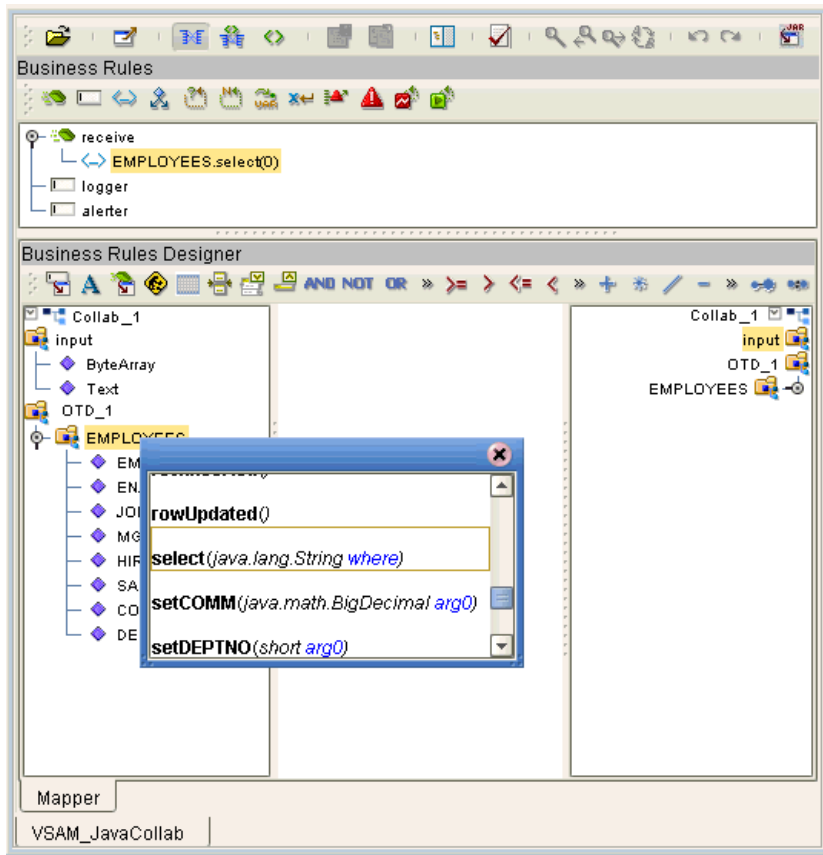
- **setConcurrencytoUpdatable**
- **setConcurrentlytoReadOnly**
- **setScrollTypetoForwardOnly**
- **setScrollTypetoScrollSensitive**
- **setScrollTypetoInsensitive**

To call a method in the Java Collaboration Editor

- 1 Open the eGate Enterprise Designer's Java Collaboration Editor for the desired Collaboration Definition.
- 2 In the editor, navigate to the Business Rules Designer.
- 3 Right-click on the desired node (right or left pane) where you want to call the method.

A pop-up **Method** selection menu appears, showing the methods available for the node. See Figure 32.

Figure 32 Method Selection Menu for the select Method



- 4 Select the desired method.

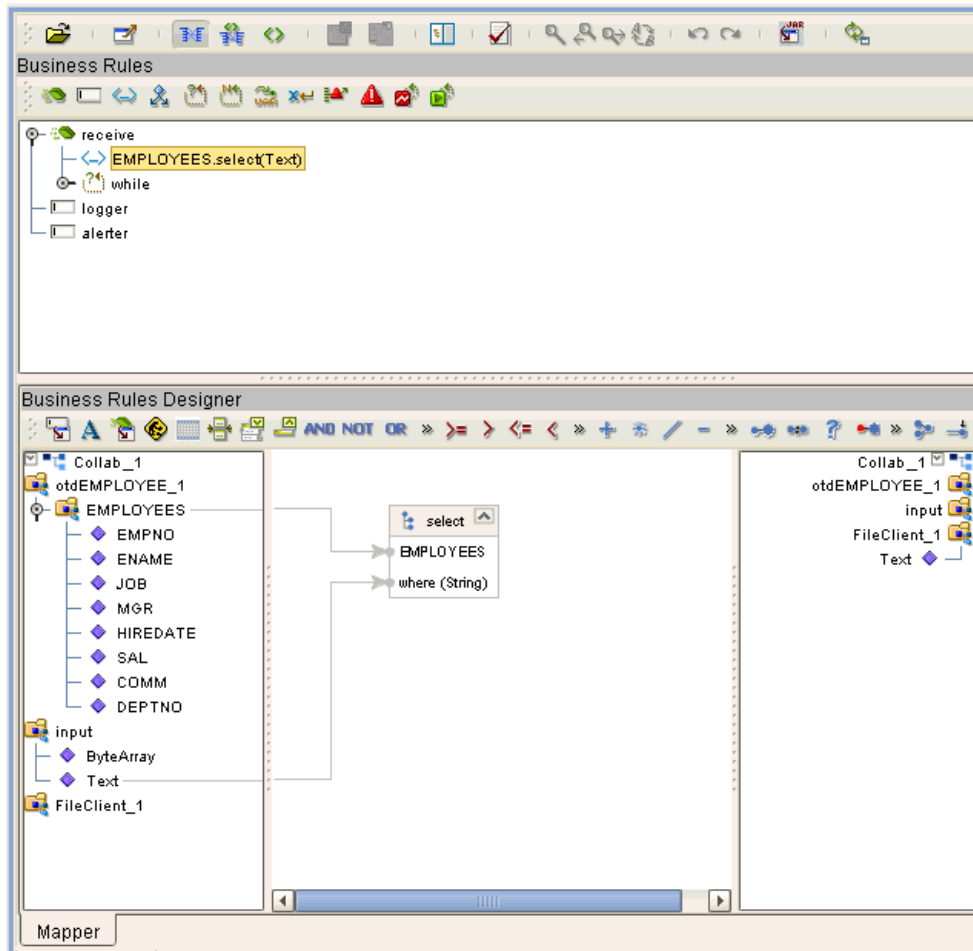
A **Method** box appears in the center pane of the Business Rules Designer. This box represents the chosen method.

6.2.2 Select Operations

To perform a select operation on a table:

- 1 Call the **select** method with the **where** clause specified (if necessary). See Figure 33.

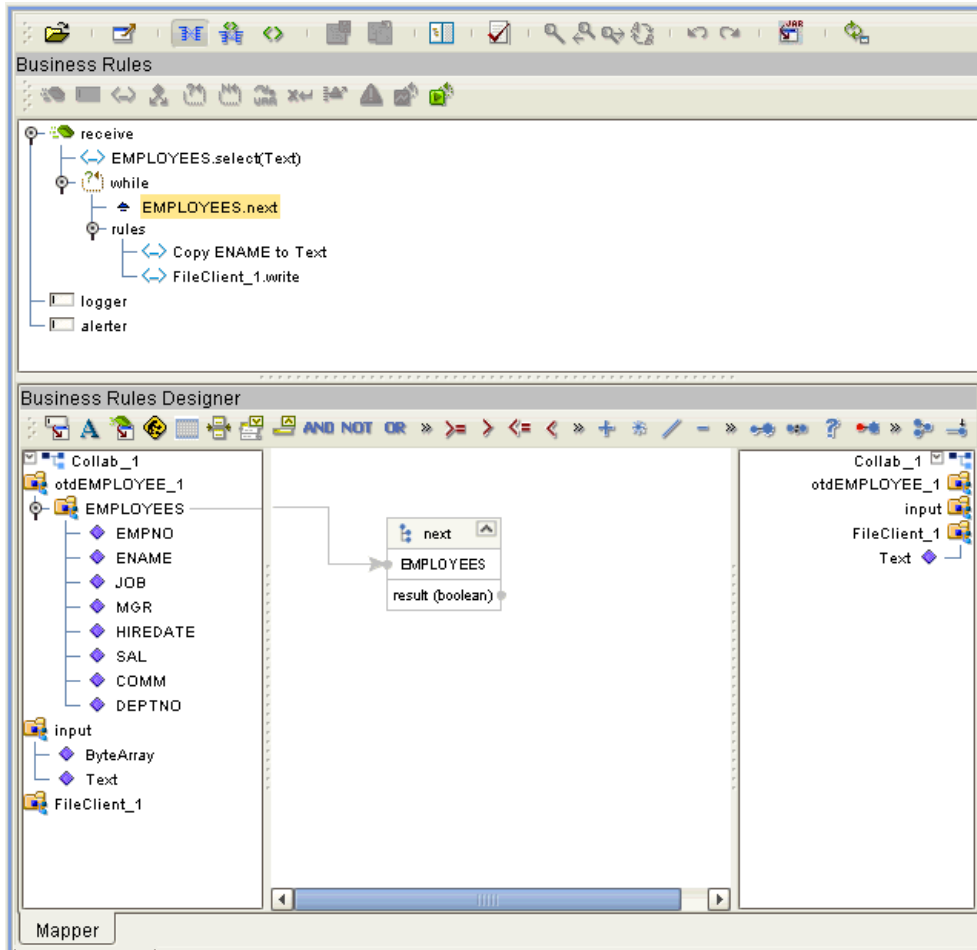
Figure 33 Select Operation: select Method



The text from the **Text** node instructs the Business Process exactly which data needs to be selected. For example, the content of the input text could be **EMPNO>100**.

- 2 Loop through the result set using the **next** method. See Figure 34.

Figure 34 Query Operation: next Method



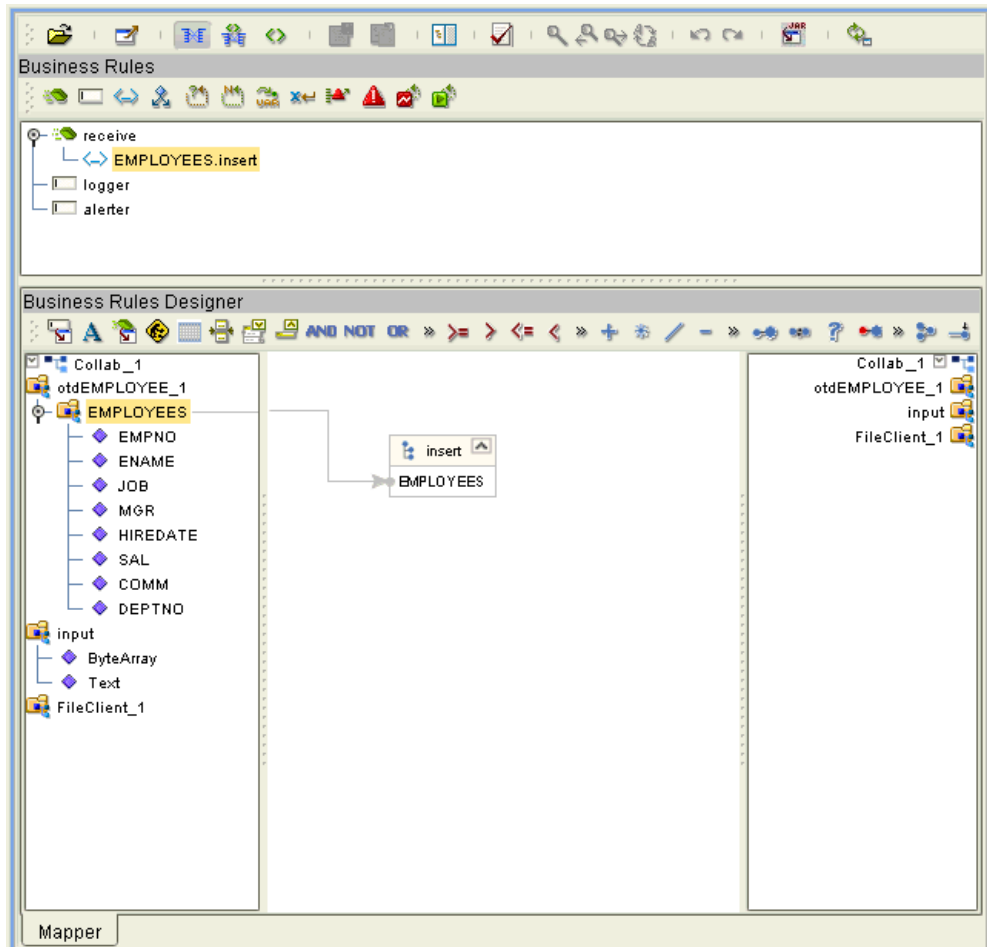
- 3 For each loop, process the return record.

6.2.3 Insert Operations

To perform an insert operation on a table:

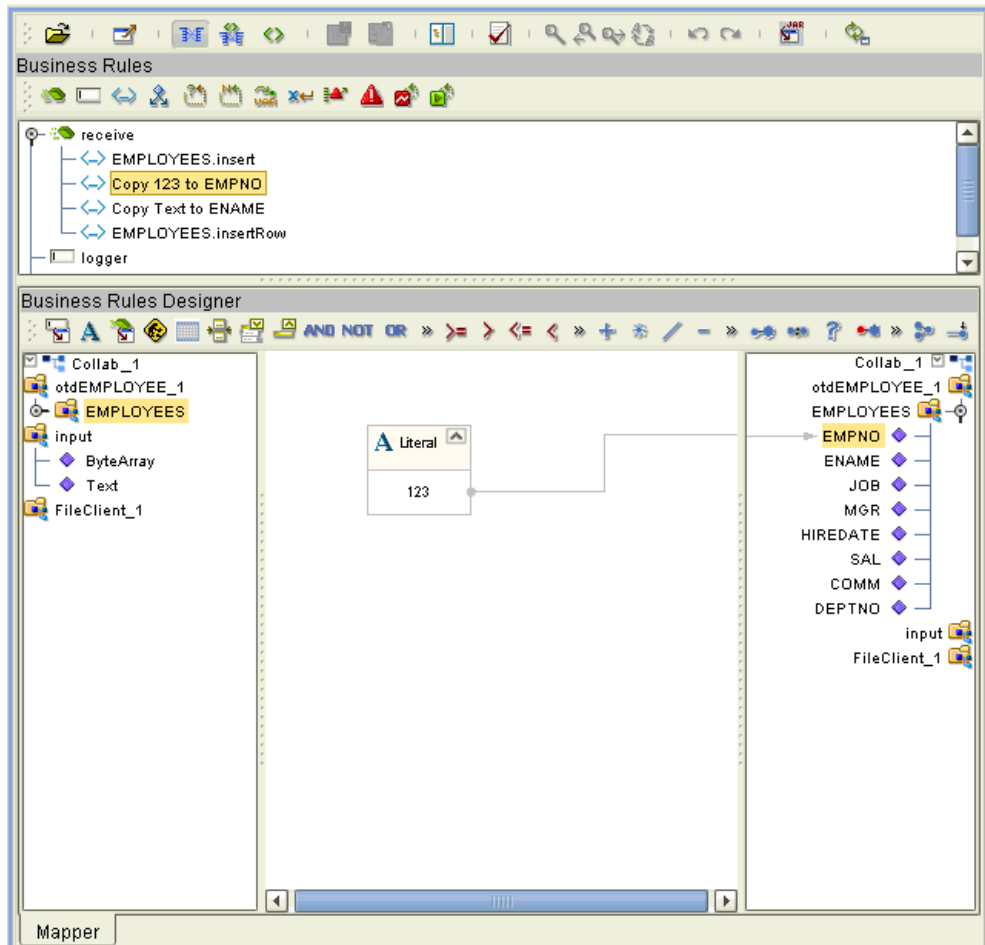
- 1 Call the **insert** method. See Figure 35.

Figure 35 Insert Operation: insert Method



- 2 Set the fields of the table OTD where you want to do the insertion and insert the row using a **Literal**. See Figure 36.

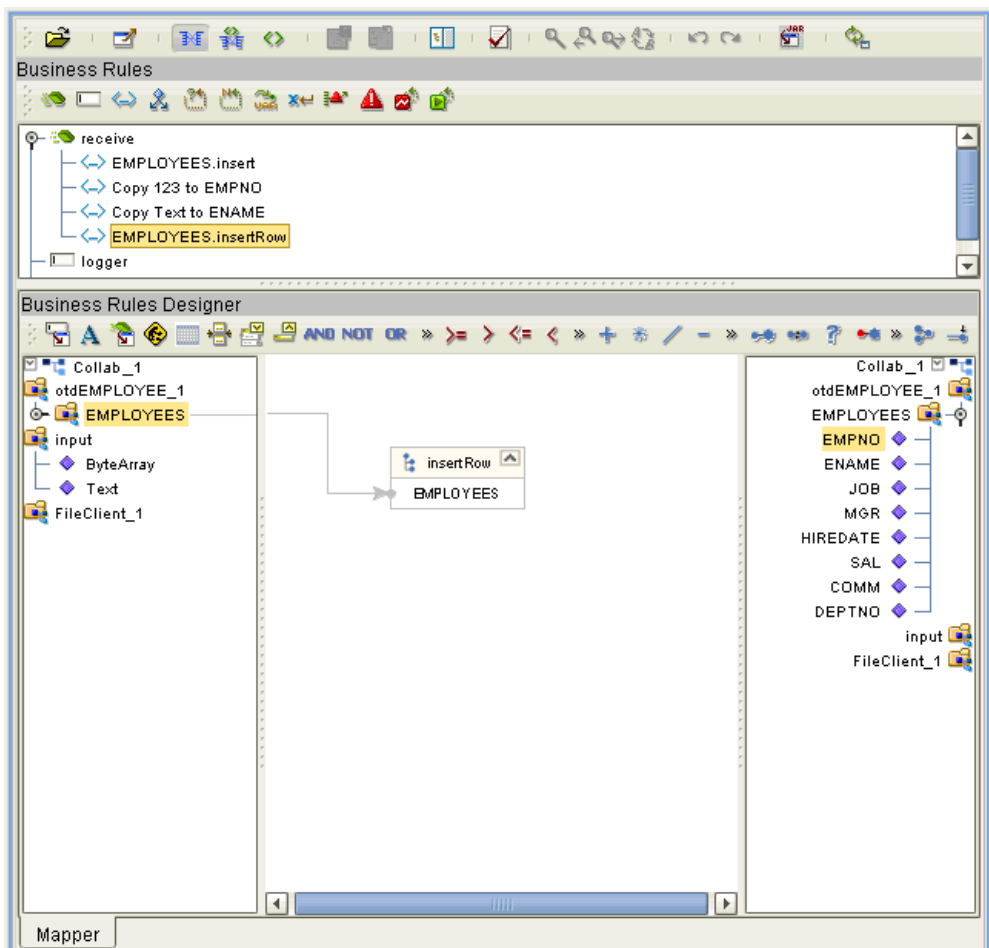
Figure 36 Insert Operation: Literal Indicates the Value Inserted



If you want to update multiple columns, you can repeat the **Copy** rule, as desired.

- 3 Activate the insertion by calling the **insertRow** method. See Figure 37.

Figure 37 Insert Operation: insertRow Method

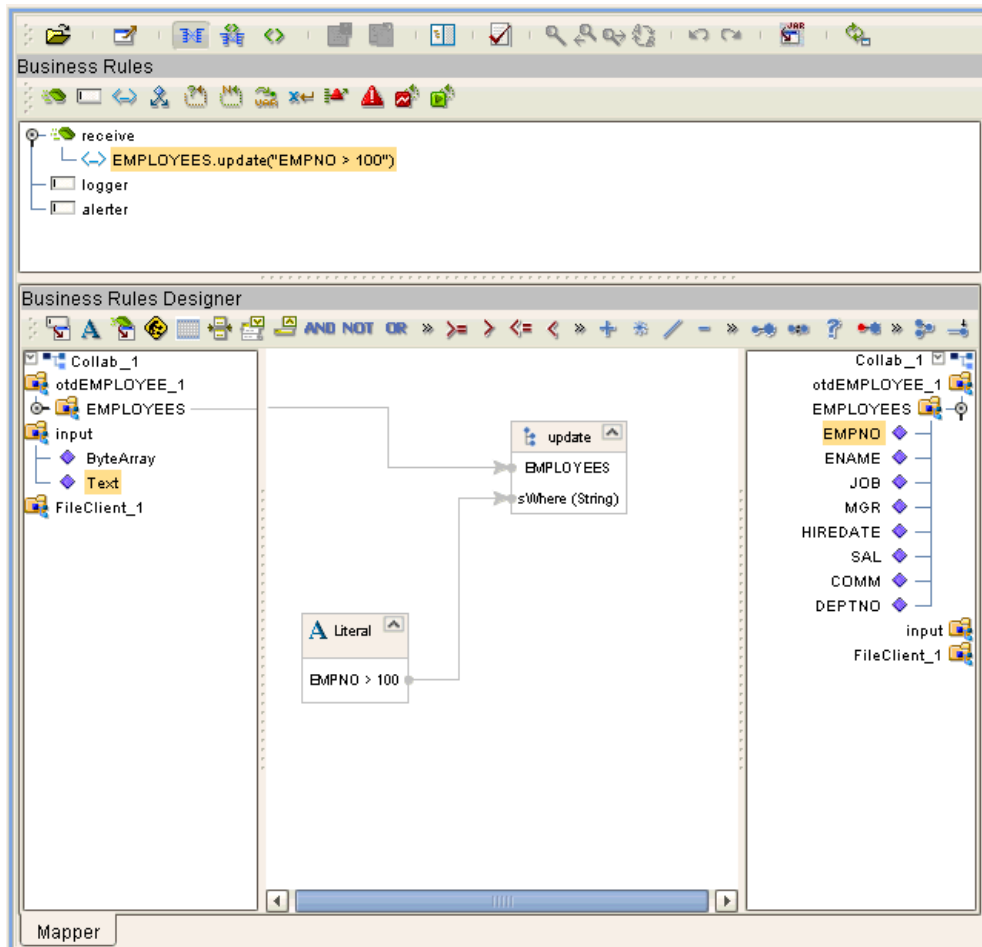


6.2.4 Update Operations

To perform an update operation on a table:

- 1 Call the **select** method with the **where** clause specified, if necessary. See Figure 38.

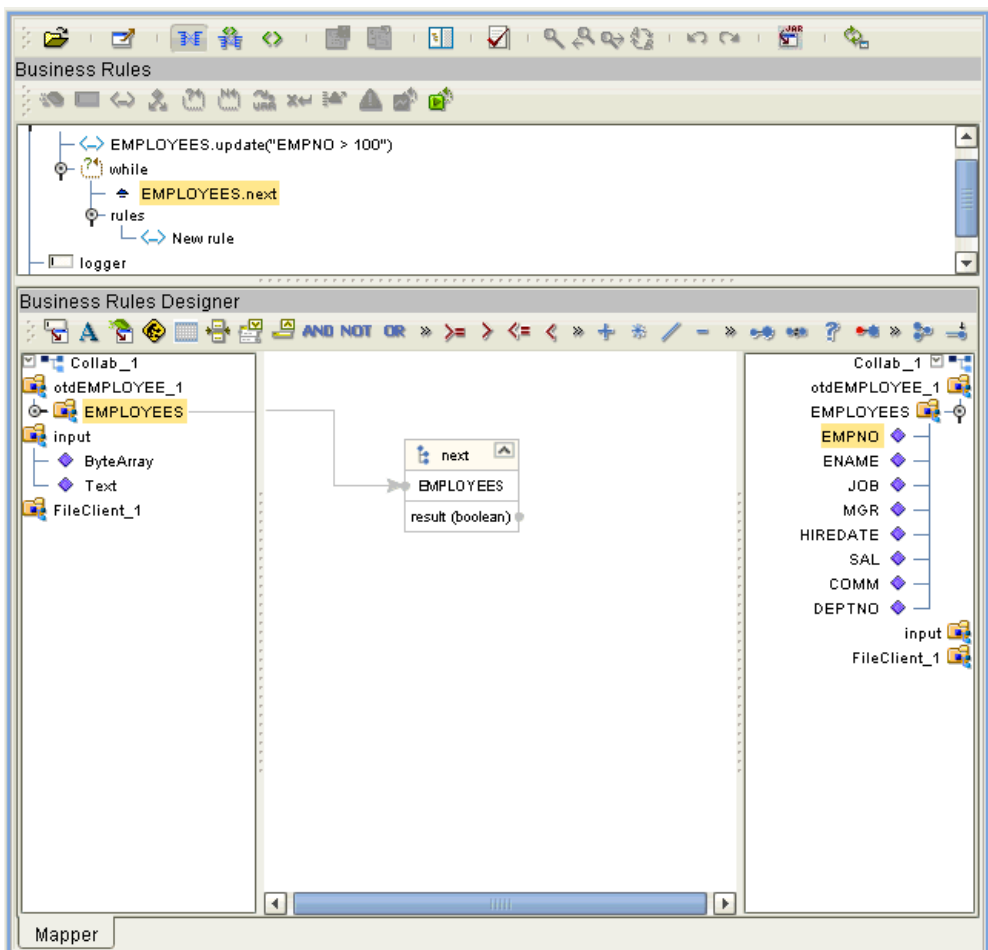
Figure 38 Update Operation: select Method With Literal



In this case, a **Literal** is used instead of the text node as shown in [Figure 35 on page 55](#). Either way of specifying the **where** clause is acceptable.

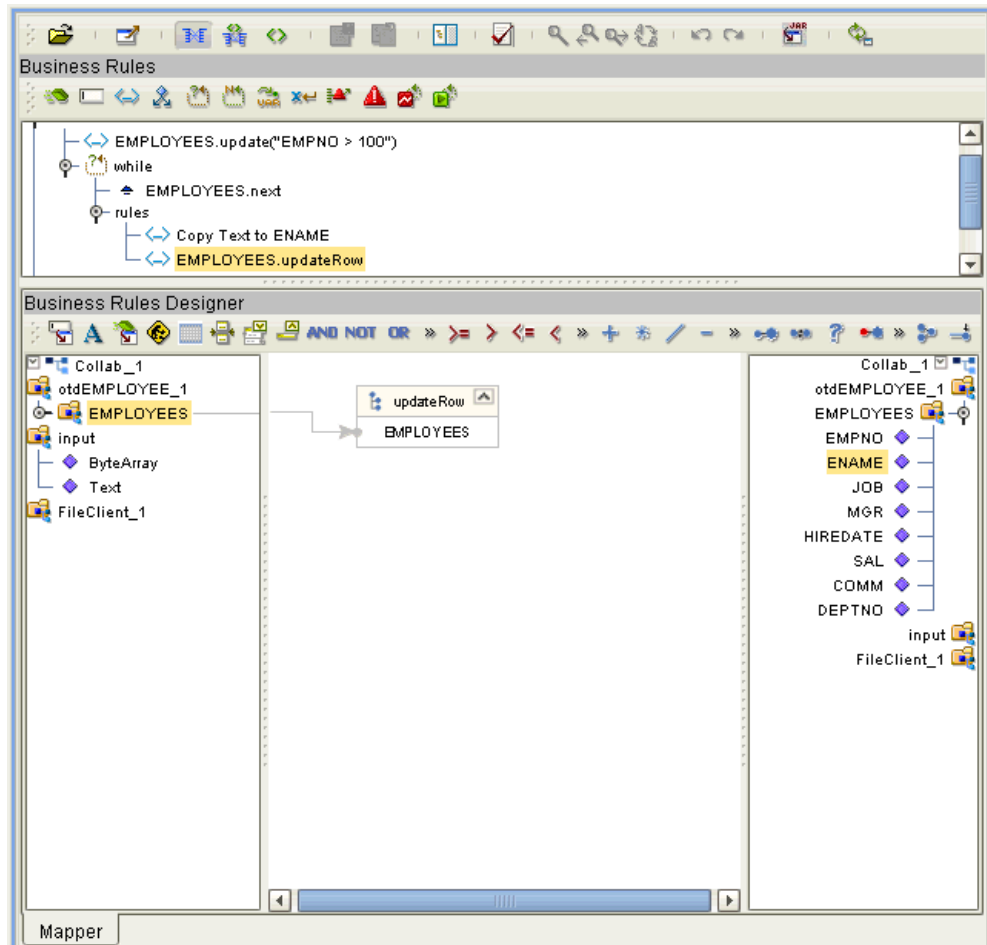
- 2 Call the **next** method. See Figure 39.

Figure 39 Update Operation: next Method



- 3 After assigning a value to the column(s), you must update the row by calling the **EMPLOYEES.updateRow** method. To update more than one column, you can repeat the copy rule.
- 4 Update the row by calling **updateRow**. See Figure 40.

Figure 40 Update Operation: updateRow Method

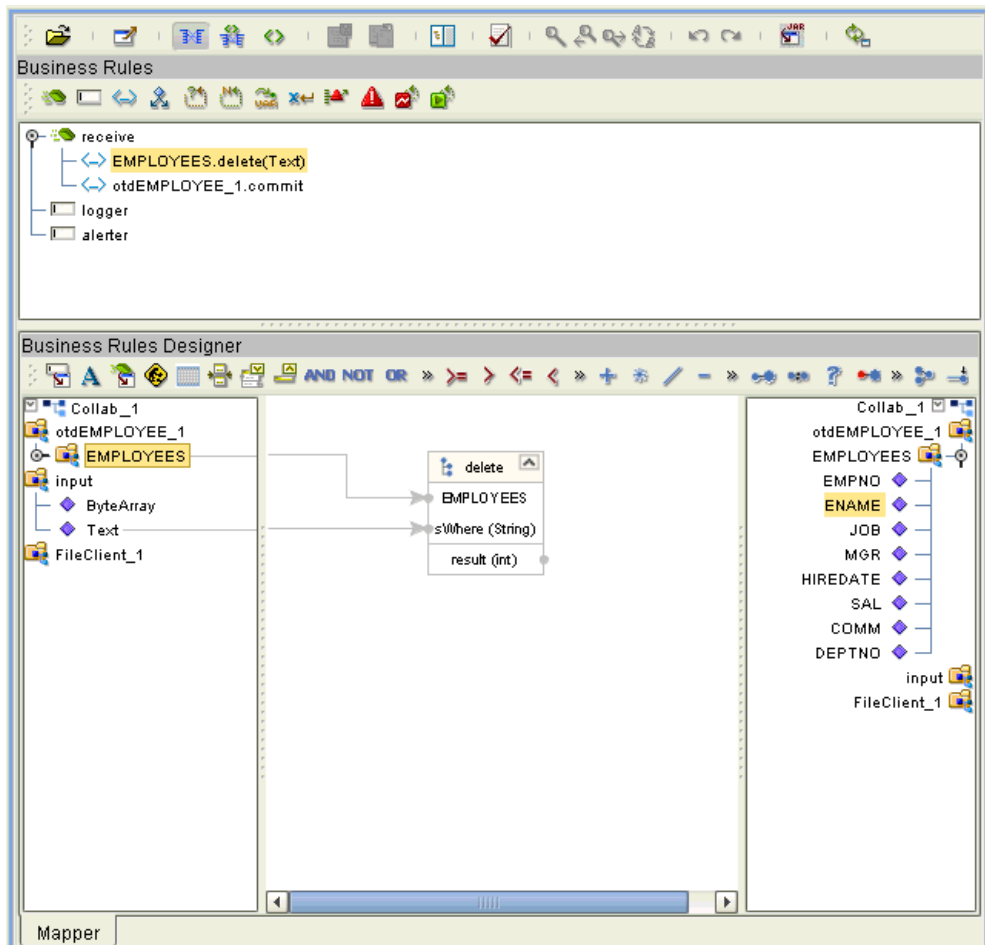


6.2.5 Delete Operations

To perform a delete operation on a table

- 1 Call the **delete** method with the **where** clause specified, if necessary. See Figure 41.

Figure 41 Delete Operation: delete Method



6.3 Using Views

Views are used to look at data from selected columns within selected tables. View OTDs are read-only.

For select operations, see [“Select Operations” on page 53](#).

6.4 Using Prepared Statements

You can perform table operations with prepared statements with the same method nodes you use for the regular table operations, that is, select, update, insert, and delete SQL operations.

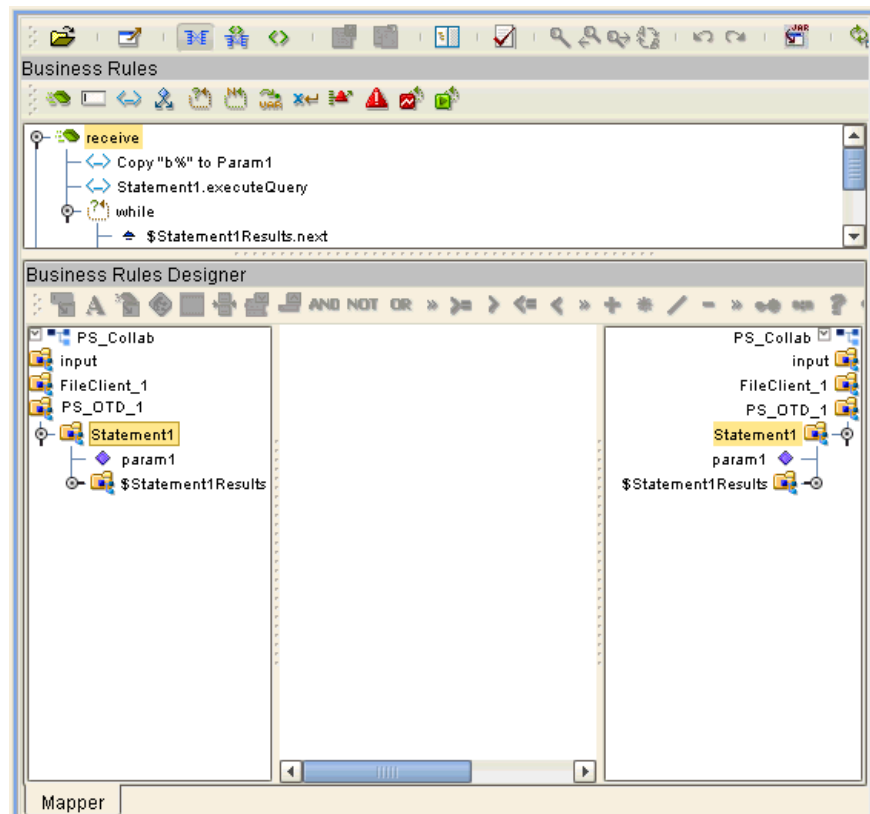
Any prepared statement you create shows up in the Java Collaboration Editor on the OTD where it was created, as a node with the name you assigned to it. You can implement the statement by dragging its node onto the method box for the operation (the desired select, update, insert, or delete) in which you want the statement to be used.

To use a prepared statement in a Java Collaboration

- 1 Using the Enterprise Designer and Datacom OTD wizard, create an OTD that contains a prepared statement. See [“Add Prepared Statements” on page 35](#) for details.
- 2 Create the desired Java Collaboration Definition using this OTD.

The Java Collaboration Editor displays the OTD with a **Prepared Statement** node as shown in [Figure 42 on page 62](#).

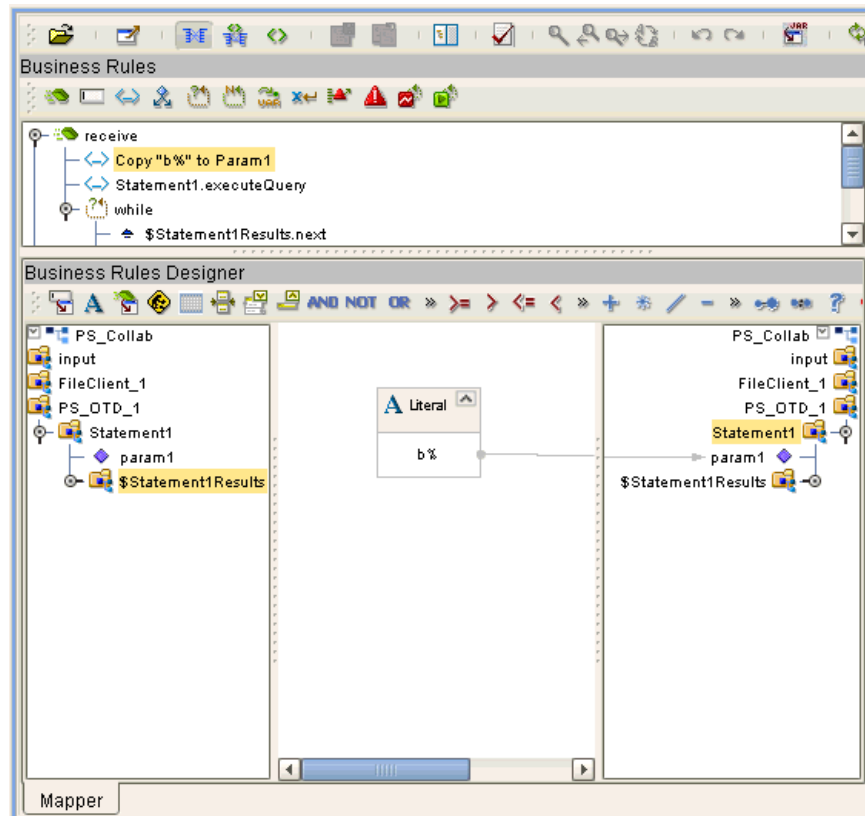
Figure 42 Prepared Statement Collaboration



In the OTD structure, you can see both the input parameter and the result set represented as nodes.

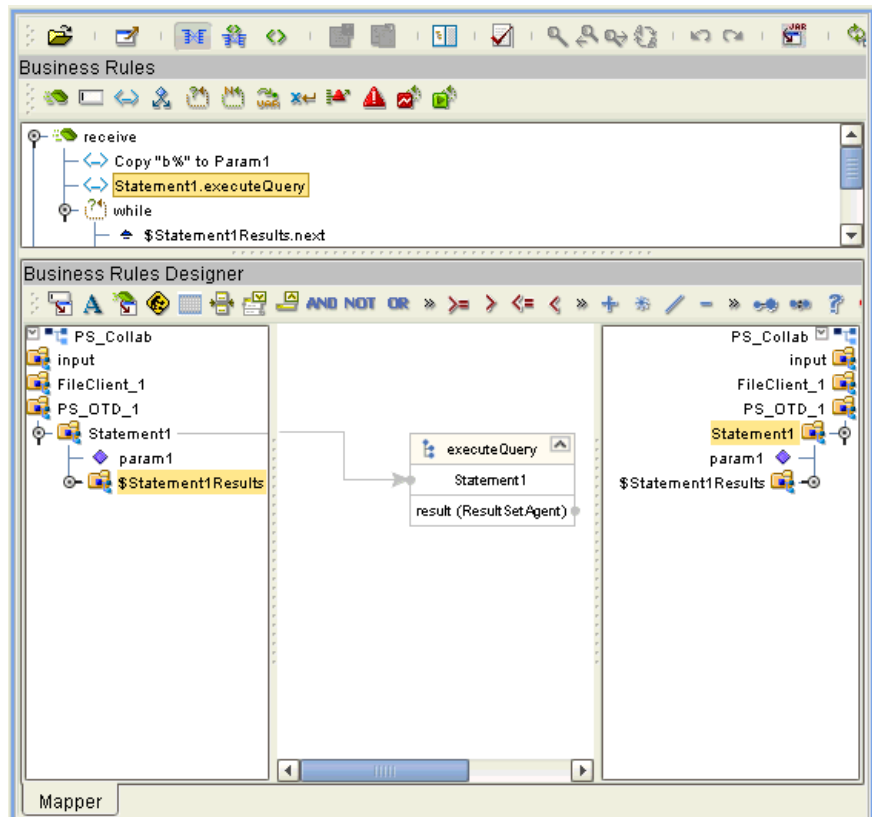
- 3 You can assign a **Literal** value or the input from another OTD to the parameter. In the example shown in Figure 43, the **Literal** value assigned to the parameter is **b%**.

Figure 43 Prepared Statement Collaboration: Assigning a Literal Value



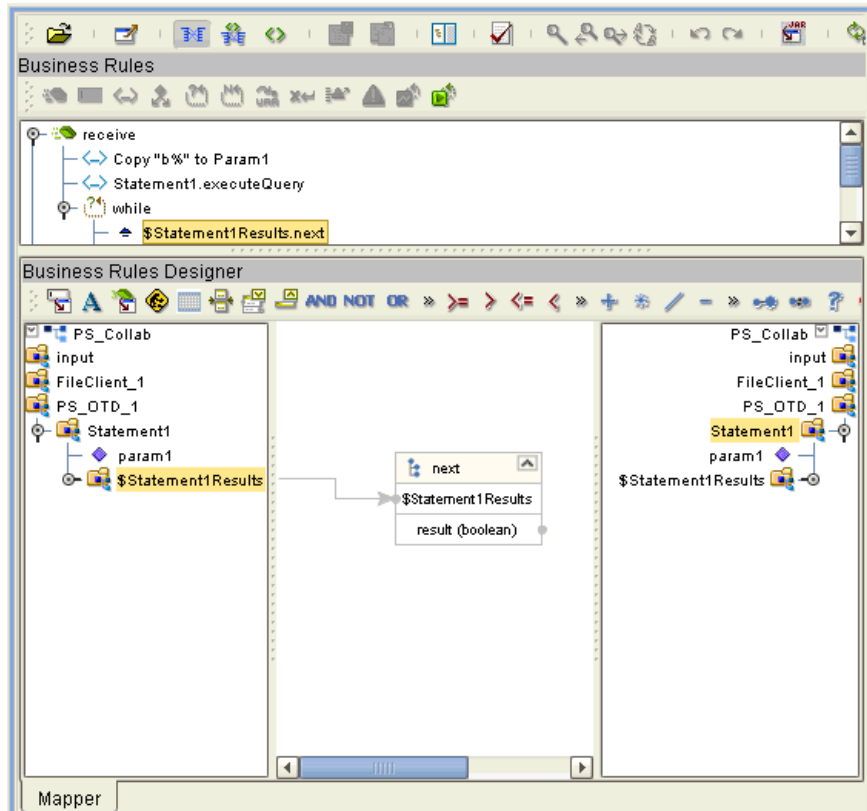
- 4 To run the prepared statement, select the **executeQuery** method from the **Prepared Statement** node. See Figure 44.

Figure 44 Prepared Statement Collaboration: Running the Statement



- 5 To view the result set after the query is finished, create a **while** rule. For the condition, create a **next** method from the result set node (**\$\$Statement1Results** in the example). See Figure 45.

Figure 45 Prepared Statement Collaboration: Viewing Results



You can continue creating your business logic by adding more Business Rules, if desired.

Using eWay Java Methods

Datacom exposes various Java methods to add extra functionality, and make it easier to set, and get information in the Datacom eWay OTDs.

For a complete list of the Java methods, refer to the **Javadoc**.

Classes referenced in the Javadoc include:

- DatacomApplicationConnection
- DatacomApplicationConnectionFactory
- DatacomCallableStatementAgent
- DatacomConnector
- DatacomCPManagedConnectionFactoryExt
- DatacomPreparedStatementAgent
- DatacomPreparedStatementResultSet
- DatacomSession
- DatacomTableResultSet
- DatacomXAManagedConnectionFactoryExt

You can find the **Javadoc** in the **DatacomWayDocs.sar** file. Open the **index.html** file located in the html folder to access information in the Javadoc.

Note: *For complete instructions on uploading files to the repository, see the SeeBeyond ICAN Suite Installation Guide.*

Index

C

ClassName parameter 19
 Connect to Database 30
 conventions, document 10

D

DatabaseName 27
 DatabaseName parameter 24
 DataSourceName parameter 24
 Delimiter 25
 Description parameter 20, 25
 document
 scope 9
 document conventions 10
 driver class, JDBC 19

E

eWay Database Wizard 29

H

host system requirements 13

I

Inbound Environment Properties
 Database 27
 Password 27
 PortNumber 28
 ServerName 28
 User 28
 InitialPoolSize parameter 20

J

JDBC
 driver class 19

L

Logical Host requirements 13
 LoginTimeOut parameter 20

M

MaxIdleTime parameter 20
 MaxPoolSize parameter 20
 MaxStatements parameter 21
 MinPoolSize parameter 21

N

NetworkProtocol parameter 21

O

operating systems
 supported 12

P

parameter
 ClassName 19
 DatabaseName 24
 DataSourceName 24
 Description 20, 25
 InitialPoolSize 20
 LoginTimeOut 20
 MaxIdleTime 20
 MaxPoolSize 20
 MaxStatements 21
 MinPoolSize 21
 NetworkProtocol 21
 Password 25
 PortNumber 25
 PropertyCycle 21
 RoleName 21
 ServerName 26
 User 26
 Password 27
 Password parameter 25
 PortNumber 28
 PortNumber parameter 25
 Property settings, Inbound Environment
 Database 27
 Password 27
 PortNumber 28
 ServerName 28
 User 28
 PropertyCycle parameter 21

R

Readme.txt
 file 12
 on installation CD-ROM 12
 requirements

Index

host system 13
RoleName parameter 21

S

scope 9
Screenshots 10
Select Wizard Type 29
ServerName 28
ServerName parameter 26
supported operating systems 12
system requirements 13
system requirements, external 13

U

User 28
User parameter 26
using Datacom OTDs, overview 50

W

Web services 13