

***SeeBeyond ICAN Suite***

# **SNMP Agent User's Guide**

***Release 5.0.1***



The information contained in this document is subject to change and is updated periodically to reflect changes to the applicable software. Although every effort has been made to ensure the accuracy of this document, SeeBeyond Technology Corporation (SeeBeyond) assumes no responsibility for any errors that may appear herein. The software described in this document is furnished under a License Agreement and may be used or copied only in accordance with the terms of such License Agreement. Printing, copying, or reproducing this document in any fashion is prohibited except in accordance with the License Agreement. The contents of this document are designated as being confidential and proprietary; are considered to be trade secrets of SeeBeyond; and may be used only in accordance with the License Agreement, as protected and enforceable by law. SeeBeyond assumes no responsibility for the use or reliability of its software on platforms that are not supported by SeeBeyond.

SeeBeyond, eGate, and e\*Way are the registered trademarks of SeeBeyond Technology Corporation in the United States and select foreign countries; the SeeBeyond logo, e\*Insight, and e\*Xchange are trademarks of SeeBeyond Technology Corporation. The absence of a trademark from this list does not constitute a waiver of SeeBeyond Technology Corporation's intellectual property rights concerning that trademark. This document may contain references to other company, brand, and product names. These company, brand, and product names are used herein for identification purposes only and may be the trademarks of their respective owners.

© 2003 by SeeBeyond Technology Corporation. All Rights Reserved. This work is protected as an unpublished work under the copyright laws.

**This work is confidential and proprietary information of SeeBeyond and must be maintained in strict confidence.**

Version 20031119111913.

# Contents

---

## Chapter 1

<b>About This Guide</b>	<b>5</b>
Contents of This Guide	5
Writing Conventions	6
Additional Conventions	6
Supporting Documents	6
SeeBeyond Web Site	7

---

## Chapter 2

<b>Using SNMP to Monitor eGate Projects</b>	<b>8</b>
The SNMP Agent Model	8
About eGate SNMP Model Configurations	9
About the SNMP Agent MIB	9
Supported Operating Systems	9
System Requirements	10

---

## Chapter 3

<b>Installing and Configuring the SNMP Agent</b>	<b>11</b>
Installing the SNMP Agent	11
Configuring SNMP Agents	12
Configuring Third-Party SNMP Management Systems	13

---

## Chapter 4

<b>Managing SNMP Agents</b>	<b>14</b>
Starting and Stopping SNMP Agents	14
Reconfiguring SNMP Agents	15

Index

# About This Guide

This guide describes how to configure and manage the SNMP (Simple Network Management Protocol) Agent.

This guide is intended for system administrators who are familiar with SNMP technology.

### In This Chapter

- [“Contents of This Guide” on page 5](#)
- [“Writing Conventions” on page 6](#)
- [“Supporting Documents” on page 6](#)
- [“SeeBeyond Web Site” on page 7](#)

---

## 1.1 Contents of This Guide

This document includes the following information:

- **Chapter 1 “About This Guide”** introduces this user’s guide, including its purpose, scope, and contents.
- **Chapter 2 “Using SNMP to Monitor eGate Projects”** provides an overview the SNMP Agent, its system requirements, and its Management Information Base (MIB).
- **Chapter 3 “Installing and Configuring the SNMP Agent”** describes how to install and configure the SNMP Agent.
- **Chapter 4 “Managing SNMP Agents”** describes how you start, stop, and reconfigure SNMP Agents.

## 1.2 Writing Conventions

The following writing conventions are observed throughout this document.

**Table 1** Writing Conventions

Text	Convention	Example
Button, file, icon, parameter, variable, method, menu, and object names.	<b>Bold</b> text	<ul style="list-style-type: none"> <li>▪ Click <b>OK</b> to save and close.</li> <li>▪ From the <b>File</b> menu, select <b>Exit</b>.</li> <li>▪ Select the <b>logicalhost.exe</b> file.</li> <li>▪ Enter the <b>timeout</b> value.</li> <li>▪ Use the <b>getClassname()</b> method.</li> <li>▪ Configure the <b>Inbound</b> File eWay.</li> </ul>
Command line arguments and code samples	Fixed font. Variables are shown in <b>bold italic</b> .	<code>bootstrap -p <b>password</b></code>
Hypertext links	<b>Blue</b> text	For more information, see <a href="#">"Writing Conventions" on page 6.</a>

### Additional Conventions

#### Windows Systems

For the purposes of this guide, references to "Windows" will apply to Microsoft Windows Server 2003, Windows XP, and Windows 2000.

#### Path Name Separator

This guide uses the backslash ("\") as the separator within path names. If you are working on a UNIX or HP NonStop system, please make the appropriate substitutions.

## 1.3 Supporting Documents

The following SeeBeyond documents provide additional information about the Integrated Composite Application Network (ICAN) Suite:

- *SeeBeyond ICAN Suite Primer*
- *SeeBeyond ICAN Suite Installation Guide*
- *eGate Integrator User's Guide*
- *eGate Integrator Tutorial*

---

## 1.4 SeeBeyond Web Site

The SeeBeyond Web site is your best source for up-to-the-minute product news and technical support information. The site's URL is:

<http://www.seebeyond.com>

# Using SNMP to Monitor eGate Projects

The SNMP Agent enables you to monitor eGate projects alerts using third-party SNMP management systems.

This chapter provides an architectural overview of the SNMP Agent and its MIB.

## In This Chapter

- [“The SNMP Agent Model” on page 8](#)
- [“About eGate SNMP Model Configurations” on page 9](#)
- [“About the SNMP Agent MIB” on page 9](#)
- [“Supported Operating Systems” on page 9](#)
- [“System Requirements” on page 10](#)

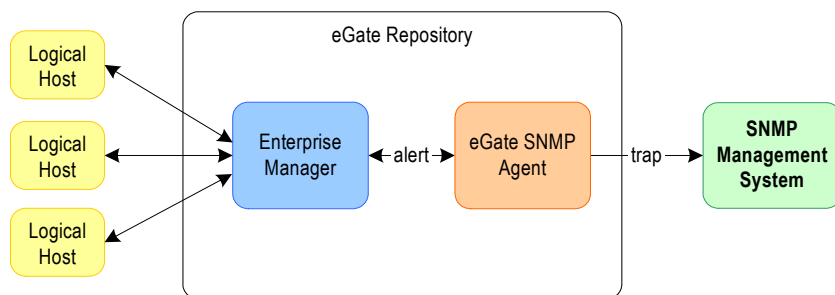
---

## 2.1 The SNMP Agent Model

The SNMP Agent enables you to forward eGate alerts as SNMP version 2 traps to a third-party SNMP management system. The Enterprise Manager monitors the Logical Hosts running in an eGate Repository, and the SNMP Agent in turn listens to the Enterprise Monitor for alert information, and forwards the alerts as SNMP traps to the trap port. The SNMP Agent also sends its start/stop status to the Enterprise Manager.

The figure below provides an overview of the SNMP Agent model.

**Figure 1** The SNMP Agent Model





---

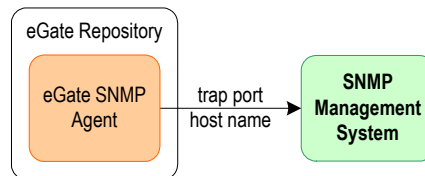
## 2.2 About eGate SNMP Model Configurations

The components in the eGate SNMP model communicate with each other via the following configurations:

- Trap host name
- Trap port number

The figure below shows where the configurations are set.

**Figure 2** SNMP Agent Model Configurations



The figure above shows the two components that are used for the SNMP Agent to communicate with components in the eGate SNMP model:

- **Trap host name**  
This is the host name of the third-party management system.
- **Trap port**  
This is the port where the SNMP Agent forwards trap notifications. On the initial SNMP Agent Configuration dialog box, this port is set to 16200.

For more information about SNMP Agent configurations, refer to [“Configuring SNMP Agents” on page 12](#).

---

## 2.3 About the SNMP Agent MIB

The SNMP Agent provides an SNMPv2 MIB which defines the trap notifications as well as the objects that can be managed in eGate Projects. The SNMP Agent MIB uses Abstract Syntax Notation One (ANS.1), which is industry standard for MIBs.

The SNMP Agent MIB, `EGATE50-SNMP-V2-MIB.txt`, is located in the `<ICANSuite\monitor\config\snmpagent` directory, where `<ICANSuite>` is the directory where you installed eGate Integrator.

The SNMP Agent MIB objects can be found under the following node:

1.3.6.9.4.1.1351.1.1.1.1.2

---

## 2.4 Supported Operating Systems

The SNMP Agent is available for the following operating systems:

- Windows Server 2003, Windows XP SP1a, and Windows 2000 SP3
- HP Tru64 V5.1A
- HP-UX 11.0 and 11i
- IBM AIX 5.1 and 5.2
- Sun Solaris 8 and 9
- HP Tru64 V5.1A

---

## 2.5 System Requirements

The system requirements for the SNMP Agent are the same as for eGate Integrator. For information, refer to the *SeeBeyond ICAN Suite Installation Guide*.

# Installing and Configuring the SNMP Agent

This chapter describes how to install and configure SNMP Agents.

## In This Chapter

- “Installing the SNMP Agent” on page 11
- “Configuring SNMP Agents” on page 12
- “Configuring Third-Party SNMP Management Systems” on page 13

---

## 3.1 Installing the SNMP Agent

During the eGate Integrator installation process, the Enterprise Manager, a web-based application, is used to select and upload products as .sar files from the eGate installation CD-ROM to the Repository.

Before you install the SNMP Agent, you must already have eGate Integrator installed, or you can install it simultaneously with eGate Integrator as follows:

- Installing the Repository
- Uploading products to the Repository, including
- Downloading components (such as Enterprise Designer and Logical Host)
- Viewing product information home pages

Follow the instructions for installing the eGate Integrator in the *SeeBeyond ICAN Suite Installation Guide*, and include the following step:

- During the procedures for uploading files to the eGate Repository using the Enterprise Manager, after uploading the **eGate.sar** file, select and upload the following file:
  - ♦ **SNMPAgent.sar**

Once you install the SNMP Agent, you must configure the SNMP agent as described below. The SNMP Agent does not have a default configuration.

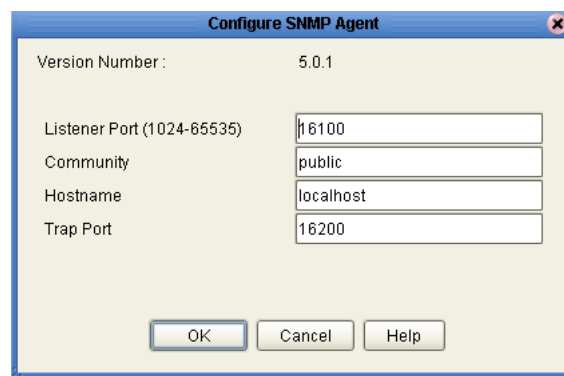
## 3.2 Configuring SNMP Agents

After installing the SNMP Agent, you must configure the SNMP Agent. The SNMP Agent does not provide a default configuration. To configure SNMP Agents, follow the procedure below. You can specify one SNMP Agent per Repository.

### To configure SNMP Agents

- 1 In the Environment Explorer tab of the Enterprise Designer, right-click the Repository for which you want to configure an SNMP agent.
- 2 Click **Configure SNMP Agent**. The **Configure SNMP Agent** dialog box appears as shown below.

**Figure 3** Configure SNMP Agent Dialog Box



- 3 Enter the following configurations:

For This Setting	Enter
Listener Port	This option is currently unavailable.
Community	The trap receiver's community name, for example, public.
Hostname	The host name or IP address of the third-party management system.
Port	The number for the trap port where the SNMP Agent forwards trap notifications.

- 4 Click **OK**.
- 5 On the **File** menu, click **Save All**.

This configures the SNMP Agent. You do not need to deploy or active the SNMP Agent, but you must start the SNMP Agent as described in [“Starting and Stopping SNMP Agents” on page 14](#).

---

## 3.3 Configuring Third-Party SNMP Management Systems

For a third-party management system to receive the eGate Integrator SNMP trap notifications, you must load the SNMP MIB into your management system.

The SNMP Agent MIB, **EGATE50-SNMP-V2-MIB.txt**, is located in the `<ICANSuite\monitor\config\snmpagent` directory, where `<ICANSuite>` is the directory where you installed eGate Integrator.

For more information about the SNMP Agent MIB, refer to [“About the SNMP Agent MIB” on page 9](#).

# Managing SNMP Agents

You can start and stop SNMP agents in the Enterprise Manager. Reconfiguring SNMP Agents is part of the Enterprise Designer. This chapter provides instructions for managing SNMP Agents.

## In This Chapter:

- [Starting and Stopping SNMP Agents](#) on page 14
- [Reconfiguring SNMP Agents](#) on page 15

---

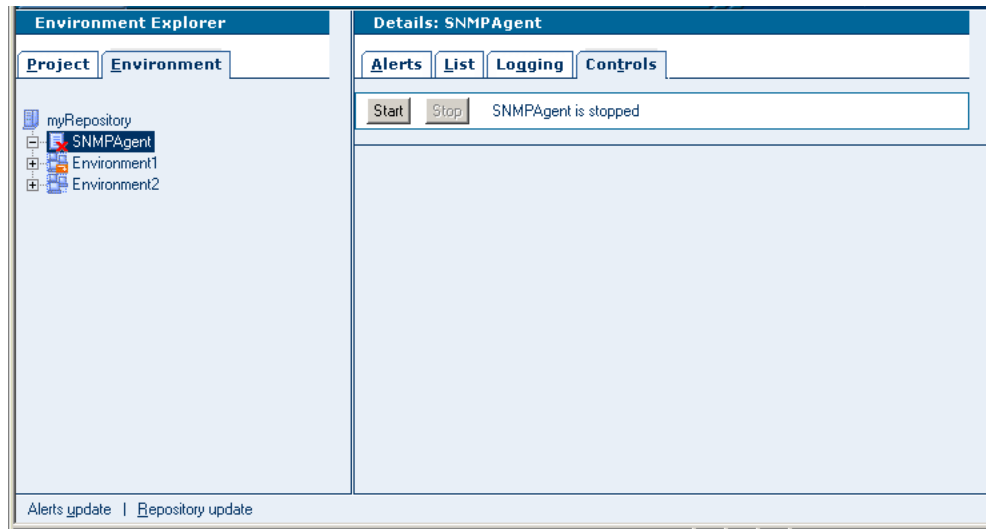
## 4.1 Starting and Stopping SNMP Agents

After installing the SNMP Agent, you must have configured the agent as described in [“Configuring SNMP Agents” on page 12](#). You then must start the SNMP Agent to start forwarding SNMP trap notification as described below.

### To start and stop SNMP Agents

- 1 In Internet Explorer, start the Enterprise Manager by entering the following URL:  
***http://hostname:portnumber***  
where *hostname* is the name or IP address of the host where the Repository runs and *portnumber* is the number of the port for the Repository.
- 2 Enter the user name and password and click **Login**.  
The Enterprise Manager **Home** page appears.
- 3 Click the **Monitor** icon. The **Monitor** page appears.
- 4 Click **SNMP Agent** and click **Controls**. The **Controls** page shows the stop and start status of the SNMP Agent as shown below.

**Figure 4** Viewing the SNMP Agent Status



- 5 To start the agent, click **Start**.

*Note:* If you are starting the SNMP Agent for the first time, and the Enterprise Manager was active while you installed and configured the SNMP Agent, you must click **Repository Update** before starting the agent.

- 6 To stop the agent, click **Stop**.

---

## 4.2 Reconfiguring SNMP Agents

To reconfigure an SNMP Agent for an eGate Project that has already been deployed, follow the procedure below:

### To reconfigure SNMP agents

- 1 Stop the SNMP Agent as described in the section above.
- 2 Configure the SNMP Agent as described in [“Configuring SNMP Agents” on page 12](#).
- 3 Restart the SNMP Agent as described in the section above.

# Index

## C

- configurations, SNMP Agent 9
- configuring
  - SNMP Agents 12
  - third-party SNMP management systems 13
- conventions
  - path name separator 6
  - Windows 6

## D

- document
  - conventions 6

## E

- EGATE50-SNMP-V2-MIB.txt 9

## H

- host name 9

## I

- installing, SNMP Agent 11

## M

- managing SNMP Agents 14
- MIB 9
- model, SNMP Agent 8

## O

- organization of information, document 5

## P

- platforms, supported 9
- port, trap 9

## R

- reconfiguring SNMP Agents 15

- requirements, system 10

## S

- SeeBeyond Website 7
- SNMP Agents
  - configurations 9
  - configuring 12
  - installing 11
  - managing 14
  - MIB 9
  - model 8
  - reconfiguring 15
  - starting 14
  - stopping 14
- SNMP management systems, configuring 13
- starting SNMP Agents 14
- stopping SNMP Agents 14
- supported platforms 9
- system requirements 10

## T

- Trap host name 9
- trap port 9

## W

- writing conventions 6