

SeeBeyond ICAN Suite

SeeBeyond ICAN Suite Installation Guide

Release 5.0.4



The information contained in this document is subject to change and is updated periodically to reflect changes to the applicable software. Although every effort has been made to ensure the accuracy of this document, SeeBeyond Technology Corporation (SeeBeyond) assumes no responsibility for any errors that may appear herein. The software described in this document is furnished under a License Agreement and may be used or copied only in accordance with the terms of such License Agreement. Printing, copying, or reproducing this document in any fashion is prohibited except in accordance with the License Agreement. The contents of this document are designated as being confidential and proprietary; are considered to be trade secrets of SeeBeyond; and may be used only in accordance with the License Agreement, as protected and enforceable by law. SeeBeyond assumes no responsibility for the use or reliability of its software on platforms that are not supported by SeeBeyond.

SeeBeyond, e*Gate, e*Way, and e*Xchange are the registered trademarks of SeeBeyond Technology Corporation in the United States and/or select foreign countries. The SeeBeyond logo, SeeBeyond Integrated Composite Application Network Suite, eGate, eWay, eInsight, eVision, eXchange, eView, eIndex, eTL, ePortal, eBAM, and e*Insight are trademarks of SeeBeyond Technology Corporation. The absence of a trademark from this list does not constitute a waiver of SeeBeyond Technology Corporation's intellectual property rights concerning that trademark. This document may contain references to other company, brand, and product names. These company, brand, and product names are used herein for identification purposes only and may be the trademarks of their respective owners.

© 2004 by SeeBeyond Technology Corporation. All Rights Reserved. This work is protected as an unpublished work under the copyright laws.

This work is confidential and proprietary information of SeeBeyond and must be maintained in strict confidence.

Version 20040708161140.

Contents

List of Figures	8
------------------------	----------

List of Tables	10
-----------------------	-----------

Chapter 1

Introduction	11
Installation Guide Purpose and Scope	11
Intended Audience	11
Organization of Information	12
Writing Conventions	12
Additional Conventions	13
Supporting Documents	13
Online Documents	14
About eGate 5.0.4	14
eGate Basics	14
eGate Integrator Components	14
Resource Considerations	15
SeeBeyond Web Site	16

Chapter 2

Overview of Installation	17
Overview	17
System Requirements	18
Internet Explorer Version	19
Windows System Requirements	19
UNIX System Requirements	20
HP NonStop Server System Requirements	21
Pre-Installation	22
Windows Pre-Installation	22
Default User Names and Passwords	22
HP NonStop Server Pre-Installation	22
The “egate” User	22

Disk-Space Quota Limitations	22
JRE Extension Libraries	22
About the Installation	24
Overview of the Installation Process	24
Installation Flexibility	27
Repository Names and User Names	27
Default “Administrator” User Name	27
Environment Names	27
Preparing for Installation	28
What Must Be Determined Prior to Installing eGate	28
Information Required Before Installing eGate	28
Upgrading from 5.0.x to 5.0.4	29

Chapter 3

Installation Instructions for Repository	30
Installing the Repository	30
Windows Installation of Repository	30
Starting the Repository as a Windows Service	38
UNIX Installation of Repository	39
Starting the Repository as a UNIX Daemon	41
HP NonStop Server Installation of Repository	41
Uploading and Installing the Repository	42
Running Repository under Pathway for HP NonStop Server	43

Chapter 4

Installation Instructions for Uploading Files to the Repository	46
Overview	46
Uploading Files to the Repository	47
Installing the Schema Runtime Environment (SRE) Monitor	58

Chapter 5

Installation Instructions for Enterprise Designer	62
Overview	62
Installation of Enterprise Designer	63
Starting Enterprise Designer and Installing Required eGate Modules	64
Starting Enterprise Designer GUI After Initial Logon	71

Chapter 6

Installation Instructions for Logical Host	73
Overview	73
Windows Installation of Logical Host	74
Starting the Logical Host on a Windows System	75
Starting the Logical Host manually on a Windows system	75
Starting the Logical Host as a Windows service	75
UNIX and Linux Installation of Logical Host	76
Starting the Logical Host on a UNIX System	77
Starting the Logical Host on a Linux System	78
Starting the Logical Host as a UNIX/Linux Daemon	78
HP NonStop Server Installation of Logical Host	79
Starting the Logical Host on an HP NonStop Server	80
Starting the Logical Host manually on an HP NonStop system	80
Starting the Logical Host as an HP NonStop Program with a generic process	81

Chapter 7

Installation Instructions for ESRs	84
About ESRs	84
ESR Distribution .zip File Contents	85
Quick Start Guide to Installing ESRs	86
Extracting ESR Distribution .zip Files	86
Uploading ESR .sar Files to the Repository	87
Using the Update Center for Enterprise Designer ESRs	88
Using the ESR Setup for Logical Host ESRs	91
Downloading and Extracting Enterprise Designer and Logical Host ESR .zip Files	93
Installing Repository ESRs	94
Rolling Back ESRs	95
Rolling Back Enterprise Designer ESRs	95
Rolling Back Logical Host ESRs	96
Rolling Back Repository ESRs	97

Chapter 8

Upgrading from 5.0.x to 5.0.4	99
Overview	99
Upgrading 5.0.0 to 5.0.4	99
Upgrading 5.0.x to 5.0.4	99
Migrating Projects from 5.0.0 to 5.0.1	99

Upgrading the Repository from 5.0.x to 5.0.4	102
<hr/>	
Chapter 9	
Installing New Product Components	104
Overview	104
Uploading and Installing New .sar Files	104
System administrator performs the following	104
User performs the following	105
<hr/>	
Chapter 10	
Troubleshooting	109
ICAN Suite Product Dependencies	109
Repository Installation	110
Naming the Repository	110
Invalid Domain/Server Name: Invalid '_' in Computer Name	110
HP NonStop Server Port Dependencies	110
Uploading Files in Enterprise Manager	110
Improving Upload Performance	110
Problem Uploading .sar Files	110
Upload Session Log Files	111
Adding a New License File	111
Launching the SRE Monitor from Enterprise Manager	111
Downloading in Enterprise Manager	111
Enterprise Designer and Logical Host - win32 Links	111
General Enterprise Manager Tips	112
Timeout Interval	112
Adobe SVG Viewer 3.0 Plug-in for Windows	112
Enterprise Manager Recognition of Adobe SVG Viewer Plug-in	112
EnterpriseManagerPlugin-Win98ToXP.sar File	112
Adobe SVG Viewer Plug-in Problem	113
Configuring SSL and HTTPS Support	113
<hr/>	
Appendix A	
UNIX and Linux Patches	114
HP Tru64 UNIX V5.1A Patches	114
Certified HP Tru64 UNIX V5.1A Patches	114
HP-UX System Parameter Changes	115
HP-UX Operating System Patches	115
HP-UX 11.0 Patches	116

HP-UX 11i (PA-RISC) Patches	116
HP-UX 11i v2.0 (11.23) Patches	117
IBM AIX 5.1L and 5.2 Patches	118
Certified IBM AIX 5.1L Patches	118
Certified IBM AIX 5.2 Patches	118
Linux Patches	118
Certified Red Hat Enterprise Linux AS 2.1 (Intel x 86) Patches	118
Certified Red Hat Linux 8 (Intel x 86) Patches	118
Certified SuSE Linux Enterprise Server 8 (Intel x86) Patches	118
Sun Solaris 8 and 9 Patches	118
nscd must be running on Sun Solaris to install eGate successfully	118
Required Sun Solaris Patches	119
Certified Sun Solaris 8 and 9 Patches	119
Glossary	120
e*Gate 4.x Terms in eGate 5.0	126
Index	128

List of Figures

Figure 1	Overview of eGate Installation	26
Figure 2	License Agreement	31
Figure 3	Select Repository Location	32
Figure 4	Repository Configuration	33
Figure 5	Installation	34
Figure 6	Completion	35
Figure 7	Repository Service Manager	35
Figure 8	Which .sar Files to Load for HP NonStop Server	49
Figure 9	SeeBeyond Customer Login window	50
Figure 10	License File Selection	50
Figure 11	Completed Upload	51
Figure 12	Repository Information	52
Figure 13	Upload eGate.sar	53
Figure 14	Product Manifest Selection	54
Figure 15	License File Selection (HP NonStop Server)	55
Figure 16	SeeBeyond Customer Login window	63
Figure 17	Products available to download from <repository_name> window	64
Figure 18	Update Center Wizard - Select Location of Modules	65
Figure 19	Property Editor: Update Center	66
Figure 20	Proxy Configuration Dialog Box	67
Figure 21	Update Center Wizard - Select Modules to Install	68
Figure 22	Update Center Wizard - Download Modules	69
Figure 23	Update Center Wizard - View Certificates and Install Modules	70
Figure 24	Restart the IDE dialog box	70
Figure 25	Enterprise Designer Login dialog box	71
Figure 26	Products available to download from <repository_name> window	75
Figure 27	Example of Selected ESR	88
Figure 28	Update Center Wizard - Select Location of Modules	89
Figure 29	Update Center Wizard - Select Modules to Install	90
Figure 30	Update Center Wizard - Download Modules	90
Figure 31	Update Center Wizard - View Certificates and Install Modules	91
Figure 32	Logical Host ESR Setup	92

Figure 33 Remove Installed ESR Dialog Box

96

List of Tables

Table 1	Writing Conventions	13
Table 2	Windows GUI System Requirements	19
Table 3	Windows Repository and Logical Host System Requirements	19
Table 4	HP Tru64 System Requirements	20
Table 5	HP-UX System Requirements	20
Table 6	IBM AIX System Requirements	20
Table 7	Red Hat and SuSE Linux System Requirements	20
Table 8	Sun Solaris System Requirements	20
Table 9	HP NonStop Server System Requirements	21
Table 10	Mounting a CD-ROM Drive Locally	39
Table 11	Logical Host .sar files	57
Table 12	Logical Host Properties File	81
Table 13	LHInit Files	83
Table 14	Contents of ESR Distribution .zip File	85
Table 15	eGate Values on an HP-UX 11 System	115
Table 16	Certified HP-UX 11.0 Patches	116
Table 17	Certified HP-UX 11i Patches	116
Table 18	Certified HP-UX 11i v2.0 (11.23) Patches	117
Table 19	eGate 5.0 Terms	126

Introduction

This chapter introduces you to the *SeeBeyond ICAN Suite Installation Guide*, its general purpose and scope, and its organization. It also provides sources of related documentation and information.

1.1 Installation Guide Purpose and Scope

This installation guide describes the procedures necessary to install the SeeBeyond® Technology Corporation (SeeBeyond) eGate Integrator (eGate) product.

After the product is installed, you must customize it to execute your site-specific business logic and to interact with your other systems as required. The steps necessary to perform those operations are discussed in the eGate documentation set and online Help systems.

1.2 Intended Audience

This guide is intended for experienced computer users who have the responsibility of helping to set up and maintain a fully functioning ICAN Suite system. This person must also understand any operating systems on which the ICAN Suite will be installed (Windows, UNIX, or HP NonStop Server) and must be thoroughly familiar with Windows-style GUI operations.

1.3 Organization of Information

This document is organized topically as follows:

- **Chapter 1 "Introduction"** gives a general preview of this document, its purpose, scope, and organization.
- **Chapter 2 "Overview of Installation"** gives you an overview of the installation process.
- **Chapter 3 "Installation Instructions for Repository"** provides instructions on how to upload and install an eGate Repository.
- **Chapter 4 "Installation Instructions for Uploading Files to the Repository"** provides instructions on how to upload product files to the eGate Repository.
- **Chapter 5 "Installation Instructions for Enterprise Designer"** provides instructions on how to install the Enterprise Designer on a Windows computer. The Enterprise Designer GUI can only be installed on Windows.
- **Chapter 6 "Installation Instructions for Logical Host"** provides instructions on how to download and install the Logical Host.
- **Chapter 7 "Installation Instructions for ESRs"** provides instructions on how to install Emergency Software Releases (ESRs).
- **Chapter 8 "Upgrading from 5.0.x to 5.0.4"** provides instructions on how to update your 5.0.x ICAN Repository to 5.0.4.
- **Chapter 9 "Installing New Product Components"** provides instructions on how to upload and install new product components (.sar files) onto a Repository that has already been installed.
- **Chapter 10 "Troubleshooting"** describes issues that may arise during the installation process and provides tips and solutions to resolve these issues.
- **Appendix A** lists the recommended and certified patches for UNIX and Linux systems.
- **"Glossary"** lists eGate 5.0.4 terminology. It also cross-references 4.5.x terms with 5.0.4 terms.

1.4 Writing Conventions

The following writing conventions are observed throughout this document.

Table 1 Writing Conventions

Text	Convention	Example
Button, file, icon, parameter, variable, method, menu, and object names.	Bold text	<ul style="list-style-type: none"> ▪ Click OK to save and close. ▪ From the File menu, select Exit. ▪ Select the logicalhost.exe file. ▪ Enter the timeout value. ▪ Use the getClassName() method. ▪ Configure the Inbound File eWay.
Command line arguments and code samples	Fixed font. Variables are shown in bold italic .	<code>bootstrap -p password</code>
Hypertext links	Blue text	http://www.seebeyond.com

Additional Conventions

Windows Systems

For the purposes of this guide, references to “Windows” will apply to Microsoft Windows Server 2003, Windows XP, and Windows 2000.

Path Name Separator

This guide uses the backslash (“\”) as the separator within path names. If you are working on a UNIX or HP NonStop system, please make the appropriate substitutions.

1.5 Supporting Documents

The following SeeBeyond documents provide additional information about the eGate Integrator system as explained in this guide:

- *eGate Integrator JMS Reference Guide*
- *eGate Integrator Release Notes*
- *eGate Integrator System Administration Guide*
- *eGate Integrator User’s Guide*
- *eGate Integrator Tutorial*
- *SeeBeyond ICAN Suite Deployment Guide*
- *SeeBeyond ICAN Suite Primer*
- *SeeBeyond ICAN Suite Upgrade Guide*

See the *SeeBeyond ICAN Suite Primer* for a complete list of eGate-related documentation. You can also refer to the appropriate Microsoft Windows or UNIX documents, if necessary.

Note: For information on how to use a specific add-on product (for example, an eWay Intelligent Adapter), see the user's guide for that product.

1.6 Online Documents

The documentation for the SeeBeyond ICAN Suite is distributed as a collection of online documents. These documents are viewable with the Acrobat Reader application from Adobe Systems. Acrobat Reader can be downloaded from:

<http://www.adobe.com>

1.7 About eGate 5.0.4

This section provides an overview of the operation, structure, architecture, and components of the eGate system.

1.7.1. eGate Basics

The purpose of the eGate system is to translate, transform, and route data between multiple external systems, and translate that data from one-to-many formats. eGate offers the following features:

- **Client/server Architecture**
eGate leverages a Java-based client/server architecture that is open and flexible.
- **Effective Communication**
eGate uses protocols and adapters that you select, allowing it to communicate with, and link together, multiple applications and databases across different operating systems.
- **Versatile Performance**
eGate can interact with a large number of hardware systems, operating systems, message standards, communication protocols, and databases.
- **Multi-mode Operation**
eGate operates in both real-time and batch/scheduled integration modes.
- **Convenient Bridges**
eGate can bridge between older and newer systems, resulting in a centrally managed and unified enterprise.

1.7.2. eGate Integrator Components

The eGate system consists of the following:

- A Java 2 Platform Enterprise Edition (J2EE)-compatible middleware services (SeeBeyond Integration Server)

- A messaging server (JMS)
- Data repositories
- Repository server
- Enterprise Manager
- Enterprise Designer GUI
- Logical Host

For an in depth description of the eGate components and how they function, see the *eGate Integrator User's Guide*.

1.7.3. Resource Considerations

eGate 5.0.4 functions can be distributed across various types of computers, as described below. Although the same computer can act in three or all four capacities simultaneously, the expectation is that all machines may be distributed and communicating via TCP/IP.

The roles for computers in an eGate environment are:

- **Repository server:** The Repository server stores the setup, components, and configuration information for the elements of an eGate Project (see the Enterprise Designer note, below). It also stores the product binary files that are required at runtime by the Logical Hosts. The components and configurations are downloaded to the Logical Host during the initial bootstrap process and as needed after design-time configuration changes are made. A Repository server must have maximal reliability and fast reliable access to long-term storage, in order to serve requests for configuration and security.

A Repository server can run on any of the operating system platforms supported by eGate.

- **Enterprise Manager:** A Web-enabled application used for uploading ICAN Suite products into the Repository, downloading and installing products from the Repository, and accessing other Web-based ICAN Suite products. It also monitors eGate components.

Note: An online Help system and ICAN Suite documentation are accessible through Enterprise Manager.

- **Enterprise Designer:** A graphical user interface (GUI) that is used to design and configure the logical components and physical resources of an eGate Project. Through this GUI, you develop Projects to process and route data through an eGate system. The major features of the Enterprise Designer are the Enterprise Explorer, which displays two views of the system in a typical Windows Explorer tree structure format, and the Project Editor, which displays various editors as you proceed through the development process of an eGate Project.

Enterprise Designer runs on Windows only.

Note: *A Project organizes the files and packages and maintains the settings that comprise an eGate system. For instructions on how to set up a simple eGate Project, see the **eGate Integrator Tutorial**.*

- **Logical Host:** An instance of the eGate runtime environment that is installed on a host hardware platform, and contains one or more Integration Servers. It also contains a messaging server and external applications. Logical Hosts handle routing, translation, and transformation of data. Most sites should tune their Logical Hosts to maximize throughput; this usually translates to plenty of RAM, fast cache, and fast I/O.

A Logical Host can run on any of the operating system platforms supported by eGate.

For hardware/software resource requirements, see **“System Requirements” on page 18**.

1.8 SeeBeyond Web Site

The SeeBeyond Web site is your best source for up-to-the-minute product news and technical support information. The site’s URL is:

<http://www.seebeyond.com>

Overview of Installation

This chapter gives you an overview of system requirements and the installation process.

This chapter contains

- [“Overview” on page 17](#)
- [“System Requirements” on page 18](#)
- [“Pre-Installation” on page 22](#)
- [“About the Installation” on page 24](#)
- [“Preparing for Installation” on page 28](#)

2.1 Overview

The major components of the eGate installation are:

- Repository server
- Enterprise Manager
- Enterprise Designer GUI
- Logical Host

Although you can install the Repository and Logical Host on any supported platform, you must install the Enterprise Designer GUI on a Windows computer. After installing and starting the Repository, use your browser to connect to the Enterprise Manager. From the Enterprise Manager you can:

- Upload products to the Repository
- Download components (including Enterprise Designer and Logical Host)
- View product information home pages

Once the Enterprise Manager is installed, use it to download other components required to run eGate, such as the Enterprise Designer and the Logical Host.

Before installing the Repository, Enterprise Designer, and Logical Host on your system, please read the following sections to ensure a smooth and error-free installation.

2.2 System Requirements

This section lists the system requirements for each platform. The **Readme.txt** file (located in the root directory of the Repository CD-ROM) contains the most up-to-date operating system requirements for the supported platforms. The requirements listed in the following sections are in addition to the operating system requirements.

eGate Integrator is available on the following operating systems

- Windows 2000 SP3 and SP4, Windows XP SP1a, and Windows Server 2003
- HP NonStop Server, G06.22
- HP Tru64 V5.1A with required patches
- HP-UX 11.0, 11i (PA-RISC), and 11i v2.0 (11.23) with required patches and parameter changes
- IBM AIX 5.1L and 5.2 with required Maintenance level patches
- Red Hat Enterprise Linux AS 2.1 (Intel x86)
- Red Hat Linux 8 (Intel x86)
- Sun Solaris 8 and 9 with required patches
- SuSE Linux Enterprise Server 8 (Intel x86)
- Japanese Windows 2000 SP3 and SP4, Windows XP SP1a, and Windows Server 2003
- Japanese HP-UX 11.0, 11i (PA-RISC), and 11i v2.0 (11.23) with required patches and parameter changes
- Japanese IBM AIX 5.1L and 5.2 with required Maintenance level patches
- Japanese Sun Solaris 8 and 9 with required patches
- Korean Windows 2000 SP3 and SP4, Windows XP SP1a, and Windows Server 2003
- Korean HP-UX 11.0, 11i (PA-RISC), and 11i v2.0 (11.23) with required patches and parameter changes
- Korean IBM AIX 5.1L and 5.2 with required Maintenance level patches
- Korean Sun Solaris 8 and 9 with required patches

HP-UX

SeeBeyond only supports HP-UX running on 9000/8xx machines. 9000/8xx is 64 bits, but can also run in 32 bit mode. To determine if the system is 32 or 64 bits, type: **getconf KERNEL_BITS**. This returns either 32 or 64. Only 64 bits mode is supported.

IBM AIX

On IBM AIX, SeeBeyond supports both 32- and 64-bit platforms. 64 bits CPU can run on either a 32-bit AIX kernel, a 32-bit AIX kernel with the 64-bit extension enabled, or a 64-bit AIX kernel. ICAN does not detect if the system is 32 or 64 bits. You must determine this prior to installing the product by typing **bootinfo -K** at the command prompt. The default in the bootstrap script is 64 bits. If you are running a 32-bit AIX kernel without

the 64 bit extension enabled, you must change the default by typing **bootstrap -32bit** at the command prompt for the directory where bootstrap was downloaded (for example: **<ICAN_install_directory>/logicalhost/bootstrap**).

2.2.1. Internet Explorer Version

You must use Internet Explorer 6 with Service Pack 1 to access Enterprise Manager.

2.2.2. Windows System Requirements

The following tables list the minimum requirements for installing and running each of the eGate components on a Windows system. The RAM and disk space requirements do not take into consideration the RAM and disk space required by the operating system. For the best performance, you should install these components on different computers. However, if you choose to install some or all of these components on the same machine (for example, in a test environment), keep in mind that the requirements for each of these components is cumulative.

Table 2 Windows GUI System Requirements

Component	CPU	RAM	Disk Space
Enterprise Designer	1.2 GHz Pentium class	512 MB	250 MB
Enterprise Manager	600 MHz Pentium class	128 MB	5 MB

Table 3 Windows Repository and Logical Host System Requirements

Component	CPU	RAM	Disk Space
Repository	1.2 GHz Pentium class	512 MB	1.2 GB
Logical Host	1.2 GHz Pentium class	512 MB	250 MB

Additionally, to use eGate on Windows, you will need the following:

- A TCP/IP network connection.
- Internet Explorer 6.0 with Service Pack 1.

Additional considerations

- The disk space requirement listed for the Logical Host does not include space for the queues and log files that are created by the user as Integration and Message Services are executed.
- For additional information regarding sizing of a test or production system, consult the *SeeBeyond ICAN Suite Deployment Guide*.
- eGate GUI is supported when using Microsoft Terminal Services®, but not with other “remote” Windows tools.

2.2.3. UNIX System Requirements

The following tables list the minimum requirements for installing the Repository and Logical Host on various UNIX systems. The RAM and disk space requirements do not take into consideration the RAM and disk space required by the operating system. For the best performance, you should install these components on different computers. However, if you choose to install both of these components on the same machine (for example, in a test environment), keep in mind that the requirements for each of these components is cumulative.

Dual (or multi) CPUs are recommended for best performance of the Logical Host, especially if you run the Repository and the Logical Host on the same computer.

Table 4 HP Tru64 System Requirements

Component	CPU	RAM	Disk Space
Repository	667 MHz	512 MB	1000 MB
Logical Host	667 MHz	512 MB	350 MB

Table 5 HP-UX System Requirements

Component	CPU	RAM	Disk Space
Repository	540 MHz	512 MB	1150 MB
Logical Host	540 MHz	1.5 GB	500 MB

Table 6 IBM AIX System Requirements

Component	CPU	RAM	Disk Space
Repository	450 MHz	256 MB	900 MB
Logical Host	450 MHz	512 MB	450 MB

Table 7 Red Hat and SuSE Linux System Requirements

Component	CPU	RAM	Disk Space
Repository	1.2 GHz	256 MB	900 MB
Logical Host	1.2 GHz	512 MB	350 MB

Table 8 Sun Solaris System Requirements

Component	CPU	RAM	Disk Space
Repository	400 MHz	256 MB	850 MB
Logical Host	400 MHz	512 MB	400 MB

The Enterprise Designer can only be installed on Windows systems.

Additionally, to use eGate on UNIX, you will need the following:

- A TCP/IP network connection.
- FTP and Telnet capabilities.

Additional considerations

- The disk space requirement listed for the Logical Host does not include space for the queues and log files that are created by the user as Integration and Message Services are executed.
- For additional information regarding sizing of a test or production system, consult the *SeeBeyond ICAN Suite Deployment Guide*.

2.2.4. HP NonStop Server System Requirements

The following table lists the requirements for installing the Repository and Logical Host on an HP NonStop Server system. The RAM and disk space requirements do not take into consideration the RAM and disk space required by the operating system. Additional disk space is required for data storage; those requirements vary based upon each installation's implementation.

Table 9 HP NonStop Server System Requirements

Component	Server	RAM	Disk Space
Repository	HP Non Stop Server, S Series	256 MB	512 MB
Logical Host	HP Non Stop Server, S Series	512 MB	512 MB

The Enterprise Designer can only be installed on Windows systems.

HP NonStop Server Requirements

- HP NonStop Server, G06.22
- HP NonStop SQL/MX 1.8.5 AAJ
- HP NonStop Java 3.1 AAS
- HP NonStop JMS 3.0 AAD
- HP NonStop JDBC/MX 3.0 AAE
- HP NonStop JDBC/MP 3.0 AAD

Additional considerations

- The disk space requirement listed for the Logical Host does not include space for the queues and log files that are created by the user as Integration and Message Services are executed.
- For additional information regarding sizing of a test or production system, consult the *SeeBeyond ICAN Suite Deployment Guide*.
- SUPER group privileges are required before installing a Logical Host (see **“Required Privileges” on page 79**).

Additionally, to use eGate on an HP NonStop Server system, you will need the following:

- A TCP/IP network connection.
- FTP and Telnet capabilities.

2.3 Pre-Installation

The following sections explain issues to consider before you begin your eGate installation.

2.3.1. Windows Pre-Installation

Exit from all Windows programs prior to running the setup.

You need Administrator privileges to install eGate.

Default User Names and Passwords

For eGate's default user name and password, see the **Readme.txt** file.

2.3.2. HP NonStop Server Pre-Installation

If you have the environment variable TEMP set to any value during the installation, that value must be a directory path location (writable by the installing user). Otherwise, the installation will fail.

The "egate" User

The user name under which you install the eGate files owns the eGate files, and all eGate processes are run under this user name. We suggest that you create an "egate" user for this purpose, but you can use any user name that meets your installation's security requirements.

Disk-Space Quota Limitations

The "egate" user, or any user that you use to install the eGate system, must have *no* disk-quota limitations imposed. eGate calculates "available disk space" in terms of total disk space available on the system, and does no quota checking. If you impose a disk-quota restriction on the "egate" user, you risk losing data when queue storage demands exceed the user's quota.

JRE Extension Libraries

eGate requires a collection of JRE 1.3 extension libraries to be copied to the `$JAVA_HOME/jre/lib/ext` directory on the HP NonStop Server. Additionally, a section must be added to the `java.security` file on the server. SUPER.SUPER access and System Administrator privileges are required to edit the `java.security` file and perform the following.

eGate also requires certain `.jar` files that are normally installed with the HP NonStop Java installation. Please verify that your HP NonStop Server has the following files in the `$JAVA_HOME/jre/lib/ext` directory:

- `crimson.jar`

- iiimp.jar
- jaas.jar
- jce1_2-do.jar
- jce1_2_2.jar
- jcert.jar
- jdbcMx.jar
- jdbcTrace.jar
- jnet.jar

Note: Update all *.jar* files not found at `$JAVA_HOME/jre/lib/ext` with those on the CD-ROM.

- jsse.jar
- jtatmf.jar
- os.jar
- sqlmp.jar
- tmf.jar

To install the JRE extension libraries

- Use an FTP client to transfer all of the files in the `HNS/lib/ext` directory on your installation media to the `$JAVA_HOME/jre/lib/ext` directory on the HP NonStop Server.

To update the `java.security` file

- 1 Use Telnet to connect to your HP NonStop Server.
- 2 Use a text editor (such as vi) to open the `$JAVA_HOME/jre/lib/security/java.security` file.
- 3 Add the following section (if it is not already present):

```
#  
# List of providers and their preference orders (see above):  
#  
security.provider.1=sun.security.provider.Sun  
security.provider.2=com.sun.rsajca.Provider  
security.provider.3=com.sun.crypto.provider.SunJCE
```

- 4 Save and close the `java.security` file.

Note: If you upgrade your computer or change your HP NonStop Server JVM in some way (for example: running *make* in `$JAVA_HOME/install`), the `java.security` file will be reset back to its original state. You must perform the procedure detailed in this section again.

2.4 About the Installation

Note: *If you are installing eGate components on the same computer (including installing upgrades to existing installations), you must install the Repository **first**, followed by the Enterprise Designer and the Logical Host.*

The installation is a multi-stage process that includes the following:

- 1 Installing the eGate Repository.
- 2 Uploading the product files to the Repository.
- 3 Installing the Enterprise Designer GUI via the Enterprise Manager.

The Enterprise Designer installation procedure consists of downloading an archive file from a Web site and extracting it to a folder within your local machine.

Important: *The eGate GUIs must be installed on a Windows systems. See [Chapter 5](#) for more information.*

- 4 Installing the eGate Logical Host(s) from the Repository via Enterprise Manager.

The Logical Host installation procedure consists of downloading an archive file from a Web site and extracting it to a folder within your local machine.

2.4.1. Overview of the Installation Process

The installation process is divided into phases (see [Figure 1 on page 26](#)).

- Step 1 installs the **Repository, Enterprise Manager, and ICAN Monitor** from CD-ROM. The Repository stores and manages the setup, component, and configuration information for eGate Projects. Enterprise Manager is the tool from which you upload files to the Repository and download products to your computer.
- Step 2 starts the Repository.
- Step 3 uploads the license and eGate files to the Repository from CD-ROM via Enterprise Manager.

Note: *Before downloading and installing the Logical Host, add-on applications, and ESRs from the Repository (Steps 6, 8, and 9 respectively), they must first be uploaded to the Repository (Step 3).*

- Step 4 downloads the **Enterprise Designer GUI**, which enables you to configure the eGate system.

Step 4 also downloads and installs the **add-on** components from the Repository to your computer via Enterprise Manager (you must first upload them to the Repository, see [Step 3](#)). Depending on your installation, the add-ons include eWay adapters for communication with specific external systems.

- Step 5 launches the Enterprise Designer, creates a Project, creates a Logical Host, and deploys a Project. See the *eGate Integrator Tutorial*, *eGate Integrator System Administration Guide*, and *eGate Integrator User's Guide* for detailed information on how to complete these tasks.
- Step 6 downloads the **Logical Host** to your system via Enterprise Manager and then installs it (you must first upload it to the Repository, see [Step 3](#)).

Note: *The Windows Logical Host is uploaded "by default" with eGate.sar.*

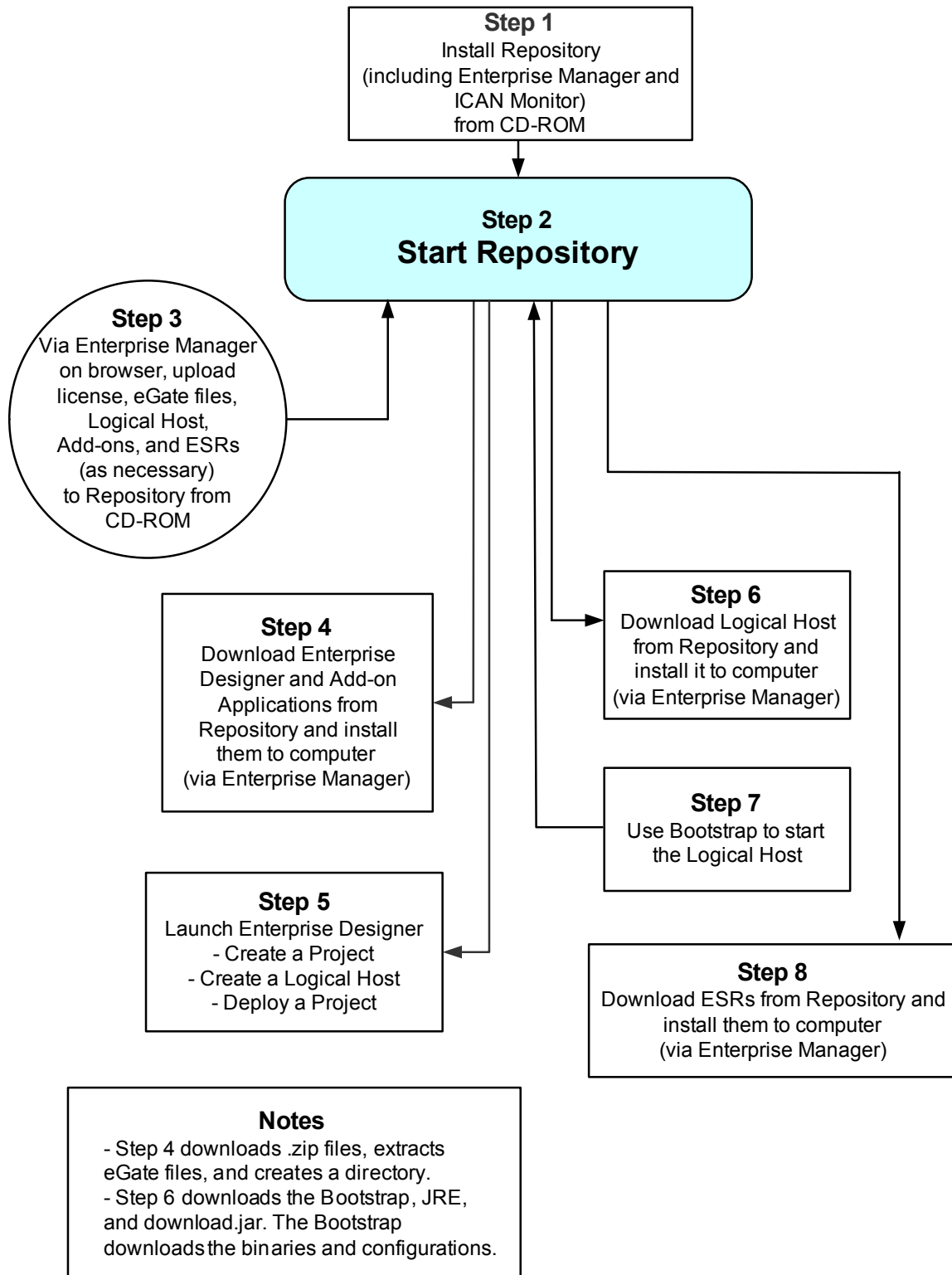
The Logical Host is an instance of the eGate runtime environment that contains the software and other installed components that are required at run time, such as:

- ♦ The **SeeBeyond Integration Server**, which provides middleware services for security and state maintenance, data access and persistence, and transactions.
- ♦ The **System Management Service**, which manages and monitors eGate deployments that may comprise other application servers in addition to the SeeBeyond Integration Server.
- ♦ The **SeeBeyond JMS IQ Manager**, which exchanges and tracks JMS messages.

Although the Logical Host installation also includes the components necessary for basic communication between the eGate system and files, communications with databases and other products will require you to add-on components.

- Step 7 starts the Logical Host from the Bootstrap.
- Step 8 downloads and installs **Emergency Software Releases** (ESRs) from the Repository to your computer via Enterprise Manager (you must first upload them to the Repository; see [Step 3](#)). ESRs are updates that resolve known issues.

Figure 1 Overview of eGate Installation



Installation Flexibility

eGate Integrator 5.0.4 allows you to:

- Install more than one Logical Host on a single computer.
- Manage multiple Projects on a single environment.
 - ♦ The separation of design from deployment makes it possible to use the same components in more than one Project.
- Centralize your software distribution.
 - ♦ After uploading software (including ESRs—Emergency Software Releases) into “software packages,” Administrators select which physical server or groups of physical servers receive the software.
 - ♦ HTTP connections are used to upload and download the software to and from the Repository.

2.4.2. Repository Names and User Names

eGate maintains its own list of Repository names and user names; it does not poll the operating system or network to obtain or validate user names or Repository names. To simplify system administration, SeeBeyond recommends that you use your current naming conventions for Repository and user names.

eGate Repository and user names (as well as passwords) are case sensitive, even on Windows systems. Although there is no limitation on the length of the names, SeeBeyond recommends that you limit them to 12 characters. Valid characters include all letters and numbers, dashes, and underscores.

Important: *Periods, spaces, and other punctuation are not valid characters for any eGate user name, password, or component name.*

Default “Administrator” User Name

For eGate’s default user name and password, see the **Readme.txt** file.

2.4.3. Environment Names

After you complete a Project, you must set up an Environment and deploy it. An Environment is a collection of Logical Host(s) that house Project components and information about external systems. You set up an Environment and deploy it after completing a Project. A deployment Environment includes:

- Logical Host (an instance of the eGate runtime environment)
 - ♦ SeeBeyond Integration Server
 - ♦ SeeBeyond JMS IQ Manager
- External Systems

Environment names can contain letters, numbers, dashes, and underscores. There is no character limit. Spaces and punctuation marks are not valid characters for Project names.

2.5 Preparing for Installation

The following sections list important information that you must decide upon prior to installing eGate.

2.5.1. What Must Be Determined Prior to Installing eGate

Before you install eGate, you must determine the following:

- 1 Select the computer that will host the Repository.
- 2 Select the computer(s) that will serve as Logical Hosts. It is possible for the same system to serve both as a Repository and a Logical Host. Whether you decide to do this depends on the requirements of your installation. Contact SeeBeyond Support if you need assistance making this determination.
- 3 Select the Windows computer(s) that will host the Enterprise Designer.
- 4 Determine which add-on applications you will require.
- 5 Ensure that each system that you select meets the system requirements for eGate. See the resource requirements in each of the following chapters for more information.

2.5.2. Information Required Before Installing eGate

You must have the following information at hand before you start the installation process:

- 1 The default eGate “Administrator” password for Windows installations (see [“Default “Administrator” User Name” on page 27](#)).
- 2 The name of each system where a Repository or Logical Host will be installed (see [“Repository Names and User Names” on page 27](#)).
- 3 That you have ports available for the installation (see step 6B in [“To install the Repository on Windows using the GUI” on page 31](#)

The installation process will prompt you for the directory in which to install each eGate component.

2.5.3. Upgrading from 5.0.x to 5.0.4

If you are upgrading from 5.0.x to 5.0.4, see [Chapter 8](#) for instructions on how to complete a successful upgrade.

Note: *If you are upgrading from 5.0.0 to 5.0.1 (which must be performed before upgrading to 5.0.4), the **MigrationToolReadme.txt** file is located in the **Utilities** directory on both of the 5.0.1 Repository installation discs (“SeeBeyond ICAN Suite Repository Disc 1 for Windows/Solaris/AIX/Linux” and “SeeBeyond ICAN Suite Repository Disc-2 for HP-UX/Tru64”), as are the **MigrationTool.zip** and **MigrationTool.tar** files.*

Installation Instructions for Repository

This chapter provides instructions on how to install the eGate Repository. If you have any questions or problems, see the SeeBeyond Support Web site at <http://www.seebeyond.com> and select **SERVICES** and then **SUPPORT**.

This chapter contains

- “Installing the Repository” on page 30
- “Windows Installation of Repository” on page 30
- “UNIX Installation of Repository” on page 39
- “HP NonStop Server Installation of Repository” on page 41

3.1 Installing the Repository

This section leads you through the steps to successfully install the Repository on the various platforms.

You can install the Repository on any eGate supported platform using one of two CD-ROMs mounted on the system on which the Repository is to be installed.

Important: *Underscores are not supported as the host name of the computer running the Repository per specification RFC-1123.*

3.2 Windows Installation of Repository

This section provides instructions for uploading and installing the Repository from a CD-ROM. There are two ways to install the Repository on a Windows computer: using the GUI and using command line prompts.

Important: *For your Repository server running on Windows XP to receive incoming connections, configure your Windows XP Firewall so that the port to the Repository is open. See your Windows XP documentation for instructions on configuring the Windows XP Firewall.*

There are two firewalls on Windows XP that can be disabled. If you think this option may be right for you, contact SeeBeyond Support.

Note: *For instructions how to set up failover support for the Repository using Microsoft Windows 2000 and Windows Server 2003 clustering technologies, see “Deploying eGate in a Windows Clustering Environment” in the SeeBeyond ICAN Suite Deployment Guide.*

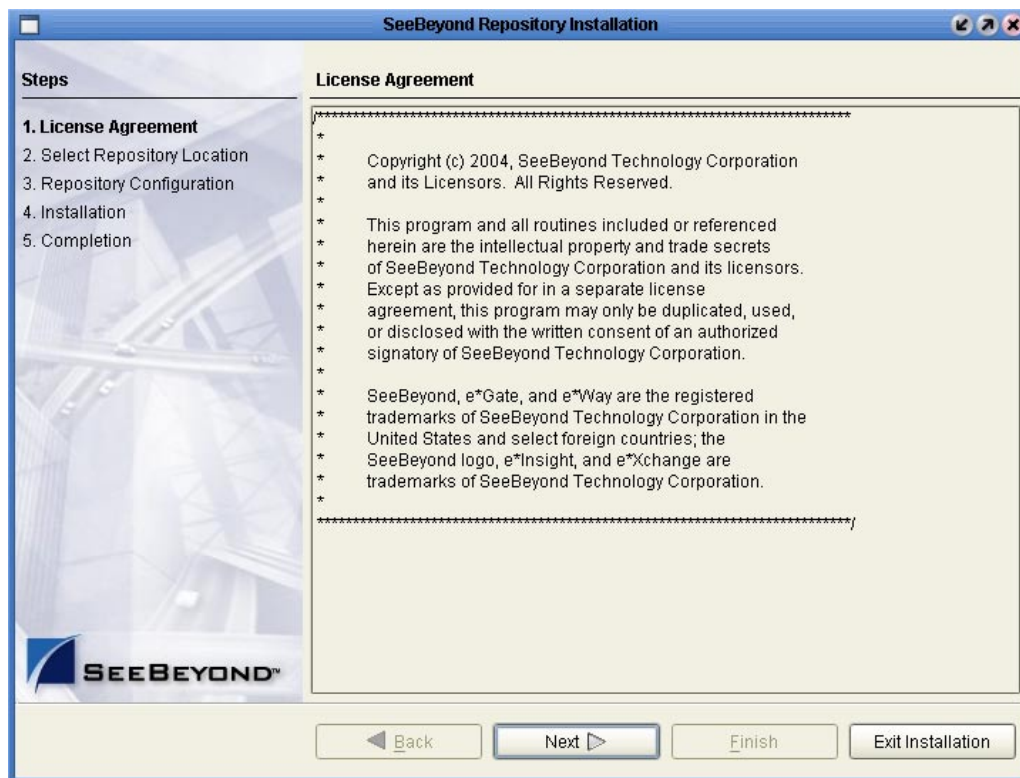
To install the Repository on Windows using the GUI

- 1 Exit from all Windows programs.
- 2 Insert “Repository Disc 1 for Windows/Solaris/AIX/Linux” CD-ROM in the CD-ROM drive. The install wizard will appear shortly after inserting the CD-ROM.

Note: *If Autorun is not enabled, double-click **install.bat** at the top level of the CD-ROM.*

The **License Agreement** dialog box appears (see Figure 2).

Figure 2 License Agreement



- 3 Click **Next** after reading the license and agreeing to its conditions. The **Select Repository Location** dialog box appears (see Figure 3).
- 4 Specify a location that will be used as the “root” for the eGate installation. For example, if you accept the default (**C:\ican50**), the Repository installation will create the **C:\ican50** directory and install the Repository to **C:\ican50\repository**.

Note: If you attempt to install the Repository server to a directory where it already exists, the dialog box informs you that the installation will perform an upgrade. Before proceeding, stop the Repository server.

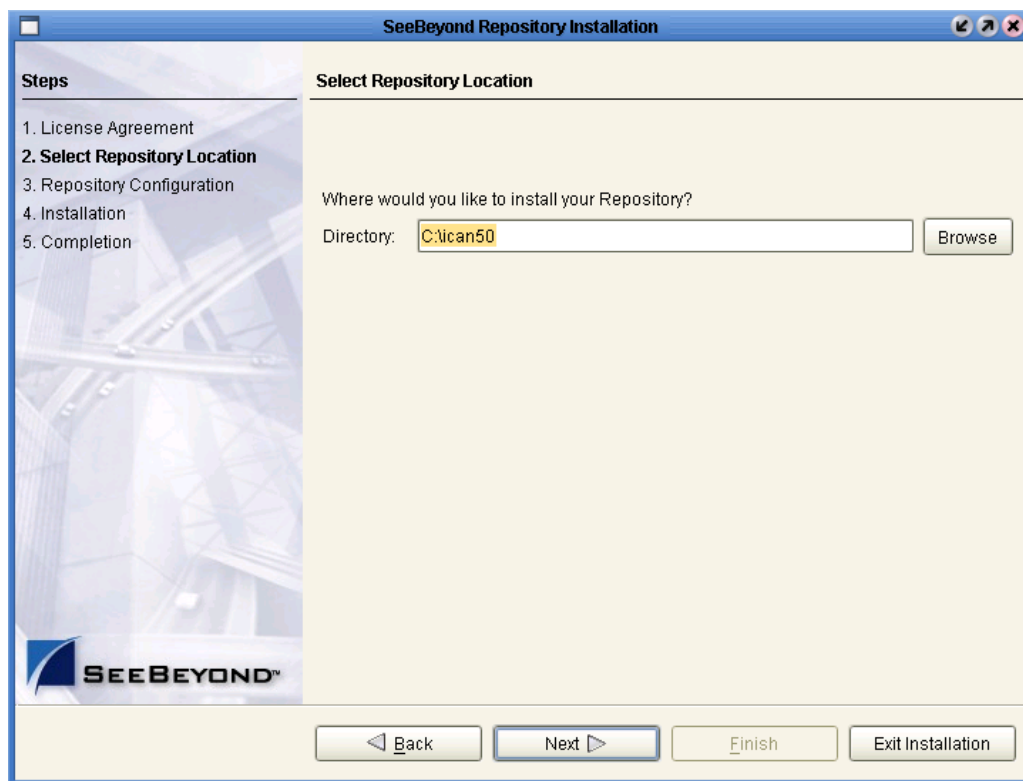
Important: If you are upgrading version 5.0.1, 5.0.2, or 5.0.3, you can install to the same directory (for details, see [Chapter 8](#)). However, if you are upgrading version 5.0.0, you must first migrate to version 5.0.1, and then follow the procedure for upgrading from 5.0.x to 5.0.4 (for details, see [Chapter 8](#)).

If you want to enter another location, click **Browse** or type in a new location.

Note: This must be a full path, including the drive letter. Also note that there can be no spaces in ICAN path names.

Click **Next** when ready. The **Repository Configuration** dialog box appears (see [Figure 4](#)).

Figure 3 Select Repository Location



5 Enter the following information:

A A name for the Repository in the **Name** box. The Repository name is the identifier for your eGate installation.

Note: Do not name the Repository “repository.” For more information, see [“Naming the Repository” on page 110](#).

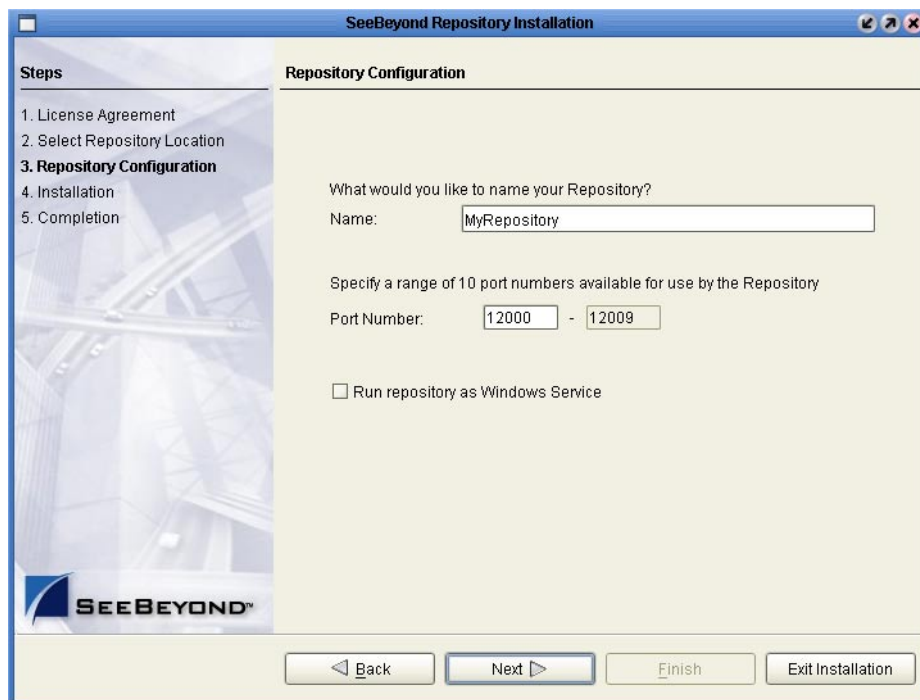
Record the name that you select. You will need it later.

B The **Port Number** box automatically lists 10 consecutive available ports (12000–12009 is the default). You will need the base port number later when you connect to the Repository. For more information about the 10 consecutive ports, see the *eGate Integrator System Administration Guide*.

Note: Make sure that the port number is not in use. To determine which ports are in use, type “*netstat -a*” at a command prompt. During the installation, the system selects nine additional port numbers which are sequentially above the port number you entered (for example: **12001** through **12009**). Be aware that the port checking performed at the time of the installation only detects ports that are in use at the time of the installation. This means that the installation will not detect ports that are configured to be used by other applications which are currently not running.

C Select the **Run repository as Windows Service** check box if you want the server to start automatically upon system reboot. If you do not select this option at this time, you can enable it later (see “[Starting the Repository as a Windows Service](#)” on page 38), but must otherwise start the Repository manually. Use the Repository Service Manager to set the Repository to run as a service after completing the installation.

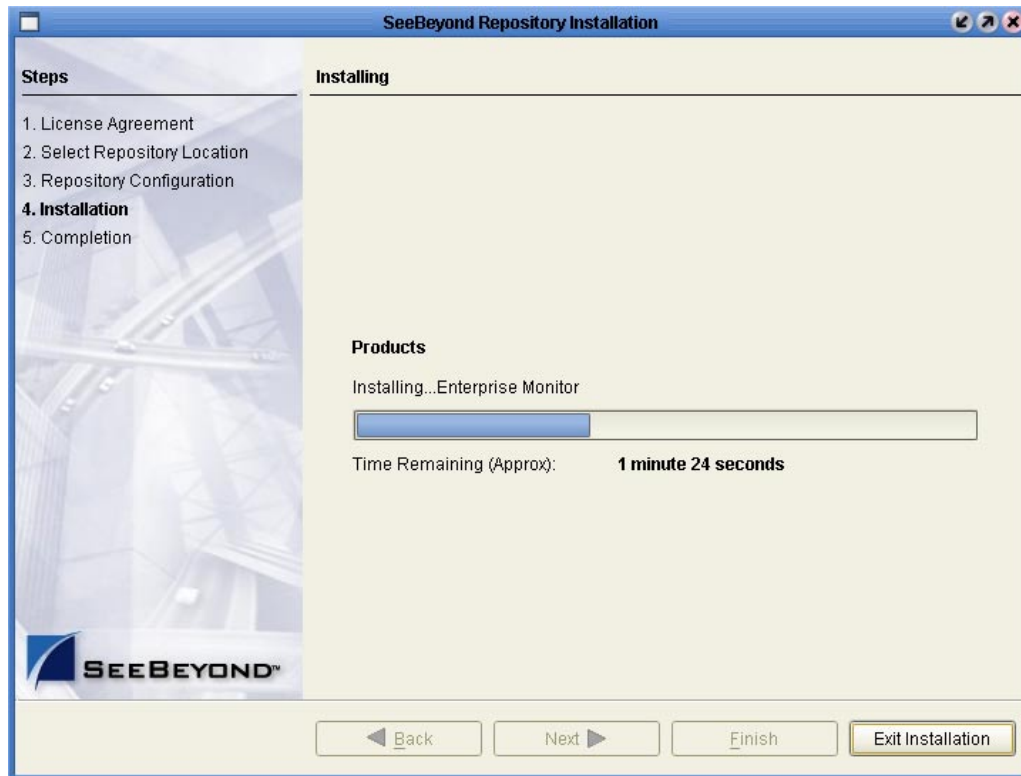
Figure 4 Repository Configuration



Note: After installing, you must either reboot or go to the Control Panel and select *Administrative Tools and Services* to start the Repository for the first time.

- D Click **Next** when ready. The **Installation** dialog box appears (see Figure 5). A progress bar indicates the approximate time remaining.

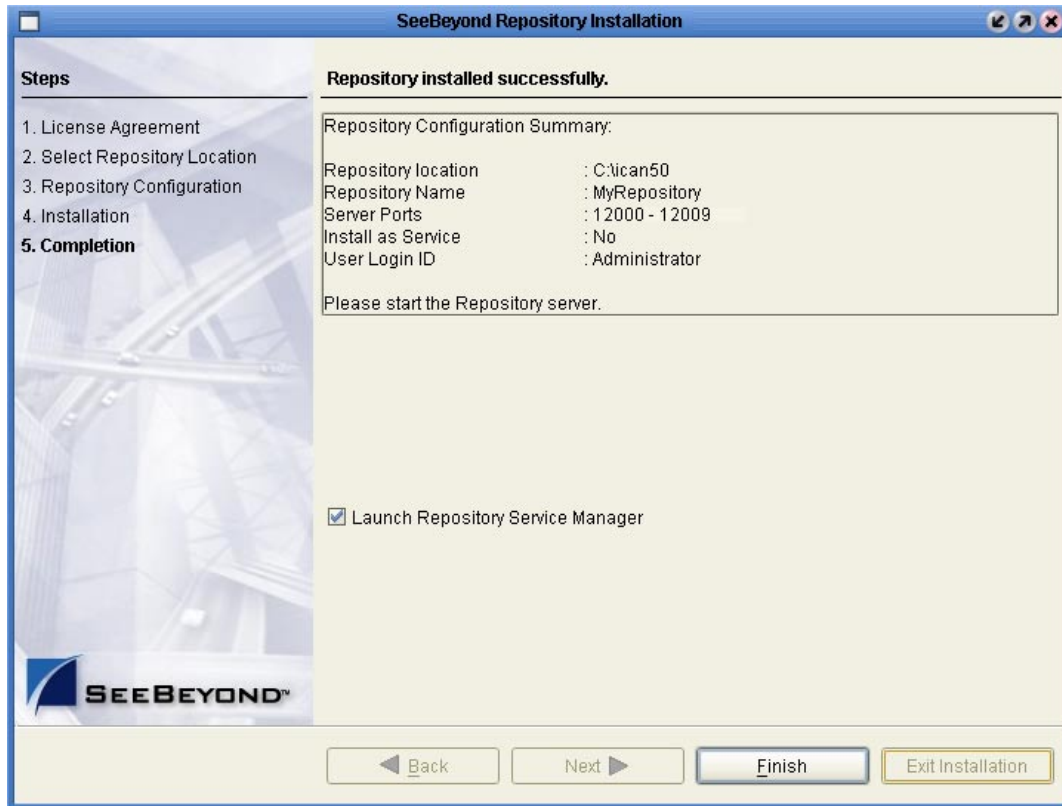
Figure 5 Installation



- 6 Click **Next** when the installation is complete. The **Completion** dialog box appears and informs you that the Repository installed successfully (see Figure 6), listing your selections during the installation:
- ◆ Repository location
 - ◆ Repository Name
 - ◆ Server Ports
 - ◆ Install as Service
 - ◆ User Login ID

Note: SeeBeyond recommends you record the contents of this screen for future reference.

Figure 6 Completion



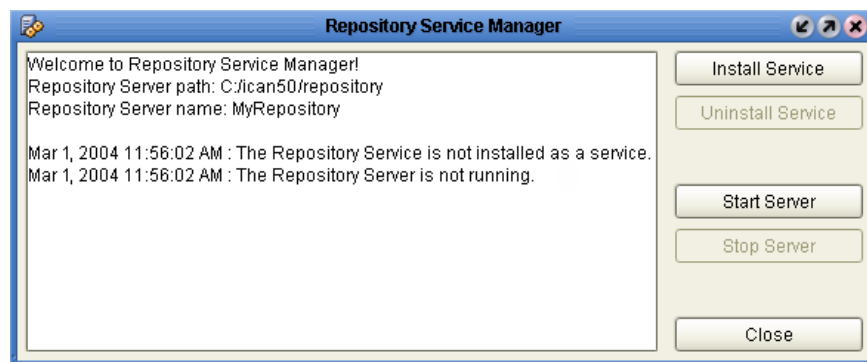
The default is set to **Launch Repository Service Manager**, which allows you to start the Repository server and set the Repository to run as a service.

7 Click **Finish**.

An installation log (**install.log**) is created in `<directory_path>\repository\logs`. Use this log file to view details about any problems you may encounter during the installation process.

The **Repository Service Manager** dialog box (see Figure 7) appears.

Figure 7 Repository Service Manager



- 8 Click **Start Server** to start your Repository server without navigating to the directory where the Repository is installed. The server must be running to complete the installation.

Note: See **“To start and stop the Repository on Windows” on page 37** for an alternate way to start and stop the Repository server.

The Repository Service Manager also gives you the capability to do the following:

- A Click **Stop Server** if the Repository is running and you want to shut it down.
- B Click **Install Service** to set your Repository to start as a Windows Service. If you install the Repository to start as a Windows service, the Repository automatically starts at system startup and restarts after an abnormal shutdown. The Repository must be stopped before you can install it as a Windows Service.
 - ♦ Click **Stop Server** to shut down the Repository if it is installed and running as a Windows service and you no longer want it to run as a service.
 - ♦ Click **Uninstall Service** after you are informed that the server is no longer running.

Note: See **“Starting the Repository as a Windows Service” on page 38** for an alternate way to start, stop, and uninstall the Repository as a Windows service.

- C Click **Close** to close the dialog box after your system informs you that the Repository server is running.
- D Navigate to `<C:\ican50>\repository` and double-click `servicemanager.bat` to reopen the **Repository Service Manager** dialog box after the initial installation of the Repository.

Where:

`<C:\ican50>` is the directory where you installed ICAN.

To install the Repository on Windows using command line prompts

- 1 Insert the Repository - Disc 1 (Windows/Solaris/AIX/Linux) CD-ROM in the CD-ROM drive.
- 2 At the command prompt, navigate to the top level of the CD-ROM and enter: **install.bat -text**. The following prompt appears:

Please enter the base directory to install the Repository:
Type the full drive and path location (for example, `C:\ican50`) and press **Enter**.
The location that you specify here will be used as the “root” for the eGate installation. For example, if you specify `C:\ican50`, the Repository installation will create the `C:\ican50` directory and install the Repository to `C:\ican50\repository`.

Note: This must be a full path, including the drive letter. Also note that there can be no spaces in ICAN path names.

- 3 The next prompt displays the following message:

Please enter name of the Repository:

Type the name to be used for your Repository and press **Enter**. The Repository name is the identifier for your eGate installation.

- 4 The next prompt displays the following message:

The Repository needs a range of 10 consecutive tcpip ports for http and related services. Please enter the starting port number:

Enter a Repository port number such as 12000. You will need the port number later when you connect to the Repository. For more information about the 10 consecutive ports, see the *eGate Integrator System Administration Guide*.

Note: Make sure that the port number is not in use. To determine which ports are in use, type *“netstat -a”* at a command prompt. During the installation, the system selects nine additional port numbers which are sequentially above the port number you entered (for example: **12001** through **12009**). Be aware that the port checking performed at the time of the installation only detects ports that are in use at the time of the installation. This means that the installation will not detect ports that are configured to be used by other applications which are currently not running.

- 5 The next prompt displays the following message:

Would you like to run the Repository as a Windows service? If you decline, you can always install the Windows service later. (y/n)
[n]:

Answer **n** so the Repository server does not start automatically after system reboot.

Note: If you select **y**, see [“Starting the Repository as a Windows Service” on page 38](#) to perform the steps necessary to start the Repository as a Windows service.

To start and stop the Repository on Windows

- 1 Navigate to the directory where you installed the Repository (for example: **C:\ican50\repository**).
- 2 Double-click **startserver.bat** to start the Repository on the port that you specified during installation.

You can redirect Repository server console messages to a text file by using the following command:

```
startserver.bat > ServerLog.txt 2>&1
```

- 3 Double-click **stopserver.bat** to stop the Repository.

Wait until the system prompts you that the server has started. You are then ready to upload product files to the Repository. Continue to [Chapter 4 “Installation Instructions for Uploading Files to the Repository” on page 46](#).

3.2.1. Starting the Repository as a Windows Service

Installing the Repository as a Windows service configures the Repository to automatically start up at system startup. This makes it possible for the Repository to automatically restart after an abnormal system shutdown.

You must have Administrator rights to the local Windows machine in order to configure the Repository to start as a service. The installation script writes to the Windows Registry; this cannot be done without Administrator rights.

Note: *The Repository Service Manager can also be used to install or uninstall the service. See [Step 7](#) under section 3.2.*

To start the Repository as a Windows Service

- 1 Use Windows Explorer to navigate to the Repository directory (for example, **C:\ican50\repository**).

- 2 Double-click **installwinsvc.bat**.

This runs the script that configures the Windows service to automatically run the Repository at system startup. The service will have the same name as the installed Repository.

- 3 Manually start the service the first time that you use it (this is prior to running Enterprise Manager).

A Open the Windows **Control Panel**.

B Double-click **Administrative Tools**.

C Double-click **Services**, and then locate **<name_of_repository>** where:

<name_of_repository> is the name of the Repository that you want to start as a service.

D Right-click **<name_of_repository>** and select **Properties**.

E Ensure that the **Startup type** is **Automatic**, and then click **Start**.

Note: *From this time forward, the Repository will start automatically at system startup or whenever the computer is rebooted.*

To remove the Repository Windows Service

- 1 Use Windows Explorer to navigate to the Repository directory (for example, **C:\ican50\repository**).

- 2 Double-click **stopserver.bat** to shut down the Repository server.

- 3 Double-click **uninstwinsvc.bat**.

This runs the script that removes the Windows service that automatically starts the Repository at system startup.

You are now ready to upload product files to the Repository. Continue to [Chapter 4](#) **“Installation Instructions for Uploading Files to the Repository”** on page 46.

3.3 UNIX Installation of Repository

This section explains how to install the eGate Repository on your UNIX system. You can mount the CD-ROM on your UNIX computer or FTP the installation files to your UNIX computer via a Windows computer. See “UNIX System Requirements” on page 20 for additional information and installation requirements before proceeding.

To install the Repository on UNIX

- 1 If it is a UNIX computer, log in as either a non-root or root user on the workstation containing the CD-ROM drive, and insert the SeeBeyond ICAN Suite Repository - Disk 1 or SeeBeyond ICAN Suite Repository -Disk 2 CD-ROM (depending on which UNIX platform you are using) into the drive.

Note: To mount the CD-ROM, you must have root privileges. If the directory that you want to mount over does not exist, you must create it. Once this directory is created, mount the CD-ROM, using the appropriate command. The correct arguments for the mount command vary for each operating platform. See the following table for the recommended mounting commands.

Table 10 Mounting a CD-ROM Drive Locally

Platform	Mount Command
HP Tru64	mount -t cdrfs -r -o noversion -o rrip /dev/rz<extension>/cdrom
HP-UX	pfs_mount -t rrip -r /dev/dsk/c0t<extension> /cdrom where /cdrom is the mount point.
IBM AIX	mount -V cdrfs -r /dev/cd<extension>/cdrom
Red Hat Linux and SuSE Linux	mount -t iso9660 /dev/cdrom /cdrom (On Linux systems, you may have to change the CD-ROM drive configuration from read-only to execute. By default, on Linux systems, CD-ROM drives have read-only permission.)
Sun Solaris 8 and 9	mount -F hsfs -o ro /dev/dsk/c0t<extension> /cdrom (On Sun Solaris systems, the CD-ROM drive mounts automatically if the volume manager is running.)
Note: Mounting of the CD-ROM on a Sun Solaris machine is automatic; for all other platforms you must be logged in as root to mount the CD-ROM.	

- 2 Navigate to the root directory of the CD-ROM on your UNIX computer.
- 3 Type **./install.sh** and press **Enter** to install the Repository. The following prompt appears:

Please enter the base directory to install the Repository:

Type the full path location (for example, *<install_path>/ican50*) and press **Enter**.

The location that you specify here will be used as the root for the eGate installation. For example, if you specify *<install_path>/ican50*, the Repository installation will create the *<install_path>/ican50* directory and install the Repository to *<install_path>/ican50/repository*.

Note: *This must be an absolute path.*

Important: *If you are upgrading version 5.0.1, 5.0.2, or 5.0.3, you can install to the same directory (for details, see [Chapter 8](#)). However, if you are upgrading version 5.0.0, you must first migrate to version 5.0.1, and then follow the procedure for upgrading from 5.0.x to 5.0.4 (for details, see [Chapter 8](#)).*

- 4 The next prompt displays the following message:

```
Please enter name of the Repository:
```

Type the name to be used for your Repository and press **Enter**. The Repository name is the identifier for your eGate installation.

- 5 The next prompt displays the following message:

```
The Repository needs a range of 10 consecutive tcpip ports for http  
and related services. Please enter the starting port number:
```

Enter a Repository port number such as 12000. You will need the port number later when you connect to the Repository.

Note: *Make sure that the port number is not in use. To determine whether a port is available, type “`netstat -a | grep <port_number>`” at a command prompt; this will return the name of any process using that port number. During the installation, the system selects nine additional port numbers which are sequentially above the port number you entered (for example: **12001** through **12009**). Be aware that the port checking performed at the time of the installation only detects ports that are in use at the time of the installation. This means that the installation will not detect ports that are configured to be used by other applications which are currently not running.*

- 6 Change the directory to the location where you installed the Repository after the installation completes. For example:

```
cd <install_path>/ican50/repository
```

- 7 Run the following command *before* starting the Repository if you installed on HP Tru64 and the shell is **csh**:

```
unlimit
```

Run the following command *before* starting the Repository if you installed on HP Tru64 and the shell is **bash**:

```
ulimit -sd 1048576
```

- 8 To start the Repository, type `./startserver.sh`. The Repository server starts in the background. To confirm that the Repository server has started, use your Web browser to type the URL and port number, for example:

```
http://<server_name>:<port_number>
```

where:

`<server_name>` is name of the UNIX server where you installed the Repository and

`<port_number>` is the port you specified previously.

Use a text editor such as **vi** to view the contents of `<install_path>/ican50/repository/server/logs/catalina.out` to see the Repository server console messages. This is a useful way to view the progress of the Repository server startup process.

Important: *The Repository is a separate process from your shell; unlike Windows, it continues to run after you log off from your UNIX account. To stop the Repository, you must run `.!stopserver.sh`.*

3.3.1. Starting the Repository as a UNIX Daemon

You can have the Repository start automatically upon startup of the UNIX system. To do this, create an init script that calls the **nohup** command with the **startserver.sh** script. For example:

```
nohup /home/jsmith/ican50/repository/startserver.sh &
```

This script creates a UNIX Daemon that runs in the background for the following platforms:

- HP Tru64 V5.1A
- HP-UX 11.0, 11i (PA-RISC), and 11i v2.0 (11.23)
- IBM AIX 5.1L and 5.2
- Red Hat Linux Advanced Server 2.1 (Intel x86)
- Red Hat Linux 8 (Intel x86)
- Sun Solaris 8 and 9
- SuSE Linux Enterprise Server 8 (Intel x86)

All Repository startup and shutdown command line information is sent to an output text file called **nohup.out**, which is located in the directory where you installed the Repository (for example: `/home/jsmith/ican50/repository`). For additional details, see the system administration documentation for the specific UNIX platform.

You are now ready to upload product files to the Repository. Continue to [Chapter 4 “Installation Instructions for Uploading Files to the Repository” on page 46](#).

3.4 HP NonStop Server Installation of Repository

This section leads you through the steps to complete a successful transfer of files and installation of the eGate Repository on your HP NonStop Server. You will need a Windows machine to upload the installation files to your HP NonStop Server. See [“HP NonStop Server System Requirements” on page 21](#) for additional information and installation requirements before proceeding.

Important: *Before you install any eGate components, you must install the JRE extension libraries on the HP NonStop Server. For more information, see [“JRE Extension Libraries” on page 22](#).*

3.4.1. Uploading and Installing the Repository

To transfer Repository files

Use the following steps to upload the files from the media (accessed via a Windows machine that has FTP capabilities) to the HP NonStop Server.

- 1 On the Windows computer that is accessing the media on drive X:, verify that you can start an FTP session to the HP NonStop Server computer (for example: *myHNSBox*) using a valid Guardian ID (for example: *myFTP_UserID*) and password.
- 2 On the Windows computer, in a command prompt, type the following commands to upload Repository installation files to the desired installation staging location (For example: */myPath/ican50/myInstall*):

```
X:  
instnsk.bat myHNS_Server myFTP_UserID /myPath/ican50/myInstall
```

where:

myHNS_Server is the name of your HP NonStop Server,

myFTP_UserID is a valid Guardian ID, and

/myPath/ican50/myInstall is the location where you want to install the files.

- 3 In response to the prompt, supply the password for *myFTP_UserID*.

To install the Repository

- 1 At the command line, **cd** to the directory where you transferred the Repository files on the HP NonStop Server.
- 2 To install the Repository, type: **sh ./install.sh** and press **Enter**. The following prompts appear:

```
Please enter the base directory to install the Repository:  
Type the full path location (for example, <install_path>/ican50/repository) and  
press Enter.
```

Note: *This must be a fully qualified path.*

- 3 The next prompt displays the following message:

```
Please enter name of the Repository:  
Type the name to be used for your Repository and press Enter.
```

Note: *The Repository name is the identifier for your eGate installation.*

- 4 The next prompt displays the following message:

```
The repository needs a range of 10 consecutive tcpip ports for http  
and related services. Please enter the starting port number:
```

Enter a Repository port number such as 12000. You will need the port number later when you connect to the Repository.

During the installation, the system selects nine additional port numbers which are sequentially above the port number you entered (for example: **12001** through **12009**).

The Repository installs to the directory you specified and an installation log (**install.log**) is created in `<directory_path>/repository/server/logs`. Use this log file to view details about any problems you may encounter during the installation process.

After the Repository installation is complete, the SeeBeyond Repository Server must be started manually before you can upload product files.

3.4.2. Running Repository under Pathway for HP NonStop Server

The **pathmon** facility (native to HP NonStop Server) monitors processes to protect them against CPU failure. The SeeBeyond-supplied script **pathway.sh** invokes some pathmon capabilities to provide failover for eGate Repository processes. Each time you install a new Repository on an HP NonStop Server, you should run **pathway.sh** three times—to create, then configure, and then start a new Repository pathway. Thereafter, you can run **pathway stop** to stop the Repository and **pathway restart** to start the Repository.

*Note: If you want to start or stop the Repository without pathway failover protection (for testing purposes), you can use the **startserver.sh** and **stopserver.sh** scripts.*

Pathway commands to run upon installing a new Repository

Any time you install a new Repository, use the following three procedures (exactly once, in order):

- To create a pathway for a new Repository:

```
sh ./pathway.sh create -r <repm> -v <vol.subvol> -p <primaryCPU> -b <backupCPU>
```

- To configure a pathway for a new Repository:

```
sh ./pathway.sh config -r <repm> -v <vol.subvol> -t <tcpipProcName> -p <primaryCPU> -b <backupCPU>
```

*Note: **-p <primaryCPU> -b <backupCPU>** are optional when configuring a pathway for a new Repository.*

- To start a pathway for a new Repository:

```
sh ./pathway.sh start -r <repm>
```

Note: The start action is reserved for pathways that have never been started. If, instead, you want to resume execution of a frozen pathway, use the restart action instead; see below.

Pathway commands to run against an existing Repository pathway

For Repository pathways that have already been started at least once, you can use any of the following procedures as needed:

- To check the status of a Repository pathway:

```
sh ./pathway.sh status -r <repmn>
```
- To stop execution of a running Repository pathway:

```
sh ./pathway.sh stop -r <repmn>
```
- To resume execution of a frozen Repository pathway:

```
sh ./pathway.sh restart -r <repmn>
```

Note: The *restart* action yields an error if attempted against a running Repository pathway.

- To permanently delete a Repository pathway:

```
sh ./pathway.sh remove -r <repmn>
```

Note: The *remove* action yields an error if attempted against a running Repository pathway.

Syntax and keywords for pathway.sh

To run pathway.sh, use the following syntax.

```
sh ./pathway.sh action -flag value [-flag value [...]]
```

You must specify exactly one *action* and one or more *-flag value* pairs, as follows:

For *action*, supply exactly one of the following:

- **-?** - to summon usage information. Takes no flags.
- **create** - to create a new pathway. Requires four flags: **r**, **v**, **p**, and **b**. The primary and backup CPUs specified by this parameter are the primary and backup CPUs for the pathway itself.
- **config** - to configure a newly created pathway. Requires three flags: **r**, **v**, and **t**.
Optional flags are **p** and **b** to specify a primary and backup CPU. The primary and backup CPUs specified by this parameter are the primary and backup CPUs to be used by the repository server started by this pathway.
If no primary and backup CPU are specified, PATHMON will automatically select a primary and backup CPU.
- **start** - to start a newly configured pathway. Requires one flag: **r**.
- **status** - to check status on a running pathway. Requires one flag: **r**.
- **stop** - to stop a running pathway. Requires one flag: **r**.
- **restart** - to resume execution of a frozen pathway. Requires one flag: **r**.
- **remove** - to permanently delete a frozen pathway. Requires one flag: **r**.

For *-flag value*, supply one or more of the following:

- **-r repnm** - a handle for this Repository pathway. Initially specified by the create action; referenced by all other actions except **-?**. The string you supply for **repnm** must be five characters or shorter, and it cannot begin with a Z or a digit.

- **-v volume.subvolume** - the volume and subvolume (for example, \SDATA.GTEMP) for this Repository pathway. Specified by the **create** action; referenced by the **configure** action. The string you supply must follow standard naming conventions for volumes and subvolumes.
- **-p primaryCPU** - the label for the primary CPU (for example, 0) whose residing pathmon process you want to monitor the Repository. Specified by the **create** action—or optionally by the **config** action. This flag must be used in combination with the **-b** flag.
- **-b backupCPU** - the label for the backup CPU (for example, 2) whose residing pathmon process you want to monitor the Repository pathway. Specified by the **create** action—or optionally by the **config** action. The number you supply must be a label for an existing CPU. This flag must be used in combination with the **-p** flag.
- **-t tcpipProcName** - the TCP/IP process name, **<machine_name>.\\$<tcp-ip_process_name>** (for example, SBYN.\\$ZTCO) for this Repository pathway. Specified by the **configure** action. The string you supply must follow standard naming conventions for TCP/IP process names.

You are now ready to upload product files to the Repository. Continue to [Chapter 4 “Installation Instructions for Uploading Files to the Repository”](#) on page 46.

Installation Instructions for Uploading Files to the Repository

This chapter provides instructions on how to upload files to the eGate Repository. If you have any questions or problems, see the SeeBeyond Support Web site at <http://www.seebeyond.com> and select **SERVICES** and then **SUPPORT**.

This chapter contains

- **“Overview” on page 46**
- **“Uploading Files to the Repository” on page 47**
- **“Installing the Schema Runtime Environment (SRE) Monitor” on page 58**

4.1 Overview

Before SeeBeyond ICAN Suite products can be installed on client systems, the product installation files must be uploaded from the Products CD-ROMs to the eGate Repository. This step only needs to be performed one time for each product.

Regardless of what operating system your Repository is running on, you must upload the product installation files from a Windows PC to your Repository.

After you upload the product installation files to the Repository, the products will be available for downloading to the client computers.

4.2 Uploading Files to the Repository

In the following procedures, you will use the Enterprise Manager, a Web-based application, to upload files from the Products CD-ROMs to the Repository.

The product **.sar** files must be uploaded to the Repository in the proper sequence. The following procedures indicate which order to upload the product **.sar** files.

Note: Before uploading product **.sar** files to the Repository, see [“Improving Upload Performance” on page 110](#) for a tip on how to improve upload performance.

Required **.sar** files for Repositories running on platforms other than HP NonStop Server

These **.sar** files are required for all Repositories running on servers other than HP NonStop Server:

- **license.sar**
- **eGate.sar**
- One or more of the following Logical Host **.sar** files:
 - ♦ **logicalhost_aix.sar** (required if the Logical Host is running on IBM AIX)
 - ♦ **logicalhost_hpux.sar** (required if the Logical Host is running on HP-UX)
 - ♦ **logicalhost_linux.sar** (required if the Logical Host is running on Red Hat Linux or SuSE Linux)
 - ♦ **logicalhost_hns.sar** (required if the Logical Host is running on HP NonStop Server)
 - ♦ **logicalhost_sparc64.sar** (required if the Logical Host is running on Sun Solaris)
 - ♦ **logicalhost_tru64.sar** (required if the Logical Host is running on HP Tru64)

Note: The **logicalhost_win32.sar** file for Windows is automatically installed in the Repository by default.

- **HNS.sar** (required if the Logical Host is running on HP NonStop Server)
- Any product **.sar** files for which you have a valid license (optional)
 - ♦ **weblogic.sar** (required if using a BEA WebLogic™ application server in place of the SeeBeyond Integration Server)

Note: See the *eGate Integrator User's Guide* for information about WebLogic.

- ♦ **weblogicjmsmessageserver.sar** (required if using a BEA WebLogic™ JMS server in place of the SeeBeyond JMS IQ Manager)

Note: See the *eGate Integrator User's Guide* for information about WebLogic.

- ♦ **websphere.sar** (required if using a WebSphere application server in place of the SeeBeyond Integration Server)

Note: See the *eGate Integrator User's Guide* for information about WebSphere.

- ♦ **webspherejmsmessageserver.sar** (required if using a WebSphere JMS server in place of the SeeBeyond JMS IQ Manager)

Note: See the *eGate Integrator User's Guide* for information about WebSphere.

- ♦ **sreMonitor.sar** (required for the Schema Runtime Environment (SRE) Monitor, which enables you to manage an existing e*Gate 4.x system that has been upgraded to the SRE from the eGate 5.0.4 Schema Designer)

Note: See [“Installing the Schema Runtime Environment \(SRE\) Monitor” on page 58](#) for additional information.

- ♦ **JMSClientToSREJMSIQMgr.sar** (provides backward compatibility for e*Gate 4.5.x JMS)
- ♦ The **EnterpriseManagerPlugin-Win98ToXP.sar** file is not required for viewing Connectivity Maps in Enterprise Manager. However, installing this .sar file enhances the Connectivity Map's capabilities. See [“Enterprise Manager Recognition of Adobe SVG Viewer Plug-in” on page 112](#) and [“EnterpriseManagerPlugin-Win98ToXP.sar File” on page 112](#) for additional information.

Note: If the Repository is running on a UNIX server, the UNIX server is not running an X Windows server, and the SVG plug-in is not installed in the client (browser), you must add the following command to the **JAVA_OPTS** environment variable (either in the Repository **startserver.sh** or before running the Repository **startserver.sh**):

-Djava.awt.headless=true

- ♦ **UANextension.sar** (required for using the XSLT Collaboration Editor with Siebel UAN eWays)

Note: See the *eGate Integrator User's Guide* for information about the XSLT Collaboration Editor.

- ♦ **CBO_OTD_v1_0.sar** (a horizontal business language that provides an open interface for interaction with vertical industry standards)

Note: See the *eGate Integrator User's Guide* for information about the Canonical Business Object (CBO) OTD Library.

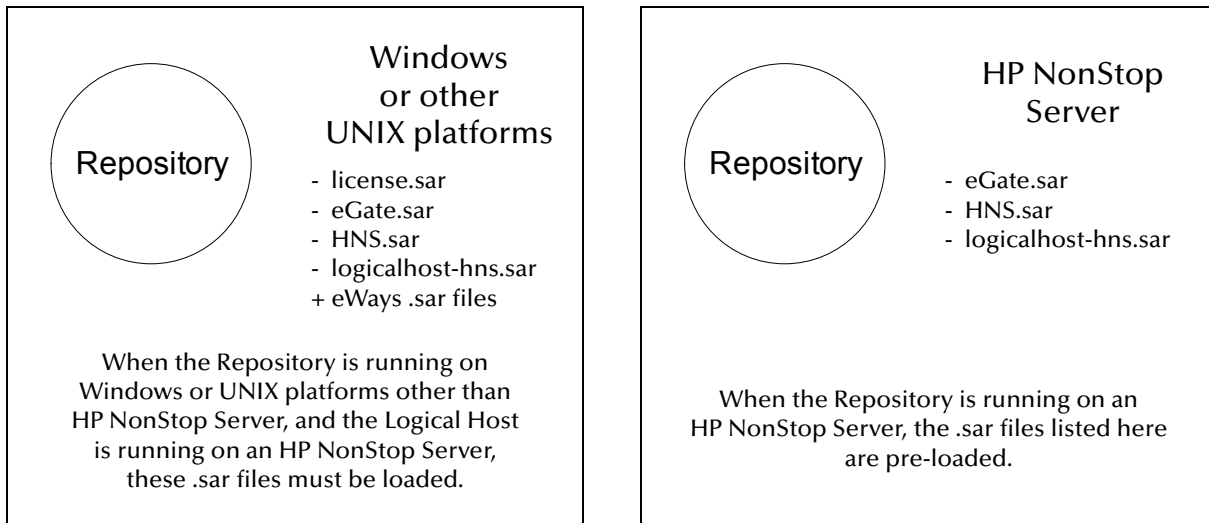
- Any Add-on .sar files (such as eWays) for which you have a valid license (optional)
 - ♦ When installing an eWay, include the following:
 - ♦ **<name_of>eWay.sar**
 - ♦ **<name_of>eWayDocs.sar** (includes documentation .pdf files, sample Projects, and JavaDocs)

♦ FileeWay.sar

Required .sar files for Repositories running on HP NonStop Server

- license.sar
- Any product .sar files for which you have a valid license (optional)

Figure 8 Which .sar Files to Load for HP NonStop Server



Note: Before you can begin this procedure, your SeeBeyond Repository server must be running. See [Chapter 3 “Installation Instructions for Repository” on page 30](#) for instructions on starting your Repository server.

To start the Enterprise Manager

- 1 Start Internet Explorer.
- 2 Type `http://<hostname>:<port_number>` in the **Address** line where:

hostname is the TCP/IP host name of the server where you installed the Repository—not the name of the Repository itself.

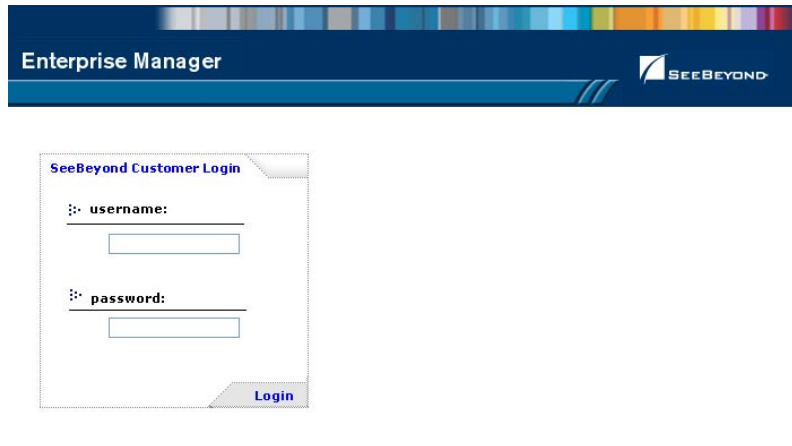
port_number is the port number that you specified during the installation of the Repository.

Note: The host name must be valid.

- 3 Press **Enter** when ready.

The **SeeBeyond Customer Login** window of the Enterprise Manager appears (see Figure 9). The Enterprise Manager serves as an update center, management center, and a dashboard to gain access to available applications. In addition, system administrators use the Enterprise Manager to upload components to the Repository server.

Figure 9 SeeBeyond Customer Login window



- 4 Enter your **username** and **password** and click **Login**. Note that this is your ICAN administrator username and password, not your operating system/network username and password. See the **Readme.txt** file on the root directory of the Repository CD-ROM for the default username and password.

The Enterprise Manager appears with the **HOME** tab active.

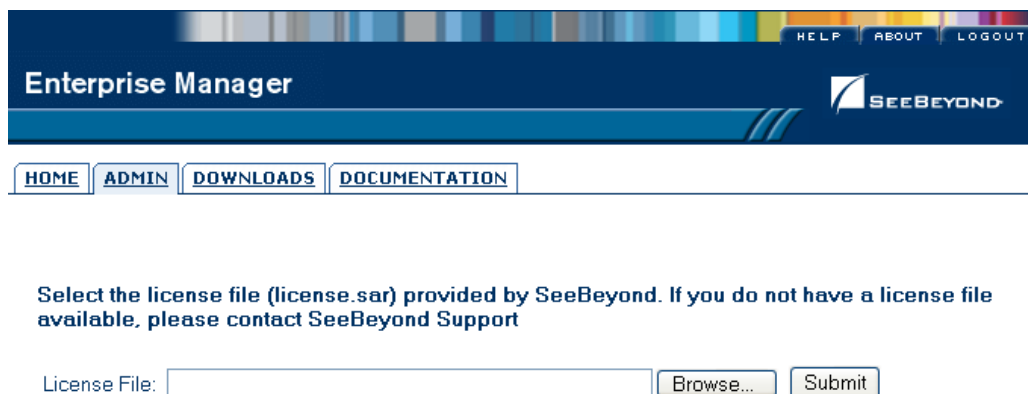
If you are uploading products to a Repository on HP NonStop Server, skip to **“To upload products to the Repository on HP NonStop Server” on page 54**. To upload products to a Repository on any other supported platform, continue to the following procedure.

To upload products to the Repository

- 1 Click the **ADMIN** tab to begin the process of selecting and uploading files to the Repository.

The License file selection screen appears.

Figure 10 License File Selection

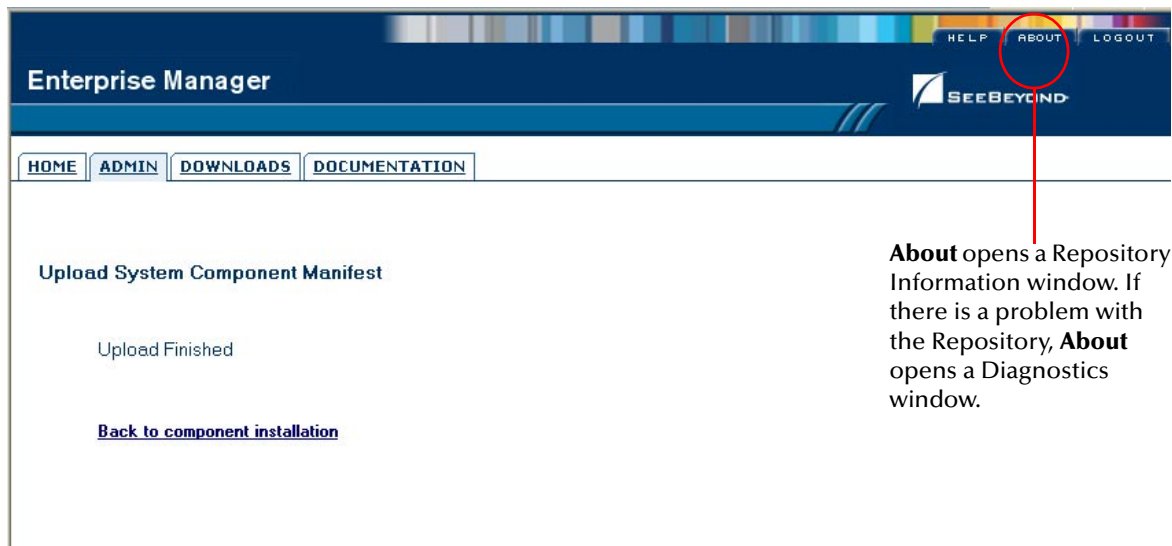


- 2 Click **Browse** to navigate to **license.sar**. After selecting it, click **Submit**.

Note: The *license.sar* file is uniquely created for each customer. This file is provided by e-mail. If you do not have this file, contact SeeBeyond Support.

Do not do anything until the license upload finishes; the Upload System Component Manifest screen will indicate when the upload has completed (see Figure 11).

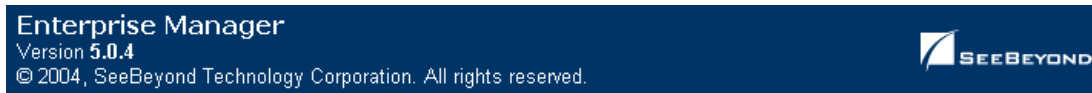
Figure 11 Completed Upload



About opens a Repository Information window. If there is a problem with the Repository, **About** opens a Diagnostics window.

- A Click **About** (see Figure 11) to see additional information about your Repository such as performance, working directory, connection information, and the version of Java. A Repository Information window appears (see Figure 12).
- B Click **Close Window** to return to the Completed Upload screen when you finish looking at the information.

Figure 12 Repository Information



Repository Information

Java Version: 1.4.2_04

Performance	
Number of Threads:	35
Session ID:	1087495686337
Free Memory:	14669920 bytes
Total Memory:	35364864 bytes
Total Number of Connection Requests:	23
Operating System	
Name:	Windows XP
Version:	5.1
Architecture:	x86
Repository	
Version Number:	5.0.4
Startup Time:	Thursday, June 17, 2004 11:07:19 AM PDT
Working Directory:	C:/ican50/repository
Patch level:	

Repository Connection Information

User #	User ID	Session ID	Machine Name	Connect Time
1	Administrator	1087495686337	Name-XP	Thursday, June 17, 2004 11:11:00 AM PDT
2	Administrator	1087495686328	Name-XP	Thursday, June 17, 2004 11:10:14 AM PDT

Close Window

- 3 Click **Back to component installation** to continue once you have returned to the Completed Upload screen. The next file to upload is **eGate.sar**.
- 4 Click **Browse** to navigate to **eGate.sar**. This file is located on the "SeeBeyond ICAN Suite Products - Disc 1" CD-ROM. Select it and click **Submit**.

Figure 13 Upload eGate.sar

The screenshot shows the Enterprise Manager web interface. At the top, there is a navigation bar with 'HOME', 'ADMIN', 'DOWNLOADS', and 'DOCUMENTATION' buttons. Below this is a table with the following data:

Product Name	Product Version	Uploaded By	Date of Upload
license	5.0.4	Administrator	Tuesday, May 25, 2004 3:39:52 PM PDT

Below the table, there is a section titled 'Select the eGate SAR (eGate.sar) or eInsightESB SAR file (eInsightESB.sar) from the CDROM'. It contains a text input field labeled 'eGate or eInsightESB SAR File:', a 'Browse...' button, and a 'Submit' button.

eGate.sar is a large file. Uploading **eGate.sar** may take several minutes.

As product **.sar** files are uploaded to the Repository, two actions take place:

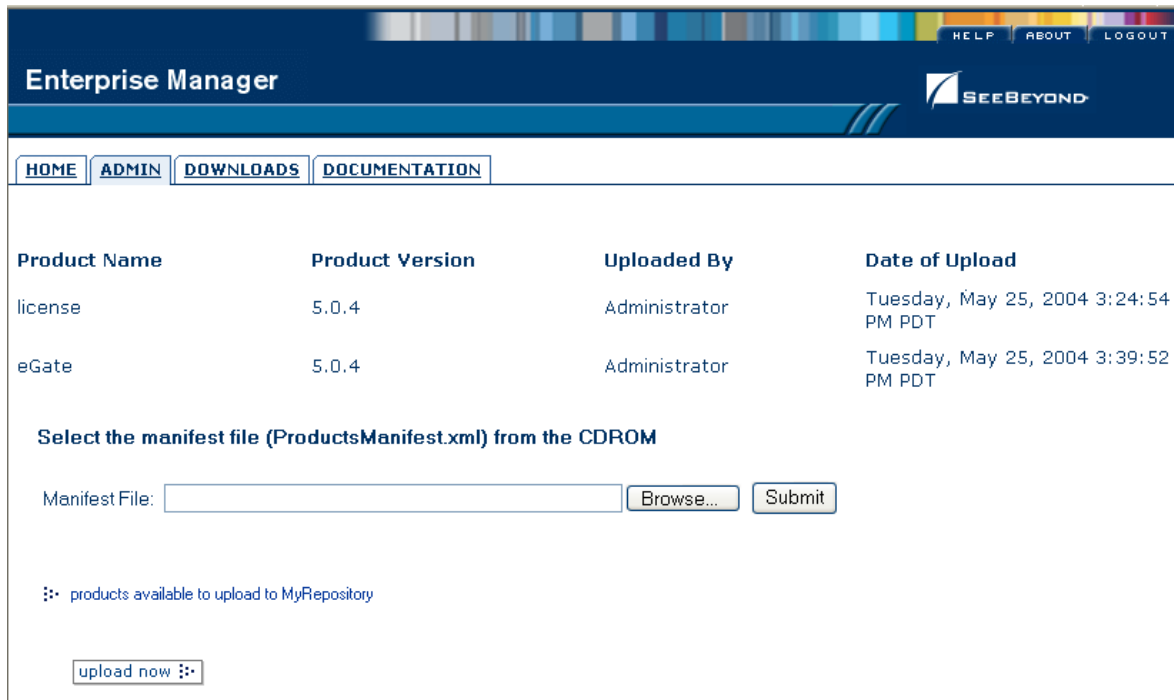
- ◆ The product **.sar** file is uploaded to the Repository server from your installation media. The length of time required for the file transfer depends on the size of the file and the speed of your network.
- ◆ The product **.sar** file is decompressed and installed into the Repository.

After the **eGate.sar** upload finishes, the Upload System Component Manifest screen indicates that the upload has completed (as previously seen in [Figure 11 on page 51](#)).

- 5 Click **Back to component installation** to continue.

The ADMIN page displays a list of the files that have been uploaded to the Repository so far (see Figure 14).

Figure 14 Product Manifest Selection



The next file to upload is **ProductsManifest.xml**. There are two versions of this file. The version for non-eWay products is located on the “SeeBeyond ICAN Suite Products - Disc 1” CD-ROM. The version for eWay products is located on the “SeeBeyond ICAN Suite Products - Disc 2” CD-ROM.

- 6 Click **Browse** to navigate to **ProductsManifest.xml**. After selecting it, click **Submit**.

Note: If you add additional products after your initial purchase, you would use the **ProductsManifest.xml** that was initially sent to you with the **license.sar** file to upload the new license. See [“Adding a New License File” on page 111](#).

The ADMIN page now displays a list of all the ICAN products based on the contents of the Products Manifest file.

To continue with the product upload process, skip to [“To upload documentation and additional products to the Repository” on page 56](#).

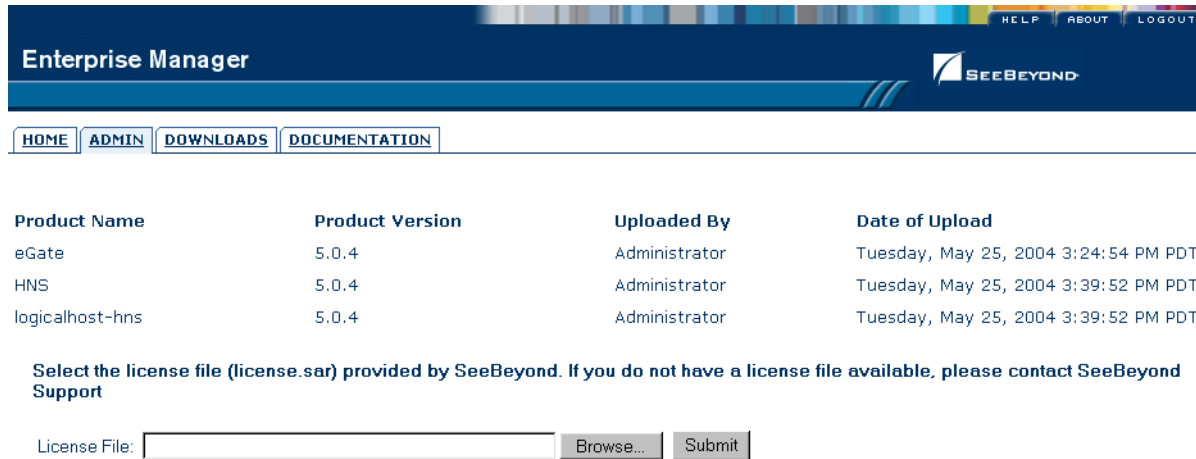
To upload products to the Repository on HP NonStop Server

Important: Do not upload **eGate.sar** to a Repository residing on HP NonStop Server. This file is installed automatically during the HP NonStop Server Repository installation.

- 1 Click the **ADMIN** tab to begin the process of selecting and uploading files to the Repository.

The License file selection screen appears.

Figure 15 License File Selection (HP NonStop Server)



As shown in Figure 15, the **eGate.sar**, **HNS.sar**, and **logicalhost_hns.sar** files are installed automatically during the HP NonStop Server Repository installation.

- 2 Click **Browse** to navigate to **license.sar**. After selecting it, click **Submit**.

Note: The *license.sar* file is uniquely created for each customer. This file is packaged separately from the rest of the ICAN installation media.

After the license upload has completed, the Upload System Component Manifest screen indicates that the upload is finished.

- 3 Click **Back to component installation** to continue. The next file to upload is **ProductsManifest.xml**. This file is located on the Products 1 CD-ROM.
- 4 Click **Browse** to navigate to **ProductsManifest.xml**. After selecting it, click **Submit**.

The ADMIN page now displays a list of all the ICAN products based on the contents of the Products Manifest file.

To upload documentation and additional products to the Repository

Each ICAN product requires one or more product **.sar** files to be uploaded to the Repository. For example, to install the File eWay, you must upload **FileeWay.sar**. Follow these steps to upload and install your product **.sar** files.

The product **.sar** files for non-eWay products are located on the “SeeBeyond ICAN Suite Products - Disc 1” CD-ROM. The product **.sar** files for eWay products are located on the “SeeBeyond ICAN Suite Products - Disc 2” CD-ROM. The product **.sar** files for OTD Libraries are located on the “SeeBeyond ICAN Suite Products - Disc 3” CD-ROM (HL7, Swift, and X12) and “SeeBeyond ICAN Suite Products - Disc 4” CD-ROM (HIPAA and UN/EDIFACT).

If you switch from one CD-ROM to the other, you can reload the **ProductsManifest.xml** to display the correct list of products.

- 1 Click the **Browse** button next to any of the product boxes. For example, to install the File eWay, click the **Browse** button next to any of the eWay boxes.

Note: You might want to upload the **.sar** files for the ICAN documentation first.

- 2 Navigate to the location where the product **.sar** file resides and select the file that you want to install.

Note: The **.sar** files for non-eWay documentation are located in the **\Documentation** directory on the “SeeBeyond ICAN Suite Products - Disc 1” CD-ROM (the **.sar** file for eGate documentation is **eGateDocs.sar**). The **.sar** files for eWay documentation are located in the **\Documentation** directory on the “SeeBeyond ICAN Suite Products - Disc 2” CD-ROM.

Important: The **EnterpriseManagerPlugin-Win98ToXP.sar** file is required for the Adobe SVG Viewer plug-in for Windows. It is located on the “SeeBeyond ICAN Suite Products - Disc 1” and “SeeBeyond ICAN Suite Products - Disc 1 eInsight ESB” CD-ROMs.

- 3 Click **upload now** to upload the product **.sar** file to the Repository.

The Upload System Component page displays. The status bar indicates the progress of the file upload. After the upload finishes, the Upload System Component Manifest screen indicates that the upload has completed (as previously seen in **Figure 11 on page 51**).

- 4 Click **Back to component installation** to continue.

The ADMIN page now displays a list of all the ICAN products based on the contents of the Products Manifest file.

- 5 Repeat steps 1 through 4 to install additional products.

Refer to the product documentation for the product or Add-on **.sar** file names. If you uploaded the documentation, you can access the manuals from the **DOCUMENTATION** tab of the Enterprise Manager.

To upload the Logical Host files

- Repeat the steps in the previous procedure to upload the appropriate Logical Host **.sar** file. See Table 11 to determine the correct Logical Host file(s) for your environment. The Logical Host **.sar** files are located on the Logical Host CD-ROM. Like the Products CD-ROMs, the Logical Host CD-ROM contains a **ProductsManifest.xml** file.

Note: You can use the **Browse** button next to any product text box to place UNIX Logical Host **.sar** files prior to uploading them.

SeeBeyond recommends that you upload the Logical Host **.sar** file at this time so that you do not have to return to the uploading process when you are downloading the Logical Host (see [Chapter 6](#)).

Table 11 Logical Host .sar files

Logical Host Platform	Logical Host .sar file
Windows	No .sar file is required for Windows; it is automatically uploaded with eGate.sar.
HP-UX	logicalhost_hpux.sar
HP Tru64	logicalhost_tru64.sar
HP NonStop Server	logicalhost_hns.sar and HNS.sar (only upload HNS.sar if your Repository is <i>not</i> on an HP NonStop Server)
IBM AIX	logicalhost_aix.sar
Red Hat or SuSE Linux	logicalhost_linux.sar
Sun Solaris	logicalhost_sparc64.sar

Continue to [Chapter 5 “Installation Instructions for Enterprise Designer”](#) on page 62 for instructions for installing the Enterprise Designer GUI on your development PCs.

4.3 Installing the Schema Runtime Environment (SRE) Monitor

The Schema Runtime Environment (SRE) Monitor enables you to monitor and manage an existing e*Gate 4.x system that has been upgraded to the SRE from the e*Gate Schema Designer.

Note: *The SRE installation is similar to the 4.x installation process, and like requirements and caveats apply (for example: On Windows you have to consider the Windows Registry if you want to install multiple versions of e*Gate). Before attempting the installation, see the appropriate SRE [eGate_Install_Guide.pdf](#) for details.*

This section describes how to install the SRE Monitor.

Java 1.4 and JAVA_HOME

The SRE Monitor requires Java 1.4 (JDK 1.4). *Java 1.4 must be installed, and the JAVA_HOME environment variable must be set prior to installing the SRE Monitor. If you have not previously installed Java and set JAVA_HOME, you will have the opportunity to set it during the installation (see [step 16](#) in “To install the SRE Monitor”).*

Note: *The SRE Monitor cannot be run with JDK 1.4.1_03, but earlier or later versions of JDK 1.4 are acceptable.*

To install the SRE Monitor

- 1 Navigate to the directory where you installed the ICAN Repository (for example: **C:\ican50\repository**) and double-click **startserver.bat**.
- 2 Start Internet Explorer and Log in to Enterprise Manager by typing **http://<hostname>:<port_number>** in the **Address** line

where:

hostname is the TCP/IP host name of the server where you installed the ICAN Repository—not the name of the Repository itself.

port_number is the port number that you specified during the installation of the ICAN Repository.

Note: *The system must be able to resolve the host name to an IP address using DHCP or any other name resolution protocol.*

- 3 Press **Enter**. The **SeeBeyond Customer Login** window of Enterprise Manager appears (see [Figure 16 on page 63](#)).
- 4 Enter your **username** and **password** (see the **Readme.txt** file found on the “SeeBeyond ICAN Suite Products - Disc 1” CD-ROM for the default username and password), and click **Login**. Enterprise Manager appears with the **HOME** tab active.
- 5 Click the **ADMIN** tab.

- 6 Insert the "SeeBeyond ICAN Suite Products - Disc 1" CD-ROM into the CD-ROM drive.
- 7 Click **Browse** to navigate to **ProductsManifest.xml**, select it, click **Open** and then **Submit**.

Note: This assumes that you have already installed the 5.0.4 ICAN Suite, including *license.sar* and *eGate.sar*.

- 8 Click **Browse** next to a box in the SeeBeyond Products Suite list.
- 9 Navigate to the **sreMonitor.sar** file, select it, click **Open**, and then click **upload now** to upload it to the Repository.
- 10 Click **Back to component installation** to continue.
- 11 Click the **DOWNLOADS** tab.
- 12 Click **Schema Runtime Environment Monitor**.
- 13 Click **Open** when the **File Download** dialog box appears. The **sreMonitor.zip** file is opened by an extraction program (such as WinZip).
Do not extract the files to the directory where you intend to install the SRE Monitor. For example, if you are going to install the SRE Monitor to **<C:\SREMonitor>**, extract the files to **<C:\SREMonitorDownload>**.
- 14 FTP (**in binary mode**) the files to the UNIX host if installing on UNIX.

Important: *Do not edit the files on Windows before you FTP them to the UNIX host.*

- 15 Open a command prompt (or Terminal window in UNIX) and change directories to where you downloaded the SRE Monitor files (for example: **<C:\SREMonitorDownload>**).
- 16 Type **install.bat** (or **sh install.sh** on UNIX computers) and press **Enter**.

The following prompt displays:

```
[1] Please enter the base directory for the SRE Monitor:
```

Note: *If you had not previously set your JAVA_HOME environment variable, you will see the message, "Please set JAVA_HOME (Java 1.4 or later) before running install.bat" (or "install.sh").*

From the command prompt (or Terminal window in UNIX), type:

```
set JAVA_HOME=<C:\ican50>\repository\jre\<1.4.x>
```

where:

<C:\ican50> is the directory where you installed the 5.0.4 ICAN Suite.

<1.4.x> is the runtime Java 1.4 that was installed when you installed the 5.0.4 ICAN Suite.

When the JAVA_HOME environment variable is set, type **install.bat** (or **sh install.sh** on UNIX computers) and press **Enter**. The following prompt displays:

[1] Please enter the base directory for the SRE Monitor:

- 17 Type the name to be used for the directory where you want to run the SRE Monitor (for example: `<C:\SREMonitor>`) and press **Enter**.

Note: *If the base directory you selected is not empty, you will be asked if you want to delete the contents of this directory before continuing with the installation. The default is **n**. Select **y** if you want to delete the contents.*

The next prompt displays the following message:

[2] Please enter the port number `<1025-65533>` used by the SRE monitor for remote access [25000]:

- 18 Type the port number that the SRE Monitor will use for remote access (25000 is the default) to the SRE Monitor Tomcat server and press **Enter**. The installation begins.

To start the SRE Monitor server

- 1 Open a command prompt (or Terminal window in UNIX) and change directories to the directory where you installed the SRE Monitor (for example: `<C:\SREMonitor>`).

Note: *It is assumed that the Registry Host and Control Broker for the 4.5.x version of e*Gate that you want to monitor are already running. See the appropriate 4.5.x SRE e*Gate documentation for details.*

- 2 Type **startserver.bat** (or **sh startserver.sh** on UNIX computers).
- 3 Press **Enter**.

To stop the server, type **stopserver.bat** (or **sh stopserver.sh** on UNIX computers).

Note: *This is the remote access SRE server and not the ICAN Repository server.*

- 4 Type the URL for the SRE Monitor on the Address line of your browser:

http://<hostname>:<port_number>/SREMonitor

where:

`<hostname>` is the host name of the computer where the SRE Monitor is installed.

`<port_number>` is the port number you entered at **step 18** in the preceding procedure (25000 by default).

Note: *The initial SRE Monitor screen contains two buttons in the Environment Explorer. The left button enables you to add a Registry or Repository, and the right button enables you to refresh the Registry or Repository. See the *eGate Integrator User's Guide* for more information.*

To log off the SRE Monitor

- 1 Click **LOGOUT** on Enterprise Manager.
- 2 Close Enterprise Manager.

To stop the SRE Monitor server

- 1 Open a command prompt (or Terminal window on UNIX).
- 2 Change to the directory where the SRE Monitor Tomcat server is running (for example: `<C:\SREMonitor>`).
- 3 Type **stopserver.bat** at the command prompt (or **sh stopserver.sh** on a UNIX Terminal window).

Installation Instructions for Enterprise Designer

This chapter provides instructions on how to install the Enterprise Designer GUI on a Windows system. If you have any questions or problems, see the SeeBeyond Support Web site at <http://www.seebeyond.com> and select **SERVICES** and then **SUPPORT**.

Note: The Enterprise Designer GUI can only be installed on Windows systems.

This chapter contains

- “Overview” on page 62
- “Installation of Enterprise Designer” on page 63

5.1 Overview

The Enterprise Designer must be installed on a Windows computer. After uploading the product files to the Repository (see **Chapter 4**), you can download the Enterprise Designer from the Repository and install it on all Windows clients that will be used to build and configure eGate Projects. Although the Enterprise Designer must be installed on Windows PCs, the Enterprise Designer can connect to Repositories on any supported platform.

Note: An extraction program, such as WinZip, must be installed on the Windows client prior to beginning the installation of the Enterprise Designer.

5.2 Installation of Enterprise Designer

This section provides the steps to download the Enterprise Designer from the Repository via the Enterprise Manager.

Note: Before you can begin this procedure, your SeeBeyond must be running. See [Chapter 3 “Installation Instructions for Repository” on page 30](#) for instructions for starting your Repository server.

To log on to the Enterprise Manager

- 1 Start Internet Explorer.
- 2 In the **Address** line, type `http://<hostname>:<port_number>`

where:

hostname is the TCP/IP host name of the server where you installed the Repository—not the name of the Repository itself.

port_number is the port number that you specified during the installation of the Repository.

Note: The host name must be valid.

- 3 Press **Enter**. The **SeeBeyond Customer Login** window of the Enterprise Manager appears (see Figure 16).

Figure 16 SeeBeyond Customer Login window

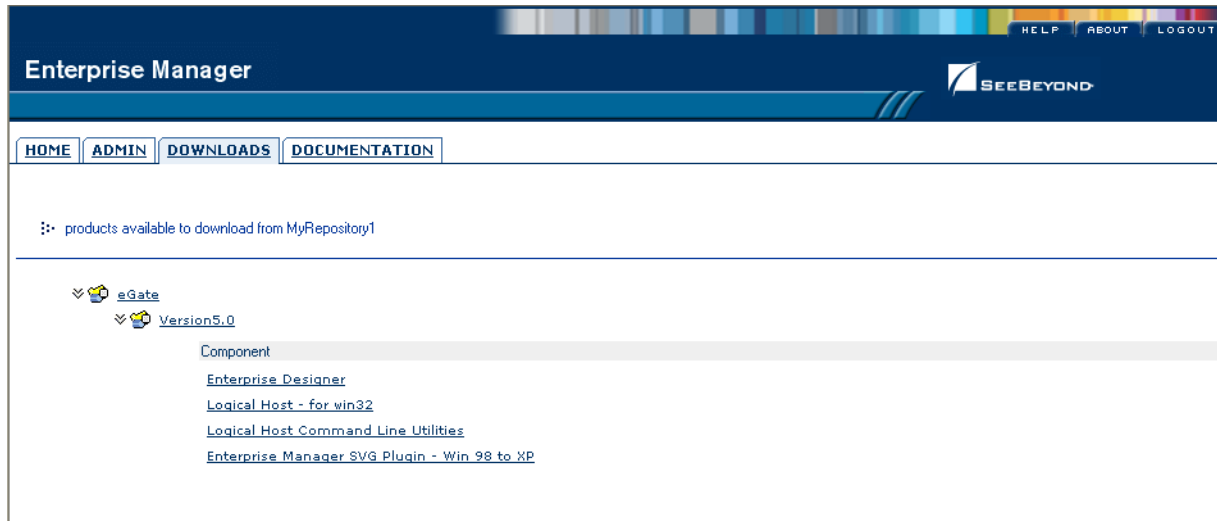


- 4 Enter your **username** and **password**. See the **Readme.txt** file for the default username and password.
- 5 Click **Login**. Enterprise Manager appears with the **HOME** tab active.

To install the Enterprise Designer GUI

- 1 Click the **DOWNLOADS** tab. The **products available to download from <repository_name>** window appears (see Figure 17).

Figure 17 Products available to download from <repository_name> window



- 2 Click **Enterprise Designer**.
- 3 Click **Open** after the **File Download** dialog box appears. The **edesigner.zip** file is opened by an extraction program (such as WinZip).

Note: *If you uploaded the **EnterpriseManagerPlugin-Win98ToXP.sar** file, you must download **Enterprise Manager SVG Plugin - Win 98 to XP** from the **products available to download from <repository_name>** window for the Adobe SVG Viewer plug-in to function properly.*

- 4 Extract all the files to the client directory (such as **C:\ican50**). The **\edesigner** subdirectory is created when the file is unzipped.
- 5 Close the extraction program and Internet Explorer.

Note: *Selecting **Logical Host Command Line Utilities** to download provides command-line activation and deactivation. However, to use this standalone utility you must first have Java installed on the computer on which you intend to use the program, and **JAVA_HOME** must be set. For additional information, see the **eGate Integrator User's Guide**.*

5.2.1. Starting Enterprise Designer and Installing Required eGate Modules

After you start the Enterprise Designer for the first time, you must install all the modules required to run the program.

To start the Enterprise Designer and install required modules

- 1 Navigate to `<C:\ican50>\edesigner\bin` and double-click **runed.bat**.
- 2 Start the Enterprise Designer using one of these two methods:
 - If you are connecting to a Repository on any platform other than HP NonStop Server, navigate to `<C:\ican50>\edesigner\bin` and double-click **runed.bat**.
 - If Enterprise Designer is downloaded from a Repository on an HP NonStop Server, open a command prompt and change directories to `<C:\ican50>\edesigner\bin`, and type the following command:

```
runed hostname port rep_name
```

where:

hostname is the TCP/IP host name of the server where you installed the Repository—not the name of the Repository itself.

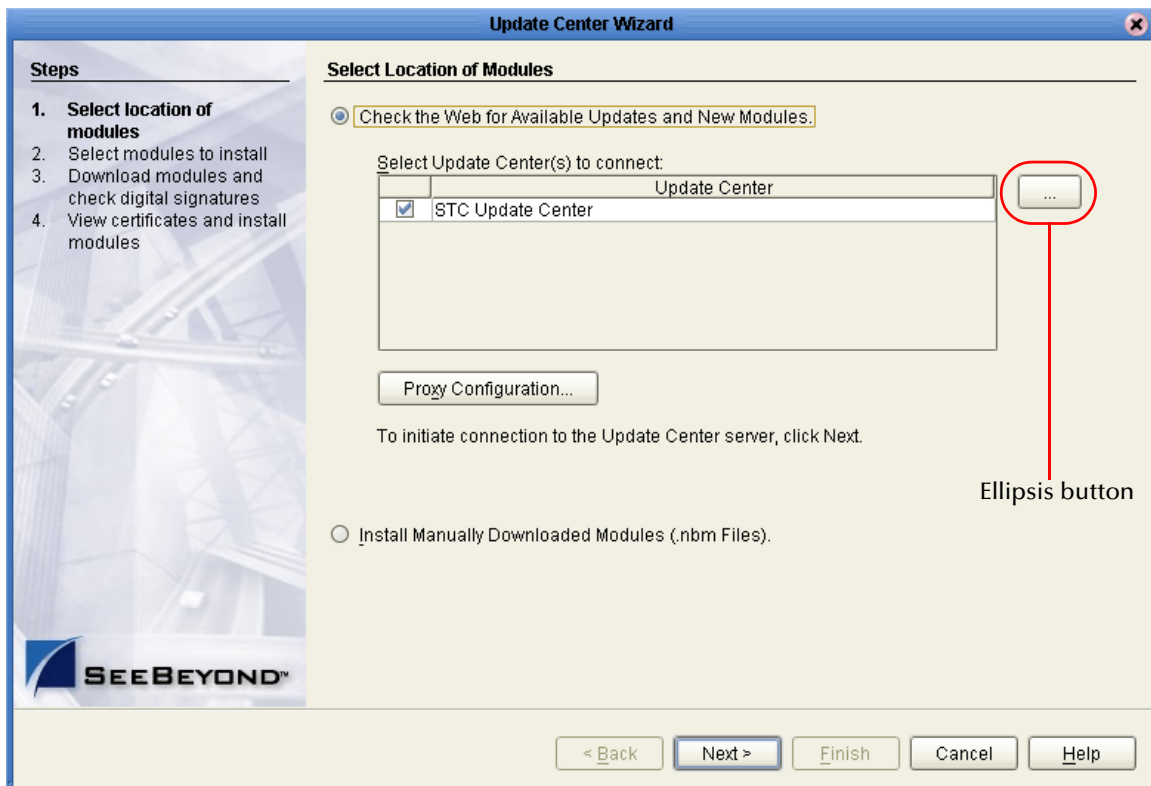
port is the port number of the Repository.

rep_name is the name of the Repository.

Note: You may want to create a shortcut to Enterprise Designer on the desktop.

- 3 You must download the modules, check their signatures, and then install the modules. On the **Tools** menu, click **Update Center**. The **Update Center Wizard - Select Location of Modules** dialog box appears (see Figure 18).

Figure 18 Update Center Wizard - Select Location of Modules



- 4 Click **Next** if you are installing the Enterprise Designer on the same computer where the Repository server is running. The **Update Center Wizard - Select modules to install** dialog box appears (see Figure 21).

However, if you are installing the Enterprise Designer on a different computer than the computer where the Repository server is running:

- A Click the **ellipsis** button (...) to the right of "STC Update Center." The **Property Editor: Update Center** dialog box appears (see Figure 19).
- B Confirm in the **Server URL** box that the Enterprise Designer installation points to the URL of the host where the Repository is installed.

For example:

`http://<hostname>:<port>/repository/<rep_name>`

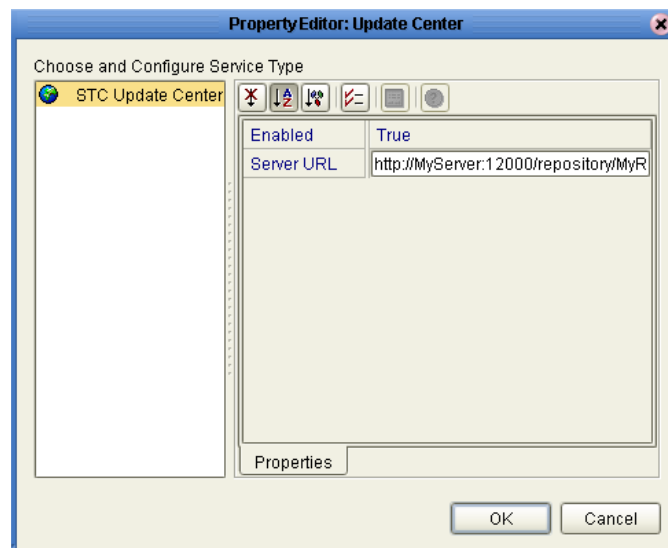
where:

hostname is the TCP/IP host name of the server where you installed the Repository—not the name of the Repository itself.

port is the port number of the Repository.

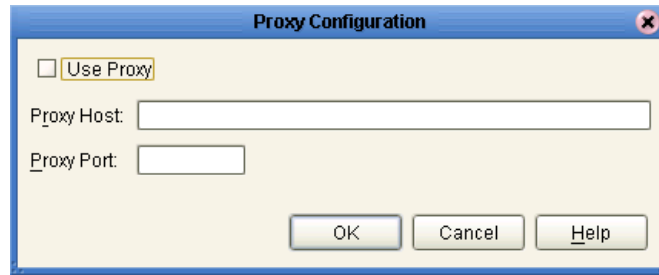
rep_name is the name of the Repository.

Figure 19 Property Editor: Update Center



- C Specify the URL of the Repository server and click **OK**. The **Update Center Wizard - Select Location of Modules** dialog box reappears (see Figure 18).
- D Click the **Proxy Configuration** button if a proxy server forwards requests to the Repository. The **Proxy Configuration** dialog box appears (see Figure 20).

Figure 20 Proxy Configuration Dialog Box



- E Select the **Use Proxy** check box and specify the **Proxy Host** and **Proxy Port**.
 - ♦ The **Proxy Host** is the IP address of the proxy server (for example: **10.0.0.1**).
 - ♦ The **Proxy Port** is the port number of the proxy server (for example: **443**).
- F Click **OK**. The **Update Center Wizard - Select Location of Modules** dialog box reappears (see Figure 18).
- G Click **Next**. The **Update Center Wizard - Select Modules to Install** dialog box appears (see Figure 21).

Read the following before continuing:

All Enterprise Designer product modules must be installed before any ESRs can be applied. If you reach step 2 on the Update Center Wizard (see Figure 21) and ESRs are present in the **Available Updates and New Modules** area, they cannot be applied until *all* Enterprise Designer product modules have been installed—make sure that *no ESRs* are present in the **Include in Install** area before continuing.

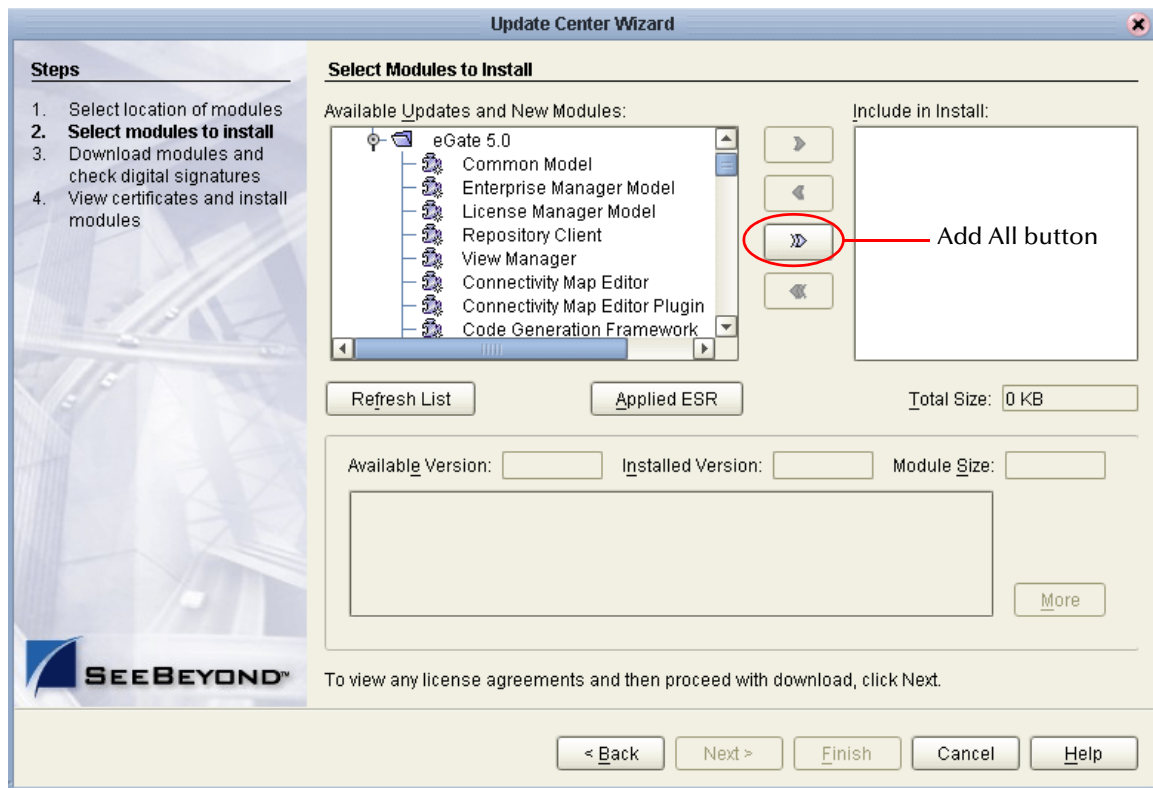
Do not apply any ESRs until you have completed this procedure, all the Enterprise Designer product modules have been installed, and you have been prompted to restart Enterprise Designer.

Note: See [Chapter 7](#) for information about ESRs and instructions on how to apply them.

- 5 Click the **Add All** button (double-arrow button that is the third arrow button from top) *only if there are no ESRs present* in the **Available Updates and New Modules** area. All of the modules are moved to the **Include in Install** list.

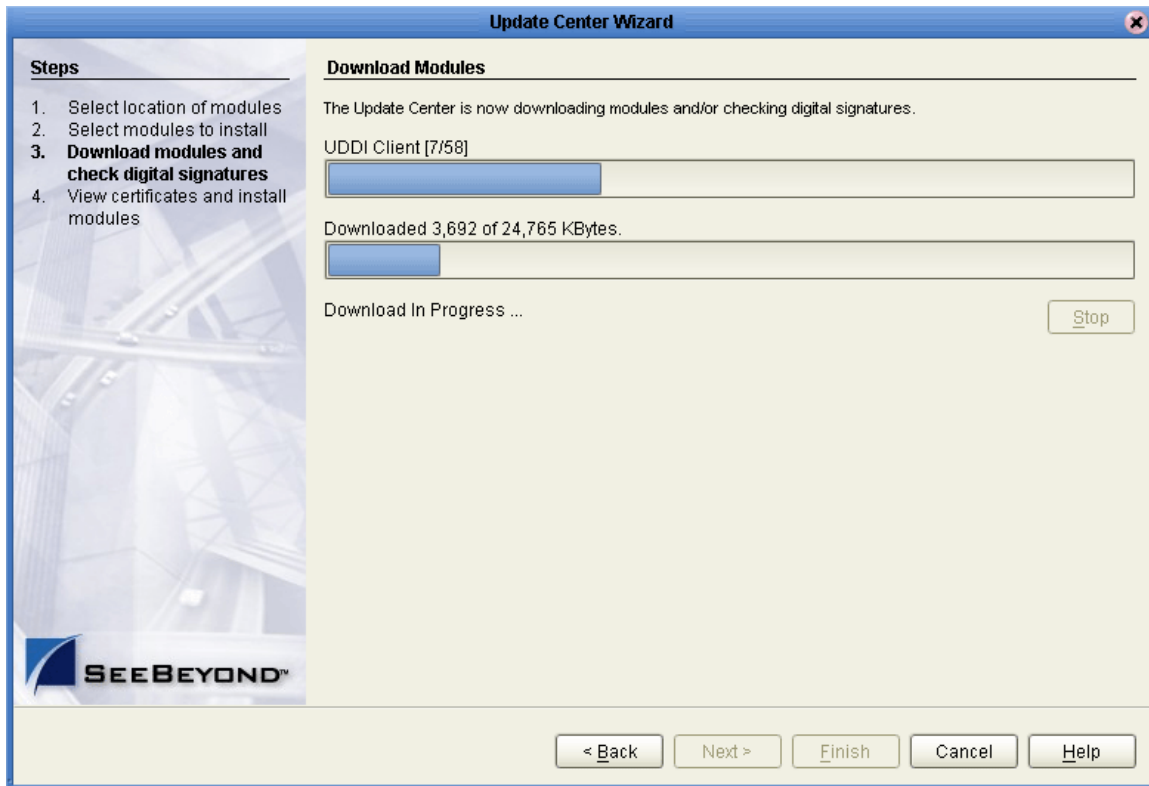
If there are ESRs present in the **Available Updates and New Modules** area, you must use the single-arrow button to move only product modules into the **Include in Install** list.

Figure 21 Update Center Wizard - Select Modules to Install



- 6 Click Next.
- 7 Click **Accept** when the **License Agreement** appears. The **Update Center Wizard - Download Modules** dialog box appears (see Figure 22).

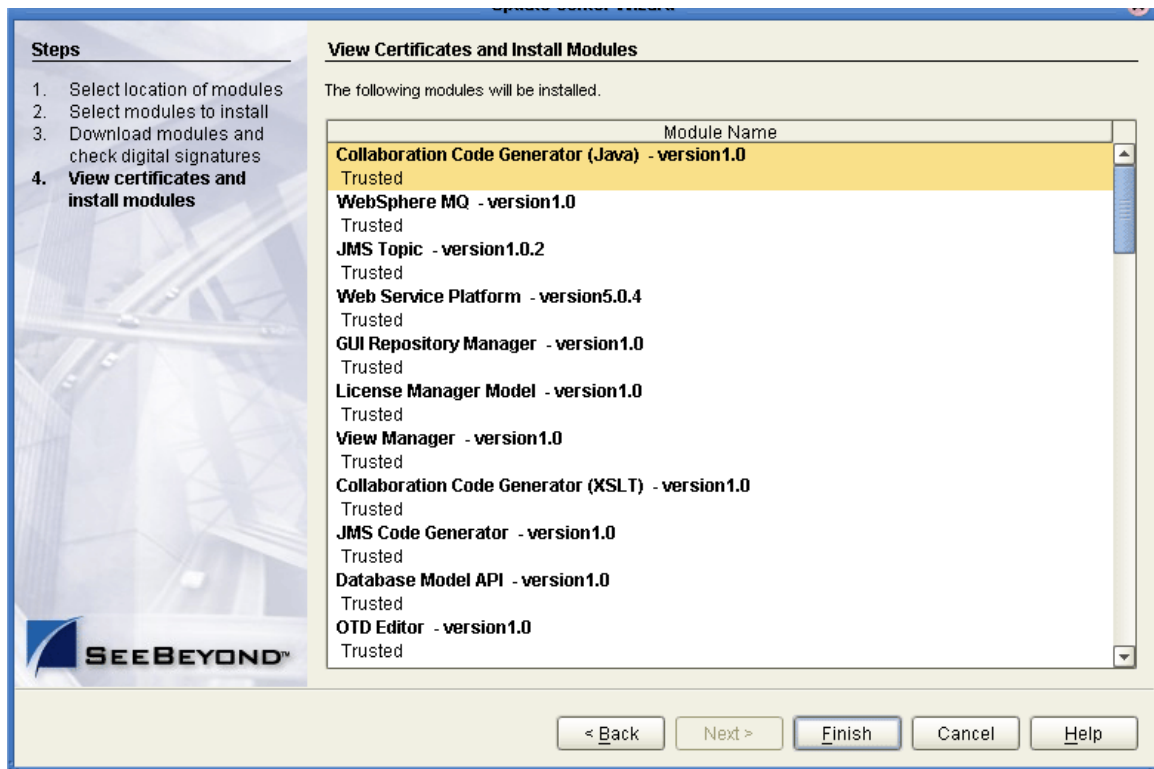
Figure 22 Update Center Wizard - Download Modules



- 8 Click **Next** when the progress bar reaches 100 percent and “Done” appears below the bar.

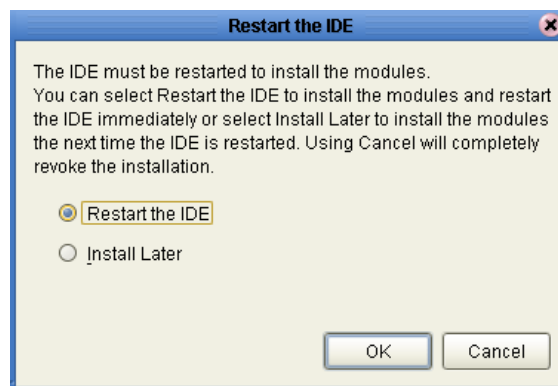
The **Update Center Wizard - View Certificates and Install Modules** dialog box appears (see Figure 23). All of the modules must be installed for Enterprise Designer to fully function.

Figure 23 Update Center Wizard - View Certificates and Install Modules



- 9 Click **Finish** to accept the certificates and install the modules. The **Restart the IDE** dialog box appears (see Figure 24).

Figure 24 Restart the IDE dialog box



The modules that were installed in [step 9](#) must be reloaded before Enterprise Designer functions properly.

- 10 Ensure that the **Restart the IDE** option is selected, then click **OK** to restart the IDE and install the modules. The Enterprise Designer **Login** dialog box appears (see Figure 25).

- 11 Enter your **Login ID** and **Password** and then click **Login**. The Login ID is the same as the username. SeeBeyond recommends that you log in as “Administrator” the first time you log in; the Administrator can then create additional Login IDs (usernames).

The **SeeBeyond Enterprise Designer** window appears. You can now begin using the Enterprise Designer.

Note: See the *eGate Integrator Tutorial* and the *eGate Integrator User’s Guide* for detailed instructions on using eGate.

5.2.2. Starting Enterprise Designer GUI After Initial Logon

This section provides instructions for logging in for subsequent sessions of eGate.

Before logging in for subsequent sessions of eGate, the SeeBeyond Repository server must be running.

To start Enterprise Designer GUI

- 1 Navigate to <C:\ican50>\edesigner\bin and double-click **runed.bat**.

The Enterprise Designer **Login** dialog box appears (see Figure 25).

Figure 25 Enterprise Designer Login dialog box



- 2 Enter your **Login ID** and **Password**, and then click **Login**.

Or, if you specified a URL for the Repository server (see [Figure 19 on page 66](#)) on the **Property Editor: Update Center** dialog box, you must enter this URL in the **Repository URL** box before clicking **Login**.

The **SeeBeyond Enterprise Designer 5.0.4** window appears.

To exit Enterprise Designer

- Click the “X” in the upper right corner of the window.
or
- On the **File** menu, click **Exit**.

Installation Instructions for Logical Host

This chapter provides instructions on how to install the Logical Host. If you have any questions or problems, see the SeeBeyond Support Web site at <http://www.seebeyond.com> and select **SERVICES** and then **SUPPORT**.

This chapter contains

- “Overview” on page 73
- “Windows Installation of Logical Host” on page 74
- “UNIX and Linux Installation of Logical Host” on page 76
- “HP NonStop Server Installation of Logical Host” on page 79

Note: See the *eGate Integrator Tutorial* before beginning the Logical Host installation.

6.1 Overview

The Logical Host can be installed on any eGate supported platform. The Logical Host is installed after you have installed the Repository and the Enterprise Designer.

Note: The Logical Host download is via Enterprise Manager, which only runs on Windows systems.

Notes regarding bootstrapping the Logical Host

- When you bootstrap the Logical Host the first time it automatically downloads binaries, configurations, and Projects. Use Enterprise Designer to control what changes are applied to all subsequent restarts of the Logical Host. See the *eGate Integrator User's Guide* for additional information.
- If you want the Logical Host to download configuration and Project changes automatically every time you bootstrap, specify **-f** or **--force-connect** on the bootstrap command line.

Note: It is not necessary to specify **-f** the first time you bootstrap.

6.2 Windows Installation of Logical Host

Before deploying a Project created in the Enterprise Designer, you must install a Logical Host. This section provides instructions for downloading and installing the Logical Host from the Repository.

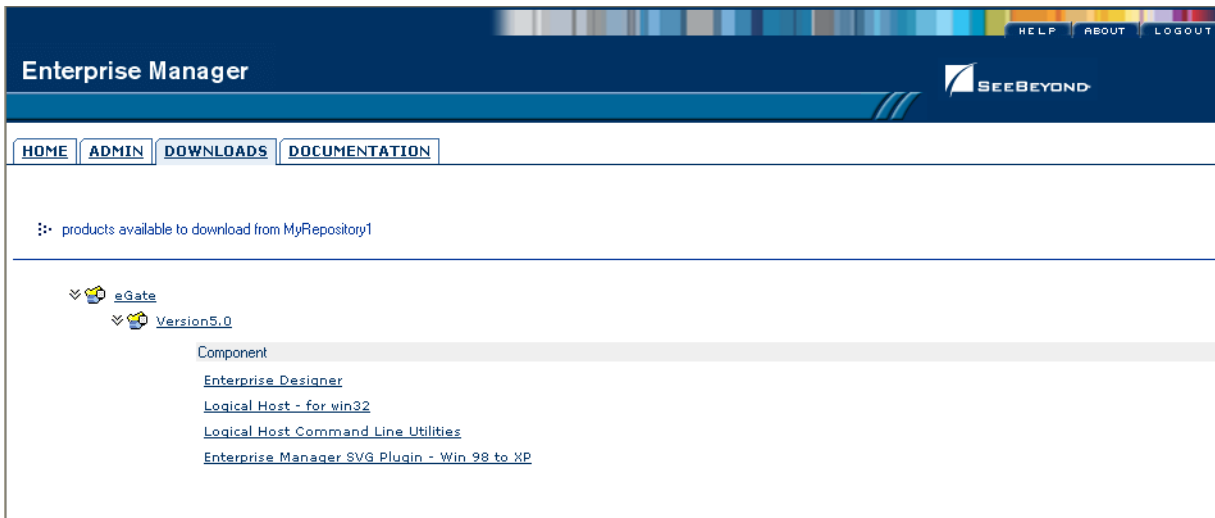
Note: Before you can begin this procedure, your SeeBeyond Repository server must be running. See [Chapter 3](#) for instructions on how to start your Repository server.

To install the Logical Host

Note: If your browser is running and Enterprise Manager is open, skip to step 6.

- 1 Start Internet Explorer.
- 2 In the **Address** line, type **http://<hostname>:<port_number>**
where:
<hostname> is the TCP/IP host name of the server where you installed the Repository—not the name of the Repository itself.
<port_number> is the port number that you gave during the installation of the Repository.
- 3 Press **Enter**. The **SeeBeyond Customer Login** window of Enterprise Manager appears (see [Figure 16 on page 63](#)).
- 4 Enter your **username** and **password**. See the **Readme.txt** file for the default username and password.
- 5 Click **Login**. Enterprise Manager appears with the **HOME** tab active.
- 6 Click the **DOWNLOADS** tab. The **products available to download from <repository_name>** window appears (see [Figure 26](#)). Use this window to download and install a Logical Host from your Repository.

Figure 26 Products available to download from <repository_name> window



- 7 Click **Logical Host - for win32**.
- 8 Click **Open** when the **File Download** dialog box appears. The **logicalhost-win32.zip** file is opened by an extraction program (such as WinZip).
- 9 Extract all the files to the client directory (such as **C:\ican50**). The **\logicalhost** subdirectory is created when the file is unzipped.
- 10 Close the extraction program and Internet Explorer.

6.2.1. Starting the Logical Host on a Windows System

There are two ways to start the Logical Host on a Windows system:

- [“Starting the Logical Host manually on a Windows system” on page 75](#)
- [“Starting the Logical Host as a Windows service” on page 75](#)

Starting the Logical Host manually on a Windows system

To manually start the Logical Host on a Windows system, run **bootstrap.bat**. See the *eGate Integrator System Administration Guide* for details on the bootstrap arguments.

Starting the Logical Host as a Windows service

Modifying the Logical Host Startup Configuration File on a Windows System

You must set the arguments for the Logical Host in the **logical-host.properties** file. For information on how to modify the startup configuration file, see the *eGate Integrator System Administration Guide*.

To automatically start the Logical Host as a service

To automatically start the Logical Host as a Windows service upon startup of a Windows system, see “Installing the Logical Host as a Windows Service” in the *eGate Integrator System Administration Guide* for details.

Note: *If you set the Logical Host to start as a Windows service, it automatically starts each time your computer is rebooted. If the Logical Host is set to start manually, you will have to start it each time your computer is rebooted.*

6.3 UNIX and Linux Installation of Logical Host

Before deploying a Project created in the Enterprise Designer, you must install a Logical Host. This section provides instructions for downloading and installing the Logical Host from the Repository.

Note: *Before downloading a specific Logical Host for any UNIX or Linux platform, that Logical Host must first be uploaded from the “SeeBeyond ICAN Suite Logical Host” CD-ROM to the Repository.*

To install the Logical Host

Use the FTP feature of the Repository to download the Logical Host **.tar** file for a particular UNIX or Linux platform.

- 1 TELNET into the UNIX or Linux system and change to the directory where you want to install the Logical Host.
- 2 Connect to the Repository FTP server by typing: **ftp <repository_hostname> <ftp_port_number>**

where:

<repository_hostname> is the TCP/IP host name of the server where you installed the Repository—not the name of the Repository itself.

<ftp_port_number> is the base port number that you entered during the installation of the Repository plus 8. That is, if the base port number is **12000**, then the FTP server port number would be **12008**.

- 3 Press **Enter**.
- 4 Log in using your ICAN administrator username and password.

A At the prompt, type **<username>** and press **Enter**.

Note: *This is your ICAN administrator username, not your operating system/network username. See the **Readme.txt** file on the root directory of the Repository CD-ROM for the default username.*

B At the prompt, type **<password>** and press **Enter**.

Note: This is your ICAN administrator password, not your operating system/network password. See the *Readme.txt* file on the root directory of the Repository CD-ROM for the default password.

- 5 Type: **bin** and press **Enter** to enter binary mode, otherwise you will download in ASCII.
- 6 To browse for the downloadable Logical Hosts, type **ls** and press **Enter**.
- 7 To begin the download, type **get <tar-file-name>**

where:

<tar-file-name> is the name of the **.tar** file name that contains the Logical Host that you want to install (for example: **logicalhost-sparc64.tar**).

- 8 Quit the FTP session by typing: **quit** and then pressing **Enter**.
- 9 Decompress the **.tar** file by typing **tar -xvf <tar-file-name>**

where:

<tar-file-name> is the name of the **.tar** file name that contains the Logical Host that you want to install (for example: **logicalhost-sparc64.tar**).

When ready, press **Enter**. This creates a directory named “logicalhost” inside the directory where the **tar** command was executed.

6.3.1. Starting the Logical Host on a UNIX System

To start the Logical Host on a UNIX system, see:

- [“Starting the Logical Host manually on a UNIX system” on page 77](#)

Starting the Logical Host manually on a UNIX system

To manually start the Logical Host on a UNIX system, run **bootstrap.sh**. See the *eGate Integrator System Administration Guide* for details on the bootstrap arguments.

In addition, be aware of the following:

- If you installed the Logical Host on HP Tru64 and the shell is **csh**, you must run the following command *before* starting the Logical Host:

```
unlimit
```

- If you installed the Logical Host on HP Tru64 and the shell is **bash**, you must run the following command *before* starting the Logical Host:

```
ulimit -sd 512000
```

6.3.2. Starting the Logical Host on a Linux System

To start the Logical Host on a Linux system, see:

- [“Starting the Logical Host manually on a Linux system” on page 78](#)

Starting the Logical Host manually on a Linux system

To manually start the Logical Host on a Linux system, run **bootstrap.sh**. See the *eGate Integrator System Administration Guide* for details on the bootstrap arguments.

6.3.3. Starting the Logical Host as a UNIX/Linux Daemon

You can have the Logical Host start automatically upon startup of the UNIX system (see the *eGate Integrator System Administration Guide* for details on bootstrap arguments).

To start the Logical Host on startup

- 1 Manually run bootstrap the first time you log on to set the bootstrap arguments.

or

Open the **logical-host.properties** file and modify the bootstrap arguments (see the *eGate Integrator System Administration Guide* for details on bootstrap arguments).

- 2 System Administrator creates an **init** script that calls the **nohup** command with the **bootstrap.sh** script. For example:

```
nohup /home/jsmith/logicalhost/bootstrap/bin/bootstrap.sh &
```

This script creates a UNIX Daemon that runs in the background for the following platforms:

- ♦ HP Tru64 V5.1A
- ♦ HP-UX 11.0, 11i (PA-RISC), and 11i v2.0 (11.23)
- ♦ IBM AIX 5.1L and 5.2
- ♦ Red Hat Linux Advanced Server 2.1 (Intel x86)
- ♦ Red Hat Linux 8 (Intel x86)
- ♦ Sun Solaris 8 and 9
- ♦ SuSE Linux Enterprise Server 8 (Intel x86)

All Logical Host startup and shutdown command line information is sent to an output text file called **nohup.out**, which is located in the directory where you installed the Logical Host (for example: **/home/jsmith/logicalhost**). For additional details, see the system administration documentation for the specific UNIX platform.

6.4 HP NonStop Server Installation of Logical Host

Before running the Project you created in the Enterprise Designer GUI, you must install a Logical Host onto your HP NonStop Server. The Logical Host receives notification of the Project's deployment, and downloads the bundle that was created for it. This section provides instructions for downloading and installing the Logical Host from the Repository.

Important: Before you install any eGate components, you must install the JRE extension libraries on the HP NonStop Server. For more information, see ["JRE Extension Libraries" on page 22](#).

Required Privileges

Before installing the Logical Host, log on to the HP NonStop Server using a user ID that has SUPER group privileges, for example, 255,xxxx. You must use this same user ID to download and install the Logical Host. You will also need to use this user ID to run the LHInit program (see ["Starting the Logical Host as an HP NonStop Program with a generic process" on page 81](#)).

To install the Logical Host

Use the FTP feature of the Repository to download the Logical Host .tar file for a particular HP NonStop Server platform.

- 1 Log on to the HP NonStop Server system and change to the directory where you want to install the Logical Host.
- 2 Connect to the Repository FTP server by typing `ftp <repository_hostname> <ftp_port_number>`

where:

`<repository_hostname>` is the TCP/IP host name of the server where you installed the Repository—not the name of the Repository itself.

`<ftp_port_number>` is the base port number that you entered during the installation of the Repository plus 8. That is, if the base port number is 12000, then the FTP server port number would be 12008.

When ready, press **Enter**.

- 3 Log in using your ICAN administrator username and password.
A At the prompt, type `<username>` and press **Enter**.

Note: This is your ICAN administrator username, not your operating system/network username. See the *Readme.txt* file on the root directory of the Repository CD-ROM for the default username.

- B** At the prompt, type `<password>` and press **Enter**.

Note: This is your ICAN administrator password, not your operating system/network password. See the **Readme.txt** file on the root directory of the Repository CD-ROM for the default password.

- 4 Type: **bin** and press **Enter** to enter binary mode, otherwise you will download in ASCII.
- 5 To browse for the downloadable Logical Hosts, type **ls** and press **Enter**.
- 6 To begin the download, type **get <tar-file-name>**

where:

<tar-file-name> is the name of the **.tar** file name that contains the Logical Host that you want to install (for example: **logicalhost-hns.tar**).

- 7 Quit the FTP session by typing **quit** and then pressing **Enter**.
- 8 Decompress the **.tar** file by typing **tar -xvf <tar-file-name>**

where:

<tar-file-name> is the name of the **.tar** file name that contains the Logical Host that you want to install (for example: **logicalhost-hns.tar**).

When ready, press **Enter**. This creates a directory named “logicalhost” inside the directory where the **tar** command was executed.

6.4.1. Starting the Logical Host on an HP NonStop Server

There are two ways to start the Logical Host on an HP NonStop system:

- [“Starting the Logical Host manually on an HP NonStop system” on page 80](#)
- [“Starting the Logical Host as an HP NonStop Program with a generic process” on page 81](#)

Starting the Logical Host manually on an HP NonStop system

- 1 Execute the command **export NSJMS_HOME=<NSJMS_HOME>**

where:

<NSJMS_HOME> is the directory where the HP NonStop JMS is located.

- 2 Change directories to **<ICAN504>/logicalhost/bootstrap/bin**

where:

<ICAN504> is the directory where you installed the ICAN Suite.

- 3 Execute the command **sh ./bootstrap.sh**.

See the *eGate Integrator System Administration Guide* for details on the bootstrap arguments.

Starting the Logical Host as an HP NonStop Program with a generic process

Before starting the Logical Host as an HP NonStop program with a generic process, you must set the arguments for the Logical Host in the **logical-host.properties** file.

To modify the startup configuration file

- 1 Navigate to `<path>/logicalhost/bootstrap/config`.
- 2 Use a text editor (such as vi) to open the **logical-host.properties** file.
- 3 At the top of the **logical-host.properties** file, locate the following list of properties:

```
logical.host.root.dir= [OPTIONAL]
logical.host.name=
logical.host.environment.name=
repository.url=
repository.username=
repository.password=
physical.host.name= [OPTIONAL]
```

Note: The properties in your **logical-host.properties** file may appear in a different order than the properties shown above.

- 4 Set the properties in your **logical-host.properties** file. See the following table for descriptions of the properties' values:

Note: When you type values into the **logical-host.properties** file, make sure you **do not enter spaces before or after the equal (=) sign and the property values. Spaces are not allowed between a property and its value. Spaces are allowed in the value only.**

Table 12 Logical Host Properties File

Property	Description
logical.host.root.dir	Set this value to the full path of the Logical Host directory. For example, c:\ican50\logicalhost . [OPTIONAL] Automatically detected and updated.
logical.host.name	Set this value to the name you specified for the Logical Host. For example, logicalhost1 .
logical.host.environment.name	Set this value to the name of the environment containing the current logical host. For example, EnvironmentDeployment1 .
repository.url	Set this value to the name of the Repository URL. For example http://hostname:port/repositoryname where: <ul style="list-style-type: none"> ▪ hostname is the physical name of the computer on which the Repository resides. For example, localhost. ▪ port is the port number that the Repository uses to receive requests. For example, 9999. ▪ repositoryname is the name you specified for the Repository. For example, Repository1.

Table 12 Logical Host Properties File (Continued)

Property	Description
repository.username	Set this value to the user name you are using to access the Repository. For example, Administrator .
repository.password	Set this value to the password you are using to access the Repository. For example, myPassword . When you launch the bootstrap process, this password is encrypted and written to the repository.password.encrypted property. After the encrypted password has been written, this repository.password value is removed from the logical-host.properties file.
repository.password.encrypted	Do not enter anything for this property or modify its contents. This property is automatically updated based on changes made to the repository.password property.
physical.host.name	Specifies the physical host on which this Logical Host is running. The host name should include the domain name. [OPTIONAL] Automatically detected and updated.
os.type	Specifies the operating system type of the computer on which the Logical Host is going to run. For example: os.type=NONSTOP_KERNEL . This is automatically populated when you bootstrap.
user.timezone	Specifies the location and time zone of the computer on which the Logical Host is going to run. For example: user.timezone=America/Los_Angeles . This is automatically populated when you bootstrap.

- 5 Save the **logical-host.properties** file.

To start the Logical Host as an HP NonStop LHInit Program

The LHInit program must be installed on each CPU on which the Logical Host will be run. To install the LHInit program, use the same user ID you used to download the Logical Host (see [“Required Privileges” on page 79](#)).

At a command prompt:

- 1 Log on to the HP NonStop Server using a user ID with sufficient privileges (see [“Required Privileges” on page 79](#)).
- 2 Navigate to:


```
<Destination Directory name>/logicalhost/bootstrap/bin
```
- 3 Copy **lh.profile.sample** to **lh.profile**.
- 4 Edit **lh.profile** and make changes if needed.
- 5 Update **NSJMS_HOME**, for example:


```
export NSJMS_HOME=/usr/tandem/nsjms/T1251V30_31MAR2004_AAD
```
- 6 Update **TCPIP^PROCESS^NAME**, for example:

```
add_define =TCPIP^PROCESS^NAME class=map file=\$ZB01C
```

- 7 Copy the **infile.sample** to the **infile**.
- 8 Update the file path in the **infile** to the location of your Logical Host installation once you have copied it. For example:

```
/home/ <user>/logicalhost/bootstrap
```

- 9 cd to the bin directory:

```
>cd ../bin
```

To install LHInit:

- 1 To install the LHInit program on a CPU:

```
>sh ./install.sh <user> <volume> [<host>]
```

For example,

```
sh ./install.sh sadmin \$DATA01.LHOST1
```

Once completed, the following files will be located in **<volume>**:

Table 13 LHInit Files

INFILE	The input command file for LHInt.
LHINIT	The LHInit program.

- 2 To configure the LHInit as a generic process for the CPU:

```
>sh ./admin.sh config <cpu number> <user id> <volume>
```

For example:

```
>sh ./admin.sh config 2 255,250 \$DATA01.LHOST1
```

Installation Instructions for ESRs

This chapter provides instructions on how to install Emergency Software Releases (ESRs), which are updates that resolve known issues. If you have any questions or problems, see the SeeBeyond Support Web site at <http://www.seebeyond.com> and select **SERVICES** and then **SUPPORT**.

This chapter contains

- “About ESRs” on page 84
- “Extracting ESR Distribution .zip Files” on page 86
- “Uploading ESR .sar Files to the Repository” on page 87
- “Using the Update Center for Enterprise Designer ESRs” on page 88
- “Using the ESR Setup for Logical Host ESRs” on page 91
- “Downloading and Extracting Enterprise Designer and Logical Host ESR .zip Files” on page 93
- “Installing Repository ESRs” on page 94
- “Rolling Back ESRs” on page 95

7.1 About ESRs

ESRs are bundled as distribution **.zip** files named **ESR00nnnnn-dist.zip**, where *nnnnn* is the number of the ESR ticket.

ESRs update one or more of the following ICAN Suite components:

- **Enterprise Designer**
These ESRs resolve issues for Enterprise Designer components. An Enterprise Designer ESR is provided as an **ESR00nnnnn.sar** file included in the distribution **.zip** file.
- **Logical Host**
These ESRs resolve issues for Logical Hosts, SeeBeyond JMS IQ Manager, Management Agents (STCMA), and Integration Servers. A Logical Host ESR is provided as an **ESRnnnnn.sar** file included in the distribution **.zip** file.
- **Repository**
These ESRs resolve issues for the Repository and the Enterprise Manager. A

Repository ESR is provided as an **ESRnnnnn.zip** file included in the distribution **.zip** file.

7.1.1. ESR Distribution .zip File Contents

ESR distribution **.zip** files (**ESR00nnnnn-dist.zip**) include the files listed below. Distribution files can include one **.sar** or one **.zip** file but may also contain two **.sar** files and a **.zip** file. It depends on whether the ESR updates Enterprise Designer, Logical Host, and/or Repository components.

Table 14 Contents of ESR Distribution .zip File

ESR file	Packaged with ESR	Purpose
ESR00nnnnn.sar	Enterprise Designer	Resolves Enterprise Designer issues. <ul style="list-style-type: none"> Enterprise Designer ESRs are installed on each computer that has Enterprise Designer installed.
ESRnnnnn.sar	Logical Host	Resolves Logical Host issues. <ul style="list-style-type: none"> Logical Host ESRs are installed on each computer that has Logical Hosts installed. You must decide which ESRs you want to install on each Logical Host.
ESRnnnnn.zip	Repository	Resolves Repository issues. <ul style="list-style-type: none"> Repository ESRs are installed on the computer where the Repository runs.
ESR<number>Filelist.txt	Enterprise Designer Logical Host Repository	Lists all files associated with this ESR.
ESR<number>Readme.txt	Enterprise Designer Logical Host Repository	Describes the issue(s) resolved by this ESR, lists superseded ESRs (if any), and provides general installation information
ProductsManifest.xml	Enterprise Designer Logical Host	Provides a placeholder for an ESR<number>.sar file on the ADMIN page of Enterprise Manager for Enterprise Designer and Logical Host ESRs.

7.2 Quick Start Guide to Installing ESRs

The installation procedure for ESRs depends on the type(s) of ICAN components that are being updated. The ESR Readme file, *ESR<number>Readme.txt*, which is included in the ESR distribution file, provides a brief outline of the installation process for the ESR. This chapter provides the details for each installation step.

To provide you with a quick overview, the procedure below describes each possible step in the installation process and refers you to the section in this chapter that provides the details for the step.

Some ESRs may require all steps, and others may require less. The ESR Readme file lists which steps are required for the particular ESR you want to install.

- 1 Extract the **ESR00nnnnn-dist.zip** file to a temporary directory as described in **“Extracting ESR Distribution .zip Files” on page 86**.
- 2 If the distribution file includes a Repository **.zip** file (**ESRnnnnn.zip**), install the **.zip** file as described in **“Installing Repository ESRs” on page 94**.
- 3 If the distribution file includes **.sar** files, upload the files to the Repository as described in **“Uploading ESR .sar Files to the Repository” on page 87**.
- 4 If the ESR Readme file instructs you to do so, download and extract any available **edesigner_ESR00nnnnn.zip** and/or **logicalhost_ESR00nnnnn.zip** files as described in **“Downloading and Extracting Enterprise Designer and Logical Host ESR .zip Files” on page 93**.
- 5 If the ESR Readme file instructs you to do so, install Enterprise Designer ESRs using the Update Center in the Enterprise Designer as described in **“Using the Update Center for Enterprise Designer ESRs” on page 88**.
- 6 If the ESR Readme file instructs you to do so, install Logical Host ESRs using the ESR Setup function in the Enterprise Designer as described in **“Using the ESR Setup for Logical Host ESRs” on page 91**.

7.3 Extracting ESR Distribution .zip Files

The first step in the ESR installation process is to extract the ESR distribution **.zip** file named *ESR00nnnnn-dist.zip*, where *nnnnn* is the ESR ticket number. The procedure below describes how to extract the ESR distribution.zip file.

To extract distribution ESR **.zip** files

- 1 Create a temporary directory.
- 2 Use WinZip (or another tool) to extract the ESR **.zip** file to a temporary directory.

See Table 14 for a listing of what ESR files are packaged within each ESR distribution **.zip** file.

7.4 Uploading ESR .sar Files to the Repository

Before you can install an Enterprise Designer or Logical Host ESR, you must extract the ESR .zip file as described in “[Extracting ESR Distribution .zip Files](#)” on page 86 and then upload the ESR .sar file to the Repository (Enterprise Designer and Logical Host ESRs are distributed as .sar files).

Note: *There may be more than one .sar file to upload. You upload all .sar files at the same time.*

- The ESR number for Enterprise Designer .sar files contains seven digits and are zero padded (for example: **ESR00nnnnn.sar**).
- The ESR number for Logical Host .sar files contains five digits (for example: **ESRnnnnn.sar**).

Only Enterprise Designer and Logical Host ESRs are uploaded to the Repository.

To upload ESR .sar files to the Repository

- 1 If your Repository is not running, start it.
- 2 Start Enterprise Manager by starting Internet Explorer and entering **http://<hostname>:<port_number>** in the **Address** line
where:
hostname is the TCP/IP host name of the server where you installed the Repository—not the name of the Repository itself.
port_number is the port number that you specified during the installation of the Repository.
The **SeeBeyond Customer Login** of the Enterprise Manager appears (see [Figure 9 on page 50](#)).
- 3 Enter your **username** and **password** and click **Login**. See the **Readme.txt** file (of the ICAN Suite) for the default username and password.
Enterprise Manager appears with the **HOME** tab active.
- 4 Click the **ADMIN** tab.
- 5 Click **Browse** to navigate to the **ProductsManifest.xml**, select it, and then click **Open**.
- 6 Click **Submit** after the **ProductsManifest.xml** file appears in the **Manifest File** box.
The **ADMIN** page now displays a list of all the ICAN products based on the contents of the Products Manifest file.
- 7 Click **Browse** next to an ESR box to navigate to the ESR .sar file (for example, **ESR00nnnnn.sar** for Enterprise Designer ESRs and **ESRnnnnn.sar** for Logical Host ESRs), select it, and then click **Open**. Repeat this step for each ESR that you want to upload.

Figure 27 shows an example of a selected ESR.

Figure 27 Example of Selected ESR



8 When finished selecting ESRs, click **upload now**. The ESRs are uploaded.

Note: *If the ESR Readme file instructs you to download Enterprise Designer and Logical Host .zip files, see “[Downloading and Extracting Enterprise Designer and Logical Host ESR .zip Files](#)” on page 93.*

7.5 Using the Update Center for Enterprise Designer ESRs

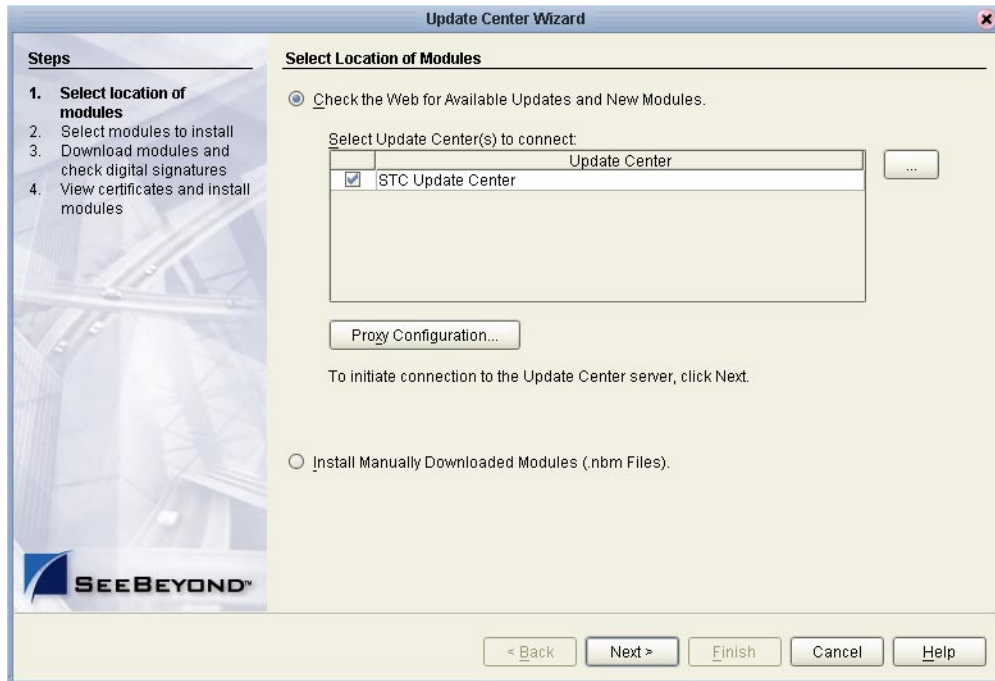
This section describes how to install ESRs for Enterprise Designer components.

Before following the procedure below to install the ESR, you must have first uploaded the ESR to the Repository as described in “[Uploading ESR .sar Files to the Repository](#)” on page 87.

To install Enterprise Designer ESRs

- 1 Start Enterprise Designer (see “[Starting Enterprise Designer GUI After Initial Logon](#)” on page 71).
- 2 On the **Tools** menu, click **Update Center**. The **Update Center Wizard - Select Location of Modules** dialog box appears (see Figure 28).

Figure 28 Update Center Wizard - Select Location of Modules



- 3 Ensure that the **Check the Web for Available Updates and New Modules** option is active. When ready, click **Next**. The **Update Center Wizard - Select Modules to Install** dialog box appears (see Figure 29). The available ESRs are listed in the **Available Updates and New Modules** box.

Important: All non-ESR Enterprise Designer product modules must be installed before their ESRs can be applied. If you reach step 2 on the Update Center Wizard (see Figure 29) and Enterprise Designer product modules are present in the **Available Updates and New Modules** area, they must be installed before you apply their ESRs—make sure that no ESRs are present in the **Include in Install** area before continuing.

Do not apply any ESRs until the Update Center Wizard has completed this process, all non-ESR Enterprise Designer product modules have been installed, and you have been prompted to restart Enterprise Designer.

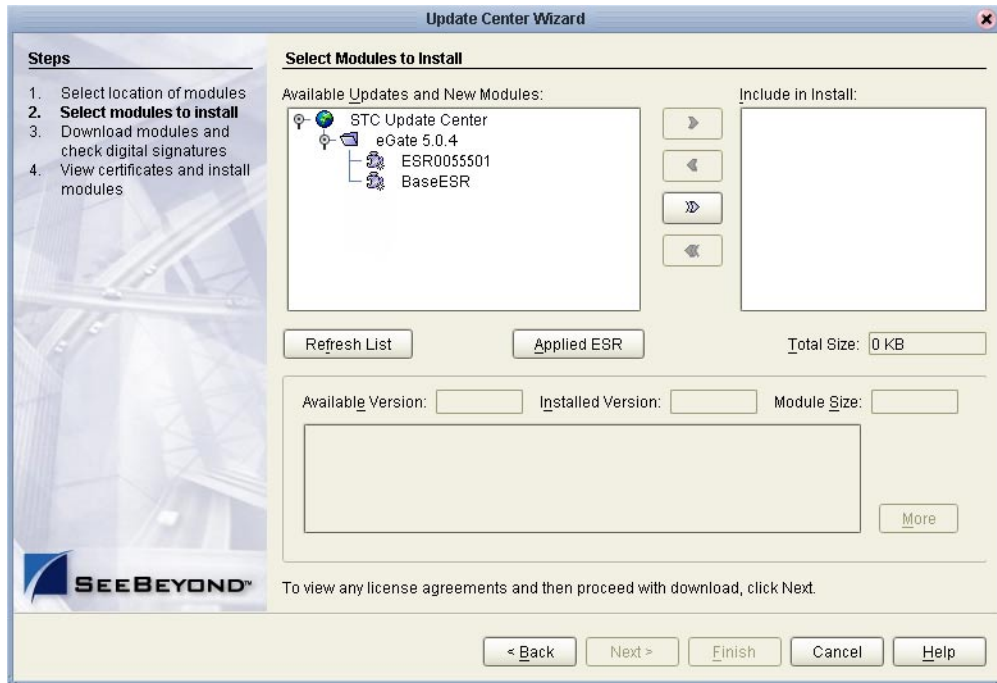
- 4 Move the ESR(s) to the **Include in Install** box. You can select an individual ESR by highlighting it and then clicking the single-right-arrow button to move the ESR. Repeat this procedure to move all the ESRs that you want to install.

or

Click the double-right-arrow button to move all the listed ESRs to the **Include in Install** box. If an ESR has dependencies on other ESRs, the other ESRs are automatically moved to the **Include in Install** area.

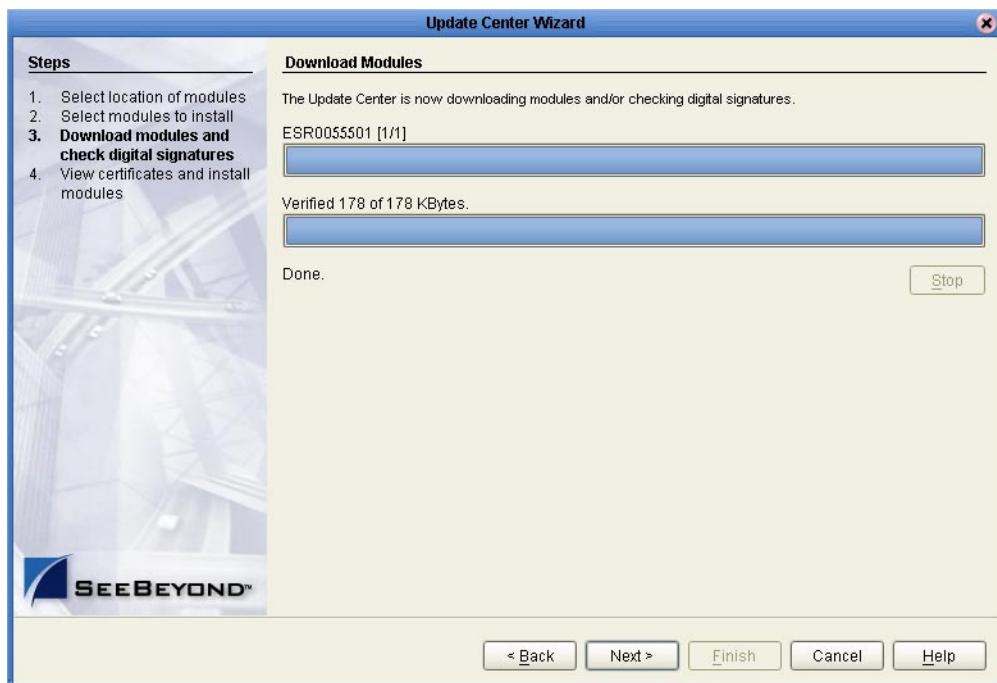
- ♦ A message appears if you move an ESR that conflicts with or supersedes another ESR.

Figure 29 Update Center Wizard - Select Modules to Install



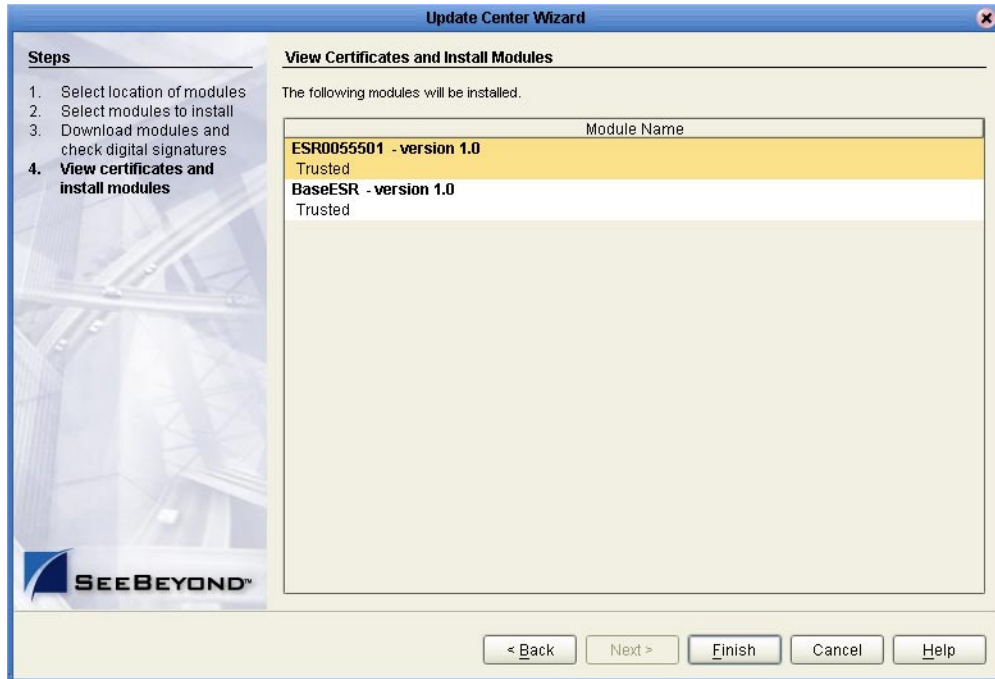
- 5 Click **Next**. The **License Agreement** window appears.
- 6 Click **Accept**. The **Update Center Wizard - Download Modules** dialog box appears (see Figure 30).

Figure 30 Update Center Wizard - Download Modules



- 7 Click **Next** after the progress bar reaches 100 percent and “Done” appears below the bar. The **Update Center Wizard - View Certificates and Install Modules** dialog box appears (see Figure 31). “Trusted” means that the file is a sanctioned SeeBeyond file and not a rogue file.

Figure 31 Update Center Wizard - View Certificates and Install Modules



- 8 Click **Finish**. The **Restart the IDE** dialog box appears.
- 9 Make sure that **Restart the IDE** is selected and click **OK**. The Enterprise Designer **Login** dialog box appears (see [Figure 25 on page 71](#)).
- 10 Enter your **Login ID** and **Password**, and then click **Login**. The Login ID is the same as the username. Enterprise Designer restarts.

7.6 Using the ESR Setup for Logical Host ESRs

This section describes how to install ESRs for the Logical Host and its components (the Management Agent, SeeBeyond Integration Server, and SeeBeyond JMS IQ Manager).

Before you can perform the following procedure, you must have uploaded one or more ESRs to the Repository. See [“Uploading ESR .sar Files to the Repository” on page 87](#).

To install Logical Host ESRs

- 1 Start Enterprise Designer (see [“Starting Enterprise Designer GUI After Initial Logon” on page 71](#)).
- 2 Click the **Environment Explorer** tab from the Enterprise Explorer.

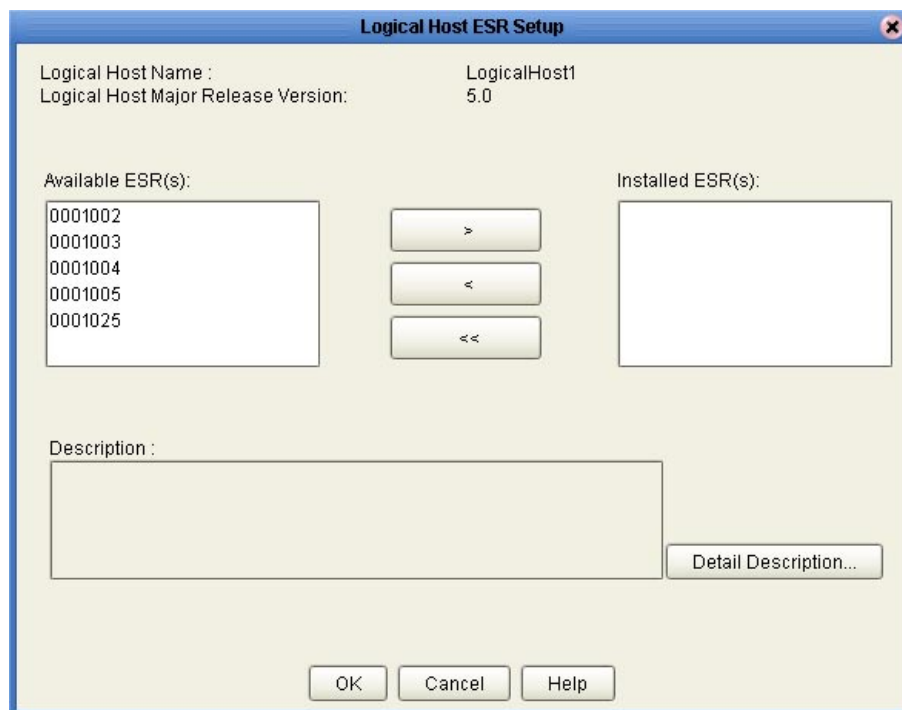
- 3 Right-click the Logical Host that you want to update, and then click **ESR Setup**.

The **Logical Host ESR Setup** dialog box appears (see Figure 32). The ESRs that were uploaded to the Repository and that can be applied to this Logical Host appear in the **Available ESR(s)** area.

You can click on an ESR to display a brief description of that ESR. For a detailed description of the ESR, click **Detail Description**.

Note: *If you cannot get to a Logical Host, this is because the Logical Host must first be checked out. Right-click the Logical Host, and then click **Check Out**. Version control only affects personal Environments; shared Environments will not see your edits until you check them in (see the **eGate Integrator User's Guide**).*

Figure 32 Logical Host ESR Setup



- 4 Move the ESRs that you want to install from the **Available ESR(s)** area to the **Installed ESR(s)** area. Only one ESR at a time can be moved.
 - ♦ If you move an ESR that has dependencies on other ESRs, the other ESRs are automatically moved to the **Installed ESR(s)** area.
 - ♦ If you move an ESR that conflicts with another ESR, a message informs you of this situation and suggests that you remove the other ESR.
 - ♦ If you move an ESR that supersedes another ESR, a message informs you of this situation and suggests that you remove the other ESR.
- 5 Click **OK**.
- 6 Select **File** and then click **Save All**. This saves everything you have open to the Repository.

The ESRs will take effect when you reactivate the Deployment Profile or rerun the Logical Host bootstrap script.

Note: For the Logical Host to download configuration and Project changes automatically every time you bootstrap, specify `-f` or `--force-connect` on the bootstrap command line. See the *eGate Integrator User's Guide* for additional information.

or

Apply the selected ESR(s) immediately by right-clicking the Logical Host and selecting **Apply**.

Note: The Logical Host must be running to apply the selected ESR(s) immediately.

7.7 Downloading and Extracting Enterprise Designer and Logical Host ESR .zip Files

Enterprise Designer ESRs are delivered as `edesigner_ESR00nnnnnn.zip` files and Logical Host ESRs are delivered as `logicalhost_ESR00nnnnnn.zip` files. This section describes the .zip file extraction process.

Note: All Enterprise Designer and Logical Host ESR .zip files must be extracted before they can be installed.

To download Enterprise Designer and Logical Host ESR .zip files

- 1 Upload the ESR .sar file(s) as described in [“Uploading ESR .sar Files to the Repository” on page 87](#).
- 2 In the Enterprise Manager, click the **DOWNLOADS** tab.
- 3 Double-click the `edesigner_ESR00nnnnnn.zip` and/or `logicalhost_ESR00nnnnnn.zip` files and save the files locally.

To extract Enterprise Designer ESR .zip files

- 1 Shut down Enterprise Designer.
- 2 Use WinZip (or another tool) to extract `edesigner_ESR00nnnnnn.zip` to the directory where eGate Integrator is installed.

To extract Enterprise Designer and Logical Host ESR .zip files

- 1 Shut down the Logical Host in Enterprise Designer.
- 2 Use WinZip (or another tool) to extract `logicalhost_ESR00nnnnnn.zip` to the `logicalhost` directory, where `logicalhost` is the name of the Logical Host.
- 3 Rerun the Logical Host bootstrap script from the command prompt.

7.8 Installing Repository ESRs

Repository ESRs are delivered as **.zip** files and they are installed manually.

Although the **.zip** file that bundles all the components for the Repository ESR ([“Extracting ESR Distribution .zip Files” on page 86](#)) has seven digits and is zero padded (for example: **ESR00nnnnn-dist.zip**), the ESR number for the Repository **.zip** file you must apply to fix a known Repository issue is non-zero padded (for example: **ESRnnnnnn.zip**).

Note: *Repository .txt files contain seven digits and are zero padded (for example: **ESR00nnnnnnReadme.txt** or **ESR00nnnnnnFilelist.txt**).*

To install Repository ESRs

- 1 Shut down the Repository.
- 2 Copy the ESR **.zip** file (for example: **ESRnnnnnn.zip**) to the **<ican504>/ESRs** directory.

Important: *Although the .zip file that bundles all the components for the ESR (**ESR<number>Readme.txt**, **ESR<number>Filelist.txt**, and **ESR<number>.zip** file) has seven digits, the ESR .zip file you are going to install only contains five digits (for example: **ESRnnnnnn.zip**).*

- 3 Open a command prompt (or Terminal window in UNIX) and type:

ESRInstall <number> (for Windows)

or

sh ESRInstall.sh <number> (for UNIX)

where:

<number> is the number of the ESR you want to apply (for example: **33333**).

The ESR is applied (see the example).

```
C:\ican504\ESRs>ESRInstall 33333
Going to install ESR : ESR33333
Going to read InstalledESR.txt
Successfully read InstalledESR.txt
Backing up file :
C:/ican504/repository/./repository/data/files/InstallManager/repo
sitoryapis/OTDFrameworkManager/SBYNOTDFRAMEWORK110/com.stc.otd.fra
meworkapi.jar
Backing up file :
C:/ican504/repository/./repository/data/files/InstallManager/repo
sitoryapis/UD1Manager/SBYNUD1110/com.stc.otd.ud1impl.jar
Going to update Manifest
Successfully updated Manifest
Backed up files successfully.
Going to update InstalledESR.txt
Successfully updated InstalledESR.txt
Going to extract files from ESR33333.zip
WARNING: trying to extract a directory : repository/
WARNING: trying to extract a directory : repository/data/
```

```
WARNING: trying to extract a directory : repository/data/files/  
WARNING: trying to extract a directory :  
repository/data/files/InstallManager/  
WARNING: trying to extract a directory :  
repository/data/files/InstallManager/repositoryapis/  
WARNING: trying to extract a directory :  
repository/data/files/InstallManager/repositoryapis/OTDFrameworkMa  
nager/  
WARNING: trying to extract a directory :  
repository/data/files/InstallManager/repositoryapis/OTDFrameworkMa  
nager/SBYNOTDFRAMEWORK110/  
WARNING: trying to extract a directory :  
repository/data/files/InstallManager/repositoryapis/UD1Manager/  
WARNING: trying to extract a directory :  
repository/data/files/InstallManager/repositoryapis/UD1Manager/SBY  
NUD1110/  
Extracting file:  
C:\ican504\repository\..\repository\data\files\InstallManager\repo  
sitoryapis\OTDFrameworkManager\SBYNOTDFRAMEWORK110\com.stc.otd.fra  
meworkapi.jar  
Extracting file:  
C:\ican504\repository\..\repository\data\files\InstallManager\repo  
sitoryapis\UD1Manager\SBYNUD1110\com.stc.otd.ud1impl.jar  
Extracted files successfully.  
Successfully installed ESR.  
C:\ican504\ESRs>
```

4 Restart the Repository.

To ensure Repository ESRs are applied

- Navigate to the directory where you store ESRs (for example: `<ican504>/ESRs`) and open the file `InstalledESR.txt` in a text editor.

You will see a list of your applied ESRs (for example: `ESRnnnnn`).

7.9 Rolling Back ESRs

This section describes how to roll back ESRs. See the following for the appropriate procedure:

- [“Rolling Back Enterprise Designer ESRs” on page 95](#)
- [“Rolling Back Logical Host ESRs” on page 96](#)
- [“Rolling Back Repository ESRs” on page 97](#)

7.9.1 Rolling Back Enterprise Designer ESRs

The Enterprise Designer uses a special ESR called the BaseESR to track installation data, and it is this data that later allows you to roll back an ESR. This section describes how to roll back applied Enterprise Designer ESRs.

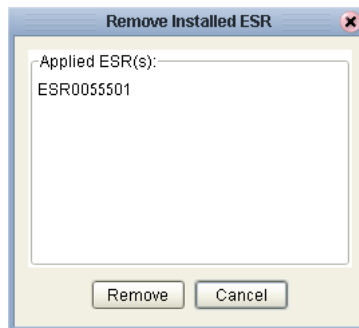
To roll back applied Enterprise Designer ESRs

- 1 On the **Tools** menu of Enterprise Designer, click **Update Center**. The **Update Center Wizard - Select location of modules** dialog box appears.

- 2 Click **Next**. The **Update Center Wizard - Select Modules to Install** dialog box appears.
- 3 Click **Applied ESR** (see [Figure 29 on page 90](#)). The **Remove Installed ESR** dialog box appears; it shows which ESRs have been applied (see [Figure 33](#)).

Note: Click **Cancel** if you do not want to roll back any ESRs.

Figure 33 Remove Installed ESR Dialog Box



- 4 Select the ESRs you want to roll back and then click **Remove**. The **Applied ESR(s)** dialog box appears; it lists the ESRs you have marked for removal.
- 5 Click **OK** to roll back the ESRs.
- 6 The Enterprise Designer **Login** dialog box appears (see [Figure 25 on page 71](#)). Enter your **Login ID** and **Password**, and then click **Login**. The Login ID is the same as the username. Enterprise Designer restarts.

7.9.2. Rolling Back Logical Host ESRs

This section describes how to roll back applied Logical Host ESRs.

To roll back applied Logical Host ESRs

- 1 Right-click the Logical Host that you want to update, and then click **ESR Setup**. The **Logical Host ESR Setup** dialog box appears.
- 2 Move the ESRs that you want to roll back from the **Installed ESR(s)** area to the **Available ESR(s)** area.
- 3 Click **OK**.
- 4 The rollback will take effect when you reactivate the Deployment Profile or rerun the Logical Host bootstrap script.

or

Roll back the selected ESR(s) immediately by right-clicking the Logical Host and selecting **Apply**.

Note: The Logical Host must be running to roll back the selected ESR(s) immediately.

7.9.3. Rolling Back Repository ESRs

This section describes how to roll back applied Repository ESRs.

To roll back applied Repository ESRs

- 1 Open a command prompt (or Terminal window in UNIX) and navigate to the ESRs directory (for example: `<ican504>/ESRs`).
- 2 To roll back the last applied ESR, run **ESRRollback**. No ESR number is required as ESRs must be rolled back one at a time in reverse order of installation (see the example).

```
C:\ican504\ESRs>ESRRollback
Going to read InstalledESR.txt
Successfully read InstalledESR.txt
Going to rollback ESR: ESR33333
Going to extract files from Backup\ESR33333Backup.zip
Going to read Manifest
Successfully read Manifest
WARNING: Found a directory: C:\ican504\repository\..\repository
WARNING: Found a directory:
C:\ican504\repository\..\repository\data
WARNING: Found a directory:
C:\ican504\repository\..\repository\data\files
WARNING: Found a directory:
C:\ican504\repository\..\repository\data\files\InstallManager
WARNING: Found a directory:
C:\ican504\repository\..\repository\data\files\InstallManager\repo
sitoryapis
WARNING: Found a directory:
C:\ican504\repository\..\repository\data\files\InstallManager\repo
sitoryapis\OTDFrameworkManager
WARNING: Found a directory:
C:\ican504\repository\..\repository\data\files\InstallManager\repo
sitoryapis\OTDFrameworkManager\SBYNOTDFRAMEWORK110
WARNING: Found a directory:
C:\ican504\repository\..\repository\data\files\InstallManager\repo
sitoryapis\UD1Manager
WARNING: Found a directory:
C:\ican504\repository\..\repository\data\files\InstallManager\repo
sitoryapis\UD1Manager\SBYNUD1110
Removing file:
C:\ican504\repository\..\repository\data\files\InstallManager\repo
sitoryapis\OTDFrameworkManager\SBYNOTDFRAMEWORK110\com.stc.otd.fra
meworkapi.jar

Removing file:
C:\ican504\repository\..\repository\data\files\InstallManager\repo
sitoryapis\UD1Manager\SBYNUD1110\com.stc.otd.udlimpl.jar
Removed files successfully.
Going to extract files from Backup\ESR33333Backup.zip
Extracting file:
C:\ican504\repository\..\repository\data\files\InstallManager\repo
sitoryapis\OTDFrameworkManager\SBYNOTDFRAMEWORK110\com.stc.otd.fra
meworkapi.jar
Extracting file:
C:\ican504\repository\..\repository\data\files\InstallManager\repo
sitoryapis\UD1Manager\SBYNUD1110\com.stc.otd.udlimpl.jar
Extracted files successfully.
Going to update InstalledESR.txt
Successfully updated InstalledESR.txt
Successfully completed rollback
```

C:\ican504ESRs>

- 3 Restart the Repository and connect to it using Enterprise Designer.

Upgrading from 5.0.x to 5.0.4

This chapter describes how to update your 5.0.x ICAN Repository to version 5.0.4. If you have any questions or problems, see the SeeBeyond Support Web site at <http://www.seebeyond.com> and select **SERVICES** and then **SUPPORT**.

This chapter contains

- “Overview” on page 99
- “Migrating Projects from 5.0.0 to 5.0.1” on page 99
- “Upgrading the Repository from 5.0.x to 5.0.4” on page 102

8.1 Overview

Upgrading 5.0.0 to 5.0.4

Before you can upgrade from version 5.0.0 to 5.0.4, you must first migrate to version 5.0.1, and then follow the procedure for upgrading from 5.0.x to 5.0.4. The ICAN 5.0 Migration utility creates an archive file that can be restored into a newly-installed 5.0.1 Repository. For complete upgrade instructions, see “[Migrating Projects from 5.0.0 to 5.0.1](#)” on page 99.

Upgrading 5.0.x to 5.0.4

Upgrading from 5.0.x to 5.0.4 does not require using the ICAN 5.0 Migration utility. For complete upgrade instructions, see “[Upgrading the Repository from 5.0.x to 5.0.4](#)” on page 102.

8.2 Migrating Projects from 5.0.0 to 5.0.1

Migrating your ICAN Projects from version 5.0.0 to version 5.0.1 involves installing ICAN 5.0.1, installing all of the desired product files, exporting the 5.0.0 Projects to an archive file, and importing the archive file into the 5.0.1 Repository.

Note: If you are upgrading from 5.0.0 to 5.0.1 (which must be performed before upgrading to 5.0.4), the *Migration ToolReadme.txt* file is located in the **Utilities** directory

on both of the 5.0.1 Repository installation discs (“SeeBeyond ICAN Suite Repository Disc 1 for Windows/Solaris/AIX/Linux” and “SeeBeyond ICAN Suite Repository Disc-2 for HP-UX/Tru64”), as are the **MigrationTool.zip** and **MigrationTool.tar** files.

To install ICAN 5.0.1

- Follow the steps in Chapter 3, “Installation Instructions for Repository,” in the 5.0.1 **ICAN_Install_Guide.pdf** file to install ICAN 5.0.1 to a *different* location than where ICAN 5.0.0 is installed.

Note: Do not install ICAN 5.0.1 to the same location where ICAN 5.0.0 is installed.

To install the 5.0.1 product .sar files

- 1 Refer to the ADMIN page in the Enterprise Manager to determine which product .sar files have been installed in the 5.0.0 Repository.
- 2 Follow the steps in Chapter 4, “Installation Instructions for Uploading Files to the Repository,” in the 5.0.1 **ICAN_Install_Guide.pdf** file to upload the necessary product .sar files.
- 3 Do not create any Projects in this 5.0.1 Repository until after importing the archive file as described in the “import” [procedure on page 101](#).

To create the 5.0.0 Projects archive file

- 1 Before creating the Projects archive file, ensure that the 5.0.0 Repository server is running. If the Repository server is not running, follow the instructions in Chapter 4, “Installation Instructions for Uploading Files to the Repository,” in the 5.0.1 **ICAN_Install_Guide.pdf** file to start the Repository server.
- 2 Create the following environment variable to be used by the ICAN 5.0 Migration utility:

```
JAVA_HOME=ICAN_INSTALL_DIR/repository/jre/<version>
```

where:

ICAN_INSTALL_DIR is the location of your ICAN installation.

<version> is the version of the JRE your operating system uses (most likely 1.4.2).

Consult the documentation for your operating system for instructions on creating an environment variable.

Note: This environment variable is used by the export and import processes. You can remove the environment variable after you have finished the import and export processes.

- 3 Shut down all Logical Hosts for all of the 5.0.0 Projects.
- 4 With the Repository server running, type the following command to create the export file:

```
export repository_url user_ID password file_name
```

where:

repository_url is the root URL for the 5.0.0 Repository where the Projects to be exported are located,

user_ID is the user ID used for accessing the Repository (must have Administrator privileges),

password is the password used for accessing the Repository, and

file_name is the name of the export file to be created.

After creating the export file, you can optionally shut down the 5.0.0 Repository server to prevent users from attempting to connect to the old Repository.

Note: *Make sure that all objects are checked in before creating an export.*

To import the archive file into the 5.0.1 Repository

- 1 Follow the instructions in Chapter 4, “Installation Instructions for Uploading Files to the Repository,” in the 5.0.1 **ICAN_Install_Guide.pdf** file to start the 5.0.1 Repository server.
- 2 With the Repository server running, type the following command to import the archive file into the 5.0.1 Repository:

```
import repository_url user_ID password path_file_name
```

where:

repository_url is the root URL for the 5.0.1 Repository to where the archive file is to be imported,

user_ID is the user ID used for accessing the Repository (must have Administrator privileges),

password is the password used for accessing the Repository, and

path_file_name is the name of the archive file that contains the 5.0.0 Repository information, including the directory path.

Note: *The 5.0.1 Repository must not contain any Projects or user-created data before importing the archive file.*

Post migration steps

- 1 From the Enterprise Manager, download and install the Enterprise Designer. For complete instructions, see Chapter 5, “Installation Instructions for Enterprise Designer,” in the 5.0.1 **ICAN_Install_Guide.pdf** file.
- 2 In the Enterprise Designer, re-create the following items:
 - ♦ Environments
 - ♦ Deployment Profiles
 - ♦ Logical Hosts
- 3 You can optionally delete the ICAN 5.0.0 installation.
- 4 To upgrade to 5.0.4, follow the steps in **“Upgrading the Repository from 5.0.x to 5.0.4” on page 102.**

8.3 Upgrading the Repository from 5.0.x to 5.0.4

Upgrading your ICAN Repository from version 5.0.x to version 5.0.4 involves backing up your 5.0.x Projects and installing the desired 5.0.4 ICAN product files in the same directory where your 5.0.x Repository is installed.

To prepare for the upgrade from 5.0.x to 5.0.4

- 1 It is recommended that you deactivate all Projects and imported Business Processes before upgrading to ensure all activation fixes and enhancements get used.

Note: *If you did not deactivate your Projects and imported Business Processes before upgrading, you must reactivate all Projects and imported Business Processes after the upgrade completes to ensure all activation fixes and enhancements get used.*

- 2 Check in all 5.0.x objects before upgrading in the same directory.

Note: *See the eGate Integrator User's Guide for information about checking in objects.*

- 3 Back up your 5.0.1, 5.0.2, or 5.0.3 ICAN Projects by exporting them. This is just a precaution in case something happens and you have to re-import them.

Note: *See the eGate Integrator User's Guide for details on exporting.*

- 4 Before upgrading, perform the following:

- ♦ **Shut down**

- ♦ Enterprise Designer
- ♦ Logical Host
- ♦ Repository

- ♦ **Delete**

- ♦ **deploymentSnapshot.xml** in the `\logicalhost` directory (This is only necessary if you are installing the new Logical Host in the same location as the old Logical Host. The deletion must be done before you bootstrap.)
- ♦ **usrdir** directory under `\edesigner` (You must delete or rename **usrdir** to see updated settings for components that were previously installed before upgrading. If you do not delete this directory or change its name, you will see the settings for newly installed components, but you will not see the new settings for upgraded components.)

- ♦ **Save**

- ♦ **logical-host.properties** file in the `logicalhost\bootstrap\config` directory (If you do not save the **logical-host.properties** file, after you finish upgrading, the next time you bootstrap you will need to retype the Logical Host options. See the *eGate Integrator System Administration Guide* for information on the properties options.)

To install ICAN 5.0.4

- 1 Follow the steps in [Chapter 3 “Installation Instructions for Repository” on page 30](#) to install the new Repository on top of the old Repository. That is, *install ICAN 5.0.4 to the same location where ICAN 5.0.x is installed.*

Important: *When upgrading eGate both the Repository upgrade and eGate.sar upload must be performed.*

- 2 Start the Repository.
- 3 Start Enterprise Manager and follow the steps in [Chapter 4 “Installation Instructions for Uploading Files to the Repository” on page 46](#) to submit **ProductsManifest.xml**, **license.sar** (if new components are being installed), and **eGate.sar**, and upload the necessary 5.0.4 product **.sar** files and accompanying documentation.

Note: *The .sar files that were previously uploaded will still be listed in the ADMIN tab after the Repository has been upgraded.*

- 4 Download and install the new Enterprise Designer on top of the old Enterprise Designer, and then start Enterprise Designer, download the modules, check the digital signatures, and install the modules using the Update Center Wizard in Enterprise Designer. For complete instructions, see [Chapter 5 “Installation Instructions for Enterprise Designer” on page 62](#).
- 5 Follow the steps in [Chapter 6 “Installation Instructions for Logical Host” on page 73](#) to install the new Logical Host in a different location than the old Logical Host.
- 6 Run the bootstrap command to start the Logical Host. See the *eGate Integrator System Administration Guide* for details (**bootstrap.bat** on Windows, **bootstrap.sh** on UNIX and Linux, **bootstrap.sh** on HP NonStop Server) and bootstrap arguments.

You will see the following message:

```
Upgrading LogicalHost from 50x to 504 .....  
Setting up a first time bootstrap for 504 LogicalHost
```

This message appears when you upgrade the Logical Host from version 5.0.x to version 5.0.4. After this initial bootstrap process completes, all subsequent bootstrap commands will start the 5.0.4 Logical Host.

To upgrade other ICAN products

If you are not upgrading your core product but only single or few components, such as eInsight or an eWay, perform the following:

- 1 Remove the **usrdir** subdirectory under **\edesigner**.
- 2 In Enterprise Manager upload the new **.sar** file(s).
- 3 In Enterprise Designer run **Update Center**.

Installing New Product Components

This chapter describes how to install new product components. If you have any questions or problems, see the SeeBeyond Support Web site at <http://www.seebeyond.com> and select **SERVICES** and then **SUPPORT**.

This chapter contains

- [“Overview” on page 104](#)
- [“Uploading and Installing New .sar Files” on page 104](#)

9.1 Overview

After a new product component becomes available, the system administrator uploads the .sar file to the Repository, and then the user runs the Update Center Wizard in Enterprise Designer to complete the installation. See [“Uploading and Installing New .sar Files” on page 104](#) for complete instructions on how to complete this two-fold process.

9.2 Uploading and Installing New .sar Files

You install new product components using Enterprise Designer after the system administrator uploads new .sar files to the Repository. The two-fold process is described in the following sections:

- [“System administrator performs the following” on page 104](#)
- [“User performs the following” on page 105](#)

System administrator performs the following

- 1 Navigate to the directory where you installed the Repository (for example: `\ican50\repository`) and perform one of the following:
 - A Double-click `startserver.bat` to start the Repository on Windows.
 - B Type `./startserver.sh` to start the Repository on UNIX.
 - C Type `sh startserver.sh` to start the Repository on HP NonStop Server.

- 2 Start Enterprise Manager.
 - A Start Internet Explorer.
 - B In the **Address** line, type **http://<hostname>:<port_number>** where:

hostname is the TCP/IP host name of the server where you installed the Repository—not the name of the Repository itself.

port_number is the port number that you specified during the installation of the Repository.
 - C Press **Enter**. The **SeeBeyond Customer Login** window of the Enterprise Manager appears.
 - D Enter your **username**, **password**, and click **Login**.
- 3 Click the **ADMIN** tab.
- 4 Optional: If this is the first time you upload product components you will need to upload a **license.sar** file.
 - A Click **Browse** to navigate to and select **license.sar**.
 - B Click **Submit**.
 - C Click **Back to component installation** to continue once you have returned to the Completed Upload screen.

Note: *If there are product components that have never been licensed before, you may have to submit a new **license.sar** file. If this is the case, click the **Browse** button next to any of the product boxes to navigate to the **license.sar**, select it, and click **upload now**.*

- 5 Click **Browse** to navigate to **ProductsManifest.xml**. After selecting it, click **Submit**.
- 6 Click **Back to component installation** to continue once you have returned to the Completed Upload screen. The ADMIN page now displays a list of all the product components that are available to upload.
- 7 Click the **Browse** button next to any of the product boxes to select a new **.sar** file.

Note: *Repeat this step until you have selected all the **.sar** files you want to upload.*

- 8 Click **upload now** to upload the product **.sar** file(s) to the Repository.
- 9 Announce that new products and documentation are available to download.

User performs the following

- 1 Check in, or save, all your Projects before installing new product components.
- 2 Delete the **usrdir** directory under **\edesigner**.

Note: You must delete or rename *usrdir* to see updated settings for components that were previously installed. If you do not delete this directory or change its name, you will see the settings for newly installed components, but you will not see the new settings for upgraded components.

3 Start Enterprise Manager.

A Start Internet Explorer.

B In the **Address** line, type **http://<hostname>:<port_number>** where:

hostname is the TCP/IP host name of the server where you installed the Repository—not the name of the Repository itself.

port_number is the port number that you specified during the installation of the Repository.

C Press **Enter**. The **SeeBeyond Customer Login** window of the Enterprise Manager appears.

D Enter your **username**, **password**, and click **Login**.

4 Navigate to <C:\ican50>\edesigner\bin and double-click **runed.bat**. Start Enterprise Designer using the following:

A If you are connecting to a Repository on any platform other than HP NonStop Server, navigate to <C:\ican50>\edesigner\bin and double-click **runed.bat**.

B If Enterprise Designer is downloaded from a Repository on an HP NonStop Server, open a command prompt and change directories to <C:\ican50>\edesigner\bin, and type the following command:

```
runed hostname port rep_name
```

where:

hostname is the TCP/IP host name of the server where you installed the Repository—not the name of the Repository itself.

port is the port number of the Repository.

rep_name is the name of the Repository.

5 On the **Tools** menu, click **Update Center**. The **Update Center Wizard - Select Location of Modules** dialog box appears

6 Click **Next** if you are installing the product components on the same computer where the Repository server is running. The **Update Center Wizard - Select Modules to Install** dialog box appears (see Figure 21).

However, if you are installing the product components on a different computer than the computer where the Repository server is running:

- A Click the **ellipsis** button (...) to the right of "STC Update Center." The **Property Editor: Update Center** dialog box appears (see Figure 19).
- B Confirm in the **Server URL** box that the Enterprise Designer installation points to the URL of the host where the Repository is installed.

For example:

http://<hostname>:<port>/repository/<rep_name>

where:

hostname is the TCP/IP host name of the server where you installed the Repository—not the name of the Repository itself.

port is the port number of the Repository.

rep_name is the name of the Repository.

- C Specify the URL of the Repository server and click **OK**. The **Update Center Wizard - Select Location of Modules** dialog box reappears (see Figure 18).
- D Click the **Proxy Configuration** button if a proxy server forwards requests to the Repository. The **Proxy Configuration** dialog box appears (see Figure 20).
- E Select the **Use Proxy** check box and specify the **Proxy Host** and **Proxy Port**.
 - ♦ The **Proxy Host** is the IP address of the proxy server (for example: **10.0.0.1**).
 - ♦ The **Proxy Port** is the port number of the proxy server (for example: **443**).
- F Click **OK**. The **Update Center Wizard - Select Location of Modules** dialog box reappears (see Figure 18).
- G Click **Next**. The **Update Center Wizard - Select Modules to Install** dialog box appears (see Figure 21).
- 7 Click the **Add All** button (double-arrow button that is the third arrow button from top). All of the modules are moved to the **Include in Install** list.
- 8 Click **Next**.
- 9 Click **Accept** when the **License Agreement** appears. The **Update Center Wizard - Download Modules** dialog box appears (see Figure 22).
- 10 Click **Next** when the progress bar reaches 100 percent and "Done" appears below the bar.

The **Update Center Wizard - View Certificates and Install Modules** dialog box appears (see Figure 23). All of the modules must be installed for Enterprise Designer to fully function.
- 11 Click **Finish** to accept the certificates and install the modules. The **Restart the IDE** dialog box appears (see Figure 24).
- 12 Ensure that the **Restart the IDE** option is selected, then click **OK** to restart the IDE and install the modules. The Enterprise Designer **Login** dialog box appears.
- 13 Enter your **Login ID** and **Password** and then click **Login**. The Login ID is the same as the username. SeeBeyond recommends that you log in as "Administrator" the

first time you log in; the Administrator can then create additional Login IDs (usernames).

The **SeeBeyond Enterprise Designer** window appears. You can now begin using the new product components.

Troubleshooting

This chapter describes issues that may arise during the installation process and provides tips and solutions to resolve these issues. If you have any questions or problems, see the SeeBeyond Support Web site at <http://www.seebeyond.com> and select **SERVICES** and then **SUPPORT**.

This chapter contains

- “ICAN Suite Product Dependencies” on page 109
- “Repository Installation” on page 110
- “Uploading Files in Enterprise Manager” on page 110
- “Downloading in Enterprise Manager” on page 111
- “General Enterprise Manager Tips” on page 112
- “Adobe SVG Viewer 3.0 Plug-in for Windows” on page 112
- “Configuring SSL and HTTPS Support” on page 113

10.1 ICAN Suite Product Dependencies

ICAN Suite products have dependencies, and you must install these dependencies before attempting to upload the **.sar** file for a particular product. This includes installing and running a Repository where you intend to upload the product files. If there are prerequisite **.sar** files, these files must be uploaded to the Repository before attempting to upload the product **.sar** file.

Using eXchange Integrator as an example, it has dependencies that must be installed, running, and uploaded prior to uploading **eXchange.sar**: If you attempt to install eXchange without first installing and uploading its dependencies, the **eXchange.sar** upload may fail.

Important: See the ICAN Suite product documentation for dependencies specific to a particular product.

10.2 Repository Installation

10.2.1. Naming the Repository

Do not name your Repository: **repository** (all lower case) as this can cause a problem wherein you cannot connect to the bootstrap (even when you use the correct case for the URL).

10.2.2. Invalid Domain/Server Name: Invalid ‘_’ in Computer Name

Computers must be appropriately named when they host Web containers. The Internet Engineering Task Force (IETF) Request for Comments (RFC) 883 specification “DOMAIN NAMES-IMPLEMENTATION and SPECIFICATION,” states that domains that use cookies must use only alphanumeric characters (“-” or “.”) in the domain name and the server name. In conformance to this requirement, Internet Explorer blocks cookies from a server if the server name contains other characters, such as an underscore character (“_”).

Enterprise Manager will not run on computers that have an invalid character in their computer name. For more information, see the Microsoft Knowledge Base article 316112 (<http://support.microsoft.com/default.aspx?scid=kb;en-us;316112>).

10.2.3. HP NonStop Server Port Dependencies

When installing a Repository on HP NonStop Server, if you attempt to use a port number that is in use on another Repository, you will be queried if you want to continue with the same port number. If you want to use this port number for the second Repository, answer **Yes**. For the port number to function properly on the second Repository, before starting the second Repository shut down the other Repository that is using the same port number.

10.3 Uploading Files in Enterprise Manager

10.3.1. Improving Upload Performance

To improve the upload performance when uploading product **.sar** files to the Repository, see Microsoft Knowledge Base article 329781. Increasing the buffer size to 64 KB will improve the speed of uploading files to the Repository via Internet Explorer.

10.3.2. Problem Uploading **.sar** Files

If you experience a problem uploading ICAN Suite **.sar** files, it is because you are using a limited version of the ICAN Suite. Contact SeeBeyond Support.

10.3.3. Upload Session Log Files

Whenever you upload a **.sar** file to the Repository using Enterprise Manager, a log file is created in the `<ICAN-root>/repository/server/logs` directory. This log file contains information about the upload session. The name of the log file is **eManagerInstaller-uniqueID.log**.

If you have an installation failure, check this log file to see the details about the session.

10.3.4. Adding a New License File

If, after first installing ICAN products, you purchase additional products, you must upload a new **license.sar** file prior to installing the products. Use the **ProductsManifest.xml** that is sent with the new **license.sar** file, as this makes the **License File** box available to upload the new license. For details on uploading files, see [“To upload products to the Repository” on page 50](#).

10.3.5. Launching the SRE Monitor from Enterprise Manager

If you encounter connection problems when attempting to launch the SRE Monitor from the Enterprise Manager Home page, close all Internet Explorer (IE) windows. After all IE windows are closed, launch the SRE Monitor.

10.4 Downloading in Enterprise Manager

10.4.1. Enterprise Designer and Logical Host - win32 Links

Problem

After clicking the **DOWNLOADS** tab in Enterprise Manager, the **Enterprise Designer** and **Logical Host - win32** links are visible. However, when you click on one of the links to open the **.zip** file in WinZip and extract the files, 0 files are available to extract.

Reason

The files have already been extracted. To ensure that this is true, navigate to the appropriate directory, for example:

```
<c:\ican503>\edesigner
```

or

```
<c:\ican503>\repository\data\files\InstallManager\logicalhost\downloadables
```

Check the directory to confirm that the appropriate files are present. For Enterprise Designer, you will see a number of populated subdirectories; for Logical Host, you will see a number of files.

If the files have not been extracted, you will see the **.zip** file in the directory (for example: **logicalhost-win32.zip**). Extract the files from the **.zip** file.

10.5 General Enterprise Manager Tips

10.5.1. Timeout Interval

The timeout interval for the Enterprise Manager is set to three hours. The Web application will timeout after three hours of inactivity.

10.6 Adobe SVG Viewer 3.0 Plug-in for Windows

10.6.1. Enterprise Manager Recognition of Adobe SVG Viewer Plug-in

During startup, Enterprise Manager detects if the Adobe SVG Viewer plug-in is present on your system. If the SVG Viewer plug-in is not present, Enterprise Manager automatically displays a JPEG version of the Connectivity Map, which includes the following monitoring functions:

- View status of components
- Start and stop “stoppable” components
- View details of a component

Note: *The Adobe SVG Viewer is an optional tool for monitoring business processes. The JPEG version that Enterprise Manager automatically displays of the Connectivity Map uses pure HTML.*

10.6.2. EnterpriseManagerPlugin-Win98ToXP.sar File

The **EnterpriseManagerPlugin-Win98ToXP.sar** file is not required for viewing Connectivity Maps in Enterprise Manager. However, installing this **.sar** file enhances the Connectivity Map’s capabilities by adding features such as:

- Zoom (in, out)
- Fit (all, width, height)
- Return to “Original View” after zooming
- Select “Higher Quality” image
- Find (search for an object within a Connectivity Map)

The **.sar** file is located on the “SeeBeyond ICAN Suite Products - Disc 1” and “SeeBeyond ICAN Suite Products - Disc 1 eInsight ESB” CD-ROMs.

Note: *To successfully install the Adobe SVG Viewer, you need Administrator privileges on the local profile on the local computer.*

10.6.3. Adobe SVG Viewer Plug-in Problem

Some Windows machines, if they have “orphan” files left behind from a previous installation of SVG that is unknown to the Windows Registry, are unable to install the Adobe SVG Viewer 3.0 plug-in via the normal Enterprise Manager download procedure. This component is required for viewing certain graphics over the Web, using the ICAN Monitor. The problem manifests itself by displaying an error dialog resembling the following:

```
Setup Details
```

```
Registry error:
```

```
The system cannot find the file specified.
```

```
<filename> [...]
```

```
File Error: Remove file
```

```
C:\WINNT\system32\Adobe\SVGInstallTemp\SVG3.reg
```

```
Merge registry file:
```

```
C:\WINNT\TEMP\SVGInstallTemp\SVG3.reg
```

This problem is known to Adobe, and a discussion of it can be found within the www.adobe.com Web site. Click **Search**, then click the link to **User to User Forums**, and then search on the thread “SVG Viewer Installation problems.”

If this problem occurs, take the following steps

- 1 Leave the error message dialog box open and copy the entire extracted folder:

```
c:\WINNT\TEMP\SVGInstallTemp
```

as listed above to a new location.

- 2 Exit the installer by closing the open dialog boxes.
- 3 In the new location, edit the file **Setup.inf** to comment out the **SVG3.ref** entry by making the following change.

Change the line:

```
SVG3.reg=%SourceDir%
```

To (notice the added semicolon):

```
;SVG3.reg=%SourceDir%
```

- 4 Save your changes and exit the editor.
- 5 In this same location, run **winstall.exe**.

The plug-in should now install correctly.

10.7 Configuring SSL and HTTPS Support

Secure Socket Layer (SSL) is a technology that allows Web browsers and Web servers to communicate over a secured connection. The HTTPS service of the ICAN Repository server will not run unless a server certificate has been installed. For more information about using SSL and HTTPS in ICAN, see the *eGate Integrator System Administration Guide*.

UNIX and Linux Patches

This appendix lists the required and certified UNIX and Linux patches for eGate 5.0.4.

A.1 HP Tru64 UNIX V5.1A Patches

SeeBeyond has tested the system against the following patches:

- **“Certified HP Tru64 UNIX V5.1A Patches” on page 114**

Even though applications that are developed using the HP C++ compiler are shipped with the Tru64 UNIX operating system, they must be updated. This is because they require functionality that is provided in the C++ Run-Time Library, and newer versions of the run-time library are released with each new version of the compiler. These updates of the libraries provide bug fixes and support for new features in the compiler, and must be installed on Tru64.

If you do not have a compiler installed, SeeBeyond recommends that you download and install the correct libraries for your system from the following location:

<ftp://ftp.compaq.com/pub/products/C-CXX/tru64/>

Note: A specialized FTP browser is required to access an FTP site from this document.

Certified HP Tru64 UNIX V5.1A Patches

There is one certified patch for HP Tru64 UNIX V5.1A:

- T64V51AB24AS0006-20031031 (Patch Kit #6)

Note: There is a known threading problem with HP Tru64 UNIX V5.1A, in which you may occasionally see components hang. HP is currently working on the problem. If you encounter this problem, contact HP (problem reference number: NA020731023095).

For HP Tru64 UNIX V5.1A patches only

After installing the patches for HP Tru64 UNIX V5.1A, reconfigure the memory allocation from immediate to deferred mode by performing the following:

```
/etc/sysconfigtab

vm:
    vm-swap-eager=0
```

Note: HP Tru64 UNIX used to be called Compaq Tru64 UNIX.

A.2 HP-UX System Parameter Changes

If you are installing eGate on an HP-UX 11.0 or an HP-UX 11i system (see Table 15), make the following changes to system parameters:

Table 15 eGate Values on an HP-UX 11 System

Parameter	Value
semmni	1024
semmns	16384
semmnu	2048
semume	256
shmmni	1024
shmseg	1024

Note: Services installed are not autostarted on system boot for non-root users. Startup scripts for services installed will be stored in a directory *rc3.d* under your home directory. It is not recommended to run as root.

A.2.1 HP-UX Operating System Patches

If you encounter a problem with an HP-UX OS patch while installing eGate, remove the following HP-UX patch:

PHNE_22397 (cumulative ARPA Transport patch)

and replace it with **PHNE_21767**.

Caution: If you do not have a problem with the installation of the patches, do not replace the above patch.

A.3 HP-UX 11.0 Patches

Table 16 lists the certified patches for HP-UX 11.0.

Note: These patches are also valid on Japanese and Korean operating systems.

Table 16 Certified HP-UX 11.0 Patches

Patch	Version	Explanation
HWE1100	B.11.00.0403.3	Hardware Enablement Patches for HP-UX 11.00, March 2004
QPK1100	B.11.00.64.4	Quality Pack for HP-UX 11.00, March 2004
JDK 1.4	PHCO_23117, PHCO_23651, PHCO_24189, PHCO_26017, PHCO_26089, PHCO_26111, PHCO_27375, PHCO_28425, PHCO_29108, PHKL_18543, PHKL_20016, PHKL_23409, PHKL_24064, PHKL_25613, PHKL_27207, PHKL_27813, PHKL_27980, PHKL_28172, PHKL_28180, PHNE_27651, PHNE_27821, PHNE_28102, PHNE_28538, PHSS_26495, PHSS_26559, PHSS_26637, PHSS_26945, PHSS_27869, PHSS_28368, PHSS_28469, PHSS_28874	Patches with corresponding pre-requisites

For the HP-UX 11 Java patches, go to the following URL:

<http://www.hp.com/products1/unix/java/infolibrary/patches.html>

A.4 HP-UX 11i (PA-RISC) Patches

Table 17 lists the certified patches for HP-UX 11i (PA-RISC).

Note: These patches are also valid on Japanese and Korean operating systems.

Table 17 Certified HP-UX 11i Patches

Patch	Version	Explanation
GOLDAPPS11i	B.11.11.0312.4	Gold Applications Patches for HP-UX 11i, December 2003

Table 17 Certified HP-UX 11i Patches (Continued)

Patch	Version	Explanation
GOLDBASE11i	B.11.11.0312.4	Gold Base Patches for HP-UX 11i, December 2003
HWEnable11i	B.11.11.0312.4	Hardware Enablement Patches for HP-UX 11i v2, December 2003
JDK 1.4	PHCO_24402, PHCO_27740, PHCO_27958, PHCO_29109, PHKL_25233, PHKL_25468, PHKL_25871, PHKL_25993, PHKL_25994, PHKL_27091, PHKL_27094, PHKL_27096, PHKL_27316, PHKL_27317, PHKL_27686, PHKL_28122, PHNE_28089, PHNE_28103, PHNE_28476, PHSS_26560, PHSS_26971, PHSS_26973, PHSS_26975, PHSS_26977, PHSS_28370, PHSS_28470	Patches with corresponding pre-requisites

For the HP-UX 11i Java patches, go to the following URL:

<http://www.hp.com/products1/unix/java/infolibrary/patches.html>

A.5 HP-UX 11i v2.0 (11.23) Patches

Table 18 lists the certified patches for HP-UX 11i v2.0 (11.23).

Note: These patches are also valid on Japanese and Korean operating systems.

Table 18 Certified HP-UX 11i v2.0 (11.23) Patches

Patch	Version	Explanation
HWEnable11i	B.11.23.0403.5	Hardware Enablement Patches for HP-UX 11i v2, March 2004
QPKBASE	B.11.23.0403.4	Gold Base Patches for HP-UX 11i v2, March 2004

A.6 IBM AIX 5.1L and 5.2 Patches

The following patches are certified patches for IBM AIX:

Certified IBM AIX 5.1L Patches

There is one certified patch for IBM AIX 5.1L:

5100-05_AIX_ML (Maintenance Level 5)

Certified IBM AIX 5.2 Patches

There is one certified patch for IBM AIX 5.2:

5200-02_AIX_ML (Maintenance Level 2)

Note: The IBM AIX patches are also valid on Japanese and Korean operating systems.

A.7 Linux Patches

Certified Red Hat Enterprise Linux AS 2.1 (Intel x 86) Patches

There is one certified patch for Red Hat Enterprise Linux AS 2.1 (Intel x86):

2.4.9-e.16smp

Certified Red Hat Linux 8 (Intel x 86) Patches

There is one certified patch for Red Hat Linux 8 (Intel x 86):

2.4.20-20.8

Certified SuSE Linux Enterprise Server 8 (Intel x86) Patches

There is one certified patch for SuSE Linux Enterprise Server 8 (Intel x86):

Service Pack 3

A.8 Sun Solaris 8 and 9 Patches

nscd must be running on Sun Solaris to install eGate successfully

Sun Solaris must have **nscd** running. If it is not running, the default Project fails to import properly during installation, and eGate cannot be installed.

Required Sun Solaris Patches

Sun Solaris 8 requires the following patch before eGate can be installed. If the patch is not installed, the setup program will detect it.

108435-13

This patch is available from Sun, either from a current operating system CD-ROM or downloaded from:

<http://sunsolve.sun.com>

Certified Sun Solaris 8 and 9 Patches

There are two certified patches for Sun Solaris 8 and 9:

Solaris 8 Maintenance Update 7 2-2002
Solaris 9 Maintenance Update 3 4-2003

Note: These patches are also valid on Japanese and Korean operating systems.

A complete list of the patches included in these Clusters is available from SeeBeyond Support.

Note: These patches are recommended but not required.

Glossary

BI

Business integration (also Business Intelligence).

Collaboration

A logical operation performed between some combination of message destinations and external applications. The operation is defined by a Collaboration Definition, which can be encoded in either Java or XSLT.

Also see “**Service**” and “**Collaboration Definition**”.

Collaboration Definition

The encoding of business rules, in Java or XSLT format. Typically, the encoding consists of operations on OTDs (see “**OTD**”). Several Collaborations can have the same Collaboration Definition.

Connection

Consists of the configuration information that enables an eWay to connect to an external system.

Connectivity Map

Contains business logic and routing information about the data transmission. A Connectivity Map usually includes one or more Collaborations, Passthrough Collaborations, topics, queues, and eWays. A Connectivity Map is created under a Project. A Project may have multiple Connectivity Maps.

Constants

A name or value pair that is visible across a Project.

CRM

Customer Relations Management

Data Cleansing

Data must be cleansed of errors in structure and content before it is useful in data warehousing and integration; this means transforming data for accurate and effective use in a database or data management system by cleansing “dirty” or redundant data.

Data Dictionary

Defines the organization of a database and lists all files in the database, the number of records in each file, and the names and types of each field. The data dictionary is often hidden from end users. Although the dictionary doesn’t contain actual data, it does contain essential information for managing the database.

Data Integrity

Refers to the accuracy and validity of data. Data integrity can be compromised in many ways, including human error through data entry, or through faulty logic in programming. Computer viruses, software bugs and many other factors can also compromise data integrity.

Data Mapping

In relational databases (RDBMSs) data mapping is the relationship and data flow between source and target objects. Mapping involves structuring the relationship between source and target objects.

Data Mart

A smaller, focused, database designed to help managers make business decisions. (A data warehouse is a larger, enterprise, database(s).)

Data Mining

Used to synthesize or isolate unique data patterns to predict future behaviors or to filter data to select patterns that help discover previously unknown relationships among data. Commonly used by marketers who acquire and distill consumer information.

Data Transformation

Data transformation is necessary after extracting data from legacy data formats, or any format that requires cleansing. Data is transformed for efficient use for Business-to-Business Enterprise Data Integration.

Data Warehouse

A copy or view of enterprise transaction data (sometimes non-transaction data) that is used for reporting. The data is often summarized and always structured for queries and analysis.

Deployment Profile

Contains the information about how the Project components will be deployed in an Environment. A Project can have multiple Deployment Profiles, but only one Deployment Profile can be activated for a Project in any one Environment.

Derived Collaboration

Collaboration that inherits operations from another, according to standard object-oriented practice.

Dimension Table

Dimension tables describe the business entities of an enterprise; also called lookup or reference tables.

Dirty Data

Dirty data contains, but is not limited to, incorrect data including spelling errors, punctuation errors, incorrect data referencing, incomplete, inconsistent, outdated, and redundant data.

Drill Down

To move from summary to more detailed data by “drilling down” to get it. In database terminology this might mean starting with a general category and drilling down to a specific field in a record.

eGate System

See “Project”.

Environment

A collection of physical resources and their configurations that are used to host Project components. An Environment contains logical hosts and external systems.

EPR

Enterprise Resource Management

ETL

Extract, Transform, Load. Extract is the process of reading data from a source database and extracting the desired subset of data. Transform is the process of converting the extracted data from its previous form into the desired form. Load is the process of writing the data into a larger database.

eWay

A link between a Collaboration and an external connection including the message server connection (topic or queue) or external application.

External Application

A logical representation in an eGate Project of an external application.

External System

A representation in an eGate Project of an external application system.

Extraction

Data are extracted from a source using software tools. This first step in ETL initially “gets” the data.

Fact Table

A fact table typically contains two types of columns: those containing facts and those that contain foreign keys to dimension tables. Fact tables contain detail facts and/or summary facts.

ICAN Suite

The SeeBeyond Integrated Composite Application Network Suite.

Integration Server

J2EE software platform that houses the business logic container used to run Collaborations and JCA connectors (eWays). Provides transaction services, persistence, and external connectivity.

JMS IQ Manager

JMS-compliant, guaranteed delivery store, forwarding, and queueing service.

Join

Matches records, which are joined by a common field, in two tables in a relational database. Often part of a Select query.

Link

The JMS Connection between a Collaboration and a topic or queue in a JMS-compliant message server.

Linked Message Destination

A reference to a Message Destination defined in another Connectivity Map.

Logical Host

An instance of the eGate runtime Environment that is installed on a machine. A Logical Host contains the software and other installed components that are required at runtime, such as application and message servers.

Management Agent

Uses J2EE technology to manage and monitor an eGate 5.0 deployment that may contain other application servers in addition to the SeeBeyond Integration Server. Defines management interfaces and services designed for distributed environments, focusing on providing functionality for managing networks, systems, and applications.

Message Destination

A general term for a topic or queue. Two or more Projects can share a message destination that has the same name and is deployed on the same message server. A single Project may also have a single message destination referenced in multiple Connectivity Maps.

Metadata

“Data about data.” Metadata describes “how,” “when,” and “who” about structure and format, of a particular set of data. ETL tools are used to generate and maintain a central metadata repository.

Non-normalized Data

Non-normalized data cannot be cross-referenced accurately, if at all, and causes manageability issues. Non-normalized data may be converted to normalized data.

Normalized Data

Normalization is a common database design process used to remove redundant or incorrect organization and data. The design and normalization of the database will create a maintainable data set that can be cross-referenced.

Normalized data is not only easier to analyze but also easier to expand. Normalization involves removing redundancy and correcting incorrect data structure and organization.

OLAP

Online analytical processing.

OTD

An acronym for Object Type Definition. OTDs contain the data structure and rules that define an object. An OTD is used in Java Collaboration Definitions for creating data transformations and interfacing with external systems.

Project

Contains a collection of logical components, configurations, and files that are used to solve business problems. A Project organizes the files and packages and maintains the settings that comprise an eGate system in SeeBeyond's Enterprise Designer.

Query

A request for information from a database. There are three query methods:

Choose – With this easy-to-use method, the database system presents a list of parameters from which you can choose. This method is not as flexible as other methods.

Query by example (QBE) – With this method, the system lets you specify fields and values to define a query.

Query language – With this method, you have the flexibility and power to make requests for information in the form of a stylized query using a query language. This is the most complex and powerful method.

Queue

A JMS queue is a shareable object that conforms to the *point-to-point* (p2p, or PTP) messaging domain, where one sender delivers a message to exactly one receiver. When the SeeBeyond JMS IQ Manager sends a message to a queue, it ensures it is received once and only once, even though there may be many receivers "listening" to the queue. This is equivalent to the subscriber pooling in other queue implementations. You can reference a queue that exists in another Connectivity Map or Project.

Raw Data

Data that has not been turned into "information," through processing. Although factual and "real," raw data is unorganized.

Relational Database (RDBMS)

Short for Relational Database Management System, most often referred to as RDBMS. Data is stored in related tables. Relational databases can be viewed in many different ways.

In this system a single database can be spread across several tables. (RDBMS differs from flat-file databases where each database is self-contained as a single file or table.)

Repository

Stores and manages the setup, component, and configuration information for eGate Projects. The Repository also provides monitoring services for Projects, which include version control and impact analysis.

Schema Runtime Environment

An add-on in eGate 5.0 that provides the upgrade path for e*Gate 4.x users to upgrade to eGate 5.0. Also known as the SRE.

Service

Contains the information about executing a set of business rules. These business rules can be defined in a Java Collaboration Definition, XSLT Collaboration Definition, Business Process, eTL Definition, or other service. A Service also contains binding information for connecting to JMS Topics, Queues, eWays, and other services.

Staging Data

Data that is to be processed before entering the warehouse.

Subproject

An independent Project that is included as part of another Project and listed on the Enterprise Explorer tree beneath the main Project icon.

Table

Refers to data arranged in rows and columns, like a spreadsheet. In relational database management systems, all information is stored in tables.

Topic

A JMS topic is a shareable object that conforms to the *publish-and-subscribe* (pub/sub) messaging domain, where one publisher broadcasts messages to potentially many subscribers. When the SeeBeyond JMS IQ Manager publishes a message on a topic, it ensures that all subscribers receive the message.

Transformation

Data that are extracted from databases are transformed into a desired form, using various tools that cleanse, merge, purge, aggregate, calculate, audit, remove redundancy, standardize, etc.

XSLT

An acronym for Extensible Stylesheet Language Transformations. A file format used in eGate to generate Collaboration Definitions.

e*Gate 4.x Terms in eGate 5.0

Table 19 provides definitions for the terms that are new with eGate release 5.0, as well as equivalent terms from eGate release 4.x.

Table 19 eGate 5.0 Terms

5.0 Term	4.x Equivalent Term
Collaboration	Collaboration
Collaboration Definition	Collaboration Definition
Connection	eWay Connection
Connectivity Map	Closest: Network View of an entire Schema
Deploy	Run the Control Broker
Deployment	<none>
Deployment Profile	Closest: Schema
Enterprise Designer	Enterprise Manager
Enterprise Manager	Enterprise Monitor
Environment	Schema (except only includes physical information, not business logic)
eWay	eWay Connection eWay
eWay Configuration	eWay Connection Configuration
External Application	eWay Connection
External System	eWay Connection
JMS Connection	eWay Connection
Integration Server	<none>
Link	JMS eWay Connection
Linked Message Destination	<none>
Logical Host	Participating Host
Message Destination	Topic or queue
Message Server	JMS IQ Manager
Object Type Definition (OTD)	Event Type Definition (ETD)
Process Manager	Control Broker
Project	Schema (except not including physical layer)
Queue	JMS queue
Repository	Registry
Subproject	Schema

Table 19 eGate 5.0 Terms (Continued)

5.0 Term	4.x Equivalent Term
Topic	JMS topic
XSLT	<none>

Index

Symbols

- .sar files
 - CBO_OTD_v1_0.sar 48
 - eGate.sar 47
 - eGateDocs.sar 56
 - improving upload performance 110
 - JMSClientToSREJMSIQMgr.sar 48
 - problem uploading 110
 - sreMonitor.sar 48, 59
 - weblogic.sar 47
 - websphere.sar 47
- .zip files
 - extracting ESR 86, 93
 - for ESR distribution 84

A

- add-ons
 - when installed 24
- "Administrator"
 - password 22
 - username 22
- Adobe SVG Viewer plug-in 56, 64, 112

B

- base directory
 - deleting
 - while installing SRE Monitor 60
- BI 120
- bootstrap
 - f 93
 - force-connect 93
 - problem connecting to 110
- bootstrap.sh 78

C

- CBO_OTD_v1_0.sar 48
- CD-ROM drive
 - mounting on UNIX 39
- Collaboration 120, 126
 - derived 121
- Collaboration definition 120, 126

- command line utilities
 - for Logical Host
 - downloading 64
- Connection 126
- connection 120, 126
- Connectivity Map 120, 126
- constants 120
- Control Broker 126
- conventions
 - path name separator 13
 - Windows 13
- CPU requirements
 - HP Tru64 20
 - HP-UX 20
 - IBM AIX 20
 - Red Hat Linux 20
 - Sun Solaris 20
 - SuSE Linux 20
 - Windows 19
- CRM 120

D

- daemon
 - starting Repository automatically 41, 78
- data cleansing 120
- data dictionary 120
- data integrity 121
- data mapping 121
- data mart 121
- data mining 121
- data transformation 121
- data warehouse 121
- deploy 126
- Deployment 126
- Deployment Profile 121, 126
- derived Collaboration 121
- dimension table 121
- dirty data 121
- disk space requirements
 - HP Tru64 20
 - HP-UX 20
 - IBM AIX 20
 - Red Hat Linux 20
 - Sun Solaris 20
 - SuSE Linux 20
 - Windows 19
- disk-space quota limitations
 - HP NonStop Server 22
- document
 - conventions 12
- documentation
 - accessing
 - from Enterprise Manager 56

- installing 56
- domain name
 - invalid 110
- drill down 122

E

- "egate"
 - user 22
- eGate modules
 - installing 65
- eGate system 122
- eGate.sar 47
- eGateDocs.sar 56
- eManagerInstaller log files 111
- Emergency Software Releases *See* ESRs
- Enterprise Designer 126
 - ESRs
 - uploading to Repository 87
 - roll back ESRs 95
- Enterprise Designer GUI
 - exiting 72
 - installing from Enterprise Manager 64
 - starting 71
 - starting first time
 - installing required modules 65
- Enterprise Manager 126
 - improving upload performance 110
 - Internet Explorer version 19
 - timeout interval 112
- Enterprise Manager SVG Plugin - Win 98 to XP 64
- Enterprise Monitor 126
- EnterpriseManagerPlugin-Win98ToXP.sar 56
- Environment 122, 126
- EPR 122
- ESRs
 - distribution .zip files 84
 - Enterprise Designer 88
 - roll back 95
 - uploading to Repository 87
 - Logical Host 91
 - roll back 96
 - uploading to Repository 87
 - overview 84
 - Repository
 - roll back 97
 - uploading to Repository 87
- ETD 126
- ETL 122
- Event Type Definition 126
- eWay 122, 126
- eWay .sar files 48
- eWay Configuration 126
- eWay Connection 126

- eWay Connection Configuration 126
- eWays
 - on CD-ROM Disc 2 56
- extension libraries
 - JRE 1.3 22
- external
 - application 122, 126
 - system 122, 126
- extracting
 - ESR .zip files 86, 93
- extraction 122

F

- fact table 122
- FileeWay.sar 49
- firewall
 - Windows XP 30

H

- HIPAA OTD Library
 - on CD-ROM 56
- HL7 OTD Library
 - on CD-ROM 56
- HNS.sar 47
- HP NonStop Server
 - disk-space quota limitations 22
 - installing Logical Host 79
 - installing Repository 42
 - port dependencies 110
 - pre-installation notes 22
 - requirements 21
 - running program 81
 - starting Logical Host 83
 - system requirements 21
- HP Tru64
 - CPU requirements 20
 - disk space requirements 20
 - patches, certified 114
 - RAM requirements 20
 - unlimit/ulimit setting 40, 77
- HP-UX
 - CPU requirements 20
 - disk space requirements 20
 - patches, certified 116, 117
 - patches, operating system 115
 - RAM requirements 20
 - system parameter changes 115

I

- IBM AIX

Index

- CPU requirements 20
- disk space requirements 20
- RAM requirements 20
- IBM AIX 5.1L
 - patches, certified 118
- IBM AIX 5.2
 - patches, certified 118
- ICAN 5.0 Migration utility 99, 100
- ICAN Suite 122
 - product dependencies 109
- install.bat 31
- install.log 35
- installation
 - documentation 56
 - information to determine before 28
 - overview of 24
 - SRE Monitor 48
 - SVG Viewer 113
- installation failure
 - log file 111
- installing
 - SRE Monitor 58
- Integration Server 122, 126
- Internet Explorer
 - supported version 19

J

- Java 1.4
 - required for SRE Monitor 58
- JAVA_HOME
 - required for 64
- JMS
 - connection 126
 - e*Way Connection 126
 - IQ Manager 126
 - queue 126
 - topic 127
- JMS IQ Manager 122
- JMSClientToSREJMSIQMgr.sar 48
- join 123
- JRE extension libraries 22

L

- LHInit
 - installing 83
 - running program 82
- license.sar 47
 - uploading new license file 54, 111
- link 123, 126
- linked message destination 123, 126
- Linux

- patches, certified 118
- log file
 - checking installation failure 111
- Logical Host 123, 126
 - command line utilities 64
 - ESRs
 - uploading to Repository 87
 - installing on HP NonStop Server 79
 - installing on UNIX 76
 - installing on Windows 74
 - resource considerations 16
 - restarting in HP NonStop Server 81
 - roll back ESRs 96
 - starting on HP NonStop Server 83
- logical-host.properties file 81
- logicalhost_aix.sar 47
- logicalhost_hns.sar 47
- logicalhost_hpux.sar 47
- logicalhost_linux.sar 47
- logicalhost_sparc64.sar 47
- logicalhost_tru64.sar 47

M

- Management Agent 123
- message
 - destination 123, 126
 - server 126
- metadata 123
- mount commands
 - Linux 39
 - UNIX 39

N

- network view 126
- nohup command
 - Repository
 - startserver.sh 41, 78
- non-eWay products
 - on CD-ROM Disc 1 56
- non-normalized data 123
- normalized data 123
- notes
 - pre-installation
 - HP NonStop Server 22
- nscd
 - required when installing eGate on Sun Solaris 118

O

- Object Type Definition 124, 126

OLAP 123
online support 30, 62, 73, 84, 109
operating systems 18
organization of information, document 12
OTD 124, 126
OTD Libraries
 on CD-ROM Disc 3 56

P

Participating Host 126
password
 installation default 22
patches, certified
 HP Tru64 114
 HP-UX 11.0 116
 HP-UX 111 v2.0 (11.23) 117
 HP-UX 11i 116
 IBM AIX 5.1L 118
 IBM AIX 5.2 118
 Linux 118
 Red Hat Linux 118
 Sun Solaris 119
 SuSE Linux 118
patches, required
 Sun Solaris 119
port dependencies
 for HP NonStop Server 110
port number
 specifying 33, 37, 40
pre-installation
 HP NonStop Server 22
 Windows 22
Process Manager 126
product .sar files
 eGate.sar 47
 HNS.sar 47
 license.sar 47
product dependencies 109
ProductsManifest.xml
 uploading 54, 59
Project 124, 126

Q

query 124
queue 124, 126

R

RAM requirements
 HP NonStop Server 21
 HP Tru64 20

HP-UX 20
IBM AIX 20
Red Hat Linux 20
Sun Solaris 20
SuSE Linux 20
Windows 19
raw data 124
rdbm 124
Readme.txt file
 location of 18
Red Hat Linux
 CPU requirements 20
 disk space requirements 20
 patches, certified 118
 RAM requirements 20
Registry 126
relational database 124
Repository 124, 126
 installing on HP NonStop Server 42
 installing on UNIX 39
 installing on Windows 31, 36
 names 27
 naming warning 110
 resource considerations 15
 roll back ESRs 97
 set as Windows service
 from Repository Service Manager 36
 start from Repository Service Manager 36
 starting and stopping on UNIX 40
 starting and stopping on Windows 37
 uninstall as Windows service
 from Repository Service Manager 36
 UNIX daemon 41, 78
 Windows service 38
Repository Service Manager
 reopening 36
 set Repository as Windows service 36
 start Repository 36
 uninstall Repository as Windows service 36

S

sample Projects 48
Schema 126
Schema Designer 48, 58
Schema Runtime Environment 125
Schema Runtime Environment (SRE) Monitor
 .sar file 48
 installing 58
 deleting base directory 60
 problem launching 111
 requires Java 1.4 58
Security Server 125
server name

- invalid 110
- servicemanager.bat 36
- SRE 125
- SRE Monitor
 - installing 48, 58
 - deleting base directory 60
 - problem launching 111
- sreMonitor.sar 48, 59
- staging data 125
- startserver.bat 37, 58
- startserver.sh 40, 41
- stopserver.bat 37
- stopserver.sh 41
- subproject 125, 126
- Sun Solaris
 - CPU requirements 20
 - disk space requirements 20
 - patches, certified 119
 - patches, required 119
 - RAM requirements 20
 - requires nsd to install eGate properly 118
- supporting documents 13
- SuSE Linux
 - CPU requirements 20
 - disk space requirements 20
 - patches, certified 118
 - RAM requirements 20
- SVG Viewer
 - installation 113
- Swift OTD Library
 - on CD-ROM 56
- system requirements 18
 - HP NonStop Server 21
 - UNIX 20
 - Windows 19

T

- table 125
- timeout interval
 - Enterprise Manager 112
- topic 125, 126, 127
- transformation 125
- troubleshooting
 - HP Tru64 unlimited/ulimit setting 40, 77

U

- UN/EDIFACT OTD Library
 - on CD-ROM 56
- UNIX
 - installing Repository 39
 - mounting CD-ROM drive 39
 - starting Repository as daemon 41, 78

- Update Center Wizard
 - installing Enterprise Designer 65, 66, 107
 - installing ESRs 88
- uploading
 - improving performance 110
 - problem with .sar files 110
- user
 - "egate" 22
- user names 27
- user's guide purpose and scope 11

V

- vi 23, 81

W

- weblogic.sar 47
- websphere.sar 47
- Windows
 - CPU requirements 19
 - disk space requirements 19
 - installing Logical Host 74
 - installing Repository 31, 36
 - pre-installation issues 22
 - RAM requirements 19
- Windows XP
 - firewall 30
- writing conventions 12

X

- X12 OTD Library
 - on CD-ROM 56
- XSLT 125, 127