

SeeBeyond ICAN Suite

DB2 Universal Database eWay Intelligent Adapter User's Guide

Release 5.0.4



The information contained in this document is subject to change and is updated periodically to reflect changes to the applicable software. Although every effort has been made to ensure the accuracy of this document, SeeBeyond Technology Corporation (SeeBeyond) assumes no responsibility for any errors that may appear herein. The software described in this document is furnished under a License Agreement and may be used or copied only in accordance with the terms of such License Agreement. Printing, copying, or reproducing this document in any fashion is prohibited except in accordance with the License Agreement. The contents of this document are designated as being confidential and proprietary; are considered to be trade secrets of SeeBeyond; and may be used only in accordance with the License Agreement, as protected and enforceable by law. SeeBeyond assumes no responsibility for the use or reliability of its software on platforms that are not supported by SeeBeyond.

SeeBeyond, e*Gate, e*Way, and e*Xchange are the registered trademarks of SeeBeyond Technology Corporation in the United States and/or select foreign countries. The SeeBeyond logo, SeeBeyond Integrated Composite Application Network Suite, eGate, eWay, eInsight, eVision, eXchange, eView, eIndex, eTL, ePortal, eBAM, and e*Insight are trademarks of SeeBeyond Technology Corporation. The absence of a trademark from this list does not constitute a waiver of SeeBeyond Technology Corporation's intellectual property rights concerning that trademark. This document may contain references to other company, brand, and product names. These company, brand, and product names are used herein for identification purposes only and may be the trademarks of their respective owners.

© 2004 by SeeBeyond Technology Corporation. All Rights Reserved. This work is protected as an unpublished work under the copyright laws.

This work is confidential and proprietary information of SeeBeyond and must be maintained in strict confidence.

Version 20040929155846.

Contents

Chapter 1

Introducing the DB2 Universal Database eWay	7
About DB2 Universal Database	7
About the DB2 Universal Database eWay	8
What's in This Document	8
Scope	8
Intended Audience	8
Writing Conventions	8
SeeBeyond Web Site	9
SeeBeyond Documentation Feedback	9
Related Documents	9

Chapter 2

Installing the eWay	10
Supported Operating Systems	10
WebLogic and WebSphere Application Server Support	10
System Requirements	11
Supported External Applications	11
Installing the eWay Product Files	11
After You Install	12

Chapter 3

Configuring the DB2 eWay	13
Properties of DB2 eWay on Windows or Unix Operating Systems	13
Setting the Properties of the Inbound DB2 eWay on Windows or Unix Operating Systems	14
PollMilliseconds	14
PreparedStatement	14
Setting the Environment Properties of the Inbound DB2 eWay on Windows or Unix Operating Systems	15
DatabaseName	15
Password	15

PortNumber	15
ServerName	16
User	16
Setting the Properties of the Outbound DB2 eWay on Windows or Unix Operating Systems	16
ClassName	17
Description	17
InitialPoolSize	17
LoginTimeout	17
MaxIdleTime	17
MaxPoolSize	18
MaxStatements	18
MinPoolSize	18
NetworkProtocol	18
PropertyCycle	18
RoleName	19
Setting the Environment Properties of the Outbound DB2 eWay on Windows or Unix Operating Systems	19
DatabaseName	19
Delimiter	20
Description	20
DriverProperties	20
Password	20
PortNumber	20
ServerName	21
User	21
Properties of the DB2 eWay Connecting to z/OS or an AS/400 Operating System	21
Setting the Properties of the Inbound DB2 eWay Connecting to z/OS or and AS/400 Operating System	22
PollMilliseconds	22
PreparedStatement	22
Setting the Environment Properties of the Inbound DB2 eWay Connecting to z/OS or an AS/400 Operating Systems	23
CollectionId	23
LocationName	23
Password	23
PortNumber	24
ServerName	24
User	24
Setting the Properties of the Outbound DB2 eWay Connecting to z/OS or an AS/400 Operating System	25
ClassName	25
Description	25
InitialPoolSize	26
LoginTimeout	26
MaxIdleTime	26
MaxPoolSize	26
MaxStatements	26
MinPoolSize	27
NetworkProtocol	27
PropertyCycle	27
RoleName	27
Setting the Environment Properties of the Outbound DB2 eWay Connecting to z/OS or an AS/400 Operating Systems	27

CollectionID	28
Delimiter	28
Description	28
DriverProperties	29
LocationName	29
Any valid string.	29
Password	29
PortNumber	29
ServerName	29
User	30

Chapter 4

DB2 Wizard Operation	31
Using the Database OTD Wizard	31

Chapter 5

Implementing the DB2 eWay	42
eInsight Engine and eGate Components	42
Using the Sample Project in eInsight	42
The Business Process	43
SelectAll	45
SelectMultiple	46
SelectOne	48
Insert	49
Update	51
Delete	52
Using the Sample Project in eGate	53
Working with the Sample Project in eGate	53
Configuring the eWays	54
Creating an External Environment	55
Deploying a Project	55
Running the Sample	56
Common DataType Conversions	56
Using OTDs with Tables, Views, Stored Procedures, and Prepared Statements	58
The Table	58
The Query Operation	58
The Insert Operation	59
The Update Operation	60
The Delete Operation	61
Using Clobs	61
Inserting a Clob using a Table OTD	61
Inserting a Clob using a Prepared Statement OTD	62
Inserting a Clob using a Stored Procedure OTD	62
Updating a Clob using a Table OTD	63
Updating a CLOB using a Stored Procedure or Prepared Statement OTD	64

Contents

Selecting a Clob using a Table OTD	64
Selecting a Clob using a Prepared Statement	68
The Stored Procedure	69
Executing Stored Procedures	70
Manipulating the ResultSet and Update Count Returned by Stored Procedure	71
Alerting and Logging	74

Introducing the DB2 Universal Database eWay

This document describes how to install and configure the DB2 Universal Database eWay.

What's in This Chapter:

- [About DB2 Universal Database](#) on page 7
- [About the DB2 Universal Database eWay](#) on page 8
- [What's in This Document](#) on page 8
- [SeeBeyond Web Site](#) on page 9
- [Related Documents](#) on page 9

1.1 About DB2 Universal Database

A database consists of a collection of information that is organized so that it can be easily accessed, managed, and updated. DB2 Universal Database is a database that handles the development and deployment of critical solutions such as:

- On demand business
- Business intelligence
- Content management
- Enterprise Resource Planning
- Customer Relationship Management

DB2 reduces the complexity of data management by eliminating, simplifying, and automating tasks associated with maintaining an enterprise-class database. It provides a foundation of information integration technologies, including federation, replication, Web services, and XML.

1.2 About the DB2 Universal Database eWay

The eWay enables eGate Integrator Projects to exchange data with external DB2 databases. This document describes how to install and configure the eWay.

1.3 What's in This Document

This document includes the following chapters:

- **Chapter 1 “Introducing the DB2 Universal Database eWay”:** Provides an overview description of the product as well as high-level information about this document.
- **Chapter 2 “Installing the eWay”:** Describes the system requirements and provides instructions for installing the DB2 Universal Database eWay.
- **Chapter 3 “Configuring the DB2 eWay”:** Provides instructions for configuring the eWay to communicate with your legacy systems.
- **Chapter 4 “DB2 Wizard Operation”:** Provides information about .sag files and using the DB2 Universal Database wizard.
- **Chapter 5 “Implementing the DB2 eWay”:** Provides instructions for installing and running the sample Projects.

1.3.1 Scope

This document describes the process of installing, configuring, and running the DB2 Universal Database eWay.

This document does not cover the Java methods exposed by this eWay. For information on the Java methods, download and view the DB2 Universal Database eWay Javadoc files from the Enterprise Manager.

1.3.2 Intended Audience

This guide is intended for experienced computer users who have the responsibility of helping to set up and maintain a fully functioning ICAN Suite system. This person must also understand any operating systems on which the ICAN Suite is to be installed (Windows or UNIX) and must be thoroughly familiar with Windows-style GUI operations.

1.3.3 Writing Conventions

The following writing conventions are observed throughout this document.

Table 1 Writing Conventions

Text	Convention	Example
Button, file, icon, parameter, variable, method, menu, and object names.	Bold text	<ul style="list-style-type: none">▪ Click OK to save and close.▪ From the File menu, select Exit.▪ Select the logicalhost.exe file.▪ Enter the timeout value.▪ Use the getClassname() method.▪ Configure the Inbound File eWay.
Command line arguments and code samples	Fixed font. Variables are shown in bold italic .	<code>bootstrap -p password</code>
Hypertext links	Blue text	http://www.seebeyond.com

1.4 SeeBeyond Web Site

The SeeBeyond Web site is your best source for up-to-the-minute product news and technical support information. The site's URL is:

<http://www.seebeyond.com>

SeeBeyond Documentation Feedback

If you have any feedback on any SeeBeyond documentation, please send an E-mail to:

docfeedback@seebeyond.com

1.5 Related Documents

The following SeeBeyond documents provide additional information about the ICAN product suite:

- *eGate Integrator User's Guide*
- *SeeBeyond ICAN Suite Installation Guide*

Installing the eWay

This chapter describes how to install the DB2 Universal Database eWay.

What's in This Chapter:

- [“Supported Operating Systems” on page 10](#)
- [“System Requirements” on page 11](#)
- [“Supported External Applications” on page 11](#)
- [Installing the eWay Product Files](#) on page 11
- [After You Install](#) on page 12

2.1 Supported Operating Systems

The DB2 Universal eWay is available on the following operating systems:

- Windows Server 2003, Windows XP, and Windows 2000
- HP Tru64 5.1A
- HP-UX 11.0, 11i (PA-RISC), and 11i v2.0 (11.23)
- IBM AIX 5.1L and 5.2
- Sun Solaris 8 and 9
- SuSE Linux Enterprise Server 8 (Intel x86)

Although the DB2 Universal Database eWay, the Repository, and Logical Hosts run on the platforms listed above, the Enterprise Designer requires the Windows operating system. For more information, see the *eGate Integrator User's Guide*.

2.1.1 WebLogic and WebSphere Application Server Support

In addition to the operating systems listed above, this eWay is also supported on the following application servers:

- WebSphere Application Server, version 5.0
- WebLogic Application Server, version 8.1

These are limited to outbound mode using Java Collaborations. For additional information see the *eGate Integrator User's Guide*.

2.2 System Requirements

The system requirements for the DB2 eWay are the same as for eGate Integrator. For information, refer to the *ICAN Installation Guide*. It is also helpful to review the **Readme.txt** for any additional requirements prior to installation. The **Readme.txt** is located on the installation CD-ROM.

Note: *To enable Web Services, you must install and configure the SeeBeyond ICAN Suite eInsight Business Process Manager.*

2.3 Supported External Applications

The DB2 eWay supports the following software on external systems:

- DB2 Universal Database (UDB) version 8.1.
- DB2 Universal Database (UDB) version 7.1 when connecting to DB2 running on an OS/390 operating system when using DataDirect drivers.
- DB2 Universal Database (UDB) version V5R1 when connecting to DB2 running on an AS/400 operating system.

2.4 Installing the eWay Product Files

During the eGate Integrator installation process, the Enterprise Manager, a web-based application, is used to select and upload eWays (eWay.sar files) from the eGate installation CD-ROM to the Repository.

The installation process includes installing the following components:

- Installing the Repository
- Uploading products to the Repository
- Downloading components (such as Enterprise Designer and Logical Host)
- Viewing product information home pages

Follow the instructions for installing the eGate Integrator in the *ICAN Installation Guide*, and include the following steps:

- On the Enterprise Manager, select the **DB2eWay.sar** (to install the DB2 eWay) file to upload.
- On the Enterprise Manager, select the **FileeWay.sar** (to install the File eWay, used in the sample Project) file to upload.
- On the Enterprise Manager, install the **DB2eWayDocs.sar** (to install the documentation and the sample) file to upload.

- On the Enterprise Manager under the Documentation tab, click on the document link or the sample file link. It is recommended that you extract the sample project file to another location prior to importing it, using the Enterprise Explorer's Import Project tool.
- For additional information on how to use eGate, please see the *eGate Integrator Tutorial*.

Continue installing the eGate Enterprise Designer as instructed.

2.5 After You Install

Once the eWay is installed and configured it must then be incorporated into a Project before it can perform its intended functions. See the *eGate Integrator User's Guide* for more information on incorporating the eWay into an eGate Project.

Configuring the DB2 eWay

This chapter describes how to set the properties of the DB2 eWay.

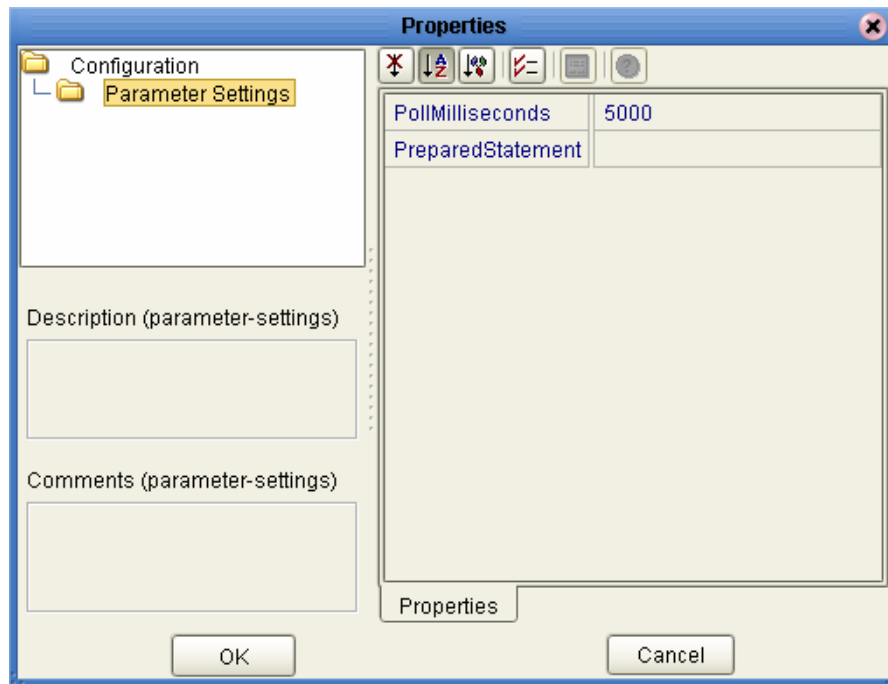
What's in This Chapter:

- [Setting the Properties of the Inbound DB2 eWay on Windows or Unix Operating Systems](#) on page 14
- [Setting the Environment Properties of the Inbound DB2 eWay on Windows or Unix Operating Systems](#) on page 15.
- [Setting the Properties of the Outbound DB2 eWay on Windows or Unix Operating Systems](#) on page 16
- [Setting the Environment Properties of the Outbound DB2 eWay on Windows or Unix Operating Systems](#) on page 19
- [Setting the Properties of the Inbound DB2 eWay Connecting to z/OS or and AS/400 Operating System](#) on page 22
- [Setting the Environment Properties of the Inbound DB2 eWay Connecting to z/OS or an AS/400 Operating Systems](#) on page 23
- [Setting the Properties of the Outbound DB2 eWay Connecting to z/OS or an AS/400 Operating System](#) on page 25
- [Setting the Environment Properties of the Outbound DB2 eWay Connecting to z/OS or an AS/400 Operating Systems](#) on page 27

3.1 Properties of DB2 eWay on Windows or Unix Operating Systems

The following parameter descriptions are used for you to enter the necessary information, on the Properties window, for the eWay to establish a connection to the external application.

3.1.1 Setting the Properties of the Inbound DB2 eWay on Windows or Unix Operating Systems



PollMilliseconds

Description

Specifies the polling interval between database queries in milliseconds.

Required Values

A valid numeric value. The default is 5000.

PreparedStatement

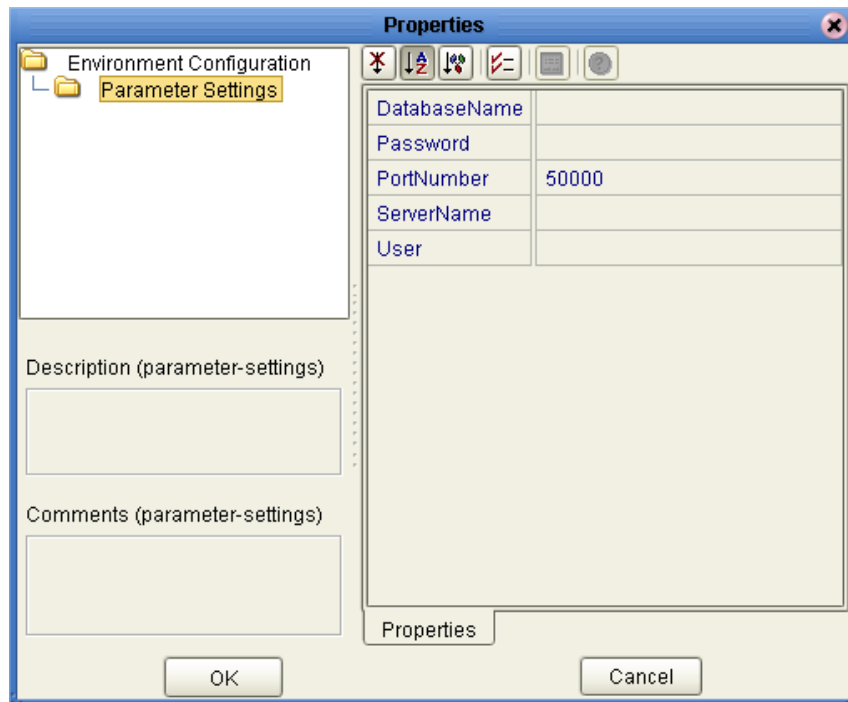
Description

Specifies the Prepared Statement used to query the database.

Required Values

The Prepared Statement must be the same Prepared Statement you created using the Database OTD Wizard. Only the SELECT statement is allowed. Additionally, no placeholders should be specified and there should not be any “?” in the Prepared Query.

3.1.2 Setting the Environment Properties of the Inbound DB2 eWay on Windows or Unix Operating Systems



DatabaseName

Description

Specifies the name of the database instance.

Required Values

Any valid string.

Password

Description

Specifies the password used to access the database.

Required Values

Any valid string.

PortNumber

Description

Specifies the I/O port number on which the server is listening for connection requests.

Required Values

A valid port number. The default is 50000.

ServerName

Description

Specifies the host name of the external database server.

Required Values

Any valid string.

User

Description

Specifies the user name the eWay uses to connect to the database.

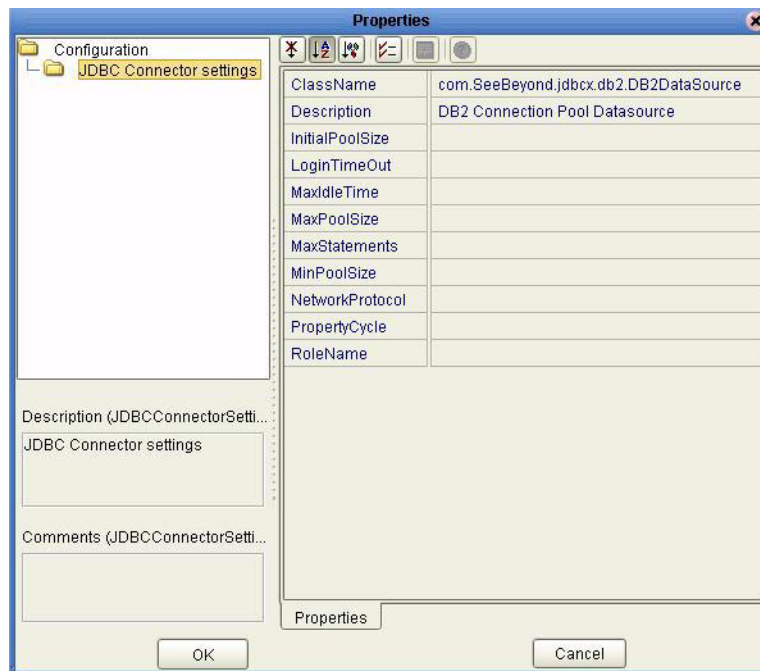
Required Values

Any valid string.

3.1.3. Setting the Properties of the Outbound DB2 eWay on Windows or Unix Operating Systems

The Property settings define the properties used to interact with the external database.

Figure 1 The eWay Properties



ClassName

Description

Specifies the Java class in the JDBC driver that is used to implement the `ConnectionPoolDataSource` interface.

Required Values

A valid class name.

The default is `com.SeeBeyond.jdbcx.db2.DB2DataSource`.

Description

Description

Enter a description for the database.

Required Values

A valid string.

InitialPoolSize

Description

Enter a number for the physical connections the pool must contain when it is created.

Required Values

A valid numeric value.

LoginTimeout

Description

The number of seconds driver waits before attempting to log in to the database before timing out.

Required Values

A valid numeric value.

MaxIdleTime

Description

The maximum number of seconds that a physical connection remains unused before it is closed. 0 (zero) indicates that there is no limit.

Required Values

A valid numeric value.

MaxPoolSize

Description

The maximum number of physical connections the pool must keep available at all times. 0 (zero) indicates that there is no maximum.

Required Values

A valid numeric value.

MaxStatements

Description

The maximum total number of statements that the pool must keep open. 0 (zero) indicates that the caching of statements is disabled.

Required Values

A valid numeric value.

MinPoolSize

The minimum number of physical connections the pool must keep available at all times. 0 (zero) indicates that there are no physical connections in the pool and new connections will be created as needed.

Required Values

A valid numeric value.

NetworkProtocol

Description

The network protocol used to communicate with the server.

Required Values

Any valid string.

PropertyCycle

Description

The interval, in seconds, that the pool must wait before enforcing the current policy defined by the values of the other connection pool properties in this deployment descriptor.

Required Values

A valid numeric value.

RoleName

Description

An initial SQL role name.

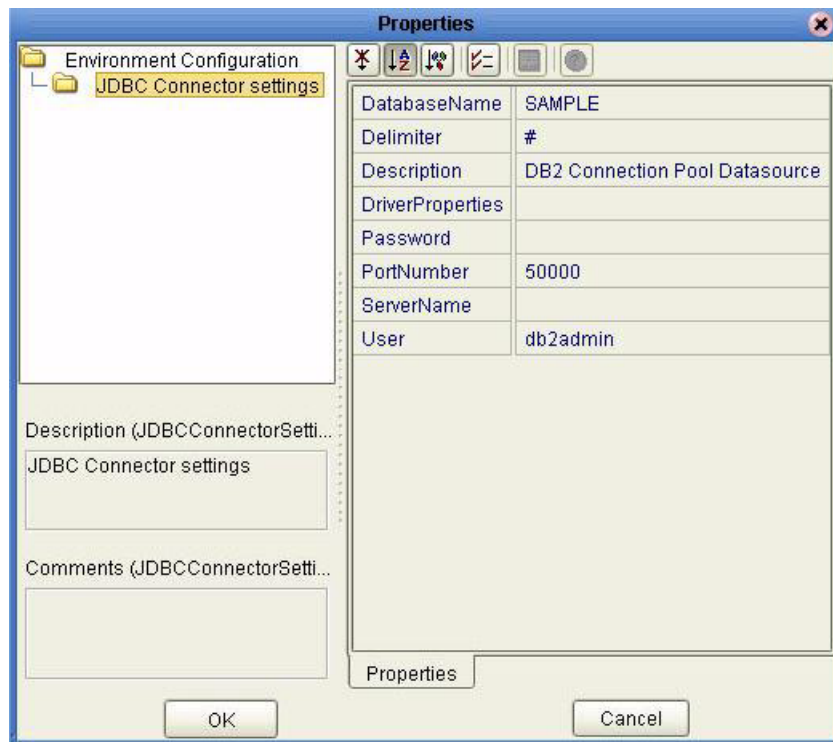
Required Values

Any valid string.

3.1.4 Setting the Environment Properties of the Outbound DB2 eWay on Windows or Unix Operating Systems

Before deploying your eWay, you must set the properties of the eWay environment using the following descriptions.

Figure 2 Environment Settings of the Outbound DB2 eWay on Windows and Unix



DatabaseName

Description

Specifies the name of the database instance.

Required Values

Any valid string.

Delimiter

Description

This is the delimiter character to be used in the DriverProperties prompt.

Required Values

The default is #.

Description

Description

Enter a description for the database.

Required Values

A valid string.

DriverProperties

Description

Use the JDBC driver that is shipped with this eWay. If you need to set any additional properties to assure a connection, you can set them in the driver properties.

Required Values

Any valid delimiter.

Valid delimiters are: "`<method-name-1>#<param-1>#<param-2>##.....<param-n>##<method-name-2>#<param-1>#<param-2>#.....<param-n>##.....##`".

For example: to execute the method `setURL`, give the method a String for the URL "`setURL#<url>##`".

If you are using Spy Log. Optional:

```
"setURL#jdbc:SeeBeyond:db2://<server>:446;locationName=<location>;collectionId=
<collection>##setLocationName#<location>##setCollectionID#<collection>##setSpyAt
tributes#log=(file)c:/temp/spy.log;logTName=yes###"
```

Password

Description

Specifies the password used to access the database.

Required Values

Any valid string.

PortNumber

Description

Specifies the I/O port number on which the server is listening for connection requests.

Required Values

A valid port number. The default is 50000.

ServerName

Description

Specifies the host name of the external database server.

Required Values

Any valid string.

User

Description

Specifies the user name the eWay uses to connect to the database.

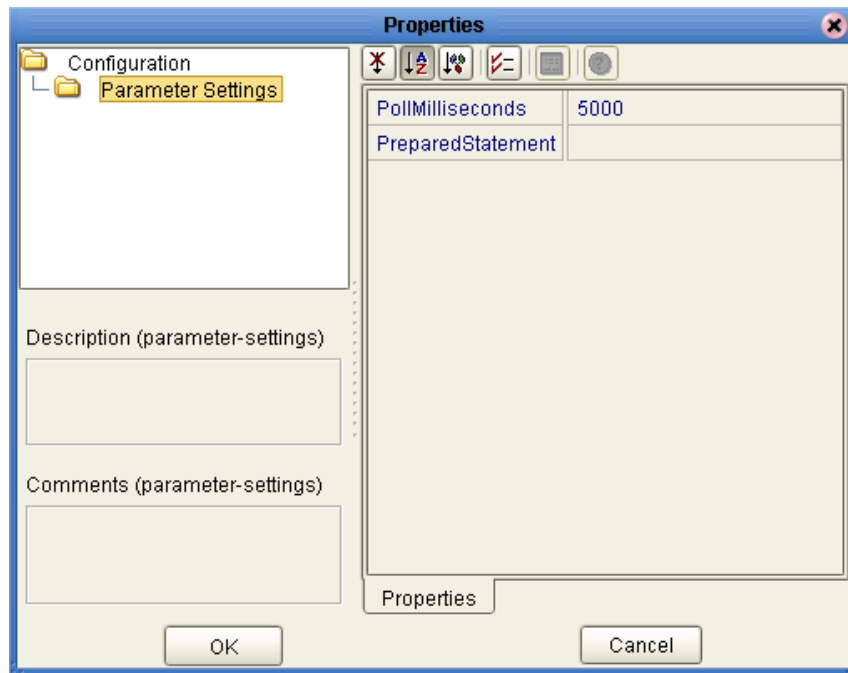
Required Values

Any valid string.

3.2 Properties of the DB2 eWay Connecting to z/OS or an AS/400 Operating System

The following parameter descriptions are used for you to enter the necessary information, on the Properties window, for the eWay to establish a connection to the external application.

3.2.1 Setting the Properties of the Inbound DB2 eWay Connecting to z/OS or and AS/400 Operating System



PollMilliseconds

Description

Specifies the polling interval between database queries in milliseconds.

Required Values

A valid numeric value. The default is 5000.

PreparedStatement

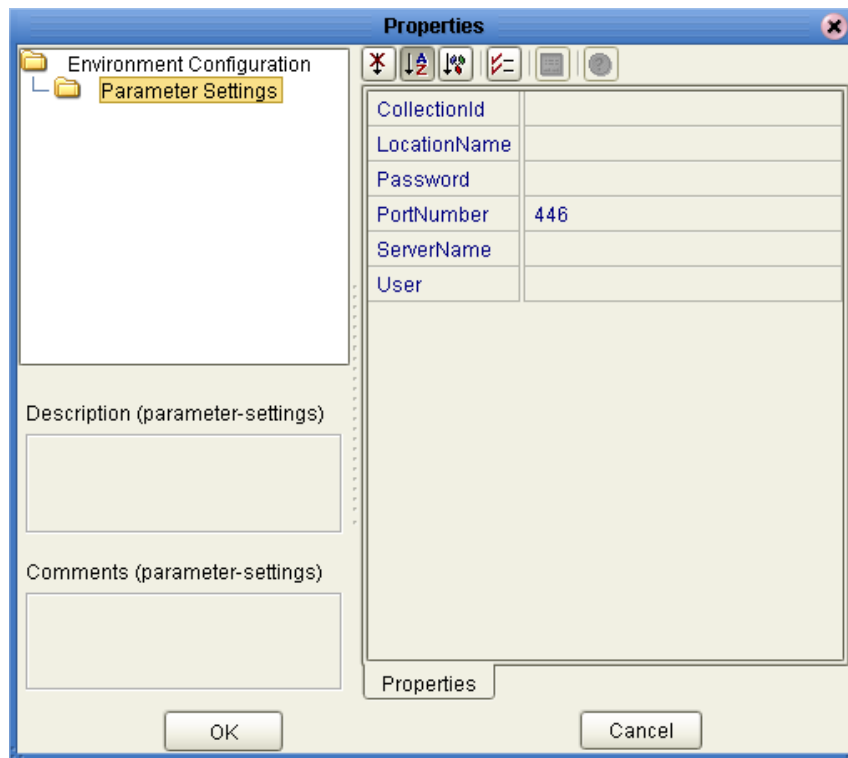
Description

Specifies the Prepared Statement used to query the database.

Required Values

The Prepared Statement must be the same Prepared Statement you created using the Database OTD Wizard. Only the SELECT statement is allowed. Additionally, no placeholders should be specified, and there should not be any “?” in the Prepared Query.

3.2.2 Setting the Environment Properties of the Inbound DB2 eWay Connecting to z/OS or an AS/400 Operating Systems



CollectionId

Description

Specifies the CollectionID for the DB2 database that is being used on AS400/zOS.

Required Values

Any valid String.

LocationName

Description

Specifies the Location Name for the DB2 database that is being used on AS400/zOS.

Required Values

Any valid String.

Password

Description

Specifies the password used to access the database.

Required Values

Any valid String.

PortNumber

Description

The TCP port number. PortNumber is used for DataSource connections only.

Required Values

Any valid String. The default port number is 446.

ServerName

Description

Specifies the name of the database server being used.

Required Values

Any valid String.

User

Description

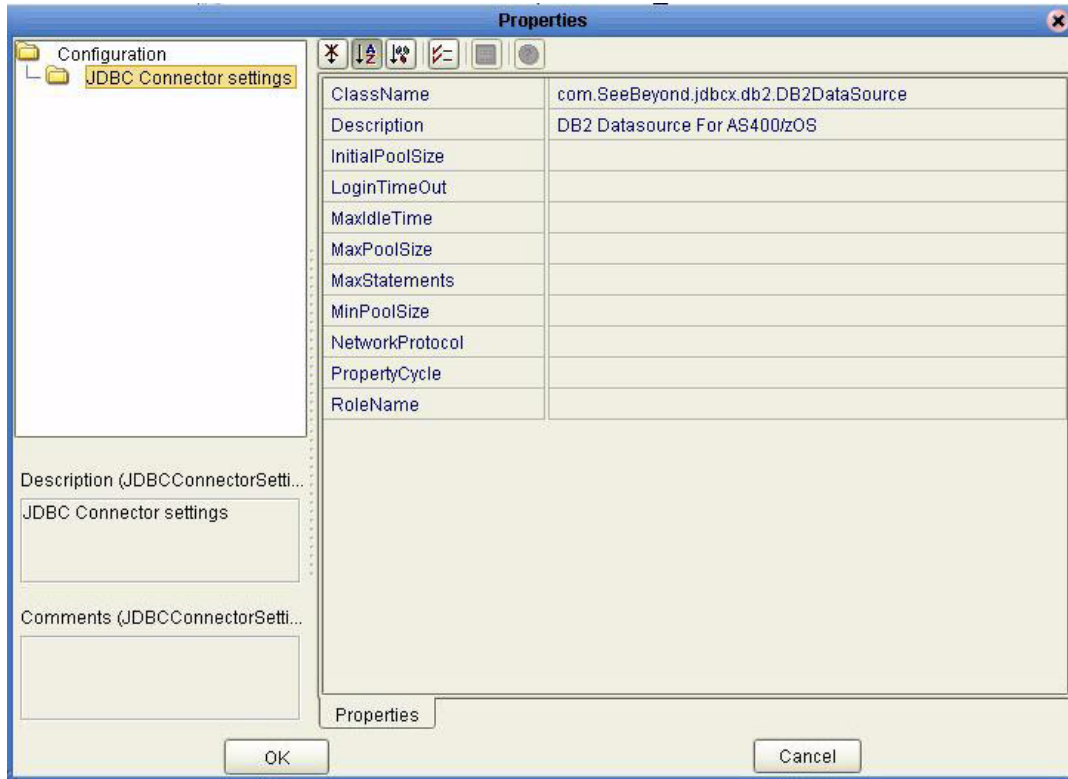
Specifies the user name the eWay uses to connect to the database.

Required Values

Any valid String.

3.2.3 Setting the Properties of the Outbound DB2 eWay Connecting to z/OS or an AS/400 Operating System

Figure 3 Outbound DB2 eWay Connecting to an AS400



ClassName

Description

Specifies the Java class in the JDBC driver that is used to implement the ConnectionPoolDataSource interface.

Required Values

A valid class name.

The default is **com.SeeBeyond.jdbcx.db2.DB2DataSource**.

Description

Description

Enter a description for the database.

Required Values

A valid string.

InitialPoolSize

Description

Enter a number for the physical connections the pool must contain when it is created.

Required Values

A valid numeric value.

LoginTimeOut

Description

The number of seconds the driver waits before attempting to log into the database before timing out.

Required Values

A valid numeric value.

MaxIdleTime

Description

The maximum number of seconds that a physical connection remains unused before it is closed. 0 (zero) indicates that there is no limit.

Required Values

A valid numeric value.

MaxPoolSize

Description

The maximum number of physical connections the pool keeps available at all times. 0 (zero) indicates that there is no maximum.

Required Value

A valid numeric value.

MaxStatements

Description

The maximum total number of statements that the pool keeps open. 0 (zero) indicates that the caching of statements is disabled.

Required Values

A valid numeric value.

MinPoolSize

The minimum number of physical connections the pool keeps available at all times. 0 (zero) indicates that there should be no physical connections in the pool and the new connections should be created as needed.

Required Values

A valid numeric value.

NetworkProtocol

Description

The network protocol used to communicate with the server.

Required Values

Any valid string.

PropertyCycle

Description

The interval, in seconds, that the pool waits before enforcing the current policy defined by the values of the other connection pool properties in this deployment descriptor.

Required Values

A valid numeric value.

RoleName

Description

An initial SQL role name.

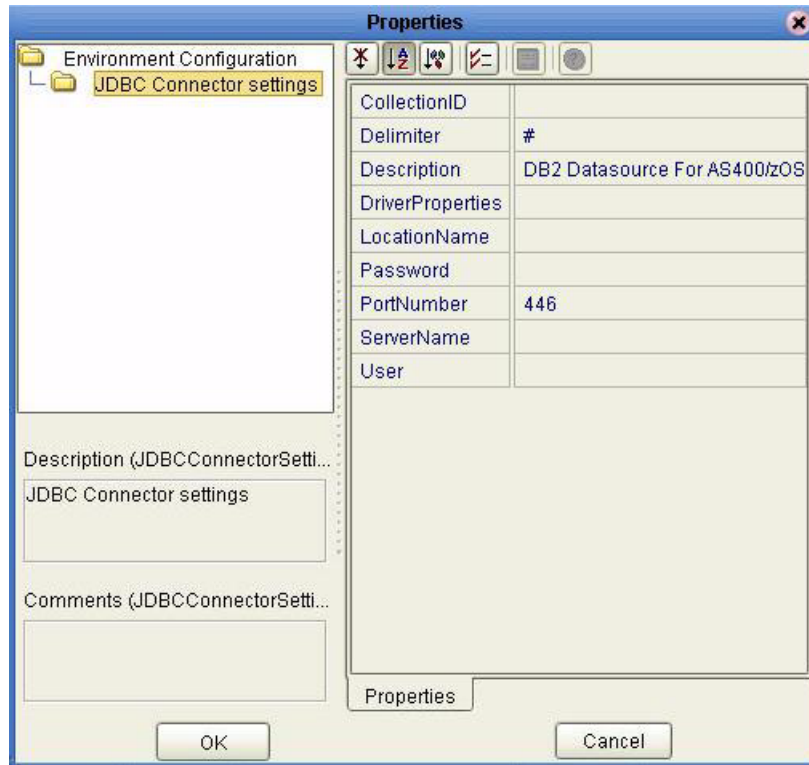
Required Values

Any valid string.

3.2.4 Setting the Environment Properties of the Outbound DB2 eWay Connecting to z/OS or an AS/400 Operating Systems

Before deploying your eWay, you must set the properties of the eWay environment using the following descriptions.

Figure 4 Properties of the DB2 eWay Connecting to z/OS or an AS/400 Operating System



CollectionID

Description

The collection or group of packages to which a package is bound.

Required Values

Any valid string.

Delimiter

Description

This is the delimiter character to be used in the DriverProperties prompt.

Required Values

The default is #.

Description

Description

Enter a description for the database.

Required Values

A valid string.

DriverProperties

Description

Use the JDBC driver that is shipped with this eWay. If you need to set any additional properties to assure a connection, you can set them in the driver properties.

Required Values

Any valid delimiter.

Valid delimiters are: “<method-name-1>#<param-1>#<param-2>##.....<param-n>##<method-name-2>#<param-1>#<param-2>#.....<param-n>##.....##”.

For example: to execute the method `setURL`, give the method a String for the URL “`setURL#<url>##`”.

If you are using Spy Log. Optional:

```
“setURL#jdbc:SeeBeyond:db2://<server>:446;locationName=<location>;collectionId=<collection>##setLocationName#<location>##setCollectionID#<collection>##setSpyAttributes#log=(file)c:/temp/spy.log;logTName=yes##”
```

LocationName

Description

The name of the DB2 location that you want to access.

Required Values

Any valid string.

Password

Description

Specifies the password used to access the database.

Required Values

Any valid string.

PortNumber

Description

Specifies the I/O port number on which the server is listening for connection requests.

Required Values

A valid port number. The default is 446.

ServerName

Description

Specifies the host name of the external database server.

Required Values

Any valid string.

User

Description

Specifies the user name the eWay uses to connect to the database.

Required Values

Any valid string.

DB2 Wizard Operation

This chapter describes how to use the DB2 eWay Database Wizard to build OTD's.

What's in This Chapter:

- [Select Wizard Type](#) on page 31
- [Connect to Database](#) on page 32
- [Select Database Objects](#) on page 32
- [Select Table/Views](#) on page 33
- [Select Procedures](#) on page 37
- [Add Prepared Statements](#) on page 38
- [Specify the OTD Name](#) on page 40

4.1 Using the Database OTD Wizard

The Database OTD Wizard generates OTDs by connecting to external data sources and creating corresponding Object Type Definitions. The OTD Wizard can create OTDs based on any combination of Tables and Stored Procedures or Prepared SQL Statements.

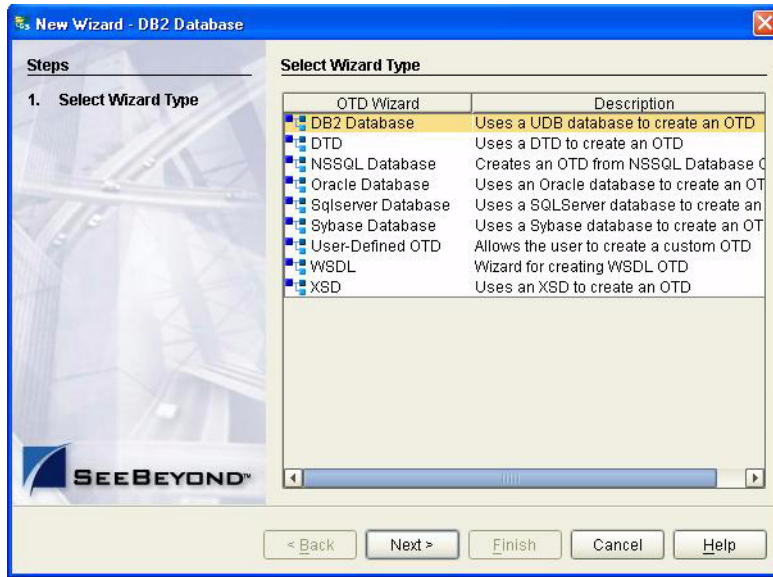
Field nodes are added to the OTD based on the Tables in the external data source. Java method and parameter nodes are added to provide the appropriate JDBC functionality. For more information about the Java methods, refer to your JDBC developer's reference.

Note: *Database OTD's are not messagable. For more information on messagable OTD's, see the eGate Integrator User's Guide.*

Select Wizard Type

- 1 On the Enterprise Explorer, right click on the project and select **Create an Object Type Definition** from the shortcut menu.
- 2 From the OTD Wizard Selection window, select the **DB2 Database** and click **Next**. See [Figure 5](#).

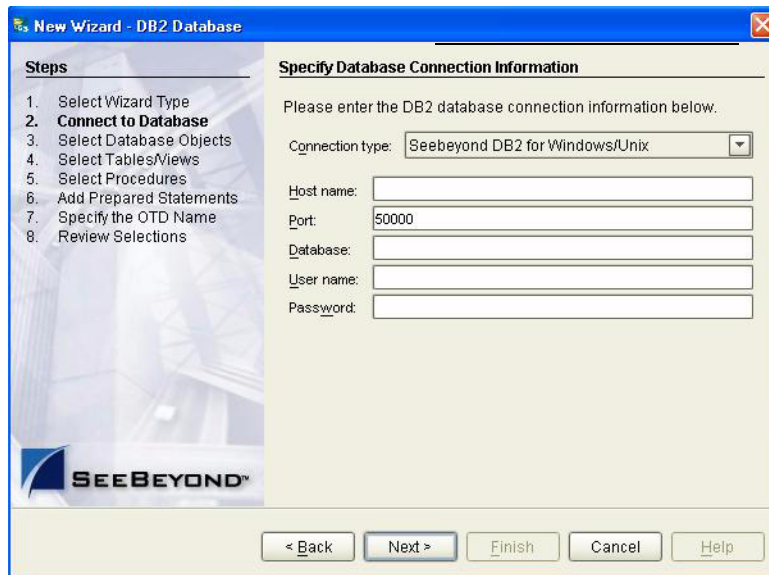
Figure 5 OTD Wizard Selection



Connect to Database

- 3 Specify the **Connection Type** and the general connection information for your database including your **UserName** and **Password** and click **Next**. See [Figure 6](#).

Figure 6 Database Connection Information

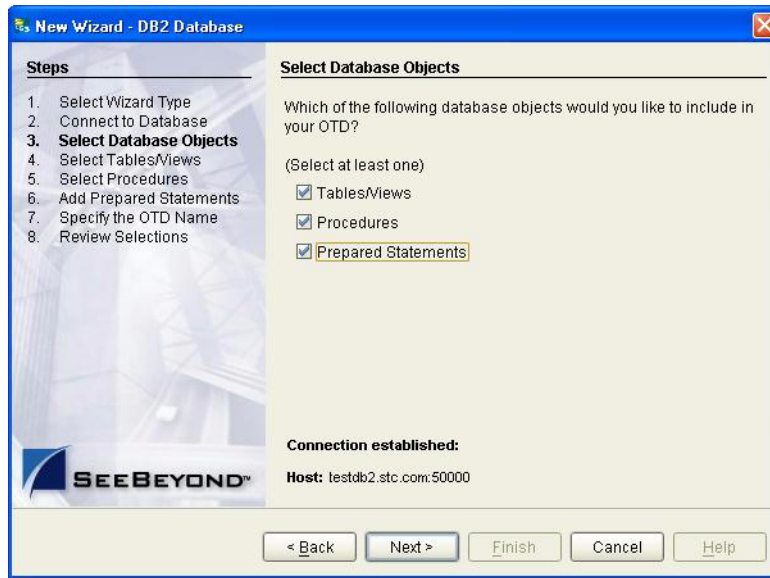


Select Database Objects

- 1 When selecting Database Objects, you can select any combination of **Tables**, **Views**, **Procedures**, or **Prepared Statements** you would like to include in the .otd file. Click **Next** to continue. See [Figure 7](#).

Note: Views are read-only and are for informational purposes only.

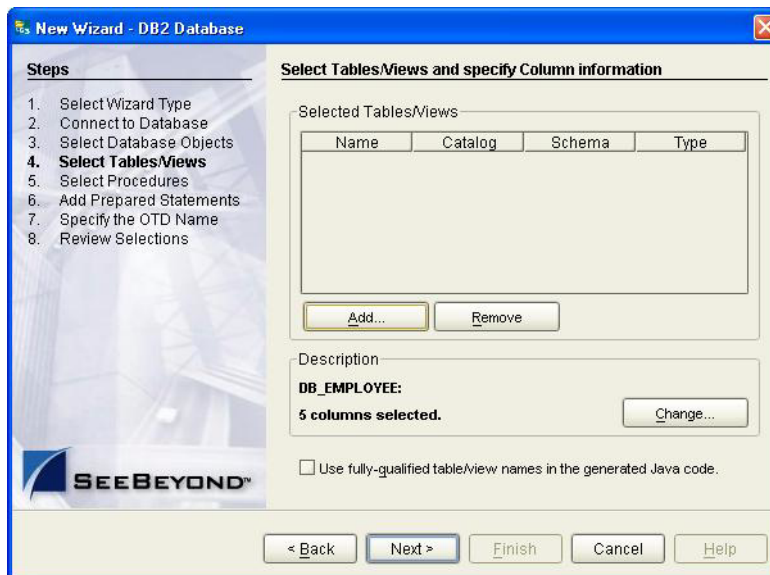
Figure 7 Select Database Objects



Select Table/Views

- 1 In the **Select Tables/Views** window, click **Add**. See [Figure 8](#).

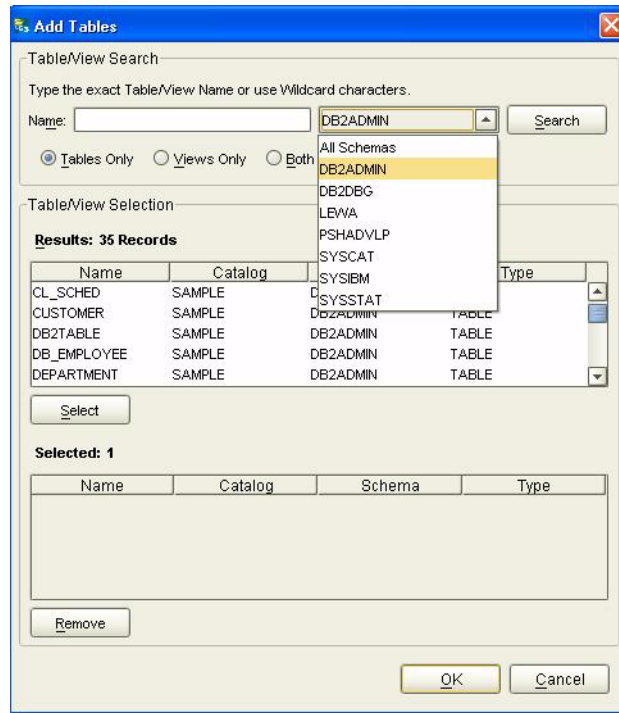
Figure 8 Select Tables/Views



- 2 In the **Add Tables** window, select the type of criteria to be used for your search, consisting of table data, view only data, or both. You can include system tables in your search by selecting the checkbox.

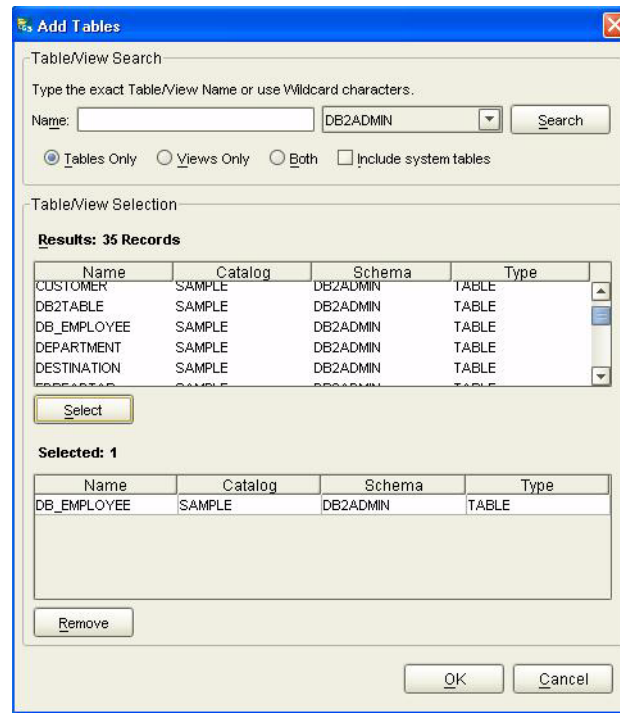
- From the **Table/View Name** drop down list, select the location of your database table and click **Search**. See [Figure 9](#). You can search for **Table/View Names** by entering a table name. The use of wildcard characters of '?' and '*' as part of your Table/View name search allow for greater search capabilities. For example, "AB?CD" or "AB*CD".

Figure 9 Database Wizard - All Schemes



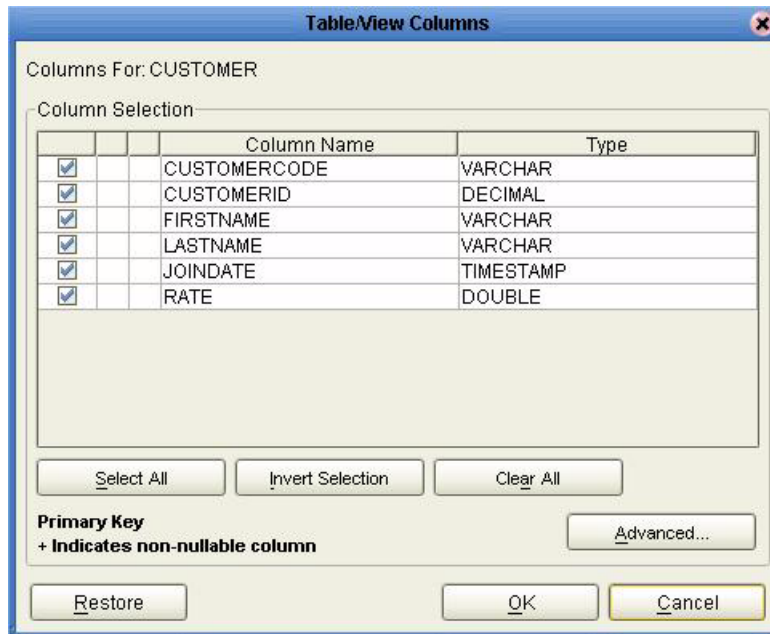
- Select the table of choice and click **OK**.
The table selected is added to the **Selected** window. See [Figure 10](#).

Figure 10 Selected Tables/Views window with a table selected



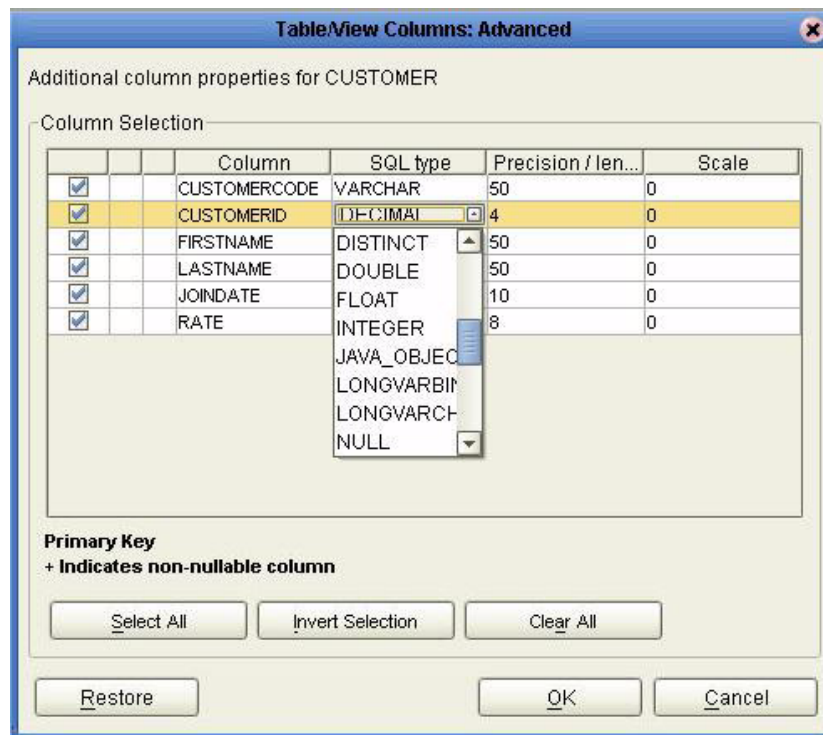
- 5 On the **Selected Tables/Views** window, review the table(s) you have selected. To make changes to the selected Table or View, click **Change**. If you do not wish to make any additional changes, click **Next** to continue.
- 6 If you clicked **Change** on the **Selected Tables/Views** window, you can select or deselect your table columns on the **Table/View Columns** window. You can also change the data type for each table by highlighting the data type and selecting a different one from the drop down. See [Figure 11](#).

Figure 11 Table/View Columns



- 7 Click **Advanced** to change the data type, precision/length, or scale. In general, do not change the precision/length or the scale. Once you have finished your table choices, click **OK**. See [Figure 12](#).

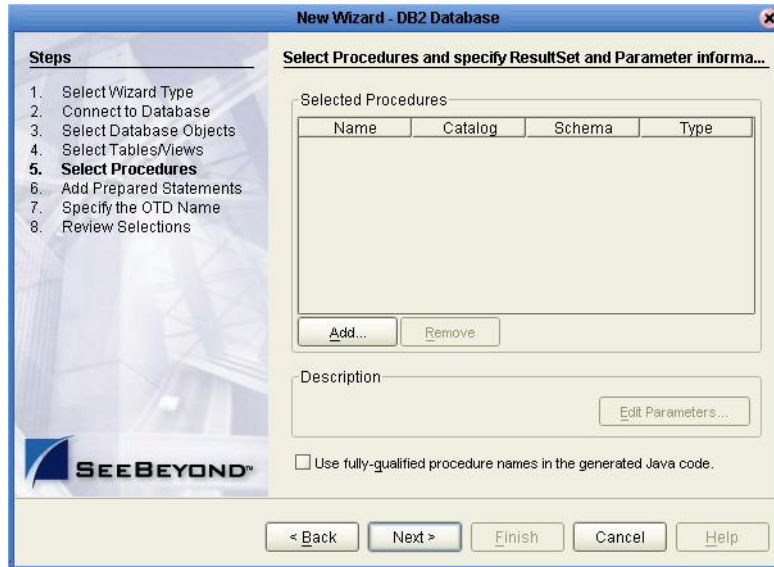
Figure 12 Table/View Columns – Advanced



Select Procedures

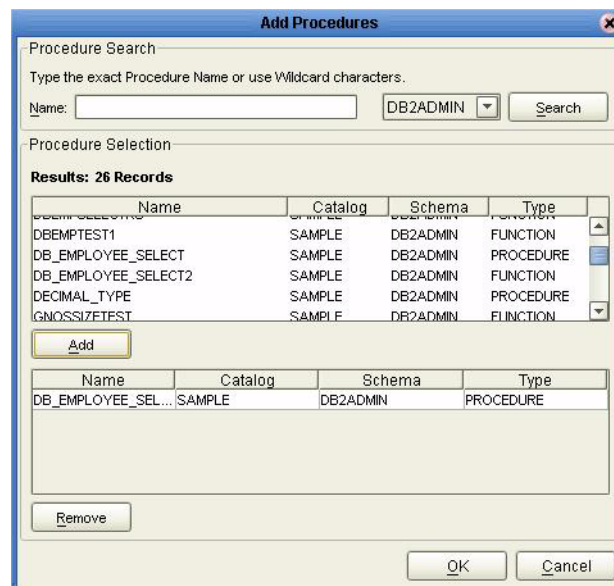
- 1 On the **Select Procedures and specify Resultset and Parameter Information** window, click **Add**.

Figure 13 Select Procedures and specify Resultset and Parameter Information



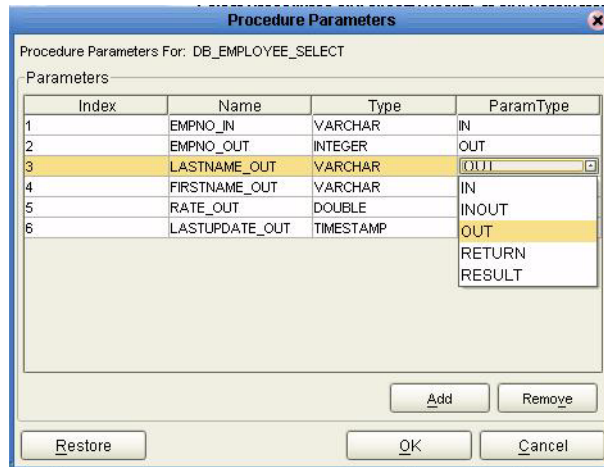
- 2 On the **Select Procedures** window, enter the name of a Procedure or select a table from the drop down list. Click **Search**. Wildcard characters can also be used.
- 3 In the resulting **Procedure Selection** list box, select a Procedure. Click **OK**.

Figure 14 Add Procedures



- 4 On the **Select Procedures and specify Resultset and Parameter Information** window click **Edit Parameters** to make any changes to the selected Procedure. See **Figure 15**.

Figure 15 Procedure Parameters

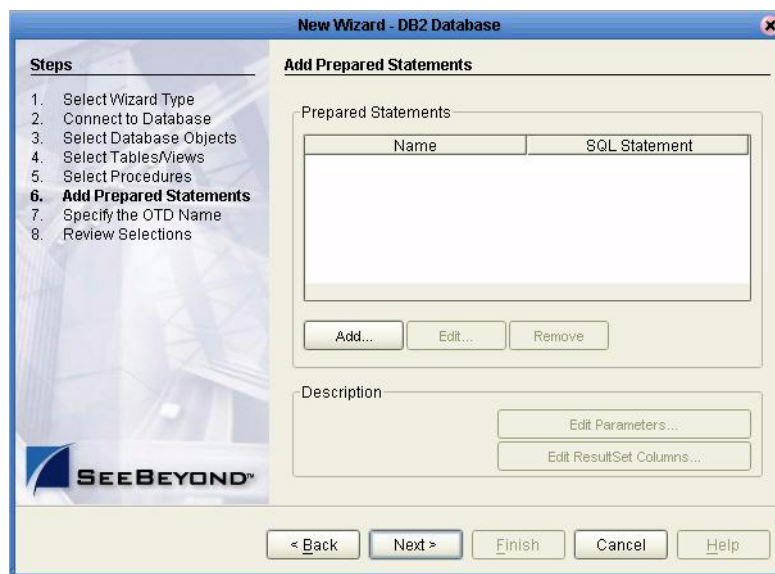


- 5 To restore the data type, click **Restore**. When finished, click **OK**.
- 6 On the **Select Procedures and specify Resultset and Parameter Information** window click **Next** to continue.

Add Prepared Statements

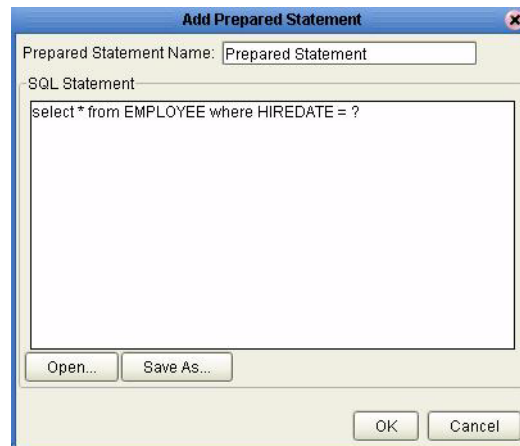
- 1 On the **Add Prepared Statements** window, click **Add**.

Figure 16 Prepared Statement



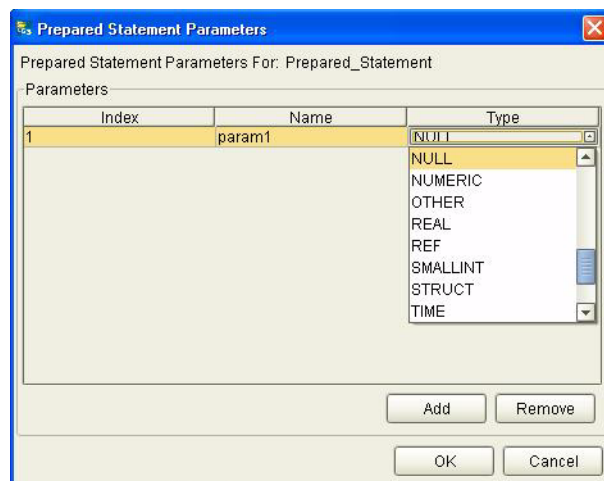
- 2 Enter the name of a Prepared Statement or create a SQL statement by clicking in the SQL Statement window. When finished creating the statement, click **Save As** giving the statement a name. This name appears as a node in the OTD. Click **OK**. See [Figure 17](#).

Figure 17 Prepared SQL Statement



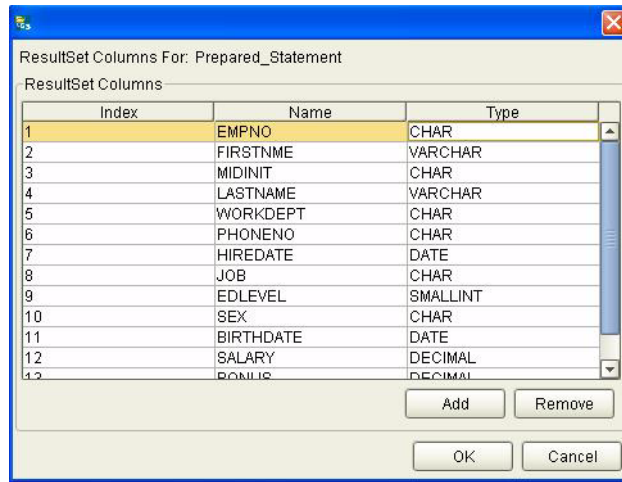
- 3 On the **Add Prepared Statement** window, the name you assigned to the Prepared Statement appears. To edit the parameters, click **Edit Parameters**. You can change the datatype by clicking in the **Type** field and selecting a different type from the list.
- 4 Click **Add** if you want to add additional parameters to the Statement or highlight a row and click **Remove** to remove it. Click **OK**. See [Figure 18](#).

Figure 18 Edit the Prepared Statement Parameters



- 5 To edit the Resultset Columns, click **Edit Resultset Columns**. Both the Name and Type are editable. Click **OK**. See [Figure 19](#).

Figure 19 ResultSet Columns



- 6 On the **Add Prepared Statements** window, click **OK**.

Specify the OTD Name

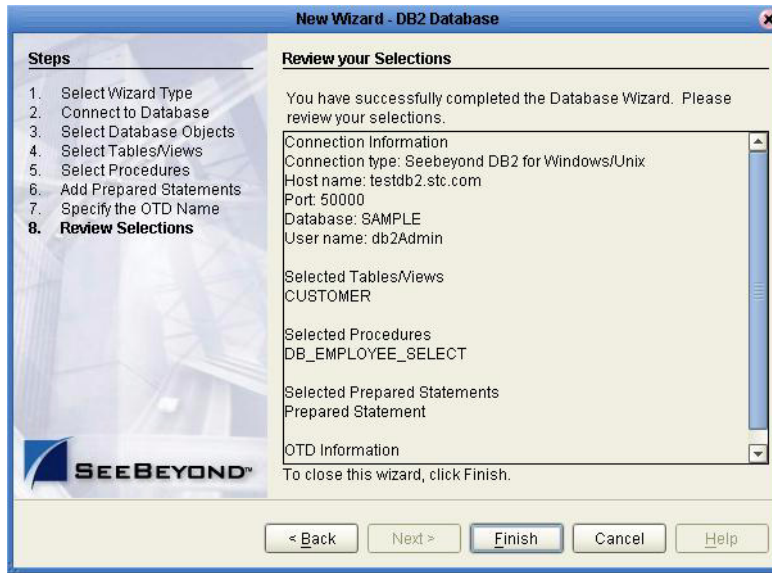
- 1 Enter a name for the OTD. The OTD contains the selected tables and the package name of the generated classes. See [Figure 20](#).

Figure 20 Naming an OTD



- 2 View the summary of the OTD. Click **Back** to review previous screens, or click **Finish** to begin generating the OTD. See [Figure 21](#).

Figure 21 Database Wizard - Summary



The resulting OTD appears on the Enterprise Designer's canvas.

Implementing the DB2 eWay

This chapter discusses how to build a DB2 eWay project in a production environment.

What's in This Chapter:

- [eInsight Engine and eGate Components](#) on page 42
- [Using the Sample Project in eInsight](#) on page 42
- [Using the Sample Project in eGate](#) on page 53
- [Common DataType Conversions](#) on page 56
- [Using OTDs with Tables, Views, Stored Procedures, and Prepared Statements](#) on page 58
- [Alerting and Logging](#) on page 74

5.1 eInsight Engine and eGate Components

You can deploy an eGate component as an Activity in an eInsight Business Process. Once you have associated the desired component with an Activity, the eInsight engine can invoke it using a Web Services interface. Examples of eGate components that can interface with eInsight in this way are:

- Java Messaging Service (JMS)
- Object Type Definitions (OTDs)
- An eWay
- Collaborations

Note: For inbound BPEL Collaborations, use an eGate Scheduler. For more information on Schedulers see “eGate Integrator for eInsight Enterprise Service Bus Users Guide.”

5.2 Using the Sample Project in eInsight

To begin using the sample eInsight Business Process project, you must import the project and view it from within the Enterprise Designer using the Enterprise Designer

Project Import utility. Import the **DB2_sampleBPEL.zip** file contained in the eWay sample folder on the installation CD-ROM.

Note: *eInsight is a Business Process modeling tool. If you have not purchased eInsight, contact your sales representative for information on how to do so.*

Before recreating the sample Business Process, review the *eInsight Business Process Manager User's Guide* and the *eGate Integrator Tutorial*.

Importing the Sample Project

- 1 From Enterprise Designer's Project Explorer pane, right-click the Repository and select **Import**.
- 2 In the Import Manager window, browse to the directory that contains the sample Project zip files.

Sample Projects are contained within the zip file **DB2_eWay_Sample**, which is downloaded from the Repository to a folder of your choosing, (see [Installing the eWay](#) on page 10). Once downloaded, unzip the file and extract the following sample Projects:

- ♦ DB2_sampleBPEL.zip
- ♦ DB2_sampleJCE.zip

- 3 Select a sample Project zip file and click **Import**.
- 4 After importing the file, click **OK** on the Import Status window. You can now import another zip file, or click **Close** to exit the Import Manager window.

The Business Process

The data used for this sample project is contained within a table called DBEmployee. The table has the following columns:

Table 2 Sample Project Data

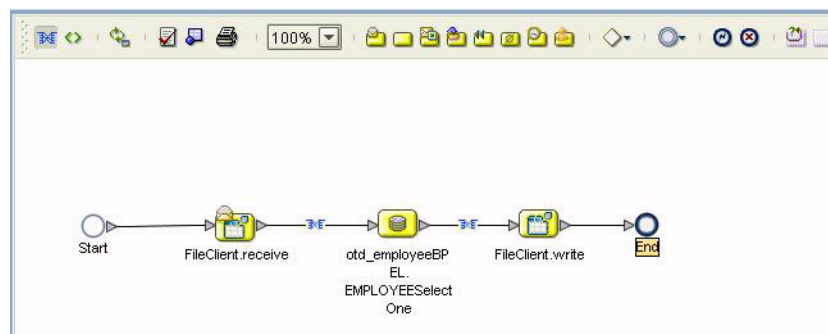
Column Name	Mapping	Data Type	Data Length
EMPNO	EMPNO	char	6
FIRSTNME	FIRSTNME	varchar	12
MIDINIT	MIDINIT	char	1
LASTNAME	LASTNAME	varchar	15
WORKDEPT	WORKDEPT	char	3
PHONENO	PHONENO	char	4
HIREDATE	HIREDATE	date	4
JOB	JOB	char	8
EDLEVEL	EDLEVEL	smallint	2
SEX	SEX	char	1
BIRTHDATE	BIRTHDATE	date	4

Column Name	Mapping	Data Type	Data Length
SALARY	SALARY	decimal	9
BONUS	BONUS	decimal	9
COMM	COMM	decimal	9

The sample project consists of an input file containing data that is passed into a database collaboration, and then written out to an output file

Note: Refer to the *eInsight Business Process Manager User's Guide* for specific information on how to create and use a Business Process.

Figure 22 Sample Project Business Process



You can associate an eInsight Business Process Activity with the eWay, both during the system design phase and during run time. To make this association, select the desired **receive** or **write** operation under the eWay in the Enterprise Explorer and drag it onto the eInsight Business Process canvas. The following operations are available:

- SelectAll
- SelectMultiple
- SelectOne
- Insert
- Update
- Delete

The operation automatically changes to an Activity with an icon identifying the component that is the basis for the Activity.

At run time, the eInsight engine invokes each step in the order that you defined in the Business Process. Using the engine's Web Services interface, the Activity in turn invokes the DB2 eWay. You can open a file specified in the eWay and view its contents before and after the Business Process is executed.

The table below shows the inputs and outputs to each of these eInsight operations:

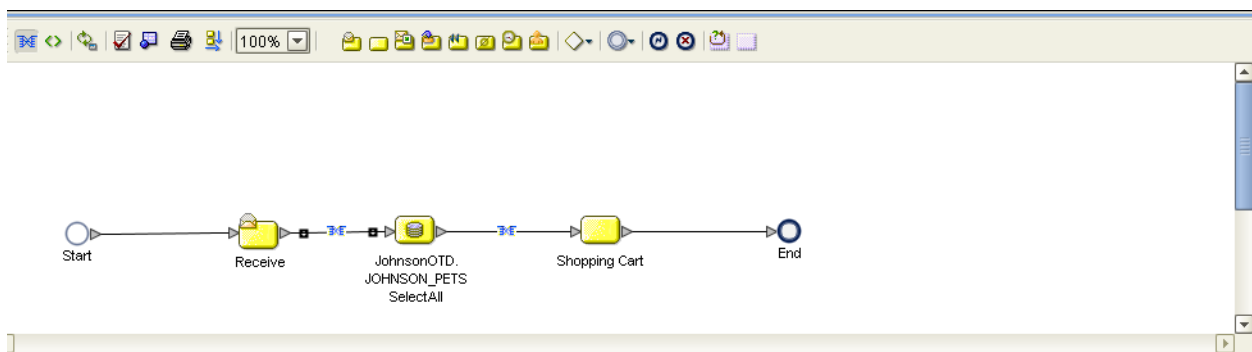
eInsight Operation	Input	Output
SelectAll	where() clause (optional)	Returns all rows that fit the condition of the where() clause
SelectMultiple	number of rows where() clause. Optional	Returns the number of rows specified that fit the condition of the where() clause
SelectOne	number of rows where() clause. Optional	Returns the first row that fits the condition of the where() clause
Insert	definition of new item to be inserted	Returns status.
Update	where() clause	Returns status.
Delete	where() clause	Returns status.

5.2.1 SelectAll

The input to a SelectAll operation is an optional where() clause. The where() clause defines to which criteria rows must adhere to be returned. In the SelectAll operation, all items that fit the criteria are returned. If the where() clause is not specified, all rows are returned.

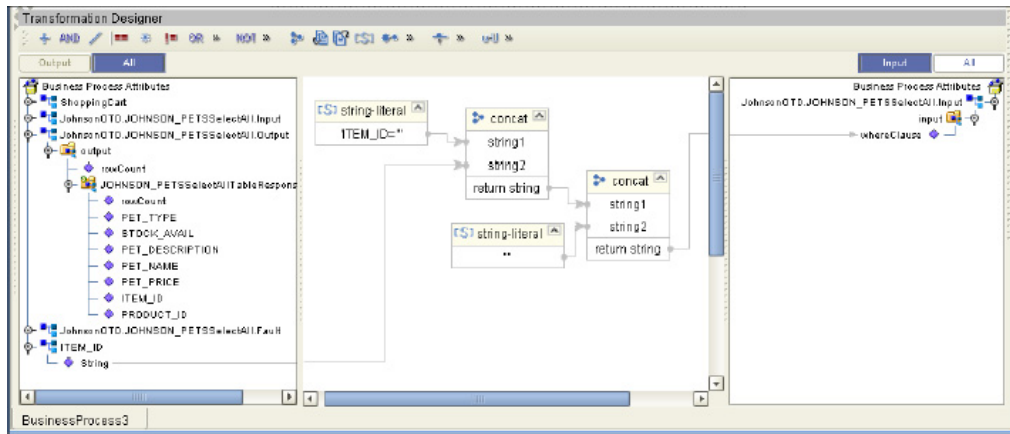
The figure below shows a sample eInsight Business Process using the SelectAll operation. In this process, the SelectAll operation returns all rows where the ITEM_ID matches the selected ITEM_ID to the shopping cart.

Figure 23 SelectAll Sample Business Process



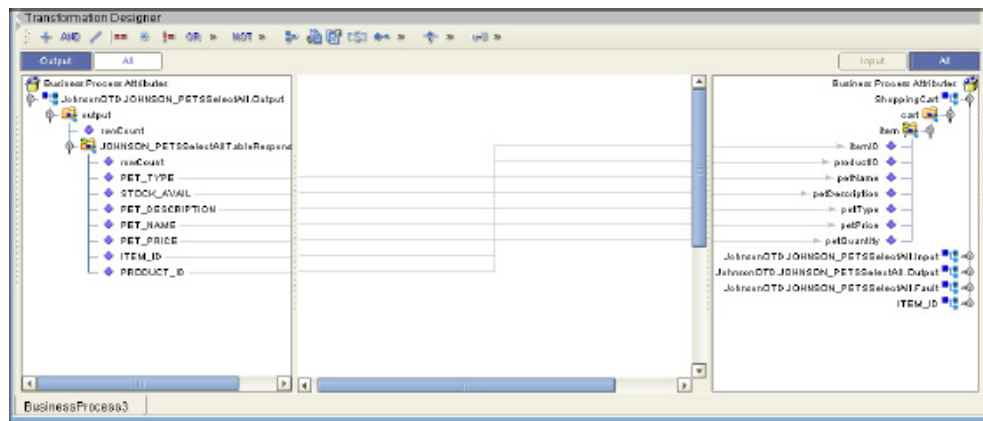
The figure below shows the definition of the where() clause for the SelectAll operation.

Figure 24 SelectAll Input



The figure below shows the definition of the output for the SelectAll operation. For each row selected during the operation, the shopping cart shows the columns of those rows as defined here.

Figure 25 SelectAll Output

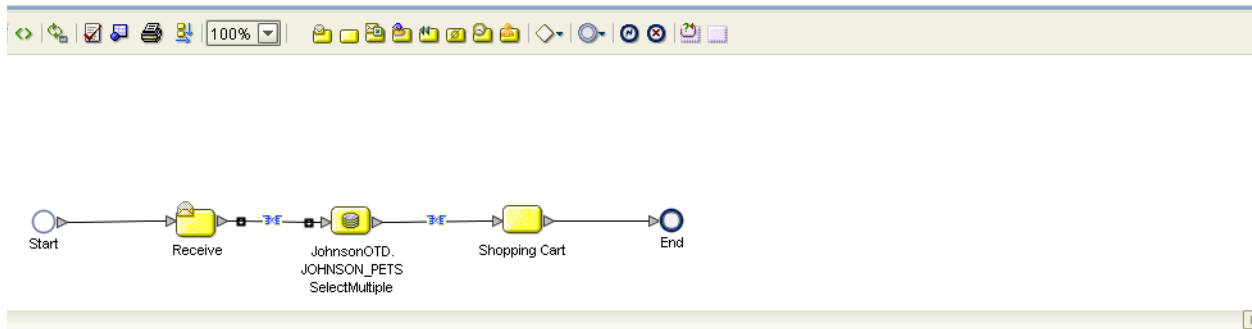


5.2.2 SelectMultiple

The input to a SelectMultiple operation is the number of rows to be selected and a where() clause. The number of rows indicates how many rows the SelectMultiple operation returns. The where() clause defines to which criteria rows must adhere to be returned.

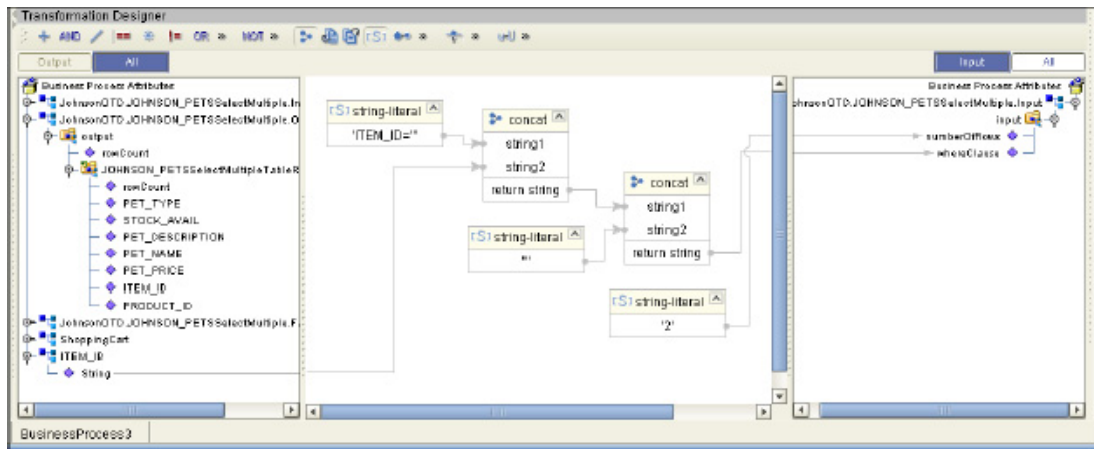
The figure below shows a sample eInsight Business Process using the SelectMultiple operation. In this process, the SelectMultiple operation returns the first two rows where the ITEM_ID matches the selected ITEM_ID to the shopping cart.

Figure 26 SelectMultiple Sample Business Process



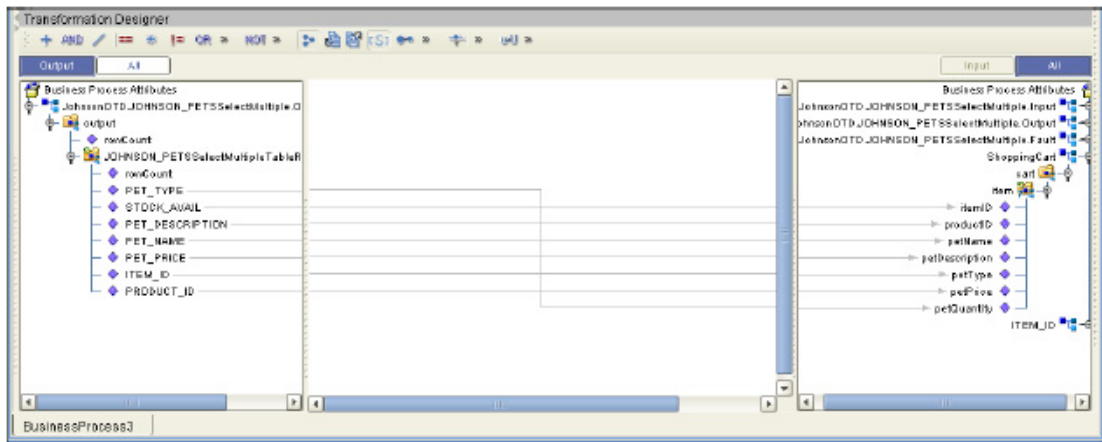
The figure below shows the definition of the number of rows and where() clause into the input for the SelectMultiple operation. You could also use an empty string or Item_ID='123'.

Figure 27 SelectMultiple Input



The figure below shows the definition of the output for the SelectMultiple operation. For each row selected during the operation, the shopping cart shows the columns of those rows as defined here.

Figure 28 SelectMultiple Output

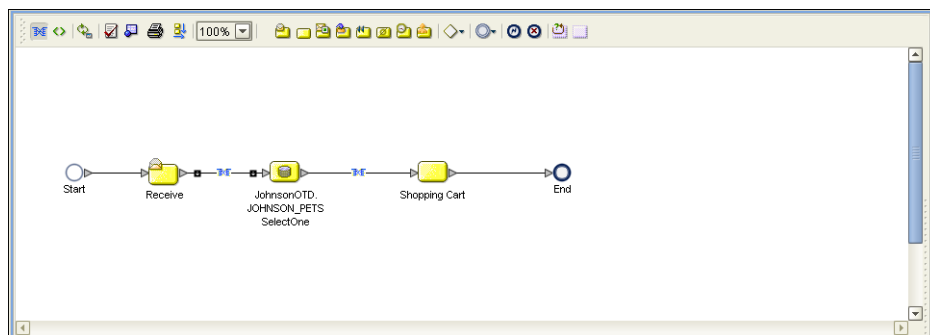


5.2.3 SelectOne

The input to a SelectOne operation is a where() clause. The where() clause defines to which criteria rows must adhere to be selected for the operation. In the SelectOne operation, the first row that fits the criteria is returned.

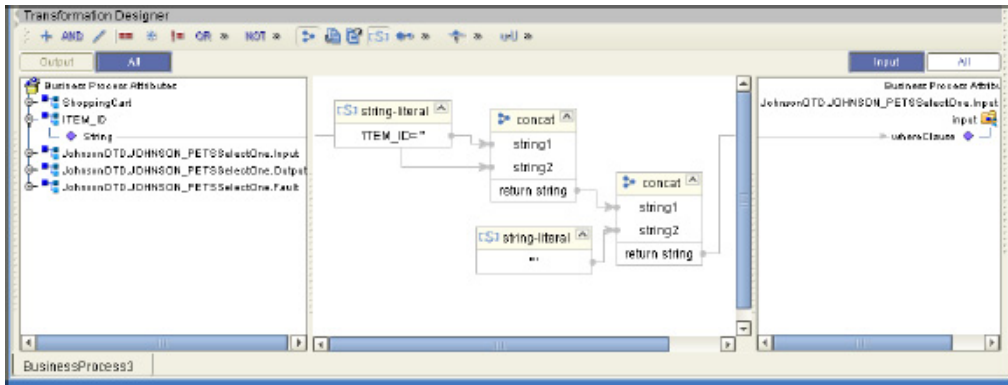
The figure below shows a sample eInsight Business Process using the SelectOne operation. In this process, the SelectOne operation returns the first row where the ITEM_ID matches the specified ITEM_ID to the shopping cart.

Figure 29 SelectOne Sample Business Process



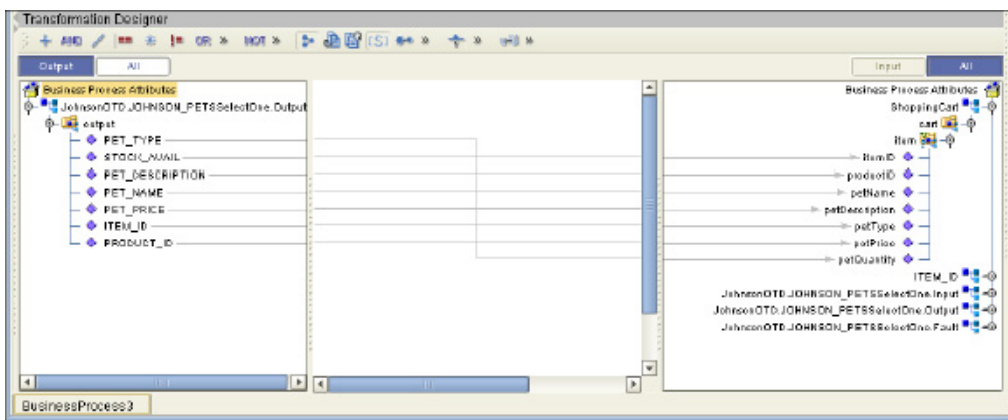
The figure below shows the definition of the where() clause for the SelectOne operation.

Figure 30 SelectOne Input



The figure below shows the definition of the output for the SelectOne operation. For the first row selected during the operation, the shopping cart shows the columns of that row as defined here.

Figure 31 SelectOne Output

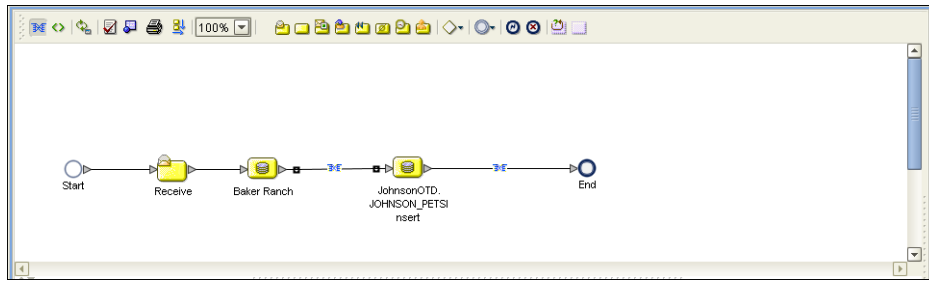


5.2.4 Insert

The Insert operation inserts a row. The input to an Insert operation is a where() clause. The where() clause defines to which criteria rows must adhere to be selected for the operation. In the Insert operation, the first row that fits the criteria is returned.

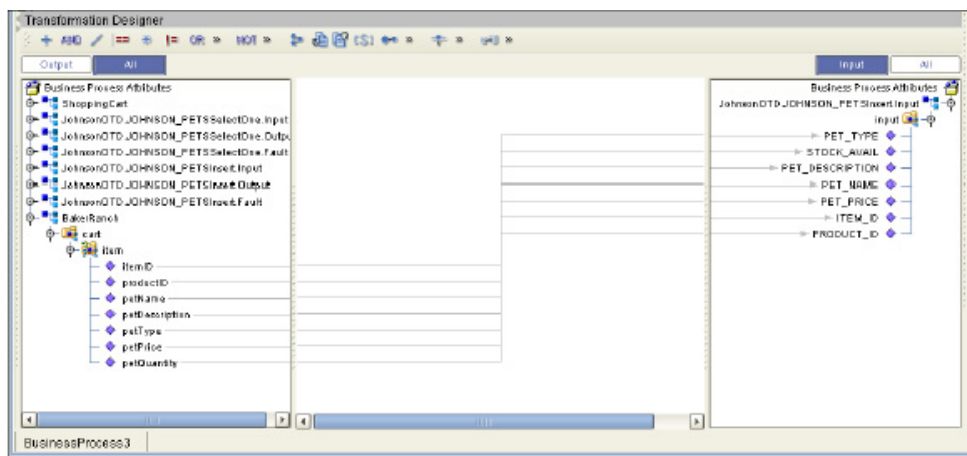
The figure below shows a sample eInsight Business Process using the Insert operation. In this process, the operation inserts a new row into the database to accommodate a new item provided by a vendor.

Figure 32 Insert Sample Business Process



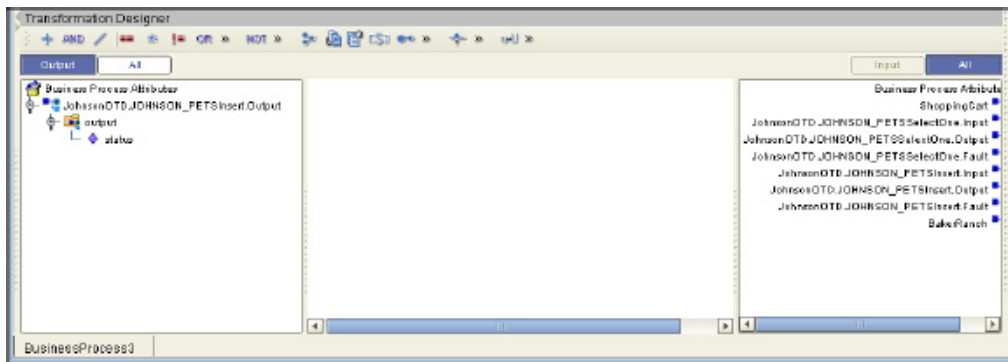
The figure below shows the definition of the input for the Insert operation.

Figure 33 Insert Input



The figure below shows the output of the Insert operation, which is a status indicating the number of rows created.

Figure 34 Insert Output

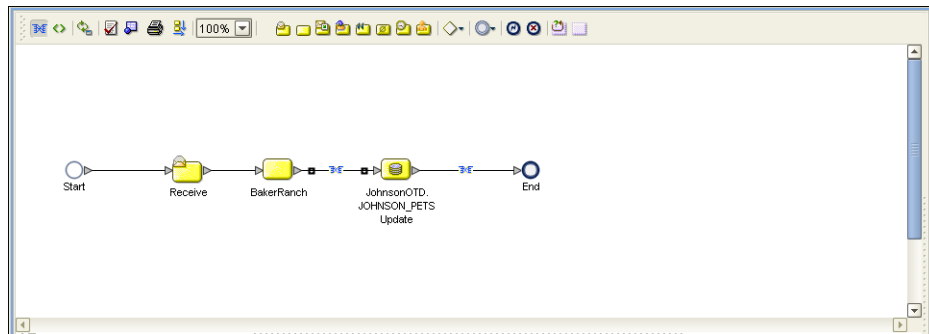


5.2.5 Update

The Update operation updates rows that fit certain criteria defined in a where() clause.

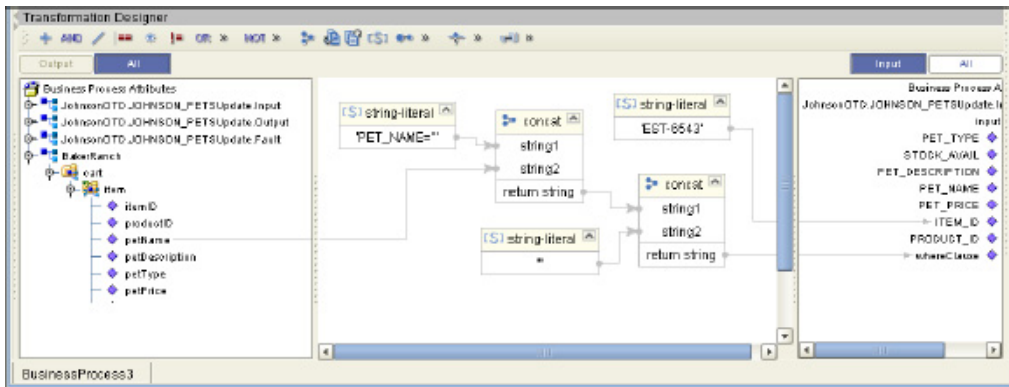
The figure below shows a sample eInsight Business Process using the Update operation. In this process, the operation updates the ITEM_ID for all items with a certain name to ESR_6543.

Figure 35 Update Sample Business Process



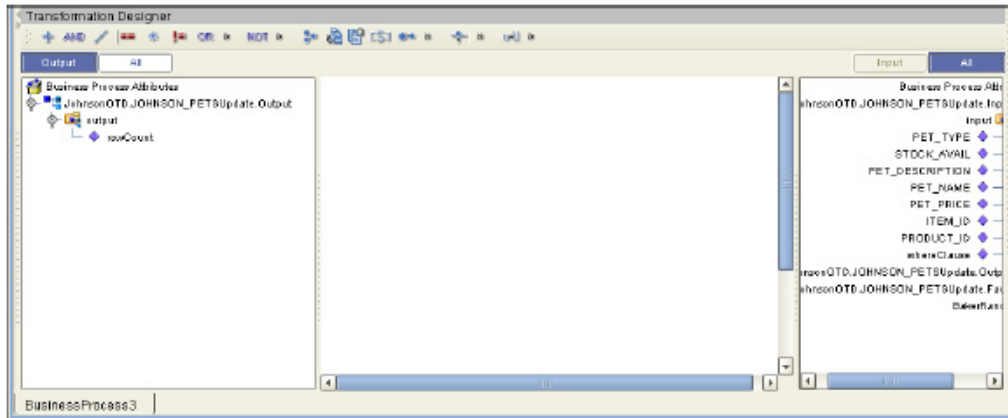
The figure below shows the definition of the where() clause for the Update operation.

Figure 36 Update Input



The figure below shows the output of the Update operation, which is a status indicating the number of rows updated.

Figure 37 Update Output



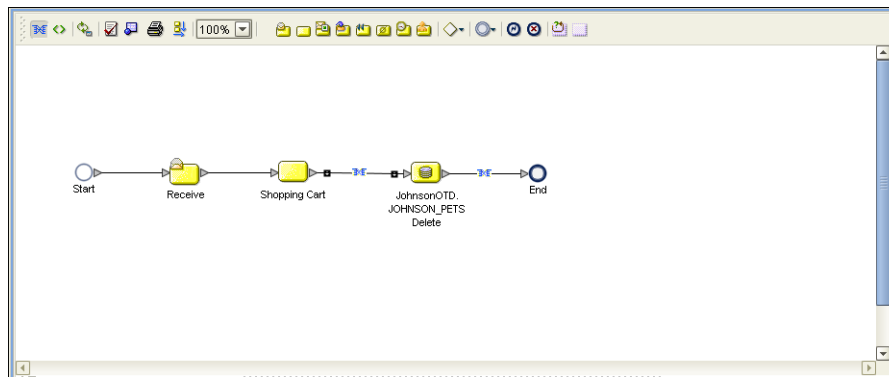
5.2.6 Delete

The Delete operation deletes rows that match the criteria defined in a where() clause. The output is a status of how many rows were deleted.

The figure below shows a sample eInsight Business Process using the Delete operation. In this process, the operation deletes rows with a certain product ID from the shopping cart.

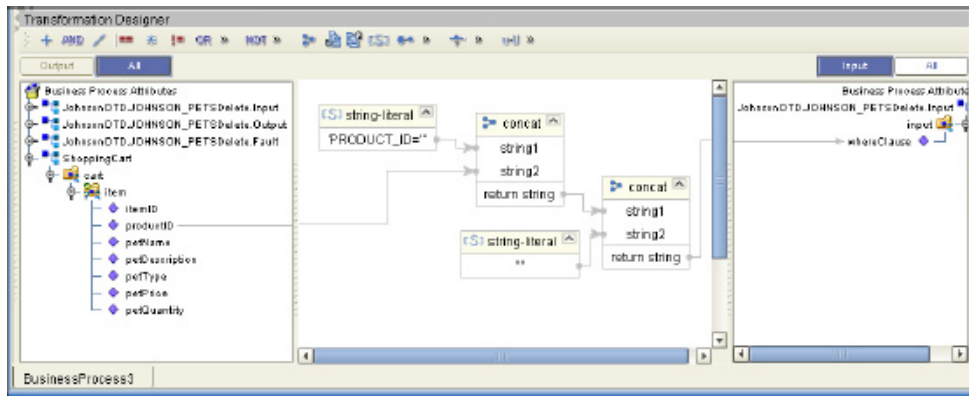
Note: If a where() clause is not defined, all rows will be deleted.

Figure 38 Delete Sample Business Process



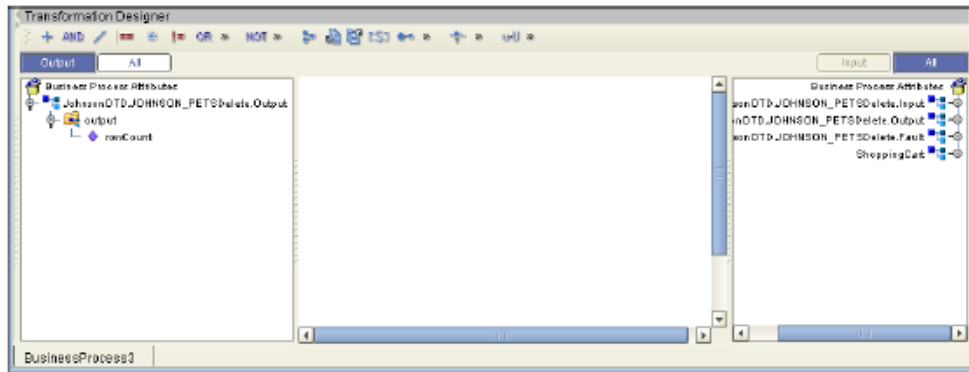
The figure below shows the definition of the where() clause for the Delete operation.

Figure 39 Delete Input



The figure below shows the output of the Delete operation, which is a status indicating the number of rows deleted.

Figure 40 Delete Output



5.3 Using the Sample Project in eGate

To import the sample project **DB_sampleJCE.zip** follow the instructions given in [Importing the Sample Project](#) on page 43.

5.3.1. Working with the Sample Project in eGate

This sample project selects columns from the table **DBEmployee** and publishes the record to an output file.

The data used for this projects is within a table called **DBEmployee**. The table contains the following columns:

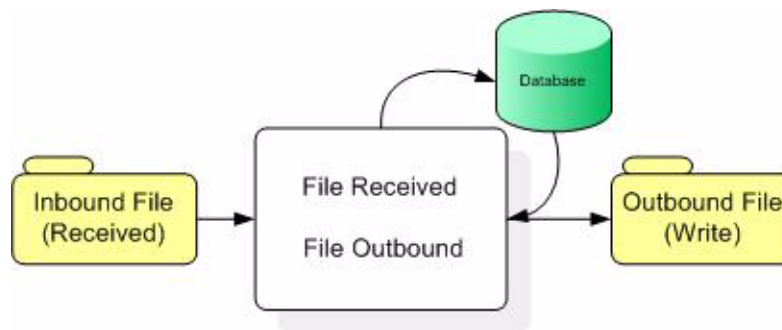
Table 3 Sample Project Data

Column Name	Mapping	Data Type	Data Length
EMPNO	EMPNO	char	6

Column Name	Mapping	Data Type	Data Length
FIRSTNME	FIRSTNME	varchar	12
MIDINIT	MIDINIT	char	1
LASTNAME	LASTNAME	varchar	15
WORKDEPT	WORKDEPT	char	3
PHONENO	PHONENO	char	4
HIREDATE	HIREDATE	date	4
JOB	JOB	char	8
EDLEVEL	EDLEVEL	smallint	2
SEX	SEX	char	1
BIRTHDATE	BIRTHDATE	date	4
SALARY	SALARY	decimal	9
BONUS	BONUS	decimal	9
COMM	COMM	decimal	9

The sample project consists of an input file containing data that is passed into a collaboration and out to the database from which data is retrieved and passed back into the collaboration and then to an output file.

Figure 41 Database project flow



To work with the sample project, follow the instructions given in the *eGate Integrator Tutorial*.

5.3.2. Configuring the eWays

The sample uses an inbound and an outbound File eWay as well as an outbound DB2 eWay. To configure the sample projects eWays, use the following information. For additional information on the DB2 properties, see [Properties of DB2 eWay on Windows or Unix Operating Systems](#) on page 13.

To configure the Inbound File eWay:

- 1 On the Connectivity Map canvas, double click the eWay icon located between the **File1** and **Service1**.
- 2 On the resulting **Templates** window, select **Inbound File eWay** and click **OK**.
- 3 On the **Properties** window, enter the appropriate configurations for the Inbound File eWay. See the *File eWay User's Guide* for information on how to specifically configure the File eWay. For this sample, the default settings are used.
- 4 When you have completed your selections, click **OK**.

To configure the DB2 eWay:

- 1 On the Connectivity Map canvas, double click the eWay icon located between the **Service1** and **DB2** database.
- 2 On the resulting **Templates** window, select the required Outbound or Inbound DB2 connection, and click **OK**.
- 3 On the **Properties** window, enter the appropriate configurations for the Outbound DB2 eWay and click **OK**. See [Properties of DB2 eWay on Windows or Unix Operating Systems](#) on page 13. For this sample, the default settings are used.
- 4 When you have completed your selections, click **OK**.

To configure the Outbound File eWay:

- 1 On the Connectivity Map canvas, double click the eWay icon located between **Service1** and **File2** eWay.
- 2 On the resulting **Templates** window, select **Outbound File eWay** and click **OK**.
- 3 On the **Properties** window, enter the appropriate configurations for the Outbound File eWay. See the *File eWay User's Guide* for information on how to specifically configure the File eWay. For this sample, change the Directory field to **<valid path to the directory where the output file is stored>**. The Output File Name to **Output1.dat**. For the remaining parameters, the default settings are used.
- 4 When you have completed your selections, click **OK**.

5.3.3. Creating an External Environment

To review the components of the Sample project, there is an Inbound and an Outbound File eWay, an Inbound and an Outbound DB2 eWay, and a Service.

To create the external environment for the Sample project:

- 5 On the Environment Explorer, highlight and right-click the DB2 profile. Select **Properties**. Enter the configuration information required for your Outbound or Inbound DB2 eWay. See [Properties of DB2 eWay on Windows or Unix Operating Systems](#) on page 13.

5.3.4 Deploying a Project

To deploy a project, please see the *"eGate Integrators User's Guide"*.

5.3.5. Running the Sample

For instruction on how to run the Sample project, see the *eGate Integrator Tutorial*.

Once the process has completed, the Output file in the target directory, configured in the Outbound File eWay, will contain all records retrieved from the database.

5.4 Common Data Type Conversions

Table 4 The DB2 eWay Insert or Update Operations for Text/String Input Data

DB2 Data Type	OTD/Java Data Type	Java Method or New Constructor to Use (Default: Java Method)	Sample Data
Int	Int	Integer java.lang.Integer.parseInt(String)	123
Smallint	BigDecimal	Call a New Constructor BigDecimal: java.math.BigDecimal(String)	123
Number	BigDecimal	Call a New Constructor BigDecimal: java.math.BigDecimal(String)	123
Decimal	BigDecimal	Call a New Constructor BigDecimal: java.math.BigDecimal(String)	123
BigInteger	Long	Long: java.lang.Long.parseLong(String)	123
Short	Short	Short: java.lang.Short.parseShort(String)	123
Real	Float	Float: java.lang.Float.parseFloat(String)	2454.56
Float	Double	Double: java.sql.Double.parseDouble(String)	2454.56
Double	Double	Double: java.sql.Double.parseDouble(String)	2454.56
Timestamp	Timestamp	TimeStamp: java.sql.TimeStamp.valueOf(String)	2003-09-04 23:55:59
Time	Time	Time: java.sql.Time.valueOf(String)	11:15:33

DB2 Data Type	OTD/Java Data Type	Java Method or New Constructor to Use (Default: Java Method)	Sample Data
Date	Date	Date: java.sql.Date.valueOf(String)	2003-09-04
Varchar2	String	Direct Assign	Any character
Char	String	Direct Assign	Any character

Table 5 The DB2 eWay Select Operations for Text/String Output Data

DB2 Data Type	OTD/Java Data Type	Java Method or New Constructor to Use (Default: Java Method)	Sample Data
Int	Integer	Integer java.lang.Integer.toString(Int)	123
Smallint	BigDecimal	BigDecimal: java.math.BigDecimal.toString()	123
Number	BigDecimal	BigDecimal: java.math.BigDecimal.toString()	123
Decimal	BigDecimal	BigDecimal: java.math.BigDecimal.toString()	123
Short	Short	Short: java.lang.Short.toString(short)	123
Real	Float	Float: java.lang.Float.toString(Float)	2454.56
Float	Double	Double: java.sql.Double.parseDouble(String)	2454.56
Double	Double	Double: java.sql.Double.parseDouble(String)	2454.56
Timestamp	Timestamp	TimeStamp: java.sql.Timestamp.toString()	2003-09-04 23:55:59
Time	Time	Time: java.sql.Time.toString()	11:15:33
Date	TimeStamp	Date: java.sql.Date.toString()	2003-09-04
Varchar2	String	Direct Assign	Any character
Char	String	Direct Assign	Any character

5.5 Using OTDs with Tables, Views, Stored Procedures, and Prepared Statements

Tables, Views, Stored Procedures, and Prepared Statements are manipulated through OTDs. Common operations include insert, delete, update, and query.

5.5.1 The Table

A table OTD represents a database table. It consists of fields and methods. Fields correspond to the columns of a table while methods are the operations that you can apply to the OTD. This allows you to perform query, update, insert, and delete SQL operations in a table.

By default, the Table OTD has `UpdatableConcurrency` and `ScrollTypeForwardOnly`. The type of result returned by the `select()` method can be specified using:

- `SetConcurrencytoUpdatable`
- `SetConcurrencytoReadOnly`
- `SetScrollTypetoForwardOnly`
- `SetScrollTypetoScrollSensitive`
- `SetScrollTypetoInsensitive`

The methods should be called before executing the `select()` method. For example,

```
getDBEmp().setConcurToUpdatable();  
getDBEmp().setScroll_TypeToScrollSensitive();  
getDBEmp().getDB_EMPLOYEE().select("");
```

The Query Operation

To perform a query operation on a table

- 1 Execute the `select()` method with the “**where**” clause specified if necessary.
- 2 Loop through the `ResultSet` using the `next()` method.
- 3 Process the return record within a `while()` loop.

For example:

```
package SelectSales;  
  
public class Select  
{  
  
    public com.stc.codegen.logger.Logger logger;  
  
    public com.stc.codegen.alerter.Alerter alerter;  
  
    public void receive(  
        com.stc.connector.appconn.file.FileTextMessage  
        input, com.stc.connector.appconn.file.FileApplication  
        FileClient_1, db_employee.Db_employeeOTD  
        db_employee_1, employeedb.Db_employee employeedb_db_employee_1 )
```

```
throws Throwable
{
    //@map:Db_employee.select(Text)
    db_employee_1.getDb_employee().select( input.getText() );

    //@while
    while (db_employee_1.getDb_employee().next()) {
        //@map:Copy EMP_NO to Employee_no
        employeeedb_db_employee_1.setEmployee_no(
        java.lang.Integer.toString(
        db_employee_1.getDb_employee().getEMP_NO() ) );

        //@map:Copy LAST_NAME to Employee_lname
        employeeedb_db_employee_1.setEmployee_lname(
        db_employee_1.getDb_employee().getLAST_NAME() );

        //@map:Copy FIRST_NAME to Employee_fname
        employeeedb_db_employee_1.setEmployee_fname(
        db_employee_1.getDb_employee().getFIRST_NAME() );

        //@map:Copy RATE to Rate
        employeeedb_db_employee_1.setRate(
        java.lang.Double.toString(
        db_employee_1.getDb_employee().getRATE() ) );

        //@map:Copy LAST_UPDATE to Update_date
        employeeedb_db_employee_1.setUpdate_date(
        db_employee_1.getDb_employee().getLAST_UPDATE().toString() );
    }
    //@map:Copy employeeedb_db_employee_1.marshallToString to
    Text
    FileClient_1.setText(
    employeeedb_db_employee_1.marshallToString() );

    //@map:FileClient_1.write
    FileClient_1.write();
}
}
```

The Insert Operation

To perform an insert operation on a table

- 1 Execute the **insert()** method. Assign a field.
- 2 Insert the row by calling **insertRow()**

This example inserts an employee record.

```
//DB_EMPLOYEE.insert
Table_OTD_1.getDB_EMPLOYEE().insert();

//Copy EMP_NO to EMP_NO
insert_DB_1.getInsert_new_employee().setEmployee_no(
java.lang.Integer.parseInt(
employeeedb_with_top_db_employee_1.getEmployee_no() ) );

//@map:Copy Employee_lname to Employee_Lname
insert_DB_1.getInsert_new_employee().setEmployee_Lname(
employeeedb_with_top_db_employee_1.getEmployee_lname() );

//@map:Copy Employee_fname to Employee_Fname
insert_DB_1.getInsert_new_employee().setEmployee_Fname(
employeeedb_with_top_db_employee_1.getEmployee_fname() );
```

```
//@map:Copy java.lang.Float.parseFloat(Rate) to Rate
insert_DB_1.getInsert_new_employee().setRate(
    java.lang.Float.parseFloat(
        employeedb_with_top_db_employee_1.getRate() ) );

//@map:Copy java.sql.Timestamp.valueOf(Update_date) to Update_date
insert_DB_1.getInsert_new_employee().setUpdate_date(
    java.sql.Timestamp.valueOf(
        employeedb_with_top_db_employee_1.getUpdate_date() ) );
Table_OTD_1.getDB_EMPLOYEE().insertRow();

//Table_OTD_1.commit
Table_OTD_1.commit();
}
```

The Update Operation

To perform an update operation on a table

- 1 Execute the **update()** method.
- 2 Using a while loop together with **next()**, move to the row that you want to update.
- 3 Assign updating value(s) to the fields of the table OTD
- 4 Update the row by calling **updateRow()**.

```
//SalesOrders_with_top_SalesOrders_1.unmarshalFromString(Text)
SalesOrders_with_top_SalesOrders_1.unmarshalFromString(
    input.getText() );

//SALES_ORDERS.update("SO_num =99")
DB_sales_orders_1.getSALES_ORDERS().update( "SO_num ='01'" );

//while
while (DB_sales_orders_1.getSALES_ORDERS().next()) {

//Copy SalesOrderNum to SO_num
DB_sales_orders_1.getSALES_ORDERS().setSO_num(
    SalesOrders_with_top_SalesOrders_1.getSalesOrderNum() );

//Copy CustomerName to Cust_name
DB_sales_orders_1.getSALES_ORDERS().setCust_name(
    SalesOrders_with_top_SalesOrders_1.getCustomerName() );

//Copy CustomerPhone to Cust_phone
DB_sales_orders_1.getSALES_ORDERS().setCust_phone(
    SalesOrders_with_top_SalesOrders_1.getCustomerPhone() );

//SALES_ORDERS.updateRow
DB_sales_orders_1.getSALES_ORDERS().updateRow();
}
//DB_sales_orders_1.commit
DB_sales_orders_1.commit();

//Copy "Update completed" to Text
FileClient_1.setText( "Update completed" );

//FileClient_1.write
FileClient_1.write();
}
```

The Delete Operation

To perform a delete operation on a table

- 1 Execute the **delete()** method.

In this example DELETE an employee.

```
//DB_EMPLOYEE.delete("EMP_NO = '".concat(EMP_NO).concat("'")  
Table_OTD_1.getDB_EMPLOYEE().delete( "EMP_NO = '".concat(  
employeeDb_with_top_db_employee_1.getEMP_NO() ).concat( "' " ) );  
}
```

5.5.2. Using Clobs

A Clob (Character Large Object) is a LOB datatype that has content consisting of character data in the database character set. The following describes how to Insert, Update, and Select Clobs using:

- Table OTD
- Prepared Statement OTD
- Procedure OTD

Inserting a Clob using a Table OTD

To Insert a Clob using a Table OTD, you must:

- 1 Invoke "Select" to get the ResultSet.

```
//@map:TEST.select("")  
TESTCLOB_1.getTEST().select( "" );
```

- 2 Move to a new row (to be inserted).

```
//@map:TEST.moveToInsertRow  
TESTCLOB_1.getTEST().moveToInsertRow();
```

- 3 Set the values to the CLOB field.

```
//@map:Copy Text(java.lang.String) to TEXT  
TESTCLOB_1.getTEST().setText( input.getText() );
```

- 4 Insert the row.

```
//@map:TEST.insertRow  
TESTCLOB_1.getTEST().insertRow();
```

The Complete JCE Code Appears as:

```
public class TESTCLOB_JCE  
{  
    public com.stc.codegen.logger.Logger logger;  
    public com.stc.codegen.alerter.Alerter alerter;  
  
    public void receive(  
com.stc.connector.appconn.file.FileTextMessage  
input, tESTCLOB.TESTCLOBOTD TESTCLOB_1 )  
throws Throwable  
    {  
        //@map:TEST.select("")
```

```

TESTCLOB_1.getTEST().select( "" );

//@map:TEST.moveToInsertRow
TESTCLOB_1.getTEST().moveToInsertRow();

//@map:Copy Text to TEXT
TESTCLOB_1.getTEST().setText( input.getText() );

//@map:TEST.insertRow
TESTCLOB_1.getTEST().insertRow();
}
}

```

Inserting a Clob using a Prepared Statement OTD

To Insert a Clob using a Prepared Statement OTD, you must:

- 1 Set the values to the Prepared Statement parameter.

```

//@map:Copy Text (java.lang.String) to Param1 (Clob Column)
InsertClobPrepStat_1.getInsertClobPrepStat().setParam1(
input.getText() );

```

- 2 Execute the Prepared Statement

```

//@map:InsertClobPrepStat.executeUpdate
InsertClobPrepStat_1.getInsertClobPrepStat().executeUpdate();

```

The Complete JCE Code Appears as:

```

public class CLOB_PREPSTAT_JCE
{
    public com.stc.codegen.logger.Logger logger;
    public com.stc.codegen.alerter.Alerter alerter;

    public void receive(
com.stc.connector.appconn.file.FileTextMessage
        input,insertClobPrepStat.InsertClobPrepStatOTD
InsertClobPrepStat_1 )
        throws Throwable
    {
        //@map:Copy Text to Param1
        InsertClobPrepStat_1.getInsertClobPrepStat().setParam1(
input.getText() );

        //@map:InsertClobPrepStat.executeUpdate
        InsertClobPrepStat_1.getInsertClobPrepStat().executeUpdate();
    }
}

```

Inserting a Clob using a Stored Procedure OTD

To Insert a Clob using a Stored Procedure OTD, you must:

- 1 Set the values to the Stored Procedure OTD arguments.

```

//@map:Copy Text to CLOBVALUE
TEST_CLOB_STORED_PROC_1.getINSERTCLOB().setCLOBVALUE(
input.getText() );

```

2 Execute the Store procedure.

```
//@map:INSERTCLOB.execute  
TEST_CLOB_STORED_PROC_1.getINSERTCLOB().execute();
```

The Complete JCE Code Appears as:

```
public class TESTCLOB_STOREDPROC  
{  
  
    public com.stc.codegen.logger.Logger logger;  
  
    public com.stc.codegen.alerter.Alerter alerter;  
  
    public void receive(  
com.stc.connector.appconn.file.FileTextMessage  
        input, tEST_CLOB_STORED_PROC.TEST_CLOB_STORED_PROCOTD  
        TEST_CLOB_STORED_PROC_1 )  
        throws Throwable  
    {  
        //@map:Copy Text to CLOBVALUE  
        TEST_CLOB_STORED_PROC_1.getINSERTCLOB().setCLOBVALUE(  
            input.getText() );  
  
        //@map:INSERTCLOB.execute  
        TEST_CLOB_STORED_PROC_1.getINSERTCLOB().execute();  
    }  
}
```

Updating a Clob using a Table OTD

To Update a Clob using a Table OTD, you must:

1 Invoke "Select" to get the ResultSet.

```
//@map:TEST.select("")  
TESTCLOB_1.getTEST().select( "" );
```

2 Move to the to-be-updated row.

```
//@map:TEST.next  
TESTCLOB_1.getTEST().next();
```

3 Set the values to the CLOB field.

```
//@map:Copy Text(java.lang.String) to TEXT  
TESTCLOB_1.getTEST().setText( input.getText() );
```

4 Update the row.

```
//@map:TEST.insertRow  
TESTCLOB_1.getTEST().updateRow();
```

The Complete JCE Code Appears as:

```
public class TESTCLOB_JCE  
{  
  
    public com.stc.codegen.logger.Logger logger;  
  
    public com.stc.codegen.alerter.Alerter alerter;  
  
    public void receive(  
com.stc.connector.appconn.file.FileTextMessage  
        input, tESTCLOB.TESTCLOBOTD TESTCLOB_1 )
```

```
throws Throwable
{
    //@map:TEST.select("")
    TESTCLOB_1.getTEST().select( "" );

    //@map:TEST.next
    TESTCLOB_1.getTEST().next();

    //@map:Copy Text to TEXT
    TESTCLOB_1.getTEST().setText( input.getText() );

    //@map:TEST.insertRow
    TESTCLOB_1.getTEST().updateRow();
}
}
```

Updating a CLOB using a Stored Procedure or Prepared Statement OTD

Updating a CLOB using a Stored Procedure or Prepared Statement is similar to the procedures for Inserting a CLOB. For more information, see [“Inserting a Clob using a Prepared Statement OTD” on page 62](#) and [“Inserting a Clob using a Stored Procedure OTD” on page 62](#).

Selecting a Clob using a Table OTD

To Select a Clob using a Table OTD, you must:

- 1 Select desired Rows.

```
//@map:TEST.select("")
TESTCLOB_1.getTEST().select( "" );
```

- 2 Scroll to the desired row.

```
//@map:TEST.next
TESTCLOB_1.getTEST().next();
```

- 3 Declare a variable of type `java.sql.Clob`.

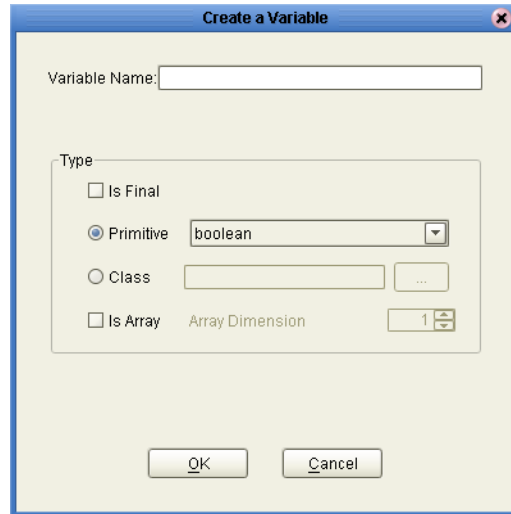
```
//@map:java.sql.Clob clobValue;
java.sql.Clob clobValue;
```

Note: The `getXXX()` method of the OTD returns the Clob as `java.lang.Object`. This needs to be converted to `java.sql.Clob` before fetching the actual value from the Field. A local variable must be declared to facilitate conversion.

To declare a variable of type `java.sql.Clob`, you must first:

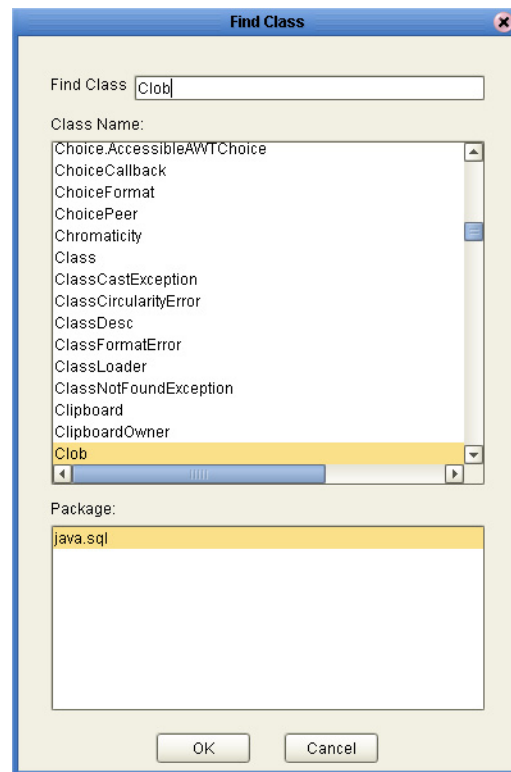
- A Open the **Create a Variable** window, as seen in Figure 42.

Figure 42 Create a Local Variable



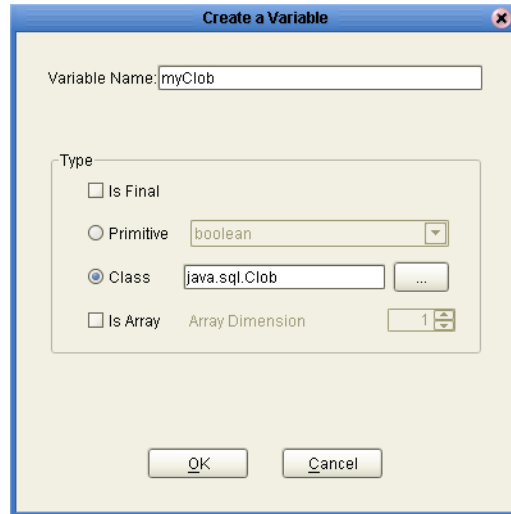
- B** Select the **Class** button and then click the ellipsis (...) button to search for a Class.
- C** In the **Find Class** window, locate the Clob class and click **OK**, as seen in Figure 43.

Figure 43 Find Class window



- D** The java.sql.Clob class appears in the Create a Variable window. Click **OK** to create the new variable, as seen in Figure 44.

Figure 44 Create Local Variable java.sql.Clob



- 4 Convert (cast) and assign the value of the Clob field to the local variable.

```
//@map:Copy cast TEXT (clob field) to java.sql.Clob to clobValue  
clobValue = (java.sql.Clob) TESTCLOB_1.getTEST().getTEXT();
```

Figure 45 displays the Cast window.

Figure 45 Convert using the Cast() Method

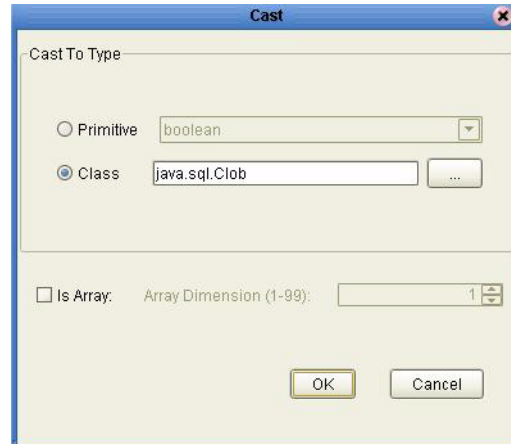
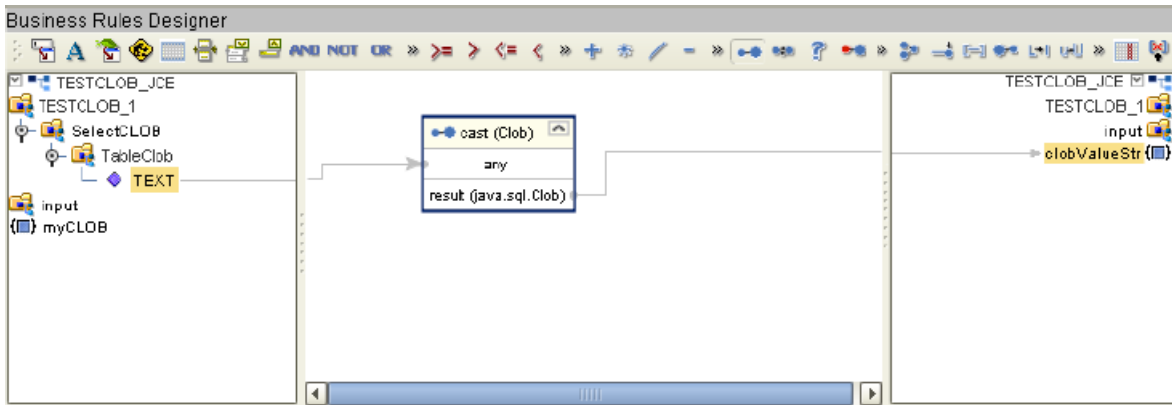


Figure 46 displays assigning the value to the variable.

Figure 46 Assigning to the clobValue Variable



5 Declare the variable of type String.

```
//@map:String clobValueStr;  
String clobValueStr;
```

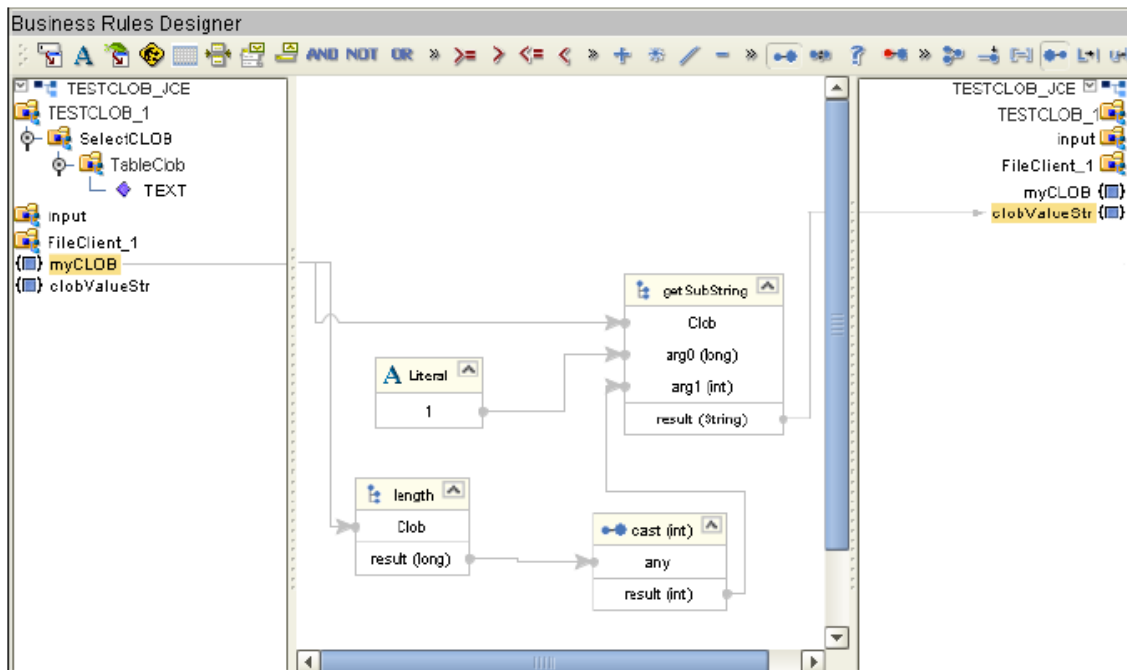
6 Fetch the Clob value to the String variable.

```
//@map:Copy SubString(1 ,cast clobValue.length to int) to  
//clobValueStr  
clobValueStr = clobValue.getSubString( 1,(int)clobValue.length() );
```

Note: When using the Business Rules Designer, you must add the cast prior to adding the length() method.

Figure 47 displays Fetching the Clob value to the String variable.

Figure 47 Copy the Clob Value to a String Variable



The Complete JCE Code Appears as:

```
public class TESTCLOB_JCE
{
    public com.stc.codegen.logger.Logger logger;

    public com.stc.codegen.alerter.Alerter alerter;

    public void receive(
com.stc.connector.appconn.file.FileTextMessage
        input, tTESTCLOB.TESTCLOBOTD TESTCLOB_1 )
    throws Throwable
    {
        //@map:TEST.select("")
        TESTCLOB_1.getTEST().select( "" );

        //@map:TEST.next
        TESTCLOB_1.getTEST().next();

        //@map:java.sql.Clob clobValue;
        java.sql.Clob clobValue;

        //@map:Copy cast TEXT to java.sql.Clob to clobValue
        clobValue = (java.sql.Clob) TESTCLOB_1.getTEST().getText();

        //@map:String clobValueStr;
        String clobValueStr;

        //@map:Copy SubString(1 , cast clobValue.length to
        // int) to clobValueStr
        clobValueStr = clobValue.getSubString( 1, (int)
                                                    clobValue.length() );
    }
}
```

Selecting a Clob using a Prepared Statement

To Select a Clob using a Prepared Statement OTD, you must:

- 1 Execute the query.

```
//@map:SelectClobPrepStat.executeQuery
SelectClobPrepStat_1.getSelectClobPrepStat().executeQuery();
```

- 2 Declare the variable of type java.sql.Clob.

```
//@map:java.sql.Clob clobValue;
java.sql.Clob clobValue;
```

Note: The `getXXX()` method of the OTD resultSet returns the clob as `java.lang.Object`. This needs to be converted to `java.sql.Clob` before fetching the actual value from the Field. A local variable must be declared to facilitate conversion. For additional details, see the figures found in [Selecting a Clob using a Table OTD](#) on page 64.

- 3 Convert (cast) and assign the value of the Clob field to the local variable.

```
//@map:Copy cast TEXT to java.sql.Clob to clobValue
//clobValue = (java.sql.Clob)
SelectClobPrepStat_1.getSelectClobPrepStat().
get$SelectClobPrepStatResults().getText();
```

4 Declare the variable of type String

```
//@map:String clobValueStr;  
String clobValueStr;
```

5 Fetch the clob value to the String variable

```
//@map:Copy SubString(1 ,cast clobValue.length to int) to  
//clobValueStr  
clobValueStr = clobValue.getSubString( 1,(int)  
clobValue.length() );
```

The Complete JCE Code Appears as:

```
public class SELECTCLOB_PREPSTAT_JCE  
{  
  
    public com.stc.codegen.logger.Logger logger;  
  
    public com.stc.codegen.alerter.Alerter alerter;  
  
    public void receive(  
com.stc.connector.appconn.file.FileTextMessage  
        input,selectClobPrepStat.SelectClobPrepStatOTD  
        SelectClobPrepStat_1 )  
throws Throwable  
    {  
        //@map:SelectClobPrepStat.executeQuery  
        SelectClobPrepStat_1.getSelectClobPrepStat().executeQuery();  
  
        //while  
        while  
(SelectClobPrepStat_1.getSelectClobPrepStat().get$SelectClobPrepStatR  
esults().next()) {  
            //@map:java.sql.Clob clobValue;  
            java.sql.Clob clobValue;  
  
            //@map:Copy cast TEXT to java.sql.Clob to clobValue  
            clobValue = (java.sql.Clob)  
SelectClobPrepStat_1.getSelectClobPrepStat().get$SelectClobPrepStatR  
esults().getTEXT();  
  
            //@map:String clobValueStr;  
            String clobValueStr;  
  
            //@map:Copy SubString(1,cast clobValue.length to int) to  
            clobValueStr  
            clobValueStr = clobValue.getSubString( 1,(int)  
            clobValue.length() );  
        }  
    }  
}
```

5.5.3 The Stored Procedure

A Stored Procedure OTD represents a database stored procedure. The OTD allows you to execute a stored procedure, with fields corresponding to the arguments of a stored procedure and methods representing the operations that you can apply. Remember that while in the Collaboration Editor you can drag and drop nodes from the OTD into the Collaboration Editor.

Note: *When creating a Package Stored Procedure in the Database Wizard, you must select Use fully qualified names.*

Note: *Stored Procedure Resultsets are supported in Java collaborations only.*

Executing Stored Procedures

The OTD represents the Stored Procedure “LookUpGlobal” with two parameters, an inbound parameter (INLOCALID) and an outbound parameter (OUTGLOBALPRODUCTID). These inbound and outbound parameters are generated by the Data Base Wizard and are represented in the resulting OTD as nodes. Within the Transformation Designer, you can drag values from the input parameters, execute the call, collect data, and drag the values to the output parameters.

Below are the steps for executing the Stored Procedure:

- 1 Specify the input values.
- 2 Execute the Stored Procedure.
- 3 Retrieve the output parameters if any.

For example:

```
package Storedprocedure;

public class sp_jce
{
    public com.stc.codegen.logger.Logger logger;
    public com.stc.codegen.alerter.Alerter alerter;

    public void receive(
com.stc.connector.appconn.file.FileTextMessage
input, com.stc.connector.appconn.file.FileApplication
FileClient_1, employeedb.Db_employee
employeedb_with_top_db_employee_1, insert_DB.Insert_DBOTD insert_DB_1
)
    throws Throwable
    {
        //@map:employeedb_with_top_db_employee_1.unmarshalFromString(Text)
        employeedb_with_top_db_employee_1.unmarshalFromString(
input.getText() );

        //@map:Copy java.lang.Integer.parseInt(Employee_no) to
Employee_no
        insert_DB_1.getInsert_new_employee().setEmployee_no(
java.lang.Integer.parseInt(
employeedb_with_top_db_employee_1.getEmployee_no() ) );

        //@map:Copy Employee_lname to Employee_Lname
        insert_DB_1.getInsert_new_employee().setEmployee_Lname(
employeedb_with_top_db_employee_1.getEmployee_lname() );

        //@map:Copy Employee_fname to Employee_Fname
        insert_DB_1.getInsert_new_employee().setEmployee_Fname(
employeedb_with_top_db_employee_1.getEmployee_fname() );

        //@map:Copy java.lang.Float.parseFloat(Rate) to Rate
```

```
        insert_DB_1.getInsert_new_employee().setRate(  
java.lang.Float.parseFloat(  
employee_db_with_top_db_employee_1.getRate() ) );  
  
        //@map:Copy java.sql.Timestamp.valueOf(Update_date) to  
Update_date  
        insert_DB_1.getInsert_new_employee().setUpdate_date(  
java.sql.Timestamp.valueOf(  
employee_db_with_top_db_employee_1.getUpdate_date() ) );  
  
        //@map:Insert_new_employee.execute  
insert_DB_1.getInsert_new_employee().execute();  
  
        //@map:insert_DB_1.commit  
insert_DB_1.commit();  
  
        //@map:Copy "procedure executed" to Text  
FileClient_1.setText( "procedure executed" );  
  
        //@map:FileClient_1.write  
FileClient_1.write();  
    }  
}
```

Manipulating the ResultSet and Update Count Returned by Stored Procedure

For Stored Procedures that return ResultSets and Update Count, the following methods are provided to manipulate the ResultSet:

- enableResultSetOnly
- enableUpdateCountsOnly
- enableResultSetandUpdateCounts
- resultsAvailable
- next
- getUpdateCount
- available

DB2 stored procedures do not return records as ResultSets, instead, the records are returned through output reference cursor parameters. Reference Cursor parameters are essentially ResultSets.

The **resultsAvailable()** method, added to the OTD, simplifies the whole process of determining whether any results, be it update Counts or ResultSets, are available after a stored procedure has been executed. Although JDBC provides three methods (**getMoreResults()**, **getUpdateCount()**, and **getResultSet()**) to access the results of a stored procedure call, the information returned from these methods can be quite confusing to the inexperienced Java JDBC programmer and they also differ between vendors. You can simply call **resultsAvailable()** and if Boolean true is returned, you can expect either a valid Update Count when **getUpdateCount()** is called and/or the next ResultSet has been retrieved and made available to one of the ResultSet nodes defined for the Stored Procedure OTD, when that node's **available()** method returns true.

Update Counts information which is returned from Stored Procedures is often insignificant. You should process returned ResultSet information and avoid looping through all of the Update Counts. The following three methods control exactly what information is returned from a stored procedure call. The **enableResultSetsOnly()** method, added to the OTD allows only ResultSets to be returned and thus every **resultsAvailable()** called only returns Boolean true if a ResultSet is available. Likewise, the **enableUpdateCountsOnly()** method causes **resultsAvailable()** to return true only if an Update Count is available. The default case of the **enableResultsetsAndUpdateCount()** method allows both ResultSets and Update Counts to be returned.

Note: Because a Stored Procedure returns a Result set based on the input parameter, the execute method may not detect a result set in certain cases. If this occurs, you must use Manual mode.

Collaboration usability for a Stored Procedure ResultSet

The Column data of the ResultSets can be dragged-and-dropped from their OTD nodes to the Business Rules. Below is a code snippet that can be generated by the Collaboration Editor:

```
// resultsAvailable() true if there's an update count and/or a result
// set available.
// note, it should not be called indiscriminantly because each time
// the results pointer is
// advanced via getMoreResults() call.
while (getSPIn().getSpS_multi().resultsAvailable())
{
    // check if there's an update count
    if (getSPIn().getSpS_multi().getUpdateCount() > 0)
    {
        logger.info("Updated
"+getSPIn().getSpS_multi().getUpdateCount()+" rows");
    }
    // each result set node has an available() method (similar to OTD's)
    // that tells the user
    // whether this particular result set is available. note, JDBC does
    // support access to
    // more than one result set at a time, i.e., cannot drag from 2
    // distinct result sets
    // simultaneously
    if (getSPIn().getSpS_multi().getNormRS().available())
    {
        while (getSPIn().getSpS_multi().getNormRS().next())
        {
            logger.info("Customer Id =
"+getSPIn().getSpS_multi().getNormRS().getCustomerId());
            logger.info("Customer Name =
"+getSPIn().getSpS_multi().getNormRS().getCustomerName());
        }
        if (getSPIn().getSpS_multi().getDbEmployee().available())
        {
            while (getSPIn().getSpS_multi().getDbEmployee().next())
            {
                logger.info("EMPNO =
"+getSPIn().getSpS_multi().getDbEmployee().getEMPNO());
                logger.info("ENAME =
"+getSPIn().getSpS_multi().getDbEmployee().getENAME());
            }
        }
    }
}
```



```
        logger.info("JOB =  
"+getSPIn().getSpS_multi().getDbEmployee().getJOB());  
        logger.info("MGR =  
"+getSPIn().getSpS_multi().getDbEmployee().getMGR());  
        logger.info("HIREDATE =  
"+getSPIn().getSpS_multi().getDbEmployee().getHIREDATE());  
        logger.info("SAL =  
"+getSPIn().getSpS_multi().getDbEmployee().getSAL());  
        logger.info("COMM =  
"+getSPIn().getSpS_multi().getDbEmployee().getCOMM());  
        logger.info("DEPTNO =  
"+getSPIn().getSpS_multi().getDbEmployee().getDEPTNO());  
    }  
}
```

Note: *resultsAvailable() and available() cannot be indiscriminately called because each time they move ResultSet pointers to the appropriate locations.*

After calling "**resultsAvailable()**", the next result (if available) can be either a **ResultSet** or an **UpdateCount** if the default "**enableResultSetsAndUpdateCount()**" was used.

Because of limitations imposed by some DBMSs, it is recommended that for maximum portability, all of the results in a **ResultSet** object should be retrieved before OUT parameters are retrieved. Therefore, you should retrieve all **ResultSet(s)** and update counts first followed by retrieving the OUT type parameters and return values.

The following list includes specific **ResultSet** behavior that you may encounter:

- The method **resultsAvailable()** implicitly calls **getMoreResults()** when it is called more than once. You should not call both methods in your java code. Doing so may result in skipped data from one of the **ResultSets** when more than one **ResultSet** is present.
- The methods **available()** and **getResultSet()** can not be used in conjunction with multiple **ResultSets** being open at the same time. Attempting to open more the one **ResultSet** at the same time closes the previous **ResultSet**. The recommended working pattern is:
 - ♦ Open one Result Set, **ResultSet_1** and work with the data until you have completed your modifications and updates. Open **ResultSet_2**, (**ResultSet_1** is now closed) and modify. When you have completed your work in **ResultSet_2**, open any additional **ResultSets** or close **ResultSet_2**.
- If you modify the **ResultSet** generated by the Execute mode of the Database Wizard, you need to assure the indexes match the stored procedure. By doing this, your **ResultSet** indexes are preserved.
- Generally, **getMoreResults** does not need to be called. It is needed if you do not want to use our enhanced methods and you want to follow the traditional JDBC calls on your own.

5.6 Alerting and Logging

eGate provides an alerting and logging feature that allows for the monitoring of messages. This feature also captures any adverse messages, in order of severity, based on configured severity level and higher. To enable Logging, please see the *eGate Integrator User's Guide*.

Index

A

Add Prepared Statements 38

B

Building an eWay Project 42
Business Process 43

C

ClassName 17, 21, 25
Clobs
 Inserting a Clob using a Prepared Statement
 OTD 62
 Inserting a Clob using a Stored Procedure OTD
 62
 Inserting a Clob using a Table OTD 61
 Selecting a Clob using a Prepared Statement 68
 Selecting a Clob using a Table OTD 64
 Updating a Clob using a Stored Procedure 64
 Updating a Clob using a Table OTD 63
 Using 61
CollectionID 28
CollectionId 23
Common DataType Conversions 56
configuring eWay connections 13
Configuring the eWay
 creating 13
Configuring the eWays 54
Connect to Database 32
Creating an External Environment 55

D

Data Conversions 56
Data Types
 Conversions 56
Database Connection 32
Database Objects 32
DatabaseName 15, 19
Delete Operation 44, 52
 Table OTD 61
Delimiter 20, 28
Deploying a Project 55

Description 17, 20, 25, 28
driver class, JDBC 17, 25
DriverProperties 20, 29

E

eGate Sample Project 53
eInsight Engine and eGate Components 42
Environment Properties
 DatabaseName 15, 19
 Delimiter 20, 28
 Description 20, 28
 DriverProperties 20, 29
 Password 20, 29
 PortNumber 20, 29
 ServerName 21, 29
 User 21, 30
Environment Property Settings
 CollectionID 28
 DatabaseName 15, 19
 Delimiter 20, 28
 Description 20, 28
 DriverProperties 20, 29
 LocationName 29
 Password 15, 20, 29
 PortNumber 15, 20, 29
 ServerName 16, 29
 User 16, 21

I

Importing the Sample Project 43
Inbound Environment Properties
 DatabaseName 15
 Password 15
 PortNumber 15
 ServerName 16
 User 16
Inbound Properties
 CollectionId 23
 LocationName 23
 Password 23
 PollMilliseconds 14, 22
 PortNumber 24
 PreparedStatement 14, 22
 ServerName 24
 User 24
InitialPoolSize 17, 26
Insert Operation 44, 49
 Table OTD 59

J

JDBC
 driver class 17, 25

L

LocationName 23, 29
 LoginTimeOut 17, 26

M

MaxIdleTime 17, 26
 MaxPoolSize 18, 26
 MaxStatements 18, 26
 MinPoolSize 18, 27

N

NetworkProtocol 18, 27

O

Operation
 Delete 44, 52
 Insert 44, 49
 SelectAll 44, 45
 SelectMultiple 44, 46
 SelectOne 44, 48
 Update 44, 51
 OTD Wizard
 Add Prepared Statements 38
 Database Connection 32
 Select Database Objects 32
 Select Table/Views 33
 Specify the OTD Name 40
 OTDs
 Tables, Views, Stored Procedures, and Prepared
 Statements 58
 Outbound Environment Properties
 DatabaseName 19
 Delimiter 20, 28
 Description 20, 28
 DriverProperties 20, 29
 LocationName 29
 Password 20, 29
 PortNumber 20, 29
 ServerName 29
 User 21
 Outbound Properties
 ClassName 17, 25, 26
 Description 17, 25
 DriverProperties 20
 InitialPoolSize 17, 26

LoginTimeOut 17, 26
 MaxIdleTime 17, 26
 MaxPoolSize 18, 26
 MaxStatements 18, 26
 MinPoolSize 18, 27
 NetworkProtocol 18, 27
 PropertyCycle 18, 27
 RoleName 19, 27
 ServerName 21
 User 30

P

Password 15, 20, 23, 29
 PollMilliseconds 14, 22
 PortNumber 15, 20, 24, 29
 Prepared Statements 58
 PreparedStatement 14, 22
 Property settings, Environment
 DatabaseName 15, 19
 Delimiter 20, 28
 Description 20, 28
 DriverProperties 20, 29
 Password 20, 29
 PortNumber 20, 29
 ServerName 21, 29
 User 21, 30
 Property settings, Inbound
 CollectionId 23
 LocationName 23
 Password 23
 PollMilliseconds 14, 22
 PortNumber 24
 PreparedStatement 14, 22
 ServerName 24
 User 24
 Property settings, Outbound
 ClassName 17, 25
 Description 17, 25
 DriverProperties 20
 InitialPoolSize 17, 26
 LoginTimeOut 17, 26
 MaxIdleTime 17, 26
 MaxPoolSize 18, 26
 MaxStatements 18, 26
 MinPoolSize 18, 27
 NetworkProtocol 18, 27
 PropertyCycle 18, 27
 RoleName 19, 27
 ServerName 21
 User 30
 PropertyCycle 18, 27

Q

Query Operation
Table OTD 58

R

RoleName 19, 27
Running the Sample 56

S

Sample Project
 Configuring the eWays 54
 Creating and External Environment 55
 Deploying a Project 55
 eGate 53
 Running the Sample 56
Scope
 ADABAS Natural eWay 8
Select Database Objects 32
Select Procedures 37
Select Table/Views 33
Select Wizard Type 31
SelectAll Operation 44, 45
SelectMultiple Operation 44, 46
SelectOne Operation 44, 48
ServerName 21, 24, 29
Servername 16
Specify the OTD Name 40
Stored Procedures 58, 69
 Collaboration usability for a ResultSet 72
 Executing 70
 Manipulating the ResultSet and Update Count
 71

T

Table/Views 33
Tables 58

U

Update 44
Update Operation 51
 Table OTD 60
User 16, 21, 24, 30
Using Clobs 61

V

Views 58

W

WebLogic and WebSphere 10