

SeeBeyond ICAN Suite

HL7 ETD Library User's Guide

Release 5.0.5 for Schema Run-time Environment (SRE)



The information contained in this document is subject to change and is updated periodically to reflect changes to the applicable software. Although every effort has been made to ensure the accuracy of this document, SeeBeyond Technology Corporation (SeeBeyond) assumes no responsibility for any errors that may appear herein. The software described in this document is furnished under a License Agreement and may be used or copied only in accordance with the terms of such License Agreement. Printing, copying, or reproducing this document in any fashion is prohibited except in accordance with the License Agreement. The contents of this document are designated as being confidential and proprietary; are considered to be trade secrets of SeeBeyond; and may be used only in accordance with the License Agreement, as protected and enforceable by law. SeeBeyond assumes no responsibility for the use or reliability of its software on platforms that are not supported by SeeBeyond.

SeeBeyond, e*Gate, e*Way, and e*Xchange are the registered trademarks of SeeBeyond Technology Corporation in the United States and/or select foreign countries. The SeeBeyond logo, SeeBeyond Integrated Composite Application Network Suite, eGate, eWay, eInsight, eVision, eXchange, eView, eIndex, eTL, ePortal, eBAM, and e*Insight are trademarks of SeeBeyond Technology Corporation. The absence of a trademark from this list does not constitute a waiver of SeeBeyond Technology Corporation's intellectual property rights concerning that trademark. This document may contain references to other company, brand, and product names. These company, brand, and product names are used herein for identification purposes only and may be the trademarks of their respective owners.

© 2005 SeeBeyond Technology Corporation. All Rights Reserved. This work is protected as an unpublished work under the copyright laws.

This work is confidential and proprietary information of SeeBeyond and must be maintained in strict confidence.

Version 20050406092119.

Contents

Chapter 1

Introduction	5
Overview	5
Intended Reader	5
Supported Operating Systems	6
System Requirements	6

Chapter 2

Overview of HL7	7
HL7 Overview	7
The HL7 Standard	7
Components of the HL7 Message	8
The HL7 Message	8
Segments	8
Fields	8
Message Delimiters	9
Data Types	9
Escape Sequences in Text Fields	9
HL7 Message Sets	9
Patient Administration	10
Order Entry	10
Query	10
Financial Management	10
Observation Reporting	10
Master File	10
Medical Records/Information Management	11
Scheduling	11
Patient Referral	11
Patient Care	11
Laboratory Automation	12
Application Management	12
Personnel Management	12
Additional Information	12

Chapter 3

Installation	13
Windows Installation	13
Pre-installation	13
Installation Procedure	13
UNIX Installation	14
Pre-installation	14
Installation Procedure	14
Files/Directories Created by the Installation	15

Chapter 4

The HL7 ETD Library	29
HL7 ETD Libraries	29
HL7 Version 2.4 Library	29
HL7 Version 2.3.1 Library	45
HL7 Version 2.3 ETD Library	53
HL7 Version 2.2 ETD Library	61
HL7 Version 2.1 ETD Library	66

Appendix A

Implementation Tips	69
Editing a Java HL7 ETD	69
Java ETD Run Test Option	72
Creating a Schema Using the HL7 ETD Library	72
Index	73

Introduction

1.1 Overview

An Event Type Definition (ETD) library is a compilation of pre-built message structures for industry-standard formats. e*Gate ETD files are message format definitions presented in Java™ and Monk syntax. The HL7 ETD Library is a feature of the e*Gate Integrator system, and contains message definitions for HL7 messages. This document gives a brief overview of HL7 and HL7 message structure, and provides information on installing and implementing the HL7 ETD Library.

The HL7 ETD Library supports the following versions of HL7:

- Version 2.1
- Version 2.2
- Version 2.3
- Version 2.3.1
- Version 2.4

1.2 Intended Reader

The reader of this guide is presumed to:

- be a developer or system administrator with responsibility for maintaining the HL7 and e*Gate systems
- have a high-level knowledge of Windows or UNIX operations and administration
- to be familiar with HL7 protocol

1.3 Supported Operating Systems

The HL7 ETD Library is available on the following operating systems:

- Windows 2000, Windows XP, and Windows Server 2003
- IBM AIX 5.1L and 5.2
- HP Tru64 V5.1A and 5.1B
- HP-UX 11.0 and 11i (PA-RISC)
- Red Hat Enterprise Linux AS 2.1 (Intel x86)
- Sun Solaris 8 and 9

Important: *Open and review the **Readme.txt** for the HL7 ETD Library for any additional information or requirements, prior to installation. The **Readme.txt** is located on the Installation CD_ROM at `setup\addons\HL7`.*

1.4 System Requirements

To use the HL7 ETD Library, you need the following:

- An e*Gate Participating Host.
- A TCP/IP network connection.
- Additional disk space for configuration, library, and script files. The disk space is required on both the Participating and the Registry Host. The amount necessary varies based on the type and size of the data being processed, and any external applications performing the processing.

Overview of HL7

This chapter presents an overview of HL7, the HL7 standard, and its components.

2.1 HL7 Overview

HL7 is a standard for electronic data exchange in the healthcare environment. It standardizes the format and protocol for the exchange of certain key data sets among healthcare computer application systems. HL7 is designed to be flexible, allowing the various systems that send or receive patient information to share and apply data as needed. Because of this diversity in systems (data models, operating systems, communication environments, and so forth) HL7 cannot be a “plug and play” interface standard. Instead HL7’s goal is to allow the greatest possible degree of standardization consistent with site variations in the usage and format of certain data elements.

HL7 or Health Level Seven is also the name of an organization consisting of technical committees and special interest groups who's goal is to provide standards for the exchange, management and integration of data that support clinical patient care and the management, transfer and assessment of healthcare services. Specifically, to create flexible, cost effective approaches, standards, guidelines, methodologies, and related services for interoperability between healthcare information systems.

2.2 The HL7 Standard

The HL7 Standard addresses the interfaces among various systems that send or receive healthcare focused information, such as, patient admissions/registration, discharge or transfer (ADT) data, queries, resource and patient scheduling, orders, results, clinical observations, billing, master file update information, medical records, patient referral, and patient care. It does not try to assume a particular architecture with respect to the placement of data within applications but is designed to support a central patient care system as well as a more distributed environment where data resides in departmental systems. Instead, HL7 serves as a way for dissimilar applications and data architectures operating in a heterogeneous system environment to communicate with each other.

2.3 Components of the HL7 Message

An HL7 transaction or message is comprised of a number of components in a defined sequence. This section defines the components of the HL7 transaction.

2.3.1. The HL7 Message

The HL7 message is a unit of data transferred between systems. It consists of a group of segments in a defined sequence. Each message has a message type that defines its purpose. For example, an ADT Message type is used to transmit portions of a patient's Patient Administration (ADT) data from one system to another. A three-character code contained within each message identifies its type. A **Trigger Event**, a real-world event such as a patient being admitted, initiates the exchange of messages.

Segments

A segment is a logical grouping of data fields. Segments may occur only once or repeat in a message and may be required or optional. Each segment is given a name. For example, the ADT message may include the following segments: Message Header (MSH), Event Type (EVN), Patient ID (PID), and Patient Visit (PV1). Segments are identified by unique three-character codes known as the Segment IDs.

Fields

A field is a string of characters. HL7 is not concerned with how a system actually stores data within an application. When fields are transmitted, they are sent as character strings. Except where noted, HL7 data fields may take on the null value. Sending the null value, which is transmitted as two double quote marks (""), is different from omitting an optional data field. The difference appears when the contents of a message is used to update a record in a database rather than create a new one. If no value is sent, (i.e., it is omitted) the old value should remain unchanged. If the null value is sent, the old value should be changed to null.

Data field characteristics are as follows:

- **Position:** The ordinal position or sequence of the data field within the segment.
- **Maximum Length:** Maximum number of characters that one occurrence of the data field may occupy.
- **Type of Data:** Restrictions on the contents of the data field. There are a number of data types defined by HL7, for example TX (text data), SN (structured numeric), PT (processing time), DT (date), and so forth.
- **Optionality:** Whether the field is required, optional, or conditional in a segment.
- **Repetition:** Whether the field may or may not repeat, or the number of times the field may repeat.
- **Table:** The manner in which HL7 defines the valid values for tables varies depending on institution, data type, reference, and so forth.

- **ID Number:** Small integer that uniquely identifies the data field throughout the Standard.
- **Name:** Descriptive name for the field.

Message Delimiters

Message delimiters are the specific predefined characters that are used to define the beginning and end of a message component. They are the segment terminator, the field separator, the component separator, subcomponent separator, repetition separator, and escape character.

Data Types

The types of data defined. There are a number of data types defined by HL7, for example TX (text data), SN (structured numeric), PT (processing time), DT (date), and so forth.

Escape Sequences in Text Fields

Escape sequences vary depending on the type of field.

2.4 HL7 Message Sets

HL7 messages are grouped by type or purpose into transaction sets. For example, a Patient Administration (ADT) message is used to transmit patient admittance, transfer, demographic and discharge information. The Patient Administration transaction set includes messages that transmit portions, instances or updates of this data necessary to the participating healthcare system.

Table 1 displays the transaction sets that are available with the 2.2, 2.3, 2.3.1, and 2.4 version of the HL7 Standard.

Table 1 system.

Transaction sets	HL7 V2.2	HL7 V2.3	HL7 V2.3.1	HL7 V2.4
Patient Administration	Yes	Yes	Yes	Yes
Order Entry	Yes	Yes	Yes	Yes
Query	Yes	Yes	Yes	Yes
Financial Management	Yes	Yes	Yes	Yes
Observation Reporting	Yes	Yes	Yes	Yes
Master File	Yes	Yes	Yes	Yes
Medical Records/ Information Management		Yes	Yes	Yes
Scheduling		Yes	Yes	Yes
Patient Referral		Yes	Yes	Yes

Patient Care		Yes	Yes	Yes
Laboratory Automation				Yes
Application Management				Yes
Personnel Management				Yes

Patient Administration

The Patient Administration transaction set (HL7 Standard, **chapter 3**), one of the most commonly used, provides demographic and visit information about patients. The event is transmitted as an unsolicited update or as a response to a record-oriented query.

Order Entry

The Order Entry transaction set (HL7 Standard, **chapter 4**) provides for the transmission of orders for materials or services, and information regarding orders, for specific patients or departments. Order Entry messages include components that specify quantity, timing, billing, start and end date, priority, and so on.

Query

The Query transaction set (HL7 Standard, **chapter 5**) provides requests for specific information with either an immediate or deferred response, depending on the type of query. Newer versions of HL7 include many of the most common queries that are likely to occur in a hospital.

Financial Management

The Financial Management transaction set (HL7 Standard, **chapter 6**) provides for the entry and manipulation of information pertaining to billing accounts, adjustments, payments, charges, insurance, and other related patient billing and A/R information.

Observation Reporting

The Observation Reporting message set (HL7 Standard, **chapter 7**) provides for the transmission of structured patient-oriented clinical information. This includes clinical observations such as clinical laboratory results, the results of imaging studies (excluding images), EKG pulmonary function studies, vital signs, intake and output, measures of patient status and condition, severity and/or frequency of symptoms, drug allergies, diagnostic lists, physician and nursing history, physicals, progress notes, operative notes and so on. Message information is reported in text, numeric or categorical values.

Master File

A master file is a common reference file containing more or less permanent descriptive information about a principal subject. In the healthcare environment, some common master files are doctor, location, system user, patient status, patient type, lab test definition, exam code definition, and charge master files. The Master Files Notification

messages (HL7 Standard, **chapter 8**) support the distribution of changes to various master files between systems, by either providing changes to the files or making data available for review and possible inclusion.

Medical Records/Information Management

The Medical Document Management (MDM) transaction set (HL7 Standard, **chapter 9**) provides for the transmission of new or updated documents. MDM messages may contain a description of the status of a document (for example, the document has been dictated and is awaiting transcription) or both the status description and the document itself. A medical document or record is a legal document that serves as an accurate and comprehensive account of healthcare services provided to a patient.

Scheduling

The Scheduling transaction set (HL7 Standard, **chapter 10**) supports the communication of various events in relation to schedules, appointments, services and resources. A schedule controls the dates and times available for the performance of a service and/or the use of a resource. The scheduling set contains three basic types of messages:

- The *Request transaction*, used to request an appointment for services or the use of resources.
- The *Query transaction*, which actively solicits scheduling information between systems.
- The *Unsolicited transaction*, which passively gathers and provides scheduling information between systems.

Scheduling messages may also contain other supporting information, including the reason for the appointment, patient information, person initiating the appointment, and location.

Patient Referral

The Patient Referral transaction set (HL7 Standard, **chapter 11**) provides for patient referral communications between separate healthcare related entities. This includes primary healthcare providers, hospitals, labs, specialists, government agencies, and other healthcare entities. The receiving entity may require billing information, test results, provider information, patient demographics and so forth, calling for multiple inquires and responses. For this reason, the referral set includes the referral, requests for information, and returned patient information.

Patient Care

The Patient Care transaction set (HL7 Standard, **chapter 12**) supports the communication of problem-oriented records which include clinical problems, goals, and clinical pathway information. The **problem** in this case may be a diagnosis or other professional description of healthcare issues affecting a specific patient. **Goals** are objectives to be attained as the result of healthcare intervention applied to an

individual. A **pathway** refers to a standardized plan of care by which progress toward an expected outcome is measured.

Laboratory Automation

The Laboratory Automation transaction set (HL7 Standard, **chapter 13**) supports the communication of equipment information, including status, inventory, logs and service, test code settings, response, notification, and comment, as well as specimen status.

Application Management

The Application Management transaction set (HL7 Standard, **chapter 14**) supports the transmission of application management information and application control-level requests.

Personnel Management

The Personnel Management transaction set (HL7 Standard, **chapter 15**) supports the transmission of details regarding education, language, practitioner, and professional affiliations, as well as information on practitioner organization unit, and staff identification.

2.5 Additional Information

For more information regarding HL7, and HL7 standards and versions, visit the HL7 Web site at:

<http://hl7.org/>

Installation

This chapter covers requirements and procedures for installing the HL7 ETD Library on Windows, and UNIX systems.

Important: Open and review the *Readme.txt* for the HL7 ETD Library for any additional information or requirements, prior to installation. The *Readme.txt* is located on the Installation CD_ROM at `setup\addons\HL7`.

3.1 Windows Installation

3.1.1. Pre-installation

- Exit all Windows programs before running the setup program, including any anti-virus applications.
- You must have Administrator privileges to install this product.

3.1.2. Installation Procedure

To install the HL7 ETD Library on a Windows system

- 1 Log onto the workstation on which you want to install the HL7 ETD Library.
- 2 Insert the installation CD-ROM into the CD-ROM drive.
- 3 If the CD-ROM drive's Autorun feature is enabled, the setup application should launch automatically. Otherwise, use the Windows Explorer or the Control Panel's **Add/Remove Applications** feature to launch the file `setup.exe` on the CD-ROM drive.
- 4 The InstallShield setup application will launch. Follow the on-screen instructions until you come to the **Choose Product to install** dialog box.

Note: Be sure to use the directory suggested by the installation wizard. Unless directed to do so by SeeBeyond support personnel, do not change the suggested installation directory.

- 5 Select **e*Gate Integrator**, then click **Next**.

- 6 Follow the on-screen instructions until you come to the second **Please choose the product to install** dialog box.
- 7 Clear all check boxes other than **Add-ons**, then click **Next**.
- 8 Follow the on-screen instructions until you come to the **Select Components** dialog box.
- 9 Select (but do not check) **ETD Libraries**, then click the **Change** button.
The **Select Sub-components** dialog box appears.
- 10 Select the **HL7 ETD Library** and click **Continue**.
- 11 Follow the rest of the on-screen instructions to complete the installation the HL7 ETD Library.

3.2 UNIX Installation

3.2.1. Pre-installation

- 1 Root privileges are not required to install the HL7 ETD Library. Log in under the user name that you wish to own the library files. Be sure that this user has sufficient privilege to create files in the e*Gate directory tree.

3.2.2. Installation Procedure

To install the HL7 ETD Library on a UNIX system

- 1 Log in on the workstation containing the CD-ROM drive, and insert the CD-ROM into the drive.
- 2 If necessary, mount the CD-ROM drive. For information on mounting a CD for the various UNIX platforms see the **e*Gate Integrator Installation Guide**.
- 3 At the shell prompt, type
cd /cdrom
- 4 Start the installation script by typing:
setup.sh
- 5 A menu of options will appear. Select **e*Gate Add-on Applications**.
- 6 Under **Choose Add-on categories to install**, select **ETD Library**.
- 7 Under the **Choose ETD Libraries to install**, select **HL7 ETD Library**.
- 8 Follow the rest of the on-screen instructions to install the product.

For additional details about e*Gate installation, see the e*Gate Integrator Installation Guide.

Note: Be sure to install the files in the suggested installation directory. The installation utility detects and suggests the appropriate installation directory. Unless you are directed to do so by SeeBeyond support personnel, do not change the suggested “installation directory” setting.

3.3 Files/Directories Created by the Installation

Installation places the HL7 ETD Library within the e*Gate directory tree, committed to the default schema on the Registry Host. Files for the Monk implementation of the HL7 ETD Library (installs only .ssc files) are placed in the following path:

..\Server\registry\repository\default\monk_scripts\templates\HL7\..

Files for the Java implementation of the HL7 ETD Library (installs .xsc, .ssc, and .jar files for each ETD) are placed in the following path:

..\Server\registry\repository\default\etd\templates\HL7\..

HL7 ETD files are installed in four subdirectories according to HL7 version:

- ♦ [HL7 2.4 Installed Files](#) on page 15
- ♦ [HL7 2.3.1 Installed Files](#) on page 21
- ♦ [HL7_2.3 Installed Files](#) on page 23
- ♦ [HL7_2.2 Installed Files](#) on page 26
- ♦ [HL7 2.1 Installed Files](#) on page 28

Table 2 HL7 2.4 Installed Files

HL7_2.4*\		
hl7_2.4_abs.ssc, .xsc, .jar	hl7_2.4_acc.ssc, .xsc, .jar	hl7_2.4_ACK.ssc, .xsc, .jar
hl7_2.4_ACK_N02.ssc, .xsc, .jar	hl7_2.4_ACK_Q03.ssc, .xsc, .jar	hl7_2.4_ACK_Q05.ssc, .xsc, .jar
hl7_2.4_ACK_Q16.ssc, .xsc, .jar	hl7_2.4_ACK_Q17.ssc, .xsc, .jar	hl7_2.4_ACK_R01.ssc, .xsc, .jar
hl7_2.4_ad.ssc, .xsc, .jar	hl7_2.4_add.ssc, .xsc, .jar	hl7_2.4_ADR_A19.ssc, .xsc, .jar
hl7_2.4_ADT_A01.ssc, .xsc, .jar	hl7_2.4_ADT_A02.ssc, .xsc, .jar	hl7_2.4_ADT_A03.ssc, .xsc, .jar
hl7_2.4_ADT_A05.ssc, .xsc, .jar	hl7_2.4_ADT_A06.ssc, .xsc, .jar	hl7_2.4_ADT_A09.ssc, .xsc, .jar
hl7_2.4_ADT_A15.ssc, .xsc, .jar	hl7_2.4_ADT_A16.ssc, .xsc, .jar	hl7_2.4_ADT_A17.ssc, .xsc, .jar
hl7_2.4_ADT_A18.ssc, .xsc, .jar	hl7_2.4_ADT_A20.ssc, .xsc, .jar	hl7_2.4_ADT_A21.ssc, .xsc, .jar
hl7_2.4_ADT_A24.ssc, .xsc, .jar	hl7_2.4_ADT_A30.ssc, .xsc, .jar	hl7_2.4_ADT_A37.ssc, .xsc, .jar
hl7_2.4_ADT_A38.ssc, .xsc, .jar	hl7_2.4_ADT_A39.ssc, .xsc, .jar	hl7_2.4_ADT_A43.ssc, .xsc, .jar
hl7_2.4_ADT_A45.ssc, .xsc, .jar	hl7_2.4_ADT_A50.ssc, .xsc, .jar	hl7_2.4_ADT_A52.ssc, .xsc, .jar
hl7_2.4_ADT_A54.ssc, .xsc, .jar	hl7_2.4_ADT_A60.ssc, .xsc, .jar	hl7_2.4_ADT_A61.ssc, .xsc, .jar
hl7_2.4_aff.ssc, .xsc, .jar	hl7_2.4_aig.ssc, .xsc, .jar	hl7_2.4_ail.ssc, .xsc, .jar
hl7_2.4_aip.ssc, .xsc, .jar	hl7_2.4_ais.ssc, .xsc, .jar	hl7_2.4_al1.ssc, .xsc, .jar
hl7_2.4_apr.ssc, .xsc, .jar	hl7_2.4_arq.ssc, .xsc, .jar	hl7_2.4_aut.ssc, .xsc, .jar

Table 2 HL7 2.4 Installed Files

\HL7_2.4*\		
hl7_2.4_BAR_P01.ssc, .xsc, .jar	hl7_2.4_BAR_P02.ssc, .xsc, .jar	hl7_2.4_BAR_P05.ssc, .xsc, .jar
hl7_2.4_BAR_P06.ssc, .xsc, .jar	hl7_2.4_BAR_P10.ssc, .xsc, .jar	hl7_2.4_bhs.ssc, .xsc, .jar
hl7_2.4_blc.ssc, .xsc, .jar	hl7_2.4_blg.ssc, .xsc, .jar	hl7_2.4_bts.ssc, .xsc, .jar
hl7_2.4_cd.ssc, .xsc, .jar	hl7_2.4_cdm.ssc, .xsc, .jar	hl7_2.4_ce.ssc, .xsc, .jar
hl7_2.4_ce_0002.ssc, .xsc, .jar	hl7_2.4_ce_0005.ssc, .xsc, .jar	hl7_2.4_ce_0006.ssc, .xsc, .jar
hl7_2.4_ce_0048.ssc, .xsc, .jar	hl7_2.4_ce_0049.ssc, .xsc, .jar	hl7_2.4_ce_0050.ssc, .xsc, .jar
hl7_2.4_ce_0051.ssc, .xsc, .jar	hl7_2.4_ce_0055.ssc, .xsc, .jar	hl7_2.4_ce_0059.ssc, .xsc, .jar
hl7_2.4_ce_0063.ssc, .xsc, .jar	hl7_2.4_ce_0066.ssc, .xsc, .jar	hl7_2.4_ce_0069.ssc, .xsc, .jar
hl7_2.4_ce_0070.ssc, .xsc, .jar	hl7_2.4_ce_0072.ssc, .xsc, .jar	hl7_2.4_ce_0083.ssc, .xsc, .jar
hl7_2.4_ce_0088.ssc, .xsc, .jar	hl7_2.4_ce_0114.ssc, .xsc, .jar	hl7_2.4_ce_0118.ssc, .xsc, .jar
hl7_2.4_ce_0127.ssc, .xsc, .jar	hl7_2.4_ce_0128.ssc, .xsc, .jar	hl7_2.4_ce_0129.ssc, .xsc, .jar
hl7_2.4_ce_0131.ssc, .xsc, .jar	hl7_2.4_ce_0132.ssc, .xsc, .jar	hl7_2.4_ce_0136.ssc, .xsc, .jar
hl7_2.4_ce_0136_0262_0263.ssc, .xsc, .jar	hl7_2.4_ce_0160.ssc, .xsc, .jar	hl7_2.4_ce_0162.ssc, .xsc, .jar
hl7_2.4_ce_0163.ssc, .xsc, .jar	hl7_2.4_ce_0164.ssc, .xsc, .jar	hl7_2.4_ce_0165.ssc, .xsc, .jar
hl7_2.4_ce_0171.ssc, .xsc, .jar	hl7_2.4_ce_0172.ssc, .xsc, .jar	hl7_2.4_ce_0175.ssc, .xsc, .jar
hl7_2.4_ce_0181.ssc, .xsc, .jar	hl7_2.4_ce_0184.ssc, .xsc, .jar	hl7_2.4_ce_0185.ssc, .xsc, .jar
hl7_2.4_ce_0189.ssc, .xsc, .jar	hl7_2.4_ce_0212.ssc, .xsc, .jar	hl7_2.4_ce_0215.ssc, .xsc, .jar
hl7_2.4_ce_0218.ssc, .xsc, .jar	hl7_2.4_ce_0222.ssc, .xsc, .jar	hl7_2.4_ce_0227.ssc, .xsc, .jar
hl7_2.4_ce_0233.ssc, .xsc, .jar	hl7_2.4_ce_0247.ssc, .xsc, .jar	hl7_2.4_ce_0254.ssc, .xsc, .jar
hl7_2.4_ce_0255.ssc, .xsc, .jar	hl7_2.4_ce_0258.ssc, .xsc, .jar	hl7_2.4_ce_0259.ssc, .xsc, .jar
hl7_2.4_ce_0264.ssc, .xsc, .jar	hl7_2.4_ce_0265.ssc, .xsc, .jar	hl7_2.4_ce_0276.ssc, .xsc, .jar
hl7_2.4_ce_0277.ssc, .xsc, .jar	hl7_2.4_ce_0278.ssc, .xsc, .jar	hl7_2.4_ce_0280.ssc, .xsc, .jar
hl7_2.4_ce_0281.ssc, .xsc, .jar	hl7_2.4_ce_0282.ssc, .xsc, .jar	hl7_2.4_ce_0283.ssc, .xsc, .jar
hl7_2.4_ce_0284.ssc, .xsc, .jar	hl7_2.4_ce_0285.ssc, .xsc, .jar	hl7_2.4_ce_0286.ssc, .xsc, .jar
hl7_2.4_ce_0292.ssc, .xsc, .jar	hl7_2.4_ce_0293.ssc, .xsc, .jar	hl7_2.4_ce_0296.ssc, .xsc, .jar
hl7_2.4_ce_0324.ssc, .xsc, .jar	hl7_2.4_ce_0325.ssc, .xsc, .jar	hl7_2.4_ce_0336.ssc, .xsc, .jar
hl7_2.4_ce_0339.ssc, .xsc, .jar	hl7_2.4_ce_0340.ssc, .xsc, .jar	hl7_2.4_ce_0341.ssc, .xsc, .jar
hl7_2.4_ce_0342.ssc, .xsc, .jar	hl7_2.4_ce_0343.ssc, .xsc, .jar	hl7_2.4_ce_0344.ssc, .xsc, .jar
hl7_2.4_ce_0345.ssc, .xsc, .jar	hl7_2.4_ce_0346.ssc, .xsc, .jar	hl7_2.4_ce_0347.ssc, .xsc, .jar
hl7_2.4_ce_0348.ssc, .xsc, .jar	hl7_2.4_ce_0349.ssc, .xsc, .jar	hl7_2.4_ce_0351.ssc, .xsc, .jar
hl7_2.4_ce_0357.ssc, .xsc, .jar	hl7_2.4_ce_0358.ssc, .xsc, .jar	hl7_2.4_ce_0364.ssc, .xsc, .jar
hl7_2.4_ce_0365.ssc, .xsc, .jar	hl7_2.4_ce_0366.ssc, .xsc, .jar	hl7_2.4_ce_0367.ssc, .xsc, .jar
hl7_2.4_ce_0368.ssc, .xsc, .jar	hl7_2.4_ce_0369.ssc, .xsc, .jar	hl7_2.4_ce_0370.ssc, .xsc, .jar
hl7_2.4_ce_0371.ssc, .xsc, .jar	hl7_2.4_ce_0373.ssc, .xsc, .jar	hl7_2.4_ce_0374.ssc, .xsc, .jar
hl7_2.4_ce_0375.ssc, .xsc, .jar	hl7_2.4_ce_0376.ssc, .xsc, .jar	hl7_2.4_ce_0377.ssc, .xsc, .jar

Table 2 HL7 2.4 Installed Files

\HL7_2.4*\		
hl7_2.4_ce_0378.ssc, .xsc, .jar	hl7_2.4_ce_0379.ssc, .xsc, .jar	hl7_2.4_ce_0380.ssc, .xsc, .jar
hl7_2.4_ce_0381.ssc, .xsc, .jar	hl7_2.4_ce_0382.ssc, .xsc, .jar	hl7_2.4_ce_0383.ssc, .xsc, .jar
hl7_2.4_ce_0384.ssc, .xsc, .jar	hl7_2.4_ce_0385.ssc, .xsc, .jar	hl7_2.4_ce_0386.ssc, .xsc, .jar
hl7_2.4_ce_0387.ssc, .xsc, .jar	hl7_2.4_ce_0388.ssc, .xsc, .jar	hl7_2.4_ce_0389.ssc, .xsc, .jar
hl7_2.4_ce_0393.ssc, .xsc, .jar	hl7_2.4_ce_0394.ssc, .xsc, .jar	hl7_2.4_ce_0401.ssc, .xsc, .jar
hl7_2.4_ce_0402.ssc, .xsc, .jar	hl7_2.4_ce_0403.ssc, .xsc, .jar	hl7_2.4_ce_0404.ssc, .xsc, .jar
hl7_2.4_ce_0405.ssc, .xsc, .jar	hl7_2.4_ce_0406.ssc, .xsc, .jar	hl7_2.4_ce_0411.ssc, .xsc, .jar
hl7_2.4_ce_0412.ssc, .xsc, .jar	hl7_2.4_ce_0413.ssc, .xsc, .jar	hl7_2.4_ce_0414.ssc, .xsc, .jar
hl7_2.4_ce_0417.ssc, .xsc, .jar	hl7_2.4_ce_0421.ssc, .xsc, .jar	hl7_2.4_ce_0422.ssc, .xsc, .jar
hl7_2.4_ce_0423.ssc, .xsc, .jar	hl7_2.4_ce_0424.ssc, .xsc, .jar	hl7_2.4_ce_0425.ssc, .xsc, .jar
hl7_2.4_ce_0426.ssc, .xsc, .jar	hl7_2.4_ce_0427.ssc, .xsc, .jar	hl7_2.4_ce_0428.ssc, .xsc, .jar
hl7_2.4_ce_0429.ssc, .xsc, .jar	hl7_2.4_ce_0430.ssc, .xsc, .jar	hl7_2.4_ce_0431.ssc, .xsc, .jar
hl7_2.4_ce_0432.ssc, .xsc, .jar	hl7_2.4_ce_0433.ssc, .xsc, .jar	hl7_2.4_ce_0434.ssc, .xsc, .jar
hl7_2.4_ce_0435.ssc, .xsc, .jar	hl7_2.4_ce_0436.ssc, .xsc, .jar	hl7_2.4_ce_0437.ssc, .xsc, .jar
hl7_2.4_ce_0438.ssc, .xsc, .jar	hl7_2.4_ce_0443.ssc, .xsc, .jar	hl7_2.4_ce_0446.ssc, .xsc, .jar
hl7_2.4_ce_0447.ssc, .xsc, .jar	hl7_2.4_ce_0450.ssc, .xsc, .jar	hl7_2.4_ce_0451.ssc, .xsc, .jar
hl7_2.4_ce_0452.ssc, .xsc, .jar	hl7_2.4_ce_0453.ssc, .xsc, .jar	hl7_2.4_ce_0454.ssc, .xsc, .jar
hl7_2.4_ce_0461.ssc, .xsc, .jar	hl7_2.4_ce_0462.ssc, .xsc, .jar	hl7_2.4_ce_0463.ssc, .xsc, .jar
hl7_2.4_ce_0464.ssc, .xsc, .jar	hl7_2.4_ce_0466.ssc, .xsc, .jar	hl7_2.4_ce_0471.ssc, .xsc, .jar
hl7_2.4_ce_0474.ssc, .xsc, .jar	hl7_2.4_cf.ssc, .xsc, .jar	hl7_2.4_ck.ssc, .xsc, .jar
hl7_2.4_cm0.ssc, .xsc, .jar	hl7_2.4_cm1.ssc, .xsc, .jar	hl7_2.4_cm2.ssc, .xsc, .jar
hl7_2.4_cm_abs_range.ssc, .xsc, .jar	hl7_2.4_cm_aui.ssc, .xsc, .jar	hl7_2.4_cm_ccd.ssc, .xsc, .jar
hl7_2.4_cm_ccp.ssc, .xsc, .jar	hl7_2.4_cm_csu.ssc, .xsc, .jar	hl7_2.4_cm_ddi.ssc, .xsc, .jar
hl7_2.4_cm_din.ssc, .xsc, .jar	hl7_2.4_cm_dld.ssc, .xsc, .jar	hl7_2.4_cm_dlt.ssc, .xsc, .jar
hl7_2.4_cm_dtn.ssc, .xsc, .jar	hl7_2.4_cm_eip.ssc, .xsc, .jar	hl7_2.4_cm_eld.ssc, .xsc, .jar
hl7_2.4_cm_fam_name.ssc, .xsc, .jar	hl7_2.4_cm_la1.ssc, .xsc, .jar	hl7_2.4_cm_la2.ssc, .xsc, .jar
hl7_2.4_cm_mdv.ssc, .xsc, .jar	hl7_2.4_cm_moc.ssc, .xsc, .jar	hl7_2.4_cm_msg.ssc, .xsc, .jar
hl7_2.4_cm_ndl.ssc, .xsc, .jar	hl7_2.4_cm_ocr.ssc, .xsc, .jar	hl7_2.4_cm_osd.ssc, .xsc, .jar
hl7_2.4_cm_osp.ssc, .xsc, .jar	hl7_2.4_cm_pcf.ssc, .xsc, .jar	hl7_2.4_cm_pen.ssc, .xsc, .jar
hl7_2.4_cm_pi.ssc, .xsc, .jar	hl7_2.4_cm_pip.ssc, .xsc, .jar	hl7_2.4_cm_pln.ssc, .xsc, .jar
hl7_2.4_cm_prl.ssc, .xsc, .jar	hl7_2.4_cm_pta.ssc, .xsc, .jar	hl7_2.4_cm_range.ssc, .xsc, .jar
hl7_2.4_cm_rfr.ssc, .xsc, .jar	hl7_2.4_cm_ri.ssc, .xsc, .jar	hl7_2.4_cm_rmc.ssc, .xsc, .jar
hl7_2.4_cm_spd.ssc, .xsc, .jar	hl7_2.4_cm_sps.ssc, .xsc, .jar	hl7_2.4_cm_uvc.ssc, .xsc, .jar
hl7_2.4_cm_vr.ssc, .xsc, .jar	hl7_2.4_cm_wvi.ssc, .xsc, .jar	hl7_2.4_cm_wvs.ssc, .xsc, .jar

Table 2 HL7 2.4 Installed Files

\\HL7_2.4*\		
hl7_2.4_cn.ssc, .xsc, .jar	hl7_2.4_cne.ssc, .xsc, .jar	hl7_2.4_cns.ssc, .xsc, .jar
hl7_2.4_cp.ssc, .xsc, .jar	hl7_2.4_cq.ssc, .xsc, .jar	hl7_2.4_CRM_C01.ssc, .xsc, .jar
hl7_2.4_csp.ssc, .xsc, .jar	hl7_2.4_csr.ssc, .xsc, .jar	hl7_2.4_css.ssc, .xsc, .jar
hl7_2.4_CSU_C09.ssc, .xsc, .jar	hl7_2.4_ctd.ssc, .xsc, .jar	hl7_2.4_cti.ssc, .xsc, .jar
hl7_2.4_cwe.ssc, .xsc, .jar	hl7_2.4_cx.ssc, .xsc, .jar	hl7_2.4_db1.ssc, .xsc, .jar
hl7_2.4_DFT_P03.ssc, .xsc, .jar	hl7_2.4_dg1.ssc, .xsc, .jar	hl7_2.4_dln.ssc, .xsc, .jar
hl7_2.4_DOC_T12.ssc, .xsc, .jar	hl7_2.4_dr.ssc, .xsc, .jar	hl7_2.4_drg.ssc, .xsc, .jar
hl7_2.4_dsc.ssc, .xsc, .jar	hl7_2.4_dsp.ssc, .xsc, .jar	hl7_2.4_DSR_Q01.ssc, .xsc, .jar
hl7_2.4_DSR_Q03.ssc, .xsc, .jar	hl7_2.4_EAC_U07.ssc, .xsc, .jar	hl7_2.4_EAN_U09.ssc, .xsc, .jar
hl7_2.4_EAR_U08.ssc, .xsc, .jar	hl7_2.4_ecd.ssc, .xsc, .jar	hl7_2.4_ecr.ssc, .xsc, .jar
hl7_2.4_ed.ssc, .xsc, .jar	hl7_2.4_EDR_R07.ssc, .xsc, .jar	hl7_2.4_edu.ssc, .xsc, .jar
hl7_2.4_ei.ssc, .xsc, .jar	hl7_2.4_eql.ssc, .xsc, .jar	hl7_2.4_eqp.ssc, .xsc, .jar
hl7_2.4_EQQ_Q04.ssc, .xsc, .jar	hl7_2.4_equ.ssc, .xsc, .jar	hl7_2.4_ERP_R09.ssc, .xsc, .jar
hl7_2.4_erq.ssc, .xsc, .jar	hl7_2.4_err.ssc, .xsc, .jar	hl7_2.4_ESR_U02.ssc, .xsc, .jar
hl7_2.4_ESU_U01.ssc, .xsc, .jar	hl7_2.4_evn.ssc, .xsc, .jar	hl7_2.4_fac.ssc, .xsc, .jar
hl7_2.4_fc.ssc, .xsc, .jar	hl7_2.4_fhs.ssc, .xsc, .jar	hl7_2.4_fn.ssc, .xsc, .jar
hl7_2.4_ft1.ssc, .xsc, .jar	hl7_2.4_fts.ssc, .xsc, .jar	hl7_2.4_gol.ssc, .xsc, .jar
hl7_2.4_gp1.ssc, .xsc, .jar	hl7_2.4_gp2.ssc, .xsc, .jar	hl7_2.4_gt1.ssc, .xsc, .jar
hl7_2.4_hd.ssc, .xsc, .jar	hl7_2.4_iam.ssc, .xsc, .jar	hl7_2.4_in1.ssc, .xsc, .jar
hl7_2.4_in2.ssc, .xsc, .jar	hl7_2.4_in3.ssc, .xsc, .jar	hl7_2.4_INR_U06.ssc, .xsc, .jar
hl7_2.4_INU_U05.ssc, .xsc, .jar	hl7_2.4_inv.ssc, .xsc, .jar	hl7_2.4_isd.ssc, .xsc, .jar
hl7_2.4_jcc.ssc, .xsc, .jar	hl7_2.4_lan.ssc, .xsc, .jar	hl7_2.4_lcc.ssc, .xsc, .jar
hl7_2.4_lch.ssc, .xsc, .jar	hl7_2.4_ldp.ssc, .xsc, .jar	hl7_2.4_loc.ssc, .xsc, .jar
hl7_2.4_lrl.ssc, .xsc, .jar	hl7_2.4_LSU_U12.ssc, .xsc, .jar	hl7_2.4_ma.ssc, .xsc, .jar
hl7_2.4_MDM_T01.ssc, .xsc, .jar	hl7_2.4_MDM_T02.ssc, .xsc, .jar	hl7_2.4_mfa.ssc, .xsc, .jar
hl7_2.4_MFD_MFA.ssc, .xsc, .jar	hl7_2.4_mfe.ssc, .xsc, .jar	hl7_2.4_mfi.ssc, .xsc, .jar
hl7_2.4_MFK_M01.ssc, .xsc, .jar	hl7_2.4_MFN_M01.ssc, .xsc, .jar	hl7_2.4_MFN_M02.ssc, .xsc, .jar
hl7_2.4_MFN_M03.ssc, .xsc, .jar	hl7_2.4_MFN_M04.ssc, .xsc, .jar	hl7_2.4_MFN_M05.ssc, .xsc, .jar
hl7_2.4_MFN_M06.ssc, .xsc, .jar	hl7_2.4_MFN_M07.ssc, .xsc, .jar	hl7_2.4_MFN_M08.ssc, .xsc, .jar
hl7_2.4_MFN_M09.ssc, .xsc, .jar	hl7_2.4_MFN_M10.ssc, .xsc, .jar	hl7_2.4_MFN_M11.ssc, .xsc, .jar
hl7_2.4_MFN_M12.ssc, .xsc, .jar	hl7_2.4_MFQ_M01.ssc, .xsc, .jar	hl7_2.4_MFR_M01.ssc, .xsc, .jar
hl7_2.4_mo.ssc, .xsc, .jar	hl7_2.4_mrg.ssc, .xsc, .jar	hl7_2.4_msa.ssc, .xsc, .jar
hl7_2.4_msh.ssc, .xsc, .jar	hl7_2.4_na.ssc, .xsc, .jar	hl7_2.4_nck.ssc, .xsc, .jar
hl7_2.4_nds.ssc, .xsc, .jar	hl7_2.4_nk1.ssc, .xsc, .jar	hl7_2.4_NMD_N02.ssc, .xsc, .jar
hl7_2.4_NMQ_N01.ssc, .xsc, .jar	hl7_2.4_NMR_N01.ssc, .xsc, .jar	hl7_2.4_npu.ssc, .xsc, .jar

Table 2 HL7 2.4 Installed Files

\HL7_2.4*\		
hl7_2.4_nsc.ssc, .xsc, .jar	hl7_2.4_nst.ssc, .xsc, .jar	hl7_2.4_nte.ssc, .xsc, .jar
hl7_2.4_obr.ssc, .xsc, .jar	hl7_2.4_obx.ssc, .xsc, .jar	hl7_2.4_ods.ssc, .xsc, .jar
hl7_2.4_odt.ssc, .xsc, .jar	hl7_2.4_om1.ssc, .xsc, .jar	hl7_2.4_om2.ssc, .xsc, .jar
hl7_2.4_om3.ssc, .xsc, .jar	hl7_2.4_om4.ssc, .xsc, .jar	hl7_2.4_om5.ssc, .xsc, .jar
hl7_2.4_om6.ssc, .xsc, .jar	hl7_2.4_om7.ssc, .xsc, .jar	hl7_2.4_OMD_O03.ssc, .xsc, .jar
hl7_2.4_OMG_O19.ssc, .xsc, .jar	hl7_2.4_OML_O21.ssc, .xsc, .jar	hl7_2.4_OMN_O07.ssc, .xsc, .jar
hl7_2.4_OMP_O09.ssc, .xsc, .jar	hl7_2.4_OMS_O05.ssc, .xsc, .jar	hl7_2.4_orc.ssc, .xsc, .jar
hl7_2.4_ORD_O04.ssc, .xsc, .jar	hl7_2.4_ORF_R04.ssc, .xsc, .jar	hl7_2.4_org.ssc, .xsc, .jar
hl7_2.4_ORG_O20.ssc, .xsc, .jar	hl7_2.4_ORL_O22.ssc, .xsc, .jar	hl7_2.4_ORM_O01.ssc, .xsc, .jar
hl7_2.4_ORN_O08.ssc, .xsc, .jar	hl7_2.4_ORP_O10.ssc, .xsc, .jar	hl7_2.4_ORR_O02.ssc, .xsc, .jar
hl7_2.4_ORS_O06.ssc, .xsc, .jar	hl7_2.4_ORU_R01.ssc, .xsc, .jar	hl7_2.4_OSQ_Q06.ssc, .xsc, .jar
hl7_2.4_OSQ_Q06.ssc, .xsc, .jar	hl7_2.4_OUL_R21.ssc, .xsc, .jar	hl7_2.4_pcr.ssc, .xsc, .jar
hl7_2.4_pd1.ssc, .xsc, .jar	hl7_2.4_pda.ssc, .xsc, .jar	hl7_2.4_pdc.ssc, .xsc, .jar
hl7_2.4_peo.ssc, .xsc, .jar	hl7_2.4_pes.ssc, .xsc, .jar	hl7_2.4_PEX_P07.ssc, .xsc, .jar
hl7_2.4_PGL_PC6.ssc, .xsc, .jar	hl7_2.4_pid.ssc, .xsc, .jar	hl7_2.4_pl.ssc, .xsc, .jar
hl7_2.4_PMU_B01.ssc, .xsc, .jar	hl7_2.4_PMU_B03.ssc, .xsc, .jar	hl7_2.4_PMU_B04.ssc, .xsc, .jar
hl7_2.4_pn.ssc, .xsc, .jar	hl7_2.4_PPG_PCG.ssc, .xsc, .jar	hl7_2.4_ppn.ssc, .xsc, .jar
hl7_2.4_PPP_PCB.ssc, .xsc, .jar	hl7_2.4_PPR_PC1.ssc, .xsc, .jar	hl7_2.4_PPT_PCL.ssc, .xsc, .jar
hl7_2.4_PPV_PCA.ssc, .xsc, .jar	hl7_2.4_pr1.ssc, .xsc, .jar	hl7_2.4_pra.ssc, .xsc, .jar
hl7_2.4_prb.ssc, .xsc, .jar	hl7_2.4_prc.ssc, .xsc, .jar	hl7_2.4_prd.ssc, .xsc, .jar
hl7_2.4_PRR_PC5.ssc, .xsc, .jar	hl7_2.4_psh.ssc, .xsc, .jar	hl7_2.4_pt.ssc, .xsc, .jar
hl7_2.4_pth.ssc, .xsc, .jar	hl7_2.4_PTR_PCF.ssc, .xsc, .jar	hl7_2.4_pv1.ssc, .xsc, .jar
hl7_2.4_pv2.ssc, .xsc, .jar	hl7_2.4_qak.ssc, .xsc, .jar	hl7_2.4_QBP_K13.ssc, .xsc, .jar
hl7_2.4_QBP_Q11.ssc, .xsc, .jar	hl7_2.4_QBP_Q13.ssc, .xsc, .jar	hl7_2.4_QBP_Q15.ssc, .xsc, .jar
hl7_2.4_QBP_Q21.ssc, .xsc, .jar	hl7_2.4_QBP_Qnn.ssc, .xsc, .jar	hl7_2.4_QBP_Z73.ssc, .xsc, .jar
hl7_2.4_QCK_Q02.ssc, .xsc, .jar	hl7_2.4_QCN_J01.ssc, .xsc, .jar	hl7_2.4_qid.ssc, .xsc, .jar
hl7_2.4_qip.ssc, .xsc, .jar	hl7_2.4_qpd.ssc, .xsc, .jar	hl7_2.4_qrd.ssc, .xsc, .jar
hl7_2.4_qrf.ssc, .xsc, .jar	hl7_2.4_qri.ssc, .xsc, .jar	hl7_2.4_QRY_A19.ssc, .xsc, .jar
hl7_2.4_QRY_PC4.ssc, .xsc, .jar	hl7_2.4_QRY_Q01.ssc, .xsc, .jar	hl7_2.4_QRY_Q02.ssc, .xsc, .jar
hl7_2.4_QRY_R02.ssc, .xsc, .jar	hl7_2.4_QRY_T12.ssc, .xsc, .jar	hl7_2.4_QSB_Q16.ssc, .xsc, .jar
hl7_2.4_qsc.ssc, .xsc, .jar	hl7_2.4_QVR_Q17.ssc, .xsc, .jar	hl7_2.4_RAR_RAR.ssc, .xsc, .jar
hl7_2.4_RAS_O17.ssc, .xsc, .jar	hl7_2.4_rcd.ssc, .xsc, .jar	hl7_2.4_RCI_I05.ssc, .xsc, .jar
hl7_2.4_RCL_I06.ssc, .xsc, .jar	hl7_2.4_rcp.ssc, .xsc, .jar	hl7_2.4_RDE_O11.ssc, .xsc, .jar
hl7_2.4_rdf.ssc, .xsc, .jar	hl7_2.4_RDR_RDR.ssc, .xsc, .jar	hl7_2.4_RDS_O13.ssc, .xsc, .jar
hl7_2.4_rdt.ssc, .xsc, .jar	hl7_2.4_RDY_K15.ssc, .xsc, .jar	hl7_2.4_REF_I12.ssc, .xsc, .jar

Table 2 HL7 2.4 Installed Files

\\HL7_2.4*\		
hl7_2.4_RER_RER.ssc, .xsc, .jar	hl7_2.4_rf1.ssc, .xsc, .jar	hl7_2.4_RGR_RGR.ssc, .xsc, .jar
hl7_2.4_rgs.ssc, .xsc, .jar	hl7_2.4_RGV_O15.ssc, .xsc, .jar	hl7_2.4_ri.ssc, .xsc, .jar
hl7_2.4_rmi.ssc, .xsc, .jar	hl7_2.4_rol.ssc, .xsc, .jar	hl7_2.4_ROR_ROR.ssc, .xsc, .jar
hl7_2.4_rp.ssc, .xsc, .jar	hl7_2.4_RPA_I08.ssc, .xsc, .jar	hl7_2.4_RPI_I01.ssc, .xsc, .jar
hl7_2.4_RPI_I04.ssc, .xsc, .jar	hl7_2.4_RPL_I02.ssc, .xsc, .jar	hl7_2.4_RPR_I03.ssc, .xsc, .jar
hl7_2.4_rq1.ssc, .xsc, .jar	hl7_2.4_RQA_I08.ssc, .xsc, .jar	hl7_2.4_RQC_I05.ssc, .xsc, .jar
hl7_2.4_rqd.ssc, .xsc, .jar	hl7_2.4_RQI_I01.ssc, .xsc, .jar	hl7_2.4_RQP_I04.ssc, .xsc, .jar
hl7_2.4_RQQ_Q09.ssc, .xsc, .jar	hl7_2.4_RRA_O18.ssc, .xsc, .jar	hl7_2.4_RRD_O14.ssc, .xsc, .jar
hl7_2.4_RRE_O12.ssc, .xsc, .jar	hl7_2.4_RRG_O16.ssc, .xsc, .jar	hl7_2.4_RRI_I12.ssc, .xsc, .jar
hl7_2.4_RSP_K11.ssc, .xsc, .jar	hl7_2.4_RSP_K13.ssc, .xsc, .jar	hl7_2.4_RSP_K15.ssc, .xsc, .jar
hl7_2.4_RSP_K21.ssc, .xsc, .jar	hl7_2.4_RSP_K22.ssc, .xsc, .jar	hl7_2.4_RSP_K23.ssc, .xsc, .jar
hl7_2.4_RSP_K24.ssc, .xsc, .jar	hl7_2.4_RSP_K25.ssc, .xsc, .jar	hl7_2.4_RSP_Z82.ssc, .xsc, .jar
hl7_2.4_RSP_Z86.ssc, .xsc, .jar	hl7_2.4_RSP_Z88.ssc, .xsc, .jar	hl7_2.4_RSP_Z90.ssc, .xsc, .jar
hl7_2.4_RTb_K13.ssc, .xsc, .jar	hl7_2.4_RTb_Knn.ssc, .xsc, .jar	hl7_2.4_RTb_Q13.ssc, .xsc, .jar
hl7_2.4_RTb_Z74.ssc, .xsc, .jar	hl7_2.4_rxa.ssc, .xsc, .jar	hl7_2.4_rxc.ssc, .xsc, .jar
hl7_2.4_rxd.ssc, .xsc, .jar	hl7_2.4_rxe.ssc, .xsc, .jar	hl7_2.4_rxg.ssc, .xsc, .jar
hl7_2.4_rxo.ssc, .xsc, .jar	hl7_2.4_rxr.ssc, .xsc, .jar	hl7_2.4_sac.ssc, .xsc, .jar
hl7_2.4_sad.ssc, .xsc, .jar	hl7_2.4_sch.ssc, .xsc, .jar	hl7_2.4_scv.ssc, .xsc, .jar
hl7_2.4_sid.ssc, .xsc, .jar	hl7_2.4_SIU_S12.ssc, .xsc, .jar	hl7_2.4_sn.ssc, .xsc, .jar
hl7_2.4_SPQ_Q08.ssc, .xsc, .jar	hl7_2.4_spr.ssc, .xsc, .jar	hl7_2.4_SQM_S25.ssc, .xsc, .jar
hl7_2.4_SQR_S25.ssc, .xsc, .jar	hl7_2.4_SRM_S01.ssc, .xsc, .jar	hl7_2.4_SRR_S01.ssc, .xsc, .jar
hl7_2.4_srt.ssc, .xsc, .jar	hl7_2.4_SSR_U04.ssc, .xsc, .jar	hl7_2.4_Ssu_U03.ssc, .xsc, .jar
hl7_2.4_stf.ssc, .xsc, .jar	hl7_2.4_SUR_P09.ssc, .xsc, .jar	hl7_2.4_TBR_R08.ssc, .xsc, .jar
hl7_2.4_tcc.ssc, .xsc, .jar	hl7_2.4_tcd.ssc, .xsc, .jar	hl7_2.4_TCU_U10.ssc, .xsc, .jar
hl7_2.4_tq.ssc, .xsc, .jar	hl7_2.4_txa.ssc, .xsc, .jar	hl7_2.4_tx_challenge.ssc, .xsc, .jar
hl7_2.4_ub1.ssc, .xsc, .jar	hl7_2.4_ub2.ssc, .xsc, .jar	hl7_2.4_UDM_Q05.ssc, .xsc, .jar
hl7_2.4_urd.ssc, .xsc, .jar	hl7_2.4_urs.ssc, .xsc, .jar	hl7_2.4_var.ssc, .xsc, .jar
hl7_2.4_vh.ssc, .xsc, .jar	hl7_2.4_vid.ssc, .xsc, .jar	hl7_2.4_VQQ_Q07.ssc, .xsc, .jar
hl7_2.4_vtq.ssc, .xsc, .jar	hl7_2.4_VXQ_V01.ssc, .xsc, .jar	hl7_2.4_VXR_V03.ssc, .xsc, .jar
hl7_2.4_VXU_V04.ssc, .xsc, .jar	hl7_2.4_VXX_V02.ssc, .xsc, .jar	hl7_2.4_xad.ssc, .xsc, .jar
hl7_2.4_xcn.ssc, .xsc, .jar	hl7_2.4_xon.ssc, .xsc, .jar	hl7_2.4_xpn.ssc, .xsc, .jar
hl7_2.4_xtn.ssc, .xsc, .jar		

Table 3 HL7 2.3.1 Installed Files

\HL7_2.3.1*		
hl7_2.3.1_acc .ssc, .xsc, .jar	hl7_2.3.1_ad .ssc, .xsc, .jar	hl7_2.3.1_add .ssc, .xsc, .jar
hl7_2.3.1_aig .ssc, .xsc, .jar	hl7_2.3.1_ail .ssc, .xsc, .jar	hl7_2.3.1_aip .ssc, .xsc, .jar
hl7_2.3.1_ais .ssc, .xsc, .jar	hl7_2.3.1_al1 .ssc, .xsc, .jar	hl7_2.3.1_apr .ssc, .xsc, .jar
hl7_2.3.1_arq .ssc, .xsc, .jar	hl7_2.3.1_aut .ssc, .xsc, .jar	hl7_2.3.1_bhs .ssc, .xsc, .jar
hl7_2.3.1_blg .ssc, .xsc, .jar	hl7_2.3.1_bts .ssc, .xsc, .jar	hl7_2.3.1_cd .ssc, .xsc, .jar
hl7_2.3.1_cdm .ssc, .xsc, .jar	hl7_2.3.1_ce .ssc, .xsc, .jar	hl7_2.3.1_cf .ssc, .xsc, .jar
hl7_2.3.1_ck .ssc, .xsc, .jar	hl7_2.3.1_cm0 .ssc, .xsc, .jar	hl7_2.3.1_cm1 .ssc, .xsc, .jar
hl7_2.3.1_cm2 .ssc, .xsc, .jar	hl7_2.3.1_cn .ssc, .xsc, .jar	hl7_2.3.1_cne .ssc, .xsc, .jar
hl7_2.3.1_cp .ssc, .xsc, .jar	hl7_2.3.1_cq .ssc, .xsc, .jar	hl7_2.3.1_csp .ssc, .xsc, .jar
hl7_2.3.1_csr .ssc, .xsc, .jar	hl7_2.3.1_css .ssc, .xsc, .jar	hl7_2.3.1_ctd .ssc, .xsc, .jar
hl7_2.3.1_cti .ssc, .xsc, .jar	hl7_2.3.1_cwe .ssc, .xsc, .jar	hl7_2.3.1_cx .ssc, .xsc, .jar
hl7_2.3.1_db1 .ssc, .xsc, .jar	hl7_2.3.1_dg1 .ssc, .xsc, .jar	hl7_2.3.1_dl .ssc, .xsc, .jar
hl7_2.3.1_dr .ssc, .xsc, .jar	hl7_2.3.1_drg .ssc, .xsc, .jar	hl7_2.3.1_dsc .ssc, .xsc, .jar
hl7_2.3.1_dsp .ssc, .xsc, .jar	hl7_2.3.1_ed .ssc, .xsc, .jar	hl7_2.3.1_ei .ssc, .xsc, .jar
hl7_2.3.1_eq1 .ssc, .xsc, .jar	hl7_2.3.1_erq .ssc, .xsc, .jar	hl7_2.3.1_err .ssc, .xsc, .jar
hl7_2.3.1_evn .ssc, .xsc, .jar	hl7_2.3.1_fac .ssc, .xsc, .jar	hl7_2.3.1_fc .ssc, .xsc, .jar
hl7_2.3.1_fhs .ssc, .xsc, .jar	hl7_2.3.1_ft1 .ssc, .xsc, .jar	hl7_2.3.1_fts .ssc, .xsc, .jar
hl7_2.3.1_gol .ssc, .xsc, .jar	hl7_2.3.1_gt1 .ssc, .xsc, .jar	hl7_2.3.1_hd .ssc, .xsc, .jar
hl7_2.3.1_in1 .ssc, .xsc, .jar	hl7_2.3.1_in2 .ssc, .xsc, .jar	hl7_2.3.1_in3 .ssc, .xsc, .jar
hl7_2.3.1_jc .ssc, .xsc, .jar	hl7_2.3.1_lcc .ssc, .xsc, .jar	hl7_2.3.1_lch .ssc, .xsc, .jar
hl7_2.3.1_ldp .ssc, .xsc, .jar	hl7_2.3.1_loc .ssc, .xsc, .jar	hl7_2.3.1_lrl .ssc, .xsc, .jar
hl7_2.3.1_ma .ssc, .xsc, .jar	hl7_2.3.1_mfa .ssc, .xsc, .jar	hl7_2.3.1_mfe .ssc, .xsc, .jar
hl7_2.3.1_mfi .ssc, .xsc, .jar	hl7_2.3.1_mo .ssc, .xsc, .jar	hl7_2.3.1_mrg .ssc, .xsc, .jar
hl7_2.3.1_msa .ssc, .xsc, .jar	hl7_2.3.1_msh .ssc, .xsc, .jar	hl7_2.3.1_na .ssc, .xsc, .jar
hl7_2.3.1_nk1 .ssc, .xsc, .jar	hl7_2.3.1_npu .ssc, .xsc, .jar	hl7_2.3.1_nte .ssc, .xsc, .jar
hl7_2.3.1_obr .ssc, .xsc, .jar	hl7_2.3.1_obx .ssc, .xsc, .jar	hl7_2.3.1_ods .ssc, .xsc, .jar
hl7_2.3.1_odt .ssc, .xsc, .jar	hl7_2.3.1_om1 .ssc, .xsc, .jar	hl7_2.3.1_om2 .ssc, .xsc, .jar
hl7_2.3.1_om3 .ssc, .xsc, .jar	hl7_2.3.1_om4 .ssc, .xsc, .jar	hl7_2.3.1_om5 .ssc, .xsc, .jar
hl7_2.3.1_om6 .ssc, .xsc, .jar	hl7_2.3.1_orc .ssc, .xsc, .jar	hl7_2.3.1_pcr .ssc, .xsc, .jar
hl7_2.3.1_pd1 .ssc, .xsc, .jar	hl7_2.3.1_pdc .ssc, .xsc, .jar	hl7_2.3.1_peo .ssc, .xsc, .jar
hl7_2.3.1_pes .ssc, .xsc, .jar	hl7_2.3.1_pid .ssc, .xsc, .jar	hl7_2.3.1_pl .ssc, .xsc, .jar
hl7_2.3.1_pn .ssc, .xsc, .jar	hl7_2.3.1_pp .ssc, .xsc, .jar	hl7_2.3.1_pr1 .ssc, .xsc, .jar
hl7_2.3.1_pra .ssc, .xsc, .jar	hl7_2.3.1_prb .ssc, .xsc, .jar	hl7_2.3.1_prc .ssc, .xsc, .jar
hl7_2.3.1_prd .ssc, .xsc, .jar	hl7_2.3.1_psh .ssc, .xsc, .jar	hl7_2.3.1_pt .ssc, .xsc, .jar
hl7_2.3.1_pth .ssc, .xsc, .jar	hl7_2.3.1_pv1 .ssc, .xsc, .jar	hl7_2.3.1_pv2 .ssc, .xsc, .jar
hl7_2.3.1_qak .ssc, .xsc, .jar	hl7_2.3.1_qp .ssc, .xsc, .jar	hl7_2.3.1_qrd .ssc, .xsc, .jar

\HL7_2.3.1*\		
hl7_2.3.1_qrf .ssc, .xsc, .jar	hl7_2.3.1_qs .ssc, .xsc, .jar	hl7_2.3.1_rc .ssc, .xsc, .jar
hl7_2.3.1_rdf .ssc, .xsc, .jar	hl7_2.3.1_rdt .ssc, .xsc, .jar	hl7_2.3.1_rf .ssc, .xsc, .jar
hl7_2.3.1_rf1 .ssc, .xsc, .jar	hl7_2.3.1_rgs .ssc, .xsc, .jar	hl7_2.3.1_ri .ssc, .xsc, .jar
hl7_2.3.1_rol .ssc, .xsc, .jar	hl7_2.3.1_rp .ssc, .xsc, .jar	hl7_2.3.1_rq1 .ssc, .xsc, .jar
hl7_2.3.1_rqd .ssc, .xsc, .jar	hl7_2.3.1_rxa .ssc, .xsc, .jar	hl7_2.3.1_rxc .ssc, .xsc, .jar
hl7_2.3.1_rxd .ssc, .xsc, .jar	hl7_2.3.1_rxe .ssc, .xsc, .jar	hl7_2.3.1_rxg .ssc, .xsc, .jar
hl7_2.3.1_rxo .ssc, .xsc, .jar	hl7_2.3.1_rxr .ssc, .xsc, .jar	hl7_2.3.1_sc .ssc, .xsc, .jar
hl7_2.3.1_sch .ssc, .xsc, .jar	hl7_2.3.1_sn .ssc, .xsc, .jar	hl7_2.3.1_spr .ssc, .xsc, .jar
hl7_2.3.1_stf .ssc, .xsc, .jar	hl7_2.3.1_tq .ssc, .xsc, .jar	hl7_2.3.1_txa .ssc, .xsc, .jar
hl7_2.3.1_ub1 .ssc, .xsc, .jar	hl7_2.3.1_ub2 .ssc, .xsc, .jar	hl7_2.3.1_urd .ssc, .xsc, .jar
hl7_2.3.1_urs .ssc, .xsc, .jar	hl7_2.3.1_var .ssc, .xsc, .jar	hl7_2.3.1_vh .ssc, .xsc, .jar
hl7_2.3.1_vi .ssc, .xsc, .jar	hl7_2.3.1_vtq .ssc, .xsc, .jar	hl7_2.3.1_xa .ssc, .xsc, .jar
hl7_2.3.1_xc .ssc, .xsc, .jar	hl7_2.3.1_xo .ssc, .xsc, .jar	hl7_2.3.1_xp .ssc, .xsc, .jar
hl7_2.3.1_xt .ssc, .xsc, .jar	hl7_A01_2.3.1 .ssc, .xsc, .jar	hl7_A02_2.3.1 .ssc, .xsc, .jar
hl7_A03_2.3.1 .ssc, .xsc, .jar	hl7_A04_2.3.1 .ssc, .xsc, .jar	hl7_A05_2.3.1 .ssc, .xsc, .jar
hl7_A06_2.3.1 .ssc, .xsc, .jar	hl7_A07_2.3.1 .ssc, .xsc, .jar	hl7_A08_2.3.1 .ssc, .xsc, .jar
hl7_A09_2.3.1 .ssc, .xsc, .jar	hl7_A10_2.3.1 .ssc, .xsc, .jar	hl7_A11_2.3.1 .ssc, .xsc, .jar
hl7_A12_2.3.1 .ssc, .xsc, .jar	hl7_A13_2.3.1 .ssc, .xsc, .jar	hl7_A14_2.3.1 .ssc, .xsc, .jar
hl7_A15_2.3.1 .ssc, .xsc, .jar	hl7_A16_2.3.1 .ssc, .xsc, .jar	hl7_A17_2.3.1 .ssc, .xsc, .jar
hl7_A18_2.3.1 .ssc, .xsc, .jar	hl7_A19_2.3.1 .ssc, .xsc, .jar	hl7_A20_2.3.1 .ssc, .xsc, .jar
hl7_A21_2.3.1 .ssc, .xsc, .jar	hl7_A22_2.3.1 .ssc, .xsc, .jar	hl7_A23_2.3.1 .ssc, .xsc, .jar
hl7_A24_2.3.1 .ssc, .xsc, .jar	hl7_A25_2.3.1 .ssc, .xsc, .jar	hl7_A26_2.3.1 .ssc, .xsc, .jar
hl7_A27_2.3.1 .ssc, .xsc, .jar	hl7_A28_2.3.1 .ssc, .xsc, .jar	hl7_A29_2.3.1 .ssc, .xsc, .jar
hl7_A30_2.3.1 .ssc, .xsc, .jar	hl7_A31_2.3.1 .ssc, .xsc, .jar	hl7_A32_2.3.1 .ssc, .xsc, .jar
hl7_A33_2.3.1 .ssc, .xsc, .jar	hl7_A34_2.3.1 .ssc, .xsc, .jar	hl7_A35_2.3.1 .ssc, .xsc, .jar
hl7_A36_2.3.1 .ssc, .xsc, .jar	hl7_A37_2.3.1 .ssc, .xsc, .jar	hl7_A38_2.3.1 .ssc, .xsc, .jar
hl7_A39_2.3.1 .ssc, .xsc, .jar	hl7_A40_2.3.1 .ssc, .xsc, .jar	hl7_A41_2.3.1 .ssc, .xsc, .jar
hl7_A42_2.3.1 .ssc, .xsc, .jar	hl7_A43_2.3.1 .ssc, .xsc, .jar	hl7_A44_2.3.1 .ssc, .xsc, .jar
hl7_A45_2.3.1 .ssc, .xsc, .jar	hl7_A46_2.3.1 .ssc, .xsc, .jar	hl7_A47_2.3.1 .ssc, .xsc, .jar
hl7_A48_2.3.1 .ssc, .xsc, .jar	hl7_A49_2.3.1 .ssc, .xsc, .jar	hl7_A50_2.3.1 .ssc, .xsc, .jar
hl7_A51_2.3.1 .ssc, .xsc, .jar	hl7_ACK_2.3.1 .ssc, .xsc, .jar	hl7_ADR_2.3.1 .ssc, .xsc, .jar
hl7_CRM_2.3.1 .ssc, .xsc, .jar	hl7_CSU_2.3.1 .ssc, .xsc, .jar	hl7_DFT_2.3.1 .ssc, .xsc, .jar
hl7_DOC_2.3.1 .ssc, .xsc, .jar	hl7_DSR_2.3.1 .ssc, .xsc, .jar	hl7_EDR_2.3.1 .ssc, .xsc, .jar
hl7_EQQ_2.3.1 .ssc, .xsc, .jar	hl7_ERP_2.3.1 .ssc, .xsc, .jar	hl7_MCF_2.3.1 .ssc, .xsc, .jar
hl7_MDM_2.3.1 .ssc, .xsc, .jar	hl7_MFD_2.3.1 .ssc, .xsc, .jar	hl7_MFK_2.3.1 .ssc, .xsc, .jar
hl7_MFN_2.3.1 .ssc, .xsc, .jar	hl7_MFN_PHYS_2.3.1 .ssc, .xsc, .jar	hl7_MFN_STUDY_2.3.1 .ssc, .xsc, .jar

\HL7_2.3.1*		
hl7_MFN_TESTS_2.3.1 .ssc, .xsc, .jar	hl7_MFN-CDM_2.3.1 .ssc, .xsc, .jar	hl7_MFN-LOC_2.3.1 .ssc, .xsc, .jar
hl7_MFR_2.3.1 .ssc, .xsc, .jar	hl7_ORF_2.3.1 .ssc, .xsc, .jar	hl7_ORM_2.3.1 .ssc, .xsc, .jar
hl7_ORM_DIET_2.3.1 .ssc, .xsc, .jar	hl7_ORM_NON-STOCK_2.3.1 .ssc, .xsc, .jar	hl7_ORM_RX_2.3.1 .ssc, .xsc, .jar
hl7_ORM_STOCK_2.3.1 .ssc, .xsc, .jar	hl7_ORR_2.3.1 .ssc, .xsc, .jar	hl7_ORR_DIET_2.3.1 .ssc, .xsc, .jar
hl7_ORR_NON-STOCK_2.3.1 .ssc, .xsc, .jar	hl7_ORR_RX_2.3.1 .ssc, .xsc, .jar	hl7_ORR_STOCK_2.3.1 .ssc, .xsc, .jar
hl7_ORU_2.3.1 .ssc, .xsc, .jar	hl7_OSR_2.3.1 .ssc, .xsc, .jar	hl7_P01_2.3.1 .ssc, .xsc, .jar
hl7_P02_2.3.1 .ssc, .xsc, .jar	hl7_P03_2.3.1 .ssc, .xsc, .jar	hl7_P05_2.3.1 .ssc, .xsc, .jar
hl7_P06_2.3.1 .ssc, .xsc, .jar	hl7_PEX_2.3.1 .ssc, .xsc, .jar	hl7_PGL_2.3.1 .ssc, .xsc, .jar
hl7_PIN_2.3.1 .ssc, .xsc, .jar	hl7_PPG_2.3.1 .ssc, .xsc, .jar	hl7_PPP_2.3.1 .ssc, .xsc, .jar
hl7_PPR_2.3.1 .ssc, .xsc, .jar	hl7_PPT_2.3.1 .ssc, .xsc, .jar	hl7_PPV_2.3.1 .ssc, .xsc, .jar
hl7_PRR_2.3.1 .ssc, .xsc, .jar	hl7_PTR_2.3.1 .ssc, .xsc, .jar	hl7_QCK_2.3.1 .ssc, .xsc, .jar
hl7_QRY_2.3.1 .ssc, .xsc, .jar	hl7_RAR_2.3.1 .ssc, .xsc, .jar	hl7_RAS_2.3.1 .ssc, .xsc, .jar
hl7_RCI_2.3.1 .ssc, .xsc, .jar	hl7_RCL_2.3.1 .ssc, .xsc, .jar	hl7_RDE_2.3.1 .ssc, .xsc, .jar
hl7_RDR_2.3.1 .ssc, .xsc, .jar	hl7_RDS_2.3.1 .ssc, .xsc, .jar	hl7_REF_2.3.1 .ssc, .xsc, .jar
hl7_RER_2.3.1 .ssc, .xsc, .jar	hl7_RGR_2.3.1 .ssc, .xsc, .jar	hl7_RGV_2.3.1 .ssc, .xsc, .jar
hl7_ROR_2.3.1 .ssc, .xsc, .jar	hl7_RPA_2.3.1 .ssc, .xsc, .jar	hl7_RPI_2.3.1 .ssc, .xsc, .jar
hl7_RPL_2.3.1 .ssc, .xsc, .jar	hl7_RPR_2.3.1 .ssc, .xsc, .jar	hl7_RQA_2.3.1 .ssc, .xsc, .jar
hl7_RQC_2.3.1 .ssc, .xsc, .jar	hl7_RQI_2.3.1 .ssc, .xsc, .jar	hl7_RQP_2.3.1 .ssc, .xsc, .jar
hl7_RQQ_2.3.1 .ssc, .xsc, .jar	hl7_RRA_2.3.1 .ssc, .xsc, .jar	hl7_RRD_2.3.1 .ssc, .xsc, .jar
hl7_RRE_2.3.1 .ssc, .xsc, .jar	hl7_RRG_2.3.1 .ssc, .xsc, .jar	hl7_RRI_2.3.1 .ssc, .xsc, .jar
hl7_SIU_2.3.1 .ssc, .xsc, .jar	hl7_SPQ_2.3.1 .ssc, .xsc, .jar	hl7_SQM_2.3.1 .ssc, .xsc, .jar
hl7_SQR_2.3.1 .ssc, .xsc, .jar	hl7_SRM_2.3.1 .ssc, .xsc, .jar	hl7_SRR_2.3.1 .ssc, .xsc, .jar
hl7_SUR_2.3.1 .ssc, .xsc, .jar	hl7_TBR_2.3.1 .ssc, .xsc, .jar	hl7_UDM_2.3.1 .ssc, .xsc, .jar
hl7_VQQ_2.3.1 .ssc, .xsc, .jar	hl7_VXQ_2.3.1 .ssc, .xsc, .jar	hl7_VXR_2.3.1 .ssc, .xsc, .jar
hl7_VXU_2.3.1 .ssc, .xsc, .jar	hl7_VXX_2.3.1 .ssc, .xsc, .jar	

Table 4 HL7_2.3 Installed Files

\HL7_2.3*		
hl7_2.3_acc .ssc, .xsc, .jar	hl7_2.3_ad .ssc, .xsc, .jar	hl7_2.3_add .ssc, .xsc, .jar
hl7_2.3_aig .ssc, .xsc, .jar	hl7_2.3_ail .ssc, .xsc, .jar	hl7_2.3_aip .ssc, .xsc, .jar
hl7_2.3_ais .ssc, .xsc, .jar	hl7_2.3_al1 .ssc, .xsc, .jar	hl7_2.3_apr .ssc, .xsc, .jar
hl7_2.3_arq .ssc, .xsc, .jar	hl7_2.3_aut .ssc, .xsc, .jar	hl7_2.3_bhs .ssc, .xsc, .jar
hl7_2.3_blg .ssc, .xsc, .jar	hl7_2.3_bts .ssc, .xsc, .jar	hl7_2.3_cd .ssc, .xsc, .jar
hl7_2.3_cdm .ssc, .xsc, .jar	hl7_2.3_ce .ssc, .xsc, .jar	hl7_2.3_cf .ssc, .xsc, .jar

\HL7_2.3*\		
hl7_2.3_ck .ssc, .xsc, .jar	hl7_2.3_cm0 .ssc, .xsc, .jar	hl7_2.3_cm1 .ssc, .xsc, .jar
hl7_2.3_cm2 .ssc, .xsc, .jar	hl7_2.3_cn .ssc, .xsc, .jar	hl7_2.3_cp .ssc, .xsc, .jar
hl7_2.3_cq .ssc, .xsc, .jar	hl7_2.3_csp .ssc, .xsc, .jar	hl7_2.3_csr .ssc, .xsc, .jar
hl7_2.3_css .ssc, .xsc, .jar	hl7_2.3_ctd .ssc, .xsc, .jar	hl7_2.3_cti .ssc, .xsc, .jar
hl7_2.3_cx .ssc, .xsc, .jar	hl7_2.3_db1 .ssc, .xsc, .jar	hl7_2.3_dg1 .ssc, .xsc, .jar
hl7_2.3_dl .ssc, .xsc, .jar	hl7_2.3_dr .ssc, .xsc, .jar	hl7_2.3_drg .ssc, .xsc, .jar
hl7_2.3_dsc .ssc, .xsc, .jar	hl7_2.3_dsp .ssc, .xsc, .jar	hl7_2.3_ed .ssc, .xsc, .jar
hl7_2.3_ei .ssc, .xsc, .jar	hl7_2.3_eql .ssc, .xsc, .jar	hl7_2.3_erq .ssc, .xsc, .jar
hl7_2.3_err .ssc, .xsc, .jar	hl7_2.3_evn .ssc, .xsc, .jar	hl7_2.3_fac .ssc, .xsc, .jar
hl7_2.3_fc .ssc, .xsc, .jar	hl7_2.3_fhs .ssc, .xsc, .jar	hl7_2.3_ft1 .ssc, .xsc, .jar
hl7_2.3_fts .ssc, .xsc, .jar	hl7_2.3_gol .ssc, .xsc, .jar	hl7_2.3_gt1 .ssc, .xsc, .jar
hl7_2.3_hd .ssc, .xsc, .jar	hl7_2.3_in1 .ssc, .xsc, .jar	hl7_2.3_in2 .ssc, .xsc, .jar
hl7_2.3_in3 .ssc, .xsc, .jar	hl7_2.3_jc .ssc, .xsc, .jar	hl7_2.3_lcc .ssc, .xsc, .jar
hl7_2.3_lch .ssc, .xsc, .jar	hl7_2.3_ldp .ssc, .xsc, .jar	hl7_2.3_loc .ssc, .xsc, .jar
hl7_2.3_lrl .ssc, .xsc, .jar	hl7_2.3_ma .ssc, .xsc, .jar	hl7_2.3_mfa .ssc, .xsc, .jar
hl7_2.3_mfe .ssc, .xsc, .jar	hl7_2.3_mfi .ssc, .xsc, .jar	hl7_2.3_mo .ssc, .xsc, .jar
hl7_2.3_mrg .ssc, .xsc, .jar	hl7_2.3_msa .ssc, .xsc, .jar	hl7_2.3_msh .ssc, .xsc, .jar
hl7_2.3_na .ssc, .xsc, .jar	hl7_2.3_nk1 .ssc, .xsc, .jar	hl7_2.3_npu .ssc, .xsc, .jar
hl7_2.3_nte .ssc, .xsc, .jar	hl7_2.3_obr .ssc, .xsc, .jar	hl7_2.3_obx .ssc, .xsc, .jar
hl7_2.3_ods .ssc, .xsc, .jar	hl7_2.3_odt .ssc, .xsc, .jar	hl7_2.3_om1 .ssc, .xsc, .jar
hl7_2.3_om2 .ssc, .xsc, .jar	hl7_2.3_om3 .ssc, .xsc, .jar	hl7_2.3_om4 .ssc, .xsc, .jar
hl7_2.3_om5 .ssc, .xsc, .jar	hl7_2.3_om6 .ssc, .xsc, .jar	hl7_2.3_orc .ssc, .xsc, .jar
hl7_2.3_pcr .ssc, .xsc, .jar	hl7_2.3_pd1 .ssc, .xsc, .jar	hl7_2.3_pdc .ssc, .xsc, .jar
hl7_2.3_peo .ssc, .xsc, .jar	hl7_2.3_pes .ssc, .xsc, .jar	hl7_2.3_pid .ssc, .xsc, .jar
hl7_2.3_pl .ssc, .xsc, .jar	hl7_2.3_pn .ssc, .xsc, .jar	hl7_2.3_pp .ssc, .xsc, .jar
hl7_2.3_pr1 .ssc, .xsc, .jar	hl7_2.3_pra .ssc, .xsc, .jar	hl7_2.3_prb .ssc, .xsc, .jar
hl7_2.3_prc .ssc, .xsc, .jar	hl7_2.3_prd .ssc, .xsc, .jar	hl7_2.3_psh .ssc, .xsc, .jar
hl7_2.3_pt .ssc, .xsc, .jar	hl7_2.3_pth .ssc, .xsc, .jar	hl7_2.3_pv1 .ssc, .xsc, .jar
hl7_2.3_pv2 .ssc, .xsc, .jar	hl7_2.3_qak .ssc, .xsc, .jar	hl7_2.3_qp .ssc, .xsc, .jar
hl7_2.3_qrd .ssc, .xsc, .jar	hl7_2.3_qrf .ssc, .xsc, .jar	hl7_2.3_qs .ssc, .xsc, .jar
hl7_2.3_rc .ssc, .xsc, .jar	hl7_2.3_rdf .ssc, .xsc, .jar	hl7_2.3_rdt .ssc, .xsc, .jar
hl7_2.3_rf .ssc, .xsc, .jar	hl7_2.3_rf1 .ssc, .xsc, .jar	hl7_2.3_rgs .ssc, .xsc, .jar
hl7_2.3_ri .ssc, .xsc, .jar	hl7_2.3_rol .ssc, .xsc, .jar	hl7_2.3_rp .ssc, .xsc, .jar
hl7_2.3_rq1 .ssc, .xsc, .jar	hl7_2.3_rqd .ssc, .xsc, .jar	hl7_2.3_rxa .ssc, .xsc, .jar
hl7_2.3_rxc .ssc, .xsc, .jar	hl7_2.3_rxd .ssc, .xsc, .jar	hl7_2.3_rxe .ssc, .xsc, .jar
hl7_2.3_rxg .ssc, .xsc, .jar	hl7_2.3_rxo .ssc, .xsc, .jar	hl7_2.3_rxr .ssc, .xsc, .jar

\\HL7_2.3*		
hl7_2.3_sc .ssc, .xsc, .jar	hl7_2.3_sch .ssc, .xsc, .jar	hl7_2.3_sn .ssc, .xsc, .jar
hl7_2.3_spr .ssc, .xsc, .jar	hl7_2.3_stf .ssc, .xsc, .jar	hl7_2.3_tq .ssc, .xsc, .jar
hl7_2.3_txa .ssc, .xsc, .jar	hl7_2.3_ub1 .ssc, .xsc, .jar	hl7_2.3_ub2 .ssc, .xsc, .jar
hl7_2.3_urd .ssc, .xsc, .jar	hl7_2.3_urs .ssc, .xsc, .jar	hl7_2.3_var .ssc, .xsc, .jar
hl7_2.3_vh .ssc, .xsc, .jar	hl7_2.3_vtq .ssc, .xsc, .jar	hl7_2.3_xa .ssc, .xsc, .jar
hl7_2.3_xc .ssc, .xsc, .jar	hl7_2.3_xo .ssc, .xsc, .jar	hl7_2.3_xp .ssc, .xsc, .jar
hl7_2.3_xt .ssc, .xsc, .jar	hl7_A01_2.3 .ssc, .xsc, .jar	hl7_A02_2.3 .ssc, .xsc, .jar
hl7_A03_2.3 .ssc, .xsc, .jar	hl7_A04_2.3 .ssc, .xsc, .jar	hl7_A05_2.3 .ssc, .xsc, .jar
hl7_A06_2.3 .ssc, .xsc, .jar	hl7_A07_2.3 .ssc, .xsc, .jar	hl7_A08_2.3 .ssc, .xsc, .jar
hl7_A09_2.3 .ssc, .xsc, .jar	hl7_A10_2.3 .ssc, .xsc, .jar	hl7_A11_2.3 .ssc, .xsc, .jar
hl7_A12_2.3 .ssc, .xsc, .jar	hl7_A13_2.3 .ssc, .xsc, .jar	hl7_A14_2.3 .ssc, .xsc, .jar
hl7_A15_2.3 .ssc, .xsc, .jar	hl7_A16_2.3 .ssc, .xsc, .jar	hl7_A17_2.3 .ssc, .xsc, .jar
hl7_A18_2.3 .ssc, .xsc, .jar	hl7_A19_2.3 .ssc, .xsc, .jar	hl7_A20_2.3 .ssc, .xsc, .jar
hl7_A21_2.3 .ssc, .xsc, .jar	hl7_A22_2.3 .ssc, .xsc, .jar	hl7_A23_2.3 .ssc, .xsc, .jar
hl7_A24_2.3 .ssc, .xsc, .jar	hl7_A25_2.3 .ssc, .xsc, .jar	hl7_A26_2.3 .ssc, .xsc, .jar
hl7_A27_2.3 .ssc, .xsc, .jar	hl7_A28_2.3 .ssc, .xsc, .jar	hl7_A29_2.3 .ssc, .xsc, .jar
hl7_A30_2.3 .ssc, .xsc, .jar	hl7_A31_2.3 .ssc, .xsc, .jar	hl7_A32_2.3 .ssc, .xsc, .jar
hl7_A33_2.3 .ssc, .xsc, .jar	hl7_A34_2.3 .ssc, .xsc, .jar	hl7_A35_2.3 .ssc, .xsc, .jar
hl7_A36_2.3 .ssc, .xsc, .jar	hl7_A37_2.3 .ssc, .xsc, .jar	hl7_A38_2.3 .ssc, .xsc, .jar
hl7_A39_2.3 .ssc, .xsc, .jar	hl7_A40_2.3 .ssc, .xsc, .jar	hl7_A41_2.3 .ssc, .xsc, .jar
hl7_A42_2.3 .ssc, .xsc, .jar	hl7_A43_2.3 .ssc, .xsc, .jar	hl7_A44_2.3 .ssc, .xsc, .jar
hl7_A45_2.3 .ssc, .xsc, .jar	hl7_A46_2.3 .ssc, .xsc, .jar	hl7_A47_2.3 .ssc, .xsc, .jar
hl7_A48_2.3 .ssc, .xsc, .jar	hl7_A49_2.3 .ssc, .xsc, .jar	hl7_A50_2.3 .ssc, .xsc, .jar
hl7_A51_2.3 .ssc, .xsc, .jar	hl7_ACK_2.3 .ssc, .xsc, .jar	hl7_ADR_2.3 .ssc, .xsc, .jar
hl7_CRM_2.3 .ssc, .xsc, .jar	hl7_CSU_2.3 .ssc, .xsc, .jar	hl7_DFT_2.3 .ssc, .xsc, .jar
hl7_DOC_2.3 .ssc, .xsc, .jar	hl7_DSR_2.3 .ssc, .xsc, .jar	hl7_EDR_2.3 .ssc, .xsc, .jar
hl7_EQQ_2.3 .ssc, .xsc, .jar	hl7_ERP_2.3 .ssc, .xsc, .jar	hl7_MCF_2.3 .ssc, .xsc, .jar
hl7_MDM_2.3 .ssc, .xsc, .jar	hl7_MFD_2.3 .ssc, .xsc, .jar	hl7_MFK_2.3 .ssc, .xsc, .jar
hl7_MFN_2.3 .ssc, .xsc, .jar	hl7_MFN_PHYS_2.3 .ssc, .xsc, .jar	hl7_MFN_STUDY_2.3 .ssc, .xsc, .jar
hl7_MFN_TESTS_2.3 .ssc, .xsc, .jar	hl7_MFN-CDM_2.3 .ssc, .xsc, .jar	hl7_MFN-LOC_2.3 .ssc, .xsc, .jar
hl7_MFR_2.3 .ssc, .xsc, .jar	hl7_ORF_2.3 .ssc, .xsc, .jar	hl7_ORM_2.3 .ssc, .xsc, .jar
hl7_ORM_DIET_2.3 .ssc, .xsc, .jar	hl7_ORM_NON-STOCK_2.3 .ssc, .xsc, .jar	hl7_ORM_RX_2.3 .ssc, .xsc, .jar
hl7_ORM_STOCK_2.3 .ssc, .xsc, .jar	hl7_ORR_2.3 .ssc, .xsc, .jar	hl7_ORR_DIET_2.3 .ssc, .xsc, .jar

\\HL7_2.3*		
hl7_ORR_NON-STOCK_2.3 .ssc, .xsc, .jar	hl7_ORR_RX_2.3 .ssc, .xsc, .jar	hl7_ORR_STOCK_2.3 .ssc, .xsc, .jar
hl7_ORU_2.3 .ssc, .xsc, .jar	hl7_OSR_2.3 .ssc, .xsc, .jar	hl7_P01_2.3 .ssc, .xsc, .jar
hl7_P02_2.3 .ssc, .xsc, .jar	hl7_P03_2.3 .ssc, .xsc, .jar	hl7_P05_2.3 .ssc, .xsc, .jar
hl7_P06_2.3 .ssc, .xsc, .jar	hl7_PEX_2.3 .ssc, .xsc, .jar	hl7_PGL_2.3 .ssc, .xsc, .jar
hl7_PIN_2.3 .ssc, .xsc, .jar	hl7_PPG_2.3 .ssc, .xsc, .jar	hl7_PPP_2.3 .ssc, .xsc, .jar
hl7_PPR_2.3 .ssc, .xsc, .jar	hl7_PPT_2.3 .ssc, .xsc, .jar	hl7_PPV_2.3 .ssc, .xsc, .jar
hl7_PRR_2.3 .ssc, .xsc, .jar	hl7_PTR_2.3 .ssc, .xsc, .jar	hl7_QCK_2.3 .ssc, .xsc, .jar
hl7_QRY_2.3 .ssc, .xsc, .jar	hl7_RAR_2.3 .ssc, .xsc, .jar	hl7_RAS_2.3 .ssc, .xsc, .jar
hl7_RCI_2.3 .ssc, .xsc, .jar	hl7_RCL_2.3 .ssc, .xsc, .jar	hl7_RDE_2.3 .ssc, .xsc, .jar
hl7_RDR_2.3 .ssc, .xsc, .jar	hl7_RDS_2.3 .ssc, .xsc, .jar	hl7_REF_2.3 .ssc, .xsc, .jar
hl7_RER_2.3 .ssc, .xsc, .jar	hl7_RGR_2.3 .ssc, .xsc, .jar	hl7_RGV_2.3 .ssc, .xsc, .jar
hl7_ROR_2.3 .ssc, .xsc, .jar	hl7_RPA_2.3 .ssc, .xsc, .jar	hl7_RPI_2.3 .ssc, .xsc, .jar
hl7_RPL_2.3 .ssc, .xsc, .jar	hl7_RPR_2.3 .ssc, .xsc, .jar	hl7_RQA_2.3 .ssc, .xsc, .jar
hl7_RQC_2.3 .ssc, .xsc, .jar	hl7_RQI_2.3 .ssc, .xsc, .jar	hl7_RQP_2.3 .ssc, .xsc, .jar
hl7_RQQ_2.3 .ssc, .xsc, .jar	hl7_RRA_2.3 .ssc, .xsc, .jar	hl7_RRD_2.3 .ssc, .xsc, .jar
hl7_RRE_2.3 .ssc, .xsc, .jar	hl7_RRG_2.3 .ssc, .xsc, .jar	hl7_RRI_2.3 .ssc, .xsc, .jar
hl7_SIU_2.3 .ssc, .xsc, .jar	hl7_SPQ_2.3 .ssc, .xsc, .jar	hl7_SQM_2.3 .ssc, .xsc, .jar
hl7_SQR_2.3 .ssc, .xsc, .jar	hl7_SRM_2.3 .ssc, .xsc, .jar	hl7_SRR_2.3 .ssc, .xsc, .jar
hl7_SUR_2.3 .ssc, .xsc, .jar	hl7_TBR_2.3 .ssc, .xsc, .jar	hl7_UDM_2.3 .ssc, .xsc, .jar
hl7_VQQ_2.3 .ssc, .xsc, .jar	hl7_VXQ_2.3 .ssc, .xsc, .jar	hl7_VXR_2.3 .ssc, .xsc, .jar
hl7_VXU_2.3 .ssc, .xsc, .jar	hl7_VXX_2.3 .ssc, .xsc, .jar	

Table 5 HL7_2.2 Installed Files

\\HL7_2.2*		
hl7_2.2_acc .ssc, .xsc, .jar	hl7_2.2_ad .ssc, .xsc, .jar	hl7_2.2_add .ssc, .xsc, .jar
hl7_2.2_al1 .ssc, .xsc, .jar	hl7_2.2_bhs .ssc, .xsc, .jar	hl7_2.2_blg .ssc, .xsc, .jar
hl7_2.2_bts .ssc, .xsc, .jar	hl7_2.2_ce .ssc, .xsc, .jar	hl7_2.2_cf .ssc, .xsc, .jar
hl7_2.2_ck .ssc, .xsc, .jar	hl7_2.2_cn .ssc, .xsc, .jar	hl7_2.2_cq .ssc, .xsc, .jar
hl7_2.2_dg1 .ssc, .xsc, .jar	hl7_2.2_dsc .ssc, .xsc, .jar	hl7_2.2_dsp .ssc, .xsc, .jar
hl7_2.2_err .ssc, .xsc, .jar	hl7_2.2_evn .ssc, .xsc, .jar	hl7_2.2_fhs .ssc, .xsc, .jar
hl7_2.2_ft1 .ssc, .xsc, .jar	hl7_2.2_fts .ssc, .xsc, .jar	hl7_2.2_gt1 .ssc, .xsc, .jar
hl7_2.2_in1 .ssc, .xsc, .jar	hl7_2.2_in2 .ssc, .xsc, .jar	hl7_2.2_in3 .ssc, .xsc, .jar
hl7_2.2_mfa .ssc, .xsc, .jar	hl7_2.2_mfe .ssc, .xsc, .jar	hl7_2.2_mfi .ssc, .xsc, .jar
hl7_2.2_mo .ssc, .xsc, .jar	hl7_2.2_mrg .ssc, .xsc, .jar	hl7_2.2_msa .ssc, .xsc, .jar
hl7_2.2_msh .ssc, .xsc, .jar	hl7_2.2_nk1 .ssc, .xsc, .jar	hl7_2.2_npu .ssc, .xsc, .jar
hl7_2.2_nte .ssc, .xsc, .jar	hl7_2.2_obr .ssc, .xsc, .jar	hl7_2.2_obx .ssc, .xsc, .jar

Table 5 HL7_2.2 Installed Files

\\HL7_2.2*		
hl7_2.2_ods .ssc, .xsc, .jar	hl7_2.2_odt .ssc, .xsc, .jar	hl7_2.2_om1 .ssc, .xsc, .jar
hl7_2.2_om2 .ssc, .xsc, .jar	hl7_2.2_om3 .ssc, .xsc, .jar	hl7_2.2_om4 .ssc, .xsc, .jar
hl7_2.2_om5 .ssc, .xsc, .jar	hl7_2.2_om6 .ssc, .xsc, .jar	hl7_2.2_orc .ssc, .xsc, .jar
hl7_2.2_pid .ssc, .xsc, .jar	hl7_2.2_pl .ssc, .xsc, .jar	hl7_2.2_pn .ssc, .xsc, .jar
hl7_2.2_pr1 .ssc, .xsc, .jar	hl7_2.2_pra .ssc, .xsc, .jar	hl7_2.2_pv1 .ssc, .xsc, .jar
hl7_2.2_pv2 .ssc, .xsc, .jar	hl7_2.2_qrd .ssc, .xsc, .jar	hl7_2.2_qrf .ssc, .xsc, .jar
hl7_2.2_rp .ssc, .xsc, .jar	hl7_2.2_rq1 .ssc, .xsc, .jar	hl7_2.2_rqd .ssc, .xsc, .jar
hl7_2.2_rxa .ssc, .xsc, .jar	hl7_2.2_rxc .ssc, .xsc, .jar	hl7_2.2_rxd .ssc, .xsc, .jar
hl7_2.2_rxe .ssc, .xsc, .jar	hl7_2.2_rxc .ssc, .xsc, .jar	hl7_2.2_rxo .ssc, .xsc, .jar
hl7_2.2_rxr .ssc, .xsc, .jar	hl7_2.2_stf .ssc, .xsc, .jar	hl7_2.2_tq .ssc, .xsc, .jar
hl7_2.2_ub1 .ssc, .xsc, .jar	hl7_2.2_ub2 .ssc, .xsc, .jar	hl7_2.2_urd .ssc, .xsc, .jar
hl7_2.2_urs .ssc, .xsc, .jar	hl7_A01_2.2 .ssc, .xsc, .jar	hl7_A02_2.2 .ssc, .xsc, .jar
hl7_A03_2.2 .ssc, .xsc, .jar	hl7_A04_2.2 .ssc, .xsc, .jar	hl7_A05_2.2 .ssc, .xsc, .jar
hl7_A06_2.2 .ssc, .xsc, .jar	hl7_A07_2.2 .ssc, .xsc, .jar	hl7_A08_2.2 .ssc, .xsc, .jar
hl7_A09_2.2 .ssc, .xsc, .jar	hl7_A10_2.2 .ssc, .xsc, .jar	hl7_A11_2.2 .ssc, .xsc, .jar
hl7_A12_2.2 .ssc, .xsc, .jar	hl7_A13_2.2 .ssc, .xsc, .jar	hl7_A14_2.2 .ssc, .xsc, .jar
hl7_A15_2.2 .ssc, .xsc, .jar	hl7_A16_2.2 .ssc, .xsc, .jar	hl7_A17_2.2 .ssc, .xsc, .jar
hl7_A18_2.2 .ssc, .xsc, .jar	hl7_A19_2.2 .ssc, .xsc, .jar	hl7_A20_2.2 .ssc, .xsc, .jar
hl7_A21_2.2 .ssc, .xsc, .jar	hl7_A22_2.2 .ssc, .xsc, .jar	hl7_A23_2.2 .ssc, .xsc, .jar
hl7_A24_2.2 .ssc, .xsc, .jar	hl7_A25_2.2 .ssc, .xsc, .jar	hl7_A26_2.2 .ssc, .xsc, .jar
hl7_A27_2.2 .ssc, .xsc, .jar	hl7_A28_2.2 .ssc, .xsc, .jar	hl7_A29_2.2 .ssc, .xsc, .jar
hl7_A30_2.2 .ssc, .xsc, .jar	hl7_A31_2.2 .ssc, .xsc, .jar	hl7_A32_2.2 .ssc, .xsc, .jar
hl7_A33_2.2 .ssc, .xsc, .jar	hl7_A34_2.2 .ssc, .xsc, .jar	hl7_A35_2.2 .ssc, .xsc, .jar
hl7_A36_2.2 .ssc, .xsc, .jar	hl7_A37_2.2 .ssc, .xsc, .jar	hl7_ACK_2.2 .ssc, .xsc, .jar
hl7_ADR_2.2 .ssc, .xsc, .jar	hl7_DFT_2.2 .ssc, .xsc, .jar	hl7_DSR_2.2 .ssc, .xsc, .jar
hl7_MCF_2.2 .ssc, .xsc, .jar	hl7_MFD_2.2 .ssc, .xsc, .jar	hl7_MFK_2.2 .ssc, .xsc, .jar
hl7_MFN_2.2 .ssc, .xsc, .jar	hl7_MFN_PHYS_2.2 .ssc, .xsc, .jar	hl7_MFN_TESTS_2.2 .ssc, .xsc, .jar
hl7_MFR_2.2 .ssc, .xsc, .jar	hl7_ORF_2.2 .ssc, .xsc, .jar	hl7_ORM_2.2 .ssc, .xsc, .jar
hl7_ORM_DIET_2.2 .ssc, .xsc, .jar	hl7_ORM_NON-STOCK_2.2 .ssc, .xsc, .jar	hl7_ORM_RX_2.2 .ssc, .xsc, .jar
hl7_ORM_STOCK_2.2 .ssc, .xsc, .jar	hl7_ORR_2.2 .ssc, .xsc, .jar	hl7_ORR_DIET_2.2 .ssc, .xsc, .jar
hl7_ORR_NON-STOCK_2.2 .ssc, .xsc, .jar	hl7_ORR_RX_2.2 .ssc, .xsc, .jar	hl7_ORR_STOCK_2.2 .ssc, .xsc, .jar
hl7_ORU_2.2 .ssc, .xsc, .jar	hl7_P01_2.2 .ssc, .xsc, .jar	hl7_P02_2.2 .ssc, .xsc, .jar
hl7_P03_2.2 .ssc, .xsc, .jar	hl7_QRY_2.2 .ssc, .xsc, .jar	hl7_RAR_2.2 .ssc, .xsc, .jar

Table 5 HL7_2.2 Installed Files

\HL7_2.2*		
hl7_RAS_2.2 .ssc, .xsc, .jar	hl7_RDE_2.2 .ssc, .xsc, .jar	hl7_RDR_2.2 .ssc, .xsc, .jar
hl7_RDS_2.2 .ssc, .xsc, .jar	hl7_RER_2.2 .ssc, .xsc, .jar	hl7_RGR_2.2 .ssc, .xsc, .jar
hl7_RGV_2.2 .ssc, .xsc, .jar	hl7_ROR_2.2 .ssc, .xsc, .jar	hl7_RRA_2.2 .ssc, .xsc, .jar
hl7_RRD_2.2 .ssc, .xsc, .jar	hl7_RRE_2.2 .ssc, .xsc, .jar	hl7_RRG_2.2 .ssc, .xsc, .jar
hl7_UDM_2.2 .ssc, .xsc, .jar		

Table 6 HL7 2.1 Installed Files

\HL7_2.1*		
hl7_2.1_acc .ssc, .xsc, .jar	hl7_2.1_ad .ssc, .xsc, .jar	hl7_2.1_add .ssc, .xsc, .jar
hl7_2.1_adt .ssc, .xsc, .jar	hl7_2.1_bhs .ssc, .xsc, .jar	hl7_2.1_blg .ssc, .xsc, .jar
hl7_2.1_bts .ssc, .xsc, .jar	hl7_2.1_ce .ssc, .xsc, .jar	hl7_2.1_ck .ssc, .xsc, .jar
hl7_2.1_cn .ssc, .xsc, .jar	hl7_2.1_cq .ssc, .xsc, .jar	hl7_2.1_dg1 .ssc, .xsc, .jar
hl7_2.1_dsc .ssc, .xsc, .jar	hl7_2.1_dsp .ssc, .xsc, .jar	hl7_2.1_err .ssc, .xsc, .jar
hl7_2.1_evn .ssc, .xsc, .jar	hl7_2.1_fhs .ssc, .xsc, .jar	hl7_2.1_ft1 .ssc, .xsc, .jar
hl7_2.1_fts .ssc, .xsc, .jar	hl7_2.1_gt1 .ssc, .xsc, .jar	hl7_2.1_in1 .ssc, .xsc, .jar
hl7_2.1_mrg .ssc, .xsc, .jar	hl7_2.1_msa .ssc, .xsc, .jar	hl7_2.1_msh .ssc, .xsc, .jar
hl7_2.1_nk1 .ssc, .xsc, .jar	hl7_2.1_npu .ssc, .xsc, .jar	hl7_2.1_nte .ssc, .xsc, .jar
hl7_2.1_obr .ssc, .xsc, .jar	hl7_2.1_obx .ssc, .xsc, .jar	hl7_2.1_orc .ssc, .xsc, .jar
hl7_2.1_oro .ssc, .xsc, .jar	hl7_2.1_pid .ssc, .xsc, .jar	hl7_2.1_pn .ssc, .xsc, .jar
hl7_2.1_pr1 .ssc, .xsc, .jar	hl7_2.1_pv1 .ssc, .xsc, .jar	hl7_2.1_qrd .ssc, .xsc, .jar
hl7_2.1_qrf .ssc, .xsc, .jar	hl7_2.1_rx1 .ssc, .xsc, .jar	hl7_2.1_tq .ssc, .xsc, .jar
hl7_2.1_ub1 .ssc, .xsc, .jar	hl7_2.1_urd .ssc, .xsc, .jar	hl7_2.1_urs .ssc, .xsc, .jar
hl7_A01_2.1 .ssc, .xsc, .jar	hl7_A02_2.1 .ssc, .xsc, .jar	hl7_A03_2.1 .ssc, .xsc, .jar
hl7_A04_2.1 .ssc, .xsc, .jar	hl7_A05_2.1 .ssc, .xsc, .jar	hl7_A06_2.1 .ssc, .xsc, .jar
hl7_A07_2.1 .ssc, .xsc, .jar	hl7_A08_2.1 .ssc, .xsc, .jar	hl7_A09_2.1 .ssc, .xsc, .jar
hl7_A10_2.1 .ssc, .xsc, .jar	hl7_A11_2.1 .ssc, .xsc, .jar	hl7_A12_2.1 .ssc, .xsc, .jar
hl7_A13_2.1 .ssc, .xsc, .jar	hl7_A14_2.1 .ssc, .xsc, .jar	hl7_A15_2.1 .ssc, .xsc, .jar
hl7_A16_2.1 .ssc, .xsc, .jar	hl7_A17_2.1 .ssc, .xsc, .jar	hl7_A18_2.1 .ssc, .xsc, .jar
hl7_A19_2.1 .ssc, .xsc, .jar	hl7_A20_2.1 .ssc, .xsc, .jar	hl7_A21_2.1 .ssc, .xsc, .jar
hl7_A22_2.1 .ssc, .xsc, .jar	hl7_A23_2.1 .ssc, .xsc, .jar	hl7_A24_2.1 .ssc, .xsc, .jar
hl7_ACK_2.1 .ssc, .xsc, .jar	hl7_DSR_2.1 .ssc, .xsc, .jar	hl7_MCF_2.1 .ssc, .xsc, .jar
hl7_ORF_2.1 .ssc, .xsc, .jar	hl7_ORM_2.1 .ssc, .xsc, .jar	hl7_ORM_other_2.1.s
hl7_ORM_rx_2.1 .ssc, .xsc, .jar	hl7_ORR_2.1 .ssc, .xsc, .jar	hl7_ORU_2.1 .ssc, .xsc, .jar
hl7_P01_2.1 .ssc, .xsc, .jar	hl7_P02_2.1 .ssc, .xsc, .jar	hl7_P03_2.1 .ssc, .xsc, .jar
hl7_QRY_2.1 .ssc, .xsc, .jar	hl7_UDM_2.1 .ssc, .xsc, .jar	

The HL7 ETD Library

This chapter describes, and provides a cross-reference for, the HL7 ETD Library.

4.1 HL7 ETD Libraries

HL7 ETD libraries are arranged by version:

- [HL7 Version 2.4 Library](#) on page 29
- [HL7 Version 2.3.1 Library](#) on page 45
- [HL7 Version 2.3 ETD Library](#) on page 53
- [HL7 Version 2.2 ETD Library](#) on page 61
- [HL7 Version 2.1 ETD Library](#) on page 66

4.1.1. HL7 Version 2.4 Library

HL7 2.4 ETD	Description
hl7_2.4_abs.ssc, .xsc	Abstract
hl7_2.4_acc.ssc, .xsc	Accident
hl7_2.4_ACK.ssc, .xsc	General acknowledgment message
hl7_2.4_ACK_N02.ssc, .xsc	Acknowledge application management data message
hl7_2.4_ACK_Q03.ssc, .xsc	Acknowledge deferred response to a query
hl7_2.4_ACK_Q05.ssc, .xsc	Acknowledge unsolicited display update message
hl7_2.4_ACK_Q16.ssc, .xsc	Acknowledge create subscription
hl7_2.4_ACK_Q17.ssc, .xsc	Acknowledge query for previous events
hl7_2.4_ACK_R01.ssc, .xsc	Acknowledge unsolicited transmission of an observation message
hl7_2.4_ad.ssc, .xsc	Address data type
hl7_2.4_add.ssc, .xsc	Addendum
hl7_2.4_ADR_A19.ssc, .xsc	Patient query
hl7_2.4_ADT_A01.ssc, .xsc	Admit/visit notification
hl7_2.4_ADT_A02.ssc, .xsc	Transfer a patient

HL7 2.4 ETD	Description
hl7_2.4_ADT_A03.ssc, .xsc	Discharge/end visit
hl7_2.4_ADT_A05.ssc, .xsc	Pre-admit a patient
hl7_2.4_ADT_A06.ssc, .xsc	Change an outpatient to inpatient
hl7_2.4_ADT_A09.ssc, .xsc	Patient departing - tracking
hl7_2.4_ADT_A15.ssc, .xsc	Pending transfer
hl7_2.4_ADT_A16.ssc, .xsc	Pending discharge
hl7_2.4_ADT_A17.ssc, .xsc	Swap patients
hl7_2.4_ADT_A18.ssc, .xsc	Merge patient information (for backward compatibility)
hl7_2.4_ADT_A20.ssc, .xsc	Bed status update
hl7_2.4_ADT_A21.ssc, .xsc	Patient leave of absence
hl7_2.4_ADT_A24.ssc, .xsc	Link patient information
hl7_2.4_ADT_A30.ssc, .xsc	Merge person information (for backward compatibility)
hl7_2.4_ADT_A37.ssc, .xsc	Unlink patient information
hl7_2.4_ADT_A38.ssc, .xsc	Cancel pre-admit
hl7_2.4_ADT_A39.ssc, .xsc	Merge person - patient ID (for backward compatibility)
hl7_2.4_ADT_A43.ssc, .xsc	Move patient information - patient identifier list
hl7_2.4_ADT_A45.ssc, .xsc	Move visit information - visit number
hl7_2.4_ADT_A50.ssc, .xsc	Change visit number
hl7_2.4_ADT_A52.ssc, .xsc	Cancel leave of absence for a patient
hl7_2.4_ADT_A54.ssc, .xsc	Change attending doctor
hl7_2.4_ADT_A60.ssc, .xsc	Update allergy information
hl7_2.4_ADT_A61.ssc, .xsc	Change consulting doctor
hl7_2.4_aff.ssc, .xsc	Affiliation
hl7_2.4_aig.ssc, .xsc	Appointment information - general resource
hl7_2.4_ail.ssc, .xsc	Appointment information - location resource
hl7_2.4_aip.ssc, .xsc	Appointment information - personnel resource
hl7_2.4_ais.ssc, .xsc	Appointment information - service
hl7_2.4_al1.ssc, .xsc	Patient allergy information
hl7_2.4_apr.ssc, .xsc	Appointment preferences
hl7_2.4_arq.ssc, .xsc	Appointment request
hl7_2.4_aut.ssc, .xsc	Authorization information
hl7_2.4_BAR_P01.ssc, .xsc	Add patient account
hl7_2.4_BAR_P02.ssc, .xsc	Purge patient account
hl7_2.4_BAR_P05.ssc, .xsc	Update account
hl7_2.4_BAR_P06.ssc, .xsc	End account
hl7_2.4_BAR_P10.ssc, .xsc	Transmit ambulatory payment classification (APC)

HL7 2.4 ETD	Description
hl7_2.4_bhs.ssc, .xsc	Batch header
hl7_2.4_blc.ssc, .xsc	Blood Code
hl7_2.4_blg.ssc, .xsc	Billing
hl7_2.4_bts.ssc, .xsc	Batch trailer
hl7_2.4_cd.ssc, .xsc	Chanel definition data type
hl7_2.4_cdm.ssc, .xsc	Charge description master
hl7_2.4_ce.ssc, .xsc	Coded element data type
hl7_2.4_ce_0002.ssc, .xsc	Marital status
hl7_2.4_ce_0005.ssc, .xsc	Race
hl7_2.4_ce_0006.ssc, .xsc	Religion
hl7_2.4_ce_0048.ssc, .xsc	What subject filter
hl7_2.4_ce_0049.ssc, .xsc	Department code
hl7_2.4_ce_0050.ssc, .xsc	Accident code
hl7_2.4_ce_0051.ssc, .xsc	Diagnosis code
hl7_2.4_ce_0055.ssc, .xsc	Diagnostic related group
hl7_2.4_ce_0059.ssc, .xsc	Consent code
hl7_2.4_ce_0063.ssc, .xsc	Contact relationship
hl7_2.4_ce_0066.ssc, .xsc	Employment status code
hl7_2.4_ce_0069.ssc, .xsc	Hospital service
hl7_2.4_ce_0070.ssc, .xsc	Specimen source
hl7_2.4_ce_0072.ssc, .xsc	Authorizing payor, plan ID
hl7_2.4_ce_0083.ssc, .xsc	Outlier type
hl7_2.4_ce_0088.ssc, .xsc	Procedure code
hl7_2.4_ce_0114.ssc, .xsc	Diet type
hl7_2.4_ce_0118.ssc, .xsc	Major diagnostic category
hl7_2.4_ce_0127.ssc, .xsc	Allergen type
hl7_2.4_ce_0128.ssc, .xsc	Allergy severity
hl7_2.4_ce_0129.ssc, .xsc	Accommodation code
hl7_2.4_ce_0131.ssc, .xsc	Contact Role
hl7_2.4_ce_0132.ssc, .xsc	Transaction code
hl7_2.4_ce_0136.ssc, .xsc	Yes/no indicator
hl7_2.4_ce_0136_0262_0263.ssc, .xsc	Yes/no indicator, Privacy level, Level of care
hl7_2.4_ce_0160.ssc, .xsc	Tray Type
hl7_2.4_ce_0162.ssc, .xsc	Route of administration
hl7_2.4_ce_0163.ssc, .xsc	Body site

HL7 2.4 ETD	Description
hl7_2.4_ce_0164.ssc, .xsc	Administration device
hl7_2.4_ce_0165.ssc, .xsc	Administration method
hl7_2.4_ce_0171.ssc, .xsc	Citizenship
hl7_2.4_ce_0172.ssc, .xsc	Veterans military status
hl7_2.4_ce_0175.ssc, .xsc	Master file identifier code
hl7_2.4_ce_0181.ssc, .xsc	MFN record level error return
hl7_2.4_ce_0184.ssc, .xsc	Department
hl7_2.4_ce_0185.ssc, .xsc	Preferred method of contact
hl7_2.4_ce_0189.ssc, .xsc	Ethnic group
hl7_2.4_ce_0212.ssc, .xsc	Nationality
hl7_2.4_ce_0215.ssc, .xsc	Publicity code
hl7_2.4_ce_0218.ssc, .xsc	Guarantor charge adjustment code
hl7_2.4_ce_0222.ssc, .xsc	Contact reason
hl7_2.4_ce_0227.ssc, .xsc	Substance manufacturer name
hl7_2.4_ce_0233.ssc, .xsc	Non-concur code/description
hl7_2.4_ce_0247.ssc, .xsc	Product evaluation status
hl7_2.4_ce_0254.ssc, .xsc	Kind of quantity
hl7_2.4_ce_0255.ssc, .xsc	Duration categories
hl7_2.4_ce_0258.ssc, .xsc	Relationship modifier
hl7_2.4_ce_0259.ssc, .xsc	Modality
hl7_2.4_ce_0264.ssc, .xsc	Location department
hl7_2.4_ce_0265.ssc, .xsc	Specialty type
hl7_2.4_ce_0276.ssc, .xsc	Appointment reason codes
hl7_2.4_ce_0277.ssc, .xsc	Appointment type codes
hl7_2.4_ce_0278.ssc, .xsc	Filler status codes
hl7_2.4_ce_0280.ssc, .xsc	Referral priority
hl7_2.4_ce_0281.ssc, .xsc	Referral type
hl7_2.4_ce_0282.ssc, .xsc	Referral disposition
hl7_2.4_ce_0283.ssc, .xsc	Referral Status
hl7_2.4_ce_0284.ssc, .xsc	Referral category
hl7_2.4_ce_0285.ssc, .xsc	Authorizing payor, company ID
hl7_2.4_ce_0286.ssc, .xsc	Provider role
hl7_2.4_ce_0292.ssc, .xsc	Vaccines administered
hl7_2.4_ce_0293.ssc, .xsc	Billing category
hl7_2.4_ce_0296.ssc, .xsc	Language code
hl7_2.4_ce_0324.ssc, .xsc	Location characteristic ID

HL7 2.4 ETD	Description
hl7_2.4_ce_0325.ssc, .xsc	Location relationship ID
hl7_2.4_ce_0336.ssc, .xsc	Referral reason
hl7_2.4_ce_0339.ssc, .xsc	Advanced beneficiary notice code
hl7_2.4_ce_0340.ssc, .xsc	Procedure code modifier
hl7_2.4_ce_0341.ssc, .xsc	Guarantor credit rating code
hl7_2.4_ce_0342.ssc, .xsc	Dependent of military recipient
hl7_2.4_ce_0343.ssc, .xsc	Military handicapped program
hl7_2.4_ce_0344.ssc, .xsc	Patient's relationship to insured
hl7_2.4_ce_0345.ssc, .xsc	Appeal reason
hl7_2.4_ce_0346.ssc, .xsc	Certification agency
hl7_2.4_ce_0347.ssc, .xsc	Auto accident state
hl7_2.4_ce_0348.ssc, .xsc	Special program indicator
hl7_2.4_ce_0349.ssc, .xsc	Approved by the PSRO/UR as billed
hl7_2.4_ce_0351.ssc, .xsc	Occurrence span
hl7_2.4_ce_0357.ssc, .xsc	Message error condition codes
hl7_2.4_ce_0358.ssc, .xsc	Practitioner group
hl7_2.4_ce_0364.ssc, .xsc	Comment type
hl7_2.4_ce_0365.ssc, .xsc	Equipment state
hl7_2.4_ce_0366.ssc, .xsc	Local/remote control state
hl7_2.4_ce_0367.ssc, .xsc	Alert level
hl7_2.4_ce_0368.ssc, .xsc	Remote control command
hl7_2.4_ce_0369.ssc, .xsc	Specimen role
hl7_2.4_ce_0370.ssc, .xsc	Container status
hl7_2.4_ce_0371.ssc, .xsc	Additive
hl7_2.4_ce_0373.ssc, .xsc	Treatment
hl7_2.4_ce_0374.ssc, .xsc	System induced contaminants
hl7_2.4_ce_0375.ssc, .xsc	Artificial blood
hl7_2.4_ce_0376.ssc, .xsc	Special handling considerations
hl7_2.4_ce_0377.ssc, .xsc	Other environmental factors
hl7_2.4_ce_0378.ssc, .xsc	Carrier type
hl7_2.4_ce_0379.ssc, .xsc	Tray type
hl7_2.4_ce_0380.ssc, .xsc	Separator type
hl7_2.4_ce_0381.ssc, .xsc	Cap type
hl7_2.4_ce_0382.ssc, .xsc	Drug interference
hl7_2.4_ce_0383.ssc, .xsc	Substance status
hl7_2.4_ce_0384.ssc, .xsc	Substance type

HL7 2.4 ETD	Description
hl7_2.4_ce_0385.ssc, .xsc	Manufacturer identifier
hl7_2.4_ce_0386.ssc, .xsc	Supplier identifier
hl7_2.4_ce_0387.ssc, .xsc	Command response
hl7_2.4_ce_0388.ssc, .xsc	Processing type
hl7_2.4_ce_0389.ssc, .xsc	Analyte repeat status
hl7_2.4_ce_0393.ssc, .xsc	Match algorithms
hl7_2.4_ce_0394.ssc, .xsc	Response modality
hl7_2.4_ce_0401.ssc, .xsc	Government reimbursement program
hl7_2.4_ce_0402.ssc, .xsc	School type
hl7_2.4_ce_0403.ssc, .xsc	Language ability
hl7_2.4_ce_0404.ssc, .xsc	Language proficiency
hl7_2.4_ce_0405.ssc, .xsc	Organization unit code
hl7_2.4_ce_0406.ssc, .xsc	Organization unit type
hl7_2.4_ce_0411.ssc, .xsc	Supplemental service information values
hl7_2.4_ce_0412.ssc, .xsc	Category identifier
hl7_2.4_ce_0413.ssc, .xsc	Consent identifier
hl7_2.4_ce_0414.ssc, .xsc	Consent interval units
hl7_2.4_ce_0417.ssc, .xsc	Tissue type code
hl7_2.4_ce_0421.ssc, .xsc	Severity of illness code
hl7_2.4_ce_0422.ssc, .xsc	Triage code
hl7_2.4_ce_0423.ssc, .xsc	Case category code
hl7_2.4_ce_0424.ssc, .xsc	Gestation category code
hl7_2.4_ce_0425.ssc, .xsc	Newborn code
hl7_2.4_ce_0426.ssc, .xsc	Blood product code
hl7_2.4_ce_0427.ssc, .xsc	Risk management incident code
hl7_2.4_ce_0428.ssc, .xsc	Incident type code
hl7_2.4_ce_0429.ssc, .xsc	Production class code
hl7_2.4_ce_0430.ssc, .xsc	Mode of arrival code
hl7_2.4_ce_0431.ssc, .xsc	Recreational drug use code
hl7_2.4_ce_0432.ssc, .xsc	Admission level of care code
hl7_2.4_ce_0433.ssc, .xsc	Precaution code
hl7_2.4_ce_0434.ssc, .xsc	Patient condition code
hl7_2.4_ce_0435.ssc, .xsc	Advance directive code
hl7_2.4_ce_0436.ssc, .xsc	Sensitivity to caustive agent code
hl7_2.4_ce_0437.ssc, .xsc	Alert device code
hl7_2.4_ce_0438.ssc, .xsc	Allergy clinical status

HL7 2.4 ETD	Description
hl7_2.4_ce_0443.ssc, .xsc	Provider role
hl7_2.4_ce_0446.ssc, .xsc	Species code
hl7_2.4_ce_0447.ssc, .xsc	Breed code
hl7_2.4_ce_0450.ssc, .xsc	Event type
hl7_2.4_ce_0451.ssc, .xsc	Substance identifier
hl7_2.4_ce_0452.ssc, .xsc	Health care provider type code
hl7_2.4_ce_0453.ssc, .xsc	Health care provider classification
hl7_2.4_ce_0454.ssc, .xsc	Health care provider area of specialization
hl7_2.4_ce_0461.ssc, .xsc	License number
hl7_2.4_ce_0462.ssc, .xsc	Location cost center
hl7_2.4_ce_0463.ssc, .xsc	Inventory number
hl7_2.4_ce_0464.ssc, .xsc	Facility ID
hl7_2.4_ce_0466.ssc, .xsc	Ambulatory payment classification code
hl7_2.4_ce_0471.ssc, .xsc	Message query name
hl7_2.4_ce_0474.ssc, .xsc	Organization unit type code
hl7_2.4_cf.ssc, .xsc	Coded element with formatted values
hl7_2.4_ck.ssc, .xsc	Composite ID with check digit data type
hl7_2.4_cm0.ssc, .xsc	Clinical study master
hl7_2.4_cm1.ssc, .xsc	Clinical study phase master
hl7_2.4_cm2.ssc, .xsc	Clinical study schedule master
hl7_2.4_cm_abs_range.ssc, .xsc	Abstract range
hl7_2.4_cm_aui.ssc, .xsc	Authorization information
hl7_2.4_cm_ccd.ssc, .xsc	When to charge
hl7_2.4_cm_ccp.ssc, .xsc	Channel calibration parameters
hl7_2.4_cm_csu.ssc, .xsc	Channel sensitivity and units
hl7_2.4_cm_ddi.ssc, .xsc	Daily deductible
hl7_2.4_cm_din.ssc, .xsc	Institution activation date
hl7_2.4_cm_dld.ssc, .xsc	Discharged to location
hl7_2.4_cm_dlt.ssc, .xsc	Delta check criteria
hl7_2.4_cm_dtn.ssc, .xsc	Days type/number
hl7_2.4_cm_eip.ssc, .xsc	Parent number
hl7_2.4_cm_eld.ssc, .xsc	Error code and location
hl7_2.4_cm_fam_name.ssc, .xsc	Composite/family name
hl7_2.4_cm_la1.ssc, .xsc	Deliver-to location
hl7_2.4_cm_la2.ssc, .xsc	Administered-at location
hl7_2.4_cm_mdv.ssc, .xsc	Minimum and maximum data values

HL7 2.4 ETD	Description
hl7_2.4_cm_moc.ssc, .xsc	Charge to practice
hl7_2.4_cm_msg.ssc, .xsc	Message type
hl7_2.4_cm_ndl.ssc, .xsc	Result interpreter
hl7_2.4_cm_ocd.ssc, .xsc	Occurrence code & date
hl7_2.4_cm_osd.ssc, .xsc	Order sequencing component
hl7_2.4_cm_osp.ssc, .xsc	Occurrence span code/dates
hl7_2.4_cm_pcf.ssc, .xsc	Pre-certification req/window
hl7_2.4_cm_pen.ssc, .xsc	Penalty
hl7_2.4_cm_pi.ssc, .xsc	Patient ID
hl7_2.4_cm_pip.ssc, .xsc	Privileges
hl7_2.4_cm_pln.ssc, .xsc	Practitioner ID numbers
hl7_2.4_cm_prl.ssc, .xsc	Parent result
hl7_2.4_cm_pta.ssc, .xsc	Policy type/amount
hl7_2.4_cm_range.ssc, .xsc	Range
hl7_2.4_cm_rfr.ssc, .xsc	Reference (normal) range - ordinal & continuous Obs
hl7_2.4_cm_ri.ssc, .xsc	Interval component
hl7_2.4_cm_rmc.ssc, .xsc	Room coverage type/amount
hl7_2.4_cm_spd.ssc, .xsc	Specialty
hl7_2.4_cm_sps.ssc, .xsc	Specimen source
hl7_2.4_cm_uvc.ssc, .xsc	Value amount & code
hl7_2.4_cm_vr.ssc, .xsc	What data code value (first/last)
hl7_2.4_cm_wvi.ssc, .xsc	Channel identifier
hl7_2.4_cm_wvs.ssc, .xsc	Waveform source
hl7_2.4_cn.ssc, .xsc	Composite number and name data type
hl7_2.4_cne.ssc, .xsc	Coded with no exceptions
hl7_2.4_cns.ssc, .xsc	Clear Notification Detail
hl7_2.4_cp.ssc, .xsc	Composite price data type
hl7_2.4_cq.ssc, .xsc	Composite quantity with units data type
hl7_2.4_CRM_C01.ssc, .xsc	Register a patient on a clinical trial
hl7_2.4_csp.ssc, .xsc	Clinical study phase
hl7_2.4_csr.ssc, .xsc	Clinical study registration
hl7_2.4_css.ssc, .xsc	Clinical study data schedule
hl7_2.4_CSU_C09.ssc, .xsc	Automated time intervals for reporting (like monthly)
hl7_2.4_ctd.ssc, .xsc	Contact data
hl7_2.4_cti.ssc, .xsc	Clinical trial identification
hl7_2.4_cwe.ssc, .xsc	Coded with exceptions

HL7 2.4 ETD	Description
hl7_2.4_cx.ssc, .xsc	Extended composite ID with check digit
hl7_2.4_db1.ssc, .xsc	Disability
hl7_2.4_DFT_P03.ssc, .xsc	Post detail financial transactions
hl7_2.4_dg1.ssc, .xsc	Diagnosis
hl7_2.4_dln.ssc, .xsc	Driver's license number data type
hl7_2.4_DOC_T12.ssc, .xsc	Document query
hl7_2.4_dr.ssc, .xsc	Date/time range data type
hl7_2.4_drg.ssc, .xsc	Diagnosis related group
hl7_2.4_dsc.ssc, .xsc	Continuation pointer
hl7_2.4_dsp.ssc, .xsc	Display data
hl7_2.4_DSR_Q01.ssc, .xsc	Query sent for immediate response
hl7_2.4_DSR_Q03.ssc, .xsc	Deferred response to a query
hl7_2.4_EAC_U07.ssc, .xsc	Automated equipment command
hl7_2.4_EAN_U09.ssc, .xsc	Automated equipment notification
hl7_2.4_EAR_U08.ssc, .xsc	Automated equipment response
hl7_2.4_ecd.ssc, .xsc	Equipment command
hl7_2.4_e cr.ssc, .xsc	Equipment command response
hl7_2.4_ed.ssc, .xsc	Encapsulated data type
hl7_2.4_EDR_R07.ssc, .xsc	EDR - enhanced display response
hl7_2.4_edu.ssc, .xsc	Education
hl7_2.4_ei.ssc, .xsc	Entity identifier data type
hl7_2.4_eql.ssc, .xsc	Embedded query language
hl7_2.4_eqp.ssc, .xsc	Equipment Log/Service
hl7_2.4_EQQ_Q04.ssc, .xsc	Embedded query language query
hl7_2.4_equ.ssc, .xsc	Equipment
hl7_2.4_ERP_R09.ssc, .xsc	ERP - event replay response
hl7_2.4_erq.ssc, .xsc	Event replay query
hl7_2.4_err.ssc, .xsc	Error
hl7_2.4_ESR_U02.ssc, .xsc	Automated equipment status request
hl7_2.4_ESU_U01.ssc, .xsc	Automated equipment status update
hl7_2.4_evn.ssc, .xsc	Event type
hl7_2.4_fac.ssc, .xsc	Facility
hl7_2.4_fc.ssc, .xsc	Financial class data type
hl7_2.4_fhs.ssc, .xsc	File header
hl7_2.4_fn.ssc, .xsc	Family name
hl7_2.4_ft1.ssc, .xsc	Financial transaction

HL7 2.4 ETD	Description
hl7_2.4_fts.ssc, .xsc	File trailer
hl7_2.4_gol.ssc, .xsc	Goal detail
hl7_2.4_gp1.ssc, .xsc	Grouping/reimbursement visit
hl7_2.4_gp2.ssc, .xsc	Grouping/reimbursement procedure
hl7_2.4_gt1.ssc, .xsc	Guarantor
hl7_2.4_hd.ssc, .xsc	Hierarchic designator data type
hl7_2.4_iam.ssc, .xsc	Patient adverse reaction information
hl7_2.4_in1.ssc, .xsc	Insurance
hl7_2.4_in2.ssc, .xsc	Insurance additional information
hl7_2.4_in3.ssc, .xsc	Insurance additional information, certification
hl7_2.4_INR_U06.ssc, .xsc	Automated equipment inventory request
hl7_2.4_INU_U05.ssc, .xsc	Automated equipment inventory update
hl7_2.4_inv.ssc, .xsc	Inventory detail
hl7_2.4_isd.ssc, .xsc	Interaction status detail
hl7_2.4_jcc.ssc, .xsc	Job code/class data type
hl7_2.4_lan.ssc, .xsc	Language
hl7_2.4_lcc.ssc, .xsc	Location charge code
hl7_2.4_lch.ssc, .xsc	Location characteristic
hl7_2.4_ldp.ssc, .xsc	Location department
hl7_2.4_loc.ssc, .xsc	Location identification
hl7_2.4_lrl.ssc, .xsc	Location relationship
hl7_2.4_LSU_U12.ssc, .xsc	Automated equipment log/service update
hl7_2.4_ma.ssc, .xsc	Multiplexed array data type
hl7_2.4_MDM_T01.ssc, .xsc	Original document notification
hl7_2.4_MDM_T02.ssc, .xsc	Original document notification and content
hl7_2.4_mfa.ssc, .xsc	Master file acknowledgment
hl7_2.4_MFD_MFA.ssc, .xsc	Master file update delayed application acknowledgement
hl7_2.4_mfe.ssc, .xsc	Master file entry
hl7_2.4_mfi.ssc, .xsc	Master file identification
hl7_2.4_MFK_M01.ssc, .xsc	Master file acknowledgement - master file not otherwise specified (backward compatibility)
hl7_2.4_MFN_M01.ssc, .xsc	Master file notification - master file not otherwise specified (backward compatibility)
hl7_2.4_MFN_M02.ssc, .xsc	Master file notification - staff/practitioner
hl7_2.4_MFN_M03.ssc, .xsc	Master file notification - test/observation
hl7_2.4_MFN_M04.ssc, .xsc	Master file notification - charge description
hl7_2.4_MFN_M05.ssc, .xsc	Master file notification - patient location

HL7 2.4 ETD	Description
hl7_2.4_MFN_M06.ssc, .xsc	Master file notification - clinical study with phases and schedules
hl7_2.4_MFN_M07.ssc, .xsc	Master file notification - Clinical study without phases but with schedules
hl7_2.4_MFN_M08.ssc, .xsc	Master file notification - test/observation (numeric)
hl7_2.4_MFN_M09.ssc, .xsc	Master file notification - test/observation (categorical)
hl7_2.4_MFN_M10.ssc, .xsc	Master file notification - test/observation batteries
hl7_2.4_MFN_M11.ssc, .xsc	Master file notification - test/calculated observations
hl7_2.4_MFN_M12.ssc, .xsc	Master file notification - additional basic observation/service attributes
hl7_2.4_MFQ_M01.ssc, .xsc	Master file query -master file not otherwise specified (backward compatibility)
hl7_2.4_MFR_M01.ssc, .xsc	Master file response - master file not otherwise specified (backward compatibility)
hl7_2.4_mo.ssc, .xsc	Money data type
hl7_2.4_mrg.ssc, .xsc	Merge patient information
hl7_2.4_msa.ssc, .xsc	Message acknowledgment
hl7_2.4_msh.ssc, .xsc	Message header
hl7_2.4_na.ssc, .xsc	Numeric array data type
hl7_2.4_nck.ssc, .xsc	Network clock (synchronize system date and time)
hl7_2.4_nds.ssc, .xsc	Notification Detail
hl7_2.4_nk1.ssc, .xsc	Next of kin / associated parties
hl7_2.4_NMD_N02.ssc, .xsc	Network management data message (unsolicited)
hl7_2.4_NMQ_N01.ssc, .xsc	Network management query message
hl7_2.4_NMR_N01.ssc, .xsc	Network management query message response
hl7_2.4_npu.ssc, .xsc	Bed status update
hl7_2.4_nsc.ssc, .xsc	Network status change
hl7_2.4_nst.ssc, .xsc	Network statistics
hl7_2.4_nte.ssc, .xsc	Notes and comments
hl7_2.4_obr.ssc, .xsc	Observation report
hl7_2.4_obx.ssc, .xsc	Observation/Results (medication specific)
hl7_2.4_ods.ssc, .xsc	Dietary orders, supplements, and preferences
hl7_2.4_odt.ssc, .xsc	Diet tray instructions
hl7_2.4_om1.ssc, .xsc	General - fields that apply to most observations
hl7_2.4_om2.ssc, .xsc	Numeric observation
hl7_2.4_om3.ssc, .xsc	Categorical test/observation
hl7_2.4_om4.ssc, .xsc	Observations that require specimens
hl7_2.4_om5.ssc, .xsc	Observation batteries (sets)

HL7 2.4 ETD	Description
hl7_2.4_om6.ssc, .xsc	Observations calculated from other observations
hl7_2.4_om7.ssc, .xsc	Observations/additional basic attributes
hl7_2.4_OMD_O03.ssc, .xsc	Diet order
hl7_2.4_OMG_O19.ssc, .xsc	General clinical order
hl7_2.4_OML_O21.ssc, .xsc	Laboratory order
hl7_2.4_OMN_O07.ssc, .xsc	Non-stock requisition order
hl7_2.4_OMP_O09.ssc, .xsc	Pharmacy/treatment order
hl7_2.4_OMS_O05.ssc, .xsc	Stock requisition order
hl7_2.4_orc.ssc, .xsc	Common order
hl7_2.4_ORD_O04.ssc, .xsc	Dietary order
hl7_2.4_ORF_R04.ssc, .xsc	Response to query; transmission of requested observation
hl7_2.4_org.ssc, .xsc	Practitioner organization unit
hl7_2.4_ORG_O20.ssc, .xsc	General clinical order
hl7_2.4_ORL_O22.ssc, .xsc	Clinical order response
hl7_2.4_ORM_O01.ssc, .xsc	Order message
hl7_2.4_ORN_O08.ssc, .xsc	Non-stock requisition acknowledgement
hl7_2.4_ORP_O10.ssc, .xsc	Pharmacy/treatment order acknowledgement
hl7_2.4_ORR_O02.ssc, .xsc	Order response
hl7_2.4_ORs_O06.ssc, .xsc	Stock requisition order acknowledgement
hl7_2.4_ORU_R01.ssc, .xsc	Unsolicited transmission of an observation message
hl7_2.4_OSQ_Q06.ssc, .xsc	Query for order status
hl7_2.4_OSR_Q06.ssc, .xsc	Query for order status
hl7_2.4_OUL_R21.ssc, .xsc	Unsolicited laboratory observation
hl7_2.4_pcr.ssc, .xsc	Possible causal relationship
hl7_2.4_pd1.ssc, .xsc	Patient additional demographic
hl7_2.4_pda.ssc, .xsc	Patient Death and Autopsy
hl7_2.4_pdc.ssc, .xsc	Product detail country
hl7_2.4_peo.ssc, .xsc	Product experience observation
hl7_2.4_pes.ssc, .xsc	Product experience sender
hl7_2.4_PEX_P07.ssc, .xsc	Unsolicited initial individual product experience report
hl7_2.4_PGL_PC6.ssc, .xsc	PC/ goal add
hl7_2.4_pid.ssc, .xsc	Patient identification
hl7_2.4_pl.ssc, .xsc	Person location data type
hl7_2.4_PMU_B01.ssc, .xsc	Add Personnel Record
hl7_2.4_PMU_B03.ssc, .xsc	Delete Personnel Record
hl7_2.4_PMU_B04.ssc, .xsc	Activate Practicing Person

HL7 2.4 ETD	Description
hl7_2.4_pn.ssc, .xsc	Person name data type
hl7_2.4_PPG_PCG.ssc, .xsc	PC/ pathway (goal-oriented) add
hl7_2.4_ppn.ssc, .xsc	Performing person time stamp
hl7_2.4_PPP_PCB.ssc, .xsc	PC/ pathway (problem-oriented) add
hl7_2.4_PPR_PC1.ssc, .xsc	PC/ problem add
hl7_2.4_PPT_PCL.ssc, .xsc	PC/ pathway (goal-oriented) query response
hl7_2.4_PPV_PCA.ssc, .xsc	PC/ goal response
hl7_2.4_pr1.ssc, .xsc	Procedures
hl7_2.4_pra.ssc, .xsc	Practitioner detail
hl7_2.4_prb.ssc, .xsc	Problem detail
hl7_2.4_prc.ssc, .xsc	Pricing
hl7_2.4_prd.ssc, .xsc	Provider data
hl7_2.4_PRR_PC5.ssc, .xsc	PC/ problem response
hl7_2.4_psh.ssc, .xsc	Product summary header
hl7_2.4_pt.ssc, .xsc	Processing type data type
hl7_2.4_pth.ssc, .xsc	Pathway
hl7_2.4_PTR_PCF.ssc, .xsc	PC/ pathway (problem-oriented) query response
hl7_2.4_pv1.ssc, .xsc	Patient visit
hl7_2.4_pv2.ssc, .xsc	Patient visit - additional information
hl7_2.4_qak.ssc, .xsc	Query acknowledgment
hl7_2.4_QBP_K13.ssc, .xsc	Query by parameter - trigger query
hl7_2.4_QBP_Q11.ssc, .xsc	Query by parameter - default trigger for segment pattern response
hl7_2.4_QBP_Q13.ssc, .xsc	Query by parameter - default trigger for tabular response
hl7_2.4_QBP_Q15.ssc, .xsc	Query by parameter - default trigger for display response
hl7_2.4_QBP_Q21.ssc, .xsc	Query by parameter - get person demographics
hl7_2.4_QBP_Qnn.ssc, .xsc	Query by parameter - personal information
hl7_2.4_QBP_Z73.ssc, .xsc	Query by parameter/
hl7_2.4_QCK_Q02.ssc, .xsc	Query sent for deferred response
hl7_2.4_QCN_J01.ssc, .xsc	Cancel query
hl7_2.4_qid.ssc, .xsc	Query identification
hl7_2.4_qip.ssc, .xsc	Query input parameter list
hl7_2.4_qpd.ssc, .xsc	Query parameter definition
hl7_2.4_qrd.ssc, .xsc	Query definition
hl7_2.4_qrf.ssc, .xsc	Query filter
hl7_2.4_qri.ssc, .xsc	Query response instance
hl7_2.4_QRY_A19.ssc, .xsc	Patient query

HL7 2.4 ETD	Description
hl7_2.4_QRY_PC4.ssc, .xsc	PC/ problem query
hl7_2.4_QRY_Q01.ssc, .xsc	Query sent for immediate response
hl7_2.4_QRY_Q02.ssc, .xsc	Query sent for deferred response
hl7_2.4_QRY_R02.ssc, .xsc	Query for results of observation
hl7_2.4_QRY_T12.ssc, .xsc	Document query
hl7_2.4_QSB_Q16.ssc, .xsc	Create subscription
hl7_2.4_qsc.ssc, .xsc	Query selection criteria
hl7_2.4_QVR_Q17.ssc, .xsc	Query for previous events
hl7_2.4_RAR_RAR.ssc, .xsc	Pharmacy administration information query response
hl7_2.4_RAS_O17.ssc, .xsc	Pharmacy/treatment administration message
hl7_2.4_rcd.ssc, .xsc	Column description
hl7_2.4_RCI_I05.ssc, .xsc	Request for patient clinical information
hl7_2.4_RCL_I06.ssc, .xsc	Request/receipt of clinical data listing
hl7_2.4_rcp.ssc, .xsc	Response control parameter
hl7_2.4_RDE_O11.ssc, .xsc	Replace dispense event
hl7_2.4_rdf.ssc, .xsc	Table row definition
hl7_2.4_RDR_RDR.ssc, .xsc	Pharmacy administration information query response
hl7_2.4_RDS_O13.ssc, .xsc	Pharmacy/treatment dispense
hl7_2.4_rdt.ssc, .xsc	Table row data
hl7_2.4_RDY_K15.ssc, .xsc	Display response to the query by parameter (QBP)
hl7_2.4_REF_I12.ssc, .xsc	Patient referral
hl7_2.4_RER_RER.ssc, .xsc	Pharmacy encoded order information query response
hl7_2.4_rf1.ssc, .xsc	Referral information
hl7_2.4_RGR_RGR.ssc, .xsc	Pharmacy dose information query response
hl7_2.4_rgs.ssc, .xsc	Resource group
hl7_2.4_RGV_O15.ssc, .xsc	Pharmacy/treatment give
hl7_2.4_ri.ssc, .xsc	Repeating interval
hl7_2.4_rmi.ssc, .xsc	Risk management incident
hl7_2.4_rol.ssc, .xsc	Role (function or responsibility assumed by a person)
hl7_2.4_ROR_ROR.ssc, .xsc	Pharmacy prescription order query response
hl7_2.4_rp.ssc, .xsc	Reference Pointer data type
hl7_2.4_RPA_I08.ssc, .xsc	Request for treatment authorization information
hl7_2.4_RPI_I01.ssc, .xsc	Request for insurance information
hl7_2.4_RPI_I04.ssc, .xsc	Request for patient demographic data
hl7_2.4_RPL_I02.ssc, .xsc	Request/receipt of patient selection display list
hl7_2.4_RPR_I03.ssc, .xsc	Request/receipt of patient selection list

HL7 2.4 ETD	Description
hl7_2.4_rq1.ssc, .xsc	Requisition detail-1
hl7_2.4_RQA_I08.ssc, .xsc	Request for treatment authorization information
hl7_2.4_RQC_I05.ssc, .xsc	Request for patient clinical information
hl7_2.4_rqd.ssc, .xsc	Requisition detail
hl7_2.4_RQI_I01.ssc, .xsc	Request for insurance information
hl7_2.4_RQP_I04.ssc, .xsc	Request for patient demographic data
hl7_2.4_RQQ_Q09.ssc, .xsc	Event replay query
hl7_2.4_RRA_O18.ssc, .xsc	Pharmacy/treatment administration acknowledgement
hl7_2.4_RRD_O14.ssc, .xsc	Pharmacy/treatment dispense acknowledgement
hl7_2.4_RRE_O12.ssc, .xsc	Pharmacy/treatment encoded order acknowledgement
hl7_2.4_RRG_O16.ssc, .xsc	Pharmacy/treatment give acknowledgment
hl7_2.4_RRI_I12.ssc, .xsc	Patient referral
hl7_2.4_RSP_K11.ssc, .xsc	Segment pattern response to the query by parameter (QBP)
hl7_2.4_RSP_K13.ssc, .xsc	Tabular response to the query by parameter (QBP)
hl7_2.4_RSP_K15.ssc, .xsc	Display response to the query by parameter (QBP)
hl7_2.4_RSP_K21.ssc, .xsc	Segment pattern response/get person demographics
hl7_2.4_RSP_K22.ssc, .xsc	Segment pattern response/find candidates
hl7_2.4_RSP_K23.ssc, .xsc	Segment pattern response/get corresponding identifiers
hl7_2.4_RSP_K24.ssc, .xsc	Segment pattern response/allocate indentifiers
hl7_2.4_RSP_K25.ssc, .xsc	Segment pattern response/query personnel information
hl7_2.4_RSP_Z82.ssc, .xsc	Segment pattern response/dispense history
hl7_2.4_RSP_Z86.ssc, .xsc	Segment pattern response/pharmacy information comprehensive
hl7_2.4_RSP_Z88.ssc, .xsc	Segment pattern response/dispense information
hl7_2.4_RSP_Z90.ssc, .xsc	Segment pattern response/lab results history
hl7_2.4_RTb_K13.ssc, .xsc	Tabular response/trigger response
hl7_2.4_RTb_Knn.ssc, .xsc	Segment pattern response/personal information
hl7_2.4_RTb_Q13.ssc, .xsc	Table based response
hl7_2.4_RTb_Z74.ssc, .xsc	Tabular response
hl7_2.4_rxa.ssc, .xsc	Pharmacy/treatment administration
hl7_2.4_rxc.ssc, .xsc	Pharmacy/treatment component order
hl7_2.4_rxd.ssc, .xsc	Pharmacy/treatment dispense
hl7_2.4_rxe.ssc, .xsc	Pharmacy/treatment encoded order
hl7_2.4_rxg.ssc, .xsc	Pharmacy/treatment give
hl7_2.4_rxo.ssc, .xsc	Pharmacy/treatment order
hl7_2.4_rxr.ssc, .xsc	Pharmacy/treatment route

HL7 2.4 ETD	Description
hl7_2.4_sac.ssc, .xsc	Specimen and container details
hl7_2.4_sad.ssc, .xsc	Street address
hl7_2.4_sch.ssc, .xsc	Schedule activity information
hl7_2.4_scv.ssc, .xsc	Scheduling class value pair
hl7_2.4_sid.ssc, .xsc	Substance identifier
hl7_2.4_SIU_S12.ssc, .xsc	Notification of new appointment booking
hl7_2.4_sn.ssc, .xsc	Structured numeric data type
hl7_2.4_SPQ_Q08.ssc, .xsc	Stored procedure request
hl7_2.4_spr.ssc, .xsc	Stored procedure request definition
hl7_2.4_SQM_S25.ssc, .xsc	Schedule query message and response
hl7_2.4_SQR_S25.ssc, .xsc	Schedule query message and response
hl7_2.4_SRM_S01.ssc, .xsc	Request new appointment booking
hl7_2.4_SRR_S01.ssc, .xsc	Request new appointment booking
hl7_2.4_srt.ssc, .xsc	Sort order
hl7_2.4_SSR_U04.ssc, .xsc	Specimen status request
hl7_2.4_SSU_U03.ssc, .xsc	Specimen status update
hl7_2.4_stf.ssc, .xsc	Staff identification
hl7_2.4_SUR_P09.ssc, .xsc	Summary product experience report
hl7_2.4_TBR_R08.ssc, .xsc	Tabular data response
hl7_2.4_tcc.ssc, .xsc	Test code configuration
hl7_2.4_tcd.ssc, .xsc	Test code details
hl7_2.4_TCU_U10.ssc, .xsc	Automated equipment test code settings update
hl7_2.4_tq.ssc, .xsc	Timing/quantity data type
hl7_2.4_txa.ssc, .xsc	Transcription document header
hl7_2.4_tx_challenge.ssc, .xsc	Text data challenge information
hl7_2.4_ub1.ssc, .xsc	UB82 data
hl7_2.4_ub2.ssc, .xsc	UB92 data
hl7_2.4_UDM_Q05.ssc, .xsc	Unsolicited display update message
hl7_2.4_urd.ssc, .xsc	Results/update definition
hl7_2.4_urs.ssc, .xsc	Unsolicited selection
hl7_2.4_var.ssc, .xsc	Variance
hl7_2.4_vh.ssc, .xsc	Visiting hours
hl7_2.4_vid.ssc, .xsc	Version ID
hl7_2.4_VQQ_Q07.ssc, .xsc	Virtual table query
hl7_2.4_vtq.ssc, .xsc	Virtual table query request
hl7_2.4_VXQ_V01.ssc, .xsc	Query for vaccination record

HL7 2.4 ETD	Description
hl7_2.4_VXR_V03.ssc, .xsc	Vaccination record response
hl7_2.4_VXU_V04.ssc, .xsc	Unsolicited vaccination record update
hl7_2.4_VXX_V02.ssc, .xsc	Response to vaccination query returning multiple PID matches
hl7_2.4_xad.ssc, .xsc	Extended address
hl7_2.4_xcn.ssc, .xsc	Extended composite name and number for persons
hl7_2.4_xon.ssc, .xsc	Extended composite name and number for organizations
hl7_2.4_xpn.ssc, .xsc	Extended person name
hl7_2.4_xtn.ssc, .xsc	Extended telecommunications number

4.1.2. HL7 Version 2.3.1 Library

HL7 2.3.1 ETD	Description
hl7_2.3.1_acc .ssc, .xsc	Accident
hl7_2.3.1_ad .ssc, .xsc	Address data type
hl7_2.3.1_add .ssc, .xsc	Addendum
hl7_2.3.1_aig .ssc, .xsc	Appointment information - general resource
hl7_2.3.1_ail .ssc, .xsc	Appointment information - location resource
hl7_2.3.1_aip .ssc, .xsc	Appointment information - personnel resource
hl7_2.3.1_ais .ssc, .xsc	Appointment information - service
hl7_2.3.1_al1 .ssc, .xsc	Patient allergy information
hl7_2.3.1_apr .ssc, .xsc	Appointment preferences
hl7_2.3.1_arq .ssc, .xsc	Appointment request
hl7_2.3.1_aut .ssc, .xsc	Authorization information
hl7_2.3.1_bhs .ssc, .xsc	Batch header
hl7_2.3.1_blg .ssc, .xsc	Billing
hl7_2.3.1_bts .ssc, .xsc	Batch trailer
hl7_2.3.1_cd .ssc, .xsc	Chanel definition data type
hl7_2.3.1_cdm .ssc, .xsc	Charge description master
hl7_2.3.1_ce .ssc, .xsc	Coded element data type
hl7_2.3.1_cf .ssc, .xsc	Coded element with formatted values data type
hl7_2.3.1_ck .ssc, .xsc	Composite ID with check digits data type
hl7_2.3.1_cm0 .ssc, .xsc	Clinical study master
hl7_2.3.1_cm1 .ssc, .xsc	Clinical study phase master
hl7_2.3.1_cm2 .ssc, .xsc	Clinical study schedule master
hl7_2.3.1_cn .ssc, .xsc	Composite number and name data type

HL7 2.3.1 ETD	Description
hl7_2.3.1_cne .ssc, .xsc	Coded with no exceptions
hl7_2.3.1_cp .ssc, .xsc	Composite price data type
hl7_2.3.1_cq .ssc, .xsc	Composite quantity with units data type
hl7_2.3.1_csp .ssc, .xsc	Clinical study phase
hl7_2.3.1_csr .ssc, .xsc	Clinical study registration
hl7_2.3.1_css .ssc, .xsc	Clinical study data schedule
hl7_2.3.1_ctd .ssc, .xsc	Contact data
hl7_2.3.1_cti .ssc, .xsc	Clinical trial identification
hl7_2.3.1_cwe .ssc, .xsc	Coded with exceptions
hl7_2.3.1_cx .ssc, .xsc	Extended Composite ID With Check Digit
hl7_2.3.1_db1 .ssc, .xsc	Disability
hl7_2.3.1_dg1 .ssc, .xsc	Diagnosis
hl7_2.3.1_dl .ssc, .xsc	Driver's license number data type
hl7_2.3.1_dr .ssc, .xsc	Date/time range data type
hl7_2.3.1_drg .ssc, .xsc	Diagnosis related group
hl7_2.3.1_dsc .ssc, .xsc	Continuation pointer
hl7_2.3.1_dsp .ssc, .xsc	Display data
hl7_2.3.1_ed .ssc, .xsc	Encapsulated data type
hl7_2.3.1_ei .ssc, .xsc	Entity identifier data type
hl7_2.3.1_eql .ssc, .xsc	Embedded query language
hl7_2.3.1_erq .ssc, .xsc	Event replay query
hl7_2.3.1_err .ssc, .xsc	Error
hl7_2.3.1_evn .ssc, .xsc	Event type
hl7_2.3.1_fac .ssc, .xsc	Facility
hl7_2.3.1_fc .ssc, .xsc	Financial class data type
hl7_2.3.1_fhs .ssc, .xsc	File header
hl7_2.3.1_ft1 .ssc, .xsc	Financial transaction
hl7_2.3.1_fts .ssc, .xsc	File trailer
hl7_2.3.1_gol .ssc, .xsc	Goal detail
hl7_2.3.1_gt1 .ssc, .xsc	Guarantor
hl7_2.3.1_hd .ssc, .xsc	Hierarchic designator data type
hl7_2.3.1_in1 .ssc, .xsc	Insurance
hl7_2.3.1_in2 .ssc, .xsc	Insurance additional information
hl7_2.3.1_in3 .ssc, .xsc	Insurance additional information, certification
hl7_2.3.1_jc .ssc, .xsc	Job code/class data type
hl7_2.3.1_lcc .ssc, .xsc	Location charge code

HL7 2.3.1 ETD	Description
hl7_2.3.1_lch .ssc, .xsc	Location characteristic
hl7_2.3.1_ldp .ssc, .xsc	Location department
hl7_2.3.1_loc .ssc, .xsc	Location identification
hl7_2.3.1_lrl .ssc, .xsc	Location relationship
hl7_2.3.1_ma .ssc, .xsc	Multiplexed array data type
hl7_2.3.1_mfa .ssc, .xsc	Master file acknowledgment
hl7_2.3.1_mfe .ssc, .xsc	Master file entry
hl7_2.3.1_mfi .ssc, .xsc	Master file identification
hl7_2.3.1_mo .ssc, .xsc	Money data type
hl7_2.3.1_mrg .ssc, .xsc	Merge patient information
hl7_2.3.1_msa .ssc, .xsc	Message acknowledgment
hl7_2.3.1_msh .ssc, .xsc	Message header
hl7_2.3.1_na .ssc, .xsc	Numeric array data type
hl7_2.3.1_nk1 .ssc, .xsc	Next of kin / associated parties
hl7_2.3.1_npu .ssc, .xsc	Bed status update
hl7_2.3.1_nte .ssc, .xsc	Notes and comments
hl7_2.3.1_obr .ssc, .xsc	Observation request
hl7_2.3.1_obx .ssc, .xsc	Observation/result
hl7_2.3.1_ods .ssc, .xsc	Dietary orders, supplements, and preferences
hl7_2.3.1_odt .ssc, .xsc	Diet tray instructions
hl7_2.3.1_om1 .ssc, .xsc	General - fields that apply to most observations
hl7_2.3.1_om2 .ssc, .xsc	Numeric observation
hl7_2.3.1_om3 .ssc, .xsc	Categorical test/observation
hl7_2.3.1_om4 .ssc, .xsc	Observations that require specimens
hl7_2.3.1_om5 .ssc, .xsc	Observation batteries (sets)
hl7_2.3.1_om6 .ssc, .xsc	Observations calculated from other observations
hl7_2.3.1_orc .ssc, .xsc	Common order
hl7_2.3.1_pcr .ssc, .xsc	Possible causal relationship
hl7_2.3.1_pd1 .ssc, .xsc	Patient additional demographic
hl7_2.3.1_pdc .ssc, .xsc	Product detail country
hl7_2.3.1_peo .ssc, .xsc	Product experience observation
hl7_2.3.1_pes .ssc, .xsc	Product experience sender
hl7_2.3.1_pid .ssc, .xsc	Patient identification
hl7_2.3.1_pl .ssc, .xsc	Person location data type
hl7_2.3.1_pn .ssc, .xsc	Person name data type
hl7_2.3.1_pp .ssc, .xsc	Authentication person, time stamp

HL7 2.3.1 ETD	Description
hl7_2.3.1_pr1 .ssc, .xsc	Procedures
hl7_2.3.1_pra .ssc, .xsc	Practitioner detail
hl7_2.3.1_prb .ssc, .xsc	Problem detail
hl7_2.3.1_prc .ssc, .xsc	Pricing
hl7_2.3.1_prd .ssc, .xsc	Provider data
hl7_2.3.1_psh .ssc, .xsc	Product summary header
hl7_2.3.1_pt .ssc, .xsc	Processing type data type
hl7_2.3.1_pth .ssc, .xsc	Pathway
hl7_2.3.1_pv1 .ssc, .xsc	Patient visit
hl7_2.3.1_pv2 .ssc, .xsc	Patient visit - additional information
hl7_2.3.1_qak .ssc, .xsc	Query acknowledgment
hl7_2.3.1_qp .ssc, .xsc	Input parameter list
hl7_2.3.1_qrd .ssc, .xsc	Original-style query definition
hl7_2.3.1_qrf .ssc, .xsc	Original style query filter
hl7_2.3.1_qs .ssc, .xsc	Selection criteria
hl7_2.3.1_rc .ssc, .xsc	Column description
hl7_2.3.1_rdf .ssc, .xsc	Table row definition
hl7_2.3.1_rdt .ssc, .xsc	Table row data
hl7_2.3.1_rf .ssc, .xsc	Refill order request
hl7_2.3.1_rf1 .ssc, .xsc	Referral information
hl7_2.3.1_rgs .ssc, .xsc	Resource group
hl7_2.3.1_ri .ssc, .xsc	Repeating interval
hl7_2.3.1_rol .ssc, .xsc	Role
hl7_2.3.1_rp .ssc, .xsc	Reference Pointer data type
hl7_2.3.1_rq1 .ssc, .xsc	Requisition detail-1
hl7_2.3.1_rqd .ssc, .xsc	Requisition detail
hl7_2.3.1_rxa .ssc, .xsc	Pharmacy/treatment administration
hl7_2.3.1_rxc .ssc, .xsc	Pharmacy/treatment component order
hl7_2.3.1_rxd .ssc, .xsc	Pharmacy/treatment dispense
hl7_2.3.1_rxe .ssc, .xsc	Pharmacy/treatment encoded order
hl7_2.3.1_rxg .ssc, .xsc	Pharmacy/treatment give
hl7_2.3.1_rxo .ssc, .xsc	Pharmacy/treatment order
hl7_2.3.1_rxr .ssc, .xsc	Pharmacy/treatment route
hl7_2.3.1_sc .ssc, .xsc	Selection criteria
hl7_2.3.1_sch .ssc, .xsc	Schedule activity information
hl7_2.3.1_sn .ssc, .xsc	Structured numeric data type

HL7 2.3.1 ETD	Description
hl7_2.3.1_spr .ssc, .xsc	Stored procedure request definition
hl7_2.3.1_stf .ssc, .xsc	Staff identification
hl7_2.3.1_tq .ssc, .xsc	Timing/quantity data type
hl7_2.3.1_txa .ssc, .xsc	Transcription document header
hl7_2.3.1_ub1 .ssc, .xsc	UB82 data
hl7_2.3.1_ub2 .ssc, .xsc	UB92 data
hl7_2.3.1_urd .ssc, .xsc	Results/update definition
hl7_2.3.1_urs .ssc, .xsc	Unsolicited selection
hl7_2.3.1_var .ssc, .xsc	Variance
hl7_2.3.1_vh .ssc, .xsc	Visiting hours
hl7_2.3.1_vi .ssc, .xsc	Version ID
hl7_2.3.1_vtq .ssc, .xsc	Virtual table query request
hl7_2.3.1_xa .ssc, .xsc	Extended address
hl7_2.3.1_xc .ssc, .xsc	Extended composite name and number for persons
hl7_2.3.1_xo .ssc, .xsc	Extended composite name and number for organizations
hl7_2.3.1_xp .ssc, .xsc	Extended person name
hl7_2.3.1_xt .ssc, .xsc	Extended telecommunications number
hl7_A01_2.3.1 .ssc, .xsc	ADT/ACK - Admit/visit notification
hl7_A02_2.3.1 .ssc, .xsc	ADT/ACK - Transfer a patient
hl7_A03_2.3.1 .ssc, .xsc	ADT/ACK - Discharge/end visit
hl7_A04_2.3.1 .ssc, .xsc	ADT/ACK - Register a patient
hl7_A05_2.3.1 .ssc, .xsc	ADT/ACK - Pre-admit a patient
hl7_A06_2.3.1 .ssc, .xsc	ADT/ACK - Change an outpatient to an inpatient
hl7_A07_2.3.1 .ssc, .xsc	ADT/ACK - Change an inpatient to an outpatient
hl7_A08_2.3.1 .ssc, .xsc	ADT/ACK - Update patient information
hl7_A09_2.3.1 .ssc, .xsc	ADT/ACK - Patient departing - tracking
hl7_A10_2.3.1 .ssc, .xsc	ADT/ACK - Patient arriving - tracking
hl7_A11_2.3.1 .ssc, .xsc	ADT/ACK - Cancel admit/visit notification
hl7_A12_2.3.1 .ssc, .xsc	ADT/ACK - Cancel transfer
hl7_A13_2.3.1 .ssc, .xsc	ADT/ACK - Cancel discharge/end visit
hl7_A14_2.3.1 .ssc, .xsc	ADT/ACK - Pending admit
hl7_A15_2.3.1 .ssc, .xsc	ADT/ACK - Pending transfer
hl7_A16_2.3.1 .ssc, .xsc	ADT/ACK - Pending discharge
hl7_A17_2.3.1 .ssc, .xsc	ADT/ACK - Swap patients
hl7_A18_2.3.1 .ssc, .xsc	ADT/ACK - Merge patient information
hl7_A19_2.3.1 .ssc, .xsc	QRY/ADR - Patient query

HL7 2.3.1 ETD	Description
hl7_A20_2.3.1 .ssc, .xsc	ADT/ACK - Bed status update
hl7_A21_2.3.1 .ssc, .xsc	ADT/ACK - Patient goes on a "leave of absence"
hl7_A22_2.3.1 .ssc, .xsc	ADT/ACK - Patient returns from a "leave of absence"
hl7_A23_2.3.1 .ssc, .xsc	ADT/ACK - Delete a patient record
hl7_A24_2.3.1 .ssc, .xsc	ADT/ACK - Link patient information
hl7_A25_2.3.1 .ssc, .xsc	ADT/ACK - Cancel pending discharge
hl7_A26_2.3.1 .ssc, .xsc	ADT/ACK - Cancel pending transfer
hl7_A27_2.3.1 .ssc, .xsc	ADT/ACK - Cancel pending admit
hl7_A28_2.3.1 .ssc, .xsc	ADT/ACK - Add person information
hl7_A29_2.3.1 .ssc, .xsc	ADT/ACK - Delete person information
hl7_A30_2.3.1 .ssc, .xsc	ADT/ACK - Merge person information
hl7_A31_2.3.1 .ssc, .xsc	ADT/ACK - Update person information
hl7_A32_2.3.1 .ssc, .xsc	ADT/ACK - Cancel patient arriving - tracking
hl7_A33_2.3.1 .ssc, .xsc	ADT/ACK - Cancel patient departing - tracking
hl7_A34_2.3.1 .ssc, .xsc	ADT/ACK - Merge patient information - patient ID only
hl7_A35_2.3.1 .ssc, .xsc	ADT/ACK - Merge patient information - account number only
hl7_A36_2.3.1 .ssc, .xsc	ADT/ACK - Merge patient information - patient ID and account number
hl7_A37_2.3.1 .ssc, .xsc	ADT/ACK - Unlink patient information
hl7_A38_2.3.1 .ssc, .xsc	ADT/ACK - Cancel pre-admit
hl7_A39_2.3.1 .ssc, .xsc	ADT/ACK - Merge person – patient ID
hl7_A40_2.3.1 .ssc, .xsc	ADT/ACK - Merge patient – patient identifier list
hl7_A41_2.3.1 .ssc, .xsc	ADT/ACK - Merge account - patient account number
hl7_A42_2.3.1 .ssc, .xsc	ADT/ACK - Merge visit - visit number
hl7_A43_2.3.1 .ssc, .xsc	ADT/ACK - Move patient information – patient identifier list
hl7_A44_2.3.1 .ssc, .xsc	ADT/ACK - Move account information - patient account number
hl7_A45_2.3.1 .ssc, .xsc	ADT/ACK - Move visit information - visit number
hl7_A46_2.3.1 .ssc, .xsc	ADT/ACK - Change patient ID
hl7_A47_2.3.1 .ssc, .xsc	ADT/ACK - Change patient identifier list
hl7_A48_2.3.1 .ssc, .xsc	ADT/ACK - Change alternate patient ID
hl7_A49_2.3.1 .ssc, .xsc	ADT/ACK - Change patient account number
hl7_A50_2.3.1 .ssc, .xsc	ADT/ACK - Change visit number
hl7_A51_2.3.1 .ssc, .xsc	ADT/ACK - Change alternate visit ID
hl7_ACK_2.3.1 .ssc, .xsc	General acknowledgment message
hl7_ADR_2.3.1 .ssc, .xsc	ADT response Message
hl7_CRM_2.3.1 .ssc, .xsc	Clinical study registration message

HL7 2.3.1 ETD	Description
hl7_CSU_2.3.1 .ssc, .xsc	Unsolicited clinical study data message
hl7_DFT_2.3.1 .ssc, .xsc	Detail financial transactions message
hl7_DOC_2.3.1 .ssc, .xsc	Document response message
hl7_DSR_2.3.1 .ssc, .xsc	Display response message
hl7_EDR_2.3.1 .ssc, .xsc	Enhanced display response message
hl7_EQQ_2.3.1 .ssc, .xsc	Embedded query language query message
hl7_ERP_2.3.1 .ssc, .xsc	Event replay response message
hl7_MCF_2.3.1 .ssc, .xsc	Delayed acknowledgment message
hl7_MDM_2.3.1 .ssc, .xsc	Documentation message
hl7_MFD_2.3.1 .ssc, .xsc	Master files delayed application acknowledgment
hl7_MFK_2.3.1 .ssc, .xsc	Master files application acknowledgment
hl7_MFN_2.3.1 .ssc, .xsc	Master files notification
hl7_MFN_PHYS_2.3.1 .ssc, .xsc	Master files notification, physician
hl7_MFN_STUDY_2.3.1 .ssc, .xsc	Master files notification, study
hl7_MFN_TESTS_2.3.1 .ssc, .xsc	Master files notification, tests
hl7_MFN-CDM_2.3.1 .ssc, .xsc	Master files notification, charge description
hl7_MFN-LOC_2.3.1 .ssc, .xsc	Master files notification, location
hl7_MFR_2.3.1 .ssc, .xsc	Master files response
hl7_ORF_2.3.1 .ssc, .xsc	Query for results of observation
hl7_ORM_2.3.1 .ssc, .xsc	Order message
hl7_ORM_DIET_2.3.1 .ssc, .xsc	Order message, diet orders and restrictions
hl7_ORM_NON-STOCK_2.3.1 .ssc, .xsc	Order message, non-stock requisition
hl7_ORM_RX_2.3.1 .ssc, .xsc	Order message, pharmacy/treatment order
hl7_ORM_STOCK_2.3.1 .ssc, .xsc	Order message, stock (in-stock) requisition
hl7_ORR_2.3.1 .ssc, .xsc	General order acknowledgement message response to any ORM
hl7_ORR_DIET_2.3.1 .ssc, .xsc	Order response message, diet orders and restrictions
hl7_ORR_NON-STOCK_2.3.1 .ssc, .xsc	Order response message, non-stock requisitions
hl7_ORR_RX_2.3.1 .ssc, .xsc	Order response message, pharmacy/treatment order
hl7_ORR_STOCK_2.3.1 .ssc, .xsc	Order response message, stock (in-stock) requisitions
hl7_ORU_2.3.1 .ssc, .xsc	Observation result/unsolicited
hl7_OSR_2.3.1 .ssc, .xsc	Query response for order status
hl7_P01_2.3.1 .ssc, .xsc	BAR/ACK - Add patient accounts
hl7_P02_2.3.1 .ssc, .xsc	BAR/ACK - Purge patient accounts
hl7_P03_2.3.1 .ssc, .xsc	DFT/ACK - Post detail financial transaction

HL7 2.3.1 ETD	Description
hl7_P05_2.3.1 .ssc, .xsc	BAR/ACK – Update account
hl7_P06_2.3.1 .ssc, .xsc	BAR/ACK - End account
hl7_PEX_2.3.1 .ssc, .xsc	Product experience message
hl7_PGL_2.3.1 .ssc, .xsc	Patient goal message
hl7_PIN_2.3.1 .ssc, .xsc	Patient insurance information
hl7_PPG_2.3.1 .ssc, .xsc	Patient pathway message (goal-oriented)
hl7_PPP_2.3.1 .ssc, .xsc	Patient pathway message (problem-oriented)
hl7_PPR_2.3.1 .ssc, .xsc	Patient problem message ¹²
hl7_PPT_2.3.1 .ssc, .xsc	Patient pathway goal-oriented response
hl7_PPV_2.3.1 .ssc, .xsc	Patient goal response
hl7_PRR_2.3.1 .ssc, .xsc	Patient problem response
hl7_PTR_2.3.1 .ssc, .xsc	Patient pathway problem-oriented response
hl7_QCK_2.3.1 .ssc, .xsc	Deferred query
hl7_QRY_2.3.1 .ssc, .xsc	Query, original mode
hl7_RAR_2.3.1 .ssc, .xsc	Pharmacy/treatment administration information
hl7_RAS_2.3.1 .ssc, .xsc	Pharmacy/treatment administration message
hl7_RCI_2.3.1 .ssc, .xsc	Return clinical information
hl7_RCL_2.3.1 .ssc, .xsc	Return clinical list
hl7_RDE_2.3.1 .ssc, .xsc	Pharmacy/treatment encoded order message
hl7_RDR_2.3.1 .ssc, .xsc	Pharmacy/treatment dispense information
hl7_RDS_2.3.1 .ssc, .xsc	Pharmacy/treatment dispense message
hl7_REF_2.3.1 .ssc, .xsc	Patient referral
hl7_RER_2.3.1 .ssc, .xsc	Pharmacy/treatment encoded order information
hl7_RGR_2.3.1 .ssc, .xsc	Pharmacy/treatment dose information
hl7_RGV_2.3.1 .ssc, .xsc	Pharmacy/treatment give message
hl7_ROR_2.3.1 .ssc, .xsc	Pharmacy prescription order response
hl7_RPA_2.3.1 .ssc, .xsc	Return patient authorization
hl7_RPI_2.3.1 .ssc, .xsc	Return patient information
hl7_RPL_2.3.1 .ssc, .xsc	Return patient display list
hl7_RPR_2.3.1 .ssc, .xsc	Return patient list
hl7_RQA_2.3.1 .ssc, .xsc	Request patient authorization
hl7_RQC_2.3.1 .ssc, .xsc	Request clinical information
hl7_RQI_2.3.1 .ssc, .xsc	Request patient information
hl7_RQP_2.3.1 .ssc, .xsc	Request patient demographics
hl7_RQQ_2.3.1 .ssc, .xsc	Event replay query
hl7_RRA_2.3.1 .ssc, .xsc	Pharmacy/treatment administration acknowledgement message

HL7 2.3.1 ETD	Description
hl7_RRD_2.3.1 .ssc, .xsc	Pharmacy/treatment dispense acknowledgment message
hl7_RRE_2.3.1 .ssc, .xsc	Pharmacy/treatment encoded order acknowledgment message
hl7_RRG_2.3.1 .ssc, .xsc	Pharmacy/treatment give acknowledgment message
hl7_RRI_2.3.1 .ssc, .xsc	Return referral information
hl7_SIU_2.3.1 .ssc, .xsc	Schedule information unsolicited
hl7_SPQ_2.3.1 .ssc, .xsc	Stored procedure request
hl7_SQM_2.3.1 .ssc, .xsc	Schedule query message
hl7_SQR_2.3.1 .ssc, .xsc	Schedule query response
hl7_SRM_2.3.1 .ssc, .xsc	Schedule request message
hl7_SRR_2.3.1 .ssc, .xsc	Scheduled request response
hl7_SUR_2.3.1 .ssc, .xsc	Summary product experience report
hl7_TBR_2.3.1 .ssc, .xsc	Tabular data response
hl7_UDM_2.3.1 .ssc, .xsc	Unsolicited display update message
hl7_VQQ_2.3.1 .ssc, .xsc	Virtual table query
hl7_VXQ_2.3.1 .ssc, .xsc	Query for vaccination record
hl7_VXR_2.3.1 .ssc, .xsc	Vaccination record response
hl7_VXU_2.3.1 .ssc, .xsc	Unsolicited vaccination record update
hl7_VXX_2.3.1 .ssc, .xsc	Response for vaccination query with multiple PID matches

4.1.3. HL7 Version 2.3 ETD Library

HL7 2.3 ETD	Description
hl7_2.3_acc .ssc, .xsc	Accident
hl7_2.3_ad .ssc, .xsc	Address data type
hl7_2.3_add .ssc, .xsc	Addendum
hl7_2.3_aig .ssc, .xsc	Appointment information - general resource
hl7_2.3_ail .ssc, .xsc	Appointment information - location resource
hl7_2.3_aip .ssc, .xsc	Appointment information - personnel resource
hl7_2.3_ais .ssc, .xsc	Appointment information - service
hl7_2.3_al1 .ssc, .xsc	Patient allergy information
hl7_2.3_apr .ssc, .xsc	Appointment preferences
hl7_2.3_arq .ssc, .xsc	Appointment request
hl7_2.3_aut .ssc, .xsc	Authorization information
hl7_2.3_bhs .ssc, .xsc	Batch header
hl7_2.3_blg .ssc, .xsc	Billing
hl7_2.3_bts .ssc, .xsc	Batch trailer

HL7 2.3 ETD	Description
hl7_2.3_cd .ssc, .xsc	Chanel definition data type
hl7_2.3_cdm .ssc, .xsc	Charge description master
hl7_2.3_ce .ssc, .xsc	Coded element data type
hl7_2.3_cf .ssc, .xsc	Coded element with formatted values data type
hl7_2.3_ck .ssc, .xsc	Composite with check digits data type
hl7_2.3_cm0 .ssc, .xsc	Clinical study master
hl7_2.3_cm1 .ssc, .xsc	Clinical study phase master
hl7_2.3_cm2 .ssc, .xsc	Clinical study schedule master
hl7_2.3_cn .ssc, .xsc	Composite number and name data type
hl7_2.3_cp .ssc, .xsc	Composite price data type
hl7_2.3_cq .ssc, .xsc	Composite quantity with units data type
hl7_2.3_csp .ssc, .xsc	Clinical study phase
hl7_2.3_csr .ssc, .xsc	Clinical study registration
hl7_2.3_css .ssc, .xsc	Clinical study data schedule
hl7_2.3_ctd .ssc, .xsc	Contact data
hl7_2.3_cti .ssc, .xsc	Clinical trial identification
hl7_2.3_cx .ssc, .xsc	Extended Composite ID With Check Digit
hl7_2.3_db1 .ssc, .xsc	Disability
hl7_2.3_dg1 .ssc, .xsc	Diagnosis
hl7_2.3_dl .ssc, .xsc	Driver's license number data type
hl7_2.3_dr .ssc, .xsc	Date/time range data type
hl7_2.3_drg .ssc, .xsc	Diagnosis related group
hl7_2.3_dsc .ssc, .xsc	Continuation pointer
hl7_2.3_dsp .ssc, .xsc	Display data
hl7_2.3_ed .ssc, .xsc	Encapsulated data type
hl7_2.3_ei .ssc, .xsc	Entity identifier data type
hl7_2.3_eql .ssc, .xsc	Embedded query language
hl7_2.3_erq .ssc, .xsc	Event replay query
hl7_2.3_err .ssc, .xsc	Error
hl7_2.3_evn .ssc, .xsc	Event type
hl7_2.3_fac .ssc, .xsc	Facility
hl7_2.3_fc .ssc, .xsc	Financial class
hl7_2.3_fhs .ssc, .xsc	File header
hl7_2.3_ft1 .ssc, .xsc	Financial transaction
hl7_2.3_fts .ssc, .xsc	File trailer
hl7_2.3_gol .ssc, .xsc	Goal detail

HL7 2.3 ETD	Description
hl7_2.3_gt1 .ssc, .xsc	Guarantor
hl7_2.3_hd .ssc, .xsc	Hierarchic designator data type
hl7_2.3_in1 .ssc, .xsc	Insurance
hl7_2.3_in2 .ssc, .xsc	Insurance additional information
hl7_2.3_in3 .ssc, .xsc	Insurance additional information, certification
hl7_2.3_jc .ssc, .xsc	Job code/class
hl7_2.3_lcc .ssc, .xsc	Location charge code
hl7_2.3_lch .ssc, .xsc	Location characteristic
hl7_2.3_ldp .ssc, .xsc	Location department
hl7_2.3_loc .ssc, .xsc	Location identification
hl7_2.3_lrl .ssc, .xsc	Location relationship
hl7_2.3_ma .ssc, .xsc	Multiplexed array data type
hl7_2.3_mfa .ssc, .xsc	Master file acknowledgment
hl7_2.3_mfe .ssc, .xsc	Master file entry
hl7_2.3_mfi .ssc, .xsc	Master file identification
hl7_2.3_mo .ssc, .xsc	Money data type
hl7_2.3_mrg .ssc, .xsc	Merge patient information
hl7_2.3_msa .ssc, .xsc	Message acknowledgment
hl7_2.3_msh .ssc, .xsc	Message header
hl7_2.3_na .ssc, .xsc	Numeric array data type
hl7_2.3_nk1 .ssc, .xsc	Next of kin / associated parties
hl7_2.3_npu .ssc, .xsc	Bed status update
hl7_2.3_nte .ssc, .xsc	Notes and comments
hl7_2.3_obr .ssc, .xsc	Observation request
hl7_2.3_obx .ssc, .xsc	Observation/result
hl7_2.3_ods .ssc, .xsc	Dietary orders, supplements, and preferences
hl7_2.3_odt .ssc, .xsc	Diet tray instructions
hl7_2.3_om1 .ssc, .xsc	General - fields that apply to most observations
hl7_2.3_om2 .ssc, .xsc	Numeric observation
hl7_2.3_om3 .ssc, .xsc	Categorical test/observation
hl7_2.3_om4 .ssc, .xsc	Observations that require specimens
hl7_2.3_om5 .ssc, .xsc	Observation batteries (sets)
hl7_2.3_om6 .ssc, .xsc	Observations calculated from other observations
hl7_2.3_orc .ssc, .xsc	Common order
hl7_2.3_pcr .ssc, .xsc	Possible causal relationship
hl7_2.3_pd1 .ssc, .xsc	Patient additional demographic

HL7 2.3 ETD	Description
hl7_2.3_pdc .ssc, .xsc	Product detail country
hl7_2.3_peo .ssc, .xsc	Product experience observation
hl7_2.3_pes .ssc, .xsc	Product experience sender
hl7_2.3_pid .ssc, .xsc	Patient identification
hl7_2.3_pl .ssc, .xsc	Patient location data type
hl7_2.3_pn .ssc, .xsc	Person name data type
hl7_2.3_pp .ssc, .xsc	Authentication person, time stamp
hl7_2.3_pr1 .ssc, .xsc	Procedures
hl7_2.3_pra .ssc, .xsc	Practitioner detail
hl7_2.3_prb .ssc, .xsc	Problem detail
hl7_2.3_prc .ssc, .xsc	Pricing
hl7_2.3_prd .ssc, .xsc	Provider data
hl7_2.3_psh .ssc, .xsc	Product summary header
hl7_2.3_pt .ssc, .xsc	Processing ID
hl7_2.3_pth .ssc, .xsc	Pathway
hl7_2.3_pv1 .ssc, .xsc	Patient visit
hl7_2.3_pv2 .ssc, .xsc	Patient visit - additional information
hl7_2.3_qak .ssc, .xsc	Query acknowledgment
hl7_2.3_qp .ssc, .xsc	Input parameter list
hl7_2.3_qrd .ssc, .xsc	Original-style query definition
hl7_2.3_qrf .ssc, .xsc	Original style query filter
hl7_2.3_qs .ssc, .xsc	Selection criteria
hl7_2.3_rc .ssc, .xsc	Column description
hl7_2.3_rdf .ssc, .xsc	Table row definition
hl7_2.3_rdt .ssc, .xsc	Table row data
hl7_2.3_rf .ssc, .xsc	Refill order request
hl7_2.3_rf1 .ssc, .xsc	Referral information
hl7_2.3_rgs .ssc, .xsc	Resource group
hl7_2.3_ri .ssc, .xsc	Repeating interval
hl7_2.3_rol .ssc, .xsc	Role
hl7_2.3_rp .ssc, .xsc	Reference Pointer data type
hl7_2.3_rq1 .ssc, .xsc	Requisition detail-1
hl7_2.3_rqd .ssc, .xsc	Requisition detail
hl7_2.3_rxa .ssc, .xsc	Pharmacy/treatment administration
hl7_2.3_rxc .ssc, .xsc	Pharmacy/treatment component order
hl7_2.3_rxd .ssc, .xsc	Pharmacy/treatment dispense

HL7 2.3 ETD	Description
hl7_2.3_rxe .ssc, .xsc	Pharmacy/treatment encoded order
hl7_2.3_rxg .ssc, .xsc	Pharmacy/treatment give
hl7_2.3_rxo .ssc, .xsc	Pharmacy/treatment order
hl7_2.3_rxr .ssc, .xsc	Pharmacy/treatment route
hl7_2.3_sc .ssc, .xsc	Selection criteria
hl7_2.3_sch .ssc, .xsc	Schedule activity information
hl7_2.3_sn .ssc, .xsc	Structured numeric data type
hl7_2_spr .ssc, .xsc	Stored procedure request definition
hl7_2.3_stf .ssc, .xsc	Staff identification
hl7_2.3_tq .ssc, .xsc	Timing/quantity data type
hl7_2.3_txa .ssc, .xsc	Transcription document header
hl7_2.3_ub1 .ssc, .xsc	UB82 data
hl7_2.3_ub2 .ssc, .xsc	UB92 data
hl7_2.3_urd .ssc, .xsc	Results/update definition
hl7_2.3_urs .ssc, .xsc	Unsolicited selection
hl7_2.3_var .ssc, .xsc	Variance
hl7_2.3_vh .ssc, .xsc	Visiting hours
hl7_2.3_vtq .ssc, .xsc	Virtual table query request
hl7_2.3_xa .ssc, .xsc	Extended address
hl7_2.3_xc .ssc, .xsc	Extended composite name and number for persons
hl7_2.3_xo .ssc, .xsc	Extended composite name and number for organizations
hl7_2.3_xp .ssc, .xsc	Extended person name
hl7_2.3_xt .ssc, .xsc	Extended telecommunications number
hl7_A01_2.3 .ssc, .xsc	ADT/ACK - Admit/visit notification
hl7_A02_2.3 .ssc, .xsc	ADT/ACK -Transfer a patient
hl7_A03_2.3 .ssc, .xsc	ADT/ACK - Discharge/end visit
hl7_A04_2.3 .ssc, .xsc	ADT/ACK - Register a patient
hl7_A05_2.3 .ssc, .xsc	ADT/ACK - Pre-admit a patient
hl7_A06_2.3 .ssc, .xsc	ADT/ACK - Change an outpatient to an inpatient
hl7_A07_2.3 .ssc, .xsc	ADT/ACK - Change an inpatient to an outpatient
hl7_A08_2.3 .ssc, .xsc	ADT/ACK - Update patient information
hl7_A09_2.3 .ssc, .xsc	ADT/ACK - Patient departing - tracking
hl7_A10_2.3 .ssc, .xsc	ADT/ACK - Patient arriving - tracking
hl7_A11_2.3 .ssc, .xsc	ADT/ACK - Cancel admit/visit notification
hl7_A12_2.3 .ssc, .xsc	ADT/ACK - Cancel transfer
hl7_A13_2.3 .ssc, .xsc	ADT/ACK - Cancel discharge/end visit

HL7 2.3 ETD	Description
hl7_A14_2.3 .ssc, .xsc	ADT/ACK - Pending admit
hl7_A15_2.3 .ssc, .xsc	ADT/ACK - Pending transfer
hl7_A16_2.3 .ssc, .xsc	ADT/ACK - Pending discharge
hl7_A17_2.3 .ssc, .xsc	ADT/ACK - Swap patients
hl7_A18_2.3 .ssc, .xsc	ADT/ACK - Merge patient information
hl7_A19_2.3 .ssc, .xsc	QRY/ADR - Patient query
hl7_A20_2.3 .ssc, .xsc	ADT/ACK - Bed status update
hl7_A21_2.3 .ssc, .xsc	ADT/ACK - Patient goes on a "leave of absence"
hl7_A22_2.3 .ssc, .xsc	ADT/ACK - Patient returns from a "leave of absence"
hl7_A23_2.3 .ssc, .xsc	ADT/ACK - Delete a patient record
hl7_A24_2.3 .ssc, .xsc	ADT/ACK - Link patient information
hl7_A25_2.3 .ssc, .xsc	ADT/ACK - Cancel pending discharge
hl7_A26_2.3 .ssc, .xsc	ADT/ACK - Cancel pending transfer
hl7_A27_2.3 .ssc, .xsc	ADT/ACK - Cancel pending admit
hl7_A28_2.3 .ssc, .xsc	ADT/ACK - Add person information
hl7_A29_2.3 .ssc, .xsc	ADT/ACK - Delete person information
hl7_A30_2.3 .ssc, .xsc	ADT/ACK - Merge person information
hl7_A31_2.3 .ssc, .xsc	ADT/ACK - Update person information
hl7_A32_2.3 .ssc, .xsc	ADT/ACK - Cancel patient arriving - tracking
hl7_A33_2.3 .ssc, .xsc	ADT/ACK - Cancel patient departing - tracking
hl7_A34_2.3 .ssc, .xsc	ADT/ACK - Merge patient information - patient ID only
hl7_A35_2.3 .ssc, .xsc	ADT/ACK - Merge patient information - account number only
hl7_A36_2.3 .ssc, .xsc	ADT/ACK - Merge patient information - patient ID and account number
hl7_A37_2.3 .ssc, .xsc	ADT/ACK - Unlink patient information
hl7_A38_2.3 .ssc, .xsc	ADT/ACK - Cancel pre-admit
hl7_A39_2.3 .ssc, .xsc	ADT/ACK - Merge person – patient ID
hl7_A40_2.3 .ssc, .xsc	ADT/ACK - Merge patient – patient identifier list
hl7_A41_2.3 .ssc, .xsc	ADT/ACK - Merge account - patient account number
hl7_A42_2.3 .ssc, .xsc	ADT/ACK - Merge visit - visit number
hl7_A43_2.3 .ssc, .xsc	ADT/ACK - Move patient information – patient identifier list
hl7_A44_2.3 .ssc, .xsc	ADT/ACK - Move account information - patient account number
hl7_A45_2.3 .ssc, .xsc	ADT/ACK - Move visit information - visit number
hl7_A46_2.3 .ssc, .xsc	ADT/ACK - Change patient ID
hl7_A47_2.3 .ssc, .xsc	ADT/ACK - Change patient identifier list
hl7_A48_2.3 .ssc, .xsc	ADT/ACK - Change alternate patient ID
hl7_A49_2.1 .ssc, .xsc	ADT/ACK - Change patient account number

HL7 2.3 ETD	Description
hl7_A50_2.3 .ssc, .xsc	ADT/ACK - Change visit number
hl7_A51_2.3 .ssc, .xsc	ADT/ACK - Change alternate visit ID
hl7_ACK_2.3 .ssc, .xsc	General acknowledgment message
hl7_ADR_2.3 .ssc, .xsc	ADT response
hl7_CRM_2.3 .ssc, .xsc	Clinical study registration message
hl7_CSU_2.3 .ssc, .xsc	Unsolicited study data message
hl7_DFT_2.3 .ssc, .xsc	Detail financial transactions
hl7_DOC_2.3 .ssc, .xsc	Document response
hl7_DSR_2.3 .ssc, .xsc	Display response
hl7_EDR_2.3 .ssc, .xsc	Enhanced display response
hl7_EQQ_2.3 .ssc, .xsc	Embedded query language query
hl7_ERP_2.3 .ssc, .xsc	Event replay response
hl7_MCF_2.3 .ssc, .xsc	Delayed acknowledgment
hl7_MDM_2.3 .ssc, .xsc	Medical document management
hl7_MFD_2.3 .ssc, .xsc	Master files delayed application acknowledgment
hl7_MFK_2.3 .ssc, .xsc	Master files application acknowledgment
hl7_MFN_2.3 .ssc, .xsc	Master files notification
hl7_MFN_PHYS_2.3 .ssc, .xsc	Master files notification, physician
hl7_MFN_STUDY_2.3 .ssc, .xsc	Master files notification, study
hl7_MFN_TESTS_2.3 .ssc, .xsc	Master files notification, tests
hl7_MFN-CDM_2.3 .ssc, .xsc	Master files notification, charge description
hl7_MFN-LOC_2.3 .ssc, .xsc	Master files notification, location
hl7_MFR_2.3 .ssc, .xsc	Master files response
hl7_ORF_2.3 .ssc, .xsc	Query for results of observation
hl7_ORM_2.3 .ssc, .xsc	Order message
hl7_ORM_DIET_2.3 .ssc, .xsc	Order message, diet orders and restrictions
hl7_ORM_NON-STOCK_2.3 .ssc, .xsc	Order message, non-stock requisition
hl7_ORM_RX_2.3 .ssc, .xsc	Order message, pharmacy/treatment order
hl7_ORM_STOCK_2.3 .ssc, .xsc	Order message, stock (in-stock) requisitions
hl7_ORR_2.3 .ssc, .xsc	General order response message response to any ORM
hl7_ORR_DIET_2.3 .ssc, .xsc	General order response message, diet orders and restrictions
hl7_ORR_NON-STOCK_2.3 .ssc, .xsc	General order response message, non-stock requisitions
hl7_ORR_RX_2.3 .ssc, .xsc	General order response message, pharmacy/treatment order
hl7_ORR_STOCK_2.3 .ssc, .xsc	General order response message, stock (in-stock) requisitions
hl7_ORU_2.3 .ssc, .xsc	Unsolicited transmission of an observation message

HL7 2.3 ETD	Description
hl7_OSR_2.3 .ssc, .xsc	Query response for order status
hl7_P01_2.3 .ssc, .xsc	BAR/ACK - Add patient accounts
hl7_P02_2.3 .ssc, .xsc	BAR/ACK - Purge patient accounts
hl7_P03_2.3 .ssc, .xsc	DFT/ACK - Post detail financial transaction
hl7_P05_2.3 .ssc, .xsc	BAR/ACK – Update account
hl7_P06_2.3 .ssc, .xsc	BAR/ACK - End account
hl7_PEX_2.3 .ssc, .xsc	Product experience message
hl7_PGL_2.3 .ssc, .xsc	Patient goal message
hl7_PIN_2.3 .ssc, .xsc	Patient insurance information
hl7_PPG_2.3 .ssc, .xsc	Patient pathway message (goal-oriented)
hl7_PPP_2.3 .ssc, .xsc	Patient pathway message (problem-oriented)
hl7_PPR_2.3 .ssc, .xsc	Patient problem message ¹²
hl7_PPT_2.3 .ssc, .xsc	Patient pathway goal-oriented response
hl7_PPV_2.3 .ssc, .xsc	Patient goal response
hl7_PRR_2.3 .ssc, .xsc	Patient problem response
hl7_PTR_2.3 .ssc, .xsc	Patient pathway problem-oriented response
hl7_QCK_2.3 .ssc, .xsc	Deferred query
hl7_QRY_2.3 .ssc, .xsc	Query, original mode
hl7_RAR_2.3 .ssc, .xsc	Pharmacy/treatment administration information
hl7_RAS_2.3 .ssc, .xsc	Pharmacy/treatment administration message
hl7_RCI_2.3 .ssc, .xsc	Return clinical information
hl7_RCL_2.3 .ssc, .xsc	Return clinical list
hl7_RDE_2.3 .ssc, .xsc	Pharmacy/treatment encoded order message
hl7_RDR_2.3 .ssc, .xsc	Pharmacy/treatment dispense information
hl7_RDS_2.3 .ssc, .xsc	Pharmacy/treatment dispense message
hl7_REF_2.3 .ssc, .xsc	Patient referral
hl7_RER_2.3 .ssc, .xsc	Pharmacy/treatment encoded order information
hl7_RGR_2.3 .ssc, .xsc	Pharmacy/treatment dose information
hl7_RGV_2.3 .ssc, .xsc	Pharmacy/treatment give message
hl7_ROR_2.3 .ssc, .xsc	Pharmacy prescription order response
hl7_RPA_2.3 .ssc, .xsc	Return patient authorization
hl7_RPI_2.3 .ssc, .xsc	Return patient information
hl7_RPL_2.3 .ssc, .xsc	Return patient display list
hl7_RPR_2.3 .ssc, .xsc	Return patient list
hl7_RQA_2.3 .ssc, .xsc	Request patient authorization
hl7_RQC_2.3 .ssc, .xsc	Request clinical information

HL7 2.3 ETD	Description
hl7_RQI_2.3 .ssc, .xsc	Request patient information
hl7_RQP_2.3 .ssc, .xsc	Request patient demographics
hl7_RQQ_2.3 .ssc, .xsc	Event replay query
hl7_RRA_2.3 .ssc, .xsc	Pharmacy/treatment administration acknowledgement message
hl7_RRD_2.3 .ssc, .xsc	Pharmacy/treatment dispense acknowledgment message
hl7_RRE_2.3 .ssc, .xsc	Pharmacy/treatment encoded order acknowledgment message
hl7_RRG_2.3 .ssc, .xsc	Pharmacy/treatment give acknowledgment message
hl7_RRI_2.3 .ssc, .xsc	Return referral information
hl7_SIU_2.3 .ssc, .xsc	Schedule information unsolicited
hl7_SPQ_2.3 .ssc, .xsc	Stored procedure request
hl7_SQM_2.3 .ssc, .xsc	Schedule query message
hl7_SQR_2.3 .ssc, .xsc	Schedule query response
hl7_SRM_2.3 .ssc, .xsc	Schedule request message
hl7_SRR_2.3 .ssc, .xsc	Scheduled request response
hl7_SUR_2.3 .ssc, .xsc	Summary product experience report
hl7_TBR_2.3 .ssc, .xsc	Tabular data response
hl7_UDM_2.3 .ssc, .xsc	Unsolicited display update message
hl7_VQQ_2.3 .ssc, .xsc	Virtual table query
hl7_VXQ_2.3 .ssc, .xsc	Query for vaccination record
hl7_VXR_2.3 .ssc, .xsc	Vaccination record response
hl7_VXU_2.3 .ssc, .xsc	Unsolicited vaccination record update
hl7_VXX_2.3 .ssc, .xsc	Response for vaccination query with multiple PID matches

4.1.4. HL7 Version 2.2 ETD Library

HL7 2.2 ETD	Description
hl7_2.2_acc .ssc, .xsc	Accident
hl7_2.2_ad .ssc, .xsc	Address data type
hl7_2.2_add .ssc, .xsc	Addendum
hl7_2.2_al1 .ssc, .xsc	Patient allergy information
hl7_2.2_bhs .ssc, .xsc	Batch header
hl7_2.2_blg .ssc, .xsc	Billing
hl7_2.2_bts .ssc, .xsc	Batch trailer
hl7_2.2_ce .ssc, .xsc	Coded element data type
hl7_2.2_cf .ssc, .xsc	Coded element with formatted values data type
hl7_2.2_ck .ssc, .xsc	Composite with check digits data type

HL7 2.2 ETD	Description
hl7_2.2_cn .ssc, .xsc	Composite number and name data type
hl7_2.2_cq .ssc, .xsc	Composite quantity with units data type
hl7_2.2_dg1 .ssc, .xsc	Diagnosis
hl7_2.2_dsc .ssc, .xsc	Continuation pointer
hl7_2.2_dsp .ssc, .xsc	Display data
hl7_2.2_err .ssc, .xsc	Error
hl7_2.2_evn .ssc, .xsc	Event type
hl7_2.2_fhs .ssc, .xsc	File header
hl7_2.2_ft1 .ssc, .xsc	Financial transaction
hl7_2.2_fts .ssc, .xsc	File trailer
hl7_2.2_gt1 .ssc, .xsc	Guarantor
hl7_2.2_in1 .ssc, .xsc	Insurance
hl7_2.2_in2 .ssc, .xsc	Insurance additional information
hl7_2.2_in3 .ssc, .xsc	Insurance additional information, certification
hl7_2.2_mfa .ssc, .xsc	Master file acknowledgment
hl7_2.2_mfe .ssc, .xsc	Master file entry
hl7_2.2_mfi .ssc, .xsc	Master file identification
hl7_2.2_mo .ssc, .xsc	Money data type
hl7_2.2_mrg .ssc, .xsc	Merge patient information
hl7_2.2_msa .ssc, .xsc	Message acknowledgment
hl7_2.2_msh .ssc, .xsc	Message header
hl7_2.2_nk1 .ssc, .xsc	Next of kin / associated parties
hl7_2.2_npu .ssc, .xsc	Bed status update
hl7_2.2_nte .ssc, .xsc	Notes and comments
hl7_2.2_obr .ssc, .xsc	Observation request
hl7_2.2_obx .ssc, .xsc	Observation/result
hl7_2.2_ods .ssc, .xsc	Dietary orders, supplements, and preferences
hl7_2.2_odt .ssc, .xsc	Diet tray instructions
hl7_2.2_om1 .ssc, .xsc	General - fields that apply to most observations
hl7_2.2_om2 .ssc, .xsc	Numeric observation
hl7_2.2_om3 .ssc, .xsc	Categorical test/observation
hl7_2.2_om4 .ssc, .xsc	Observations that require specimens
hl7_2.2_om5 .ssc, .xsc	Observation batteries (sets)
hl7_2.2_om6 .ssc, .xsc	Observations calculated from other observations
hl7_2.2_orc .ssc, .xsc	Common order
hl7_2.2_pid .ssc, .xsc	Patient identification

HL7 2.2 ETD	Description
hl7_2.2_pl .ssc, .xsc	Patient location data type
hl7_2.2_pn .ssc, .xsc	Person name data type
hl7_2.2_pr1 .ssc, .xsc	Procedures
hl7_2.2_pra .ssc, .xsc	Practitioner detail
hl7_2.2_pv1 .ssc, .xsc	Patient visit
hl7_2.2_pv2 .ssc, .xsc	Patient visit - additional information
hl7_2.2_qrd .ssc, .xsc	Original-style query definition
hl7_2.2_qrf .ssc, .xsc	Original style query filter
hl7_2.2_rp .ssc, .xsc	Reference Pointer data type
hl7_2.2_rq1 .ssc, .xsc	Requisition detail-1
hl7_2.2_rqd .ssc, .xsc	Requisition detail
hl7_2.2_rxa .ssc, .xsc	Pharmacy/treatment administration
hl7_2.2_rxc .ssc, .xsc	Pharmacy/treatment component order
hl7_2.2_rxd .ssc, .xsc	Pharmacy/treatment dispense
hl7_2.2_rxe .ssc, .xsc	Pharmacy/treatment encoded order
hl7_2.2_rxg .ssc, .xsc	Pharmacy/treatment give
hl7_2.2_rxo .ssc, .xsc	Pharmacy/treatment order
hl7_2.2_rxr .ssc, .xsc	Pharmacy/treatment route
hl7_2.2_stf .ssc, .xsc	Staff identification
hl7_2.2_tq .ssc, .xsc	Timing/quantity data type
hl7_2.2_ub1 .ssc, .xsc	UB82 data
hl7_2.2_ub2 .ssc, .xsc	UB92 data
hl7_2.2_urd .ssc, .xsc	Results/update definition
hl7_2.2_urs .ssc, .xsc	Unsolicited selection
hl7_A01_2.2 .ssc, .xsc	ADT/ACK - Admit/visit notification
hl7_A02_2.2 .ssc, .xsc	ADT/ACK - Transfer a patient
hl7_A03_2.2 .ssc, .xsc	ADT/ACK - Discharge/end visit
hl7_A04_2.2 .ssc, .xsc	ADT/ACK - Register a patient
hl7_A05_2.2 .ssc, .xsc	ADT/ACK - Pre-admit a patient
hl7_A06_2.2 .ssc, .xsc	ADT/ACK - Change an outpatient to an inpatient
hl7_A07_2.2 .ssc, .xsc	ADT/ACK - Change an inpatient to an outpatient
hl7_A08_2.2 .ssc, .xsc	ADT/ACK - Update patient information
hl7_A09_2.2 .ssc, .xsc	ADT/ACK - Patient departing - tracking
hl7_A10_2.2 .ssc, .xsc	ADT/ACK - Patient arriving - tracking
hl7_A11_2.2 .ssc, .xsc	ADT/ACK - Cancel admit/visit notification
hl7_A12_2.2 .ssc, .xsc	ADT/ACK - Cancel transfer

HL7 2.2 ETD	Description
hl7_A13_2.2 .ssc, .xsc	ADT/ACK - Cancel discharge/end visit
hl7_A14_2.2 .ssc, .xsc	ADT/ACK - Pending admit
hl7_A15_2.2 .ssc, .xsc	ADT/ACK - Pending transfer
hl7_A16_2.2 .ssc, .xsc	ADT/ACK - Pending discharge
hl7_A17_2.2 .ssc, .xsc	ADT/ACK - Swap patients
hl7_A18_2.2 .ssc, .xsc	ADT/ACK - Merge patient information
hl7_A19_2.2 .ssc, .xsc	QRY/ADR - Patient query
hl7_A20_2.2 .ssc, .xsc	ADT/ACK - Bed status update
hl7_A21_2.2 .ssc, .xsc	ADT/ACK - Patient goes on a "leave of absence"
hl7_A22_2.2 .ssc, .xsc	ADT/ACK - Patient returns from a "leave of absence"
hl7_A23_2.2 .ssc, .xsc	ADT/ACK - Delete a patient record
hl7_A24_2.2 .ssc, .xsc	ADT/ACK - Link patient information
hl7_A25_2.2 .ssc, .xsc	ADT/ACK - Cancel pending discharge
hl7_A26_2.2 .ssc, .xsc	ADT/ACK - Cancel pending transfer
hl7_A27_2.2 .ssc, .xsc	ADT/ACK - Cancel pending admit
hl7_A28_2.2 .ssc, .xsc	ADT/ACK - Add person information
hl7_A29_2.2 .ssc, .xsc	ADT/ACK - Delete person information
hl7_A30_2.2 .ssc, .xsc	ADT/ACK - Merge person information
hl7_A31_2.2 .ssc, .xsc	ADT/ACK - Update person information
hl7_A32_2.2 .ssc, .xsc	ADT/ACK - Cancel patient arriving - tracking
hl7_A33_2.2 .ssc, .xsc	ADT/ACK - Cancel patient departing - tracking
hl7_A34_2.2 .ssc, .xsc	ADT/ACK - Merge patient information - patient ID only
hl7_A35_2.2 .ssc, .xsc	ADT/ACK - Merge patient information - account number only
hl7_A36_2.2 .ssc, .xsc	ADT/ACK - Merge patient information - patient ID and account number
hl7_A37_2.2 .ssc, .xsc	ADT/ACK - Unlink patient information
hl7_ACK_2.2 .ssc, .xsc	General acknowledgment message
hl7_ADR_2.2 .ssc, .xsc	ADT response
hl7_DFT_2.2 .ssc, .xsc	Detail financial transactions
hl7_DSR_2.2 .ssc, .xsc	Display response
hl7_MCF_2.2 .ssc, .xsc	Delayed acknowledgment
hl7_MFD_2.2 .ssc, .xsc	Master files delayed application acknowledgment
hl7_MFK_2.2 .ssc, .xsc	Master files application acknowledgment
hl7_MFN_2.2 .ssc, .xsc	Master files notification
hl7_MFN_PHYS_2.2 .ssc, .xsc	Master files notification, physician
hl7_MFN_TESTS_2.2 .ssc, .xsc	Master files notification, tests
hl7_MFR_2.2 .ssc, .xsc	Master files response

HL7 2.2 ETD	Description
hl7_ORF_2.2 .ssc, .xsc	Query for results of observation
hl7_ORM_2.2 .ssc, .xsc	Order message
hl7_ORM_DIET_2.2 .ssc, .xsc	Order message, diet orders and restrictions
hl7_ORM_NON-STOCK_2.2 .ssc, .xsc	Order message, non-stock requisition
hl7_ORM_RX_2.2 .ssc, .xsc	Order message, pharmacy/treatment order
hl7_ORM_STOCK_2.2 .ssc, .xsc	Order message, stock (in-stock) requisition
hl7_ORR_2.2 .ssc, .xsc	General order response message response to any ORM
hl7_ORR_DIET_2.2 .ssc, .xsc	General order response message, diet orders and restrictions
hl7_ORR_NON-STOCK_2.2 .ssc, .xsc	General order response message, non-stock requisition
hl7_ORR_RX_2.2 .ssc, .xsc	General order response message, pharmacy/treatment order
hl7_ORR_STOCK_2.2 .ssc, .xsc	General order response message, stock (in-stock) requisitions
hl7_ORU_2.2 .ssc, .xsc	Unsolicited transmission of an observation message
hl7_P01_2.2 .ssc, .xsc	BAR/ACK - Add patient accounts
hl7_P02_2.2 .ssc, .xsc	BAR/ACK - Purge patient accounts
hl7_P03_2.2 .ssc, .xsc	DFT/ACK - Post detail financial transaction
hl7_QRY_2.2 .ssc, .xsc	Query, original mode
hl7_RAR_2.2 .ssc, .xsc	Pharmacy/treatment administration information
hl7_RAS_2.2 .ssc, .xsc	Pharmacy/treatment administration message
hl7_RDE_2.2 .ssc, .xsc	Pharmacy/treatment encoded order message
hl7_RDR_2.2 .ssc, .xsc	Pharmacy/treatment dispense information
hl7_RDS_2.2 .ssc, .xsc	Pharmacy/treatment dispense message
hl7_RER_2.2 .ssc, .xsc	Pharmacy/treatment encoded order information
hl7_RGR_2.2 .ssc, .xsc	Pharmacy/treatment dose information
hl7_RGV_2.2 .ssc, .xsc	Pharmacy/treatment give message
hl7_ROR_2.2 .ssc, .xsc	Pharmacy prescription order response
hl7_RRA_2.2 .ssc, .xsc	Pharmacy/treatment administration acknowledgement message
hl7_RRD_2.2 .ssc, .xsc	Pharmacy/treatment dispense acknowledgment message
hl7_RRE_2.2 .ssc, .xsc	Pharmacy/treatment encoded order acknowledgment message
hl7_RRG_2.2 .ssc, .xsc	Pharmacy/treatment give acknowledgment message
hl7_UDM_2.2 .ssc, .xsc	Unsolicited display update message

4.1.5. HL7 Version 2.1 ETD Library

HL7 2.1 ETD	Description
hl7_2.1_acc .ssc, .xsc	Accident
hl7_2.1_ad .ssc, .xsc	Address data type
hl7_2.1_add .ssc, .xsc	Addendum
hl7_2.1_adt .ssc, .xsc	Admission, discharge, and transfer data type
hl7_2.1_bhs .ssc, .xsc	Batch header
hl7_2.1_blg .ssc, .xsc	Billing
hl7_2.1_bts .ssc, .xsc	Batch trailer
hl7_2.1_ce .ssc, .xsc	Coded element data type
hl7_2.1_ck .ssc, .xsc	Composite with check digits data type
hl7_2.1_cn .ssc, .xsc	Composite number and name data type
hl7_2.1_cq .ssc, .xsc	Composite quantity with units data type
hl7_2.1_dg1 .ssc, .xsc	Diagnosis
hl7_2.1_dsc .ssc, .xsc	Continuation pointer
hl7_2.1_dsp .ssc, .xsc	Display data
hl7_2.1_err .ssc, .xsc	Error
hl7_2.1_evn .ssc, .xsc	Event type
hl7_2.1_fhs .ssc, .xsc	File header
hl7_2.1_ft1 .ssc, .xsc	Financial transaction
hl7_2.1_fts .ssc, .xsc	File trailer
hl7_2.1_gt1 .ssc, .xsc	Guarantor
hl7_2.1_in1 .ssc, .xsc	Insurance
hl7_2.1_mrg .ssc, .xsc	Merge patient information
hl7_2.1_msa .ssc, .xsc	Message acknowledgment
hl7_2.1_msh .ssc, .xsc	Message header
hl7_2.1_nk1 .ssc, .xsc	Next of kin / associated parties
hl7_2.1_npu .ssc, .xsc	Bed status update
hl7_2.1_nte .ssc, .xsc	Notes and comments
hl7_2.1_obr .ssc, .xsc	Observation request
hl7_2.1_obx .ssc, .xsc	Observation/result
hl7_2.1_orc .ssc, .xsc	Common order
hl7_2.1_oro .ssc, .xsc	Order request other
hl7_2.1_pid .ssc, .xsc	Patient identification
hl7_2.1_pn .ssc, .xsc	Person name data type
hl7_2.1_pr1 .ssc, .xsc	Procedures
hl7_2.1_pv1 .ssc, .xsc	Patient visit

HL7 2.1 ETD	Description
hl7_2.1_qrd .ssc, .xsc	Original-style query definition
hl7_2.1_qrf .ssc, .xsc	Original style query filter
hl7_2.1_rx1 .ssc, .xsc	Pharmacy order
hl7_2.1_tq .ssc, .xsc	Timing/quantity data type
hl7_2.1_ub1 .ssc, .xsc	UB82 data
hl7_2.1_urd .ssc, .xsc	Results/update definition
hl7_2.1_urs .ssc, .xsc	Unsolicited selection
hl7_A01_2.1 .ssc, .xsc	ADT/ACK - Admit/visit notification
hl7_A02_2.1 .ssc, .xsc	ADT/ACK - Transfer a patient
hl7_A03_2.1 .ssc, .xsc	ADT/ACK - Discharge/end visit
hl7_A04_2.1 .ssc, .xsc	ADT/ACK - Register a patient
hl7_A05_2.1 .ssc, .xsc	ADT/ACK - Pre-admit a patient
hl7_A06_2.1 .ssc, .xsc	ADT/ACK - Change an outpatient to an inpatient
hl7_A07_2.1 .ssc, .xsc	ADT/ACK - Change an inpatient to an outpatient
hl7_A08_2.1 .ssc, .xsc	ADT/ACK - Update patient information
hl7_A09_2.1 .ssc, .xsc	ADT/ACK - Patient departing - tracking
hl7_A10_2.1 .ssc, .xsc	ADT/ACK - Patient arriving - tracking
hl7_A11_2.1 .ssc, .xsc	ADT/ACK - Cancel admit/visit notification
hl7_A12_2.1 .ssc, .xsc	ADT/ACK - Cancel transfer
hl7_A13_2.1 .ssc, .xsc	ADT/ACK - Cancel discharge/end visit
hl7_A14_2.1 .ssc, .xsc	ADT/ACK - Pending admit
hl7_A15_2.1 .ssc, .xsc	ADT/ACK - Pending transfer
hl7_A16_2.1 .ssc, .xsc	ADT/ACK - Pending discharge
hl7_A17_2.1 .ssc, .xsc	ADT/ACK - Swap patients
hl7_A18_2.1 .ssc, .xsc	ADT/ACK - Merge patient information
hl7_A19_2.1 .ssc, .xsc	QRY/ADR - Patient query
hl7_A20_2.1 .ssc, .xsc	ADT/ACK - Bed status update
hl7_A21_2.1 .ssc, .xsc	ADT/ACK - Patient goes on a "leave of absence"
hl7_A22_2.1 .ssc, .xsc	ADT/ACK - Patient returns from a "leave of absence"
hl7_A23_2.1 .ssc, .xsc	ADT/ACK - Delete a patient record
hl7_A24_2.1 .ssc, .xsc	ADT/ACK - Link patient information
hl7_ACK_2.1 .ssc, .xsc	General acknowledgment message
hl7_DSR_2.1 .ssc, .xsc	Display response
hl7_MCF_2.1 .ssc, .xsc	Delayed acknowledgment
hl7_ORF_2.1 .ssc, .xsc	Query for results of observation
hl7_ORM_2.1 .ssc, .xsc	Order message

HL7 2.1 ETD	Description
hl7_ORM_other_2.1 .ssc, .xsc	Order message, other
hl7_ORM_rx_2.1 .ssc, .xsc	Order message, pharmacy/treatment order
hl7_ORR_2.1 .ssc, .xsc	General order response message response to any ORM
hl7_ORU_2.1 .ssc, .xsc	Unsolicited transmission of an observation message
hl7_P01_2.1 .ssc, .xsc	BAR/ACK - Add patient accounts
hl7_P02_2.1 .ssc, .xsc	BAR/ACK - Purge patient accounts
hl7_P03_2.1 .ssc, .xsc	DFT/ACK - Post detail financial transaction
hl7_QRY_2.1 .ssc, .xsc	Query, original mode
hl7_UDM_2.1 .ssc, .xsc	Unsolicited display update message


Implementation Tips

This appendix includes information on editing and implementing the Java templates for the HL7 ETD Library.

A.1 Editing a Java HL7 ETD

The Java HL7 ETDs can be edited or modified using the e*Gate Schema Designer's ETD Editor. The Java ETDs, as installed, are "read only," and must be saved to the schema to create an editable HL7 ETD file.

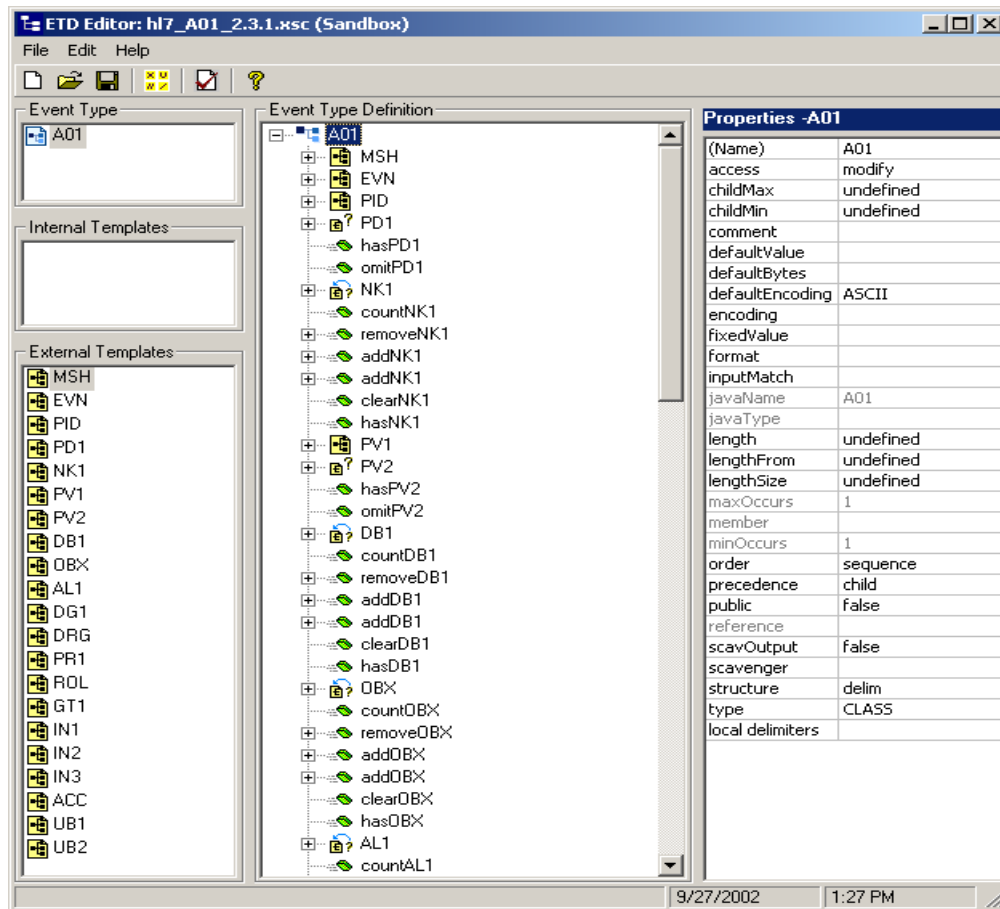
Creating an editable Java HL7 ETD

- 1 Open the e*Gate Schema Designer to your schema.
- 2 From the e*Gate Schema Designer's **Options** menu, click **Default Editor** and make sure that **Java** is selected.
- 3 From the e*Gate toolbar, click the ETD Editor  button, or from the **Tools** menu, select **ETD Editor**. The ETD Editor appears.
- 4 From the editor's **File** menu, select **Open from Default Schema**. Select `etd\templates\HL7\...`, the appropriate HL7 template folder, and the file (.xsc) to be edited. The .xsc file appears as a **read only** file in the ETD Editor and cannot be modified. This is indicated by the "grayed out" appearance.
- 5 From the editor's **File** menu, select **Save As**, saving the file, with a the same name or a new name. The ETD (.xsc) is now saved for this schema to the following folder:


```
eGate\Server\registry\Repository\SchemaName\sandbox\Administrator\
etd\templates\HL7\HL7_2.x
```

 where *SchemaName* is the name of the specific schema, and *HL7_2.x* is the name of the HL7 ETD version the file was selected from.
- 6 From the editor's **File** menu, select **Open**. Select `etd\templates\HL7\...`, the appropriate HL7 template folder, and the ETD file (.xsc) that was just saved, and click **Open**.
- 7 The .xsc file now appears in the editor in color, indicating that the ETD can now be modified as needed (see Figure 1).

Figure 1 ETD Editor - an Editable ETD



- 8 Once the ETD's modifications are complete, from the editor's **File** menu, click **Compile and Save**, to generate .xsc, .ssc, and .jar files containing the changes made using the ETD Editor. For more information on editing or modifying an ETD, see the *e*Gate Integrator User's Guide*.

ETDs containing External Templates

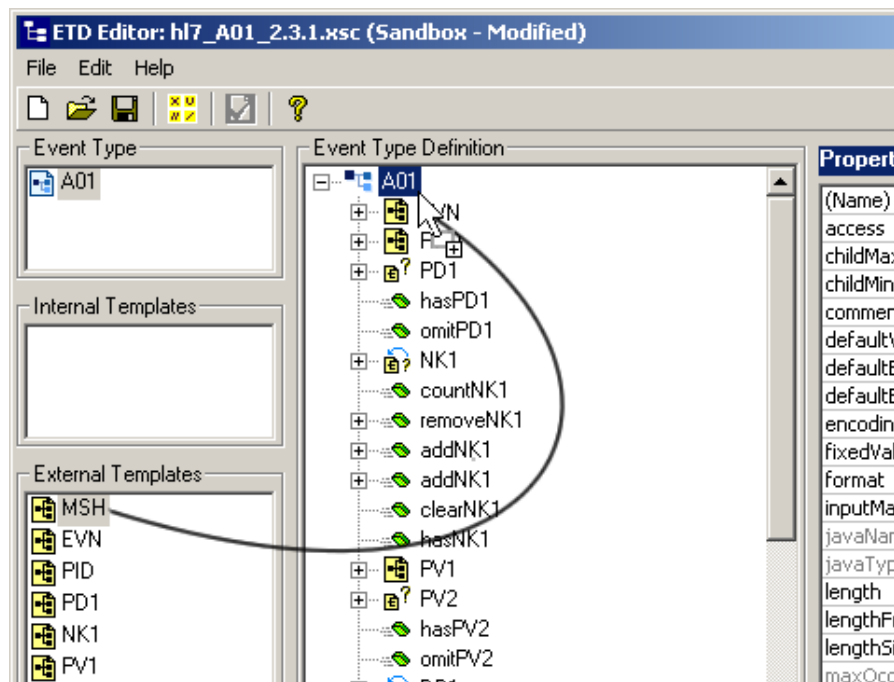
Many of the HL7 ETDs contain **external templates** (see Figure 1). An external template is a reference to an .xsc file that resides outside the current ETD and is used as a component of the main ETD's structure. For example, the external template **MSH**, in Figure 1, uses the file hl7_2.3.1_msh.xsc. External templates may contain references to other external templates.

To modify an external template referenced in an ETD, the .xsc file referenced by the external template must be modified and compiled. The external template must be deleted from the ETD's External Template pane and the ETD structure in the Event Type Definition pane. These modifications are then passed on to the ETD that contains the external template when it is modified and saved. The procedures for modifying the external template's .xsc as follows:

- 1 Follow steps 1-8 under **Creating an editable Java HL7 ETD** on page 69, to save the ETD (.xsc) that contains the external templates. This will also save the external template's .xsc files to the new schema's etd/templates/HL7.. folder.

- 2 To modify the external template, click **Open** from the editor's **File** menu, and select the .xsc file that corresponds to the external template. The file appears in the editor as an editable ETD.
- 3 When modifications to the ETD are complete, click **Compile and Save** from the editor's **File** menu,. An .xsc, .ssc, and .jar file are created and saved in the schema's etd/templates/HL7.. folder.
- 4 From the ETD Editor's File menu, click **Open** and select the main ETD (the .xsc that contains the external templates).
- 5 Right-click and delete the external template component from the ETD structure in the **Event Type Definition** pane and delete the reference from the ETD's **External Template** pane.
- 6 After the external template has been deleted, import the modified external template by placing the cursor in the External Templates pane, right-clicking, and selecting **Import External Reference**. Select the modified .xsc file to be referenced as an external template and click **Open**. This places the reference for this .xsc in the External Template pane.
- 7 To add the external template to the ETD structure, click on the Event Type in the Event Type pane of the editor to display the ETD in the Event Type Definition pane. Now "drag and drop" the imported reference from the External Template pane, to the root node of the ETD structure in the Event Type Definition pane (see Figure 2).

Figure 2 ETD Editor - Importing External Templates



- 8 The External Template is added at the bottom of the ETD as a node with "1" added to the name. The node can be left with this new name or renamed with the same name as the reference in the External Templates pane by double-clicking the node

and entering the desired name. The node can be dragged to the desired position in the ETD structure.

- 9 Compile and save the ETD. Any modifications made to the external template are now included in the ETD referencing the external template.

A.2 Java ETD Run Test Option

The Java ETD Editor's Run Test option is not supported for the HL7 ETD Library.

A.3 Creating a Schema Using the HL7 ETD Library

HL7 ETDs are used to create Collaboration Rules that are incorporated in an e*Gate schema. For information on creating a schema, refer to the following documents:

- *e*Gate Integrator User's Guide*
- *Standard e*Way Intelligent Adapters User's Guide*
- *Creating an End-to-end Scenario with e*Gate Integrator*
- *e*Gate Integrator Collaboration Services Reference Guide*
- *e*Gate Integrator System Administration and Operations Guide*

Index

C

components of the HL7 standard 8

D

description
HL7 2.1 ETDs 66
HL7 2.2 ETDs 61
HL7 2.3 ETDs 53
HL7 2.3.1 ETDs 45

E

editing a Java ETD 69
external templates 70
external templates 70

H

HL7 29
additional information (Web site) 12
standard 7
HL7 ETD libraries
version 2.1 66
version 2.2 61
version 2.3 53
version 2.3.1 29, 45
HL7 message sets 9
financial management message set 10
master file message set 10
medical documentation management (MDM)
message set 11
observation reporting message set 10
order entry message set 10
patient administration message set 10
patient care message set 11
patient referral message set 11
query message set 10
scheduling message set 11

I

implementation 69
installation

created files 15
UNIX 14
Windows 13

J

Java ETD Tester 72

O

overview
of HL7 7
user's guide 5

S

SeeBeyond documents 72
standard components 8
data types 9
escape sequences 9
fields 8
message 8
message delimiters 9
segments 8
subdirectories and files
HL7 2.1 28
HL7 2.2 26
HL7 2.3 23
system requirements 6