

e*Way Intelligent Adapter for SQL Server User's Guide

*Release 5.0.5 for Schema Run-time
Environment (SRE)*



Copyright © 2005, 2010, Oracle and/or its affiliates. All rights reserved.

This software and related documentation are provided under a license agreement containing restrictions on use and disclosure and are protected by intellectual property laws. Except as expressly permitted in your license agreement or allowed by law, you may not use, copy, reproduce, translate, broadcast, modify, license, transmit, distribute, exhibit, perform, publish, or display any part, in any form, or by any means. Reverse engineering, disassembly, or decompilation of this software, unless required by law for interoperability, is prohibited.

The information contained herein is subject to change without notice and is not warranted to be error-free. If you find any errors, please report them to us in writing.

If this is software or related software documentation that is delivered to the U.S. Government or anyone licensing it on behalf of the U.S. Government, the following notice is applicable:

U.S. GOVERNMENT RIGHTS Programs, software, databases, and related documentation and technical data delivered to U.S. Government customers are "commercial computer software" or "commercial technical data" pursuant to the applicable Federal Acquisition Regulation and agency-specific supplemental regulations. As such, the use, duplication, disclosure, modification, and adaptation shall be subject to the restrictions and license terms set forth in the applicable Government contract, and, to the extent applicable by the terms of the Government contract, the additional rights set forth in FAR 52.227-19, Commercial Computer Software License (December 2007). Oracle USA, Inc., 500 Oracle Parkway, Redwood City, CA 94065.

This software or hardware is developed for general use in a variety of information management applications. It is not developed or intended for use in any inherently dangerous applications, including applications which may create a risk of personal injury. If you use this software or hardware in dangerous applications, then you shall be responsible to take all appropriate fail-safe, backup, redundancy, and other measures to ensure the safe use. Oracle Corporation and its affiliates disclaim any liability for any damages caused by use of this software or hardware in dangerous applications.

Oracle and Java are registered trademarks of Oracle and/or its affiliates. Other names may be trademarks of their respective owners.

AMD, Opteron, the AMD logo, and the AMD Opteron logo are trademarks or registered trademarks of Advanced Micro Devices. Intel and Intel Xeon are trademarks or registered trademarks of Intel Corporation. All SPARC trademarks are used under license and are trademarks or registered trademarks of SPARC International, Inc. UNIX is a registered trademark licensed through X/Open Company, Ltd.

This software or hardware and documentation may provide access to or information on content, products, and services from third parties. Oracle Corporation and its affiliates are not responsible for and expressly disclaim all warranties of any kind with respect to third-party content, products, and services. Oracle Corporation and its affiliates will not be responsible for any loss, costs, or damages incurred due to your access to or use of third-party content, products, or services.

Version 20100720144821.

Contents

Chapter 1

| | |
|------------------------------------|-----------|
| Introduction | 10 |
| Overview | 10 |
| Components | 10 |
| Operational Overview | 10 |
| System Requirements | 10 |
| Host System Requirements | 11 |
| GUI Host Requirements | 11 |
| Participating Host Requirements | 11 |
| Supported Operating Systems | 11 |

Chapter 2

| | |
|---|-----------|
| e*Way Connection Configuration | 12 |
| Create e*Way Connections | 12 |
| DataSource Settings | 13 |
| class | 13 |
| Connection Method | 14 |
| ServerName | 14 |
| PortNumber | 14 |
| DatabaseName | 14 |
| user name | 14 |
| password | 15 |
| SelectMethod | 15 |
| timeout | 15 |
| Connector Settings | 15 |
| type | 15 |
| class | 16 |
| transaction mode | 16 |
| transaction mode | 16 |
| connection establishment mode | 16 |
| connection inactivity timeout | 17 |
| connection verification interval | 17 |
| Connection Manager | 17 |
| Controlling When a Connection is Made | 18 |
| Controlling When a Connection is Disconnected | 18 |
| Controlling the Connectivity Status | 19 |

| | |
|---|-----------|
| Stceway Connection | 19 |
| Classpath Prepend | 19 |
| <hr/> | |
| Chapter 3 | |
| Installation | 20 |
| Installing the SQL Server e*Way on Windows | 20 |
| Pre-installation | 20 |
| Installation Procedure | 20 |
| Installing the SQL Server e*Way on UNIX | 21 |
| Pre-installation | 21 |
| Installation Procedure | 21 |
| Configuring the DataDirect 3.0 Drivers for XA Mode | 21 |
| Files/Directories Created by the Installation | 22 |
| <hr/> | |
| Chapter 4 | |
| Implementation | 23 |
| The Java Collaboration Service | 23 |
| Java Components | 23 |
| The Java ETD Builder | 23 |
| The Parts of the ETD | 24 |
| Using the DBWizard ETD Builder | 24 |
| The Generated ETDs | 33 |
| Editing an Existing .XSC Using the Database Wizard | 33 |
| Using ETDs with Tables, Views, Stored Procedures, and Prepared Statements | 34 |
| The Table | 34 |
| The query Operation | 35 |
| The insert Operation | 35 |
| The update Operation | 37 |
| The delete Operation | 38 |
| The View | 39 |
| The Stored Procedure | 39 |
| Executing Stored Procedures | 39 |
| Manipulating the ResultSet and Update Count Returned by Stored Procedure | 40 |
| Prepared Statement | 42 |
| Batch Operations | 43 |
| Database Configuration Node | 43 |
| Sample Scenario—Polling from a Database | 44 |
| Create the Schema | 46 |
| Add the Event Types and Event Type Definitions | 46 |
| Create the Collaboration Rules and the Java Collaboration | 49 |
| Add and Configure the e*Ways | 53 |
| Add and Configure the e*Way Connections | 55 |
| Add the IQs | 56 |
| Add and Configure the Collaborations | 56 |
| Run the Schema | 57 |

Chapter 5

SQL Server e*Way Methods 59

| | |
|---|-----------|
| com.stc.eways.jdbcx.StatementAgent Class | 59 |
| resultSetTypeToString | 60 |
| resultSetDirToString | 60 |
| resultSetConcurToString | 61 |
| isClosed | 61 |
| queryName | 61 |
| queryDescription | 61 |
| sessionOpen | 62 |
| sessionClosed | 62 |
| resetRequested | 62 |
| getResultSetType | 62 |
| getResultSetConcurrency | 63 |
| setEscapeProcessing | 63 |
| setCursorName | 63 |
| setQueryTimeout | 64 |
| setQueryTimeout | 64 |
| getFetchDirection | 64 |
| setFetchDirection | 64 |
| getFetchSize | 65 |
| getMaxRows | 65 |
| setMaxRows | 65 |
| getMaxFieldSize | 66 |
| setMaxFieldSize | 66 |
| getUpdateCount | 66 |
| getResultSet | 66 |
| getMoreResults | 67 |
| clearBatch | 67 |
| executeBatch | 67 |
| cancel | 67 |
| getWarnings | 68 |
| clearWarnings | 68 |
| stmtInvoke | 68 |
| com.stc.eways.jdbcx.PreparedStatementAgent Class | 69 |
| sessionOpen | 69 |
| setNull | 70 |
| setNull | 70 |
| setObject | 70 |
| setObject | 71 |
| setObject | 71 |
| setBoolean | 72 |
| setByte | 72 |
| setShort | 72 |
| setInt | 73 |
| setLong | 73 |
| setFloat | 73 |
| setDouble | 74 |
| setBigDecimal | 74 |
| setDate | 74 |
| setDate | 75 |
| setTime | 75 |
| setTime | 75 |
| setTimestamp | 76 |
| setTimestamp | 76 |
| setString | 76 |
| setBytes | 77 |
| setAsciiStream | 77 |
| setBinaryStream | 77 |

| | |
|---|-----------|
| setCharacterStream | 78 |
| setArray | 78 |
| setBlob | 79 |
| setClob | 79 |
| setRef | 79 |
| clearParameters | 80 |
| addBatch | 80 |
| execute | 80 |
| executeQuery | 80 |
| executeUpdate | 80 |
| com.stc.eways.jdbcx.PreparedStatementResultSet Class | 81 |
| Constructor PreparedStatementResultSet | 83 |
| getMetaData | 83 |
| getConcurrency | 83 |
| getFetchDirection | 83 |
| setFetchDirection | 84 |
| getFetchSize | 84 |
| setFetchSize | 84 |
| getCursorName | 85 |
| close | 85 |
| next | 85 |
| previous | 85 |
| absolute | 85 |
| relative | 86 |
| first | 86 |
| isFirst | 86 |
| last | 86 |
| isLast | 87 |
| beforeFirst | 87 |
| isBeforeFirst | 87 |
| afterLast | 87 |
| isAfterLast | 88 |
| getType | 88 |
| findColumn | 88 |
| getObject | 88 |
| getObject | 89 |
| getObject | 89 |
| getObject | 90 |
| getBoolean | 90 |
| getBoolean | 90 |
| getByte | 91 |
| getShort | 91 |
| getShort | 91 |
| getInt | 92 |
| getInt | 92 |
| getLong | 92 |
| getLong | 93 |
| getFloat | 93 |
| getFloat | 94 |
| getDouble | 94 |
| getBigDecimal | 94 |
| getBigDecimal | 95 |
| getDate | 95 |
| getDate | 95 |
| getDate | 96 |
| getTime | 96 |
| getTime | 96 |
| getTime | 97 |
| getTime | 97 |
| getTimestamp | 98 |
| getTimestamp | 98 |
| getTimestamp | 98 |
| getTimestamp | 99 |

| | |
|---|------------|
| getString | 99 |
| getString | 99 |
| getBytes | 100 |
| getBytes | 100 |
| getAsciiStream | 101 |
| getAsciiStream | 101 |
| getBinaryStream | 101 |
| getBinaryStream | 102 |
| getCharacterStream | 102 |
| getArray | 102 |
| getBlob | 103 |
| getBlob | 103 |
| getClob | 103 |
| getClob | 104 |
| getRef | 104 |
| getRef | 105 |
| wasNull | 105 |
| getWarnings | 105 |
| clearWarnings | 105 |
| getRow | 106 |
| refreshRow | 106 |
| insertRow | 106 |
| updateRow | 106 |
| deleteRow | 106 |
| com.stc.eways.jdbcx.SqlStatementAgent Class | 107 |
| Constructor SqlStatementAgent | 107 |
| Constructor SqlStatementAgent | 107 |
| execute | 108 |
| executeQuery | 108 |
| executeUpdate | 109 |
| addBatch | 109 |
| com.stc.eways.jdbcx.CallableStatementAgent Class | 109 |
| Constructor CallableStatementAgent | 110 |
| Constructor CallableStatementAgent | 111 |
| Constructor CallableStatement Agent | 111 |
| sessionOpen | 111 |
| registerOutParameter | 112 |
| registerOutParameter | 112 |
| registerOutParameter | 112 |
| wasNull | 113 |
| getObject | 113 |
| getObject | 113 |
| getBoolean | 114 |
| getByte | 114 |
| getShort | 114 |
| getInt | 115 |
| getLong | 115 |
| getFloat | 115 |
| getDouble | 116 |
| getBigDecimal | 116 |
| getDate | 116 |
| getDate | 117 |
| getTime | 117 |
| getTime | 118 |
| getTimestamp | 118 |
| getTimestamp | 118 |
| getString | 119 |
| getBytes | 119 |
| getArray | 119 |
| getBlob | 120 |
| getClob | 120 |
| getRef | 121 |

| | |
|---|------------|
| com.stc.eways.jdbcx.TableResultSet Class | 121 |
| select | 122 |
| next | 122 |
| previous | 122 |
| absolute | 123 |
| relative | 123 |
| first | 123 |
| isFirst | 124 |
| last | 124 |
| isLast | 124 |
| beforeFirst | 124 |
| isBeforeFirst | 125 |
| afterLast | 125 |
| isAfterLast | 125 |
| findColumn | 125 |
| getAsciiStream | 126 |
| getAsciiStream | 126 |
| getBinaryStream | 126 |
| getBinaryStream | 126 |
| getCharacterStream | 126 |
| getCharacterStream | 127 |
| refreshRow | 127 |
| insertRow | 127 |
| updateRow | 127 |
| deleteRow | 127 |
| moveToInsertRow | 127 |
| moveToCurrentRow | 128 |
| cancelRowUpdates | 128 |
| rowInserted | 128 |
| rowUpdated | 128 |
| rowDeleted | 128 |
| wasNull | 129 |
| \$DB Configuration Node Methods | 129 |
| com_stc_jdbcx_sqlservercfg.DataSource | 129 |
| getClass | 130 |
| setClass | 130 |
| hasClass | 130 |
| omitClass | 130 |
| getConnectionMethod | 131 |
| setConnectionMethod | 131 |
| hasConnectionMethod | 131 |
| omitConnectionMethod | 131 |
| getServerName | 132 |
| setServerName | 132 |
| hasServerName | 132 |
| omitServerName | 132 |
| getPortNumber | 132 |
| setPortNumber | 133 |
| hasPortNumber | 133 |
| omitPortNumber | 133 |
| getDatabaseName | 133 |
| setDatabaseName | 133 |
| hasDatabaseName | 133 |
| omitDatabaseName | 134 |
| getUserName | 134 |
| setUserName | 134 |
| hasUserName | 134 |
| omitUserName | 134 |
| getPassword | 135 |
| setPassword | 135 |
| setPassword_Asls | 135 |
| hasPassword | 135 |

Contents

| | |
|-----------------------------------|------------|
| omitPassword | 135 |
| getPassword | 135 |
| setPassword | 136 |
| setPassword_AsIs | 136 |
| hasPassword | 136 |
| omitPassword | 136 |
| getSelectMethod | 136 |
| setSelectMethod | 137 |
| hasSelectMethod | 137 |
| omitSelectMethod | 137 |
| getTimeout | 137 |
| setTimeout | 137 |
| hasTimeout | 138 |
| omitTimeout | 138 |
| com_stc_jdbcx_sqlservercfg | 138 |
| getDataSource | 138 |
| setDataSource | 138 |

| | |
|--------------|------------|
| Index | 140 |
|--------------|------------|

Introduction

This document describes how to install and configure the e*Way Intelligent Adapter for SQL Server.

1.1 Overview

The SQL Server e*Way enables the e*Gate system to exchange data with external SQL Server databases. Using the java library, SQL statements are issued to interact with the SQL Server databases.

1.1.1 Components

The e*Way is composed of the following components:

- **e*Way Connections:** The database e*Way Connections provide access to the information necessary for connecting to a specified external system.
- **stcjdbcx.jar:** This file contains the logic required by the e*Way to interact with the external databases.

A complete list of installed files appears in Table 1.

1.2 Operational Overview

The SQL Server e*Way uses Java Collaborations to interact with one or more external databases. By using the Java Collaboration Service it is possible for e*Gate components—such as e*Way Intelligent Adapters (e*Ways) and Business Object Brokers (BOBs)—to connect to external databases and execute business rules written entirely in Java.

1.3 System Requirements

To use the e*Way, you also need the following:

- An e*Gate Participating Host.
- A TCP/IP network connection.

The client components for the databases that the e*Way interfaces with have their own requirements; see that system's documentation for more details.

1.3.1 Host System Requirements

The external system requirements are different for a GUI host machine—specifically a machine running the ETD Editor and the Java Collaboration Editor GUIs—versus a participating host which is used solely to run the e*Gate schema.

GUI Host Requirements

To enable the GUI editors to communicate with the external system, the following items must be installed on each host machine that runs the GUI editors:

- SQL Server 7 with Service Pack 3, SQL Server 2000 Service Pack 1 or SQL Server 2008.
- Microsoft Data Access Components (MDAC) RTM version 2.6 or greater. This component is included in the e*Gate GUI installation.
- DataDirect ODBC 4.1 wire protocol driver. This driver is included on the e*Gate installation cd.

If the GUI host machine will also be executing the SQL Server e*Way, the host machine must also meet the "Participating Host Requirements".

Note: *Open and review the Readme.txt for any additional requirements prior to installation. The Readme.txt is located on the Installation CD_ROM.*

Participating Host Requirements

The SQL Server Database e*Way requires that the following item be installed on the Participating Host:

- DataDirect Connect JDBC 3.2 driver. This driver is required for use with Java JDK.

1.4 Supported Operating Systems

For information about the operating systems supported by the e*Gate Integrator system, see the **readme.txt** file provided on the installation CD.

Note: *For Japanese and Korean operating systems DBCS (acronym for Double Byte Character Set) are for table names and column names within the tables when using e*Gate 4.5.2 or later. It is not recommended you mix DBCS with English characters in column names.*

e*Way Connection Configuration

This chapter describes how to configure the SQL Server e*Way Connections.

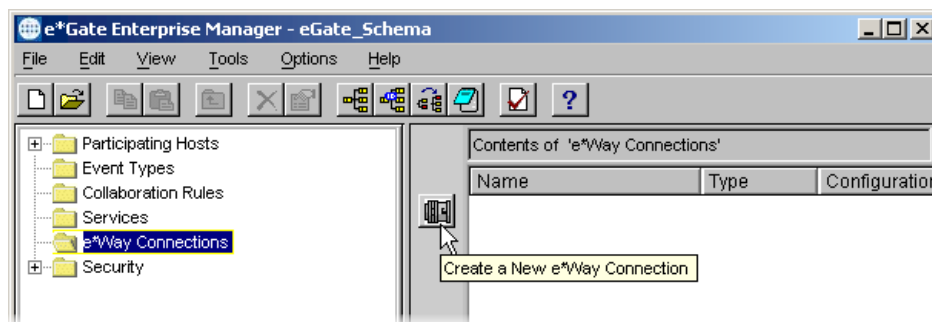
2.1 Create e*Way Connections

The e*Way Connections are created and configured in the Schema Designer.

To create and configure the e*Way Connections

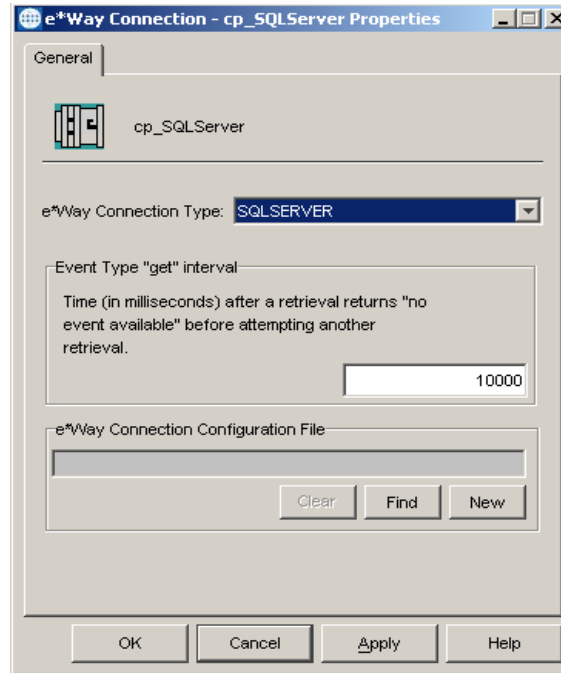
- 1 In the Schema Designer's Component editor, select the e*Way Connections folder.

Figure 1 The e*Way Connections Folder



- 2 On the Palette, click the **New e*Way Connection** icon.
- 3 The **New e*Way Connection Component** dialog box opens. Enter a name for the e*Way Connection and click **OK**.
- 4 Double-click the new e*Way Connection to open the e*Way Connection Properties dialog box.

Figure 2 e*Way Connection Properties Dialog Box



- 5 From the e*Way Connection Type drop-down list, select **SQLSERVER**.
- 6 Enter the **Event Type “get” interval** in the dialog box provided.
- 7 Click **New** to create a new e*Way Connection Configuration File.

The e*Way Connection Configuration File Editor appears.

The e*Way Connection configuration file parameters are organized into the following sections:

- **DataSource Settings** on page 13
- **Connector Settings** on page 15

2.1.1 DataSource Settings

The DataSource settings define the parameters used to interact with the external database.

class

Description

Specifies the Java class in the JDBC driver that is used to implement the `ConnectionPoolDataSource` interface.

Required Values

A valid class name.

The default is `com.SeeBeyond.jdbcx.sqlserver.SQLServerDataSource`.

Connection Method

Specifies which method is used to connect to the database server:

Pooled Data Source - A `ConnectionPoolDataSource` object for creating `PooledConnection` objects. A `PooledConnection` object represents a physical connection and is cached in memory for reuse, which saves the overhead of establishing a new connection. This is implemented by the driver.

XA Data Source - An `XADataSource` object for creating `XAConnection` objects, connections that can be used for distributed transaction.

You should make sure that the class specified in the "class" parameter supports the connection method that is used here.

Required Values

The default is "Pooled Data Source"

ServerName

Description

Specifies the host name of the external database server.

Required Values

Any valid string.

PortNumber

Description

Specifies the port number on which the server is listening for connection requests. The default value is 1433. You must specify a valid port number. This e*Way does not support dynamic port assignments.

Required Values

A valid port number.

DatabaseName

Description

Specifies the name of the database instance.

Required Values

Any valid string.

user name

Description

Specifies the user name the e*Way will use to connect to the database.

Required Values

Any valid string.

password

Description

Specifies the password used to access the database.

Required Values

Any valid string.

SelectMethod

Description

Specifies whether database cursors are used for Select statements. Using the Direct mode is the most efficient for executing Select statements; however, you may be limited to a single active statement while executing inside a transaction. Setting SelectMethod to cursor allows multiple active statements within a transaction.

Required Values

Cursor or **Direct**

timeout

Description

This is the login timeout in seconds.

Required Values

Any valid string. The default is **300** seconds.

2.1.2 Connector Settings

The Connector settings define the high-level characteristics of the e*Way Connection.

type

Description

Specifies the type of e*Way Connection. The current available type for JDBC connections is **DB**.

Required Values

The default is **DB**.

class

Description

Specifies the class name of the JDBC connector object.

Required Values

The default is **com.stc.eways.jdbcx.DbConnector**.

transaction mode

Description

Specifies how transactions should be handled.

Required Values

transaction mode

This parameter specifies how a transaction should be handled.

- **Automatic** — e*Gate will take care of transaction control and users should not issue a commit or rollback. If you are using XA, you must set your **connection establishment mode** and your **transaction mode** both to **Automatic**.
- **Manual** — You will manually take care of transaction control by issuing a commit or rollback.

Required Values

The required values are **Automatic** or **Manual**. The default is set to **Automatic**.

Mixing XA-Compliant and XA-Noncompliant e*Way Connections

A Collaboration can be XA-enabled if and only if all its sources and destinations are XA-compliant e*Way Connections. However, XA-related advantages can accrue to a Collaboration that uses one (and only one) e*Way Connection that is transactional but not XA-compliant—in other words, it connects to exactly one external system that supports commit/rollback (and is thus transactional) but does not support two-phase commit (and is thus not XA-compliant). Please see the *e*Gate User's Guide* for usage and restrictions.

connection establishment mode

This parameter specifies how a connection with the database server is established and closed.

- **Automatic** indicates that the connection is automatically established when the collaboration is started and keeps the connection alive as needed. If you are using XA, you must set your **connection establishment mode** and your **transaction mode** both to **Automatic**.
- **OnDemand** indicates that the connection will be established on demand as business rules requiring a connection to the external system are performed. The connection will be closed after the methods are completed.

- **Manual** indicates that the user will explicitly call the connection connect and disconnect methods in their collaboration as business rules.

Required Values

The required values are **Automatic**, **OnDemand** or **Manual**. The default is set to **Automatic**.

Note: If you are using Manual connection establishment mode, you must also use Manual transaction mode.

connection inactivity timeout

This value is used to specify the timeout for the Automatic connection establishment mode. If this is set to 0, the connection will not be brought down due to inactivity. The connection is always kept alive; if it goes down, re-establishing the connection will automatically be attempted. If a non-zero value is specified, the connection manager will try to monitor for inactivity so that the connection is brought down if the timeout specified is reached.

Required Values

Any valid string.

connection verification interval

This value is used to specify the minimum period of time between checks for connection status to the database server. If the connection to the server is detected to be down during verification, your collaboration's onDown method is called. If the connection comes up from a previous connection error, your collaboration's onUp method is called.

Required Values

Any valid string.

2.2 Connection Manager

The Connection Manager allows you to define the connection functionality of your e*Way. You choose:

- When an e*Way connection is made.
- When to close the e*Way connection and disconnect.
- What the status of your e*Way connection is.
- When the connection fails, an OnConnectionDown method is called by the Collaboration

The Connection Manager was specifically designed to take full advantage of the enhanced e*Gate functionality. If you are running e*Gate 4.5.1 or earlier, this enhanced functionality is visible but will be ignored.

The Connection Manager is controlled in the e*Way configuration as described in [Connector Settings](#) on page 15. If you choose to manually control the e*Way connections, you may find the following chart helpful.

Figure 3 e*Way Connection Control methods

| | Automatic | On-Demand | Manual |
|----------------------------|------------------|--|---------------|
| onConnectionUp | yes | no | no |
| onConnectionDown | yes | yes only if the connection attempt fails | no |
| Automatic Transaction (XA) | yes | no | no |
| Manual Transaction | yes | no | no |
| connect | no | no | yes |
| isConnect | no | no | yes |
| disconnect | no | no | yes |
| timeout or connect | yes | yes | no |
| verify connection interval | yes | no | no |

Controlling When a Connection is Made

As a user, you can control when a connection is made. Using Connector Settings, you can choose to have e*Way connections controlled manually — through the Collaboration, or automatically — through the e*Way Connection Configuration. If you choose to control the connection you can specify the following:

- To connect when the Collaboration is loaded.
- To connect when the Collaboration is executed.
- To connect by using an additional connection method in the ETD.
- To connect by overriding any custom values you have assigned in the Collaboration.
- To connect by using the isConnected() method. The isConnected() method is called per connection if your ETD has multiple connections.

Controlling When a Connection is Disconnected

In addition to controlling when a connection is made, you can also manually or automatically control when an e*Way connection is terminated or disconnected. To control the disconnect you can specify:

- To disconnect at the end of a Collaboration.
- To disconnect at the end of the execution of the Collaborations Business Rules.
- To disconnect during a timeout.
- To disconnect after a method call.

Controlling the Connectivity Status

You can control how often the e*Way connection checks to verify if it is still alive and you can set how often it checks. See [Connector Settings](#) on page 15.

2.3 Stceway Connection

Classpath Prepend

Required Values

You will need to add the following .jar files to your classpath:

- DGbase.jar
- DGutil.jar
- DGsqlserver.jar
- spy.jar

The absolute path should be set in:

```
\client\ThirdParty\merant\classes\DGbase.jar;\client\ThirdParty  
\merant\classes\DGsqlserver.jar;\client\ThirdParty\merant\classes  
\DGutil.jar;\client\ThirdParty\merant\classes\spy.jar.
```

Installation

This chapter describes how to install the SQL Server e*Way.

3.1 Installing the SQL Server e*Way on Windows

The following information will guide you through installing the e*Way.

3.1.1 Pre-installation

Before beginning the installation process, you must do the following:

- Exit all Windows programs before running the setup program, including any anti-virus applications.
- Assure that you have Administrator privileges before installing this e*Way.

3.1.2 Installation Procedure

To install the SQL Server e*Way on a Windows operating system

- 1 Log in as an Administrator on the workstation on which you want to install the e*Way.
- 2 Insert the e*Gate installation CD-ROM into the CD-ROM drive.
- 3 If the CD-ROM drive's "Autorun" feature is enabled, the setup application should launch automatically; skip ahead to step 4. Otherwise, use Windows Explorer or the Control Panel's **Add/Remove Applications** feature to launch the file **setup.exe** on the CD-ROM drive.
- 4 The InstallShield setup application will launch. Follow the on-screen instructions to install the e*Way.

Be sure to install the e*Way files in the suggested "client" installation directory. The installation utility detects and suggests the appropriate installation directory. **Unless you are directed to do so by Oracle support personnel, do not change the suggested "installation directory" setting.**

3.2 Installing the SQL Server e*Way on UNIX

3.2.1 Pre-installation

You do not require root privileges to install this e*Way. Log in under the user name that you wish to own the e*Way files. Be sure that this user has sufficient privileges to create files in the e*Gate directory tree.

3.2.2 Installation Procedure

To install the SQL Server e*Way on a UNIX system

- 1 Log in on the workstation containing the CD-ROM drive, and insert the CD-ROM into the drive.
- 2 If necessary, mount the CD-ROM drive.
- 3 At the shell prompt, type
cd /cdrom
- 4 Start the installation script by typing
setup.sh
- 5 A menu of options will appear. Select the “install e*Way” option. Then follow any additional on-screen directions.

Be sure to install the e*Way files in the suggested “client” installation directory. The installation utility detects and suggests the appropriate installation directory. **Unless you are directed to do so by Oracle support personnel, do not change the suggested “installation directory” setting.**

3.2.3 Configuring the DataDirect 3.0 Drivers for XA Mode

If you are running in XA mode, you will need to install and run DataDirect 3.0 JDBC drivers. You may request a copy of these drivers by contacting Oracle support personnel.

Once the DataDirect 3.0 drivers are installed, do the following:

- 1 Copy the **sqljdbc.dll** from
`\eGate\server\registry\repository\default\ThirdParty\merant\jta\sqlserver`
directory to your Microsoft SQL Server\MSSQL\Binn directory located on the SQL server install.
- 2 From a command prompt, run the sql script **instjdbc.sql** using isql. The path to the script is:
`\eGate\server\registry\repository\default\ThirdParty\merant\jta\sqlserver.`

For more information please see the *DataDirect Connect JDBC User's Guide and Reference*.

3.3 Files/Directories Created by the Installation

The SQL Server e*Way installation process will install the following files within the e*Gate directory tree. Files will be installed within the “egate\client” tree on the Participating Host and committed to the “default” schema on the Registry Host.

Table 1 Files created by the installation

| e*Gate Directory | File(s) |
|---------------------------------|---|
| classes\ | stcjdbcx.jar |
| configs\sqlserver\ | sqlserver.def |
| etd\ | sqlserver.ctl dbwizard.ctl |
| etd\sqlserver\ | Com_stc_jdbcx_sqlservercfg.java Com_stc_jdbcx_sqlservercfg.xsc |
| ThirdParty\merant\Classes\ | DGsqlserver.jar DGbase.jar DGutil.jar spy.jar DGdb2.jar DGsybase.jar |
| ThirdParty\sun\classes | jdbc2_0-stdext.jar |
| ThirdParty\merant\jta\sqlserver | instjdbc.sql sqljdbc.dll |

Implementation

This chapter discusses how to implement the SQL Server e*Way in a production environment. Also included is a sample configuration.

4.1 The Java Collaboration Service

The Java Collaboration Service makes it possible to develop external Collaboration Rules that will execute e*Gate business logic using Java code. Using the Java Collaboration Editor, you create Java classes that utilize the **executeBusinessRules()**, **userTerminate()**, and **userInitialize()** methods.

For more information on the Java Collaboration Service and subcollaborations, see the *e*Gate Integrator Collaboration Services Reference Guide*. For more information on the Java ETD Editor and the Java Collaboration Editor, see the *e*Gate Integrator User's Guide*.

4.1.1 Java Components

To make an e*Gate component Java-enabled, the component's Collaboration Rule must use the Java Collaboration Service. This requires all the intermediate components to also be configured correctly, since there is not a direct relationship between the e*Way/BOB and the Collaboration Service.

The e*Way/BOB requires one or more Collaborations. The Collaboration uses a Collaboration Rule. The Collaboration Rule uses a Collaboration Service. In order for the e*Way or BOB to be Java-enabled, the component's Collaboration Rule must use the Java Collaboration Service.

4.2 The Java ETD Builder

The Java ETD Builder is used to generate a Java-enabled ETD. The ETD Builder connects to the external database and generates the ETD corresponding to the external tables and procedures.

Note: *Database ETD's are not messagable.*

4.2.1 The Parts of the ETD

There are four possible parts to the Java-enabled Event Type Definition as shown in Figure 4.

Figure 4 The Java-enabled ETD



- **Element** – This is the highest level in the ETD tree. The element is the basic container that holds the other parts of the ETD. The element can contain fields and methods.
- **Field** – Fields are used to represent data. A field can contain data in any of the following formats: boolean, char, double, float, int, long, or java.lang.String.
- **Method** – Method nodes represent actual Java methods.
- **Parameter** – Parameter nodes represent the parameters of the Java method.

4.2.2 Using the DBWizard ETD Builder

The DBWizard ETD Builder generates Java-enabled ETDs by connecting to external data sources and creating corresponding Event Type Definitions. The ETD Builder can create ETDs based on any combination of tables, views, stored procedures, or prepared SQL statements.

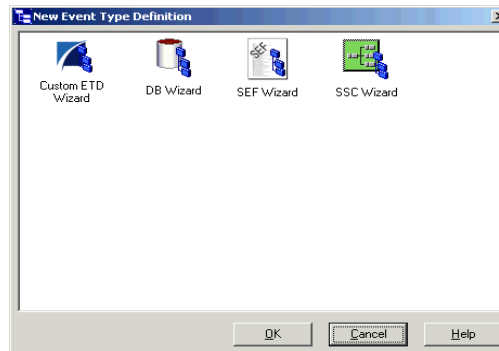
Field nodes are added to the ETD based on the tables in the external data source. Java method and parameter nodes are added to provide the appropriate JDBC functionality. For more information on the Java methods, refer to your JDBC developer's reference.

Please note that the DBWizard is using ODBC standard data types. Specific data types that are not ODBC standard will not be supported.

To create a new ETD using the DBWizard

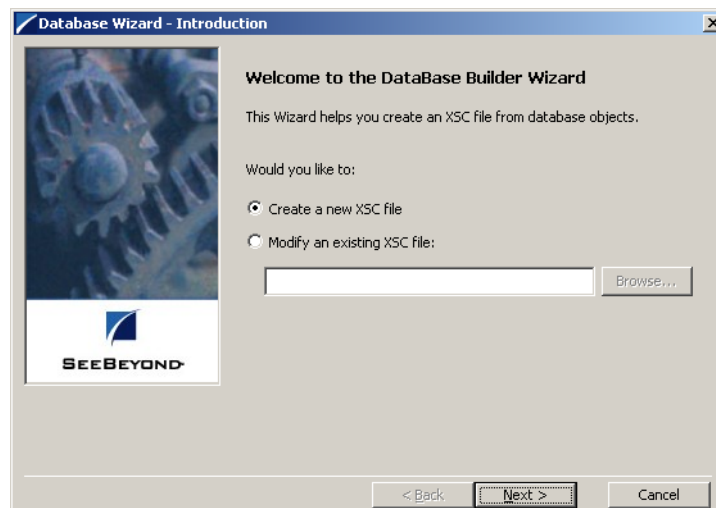
- 1 From the **Options** menu of the Schema Designer, choose **Default Editor...**
- 2 Verify that **Java** is selected, then click **OK**.
- 3 Click the **ETD Editor** button to launch the Java ETD Editor.
- 4 In the **Java ETD Editor**, click the **New** button to launch the New Event Type Definition Wizard.
- 5 In the **New Event Type Definition Wizard**, select the **DBWizard** and click **OK** to continue.

Figure 5 New Event Type Definition



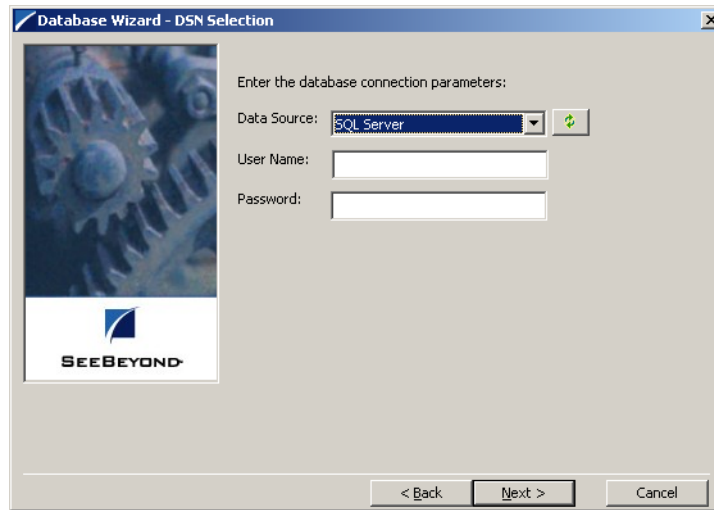
- 6 Enter the name of the new .xsc file you want to create or enter the name of the .xsc file you want to edit by browsing to its location.

Figure 6 Database Wizard - Introduction



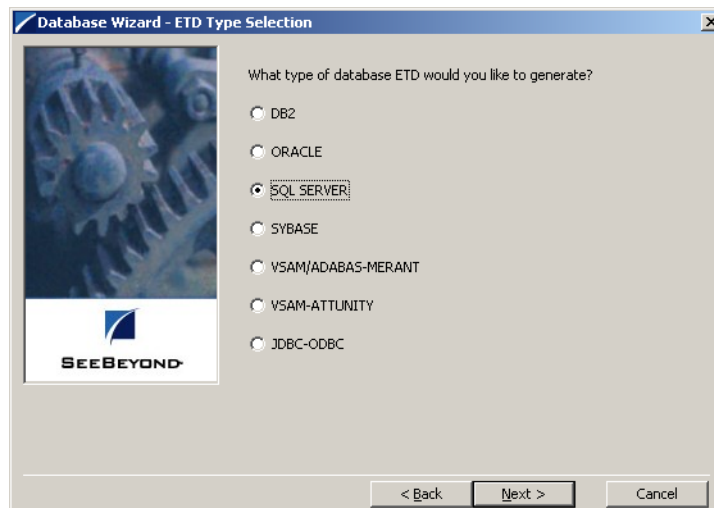
- 7 Select your **Data Source:** from the drop down list and enter your **User Name:** and **Password:**.

Figure 7 Database Wizard - DSN Selection



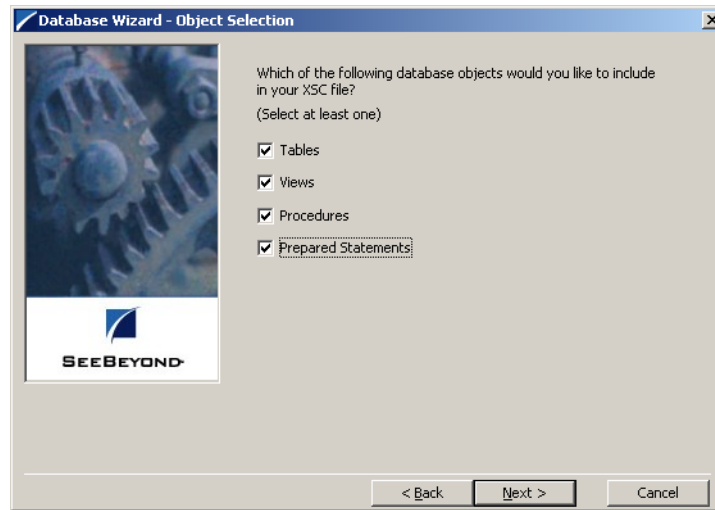
- 8 Select what type of database ETD you would like to generate. The data source you selected in the **Database Wizard - DSN Selection** window is the default. *Note: Do not change this unless instructed to do so by Oracle personnel.*

Figure 8 Database Wizard - ETD Type Selection



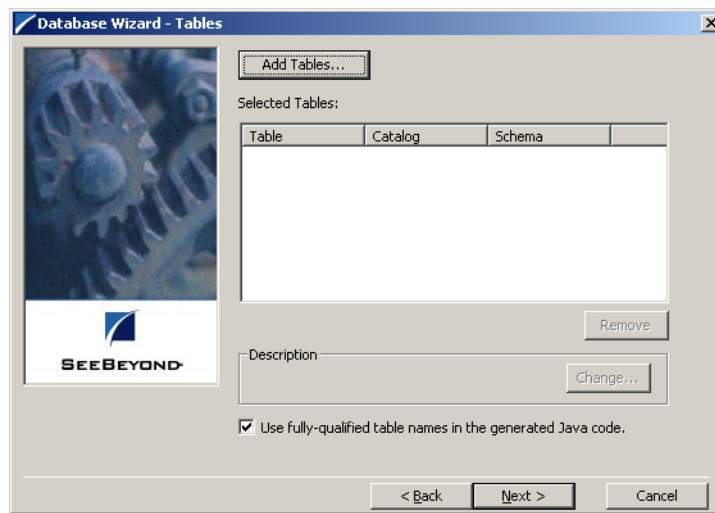
- 9 In the **Database Wizard - Object Selection** window, select any combination of **Tables, Views, Procedures, or Prepared Statements** you would like to include in your .xsc file. Click **Next** to continue.

Figure 9 Database Wizard - Object Selection



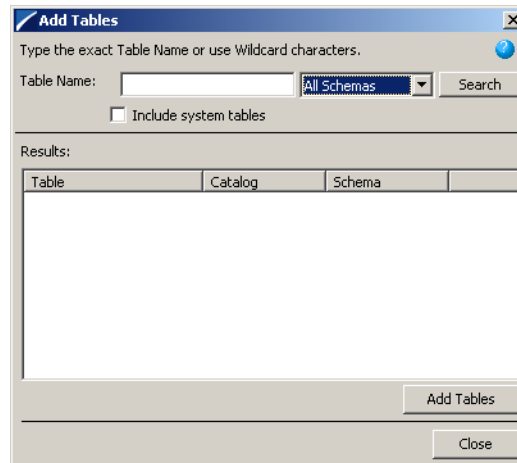
- 10 In the **Database Wizard - Tables** window, click **Add Tables**.

Figure 10 Database Wizard - Tables



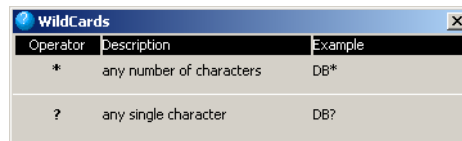
- 11 In the **Add Tables** window, type the exact name of the database table or use wildcard characters to return table names.

Figure 11 Add Tables



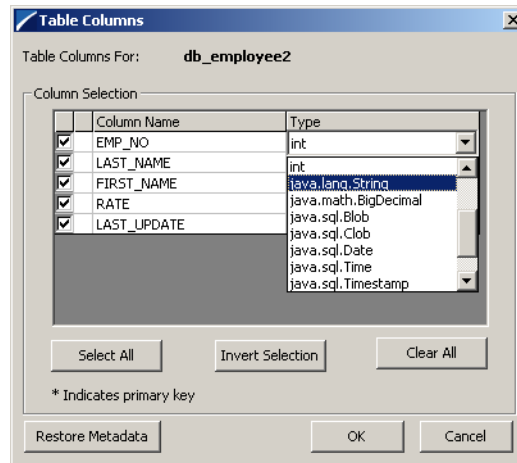
- 12 To see a list of valid wildcard characters, click the round ball with a question mark located in its center.

Figure 12 Wildcards



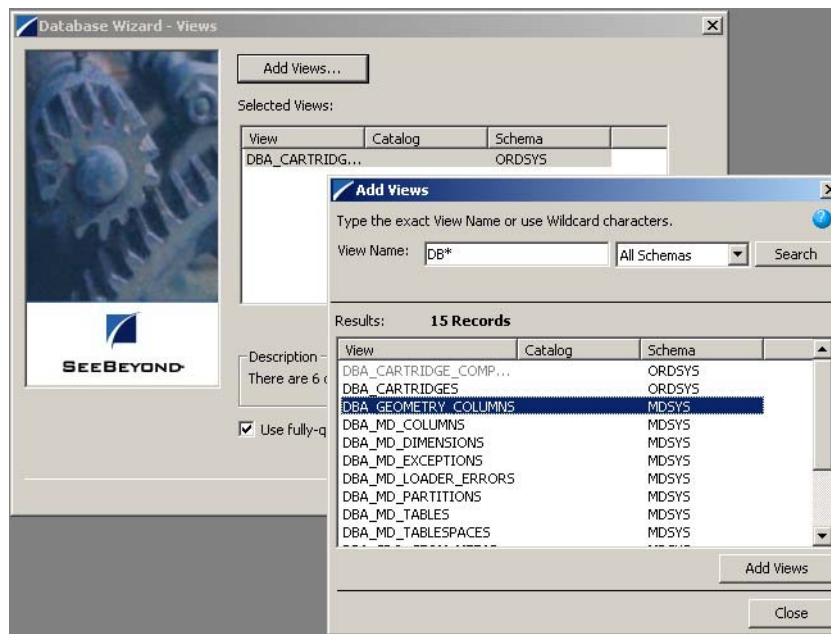
- 13 Select **Include System Tables** if you wish to include them and click **Search**. If your search was successful, you will see the results in the Results window. To select the name of the tables you wish to add to your .xsc, double click on the table name or highlight the table names and click **Add Tables**. You may also use adjacent selections or nonadjacent selections to select multiple table names. When you have finished, click **Close**.
- 14 In the **Database Wizard - Tables** window, review the tables you have selected. If you would like to change any of the tables you have selected, click **Change**.
- 15 In the **Columns Selection** window, you can select or deselect your table choices. You can also change the data type for each table by highlighting the data type and selecting a different data type from the drop down list. Once you have completed your choices, click **OK**.

Figure 13 Columns Selection



- 16 In the **Database Wizard - Tables** window, review the tables you have selected. If you do not want to use fully-qualified table names in the generated Java code, click to clear the check box and click **Next** to continue.
- 17 If you selected **Views** on the **Database Wizard - Object Selection** window, you are presented with the **Database Wizard - Views** window. Follow steps 9 - 15 to select and add views to your .xsc. Views are read-only.

Figure 14 Database Wizard - Views



- 18 If you selected **Procedures** on the **Database Wizard - Object Selection** window, you are presented with the **Database Wizard - Procedures** window. Follow steps 9 - 15 to select and add **Procedures** to your .xsc. If you do not want to use fully-qualified

procedure names in the generated Java code, click to clear the check box and click **Next** to continue.

The DBWizard provides three different ways to generate the ResultSet nodes of a Stored Procedure. They are “By Executing”, “Manually”, and “With Assistance” modes.

“By Executing” mode executes the specified Stored Procedure with default values to generate the ResultSet(s). Depending on the business logic of the Stored Procedure, zero or more ResultSets can be returned from the execution. In the case that there are multiple ResultSets and “By Executing” mode does not return all ResultSets, one should use the other modes to generate the ResultSet nodes.

“With Assistance” mode allows users to specify a query and execute it to generate the ResultSet node. To facilitate this operation, the DBWizard will try to retrieve the content of the specified Stored Procedure and display it. However, content retrieval is not supported by all types of Stored Procedures. We can roughly classify Stored Procedures into two types: SQL and external. SQL Stored Procedures are created using CREATE PROCEDURE SQL statements while external Stored Procedures are created using host languages (e.g. Java). Since external Stored Procedures do not store their execution plans in the database, content retrieval is impossible. When using “Assist” mode, highlight the execute statement up to and including the table name(s) before executing the query.

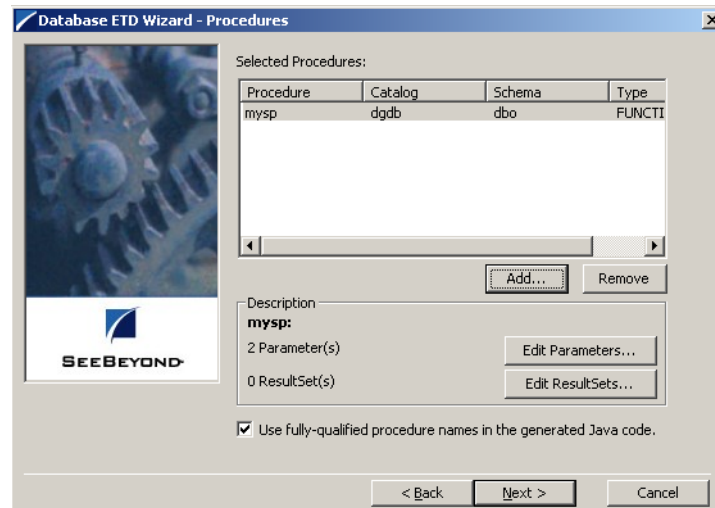
“Manually” mode is the most flexible way to generate the result set nodes. It allows users to specify the node name, original column name and data type manually. One drawback of this method is that users need to know the original column names and data types. This is not always possible. For example, the column name of 3*C in this query.

```
SELECT A, B, 3*C FROM table T
```

is generated by the database. In this case, “With Assistance” mode is a better choice.

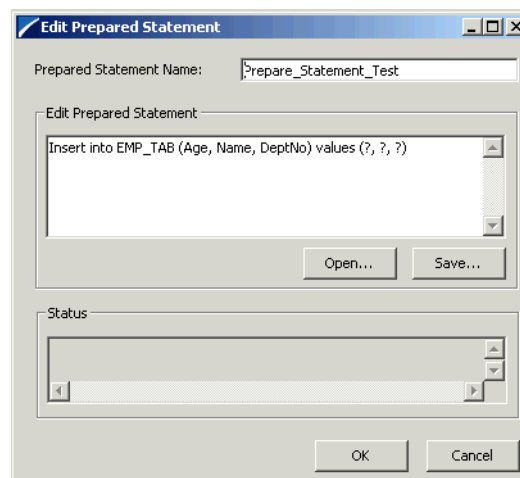
Note: *If you modify the ResultSet generated by the 'Execute' mode of the Database Wizard you will need to make sure the indexes match the Stored Procedure. This will assure your ResultSet indexes are preserved.*

Figure 15 Database Wizard - Procedures



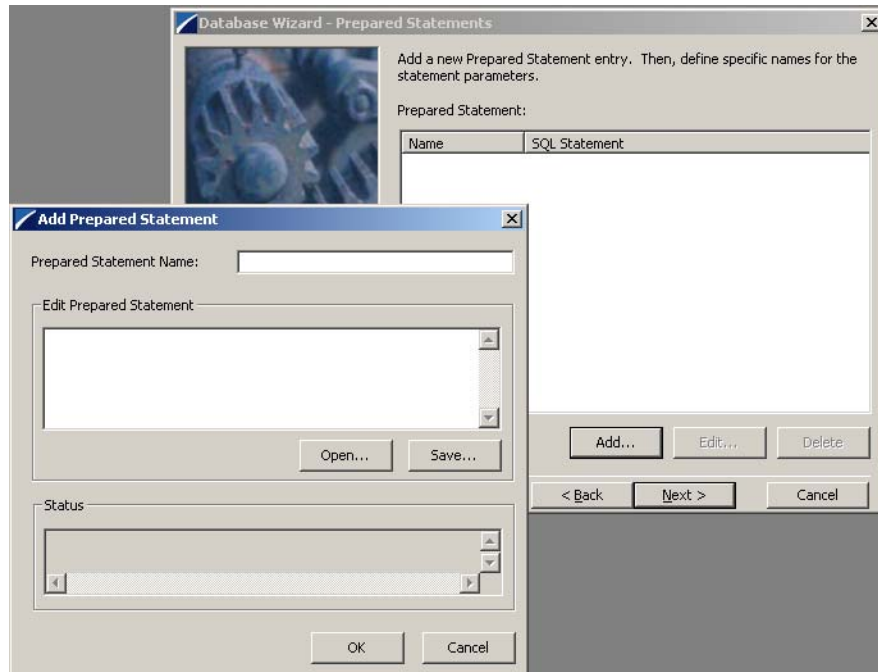
- 19 If you selected **Prepared Statements** on the **Database Wizard - Object Selection** window, you are presented with the **Database Wizard - Prepared Statement** window. To add **Prepared Statements** to your .xsc, complete the following steps:
- A Click **Add** to add a new prepared statement
 - B Enter a prepared SQL statement.
 - C Enter the **Prepared Statement Name** to be used by the statement.
 - D Use the **Open...** or **Save...** buttons to open pre-existing statements or save the current one. See Figure 16.

Figure 16 Add Prepared Statement



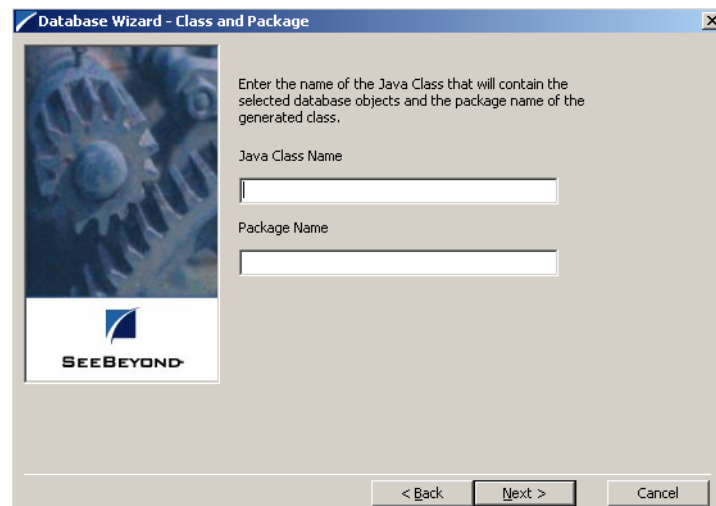
- E Click **OK** to return to the **Database Wizard - Prepared Statements** screen.
- 20 Repeat steps A–E to add additional prepared statements or click **Next** to continue.

Figure 17 Database Wizard - Prepared Statements



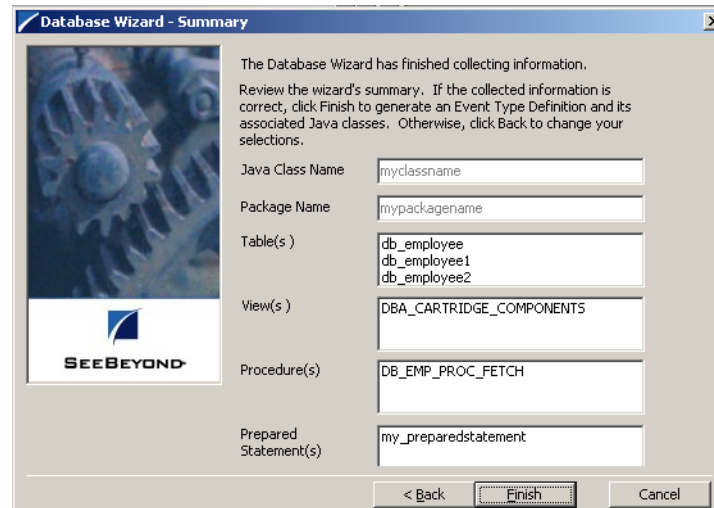
- 21 Enter the **Java Class Name** that will contain the selected tables and/or procedures and the **Package Name** of the generated classes.

Figure 18 Database Wizard - Class and Package



- 22 View the summary of the database wizard information and click **Finish** to begin generating the ETD.

Figure 19 Database Wizard - Summary



4.2.3 The Generated ETDs

The Database Wizard ETD builder can create three editable Event Type Definitions (ETDs) and one non-editable Event Type Definition (ETD). These types of ETDs can also be combined with each other. The four types of ETDs are:

- **The Table ETD** – The table ETD contains fields for each of the columns in the selected table as well as the methods required to exchange data with the external data source. To edit this type of ETD, you will need to open the .xsc in the Database Wizard.
- **The View ETD** - The view ETD contains selected columns from selected tables. View ETD's are read-only.
- **The Stored Procedure ETD** – The stored procedure ETD contains fields which correspond to the input and output fields in the procedure. To edit this type of ETD, you will need to open the .xsc in the Database Wizard
- **The Prepared Statement ETD** – The prepared statement ETD contains a result set for the prepared statement. To edit this type of ETD, you will need to open the .xsc in the Database Wizard.

4.2.4 Editing an Existing .XSC Using the Database Wizard

If you choose to edit an existing .xsc that you have created using the Database Wizard, do the following:

- 1 From the **Options** menu of the Schema Designer, choose **Default Editor....**
- 2 Verify that **Java** is selected, then click **OK**.
- 3 From the **Tools** menu, click **ETD Editor...**
- 4 From the ETD Tool menu click **File** and click **New**.
- 5 From the **New Event Type Definition** window, select **DBWizard** and click **OK**.

- 6 On the Database Wizard - Introduction window, select **Modify an existing XSC file:** and browse to the appropriate .xbs file that you would like to edit.

You are now able to edit your .xsc file.

Note: When you add a new element type to your existing .xsc, you must reselect any pre-existing elements or you will lose them when the new .xsc is created.

If you attempt to edit an .xsc whose elements no longer exist in the database, you will see a warning and the element will be dropped from the ETD.

4.3 Using ETDs with Tables, Views, Stored Procedures, and Prepared Statements

Tables, Views, Stored Procedures and Prepared Statements are manipulated through ETDs. Common operations include insert, delete, update, and query.

4.3.1 The Table

A table ETD represents a database table. It consists of fields and methods. Fields correspond to the columns of a table while methods are the operations that you can apply to the ETD. This allows you to perform query, update, insert and delete SQL operations in a table.

Using the select() method, you can specify the following types of ResultSets:

- TYPE_FORWARD_ONLY
- TYPE_SCROLL_INSENSITIVE

You can also specify ResultSets with a type of Concurrency:

- CONCUR_READ_ONLY
- CONCUR_UPDATABLE

To perform the update, insert or delete operation, the type of the ResultSet returned by the select() method must be CONCUR_UPDATABLE. Instead of specifying the type of ResultSet and concurrency in the select() method, you can also use the following methods:

- SetConcurrencytoUpdatable
- SetConcurrentlytoRead Only
- SetScrollTypetoForwardOnly
- SetScrollTypetoScrollSensitive
- SetScrollTypetoInsensitive

The methods should be called before executing the select() method. For example,

```
getDBEmp().setConcurToUpdatable();
```

```
getDBEmp().setScroll_TypeToForwardOnly();  
getDBEmp().getDB_EMPLOYEE().select("");
```

Note: *DataDirect Drivers do not support TYPE_SCROLL_SENSITIVE and will implicitly downgrade TYPE_SCROLL_SENSITIVE to TYPE_SCROLL_INSENSITIVE if TYPE_SCROLL_SENSITIVE is used.*

The query Operation

To perform a query operation on a table:

- 1 Execute the select() method with the “where” clause specified if necessary.
- 2 Loop through the ResultSet using the “next” method.
- 3 For each loop, process the return record.

For example:

```
getDBEmp().getDB_EMPLOYEE().select("");  
while(getDBEmp().getDB_EMPLOYEE().next());  
{ //Process the returning record  
  getGenericOut.SetPayload(getDBEmp().getDB_Employee().  
    getDBEmp().getFirstName());  
}
```

If you want to check if the last value read was SQL NULL or not, you can use the wasNull() method. It is most useful for native datatypes like “int”. Note that a getxxx method should be called before wasNull() is called.

For example:

```
int empNo = getDBEmp().getDB_EMPLOYEE().getEMP_NO();  
if (getDBEMP().getDB_EMLOYEE().wasNULL())  
{ //Check to see if empNo is SQL NULL  
  //Do something if empNo is SQL NULL  
}  
else  
{ //Do something if empNo is not SQL NULL  
}
```

The insert Operation

To perform an insert operation on a table, do the following:

- 1 Execute the select() method. You can specify the following types of ResultSets:
 - TYPE_FORWARD_ONLY
 - TYPE_SCROLL_INSENSITIVE

You must specify ResultSets with:

- CONCUR_UPDATABLE
- 2 Move to the insert row by the moveToInsertRow method.
 - 3 Set the fields of the table ETD
 - 4 Insert the row by calling insertRow

This example inserts an employee record.

```

getDBEmp().getDB_EMPLOYEE(ResultSet.TYPE_SCROLL_SENSITIVE,
ResultSet.CONCUR_UPDATABLE).select("");
getDBEmp().getDB_EMPLOYEE().moveToInsertRow();
getDBEmp().getDB_EMPLOYEE().setEMP_NO(123);
.
.
.
getDBEmp().getDB_EMPLOYEE().setRATE(123.45);
getDBEmp().getDB_EMPLOYEE().insertRow();

```

Table ResultSet Behavior

To make repeated insertions using a “select” into the table ResultSet without having to re-populate all the column values do the following:

Before the schema runs, we have

```
SQL> select * from MARKET_TEMP;
```

Where:

```

C1 C2          C3
-- -----
1  A1          B1

```

After the schema runs we have:

```
SQL> select * from MARKET_TEMP;
```

Becomes:

```

C1 C2          C3
-- -----
1  A1          B1
2  A2          B1
3  A3          B1

```

Buffer the value of the selected column by :

```
String buf3 = getTempTbl().getMARKET_TEMP().getC3();
```

Call moveToInsertRow()

```
getTempTbl().getMARKET_TEMP().moveToInsertRow();
```

Set all the columns the first time

```

getTempTbl().getMARKET_TEMP().setC1("2");;
getTempTbl().getMARKET_TEMP().setC2("A2");;
getTempTbl().getMARKET_TEMP().setC3(buf3);

```

Call insertRow()

```
getTempTbl().getMARKET_TEMP().insertRow();
```

Set all the columns except the unchanged column.

```

getTempTbl().getMARKET_TEMP().setC1("3");;
getTempTbl().getMARKET_TEMP().setC2("A3");;

```

Call insertRow()

```
getTempTbl().getMARKET_TEMP().insertRow();
```

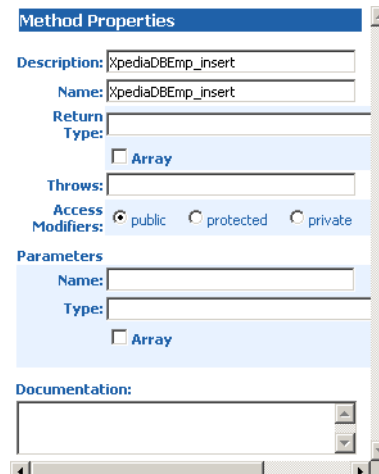
In the above example, column C3 will always have the same value (buf3).

Figure 20 Insert Method Business Rule

```

Business Rules
  XpediaDBEmp_insert : public class XpediaDBEmp_insert extends XpediaDBEmp_insertBase implements JCollaboratorExt
  {
    XpediaDBEmp_insert : public XpediaDBEmp_insert()
    {
      rule : super();
    }
    method : void method()
    executeBusinessRules : public boolean executeBusinessRules() throws Exception
    {
      retBoolean : boolean retBoolean = true;
      rule : getXPediaDBEmp().getDB_EMPLOYEE(ResultSet.TYPE_SCROLL_SENSITIVE, ResultSet.CONCUR_UPDATABLE).select("");
      rule : getXPediaDBEmp().getDB_EMPLOYEE().moveToInsertRow();
      rule : getXPediaDBEmp().getDB_EMPLOYEE().setEMP_NO(new java.math.BigDecimal(getStandardDBEmp().getEmployeeNumber()));
      rule : getXPediaDBEmp().getDB_EMPLOYEE().setLAST_NAME(getStandardDBEmp().getLastName());
      rule : getXPediaDBEmp().getDB_EMPLOYEE().setFIRST_NAME(getStandardDBEmp().getFirstName());
      rule : getXPediaDBEmp().getDB_EMPLOYEE().setRATE(Double.parseDouble(getStandardDBEmp().getRate()));
      rule : getXPediaDBEmp().getDB_EMPLOYEE().setLAST_UPDATE(java.sql.Timestamp.valueOf(getStandardDBEmp().getLastUpdate()));
      rule : getXPediaDBEmp().getDB_EMPLOYEE().insertRow();
      return : return retBoolean;
    }
    userInitialize : public void userInitialize()
    userTerminate : public void userTerminate()
  }
  
```

Figure 21 Insert Method Properties



The update Operation

To perform an update operation on a table, do the following:

- 1 Execute the select() method. You can specify the following types of ResultSets:
 - TYPE_FORWARD_ONLY
 - TYPE_SCROLL_INSENSITIVE

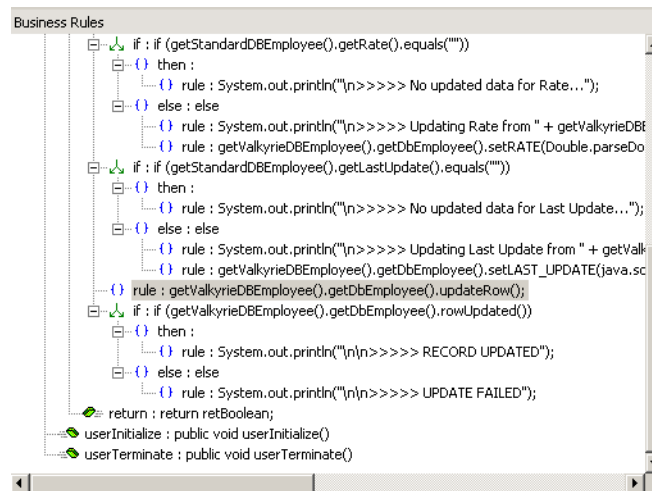
You must specify ResultSets with:

- CONCUR_UPDATABLE
- 2 Move to the row that you want to update.
 - 3 Set the fields of the table ETD
 - 4 Update the row by calling **updateRow**.

In this example, we move to the third record and update the EMP_NO and RATE fields.

```
getDBEmp().getDB_EMPLOYEE(ResultSet.TYPE_SCROLL_SENSITIVE,
ResultSet.CONCUR_UPDATABLE).select("");
getDBEmp().getDB_EMPLOYEE().absolute(3);
getDBEmp().getDB_EMPLOYEE().setEMP_NO(123);
getDBEmp().getDB_EMPLOYEE().setRATE(123.45);
getDBEmp().getDB_EMPLOYEE().updateRow();
```

Figure 22 Update() Method Business Rule



The delete Operation

To perform a delete operation on a table do the following:

- 1 Execute the select() method. You can specify the following types of ResultSets:
 - TYPE_FORWARD_ONLY
 - TYPE_SCROLL_INSENSITIVE

You must specify ResultSets with:

- CONCUR_UPDATABLE
- 2 Move to the row that you want to delete.
 - 3 Set the fields of the table ETD
 - 4 Delete the row by calling **deleteRow**.

In this example DELETE the first record of the result set.

```
getDBEmp().getDB_EMPLOYEE(ResultSet.TYPE_SCROLL_SENSITIVE,
ResultSet.CONCUR_UPDATABLE).select("");
getDBEmp().getDB_EMPLOYEE().first();
getDBEmp().getDB_EMPLOYEE().deleteRow();
```

4.3.2 The View

Views are used to look at data from selected columns within selected tables. Views are read-only.

For query operations, please refer to "Tables" sub section.

4.3.3 The Stored Procedure

A Stored Procedure ETD represents a database stored procedure. Fields correspond to the arguments of a stored procedure while methods are the operations that you can apply to the ETD. It allows you to execute a stored procedure. Remember that while in the Collaboration Editor you can drag and drop nodes from the ETD's into the Collaboration Editor.

Executing Stored Procedures

Assuming that you have the following procedure:

```
CREATE PROCEDURE LookupGlobal (@inlocalID varchar,  
@outglobalProductID varchar out)  
AS select @outglobalProductID = globalProductID from SimpleLookup  
where localID = @inlocalID
```

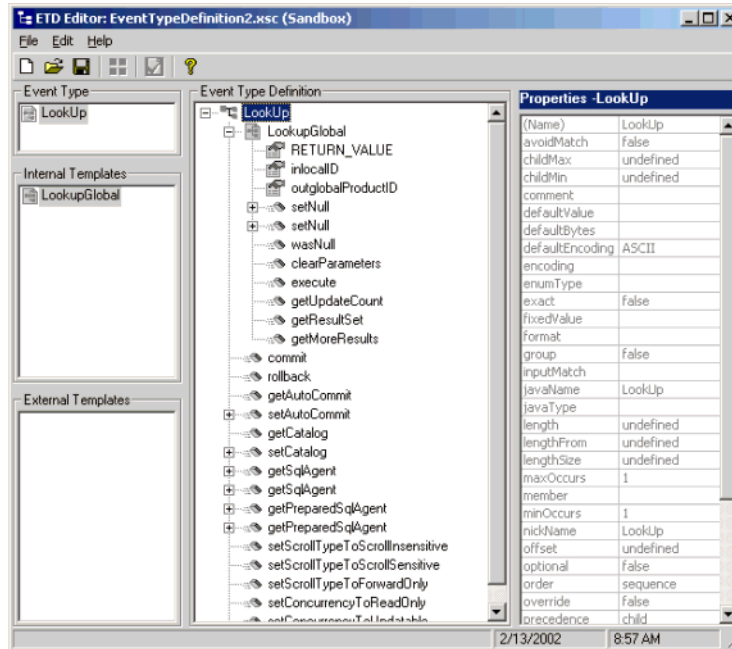
The ETD represents the Stored Procedure "LookUpGlobal" with two parameters, an inbound parameter (INLOCALID) and an outbound parameter (OUTGLOBALPRODUCTID) can be generated by the DB Wizard as shown in Figure 23. Representing these as nodes in an ETD allows you to drag values from other ETD's to the input parameters, execute the call, and collect the output parameter data by dragging from it's node to elsewhere.

Below are the steps for executing the Stored Procedure:

- 1 Specify the input values.
- 2 Execute the Stored Procedure.
- 3 Retrieve the output parameters if any.

For example:

```
getLookup().getLookupGlobal().setIntlocalID("123");  
getLookup().getLookupPGlobal().execute();  
String s =  
getLookup().getLookupGlobal().getOutGlobalProductID;
```

Figure 23 Stored Procedure LookUpGlobal

Manipulating the ResultSet and Update Count Returned by Stored Procedure

For Stored Procedures that return ResultSets and Update Count, the following methods are provided to manipulate the ResultSet:

- enableResultSetOnly
- enableUpdateCountsOnly
- enableResultSetandUpdateCounts
- resultsAvailable
- next
- getUpdateCount
- available

The resultsAvailable() method, added to the PreparedStatementAgent class, simplifies the whole process of determining whether any results, be it update Counts or ResultSets, are available after a Stored Procedure has been executed. JDBC provides three methods (getMoreResults(), getUpdateCount(), and getResultSet()) to access the results of a Stored Procedure call the information returned from these methods at times, can be confusing. You can simply call resultsAvailable() and if Boolean true is returned, you can expect either a valid Update Count when getUpdateCount() is called and/or the next ResultSet has been retrieved and made available to one of the ResultSet nodes defined for the Stored Procedure ETD, when that node's available() method returns true.

Frequently, Update Counts information that is returned from a Stored Procedures is insignificant. You will want to process returned ResultSet information and avoid looping through all of the Update Counts. The following three methods provide you with the ability to control exactly what information should be returned from a Stored Procedure call. The `enableResultSetsOnly()` method, added to the `PreparedStatement Agent` class allows only ResultSets to be returned and thus every `resultsAvailable()` called will only return Boolean true if a ResultSet is available. Likewise, the `enableUpdateCountsOnly()` will cause `resultsAvailable()` to return true only if an Update Count is available. The default case of `enableResultsetsAndUpdateCount()` method allows both ResultSets and Update Counts to be returned.

Collaboration Usability for a Stored Procedure ResultSet

The Column data of the ResultSets can be dragged-and-dropped from their XSC nodes to the Business Rules. Below is a code snippet that can be generated by the Collaboration Editor:

```
// resultsAvailable() will be true if there's an update count and/or a
// result set available.
// note, it should not be called indiscriminantly because each time
// the results pointer is
// advanced via getMoreResults() call.
while (getSPIn().getSpS_multi().resultsAvailable())
{
    // check if there's an update count
    if (getSPIn().getSpS_multi().getUpdateCount() > 0)
    {
        System.err.println("Updated
"+getSPIn().getSpS_multi().getUpdateCount()+" rows");
    }

    // each result set node has an available() method (similar to ETD's)
    // that tells the user
    // whether this particular result set is available. note, JDBC does
    // support access to
    // not more than one result set at a time, i.e., cannot drag from 2
    // distinct result sets
    // simultaneously
    if (getSPIn().getSpS_multi().getNormRS().available())
    {
        while (getSPIn().getSpS_multi().getNormRS().next())
        {
            System.err.println("Customer Id =
"+getSPIn().getSpS_multi().getNormRS().getCustomerId());
            System.err.println("Customer Name =
"+getSPIn().getSpS_multi().getNormRS().getCustomerName());
            System.err.println();
        }
        System.err.println("===");
    }
    else if (getSPIn().getSpS_multi().getDbEmployee().available())
    {
        while (getSPIn().getSpS_multi().getDbEmployee().next())
        {
            System.err.println("EMPNO =
"+getSPIn().getSpS_multi().getDbEmployee().getEMPNO());
            System.err.println("ENAME =
"+getSPIn().getSpS_multi().getDbEmployee().getENAME());
            System.err.println("JOB =
"+getSPIn().getSpS_multi().getDbEmployee().getJOB());
        }
    }
}
```

```
        System.err.println("MGR          =  
"+getSPIn().getSpS_multi().getDbEmployee().getMGR());  
        System.err.println("HIREDATE    =  
"+getSPIn().getSpS_multi().getDbEmployee().getHIREDATE());  
        System.err.println("SAL          =  
"+getSPIn().getSpS_multi().getDbEmployee().getSAL());  
        System.err.println("COMM          =  
"+getSPIn().getSpS_multi().getDbEmployee().getCOMM());  
        System.err.println("DEPTNO       =  
"+getSPIn().getSpS_multi().getDbEmployee().getDEPTNO());  
        System.err.println();  
    }  
    System.err.println("===");  
}  
}
```

After calling **resultsAvailable()** or **getMoreResults()**, the next result (if available) can be either a **ResultSet** or an **UpdateCount** if the default **enableResultSetsAndUpdateCount()** was used.

The definition of **UpdateCount** is JDBC driver dependent. Some drivers send the row count in the previous **ResultSet** back as an update count. While other drivers e.g., the DataDirect JDBC 3.0 driver can only return the number of rows that actually were updated in the database as the **UpdateCount**.

Because of limitations imposed by some DBMSs, it is recommended that for maximum portability, all of the results in a **ResultSet** object should be retrieved before OUT parameters are retrieved. Therefore, you should retrieve all **ResultSet(s)** and update counts first followed by retrieving the OUT type parameters and return values.

The following list includes specific **ResultSet** behavior that you may encounter:

- The method **resultsAvailable()** calls **getMoreResults()** when it is called more than once. You should not call both methods in your java code. Doing so may result in skipped data from one of the **ResultSets** when more than one **ResultSet** is present.
- The methods **available()** and **getResultSet()** can not be used in conjunction with multiple **ResultSets** being open at the same time. Attempting to open more the one **ResultSet** at the same time will close the previous **ResultSet**. The recommended working pattern is:
 - ♦ Open one Result Set, **ResultSet_1** and work with the data until you have completed your modifications and updates. Open **ResultSet_2**, (**ResultSet_1** is now closed) and modify. When you have completed your work in **ResultSet_2**, open any additional **ResultSets** or close **ResultSet_2**.
- If you modify the **ResultSet** generated by the Execute mode of the Database Wizard, you will need to assure the indexes match the Stored Procedure. By doing this, your **ResultSet** indexes will be preserved.
- You will be unable to convert your Stored Procedure into a **ResultSet** when executing an OUT **SQL_VARIANT** parameter. Try using **INPUT SQL_VARIANT** parameter.

4.3.4 Prepared Statement

A Prepared Statement ETD represents a SQL statement that has been compiled. Fields in the ETD correspond to the input values that users need to provide.

Prepared Statements can be used to perform insert, update, delete and query operations. A Prepared Statement uses a question mark (?) as a place holder for input. For example:

```
insert into EMP_TAB(Age, Name, Dept No) value(?, ?, ?)
```

To execute a Prepared Statement, set the input parameters and call **executeUpdate()** and specify the input values if any.

```
getPrepStatement().getPreparedStatementTest().setAge(23);  
getPrepStatement().getPreparedStatementTest().setName("Peter Pan");  
getPrepStatement().getPreparedStatementTest().setDeptNo(6);  
getPrepStatement().getPreparedStatementTest().executeUpdate();
```

Note: When creating table names, specifying 'alias' name for result columns of the prepared statement.

For example:

```
SELECT max(MARKETING_TRANSACTION_ID) as  
MAX_MARKETING_TRANS_ID FROM IMPORT_MARKETING_NUMBER  
WHERE Number_id = ? and Variation_id = ? and Language_id = ?
```

4.3.5 Batch Operations

While the Java API used by the SQL Server e*Way does not support traditional bulk insert or update operations, there is an equivalent feature that can achieve comparable results, with better performance. This is the "Add Batch" capability. The only modification required is to include the **addBatch()** method for each SQL operation and then the **executeBatch()** call to submit the batch to the database server. Batch operations apply only to Prepared Statements.

```
getPrepStatement().getPreparedStatementTest().setAge(23);  
getPrepStatement().getPreparedStatementTest().setName("Peter Pan");  
getPrepStatement().getPreparedStatementTest().setDeptNo(6);  
getPrepStatement().getPreparedStatementTest().addBatch();  
  
getPrepStatement().getPreparedStatementTest().setAge(45);  
getPrepStatement().getPreparedStatementTest().setName("Harrison  
Ford");  
getPrepStatement().getPreparedStatementTest().setDeptNo(7);  
getPrepStatement().getPreparedStatementTest().addBatch();  
getPrepStatement().getPreparedStatementTest().executeBatch();
```

4.3.6 Database Configuration Node

The Database Configuration node allows you to manage the "transaction mode" through the Collaboration if you have set the mode to manual in the e*Way connection configuration. See ["Connector Settings" on page 15](#).

- 1 You will need to specify "cursor" for the connection attribute "SelectMethod" for the following reasons:

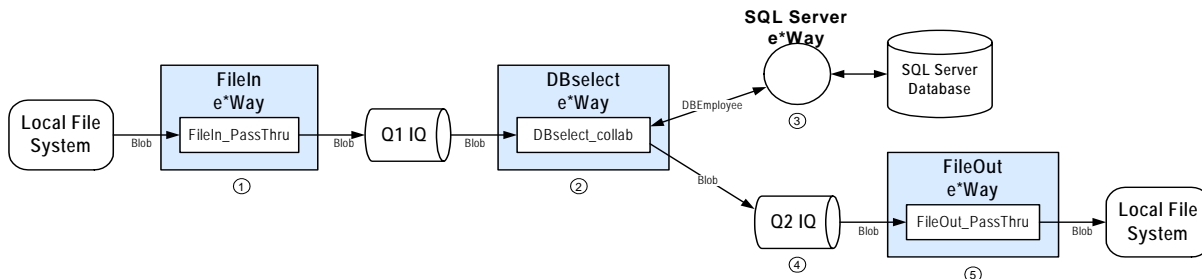
- A This e*Way implementation uses the same JDBC connection to create multiple JDBC statements.
- B and the default transaction behavior is set to "false" for Autocommit.

4.4 Sample Scenario—Polling from a Database

This section describes how to use the SQL Server e*Way in a sample implementation. This sample schema demonstrates the polling of records from an SQL Server database and converting the records into e*Gate Events.

Figure 24 shows a graphical overview of the sample schema.

Figure 24 The Database Select Scenario—Overview



- 1 The **FileIn** e*Way retrieves an Event (text file) containing the database select criteria and publishes it to the **Q1 IQ**.
- 2 The **DBselect** e*Way retrieves the Generic Event (**Blob**) from the IQ. This triggers the rest of the Collaboration which has two parts.
- 3 The information in **Blob** is used to retrieve information from the database via the **SQLSERVER_eWc** e*Way Connection. This e*Way Connection contains information used by the Collaboration to connect to the SQL Server database.
- 4 The information retrieved from the database is copied to the Generic Event (**Blob**) and published to the **Q2 IQ**.
- 5 The **FileOut** e*Way retrieves the Generic Event (**Blob**) from the **Q2 IQ** then writes it out to a text file on the local file system.

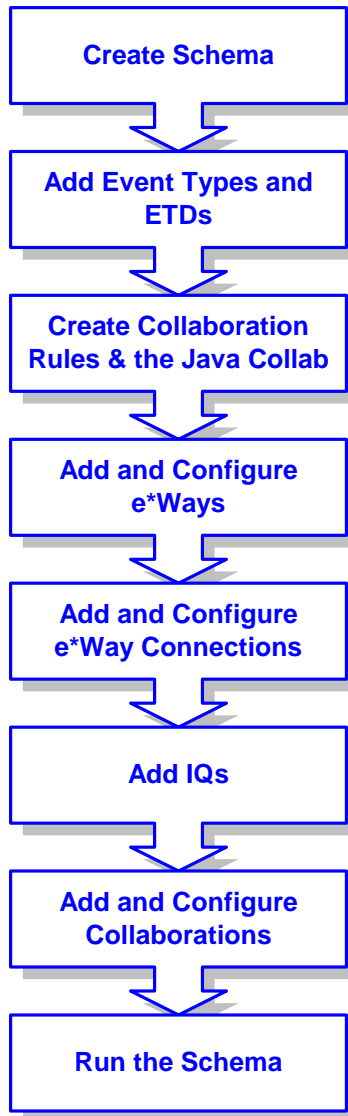
Overview of Steps

The sample implementation follows these general steps:

- 1 Create the Schema
- 2 Add the Event Types and Event Type Definitions
- 3 Create the Collaboration Rules and the Java Collaboration
- 4 Add and Configure the e*Ways
- 5 Add and Configure the e*Way Connections
- 6 Add the IQs

- 7 Add and Configure the Collaborations
- 8 Run the Schema

Figure 25 Schema Configuration Steps



External Database Tables

The sample uses a simple external SQL Server database with a table called **DB_EMPLOYEE**. The table contains the following columns:

Table 2 The DB_EMPLOYEE Table

| Column | Format | Description |
|------------|----------|---------------------------|
| EMP_NO | INTEGER | The employee number |
| LAST_NAME | VARCHAR2 | The employee’s last name |
| FIRST_NAME | VARCHAR2 | The employee’s first name |

| Column | Format | Description |
|-----------|----------|--|
| RATE | FLOAT | The employee's pay rate |
| LAST_DATE | DATETIME | The last transaction date for the employee |

4.4.1 Create the Schema

The first step in deploying the sample implementation is to create a new schema. After installing the SQL Server e*Way Intelligent Adapter, do the following:

- 1 Launch the e*Gate Schema Designer GUI.
- 2 Log into the appropriate Registry Host.
- 3 From the list of schemas, click **New** to create a new schema.
- 4 For this sample implementation, enter the name **DBSelect** and click **Open**.

The Schema Designer will launch and display the newly the created schema.

4.4.2 Add the Event Types and Event Type Definitions

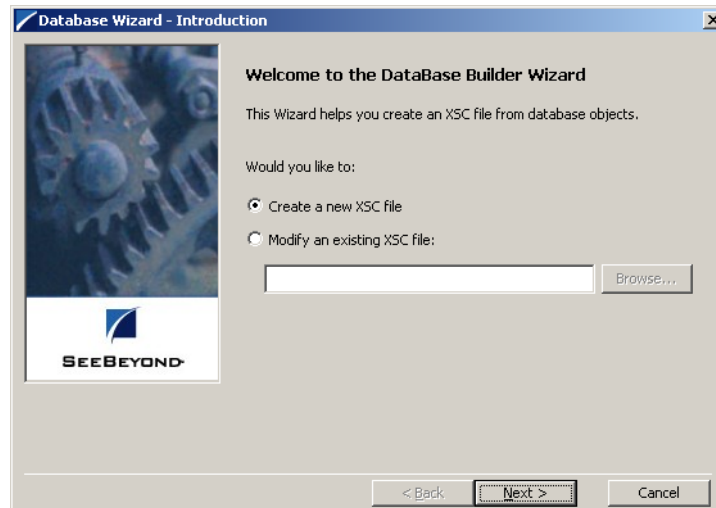
Two Event Types and Event Type Definitions are used in this sample.

- **DBEmployee** – This Event Type represents the layout of the employee records in the **DB_Employee** table. The Event Type uses the **DBEmployee.xsc** Event Type Definition. The ETD will be generated by using the Java ETD Editor's Database Wizard (DBWizard).
- **GenericBlob** – This Event Type is used to pass records with no specific format (blob). The Event Type uses the **GenericBlob.xsc** ETD. The ETD will be manually created as a fixed-length ETD.

To create the DBEmployee Event Type and ETD

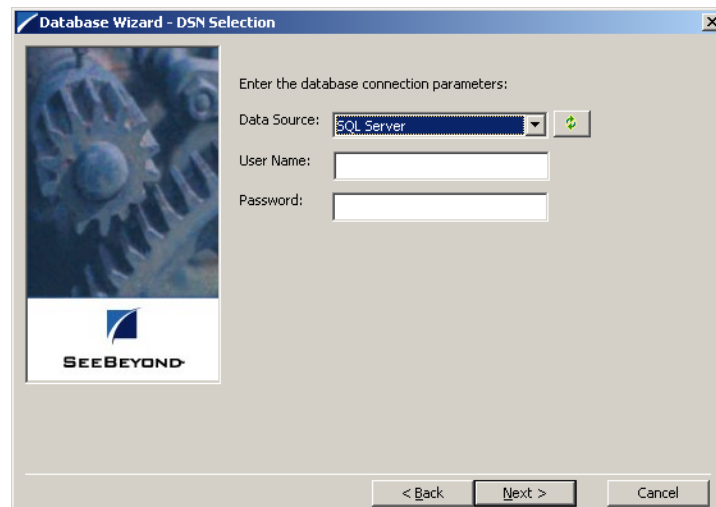
- 1 From the **Options** menu of the Schema Designer, choose **Default Editor....**
- 2 Verify that **Java** is selected, then click **OK**.
- 3 In the **Components** pane of the Schema Designer, select the **Event Types** folder.
- 4 Click the **New Event Type** button to add a new Event Type.
- 5 Enter the name **DBEmployee** and click **OK**.
- 6 Double-click the new **DBEmployee** Event Type to display its properties.
- 7 Select your **Data Source:** from the drop down list and enter your **User Name:** and **Password:**.
- 8 From the **File** menu, choose **New**. The New Event Type Definition dialog box will appear.
- 9 In the New Event Type Definition dialog box, select **DBWizard** and click **OK**.
- 10 Select Create a new .XSC file. Click **Next** to continue. See Figure 26.

Figure 26 Database Wizard Introduction



- 11 Enter the database DNS source and login information.
 - A Select the **Data Source** from the dropdown list of ODBC data sources.
 - B Enter the **User Name** and **Password** used to log into the database.
- Click **Next** to continue. See Figure 27

Figure 27 Database Wizard - DSN Selection



- 12 The **Database Wizard - ETD Type Selection** window appears. The DNS source you selected on the previous window is the default selection for this window. Do not change this selection type unless instructed to do so by Oracle support personal. Click **Next** to continue.
- 13 This scenario uses a table rather than a procedure. Select **Table** and click **Next** to continue.

- 14 From the **Database Wizard - Tables** window, click **Add Tables...** Enter the exact **Table Name** or enter any valid wildcards. From the drop down list select the appropriate database schema and click **Search**. The wizard connects to the data source and display a list of tables.
- 15 Select the table to be included in the ETD and click **Next**.
- 16 The Java Class Name/ Package Name dialog box will appear. Enter the Group and Package information.
 - A Enter your database name as the **Java Class Name**.
 - B Enter **DBEmployee** for the Package Name and click **Next** to continue.
- 17 Click **Finish** to complete the Wizard. The Wizard will generate and display the ETD.
- 18 From the **File** menu, choose **Save**.
- 19 Name the ETD **DBEmployee.xsc** and click **OK**.
- 20 From the **File** menu, choose **Promote to Run Time** and click **OK** when finished.
- 21 From the **File** menu, choose **Close** to exit the ETD Editor.

To create the GenericBlob Event Type and ETD

- 1 In the **Components** pane of the Schema Designer, select the **Event Types** folder.
- 2 Click the **New Event Type** button to add a new Event Type.
- 3 Enter the name **GenericBlob** and click **OK**.
- 4 Double-click the new **GenericBlob** Event Type to display its properties.
- 5 Click the **New** button to create a new Event Type Definition.
The Java Event Type Definition Editor will appear.
- 6 On the **File** menu, click **New**. The New Event Type Definition dialog box will appear.
- 7 In the New Event Type Definition dialog box, select **Standard ETD** and click **OK**.
- 8 Read the introductory screen and then click **Next** to continue. The Package Name dialog box will appear.
- 9 Enter **GenericBlobPackage** for the **Package Name** and click **Next** to continue.
- 10 Read the summary information and click **Finish** to generate the ETD.
- 11 In the **Event Type Definition** pane, right-click the root node, point to **Add Field** in the shortcut menu, and click **As Child Node**.
- 12 Enter the properties for the two nodes as shown in Table 3.

Table 3 GenericBlob ETD Properties

| Node | Property | Value |
|-----------|-----------|-------------|
| Root Node | Name | GenericBlob |
| | Structure | fixed |
| | Length | 0 |

| Node | Property | Value |
|------------|-----------|-------|
| Child Node | Name | Data |
| | Structure | fixed |
| | Length | 0 |

- 13 On the **File** menu, click **Save**.
- 14 Enter the name **GenericBlob.xsc** and click **OK**.
- 15 From the **File** menu, choose **Compile**.
- 16 On the **File** menu, click **Promote to Run Time**, and then click **OK** when finished.
- 17 On the **File** menu, click **Close** to exit the ETD Editor.
- 18 In the Event Type properties dialog box, click **OK** to save and close the Event Type.

4.4.3 Create the Collaboration Rules and the Java Collaboration

The sample scenario uses two Collaboration Rules and one Java Collaboration:

- **GenericPassThru** – This Collaboration Rule is used to pass the GenericBlob Event Type through the schema without modifying the Event.
- **DBSelect** – This Collaboration Rule is used to convert the inbound Event’s selection criteria into a SQL statement, poll the external database, and return the matching records as an outbound Event.
- **DBSelectCollab** – This Java Collaboration contains the logic required to communicate with the external database.

To create the GenericPassThru Event Type

- 1 In the components pane of the Schema Designer, select the **Collaboration Rules** folder.
- 2 Click the **New Collaboration Rules** button to add a new Collaboration Rule.
- 3 Name the Collaboration Rule **GenericPassThru** and click **OK**.
- 4 Click the **Properties** button to display the Collaboration Rule’s properties.
- 5 Click the **Subscriptions** tab, select the **GenericBlob** Event Type, and click the right arrow.
- 6 Click the **Publications** tab, select the **GenericBlob** Event Type, and click the right arrow.
- 7 Click **OK** to save the Collaboration Rule.

To create the DBSelect Event Type

- 1 In the components pane of the Schema Designer, select the **Collaboration Rules** folder.
- 2 Click the **New Collaboration Rules** button to add a new Collaboration Rule.
- 3 Name the Collaboration Rule **DBSelect** and click **OK**.

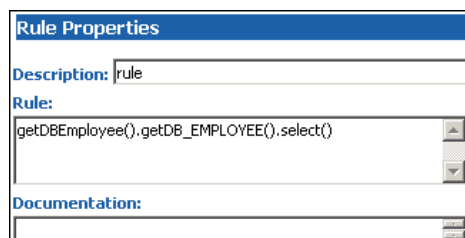
- 4 Click the **Properties** button to display the Collaboration Rule’s properties.
- 5 In the **Service** list, click **Java**.
- 6 Click the **Collaboration Mapping** tab.
- 7 Add three instances as shown in Figure 28:

Figure 28 DBSelect Instances

| Instance Name | ETD | Find ... | Mode | Trigger | Manual Publish |
|----------------|-----------------|----------|--------|-------------------------------------|-------------------------------------|
| GenericBlobIn | GenericBlob.xsc | Find ... | In | <input checked="" type="checkbox"/> | <input type="checkbox"/> |
| GenericBlobOut | GenericBlob.xsc | Find ... | Out | <input type="checkbox"/> | <input checked="" type="checkbox"/> |
| DBEmployee | DBEmployee.xsc | Find ... | In/Out | <input type="checkbox"/> | <input type="checkbox"/> |

- 8 Click **Apply** to save the current changes.
- 9 Click the **General** tab.
- 10 Click **New** to create the new Collaboration file.
The Java Collaboration Editor appears. Note that Source and Destination Events are already supplied based on the Collaboration Rule’s Collaboration Mapping (see Figure 28).
- 11 From the **View** menu, choose **Display Code**.
This displays the Java code associated with each of the Collaboration’s rules.
- 12 From the **Tools** menu, choose **Options**, and then click **Add File....** Select `\eGate\client\classes\stcjdbcx.jar` and click **OK** to close each of the dialog boxes.
- 13 In the Business Rules pane, select the **retBoolean** rule and click the **rule** button to add a new Rule.
- 14 In the **Destination Events** pane, expand the **DBEmployee** Event Type until the **select** method is visible.
- 15 Drag the **select** method into the **Rule** field of the **Rule Properties** pane. Click **OK** to close the dialog box without entering any criteria.

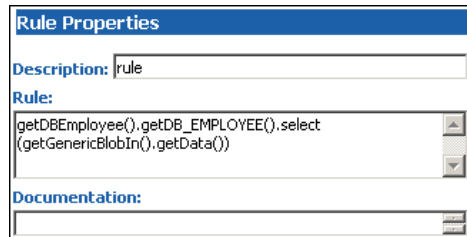
Figure 29 Rule Properties



- 16 In the **Source Events** pane, expand the **GenericBlobIn** Event Type until the **Data** node is visible.

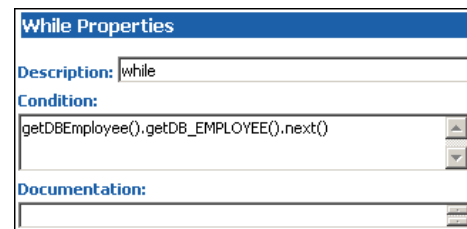
- 17 In the **Rule Properties** pane, position the cursor inside the parentheses of the **select** method. Then drag the **Data** node from the **Source Events** pane into the **select** method's parentheses. (See Figure 30).

Figure 30 Rule Properties (Continued)



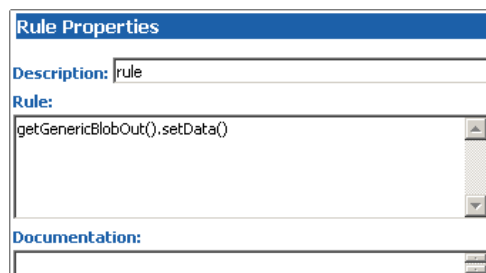
- 18 Select the newly edited rule in the **Business Rules** pane and click the **while** button to add a new while loop beneath the current rule.
- 19 Drag the **next** method from the **Destination Events** pane into the **Condition** field of the **While Properties** pane. (See Figure 31).

Figure 31 While Properties



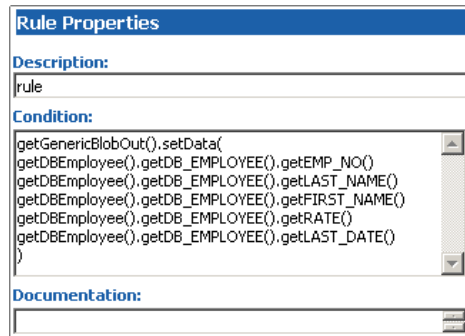
- 20 Select the newly edited while loop in the Business Rules pane and click the **rule** button to add a new rule as a **child** to the while loop.
- 21 In the **Destination Events** pane, expand the **GenericBlobOut** Event Type until the **Data** node is visible.
- 22 Drag the **Data** node into the **Rule** field of the Rule Properties pane. (See Figure 32).

Figure 32 Rule Properties



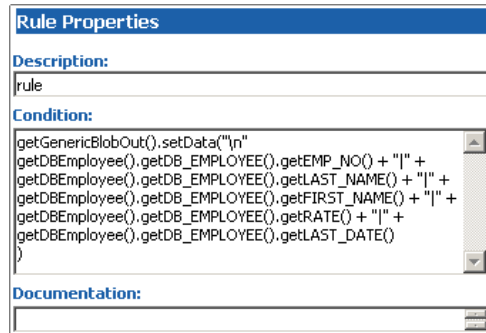
- 23 In the Rule Properties pane, position the cursor inside the parentheses of the **setData()** method. Then drag each of the five data nodes of **DB_EMPLOYEE** from the Source Events into the parentheses of the rule. (See Figure 33).

Figure 33 Rule Properties (Continued)



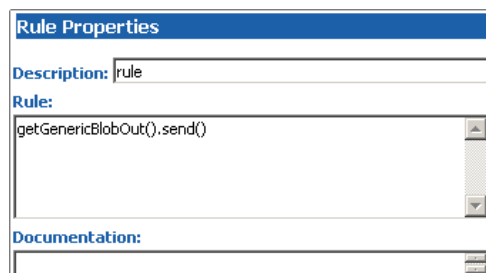
- 24 Edit the text of the condition to add a newline character and pipe (|) delimiters between each of the five data nodes. (See Figure 34).

Figure 34 Rule Properties (Continued)



- 25 Select the newly edited rule in the **Business Rules** pane and click the **rule** button to add a new rule inside the while loop.
- 26 Drag the root node of the **GenericBlobOut** Event into the **rule** field in the **Rule Properties** pane.
- 27 Edit the rule; add a **send()** method as shown in Figure 35.

Figure 35 GenericBlobOut send()



- 28 On the **File** menu, click **Save** to save the file.
- 29 On the **File** menu, click **Compile** to compile the Collaboration.
View the bottom pane to ensure that there were no compiler errors.

- 30 On the **File** menu, click **Exit** to close the Java Collaboration Editor and return to the Collaboration Rule.

Note that the **Collaboration Rules** and **Initialization file** fields have been completed by closing the Java Collaboration Editor.

- 31 Click **OK** to save and close the **DBSelect** Collaboration Rule.

4.4.4 Add and Configure the e*Ways

The sample scenario uses three e*Ways:

- **FileIn** – This e*Way retrieves an Event (text file) containing the database select criteria and publishes it to the **Q1 IQ**.
- **DBSelect** – This e*Way retrieves the Generic Event (**Blob**) from the **Q1 IQ**. This triggers the e*Way to request information from the external database (via the e*Way Connection) and publishes the results to the **Q2 IQ**.
- **FileOut** – This e*Way retrieves the Generic Event (**Blob**) from the **Q2 IQ** then writes it out to a text file on the local file system.

To create the FileIn e*Way

- 1 In the Components pane of the Schema Designer, select the Control Broker and click the **New e*Way** button.
- 2 Enter **FileIn** for the component name and click **OK**.
- 3 Select the newly created e*Way and click the **Properties** button to display the e*Way's properties.
- 4 Use the **Find** button to select **stcewfile.exe** as the executable file.
- 5 Click **New** to create a new configuration file.
- 6 Enter the parameters for the e*Way as shown in Table 4.

Table 4 FileIn e*Way Parameters

| Section Name | Parameter | Value |
|---------------------------|--------------------|---------------------------|
| General Settings | AllowIncoming | YES |
| | AllowOutgoing | NO |
| | PerformanceTesting | default |
| Outbound (send) settings | All | default |
| Poller (inbound) settings | PollDirectory | c:\egate\data\dbSelect_In |
| | All others | default |
| Performance Testing | All | default |

- 7 Select **Save** from the **File** menu. Enter **FileIn** as the file name and click **Save**.
- 8 Select **Promote to Run Time** from the **File** menu. Click **OK** to close the e*Way configuration file editor.
- 9 In the **Start Up** tab of the e*Way properties, select the **Start automatically** check box.

- Click **OK** to save the e*Way properties.

To create the DBSelect e*Way

- In the Components pane of the Schema Designer, select the Control Broker and click the **New e*Way** button.
- Enter **DBselect** for the component name and click **OK**.
- Select the newly created e*Way and click the **Properties** button to display the e*Way's properties.
- Use the **Find** button to select **stceway.exe** as the executable file.
- Click **New** to create a new configuration file.
- Enter the parameters for the e*Way as shown in Table 5.

Table 5 DBSelect e*Way Parameters

| Section Name | Parameter | Value |
|--------------|-----------|---------|
| JVM Settings | All | default |

- Select **Save** from the **File** menu. Enter **DBSelect** as the file name and click **Save**.
- Select **Promote to Run Time** from the **File** menu. Click **OK** to close the configuration file editor.
- In the **Start Up** tab of the Business Object Broker properties, select the **Start automatically** check box.
- Click **OK** to save the e*Way's properties.

To create the FileOut e*Way

- In the Components pane of the Schema Designer, select the Control Broker and click the **New e*Way** button.
- Enter **FileOut** for the component name and click **OK**.
- Select the newly created e*Way and click the **Properties** button to display the e*Way's properties.
- Use the **Find** button to select **stcewfile.exe** as the executable file.
- Click **New** to create a new configuration file.
- Enter the parameters for the e*Way as shown in Table 6.

Table 6 FileOut e*Way Parameters

| Section Name | Parameter | Value |
|---------------------------|--------------------|----------------------------|
| General Settings | AllowIncoming | NO |
| | AllowOutgoing | YES |
| | PerformanceTesting | default |
| Outbound (send) settings | OutputDirectory | c:\egate\data\dbSelect_Out |
| | OutputFileName | dbSelect%d.dat |
| Poller (inbound) settings | All | default |

| Section Name | Parameter | Value |
|---------------------|-----------|---------|
| Performance Testing | All | default |

- 7 Select **Save** from the **File** menu. Enter **FileOut** as the file name and click **Save**.
- 8 Select **Promote to Run Time** from the **File** menu. Click **OK** to close the configuration file editor.
- 9 In the **Start Up** tab of the e*Way properties, select the **Start automatically** check box.
- 10 Click **OK** to save the e*Way properties.

4.4.5 Add and Configure the e*Way Connections

The sample scenario uses one e*Way Connection:

- **SQLSERVER_eWc** – This e*Way Connection connects the **DBselect** component to the external database and returns the requested records to be published to the **Q2 IQ**.

To create the e*Way Connection

- 1 In the Components pane of the Schema Designer, select the **e*Way Connections** folder.
- 2 Click the **New e*Way Connection** button to add a new e*Way Connection.
- 3 Enter **SQLSERVER_eWc** for the component name and click **OK**.
- 4 Select the newly created e*Way Connection and click the **Properties** button to display the e*Way Connection’s properties.
- 5 Select **SQLSERVER** from the e*Way Connection Type drop down list.
- 6 Click **New** to create a new configuration file.
- 7 Enter the parameters for the e*Way Connection as shown in Table 7.

Table 7 SQLSERVER_eWc e*Way Connection Parameters

| Section Name | Parameter | Value |
|--------------|----------------|--|
| DataSource | class | default |
| | DriverType | default |
| | ServerName | Use the ODBC Data Source name. |
| | PortNumber | Use the default port number . |
| | DatabaseName | Use the name of the SQL Server database. |
| | user name | Use local settings. |
| | password | Use local settings. |
| | retry interval | default |
| connector | All | default |

- 8 Select **Save** from the **File** menu. Enter **SQLSERVER_eWc** as the file name and click **Save**.
- 9 Select **Promote to Run Time** from the **File** menu. Click **OK** to close the e*Way Connection configuration file editor.
- 10 Click **OK** to save the e*Way Connection's properties.

4.4.6 Add the IQs

The sample scenario uses two IQs:

- **Q1** – This IQ queues the inbound Events for the DBSelect e*Way.
- **Q2** – This IQ queues the outbound Events for the FileOut e*Way.

To add the IQs

- 1 In the components pane of the Schema Designer, select the IQ Manager.
- 2 Click the **New IQ** button to add a new IQ.
- 3 Enter the name **Q1** and click **Apply** to save the IQ and leave the New IQ dialog box open.
- 4 Enter the name **Q2** and click **OK** to save the second IQ.
- 5 Select the IQ Manger and click the **Properties** button.
- 6 Select the **Start automatically** check box and click **OK** to save the properties.

4.4.7 Add and Configure the Collaborations

The sample scenario uses three Collaborations:

- **FileIn_PassThru** – This Collaboration uses the **GenericPassThru** Collaboration Rule.
- **DBselect_collab** – This Collaboration uses the **GenericEventToDatabase** Collaboration Rule to execute the **dbCollab.class** Java Collaboration file.
- **FileOut_PassThru** – This Collaboration uses the **GenericPassThru** Collaboration Rule.

To add the FileIn_PassThru Collaboration

- 1 In the components pane of the Schema Designer, select the **FileIn** e*Way.
- 2 Click the **New Collaboration** button to create a new Collaboration.
- 3 Enter the name **FileIn_PassThru** and click **OK**.
- 4 Select the newly created Collaboration and click the **Properties** button.
- 5 Select **GenericPassThru** from the dropdown list of Collaboration Rules.
- 6 Click the upper **Add** button to add a new Subscription.
- 7 Select the **GenericEvent** Event Type and the **<External>** source.
- 8 Click the lower **Add** button to add a new Publication

- 9 Select the **GenericEvent** Event Type and the **Q1** destination.
- 10 Click **OK** to close the Collaboration's properties.

To add the **DBselect_collab** Collaboration

- 1 In the components pane of the Schema Designer, select the **DBSelect** e*Way.
- 2 Click the **New Collaboration** button to create a new Collaboration.
- 3 Enter the name **DBselect_collab** and click **OK**.
- 4 Select the newly created Collaboration and click the **Properties** button.
- 5 Select **GenericEventToDatabase** from the dropdown list of Collaboration Rules.
- 6 Click the upper **Add** button to add a new Subscription.
- 7 Select the **GenericEvent** Event Type and the **FileIn_PassThru** source.
- 8 Click the lower **Add** button to add a new Publication
- 9 Select the **DBEmployee** Event Type and the **SQLSERVER_eWc** destination.
- 10 Click the lower **Add** button to add a new Publication
- 11 Select the **GenericEvent** Event Type and the **Q2** destination.
- 12 Click **OK** to close the Collaboration's properties.

To add the **FileOut_PassThru** Collaboration

- 1 In the components pane of the Schema Designer, select the **FileOut** e*Way.
- 2 Click the **New Collaboration** button to create a new Collaboration.
- 3 Enter the name **FileOut_PassThru** and click **OK**.
- 4 Select the newly created Collaboration and click the **Properties** button.
- 5 Select **GenericPassThru** from the dropdown list of Collaboration Rules.
- 6 Click the upper **Add** button to add a new Subscription.
- 7 Select the **GenericEvent** Event Type and the **DBSelect_collab** source.
- 8 Click the lower **Add** button to add a new Publication
- 9 Select the **GenericEvent** Event Type and the **<External>** destination.
- 10 Click **OK** to close the Collaboration's properties.

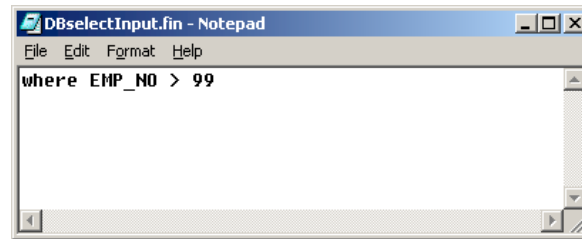
4.4.8 Run the Schema

Running the sample Schema requires that a sample input file be created. Once the input file has been created, you can start the Control Broker from a command prompt to execute the Schema. After the Schema has been run, you can view the output text file to verify the results.

The sample input file

Use a text editor to create an input file to be read by the inbound file e*Way (**FileIn**). This simple input file contains the criteria for the **dbSelect.class** Collaboration's select statement. An example of an input file is shown in Figure 36.

Figure 36 Sample Input File



To start the Control Broker

From a command prompt, type the following command:

```
stccb -ln logical_name -rh registry -rs DBSelect -un user_name  
-up password
```

where

logical_name is the logical name of the Control Broker,

registry is the name of the Registry Host, and

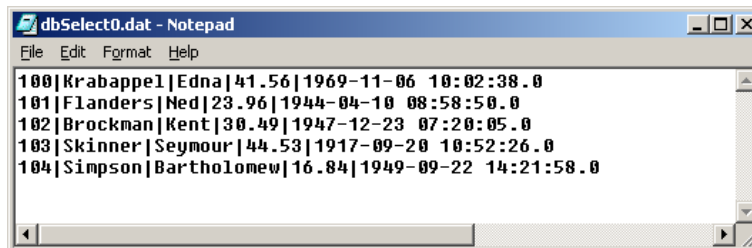
user_name and *password* are a valid e*Gate username/password combination.

To verify the results

Use a text editor to view the output file `C:\eGate\data\dbSelect_out\dbSelect0.dat`.

Figure 37 shows an example of the records that were returned by the sample schema.

Figure 37 Sample Output File



SQL Server e*Way Methods

The SQL Server e*Way contains Java methods that are used to extend the functionality of the e*Way. These methods are contained in the following classes:

- [com.stc.eways.jdbcx.StatementAgent Class](#) on page 59
- [com.stc.eways.jdbcx.PreparedStatementAgent Class](#) on page 69
- [com.stc.eways.jdbcx.PreparedStatementResultSet Class](#) on page 81
- [com.stc.eways.jdbcx.SqlStatementAgent Class](#) on page 107
- [com.stc.eways.jdbcx.CallableStatementAgent Class](#) on page 109
- [com.stc.eways.jdbcx.TableResultSet Class](#) on page 121

5.1 com.stc.eways.jdbcx.StatementAgent Class

```

java.lang.Object
|
+ - - com.stc.eways.jdbcx.StatementAgent

```

All Implemented Interfaces

ResetEventListener, SessionEventListener

Direct Known Subclasses

PreparedStatementAgent, SqlStatementAgent, TableResultSet

```

public abstract class StatementAgent
extends java.lang.Object

```

Implements SessionEventListener, ResetEventListener

Abstract class for other Statement Agent.

Methods of the StatementAgent

- [cancel](#) on page 67
- [clearWarnings](#) on page 68
- [getFetchDirection](#) on page 64
- [getMaxFieldSize](#) on page 66
- [getMoreResults](#) on page 67
- [getResultSetConcurrency](#) on page 63
- [getUpdateCount](#) on page 66
- [isClosed](#) on page 61
- [queryName](#) on page 61
- [resultSetConcurToString](#) on page 61
- [resultSetTypeToString](#) on page 60
- [sessionOpen](#) on page 62
- [setEscapeProcessing](#) on page 63
- [setMaxFieldSize](#) on page 66
- [setQueryTimeout](#) on page 64
- [stmtInvoke](#) on page 68
- [clearBatch](#) on page 67
- [executeBatch](#) on page 67
- [getFetchSize](#) on page 65
- [getMaxRows](#) on page 65
- [getResultSet](#) on page 66
- [getResultSetType](#) on page 62
- [getWarnings](#) on page 68
- [queryDescription](#) on page 61
- [resetRequested](#) on page 62
- [resultSetDirToString](#) on page 60
- [sessionClosed](#) on page 62
- [setCursorName](#) on page 63
- [setFetchDirection](#) on page 64
- [setMaxRows](#) on page 65
- [setQueryTimeout](#) on page 64

resultSetTypeToString

This method gets the symbol string corresponding to the ResultSet enumeration.

```
public static java.lang.String resultSetTypeToString(int type)
```

| Name | Description |
|------|-----------------|
| type | ResultSet type. |

Returns

Enumeration symbol string.

resultSetDirToString

This method gets the symbol string corresponding to the ResultSet direction enumeration.

```
public static java.lang.String resultSetDirToString(int dir)
```

| Name | Description |
|------|------------------------------|
| dir | ResultSet scroll directions. |

Returns

Enumeration symbol string.

resultSetConcurToString

This method gets the symbol string corresponding to the ResultSet concurrency enumeration.

```
public static java.lang.String resultSetConcurToString(int concur)
```

| Name | Description |
|--------|------------------------|
| concur | ResultSet concurrency. |

Returns

Enumeration symbol string.

isClosed

This method returns the statement agent's close status.

```
public boolean isClosed()
```

Returns

True if the statement agent is closed.

queryName

This method supplies the name of the listener.

```
public java.lang.String queryName()
```

Specified By

queryName in interface SessionEventListener.

Returns

The listener's class name.

queryDescription

This method gives a description of the query.

```
public java.lang.String queryDescription()
```

Returns

The description of the query.

sessionOpen

Opens the session event handler.

```
public void sessionOpen(SessionEvent evt)
```

Specified by

sessionOpen in interface SessionEventListener

| Name | Description |
|------|----------------|
| evt | Session event. |

sessionClosed

Closes the session event handler.

```
public void sessionClosed(SessionEvent evt)
```

Specified by

sessionClosed in interface SessionEventListener

| Name | Description |
|------|----------------|
| evt | Session event. |

resetRequested

Resets the event handler.

```
public void resetRequested(ResetEvent evt)
```

Specified by

resetRequested in interface ResetEventListener

| Name | Description |
|------|------------------------|
| evt | Requested Reset event. |

Throws

java.sql.SQLException

getResultSetType

Returns the result set scroll type.

```
public int getResultSetType()
```

Returns

ResultSet type

Throws

java.sql.SQLException

getResultSetConcurrency

Returns the result set concurrency mode.

```
public int getResultSetConcurrency()
```

Returns

ResultSet concurrency

Throws

java.sql.SQLException

setEscapeProcessing

Sets escape syntax processing

```
public void setEscapeProcessing (boolean bEscape)
```

| Name | Description |
|---------|------------------------------------|
| bEscape | True to enable False to disable |

Throws

java.sql.SQLException

setCursorName

Sets result set cursor name.

```
public void setCursorName(java.lang.String sName)
```

| Name | Description |
|-------|--------------|
| sName | Cursor name. |

Throws

java.sql.SQLException

setQueryTimeout

Returns query timeout duration.

```
public int getQueryTimeout()
```

Returns

The number of seconds to wait before timeout.

Throws

java.sql.SQLException

setQueryTimeout

Sets the query timeout duration

```
public void setQueryTimeout(int nInterval)
```

| Name | Description |
|-----------|---------------------------------------|
| nInterval | The number of seconds before timeout. |

Throws

java.sql.SQLException

getFetchDirection

Returns result set fetch direction.

```
public int getFetchDirection()
```

Returns

The fetch direction of the ResultSet: FETCH_FORWARD, FETCH_REVERSE, FETCH_UNKNOWN.

Throws

java.sql.SQLException

setFetchDirection

Sets result set fetch direction.

```
public void setFetchDirection (int iDir)
```


| Name | Description |
|------|--|
| iDir | The fetch direction of the ResultSet: FETCH_FORWARD, FETCH_REVERSE, FETCH_UNKNOWN. |

Throws

java.sql.SQLException

getFetchSize

Returns the result set prefetch record count.

```
public int getFetchSize()
```

Returns

The fetch size this StatementAgent object set.

Throws

java.sql.SQLException

getMaxRows

Returns the maximum number of fetch records.

```
public int getMaxRows()
```

Returns

The maximum number of rows that a ResultSetAgent may contain.

Throws

java.sql.SQLException

setMaxRows

Sets the maximum number of fetch records.

```
public void setMaxRows (int nRow)
```

| Name | Description |
|------|--|
| nRow | The maximum number of rows in the ResultSetAgent. |

Throws

java.sql.SQLException

getMaxFieldSize

Returns the maximum field data size.

```
public int getMaxFieldSize()
```

Returns

The maximum number of bytes that a ResultSetAgent column may contain; 0 means no limit.

Throws

java.sql.SQLException

setMaxFieldSize

Sets the maximum field data size.

```
public void setMaxFieldSize (int nSize)
```

| Name | Description |
|-------|--|
| nSize | The maximum size for a column in a ResultSetAgent. |

Throws

java.sql.SQLException

getUpdateCount

Returns the records count of the last executed statement.

```
public int getUpdateCount()
```

Returns

The number of rows affected by an updated operation. 0 if no rows were affected or the operation was a DDL command. -1 if the result is a ResultSetAgent or there are no more results.

Throws

java.sql.SQLException

getResultSet

Returns the result set of the last executed statement.

```
public ResultSetAgent getResultSet()
```

Returns

The ResultSetAgent that was produced by the call to the method execute.

Throws

java.sql.SQLException

getMoreResults

Returns if there are more result sets.

```
public boolean getMoreResults()
```

Returns

True if the next result is a ResultSetAgent; False if it is an integer indicating an update count or there are no more results).

Throws

java.sql.SQLException

clearBatch

Clears the batch operation.

```
public void clearBatch()
```

Throws

java.sql.SQLException

executeBatch

Executes batch statements.

```
public int[] executeBatch ()
```

Returns

An array containing update counts that correspond to the commands that executed successfully. An update count of -2 means the command was successful but that the number of rows affected is unknown.

Throws

java.sql.SQLException

cancel

Cancels a statement that is being executed.

```
public void cancel()
```

Throws

java.sql.SQLException

getWarnings

Returns SQL warning object.

```
public java.sql.SQLWarning getWarnings()
```

Returns

The first SQL warning or null if there are no warnings.

Throws

java.sql.SQLException

clearWarnings

Clear all SQL Warning objects.

```
public void clearWarnings()
```

Throws

java.sql.SQLException

stmtInvoke

Invokes a method of the database Statement object of this ETD.

```
public java.lang.Object stmtInvoke (java.lang.String methodName,  
java.lang.Class[] argsCls, java.lang.Object[] args)
```

| Name | Description |
|------------|---|
| methodName | The name of the method. |
| argsCls | Class array for types of formal arguments for method, in the declared order. Can be null if there are no formal arguments. However, cannot invoke constructor here. |
| args | Object array of formal arguments for method in the declared order. Can be null if there are no formal arguments. However, cannot invoke constructor here. |

Returns

The Object instance resulting from the method invocation. Can be null if nothing is returned (void return declaration).

Throws

java.lang.Exception. Whatever exception the invoked method throws.

5.2 com.stc.eways.jdbcx.PreparedStatementAgent Class

```
java.lang.Object
|
+ --com.stc.eways.jdbcx.StatementAgent
|
+ -- com.stc.eways.jdbcx.PreparedStatementAgent
```

All Implemented Interfaces

ResetEventListener, SessionEventListener

Direct Known Subclasses

CallableStatementAgent

```
public class PreparedStatementAgent
extends StatementAgent
```

Agent hosts PreparedStatement Object

Methods of the PreparedStatementAgent

[addBatch](#) on page 80

[execute](#) on page 80

[executeUpdate](#) on page 80

[setArray](#) on page 78

[setBigDecimal](#) on page 74

[setBlob](#) on page 79

[setByte](#) on page 72

[setCharacterStream](#) on page 78

[setDate](#) on page 74

[setDouble](#) on page 74

[setInt](#) on page 73

[setNull](#) on page 70

[setObject](#) on page 71

[setRef](#) on page 79

[setString](#) on page 76

[setTime](#) on page 75

[setTimestamp](#) on page 76

[clearParameters](#) on page 80

[executeQuery](#) on page 80

[sessionOpen](#) on page 111

[setAsciiStream](#) on page 77

[setBinaryStream](#) on page 77

[setBoolean](#) on page 72

[setBytes](#) on page 77

[setClob](#) on page 79

[setDate](#) on page 75

[setFloat](#) on page 73

[setLong](#) on page 73

[setObject](#) on page 70

[setObject](#) on page 71

[setShort](#) on page 72

[setTime](#) on page 75

[setTimestamp](#) on page 76

sessionOpen

Opens the session event handler.

```
public void sessionOpen(SessionEvent evt)
```

Overrides

sessionOpen in class StatementAgent

| Name | Description |
|------|----------------|
| evt | Session event. |

setNull

Nullify value of indexed parameter.

```
public void setNull(int index, int type)
```

| Name | Description |
|-------|---------------------------------------|
| index | Parameter index starting from 1. |
| type | A JDBC type defined by java.sql.Types |

Throws

java.sql.SQLException

setNull

Nullify value of indexed parameter.

```
public void setNull(int index, int type, java.lang.String tname)
```

| Name | Description |
|-------|--|
| index | Parameter index starting from 1. |
| type | A JDBC type defined by java.sql.Types |
| tname | The fully-qualified name of the parameter being set. If type is not REF, STRUCT, DISTINCT, or JAVA_OBJECT, this parameter will be ignored. |

Throws

java.sql.SQLException

setObject

Sets value of indexed parameter with an object.

```
public void setObject(int index, java.lang.Object ob)
```

| Name | Description |
|-------|--|
| index | Parameter index starting from 1. |
| ob | An instance of a Java Object containing the input parameter value. |

Throws

java.sql.SQLException

setObject

Sets value of indexed parameter with an object.

```
public void setObject(int index, java.lang.Object ob, int iType)
```

| Name | Description |
|-------|--|
| index | Parameter index starting from 1. |
| ob | An instance of a Java Object containing the input parameter value. |
| iType | A JDBC type defined by java.sql.Types |

Throws

java.sql.SQLException

setObject

Sets value of indexed parameter with an object.

```
public void setObject(int index, java.lang.Object ob, int iType, int iScale)
```

| Name | Description |
|--------|---|
| index | Parameter index starting from 1. |
| ob | An instance of a Java Object containing the input parameter value. |
| iType | A JDBC type defined by java.sql.Types |
| iScale | The number of digits to the right of the decimal point. Only applied to DECIMAL and NUMERIC types |

Throws

java.sql.SQLException

setBoolean

Sets the boolean value of the indexed parameter.

```
public void setBoolean(int index, boolean b)
```

| Name | Description |
|-------|----------------------------------|
| index | Parameter index starting from 1. |
| b | true or false. |

Throws

java.sql.SQLException

setByte

Sets the byte value of the indexed parameter.

```
public void setByte(int index, byte byt)
```

| Name | Description |
|-------|-------------------------------------|
| index | Parameter index starting from 1. |
| byt | The byte parameter value to be set. |

Throws

java.sql.SQLException

setShort

Sets the short value of the indexed parameter.

```
public void setShort(int index, short si)
```

| Name | Description |
|-------|--------------------------------------|
| index | Parameter index starting from 1. |
| si | The short parameter value to be set. |

Throws

java.sql.SQLException

setInt

Sets the integer value of the indexed parameter.

```
public void setInt(int index, int i)
```

| Name | Description |
|-------|--|
| index | Parameter index starting from 1. |
| i | The integer parameter value to be set. |

Throws

```
java.sql.SQLException
```

setLong

Sets the long value of the indexed parameter.

```
public void setLong(int index, long l)
```

| Name | Description |
|-------|-------------------------------------|
| index | Parameter index starting from 1. |
| l | The long parameter value to be set. |

Throws

```
java.sql.SQLException
```

setFloat

Sets the float value of the indexed parameter.

```
public void setFloat(int index, float f)
```

| Name | Description |
|-------|--------------------------------------|
| index | Parameter index starting from 1. |
| f | The float parameter value to be set. |

Throws

```
java.sql.SQLException
```

setDouble

Sets the double value of the indexed parameter.

```
public void setDouble(int index, double d)
```

| Name | Description |
|-------|---------------------------------------|
| index | Parameter index starting from 1. |
| d | The double parameter value to be set. |

Throws

java.sql.SQLException

setBigDecimal

Sets the decimal value of the indexed parameter.

```
public void setBigDecimal(int index, java.math.BigDecimal dec)
```

| Name | Description |
|-------|---|
| index | Parameter index starting from 1. |
| dec | The BigDecimal parameter value to be set. |

Throws

java.sql.SQLException

setDate

Sets the date value of the indexed parameter.

```
public void setDate(int index, java.sql.Date date)
```

| Name | Description |
|-------|-------------------------------------|
| index | Parameter index starting from 1. |
| date | The Date parameter value to be set. |

Throws

java.sql.SQLException

setDate

Sets the date value of indexed parameter with time zone from calendar.

```
public void setDate(int index, java.sql.Date date, java.util.Calendar cal)
```

| Name | Description |
|-------|---|
| index | Parameter index starting from 1. |
| date | The Date parameter value to be set. |
| cal | The calendar object used to construct the date. |

Throws

java.sql.SQLException

setTime

Sets the time value of the indexed parameter.

```
public void setTime(int index, java.sql.Time t)
```

| Name | Description |
|-------|-------------------------------------|
| index | Parameter index starting from 1. |
| t | The Time parameter value to be set. |

Throws

java.sql.SQLException

setTime

Sets the time value of the indexed parameter.

```
public void setTime(int index, java.sql.Time t, java.util.Calendar cal)
```

| Name | Description |
|-------|---|
| index | Parameter index starting from 1. |
| t | The Time parameter value to be set. |
| cal | The Calendar object used to construct the time. |

Throws

java.sql.SQLException

setTimestamp

Sets the timestamp value of the indexed parameter.

```
public void setTimestamp(int index, java.sql.Timestamp ts)
```

| Name | Description |
|-------|--|
| index | Parameter index starting from 1. |
| ts | The Timestamp parameter value to be set. |

Throws

java.sql.SQLException

setTimestamp

Sets the timestamp value of the indexed parameter with the time zone from the calendar.

```
public void setTimestamp(int index, java.sql.timestamp ts,  
java.util.Calendar cal)
```

| Name | Description |
|-------|--|
| index | Parameter index starting from 1. |
| ts | The Timestamp parameter value to be set. |
| cal | The Calendar object used to construct the timestamp. |

Throws

java.sql.SQLException

setString

Sets the string value of the indexed parameter.

```
public void setString(int index, java.lang.String s)
```

| Name | Description |
|-------|----------------------------------|
| index | Parameter index starting from 1. |

| Name | Description |
|------|---------------------------------------|
| s | The String parameter value to be set. |

Throws

java.sql.SQLException

setBytes

Sets the byte array value of the indexed parameter.

```
public void setBytes(int index, byte[] bytes)
```

| Name | Description |
|-------|---|
| index | Parameter index starting from 1. |
| bytes | The byte array parameter value to be set. |

Throws

java.sql.SQLException

setAsciiStream

Sets the character value of the indexed parameter with an input stream and specified length.

```
public void setAsciiStream(int index, java.io.InputStream is, int length)
```

| Name | Description |
|--------|--|
| index | Parameter index starting from 1. |
| is | The InputStream that contains the Ascii parameter value to be set. |
| length | The number of bytes to be read from the stream and sent to the database. |

Throws

java.sql.SQLException

setBinaryStream

Sets the binary value of the indexed parameter with an input stream and specified length.

```
public void setBinaryStream(int index, java.io.InputStream is, int length)
```

| Name | Description |
|--------|--|
| index | Parameter index starting from 1. |
| is | The InputStream that contains the binary parameter value to be set. |
| length | The number of bytes to be read from the stream and sent to the database. |

Throws

java.sql.SQLException

setCharacterStream

Sets the character value of the indexed parameter with a reader stream and specified length.

```
public void setCharacterStream(int index, java.io.Reader rd, int length)
```

| Name | Description |
|--------|---|
| index | Parameter index starting from 1. |
| rd | The Reader that contains the Unicode parameter value to be set. |
| length | The number of characters to be read from the stream and sent to the database. |

Throws

java.sql.SQLException

setArray

Sets the Array value of the indexed parameter.

```
public void setArray(int index, java.sql.Array a)
```

| Name | Description |
|-------|----------------------------------|
| index | Parameter index starting from 1. |
| a | The Array value to be set. |

Throws

java.sql.SQLException

setBlob

Sets the Blob value of the indexed parameter.

```
public void setBlob(int index, java.sql.Blob blob)
```

| Name | Description |
|-------|----------------------------------|
| index | Parameter index starting from 1. |
| blob | The Blob value to be set. |

Throws

java.sql.SQLException

setClob

Sets the Clob value of the indexed parameter.

```
public void setClob(int index, java.sql.Clob clob)
```

| Name | Description |
|-------|----------------------------------|
| index | Parameter index starting from 1. |
| clob | The Clob value to be set. |

Throws

java.sql.SQLException

setRef

Sets the Ref value of the indexed parameter.

```
public void setRef(int index, java.sql.Ref ref)
```

| Name | Description |
|-------|------------------------------------|
| index | Parameter index starting from 1. |
| ref | The Ref parameter value to be set. |

Throws

java.sql.SQLException

clearParameters

Clears the parameters of all values.

```
public void clearParameters()
```

Throws

```
java.sql.SQLException
```

addBatch

Adds a set of parameters to the list of commands to be sent as a batch.

```
public void addBatch()
```

Throws

```
java.sql.SQLException
```

execute

Executes the Prepared SQL statement.

```
public void execute()
```

Throws

```
java.sql.SQLException
```

executeQuery

Executes the prepared SQL query and returns a `ResultSetAgent` that contains the generated result set.

```
public ResultSetAgent executeQuery()
```

Returns

`ResultSetAgent` or null.

Throws

```
java.sql.SQLException
```

executeUpdate

Executes the prepared SQL statement and returns the number of rows that were affected.

```
public int executeUpdate()
```

Returns

The number of rows affected by the update operation; 0 if no rows were affected.

Throws

java.sql.SQLException

5.3 com.stc.eways.jdbcx.PreparedStatementResultSet Class

java.lang.Object

|

+ -- **com.stc.eways.jdbcx.PreparedStatementResultSet**

```
public abstract class PreparedStatementResultSet
extends java.lang.Object
```

Base class for Result Set returned from a Prepared Statement execution.

Constructors of PreparedStatementResultSet

PreparedStatementResultSet

Methods of PreparedStatementResultSet

- [absolute](#) on page 85
- [beforeFirst](#) on page 87
- [close](#) on page 85
- [findColumn](#) on page 88
- [getArray](#) on page 102
- [getAsciiStream](#) on page 101
- [getBigDecimal](#) on page 94
- [getBinaryStream](#) on page 101
- [getBlob](#) on page 103
- [getBoolean](#) on page 90
- [getByte](#) on page 91
- [getBytes](#) on page 100
- [getCharacterStream](#) on page 102
- [getClob](#) on page 103
- [getConcurrency](#) on page 83
- [getDate](#) on page 95
- [getDate](#) on page 96
- [getDouble](#) on page 94
- [getFetchDirection](#) on page 83
- [getFloat](#) on page 93
- [getInt](#) on page 92
- [getLong](#) on page 92
- [getMetaData](#) on page 83
- [getObject](#) on page 89
- [getObject](#) on page 90
- [getRef](#) on page 105
- [getShort](#) on page 91
- [getString](#) on page 99
- [getTime](#) on page 96
- [getTime](#) on page 97
- [getTimestamp](#) on page 98
- [getTimestamp](#) on page 98
- [getType](#) on page 88
- [insertRow](#) on page 106
- [isBeforeFirst](#) on page 87
- [afterLast](#) on page 87
- [clearWarnings](#) on page 105
- [deleteRow](#) on page 106
- [first](#) on page 86
- [getArray](#) on page 102
- [getAsciiStream](#) on page 101
- [getBigDecimal](#) on page 95
- [getBinaryStream](#) on page 102
- [getBlob](#) on page 103
- [getBoolean](#) on page 90
- [getByte](#) on page 91
- [getBytes](#) on page 100
- [getCharacterStream](#) on page 102
- [getClob](#) on page 104
- [getCursorName](#) on page 85
- [getDate](#) on page 95
- [getDate](#) on page 96
- [getDouble](#) on page 94
- [getFetchSize](#) on page 84
- [getFloat](#) on page 94
- [getInt](#) on page 92
- [getLong](#) on page 93
- [getObject](#) on page 88
- [getObject](#) on page 89
- [getRef](#) on page 104
- [getRow](#) on page 106
- [getShort](#) on page 91
- [getString](#) on page 99
- [getTime](#) on page 96
- [getTime](#) on page 97
- [getTimestamp](#) on page 98
- [getTimestamp](#) on page 99
- [getWarnings](#) on page 105
- [isAfterLast](#) on page 88
- [isFirst](#) on page 86

[isLast](#) on page 87

[next](#) on page 85

[refreshRow](#) on page 127

[getFetchDirection](#) on page 83

[updateRow](#) on page 106

[last](#) on page 86

[previous](#) on page 85

[relative](#) on page 86

[getFetchSize](#) on page 84

[wasNull](#) on page 105

Constructor PreparedStatementResultSet

Constructs a Prepared Statement Result Set object.

```
public PreparedStatementResultSet(ResultSetAgent rsAgent)
```

| Name | Description |
|---------|--|
| rsAgent | The ResultSetAgent underlying control. |

getMetaData

Retrieves a ResultSetMetaData object that contains ResultSet properties.

```
public java.sql.ResultSetMetaData getMetaData()
```

Returns

ResultSetMetaData object

Throws

java.sql.SQLException

getConcurrency

Gets the concurrency mode for this ResultSet object.

```
public int getConcurrency()
```

Returns

Concurrency mode

Throws

java.sql.SQLException

getFetchDirection

Gets the direction suggested to the driver as the row fetch direction.

```
public int getFetchDirection()
```

Returns

Row fetch direction

Throws

java.sql.SQLException

setFetchDirection

Gives the driver a hint as to the row process direction.

```
public void setFetchDirection(int iDir)
```

| Name | Description |
|------|-------------------------|
| iDir | Fetch direction to use. |

Throws

java.sql.SQLException

getFetchSize

Gets the number of rows to fetch suggested to the driver.

```
public int getFetchSize()
```

Returns

Number of rows to fetch at a time.

Throws

java.sql.SQLException

setFetchSize

Gives the drivers a hint as to the number of rows that should be fetched each time.

```
public void setFetchSize(int nSize)
```

| Name | Description |
|-------|------------------------------------|
| nSize | Number of rows to fetch at a time. |

Throws

java.sql.SQLException

getCursorName

Retrieves the name for the cursor associated with this ResultSet object.

```
public java.lang.String getCursorName()
```

Returns

Name of cursor

Throws

java.sql.SQLException

close

Immediately releases a ResultSet object's resources.

```
public void close()
```

Throws

java.sql.SQLException

next

Moves the cursor to the next row of the result set.

```
public boolean next()
```

Returns

true if successful

Throws

java.sql.SQLException

previous

Moves the cursor to the previous row of the result set.

```
public boolean previous()
```

Returns

true if successful

Throws

java.sql.SQLException

absolute

Moves the cursor to the specified row of the result set.

```
public boolean absolute(int index)
```

Returns

true if successful

Throws

java.sql.SQLException

relative

Moves the cursor to the specified row relative to the current row of the result set.

```
public boolean relative(int index)
```

Returns

true if successful

Throws

java.sql.SQLException

first

Moves the cursor to the first row of the result set.

```
public boolean first()
```

Returns

true if successful

Throws

java.sql.SQLException

isFirst

Determines whether the cursor is on the first row of the result set.

```
public boolean isFirst()
```

Returns

true if on the first row.

Throws

java.sql.SQLException

last

Moves the cursor to the last row of the result set.

```
public boolean last()
```

Returns

true if successful

Throws

java.sql.SQLException

isLast

Determines whether the cursor is on the last row of the result set.

```
public boolean isLast()
```

Returns

true if on the last row

Throws

java.sql.SQLException

beforeFirst

Moves the cursor before the first row of the result set.

```
public void beforeFirst()
```

Throws

java.sql.SQLException

isBeforeFirst

Determines whether the cursor is before the first row of the result set.

```
public boolean isBeforeFirst()
```

Returns

true if before the first row

Throws

java.sql.SQLException

afterLast

Moves the cursor after the last row of the result set.

```
public void afterLast()
```

Throws

java.sql.SQLException

isAfterLast

Determines whether the cursor is after the last row of the result set.

```
public boolean isAfterLast()
```

Returns

true if after the last row

Throws

java.sql.SQLException

getType

Retrieves the scroll type of cursor associated with the result set.

```
public int getType()
```

Returns

Scroll type of cursor.

Throws

java.sql.SQLException

findColumn

Returns the column index for the named column in the result set.

```
public int findColumn(java.lang.String index)
```

| Name | Description |
|-------|--------------|
| index | Column name. |

Returns

Corresponding column index.

Throws

java.sql.SQLException

getObject

Gets the object value of the specified column.

```
public java.lang.Object getObject(int index)
```


| Name | Description |
|-------|---------------|
| index | Column index. |

Returns

Object form of column value.

Throws

java.sql.SQLException

getObject

Gets the object value of the specified column.

```
public java.lang.Object getObject(java.lang.String index)
```

| Name | Description |
|-------|---------------|
| index | Column index. |

Returns

Object form of column value.

Throws

java.sql.SQLException

getObject

Gets the object value of the specified column using the given type map.

```
public java.lang.Object getObject(int index, java.util.Map.map)
```

| Name | Description |
|-------|---------------|
| index | Column index. |
| map | Type map. |

Returns

Object form of column value.

Throws

java.sql.SQLException

getObject

Gets the object value of the specified column using the given type map.

```
public java.lang.Object getObject(java.lang.String index,  
java.util.Map map)
```

| Name | Description |
|-------|---------------|
| index | Column index. |
| map | Type map. |

Returns

Object form of column value.

Throws

java.sql.SQLException

getBoolean

Gets the boolean value of the specified column.

```
public boolean getBoolean(int index)
```

| Name | Description |
|-------|---------------|
| index | Column index. |

Returns

Boolean value of the column.

Throws

java.sql.SQLException

getBoolean

Gets the boolean value of the specified column.

```
public boolean getBoolean(java.lang.String index)
```

| Name | Description |
|-------|--------------|
| index | Column name. |

Returns

Boolean value of the column.

Throws

java.sql.SQLException

getBytes

Gets the byte value of the specified column.

```
public byte getBytes(int index)
```

| Name | Description |
|-------|---------------|
| index | Column index. |

Returns

Boolean value of the column.

Throws

java.sql.SQLException

getShort

Gets the short value of the specified column.

```
public short getShort(int index)
```

| Name | Description |
|-------|---------------|
| index | Column index. |

Returns

Short value of the column.

Throws

java.sql.SQLException

getShort

Gets the short value of the specified column.

```
public short getShort(java.lang.String index)
```

| Name | Description |
|-------|--------------|
| index | Column name. |

Returns

Short value of the column.

Throws

java.sql.SQLException

getInt

Gets the integer value of the specified column.

```
public int getInt(int index)
```

| Name | Description |
|-------|---------------|
| index | Column index. |

Returns

Int value of the column.

Throws

java.sql.SQLException

getInt

Gets the integer value of the specified column.

```
public int getInt(java.lang.String index)
```

| Name | Description |
|-------|--------------|
| index | Column name. |

Returns

Int value of the column.

Throws

java.sql.SQLException

getLong

Gets the long value of the specified column.

```
public long getLong(int index)
```

| Name | Description |
|-------|---------------|
| index | Column index. |

Returns

Long value of the column.

Throws

java.sql.SQLException

getLong

Gets the long value of the specified column.

```
public long getLong(java.lang.String index)
```

| Name | Description |
|-------|--------------|
| index | Column name. |

Returns

Long value of the column.

Throws

java.sql.SQLException

getFloat

Gets the float value of the specified column.

```
public float getFloat(int index)
```

| Name | Description |
|-------|---------------|
| index | Column index. |

Returns

Float value of the column.

Throws

java.sql.SQLException

getFloat

Gets the float value of the specified column.

```
public float getFloat(java.lang.String index)
```

| Name | Description |
|-------|--------------|
| index | Column name. |

Returns

Float value of the column.

Throws

java.sql.SQLException

getDouble

Gets the double value of the specified column.

```
public double getDouble(int index)
```

| Name | Description |
|-------|---------------|
| index | Column index. |

Returns

Double value of the column.

Throws

java.sql.SQLException

getBigDecimal

Gets the decimal value of the specified column.

```
public java.math.BigDecimal getBigDecimal(int index)
```

| Name | Description |
|-------|---------------|
| index | Column index. |

Returns

Big decimal value of the column.

Throws

java.sql.SQLException

getBigDecimal

Gets the decimal value of the specified column.

```
public java.math.BigDecimal getBigDecimal(java.lang.String index)
```

| Name | Description |
|-------|--------------|
| index | Column name. |

Returns

Big decimal value of the column.

Throws

java.sql.SQLException

getDate

Gets the date value of the specified column.

```
public java.sql.Date getDate(int index)
```

| Name | Description |
|-------|---------------|
| index | Column index. |

Returns

Date value of the column.

Throws

java.sql.SQLException

getDate

Gets the date value of the specified column.

```
public java.sql.Date getDate(java.lang.String index)
```

| Name | Description |
|-------|--------------|
| index | Column name. |

Returns

Date value of the column.

Throws

java.sql.SQLException

getDate

Gets the date value of the specified column using the time zone from the calendar.

```
public java.sql.Date getDate(java.lang.String index,  
java.util.Calendar calendar)
```

| Name | Description |
|----------|------------------|
| index | Column name. |
| calendar | Calendar to use. |

Returns

Date value of the column.

Throws

java.sql.SQLException

getTime

Gets the time value of the specified column.

```
public java.sql.Time getTime(int index)
```

| Name | Description |
|-------|---------------|
| index | Column index. |

Returns

Time value of the column.

Throws

java.sql.SQLException

getTime

Gets the time value of the specified column.

```
public java.sql.Time getTime(java.lang.String index)
```


| Name | Description |
|-------|--------------|
| index | Column name. |

Returns

Time value of the column.

Throws

java.sql.SQLException

getTime

Gets the time value of the specified column.

```
public java.sql.Time getTime(int index, java.util.Calendar calendar)
```

| Name | Description |
|----------|------------------|
| index | Column index. |
| calendar | Calendar to use. |

Returns

Time value of the column.

Throws

java.sql.SQLException

getTime

Gets the time value of the specified column.

```
public java.sql.Time getTime(java.lang.String index,  
java.util.Calendar calendar)
```

| Name | Description |
|----------|------------------|
| index | Column name. |
| calendar | Calendar to use. |

Returns

Time value of the column.

Throws

java.sql.SQLException

getTimestamp

Gets the timestamp value of the specified column.

```
public java.sql.Timestamp getTimestamp(int index)
```

| Name | Description |
|-------|---------------|
| index | Column index. |

Returns

The timestamp value of the column.

Throws

java.sql.SQLException

getTimestamp

Gets the timestamp value of the specified column.

```
public java.sql.Timestamp getTimestamp(java.lang.String index)
```

| Name | Description |
|-------|--------------|
| index | Column name. |

Returns

The timestamp value of the column.

Throws

java.sql.SQLException

getTimestamp

Gets the timestamp value of the specified column using the time zone from the calendar.

```
public java.sql.Timestamp getTimestamp(int index, java.util.Calendar calendar)
```

| Name | Description |
|-------|---------------|
| index | Column index. |

Returns

The timestamp value of the column.

Throws

java.sql.SQLException

getTimestamp

Gets the timestamp value of the specified column using the time zone from the calendar.

```
public java.sql.Timestamp getTimestamp(java.lang.String index,  
java.util.Calendar calendar)
```

| Name | Description |
|----------|------------------|
| index | Column name. |
| calendar | Calendar to use. |

Returns

The timestamp value of the column.

Throws

java.sql.SQLException

getString

Gets the string value of the specified column.

```
public java.lang.String getString(int index)
```

| Name | Description |
|-------|---------------|
| index | Column index. |

Returns

Returns the String value of the column.

Throws

java.sql.SQLException

getString

Gets the string value of the specified column.

```
public java.lang.String getString(java.lang.String index)
```

| Name | Description |
|-------|--------------|
| index | Column name. |

Returns

Returns the String value of the column.

Throws

java.sql.SQLException

getBytes

Gets the byte array value of the specified column.

```
public byte[] getBytes(int index)
```

| Name | Description |
|-------|---------------|
| index | Column index. |

Returns

Byte array value of the column.

Throws

java.sql.SQLException

getBytes

Gets the byte array value of the specified column.

```
public byte[] getBytes(java.lang.String index)
```

| Name | Description |
|-------|--------------|
| index | Column name. |

Returns

Byte array value of the column.

Throws

java.sql.SQLException

getAsciiStream

Retrieves the value of the specified column value as a stream of ASCII characters.

```
public java.io.InputStream getAsciiStream(int index)
```

| Name | Description |
|-------|---------------|
| index | Column index. |

Returns

ASCII output stream value of the column.

Throws

java.sql.SQLException

getAsciiStream

Retrieves the value of the specified column value as a stream of ASCII characters.

```
public java.io.InputStream getAsciiStream(java.lang.String index)
```

| Name | Description |
|-------|--------------|
| index | Column name. |

Returns

ASCII output stream value of the column.

Throws

java.sql.SQLException

getBinaryStream

Retrieves the value of the specified column as a stream of uninterpreted bytes.

```
public java.io.InputStream getBinaryStream(int index)
```

| Name | Description |
|-------|---------------|
| index | Column index. |

Returns

Binary out steam value of the column.

Throws

java.sql.SQLException

getBinaryStream

Retrieves the value of the specified column as a stream of uninterpreted bytes.

```
public java.io.InputStream getBinaryStream(java.lang.String index)
```

| Name | Description |
|-------|--------------|
| index | Column name. |

Returns

Binary out steam value of the column.

Throws

java.sql.SQLException

getCharacterStream

Retrieves the value of the specified column as a Reader object.

```
public java.io.Reader getCharacterStream(int index)
```

| Name | Description |
|-------|---------------|
| index | Column index. |

Returns

Reader for value in the column.

Throws

java.sql.SQLException

getArray

Gets the Array value of the specified column.

```
public java.sql.Array getArray(int index)
```

| Name | Description |
|-------|---------------|
| index | Column index. |

Returns

Array value of the column.

Throws

java.sql.SQLException

getBlob

Gets the Blob value of the specified column.

```
public java.sql.Blob getBlob(int index)
```

| Name | Description |
|-------|---------------|
| index | Column index. |

Returns

Blob value of the column.

Throws

java.sql.SQLException

getBlob

Gets the Blob value of the specified column.

```
public java.sql.Blob getBlob(java.lang.String index)
```

| Name | Description |
|-------|--------------|
| index | Column name. |

Returns

Blob value of the column.

Throws

java.sql.SQLException

getClob

Gets the Clob value of the specified column.

```
public java.sql.Clob getClob(int index)
```

| Name | Description |
|-------|---------------|
| index | Column index. |

Returns

Clob value of the column.

Throws

java.sql.SQLException

getClob

Gets the Clob value of the specified column.

```
public java.sql.Clob getClob(java.lang.String index)
```

| Name | Description |
|-------|--------------|
| index | Column name. |

Returns

Clob value of the column.

Throws

java.sql.SQLException

getRef

Gets the Ref value of the specified column.

```
public java.sql.Ref getRef(int index)
```

| Name | Description |
|-------|---------------|
| index | Column index. |

Returns

Ref value of the column.

Throws

java.sql.SQLException

getRef

Gets the Ref value of the specified column.

```
public java.sql.Ref getRef(java.lang.String index)
```

| Name | Description |
|-------|--------------|
| index | Column name. |

Returns

Ref value of the column.

Throws

java.sql.SQLException

wasNull

Checks to see if the last value read was SQL NULL or not.

```
public boolean wasNull()
```

Returns

true if SQL NULL.

Throws

java.sql.SQLException

getWarnings

Gets the first SQL Warning that has been reported for this object.

```
public java.sql.SQLWarning getWarnings()
```

Returns

SQL warning.

Throws

java.sql.SQLException

clearWarnings

Clears any warnings reported on this object.

```
public void clearWarnings()
```

Throws

java.sql.SQLException

getRow

Retrieves the current row number in the result set.

```
public int getRow()
```

Returns

Current row number

Throws

java.sql.SQLException

refreshRow

Replaces the values in the current row of the result set with their current values in the database.

```
public void refreshRow()
```

Throws

java.sql.SQLException

insertRow

Inserts the contents of the insert row into the result set and the database.

```
public void insertRow()
```

Throws

java.sql.SQLException

updateRow

Updates the underlying database with the new contents of the current row.

```
public void updateRow()
```

Throws

java.sql.SQLException

deleteRow

Deletes the current row from the result set and the underlying database.

```
public void deleteRow()
```

Throws

java.sql.SQLException

5.4 com.stc.eways.jdbcx.SqlStatementAgent Class

```
java.lang.Object
|
+ -- com.stc.eways.jdbcx.StatementAgent
|
+ -- com.stc.eways.jdbcx.SqlStatementAgent
```

All Implemented Interfaces

ResetEventListener, SessionEventListener

```
public class SqlStatementAgent
extends StatementAgent
```

SQLStatement Agent that hosts a managed Statement object.

Constructors of the SqlStatementAgent

```
SqlStatementAgent
```

```
SqlStatementAgent
```

Methods of the SqlStatementAgent

[addBatch](#) on page 109

[execute](#) on page 108

[executeQuery](#) on page 108

[executeUpdate](#) on page 109

Constructor SqlStatementAgent

Creates new SQLStatementAgent with scroll direction TYPE_FORWARD_ONLY and concurrency CONCUR_READ_ONLY.

```
public SqlStatementAgent(Session session)
```

| Name | Description |
|---------|---------------------|
| session | Connection session. |

Constructor SqlStatementAgent

Creates a new SQLStatementAgent.

```
public SqlStatementAgent(Session session, int iScroll, int iConcur)
```

| Name | Description |
|---------|--|
| session | Connection session. |
| iScroll | Scroll direction: TYPE_FORWARD_ONLY, TYPE_SCROLL_INSENSITIVE, TYPE_SCROLL_SENSITIVE. |
| iConcur | Concurrency: CONCUR_READ_ONLY, CONCUR_UPDATABLE. |

execute

Executes the specified SQL statement.

```
public boolean execute(java.lang.String sSql)
```

| Name | Description |
|------|----------------|
| sSql | SQL statement. |

Returns

true if the first result is a ResultSetAgent or false if it is an integer.

Throws

java.sql.SQLException

executeQuery

Executes the specified SQL query and returns a ResultSetAgent that contains the generated result set.

```
public ResultSetAgent executeQuery(java.lang.String sSql)
```

| Name | Description |
|------|----------------|
| sSql | SQL statement. |

Returns

A ResultSetAgent or null

Throws

java.sql.SQLException

executeUpdate

Executes the specified SQL statement and returns the number of rows that were affected.

```
public int executeUpdate(java.lang.String sSql)
```

| Name | Description |
|------|----------------|
| sSql | SQL statement. |

Returns

The number of rows affected by the update operation; 0 if no rows were affected.

Throws

java.sql.SQLException

addBatch

Adds the specified SQL statement to the list of commands to be sent as a batch.

```
public void addBatch(java.lang.String sSql)
```

| Name | Description |
|------|----------------|
| sSql | SQL statement. |

Throws

java.sql.SQLException

5.5 com.stc.eways.jdbcx.CallableStatementAgent Class

```
java.lang.Object
|
+ -- com.stc.eways.jdbcx.StatementAgent
    |
    + -- com.stc.eways.jdbcx.PreparedStatementAgent
        |
        + -- com.stc.eways.jdbcx.CallableStatementAgent
```

All Implemented Interfaces

ResetEventListener, SessionEventListener

Direct Known Subclasses

StoredProcedureAgent

```
public abstract class CallableStatementAgent  
extends PreparedStatementAgent
```

Agent hosts CallableStatement interface

Constructors of the CallableStatementAgent

CallableStatementAgent

CallableStatementAgent

CallableStatementAgent

Methods of the CallableStatementAgent

[getArray](#) on page 119

[getBlob](#) on page 120

[getByte](#) on page 114

[getClob](#) on page 120

[getDate](#) on page 117

[getFloat](#) on page 115

[getLong](#) on page 115

[getObject](#) on page 113

[getShort](#) on page 114

[getTime](#) on page 117

[getTimestamp](#) on page 118

[registerOutParameter](#) on page 112

[sessionOpen](#) on page 111

[getBigDecimal](#) on page 116

[getBoolean](#) on page 114

[getBytes](#) on page 119

[getDate](#) on page 116

[getDouble](#) on page 116

[getInt](#) on page 115

[getObject](#) on page 113

[getRef](#) on page 121

[getString](#) on page 119

[getTimestamp](#) on page 118

[registerOutParameter](#) on page 112

[registerOutParameter](#) on page 112

[wasNull](#) on page 113

Constructor CallableStatementAgent

Creates new CallableStatementAgent with scroll direction TYPE_FORWARD_ONLY and concurrency CONCUR_READ_ONLY.

```
public CallableStatementAgent(Session session, java.lang.String  
sCommand)
```

| Name | Description |
|----------|---|
| session | Connection session. |
| sCommand | The Call statement used to invoke a stored procedure. |

Constructor CallableStatementAgent

Creates a new CallableStatementAgent.

```
public CallableStatementAgent(Session session, int iScroll, int  
iConcur)
```

| Name | Description |
|---------|---------------------|
| session | Connection session. |
| iScroll | Ignored. |
| iConcur | Ignored |

Constructor CallableStatement Agent

Creates a new CallableStatementAgent.

```
public CallableStatementAgent(Session session, java.lang.String  
sCommand, int iScroll, int iConcur)
```

| Name | Description |
|----------|---|
| session | Connection session. |
| sCommand | The Call statement used to invoke a stored procedure. |
| iScroll | Scroll direction: TYPE_FORWARD_ONLY, TYPE_SCROLL_INSENSITIVE, TYPE_SCROLL_SENSITIVE |
| iConcur | Concurrency: CONCUR_READ_ONLY, CONCUR_UPDATEABLE |

sessionOpen

Opens the session event handler.

```
public void sessionOpen(SessionEvent evt)
```

Overrides

sessionOpen in class PreparedStatementAgent

| Name | Description |
|------|----------------|
| evt | Session event. |

registerOutParameter

Registers the indexed OUT parameter with specified type.

```
public void registerOutParameter(int index, int iType)
```

| Name | Description |
|-------|--|
| index | Parameter index starting from 1. |
| iType | A JDBC type defined by java.sql.Types. |

Throws

java.sql.SQLException

registerOutParameter

Registers the indexed OUT parameter with specified type and scale.

```
public void registerOutParameter(int index, int iType, int iScale)
```

| Name | Description |
|--------|--|
| index | Parameter index starting from 1. |
| iType | A JDBC type defined by java.sql.Types. |
| iScale | The number of digits to the right of the decimal point. Only applied to DECIMAL and NUMERIC types. |

Throws

java.sql.SQLException

registerOutParameter

Registers the indexed OUT parameter with specified user-named type or REF type.

```
public void registerOutParameter(int index, int iType,
    java.lang.String sType)
```

| Name | Description |
|-------|--|
| index | Parameter index starting from 1. |
| iType | A JDBC type defined by java.sql.Types. |
| tName | The fully-qualified name of the parameter being set. It is intended to be used by REF, STRUCT, DISTINCT, or JAVA_OBJECT. |

Throws

java.sql.SQLException

wasNull

Returns whether or not the last OUT parameter read had the SQL NULL value.

```
public boolean wasNull()
```

Returns

true if the parameter read is SQL NULL; otherwise, false

Throws

java.sql.SQLException

getObject

Gets the value of the indexed parameter as an instance of Object.

```
public java.lang.Object getObject(int index)
```

| Name | Description |
|-------|----------------------------------|
| index | Parameter index starting from 1. |

Returns

The Object value

Throws

java.sql.SQLException

getObject

Gets the value of the indexed parameter as an instance of Object and uses map for the customer mapping of the parameter value.

```
public java.lang.Object getObject(int index, java.util.Map map)
```

| Name | Description |
|-------|--|
| index | Parameter index starting from 1. |
| map | A Map object for mapping from SQL type names for user-defined types to classes in the Java programming language. |

Returns

An Object value

Throws

java.sql.SQLException

getBoolean

Gets the boolean value of the indexed parameter.

```
public boolean getBoolean(int index)
```

| Name | Description |
|-------|----------------------------------|
| index | Parameter index starting from 1. |

Returns

A boolean value

Throws

java.sql.SQLException

getBytes

Gets byte value of the indexed parameter.

```
public byte getByte(int index)
```

| Name | Description |
|-------|----------------------------------|
| index | Parameter index starting from 1. |

Returns

A byte value

Throws

java.sql.SQLException

getShort

Gets short value of the indexed parameter.

```
public short getShort(int index)
```

Returns

A short value

Throws

java.sql.SQLException

getInt

Gets integer value of the indexed parameter.

```
public int getInt(int index)
```

| Name | Description |
|-------|----------------------------------|
| index | Parameter index starting from 1. |

Returns

A int value

Throws

java.sql.SQLException

getLong

Gets long value of the indexed parameter.

```
public long getLong(int index)
```

| Name | Description |
|-------|----------------------------------|
| index | Parameter index starting from 1. |

Returns

A long value

Throws

java.sql.SQLException

getFloat

Gets float value of the indexed parameter.

```
public float getFloat(int index)
```

| Name | Description |
|-------|----------------------------------|
| index | Parameter index starting from 1. |

Returns

A float value

Throws

java.sql.SQLException

getDouble

Gets double value of the indexed parameter.

```
public double getDouble(int index)
```

| Name | Description |
|-------|----------------------------------|
| index | Parameter index starting from 1. |

Returns

A float value

Throws

java.sql.SQLException

getBigDecimal

Gets decimal value of the indexed parameter.

```
public java.math.BigDecimal getBigDecimal(int index)
```

| Name | Description |
|-------|----------------------------------|
| index | Parameter index starting from 1. |

Returns

A BigDecimal object

Throws

java.sql.SQLException

getDate

Gets date value of the indexed parameter.

```
public java.sql.Date getDate(int index)
```

| Name | Description |
|-------|----------------------------------|
| index | Parameter index starting from 1. |

Returns

A Date object

Throws

java.sql.SQLException

getDate

Gets date value of the indexed parameter with time zone from calendar.

```
public java.sql.Date getDate(int index, java.util.Calendar calendar)
```

| Name | Description |
|-------|--|
| index | Parameter index starting from 1. |
| cal | The Calendar object used to construct the timestamp. |

Returns

A Date object

Throws

java.sql.SQLException

getTime

Gets time value of the indexed parameter.

```
public java.sql.Time getTime(int index)
```

| Name | Description |
|-------|----------------------------------|
| index | Parameter index starting from 1. |

Returns

A Time object

Throws

java.sql.SQLException

getTime

Gets time value of the indexed parameter with time zone from calendar.

```
public java.sql.Time getTime(int index, java.util.Calendar calendar)
```

| Name | Description |
|-------|--|
| index | Parameter index starting from 1. |
| cal | The Calendar object used to construct the timestamp. |

Returns

A Time object

Throws

java.sql.SQLException

getTimeStamp

Gets timestamp value of the indexed parameter.

```
public java.sql.timestamp getTimeStamp(int index)
```

| Name | Description |
|-------|----------------------------------|
| index | Parameter index starting from 1. |

Returns

A Timestamp object

Throws

java.sql.SQLException

getTimeStamp

Gets timestamp value of the indexed parameter.

```
public java.sql.timestamp getTimeStamp(int index, java.util.Calendar calendar)
```

| Name | Description |
|-------|--|
| index | Parameter index starting from 1. |
| cal | The Calendar object used to construct the timestamp. |

Returns

A Timestamp object

Throws

java.sql.SQLException

getString

Gets string value of the indexed parameter.

```
public java.lang.String getString(int index)
```

| Name | Description |
|-------|----------------------------------|
| index | Parameter index starting from 1. |

Returns

A String object

Throws

java.sql.SQLException

getBytes

Gets byte array value of the indexed parameter.

```
public byte[] getBytes(int index)
```

| Name | Description |
|-------|----------------------------------|
| index | Parameter index starting from 1. |

Returns

An array of bytes

Throws

java.sql.SQLException

getArray

Gets Array value of the indexed parameter.

```
public java.sql.Array getArray(int index)
```

| Name | Description |
|-------|----------------------------------|
| index | Parameter index starting from 1. |

Returns

An Array object

Throws

java.sql.SQLException

getBlob

Gets Blob value of the indexed parameter.

```
public java.sql.Blob getBlob(int index)
```

| Name | Description |
|-------|----------------------------------|
| index | Parameter index starting from 1. |

Returns

A Blob object

Throws

java.sql.SQLException

getClob

Gets Clob value of the indexed parameter.

```
public java.sql.Clob getClob(int index)
```

| Name | Description |
|-------|----------------------------------|
| index | Parameter index starting from 1. |

Returns

A Blob object

Throws

java.sql.SQLException

getRef

Gets Ref value of the indexed parameter.

```
public java.sql.Ref getRef(int index)
```

| Name | Description |
|-------|----------------------------------|
| index | Parameter index starting from 1. |

Returns

A Ref object

Throws

java.sql.SQLException

5.6 com.stc.eways.jdbcx.TableResultSet Class

```
java.lang.Object  
|  
+ -- com.stc.eways.jdbcx.StatementAgent  
|  
+ -- com.stc.eways.jdbcx.TableResultSet
```

All Implemented Interfaces

ResetEventListener, SessionEventListener

```
public abstract class TableResultSet  
extends StatementAgent
```

ResultSet to map selected records of table in the database

Methods of the TableResultSet

[absolute](#) on page 123

[beforeFirst](#) on page 124

[deleteRow](#) on page 127

[first](#) on page 123

[getAsciiStream](#) on page 126

[getBinaryStream](#) on page 126

[getCharacterStream](#) on page 127

[isAfterLast](#) on page 125

[afterLast](#) on page 125

[cancelRowUpdates](#) on page 128

[findColumn](#) on page 125

[getAsciiStream](#) on page 126

[getBinaryStream](#) on page 126

[getCharacterStream](#) on page 126

[insertRow](#) on page 127

[isBeforeFirst](#) on page 125

[isFirst](#) on page 124

[last](#) on page 124

[moveToInsertRow](#) on page 127

[previous](#) on page 122

[rowDeleted](#) on page 128

[rowUpdated](#) on page 128

[updateRow](#) on page 127

[isLast](#) on page 124

[moveToCurrentRow](#) on page 128

[next](#) on page 122

[relative](#) on page 123

[rowInserted](#) on page 128

[select](#) on page 122

[wasNull](#) on page 129

select

Select table records.

```
public void select(java.lang.String sWhere)
```

| Name | Description |
|--------|--------------------------------|
| sWhere | Where condition for the query. |

Throws

java.sql.SQLException

next

Navigate one row forward.

```
public boolean next()
```

Returns

true if the move to the next row is successful; otherwise, false.

Throws

java.sql.SQLException

previous

Navigate one row backward. It should be called only on ResultSetAgent objects that are TYPE_SCROLL_SENSITIVE or TYPE_SCROLL_INSENSITIVE.

```
public boolean previous()
```

Returns

true if the cursor successfully moves to the previous row; otherwise, false.

Throws

java.sql.SQLException

absolute

Move cursor to specified row number. It should be called only on ResultSetAgent objects that are TYPE_SCROLL_SENSITIVE or TYPE_SCROLL_INSENSITIVE.

| Name | Description |
|------|--------------------------|
| row | An integer other than 0. |

Returns

true if the cursor successfully moves to the specified row; otherwise, false.

Throws

java.sql.SQLException

relative

Move the cursor forward or backward a specified number of rows. It should be called only on ResultSetAgent objects that are TYPE_SCROLL_SENSITIVE or TYPE_SCROLL_INSENSITIVE.

```
public boolean relative(int rows)
```

| Name | Description |
|------|---|
| rows | The number of rows to move the cursor, starting at the current row. If the rows are positive, the cursor moves forward; if the rows are negative, the cursor moves backwards. |

Returns

true if the cursor successfully moves to the number of rows specified; otherwise, false.

Throws

java.sql.SQLException

first

Move the cursor to the first row of the result set. It should be called only on ResultSetAgent objects that are TYPE_SCROLL_SENSITIVE or TYPE_SCROLL_INSENSITIVE.

```
public boolean first()
```

Returns

true if the cursor successfully moves to the first row; otherwise, false.

Throws

java.sql.SQLException

isFirst

Check if the cursor is on the first row. It should be called only on ResultSetAgent objects that are TYPE_SCROLL_SENSITIVE or TYPE_SCROLL_INSENSITIVE.

```
public boolean isFirst()
```

Returns

true if the cursor successfully moves to the first row; otherwise, false.

Throws

java.sql.SQLException

last

Move to the last row of the result set. It should be called only on ResultSetAgent objects that are TYPE_SCROLL_SENSITIVE or TYPE_SCROLL_INSENSITIVE.

```
public boolean last()
```

Returns

true if the cursor successfully moves to the last row; otherwise, false.

Throws

java.sql.SQLException

isLast

Check if the cursor is positioned on the last row. It should be called only on ResultSetAgent objects that are TYPE_SCROLL_SENSITIVE or TYPE_SCROLL_INSENSITIVE.

```
public boolean isLast()
```

Returns

true if the cursor is on the last row; otherwise, false

Throws

java.sql.SQLException

beforeFirst

Move the cursor before the first row. It should be called only on ResultSetAgent objects that are TYPE_SCROLL_SENSITIVE or TYPE_SCROLL_INSENSITIVE.

```
public void beforeFirst()
```

Throws

java.sql.SQLException

isBeforeFirst

Check if the cursor is positioned before the first row. It should be called only on ResultSetAgent objects that are TYPE_SCROLL_SENSITIVE or TYPE_SCROLL_INSENSITIVE.

```
public boolean isBeforeFirst()
```

Returns

true if the cursor successfully moves before the first row; otherwise, false

Throws

java.sql.SQLException

afterLast

Move the cursor after the last row. It should be called only on ResultSetAgent objects that are TYPE_SCROLL_SENSITIVE or TYPE_SCROLL_INSENSITIVE.

```
public void afterLast()
```

Throws

java.sql.SQLException

isAfterLast

Returns true if the cursor is positioned after the last row. It should be called only on ResultSetAgent objects that are TYPE_SCROLL_SENSITIVE or TYPE_SCROLL_INSENSITIVE.

```
public boolean isAfterLast()
```

Returns true if the cursor successfully moves after the last row; otherwise, false.

Throws

java.sql.SQLException

findColumn

Finds the index of the named column.

```
public int findColumn(java.lang.String index)
```

Throws

java.sql.SQLException

getAsciiStream

Returns the column data as an AsciiStream.

```
public java.io.InputStream getAsciiStream(int index)
```

Throws

java.sql.SQLException

getAsciiStream

Returns the column data as an AsciiStream.

```
public java.io.InputStream getAsciiStream(java.lang.String  
columnName)
```

Throws

java.sql.SQLException

getBinaryStream

Returns the column data as BinaryStream.

```
public java.io.InputStream getBinaryStream(int index)
```

Throws

java.sql.SQLException

getBinaryStream

Returns the column data as BinaryStream.

```
public java.io.InputStream getBinaryStream(java.lang.String  
columnName)
```

Throws

java.sql.SQLException

getCharacterStream

Returns the column data as CharacterStream.

```
public java.io.Reader getCharacterStream(int index)
```

Throws

java.sql.SQLException

getCharacterStream

Returns the column data as `CharacterStream`.

```
public java.io.Reader getCharacterStream(java.lang.String columnName)
```

Throws

`java.sql.SQLException`

refreshRow

Refreshes the current row with its most recent value from the database.

```
public void refreshRow()
```

Throws

`java.sql.SQLException`

insertRow

Inserts the contents of the current row into the database.

```
public void insertRow()
```

Throws

`java.sql.SQLException`

updateRow

Updates the contents of the current row into the database.

```
public void updateRow()
```

Throws

`java.sql.SQLException`

deleteRow

Deletes the contents of the current row from the database.

```
public void deleteRow()
```

Throws

`java.sql.SQLException`

moveToInsertRow

Moves the current position to a new insert row.

```
public void moveToInsertRow()
```

Throws

java.sql.SQLException

moveToCurrentRow

Moves the current position to the current row. It is used after you insert a row.

```
public void moveToCurrentRow()
```

Throws

java.sql.SQLException

cancelRowUpdates

Cancels any updates made to this row.

```
public void cancelRowUpdates()
```

Throws

java.sql.SQLException

rowInserted

Returns true if the current row has been inserted.

```
public boolean rowInserted()
```

Throws

java.sql.SQLException

rowUpdated

Returns true if the current row has been updated.

```
public boolean rowUpdated()
```

Throws

java.sql.SQLException

rowDeleted

Returns true if the current row has been deleted.

```
public boolean rowDeleted()
```

Throws

java.sql.SQLException

wasNull

Returns true if the last data retrieved is NULL.

```
public boolean wasNull()
```

Throws

```
java.sql.SQLException
```

5.7 \$DB Configuration Node Methods

The following methods are associated with the \$DB configuration node in the Collaboration. These methods are driver and database specific and will vary from database to database. It is recommended that you consult your specific databases documentation.

These methods are contained in the following classes:

- [com_stc_jdbcx_sqlservercfg.DataSource](#) on page 129
- [com_stc_jdbcx_sqlservercfg](#) on page 138

5.8 com_stc_jdbcx_sqlservercfg.DataSource

Java.lang.Object

|

```
+ - - com_stc_jdbcx_sqlservercfg.Com_stc_jdbcx_sqlservercfg.DataSource
```

Direct Known Subclasses

```
public class Com_stc_jdbcx_sqlservercfg.DataSource
extends java.lang.Object
```

Methods of the sqlserver.DataSource

| | |
|---|---|
| getClass on page 130 | getConnectionMethod on page 131 |
| getDatabaseName on page 133 | getPassword on page 135 |
| getPortNumber on page 132 | getSelectMethod on page 136 |
| getServerName on page 132 | getTimeout on page 137 |
| getUserName on page 134 | hasClass on page 130 |
| hasConnectionMethod on page 131 | hasDatabaseName on page 133 |
| hasPassword on page 135 | hasPortNumber on page 133 |
| hasSelectMethod on page 137 | hasServerName on page 132 |
| hasTimeout on page 138 | hasUserName on page 134 |

| | |
|---|--|
| omitClass on page 130 | omitConnectionMethod on page 131 |
| omitDatabaseName on page 134 | omitPassword on page 135 |
| omitPortNumber on page 133 | omitSelectMethod on page 137 |
| omitServerName on page 132 | omitTimeout on page 138 |
| omitUserName on page 134 | setClass on page 130 |
| setConnectionMethod on page 131 | setDatabaseName on page 133 |
| setPassword on page 135 | setPassword_AsIs on page 135 |
| setPortNumber on page 133 | setServerName on page 132 |
| setTimeout on page 137 | setUserName on page 134 |

getClass

Retrieves the name of the Java class in the JDBC driver that implements the `ConnectionPoolDataSource` interface.

```
public java.lang.String getClass_()
```

Returns

`java.lang.String`

setClass

Sets the name of the Java class in the JDBC driver that implements the `ConnectionPoolDataSource` interface.

```
public void setClass_(java.lang.string val)
```

Returns

None.

hasClass

Returns true if the java class has been set.

```
public boolean hasClass_()
```

Returns

True.

omitClass

Sets the java class name to null.

```
public void omitClass_()
```

Returns

None.

getConnectionMethod

Retrieves the connection method.

```
public java.lang.String getConnectionMethod()
```

Returns

java.lang.String

setConnectionMethod

Specifies which method is used to connect to the database server.

Pooled Data Source - a `ConnectionPoolDataSource` object for creating `PooledConnection` objects. A `PooledConnection` object represents a physical connection and is cached in memory for reuse which saves the overhead of establishing a new connection. This is implemented by the driver.

XA Data Source - an `XADataSource` object for creating `XAConnection` objects, connections that can be used for distributed transactions.

One should make sure that the class specified in "class" parameter supports the connection method that is used.

The default is "Pooled Data Source".

If XA Data Source is selected, make sure to set `SelectMethod` to cursor mode.

```
public void setConnectionMethod(java.lang.String val)
```

Returns

None.

hasConnectionMethod

Returns true if the connection method has been set.

```
public boolean hasConnectionMethod()
```

Returns

True.

omitConnectionMethod

Sets the connection method to null.

```
public void omitConnectionMethod()
```

Returns

None.

getServerName

Retrieves the database server host name.

```
public java.lang.String getServerName()
```

Returns

java.lang.String.

setServerName

Sets the database server host name.

```
public void setServerName (java.lang.String val)
```

Returns

None.

hasServerName

Returns true if the server name has been set.

```
public boolean hasServerName()
```

Returns

True.

omitServerName

Sets the server name to null.

```
public void omitServerName()
```

Returns

None.

getPortNumber

Retrieves the I/O port number of the database server.

```
public long getPortNumber()
```

Returns

None.

setPortNumber

Sets the I/O port number of the database server.

```
public void setPortNumber(long val)
```

Returns

None.

hasPortNumber

Returns true if the port number has been set.

```
public boolean hasPortNumber()
```

Returns

None.

omitPortNumber

Sets the port number to null.

```
public void omitPortNumber()
```

Returns

None.

getDatabaseName

Retrieves the name of the database instance.

```
public java.lang.String getDatabaseName()
```

Returns

java.lang.String.

setDatabaseName

Sets the name of the database instance.

```
public void setDatabaseName(java.lang.String val)
```

Returns

None.

hasDatabaseName

Returns true if the database name has been set.

```
public boolean hasDatabaseName()
```

Returns

True.

omitDatabaseName

Sets the database name to null.

```
public void omitDatabaseName()
```

Returns

None.

getUserName

Retrieves the user name the e*Way uses to connect to the database.

```
public java.lang.String getUserName()
```

Returns

java.lang.String

setUserName

Set the user name the e*Way uses to connect to the database.

```
public void setUserName(java.lang.String val)
```

Return

None.

hasUserName

Returns true if the user name has been set.

```
public boolean hasUserName()
```

Returns

True.

omitUserName

Sets the user name to null.

```
public void omitUserName()
```

Returns

None.

getPassword

Retrieves the password the e*Way uses to connect to the database.

```
public java.lang.String getPassword()
```

Returns

java.lang.String.

setPassword

Sets the password (will be internally encrypted) the e*Way uses to connect to the database.

```
public void setPassword(java.lang.String val)
```

Returns

None.

setPassword_AsIs

Sets the password (will not be encrypted) the e*Way uses to connect to the database.

```
public void setPassword_AsIs(java.lang.String val)
```

Returns

None.

hasPassword

Returns true if the password has been set.

```
public boolean hasPassword()
```

Returns

True.

omitPassword

Sets the password to null.

```
public void omitPassword()
```

Returns

None.

getPassword

Retrieves the password the e*Way uses to connect to the database.

```
public java.lang.String getPassword()
```

Returns

java.lang.String.

setPassword

Sets the password (will be encrypted internally) the e*Way uses to connect to the database.

```
public void setPassword (java.lang.String val)
```

Returns

None.

setPassword_AsIs

Sets the password (will not be encrypted internally) the e*Way uses to connect to the database.

```
public void setPassword_AsIs (java.lang.String val)
```

Returns

None.

hasPassword

Returns true if password has been set.

```
public boolean hasPassword()
```

Returns

True.

omitPassword

Sets the password to null.

```
public void omitPassword()
```

Returns

None.

getSelectMethod

Retrieves the Select Method.

```
public java.lang.String getSelectMethod()
```


Returns

`java.lang.String`.

setSelectMethod

Determines whether database cursors are used for Select statements.

Performance of the DataDirect SQL driver when performing queries is affected by the choice of direct or cursor for SelectMethod.

For XA operations, this parameter needs to be set to cursor mode.

```
public void setSelectMethod (java.lang.String val)
```

Returns

None.

hasSelectMethod

Returns true if the Select Method has been set.

```
public boolean hasSelectMethod()
```

Returns

True.

omitSelectMethod

Sets the Select Method to null.

```
public void omitSelectMethod()
```

Returns

None.

getTimeout

Retrieves the login timeout in seconds.

```
public java.lang.String getTimeout()
```

Returns

`java.lang.String`.

setTimeout

Sets the login timeout in seconds.

```
public void setTimeout (java.lang.String val)
```

Returns

None.

hasTimeout

Returns true if the login time out has been set.

```
public boolean hasTimeout()
```

Returns

True.

omitTimeout

Sets the time out to null.

```
public void omitTimeout()
```

Returns

None.

5.9 com_stc_jdbcx_sqlservercfg

```
com_stc_jdbcx_sqlservercfg.Com_stc_jdbcx_sqlservercfg
```

Direct Known Subclasses

```
public class Com_stc_jdbcx_sqlservercfg
```

Methods of the sqlservercfg

| |
|---|
| getDataSource on page 138 |
|---|

| |
|---|
| setDataSource on page 138 |
|---|

getDataSource

Returns the DataSource object.

```
public Com stc jdbcx sqlservercfg.DataSource getDataSource()
```

Returns

None.

setDataSource

Sets the DataSource object.

```
public void setDataSource (Com stc jdbcx sqlservercfg.DataSource val)
```

Returns

None.

Index

B

Batch Operations 43

C

class 13

class parameter

Connector settings 16

Collaboration Service

Java 23

component relationship 23

components, Java-enabled 23

configuration file sections

Connector settings 15–16

configuration parameters

class 16

DatabaseName 14

password 15

PortNumber 14

ServerName 14

type 15

user name 14

configuration steps, schema 45

configuring e*Way connections 12–16

connection establishment mode 16

connection inactivity timeout 17

Connection Manager 17

connection types, JDBC 15

connection verification interval 17

connector objects, JDBC 16

Connector settings 15–16

Creating a new ETD 24

creating e*Way connections 12

D

Database Configuration Node 43

DatabaseName parameter 14

DataDirect 2.2 Drivers for XA Mode 21

DBWizard ETD Builder 24

delete Operation 38

E

e*Way connections

configuring 12–16

creating 12

Editing an Existing .XSC 33

Element 24

executeBusinessRules() 23

Executing Stored Procedures 39

F

Field 24

H

host system requirements 11

I

insert Operation 35

Installing on Windows 20

J

Java Collaboration Service 23

Java ETD Builder 23–33

Java-enabled components 23

JDBC 24

connection types 15

connector objects 16

M

Manipulating the ResultSet and Update Count 40

Method 24

Microsoft ODBC driver for SQL Server 11

Mixing XA-Compliant and XA-Noncompliant

e*Way Connections 16

O

ODBC drivers 11

P

Parameter 24

password parameter 15

PortNumber parameter 14

Prepared Statement 42

Q

query Operation 35

R

requirements
 host system 11
 system 10
ResultSets 34

S

schema configuration steps 45
SelectMethod 15
Server Name parameter 14
Stceway Connection 19
stcjdbcx.jar 10, 50
system requirements 10

T

The Prepared Statement ETD 33
The Stored Procedure 39
The Stored Procedure ETD 33
The Table ETD 33
The View ETD 33
timeout 15
transaction mode 16
type parameter 15

U

UNIX 21
update Operation 37
user name parameter 14
userInitialize() 23
userTerminate() 23
Using ETDs with Tables, Views, Stored Procedures,
and Prepared Statements 34
Using the DBWizard 24