



Sun Management Center 3.5 Performance Reporting Manager User's Guide

Sun Microsystems, Inc.
4150 Network Circle
Santa Clara, CA 95054
U.S.A.

Part No: 816-7417-10
May, 2003

Copyright 2003 Sun Microsystems, Inc. 4150 Network Circle, Santa Clara, CA 95054 U.S.A. All rights reserved.

This product or document is protected by copyright and distributed under licenses restricting its use, copying, distribution, and decompilation. No part of this product or document may be reproduced in any form by any means without prior written authorization of Sun and its licensors, if any. Third-party software, including font technology, is copyrighted and licensed from Sun suppliers.

Parts of the product may be derived from Berkeley BSD systems, licensed from the University of California. UNIX is a registered trademark in the U.S. and other countries, exclusively licensed through X/Open Company, Ltd.

Sun, Sun Microsystems, the Sun logo, docs.sun.com, AnswerBook, AnswerBook2, Java and Solaris are trademarks, registered trademarks, or service marks of Sun Microsystems, Inc. in the U.S. and other countries. All SPARC trademarks are used under license and are trademarks or registered trademarks of SPARC International, Inc. in the U.S. and other countries. Products bearing SPARC trademarks are based upon an architecture developed by Sun Microsystems, Inc. Netscape Navigator is a trademark or registered trademark of Netscape Communications Corporation in the United States and other countries. Netscape is a trademark or registered trademark of Netscape Communications Corporation in the United States and other countries. This distribution might include materials developed by third parties, including Halcyon Inc. and Oracle Corporation.

The OPEN LOOK and Sun™ Graphical User Interface was developed by Sun Microsystems, Inc. for its users and licensees. Sun acknowledges the pioneering efforts of Xerox in researching and developing the concept of visual or graphical user interfaces for the computer industry. Sun holds a non-exclusive license from Xerox to the Xerox Graphical User Interface, which license also covers Sun's licensees who implement OPEN LOOK GUIs and otherwise comply with Sun's written license agreements.

Federal Acquisitions: Commercial Software—Government Users Subject to Standard License Terms and Conditions.

DOCUMENTATION IS PROVIDED "AS IS" AND ALL EXPRESS OR IMPLIED CONDITIONS, REPRESENTATIONS AND WARRANTIES, INCLUDING ANY IMPLIED WARRANTY OF MERCHANTABILITY, FITNESS FOR A PARTICULAR PURPOSE OR NON-INFRINGEMENT, ARE DISCLAIMED, EXCEPT TO THE EXTENT THAT SUCH DISCLAIMERS ARE HELD TO BE LEGALLY INVALID.

Copyright 2003 Sun Microsystems, Inc. 4150 Network Circle, Santa Clara, CA 95054 U.S.A. Tous droits réservés.

Ce produit ou document est protégé par un copyright et distribué avec des licences qui en restreignent l'utilisation, la copie, la distribution, et la décompilation. Aucune partie de ce produit ou document ne peut être reproduite sous aucune forme, par quelque moyen que ce soit, sans l'autorisation préalable et écrite de Sun et de ses bailleurs de licence, s'il y en a. Le logiciel détenu par des tiers, et qui comprend la technologie relative aux polices de caractères, est protégé par un copyright et licencié par des fournisseurs de Sun.

Des parties de ce produit pourront être dérivées du système Berkeley BSD licenciés par l'Université de Californie. UNIX est une marque déposée aux Etats-Unis et dans d'autres pays et licenciée exclusivement par X/Open Company, Ltd.

Sun, Sun Microsystems, le logo Sun, docs.sun.com, AnswerBook, AnswerBook2, Java et Solaris sont des marques de fabrique ou des marques déposées, ou marques de service, de Sun Microsystems, Inc. aux Etats-Unis et dans d'autres pays. Toutes les marques SPARC sont utilisées sous licence et sont des marques de fabrique ou des marques déposées de SPARC International, Inc. aux Etats-Unis et dans d'autres pays. Les produits portant les marques SPARC sont basés sur une architecture développée par Sun Microsystems, Inc. Netscape Navigator est une marque de Netscape Communications Corporation aux Etats-Unis et dans d'autres pays. Netscape est une marque de Netscape Communications Corporation aux Etats-Unis et dans d'autres pays. Cette distribution peut comprendre des composants développés par des tierces parties, dont Halcyon Inc. et Oracle Corporation.

L'interface d'utilisation graphique OPEN LOOK et Sun™ a été développée par Sun Microsystems, Inc. pour ses utilisateurs et licenciés. Sun reconnaît les efforts de pionniers de Xerox pour la recherche et le développement du concept des interfaces d'utilisation visuelle ou graphique pour l'industrie de l'informatique. Sun détient une licence non exclusive de Xerox sur l'interface d'utilisation graphique Xerox, cette licence couvrant également les licenciés de Sun qui mettent en place l'interface d'utilisation graphique OPEN LOOK et qui en outre se conforment aux licences écrites de Sun.

CETTE PUBLICATION EST FOURNIE "EN L'ETAT" ET AUCUNE GARANTIE, EXPRESSE OU IMPLICITE, N'EST ACCORDEE, Y COMPRIS DES GARANTIES CONCERNANT LA VALEUR MARCHANDE, L'APTITUDE DE LA PUBLICATION A REpondre A UNE UTILISATION PARTICULIERE, OU LE FAIT QU'ELLE NE SOIT PAS CONTREFAISANTE DE PRODUIT DE TIERS. CE DENI DE GARANTIE NE S'APPLIQUERAIT PAS, DANS LA MESURE OU IL SERAIT TENU JURIDIQUEMENT NUL ET NON AVENU.



030411 @5533



Contents

Preface	7
1 Introduction to Performance Reporting Manager	11
About Performance Reporting Manager	11
Data Collection Process	13
Raw Data	13
Roll-up Process	13
Data For Reports	14
Report Manager	15
Report Requests	15
Categories and Subcategories	15
Output Format Options For Reports	16
Tabular Report	17
Line Graph Report	17
Bar Chart Report	18
Pie Chart Report	19
2 Performance Reporting Manager Installation and Setup	21
Performance Reporting Manager Software	21
Installing Performance Reporting Manager	23
▼ To Install Performance Reporting Manager During Sun Management Center 3.5 Installation	24
▼ To Install Performance Reporting Manager Individually	24
▼ To Install Performance Reporting Manager During Sun Management Center 3.5 Installation on the Microsoft Windows Platform	25

▼ To Install Performance Reporting Manager Individually on the Microsoft Windows Platform	26
Setting Up Performance Reporting Manager	26
▼ To Set Up Performance Reporting Manager During Sun Management Center 3.5 Installation	27
▼ To Set Up Performance Reporting Manager Individually	27
Before Generating Reports	29
Backup and Restore	29
Agent Update Feature	30
Upgrading to Performance Reporting Manager 3.5	30
Uninstalling Performance Reporting Manager	31
▼ To Remove the Performance Reporting Manager Software	31
3 Standard Reports	33
Standard Reports Overview	33
Standard Performance Reports	34
Standard System Configuration Reports	35
Report Manager GUI	36
▼ To Start Report Manager	37
Generating Reports	38
▼ To Generate a Standard Report	38
4 Custom Reports	41
Custom Reports Overview	41
Adding a New Category or New Subcategory	42
▼ To Create a New Category	42
▼ To Create a New Subcategory	42
Custom Report Templates	43
Common Custom Report Fields	44
Performance Report Fields	46
Custom System Configuration Report Fields	47
Creating or Modifying a Report Request	48
▼ To Create a New Report Request by Modifying a Standard Report Request	48
▼ To Create a New Report Request	49
▼ To Modify a Report Request	49
Data Properties	50
Data Availability	51

	Data Properties Selection	53
	Data Properties Logging	55
	Group Logging	56
	Data Collection Options	59
	▼ To Enable or Disable Data Collection on a Host	60
	Filtering Reports	61
	Composite Report Requests	62
	▼ To Create a Composite Report Request	62
5	Report Options	63
	Report Options Overview	63
	Scheduling Reports	64
	▼ To Schedule a Report	64
	▼ To Remove a Scheduled Report	64
	Options for Viewing Report Output	65
	▼ To View a Report as HTML in a Browser	65
	▼ To Post to a Sun Management Center Web Server	65
	▼ To Export Data	66
	Accessing Reports From the Sun Management Center Web Server	66
	▼ To Access a Posted Report	66
	▼ To Delete a Posted Report	67
	Line Graph Report Viewing Options	68
	Customizing Line Graph Reports	69
	Customizing the Appearance of Reports	69
	Line Breaks	70
A	Reference Information	71
	Default Logging Properties	71
	Predefined Options for Standard Reports	72
B	Installing Using the Command Line	75
	Installing the Performance Reporting Manager Software	75
	▼ To Install Performance Reporting Manager During Sun Management Center 3.5 Installation	76
	▼ To Install Performance Reporting Manager Individually	76
	Setting Up Performance Reporting Manager	77
	▼ To Set Up Performance Reporting Manager Individually	77

Removing the Performance Reporting Manager Software	78
▼ To Remove Performance Reporting Manager Using <code>es-uninst</code>	78
Glossary	79
Index	81

Preface

The *Sun Management Center 3.5 Performance Reporting Manager User's Guide* provides instructions on how to use Performance Reporting Manager to create system management reports.

Who Should Use This Book

This document is intended for users familiar with the Sun™ Management Center product. Therefore, many terms and concepts specific to the Sun Management Center are not explained here. For more information about Sun Management Center, refer to the *Sun Management Center 3.5 User's Guide*.

How This Book Is Organized

This document describes all services offered by Performance Reporting Manager. It includes the following chapters:

- Chapter 1 provides an introduction to Performance Reporting Manager.
- Chapter 2 includes installation and setup instructions.
- Chapter 3 includes instructions for using standard reports.
- Chapter 4 includes instructions for using custom reports.
- Chapter 5 includes instructions for using report options.
- Appendix A provides reference information for Performance Reporting Manager.
- Appendix B includes instructions for installation and setup using the command line.

To view license terms, attribution, and copyright statements for open source software included in this release, the default path is
`/cdrom/sunmc_3_5_sparc/image/Webserver/Solaris_9/SUNWtcatr/install/copyright`.
If you are using Solaris 8 software, substitute `Solaris_8` for `Solaris_9` in the path.

Access to Latest Information on Sun Management Center

The latest information on Sun Management Center 3.5 software and add-on products is available at <http://www.sun.com/solaris/sunmanagementcenter>.

About UNIX Commands

This document might not contain information on basic UNIX[®] commands and procedures such as shutting down the system, booting the system, and configuring devices.

See one or more of the following documents for this information:

- *Solaris Handbook for Sun Peripherals*
- Online documentation for the Solaris[™] operating environment
- Other software documentation that you received with your system

Typographic Conventions

Typeface	Meaning	Examples
AaBbCc123	The names of commands, files, and directories; on-screen computer output	Edit your <code>.login</code> file. Use <code>ls -a</code> to list all files. % You have mail.

Typeface	Meaning	Examples
AaBbCc123	What you type, when contrasted with on-screen computer output	%su Password:
<i>AaBbCc123</i>	Book titles, new words or terms, words to be emphasized. Replace command-line variables with real names or values.	Read Chapter 6 in the <i>User's Guide</i> . These are called <i>class</i> options. You <i>must</i> be superuser to do this. To delete a file, type <code>rm filename</code> .

Shell Prompts

Shell	Prompt
C shell	<i>machine-name%</i>
C shell superuser	<i>machine-name#</i>
Bourne shell and Korn shell	\$
Bourne shell and Korn shell superuser	#

Accessing Sun Documentation Online

The docs.sun.comSM Web site enables you to access Sun technical documentation online. You can browse the docs.sun.com archive or search for a specific book title or subject. The URL is `http://www.docs.sun.com`.

Introduction to Performance Reporting Manager

This chapter discusses the following topics:

- “About Performance Reporting Manager” on page 11
- “Data Collection Process” on page 13
- “Report Manager” on page 15
- “Report Requests” on page 15
- “Categories and Subcategories” on page 15
- “Output Format Options For Reports” on page 16

About Performance Reporting Manager

Performance Reporting Manager is an add-on product to Sun™ Management Center 3.5 that enables you to create reports detailing the status of your machines. Performance data is gathered by the history logging capability that is part of Sun Management Center 3.5. Performance reports generated with Performance Reporting Manager use the data collected in this manner.

The product includes 12 standard reports for which the report options are predefined. History logging of the data properties used in standard reports is automatically started by the software. You can also create your own custom reports by selecting options from the report templates that are provided. Performance Reporting Manager can generate the following types of reports:

- Performance
- Hardware system
- Hardware configuration
- Packages
- Patches
- Alarms

To use Performance Reporting Manager, the first step is to install and set up the add-on software. For information about the installation and setup of Performance Reporting Manager, see Chapter 2. For additional information about installing Sun Management Center software, see *Sun Management Center 3.5 Installation and Configuration Guide*.

You can generate any of the standard reports included with the software after the Performance Reporting Manager software is installed and set up . For more information about standard reports, see Chapter 3.

You can also create your own custom reports. You select the format for your report from the available report formats given. Performance Reporting Manager includes four possible format options for viewing reports. For information about creating custom report requests, see Chapter 4.

Reports can provide information about one host, all hosts, or a set of hosts that you designate. In general, data is collected on the agent machines. The data is then transferred to a database on the server machine. You can request a report for any agent machine for which data has been collected. A host must be in the Sun Management Center 3.5 server context to be included in a report. For more information about how the data in reports is collected, see "Data Collection Process" on page 13.

The host name in a report usually refers to the agent machine. One exception is in the case of alarm reports. Alarms resulting from an agent machine that is down or is otherwise not responding will list the name of the server machine.

Any standard or custom report can be scheduled to generate automatically at a regular interval. Additionally, you can save reports in other file formats either for viewing in a web browser, or for using tools to analyze data. For more information regarding these report options, see Chapter 5.

Performance Reporting Manager automatically logs a number of data properties. These properties are predefined for you. For more information regarding this feature, and for other reference information, see Appendix A.

For information about the installation and setup of Performance Reporting Manager using the command line, see Appendix B. For additional information about installing Sun Management Center software using the command line, see *Sun Management Center 3.5 Installation and Configuration Guide*.

Data Collection Process

Before installing and using the software to generate reports, you should have an understanding of how data collection occurs. The Performance Reporting Manager add-on uses the history logging capability for agent machines that is provided by the Sun Management Center 3.5 software. A data collection service is created on the server layer. The following types of data are collected:

- Hardware system data
- Hardware configuration data
- Software package data
- Software patch data
- Performance data
- Process data

The data is logged on the agent machines. The data collection service on the server layer collects this data from the agent machines and then stores it. The data returned in reports comes from the data stored on the server or stored on the agent machine.

Raw Data

Raw data is the term given to data that is logged in the history log files located on the agent machines. The ability to log raw data is a feature of Sun Management Center 3.5 base product. This data can be logged either on a single machine or on a group of machines by using the grouping capability. If you use the grouping capability, the data is logged at the time interval that you specify. For more information about the grouping capability, see “Data Properties” on page 50, and “Managing Group-related Jobs” in *Sun Management Center 3.5 User’s Guide*.

Raw data is retained on the agent machine for eight days. This limit is necessary because the total volume of raw data is very large. Data is purged after eight days. For example, on the ninth day, the first day of raw data is purged from the agent machine. At any given time on the agent machine, the last eight days of raw data is available. Before this data is purged, summary records are preserved. For more information regarding this process, see “Roll-up Process” on page 13.

Roll-up Process

Before raw data is purged, the data is summarized or “rolled-up” at predefined intervals. *Roll-up data* is the term given to the data that has been summarized. Before any raw data is purged, the minimum, maximum, and average values are calculated. These values can be preserved in several ways.

Hourly data is data that is summarized or rolled-up every hour. The raw data for each hour is processed to create a summary record for that hour. For example, if raw data is logged every five minutes, a total of twelve raw records are available in one hour. When data is rolled-up after one hour, the twelve raw records are processed to find the minimum, maximum, and average values during that hour. One summary record is generated for the twelve raw records. The hourly data is first computed on the agent machine. The data is then brought over to the server machine, where the data is added to the database.

The daily, weekly, and monthly values are calculated in a similar manner. The maximum, minimum, and average values are also calculated for each period.

Data is retained in the following manner:

- Hourly data is kept for 7 days.
- Daily data is kept for 5 weeks.
- Weekly data is kept for 12 months.
- Monthly data is kept for 24 months.

Depending upon the time range specified in a report request, the most granular data is returned in a report. For example, if the specified date range is seven days, then hourly data is returned. If the specified date range is beyond the last seven days but within the last five weeks, then daily data is returned.

Data For Reports

Data polling starts after the Performance Reporting Manager software is installed and set up, and once the server is started. The Sun Management Center 3.5 server starts polling the agent machines every hour to collect the data logged on those machines. Logged data is available for reports at the following intervals:

- Hardware system data – 90 minutes after the server is started.
- Patch and package data – 30 minutes after the server is started.
- Hardware configuration data – 90 minutes after the server is started.
- Performance data – 90 minutes after the server is started.

Data on the agent machines is collected at different times. Data is logged on an agent machine after the following time intervals:

- Hardware system and hardware – configuration data Every 12 hours.
- Patch and package data – Every 12 hours.
- Performance data – According to the logging interval specified in the Property Logging Setting dialog box. This data is stored in the history log files.
- Process data – Every 15 minutes.

The data collection service on the server layer collects the data in the following manner:

- Agent machines – Data is collected from those machines that are in the current server context and have the Performance Reporting Manager software installed. The agent machine must be in the server’s topology.
- Performance data – Roll-up data is collected every hour.

Report Manager

The Report Manager GUI is linked to the Sun Management Center 3.5 Java™ console only, and is opened from the Tools menu. You manage all report activity through the Report Manager GUI. For example, from Report Manager you can generate a report, create a new custom report, or schedule a report to generate at regular intervals.

For more information, see “Report Manager GUI” on page 36.

Report Requests

You can either use any of the standard reports included with Performance Reporting Manager, or create your own custom system management reports. For all standard reports, the report specifications and report format are already predefined and saved for your repeated use.

A custom report enables you to specify the content you want included in your reports, as well as the report output format. The saved report specifications are called a *report request*. The report request is based on one of several report templates. A report request is used to generate either a standard or a custom report. The report request is also used to schedule reports to run regularly.

For more information about using standard report requests, see Chapter 3. For more information about creating custom report requests, see Chapter 4.

Categories and Subcategories

The reports in the Report Manager GUI are organized by category and subcategory name. The left pane of Report Manager displays a hierarchy view that shows all the reports by name, both for standard and custom reports.

The first level of the hierarchy contains the category names. The second level of the hierarchy contains the subcategory names. The report requests themselves are found at the third level of the hierarchy. All standard reports are organized in the hierarchy view under predefined categories and subcategories.

You can place any type of custom report under the category or subcategory of your choosing. This ability enables you to control the organization of your reports.

Performance Reporting Manager has the following predefined categories and subcategories:

- Alarm
 - Alarms
- Hardware
 - System
 - Configuration
- Performance
 - CPU
 - Swap
 - Mem (Memory)
- Software
 - Packages
 - Patches

Output Format Options For Reports

Performance Reporting Manager provides four possible output formats for its reports:

- Tabular
- Line graph
- Bar chart
- Pie chart

All four format options are not available for every report. The type of report determines the format options available. Certain formats do not make sense for particular reports, so they are not always given as an option. When creating a custom report request, you choose from the available format options given at that time.

Once a report request is saved, an icon depicting the report format option appears in the hierarchy view in the Report Manager GUI. Each icon is representative of the format chosen for the report. A lock symbol is added to the icon when the request is for a standard report that comes with Performance Reporting Manager. Standard reports have predefined reporting options that you cannot change.

Tabular Report

The tabular report option returns data in table format. The distinctive icon for the tabular option is a table. The table icon is a grid with rows and columns. The cells of the table contain the numerical values for the data properties specified in the report request. You change the column sizing by dragging either edge of the column heading. If the title to a column heading appears truncated or is followed by several dots, you may want to resize the column in order to view all information. Tabular reports can be sorted by clicking on a column, except for performance reports. Performance reports are presorted according to the time field.

When the Real Time range is selected, you can update the information by clicking the Refresh button located at the right top of the table. The new data is added to the top of the table.

Line Graph Report

The line graph report option returns data as graphs with line plots. The line graph icon is a graph with a climbing, jagged line. The number of graphs contained in each report depends on the Graph Orientation option selected in the report request.

When the Real Time range is selected for a report, the graph refreshes according to the refresh interval of the properties being logged. For Real Time reports, only the last hour of data is visible on the graph at any point in time.

Each line graph report has several viewing options. For example, you can use the Zoom button to view finer, more granular data for any point on a line. The Alarms button enables you to obtain the alarm detail for any host included in the report. The Processes button similarly enables you to obtain the top ten CPU processes and the top ten memory processes for any host in the report. For more information, see “Line Graph Report Viewing Options” on page 68.

The following figure shows a sample of a line graph report.

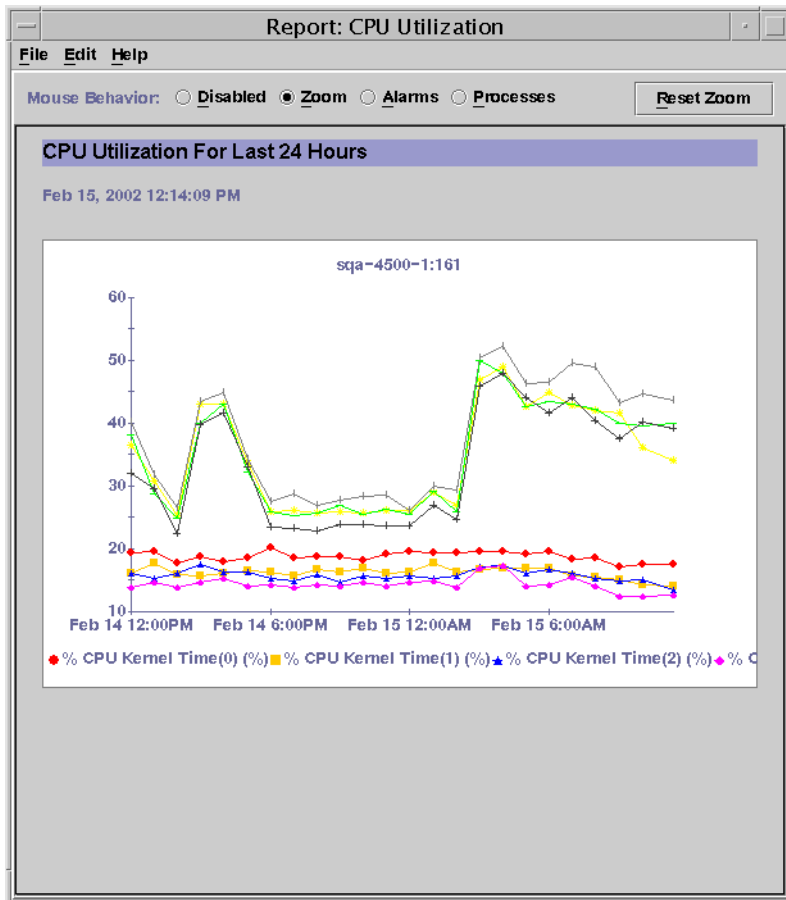


FIGURE 1-1 Sample Line Graph from a Standard Performance Report

Bar Chart Report

The bar chart report option returns data as one or more graphs with bar lines. The bar chart icon is a graph that contains three horizontal bar lines. The number of graphs contained in each bar chart report is controlled by the Graph Orientation option selected in the report request. This format enables you to create a report that provides a visual comparison of data values.

Each bar chart graph has the same viewing options as the line graph report option. See "Line Graph Report" on page 17.

Pie Chart Report

The number of pie chart reports returned depends upon whether the data property `hostname` is included in the report request. The report returns data as one pie chart per host if `hostname` is specified in the report request. If the data property `hostname` is not specified in the report request, only one pie chart is generated in the report. Pie chart reports are not available for performance and hardware configuration reports when the Level of Detail:Summary option is selected. The pie chart icon is a circle with a single line that depicts the radius.

For more information about the selection of data properties in a report request, see “Data Properties” on page 44.

Performance Reporting Manager Installation and Setup

This chapter contains procedures for installing and setting up the Performance Reporting Manager software using the installation and setup wizards. For information about using the command line for installation, see Appendix B.

This chapter discusses the following topics:

- “Performance Reporting Manager Software” on page 21
- “Installing Performance Reporting Manager” on page 23
- “Setting Up Performance Reporting Manager” on page 26
- “Before Generating Reports” on page 29
- “Backup and Restore” on page 29
- “Agent Update Feature” on page 30
- “Upgrading to Performance Reporting Manager 3.5” on page 30
- “Uninstalling Performance Reporting Manager” on page 31

Performance Reporting Manager Software

Performance Reporting Manager is installed as an add-on to the Sun Management Center 3.5 software. The Performance Reporting Manager software runs on the following platforms:

- Solaris™ 2.6, Solaris 7, Solaris 8, and Solaris 9 operating environment
- All the platforms that the Sun Management Center 3.5 agent can run on, and that are supported by Sun Management Center 3.5

The Performance Reporting Manager server layer runs on the Solaris 8 and Solaris 9 operating environments.

The Performance Reporting Manager server layer requires that you have 1 Gbyte RAM and 1 Gbyte swap space available on the machine.

The following disk space requirements are needed before performing the setup procedure on the Performance Reporting Manager software.

- Server – The disk space requirement for the server layer can vary based on the size of the configuration you choose during setup.
 - Small configuration – The disk space requirement is 5 Gbytes. This configuration supports up to 100 agent machines that are monitoring 500 properties.
 - Medium configuration – The disk space requirement is 12 Gbytes. This configuration supports up to 400 agent machines that are monitoring 600 properties.
 - Large configuration – The disk space requirement is 24 Gbytes. This configuration supports up to 750 agents that are monitoring 650 properties.
- Agent – The disk space requirement for the agent layer can vary based on the number of properties being logged and their log interval. For 1000 properties logged at five-minute intervals, the disk space requirement is approximately 80 Mbytes.
- Console – 3 Mbytes is the disk space requirement.

Before installing Performance Reporting Manager, you must have the following software already installed:

- Sun Management Center 3.5 software
- Config-Reader add-on software specific to your platform

For any late-breaking information, please see the *Sun Management Center 3.5 Release Notes*.

The Performance Reporting Manager add-on software consists of the following packages:

- SUNWescrg – Performance Reporting Manager package for Sun Management Center console layer
- SUNWessrg – Performance Reporting Manager package for Sun Management Center server layer
- SUNWesarg – Performance Reporting Manager package for Sun Management Center agent layer
- SUNWesdrg – Performance Reporting Manager package for Sun Management Center server layer
- SUNWeslrg – Performance Reporting Manager package for Sun Management Center server and console layer
- SUNWeshrg – Performance Reporting Manager online help package for Sun Management Center server layer (English)

- SUNWesprm – Performance Reporting Manager package for Sun Management Center server and console layer
- SUNWfrprm – Performance Reporting Manager package for Sun Management Center server and console layer for French Localization
- SUNWjaprm – Performance Reporting Manager package for Sun Management Center server and console layer for Japanese Localization
- SUNWkoprm – Performance Reporting Manager package for Sun Management Center server and console layer for Korean Localization
- SUNWcprm – Performance Reporting Manager package for Sun Management Center server and console layer for Simplified Chinese Localization
- SUNWhprm – Performance Reporting Manager package for Sun Management Center server and console layer for Traditional Chinese Localization
- SUNWfrhrg – Performance Reporting Manager online help package for Sun Management Center server layer for French Localization
- SUNWjahrg – Performance Reporting Manager online help package for Sun Management Center server layer for Japanese Localization
- SUNWkohrg – Performance Reporting Manager online help package for Sun Management Center server layer for Korean Localization
- SUNWchrg – Performance Reporting Manager online help package for Sun Management Center server layer for Simplified Chinese Localization
- SUNWhhrg – Performance Reporting Manager online help package for Sun Management Center server layer for Traditional Chinese Localization

Installing Performance Reporting Manager

You can install the Performance Reporting Manager add-on software either using the installation wizard or the command line. This section discusses how to install the software using the installation wizard. For information about installing using the command line, see Appendix B.

The Performance Reporting Manager software can be installed at the same time that you install the Sun Management Center 3.5 software. Installation can also be done after Sun Management Center 3.5 is already installed.

Performance Reporting Manager must be installed on the following layers of Sun Management Center 3.5:

- Console layer
- Server layer

- Agent layer, on all hosts for which you want to generate reports

▼ To Install Performance Reporting Manager During Sun Management Center 3.5 Installation

- For more information and detailed steps, see “Installing Sun Management Center 3.5 on Solaris” in *Sun Management Center 3.5 Installation and Configuration Guide*.

▼ To Install Performance Reporting Manager Individually

Note – Perform this procedure only after the Sun Management Center 3.5 software has been installed.

1. As superuser (su -), launch the Sun Management Center 3.5 installation wizard by typing:

```
# /opt/SUNWsymon/sbin/es-guiinst
```

where /opt is the directory in which Sun Management Center 3.5 is installed. Substitute the name of the actual directory if it is different on your system.

The Sun Management Center 3.5 installation wizard appears.

2. Provide the source directory of the Performance Reporting Manager files when prompted.

- If installing from the software CD-ROM, type:

```
/cdrom/sunmanagementcenter_3_5/image
```

- If installing from a directory to which the software has been copied, type:

```
disk1/image
```

where *disk1* is the corresponding name of the location where the software was copied.

3. If installing the server layer, select the languages from the Select Language Support panel and click Next.

The Checking for Available Products panel appears. When the progress bar is finished, the Products Already Installed panel appears.

4. Review the list of products already installed and click Next.

The Select Add-on Products panel appears.

- 5. Select Performance Reporting Manager from the list of add-on software to be installed, and click Next.**

The Add-on Products License Agreement panel appears.

- 6. Read the license agreement. You must click the I Agree button to proceed with installation.**

The Confirmation Panel appears.

- 7. Review the Confirmation Panel and click Next.**

The Installation Complete panel is displayed when the software installation is complete.

Once installation of the Performance Reporting Manager software is complete, the setup wizard will guide you through the setup process for the software. For more information, see “Setting Up Performance Reporting Manager” on page 26.

▼ To Install Performance Reporting Manager During Sun Management Center 3.5 Installation on the Microsoft Windows Platform

- 1. Copy the winImage.tar file from the source image.**

The usual location is `disk1/Window/winImage.tar`.

- 2. Use winzip to extract the tar file, and then save the file to a directory.**

- 3. Change to the directory in which the files were placed, if needed.**

- 4. Start the installation wizard by typing:**

```
disk1\install\install.bat
```

The Sun Management Center 3.5 installation wizard for the Microsoft Windows platform appears.

- 5. Provide the name of the installed directory, for example, C:\>\Program Files\SunMC.**

- 6. From the list of products available for installation, select Performance Reporting Manager.**

The software is installed.

▼ To Install Performance Reporting Manager Individually on the Microsoft Windows Platform

1. From the directory from which Sun Management Center 3.5 is installed, run the following .bat file by typing:

```
C:>\Program Files\SUNWsyson\SunMC\SunMC3.5\SunMCInst.bat
```

2. To start the installation wizard, provide the location of the extracted files by typing:

```
C:\install directory\disk1\image
```

3. Select Performance Reporting Manager from the list of add-on software to be installed, and click Next.

The software is installed.

Setting Up Performance Reporting Manager

After installation is complete, you must run the Performance Reporting Manager setup wizard to configure the server and agent layers. The setup procedure is not required for the console layer. You can perform the setup procedure directly after the software installation is complete, or you can exit the installation wizard and perform the setup procedure later. If you did exit after installation, the Sun Management Center 3.5 core server layer must be set up before you start the Performance Reporting Manager setup procedure.

The Sun Management Center 3.5 installation wizard can launch the Performance Reporting Manager setup wizard. The setup wizard appears after the Installation Complete panel when using the installation wizard. The Performance Reporting Manager setup wizard guides you through the setup procedure. For the command-line instructions for running the `setup` script, see Appendix B.

Note – If you later run the re-setup option (`es-setup -F`) for the base Sun Management Center 3.5 software in addition to the Performance Reporting Manager 3.5 software, you can lose the scheduled report information. This can occur when you choose not to preserve the base product's data, but choose to save the Performance Reporting Manager data. In this case, you will need to reschedule the report requests manually. The original report requests are preserved.

▼ To Set Up Performance Reporting Manager During Sun Management Center 3.5 Installation

- For more information and detailed steps, see *Sun Management Center 3.5 Installation and Configuration Guide*.

▼ To Set Up Performance Reporting Manager Individually

Note – Perform this procedure only after the Sun Management Center 3.5 software has been already installed and setup. This procedure assumes that you chose not to set up Performance Reporting Manager 3.5 at the end of the installation process.

1. As superuser (su -), launch the Sun Management Center 3.5 setup wizard by typing:

```
# /opt/SUNWsymon/sbin/es-guisetup
```

where /opt is the directory in which Sun Management Center 3.5 is installed. Substitute the name of the actual directory if it is different on your system.

The Sun Management Center 3.5 setup wizard appears and guides you through the setup process for the software.

Note – If you have installed more than one add-on product, the setup wizard for each product appears automatically. Each wizard guides you through the setup process for its add-on product. Each new setup wizard appears automatically after the setup process is completed for the previous add-on product. The setup wizard for the Performance Reporting Manager software may not be the first to appear, in this case.

2. The Overview panel appears first. Click Next to continue through the wizard panels.
3. Review the list in the Stopping Components panel and click Next.
The Sun Management Center components must be stopped before the setup process can continue.
4. The Advanced Setup Options panel appears if you have completed the setup process for some of the add-on products installed. The remaining add-on software can be setup now. Select from the following and click Next:

- Reconfigure All — The setup process is run again for the base Sun Management Center 3.5 software and all add-on software. All the Sun Management Center software that was previously setup is setup again.
- Configure Addons — The add-on software that was recently installed, but not yet setup, is now setup.

5. Review the list of products in the Setup Complete panel and click Next.

The Select Add-on Products panel appears. All products newly installed on the system that will be set up are listed. You are also given the option to run setup again on any product that has already been set up.

6. Confirm that Performance Reporting Manager appears as a product to be set up now and click Next.

The Performance Reporting Manager setup progress bar appears.

- If you are setting up the agent layer, after the progress bar is done go to Step 10.
- If you are setting up the server layer, the Performance Reporting Manager DB Size panel appears after the progress bar is done. Go to Step 7.

7. From the Performance Reporting Manager DB Size panel, provide the desired database size by selecting the radio button next to Small, Medium, or Large, and click Next.

The three sizes to select from are based on the number of agent machines and data properties you will monitor. For more information, see “Performance Reporting Manager Software” on page 21.

8. Provide the full path to three directories in the Performance Reporting Manager DB Directories panel and click Next.

You are prompted in a single panel for three data file locations. While you can enter the same directory three times, try to use three different directories located on three different filesystems. This separation reduces disk I/O contention and results in better product performance.

The space required depends upon the size of the configuration you choose during setup. The data file locations require disk space as listed in the following table.

TABLE 2-1 Data Directory Sizes For Server Layer

Configuration Size	First Directory Size	Second Directory Size	Third Directory Size
Small	2048 MB	1536 MB	1536 MB
Medium	5120 MB	4096 MB	3072 MB
Large	8192 MB	7168 MB	7168 MB

The Performance Reporting Manager DB Configuration Panel appears.

9. Once the progress bar in the Performance Reporting Manager DB Configuration Panel completes, click Next.

Configuration of the database takes approximately 15 minutes to complete. Once done, the Add-on Products Setup panel appears.

10. To invoke the Start Wizard, click Next.

Once the setup procedure is complete, you have the option to start the Sun Management Center processes. For more information, see *Sun Management Center 3.5 Installation and Configuration Guide*.

Before Generating Reports

Once you have completed installation and setup, you must start the Sun Management Center 3.5 server. You can choose to start the server either after the setup process is completed, or manually later on. For more information about starting the server, see *Sun Management Center 3.5 Installation and Configuration Guide*.

You cannot generate reports until data is being logged and collected. For more information about how data is collected, see “Data Collection Process” on page 13. For more information about enabling the logging of data, see “Data Properties Logging” on page 55.

Backup and Restore

Use the Sun Management Center 3.5 backup and restore scripts to back up or restore all Sun Management Center 3.5 data, including Performance Reporting Manager. For information, see *Sun Management Center 3.5 Installation and Configuration Guide*.

Performing frequent backups of your entire system enables you to recover the most current data possible, in the event of a system failure. Frequent backups will help to minimize any data loss.



Caution – If you restore from a backup made before the Performance Reporting Manager software is set up, you lose your Performance Reporting Manager data.



Caution – Do not attempt to restore a backup from a medium or large configuration if the machine has been converted to a small configuration. Problems might result from having insufficient disk space to restore the data, and you might experience performance degradation. This type of restoration is not supported.



Caution – Do not attempt to restore a backup from any configuration to a machine that has a configuration of a different size. This type of restoration is not supported.

Agent Update Feature

Sun Management Center 3.5 Agent Update feature enables you to update the agent layer. An update image is created on the server machine that is specified as the server context for the agent machines. Before using the Agent Update feature, the Performance Reporting Manager 3.5 server layer must be installed on the server machine that is specified as the server context. The update image wizard prompts you to select from the list of products to include in the update image. You must select Performance Reporting Manager for inclusion in the update image. You must provide the server context for the agent machine when the update image wizard prompts you. For information about using the Agent Update feature, see *Sun Management Center 3.5 Installation and Configuration Guide*.

Upgrading to Performance Reporting Manager 3.5

If you have an installation of Performance Reporting Manager 3.0 on your system, the earlier software must be uninstalled as part of the upgrade procedure. If you want the Performance Reporting Manager 3.0 data to be upgraded to version 3.5, do not use the Performance Reporting Manager 3.0 `es-uninst.sh` script to uninstall the earlier software. This script does not offer you the choice to preserve the version 3.0 data.

Instead, use the Sun Management Center 3.5 installation wizard to remove the earlier version 3.0 software while installing the Sun Management Center 3.5 software. The Sun Management Center 3.5 installation wizard asks if you want to preserve your version 3.0 data files before removing the software. If you want to preserve your

Performance Reporting Manager 3.0 data files, answer Yes to this question. The installation wizard then proceeds to install the Sun Management Center 3.5 software, and prompts you to select add-on products to install. You must say Yes to the installation of the Performance Reporting Manager 3.5 software. The version 3.0 data will be upgraded to version 3.5 as long you install Performance Reporting Manager 3.5 during the installation of Sun Management Center 3.5.

Note – If you are upgrading the Sun Management Center 3.0 server, the machine must have either the Solaris 8 or Solaris 9 developer environment installed.

For more information about upgrading your Sun Management Center software, including detailed procedures, see *Sun Management Center 3.5 Installation and Configuration Guide*.

Uninstalling Performance Reporting Manager

Use the Sun Management Center 3.5 uninstall wizard for removing the Performance Reporting Manager software. The uninstall wizard removes both the Performance Reporting Manager packages and all the Performance Reporting Manager data and configuration changes made during setup. The Sun Management Center 3.5 uninstall wizard gives you the option to save the existing data. Your selection regarding the saving of data applies to all the products chosen to uninstall at the same time. For more information about using the uninstall wizard, see *Sun Management Center 3.5 Installation and Configuration Guide*.

▼ To Remove the Performance Reporting Manager Software

Note – From a Microsoft Windows system, start the uninstall process from `C:>\Program Files\SUNWsymon\SunMC3.5\SunMCUninst.bat`.

1. As superuser (su -), launch the uninstall wizard by typing:

```
# /opt/SUNWsymon/sbin/es-guiuninst
```

where /opt is the directory in which Sun Management Center 3.5 is installed. Substitute the name of the actual directory if it is different on your system.

The Sun Management Center 3.5 uninstall wizard appears.

2. Select Performance Reporting Manager from the list of software, and click Next.

3. Indicate whether to preserve the data files, and click Next.

The Performance Reporting Manager packages and configuration files are removed. If you chose not to preserve the data files, they are removed as well.

4. Click Close to exit the wizard.

Standard Reports

This chapter discusses the following topics:

- “Standard Reports Overview” on page 33
- “Report Manager GUI” on page 36
- “Generating Reports” on page 38

Standard Reports Overview

Performance Reporting Manager includes 12 standard reports with predefined options that you cannot edit. A standard report has predefined report options that generate a report that is generally useful to anyone monitoring a system. The report output format is also predefined and cannot be changed.

Standard reports are organized by category and subcategory in the left pane of the Report Manager GUI. Standard report requests are identified by the lock symbol that appears on the report request icon. The lock reminds you that you cannot change the predefined report options.

All standard reports generated by Performance Reporting Manager are classified as being either a performance report or a system configuration report. A *performance report* tracks properties that are numerical and change over time. An example of a performance report is a graph that shows the percentage of CPU kernel usage on a host over the last 24 hours. For more information about standard performance reports, see “Standard Performance Reports” on page 34.

A *standard system configuration report* provides data detailing the state of the configuration on that machine. An example of a system configuration report is a table that summarizes all the patches currently installed on one or more machines. For more information about standard system configuration reports, see “Standard System Configuration Reports” on page 35.

The output from all standard reports can be viewed in the Sun Management Center 3.5 console, in a web browser as an HTML file, or in a comma-separated value (CSV) or tab-separated ASCII text file. The text file can be used with other tools to analyze the data. See “Options for Viewing Report Output” on page 65 for more information.

For a detailed list of properties that each standard report incorporates, see “Standard Performance Reports” on page 34, “Standard System Configuration Reports” on page 35, or Appendix A.

Note – You must have the Kernel Reader Simple module loaded before you can run any standard report.

Standard Performance Reports

Performance data logging on agent machines is provided by the history logging capability included with Sun Management Center 3.5. Performance Reporting Manager only collects the data logged in the history log files. The data then is transferred to the Sun Management Center 3.5 server machine and loaded into the database. Report data is obtained by making queries to the database to determine trends in the performance statistics over a specified time period.

The report options are predefined in the report request. The report output format for all standard performance reports is a graph. The following three standard performance reports are included with Performance Reporting Manager. They are organized by their category and subcategory names.

- Performance
 - CPU
 - CPU Utilization — This report lists the CPU utilization for the last 24 hours using the Maximum function. The report data includes the % CPU kernel time, and % CPU user time. The host name and port are entered when the report is run.
 - Swap
 - Swap Available — This report lists the swap space available on each host over time. The report data includes the available memory in Kbytes (anon memory not reserved). You provide the host name and port when the report is run.
 - Memory
 - Memory Free — This report lists the amount of physical memory free in megabytes on each host over time. The report data includes the amount of physical memory free in Mbytes. You provide the host name and port when the report is run.

Standard System Configuration Reports

System configuration data is logged on the agent machines by the Performance Reporting Manager logging component. This logging component is added to the agent machine during installation. The data is then transferred to the Sun Management Center 3.5 server machine and loaded into the database. Report data is obtained by making queries to the database located on the Sun Management Center 3.5 server machine. This method is similar to the way the data for standard performance reports is obtained.

The report options are predefined in the report request. The report output format for all standard system configuration reports is a table. The following nine standard system configuration reports are included with Performance Reporting Manager. They are organized by their category and subcategory names.

- Alarm
 - Alarms
 - Alarm Details – This report lists all open alarms for each host. The report data includes host name, operating system, alarm severity, alarm status, open date, and alarm message. You provide the host name and port when the report is run.
 - Alarm Summary – This report lists the alarm status and alarm count for each host. The report data includes the host name and alarm status. The report provides detail for all hosts in the server context.
 - Alarm Severity Count By Host – This report lists the alarm severity count for each host. The report data includes the host name, alarm severity, and alarm status. The report provides detail for all hosts in the server context.
- Hardware
 - System
 - System Details – This report lists the system details by host name. All hosts in the server context that have both the Config-Reader add-on and Performance Reporting Manager installed are included. The report data includes the host name, operating system, system clock frequency, platform type, total disks, total memory, total processors, and total tape devices.
 - Platform Summary – This report lists the platform type by host name. All hosts in the server context that have the Config-Reader add-on and Performance Reporting Manager installed are included. The report data includes platform.
 - OS Summary – This report lists the operating system by host name. All hosts in the server context that have the Config-Reader add-on and Performance Reporting Manager installed are included. The report data includes the operating system.
 - Configuration
- Software

- Packages
 - Hosts with SUNWcsr package – This report lists the hosts that have the SUNWcsr package installed. The report data includes the host name, package instance, package name, category, version, package description, and install date. The report provides detail for all hosts in the server context.
 - Package Details – This report lists all the software packages installed on a specified host. The report data includes the host name, package instance, package name, category, version, package description, and install date. The host name and port is entered when the report is run.
- Patches
 - Patch Details – This report lists all the software patches installed on a specified host. The report data includes host name, operating system, patch id, packages, obsoletes, requires, and incompatibles. The host name and port is entered when the report is run.

You can resize the columns in any tabular report by dragging the sides of the column header. Additionally, you can sort any tabular report by double-clicking the column headers. The report then sorts according to the header selected.

Report Manager GUI

You manage all report activity through the Report Manager graphical user interface (GUI). For example, you can generate a report from a report request, create a new custom report request, or schedule a report to generate at regular intervals. The Report Manager GUI is linked to the Sun Management Center 3.5 Java console only. The GUI is opened from the Tools menu in the Sun Management Center 3.5 console.

Report Manager displays information in two panes. The left pane contains the hierarchy view of the report requests. The report requests are organized by category and subcategory. For more information about categories and subcategories, see “Categories and Subcategories” on page 15.

The right pane in Report Manager contains summary fields. These summaries help you to quickly identify the important distinguishing characteristics of each report request. After selecting a request name from the hierarchy view in the left pane, the following information is displayed in the right pane:

- Report Request – The name and description of the report request
- Data Properties – The list of data properties selected for the report request
- Hosts – The host names included in the report

▼ To Start Report Manager

1. Start the Sun Management Center 3.5 console.

2. Choose Report Manager from the Tools menu.

The Report Manager GUI appears. The hierarchy view is in the left pane, and the report request summary appears in the right pane after a report request is selected.

3. Click the key symbol next to a category name to expand the hierarchy view.

The hierarchy view expands one level to display the subcategory name. The report requests are identified by the report request name, and are located under the subcategory name.

The following figure shows a sample of what the Report Manager GUI contains when a standard performance report is selected from the hierarchy view. The left pane shows that the CPU Utilization report request is selected in the hierarchy view. The right pane displays a summary of some of the report options for the CPU Utilization report request. The detail fields include Report Request, Data Properties, and Hosts. The detail for each field provides a summary of the options that are predefined in the report request.

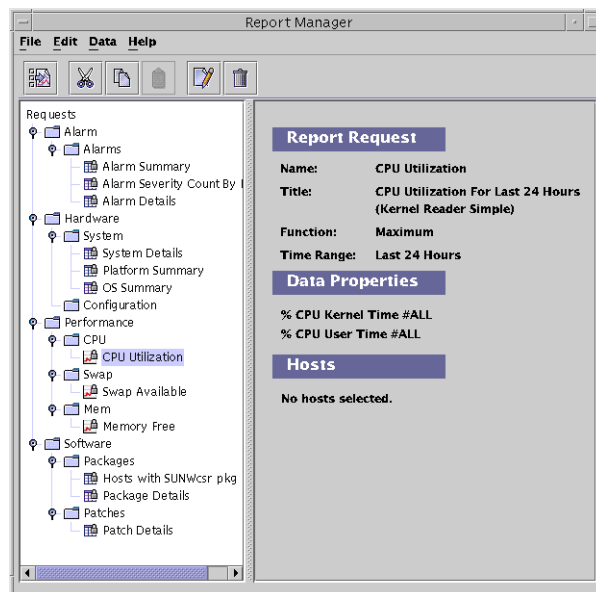


FIGURE 3-1 Sample of Report Manager With Details Showing for a Standard Report

Generating Reports

You can generate a standard report in one of three ways:

- By choosing Generate from the File menu in Report Manager.
- By double-clicking the name of the report request from the left pane in Report Manager.
- By clicking the Generate icon in the menu. This is the first icon located under the menu options.

Each time you generate a standard performance report, you must provide the host name and corresponding port if this information is not predefined. The host name is not saved to the report request. You can specify a different host name each time you generate a standard performance report.

For standard system configuration reports, a report is generated for all hosts identified in the Sun Management Center 3.5 server context that also have the Performance Reporting Manager software installed.

For more information about standard performance and system configuration report requests, see “Standard Reports Overview” on page 33.

Both standard and custom reports are generated this way. For information about scheduling reports to run at regular intervals, see “Scheduling Reports” on page 64.

▼ To Generate a Standard Report

Note – You must have the Kernel Reader Simple module loaded in order to run any standard report.

- 1. Start Report Manager.**
- 2. Select the name of the desired report request from the hierarchy view.**
Verify that this report request is correct by reviewing the summary information contained in the right pane.
- 3. Choose Generate from the File menu, or double-click the name of the report request from the hierarchy view.**
The standard report is generated. A second window opens that contains the report output. For information about when data is available for reports, see “Data For Reports” on page 14.

4. If a dialog box appears, provide the host name and corresponding port.

Custom Reports

This chapter discusses the following topics:

- “Custom Reports Overview” on page 41
- “Adding a New Category or New Subcategory” on page 42
- “Custom Report Templates” on page 43
- “Data Properties” on page 50
- “Data Collection Options” on page 59
- “Filtering Reports” on page 61
- “Composite Report Requests” on page 62

Custom Reports Overview

Performance Reporting Manager enables you to create your own custom reports. You use one of the report templates provided to create custom reports. The correct template is displayed automatically for you, depending upon the report request type selected from the menu. The report templates contain similar options, but there are differences between them. For more information about the fields contained in the report templates, see “Custom Report Templates” on page 43.

Unlike a standard report in which the report output format is predefined, you can specify the output format when creating a custom report. The possible output options are a table, a line graph, a bar chart, or a pie chart. At the time you complete the report template, you are offered only the valid output options for the type of report request you are creating. For more information about report format options, see “Output Format Options For Reports” on page 16.

Before creating a custom report, you should be familiar with how Performance Reporting Manager collects the data that is polled for reports. For more information, see “Data Collection Process” on page 13.

Adding a New Category or New Subcategory

You can place reports under a predefined category or add a new category and new subcategory to the report hierarchy. For more information about the predefined options, see “Categories and Subcategories” on page 15.

New categories are added to the bottom of the list in the hierarchy view. Each new subcategory is added to the bottom of its corresponding category.

▼ To Create a New Category

1. Start Report Manager

For the detailed steps, see “To Start Report Manager” on page 37.

2. From the File menu, choose New, then select Category.

The Create Category dialog box appears. It contains two text fields.

3. Type the new category name in the Name field.

4. (Optional) Type the description of the category in the Description field.

5. Click OK to finish adding the category to the hierarchy view.

When the category name is selected, the name and description appear in the Report Category summary in the right pane.

▼ To Create a New Subcategory

1. Start Report Manager.

For the detailed steps, see “To Start Report Manager” on page 37.

2. From the File menu, choose New, then select Subcategory.

The Create Subcategory dialog box appears. It contains two text fields.

3. Select the desired Category from the drop-down menu.

4. Type the new subcategory name in the Name field.

5. (Optional) Type a description of the subcategory in the Description field.

6. Click OK to finishing adding the subcategory.

The new subcategory name appears at the second level in the hierarchy view, beneath the category name. When the subcategory name is selected, the name and description appear in the Report Subcategory summary in the right pane.

Custom Report Templates

A *report template* guides you through the process of creating your own custom report. The report fields displayed are predefined in the report template according to the type of report you want. A saved report template containing the options you select for your custom report is called a *report request*. All custom report requests are based on one of the report templates that are included with Performance Reporting Manager.

Small differences exist between the report templates, depending upon the type of request you want to create: a custom performance report or a custom system configuration report. *Performance reports* are based on properties that yield numerical results and that change over time. The data returned can be plotted over time in a graph, for example. This graph can then be used to determine trends in performance of the machines. The *system configuration reports* provide data regarding the details of the hardware and software configuration of the host.

When you choose a report request from the File menu in Report Manager, a report template is automatically launched in a dialog box. The template displayed depends upon the type of report request you choose. The following report templates are available:

- Performance Report Request – Reports that provide information regarding system resource utilization, such as the amount of disk space or processor used.
- System Report Request – Reports that provide basic information on system capacity, such as the number of disks or processors on a host.
- Hardware Configuration Report Request – Reports that provide detailed information on the host. For example, the report might detail the specifics about each processor or each disk on a host.
- Package Report Request – Reports that provide information about the software packages installed on a host.
- Patch Report Request – Reports that provide information about the software patches installed on a host.
- Alarms Report Request – Reports that provide information about the status of alarms on a host.

The fields possible in a report template are described below. The report field descriptions are grouped according whether they are found in both types of reports, only in performance reports, or only in system configuration reports.

Common Custom Report Fields

The fields that can be common to both performance and system configuration reports are:

- Category
- Subcategory
- Report Request
- Report Title
- Data Properties
- Selected Hosts
- Output Mode
- Customize

Category

Select the desired category from the Category drop-down menu. New categories you create also appear in the drop-down menu. This field determines where in the hierarchy view the saved report request appears.

Subcategory

The Subcategory field is optional. Select the desired subcategory from the drop-down menu. New subcategories that you create also appear in the drop-down menu.

Report Request

Provide the name of the report request. This name appears as the title in the report request. The name also appears in both the report summary and the hierarchy views in Report Manager.

Report Title

The Report Title field is optional. This field provides a description of the report that then appears as the title. This description appears in the report summary of Report Manager. The report summary is displayed when the name of the report is selected in the hierarchy view.

Data Properties

Select the data properties to be included in the report in the Data Properties field. Click Edit to make your selections from the Select Data Properties dialog box. There are some differences between the Select Data Properties dialog box that is displayed in the performance or system configuration report templates. The correct dialog box automatically launches for you. Only the data properties currently being logged on the hosts return data. For more information, see "Data Properties" on page 50.

Selected Hosts

Specify the hosts and corresponding port that you want to include in the report. Only agent machines that have the software installed, that are in the server's topology, and are linked to the server context return data. If no port is specified for a host, the default port 161 is assigned. The following list describes the host choices:

- Enter Hosts at Run Time – You must provide each host and corresponding port when you run the report request. A separate dialog box for this purpose is displayed at runtime. You can also provide the IP address for the host and corresponding port. The host and corresponding port are not saved to the report request, and can be changed each time the report is run.
- Select Hosts From Main Console Window (Then Click Update) – The hosts and corresponding ports that you provide are saved to the report request. Each time the report is run, data is returned regarding the hosts originally saved. To select the desired hosts, go to the Sun Management Center 3.5 Main Console window. Make your selections either by pressing Shift+Click, or by drawing a lasso around the icons that represent the desired hosts. Click Update in the report template to add the hosts.
- Enter Hosts as Hostname:Port (Comma Delimited) – If selected, you provide the host and the corresponding port. You can also provide the IP address for the host and corresponding port. The proper form is to use a comma delimiter without a space. You can add as many valid hosts and ports as wanted.

Output Mode

Choose the desired format of the report from the Output Mode drop-down menu. The available options depend on the type of report request you are creating. The following list describes the possible options:

- Line Graph
- Bar Chart
- Pie Chart
- Tabular

For more information about the report formats available, see “Output Format Options For Reports” on page 16.

Customize

The Customize field is optional. You can further customize the look of a graph report through the Customize dialog box. For more information, see “Customizing the Appearance of Reports” on page 69.

Performance Report Fields

There are three report fields that are found only in a performance report template:

- Function
- Time Range
- Graph Orientation

The other possible fields available for this type of report are as described in “Common Custom Report Fields” on page 44.

Function

The Function field controls the type of data that appears in the report. Select the type of data you want from the drop-down menu. For more information about how data is collected, see “Data Collection Process” on page 13. The following list describes the function choices:

- Raw – The raw data logged on the agent machine is returned. Raw data is logged according to the time interval specified in the Property Logging Setting dialog box for each data property. The Raw option is available only for these standard time ranges: Last 4 Hours, Last 24 Hours, Last 3 Days, and Real Time. If the Raw option is chosen for a custom time range, a maximum of three days of raw data is available.
- Maximum – The maximum value of the most granular level of data available in the database is returned.
- Average – The average value of the most granular level of data available in the database is returned.
- Minimum – The minimum value of the most granular level of data available in the database is returned.

Time Range

This field determines the time span of the report. The following list describes the time range choices:

- Standard: Select a predefined time range from the drop-down menu. Choose from the following time ranges:
 - Last 4 Hours – The range starts from the current hour to minus four hours.
 - Last 24 Hours – The range starts from the current hour to minus 24 hours.
 - Last 3 Days – The range starts from 12:00 a.m. three days before the current date to 11:59 p.m. the day before the current date.
 - Last 7 Days – The range starts from 12:00 a.m. seven days before the current date to 11:59 p.m. the day before the current date.

- Last Calendar Week – The range starts from 12:00 a.m. Sunday of the previous week to 11:59 p.m. of the following Saturday.
- Last Calendar Month – The range starts from 12:00 a.m. of the first day of the last month to 11:59 p.m. of the last day of the last month.
- Real Time – The range starts from the current day and time and goes forward. This option is only available when the Function selection is Raw.
- Custom: Use this option to define your own time range. First click Edit, then type a Date and Time Range in the Time Range dialog box. The From and To fields contain drop-down menus from which you make your selections.

Graph Orientation

If you selected Line Graph or Bar Chart as the output mode, you must choose the desired orientation of the graphs in the report. The following list describes the graph orientation options:

- One Host, Many Data Properties – A separate graph for each host included in the report is displayed. Each graph shows all the data properties for that host. Each data property is shown as a separate line or bar on the graph. Each line or bar is distinguished by either its color, its symbol, or both. The legend for the graph identifies which color or symbol is being used for each data property in the report. The host name is listed at the top of each graph.
- One Data Property, Many Hosts – A separate graph for each data property included in the report is displayed. Each graph includes a separate line or separate bar for every host in the report. Each line is distinguished by either its color, or its symbols, or both. The legend for the graph identifies which color or symbol is being used for each host in the report. The data property is listed at the top of each graph.
- All Hosts and Data Properties on One Graph – Only one graph is displayed. All hosts and data properties in the report are included. Each line or bar is distinguished by either its color, its symbol, or both. The legend for the graph identifies which color or symbol is being used to identify each host and data property in the report.

Custom System Configuration Report Fields

The report template for creating a custom system configuration report has two fields that are found in this type of report:

- Level of Detail
- Filter

The other possible fields available for this type of report are as described in “Common Custom Report Fields” on page 44.

Level of Detail

Use the Level of Detail field to determine the amount of detail wanted in the report. Accept either the default (Detailed) or select Summary. If you select Summary, the following information is returned:

- Alarm Reports – The number of alarms
- Hardware Reports – The number of hosts
- Packages Reports – The number of packages
- Patch Reports – The number of patches

Filter

The Filter field is optional. Click Set Filter to select the desired filter options from the Filter dialog box. Use the drop-down menus to build an expression that creates the report filter wanted. The filtering options are case sensitive. For more information, see “Filtering Reports” on page 61.

Creating or Modifying a Report Request

You can create your own custom report request by one of the following methods:

- Copying a standard report request, and then modifying the predefined report options in the copy
- Setting the desired report options in a new report request template

Once you save a custom report request, you can later make changes by using the Modify dialog box.

▼ To Create a New Report Request by Modifying a Standard Report Request

1. **Start Report Manager.**
For more information, see “To Start Report Manager” on page 37.
2. **Select the name of the standard report request from the hierarchy view.**
3. **From the Edit menu, choose Copy.**
4. **Select the category or subcategory name under which you want the new report icon to appear.**

5. From the Edit menu, choose Paste.

The copied report icon appears at the bottom of the selected category or subcategory. The name of the report is “Untitled” followed by a number.

6. From the Edit menu, choose Modify.

A report request dialog box appears with the options of the original standard report already completed.

7. Type the new name of the report request in the Report Request field.

8. Make the desired changes to the report option. Click OK to save your changes.

The new report name replaces “Untitled” in the hierarchy view.

▼ To Create a New Report Request

1. Start Report Manager.

For the detailed steps, see “To Start Report Manager” on page 37.

2. From the File menu, choose New, then select the desired report request type.

The report template specific to the type of report that you selected opens.

3. Complete the fields of the report template.

For more information about the report template options, see “Custom Report Templates” on page 43. The hostname must match the name that appears in the Data Collection window.

4. (Optional) Click Preview to see a preview of the report.

A preview of the report output is displayed in a new window. The data that has already been collected is used for a report preview.

5. Click OK to save the report request.

The report request is now saved. The title of the report request appears, with the corresponding report format icon, in the hierarchy view under the category and subcategory selected. This report request is available until it is deleted.

▼ To Modify a Report Request

1. Start Report Manager.

For the detailed steps, see “To Start Report Manager” on page 37.

2. Select the name of the report request that you want to modify.

3. From the Edit menu, choose Modify.

The Modify dialog box opens. The fields contain the current values for Data Properties, Time Range, Filter, and Selected Hosts.

4. Make your changes to the fields.
5. Click OK to save your changes to the report request.

The following figure is a sample of a New Performance Report Request template.

The screenshot shows a dialog box titled "New Performance Report Request". It contains the following fields and controls:

- Category:** Performance (dropdown), **Subcategory:** CPU (dropdown)
- Report Request:** My Report (text box)
- Report Title:** CPU (text box)
- Data Properties:** Load Average Over Last 1 Minute, Load Average Over Last 5 Minutes, Number of Interfaces (list box), **Edit...** button
- Function:** Raw (dropdown)
- Time Range:** **Standard:** Last 3 Days (dropdown), **Custom:** (text box), **Edit...** button
- Selected Hosts:** **Enter Hosts at Run Time**, **Select Hosts from Main Console Window (Then Click Update)**
 - smtg-dev37:161
 - design:161
 - Update** button
 - Remove** button
- Enter Hosts as Hostname:Port (Comma Delimited)** (text box)
- Output Mode:** Line Graph (dropdown), **Customize...** button
- Graph Orientation:** One Host, Many Data Properties (dropdown)
- OK**, **Preview**, **Cancel**, **Help** buttons at the bottom.

FIGURE 4-1 Sample New Performance Report Request Template

Data Properties

The ability to log data is included with the Sun Management Center 3.5 base product. Performance Reporting Manager uses this logged data in the reports. Only data that is logged to the history log files on the agent machine is collected for reporting purposes.

Data cannot be included in any report until logging of the data property is first enabled. Certain data properties are automatically logged for you. If a property is not being logged, you do not receive any data for that property until logging is first enabled. For more information, see “Data Properties Logging” on page 55.

You can use the Data Availability option to determine whether a property is being logged on the machine. Use the history logging capability of Sun Management Center 3.5 to either enable or disable the logging of a data property. You can also use the group logging task. For more information about history logging, see *Sun Management Center 3.5 User’s Guide*. For more information about the group logging task, see “Group Logging” on page 56

If you receive a No Data Found error message when running a report, first check to see if the data property is being logged on the agent machine specified in your report. For more information, see “Data Collection Options” on page 59. If logging is enabled, check to see if the data property is being logged from the Data Availability window. For more information, see “To View the Data Properties Logged for a Host” on page 52.

Data Availability

Only those data properties that are being logged on the agent machine can return data for reports. Data logging must be enabled for these properties. The Data Availability dialog box enables you to check data properties per host for which logging is enabled. Information for inactive hosts is also provided. *Inactive hosts* are those that may no longer be in the topology, or may not be in the server context, but that still have historical data in the database.

Information is available from the following three tabs: Collection Enabled, Collection Disabled, and Inactive Hosts. Each tab contains two tables. The first table lists the host name with corresponding port, and the latest time data was collected. The second table lists information about the data properties, including the property name, index number, module name, and module instance. Properties for which data was collected in the last collection cycle for the host is displayed. The table expands to list all the data properties collected for that host. You can resize the columns by dragging the cell borders in the column title. You can sort the table by double-clicking the column headings.

The information in the tables is updated every hour, except for Inactive Hosts or hosts for which collection has been disabled. If you have just installed Performance Reporting Manager, the data might take an hour to first appear in the Data Availability dialog box.

Note – The data properties being logged are used for performance reports only.

▼ To View the Data Properties Logged for a Host

1. **From the Report Manager file menu, choose Data, and then select Data Availability.**

The Data Availability dialog box opens.

2. **Select the desired tab.**

- Collection Enabled – Select for information about hosts that have data collection enabled.
- Collection Disabled – Select for information about hosts that have data collection disabled.
- Inactive Hosts – Select for information about hosts that are no longer active and for which historical data is still available.

3. **From the first table, select the row for the desired host.**

The data properties for that host are displayed in the second table.

4. **Click Close to dismiss the dialog box.**

The following figure shows a sample of the Data Availability dialog box.

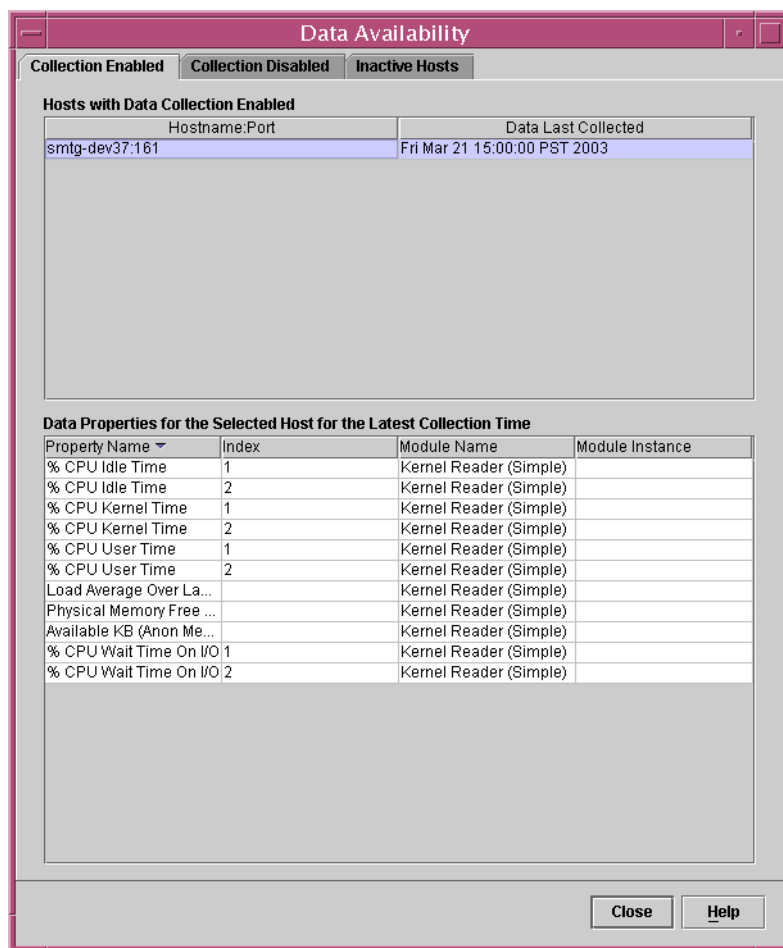


FIGURE 4-2 Sample of the Data Availability Dialog Box with Data Properties Showing

Data Properties Selection

When creating your custom report request, the report template requires that you select the data properties to include in the report.

The addition of certain properties requires that you provide an entry for either the module instance or property instance, or both. The *module instance* is needed only for multi-instance modules. Examples of a multi-instance module include File Monitoring or Directory Monitoring. Each instance can be used for monitoring a different file or different directory.

The *property instance* typically refers to an instance name given to the property being logged. For example, in a machine with four CPUs, the CPUs can be numbered 0, 1, 2, and 3. If you want the performance of CPU number 3, you specify 3 as the property instance for the CPU property. You specify All as the property instance when you want a report that includes all instances that exist for the host. For more information, see *Sun Management Center 3.5 User's Guide*

▼ To Add Data Properties

1. From the Data Properties field in the New Report Request template, click Edit.

The Select Data Properties dialog box appears. It contains two panes. The left pane is titled Properties to Choose From. The right pane is titled Selected Properties.

2. Expand the hierarchy view in the left pane by clicking the key symbols.

The data properties are located at the third level of the hierarchy.

3. Select the desired property, and click Add.

The property moves to the right pane. If required, the Module Instance or Specific Property Index fields become active in the lower left corner of the dialog box.

4. (Optional) Provide the Module Instance and Specific Property Index in their respective text fields.

If module is a multiple instance module, provide the module instance wanted.

5. When you finish adding all desired properties, click OK.

The Select Data Properties dialog box closes. Continue completing the report template.

The figure below shows a sample of the Select Data Properties dialog box for performance reports.

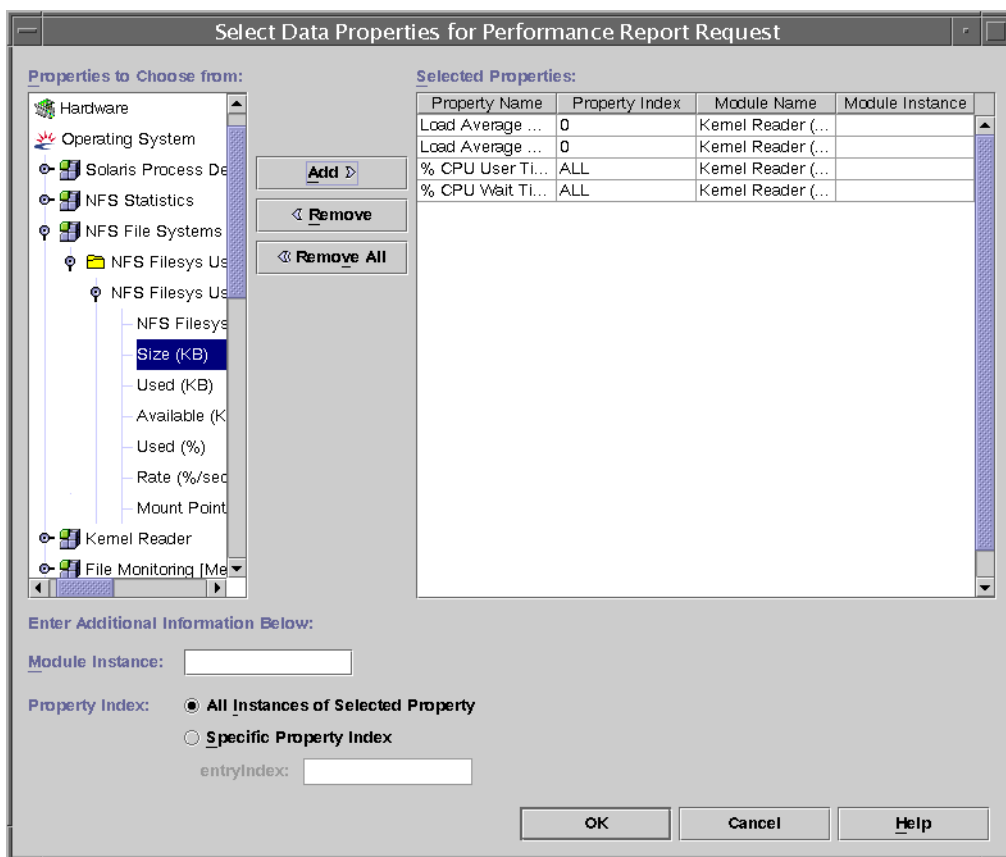


FIGURE 4-3 Sample of the Select Data Properties Dialog Box for a Performance Report Request

Data Properties Logging

You can either enable the logging of a single data property, or you can enable the logging of many data properties on many hosts at the same time. The second method is called group logging, and is done by using the Manage Jobs features of Sun Management Center 3.5. For more information about group logging, see “Group Logging” on page 56.

You must enable the logging of a single data property from the Sun Management Center 3.5 console.

▼ To Enable Logging of a Single Data Property

1. From the Sun Management Center 3.5 console window, select the host name from the hierarchy.

The Details window appears.

2. From the left pane, select the desired module from the hierarchy view.

The hierarchy view expands to reveal table names underneath.

3. Double-click the desired table name.

A table appears in the right pane. Each row contains a data property. More than one table can appear, depending upon the module.

4. Highlight the row containing the desired data property, and press mouse button 3.

A pop-up menu appears.

5. Select Attribute Editor.

The Attribute Editor dialog box appears.

6. Select the History tab.

7. Place a check in the Save History as Disk File box.

8. From the File Type drop-down menu, select Circular File.

9. Click OK to close.

Data logging is now enabled on the data property.

Group Logging

Use the Manage Jobs features of Sun Management Center 3.5 to enable logging of the same data properties on a group of agent machines. This is called *group logging*.

Instead of adding the same set of data properties to be logged on each machine individually, you can save time with group logging by using the Manage Jobs dialog box to do the following:

- Create a data logging task.
- Create a job that contains the data logging task.
- Running the job.

After you install the Performance Reporting Manager software, the Manage Jobs features of Sun Management Center 3.5 are enhanced, and a new option appears in the New Task dialog box. This new option is Data Logging. Data Logging appears in the Show Task Type and Task Type drop-down menus. When Data Logging is selected as the Task Type, the Logging Setting button appears next to the Data Properties table. The logging of data properties is enabled with the Property Logging Setting dialog box. You access the Property Logging Setting dialog box from the Logging Setting button. You can also change the interval time properties are logged at the same time. The default logging interval is 300 seconds. For more information about the Manage Jobs features, see "Managing Group-related Jobs" in *Sun Management Center 3.5 User's Guide*.

▼ To Create a Data Logging Task

1. From the Sun Management Center 3.5 main console File menu, choose Tools, then select Manage Jobs.

The Manage Jobs dialog box appears.

2. From the Task field, click New Task.

The New Task dialog box appears.

3. Type the name of the new task in the Task Name text field.

4. From the Task Type drop-down list, select Data Logging.

5. Click Add Properties.

The Select Data Properties dialog box appears.

6. From the Properties to Choose From panel, select the data properties one property at a time. Click Add after each property.

The data properties are contained in the third-level in the hierarchy. As each data property is added, the name moves to the right pane. Provide the Module Instance and Property Index information when required.

7. Click OK when done.

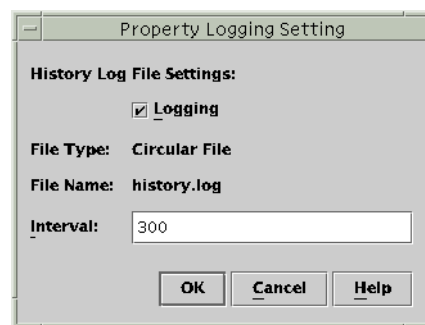
The data properties are added to the task.

8. From the New Task dialog box, select the row that contains the data property.

If you added more than one data property to the task, you must do this one row at a time. The Logging Setting button is enabled.

9. Click Logging Setting.

The Property Logging Setting dialog box launches.



10. Select the checkbox next to Logging if it is not already selected.

The data property is now being logged.

11. **Type the desired time interval, in seconds, in the Interval text field.**
The default is 300 seconds. The data property is logged at the interval specified.
12. **Click OK to save your changes.**
The Property Setting Dialog box is dismissed.
13. **In the New Task dialog box, click Add Task to save.**
14. **To dismiss the New Task dialog box when finished, click Close.**

▼ To Define a Job

- **For the detailed steps, see “To Define a Job” in *Sun Management Center 3.5 User’s Guide*.**

Note – When specifying the task in step 6 of the To Define a Job procedure, click Data Logging. Be sure to select the Data Logging task that you defined to enable logging. Data logging is enabled when the job is actually executed. Follow the remainder of the procedure.

▼ To Disable Logging of a Single Data Property

1. **Launch the Attribute Editor dialog box by completing Steps 1 through 7 of “To Enable Logging of a Single Data Property” on page 55.**
2. **Remove the check from the Save History as Disk File box.**
3. **Click OK to save the change.**
Logging of the data property is now disabled.

▼ To Disable Data Logging in a Data Logging Task

1. **From the Sun Management Center 3.5 main console File menu, choose Tools, then select Manage Jobs.**
The Manage Jobs dialog box appears.
2. **From the Task field, click New Task.**
The New Task dialog box appears.
3. **Type the name of the new task in the Task Name text field.**
4. **From the Task Type drop-down list, select Data Logging.**
5. **Click Add Properties.**

The Select Data Properties dialog box appears.

6. **From the Properties to Choose From panel, select the data properties one property at a time. Click Add after each property.**

The data properties are contained in the third-level in the hierarchy. As each data property is added, the name moves to the right pane. Provide the Module Instance and Property Index information when required.

7. **Click OK when done.**

The data properties are added to the task.

8. **From the New Task dialog box, select the row that contains the data property.**

If you added more than one data property to the task, you must do this one row at a time. The Logging Setting button is enabled.

9. **Click Logging Setting.**

The Property Logging Setting dialog box launches.

10. **Remove the check in the box next to Logging by deselecting it.**

11. **In the New Task dialog box, click Add Task to save.**

12. **Click Close to dismiss the New Task dialog box when finished.**

Note – You must define a job with this task to complete the disabling of data logging. For the detailed steps, see “To Define a Job” in *Sun Management Center 3.5 User’s Guide*. When specifying the task in step 6 of the To Define a Job procedure, select the Data Logging task that you defined to disable data logging. Data logging is disabled when the job is actually executed.

Data Collection Options

You can use this screen to enable or disable data collection on a host. The Data Collection dialog box lists the agent machines that have data collection enabled or disabled.

Data collection on an agent machine is enabled by default when that host meets the following requirements:

- The Performance Reporting Manager software is installed, and
- It is in the Sun Management Center topology, and
- It is in the server context

The table in the left pane displays the state of data collection when it is enabled on a host, as well as the latest time that data was collected. An alert appears in the first column if data collection did not occur in the last collection cycle. This can occur if the host was not running during the last collection cycle, for example. If no alert appears, this confirms that data was collected on schedule. The final column lists the latest time data was collected.

If you have just installed the Performance Report Manager software, it might take an hour for collection time to appear in the table. Entries are added to this table continuously as long as data collection is enabled. See the following figure for an example of the Data Collection dialog box.

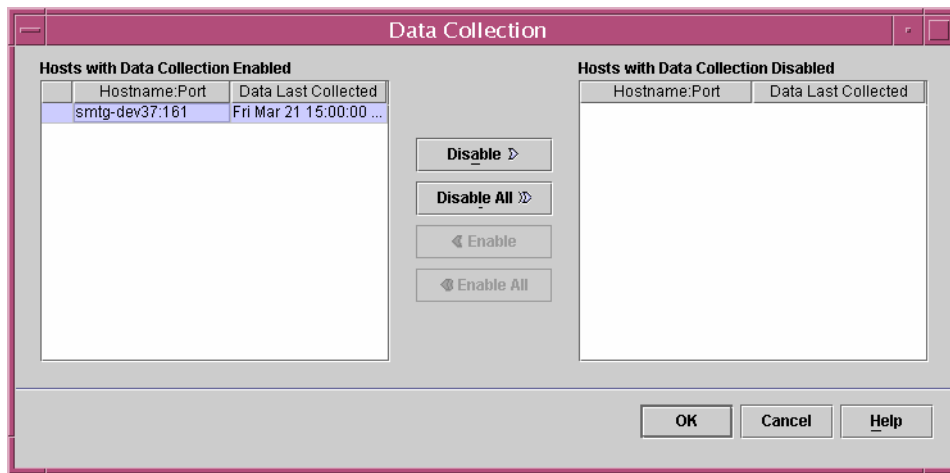


FIGURE 4-4 Sample of Data Collection Dialog Box

When data collection is disabled, the host name and latest collection time appear in the table in the right pane. This information remains until the Performance Reporting Manager software is uninstalled, or the host is removed from the topology, or removed from the server context.

You can stop data collection on any agent machine that you no longer need to include in reports. Once data collection is disabled for a host, you can later enable it again using this screen.

▼ To Enable or Disable Data Collection on a Host

1. **From the Report Manager File menu, choose Data, and then select Data Collection.**

The Data Collection dialog box opens. All hosts for which data is not currently being collected are listed in the right pane. All hosts for which data is currently being collected are listed in the left pane.

2. **Select the name of the host from the corresponding table.**
3. **Click the Enable, Enable All, Disable, and Disable All buttons to move the host names as needed.**

To disable data collection, move the host name from the left table to the right table. To enable data collection, do the reverse. Your selections are not activated until you click OK.

4. **Click OK to save the changes.**

Filtering Reports

You can further modify the type of information that your custom report contains by using the Filter feature. The Filter option is available for some custom system configuration report requests.

The Filter dialog box contains several drop-down menus and text fields. Use them to build an expression. This expression defines the report parameters to include in the filter criteria wanted. The expression operators provided are common to the C programming language. Filter options are case sensitive.

For example, you can create a custom system configuration report request to include data on machines that are running the Solaris 7 or Solaris 8 operating environments. To do this, you would create the following expression using the Filter dialog box:

```
Operating System = SunOS 5.7  
OR  
Operating System = SunOS 5.8
```

As another example, you can create a custom system configuration report request to include the machines that have the SyMON packages installed. To do this, you would create the following expression:

```
Category contains SyMON
```

In order to include only those machines that have the Sun Management Center 3.5 SyMon packages installed, you can modify the above example this way:

```
Category contains SyMON AND Version contains 3.5
```

Composite Report Requests

Performance Reporting Manager enables you to combine two or more existing report requests to create a new report request. The resulting report request is called a *composite report request*. To create a composite report request, you can use existing standard or custom report requests, or a combination of both types. A composite report request combines the options of the report requests used. You specify a new name for the composite report request. The report then is identified in the hierarchy view under the category and subcategory selected.

If the host name is not defined in any report request, you cannot select that request to become part of a composite report request. For example, you cannot select any report request for which the option Add Hosts at Runtime was specified.

You cannot delete or rename any existing standard or custom report request once it is referenced by a composite report request. You must first delete the composite report request.

▼ To Create a Composite Report Request

1. **From the Report Manager File menu, choose New, then select Composite Request Request.**

The Composite Report Request dialog box opens.

2. **Select the desired category and subcategory from the drop-down menus.**

3. **Type a name for the report in the Name field.**

4. **Select the desired reports from the left pane. Use the Add button to move the reports to the right pane that is titled Selected Report Requests.**

Use the Remove button if you select a report you do not want. The Remove All button clears all selections from the right pane.

5. **(Optional) Click Preview to see a preview of the report.**

A preview of the report output is displayed in a new window. The data that has already been collected is used for a preview of a report request.

6. **Click OK to save the report request.**

The composite report request is now saved. The title of the composite report request appears in the hierarchy view under the category and subcategory selected. This report is available until it is deleted.

Report Options

Performance Reporting Manager enables you to customize reporting capabilities.

This chapter discusses the following topics:

- “Report Options Overview” on page 63
- “Scheduling Reports” on page 64
- “Options for Viewing Report Output” on page 65
- “Accessing Reports From the Sun Management Center Web Server” on page 66
- “Line Graph Report Viewing Options” on page 68
- “Customizing the Appearance of Reports” on page 69

Report Options Overview

Performance Reporting Manager includes several options that enable you to tailor the reporting capabilities.

- You can schedule reports to automatically generate as needed.
- If you decide that you no longer need to monitor a particular host for a report, you can stop collecting data on that host.
- The report output can be saved in HTML for viewing in a web browser.
- Reports can be saved in tab-separated or comma-separated values (CSV) ASCII text form.

For more information about viewing reports in a web browser, see “Options for Viewing Report Output” on page 65.

Scheduling Reports

You can schedule any standard or custom report request to automatically generate at a regular interval, as long as the host names are saved in the report request. The output from all scheduled reports is posted to the Sun Management Center 3.5 server machine. The reports are saved in a directory on the server machine. You access these reports in a browser at: `http://server-machine-name:8080/prm/reports`.

▼ To Schedule a Report

1. **From the Report Manager File menu, choose Schedule, and then select Schedule Report Generation.**

The Schedule Report Generation dialog box opens.

2. **Select the name of the desired report request from the hierarchy view contained in the left pane.**

The report requests are located at the third level in the hierarchy view.

3. **Click the Add button.**

The name of the report request moves to the right pane.

4. **(Optional) Select Multiple Report Requests if you have more than one report to schedule for the same time.**

Select this option only if you want all the reports to run at the same time.

5. **Complete the Date, Time and Repeat Interval fields.**

The date format is specific to the locale. Provide the date as specified in the date label. Make your selections for the Time and Repeat Interval fields from the drop-down menu.

6. **Click OK to schedule the report.**

The report is now scheduled to generate according to your selections. The report continues to generate at the interval specified, until the request is deleted.

▼ To Remove a Scheduled Report

1. **From the Report Manager File menu, choose Schedule, and then select View Scheduled Report Status.**

A new window opens with a table that contains the status of all reports currently scheduled. You can resize the table columns by dragging the cell border of the header title.

2. **Select the row that contains the name of the report to be removed.**
3. **Click Remove.**
The report is removed from the table.
4. **Click OK.**
The report is no longer scheduled to be generated

Options for Viewing Report Output

After a report is generated, you have several options for viewing and saving the output. These options include the following outputs:

- View a report as an HTML file in a browser. This option is helpful for printing the report.
- Post any saved reports as HTML files to a Sun Management Center server for others to view.
- Save the report in a tab-separated value or a comma-separated value (CSV) ASCII text file that can be used with other tools to analyze the data.

Reports saved as an HTML file can be viewed using Netscape Navigator™ 4.5.1, or higher, or Internet Explorer 5.0, or higher.

▼ To View a Report as HTML in a Browser

1. **Generate the desired report.**
The report output is shown in a separate window. For the detailed steps, see “To Generate a Standard Report” on page 38.
2. **Choose Show in Web Browser from the File menu in the report window.**
The web browser launches and the report is displayed as HTML.

▼ To Post to a Sun Management Center Web Server

1. **Generate the desired report request.**
The report output is shown in a separate window. For the detailed steps, see “To Generate a Standard Report” on page 38.
2. **Choose Post to a Web Server from the File menu in the report window.**

The report is posted to the Sun Management Center 3.5 server you to which are connected, which acts as a web server.

▼ To Export Data

1. **Generate the desired report.**

The report output is shown in a separate window. For the detailed steps, see “To Generate a Standard Report” on page 38.

2. **Choose Export Data from the File menu in the report window.**

The Export Data dialog box appears.

3. **Select either Comma or Tab as the delimiter.**

4. **Choose the directory in which to save the file.**

5. **Type a name in the File Name text field.**

6. **Select the file type from the File Type drop-down menu.**

7. **Click Save.**

Accessing Reports From the Sun Management Center Web Server

You can view a report as HTML in a browser. The report must first be saved and then posted to a Sun Management Center 3.5 web server. All scheduled reports are posted to the Sun Management Center 3.5 server machine. You can also post an individual report by using the Post to a Web Server option from the report’s menu. A list of all reports ever posted appears in the browser window that is opened from the server. All reports continues to appear until the report is deleted.

▼ To Access a Posted Report

1. **Launch the Sun Management Center 3.5 web server at the following URL:**

`http://server-machine-name:8080/prm/reports`

2. **Log in by typing your login name and password in the text fields.**

Use the same login name and password that are required for the Sun Management Center 3.5 server.

A table is displayed in the browser window that lists all the reports that have been posted to the web server. The name of the report request, the report category and subcategory, the report title, and the create time are displayed in the table.

- 3. To view a report, click its name in the Report Title field.**
The report is displayed in the browser window.
- 4. (Optional) To print the report, use the Print option in the browser.**
- 5. Close the browser window.**

▼ To Delete a Posted Report

- 1. Log in to the Sun Management Center 3.5 web server.**
For the detailed steps, see steps 1 and 2 in “To Access a Posted Report” on page 66.
- 2. Locate the name of the report in the table, then click the corresponding Delete button.**
A second dialog box appears that asks you to confirm the deletion request.
- 3. Click OK to confirm the deletion request.**
The report is deleted from the list in the table, and is removed from the web server.

The figure below shows a sample of the list of posted reports as it appears in a browser window.

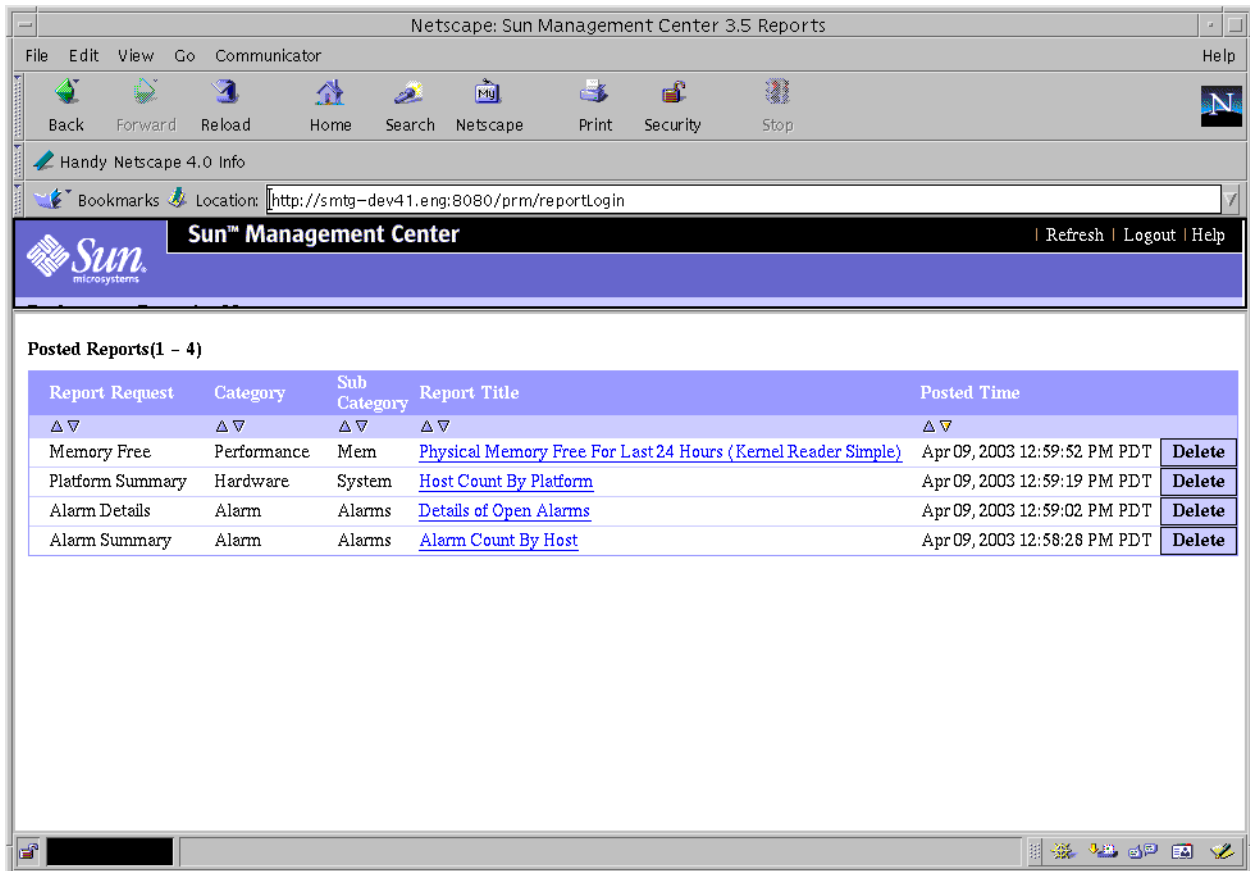


FIGURE 5-1 Sample of a List of Reports That Are Posted to a Web Server

Line Graph Report Viewing Options

If your report is in Line Graph format, you have several options for viewing the data. Several buttons used for accessing the options are located at the top of the report window. First, click the desired point on a graph, then click one of the following buttons:

- Disabled – Deactivates the mouse so a click on any line in the graph does not register.
- Zoom – Enlarges, or zooms, the area selected on any line. Either click the desired point, or draw a lasso around a series of points for which you want more detail. The area selected appears in enlarged detail.

- Alarms – A second window appears that contains a tabular report providing alarm details for the date range specified in the report request.
- Processes – A second window appears that contains two tabular reports providing detail about processes. One report is titled the Top 10 CPU Processes, and the other is titled Top 10 Memory Processes. The report information is for the time represented by the data point nearest to the point selected on the line. Process data is logged every 15 minutes. Process data is available only for the last 8 days.
- Reset Zoom – Resets the graph orientation back to the initial starting point.

Customizing Line Graph Reports

Once you have run a report in line graph format, you can further customize the appearance of the report. From the Edit menu, choose Customize Graph. The options are the same as when completing a new custom report template. The difference is that the customizing options you select after running a report apply only to that report. You cannot save the changes, but you can post the customized report to a Sun Management Center web server for viewing or printing.

For more information, see “Customizing the Appearance of Reports” on page 69.

Customizing the Appearance of Reports

Some custom report templates have an option that enables you to customize the appearance of your Line Graph, Bar Chart, and Pie Chart reports. You add these customizing features when you create the report request. You can also modify the report request at a later time to include the desired appearance customization.

After you click the Customize button in the report template, the Customize Graph dialog box appears. The dialog box contains the following three tabs, from which you can specify these appearance changes:

- Titles & Legend – Enables you to add a Footer and change the Legend Text. From the drop-down menus, you can choose the placement of the Footer or Legend on the graph. You can change the X-Axis and Y-Axis Labels using the text fields.
- Line Attributes – Use the All Lines options to change the appearance of the Line Thickness or Line Style, and Symbol Size. Use the drop-down menus to make your selections. Use the Specific Line options to change the appearance of a line you select from the drop-down menu.
- Size & Spacing – Use the text fields to control the size of the graph width and height, or the X-Axis and Y-Axis scale. You enable grid lines on the graph by selecting Show Grid. The value range for grid spacing is 0 to 100.

Note – Some of the options in the Customize Graph dialog box are not available for Pie Chart reports.

Once you have finished selecting all the customizing options, click OK to dismiss the dialog box. You must also click OK from the report template for these options to be saved to the report request.

Line Breaks

The legend of a report lists all the data properties contained in the report. You can insert line breaks in the legend to enhance appearance. You use HTML commands to do this. Inserting a line break by using an escape character such as `\n` does not work as this character is not recognized.

▼ To Insert a Line Break

To insert a line break in the report's legend, follow these steps:

1. **From the report window, choose Edit, then select Customize Graph.**

The Customize Graph dialog box appears.

2. **Select the Line Attributes folder.**

The view changes to show the options already selected.

3. **From the drop-down menu in the Selected Line field, select the name of the data property you want to edit.**

The name of the data property selected in the Selected Line field appears in the Text field. You edit this field to insert the line break. The HTML tag `<p>` is used to create the line break.

4. **Insert the line break by typing:**

```
<html> data_property_name <p> <\html>
```

The line break appears wherever the `<p>` tag is inserted. You can place this tag anywhere in the full data property name. For example:

```
<html>% CPU <p> Kernel Time(0)<\html>
```

results in the line break appearing after `% CPU` in the report legend.

5. **Click OK.**

The line break appears in the report legend. Repeat this procedure for as many line breaks as you want to insert.

Reference Information

This appendix contains reference information for the Performance Reporting Manager add-on software.

Default Logging Properties

The following properties are logged by default on the Sun Management Center 3.5 agent machines that have the Performance Reporting Manager software installed. You will have either the `kernelReader (simple)` module or the `kernelReader` module on your system. Both modules cannot be loaded at the same time.

The `kernelReader (simple)` module logs the following properties by default:

```
Load Average Over Last 5 Minutes
Physical Memory Free (MB)
Available KB (Anon Memory Not Reserved)
CPU User Time %
CPU Idle Time %
CPU Kernel Time %
CPU Wait Time On I/O %
```

The `kernelReader` module logs the following properties by default:

```
Load Average Over Last 5 Minutes
Physical Memory Free (MB)
Available KB (Anon Memory Not Reserved)
CPU User Time %
CPU Idle Time %
CPU Kernel Time %
```

Predefined Options for Standard Reports

Each standard report included in Performance Reporting Manager contains predefined report options that you cannot edit. The following table lists these predefined options.

TABLE A-1 Standard Report Options

Report Request Name	Category	Subcategory	Data Properties	Host and Port	Report Format
CPU Utilization	Performance	CPU	% CPU Kernel Time #ALL, % CPU User Time #ALL	Enter at runtime	Line Graph
Swap Available	Performance	Swap	Available KB (Anon Memory Not Reserved)	Enter at runtime	Line Graph
Memory Free	Performance	Memory	Physical Memory Free (MB)	Enter at runtime	Line Graph
Alarm Details	Alarm	Alarms	Hostname, OS, Alarm Severity, Alarm State, Open Date, Alarm Message	Enter at runtime	Table
Alarm Summary	Alarm	Alarms	Hostname, Alarm State	All hosts in the server context	Table
Alarm Severity Count By Host	Alarm	Alarms	Hostname, Alarm Severity, Alarm State	All hosts in the server context	Table
System Details	Hardware	System	Hostname, Operating System, System Clock Frequency, Platform Type, Total Disks, Total Memory, Total Processors, Total Tape Devices	All hosts in the server context that have the Config-Reader add-on installed	Table

TABLE A-1 Standard Report Options *(Continued)*

Report Request Name	Category	Subcategory	Data Properties	Host and Port	Report Format
Platform Summary	Hardware	System	Platform	All hosts in the server context that have the Config-Reader add-on installed	Table
OS Summary	Hardware	System	Operating System	All hosts in the server context that have the Config-Reader add-on installed	Table
Hosts with SUNWcsr Package	Software	Packages	Hostname, Package Instance, Package Name, Category, Version, Package Description, Install Date	All hosts in the server context	Table
Package Details	Software	Packages	Hostname, Package Instance, Package Name, Category, Version, Package Description, Install Date	Enter at runtime	Table
Patch Details	Software	Patches	Hostname, Operating System, PatchID, Packages, Obsoletes, Requires, Incompatibles	Enter at runtime	Table

For more information about standard reports, see “Standard Reports Overview” on page 33.

Installing Using the Command Line

This appendix contains procedures for installing, setting up, and removing the Performance Reporting Manager software using the command line. Command-line installation is an alternative to using the installation wizard.

For information about using the installation wizard, see Chapter 2.

This appendix discusses the following topics:

- “Installing the Performance Reporting Manager Software” on page 75
- “Setting Up Performance Reporting Manager” on page 77
- “Removing the Performance Reporting Manager Software” on page 78

Installing the Performance Reporting Manager Software

Installation of Performance Reporting Manager using the command line follows the standard Sun Management Center 3.5 add-on software installation procedures. For more information about installation of add-on software using the command line, see *Sun Management Center 3.5 Installation and Configuration Guide*.

Performance Reporting Manager must be installed on the following layers of Sun Management Center 3.5:

- Console layer
- Server layer
- Agent layer, on all hosts for which you want to generate reports

The interactive `es-inst` installation script installs the correct Performance Reporting Manager software packages on the console, server, and agent layers. For all layers, the packages, module configuration files, and libraries are installed in standard Sun Management Center 3.5 locations.

▼ To Install Performance Reporting Manager During Sun Management Center 3.5 Installation

- **For information and detailed steps using the command line, see *Sun Management Center 3.5 Installation and Configuration Guide*.**

▼ To Install Performance Reporting Manager Individually

1. **As superuser (su -), run the installation script by typing:**

```
# /opt/SUNWsymon/sbin/es-inst
```

where `/opt` is the directory in which Sun Management Center 3.5 is installed. Substitute the name of the actual directory if it is different on your system.

2. **Provide the source directory of the Performance Reporting Manager files when prompted.**

Please enter the source directory:

- If installing from the software CD-ROM, type:

```
/cdrom/sunmanagementcenter_3_5/image
```

- If installing from a directory to which the software has been copied, type:

```
disk1/image
```

when `disk1` is the name of the location where the software was copied.

3. **To install the Performance Reporting Manager, answer “Yes” when prompted.**

The `es-inst` script installs Performance Reporting Manager.

The `es-inst` script then automatically displays `setup` prompt.

4. **Determine whether you want to set up Performance Reporting Manager now or at a later time.**

- To set up the software at a later time, answer `n` for “No”. When you are ready to run the `setup` process, see “To Set Up Performance Reporting Manager Individually” on page 77.
- To set up the software now, answer `y` for “Yes”. The Sun Management Center 3.5 software is not setup again.

Setting Up Performance Reporting Manager

After installation is complete, you must run the Performance Reporting Manager setup script to configure the server and agent layers.

▼ To Set Up Performance Reporting Manager Individually

Note – This procedure assumes that you chose not to set up Performance Reporting Manager at the end of the installation process.

1. Run the Sun Management Center 3.5 setup script as superuser (su -). Choose one of the following options:

- To run setup on all components that are not yet set up, type:

```
# /opt/SUNWsymon/sbin/es-setup
```

- To run setup on the Performance Reporting Manager add-on software only, type:

```
# /opt/SUNWsymon/sbin/es-setup -p PRM
```

where /opt is the directory in which Sun Management Center 3.5 is installed. Substitute the name of the actual directory if it is different on your system.

2. When asked, choose the configuration size. Provide three data file locations.

During the server setup, you are given three different configuration choices based on the number of agent machines and data properties you will monitor. You are prompted three times for data file locations. While you can enter the same directory three times, try to use three different directories located on three different filesystems. This separation reduces disk I/O contention and results in better product performance.

The space required depends upon the size of the configuration you choose during setup. The data file locations require disk space as listed in the following table.

TABLE B-1 Data Directory Sizes For Server Layer

Configuration Size	First Directory Size	Second Directory Size	Third Directory Size
Small	2048 MB	1536 MB	1536 MB

TABLE B-1 Data Directory Sizes For Server Layer (Continued)

Configuration Size	First Directory Size	Second Directory Size	Third Directory Size
Medium	5120 MB	4096 MB	3072 MB
Large	8192 MB	7168 MB	7168 MB

If you need to run the Performance Reporting Manager `setup` script again at any time, use this procedure to start the script.

Removing the Performance Reporting Manager Software

The `es-uninst` removal script removes the Performance Reporting Manager add-on software. This script removes the Performance Reporting Manager packages, and all the data and configuration changes made during setup.

▼ To Remove Performance Reporting Manager Using `es-uninst`

1. As superuser (`su -`), type:

```
# /opt/SUNWsymon/sbin/es-uninst
```

where `/opt` is the directory in which Sun Management Center 3.5 is installed. Substitute the name of the actual directory if it is different on your system.

2. Select Performance Reporting Manager from the list of add-on software, and click Next.

3. Indicate whether to preserve the data files, and click Next.

The Performance Reporting Manager packages and configuration files are removed. If you chose not to preserve the data files, they are removed as well.

Glossary

custom report	A report you create by choosing the report specifications from the options given in the report template. The choices are saved to a report request, which is used to generate the report when needed.
data collection service	A service on the server layer that collects data from the agent machines and stores the data in the database on the server.
group logging	The ability to log the same set of data properties on a group of agent machines. Group logging is part of the Manage Jobs features of Sun Management Center 3.5 that Performance Reporting Manager uses.
history logging	The ability to log data that is part of Sun Management Center 3.5. Logged data is collected and stored in the history log files that are located on the agent machine. This data is used in reports created with Performance Reporting Manager.
hourly data	Data that has been summarized, or rolled-up, every hour.
lock icon	A lock symbol that is added to all standard report icons as a reminder that the report specifications are predefined, and cannot be changed.
logging component	A component on agent machines that is added as part of the Performance Reporting Manager installation to perform logging of system data properties.
module instance	An entry in the Property Chooser dialog box when adding data properties to a custom performance report request. The module instance is required only for multi-instance modules, for example, File Monitoring or Directory Monitoring.
performance report	A report that is designed to track properties that are numerical and that change over time.
property instance	An instance name given to the data property that is being logged. A property instance can be a required entry in the Select Data Properties dialog box when adding data properties to a custom performance report request.

raw data	Data that is logged in the history log files located on the agent machines. Raw data is retained on the agent machine for eight days. The data is summarized, or rolled-up, before it is purged.
Report Manager	The graphical user interface in Performance Reporting Manager from which you manage all report activity. Report Manager is linked to the Sun Management Center 3.5 Java console only.
report request	Contains the saved report specifications that define the scope and nature of the report. A report request is used to generate any report.
report template	A form included with Performance Reporting Manager that guides you through the choices when creating your own custom report request. Several report templates are provided, each specific to the type of report request being created. The correct template is automatically displayed, depending upon the report type selected from the File menu.
roll-up data	Data that has been summarized. All data is summarized, or rolled-up, before it is purged.
server context	A Sun Management Center sever layer and its associated agents.
standard report	A report whose report request is included with the product, and whose report specifications are predefined. The report specifications in a standard report request cannot be changed.
system configuration report	A report that provides data that details the state of the configuration on a machine.
topology view	The view that displays the members of the object selected in the hierarchy view.

Index

A

- accessing posted reports, 66
- agent update, 30
- Alarm Details report, 35
- alarm reports
 - description of, 35
 - host name, 12
- Alarm Severity Count By Host report, 35
- Alarm Summary report, 35
- Alarms button, 17, 69
- average data, 46

B

- backing up data, 29
- bar chart reports
 - customizing, 69
 - description of, 18
- browser, viewing reports in, 65

C

- category
 - adding new, 42
 - list of predefined, 16
 - selecting, 44
- column sizing, 17
- composite report request, 62
- CPU Utilization report, 34
- creating
 - category, 42

- creating (Continued)

- custom report, 48
 - report request, 43
 - subcategory, 42
- custom reports
 - description of, 41
 - determining data type for, 46
 - templates for, 43
 - time range for, 46
- Customize, report field, 45
- customizing
 - report appearance, 69

D

- data
 - availability, 14
 - exporting, 66
 - hardware configuration, 14
 - hardware system, 14
 - hourly report of, 14
 - patch and package, 14
 - performance, 34
 - polling, 14
 - retention, 14
 - rolled-up, 13
 - stopping collection of, 60
 - summary, 14
 - transfer of, 34
 - types of collection, 13
- Data Availability dialog box, 51
- data collection, 14

- data collection (Continued)
 - enable or disable, 59
 - service, 14
 - stopping, 60
 - types of, 13
- data collection service, 13
- data files
 - server layer, 28, 77
- data logging
 - history.log file, 50
 - intervals, 14
 - overview, 13
 - performance, 34
- data properties
 - adding, 53
 - adding for group task, 56
 - available, 51
 - enabling or disabling logging, 55
 - report field, 44, 53
- data types, 13
- database, 35
- date format, 64
- Disabled button, 68
- disabling data logging, 55
- disk space requirements, 22

E

- enabling data logging, 55
- exporting data, 66

F

- Filter dialog box, 61
- filtering reports, 61
- Function field, 46

G

- Generate icon, 38
- generating a report, 38
- graph orientation, 47
- group logging, 56
- grouping functionality, logging interval, 13

H

- hierarchy view, 36
- history.log file, 50
- host name
 - alarm reports, 12
 - standard performance report, 38
- Hosts with SUNWcsr package report, 36
- hourly data, 14
- HTML, viewing a report as, 65

I

- installation
 - layers, 23, 75
 - requirements, 22
- installing Performance Reporting Manager
 - command-line instructions for, 75
 - individually on Microsoft Windows, 26
 - individually on the Solaris platform, 24
 - on Microsoft Windows during Sun Management Center 3.5 installation, 25

K

- Kernel Reader Simple module, 34

L

- level of detail, report field, 48
- Line Attributes tab, 69
- line break, inserting in a report, 70
- line graph reports
 - customizing, 69
 - description of, 17
 - viewing options, 17, 68
- lock symbol, 16, 33
- logging component, 35
- logging data properties
 - enabling or disabling, 55
 - list of default, 71

M

- maximum data, 46

- Memory Free report, 34
- Microsoft Windows, installing Performance Reporting Manager on, 25
- minimum data, 46
- modifying a report request, 48
- module instance, 53
- multi-instance modules, 53

N

- No Data Found error, 51

O

- OS Summary report, 35
- output format options for reports, 16
- output mode, 45

P

- Package Details reports, 36
- packages, add-on, 22
- Patch Details reports, 36
- Performance Reporting Manager
 - installing, 75
 - prerequisites for, 21
 - setting up, 26, 77
 - software packages, 22
- performance reports
 - definition, 33
 - report fields, 46
 - template, 43
- pie chart reports
 - customizing, 69
 - description of, 19
- Platform Summary report, 35
- port, default, 45
- posted reports, 66
- predefined options for standard reports, list of, 72
- preview, 49, 62
- Processes button, 17, 69
- property instance, 53
- Property Logging Setting dialog box, 55

R

- raw data, 13, 46
- raw function, 46
- real time, 47
 - graph refresh interval, 17
- Refresh button, 17
- removing
 - Performance Reporting Manager software through the command-line, 78
 - Performance Reporting Manager software through the GUI, 31
 - posted reports, 67
 - scheduled reports, 64
- report, standard icon, 16
- report data
 - availability, 14, 50
 - retaining, 14
- report field
 - Category, 44
 - common to all templates, 44
 - Customize, 45
 - Data Properties, 44
 - Filter, 48
 - Function, 46
 - Graph Orientation, 47
 - Level of Detail, 48
 - Output Mode, 45
 - performance report template only, 46
 - Report Request, 44
 - Report Title, 44
 - Selected Hosts, 45
 - Subcategory, 44
 - system configuration report template only, 47
 - Time Range, 46
- report formats
 - bar chart, 18
 - line graph, 17
 - pie chart, 19
 - table, 17
- Report Manager GUI
 - description of, 36
 - starting, 37
- Report Request report field, 44
- report requests
 - alarms, 43
 - composite, 62
 - definition of, 43

- report requests (Continued)
 - description of, 15
 - hardware configuration, 43
 - hierarchy view, 36
 - modifying, 48
 - package, 43
 - patch, 43
 - performance, 43
 - system, 43
- reports
 - custom, 41
 - generating, 38
 - icons, 16
 - output format options for, 16
 - performance, 33, 43
 - posted as HTML, 66
 - scheduling, 64
 - standard, 33
 - standard system configuration, 33
 - system configuration, 43
 - templates, 41, 43
 - types, 11
 - viewing in different formats, 65
- Reset Zoom button, 69
- restoring data, 29
- roll-up data process, 13

S

- samples
 - Data Availability dialog box, 52
 - Data Collection dialog box, 60
 - line graph report, 17
 - New Performance Report Request
 - template, 50
 - posted reports in a browser, 67
 - Property Logging Setting dialog box, 57
 - Report Manager, 37
 - Select Data Properties dialog box, 54
- scheduling a report, 64
- script
 - es-inst, 76
 - setup, 26, 77
- select data properties dialog box, 44
- selected hosts, choices, 45
- server layer
 - data files, 28, 77

- setting up Performance Reporting Manager
 - command-line instructions for, 77
 - individually, 27
 - overview, 26
- setup
 - script, 26, 77
 - server data files, 28, 77
- Size & Spacing tab, 69
- sorting tabular reports, 17
- standard performance reports
 - CPU Utilization, 34
 - host name, 38
 - list of types, 34
 - Memory Free, 34
 - Swap Available, 34
- standard reports
 - Alarm Details, 35
 - Alarm Severity Count By Host, 35
 - Alarm Summary, 35
 - Hosts with SUNWcsr package, 36
 - Kernel Reader Simple module, 34
 - list of, 34, 35
 - OS Summary, 35
 - overview of, 33
 - Package Details, 36
 - Patch Details, 36
 - performance, 33
 - Platform Summary, 35
 - predefined options for, 72
 - system configuration, 33
 - System Details, 35
- standard system configuration reports, host
 - name, 38
- subcategory
 - adding new, 42
 - list of predefined, 16
 - selecting, 44
- Swap Available report, 34
- system configuration reports
 - level of detail in, 48
 - list of types, 35
 - template, 43
- System Details report, 35

T

- tabular reports, 17

Titles & Legend tab, 69
Top 10 CPU Processes report, 69
Top 10 Memory Processes report, 69

U

uninstalling Performance Reporting
 Manager, 31
upgrading to Performance Reporting Manager
 3.5, 30

V

viewing
 details for points in line graph report, 17, 68
 report output, 65

Z

Zoom button, 17, 68

