



# Sun™ Management Center 3.5 Supplement for the Sun Fire™, Sun Blade™ and Netra™ Systems

---

Sun Microsystems, Inc.  
4150 Network Circle  
Santa Clara, CA 95054 U.S.A.  
650-960-1300

Part No. 817-3771-10  
October 2003, Revision A

Submit comments about this document at: <http://www.sun.com/hwdocs/feedback>

Copyright 2003 Sun Microsystems, Inc., 4150 Network Circle, Santa Clara, California 95054, U.S.A. All rights reserved.

Sun Microsystems, Inc. has intellectual property rights relating to technology embodied in the product that is described in this document. In particular, and without limitation, these intellectual property rights may include one or more of the U.S. patents listed at <http://www.sun.com/patents> and one or more additional patents or pending patent applications in the U.S. and in other countries.

This document and the product to which it pertains are distributed under licenses restricting their use, copying, distribution, and decompilation. No part of the product or of this document may be reproduced in any form by any means without prior written authorization of Sun and its licensors, if any.

Third-party software, including font technology, is copyrighted and licensed from Sun suppliers.

Parts of the product may be derived from Berkeley BSD systems, licensed from the University of California. UNIX is a registered trademark in the U.S. and in other countries, exclusively licensed through X/Open Company, Ltd.

Sun, Sun Microsystems, the Sun logo, AnswerBook2, docs.sun.com, Sun Fire, Sun Blade, Netra and Solaris are trademarks or registered trademarks of Sun Microsystems, Inc. in the U.S. and in other countries.

All SPARC trademarks are used under license and are trademarks or registered trademarks of SPARC International, Inc. in the U.S. and in other countries. Products bearing SPARC trademarks are based upon an architecture developed by Sun Microsystems, Inc.

The OPEN LOOK and Sun™ Graphical User Interface was developed by Sun Microsystems, Inc. for its users and licensees. Sun acknowledges the pioneering efforts of Xerox in researching and developing the concept of visual or graphical user interfaces for the computer industry. Sun holds a non-exclusive license from Xerox to the Xerox Graphical User Interface, which license also covers Sun's licensees who implement OPEN LOOK GUIs and otherwise comply with Sun's written license agreements.

U.S. Government Rights—Commercial use. Government users are subject to the Sun Microsystems, Inc. standard license agreement and applicable provisions of the FAR and its supplements.

DOCUMENTATION IS PROVIDED "AS IS" AND ALL EXPRESS OR IMPLIED CONDITIONS, REPRESENTATIONS AND WARRANTIES, INCLUDING ANY IMPLIED WARRANTY OF MERCHANTABILITY, FITNESS FOR A PARTICULAR PURPOSE OR NON-INFRINGEMENT, ARE DISCLAIMED, EXCEPT TO THE EXTENT THAT SUCH DISCLAIMERS ARE HELD TO BE LEGALLY INVALID.

---

Copyright 2003 Sun Microsystems, Inc., 4150 Network Circle, Santa Clara, California 95054, Etats-Unis. Tous droits réservés.

Sun Microsystems, Inc. a les droits de propriété intellectuels relatants à la technologie incorporée dans le produit qui est décrit dans ce document. En particulier, et sans la limitation, ces droits de propriété intellectuels peuvent inclure un ou plus des brevets américains énumérés à <http://www.sun.com/patents> et un ou les brevets plus supplémentaires ou les applications de brevet en attente dans les Etats-Unis et dans les autres pays.

Ce produit ou document est protégé par un copyright et distribué avec des licences qui en restreignent l'utilisation, la copie, la distribution, et la décompilation. Aucune partie de ce produit ou document ne peut être reproduite sous aucune forme, par quelque moyen que ce soit, sans l'autorisation préalable et écrite de Sun et de ses bailleurs de licence, s'il y en a.

Le logiciel détenu par des tiers, et qui comprend la technologie relative aux polices de caractères, est protégé par un copyright et licencié par des fournisseurs de Sun.

Des parties de ce produit pourront être dérivées des systèmes Berkeley BSD licenciés par l'Université de Californie. UNIX est une marque déposée aux Etats-Unis et dans d'autres pays et licenciée exclusivement par X/Open Company, Ltd.

Sun, Sun Microsystems, le logo Sun, AnswerBook2, docs.sun.com, Sun Fire, Sun Blade, Netra et Solaris sont des marques de fabrique ou des marques déposées de Sun Microsystems, Inc. aux Etats-Unis et dans d'autres pays.

Toutes les marques SPARC sont utilisées sous licence et sont des marques de fabrique ou des marques déposées de SPARC International, Inc. aux Etats-Unis et dans d'autres pays. Les produits portant les marques SPARC sont basés sur une architecture développée par Sun Microsystems, Inc.

L'interface d'utilisation graphique OPEN LOOK et Sun™ a été développée par Sun Microsystems, Inc. pour ses utilisateurs et licenciés. Sun reconnaît les efforts de pionniers de Xerox pour la recherche et le développement du concept des interfaces d'utilisation visuelle ou graphique pour l'industrie de l'informatique. Sun détient une licence non exclusive de Xerox sur l'interface d'utilisation graphique Xerox, cette licence couvrant également les licenciées de Sun qui mettent en place l'interface d'utilisation graphique OPEN LOOK et qui en outre se conforment aux licences écrites de Sun.

LA DOCUMENTATION EST FOURNIE "EN L'ÉTAT" ET TOUTES AUTRES CONDITIONS, DECLARATIONS ET GARANTIES EXPRESSES OU TACITES SONT FORMELLEMENT EXCLUES, DANS LA MESURE AUTORISÉE PAR LA LOI APPLICABLE, Y COMPRIS NOTAMMENT TOUTE GARANTIE IMPLICITE RELATIVE A LA QUALITE MARCHANDE, A L'APTITUDE A UNE UTILISATION PARTICULIERE OU A L'ABSENCE DE CONTREFAÇON.

# Contents

---

- 1. Introduction 1**
  - Sun Management Center 3.5 1
  - Supported Platforms 2
  - Presentation of the Platform 3
  - Hardware Platform Module 4
    - Browser View 4
      - Physical Components 5
      - Device Information 6
      - Environmental Sensors 6
    - Logical View 6
    - Physical View 7
  - Alarms 10
  
- 2. Installation 11**
  - Sun Management Center 3.5 Software 11
  - Obtaining the Add-On Software 13
  - Preparing for Installation 13
    - Sun Management Center Server 13
  - Installation and Configuration 14
    - GUI Setup 15

|  |           |
|--|-----------|
| Installation Summary   | 15        |
| Removing Existing Hardware Platform Modules                      | 17        |
| ▼ To Remove Existing 3.5 Packages From The Server                | 17        |
| ▼ To Remove Existing 3.5 Packages From The Agent                 | 19        |
| Installing the Hardware Platform Module                          | 21        |
| ▼ To Install and Setup the Sun Management Center Agent Component | 21        |
| ▼ To Install the Sun Management Center Server Software           | 24        |
| Creation and Installation of an Agent Update Image               | 26        |
| <b>3. Physical and Logical Properties</b>                        | <b>27</b> |
| System Properties  | 28        |
| Physical Component Properties                                    | 29        |
| Common Properties  | 29        |
| Fans   | 32        |
| Power Supplies   | 32        |
| Expansion Cards  | 33        |
| Memory Modules   | 34        |
| Other Physical Components  | 35        |
| Locations  | 35        |
| Logical Device Properties  | 36        |
| Processors   | 38        |
| Media Devices  | 38        |
| Network Interfaces   | 39        |
| Indicators   | 40        |
| Other Devices  | 40        |
| Environmental Sensor Properties                                  | 41        |
| Numeric Sensors  | 42        |
| Non-Numeric Sensors  | 42        |

|   |           |
|---|-----------|
| <b>4. Alarms</b>                        | <b>43</b> |
| Overview                                | 43        |
| Operational State Rule                  | 44        |
| Availability Rule                       | 45        |
| Non-Numeric Sensor Rule                 | 45        |
| Numeric Sensor Threshold Rule           | 46        |
| Occupancy Rule                          | 46        |
| Rate or Count Rule                      | 47        |
| Module Status Rule                      | 47        |
| Indicator Status Rule                   | 48        |
| <b>A. PCI Cards</b>                     | <b>49</b> |
| <b>B. Platform-Specific Information</b> | <b>51</b> |
| Sun Fire V210 and V240 Servers          | 52        |
| Sun Fire V250 Server                    | 52        |
| Sun Fire V440 Server                    | 53        |
| Sun Blade 1500 and 2500 Workstations    | 54        |



# Figures

---

- [FIGURE 1-1](#) Domain View Showing Icons for the Supported Platforms 3
- [FIGURE 1-2](#) Browser View for of Sun Fire V250 Showing Physical Components, Device Information and Environmental Sensors 5
- [FIGURE 1-3](#) A Section of the Sun Fire V250 Logical View 7
- [FIGURE 1-4](#) Sun Fire V250 Physical View—Front 8
- [FIGURE 1-5](#) Sun Fire V250 Physical View—Rear 9
- [FIGURE 2-1](#) Installation Process Flow 16
- [FIGURE 3-1](#) Physical Components Showing Location and Description Columns (Sun Fire V250 Shown) 30
- [FIGURE 3-2](#) Part of the Logical Device Table Showing Indicators (Sun Fire V250 Shown) 36
- [FIGURE 3-3](#) Numeric Voltage Sensors and Voltage Threshold Sensors Tables (Sun Fire V250 Shown) 41





# Tables

---

|                            |  |    |
|----------------------------|--|----|
| <a href="#">TABLE 2-1</a>  | Required Software Versions                 | 12 |
| <a href="#">TABLE 3-1</a>  | System Information Table Properties        | 28 |
| <a href="#">TABLE 3-2</a>  | Operational Status Values                  | 31 |
| <a href="#">TABLE 3-3</a>  | Fan Table Properties                       | 32 |
| <a href="#">TABLE 3-4</a>  | Power Supply Table Properties              | 32 |
| <a href="#">TABLE 3-5</a>  | Expansion Card Table Properties            | 33 |
| <a href="#">TABLE 3-6</a>  | Memory Modules Table Properties            | 34 |
| <a href="#">TABLE 3-7</a>  | Other Physical Components Table Properties | 35 |
| <a href="#">TABLE 3-8</a>  | Other Physical Components Table Properties | 35 |
| <a href="#">TABLE 3-9</a>  | Processor Table Properties                 | 38 |
| <a href="#">TABLE 3-10</a> | Media Device Table Properties              | 38 |
| <a href="#">TABLE 3-11</a> | Network Interface Table Properties         | 39 |
| <a href="#">TABLE 3-12</a> | Indicator Table Properties                 | 40 |
| <a href="#">TABLE 3-13</a> | Other Device Table Properties              | 40 |
| <a href="#">TABLE 3-14</a> | Numeric Sensor Table Properties            | 42 |
| <a href="#">TABLE 3-15</a> | Non-Numeric Sensor Table Properties        | 42 |
| <a href="#">TABLE 4-1</a>  | Operation Status Rule                      | 44 |
| <a href="#">TABLE 4-2</a>  | Availability Rule                          | 45 |
| <a href="#">TABLE 4-3</a>  | Non Numeric Sensor Rule                    | 45 |
| <a href="#">TABLE 4-4</a>  | Numeric Sensor Threshold Rule              | 46 |

|           |  |    |
|-----------|--|----|
| TABLE 4-5 | Occupancy Rule   | 46 |
| TABLE 4-6 | Occupancy Rule   | 47 |
| TABLE 4-7 | Module Status Rule                                     | 47 |
| TABLE 4-8 | Indicator Status Rule                                  | 48 |
| TABLE A-1 | Supported PCI Cards                                    | 49 |
| TABLE B-1 | Common Hardware Platform Module Packages               | 51 |
| TABLE B-2 | Platform-Specific Packages for Sun Fire V210 and V240  | 52 |
| TABLE B-3 | Platform-Specific Packages for Sun Fire V250           | 52 |
| TABLE B-4 | Platform-Specific Packages for Sun Fire V440           | 53 |
| TABLE B-5 | Platform-Specific Packages for Sun Blade 1500 and 2500 | 54 |

# Preface

---

The *Sun Management Center 3.5 Supplement for Sun Fire, Sun Blade and Netra Systems* provides instructions on how to install, configure and use Sun Management Center software on the supported platforms. The supplement is intended for system administrators who install and use Sun Management Center 3.5 software to monitor and manage these servers and workstations.

---

**Note** – Sun Fire Entry-Level Servers, NEBS-Certified Servers and Sun Blade Workstations introduced prior to the introduction of Sun Fire V210, V240, V250 and V440, and Sun Blade 1500 and 2500 continue to be supported by the Sun Management Center 3.5 Supplement for Netra Servers, Sun Management Center 3.5 Supplement for Workgroup Servers and Sun Management Center 3.5 Supplement for Workstations.

---

---

## How This Book Is Organized

**Chapter 1** introduces Sun Management Center software for the supported platforms.

**Chapter 2** provides a general procedure for installing and setting up Sun Management Center software on the supported platforms. Use this chapter in conjunction with the *Sun Management Center 3.5 Software Installation Guide*.

**Chapter 3** describes the data that is shown in the *Details* window.

**Chapter 4** describes the alarm rules used by the supported platforms components.

**Appendix A** describes the level of support provided by this product for PCI cards.

**Appendix B** contains information concerning platform-specific packages and documentation.

---

# Typographic Conventions

| Typeface*        | Meaning  | Examples   |
|------------------|--|--|
| AaBbCc123        | The names of commands, files, and directories; on-screen computer output   | Edit your <code>.login</code> file.<br>Use <code>ls -a</code> to list all files.<br>% You have mail.   |
| <b>AaBbCc123</b> | What you type, when contrasted with on-screen computer output  | % <b>su</b><br>Password:   |
| <i>AaBbCc123</i> | Book titles, new words or terms, words to be emphasized. Replace command-line variables with real names or values. | Read Chapter 6 in the <i>User's Guide</i> .<br>These are called <i>class</i> options.<br>You <i>must</i> be superuser to do this.<br>To delete a file, type <code>rm filename</code> . |

\* The settings on your browser might differ from these settings.

---

# Shell Prompts

| Shell                                 | Prompt               |
|---------------------------------------|----------------------|
| C shell                               | <i>machine-name%</i> |
| C shell superuser                     | <i>machine-name#</i> |
| Bourne shell and Korn shell           | \$                   |
| Bourne shell and Korn shell superuser | #                    |

---

## Related Documentation

| Application   | Title   | Part Number |
|---|---|-------------|
| Installing and configuring Sun Management Center 3.5 software | <i>Sun Management Center 3.5 Installation and Configuration Guide</i> | 816-2678    |
| Using Sun Management Center 3.5 software                      | <i>Sun Management Center 3.5 User's Guide</i>                         | 816-2716    |
| Sun Fire V210 and V240 Platform                               | <i>Sun Fire V210 and V240 Servers Installation Guide</i>              | 816-4825    |
|   | <i>Sun Fire V210 and V240 Servers Administration Guide</i>            | 816-4826    |
| Sun Fire V250 Platform  | <i>Sun Fire V250 Server Installation Guide</i>                        | 817-0899    |
|   | <i>Sun Fire V250 Server Administration Guide</i>                      | 817-0900    |
| Sun Fire V440 Platform  | <i>Sun Fire V440 Server Installation Guide</i>                        | 816-7727    |
|   | <i>Sun Fire V440 Server Administration Guide</i>                      | 816-7728    |
|   | <i>Sun Fire V440 Server Diagnostics and Troubleshooting Guide</i>     | 816-7730    |
| Sun Blade 1500 and 2500 Platforms                             | <i>Sun Blade 1500 Getting Started Guide</i>                           | 816-7565    |
|   | <i>Sun Blade 1500 Service, Diagnostics and Troubleshooting Manual</i> | 816-7564    |
|   | <i>Sun Blade 2500 Getting Started Guide</i>                           | 816-1005    |
|   | <i>Sun Blade 2500 Service, Diagnostics and Troubleshooting Manual</i> | 816-0996    |

For a list of other related documents, refer to the *Sun Management Center 3.5 Software Release Notes* on the Sun Management Center Web site:

<http://www.sun.com/software/solaris/sunmanagementcenter>

---

## Accessing Sun Documentation

You can view, print, or purchase a broad selection of Sun documentation, including localized versions, at:

<http://www.sun.com/documentation>

---

## Contacting Sun Technical Support

If you have technical questions about this product that are not answered in this document, go to:

<http://www.sun.com/service/contacting>

---

## Sun Welcomes Your Comments

Sun is interested in improving its documentation and welcomes your comments and suggestions. You can submit your comments by going to:

<http://www.sun.com/hwdocs/feedback>

Please include the title and part number of your document with your feedback:

*Sun Management Center 3.5 Supplement for Sun Fire, Sun Blade and Netra Systems*,  
part number 817-xxxx-01.

# Introduction

---

This chapter provides an introduction to the Sun Management Center 3.0 software in relation to the supported platforms.

The chapter contains the following sections:

- [“Sun Management Center 3.5” on page 1](#)
- [“Presentation of the Platform” on page 3](#)
- [“Hardware Platform Module” on page 4](#)
- [“Alarms” on page 10](#)

---

## Sun Management Center 3.5

Sun Management Center 3.5 is an open, extensible system monitoring and management solution that uses Java and a variant of the Simple Network Management Protocol (SNMP) to provide integrated and comprehensive enterprise-wide management of Sun products and their subsystem, component, and peripheral devices.

The *Sun Management Center 3.5 Software User's Guide* includes definitions, explanations and diagrams that clarify the Sun Management Center architecture. Review that document whenever you have questions about how consoles, servers, agents, domains and modules interact.

Support for hardware monitoring within the Sun Management Center environment is achieved through the use of an appropriate hardware platform module, which presents hardware configuration and fault reporting information to the Sun Management Center management server and console.

---

# Supported Platforms

This document relates to the Sun Management Center 3.5 Supplement for Sun Fire, Sun Blade and Netra Systems, which is a hardware platform module that currently supports the following platforms:

- Sun Fire V210 Server
- Sun Fire V240 Server
- Sun Fire V250 Server
- Sun Fire V440 Server
- Sun Blade 1500 Workstation
- Sun Blade 2500 Workstation

---

**Note** – This document will be updated to support additional Sun Fire Entry-Level Servers, NEBS-Certified Servers (that is, *Netra* Servers) and Sun Blade Workstations as they become available.

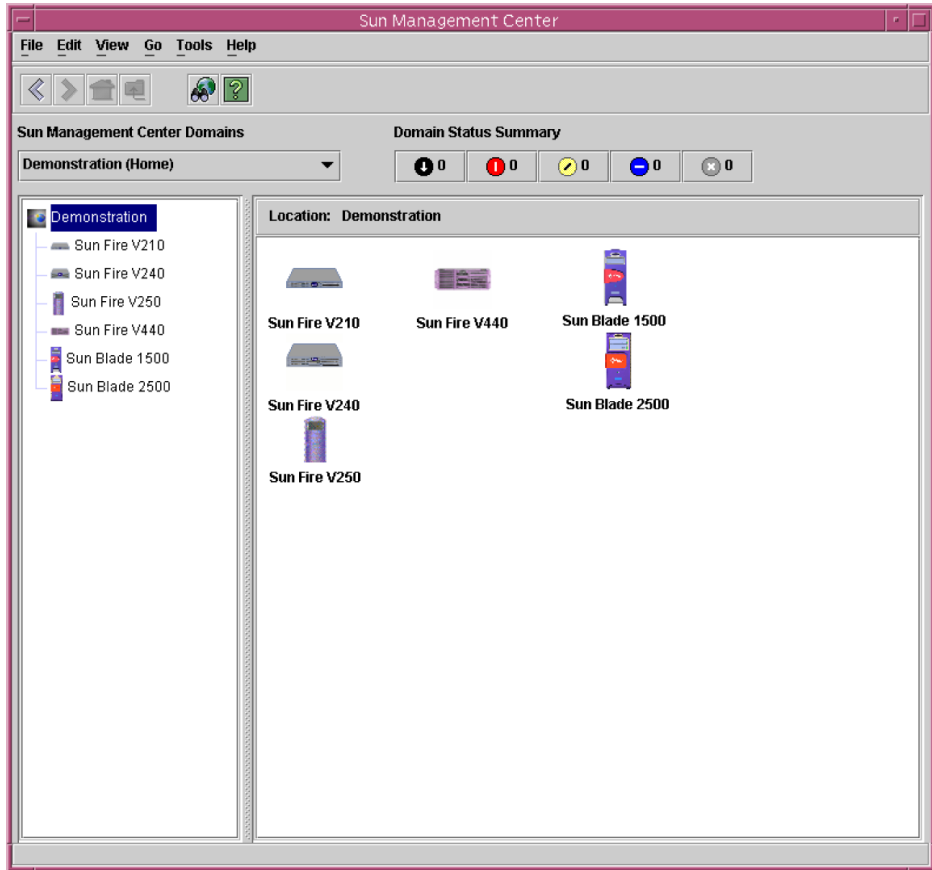
---



---

# Presentation of the Platform

The Sun Management Center graphical user interface (GUI) presents platforms as icons. For each monitored platform there is an icon representing the platform agent.



**FIGURE 1-1** Domain View Showing Icons for the Supported Platforms

You can expand these icons to provide detailed views of the platform(s). Sun Management Center 3.5 launches a detail viewer in which the hardware platform module is displayed, in addition to any other traditional Sun Management Center 3.5 monitoring and control modules.

---

# Hardware Platform Module

The hardware platform module represents the monitored hardware, and presents the following views:

- Browser view
- Logical view
- Physical view

---

**Note** – A hardware platform module is also referred to as the *Config Reader* or *platform add-on*.

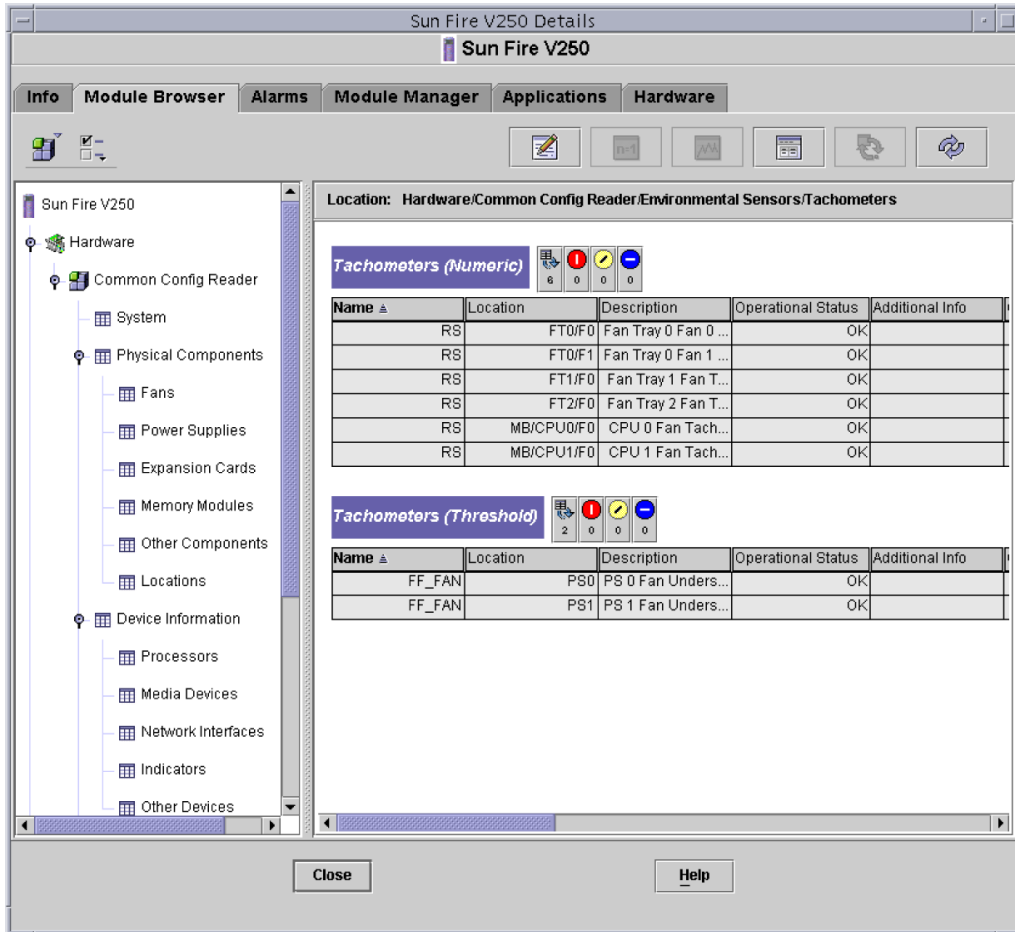
---

## Browser View

The browser view displays information representing the platform hardware in the form of tables representing the various physical and logical components.

The browser view represents the hardware configuration in terms of three primary categories:

- Physical components
- Device Information
- Environmental sensors



**FIGURE 1-2** Browser View for of Sun Fire V250 Showing Physical Components, Device Information and Environmental Sensors

## Physical Components

Physical components occupy physical space and include fans, power supply units, the chassis and so on. The browser view represents each physical component using a fundamental set of properties common to all physical components (for example, part number, serial number) with additional properties defined as appropriate.

## Device Information

Devices represent the logical devices comprising the platform. For example, a CPU module could contain one or more processing cores. Hence, in this case the CPU module would be represented by the browser as a physical component, but the processing cores would be represented by the browser view as separate devices.

The browser view represents each device using a fundamental set of properties common to all devices. Additional properties are defined to extend the common set as appropriate. For example, *speed* is an additional property defined for network interfaces.

## Environmental Sensors

The browser represents the various environmental sensors of the platform as a discrete category. Environmental sensors include those for voltage, current, temperature and fan speed. Two classes of sensor are supported:

- Numeric sensors
- Non-numeric sensors.

[“Environmental Sensor Properties” on page 41](#) describes the various tables and columns in more detail.

## Logical View

The logical view is a tree structure with each node in the tree corresponding to a single row in one table of the browser view. At the top of the tree is the system object. Using parent-child relationships to represent the physical containment hierarchy of the platform, the children of the system object are a set of locations, each containing one physical component. The children of the physical components are either further locations for the physical or logical devices that they realize, or the environmental sensors for monitoring them.

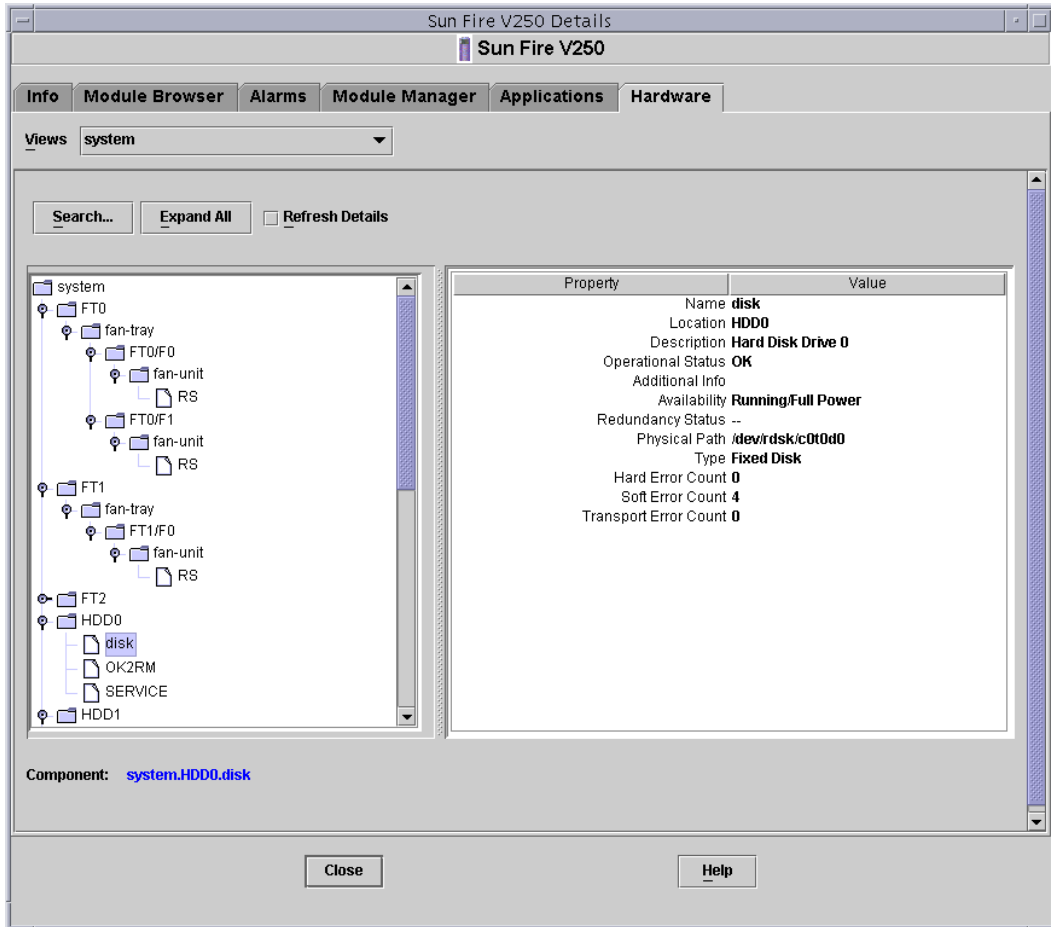


FIGURE 1-3 A Section of the Sun Fire V250 Logical View

## Physical View

The physical view is represented by projections of the platform (for example, front, rear and top views). The projections enable you to select the individual physical or logical components modeled in the physical or logical components tables, and any LEDs that are visible. You can move the mouse over the physical image to display node information in a panel to the right of the physical image.

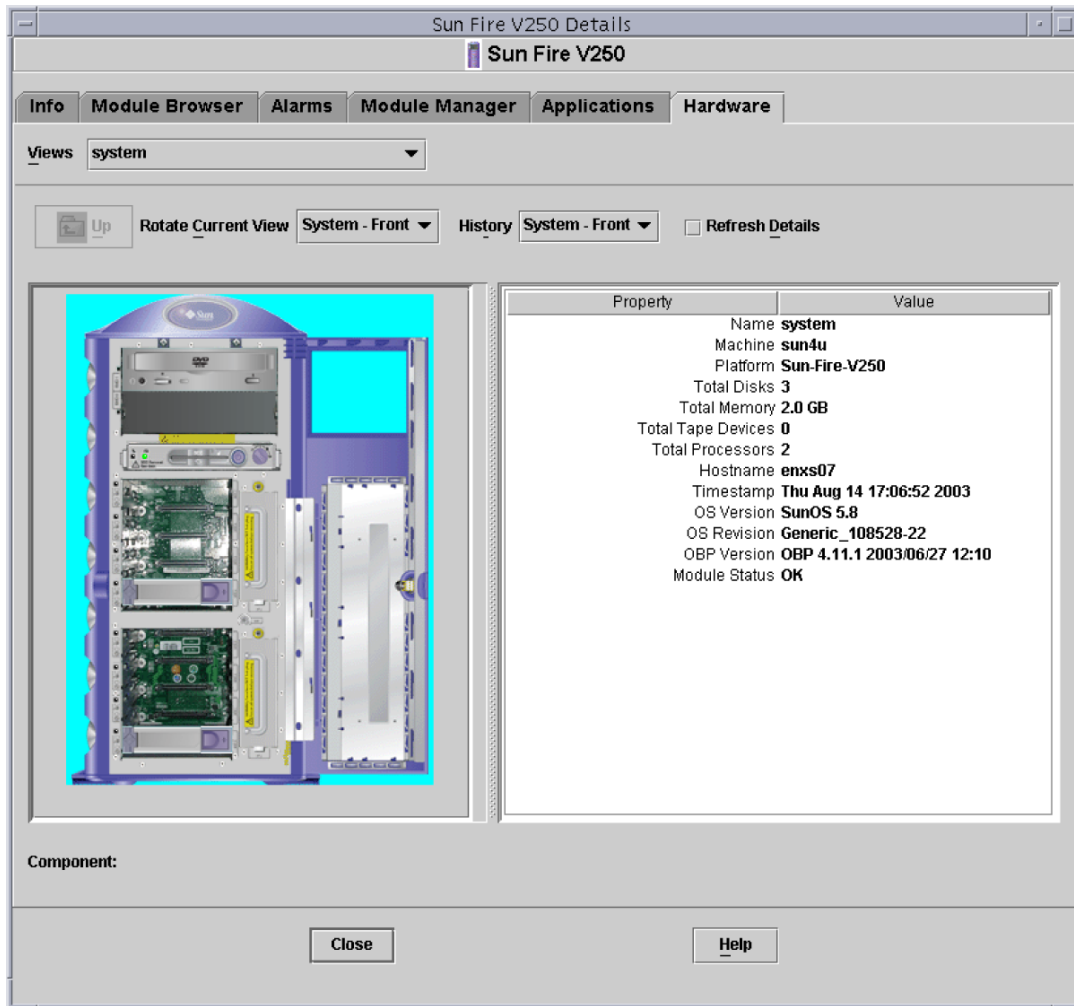


FIGURE 1-4 Sun Fire V250 Physical View—Front

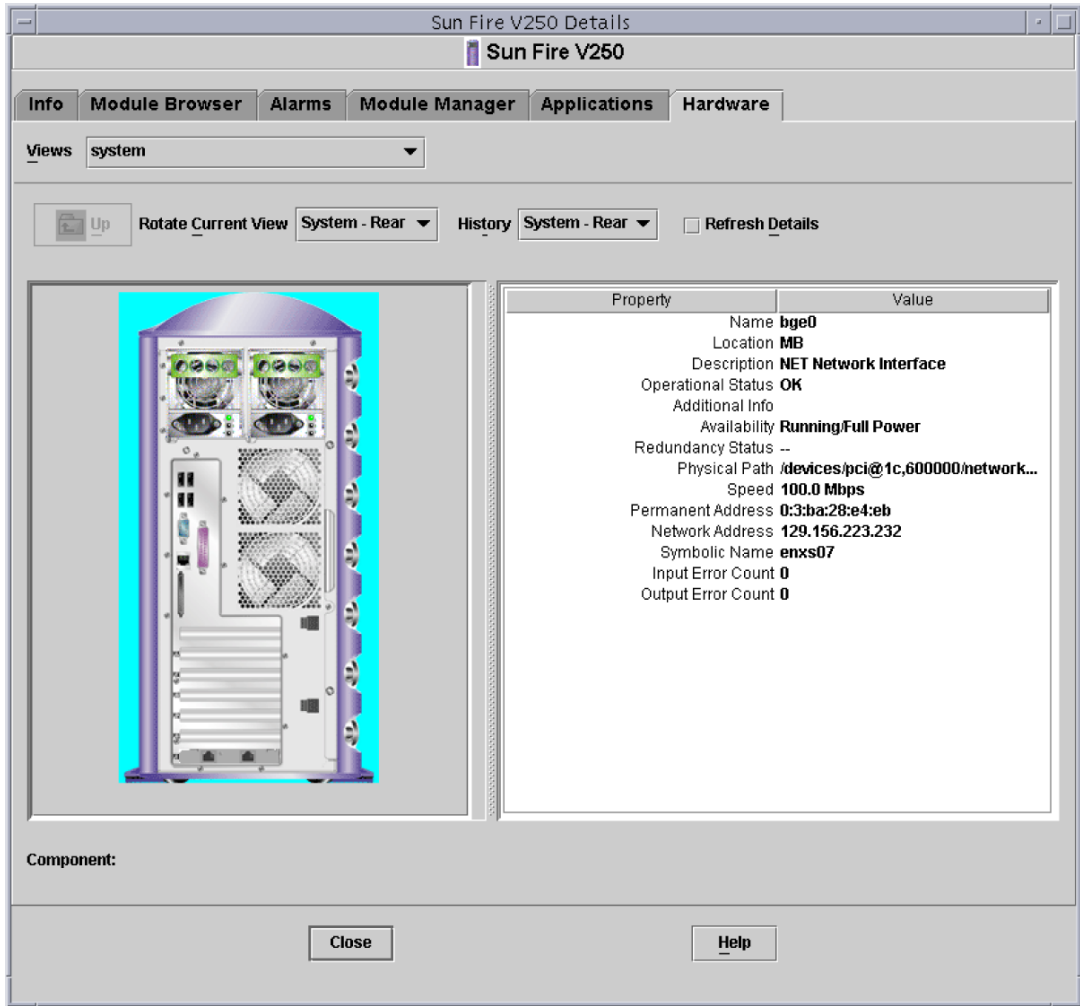


FIGURE 1-5 Sun Fire V250 Physical View—Rear

---

# Alarms

The hardware platform module includes a number of alarm rules that are used by the system to determine the status of the various components. Each alarm rule is applied to a specific property of a table in the hardware platform module. [Chapter 4](#) describes the various alarms in more detail.



## Installation

---

This chapter describes how to install and set up Sun Management Center 3.5 software on the platforms listed in “Supported Platforms” on page 2.

The chapter contains the following sections:

- “Sun Management Center 3.5 Software” on page 11
- “Preparing for Installation” on page 13
- “Obtaining the Add-On Software” on page 13
- “Installation and Configuration” on page 14

---

## Sun Management Center 3.5 Software

The Sun Management Center 3.5 software comprises:

- Core Sun Management Center components
- Value-added software
- Hardware platform modules
- Integration adapters

*The Sun Management Center 3.5 Software Installation and Configuration Guide* provides basic information about installing and setting up the Sun Management Center 3.5 core components and starting and stopping the software. For information about the value-added software and integration adapters, please refer to the Sun Management Center web site:

<http://www.sun.com/software/solaris/sunmanagementcenter>

Support for each platform requires the Sun Management Center 3.5 core packages and the add-on packages for the monitored platform. In this release of the product, the add-on packages are available independently from the Sun Management Center 3.5 core packages.

[TABLE 2-1](#) lists the specific software revisions required to install Sun Management Center 3.5 on the monitored platform.

Your Sun Management Center 3.5 installation and setup scripts may not display the same messages in exactly the same sequence as the examples in this chapter. However, these examples show the basic messages you receive and the approximate sequence in which you receive them.

Specific installation and setup scripts depend on the additional components you install and other choices you make.

**TABLE 2-1** Required Software Versions

| Host                         | Required Software                 | Version   |
|------------------------------|-----------------------------------|---|
| Sun Management Center Server | Solaris operating environment     | 8, 9  |
|                              | Sun Management Center             | 3.5   |
|                              | Hardware Platform Module packages | Platform-specific, see <a href="#">Appendix B</a> |
| Monitored Platform           | Solaris operating environment     | *   |
|                              | Sun Management Center*            | 3.5   |
|                              | Hardware Platform Module packages | Platform-specific, see <a href="#">Appendix B</a> |

\* The Solaris operating environment is dependent on the supported platform. Refer to the platform documentation for details of the Solaris version(s) supported by your platform.

The installation procedure described in this chapter installs the common packages and platform-specific packages automatically.

---

# Obtaining the Add-On Software

The packages are supplied in an archive bundle named `symon_elsw_<ver>.tar.Z` where `<ver>` is the version number. At the time of publication of this document, the version is `<b1.3>`. Always use the latest available version of this file for installation.

The file, which is in compressed tar format, is available from:

<http://www.sun.com/software/solaris/sunmanagementcenter/get.html>

---

**Note** – In the future, some of the filenames can vary depending on which version of Solaris you are using, the version of Sun Management Center you have downloaded and the version of this product.

---

---

# Preparing for Installation

Your environment must meet certain requirements before you can install the management software. This section explains these requirements.

## Sun Management Center Server

Before installing the Sun Management Center 3.5 software, determine which server is to be the Sun Management Center server. The available memory in the server must meet the requirements given in the *Sun Management Center 3.5 Installation and Configuration Guide* (part no. 816-2678).

When the Sun Management Center server is down, you will not be able to use Sun Management Center software to manage your system. Refer to the *Sun Management Center 3.5 Installation and Configuration Guide* (part no. 816-2678) for more information about server requirements.

---

# Installation and Configuration

---

**Note** – If you are extending an existing Sun Management Center 3.5 installation to provide support for the supported platforms, it is not necessary to re-install the core Sun Management Center packages.

---

**Note** – This document does not describe the installation and setup process for the core Sun Management Center 3.5 product. Refer to the *Sun Management Center 3.5 Installation and Configuration Guide* for information about installing and setting up the core software. Upgrade to Sun Management Center 3.5 before you attempt to install the packages specified in this document.

---

To simplify the installation procedure, make sure you have the following information to hand before starting your installation:

- Name of the Sun Management Center server
- Name and agent port number of the monitored platforms

If you have a previous version of the hardware platform module for a supported platform already installed, remove the existing packages before you install the new version.

There are two ways to run the installation script. You can use either the traditional installation script, `es-inst`, or the GUI Install feature, `es-guiinst`. The installation method you use determines which setup script automatically runs afterward. For example, if you used the GUI Install program for installation, `es-guisetup` runs by default.

---

**Note** – Sun Management Center packages are treated differently from platform-specific packages. This installation program does not automatically update the former. To update core packages, you must apply the appropriate patches as discussed in the *supported platforms Release Notes*.

---

For complete Sun Management Center 3.5 core software installation instructions, refer to the documentation provided with your Sun Management Center 3.5 media, or consult the Sun Management Center 3.5 web site:

<http://www.sun.com/sunmanagementcenter>

# GUI Setup

The GUI Setup application is new to Sun Management Center. This application enables you to set up the add-on software for the supported platforms through the GUI. For more information about the GUI Setup application, refer to the *Sun Management Center 3.5 User's Guide* and the *Sun Management Center 3.5 Installation and Configuration Guide*.

## Installation Summary



- 1. If necessary, uninstall any Sun Management Center 3.0 add-on software on the Sun Management Center server and agent.**

For details, refer to [“Removing Existing Hardware Platform Modules”](#) on page 17.



- 2. If necessary, upgrade the Sun Management Center software to version 3.5 on the Sun Management Center server and agent.**

For further details, refer to the *Sun Management Center 3.5 Installation and Configuration Guide* (part no. 816-2678).



- 3. If necessary, uninstall any pre-existing version 3.5 of the add-on software on the Sun Management Center server and agent.**

For details, see [“Removing Existing Hardware Platform Modules”](#) on page 17.



- 4. If necessary, install Sun Management Center 3.5 software on the system used as the Sun Management Center console.**

For details, refer to the *Sun Management Center 3.5 Installation and Configuration Guide* (part no. 816-2678).



- 5. Install Sun Management Center 3.5 server software and the add-on server software on the Sun Management Center server.**

For details of how to install core Sun Management Center 3.5 server software, refer to the *Sun Management Center 3.5 Installation and Configuration Guide*.

For details of how to install the add-on server software, see [“To Install the Sun Management Center Server Software”](#) on page 24.

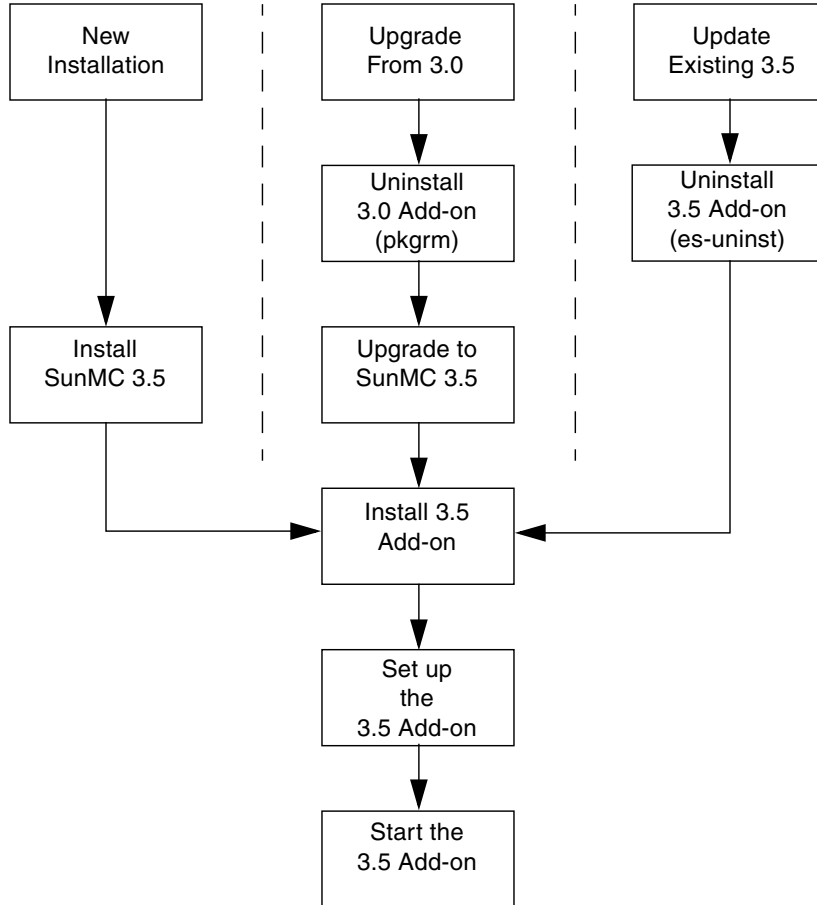


- 6. Install Sun Management Center 3.5 agent software and the add-on agent software on the platform(s) to be monitored.**

For details of how to install core Sun Management Center 3.5 agent software, refer to the *Sun Management Center 3.5 Installation and Configuration Guide* (part no. 816-2678).

For details of how to install the add-on agent software, see [“To Install and Setup the Sun Management Center Agent Component”](#) on page 21.

See [FIGURE 2-1](#) for high-level details of the installation process.



**FIGURE 2-1** Installation Process Flow

# Removing Existing Hardware Platform Modules

You must remove all existing packages from the server prior to installation of the new platform module packages.

Refer to [“Platform-Specific Information” on page 51](#) for details of which Sun Management Center 3.5 platform-specific packages apply to your hardware.

If you have the earlier 3.0 supplement installed you must remove it manually in its entirety. Refer to the *Sun Management Center 3.0 Supplement for Sun Fire, Sun Blade and Netra Systems* (part no. 817-1007) for further details.

## ▼ To Remove Existing 3.5 Packages From The Server

1. Remove all platform-specific Sun Management Center server packages that are already installed using the `es-uninst` command.

```
# /opt/SUNWsymon/sbin/es-uninst
```

```
This script will help you to uninstall the Sun Management Center software.
```

```
Following Sun Management Center Products are installed:
```

```
-----  
PRODUCT                                DEPENDENT PRODUCTS  
-----  
Production Environment                  All Addons  
Sun Fire Platform Administration        None  
ELP Config-Reader Monitoring            None
```

```
Do you want to uninstall Production Environment (y|n|q) n
```

```
Do you want to uninstall Sun Fire Platform Administration (y|n|q) n
```

```
Do you want to uninstall ELP Config-Reader Monitoring (y|n|q) y
```

The following product[s] will be removed:

ELP Config-Reader Monitoring.

Do you want to change selection (y|n|q) **n**

Select Save Data to save all user and configuration data. Your data is saved and can be restored when you re-install Sun Management Center.

Do you want to preserve data (y|n|q) **n**

Proceed with uninstall (y|n|q) **y**

java server is not running

Calling Uninstall script of ELP Config-Reader Monitoring...

Making list of packages to uninstall...

Sorting list of packages according to reverse timestamp...

Removing package : SUNWescws...

Removal of <SUNWescws> was successful.

Removing package : SUNWescps...

Removal of <SUNWescps> was successful.

Removing package : SUNWeschs...

Removal of <SUNWeschs> was successful.

Removing package : SUNWescfs...

Removal of <SUNWescfs> was successful.

Removing package : SUNWescs...

Removing package : SUNWesci...

Removal of <SUNWesci> was successful.

Status of uninstallation:

| PRODUCT                      | STATUS  |
|------------------------------|---------|
| ELP Config-Reader Monitoring | Removed |

Uninstall logfile is :

/var/opt/SUNWsymon/install/uninstall\_reboot.030701153157.3517

#



## ▼ To Remove Existing 3.5 Packages From The Agent

### 1. Remove all platform-specific agent packages using the `es-uninst` command.

```
# /opt/SUNWsymon/sbin/es-uninst
This script will help you to uninstall the Sun Management Center software.

Following Sun Management Center Products are installed:
-----
-
PRODUCT                                DEPENDENT PRODUCTS
-----
-
Production Environment                  All Addons
Sun Fire Platform Administration        None
ELP Config-Reader Monitoring           None

Do you want to uninstall Production Environment (y|n|q) n
Do you want to uninstall Sun Fire Platform Administration (y|n|q) n
Do you want to uninstall ELP Config-Reader Monitoring (y|n|q) y

The following product[s] will be removed:
  ELP Config-Reader Monitoring.

Do you want to change selection (y|n|q) n
Select Save Data to save all user and configuration data. Your data is
saved and can be restored when you re-install Sun Management Center.
Do you want to preserve data (y|n|q) n

Proceed with uninstall (y|n|q) y

chown: unknown group id smcorag
Stopping all Sun Management Center processes.  This may take a few moments...
agent component is not running
platform component is not running
```

```
Calling Uninstall script of ELP Config-Reader Monitoring...
Making list of packages to uninstall...
Sorting list of packages according to reverse timestamp...
```

```
Removing package : SUNWescwa...
```

```
Removal of <SUNWescwa> was successful.
```

```
Removing package : SUNWescpl...
```

```
Removal of <SUNWescpl> was successful.
```

```
Removing package : SUNWescpa...
```

```
Removal of <SUNWescpa> was successful.
```

```
Removing package : SUNWeschl...
```

```
Removal of <SUNWeschl> was successful.
```

```
Removing package : SUNWescha...
```

```
Removal of <SUNWescha> was successful.
```

```
Removing package : SUNWescfl...
```

```
Removal of <SUNWescfl> was successful.
```

```
Removing package : SUNWescfa...
```

```
Removal of <SUNWescfa> was successful.
```

```
Removing package : SUNWesc-ci...
```

```
Removal of <SUNWesc-ci> was successful.
```

```
Removing package : SUNWescda...
```

```
Removal of <SUNWescda> was successful.
```

```
Removing package : SUNWescdl...
```

```
Removal of <SUNWescdl> was successful.
```

```
Removing package : SUNWesc-ca...
```

```
Removal of <SUNWesc-ca> was successful.
```

```
Status of uninstallation:
```

```
-----  
PRODUCT                                STATUS  
-----  
ELP Config-Reader Monitoring           Removed
```

```
Uninstall logfile is :  
/var/opt/SUNWsymon/install/uninstall_enxs07.030701160035.8064
```

## Installing the Hardware Platform Module

This section describes the procedures for installing and setting up Sun Management Center 3.5 software on the supported platforms.

### ▼ To Install and Setup the Sun Management Center Agent Component

1. Log on to the monitored platform as root.
2. If the agent is running, stop it by typing:

```
# /opt/SUNWsymon/sbin/es-stop -a
```

3. Create a temporary directory and move to it.  
For example:

```
# mkdir /var/tmp/<temp_directory>  
# cd /var/tmp/<temp_directory>
```

4. Copy the platform-specific software archive file, `symon_elsw_<ver>.tar.Z`, to the directory you have created.
5. Uncompress and untar the file.

For example:

```
# zcat ../symon_elsw_<ver>.tar.Z | tar xvf -
```

---

**Note** – The exact filename depends on the software release you have downloaded.

---

6. Add the Sun Management Center platform agent package using the `es-inst` command.

```
# /opt/SUNWsymon/sbin/es-inst

-----
This script installs Sun (TM) Management Center 3.5
-----

Enter the source directory of the installation files:
/var/tmp/<temp_directory>/disk1/image
Installation files source directory: /var/tmp/<temp_directory>/disk1/image

Installation destination directory: /opt

Reading Add-On products from image. Please wait...
This can take approximately 2 minutes to complete.

    Found: ELP Config-Reader Monitoring

Checking for applicable products. Please wait...
This can take approximately 1 minutes to complete.

The following Add-On Products are applicable for installation.
    ELP Config-Reader Monitoring

Select the products you want to install:
    ELP Config-Reader Monitoring (y|n|q) Y

The following Add-On Products will be installed:
    ELP Config-Reader Monitoring

Do you want to proceed (y|n|q) Y

Disk Space Checking.....

    <truncated>
```

```
You must perform setup before using Sun Management Center 3.5.
Do you want to run setup now (y|n|q) y
-----
This script will help you to setup Sun (TM) Management Center 3.5.
-----

Setting up Addon[s]...
-----
Starting Sun Management Center Entry Level Platform Config Reader Agent Setup
-----

Do you want to start Sun Management Center agent now (y|n|q) n
Use /opt/SUNWsymon/sbin/es-start -a to start Sun Management Center agent.

Setup of Sun Management Center is complete.
Setup logfile is : /var/opt/SUNWsymon/install/setup_enxs07.030701160846.12642

Install logfile is :
/var/opt/SUNWsymon/install/install_enxs07.030701160341.9714

                End of Installation

Exiting Sun Management Center installation.

#
```

---

**Note** – The name of the Sun Management Center server depends on your own environment.

---

7. When the installation is complete, you can delete the downloaded file from the temporary directory you created at Step 4, then delete the directory itself.

## ▼ To Install the Sun Management Center Server Software

1. Make sure that the Sun Management Center 3.5 core packages are installed and set up on the Sun Management Center server.

For details of how to install core Sun Management Center 3.5 server software, refer to the *Sun Management Center 3.5 Software Installation Guide*.

2. Log on to the Sun Management Center server as root.
3. Create a temporary directory and move to it.

For example:

```
# mkdir /var/tmp/<temp_directory>
# cd /var/tmp/<temp_directory>
```

4. Copy the platform-specific software archive file, `symon_elsw_<ver>.tar.Z`, to the directory you have created.
5. Uncompress and untar the file.

For example:

```
# zcat symon_elsw_<ver>.tar.Z | tar xvf -
```

---

**Note** – The filename depends on the software release you have downloaded.

---

6. Add the Sun Management Center platform server package using the `es-inst` command.

When installation is complete, you are prompted to run `es-setup` to configure the software.

```
# /opt/SUNWsymon/sbin/es-inst
```

```
-----
This script installs Sun (TM) Management Center 3.5
-----
```

```
Enter the source directory of the installation files:
```

```
/var/tmp/<temp_directory>/disk1/image
```

```
Installation files source directory: /var/tmp/<temp_directory>/disk1/image
```

```
Installation destination directory: /opt
```

```
Reading Add-On products from image. Please wait...
This can take approximately 3 minutes to complete.
```

```
Found: ELP Config-Reader Monitoring
```

```
Checking for applicable products. Please wait...
This can take approximately 2 minutes to complete.
```

```
The following Add-On Products are applicable for installation.
ELP Config-Reader Monitoring
```

```
Select the products you want to install:
ELP Config-Reader Monitoring (y|n|q) y
```

```
The following Add-On Products will be installed:
ELP Config-Reader Monitoring
```

```
Do you want to proceed (y|n|q) y
```

```
Disk Space Checking.....
```

```
<truncated>
```

```
You must perform setup before using Sun Management Center 3.5.
Do you want to run setup now (y|n|q) y
```

```
-----
This script will help you to setup Sun (TM) Management Center 3.5.
-----
```

```
Setting up Addon[s]...
```

```
-----
Starting Sun Management Center Entry Level Platform Config Reader Server Setup
-----
```

```
Do you want to start Sun Management Center agent and server components now (y|n|q) y
```

```
<truncated>
```

```
Java server started successfully.
Grouping service started successfully.
Agent started successfully.
Topology service started successfully.
Trap-handler service started successfully.
Configuration service started successfully.
Event-handler service started successfully.
Metadata Service started successfully.
```

```
Web server started successfully.
```

```
Setup of Sun Management Center is complete.
Setup logfile is : /var/opt/SUNWsymon/install/setup_reboot.030701154003.13541

Install logfile is : /var/opt/SUNWsymon/install/install_reboot.030701153730.11164

                End of Installation

Exiting Sun Management Center installation.

#
```

7. When the installation is complete, you can delete the downloaded file from the temporary directory you created at Step 4, then delete the directory itself.

---

## Creation and Installation of an Agent Update Image

The add-on for Sun Fire, Sun Blade and Netra Systems supports the agent update feature introduced in Sun Management Center 3.5.

See "Creating Agent Installation and Update Images" in Chapter 6 of the *Sun Management Center 3.5 Installation and Configuration Guide* (part no. 816-2678) for instructions on how to create an agent update image.

To create an agent update image containing the add-on for Sun Fire, Sun Blade and Netra Systems, type the path to the `disk1/image` directory of the add-on when prompted to provide the name of a valid Sun Management Center 3.5 source directory. For example, if you installed the add-on using the instructions in chapter 2 of the *Sun Management Center 3.5 Supplement for Sun Fire, Sun Blade and Netra Systems*, the installation source directory will be:

```
/var/tmp/<temp_directory>/disk1/image
```

See "Applying Agent Installation, Update, and Patch-Only Images" in chapter 6 of the *Sun Management Center 3.5 Installation and Configuration Guide* for instructions on how to apply the agent update image.



## Physical and Logical Properties

---

The Sun Management Center console presents hardware information for the supported platforms using a common set of tables and fields. This chapter provides a summary of the classes and properties by table.

The chapter contains the following sections:

- [“System Properties” on page 28](#)
- [“Physical Component Properties” on page 29](#)
- [“Logical Device Properties” on page 36](#)
- [“Environmental Sensor Properties” on page 41](#)

In the following tables, some fields can be filled with “--” or be blank in the following circumstances:

- The table or field is not currently used.

For example, for many physical components a serial number is not available and therefore the Serial Number field of the corresponding table will contain “--”. This is also the case with other common properties.

- The field normally contains data under certain conditions.

For example, the Additional Info field contains textual information only when an alarm condition exists.

---

# System Properties

The System Information table contains the top level view of the system hardware.

**TABLE 3-1** System Information Table Properties

| <b>Property</b>    | <b>Comments</b>   |
|--------------------|---|
| Name               | Fixed value of System   |
| Machine            | CPU architecture (for example Sun4u)                            |
| Platform           | Platform type   |
| Total Disks        | Total of all hard disks managed directly through the platform   |
| Total Memory       | Total of all DIMM memory capacity                               |
| Total Tape Devices | Total of all tape devices managed directly through the platform |
| Total Processors   | Total number of CPU processors                                  |
| Hostname           | System IP hostname  |
| Timestamp          | Date and time that the Agent was started                        |
| OS Version         | System OS version   |
| OS Revision        | OS revision   |
| OBP Version        | OBP Version   |
| Module Status      | Module Status   |

---

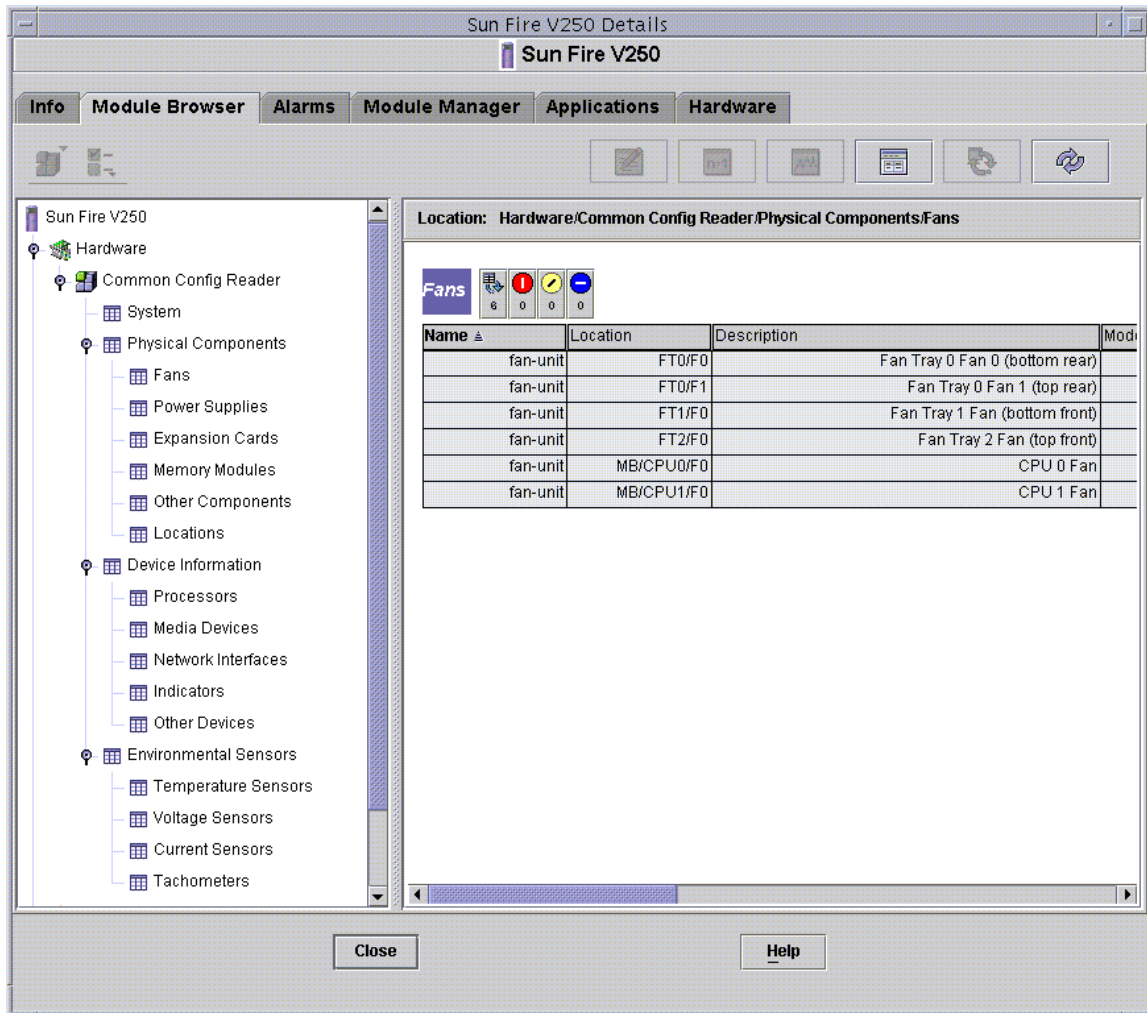
# Physical Component Properties

The tables in this section represent instances of physical components within the system.

## Common Properties

All physical components (apart from the Locations table) share a common set of properties:

- Name
- Location
- Description
- Model Name
- Operational Status
- Additional Information
- Part Number
- Version
- Serial Number
- Manufacturer
- Hot Swappable
- Removable



**FIGURE 3-1** Physical Components Showing Location and Description Columns (Sun Fire V250 Shown)

The Operational Status property can take the values shown in [TABLE 3-2](#).

**TABLE 3-2** Operational Status Values

| <b>SunMC Property</b> | <b>Comments</b>   |
|-----------------------|---|
| OK                    | The component is operating normally.  |
| Error                 | The component has a detected error.   |
| Degraded              | The component is providing service, but operating in a degraded state.  |
| Unknown               | The current operational status is unknown.  |
| Failure Predicted     | The component is functioning correctly but a failure in the near future is predicted.   |
| Starting              | The component is starting up but is not yet online.   |
| Stopping              | The component is shutting down.   |
| Service               | The component is being configured, maintained, cleaned, or otherwise administered.  |
| Stressed              | The component is operating but needs attention. Examples of stressed states include <i>overloaded</i> , <i>overheated</i> and so forth.   |
| Non Recoverable       | A non recoverable error has occurred.   |
| No Contact            | The current instance of the monitoring system has knowledge of this component but has never been able to establish communication with it.   |
| Lost Comms            | The component is known to exist and has been contacted successfully in the past, but is currently unreachable.  |
| Stopped               | The component is known to exist and has not failed, but is not operational and is unable to provide service to users. That is, the component has been purposely made non operational. |

# Fans

**TABLE 3-3** Fan Table Properties

| SunMC Property     | Comments  |
|--------------------|---|
| Name               | Unique name   |
| Location           | Path to the device location                                       |
| Description        | Informal component description                                    |
| Model Name         | Sun Microsystems model name                                       |
| Operational Status | Current component state   |
| Additional Info    | Supporting textual information for the current Operational Status |
| Part Number        | Sun Microsystems or other part number                             |
| Version            | Part version number   |
| Serial Number      | Part serial number  |
| Manufacturer       | Vendor name   |
| HotSwappable       | Boolean: specifies in the component is hot swappable*             |
| Removable          | Boolean: specifies if the component is removable†                 |

\* A component is hot swappable if it can be replaced without shutting down the system

† A component is removable when the component itself is removable, rather than any containing removable group. For example, a fan in a fan tray may not individually be removable, although the fan tray itself may be removable. All Field Replaceable Units (FRUs) are Removable.

# Power Supplies

**TABLE 3-4** Power Supply Table Properties

| SunMC Property     | Comments  |
|--------------------|---|
| Name               | Unique name   |
| Location           | Path to the device location                                       |
| Description        | Informal component description                                    |
| Model Name         | Sun Microsystems model  |
| Operational Status | Current component status  |
| Additional Info    | Supporting textual information for the current Operational Status |
| Part Number        | Sun Microsystems or other part number                             |

**TABLE 3-4** Power Supply Table Properties (*Continued*)

| SunMC Property | Comments   |
|----------------|--|
| Version        | Part version number                                  |
| Serial Number  | Part serial number                                   |
| Manufacturer   | Vendor name  |
| HotSwappable   | Boolean: specifies in the component is hot swappable |
| Removable      | Boolean: specifies if the component is removable     |

## Expansion Cards

This table identifies other expansion cards that have been attached to the system.

**TABLE 3-5** Expansion Card Table Properties

| SunMC Property     | Comments  |
|--------------------|---|
| Name               | Unique name   |
| Location           | Path to the device location                                       |
| Description        | Informal component description                                    |
| Model Name         | Sun Microsystems model  |
| Operational Status | Current component status  |
| Additional Info    | Supporting textual information for the current Operational Status |
| Part Number        | Sun Microsystems or other part number                             |
| Version            | Part version number   |
| Serial Number      | Part serial number  |
| Manufacturer       | Vendor name   |
| HotSwappable       | Boolean: specifies in the component is hot swappable              |
| Removable          | Boolean: specifies if the component is removable                  |
| Bus Type           | Identifies card as PCI, cPCI, SCSI and so forth                   |

The Expansion Card table contains rows corresponding to PCI cards that are installed in your system. The hardware platform module can present a textual description of the card together with the SunStore optional component code and Sun Microsystems part number in the *Description*, *Model Name* and *Part Number* fields, respectively.

Appendix A contains a list of cards for which this information is currently available. Additional cards will be added in subsequent updates of the software as they become available.

Cards for which the add-on software is not configured to provide this information, display the text "--" in the *Description*, *Model Name* and *Part Number* fields.

## Memory Modules

This table identifies physical memory components such as DIMMs

**TABLE 3-6** Memory Modules Table Properties

| SunMC Property     | Comments  |
|--------------------|---|
| Name               | Unique name   |
| Location           | Path to the device location                                       |
| Description        | Informal component description                                    |
| Model Name         | Sun Microsystems model  |
| Operational Status | Current component status  |
| Additional Info    | Supporting textual information for the current Operational Status |
| Part Number        | Sun Microsystems or other part number                             |
| Version            | Part version number   |
| Serial Number      | Part serial number  |
| Manufacturer       | Vendor name   |
| HotSwappable       | Boolean: specifies in the component is hot swappable              |
| Removable          | Boolean: specifies if the component is removable                  |
| Size               | DIMM size   |
| Blank Label        | The physical label associated with this component*                |
| ECC Error Count    | The number of ECC error counts recorded for this component        |

\* This string relates to the physical labeling of the memory location rather than the Solaris logical bank numbering.



# Other Physical Components

This table is used for all physical components other than those already listed.

**TABLE 3-7** Other Physical Components Table Properties

| <b>SunMC Property</b> | <b>Comments</b>   |
|-----------------------|---|
| Name                  | Unique name   |
| Location              | Path to the device location                                       |
| Description           | Informal component description                                    |
| Model Name            | Sun Microsystems model  |
| Operational Status    | Current component status  |
| Additional Info       | Supporting textual information for the current Operational Status |
| Part Number           | Sun Microsystems or other part number                             |
| Version               | Part version number   |
| Serial Number         | Part serial number  |
| Manufacturer          | Vendor name   |
| HotSwappable          | Boolean: specifies in the component is hot swappable              |
| Removable             | Boolean: specifies if the component is removable                  |

## Locations

Locations represent slots into which components can be (hot) plugged.

**TABLE 3-8** Other Physical Components Table Properties

| <b>SunMC Property</b> | <b>Comments</b>   |
|-----------------------|---|
| Name                  | Unique name   |
| Location              | Path to the device location   |
| Location Type         | Specifies the type of component occupying the location                |
| Occupancy             | Permitted values are <i>unknown</i> , <i>occupied</i> or <i>empty</i> |

# Logical Device Properties

Devices represent the logical devices. For example, a CPU module could contain one or more processors, hence the CPU module would be represented as a *physical* component, whereas the processors within it would be represented here as *logical* devices. The following tables enumerate the logical devices included in the common model.

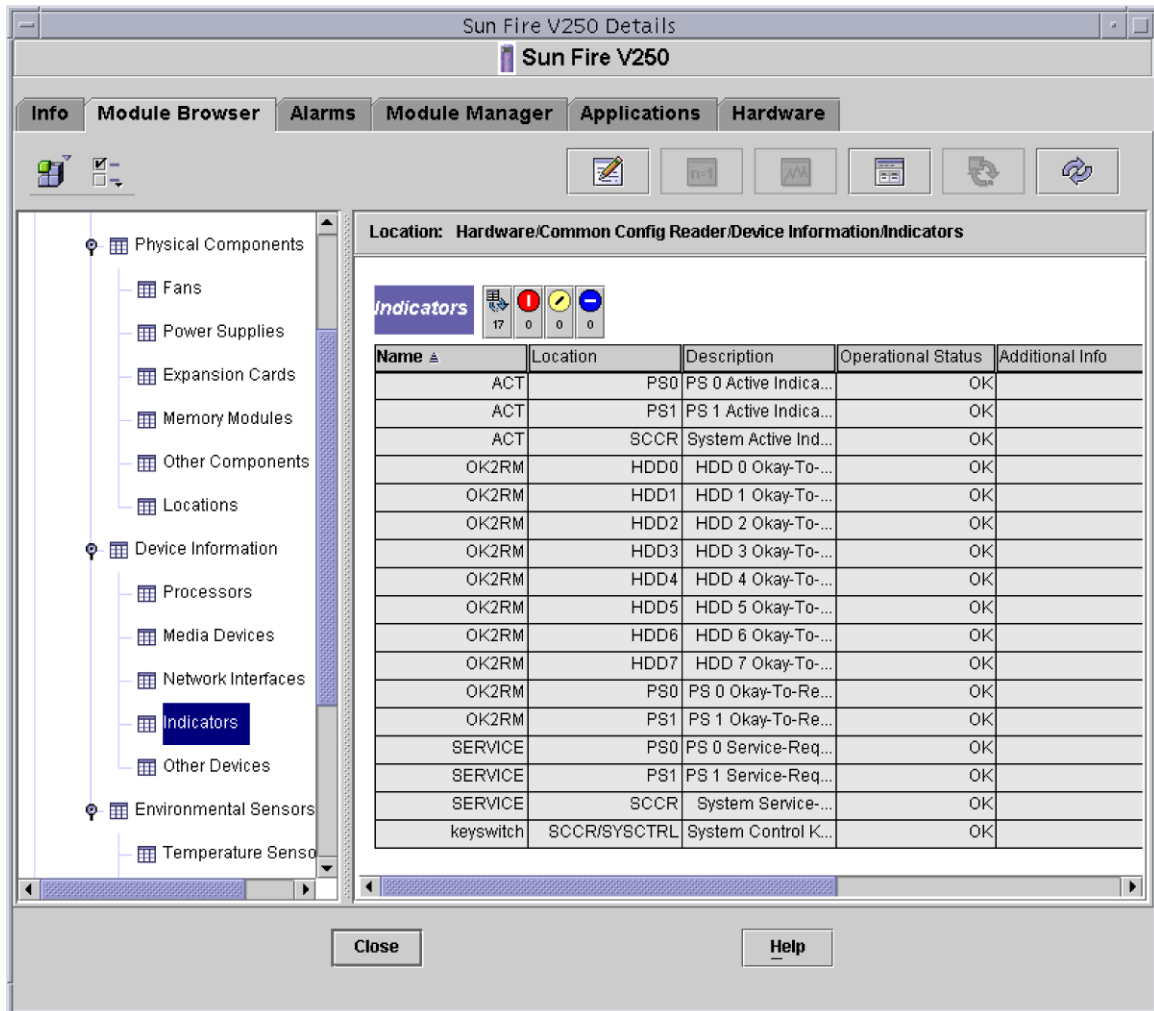


FIGURE 3-2 Part of the Logical Device Table Showing Indicators (Sun Fire V250 Shown)

Logical devices introduce an *Availability* property. The *Availability* values are:

- Other
- Unknown
- Running/Full Power
- Warning
- In Test
- Not Applicable
- Power Off
- Off Line
- Off Duty
- Degraded
- Not Installed
- Install Error
- Power Save - Unknown
- Power Save - Low Power Mode
- Power Save - Standby
- Power Cycle
- Power Save - Warning
- Paused
- Not Ready
- Not Configured
- Quiesced

Also introduced with logical devices is the *Redundancy Status* property. For devices that are part of a redundancy group, this indicates the current rôle played by this component. For example, a service processor may be operating in an active/standby pairing with another service processor. Similarly a network interface may be the primary or secondary member of a redundant network pair. Valid values for Redundancy Status are:

- Not Applicable
- Unknown
- Active
- Standby
- Primary
- Secondary
- Other

# Processors

**TABLE 3-9** Processor Table Properties

| SunMC Property         | Comments  |
|------------------------|---|
| Name                   | Unique name   |
| Location               | Path to the device location                                       |
| Description            | Informal device description                                       |
| Operational Status     | Current device status   |
| Additional Info        | Supporting textual information for the current Operational Status |
| Availability           | The device availability   |
| Redundancy Status      | Device status as part of a redundancy group                       |
| Device ID              | Numeric ID as used by various Solaris commands                    |
| Clock Frequency        | Processor clock speed   |
| Family                 | Processor family, for example, <code>sparcv9</code>               |
| Data Cache Size        | Primary data cache size   |
| Instruction Cache Size | Primary instruction cache size                                    |
| Level 2 Cache Size     | Size of level 2 cache   |

# Media Devices

This table represents all media devices: disks, CD-ROM, DVD-ROM, tapes, and so forth.

**TABLE 3-10** Media Device Table Properties

| SunMC Property     | Comments  |
|--------------------|---|
| Name               | Unique name   |
| Location           | Path to the device location                                       |
| Description        | Informal device description                                       |
| Operational Status | Current device status   |
| Additional Info    | Supporting textual information for the current Operational Status |
| Availability       | The device availability   |

**TABLE 3-10** Media Device Table Properties (*Continued*)

| <b>SunMC Property</b> | <b>Comments</b>   |
|-----------------------|---|
| Redundancy Status     | Device status as part of a redundancy group   |
| Physical Path         | Media access device path under <code>/dev/rdisk</code> or <code>/dev/rmt</code>     |
| Type                  | Disk, CD-ROM, DVD-ROM, Tape   |
| Hard Error Count      | The count of <i>hard</i> device errors, as available through <code>iostat -e</code> |
| Soft Error Count      | As available through <code>iostat -e</code>   |
| Transport Error Count | As available through <code>iostat -e</code>   |

## Network Interfaces

**TABLE 3-11** Network Interface Table Properties

| <b>SunMC Property</b> | <b>Comments</b>  |
|-----------------------|--|
| Name                  | Unique name  |
| Location              | Path to the device location  |
| Description           | Informal device description  |
| Operational Status    | Current device status  |
| Additional Info       | Supporting textual information for the current Operational Status      |
| Availability          | The device availability ( <code>offline</code> , <code>online</code> ) |
| Redundancy Status     | Device status as part of a redundancy group                            |
| Device ID             | Network device path under <code>/devices</code>                        |
| Speed                 | Speed in bps   |
| Permanent Address     | MAC address  |
| Network Address       | IP address   |
| Symbolic Name         | Symbolic network or hostname associated with this IP address           |
| Input Error Count     | Input error count as available through <code>kstat</code>              |
| Output Error Count    | Output error count as available through <code>kstat</code>             |

# Indicators

**TABLE 3-12** Indicator Table Properties

| <b>SunMC Property</b> | <b>Comments</b>   |
|-----------------------|---|
| Name                  | Unique name   |
| Location              | Path to the device location                                       |
| Description           | Informal component description                                    |
| Operational Status    | Current device status   |
| Additional Info       | Supporting textual information for the current Operational Status |
| Indicator State       | STEADY, OFF, ALTERNATING or UNKNOWN                               |
| Expected State        | STEADY, OFF, or ALTERNATING                                       |
| Color                 | Indicator color   |

# Other Devices

This table is used for all logical devices other than those already listed

**TABLE 3-13** Other Device Table Properties

| <b>SunMC Property</b> | <b>Comments</b>   |
|-----------------------|---|
| Name                  | Unique name   |
| Location              | Path to the device location                                       |
| Description           | Informal component description                                    |
| Operational Status    | Current component status  |
| Additional Info       | Supporting textual information for the current Operational Status |
| Availability          | The device availability (offline, online)                         |
| Redundancy Status     | Device status as part of a redundancy group                       |
| Device ID             | Device pather under /devices                                      |

# Environmental Sensor Properties

Environmental sensors are modelled for fan speed (tachometer), temperature, current and voltage. Two types of sensor are supported:

- Numeric
- Non numeric

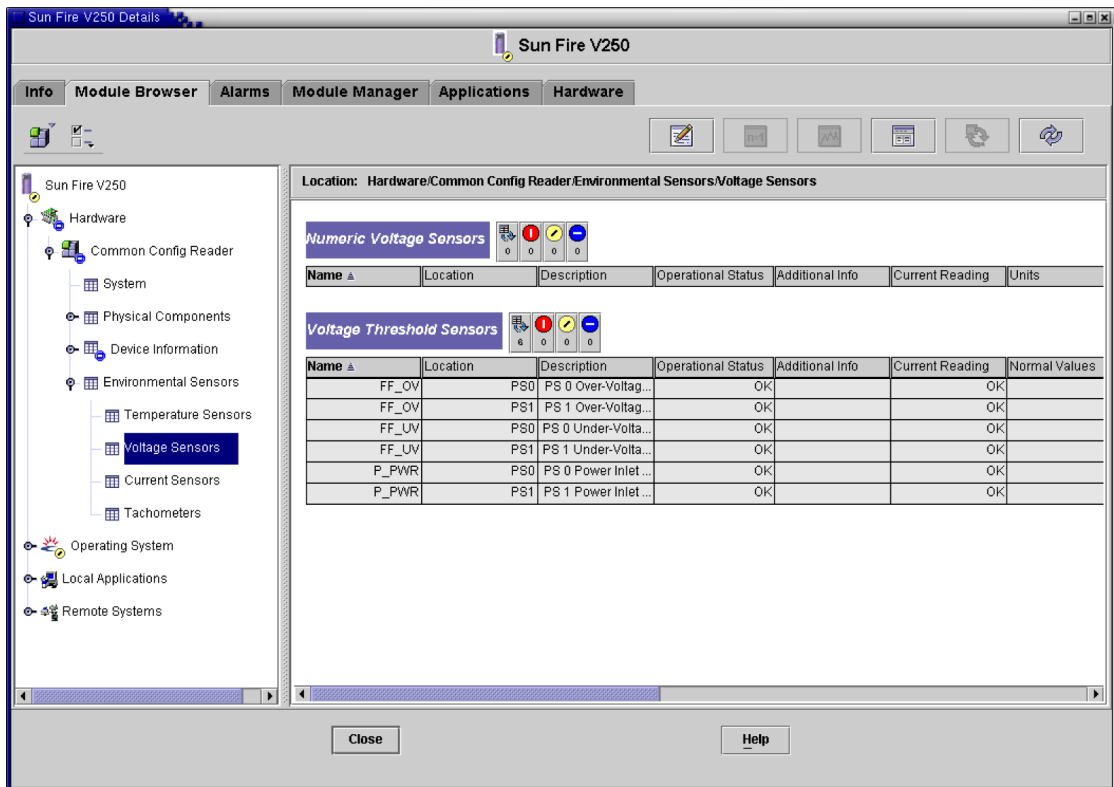


FIGURE 3-3 Numeric Voltage Sensors and Voltage Threshold Sensors Tables (Sun Fire V250 Shown)

# Numeric Sensors

TABLE 3-14 shows the properties for numeric sensors.

**TABLE 3-14** Numeric Sensor Table Properties

| SunMC Property               | Comments                                      |
|------------------------------|---|
| Name                         | Unique name                                   |
| Location                     | Path to the device location                   |
| Description                  | Informal component description                |
| Operational Status           | Current component status                      |
| Additional Info              | Supporting information for Operational Status |
| Current Reading              | Current sensor reading                        |
| Units                        | Reading units                                 |
| Lower Non Critical Threshold | Lower first warning threshold                 |
| Upper Non Critical Threshold | Upper first warning threshold                 |
| Lower Critical Threshold     | Lower second warning threshold                |
| Upper Critical Threshold     | Upper second warning threshold                |
| Lower Fatal Threshold        | Lower final warning threshold                 |
| Upper Fatal Threshold        | Upper final warning threshold                 |

# Non-Numeric Sensors

TABLE 3-15 shows the properties for non-numeric sensors.

**TABLE 3-15** Non-Numeric Sensor Table Properties

| SunMC Property     | Comments  |
|--------------------|---|
| Name               | Unique name   |
| Location           | Path to the device location                               |
| Description        | Informal component description                            |
| Operational Status | Current component status                                  |
| Additional Info    | Supporting information for Operational Status             |
| Current Reading    | Current sensor reading                                    |
| Normal Values      | A list of values considered <i>normal</i> for this sensor |



# Alarms

---

This chapter summarizes the Alarm Rules that are specific to the supported platform components.

The chapter contains the following sections:

- [“Overview” on page 43](#)
- [“Operational State Rule” on page 44](#)
- [“Availability Rule” on page 45](#)
- [“Non-Numeric Sensor Rule” on page 45](#)
- [“Numeric Sensor Threshold Rule” on page 46](#)
- [“Occupancy Rule” on page 46](#)
- [“Rate or Count Rule” on page 47](#)
- [“Module Status Rule” on page 47](#)
- [“Indicator Status Rule” on page 48](#)

---

## Overview

The hardware common config reader contains a number of alarm rules used by the system to determine the state of various components. Each alarm rule instance is applied to a specific property of a table in the config reader. A single rule can be applied to multiple properties and tables.

An alarm rule takes input from three main sources:

- Object properties within the config reader
- User-specifiable values
- Data stored by the rule itself

All three of these sources can be modified on a per-object and property basis. You can change user-specifiable values, while the rule programmer specifies which object properties and stored data are used.

You can assign actions to rule states and state transitions through the Sun Management Center console (see chapter 9 and chapter 12 of the *Sun Management 3.5 Center Software User's Guide*).

---

## Operational State Rule

This rule is applied to any node that contains an *operational status* property. It will alarm if the operational state is anything other than OK, Starting or Stopping (all of which are deemed to be *normal* operational states). The error string incorporates the value of the *Additional Information* property to provide additional information to the end user.

**TABLE 4-1** Operation Status Rule

| Rule Property       | Details  |
|---------------------|--|
| Applicable tables   | Any that contain <i>operational status</i> property  |
| Properties read     | <i>Operational Status</i> , <i>Additional Information</i>  |
| Alarm trigger       | <i>Operational Status</i> is not OK, Starting or Stopping  |
| Editable parameters | <i>Alarm Severity</i> for each of the following four groups of <i>Operational Status</i> values: <ul style="list-style-type: none"><li>• Error, Non-Recoverable</li><li>• Degraded, Predicted Failure, Stressed</li><li>• Unknown, Lost Comms, No Contact</li><li>• Service, Stopped</li></ul> |

---

# Availability Rule

This rule is applied to any table with an *availability* property.

**TABLE 4-2** Availability Rule

| Rule Property       | Details  |
|---------------------|--|
| Applicable tables   | Any that contain the <i>availability</i> property  |
| Properties read     | <i>Availability</i>  |
| Alarm trigger       | <i>Availability</i> is not Running, or Not Applicable  |
| Editable parameters | <i>Alarm Severity</i> for each of the following three groups of <i>Availability</i> values: <ul style="list-style-type: none"><li>• Degraded, Warning, Power Save - Warning, Install Error</li><li>• Not Configured, Not Installed, Not Ready</li><li>• In Test, Off Duty, Off Line, Paused, Quiesced, Power Cycle, Power Off, Power Save - Low Power Mode, Power Save - Standby, Power Save - Unknown</li></ul> |

---

# Non-Numeric Sensor Rule

This rule is applied to any non-numeric sensor. It uses the *Current Reading* in the error message.

**TABLE 4-3** Non Numeric Sensor Rule

| Rule Property       | Details  |
|---------------------|--|
| Applicable tables   | Non Numeric Temperature, Voltage and Current sensors |
| Properties read     | <i>Current Value</i> , Normal Values                 |
| Alarm trigger       | <i>Current Value</i> is not one of the Normal Values |
| Editable parameters | <i>Alarm Severity</i>                                |

---

# Numeric Sensor Threshold Rule

This rule is applied to any numeric sensor. It reads the various thresholds presented in the sensor, and generates an alarm if the current value is outside the specified ranges.

**TABLE 4-4** Numeric Sensor Threshold Rule

| Rule Property       | Details   |
|---------------------|---|
| Applicable tables   | Numeric Temperature, Voltage and Current Sensors, Tachometers         |
| Properties read     | <i>Current Value</i> , Threshold Values                               |
| Alarm trigger       | <i>Current Value</i> is outside Threshold ranges                      |
| Editable parameters | <i>Alarm Severity</i> for Non-Critical, Critical and Fatal thresholds |

---

# Occupancy Rule

This rule generates an alarm when the occupancy of a location changes.

**TABLE 4-5** Occupancy Rule

| Rule Property       | Details                        |
|---------------------|--------------------------------|
| Applicable tables   | Location                       |
| Properties read     | <i>Name</i> , <i>Occupancy</i> |
| Alarm trigger       | The occupancy changes          |
| Editable parameters | <i>Alarm Severity</i>          |

---

**Note** – You can clear this alarm by acknowledging the alarm in the Sun Management Center console. All other alarms are cleared by a change of state.

---

---

## Rate or Count Rule

This rule enables you to specify a rate or count for any integer property. If the rate or count exceeds the specified values, an alarm is generated. Apply the rule to all properties that count a number of errors, so that you can generate such alarms as required.

**TABLE 4-6** Occupancy Rule

| <b>Rule Property</b> | <b>Details</b>   |
|----------------------|--|
| Applicable tables    | Any table with an integer property                       |
| Properties read      | <i>Error Counts</i> and similar integer properties       |
| Alarm trigger        | <i>Rate</i> or <i>Count</i> exceeds user-specified value |
| Editable parameters  | <i>Rate</i> , <i>Count</i> and <i>Alarm Severity</i>     |

---

## Module Status Rule

This rule only applies to the *Module Status* property in the system object. It is primarily used to report module data acquisition problems.

**TABLE 4-7** Module Status Rule

| <b>Rule Property</b> | <b>Details</b>  |
|----------------------|---|
| Applicable tables    | System  |
| Properties read      | <i>Module Status</i> , <i>Module Status Severity</i>  |
| Alarm trigger        | <i>Status</i> is not OK   |
| Editable parameters  | An Alarm Severity level can be assigned to each of the <i>Module Status Severity</i> levels of <i>Information</i> , <i>Warning</i> and <i>Error</i> |

---

# Indicator Status Rule

This rule applies only to the *Indicator Alarm Status* property in the Indicator object.

**TABLE 4-8** Indicator Status Rule

| <b>Rule Property</b> | <b>Details</b>                             |
|----------------------|--|
| Applicable tables    | Indicator                                  |
| Properties read      | <i>Indicator State, Expected State</i>     |
| Alarm trigger        | <i>State does not equal Expected State</i> |
| Editable parameters  | <i>Alarm Severity</i>                      |

## PCI Cards

---

The Expansion Card table contains rows corresponding to PCI cards that are installed in your system. The hardware platform module can present a textual description of the card together with the SunStore optional component code and Sun Microsystems part number in the *Description*, *Model Name* and *Part Number* fields, respectively.

Cards for which the add-on software is not configured to provide this information, display the text "--" in the *Description*, *Model Name* and *Part Number* fields.

**TABLE A-1** lists the cards for which the textual description, SunStore optional component code and Sun Microsystems part number are available. Refer to the documentation supplied with your platform for details of which of these PCI cards are available for your system.

**TABLE A-1** Supported PCI Cards

| <b>PCI Card</b>  | <b>Sun Part Number</b> | <b>Optional Component Number</b> |
|--|------------------------|----------------------------------|
| Dual-Channel Differential UltraSCSI PCI Host Adapter   | 375-0006               | X6541A                           |
| Dual-Channel Ultra3 Differential SCSI PCI Host Adapter | 375-3057               | X6758A                           |
| Sun High-Speed Serial Interface PCI Adapter 2.0        | 370-2728               | X1155A                           |
| Sun Serial Asynchronous Interface PCI Adapter 3.0      | 375-0100               | X2156A                           |
| Sun FastEthernet 10/100BaseT PCI Adapter 2.0           | 501-5019               | X1033A                           |
| Sun Quad FastEthernet PCI Card (QFE)                   | 501-5406               | X1034A                           |
| Sun GigaSwift Ethernet UTP PCI Adapter                 | 501-5902               | X1150A                           |
| Sun GigaSwift Ethernet MMF PCI Adapter                 | 501-5524               | X1151A                           |

**TABLE A-1** Supported PCI Cards

| <b>PCI Card</b>                                      | <b>Sun Part Number</b> | <b>Optional Component Number</b> |
|--|------------------------|----------------------------------|
| SunATM 155/MFiber PCI Adapter 4.0                    | 501-3028               | X1157A                           |
| SunATM 155/UTP PCI Adapter 4.0                       | 501-3027               | X1158A                           |
| SunATM 622/MFiber PCI Adapter 4.0                    | 501-3029               | X1159A                           |
| Single Fibre Channel PCI Network Adapter             | 375-3019               | X6799A                           |
| Dual Fibre Channel PCI Network Adapter               | 375-3030               | X6727A                           |
| SunSwift 10/100BaseT Fast/Wide UltraSCSI PCI Adapter | 501-5656               | X1032A                           |
| Dual Fast Ethernet + Dual SCSI PCI Adapter           | 501-5727               | X2222A                           |
| PGX-128 Colour Graphics Card                         | 375-3126               | X3769A                           |
| Dual Fibre Channel 2 Gb PCI Network Adapter          | 375-3108               | X6768A                           |
| SunPCi II Pro Co-Processor Card                      | 375-3051               | X2132A                           |
| Sun PCi III Pro Co-Processor Card                    | 605-4654               | X2134A                           |
| Sun Crypto Accelerator 100 Card                      | tba                    | X6762A                           |



## Platform-Specific Information

---

**TABLE B-1** lists the common packages that you install on the monitored system and the Sun Management Center server.

The following sections contain platform-specific information about the software packages for this product and the related system documentation for each supported platform:

- [“Sun Fire V210 and V240 Servers” on page 52](#)
- [“Sun Fire V250 Server” on page 52](#)
- [“Sun Fire V440 Server” on page 53](#)
- [“Sun Blade 1500 and 2500 Workstations” on page 54](#)

Refer to the *Sun Management Center 3.5 Software Installation Guide* for information about general Sun Management Center 3.5 prerequisites, including minimum disk space requirements.

**TABLE B-1** Common Hardware Platform Module Packages

| Package   | Description   | Layer            |
|-----------|---|------------------|
| SUNWescci | SunMC Common Config Reader Module Initialization        | Server and agent |
| SUNWesccs | SunMC Common Config Reader Module Server Core Component | Server           |
| SUNWescca | SunMC Common Config Reader Module Agent Core Component  | Agent            |
| SUNWescda | SunMC Common Config Reader Module DAQ Component         | Agent            |
| SUNWescd1 | SunMC Common Config Reader DAQ Library                  | Agent            |

---

# Sun Fire V210 and V240 Servers

[TABLE B-2](#) contains a list of the server and agent components for the Sun Fire V210 and V240.

**TABLE B-2** Platform-Specific Packages for Sun Fire V210 and V240

| Package   | Description   | Layer  |
|-----------|---|--------|
| SUNWescps | SunMC Common Config Reader Module Sun Fire V210/V240 Server Component | Server |
| SUNWescpa | SunMC Common Config Reader Module Sun Fire V210/V240 Agent Component  | Agent  |
| SUNWescpl | Common Config Reader Module Sun Fire V210/V240 platform support       | Agent  |

## Related Documentation

For information about Sun Fire V210 and V240 servers, refer to the following documentation:

- *Sun Fire V210 and V240 Servers Installation Guide* (part no. 816-4825)
- *Sun Fire V210 and V240 Servers Administration Guide* (part no. 816-4826)

---

# Sun Fire V250 Server

[TABLE B-3](#) contains a list of the server and agent components for the Sun Fire V250.

**TABLE B-3** Platform-Specific Packages for Sun Fire V250

| Package   | Description  | Layer  |
|-----------|--|--------|
| SUNWescfs | SunMC Common Config Reader Module Sun Fire V250 Server Component | Server |
| SUNWescfa | SunMC Common Config Reader Module Sun Fire V250 Agent Component  | Agent  |
| SUNWescf1 | Common Config Reader Module Sun Fire V250 platform support       | Agent  |

## Related Documentation

For information about the Sun Fire V250 server, refer to the following documentation:

- *Sun Fire V250 Server Installation Guide* (part no. 817-0899)
- *Sun Fire V250 Server Administration Guide* (part no. 817-0900)

---

## Sun Fire V440 Server

[TABLE B-4](#) contains a list of the server and agent components for the Sun Fire V440.

**TABLE B-4** Platform-Specific Packages for Sun Fire V440

| Package   | Description  | Layer  |
|-----------|--|--------|
| SUNWeschs | SunMC Common Config Reader Module Sun Fire V440 Server Component | Server |
| SUNWescha | SunMC Common Config Reader Module Sun Fire V440 Agent Component  | Agent  |
| SUNWesch1 | Common Config Reader Module Sun Fire V440 platform support       | Agent  |

## Related Documentation

For information about the Sun Fire V440 server, refer to the following documentation:

- *Sun Fire V440 Server Installation Guide* (part no. 816-7727)
- *Sun Fire V440 Server Administration Guide* (part no. 816-7728)
- *Sun Fire V440 Server Diagnostics and Troubleshooting Guide* (part no. 816-7730)

---

# Sun Blade 1500 and 2500 Workstations

TABLE B-5 contains a list of the server and agent components for Sun Blade 1500 and 2500.

**TABLE B-5** Platform-Specific Packages for Sun Blade 1500 and 2500

| Package   | Description   |
|-----------|---|
| SUNWescws | SunMC Common Config Reader Module Sun Blade 1500/2500 Server Platform Component |
| SUNWescwa | SunMC Common Config Reader Module Sun Blade 1500/2500 Agent Platform Component  |

## Related Documentation

For information about Sun Blade 1500 and 2500 workstations, refer to the following documentation:

- *Sun Blade 1500 Getting Started Guide* (part no. 816-7565)
- *Sun Blade 1500 Service, Diagnostics and Troubleshooting Manual* (part no. 816-7564)
- *Sun Blade 2500 Getting Started Guide* (part no. 816-1005)
- *Sun Blade 2500 Service, Diagnostics and Troubleshooting Manual* (part no. 816-0996)

# Index

---

## A

- agent
  - stopping, 21
- Agent Update, 26
- alarm rule, 10
- alarm rules, 43
- Availability property values, 37

## B

- browser, 4

## C

- command
  - es-inst, 22, 24
  - es-setup, 24
  - es-stop, 21
- common properties, 29

## D

- detail viewer, 3
- Devices table, 38
- documentation
  - Sun Fire V210 and V240, 52

## E

- environmental sensors, 6
- es-guiinst, 14
- es-inst, 14
- es-inst command, 22, 24
- es-setup command, 24
- es-stop command, 21
- Expansion Card table, 33

## F

- Fan table, 32
- field replaceable units, 32

## G

- graphical user interface, 3
- GUI install feature, 14
- GUI setup, 15

## H

- hardware, 28

## I

- Indicators table, 40
- installation process

- core packages, 14
- GUI install feature, 14
- GUI setup, 15

installing the software, 15, 21, 24

## L

- Locations table, 35
- logical components table, 7
- logical devices, 6, 36
  - properties, 36
- logical view, 6

## M

- Media Devices table, 38
- Memory Modules table, 34

## N

- Network Interfaces table, 39
- Numeric Sensors table, 42

## O

- operational status, 31
- Other Devices table, 40
- Other Physical Components table, 35

## P

- packages
  - updating core packages, 14
- physical components, 5, 36
- physical components table, 7
- physical containment hierarchy, 6
- physical view, 7
- Power Supplies table, 32
- properties, 43
  - common, 5, 29
  - devices, 38
  - environmental sensors, 41

- expansion cards, 33
- fans, 32
- indicators, 40
- locations, 35
- media devices, 38
- memory modules, 34
- network interfaces, 39
- numeric sensors, 42
- other devices, 40
- other physical components, 35
- physical components, 29
- power supplies, 32
- system information, 28

## R

- Redundancy Status property values, 37
- removing the software, 17
- rules
  - availability, 45
  - count, 47
  - indicator status, 48
  - module status, 47
  - non-numeric sensor, 45
  - numeric sensor threshold, 46
  - occupancy, 46
  - operational state, 44
  - rate, 47

## S

- setting up the software, 21, 24
- Simple Network Management Protocol, 1
- software
  - common add-on packages, 51
  - download web site, 13
  - installation, 15, 21, 24
  - platform-specific packages, 52, 53, 54
  - removal, 17
  - requirements, 12
  - setting up, 21, 24
- stopping the agent, 21
- Sun Management Center
  - core components, 11
  - GUI, 3
  - web site, 11

Sun Management Center 3.0 core components, 11  
supported platforms, 2  
System Information table, 28  
system object, 6

## T

tables, 4  
  Devices, 38  
  Expansion Card, 33  
  Fans, 32  
  Indicators, 40  
  Locations, 35  
  Media Devices, 38  
  Memory Modules, 34  
  Network Interfaces, 39  
  Numeric Sensors, 42  
  Other Devices, 40  
  Other Physical Components, 35  
  Power Supplies, 32  
  System Information, 28

