

# Sun Modular Datacenter S20/D20 Rack Dolly Guide

The Sun Modular Datacenter S20/D20 (Sun MD) is shipped with a tool that is used to move racks inside the Sun MD. This tool is referred to as a *rack dolly*. The rack dolly is also available as an option that can be ordered and shipped separately.

## Rack Dolly Option Kit Contents

Each option kit includes the following components:

- One rack dolly - Sun part number X5311A-Z



---

**Caution** – The rack dolly weighs 89 pounds (40 kilograms). Always roll the dolly into position. Use caution and observe safety guidelines when lifting the rack dolly.

---

---

**Note** – The tool kit required for use of the rack dolly is supplied with every SunMD system. It is also available as an option as Sun part number 560-2922.

---

## Rack Dolly Functionality

When a Sun MD is shipped, and during normal operation, racks are secured in bays inside the Sun MD in what is referred to as *home position*. When a rack is pulled out of a bay, into the *service aisle*, it is in the *service position*.

The rack dolly enables you to maneuver populated racks into and out of the home position, as well as forward and back in the service aisle. The rack dolly has four leadscrews, one on each side. The leadscrews enable you to access the rack dolly from all sides with a socket wrench.

## Engaging the Wheels

The rack dolly has two sets of wheels: the IN/OUT wheels and the UP/DOWN wheels. For the purposes of this document and for servicing rack equipment within the Sun Modular Datacenter S20/ D20 (Sun MD), only the IN/OUT set of wheels will be utilized and are to be operated from either SIDE A or SIDE B. The remaining two sides are not utilized during rack equipment servicing.

Use the 7/16 -inch socket wrench provided with the Sun Modular Datacenter S20/D20 (Sun MD) to engage the leadscrews.



---

**Caution** – Only use a hand wrench to lower or raise the Dolly carriage. *Do not* use a power wrench or similar power device to lower or raise the Dolly carriage because severe damage can occur to the Dolly mechanism.

---



---

**Caution** – Do not raise the dolly more than a 1/2 inch because severe damage can occur to the Dolly mechanism.

---

---

## Moving the Equipment from Home Position to Service Position

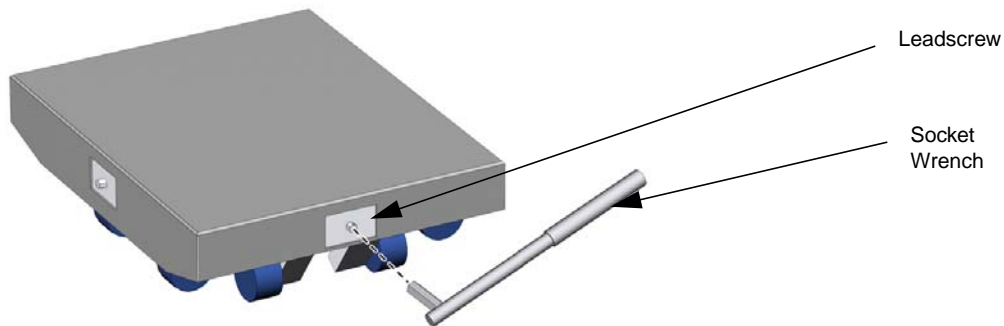
### Working with SIDE A

1. Slide the dolly under the equipment so that SIDE A is approximately flush with the front face of the equipment.
2. Turn the leadscrew clockwise to raise the equipment just enough to easily clear floor.
3. Pull the dolly and equipment into the aisle as instructed in the *Sun Modular Datacenter S20/D20 Installation Guide*.
4. Reverse the procedure to re-install the equipment into home position.

### Working with SIDE B

1. Slide dolly under the equipment so that SIDE B is approximately flush with the front face of the equipment.
2. Turn the leadscrew counter-clockwise to raise the equipment just enough to easily clear floor.
3. Pull the dolly and equipment into the aisle as instructed in the *Sun Modular Datacenter S20/D20 Installation Guide*.
4. Reverse the procedure to re-install the equipment into home position.

FIGURE 1 Rack Dolly With Socket Wrench Engaging IN/OUT Wheels



## Using the Rack Dolly to Move the Rack



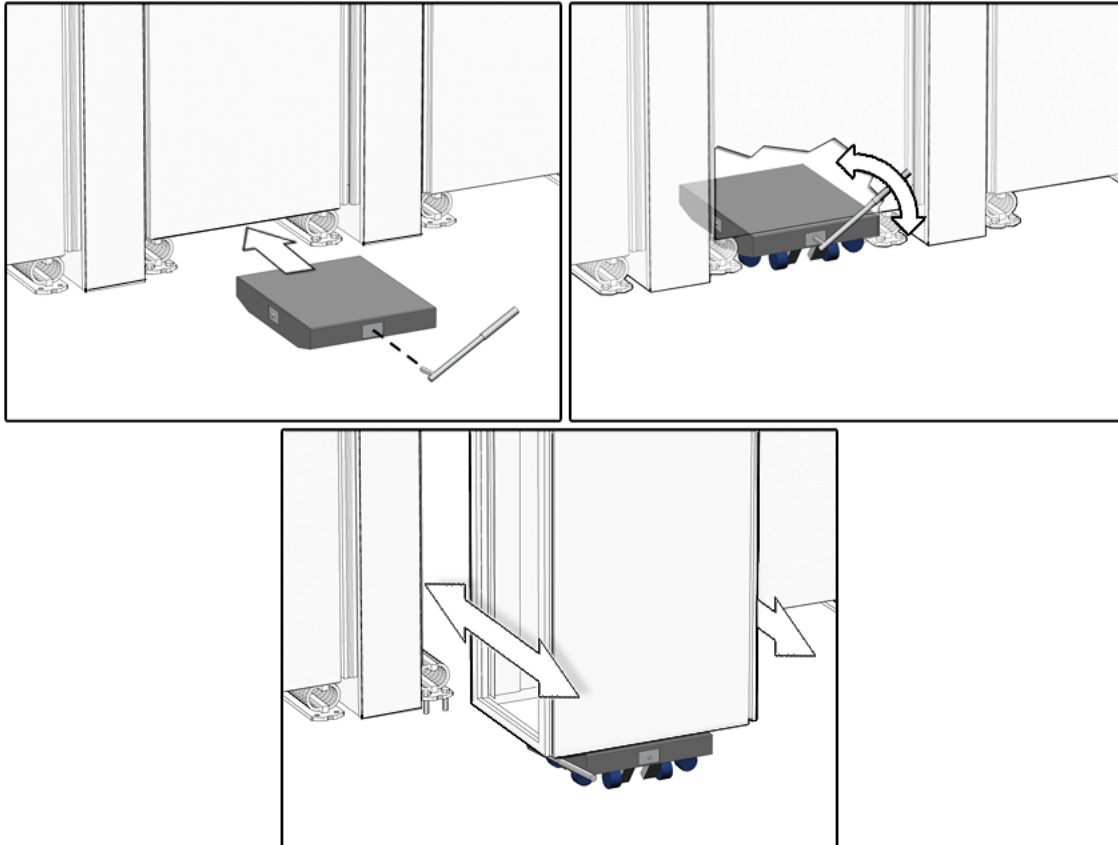
**Caution** – Due to the possible variation in equipment mounting depth and center of gravity, the rack dolly must be carefully positioned under a Sun MD D20 system deep rack to ensure it is centered under the center line of the installed equipment. In many cases this may not be the actual center of the rack.

---

**Note** – Follow the procedure in the *Sun Modular Datacenter S20/D20 Installation Guide* to release the rack before using the rack dolly.

---

**FIGURE 2** Using the Rack Dolly



---

**Note** – The Sun Modular Datacenter S20/D20 documentation is available online through a password-protected web site. Contact your Sales Representative for information about accessing the Sun MD product documentation.

---

---

## Accessing Sun Documentation

You can view, print, or purchase a broad selection of documentation, including localized versions, at:  
<http://www.oracle.com/technetwork/indexes/documentation/index.html>

## Technical Support

If you have technical questions about this product that are not answered in this document, go to:  
<https://support.oracle.com>

Copyright © 2008, 2011, Oracle and/or its affiliates. All rights reserved.  
Copyright © 2008, 2011, Oracle et/ou ses affiliés. Tous droits réservés.



Part No.: E24505-01  
July 2011