



# Sun Java™ Workstation W1100z and W2100z Getting Started Guide

---

Sun Microsystems, Inc.  
www.sun.com

Part No. 817-6584-11  
October 2004, Revision A

Submit comments about this document at: <http://www.sun.com/hwdocs/feedback>

Copyright 2004 Sun Microsystems, Inc., 4150 Network Circle, Santa Clara, California 95054, U.S.A. All rights reserved.

Sun Microsystems, Inc. has intellectual property rights relating to technology that is described in this document. In particular, and without limitation, these intellectual property rights may include one or more of the U.S. patents listed at <http://www.sun.com/patents> and one or more additional patents or pending patent applications in the U.S. and in other countries.

This document and the product to which it pertains are distributed under licenses restricting their use, copying, distribution, and decompilation. No part of the product or of this document may be reproduced in any form by any means without prior written authorization of Sun and its licensors, if any.

Third-party software, including font technology, is copyrighted and licensed from Sun suppliers.

Parts of the product may be derived from Berkeley BSD systems, licensed from the University of California. UNIX is a registered trademark in the U.S. and in other countries, exclusively licensed through X/Open Company, Ltd.

Sun, Sun Microsystems, the Sun logo, AnswerBook2, docs.sun.com, Java, and Solaris are trademarks or registered trademarks of Sun Microsystems, Inc. in the U.S. and in other countries.

All SPARC trademarks are used under license and are trademarks or registered trademarks of SPARC International, Inc. in the U.S. and in other countries. Products bearing SPARC trademarks are based upon an architecture developed by Sun Microsystems, Inc.

The OPEN LOOK and Sun™ Graphical User Interface was developed by Sun Microsystems, Inc. for its users and licensees. Sun acknowledges the pioneering efforts of Xerox in researching and developing the concept of visual or graphical user interfaces for the computer industry. Sun holds a non-exclusive license from Xerox to the Xerox Graphical User Interface, which license also covers Sun's licensees who implement OPEN LOOK GUIs and otherwise comply with Sun's written license agreements.

U.S. Government Rights—Commercial use. Government users are subject to the Sun Microsystems, Inc. standard license agreement and applicable provisions of the FAR and its supplements.

DOCUMENTATION IS PROVIDED "AS IS" AND ALL EXPRESS OR IMPLIED CONDITIONS, REPRESENTATIONS AND WARRANTIES, INCLUDING ANY IMPLIED WARRANTY OF MERCHANTABILITY, FITNESS FOR A PARTICULAR PURPOSE OR NON-INFRINGEMENT, ARE DISCLAIMED, EXCEPT TO THE EXTENT THAT SUCH DISCLAIMERS ARE HELD TO BE LEGALLY INVALID.

---

Copyright 2004 Sun Microsystems, Inc., 4150 Network Circle, Santa Clara, Californie 95054, Etats-Unis. Tous droits réservés.

Sun Microsystems, Inc. a les droits de propriété intellectuels relatants à la technologie qui est décrit dans ce document. En particulier, et sans la limitation, ces droits de propriété intellectuels peuvent inclure un ou plus des brevets américains énumérés à <http://www.sun.com/patents> et un ou les brevets plus supplémentaires ou les applications de brevet en attente dans les Etats-Unis et dans les autres pays.

Ce produit ou document est protégé par un copyright et distribué avec des licences qui en restreignent l'utilisation, la copie, la distribution, et la décompilation. Aucune partie de ce produit ou document ne peut être reproduite sous aucune forme, par quelque moyen que ce soit, sans l'autorisation préalable et écrite de Sun et de ses bailleurs de licence, s'il y en a.

Le logiciel détenu par des tiers, et qui comprend la technologie relative aux polices de caractères, est protégé par un copyright et licencié par des fournisseurs de Sun.

Des parties de ce produit pourront être dérivées des systèmes Berkeley BSD licenciés par l'Université de Californie. UNIX est une marque déposée aux Etats-Unis et dans d'autres pays et licenciée exclusivement par X/Open Company, Ltd.

Sun, Sun Microsystems, le logo Sun, AnswerBook2, docs.sun.com, Java, et Solaris sont des marques de fabrique ou des marques déposées de Sun Microsystems, Inc. aux Etats-Unis et dans d'autres pays.

Toutes les marques SPARC sont utilisées sous licence et sont des marques de fabrique ou des marques déposées de SPARC International, Inc. aux Etats-Unis et dans d'autres pays. Les produits portant les marques SPARC sont basés sur une architecture développée par Sun Microsystems, Inc.

L'interface d'utilisation graphique OPEN LOOK et Sun™ a été développée par Sun Microsystems, Inc. pour ses utilisateurs et licenciés. Sun reconnaît les efforts de pionniers de Xerox pour la recherche et le développement du concept des interfaces d'utilisation visuelle ou graphique pour l'industrie de l'informatique. Sun détient une licence non exclusive de Xerox sur l'interface d'utilisation graphique Xerox, cette licence couvrant également les licenciées de Sun qui mettent en place l'interface d'utilisation graphique OPEN LOOK et qui en outre se conforment aux licences écrites de Sun.

LA DOCUMENTATION EST FOURNIE "EN L'ÉTAT" ET TOUTES AUTRES CONDITIONS, DECLARATIONS ET GARANTIES EXPRESSES OU TACITES SONT FORMELLEMENT EXCLUES, DANS LA MESURE AUTORISEE PAR LA LOI APPLICABLE, Y COMPRIS NOTAMMENT TOUTE GARANTIE IMPLICITE RELATIVE A LA QUALITE MARCHANDE, A L'APTITUDE A UNE UTILISATION PARTICULIERE OU A L'ABSENCE DE CONTREFAÇON.



Please  
Recycle



Adobe PostScript

# Contents

---

**Preface** v

**1. Setting Up the Sun Java Workstation W1100z and W2100z** 1

Safety Information 1

Planning the Installation Process 2

Unpacking the Workstation 3

    Front Panel Overview 4

    Rear Panel Overview 5

Cabling the Workstation 6

Powering On the Workstation 7

Powering Off the Workstation 8

**2. Software Installation** 9

Preparing for Installation 9

    Erasing the Primary Boot Hard Disk 11

Installing the Operating System 11

Running the up2date Utility 12

Installing Drivers and Mounting the Diagnostics Partition 12

    Red Hat Linux Operating System Driver Installation 13

    Solaris Operating System Driver Installation 14

Java Desktop System Release 2 Driver Installation	14
Windows XP Operating System Driver Installation	15
Java Desktop System Release 2 Installation or Recovery	16
Installing JDS for Solaris Systems	17
Installing JDS for SUSE Linux	18
JDS Post Installation Procedures	24
<b>3. Setting Up the Preinstalled Solaris Operating System Software</b>	<b>27</b>
Configuring the Preinstalled Solaris Operating System	29
Sun Install Check	31
Configuring the Preinstalled Java Desktop System	31

# Preface

---

The *Sun Java Workstation W1100z and W2100z Getting Started Guide* provides the information that you need to set up, power on, and configure the workstation hardware and software.

---

## How This Book Is Organized

The document is organized into the following chapters:

[Chapter 1](#) contains instructions on unpacking, cabling, and powering on the workstation.

[Chapter 2](#) describes the operating systems supported by the Sun Java Workstation W1100z and W2100z and the supplemental drivers included with the system. It also contains information on restoring the Java Desktop System if you have the software preinstalled on your system.

[Chapter 3](#) describes how to set up the Java Desktop System if you have the software preinstalled on the workstation

---

# Accessing Sun Documentation Online

You can view, print, or purchase a broad selection of Sun documentation, including localized versions, at:

<http://www.sun.com/documentation/>

You can access the latest version of the Sun Java Workstation W1100z and W2100z documentation from the Documentation links at:

<http://www.sun.com/w1100z>

<http://www.sun.com/w2100z>

---

## Related Documentation

<b>Application</b>	<b>Title</b>	<b>Part Number</b>
System set up information	<i>Sun Java Workstation W1100z and W2100z Setup Poster</i>	817-6583-xx
Overview and service information	<i>Sun Java Workstation W1100z and W2100z User Guide</i>	817-6585-xx
Safety Information	<i>Sun Java Workstation W1100z and W2100z Safely and Compliance Guide</i>	817-6586-xx
Late-breaking information	<i>Sun Java Workstation W1100z and W2100z Release Notes</i>	817-6587-xx

---

# Contacting Sun Technical Support

If you have technical questions about this product that are not answered in this document, go to:

<http://www.sun.com/service/contacting/>

---

# Sun Welcomes Your Comments

Sun is interested in improving its documentation and welcomes your comments and suggestions. You can submit your comments by going to:

<http://www.sun.com/hwdocs/feedback/>

Please include the title and part number of your document with your feedback. The part number of this *Sun Java Workstation W1100z and W2100z Getting Started Guide* is 817-6584-11.





# Setting Up the Sun Java Workstation W1100z and W2100z

---

This chapter includes information about the following topics:

- “Safety Information” on page 1
- “Planning the Installation Process” on page 2
- “Unpacking the Workstation” on page 3
- “Cabling the Workstation” on page 6
- “Powering On the Workstation” on page 7
- “Powering Off the Workstation” on page 8

---

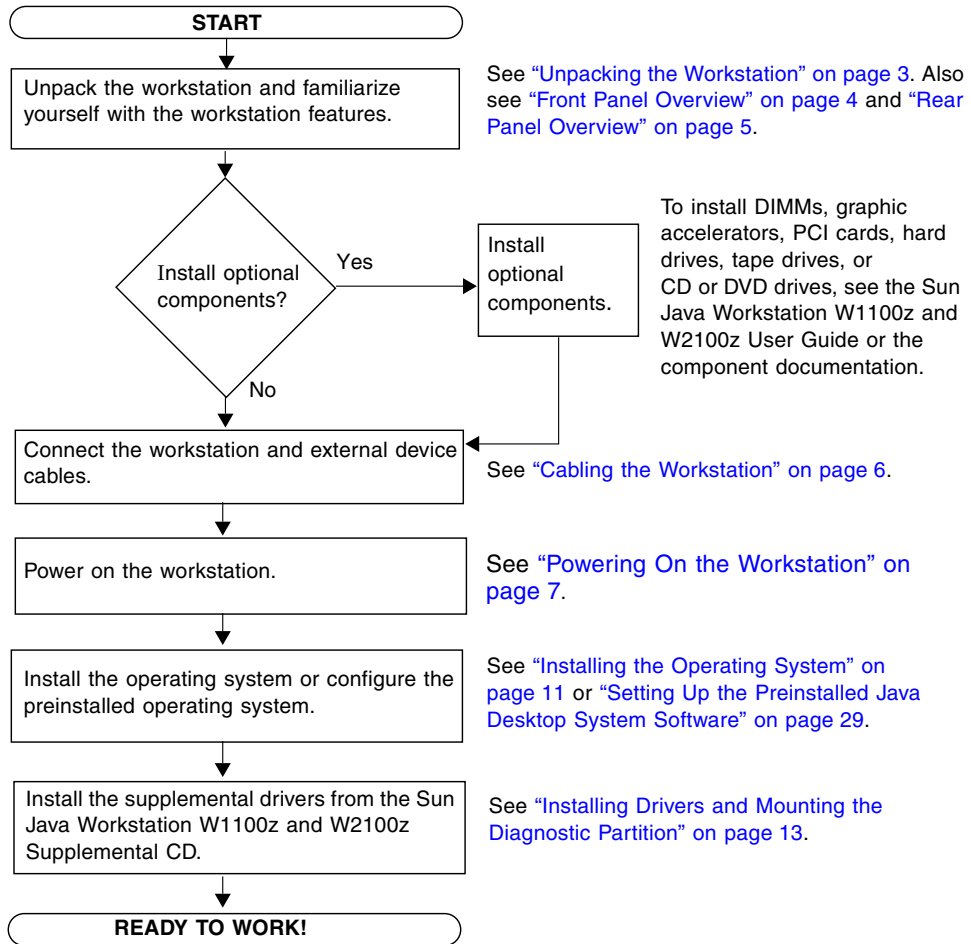
## Safety Information

Refer to the following documents for safety information regarding the Sun Java Workstation W1100z and W2100z:

- *Important Safety Information for Sun Hardware Systems*, 816-7190-10 (hardcopy document included in the ship kit)
- *Sun Java Workstation W1100z and W2100z Safety and Compliance Guide*, 817-6586-xx (included on the Sun Java Workstation W1100z and W2100z Documentation CD)

# Planning the Installation Process

Use the following flowchart as a process tool to assist you with installation of the Sun Java Workstation W1100z and W2100z.



**FIGURE 1-1** Process for Installing the Sun Java Workstation W1100z and W2100z

---

# Unpacking the Workstation

Carefully unpack all workstation components from the packing cartons. The following items should be packaged with the Sun Java Workstation W1100z and W2100z:

- Sun Java Workstation W1100z or W2100z
- Sun Java Workstation W1100z and W2100z documentation
  - *Sun Java Workstation W1100z and W2100z Set Up Poster*
  - *Sun Java Workstation W1100z and W2100z Safety and Compliance Guide*
  - *Sun Binary Code License*
- Sun Java Workstation W1100z and W2100z Documentation CD
- Sun Java Workstation W1100z and W2100z Supplemental CD (includes drivers and diagnostics software)
- Ethernet cable
- Graphics cards adapters
  - DVI to HD15 adapter for all graphics cards
  - 60-pin LFH connector cable if your system has an NVS280 graphics card
- Solaris 9 x86 HW Operating System (4/04) or later media kit
- Java Desktop System, Release 2 DVDs or CDs (if the Java Desktop System is preinstalled on your workstation).

The country accessory kit, which includes the power cable, keyboard, and mouse is packaged separately.

# Front Panel Overview

FIGURE 1-2 illustrates the front panel of the Sun Java Workstation W1100z and W2100z.

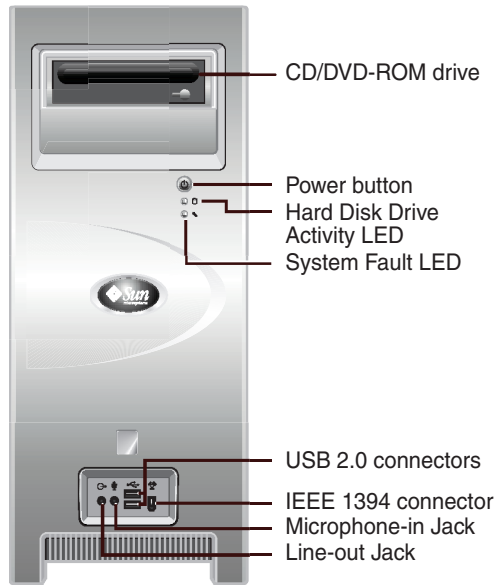


FIGURE 1-2 Front Panel

# Rear Panel Overview

FIGURE 1-3 depicts the rear panel of the Sun Java Workstation W1100z and W2100z.

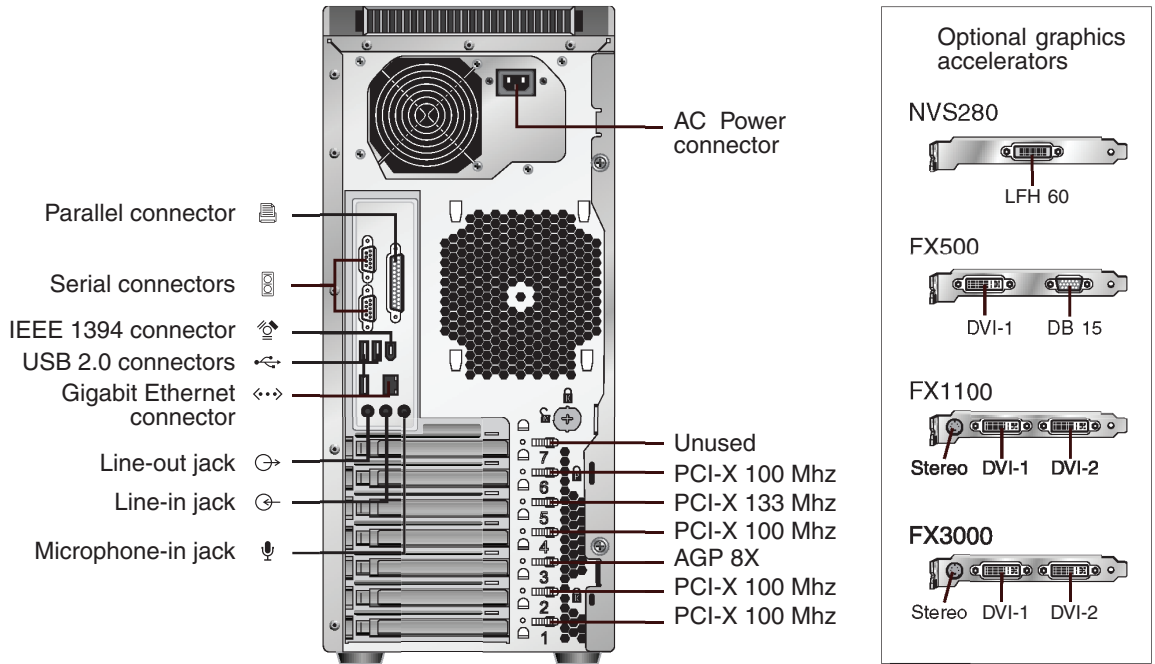


FIGURE 1-3 Rear Panel

---

# Cabling the Workstation

FIGURE 1-4 illustrates the cable connections for the workstation.

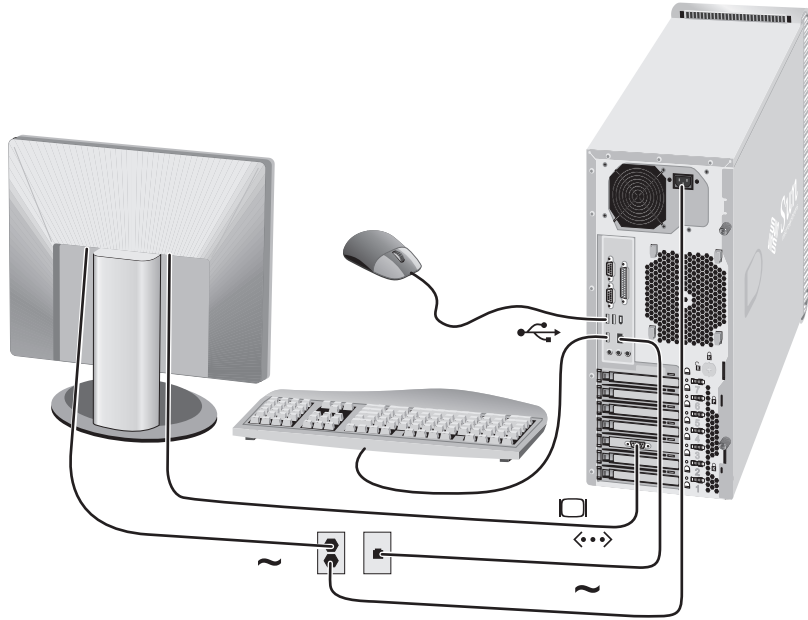


FIGURE 1-4 Cable Connections

Connect the workstation and external devices in this order (See FIGURE 1-4):

1. **Connect the workstation power cord to a grounded electrical outlet.**
2. **Connect the keyboard and mouse to the USB connectors on the rear of the panel.**
3. **Connect the monitor cable to the video connector on the filler panel of the graphics accelerator.**

---

**Note** – If the video card on your system has only DVI connectors, you will need to connect the included DVI-HD15 adapter to the DVI connector before connecting the monitor cable. If you are using the NVS280 video card, you must first connect the 60-pin LFH splitter connector included with the system before attaching the DVI-HD15 adapter.

---

4. Connect the Ethernet cable to the Ethernet connector on the Sun Java Workstation W1100z or W2100z and connect the other end to an Ethernet RJ45 jack.
5. Connect any additional external devices to the workstation's other connectors.

---

## Powering On the Workstation

---

**Tip** – If you are installing optional internal components such as additional memory DIMMs, PCI cards, optical drives, or hard drives, install those components before you power on the workstation. If you are not installing optional components, you are ready to power on the workstation.

---

1. Turn on power to the monitor and to all external devices.
2. Press and release the workstation Power button on the front panel (FIGURE 1-2).
3. After several seconds, verify that the platform power LED on the Power button lights.

The platform power LED on the Power button lights after the workstation begins the internal booting process FIGURE 1-2.

4. If you are powering on the workstation for the first time, you will need to install the operating system or configure the preinstalled operating system after the system is finished booting.
  - See Chapter 2 for information on installing the operating system.
  - See Chapter 3 for information on configuring the preinstalled Java Desktop System.

---

# Powering Off the Workstation

1. Save your data and close any open applications.
2. Read all of the following power-off options before powering off the workstation:

- Power off the workstation by using the operating system shut down command or menu option.

In most cases, this powers down the operating system, then turns off the power to the workstation.

- If the workstation power does not shut off through the operating system command or this command is not available, press and release the power button (location shown in [FIGURE 1-2](#)).

This initiates an orderly shutdown of the operating system and powers off the workstation.

---

**Note** – Use the options in the first two bullets whenever possible to avoid data loss.

---

- If the workstation does not shut off, press and hold the power button for approximately 4 seconds.

This shuts down the power to the workstation, but does *not* initiate an orderly shutdown of the system. This method could result in data loss.

If the preceding options fail to power off the workstation, see “Troubleshooting” in the *Sun Java Workstation W1100z and W2100z User Guide*, 817-6585-xx, for more options.

---

**Note** – After powering off the workstation, wait at least four seconds before powering on the workstation again.

---



## Software Installation

---

This chapter includes the following sections:

- [“Preparing for Installation” on page 9](#)
- [“Installing the Operating System” on page 11](#)
- [“Running the up2date Utility” on page 12](#)
- [“Installing Drivers and Mounting the Diagnostic Partition” on page 13](#)
- [“Java Desktop System Installation or Recovery” on page 17](#)

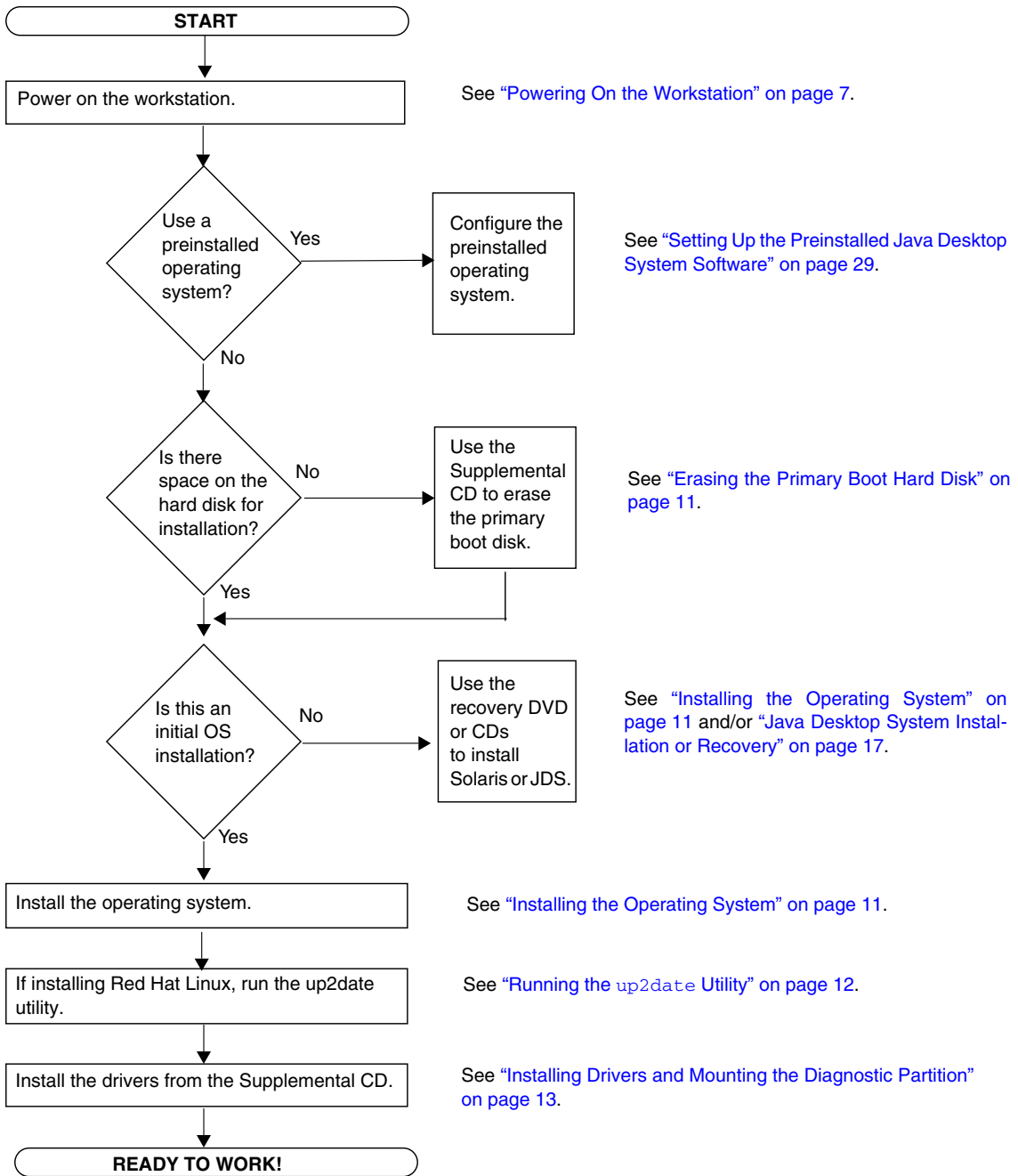
This chapter includes information on installing an operating system on your workstation, if you do not have a preinstalled operating system.

Diagnostics software is also included on the Sun Java Workstation W1100z and W2100z Supplemental CD. Instructions for using the diagnostics software can be found in the *Sun Java Workstation W1100z and W2100z User Guide*, 817-6585-xx.

---

## Preparing for Installation

Refer to [FIGURE 2-1](#) for information on the process flow for installing an operating system on your workstation.



**FIGURE 2-1** Installation Process Flow Diagram

# Erasing the Primary Boot Hard Disk

If you do not have enough space on the boot partition to install an operating system, there is an option on the Sun Java Workstation W1100z and W2100z Supplemental CD V1.2 (705-1059-12 or later) main menu, which enables you to erase other installed operating systems to make room for the new installation.



---

**Caution** – Choosing the Erase Primary Boot Hard Disk option from the Supplemental CD will erase all partitions on the hard drive, with the exception of the diagnostic partition. All user data will be lost. Make sure to back up all data on the hard drive before performing this action.

---

After you have backed up all data that you want to save on the hard drive, select the following option from the Supplemental CD main menu:

### 3. Erase Primary Boot Hard Disk

This will erase all partitions currently located on the primary hard drive, except for the diagnostic partition. The diagnostic partition, if one is present, will remain untouched.

---

# Installing the Operating System

If your Sun Java Workstation W1100z and W2100z system does not have a preinstalled operating system, you will need to install an operating system of your choosing.

The following operating systems are supported at the time of this document release:

- Red Hat Enterprise Linux 3 WS for x86—32 bit
- Red Hat Enterprise Linux 3 WS for AMD64—64 bit
- Solaris 9 x86 HW Operating System (4/04) or latest version—32 bit
- SUSE Linux Operating System (as a part of Sun Java Desktop System, Release 2)
- Microsoft XP (WHQL-certified)

Instructions for installing these operating systems can be found in the media sets that come with the operating system software.

The Solaris 9 x86 HW Operating Environment (4/04), or latest version, is included on a DVD shipped with the Sun Java Workstation W1100z or W2100z. Ensure that you use the version of Solaris 9 x86 that comes with the workstation, because it includes the drivers necessary for running Solaris 9 on the Sun Java Workstation W1100z or Sun W2100z.

If you want to run Red Hat Enterprise Linux 3 WS on the Sun Java Workstation W1100z or W2100z, you can order it from the following web site:

<http://www.sun.com/software/linux/index.html>

Support for additional operating systems will be available after the initial release of the Sun Java Workstation W1100z and W2100z. Refer to one of the following URLs for information on the operating systems currently supported:

<http://www.sun.com/w1100z>

<http://www.sun.com/w2100z>

---

**Note** – The diagnostic partition is preinstalled on the Sun Java Workstation W1100z and W2100z at the factory. If, for some reason, the diagnostic partition has been removed from the workstation, refer to the *Sun Java Workstation W1100z and Sun W2100z User Guide*, 817-6585-xx, for information on how to reinstall the diagnostic partition from the Sun Java Workstation W1100z and Sun W2100z Supplemental CD.

---

## Running the `up2date` Utility

If you are installing the Red Hat Enterprise Linux 3 WS software, run the `up2date` utility *after* installing the operating system and *before* installing the video drivers from the Sun Java Workstation W1100z and W2100z Supplemental CD.

Red Hat Enterprise Linux 3 WS AMD64 Update 1 is required for proper operation of the latest NVIDIA display drivers.

---

**Note** – If you have already installed the NVIDIA drivers, you will need to reinstall them after running `up2date`, because the kernel will be updated.

---

---

# Installing Drivers and Mounting the Diagnostic Partition

After installing the operating system, run the installation script found on the Sun Java Workstation W1100z and W2100z Supplemental CD to install the drivers that correspond your operating system.

The drivers for Java Desktop System, Release 2, and the script needed to install Window XP drivers are only available on the Supplemental CD version 1.2 (part number 705-1059-12) or later. If you have an earlier version of the CD, you can download the Supplemental CD v1.2 ISO image from the following web site:

<http://www.sun.com/desktop/workstation/w1100z/downloads.html>

You also need to run this script to mount the diagnostic partition for Red Hat Linux, Solaris, or Java Desktop System, if you have created a new diagnostic partition (see the *Sun Java Workstation W1100z and W2100z User Guide*, 817-6585-xx, for information on how to create a diagnostic partition). The diagnostic partition cannot be mounted on a Windows XP workstation.

This section contains the following subsections:

- “Red Hat Linux Operating System Driver Installation” on page 13
- “Solaris Operating System Driver Installation” on page 14
- “Java Desktop System Release 2 Driver Installation” on page 15
- “Windows XP Operating System Driver Installation” on page 16

## Red Hat Linux Operating System Driver Installation

To installing the video drivers and mount the diagnostic partition when running a Red Hat Linux operating system:

1. Log in to the Sun Java Workstation W1100z or W2100z as superuser.
2. Insert the Sun Java Workstation W1100z and W2100z Supplemental CD into the CD/DVD-ROM drive.
3. Open a terminal window and type the following command:

```
# mount -o ro /dev/cdrom /mnt/cdrom
```

This mounts the Supplemental CD to /mnt/cdrom

4. Change to the `/mnt/cdrom/drivers/linux/red_hat` directory by typing the following command:

```
# cd /mnt/cdrom/drivers/linux/red_hat
```

5. Run the installation script by typing the following command:

```
# ./install.sh
```

This script will not execute if the X server is running.

- If the script exits and you get an error message, go to [Step 6](#).
  - If the script executes correctly, go to [Step 7](#).
6. If the script exits and you get an error message, you will need to perform the following steps to disable the X server:
    - a. Type `init 3` at the system prompt.
    - b. Login as superuser.
    - c. Repeat [Step 4](#) and [Step 5](#).
  7. Eject the CD after the driver installation is completed.
  8. Reboot the workstation.

## Solaris Operating System Driver Installation

To install the drivers and mount the diagnostic partition when running the Solaris operating system:

1. Log in to the Sun Java Workstation W1100z or W2100z as superuser.
2. Insert the Sun Java Workstation W1100z and W2100z Supplemental CD into the CD/DVD-ROM drive.

The CD is automounted by the Solaris operating system.
3. Change to the `/cdrom/cdrom0/drivers/sx86` directory by typing the following command:

```
# cd /cdrom/cdrom0/drivers/sx86
```
4. Run the install script by typing the following command:

```
# ./install.sh
```
5. Reboot the workstation.

# Java Desktop System Release 2 Driver Installation

## Java Desktop System, Release 2 for SUSE Linux

To install the drivers and mount the diagnostic partition when running the Java Desktop System, Release 2 (which includes SUSE Linux):

1. **Log in to the Sun Java Workstation W1100z or W2100z as superuser.**
2. **Insert the Sun Java Workstation W1100z and W2100z Supplemental CD into the CD/DVD-ROM drive.**
3. **Open a terminal window and type the following command:**  

```
# mount -o ro /dev/cdrom /mnt/cdrom
```

This mounts the Supplemental CD to /mnt/cdrom
4. **Change to the /mnt/cdrom/drivers/linux/suse directory by typing the following command:**  

```
# cd /mnt/cdrom/drivers/linux/suse
```
5. **Run the installation script by typing the following command:**  

```
# ./install.sh
```
6. **Reboot the workstation.**

## Sun Java Desktop System, Release 2 for Solaris 9 x86 Platform Edition

If you are installing the drivers for the Java Desktop System for Solaris, follow the instructions in [“Solaris Operating System Driver Installation” on page 14](#). The install script for the Solaris Operating System will also install the Java Desktop System drivers.

# Windows XP Operating System Driver Installation

Windows XP Professional retail media does not contain the necessary SCSI, network, AMD chipset (including audio), and accelerated NVIDIA Quadro display drivers for proper operation on the Sun Java Workstation W1100z or W2100z. Windows XP can not be installed on a Sun Java Workstation W2100z without at least providing the Adaptec SCSI drivers during the installation process.

The Sun Java Workstation W1100z or W2100z Supplemental CD V1.2 (705-1059-12) or later contains an experimental script, which allows you to create a new Windows XP CD that includes the needed drivers. After the new CD is created, you can boot the CD and install Windows XP normally. This new CD automatically installs the SCSI and network drivers, which removes the need to use a USB floppy and a diskette to install the SCSI drivers.

The remaining AMD and NVIDIA drivers are left on the CD in the `\Drivers` directory for ease of installation after Windows XP has been installed.

For specific and current information, see the description at the top of the script which is located in `/drivers/utilities/xpReburn` on Supplemental CD V1.2 (705-1059-12) or later.

---

**Note** – The Supplemental CD does not mount the diagnostic partition for Windows XP as it does for other operating systems.

---

To install Windows XP using the Sun Java Workstation W1100z and W2100z Supplemental CD, you will need the following:

- A system running Solaris x86, Solaris SPARC or Red Hat Enterprise Linux 3
- An internet connection
- Access to a CD burner
- A blank recordable CD
- A Windows XP Professional CD (retail media only - not an OEM version)

To create a Windows XP CD with the Sun Java Workstation W1100z and W2100z drivers:

1. **On a Solaris x86, Solaris SPARC or Red Hat Enterprise Linux 3 system, insert the Sun Java Workstation W1100z and W2100z Supplemental CD.**
2. **As super user, create a temporary directory with at least 1.2 Gbyte of space.**

For example:

```
# mkdir /files
```



**3. Copy the XpReburn script to that directory.**

For example:

```
# cp /drivers/utilities/XpReburn /files
```

**4. Eject the Supplemental CD and insert your retail Windows XP 32 Professional CD.**

**5. Run the XpReburn script.**

If you want the script to automatically burn a new CD, add the `-b` option to the command.

For example:

```
# ./files/XpReburn [-b]
```

The script will display the driver files it expects to be in the current directory. When all four driver files have been downloaded into that directory, the script creates a new ISO image and then optionally burns that ISO image onto a CD if the system has a CD burner.

After the CD has been created, you can install Windows XP Professional on either the Sun Java Workstation W1100Z or W2100z. After installation is complete, install the AMD driver pack and the NVIDIA drivers from the installers located in the `\Drivers` directory.

Refer to the description at the top of the script file for details and the latest information.

---

## Java Desktop System Installation or Recovery

This section contains the following subsections:

- [“Installing the Java Desktop System for Solaris Systems” on page 18](#)
- [“Installing the Java Desktop System for SUSE Linux” on page 19](#)
- [“Guidelines for Partitioning” on page 24](#)
- [“Resizing Your Partition” on page 24](#)

If you have the Java Desktop System, Release 2 for Linux or the Java Desktop System, Release 2 for Solaris 9 x86 Platform Edition preinstalled on you Sun Java Workstation W1100z or W1100z, you will have DVDs or CDs included with the systems to aid in recovery, in case you need to reinstall the Java Desktop System.

If you do not have the Java Desktop System Release 2 media, you can download the software from the following web site:

<http://www.sun.com/software/javadesktopsystem/get/index.html>

The next subsections describe how to install the Java Desktop System from DVD or CDs. If you download the Java Desktop System from the web site, there are instructions on the web site for downloading and installing the Java Desktop System. Additional information on installing the Java Desktop System, including installation from a network, refer to the full Java Desktop System installation documentation at:

<http://docs.sun.com/db/doc/817-7658>

## Installing the Java Desktop System for Solaris Systems

This section describes how to install the Java Desktop System from the product DVD.

---

**Note** – You must first install the Solaris 9 Operating System 9/04 on x86 platforms on your Sun Java Workstation W1100z or Sun Java Workstation W2100z. See “[Installing the Operating System](#)” on page 11 or the documentation that applies to the version of Solaris you are using at <http://docs.sun.com/>

---

Perform the following steps to install the Java Desktop System:

1. **From the Solaris Login screen, choose Options, then Sessions, then Common Desktop Environment (CDE) and log into the system as super user.**
2. **Once you are logged in, open the DVD tray, insert the product DVD, then close the DVD tray.**

After a few seconds, the DVD file manager is displayed.

---

**Note** – If the DVD file manager displays, go to [Step 4](#). If the file manager does not display, follow the instructions in [Step 3](#).

---

3. **If the DVD file manager window fails to open, perform the following steps:**
  - a. **From the CDE Front Panel, choose File, then Removable Media Manager.**

**b. Double-click on the DVD icon to open the file manager.**

If the file manager fails to open, you may need to stop and restart Volume Management.

Enter the following commands in a terminal window:

```
# /etc/init.d/volmgt stop
# /etc/init.d/volmgt start
```

- 4. Double-click on the JavaDesktop folder.**
- 5. Double-click on install-jds icon in the JavaDesktop folder.**
- 6. Follow the on-screen instructions to view the license.**
- 7. Type `accept` in the current UI language at the prompt. If you do not type `accept`, you cannot continue with the installation.**

The installer checks your system and then begins to install the Java Desktop System, Release 2 software.
- 8. When the installation is complete, choose File, then Eject and close the installer terminal window.**
- 9. Reboot your workstation.**
- 10. From the Login screen, choose Options, then Sessions, then Java Desktop System, Release 2 to log into the Java Desktop System.**

## Installing the Java Desktop System for SUSE Linux

This section describes how to install the Java Desktop System using the CDs included with your Java Desktop System installation package.

Perform the following steps:

- 1. Insert the Java Desktop System, Release 2 CD 1 into the CD-ROM drive.**

The system starts to boot and displays the following list of options:

- Boot from hard disk
- Installation
- Installation — ACPI Disabled
- Installation — Safe Settings
- Manual Installation
- Rescue System
- Memory Test

- 2. To perform a new installation of the Java Desktop System, use the arrow keys to highlight the Installation option, then press Enter.**

The Configurator presents a Software Evaluation Agreement dialog.

- 3. Click on Accept to continue with the installation.**

You cannot continue with the installation if you do not click on Accept.

- 4. From the Language Selection dialog, select a language, then click on Accept.**

The Configurator analyzes your system.

- If SUSE Linux is not installed on your system, the Configurator displays the installation settings of your hardware, as shown in the example in [Step 6](#).
- However, if the Configurator detects that SUSE Linux is installed on your system, you are presented with the following options:
  - **New installation**  
Select this option if SUSE Linux is not installed on your system or if you want to replace an installed version of Linux.
  - **Update an existing system**  
Select this option if you want to upgrade an installed version of SUSE Linux. This option preserves configuration settings from your existing system whenever possible.
  - **Boot installed system**  
Select this option if you have an installed version of SUSE Linux that you cannot reboot. You can use this option to try to fix the reboot problem manually.
  - **Abort Installation**  
Select this option if you want to abort the installation.

- 5. Select New installation and click OK.**

The Configurator displays the following Software Options:

- Default system with StarSuite - for Japan, China, Korea and Taiwan only
- Default system with StarOffice - for all other countries

- 6. Select the appropriate option and click on Accept.**

You are presented with the Installation settings for your system.

For example:

- Mode — New Installation
- Keyboard Layout — English US
- Mouse — PS/2 Mouse (Aux-port)

- Partitioning — Format partition /dev/hda6 9.3 GB with reiser and Format partition /dev/hda5 196 MB for swap

If you click on Partitioning to modify the default settings, the Configurator checks your hard disk and displays the following options:

- Accept proposal as-is
- Base partition setup on this proposal
- Create custom partition setup

Select Accept Proposal as is and click on Next.

---

**Note** – If you want to create a dual boot system, partitioning is an essential part of the installation procedure. See [“Guidelines for Partitioning” on page 24](#) for more information.

---

- Software
  - Default system with StarOffice - for all other countries
  - GNOME system
  - StarOffice
  - Help and Support Documentation
  - Graphical Base System

If you click on Software, the Configurator displays the following software options:

- Default system with StarSuite - for Japan, China, Korea and Taiwan only
- Default system with StarOffice - for all other countries

Select the appropriate option and click on Accept.

- Booting — Booting from 1.IDE 9 54 GB, dev/hda Booting from 1.IDE 954 GB, dev/hda

If you click on Booting, the Configurator displays the following boot options:

- Write GRUB to the boot disk (MBR on /dev/hda)
- Create a boot floppy
- Do not use GRUB (a different boot manager is required)
- Write GRUB to a different partition: /dev/hda

Select the appropriate option and click Accept, or accept the booting option proposed by the Configurator.

- Time Zone —Europe – Dublin
- Language — English US

**7. Click on Accept to continue with the installation.**

**8. Click on Yes, install to commit the installation and all the choices made so far.**

A message informs you that the Configurator is preparing your hard disk. When the installation begins, a screen is displayed with the following panes:

- **Current Package**  
Displays the name, description and size of the installation package and a status bar showing percentage completion of the installation.
- **Installation**  
Displays the status of the percentage download completed from the CD and the estimated time remaining to complete the download.
- **Installation Log (Extract)**  
Displays a log of activity for all the packages currently being installed on your system.

After the system reboots, a dialog requests you to insert CD 2.

**9. Insert CD 2 and click OK.**

When the packages from CD 2 are installed, a dialog requests you to insert CD 3.

**10. Insert CD 3 and click OK.**

When all the packages from CD 3 are successfully installed, the Configurator prompts you to enter a password for root (super user), the system administrator.

---

**Note** – Make a note of the root password for future references. You only need to log in as root for system administration purposes.

---

**11. Enter a password for the root user.**

**12. Reenter the password for verification and click on Next.**

You are then prompted to add a new user. This option is optional in a network environment.

**13. Enter the First name, Last name, User login, and Password for the user you want to add and click on Next. A new user account is created with the details you enter.**

The Configurator starts to initialize the Desktop Settings as follows:

- Text mode only — no graphical desktop
- Graphical desktop environment

**14. Select the Graphical desktop environment and click on Accept.**

For a standalone non-networked installation, the Configurator tries to detect local printers only.

15. **Click Yes if you have a local printer attached to your system. Otherwise, click on Skip detection.**

The Configurator writes the system configuration and displays the Installation Settings for the following hardware devices:

- Network interfaces
- Printers
- Modems
- ISDN adapters
- Sound

16. **To change any of the Installation Settings, click on Change. Click on Next to accept the settings.**

A message is displayed that the configuration is saved successfully and the system automatically reboots.

17. **Eject the DVD.**

18. **At the login screen, log in with the username and password that you set up for the new user.**

You can now use the Java Desktop System.

The following desktop objects are displayed:

- This Computer
- Documents
- Network Places
- Trash
- Learn About The Java™ Desktop System
- StarOffice
- Bottom Edge Panel

Refer to the *Java Desktop System Release 2 User Guide* for help to get you started using the Java Desktop System on a Linux system.

## Guidelines for Partitioning

TABLE 2-1 contains recommended guidelines for partitioning your disk:

**TABLE 2-1** Partitioning Guidelines

Partition	Size	Type	Notes
/	5 Gbyte (3 Gbyte minimum)	Primary	Install the entire Java Desktop System operating system onto a single partition. This method provides sufficient space for you to install a later release of the Java Desktop System without the need to repartition the disk.
swap	Double the size of the RAM (128 MB minimum)	Swap	You can increase or reduce the size of the swap partition as necessary.

### *Resizing Your Partition*

The Configurator presents the following options when resizing your partition:

- Accept proposal as-is
- Base partition setup on this proposal
- Create custom partition setup

Perform the following steps to resize a partition:

1. **From the Installation Settings dialog, select Partitioning, select Base partition setup on this proposal option, then click on Next.**
2. **Highlight the partition that you want to resize, then click on Resize.**
3. **Use the slider to set how much space you want to allocate to your Windows partition and your Linux partition, then click OK.**

---

**Note** – The minimum allocation of space for Linux is 3024 MB.

---

4. **Click on Next to save the partition table and return to the Installation Settings screen.**



## *Creating a Custom Partition Table*

If the partition recommended by the Configurator is unsuitable for the Java Desktop System installation, you might need to create a custom partition table.

Perform the following steps to create a custom partition table:

1. **Back up any files you want to keep.**

---

**Caution** – This procedure overwrites your existing operating system partition.

---

2. **From the Installation Settings dialog, select Partitioning, select Create custom partition option, then click Next.**
3. **Select Custom partitioning, for experts, then click Next to launch the Expert Partitioner dialog.**
4. **Select the device that refers to the disk where you want to install the application.**  
For example `/dev/hda`, then click Delete to erase all partitions on that disk.
5. **Click Create to create a new partition and select the Primary option.**
6. **In the pop-up window, set the Start Cylinder size to 0, set the End Cylinder size to + 5 GB and set the mount point to `/`.**
7. **Click Create to create a new partition and select the Extended option.**  
The pop-up window must contain all the correct settings. For example, the Start Cylinder value must be one more than the End Cylinder value of `hda1` and the End Cylinder value can be the same as the End Cylinder value for `/dev/hda`.  
Creating an extended partition that covers the remainder of the disk forces all other partitions to be created within that extended partition.
8. **Click Create to create a new partition.**
9. **Select Swap from the menu beneath the Format option.**
10. **Specify the size of the swap partition using the + syntax in the End field.**  
For example, if your system has 256 MB RAM, you would have 512 MB of swap memory, which is expressed as + 512 MB.
11. **Click Create to create a new partition.**  
A new partition to occupy the remainder of the disk is configured.
12. **Set the Mount Point to `/usr`.**
13. **Click Next to save the partition table and return to the Installation Settings screen.**

# Java Desktop System Post Installation Procedures

This subsection describes post-installation procedures that you can perform after you install the Java Desktop System, Release 2.

## Checking for and Installing System Updates

The Java System Update Service (Java SUS) enables you to perform the following actions:

- Install software updates for your Java Desktop System.
- Choose which updates to install from a list of available updates.
- Specify which server to check for available updates.

To launch the Java SUS application, choose Launch, select Applications, select Utilities, then select Online Update.

Refer to the *Java System Update Service User's Guide* for more information. This guide is available at <http://docs.sun.com>.

## Configuring the Xorg Xserver

Before you start to configure your Xorg Xserver, you need to know the following

- Type of keyboard, for example, Sun Type 6 UK.
- Mouse device, for example, `/dev/usb/lhid1`.
- Graphics adapter, for example, the model of your graphics adapter and the amount of video RAM.
- Specification of the monitor.

## Configuring the Xorg Xserver on Solaris Systems

To configure the Xorg Xserver for the Solaris 9 Operating System 9/04 on x86 platforms, perform the following steps.

1. **Log in as super user to a command line Login session.**
2. **Run the following command to start the Xorg Xserver configuration:**

```
# /usr/X11R6/bin/xorgconfigure
```

3. **Follow the instructions that appear on your screen.**

Respond to all prompts and follow through the configuration decisions that you need to make.

You can reconfigure the Xserver back to its default values as follows:

1. Log in as super user to a command line Login session.
2. Execute the following command:  

```
# /usr/X11R6/bin/X -xconfigure
```
3. Copy the generated `/xorg.conf.new` file to `/etc/X11/xorg.conf` as follows:  

```
# cp /xorg.conf.new /etc/X11/xorg.conf
```

## Configuring the Xorg Xserver on Linux System

Use the YaST2 configuration tool for configuring the Xorg Xserver on Linux systems.



# Setting Up the Preinstalled Java Desktop System Software

---

If you have the Java Desktop System Release 2, for Solaris 9 x86 Platform Edition or Java Desktop System for SUSE Linux preinstalled in the your workstation's hard drive, read this chapter to determine how to configure the operating system,

This chapter includes information about the following topics:

- “Configuring the Preinstalled Java Desktop System on Solaris Systems” on page 31
- “Configuring the Preinstalled Java Desktop System on Linux Systems” on page 33

---

**Note** – The Solaris operating environment version installed on your workstation requires no licensing fee. If you install a different version of Solaris software, you may be required to pay a license fee for the new software version. The Sun Java Workstation W1100z and W2100z require Solaris 9 x86 HW 4/04, or a subsequent compatible version of Solaris software. For more information, refer to the following web site:

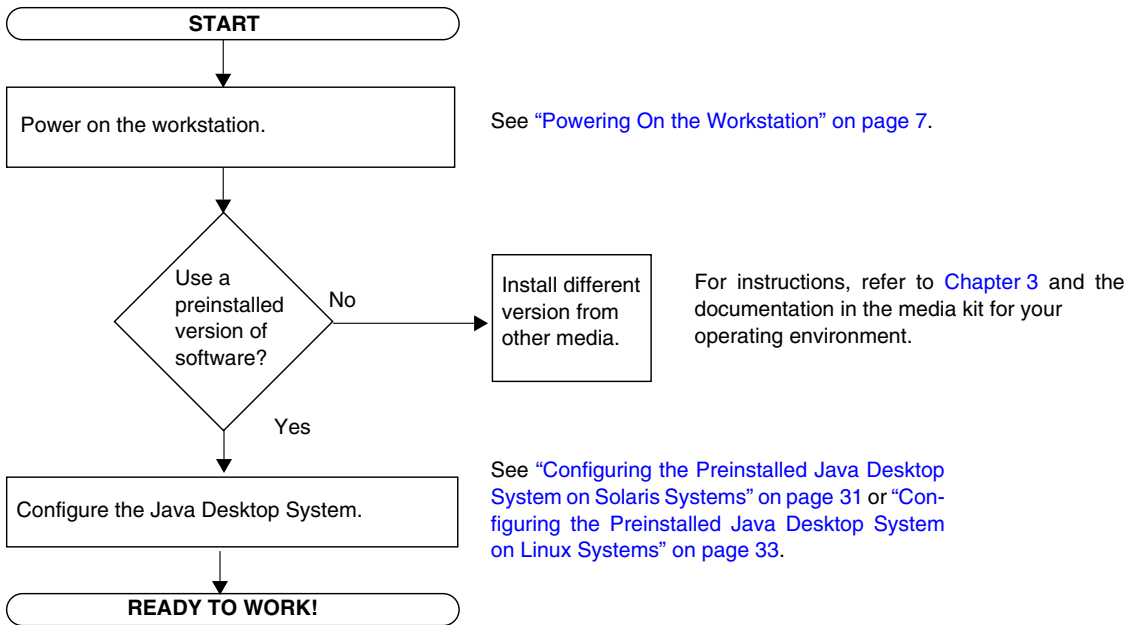
<http://www.sun.com/software/solaris/licensing/index.html>

---

The exact configuration that has been preinstalled is as follows:

- Hard drive root partition—14.0 Gbytes
- Hard drive swap partition—2.0 Gbytes
- Hard drive var partition—6.0 Gbytes
- Hard drive export partition—remainder of the disk

Use the flow chart in [FIGURE 3-1](#) to assist with setting up your operating environment.



**FIGURE 3-1** Installation Process Flow Diagram

---

# Configuring the Preinstalled Java Desktop System on Solaris Systems

Complete the following steps to configure the preinstalled Java Desktop System Release 2, for Solaris 9 x86 Platform Edition:

**1. Power on the workstation.**

See “Powering On the Workstation” on page 7.

**2. Answer the Java Desktop System setup prompts by following the on-screen instructions.**

Use a copy of [TABLE 3-1](#) to write down the information that you might need to collect before setting up the Java Desktop System.

To help fill out the information in the table, your system administrator (SA) should provide you with information specific to your site before you begin. Some of the information might be available on your network—check with your SA.

**3. When you are finished with the configuration set up, the workstation will reboot and a log in screen will be displayed.**

The workstation displays the login window, in which you can enter your user name and password to log in and begin using the workstation.

**4. Review the Solaris and Java Desktop System release notes for any late-breaking information about your preinstalled software.**

The *Solaris 9 x86 9/04 Release Notes* and *Java Desktop System, Release 2* documentation can be found at:

<http://docs.sun.com>

## Sun Install Check

The Sun Install Check tool verifies and provides information about workstation software and hardware configuration. Before you can run the Sun Install Check tool, you need to download it from the following web site:

<http://www.sun.com/software/installcheck/index.html>

**TABLE 3-1** Information for Java Desktop System Release 2, for Solaris 9 x86 Platform Edition

Setup Window	Explanation and Notes	Your Information
Select Language and Locale	Native language and locale to use for the workstation.	
Host Name	A name to give the workstation.	
Terminal Type	Type of terminal to use on the workstation.	
Network Connectivity  (IP Address)	Network or stand-alone workstation protocols. A system administrator might be required to complete this section.  <b>Note:</b> Depending on how you answer and what information is provided by your network, you might also be prompted for the workstation's IP address.	
IPv6	Enable IPv6 on the workstation.	
Security Settings	Security settings and protocols.	
Name Service	Name service to use: NIS+, NIS, DNS, LDAP, or None.  <b>Note:</b> This window is not displayed if the workstation is not connected to a network.	
Domain Name	NIS or NIS+ domain for this workstation.  <b>Note:</b> This window is not displayed if the workstation is not using the NIS or NIS+ service.	
Name Server/ Subnet/ Subnet Mask	Name server (specify the server or have the workstation find one on a local subnet).  <b>Note:</b> This window is not displayed if the workstation is not connected to a network. <b>Note:</b> Depending on how you answer and what information is provided by your network, you might also be prompted for: - The subnet for the workstation - The subnet mask for the workstation	
Time Zone	Local time zone (select by geographic region, GMT offset, or a time zone file).	



**TABLE 3-1** Information for Java Desktop System Release 2, for Solaris 9 x86 Platform Edition

Setup Window	Explanation and Notes	Your Information
Date and Time	Current date and time (accept the default or enter the current date and time).	
Root Password	Root (superuser) password for the workstation.	
Proxy Server Configuration	Workstation connection: direct to the Internet or through a proxy server.	

## Configuring the Preinstalled Java Desktop System on Linux Systems

Complete the following steps to configure Java Desktop System, Release 2, for SUSE Linux on your system.

**1. Power on the workstation, if necessary.**

See [“Powering On the Workstation” on page 7](#).

The software will prompt you to enter the configuration information shown in the following steps.

**2. Enter a password for the root user.**

**3. Reenter the password for verification and click on Next.**

You are then prompted to add a new user. This option is optional in a network environment.

**4. Enter the First name, Last name, User login, and Password for the user you want to add and click on Next. A new user account is created with the details you enter.**

The Configurator starts to initialize the Desktop Settings as follows:

- Text mode only — no graphical desktop
- Graphical desktop environment

**5. Select the Graphical desktop environment and click on Accept.**

For a standalone non-networked installation, the Configurator tries to detect local printers only.

**6. Click Yes if you have a local printer attached to your system. Otherwise, click on Skip detection.**

The Configurator writes the system configuration and displays the Installation Settings for the following hardware devices:

- Network interfaces
  - DHCP
  - Host name
  - Domain name
  - Name server
  - Search domains
  - Default gateway
- Printers
- Modems
- ISDN adapters
- Sound

**7. To change any of the Installation Settings, click on Change. Click on Next to accept the settings.**

A message is displayed that the configuration is saved successfully and the system automatically reboots.

**8. At the login screen, log in with the username and password that you set up for the new user.**

You can now use the Java Desktop System.

The following desktop objects are displayed:

- This Computer
- Documents
- Network Places
- Trash
- Learn About The Java Desktop System
- StarOffice
- Bottom Edge Panel

Refer to the *Java Desktop System Release 2 User Guide* for help to get you started using the Java Desktop System on a Linux system.

**9. Review the Java Desktop System release notes for any late-breaking information about your preinstalled software.**

The *Java Desktop System, Release 2* documentation can be found at:

<http://docs.sun.com>