

# General Service Information

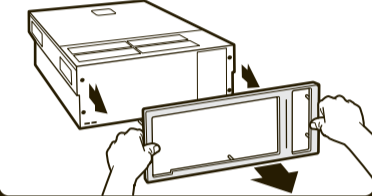
All procedures below should be performed by trained service personnel only.  
For more service information see the service manual:  
<http://docs.sun.com/app/docs/doc/819-4342>

## Tools Required

- #2 Phillips screwdriver
- Adjustable torque driver with #2 Phillips bit.
- Anti-static wrist strap
- #1 Phillips screwdriver
- Adjustable torque driver with 7mm hex bit.
- Anti-static mat
- 7mm hex nut driver

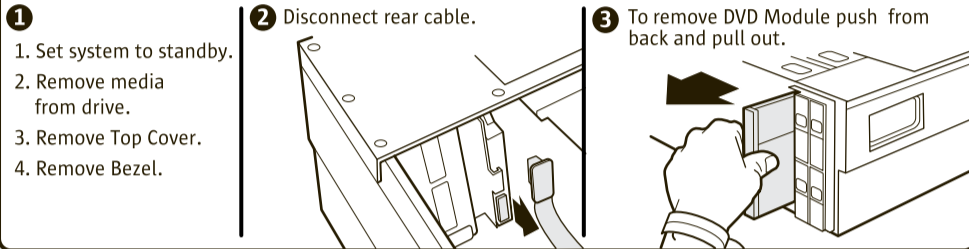
### 1 Bezel Removal

1. Set system to standby.
2. Pull off Bezel using outer Bezel edges.



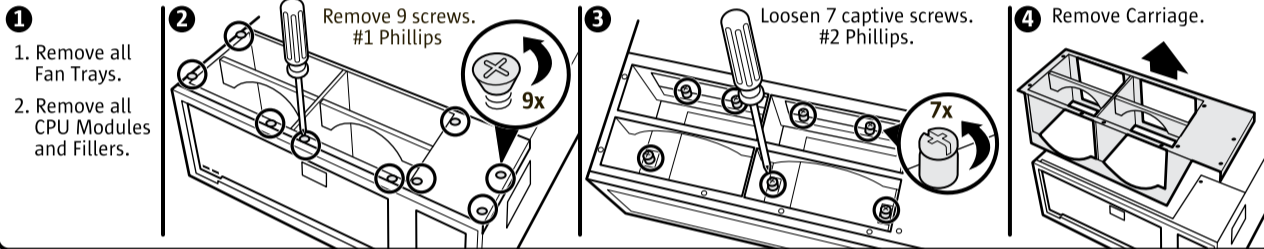
### 2 DVD Module Removal

1. Set system to standby.
2. Remove media from drive.
3. Remove Top Cover.
4. Remove Bezel.



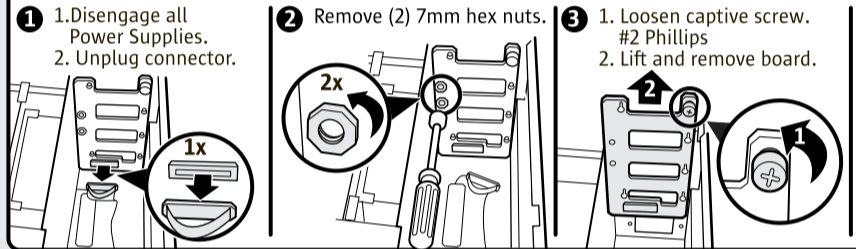
### 3 Fan Tray Carriage Removal

1. Remove all Fan Trays.
2. Remove all CPU Modules and Fillers.
- 2 Remove 9 screws. #1 Phillips (9x)
- 3 Loosen 7 captive screws. #2 Phillips. (7x)
- 4 Remove Carriage.



### 4 Power Distribution Board (PDB) Removal

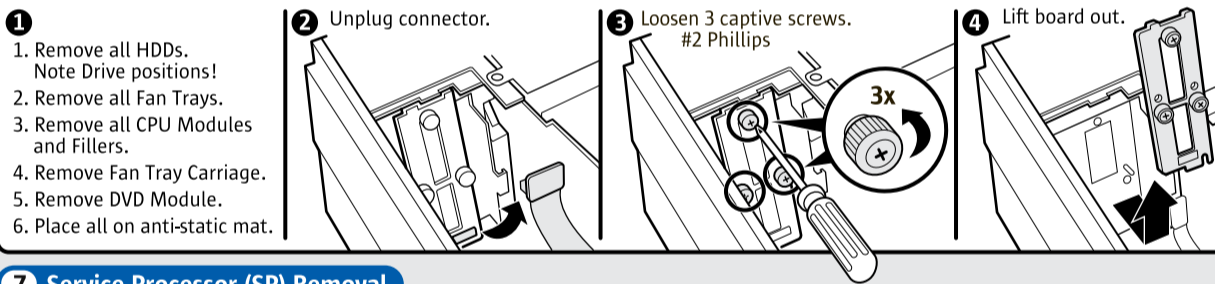
1. Disengage all Power Supplies.
2. Unplug connector.
- 2 Remove (2) 7mm hex nuts. (2x)
- 3 1. Loosen captive screw. #2 Phillips (1x)
2. Lift and remove board.



**TORQUE REQUIREMENT**  
When replacing the PDB, torque fasteners to 7 in-lbs / 0.8 N-m.

### 5 HDD Backplane Removal

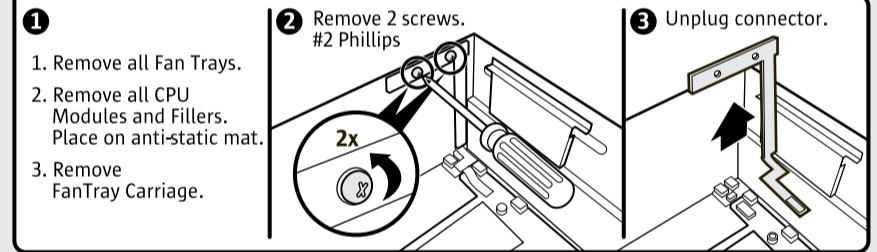
1. Remove all HDDs. Note Drive positions!
2. Remove all Fan Trays.
3. Remove all CPU Modules and Fillers.
4. Remove Fan Tray Carriage.
5. Remove DVD Module.
6. Place all on anti-static mat.
- 2 Unplug connector.
- 3 Loosen 3 captive screws. #2 Phillips (3x)
- 4 Lift board out.



**TORQUE REQUIREMENT**  
When replacing the HDD Backplane, torque fasteners to 7 in-lbs / 0.8 N-m.

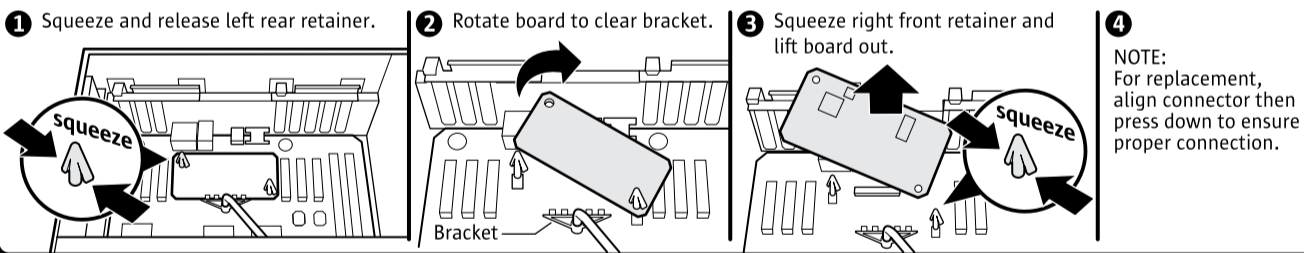
### 6 Front Indicator Board Removal

1. Remove all Fan Trays.
2. Remove all CPU Modules and Fillers. Place on anti-static mat.
3. Remove FanTray Carriage.
- 2 Remove 2 screws. #2 Phillips (2x)
- 3 Unplug connector.



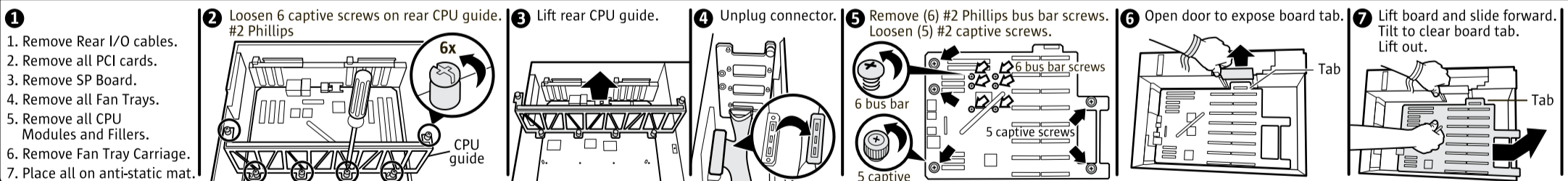
### 7 Service Processor (SP) Removal

1. Squeeze and release left rear retainer.
2. Rotate board to clear bracket.
3. Squeeze right front retainer and lift board out.
4. NOTE: For replacement, align connector then press down to ensure proper connection.



### 8 Motherboard Removal

1. Remove Rear I/O cables.
2. Remove all PCI cards.
3. Remove SP Board.
4. Remove all Fan Trays.
5. Remove all CPU Modules and Fillers.
6. Remove Fan Tray Carriage.
7. Place all on anti-static mat.
- 2 Loosen 6 captive screws on rear CPU guide. #2 Phillips (6x)
- 3 Lift rear CPU guide.
- 4 Unplug connector.
- 5 Remove (6) #2 Phillips bus bar screws. Loosen (5) #2 captive screws. (6 bus bar screws, 5 captive)
- 6 Open door to expose board tab. (Tab)
- 7 Lift board and slide forward. Tilt to clear board tab. Lift out. (Tab)



**TORQUE REQUIREMENT**  
When replacing the MB, torque all fasteners to 7 in-lbs / 0.8 N-m.