

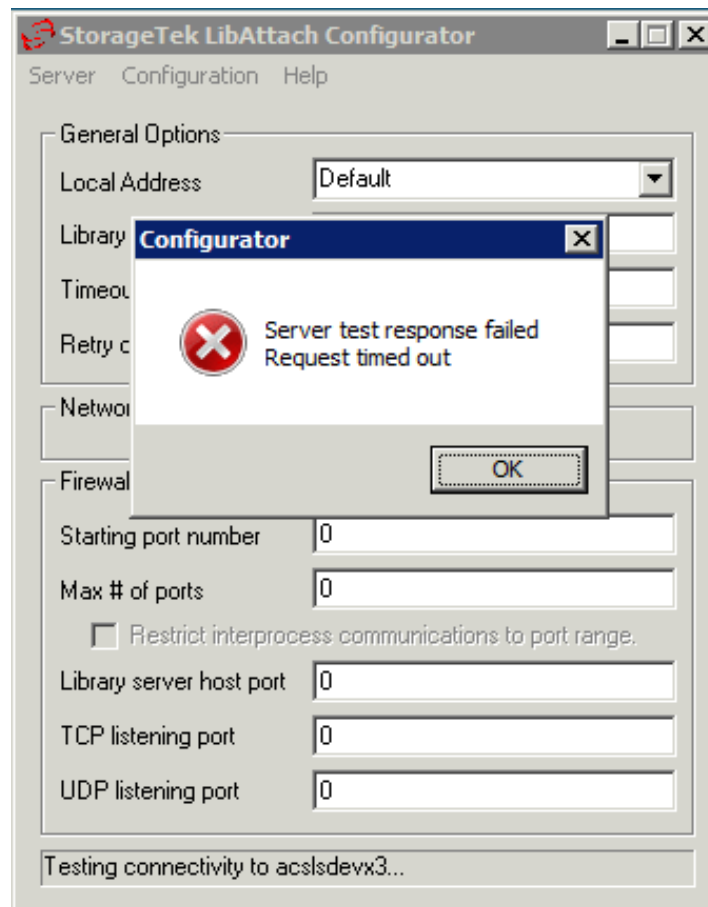
LibAttach 1.4.2 and Windows Server 2008 – Firewall Configuration

Windows Server 2008 is unlike previous versions of Windows, in that Windows Server 2008 installs with the Windows Firewall enabled by default. In this state, Windows blocks all unsolicited incoming connections. This interferes with the operation of LibAttach; it makes it impossible for the Library Server system to communicate with LibAttach.

For more information on the Windows firewall, click [here](#).

Symptoms and Diagnosis

Running the “Test” function from the LibAttach Configurator application gives a time out result:



Additionally, the following can be observed in the event log on the Library Server system:

```
2008-10-21 11:09:08 ACSSA[0]:
1441 N sa_demux.c 1 296
Server system network interface failure.

2008-10-21 11:11:38 CSI[0]:
955 N csi_client_proc.c 1 352
ONC RPC: st_send_packet(): status: STATUS_NI_FAILURE; failed:
clnttcp_create()
RPC TCP client connection failed, RPC: Rpcbind failure
Errno = 0(Error 0)
Remote Internet address:1.2.3.4, Port: 0

2008-10-21 11:11:38 ACSSA[0]:
1441 N sa_demux.c 1 296
Server system network interface failure.
```

This demonstrates that the Library Server received a packet of data from the LibAttach server, but is unable to send a reply back. The reply is being blocked by the Windows firewall.

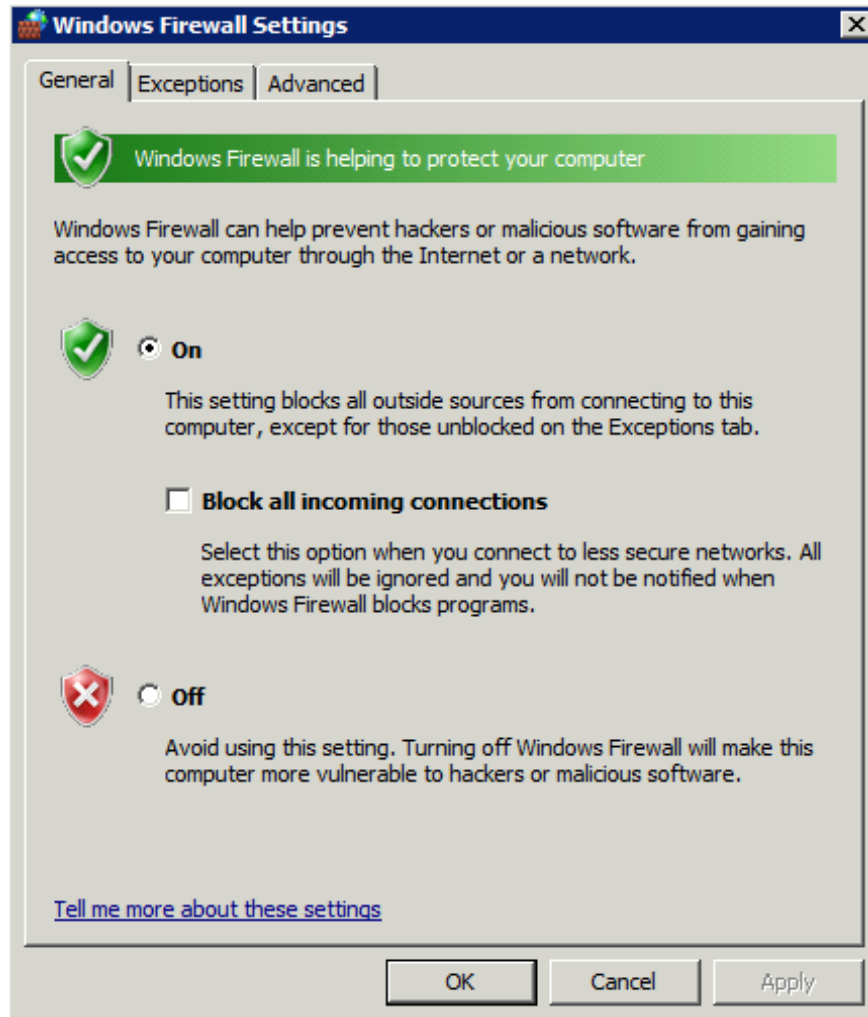
Solution

An exception must be made in the Windows firewall to allow for LibAttach to properly send and receive transmissions to and from the Library Server.

1. Start the Windows firewall control panel applet by clicking **Start → Control Panel**.
2. The control panel opens. Open the Windows firewall applet by clicking this icon:

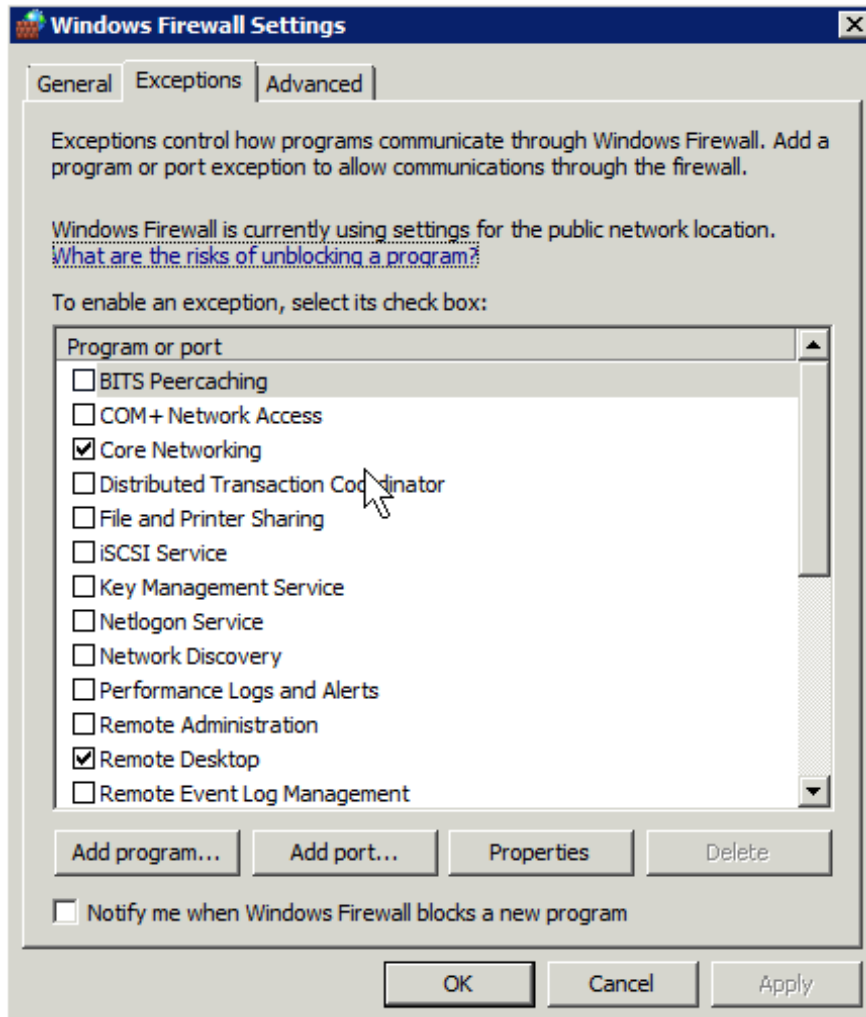


3. The Windows firewall applet starts.

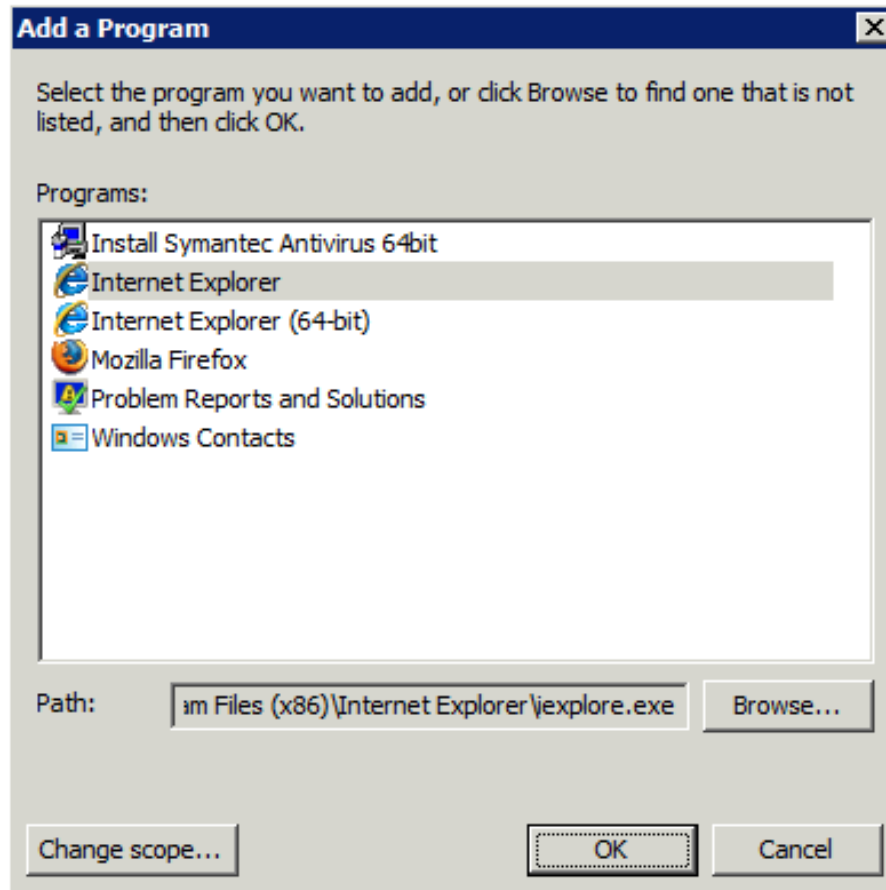


You can see that the firewall is active.

4. Click the **Exceptions** tab.

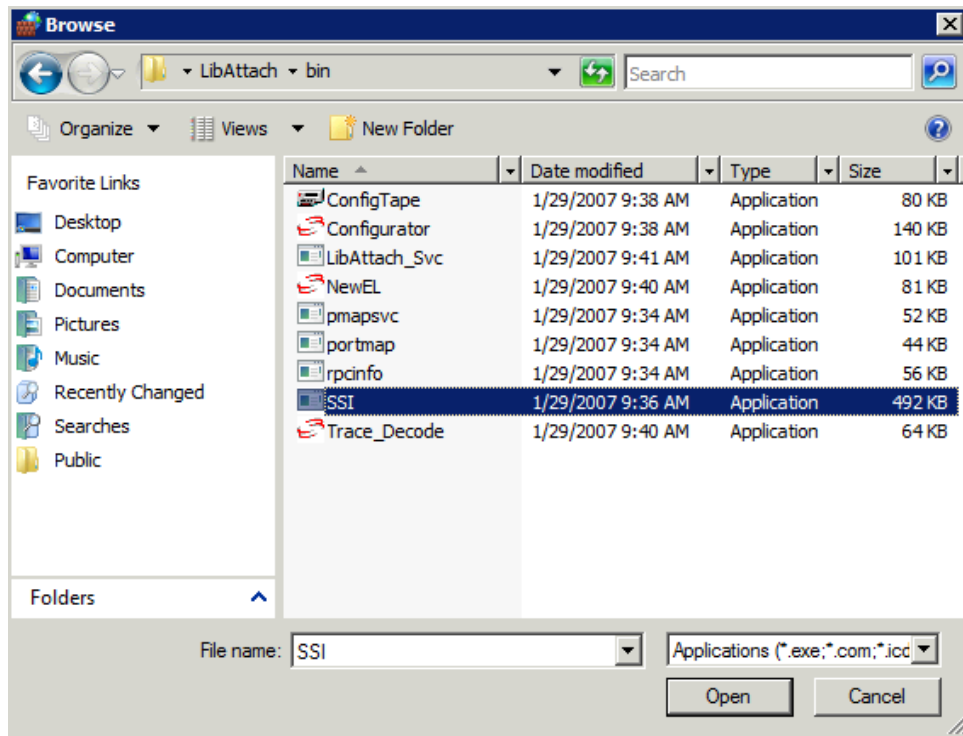


5. Click the **Add program...** button.



6. Click the **Browse...** button, and navigate to the location of the LibAttach **bin** directory. By default, this is **C:\Program Files\Sun Microsystems\LibAttach\bin**. If you changed this during installation, you will have to locate it on your own.

7. Within the LibAttach **bin** directory, locate the program **SSI.EXE**.



SSI is the main routing daemon between LibAttach and the Library Server. It must be open for both outgoing and incoming connections.

8. Click **Open**, and then click **OK**.

LibAttach has now been added as an exception to the Windows Firewall. You may now repeat the "Test" function from the LibAttach Configurator to see that communication is now possible.