

**Oracle® Utilities
Customer Self Service
Release 2.0.0**

Whitepaper: Consuming OUCSS Taskflows in
Custom Portals

E26553-01

October 2011

ORACLE®

Copyright © 2011, Oracle and/or its affiliates. All rights reserved.

This software and related documentation are provided under a license agreement containing restrictions on use and disclosure and are protected by intellectual property laws. Except as expressly permitted in your license agreement or allowed by law, you may not use, copy, reproduce, translate, broadcast, modify, license, transmit, distribute, exhibit, perform, publish, or display any part, in any form, or by any means. Reverse engineering, disassembly, or decompilation of this software, unless required by law for interoperability, is prohibited.

The information contained herein is subject to change without notice and is not warranted to be error-free. If you find any errors, please report them to us in writing.

If this software or related documentation is delivered to the U.S. Government or anyone licensing it on behalf of the U.S. Government, the following notice is applicable:

U.S. GOVERNMENT RIGHTS

Programs, software, databases, and related documentation and technical data delivered to U.S. Government customers are “commercial computer software” or “commercial technical data” pursuant to the applicable Federal Acquisition Regulation and agency-specific supplemental regulations. As such, the use, duplication, disclosure, modification, and adaptation shall be subject to the restrictions and license terms set forth in the applicable Government contract, and, to the extent applicable by the terms of the Government contract, the additional rights set forth in FAR 52.227-19, Commercial Computer Software License (December 2007). Oracle America, Inc., 500 Oracle Parkway, Redwood City, CA 94065.

This software or hardware is developed for general use in a variety of information management applications. It is not developed or intended for use in any inherently dangerous applications, including applications which may create a risk of personal injury. If you use this software or hardware in dangerous applications, then you shall be responsible to take all appropriate fail-safe, backup, redundancy and other measures to ensure its safe use. Oracle Corporation and its affiliates disclaim any liability for any damages caused by use of this software or hardware in dangerous applications.

Oracle and Java are registered trademarks of Oracle and/or its affiliates. Other names may be trademarks of their respective owners.

This software or hardware and documentation may provide access to or information on content, products and services from third parties. Oracle Corporation and its affiliates are not responsible for and expressly disclaim all warranties of any kind with respect to third party content, products and services. Oracle Corporation and its affiliates will not be responsible for any lost, costs, or damages incurred due to your access to or use of third party content, products or services.

Table of Contents

Overview	4
Additional Resources	4
Abbreviations	4
Preparation and Procedures	4
Software Requirements	4
Pre-Installation Tasks	4
Assumptions	4
Steps	5
Download and Extract OUCSS Artifacts	5
Patch View Jars with task-flow-registry.xml	7
Consuming Taskflows in a Custom Portal	12

Overview

This whitepaper describes the steps required to consume OUCSS taskflows in custom (ADF/WebCenter) portal applications in a WebLogic 11g environment.

Additional Resources

For more information please refer to the following:

Resource	Location
OUCSS_Implementation.pdf	Part of initial product package

Abbreviations

CCB - Oracle Utilities Customer Care and Billing

MDM - Oracle Utilities Meter Data Management

DDL – Data Definition Language

MDS – Metadata Services

OUCSS – Oracle Utilities Customer Self Service

Preparation and Procedures

Software Requirements

Please refer to the Oracle® Utilities Customer Self Service Installation Guide for product-specific versions and the current patch level.

Pre-Installation Tasks

The following should be completed before you can consume OUCSS taskflows in custom portals.

- Ensure that your Oracle JDeveloper version is 11gR1 PS3 (11.1.1.4.0).
 - Ensure that the WebCenter Extension bundle is enabled in JDeveloper.
- Ensure that your custom portal has the required MDS configuration (for customization).

Assumptions

- The custom portal is built using the “WebCenter Portal Application” template.

- The custom portal will be deployed onto an Oracle WebLogic (10.1.4) server.
- The OUCSS Schema is created and populated with seed data. For running the taskflows, a data source with jndi name “jdbc/OUCSSDS” is also expected in the target application server.
- For taskflows that require the sending of emails (e.g., Registration, Invite, etc.), a mail session with the jndi name “mail/OUCSS” is also expected on the target application server.

NOTE: The following information is not within the scope of this document:

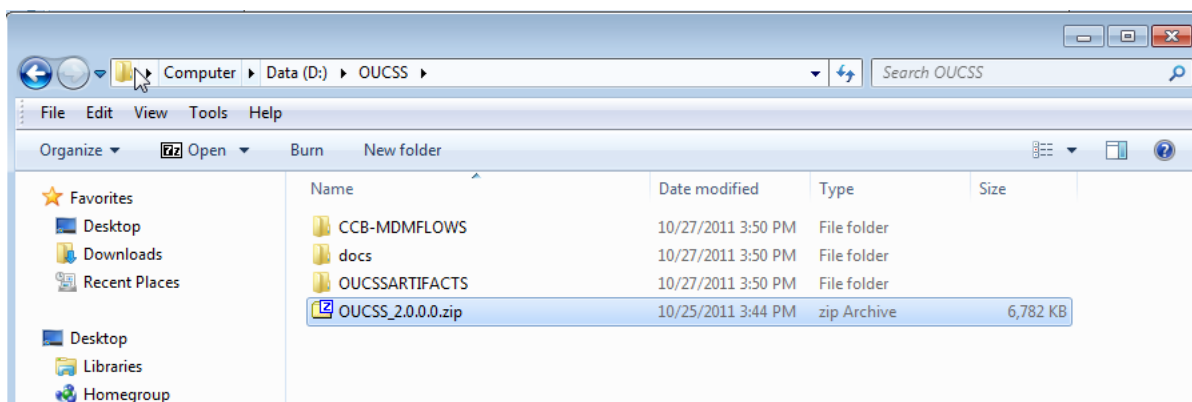
- Setup of database and MDS or other schemas required by the custom portal.
- Security of the custom portal to restrict access to taskflows or portal pages.

Steps

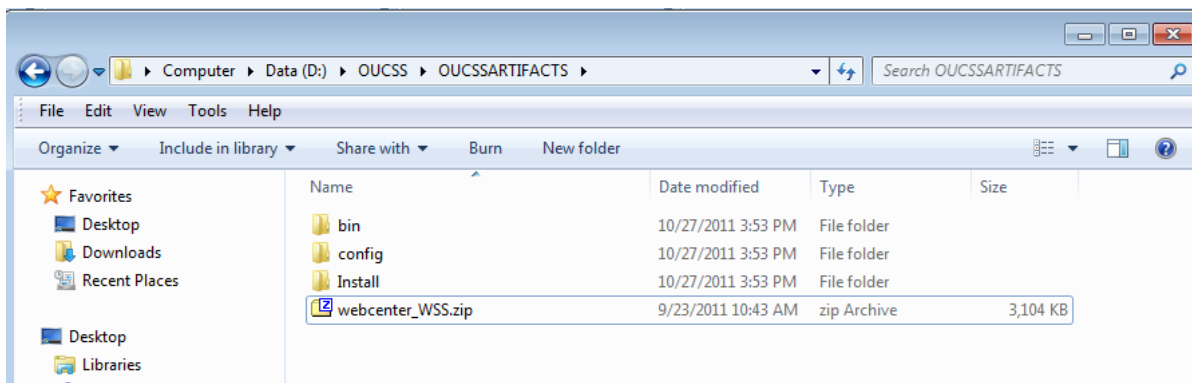
The following steps describe patching of OUCSS view jars and consuming OUCSS taskflows in a custom portal.

Download and Extract OUCSS Artifacts

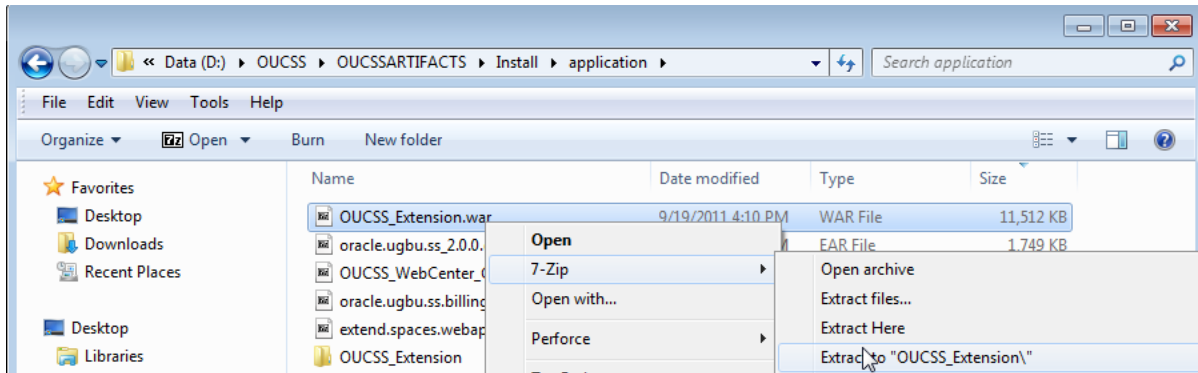
1. Download OUCSS_2.0.0.0.zip.
2. Extract the contents of OUCSS_2.0.0.0.zip into any folder (e.g., D:\OUCSS).



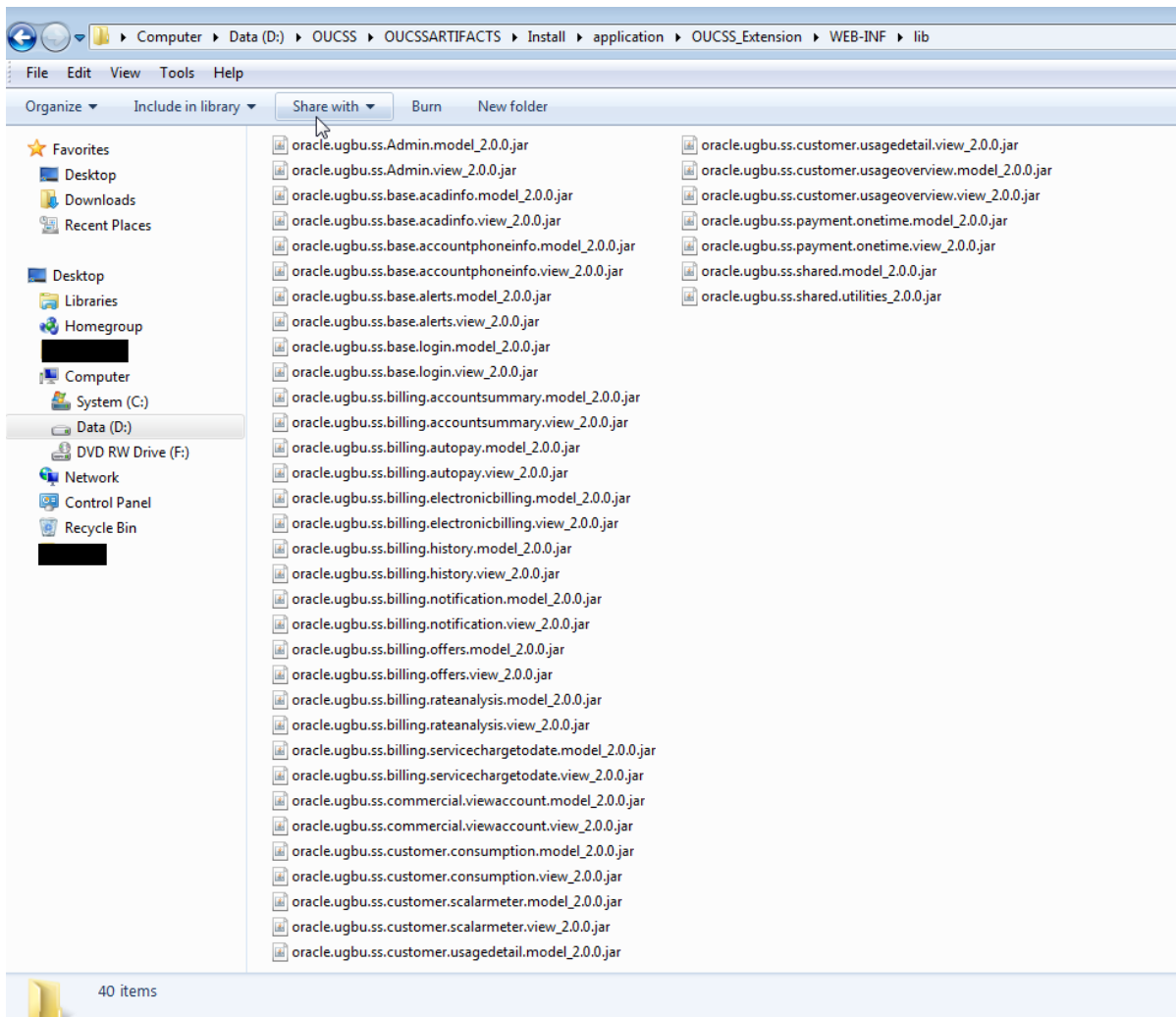
3. Change to the <<UnZipFolder>>\OUCSSARTIFACTS\ directory and extract webcenter_WSS.zip.



- Change to the <<UnZipFolder>>\OUCSSARTIFACTS\Install\application directory. Extract the contents of OUCSS_Extension.war to the OUCSS_Extension folder.



- Change to the <<UnZipFolder>>\OUCSSARTIFACTS\Install\application\OUCSS_Extension\WEB-INF\lib directory. This directory contains all model and view jars containing OUCSS data controls and taskflows.

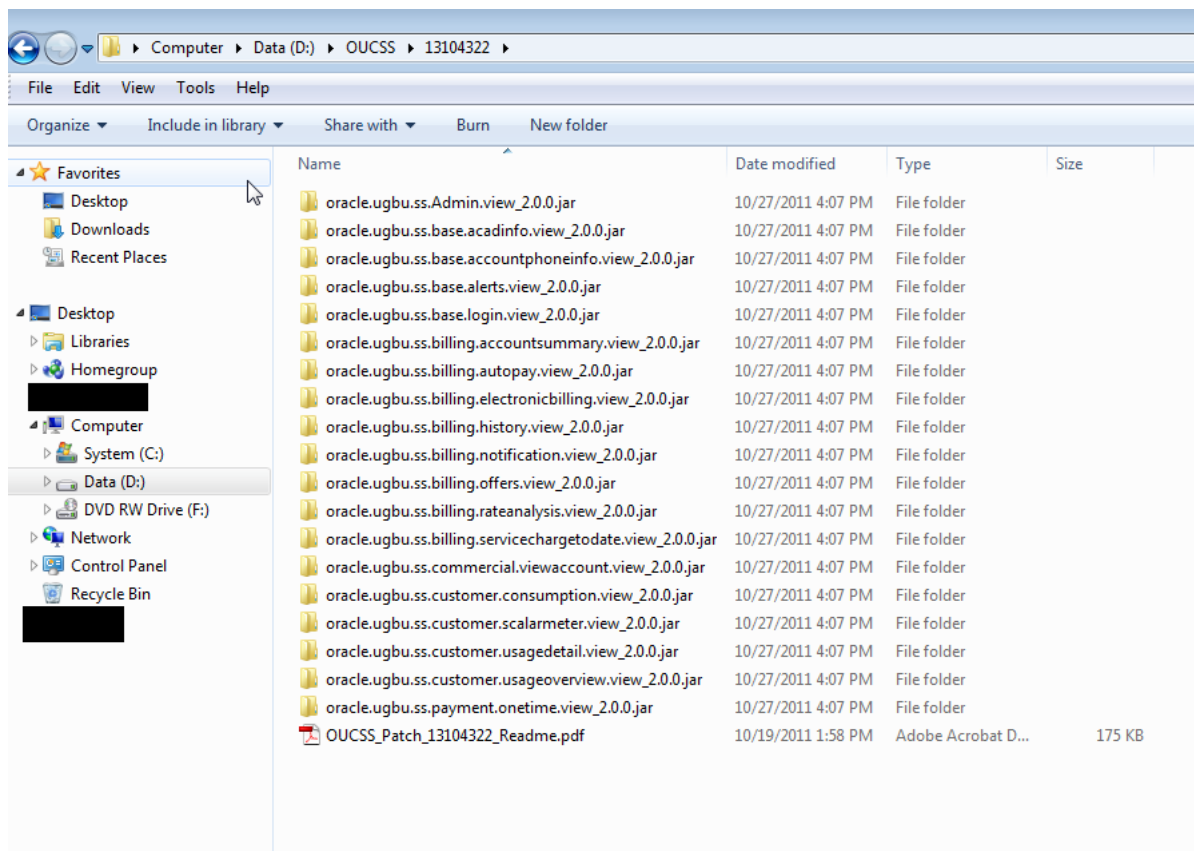


Patch View Jars with task-flow-registry.xml

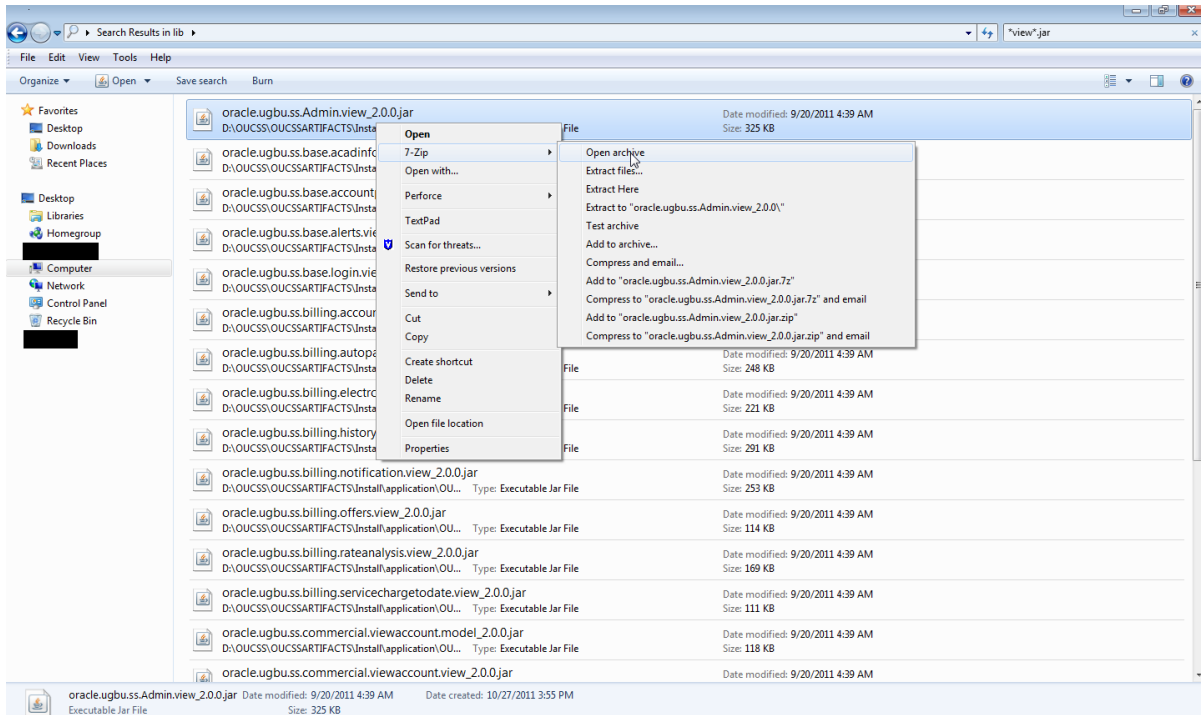
All OUCSS view jars are missing a task-flow-registry.xml file that is required to consume OUCSS taskflows in a custom portal using JDeveloper. To address this issue, a patch containing the required task-flow-registries is available on ARU.

To apply the patch:

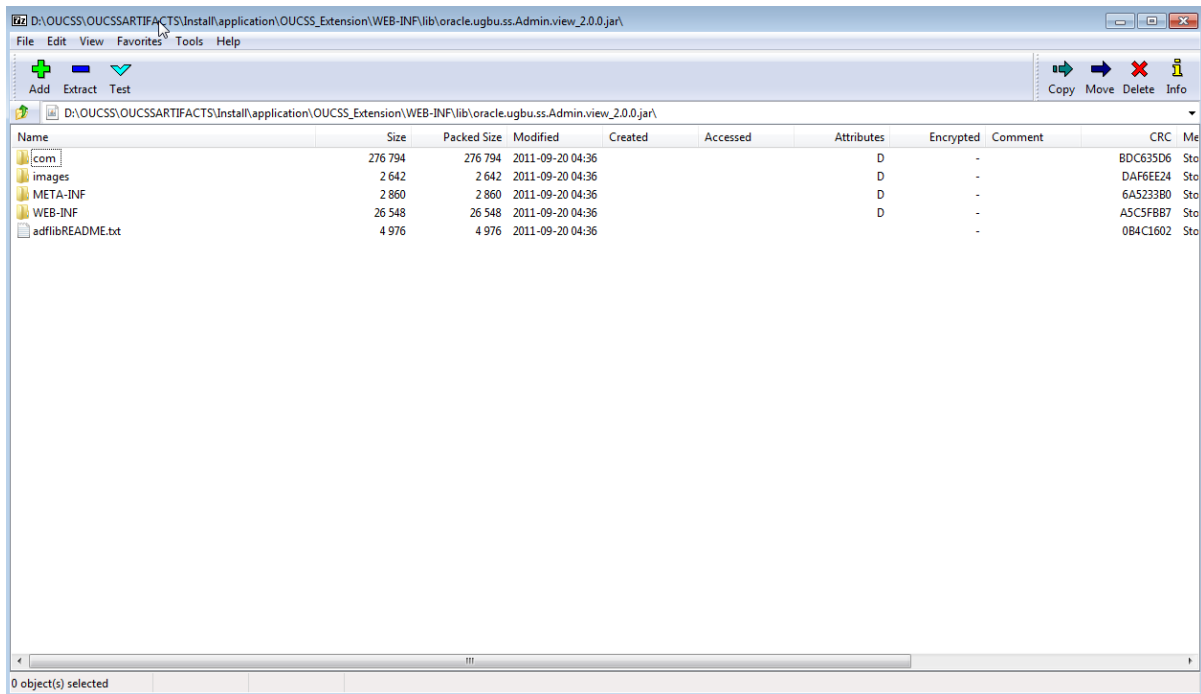
1. Download the 13104322.zip (patch) from ARU. This archive contains taskflow registries for each of the view jars in the <<jar_name>>\META-INF folder.
2. Expand 13104322.zip into a folder (e.g., D:\OUCSS\13104322).



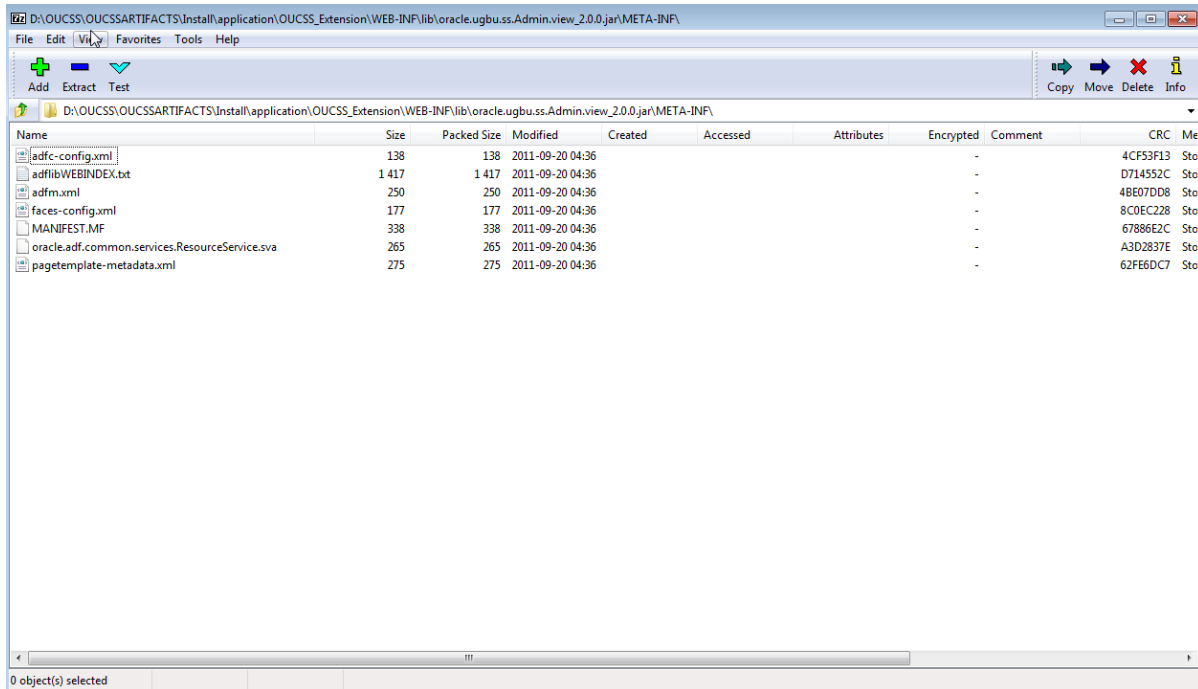
3. From the <<Unzip_Folder>>\OUCSSARTIFACTS\Install\application\OUCSS_Extension\WEB-INF\lib folder, open the oracle.ugbu.ss.Admin.view_2.0.0.jar using any zip utility software.



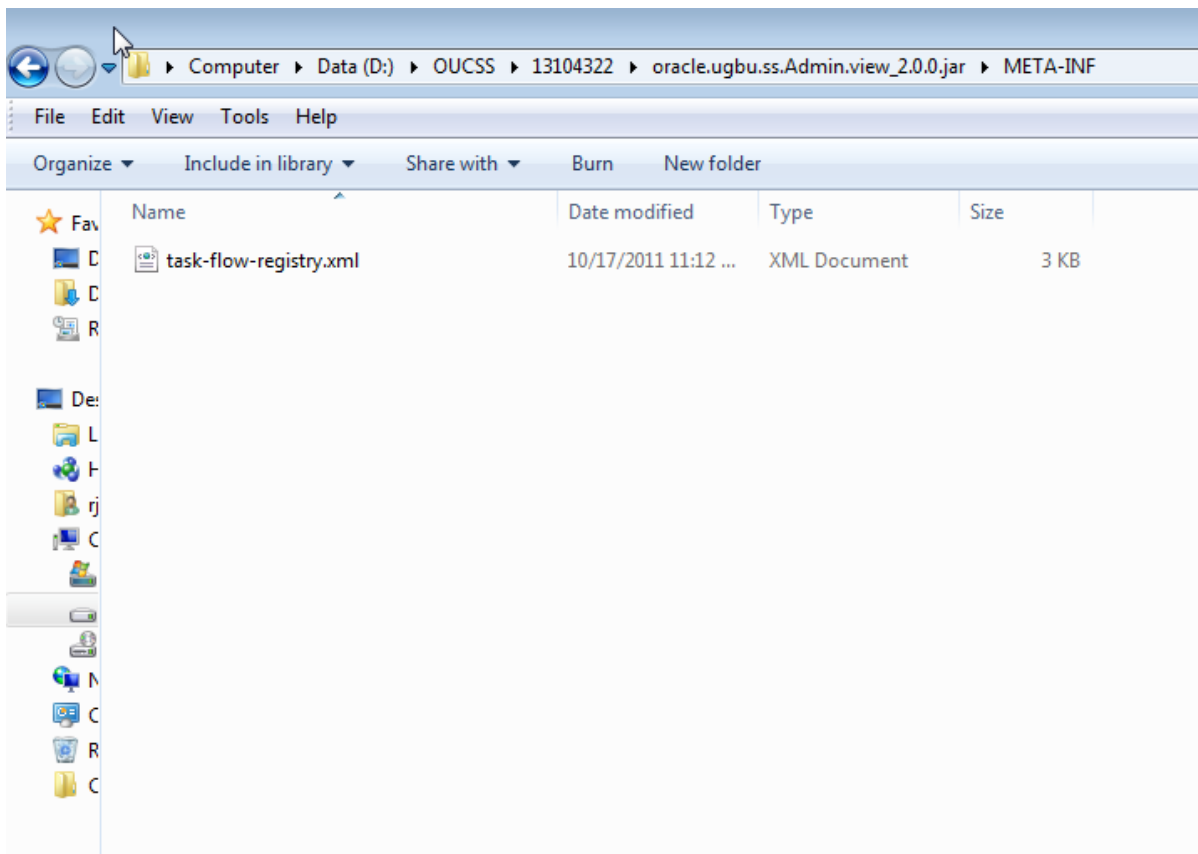
The archive should contain the following:



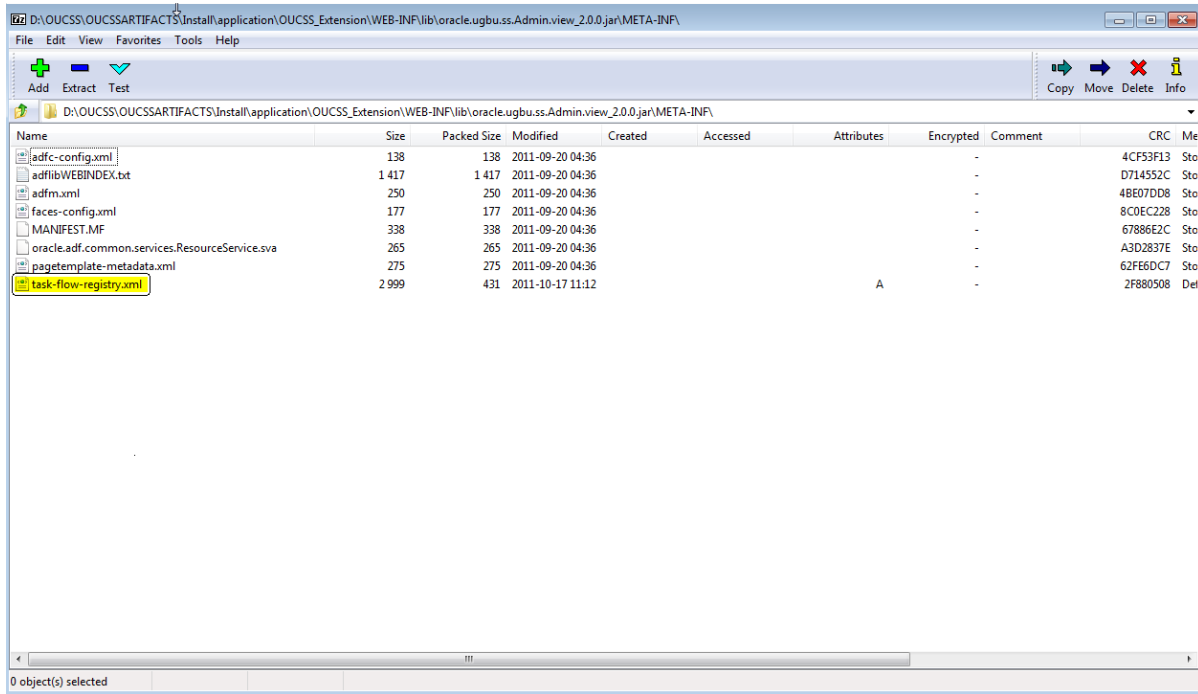
4. Change to the META-INF folder.



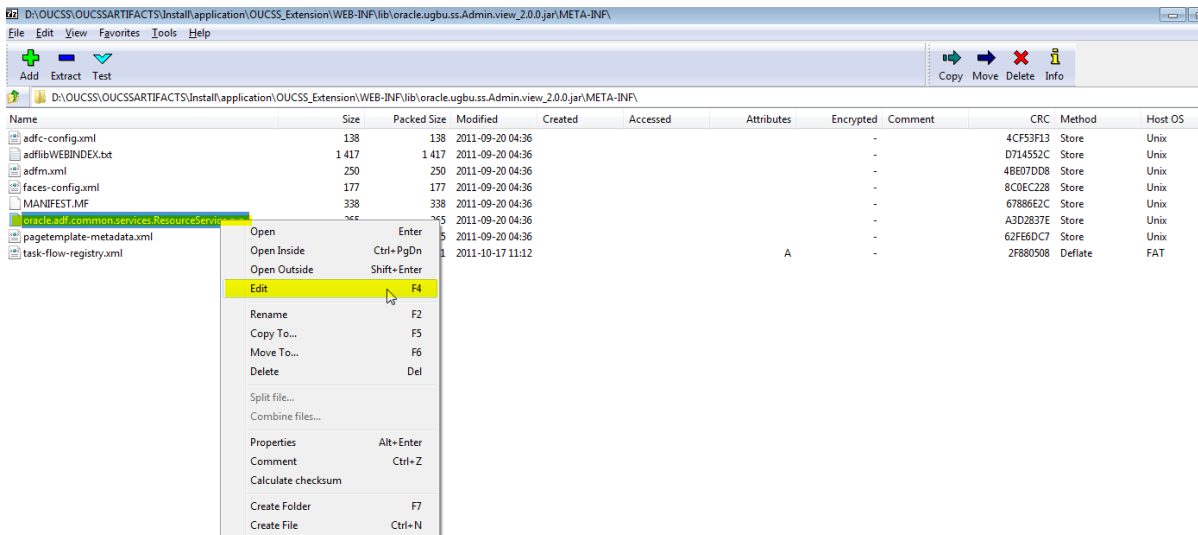
- In another window, change to the <<Unzip_Folder>>\13104322\oracle.ugbu.ss.Admin.view_2.0.0.jar\META-INF directory. This directory contains the task-flow-registry.xml file pertaining to the oracle.ugbu.ss.Admin.view_2.0.0.jar file.

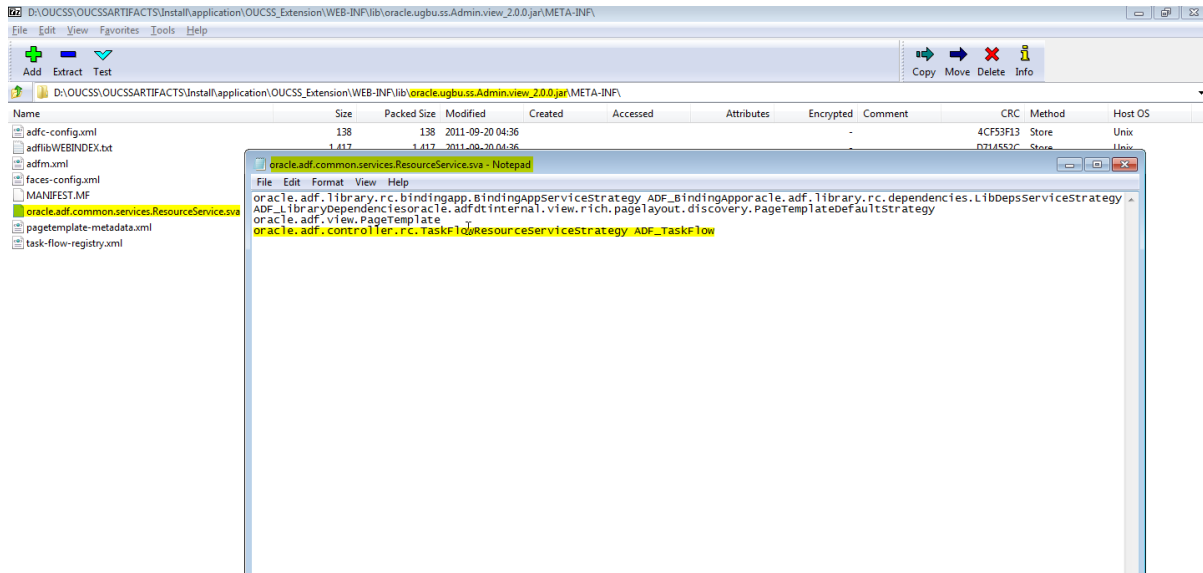


6. Add the task-flow-registry.xml file from <<Unzip_Folder>>\13104322\oracle.ugbu.ss.Admin.view_2.0.0.jar\META-INF into the META-INF folder of the actual oracle.ugbu.ss.Admin.view_2.0.0.jar file.

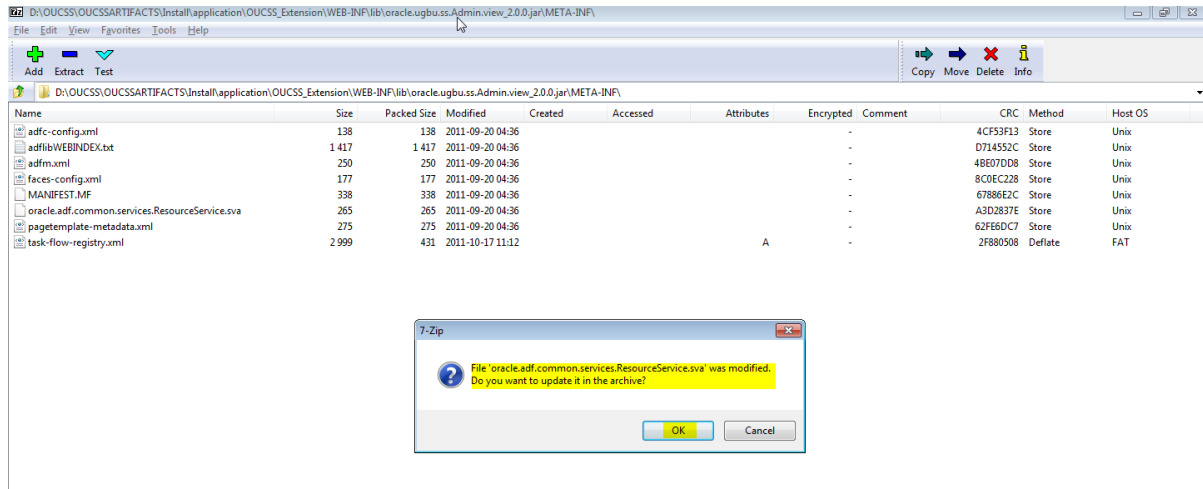


7. After adding the task-flow-registry.xml file to the jar, edit the “oracle.adf.common.services.ResourceService.sva” file found in the same folder, then add the entry “oracle.adf.controller.rc.TaskFlowResourceServiceStrategy ADF_TaskFlow”.

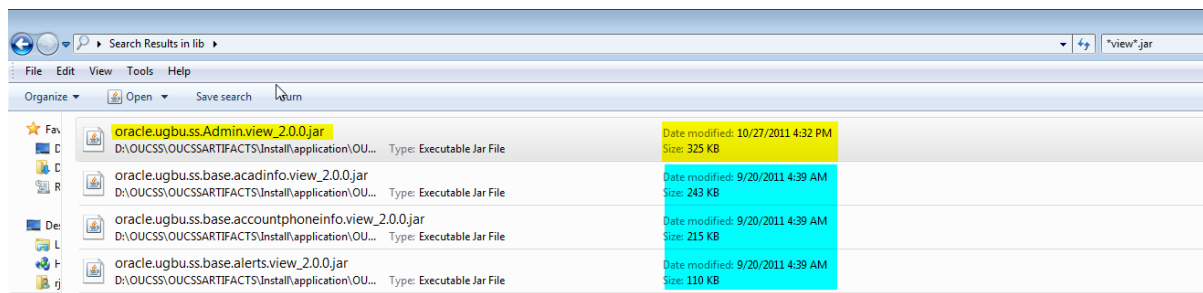




8. Save the changes and close the view jar file.



Check the timestamp of the jar to confirm the update.



9. Repeat steps 3 through 8 for all the other OUCSS view jars. Once done, the taskflows are ready to be consumed in custom portal.

Consuming Taskflows in a Custom Portal

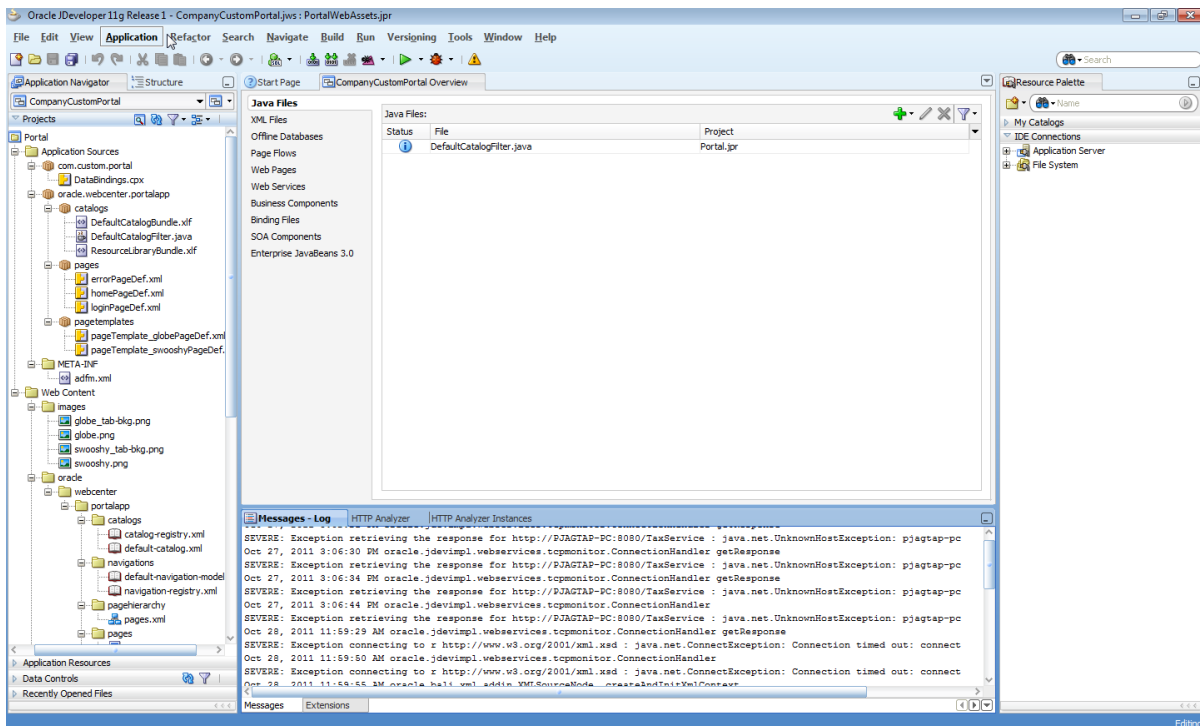
The following steps describe how to consume taskflows in a custom portal. Before consuming the portal, we recommend that you create the required site templates on which the portal pages will be based.

Note: This procedure does not describe security-related settings that may be required by the portal to restrict access to certain pages (such as Admin). Please refer to the WebCenter Portal Application guide to learn more about how to configure security for your portal.

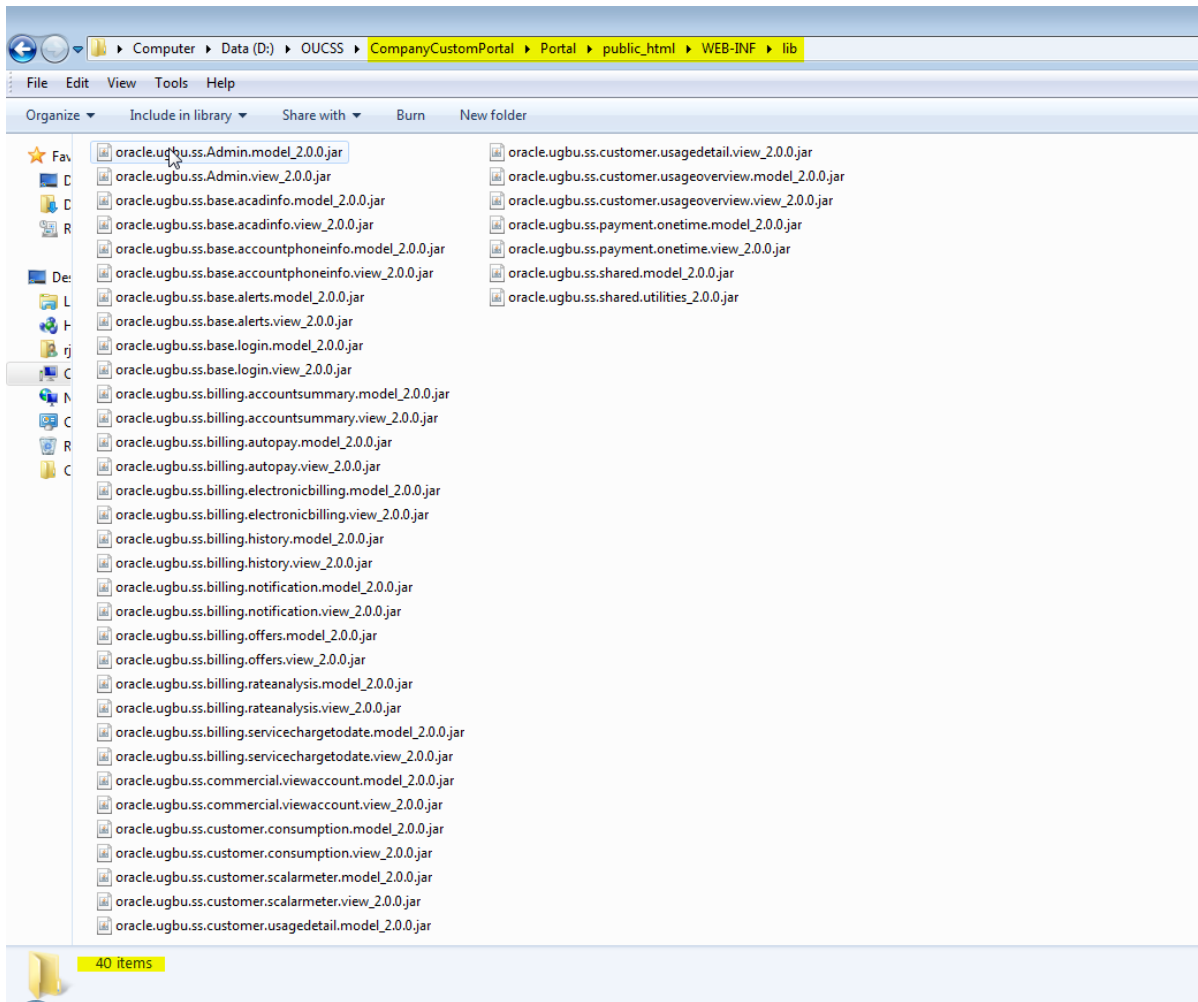
Additional information on creating custom WebCenter portal applications can be found in the Creating a WebCenter Portal Application tutorial at:

http://download.oracle.com/docs/cd/E17904_01/webcenter.1111/e10273/createapp.htm#CCHEGDIC.

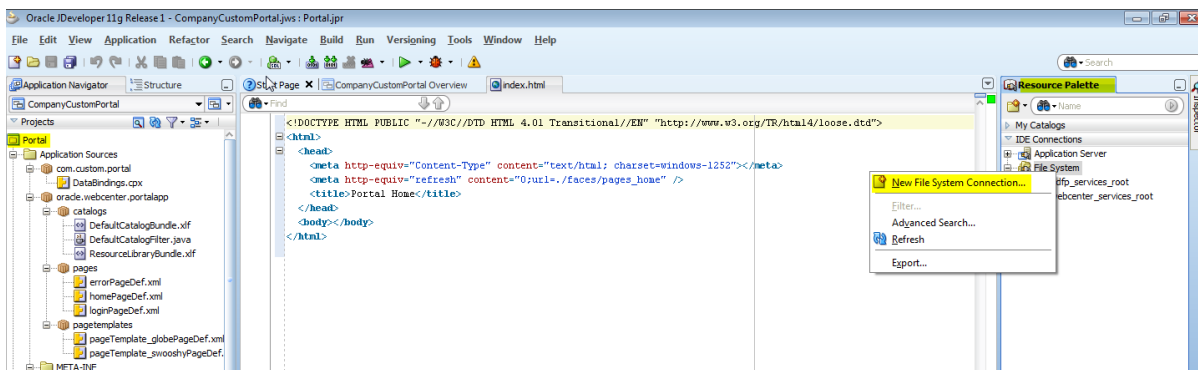
1. Create a Custom Portal application in JDeveloper using the “WebCenter Portal Application” template. Override the Application Name, Directory and Package settings per your requirements.



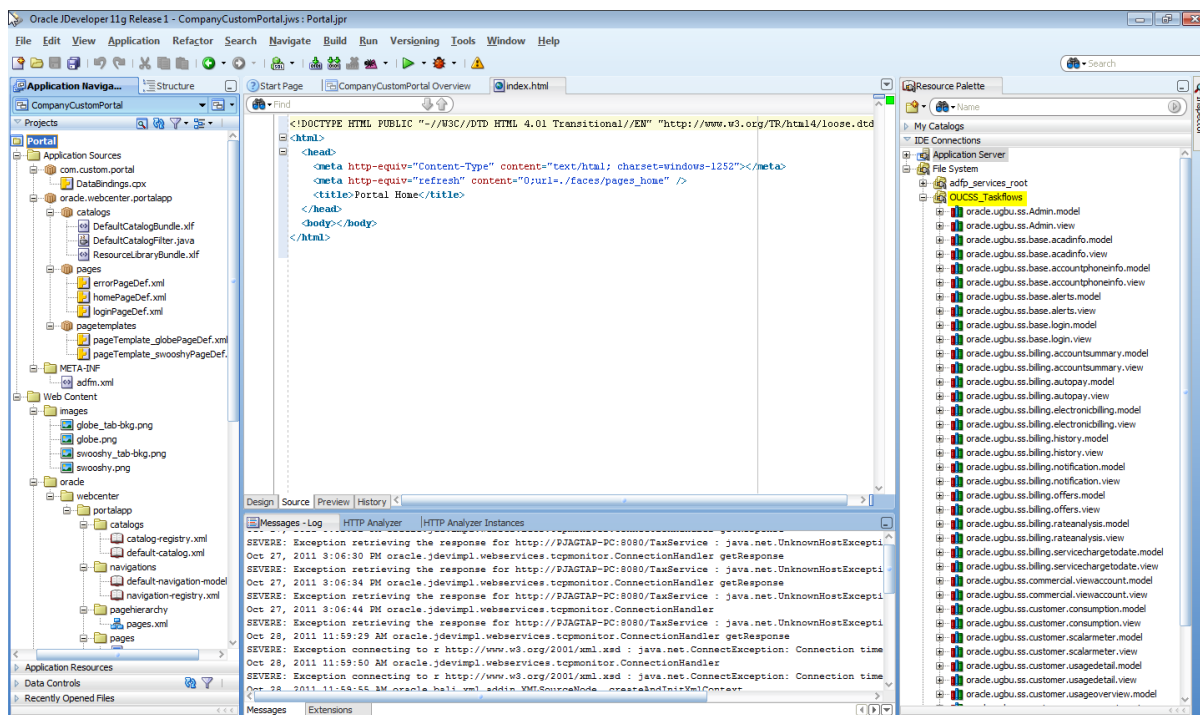
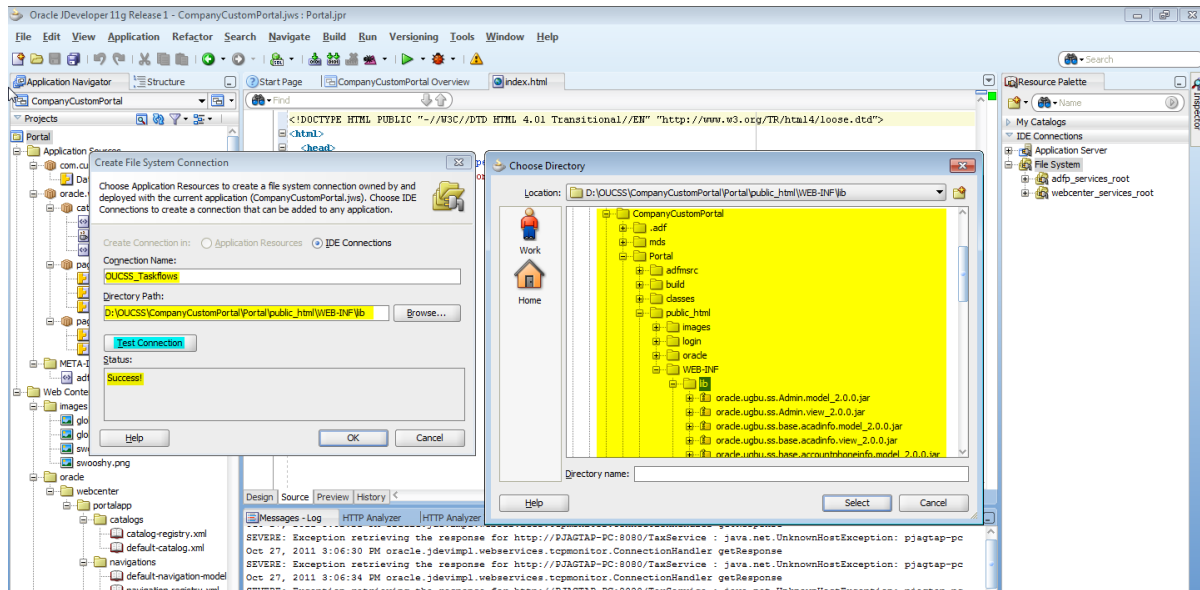
2. Open the directory <<CustomPortal_AppFolder>>\<<Portal_ProjectFolder>>\public_html\WEB-INF (e.g., D:\OUCSS\CompanyCustomPortal\Portal\public_html\WEB-INF).
 - a. If one doesn't already exist, create a lib folder.
 - b. Copy the OUCSS View and Model jars (which must already have been patched with task-flow-registry.xml files) from <<Unzip_Folder>>\OUCSSARTIFACTS\Install\application\OUCSS_Extension\WEB-INF\lib to the WEB-INF\lib folder for the portal.



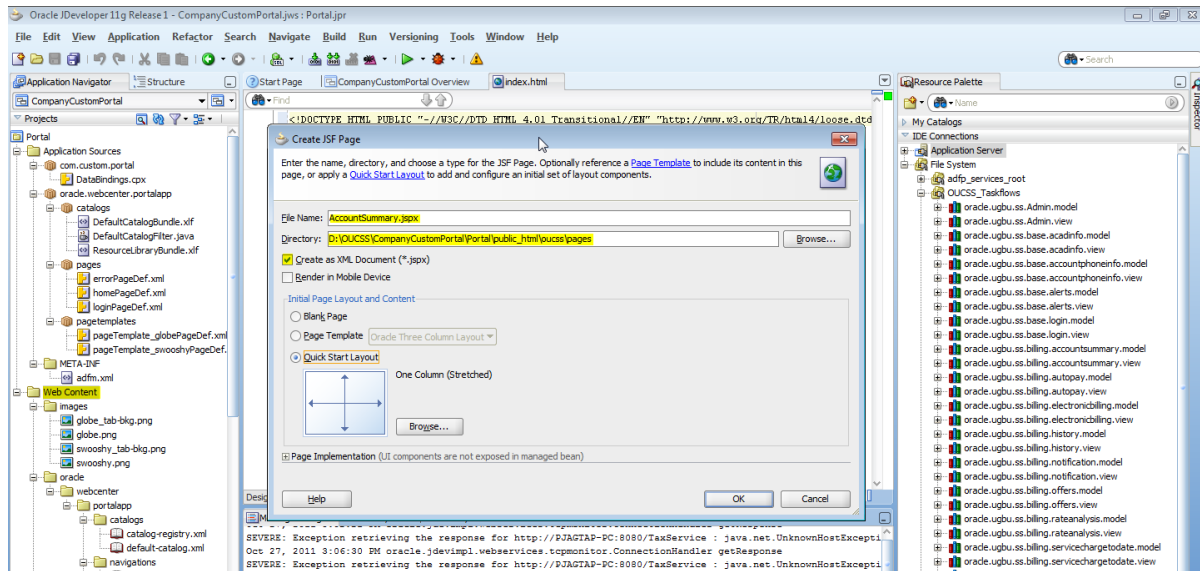
- Using the JDeveloper Resource Palette, create a File System connection with the name, “OUCSS_Taskflows” via the <<CustomPortal_AppFolder>>\<<Portal_ProjectFolder>>\public_html\WEB-INF\lib directory.



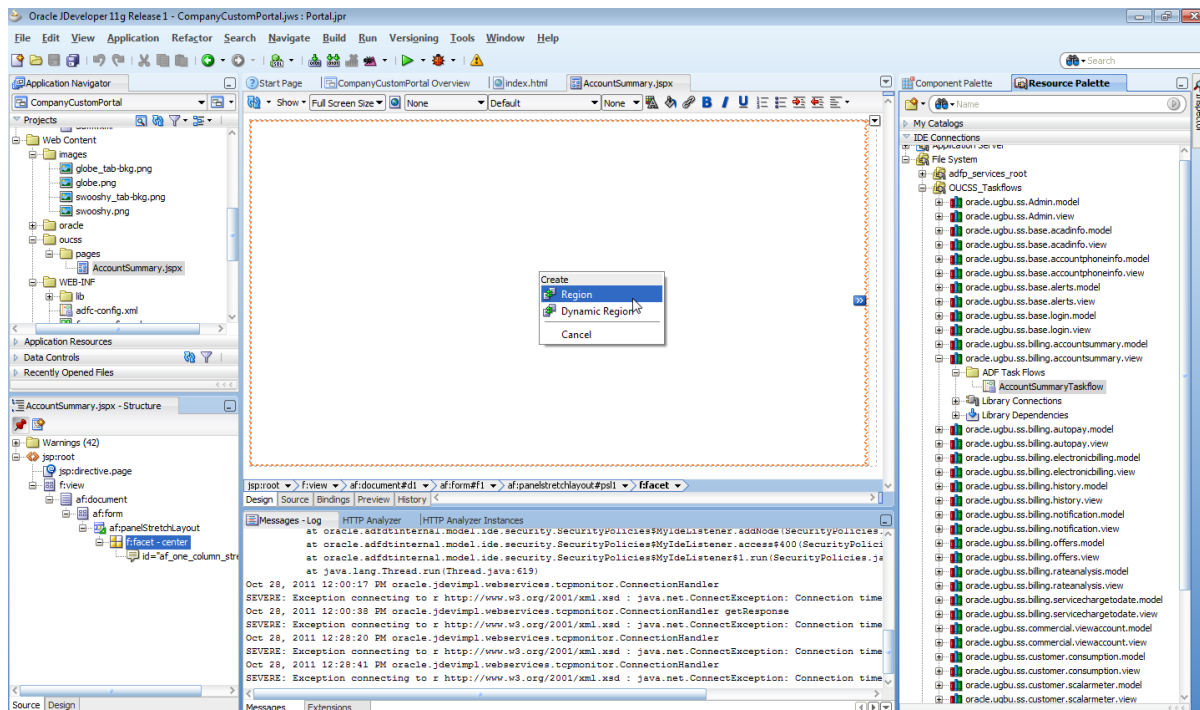
Use “Test Connection” to validate the connection



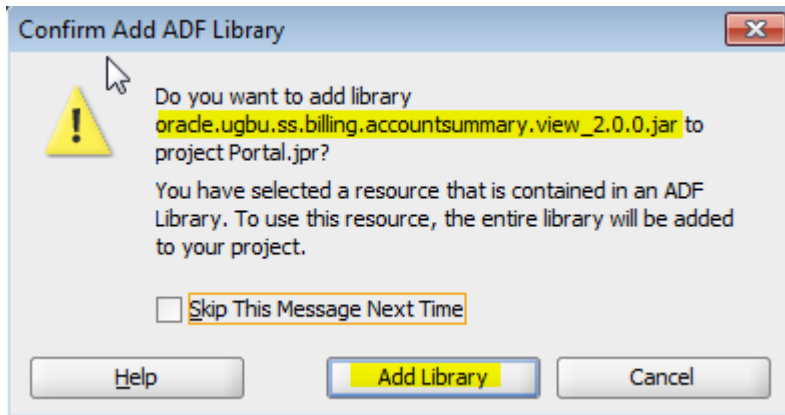
4. Create a page in which to drop the taskflow. Example: Create an Account Summary Page for the Account Summary taskflow. Note: More than one taskflow can be dropped on a page.



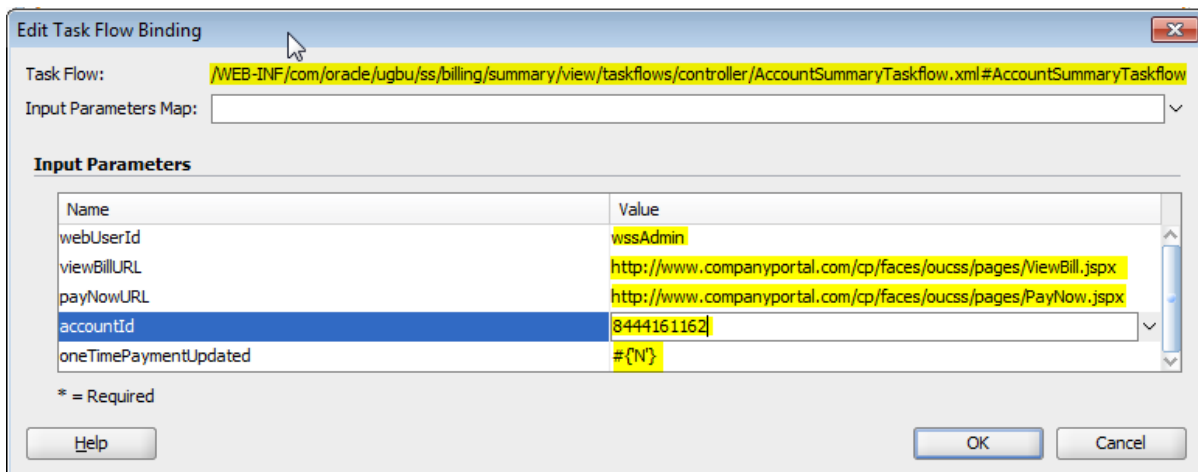
- From the resource palette, expand oracle.ugbu.ss.billing.accountssummary.view, then drag and drop the AccountSummary taskflow onto the newly-created page.



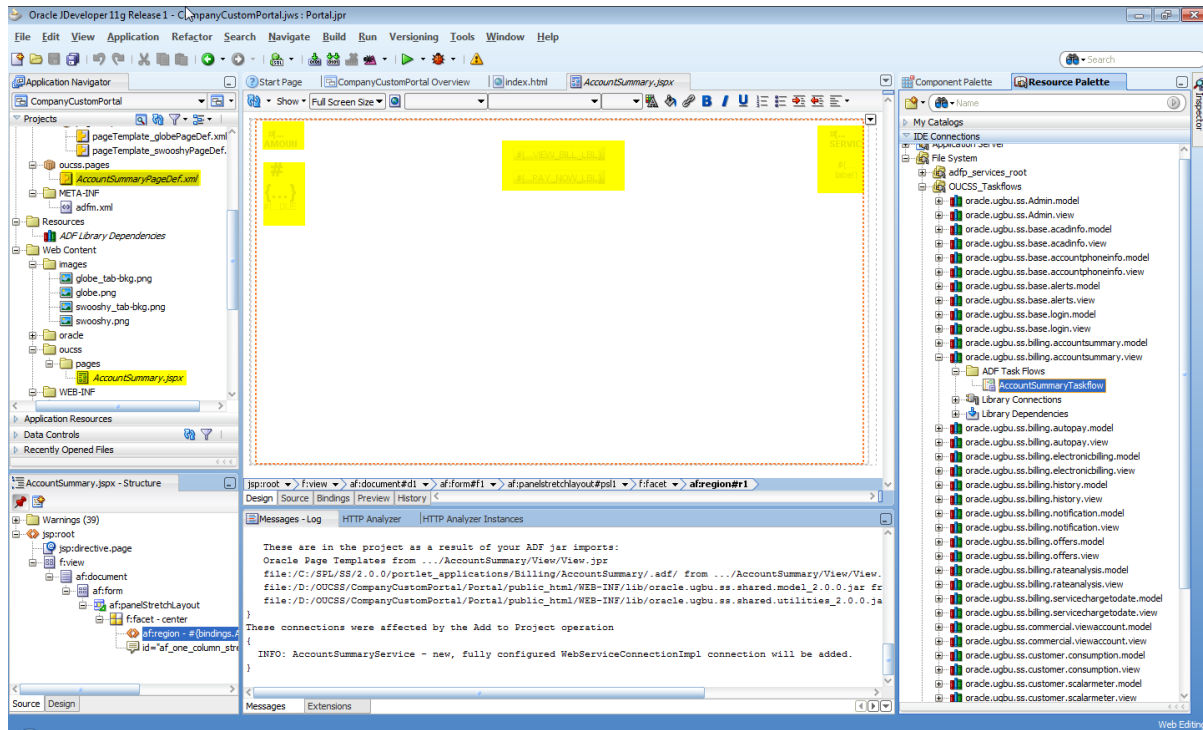
Note that when a taskflow is dropped onto a page, JDeveloper requests confirmation that you want to add the library to the project. Click “Add Library” to confirm.



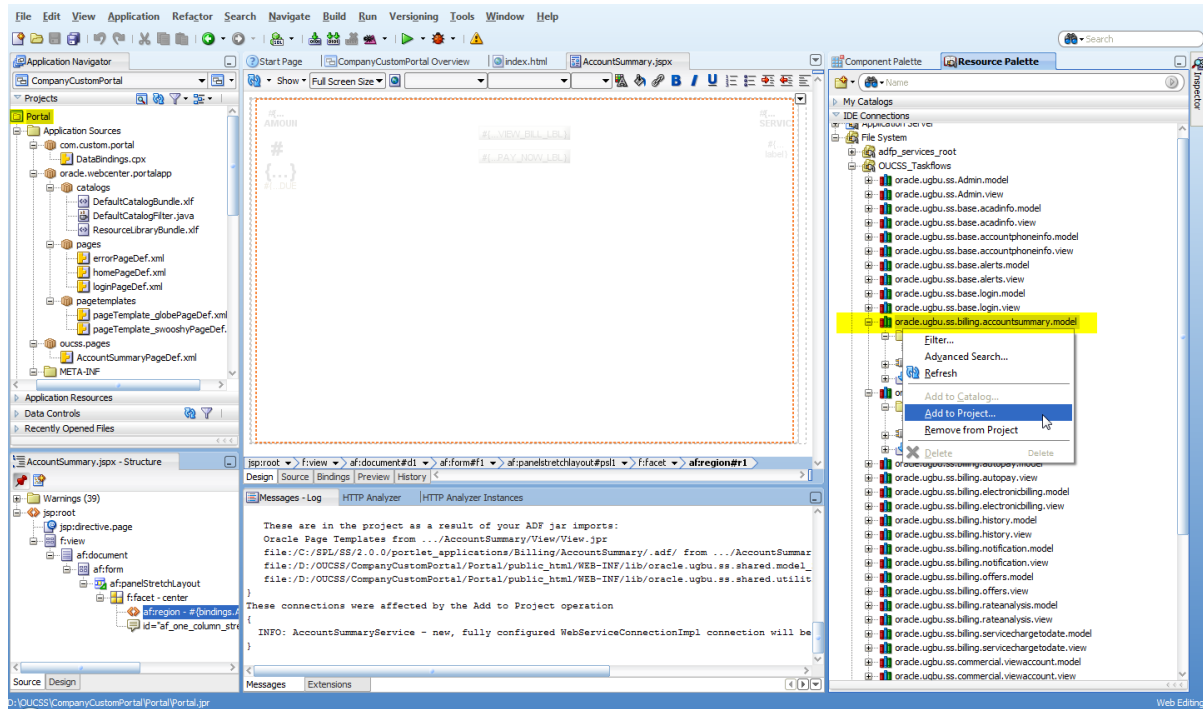
6. A dialog requesting taskflow parameters appears. The parameter values can be either static or dynamic (using an EL expression). In this example, static values are used.



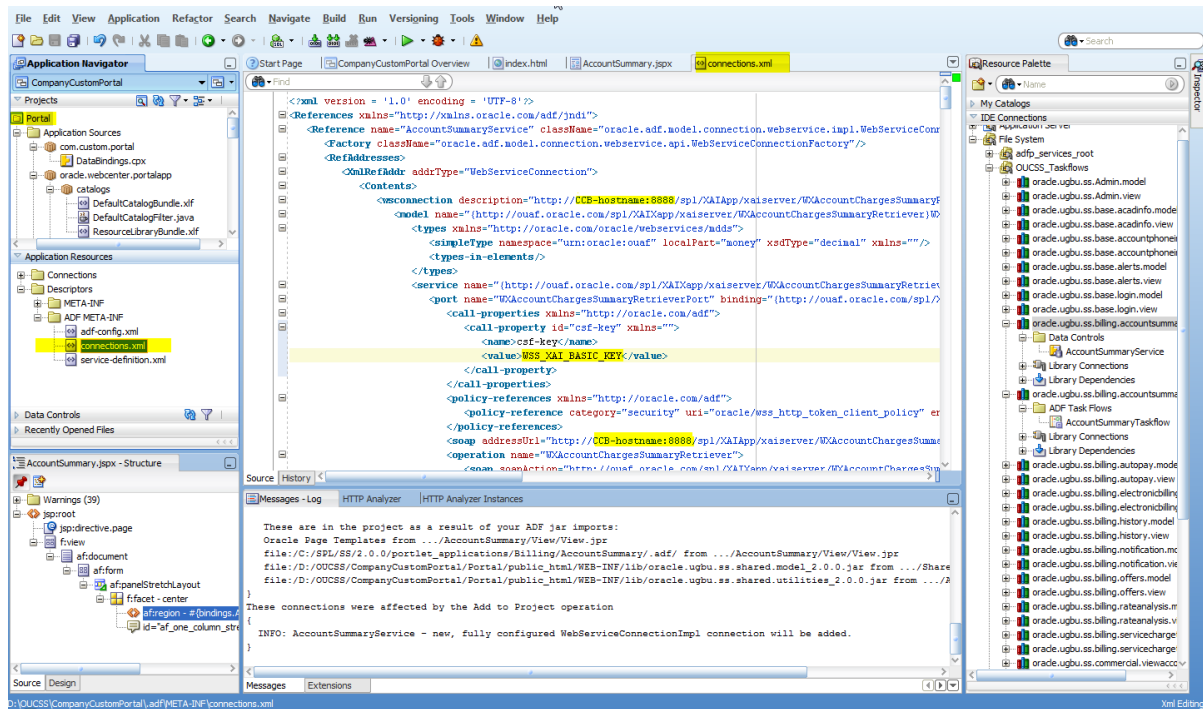
Page view after dropping the Account Summary taskflow



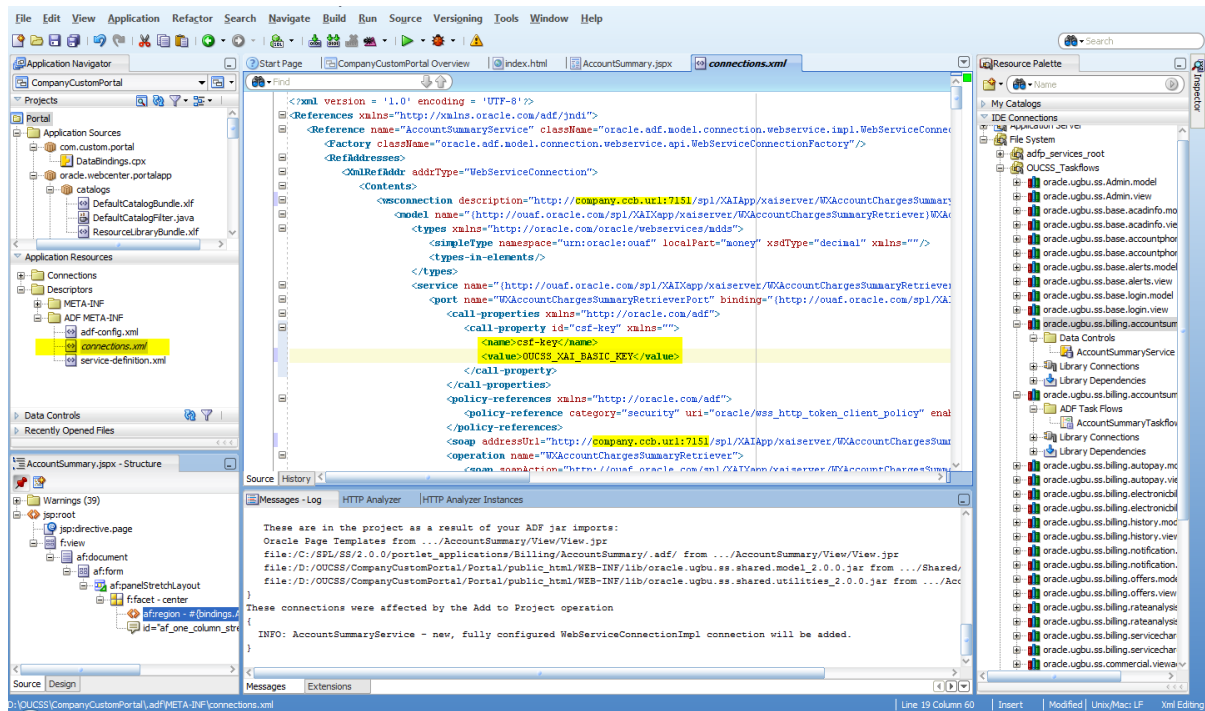
7. Click **Save All** to save your changes.
8. The OUCSS taskflows UI is built with ADF WebService data controls. These data controls are packed in the <<module_name>>_model_2.0.0.jar files. For the taskflow to run, the model project of the respective view module must be added to the project as well. To add the appropriate model to the project:
 - a. Local the <<module_name>>.model under OUCSS_Taskflows File connection on the Resource Palette.
 - b. Make sure the Portal project is selected in Application Navigator.
 - c. Right-click on the Model jar, then click **Add to Project**.



d. After adding the model jar to the project, open connections.xml.



- e. The WSDL URL used by the WebService data controls are tokenized to “CCB-hostname:8888” in connections.xml. The WSDL URL should be replaced with the proper CCB URL as installed in your environment.
- f. Replace the csf-key to oracle.wsm.security key that is created to authenticate the CCB WebService. For this whitepaper, “OUCSS_XAI_BASIC_KEY” is used for reference.



g. Click **Save All** in to save the changes.

Note: Some security settings and configuration will be required to render the taskflow in Custom Portals. Please check the WebCenter Custom Portal Application documentation for more details.