

ORACLE AGILE ENGINEERING DATA MANAGEMENT - RELEASE NOTES FOR AGILE E6.1

November 13, 2008

Part No. E13930-01

Agile e6.1 represents both: a service release and a feature release. This document outlines the major enhancements and additions to the core product as well as the improvements in each of the following areas:

- ☐ Java Client Enhancements
- ☐ Web Client Enhancements
- ☐ Large File Support
- ☐ New Icons
- ☐ Heterogeneous Structure Explosion
- ☐ Configuration Management
- ☐ I18N – Enabled Loader
- ☐ Authentication – LDAP Support
- ☐ Office Suite
- ☐ Enterprise Integration Platform 2.2
- ☐ Security
- ☐ Server Installation
- ☐ Administration Tool
- ☐ Upgrade Tool
- ☐ Removals
- ☐ De-Supported / De-Commissioned

Note – Next to this, a large number of bug fixes have been rolled up in Agile e6.1. Please, see document Fixed Bugs.

Note – A detailed list of supported platforms can be found in the document Platform Support.

Contents

Java Client Enhancements	5
General Settings	5
Login Screen	5
Preferences Mask	5
Docking Windows	6
Message Window	6
Trash	7
Search Option in Message and Trace Window	7
Object Repository Browser	7
UI Personalization Stored Between Sessions	8
Reset UI with Shift-Ctrl-F9	8
Grid Layout	8
Mask Features	9
Tab Navigation in Combined Forms	9
Multi-Tab (Mask) Editing	10
New List with Extended Functionality	10
Filter on Lists	10
Thumbnails	12
Hyperlink on Thumbnails	12
Icons in Field Titles and Field Values	12
Auto-Completion for Select Menus	13
Internal Browser	13
Inbox in Browser	14
New On-Select Userexit	14
Enhanced Text Editor	14
Drag & Drop	15
Drag & Drop in SDI Mode	15
Drag & Drop from Java Client to External Applications	15
HTML Type Export and Including Field Titles and Names	16
Stylesheets for Lists	16
Tree Tables	17
Heterogeneous Structure Explosion	18
Customize Heterogeneous Structure Explosion Configuration	18
ECI for Heterogeneous Structure Explosion	19
Extensibility	19
Java Client Plug-in Concept	19
Enhanced Layout Management	20
Renamed Toolbars	20
Enhanced Date Selection	21
Firewall Friendliness	21
HTTP/S Support Configuration	21
View Mode	22
External Mail Integration	22
Kunststoff Look&Feel	22
Internal Web Browser	22
Prerequisites	23
URL Linking Support	23
ECI Server Authentication	24
Office Suite	25
Usage	25
Des-supported Office Suite Features	25
New Default	26
Not Supported Userexits	26
Customizing Support	26
Web Client Enhancements	27
Packaging Installation	27
URL Linking Support	27

General Web Client Settings	27
Login Screen	27
Color Scheme	28
New Configuration Parameter	28
Internal Browser	28
Development View	29
Renamed Development Views	29
Development (extended)	29
Development (extended) View for Multiple Structures	29
Large File Support	30
Mask and Field Limitations	30
Extended Field Size	30
New Icons	30
Configuration Management (CM)	35
I18N - Enabled Loader	36
Authentication – LDAP Support	37
Prerequisites	37
User Authentication via LDAP	37
Setup an LDAP User	38
Configuration	38
Permissions	38
User Data Mask	38
Classification	39
Classification List	39
Multi-Lingual Attributes	39
Office Suite	39
Installation	39
Contained Hotfixes	40
Prerequisites	40
PDF Generator	41
File Type Mask	41
Workflow Editor	42
Corrected Post-field Userexit Execution in Insert Mode	42
New Userexit	42
New Environment Variable	42
New Default	43
Enterprise Integration Platform 2.2	43
General	43
Java Support	43
Oracle DB 11g Support	43
Controller Enhancements	43
Password Encryption	43
PLM Connector	44
Agile e6.1 Support	44
'loopback' Mode Support	44
SAP Connector	44
SAP Jco 2.1.x Support	44
Solved FIS IDs	45

Security	45
Loader	45
EDB_BATCH	45
Java Client ECI Server Plugin	45
FMS-Client Security Changes	46
Restricted FMS-Client on PLM Server	46
Restricted FileServer to Pre-Configured Vaults	46
Server Installation	47
Administration Tool	47
Upgrade Tool	47
De-Supported	48
De-Commissioned	48

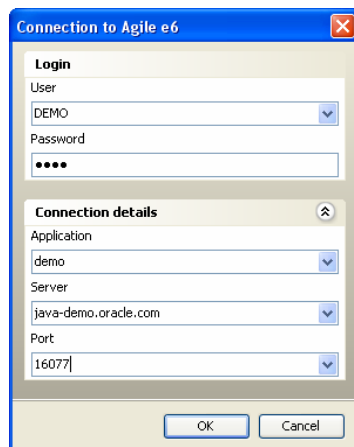
Java Client Enhancements

General Settings

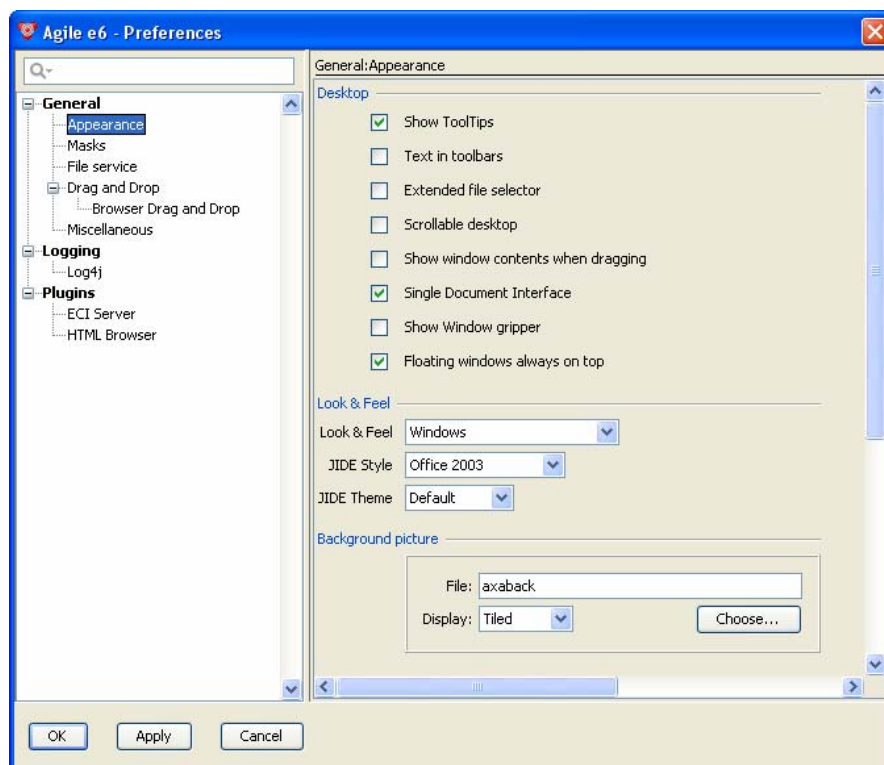
Login Screen

In order to simplify the login process for the average user, the connection details are hidden by default. In case someone wants to see or modify the connection details, a drop-down panel "Connection details" is available.

It is possible to configure whether users are allowed to just see the connection details or are allowed to also modify them.



Preferences Mask



❑ Switching to Another Look&Feel

The Java client comes with a standard look&feel. If needed, the look&feel can be

adapted to your own needs. The look&feel can be changed in the "Preferences" mask (e.g. select General > Appearance). This setting is stored between sessions on this machine and for each user.

- ❑ **Single Document Interface (SDI)**
Single Document Interface (SDI) means that all PLM forms, which can be opened, are not displayed as freely movable forms but are displayed in one window. To navigate between the different SDI-based forms, the navigation tabs in the heading area of this window (mask) can be used. The heading area also provides buttons to close masks and to navigate between the masks. The Multi Document Interface (MDI) mode is still supported. MDI means that each PLM form is opened in an extra window. Switching between SDI and MDI mode is done in the Preferences window by turning on or off the SDI flag. After restarting the Java client, the newly set mode will be activated.

Note - To open an SDI-based mask, its title has to be clicked in the header tab area.

Note - When working in SDI mode, masks can still be shown side-by-side. This can be performed by splitting the screen horizontally or vertically via the context menu of the mask title. The masks can be rejoined into one screen by dragging and dropping the mask title from one side to the other or by selecting the respective command from the context menu of the mask title.

- ❑ **Floating Windows**
Until now, floating windows were always on top, which limits the usability if these windows are quite large and the user does not work with multiple windows. The option 'Floating windows always on top' allows to configure if floating windows should stay on top or in the background.

Docking Windows

Now, the Java client provides more advanced capabilities in terms of positioning and rearranging (docking) the UI components (e.g. windows and menus). The results of all docking activities are stored in a local file to get the same layout again after restarting the client. The following docking features are now available in the client:

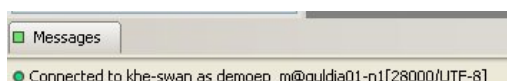
- ❑ Repositioning the window component inside the client frame, e.g. the Internal Browser component can be moved from the left side to the right side of the main frame. This can be done by clicking on the component header and dragging it to its new position.
- ❑ It is also possible to drag some of the components (e.g. Internal Structure Browser, Trace and Message windows) outside of the main client frame, e.g. to show the Internal Browser on your second monitor.

To undo the docking operation, select View > Layout > Undo Layout, or reset the layout with the Reset to default layout function.

Message Window

Some of the client components like the message window may only be helpful at times. Therefore, we now offer the AutoHide feature (in the context menu), which allows to hide the window when not in use. To see the content of this window, the mouse pointer has to be positioned on the window title. This brings the window automatically to its full size.

When AutoHide is activated, only the window title (here: Messages) is shown.



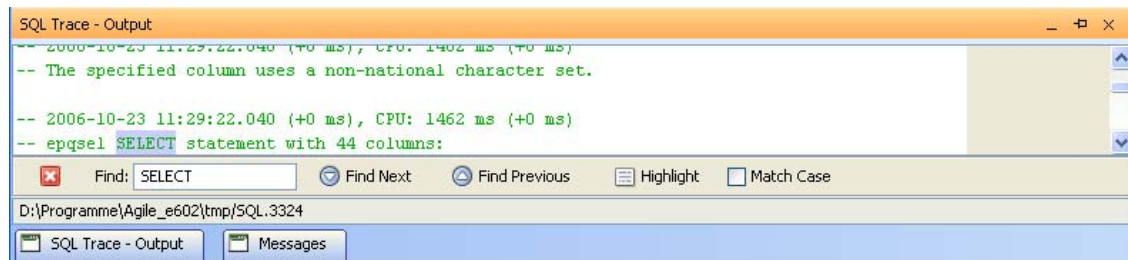
Trash

Because of the SDI mode, the trashbasket icon is now in a new location at the bottom right status bar of the Java client. When clicking on this icon with the left mouse button, the “normal” Trash form is displayed and can be used as usual.

Search Option in Message and Trace Window

To search in the Message or Trace mask, open the context menu of the respective mask and choose Find (or press CTRL-F).

Search criteria can be entered here in order to find or just high-light the searched data.

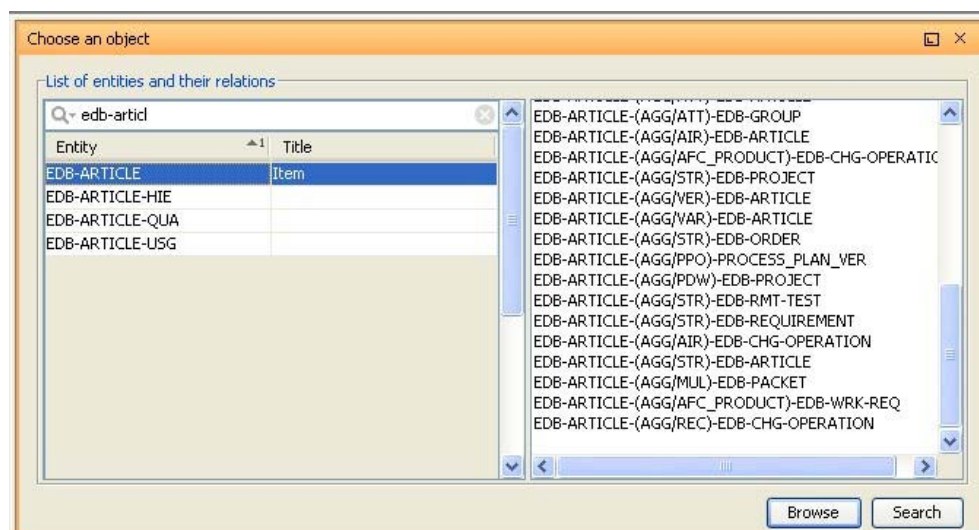


Object Repository Browser

The Object Repository Browser can be opened with the respective button in the help toolbar for Manager user.



This browser allows browsing through all entities in the PLM repository, e.g. EDB-ARTICLE for Item Management. When selecting one of the repository entries, you can either open the default list mask of this entity via the button “Browse” or you can search specific objects in this entity via the button “Search”.



The button “Search” brings up a search form where you query for specific records by entering your search criteria in the “Parameters” area. After having entered your search criteria you can either run the query via the button “Search” or just get the number of possible result records via the button “Count”. The buttons “more” and “less” allow to add or remove search parameters.



UI Personalization Stored Between Sessions

UI layout changes like moving components (e.g. the Internal Browser) to another position or changing the look&feel can be saved between sessions. When logging on again, the Java client will reopen in the same way as before closing the client.

The UI personalization information is stored in external files in the home directory of the user's operating system. In this directory several layout files are stored, one for each PLM logon user (e.g. edbcusto.layout, or demoep.layout).

To remove all personalization settings, simply delete the layout files from this directory. The Java client will open in its default layout again.

Name	Size	Type	Date Modified
demoep.layout	4 KB	LAYOUT File	10/5/2006 3:48 PM
demoep_m.layout	4 KB	LAYOUT File	10/16/2006 6:58 PM
edbcusto.layout	4 KB	LAYOUT File	9/22/2006 1:13 PM
jacc.ini	1 KB	Configuration Settings	10/17/2006 4:01 PM
Jacc.layout	4 KB	LAYOUT File	10/17/2006 4:01 PM
jacc.objects	1 KB	OBJECTS File	10/17/2006 4:01 PM

Reset UI with Shift-Ctrl-F9

When UI components are not displayed correctly, the UI-Reset function can be called by pressing Shift-CTRL F9.

Grid Layout

To display the actual position of all client elements (e.g. masks, fields, buttons, text, etc.) the grid layout can be activated.

To make the grid layout visible, follow these steps:

1. Open the Preferences mask.
2. Select Logging
3. Press the button Load profile ...
4. From the opened Choose a Profile window select Grid from the selection menu and press OK.
5. The class `com.agile.share.swing.TracePane` is set active in the Debug (1) column.

To make the grid layout visible for a mask, open the respective mask and press CTRL-F11. Now, when clicking on different mask elements, its respective grid layout and class name is displayed. If too many mask elements have been selected, press CTRL-F12 to clear all displayed grid layouts. To turn the grid layout off again, press CTRL-F11.

Item Number

Revision

Child

Name

Parent

Organization

Alias Number

Revision

General Alias IDs Preview BOM Multi-Level Structure in Items in Modular BOMs

	1	2	4	6	8	10	12	14	16	18	20	22	24	26	28	30	32	34	36	38	40	42	44	46	48
1																									
2	Unit																								
3																									
4	Material																								
5																									
6	Category																								
7																									
8																									
9	Variant																								

Hazardous Material

Document Changes

Mask Features

Tab Navigation in Combined Forms

On the right hand side of the tabs a select menu has been added to display a tab overview. This shows all available tabs in the combined form and allows opening directly a specific tab.

Project Number

Revision

Child

State

Lifecycle

Name

Parent

Valid From

Until

Current

General Preview Structure in Projects Items Members Documents Requirements Processes History Class Attributes

Description

URL

- General
- Preview
- Structure
- in Projects
- Items
- Members
- Documents
- Requirements
- Processes
- History
- Class Attributes

Note - It is also possible to activate the standard object icons on tabs in order to easier identify specific tabs (in Preferences mask > General > Masks > tab Layout. Activate ShowIcon checkbox).

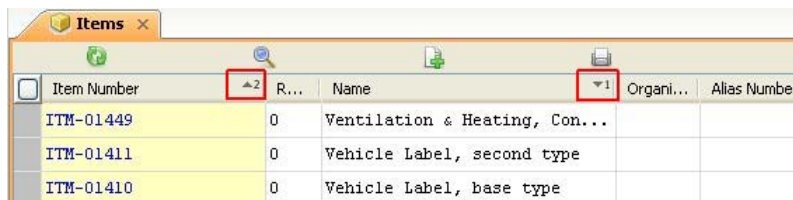
Multi-Tab (Mask) Editing

Editing fields in multiple tabs (mask) in one operation was already possible in previous versions of the Java client. This is especially helpful if more than one General tab in a combined form exists and a record needs to be inserted or updated. The record does not need to be stored before editing data in another tab. While editing the tabs it is possible to switch between them.

Note – Multi-tab editing does not apply to sublists.

New List with Extended Functionality

- List entries can now be sorted by one or more fields by clicking on the field titles (CTRL-click for combined sorting).



Item Number	R...	Name	Organi...	Alias Number
ITM-01449	0	Ventilation & Heating, Con...		
ITM-01411	0	Vehicle Label, second type		
ITM-01410	0	Vehicle Label, base type		

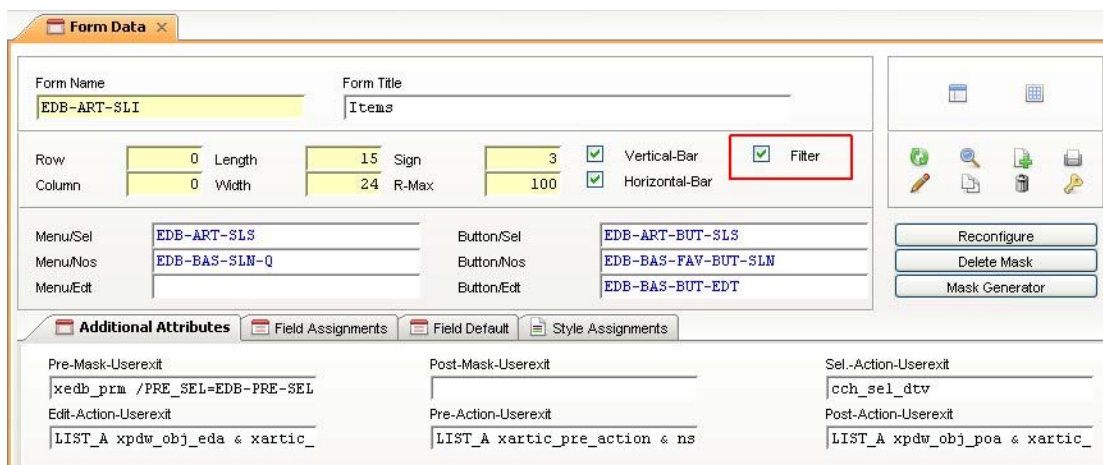
- The order the columns are selected in for the sorting process defines the priority the sorting will be carried out.
- With a double-click on the delimiter of the field title, the width of the field can be resized/optimized. This sets the field width automatically to the width of the longest field entry.

Filter on Lists

- QuickFilter

The new QuickFilter entry field allows filtering a number of records that are currently shown in any list. It is added to every list mask by activating a default. Thus, the QuickFilter is run against the data already retrieved from the database and shown in the list. It does not search or filter against all database content because that could be too time consuming. The default for activating the QuickFilter functionality is EDB-USE-ROW-FILTER. The default value is set to "y".

If the filter function should be deactivated for specific masks, turn off the Filter flag on the mask definition:



Form Name	Form Title
EDB-ART-SLI	Items

Row	0	Length	15	Sign	3	<input checked="" type="checkbox"/> Vertical-Bar	<input checked="" type="checkbox"/> Filter
Column	0	Width	24	R-Max	100	<input checked="" type="checkbox"/> Horizontal-Bar	

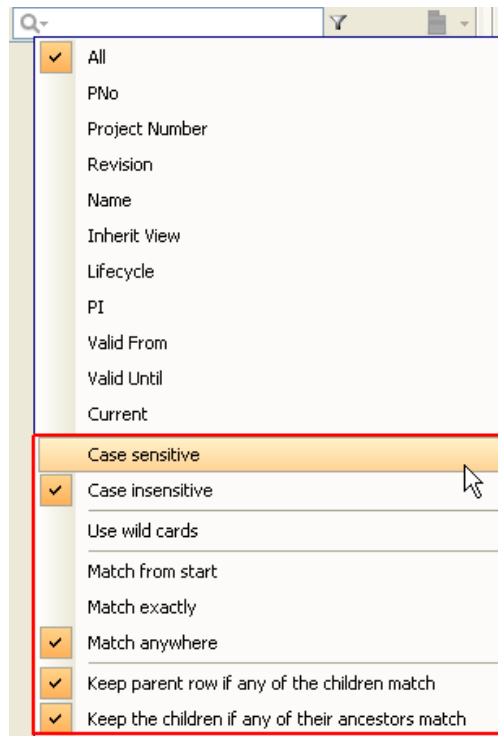
Menu/Sel	EDB-ART-SLS	Button/Sel	EDB-ART-BUT-SLS
Menu/Nos	EDB-BAS-SLN-Q	Button/Nos	EDB-BAS-FAV-BUT-SLN
Menu/Edt		Button/Edt	EDB-BAS-BUT-EDT

Additional Attributes | Field Assignments | Field Default | Style Assignments

Pre-Mask-Userexit	Post-Mask-Userexit	Sel.-Action-Userexit
xedb_prm /PRE_SEL=EDB-PRE-SEL		cch_sel_dtv
Edit-Action-Userexit	Pre-Action-Userexit	Post-Action-Userexit
LIST_A xpdw_obj_eda & xartic_	LIST_A xartic_pre_action & ns	LIST_A xpdw_obj_poa & xartic_

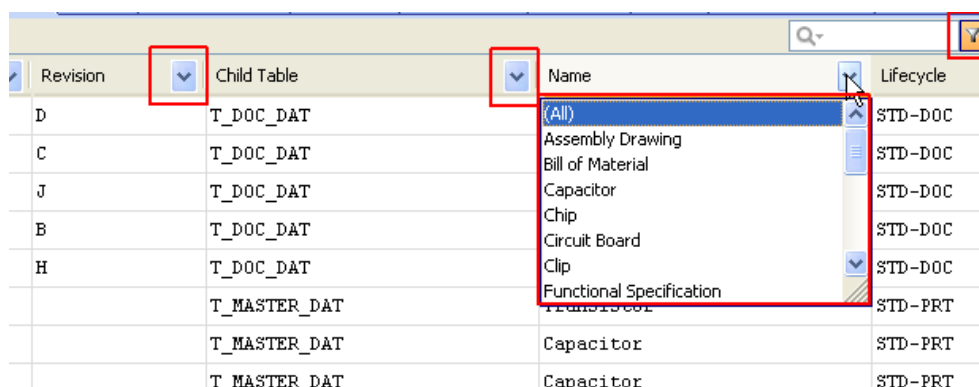
The QuickFilter can also be used when the Thumbnail view is activated, i.e. it then highlights the found entries/thumbnails.

After clicking the “magnifying glass” it can be defined which fields the QuickFilter should work on. With the first setting (All), all fields are filtered at the same time. The menu entries in the red box are the default entries.

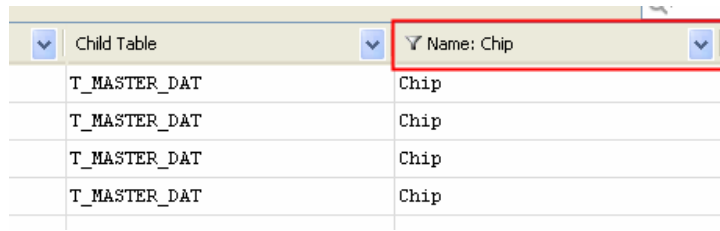


❑ Autofilter

When the Filter flag is set in the Form Data mask, the Autofilter is activated as well. An additional icon for the Autofilter is then displayed beside the QuickFilter field in the lists. To add the Autofilter to every column of a list, this button has to be clicked.



The Autofilter select menu shows all entries of the respective column in alphabetical order and allows searching for specific entries.



The screenshot shows a table with a header row and four data rows. The header row has a column titled 'Child Table' and another column titled 'Name: Chip'. The 'Name: Chip' column has a red box around it, indicating it is the active autofilter. The data rows all contain the value 'Chip' in the 'Name' column.

Child Table	Name: Chip
T_MASTER_DAT	Chip
T_MASTER_DAT	Chip
T_MASTER_DAT	Chip
T_MASTER_DAT	Chip

The title of the column, on which the Autofilter has been applied on, shows the Autofilter symbol and the chosen search criteria.

To remove the Autofilter from the columns, the Autofilter button has to be clicked again. To display all entries of the list again, select "All" from the Autofilter select menu of that column the filter had been applied on.

Note – When an Autofilter is set and a new entry is added to the list (or an existing entry is modified) and does not match the Autofilter search criteria, this entry will not be displayed after it is saved.

Thumbnails

In order to show Thumbnails instead of details of PLM objects, the thumbnails need to be loaded into the record as a BLOB object beforehand. This may be automatically done by the CAD integration or the Office integration.

Note - Only GIF and JPG file formats are currently supported as thumbnail formats.

Note - Thumbnails can only be shown in list and sub-lists (as tab in a combined form).

It is possible to switch between the Thumbnail view and the Details view. Thumbnails will only be activated/visible if the Thumbnail field (BLOB field) is assigned to that specific list in the UI customizing.

To better navigate through the Thumbnails a scroll bar is provided. In addition, the size of the Thumbnails can be adjusted by using a Slider control. This is positioned at the right bottom side. It scales the size of the Thumbnails from very small to very big.



Once the respective thumbnail/s (= the data records) is/are found, it can be selected and displayed in Detail view again. The selected thumbnails/records remain selected for further processing, e.g. putting them in edit mode.

Hyperlink on Thumbnails

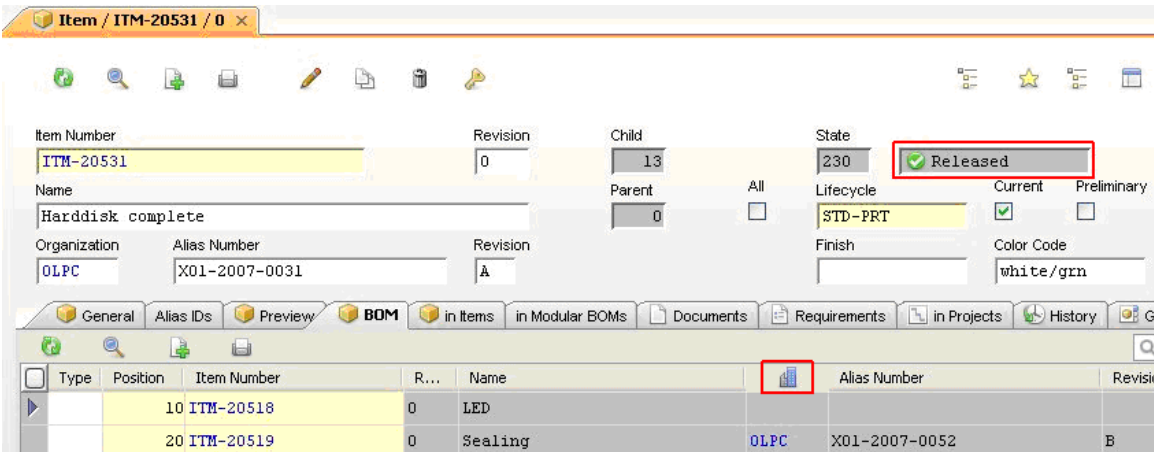
It is now possible to set up a hyperlink on Thumbnails. Add the Thumbnail field to the respective mask (e.g. T_GROUP_DAT.GRP_BLOB in EDB-GRP-SLI) and set the Hyperfield USX (e.g. zag_fld_hyp_cal). When opening a Thumbnail, the respective object is opened in a new form.

Icons in Field Titles and Field Values

One major usability improvement of the Java client is the ability to display icons as field values as well as field titles. Therefore, the PLM Repository has been enhanced to define where and which icons should be displayed.

Icons can be shown as field titles and field values in masks (forms and lists).

Note – In the DataView client, either icons or text is shown. Not both.



The following example shows how the combination of icons and text, or only icons are displayed in lists.

Selection Data				
<input type="checkbox"/>	Selection Name	Selection Text	Userexit	Ac...
	EDB-BUT-ATT-CNT@Q		xatt_cnt_lis	a
	EDB-BUT-PAC-CNT@Q		xrel_cnt_mul	a
	EDB-PDW-BUT-CNT@Q		xpdw_men_cnt_lis	a
	EDB-BAS-CNT@Q	Count	wdh_cnt_lis	a
	EDB-ATT-EXIT-COUNT@Q	count	xatt_cnt_lis	a
	EDB-CPS-MDL-PRD-FAM	Product Families	TASK	a
	EDB-CPS-MDL-PRD-VAR	Product Variants	TASK	a
	EDB-BUT-CRM-NXT		xstate_nxt_sta	a
	GDM-NXT-STA		lgw_sel_run	a
	EDB-BUT-CRM-TXT-NXT		xstate_nxt_sta	a
	EDB-BAS-EDT-CUT	cut	cch_cal_mac	a
	EDB-CHG-DEL-LIN@I		xchg_del_not_fst	a
	EDB-BUT-DEL-LIN@Q		evt_cal_mac	a
	DODE-BUT-EDT-DEL@Q		evt_cal_mac	a
	EDB-BUT-DEL-LIN@IU		evt_cal_mac	a
	EDB-BAS-QRY-FLD@Q	remove query	evt_cal_mac	a
	EDB-BUT-DEL		iwf_del_lis	a

Note – Icons can only be activated for field titles and field values of type string. They should not be applied to fields that are used with Business Logic.

Note – It is also possible to activate the icons for a specific mask only!

Auto-Completion for Select Menus

In select menus, if no checkstring is defined for the respective field, the auto-completion is activated. By typing the first letter(s) or number(s) of an entry in the select menu, auto-completion completes the word or number.

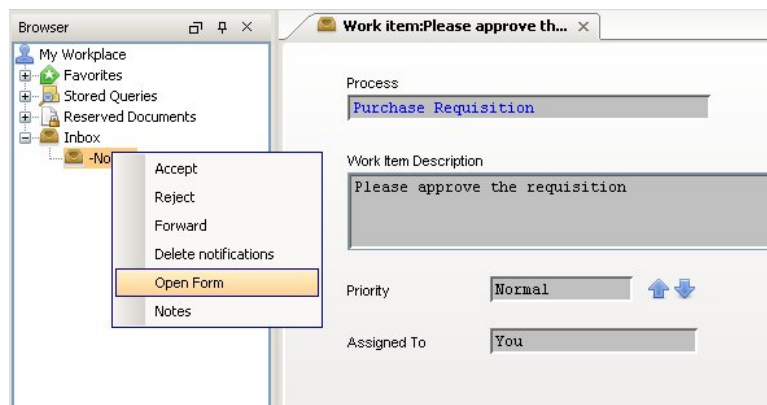
Internal Browser

Now, the Internal Browser is implemented in the Java client and shows the same functionality as in the other clients. In addition, the browser components like the MyWorkplace tab or the Global tab are now shown as MS-Outlook-like tabs. This allows switching more easily between the tabs and hide tabs which are not needed.



Inbox in Browser

A new Inbox browser element has been added to the My Workplace browser. This allows to see all active messages for the current user. You can click on a message in order to see the message in more detail.



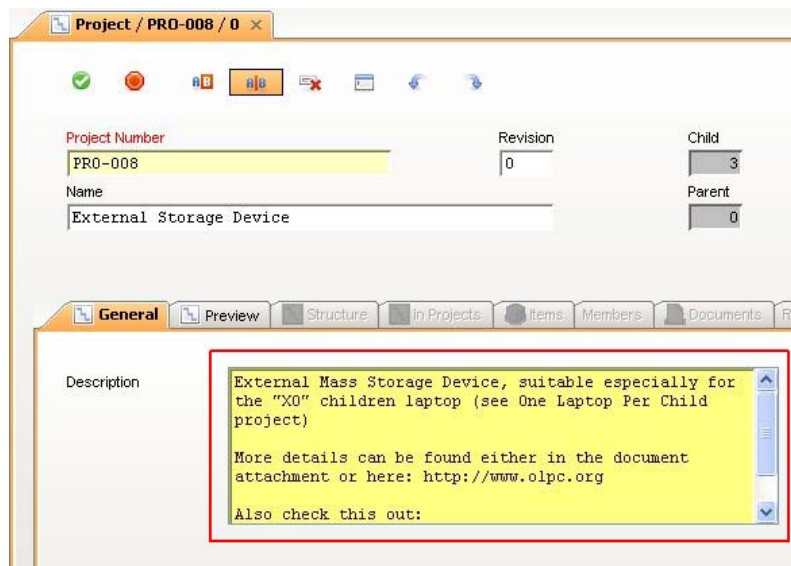
New On-Select Userexit

There is a new special browser onselect userexit `""brw_sel_dtv""` which must be used on browser lists instead of the `""cch_sel_dtv""` userexit.

The parameters of the `brw_sel_dtv` userexit are the same as for `""cch_sel_dtv""`. We choose a new name for the userexit for browser lists to emphasize that this userexit is "only" for browser lists. The functionality of this userexit is, that if a browser node is selected a widget is opened to display the detailed data for this record. The next time a other node of the same type is selected the widget will be reused to display the this record instead of opening a new widget for each selected browser node. This userexit as well as `ccl_sel_dtv` calls `""iwf_frm_lis""` to open a new DTV widget therefore see also the documentation of `iwf_frm_lis`.

Enhanced Text Editor

Long text in text fields can now be entered and managed much more easily. Vertical scrollbars are provided in order to scroll up and down in the text field, even without being forced to go into edit mode. We do not provide horizontal scroll bars, but offer automatic line-wrap when the end of line is reached inside the edit field.



Following key shortcuts are available when editing the text field:

- ☐ CTRL-ENTER: this inserts a forced line wrap (CR/LF)
- ☐ CTRL-T: this inserts a tab in the text

The keys ENTER and TAB still behave the same as they did before, i.e. ENTER completes the edit operation and TAB moves the cursor to the next field in the mask.

The key F8 also still works in the text field, i.e. it brings up a separate window for editing the text.

The limitation of the size for a long text window has been eliminated.

Drag & Drop

Drag & drop of records inside the Java client does now work like in the Windows client. You can select one or multiple records, drag them to the appropriate target masks and drop them there.

Drag & Drop in SDI Mode

Even in SDI mode (only one mask is active at a time), Drag&Drop is supported. The following example shows how to drag an Item record from the item list into the BOM tab of the Item Navigator.

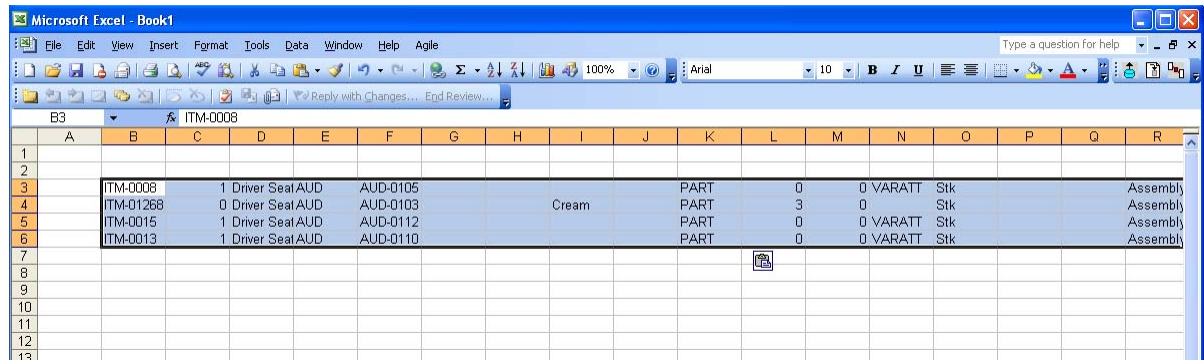
1. Select the item record and then drag the record to the tab of the Item Navigator.
2. While remaining with the mouse on the Item mask tab, the Item mask becomes the active masks.
3. Drag the record to the BOM tab of the Item mask.
4. While remaining with the mouse on the BOM tab, the BOM tab becomes active.
5. Drop the Item record in order to add the item record to a BOM position.

Drag & Drop from Java Client to External Applications

Drag & drop does now work with certain applications (e.g. Microsoft Excel). First, the drag option has to be activated in the Preferences mask (> Drag and Drop) to be able to use this features.

Drag & drop a form from Agile e6 to an external application. All fields of the record in this form are copied to the target application.

For lists, the copy & paste feature can be used to copy multiple records into the clipboard (CTRL-C) and paste them (CTRL-V) in another application (e.g. Microsoft Excel).



HTML Type Export and Including Field Titles and Names

In the Preferences mask under Drag and Drop it can be activated if field titles and/or field names (i.e. DataView field names) will be included when exporting PLM data via drag & drop.

The result of such a drag&drop can look like this:

Item Number	Revision	Name	Organization	Alias Number
T_MASTER_DAT.PART_ID	T_MASTER_DAT.PART_VERSION	T_MASTER_DAT.PART_NAME_ENG	V_CPA_ART_DAT.STEP_INT_ID_REF	V_CPA_ART_DAT.ALIAS_ID
ITM-01321	0	Driver Seat (Right hand drive) Vachette Leather Cream	FTC	FTC-0017
292120		Circuit Board		
650875		Resistor		
115724		Battery CR2032 (Varta)		

Stylesheets for Lists

The layout of all lists can now be controlled by stylesheets that are stored in the repository. Thus, it is possible to create / modify stylesheets from within Agile e6.

Stylesheet/s can also be assigned to a certain mask only. This can be done either from within the mask (an additional tab has been added to the mask), or from the Visualization Lookup Values mask (System > Visualization).

In the Visualization Lookup Values mask stylesheets can be created / modified. The following are default stylesheets and are loaded in the following order:

1. SYSTEM-DEFAULT

The System stylesheet can be used anywhere in the Agile e6 system.

2. CUSTOMER-DEFAULT

The Customer stylesheet can be set to be used from a certain customer only. The entries of this stylesheet overwrite and extend the system stylesheet.

3. USER-DEFAULT




The User stylesheet can be set to be used by a certain user only. The entries of this stylesheet overwrite and extend the system and customer stylesheet.

Note – Every style can be max. 2000 character long.

Note – Customized stylesheets cannot be updated from Agile anymore. The customer will be responsible to add customized styles to new stylesheet manually.

By default, the stylesheet functionality is activated. If this functionality is not required, it can be deactivated in the EDB-CSS-ACTIVE (ON/OFF) configuration parameter.

Example:

Normal list	List with applied stylesheet												
<table> <tr><td>Clip</td><td></td></tr> <tr><td>Circuit Board</td><td></td></tr> <tr><td>Resonator</td><td></td></tr> </table>	Clip		Circuit Board		Resonator		<table> <tr><td>Clip</td><td></td></tr> <tr><td> Circuit Board</td><td></td></tr> <tr><td>Resonator</td><td></td></tr> </table>	Clip		 Circuit Board		Resonator	
Clip													
Circuit Board													
Resonator													
Clip													
 Circuit Board													
Resonator													

Row Style

Styles can be defined for a complete row, not only for a special field. A calculatory field ROW_STYLE_DEFINITION has to be assigned to the respective Form Data mask where a row style should be applied to. The content (style rule) of the calculatory field is applied to every field of this row. The content of the calculatory field can be filled, e.g. with LogiView.

Note – The value of the calculatory field and how it is filled is within the responsibility of the customizer.

Example:

If the value of the status has been set to "250" the complete row is colored in orange.

1.00 Stk			STD-PRT	230
1.00 Stk			STD-PRT	230
1.00 Stk			STD-PRT	230
1.00 Stk			STD-PRT	230
1.00 Stk			STD-PRT	230
1.00 Stk			STD-PRT	230

Tree Tables

A Tree Table can be added to different masks (lists) in Agile e6 to graphically display a multilevel structure of an object. This can be done in the Form Data mask (Field Assignment tab > Appearance column) of the respective mask.

For the graphical display, two appearance values, Tree Renderer and Tree Structure, have been defined in the Visualization Lookup Values mask.

- ☐ Tree Renderer
Defines in which column the Tree Table should be displayed.
- ☐ Tree Structure
Defines which column contains the hierarchy information for the Tree Table.

Note – To be able to display the Tree Table in the list, the first entry in the multilevel structure has to be a root entry. Tree Tables that have more entries as fields in the list are extended over the first page. The Tree Table structure is only displayed on the following pages when the first entry of each page is a root entry as well. If it is not a root entry, the multilevel structure is displayed like a flat list.

	Position	ID	Re...	E	Name	Li...	PI	Q...	>>>>>>>>
		102595			Circuit Board	S...	230				1
10		650875			Resistor	S...	230	1.00			2
10		PS-443556	C		Procurement Specification	S...	230				3
20		430878			Resistor	S...	230	2.00			2
10		PS-443556	C		Procurement Specification	S...	230				3
30		161714			Resistor	S...	230	1.00			2
10		PS-443556	C		Procurement Specification	S...	230				3
40		440897			Capacitor	S...	230	1.00			2

If the first entry in the multilevel structure is not a root entry, and thus the Tree Table cannot be displayed, the following error message is displayed:

Graphical structure view is deactivated.

Note – Every entry in the Tree Table can be edited.

Heterogeneous Structure Explosion

Note: Only available in Java Client.

The Heterogeneous Structure Explosion provides a browser like visualization to display heterogeneous data structures.

Heterogeneous Structure Explosion can be opened via the context menu (Structure > Multi level > Heterogeneous) of the respective object (e.g. item, project, document). An additional tab (Multi-Level Structure) is added to the object mask (Item, Project, Document).

Customize Heterogeneous Structure Explosion Configuration

Users with manager rights have the possibility to customize the Heterogeneous Structure Explosion configuration. Under System->Structure Browser > Heterogeneous Structures new use cases can be defined for the Heterogeneous Structure Explosion.

The menu entries of the context menu of the Heterogeneous Structure Configuration mask allows the following:

Menu Entry	Description
View Configuration	<p>Opens the Entity Data mask.</p> <p>Here you can define which columns are used. The names of the columns are displayed in the Heterogeneous Structure Explosion tree.</p>
Browser Entries	<p>Opens the Browser Configuration mask.</p> <p>Here you can define which entities, their relations, and the order of the relations is displayed in the Heterogeneous Structure Explosion tree.</p>
Field Mappings	<p>Opens the Fields mask.</p> <p>Here you can specify what information from an entity field is displayed in the Heterogeneous Structure Explosion field (e.g. the content of the</p>

	ASE_ID field is filled with the values of the Project IDs, Document IDs, or Item IDs).
Create Table and View	A new global temporary table and view are created for the Heterogeneous Structure Explosion.

ECI for Heterogeneous Structure Explosion

Special ECI functions have been created for Heterogeneous Structure Explosion:

- ❑ `eci_ase_opn`
Opens the Heterogeneous Structure Explosion for an object (is only supported by the Java client).
- ❑ `eci_ase_loa`
Loads records from any widget, including the Heterogeneous Structure Explosion widget (is only supported by the Java client).
- ❑ `eci_rea_nxt`
Reads records in blocks from a table.
- ❑ `eci_rea_blb`
Reads a blob field for a record in the table.
- ❑ `eci_rea_ase_cfg`
Reads basic Heterogeneous Structure Explosion configuration for use case.
- ❑ `eci_rea_ase_brw_cfg`
Reads browser and field mapping Heterogeneous Structure Explosion configuration for use case.

Note – More detailed information about the ECI functions can be found in the ECI documentation of the online help.

Extensibility

Java Client Plug-in Concept

Some of the new components of the Java client, like the Embedded Browser plug-in, have been implemented by utilizing the embedded plug-in concept of the Java client. This allows implementing your own Java applications/UI and launching them from inside the Java client. A sufficient documentation to help implementing your own plug-ins is available.

The 3rd party UI framework JIDE is used, in order to provide improved UI capabilities like the enhanced docking features, the embedded web browser, and enhanced look&feel support. If you want to use the capabilities of this framework (and not just SWING) you need to purchase a license. For more information see <http://www.jidesoft.com/>.

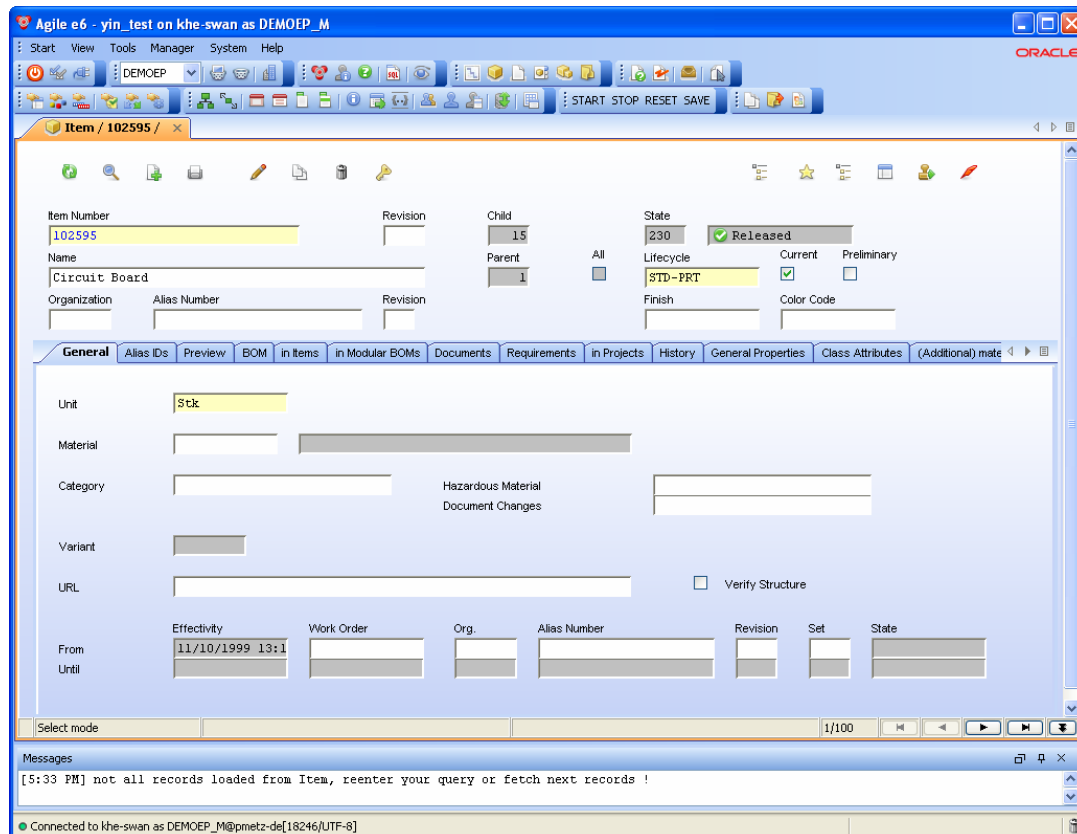
Note - The JIDE Common Layer has been open-sourced. JIDE is the framework that is used to implement the client-side components, and the behavior of the Enhanced Java Client.

Enhanced Layout Management

The enhanced Layout Management automatically extends forms and sub-lists to the right bottom corner of the form (it prevents the vertical resizing of text fields).

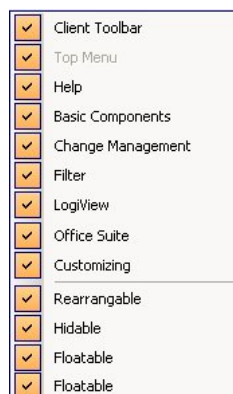
To activate this feature, perform the following steps:

1. Set `calculatedCharGridCellSize` and `varCharGridCellSize` to false in the client's preferences dialog.
2. Choose an appropriate preferred size (e.g. 10x20).



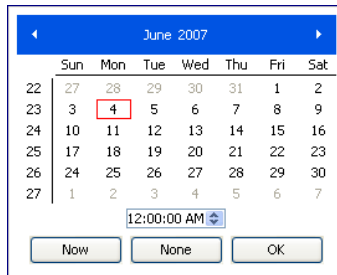
Renamed Toolbars

The titles of the toolbars have been renamed to better show the purpose of a toolbar. The toolbar for the Top Menu is also shown, but cannot be deactivated.



Enhanced Date Selection

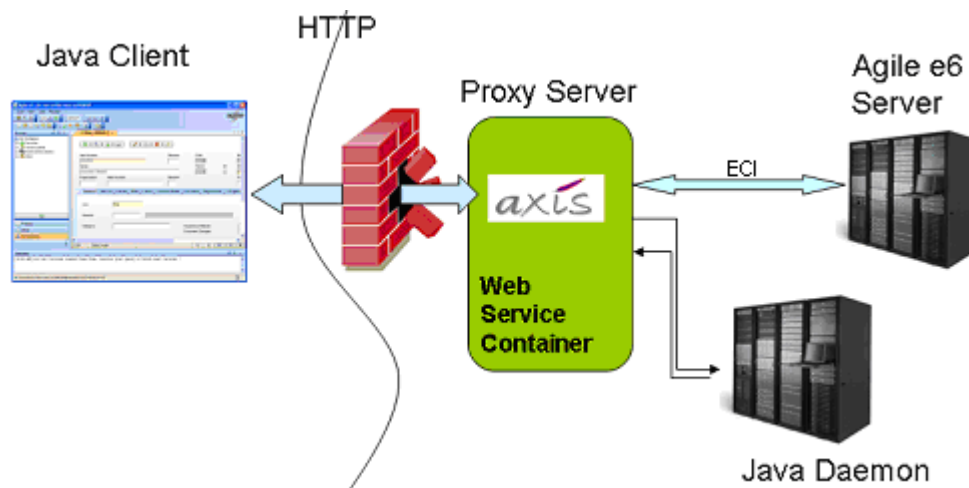
The entry of date / time information into date fields has been improved.



Firewall Friendliness

The new Firewall Friendliness allows the communication to Agile e6 application server through firewalls (via HTTP/S). This is accomplished by using ECI via Web Service with SOAP communicating through HTTP/S.

In the current release the deployment of this feature still requires manual installation steps.



The Java client sends an HTTP/S requests to the proxy server. First, the proxy server connects with the Java daemon to get the address for the Agile e6 server. Then it connects itself with the Agile e6 server for further calls from the Java client.

Note - The proxy server is built from a web service container (e.g. oc4j and tomcat) and web services.

Note – Using the new Firewall Friendliness can have an influence on the performance of the Java client.

HTTP/S Support Configuration

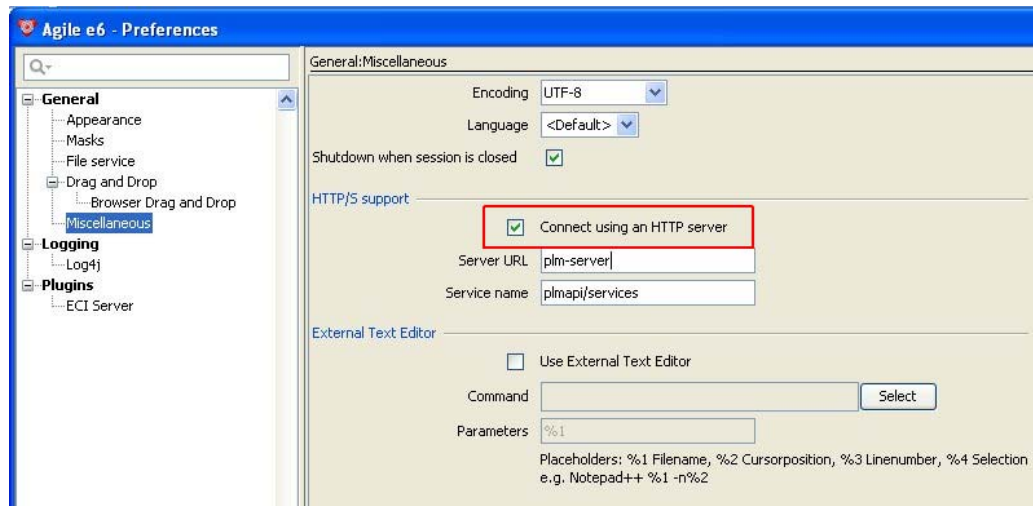
The HTTP/S support can be activated in the Preferences mask (General > Miscellaneous > HTTP/S support). The option “Connect using an HTTP server” has to be activated and the following parameters need to be set:

- ☐ Server URL:
The URL address of your HTTP/S server(proxy server).

- ☐ Service name:
The name of the web service name.

If the option "Connect using an HTTP server" in the Preferences mask is activated the connection details on the login screen (Server and Port) are deactivated.

Note - For HTTP/S connection, you need to enable the security connections on your application server and install a commercial variety of certificates (these can be purchased e.g. from VeriSign).



View Mode

With View Mode fields of masks can be opened (Ctrl + O) without editing them. The view mode is directly left via the right mouse key or [Enter].

External Mail Integration

The parameters for recipients used in the char string for either server-side sending via notifier or client-side sending have been standardized. Recipients previously starting with "/CC:" or "/BCC:" are now uniformly set to "CC:" or "BCC:".

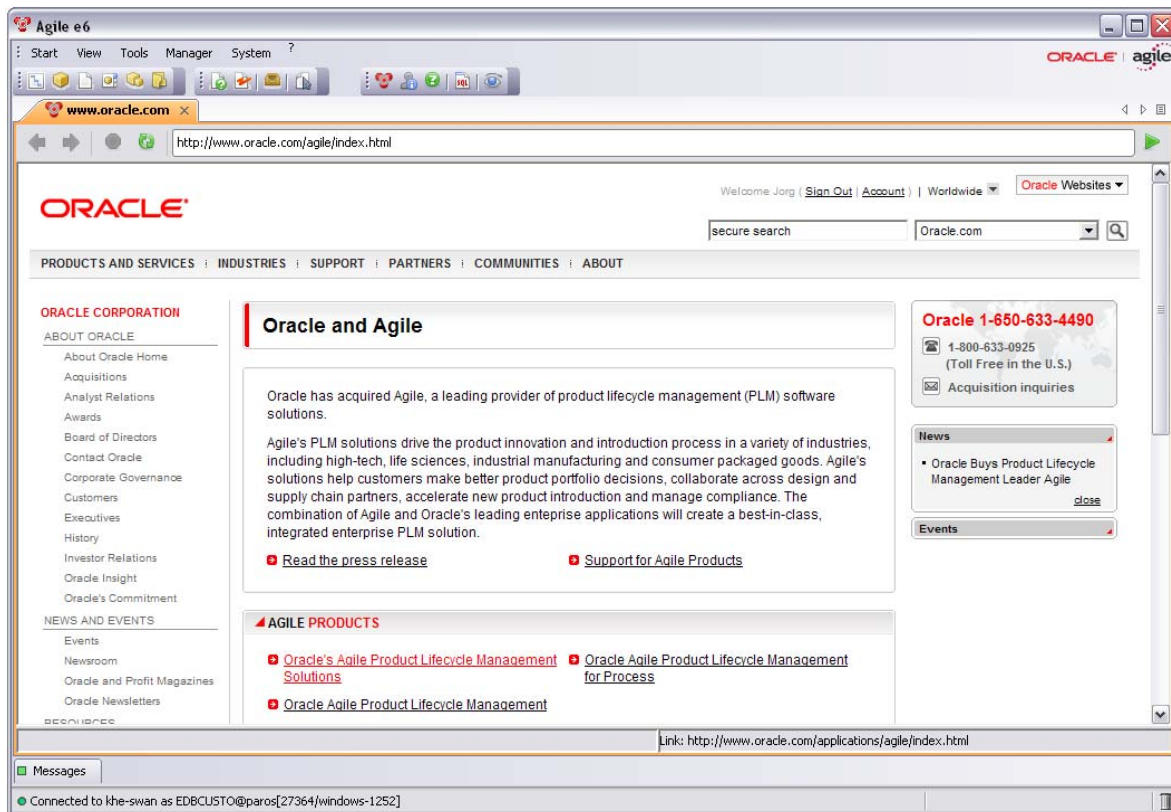
Kunststoff Look&Feel

This option has been removed.

Internal Web Browser

Now you can configure the Java Client to open a website within the client, in the embedded web browser, when Single Document Interface (SDI) mode is activated.

When clicking on a hyperlink in a mask, e.g. the URL field in the Item Navigator, the specific web page is then opened in the Internal Web Browser. It is added as a tab to the client.



Prerequisites

- ☐ In Agile e6
SDI Mode
- ☐ Operating Systems
Windows
- ☐ Web Browser
Internet Explorer (Version 6 or higher)

Note - If these prerequisites are not fulfilled, the websites will automatically be opened in an external browser window.

URL Linking Support

One of the features of the Agile Web Client was the ability to be launched by simply clicking on a URL. The URL launches the client and also opens a specific mask and displays a specific PLM object in one step. This was especially used in order to point to a PLM object mask in an email, e.g. which was sent from an ECO workflow.

This feature is now also available for the Java Client. This means that URLs can be used to launch the Java Client and display a specific PLM object in that client. This type of URL support has been made possible by means of the Java WebStart technology, which is a technology for downloading and launching a Java application from a web page.

As an example, the following URL will launch the Java Client and opens up an item mask:

```
http://plmserver:8000/Jacc/jacc.jnlp?-t=OPN-EDB-ARTICLE(EDB_ID=2000001525)&-a=plm_ref&-h=plmserver&-d=20001
```

This URL does NOT point directly to a specific entity and mask, but points to a pre-defined privilege. That way it is easier to check access rights for a specific record before displaying the data.

Note – Only manager have the possibility to define privileges for the URL Linking Support.

By default, privileges are defined for the following mask:

- ☐ Items
- ☐ Documents (All Documents mask)
- ☐ Projects
- ☐ Work Orders
- ☐ Work Items (for linking from inside Workflow emails)

Once the URL Linking Support has been added to the respective mask, the URL can be created from the main mask either via the context menu or by pressing Ctrl+U on the keyboard.

When opening the URL, a message is displayed from which the client can be launched in different ways:

- ☐ If the client is not running, a new client will be started and the URL parameter will be executed.
- ☐ If the client is running already, and does match the client name from the URL parameters, the URL will be directly executed on the running application.
- ☐ If the client is running already, but does not match the given client name from the URL, the user will be asked whether to start a new client and execute the URL, or execute the URL directly on the running client.

ECI Server Authentication

To reduce the usability impact of the security related changes when working with local Agile e6 integrations, the Java client now accepts connections from the same machine as authenticated, without requiring the ECI client to pass user credentials.

ECI connections from a remote machine still require authentication to execute ECI functions. To allow unauthenticated remote connections, the user has to disable the 'Remote connection requires password' flag in the Preferences mask under Plugins > ECI Server.

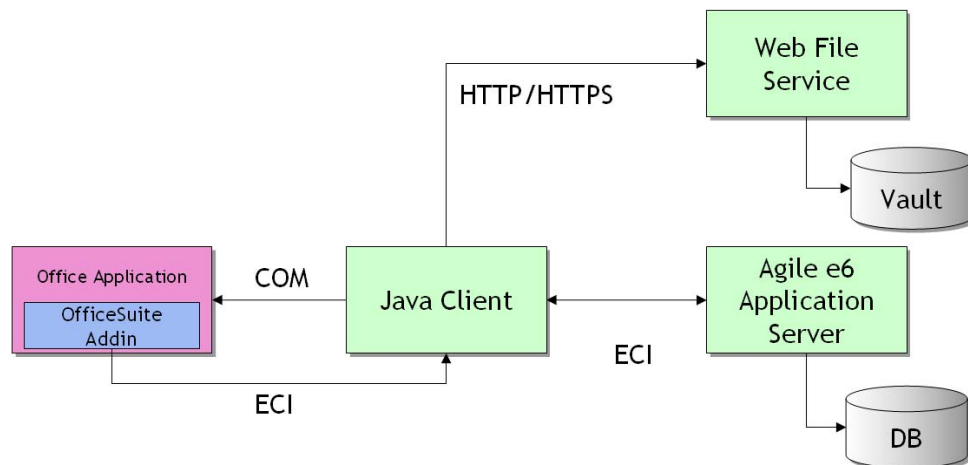
Note – Deactivating the 'Remote connection requires password' flag is a security risk!

However, remote connections are disabled by default by the machine's white list in the jacc.defaults file (see EciServer.allowHosts.%). The syntax of the white list is explained in the jacc.defaults file.

Note – Remote connections are rejected if the remote machine is not white listed in this configuration file.

Office Suite

One major component of the Agile e6.1 release is the enablement of the Office Integration to work with the Java Client. The new version of the Office Suite is mostly compatible with the older version, i.e. the UI, the data model, and the business logic are mainly still the same. It has been partly redesigned in order to allow the communication between the Office application and the Java Client, which is now based on the ECI-API.



Usage

Main goal of the Office Suite is to simplify check-in and check-out operations including attribute transfer between the Office application (MS-Word, MS-Excel and MS-Powerpoint) and the Agile PLM system.

The following use cases are supported:

- ☐ Check-in
- ☐ Check-out
- ☐ Print
- ☐ View
- ☐ Delete
- ☐ Send
- ☐ Drag & drop from Windows Explorer to Office Suite
- ☐ Web Deployment
- ☐ Installation
- ☐ PDF generation

Des-supported Offcie Suite Features

- ☐ FileGuard
- ☐ Indexer (fulltext search)

- ☐ Link a file into an Office document
- ☐ Embed a file into an Office document

New Default

- ☐ GDM-WEB-NO-JNLP

This default has been created for the connection establishment to Agile e6 from MS Office application when using the Java client with web start in the Internet Explorer. The extension jacc.jnlp at the end of the web start address caused an error with Internet Explorer.

Note – For the Internet Explorer this default has to be set to True.

This default causes that jacc.webStartURL is stored in the registry.

- True
Removes the extension jacc.jnlp at the end of the web start address in the registry. The start page is opened.
- False
The extension jacc.jnlp remains at the end of the web start address in the registry. jacc.jnlp is started directly.

Not Supported Userexits

The Java client does not support Windows-DDE, therefore, the following userexits are also not supported:

- ☐ gfi
- ☐ dde
 - dde_cal
 - dde_opn
 - dde_put
 - dde_rec

Customizing Support

Customizing is an essential task of a PLM system administrator. Therefore, most of the customizing forms have been enabled in the Java Client. You can now manage Entities, Forms and Lists, Menus and Selections, etc. inside the Java Client.

The following is not supported:

- ☐ Mask Generator

Web Client Enhancements

Packaging Installation

All required jar and configuration files are included in the 'war' or 'ear' file. Especially the configuration file for the Web Client the 'webplm.properties' file is now also in WEB-INF directory of the Web Client 'war' file.

The Web Client will no longer be installed in the root context of the web container. This has impact to all URLs for the URL based access stored in Office, PDF or other documents as well as of workflow URLs send by e-mail. These URLs will no longer work. A workaround will be to configure a web server which forwards the old URLs to the new context.

URL Linking Support

It is no longer recommended to use the old concept of the URL based access with `http://host:port/axalant/load?<parameter>`. There is a new URL linking support which is available for the Java and Web Client (please refer also to URL Linking Support section in Java Client in this document).

Compared to the Java client URL, the base URL of the Web client looks different (e.g. `http://host:8080/<context root>/axalant/task?-t=OPN-EDB-ARTICLE(EDB_ID=2000001525)&-a=plm_ref`)

General Web Client Settings

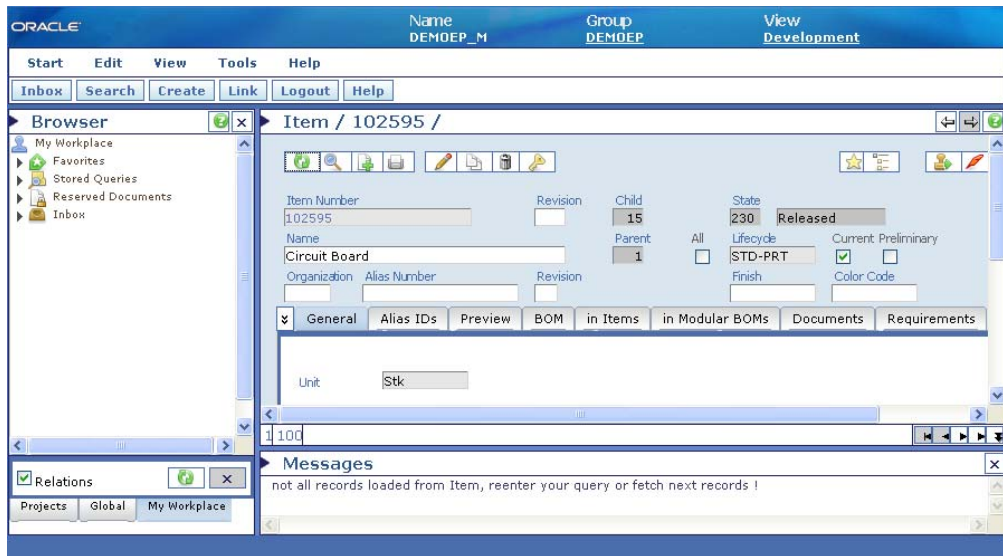
Login Screen

The layout of the login screen has been modified.



Color Scheme

To improve the readability of the Web client the color layout has been changed.



New Configuration Parameter

- ☐ axalant.web.enable.uid=[false|true]
When the Single Sign On is activated for Agile A9 and Agile e6, this configuration parameter has to be set to True to allow switching between Agile A9 to Agile e6. The User ID is passed on and therefore an additional login is not required.
- ☐ axalant.web.enable.ticket=[false|true]
When Single Sign On is activated for Agile e6, this configuration parameter has to be set to True to allow switching between different Agile e6 clients. An additional login is not required.
- ☐ axalant.web.enable.load=[false|true]
Enables the old syntax of the URL based object access, when set to true.
- ☐ axalant.web.masks
Restricts valid mask names for the old syntax of the URL based object access.

Internal Browser

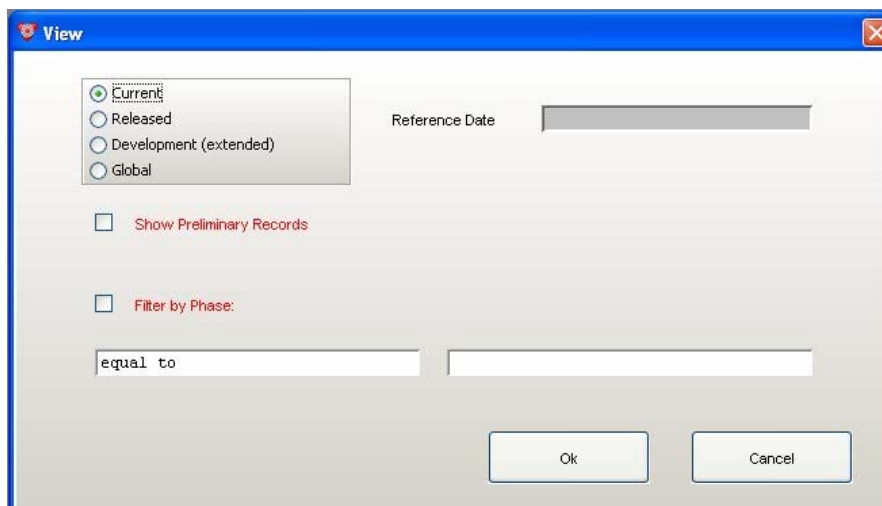
The main menu View contains now the sub-menu Browser. This option allows re-opening the browser window in its standard layout. If a tab has been closed before, it is added again when using this menu.

Development View

Renamed Development Views

The existing version views were extended by one additional view, the extended development view. Thus, the existing version views have been renamed:

- ☐ "Development" to "Current"
This version view shows the latest revisions which have the current flag. The term Development should be used for the new version view.
- ☐ "Production" to "Released"
Objects that are produced for a given date are not necessarily shown, only those that have been effective (released) at the given date.
- ☐ New version view: Development (extended).
The purpose of the "extended" is to differentiate between the new version view and the old Development.
When the Development (extended) view is activated, current revisions and released revisions are displayed.



Development (extended)

Note - We recommend that most engineers will work in this new view.

In the Development (extended) view, all revisions of an object (items, projects, documents, and requirements) that are in the state Current and Released are displayed. The reference date it is referring to is "@NOW".

Development (extended) View for Multiple Structures

Rules have been defined to determine which revision of an object will be displayed in a structure:

1. Reservation

- ☐ If the object is reserved for the current user, it is displayed.
- ☐ If the object is reserved by a different user, it is not displayed.

2. Released

- ❑ If no reservation can be found, the released revision is displayed.

3. Current

- ❑ If no reservation or released revision can be found, the current revision is displayed.

Large File Support

Note – Only available for the Java and Windows Client.

Now, the file management system (FMS) supports files larger than 2 GB.

Note – Please check if the file system supports files with this size.

Note – Please check if the FMS runtime user has no limitations regarding the file size (use the “limits” command to check the limitations on a UNIX system).

Mask and Field Limitations

Now, the repository allows up to 2000 visible fields per mask and 990 fields per database table.

Extended Field Size

The DataView limit of 255 characters for a visible field in a form has been removed.

In prior versions, the product of visible field length and visible field width - entered into the mask-field definition - had to be below 256 characters.











If the customizer violated this rule, a warning message was displayed. In addition, the DataView server truncated the field size when the mask was created.

This limitation has been removed for all clients. The visible field length and width can now be in the range from 1-255, each. So it is now possible to define large text fields (e.g 20 x 80) in a form.

If length multiplied by width exceeds the field size in the database, a database error is displayed during inserting or updating a mask. To avoid this, the customizer has to provide the correct virtual width for every mask.

New Icons

New icons have been designed and implemented for the Java, Web, and Windows client.

Icon Name	Old Icon	New Icon
Access		
Arrow Down		
Arrow Up		
Item		
Browse		

Browser Favorite		
Clear field		
Copy		
Copy and Edit		
Count		
CPS Family		
CPS Variant		
Change Status		
Cut		
Delete		 (or )
Redline		
View Document		
Edit Attribute		
CPS Component		
CPS Element		
Document		
Object File		
Object Classification		
History		
Mail		
Organization		
Folder		
Person/User		
Process		
Project		
Requirement		
Role		
Configure File Vault		

Work Order		
Work Request		
Exit		
Fetch		
Check-in		
Check-out		
Download		
Filter current context		
Filter current view		
Group		
Help		
Info		
Insert line		
Insert		
Insert edit mode		
Foreign language		
		
Store		
Postpone one month		
Postpone one day		
Postpone one week		
Complete task		
Forward task		
Reject task		
Update workflow		
Activates selected module		
Monitor		
Show structure		

Overwrite edit mode		
Paste		
Pop-up text field		
Job function		
Print		
Set password		
Value between		
Absolute tolerance		
Relative Tolerance		
Query		
Cancel		
Refresh		
Report		
Parameter		
Select work order		
Signature		
Set SQL trace output		
Store		
List expanded		
Multiple level structure explosion		
Redo		
Undo		
Edit		
Copy		
Delete Line		
User information		
Variant		
Note		

Insert ad-hoc process		
Insert process copy		
Re-start		
Resume		
Start		
Suspend		
Copy Clipboard		
Default Definition		
Data Classes Definition		
Item Variants		
Entity Definition		
Event Definition		
Favorites		
Document Folder		
Folders		
Stored Queries		
Field Definition		
Menu Definition		
Selection Definition		
LogiView Setup		
LogiView System Data		
LogiView Trace		
LogiView Logic Models		
LogiView Usage		
LogiView Variables		
Loader		
Message		
Copy from template		

Office Document		
Delete files from Office Document		
Add File to Office Document		
E-mail Office File		
Print Office File		
Reserved Documents		
Profile Definition		
LogiView Insert Rule		
Select Work Order and Set		
LogiView Syntax Assistant		
LogiView Undo		
Table		
Inbox		
Cancel		
Scale Thumbnail View		
ECI Connections in Java Client		
Repository Browser		
Java Client Preferences		
Structure Editor		

Configuration Management (CM)

The Configuration Management solution extends the core configuration management capabilities of Agile e6 by providing serialized configuration control that is integrated with the change identification and management process. CM allows producing products that meet exactly the customer specifications. Uniqueness between configurations is always tracked and identified.

The Configuration Management is now part of the Agile e6 standard.

I18N - Enabled Loader

Note - The basic use of the loader has not changed!

The Loader has been enabled to read and write UTF-8 data in order to manage international character sets correctly. The following has changed compared to the old Loader:

- ❑ File Suffix
.bld > .bin
- ❑ ASCII Loader files are not supported anymore.
New file type: .xml
- ❑ Old Loader files are rejected by the new Loader and need to be converted once.
A converter is supplied. Further information can be found in the online documentation.
- ❑ File size
The file size for binary files is only slightly increased.
- ❑ Loader File Content
XML Loader files: include all relation records (like ASCII loader files) and blob fields (like binary loader files)
- ❑ Loader Feedback
The Loader gives feedback about the currently processed action.
Now if an error occurs during exporting or importing Loader files, the Loader will return an error message.
- ❑ XML Loader replaces ASCII Loader
The external ASCII Loader (loa_ora) is replaced by the new XML Loader.
The XML Loader is able to read and write all file types (including ASCII Loader files).
The new creation of ASCII Loader files is not possible anymore.

Note – Because of the UTF8-encoded data and thus the higher complexity of the new Loader files, it is not recommended to edit the Loader files manually!

Due to fixed calls, the following is going to change:

Increased usability for

- ❑ Internal binary loader
 - Not existing files will be created during export.
Until now, the file had to be created first to loader into it. Now, this behavior will fail, because existing files will be checked and their content is written into the sublists of the loader.
 - File names are checked for the correct suffix (*.bin).
 - Sub-lists are emptied if an empty (new) loader file is chosen.
 - Export is canceled if no tables are specified
The export action is stopped but the mask stays open to create the table list.

- Option to overwrite loader file with existing file name (a message is displayed to the user)

Yes: The content of the loader file is written into the respective masks below existing content, and the loader masks remain in edit mode.

No: Existing content is removed. The content of the loader file is written into the respective masks, and the loader masks remain in edit mode.

☐ Ctrl-V loader

- The ASCII Loader file is not supported anymore; the default value for LOADER is not evaluated anymore.
- File names will be checked for correct suffix (*.bin).

Note – The new UTF-8 enabled loader files in combination with the new database setup make the conversion of characters unnecessary.

Authentication – LDAP Support

LDAP (Lightweight Directory Access Protocol) is an application protocol for querying and modifying directory services running over TCP/IP.

With Agile e6.1, LDAP-based authentication is supported. While a PLM user is logging on to the PLM system (through any supported client), the password of that PLM user is checked against an LDAP repository instead against the password which is normally stored in the PLM database.

The communication between the PLM server and the LDAP repository has to be set up. Every PLM user, as configured in the PLM database, has to exist in the LDAP repository in order to be authenticated upon login.

Note – Although LDAP support helps in needing only ONE password for many different systems, this should not be mistaken with automatic Single-Sign-On (SSO) support, which would allow a user to log on automatically without even being asked to provide user login and password!

Prerequisites

- ☐ LDAP server (Oracle Internet Directory / MS Active Directory / other LDAP server)
- ☐ Oracle LDAP client (part of the Oracle client installation)
- ☐ The LDAP user name has to be the same as the PLM user name
(e.g. LDAP user : cn=TESTUSER ; cn=users ; dc=oracle ; dc=com
PLM user : TESTUSER)

User Authentication via LDAP

An LDAP directory is often used to manage users and organization units in a central environment. The Microsoft Active Directory organizes users and groups within a Windows Domain. Products like the Oracle Internet Directory are able to manage users, groups and organization units in a standard LDAP environment and are compatible with the most other LDAP servers which are based on the LDAP standards.

With Agile e6.1 it is possible to authenticate a PLM user by using an LDAP service.

The LDAP for Agile e6.1 uses the Base-DN for a direct access path to authenticate the user. LDAP does not support relative search paths.

Setup an LDAP User

To change the authentication mechanism of a user, select the “LDAP” type in the user list of Agile PLM e6.1.

The LDAP system takes care of the password policies (expiration and format).

Note – The enhanced security module and the possibility to change the password within PLM are deactivated for LDAP users.

Configuration

The LDAP configuration used by the PLM system is stored in the database as configuration parameters (T_CFG_DAT).

Name	Default Value	Description
EDB-LDAP-HOST	<LDAP-host>	LDAP host name
EDB-LDAP-PORT	-	LDAP service port (=default port depends on encryption mode)
EDB-LDAP-BASEDN	cn=users, dc=oracle, dc=com	Base DN of the user group
EDB-LDAP-ENCRYPTION	Yes	LDAP encryption mode (yes=SSL, no=clear text)

Permissions

User Data Mask

The User Data Mask (Manager > Permissions > User > Basic data) contains two new columns.

☐ Logins

Shows the amount of unsuccessful logins since the last successful login.

☐ Type

Shows three categories of password types:

- DES
Old encryption mechanism
- SHA-O
New encryption mechanism
- LDAP
Password is sent to the LDAP integration and also stored there

Note – The column Password is desupported and invisible in this mask.

Classification

Classification List

Now, the Ctrl-r function, when updating more than one attribute at once in the Classification List, updates the invisible value reference field (ATT_VAL_REF) correctly for every selected attribute.

The values of every selection menu in the Classification List can now be entered manually as well. The respective value reference is chosen and the correct value check M/W is carried out.

Multi-Lingual Attributes

When setting up a multi-lingual attribute in the Attribute Pool, and filling out all available languages, every language will be updated when choosing this attribute in the Classification List.

When deleting a multilingual value in the classification list, the values of all available languages of this attribute will be deleted simultaneously.

Note - When the values of a multi-lingual attribute have to be changed (when the values are different to the language setting of the software), it has to be done in the Attribute Pool and not in the Classification List.

Office Suite

Installation

The Office Suite supports the following ways to install the Office Add-in on the client machine.

- ❑ Administrative installation via the Windows Installer tool (MSI Package)
 - The installation tool checks all prerequisites, except the Microsoft Office application.
 - Automatically installed hotfixes (see below).
 - Only the installation progress bar is displayed during the installation.
 - A user with administrative rights is required for this installation.
 - Allows the installation for all users.
- ❑ Administrative installation without the Windows Installer tool
 - The installation tool checks all prerequisites, except the Microsoft Office application.
 - Hotfixes need to be installed manually. These files are part of the Office Suite installation zip file (<installationspaket_root\packages\intel-ms-nt5\officsuite200x.zip).
 - Only the installation progress bar is displayed during the installation.
 - Installation for Microsoft Office 2003
The following has to be entered into a command shell:

```
msiexec /qb /i GDMAAddin2003Setup.msi ALLUSERS=2
TARGETDIR="C:\Program Files\Agile_e6\Office Suite"
```

- Installation for Microsoft Office 2007
The following has to be entered into a command shell:
msiexec /qb /i GDMAAddin2007Setup.msi ALLUSERS=2
TARGETDIR="C:\Program Files\Agile_e6\Office Suite"

☐ Web-Deployment via Java WebStart

- The installation tool checks all prerequisites, except the Microsoft Office application.
- Automatically installed hotfixes (see below).
- A wizard will guide you through the installation procedure.
- A power user is required for this installation

The install package does not install any software from Microsoft (except the DSO OLE Document Properties Reader).

Note – If no Microsoft Office application is installed (MS Word, MS Excel, MS PowerPoint, or MS Visio), the Office Suite installation will be canceled.

Contained Hotfixes

- ☐ Microsoft Office 2004 Update (KB907417)
- ☐ Shared Add-in Support Update for Microsoft .NET Framework 2.0 (KB908002)
- ☐ Shared Add-in Extensibility Update for Microsoft .NET Framework 2.0 (KB908002)

Prerequisites

- ☐ Office Suite for Microsoft Office 2003:
 - Microsoft Office 2003
 - Microsoft Office 2003 Primary Interop Assemblies (PIA)
 - Microsoft Office 2003 Update (KB907417)
 - Microsoft .NET Framework 2.0
 - Shared Add-in Support Update for Microsoft .NET Framework 2.0 (KB908002)
 - Shared Add-in Extensibility Update for Microsoft .NET Framework 2.0 (KB908002)
- ☐ Office Suite for Microsoft Office 2007
 - Microsoft Office 2007
 - Microsoft Office 2007 Primary Interop Assemblies (PIA)
 - Microsoft .NET Framework 2.0
 - Shared Add-in Support Update for Microsoft .NET Framework 2.0 (KB908002)

- Shared Add-in Extensibility Update for Microsoft .NET Framework 2.0 (KB908002)
- Microsoft .NET Framework 3.0

Note – If the prerequisites are not met, the Office Suite installation will be canceled.

PDF Generator

Note – The functionality of the PDF Generator has been completely revised.

Note – Prerequisite for the PDF Generator is Adobe Acrobat 8.

The enhanced PDF Generator can now be set up as a Service and does not need to be set up on a special Client.

The PDF Generator can be installed with the Windows Installer tool. After the PDF Generator is installed, an extra service is added to the Services list. Agile PLM Office Suite PDF (Administrative Tools > Services).

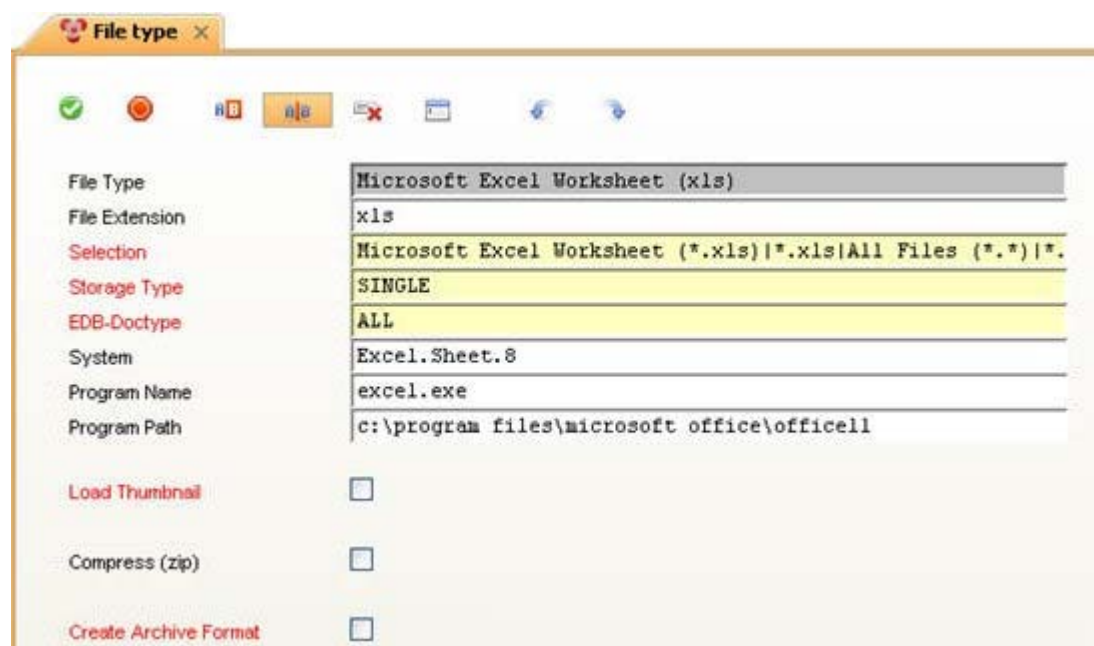
Note – Further information about the installation of the PDF Generator can be found in the Administration Guide for Agile e6.1.

File Type Mask

The information on the File Type mask from the tabs General, Other Functions, and Batch have been moved and appear now on the main File Type mask. The tabs have been removed.

The information from the Menus tab has been removed. Now, every function of the toolbar can be assigned to or removed specifically for a user or group.

Note – Further information about assigning or removing rights to user or groups can be found in the Role Concept Module.



Workflow Editor

Now, the workflow editor connects via the Windows client or Java client to the PLM server. Therefore, the client must always be started using the ECI-TOPIC parameter if you want to use the workflow editor (-p ECI-TOPIC:t:1:h:localhost:r:12349). Otherwise, the following message is displayed:

"Could not read ECI-TOPIC from client environment. Make sure that ECI-TOPIC has syntax ':t:transportmode:h:hostname:r:portnumber'"

Note – For transportmode only tcpip-connection (=1) is allowed.

Corrected Post-field Userexit Execution in Insert Mode

Until now, when setting a combined widget into insert mode and then clicking into a field of the sub-widget, the userexits have been executed in the following order (which was not correct):

- ☐ Post-field userexit of first field in main widget (correct)
- ☐ Pre-field userexit of field in sub-widget (correct)
- ☐ Post-field userexit of field in sub-widget (NOT correct)
- ☐ Pre-field userexit of field in sub-widget (2nd time) (NOT correct)

This behavior has been corrected. Only the following userexits are executed now.

- ☐ Post-field userexit of first field in main widget
- ☐ Pre-field userexit of field in sub-widget

New Userexit

- ☐ zag_mas_opn_xsl
Select menu/button userexit that opens widget for current record.
- ☐ zag_mas_opn_xas
Select action userexit that opens widget for current record.

New Environment Variable

- ☐ edb_logbufsize (UNIX) / EDB_LOGBUFSIZE (Windows)

A new environment variable has been created to set the logfile buffer size to 0 when debugging the server. This ensures that trace or messages that are issued by the server are flushed immediately to the output or error file.

Value	Description
0 to 1024 Byte	If the variable is set and the value is within the range of 0 to 1024, the value is used as log buffer size. Otherwise, the default value of 1024 is used. 0 = no buffer

New Default

❑ DTV-MSG-WRP-LIN:

Defines if a message (or a LogiView variable) is displayed with a link break.

Value	Description
N	The message line is displayed without line breaks
Y OR If default does not exist	Inserts a line break after 160 characters if no separating character can be found (e.g. blank, tab, semicolon, comma, ())

Enterprise Integration Platform 2.2

The Enterprise Integration Platform (EIP) will be released together with Agile e6.1.

General

Java Support

In addition to Java 5, Java 6 is now supported as well.

Note – Older Java versions are not supported anymore.

Oracle DB 11g Support

Oracle Database 11g (11.1.0.6.0) is now supported in addition to all previous versions.

Controller Enhancements

The internal web server that is required by some network connectors is now disabled by default to resolve port conflicts with other processes that are running on the same machine.

Password Encryption

The password encryption had been changed to be compliant with the Oracle Security Guidelines. It will now use the same method as used for Agile EDM (e.g. for the encryption of the database password). Therefore, all passwords in the eai_ini.xml file need to be re-generated.

Please note that the new passwords will be significant longer and are now prefixed with "RSA-PUBLIC-BASE64:". There will be different passwords generated from the same input to make it more difficult to guess or recognize previously used passwords. Therefore, we advise to generate separate encrypted passwords for the same input.

The command line tool "encrypt" does not allow specifying the password to be encrypted on the command line anymore. It is recommended to paste the plain password into the system's clipboard before running the tool. The encrypted password will be stored into the clipboard again. Or you may choose to use the UI tool named "crypt".

PLM Connector

Agile e6.1 Support

All operating systems and databases, which are supported by Agile e6.1, are also supported by the Enterprise Integration Platform, especially the PLM Connector.

- ❑ New userexit libraries (e.g. eipsync.dll, libeipsync.so) are provided.
- ❑ No older versions of Agile e-series are supported anymore. If you need an Enterprise Integration Platform for an older version, please use EIP 2.1.2.

'loopback' Mode Support

The loopback mode of the PlmSyncConnector allows the connector to connect back to the user's PLM process instead of using an own process instance in the background.

- ❑ New userexits eip_sync_enable_loopback, eip_sync_disable_loopback, and eip_sync_has_loopback have been added to the EIP shared library.
- ❑ A new attribute "loopback" had been added to the configuration of the PlmSyncConnector:

```
<synchronous name="plm-sync" version="2.2.0" active="true"
class="com.eigner.eai.connector.plm.sync.PlmSyncConnector">
  <connection name="default" active="false">
    <id/>
    <connection-timeout>300000</connection-timeout>
    <call-timeout>300000</call-timeout>
    <queue-mask>EDB-EIP-SEN-SLI</queue-mask>
    <snapshot active="true"/>
    <loopback active="true" retries="5" delay="100" initial="0"/>
  </connection>
  <port>19997</port>
  <connector>plm</connector>
  <bor location="{eai.conf}/bor_plm_sync.xml"/>
</synchronous>
```

SAP Connector

SAP Jco 2.1.x Support

In addition to Jco2.0.x, Jco2.1.x is supported.

Solved FIS IDs

FIS-ID	BUG DB	Description
10235	7106589	EIP ping tool as separate application
10237	7106591	Admin tool as separate application
11312	1707919	Cleanup fails on mssql server

Security

Loader

To make the handling of the loader more save, user names and encrypted passwords are not set in the environment any longer. They are read from the configuration file of the environment if needed.

EDB_BATCH

Due to security concerns, the EDB_BATCH mechanism is now only available if the Agile e6.1 server runs with the security level 'unrestricted'. The security level is configured in the XML configuration file of the Agile e6.1 environment.

In addition, the default security level has been set to 'connection', which means that each ECI connection has to authenticate with valid credentials.

Solutions relying on the EDB_BATCH mechanism should be reworked to use the standard ECI client API instead:

1. Connect to the Java daemon and start a new Agile e6.1 server (user/password or ECI ticket is needed) using the EciClient class.
2. Open an ECI connection to the Agile e6.1 server.
3. Execute the userexit listed in EDB_BATCH using the ECI API (e.g. by calling `eci_usx_cal`).
4. Disconnect from the server.

If you still need EDB_BATCH for your solution, you should set up an Agile e6.1 environment that runs in unrestricted mode. Do not lower the security level of the standard production environment, use a new environment instead.

Java Client ECI Server Plugin

Due to security concerns, the configuration of the ECI server in the Java client has been changed: Now, the default installation requires an authentication from each connection.

- ❑ If the client code uses the Java ECI API, it has to specify valid credentials in the parameter object:
 - A valid user/password combination, or
 - An ECI ticket.
- ❑ If the client code uses the C ECI API, it has to call `eci_chk_pwd` with valid credentials after establishing the connection.

- ❑ If an integration cannot be adapted, the user has to disable the password authentication in the Java client:

Preferences->Plugins->ECI Server: Password required

The user has to confirm this action by accepting a warning message.

FMS-Client Security Changes

Restricted FMS-Client on PLM Server

The xfile interface supports check-in / check-out operations on the PLM server. The access of these operations is restricted now. Now, only server paths are allowed which have been defined in the configuration parameter EDB-FMS-ALLOWED-PATHS section. The Windows "C:\temp" directory (EDB-FMS-WIN-TMP-DIR) and the UNIX "/tmp" directory (EDB-FMS-UNIX-TMP-DIR) are predefined.

Note – It is only possible to use these directories. The sub-directories are not considered.

Restricted FileServer to Pre-Configured Vaults

The FileServer uses a new configuration file (fileserv.cfg) which is located in the FileServer root directory. The configuration file contains a "Vaults" section where all valid vaults are listed. The standard vaults are already listed in the installed configuration file.

Note - Due to security reasons the FileServer manager has to approve the vault paths defined by the PLM Manager by adding the path to the following configuration file of the FileServer.

```
#
# This is the default configuration file for the Agile e6 File Server.
#
# You may adapt this file to your needs, but be aware that any change
# may have severe consequences on performance and memory consumption.
#
# This file is not changed by the application.
#
# --- Allowed vault path section -----
# Only vaults defined in this section are accessible by the File server.
# Syntax:  <vault name>=<vault path>
# Tip: use the PLM vault name to make it easier to synchronize the vault
# definition within PLM with the allowed paths.
#
# The standard vaults are predefined.
#
[Vaults]
FMS=fms/
EIF=area/
PUB=pub/
```

Steps to add a vault:

1. Create a vault definition within the PLM system.
2. Create the vault on the FileServer by using the FMS administration tool (fms_adm).

Note - The next two steps are a result of the security changes!

3. Add the vault to the configuration file.
4. Reload the configuration using the FMS administration tool.

Note – Further information on this can be found in the File Server documentation.

Server Installation

The installation is now using new platform independent technologies like Ant / Java / XML.

It is possible to have multiple installations on one server.

Each installation component (e.g. JavaDaemon, Fileserver, etc.) can be installed / uninstalled in batch mode. Also the complete server installation can be done in batch mode.

Customer adapted configuration parameters are separated from Agile configurations.

Administration Tool

The new Administration Tool replaces the old TCL-based Admin UI. The following technology is used:

- ☐ Web Application
- ☐ JSP/Servlets
- ☐ Ant Backbone
- ☐ Runs in Tomcat

Main advantages of the new Administration Tool are:

- ☐ Platform independent
- ☐ Separation of GUI and Install logic
- ☐ Easy to extend
- ☐ Ant Backbone

The Administration Tool has the following features:

- ☐ Administration of multiple Agile e6.1 installations
- ☐ Create references or administrate used references (database connections, database definitions, application server)
- ☐ Modifies configurations for available applications

Upgrade Tool

The Upgrade Tool allows upgrading to Agile e6.1 from the following versions:

- ☐ Pre-Agile e5.x (on request)
- ☐ Agile e5.x
- ☐ Agile e6.0.x

The Upgrade Tool considers enhancements / changes of:

- ☐ Java Client compliance

- ☐ Icons
- ☐ Office Suite LogiViews
- ☐ Configuration Management

Note - Since Agile e6.0.4 the field T_ACT_HIS.PV_VALUE has been replaced by two new fields (T_ACT_HIS.PV_SL_VALUE and T_ACT_HIS.PV_ML_VALUE) in the History for Workflow activities. Because the old data cannot be mapped exactly for the new schema, they are still stored in the existing old field. The old field is invisible and the new fields T_ACT_HIS.PV_SL_VALUE (single-language value) and T_ACT_HIS.PV_ML_VALUE (multi-language value) are empty after the upgrade.

If requested, the old field can be made visible.

Since Agile e6.0.4, respectively Agile e6.1 new data is only filled in the new fields.

De-Supported

- ☐ Wizard (User Admin Assistant)

Note – Only de-supported for the Java client.

- ☐ Navigator

Note – Only de-supported for the Java client.

- ☐ DDE/GFI Userexits

Note – Only de-supported for the Java client.

- ☐ Cross-Entity Search
- ☐ Search in combined masks

Note – Only de-supported for the Java client.

- ☐ Print Studio Server

Note – For further support please refer to ots Unternehmensberatung GmbH.

- ☐ TCL Integration
- ☐ STEP processor and DXM

Note – For further support please refer to PROSTEP AG.

De-Commissioned

- ☐ Report Generator

- ☐ Default DTV_LTX_BUF

Longtext is now stored in in the C++ Data Object (DTO) together with ordinary field data.

Advantages:

- Longtext content does not need to be refetched with extra database calls.

- No double buffering is used to store longtext (the first 255 bytes of each longtext were stored in an ordinary field buffer).
- Rules regarding longtext fields are obsolete (Until now, it was necessary to enter a newline character in the first 255 bytes of the longtext data. Otherwise, the data was truncated by DataView. This is not necessary anymore.).
- The DataView code has been simplified.

Disadvantages:

- Because the longtext is now stored together with other mask field data, a higher memory consumption is expected.

Recommendation:

- When creating masks with a lot of longtext and memory problems occur when fetching the data, reduce the mask limit of the respective mask.

☐ FELICS

The FELICS License Server has been removed. All contractual terms for using Agile PLM Solutions stay in place.

Note - It is within the responsibilities of the customer to ensure that the license usage is in line with the software license agreement.

Due to the removal of the FELICS license server, the behavior of `eci_get_lic` has been changed. The return value of `eci_get_lic` is always true.

Input Parameter	Name	Type	Description
	lic_Name	String	Name of module
Returned Parameter			
	ret_code	String	Always: 0

- ☐ JBOSS (has been replaced by Oracle Application Server)
- ☐ ARP
- ☐ Office Suite Indexer (fulltext search)