

**Oracle FLEXCUBE Private Banking
Feb 2012**

**APPLICATION INSTALLATION MANUAL -
Single Deployable (ORACLE
WEBLOGIC 11g)**

Oracle Part Number E51529-01



COPYRIGHT (C) 2010 Oracle Financial Services Software Pvt Limited All rights reserved. No part of this work may be reproduced, stored in a retrieval system, adopted or transmitted in any form or by any means, electronic, mechanical, photographic, graphic, optic recording or otherwise, translated in any language or computer language, without the prior written permission of Oracle Financial Services Software. Due care has been taken to make this Application Installation Manual as accurate as possible. Oracle Financial Services Software Pvt Ltd makes no representation or warranties with respect to the contents hereof and shall not be responsible for any loss or damage caused to the user by the direct or indirect use of this Application Installation Manual. Furthermore Oracle Financial Software Services Limited reserves the right to alter, modify or otherwise change in any manner the content hereof, without obligation of Oracle Financial Services Software Pvt Ltd to notify any person of such revision or changes. All company and product names are trademarks of the respective companies with which they are associated.

APPLICATION PARAMETER SETUP

The following section would details the individual parameters that need to be setup on the App Server before the application is successfully deployed.

PLEASE NOTE THAT A DOMAIN HAS TO BE CREATED BEFORE THE FOLLOWING SETTINGS CAN BE DONE. PLEASE REFER TO THE PREVIOUS SECTION TO CREATE ONE OR REFER TO THE INSTALLATION MANUAL OF THE INSTALLATION PLATFORM TO CREATE A DOMAIN

The fcpb.ear will be deployed on the Managed Server created for FCPB

DATASOURCE SETUP

Datasources are managed objects that provide access to the database via a layer of indirection to applications which are deployed on the weblogic server. The following steps will detail the creation of the datasource to connect to the schema which would be available for access

- Open the Application Server (AS) control console and login with the weblogic user id and password and navigate to the **Services > JDBC > Data Sources**, in the **Domain Structure**

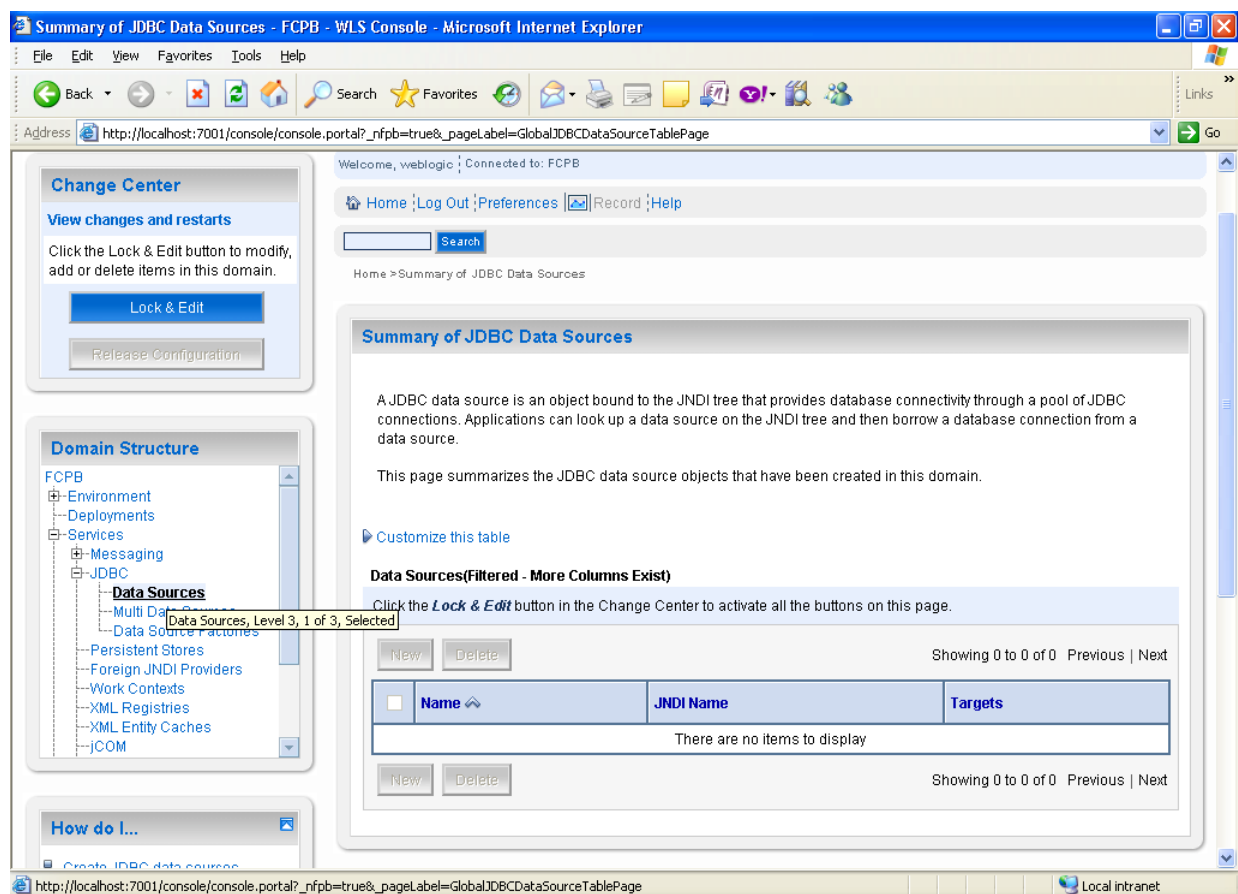


Figure 2.27 JDBC resources

Click on **Lock & Edit**

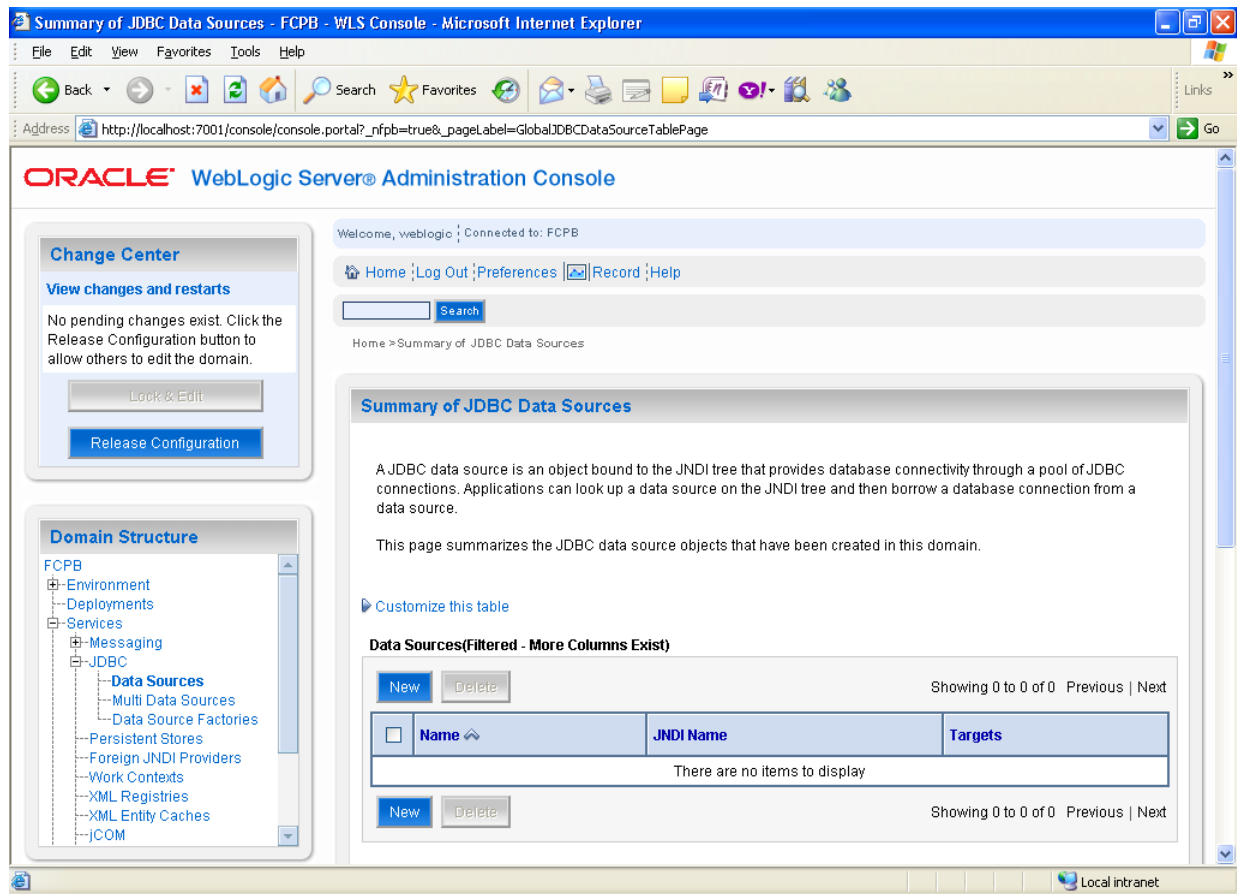


Figure2.28 Data Source Creation

- The first step would be to create Data Source. Click on the “NEW” button under the tab “Data Sources”. Create New Data source setup screen would come up .

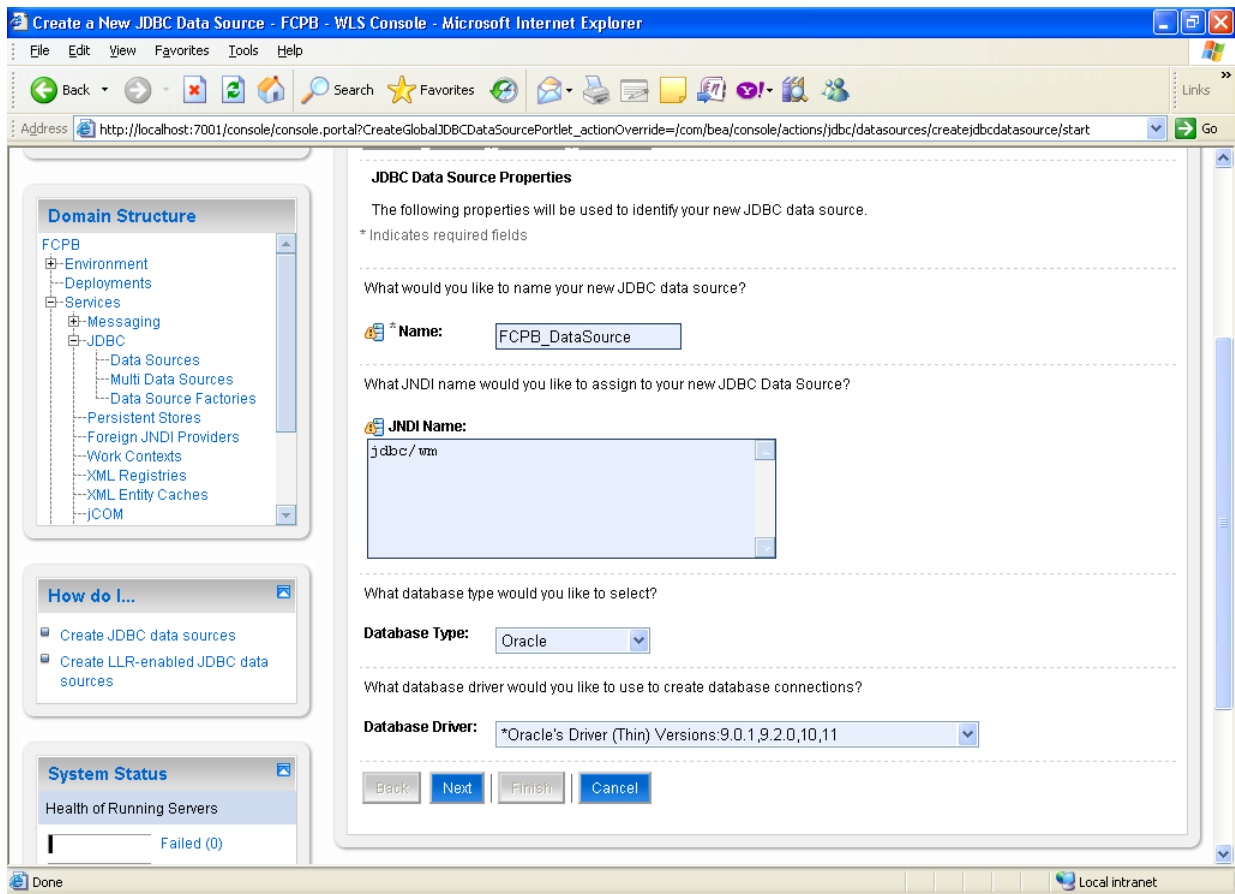


Figure2.29 Create new Data Source

- JDBC Data Source Properties
- Name : **fcpbbank**
- JNDI Name : **jdbc/fcpbbank**
- Database Type : **Oracle**
- Database Driver : **Oracle Driver(Thin)**
- Managed Server : **fcpbbank**

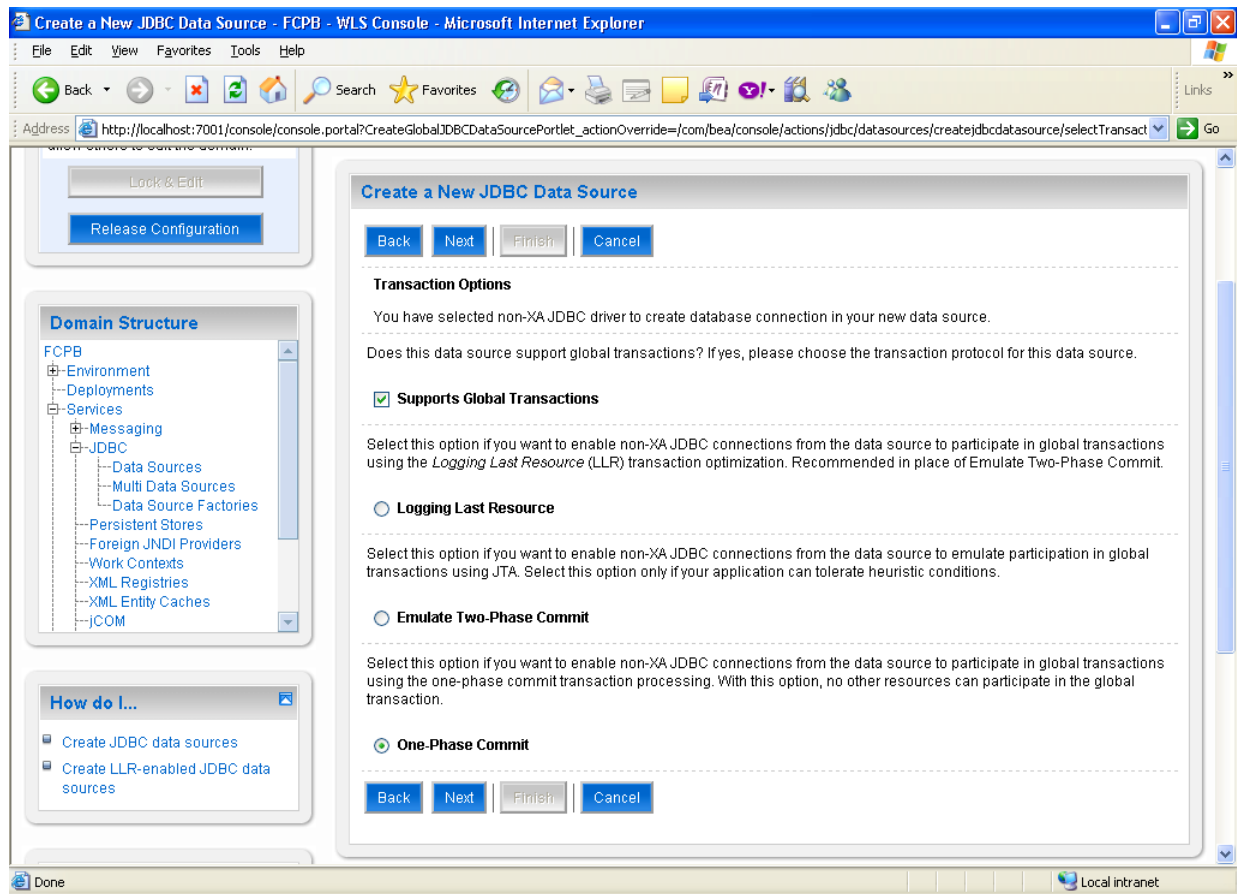


Figure2.30 Transaction Options

Please check the check box of “Supports Global transactions check box” and radio button “One-Phase Commit”, these are default settings, don’t make any changes please proceed

Click **Next**

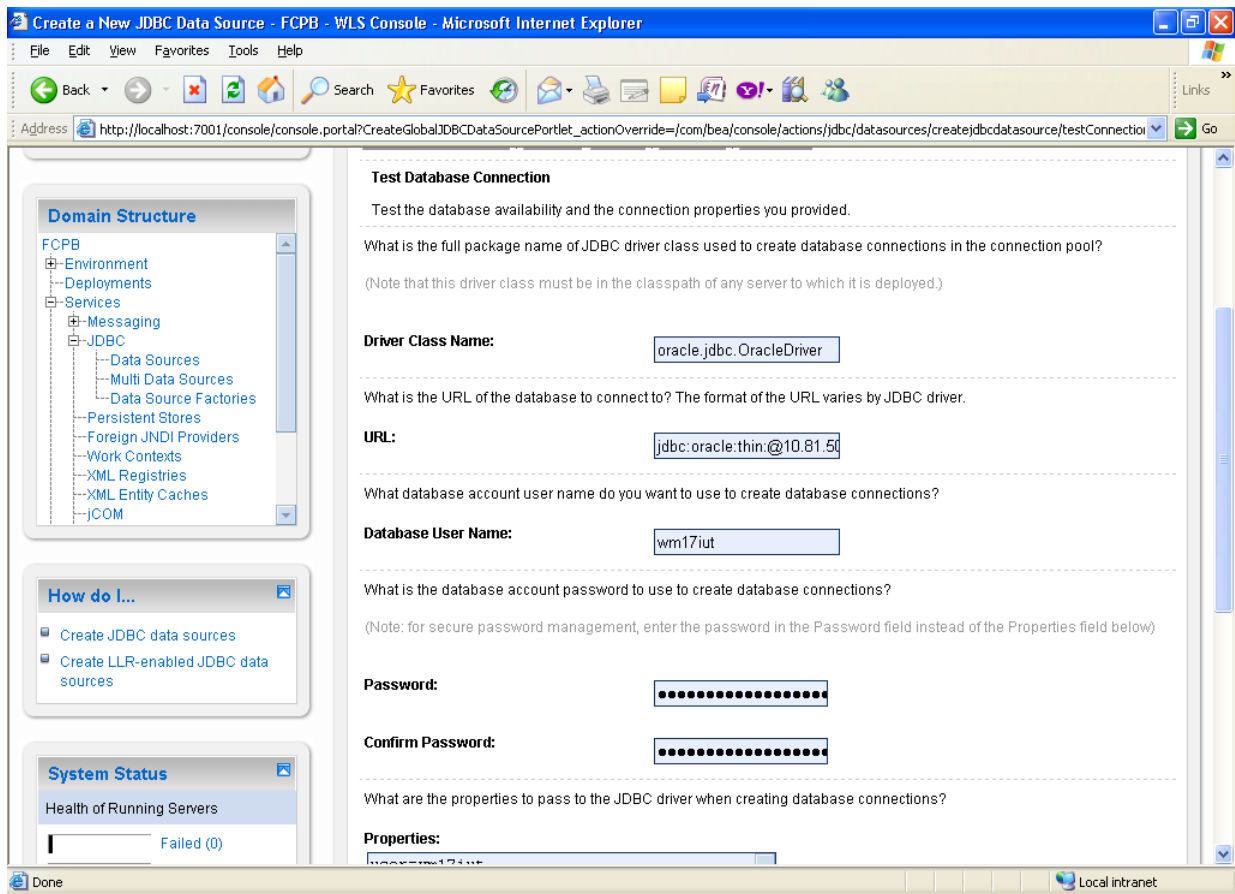


Figure2.31 Connection Properties

Enter the Connection properties

- **Database Name(SID)** : SID of the database instance created
- **Host Name** : Host name of the database
- **Port** : Port on which the database listener is listening on e.g. 1521
- **Database User Name:** Database User ID (Schema Owner/Application User)
- **Password** : Database User Password (Schema Owner/Application User)

And click **Next**

Create a New JDBC Data Source - FCPB - WLS Console - Microsoft Internet Explorer

File Edit View Favorites Tools Help

Address: http://localhost:7001/console/console.portal?CreateGlobalJDBCDataSourcePortlet_actionOverride=/com/bean/console/actions/jdbc/datasources/createjdbcdatasource/testConnection

How do I...

- Create JDBC data sources
- Create LLR-enabled JDBC data sources

System Status

Health of Running Servers

Failed (0)
Critical (0)
Overloaded (0)
Warning (0)
OK (1)

What is the database account password to use to create database connections?

(Note: for secure password management, enter the password in the Password field instead of the Properties field below)

Password: [Password field]

Confirm Password: [Confirm Password field]

What are the properties to pass to the JDBC driver when creating database connections?

Properties:

user=wm17iut

What table name or SQL statement would you like to use to test database connections?

Test Table Name:

SQL SELECT 1 FROM DUAL

Test Configuration Back Next Finish Cancel

Done Local intranet

Figure2.32 Connection Properties

Create a New JDBC Data Source - FCPB - WLS Console - Microsoft Internet Explorer

File Edit View Favorites Tools Help

Address: http://localhost:7001/console/console.portal?CreateGlobalJDBCDataSourcePortlet_actionOverride=/com/bean/console/actions/jdbc/datasources/createjdbcdatasource/testConnection Go

How do I...

- Create JDBC data sources
- Create LLR-enabled JDBC data sources

System Status

Health of Running Servers

Failed (0)
Critical (0)
Overloaded (0)
Warning (0)
OK (1)

What is the database account password to use to create database connections?
(Note: for secure password management, enter the password in the Password field instead of the Properties field below)

Password:

Confirm Password:

What are the properties to pass to the JDBC driver when creating database connections?

Properties:

user=wm17iut

What table name or SQL statement would you like to use to test database connections?

Test Table Name:

SQL SELECT 1 FROM DUAL

Test Configuration Back Next Finish Cancel

Done Local intranet

Figure2.33 Test Configuration

Click on Test Configuration Tab to test connection is success or not

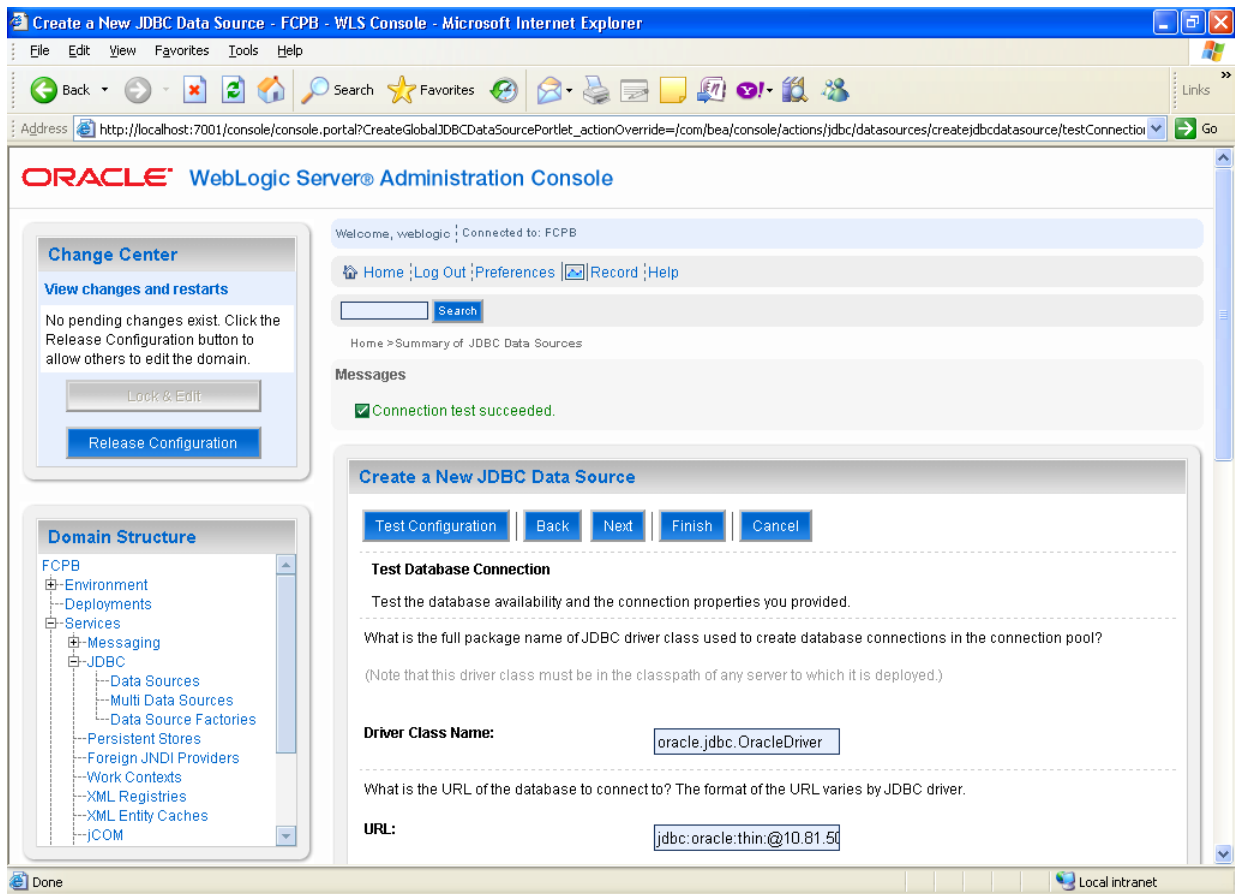


Figure2.34 Test Configuration

If the connection is succeeded, click **NEXT**

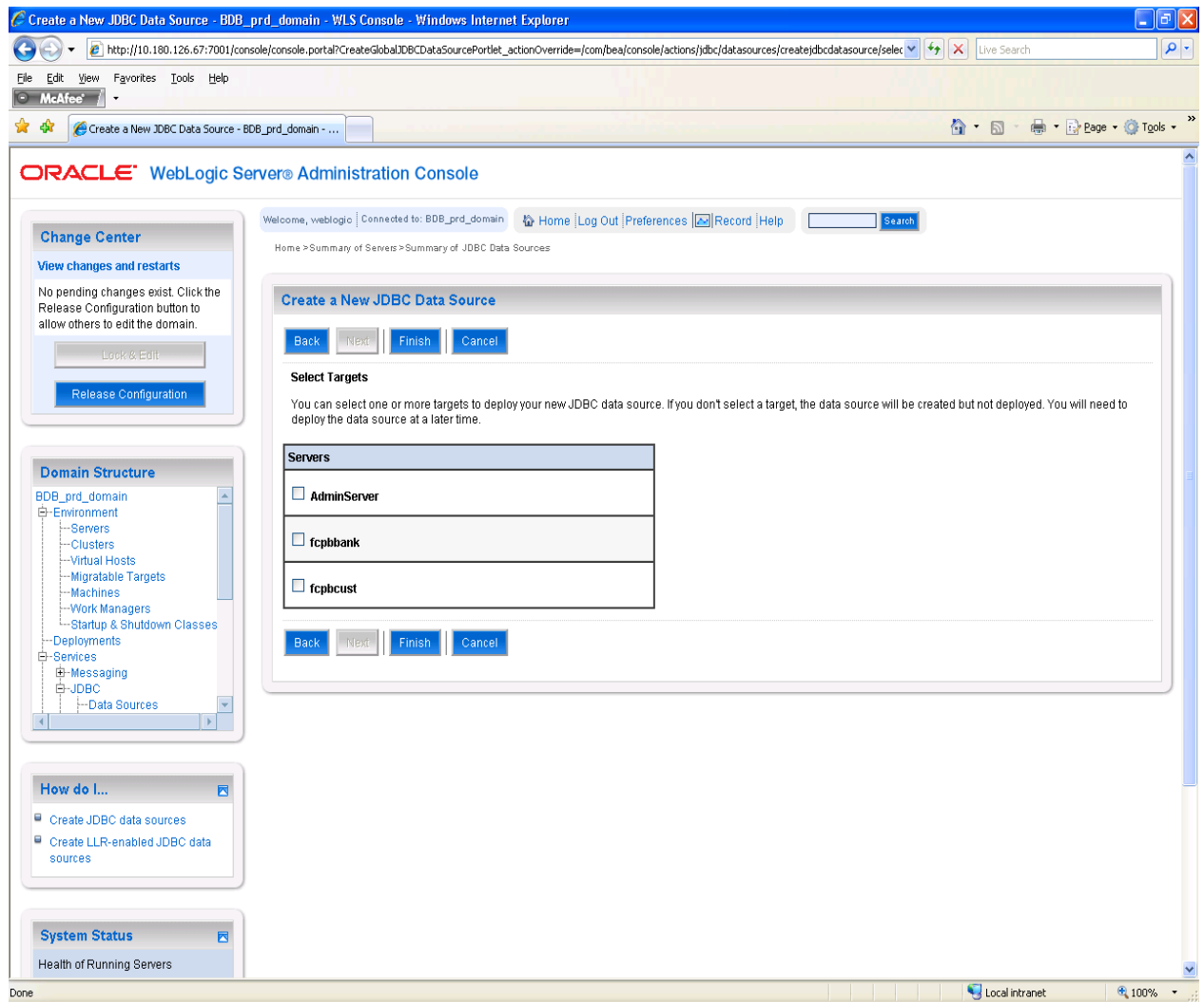


Figure2.35 Binding Managed Server to Data Source

Please check the checkbox of Required Managed Server, so that created Data source configuration will be bind to the Required Managed Server.

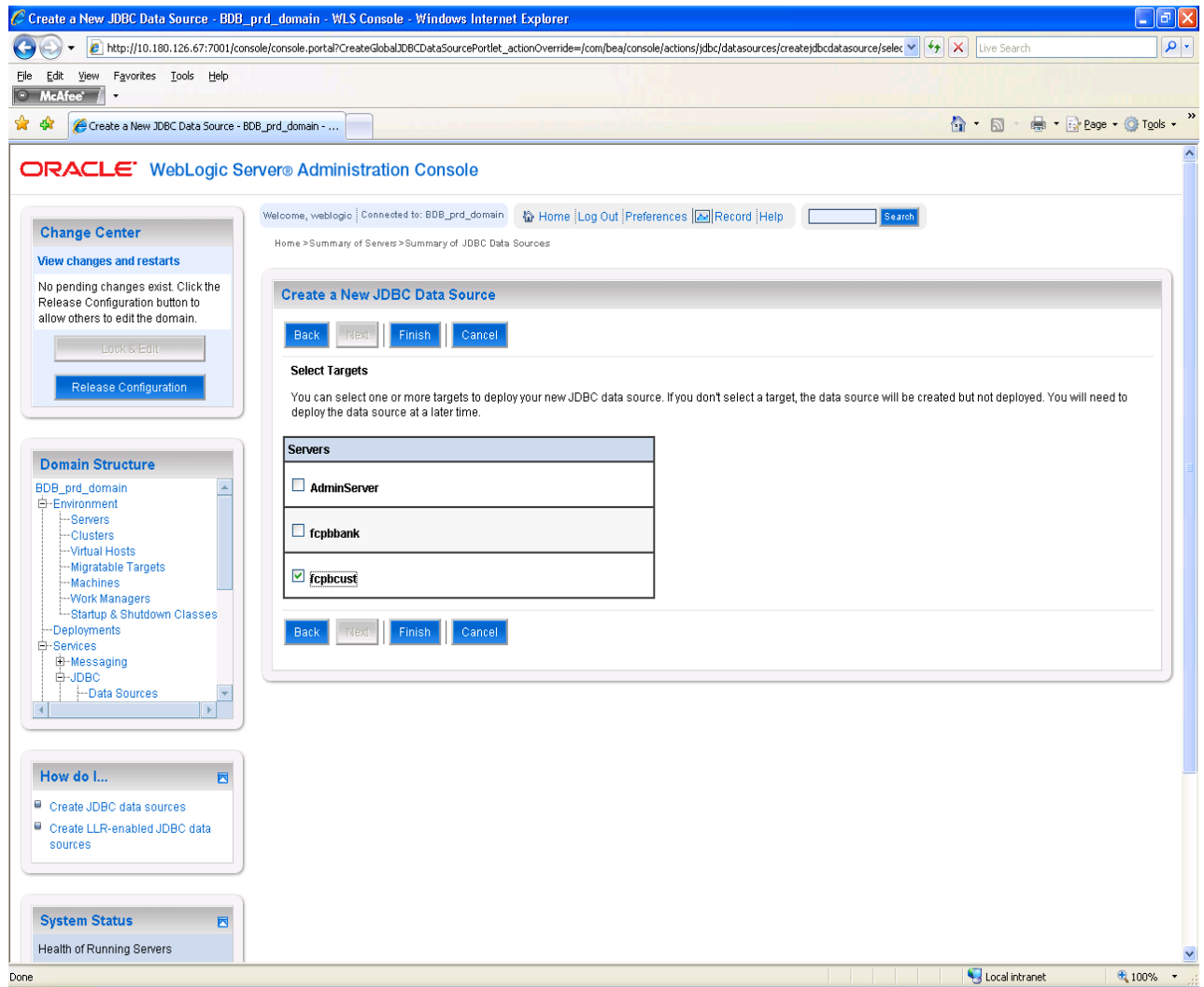


Figure2.36 Binding Managed Server to Data Source

click **Finish**

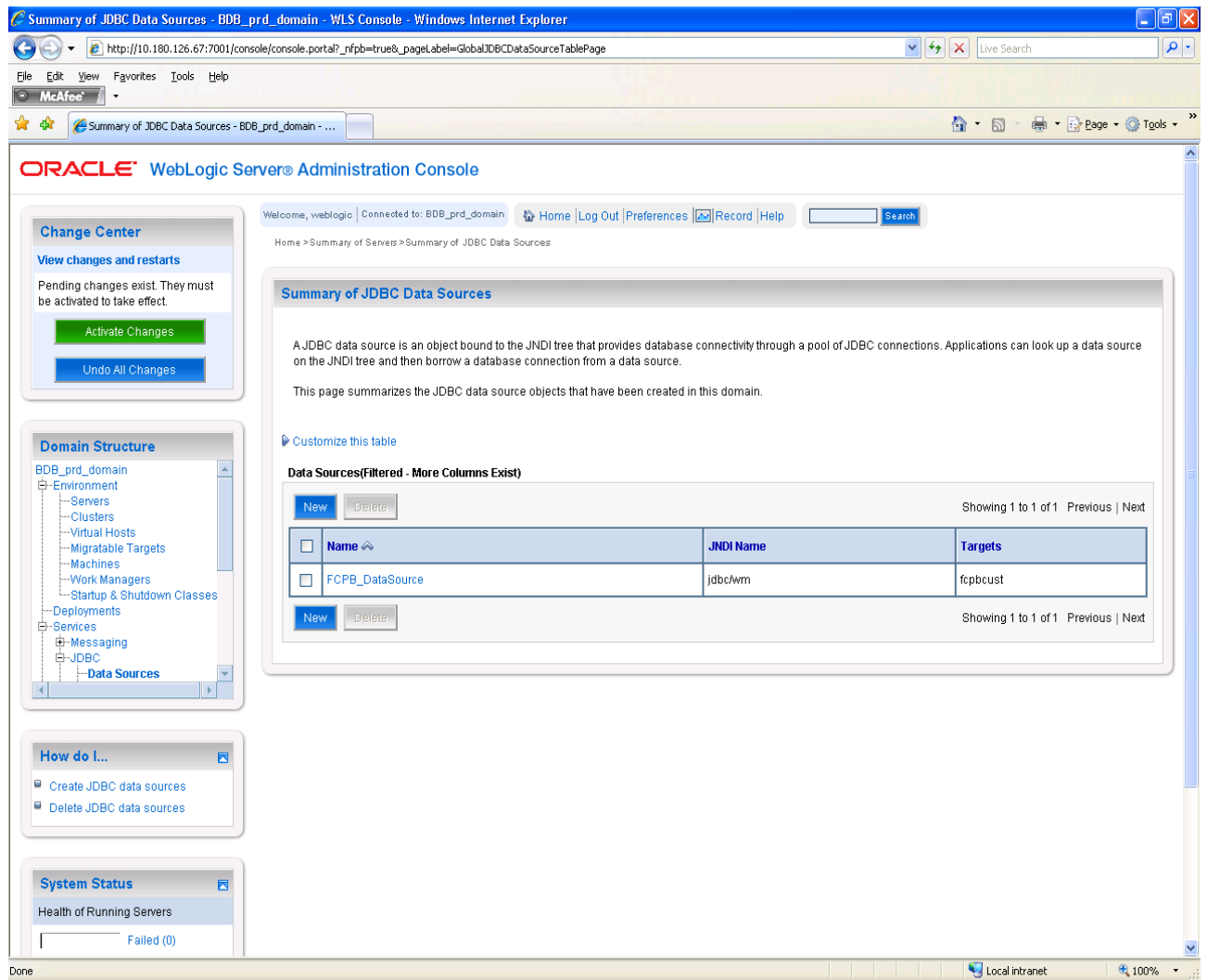


Figure2.37 Activate Changes

Click on “**Activate Changes**” to save the created Data Source.

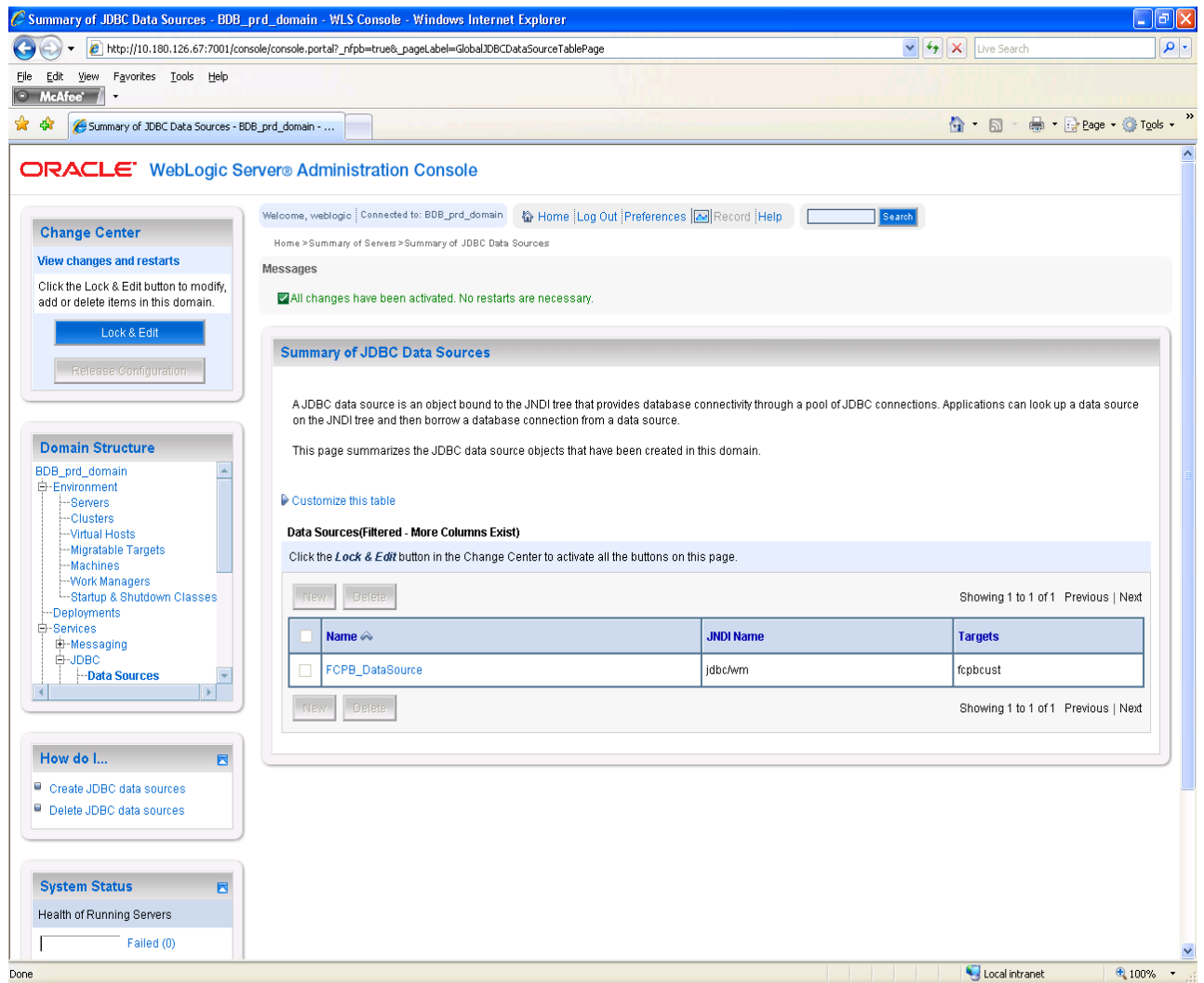


Figure 2.38 Data Source Successfully created

Click on FCPB the configuration page of Data source will come as shown below

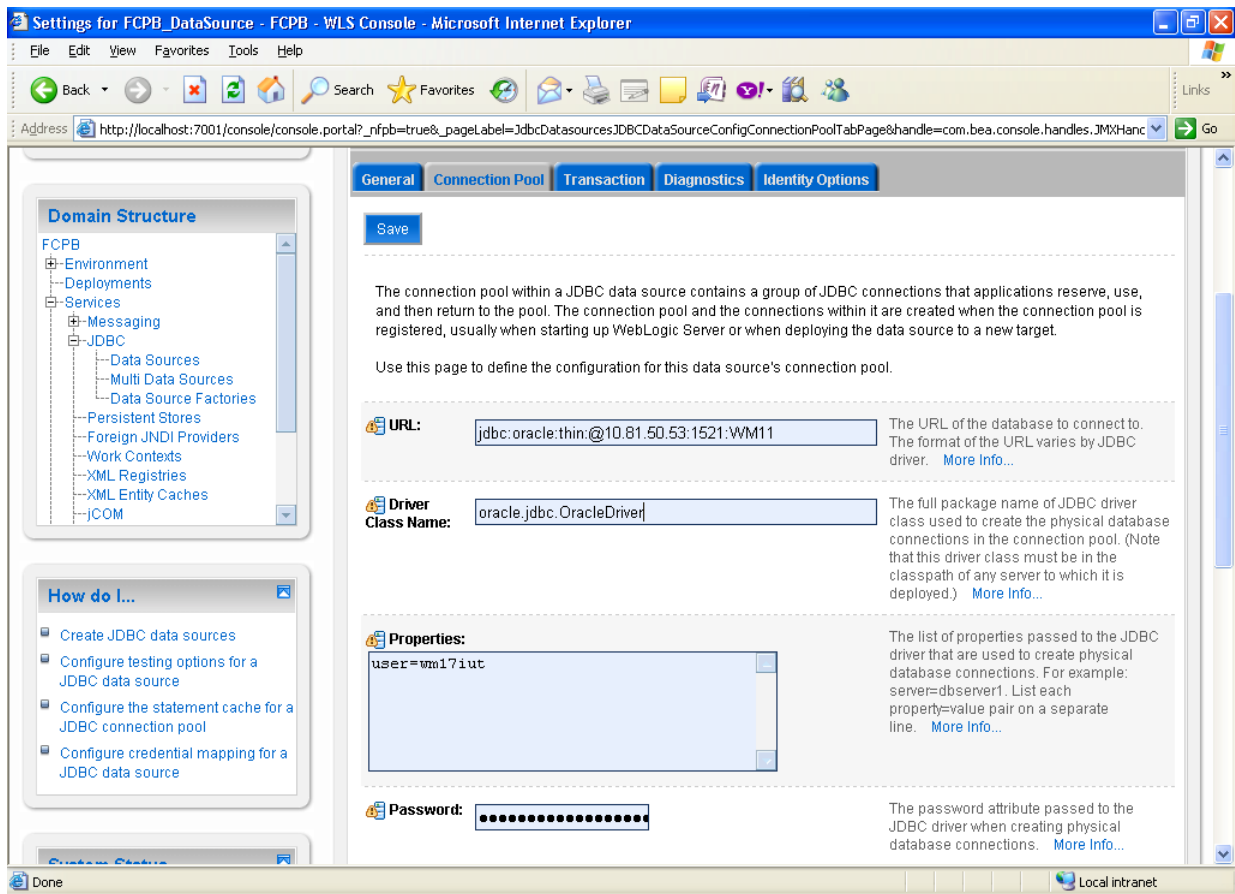


Figure2.39 Connection Pool Properties

Click on **Lock & Edit to edit the Connection Properties**

****Enter the Driver Class Name as oracle.jdbc.pool.OracleDataSource**

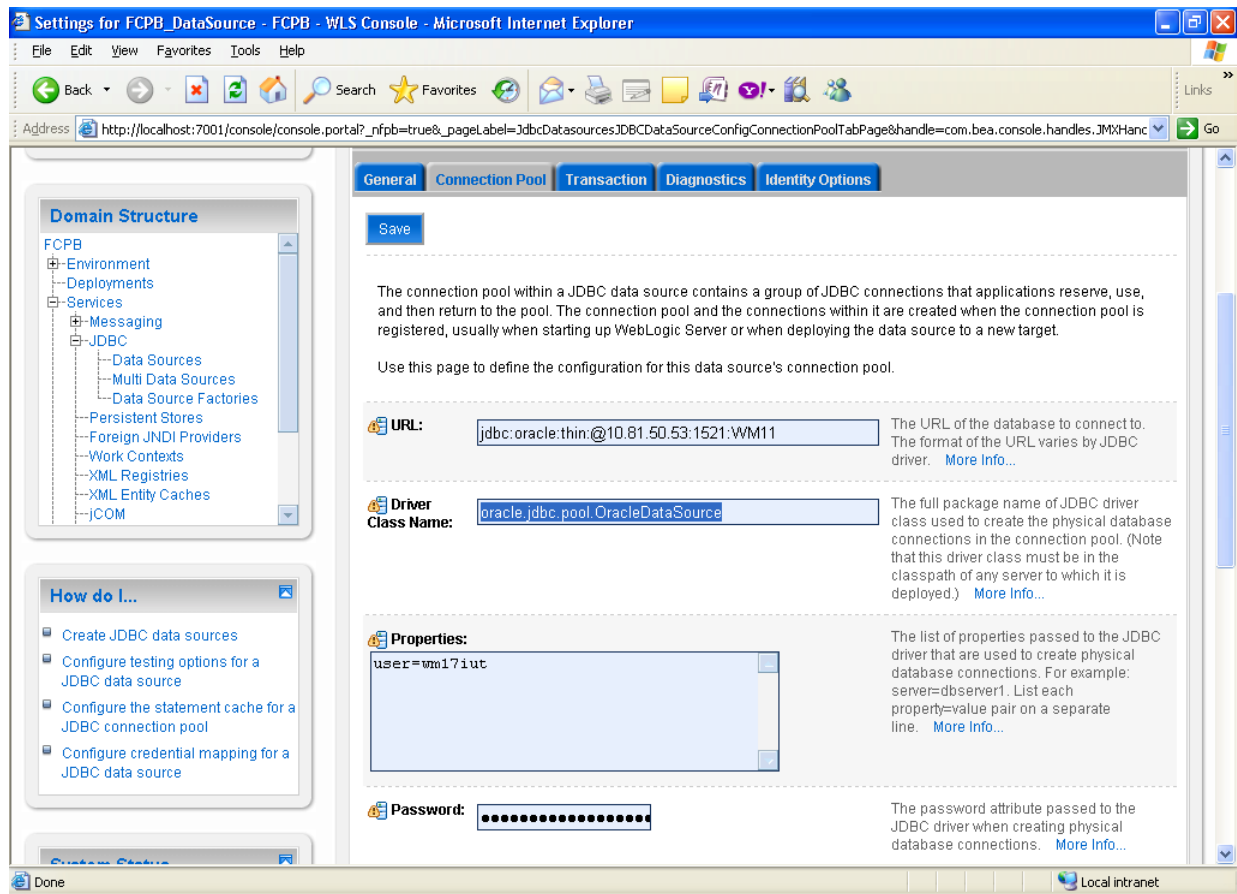


Figure2.40 Edit Connection Properties

Scroll down to set **Statement Cache size** to 50

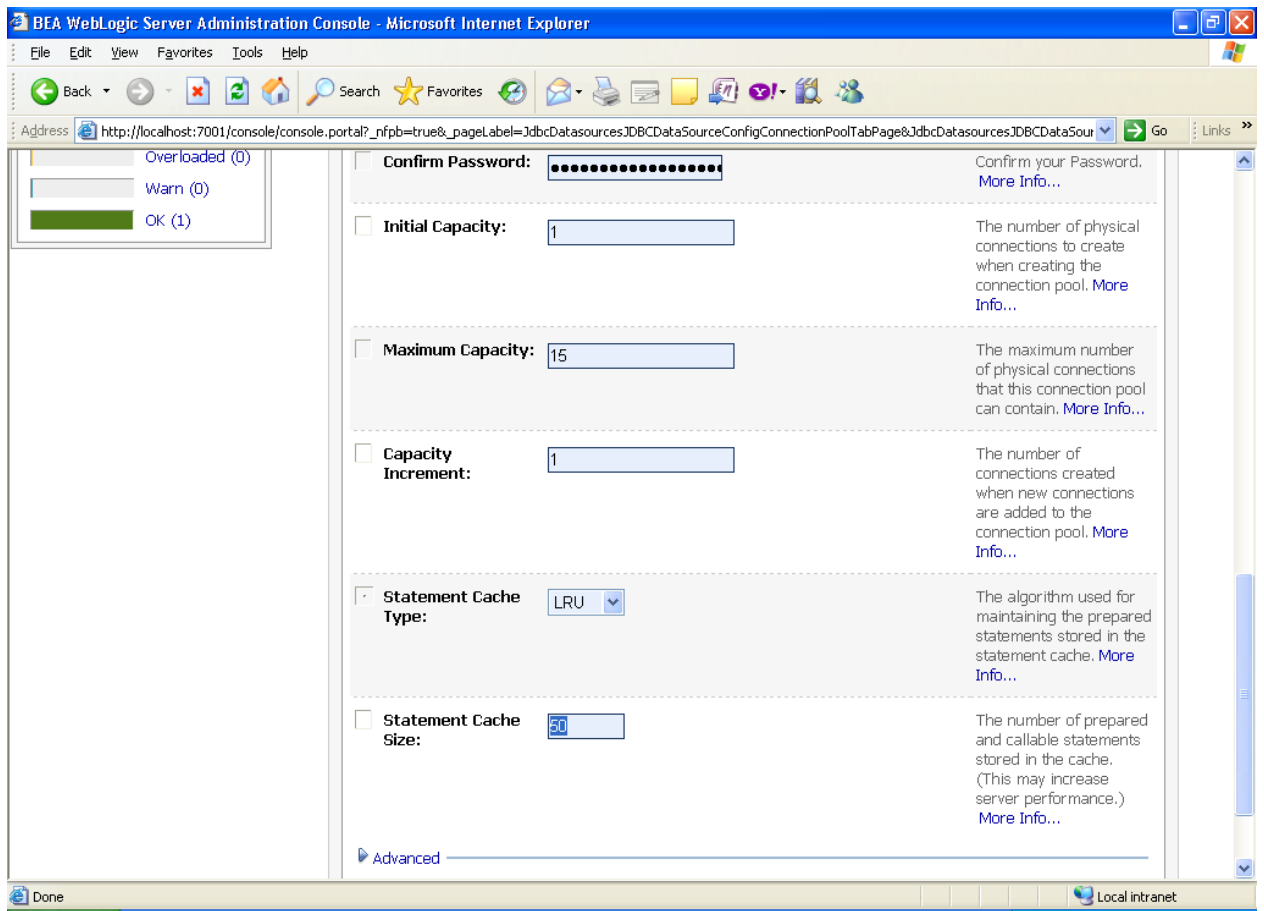


Figure2.41 Edit cahce size

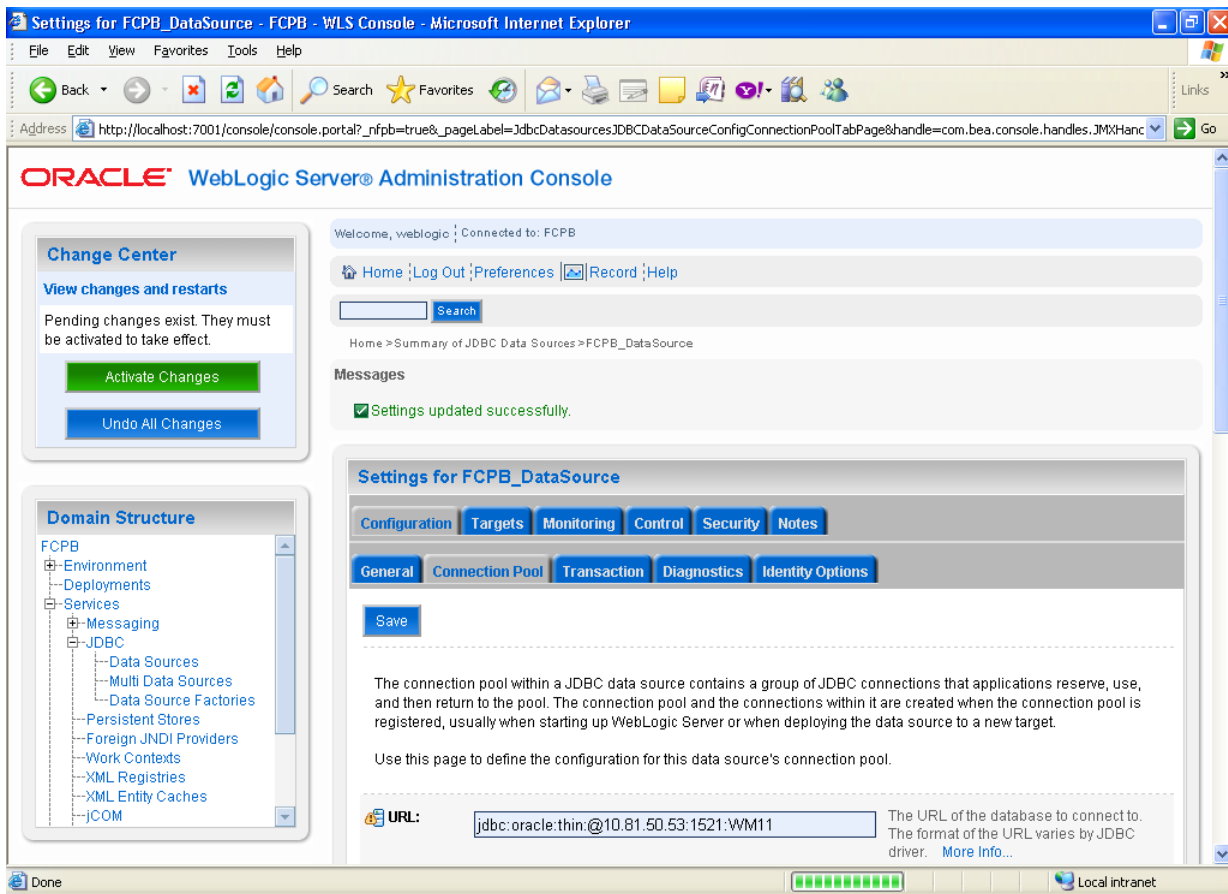


Figure2.42 Connection properties set

Click on “**Activate Changes**” to save the changes

The above steps need to be repeated again for creating one more data source to same Database with the parameters as given below and rest of the steps remaining the same,

- JDBC Data Source Properties for Customer Login

Name : **fcpcbust**

JNDI Name : **jdbc/fcpbcust**

Database Type : **Oracle**

Database Driver : **Oracle Driver(Thin)**

Managed Server : **fcppbank**

JTA Parameter setup

Navigate to **Services > JTA**

Click on **Lock &Edit**

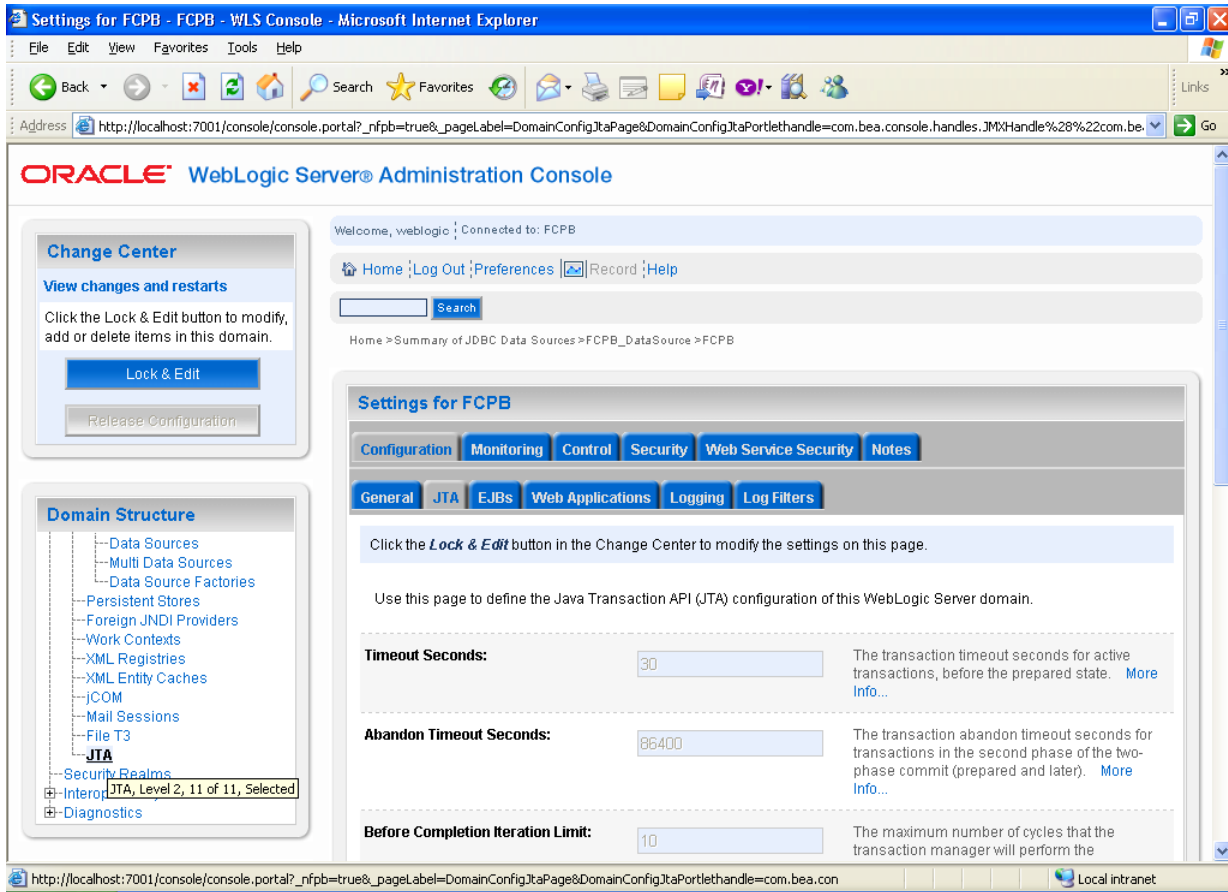


Figure2.43 JTA Parameter Setup

-Set the JTA parameter to **500**

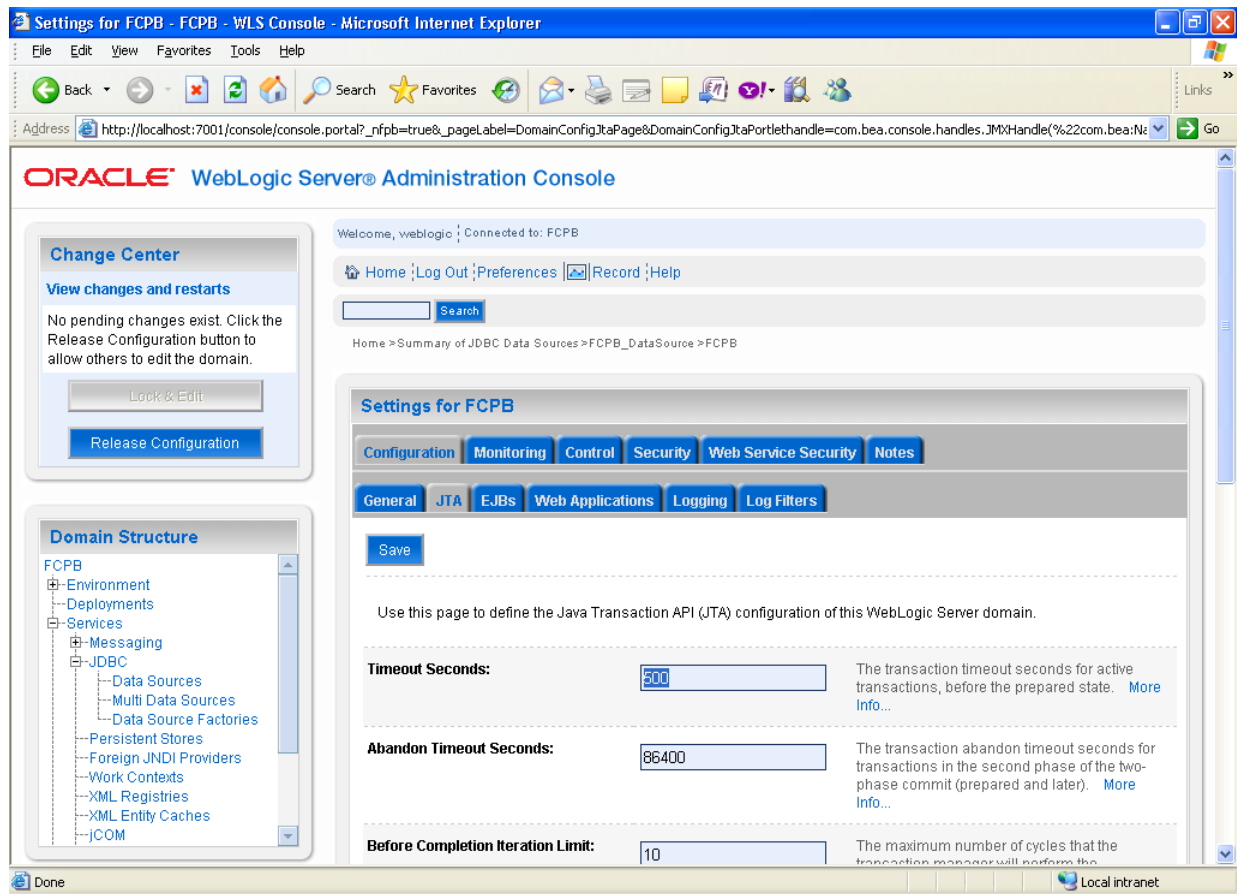


Figure2.44 JTA Parameter setup

Click on save and “**Activate Changes**”

Memory settings

FCPB to perform optimally requires the following heap settings setup (JRockit)

Memory Setting	Value
-Xms	1024M
-Xmx	2048M

FCPB Application Setup

Application installation

The FCPB product is deployed as a ear (web archive resource) on any J2EE 1.4/1.5 compliant application server. In a single depoyable mode, there is only one ear which will get deployed - fcpb.ear. Once the configuration changes have been done and verified as mentioned in the section above (Folder setup) , the application ear files generated out of the build process should be sufficient for deployment. Once the resource archive files have been done, extract them onto the disk in a suitable drive

The following steps need to be followed to deploy the product on the WEB LOGIC server;

- Login into the any AS console with the web logic credentials and the screen should appear as shown below with all the application server and webserver instances

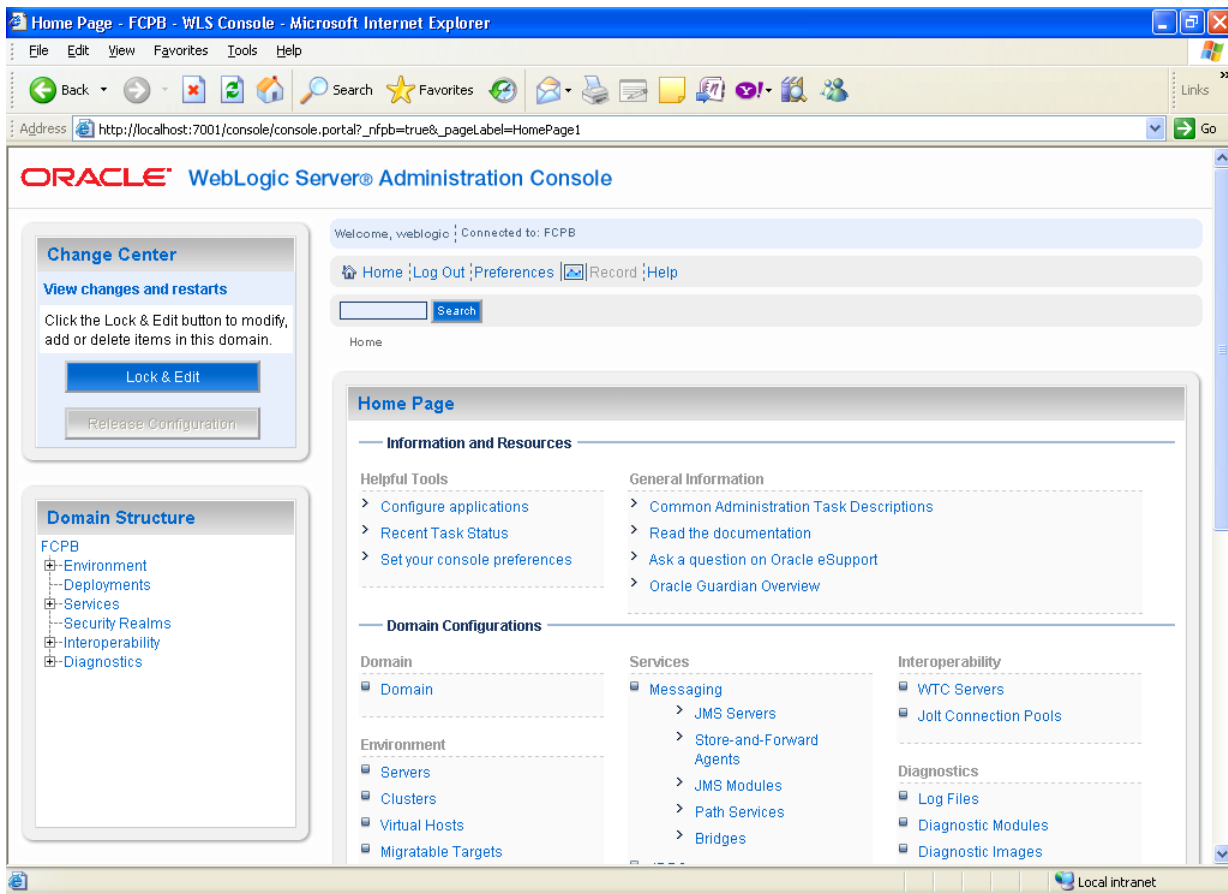


Figure2.45 Appserver Console

- Click on Deployments under Domain Structure
- Click on the **Lock & Edit**

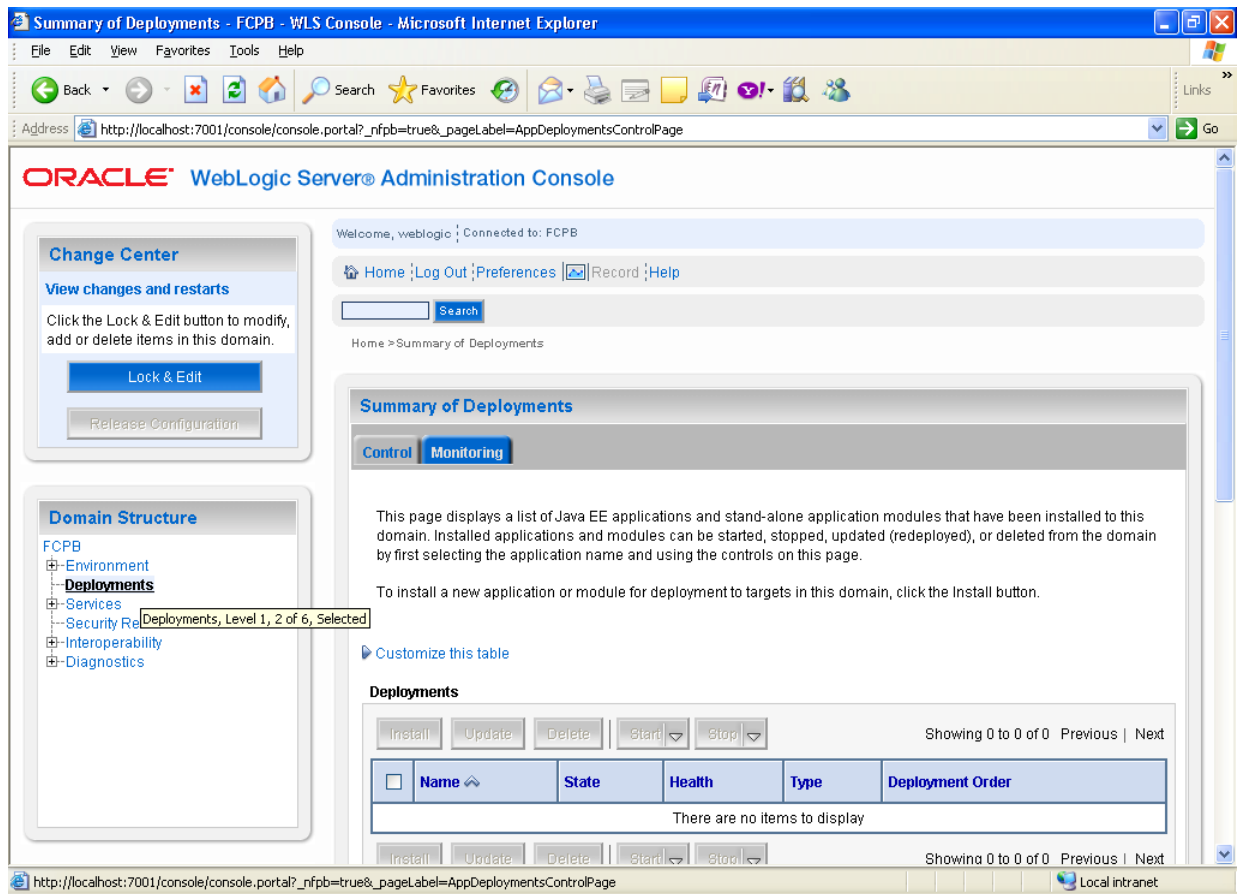


Figure 2.46 Application screen of Deployment

Click on **Install**

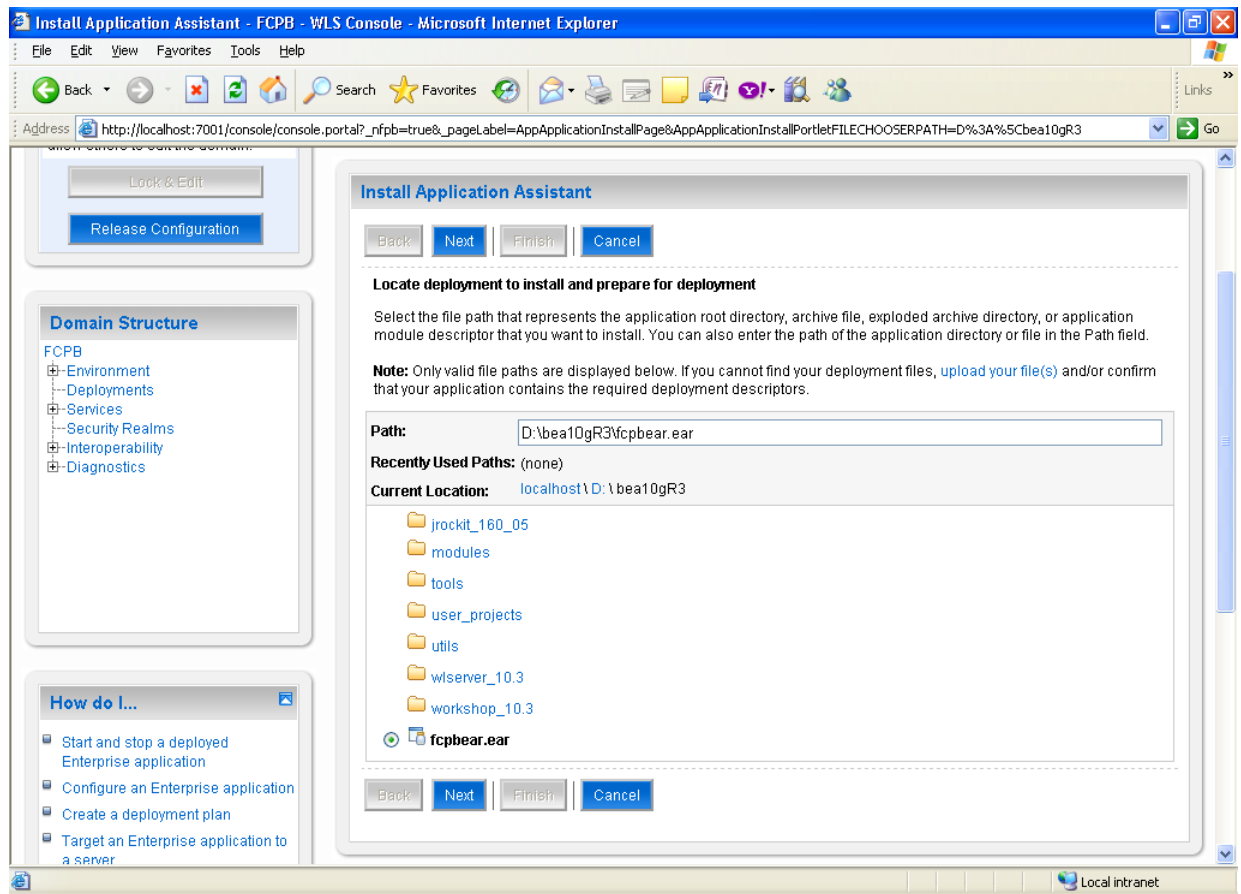


Figure2.47 Application installation to select the ear file

After selecting the Ear file click Next

Figure2.48 Select the file

- The deployment wizard is a UI driven wizard which helps you to deploy ear,war,rar files onto the weblogic server. Under the section archive, click on the browse button which prompts the depoyer to select the location where the ear file would be placed. Once the location is selected, under the section of the deployment plan, select the default option and click on Next to continue. The deployment process begins by loading the war file and creating a new deployment plan

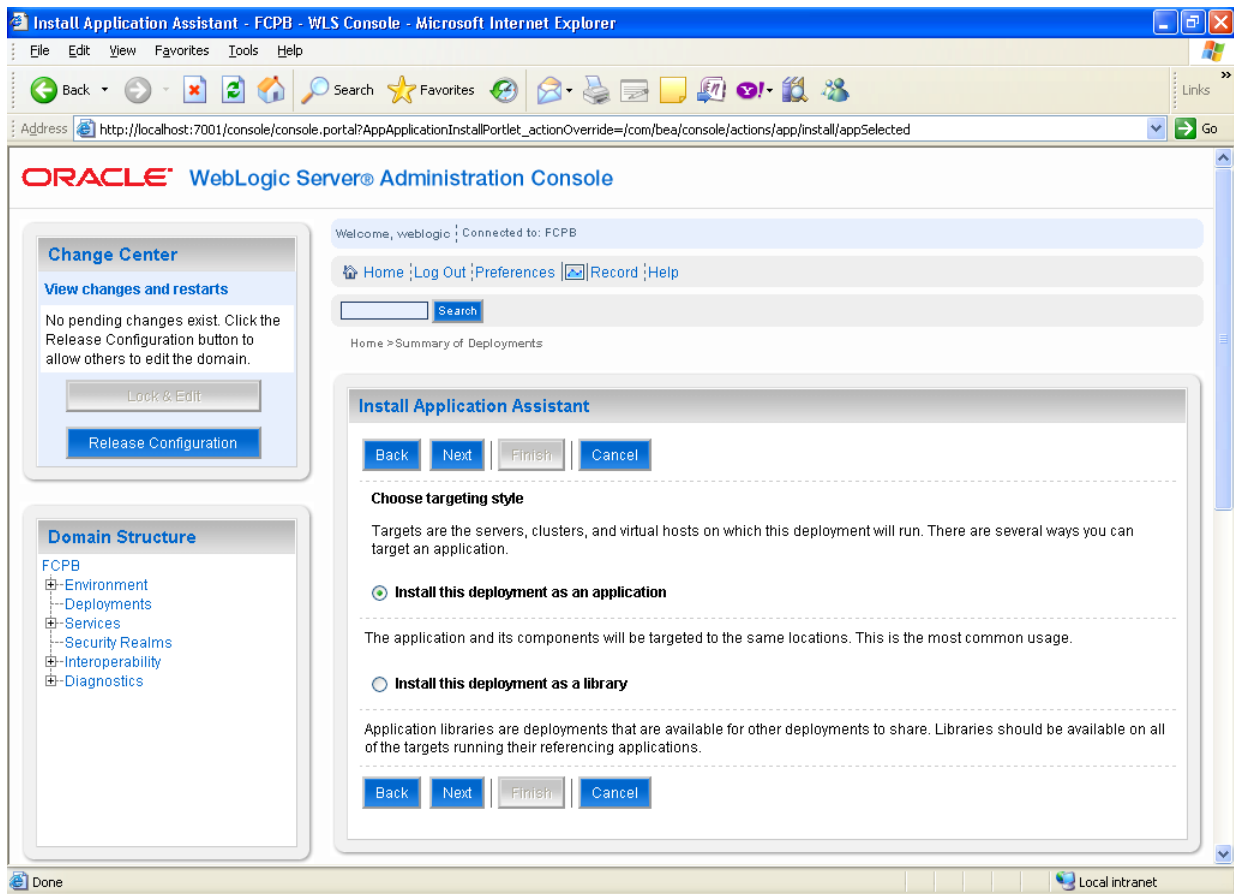


Figure2.48 Install Application

Click the Radio button **Install this deployment as an application** and click **NEXT**

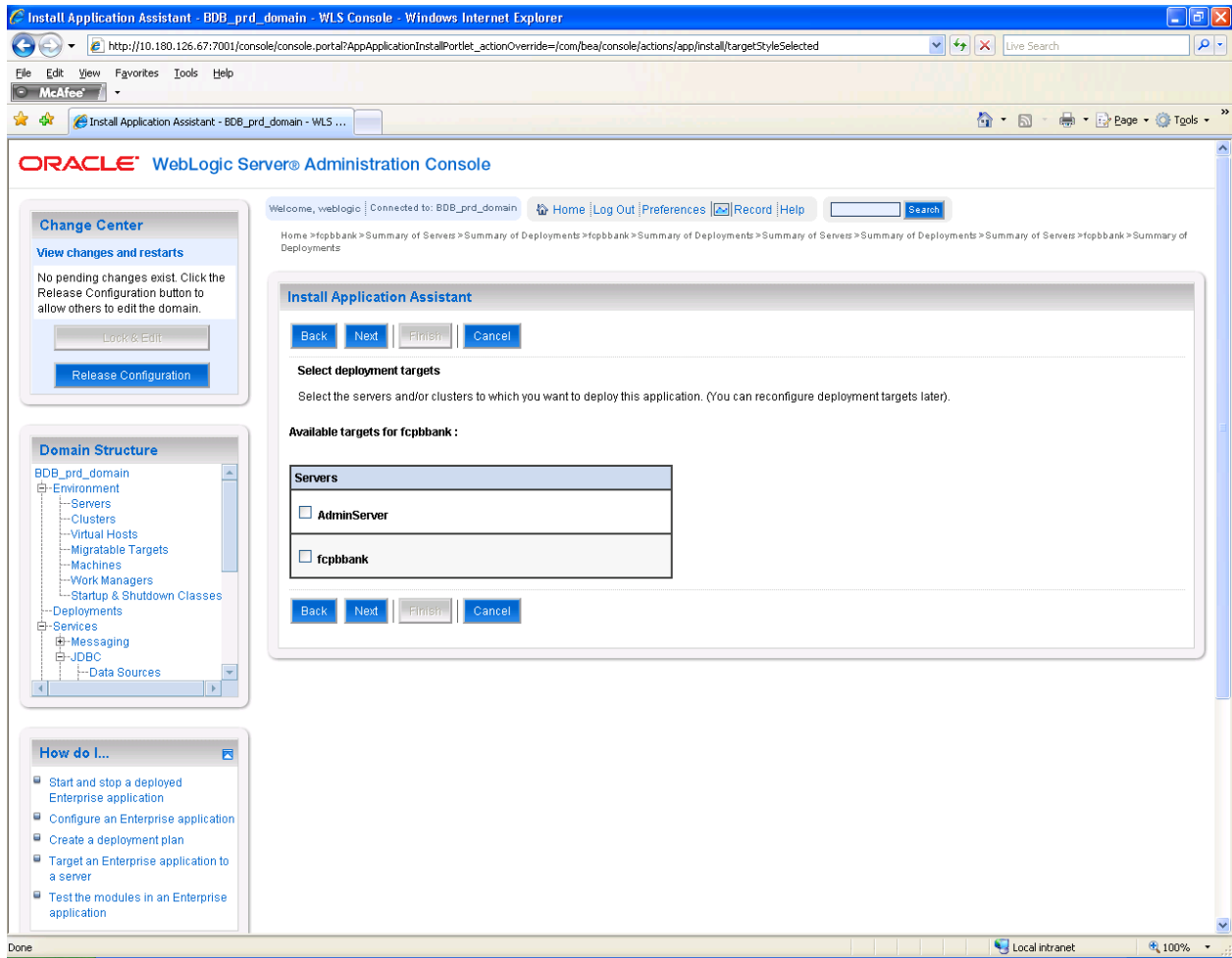


Figure2.49 Binding Managed Server

Click on the Managed Server on which the application needs to be deployed

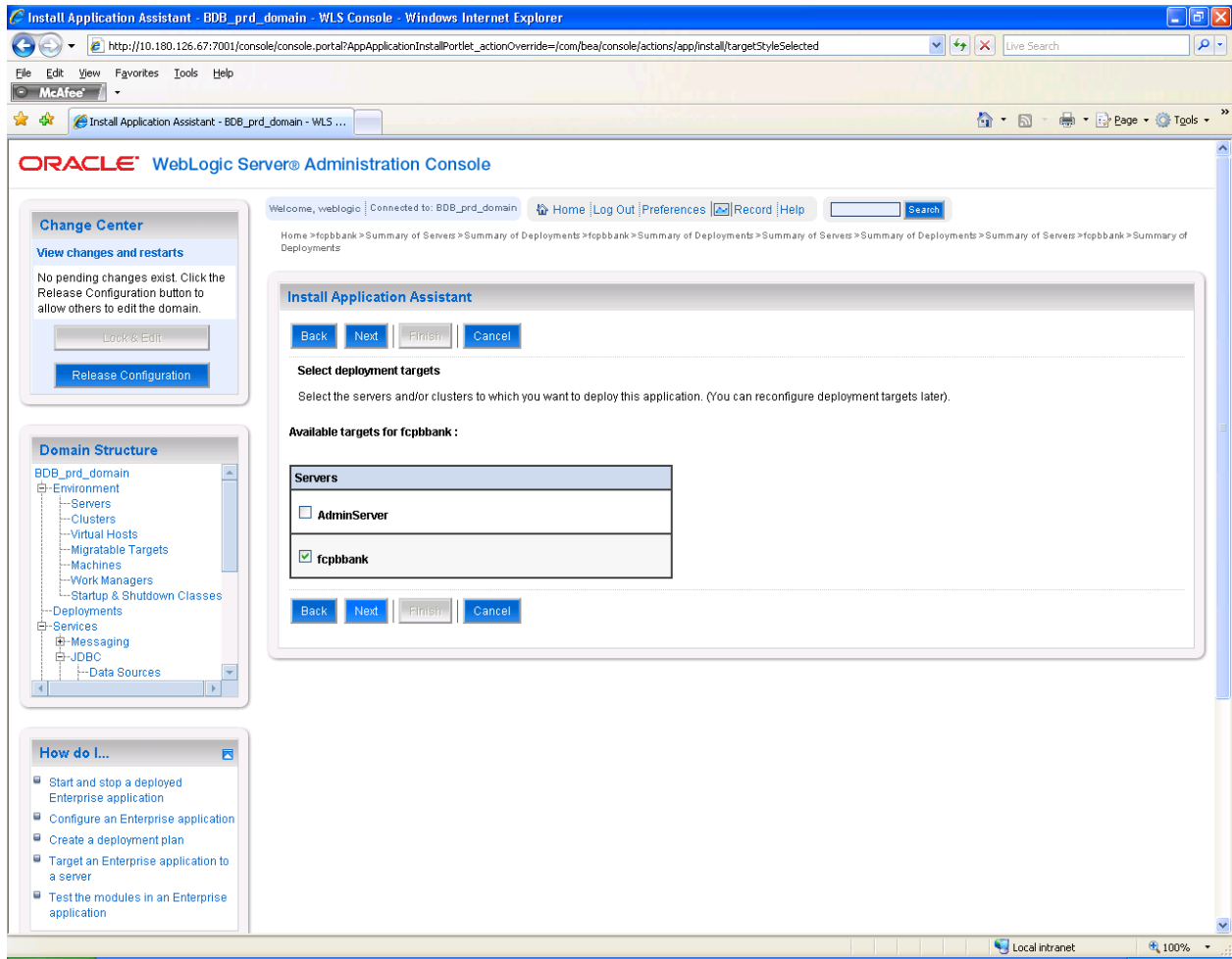


Figure2.50 Binding Managed Server

click on **NEXT**

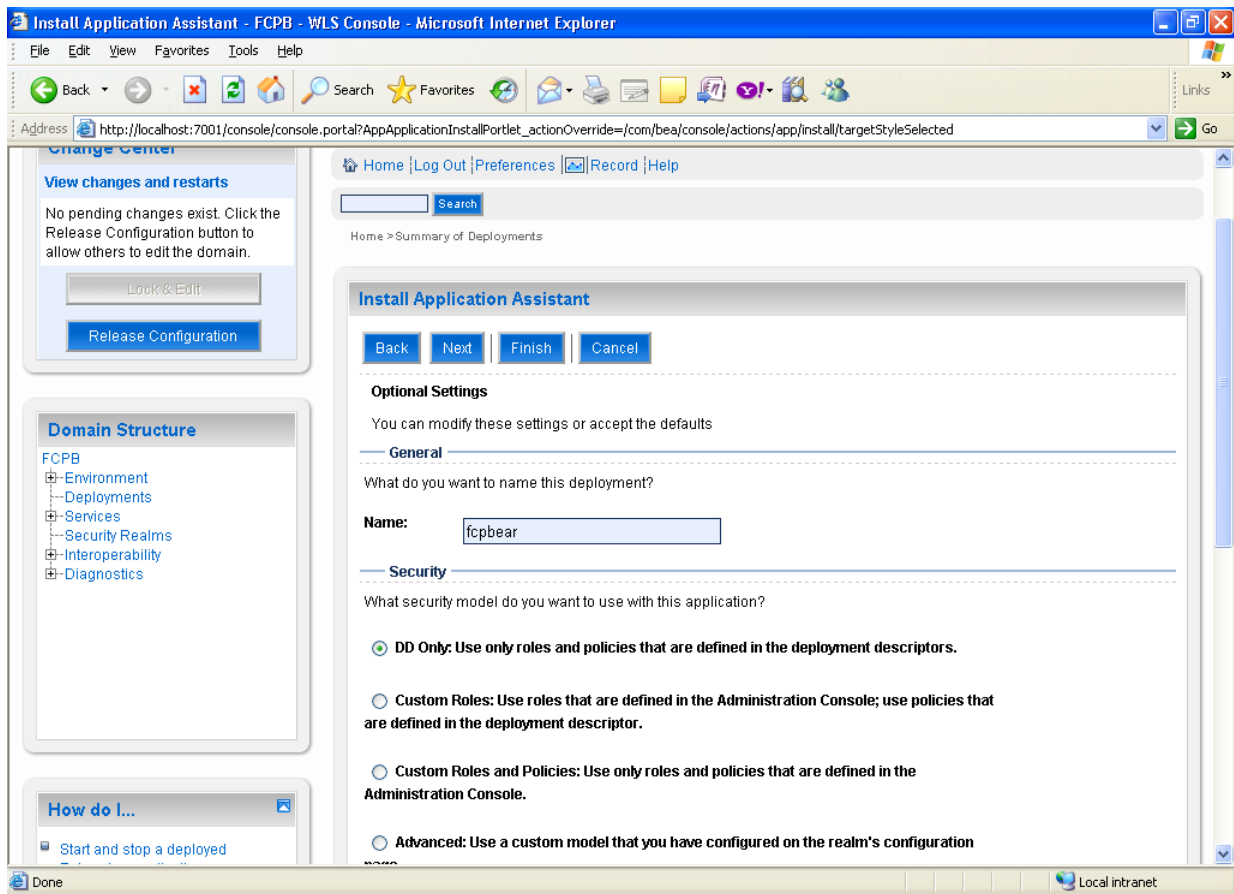


Figure2.51 Deployment Name

Enter the Deployment Name and click on **NEXT**

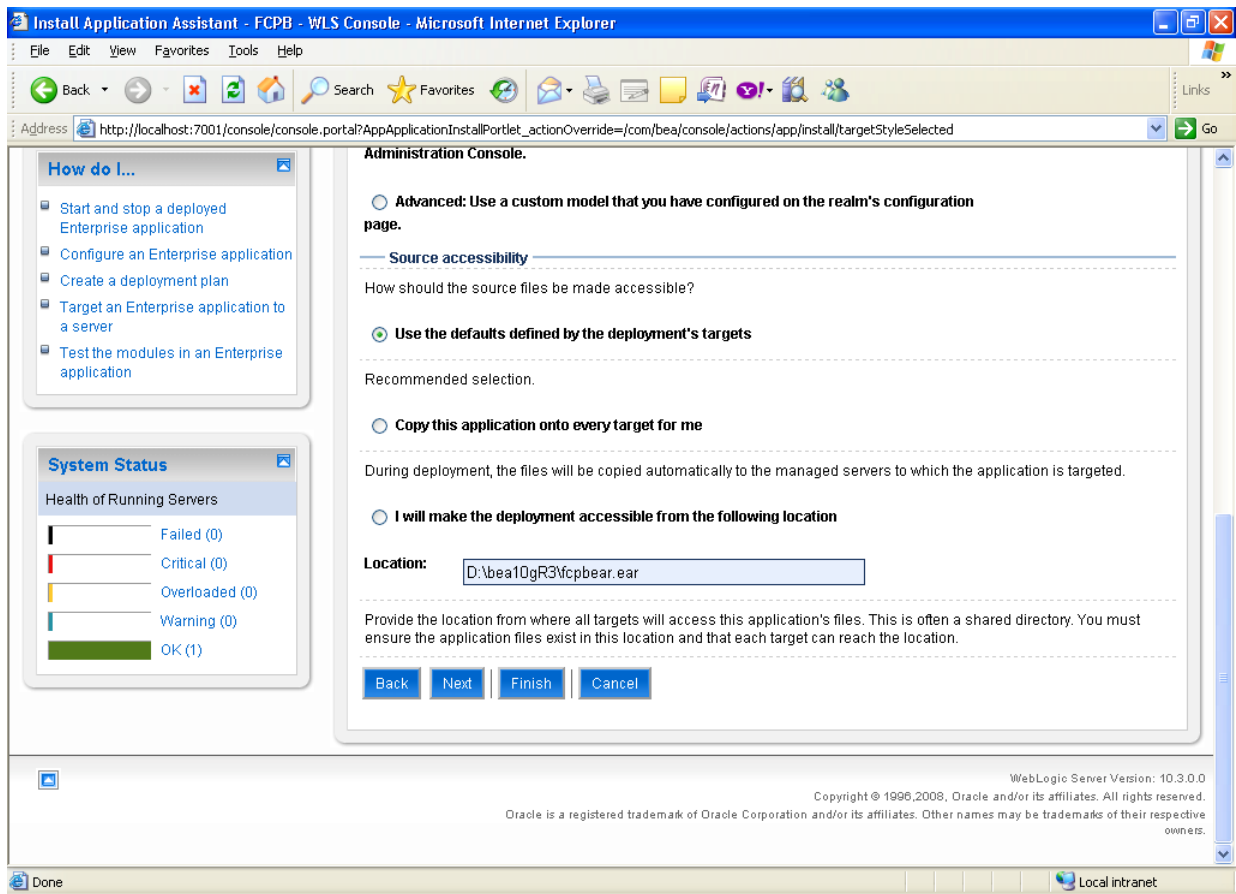


Figure2.52 Installation of Application

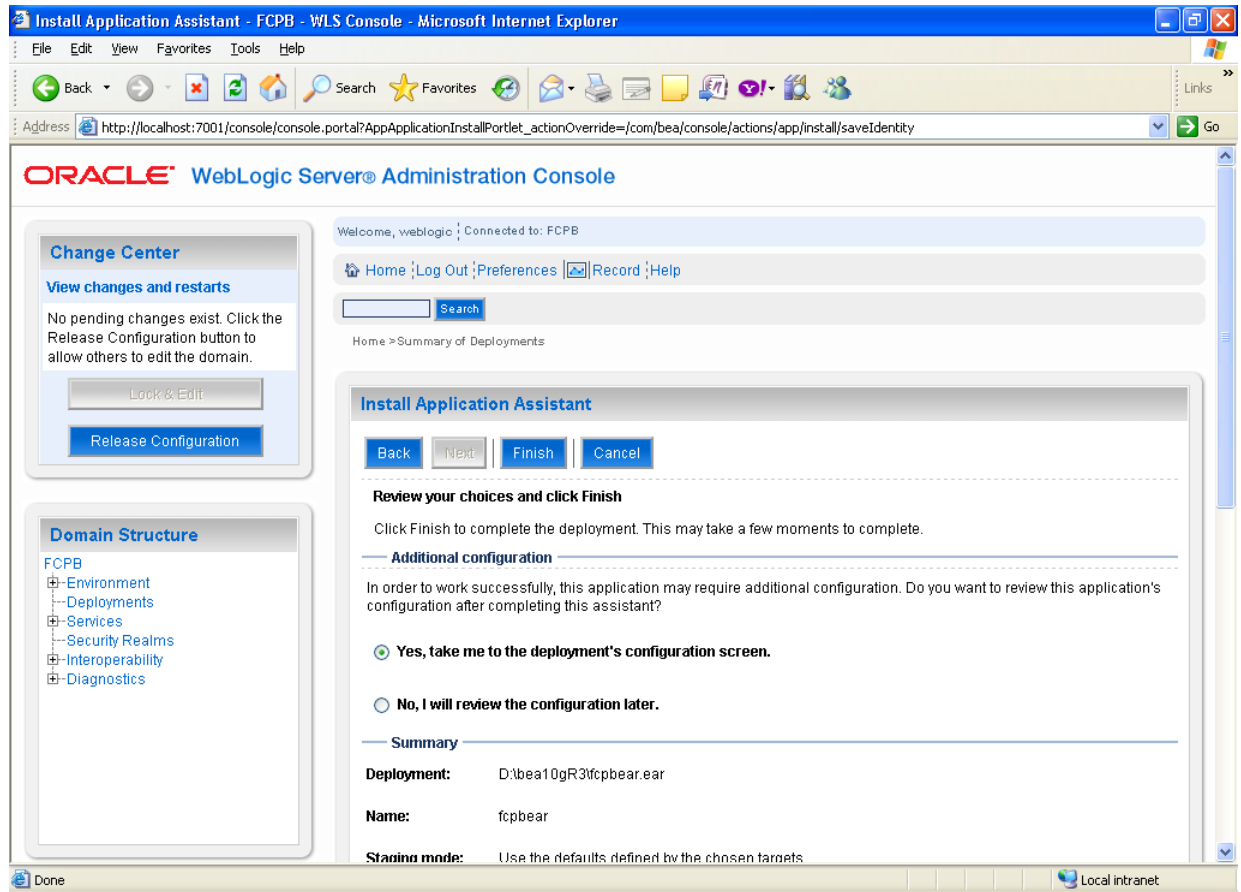


Figure2.53 Installation of Application

Don't change any settings and click **FINSH**

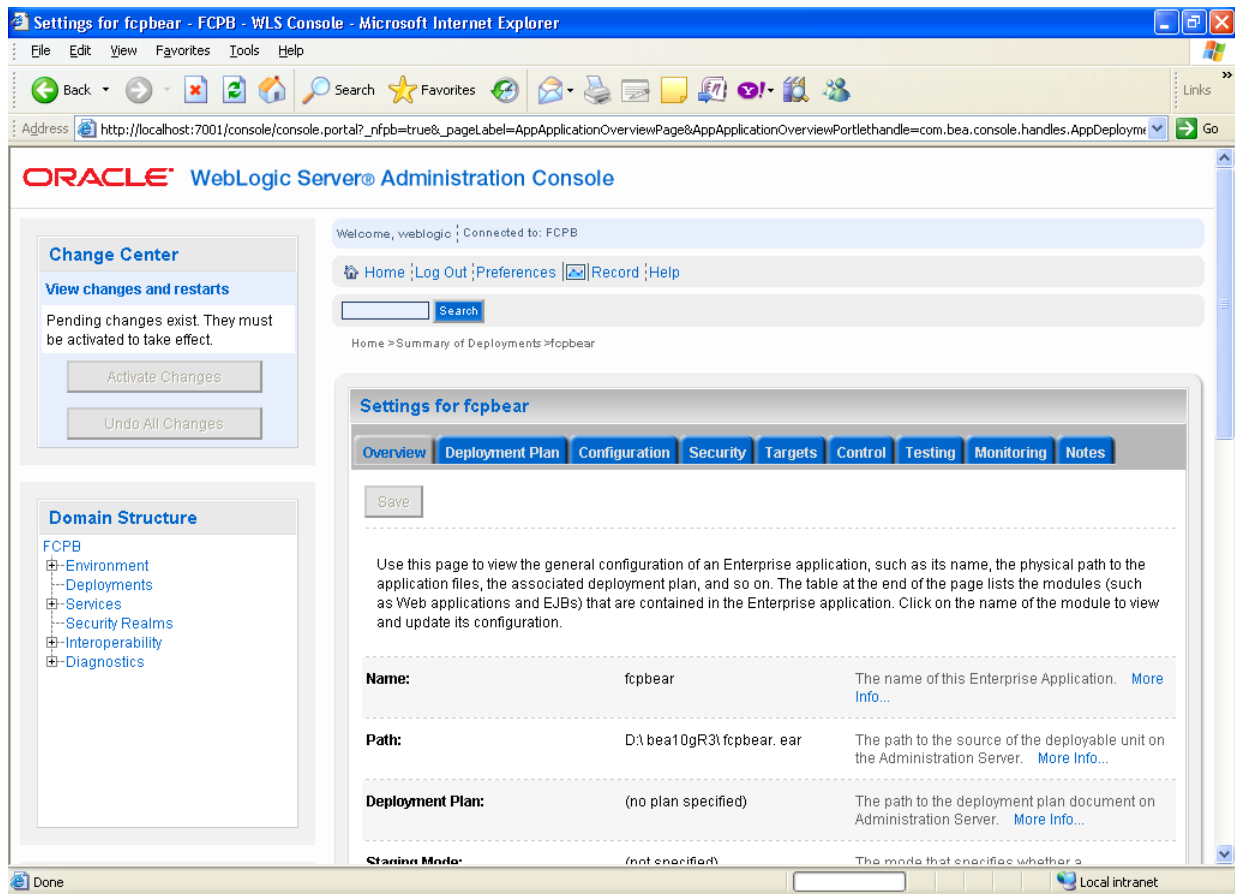


Figure 2.54 Complete Installation

Click on “**Activate Changes**” to save the installation of application

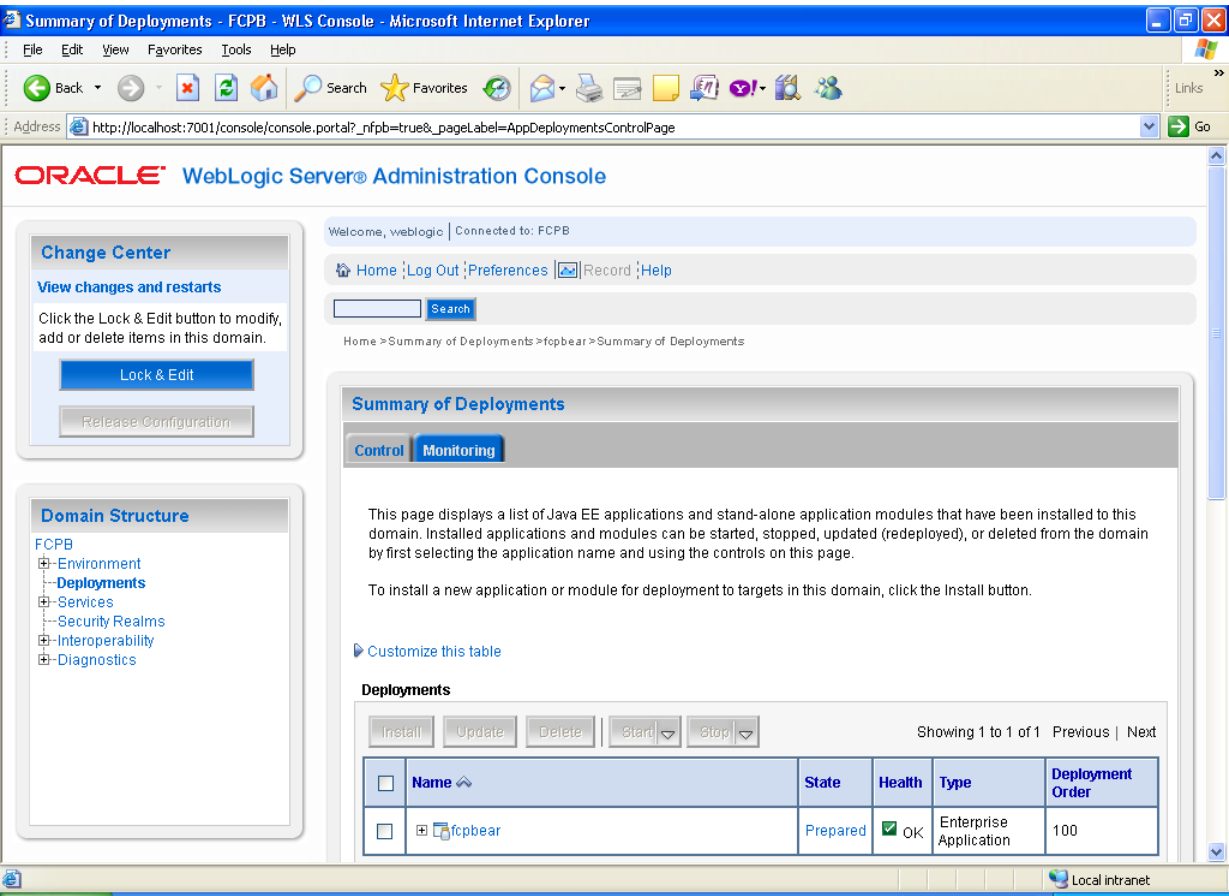


Figure2.55 Complete Installation

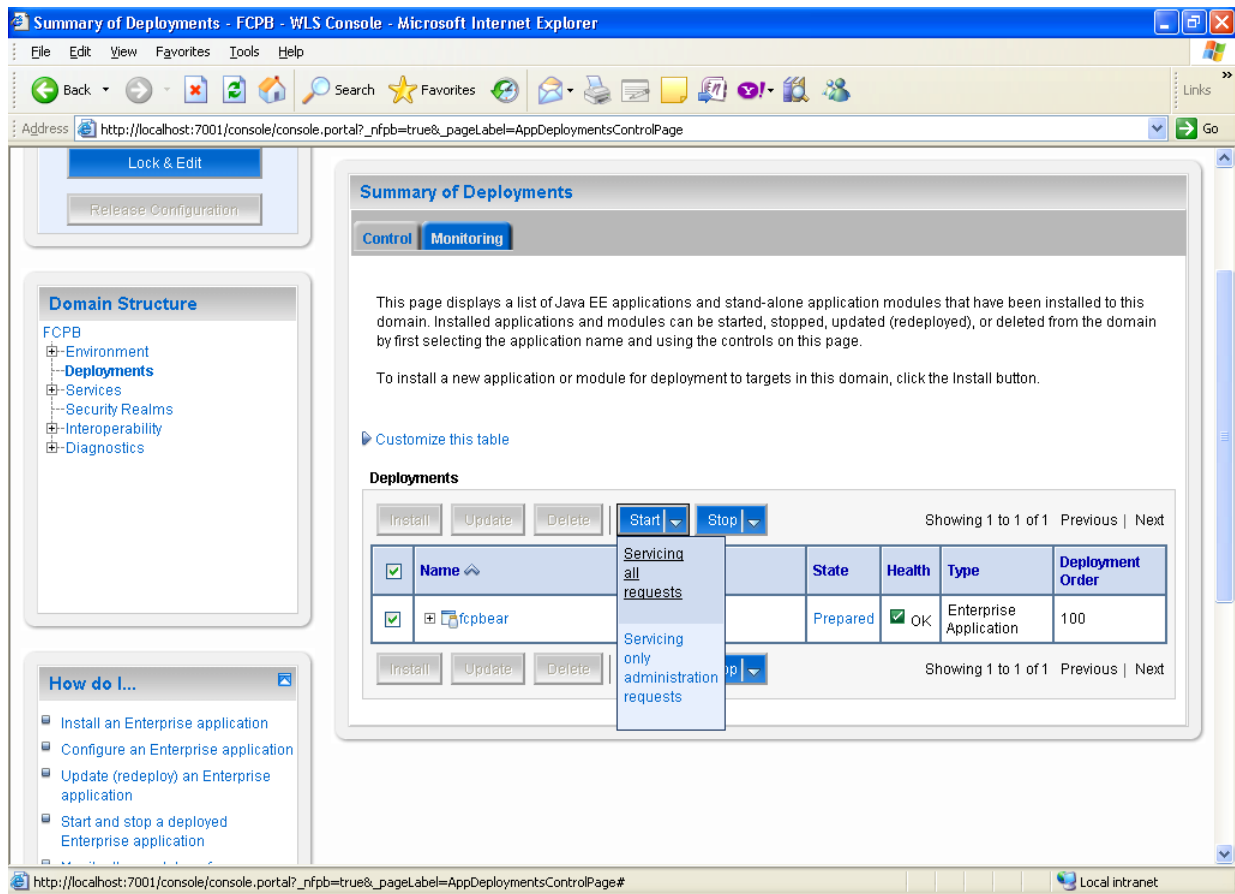


Figure2.56 Start Application

Select application and click on **start Servicing all requests**

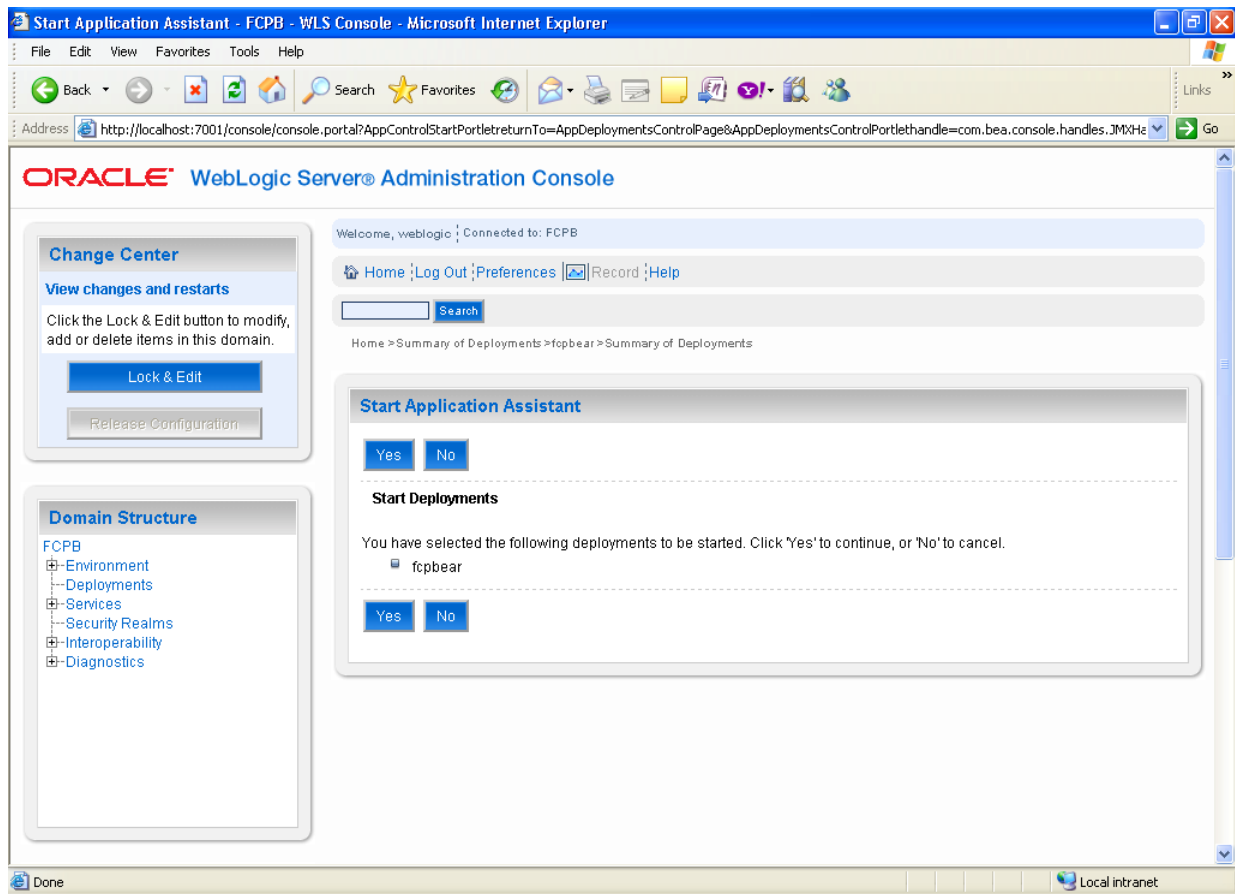


Figure2.57 Processing of start Application

Click on **YES** this will deploy the application, it will take 3 to 4 minutes to deploy the application

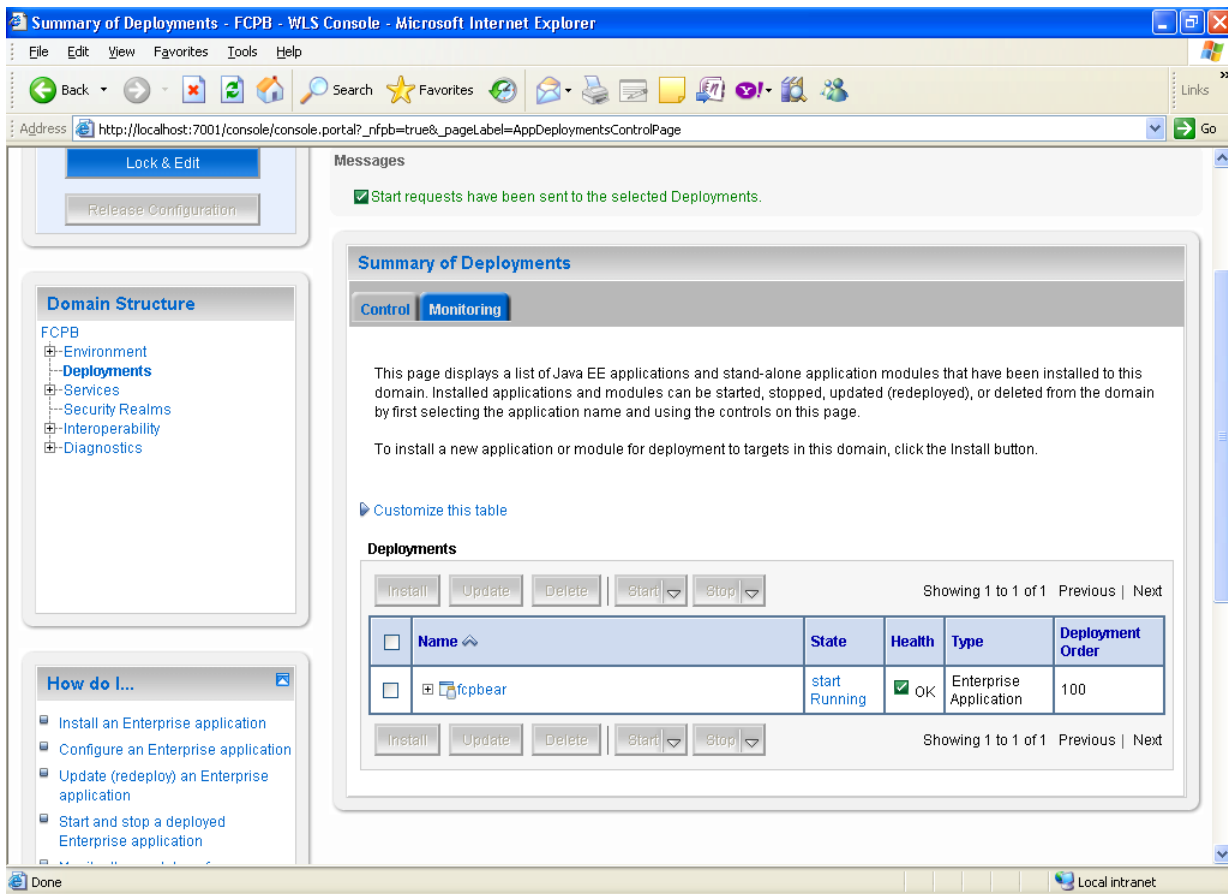


Figure2.58 Deployment in process

Once Deployment is complete the state of application will become **active** as shown in screen below

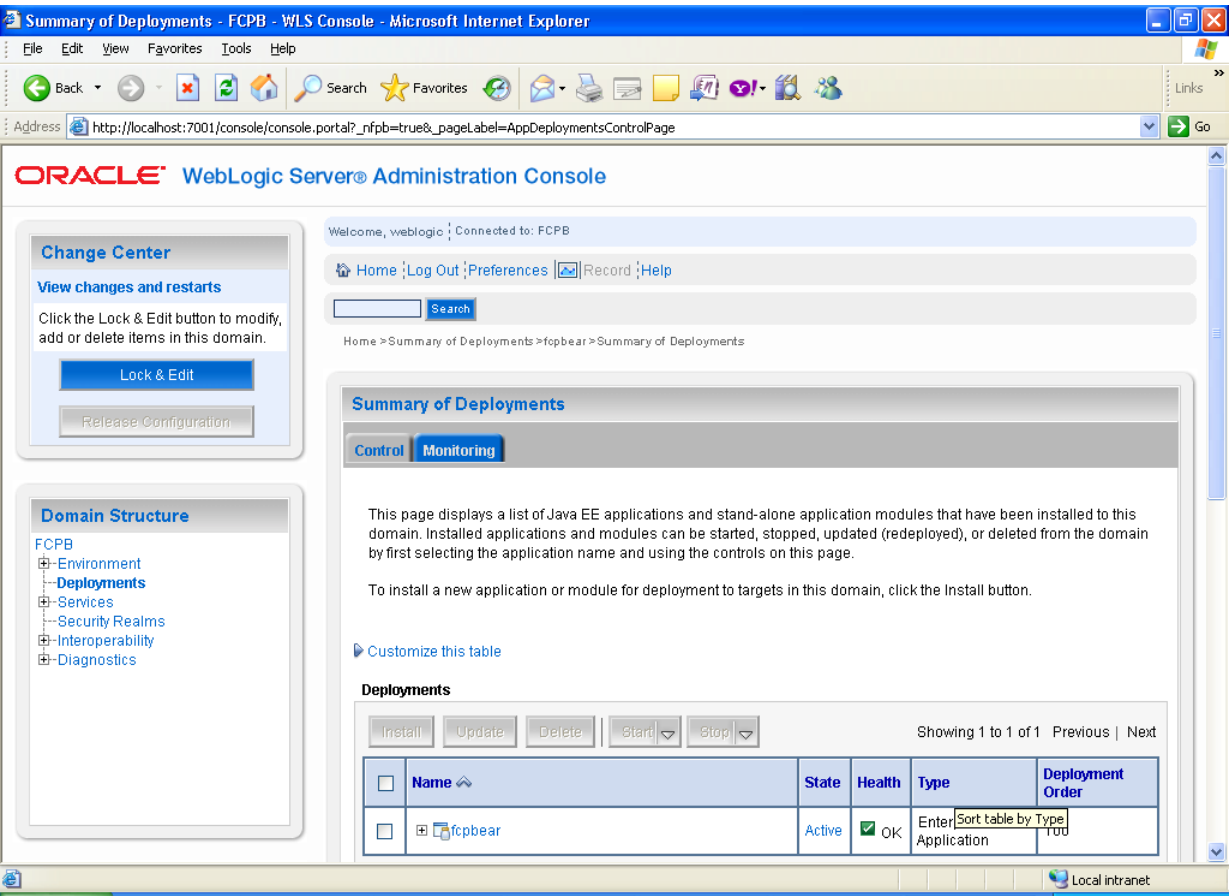


Figure2.59 Deployment in Completed

- To test the Deployed application

Open internet explorer and type the following URL in address

<http://localhost:7001/fcpbbank/>

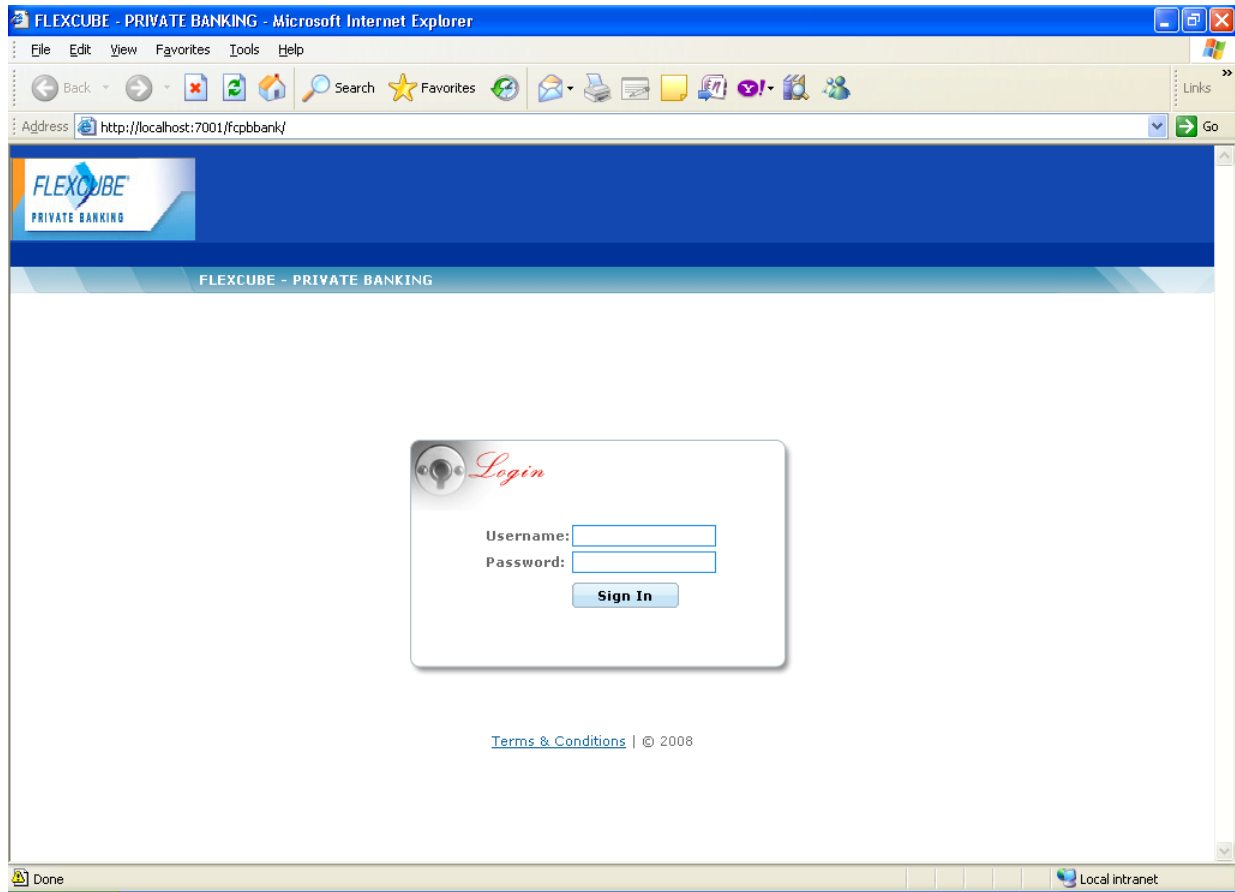


Figure2.60 Product Login Page