

.....**Oracle FLEXCUBE Universal Banking® 11.3**
.....**Data Model - Getting Started**
Release 1.0

May 2011

Oracle Part Number E51536-01



Contents

1	Preface.....	3
1.1	Audience	3
2	Introduction.....	3
2.1	What is in this guide.....	3
2.2	Why reverse engineering.....	3
3	FLEXCUBE UBS Data Model – getting started.....	3
3.1	FLEXCUBE UBS Data model schema	3
3.2	Oracle SQL Developer Data Modeler	4
4	Creating Data Model and ER diagram	4

1 Preface

Oracle FLEXCUBE Universal Banking Software – Data model – Getting started document describes the method to create data model for application business extensibility purpose.

1.1 Audience

This guide is intended for FLEXCUBE Application developers who need to understand the FLEXCUBE UBS data model

2 Introduction

2.1 What is in this guide

This document describes the reverse engineering methodology to get the FLEXCUBE UBS data model for a given business purpose. A given business purpose could vary from report generation to data extraction to extending FLEXCUBE application functionality.

2.2 Why reverse engineering

As the complete ER diagram of FLEXCUBE UBS application would be huge, the business application developers need to re-engineer with required filtered portion of FLEXCUBE UBS to get specific portion of data model.

Example:

There is a business requirement to add additional fields to customer personal information. The business developer could filter the Customer specific entities from FLEXCUBE UBS Database schema and generate the ER diagram. This ER diagram further can be used to understand the FLEXCUBE UBS and can be foundation for further business development requirement.

3 FLEXCUBE UBS Data Model – getting started

3.1 FLEXCUBE UBS Data model schema

1. Follow the below steps to get the Oracle FLEXCUBE UBS Data model schema.
 - a. Identify the new Oracle Database schema for data model purpose.
 - b. Create the FLEXCUBE UBS database tables by running all the DDL scripts in below folder at the schema identified.
 - FC_UBS_V.UM_11.3.0\MAIN\DATABASE\HOST\CONSOL\DDL\TABLE

- FC_UBS_V.UM_11.3.0\MAIN\DATABASE\BRANCH\CONSOL\DDL\TABLE
 - FC_UBS_V.UM_11.3.0\MAIN\DATABASE\EL\CONSOL\DDL\TABLE
- c. Create Foreign Keys in schema using following scripts at the schema identified.
- FC_UBS_V.UM_11.3.0\MAIN\DATABASE\DATAMODEL\FKR
- d. Create column comments using below scripts at the schema identified.
- FC_UBS_V.UM_11.3.0\MAIN\DATABASE\DATAMODEL\CMT

Note: The Database environment used for this data model cannot be used for other testing/production purpose.

2. You can get the data model PDF documents from below folders for each module that data model is shipped.
- FC_UBS_V.UM_11.3.0\MAIN\DATABASE\DATAMODEL\PDF

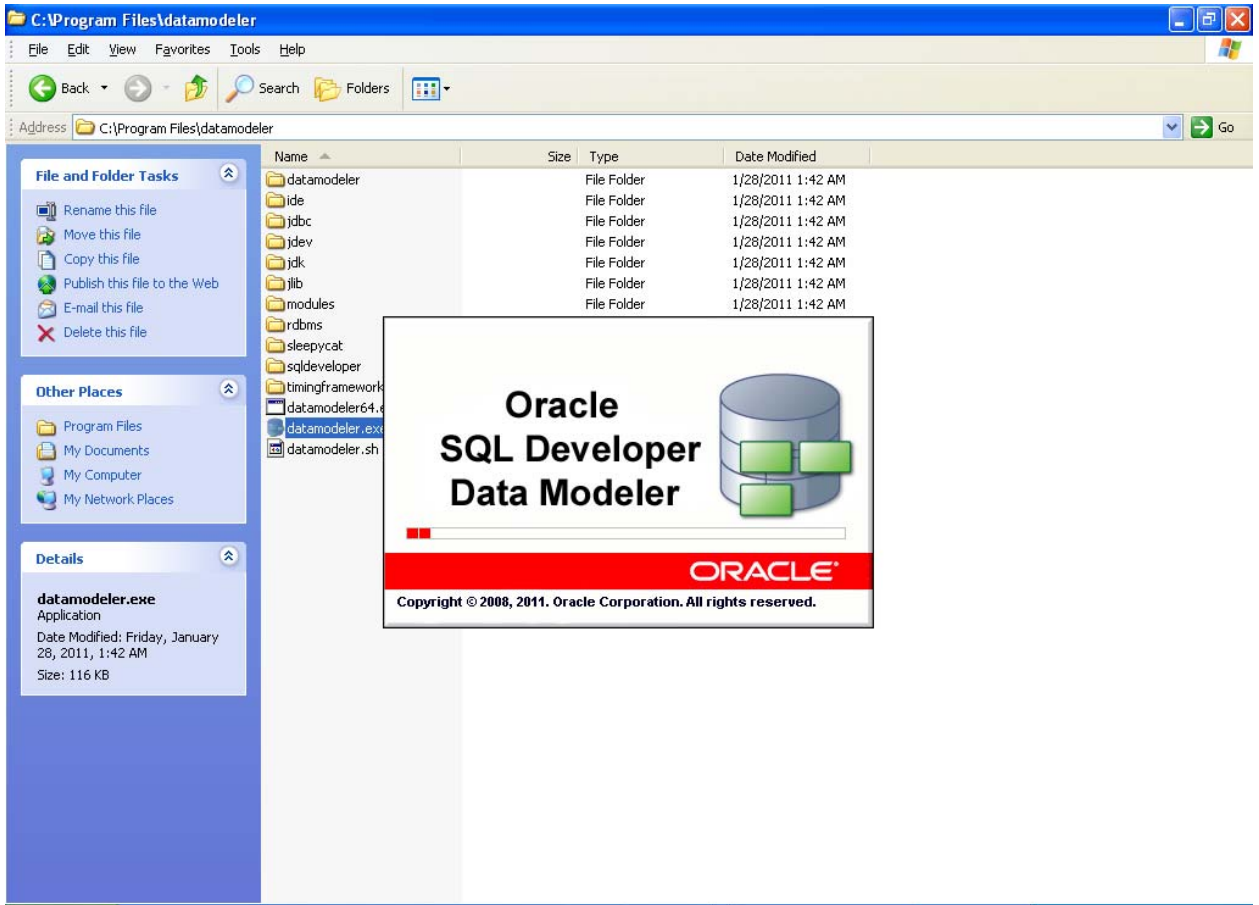
3.2 Oracle SQL Developer Data Modeler

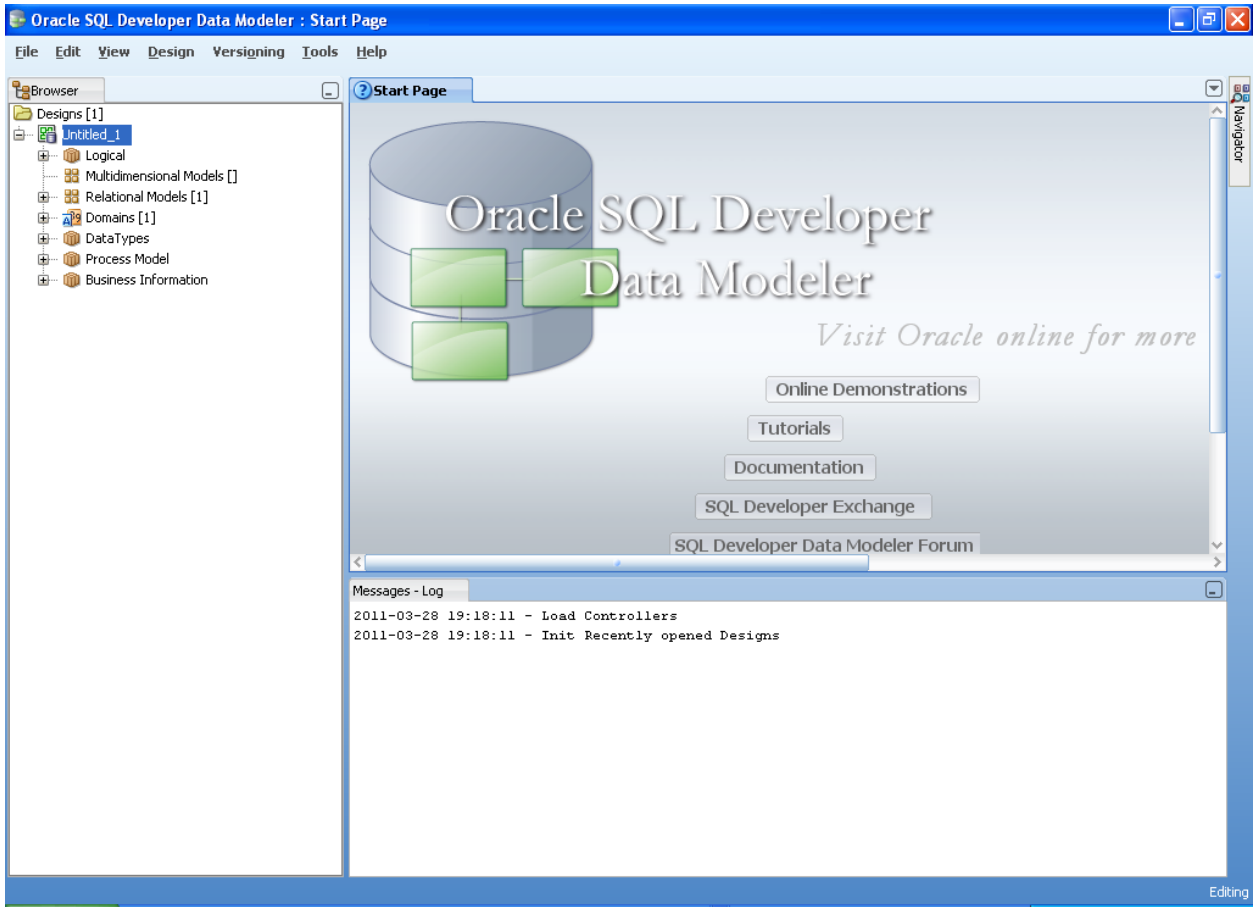
Ensure you have installed the Oracle SQL Developer Data model in your local system. Refer further Oracle documentation for download and install instructions.

<http://www.oracle.com/technetwork/developer-tools/datamodeler/downloads/index.html>

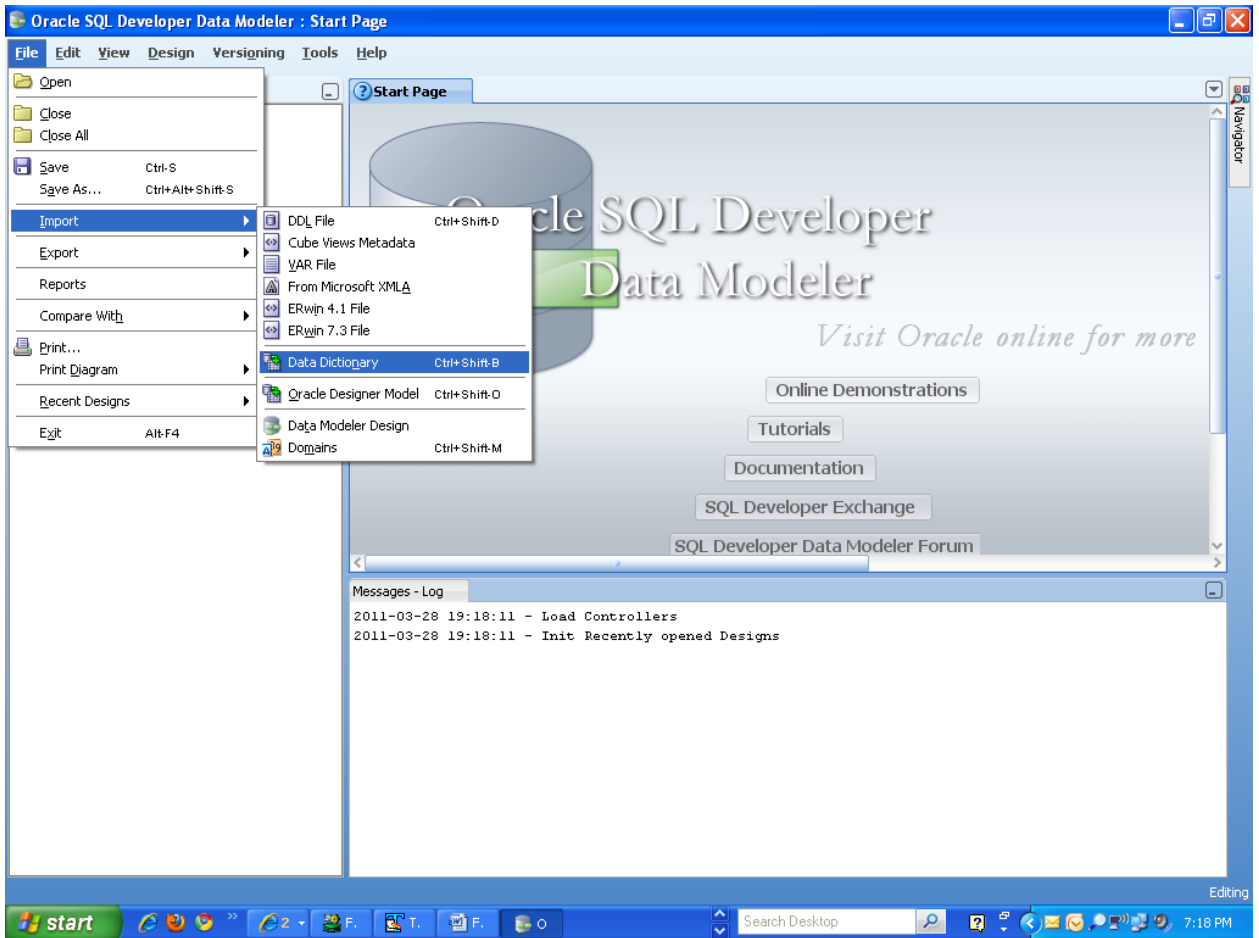
4 Creating Data Model and ER diagram

1. Open the Oracle SQL Developer Data modeler

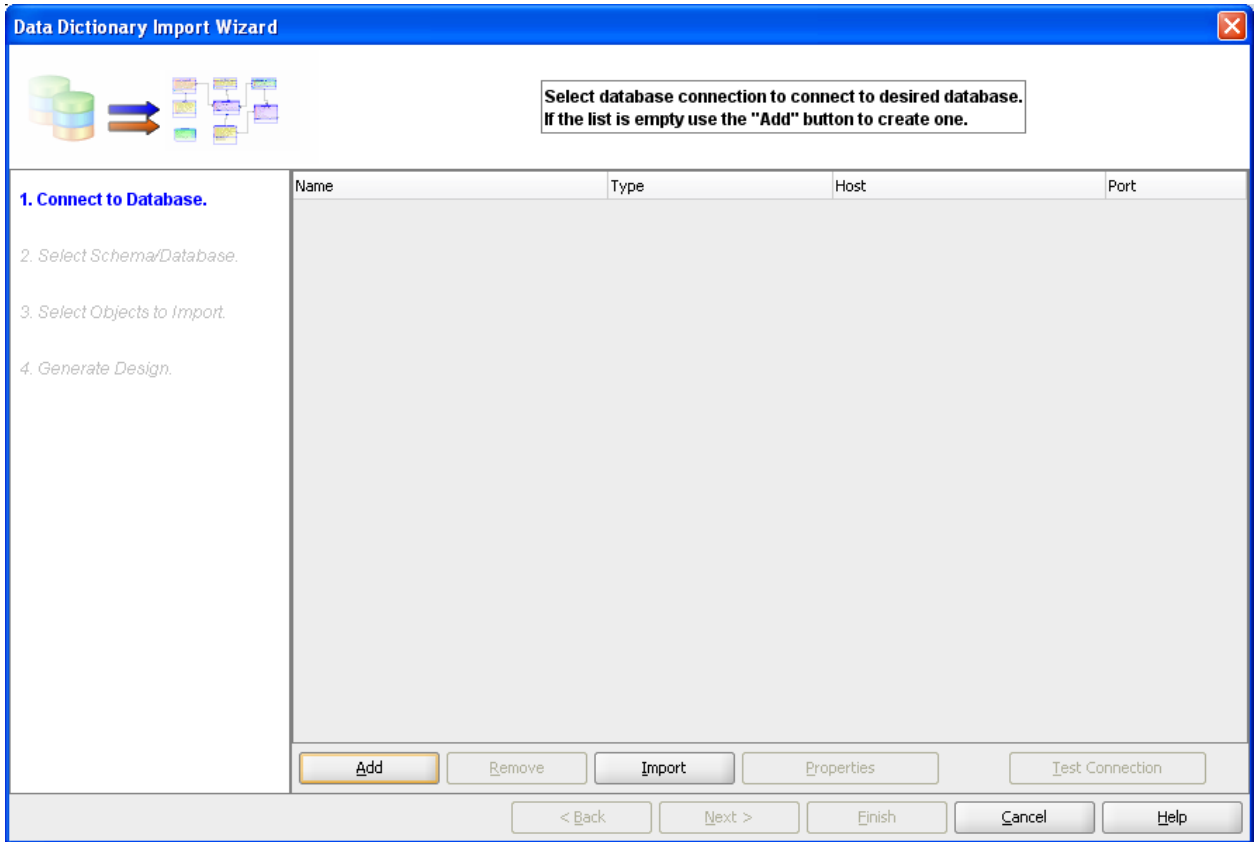




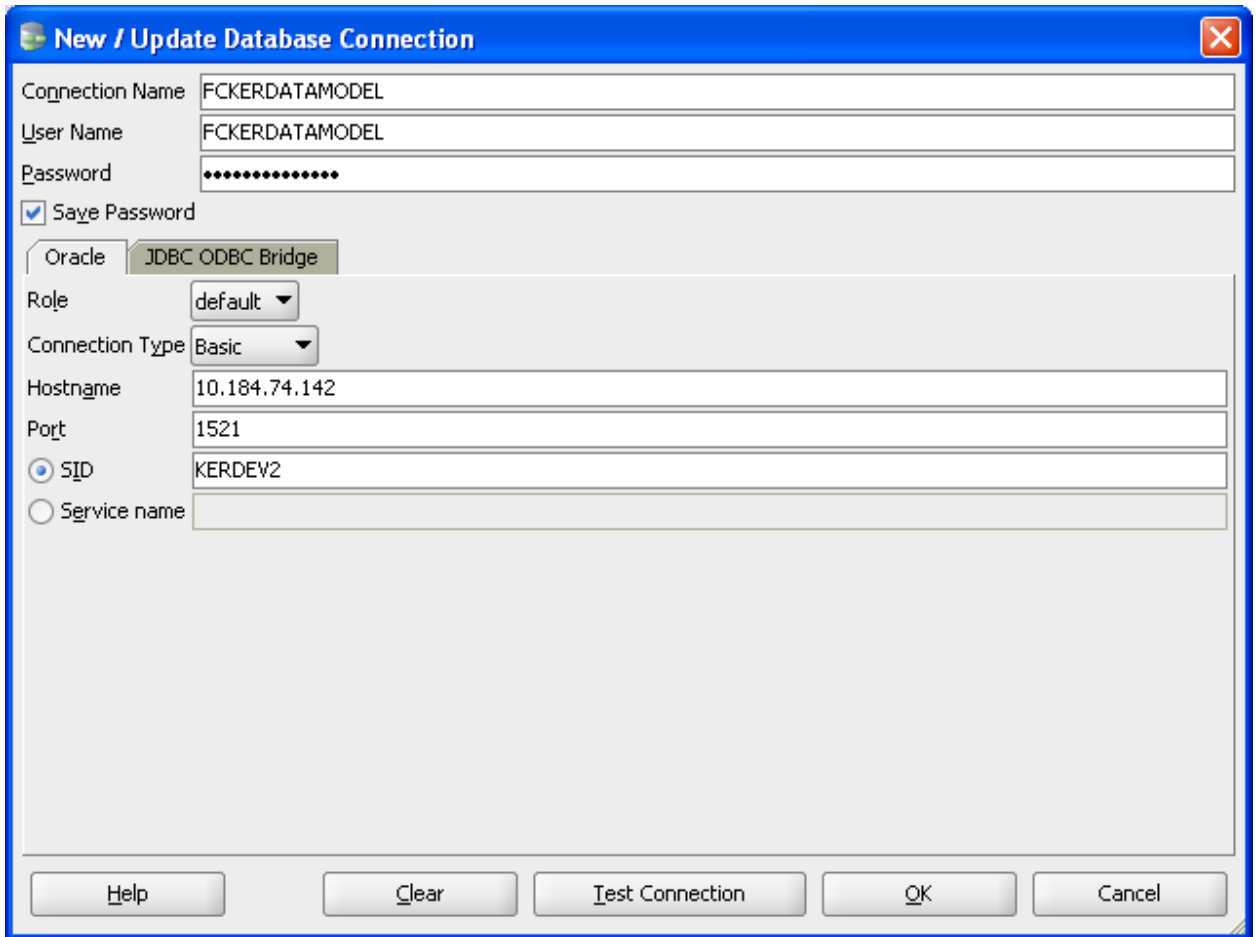
2. Click **File** → **Import** → **Data dictionary**



3. Click **Add**



4. Provide the **database connectivity** parameters



New / Update Database Connection

Connection Name: FCKERDATAMODEL

User Name: FCKERDATAMODEL

Password:

Save Password

Oracle JDBC ODBC Bridge

Role: default

Connection Type: Basic

Hostname: 10.184.74.142

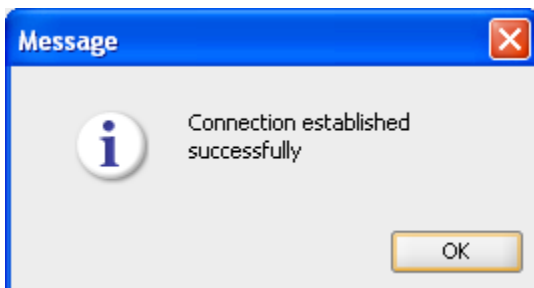
Port: 1521

SID: KERDEV2

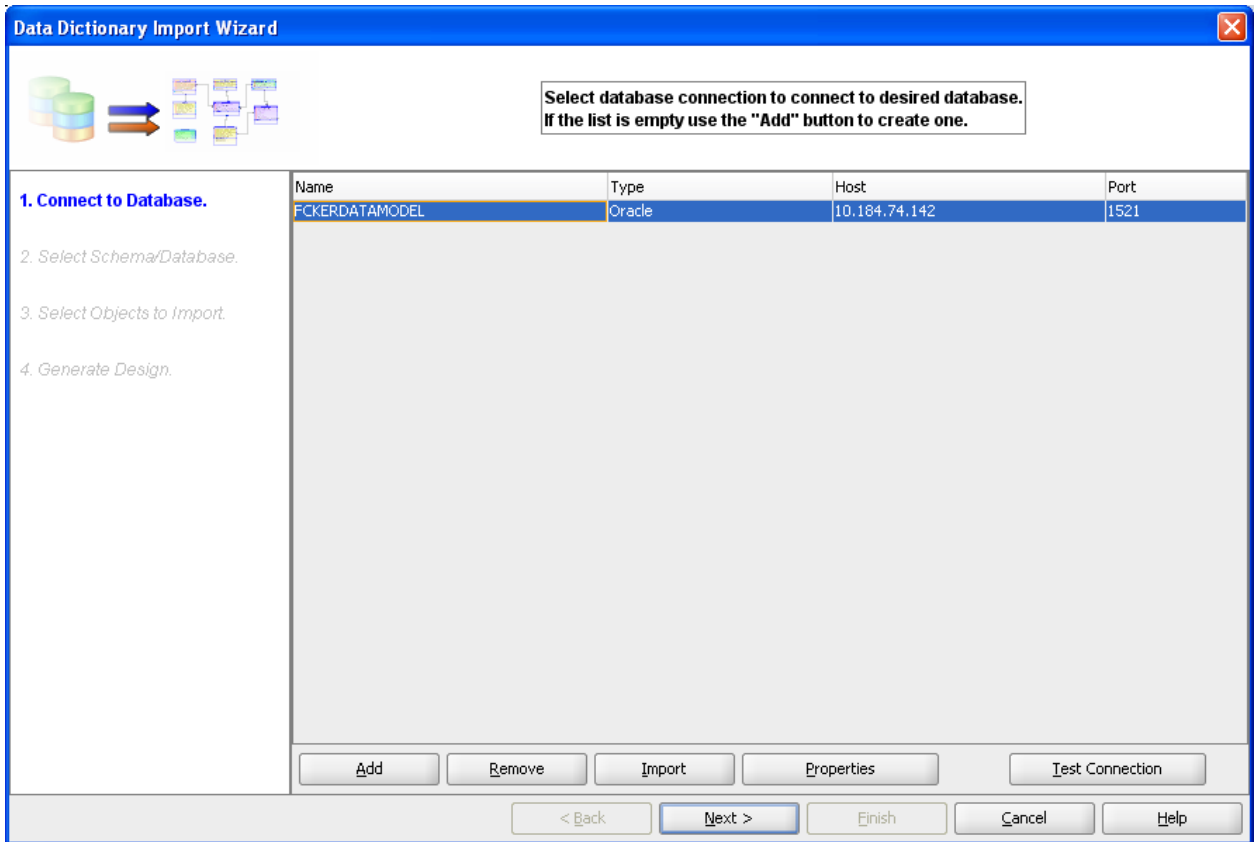
Service name:

Buttons: Help, Clear, Test Connection, OK, Cancel

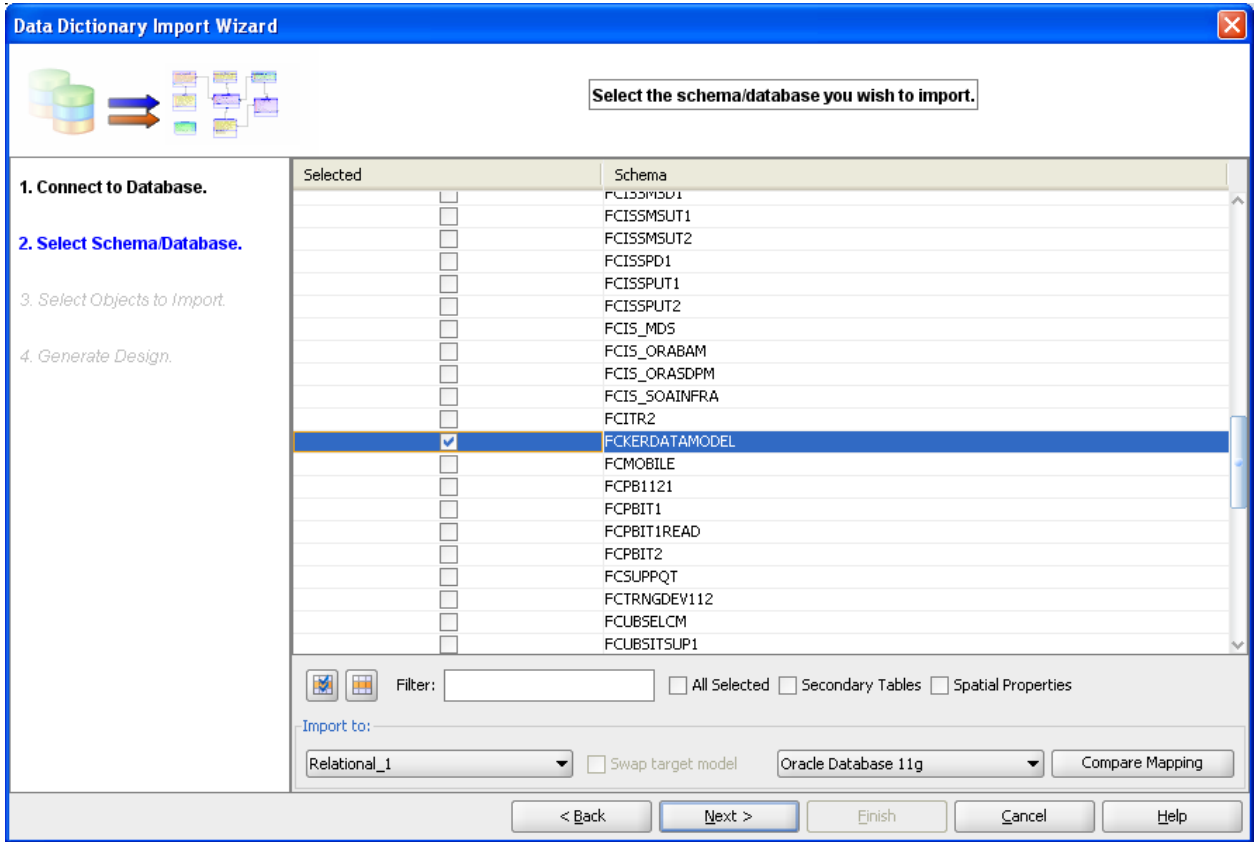
5. Click **Test Connection** and ensure it is successful. If connection fails, verify and repeat step 4



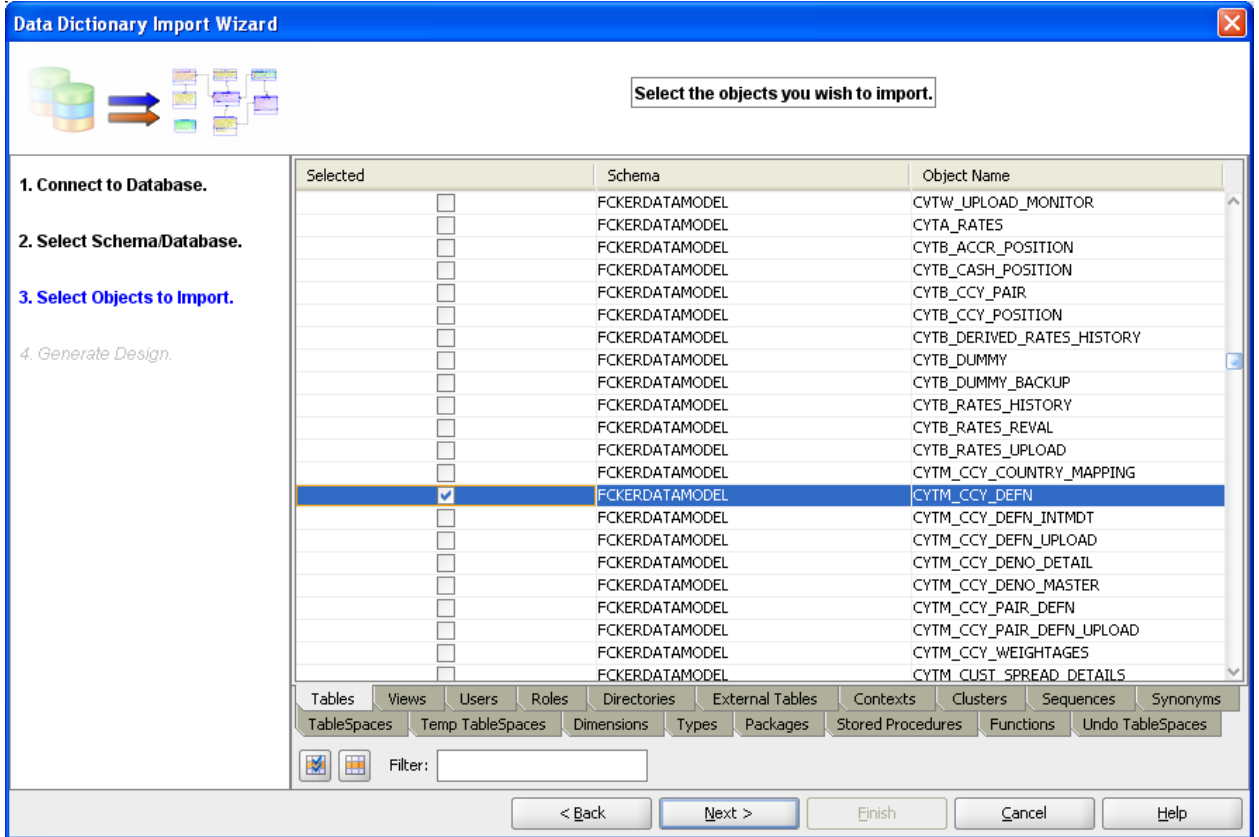
6. Click database connection row

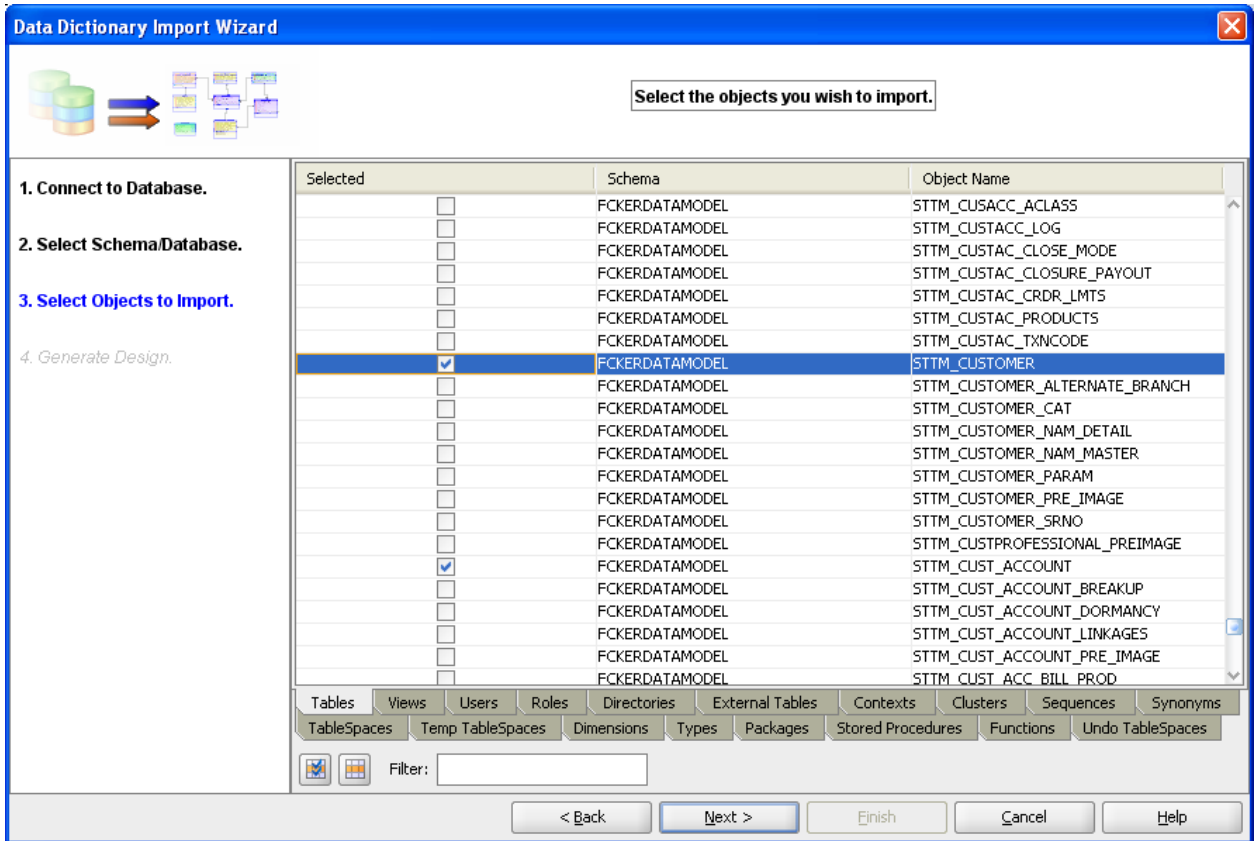


8. Select the database Schema name

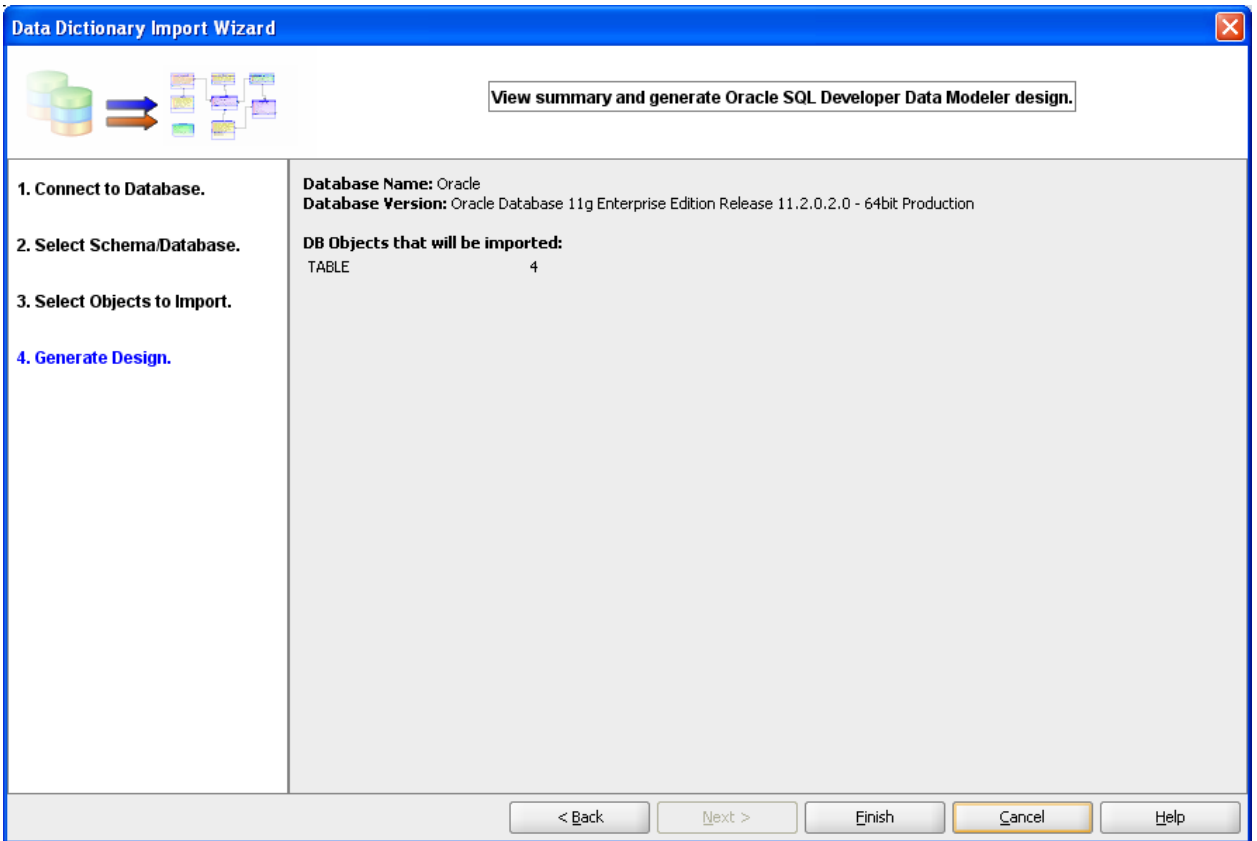


- Select the entities(tables) that are to be used in ER diagram

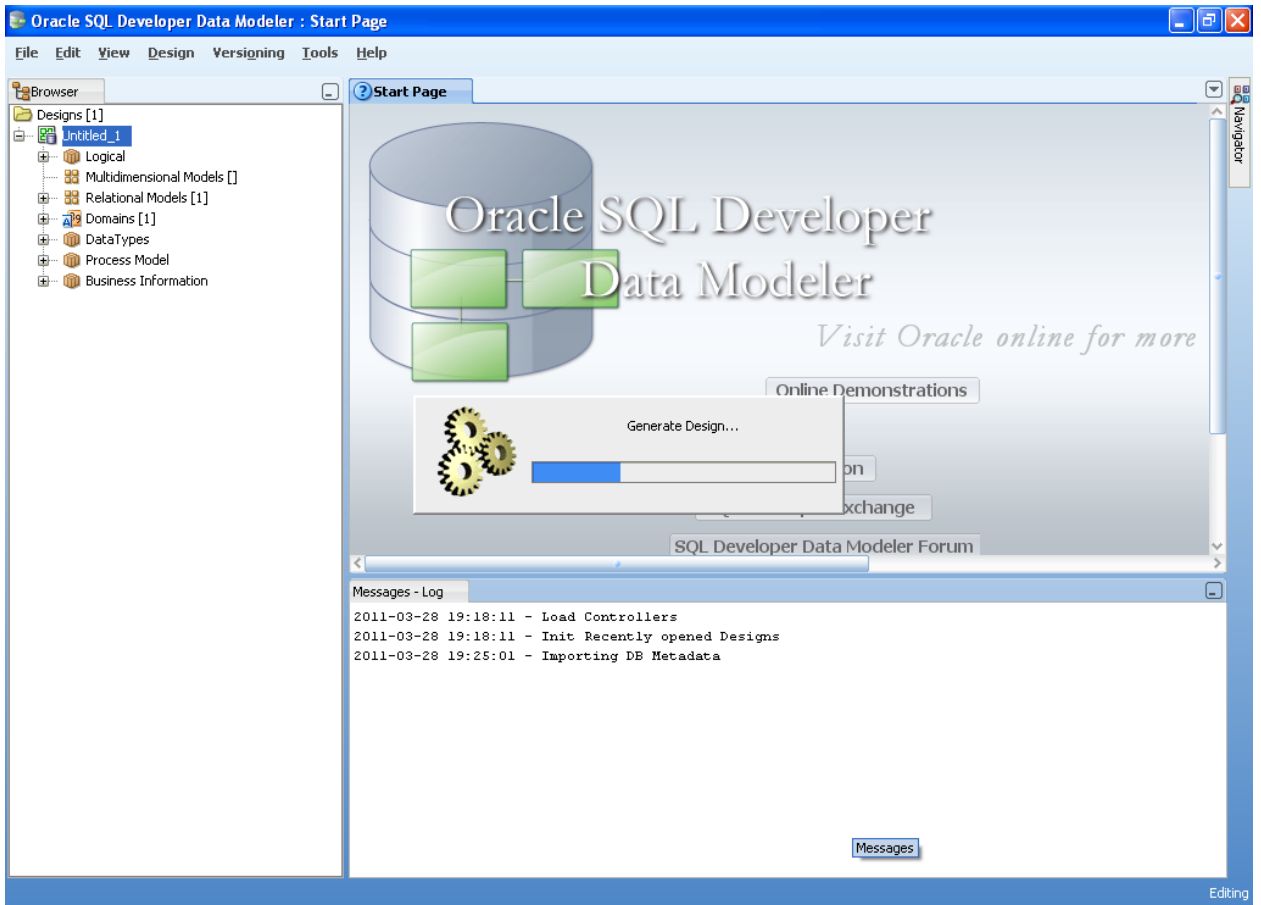


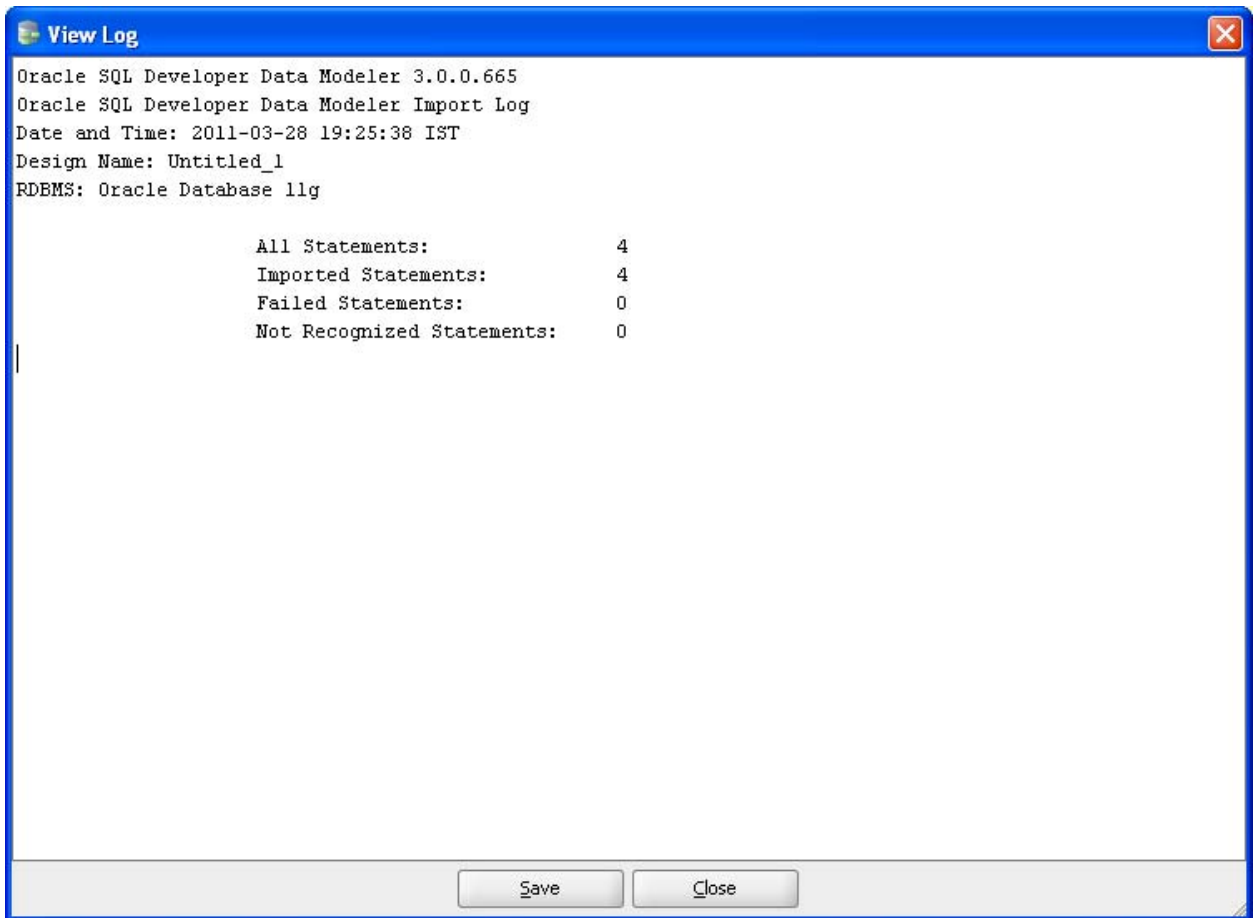


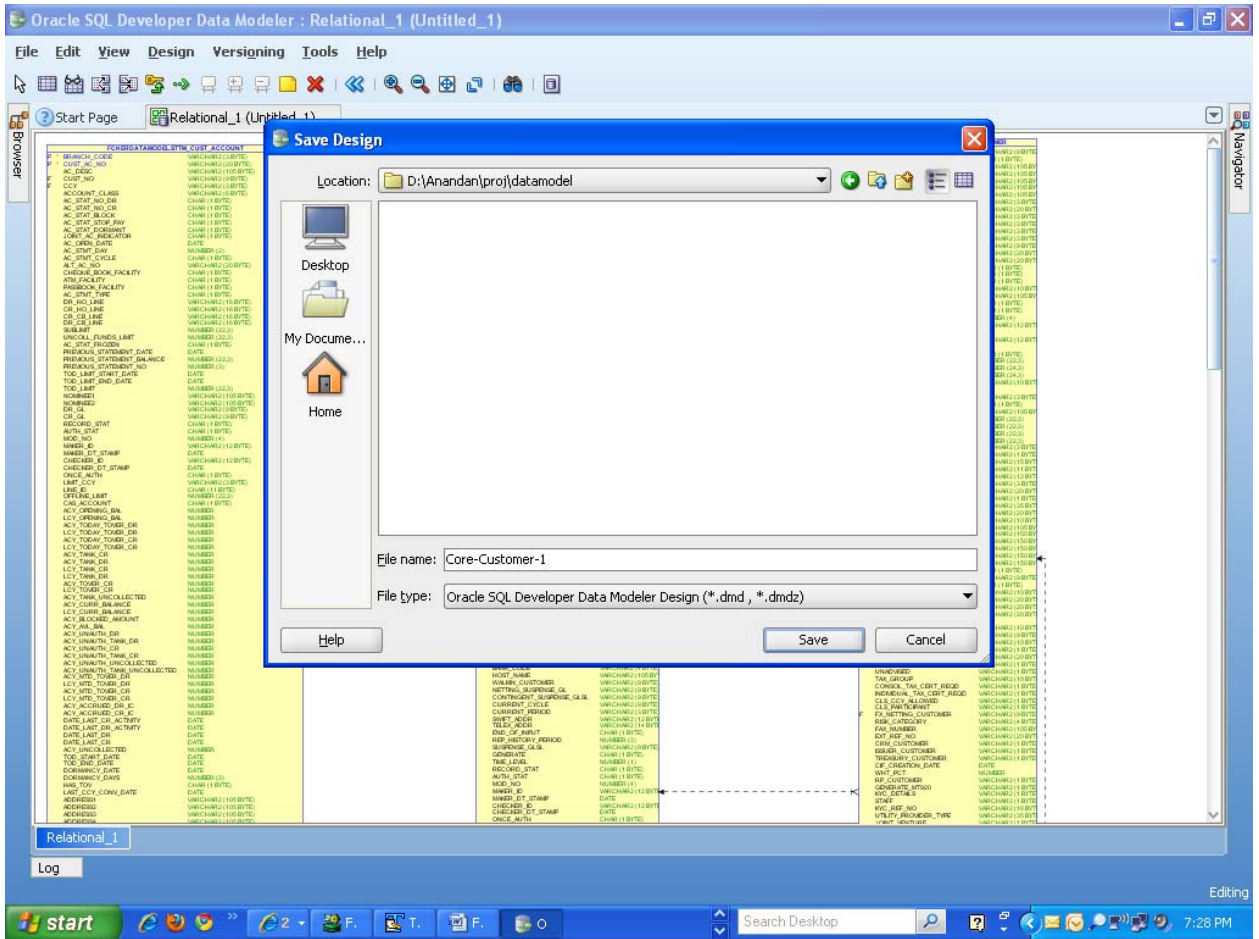
10. Click Next



11. Click **Finish**







Oracle SQL Developer Data Modeler : Relational_1 (Core-Customer-1)

File Edit View Design Versigning Tools Help

Start Page Relational_1 (Core-Customer-1)

Browser

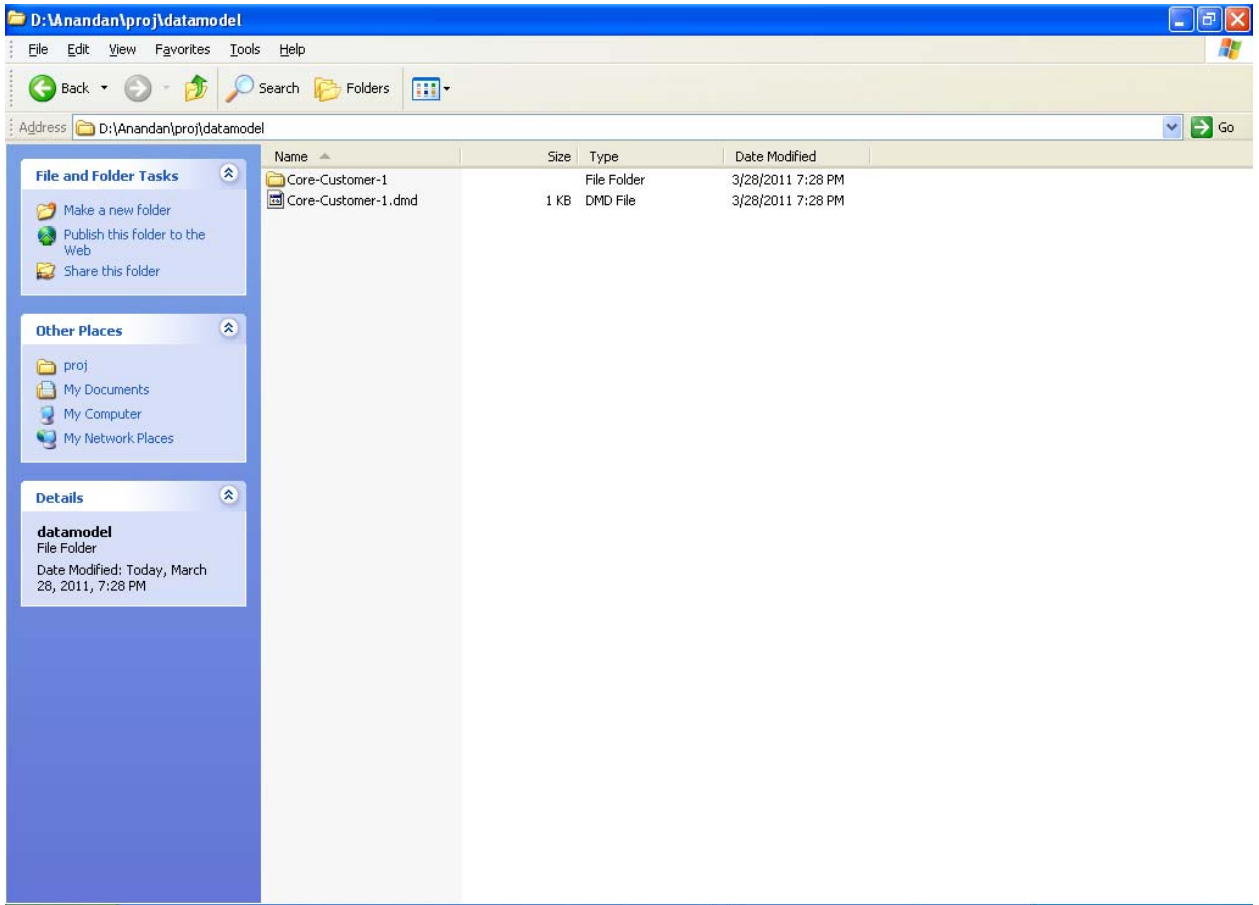
FCUBSDATABANK_VTM_CUST_ACCOUNT	FCUBSDATABANK_VTM_CCV_CODE	FCUBSDATABANK_VTM_CUSTOMER
BRANCH_CODE VARCHAR2(3 BYTE)	CCV_CODE VARCHAR2(3 BYTE)	CUSTOMER_CODE VARCHAR2(3 BYTE)
AC_DESC VARCHAR2(150 BYTE)	COUNTRY VARCHAR2(3 BYTE)	CUSTOMER_TYPE CHAR(1 BYTE)
CUST_NO VARCHAR2(150 BYTE)	CCV_DESC VARCHAR2(30 BYTE)	CUSTOMER_NUMBER VARCHAR2(150 BYTE)
ACCOUNT_CLASS VARCHAR2(30 BYTE)	CCV_ROUND_RULE CHAR(1 BYTE)	ADDRESS_LINE1 VARCHAR2(150 BYTE)
AC_STAT_NO_DR CHAR(1 BYTE)	CCV_ROUND_FREQ NUMBER(7,2)	ADDRESS_LINE2 VARCHAR2(150 BYTE)
AC_STAT_BLOCK CHAR(1 BYTE)	CCV_FORMAT_MASK CHAR(1 BYTE)	ADDRESS_LINE4 VARCHAR2(150 BYTE)
AC_STAT_STOP_RAV CHAR(1 BYTE)	CCV_MTH_METHOD NUMBER(1)	BRANCH_NAME VARCHAR2(30 BYTE)
AC_STAT_CASHMENT CHAR(1 BYTE)	RECORD_STAT CHAR(1 BYTE)	NATIONALITY VARCHAR2(30 BYTE)
JOBST_AC_INDICATOR CHAR(1 BYTE)	ONCE_AUTH CHAR(1 BYTE)	LANGUAGE VARCHAR2(30 BYTE)
AC_OPEN_DATE DATE	ALTN_STAT CHAR(1 BYTE)	ORIGINATION_COUNTRY VARCHAR2(30 BYTE)
AC_STAT_SWV NUMBER(2)	MISC_NO NUMBER(4)	LOCAL_BRANCH VARCHAR2(30 BYTE)
AC_STAT_CYCLE CHAR(1 BYTE)	NUMBER_ID VARCHAR2(12 BYTE)	LINE1 VARCHAR2(30 BYTE)
ATL_AC_NO VARCHAR2(20 BYTE)	CHECKER_ID VARCHAR2(12 BYTE)	UNIQUE_ID_NAME VARCHAR2(30 BYTE)
CHECKED_BOOK_FACILITY CHAR(1 BYTE)	DATE DATE	UNIQUE_ID_SUFFIX VARCHAR2(30 BYTE)
ATL_FACILITY VARCHAR2(30 BYTE)	POSITION_CD VARCHAR2(30 BYTE)	FISDIS VARCHAR2(30 BYTE)
PROBACOR_FACILITY CHAR(1 BYTE)	CCV_DUR_TYPE VARCHAR2(30 BYTE)	WHISKEYDLY_UNKNOWN CHAR(1 BYTE)
AL_STAT_TYPE CHAR(1 BYTE)	CCV_TL_LAST NUMBER(2,2)	CUSTOMER_CATEGORIES VARCHAR2(150 BYTE)
DR_HO_LINE VARCHAR2(150 BYTE)	SETTLEMENT_DAYS NUMBER	HO_AC_NO NUMBER(20,2)
CR_CL_LINE VARCHAR2(150 BYTE)	RECORD_FLAG VARCHAR2(10 BYTE)	RECORD_STAT CHAR(1 BYTE)
CR_CE_LINE VARCHAR2(150 BYTE)	CUT_OFF_DATE NUMBER(2)	ACT_STAT CHAR(1 BYTE)
CR_DE_LINE VARCHAR2(150 BYTE)	CUT_OFF_MTH NUMBER(2)	MOD_NO NUMBER(4)
SUBLINE_LIMIT NUMBER(22,3)	ALT_CCV_CODE VARCHAR2(10 BYTE)	NUMBER_ID VARCHAR2(12 BYTE)
UNICAL_FUNDING_LIMIT NUMBER(22,3)	DIR_CONVERTAL_FLAG CHAR(1 BYTE)	NUMBER_DT_STAMP VARCHAR2(12 BYTE)
AC_STAT_PRODN CHAR(1 BYTE)	CUT_OFF_DAYS NUMBER(2)	DATE DATE
PREVIOUS_STATEMENT_DATE DATE	CEL_AUTO_EX_RATE_LMT NUMBER(22,3)	CHECKER_ID VARCHAR2(12 BYTE)
PREVIOUS_STATEMENT_AMOUNT NUMBER(22,3)	CCV_TYPE VARCHAR2(30 BYTE)	ONCE_AUTH CHAR(1 BYTE)
FX_LAST_STMT_DATE DATE	DIR_AUTO_EX_RATE_LMT NUMBER(22,3)	DATE DATE
TOL_LIMIT DATE	DIR_HOIP VARCHAR2(10 BYTE)	FCUBSDATABANK_VTM_BRANCH
TOL_LIMIT_END_DATE DATE	DIR_SLS_CODE VARCHAR2(11 BYTE)	BRANCH_CODE VARCHAR2(30 BYTE)
NONRESI NUMBER	FX_NETWORK_DAYS NUMBER(3)	BRANCH_NAME VARCHAR2(30 BYTE)
DR_GL VARCHAR2(150 BYTE)	FX_NETWORK_DAYS VARCHAR2(10 BYTE)	WALRIP_CUSTOMER VARCHAR2(30 BYTE)
CR_GL VARCHAR2(150 BYTE)	GRN_CUST_CODE VARCHAR2(11 BYTE)	NETING_SUSPENSE_GLS VARCHAR2(30 BYTE)
RECORD_STAT CHAR(1 BYTE)	VALDATE_SOF VARCHAR2(30 BYTE)	CONTINENT_SUSPENSE_GLS VARCHAR2(30 BYTE)
ACTN_STAT CHAR(1 BYTE)		CUSTOMER_PRIOCD VARCHAR2(30 BYTE)
NUMBER_ID VARCHAR2(12 BYTE)		SWIFT_CODE VARCHAR2(12 BYTE)
NUMBER_DT_STAMP VARCHAR2(12 BYTE)		LOCAL_CODE VARCHAR2(12 BYTE)
CHECKER_DT_STAMP VARCHAR2(12 BYTE)		UTLTY_PROVIDER VARCHAR2(30 BYTE)
ONCE_AUTH CHAR(1 BYTE)		UTLTY_PROVIDER_ID VARCHAR2(30 BYTE)
LINE_CODE CHAR(150 BYTE)		EDITOR_CATEGORY VARCHAR2(150 BYTE)
CUSTOMER_LIMIT CHAR(150 BYTE)		TAX_NAME VARCHAR2(150 BYTE)
CAL_ACCOUNT CHAR(150 BYTE)		UDF_1 VARCHAR2(150 BYTE)
ACV_OPENING_BAL NUMBER		UDF_2 VARCHAR2(150 BYTE)
ACV_OPENING_BAL NUMBER		UDF_3 VARCHAR2(150 BYTE)
ACV_TODAY_TOWRD_DR NUMBER		UDF_4 VARCHAR2(150 BYTE)
ACV_TODAY_TOWRD_CR NUMBER		UDF_5 VARCHAR2(150 BYTE)
ACV_TODAY_TOWRD_DR NUMBER		UDF_6 VARCHAR2(150 BYTE)
ACV_TODAY_TOWRD_CR NUMBER		UDF_7 VARCHAR2(150 BYTE)
ACV_TODAY_TOWRD_DR NUMBER		UDF_8 VARCHAR2(150 BYTE)
ACV_TODAY_TOWRD_CR NUMBER		UDF_9 VARCHAR2(150 BYTE)
ACV_TODAY_TOWRD_DR NUMBER		UDF_10 VARCHAR2(150 BYTE)
ACV_TODAY_TOWRD_CR NUMBER		UDF_11 VARCHAR2(150 BYTE)
ACV_TODAY_TOWRD_DR NUMBER		UDF_12 VARCHAR2(150 BYTE)
ACV_TODAY_TOWRD_CR NUMBER		UDF_13 VARCHAR2(150 BYTE)
ACV_TODAY_TOWRD_DR NUMBER		UDF_14 VARCHAR2(150 BYTE)
ACV_TODAY_TOWRD_CR NUMBER		UDF_15 VARCHAR2(150 BYTE)
ACV_TODAY_TOWRD_DR NUMBER		UDF_16 VARCHAR2(150 BYTE)
ACV_TODAY_TOWRD_CR NUMBER		UDF_17 VARCHAR2(150 BYTE)
ACV_TODAY_TOWRD_DR NUMBER		UDF_18 VARCHAR2(150 BYTE)
ACV_TODAY_TOWRD_CR NUMBER		UDF_19 VARCHAR2(150 BYTE)
ACV_TODAY_TOWRD_DR NUMBER		UDF_20 VARCHAR2(150 BYTE)
ACV_TODAY_TOWRD_CR NUMBER		UDF_21 VARCHAR2(150 BYTE)
ACV_TODAY_TOWRD_DR NUMBER		UDF_22 VARCHAR2(150 BYTE)
ACV_TODAY_TOWRD_CR NUMBER		UDF_23 VARCHAR2(150 BYTE)
ACV_TODAY_TOWRD_DR NUMBER		UDF_24 VARCHAR2(150 BYTE)
ACV_TODAY_TOWRD_CR NUMBER		UDF_25 VARCHAR2(150 BYTE)
ACV_TODAY_TOWRD_DR NUMBER		UDF_26 VARCHAR2(150 BYTE)
ACV_TODAY_TOWRD_CR NUMBER		UDF_27 VARCHAR2(150 BYTE)
ACV_TODAY_TOWRD_DR NUMBER		UDF_28 VARCHAR2(150 BYTE)
ACV_TODAY_TOWRD_CR NUMBER		UDF_29 VARCHAR2(150 BYTE)
ACV_TODAY_TOWRD_DR NUMBER		UDF_30 VARCHAR2(150 BYTE)
ACV_TODAY_TOWRD_CR NUMBER		UDF_31 VARCHAR2(150 BYTE)
ACV_TODAY_TOWRD_DR NUMBER		UDF_32 VARCHAR2(150 BYTE)
ACV_TODAY_TOWRD_CR NUMBER		UDF_33 VARCHAR2(150 BYTE)
ACV_TODAY_TOWRD_DR NUMBER		UDF_34 VARCHAR2(150 BYTE)
ACV_TODAY_TOWRD_CR NUMBER		UDF_35 VARCHAR2(150 BYTE)
ACV_TODAY_TOWRD_DR NUMBER		UDF_36 VARCHAR2(150 BYTE)
ACV_TODAY_TOWRD_CR NUMBER		UDF_37 VARCHAR2(150 BYTE)
ACV_TODAY_TOWRD_DR NUMBER		UDF_38 VARCHAR2(150 BYTE)
ACV_TODAY_TOWRD_CR NUMBER		UDF_39 VARCHAR2(150 BYTE)
ACV_TODAY_TOWRD_DR NUMBER		UDF_40 VARCHAR2(150 BYTE)
ACV_TODAY_TOWRD_CR NUMBER		UDF_41 VARCHAR2(150 BYTE)
ACV_TODAY_TOWRD_DR NUMBER		UDF_42 VARCHAR2(150 BYTE)
ACV_TODAY_TOWRD_CR NUMBER		UDF_43 VARCHAR2(150 BYTE)
ACV_TODAY_TOWRD_DR NUMBER		UDF_44 VARCHAR2(150 BYTE)
ACV_TODAY_TOWRD_CR NUMBER		UDF_45 VARCHAR2(150 BYTE)
ACV_TODAY_TOWRD_DR NUMBER		UDF_46 VARCHAR2(150 BYTE)
ACV_TODAY_TOWRD_CR NUMBER		UDF_47 VARCHAR2(150 BYTE)
ACV_TODAY_TOWRD_DR NUMBER		UDF_48 VARCHAR2(150 BYTE)
ACV_TODAY_TOWRD_CR NUMBER		UDF_49 VARCHAR2(150 BYTE)
ACV_TODAY_TOWRD_DR NUMBER		UDF_50 VARCHAR2(150 BYTE)
ACV_TODAY_TOWRD_CR NUMBER		UDF_51 VARCHAR2(150 BYTE)
ACV_TODAY_TOWRD_DR NUMBER		UDF_52 VARCHAR2(150 BYTE)
ACV_TODAY_TOWRD_CR NUMBER		UDF_53 VARCHAR2(150 BYTE)
ACV_TODAY_TOWRD_DR NUMBER		UDF_54 VARCHAR2(150 BYTE)
ACV_TODAY_TOWRD_CR NUMBER		UDF_55 VARCHAR2(150 BYTE)
ACV_TODAY_TOWRD_DR NUMBER		UDF_56 VARCHAR2(150 BYTE)
ACV_TODAY_TOWRD_CR NUMBER		UDF_57 VARCHAR2(150 BYTE)
ACV_TODAY_TOWRD_DR NUMBER		UDF_58 VARCHAR2(150 BYTE)
ACV_TODAY_TOWRD_CR NUMBER		UDF_59 VARCHAR2(150 BYTE)
ACV_TODAY_TOWRD_DR NUMBER		UDF_60 VARCHAR2(150 BYTE)
ACV_TODAY_TOWRD_CR NUMBER		UDF_61 VARCHAR2(150 BYTE)
ACV_TODAY_TOWRD_DR NUMBER		UDF_62 VARCHAR2(150 BYTE)
ACV_TODAY_TOWRD_CR NUMBER		UDF_63 VARCHAR2(150 BYTE)
ACV_TODAY_TOWRD_DR NUMBER		UDF_64 VARCHAR2(150 BYTE)
ACV_TODAY_TOWRD_CR NUMBER		UDF_65 VARCHAR2(150 BYTE)
ACV_TODAY_TOWRD_DR NUMBER		UDF_66 VARCHAR2(150 BYTE)
ACV_TODAY_TOWRD_CR NUMBER		UDF_67 VARCHAR2(150 BYTE)
ACV_TODAY_TOWRD_DR NUMBER		UDF_68 VARCHAR2(150 BYTE)
ACV_TODAY_TOWRD_CR NUMBER		UDF_69 VARCHAR2(150 BYTE)
ACV_TODAY_TOWRD_DR NUMBER		UDF_70 VARCHAR2(150 BYTE)
ACV_TODAY_TOWRD_CR NUMBER		UDF_71 VARCHAR2(150 BYTE)
ACV_TODAY_TOWRD_DR NUMBER		UDF_72 VARCHAR2(150 BYTE)
ACV_TODAY_TOWRD_CR NUMBER		UDF_73 VARCHAR2(150 BYTE)
ACV_TODAY_TOWRD_DR NUMBER		UDF_74 VARCHAR2(150 BYTE)
ACV_TODAY_TOWRD_CR NUMBER		UDF_75 VARCHAR2(150 BYTE)
ACV_TODAY_TOWRD_DR NUMBER		UDF_76 VARCHAR2(150 BYTE)
ACV_TODAY_TOWRD_CR NUMBER		UDF_77 VARCHAR2(150 BYTE)
ACV_TODAY_TOWRD_DR NUMBER		UDF_78 VARCHAR2(150 BYTE)
ACV_TODAY_TOWRD_CR NUMBER		UDF_79 VARCHAR2(150 BYTE)
ACV_TODAY_TOWRD_DR NUMBER		UDF_80 VARCHAR2(150 BYTE)
ACV_TODAY_TOWRD_CR NUMBER		UDF_81 VARCHAR2(150 BYTE)
ACV_TODAY_TOWRD_DR NUMBER		UDF_82 VARCHAR2(150 BYTE)
ACV_TODAY_TOWRD_CR NUMBER		UDF_83 VARCHAR2(150 BYTE)
ACV_TODAY_TOWRD_DR NUMBER		UDF_84 VARCHAR2(150 BYTE)
ACV_TODAY_TOWRD_CR NUMBER		UDF_85 VARCHAR2(150 BYTE)
ACV_TODAY_TOWRD_DR NUMBER		UDF_86 VARCHAR2(150 BYTE)
ACV_TODAY_TOWRD_CR NUMBER		UDF_87 VARCHAR2(150 BYTE)
ACV_TODAY_TOWRD_DR NUMBER		UDF_88 VARCHAR2(150 BYTE)
ACV_TODAY_TOWRD_CR NUMBER		UDF_89 VARCHAR2(150 BYTE)
ACV_TODAY_TOWRD_DR NUMBER		UDF_90 VARCHAR2(150 BYTE)
ACV_TODAY_TOWRD_CR NUMBER		UDF_91 VARCHAR2(150 BYTE)
ACV_TODAY_TOWRD_DR NUMBER		UDF_92 VARCHAR2(150 BYTE)
ACV_TODAY_TOWRD_CR NUMBER		UDF_93 VARCHAR2(150 BYTE)
ACV_TODAY_TOWRD_DR NUMBER		UDF_94 VARCHAR2(150 BYTE)
ACV_TODAY_TOWRD_CR NUMBER		UDF_95 VARCHAR2(150 BYTE)
ACV_TODAY_TOWRD_DR NUMBER		UDF_96 VARCHAR2(150 BYTE)
ACV_TODAY_TOWRD_CR NUMBER		UDF_97 VARCHAR2(150 BYTE)
ACV_TODAY_TOWRD_DR NUMBER		UDF_98 VARCHAR2(150 BYTE)
ACV_TODAY_TOWRD_CR NUMBER		UDF_99 VARCHAR2(150 BYTE)
ACV_TODAY_TOWRD_DR NUMBER		UDF_100 VARCHAR2(150 BYTE)

Navigator

Relational_1

Log

Editing





FCUBS-FD08-01-01-Data Model getting started

May 2011

1.0

Oracle Corporation
World Headquarters
500 Oracle Parkway
Redwood Shores, CA 94065
U.S.A.

Worldwide Inquiries:
Phone: +1.650.506.7000
Fax: +1.650.506.7200
[www.oracle.com/ financial_services/](http://www.oracle.com/financial_services/)

Copyright © 2011- Oracle Financial Services Software Limited. All rights reserved.

No part of this work may be reproduced, stored in a retrieval system, adopted or transmitted in any form or by any means, electronic, mechanical, photographic, graphic, optic recording or otherwise, translated in any language or computer language, without the prior written permission of Oracle Financial Services Software Limited.

Due care has been taken to make this document FCUBS-FD08-01-01-Data Model getting started and accompanying software package as accurate as possible. However, Oracle Financial Services Software Limited makes no representation or warranties with respect to the contents hereof and shall not be responsible for any loss or damage caused to the user by the direct or indirect use of this FCUBS-FD08-01-01-Data Model getting started and the accompanying Software System. Furthermore, Oracle Financial Services Software Limited reserves the right to alter, modify or otherwise change in any manner the content hereof, without obligation of Oracle Financial Services Software Limited to notify any person of such revision or changes.

All company and product names are trademarks of the respective companies with which they are associated.