

ELCM Application Setup
Oracle FLEXCUBE Enterprise Limits and Collateral
Management

Release 12.0.0.0.0

[October] [2013]

Oracle Part Number E51544-01



Table of Contents

- 1. SETTING UP STANDALONE ELCM..... 1-1
 - 1.1 INTRODUCTION 1-1
 - 1.2 PREREQUISITES 1-1
 - 1.3 PREPARING SOURCE FOLDER 1-1
 - 1.4 BUILDING APPLICATION FOR SETUP 1-1

1. Setting up Standalone ELCM

1.1 Introduction

This document explains the steps to build ELCM as standalone application. It includes the ELCM standalone database and Application installation.

1.2 Prerequisites

Following are the prerequisites for setting up Oracle FGL Application in centralized mode:

Queue and Connection Factories: If you wish to include the scheduler plug-in, ensure that you have the respective queue and connection factories in the Application Server.

BIP Report Server: To include the report plug-in in Application, you need to setup the BIP Reports Server for facilitating the report generation.

1.3 Preparing Source Folder

You need to setup various folders to be used as the source input for Installer to build the EAR files based on different plug-ins selected.

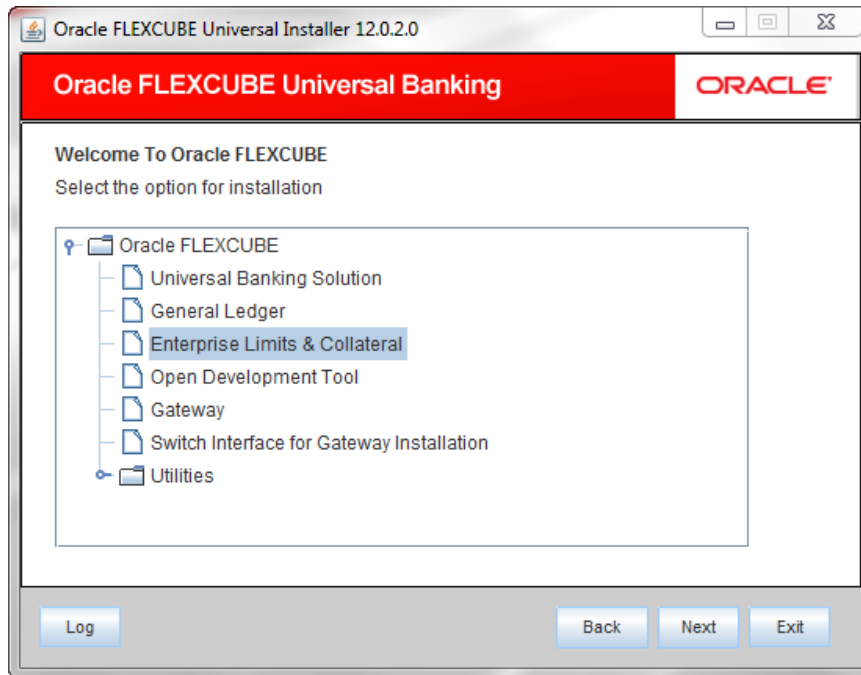
In order to create EAR file for ELCM Application, you need to copy the following folders to the Source Directory:

Folder	Destination Folder	Action
INFRA	Source_Dir/INFRA	Copy the INFRA folder from the Shipment Media into the Source Directory
MAIN	Source_Dir/MAIN	Copy the MAIN folder from the Shipment Media to the Source Directory.
APPLICATION	Source_Dir/APPLICATION	Copy the APPLICATION folder from the Shipment Media to the Source Directory.

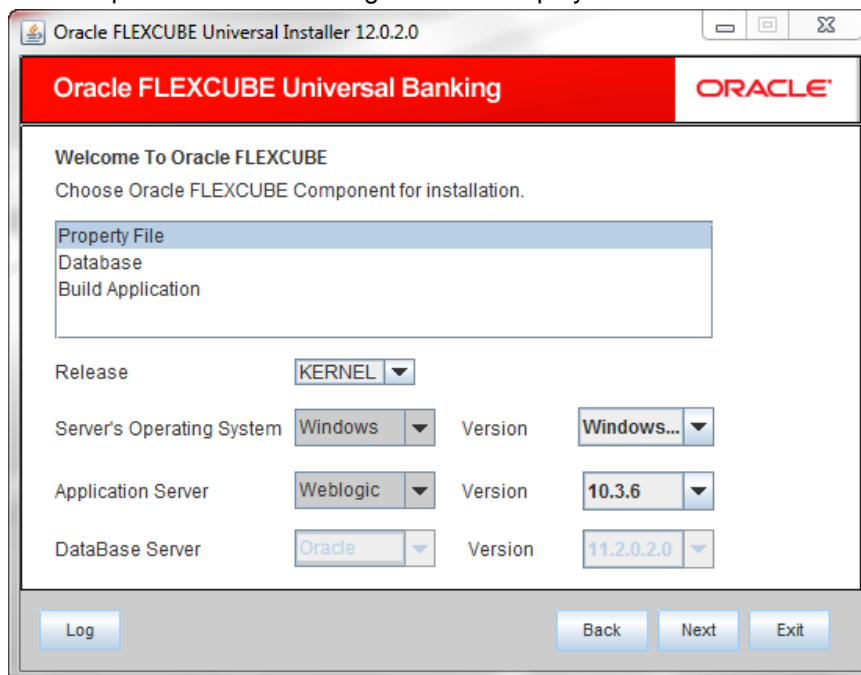
1.4 Building Application for Setup

This section guides you through the steps to build EAR file. To build the application for setup using the installer, follow the steps given below.

1. Double-click 'FCUBSInstaller.bat' batch file to launch Oracle FLEXCUBE Universal Installer. The following screen is displayed.



2. You need to select the application to be installed. Choose 'Enterprise Limits & Collaterals' and click 'Next' to proceed. The following screen is displayed.



3. Choose the option 'Property File'.
4. Specify the following details:

Operating System and Version

Specify the operating system in which you are creating the property file. Choose the appropriate one from the drop-down list. You also need to specify the version of the selected operating system.

Application Server and Version

Specify the application server in which you are creating the property file. Choose the appropriate one from the drop-down list. You also need to specify the version of the selected application server.

Database Server and Version

Specify the database server in which you are creating the property file. Choose the appropriate one from the drop-down list. You also need to specify the version of the selected database server.

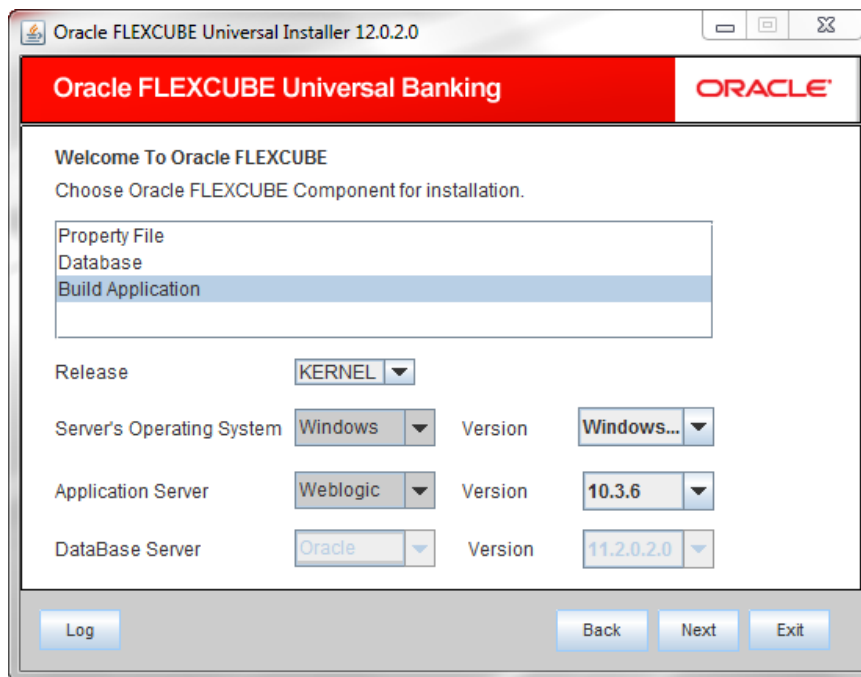
Release

Specify the release in which you are creating the property file. Choose the appropriate one from the drop-down list. The list has two values-KERNEL and VN.

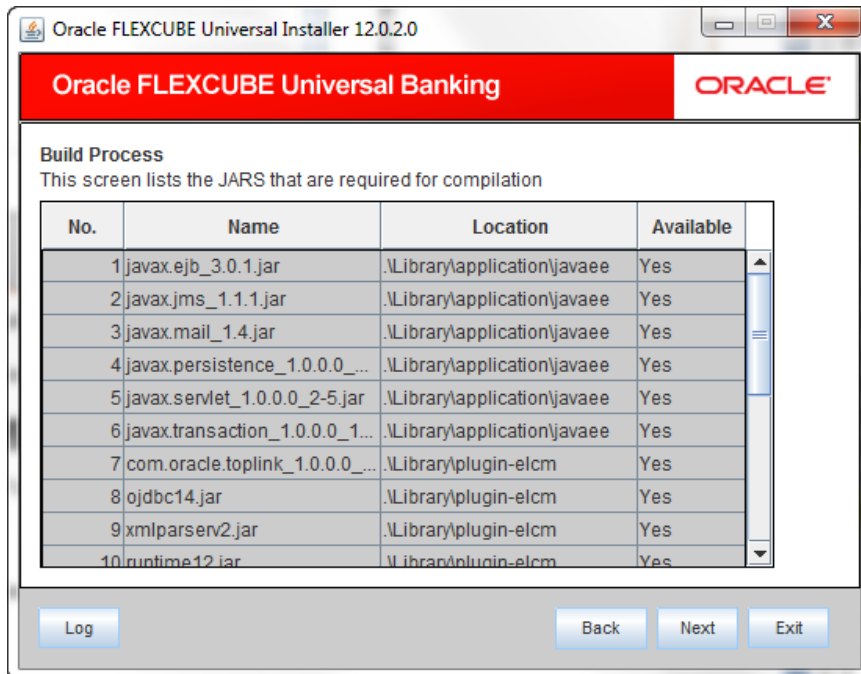
5. Once you have specified the details, click 'Next' to continue.

Refer to the chapter 'Setting up Property File' for details on the method of setting up and modifying property files.

6. The following screen is displayed.

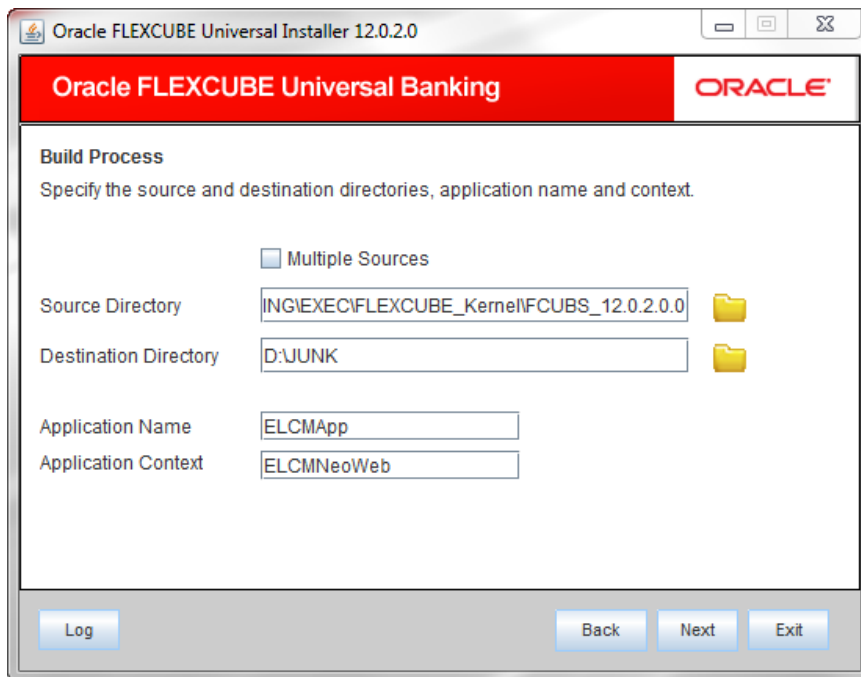


7. Choose the option 'Build Application' and click 'Next' to continue. You will be prompted to specify the application details in the following screen.



8. Observe the list of JAR files required for compilation. Verify the JAR file requirements and click 'Next'.

Note: You need to verify the JAR in EXEC mode of installation also.



9. Specify the following details.

Source Directory

Specify the location of the application source directory. The source directory will have the following folders:

- INFRA (Copied from Shipment Media)
- MAIN (Copied from Shipment Media) (optional)
- APPLICATION

Use the 'Browse' button to browse and select the source directory.

Check the box 'Multiple Sources' to use multiple source directories.

Destination Directory

Specify the location where the application should be setup. The installer will copy the source files from the App Source Path to the App Destination Path.

Use the 'Browse' button to browse and select the destination directory.

Application Name

Specify a name for the Application to be deployed.

You cannot use special characters such as '.' (dot), ',' (comma), '\$' etc. However, you may use '_' (underscore).

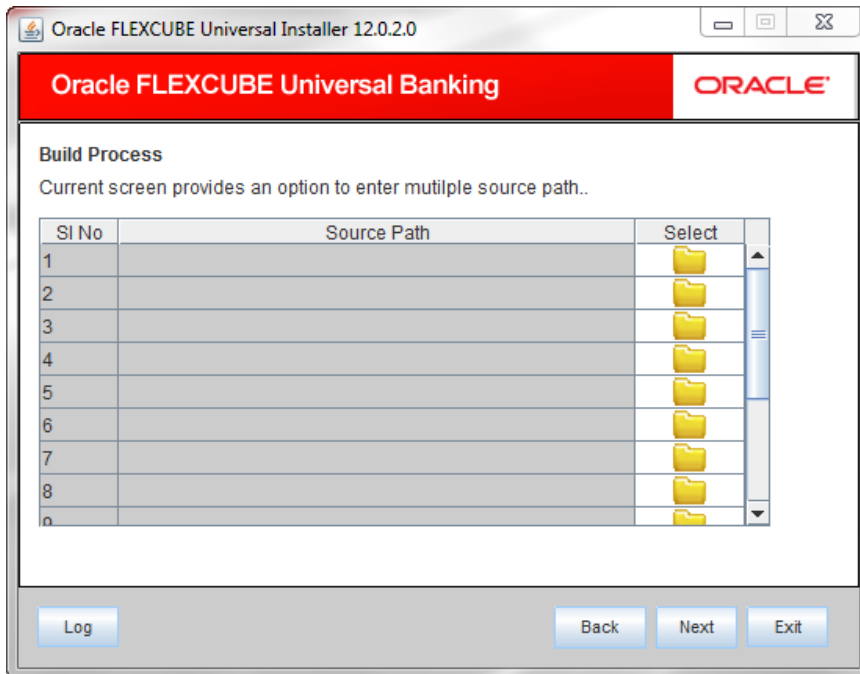
E.g.: FCUBSELCM

Application Context

Based on the Application type selected, the Installer displays the application context. However, you may modify the default value.

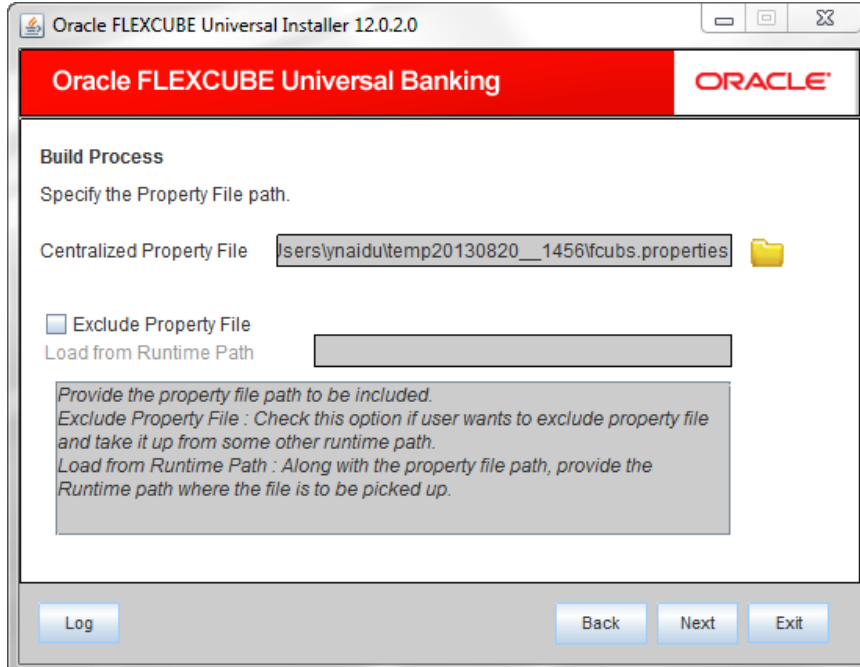
Multiple Sources

In case of Cluster/Patch releases, you can get the files from multiple source directories. If you check this box, the installer will not allow you to specify the source directory in this screen. On clicking 'Next', the following screen is displayed.



You can select all the source directories in this screen. The Installer will copy the sources from the multiple locations into the destination directory. You can have consolidated sources in the destination directory.

10. Once you have specified the details, click 'Next' to continue.

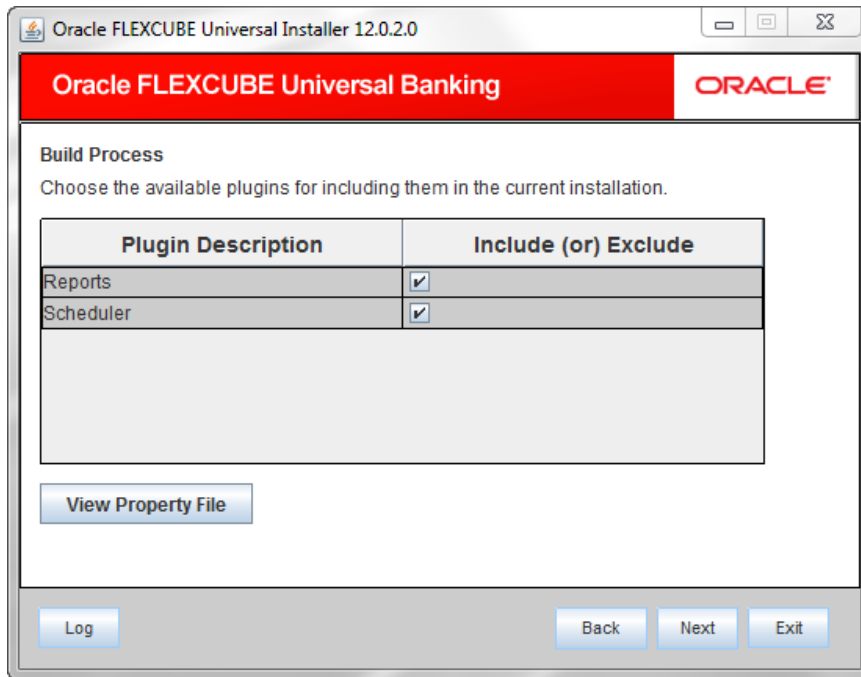


11. Specify the following details:

Centralized Property File

To modify an existing property file, you can manually specify the location of the property file.

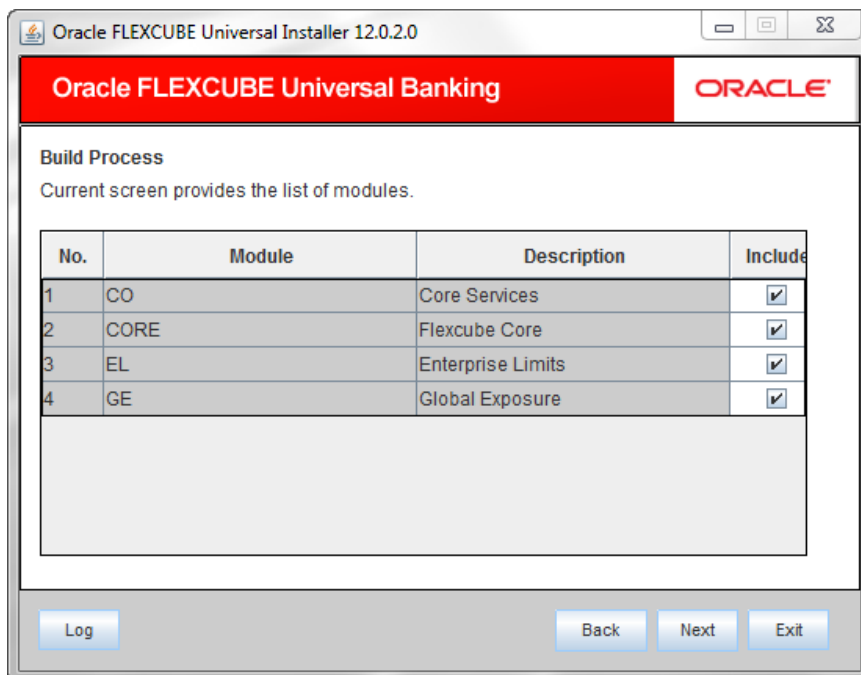
12. Click 'Next'. The system displays the following screen.



13. When you load an existing property file, the installer will not allow you to edit the plug-ins. To edit the plug-ins, you need to create a new property file, set the plug-in details there and then load the new property file,

Note: Ensure that the source folder pertaining to the plug-in exists in the source directory itself.

14. Click 'Next'. The following screen is displayed.



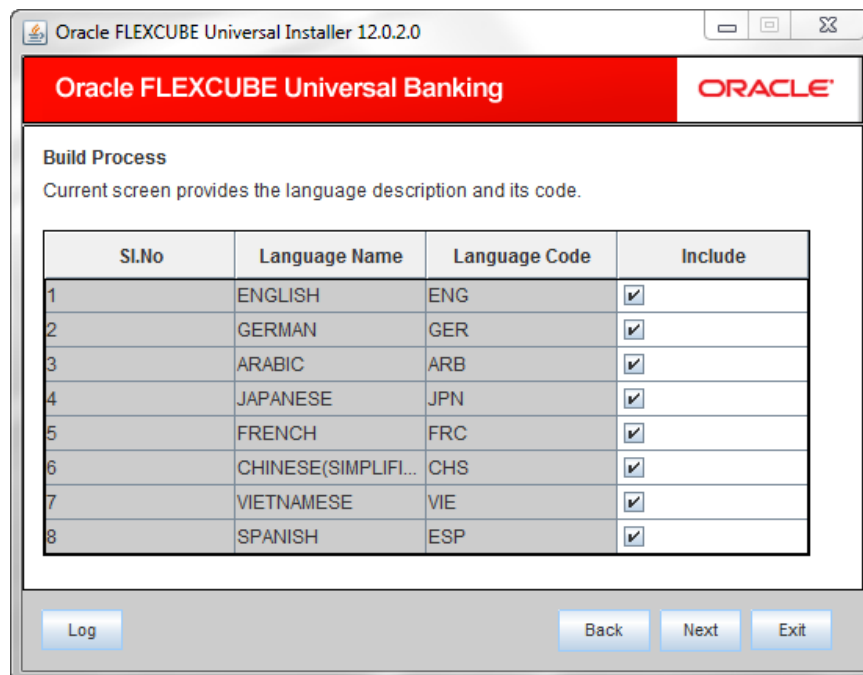
15. Select the modules to be included.

On including the modules, the Installer copies the following files from source folder to the destination folder if the module is available in the MAIN folder of the Source Directory.

- All the JS files from MAIN/<Module>/JS to the folder INFRA/FCJNeoWeb/WebContent/Script/JS in the destination directory
- All the XML files from MAIN/<Module>/ UIXML/ENG/ to the folder INFRA/FCJNeoWeb/WebContent/UIXML/ENG in the destination directory

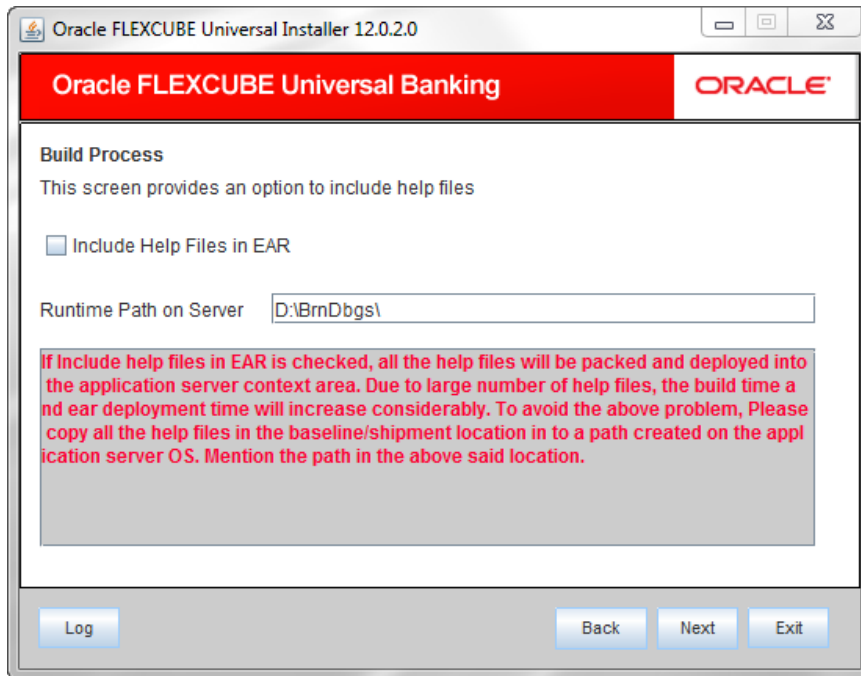
If the Main folder is not copied to the Source Directory, then, after deployment of EAR file, you need to manually copy these files into the deployed location.

16. Click 'Next'. The following screen is displayed.



17. Select the languages that you wish to include in the installation.

18. Click 'Next'. The following screen is displayed.



19. Specify the following details:

Include Help Files in EAR

Check the box 'Help Files' to include the online help files in the installation.

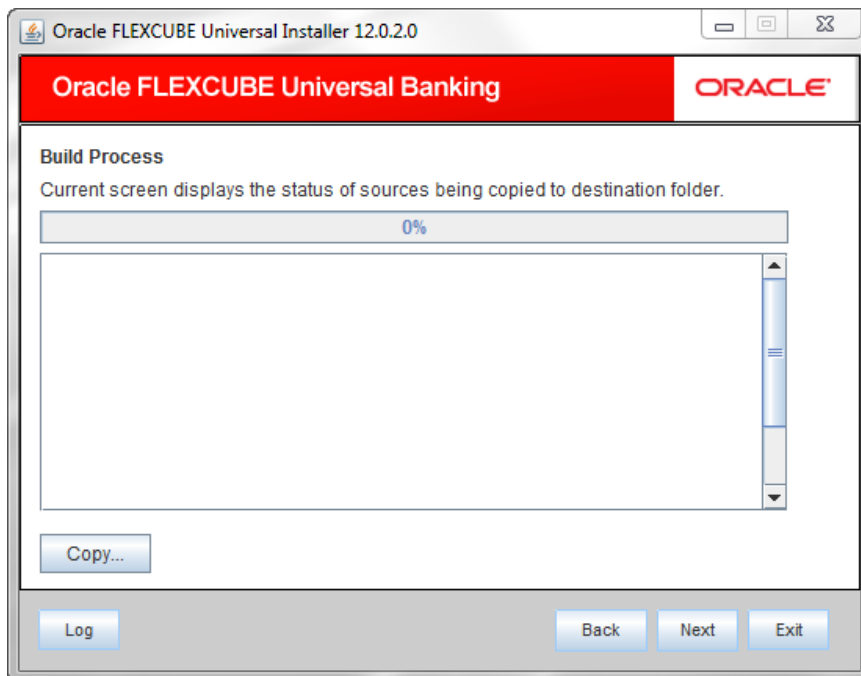
If you do not check this box, the Installer will not include the help files in the EAR file. However, you can manually copy the help files to a specific folder in the application server. For details, read the information below.

Runtime Path on Server

In case you have manually moved the help files into a folder in the application server, specify the path of that folder.

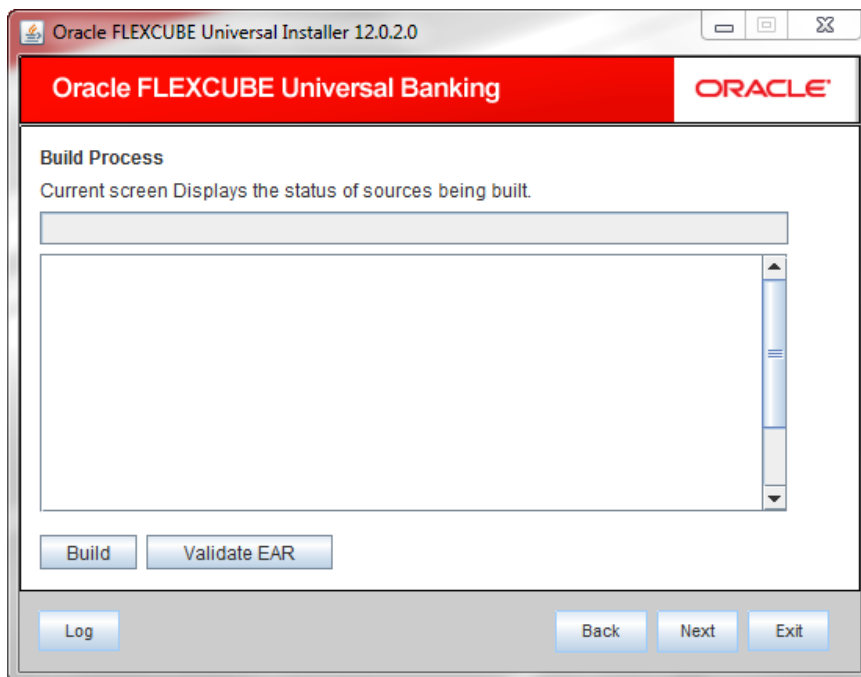
Note: You can manually copy the help files from the shipment media to a specific folder in the application server. This will reduce the time required for building EAR file. Copy the help files into a specific folder in the application server and unzip the files. Later, specify the folder location in the field 'Runtime Path on Server'.

20. Click 'Next'. The following screen is displayed.



21. Click 'Copy' button to copy the source files to the destination folder. The installer copies the files.

22. Click 'Next'. The following screen is displayed.



23. Click 'Build' button to start the build process. The installer builds the EAR file.

This completes the EAR file generation process.

EAR file will be available in selected EAR file location. If you have opted for BPEL, then FCBPELCIS.jar file will also be available in the EAR file location.



ELCM Application Setup
[October] [2013]
Version 12.0.0.0.0

Oracle Financial Services Software Limited
Oracle Park
Off Western Express Highway
Goregaon (East)
Mumbai, Maharashtra 400 063
India

Worldwide Inquiries:
Phone: +91 22 6718 3000
Fax: +91 22 6718 3001
www.oracle.com/financialservices/

Copyright © [2007], [2013], Oracle and/or its affiliates. All rights reserved.

Oracle and Java are registered trademarks of Oracle and/or its affiliates. Other names may be trademarks of their respective owners.

U.S. GOVERNMENT END USERS: Oracle programs, including any operating system, integrated software, any programs installed on the hardware, and/or documentation, delivered to U.S. Government end users are "commercial computer software" pursuant to the applicable Federal Acquisition Regulation and agency-specific supplemental regulations. As such, use, duplication, disclosure, modification, and adaptation of the programs, including any operating system, integrated software, any programs installed on the hardware, and/or documentation, shall be subject to license terms and license restrictions applicable to the programs. No other rights are granted to the U.S. Government.

This software or hardware is developed for general use in a variety of information management applications. It is not developed or intended for use in any inherently dangerous applications, including applications that may create a risk of personal injury. If you use this software or hardware in dangerous applications, then you shall be responsible to take all appropriate failsafe, backup, redundancy, and other measures to ensure its safe use. Oracle Corporation and its affiliates disclaim any liability for any damages caused by use of this software or hardware in dangerous applications.

This software and related documentation are provided under a license agreement containing restrictions on use and disclosure and are protected by intellectual property laws. Except as expressly permitted in your license agreement or allowed by law, you may not use, copy, reproduce, translate, broadcast, modify, license, transmit, distribute, exhibit, perform, publish or display any part, in any form, or by any means. Reverse engineering, disassembly, or decompilation of this software, unless required by law for interoperability, is prohibited.

The information contained herein is subject to change without notice and is not warranted to be error-free. If you find any errors, please report them to us in writing.

This software or hardware and documentation may provide access to or information on content, products and services from third parties. Oracle Corporation and its affiliates are not responsible for and expressly disclaim all warranties of any kind with respect to third-party content, products, and services. Oracle Corporation and its affiliates will not be responsible for any loss, costs, or damages incurred due to your access to or use of third-party content, products, or services.