

Oracle PeopleSoft Program Management

Large enterprises and project-based organizations have long recognized the value of leveraging project knowledge across multiple projects. Oracle's PeopleSoft Program Management gives project managers the tools they need to manage projects across the organization while leveraging common standards and procedures. With PeopleSoft Program Management, you increase organizational efficiency while saving money.

Lower Costs with Detailed Project Planning and Estimating

Project planning and estimating are the building blocks of successful project management. Lack of a central repository of project planning tools promotes inconsistency and inefficiency. With one solution for planning projects, you can standardize data, leverage project knowledge, and lower costs. Using PeopleSoft Program Management, you can:

- Build project plans or use templates to list and relate project activities, create a work breakdown structure, schedule activities, identify resources, and estimate project costs.
- Improve the accuracy of project estimates by standardizing the cost rate associated with resources and create a single source of information for estimates.
- Integrate labor, material, and asset resources for a project so that you can plan and create an estimate for all resource types, in one repository.
- Leverage workbench visual indicators for each major project component, such as scope, schedule, budget, resources, risk, and issues, which gives program and project managers an accurate pulse on their projects.
- Define releases and release types, associate projects, issues, and risks to releases, and view a dashboard that shows projects by release.

Key Benefits

- Control project costs with detailed planning, estimates, and forecasting
- Gain efficiency by managing projects across your enterprise
- Lower costs with robust application integration
- Alert managers to project issues and risk using the approval workflow engine
- Monitor status reports and deliverables

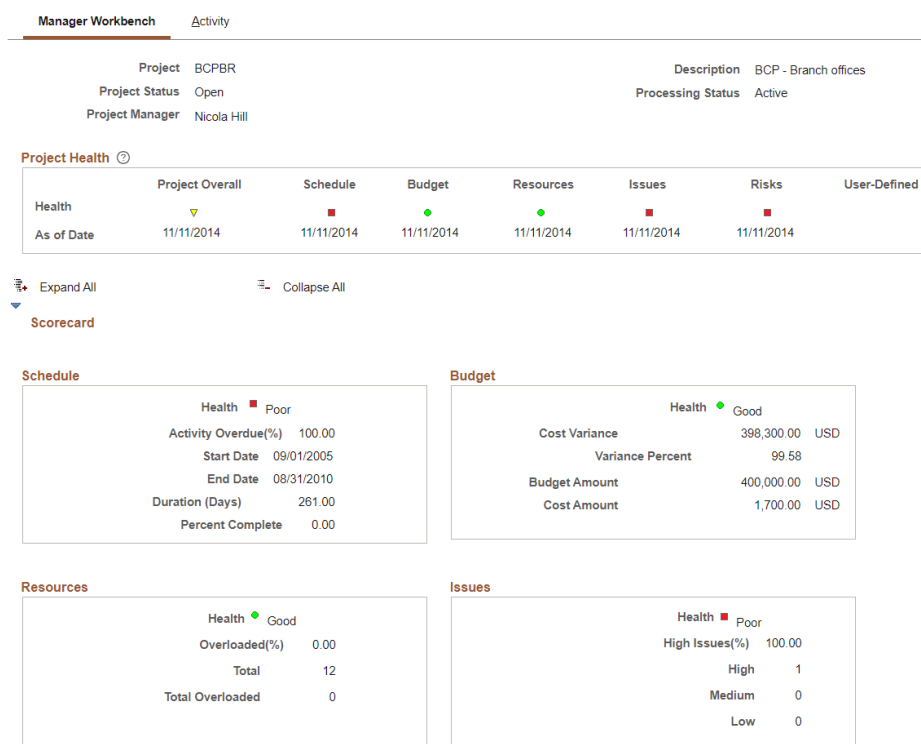


Figure 1. Manager Workbench is organized into two pages. Managers can view information about a project on the Manager Workbench page and select the Activity tab to view workbench information about the project's activities.

Project Visibility Reduces Risk

Every project is subject to risks that can lead to increased costs, delayed schedules, and increased resource requirements. Failure to manage these risks often arises from the inability to decide what to do, when to do it, and whether enough has been done. You can address these challenges with PeopleSoft functionality to:

- Identify risks that impact projects and document their characteristics.
- Monitor residual risks, identify new risks, execute risk reduction plans, and evaluate their effectiveness throughout the project lifecycle.

Workflow Approvals and Notifications to Inform Managers

It is critically important in any organization to keep managers and executives informed so that they can make go, no-go, and financial impact decisions. PeopleSoft Program Management provides the ability to configure approvals and notifications using the PeopleSoft Approval Workflow Engine (AWE) including:

- Requests for projects
- Issue notification
- Activity assignment
- Resource deliverables
- Program budgets

PeopleSoft delegation capabilities ensure approvals are routed to the appropriate staff when employees are unavailable.

Project Management Tools to Increase Efficiency

Scope creep and issue management can be the principal reasons why a project runs over budget or even fails. PeopleSoft Program Management includes a scope and issue management solution that is embedded throughout the application.

Tracking changes in a single location provides consistency, accuracy, and real-time updates to project data.

- Organize the work breakdown structure (WBS) using icons on a tool bar in a hierarchical grid format.

Project Activities Gantt Chart

Project: 0000000000000320 Description: HVAC Upgrade Processing Status: Pending Charging Level: Detail

Number Rows: 1 Expand All Subtasks Run to Excel

Project Activities

Schedule Move Dates Details User Fields

Select	WBS ID	Activity Name	Activity	Duration (Days)	Start Date	End Date	Percent Complete				
<input type="checkbox"/>	1	Equipment	1	90	01/01/2023	03/31/2023	0.00				
<input type="checkbox"/>	1.1	Compressor	% 2	28	02/01/2023	02/28/2023	0.00				
<input type="checkbox"/>	1.2	UV Lighting	% 3	31	01/01/2023	01/31/2023	0.00				
<input type="checkbox"/>	1.3	Gas	% 4	31	03/01/2023	03/31/2023	0.00				
<input type="checkbox"/>	1.4	Electrical	% 5	15	03/01/2023	03/15/2023	0.00				
<input type="checkbox"/>	2	Labor	6	90	01/01/2023	03/31/2023	0.00				
<input type="checkbox"/>	2.1	Internal	% 7	90	01/01/2023	03/31/2023	0.00				
<input type="checkbox"/>	2.2	External	% 8	31	03/01/2023	03/31/2023	0.00				

Figure 2. The Project Activities page supports dependencies and constraints and Gantt charts.

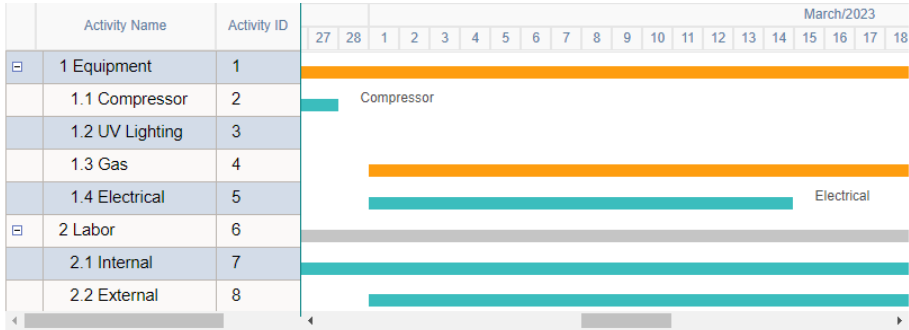


Figure 3. Use the Gantt Chart as a graphical representation of project activities and the related start dates, end dates and duration.

- Leverage the Project Activities page that supports dependencies and constraints, as well as Gantt charts.
- Review all activities, critical path tasks, and milestone tasks.
- Review the workload in a grid format for all resources, named or generic.
- Establish critical finish-to-start activity relationships, both within a single project and across projects, by supporting activity dependencies and constraints.
- Enter issues with one click.

Forecasting capabilities allow organizations to react quickly to changing conditions. These capabilities allow you to:

- Create and track a program budget that is completely separate from the project budgets.
- Use a bottoms-up forecasting feature where project team members who are assigned activities can enter forecasts to complete estimates.
- View online analytics to anticipate future projected costs and revenues.
- Choose from three methods to automatically calculate the completion percentage of project activities against forecasts.
- Utilize charts to track a project's percent of completion over time, and compare actual and forecasts over time.

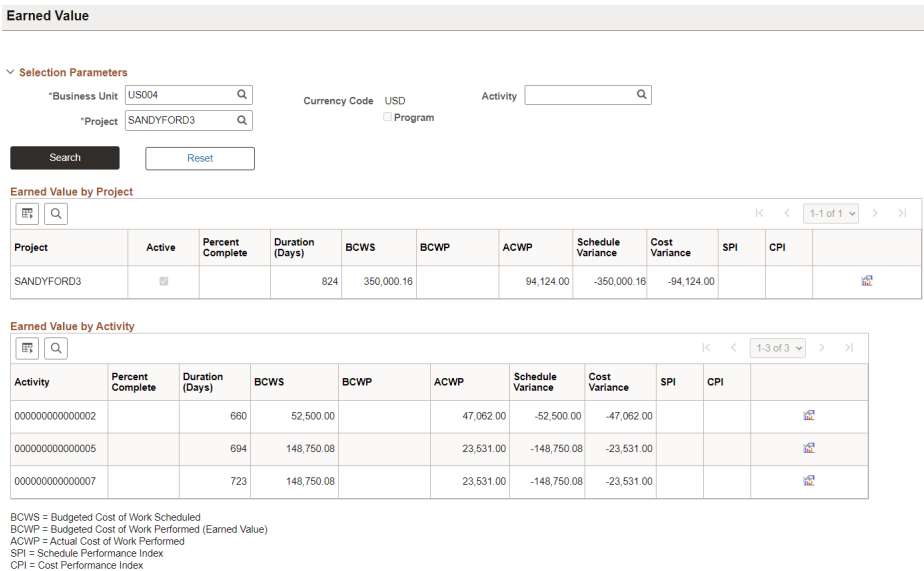


Figure 4. The Earned Value page highlights the earned value by activity and project.

Status reports ensure the success of project delivery and are critical for internal and external communication. PeopleSoft Program Management allows you to:

- Automate project health and percent complete calculations.
- Define the frequency of status report submission.
- Summarize multiple reports into an overall project status report.
- Quickly enable and restrict time reports on projects to specific pools of resources without having to manually add each resource to a project team.

Application Integration Lowers Implementation Costs

PeopleSoft Program Management not only increases project visibility, but also saves money for your organization because of the deep cross-product integration that is built into the solution.

Tight integration with resource management and project costing is crucial to efficient utilization of resources. PeopleSoft Program Management integrates with PeopleSoft Resource Management and PeopleSoft Project Costing to

accurately plan, cost, and estimate resource requirements and staff projects. This integration enables you to:

- Identify skill requirements for job functions.
- Search for resources that have appropriate skill sets, and verify schedules for potential conflicts.
- Optimize resource utilization across programs or projects to level workload, improve project results, and increase efficiency.
- Rapidly identify both the qualifications and quantities of labor needed on a project to facilitate the creation of Resource Management service orders.
- Identify trouble spots using analytics such as cost estimates to complete variance and earned value.
- Use the program tree to group similar projects together to summarize project data accurately.

PeopleSoft Program Management is an enterprise application that is the enterprise-wide repository for all project-related data. One source of integrated individual and group project data means that you have the intelligence to make business decisions about project plans, cost, time, and resources for individual projects across the enterprise.

Oracle's PeopleSoft Enterprise Service Automation Solutions

Oracle's PeopleSoft Program Management is part of the PeopleSoft Enterprise Service Automation suite (ESA), an integrated family of project management applications. These products provide a complete solution to help you invest in the right portfolio of projects, standardize project delivery, and optimize your project resources.

Related Products

The following PeopleSoft products integrate with Oracle PeopleSoft Program Management:

- Resource Management
- Project Costing

Connect with us

Call **+1.800.ORACLE1** or visit **oracle.com**. Outside North America, find your local office at: **oracle.com/contact**.

 blogs.oracle.com

 facebook.com/oracle

 twitter.com/oracle

Copyright © 2023, Oracle and/or its affiliates. This document is provided for information purposes only, and the contents hereof are subject to change without notice. This document is not warranted to be error-free, nor subject to any other warranties or conditions, whether expressed orally or implied in law, including implied warranties and conditions of merchantability or fitness for a particular purpose. We specifically disclaim any liability with respect to this document, and no contractual obligations are formed either directly or indirectly by this document. This document may not be reproduced or transmitted in any form or by any means, electronic or mechanical, for any purpose, without our prior written permission.

Oracle, Java, and MySQL are registered trademarks of Oracle and/or its affiliates. Other names may be trademarks of their respective owners.