

Tekelec EAGLE® 5

FTP-Based Table Retrieve Application (FTRA) Software Installation Instructions

909-0643-001 Revision H
June 2010



Tekelec

Copyright 2010 Tekelec. All Rights Reserved. Printed in USA.
Legal Information can be accessed from the Main Menu of the optical disc or on the
Tekelec Customer Support web site in the *Legal Information* folder of the *Product Support* tab.

Table of Contents

- Introduction 4**
 - Overview 4
 - Related Publications 4
 - Documentation Availability, Packaging, and Updates 5
 - Documentation Admonishments..... 5
 - Customer Care Center..... 6
 - Emergency Response..... 8
- Hardware and Software Requirements 9**
- Software Installation 10**
 - Overview 10
 - FTRA Software Installation on Windows..... 11
 - FTRA Software Installation on Unix..... 17
 - Java Runtime Environment Installation..... 18
 - Windows FTRA Release 4.x or Later Upgrade 19
 - Unix FTRA Release 4.x or Later Upgrade 20

List of Figures

Figure 1. Exploring the FTRA 4.3 CD Using Windows Explorer.....	11
Figure 2. Add or Remove Program Window.....	11
Figure 3. Selecting a Custom Installation.....	12
Figure 4. Creating New Folder for FTRA Installation.....	13
Figure 5. Rename New Folder to ftra.....	13
Figure 6. Copy the ftra_install.exe File.....	14
Figure 7. Extracting the FTRA Program Files Using the Command Prompt.....	14
Figure 8. Setting the Environment Variables.....	15
Figure 9. Creating a Shortcut to FTRA.....	16
Figure 10. Windows Upgrade Procedure from FTRA Release 4.x to FTRA Release 4.3.....	19

Introduction

Overview

The FTP-Based Table Retrieve Application (FTRA) was designed in conjunction with the FTP Retrieve and Replace feature to transfer EAGLE 5 ISS database tables using an FTP session to a remote server for offline processing. The FTRA is a stand-alone application that interfaces with one or more STP's. Database tables can be retrieved from the selected EAGLE 5 ISS using the EAGLE 5 ISS's retrieve commands. The output of these retrieve commands is converted to CSV (comma separated value) files. The EAGLE 5 ISS commands in the form of a command file can be read into the FTRA where they are validated and sent to the selected STP. Logs are provided for event tracking and error message display.

The FTRA provides the following features through the use of a graphical user interface (GUI).

- STP Connection Configuration
- STP Connectivity Test
- FTP Server Configuration
- Retrieving the EAGLE 5 ISS database tables with the results converted to CSV files.
- Automated or manual retrieval of database tables from multiple STPs with the command line interface. The results are converted to CSV files.
- Validation of command files before being sent to the STP.
- Command file editing
- Viewing the log files for event tracking and error message display.

Related Publications

For information about additional publications that are related to this document, refer to the Related Publications document. The Related Publications document is published as a part of the Release Documentation and is also published as a separate document on the [Tekelec Customer Support Site](#).

User Guide Conventions

In order to clearly differentiate between references to objects, actions, literal entries, and user-supplied information, the following conventions are used in this user guide:

Menu selections and buttons are shown in bold, and the steps in a menu path are represented with ">". For example:

Select **Edit > STP Connection Configuration** from the menu.

The **Add** button is not enabled when the **STP Connection Configuration** menu opens.

Commands and entries that must be entered exactly as shown in this document are shown in the 10 point Courier bold font. For example:

Using a text editor (such as Notepad) add the following lines to the AUTOEXEC.BAT file:

```
SETFTRA_HOME="C:\ <download_directory> "  
SETJRE_HOME="C:\Program Files\Java\j2re1.4.0_01"
```

User-specific information is shown in italics and enclosed in “<>”. For example, the name of the folder you wish to use as the download directory in the previous example is shown as <download_directory>.

Documentation Availability, Packaging, and Updates

Tekelec provides documentation with each system and in accordance with contractual agreements. For General Availability (GA) releases, Tekelec publishes a complete EAGLE 5 ISS documentation set. For Limited Availability (LA) releases, Tekelec may publish a documentation subset tailored to specific feature content or hardware requirements. Documentation Bulletins announce a new or updated release.

The Tekelec EAGLE 5 ISS documentation set is released on an optical disc. This format allows for easy searches through all parts of the documentation set.

The electronic file of each manual is also available from the [Tekelec Customer Support Site](#). This site allows for 24-hour access to the most up-to-date documentation, including the latest versions of Feature Notices.

Printed documentation is available for GA releases on request only and with a lead time of six weeks. The printed documentation set includes pocket guides for commands and alarms. Pocket guides may also be ordered separately. Exceptions to printed documentation are:




- Hardware or Installation manuals are printed without the linked attachments found in the electronic version of the manuals.
- The Release Notice is available only on the Customer Support site.

Note: Customers may print a reasonable number of each manual for their own use.

Documentation is updated when significant changes are made that affect system operation. Updates resulting from Severity 1 and 2 Problem Reports (PRs) are made to existing manuals. Other changes are included in the documentation for the next scheduled release. Updates are made by re-issuing an electronic file to the customer support site. Customers with printed documentation should contact their Sales Representative for an addendum. Occasionally, changes are communicated first with a Documentation Bulletin to provide customers with an advanced notice of the issue until officially released in the documentation. Documentation Bulletins are posted on the Customer Support site and can be viewed per product and release.

Documentation Admonishments

Admonishments are icons and text throughout this manual that alert the reader to assure personal safety, to minimize possible service interruptions, and to warn of the potential for equipment damage.

	DANGER: (This icon and text indicate the possibility of personal injury.)
	WARNING: (This icon and text indicate the possibility of equipment damage.)
	CAUTION: (This icon and text indicate the possibility of service interruption.)

Customer Care Center

The Tekelec Customer Care Center is your initial point of contact for all product support needs. A representative takes your call or email, creates a Customer Service Request (CSR) and directs your requests to the Tekelec Technical Assistance Center (TAC). Each CSR includes an individual tracking number. Together with TAC Engineers, the representative will help you resolve your request.

The Customer Care Center is available 24 hours a day, 7 days a week, 365 days a year, and is linked to TAC Engineers around the globe.

Tekelec TAC Engineers are available to provide solutions to your technical questions and issues 7 days a week, 24 hours a day. After a CSR is issued, the TAC Engineer determines the classification of the trouble. If a critical problem exists, emergency procedures are initiated. If the problem is not critical, normal support procedures apply. A primary Technical Engineer is assigned to work on the CSR and provide a solution to the problem. The CSR is closed when the problem is resolved.

Tekelec Technical Assistance Centers are located around the globe in the following locations:

Tekelec - Global

Email (All Regions): support@tekelec.com

- **USA and Canada**

Phone:

1-888-FOR-TKLC or 1-888-367-8552 (toll-free, within continental USA and Canada)

1-919-460-2150 (outside continental USA and Canada)

TAC Regional Support Office Hours:

8:00 a.m. through 5:00 p.m. (GMT minus 5 hours), Monday through Friday, excluding holidays

- **Central and Latin America (CALA)**

Phone:

USA access code +1-800-658-5454, then 1-888-FOR-TKLC or 1-888-367-8552 (toll-free)

TAC Regional Support Office Hours (except Brazil):

10:00 a.m. through 7:00 p.m. (GMT minus 6 hours), Monday through Friday, excluding holidays

- **Argentina**

Phone:

0-800-555-5246 (toll-free)

- **Brazil**

Phone:

0-800-891-4341 (toll-free)

TAC Regional Support Office Hours:

8:30 a.m. through 6:30 p.m. (GMT minus 3 hours), Monday through Friday, excluding holidays

- **Chile**

Phone:

1230-020-555-5468

- **Colombia**
Phone:
01-800-912-0537
- **Dominican Republic**
Phone:
1-888-367-8552
- **Mexico**
Phone:
001-888-367-8552
- **Peru**
Phone:
0800-53-087
- **Puerto Rico**
Phone:
1-888-367-8552 (1-888-FOR-TKLC)
- **Venezuela**
Phone:
0800-176-6497
- **Europe, Middle East, and Africa**
Regional Office Hours:
8:30 a.m. through 5:00 p.m. (GMT), Monday through Friday, excluding holidays
 - **Signaling**
Phone:
+44 1784 467 804 (within UK)
 - **Software Solutions**
Phone:
+33 3 89 33 54 00
- **Asia**
 - **India**
Phone:
+91 124 436 8552 or +91 124 436 8553
TAC Regional Support Office Hours:
10:00 a.m. through 7:00 p.m. (GMT plus 5 1/2 hours), Monday through Saturday, excluding holidays
 - **Singapore**
Phone:
+65 6796 2288

TAC Regional Support Office Hours:

9:00 a.m. through 6:00 p.m. (GMT plus 8 hours), Monday through Friday, excluding holidays

Emergency Response

In the event of a critical service situation, emergency response is offered by the Tekelec Customer Care Center 24 hours a day, 7 days a week. The emergency response provides immediate coverage, automatic escalation, and other features to ensure that the critical situation is resolved as rapidly as possible.

A critical situation is defined as a problem with an EAGLE 5 ISS that severely affects service, traffic, or maintenance capabilities, and requires immediate corrective action. Critical problems affect service and/or system operation resulting in:

- A total system failure that results in loss of all transaction processing capability
- Significant reduction in system capacity or traffic handling capability
- Loss of the system's ability to perform automatic system reconfiguration
- Inability to restart a processor or the system
- Corruption of system databases that requires service affecting corrective actions
- Loss of access for maintenance or recovery operations
- Loss of the system ability to provide any required critical or major trouble notification

Any other problem severely affecting service, capacity/traffic, billing, and maintenance capabilities may be defined as critical by prior discussion and agreement with the Tekelec Customer Care Center.

Hardware and Software Requirements

To run the offline application, a workstation on a Windows or UNIX platform is required.

The Windows workstation requires that the following hardware and software is installed.

- Windows® 2000/XP¹
- Note: Windows 98 and Windows NT support is discontinued.²
- CPU: Pentium III 750MHz or faster
- RAM – Minimum 128 MB
- Disk Space – Minimum 500 MB + 500 MB per STP
- CD-ROM drive
- 10/100BaseT Ethernet connection to the LAN
- Static IP addressing
- Java™ Runtime Environment (JRE) 1.5 or 1.6³

The UNIX workstation requires that the following hardware and software is installed.

- Solaris 10 SPARC
- Processor speed - 500 MHz or faster
- RAM - Minimum 512 MB
- Disk Space - Minimum 500 MB + 500 MB per STP
- CD-ROM drive
- 10/100BaseT Ethernet connection to the LAN
- Static IP addressing
- Java™ Runtime Environment (JRE) 1.5 or 1.6³

¹ Windows is a registered trademark of Microsoft Corporation in the United States of America and/or other countries.

² Windows Vista is not supported.

³ Java and all Java-based marks are trademarks or registered trademarks of Sun Microsystems, Inc. in the United States of America and other countries. Tekelec is independent of Sun Microsystems, Inc.

Software Installation

Overview

The installation and upgrading of the FTRA can be done locally or remotely thru a LAN. Since FTRA is a Java™ based application, it requires Java™ Runtime Environment to be installed on your machine. The installation and upgrading of the FTRA can be accomplished in 5-10 minutes if the Java™ Runtime Environment had been previously installed and 30-90 minutes (depending upon the download speed of your internet connection if you are downloading the Java™ Runtime Environment software from Sun Microsystem's web site) if it has not been previously installed. The FTRA will not provide service during this time. If the FTRA is being upgraded, it will not be necessary to recreate directories or environment variables that already exist.

If the FTRA software is being installed for the first time, perform one of these procedures:

[FTRA Software Installation on Windows](#)

[FTRA Software Installation on Unix](#)

| If the FTRA software is being upgraded to FTRA 4.3, perform one of these procedures:

[Windows FTRA Release 4.x or Later Upgrade](#)

[Unix FTRA Release 4.x or Later Upgrade](#)

FTRA Software Installation on Windows

1. Place the FTRA CD in the CD-ROM drive.
 - a. To see the contents of the FTRA CD, double click on **My Computer** icon on the Desktop of your computer. This will open the Windows explorer for you.
 - b. Click on the **Folders** tab at the top of Windows explorer menu and it will display the drives in your system.
 - c. Select the CD Drive by clicking on it and it will display the contents of the CD as shown in Figure 1.

Figure 1. Exploring the FTRA 4.3 CD Using Windows Explorer.



2. Install the Java™ 2 Runtime Environment, Standard Edition from the CD:

You may not need to install Java™ 2 Runtime Environment, Standard Edition Version 1.5 or 1.6 if it is already installed on your machine. Perform the following steps to verify this.

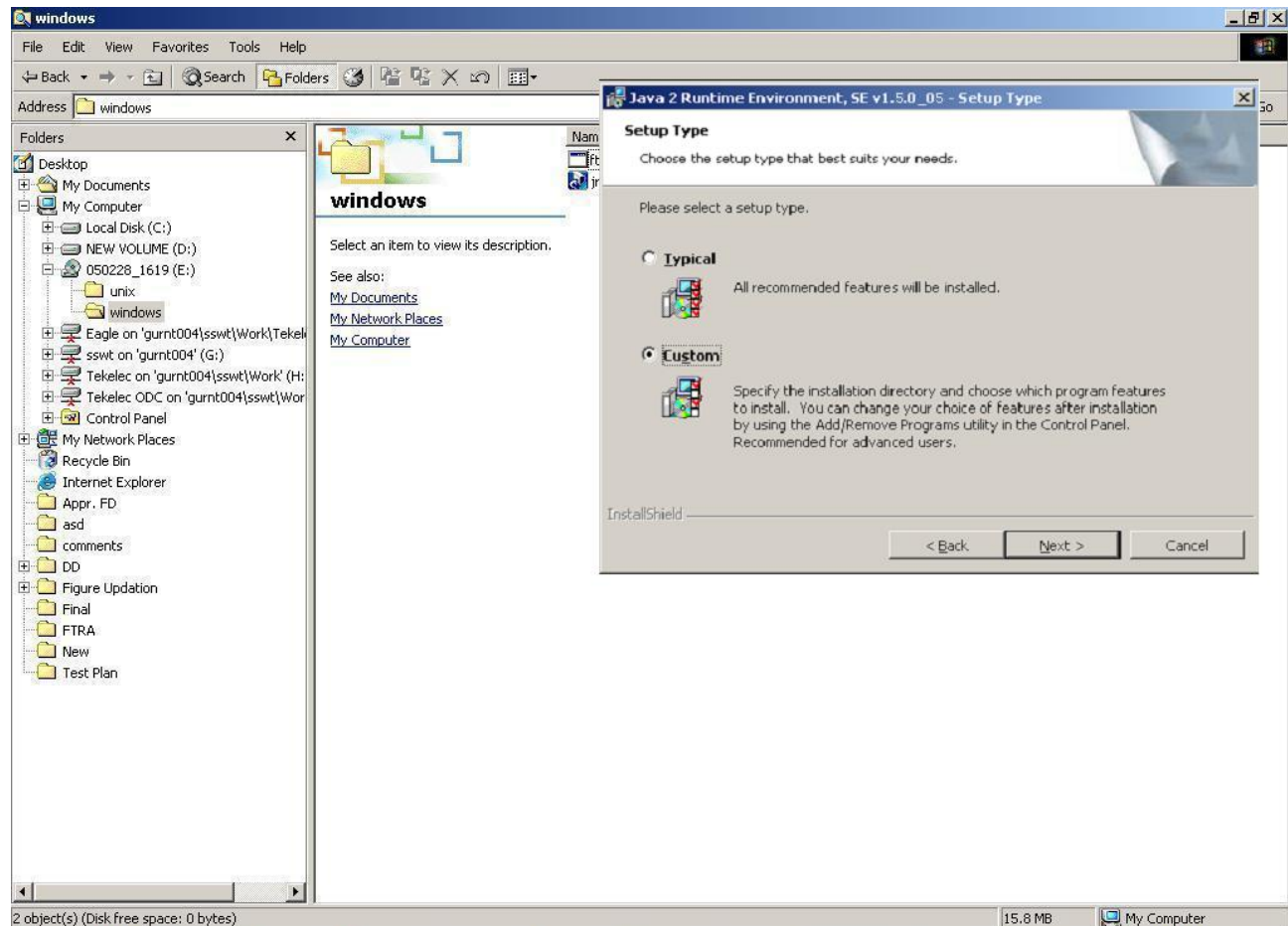
 - a. Go to **Start Menu->Settings->Control Panel ->Add or Remove Programs**. This will display all the programs, which are installed on your computer.
 - b. If Java™ 2 Runtime Environment, Standard Edition Version 1.5 or 1.6 is already installed on your computer (as shown in Figure 2), go to Step 4. If the Java™ 2 Runtime Environment Standard Edition Version 1.5 or 1.6 software is not installed on your computer, go to step 3.

Figure 2. Add or Remove Program Window



3. Install the Java™ 2 Runtime Environment software on your computer by performing these steps.
 - a. Select the CD Drive on your computer.
 - b. Select Windows folder by double clicking on it. The executable files required for the FTRA installation are displayed.
 - c. Double-click on the Java™ 2 Runtime Environment, Standard Edition installable icon in the Windows folder. The InstallShield Wizard opens.
 - d. Follow the InstallShield Wizard instructions. Click the **Yes/ Next** buttons in the InstallShield Wizard to proceed with the installation procedure.
 - e. Installshield wizard asks you to choose the destination location for the installation of Java™ 2 Runtime Environment, Standard Edition only when custom installation is selected. You may change it by clicking on **Change** button or you may use with the default path given in the wizard. You need to remember this path, as this is required in step 7.

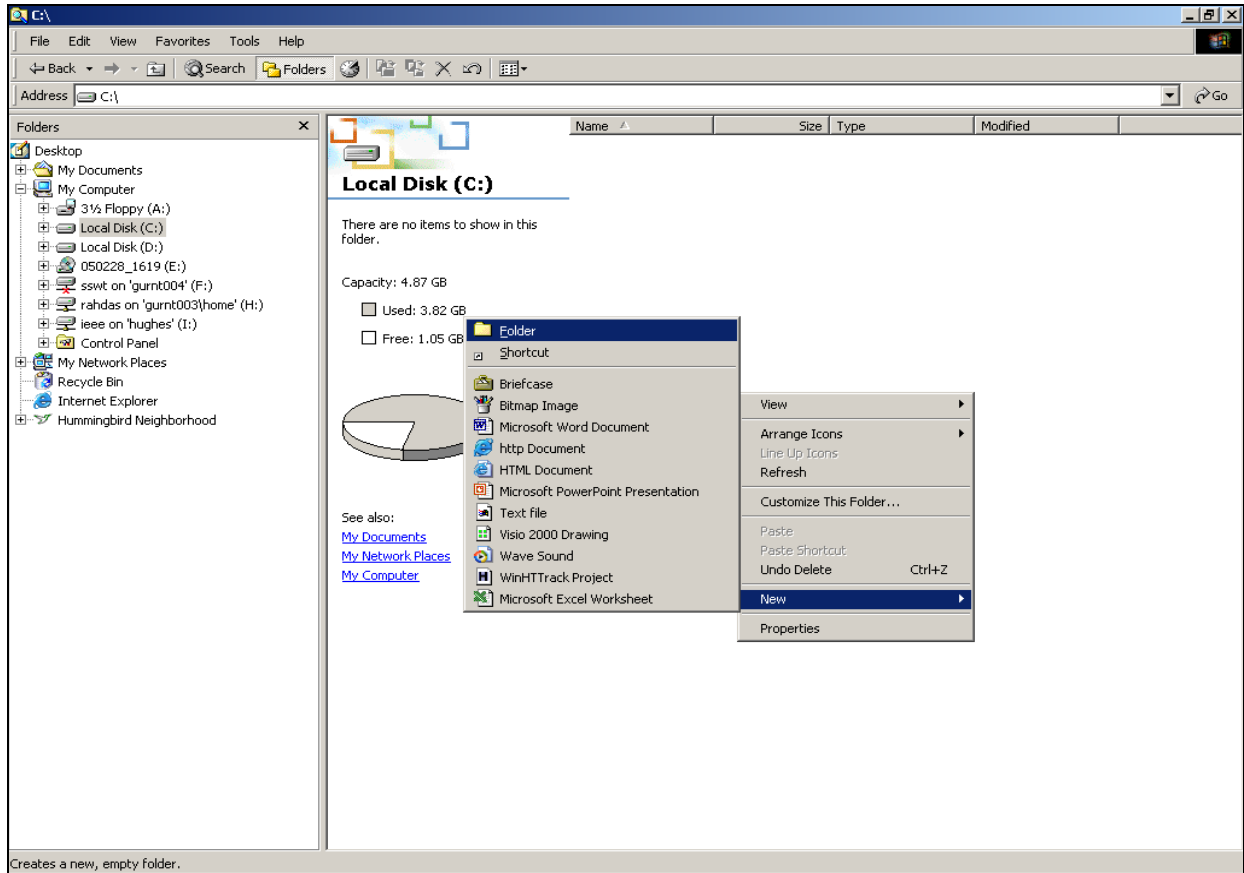
Figure 3. Selecting a Custom Installation



4. Create a folder on your computer for installing the FTRA package (the <base_directory>), for example, C:/ftra. The new folder can be created on any drive on your computer. Perform these steps to create the folder. For this example, a new folder named *ftra* is created on the C: Drive.
 - a. Select the C: Drive from Windows Explorer.

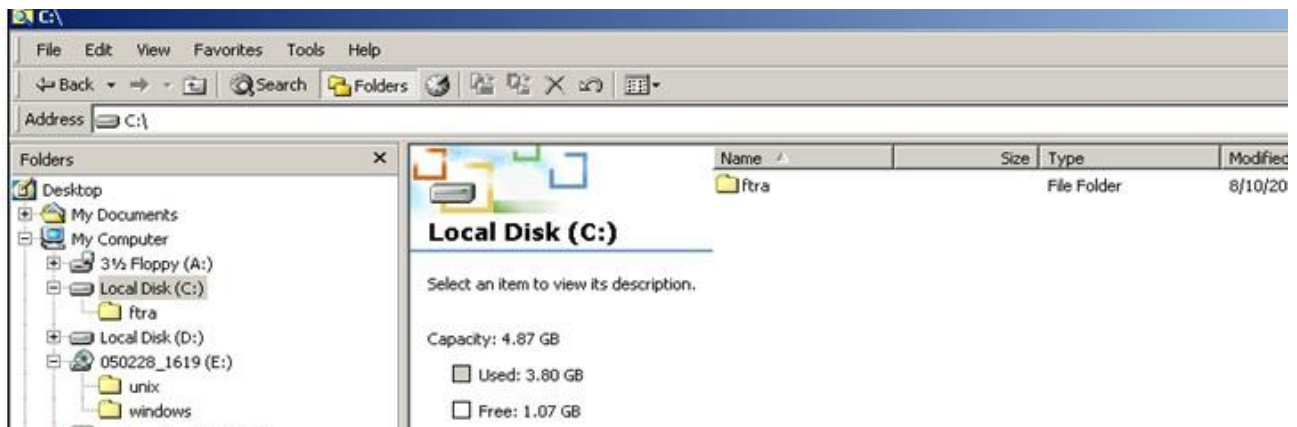
- b. Right click and select **New>Folder** as shown in Figure 4. This will create a folder with the name **New Folder**.

Figure 4. Creating New Folder for FTRA Installation



- c. Rename this folder to *ftra* as shown in Figure 5

Figure 5. Rename New Folder to ftra

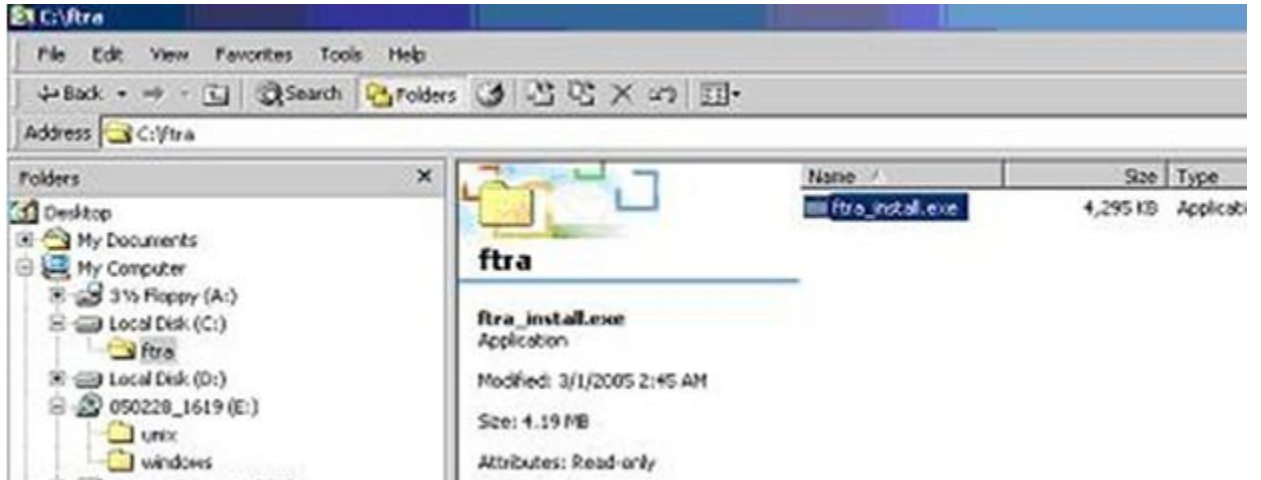


Note: Make sure that there is no previous installation of the FTRA software inside *ftra* folder on your computer. If a previous installation of the FTRA software is inside the *ftra* folder, you may choose a different name for your *<base_directory>* or else you may choose to remove or rename your previous FTRA installation.

- 5. Copy *ftra_install.exe* file from the FTRA CD to the *<base_directory>* by performing these steps.

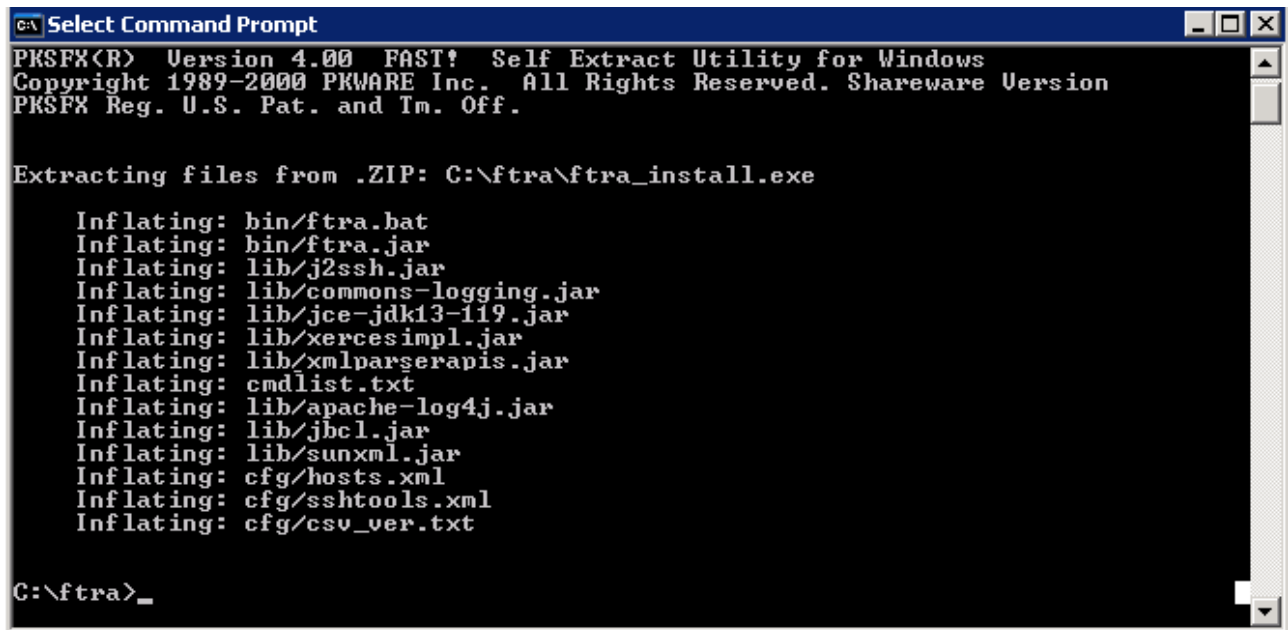
- a. In Windows Explorer, select the CD Drive on your machine and go to the Windows folder.
- b. Copy the *ftra_install.exe* file from the Windows folder to the *<base_directory>* directory as shown in Figure 6.

Figure 6. Copy the ftra_install.exe File



- a.
6. Extract the FTRA files using only the Command Prompt. Do not use a Windows Explorer window to extract the FTRA program files.
 - a. Open the Windows command prompt.
 - b. Change directory to the FTRA *<base_directory>*.
 - c. Enter the *ftra_install.exe -d* command as shown in Figure 7. This will extract the FTRA program files in *<base_directory>*.

Figure 7. Extracting the FTRA Program Files Using the Command Prompt



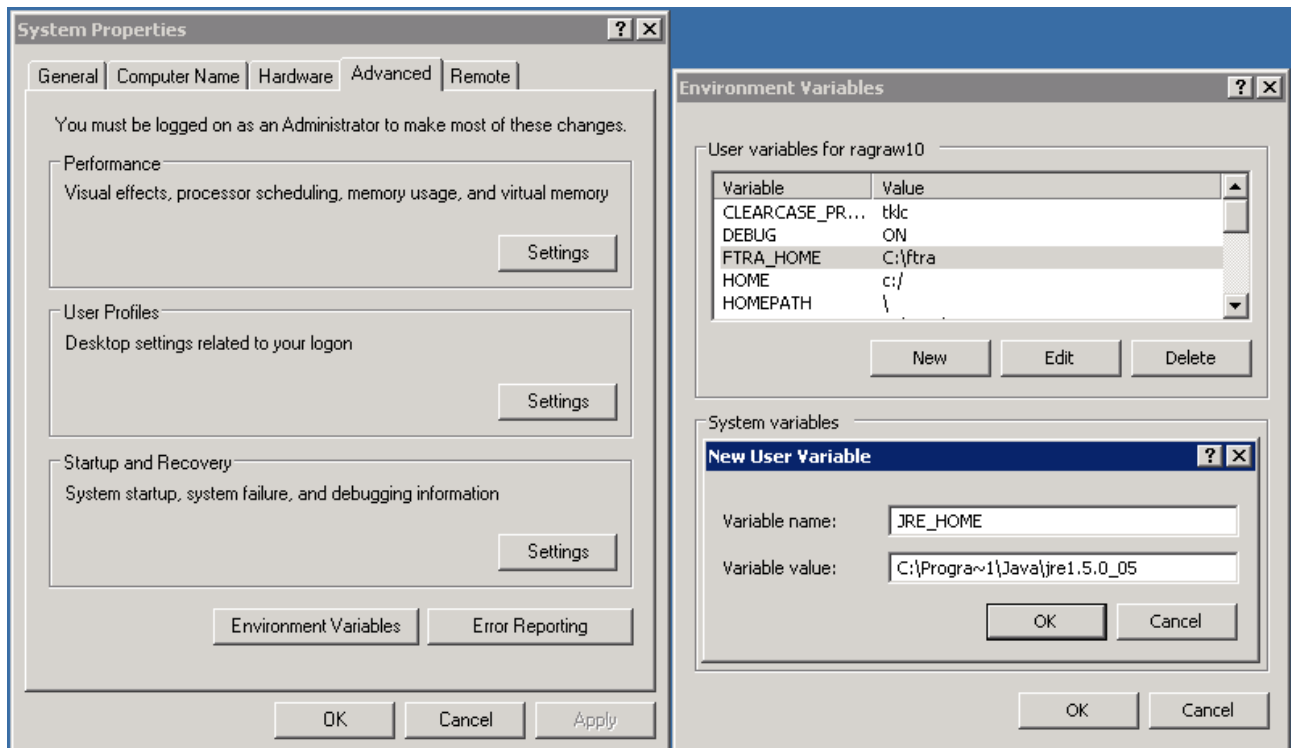
7. Set the system/user environment variables *FTRA_HOME* & *JRE_HOME*.

- a. Right-click the **My Computer** icon on the desktop and select **Properties**.
- b. In the **Advanced** tab, click **Environment Variables** and then click **New** as shown in Figure 8.
- c. Under *User variables*, enter the following variable names and their values.

FTRA_HOME = C:\ <base_directory created for FTRA> (typically C:\ftra)

JRE_HOME = C:\Program Files\Java\<jre path> (typically, the folder where Java is installed, and the Java path information recorded in Step 3).

Figure 8. Setting the Environment Variables



Note: If the directory name has spaces or is over eight characters long, the DOS short name may be required to define the environment variable. For example, using the *JRE_HOME* environment variable above, the user would define the variable as “C:\Progra~1\Java\<jre path>” (without the quotes) with maximum of eight characters for the directory name.

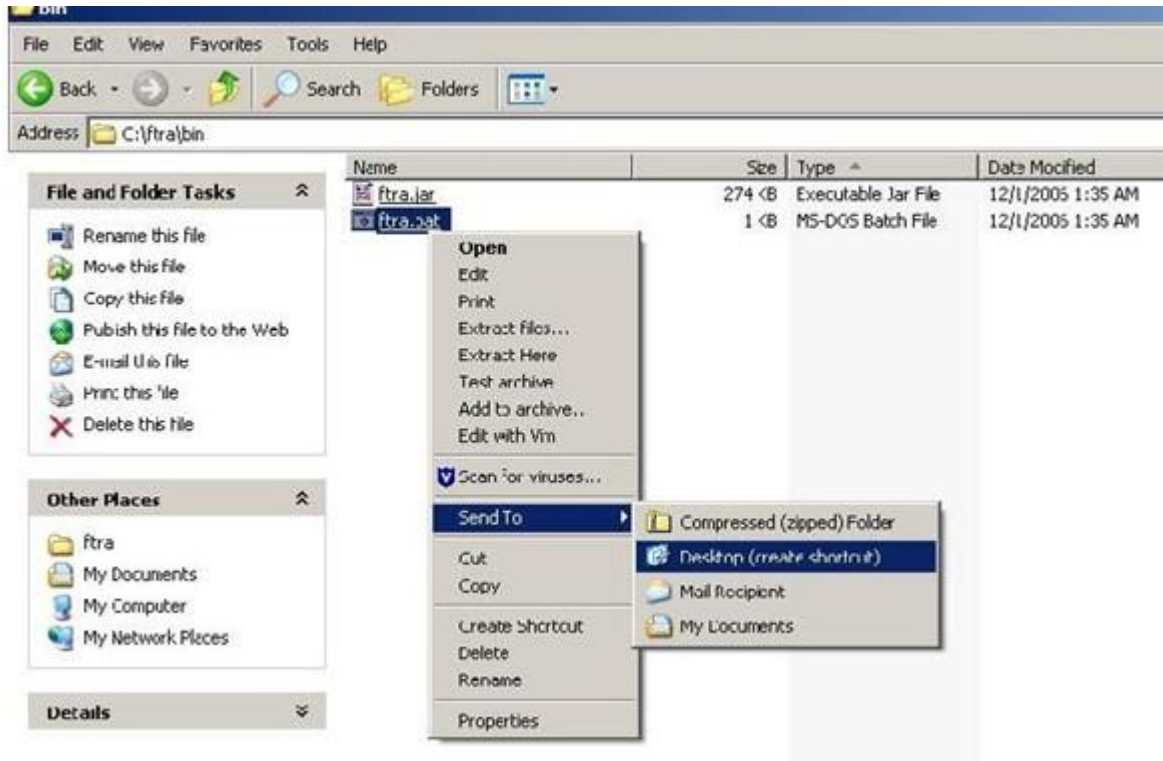
8. Create an FTRA shortcut on your desktop:

- a. Using Windows Explorer, open the <base_directory>/bin folder.
- b. Right click on the *ftra.bat* file and then select *Send To->Desktop (Create Shortcut)* as shown below in Figure 9. This will create the shortcut to FTRA on the desktop.

Note: For new installation of FTRA Release 4.x, the bin folder will contain the *ftra.jar* and *ftra.bat* files only as shown in Figure 9.

Note: On multi-user systems, the shortcut should be placed in the Default User or in All Users desktop folder in order to make it available to all users.

Figure 9. Creating a Shortcut to FTRA



FTRA Software Installation on Unix

1. Place the FTRA CD in the CD-ROM drive.
2. Check whether the Java is already installed in your computer. Check the version of Java 2 Runtime Environment that is installed with the command **java -version**.

If Java 2 Runtime Environment Standard Edition version 1.5 or 1.6 is already installed in your computer, go to step 4.

3. To install the Java 2 Runtime Environment, Standard Edition from the CD, open **FileManager** and goto the CDROM drive. Follow the instructions in the [Java™ Runtime Environment Installation](#) procedure to install the Java 2 Runtime Environment Standard Edition version 1.5 or 1.6.

Create an *<install_directory>* to install the FTRA software into. The preferred location to install the FTRA software into is *<HOME_DIRECTORY>/ftra*, but you may place it wherever you would prefer. Open **FileManager** and go to the preferred location. From **FileManager**, select **File > New Folder** and rename it **ftra**. Copy the file *ftra_install.tar* from the FTRA CD to the new *<install_directory>* (for example, *<HOME_DIRECTORY>/ftra*).

Note: The HOME_DIRECTORY can be found using the command echo \$HOME_DIRECTORY.

4. Extract the FTRA file(s) from the new *<install_directory>*. (for example, *<HOME_DIRECTORY>/ftra*).

From **FileManager**, right-click on the *ftra_install.tar* file and select **Archive Unpack**. This will extract the program files into a new */bin* subdirectory.

Note: The Archive Unpack function is only available when using the CDE (Common Desktop Environment) X-window File Manager. If you are not using the CDE, the Unix tar -xvzf ftra_install.tar command to extract the contents of ftra_install.tar should be used. Please refer to the man pages for more information about the tar command.

5. To display the environment settings use the following commands:

```
echo $FTRA_HOME
```

```
echo $JRE_HOME
```

An example of the possible output is:

```
echo $FTRA_HOME:
```

```
<ftra_install_directory> (for example, <HOME_DIRECTORY>/ftra)
```

```
echo $JRE_HOME:
```

```
<jre_install_directory> (for example, /usr/java)
```

Note: For NetBoss, the example of the output would be:

```
harristest[netboss]/opt/home/netboss% echo $FTRA_HOME
```

```
/usr/ftra/
```

```
harristest[netboss]/opt/home/netboss% echo $JRE_HOME
```

```
/usr/java/
```

If FTRA_HOME is already set to <HOME_DIRECTORY>/ftra and JRE_HOME is set to <jre_install_directory>, go to step 7.

6. Set the required environment variables by using `setenv` command from the shell prompt:

```
setenv FTRA_HOME '<jra_install_directory>' (for example, <HOME_DIRECTORY>/ftra)
```

```
setenv JRE_HOME '<jre_install_directory>'
```

If a user wants these environment variables to be set each time the user logs in, then add these lines to the user's `.cshrc` file.

For Netboss, set the required environment variables in the user's `.cshrc` file by editing the file using some editor like 'vi':

```
setenv FTRA_HOME "$ (anmdr) /local/stp/ftra"
```

```
setenv JRE_HOME "/usr/java"
```

Note: Use the `ls -al` command to view the hidden file '.cshrc' and the 'man vi' command to display help for the vi editor.

7. Change to the FTRA bin directory to run FTRA. (for example, `<cd/ftra/bin>`)

Run FTRA by entering this command. `./ftra`

Note: Verify that the `ftra` file is executable. Otherwise, use `chmod 555 ftra` command to change the permissions on this file.

Java Runtime Environment Installation

The Java Runtime Environment (JRE) can be installed from the FTRA CD or from the web site <http://java.sun.com/products/archive> and follow the product installation instructions.

Following are the installation steps for JRE 1.5. JRE 1.6 can be installed using "jre-6u20-solaris-sparc.sh". The below mentioned steps would remain the same.

1. Log on as root.

2. Go to the Java installation directory:

```
Shell> cd /usr
```

3. Copy the Java distribution from the FTRA CD:

```
Shell> cp <path to FTRA CD>/jre-1_5_0_18-solaris-sparc.sh .
```

4. Execute the Java installation program:

```
Shell> ./jre-1_5_0_18-solaris-sparc.sh
```

This will create a directory called `jre1.5.0_18`.

Note: Make sure the file is executable. If the file is not executable, use the command: `chmod 555 jre-1_5_0_18-solaris-sparc.sh` to set the execute permissions for the file.

5. Make a symbolic link to this directory called `/usr/java`:

If a Java™ link already exists in the directory, remove the existing link first. (Check for link using `ls -l`, remove with `rm java`)

```
Shell> ln -s jre1.5.0_18 java
```

Windows FTRA Release 4.x or Later Upgrade

1. Place the FTRA CD in the CD-ROM drive..
2. From Windows Explorer, copy the ftra_install.exe file from the FTRA_CD to the existing *<base_directory>* directory (see step 4 of the [FTRA Software Installation on Windows](#), procedure for details about the *<base_directory>*).
3. Extract the FTRA file(s) to the existing *<base_directory>*, using the Command Prompt only. Do not use a Windows Explorer window for the extraction.

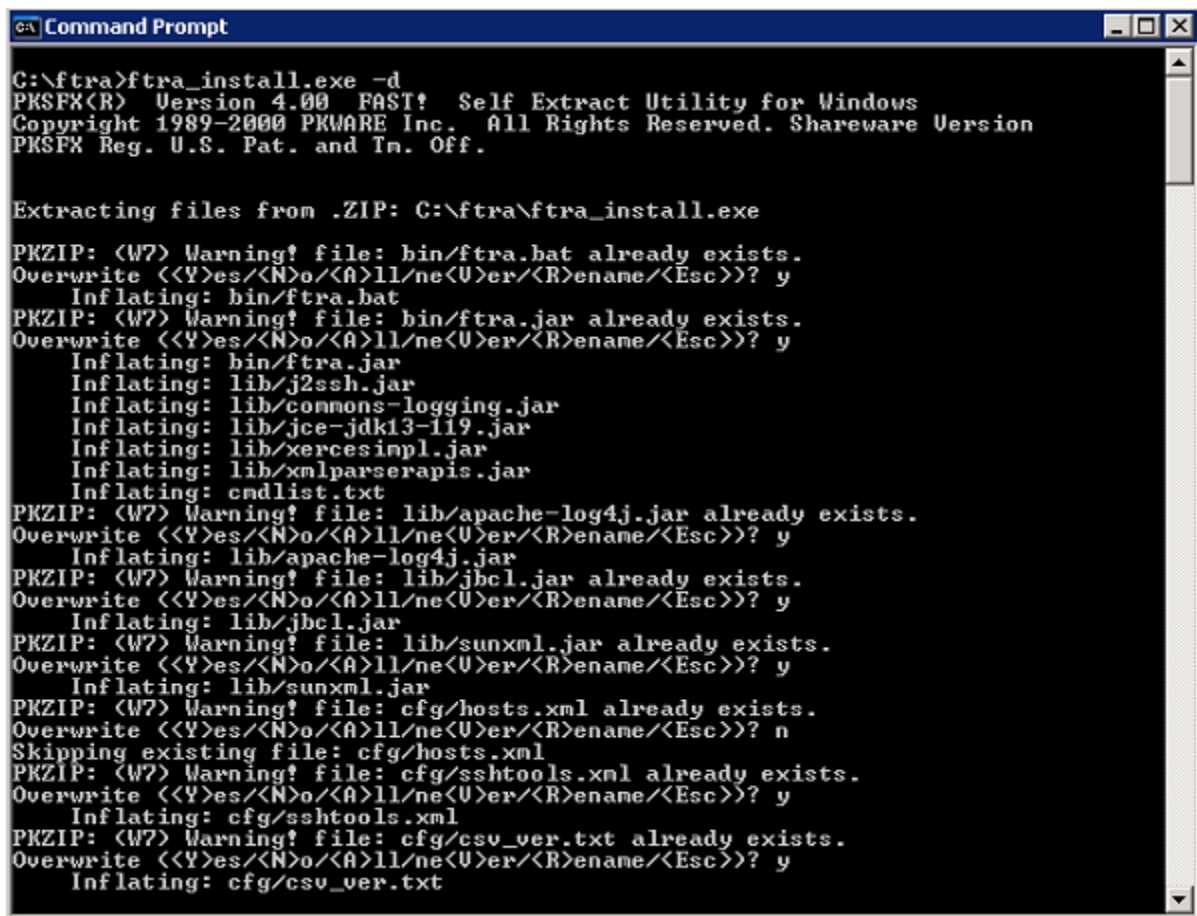
From Windows command line, enter the `ftra_install.exe -d` command. This will create the sub-directories and extract the program files into the existing *<base_directory>*.

Note: Answer “yes” when asked to overwrite an existing file. However, if some host entries were previously provisioned in hosts.xml file that need to be retained, “no” option shall be specified when asked to overwrite. Figure 10 shows the selection of “no” option for hosts.xml file while upgrading to FTRA Release 4.x or later.

FTRA Release 4.x or later has been installed.

4. Start the FTRA software. See the “FTRA Initialization” section in the FTP-Based Table Retrieve Application (FTRA) User Guide for more information on starting the FTRA software. The existing FTRA STP Connection Configuration data will automatically be converted during the FTRA system initialization.

Figure 10. Windows Upgrade Procedure from FTRA Release 4.x to FTRA Release 4.3



```
C:\ftra>ftra_install.exe -d
PKSPFX(R) Version 4.00 FAST! Self Extract Utility for Windows
Copyright 1989-2000 PKWARE Inc. All Rights Reserved. Shareware Version
PKSPFX Reg. U.S. Pat. and Tm. Off.

Extracting files from .ZIP: C:\ftra\ftra_install.exe

PKZIP: (W7) Warning! file: bin/ftra.bat already exists.
Overwrite <<Y>es/<N>o/<A>ll/ne<U>er/<R>ename/<Esc>>? y
Inflating: bin/ftra.bat
PKZIP: (W7) Warning! file: bin/ftra.jar already exists.
Overwrite <<Y>es/<N>o/<A>ll/ne<U>er/<R>ename/<Esc>>? y
Inflating: bin/ftra.jar
Inflating: lib/j2ssh.jar
Inflating: lib/commons-logging.jar
Inflating: lib/jce-jdk13-119.jar
Inflating: lib/xercesimpl.jar
Inflating: lib/xmlparserapis.jar
Inflating: cmdlist.txt
PKZIP: (W7) Warning! file: lib/apache-log4j.jar already exists.
Overwrite <<Y>es/<N>o/<A>ll/ne<U>er/<R>ename/<Esc>>? y
Inflating: lib/apache-log4j.jar
PKZIP: (W7) Warning! file: lib/jbcl.jar already exists.
Overwrite <<Y>es/<N>o/<A>ll/ne<U>er/<R>ename/<Esc>>? y
Inflating: lib/jbcl.jar
PKZIP: (W7) Warning! file: lib/sunxml.jar already exists.
Overwrite <<Y>es/<N>o/<A>ll/ne<U>er/<R>ename/<Esc>>? y
Inflating: lib/sunxml.jar
PKZIP: (W7) Warning! file: cfg/hosts.xml already exists.
Overwrite <<Y>es/<N>o/<A>ll/ne<U>er/<R>ename/<Esc>>? n
Skipping existing file: cfg/hosts.xml
PKZIP: (W7) Warning! file: cfg/sshtools.xml already exists.
Overwrite <<Y>es/<N>o/<A>ll/ne<U>er/<R>ename/<Esc>>? y
Inflating: cfg/sshtools.xml
PKZIP: (W7) Warning! file: cfg/csv_ver.txt already exists.
Overwrite <<Y>es/<N>o/<A>ll/ne<U>er/<R>ename/<Esc>>? y
Inflating: cfg/csv_ver.txt
```

Unix FTRA Release 4.x or Later Upgrade

1. Place the FTRA CD in the CD-ROM drive.
2. From **FileManager**, copy the `ftra_install.tar` file to the existing `<install_directory>` directory (see step 4 of the [FTRA Software Installation on Unix](#) procedure for details about the `<install_directory>`).
3. From **FileManager**, right-click on the `ftra_install.tar` file that was copied from the FTRA CD, not the `ftra_install.tar` file on the FTRA CD, and select **Archive Unpack**. The program files will be extracted into the existing directory containing the FTRA software.

To retain the `hosts.xml` file, which may contain some provisioned host entries, make a backup of the file before overwriting, using the command:

```
mv hosts.xml hosts_backup.xml
```

If installing from the command prompt, the `tar -xvzf ftra_install.tar` command is used to extract the contents of `ftra_install.tar`. The user may choose to enter 'y' or 'n' at the command prompt to overwrite or not to overwrite files, while the files are being extracted from the `ftra_install.tar` file.

Note: The Archive Unpack function is only available when using the CDE (Common Desktop Environment) X-window File Manager. If the CDE is not being used, the Unix tar command should be used to extract the program files. Please refer to the man pages for the tar command for more information about using the tar command.

When the extraction of the FTRA program files has completed, the FTRA 4.x software has been installed.

To restore the original `hosts.xml` file, use the command:

```
cp hosts_backup.xml hosts.xml
```

4. Start the FTRA software. See the “FTRA Initialization” section in the FTP-Based Table Retrieve Application (FTRA) User Guide for more information on starting the FTRA software. The existing FTRA STP Connection Configuration data will automatically be converted during the FTRA system initialization.