

4

3

2

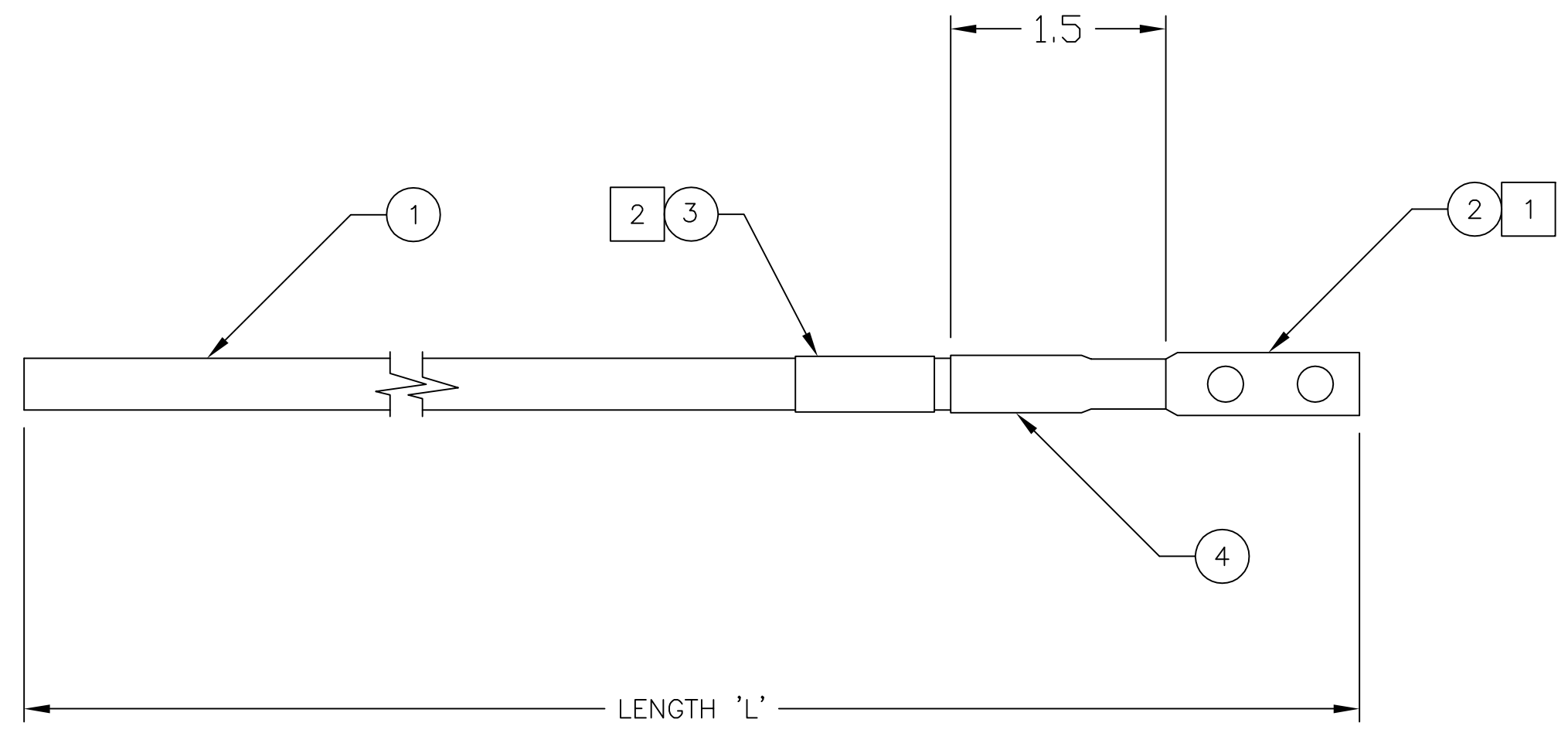
1

NOTES: UNLESS OTHERWISE SPECIFIED

- 1) CRIMP CONTACTS (ITEM 2) PER MANUFACTURER'S INSTRUCTIONS USING DOUBLE CRIMPS. RECOMMENDED CRIMPING TOOL: THOMAS AND BETTS P/N TBM5.
- 2) MARK - PERMANENTLY MARK CABLE LABEL WITH TEKELEC PART NUMBER INCLUDING APPLICABLE DASH NUMBER AND REVISION LEVEL, VENDOR NAME AND DATE OF MANUFACTURE. LOCATE APPROXIMATELY AS SHOWN.
- 3) NO ADDITIONS, DELETIONS, SUBSTITUTIONS, OR MODIFICATIONS WITHOUT PRIOR WRITTEN TEKELEC APPROVAL.
- 4) THIS ASSEMBLY HAS BEEN DESIGNED IN ACCORDANCE WITH TEKELEC SPECIFICATION 906-0015-01 "SPECIFICATION, DESIGN, CABLE ASSEMBLIES, NSD".
- 5) THIS ASSEMBLY SHALL BE FABRICATED IN ACCORDANCE WITH TEKELEC SPECIFICATION 906-0016-01 "SPECIFICATION, FABRICATION, CABLE ASSEMBLIES, NSD".

REVISIONS			
LTR	DESCRIPTION	DATE	APPROVED
A	RELEASE PER ECN #12336	2/14/03	HICKAM
B	REVISED PER ECO#13333	12/18/03	GRIFFITH
C	REVISED PER ECO# 13465	3/3/04	GRIFFITH

DOCUMENT CONTROL
PRODUCTION RELEASED



TABULATION BLOCK			
DASH NUMBER	LENGTH "L" ± .50"	GAUGE	REVISION LEVEL
-01	36.00	6 AWG	A1
-02	36.00	2 AWG	B
-03	84.00	6 AWG	B

SEE SEPARATE PARTS LIST

UNLESS OTHERWISE SPECIFIED.
DO NOT SCALE DRAWING.
DIMENSIONS ARE IN INCHES.
INTERPRET DIMENSIONS IN ACCORDANCE WITH
ANSI Y14.5M-82.
DEBURR AND BREAK SHARP EDGES .005--.015.
MACHINED SURFACE FINISH 125/
TOLERANCES: .XX= ± .03 .XXX= ±010

STANDARD HOLE TOLERANCES:	
HOLE DIA	TOLERANCES
.013 THRU .125	+ .004 - .001
.126 THRU .250	+ .005 - .001
.251 THRU .500	+ .006 - .001
.501 THRU .750	+ .008 - .001
.751 THRU 1.000	+ .010 - .001
1.001 THRU 2.000	+ .012 - .001

CONTRACT NO.	
APPROVALS	DATE
DRAWN M.BRYAN	1/25/99
CHECKED J. HICKAM	1/25/99
APPROVED M.BRYAN	1/25/99
APPROVED	-
NEXT ASSY	USED ON
APPLICATION	
FINISH	
MATERIAL	

TEKELEC 26580 W. Agoura Road,
Calabasas, California 91302

GENERIC DRAWING_
CABLE ASSY_XX AWG
FRAME GROUND_XX INCHES

SIZE	CAGE CODE	DRAWING NO.	REV.
C		830-0715-XX	C
SCALE: NONE		FILE NAME:830-0715-XX_REV_C.DWG	SHEET 1 OF 1

THIS DOCUMENT AND THE DATA DISCLOSED HEREIN OR HEREWITH IS PROPRIETARY AND IS NOT TO BE REPRODUCED, USED OR DISCLOSED IN WHOLE OR PART TO ANYONE WITHOUT THE WRITTEN PERMISSION OF TEKELEC. COPYRIGHT, TEKELEC 1996.

4

3

2

1

DWG NO
830-0715-XX
SH
1
REV
C