

Oracle FLEXCUBE Universal Banking ® 12.0.3

Development Workbench - Bulk Generation

August 2013



Contents

| | | |
|-------|-----------------------------|-------------------------------------|
| 1. | Preface..... | 3 |
| 1.1 | Audience | 3 |
| 1.2 | Related Documents..... | 3 |
| 2. | Introduction | 4 |
| 3. | Bulk Generation | 4 |
| 3.1 | Source File List | 5 |
| 3.1.1 | Include Call form List..... | 5 |
| 3.2 | Destination Path | 6 |
| 3.3 | Source File Location | Error! Bookmark not defined. |
| 3.4 | Sources Files | 6 |
| 4. | Log Files | 9 |

1. Preface

This document describes the Bulk Generation functionality available in Oracle FLEXCUBE Development Workbench for Universal Banking and guides the developers/users to generate files for a set of radxmls at one time from Workbench.

1.1 Audience

This document is intended for FLEXCUBE Application developers/users that use Development Workbench to generate various FLEXCUBE components. Mainly used by vercon team.

To Use this manual, you need conceptual and working knowledge of the below:

| <i>Proficiency</i> | <i>Resources</i> |
|--|--|
| FLEXCUBE Functional Architecture | Training programs from Oracle Financial Software Services. |
| FLEXCUBE Object Naming conventions | Development Overview Guide |
| Working Knowledge of Oracle FLEXCUBE Development Workbench for Universal Banking | User Manuals |
| Working knowledge of Oracle Database | Oracle Documentations |
| Working knowledge of PLSQL developer | Respective vendor documents |
| Working knowledge of PLSQL & SQL Language | Self Acquired |
| Working knowledge of XML files | Self Acquired |

1.2 Related Documents

[04-Development WorkBench Screen Development-I.pdf](#)

[05-Development WorkBench Screen Development-II.pdf](#)

2. Introduction

This document contains:

- [Chapter 2 , “Introduction”](#)
- [Chapter 3 , “ Bulk Generation”](#)
- [Chapter 4 , “Console Log”](#)

3. Bulk Generation

Oracle FLEXCUBE Universal Banking Development Workbench provide Bulk Generation (all files at one time) of both front-end and backend units for both Extensible and Non-Extensible radxmls. The Bulk Generation Screen is shown below.

| Front-End Files | System Packages | Hook Packages | Meta Data | Others |
|--|--|---|---|---|
| <input type="checkbox"/> RadXML | <input type="checkbox"/> Main Package Spec | <input type="checkbox"/> Kernel Package Spec | <input type="checkbox"/> Menu Details | <input type="checkbox"/> Label Details |
| <input checked="" type="checkbox"/> Screen Xml | <input type="checkbox"/> Main Package Body | <input type="checkbox"/> Kernel Package Body | <input type="checkbox"/> Datasource Details | <input type="checkbox"/> Block PK Columns |
| <input checked="" type="checkbox"/> System JS | <input type="checkbox"/> Notification Triggers | <input type="checkbox"/> Cluster Package Spec | <input type="checkbox"/> LOV Details | <input type="checkbox"/> Function Call Forms |
| | <input type="checkbox"/> Upload Package Spec | <input type="checkbox"/> Cluster Package Body | <input type="checkbox"/> Block Details | <input type="checkbox"/> Gateway Details |
| | <input type="checkbox"/> Upload Package Body | <input type="checkbox"/> Custom Package Spec | <input type="checkbox"/> Screen Details | <input type="checkbox"/> Upload Table Trigger |
| | | <input type="checkbox"/> Custom Package Body | <input type="checkbox"/> Amendable Details | <input type="checkbox"/> Upload Tables Definition |
| | | | <input type="checkbox"/> Call form Details | <input type="checkbox"/> Archive Table Definition |
| | | | <input type="checkbox"/> Summary Details | |

| Sl.No | File Name | Sub Folder | File Status | Error Description |
|-------|-----------|------------|-------------|-------------------|
|-------|-----------|------------|-------------|-------------------|

Fig 3.1: Bulk generation Screen

For bulk generation user has to follow the following steps:

For non extensible function id's(radxmls),bulk generation of front end files only are supported

3.1 Source File List

User must create a **text file** containing the absolute path of the radxmls for which bulk generation has to be done.

Prepare a text file with absolute path.

If all the files are placed in one folder, dos commands (as shown below) can be used to generate the text file.

```
Z:\FLEXCUBE_Kerne\FCUBS_11.4.0\MAIN>Dir /b /s *_RAD.xml >
D:\BulkGeneration\Console.txt
```

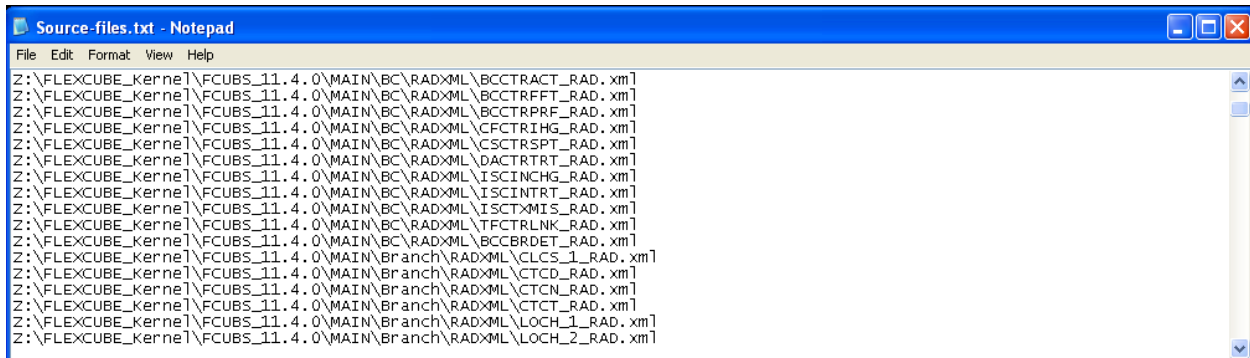


Fig 3.1.1: Source File list sample

3.1.1 Include Call form List

If user is generating for function id's which has call forms attached to it , call form list should be included as a part of the source file list. If call form is not included generation will fail.

If units for call form files are not required to be generated, then call form paths can be prefixed with double hyphen (--). All lines starting with double hyphen (--) won't be taken up for bulk generation.

As it is difficult to search and put each callform for individual screen prepare callform list upfront and add the files to be generated at the end of callform list. Even if any of callform is repeated in generation list it won't affect the generation of that file.

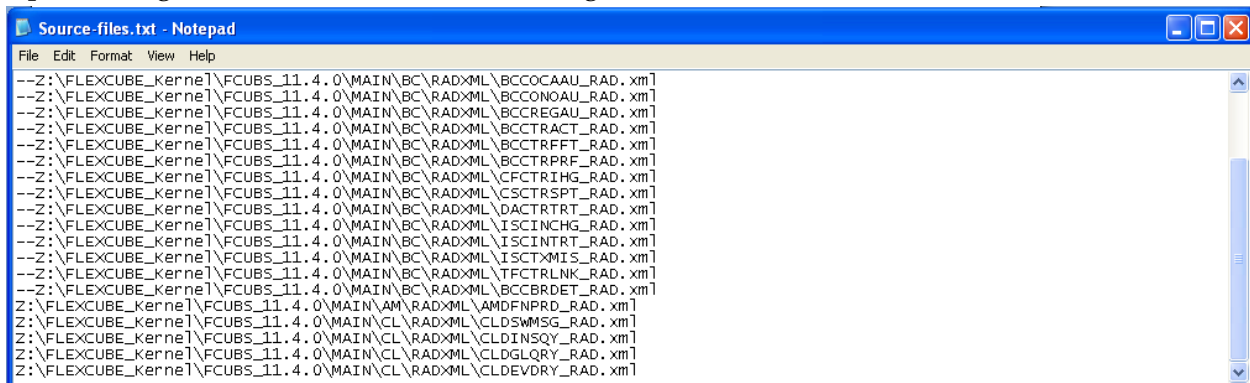


Fig 3.3.1.1: Including call forms in source file list

Example: Including callform to the Source list.

--Z:\FLEXCUBE_Kernel\FCUBS_11.4.0\MAIN\AM\RADXML\AMCPRPCL_RAD.xml

If generating complete radxmls from base line area, call form list is not required.

3.2 Destination Path

Enter the absolute path where files will be generated.

This path should be in the Client Machine if Save Mode is Client; and it should refer to a path in Server if the Save Mode is Server. Zip mode is not supported for Bulk generation activity

3.3 Sources Files

User has option to generate both extensible and non extensible files

- **Extensible** → On selection of this option only extensible files will be considered for generation.
- **Non-Extensible** → On selection of this option only non-extensible files will be considered for generation.
- **Both** → Both extensible and non-extensible gets generated.

Data XML Path Field is defunct

User has to select required files to be generated for all RADxml's .Workbench will generate the required files into respective folders.

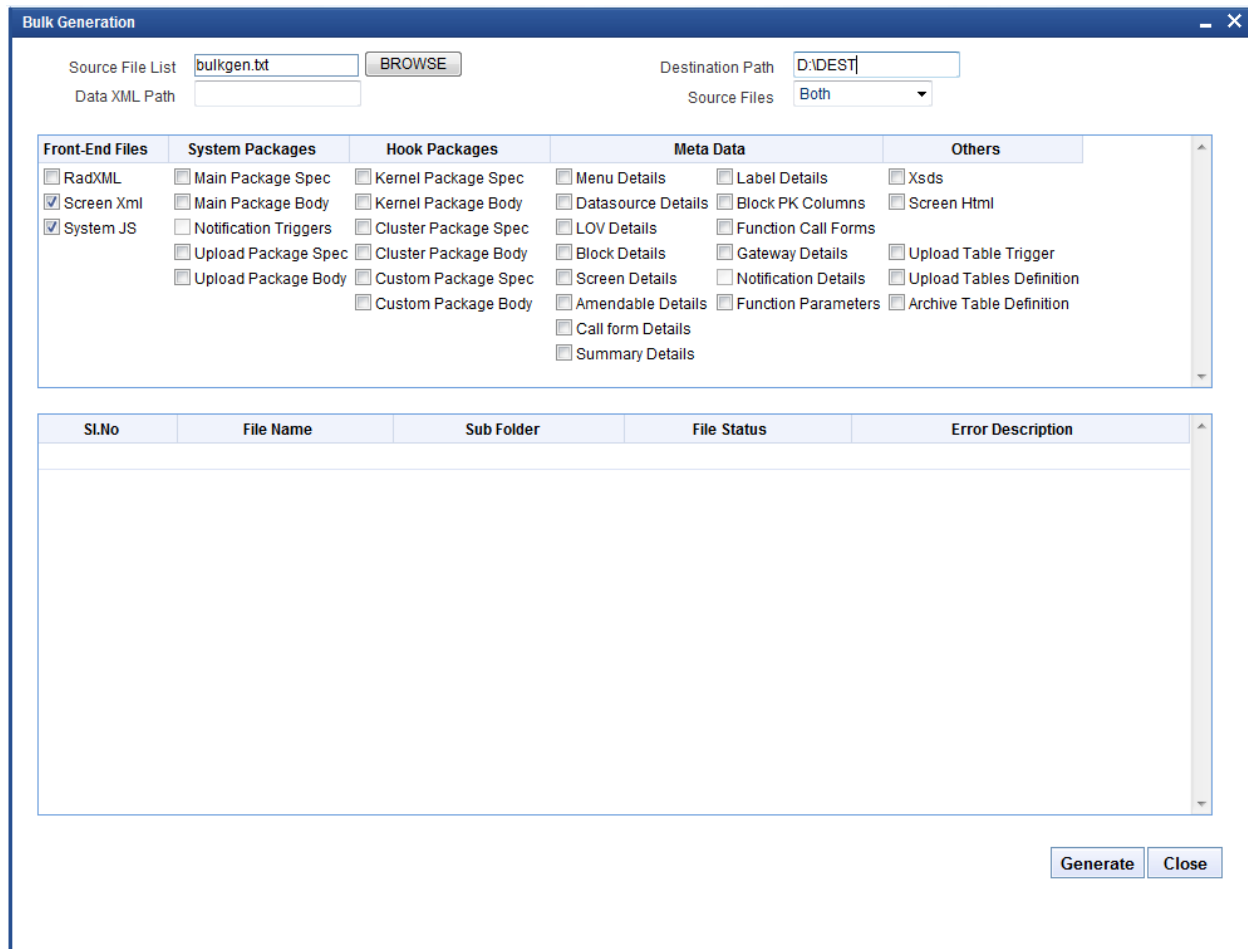


Fig 3.4.1: Bulk generation Screen after selecting required units

On successful generation of files file status will be displayed generated if success or failed for failed.

Note: No Front End units will be generated for notification and purge-entity radxmls

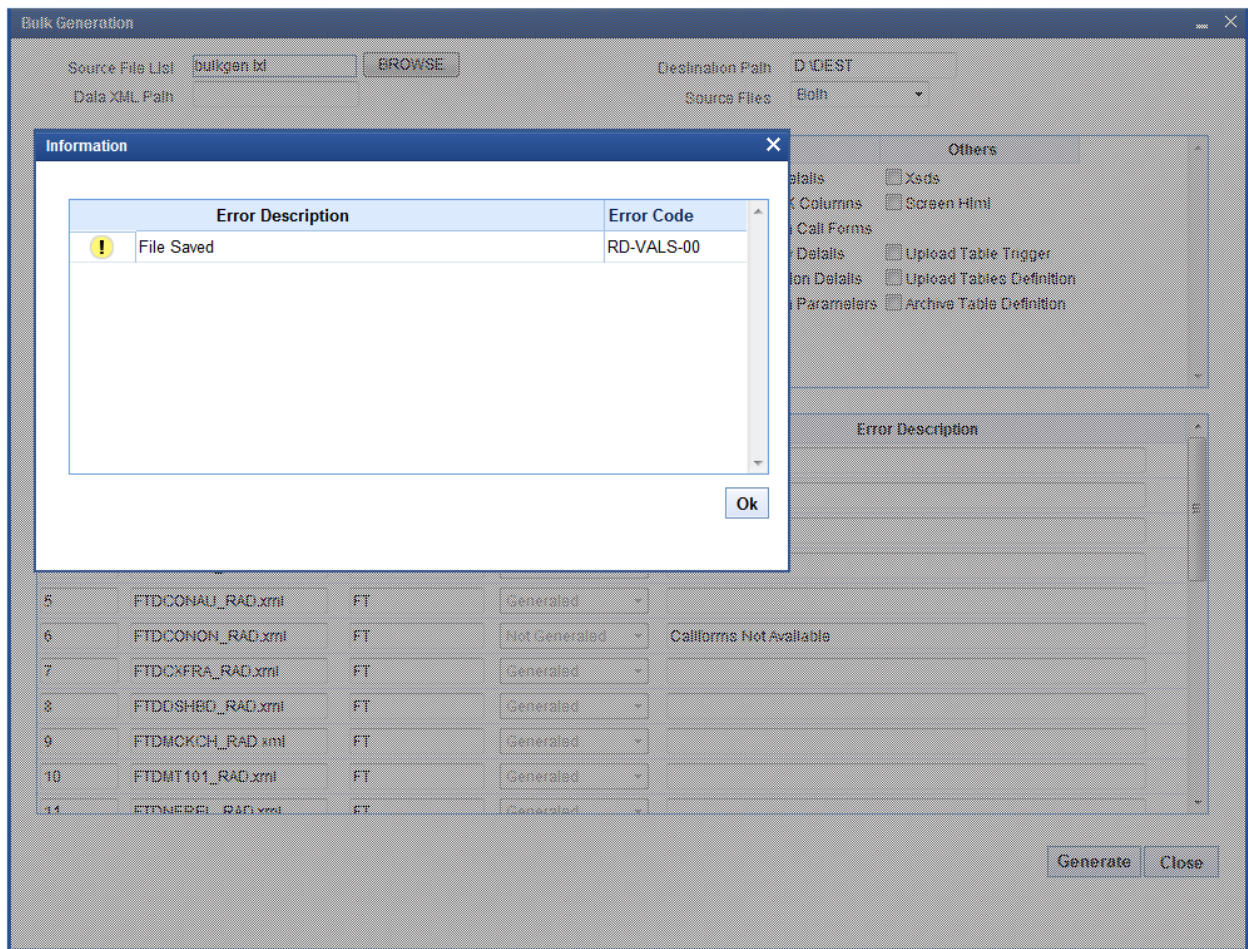


Fig 3.4.2: After Successful generation

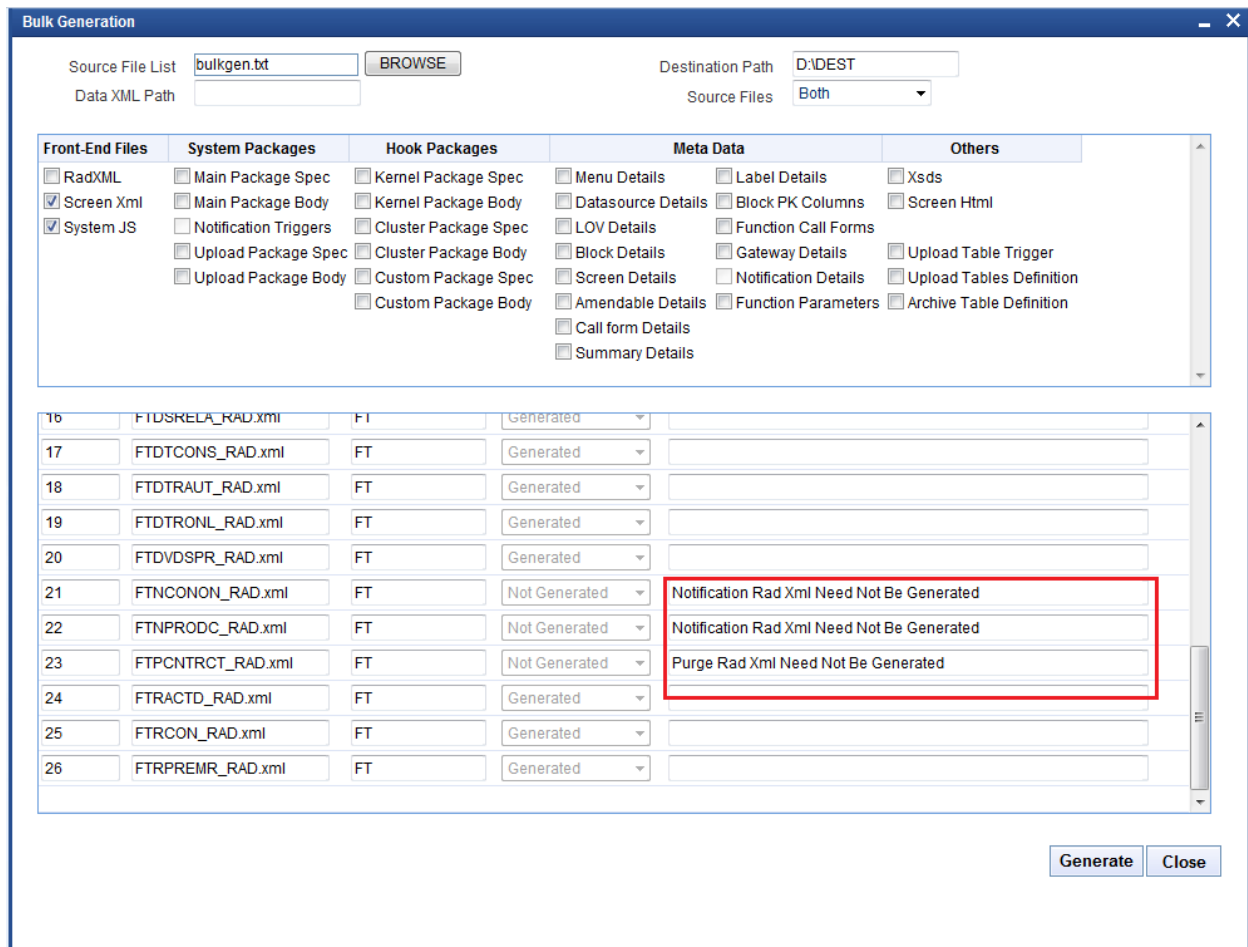


Fig 3.4.3: Message displayed in case of trying to generate files for notification screen

Note that the time taken for bulk generation of units depend on the number of files, number of units to be generated for each file , client and server machine configuration etc.

4. Log Files

Development Workbench will generate file status log. It will be generated in the destination path.

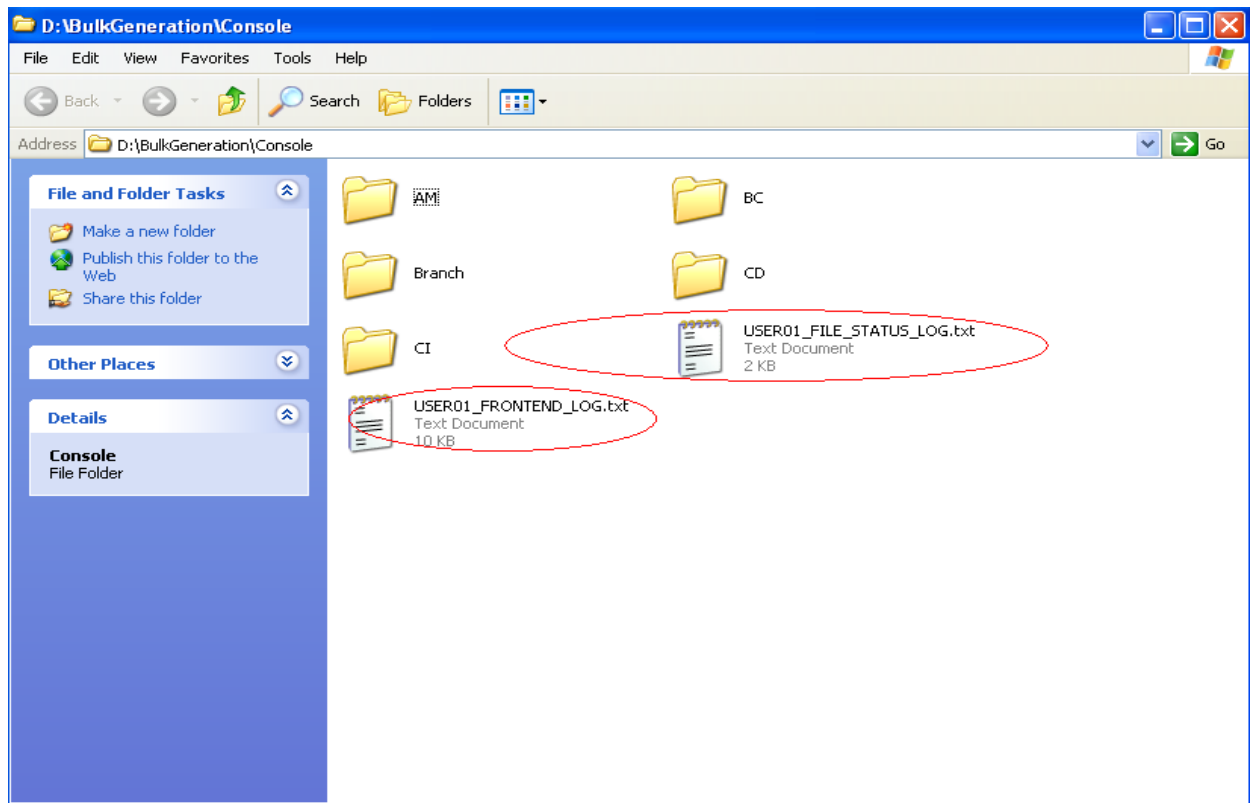


Fig 4.1: User log files

It gives the details of all the files processed and its status as shown in the figure below

The screenshot shows a WordPad window titled "USER01_FILE_STATUS_LOG.txt - WordPad". The window contains a status log file with the following content:

| FILE NAME | STATUS | Error Description |
|---|------------|---------------------------|
| D:\Base\MAIN\AM\RADXML\AMCPRPCL_RAD.xml | Successful | Generated Successfully... |
| D:\Base\MAIN\AM\RADXML\AMDCAOAU_RAD.xml | Successful | Generated Successfully... |
| D:\Base\MAIN\AM\RADXML\AMDCAONL_RAD.xml | Successful | Generated Successfully... |
| D:\Base\MAIN\AM\RADXML\AMDCDEAU_RAD.xml | Successful | Generated Successfully... |
| D:\Base\MAIN\AM\RADXML\AMDCDEFN_RAD.xml | Successful | Generated Successfully... |
| D:\Base\MAIN\AM\RADXML\AMDFNOAU_RAD.xml | Successful | Generated Successfully... |

Summary statistics:

```

Total No Of Files           : 3135
Total No Of Commented Files : 3120
Total No Of Successfully Generated Files : 12
Total No Of Failed Files   : 0
Total No Of Notification Files : 3
Total No Of 10.0 Files     : 0
  
```

Fig 4.2: A Status Log file

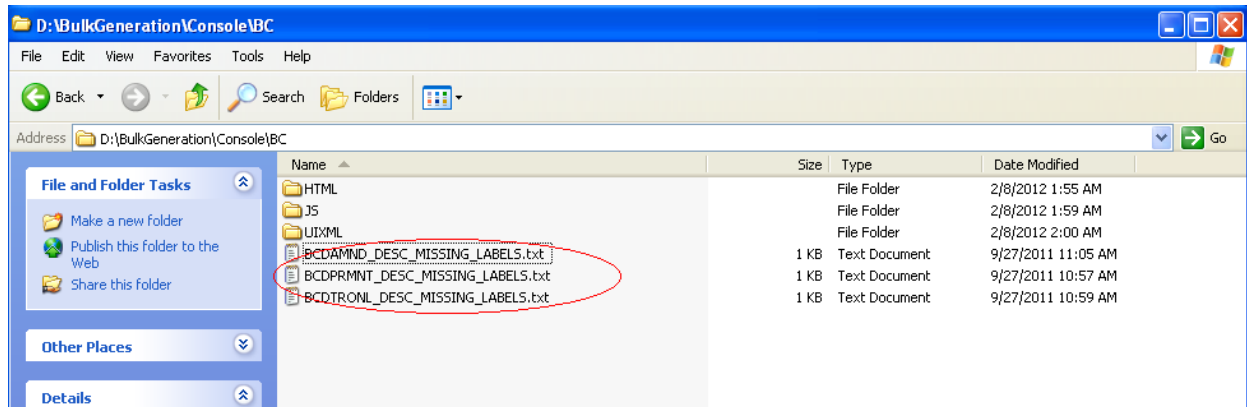


Fig 4.3: Missing labels file

Missing label information will also be generated for each function id for which units were generated



Development Workbench- Bulk Generation
Augusts 2013

Oracle Corporation
World Headquarters
500 Oracle Parkway
Redwood Shores, CA 94065
U.S.A.

Worldwide Inquiries:
Phone: +1.650.506.7000
Fax: +1.650.506.7200
[www.oracle.com/ financial_services/](http://www.oracle.com/financial_services/)

Copyright © 2012-2013 Oracle Financial Services Software Limited. All rights reserved.

No part of this work may be reproduced, stored in a retrieval system, adopted or transmitted in any form or by any means, electronic, mechanical, photographic, graphic, optic recording or otherwise, translated in any language or computer language, without the prior written permission of Oracle Financial Services Software Limited.

Due care has been taken to make this document *Development Workbench - Bulk Generation* and accompanying software package as accurate as possible. However, Oracle Financial Services Software Limited makes no representation or warranties with respect to the contents hereof and shall not be responsible for any loss or damage caused to the user by the direct or indirect use of this *Development Workbench - Bulk Generation* and the accompanying Software System. Furthermore, Oracle Financial Services Software Limited reserves the right to alter, modify or otherwise change in any manner the content hereof, without obligation of Oracle Financial Services Software Limited to notify any person of such revision or changes.

All company and product names are trademarks of the respective companies with which they are associated.