

NOTES: UNLESS OTHERWISE SPECIFIED

- 1) INSTALL ALL CABLE ASSEMBLIES WITH DRESSED BEND RADII IN ACCORDANCE WITH TEKELEC CABLE BEND RADIUS SPECIFICATION 906-0020-01.
- 2) ALL INTERCONNECTION POINTS SHALL BE STRAIN RELIEVED BY POSITIVE MECHANICAL FEATURES OR FASTENERS FOR LENGTH CONFIGURATIONS.
- 3) THIS DIAGRAM AND ALL PART NUMBERS SHOWN ARE FOR REFERENCE ONLY. REFERENCE CABLE PART NUMBERS WITH XX FOR THE DASH NUMBER ARE LENGTHS THAT ARE SITE SPECIFIC. SEE APPROPRIATE BILL OF MATERIAL FOR SPECIFIC PART NUMBERS AND QUANTITIES.
- 4) NO ADDITIONS, DELETIONS, SUBSTITUTIONS OR MODIFICATIONS WITHOUT PRIOR WRITTEN TEKELEC APPROVAL.

5) SEE TEKELEC P/N 820-5695-01 FOR CURRENT HARDWARE LIST.

6) USE LABEL PN 617-0009-01 TO MAKE LABEL SET FOR "FROM AND TO" ON CABLES INDICATED IN TABLE A. EACH CABLE INDICATED WILL REQUIRE 2 LABELS ONE AS SHOWN IN THE TABLES AND ONE WITH "FROM AND TO" REVERSED AS SHOWN IN DETAIL K. PERMANENTLY PRINT LABELS WITH .09 HIGH BLACK CHARACTERS. CENTER TEXT APPROXIMATELY AS SHOWN. MAX 23 CHARACTERS PER LINE.

7) THREE LABELS REQUIRED FOR THE CABLES INDICATED THEY ARE Y CABLES.

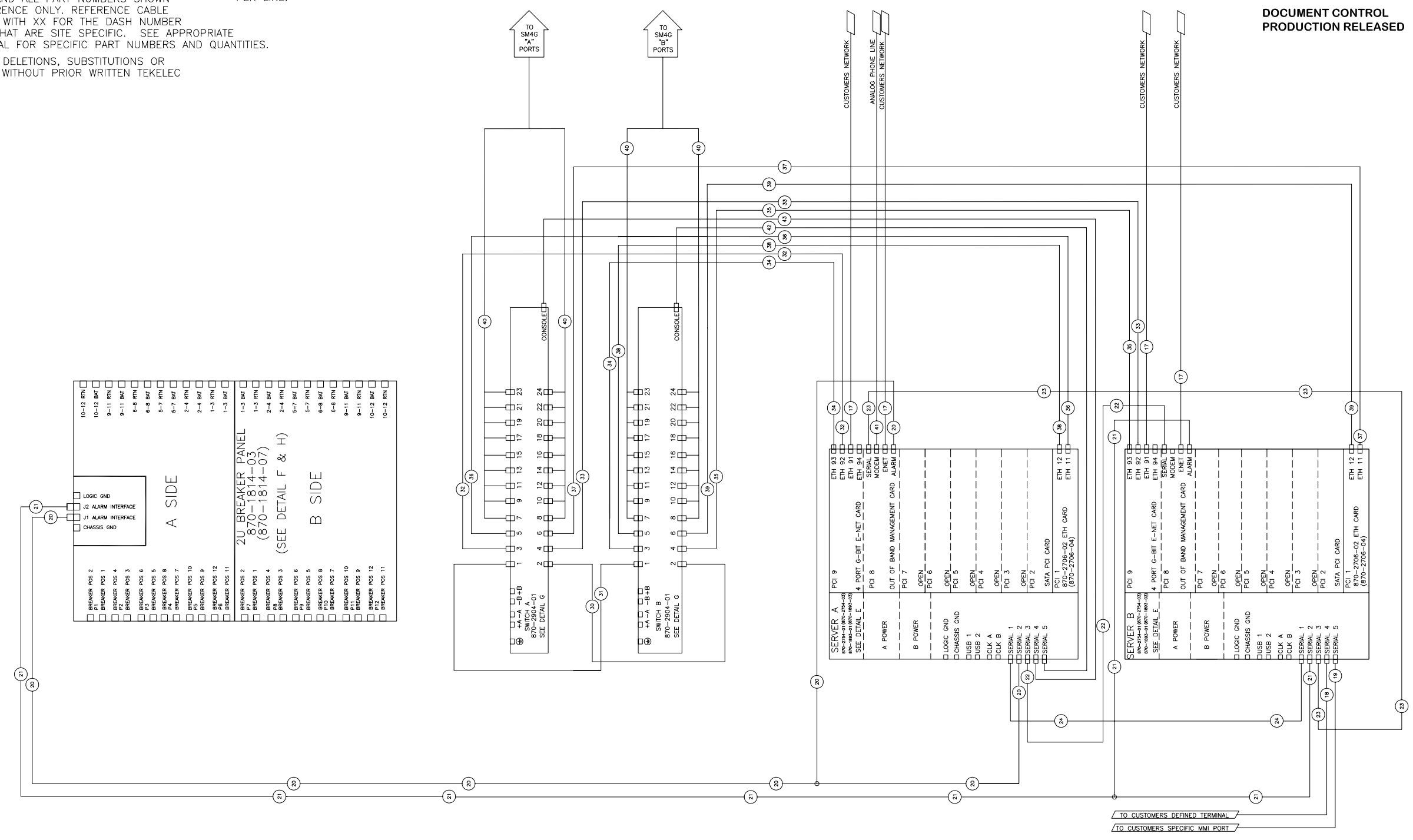
8) CIRCUIT BREAKER IS SUPPLIED WITH JUMPERS BETWEEN POWER INPUTS TO CONNECT 4 CIRCUIT BREAKERS PER POWER INPUT. FUSE POSITIONS 1-4, 5-8 AND 9-12.

9) ORIGINAL PART NUMBERS TO BE USED FOR REFERENCE ONLY. CROSS-REFERENCE PART NUMBERS SHALL BE USED FOR PRODUCTION OR REPLACEMENT SYSTEMS.

10) EACH CONNECTION TO E5SM4G REQUIRES QTY 1 830-1104-04.

REVISIONS			
LTR	DESCRIPTION	DATE	APPROVED
A	RELEASED PER ECO #	7/16/08	ARMSTRONG
B	REVISED PER ECO# 18761	7/07/08	ARMSTRONG

DOCUMENT CONTROL  
PRODUCTION RELEASED



DATA CONNECTIONS AND CABLES

UNLESS OTHERWISE SPECIFIED, DO NOT SCALE DRAWING. DIMENSIONS ARE IN INCHES. INTERPRET DIMENSIONS IN ACCORDANCE WITH ANSI Y14.5M-82. DEBURR AND BREAK SHARP EDGES .005-.015. MACHINED SURFACE FINISH 12.5. TOLERANCES: .xxx = ± .03 .xxxx = ±0.10

STANDARD HOLE TOLERANCES:	
HOLE DIA	TOLERANCES
.013 THRU .125	+ .004 - .001
.126 THRU .250	+ .005 - .001
.251 THRU .500	+ .006 - .001
.501 THRU .750	+ .008 - .001
.751 THRU 1.000	+ .010 - .001
1.001 THRU 2.000	+ .012 - .001

CONTRACT NO.	
APPROVALS	DATE
DRAWN JKRIEGSMAN	4/18/05
CHECKED MCCORMICK	XXXXX
APPROVED ARMSTRONG	4/18/08
APPLICATION	USED ON
FINISH	MATERIAL

**TEKELEC** 5200 Paramount Parkway  
Morrisville, NC 27560

INTERCONNECT DIAGRAM\_  
ELAP MIGRATION KIT

SIZE	DIVISION	DRAWING NO.	REV.
D	GPS	892-0087-01	B
SCALE: NONE	FILE NAME: 892-0087-01_REV_B.dwg	SHEET 1	OF 4

THIS DOCUMENT AND THE DATA DISCLOSED HEREIN OR HEREWITH IS PROPRIETARY AND IS NOT TO BE REPRODUCED, USED OR DISCLOSED IN WHOLE OR PART TO ANYONE WITHOUT THE WRITTEN PERMISSION OF TEKELEC. COPYRIGHT, TEKELEC 2008.

892-0087-01 1 B

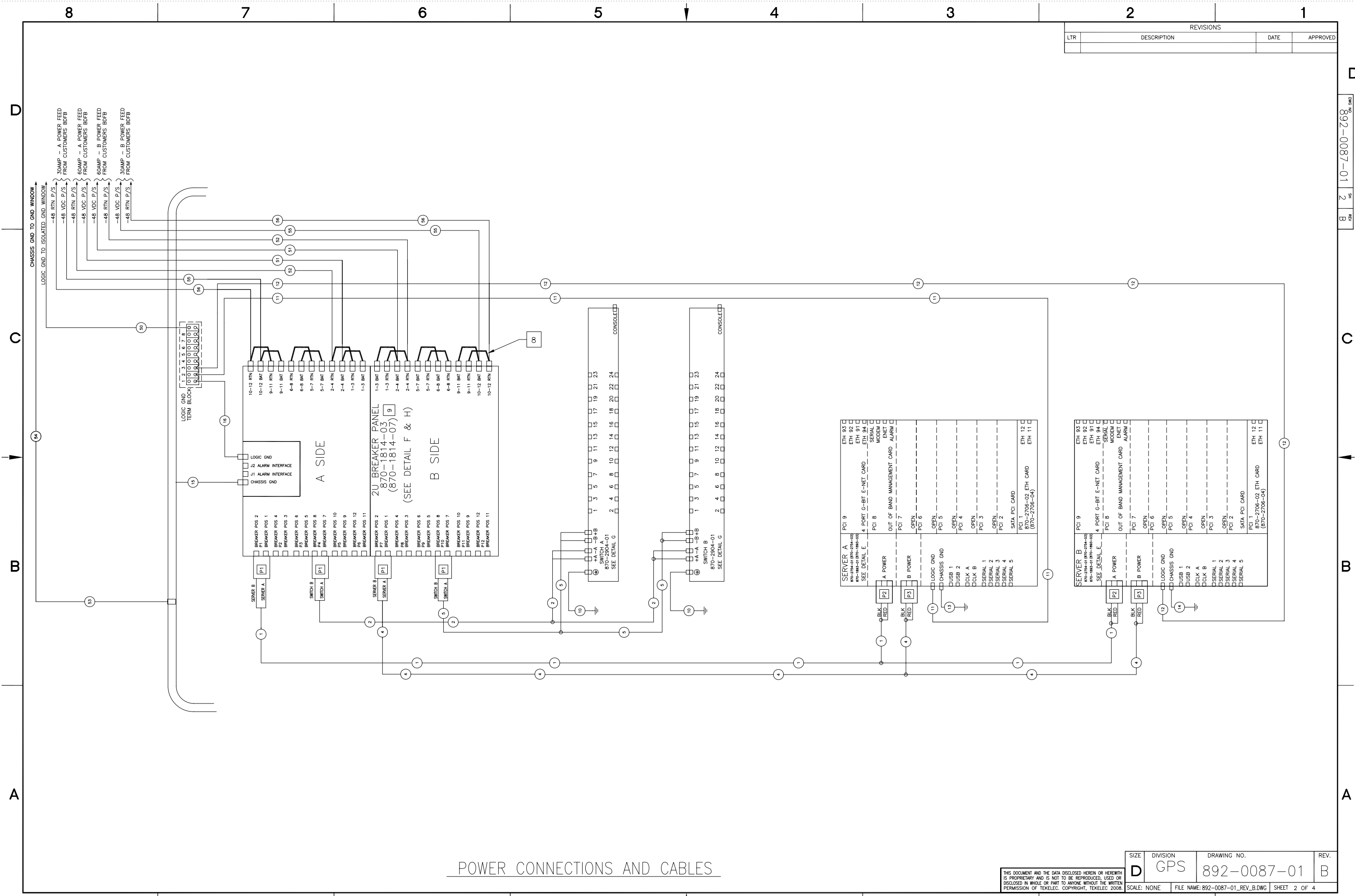
C

B

A

REVISIONS			
LTR	DESCRIPTION	DATE	APPROVED

DWG NO. 892-0087-01  
 SH 2  
 REV B



POWER CONNECTIONS AND CABLES

SIZE	DIVISION	DRAWING NO.	REV.
D	GPS	892-0087-01	B
SCALE: NONE		FILE NAME: 892-0087-01_REV_B.DWG	SHEET 2 OF 4

THIS DOCUMENT AND THE DATA DISCLOSED HEREIN OR HEREWITH IS PROPRIETARY AND IS NOT TO BE REPRODUCED, USED OR DISCLOSED IN WHOLE OR PART TO ANYONE WITHOUT THE WRITTEN PERMISSION OF TEKELEC. COPYRIGHT, TEKELEC 2008.

REVISIONS			
LTR	DESCRIPTION	DATE	APPROVED

9 TABLE A - CABLE PART NUMBERS

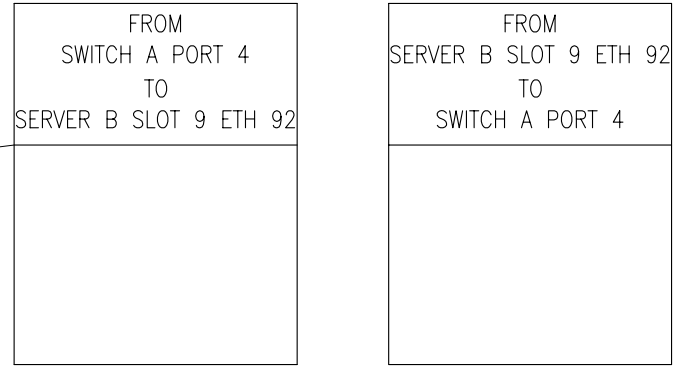
ITEM NO.	TEKELEC P/N	CROSS - REFERENCE P/N	QTY	LENGTH	RUN LIST AND LABEL INFORMATION FOR FROM AND TO	LABEL REQUIRED
1	830-0014-01	830-1133-01	1	81.00 INCHES	FROM: SERVER A AND B - A POWER / TO: BP1 P1	NO
2	830-1088-01	830-1228-01	1	48.00 INCHES	FROM: SWITCH A AND B - A POWER / TO: BP1 P6	NO
3						
4	N/A	830-1330-01	1	66.00 INCHES	FROM: SERVER A AND B - B POWER / TO: BP1 P7	NO
5	N/A	830-1329-01	1	54.00 INCHES	FROM: SWITCH A AND B - B POWER / TO: BP1 P12	NO
6						
7						
8						
9						
10	N/A	830-1346-03	2	48.00 INCHES	FROM: SWITCH / TO: FRAME GND	NO
11	830-1071-01	830-1218-01	1	60.00 INCHES	FROM: SERVER A LOGIC GND / TO: LOGIC GND TERM BLK POS 2	YES
12	830-1071-02	830-1218-02	1	67.00 INCHES	FROM: SERVER B LOGIC GND / TO: LOGIC GND TERM BLK POS 3	YES
13	830-0927-01	830-1124-01	1	14.00 INCHES	FROM: SERVER A CHASSIS GND / TO: FRAME	NO
14	830-0927-01	830-1124-01	1	14.00 INCHES	FROM: SERVER B CHASSIS GND / TO: FRAME	NO
15	830-0830-01	830-1181-01	1	14.00 INCHES	FROM: BP1 FRAME GND / TO: FRAME	NO
16	830-1003-01	830-1273-01	1	18.00 INCHES	FROM: BP1 LOGIC GND / TO: LOGIC GND TERM BLK POS 1	YES
17	CUSTOMER PROVIDED	CUSTOMER PROVIDED	4	SITE SPECIFIC	TO CUSTOMER NETWORK	FIELD LABEL
18	830-0058-XX	830-1137-XX	AR	SITE SPECIFIC	FROM: SERVER B SERIAL PORT 4 / TO: CUSTOMER SUPPLIED TERMINAL	FIELD LABEL
19	830-0059-XX	830-1138-XX	AR	SITE SPECIFIC	FROM: SERVER B SERIAL PORT 5 / TO: CUSTOMER SPECIFIC MMI PORT	FIELD LABEL
20	830-0020-01	830-1276-01	1	72.00 INCHES	FROM: BP1 ALARM INT J1 / TO: SERVER A SERIAL PORT 2 TO: SERV A SLOT 8 ALM PORT	YES 7
21	830-0020-02	830-1276-02	1	80.00 INCHES	FROM: BP1 ALARM INT J2 / TO: SERVER B SERIAL PORT 2 TO: SERV B SLOT 8 ALM PORT	YES 7
22	830-1074-06	830-1220-06	1	72.00 INCHES	FROM: SERVER A SERIAL PORT 3 / TO: SERVER B SLOT 8 OOBM SERIAL	YES
23	830-1074-06	830-1220-06	1	72.00 INCHES	FROM: SERVER B SERIAL PORT 3 / TO: SERVER A SLOT 8 OOBM SERIAL	YES
24	830-1074-06	830-1220-06	1	72.00 INCHES	FROM: SERVER A SERIAL PORT 1 / TO: SERVER B SERIAL PORT 1	YES
25						
26						
27						
28						
29						
30	830-0723-68	830-1173-68	1	8.04 INCHES	FROM: SWITCH A PORT 2 / TO: SWITCH B PORT 2	YES
31	830-0723-68	830-1173-68	1	8.04 INCHES	FROM: SWITCH A PORT 1 / TO: SWITCH B PORT 1	YES
32	830-0888-03	830-1191-03	1	72.00 INCHES	FROM: SWITCH A PORT 3 / TO: SERVER A SLOT 9 ETH 92	YES
33	830-0888-03	830-1191-03	1	72.00 INCHES	FROM: SWITCH A PORT 4 / TO: SERVER B SLOT 9 ETH 92	YES
34	830-0889-03	830-1192-03	1	72.00 INCHES	FROM: SWITCH B PORT 3 / TO: SERVER A SLOT 9 ETH 93	YES
35	830-0889-03	830-1192-03	1	72.00 INCHES	FROM: SWITCH B PORT 4 / TO: SERVER B SLOT 9 ETH 93	YES
36	830-0888-03	830-1191-03	1	72.00 INCHES	FROM: SWITCH A PORT 5 / TO: SERVER A SLOT 1 ETH 11	YES
37	830-0888-03	830-1191-03	1	72.00 INCHES	FROM: SWITCH A PORT 6 / TO: SERVER B SLOT 1 ETH 11	YES
38	830-0889-03	830-1192-03	1	72.00 INCHES	FROM: SWITCH B PORT 5 / TO: SERVER A SLOT 1 ETH 12	YES
39	830-0889-03	830-1192-03	1	72.00 INCHES	FROM: SWITCH B PORT 6 / TO: SERVER B SLOT 1 ETH 12	YES
40	830-0724-XX 830-1104-04	830-1174-XX 830-1104-04	AR AR	SITE SPECIFIC SITE SPECIFIC	FROM SWITCH SERIAL PORT XX / TO 830-1104-04 ADAPTER FROM 830-1174-XX CABLE / TO E5 SM4G CARD	FIELD LABEL 10
41	830-0680-01	830-1165-01	1	25.00 FEET	FROM SERVER A SLOT 8 MODEM / TO CUSTOMER PROVIDED PHONE LINE	FIELD LABEL
42	830-1074-06	830-1220-06	1	72.00 INCHES	FROM: SWITCH B CONSOLE / TO: SERVER A SERIAL PORT 5	YES
43	830-1074-06	830-1220-06	1	72.00 INCHES	FROM: SWITCH A CONSOLE / TO: SERVER A SERIAL PORT 4	YES
44						
45						
46						
47						
48						
49						
50	LOGIC GROUND			SEE TABLE D		FIELD LABEL
51	-48VDC (BAT)			SEE TABLE B		FIELD LABEL
52	-48 RTN		1	SEE TABLE B		FIELD LABEL
53	830-0715-03		2	84.00 INCHES		FIELD LABEL
54	CHASSIS GROUND		2	SEE TABLE F		FIELD LABEL
55	-48VDC (BAT)		1	SEE TABLE E		FIELD LABEL
56	-48 RTN		1 2 2	SEE TABLE E		FIELD LABEL

9 TABLE D - LOGIC GROUND CABLING

DISTANCE	PRIMARY CABLE P/N (CROSS-REF. P/N)	CABLE AWG	TERMINAL LUG P/N (CROSS-REF. P/N)	HEAT SHRINK P/N (CROSS-REF. P/N)	COMMENT	REF. DETAIL
0' - 40'	690-0131-01(-R01)	6	502-0085-01(-R01)	804-0228-01(-R01)	CABLE LENGTH IS SITE-SPECIFIC	C
40' - 160'	690-0108-07(-R01)	1/0	804-0977-01(-R01)	804-0229-01(-R01)	CABLE LENGTH IS SITE-SPECIFIC	A

9 TABLE F - SYSTEM FRAME GROUND CABLING

DISTANCE	CABLE P/N (CROSS-REF. P/N)	CABLE AWG	ITEM A (830-0715-01 SUPPLIED WITH FRAME)		ITEM B		HTAP P/N (A TO B CONNECTION) (CROSS - REFERENCE P/N)	COMMENT	REF. DETAIL
			TERMINAL LUG P/N (CROSS-REF. P/N)	HEAT SHRINK P/N (CROSS-REF. P/N)	CABLE P/N (CROSS-REF. P/N)	CABLE AWG			
0' - 40'	690-0131-01(-R01)	6	502-0085-01(-R01)	804-0228-01(-R01)	690-0131-01(-R01)	6	804-0865-01(-R01)	CABLE LENGTH IS SITE-SPECIFIC	D
40' - 160'	690-0108-01(-R01)	6	502-0085-01(-R01)	804-0228-01(-R01)	690-0108-07(-R01)	1/0	804-0865-01(-R01)	CABLE LENGTH IS SITE-SPECIFIC	D



EXAMPLE OF TEXT SHOWN IN TABLES      EXAMPLE WITH TEXT REVERSED FROM FIRST LABEL

DETAIL K 6  
CABLE LABEL EXAMPLE USING CABLE ITEM NO. 33

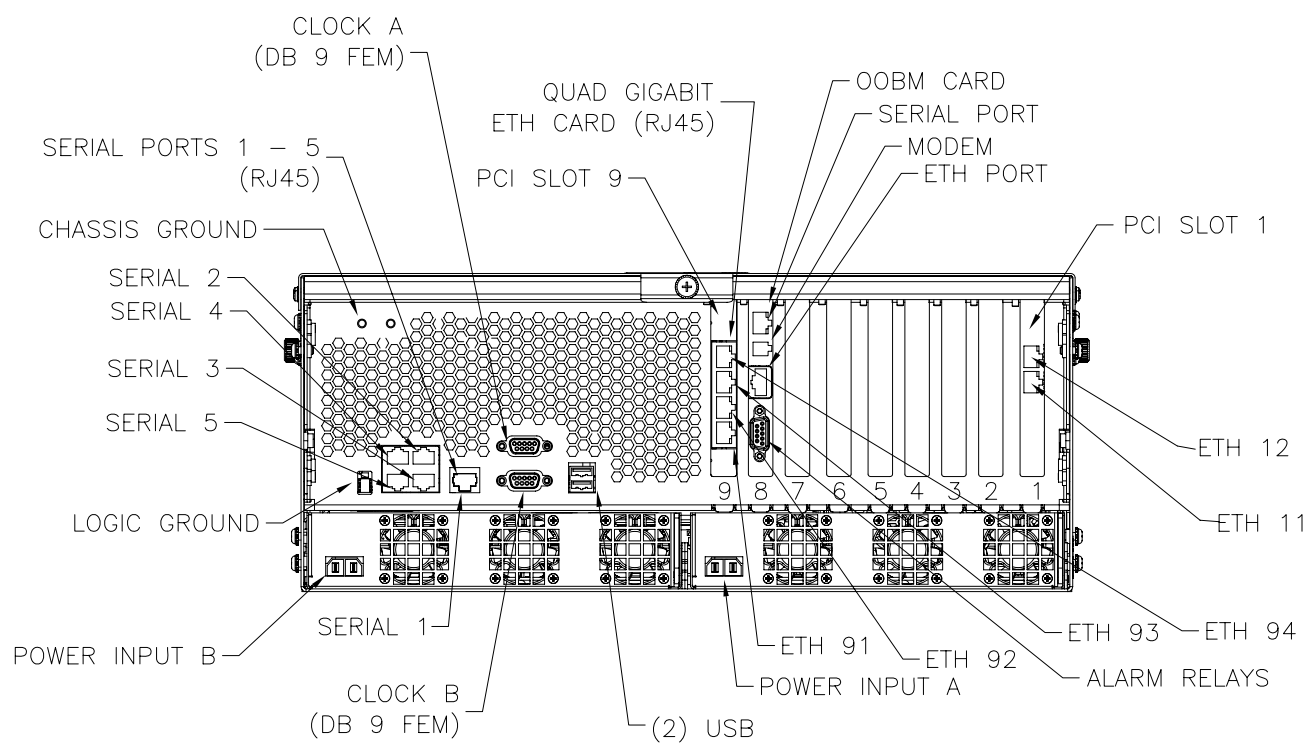
9 TABLE B - 60 AMP POWER FEED CABLE CHART FOR -48VDC & 48VRTN CABLING COMPONENTS

DISTANCE	ITEM A		ITEM B		ITEM C		HALF TAP SPLICE P/N	HTAP SOFT COVER P/N	COMMENT	REF. DETAIL	
	CABLE P/N (CROSS-REF. P/N)	CABLE AWG	TERMINAL LUG P/N (CROSS-REF. P/N)	HEAT SHRINK P/N (CROSS-REF. P/N)	CABLE P/N (CROSS-REF. P/N)	CABLE AWG					CABLE CONSTRUCTION
0' - 40'	690-0108-01(-R01)	6	502-0085-01(-R01)	804-0228-01(-R01)	690-0108-08(-R01)	2	N/A	NONE REQUIRED	NONE REQUIRED	CABLE LENGTH IS SITE-SPECIFIC	C
40' - 70'	690-0108-01(-R01)	6	502-0085-01(-R01)	804-0228-01(-R01)	690-0108-03(-R01)	1/0	SITE SPECIFIC	T&B 63125	T&B HTC40	CABLE LENGTH IS SITE-SPECIFIC	B
70' - 110'	690-0108-01(-R01)	6	502-0085-01(-R01)	804-0228-01(-R01)	690-0108-14(-R01)	2/0	SITE SPECIFIC	T&B 63125	T&B HTC40	CABLE LENGTH IS SITE-SPECIFIC, HTAPPED STUBS <= 10' EACH END	B
110' - 170'	690-0108-01(-R01)	6	502-0085-01(-R01)	804-0228-01(-R01)	690-0108-13(-R01)	4/0	SITE SPECIFIC	T&B 63125	T&B HTC40	CABLE LENGTH IS SITE-SPECIFIC, HTAPPED STUBS <= 10' EACH END	B
170' - 200'	690-0108-01(-R01)	6	502-0085-01(-R01)	804-0228-01(-R01)	690-0108-TBD	350 MCM	SITE SPECIFIC	T&B 63125	T&B HTC40	CABLE LENGTH IS SITE-SPECIFIC, HTAPPED STUBS <= 10' EACH END	B
200' - 220'	690-0108-01(-R01)	6	502-0085-01(-R01)	804-0228-01(-R01)	690-0108-TBD	500 MCM	SITE SPECIFIC	T&B 63125	T&B HTC40	CABLE LENGTH IS SITE-SPECIFIC, HTAPPED STUBS <= 10' EACH END	B

9 TABLE E - 30 AMP POWER FEED CABLE CHART FOR -48VDC & 48VRTN CABLING COMPONENTS

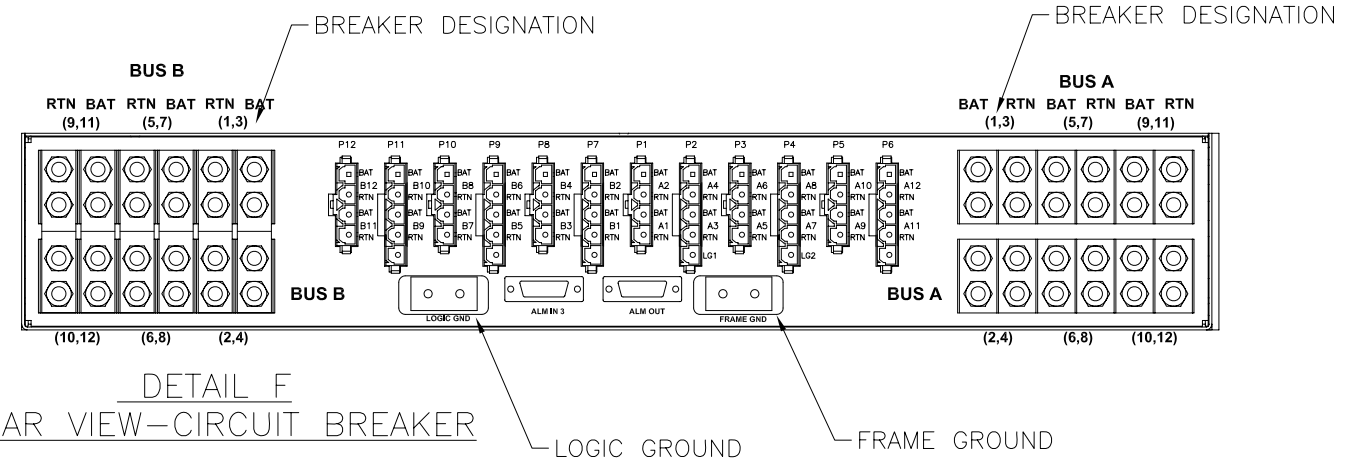
DISTANCE	ITEM A		ITEM B		ITEM C		HALF TAP SPLICE P/N	HTAP SOFT COVER P/N	COMMENT	REF. DETAIL	
	CABLE P/N (CROSS-REF. P/N)	CABLE AWG	TERMINAL LUG P/N (CROSS-REF. P/N)	HEAT SHRINK P/N (CROSS-REF. P/N)	CABLE P/N (CROSS-REF. P/N)	CABLE AWG					CABLE CONSTRUCTION
0' - 40'	690-0108-01(-R01)	6	502-0085-01(-R01)	804-0228-01(-R01)	N/A	--	N/A	NONE REQUIRED	NONE REQUIRED	CABLE LENGTH IS SITE-SPECIFIC	C
40' - 65'	690-0108-01(-R01)	6	502-0085-01(-R01)	804-0228-01(-R01)	690-0108-04(-R01)	4	SITE SPECIFIC	T&B 63125	T&B HTC40	CABLE LENGTH IS SITE-SPECIFIC	B
65' - 100'	690-0108-01(-R01)	6	502-0085-01(-R01)	804-0228-01(-R01)	690-0108-06(-R01)	2	SITE SPECIFIC	T&B 63125	T&B HTC40	CABLE LENGTH IS SITE-SPECIFIC, HTAPPED STUBS <= 10' EACH END	B
100' - 160'	690-0108-01(-R01)	6	502-0085-01(-R01)	804-0228-01(-R01)	690-0108-03(-R01)	1/0	SITE SPECIFIC	T&B 63125	T&B HTC40	CABLE LENGTH IS SITE-SPECIFIC, HTAPPED STUBS <= 10' EACH END	B

REVISIONS			
LTR	DESCRIPTION	DATE	APPROVED

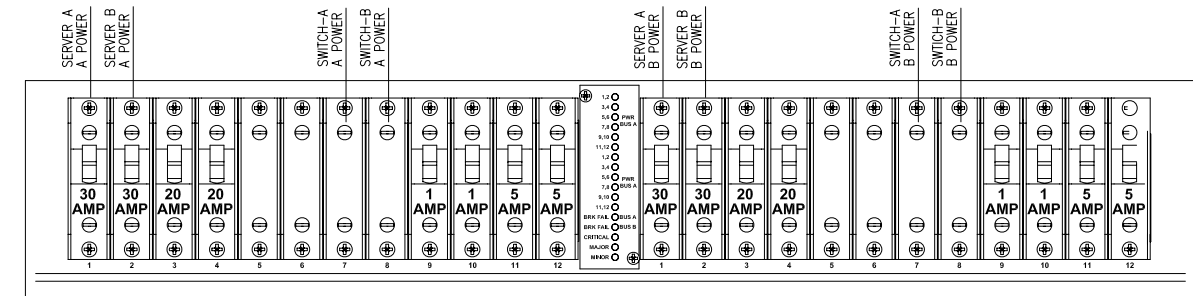


**DETAIL E**

SERVER A AND B (REAR VIEW)  
 870-2754-01(870-2754-03) W/ PCI CARDS: 9  
 SLOT 1 -870-2706-02 (870-2706-04)  
 SLOT 8 -870-2798-XX  
 SLOT 9 -870-2799-XX



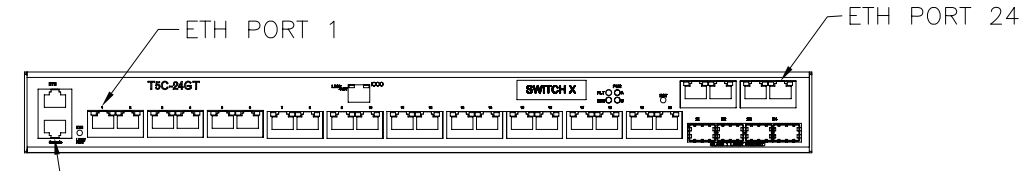
**DETAIL F**  
 REAR VIEW-CIRCUIT BREAKER



**BUS A**

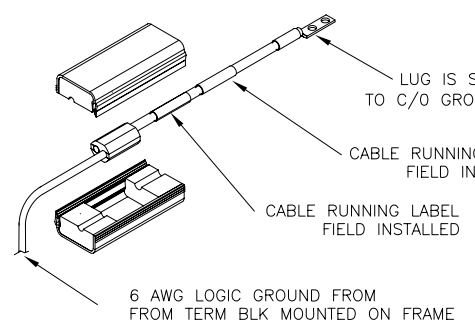
**BUS B**

**DETAIL H**  
 FRONT VIEW-CIRCUIT BREAKER

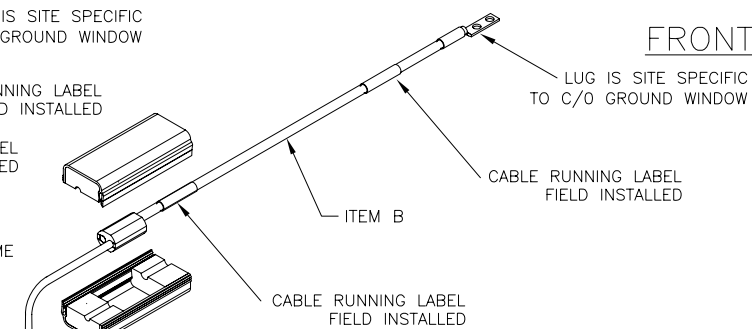


**DETAIL G**  
 FRONT VIEW-SWITCH

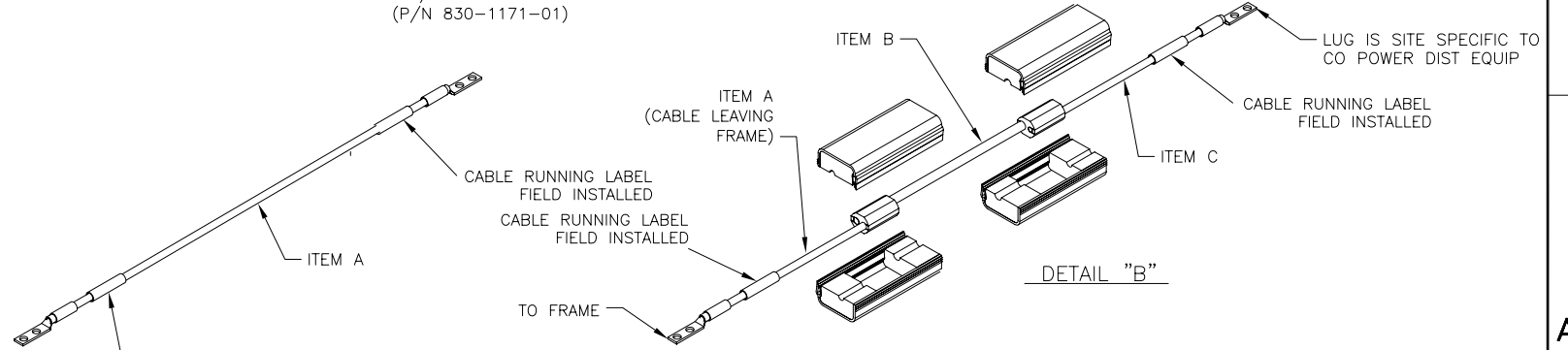
870-2904-01



**DETAIL "A"**



**DETAIL "D"**



**DETAIL "B"**

**DETAIL "C"**

SIZE	DIVISION	DRAWING NO.	REV.
D	GPS	892-0087-01	B
SCALE: NONE FILE NAME: 892-0087-01_REV_B.DWG SHEET 4 OF 4			

DWG NO. 892-0087-01 4 REV B

C

B

A