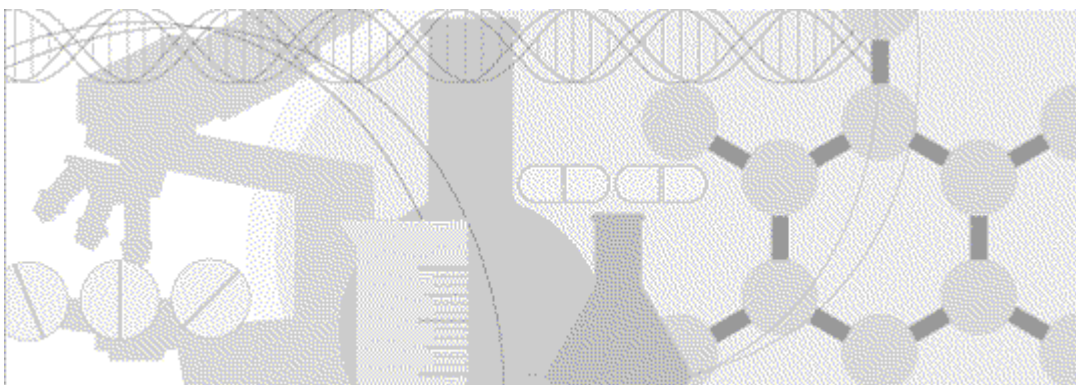


Integration Guide

Oracle[®] Health Sciences InForm Publisher On Demand
Release 2.0



ORACLE[®]

Part Number: E53023-01

Copyright © 2014, Oracle and/or its affiliates. All rights reserved.

The Programs (which include both the software and documentation) contain proprietary information; they are provided under a license agreement containing restrictions on use and disclosure and are also protected by copyright, patent, and other intellectual and industrial property laws. Reverse engineering, disassembly, or decompilation of the Programs, except to the extent required to obtain interoperability with other independently created software or as specified by law, is prohibited.

The information contained in this document is subject to change without notice. If you find any problems in the documentation, please report them to us in writing. This document is not warranted to be error-free. Except as may be expressly permitted in your license agreement for these Programs, no part of these Programs may be reproduced or transmitted in any form or by any means, electronic or mechanical, for any purpose.

If the Programs are delivered to the United States Government or anyone licensing or using the Programs on behalf of the United States Government, the following notice is applicable:

U.S. GOVERNMENT RIGHTS Programs, software, databases, and related documentation and technical data delivered to U.S. Government customers are "commercial computer software" or "commercial technical data" pursuant to the applicable Federal Acquisition Regulation and agency-specific supplemental regulations. As such, use, duplication, disclosure, modification, and adaptation of the Programs, including documentation and technical data, shall be subject to the licensing restrictions set forth in the applicable Oracle license agreement, and, to the extent applicable, the additional rights set forth in FAR 52.227-19, Commercial Computer Software -- Restricted Rights (June 1987). Oracle USA, Inc., 500 Oracle Parkway, Redwood City, CA 94065.

The Programs are not intended for use in any nuclear, aviation, mass transit, medical, or other inherently dangerous applications. It shall be the licensee's responsibility to take all appropriate fail-safe, backup, redundancy and other measures to ensure the safe use of such applications if the Programs are used for such purposes, and we disclaim liability for any damages caused by such use of the Programs.

The Programs may provide links to Web sites and access to content, products, and services from third parties. Oracle is not responsible for the availability of, or any content provided on, third-party Web sites. You bear all risks associated with the use of such content. If you choose to purchase any products or services from a third party, the relationship is directly between you and the third party. Oracle is not responsible for: (a) the quality of third-party products or services; or (b) fulfilling any of the terms of the agreement with the third party, including delivery of products or services and warranty obligations related to purchased products or services. Oracle is not responsible for any loss or damage of any sort that you may incur from dealing with any third party.

Oracle is a registered trademark of Oracle Corporation and/or its affiliates. Other names may be trademarks of their respective owners.

This documentation may include references to materials, offerings, or products that were previously offered by Phase Forward Inc. Certain materials, offerings, services, or products may no longer be offered or provided. Oracle and its affiliates cannot be held responsible for any such references should they appear in the text provided.

Contents

About this guide	v
Overview of this guide.....	vi
Audience	vi
Documentation	vii
Documentation accessibility.....	vii
If you need assistance.....	viii
Finding InForm Publisher information and patches on My Oracle Support.....	viii
Finding Oracle documentation	ix
Finding prerequisite software for Oracle Health Sciences applications	ix
Chapter 1 InForm Publisher integration overview	1
What is InForm Publisher?	2
The InForm Publisher interfaces	3
Chapter 2 Working with custom events	5
Overview of custom events	6
What are custom events?.....	6
Elements of custom events.....	6
Output of custom events	7
Custom event triggers	8
Limitations on triggers.....	10
Combined criteria as triggers	11
AND/OR rules and limitations.....	11
Changes to custom events.....	12
How events are published.....	13
Working with Oracle Services to implement custom event triggers	14
Chapter 3 Defining how the receiving application receives ODM extract data	15
Using the web service	16
Writing the web service	16
High-level summary of the web service API.....	16
Sample web service request and response.....	17
WSDL documentation	18
Services.....	18
Bindings.....	18
Porttypes	19
Messages.....	20
Types.....	21
Elements	23
Complex types.....	25
Simple types.....	26
FTP option.....	27
Local Directory option	28
Chapter 4 Export formats	29
ODM Snapshot format.....	30
Oracle extensions for ODM Snapshot	31
Elements for custom events.....	31

Elements for clinical data.....	42
Elements for admin data.....	60
Elements for metadata.....	66
Oracle attributes that are applied to standard ODM elements	78
Revision, DBUID, and GUID attributes.....	79
Extensions that show control hierarchy and type	81

About this guide

In this preface

Overview of this guide.....	vi
Documentation	vii
If you need assistance.....	viii

Overview of this guide

This guide provides information on using the interfaces that are included with the InForm Publisher software. The guide provides information on using custom events to trigger publishing of specific InForm study information to receiving applications, including metric reporting, clinical coding, clinical repositories, Oracle Health Sciences IRT On Demand, and Siebel Clinical Trial Management System On Demand.

Although mentioned here, detailed information on configuring the Argus Safety Publisher is included in the Oracle® Health Sciences Adverse Event Integration Pack for Oracle Health Sciences InForm and Oracle Argus Safety Implementation Guide.

Audience

This guide is for IT administrators and others who are responsible for integrating the InForm software with other applications, including Oracle-provided products, third-party products, and custom client processes.

Documentation

The product documentation is available from the following locations:

- **Oracle Software Delivery Cloud** (<https://edelivery.oracle.com>)—The complete documentation set.
- **My Oracle Support** (<https://support.oracle.com>)—*Release Notes* and *Known Issues*.
- **Oracle Technology Network** (<http://www.oracle.com/technetwork/documentation>)—The most current documentation set, excluding the *Release Notes* and *Known Issues*.

All documents may not be updated for every InForm Publisher release. Therefore, the version numbers for the documents in a release may differ.

Document	Description
<i>Installation Guide</i>	The <i>Installation Guide</i> provides instructions for installing the InForm Publisher software.
<i>Release Notes</i>	The <i>Release Notes</i> document includes: <ul style="list-style-type: none"> • System requirements. • Descriptions of the new features, enhancements, and bug fixes.
<i>Known Issues</i>	The <i>Known Issues</i> document provides detailed information about the known issues in this release, along with workarounds, if available.
<i>Integration Guide</i>	The <i>Integration Guide</i> provides detailed information about defining custom events and triggers and publishing events using web services, FTP, and Local Directory.
<i>Secure Configuration Guide</i>	The <i>Secure Configuration Guide</i> provides essential secure configuration considerations for the InForm Publisher application.
<i>Third Party Licenses and Notices</i>	This document includes licenses and notices for third party technology that may be included in or distributed with the InForm Publisher software.

Documentation accessibility

For information about Oracle's commitment to accessibility, visit the Oracle Accessibility Program website at <http://www.oracle.com/pls/topic/lookup?ctx=acc&id=docacc>.

If you need assistance

Oracle customers have access to support through My Oracle Support. For information, visit <http://www.oracle.com/pls/topic/lookup?ctx=acc&id=info>, or if you are hearing impaired, visit <http://www.oracle.com/pls/topic/lookup?ctx=acc&id=trs>.

Finding InForm Publisher information and patches on My Oracle Support

The latest information about the InForm Publisher application is on the Oracle Support self-service website, My Oracle Support. Before you install and use the InForm Publisher application, check My Oracle Support for the latest information, including *Release Notes* and *Known Issues*, alerts, white papers, bulletins, and patches.

Creating a My Oracle Support account

You must register at My Oracle Support to obtain a user name and password before you can enter the site.

- 1 Open a browser to <https://support.oracle.com>.
- 2 Click the **Register** link.
- 3 Follow the instructions on the registration page.

Finding information and articles

- 1 Sign in to My Oracle Support at <https://support.oracle.com>.
- 2 If you know the ID number of the article you need, enter the number in the text box at the top right of any page, and then click the magnifying glass icon or press **Enter**.
- 3 To search the knowledge base, click the **Knowledge** tab, and then use the options on the page to search by:
 - Product name or family.
 - Keywords or exact terms.

Finding patches

You can search for patches by patch ID or number, product, or family.

- 1 Sign in to My Oracle Support at <https://support.oracle.com>.
- 2 Click the **Patches & Updates** tab.
- 3 Enter your search criteria and click **Search**.
- 4 Click the patch ID number.

The system displays details about the patch. You can view the Read Me file before downloading the patch.

- 5 Click **Download**, and then follow the instructions on the screen to download, save, and install the patch files.

Finding Oracle documentation

The Oracle website contains links to Oracle user and reference documentation. You can view or download a single document or an entire product library.

Finding Oracle Health Sciences documentation

For Oracle Health Sciences applications, go to the Oracle Health Sciences Documentation page at <http://www.oracle.com/technetwork/documentation/hsgbu-clinical-407519.html>.

Note: Always check the Oracle Health Sciences Documentation page to ensure you have the most up-to-date documentation.

Finding other Oracle documentation

- 1 Do one of the following:
 - Go to <http://www.oracle.com/technology/documentation/index.html>.
 - Go to <http://www.oracle.com>, point to the **Support** tab, and then click **Product Documentation**.
- 2 Scroll to the product you need, and click the link.

Finding prerequisite software for Oracle Health Sciences applications

Prerequisite software for Oracle Health Sciences applications is available from the following locations:

- Download the latest major or minor release from the Oracle Software Delivery Cloud (<https://edelivery.oracle.com/>).

For information on the credentials that are required for authorized downloads, click **FAQs** on the main page of the Oracle Software Delivery Cloud portal.

- Download subsequent patch sets and patches from My Oracle Support (<https://support.oracle.com>).

To find patch sets or patches, select the **Patches & Updates** tab.

If a previous version of prerequisite software is no longer available on the Oracle Software Delivery Cloud, log a software media request Service Request (SR). Previous versions of prerequisite software are archived and can usually be downloaded. After you open an SR, you can check its status:

- US customers: Call 1-800-223-1711.
- Outside the US: Check www.oracle.com/us/support/contact/index.html for your local Oracle Support phone number.

For more information on logging a media request SR, go to My Oracle Support for Document 1071023.1: Requesting Physical Shipment or Download URL for Software Media (<https://support.oracle.com/epmos/faces/DocumentDisplay?id=1071023.1>).

CHAPTER 1

InForm Publisher integration overview

In this chapter

What is InForm Publisher?	2
The InForm Publisher interfaces	3

What is InForm Publisher?

The InForm Publisher software is an application programming interface (API) for the InForm application. It supports integrations with Oracle and third-party applications by pulling selected data from the InForm application when triggered by specific data entered for a subject in the InForm application.

Like other APIs, the InForm Publisher interfaces use published web services interfaces to allow programmatic access to applications. This allows Oracle products to be tightly integrated with each other and with third-party products.

The data is published in real time from a transaction queue, or on a configurable schedule. To use the InForm Publisher software with an InForm study, you must:

- 1 Install the InForm Publisher software on the InForm application server.
- 2 Configure the software to work with the study and the target application.

For more information, see *InForm Publisher On Demand 2.0 Installation Guide*.

The InForm Publisher interfaces

The InForm Publisher release includes the following interfaces that are available for programmatic access.

Interface	Description	For more information
Argus Safety Publisher	<p>Publishes adverse event data for a study in the InForm application to the Oracle Argus Safety application, based on a data mapping in the study design that is configured in the Central Designer application.</p> <p>You can configure settings in the InForm Publisher application related to number of attempts and frequency of data publishing, and error logging.</p>	<p>Oracle® Health Sciences Adverse Event Integration Pack for Oracle Health Sciences InForm and Oracle Argus Safety Implementation Guide, Release 1.0.</p> <p>Oracle® Health Sciences InForm Publisher On Demand 2.0 Installation Guide.</p>
ODM Extract Publisher	<p>Provides access to receive InForm clinical data and metadata in CDISC ODM standard format. The ODM Extract Publisher can publish data to web services, local directory, or FTP endpoints.</p> <p>The InForm Publisher application provides a way for customers to define events of interest and select the output format for publishing data from InForm studies. Transactions are based on custom events (for example, data added to a subject's study data or changes in subject status).</p> <p>A custom event is set up to provide input for applications requiring InForm data or status, and to provide the specific information needed as determined by customer receiving application requirements. The output adheres to the ODM Snapshot format.</p>	<p>Oracle® Health Sciences InForm Publisher On Demand 2.0 Installation Guide.</p>

CHAPTER 2

Working with custom events

In this chapter

Overview of custom events.....	6
Custom event triggers	8
Combined criteria as triggers.....	11
Changes to custom events	12
How events are published	13
Working with Oracle Services to implement custom event triggers	14

Overview of custom events

What are custom events?

A custom event is a transaction initiated by a trigger event that causes data, metadata, status, specific information, and reason for transmission to be exported from an InForm study to one or more known destinations. A custom event includes:

- A trigger event, which initiates publishing. For example, enrollment of a subject can be a trigger event. Each custom event has at least one trigger.
- A definition of the data or status to be published.
- A destination.
- Event output XML, which is sent to the receiving application.

Output is in CDISC standard ODM Snapshot format. When designing a study with Oracle Services, you can include multiple custom events, each with its own triggers, results, and targeted destination.

Custom events support a variety of customer applications, including metric reporting, clinical coding, clinical repositories, Oracle Health Sciences IRT On Demand, and Siebel Clinical Trial Management System On Demand.

Using custom events, customers can:

- Create trigger events based on simple occurrences in the InForm application such as field changes, form or visit completions, or subject status changes.
- Allow a selective amount of data to be provided from a study when an event is triggered.
- Provide the latest data or status of a subject.
- Select data for the extract during study design or setup.

Elements of custom events

A custom event must contain the following:

- **Event Name**—A name that is given to the event and is exported with the custom event (for example, Coding Verbatim or CTMS New Subject Added).
- **Trigger Event**—An event in an InForm study that initiates publishing the custom event. The trigger supports all form items (hidden fields, calculated fields, and checkboxes).
- **Event Destination**—A name assigned to the destination (receiving) application of a custom event (for example, Customer Coding System). The application maps the name to the actual web service URL of the application.

Note: The destination is transformed by the InForm Publisher application to the equivalent of an application URL or other web service endpoint.

- **Event Result**—The set of data and status updates that is exported when a trigger event occurs (for example, Adverse Event, trial, site, subject, form, and Inform coding target names created with Central Designer mappings).

Output of custom events

The InForm Publisher application monitors custom events in the InForm application and publishes them in ODM Snapshot format. The InForm Publisher application evaluates and publishes custom events periodically. The frequency of evaluation and publication is configurable, but must be at least every 24 hours and no more than every 5 minutes. The default is every 15 minutes.

The event result is compatible with the InForm ODM Transaction Export format produced by InForm Adapter.

The data is transmitted as an outgoing SOAP message through a web service call or in a file sent by SFTP (Secure File Transfer Protocol). Output can also be written to a directory on the InForm application server. For configuration information, see the *InForm Publisher On Demand 2.0 Installation Guide*.

Since the receiving application needs the ODM metadata to interpret the event result, the InForm Publisher application exports the metadata.

- When SOAP is used, the receiving application can return a response code to tell the InForm Publisher application to send the metadata and administrative data after the event XML is received.
- When SFTP is used, a special property file at the receiving end tells the InForm Publisher application whether to send the metadata and administrative data.
- When Directory type is used, metadata and administrative data can be obtained by specifying type and frequency of metadata and administrative data in InForm Publisher configuration.

Alternately, the receiving application can obtain the metadata and administrative data through the InForm Adapter ODM interface.

The InForm Publisher application maintains a history of the exports of custom events. When the InForm Publisher application cannot evaluate or publish a custom event, the application retries evaluation and publication and saves the failures so that the custom event is not lost.

Because ODM extract messages published by the InForm Publisher application might contain patient data and must conform to HIPAA requirements, the data transmitted from the Oracle Cloud for Industry (OCI) hosted environment is encrypted.

Custom event triggers

Each custom event must have a trigger that initiates the publishing of the custom event.

Trigger events can be based on occurrences in the InForm application such as a change to the value in a field, form or visit completion, or a change to subject status. These triggers are saved in the study database. The InForm Publisher application periodically checks the transaction history to determine whether triggers occurred.

Unless noted in the Description column in the table below, an event results in an initial transmission when it first tests positive and an event results in a follow-up transmission when it tests negative after having previously been reported as positive.

Trigger	Associated with:	Description
Data entered	Specific item	<ul style="list-style-type: none"> Particular data for an item is entered or changed. A data value change always results in a transmission.
Matches the codelist value	Specific control	A particular codelist value for a control is entered or changed.
Matches a query state: <ul style="list-style-type: none"> Candidate Opened Answered Closed Deleted Sponsor Conflict Site Conflict 	Specific item or form	The state of the query has changed to the state listed.
Source verification state change: Source Verified $\leftarrow \rightarrow$ Not Source Verified	Specific item	$\leftarrow \rightarrow$ means that the state changes from one state to the other.
Itemset state change: <ul style="list-style-type: none"> Delete $\leftarrow \rightarrow$ Undelete Source Verified $\leftarrow \rightarrow$ Not Source Verified 	Specific itemset	$\leftarrow \rightarrow$ means that the state changes from one state to the other.

Trigger	Associated with:	Description
Form state change: <ul style="list-style-type: none"> Started Complete $\leftarrow \rightarrow$ Incomplete Frozen $\leftarrow \rightarrow$ Unfrozen Locked $\leftarrow \rightarrow$ Unlocked Signed $\leftarrow \rightarrow$ Unsigned Source Verified $\leftarrow \rightarrow$ Not Source Verified Deleted $\leftarrow \rightarrow$ Undeleted SV Ready $\leftarrow \rightarrow$ Not SV Ready SV Partial $\leftarrow \rightarrow$ SV Complete 	Specific form	<ul style="list-style-type: none"> The state of the form has changed to the state shown. $\leftarrow \rightarrow$ means that the state changes from one state to the other.
Data entry	Specific form	A data value change always results in a transmission.
Review state change	Specific form	The state of the form has changed to the state listed.
Visit state change: <ul style="list-style-type: none"> Started Complete $\leftarrow \rightarrow$ Incomplete Frozen $\leftarrow \rightarrow$ Unfrozen Locked $\leftarrow \rightarrow$ Unlocked Signed $\leftarrow \rightarrow$ Unsigned Source Verified $\leftarrow \rightarrow$ Not Source Verified 	Specific visit	<ul style="list-style-type: none"> The state of the query has changed to the state listed. $\leftarrow \rightarrow$ means that the state changes from one state to the other.

Trigger	Associated with:	Description
Subject state change: <ul style="list-style-type: none"> • Screened • Screen Failed • Enrolled • Enrollment Failed • Randomized • Complete ← → Discontinue • Site Transfer • Subject Number Change 	Subject state	<ul style="list-style-type: none"> • The state of the subject has changed to the state shown. • ← → means that the state changes from one state to the other.

Limitations on triggers

Compound item—When a data change item trigger is set within a compound item, the trigger occurs when any items within the compound item gets edited.

Visit state triggers—These triggers (Frozen, Locked, Complete, and SV Complete) occur only when all expected forms in the visit have been started. Visit state should match the state in the InForm application.

Float data type—When a codelist value is float type and it includes decimal point with zero (.0), decimal point with zero (.0) cannot be included in the CODELISTVALUE column in the PFEX_ITEMTRIGGER table. Use an integer in this instance. For example, for 12.0, use 12.

Repeating instance output—Displays only the instance that triggered the output.

Combined criteria as triggers

The trigger event can be a combination of triggers connected by either AND or OR, but not both.

AND examples:

- Form is Complete AND form is SV'd.
- MRI date entered AND MRI Successful = Yes.
- Form1, Form2, AND Form3 are completed.

OR examples:

- On a specific form, such as the Demographic form, the OR could be used to specify if any field of a specific set of fields was entered or changed.
- Weight OR height OR age OR blood pressure OR . . .
- Visit1, Visit2, . . .OR Visit 16 is completed.

AND/OR rules and limitations

Rules

- An AND event trigger occurs when ALL triggers are positive.
- An OR event trigger occurs when any trigger is positive.
- An event results in an initial transmission when it first tests positive.
- An event results in a follow-up transmission when it tests negative after having previously been reported as positive.
- If any trigger element for an event includes a non-repeating type, then no elements in other triggers for that event may include a repeating type. Repeating types are items, such as repeating forms, visits, and itemsets, for which you can create multiple instances in the InForm application.
- If any trigger element for an event includes repeating types, all elements in other triggers for that event must include all of the same repeating types. Therefore, if you want to combine a non-repeating and a repeating type, Oracle suggests you create two separate events.

Limitations

- Multiple subject states using AND/OR are not supported.
- Subject state can be combined with other triggers using AND/OR as long as the other triggers are not repeating types.

Changes to custom events

You can modify the Event Name, Event Destination, Trigger Event, Events Results, and Event Result refnames in an ongoing study. A change to a custom event takes effect from the time it is implemented in an InForm study. It does not affect previously sent events.

You can delete a custom event in an ongoing study.

Updates made to custom events affect future events only. They cannot be applied to events retroactively.

How events are published

To use custom events, the InForm Publisher application must be installed on the InForm server. The InForm Publisher application:

- Monitors the InForm database for events that meet trigger event criteria.
- Retrieves data from the InForm application based on the fields specified in the event result.
- Pushes ODM Snapshot extracts to configured destinations through directory, web services, or SFTP.

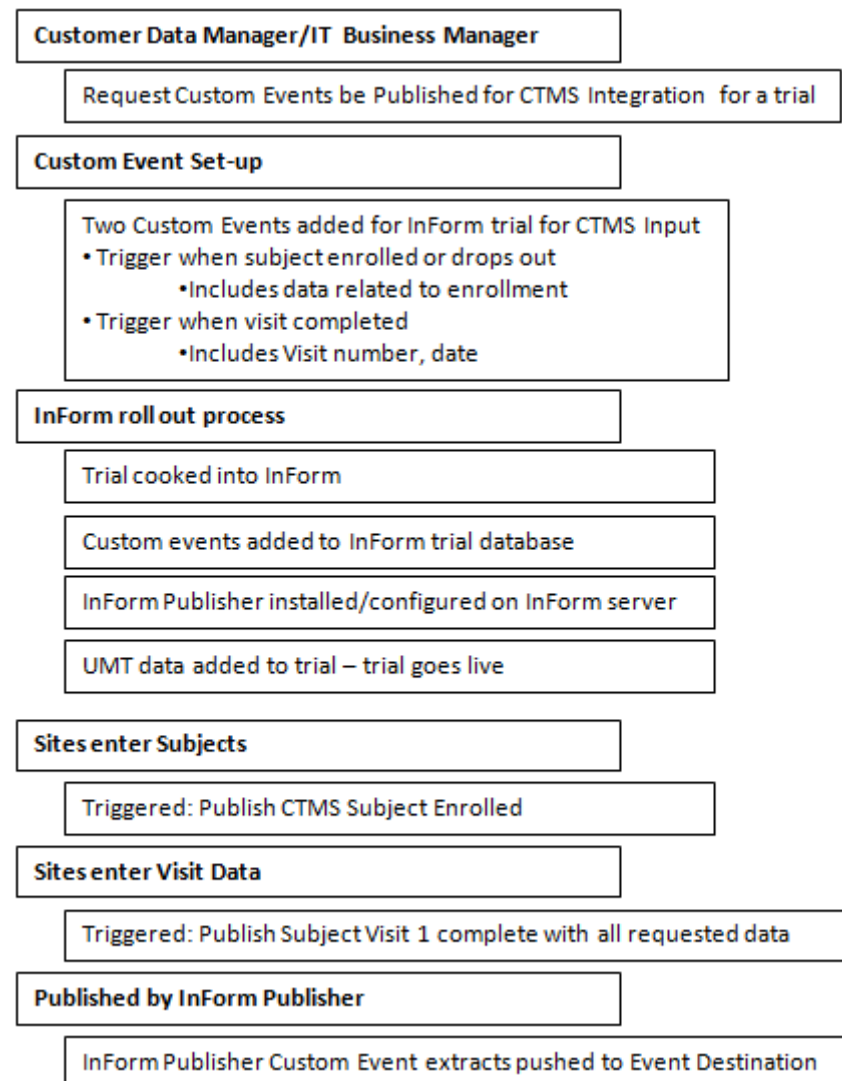
Note: Item blinding is not supported in ODM export. All selected items are exported.

Working with Oracle Services to implement custom event triggers

Customers must work with their Oracle Health Sciences Consulting (HSC) team to:

- Define custom event requirements for implementation in a study.
- Implement the custom event tables in the InForm database.
- Set configuration options.

Example steps followed include:



CHAPTER 3

Defining how the receiving application receives ODM extract data

In this chapter

Using the web service.....	16
WSDL documentation.....	18
FTP option.....	27
Local Directory option.....	28

Using the web service

Custom event data is sent by the InForm Publisher application and received by target applications using web service transactions.

Writing the web service

ODMProcessorService Web Services Description Language (WSDL) defines how a receiving application receives ODM extract data from InForm Publisher. A receiving application must implement the web service using the WSDL provided. The web service defines a single operation, called receiveODMData.

The receiving application should provide implementation logic to receive ODM data and process it based on the application's requirements. Further processing might involve validating ODM data, storing the data in its database or file system, or transforming and sending the data to downstream applications.

High-level summary of the web service API

Service

Service	Operation
ODMProcessorService	receiveODMData

Operation - receiveODMData

Service	Operation
ODMProcessorService	receiveODMData

Input	The InForm Publisher application sends ODM extract data XML in string format to the web service.
Output	The web service sends one of the following return codes to the InForm Publisher application:
SUCCESS*	After receiving ODM extract data, the receiving application sends a SUCCESS response.
ODMMETAREQUIRED	The receiving application can request ODM metadata.
ODMADMINREQUIRE D	The receiving application can request ODM administrative data.
ODMMETAANDADMIN REQUIRED	The receiving application can request ODM metadata and administrative data.
Fault	If the web service is unable to process data for any reason, it returns a fault.

Note: The web service should return a success code after receiving either ODM extract data or ODM metadata and administrative data. The remaining codes should be used only when the receiving application needs administrative data, metadata, or both.

Sample web service request and response

Sample Request

```
<soap:Envelope xmlns:soap="http://www.w3.org/2003/05/soap-envelope"
xmlns:test="http://test.odmextract.informpublisher.hsgbu.oracle.com/"
xmlns:s="s" xmlns:u="u">
  <soap:Body>
    <test:receiveODMData>
      <arg0><![CDATA[<ResponseODM
xmlns:pf="http://www.phaseforward.com/InFormAdapter/ODM/Extensions/3.0"
xmlns="http://www.phaseforward.com/InFormAdapter/ODM/3.0">
  <ODM Description="combo" FileType="Snapshot" CreationDateTime="2013-09-
16T18:37:54.0535222Z" ODMVersion="1.3.1" Originator="Oracle HSGBU"
SourceSystem="InForm" SourceSystemVersion="6.0" pf:MappingVersion="V3"
pf:HierarchicalOIDs="Yes" pf:Generator="InFormPublisher v2.0.50727"
xmlns="http://www.cdisc.org/ns/odm/v1.3">
  <ClinicalData StudyOID="StudyDesign" MetaDataVersionOID="Study Design
0.0.4">
    <SubjectData SubjectKey="17647" pf:GUID="{4ABEE1F2-839F-44CC-B5FD-
81720BEE5A9A}">
      <SiteRef LocationOID="01" />
      <pf:SubjectStatus State="Enrolled" />
    </SubjectData>
    <pf:CustomEvent Name="TC10000027e" Destination="Service_1"
StudyVersion="Study Design 0.0.4" EventID="1" EventRev="1" />
  </ClinicalData>
</ODM>
<Status>OK</Status>
</ResponseODM>]]></arg0>
    </test:receiveODMData>
  </soap:Body>
</soap:Envelope>
```

Sample Response

```
<S:Envelope xmlns:S="http://www.w3.org/2003/05/soap-envelope">
  <S:Header>
    <To
xmlns="http://www.w3.org/2005/08/addressing">http://www.w3.org/2005/08/addressin
g/anonymous</To>
    <Action
xmlns="http://www.w3.org/2005/08/addressing">http://test.odmextract.informpublis
her.hsgbu.oracle.com/ODMProcessor/receiveODMDataResponse</Action>
    <MessageID xmlns="http://www.w3.org/2005/08/addressing">uuid:bfba08fd-ed9a-
4649-aa68-cddc94ed43a3</MessageID>
    <RelatesTo xmlns="http://www.w3.org/2005/08/addressing">urn:uuid:621b1526-
a917-4a8f-b27c-9d979683852c</RelatesTo>
  </S:Header>
  <S:Body>
    <ns2:receiveODMDataResponse
xmlns:ns2="http://test.odmextract.informpublisher.hsgbu.oracle.com/">
      <return>SUCCESS</return>
    </ns2:receiveODMDataResponse>
  </S:Body>
</S:Envelope>
```

WSDL documentation

Services

ODMProcessorService

Diagram	
Ports	ODMProcessorSoap12HttpPort
Binding:	<i>tns:ODMProcessorSoapHttp</i> (on page 18)
Extensibility:	<soap12:address location="http://localhost:7101/ODMTest-GenericReceiverService-context-root/ODMProcessorService"/>
Source	<pre><wsdl:service name="ODMProcessorService"> <wsdl:port name="ODMProcessorSoap12HttpPort" binding="tns:ODMProcessorSoapHttp"> <soap12:address location="http://localhost:7101/ODMTest- GenericReceiverService-context-root/ ODMProcessorService"/> </wsdl:port> </wsdl:service></pre>

Bindings

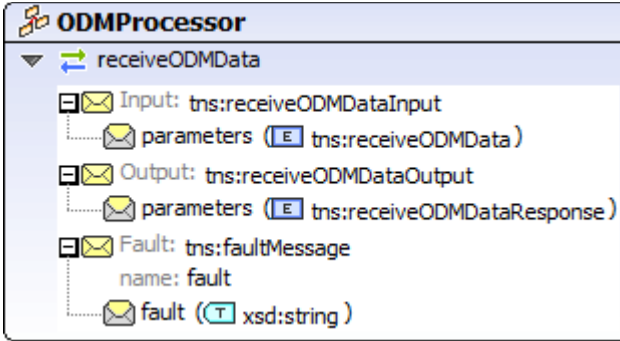
ODMProcessorSoapHttp

Diagram	
Type	<i>tns:ODMProcessor</i> (on page 19)
Extensibility	<soap12:binding style="document" transport="http://www.w3.org/2003/05/soap/bindings/HTTP"/>
Operations	receiveODMData
Extensibility:	<soap12:operation soapAction="http://test.odmextract.informpublisher.hsgbu.oracle.com/receiveODMData" soapActionRequired="false"/>
Input:	<soap12:body use="literal"/>
Output:	<soap12:body use="literal"/>

Used by	Port <i>ODMProcessorSoap12HttpPort</i> (on page 18) in Service <i>ODMProcessorService</i> (on page 18)
Source	<pre> <wsdl:binding name="ODMProcessorSoapHttp" type="tns:ODMProcessor"> <soap12:binding style="document" transport="http://www.w3.org/2003/05/soap/bindings/HTTP/"> <wsdl:operation name="receiveODMData"> <soap12:operation soapAction="http://test.odmextract.informpublisher.hsgbu.oracle. com/receiveODMData" soapActionRequired="false"/> <wsdl:input> <soap12:body use="literal"/> </wsdl:input> <wsdl:output> <soap12:body use="literal"/> </wsdl:output> </wsdl:operation> </wsdl:binding> </pre>

Porttypes

ODMProcessor

Diagram	
Operation	receiveODMData
Input:	<i>tns:receiveODMDataInput</i> (on page 20)
Output:	<i>tns:receiveODMDataOutput</i> (on page 20)
Fault:	<i>tns:faultMessage</i> (on page 20)
Used by	
Binding:	<i>ODMProcessorSoapHttp</i> (on page 18)
Source	<pre> <wsdl:portType name="ODMProcessor"> <wsdl:operation name="receiveODMData"> <wsdl:input message="tns:receiveODMDataInput" xmlns:ns2="http://www.w3.org/2006/05/addressing/wsdl" ns2:action="http://test.odmextract.informpublisher.hsgbu.oracle. com/receiveODMData"/> <wsdl:output message="tns:receiveODMDataOutput" xmlns:ns2="http://www.w3.org/2006/05/addressing/wsdl" ns2:action="http://test.odmextract.informpublisher.hsgbu.oracle. com/receiveODMDataResponse"/> <wsdl:fault name="fault" message="tns:faultMessage"/> </wsdl:operation> </wsdl:portType> </pre>

Messages

faultMessage

Parts	fault
Type:	xsd:string
Used by	
Operation:	<i>receiveODMData</i> (on page 19)
in PortType:	<i>ODMProcessor</i> (on page 19)
Source	<pre><wsdl:message name="faultMessage"> <wsdl:part name="fault" type="xsd:string"/> </wsdl:message></pre>

ReceiveODMDataInput


Parts	parameters
Element:	<i>tns:receiveODMData</i> (on page 21)
Used by	
Operation:	<i>receiveODMData</i> (on page 19)
in PortType:	<i>ODMProcessor</i> (on page 19)
Source	<pre><wsdl:message name="receiveODMDataInput"> <wsdl:part name="parameters" element="tns:receiveODMData"/> </wsdl:message></pre>

receiveODMDataOutput

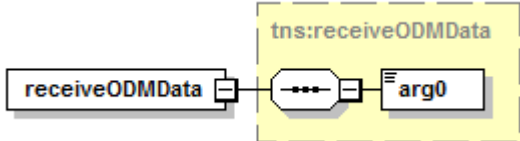
Parts	parameters
Element:	<i>tns:receiveODMDataResponse</i> (on page 21)
Used by	
Operation:	<i>receiveODMData</i> (on page 19)
in PortType:	<i>ODMProcessor</i> (on page 19)
Source	<pre><wsdl:message name="receiveODMDataOutput"> <wsdl:part name="parameters" element="tns:receiveODMDataResponse"/> </wsdl:message></pre>

Types

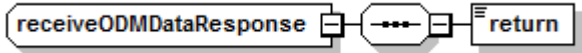
receiveODMData

Diagram	
Namespace	http://test.odmextract.informpublisher.hsgbu.oracle.com/
Children	<i>arg0</i> (on page 25)
Used by	
Element:	<i>receiveODMData</i> (on page 21)
Source	<pre><complexType name="receiveODMData"> <sequence> <element name="arg0" type="xsd:string"/> </sequence> </complexType></pre>

receiveODMData

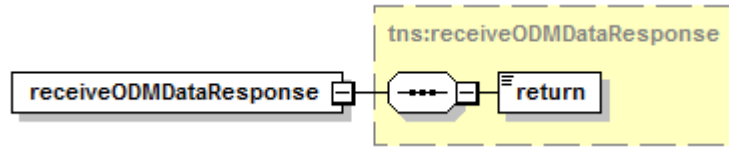
Diagram	
Namespace	http://test.odmextract.informpublisher.hsgbu.oracle.com/
Type	<i>tns:receiveODMData</i> (on page 21)
Properties	
Content:	complex
Children	<i>arg0</i> (on page 25)
Source	<pre><element name="receiveODMData" type="tns:receiveODMData"/></pre>

receiveODMData Response

Diagram	
Namespace	http://test.odmextract.informpublisher.hsgbu.oracle.com/
Children	<i>return</i> (on page 24)
Used by	
Element:	<i>receiveODMDataResponse</i> (on page 23)
Source	<pre><complexType name="receiveODMDataResponse"> <sequence> <element name="return" type="tns:ReturnCodes"/> </sequence> </complexType></pre>

receiveODMDataResponseReturnCodes

Diagram



Namespace `http://test.odmextract.informpublisher.hsgbu.oracle.com/`

Type *tns:receiveODMDataResponse* (on page 21)

Properties

Content: complex

Children *return* (on page 24)

Source `<element name="receiveODMDataResponse" type="tns:receiveODMDataResponse" />`

ReturnCodes

Namespace `http://test.odmextract.informpublisher.hsgbu.oracle.com/`

Type restriction of string

Properties

Base: xsd:string

Used by

Element: *receiveODMDataResponse/return* (on page 24)

Facets

Kind: enumeration

Value: SUCCESS

Annotation: After receiving ODM extract data, the receiving application should send a SUCCESS response back to InForm Publisher by sending this return code.

Kind: enumeration

Value: ODMMETAREQUIRED

Annotation: After receiving ODM extract data, the receiving application can request ODM metadata from InForm Publisher by sending this return code.

Kind: enumeration

Value: ODMADMINREQUIRED

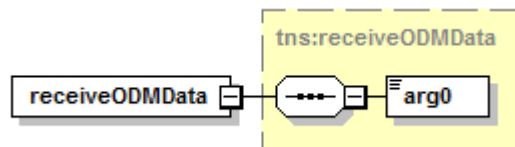
Annotation: After receiving ODM extract data, the receiving application can request ODM administrative data from InForm Publisher by sending this return code.

Kind:	enumeration
Value:	ODMMETAANDADMINREQUIRED
Annotation:	After receiving ODM extract data, the receiving application can request ODM metadata and administrative data from InForm Publisher by sending this return code.
Source	<pre><simpleType name="ReturnCodes"> <restriction base="xsd:string"> <enumeration value="SUCCESS" /> <enumeration value="ODMMETAREQUIRED" /> <enumeration value="ODMADMINREQUIRED" /> <enumeration value="ODMMETAANDADMINREQUIRED" /> </restriction> </simpleType></pre>

Elements

receiveODMData

Diagram



Namespace <http://test.odmextract.informpublisher.hsgbu.oracle.com/>

Type *tns:receiveODMData* (on page 21)

Properties

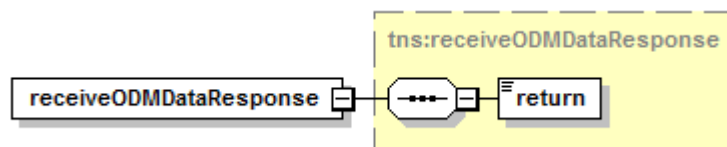
Content: complex

Children *arg0* (on page 25)

Source `<element name="receiveODMData" type="tns:receiveODMData"/>`

receiveODMDataResponse

Diagram



Namespace <http://test.odmextract.informpublisher.hsgbu.oracle.com/>

Type *tns:receiveODMDataResponse* (on page 21)


Properties

Content: complex


Children *return* (on page 24)

Source `<element name="receiveODMDataResponse" type="tns:receiveODMDataResponse"/>`

receiveODMDataResponse/return


Diagram	
Type	<i>tns:ReturnCodes</i> (on page 22)
Properties	
Content:	simple
Facets	
Kind:	enumeration
Value:	SUCCESS
Annotation:	After receiving ODM extract data, the receiving application should send SUCCESS response back to InForm Publisher by sending this return code.
Kind:	enumeration
Value:	ODMMETAREQUIRED
Annotation:	After receiving ODM extract data, the receiving application can request ODM metadata from InForm Publisher by sending this return code.
Kind:	enumeration
Value:	ODMADMINREQUIRED
Annotation:	After receiving ODM extract data, the receiving application can request ODM administrative data from InForm Publisher by sending this return code.
Kind:	enumeration
Value:	ODMMETAANDADMINREQUIRED
Annotation:	After receiving ODM extract data, the receiving application can request ODM metadata and administrative data from InForm Publisher by sending this return code.
Source	<code><element name="return" type="tns:ReturnCodes"/></code>

receiveODMData/arg0

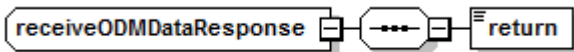
Diagram	
Type	string
Properties	
Content:	simple
Source	<code><element name="arg0" type="xsd:string"/></code>

Complex types

receiveODMData

Diagram	
Namespace	<code>http://test.odmextract.informpublisher.hsgbu.oracle.com/</code>
Children	<i>arg0</i> (on page 25)
Used by	
Element:	<i>receiveODMData</i> (on page 21)
Source	<pre><complexType name="receiveODMData"> <sequence> <element name="arg0" type="xsd:string"/> </sequence> </complexType></pre>

receiveODMData Response

Diagram	
Namespace	<code>http://test.odmextract.informpublisher.hsgbu.oracle.com/</code>
Children	<i>return</i> (on page 24)
Used by	
Element:	<i>receiveODMDataResponse</i> (on page 23)
Source	<pre><complexType name="receiveODMDataResponse"> <sequence> <element name="return" type="tns:ReturnCodes"/> </sequence> </complexType></pre>

Simple types

ReturnCodes

Namespace	http://test.odmextract.informpublisher.hsgbu.oracle.com/
Type	restriction of string
Properties	
Base:	xsd:string
Used by	
Element:	<i>receiveODMDataResponse/return</i> (on page 24)
Facets	
Kind:	enumeration
Value:	SUCCESS
Annotation:	After receiving ODM extract data, the receiving application should send a SUCCESS response back to InForm Publisher by sending this return code.
Kind:	enumeration
Value:	ODMMETAREQUIRED
Annotation:	After receiving ODM extract data, the receiving application can request ODM metadata from InForm Publisher by sending this return code.
Kind:	enumeration
Value:	ODMADMINREQUIRED
Annotation:	After receiving ODM extract data, the receiving application can request ODM administrative data from InForm Publisher by sending this return code.
Kind:	enumeration
Value:	ODMMETAANDADMINREQUIRED
Annotation:	After receiving ODM extract data, the receiving application can request ODM metadata and administrative data from InForm Publisher by sending this return code.
Source	<pre><simpleType name="ReturnCodes"> <restriction base="xsd:string"> <enumeration value="SUCCESS" /> <enumeration value="ODMMETAREQUIRED" /> <enumeration value="ODMADMINREQUIRED" /> <enumeration value="ODMMETAANDADMINREQUIRED" /> </restriction> </simpleType></pre>

FTP option

To enable FTP publishing for ODM extract type subscriber, configure the following in the InFormPublisher.config file:

- EndPointType = "FTP"
- EndPoint—IP or hostname address for remote host.
- Username—Login credential for remote host.
- Password—Login credential for remote host.
- Local folder—Folder name (FtpLocalFolderPath) from which local files are picked up by ODM Extract SFTP transmitter.
- Remote folder—Folder name (RemoteFolder) on the remote host, where files will be sent.

FTP Attributes

```
.\PublisherAdmin.exe Subscriber set OESubscriber9  
EndPoint=ftp://<hostname>:<portnumber> EndPointType=FTP FtpLocalFolderPath=<  
local folder path> FtpRemoteFolderPath=<Remote folder path>
```

SecureEndPointCredentials

```
.\PublisherAdmin.exe Subscriber setCredentials OESubscriber9 User=<username>  
<Enter password when prompted>
```

Local Directory option

The InForm Publisher application can publish ODM Snapshot output file to a directory. This option is not available when Oracle hosts the application. However, customers who have the InForm application and the InForm Publisher application on premises can use this option.

CHAPTER 4

Export formats

In this chapter

ODM Snapshot format.....	30
Oracle extensions for ODM Snapshot.....	31

ODM Snapshot format

The format of the of ODM custom event extract XML conforms to ODM 1.3.1 with new extensions that do not exist in the ODM XML from InForm Adapter. The ODM XML is in the Snapshot format and compatible with the transactional output. The custom events extract is in CDISC ODM Snapshot format. InForm ODM extensions designed for InForm Adapter ODM transactional output are also supported and have been incorporated into this guide. Audit trails are not included in the ODM Snapshot format.

Oracle extensions for ODM Snapshot

The ODM Extract Publisher is a unidirectional interface called by a customer web service from any outside application that needs to retrieve data from an InForm database in CDISC ODM standard format. Refer to www.cdisc.org for more information on the ODM standard.

The ODM Extract Publisher connects directly to the InForm database.

This section describes the Oracle extensions to the syntax and functionality of the ODM Extract Publisher of the InForm Publisher software. The ODM Extract Publisher focuses on the semantics of the function calls that are published by the interface, and the parameters that the published web methods use. Elements are included for:

- Custom events
- Clinical data
- Administrative data
- Metadata

Each section gives examples of XML for both the web method request and response.

Elements for custom events

ODM element

The ODM element has the following attribute set for the predefined value in ODM Custom Event Extract output:

- pf:MappingVersion attribute is set to V3.
- ODMVersion attribute value is 1.3.1.
- FileType is set to Snapshot.
- FileOID is set to the new guid.
- Originator is set to "InForm Publisher."
- SourceSystem is set to "InForm."
- SourceSystemVersion is set to the database version of the InForm study for which the custom event extract is published.

ODM element example

```
<ODM Description="combosample" FileType="Snapshot" CreationDateTime="ignored"
ODMVersion="1.3.1" Originator="Oracle HSGBU" FileOID="" SourceSystem="InForm"
SourceSystemVersion="6.0" pf:MappingVersion="V3" pf:HierarchicalOIDs="Yes"
pf:Generator="InForm Publisher"
xmlns="http://www.cdisc.org/ns/odm/v1.3">
```

pf:CustomEvent element

This extension denotes the custom event for which the ODM XML is published.

XPath

```
ODM/ClinicalData/pf:CustomEvent
```

Attributes

Attribute	Description
Name	Custom context alias defined for this event.
Destination	Name of the destination that the InForm Publisher application uses to locate the endpoint to which it sends the custom event XML.
StudyVersion	Study version to which this custom event is assigned.
EventID	Internal numeric identifier of the custom event.
EventRef	Revision number of the custom event.

pf:CustomEvent example

```
<pf:CustomEvent Name="DataChangeTest" Destination="FrancaEndpoint"
StudyVersion="Study Design 0.0.9" EventID="18" EventRev="1" />
```

pf:Alias attribute

This attribute is the customer context alias for the event result included.

XPath

```
ODM/ClinicalData/SubjectData/StudyEventData/FormData/ItemGroupData/ItemData/@pf:
Alias
ODM/ClinicalData/SubjectData/StudyEventData/FormData/@pf:Alias
ODM/ClinicalData/SubjectData/pf:StudyEventStatus/@pf:Alias
ODM/ClinicalData/SubjectData/pf:SubjectStatus/@pf:Alias
ODM/ClinicalData/SubjectData/StudyEventData/FormData/ItemGroupData/ItemGroupStat
us/pf:Alias
ODM/ClinicalData/SubjectData/StudyEventStatus/pf:FormStatus/pf:Alias
ODM/ClinicalData/SubjectData/StudyEventData/FormData/ItemGroupData/ItemData/Item
Status/pf:Alias
```

pf:StudyEventStatus

This element reflects the visit status and includes the pf:FormStatus element for the form started in the visit.

XPath

```
ODM/ClinicalData/SubjectData/pf:StudyEventStatus
```

Attributes

Attributes	Description
StudyEventOID	Visit refname in the InForm application.
StudyEventRepeatKey	Visit index for the repeating visit. If the visit is not repeating, this attribute is not generated.
Complete	Yes=Visit is complete. No=Visit is incomplete.

Attributes	Description
Frozen	Yes=Visit is frozen. No=Visit is not frozen.
Lock	Yes=Visit is locked. No=Visit is unlocked.
SDV	Yes=Visit is source verified. No=Visit is not source verified.
Activated	Yes=Form is activated. No=Other status attributes, such as Complete, Frozen, and so on, are not generated.

pf:StudyEventStatus example

```

    <pf:StudyEventStatus Complete="No" Frozen="No" Lock="No" SDV="No"
StudyEventOID="vstUnschVisit" StudyEventRepeatKey="393232473548079">
    <pf:FormStatus Activated="Yes" Frozen="No" Locked="No" Deleted="No"
SVReady="No" SVPartial="No" SVComplete="No" SVSelected="Yes" Signed="No"
Completed="No" FormOID="frmCGI" />
    <pf:FormStatus Activated="Yes" Frozen="No" Locked="No" Deleted="No"
SVReady="No" SVPartial="No" SVComplete="No" SVSelected="Yes" Signed="No"
Completed="No" FormOID="frmECG" FormRepeatKey="393232471708079" />
    <pf:FormStatus Activated="Yes" Frozen="No" Locked="No" Deleted="No"
SVReady="No" SVPartial="No" SVComplete="No" SVSelected="Yes" Signed="No"
Completed="No" FormOID="frmHamD" />
    <pf:FormStatus Activated="Yes" Frozen="No" Locked="No" Deleted="No"
SVReady="No" SVPartial="No" SVComplete="No" SVSelected="Yes" Signed="No"
Completed="No" FormOID="frmVS" />
    <pf:FormStatus Activated="Yes" Frozen="No" Locked="No" Deleted="No"
SVReady="No" SVPartial="No" SVComplete="No" SVSelected="Yes" Signed="No"
Completed="No" FormOID="frmPE" />
    <pf:FormStatus Activated="Yes" Frozen="No" Locked="No" Deleted="No"
SVReady="No" SVPartial="No" SVComplete="No" SVSelected="Yes" Signed="No"
Completed="Yes" FormOID="frmDOV2" />
    <pf:FormStatus Activated="Yes" Frozen="No" Locked="No" Deleted="No"
SVReady="No" SVPartial="No" SVComplete="No" SVSelected="Yes" Signed="No"
Completed="No" FormOID="frmECG" FormRepeatKey="393232474285079" />
    <pf:CustomData Name="CTMSElementName" Value="VisitStatus" />
</pf:StudyEventStatus>

```

pf:SubjectStatus

This element reflects the subject status.

XPath

ODM/ClinicalData/SubjectData/pf:SubjectStatus

Attributes

Attribute	Description
State	Subject status: <ul style="list-style-type: none"> • Screened • ScreenFailed • Enrolled • EnrollmentFailed • Randomized • DroppedOut • Complete

pf:SubjectStatus example

```
<pf:SubjectStatus State="Enrolled">
```

MeasurementUnitRef

This element exists in the transactional output and will be populated for the item data if applicable.

XPath

ODM/ClinicalData/SubjectData/StudyEventData/FormData/ItemGroupData/ItemData/MeasurementUnitRef

pf:NormalizedValue of ItemData

This extension attribute will be populated if there is a normalized value.

XPath

ODM/ClinicalData/SubjectData/StudyEventData/FormData/ItemGroupData/ItemData/@NormalizedValue

Annotation

This element is either the form or item comment and is populated when there is a comment.

XPath for the Item comment

ODM/ClinicalData/SubjectData/StudyEventData/FormData/ItemGroupData/ItemData/Annotation

XPath for the form comment

ODM/ClinicalData/SubjectData/StudyEventData/FormData/ItemGroupData/ItemData/

Annotation

pf:ItemGroupStatus

This extension element reflects the item group status.

XPath

ODM/ClinicalData/SubjectData/StudyEventData/FormData/ItemGroupData/ItemGroupStatus

Attributes

Attribute	Description
SVComplete	Yes=Itemset is source verified.
	No=Itemset is not source verified.
Deleted	Yes=Itemset is deleted.
	No=Itemset is not deleted.

pf:ItemGroupStatus example

```
<pf:ItemGroupStatus SVComplete="No" Deleted="No" />
```

pf:ReasonIncomplete

This extension element already exists in the transactional output. It will be populated in the custom event extract if the reason incomplete.

Form Reason Incomplete XPath

ODM/ClinicalData/SubjectData/StudyEventData/FormData/Annotation/pf:ReasonIncomplete

Item Reason Incomplete XPath

ODM/ClinicalData/SubjectData/StudyEventData/FormData/ItemGroupData/ItemData/Annotation/pf:ReasonIncomplete

pf:FormStatus

This element reflects the form status.

XPath

ODM/ClinicalData/SubjectData/StudyEventData/FormData/pf:FormStatus
ODM/ClinicalData/SubjectData/StudyEventStatus/pf:FormStatus

Attributes

Attribute	Description
Activated	Yes=Itemset is activated.
	No=Itemset is not activated.
Frozen	Yes=Itemset is frozen.
	No=Itemset is not frozen.

Attribute	Description
Locked	Yes=Form is locked. No=Form is unlocked.
Deleted	Yes=Form is deleted. No=Form is not deleted.
SVReady	Yes=Form is ready for source verification. No=Form is not ready for source verification.
SVPartial	Yes=Form is partially source verified. No=Form is not Partially source verified.
SVComplete	Yes=Form is source verified. No=Form is not source verified.
SVSelected	Yes=Form is SV critical. No=Form is not SV critical.
Signed	Yes=Form is signed. No=Form is not signed.
Completed	Yes=Form is complete. No=Form is incomplete.
FormOID	Form refname.
FormRepeatKey	Form index. Generated only for repeating forms.

pf:FormStatus example

```
<pf:FormStatus Activated="Yes" Frozen="No" Locked="No" Deleted="No" SVReady="No"
SVPartial="No" SVComplete="No" SVSelected="Yes" Signed="No" Completed="Yes"
FormOID="frmDOV2" />
  <pf:FormStatus Activated="Yes" Frozen="No" Locked="No" Deleted="No"
SVReady="No" SVPartial="No" SVComplete="No" SVSelected="Yes" Signed="No"
Completed="No" FormOID="frmECG" FormRepeatKey="393232474285079" />
```

Critical attribute of ItemStatus

This element tells whether or not the item is SV critical in the InForm application. The value is True when the item is SV critical and False when it is not. Otherwise, it is StudyDefault.

XPath

```
ODM/ClinicalData/SubjectData/StudyEventData/FormData/ItemGroupData/ItemData/Item
Status/@Critical
```

Query

This element reflects the query for the item.

XPath

```
ODM/ClinicalData/SubjectData/StudyEventData/FormData/ItemGroupData/pf:InFormItem
Data/Query
```

Attributes

Attribute	Description
Text	Query text.
Type	One of the following: <ul style="list-style-type: none"> User Autoquery
DBUID	DBUID of the query.
Revision	Revision number of the query.
QueryGroupOID	Query group ID.
FormRepeatKey	Form index. Generated only for repeating forms.

The query element has a child element: pf:QueryStatus. This element indicates the status of the query.

Attribute	Description
Status	The value is one of the following: <ul style="list-style-type: none"> Open Answered Closed Candidate Deleted SponsorConflict SiteConflict Reissued

Query example

```
<pf:Query OID="{BB5935ED-083F-421C-90C4-05834AAC49BD}"
Text="Item incomplete" Type="User" pf:DBUID="20237"
pf:Revision="401964420976015" QueryGroupOID="13741">
  <pf:QueryStatus Status="Open" />
</pf:Query>
```

CustomData

This is the extension element to include a string attached to an element in the custom event XML.

XPath

```
ODM/ClinicalData/SubjectData/pf:SubjectStatus/pf:CustomData
```

Example

```
<pf:SubjectStatus State="Enrolled">
  <pf:CustomData Name="CustomDataName" Value="CustomDataValue" />
</pf:SubjectStatus>
```

XPath

ODM/ClinicalData/SubjectData/pf:StudyEventStatus/pf:CustomData

Example

```
<pf:StudyEventStatus Complete="No" Frozen="No" Lock="No" SDV="No"
StudyEventOID="vstBASE">
  <pf:FormStatus Activated="Yes" Frozen="No" Locked="No" Deleted="No"
SVReady="No" SVPartial="No" SVComplete="No" SVSelected="Yes" Signed="No"
Completed="Yes" FormOID="MEDHISTiSet" />
  <pf:FormStatus Activated="Yes" Frozen="No" Locked="No" Deleted="No"
SVReady="No" SVPartial="No" SVComplete="No" SVSelected="Yes" Signed="No"
Completed="Yes" FormOID="frmCGI" />
  <pf:FormStatus Activated="Yes" Frozen="No" Locked="No" Deleted="No"
SVReady="No" SVPartial="No" SVComplete="No" SVSelected="Yes" Signed="No"
Completed="Yes" FormOID="frmDOV" />
  <pf:FormStatus Activated="Yes" Frozen="No" Locked="No" Deleted="No"
SVReady="No" SVPartial="No" SVComplete="No" SVSelected="Yes" Signed="No"
Completed="No" FormOID="frmPEBase" />
  <pf:FormStatus Activated="Yes" Frozen="No" Locked="No" Deleted="No"
SVReady="No" SVPartial="No" SVComplete="No" SVSelected="Yes" Signed="No"
Completed="No" FormOID="frmHamD" />
  <pf:FormStatus Activated="Yes" Frozen="No" Locked="No" Deleted="No"
SVReady="No" SVPartial="No" SVComplete="No" SVSelected="Yes" Signed="No"
Completed="Yes" FormOID="frmDem" />
  <pf:FormStatus Activated="Yes" Frozen="No" Locked="No" Deleted="No"
SVReady="No" SVPartial="No" SVComplete="No" SVSelected="Yes" Signed="No"
Completed="Yes" FormOID="frmINCEXC" />
  <pf:FormStatus Activated="Yes" Frozen="No" Locked="No" Deleted="No"
SVReady="No" SVPartial="No" SVComplete="No" SVSelected="Yes" Signed="No"
Completed="No" FormOID="frmRAND" />
  <pf:FormStatus Activated="Yes" Frozen="No" Locked="No" Deleted="No"
SVReady="No" SVPartial="No" SVComplete="No" SVSelected="Yes" Signed="No"
Completed="No" FormOID="frmVS" />
  <pf:FormStatus Activated="Yes" Frozen="No" Locked="No" Deleted="No"
SVReady="No" SVPartial="No" SVComplete="No" SVSelected="Yes" Signed="No"
Completed="No" FormOID="frmPI" />
  <pf:FormStatus Activated="Yes" Frozen="No" Locked="No" Deleted="No"
SVReady="No" SVPartial="No" SVComplete="No" SVSelected="Yes" Signed="No"
Completed="Yes" FormOID="frmECGBase" />
  <pf:FormStatus Activated="Yes" Frozen="No" Locked="No" Deleted="No"
SVReady="No" SVPartial="No" SVComplete="No" SVSelected="Yes" Signed="No"
Completed="Yes" FormOID="frmPM" />
  <pf:FormStatus Activated="Yes" Frozen="No" Locked="No" Deleted="No"
SVReady="No" SVPartial="No" SVComplete="No" SVSelected="Yes" Signed="No"
Completed="No" FormOID="frmPreg" />
  <pf:CustomData Name="CTMSElementName" Value="VisitStatus" />
</pf:StudyEventStatus>
```

XPath

ODM/ClinicalData/SubjectData/StudyEventData/FormData/pf:CustomData

Example

```
<FormData FormOID="frmDem">
  <ItemGroupData ItemGroupOID="frmDem.sctDemographics">
    <ItemData
ItemOID="frmDem.sctDemographics.DateofBirth_DEM.DateofBirth_DEM" Value="1975-12-
25T-:-:--+00:00" pf:FormattedDateValue="1975-12-25TUNK:UNK:UNK+00:00"
pf:Alias="vstBase.frmDem" />
    <ItemData ItemOID="frmDem.sctDemographics.Race.Race" Value="3"
pf:Alias="vstBase.frmDem" />
  </ItemGroupData>
</FormData>
```



```

        <ItemData
ItemOID="frmDem.sctDemographics.ScreeningDate_DEM.ScreeningDate_DEM"
Value="2011-10-26T-:-:-+00:00" pf:FormattedDateValue="2011-10-
26TUNK:UNK:UNK+00:00" pf:Alias="vstBase.frmDem" />
        <ItemData ItemOID="frmDem.sctDemographics.Height.Height"
Value="153.0" pf:NormalizedValue="153" pf:Alias="vstBase.frmDem">
        <MeasurementUnitRef MeasurementUnitOID="cm" />
        <Annotation SeqNum="1" pf:DBUID="20401" pf:GUID="{7725F52A-204D-
4A07-A4D9-1980F0D41C97}">
        <Comment>2nd comment</Comment>
        </Annotation>
        </ItemData>
        <ItemData ItemOID="frmDem.sctDemographics.OnsetAge.OnsetAge"
Value="37.0" pf:Alias="vstBase.frmDem" />
        <ItemData ItemOID="frmDem.sctDemographics.Age.Age" Value="46"
pf:Alias="vstBase.frmDem" />
        <ItemData ItemOID="frmDem.sctDemographics.Gender.Gender" Value="2"
pf:Alias="vstBase.frmDem" />
        <ItemData ItemOID="frmDem.sctDemographics.AgeGroup.AgeGroup"
Value="4" pf:Alias="vstBase.frmDem" />
        <pf:InFormItemData
InFormItemOID="frmDem.sctDemographics.DateofBirth_DEM" Name="DateofBirth_DEM">
        <pf:ItemStatus SourceVerified="No" Critical="StudyDefault" />
        </pf:InFormItemData>
        <pf:InFormItemData InFormItemOID="frmDem.sctDemographics.Race"
Name="Race">
        <pf:ItemStatus SourceVerified="No" Critical="StudyDefault" />
        </pf:InFormItemData>
        <pf:InFormItemData
InFormItemOID="frmDem.sctDemographics.ScreeningDate_DEM"
Name="ScreeningDate_DEM">
        <pf:ItemStatus SourceVerified="No" Critical="StudyDefault" />
        </pf:InFormItemData>
        <pf:InFormItemData InFormItemOID="frmDem.sctDemographics.Height"
Name="Height">
        <pf:ItemStatus SourceVerified="No" Critical="StudyDefault" />
        </pf:InFormItemData>
        <pf:InFormItemData InFormItemOID="frmDem.sctDemographics.OnsetAge"
Name="OnsetAge">
        <pf:ItemStatus SourceVerified="No" Critical="StudyDefault" />
        </pf:InFormItemData>
        <pf:InFormItemData InFormItemOID="frmDem.sctDemographics.Age"
Name="Age">
        <pf:ItemStatus SourceVerified="No" Critical="StudyDefault" />
        </pf:InFormItemData>
        <pf:InFormItemData InFormItemOID="frmDem.sctDemographics.Gender"
Name="Gender">
        <pf:ItemStatus SourceVerified="No" Critical="StudyDefault" />
        </pf:InFormItemData>
        <pf:InFormItemData InFormItemOID="frmDem.sctDemographics.AgeGroup"
Name="AgeGroup">
        <pf:ItemStatus SourceVerified="No" Critical="StudyDefault" />
        </pf:InFormItemData>
        </ItemGroupData>
        <ItemGroupData ItemGroupOID="frmDem.PatientMedicalHistory">
        <ItemData
ItemOID="frmDem.PatientMedicalHistory.MedicalHistory.MedicalHistory" Value="A
brief summary of the medical history here." pf:Alias="vstBase.frmDem" />
        <pf:InFormItemData
InFormItemOID="frmDem.PatientMedicalHistory.MedicalHistory"
Name="MedicalHistory">
        <pf:ItemStatus SourceVerified="No" Critical="StudyDefault" />
        </pf:InFormItemData>
        </ItemGroupData>
        <ItemGroupData ItemGroupOID="frmDem.sctFamilyHistoy">
        <ItemData
ItemOID="frmDem.sctFamilyHistoy.MaritalStatus.MaritalStatus.NeverMarried"
IsNull="Yes" pf:Alias="vstBase.frmDem" />
        <ItemData
ItemOID="frmDem.sctFamilyHistoy.MaritalStatus.MaritalStatus.Married"
Value="Married" pf:Alias="vstBase.frmDem" />

```

```

        <ItemData
ItemOID="frmDem.sctFamilyHistoy.MaritalStatus.MaritalStatus.Separated"
IsNull="Yes" pf:Alias="vstBase.frmDem" />
        <ItemData
ItemOID="frmDem.sctFamilyHistoy.MaritalStatus.MaritalStatus.Divorced"
IsNull="Yes" pf:Alias="vstBase.frmDem" />
        <ItemData
ItemOID="frmDem.sctFamilyHistoy.MaritalStatus.MaritalStatus.Widowed"
IsNull="Yes" pf:Alias="vstBase.frmDem" />
        <ItemData ItemOID="frmDem.sctFamilyHistoy.Children.Children"
Value="1" pf:Alias="vstBase.frmDem" />
        <ItemData
ItemOID="frmDem.sctFamilyHistoy.FamilyHistoryofDepression.FamilyHistoryofDepress
ion.1" Value="1" pf:Alias="vstBase.frmDem">
        <Annotation SeqNum="1" pf:DBUID="20567" pf:GUID="{06673504-7BD4-
4505-A87C-A52406327D2F}">
        <Comment>test comment</Comment>
        </Annotation>
        </ItemData>
        <ItemData
ItemOID="frmDem.sctFamilyHistoy.FamilyHistoryofDepression.FamilyHistoryofDepress
ion.2" Value="2" pf:Alias="vstBase.frmDem">
        <Annotation SeqNum="1" pf:DBUID="20567" pf:GUID="{06673504-7BD4-
4505-A87C-A52406327D2F}">
        <Comment>test comment</Comment>
        </Annotation>
        </ItemData>
        <ItemData
ItemOID="frmDem.sctFamilyHistoy.FamilyHistoryofDepression.FamilyHistoryofDepress
ion.3" Value="3" pf:Alias="vstBase.frmDem">
        <Annotation SeqNum="1" pf:DBUID="20567" pf:GUID="{06673504-7BD4-
4505-A87C-A52406327D2F}">
        <Comment>test comment</Comment>
        </Annotation>
        </ItemData>
        <ItemData
ItemOID="frmDem.sctFamilyHistoy.FamilyHistoryofDepression.FamilyHistoryofDepress
ion.1.FamilyHistoryYes.Grandparent" IsNull="Yes" pf:Alias="vstBase.frmDem">
        <Annotation SeqNum="1" pf:DBUID="20567" pf:GUID="{06673504-7BD4-
4505-A87C-A52406327D2F}">
        <Comment>test comment</Comment>
        </Annotation>
        </ItemData>
        <ItemData
ItemOID="frmDem.sctFamilyHistoy.FamilyHistoryofDepression.FamilyHistoryofDepress
ion.1.FamilyHistoryYes.Parent" IsNull="Yes" pf:Alias="vstBase.frmDem">
        <Annotation SeqNum="1" pf:DBUID="20567" pf:GUID="{06673504-7BD4-
4505-A87C-A52406327D2F}">
        <Comment>test comment</Comment>
        </Annotation>
        </ItemData>
        <ItemData
ItemOID="frmDem.sctFamilyHistoy.FamilyHistoryofDepression.FamilyHistoryofDepress
ion.1.FamilyHistoryYes.Parent_Sibling" Value="Parent_Sibling"
pf:Alias="vstBase.frmDem">
        <Annotation SeqNum="1" pf:DBUID="20567" pf:GUID="{06673504-7BD4-
4505-A87C-A52406327D2F}">
        <Comment>test comment</Comment>
        </Annotation>
        </ItemData>
        <ItemData
ItemOID="frmDem.sctFamilyHistoy.FamilyHistoryofDepression.FamilyHistoryofDepress
ion.1.FamilyHistoryYes.Sibling" Value="Sibling" pf:Alias="vstBase.frmDem">
        <Annotation SeqNum="1" pf:DBUID="20567" pf:GUID="{06673504-7BD4-
4505-A87C-A52406327D2F}">
        <Comment>test comment</Comment>
        </Annotation>
        </ItemData>
        <ItemData
ItemOID="frmDem.sctFamilyHistoy.FamilyHistoryofDepression.FamilyHistoryofDepress
ion.1.FamilyHistoryYes.Other" Value="Other" pf:Alias="vstBase.frmDem">

```

```

        <Annotation SeqNum="1" pf:DBUID="20567" pf:GUID="{06673504-7BD4-
4505-A87C-A52406327D2F}">
        <Comment>test comment</Comment>
        </Annotation>
    </ItemData>
    <ItemData
ItemOID="frmDem.sctFamilyHistoy.FamilyHistoryofDepression.FamilyHistoryofDepress
ion.1.FamilyHistoryYes.Other.OtherSpecify" Value="What is this"
pf:Alias="vstBase.frmDem">
        <Annotation SeqNum="1" pf:DBUID="20567" pf:GUID="{06673504-7BD4-
4505-A87C-A52406327D2F}">
        <Comment>test comment</Comment>
        </Annotation>
    </ItemData>
    <pf:InFormItemData
InFormItemOID="frmDem.sctFamilyHistoy.MaritalStatus" Name="MaritalStatus">
        <pf:ItemStatus SourceVerified="No" Critical="StudyDefault" />
    </pf:InFormItemData>
    <pf:InFormItemData InFormItemOID="frmDem.sctFamilyHistoy.Children"
Name="Children">
        <pf:ItemStatus SourceVerified="No" Critical="StudyDefault" />
    </pf:InFormItemData>
    <pf:InFormItemData
InFormItemOID="frmDem.sctFamilyHistoy.FamilyHistoryofDepression"
Name="FamilyHistoryofDepression">
        <pf:ItemStatus SourceVerified="No" Critical="StudyDefault" />
    </pf:InFormItemData>
    </ItemGroupData>
    <ItemGroupData ItemGroupOID="frmDem.EmploymentInfo">
    <ItemData ItemOID="frmDem.EmploymentInfo.Employed.Employed"
Value="1" pf:Alias="vstBase.frmDem" />
    <ItemData ItemOID="frmDem.EmploymentInfo.Occupation.Occupation"
Value="5" pf:Alias="vstBase.frmDem" />
    <ItemData ItemOID="frmDem.EmploymentInfo.AutoFileName"
IsNull="Yes" />
    <pf:InFormItemData InFormItemOID="frmDem.EmploymentInfo.Employed"
Name="Employed">
        <pf:ItemStatus SourceVerified="No" Critical="StudyDefault" />
    </pf:InFormItemData>
    <pf:InFormItemData
InFormItemOID="frmDem.EmploymentInfo.Occupation" Name="Occupation">
        <pf:ItemStatus SourceVerified="No" Critical="StudyDefault" />
    </pf:InFormItemData>
    </ItemGroupData>
    <pf:FormStatus Activated="Yes" Frozen="No" Locked="No" Deleted="No"
SVReady="No" SVPartial="No" SVComplete="No" SVSelected="Yes" Signed="No"
Completed="Yes" />
    <pf:CustomData Name="CTMSElementName" Value="FormDemData" />
</FormData>

```

XPath

ODM/ClinicalData/SubjectData/StudyEventData/FormData/pf:FormStatus/pf:CustomData

Example

```

<FormData FormOID="frmDem">
    <pf:FormStatus Activated="Yes" Frozen="No" Locked="No" Deleted="No"
SVReady="No" SVPartial="No" SVComplete="No" SVSelected="Yes" Signed="No"
Completed="Yes">
        <pf:CustomData Name="CTMSElementName" Value="DemFormStatus" />
    </pf:FormStatus>
</FormData>

```

XPath

ODM/ClinicalData/SubjectData/StudyEventData/FormData/ItemGroupData/pf:CustomData

Example

```
<ItemGroupData
ItemGroupOID="frmDOSE.sctDosingRecordEntry.sctDosingRecordEntry"
ItemGroupRepeatKey="404831346876015">
  <pf:ItemGroupStatus SVComplete="Yes" Deleted="No" />
  <pf:CustomData Name="CTMSElementName" Value="ItemsetStatus" />
</ItemGroupData>
```

XPath

```
ODM/ClinicalData/SubjectData/StudyEventData/FormData/ItemGroupData/ItemData/pf:CustomData\
```

Example

```
<ItemData
ItemOID="frmDOV2.sctFormstobecompleted.Checkallforms.Checkallforms.ECG"
IsNull="Yes" pf:Alias="CheckBoxGroup">
  <pf:CustomData Name="CTMSElementName" Value="ItemData" />
</ItemData>
```

Association

This element exists in the transactional output. The custom event extract populates it when there is an association between the two forms.

IsNull

This element indicates whether or not the item or form is null. The value is Yes when the form or item does not have any data. Otherwise, the element is not generated.

XPath

```
ODM/ClinicalData/SubjectData/StudyEventData/FormData/ItemGroupData/ItemData/
@IsNull
```

IsNull example

```
<ItemData ItemOID="frmPE.sctPhysicalExamination_PE.Respiratory" IsNull="Yes" />
<FormData FormOID="frmVS" pf:IsNull="Yes" />
```

Elements for clinical data**FormattedDateValue**

The FormattedDateValue element returns data that differentiates between null and unknown date values in the InForm software.

XPath

```
ODM/ClinicalData/ItemData/pf:FormattedDateValue
```

- UNK indicates an unknown date part.
- NUL indicates a null date part.

To maintain backward compatibility and conform to ODM standard, "-" is still used to express a value of unknown or null in the Value attribute. If differentiation between null and unknown is required, use the pf:FormattedDateValue extension.

For more information, see *ItemData* (on page 56).

FormStatus element

The FormStatus element refers to the state of a form in the InForm software. A FormStatus element is returned if a change has been made to a form's state; for example, if the form was frozen, locked, or marked SV ready.

XPath

ODM/ClinicalData/SubjectData/StudyEventData/FormData/pf:FormStatus

Parent element	Child elements
FormData	odm:AuditRecord.

Attributes

Attributes: FormStatus	Description
Activated	A flag that indicates whether the form has been activated. type=odm:YesOrNo. Optional.
SVPartial	A flag that indicates whether the form has been partially source verified. type=odm:YesOrNo. Optional.
Frozen	A flag that indicates whether the form is frozen. type=odm:YesOrNo. Optional.
Locked	A flag that indicates whether the form is locked. type=odm:YesOrNo. Optional.
Deleted	A flag that indicates whether the form is deleted. This attribute is returned only when complianceMode="Loose." type=odm:YesOrNo Optional.
SVComplete	A flag that indicates whether the form is source verification complete. type=odm:YesOrNo. Optional.
SVReady	A flag that indicates whether the form is source verification ready. type=odm:YesOrNo Optional.

Attributes: FormStatus	Description
SVSelected	A flag that indicates whether partial source verification has been selected for the form. type=odm:YesOrNo Optional.
Signed	A flag that indicates whether the transaction caused the signature status of the form to change. type=odm:YesOrNo Yes —the transaction caused the signature status of the form to change to "signed." No —the transaction caused the signature status of the form to change to "unsigned."

ItemStatus element

The ItemStatus element refers to the status of an item on a form. This element is returned if an item has been source verified or if an itemset has been deleted or undeleted.

XPath

If an item has been source verified:

```
ODM/ClinicalData/SubjectData/StudyEventData/FormData/ItemGroupData/pf:ItemStatus
```

If an itemset has been deleted or undeleted:

```
ODM/ClinicalData/SubjectData/StudyEventData/FormData/ItemGroupData/InformItemData/pf:ItemStatus
```

Parent element	Child elements
Either of the following: <ul style="list-style-type: none"> InFormItemData (if the item has been source verified). ItemGroupData (if the itemset has been deleted). 	odm:AuditRecord.

Attributes

Attributes: ItemStatus	Description
SourceVerified	A flag that indicates whether the item has been source verified. type=odm:YesOrNo. Optional.

Attributes: ItemStatus	Description
Deleted	A flag that indicates whether the itemset has been deleted. type=odm:YesOrNo. Optional.

Query element

The query element represents a query in the InForm software.

XPath

ODM/ClinicalData/SubjectData/StudyEventData/FormData/ItemGroupData/pf:InFormItemData/pf:Query

Parent element	Child elements
InFormItemData.	<i>QueryStatus</i> (on page 46).

Attributes

Attributes: Query	Description
DBUID	The location OID of the query.
OID	The identifier of the query. type=odm:oid. Optional
Text	The text of the query. type=xs:string. Optional
Type	The type of query. type=QueryType. Required.

QueryStatus element

The QueryStatus element represents the state of a query. The element contains an audit record that explains when and why the change of state happened.

XPath

ODM/ClinicalData/SubjectData/StudyEventData/formData/ItemGroupData/InFormItemData/pf:Query/pf:QueryStatus

Parent element	Child elements
pf:Query	odm:AuditRecord.

Attributes

Attributes: QueryStatus	Description
Status	type=QueryState. Required. Values: Open, Answered, closed, Candidate, Reissued, or Deleted.
Text	type=String.

ReasonIncomplete element

The ReasonIncomplete element represents the reason that an item in the InForm software does not have a value.

XPath

ODM/ClinicalData/SubjectData/StudyEventData/FormData/Annotation/pf:ReasonIncomplete

Parent element	Child elements
Annotation	CodeListOID="ReasonIncomplete."

ReasonIncomplete is a hard-coded codelist that defines the options. The code list is returned in the metadata and ItemData.

SubjectStatus element

The SubjectStatus element indicates that a state change has occurred to a patient, subject, or CRB.

XPath

ODM/ClinicalData/SubjectData/pf:SubjectStatus

Parent element	Child elements
SubjectData	odm:AuditRecord.

Attributes

Attributes: SubjectStatus	Description
Frozen	A flag that indicates whether the subject is frozen. type=odm:YesOrNo. Optional.

Attributes: SubjectStatus	Description
Locked	A flag that indicates whether the item is locked. type=odm:YesOrNo. Optional.
SVReady	A flag that indicates whether the item is source verification ready. type=odm:YesOrNo. Optional.
State	The state of the subject. Values are: Screened, ScreenFailed, Enrolled, EnrollmentFailed, EnrollmentOverride, Randomized, Complete, or DroppedOut. type=SubjectState. Optional.
ScreenFailReason	The reason that the subject failed the screening. type=xs:string. Optional.
EnrollFailReason	The reason that the subject failed to enroll. type=xs:string. Optional.
EnrollOverrideReason	The reason that the enrollment was overridden. type=xs:string. Optional.

MetaDataVersionRef

Attributes	Value/Map to InForm
StudyOID	Study Name. Entity: Site. Property: Study.
MetaDataVersionOID	Volume Edition Description. Entity: Site. Property: Study Version. If the form has no study version, MetaDataVersionOID="Undefined."

Attributes	Value/Map to InForm
EffectiveDate	Site accept date. Entity: Site. Property: Study Version Approval Date.

Example—MetaDataVersionRef

```
<MetaDataVersionRef StudyOID="Hypertension Study"
  MetaDataVersionOID="Study Version Basic" EffectiveDate="1998-06-30" />
```

ClinicalData

Attributes	Value/Map to InForm
StudyOID	Study Name.
MetaDataVersionOID	Study Version. If the form has no study version, MetaDataVersionOID="Undefined."

Example—ClinicalData

```
<ClinicalData StudyOID="Depression Study Update" MetaDataVersionOID="Study
Version 1.0" />
```

SubjectData

Attributes	Value/Map to InForm
SubjectKey	Patient DBUID.
GUID	Subject identifier.
Revision	Entity: Subject. Property: Revision.
SiteRef	Entity: Patient Move. Property: <i>no property listed.</i>

Signature

Indicates that the CRB has been signed for the subject.

SiteRef

Site for the subject. In the event of a subject site move, a SubjectData element that contains a new SiteRef and no StudyEventData element is sent.

pf:SubjectPool

Represents the source verification pool in the InForm application.

SubjectData/pf:SubjectPool

Attributes	Value/Map to InForm
PoolNumber	<p>The InForm Pool Number.</p> <p>type=xs:string.</p> <p>Required.</p> <p>One of the following values, representing the available pools that are hardcoded in the InForm software:</p> <p>0—PF_SVELIGIBLE_POOL</p> <p>1—PF_SVAUTO_SELECT_POOL</p> <p>2—PF_SVMANUAL_FIRSTN_POOL</p> <p>3—PF_SVMANUAL_UISELECT_POOL</p> <p>4—PF_SVMANUAL_IMPORT_POOL</p> <p>99—PF_SVEXCLUDED_POOL</p>
PoolRefName	<p>The ref name of the pool.</p> <p>type=xs:string.</p> <p>Required.</p> <p>One of the following values:</p> <p>Eligible—PoolNumber=0, indicating the pool is SV Eligible.</p> <p>AutoSelect—PoolNumber=1, indicating a pool whose members are automatically selected based on settings determined by the site administrator.</p> <p>ManualFirstN—PoolNumber=2, indicating a pool in which the first <n> number of subjects are automatically selected.</p> <p>ManualUISelect—PoolNumber=3, indicating that the pool members are added by being selected in the UI.</p> <p>ManualImport—PoolNumber=4, indicating an imported file that contains the pool members.</p> <p>Excluded—PoolNumber=99, indicating that the pool is excluded from source verification.</p>

pf:SubjectPoolChange

Reflects the change in the subject pool. Includes the subjects placed in the pool.

SubjectData/pf:SubjectPoolChange

Attributes	Value/Map to InForm
LocationOID	Includes the subjects placed in the pool.
PoolNumber	Pool number.

pf:CriticalForm

Represents a form that must be source verified.

SubjectData/pf:CriticalForm

Attributes	Value/Map to InForm
FormRef	FORMGUID.
LocationOID	Site OID.
IsCritical	ISCRITICAL.

pf:ReviewState

Represents the state and stage of the progress of data review in the InForm application.

SubjectData/pf:ReviewState

Attributes	Value/Map to InForm
pf:DBUID	dbuid.
RefName	Review state name.
StateValue	State value.
Revision	Revision number.
Name element	Translated text.
Mnemonic element	Mnemonic.

pf:ReviewStage

Represents one of the three review stages of the review state.

SubjectData/pf:CriticalForm

Attributes	Value/Map to InForm
RefName	Stage ref name.

Attributes	Value/Map to InForm
StageValue	Stage value.
Activated	0 or 1.
Revision	Revision number.

Example—SubjectData

```
<ClinicalData StudyOID="StudyDesign" MetaDataVersionOID="Study Design 0.0.2"
pf:TransactionGuid="{6EAEA8C3-68D1-4314-881C-5AA2A5575308}"
pf:Revision="326048162773035.000">
  <SubjectData SubjectKey="14266" TransactionType="Upsert"
pf:GUID="{83A9C428-8475-4AEF-A169-37D4F1E52975}">
    <SiteRef LocationOID="13341" />
    <StudyEventData StudyEventOID="enroll">
      <AuditRecord>
        <UserRef UserOID="enes" />
        <LocationRef LocationOID="Unknown" />
        <DateTimeStamp>2011-05-02T21:56:02+00:00</DateTimeStamp>
        <ReasonForChange>Visit Started</ReasonForChange>
      </AuditRecord>
      <FormData FormOID="frmEnr">
        <ItemGroupData ItemGroupOID="frmEnr.sctSubjectNum">
          <ItemData ItemOID="frmEnr.sctSubjectNum.SubNum_Enr.SubNum_Enr"
Value="AAA">
            <AuditRecord>
              <UserRef UserOID="enes" />
              <LocationRef LocationOID="13341" />
              <DateTimeStamp>2011-05-02T21:56:02+00:00</DateTimeStamp>
              <ReasonForChange>Enrollment Entry</ReasonForChange>
              <SourceID>RDINFAPP261</SourceID>
            </AuditRecord>
          </ItemData>
        </ItemGroupData>
      </FormData>
    </StudyEventData>
  </SubjectData>
</ClinicalData>
```

Candidate

SubjectData/Candidate

Attributes	Value/Map to InForm
DOB	The date of birth of the subject.
ScreeningDate	The date of the screening.
PatientGUID	The GUID of the subject.
Revision	The revision number of the subject.
SiteGUIDREF	The GUID of the site.
Initials	The initials of the subject.
State	The state of the subject.
ScreeningNumber	The subject's screening number.

Attributes	Value/Map to InForm
EnrollmentNumber	The subject's enrollment number.
ScreeningFailure	The reason for screening failure.
EnrollmentFailure	The reason for enrollment failure.
EnrollmentOverride	The reason that the enrollment failure was overridden.
PatientNumberRevision	The revision number of the subject number.

Example—Candidate

```

pf:Candidate SubjectInitials="GMC" EnrollmentNumber="08-002"
ScreeningNumber="SCR-08-1" ScreeningFailure="" EnrollmentFailure=""
EnrollmentOverride="" DateOfBirth="1959-04-18T00:00:00+00:00"
ScreeningDate="2004-01-01T00:00:00+00:00" PatientRevision="94995391031040.000">
  <AuditRecord>
    <UserRef UserOID="msilva" />
    <LocationRef LocationOID="Unknown" />
    <DateTimeStamp>2004-01-05T16:36:31+00:00</DateTimeStamp>
    <ReasonForChange>Screening Log Entry</ReasonForChange>
  </AuditRecord>
</pf:Candidate>

```

SubjectStatus

Attributes	Value/Map to InForm-
State	Screened, ScreenFailed, Enrolled, EnrollmentFailed, EnrollmentOverride, Randomized, Complete, or DroppedOut.
ScreenFailReason	Text that describes the reason for the screening failure.
EnrollFailReason	Text that describes the reason for the enrollment failure.
EnrollOverrideReason	Text that describes the reason for the enrollment override.
SVReady	Source verification ready.
Frozen	Yes , if subject is frozen.
Locked	Yes , if subject is locked.

Example—SubjectStatus

```

<pf:SubjectStatus State="Screened">
  <AuditRecord>
    <UserRef UserOID="msilva" />
    <LocationRef LocationOID="Unknown" />
    <DateTimeStamp>2004-01-05T16:36:31+00:00</DateTimeStamp>
    <ReasonForChange>Screening Log Entry</ReasonForChange>
  </AuditRecord>
</pf:SubjectStatus>

```

StudyEventData

An activated visit is indicated by a StudyEventData element that contains no child FormData element.

Attributes	Value/Map to InForm
StudyEventOID	Form-relative visit refilepath.
StudyEventRepeatKey	Visit index (for repeating visits only).
TransactionType	<ul style="list-style-type: none"> • With Loose compliance mode: Upsert. • With Strict compliance mode: Insert, Upsert, or Remove.
DBUID	Entity: Visit. Property: DBUID.
Revision	Entity: Visit. Property: Revision.

Example—StudyEventData

```
<StudyEventData StudyEventOID="vstBASE" />
```

FormData

Attributes	Value/Map to InForm
FormOID	Form RefName.
FormRepeatKey	Form index (for repeating forms only).

Signature

Indicates that the form has been signed for the subject.

Example—FormData

```
<FormData FormOID="LAE1" FormRepeatKey="243960146618003"
TransactionType="Remove">
  <pf:FormStatus Deleted="Yes" > Yes/No
    <AuditRecord>
      <UserRef UserOID="system" />
      <LocationRef LocationOID="Unknown" />
      <DateTimeStamp>2008-09-24T19:46:51+00:00</DateTimeStamp>
    </AuditRecord>
  </pf:FormStatus>
</FormData>
```


FormStatus

Attributes	Value/Map to InForm
Activated	Yes , when the form has been activated.
SVPartial	Yes , when the form has been partially source verified.
Frozen	Yes , when the form is frozen.
Locked	Yes , when the form is locked.
Deleted	Yes , when the form has been deleted.
SVComplete	Yes , when the form is source verification complete.
SVReady	Yes , when the form is source verification ready.
SVSelected	Yes , when partial source verification has been selected for the form.
Signed	<p>Yes—the transaction caused the signature status of the form to change to "signed."</p> <p>No—the transaction caused the signature status of the form to change to "unsigned."</p> <p>The Signed attribute is not returned for a form that has not yet been signed.</p>

Example—FormStatus

```
<FormData FormOID="frmDOSE">
  <pf:FormStatus SVComplete="No" >          Yes/No
    <AuditRecord>
      <UserRef UserOID="system" />
      <LocationRef LocationOID="Unknown" />
      <DateTimeStamp>2008-09-19T21:05:54+00:00</DateTimeStamp>
    </AuditRecord>
  </pf:FormStatus>
</FormData>
```

ItemGroupData

Attributes	Value/Map to InForm
ItemGroupOID	Form-relative RefPath for the section.
ItemGroupRepeatKey	Present when the section contains an ItemSet and specifies the ItemSet index.

Example—ItemGroupData

```
<ItemGroupData ItemGroupOID="LAB" ItemGroupRepeatKey="134562926897091" />
```

Annotation

FormData/Annotation
ItemData/Annotation

Attributes/Children	Value/Map to InForm
SeqNum	Comment ID.
Comment	Comment text.
Comment/ReasonIncomplete	Reason that the form or item is incomplete.
GUID	Entity: Comment. Property: GUID.
DBUID	Entity: Comment. Property: DBUID.

Example—Annotation

```
<Annotation SeqNum="9985">
  <Comment>test item comment</Comment>
</Annotation>
```

ItemData

Attributes/Children	Value/Map to InForm
ItemOID	Item RefName.
Value	ItemContext/control values.
DBUID	<ul style="list-style-type: none"> Entity: Item. Property: DBUID. Entity: Control. Property: DBUID.
Revision	<ul style="list-style-type: none"> Entity: Item. Property: Revision. Entity: Control Property: Revision.

Attributes/Children	Value/Map to InForm
pf:FormattedDateValue	<p>Indicates a value of null or unknown in the date part.</p> <ul style="list-style-type: none"> • UNK indicates an unknown date part. • NUL indicates a null date part. <p>Note: To maintain backward compatibility and conform to ODM standard, "-" is still used to express a value of unknown or null in the Value attribute. If differentiation between null and unknown is required, use the pf:FormattedDateValue extension.</p>

Example—ItemData

Example for unknown date part:

```
<ItemData ItemOID="LAE1.LsctAE.LitmAESTDT.LAESTDTTM"Value="2009-04-19T--:--
+00:00" pf:FormattedDateValue="2009-04-19TUNK:UNK:UNK+00:00" />
```

Example for null date part:

In the example, the hour, minute, and second are null.

```
<ItemData ItemOID="LAE1.LsctAE.LitmAESTDT.LAESTDTTM"Value="2009-04-19T--:--
+00:00" pf:FormattedDateValue="2009-04-19TNUL:NUL:NUL+00:00" />
```

ItemStatus

If an item has been source verified:

```
InformItemData/ItemStatus
```

If an itemset has been deleted or undeleted:

```
ItemGroupData/ItemStatus
```

Attributes/Children	Value/Map to InForm
Source Verified	Item has been source verified.
Deleted	Indicates whether the item has been deleted.

Example—ItemStatus

```
<FormData FormOID="frmDOV">
  <ItemGroupData ItemGroupOID="frmDOV.DOV">
    <pf:InFormItemData InFormItemOID="frmDOV.DOV.DOV" Name="DOV">
      <pf:ItemStatus SourceVerified="Yes"> "> (Yes or No are the 2 values this
        can be)
        <AuditRecord>
          <UserRef UserOID="system" />
          <LocationRef LocationOID="Unknown" />
          <DateTimeStamp>2008-09-17T20:32:49+00:00</DateTimeStamp>
        </AuditRecord>
      </pf:ItemStatus>
    </pf:InFormItemData>
  </ItemGroupData>
</FormData>
```

InformItemData

InformItemData/ItemStatus

Attributes/Children	Value/Map to InForm
InformItemOID	Form-relative RefPath for the item.
Name	Item RefName.
ItemStatus	Status of the item in the InForm software; for example, SVReady.
Query	Query element against an item in the InForm software.

Example—InformItemData

```
<pf:InFormItemData InFormItemOID="frmDOSE.sctDOSE.itsDOSE.itmDOSEToDate"
Name="itmDOSEToDate">
  <pf:Query OID="{00E6AD12-0848-4F71-AB61-ED0F845D1404}" Text="Stop Date is
not equal to or after the Start Date; please verify" Type="Autoquery"
pf:DBUID="75369" pf:Revision="244386598500043.000">
    <pf:QueryStatus Status="Open">
      <AuditRecord>
        <UserRef UserOID="autoquery" />
        <LocationRef LocationOID="Unknown" />
        <DateTimeStamp>2008-09-29T18:09:58+00:00</DateTimeStamp>
        <ReasonForChange>Stop Date is not equal to or after the Start
Date; please verify</ReasonForChange>
      </AuditRecord>
    </pf:QueryStatus>
  </pf:Query>
</pf:InFormItemData>
```

Query

InformItemData/Query

Attributes/Children	Value/Map to InForm
DBUID	Entity: Query. Property: DBUID.
OID	Query identifier.
Text	The text of the query.
Type	Autoquery or User.
Revision	Revision.
Query/QueryStatus	The status of the query.

Example—Query

```
<pf:Query OID="{08016623-5E3D-417C-93BB-33573CF1E1DC}" Text="Data does not match
source" Type="User">
  <pf:QueryStatus Status="Open">
    <AuditRecord>
      <UserRef UserOID="system" />
      <LocationRef LocationOID="Unknown" />
      <DateTimeStamp>2008-03-17T19:17:22+00:00</DateTimeStamp>
      <ReasonForChange>Data does not match source</ReasonForChange>
    </AuditRecord>
  </pf:QueryStatus>
</pf:Query>
```

QueryStatus

InformItemData/ItemStatus

Attributes/Children	Value/Map to InForm
Status	Open, Answered, Closed, Candidate, Reissued, or Deleted.
Text	Query text.
Query/QueryStatus/AuditRecord/UserRef	Entity: Query. Property: User.
Query/QueryStatus/AuditRecord/DateTimeStamp	Entity: Query. Property: Time.
Query/QueryStatus/AuditRecord/ReasonForChange	Entity: Query. Property: Reason for Change.

Example—QueryStatus

```
<pf:Query OID="{B70FF676-A6B3-4608-8AD0-A32444764F45}" Text="Date of Visit is
prior to Screening Date; please correct" Type="Autoquery">
  <pf:QueryStatus Status="Open">
    <AuditRecord>
      <UserRef UserOID="autoquery" />
      <LocationRef LocationOID="Unknown" />
      <DateTimeStamp>2004-01-08T13:47:01+00:00</DateTimeStamp>
      <ReasonForChange>Date of Visit is prior to Screening Date; please
correct</ReasonForChange>
    </AuditRecord>
  </pf:QueryStatus>
</pf:Query>
```

Elements for admin data

GroupDef element

The GroupDef element defines a user group in an InForm study. AdminData contains a collection of GroupDef elements.

Xpath

ODM/AdminData/pf:GroupDef

Parent element	Child elements
AdminData	pf:Right.

Attributes

Attributes: GroupDef	Description
OID	The refname of the item. type=odm:oid. Required.
Name	The name of the group as displayed in the InForm software. type=odm:text. Required.
GroupType	The type of the group, such as Rights, Reporting, Query, Signature. type=xs:String. Required.

Right element

The pf:Right element is a child element of the pf:GroupDef element. One pf:Right element exists for each right defined in the user group.

Xpath

ODM/AdminData/pf:GroupDef/pf:Right

Parent element	Child elements
pf:GroupDef	None.

Attributes

Attributes: Right	Description
Description	The description of the right. type=xs:string. Required.

User

Attributes/Children	Value/Map to InForm
OID	User Name.
UserType	User Type.
LoginName	User Name.
DisplayName	User DisplayName.
FullName	User first name + User last name. Note: Not all cultures use FirstName + LastName as the full name. The full name can be derived from FirstName and LastName elements that are available in the same response. The consumer of DownloadAdminDataODM should rely on FirstName and LastName elements to get the full name or display name.
FirstName	User first name.
LastName	User last name.
Organization	
Address/StreetName	User Address 1. User Address 2.

Attributes/Children	Value/Map to InForm
Address/City	User City.
Address/StateProv	User State Province.
Address/County	User Country.
Address/PostalCode	User postal code.
Address/OtherText	
Email	User email.
Picture	
Pager	User beeper.
Fax	User fax.
Phone	User phone number.
LocationRef/LocationOID	Site Name. Entity: User. Property: Site.
GroupRef	One GroupRef child element exists for each group to which the user belongs. Contains a GroupOID attribute.
DBUID	Entity: User. Property: DBUID.
GUID	User Identifier.
Revision	Entity: User. Property: Revision.
LoginName	Entity: User. Property: Login Name.
UserType	Entity: User. Property: User Type.
StudyLocale	Locale of study. Derived from dcv_thingdata in the study database.
Active	Indicates whether the user state is active.
Terminated	Indicates whether the user state is terminated.

Example—User

```
<User OID="mmeyer" UserType="Investigator" pf:DBUID="11816" pf:GUID="{09379D50-
EB2B-46B1-8BDC-F2F7F6A6363D}" pf:StudyLocale="en-US" pf:Active="Yes"
pf:Terminated="No">
  <LoginName>mmeyer</LoginName>
  <DisplayName>Marianne Meyer</DisplayName>
```



```

    <FullName>Marianne Meyer</FullName>
    <FirstName>Marianne</FirstName>
    <LastName>Meyer</LastName>
    <Address>
      <Country>USA</Country>
    </Address>
    <Email>email@domain.test</Email>
    <Fax>(555) 555-1212</Fax>
    <Phone>(555) 555-1212</Phone>
    <LocationRef LocationOID="13341" />
    <pf:GroupRef GroupOID="6536" />
    <pf:GroupRef GroupOID="13940" />
  </User>

```

GroupDef

GroupRef elements reference GroupDef elements by matching the GroupRef's GroupOID attribute to the GroupDef's OID attribute.

GroupRef is a child of *User* (on page 61).

Attributes/Children	Value/Map to InForm
OID	The DBUID of the group.
NAME	Name of group as displayed in the InForm software.
GroupType	Type of group as defined in the InForm software.
Right	List of rights. Contains a list of Right elements, each of which contains a Description.

Right

AdminData/pf:GroupDef/pf:Right

Attributes	Value/Map to InForm
Description	The right defined in the group.

Example—GroupDef

```

<pf:GroupDef OID="5954" Name="System Creator Group" GroupType="Rights">
  <pf:Right Description="Create User"/>
  <pf:Right Description="Terminate User" />
</pf:GroupDef>

```

Location

To ensure that the audit records that are generated by sponsor users comply with the ODM standard, a Location with OID **Unknown** is automatically defined in the ODM that is returned for a study.

Attributes	Value/Map to InForm
OID	Site DBUID.
Name	Site name.
LocationType	Site. Entity: Site. Property: Type.
Revision	Entity: Site. Property: Revision. Note: Location Revision is the same as transaction only if the transaction is revising the location.
GUID	Site identifier.
SiteCountry	Entity: Site. Property: Country.
SiteTimezone	Entity: Site. Property: Timezone.
Locale	Locale of the site.
pf:SVAutoSelectRate	The value comes from a query: For more information, see <i>Subject pool selection</i> (on page 50).
pf:SVFirstNSubjects	The value comes from a query: For more information, see <i>Subject pool selection</i> (on page 50).

Mnemonic

Location/Mnemonic

Attributes	Value/Map to InForm
TranslatedText	The site mnemonic that does not come from the pf_resourcedata. This mnemonic can have any Unicode characters. It should not contain the xml:lang attribute.

Example—Location

```
<Location
  LocationType="Site" Name="(01) Massachusetts General Hospital"
  OID="10127" pf:SiteCountry="USA"
    pf:SiteTimezone="(GMT-05:00) Eastern Time (US & Canada)">
  <MetaDataVersionRef
    EffectiveDate="2005-04-01T00:00:00+00:00"
    MetaDataVersionOID="StudyVersion020108"
    StudyOID="Depression Study"/>
  <Mnemonic
    xmlns="http://www.phaseforward.com/InFormAdapter/ODM/Extensions/2.0">
  <TranslatedText
    xmlns="http://www.cdisc.org/ns/odm/v1.3">01</TranslatedText>
  </Mnemonic>
</Location>
```

SignatureDef

Attributes	Value/Map to InForm
OID	Signature DBUID.
Methodology	Electronic.
Meaning	CRB meaning, CRF meaning, or Group Name.
LegalReason	CRB Affidavit, CRF Affidavit, or PF_DEFAULT_CRFAFFADAVIT.

Meaning

CRB meaning, CRF meaning, or Group Name.

SignatureDef/Meaning

Attributes	Value/Map to InForm
TranslatedText	Language-specific text from the study.

LegalReason

CRB Affidavit, CRF Affidavit, or PF_DEFAULT_CRFAFFADAVIT.

SignatureDef/Meaning

Attributes	Value/Map to InForm
TranslatedText	Language-specific text from the study.

Example—SignatureDef

```
<SignatureDef OID="CRA Sigs" Methodology="Electronic">
  <Meaning>Approved</Meaning>
  <LegalReason>
    By my dated signature below, I, %s %s, verify that this case report form
    accurately displays the results of the examinations, tests, evaluations
```

```

    and treatments noted within. Pursuant to Section 11.100 of Title 21 of the
    Code of Federal Regulations, this is to certify that I intend that this
    electronic signature is to be the legally binding equivalent of my
    handwritten signature. To this I do attest by supplying my password and
    clicking the button marked Submit below.
  </LegalReason>
</SignatureDef>

```

Elements for metadata

Mapping of localized items

The following items are localized in the InForm software. The translation for each item is placed under the TranslatedText element in the ODM that is returned.

Item name	Element name in ODM.xml
The symbol of measurement unit.	MeasurementUnit/Symbol
Item text.	itemDef/Question
Radio button list, dropdown list, list box, control group, or checkbox list that is associated with a control in the InForm software.	CodeList/CodeListItem/Decode
Form mnemonic.	FormDef/pf:Mnemonic
Visit mnemonic.	StudyEventDef/pf:Mnemonic
Legal Reason.	SignatureDef/pf:LegalReason
Meaning.	SignatureDef/pf:Meaning

Site mnemonic is also placed under the TranslatedText element. However, it is not localized in pf_resourcedata in the InForm application. It is returned as the fallback because there is no language associated with it.

InFormItemDef element

The InFormItemDef element is the metadata definition for the Inform item, and explains which controls (ItemRefs) are contained in the item.

In the Oracle implementation, an ItemDef maps to an InForm control.

XPath

```
ODM/Study/MetaDataVersion/pf:FormItemDef
```

Parent element	Child elements
MetaDataVersion	odm:ItemRef.

Attributes

Attributes: InFormItemDef	Description
OID	The refname of the item. type=odm:oid. Required.
Name	type=odm:text. Required.
SVRequired	Indicates whether source verification is required. type=odm:YesOrNo. Optional.
DBUID	The location OID.
GUID	Visit identifier.
Revision	Revision.
UUID	UUID.

InFormItemRef element

The InFormItemRef element shows the ordering of the InForm item within a section.

XPath

ODM/Study/MetaDataVersion/ItemGroupDef/pf:InFormItemRef

Parent element	Child elements
ItemGroupDef	None.

Attributes

Attributes: InFormItemRef	Description
InFormItemOid	The refname of the item. type=odm:oid. Required.
OrderNumber	Display order of the item within the section. type=odm:integer. Optional.

Attributes: InFormItemRef	Description
Mandatory	Indicates whether the item is mandatory. type=odm:YesOrNo. Required.

Study

Attributes	Value/Map To InForm
OID	InForm Study Name.

Example—Study

```
<Study OID="Hypertension Study" />
```

GlobalVariables

Children	Value/Map To InForm
StudyName	InForm Study Name.
StudyDescription	Volume Edition DesignNotes.
ProtocolName	ProtocolVersion.

Example—GlobalVariables

```
<GlobalVariables>
  <StudyName>Hypertension Study</StudyName>
  <ProtocolName>Protocol XYZZY</ProtocolName>
</GlobalVariables>
```

BasicDefinitions

BasicDefinitions contains the InForm measurement unit definitions.

MeasurementUnit

Attributes	Value/Map To InForm
OID	Unit RefName.
Name	Unit Symbol.
DBUID	Entity: Units. Property: DBUID.

Attributes	Value/Map To InForm
GUID	Unit identifier.
Revision	Entity: Units. Property: Revision.

TranslatedText

BasicDefinitions/MeasurementUnit/Symbol/TranslatedText

Attributes	Value/Map to InForm
Body text	Unit Symbol.

TranslatedText specifies the xml:lang for each language, and the element without xml:lang. This value is used when the culture is unspecified or unavailable for a given value.

Example—BasicDefinitions

```
<BasicDefinitions>
  <MeasurementUnit OID="Inches" Name="Inches">
    <Symbol>
      <TranslatedText>in</TranslatedText>
      <TranslatedText xml:lang="en-US">in</TranslatedText>
      <TranslatedText xml:lang="ja-JP">in</TranslatedText>
    </Symbol>
  </MeasurementUnit>
  <MeasurementUnit OID="Centimeter" Name="Centimeter">
    <Symbol>
      <TranslatedText>cm</TranslatedText>
    </Symbol>
  </MeasurementUnit>
</BasicDefinitions>
```

MetaDataVersion

Attributes	Value/Map to InForm
OID	Study version RefName.
Name	Study version display name.
ApprovalDate	Date that the study was approved.
DBUID	Entity:StudyVersion. Property: Revision.
GUID	Study version identifier.
Revision	Entity:StudyVersion. Property: Revision.

StudyEventRef

Attributes	Value/Map to InForm
StudyEventOID	Visit RefName.
OrderNumber	Visit order number (for user interface display).
Mandatory	Always No .

Example—MetaDataVersion

```
<MetaDataVersion OID="Study Version Basic" Name="Protocol XYZZY">
  <Protocol>
    <StudyEventRef StudyEventOID="Visit1" OrderNumber="1" Mandatory="No" />
    <StudyEventRef StudyEventOID="Visit2" OrderNumber="2" Mandatory="No" />
    <StudyEventRef StudyEventOID="Visit3" OrderNumber="3" Mandatory="No" />
    <StudyEventRef StudyEventOID="Visit4" OrderNumber="4" Mandatory="No" />
  </Protocol>
</MetaDataVersion>
```

StudyEventDef

Attributes	Value/Map to InForm
OID	Visit RefName.
Name	Visit RefName.
Repeating	Yes for repeating visits.
Type	Scheduled, Unscheduled, or Common.
Category	PatientVisit, Screening, Enrollment, CommonCRF, or Relation.
DBUID	Entity: Visit. Property: DBUID.
GUID	Visit identifier.
Revision	Entity: Visit. Property: Revision.
UUID	Entity: Visit. Property: UUID.
Dynamic	Visit is a dynamic visit.

Mnemonic

StudyEventDef/Mnemonic

Attributes	Value/Map to InForm
TranslatedText	Display mnemonic for visit.

FormRef

Attributes	Value/Map to InForm
FormOID	Form RefName.
OrderNumber	Form page order (for user interface display).
Mandatory	Always No .
AltFormOID	Specifies the OID of the Alt form for the form that is identified by the current FormOID.

Example—StudyEventDef

```
<StudyEventDef OID="vstFinal" Name="vstFinal" Repeating="No" Type="Scheduled"
Category="Enrollment" pf:DBUID="10057" pf:GUID="{8BA4EB52-CCFD-4567-92CD-
AFFA16947926}" pf:Revision="250599557260035" pf:UUID="D882CE3A-0F42-11D2-A419-
00A0C963E0AC">
  <FormRef FormOID="frmDOV" OrderNumber="1" Mandatory="No" />
  <FormRef FormOID="frmSC" OrderNumber="2" Mandatory="No" />
    <pf:Mnemonic>
      <TranslatedText>Final</TranslatedText>
    </pf:Mnemonic>
</StudyEventDef>
```

FormDef

Attributes	Value/Map to InForm
FormOID	Form RefName.
Name	Form RefName.
Repeating	Yes if the form is a repeating form.
DBUID	Entity: Form. Property: DBUID.
GUID	Form identifier.
Revision	Entity: Form. Property: Revision.
UUID	Entity: Form. Property: UUID.
Dynamic	Yes if the form is a dynamic form.
OrderNumber	The order of the form (for presentation in the user interface).

Mnemonic

FormDef/Mnemonic

Attributes	Value/Map to InForm
TranslatedText	The display mnemonic for the form.

ItemGroupRef

Attributes	Value/Map to InForm
ItemGroupOID	Form-relative RefPath for the section.
OrderNumber	Section Order.
Repeating	Section Repeating, when Yes indicates that the section contains an itemset.

Example—FormDef

```
<FormDef OID="frmDOV" Name="frmDOV" Repeating="No" pf:DBUID="7642"
pf:GUID="ab9274c1-b46c-4d3d-baf6-a0a8bbcf6a06" pf:Revision="250599336073035"
pf:UUID="D882CE3B-0F42-11D2-A419-00A0C963E0AC">
  <ItemGroupRef ItemGroupOID="frmDOV.sctVisitDateandTime" OrderNumber="1"
Mandatory="No" />
  <pf:Mnemonic>
    <TranslatedText>DOV</TranslatedText>
  </pf:Mnemonic>
</FormDef>
```

ItemGroupDef

Attributes	Value/Map to InForm
OID	Form-relative RefPath for the section.
Name	Section RefName.
Repeating	Section Repeating; Yes when the section contains an ItemSet.
ItemSetDBUID	Entity: ItemSet. Property: DBUID.
DBUID	Entity: Section. Property: DBUID.
GUID	Form identifier.
Revision	Entity: Section. Property: Revision.
UUID	Entity: Section/Itemset. Property: UUID.

Attributes	Value/Map to InForm
ItemSetRefName	Present when the section contains an itemset; specifies the RefName of the ItemSet in the section.
ItemSetRevision	Entity: ItemSet. Property: Revision.
SVRequired	Present when the section contains an ItemSet and the ItemSet requires source verification.

InformItemRef

InformItemData/ItemStatus

Attributes	Value/Map to InForm
InFormOID	Form-relative RefPath of an item.
Mandatory	Yes , if the item is mandatory.
OrderNumber	Display order of the item within the section.

Example—InformItemRef

```
<pf:InformItemRef InformItemOID="frmCGI.sctCGIImp.itmCGIImp" OrderNumber="1"
Mandatory="Yes" />
```

ItemRef

Attributes	Value/Map to InForm
ItemOID	Form-relative RefPath for a control within an item.
OrderNumber	Control order within an item.
Mandatory	Control is required.

Example—ItemGroupDef

```
<ItemGroupDef OID="frmDOV.sctVisitDateandTime" Name="sctVisitDateandTime"
Repeating="No" pf:DBUID="7639" pf:GUID="{0bf10cac-c53e-4926-8843-9e8fda1569d4}"
pf:Revision="250599335838035" pf:UUID="ABCFA388-223A-11D2-A426-00A0C963E0AC">
  <ItemRef
    ItemOID="frmDOV.sctVisitDateandTime.DateandTimeofVisit_DOV.DateandTimeofVisit
_DOV" OrderNumber="1" Mandatory="Yes" />
  <pf:InformItemRef
    InformItemOID="frmDOV.sctVisitDateandTime.DateandTimeofVisit_DOV"
    OrderNumber="1" Mandatory="Yes" />
</ItemGroupDef>
```

InformItemDef

Attributes/Children	Value/Map to InForm
OID	The refname of the item. type=odm:oid. Required.
Name	Form-relative RefPath for the item. type=odm:text. Required.
SVRequired	Yes , if source verification is required for the item. type=odm:YesOrNo. Optional.
DBUID	Entity: Item. Property: DBUID.
GUID	Entity: Item. Property: GUID.
Revision	Entity: Item. Property: Revision.
UUID	Entity: Item. Property: UUID.

Example—InformItemDef

```
<pf:InFormItemDef OID="frmDOV.sctVisitDateandTime.DateandTimeofVisit_DOV"
Name="DateandTimeofVisit_DOV" SVRequired="Yes" pf:DBUID="7648"
pf:GUID="{005A7BA1-AEA9-42E4-83F3-3E2358F68646}" pf:Revision="250599336526035"
pf:UUID="BD991BBF-B0A4-11D2-80E3-00A0C9AF7674">
  <ItemRef
    ItemOID="frmDOV.sctVisitDateandTime.DateandTimeofVisit_DOV.DateandTimeofVisit
    _DOV" OrderNumber="1" Mandatory="Yes" />
</pf:InFormItemDef>
```

ItemDef

Attributes	Value/Map to InForm
OID	Form-relative RefPath for the control.
Name	Item RefName.
Data Type	See <i>Data Type Table</i> (on page 76).
Length	See <i>Data Type Table</i> (on page 76).

Attributes	Value/Map to InForm
SignificantDigits	See <i>Data Type Table</i> (on page 76).
Revision	<ul style="list-style-type: none"> Entity: Control. Property: Revision. Entity: Item. Property: Revision.
GUID	Item identifier.
DBUID	<ul style="list-style-type: none"> Entity: Control. Property: DBUID. Entity: Item. Property: DBUID.
UUID	Entity: Control. Property: UUID.
ParentOID	The parent of each ItemDef that is not a top-level ItemDef.
ParentType	<p>Defines the type of parent control.</p> <p>If value of parent type is:</p> <ul style="list-style-type: none"> ItemDef, then pf:ParentOID refers to the parent ItemDef's OID. CodeListItem, then pf:ParentOID refers to the parent CodeListItem's pf:SelectionOID.
SelectionOID	An OID that uniquely identifies the selection in a radio group.
SelectionOwner	For each ItemDef that is the child of a radio group selection, the OID of the CodeList that contains the codelist selection.
ItemDefType	<p>Indicates the control type.</p> <p>Values: RadioGroup, Checkbox, Text, Calculated, PullDown, Date.</p>
Question	Question text for the item that contains the control.
SignificantDigits	See <i>Data Type Table</i> (on page 76).
CheckboxGroupRefName	Present when the control is contained in a checkbox group and contains the RefName of the checkbox group.

Data Type Table

InForm control type	Definition
Simple Control	<ul style="list-style-type: none"> Data Type is defined by the element's type. Length: text 255, integer 10, float 308. <p>Notes:</p> <ul style="list-style-type: none"> Integer is always returned as 10 (the maximum number of digits in a 32-bit integer). Float is always returned as 308 (the maximum exponent for a 64-bit floating-point number). <ul style="list-style-type: none"> Significant Digit: 4.
Pulldown Control	References a codelist with the allowable values.
Text Control	<ul style="list-style-type: none"> Data Type is defined by control data type (Pf_TextControl/DataType). Length: text Pf_TextControl/MaxLength, integer 10, float 308. <p>Notes:</p> <ul style="list-style-type: none"> Integer is always returned as 10 (the maximum number of digits in a 32-bit integer). Float is always returned as 308 (the maximum exponent for a 64-bit floating-point number). <ul style="list-style-type: none"> Significant Digit: Pf_TextControl/PFPrecision.
Radio Control	References a codelist with the allowable values.
Group Control	Represented as an ItemDef per check option with the name of the option included in the form-relative RefPath in the ItemDefOID.
Datetime Control	incompleteDatetime.
Calculated Control	Text type with length = 255.

MeasurementUnitRef

Attributes	Value/Map to InForm
MeasurementUnitOID	Unit RefName.
NormalizationUnit	Yes , if the referenced unit is for normal values.

Question

Children	Value/Map to InForm
TranslatedText	Item question. A TranslatedText element exists for each study language.

Example—ItemDef

```
<ItemDef OID="frmDOSE.sctDOSE.itsDOSE.itmDOSEFromDate.dtmDOSE" Name="dtmDOSE"
  DataType="incompleteDatetime">
  <Question>
    <TranslatedText>Start date</TranslatedText>
  </Question>
</ItemDef>
```

CodeList

Attributes	Value/Map to InForm
OID	Control RefName. For example, if an item contains a drop-down list, the RefName of the drop-down list will be used. If file type is Transactional, the ControlRefName is hierarchical: form.section.item.control
Name	<ul style="list-style-type: none"> • If file type is Snapshot, Name is the same as OID. • If file type is Transactional, Name is the same as the ControlRefName without the hierarchical prefixing.
DataType	Type of Control. See <i>Data Type Table</i> (on page 76).

Example—CodeList

File type is Snapshot:

```
<CodeList OID="rdcEXCLC" Name="rdcEXCLC" DataType="text" />
```

File type is Transactional:

```
<CodeList OID="frmPreg.sctPreg.itmPregTest.itmPregTest.rdcPregDone"
  Name="rdcPregDone" DataType="text">
```

CodeListItem

Attributes	Value/Map to InForm
CodedValue	Value used to map the CodeListItem to an ItemData value in ODM ClinicalData.
pf:SelectionOID	An OID that uniquely identifies the selection in a radio group. The value is a concatenation of the CodeList OID and the CodeListItem CodedValue.

Example—CodeListItem

```
<CodeListItem CodedValue="2"
pf:SelectionOID="frmPreg.sctPreg.itmPregTest.itmPregTest.rdcPregDone.2">
  <Decode>
    <TranslatedText>Positive</TranslatedText>
  </Decode>
</CodeListItem>
```

Oracle attributes that are applied to standard ODM elements

The file **PFextensions.xsd** contains the attribute extensions for attributes that are defined in the **PhaseForward_ODM.xsd** file. These schema files are located in the **<Installation_path>/ODM/bin/xsd** directory.

Standard ODM element	Oracle attribute	Type
ClinicalData	TransactionalGuid	xs:string
CodeListItem	SelectionOID	odm:oid
FormDef	UUID	xs:string
FormRef	AltFormOID	xs:string
ItemData	NormalizedValue	odm:value
ItemDef	CheckboxGroupRefName	xs:string
ItemDef	InFormDateTime	xs:boolean
ItemDef	PFVarName	xs:string
ItemDef	ParentOID	odm:oidref
ItemDef	ParentType	pf:ParentType
ItemDef	ItemDefType	pf:ItemDefType
ItemDef	SelectionOwner	odm:oidref
ItemDef	UUID	xs:string
ItemGroupDef	ItemSetRefName	xs:string
ItemGroupDef	SVRequired	odm:YesOrNo
ItemGroupDef	UUID	xs:string

Standard ODM element	Oracle attribute	Type
Location	Mnemonic	xs:string
Location	SiteCountry	xs:string
Location	SiteTimezone	xs:string
Location	Locale	xs:language
Location	SVAutoSelectRate	xs:integer Value 1-100
Location	SVFirstNSubjects	xs:integer
MeasurementUnitRef	NormalizationUnit	odm:YesOrNo
MetaDataVersion	ApprovalDate	xs:boolean
ODM	MappingVersion	xs:string
ODM	HierarchicalOIDs	xs:string
ODM	InFormAdapterVersion	xs:string
SignatureDef	GroupName	xs:string
SignatureDef	Meaning	xs:string
SignatureDef	LegalReason	xs:string
FormDef	Dynamic	odm:YesOrNo
StudyEventDef		
StudyEventDef	Optional	odm:YesOrNo
StudyEventDef	UUID	xs:string
User	StudyLocale	xs:language

Revision, DBUID, and GUID attributes

DBUID, GUID, and Revision attributes are Oracle extension attributes on their respective elements.

Metadata

In metadata, the following elements include the pf:DBUID, pf:GUID, and pf:Revision attributes.

- `MetaDataVersion`
- `StudyEventDef`
- `FormDef`
- `ItemGroupDef`
- `ItemDef`
- `MeasurementUnit`
- `InFormItemDef`

In metadata, the following elements include the pf:UUID attribute.

- `StudyEventDef`
- `FormDef`
- `ItemGroupDef`
- `ItemDef`
- `InFormItemDef`

For more information, see the individual elements listed in ODM Mapping.

Clinical data and Association data

ODM data elements consist of Clinical data nodes and Association nodes. These nodes contain a new pf:Revision attribute that applies to all the data in the node unless the child node contains a pf:Revision attribute of its own.

The DBUID and GUID attributes for the data items within these nodes are defined in the metadata except as noted:

- *Annotation* (on page 56).
- Location.
- *Query* (on page 59).
- *SubjectData* (on page 49).
- *MetaDataVersion* (on page 69).
- *User* (on page 61).
- Site\Location.

AdminData

The User element includes pf:DBUID, pf:GUID, pf:Revision, and pf:StudyLocale extensions.

Site\Location includes the pf:GUID, pf:Revision, and pf:Locale extensions.

- The location OID is the DBUID.
- Location Revision is the same as transaction only if the transaction is revising the location.

For more information, see the individual elements listed in ODM Mapping.

Extensions that show control hierarchy and type

To define details for controls, the ODM Export interface provides the following extensions to the ODM elements *ItemDef* (on page 74) and *CodeListItem* (on page 78).

Oracle extension to ItemDef	Description
pf:ParentOID	The parent of each ItemDef that is not a top-level ItemDef.
pf:ParentType	Defines the type of parent control. If value of parent type is: <ul style="list-style-type: none"> • ItemDef, then pf:ParentOID refers to the parent ItemDef's OID. • CodeListItem, then pf:ParentOID refers to the parent CodeListItem's pf:SelectionOID.
pf:SelectionOwner	For each ItemDef that is the child of a radio group selection, the OID of the CodeList that contains the codelist selection.
pf:ItemDefType	Indicates the control type. Values: RadioGroup, Checkbox, Text, Calculated, PullDown, Date.
Oracle extension to CodeListItem	Description
pf:SelectionOID	An OID that uniquely identifies the selection in a radio group. The value is a concatenation of the CodeList OID and the CodeListItem CodedValue.