

**Oracle Utilities Extractors and Schema  
for Oracle Utilities Network Management  
System**

Data Mapping Guide

Release 2.5.1 Service Pack 1

**E49012-04**

November 2014

Copyright © 2013, 2014 Oracle and/or its affiliates. All rights reserved.

This software and related documentation are provided under a license agreement containing restrictions on use and disclosure and are protected by intellectual property laws. Except as expressly permitted in your license agreement or allowed by law, you may not use, copy, reproduce, translate, broadcast, modify, license, transmit, distribute, exhibit, perform, publish, or display any part, in any form, or by any means. Reverse engineering, disassembly, or decompilation of this software, unless required by law for interoperability, is prohibited.

The information contained herein is subject to change without notice and is not warranted to be error-free. If you find any errors, please report them to us in writing.

If this is software or related documentation that is delivered to the U.S. Government or anyone licensing it on behalf of the U.S. Government, the following notice is applicable:

U.S. GOVERNMENT END USERS: Oracle programs, including any operating system, integrated software, any programs installed on the hardware, and/or documentation, delivered to U.S. Government end users are “commercial computer software” pursuant to the applicable Federal Acquisition Regulation and agency-specific supplemental regulations. As such, use, duplication, disclosure, modification, and adaptation of the programs, including any operating system, integrated software, any programs installed on the hardware, and/or documentation, shall be subject to license terms and license restrictions applicable to the programs. No other rights are granted to the U.S. Government.

This software or hardware is developed for general use in a variety of information management applications. It is not developed or intended for use in any inherently dangerous applications, including applications that may create a risk of personal injury. If you use this software or hardware in dangerous applications, then you shall be responsible to take all appropriate fail-safe, backup, redundancy, and other measures to ensure its safe use. Oracle Corporation and its affiliates disclaim any liability for any damages caused by use of this software or hardware in dangerous applications.

Oracle and Java are registered trademarks of Oracle and/or its affiliates. Other names may be trademarks of their respective owners.

Intel and Intel Xeon are trademarks or registered trademarks of Intel Corporation. All SPARC trademarks are used under license and are trademarks or registered trademarks of SPARC International, Inc. AMD, Opteron, the AMD logo, and the AMD Opteron logo are trademarks or registered trademarks of Advanced Micro Devices. UNIX is a registered trademark of The Open Group.

This software or hardware and documentation may provide access to or information on content, products, and services from third parties. Oracle Corporation and its affiliates are not responsible for and expressly disclaim all warranties of any kind with respect to third-party content, products, and services. Oracle Corporation and its affiliates will not be responsible for any loss, costs, or damages incurred due to your access to or use of third-party content, products, or services.

# Contents

---

---

<b>Preface</b> .....	<b>i-i</b>
Audience .....	i-i
Related Documents .....	i-i
Notational Conventions .....	i-i
<b>Chapter 1</b>	
<b>Overview</b> .....	<b>1-1</b>
Terminologies.....	1-1
<Table Name> .....	1-1
<b>Chapter 2</b>	
<b>Data Maps for Oracle Utilities Network Management System</b> .....	<b>2-1</b>
Dimension Tables.....	2-2
Account Dimension.....	2-2
Address Dimension .....	2-5
Call Info Dimension .....	2-8
City Dimension.....	2-11
Control Zone Dimension .....	2-12
Crew Dimension.....	2-15
Device Dimension .....	2-17
Duration Deviation Dimension .....	2-20
Estimated Restoration Duration Dimension .....	2-22
Event Dimension .....	2-24
Event Status Dimension .....	2-34
Feeder Dimension.....	2-36
Meter Dimension .....	2-39
Outage Duration Dimension.....	2-41
Person Dimension.....	2-43
Phase Dimension.....	2-45
Premise Dimension.....	2-47
Storm Dimension .....	2-50
Storm Outage Type Dimension .....	2-53
Supply Node Lookup Dimension.....	2-54
Switch Plan Dimension .....	2-57
Switch Plan State Dimension .....	2-59
User Dimension.....	2-61
Fact Tables.....	2-64
City Outage Fact.....	2-64
Control Zone Outage Fact .....	2-70
Feeder Delivered Load Snapshot Fact.....	2-76
Outage Fact.....	2-81
Recent Call Fact.....	2-84
Recent Crew Fact .....	2-88
Recent Job Fact .....	2-94
Recent Customer Outage Fact .....	2-101
Restored Call Fact.....	2-108

---

Restored Crew Fact.....	2-112
Restored Job Fact.....	2-117
Restored Customer Outage Fact .....	2-122
Switch Plan Fact .....	2-128
Switch Plan State Fact .....	2-134
User Defined Dimension Tables.....	2-138

### **Chapter 3**

<b>Configuring Oracle Utilities Extractors and Schema for Network Management System.....</b>	<b>3-1</b>
Configuring OUA for NMS.....	3-1
Configuring NMS .....	3-3

---

---

# Preface

This guide provides the data mapping information from the Oracle Utilities Network Management System source system to the Oracle Utilities Extractors and Schema target product.

## Audience

The guide is intended for all implementers of Oracle Utilities Extractors and Schema for Oracle Utilities Network Management System.

## Related Documents

For more information, see the following documents:

- *Oracle Utilities Analytics Installation Guide*
- *Oracle Utilities Analytics Quick Install Guide*
- *Oracle Utilities Analytics Release Notes*
- *Oracle Utilities Analytics User's Guide*
- *Oracle Utilities Analytics Administration Guide*

**See Also:**

- Oracle Utilities Network Management System Documentation Library

## Notational Conventions

The following notational conventions are used in this document:

<b>Notation</b>	<b>Indicates</b>
<b>boldface</b>	Graphical user interface elements associated with an action, terms defined in text, or terms defines in the glossary
<i>italic</i>	Book titles, emphasis, or placeholder variables for which you supply particular values
monospace	Commands within a paragraph, URLs, code in examples, text that appears on the screen, or text that you enter

# Chapter 1

## Overview

This guide provides the data mapping information from the Oracle Utilities Network Management System source system to the Oracle Utilities Extractors and Schema target product. The guide describes the data mapping between the source system and the target, and the rules of data transformation for Oracle Utilities Extractors and Schema for Oracle Utilities Network Management System.

### Terminologies

The following terminologies are used for the data maps included in this document.

#### <Table Name>

The Table Name indicates the name of the fact or the dimension in a star schema in the data warehouse.

#### Properties

The Properties table lists properties of the table independent of each field. The following properties are listed in the table:

Property	Value
Target Table	Name of the table in the target schema (BI data warehouse) into which data is loaded
Table Type	Fact or dimension
SCD Type	The nature of the dimension on how it handles changes made in the source system.  Type 1 - Existing records are updated directly.  Type 2 - Existing records are inactivated by putting the current date as the effective end date and new records are inserted with an effective start date as today's date. The new record will have the end date as a high date.
Fact Type	Whether this is a snapshot or accumulation fact table
Source System Driver Table	Name of the table in source database from which data is extracted

<b>Property</b>	<b>Value</b>
Stage Table	Name of the table in the staging schema (data warehouse) that can be used to query the data records generated by the ETL logic
ODI Package	Name of the ODI package that needs be executed to extract data from the source application and populate a specific target table in the data warehouse
ETL View	Name of the view in the data warehouse that has the logic for retrieval and transformation of the source data
Materialized View	Names of the materialized views delivered with the product for a specific fact table.  These materialized views are designed to support all of the OBIEE answers delivered with the product. Refreshing these materialized views will be taken care as part of the ETL processes.

## Fields

The Fields table lists the individual properties of each field in the Presentation Table or the Database Table. The following fields are listed in the tables:

<b>Property</b>	<b>Value</b>
Source Field	Name of the field from the source application which is used to load the target field either directly or after transformation.
Target Field	Name of the column in the fact or dimension table present in the data warehouse. This is where the extracted data will be loaded into.
OBIEE Field	Name of the field in the OBIEE Presentation folder. If blank, the field is not available by default in OBIEE.

# Chapter 2

---

## Data Maps for Oracle Utilities Network Management System

This section contains data maps for the following Oracle Utilities Extractors and Schema for Oracle Utilities Network Management data:

- [Dimension Tables](#)
- [Fact Tables](#)
- [User Defined Dimension Tables](#)



# Dimension Tables

## Account Dimension

The Account dimension extracts account data from the Oracle Utilities Network Management system with all related attributes.

### Properties

Property	Value
Target Table	CD_ACCT
Table Type	Dimension
SCD Type	Type 2
Source System Driver Table	CU_SERVICE_LOCATIONS
Stage Table	STG_CD_ACCT
ODI Package	B1_PKG_CD_ACCT
ETL View	B1_D_ACCT_VW

### Fields

Target Field	OBIEE Field	Source Field	Transformation / Calculation Logic
ACCT_KEY	Account Dimension Surrogate Key		<b>Transformation Logic:</b> This field is populated with the sequence from SPL_ACCT_SEQ.NEXT VAL.
SRC_ACCT_ID	Account ID	CU_SERVICE_LOCATIONS.SERV_ACCOUNT_NUMBER	
ACCT_INFO	Account Information	CU_SERVICE_LOCATIONS.SERV_LOC_ID	
UDF1_CD	Revenue Class Code	CU_SERVICE_LOCATIONS.SERV_REVENUE_CLASS	
UDF1_DESCR	Revenue Class Description	CU_SERVICE_LOCATIONS.SERV_REVENUE_CLASS	
UDF2_CD	User Defined Field 2 Code		
UDF2_DESCR	User Defined Field 2 Description		
UDF3_CD	User Defined Field 3 Code		

<b>Target Field</b>	<b>OBIEE Field</b>	<b>Source Field</b>	<b>Transformation / Calculation Logic</b>
UDF3_DESCR	User Defined Field 3 Description		
UDF4_CD	User Defined Field 4 Code		
UDF4_DESCR	User Defined Field 4 Description		
UDF5_CD	User Defined Field 5 Code		
UDF5_DESCR	User Defined Field 5 Description		
UDF6_CD	User Defined Field 6 Code		
UDF6_DESCR	User Defined Field 6 Description		
UDF7_CD	User Defined Field 7 Code		
UDF7_DESCR	User Defined Field 7 Description		
UDF8_CD	User Defined Field 8 Code		
UDF8_DESCR	User Defined Field 8 Description		
UDF9_CD	User Defined Field 9 Code		
UDF9_DESCR	User Defined Field 9 Description		
UDF10_CD	User Defined Field 10 Code		
UDF10_DESCR	User Defined Field 10 Description		
UDF11_CD	User Defined Field 11 Code		
UDF11_DESCR	User Defined Field 11 Description		
UDF12_CD	User Defined Field 12 Code		
UDF12_DESCR	User Defined Field 12 Description		
UDF13_CD	User Defined Field 13 Code		

Target Field	OBIEE Field	Source Field	Transformation / Calculation Logic
UDF13_DESCR	User Defined Field 13 Description		
UDF14_CD	User Defined Field 14 Code		
UDF14_DESCR	User Defined Field 14 Description		
UDF15_CD	User Defined Field 15 Code		
UDF15_DESCR	User Defined Field 15 Description		
DATA_SOURCE_IND	Data Source Indicator	B1_PROD_INSTANCE. DSI	<b>Transformation Logic:</b> This field is populated with the DSI value on the source product instance configuration. The table is populated as part of the initial setup and the DSI value is extracted from the environment ID of the source system (CI_INSTALLATION.E NV_ID).
DATA_LOAD_DTTM	Data Load Date/Time		<b>Transformation Logic:</b> This field is populated with the load timestamp value.
EFF_START_DTTM	Effective Start Date/ Time		
EFF_END_DTTM	Effective End Date/ Time		
JOB_NBR	Job Number		<b>Transformation Logic:</b> This field is populated with the ODI job execution session number.

## Address Dimension

The Address dimension extracts address information from the CU\_SERVICE\_LOCATIONS table in Oracle Utilities Network Management System.

### Properties

Property	Value
Target Table	CD_ADDR
Table Type	Dimension
SCD Type	Type 2
Source System Driver Table	CU_SERVICE_LOCATIONS
Stage Table	STG_CD_ADDR
ODI Package	B1_PKG_CD_ADDR
ETL View	B1_D_ADDR_VW

### Fields

Target Field	OBIEE Field	Source Field	Transformation / Calculation Logic
ADDR_KEY	Address Dimension Surrogate Key		<b>Transformation Logic:</b> This field is populated with the sequence from SPL_ADDR_SEQ.NEXTVAL.
SRC_ADDR_ID	Premise ID	CU_SERVICE_LOCATIONS.SERV_LOC_ID	
ADDR_INFO	Address	CU_SERVICE_LOCATIONS.SERV_ADDR_1   ','  SERV_CITY   '  SERV_STATE   '   SERV_POSTCODE_1	
ADDR_LINE1	Address Line 1	CU_SERVICE_LOCATIONS.SERV_ADDR_1	
ADDR_LINE2	Address Line 2	CU_SERVICE_LOCATIONS.SERV_ADDR_2	
ADDR_LINE3	Address Line 3	CU_SERVICE_LOCATIONS.SERV_ADDR_3	
ADDR_LINE4	Address Line 4	CU_SERVICE_LOCATIONS.SERV_ADDR_4	
CITY	City	CU_SERVICE_LOCATIONS.SERV_CITY	
COUNTY	County		

<b>Target Field</b>	<b>OBIEE Field</b>	<b>Source Field</b>	<b>Transformation / Calculation Logic</b>
POSTAL	Postal Code	CU_SERVICE_LOCATIONS.SERV_POSTCODE_1	
STATE_CD	State Code	CU_SERVICE_LOCATIONS.SERV_STATE	
STATE_DESCR	State	CU_SERVICE_LOCATIONS.SERV_STATE	
COUNTRY_CD	Country Code		
COUNTRY_DESCR	Country		
GEO_CODE	Geographical Code		
CROSS_STREET	Cross Street		
SUBURB	Suburb		
UDF1_CD	City Code	CU_SERVICE_LOCATIONS.SERV_CITY	
UDF1_DESCR	City	CU_SERVICE_LOCATIONS.SERV_CITY	
UDF2_CD	County Code		
UDF2_DESCR	County		
UDF3_CD	Postal Code	CU_SERVICE_LOCATIONS.SERV_POSTCODE_1	
UDF3_DESCR	Postal Code	CU_SERVICE_LOCATIONS.SERV_POSTCODE_1	
UDF4_CD	State Code	CU_SERVICE_LOCATIONS.SERV_STATE	
UDF4_DESCR	State	CU_SERVICE_LOCATIONS.SERV_STATE	
UDF5_CD	User Defined Field 5 Code		
UDF5_DESCR	User Defined Field 5 Description		
UDF6_CD	User Defined Field 6 Code		
UDF6_DESCR	User Defined Field 6 Description		
UDF7_CD	User Defined Field 7 Code		

<b>Target Field</b>	<b>OBIEE Field</b>	<b>Source Field</b>	<b>Transformation / Calculation Logic</b>
UDF7_DESCR	User Defined Field 7 Description		
UDF8_CD	User Defined Field 8 Code		
UDF8_DESCR	User Defined Field 8 Description		
UDF9_CD	User Defined Field 9 Code		
UDF9_DESCR	User Defined Field 9 Description		
UDF10_CD	User Defined Field 10 Code		
UDF10_DESCR	User Defined Field 10 Description		
UDF11_CD	User Defined Field 11 Code		
UDF11_DESCR	User Defined Field 11 Description		
UDF12_CD	User Defined Field 12 Code		
UDF12_DESCR	User Defined Field 12 Description		
UDF13_CD	User Defined Field 13 Code		
UDF13_DESCR	User Defined Field 13 Description		
UDF14_CD	User Defined Field 14 Code		
UDF14_DESCR	User Defined Field 14 Description		
UDF15_CD	User Defined Field 15 Code		
UDF15_DESCR	User Defined Field 15 Description		
UDF16_CD	User Defined Field 16 Code		
UDF16_DESCR	User Defined Field 16 Description		

Target Field	OBIEE Field	Source Field	Transformation / Calculation Logic
DATA_SOURCE_IND	Data Source Indicator	B1_PROD_INSTANCE. DSI	<b>Transformation Logic:</b> This field is populated with the DSI value on the source product instance configuration. The table is populated as part of the initial setup and the DSI value is extracted from the environment ID of the source system (CI_INSTALLATION_ENV_ID).
DATA_LOAD_DTTM	Data Load Date/Time		<b>Transformation Logic:</b> This field is populated with the load timestamp value.
EFF_START_DTTM	Effective Start Date/ Time		
EFF_END_DTTM	Effective End Date/ Time		
JOB_NBR	Job Number		<b>Transformation Logic:</b> This field is populated with the ODI job execution session number.

## Call Info Dimension

The Call Info dimension extracts the call details (along with the caller information) created in the Oracle Utilities Network Management System Web Call Entry application.

### Properties

Property	Value
Target Table	CD_CALL_INFO
Table Type	Dimension
SCD Type	Type 1
Source System Driver Table	INCIDENTS
Stage Table	STG_CD_CALL_INFO
ODI Package	B1_PKG_CD_CALL_INFO
ETL View	B1_D_CALL_INFO_VW

## Fields

Target Field	OBIEE Field	Source Field	Transformation / Calculation Logic
CALL_INFO_KEY	Call Info Dimension Surrogate Key		<b>Transformation Logic:</b> This field is populated with the sequence from SPL_CALL_INFO_SEQ .
CALLER_NAME	Caller Name	INCIDENTS.CUSTOMER_NAME	
PHONE_NBR	Phone Number	INCIDENTS.CUSTOMER_PHONE	
COMPLAINT	Complaint Description	INCIDENTS.COMPLAINT	
COMMENTS	Call Comments	INCIDENTS.OP_COMMENT	
SRC_INCIDENT_ID	Call Number	INCIDENTS.NUMB	
UDF1_CD	User Defined Field 1 Code	INCIDENTS.ACTIVE	
UDF1_DESCR	User Defined Field 1 Description	INCIDENTS.ACTIVE	
UDF2_CD	User Defined Field 2 Code	INCIDENTS.COMPLETE	
UDF2_DESCR	User Defined Field 2 Description	INCIDENTS.COMPLETE	
UDF3_CD	User Defined Field 3 Code	INCIDENTS.COMPLAINT	
UDF3_DESCR	User Defined Field 3 Description	INCIDENTS.SHORT_DESC	
UDF4_CD	User Defined Field 4 Code		
UDF4_DESCR	User Defined Field 4 Description		
UDF5_CD	User Defined Field 5 Code		
UDF5_DESCR	User Defined Field 5 Description		
UDF6_CD	User Defined Field 6 Code		
UDF6_DESCR	User Defined Field 6 Description		
UDF7_CD	User Defined Field 7 Code		



Target Field	OBIEE Field	Source Field	Transformation / Calculation Logic
UDF7_DESCR	User Defined Field 7 Description		
UDF8_CD	User Defined Field 8 Code		
UDF8_DESCR	User Defined Field 8 Description		
UDF9_CD	User Defined Field 9 Code		
UDF9_DESCR	User Defined Field 9 Description		
UDF10_CD	User Defined Field 10 Code		
UDF10_DESCR	User Defined Field 10 Description		
DATA_SOURCE_IND	Data Source Indicator	B1_PROD_INSTANCE. DSI	<b>Transformation Logic:</b> This field is populated with the DSI value on the source product instance configuration. The table is populated as part of the initial setup and the DSI value is extracted from the environment ID of the source system (CI_INSTALLATION.ENV_ID).
DATA_LOAD_DTTM	Data Load Date/Time		<b>Transformation Logic:</b> This field is populated with the load timestamp value.
UPDATE_DTTM	Update Date/Time	INCIDENTS.LAST_UP DATE_TIME	<b>Transformation Logic:</b> This field is populated with the updated timestamp value.
DELETE_IND		INCIDENTS.JRN_FLAG	<b>Transformation Logic:</b> This field is populated with "1" for deleted records, and "0" for new/modified records.
JOB_NBR	Job Number		<b>Transformation Logic:</b> This field is populated with the ODI job execution session number.

## City Dimension

The City dimension extracts distinct city information from the CU\_SERVICE\_LOCATIONS table. The columns that identify the distinct city records are SRC\_STATE, SRC\_COUNTRY, SRC\_CITY, and DATA\_SOURCE\_IND.

### Properties

Property	Value
Target Table	CD_CITY
Table Type	Dimension
SCD Type	Type 1
Source System Driver Table	CU_SERVICE_LOCATIONS
Stage Table	STG_CD_CITY
ODI Package	B1_PKG_CD_CITY
ETL View	B1_D_CITY_VW

### Fields

Target Field	OBIEE Field	Source Field	Transformation / Calculation Logic
CITY_KEY	City Dimension Surrogate Key		<b>Transformation Logic:</b> This field is populated with the sequence from SPL_CITY_SEQ.NEXT VAL.
SRC_STATE	State	CU_SERVICE_LOCATIONS.SERV_STATE	
SRC_CITY	City	CU_SERVICE_LOCATIONS.SERV_CITY	
SRC_COUNTRY	Country	CU_SERVICE_LOCATIONS.SERV_COUNTRY	
UDF1_CD	User Defined Field 1 Code		
UDF1_DESCR	User Defined Field 1 Description		
UDF2_CD	User Defined Field 2 Code		
UDF2_DESCR	User Defined Field 2 Description		
UPDATE_DTTM	Update Date/Time	CU_SERVICE_LOCATIONS.LAST_UPDATE_TIME	<b>Transformation Logic:</b> This field is populated with the updated timestamp value.

Target Field	OBIEE Field	Source Field	Transformation / Calculation Logic
DATA_SOURCE_IND	Data Source Indicator	B1_PROD_INSTANCE. DATA_SOURCE_IND	<b>Transformation Logic:</b> This field is populated with the DSI value on the source product instance configuration. The table is populated as part of the initial setup and the DSI value is extracted from the environment ID of the source system (CI_INSTALLATION.ENV_ID).
DATA_LOAD_DT_TM	Data Load Date/Time		<b>Transformation Logic:</b> This field is populated with the load timestamp value.
JOB_NBR	Job Number		<b>Transformation Logic:</b> This field is populated with the ODI job execution session number.

## Control Zone Dimension

The Control Zone dimension extracts the control zone records and their hierarchical relationships from the Network Management System source database tables CONTROL\_ZONES and CONTROL\_ZONE\_STRUCTURES.

### Properties

Property	Value
Target Table	CD_CTRL_ZONE
Table Type	Dimension
SCD Type	Type 2
Source System Driver Table	CONTROL_ZONE_STRUCTURES CONTROL_ZONES CONTROL_ZONE_STRUCTURES A CONTROL_ZONES B CONTROL_ZONES C
Stage Table	STG_CD_CTRL_ZONE
ODI Package	B1_PKG_CD_CTRL_ZONE
ETL View	B1_D_CTRL_ZONE_VW

**Fields (**

<b>Target Field</b>	<b>OBIEE Field</b>	<b>Source Field</b>	<b>Transformation / Calculation Logic</b>
CTRL_ZONE_KEY	Control Zone Dimension Surrogate Key		<b>Transformation Logic:</b> This field is populated with the sequence from SPL_CTRL_ZONE_SEQ.NEXT VAL.
SRC_NCG_ID		CONTROL_ZONES.NCG_ID  CONTROL_ZONE_STRUCTURES.CHILD_NCG_ID	
HIERARCHY_TYPE			
CTRL_ZONE_NAME		CONTROL_ZONES.NAME	
UDF1_CD	User Defined Field 1 Code	CONTROL_ZONES.NCG_ID  CONTROL_ZONE_STRUCTURES.PARENT_NCG_ID	
UDF1_DESCR	User Defined Field 1 Description	CONTROL_ZONES.NAME	
UDF2_CD	User Defined Field 2 Code	CONTROL_ZONES.NCG_ID	
UDF2_DESCR	User Defined Field 2 Description	CONTROL_ZONES.NAME	
UDF3_CD	User Defined Field 3 Code	CONTROL_ZONES.NCG_ID	
UDF3_DESCR	User Defined Field 3 Description	CONTROL_ZONES.NAME	
UDF4_CD	User Defined Field 4 Code	CONTROL_ZONES.NCG_ID	
UDF4_DESCR	User Defined Field 4 Description	CONTROL_ZONES.NAME	
UDF5_CD	User Defined Field 5 Code	CONTROL_ZONES.NCG_ID	
UDF5_DESCR	User Defined Field 5 Description		
UDF6_CD	User Defined Field 6 Code		
UDF6_DESCR	User Defined Field 6 Description		

Target Field	OBIEE Field	Source Field	Transformation / Calculation Logic
UDF7_CD	User Defined Field 7 Code		
UDF7_DESCR	User Defined Field 7 Description		
UDF8_CD	User Defined Field 8 Code		
UDF8_DESCR	User Defined Field 8 Description		
UDF9_CD	User Defined Field 9 Code		
UDF9_DESCR	User Defined Field 9 Description		
UDF10_CD	User Defined Field 10 Code		
UDF10_DESCR	User Defined Field 10 Description		
EFF_START_DTTM	Effective Start Date/ Time		
EFF_END_DTTM	Effective End Date/ Time		
DATA_SOURCE_IND	Data Source Indicator	B1_PROD_INSTANCE. DATA_SOURCE_IND	<b>Transformation Logic:</b> This field is populated with the DSI value on the source product instance configuration. The table is populated as part of the initial setup and the DSI value is extracted from the environment ID of the source system (CI_INSTALLATION.ENV_ID).
DATA_LOAD_DTTM	Data Load Date/Time		<b>Transformation Logic:</b> This field is populated with the load timestamp value.
JOB_NBR	Job Number		<b>Transformation Logic:</b> This field is populated with the ODI job execution session number.

## Crew Dimension

The Crew dimension extracts crew records from the Network Management System source database tables CREWS and CREW\_TYPES.

### Properties

Property	Value
Target Table	CD_CREW
Table Type	Dimension
SCD Type	Type 2
Source System Driver Table	CREWS
Stage Table	STG_CD_CREW
ODI Package	B1_PKG_CD_CREW
ETL View	B1_D_CREW_VW

### Fields

Target Field	OBIEE Field	Source Field	Transformation / Calculation Logic
CREW_KEY	Crew Dimension Surrogate Key		<b>Transformation Logic:</b> This field is populated with the sequence from SPL_CREW_SEQ.NEXT VAL.
CREW_CD	Crew Code	CREWS.CREW_KEY	
CREW_DESCR	Crew Description	CREW_TYPES.CREW_NAME	
SRC_CREW_ID	Crew ID	CREWS.CREW_ID	
CREW_TYPE_CD	Crew Type Code	CREWS.CREW_TYPE	
CREW_TYPE_DESCR	Crew Type Description	CREW_TYPES.CREW_TYPE	
ORG_UNIT1_CD	Organization Unit 1 Code		
ORG_UNIT1_DESCR	Organization Unit 1 Description		
ORG_UNIT2_CD	Organization Unit 2 Code		
ORG_UNIT2_DESCR	Organization Unit 2 Description		
ORG_UNIT3_CD	Organization Unit 3 Code		

<b>Target Field</b>	<b>OBIEE Field</b>	<b>Source Field</b>	<b>Transformation / Calculation Logic</b>
ORG_UNIT3_DESCR	Organization Unit 3 Description		
UDF1_CD	User Defined Field 1 Code	CREWS.CREW_TYPE	
UDF1_DESCR	User Defined Field 1 Description	CREW_TYPES.CREW_TYPE	
UDF2_CD	User Defined Field 2 Code		
UDF2_DESCR	User Defined Field 2 Description		
UDF3_CD	User Defined Field 3 Code		
UDF3_DESCR	User Defined Field 3 Description		
UDF4_CD	User Defined Field 4 Code		
UDF4_DESCR	User Defined Field 4 Description		
UDF5_CD	User Defined Field 5 Code		
UDF5_DESCR	User Defined Field 5 Description		
UDF6_CD	User Defined Field 6 Code		
UDF6_DESCR	User Defined Field 6 Description		
UDF7_CD	User Defined Field 7 Code		
UDF7_DESCR	User Defined Field 7 Description		
UDF8_CD	User Defined Field 8 Code		
UDF8_DESCR	User Defined Field 8 Description		
UDF9_CD	User Defined Field 9 Code		
UDF9_DESCR	User Defined Field 9 Description		
UDF10_CD	User Defined Field 10 Code		

Target Field	OBIEE Field	Source Field	Transformation / Calculation Logic
UDF10_DESCR	User Defined Field 10 Description		
EFF_START_DTTM	Effective Start Date/Time		
EFF_END_DTTM	Effective End Date/Time	CREWS.DEATH	
DATA_SOURCE_IND	Data Source Indicator	B1_PROD_INSTANCE. DATA_SOURCE_IND	<b>Transformation Logic:</b> This field is populated with the DSI value on the source product instance configuration. The table is populated as part of the initial setup and the DSI value is extracted from the environment ID of the source system (CI_INSTALLATION_ENV_ID).
DATA_LOAD_DTTM	Data Load Date/Time		<b>Transformation Logic:</b> This field is populated with the load timestamp value.
JOB_NBR	Job Number		<b>Transformation Logic:</b> This field is populated with the ODI job execution session number.

## Device Dimension

The Device dimension extracts device records from the Network Management System source database table NETWORK\_COMPONENTS.

### Properties

Property	Value
Target Table	CD_DEVICE
Table Type	Dimension
SCD Type	Type 2
Source System Driver Table	NETWORK_COMPONENTS
Stage Table	STG_CD_DEVICE
ODI Package	B1_PKG_CD_DEVICE
ETL View	B1_D_DEVICE_VW



## Fields

Target Field	OBIEE Field	Source Field	Transformation / Calculation Logic
DEVICE_KEY	Device Dimension Surrogate Key		<b>Transformation Logic:</b> This field is populated with the sequence from SPL_DEVICE_SEQUENCE NEXT VAL.
SRC_DEVICE_CLS	Device Class	NETWORK_COMPONENTS.H_CLS	
SRC_DEVICE_IDX	Device Index	NETWORK_COMPONENTS.H_IDX	
DEVICE_NAME	Device Name	NETWORK_COMPONENTS.NAME	
DEVICE_TYPE_CD	Device Type Code	CLASSES.C_TYPE	<b>Transformation Logic:</b> If null, this field is populated with “-”.
DEVICE_TYPE_DESCR	Device Type Description	CLASSES.C_TYPE	<b>Transformation Logic:</b> If null, this field is populated with “-”.
DEVICE_CLASS_CD	Device Class Code	CLASSES.C_NAME	<b>Transformation Logic:</b> If null, this field is populated with “-”.
DEVICE_CLASS_DESCR	Device Class Description	CLASSES.C_DESC	<b>Transformation Logic:</b> If null, this field is populated with “-”.
UDF1_CD	User Defined Field 1 Code		
UDF1_DESCR	User Defined Field 1 Description		
UDF2_CD	User Defined Field 2 Code		
UDF2_DESCR	User Defined Field 2 Description		
UDF3_CD	User Defined Field 3 Code		
UDF3_DESCR	User Defined Field 3 Description		
UDF4_CD	User Defined Field 4 Code		
UDF4_DESCR	User Defined Field 4 Description		
UDF5_CD	User Defined Field 5 Code		

Target Field	OBIEE Field	Source Field	Transformation / Calculation Logic
UDF5_DESCR	User Defined Field 5 Description		
UDF6_CD	User Defined Field 6 Code		
UDF6_DESCR	User Defined Field 6 Description		
UDF7_CD	User Defined Field 7 Code		
UDF7_DESCR	User Defined Field 7 Description		
UDF8_CD	User Defined Field 8 Code		
UDF8_DESCR	User Defined Field 8 Description		
UDF9_CD	User Defined Field 9 Code		
UDF9_DESCR	User Defined Field 9 Description		
UDF10_CD	User Defined Field 10 Code		
UDF10_DESCR	User Defined Field 10 Description		
EFF_START_DTTM	Effective Start Date/ Time		
EFF_END_DTTM	Effective End Date/ Time	NETWORK_COMPON ENTS.DEATH	
DATA_SOURCE_IND	Data Source Indicator	B1_PROD_INSTANCE. DSI	<b>Transformation Logic:</b> This field is populated with the DSI value on the source product instance configuration. The table is populated as part of the initial setup and the DSI value is extracted from the environment ID of the source system (CI_INSTALLATION.ENV_ID).
DATA_LOAD_DTTM	Data Load Date/Time		<b>Transformation Logic:</b> This field is populated with the load timestamp value.

Target Field	OBIEE Field	Source Field	Transformation / Calculation Logic
JOB_NBR	Job Number		<b>Transformation Logic:</b> This field is populated with the ODI job execution session number.

## Duration Deviation Dimension

The Duration Deviation dimension extracts the estimated versus actual duration bucket information.

### Properties

Property	Value
Target Table	CD_DURATION_DEVIATION
Table Type	Dimension
SCD Type	Type 1
Source System Driver Table	B1_RANGE_LOOKUP
Stage Table	STG_CD_DURATION_DEVIATION
ODI Package	B1_PKG_CD_DURATION_DEVIATION
ETL View	B1_D_DURATION_DEVIATION_VW

### Fields

Target Field	OBIEE Field	Source Field	Transformation / Calculation Logic
DURATION_DEVIATION_KEY	Estimated VS Actual Duration Dimension Surrogate Key		<b>Transformation Logic:</b> This field is populated with the sequence from B1_DURATION_DEVIATION_SEQ.NEXT_VALUE.
DURATION_DEVIATION_DESCR	Estimated VS Actual Duration Description	B1_RANGE_LOOKUP.DESCR	
RANGE_START	Start Range	B1_RANGE_LOOKUP.START_RANGE	
RANGE_END	End Range	B1_RANGE_LOOKUP.END_RANGE	
UDF1_CD	User Defined Field 1 Code		
UDF1_DESCR	User Defined Field 1 Description		

<b>Target Field</b>	<b>OBIEE Field</b>	<b>Source Field</b>	<b>Transformation / Calculation Logic</b>
UDF2_CD	User Defined Field 2 Code		
UDF2_DESCR	User Defined Field 2 Description		
UDF3_CD	User Defined Field 3 Code		
UDF3_DESCR	User Defined Field 3 Description		
UDF4_CD	User Defined Field 4 Code		
UDF4_DESCR	User Defined Field 4 Description		
UDF5_CD	User Defined Field 5 Code		
UDF5_DESCR	User Defined Field 5 Description		
UDF6_CD	User Defined Field 6 Code		
UDF6_DESCR	User Defined Field 6 Description		
UDF7_CD	User Defined Field 7 Code		
UDF7_DESCR	User Defined Field 7 Description		
UDF8_CD	User Defined Field 8 Code		
UDF8_DESCR	User Defined Field 8 Description		
UDF9_CD	User Defined Field 9 Code		
UDF9_DESCR	User Defined Field 9 Description		
UDF10_CD	User Defined Field 10 Code		
UDF10_DESCR	User Defined Field 10 Description		
UPDATE_DT_TM	Update Date/Time		

Target Field	OBIEE Field	Source Field	Transformation / Calculation Logic
DATA_SOURCE_IND	Data Source Indicator	B1_PROD_INSTANCE. DSI	<b>Transformation Logic:</b> This field is populated with the DSI value on the source product instance configuration. The table is populated as part of the initial setup and the DSI value is extracted from the environment ID of the source system (CI_INSTALLATION.E NV_ID).
DATA_LOAD_DT*TM	Data Load Date/Time		<b>Transformation Logic:</b> This field is populated with the load timestamp value.
JOB_NBR	Job Number		<b>Transformation Logic:</b> This field is populated with the ODI job execution session number.

## Estimated Restoration Duration Dimension

The Estimated Restoration Duration dimension extracts the estimated restoration duration age bucket information.

### Properties

Property	Value
Target Table	CD_EST_RST_DUR
Table Type	Dimension
SCD Type	Type 1
Source System Driver Table	B1_RANGE_LOOKUP
Stage Table	STG_CD_EST_RST_DUR
ODI Package	B1_PKG_CD_EST_RST_DUR
ETL View	B1_D_EST_RST_DUR_VW

## Fields

Target Field	OBIEE Field	Source Field	Transformation / Calculation Logic
EST_RST_DUR_KEY	Estimated Restoration Duration Dimension Surrogate Key		<b>Transformation Logic:</b> This field is populated with the sequence from B1_EST_RST_DUR_SEQ.NEXT_VAL.
EST_RST_DUR_DESCR	Estimated Restoration Duration Description	B1_RANGE_LOOKUP. DESCR	
RANGE_START	Start Range	B1_RANGE_LOOKUP. START_RANGE	
RANGE_END	End Range	B1_RANGE_LOOKUP. END_RANGE	
UDF1_CD	User Defined Field 1 Code		
UDF1_DESCR	User Defined Field 1 Description		
UDF2_CD	User Defined Field 2 Code		
UDF2_DESCR	User Defined Field 2 Description		
UDF3_CD	User Defined Field 3 Code		
UDF3_DESCR	User Defined Field 3 Description		
UDF4_CD	User Defined Field 4 Code		
UDF4_DESCR	User Defined Field 4 Description		
UDF5_CD	User Defined Field 5 Code		
UDF5_DESCR	User Defined Field 5 Description		
UDF6_CD	User Defined Field 6 Code		
UDF6_DESCR	User Defined Field 6 Description		
UDF7_CD	User Defined Field 7 Code		
UDF7_DESCR	User Defined Field 7 Description		

Target Field	OBIEE Field	Source Field	Transformation / Calculation Logic
UDF8_CD	User Defined Field 8 Code		
UDF8_DESCR	User Defined Field 8 Description		
UDF9_CD	User Defined Field 9 Code		
UDF9_DESCR	User Defined Field 9 Description		
UDF10_CD	User Defined Field 10 Code		
UDF10_DESCR	User Defined Field 10 Description		
UPDATE_DTTM	Update Date/Time		
DATA_SOURCE_IND	Data Source Indicator	B1_PROD_INSTANCE. DSI	<b>Transformation Logic:</b> This field is populated with the DSI value on the source product instance configuration. The table is populated as part of the initial setup and the DSI value is extracted from the environment ID of the source system (CI_INSTALLATION.ENV_ID).
DATA_LOAD_DTTM	Data Load Date/Time		<b>Transformation Logic:</b> This field is populated with the load timestamp value.
JOB_NBR	Job Number		<b>Transformation Logic:</b> This field is populated with the ODI job execution session number.

## Event Dimension

The Event dimension extracts event information from the Network Management System applications using the source database table JOBS.

### Properties

Property	Value
Target Table	CD_EVENT

Table Type	Dimension
SCD Type	Type 1
Source System Driver Table	JOBS
Stage Table	STG_CD_EVENT
ODI Package	B1_PKG_CD_EVENT
ETL View	B1_D_EVENT_VW

## Fields

Target Field	OBIEE Field	Source Field	Transformation / Calculation Logic
EVENT_KEY	Event Dimension Surrogate Key		<b>Transformation Logic:</b> This field is populated with the sequence from SPL_EVENT_SEQ.NEXT_VAL.
SRC_NBR	Number (Natural Key)	JOBS.NUMB	
EVENT_NBR	Event Number	JOBS.EVENT_IDX	
DELETE_IND	Delete Indicator		
EXCLUDE_REASON	Exclude Reason	PICKLIST_INFO_UPD _TR.DTR_TEXT	
OPERATOR_COMMENT	Operator Comment	JOBS.OPERATOR_COMMENT	
EVENT_STATE_CD	Event Status Code	JOBS.VALID_STATE_KEY	
EVENT_STATE_DESCRIPTION	Event Status Description	If TE_VALID_STATES.D ESCRIPTION is null, then JOBS.ALARM_STATE	
X_COORDINATE	X Coordinate	JOBS.X_COORD	
Y_COORDINATE	Y Coordinate	JOBS.Y_COORD	
FIRST_CALL_ADDR	First Call Address	JOBS.ADDR_STREET  JOBS.ADDR_CITY	
REMEDY_CD	Remedy	PICKLIST_INFO_UPD _TR.REMEDY_OM	
TROUBLE_CD_LIST	Trouble Code	JOBS.TROUBLE_CODE	
UDF1_CD	User Defined Field 1 Code	PICKLIST_INFO_UPD _TR.SCHEDULED_DE V_OM	



Target Field	OBIEE Field	Source Field	Transformation / Calculation Logic
UDF1_DESCR	Scheduled	PICKLIST_INFO_UPD _TR.SCHEDULED_DE V_OM	
UDF2_CD	User Defined Field 2 Code	PICKLIST_INFO_UPD _TR.HUMAN_ELEM_ OM	
UDF2_DESCR	Utility Error	PICKLIST_INFO_UPD _TR.HUMAN_ELEM_ OM	
UDF3_CD	User Defined Field 3 Code	PICKLIST_INFO_UPD _TR.OTHER_CAUSE_ OM	
UDF3_DESCR	Other	PICKLIST_INFO_UPD _TR.OTHER_CAUSE_ OM	
UDF4_CD	User Defined Field 4 Code	PICKLIST_INFO_UPD _TR.FOREIGN_INTE RF_OM	
UDF4_DESCR	Foreign Interference	PICKLIST_INFO_UPD _TR.FOREIGN_INTE RF_OM	
UDF5_CD	User Defined Field 5 Code	PICKLIST_INFO_UPD _TR.VEGETATION_O M	
UDF5_DESCR	Vegetation	PICKLIST_INFO_UPD _TR.VEGETATION_O M	
UDF6_CD	User Defined Field 6 Code	PICKLIST_INFO_UPD _TR.DEF_EQUIP_OM	
UDF6_DESCR	Defective Equipment	PICKLIST_INFO_UPD _TR.DEF_EQUIP_OM	
UDF7_CD	User Defined Field 7 Code	PICKLIST_INFO_UPD _TR.ADV_ENVIRON_ OM	
UDF7_DESCR	Environment	PICKLIST_INFO_UPD _TR.ADV_ENVIRON_ OM	
UDF8_CD	User Defined Field 8 Code	PICKLIST_INFO_UPD _TR.ADV_WEATHER_ OM	
UDF8_DESCR	Weather	PICKLIST_INFO_UPD _TR.ADV_WEATHER_ OM	

Target Field	OBIEE Field	Source Field	Transformation / Calculation Logic
UDF9_CD	User Defined Field 9 Code	PICKLIST_INFO_UPD _TR.SCHEDULED_DE V_OM	
		PICKLIST_INFO_UPD _TR.HUMAN_ELEM_ OM	
		PICKLIST_INFO_UPD _TR.OTHER_CAUSE_ OM	
		PICKLIST_INFO_UPD _TR.FOREIGN_INTE RF_OM	
		PICKLIST_INFO_UPD _TR.VEGETATION_O M	
		PICKLIST_INFO_UPD _TR.DEF_EQUIP_OM	
		PICKLIST_INFO_UPD _TR.ADV_ENVIRON_ OM	
		PICKLIST_INFO_UPD _TR.ADV_WEATHER_ OM	

Target Field	OBIEE Field	Source Field	Transformation / Calculation Logic
UDF9_DESCR	Outage Cause	PICKLIST_INFO_UPD _TR.SCHEDULED_DE V_OM	
		PICKLIST_INFO_UPD _TR.HUMAN_ELEM_ OM	
		PICKLIST_INFO_UPD _TR.OTHER_CAUSE_ OM	
		PICKLIST_INFO_UPD _TR.FOREIGN_INTE RF_OM	
		PICKLIST_INFO_UPD _TR.VEGETATION_O M	
		PICKLIST_INFO_UPD _TR.DEF_EQUIP_OM	
		PICKLIST_INFO_UPD _TR.ADV_ENVIRON_ OM	
		PICKLIST_INFO_UPD _TR.ADV_WEATHER_ OM	

Target Field	OBIEE Field	Source Field	Transformation / Calculation Logic
UDF10_CD	User Defined Field 10 Code	PICKLIST_INFO_UPD _TR.SCHEDULED_DE V_OM	
		PICKLIST_INFO_UPD _TR.HUMAN_ELEM_ OM	
		PICKLIST_INFO_UPD _TR.OTHER_CAUSE_ OM	
		PICKLIST_INFO_UPD _TR.FOREIGN_INTE RF_OM	
		PICKLIST_INFO_UPD _TR.VEGETATION_O M	
		PICKLIST_INFO_UPD _TR.DEF_EQUIP_OM	
		PICKLIST_INFO_UPD _TR.ADV_ENVIRON_ OM	
		PICKLIST_INFO_UPD _TR.ADV_WEATHER_ OM	

Target Field	OBIEE Field	Source Field	Transformation / Calculation Logic
UDF10_DESCR	Detailed Cause	PICKLIST_INFO_UPD _TR.SCHEDULED_DE V_OM	
		PICKLIST_INFO_UPD _TR.HUMAN_ELEM_ OM	
		PICKLIST_INFO_UPD _TR.OTHER_CAUSE_ OM	
		PICKLIST_INFO_UPD _TR.FOREIGN_INTE RF_OM	
		PICKLIST_INFO_UPD _TR.VEGETATION_O M	
		PICKLIST_INFO_UPD _TR.DEF_EQUIP_OM	
		PICKLIST_INFO_UPD _TR.ADV_ENVIRON_ OM	
		PICKLIST_INFO_UPD _TR.ADV_WEATHER_ OM	
UDF11_CD	User Defined Field 11 Code	PICKLIST_INFO_UPD _TR.REMEDY_OM	
UDF11_DESCR	Priority	PICKLIST_INFO_UPD _TR.REMEDY_OM	
UDF12_CD	User Defined Field 12 Code		
UDF12_DESCR	Standard Remarks		
UDF13_CD	User Defined Field 13 Code		
UDF13_DESCR	User Defined Field 13 Description		
UDF14_CD	User Defined Field 14 Code		
UDF14_DESCR	User Defined Field 14 Description		

<b>Target Field</b>	<b>OBIEE Field</b>	<b>Source Field</b>	<b>Transformation / Calculation Logic</b>
UDF15_CD	User Defined Field 15 Code	RELATED_OUTAGES. KEY_EVENT_IDX	
UDF15_DESCR	User Defined Field 15 Description	RELATED_OUTAGES. KEY_EVENT_IDX	
UDF16_CD	User Defined Field 16 Code		
UDF16_DESCR	User Defined Field 16 Description		
UDF17_CD	User Defined Field 17 Code		
UDF17_DESCR	User Defined Field 17 Description		
UDF18_CD	User Defined Field 18 Code		
UDF18_DESCR	User Defined Field 18 Description		
UDF19_CD	User Defined Field 19 Code		
UDF19_DESCR	User Defined Field 19 Description		
UDF20_CD	User Defined Field 20 Code		
UDF20_DESCR	User Defined Field 20 Description		
UDF21_CD	User Defined Field 21 Code		
UDF21_DESCR	User Defined Field 21 Description		
UDF22_CD	User Defined Field 22 Code		
UDF22_DESCR	User Defined Field 22 Description		
UDF23_CD	User Defined Field 23 Code		
UDF23_DESCR	User Defined Field 23 Description		
UDF24_CD	User Defined Field 24 Code		
UDF24_DESCR	User Defined Field 24 Description		

<b>Target Field</b>	<b>OBIEE Field</b>	<b>Source Field</b>	<b>Transformation / Calculation Logic</b>
UDF25_CD	User Defined Field 25 Code		
UDF25_DESCR	User Defined Field 25 Description		
UDF26_CD	User Defined Field 26 Code		
UDF26_DESCR	User Defined Field 26 Description		
UDF27_CD	User Defined Field 27 Code		
UDF27_DESCR	User Defined Field 27 Description		
UDF28_CD	User Defined Field 28 Code		
UDF28_DESCR	User Defined Field 28 Description		
UDF29_CD	User Defined Field 29 Code		
UDF29_DESCR	User Defined Field 29 Description		
UDF30_CD	User Defined Field 30 Code		
UDF30_DESCR	User Defined Field 30 Description		
UDF31_CD	User Defined Field 31 Code		
UDF31_DESCR	User Defined Field 31 Description		
UDF32_CD	User Defined Field 32 Code		
UDF32_DESCR	User Defined Field 32 Description		
UDF33_CD	User Defined Field 33 Code		
UDF33_DESCR	User Defined Field 33 Description		
UDF34_CD	User Defined Field 34 Code		
UDF34_DESCR	User Defined Field 34 Description		

Target Field	OBIEE Field	Source Field	Transformation / Calculation Logic
UDF35_CD	User Defined Field 35 Code		
UDF35_DESCR	User Defined Field 35 Description		
UDF36_CD	User Defined Field 36 Code		
UDF36_DESCR	User Defined Field 36 Description		
UDF37_CD	User Defined Field 37 Code		
UDF37_DESCR	User Defined Field 37 Description		
UDF38_CD	User Defined Field 38 Code	JOBS.H_CLS	
UDF38_DESCR	User Defined Field 38 Description	JOBS.H_CLS	
UDF39_CD	User Defined Field 39 Code	JOBS.H_IDX	
UDF39_DESCR	User Defined Field 39 Description	JOBS.H_IDX	
UDF40_CD	User Defined Field 40 Code		
UDF40_DESCR	User Defined Field 40 Description		
DATA_LOAD_DTTM	Data Load Date/Time		<b>Transformation Logic:</b> This field is populated with the load timestamp value.
DATA_SOURCE_IND	Data Source Indicator	B1_PROD_INSTANCE. DSI	<b>Transformation Logic:</b> This field is populated with the DSI value on the source product instance configuration. The table is populated as part of the initial setup and the DSI value is extracted from the environment ID of the source system (CI_INSTALLATION.E NV_ID).
UPDATE_DTTM	Update Date/Time		



Target Field	OBIEE Field	Source Field	Transformation / Calculation Logic
JOB_NBR	Job Number		<b>Transformation Logic:</b> This field is populated with the ODI job execution session number.

## Event Status Dimension

The Event Status dimension extracts various statuses of events in the TE\_VALID\_STATES table from the Network Management System database.

### Properties

Property	Value
Target Table	CD_EVENT_STATUS
Table Type	Dimension
SCD Type	Type 1
Source System Driver Table	TE_STATUSES A
Stage Table	STG_CD_EVENT_STATUS
ODI Package	B1_PKG_CD_EVENT_STATUS
ETL View	B1_D_EVENT_STATUS_VW

### Fields (

Target Field	OBIEE Field	Source Field	Transformation / Calculation Logic
EVENT_STATUS_KEY	Event Status Dimension Surrogate Key		<b>Transformation Logic:</b> This field is populated with the sequence from SPL_EVENT_STATUS_SEQ.NEXT_VAL.
SRC_STATUS	Status (Natural Key)	TE_STATUSES.TRANS_STATUS	
EVENT_STATUS_CD	Event Status Code	TE_STATUSES.DESCRPTION	<b>Transformation Logic:</b> If null, this field is populated with “-”.
EVENT_STATUS_DESCR	Event Status Description	TE_STATUSES.DESCRPTION	<b>Transformation Logic:</b> If null, this field is populated with “-”.
UDF1_CD	User Defined Field 1 Code	TE_STATUS_GROUPS.DESCRPTION	

<b>Target Field</b>	<b>OBIEE Field</b>	<b>Source Field</b>	<b>Transformation / Calculation Logic</b>
UDF1_DESCR	User Defined Field 1 Description	TE_STATUS_GROUPS. DESCRIPTION	
UDF2_CD	User Defined Field 2 Code	TE_STATUS_GROUPS. GROUP_NAME	
UDF2_DESCR	User Defined Field 2 Description	TE_STATUS_GROUPS. GROUP_NAME	
UDF3_CD	User Defined Field 3 Code		
UDF3_DESCR	User Defined Field 3 Description		
UDF4_CD	User Defined Field 4 Code		
UDF4_DESCR	User Defined Field 4 Description		
UDF5_CD	User Defined Field 5 Code		
UDF5_DESCR	User Defined Field 5 Description		
UDF6_CD	User Defined Field 6 Code		
UDF6_DESCR	User Defined Field 6 Description		
UDF7_CD	User Defined Field 7 Code		
UDF7_DESCR	User Defined Field 7 Description		
UDF8_CD	User Defined Field 8 Code		
UDF8_DESCR	User Defined Field 8 Description		
UDF9_CD	User Defined Field 9 Code		
UDF9_DESCR	User Defined Field 9 Description		
UDF10_CD	User Defined Field 10 Code		
UDF10_DESCR	User Defined Field 10 Description		

Target Field	OBIEE Field	Source Field	Transformation / Calculation Logic
DATA_LOAD_DTTM	Data Load Date/Time		<b>Transformation Logic:</b> This field is populated with the load timestamp value.
DATA_SOURCE_IND	Data Source Indicator	B1_PROD_INSTANCE. DSI	<b>Transformation Logic:</b> This field is populated with the DSI value on the source product instance configuration. The table is populated as part of the initial setup and the DSI value is extracted from the environment ID of the source system (CI_INSTALLATION_ENV_ID).
UPDATE_DTTM	Update Date/Time	TE_STATUSES.JRN_UPDATE_DTTM  TE_STATUS_GROUPS. JRN_UPDATE_DTTM	<b>Transformation Logic:</b> This field is populated with the updated timestamp value.
JOB_NBR	Job Number		<b>Transformation Logic:</b> This field is populated with the ODI job execution session number.

## Feeder Dimension

The Feeder dimension extracts the feeder and corresponding substation information from the FEEDERS table.

### Properties

Property	Value
Target Table	CD_FEEDER
Table Type	Dimension
SCD Type	Type 2
Source System Driver Table	FEEDERS
Stage Table	STG_CD_FEEDER
ODI Package	B1_PKG_CD_FEEDER
ETL View	B1_D_FEEDER_VW

**Fields (**

<b>Target Field</b>	<b>OBIEE Field</b>	<b>Source Field</b>	<b>Transformation / Calculation Logic</b>
FEEDER_KEY	Feeder Duration Dimension Surrogate Key		<b>Transformation Logic:</b> This field is populated with the sequence from SPL_FEEDER_SEQ.NEXT_VAL.
SRC_FEEDER_CLS	Feeder Class	FEEDERS.H_CLS	
SRC_FEEDER_IDX	Feeder Index	FEEDERS.H_IDX	
FEEDER_NAME	Feeder Name	FEEDERS.FEEDER_NAME  FEEDERS.H_CLS  FEEDERS.H_IDX	<b>Transformation Logic:</b> Use the feeder name if available. Else, use the combination of class and index.
SUBSTN_CD	Substation Code	FEEDERS.SUBSTATION_NAME	
SUBSTN_DESCR	Substation Name	FEEDERS.SUBSTATION_NAME	
UDF1_CD	User Defined Field 1 Code		
UDF1_DESCR	User Defined Field 1 Description		
UDF2_CD	User Defined Field 2 Code		
UDF2_DESCR	User Defined Field 2 Description		
UDF3_CD	User Defined Field 3 Code		
UDF3_DESCR	User Defined Field 3 Description		
UDF4_CD	User Defined Field 4 Code		
UDF4_DESCR	User Defined Field 4 Description		
UDF5_CD	User Defined Field 5 Code		
UDF5_DESCR	User Defined Field 5 Description		
UDF6_CD	User Defined Field 6 Code		

Target Field	OBIEE Field	Source Field	Transformation / Calculation Logic
UDF6_DESCR	User Defined Field 6 Description		
UDF7_CD	User Defined Field 7 Code		
UDF7_DESCR	User Defined Field 7 Description		
UDF8_CD	User Defined Field 8 Code		
UDF8_DESCR	User Defined Field 8 Description		
UDF9_CD	User Defined Field 9 Code		
UDF9_DESCR	User Defined Field 9 Description		
UDF10_CD	User Defined Field 10 Code		
UDF10_DESCR	User Defined Field 10 Description		
DATA_LOAD_DTTM	Data Load Date/Time		<b>Transformation Logic:</b> This field is populated with the load timestamp value.
DATA_SOURCE_IND	Data Source Indicator	B1_PROD_INSTANCE. DSI	<b>Transformation Logic:</b> This field is populated with the DSI value on the source product instance configuration. The table is populated as part of the initial setup and the DSI value is extracted from the environment ID of the source system (CI_INSTALLATION.E NV_ID).
EFF_START_DTTM	Effective Start Date/ Time		
EFF_END_DTTM	Effective End Date/ Time	FEEDERS.DEATH	
JOB_NBR	Job Number		<b>Transformation Logic:</b> This field is populated with the ODI job execution session number.

## Meter Dimension

The Meter dimension extracts meter ID and meter type details from the CU\_METERS table in the Network Management System source database.

### Properties

Property	Value
Target Table	CD_METER
Table Type	Dimension
SCD Type	Type 2
Source System Driver Table	CU_METERS
Stage Table	STG_CD_METER
ODI Package	B1_PKG_CD_METER
ETL View	B1_D_METER_VW

### Fields

Target Field	OBIEE Field	Source Field	Transformation / Calculation Logic
METER_KEY	Meter Dimension Surrogate Key		<b>Transformation Logic:</b> This field is populated with the sequence from SPL_METER_SEQ.NEXT_VAL.
SRC_METER_ID	Meter ID	CU_METERS.METER_ID	
METER_INFO	Meter Number	CU_METERS.METER_NO	
UDF1_CD	User Defined Field 1 Code	CU_METERS.METER_TYPE	
UDF1_DESCR	User Defined Field 1 Description	CU_METERS.METER_TYPE	
UDF2_CD	User Defined Field 2 Code		
UDF2_DESCR	User Defined Field 2 Description		
UDF3_CD	User Defined Field 3 Code		
UDF3_DESCR	User Defined Field 3 Description		
UDF4_CD	User Defined Field 4 Code		

Target Field	OBIEE Field	Source Field	Transformation / Calculation Logic
UDF4_DESCR	User Defined Field 4 Description		
UDF5_CD	User Defined Field 5 Code		
UDF5_DESCR	User Defined Field 5 Description		
UDF6_CD	User Defined Field 6 Code		
UDF6_DESCR	User Defined Field 6 Description		
UDF7_CD	User Defined Field 7 Code		
UDF7_DESCR	User Defined Field 7 Description		
UDF8_CD	User Defined Field 8 Code		
UDF8_DESCR	User Defined Field 8 Description		
UDF9_CD	User Defined Field 9 Code		
UDF9_DESCR	User Defined Field 9 Description		
UDF10_CD	User Defined Field 10 Code		
UDF10_DESCR	User Defined Field 10 Description		
DATA_LOAD_DTTM	Data Load Date/Time		<b>Transformation Logic:</b> This field is populated with the load timestamp value.
DATA_SOURCE_IND	Data Source Indicator	B1_PROD_INSTANCE. DSI	<b>Transformation Logic:</b> This field is populated with the DSI value on the source product instance configuration. The table is populated as part of the initial setup and the DSI value is extracted from the environment ID of the source system (CI_INSTALLATION.E NV_ID).

Target Field	OBIEE Field	Source Field	Transformation / Calculation Logic
EFF_START_DTTM	Effective Start Date/ Time	CU_METERS.LAST_U PDATE_TIME	
EFF_END_DTTM	Effective End Date/ Time	CU_METERS.LAST_U PDATE_TIME	
JOB_NBR	Job Number		<b>Transformation Logic:</b> This field is populated with the ODI job execution session number.

## Outage Duration Dimension

The Outage Duration dimension extracts the outage duration age bucket information.

### Properties

Property	Value
Target Table	CD_OUTG_DUR
Table Type	Dimension
SCD Type	Type 1
Source System Driver Table	B1_RANGE_LOOKUP
Stage Table	STG_CD_OUTG_DUR
ODI Package	B1_PKG_CD_OUTG_DUR
ETL View	B1_D_OUTG_DUR_VW

### Fields

Target Field	OBIEE Field	Source Field	Transformation / Calculation Logic
OUTG_DUR_KEY	Outage Duration Dimension Surrogate Key		<b>Transformation Logic:</b> This field is populated with the sequence from B1_OUTG_DUR_SEQ. NEXT_VAL.
OUTG_DUR_DESCR	Outage Duration Description	B1_RANGE_LOOKUP. DESCR	
RANGE_START	Start Range	B1_RANGE_LOOKUP. START_RANGE	
RANGE_END	End Range	B1_RANGE_LOOKUP. END_RANGE	



<b>Target Field</b>	<b>OBIEE Field</b>	<b>Source Field</b>	<b>Transformation / Calculation Logic</b>
UDF1_CD	User Defined Field 1 Code		
UDF1_DESCR	User Defined Field 1 Description		
UDF2_CD	User Defined Field 2 Code		
UDF2_DESCR	User Defined Field 2 Description		
UDF3_CD	User Defined Field 3 Code		
UDF3_DESCR	User Defined Field 3 Description		
UDF4_CD	User Defined Field 4 Code		
UDF4_DESCR	User Defined Field 4 Description		
UDF5_CD	User Defined Field 5 Code		
UDF5_DESCR	User Defined Field 5 Description		
UDF6_CD	User Defined Field 6 Code		
UDF6_DESCR	User Defined Field 6 Description		
UDF7_CD	User Defined Field 7 Code		
UDF7_DESCR	User Defined Field 7 Description		
UDF8_CD	User Defined Field 8 Code		
UDF8_DESCR	User Defined Field 8 Description		
UDF9_CD	User Defined Field 9 Code		
UDF9_DESCR	User Defined Field 9 Description		
UDF10_CD	User Defined Field 10 Code		
UDF10_DESCR	User Defined Field 10 Description		

Target Field	OBIEE Field	Source Field	Transformation / Calculation Logic
DATA_LOAD_DTTM	Data Load Date/Time		<b>Transformation Logic:</b> This field is populated with the load timestamp value.
DATA_SOURCE_IND	Data Source Indicator	B1_PROD_INSTANCE. DSI	<b>Transformation Logic:</b> This field is populated with the DSI value on the source product instance configuration. The table is populated as part of the initial setup and the DSI value is extracted from the environment ID of the source system (CI_INSTALLATION.ENV_ID).
UPDATE_DTTM	Update Date/Time		<b>Transformation Logic:</b> This field is populated with the updated timestamp value.
JOB_NBR	Job Number		<b>Transformation Logic:</b> This field is populated with the ODI job execution session number.

## Person Dimension

The Person dimension extracts person data from the Oracle Utilities Network Management System with all related attributes.

### Properties

Property	Value
Target Table	CD_PER
Table Type	Dimension
SCD Type	Type 2
Source System Driver Table	CU_CUSTOMERS
Stage Table	STG_CD_PER
ODI Package	B1_PKG_CD_PER
ETL View	B1_D_PER_VW

## Fields

Target Field	OBIEE Field	Source Field	Transformation / Calculation Logic
BUSINESS_IND	Business Indicator Flag		
PER_INFO	Person Info String	CU_CUSTOMERS.CUS T_NAME	
PER_KEY	Person Dimension Surrogate Key		<b>Transformation Logic:</b> This field is populated with the sequence from SPL_PER_SEQ.NEXT_VAL.
PER_NAME	Person Name	CU_CUSTOMERS.CUS T_NAME	
PER_PHONE_NBR	Person Phone Number	CU_CUSTOMERS.CUS T_HOME_PHONE  CU_CUSTOMERS.CUS T_HOME_AC	<b>Transformation Logic:</b> This field is populated with the phone number in the (001) 775-0125 format.
SRC_PER_ID	Person ID (Natural Key)	CU_CUSTOMERS.CUS T_ID	
UDF1_CD	User Defined Field 1 Code		
UDF1_DESCR	User Defined Field 1 Description		
UDF2_CD	User Defined Field 2 Code		
UDF2_DESCR	User Defined Field 2 Description		
UDF3_CD	User Defined Field 3 Code		
UDF3_DESCR	User Defined Field 3 Description		
UDF4_CD	User Defined Field 4 Code		
UDF4_DESCR	User Defined Field 4 Description		
UDF5_CD	User Defined Field 5 Code		
UDF5_DESCR	User Defined Field 5 Description		
UDF6_CD	User Defined Field 6 Code		

Target Field	OBIEE Field	Source Field	Transformation / Calculation Logic
UDF6_DESCR	User Defined Field 6 Description		
DATA_LOAD_DTTM	Data Load Date/Time		<b>Transformation Logic:</b> This field is populated with the load timestamp value.
DATA_SOURCE_IND	Data Source Indicator	B1_PROD_INSTANCE. DSI	<b>Transformation Logic:</b> This field is populated with the DSI value on the source product instance configuration. The table is populated as part of the initial setup and the DSI value is extracted from the environment ID of the source system (CI_INSTALLATION.ENV_ID).
EFF_END_DTTM	Effective End Date/Time	CU_CUSTOMERS.LAS T_UPDATE_TIME	
EFF_START_DTTM	Effective Start Date/Time	CU_CUSTOMERS.LAS T_UPDATE_TIME	
JOB_NBR	Job Number		<b>Transformation Logic:</b> This field is populated with the ODI job execution session number.

## Phase Dimension

The Phase dimension extracts phase data from the Network Management System with all related attributes.

### Properties

Property	Value
Target Table	CD_PHASE
Table Type	Dimension
SCD Type	Type 2
Source System Driver Table	PHASE_BITMAP_LOOKUP
Stage Table	STG_CD_PHASE
ODI Package	B1_PKG_CD_PHASE
ETL View	B1_D_PHASE_VW

## Fields

Target Field	OBIEE Field	Source Field	Transformation / Calculation Logic
PHASE_KEY	Phase Dimension Surrogate Key		<b>Transformation Logic:</b> This field is populated with the sequence from SPL_PHASE_SEQ.NEXT_VAL.
SRC_PHASE_ID	Phase ID	PHASE_BITMAP_LOO KUP.PHASE_BITS	
PHASE_CD		PHASE_BITMAP_LOO KUP.PHASE_STRING	
PHASE_DESCR	Phase	PHASE_BITMAP_LOO KUP.PHASE_STRING	
UDF1_CD	User Defined Field 1 Code		
UDF1_DESCR	User Defined Field 1 Description		
UDF2_CD	User Defined Field 2 Code		
UDF2_DESCR	User Defined Field 2 Description		
UDF3_CD	User Defined Field 3 Code		
UDF3_DESCR	User Defined Field 3 Description		
UDF4_CD	User Defined Field 4 Code		
UDF4_DESCR	User Defined Field 4 Description		
UDF5_CD	User Defined Field 5 Code		
UDF5_DESCR	User Defined Field 5 Description		
DATA_LOAD_DT*TM	Data Load Date/Time		<b>Transformation Logic:</b> This field is populated with the load timestamp value.

Target Field	OBIEE Field	Source Field	Transformation / Calculation Logic
DATA_SOURCE_IND	Data Source Indicator	B1_PROD_INSTANCE. DSI	<b>Transformation Logic:</b> This field is populated with the DSI value on the source product instance configuration. The table is populated as part of the initial setup and the DSI value is extracted from the environment ID of the source system (CI_INSTALLATION.E NV_ID).
EFF_END_DTTM	Effective End Date/ Time	CU_CUSTOMERS.LAS T_UPDATE_TIME	
EFF_START_DTTM	Effective Start Date/ Time	CU_CUSTOMERS.LAS T_UPDATE_TIME	
JOB_NBR	Job Number		<b>Transformation Logic:</b> This field is populated with the ODI job execution session number.

## Premise Dimension

The Premise dimension extracts premise information from the CU\_SERVICE\_LOCATIONS table in the Network Management System source database.

### Properties

Property	Value
Target Table	CD_PREM
Table Type	Dimension
SCD Type	Type 2
Source System Driver Table	CU_SERVICE_LOCATIONS
Stage Table	STG_CD_PREM
ODI Package	B1_PKG_CD_PREM
ETL View	B1_D_PREM_VW

## Fields

Target Field	OBIEE Field	Source Field	Transformation / Calculation Logic
PREM_KEY	Premise Dimension Surrogate Key		<b>Transformation Logic:</b> This field is populated with the sequence from SPL_PREM_SEQ.NEXT_VAL.
SRC_PREM_ID	Premise ID (Natural Key)	CU_SERVICE_LOCATIONS.SERV_LOC_ID	
PREM_INFO	Premise Info String	CU_SERVICE_LOCATIONS.SERV_LOC_ID	
UDF1_CD	Jurisdiction Code		
UDF1_DESCR	Jurisdiction		
UDF2_CD	Premise Type Code	CU_SERVICE_LOCATIONS.SERV_TYPE	
UDF2_DESCR	Premise Type	CU_SERVICE_LOCATIONS.SERV_TYPE	
UDF3_CD	Life Support Flag Code	CU_SERVICE_LOCATIONS.SERV_LIFE_SUPPORT	
UDF3_DESCR	Life Support Flag	CU_SERVICE_LOCATIONS.SERV_LIFE_SUPPORT	
UDF4_CD	Trend Area Code		
UDF4_DESCR	Trend Area		
UDF5_CD	In City Limit Code		
UDF5_DESCR	In City Limit		
UDF6_CD	User Defined Field 6 Code	CU_SERVICE_LOCATIONS.SERV_C_PRIORITY	
UDF6_DESCR	User Defined Field 6 Description	CU_SERVICE_LOCATIONS.SERV_C_PRIORITY	
UDF7_CD	User Defined Field 7 Code	CU_SERVICE_LOCATIONS.SERV_D_PRIORITY	
UDF7_DESCR	User Defined Field 8 Description	CU_SERVICE_LOCATIONS.SERV_D_PRIORITY	
UDF8_CD	User Defined Field 8 Code	CU_SERVICE_LOCATIONS.SERV_K_PRIORITY	

<b>Target Field</b>	<b>OBIEE Field</b>	<b>Source Field</b>	<b>Transformation / Calculation Logic</b>
UDF8_DESCR	User Defined Field 8 Description	CU_SERVICE_LOCAT IONS.SERV_K_PRIOR ITY	
UDF9_CD	User Defined Field 9 Code		
UDF9_DESCR	User Defined Field 9 Description		
UDF10_CD	User Defined Field 10 Code		
UDF10_DESCR	User Defined Field 10 Description		
UDF11_CD	User Defined Field 11 Code		
UDF11_DESCR	User Defined Field 11 Description		
UDF12_CD	User Defined Field 12 Code		
UDF12_DESCR	User Defined Field 12 Description		
UDF13_CD	User Defined Field 13Code		
UDF13_DESCR	User Defined Field 13 Description		
UDF14_CD	User Defined Field 14 Code		
UDF14_DESCR	User Defined Field 14 Description		
UDF15_CD	User Defined Field 15Code		
UDF15_DESCR	User Defined Field 15 Description		
UDF16_CD	User Defined Field 16 Code		
UDF16_DESCR	User Defined Field 16 Description		
UDF17_CD	User Defined Field 17Code		
UDF17_DESCR	User Defined Field 17 Description		
UDF18_CD	User Defined Field 18 Code		



Target Field	OBIEE Field	Source Field	Transformation / Calculation Logic
UDF18_DESCR	User Defined Field 18 Description		
DATA_LOAD_DTTM	Data Load Date/Time		<b>Transformation Logic:</b> This field is populated with the load timestamp value.
DATA_SOURCE_IND	Data Source Indicator	B1_PROD_INSTANCE. DSI	<b>Transformation Logic:</b> This field is populated with the DSI value on the source product instance configuration. The table is populated as part of the initial setup and the DSI value is extracted from the environment ID of the source system (CI_INSTALLATION.E NV_ID).
EFF_END_DTTM	Effective End Date/Time	CU_CUSTOMERS.LAS T_UPDATE_TIME	
EFF_START_DTTM	Effective Start Date/Time	CU_CUSTOMERS.LAS T_UPDATE_TIME	
JOB_NBR	Job Number		<b>Transformation Logic:</b> This field is populated with the ODI job execution session number.

## Storm Dimension

The Storm dimension extracts storm specific data from the Network Management System with all related attributes.

### Properties

Property	Value
Target Table	CD_STORM
Table Type	Dimension
SCD Type	Type 1
Source System Driver Table	STORMMAN_STORMS SS
Stage Table	STG_CD_STORM
ODI Package	B1_PKG_CD_STORM
ETL View	B1_D_STORM_VW

## Fields

Target Field	OBIEE Field	Source Field	Transformation / Calculation Logic
STORM_KEY	Storm Dimension Surrogate Key		<b>Transformation Logic:</b> This field is populated with the sequence from SPL_STORM_SEQ.NEXT_VAL.
SRC_STORM_NAME	Storm Name	SS.STORM_NAME	
SRC_STORM_NAME_SFX	Storm Name Suffix	SS.STORM_DATE	
STORM_TYPE_CD	Storm Type Code	SS.STORM_TYPE	
STORM_TYPE_DESCR	Storm Type	SS.STORM_TYPE_NAME	
STORM_LEVEL_CD		SS.STORM_LEVEL	
STORM_LEVEL_DESCR	Storm Level	SS.STORM_LEVEL	
STORM_START_DTTM	Date/Time the Storm Started	SS.STORM_START	
STORM_END_DTTM	Date/Time the Storm Ended	SS.STORM_END	
UDF1_CD	User Defined Field 1 Code	SS.STORM_START	
UDF1_DESCR	User Defined Field 1 Description	SS.STORM_START	
UDF2_CD	User Defined Field 2 Code	SS.STORM_END	
UDF2_DESCR	User Defined Field 2 Description	SS.STORM_END	
UDF3_CD	User Defined Field 3 Code		
UDF3_DESCR	User Defined Field 3 Description		
UDF4_CD	User Defined Field 4 Code		
UDF4_DESCR	User Defined Field 4 Description		
UDF5_CD	User Defined Field 5 Code		
UDF5_DESCR	User Defined Field 5 Description		

Target Field	OBIEE Field	Source Field	Transformation / Calculation Logic
UDF6_CD	User Defined Field 6 Code		
UDF6_DESCR	User Defined Field 6 Description		
UDF7_CD	User Defined Field 7 Code		
UDF7_DESCR	User Defined Field 8 Description		
UDF8_CD	User Defined Field 8 Code		
UDF8_DESCR	User Defined Field 8 Description		
UDF9_CD	User Defined Field 9 Code		
UDF9_DESCR	User Defined Field 9 Description		
UDF10_CD	User Defined Field 10 Code		
UDF10_DESCR	User Defined Field 10 Description		
DATA_LOAD_DTTM	Data Load Date/Time		<b>Transformation Logic:</b> This field is populated with the load timestamp value.
DATA_SOURCE_IND	Data Source Indicator	B1_PROD_INSTANCE. DSI	<b>Transformation Logic:</b> This field is populated with the DSI value on the source product instance configuration. The table is populated as part of the initial setup and the DSI value is extracted from the environment ID of the source system (CI_INSTALLATION.ENV_ID).
UPDATE_DTTM	Update Date/Time		<b>Transformation Logic:</b> This field is populated with the updated timestamp value.
JOB_NBR	Job Number		<b>Transformation Logic:</b> This field is populated with the ODI job execution session number.

## Storm Outage Type Dimension

The Storm Outage Type dimension extracts the storm outage type data from Oracle Utilities Network Management System with all related attributes.

### Properties

Property	Value
Target Table	CD_STORM_OUTAGE_TYPE
Table Type	Dimension
SCD Type	Type 1
Source System Driver Table	STORMMAN_OUTAGE_TYPES
Stage Table	STG_CD_STORM_OUTAGE_TYPE
ODI Package	B1_PKG_CD_STORM_OUTAGE_TYPE
ETL View	B1_D_STORM_OUTAGE_TYPE_VW

### Fields

Target Field	OBIEE Field	Source Field	Transformation / Calculation Logic
STORM_OUTAGE_TY PE_KEY	Storm Outage Type Dimension Surrogate Key		<b>Transformation Logic:</b> This field is populated with the sequence from SPL_STORM_OUTAG E_TYPE_SEQ.NEXT_ VAL.
SRC_OUTAGE_TYPE	Outage Type Code	STORMMAN_OUTAG E_TYPES.OUTAGE_T YPE	
OUTAGE_TYPE_CD		STORMMAN_OUTAG E_TYPES.OUTAGE_T YPE	
OUTAGE_TYPE_DES CR	Outage Type Description	STORMMAN_OUTAG E_TYPES.OUTAGE_T YPE_NAME	<b>Transformation Logic:</b> If null, this populated with “-”.
UDF1_CD	User Defined Field 1 Code		
UDF1_DESCR	User Defined Field 1 Description		
UDF2_CD	User Defined Field 2 Code		
UDF2_DESCR	User Defined Field 2 Description		
UDF3_CD	User Defined Field 3 Code		

Target Field	OBIEE Field	Source Field	Transformation / Calculation Logic
UDF3_DESCR	User Defined Field 3 Description		
UDF4_CD	User Defined Field 4 Code		
UDF4_DESCR	User Defined Field 4 Description		
UDF5_CD	User Defined Field 5 Code		
UDF5_DESCR	User Defined Field 5 Description		
DATA_LOAD_DTTM	Data Load Date/Time		<b>Transformation Logic:</b> This field is populated with the load timestamp value.
DATA_SOURCE_IND	Data Source Indicator	B1_PROD_INSTANCE. DSI	<b>Transformation Logic:</b> This field is populated with the DSI value on the source product instance configuration. The table is populated as part of the initial setup and the DSI value is extracted from the environment ID of the source system (CI_INSTALLATION.E NV_ID).
UPDATE_DTTM	Update Date/Time		<b>Transformation Logic:</b> This field is populated with the updated timestamp value.
JOB_NBR	Job Number		<b>Transformation Logic:</b> This field is populated with the ODI job execution session number.

## Supply Node Lookup Dimension

The Supply Node Lookup dimension extracts the distinct service point (premise, person, and meter) information along with the device they are attached to.

**Note:** This dimension is not joined to any fact, but is used to lookup data before the fact load.

## Properties

Property	Value
Target Table	CD_SNL
Table Type	Dimension
SCD Type	Type 2
Source System Driver Table	SUPPLY_NODES CU_SERVICE_POINTS CU_SERVICE_LOCATIONS
Stage Table	STG_CD_SNL
ODI Package	B1_PKG_CD_SNL
ETL View	B1_D_SNL_VW

## Fields

Target Field	OBIEE Field	Source Field	Transformation / Calculation Logic
SNL_KEY	Supply Node Lookup Dimension Surrogate Key		<b>Transformation Logic:</b> This field is populated with the sequence from SPL_SNL_SEQ.NEXT_ VAL.
SRC_METER_ID	Meter ID	CU_SERVICE_POINTS .METER_ID	
SRC_PERSON_ID	Person ID	CU_SERVICE_POINTS .CUST_ID	
SRC_PREMISE_ID	Premise ID	CU_SERVICE_LOCAT IONS.SERV_LOC_ID	
SRC_ACCOUNT_ID	Account ID	CU_SERVICE_LOCAT IONS.SERV_ACCOUN T_NUMBER	
SRC_ADDR_ID	Address	CU_SERVICE_POINTS .SERV_LOC_ID	
DEVICE_ID	Device ID	CUSTOMER_EDIT_VI EW.DEVICE_ID  SUPPLY_NODES.DEV ICE_ID	
FEEDER_ID	Feeder ID	CUSTOMER_EDIT_VI EW.FEEDER  SUPPLY_NODES.FEE DER	
NCG_ID	NCG ID	SUPPLY_NODES.NCG	

Target Field	OBIEE Field	Source Field	Transformation / Calculation Logic
UDF1_CD	User Defined Field 1 Code		
UDF1_DESCR	User Defined Field 1 Description		
UDF2_CD	User Defined Field 2 Code		
UDF2_DESCR	User Defined Field 2 Description		
UDF3_CD	User Defined Field 3 Code		
UDF3_DESCR	User Defined Field 3 Description		
UDF4_CD	User Defined Field 4 Code		
UDF4_DESCR	User Defined Field 4 Description		
UDF5_CD	User Defined Field 5 Code		
UDF5_DESCR	User Defined Field 5 Description		
DATA_LOAD_DTTM	Data Load Date/Time		<b>Transformation Logic:</b> This field is populated with the load timestamp value.
DATA_SOURCE_IND	Data Source Indicator	B1_PROD_INSTANCE. DSI	<b>Transformation Logic:</b> This field is populated with the DSI value on the source product instance configuration. The table is populated as part of the initial setup and the DSI value is extracted from the environment ID of the source system (CI_INSTALLATION.ENV_ID).
EFF_START_DTTM	Effective Start Date/Time		

Target Field	OBIEE Field	Source Field	Transformation / Calculation Logic
EFF_END_DTTM	Effective End Date/ Time	SUPPLY_NODES.LEAST(SUPPLY_NODES.DEATH,CU_SERVICE_LOCATIONS,JRN_EFF_END_DTTM,CU_SERVICE_POINTS,JRN_EFF_END_DTTM)	
JOB_NBR	Job Number		<b>Transformation Logic:</b> This field is populated with the ODI job execution session number.

## Switch Plan Dimension

The Switch Plan dimension extracts switch plan data from the Oracle Utilities Network Management System with all related attributes.

### Properties

Property	Value
Target Table	CD_SW_PLAN
Table Type	Dimension
SCD Type	Type 1
Source System Driver Table	SWMAN_SHEET
Stage Table	STG_CD_SW_PLAN
ODI Package	B1_PKG_CD_SW_PLAN
ETL View	B1_D_SW_PLAN_VW

### Fields

Target Field	OBIEE Field	Source Field	Transformation / Calculation Logic
SW_PLAN_KEY	Switch Plan Dimension Surrogate Key		<b>Transformation Logic:</b> This field is populated with the sequence from SPL_SW_PLAN_SEQ.NEXT_VAL.
SRC_SW_PLAN_CLS	Switch Plan Class	SWMAN_SHEET.SWITCH_SHEET_CLS	
SRC_SW_PLAN_IDX	Switch Plan Index	SWMAN_SHEET.SWITCH_SHEET_IDX	



<b>Target Field</b>	<b>OBIEE Field</b>	<b>Source Field</b>	<b>Transformation / Calculation Logic</b>
UDF1_CD	User Defined Field 1 Code		
UDF1_DESCR	User Defined Field 1 Description		
UDF2_CD	User Defined Field 2 Code		
UDF2_DESCR	User Defined Field 2 Description		
UDF3_CD	User Defined Field 3 Code		
UDF3_DESCR	User Defined Field 3 Description		
UDF4_CD	User Defined Field 4 Code		
UDF4_DESCR	User Defined Field 4 Description		
UDF5_CD	User Defined Field 5 Code		
UDF5_DESCR	User Defined Field 5 Description		
UDF6_CD	User Defined Field 6 Code		
UDF6_DESCR	User Defined Field 6 Description		
UDF7_CD	User Defined Field 7 Code		
UDF7_DESCR	User Defined Field 7 Description		
UDF8_CD	User Defined Field 8 Code		
UDF8_DESCR	User Defined Field 8 Description		
UDF9_CD	User Defined Field 9 Code		
UDF9_DESCR	User Defined Field 9 Description		
UDF10_CD	User Defined Field 10 Code		
UDF10_DESCR	User Defined Field 10 Description		

Target Field	OBIEE Field	Source Field	Transformation / Calculation Logic
DATA_LOAD_DTTM	Data Load Date/Time		<b>Transformation Logic:</b> This field is populated with the load timestamp value.
DATA_SOURCE_IND	Data Source Indicator	B1_PROD_INSTANCE. DSI	<b>Transformation Logic:</b> This field is populated with the DSI value on the source product instance configuration. The table is populated as part of the initial setup and the DSI value is extracted from the environment ID of the source system (CI_INSTALLATION.E NV_ID).
UPDATE_DTTM	Update Date/Time	SWMAN_SHEET.UPD ATE_TIME	<b>Transformation Logic:</b> This field is populated with the updated timestamp value.
JOB_NBR	Job Number		<b>Transformation Logic:</b> This field is populated with the ODI job execution session number.

## Switch Plan State Dimension

The Switch Plan State dimension extracts switch plan data from the Oracle Utilities Network Management System with all related attributes.

### Properties

Property	Value
Target Table	CD_SW_PLAN_STATE
Table Type	Dimension
SCD Type	Type 1
Source System Driver Table	TE_VALID_STATES
Stage Table	STG_CD_SW_PLAN_STATE
ODI Package	B1_PKG_CD_SW_PLAN_STATE
ETL View	B1_D_SW_PLAN_STATE_VW

## Fields

Target Field	OBIEE Field	Source Field	Transformation / Calculation Logic
SW_PLAN_STATE_KEY Y	Switch Plan State Dimension Surrogate Key		<b>Transformation Logic:</b> This field is populated with the sequence from SPL_SW_PLAN_STAT E_SEQ.NEXT_VAL.
SRC_STATE_KEY		TE_VALID_STATES.ST ATE_KEY	
STATE_CD	Switch Plan State Code	TE_VALID_STATES.ST ATE_NAME	
STATE_DESCR	Switch Plan State	TE_VALID_STATES.D ESCRPTION	
UDF1_CD	User Defined Field 1 Code		
UDF1_DESCR	User Defined Field 1 Description		
UDF2_CD	User Defined Field 2 Code		
UDF2_DESCR	User Defined Field 2 Description		
UDF3_CD	User Defined Field 3 Code		
UDF3_DESCR	User Defined Field 3 Description		
UDF4_CD	User Defined Field 4 Code		
UDF4_DESCR	User Defined Field 4 Description		
UDF5_CD	User Defined Field 5 Code		
UDF5_DESCR	User Defined Field 5 Description		
DATA_LOAD_DT*TM	Data Load Date/Time		<b>Transformation Logic:</b> This field is populated with the load timestamp value.

Target Field	OBIEE Field	Source Field	Transformation / Calculation Logic
DATA_SOURCE_IND	Data Source Indicator	B1_JOB_CONFIG.DSI	<b>Transformation Logic:</b> This field is populated with the DSI value on the source product instance configuration. The table is populated as part of the initial setup and the DSI value is extracted from the environment ID of the source system (CI_INSTALLATION_ENV_ID).
UPDATE_DTTM	Update Date/Time	TE_VALID_STATES.UPDATE_DTTM	<b>Transformation Logic:</b> This field is populated with the updated timestamp value.
JOB_NBR	Job Number		<b>Transformation Logic:</b> This field is populated with the ODI job execution session number.

## User Dimension

The User dimension extracts the details of all users from the Oracle Utilities Network Management System source database.

### Properties

Property	Value
Target Table	CD_USER
Table Type	Dimension
SCD Type	Type 2
Source System Driver Table	CES_USER
Stage Table	STG_CD_USER
ODI Package	B1_PKG_CD_USER
ETL View	B1_D_USER_VW

## Fields

Target Field	OBIEE Field	Source Field	Transformation / Calculation Logic
USER_KEY	User Dimension Surrogate Key		<b>Transformation Logic:</b> This field is populated with the sequence from SPL_USER_SEQ.NEXT_VAL.
USER_CD	User Code (Natural Key)	CES_USER.USER_NAME	
USER_DESCR	User Description	CES_USER.FULL_NAME	<b>Transformation Logic:</b> If null, this field is populated with “-”.
UDF1_CD	User Defined Field 1 Code		
UDF1_DESCR	User Defined Field 1 Description		
UDF2_CD	User Defined Field 2 Code		
UDF2_DESCR	User Defined Field 2 Description		
UDF3_CD	User Defined Field 3 Code		
UDF3_DESCR	User Defined Field 3 Description		
UDF4_CD	User Defined Field 4 Code		
UDF4_DESCR	User Defined Field 4 Description		
UDF5_CD	User Defined Field 5 Code		
UDF5_DESCR	User Defined Field 5 Description		
UDF6_CD	User Defined Field 6 Code		
UDF6_DESCR	User Defined Field 6 Description		
UDF7_CD	User Defined Field 7 Code		
UDF7_DESCR	User Defined Field 7 Description		
UDF8_CD	User Defined Field 8 Code		

Target Field	OBIEE Field	Source Field	Transformation / Calculation Logic
UDF8_DESCR	User Defined Field 8 Description		
UDF9_CD	User Defined Field 9 Code		
UDF9_DESCR	User Defined Field 9 Description		
UDF10_CD	User Defined Field 10 Code		
UDF10_DESCR	User Defined Field 10 Description		
DATA_LOAD_DTTM	Data Load Date/Time		<b>Transformation Logic:</b> This field is populated with the load timestamp value.
DATA_SOURCE_IND	Data Source Indicator	B1_JOB_CONFIG.DSI	<b>Transformation Logic:</b> This field is populated with the DSI value on the source product instance configuration. The table is populated as part of the initial setup and the DSI value is extracted from the environment ID of the source system (CI_INSTALLATION_ENV_ID).
EFF_START_DTTM	Effective Start Date/ Time	CES_USER.LAST_UPD ATE_TIME	
EFF_END_DTTM	Effective End Date/ Time	CES_USER.LAST_UPD ATE_TIME	
JOB_NBR	Job Number		<b>Transformation Logic:</b> This field is populated with the ODI job execution session number.

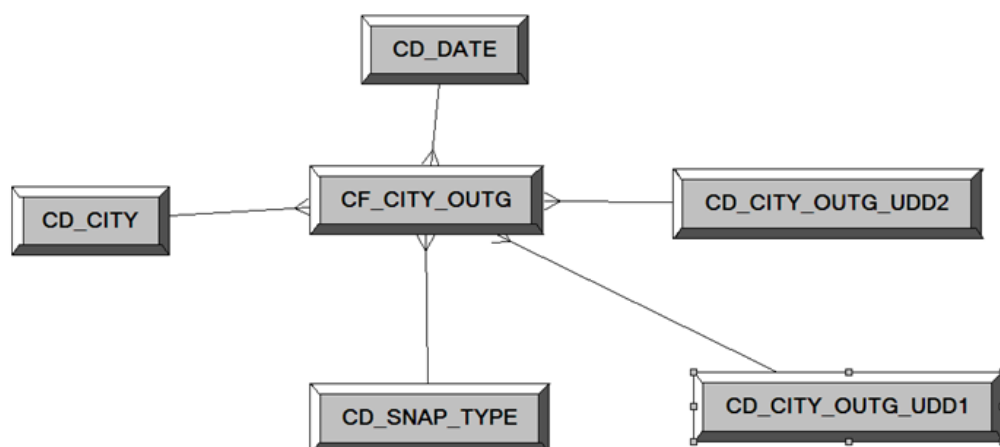
## Fact Tables

### City Outage Fact

The City Outage fact stores KPIs such as CMI, SAIDI, SAIFI, number of customers, number of interruptions, etc.

This fact is unusual in the sense that its data is not populated directly from the source tables in the replication schema. It is a calculated fact whose data is derived from the data in the [Recent Customer Outage Fact](#) and its related dimensions.

### Entity Relationship Diagram



### Properties

Property	Value
Target Table Name	CF_CITY_OUTG
Table Type	Fact
Fact Type	Snapshot
Driver Table	CD_CITY
Stage Table Name	STG_CF_CITY_OUTG
ODI Package Name	B1_PKG_CF_CITY_OUTG
ETL View Name	B1_F_CITY_OUTG_VW
Materialized View Name	B1_CITY_OUTG_MON_MV1

### Fields

Target Field	OBIEE Field	Source Field	Transformation / Calculation Logic
CITY_OUTG_KEY	City Outage Snapshot Fact Key		<b>Transformation Logic:</b> This field is populated with the sequence from SPL_CITY_OUTG_SE Q.

Target Field	OBIEE Field	Source Field	Transformation / Calculation Logic
TMED_IND	Timed Indicator		<b>Transformation Logic:</b> This field is populated with '0'.
SNAP_TYPE_CD	Snapshot Type Code	B1_TARGET_ENTITY. SCHED_TYPE_FLG	<b>Transformation Logic:</b> This field is populated the snapshot type.
SNAPSHOT_DATE_KEY	Snapshot Date	B1_JOB_CONFIG.SLICE. END_DTTM	<b>Transformation Logic:</b> Based on the snapshot date, this field is populated with surrogate key from CD_DATE.
BEGIN_DATE_KEY	Begin Date	B1_JOB_CONFIG.SLICE. START_DTTM	<b>Transformation Logic:</b> Based on the begin date, this field is populated with surrogate key from CD_DATE.
END_DATE_KEY	End Date	B1_JOB_CONFIG.SLICE. END_DTTM	<b>Transformation Logic:</b> Based on the end date, this field is populated with surrogate key from CD_DATE.
NUM_CUST_SERVED	Number of Customers Served	CD_SNL.EFF_START_DTTM  CD_SNL.EFF_END_DTTM	<b>Transformation Logic:</b> This field is populated with the average number of customers in the city during the period.
NUM_SUST_INTRPT	Number Sustained Interruptions	CF_CUST_RST_OUTG. BEGIN_DTTM  CF_CUST_RST_OUTG. RST_DTTM	<b>Transformation Logic:</b> This field is populated with the count of outages by city where outage duration is greater than P_MOM_DURATION_MINS.
NUM_MOM_INTRPT	Number of Momentary Interruptions	CF_CUST_RST_OUTG. BEGIN_DTTM  CF_CUST_RST_OUTG. RST_DTTM	<b>Transformation Logic:</b> This field is populated with the count of outages by city where outage duration is less than P_MOM_DURATION_MINS.
CMI	Total Customer Minutes	CF_CUST_RST_OUTG. BEGIN_DTTM  CF_CUST_RST_OUTG. RST_DTTM	<b>Transformation Logic:</b> This field is populated with the customer minutes interrupted.



Target Field	OBIEE Field	Source Field	Transformation / Calculation Logic
NUM_MULT_SUST_IN TRPT	Numb. Mult. Sust. Interruption	CF_CUST_RST_OUTG. PER.SRC_PER_ID  CF_CUST_RST_OUTG. PREM.SRC_PREM_ID  CF_CUST_RST_OUTG. METER.SRC_METER_ ID	<b>Transformation Logic:</b> This field is populated with the customer count who experienced more than P_CEMI_COUNT sustained interruptions during the period.
NUM_MULT_CUST_I NTRPT	Numb. Mult. Cust. Interruption	CF_CUST_RST_OUTG. PER.SRC_PER_ID  CF_CUST_RST_OUTG. PREM.SRC_PREM_ID  CF_CUST_RST_OUTG. METER.SRC_METER_ ID	<b>Transformation Logic:</b> This field is populated with the customer count who experienced more than P_CEMI_COUNT interruptions (both sustained and momentary) during the period.
SAIDI	SAIDI	CF_CUST_RST_OUTG. BEGIN_DTTM  CF_CUST_RST_OUTG. RST_DTTM	<b>Transformation Logic:</b> This field is populated with customer minutes interrupted by number of customers served.
CAIDI	CAIDI		<b>Transformation Logic:</b> This field is populated with customer minutes interrupted by number of outages.
SAIFI	SAIFI		<b>Transformation Logic:</b> This field is populated with number of outages by number of customers served.
CEMI	CEMI		<b>Transformation Logic:</b> This field is populated with the ratio of individual customers experiencing more than P_CEMI_COUNT sustained interruptions to the total number of customers served.

Target Field	OBIEE Field	Source Field	Transformation / Calculation Logic
CEMSMI	CEMSMI		<p><b>Transformation Logic:</b> This field is populated with the ratio of individual customers experiencing more than P-CEMI_COUNT of both sustained and momentary interruption events to the total customers served.</p>
CAIFI	CAIFI		<p><b>Transformation Logic:</b> This field is populated with the average frequency of sustained interruptions for customers experiencing sustained interruptions during the specified period for the specified area.</p>
MAIFI	MAIFI		<p><b>Transformation Logic:</b> This field is populated with the number of momentary interruptions by number of customers served.</p>
MAIFIE	MAIFIE		<p><b>Transformation Logic:</b> This field indicates how often an average customer experienced a momentary interruption event during the specified period.</p> <p><b>Note:</b> It does not include momentary interruptions immediately preceding a lockout.</p>
ASAI	ASAI		<p><b>Transformation Logic:</b> This field is populated with the average service availability index value.</p>
ACI	ACI		

Target Field	OBIEE Field	Source Field	Transformation / Calculation Logic
MSAIFI	MSAIFI		<b>Transformation Logic:</b> This field indicates how often an average customer experienced a momentary and sustained interruption during the specified period.
CITY_KEY	City Dimension Surrogate Key	CD_CITY.CITY_KEY	
NUM_CUST_INTRPT	Number Customers Interrupted		<b>Transformation Logic:</b> This field is populated with the number of customers who experienced an interruption during the period.
NUM_MOM_E_INTRPT	Number of Mom. E. Intrpt		<b>Transformation Logic:</b> This field is populated with the number of momentary events during the period, excluding the events that immediately precede a sustained interruption.
NUM_EVENT	Number of Events		<b>Transformation Logic:</b> This field is populated with the number of events during the period.
CITY_OUTG_UDD1_KEY	City Outage User Defined Dimension 1		
CITY_OUTG_UDD2_KEY	City Outage User Defined Dimension 2		
FACT_CNT	Number of Calls		<b>Transformation Logic:</b> This field is populated with the standard value of '1'.
UDM1	User Defined Measure 1		
UDM2	User Defined Measure 2		
UDM3	User Defined Measure 3		
UDM4	User Defined Measure 4		
UDM5	User Defined Measure 5		
UDDGEN1	User Defined Degenerate Dimension 1		

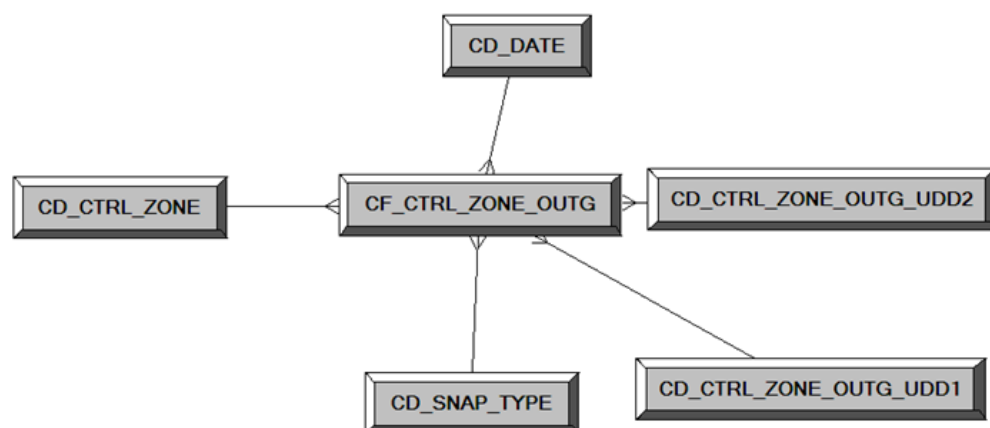
Target Field	OBIEE Field	Source Field	Transformation / Calculation Logic
UDDGEN2	User Defined Degenerate Dimension 2		
UDDGEN3	User Defined Degenerate Dimension 3		
NUM_CUST_SUST_IN TRPT	Number of Customers with Sustained Interruptions		<b>Transformation Logic:</b> This field is populated with the number of customers who experienced a sustained interruption during the period.
SNAPSHOT_DT	Snapshot Date	B1_JOB_CONFIG.SLICE_END_DTTM	
SRC_CITY	City	CD_CITY.SRC_CITY	
SRC_STATE	State	CD_CITY.SRC_STATE	
SRC_COUNTRY	Country	CD_CITY.SRC_COUNTRY	
DATA_SOURCE_IND	Data Source Indicator	B1_PROD_INSTANCE.DSI	<b>Transformation Logic:</b> This field is populated with the DSI value on the source product instance configuration. This table is populated as part of the initial setup and the DSI value is extracted from the environment ID of the source system (CI_INSTALLATION_ENV_ID).
JOB_NBR	Job Number		<b>Transformation Logic:</b> This field is populated with the ODI job execution session number.

## Control Zone Outage Fact

The Control Zone Outage fact stores the KPI related information (such as CMI, SAIDI, SAIFI, number of customers, number of interruptions, etc) in the source system.

This fact is unusual in the sense that its data is not populated directly from the source tables in the replication schema. It is a calculated fact whose data is derived from the data in the [Restored Customer Outage Fact](#) and its related dimensions.

### Entity Relationship Diagram



### Properties

Property	Value
Target Table Name	CF_CTRL_ZONE_OUTG
Table Type	Fact
Fact Type	Snapshot
Driver Table	CD_CTRL_ZONE
Stage Table Name	STG_CF_CTRL_ZONE_OUTG
ODI Package Name	B1_PKG_CF_CTRL_ZONE_OUTG
ETL View Name	B1_F_CTRL_ZONE_OUTG_VW
Materialized View Name	B1_CTRL_ZONE_OUTG_MON_MV1 B1_CTRL_ZONE_OUTG_MON_MV2

### Fields

Target Field	OBIEE Field	Source Field	Transformation / Calculation Logic
CTRL_ZONE_OUTG_KEY	Control Zone Outage Snapshot Fact Key		<b>Transformation Logic:</b> This field is populated with the sequence from SPL_CTRL_ZONE_OUTG_SEQ.
TMED_IND	Timed Indicator		

Target Field	OBIEE Field	Source Field	Transformation / Calculation Logic
SNAP_TYPE_CD	Snapshot Type Code	B1_TARGET_ENTITY. SCHED_TYPE_FLG	
SNAPSHOT_DATE_KEY	Snapshot Date	B1_JOB_CONFIG.SLICE_END_DTTM	<b>Transformation Logic:</b> Based on the snapshot date, this field is populated with surrogate key from CD_DATE.
BEGIN_DATE_KEY	Begin Date	B1_JOB_CONFIG.SLICE_START_DTTM	<b>Transformation Logic:</b> Based on the begin date, this field is populated with surrogate key from CD_DATE.
END_DATE_KEY	End Date	B1_JOB_CONFIG.SLICE_END_DTTM	<b>Transformation Logic:</b> Based on the end date, this field is populated with surrogate key from CD_DATE.
NUM_CUST_SERVED	Number of Customers Served	CD_SNL.EFF_START_DTTM  CD_SNL.EFF_END_DTTM	<b>Transformation Logic:</b> This field is populated with the average number of customers in the city during the period.
NUM_SUST_INTRPT	Number Sustained Interruptions	CF_CUST_RST_OUTG.BEGIN_DTTM  CF_CUST_RST_OUTG.RST_DTTM	<b>Transformation Logic:</b> This field is populated with the count of outages by city where outage duration is greater than p_mom_duration mins.
NUM_MOM_INTRPT	Number of Momentary Interruptions	CF_CUST_RST_OUTG.BEGIN_DTTM  CF_CUST_RST_OUTG.RST_DTTM	<b>Transformation Logic:</b> This field is populated with the count of outages by city where outage duration is less than p_mom_duration mins.
CMI	Total Customer Minutes	CF_CUST_RST_OUTG.BEGIN_DTTM  CF_CUST_RST_OUTG.RST_DTTM	<b>Transformation Logic:</b> This field is populated with the customer minutes interrupted.
NUM_MULT_SUST_INTRPT	Numb. Mult. Sust. Interruption	CF_CUST_RST_OUTG.PER.SRC_PER_ID  CF_CUST_RST_OUTG.PREM.SRC_PREM_ID  CF_CUST_RST_OUTG.METER.SRC_METER_ID	<b>Transformation Logic:</b> This field is populated with the customer count who experienced more than P_CEMI_COUNT sustained interruptions during the period.

Target Field	OBIEE Field	Source Field	Transformation / Calculation Logic
NUM_MULT_CUST_I NTRPT	Numb. Mult. Cust. Interruption	CF_CUST_RST_OUTG. PER.SRC_PER_ID  CF_CUST_RST_OUTG. PREM.SRC_PREM_ID  CF_CUST_RST_OUTG. METER.SRC_METER_ ID	<b>Transformation Logic:</b> This field is populated with the customer count who experienced more than P_CEMI_COUNT interruptions (both sustained and momentary) during the period.
SAIDI	SAIDI	CF_CUST_RST_OUTG. BEGIN_DTTM  CF_CUST_RST_OUTG. RST_DTTM	<b>Transformation Logic:</b> This field is populated with customer minutes interrupted by number of customers served.
CAIDI	CAIDI		<b>Transformation Logic:</b> This field is populated with customer minutes interrupted by number of outages.
SAIFI	SAIFI		<b>Transformation Logic:</b> This field is populated with number of outages by number of customers served.
CEMI	CEMI		<b>Transformation Logic:</b> This field is populated with the ratio of individual customers experiencing more than P_CEMI_COUNT sustained interruptions to the total number of customers served.
CEMSMI	CEMSMI		<b>Transformation Logic:</b> This field is populated with the ratio of individual customers experiencing more than P-CEMI_COUNT of both sustained and momentary interruption events to the total customers served.

Target Field	OBIEE Field	Source Field	Transformation / Calculation Logic
CAIFI	CAIFI		<b>Transformation Logic:</b> This field is populated with the average frequency of sustained interruptions for customers experiencing sustained interruptions during the specified period for the specified area.
MAIFI	MAIFI		<b>Transformation Logic:</b> This field is populated with the number of momentary interruptions by number of customers served.
MAIFIE	MAIFIE		<b>Transformation Logic:</b> This field indicates how often an average customer experienced a momentary interruption event during the specified period.  <b>Note:</b> It does not include momentary interruptions immediately preceding a lockout.
ASAI	ASAI		<b>Transformation Logic:</b> This field is populated with the average service availability index value.
ACI	ACI		
MSAIFI	MSAIFI		<b>Transformation Logic:</b> This field indicates how often an average customer experienced a momentary and sustained interruption during the specified period.
CTRL_ZONE_KEY	Control Zone Dimension Surrogate Key	CD_CTRL_ZONE.CTRL_ZONE_KEY	
NUM_CUST_INTRPT	Number Customers Interrupted		<b>Transformation Logic:</b> This field is populated with the number of customers who experienced an interruption during the period.



Target Field	OBIEE Field	Source Field	Transformation / Calculation Logic
NUM_MOM_E_INTRPT	Number of Mom. E. Intrpt		<b>Transformation Logic:</b> This field is populated with the number of momentary events during the period, excluding the events that immediately precede a sustained interruption.
NUM_EVENT	Number of Events		<b>Transformation Logic:</b> This field is populated with the number of events during the period.
CTRL_ZONE_OUTG_UDD1_KEY	Control Zone Outage User Defined Dimension 1 Key		
CTRL_ZONE_OUTG_UDD2_KEY	Control Zone Outage User Defined Dimension 2 Key		
FACT_CNT	Number of Calls		<b>Transformation Logic:</b> This field is populated with the standard value of '1'.
UDM1	User Defined Measure 1		
UDM2	User Defined Measure 2		
UDM3	User Defined Measure 3		
UDM4	User Defined Measure 4		
UDM5	User Defined Measure 5		
UDDGEN1	User Defined Degenerate Dimension 1		
UDDGEN2	User Defined Degenerate Dimension 2		
UDDGEN3	User Defined Degenerate Dimension 3		
NUM_CUST_SUST_INTRPT	Numb. Cust. Sust. Interruption		<b>Transformation Logic:</b> This field is populated with the number of customers who experienced a sustained interruption during the period.
SNAPSHOT_DT	Snapshot Date	B1_JOB_CONFIG.SLICE_END_DTTM	

Target Field	OBIEE Field	Source Field	Transformation / Calculation Logic
SRC_NCG_ID		CD_CTRL_ZONE.CD_CTRL_ZONE	
DATA_SOURCE_IND	Data Source Indicator	B1_PROD_INSTANCE.DSI	<b>Transformation Logic:</b> This field is populated with the DSI value on the source product instance configuration. This table is populated as part of the initial setup and the DSI value is extracted from the environment ID of the source system (CI_INSTALLATION_ENV_ID).
JOB_NBR	Job Number		<b>Transformation Logic:</b> This field is populated with the ODI job execution session number.

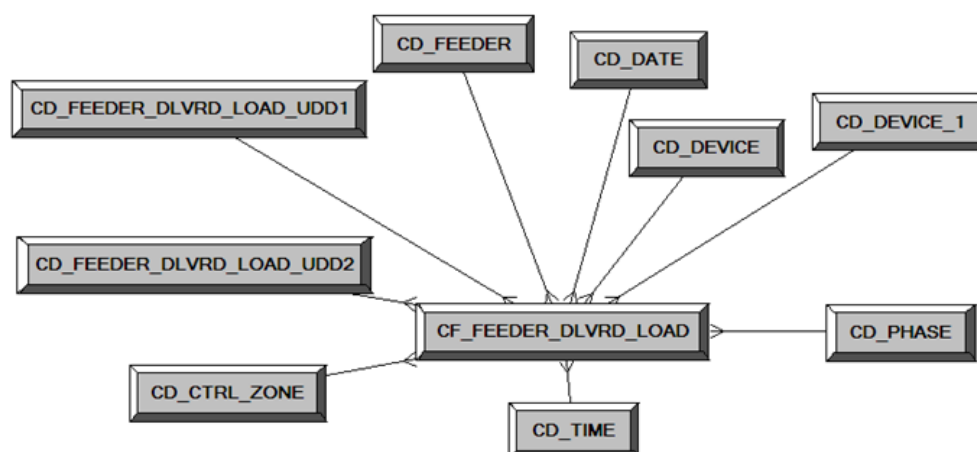
## Feeder Delivered Load Snapshot Fact

The Feeder Delivered Load Snapshot fact stores the feeder delivered load information from Oracle Utilities Network Management System.

The following measures are populated by the extract:

- BRKR\_AMP\_LIMIT. Breaker - Amp Limit
- AMP. Amp - Phase A, B and C
- KW. KW - Phase A, B and C
- KVAR. KVAR - Phase A, B and C
- KVA. KVA - Phase A, B and C
- VOLTAGE. Voltage - Phase A, B and C
- POWER\_FACTOR. Power Factor - Phase A, B and C

### Entity Relationship Diagram



### Properties

Property	Value
Target Table Name	CF_FEEDER_DLVRD_LOAD
Table Type	Fact
Fact Type	Snapshot
Driver Table	FLM_FDR_LOAD
Stage Table Name	STG_CF_FEEDER_DLVRD_LOAD
ODI Package Name	B1_PKG_CF_FEEDER_DLVRD_LOAD
ETL View Name	B1_F_FEEDER_DLVRD_LOAD_VW
Materialized View Name	B1_FEEDER_DLVRD_MON_MV1

## Fields

Target Field	OBIEE Field	Source Field	Transformation / Calculation Logic
FEEDER_DLVRD_LO AD_KEY	Feeder Delivered Load Fact Surrogate Key		<b>Transformation Logic:</b> This field is populated with the sequence from B1_PAY_PLAN_ACCUM_SEQ.
SRC_FEEDER_CLS	Feeder Class	FLM_FDR_LOAD.FDR_CLS	
SRC_FEEDER_IDX	Feeder Index	FLM_FDR_LOAD.FDR_IDX	
SRC_DTTM	Snapshot Date/Time	FLM_FDR_LOAD.ANALYSIS_DATE	
FEEDER_KEY	Feeder Key	FLM_FDR_LOAD.FDR_CLS FLM_FDR_LOAD.FDR_IDX	<b>Note:</b> Lookup in CD_FEEDER dimension table and populate the surrogate key.
CTRL_ZONE_KEY	Control Zone Key	NETWORK_COMPONENTS.NCG	<b>Note:</b> Lookup in CD_CTRL_ZONE dimension table and populate the surrogate key.
BRKR_DEVICE_KEY	Breaker Device Key	FLM_FDR_LOAD.CB_CLS FLM_FDR_LOAD.CB_IDX	<b>Note:</b> Lookup in CD_DEVICE dimension table and populate the surrogate key.
SUBSTN_DEVICE_KEY	Substation Device Dimension	FLM_FDR_LOAD.CB_CLS FLM_FDR_LOAD.CB_IDX	<b>Note:</b> Lookup in CD_DEVICE dimension table and populate the surrogate key.
SNAPSHOT_DATE_KEY	Snapshot Date Type	FLM_FDR_LOAD.ANALYSIS_DATE	<b>Transformation Logic:</b> Extract the date part and then lookup in CD_DATE dimension table.
SNAPSHOT_TIME_KEY	Snapshot Time Type	FLM_FDR_LOAD.ANALYSIS_DATE	<b>Transformation Logic:</b> Extract the date part and then lookup in CD_TIME dimension table.
PHASE_KEY			<b>Note:</b> Lookup in CD_PHASE dimension table and populate the surrogate key.

Target Field	OBIEE Field	Source Field	Transformation / Calculation Logic
FEEDER_DLVRD_LO AD_UDD1_KEY			
FEEDER_DLVRD_LO AD_UDD2_KEY			
BRKR_AMP_LIMIT	Breaker Amp Limit	PF_SWITCHES.AMP_L IMIT	
AMP	Amp – Phase A, B and C	FLM_FDR_LOAD.AMP _A  FLM_FDR_LOAD.AMP _B  FLM_FDR_LOAD.AMP _C	
KW	kW – Phase A, B and C	FLM_FDR_LOAD.KW_ A  FLM_FDR_LOAD.KW_ B  FLM_FDR_LOAD.KW_ C	
KVAR	kVAr – Phase A, B and C	FLM_FDR_LOAD.KVA R_A  FLM_FDR_LOAD.KVA R_B  FLM_FDR_LOAD.KVA R_C	
KVA	kVA – Phase A, B and C	FLM_FDR_LOAD.KW_ A  FLM_FDR_LOAD.KVA R_A  FLM_FDR_LOAD.KW_ B  FLM_FDR_LOAD.KVA R_B  FLM_FDR_LOAD.KW_ C  FLM_FDR_LOAD.KVA R_C	

Target Field	OBIEE Field	Source Field	Transformation / Calculation Logic
VOLTAGE	Voltage – Phase A, B and C	FLM_FDR_LOAD.KV_A  FLM_FDR_LOAD.KV_B  FLM_FDR_LOAD.KV_C	
POWER_FACTOR	Power Factor – Phase A, B and C		
FACT_CNT	Count		<b>Transformation Logic:</b> This field is populated with the standard value of '1'.
UDM1	User Defined Measure 1		
UDM2	User Defined Measure 2		
UDM3	User Defined Measure 3		
UDM4	User Defined Measure 4		
UDM5	User Defined Measure 5		
UDM6	User Defined Measure 6		
UDM7	User Defined Measure 7		
UDM8	User Defined Measure 8		
UDM9	User Defined Measure 9		
UDM10	User Defined Measure 10		
UDDGEN1	User Defined Degenerate Dimension 1		
UDDGEN2	User Defined Degenerate Dimension 2		
UDDGEN3	User Defined Degenerate Dimension 3		
UDDGEN4	User Defined Degenerate Dimension 4		
UDDGEN5	User Defined Degenerate Dimension 5		
UDDGENL1	User Defined Long Degenerate Dimension 1		
UDDGENL2	User Defined Long Degenerate Dimension 2		

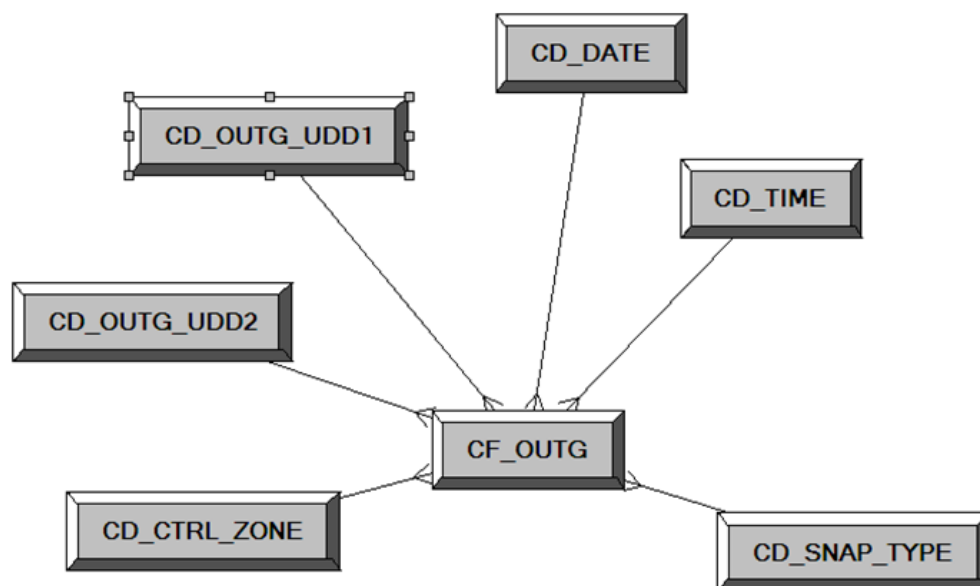
Target Field	OBIEE Field	Source Field	Transformation / Calculation Logic
UDDGENL3	User Defined Long Degenerate Dimension 3		
UDDGENL4	User Defined Long Degenerate Dimension 4		
UDDGENL5	User Defined Long Degenerate Dimension 5		
UDDFK1_KEY	User Defined Dimension Foreign Key 1		
UDDFK2_KEY	User Defined Dimension Foreign Key 2		
UDDFK3_KEY	User Defined Dimension Foreign Key 3		
UDDFK4_KEY	User Defined Dimension Foreign Key 4		
UDDFK5_KEY	User Defined Dimension Foreign Key 5		
SRC_PHASE_ID	Phase ID		
DATA_SOURCE_IND	Data Source Indicator	B1_PROD_INSTANCE. DSI  BI_APPLICATION_PA RAMS.AP_MIN_VALU E	<b>Transformation Logic:</b> This field is populated with the DSI value on the source product instance configuration. This table is populated as part of the initial setup and the DSI value is extracted from the environment ID of the source system (CI_INSTALLATION.ENV_ID).
JOB_NBR	Job Number		<b>Transformation Logic:</b> This field is populated with the ODI job execution session number.

## Outage Fact

The Outage fact is an hourly snapshot fact that stores various measures at the control zone level.

This fact is unusual in the sense that its data is not populated directly from the source tables in the replication schema. It is a calculated fact whose data is derived from the data in the restored facts ([Restored Call Fact](#), [Restored Crew Fact](#), [Restored Job Fact](#), and [Restored Customer Outage Fact](#)) and the recent facts ([Recent Call Fact](#), [Recent Crew Fact](#), [Recent Job Fact](#), and [Recent Customer Outage Fact](#)).

### Entity Relationship Diagram



### Properties

Property	Value
Target Table Name	CF_OUTG
Table Type	Fact
Fact Type	Snapshot
Driver Table	
Stage Table Name	STG_CF_OUTG
ODI Package Name	B1_PKG_CF_OUTG
ETL View Name	B1_F_CF_OUTG_VW
Materialized View Name	B1_OUTG_MON_MV1



Fields			
Target Field	OBIEE Field	Source Field	Transformation / Calculation Logic
OUTG_KEY	Outage Fact Surrogate Key		<b>Transformation Logic:</b> This field is populated with the sequence from SPL_OUTG_SEQ.
CTRL_ZONE_KEY	Control Zone Key	CD_CTRL_ZONE.CTRL_ZONE_KEY	
SNAP_TYPE_CD	Snapshot Type		<b>Transformation Logic:</b> This field is populated with the standard value of "H" (hourly).
SNAPSHOT_DATE_KEY	Snapshot Date Type		<b>Note:</b> Extract the date part and lookup in CD_DATE dimension table to populate the surrogate key.
SNAPSHOT_TIME_KEY	Snapshot Time Type		<b>Note:</b> Extract the date part and lookup in CD_TIME dimension table to populate the surrogate key.
NUM_CREW_ASSIGN	Number of Crew Assignments	CF_RECENT_CREW.FACT_CNT	
NUM_CREW_DISP	Number of Crew Dispatches	CF_RECENT_CREW.FACT_CNT	
NUM_CUST_OUTG	Number of Customers Out	CF_CUST_RECENT_OUTG.FACT_CNT	
NUM_CUST_RST	Number of Customers Restore	CF_CUST_RECENT_OUTG.FACT_CNT	
NUM_CUST_NEW	Number of New Customers	CF_CUST_RECENT_OUTG.FACT_CNT	
NUM_CUST_MOM	Number of Customer Momentaries	CF_RECENT_JOB.FACT_CNT	
NUM_EVENT	Number of Events	CF_RECENT_JOB.FACT_CNT	
NUM_NEW_EVENT	Number of New Events	CF_RECENT_JOB.FACT_CNT	
NUM_CLOSED_EVENT	Number of Closed Events	CF_RECENT_JOB.FACT_CNT	
NUM_CANCELLED_EVENT	Number of Cancelled Events	CF_RECENT_JOB.CANCELLED_IND	

Target Field	OBIEE Field	Source Field	Transformation / Calculation Logic
NUM_CALL	Number of Calls	CF_RECENT_CALL.F ACT_CNT	<b>Transformation Logic:</b> This field is populated with the number of calls received during the hour.
OUTG_UDD1_KEY			
OUTG_UDD2_KEY			
FACT_CNT			<b>Transformation Logic:</b> This field is populated with the standard value of '1'.
UDM1	User Defined Measure 1		
UDM2	User Defined Measure 2		
UDM3	User Defined Measure 3		
UDM4	User Defined Measure 4		
UDM5	User Defined Measure 5		
UDDGEN1	User Defined Degenerate Dimension 1		
UDDGEN2	User Defined Degenerate Dimension 2		
UDDGEN3	User Defined Degenerate Dimension 3		
SNAPSHOT_DTTM	Snapshot Date/Time	B1_JOB_CONFIG.SLIC E_END_DTTM	
SRC_NCG_ID		CD_CTRL_ZONE.SRC _NCG_ID	
DATA_SOURCE_IND	Data Source Indicator	B1_PROD_INSTANCE. DSI	<b>Transformation Logic:</b> This field is populated with the DSI value on the source product instance configuration. This table is populated as part of the initial setup and the DSI value is extracted from the environment ID of the source system (CI_INSTALLATION.E NV_ID).
JOB_NBR	Job Number		<b>Transformation Logic:</b> This field is populated with the ODI job execution session number.

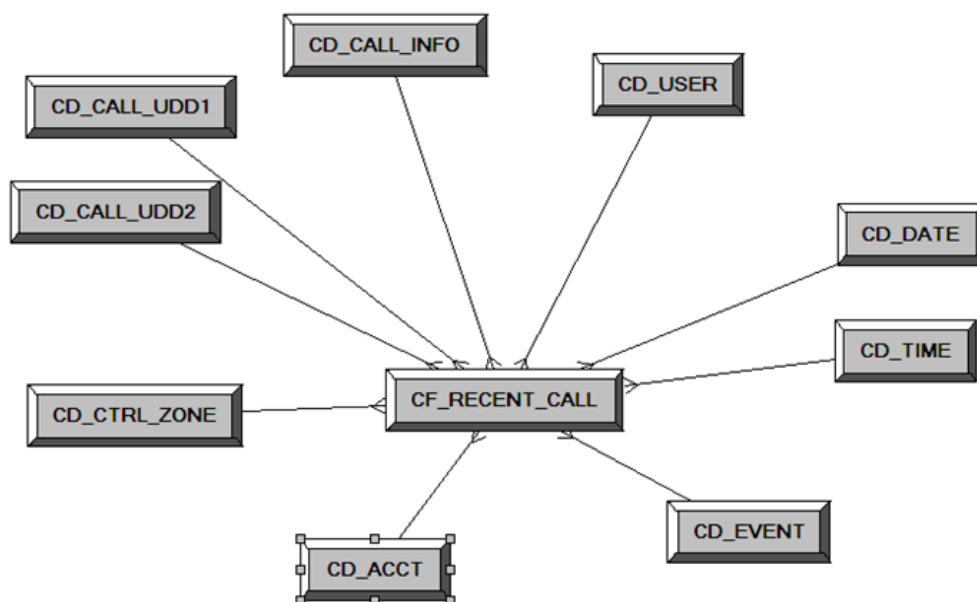
## Recent Call Fact

The Recent Call fact stores incidents' details created in Oracle Utilities Network Management System, also capturing the associated job details. The fact stores details about all un-restored jobs and jobs restored within the last 'X' number of days. The value 'X' days has to be configured using the Oracle Utilities Administration Tool. See the [Configuring Oracle Utilities Extractors and Schema for Network Management System](#) chapter for more details.

The ETL job for this fact is configured to load data in near real-time (NRT). The primary purpose to configure it as NRT is to support tracking current (active) and relatively recent restored outages. The NRT data store can also be used to help gauge the ability of the existing resources to deal with a current storm to help determine if external/foreign (crew) resources are or are not required.

The “recent fact” data store is not intended to be a long-term repository and hence the purging mechanism based on the user configured 'X' days.

### Entity Relationship Diagram



### Properties

Property	Value
Target Table Name	CF_RECENT_CALL
Table Type	Fact
Fact Type	Accumulation
Driver Table	INCIDENTS
Stage Table Name	STG_CF_RECENT_CALL
ODI Package Name	B1_PKG_CF_RECENT_CALL
ETL View Name	B1_F_RECENT_CALL_VW
Materialized View Name	

Fields			
Target Field	OBIEE Field	Source Field	Transformation / Calculation Logic
RECENT_CALL_KEY	Recent Call Key		<b>Transformation Logic:</b> This field is populated with the sequence from SPL_RECENT_CALL_SEQ.
SRC_INCIDENT_ID	Source Incident ID	INCIDENTS.DECODE(NVL(ASSOCIATE_ID X, 0), 0, NUMB, ASSOCIATE_IDX)	
EVENT_KEY	Event Key	JOBS.NUMB	<b>Note:</b> Lookup in the CD_EVENT dimension table and replace with surrogate key.
ACCT_KEY	Account Key	INCIDENTS.ACCOUNT_NUM	<b>Note:</b> Lookup in the CD_ACCOUNT dimension table and replace with surrogate key.
PRIORITY_IND	Priority Indicator	INCIDENTS.DECODE(SUBSTR(INCIDENTS.COMPLAINT, 7, 1), '1', '1', '2', '1', '0')	<b>Note:</b> Use parameter B1_PRTY_BIT instead of 7.
CALL_DATE_KEY	Call Date Key	INCIDENTS.INPUT_TIME	<b>Note:</b> Extract the date part and then lookup in CD_DATE dimension table.
CALL_TIME_KEY	Call Time Key	INCIDENTS.INPUT_TIME	<b>Note:</b> Extract the date part and then lookup in CD_DATE dimension table.
CALL_UDD1_KEY	Call User Defined Dimension 1 Key		
CALL_UDD2_KEY	Call User Defined Dimension 2 Key		
CTRL_ZONE_KEY	Control Zone Key	INCIDENTS.NCG	<b>Note:</b> Replace with surrogate key.
USER_KEY	User Key	CES_USER.USER_NAME	<b>Note:</b> Look up in the CD_USER table and populate with surrogate key.

Target Field	OBIEE Field	Source Field	Transformation / Calculation Logic
CALL_INFO_KEY	Call Info Key	INCIDENTS.DECODE ( NVL( ASSOCIATE_IDX, 0), 0, NUMB, ASSOCIATE_IDX )	<b>Note:</b> Replace with surrogate key.
PREM_KEY	Premise Key	CES_CUSTOMERS.SE RV_LOC_ID	<b>Note:</b> Look up in the CD_PREM table and populate with surrogate key.
ADDR_KEY	Address Key	CES_CUSTOMERS.SE RV_LOC_ID	<b>Note:</b> Look up in the CD_ADDR table and populate with surrogate key.
DEVICE_KEY	Device Key	INCIDENTS.H_IDX  INCIDENTS.H_CLS	<b>Note:</b> Look up in the CD_DEVICE table and populate with surrogate key.
UDM1	User Defined Measure 1		
UDM2	User Defined Measure 2		
UDM3	User Defined Measure 3		
UDM4	User Defined Measure 4		
UDM5	User Defined Measure 5		
UDM6	User Defined Measure 6		
UDM7	User Defined Measure 7		
UDM8	User Defined Measure 8		
UDM9	User Defined Measure 9		
UDM10	User Defined Measure 10		
UDDFK1_KEY	User Defined Dimension Surrogate Key 1		
UDDFK2_KEY	User Defined Dimension Surrogate Key 2		
UDDFK3_KEY	User Defined Dimension Surrogate Key 3		
UDDFK4_KEY	User Defined Dimension Surrogate Key 4		
UDDFK5_KEY	User Defined Dimension Surrogate Key 5		
UDDGEN1	User Defined Degenerate Dimension 1	JOBS.RESTORE_TIME	

Target Field	OBIEE Field	Source Field	Transformation / Calculation Logic
UDDGEN2	User Defined Degenerate Dimension 2		
UDDGEN3	User Defined Degenerate Dimension 3		
UDDGEN4	User Defined Degenerate Dimension 4		
UDDGEN5	User Defined Degenerate Dimension 5		
UDDGENL1	User Defined Long Degenerate Dimension 1		
UDDGENL2	User Defined Long Degenerate Dimension 2		
UDDGENL3	User Defined Long Degenerate Dimension 3		
UDDGENL4	User Defined Long Degenerate Dimension 4		
UDDGENL5	User Defined Long Degenerate Dimension 5		
FACT_CNT	Fact Count		<b>Transformation Logic:</b> This field is populated with the standard value of 1.
DATA_SOURCE_IND	Data Source Indicator		<b>Transformation Logic:</b> This field is populated with the DSI value on the source product instance configuration. This table is populated as part of the initial setup and the DSI value is extracted from the environment ID of the source system (CI_INSTALLATION.ENV_ID).
JOB_NBR	Job Number		<b>Transformation Logic:</b> This field is populated with the ODI job execution session number.

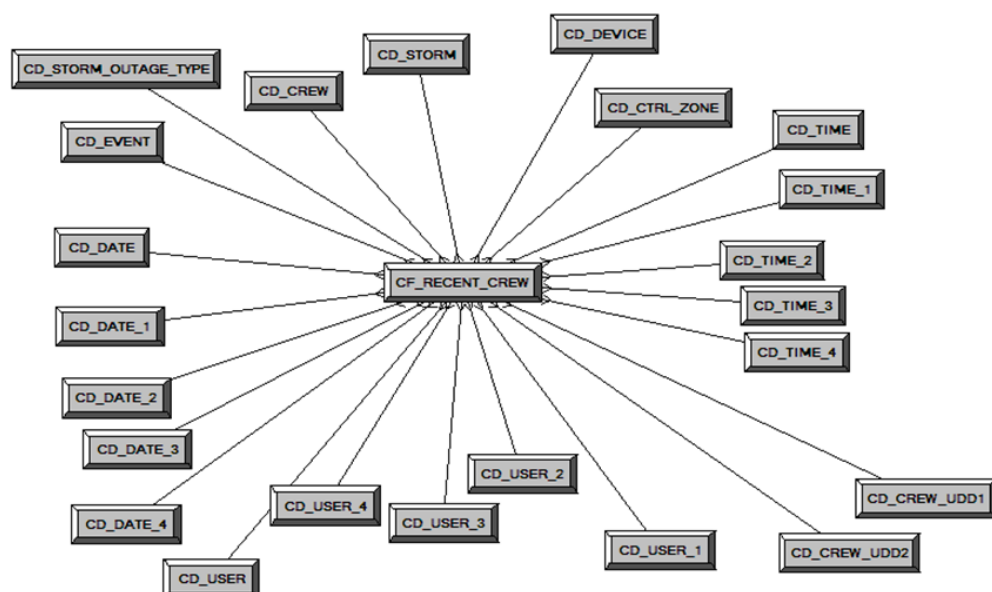
## Recent Crew Fact

For every job created in the source system, several activities (such as assignment, un-assignment, dispatch, arrival, and completion) are performed to complete the job. Each of these activities are carried out by the corresponding crew. The Recent Crew fact stores all such crew activity information for every job created in the source system. The fact stores details about all un-restored jobs and jobs restored within the last 'X' number of days. The value 'X' days has to be configured using the Oracle Utilities Administration Tool. See the [Configuring Oracle Utilities Extractors and Schema for Network Management System](#) chapter for more details.

The ETL job for this fact is configured to load data in near real-time (NRT). The primary purpose to configure it as NRT is to support tracking current (active) and relatively recent restored outages. The NRT data store can also be used to help gauge the ability of the existing resources to deal with a current storm to help determine if external/foreign (crew) resources are or are not required.

The “recent fact” data store is not intended to be a long-term repository and hence the purging mechanism based on the user configured 'X' days.

### Entity Relationship Diagram



### Properties

Property	Value
Target Table Name	CF_RECENT_CREW
Table Type	Fact
Fact Type	Accumulation
Driver Table	INCIDENTS
Stage Table Name	STG_CF_RECENT_CREW
ODI Package Name	B1_PKG_CF_RECENT_CREW
ETL View Name	B1_F_RECENT_CREW_VW

## Materialized View Name

## Fields

Target Field	OBIEE Field	Source Field	Transformation / Calculation Logic
RECENT_CREW_KEY	Recent Crew Key		<b>Transformation Logic:</b> This field is populated with the sequence from SPL_RECENT_CALL_SEQ.
EVENT_KEY	Event Key	JOBS.NUMB	<b>Note:</b> Replace with surrogate key.
SRC_EVENT_NBR	Source Event Number	JOBS.NUMB	
INROUTE_DURATION	Inroute Duration	CREW_DISPATCHES.WHEN_HAPPENED	<b>Transformation Logic:</b> This field is populated with the total time spent by the crew in 'Dispatch' state for a particular event.
ASSIGN_DATE_KEY	Last Assign Date Key	CREW_ASSIGNMENTS.ASSIGN.WHEN_HAPPENED	<b>Note:</b> Replace with surrogate key.
ASSIGN_TIME_KEY	Last Assign Time Key	CREW_ASSIGNMENTS.ASSIGN.WHEN_HAPPENED	<b>Note:</b> Replace with surrogate key.
CREW_UDD1_KEY	Crew User Defined Dimension 1 Key		
CREW_UDD2_KEY	Crew User Defined Dimension 2 Key		
CTRL_ZONE_KEY	Control Zone Key	JOBS.NCG	<b>Note:</b> Lookup in CD_CTRL_ZONE dimension table to populate surrogate key.
ASSIGN_USER_KEY	Assign User Key	CREW_ASSIGNMENTS.ASSIGN.CES_USER	<b>Note:</b> Lookup in CD_USER dimension table to populate surrogate key.
CREW_KEY	Crew Key	CREW_EVENT_HISTORY.CREW_ID	<b>Note:</b> Lookup in CD_CREW dimension table to populate surrogate key.



Target Field	OBIEE Field	Source Field	Transformation / Calculation Logic
WORK_DURATION	Work Duration	CREW_DISPATCHES. WHEN_HAPPENED	<b>Transformation Logic:</b> This field is populated with the total time spent by the crew in 'Arrive' state for a particular event.
ASSIGN_DURATION	Assign Duration	CREW_ASSIGNMENT S.WHEN_HAPPENED	<b>Transformation Logic:</b> This field is populated with the total time spent by the crew in 'Assign' state for a particular event.
DISPATCH_DURATION	Dispatch Duration	CREW_DISPATCHES. WHEN_HAPPENED  CREW_ASSIGNMENT S.WHEN_HAPPENED	
DEVICE_KEY	Device Key	JOBS.H_IDX  JOBS.H_CLS	<b>Note:</b> Look up H_IDX and H_CLS in CD_DEVICE dimension table and populate the surrogate key.
UNASSIGN_USER_KEY	Unassign User Key	CREW_ASSIGNMENT S UNASSIGN.CES_USER	
UNASSIGN_DATE_KEY	Unassign Date Key	CREW_ASSIGNMENT S UNASSIGN.WHEN_HAPPENED	<b>Note:</b> Extract the date part from WHEN_HAPPENED and then lookup in CD_DATE dimension table.
UNASSIGN_TIME_KEY	Unassign Time Key	CREW_ASSIGNMENT S UNASSIGN.WHEN_HAPPENED	<b>Note:</b> Extract the time part from WHEN_HAPPENED and then lookup in CD_DATE dimension table.
ACCEPT_USER_KEY	Accept User Key	CREW_DISPATCHES DISPATCH.CES_USER	<b>Transformation Logic:</b> This field is populated with the last user who dispatched the crew. MAX(DISPATCH.WHEN_HAPPENED).

Target Field	OBIEE Field	Source Field	Transformation / Calculation Logic
ACCEPT_DATE_KEY	Accept Date Key	CREW_DISPATCHES DISPATCH.WHEN_HAPPENED	<b>Note:</b> Extract the date part from WHEN_HAPPENED and then lookup in CD_DATE dimension table.
ACCEPT_TIME_KEY	Accept Time Key	CREW_DISPATCHES DISPATCH.WHEN_HAPPENED	<b>Note:</b> Extract the time part from WHEN_HAPPENED and then lookup in CD_TIME dimension table.
ARRIVE_TIME_KEY	Arrive Time Key	CREW_DISPATCHES ARRIVE.WHEN_HAPPENED	<b>Note:</b> Extract the time part from WHEN_HAPPENED and then lookup in CD_TIME dimension table.
CMPL_TIME_KEY	Complete Time Key	CREW_DISPATCHES COMPLETE.WHEN_HAPPENED	<b>Note:</b> Extract the time part from WHEN_HAPPENED and then lookup in CD_TIME dimension table.
ARRIVE_DATE_KEY	Arrive Date Key	CREW_DISPATCHES ARRIVE.WHEN_HAPPENED	<b>Note:</b> Extract the date part from WHEN_HAPPENED and then lookup in CD_DATE dimension table.
CMPL_DATE_KEY	Completed Date Key	CREW_DISPATCHES COMPLETE.WHEN_HAPPENED	<b>Note:</b> Extract the date part from WHEN_HAPPENED and then lookup in CD_DATE dimension table.
CMPL_USER_KEY	Completed User Key	CREW_DISPATCHES COMPLETE.CES_USER	<b>Transformation Logic:</b> This field is populated with the last user name from CREW_EVENT_HISTORY if the job is complete. Else, it is null.
ARRIVE_USER_KEY	Arrive User Key	CREW_DISPATCHES ARRIVE.CES_USER	

Target Field	OBIEE Field	Source Field	Transformation / Calculation Logic
STORM_KEY	Storm Key	STORMAN_STORMS.S TORM_NAME  STORMAN_STORMS.S TORM_DATE	<b>Note:</b> Lookup in CD_STORM dimension table to populate the surrogate key.
STORM_OUTAGE_TY PE_KEY	Storm Outage Type Key	JOBS.STORMMAN_TY PE	<b>Note:</b> Look up in CD_STORM_OUTAGE_TYPE dimension table and populate the surrogate key.
SRC_CREW_ID	Source Crew ID	CREW_EVENT_HIST ORY.CREW_ID	
UDM1	User Defined Measure 1		
UDM2	User Defined Measure 2		
UDM3	User Defined Measure 3		
UDM4	User Defined Measure 4		
UDM5	User Defined Measure 5		
UDM6	User Defined Measure 6		
UDM7	User Defined Measure 7		
UDM8	User Defined Measure 8		
UDM9	User Defined Measure 9		
UDM10	User Defined Measure 10		
UDDFK1_KEY	User Defined Dimension Surrogate Key 1		
UDDFK2_KEY	User Defined Dimension Surrogate Key 2		
UDDFK3_KEY	User Defined Dimension Surrogate Key 3		
UDDFK4_KEY	User Defined Dimension Surrogate Key 4		
UDDFK5_KEY	User Defined Dimension Surrogate Key 5		
UDDGEN1	User Defined Degenerate Dimension 1	JOBS.RESTORE_TIME	
UDDGEN2	User Defined Degenerate Dimension 2		
UDDGEN3	User Defined Degenerate Dimension 3		

Target Field	OBIEE Field	Source Field	Transformation / Calculation Logic
UDDGEN4	User Defined Degenerate Dimension 4		
UDDGEN5	User Defined Degenerate Dimension 5		
UDDGENL1	User Defined Long Degenerate Dimension 1		
UDDGENL2	User Defined Long Degenerate Dimension 2		
UDDGENL3	User Defined Long Degenerate Dimension 3		
UDDGENL4	User Defined Long Degenerate Dimension 4		
UDDGENL5	User Defined Long Degenerate Dimension 5		
FACT_CNT	Fact Count		<b>Transformation Logic:</b> This field is populated with the standard value of 1.
DATA_SOURCE_IND	Data Source Indicator		<b>Transformation Logic:</b> This field is populated with the DSI value on the source product instance configuration. This table is populated as part of the initial setup and the DSI value is extracted from the environment ID of the source system (CI_INSTALLATION.ENV_ID).
JOB_NBR	Job Number		<b>Transformation Logic:</b> This field is populated with the ODI job execution session number.

## Recent Job Fact

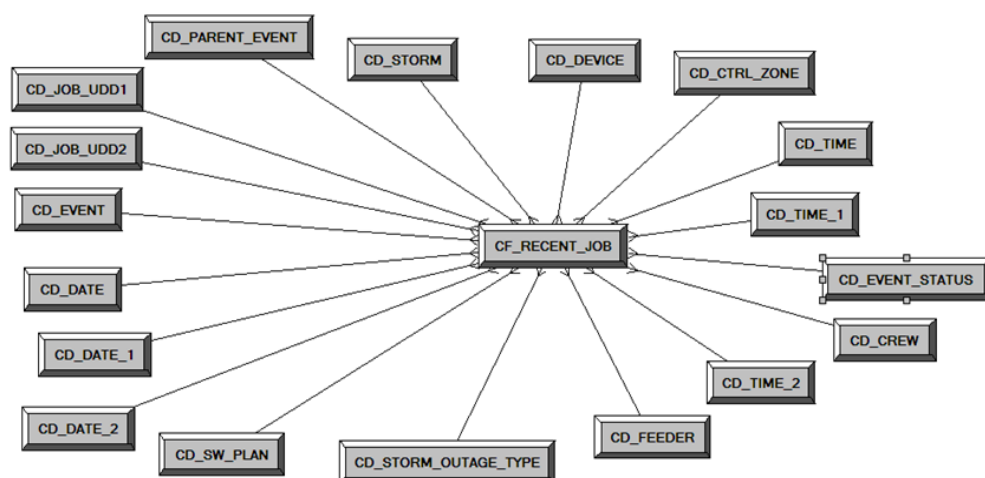
The Recent Job fact stores job information from the source system. It stores KPIs such as number of events, outage duration, restoration duration, resolved event count, etc.

The fact stores details about all un-restored jobs and jobs restored within the last 'X' number of days. The value 'X' days has to be configured using the Oracle Utilities Administration Tool. See the [Configuring Oracle Utilities Extractors and Schema for Network Management System](#) chapter for more details.

The ETL job for this fact is configured to load data in near real-time (NRT). The primary purpose to configure it as NRT is to support tracking current (active) and relatively recent restored outages. The NRT data store can also be used to help gauge the ability of the existing resources to deal with a current storm to help determine if external/foreign (crew) resources are or are not required.

The “recent fact” data store is not intended to be a long-term repository and hence the purging mechanism based on the user configured 'X' days.

### Entity Relationship Diagram



### Properties

Property	Value
Target Table Name	CF_RECENT_JOB
Table Type	Fact
Fact Type	Accumulation
Driver Table	JOBS PICKLIST_INFO_UPD_TR
Stage Table Name	STG_CF_RECENT_JOB
ODI Package Name	B1_PKG_CF_RECENT_JOB
ETL View Name	B1_F_RECENT_JOB_VW
Materialized View Name	

Fields			
Target Field	OBIEE Field	Source Field	Transformation / Calculation Logic
RECENT_JOB_KEY	Recent Job Key		<b>Transformation Logic:</b> This field is populated with the sequence from SPL_RECENT_JOB_SEQ.
SRC_JOB_NBR	Source Job Number	JOBS.NUMB	
EVENT_KEY	Event Key	JOBS.NUMB	<b>Note:</b> Lookup in CD_EVENT and populate the surrogate key.
EVENT_STATUS_KEY	Event Status Key	JOBS.STATUS	<b>Note:</b> Lookup in CD_EVENT_STATUS and populate the surrogate key.
BEGIN_DATE_KEY	Begin Date Key	JOBS.BEGIN_TIME	<b>Note:</b> Extract the date part and then lookup in the CD_DATE dimension table to populate the surrogate key.
BEGIN_TIME_KEY	Begin Time Key	JOBS.BEGIN_TIME	<b>Note:</b> Extract the time part and then lookup in the CD_TIME dimension table to populate the surrogate key.
BEGIN_DTTM	Begin Date Time	JOBS.BEGIN_TIME	
RST_TIME_KEY	Restored Time Key	JOBS.RESTORE_TIME	<b>Note:</b> Extract the time part and then lookup in the CD_TIME dimension table to populate the surrogate key.
RST_DATE_KEY	Restored Date Key	JOBS.RESTORE_TIME	<b>Note:</b> Extract the date part and then lookup in the CD_DATE dimension table to populate the surrogate key.
RST_DTTM	Restored Date Time	JOBS.RESTORE_TIME	
RST_IND	Restored Indicator	JOBS.RESTORE_TIME	

Target Field	OBIEE Field	Source Field	Transformation / Calculation Logic
EST_RST_TIME_KEY	Estimated Restored Time Key	JOBS.	<b>Note:</b> Extract the time part and then lookup in the CD_TIME dimension table to populate the surrogate key.
EST_RST_DATE_KEY	Estimated Restored Date Key	JOBS.	<b>Note:</b> Extract the date part and then lookup in the CD_DATE dimension table to populate the surrogate key.
PLANNED_IND	Planned Indicator	SWMAN_SHEET_CATEGORY.SHEET_CATEGORY_NAME	
EXCLUDE_IND	Exclude Indicator	JOBS.STATE_VALUE  PICKLIST_INFO_UPDATE.NO_DTR_FLAG  SWMAN_SHEET_CATEGORY.SHEET_CATEGORY_NAME	
OMS_EXCLUDE_IND	OMS Exclude Indicator	PICKLIST_INFO_UPDATE.NO_DTR_FLAG	
CANCELLED_IND	Cancelled Indicator	JOBS.STATE_VALUE	
OUTG_DURATION	Outage Duration	JOBS.RESTORE_TIME  JOBS.BEGIN_TIME	
CTRL_ZONE_KEY	Control Zone Key	JOBS.NCG	
DEVICE_KEY	Device Key	JOBS.H_IDX  JOBS.H_CLS	<b>Transformation Logic:</b> If H_IDX and H_CLS is '0' then populate DEVICE_KEY as '0'.
CMPL_USER_KEY	Completed User Key	WHO_COMPLETED.USER_NAME	<b>Note:</b> Lookup in the CD_USER dimension table and populate the surrogate key.
RESP_USER_KEY	Responsible User Key	WHO_RESPONSIBLE.USER_NAME	<b>Note:</b> Lookup in the CD_USER dimension table and populate the surrogate key.
CREW_KEY	Crew Key	CREW_VW.CREW_ID	<b>Note:</b> Lookup in the CD_CREW dimension table and populate the surrogate key.

Target Field	OBIEE Field	Source Field	Transformation / Calculation Logic
JOB_UDD1_KEY	User Defined Dimension 1 Key		<b>Note:</b> Lookup in CD_JOB_UDD1 and populate the surrogate key.
JOB_UDD2_KEY	User Defined Dimension 2 Key		<b>Note:</b> Lookup in CD_JOB_UDD1 and populate the surrogate key.
FEEDER_KEY	Feeder Key	JOBS.FEEDER_CLS JOBS.FEEDER_IDX	<b>Transformation Logic:</b> If FEEDER_IDX and FEEDER_CLS are '0' then populate FEEDER_KEY as '0'.
SW_PLAN_KEY	Switch Plan Key	JOBS.SWSHEET_IDX JOBS.SWSHEET_CLS	<b>Transformation Logic:</b> If SWSHEET_IDX and SWSHEET_CLS are '0' then populate SW_PLAN_KEY as '0'.
STORM_KEY	Storm Key	STORMAN_STORMS.S TORM_NAME STORMAN_STORMS.S TORM_DATE	<b>Note:</b> Lookup in CD_STORM dimension table to populate surrogate key.
STORM_OUTAGE_TY PE_KEY	Storm Outage Type Key	JOBS.STORMMAN_TY PE	<b>Note:</b> Lookup in CD_STORM_OUTAGE_TYPE dimension table to populate surrogate key.
PARENT_EVENT_KE Y	Parent Event Key	PARENT_EVENT.NU MB JOBS.NUMB	<b>Note:</b> Lookup in CD_EVENT dimension table to populate surrogate key.
OUTG_DUR_KEY	Outage Duration	JOBS.RESTORE_TIME JOBS.BEGIN_TIME	<b>Note:</b> Populate the OUTG_DURTN_KEY from CD_OUTG_DURTN where OUTG_DURATION is between RANGE_START and RANGE_END.



Target Field	OBIEE Field	Source Field	Transformation / Calculation Logic
EST_RST_DUR_KEY	Est Restoration Duration	JOBS.EST_REST_TIME  JOBS.BEGIN_TIME	<b>Note:</b> Populate the EST_RST_DURTN_KEY from CD_EST_RST_DURTN where OUTG_DURATION is between RANGE_START and RANGE_END.
DURATION_DEVIATION_KEY	Duration Deviation	JOBS.RESTORE_TIME  JOBS.EST_REST_TIME	<b>Note:</b> Populate the ESTMTD_VS_ACTL_DURTN_KEY from CD_ESTMTD_VS_ACTL_DURTN where OUTG_DURATION is between RANGE_START and RANGE_END.
EST_RST_DUR	Outage Duration	JOBS.EST_REST_TIME  JOBS.BEGIN_TIME	<b>Transformation Logic:</b> This field is populated with the outage duration value.
UDM1	User Defined Measure 1	JOBS.NUM_CUST_OUT	<b>Transformation Logic:</b> This field is populated with the number of customers impacted.
UDM2	User Defined Measure 2	INCIDENTS.NUMB	<b>Transformation Logic:</b> This field is populated with the number of customer calls.
UDM3	User Defined Measure 3	JOBS.RESTORE_TIME  JOBS.EST_REST_TIME	
UDM4	User Defined Measure 4		
UDM5	User Defined Measure 5		
UDM6	User Defined Measure 6		
UDM7	User Defined Measure 7		
UDM8	User Defined Measure 8		
UDM9	User Defined Measure 9		
UDM10	User Defined Measure 10		
UDDFK1_KEY	User Defined Dimension Surrogate Key 1		

Target Field	OBIEE Field	Source Field	Transformation / Calculation Logic
UDDFK2_KEY	User Defined Dimension Surrogate Key 2		
UDDFK3_KEY	User Defined Dimension Surrogate Key 3		
UDDFK4_KEY	User Defined Dimension Surrogate Key 4		
UDDFK5_KEY	User Defined Dimension Surrogate Key 5		
UDDGEN1	User Defined Degenerate Dimension 1	JOBS.RESTORE_TIME	
UDDGEN2	User Defined Degenerate Dimension 2		
UDDGEN3	User Defined Degenerate Dimension 3		
UDDGEN4	User Defined Degenerate Dimension 4		
UDDGEN5	User Defined Degenerate Dimension 5		
UDDGENL1	User Defined Long Degenerate Dimension 1		
UDDGENL2	User Defined Long Degenerate Dimension 2		
UDDGENL3	User Defined Long Degenerate Dimension 3		
UDDGENL4	User Defined Long Degenerate Dimension 4		
UDDGENL5	User Defined Long Degenerate Dimension 5		
FACT_CNT	Fact Count		<b>Transformation Logic:</b> This field is populated with the standard value of 1.

---

Target Field	OBIEE Field	Source Field	Transformation / Calculation Logic
DATA_SOURCE_IND	Data Source Indicator		<b>Transformation Logic:</b> This field is populated with the DSI value on the source product instance configuration. This table is populated as part of the initial setup and the DSI value is extracted from the environment ID of the source system (CI_INSTALLATION.E NV_ID).
JOB_NBR	Job Number		<b>Transformation Logic:</b> This field is populated with the ODI job execution session number.

---

## Recent Customer Outage Fact

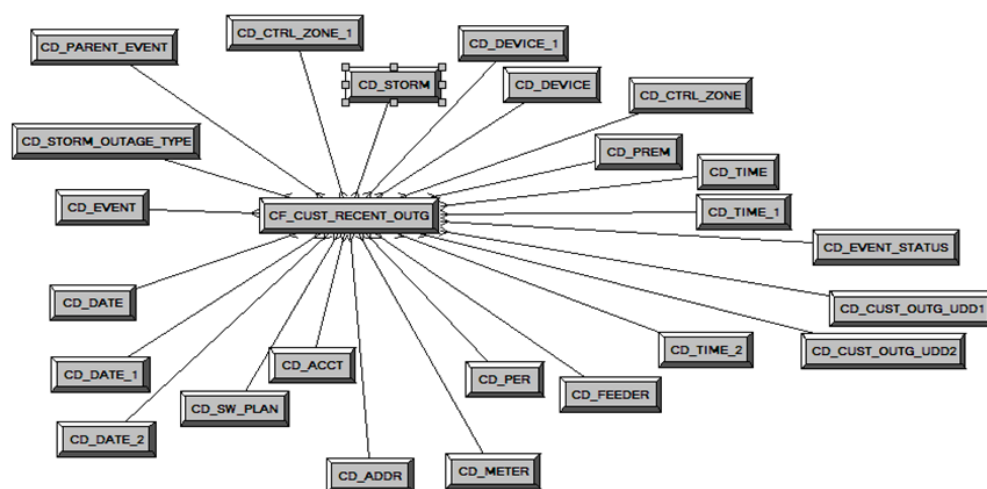
The Recent Customer Outage fact stores the details of customers experiencing service interruptions based on the supply node log information from the source system. The supply node log data will be mapped to the [Supply Node Lookup Dimension](#) to determine the actual list of customers experiencing the outage. Some of the measures captured in this fact are outage duration, CMI, number of momentary outages etc.

The fact stores details about all un-restored jobs and jobs restored within the last 'X' number of days. The value 'X' days has to be configured using the Oracle Utilities Administration Tool. See the [Configuring Oracle Utilities Extractors and Schema for Network Management System](#) chapter for more details.

The ETL job for this fact is configured to load data in near real-time (NRT). The primary purpose to configure it as NRT is to support tracking current (active) and relatively recent restored outages. The NRT data store can also be used to help gauge the ability of the existing resources to deal with a current storm to help determine if external/foreign (crew) resources are or are not required.

The “recent fact” data store is not intended to be a long-term repository and hence the purging mechanism based on the user configured 'X' days.

### Entity Relationship Diagram



### Properties

Property	Value
Target Table Name	CF_CUST_RECENT_OUTG
Table Type	Fact
Fact Type	Accumulation
Driver Table	SUPPLY_NODE_LOG SNL JOBS J
Stage Table Name	STG_CF_CUST_RECENT_OUTG
ODI Package Name	B1_PKG_CF_CUST_RECENT_OUTG
ETL View Name	B1_F_CUST_RECENT_OUTG_VW

## Materialized View Name

## Fields

Target Field	OBIEE Field	Source Field	Transformation / Calculation Logic
CUST_RECENT_OUTG_KEY	Recent Outage Key		<b>Transformation Logic:</b> This field is populated with the sequence from SPL_CUST_RECENT_OUTG_SEQ.
SRC_ID	Source Outage ID	SUPPLY_NODE_LOG.ID	
EVENT_KEY	Event Key	JOBS.NUMB	<b>Note:</b> Lookup in the CD_EVENT dimension table to populate the surrogate key.
EVENT_STATUS_KEY	Event Status Key	JOBS.STATUS	<b>Note:</b> Lookup in the CD_EVENT_STATUS dimension table to populate the surrogate key.
ACCT_KEY	Account Key	CD_ACCT.SRC_ACCT_ID  INCIDENTS.ACCOUNT_NUM  CES_CUSTOMERS.ACCOUNT_NUMBER	
PREM_KEY	Premise Key	CD_PREM.SRC_PREM_ID	
PER_KEY	Person Key	CD_PER.SRC_PER_ID	
METER_KEY	Meter Key	CD_METER.SRC_METER_ID	
ADDR_KEY	Address Key	CD_ADDR.SRC_ADDR_ID	
BEGIN_DATE_KEY	Begin Date Key	SUPPLY_NODE_LOG.OUTAGE_TIME	<b>Note:</b> Extract the date part and then lookup in the CD_DATE dimension table.
BEGIN_TIME_KEY	Begin Time Key	SUPPLY_NODE_LOG.OUTAGE_TIME	<b>Note:</b> Extract the time part and then lookup in the CD_TIME dimension table.
BEGIN_DTTM	Begin Date Time	SUPPLY_NODE_LOG.OUTAGE_TIME	

Target Field	OBIEE Field	Source Field	Transformation / Calculation Logic
RST_DATE_KEY	Restored Time Key	SUPPLY_NODE_LOG. RESTORE_TIME	<b>Note:</b> Extract the date part and then lookup in the CD_DATE dimension table.
RST_TIME_KEY	Restored Date Key	SUPPLY_NODE_LOG. RESTORE_TIME	<b>Note:</b> Extract the time part and then lookup in the CD_TIME dimension table.
RST_DTTM	Restored Date Time	SUPPLY_NODE_LOG. RESTORE_TIME	
RST_IND	Restored Indicator	SUPPLY_NODE_LOG. RESTORE_TIME	
EST_RST_TIME_KEY	Estimated Restored Time Key	JOBS.EST_REST_TIM E	<b>Note:</b> Extract the time part and then lookup in the CD_TIME dimension table.
EST_RST_DATE_KEY	Estimated Restored Date Key	JOBS.EST_REST_TIM E	<b>Note:</b> Extract the date part and then lookup in the CD_DATE dimension table.
CTRL_ZONE_KEY	Control Zone Key	SUPPLY_NODE_LOG. NCG	<b>Note:</b> Lookup in CD_CTRL_ZONE dimension table and populate the surrogate key.
CAUSE_CTRL_ZONE_KEY	Cause Control Zone Key	JOBS.NCG	<b>Note:</b> Lookup in CD_CTRL_ZONE dimension table and populate the surrogate key.
CUST_OUTG_UDD1_KEY	User Defined Dimension 1 Key		
CUST_OUTG_UDD2_KEY	User Defined Dimension 2 Key		
PLANNED_IND	Planned Indicator	SWMAN_SHEET_CAT EGORY.SHEET_CATE GORY_NAME	
EXCLUDE_IND	Exclude Indicator	JOBS.J.STATE_VALUE  PICKLIST_INFO_UPD _TR PNO_DTR_FLAG  SWMAN_SHEET_CAT EGORY SSCA.SHEET_CATEG ORY_NAME	

Target Field	OBIEE Field	Source Field	Transformation / Calculation Logic
OMS_EXCLUDE_IND	OMS Exclude Indicator	PICKLIST_INFO_UPD _TR.NO_DTR_FLAG	
CANCELLED_IND	Cancelled Indicator	JOBS.STATE_VALUE	
OUTG_DURATION	Outage Duration	SUPPLY_NODE_LOG. OUTAGE_TIME  SUPPLY_NODE_LOG. RESTORE_TIME	
NUM_MOMENTARY	number of momentaries covered	JOBS.NUM_MOMENTARIES	
AFF_DEVICE_KEY	AFF Device Key	SUPPLY_NODES.DEV ICE_IDX  SUPPLY_NODES. DEVICE_CLS	<b>Transformation Logic:</b> If H_IDX and H_CLS are '0' then populate DEVICE_KEY as '0'.
CAUSE_DEVICE_KEY	Cause Device Key	JOBS.H_IDX  JOBS.H_CLS	<b>Transformation Logic:</b> If H_IDX and H_CLS are '0' then populate DEVICE_KEY as '0'.
FEEDER_KEY	Feeder Key	JOBS.FEEDER_CLS  JOBS.FEEDER_IDX	<b>Transformation Logic:</b> If FEEDER_IDX and FEEDER_CLS are '0' then populate FEEDER_KEY as '0'.
SW_PLAN_KEY	Switch Plan Key	JOBS.SWSHEET_IDX  JOBS.SWSHEET_CLS	<b>Transformation Logic:</b> If SWSHEET_IDX and SWSHEET_CLS are '0' then populate SW_PLAN_KEY as '0'.
STORM_KEY	Storm Key	STORMAN_STORMS.S TORM_NAME  STORMAN_STORMS.S TORM_DATE	<b>Note:</b> Lookup in CD_STORM dimension to populate the surrogate key.
STORM_OUTAGE_TYPE_KEY	Storm Outage Type Key	JOBS.STORMMAN_TYPE	<b>Note:</b> Lookup in CD_STORM_OUTAGE_TYPE and populate the surrogate key.
PARENT_EVENT_KEY	Parent Event Key	PARENT_EVENT.NUMB	<b>Note:</b> Lookup in CD_EVENT and populate the surrogate key.

Target Field	OBIEE Field	Source Field	Transformation / Calculation Logic
CMI	CMI	SUPPLY_NODE_LOG. OUTAGE_TIME	
		SUPPLY_NODE_LOG. RESTORE_TIME	
OUTG_DUR_KEY	Outage Duration	SUPPLY_NODE_LOG. OUTAGE_TIME,  SUPPLY_NODE_LOG. RESTORE_TIME	<b>Transformation Logic:</b> This field is populated with OUTG_DURTN_KEY from CD_OUTG_DURTN where OUTG_DURTN is between RANGE_START and RANGE_END.
EST_RST_DUR_KEY	Est Restoration Duration Surrogate key	JOBS.BEGIN_TIME,  JOBS.EST_REST_TIME	<b>Transformation Logic:</b> This field is populated with EST_RST_DURTN_KEY from CD_EST_RST_DURTN where OUTG_DURTN is between RANGE_START and RANGE_END.
DURATION_DEVIATION_KEY	Duration Deviation Surrogate Key	JOBS.RESTORE_TIME  JOBS.EST_REST_TIME	<b>Transformation Logic:</b> This field is populated with ESTMTD_VS_ACTL_DURTN_KEY from CD_ESTMTD_VS_ACTL_DURTN where OUTG_DURTN is between RANGE_START and RANGE_END.
EST_RST_DUR	Est Restoration Duration	JOBS.BEGIN_TIME  JOBS.EST_REST_TIME	
DURATION_DEVIATION	Duration Deviation	JOBS.RESTORE_TIME  JOBS.EST_REST_TIME	
SRC_PREMISE_ID		CD_PREM.SRC_PREM_ID	
SRC_PERSON_ID		CD_PER.SRC_PER_ID	



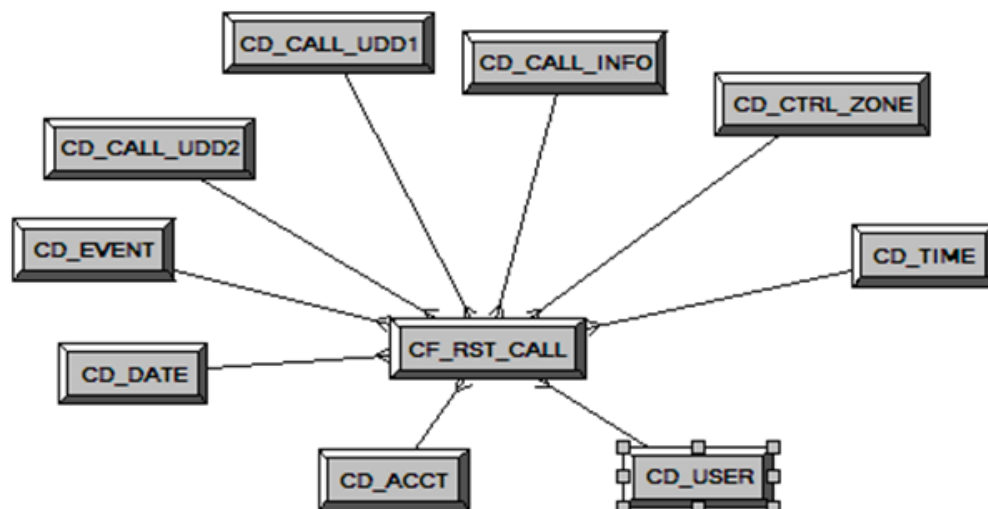
Target Field	OBIEE Field	Source Field	Transformation / Calculation Logic
SRC_METER_ID		CD_METER.SRC_METER_ID	
DEVICE_ID		CD_DEVICE.DEVICE_ID	
CREW_KEY		CREW_VW.CREW_ID	<b>Transformation Logic:</b> This field is used to lookup in CD_CREW and populate the surrogate key.
UDM1	User Defined Measure 1		
UDM2	User Defined Measure 2		
UDM3	User Defined Measure 3		
UDM4	User Defined Measure 4		
UDM5	User Defined Measure 5		
UDM6	User Defined Measure 6		
UDM7	User Defined Measure 7		
UDM8	User Defined Measure 8		
UDM9	User Defined Measure 9		
UDM10	User Defined Measure 10		
UDDFK1_KEY	User Defined Dimension Surrogate Key 1		
UDDFK2_KEY	User Defined Dimension Surrogate Key 2		
UDDFK3_KEY	User Defined Dimension Surrogate Key 3		
UDDFK4_KEY	User Defined Dimension Surrogate Key 4		
UDDFK5_KEY	User Defined Dimension Surrogate Key 5		
UDDGEN1	User Defined Degenerate Dimension 1		
UDDGEN2	User Defined Degenerate Dimension 2		
UDDGEN3	User Defined Degenerate Dimension 3		
UDDGEN4	User Defined Degenerate Dimension 4		

Target Field	OBIEE Field	Source Field	Transformation / Calculation Logic
UDDGEN5	User Defined Degenerate Dimension 5		
UDDGENL1	User Defined Long Degenerate Dimension 1		
UDDGENL2	User Defined Long Degenerate Dimension 2		
UDDGENL3	User Defined Long Degenerate Dimension 3		
UDDGENL4	User Defined Long Degenerate Dimension 4		
UDDGENL5	User Defined Long Degenerate Dimension 5		
FACT_CNT	Fact Count		<b>Transformation Logic:</b> This field is populated with the standard value of 1.
DATA_SOURCE_IND	Data Source Indicator		<b>Transformation Logic:</b> This field is populated with the DSI value on the source product instance configuration. This table is populated as part of the initial setup and the DSI value is extracted from the environment ID of the source system (CI_INSTALLATION_ENV_ID).
JOB_NBR	Job Number		<b>Transformation Logic:</b> This field is populated with the ODI job execution session number.

## Restored Call Fact

The Restored Call fact stores details about the incidents created in the source system and also captures details about the associated jobs. The data is stored for all restored and un-restored jobs.

### Entity Relationship Diagram



### Properties

Property	Value
Target Table Name	CF_RST_CALL
Table Type	Fact
Fact Type	Accumulation
Driver Table	INCIDENTS
Stage Table Name	STG_CF_RST_CALL
ODI Package Name	B1_PKG_CF_RST_CALL
ETL View Name	B1_F_RECENT_CALL_VW
Materialized View Name	

### Fields

Target Field	OBIEE Field	Source Field	Transformation / Calculation Logic
RST_CALL_KEY	Recent Call Key		<b>Transformation Logic:</b> This field is populated with the sequence from SPL_RST_CALL_SEQ.

Target Field	OBIEE Field	Source Field	Transformation / Calculation Logic
SRC_INCIDENT_ID	Source Incident ID	INCIDENTS.DECODE ( NVL( ASSOCIATE_IDX, 0), 0, NUMB, ASSOCIATE_IDX )	
EVENT_KEY	Event Key	JOBS.NUMB	<b>Note:</b> Lookup in the CD_EVENT dimension table and replace with surrogate key.
ACCT_KEY	Account Key	INCIDENTS.ACCOUNT_NUM	<b>Note:</b> Lookup in the CD_ACCOUNT dimension table and replace with surrogate key.
PRIORITY_IND	Priority Indicator	INCIDENTS.DECODE (SUBSTR( COMPLAINT, 7, 1 ), '1', '1', '2', '1', '0'), '')	
CALL_DATE_KEY	Call Date Key	INCIDENTS.INPUT_TIME	
CALL_TIME_KEY	Call Time Key	INCIDENTS.INPUT_TIME	<b>Transformation Logic:</b> Extract the date part and then lookup in the CD_DATE dimension table.
CALL_UDD1_KEY	Call User Defined Dimension 1 Key	INCIDENTS.INPUT_TIME	<b>Transformation Logic:</b> Extract the time part and then lookup in the CD_TIME dimension table.
CALL_UDD2_KEY	Call User Defined Dimension 2 Key		
CTRL_ZONE_KEY	Control Zone Key	INCIDENTS.SRC_NCG_ID	<b>Note:</b> Replace with surrogate key.
USER_KEY	User Key	CES_USER.USER_NAME	<b>Note:</b> Look up in the CD_USER dimension table and replace with surrogate key.
CALL_INFO_KEY	Call Info Key	INCIDENTS.DECODE ( NVL( ASSOCIATE_IDX, 0), 0, NUMB, ASSOCIATE_IDX )	<b>Note:</b> Replace with surrogate key.

Target Field	OBIEE Field	Source Field	Transformation / Calculation Logic
PREM_KEY	Premise Key	CES_CUSTOMERS.SE RV_LOC_ID	<b>Note:</b> Look up in the CD_PREM dimension table and replace with surrogate key.
ADDR_KEY	Address Key	CES_CUSTOMERS.SE RV_LOC_ID	<b>Note:</b> Look up in the CD_ADDR dimension table and replace with surrogate key.
DEVICE_KEY	Device Key	INCIDENTS.H_IDX  INCIDENTS.H_CLS	<b>Note:</b> Look up in the CD_DEVICE dimension table and replace with surrogate key.
UDM1	User Defined Measure 1		
UDM2	User Defined Measure 2		
UDM3	User Defined Measure 3		
UDM4	User Defined Measure 4		
UDM5	User Defined Measure 5		
UDM6	User Defined Measure 6		
UDM7	User Defined Measure 7		
UDM8	User Defined Measure 8		
UDM9	User Defined Measure 9		
UDM10	User Defined Measure 10		
UDDFK1_KEY	User Defined Dimension Surrogate Key 1		
UDDFK2_KEY	User Defined Dimension Surrogate Key 2		
UDDFK3_KEY	User Defined Dimension Surrogate Key 3		
UDDFK4_KEY	User Defined Dimension Surrogate Key 4		
UDDFK5_KEY	User Defined Dimension Surrogate Key 5		
UDDGEN1	User Defined Degenerate Dimension 1	JOBS.RESTORE_TIME	<b>Transformation Logic:</b> If RESTORE_TIME is 'null' then value is '0', else '1'. '0' indicates the job is unrestored and '1' indicates it is restored.
UDDGEN2	User Defined Degenerate Dimension 2		

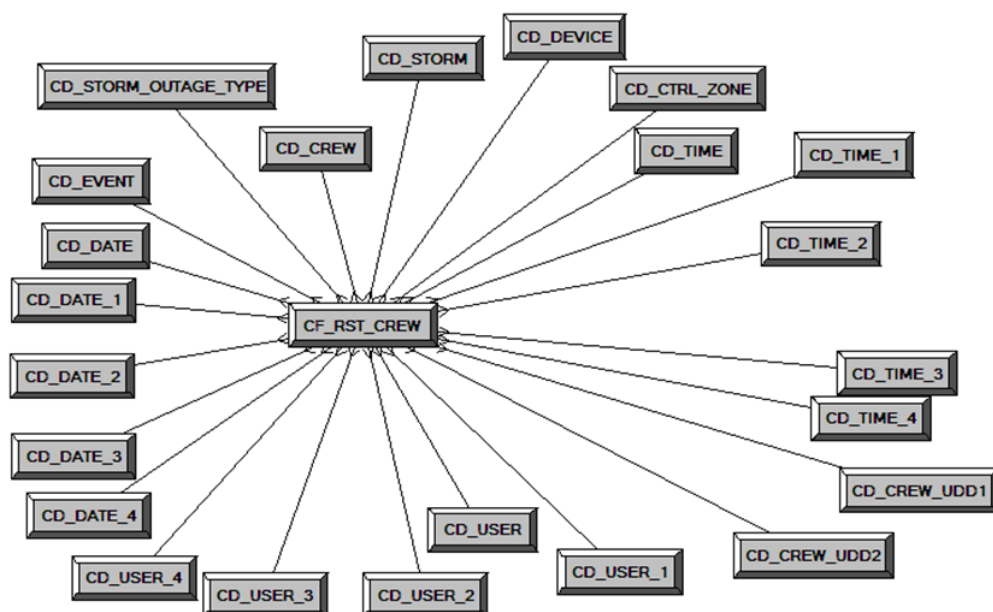
Target Field	OBIEE Field	Source Field	Transformation / Calculation Logic
UDDGEN3	User Defined Degenerate Dimension 3		
UDDGEN4	User Defined Degenerate Dimension 4		
UDDGEN5	User Defined Degenerate Dimension 5		
UDDGENL1	User Defined Long Degenerate Dimension 1		
UDDGENL2	User Defined Long Degenerate Dimension 2		
UDDGENL3	User Defined Long Degenerate Dimension 3		
UDDGENL4	User Defined Long Degenerate Dimension 4		
UDDGENL5	User Defined Long Degenerate Dimension 5		
FACT_CNT	Fact Count		<b>Transformation Logic:</b> This field is populated with the standard value of 1.
DATA_SOURCE_IND	Data Source Indicator		<b>Transformation Logic:</b> This field is populated with the DSI value on the source product instance configuration. This table is populated as part of the initial setup and the DSI value is extracted from the environment ID of the source system (CI_INSTALLATION.ENV_ID).
JOB_NBR	Job Number		<b>Transformation Logic:</b> This field is populated with the ODI job execution session number.

## Restored Crew Fact

For all jobs created in the source system, several activities (such as assignment, un-assignment, dispatch, arrival and completion) are performed to complete them. Each of these activities are carried out by the corresponding crew.

The Recent Crew fact stores all such crew activity information for every job created in the source system. The data is stored for all restored and un-restored jobs.

### Entity Relationship Diagram



### Properties

Property	Value
Target Table Name	CF_RST_CREW
Table Type	Fact
Fact Type	Accumulation
Driver Table	CREW_EVENT_HISTORY_CEH
Stage Table Name	STG_CF_RST_CREW
ODI Package Name	B1_PKG_CF_RST_CREW
ETL View Name	B1_F_RECENT_CREW_VW
Materialized View Name	B1_RST_CREW_MON_MV1

## Fields

Target Field	OBIEE Field	Source Field	Transformation / Calculation Logic
RST_CREW_KEY	Restored Crew Key		<b>Transformation Logic:</b> This field is populated with the sequence from SPL_RST_CREW_SEQ.
EVENT_KEY	Event Key	JOBS.NUMB	<b>Transformation Logic:</b> This field is populated with the surrogate key.
SRC_EVENT_NBR	Source Event Number	JOBS.NUMB	
INROUTE_DURATION	Inroute Duration	CREW_DISPATCHES.WHEN_HAPPENED	
ASSIGN_DATE_KEY	Assign Date Key	CREW_ASSIGNMENTS.ASSIGN.WHEN_HAPPENED	<b>Transformation Logic:</b> This field is populated with the last assigned date.
ASSIGN_TIME_KEY	Assign Time Key	CREW_ASSIGNMENTS.ASSIGN.WHEN_HAPPENED	<b>Transformation Logic:</b> This field is populated with the last assigned time.
CREW_UDD1_KEY	Crew User Defined Dimension 1 Key		
CREW_UDD2_KEY	Crew User Defined Dimension 2 Key		
CTRL_ZONE_KEY	Control Zone Key	JOBS.NCG	<b>Transformation Logic:</b> This field is populated with the surrogate key.
ASSIGN_USER_KEY	Assign User Key	CREW_ASSIGNMENTS.ASSIGN.CES_USER	<b>Transformation Logic:</b> This field is populated with the surrogate key.
CREW_KEY	Crew Key	CREW_EVENT_HISTORY.CREW_ID	<b>Transformation Logic:</b> This field is populated with the surrogate key.
WORK_DURATION	Work Duration	CREW_DISPATCHES.WHEN_HAPPENED	
ASSIGN_DURATION	Assign Duration	CREW_ASSIGNMENTS.WHEN_HAPPENED	
DISPATCH_DURATION	Dispatch Duration	CREW_DISPATCHES.WHEN_HAPPENED  CREW_ASSIGNMENTS.WHEN_HAPPENED	



Target Field	OBIEE Field	Source Field	Transformation / Calculation Logic
DEVICE_KEY	Device Key	JOBS.H_IDX JOBS.H_CLS	<b>Transformation Logic:</b> This field is populated with the surrogate key.
UNASSIGN_USER_KEY	Unassign User Key	CREW_ASSIGNMENTS UNASSIGN.CES_USER	<b>Transformation Logic:</b> This field is populated with the last assigned user.
UNASSIGN_DATE_KEY	Unassign Date Key	CREW_ASSIGNMENTS UNASSIGN.WHEN_HAPPENED	<b>Transformation Logic:</b> This field is populated with the last unassigned date.
UNASSIGN_TIME_KEY	Unassign Time Key	CREW_ASSIGNMENTS UNASSIGN.WHEN_HAPPENED	<b>Transformation Logic:</b> This field is populated with the last unassigned time.
ACCEPT_USER_KEY	Accept User Key	CREW_DISPATCHES DISPATCH.CES_USER	<b>Transformation Logic:</b> This field is populated with the last dispatched user.
ACCEPT_DATE_KEY	Accept Date Key	CREW_DISPATCHES DISPATCH.WHEN_HAPPENED	<b>Transformation Logic:</b> This field is populated with the last accepted date.
ACCEPT_TIME_KEY	Accept Time Key	CREW_DISPATCHES DISPATCH.WHEN_HAPPENED	<b>Transformation Logic:</b> This field is populated with the last accepted time.
ARRIVE_TIME_KEY	Arrive Time Key	CREW_DISPATCHES ARRIVE.WHEN_HAPPENED	<b>Transformation Logic:</b> This field is populated with the last arrived time.
CMPL_TIME_KEY	Complete Time Key	CREW_DISPATCHES COMPLETE.WHEN_HAPPENED	<b>Transformation Logic:</b> This field is populated with the last arrived time.
ARRIVE_DATE_KEY	Arrive Date Key	CREW_DISPATCHES COMPLETE.WHEN_HAPPENED	<b>Transformation Logic:</b> This field is populated with the last arrived date.
CMPL_DATE_KEY	Completed Date Key	CREW_DISPATCHES COMPLETE.WHEN_HAPPENED	<b>Transformation Logic:</b> This field is populated with the last job completion date.
CMPL_USER_KEY	Completed User Key	CREW_DISPATCHES COMPLETE.CES_USER	<b>Transformation Logic:</b> This field is populated with the last user name if the job is completed. Else, it is null.

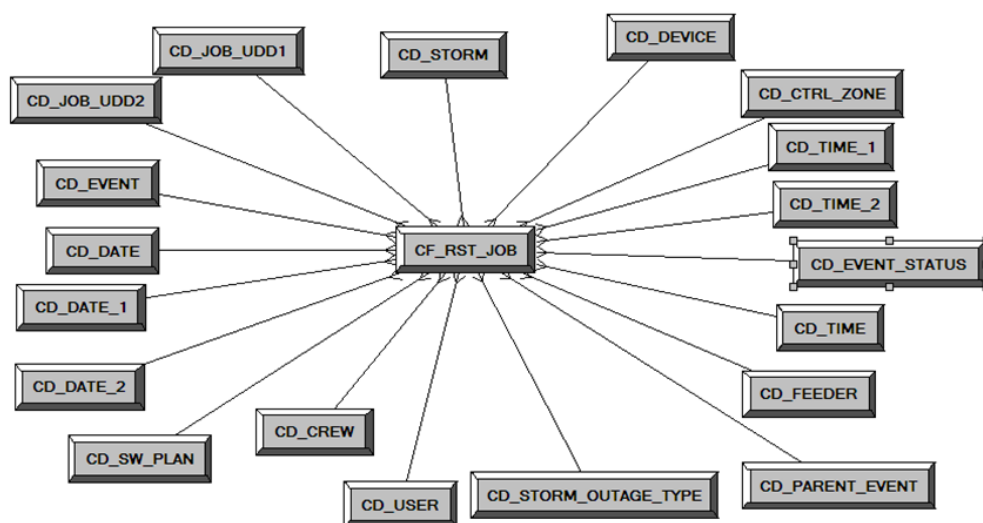
Target Field	OBIEE Field	Source Field	Transformation / Calculation Logic
ARRIVE_USER_KEY	Arrive User Key	CREW_DISPATCHES ARRIVE.CES_USER	<b>Transformation Logic:</b> This field is populated with the last user name.
STORM_KEY	Storm Key	STORMAN_STORMS.S TORM_NAME  STORMAN_STORMS.S TORM_DATE	<b>Transformation Logic:</b> This field is populated with the last storm name and date.
STORM_OUTAGE_TY PE_KEY	Storm Outage Type Key	JOBS.STORMMAN_TY PE	<b>Transformation Logic:</b> This field is populated with the type of the last storm.
SRC_CREW_ID	Source Crew ID	CREW_EVENT_HIST ORY.CREW_ID	
UDM1	User Defined Measure 1		
UDM2	User Defined Measure 2		
UDM3	User Defined Measure 3		
UDM4	User Defined Measure 4		
UDM5	User Defined Measure 5		
UDM6	User Defined Measure 6		
UDM7	User Defined Measure 7		
UDM8	User Defined Measure 8		
UDM9	User Defined Measure 9		
UDM10	User Defined Measure 10		
UDDFK1_KEY	User Defined Dimension Surrogate Key 1		
UDDFK2_KEY	User Defined Dimension Surrogate Key 2		
UDDFK3_KEY	User Defined Dimension Surrogate Key 3		
UDDFK4_KEY	User Defined Dimension Surrogate Key 4		
UDDFK5_KEY	User Defined Dimension Surrogate Key 5		
UDDGEN1	User Defined Degenerate Dimension 1	JOBS.RESTORE_TIME	<b>Transformation Logic:</b> If RESTORE_TIME is 'null' then value is '0', else '1'. '0' indicates the job is unrestored and '1' indicates it is restored.

Target Field	OBIEE Field	Source Field	Transformation / Calculation Logic
UDDGEN2	User Defined Degenerate Dimension 2		
UDDGEN3	User Defined Degenerate Dimension 3		
UDDGEN4	User Defined Degenerate Dimension 4		
UDDGEN5	User Defined Degenerate Dimension 5		
UDDGENL1	User Defined Long Degenerate Dimension 1		
UDDGENL2	User Defined Long Degenerate Dimension 2		
UDDGENL3	User Defined Long Degenerate Dimension 3		
UDDGENL4	User Defined Long Degenerate Dimension 4		
UDDGENL5	User Defined Long Degenerate Dimension 5		
FACT_CNT	Fact Count		<b>Transformation Logic:</b> This field is populated with the standard value of 1.
DATA_SOURCE_IND	Data Source Indicator		<b>Transformation Logic:</b> This field is populated with the DSI value on the source product instance configuration. This table is populated as part of the initial setup and the DSI value is extracted from the environment ID of the source system (CI_INSTALLATION.ENV_ID).
JOB_NBR	Job Number		<b>Transformation Logic:</b> This field is populated with the ODI job execution session number.

## Restored Job Fact

The Restored Job fact stores job information from the source system. It stores KPIs such as number of events, outage duration, restoration duration, resolved event count, etc. The data is stored for all restored and un-restored jobs.

### Entity Relationship Diagram



### Properties

Property	Value
Target Table Name	CF_RST_JOB
Table Type	Fact
Fact Type	Accumulation
Driver Table	JOBS PICKLIST_INFO_UPD_TR
Stage Table Name	STG_CF_RST_JOB
ODI Package Name	B1_PKG_CF_RST_JOB
ETL View Name	B1_F_RECENT_JOB_VW
Materialized View Name	B1_RST_JOB_MON_MV1 B1_RST_JOB_MON_MV2 B1_RST_JOB_MON_MV3 B1_RST_JOB_TOPX_MON_MV1

### Fields

Target Field	OBIEE Field	Source Field	Transformation / Calculation Logic
RST_JOB_KEY	Restored Job Key		<b>Transformation Logic:</b> This field is populated with the sequence from SPL_RST_JOB_SEQ.

Target Field	OBIEE Field	Source Field	Transformation / Calculation Logic
SRC_JOB_NBR	Source Job Number	JOBS.NUMB	
EVENT_KEY	Event Key	JOBS.NUMB	
EVENT_STATUS_KEY	Event Status Key	JOBS.STATUS	
BEGIN_DATE_KEY	Begin Date Key	JOBS.BEGIN_TIME	
BEGIN_TIME_KEY	Begin Time Key	JOBS.BEGIN_TIME	
BEGIN_DTTM	Begin Date Time	JOBS.BEGIN_TIME	
RST_TIME_KEY	Restored Time Key	JOBS.RESTORE_TIME	
RST_DATE_KEY	Restored Date Key	JOBS.RESTORE_TIME	
RST_DTTM	Restored Date Time	JOBS.RESTORE_TIME	
RST_IND	Restored Indicator	JOBS.RESTORE_TIME	<b>Transformation Logic:</b> If the restoration time is null, this field is populated with '0', else '1'.
EST_RST_TIME_KEY	Estimated Restored Time Key	JOBS.EST_REST_TIME	
EST_RST_DATE_KEY	Estimated Restored Date Key	JOBS.EST_REST_TIME	
PLANNED_IND	Planned Indicator	SWMAN_SHEET_CATEGORY.SHEET_CATEGORY_NAME	
EXCLUDE_IND	Exclude Indicator	JOBS.STATE_VALUE  PICKLIST_INFO_UPDATE.NO_DTR_FLAG  SWMAN_SHEET_CATEGORY.SHEET_CATEGORY_NAME	
OMS_EXCLUDE_IND	OMS Exclude Indicator	PICKLIST_INFO_UPDATE.NO_DTR_FLAG	
CANCELLED_IND	Cancelled Indicator	JOBS.STATE_VALUE	
OUTG_DURATION	Outage Duration	JOBS.RESTORE_TIME  JOBS.BEGIN_TIME	
CTRL_ZONE_KEY	Control Zone Key	JOBS.NCG	
DEVICE_KEY	Device Key	JOBS.H_IDX  JOBS.H_CLS	<b>Transformation Logic:</b> If H_IDX and H_CLS are '0', then populate DEVICE_KEY as '0'.

Target Field	OBIEE Field	Source Field	Transformation / Calculation Logic
CMPL_USER_KEY	Completed User Key	WHO_COMPLETED.USER_NAME	
RESP_USER_KEY	Responsible User Key	WHO_RESPONSIBLE.USER_NAME	
CREW_KEY	Crew Key	CREW_VW.CREW_ID	
JOB_UDD1_KEY	User Defined Dimension 1 Key		
JOB_UDD2_KEY	User Defined Dimension 2 Key		
FEEDER_KEY	Feeder Key	JOBS.FEEDER_CLS JOBS.FEEDER_IDX	<b>Transformation Logic:</b> If FEEDER_IDX and FEEDER_CLS are '0', then this field is populated as '0'.
SW_PLAN_KEY	Switch Plan Key	JOBS.SWSHEET_IDX JOBS.SWSHEET_CLS	<b>Transformation Logic:</b> If SWSHEET_IDX and SWSHEET_CLS are '0', then this field is populated as '0'.
STORM_KEY	Storm Key	STORMAN_STORMS.S TORM_NAME STORMAN_STORMS.S TORM_DATE	<b>Transformation Logic:</b> This field is populated with the storm name and date.
STORM_OUTAGE_TYPE_KEY	Storm Outage Type Key	JOBS.STORMMAN_TYPE	
PARENT_EVENT_KEY	Parent Event Key	PARENT_EVENT.NUMB JOBS.NUMB	
OUTG_DUR_KEY	Outage Duration Key	JOBS.RESTORE_TIME JOBS.BEGIN_TIME	
EST_RST_DUR_KEY	Estimated Restoration Duration Key	JOBS.EST_REST_TIME JOBS.BEGIN_TIME	
DURATION_DEVIATION_KEY	Duration Deviation Key	JOBS.RESTORE_TIME JOBS.EST_REST_TIME	

Target Field	OBIEE Field	Source Field	Transformation / Calculation Logic
EST_RST_DUR	Estimated Restoration Duration	JOBS.EST_REST_TIME JOBS.BEGIN_TIME	<b>Transformation Logic:</b> This field is populated with the date and time of estimated restoration.
UDM1	User Defined Measure 1	JOBS.NUM_CUST_OUT	<b>Transformation Logic:</b> This field is populated with the number of customers impacted.
UDM2	User Defined Measure 2	INCIDENTS.NUMB	<b>Transformation Logic:</b> This field is populated with the number of customer calls.
UDM3	User Defined Measure 3	JOBS.RESTORE_TIME JOBS.EST_REST_TIME	<b>Transformation Logic:</b> This field is populated with the difference between actual restoration time and estimated restoration time..
UDM4	User Defined Measure 4		
UDM5	User Defined Measure 5		
UDM6	User Defined Measure 6		
UDM7	User Defined Measure 7		
UDM8	User Defined Measure 8		
UDM9	User Defined Measure 9		
UDM10	User Defined Measure 10		
UDDFK1_KEY	User Defined Dimension Surrogate Key 1		
UDDFK2_KEY	User Defined Dimension Surrogate Key 2		
UDDFK3_KEY	User Defined Dimension Surrogate Key 3		
UDDFK4_KEY	User Defined Dimension Surrogate Key 4		
UDDFK5_KEY	User Defined Dimension Surrogate Key 5		
UDDGEN1	User Defined Degenerate Dimension 1		
UDDGEN2	User Defined Degenerate Dimension 2		

Target Field	OBIEE Field	Source Field	Transformation / Calculation Logic
UDDGEN3	User Defined Degenerate Dimension 3		
UDDGEN4	User Defined Degenerate Dimension 4		
UDDGEN5	User Defined Degenerate Dimension 5		
UDDGENL1	User Defined Long Degenerate Dimension 1		
UDDGENL2	User Defined Long Degenerate Dimension 2		
UDDGENL3	User Defined Long Degenerate Dimension 3		
UDDGENL4	User Defined Long Degenerate Dimension 4		
UDDGENL5	User Defined Long Degenerate Dimension 5		
FACT_CNT	Fact Count		<b>Transformation Logic:</b> This field is populated with the standard value of 1.
DATA_SOURCE_IND	Data Source Indicator		<b>Transformation Logic:</b> This field is populated with the DSI value on the source product instance configuration. This table is populated as part of the initial setup and the DSI value is extracted from the environment ID of the source system (CI_INSTALLATION.E NV_ID).
JOB_NBR	Job Number		<b>Transformation Logic:</b> This field is populated with the ODI job execution session number.

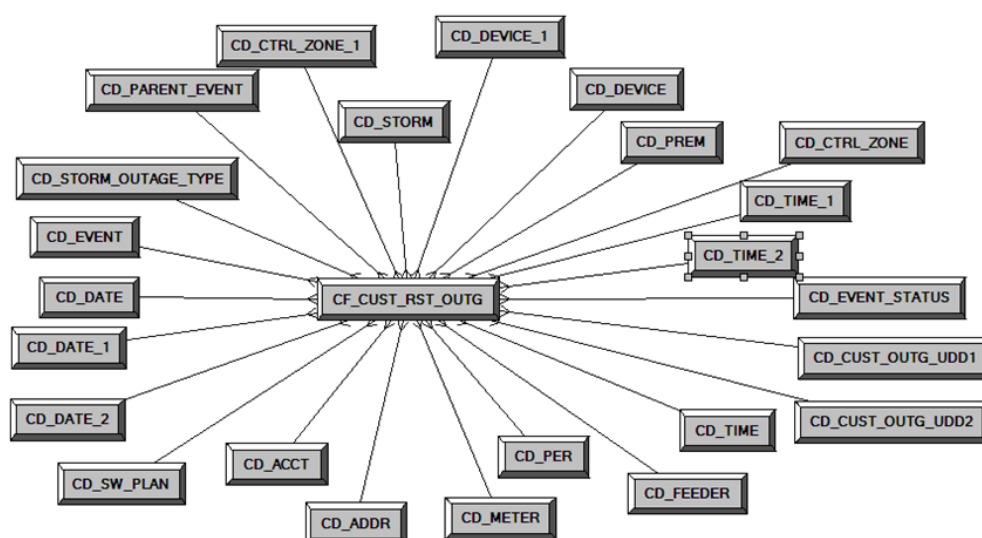


## Restored Customer Outage Fact

The Restored Customer Outage fact stores the details of customers experiencing service interruptions based on the supply node log information from the source system. The supply node log data will be mapped to the [Supply Node Lookup Dimension](#) to determine the actual list of customers experiencing the outage.

Some of the measures captured in this fact are outage duration, CMI, number of momentary outages etc. The data is stored for all restored and un-restored jobs.

### Entity Relationship Diagram



### Properties

Property	Value
Target Table Name	CF_CUST_RST_OUTG
Table Type	Fact
Fact Type	Accumulation
Driver Table	SUPPLY_NODE_LOG SNL
Stage Table Name	STG_CF_CUST_RST_OUTG
ODI Package Name	B1_PKG_CF_CUST_RST_OUTG
ETL View Name	B1_F_CUST_RECENT_OUTG_VW
Materialized View Name	B1_CUST_RST_OUTG_MON_MV1 B1_CUST_RST_OUTG_MON_MV2

## Fields

Target Field	OBIEE Field	Source Field	Transformation / Calculation Logic
CUST_RST_OUTG_KEY	Recent Outage Key		<b>Transformation Logic:</b> This field is populated with the sequence from SPL_CUST_RST_OUTG_SEQ.
SRC_ID	Source Outage ID	SUPPLY_NODE_LOG.ID	
EVENT_KEY	Event Key	JOBS.NUMB	
EVENT_STATUS_KEY	Event Status Key	JOBS.STATUS	
ACCT_KEY	Account Key	CD_ACCT.SRC_ACCT_ID  INCIDENTS.ACCOUNT_NUM  CES_CUSTOMERS.ACCOUNT_NUMBER	
PREM_KEY	Premise Key	CD_PREM.SRC_PREM_ID	
PER_KEY	Person Key	CD_PER.SRC_PER_ID	
METER_KEY	Meter Key	CD_METER.SRC_METER_ID	
ADDR_KEY	Address Key	CD_ADDR.SRC_ADDR_ID	
BEGIN_DATE_KEY	Begin Date Key	SUPPLY_NODE_LOG.OUTAGE_TIME	
BEGIN_TIME_KEY	Begin Time Key	SUPPLY_NODE_LOG.OUTAGE_TIME	
BEGIN_DTTM	Begin Date Time	SUPPLY_NODE_LOG.OUTAGE_TIME	
RST_DATE_KEY	Restored Time Key	SUPPLY_NODE_LOG.RESTORE_TIME	
RST_TIME_KEY	Restored Date Key	SUPPLY_NODE_LOG.RESTORE_TIME	
RST_DTTM	Restored Date Time	SUPPLY_NODE_LOG.RESTORE_TIME	
RST_IND	Restored Indicator	SUPPLY_NODE_LOG.RESTORE_TIME	<b>Transformation Logic:</b> If restore time is null, this field is populated with '0'. Else, '1'.

Target Field	OBIEE Field	Source Field	Transformation / Calculation Logic
EST_RST_TIME_KEY	Estimated Restored Time Key	JOBS.EST_REST_TIME	
EST_RST_DATE_KEY	Estimated Restored Date Key	JOBS.EST_REST_TIME	
CTRL_ZONE_KEY	Control Zone Key	SUPPLY_NODE_LOG.NCG	
CAUSE_CTRL_ZONE_KEY	Cause Control Zone Key	JOBS.NCG	
CUST_OUTG_UDD1_KEY	User Defined Dimension 1 Key		
CUST_OUTG_UDD2_KEY	User Defined Dimension 2 Key		
PLANNED_IND	Planned Indicator	SWMAN_SHEET.SHEET_CATEGORY_NAME	
EXCLUDE_IND	Exclude Indicator	JOBS.STATE_VALUE  PICKLIST_INFO_UPDATE.PNO_DTR_FLAG  SWMAN_SHEET_CATEGORY SSCA.SHEET_CATEGORY_NAME	
OMS_EXCLUDE_IND	OMS Exclude Indicator	PICKLIST_INFO_UPDATE.NO_DTR_FLAG	
CANCELLED_IND	Cancelled Indicator	JOBS.STATE_VALUE	
OUTG_DURATION	Outage Duration	SUPPLY_NODE_LOG.OUTAGE_TIME  SUPPLY_NODE_LOG.RESTORE_TIME	<b>Transformation Logic:</b> This field is populated with the difference between restore time and outage time.
NUM_MOMENTARY	Number of momentaries covered	JOBS.MOMENTARIES	
AFF_DEVICE_KEY	AFF Device Key	SUPPLY_NODES.DEVICE_IDX  SUPPLY_NODES.DEVICE_CLS	<b>Transformation Logic:</b> If H_IDX and H_CLS are '0', this field is populated with '0'.
CAUSE_DEVICE_KEY	Cause Device Key	JOBS.H_IDX  JOBS.H_CLS	<b>Transformation Logic:</b> If H_IDX and H_CLS are '0', this field is populated with '0'.

Target Field	OBIEE Field	Source Field	Transformation / Calculation Logic
FEEDER_KEY	Feeder Key	SUPPLY_NODES.FEEDER	<b>Transformation Logic:</b> If FEEDER_IDX and FEEDER_CLS are '0', this field is populated with '0'.
SW_PLAN_KEY	Switch Plan Key	JOBS.SWSHEET_IDX JOBS.SWSHEET_CLS	<b>Transformation Logic:</b> If SWSHEET_IDX and SWSHEET_CLS are '0', this field is populated with '0'.
STORM_KEY	Storm Key	STORMMAN_STORMS.STORM_NAME STORMMAN_STORMS.STORM_DATE	<b>Transformation Logic:</b> This field is populated with the storm name and date.
STORM_OUTAGE_TYPE_KEY	Storm Outage Type Key	JOBS.STORMMAN_TYPE	
PARENT_EVENT_KEY	Parent Event Key	PARENT_EVENT.NUMBER	
CMI	Customer Minutes Interrupted	SUPPLY_NODE_LOG.OUTAGE_TIME SUPPLY_NODE_LOG.RESTORE_TIME	
OUTG_DUR_KEY	Outage Duration Key	JOBS.RESTORE_TIME JOBS.BEGIN_TIME	<b>Transformation Logic:</b> This field is populated with the difference between restore time and outage time.
EST_RST_DUR_KEY	Estimated Restore Duration Key	JOBS.BEGIN_TIME JOBS.EST_REST_TIME	<b>Transformation Logic:</b> This field is populated with the difference between estimated restoration time and begin time.
DURATION_DEVIATION_KEY	Duration Deviation Key	JOBS.RESTORE_TIME JOBS.EST_REST_TIME	<b>Transformation Logic:</b> This field is populated with the difference between restoration time and estimated restore time.
EST_RST_DUR	Estimated Restoration Duration	JOBS.BEGIN_TIME JOBS.EST_REST_TIME	<b>Transformation Logic:</b> This field is populated with the difference between estimated restore time and begin time.

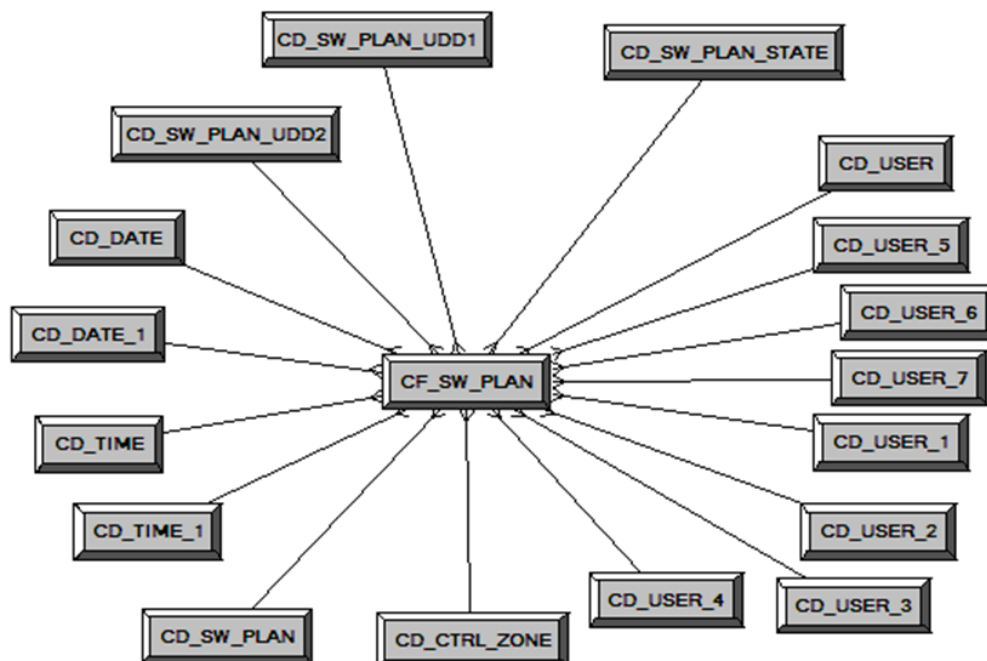
Target Field	OBIEE Field	Source Field	Transformation / Calculation Logic
DURATION_DEVIATION	Duration Deviation	JOBS.RESTORE_TIME JOBS.EST_REST_TIME	<b>Transformation Logic:</b> This field is populated with the difference between restore time and estimated restore time.
SRC_PREMISE_ID	Premise ID	CD_PREM.SRC_PREM_ID	
SRC_PERSON_ID	Person ID	CD_PER.SRC_PER_ID	
SRC_METER_ID	Meter ID	CD_METER.SRC_METER_ID	
DEVICE_ID	Device ID	CD_DEVICE.DEVICE_ID	
CREW_KEY		CREW_VW.CREW_ID	<b>Transformation Logic:</b> This field is used to lookup in CD_CREW and populate the surrogate key.
UDM1	User Defined Measure 1		
UDM2	User Defined Measure 2		
UDM3	User Defined Measure 3		
UDM4	User Defined Measure 4		
UDM5	User Defined Measure 5		
UDM6	User Defined Measure 6		
UDM7	User Defined Measure 7		
UDM8	User Defined Measure 8		
UDM9	User Defined Measure 9		
UDM10	User Defined Measure 10		
UDDFK1_KEY	User Defined Dimension Surrogate Key 1		
UDDFK2_KEY	User Defined Dimension Surrogate Key 2		
UDDFK3_KEY	User Defined Dimension Surrogate Key 3		
UDDFK4_KEY	User Defined Dimension Surrogate Key 4		
UDDFK5_KEY	User Defined Dimension Surrogate Key 5		
UDDGEN1	User Defined Degenerate Dimension 1		

Target Field	OBIEE Field	Source Field	Transformation / Calculation Logic
UDDGEN2	User Defined Degenerate Dimension 2		
UDDGEN3	User Defined Degenerate Dimension 3		
UDDGEN4	User Defined Degenerate Dimension 4		
UDDGEN5	User Defined Degenerate Dimension 5		
UDDGENL1	User Defined Long Degenerate Dimension 1		
UDDGENL2	User Defined Long Degenerate Dimension 2		
UDDGENL3	User Defined Long Degenerate Dimension 3		
UDDGENL4	User Defined Long Degenerate Dimension 4		
UDDGENL5	User Defined Long Degenerate Dimension 5		
FACT_CNT	Fact Count		<b>Transformation Logic:</b> This field is populated with the standard value of 1.
DATA_SOURCE_IND	Data Source Indicator		<b>Transformation Logic:</b> This field is populated with the DSI value on the source product instance configuration. This table is populated as part of the initial setup and the DSI value is extracted from the environment ID of the source system (CI_INSTALLATION.E NV_ID).
JOB_NBR	Job Number		<b>Transformation Logic:</b> This field is populated with the ODI job execution session number.

## Switch Plan Fact

The Switch Plan fact supports KPIs such as number of steps, number of aborted/failed steps, number of safety documents, etc.

### Entity Relationship Diagram



### Properties

Property	Value
Target Table Name	CF_SW_PLAN
Table Type	Fact
Fact Type	Accumulation
Driver Table	SWMAN_SHEET S
Stage Table Name	STG_CF_SW_PLAN
ODI Package Name	B1_PKG_CF_SW_PLAN
ETL View Name	B1_F_SW_PLAN_VW
Materialized View Name	

### Fields

Target Field	OBIEE Field	Source Field	Transformation / Calculation Logic
SW_PLAN_F_KEY	Switch Plan Fact Surrogate Key		<b>Transformation Logic:</b> This field is populated with the sequence from SPL_SW_PLAN_SEQ.

Target Field	OBIEE Field	Source Field	Transformation / Calculation Logic
SRC_SW_PLAN_CLS	Switch Plan Class	SWMAN_SHEET.SWITCH_SHEET_CLS	
SRC_SW_PLAN_IDX	Switch Plan Index	SWMAN_SHEET.SWITCH_SHEET_IDX	
SW_PLAN_KEY	Switch Plan Key	SWMAN_SHEET.SWITCH_SHEET_CLS SWMAN_SHEET.SWITCH_SHEET_IDX	
CTRL_ZONE_KEY	Control Zone Key	SWMAN_SHEET.NCG	
SW_PLAN_STATE_KEY	Switch Plan State Key	SWMAN_SHEET.STATE_KEY	
BEGIN_DATE_KEY	Begin Date	Switch Plan Begin.WHEN_ISSUED	
BEGIN_TIME_KEY	Begin Time	Switch Plan Begin.WHEN_ISSUED	
BEGIN_DTTM	Begin Date/Time	Switch Plan Begin.WHEN_ISSUED	
END_DATE_KEY	End Date	Switch Plan End.WHEN_EXECUTED	
END_TIME_KEY	End Time	Switch Plan End.WHEN_EXECUTED	
END_DTTM	End Date/Time	Switch Plan End.WHEN_EXECUTED	
USER_KEY1	User 1		<b>Transformation Logic:</b> This field is populated with '0'.
USER_KEY2	User 2		<b>Transformation Logic:</b> This field is populated with '0'.
USER_KEY3	User 3		<b>Transformation Logic:</b> This field is populated with '0'.
USER_KEY4	User 4		<b>Transformation Logic:</b> This field is populated with '0'.
USER_KEY5	User 5		<b>Transformation Logic:</b> This field is populated with '0'.



Target Field	OBIEE Field	Source Field	Transformation / Calculation Logic
USER_KEY6	User 6		<b>Transformation Logic:</b> This field is populated with '0'.
USER_KEY7	User 7		<b>Transformation Logic:</b> This field is populated with '0'.
USER_KEY8	User 8		<b>Transformation Logic:</b> This field is populated with '0'.
SW_PLAN_UDD1_KEY			
SW_PLAN_UDD2_KEY			
DURATION	Duration	Switch Plan Begin.1440 * ( CT.WHEN_EXECUTE D - ID.WHEN_ISSUED )  Switch Plan End.1440 * ( CT.WHEN_EXECUTE D - ID.WHEN_ISSUED )	
NBR_OF_STEPS	Number of steps	SWMAN_STEP.COUNT(*)	
NBR_OF_FAILED_STEPS	Number of failed steps		
NBR_OF_ABORTED_STEPS	Number of aborted steps		<b>Transformation Logic:</b> This field is populated with the difference between restore time and outage time.
NBR_OF_SAFETY_DOCUMENTS	Number of safety documents	SWMAN_SAFETY_DOCUMENTS.ID	
UDM1	User Defined Measure 1		
UDM2	User Defined Measure 2		
UDM3	User Defined Measure 3		
UDM4	User Defined Measure 4		
UDM5	User Defined Measure 5		
UDM6	User Defined Measure 6		
UDM7	User Defined Measure 7		
UDM8	User Defined Measure 8		

Target Field	OBIEE Field	Source Field	Transformation / Calculation Logic
UDM9	User Defined Measure 9		
UDM10	User Defined Measure 10		
UDDFK1_KEY	User Defined Dimension Surrogate Key 1		
UDDFK2_KEY	User Defined Dimension Surrogate Key 2		
UDDFK3_KEY	User Defined Dimension Surrogate Key 3		
UDDFK4_KEY	User Defined Dimension Surrogate Key 4		
UDDFK5_KEY	User Defined Dimension Surrogate Key 5		
UDDGEN1	User Defined Degenerate Dimension 1		
UDDGEN2	User Defined Degenerate Dimension 2		
UDDGEN3	User Defined Degenerate Dimension 3		
UDDGEN4	User Defined Degenerate Dimension 4		
UDDGEN5	User Defined Degenerate Dimension 5		
UDDGENL1	User Defined Long Degenerate Dimension 1		
UDDGENL2	User Defined Long Degenerate Dimension 2		
UDDGENL3	User Defined Long Degenerate Dimension 3		
UDDGENL4	User Defined Long Degenerate Dimension 4		
UDDGENL5	User Defined Long Degenerate Dimension 5		
FACT_CNT	Fact Count		<b>Transformation Logic:</b> This field is populated with the standard value of 1.

---

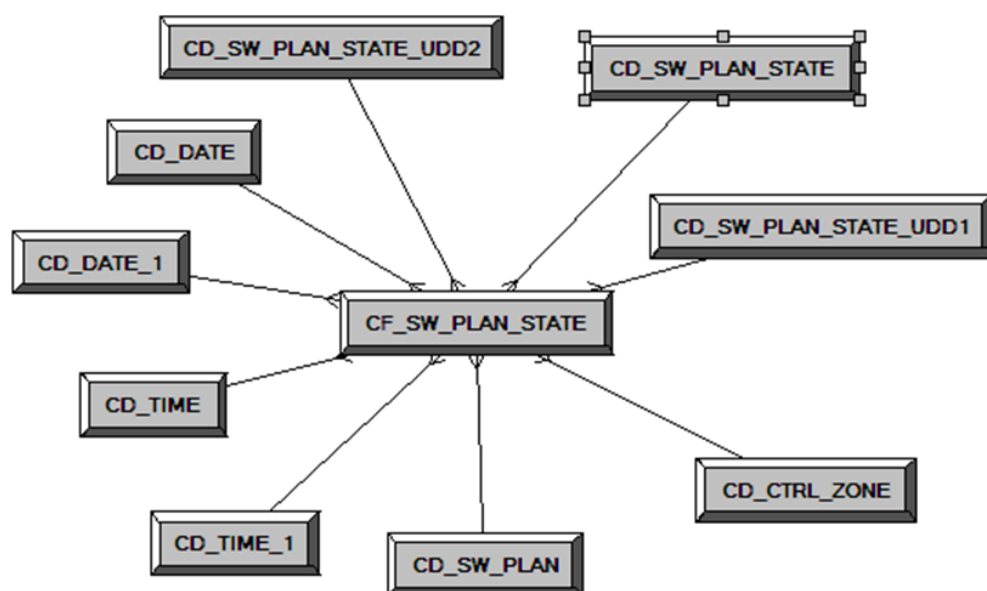
Target Field	OBIEE Field	Source Field	Transformation / Calculation Logic
DATA_SOURCE_IND	Data Source Indicator		<b>Transformation Logic:</b> This field is populated with the DSI value on the source product instance configuration. This table is populated as part of the initial setup and the DSI value is extracted from the environment ID of the source system (CI_INSTALLATION.E NV_ID).
JOB_NBR	Job Number		<b>Transformation Logic:</b> This field is populated with the ODI job execution session number.

---

## Switch Plan State Fact

The Switch Plan State fact supports KPIs such as state duration, number of log entries, etc.

### Entity Relationship Diagram



### Properties

Property	Value
Target Table Name	CF_SW_PLAN_STATE
Table Type	Fact
Fact Type	Accumulation
Driver Table	SWMAN_AUDIT_LOG_SAL1
Stage Table Name	STG_CF_SW_PLAN_STATE
ODI Package Name	B1_PKG_CF_SW_PLAN_STATE
ETL View Name	B1_F_SW_PLAN_STATE_VW
Materialized View Name	

### Fields

Target Field	OBIEE Field	Source Field	Transformation / Calculation Logic
SW_PLAN_STATE_F_KEY	Switch Plan Fact Surrogate Key		<b>Transformation Logic:</b> This field is populated with the sequence from SPL_SW_PLAN_STATE_SEQ.

Target Field	OBIEE Field	Source Field	Transformation / Calculation Logic
SRC_LOG_ENTRY	Switch Plan Log Entry ID	SWMAN_AUDIT_LOG SAL1.SEQ_LOG_ID	
SW_PLAN_KEY	Switch Plan Key	SWMAN_SHEET.SWITCH_SHEET_CLS  SWMAN_SHEET.SWITCH_SHEET_IDX	
CTRL_ZONE_KEY	Control Zone Key	SWMAN_SHEET.NCG	
SW_PLAN_STATE_KEY	Switch Plan State Key	TE_VALID_STATES.STATE_KEY	
BEGIN_DATE_KEY	Begin Date	SWMAN_AUDIT_LOG SAL1.INSERT_TIME	
BEGIN_TIME_KEY	Begin Time	SWMAN_AUDIT_LOG SAL1.INSERT_TIME	
BEGIN_DTTM	Begin Date/Time	SWMAN_AUDIT_LOG SAL1.INSERT_TIME	
END_DATE_KEY	End Date	SWMAN_AUDIT_LOG SAL2.INSERT_TIME	
END_TIME_KEY	End Time	SWMAN_AUDIT_LOG SAL2.INSERT_TIME	
END_DTTM	End Date/Time	SWMAN_AUDIT_LOG SAL2.INSERT_TIME	
SW_PLAN_STATE_UD D1_KEY			
SW_PLAN_STATE_UD D2_KEY			
STATE_DURATION	Duration of the Switch Plan State	SWMAN_AUDIT_LOG SAL1.INSERT_TIME  SWMAN_AUDIT_LOG SAL2.INSERT_TIME	
USER_KEY	Number of Switch Plan State Changes	CES_USER.USER_NAME	
UDM1	User Defined Measure 1		
UDM2	User Defined Measure 2		
UDM3	User Defined Measure 3		
UDM4	User Defined Measure 4		
UDM5	User Defined Measure 5		
UDM6	User Defined Measure 6		
UDM7	User Defined Measure 7		

Target Field	OBIEE Field	Source Field	Transformation / Calculation Logic
UDM8	User Defined Measure 8		
UDM9	User Defined Measure 9		
UDM10	User Defined Measure 10		
UDDFK1_KEY	User Defined Dimension Surrogate Key 1		
UDDFK2_KEY	User Defined Dimension Surrogate Key 2		
UDDFK3_KEY	User Defined Dimension Surrogate Key 3		
UDDFK4_KEY	User Defined Dimension Surrogate Key 4		
UDDFK5_KEY	User Defined Dimension Surrogate Key 5		
UDDGEN1	User Defined Degenerate Dimension 1		
UDDGEN2	User Defined Degenerate Dimension 2		
UDDGEN3	User Defined Degenerate Dimension 3		
UDDGEN4	User Defined Degenerate Dimension 4		
UDDGEN5	User Defined Degenerate Dimension 5		
UDDGENL1	User Defined Long Degenerate Dimension 1		
UDDGENL2	User Defined Long Degenerate Dimension 2		
UDDGENL3	User Defined Long Degenerate Dimension 3		
UDDGENL4	User Defined Long Degenerate Dimension 4		
UDDGENL5	User Defined Long Degenerate Dimension 5		
FACT_CNT	Fact Count		<b>Transformation Logic:</b> This field is populated with the standard value of 1.

---

Target Field	OBIEE Field	Source Field	Transformation / Calculation Logic
DATA_SOURCE_IND	Data Source Indicator		<b>Transformation Logic:</b> This field is populated with the DSI value on the source product instance configuration. This table is populated as part of the initial setup and the DSI value is extracted from the environment ID of the source system (CI_INSTALLATION.E NV_ID).
JOB_NBR	Job Number		<b>Transformation Logic:</b> This field is populated with the ODI job execution session number.

---

## User Defined Dimension Tables

All of the star schemas in Oracle Utilities Analytics product are supplied with user defined dimension tables that are joined to the respective fact. Customers need not make any changes to the physical table schema for any additional requirement. These dimensions help customers to easily extend an existing star schema without an upgrade impact. Customers can make use of these user defined dimensions to pull in data for an additional dimension for a fact.

For more details, see “Chapter 5: Extending Oracle Utilities Analytics” in the *Oracle Utilities Analytics Administration Guide*.

The table below lists various facts in the Oracle Utilities Network Management System star schemas and the user defined dimensions available for them.

<b>Fact</b>	<b>User Defined Dimension</b>
CF_CITY_OUTG	CD_CITY_OUTG_UDD1
	CD_CITY_OUTG_UDD2
CF_CTRL_ZONE_OUTG	CD_CTRL_ZONE_OUTG_UDD1
	CD_CTRL_ZONE_OUTG_UDD2
CF_CUST_RECENT_OUTG	CD_CUST_OUTG_UDD1
	CD_CUST_OUTG_UDD2
CF_CUST_RST_OUTG	CD_CUST_OUTG_UDD1
	CD_CUST_OUTG_UDD2
CF_FEEDER_DLVRD_LOAD	CD_FEEDER_DLVRD_LOAD_UDD1
	CD_FEEDER_DLVRD_LOAD_UDD2
CF_OUTG	CD_OUTG_UDD1
	CD_OUTG_UDD2
CF_RECENT_CALL	CD_CALL_UDD1
	CD_CALL_UDD2
CF_RECENT_CREW	CD_CREW_UDD1
	CD_CREW_UDD2
CF_RECENT_JOB	CD_JOB_UDD1
	CD_JOB_UDD2
CF_RST_CALL	CD_CALL_UDD1
	CD_CALL_UDD2
CF_RST_CREW	CD_CREW_UDD1
	CD_CREW_UDD2
CF_RST_JOB	CD_JOB_UDD1
	CD_JOB_UDD2



---

<b>Fact</b>	<b>User Defined Dimension</b>
CF_SW_PLAN	CD_SW_PLAN_UDD1
	CD_SW_PLAN_UDD2
CF_SW_PLAN_STATE	CD_SW_PLAN_STATE_UDD1
	CD_SW_PLAN_STATE_UDD2

# Chapter 3

---

## Configuring Oracle Utilities Extractors and Schema for Network Management System

To enable proper data extracts for Oracle Utilities Extractors and Schema, certain parameters need to be defined in the Oracle Utilities Analytics Admin Tool (OUA Admin Tool) and Oracle Utilities Network Management System (NMS).

This chapter provides information on the steps to be taken to enable this configuration.

- [Configuring OUA for NMS](#)
- [Configuring NMS](#)

### Configuring OUA for NMS

This section provides information about the various configurations to be setup for the Oracle Utilities Network Management System (NMS) ETL to function as necessary. These configurations have to be setup using the Oracle Utilities Analytics Admin Tool.

**Note:** For more about installing and using the Oracle Utilities Analytics Admin Tool, see *Oracle Utilities Analytics Installation Guide* and *Oracle Utilities Analytics Administration Guide*.

#### NMS Parameters

The table below lists the various parameters used by the ETL logic while populating the Oracle Utilities Network Management System star schemas in Oracle Utilities Analytics. These parameter values have to be setup based on the data available in the source Oracle Utilities Network Management System system.

Parameter	Sample Values	Comments
Switch Plan Begin States	230, 232	<p>This parameter is used for the Switch Plan fact.</p> <p><b>Note:</b> The parameterized keys for 'Begin' steps are retrieved from B1_JOB_PARM.PARM_VAL column. The begin/initial state keys correspond to the switch sheet life cycle.</p>
Switch Plan End States	230, 232	<p>This parameter is used for the Switch Plan fact.</p> <p><b>Note:</b> The parameterized keys for 'End' steps are retrieved from B1_JOB_PARM.PARM_VAL column. The end/final state keys correspond to the switch sheet life cycle.</p> <p>For example: 'Completed' is 'Final' state in NMS, out of the box.</p>
Priority Indicator	7	<p>The current ETL extracts for Call facts generate the 7th bit Complaint column from the Incidents table for PRIORITY_IND. It can be parameterized to use other bit if required.</p>
Switch Sheet Planned Category	PLANNED	<p>This parameter is used in JOB facts to populate the EXCLUDE_IND column. The value 'PLANNED' can be different in different projects.</p>
Country	USA	<p>This parameter is used for the Country column in the CD_ADDR and CD_CITY dimensions.</p> <p>Currently, the extracts hard code the country with value 'USA', and no column holds the country information.</p>
Momentary Duration (In mins)	5	<p>This parameter extracts the momentary duration in minutes. It determines if an outage is momentary or sustained.</p>

Parameter	Sample Values	Comments
CEMI Count	3	This parameter determines if a customer experienced more than 'N' interruptions during the calculated period.
Number of Retention Days	30	This parameter is used for all recent facts. It determines the number of days of data that needs to be retained.
Switch Plan Step Failed		This parameter is used for the Switch Plan fact.  <b>Note:</b> The parameterized keys for 'Failed' steps are retrieved from B1_JOB_PARM.PARM_VAL column.
Switch Plan Step Aborted		This parameter is used for the Switch Plan fact.  <b>Note:</b> The parameterized keys for 'Aborted' steps are retrieved from B1_JOB_PARM.PARM_VAL column.

## NMS Buckets

The table below lists the three buckets to be configured for the Oracle Utilities Network Management System star schemas in the Oracle Utilities Analytics application. The bucket ranges are stored in separate dimensions and are referenced in different facts when their ETL jobs are executed.

Display Value	Return Value
Outage Duration Bucket	N1-OutageDuration
Estimated Restoration Duration Bucket	N1-EstRstDuration
Duration Deviation Bucket	N1-DurationDeviation

## Configuring NMS

An entry for 'Data Source Indicator', a unique identifier for each Oracle Utilities Network Management System instance has to be configured in Oracle Utilities Network Management System. It allows users to display multiple Oracle Utilities Network Management System instances. Each instance should have a different configuration value for Data Source Indicator.

Below is a sample Insert statement:

```
INSERT INTO CES_PARAMETERS (APP, ATTRIB, VALUE) VALUES
('BI', 'DATA_SOURCE_INDICATOR', '000004');
```