

Oracle Utilities Customer Self Service

Whitepaper: Installing a Managed Server for Custom Portals

Release 2.1.0 Service Pack 2

E36187-07

June 2015

Oracle Utilities Customer Self Service Whitepaper: Installing a Managed Server for Custom Portals

Release 2.1.0 Service Pack 2

E36187-07

June 2015

Copyright © 2011, 2015, Oracle and/or its affiliates. All rights reserved.

This software and related documentation are provided under a license agreement containing restrictions on use and disclosure and are protected by intellectual property laws. Except as expressly permitted in your license agreement or allowed by law, you may not use, copy, reproduce, translate, broadcast, modify, license, transmit, distribute, exhibit, perform, publish, or display any part, in any form, or by any means. Reverse engineering, disassembly, or decompilation of this software, unless required by law for interoperability, is prohibited.

The information contained herein is subject to change without notice and is not warranted to be error-free. If you find any errors, please report them to us in writing.

If this is software or related documentation that is delivered to the U.S. Government or anyone licensing it on behalf of the U.S. Government, then the following notice is applicable:

U.S. GOVERNMENT END USERS: Oracle programs, including any operating system, integrated software, any programs installed on the hardware, and/or documentation, delivered to U.S. Government end users are "commercial computer software" pursuant to the applicable Federal Acquisition Regulation and agency-specific supplemental regulations. As such, use, duplication, disclosure, modification, and adaptation of the programs, including any operating system, integrated software, any programs installed on the hardware, and/or documentation, shall be subject to license terms and license restrictions applicable to the programs. No other rights are granted to the U.S. Government.

This software or hardware is developed for general use in a variety of information management applications. It is not developed or intended for use in any inherently dangerous applications, including applications that may create a risk of personal injury. If you use this software or hardware in dangerous applications, then you shall be responsible to take all appropriate fail-safe, backup, redundancy, and other measures to ensure its safe use. Oracle Corporation and its affiliates disclaim any liability for any damages caused by use of this software or hardware in dangerous applications.

Oracle and Java are registered trademarks of Oracle and/or its affiliates. Other names may be trademarks of their respective owners.

Intel and Intel Xeon are trademarks or registered trademarks of Intel Corporation. All SPARC trademarks are used under license and are trademarks or registered trademarks of SPARC International, Inc. AMD, Opteron, the AMD logo, and the AMD Opteron logo are trademarks or registered trademarks of Advanced Micro Devices. UNIX is a registered trademark of The Open Group.

This software or hardware and documentation may provide access to or information about content, products, and services from third parties. Oracle Corporation and its affiliates are not responsible for and expressly disclaim all warranties of any kind with respect to third-party content, products, and services unless otherwise set forth in an applicable agreement between you and Oracle. Oracle Corporation and its affiliates will not be responsible for any loss, costs, or damages incurred due to your access to or use of third-party content, products, or services, except as set forth in an applicable agreement between you and Oracle.

Table of Contents

- Overview.....4**
 - Additional Resources.....4
 - Abbreviations.....4
- Preparation and Procedures5**
 - Software Requirements5
 - Pre-Installation Tasks and Requirements.....5
 - Configure the Domain OUCSS Portal.....5
 - Assumptions6
 - Creating the Domain6
 - Extend the Domain Using the WebCenter Portal Template 15

Chapter 1

Overview

This whitepaper describes the steps required to create a new domain and Managed Servers to deploy OUCSS Portal applications and OUCSS Portlets Producer application in a WebLogic 11g environment.

Additional Resources

This document and related documentation is subject to revision and updating. For the most recent versions of documentation relating to this produce, as well as information on functionality and known issues for other Oracle products that may be required for installation and proper functionality of this product, check the Oracle Utilities Customer Self Service section of the [Oracle Utilities Documentation](http://www.oracle.com/technetwork/apps-tech/utilities/documentation/index.html) area on the Oracle Technology Network (OTN) web site (<http://www.oracle.com/technetwork/apps-tech/utilities/documentation/index.html>).

Abbreviations

CCB - Oracle Utilities Customer Care and Billing

MDM - Oracle Utilities Meter Data Management

DDL – Data Definition Language

MDS – Metadata Services

OUCSS – Oracle Utilities Customer Self Service

NMS – Network Management System

MW_HOME – Middleware home.

Chapter 2

Preparation and Procedures

Software Requirements

Please refer to the Oracle® Utilities Customer Self Service Installation Guide for product-specific versions and the current patch level.

Pre-Installation Tasks and Requirements

The following tasks should be completed or requirements confirmed before applying the procedures in this document.

- Install WebLogic 10.3.6 into MW_HOME.
- Install WebCenter PS6 (11.1.1.8.0) components into MW_HOME. To know more about Installing WebCenter Components refer to documentation on OTN http://docs.oracle.com/cd/E29542_01/install.1111/e12001/install.htm#CHDHCJEC.
- Use the Oracle Fusion Middleware Repository Creation Utility 11g (11.1.1.8.0) for Linux/Windows to create the WebCenter portal schemas that will be used to create the domain for the OUCSS Portal and OUCSS Portlets Producer. (For information on how to create WebCenter Portal schemas, refer to RCU documentation on the Oracle Technology Network at http://docs.oracle.com/cd/E12839_01/doc.1111/e14259/overview.htm).

Configure the Domain OUCSS Portal

The following steps describe how to create a domain using the WebCenter Portal Framework template to install the OUCSS Portal.

Assumptions

- The Portal is built using the “WebCenter Portal Application” template.
- A new domain is created to install the Portal.
- WebCenter Portal schemas (MDS, ACTIVITIES, and WEBCENTER) are created using RCU.

Creating the Domain

To configure and create a new domain for an OUCSS Portal:

- 1 Set the environment variable MW_HOME to Middleware home (where WebLogic and WebCenter Components are installed).

Example:

```
export MW_HOME=/OUCSS/Oracle/Middleware/PS6 (Linux)
```

```
set MW_HOME=C:\OUCSS\Oracle\Middleware\PS6 (Windows)
```

- 2 Navigate to MW_HOME:

Example:

```
cd $MW_HOME/wlserver_10.3/common/bin (Linux)
```

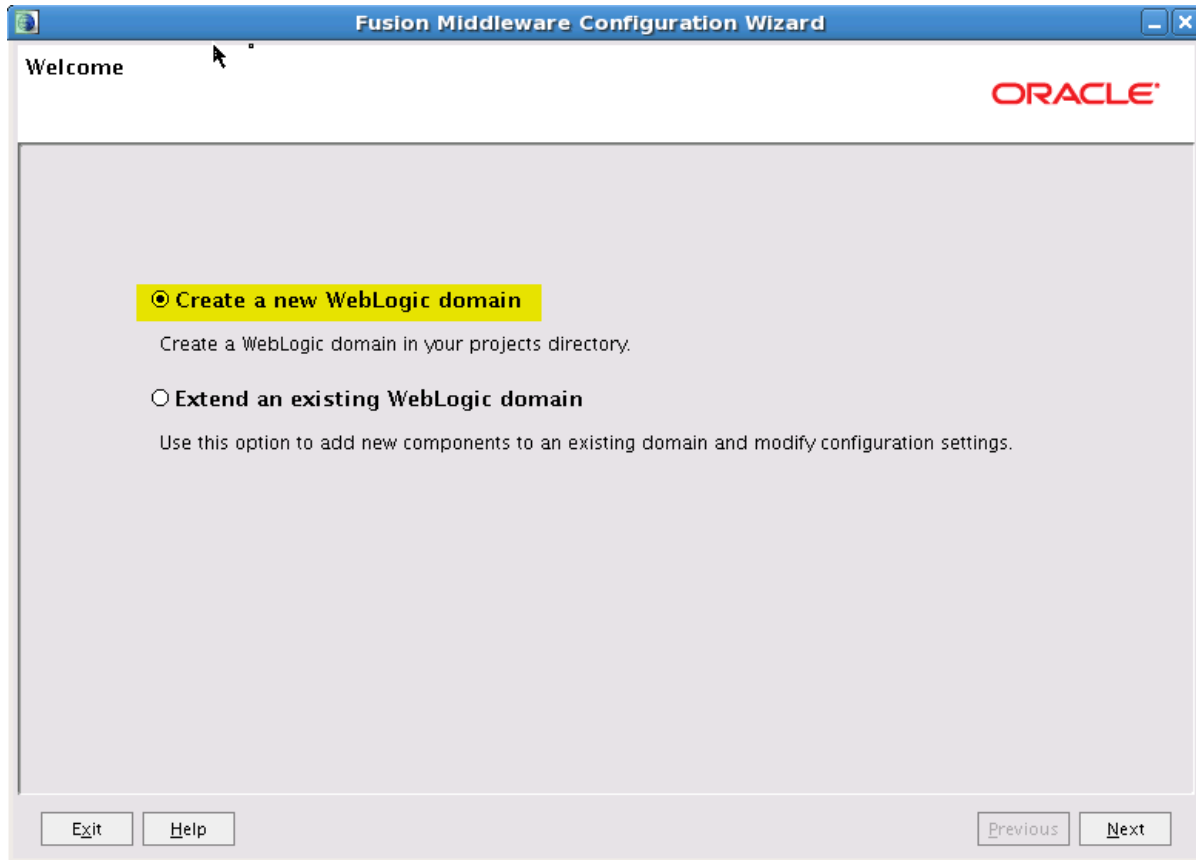
```
cd %MW_HOME%\wlserver_10.3\common\bin (Windows)
```

- 3 Run the WebLogic configuration wizard:

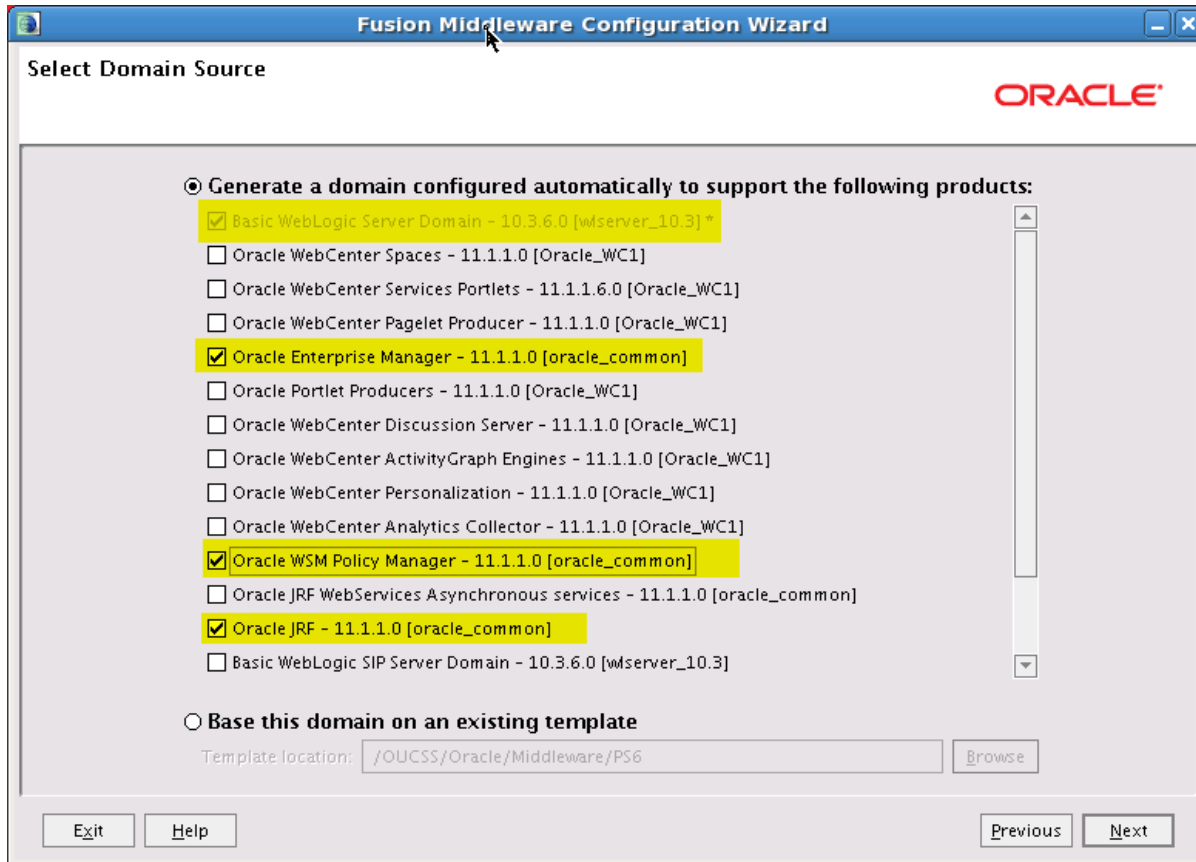
```
./config.sh (Linux)
```

```
./config.cmd (Windows)
```

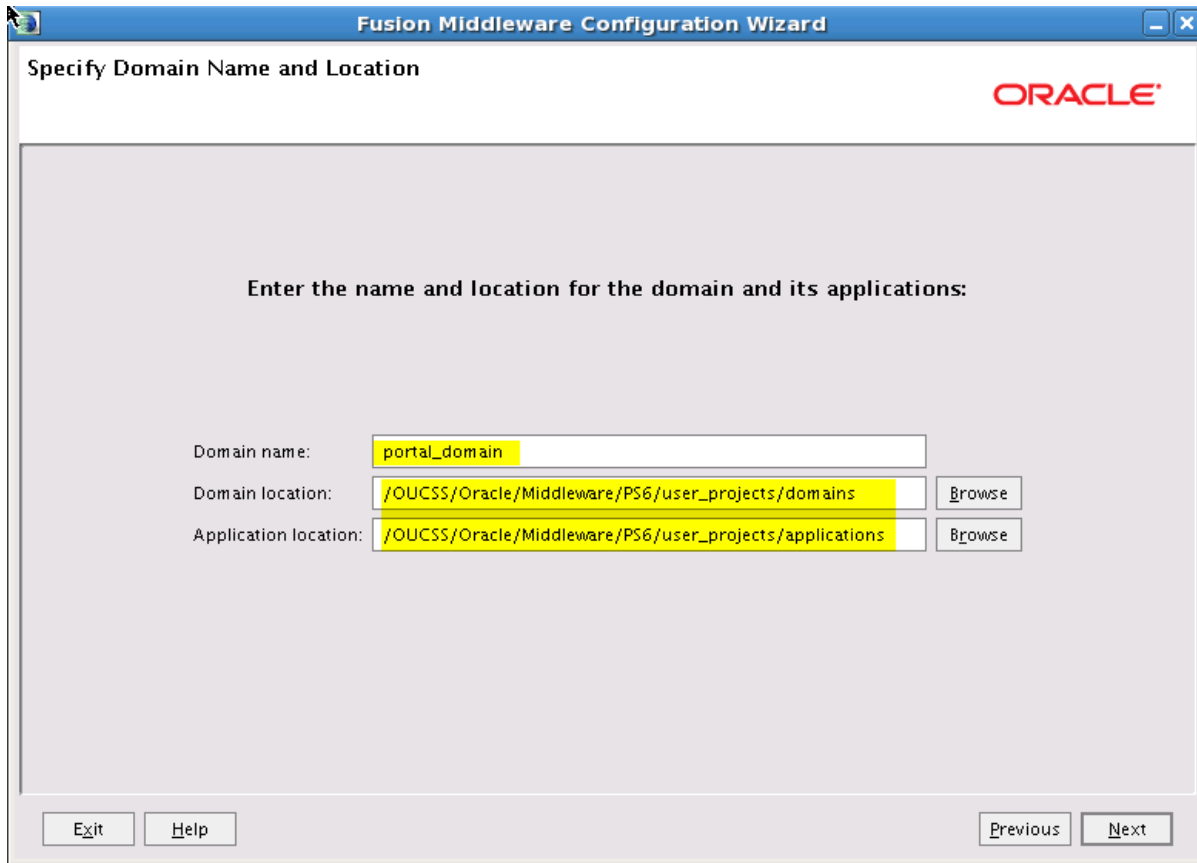
- 4 In the configuration wizard, choose “Create a new WebLogic domain”. You can also extend an existing domain by choosing the “Extend an existing WebLogic domain” option. After making your selection, click **Next**.



- 5 Choose the “Generate a domain configured automatically to support following products:” option to create a base WebLogic domain and then choose the required components as shown. Click **Next** to continue.



6 Specify a domain name and location.

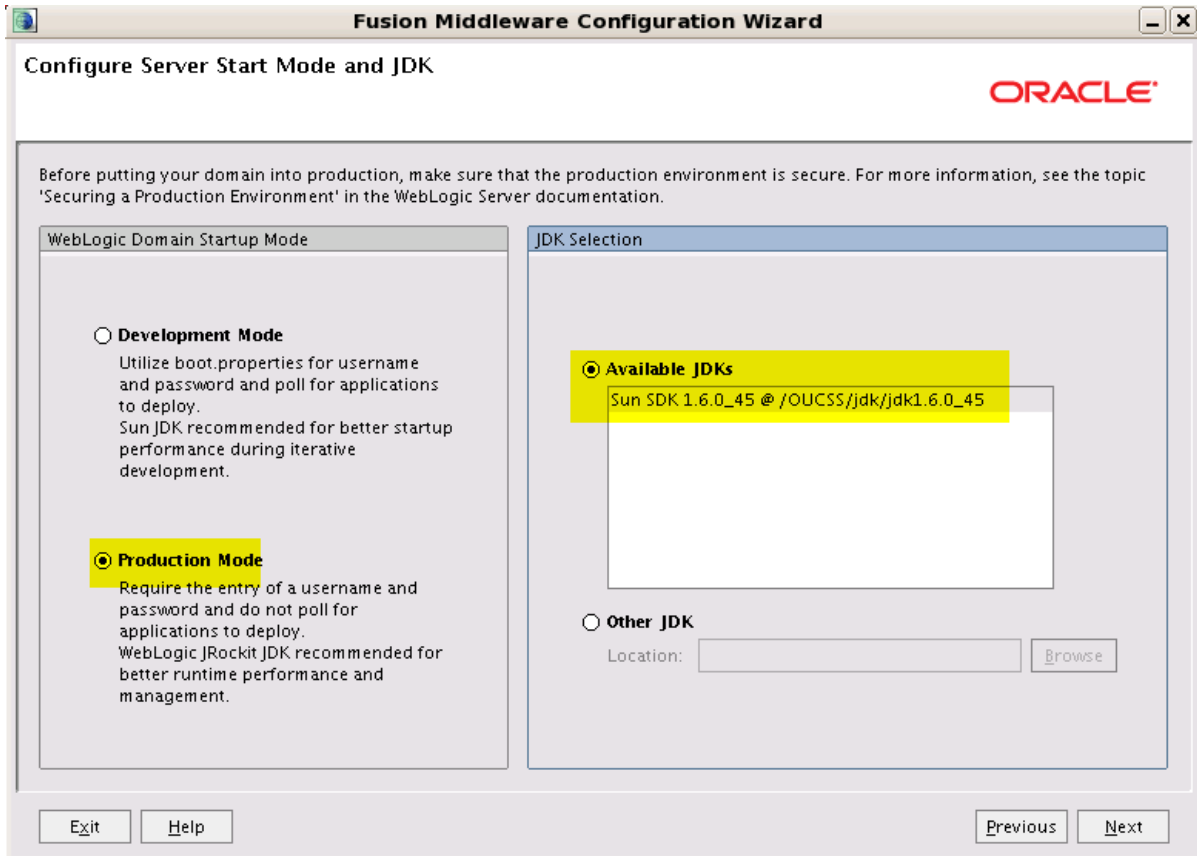


Note: The Configuration Wizard will show the default Domain and Application locations in Windows/Linux when the Domain name is provided.

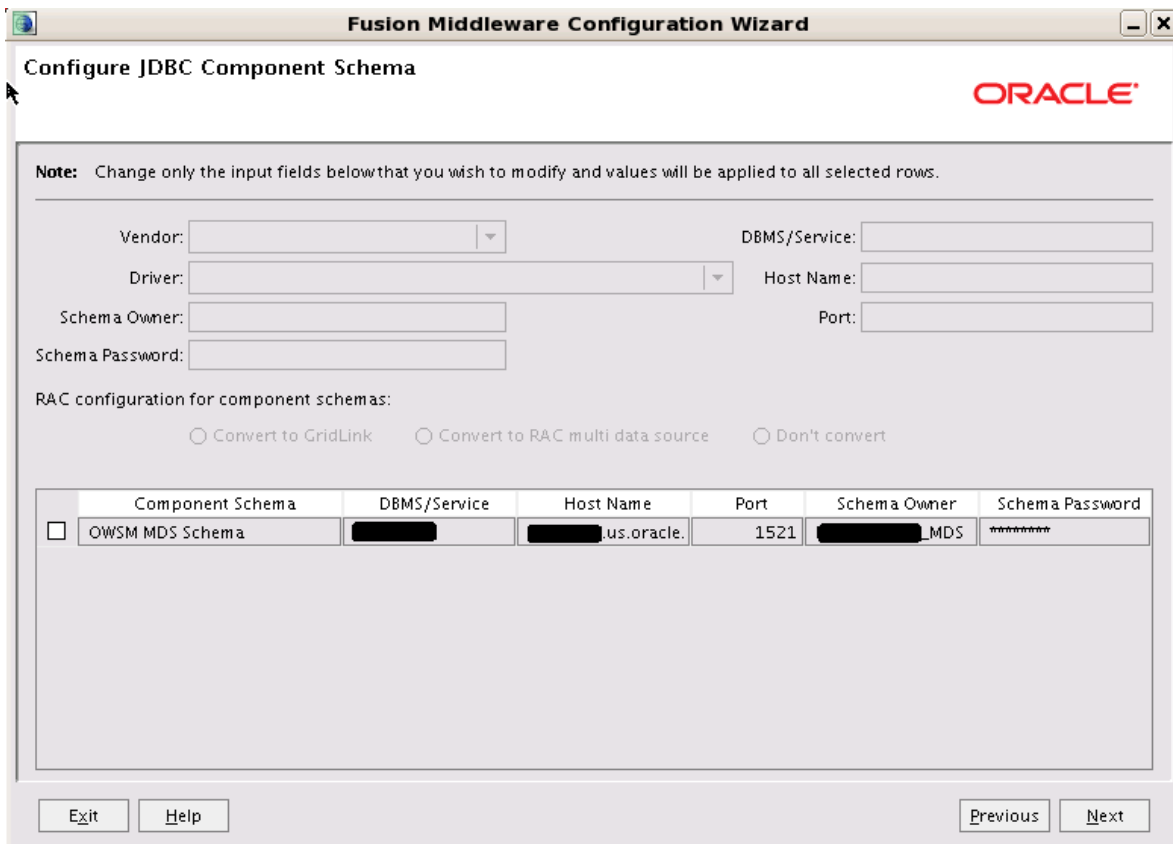
7 Configure the Administrator credentials.

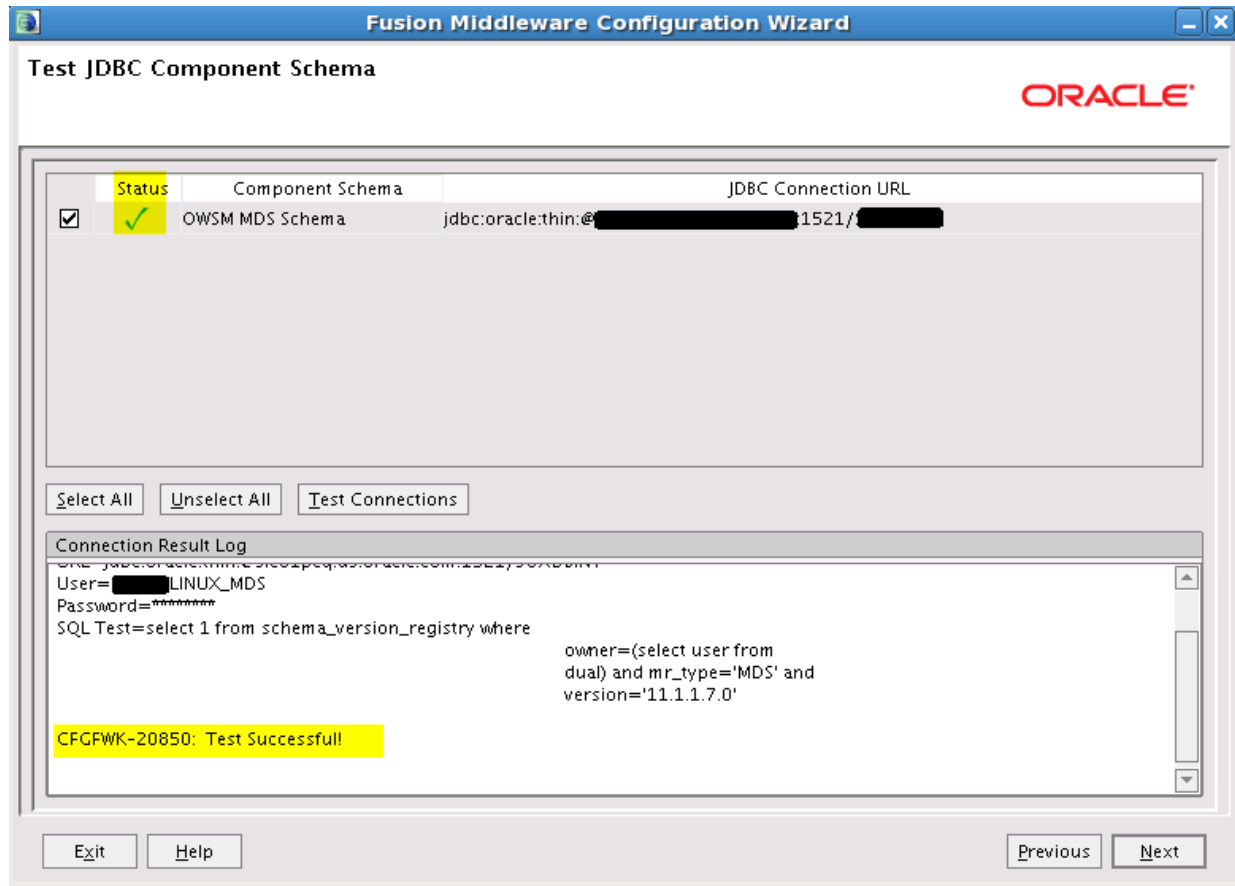
The screenshot shows a window titled "Fusion Middleware Configuration Wizard" with the subtitle "Configure Administrator User Name and Password". The Oracle logo is in the top right corner. A "Disgard Changes" button is in the top left. The main area contains four input fields: "*Name:" with the value "weblogic", "*User password:" with masked characters, "*Confirm user password:" with masked characters, and "Description:" with the text "This user is the default administrator.". At the bottom, there are "Exit", "Help", "Previous", and "Next" buttons.

- 8 Configure the Server Start Mode and JDK to be applied to the domain. For production environment, choose “Production Mode”.



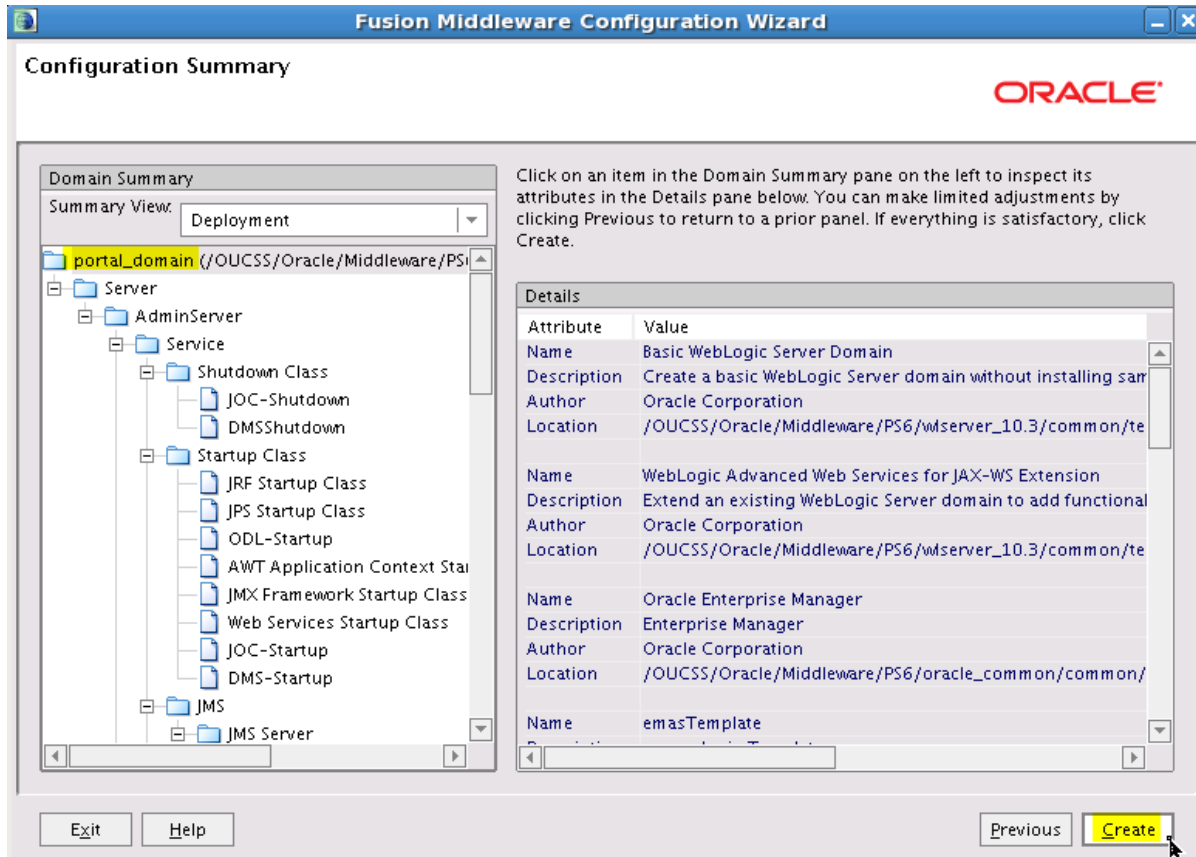
- 9 Configure the JDBC schema. This step is used to configure the MDS Schema that was created by running the Repository Creation Utility (RCU) as part of the Pre-Installation Tasks.

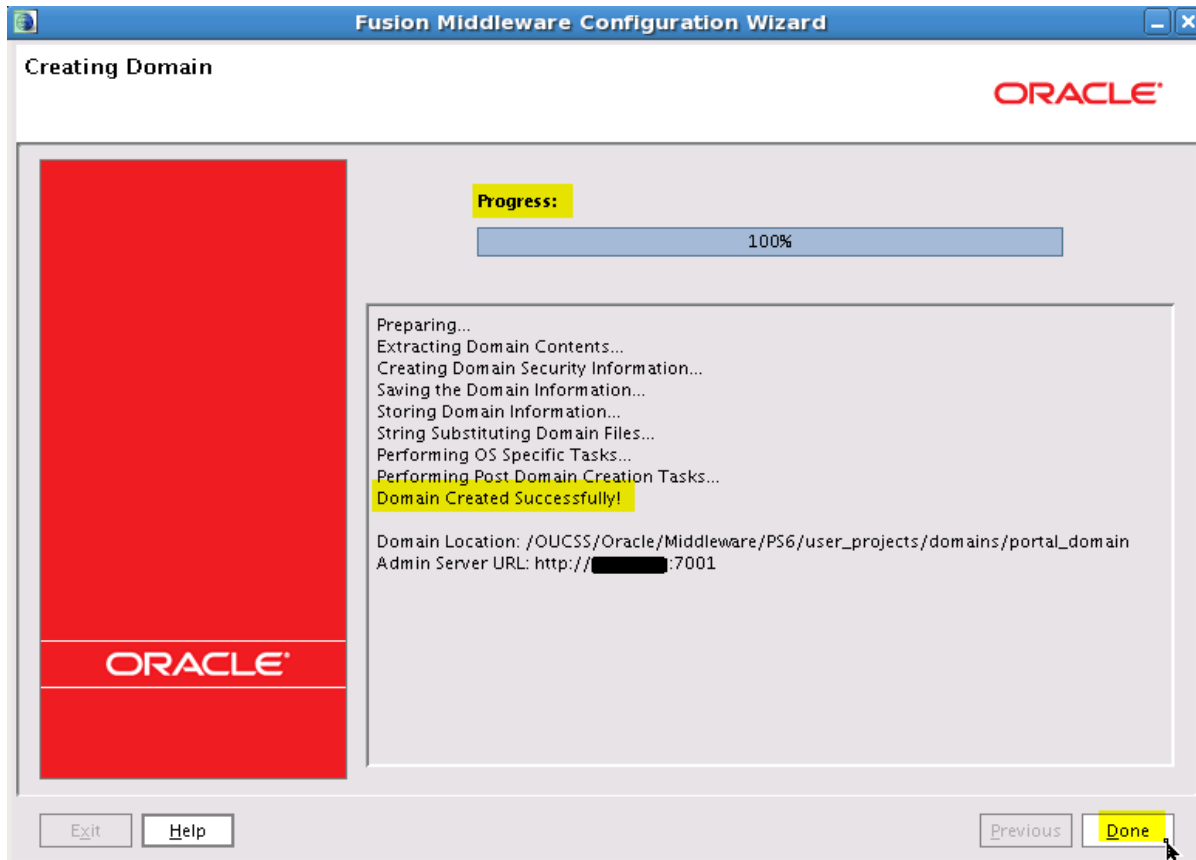




Note: After completing this step, perform the optional Configuration and configure the administration server, depending upon your environment setup.

10 Confirm the configuration details, then click **Create** to create the domain.



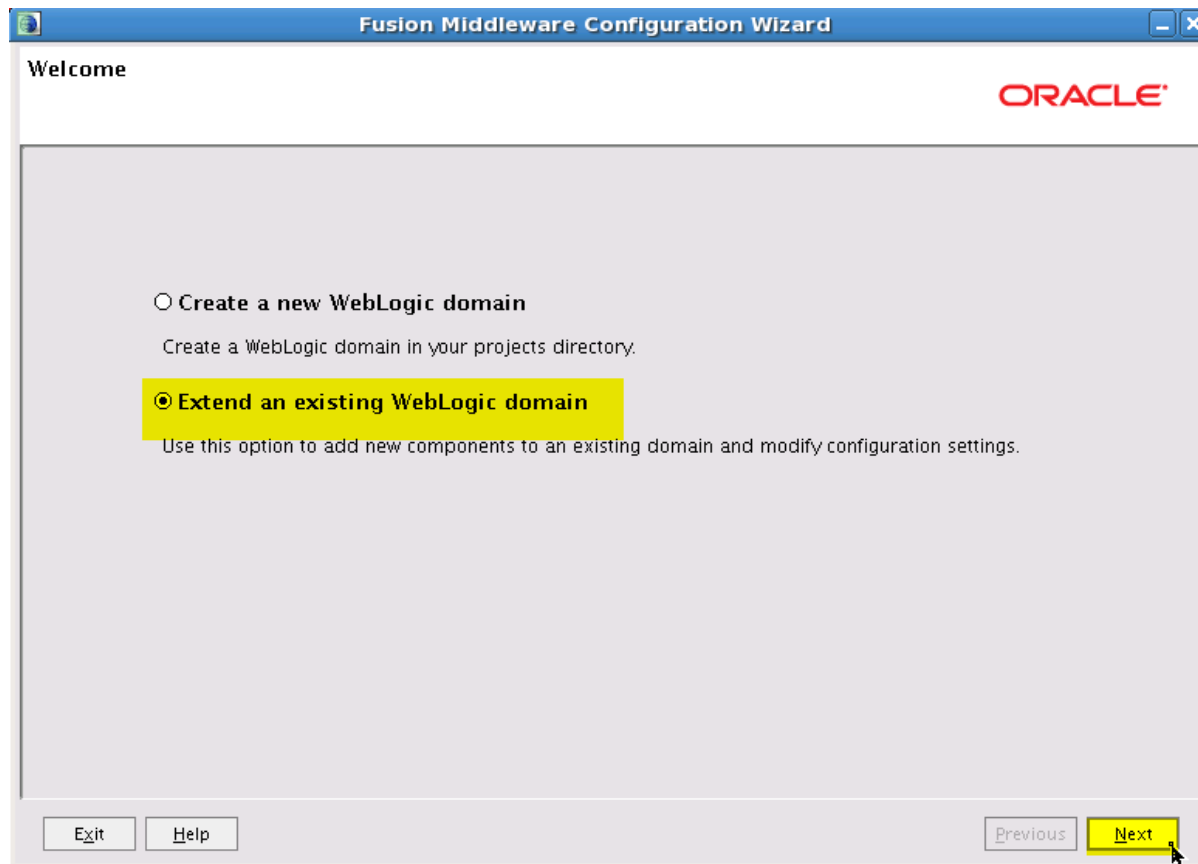


Progress screen indicating the domain is successfully created.

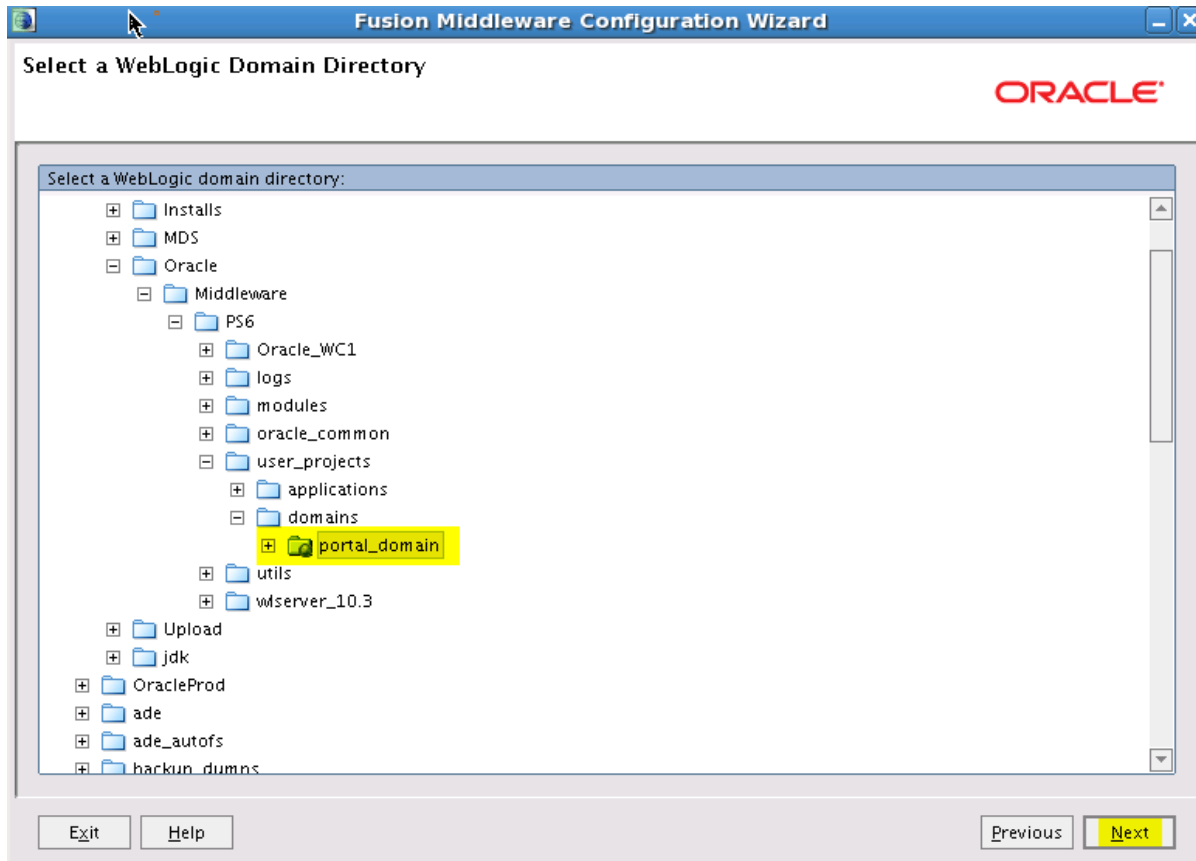
Extend the Domain Using the WebCenter Portal Template

The OUCSS Portal application can be deployed only on a managed server created using the WebCenter Portal template. To extend the domain to create the managed server:

- 1 Run the WebLogic Configuration again to extend the domain and create a managed server for your custom portal.
- 2 Choose the “Extend an existing WebLogic domain” option on the **Welcome** screen, then click **Next**.

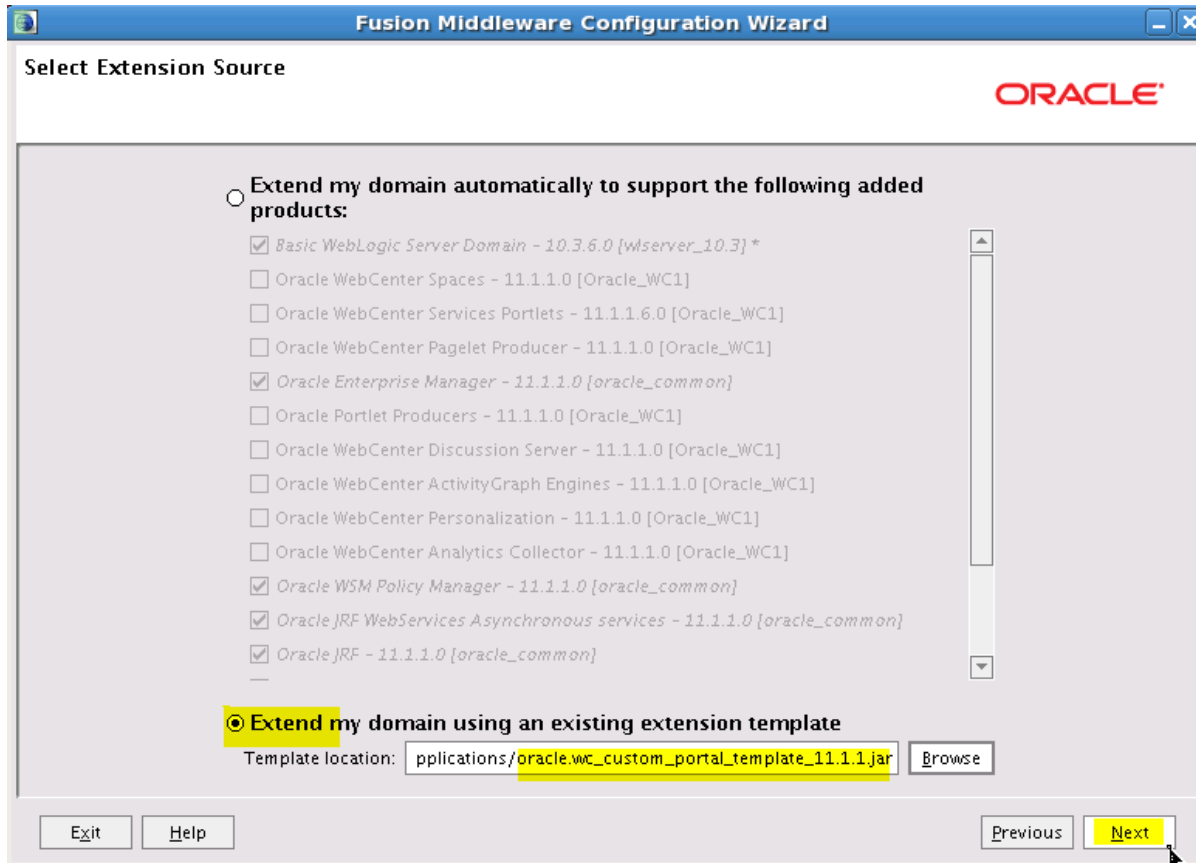


- 3 Locate and select the domain name (e.g., **portal_domain**) from the domain directory tree, then click **Next**.



- 4 Choose the “Base this domain on an existing template” option on the **Select Domain Source** screen, then browse for and select:

```
$MW_HOME/Oracle_WC1/common/templates/applications/oracle.wc_custom_portal_template_11.1.1.jar.
```



- 5 Configure the JDBC Component Schema with values relating to WebCenter, then click **Next**. This step is used to configure WebCenter schemas that were created using the Repository Creation Utility (RCU) as part of the Pre-Installation Tasks.

Configure JDBC Component Schema

Note: Change only the input fields below that you wish to modify and values will be applied to all selected rows.

Vendor: DBMS/Service:

Driver: Host Name:

Schema Owner: Port:

Schema Password:

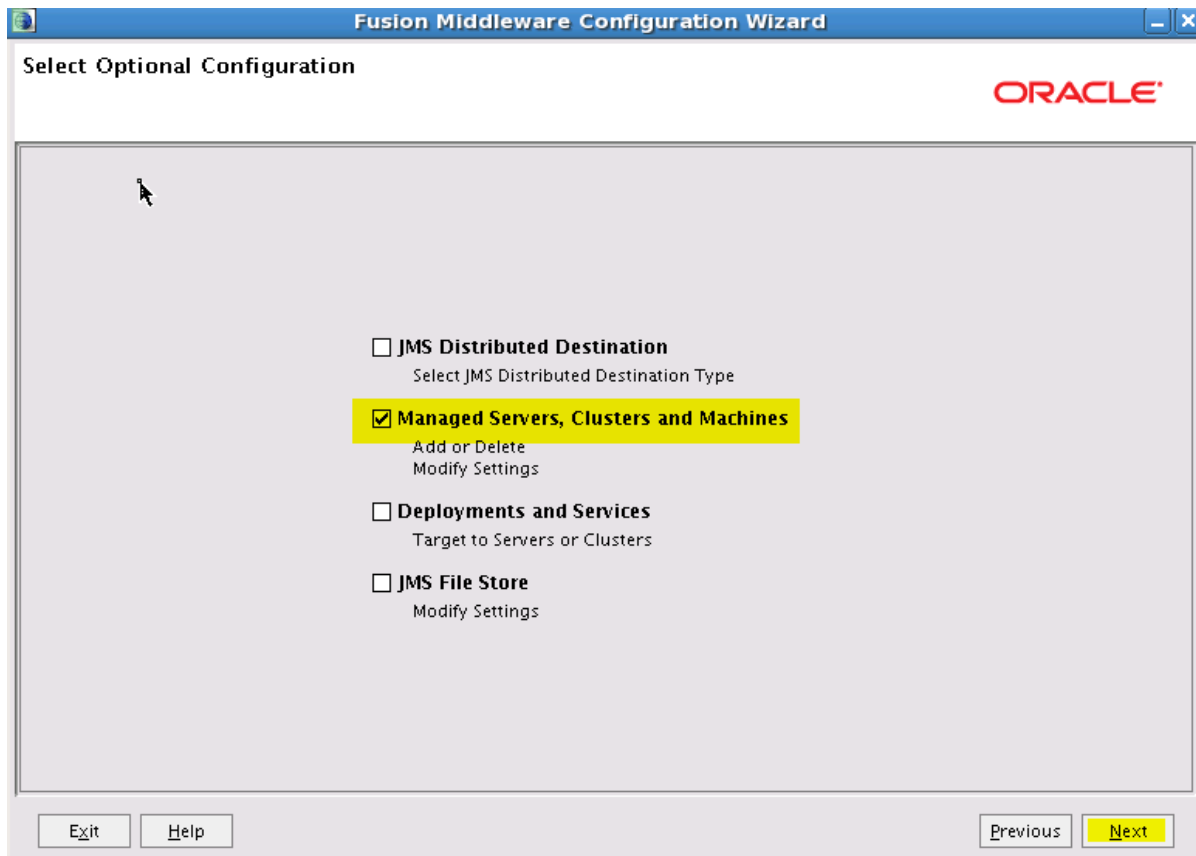
RAC configuration for component schemas:

Convert to GridLink Convert to RAC multi data source Don't convert

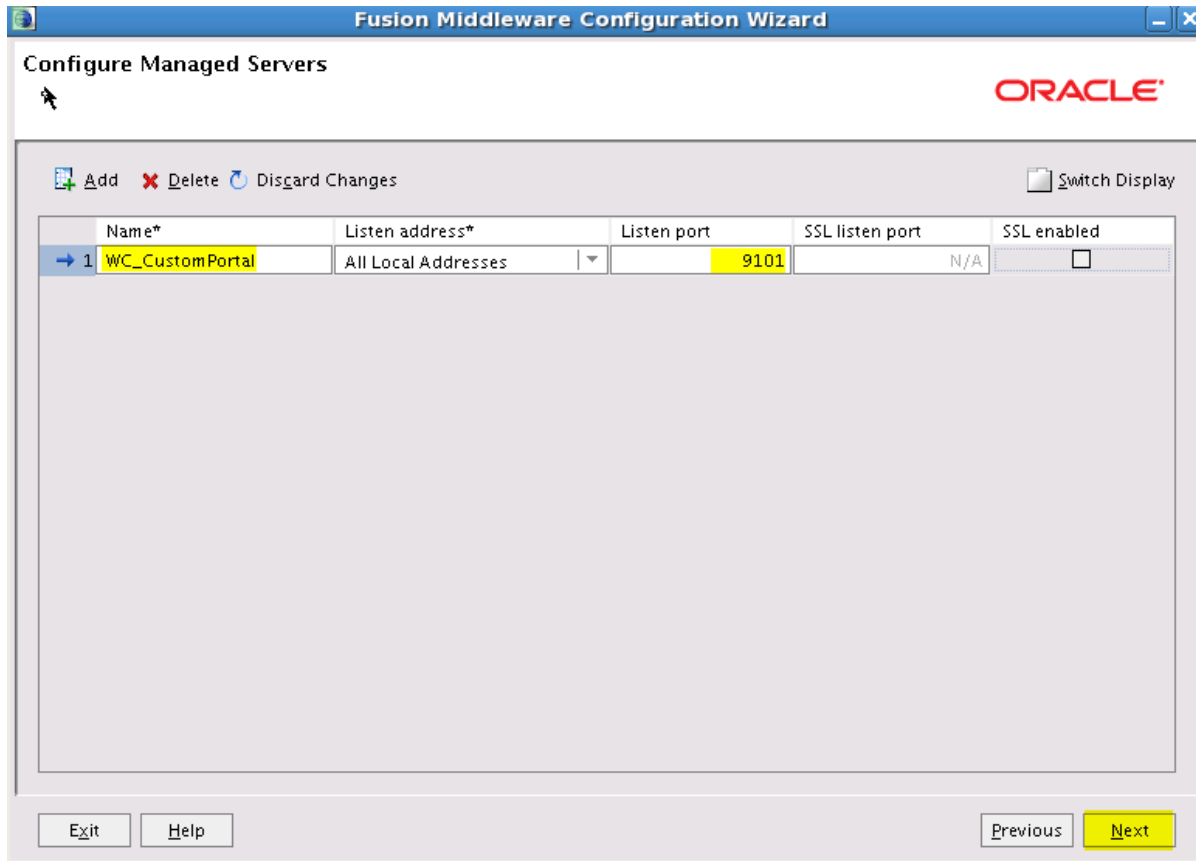
	Component Schema	DBMS/Service	Host Name	Port	Schema Owner	Schema Password
<input type="checkbox"/>	Custom Portal Activities Schem	orcl	dbhost.example.coi	1521	PROD_ACTIVITIES	
<input type="checkbox"/>	Custom Portal WebCenter Sche	orcl	dbhost.example.coi	1521	PROD_WEBCENTER	
<input type="checkbox"/>	Custom Portal MDS Schema	orcl	dbhost.example.coi	1521	PROD_MDS	
<input type="checkbox"/>	OWSM MDS Schema	orcl	dbhost.example.coi	1521	PROD_MDS	*****

Exit Help Previous **Next**

- 6 Choose “Managed Servers, Clusters, and Machines” to configure the managed server, then click **Next**.



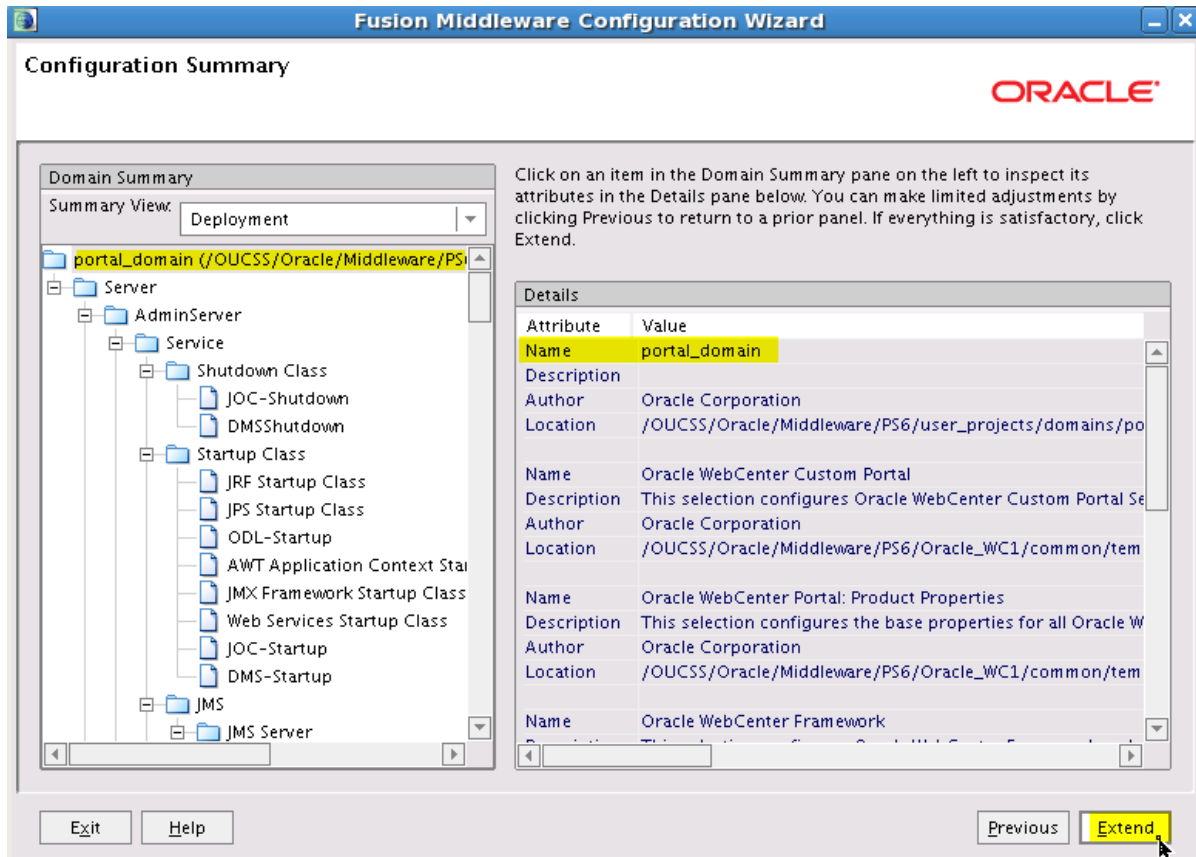
- 7 Configure the Managed server to use the desired name and port.

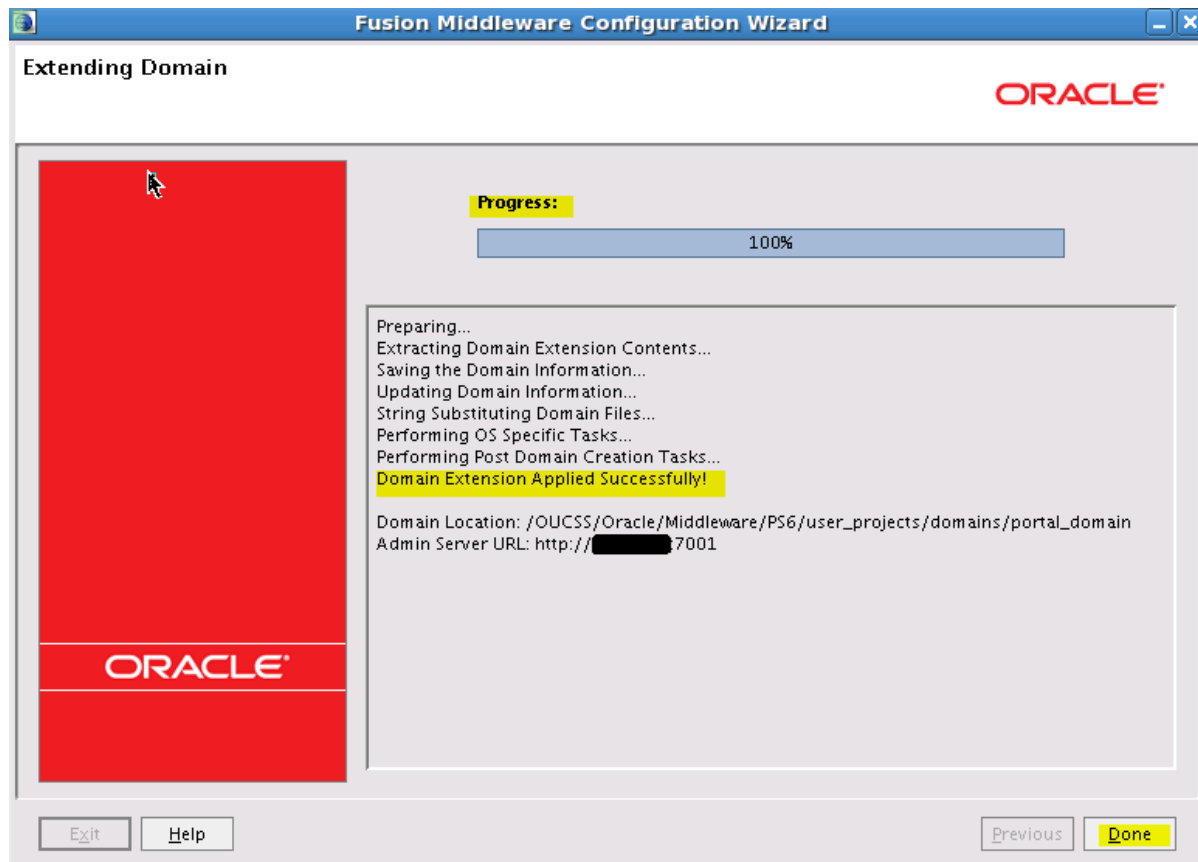


- 8 Perform this step to configure more than one managed server. To configure the mobile application on a different managed server, click **Add** in the **Configure Managed Servers** screen, then provide the name (**UCSSMobility**) for the **Instance**, and a unique **Listen** port.

Note: After this step is completed, configure machines/clusters and assign servers per your environment's requirements.

- 9 Confirm the configuration details and click **Extend** to extend the domain.





- 10 Start the AdminServer and confirm that the managed server is created by logging in to the WebLogic Administration Console and starting the servers.