

ORACLE®

Working Together

ORACLE®
JD EDWARDS ENTERPRISEONE



ORACLE®
VALUE CHAIN PLANNING

Oracle's Demand and Supply Planning Strategy



Better value proposition for JDE E1 customers

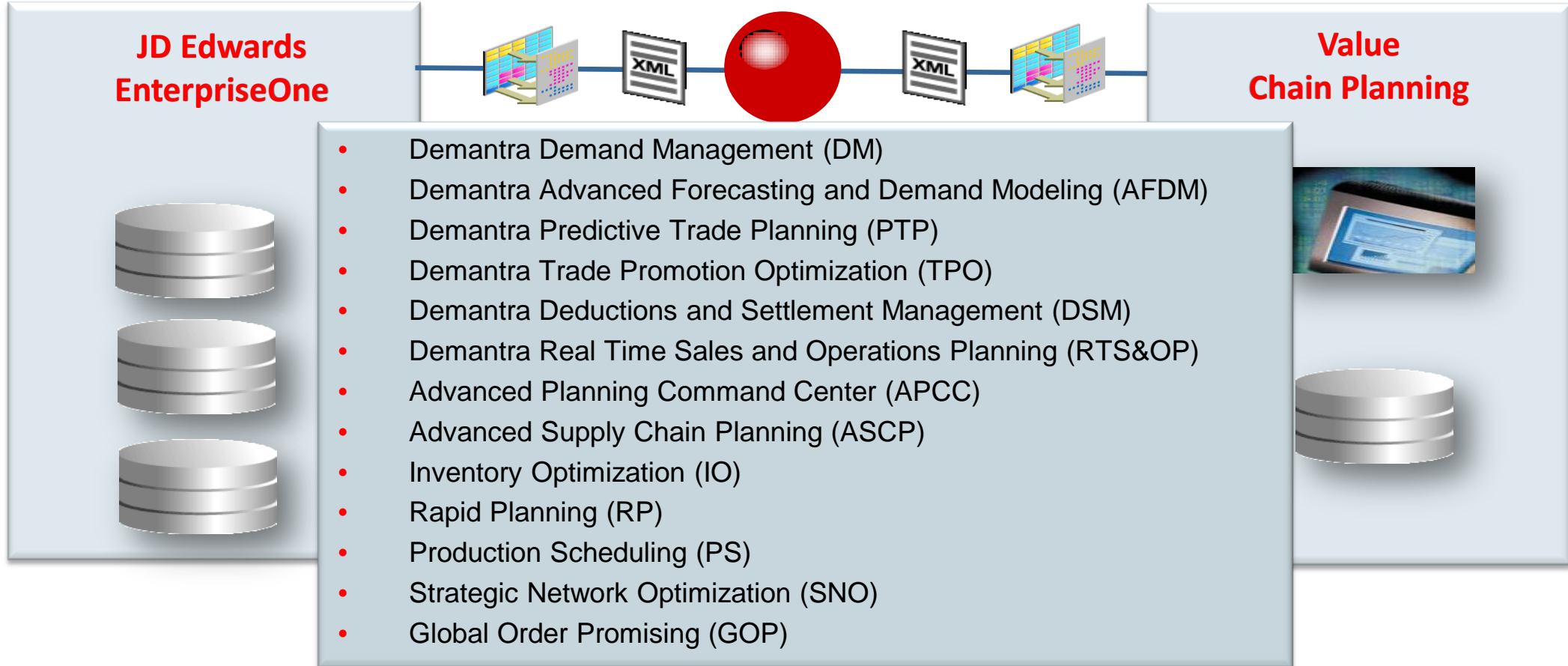
- Start with a comprehensive value chain planning solution that is the basis for the next generation

Or

- Evolve to next generation value chain planning solution

Crawl, walk, run approach – Focus on the most important problem first

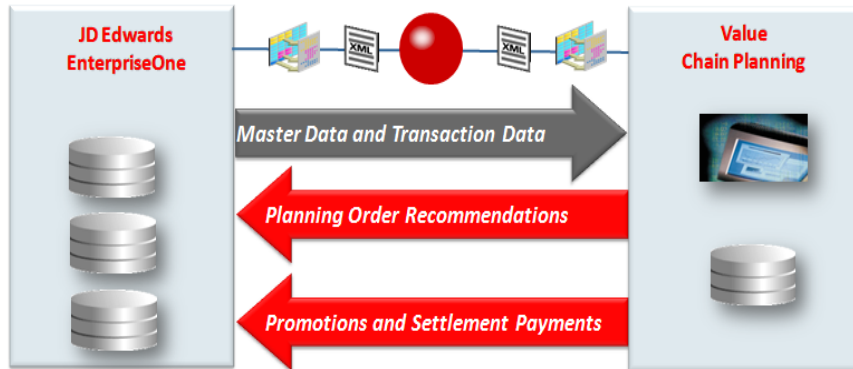
Value Chain Planning Integration Overview



Oracle's Demand and Supply Planning Strategy

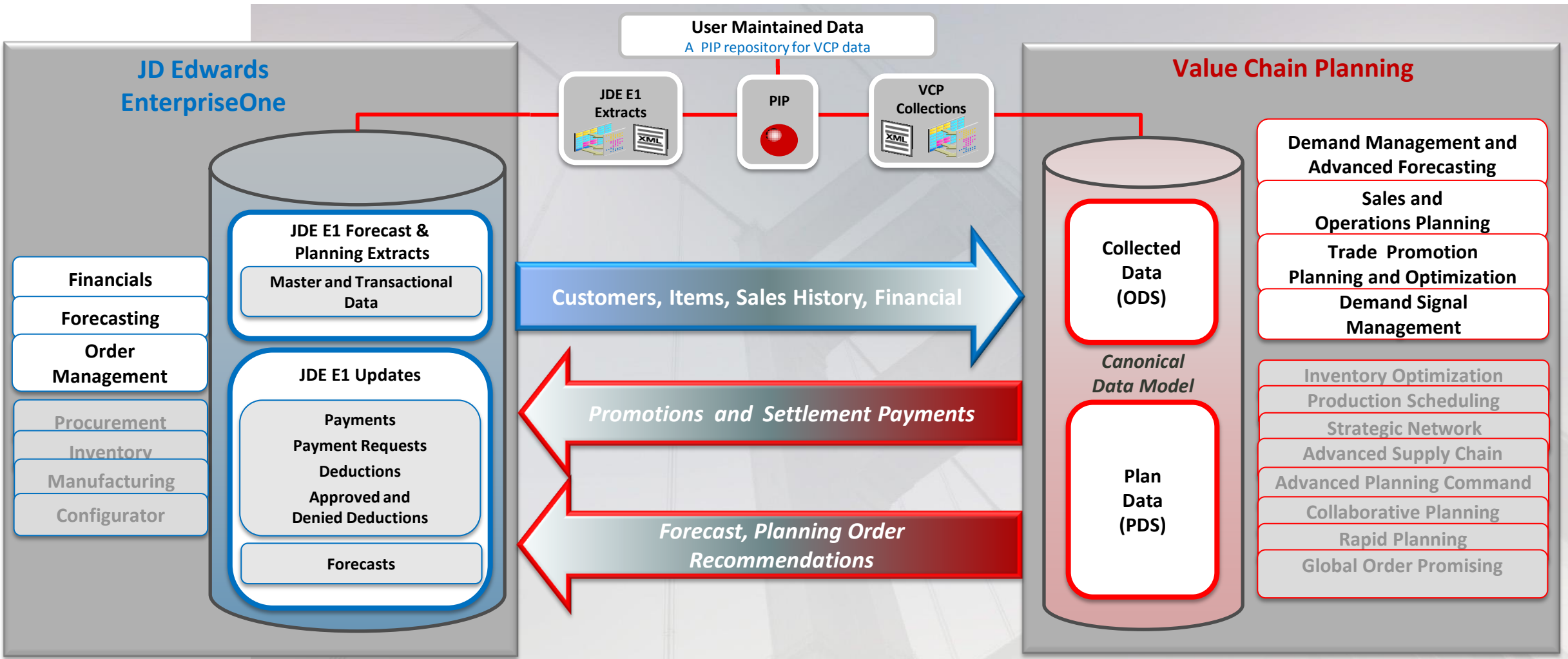
JDE E1 Supply Chain Planning (Numetrix) to Value Chain Planning Mapping

| JDE E1 SUPPLY CHAIN PLANNING | VALUE CHAIN PLANNING |
|---|--|
| Production Scheduling (PS) | Production Scheduling (PS) |
| Strategic Network Optimization (SNO) | Strategic Network Optimization (SNO) |
| Supply and Distribution Planning (PDP) | Advanced Supply Chain Planning (ASCP) |
| Order Promising (OP) | Global Order Promising (GOP) |
| JDE E1 Supply Chain Business Modeler (SCBM) | Value Chain Planning Integration Base Pack (PIP) |

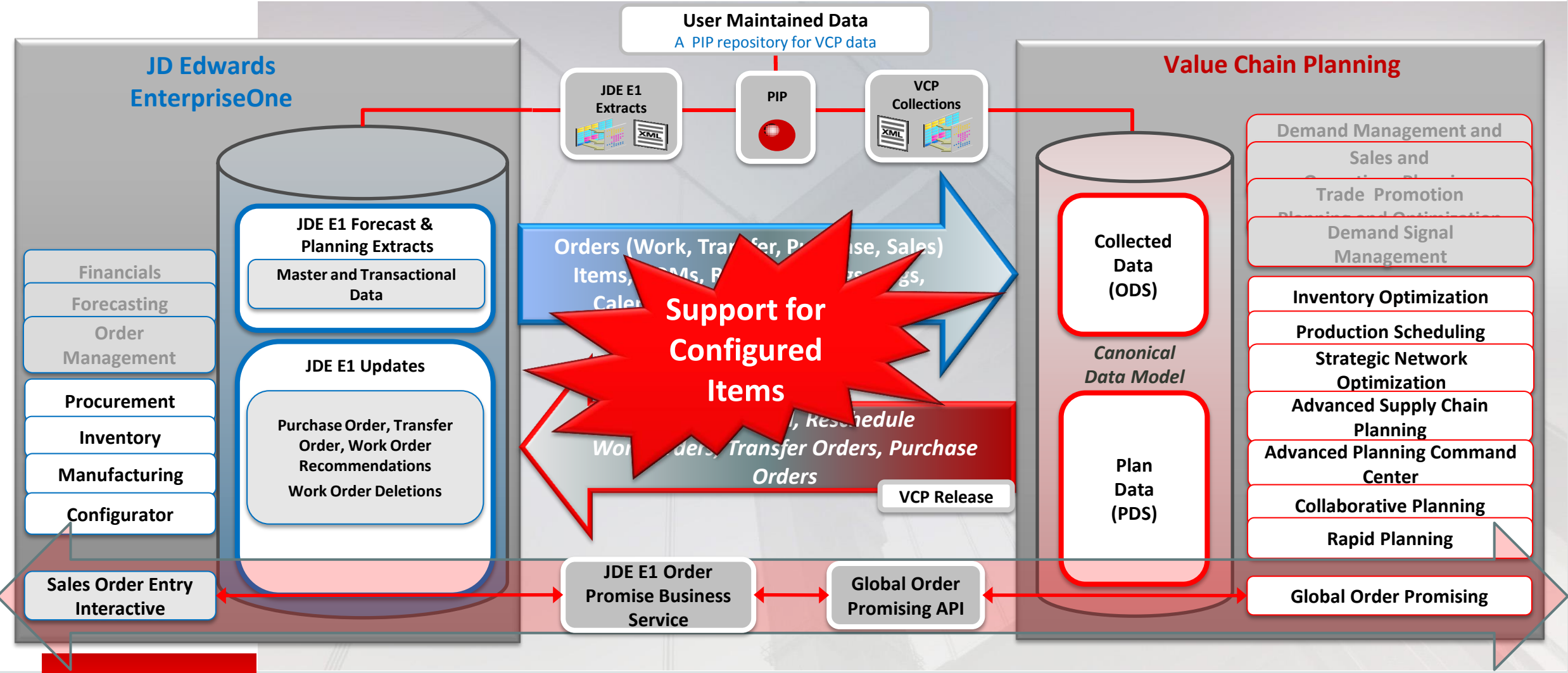


| Additional Value Chain Planning Modules Available for JDE Customers | |
|---|---|
| Demantra Advanced Forecasting and Demand Modeling (AFDM) | Collaborative Planning (CP) |
| Demantra Demand Management (DM) | Demand Signal Management (DSR) |
| Demantra Predictive Trade Planning (PTP) | Inventory Optimization (IO) |
| Demantra Trade Promotion Optimization (TPO) | Service Parts Planning (SPP) |
| Demantra Deductions and Settlement Management (DSM) | Advanced Planning Command Center (APCC) |
| Demantra Real Time Sales and Operations Planning (RTS&OP) | Rapid Planning (RP) |

Integration Details – Demand Planning



Integration Details – Advanced Planning



Global Order Promising Integration to JDE 9.1

Real-time Order Promising

- Multi-level BOMs and inter-org lead times
- Resource, material, supplier constraints
- End item substitution, allocation
- Order backlog workbench and split order lines

Sales Order Entry - Enter New Order

Buttons: Summarize Order, Submit and Enter New, Submit and Close, Cancel

Sales Order Header | Order Summary

Order Number: 14530 SO 00001
Sold To: 42012 Chain Store USA-Central
Ship To: 42012 Chain Store USA-Central
Branch/Plant: 28007
Customer PO:
Currency: USD Exchange Rate:
Previous Order Number:
Hold Code: Blank - Hold Codes
Order Date: 11/20/2009
Credit Message:
Temporary Credit Msg:
Base Currency: USD Foreign:

Buttons: Edit Full Header, Order Address, Credit Message, Go To

Sales Order Detail | Line Availability | Free Goods | Line

Records 1 - 2

| Quantity Ordered | UOM | Secondary Qty | Secondary UM | Item Number | Line Type | Unit Price | Extended Price | Branch Plant |
|------------------|-----|---------------|--------------|-------------|-----------|------------|----------------|--------------|
| 22 | EA | 22 | EA | 726696M | S | 72.4740 | 1,594.43 | 2 |
| | | | | | S | | | |

Buttons: Check Availability, Cancel Line, Check Price, Price History, Kits/Configurator, Cross Refe

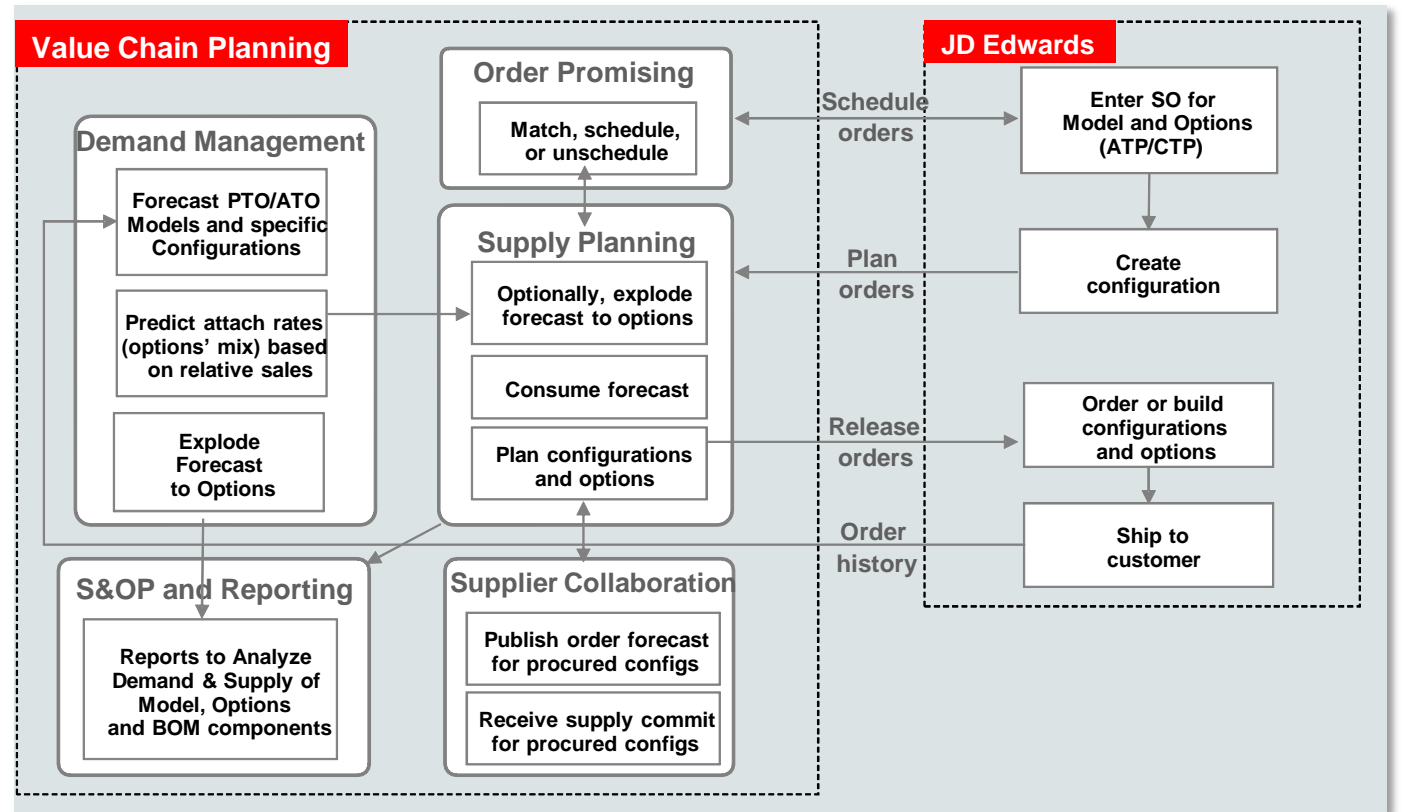
Call GOP from sales order entry screen in JDE

More Row Actions: -- Select One --, -- Select One --, Address Book, Attachments, **Auto Promise**, Credit Check, Customer Segment Item, Freight Information, Header Commissions, Multi-Item Search, Order Address, Product Catalog, Rate Shopping, Regional Info, Reprice Order, Routing Options

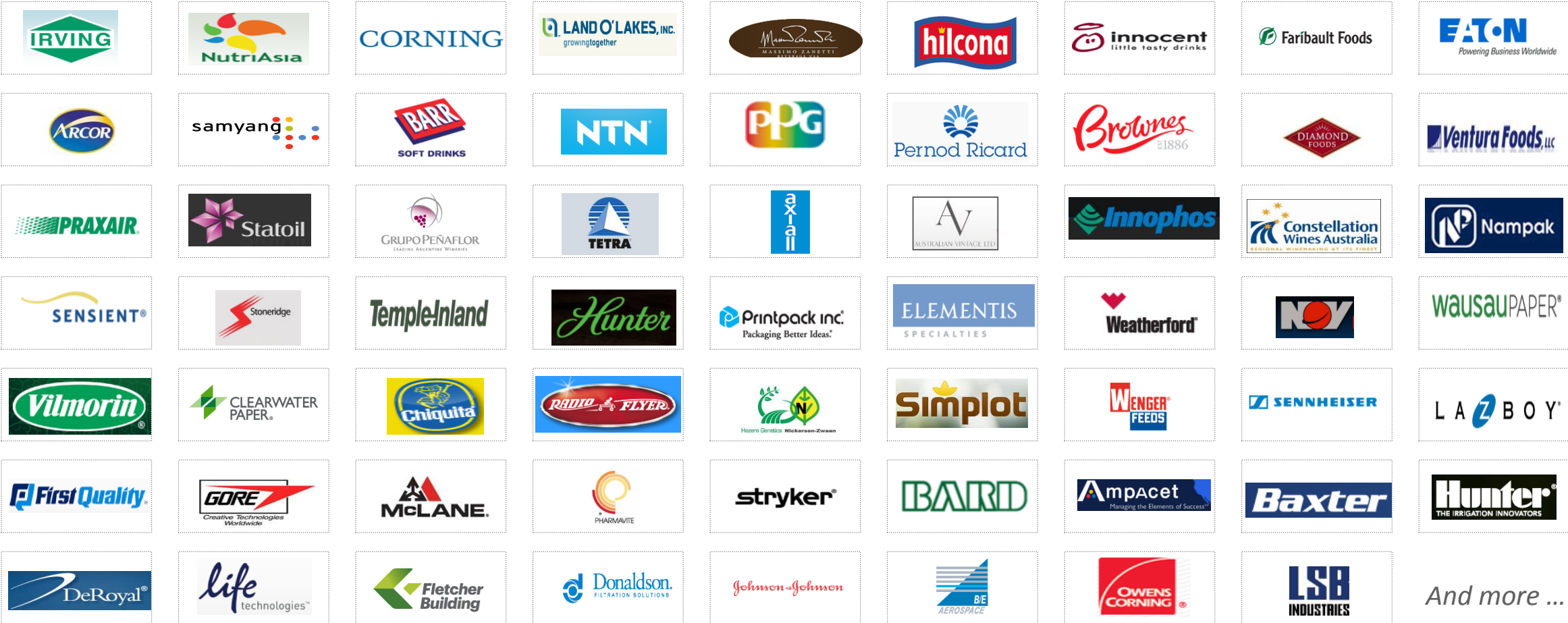
Support for Configure-to-Order

Holistic Planning for Models and Options

- Estimate planning % and calculate dependent demand in Demantra DM
- Promise Orders using GOP
- Plan for option-specific (lead time, sourcing, routing) supply in ASCP/RP
- Execute in JDE E1



Proven Solution Widely Adopted by JDE Customers



Innovative Industry Applications



HIGH TECHNOLOGY

Controlling Complex Supply Chains

- Project Driven Supply Chain
- Optimize Inventory
- Rapid Planning



CONSUMER GOODS

Customer-Centric Demand-Driven

- Trade Promotion Optimization
- Demand Sensing
- Demand Shaping



COMMS, MEDIA & ENTERTAINMENT

Demand Driven

- Consumption-Driven Planning
- Inventory Optimization
- Customer-Centric and profitable delivery



RETAIL AND DISTRIBUTION

Respond Profitably to Demand

- Demand Signal Management
- Inventory Optimization
- Consumption Driven Planning



AUTOMOTIVE

Lowest Cost, Highest Efficiency

- Production Scheduling
- Demand Driven Supply Chain
- Supplier Collaboration



AEROSPACE & DEFENSE

High Quality; Low Cost; Compliance

- Project Driven Supply Chain
- Supplier Collaboration
- Integrated Business Planning



MEDICAL DEVICES

Compliance and Efficiency

- Demand Driven Supply Chain
- Inventory Optimization
- Rapid Response to demand and supply changes



SEMICONDUCTOR

Planning for Extended Supply Chains

- Supplier Collaboration
- Binning Planning Support
- Planning Quality Management



PROCESS INDUSTRIES

Highest Quality and Utilization

- Formula/Blending Optimization
- Quality Yield Planning
- Service Parts Planning for EAM



MANUFACTURING

Maximize Efficiency

- Production Scheduling
- Demand Driven Supply Chain
- Rapid Planning and Shop Floor Execution



PHARMACEUTICAL

Compliance and Efficiency

- Demand Driven Supply Chain
- Inventory Optimization
- Project Driven Supply Chain



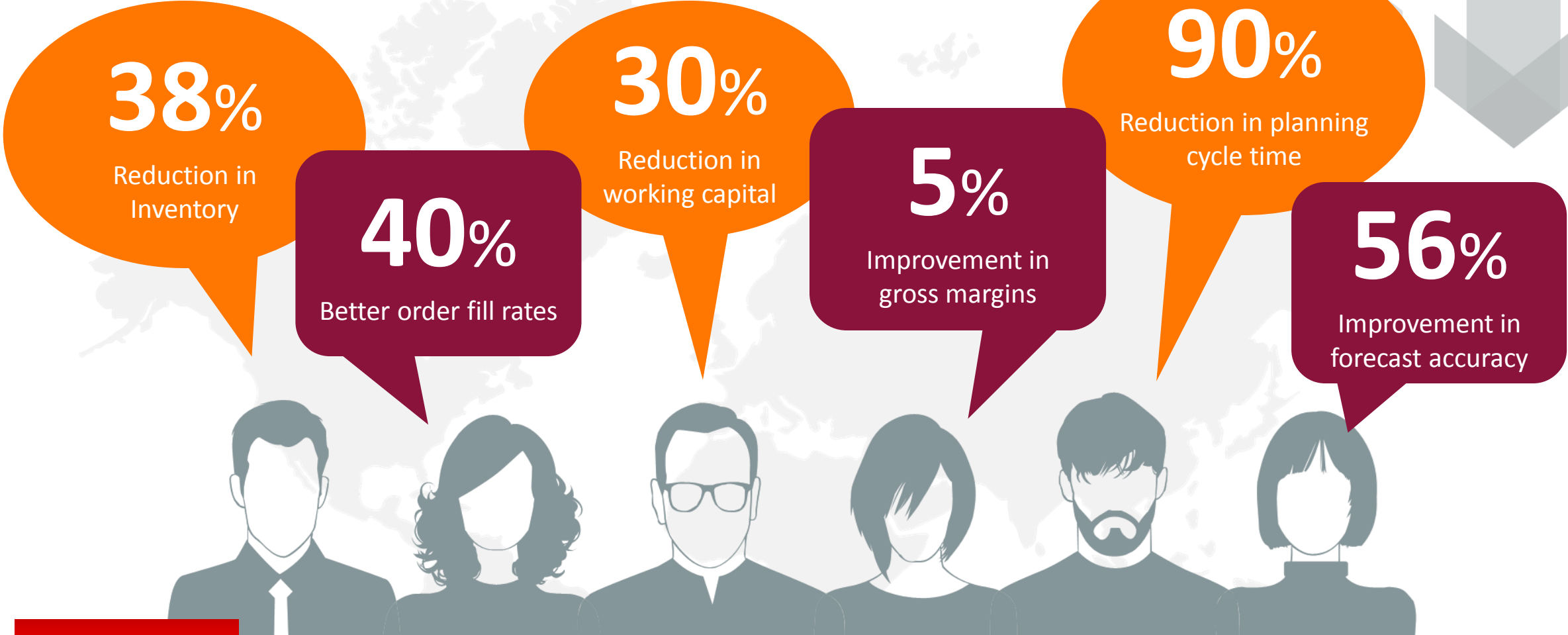
NATURAL RESOURCES

Maximizing Uptime and Efficiency

- Enterprise Asset Management
- Service Parts Planning
- Supply Planning

Benefits of Integrated Business Planning

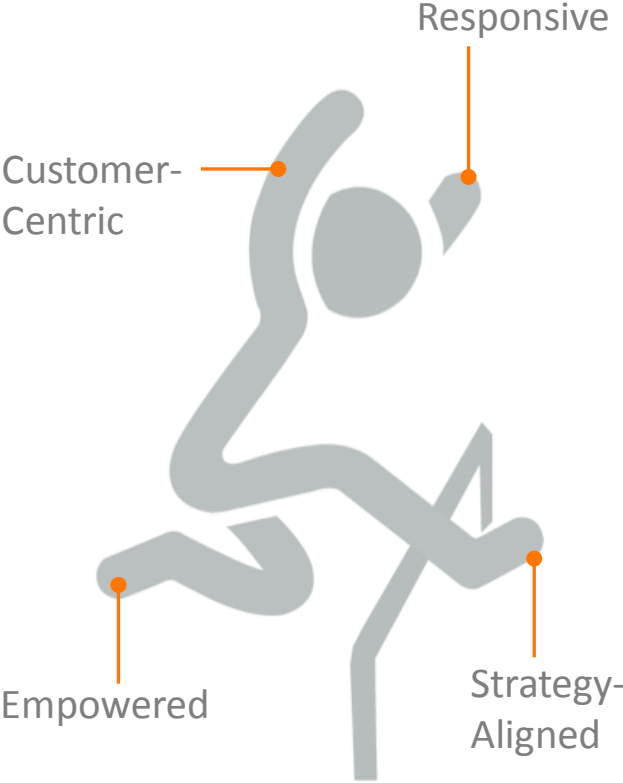
Reported customer results



Empower Modern Value Chain

Core planning strategies to drive transformation

- Drive growth through a customer centric supply chain
- Control costs through a responsive supply chain
- Execute strategy through Integrated business planning
- Empower knowledge workers to deliver better results



Hardware and Software Engineered to Work Together

ORACLE®