

MICROS Materials Control

Automated Issue Requests



Product Version **8.7.20.36.1421**

Document Title:	Automated Issue Requests
Author:	Joerg Trommeschlaeger
Department:	Materials Control
Date:	21.09.2012
Version No. of Document:	1.1

Copyright © 2015, Oracle and/or its affiliates. All rights reserved.

This software and related documentation are provided under a license agreement containing restrictions on use and disclosure and are protected by intellectual property laws. Except as expressly permitted in your license agreement or allowed by law, you may not use, copy, reproduce, translate, broadcast, modify, license, transmit, distribute, exhibit, perform, publish, or display any part, in any form, or by any means. Reverse engineering, disassembly, or decompilation of this software, unless required by law for interoperability, is prohibited.

The information contained herein is subject to change without notice and is not warranted to be error-free. If you find any errors, please report them to us in writing.

If this software or related documentation is delivered to the U.S. Government or anyone licensing it on behalf of the U.S. Government, then the following notice is applicable:

U.S. GOVERNMENT END USERS: Oracle programs, including any operating system, integrated software, any programs installed on the hardware, and/or documentation, delivered to U.S. Government end users are "commercial computer software" pursuant to the applicable Federal Acquisition Regulation and agency-specific supplemental regulations. As such, use, duplication, disclosure, modification, and adaptation of the programs, including any operating system, integrated software, any programs installed on the hardware, and/or documentation, shall be subject to license terms and license restrictions applicable to the programs. No other rights are granted to the U.S. Government.

This software or hardware is developed for general use in a variety of information management applications. It is not developed or intended for use in any inherently dangerous applications, including applications that may create a risk of personal injury. If you use this software or hardware in dangerous applications, then you shall be responsible to take all appropriate fail-safe, backup, redundancy, and other measures to ensure its safe use. Oracle Corporation and its affiliates disclaim any liability for any damages caused by use of this software or hardware in dangerous applications.

Oracle and Java are registered trademarks of Oracle and/or its affiliates. Other names may be trademarks of their respective owners.

Intel and Intel Xeon are trademarks or registered trademarks of Intel Corporation. All SPARC trademarks are used under license and are trademarks or registered trademarks of SPARC International, Inc. AMD, Opteron, the AMD logo, and the AMD Opteron logo are trademarks or registered trademarks of Advanced Micro Devices. UNIX is a registered trademark of The Open Group.

This software or hardware and documentation may provide access to or information about content, products, and services from third parties. Oracle Corporation and its affiliates are not responsible for and expressly disclaim all warranties of any kind with respect to third-party content, products, and services unless otherwise set forth in an applicable agreement between you and Oracle. Oracle Corporation and its affiliates will not be responsible for any loss, costs, or damages incurred due to your access to or use of third-party content, products, or services, except as set forth in an applicable agreement between you and Oracle.

Table of Contents

GENERAL INFORMATION:	4
INTRODUCTION:	4
CONFIGURATION:	5
SYSTEM > USERS	5
MASTER DATA > COST CENTERS / STORES.....	5
MANAGE STORE > MIN / POT STOCK ON HAND	7
WORKFLOW:	8
MANUAL CREATION OF REQUESTS	8
SCHEDULED CREATION OF REQUESTS	12
EMAIL NOTIFICATION:.....	19

General Information:

In order to be able to read this document correctly, please load the KEYCAPS font in your word-processing application. The necessary files can be found on the FTP server in the documentation directory.

This document will describe the setup and use of the functions “Automated Issue Request” in the stock module and in the scheduler.

Introduction:

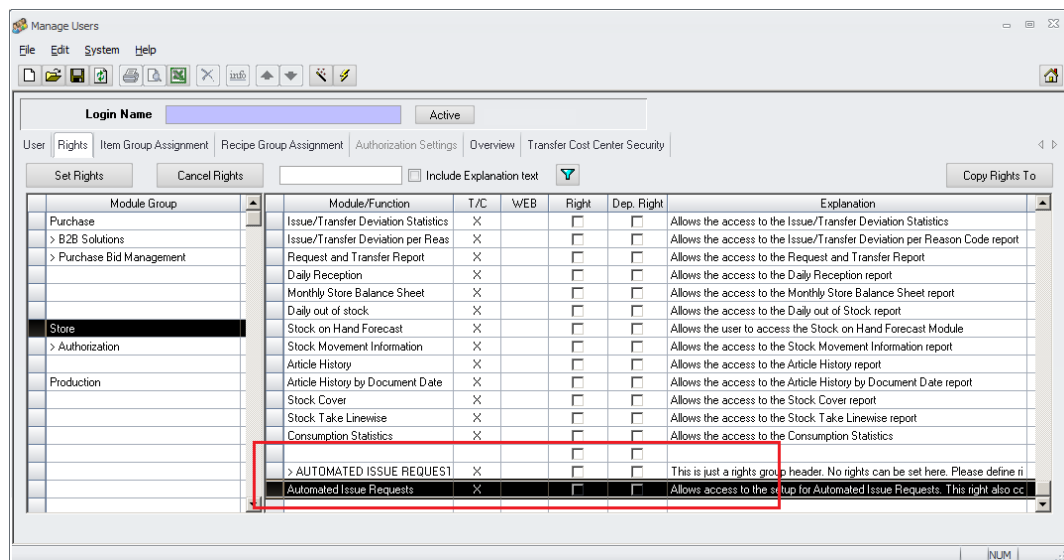
This function was implemented in order to generate issue requests for multiple stores at once, either manually controlled or automated through the Materials Control Scheduler.

Configuration:

System > Users

The user right for this function must be enabled

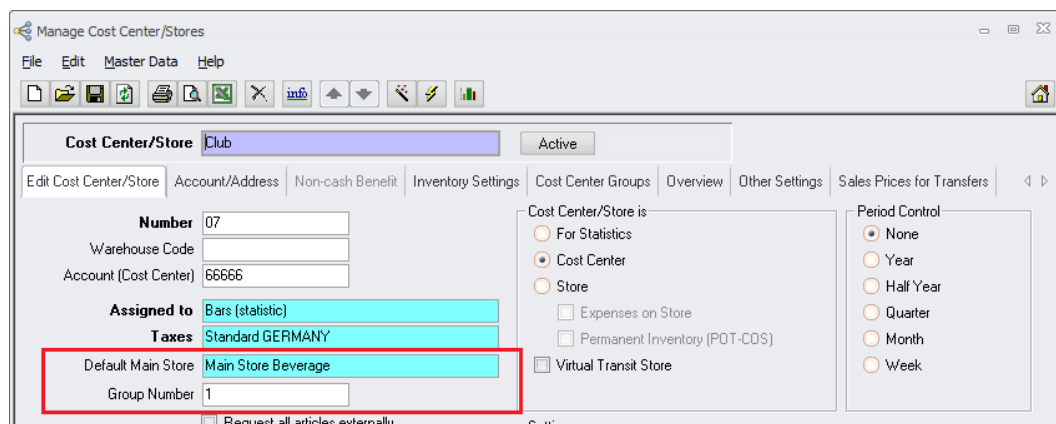
Goto System > Users > select the user > click on the tab "Rights" > select the section Store >



This right will allow the user to access the function in the store module and in the scheduler.

Master Data > Cost Centers / Stores

Two fields must be considered for this function.



- Default Main Store:
 - Select here the cost center / store where the goods are delivered from. The intention here is to support a bigger environment where several sales

locations will get deliveries from e.g. one beverage store, where other sales locations will get the deliveries from another store.

- Group Number:
 - The "Group Number" has to be defined as a numeric value. These groups will allow the user to create the documents e.g. some of the stores in the morning, but for other stores in the afternoon.

Example:

Default Main Stores:

- Beverage Store West Wing
- Beverage Store East Wing

Groups:

- Group 1: all sales locations opening in the morning
- Group 2: all sales locations opening at lunchtime
- Group 3: all sales locations opening in the evening

Manage Store > MIN / POT Stock on Hand

The calculation of the quantities is based on the definitions made in this function.

Go to Store > Manage Store > select the store and all other necessary filters:

Club With non-inventory Articles; Displayed in Units; SOH Value recalculated with last purchase Price; Evaluation by AVE;

Manage Store Stock Taking Lists

Article No.	Article	SOH	Unit	AVE	Total per AVE	MIN SOH	POT SOH	Last Inventory
35200004	Apple Korn 0,5 ltr	21,000	Bottle 0,1l	0,36771	7,72200			
28800002	Apple Spritzer 1L 0,3l (32021) (9,000	Each	0,00000	0,00000			
12100001	Apples kg	6,950	Kilogram	0,00000	0,00000			
35400002	Asbach Brandy 70cl	11,000	Bottle 0,7l	3,79947	41,79420	3,000	6,000	
35200005	Averna 0,7l	13,000	Bottle 0,7l	4,10706	53,39140			
35300001	Bacardi Black 83904	11,000	Bottle 0,7l	14,32882	157,61698			
35300002	Bacardi White 0,7l	44,571	Bottle 0,7l	2,61501	116,55453			
35200006	Baileys 0,7l	30,286	Bottle 0,7l	4,84476	146,72640			
35700001	Ballantines 0,7l	26,286	Bottle 0,7l	4,53679	119,25215	12,000	24,000	
32100013	Beer Erdinger Picantus 0,5ltr	0,000	Case /20 x 0,5ltr	19,39000	0,00000	20,000	30,000	
32100014	Beer Erdinger Urweisse 0,5ltr	0,000	Case /20 x 0,5ltr	19,33000	0,00000	20,000	30,000	
32100011	Beer Erdinger Weissbier 0,5ltr	0,000	Case /20 x 0,5ltr	16,39000	0,00000	20,000	30,000	
32100012	Beer Erdinger Weissbier non-A	0,000	Case /20 x 0,5ltr	16,39000	0,00000	20,000	30,000	
32100008	Beer Früh Kölsch 0,33 ltr Bottl	720,000	Each	0,62500	450,00000			
32000001	Beer Gaffel Kölsch 50Ltr KEG	60,000	KEG 50 ltr	65,00000	3,900,00000	6,000	10,000	
32100005	Beer Reissdorf Kölsch Flasche	460,000	Bottle 0,5l	0,56000	257,60000			

Articles w/o SOH Storage Location Deactivate Stock Take Units ☐ Sales Price Markup Apply Markup Add Article

Please define here the values for Minimum Stock on Hand and Potential Stock on Hand per article where....

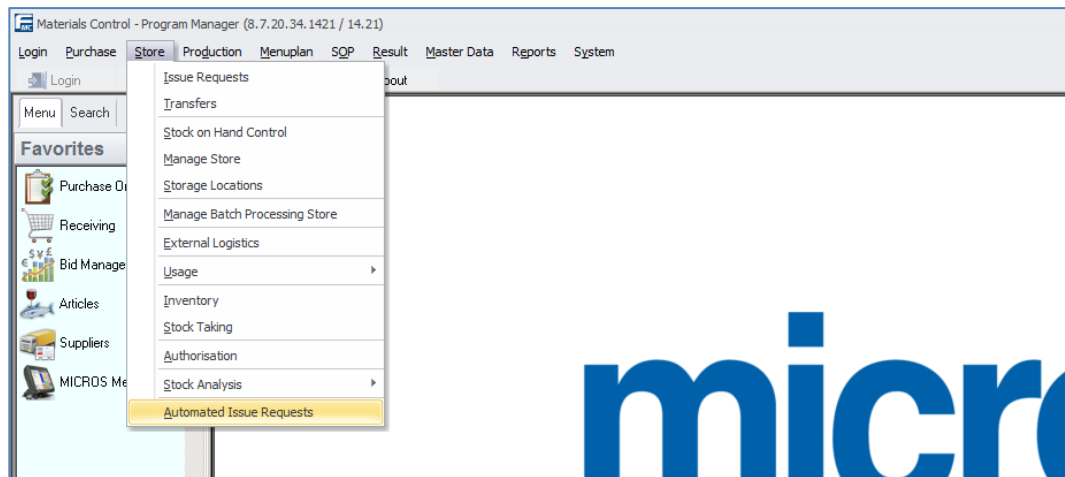
- MIN SOH = ((daily average usage x number of days until next delivery) + (daily average usage x 1))
- POT SOH = maximum quantity to be in this store at all

Workflow:

Manual Creation of Requests

The function can be accessed via the Store menu.

Go to Store > Automated Issue Requests:



This option is available if the user right is set.

Automated Issue Requests

File Edit Store Master Data Help

Default Main Store [Text Box]

Filter

- Over Group [Text Box] ☐ Only Articles with SOH less than MIN ☐ Open
- Major Group [Text Box] ☒ Articles with SOH less than POT ☒ Requested
- Item Group [Text Box] ☒ Round to Units

Group Number [Text Box] Populate

Group Number	Cost Center/Store	Last Issue Request/Transfer	Status	Last Inventory	Status

Generate

Description of the screen:

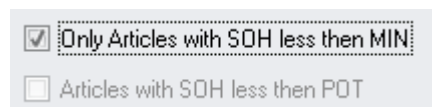
- Default Main Store
 - Select here the default main store. Only cost centers assigned as Default Main Store to any other cost center will be listed.

Filter:

- Over Group
 - If required you can filter here for a specific over group. If selected only articles assigned to this over group will be considered during the generation of the request.
- Major Group
 - If required you can filter here for a specific major group. If selected only articles assigned to this major group will be considered during the generation of the request.
 - If an over group was selected before, only major groups assigned to that over group will be displayed.
- Item Group
 - If required you can filter here for a specific item group. If selected only articles assigned to this item group will be considered during the generation of the request.
 - If an over group or major group was selected before, only item groups assigned to these groups will be displayed.
- Group Number
 - Please select here the group number which should be considered during the generation of the requests. Multiple groups can be entered here separated by a comma “,”, e.g. “2,4” will consider group number 2 and 4.

Options:

- Only Articles with SOH less than MIN
 - If this option is selected, the system will consider articles with Stock on Hand (SOH) below MIN SOH only.
 - The following option will be greyed out then.



- Articles with less than POT
 - If this option is selected, the system will consider all articles with SOH below POT SOH.
 - This is available only if the option above is not selected.
 - This option is marked by default, but can be changed.

If none of the two options above is selected, the system will generate a document for all articles available in the target cost center. For all articles with defined POT SOH it will generate the quantities to fill up to POT SOH. For all other articles the system will generate a record with 0 quantity.

- Round to Units
 - If this option is selected, the system will round the quantities to the next full number of the defined store unit for the article.

- This option is marked by default, but can be changed.

The system will not generate negative quantities if there are articles with SOH higher than defined for the selected option.

Status:

- Open
 - If this option is selected, the system will generate the documents with the status "Open Issue Request". These can be edited and processed in the module "Issue Request". These documents are not visible in the "Transfer" module until processing from "Issue Request" module.
 - This option is marked by default, but can be changed.
- Requested
 - If this option is selected the system generates documents with the status "Requested". These are visible in the module "Issue Request" with that status, but cannot be changed from here anymore. In the "Transfer" module these are visible with the status "Requested" as well and can be changed and booked from there.
 - The document option "Requested" is disabled if none of the above mentioned options (less than MIN/less than POT) was selected.
- Populate
 - After filling all filters and options the system can populate all possible documents by using this button.

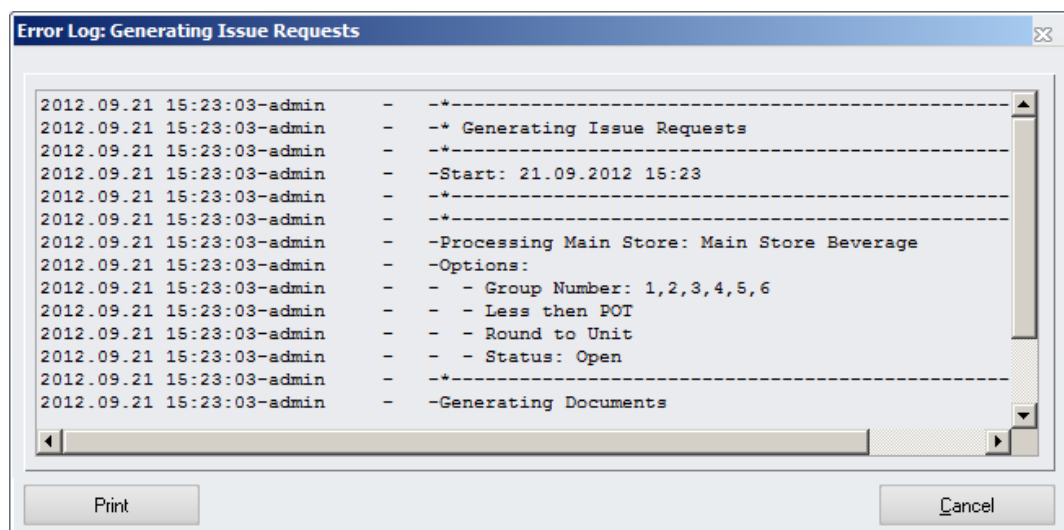
Group Number	Cost Center/Store	Last Issue Request/Transfer	Status	Last Inventory	Status
2	Anselms Bar	TR-11-11-30-00003 (Main Store Beverage)	Booked	INV-10-01-28	Edited
1	Club	TR-12-08-15-00004	Requested	INV-10-01-28	Created
1	Grill Restaurant	TR-09-08-19-00004 (Grill Restaurant)	Requested	INV-07-07-27	Not Counted

The system has not yet created the documents! It just shows all possible documents based on the selected filters and options.

- Table Description
 - Group Number: This is the Group Number defined in the Cost Center Setup.
 - Cost Center / Store: This is the target Cost Center for the document

- Last Issue Request / Transfer: Here the last Issue Request / Transfer will be listed.
 - Status: Here the target of the last document will be displayed.
 - Last Inventory: This is the last inventory task for this store.
 - Status: Here the status of the last inventory is displayed.
- Generate
- This is the function to generate the documents. By clicking this button the system will generate the document for the **marked** lines based on the parameters defined before.
 - The user can mark all lines or just single lines by using the usual Windows™ rules (using j and / or b keys).

After generation the system will display a log file which is stored in the folder \LOG\ of the local MC installation:

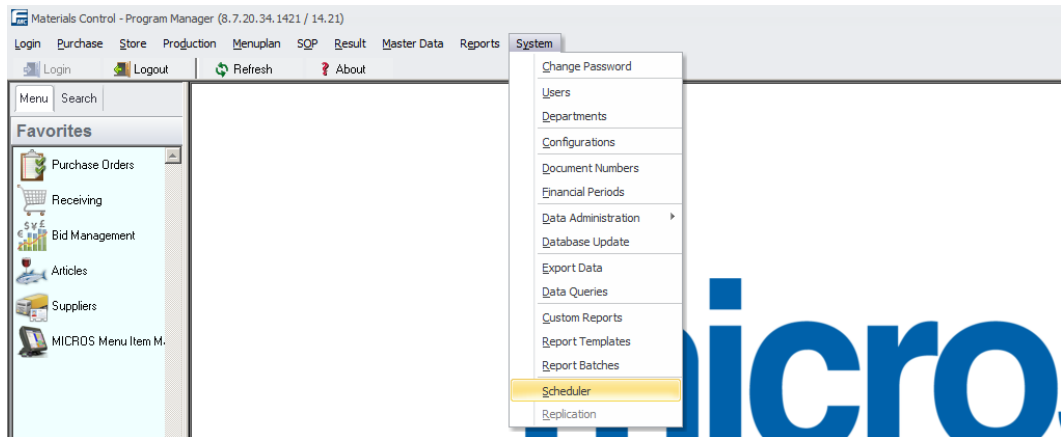


Now the documents can be processed as usual in the related modules "Issue Request" and / or "Transfer".

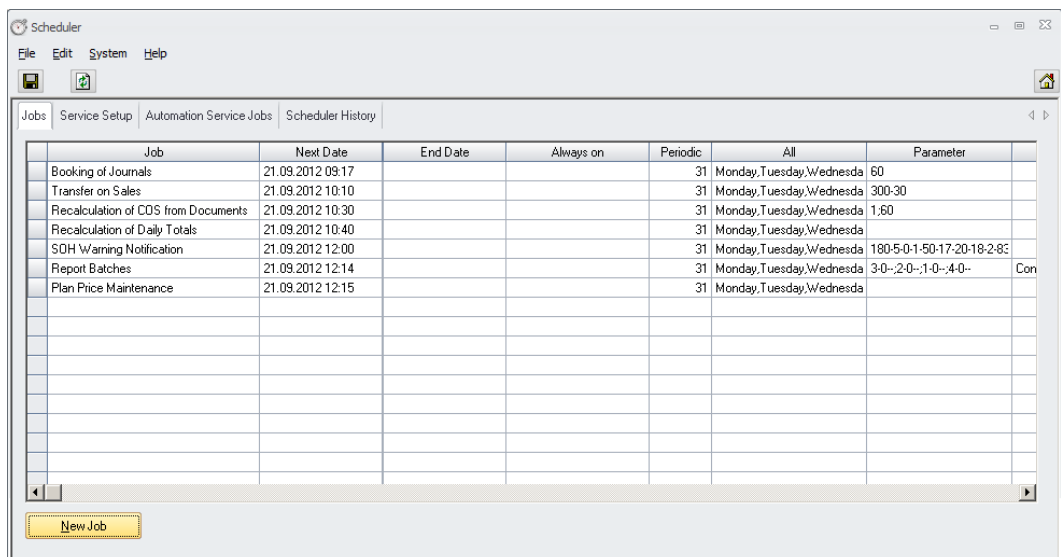
Scheduled Creation of Requests

The new function can be accessed through the usual Scheduler module.

Go to System > Scheduler:



The system will now open the usual scheduler module:



Click on the button "New Job":

Option: Define New Scheduled Job

New Job Automated Issue Requests

Job Type: Automated Issue Requests

Start (Date/Time): 21.09.2012 17:12

End (Date/Time):

☐ Start Up

☒ Once ☐ Daily

☐ Periodic all: 1 Days

☐ Always on: End of Month

Parameter:

Run Service:

☒ Under System Context

☐ As User:

User: jtrommeschlaeger

Password:

Domain: DE-N-NB10-113

Daily Settings:

☐ Daily

☐ Monday

☐ Tuesday

☐ Wednesday

☐ Thursday

☐ Friday

☐ Saturday

☐ Sunday

This job allows to generate Issue Requests based on assigned Warehouses.

OK Cancel

Select the function “Automated Issue Requests” from the drop-down list. Please define all necessary parameters (Start Date / Time, Periodic Settings, etc.). Now click on the tab “Automated Issue Requests” to configure the job details:

Option: Define New Scheduled Job

New Job Automated Issue Requests

Default Main Store:

Filter:

Over Group:

Major Group:

Item Group:

Group Number:

☐ Print Out

Printer:

Select Printer

"Default" not possible with Job under System Context

Report Templates:

☐ Only Articles with SOH less then MIN

☐ Articles with SOH less then POT

☐ Round to Units

☒ Open

☐ Requested

Sort by Storage Location

Sort by Article

Sort by Item Group, Article

Sort by Item Group, Article No.

This job allows to generate Issue Requests based on assigned Warehouses.

Description of the screen:

- Default Main Store
 - Select here the default main store. Here only these stores which are assigned as default main store to any other store will be listed.

Filter:

- Over Group
 - If required, you can filter here for a specific over group. If selected only articles assigned to this over group will be considered during the generation of the request.
- Major Group
 - If required, you can filter here for a specific major group. If selected only articles assigned to this major group will be considered during the generation of the request.
 - If an over group was selected before, only major groups assigned to that over group will be displayed.
- Item Group
 - If required, you can filter here for a specific item group. If selected only articles assigned to this item group will be considered during the generation of the request.
 - If an over group or major group was selected before, only item groups assigned to these groups will be displayed.
- Group Number
 - Please select here the group number which should be considered during the generation of the requests. Multiple groups can be entered here separated by a comma “,”, e.g. “2,4” will consider group number 2 and 4.

Options:

- Only Articles with SOH less than MIN
 - If this option is selected, the system will consider articles with Stock on Hand (SOH) below MIN SOH only.
 - The following option will be greyed out then.



- Articles with less than POT
 - If this option is selected, the system will consider all articles with SOH below POT SOH.
 - This is available if the option above is not selected.

If none of the two options above is selected, the system will generate a document for all articles available in the target cost center. For all articles with defined POT SOH it will generate the quantities to fill up to POT SOH. For all other articles the system will generate a record with 0 quantity.

- Round to Units
 - If this option is selected, the system will round the quantities to the next full number of the defined store unit for the article.

The system will not generate negative quantities if there are articles with SOH higher than defined for the selected option.

Status:

- Open
 - If this option is selected the system will generate the documents with the status "Open Issue Request". These can be edited and processed in the module "Issue Request". These documents are not visible in the "Transfer" module until processing from "Issue Request" module.
 - This option is marked by default, but can be changed.
- Requested
 - If this option is selected the system generate documents with the status "Requested". These are visible in the module "Issue Request" with that status, but cannot be changed from here anymore. In the "Transfer" module these are visible with the status "Requested" as well and can be changed and booked from here.
 - The document option "Requested" is disabled if none of the above mentioned options (less than MIN/less than POT) was selected.

Print Out:

This function allows to generate automated print outs of the documents. This could be required if e.g. the warehouse staff does not have access to a PC, but should prepare the requested goods already early in the morning.

Once the print out check box is marked the user could select the printer for this job. The system will send the documents to this printer directly.

Please keep in mind that the system will show the printers configured for the current user on the current PC only. Make sure that the printer is also available in the system context when executing the job!

Once that is done the report to be printed could be selected.
The system offers three types of reports here:

Document Title
Author
Department
Date

Automated Issue Requests
Joerg Trommeschlaeger
Materials Control
21.09.2012
Page 15 of 22

3. Sort by Item Group / Article

MICROS-FIDELIO DEMO (Jörg Trommeschläger)						Systems Management	System Scheduler
Pick List sorted by Document numbers						21.09.2012	17:12
Doc. number: TR-12-09-21-00025							
From:	Main Store Beverage						
To:	Grill Restaurant						
Date:	21.09.2012						
SOH	Base Unit	Article No.	Article	Unit	Requested QTY	Delivered QTY	Article Information
Item Group: Liqueurs							
2,00	Bottle 0,7l	35200001	Amarretto Di Saronno 70cl	Bottle 1,0l	9,00		
Item Group: Lemonades / Water							
246,00	Bottle 1,0l	31000001	Apollinaris 1,0l	Bottle 1,0l	27,00		
Item Group: Liqueurs							
2,29	Bottle 0,7l	35200003	Apple - Korn Schnaps	Bottle 0,7l	13,00		
19,00	Bottle 0,5l	35200004	Apple Korn 0,5 ltr	Bottle 0,5l	5,00		
Item Group: Spirits & Schnaps							
24,00	Bottle 0,7l	35400002	Aubach Brandy 70cl	Bottle 0,75l	11,00		
Item Group: Liqueurs							
18,60	Bottle 0,7l	35200005	Averna 0,7l	Bottle 0,7l	14,00		
Item Group: Rum / Tequila							
43,43	Bottle 0,7l	35300002	Bacardi White 0,7l	Bottle 0,7l	13,00		
Item Group: Liqueurs							
32,14	Bottle 0,7l	35200006	Baileys 0,7l	Bottle 0,7l	15,00		
Item Group: Whiskey & Whisky							
26,10	Bottle 1,0l	35700001	Ballantine's 0,7l	Bottle 1,0l	13,00		
Item Group: Beer KEG							
745,00	KEG 50 ltr	32000003	Beer Warsteiner Pils 50 KEG	KEG 50 ltr	10,00		
Item Group: Lemonades / Water							
121,00	Each	31000022	Bionade Ingwer (ea) 0,33ltr	Each	61,00		
21,83	Case /24 0,2ltr	31000002	Bitter Lemon 0,2l	Bottle 0,2l	62,00		
Total:							

4. Sort by Item Group / Article No.

MICROS-FIDELIO DEMO (Jörg Trommeschläger)						Systems Management	System Scheduler
Pick List sorted by Document numbers						21.09.2012	17:14
Doc. number: TR-12-09-21-00026							
From:	Main Store Beverage						
To:	Grill Restaurant						
Date:	21.09.2012						
SOH	Base Unit	Article No.	Article	Unit	Requested QTY	Delivered QTY	Article Information
Item Group: Liqueurs							
2,00	Bottle 0,7l	35200001	Amarretto Di Saronno 70cl	Bottle 1,0l	9,00		
Item Group: Lemonades / Water							
246,00	Bottle 1,0l	31000001	Apollinaris 1,0l	Bottle 1,0l	27,00		
Item Group: Liqueurs							
2,29	Bottle 0,7l	35200003	Apple - Korn Schnaps	Bottle 0,7l	13,00		
19,00	Bottle 0,5l	35200004	Apple Korn 0,5 ltr	Bottle 0,5l	5,00		
Item Group: Spirits & Schnaps							
24,00	Bottle 0,7l	35400002	Aubach Brandy 70cl	Bottle 0,75l	11,00		
Item Group: Liqueurs							
18,60	Bottle 0,7l	35200005	Averna 0,7l	Bottle 0,7l	14,00		
Item Group: Rum / Tequila							
43,43	Bottle 0,7l	35300002	Bacardi White 0,7l	Bottle 0,7l	13,00		
Item Group: Liqueurs							
32,14	Bottle 0,7l	35200006	Baileys 0,7l	Bottle 0,7l	15,00		
Item Group: Whiskey & Whisky							
26,10	Bottle 1,0l	35700001	Ballantine's 0,7l	Bottle 1,0l	13,00		
Item Group: Beer KEG							
745,00	KEG 50 ltr	32000003	Beer Warsteiner Pils 50 KEG	KEG 50 ltr	10,00		
Item Group: Lemonades / Water							
121,00	Each	31000022	Bionade Ingwer (ea) 0,33ltr	Each	61,00		
21,83	Case /24 0,2ltr	31000002	Bitter Lemon 0,2l	Bottle 0,2l	62,00		
Total:							

- Packing List summarized
 - Here the system offers 4 options:

1. Sort by Storage Location

MICROS-FIDELIO DEMO (Jörg Trommeschläger)						Systems Management	System Scheduler
Picklist summarized Articles						21.09.2012	17:21
Date:	21.09.2012						
From:	Main Store Beverage						
Storage Loc.:	Spirits Corner						
SOH	Base Unit	Article No.	Article	Unit	Requested QTY	Delivered QTY	Article Information
2,00	Bottle 0,7l	35200001	Amarretto Di Saronno 70cl	Bottle 1,0l	9,00		
Date: 21.09.2012							
From:	Main Store Beverage						
Storage Loc.:	Softs Cooler						
SOH	Base Unit	Article No.	Article	Unit	Requested QTY	Delivered QTY	Article Information
246,00	Bottle 1,0l	31000001	Apollinaris 1,0l	Bottle 1,0l	27,00		
Date: 21.09.2012							
From:	Main Store Beverage						
Storage Loc.:	Spirits Corner						
SOH	Base Unit	Article No.	Article	Unit	Requested QTY	Delivered QTY	Article Information
2,29	Bottle 0,7l	35200003	Apple - Korn Schnaps	Bottle 0,7l	13,00		
19,00	Bottle 0,5l	35200004	Apple Korn 0,5 ltr	Bottle 0,5l	5,00		
24,00	Bottle 0,7l	35400002	Aubach Brandy 70cl	Bottle 0,75l	11,00		
18,60	Bottle 0,7l	35200005	Averna 0,7l	Bottle 0,7l	14,00		

2. Sort by Article

MICROS-FIDELIO DEMO (Jörg Trommeschläger)					Systems Management	System Scheduler
Picklist summarized Articles						21.09.2012 17:19
Date: 21.09.2012						
From: Main Store Beverage						
Storage Loc.: Beer Cooler						
SOH	Base Unit	Article No.	Article	Unit	Requested QTY / Delivered QTY	Article Information / Information
745,00	KEG 50 ltr	32000003	Beer Warsteiner Pils 50l KEG	KEG 50 ltr	10,00	
246,00	Bottle 1,0l	31000001	Apollinaris 1,0l	Bottle 1,0l	27,00	
21,83	Case /24 0,2ltr	31000002	Bitter Lemon 0,2l	Bottle 0,2l	62,00	
2,00	Bottle 0,7l	35200001	Amarretto Di Saronno 70cl	Bottle 1,0l	9,00	
2,29	Bottle 0,7l	35200003	Apple - Korn Schnaps	Bottle 0,7l	13,00	
19,00	Bottle 0,5l	35200004	Apple Korn 0,5 ltr	Bottle 0,5l	5,00	
24,00	Bottle 0,7l	35400002	Absch Brandy 70cl	Bottle 0,75l	11,00	
18,60	Bottle 0,7l	35200005	Averna 0,7l	Bottle 0,7l	14,00	
32,14	Bottle 0,7l	35200006	Balleys 0,7l	Bottle 0,7l	15,00	
26,10	Bottle 1,0l	35700001	Balkanines 0,7l	Bottle 1,0l	13,00	
43,43	Bottle 0,7l	35300002	Bacardi White 0,7l	Bottle 0,7l	13,00	
122,00	Each	31000022	Bionade Ingwer (es) 0,33ltr	Each	61,00	
Total:						

3. Sort by Item Group / Article

MICROS-FIDELIO DEMO (Jörg Trommeschläger)					Systems Management	System Scheduler
Picklist summarized Articles						21.09.2012 17:25
Date: 21.09.2012						
From: Main Store Beverage						
Storage Loc.: Beer Cooler						
SOH	Base Unit	Article No.	Article	Unit	Requested QTY / Delivered QTY	Article Information / Information
Item Group: Beer KEG						
745,00	KEG 50 ltr	32000003	Beer Warsteiner Pils 50l KEG	KEG 50 ltr	10,00	
Item Group: Lemonades / Water						
246,00	Bottle 1,0l	31000001	Apollinaris 1,0l	Bottle 1,0l	27,00	
121,00	Each	31000022	Bionade Ingwer (es) 0,33ltr	Each	61,00	
21,83	Case /24 0,2ltr	31000002	Bitter Lemon 0,2l	Bottle 0,2l	62,00	
Item Group: Liqueurs						
2,00	Bottle 0,7l	35200001	Amarretto Di Saronno 70cl	Bottle 1,0l	9,00	
2,29	Bottle 0,7l	35200003	Apple - Korn Schnaps	Bottle 0,7l	13,00	
19,00	Bottle 0,5l	35200004	Apple Korn 0,5 ltr	Bottle 0,5l	5,00	
18,60	Bottle 0,7l	35200005	Averna 0,7l	Bottle 0,7l	14,00	
32,14	Bottle 0,7l	35200006	Balleys 0,7l	Bottle 0,7l	15,00	
Item Group: Rum / Tequila						
43,43	Bottle 0,7l	35300002	Bacardi White 0,7l	Bottle 0,7l	13,00	
Item Group: Spirits & Schnaps						
24,00	Bottle 0,7l	35400002	Absch Brandy 70cl	Bottle 0,75l	11,00	
Item Group: Whiskey & Whisky						
26,10	Bottle 1,0l	35700001	Balkanines 0,7l	Bottle 1,0l	13,00	
Total:						

4. Sort by Item Group / Article No.

MICROS-FIDELIO DEMO (Jörg Trommeschläger)					Systems Management	System Scheduler
Picklist summarized Articles						21.09.2012 17:27
Date: 21.09.2012						
From: Main Store Beverage						
Storage Loc.: Beer Cooler						
SOH	Base Unit	Article No.	Article	Unit	Requested QTY / Delivered QTY	Article Information / Information
Item Group: Beer KEG						
745,00	KEG 50 ltr	32000003	Beer Warsteiner Pils 50l KEG	KEG 50 ltr	10,00	
Item Group: Lemonades / Water						
246,00	Bottle 1,0l	31000001	Apollinaris 1,0l	Bottle 1,0l	27,00	
21,83	Case /24 0,2ltr	31000002	Bitter Lemon 0,2l	Bottle 0,2l	62,00	
121,00	Each	31000022	Bionade Ingwer (es) 0,33ltr	Each	61,00	
Item Group: Liqueurs						
2,00	Bottle 0,7l	35200001	Amarretto Di Saronno 70cl	Bottle 1,0l	9,00	
2,29	Bottle 0,7l	35200003	Apple - Korn Schnaps	Bottle 0,7l	13,00	
19,00	Bottle 0,5l	35200004	Apple Korn 0,5 ltr	Bottle 0,5l	5,00	
18,60	Bottle 0,7l	35200005	Averna 0,7l	Bottle 0,7l	14,00	
32,14	Bottle 0,7l	35200006	Balleys 0,7l	Bottle 0,7l	15,00	
Item Group: Rum / Tequila						
43,43	Bottle 0,7l	35300002	Bacardi White 0,7l	Bottle 0,7l	13,00	
Item Group: Spirits & Schnaps						
24,00	Bottle 0,7l	35400002	Absch Brandy 70cl	Bottle 0,75l	11,00	
Item Group: Whiskey & Whisky						
26,10	Bottle 1,0l	35700001	Balkanines 0,7l	Bottle 1,0l	13,00	
Total:						

After execution the system will generate log files and notification emails as usual, but including a note if the print job could be sent to the device.

```

2010.11.16 14:03:58-SystemSche-
2010.11.16 14:03:58-SystemSche-  - * Generating Issue Requests
2010.11.16 14:03:58-SystemSche-  - *
2010.11.16 14:03:58-SystemSche-  - Start: 16.11.2010 14:03
2010.11.16 14:03:58-SystemSche-  - *
2010.11.16 14:03:58-SystemSche-  - Processing Main Store: Main Store Beverage
2010.11.16 14:03:58-SystemSche-  - Options:
2010.11.16 14:03:58-SystemSche-  -   - Group Number: 1,2,3,4,5
2010.11.16 14:03:58-SystemSche-  -   - Less than POT
2010.11.16 14:03:58-SystemSche-  -   - Round to Unit
2010.11.16 14:03:58-SystemSche-  -   - Status: Requested
2010.11.16 14:03:58-SystemSche-  - *
2010.11.16 14:03:58-SystemSche-  - Generating Documents
2010.11.16 14:03:58-SystemSche-  - 2010-11-16-14.03.58.570000-SystemSche-Cost Center/Store: Club
2010.11.16 14:03:58-SystemSche-  - 2010-11-16-14.03.58.570000-SystemSche-TR-10-11-16-00004 generated
2010.11.16 14:03:58-SystemSche-  - 2010-11-16-14.04.02.050000-SystemSche-Send to Printer OK
2010.11.16 14:03:58-SystemSche-  - *
2010.11.16 14:04:02-SystemSche-  - Generating OK
2010.11.16 14:04:02-SystemSche-  - End: 16.11.2010 14:04
  
```

Unfortunately we cannot check if the print out was successfully since we cannot expect to get such a message from all used printers.

The generation of the issue requests will not be stopped if the printer cannot be accessed!

Click on “OK” to save the job. The system will now generate the documents based on the selected filters and options for all cost centers / stores having the selected group number and default main store assigned.

Email Notification:

As this is a scheduled option which creates documents we have implemented the email notification feature here as well.

This function will create an email reporting the status of the job “Automated Issue Request” after processing through the scheduler. The email will contain the information from the generated log file for this job. The log file can also be viewed in the \Log\ directory of the Materials Control installation folder.

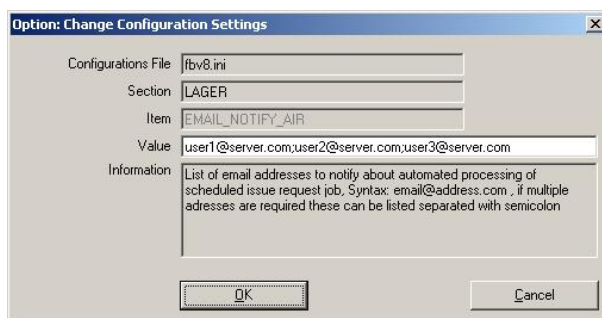
To activate this function the following parameters must be configured:

Go to System > Configuration > FBV8.INI > LAGER > EMAIL_NOTIFY_AIR:

Syntax: Enter here the recipient’s email address. Multiple email addresses can be separated with a semicolon.

Example:

user1@server.com;user2@server.com;user3@server.com



Define the type of the email to notify with the parameter EMAIL_TYPE_AIR:

The dialog box 'Option: Change Configuration Settings' shows the configuration for 'EMAIL_TYPE_AIR'. The 'Configurations File' is 'fbv8.ini', the 'Section' is 'LAGER', and the 'Item' is 'EMAIL_TYPE_AIR'. The 'Value' is set to '2'. The 'Information' text states: 'Email Definition: 0 (or empty, by default) = no mail / 1 = mail on every kind of error / 2 = always send mail, regardless of error status'. There are 'OK' and 'Cancel' buttons at the bottom.

0 or blank: No email will be send.

1: Email will be sent in case of error while processing.

2: Email will be sent always after processing of job.

Go to System > Configuration > FBV8.INI > MAIL:

MAILPASSWORD:

The dialog box 'Option: Change Configuration Settings' shows the configuration for 'MAILPASSWORD'. The 'Configurations File' is 'fbv8.ini', the 'Section' is 'MAIL', and the 'Item' is 'MAILPASSWORD'. The 'Value' is '<password>'. The 'Information' text states: 'Password of SMTP mail user for automated email notification when using scheduled e-procurement receiving, Scheduled Inventory or POS revenue import'. There are 'OK' and 'Cancel' buttons at the bottom.

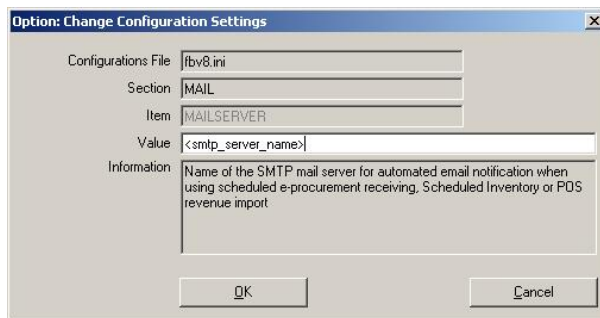
Please specify here the password of the generic user created on the email system for this process.

MAILSENDER:

The dialog box 'Option: Change Configuration Settings' shows the configuration for 'MAILSENDER'. The 'Configurations File' is 'fbv8.ini', the 'Section' is 'MAIL', and the 'Item' is 'MAILSENDER'. The 'Value' is 'MC_Alert_Email'. The 'Information' text states: 'Name to be displayed as sender for automated email notification when using scheduled e-procurement receiving, Scheduled Inventory or POS revenue import (needs to be filled because of SPAM control filters)'. There are 'OK' and 'Cancel' buttons at the bottom.

Please specify here the name of the mail sender displayed in the email of the generic user created on the email system for this process. Please note that this must be filled for certain email systems with an existing user name. Otherwise the spam filter could block the sending.

MAILSERVER:



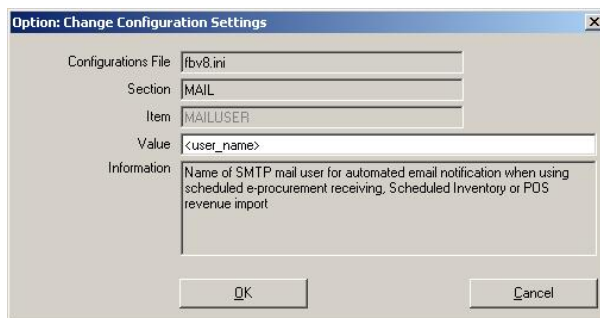
The screenshot shows a dialog box titled "Option: Change Configuration Settings". It contains the following fields and information:

- Configurations File: fbv8.ini
- Section: MAIL
- Item: MAILSERVER
- Value: <smtp_server_name>
- Information: Name of the SMTP mail server for automated email notification when using scheduled e-procurement receiving, Scheduled Inventory or POS revenue import

At the bottom, there are "OK" and "Cancel" buttons.

Please specify here the name or IP address of the SMTP mail server used for this process.

MAILUSER:



The screenshot shows a dialog box titled "Option: Change Configuration Settings". It contains the following fields and information:

- Configurations File: fbv8.ini
- Section: MAIL
- Item: MAILUSER
- Value: <user_name>
- Information: Name of SMTP mail user for automated email notification when using scheduled e-procurement receiving, Scheduled Inventory or POS revenue import

At the bottom, there are "OK" and "Cancel" buttons.

Please specify here the valid email user name used for this process. In some scenarios it is required to use the domain as prefix for identification.

At this stage of development for this feature we write a protocol file into the root directory of the PC performing this action. The file is named "TESTMAIL.TXT". Feel free to delete this file if required.

The email will contain the same information as the log file.

Please note that the email server configuration must support this functionality.

Now the documents can be processed as usual in the related modules "Issue Request" and / or "Transfer".

**MICROS-FIDELIO GmbH
Europadamm 2-6
41460 Neuss
Germany
Phone: +49 2131-137 0 | Fax: +49 2131-137 777**