

Materials Control

Yield Management



Copyright by:
MICROS-FIDELIO GmbH
Europadamm 2-6
D - 41460 Neuss
Date: May 2010

Copyright © 2015, Oracle and/or its affiliates. All rights reserved.

This software and related documentation are provided under a license agreement containing restrictions on use and disclosure and are protected by intellectual property laws. Except as expressly permitted in your license agreement or allowed by law, you may not use, copy, reproduce, translate, broadcast, modify, license, transmit, distribute, exhibit, perform, publish, or display any part, in any form, or by any means. Reverse engineering, disassembly, or decompilation of this software, unless required by law for interoperability, is prohibited.

The information contained herein is subject to change without notice and is not warranted to be error-free. If you find any errors, please report them to us in writing.

If this software or related documentation is delivered to the U.S. Government or anyone licensing it on behalf of the U.S. Government, then the following notice is applicable:

U.S. GOVERNMENT END USERS: Oracle programs, including any operating system, integrated software, any programs installed on the hardware, and/or documentation, delivered to U.S. Government end users are "commercial computer software" pursuant to the applicable Federal Acquisition Regulation and agency-specific supplemental regulations. As such, use, duplication, disclosure, modification, and adaptation of the programs, including any operating system, integrated software, any programs installed on the hardware, and/or documentation, shall be subject to license terms and license restrictions applicable to the programs. No other rights are granted to the U.S. Government.

This software or hardware is developed for general use in a variety of information management applications. It is not developed or intended for use in any inherently dangerous applications, including applications that may create a risk of personal injury. If you use this software or hardware in dangerous applications, then you shall be responsible to take all appropriate fail-safe, backup, redundancy, and other measures to ensure its safe use. Oracle Corporation and its affiliates disclaim any liability for any damages caused by use of this software or hardware in dangerous applications.

Oracle and Java are registered trademarks of Oracle and/or its affiliates. Other names may be trademarks of their respective owners.

Intel and Intel Xeon are trademarks or registered trademarks of Intel Corporation. All SPARC trademarks are used under license and are trademarks or registered trademarks of SPARC International, Inc. AMD, Opteron, the AMD logo, and the AMD Opteron logo are trademarks or registered trademarks of Advanced Micro Devices. UNIX is a registered trademark of The Open Group.

This software or hardware and documentation may provide access to or information about content, products, and services from third parties. Oracle Corporation and its affiliates are not responsible for and expressly disclaim all warranties of any kind with respect to third-party content, products, and services unless otherwise set forth in an applicable agreement between you and Oracle. Oracle Corporation and its affiliates will not be responsible for any loss, costs, or damages incurred due to your access to or use of third-party content, products, or services, except as set forth in an applicable agreement between you and Oracle.

Table of Contents

INTRODUCTION:	4
USER RIGHTS:	4
SCREEN DESCRIPTION:	4
OVERVIEW:	5
EDIT YIELD:	6
USING ASSORTMENTS:	8
SETUP FO ASSORTMENTS:	8
BOOKING YIELD WITH ASSORTMENTS:	12
BOOKING YIELD W/O ASSORTMENTS:	16
DISPLAY OF YIELD TRANSACTIONS:	18
ARTICLE HISTORY BY DOCUMENT DATE:	18
BOOKING JOURNAL:	18
USAGE STATISTICS:	19

Introduction:

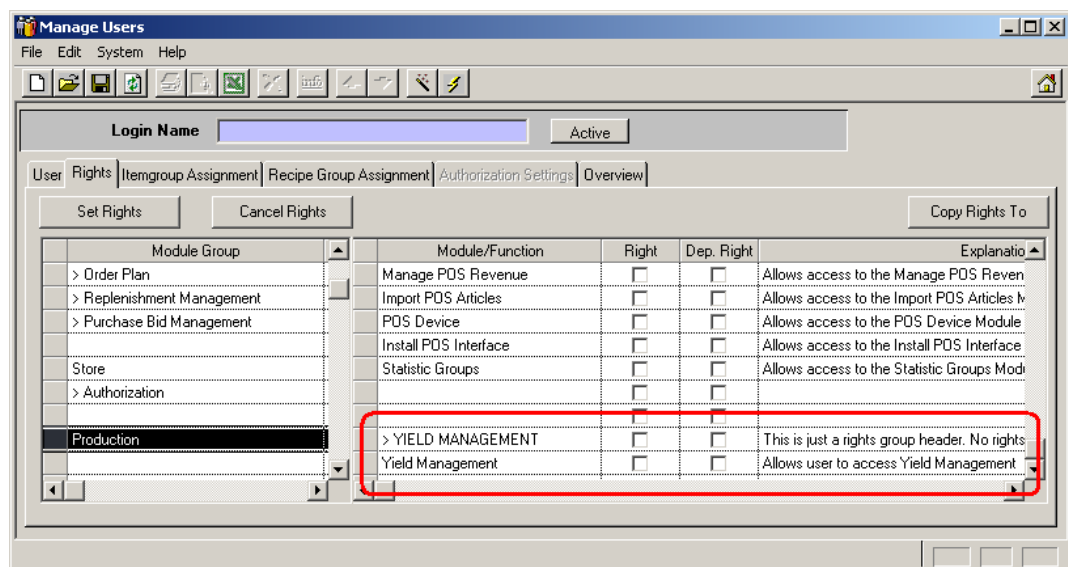
This document describes the functionality of the Yield Management module in Materials Control.

This module can be used to divide delivered items into individual stock items.

Yield Management is available in version 8.6.6.00.xx and higher and does not require any additional license part to be ordered, but older license files will have to be replaced to allow access to this module.

USER RIGHTS:

In order to access the module, the following user right must be considered:



At the end of the section "Production" a subsection for the Yield Management was added.

Yield Management:

- This user right is required to allow access to the Yield Management module.

SCREEN DESCRIPTION:

The module can be found in the submenu "Production".

At start the module will show the Overview screen and the filter dialog. Here the user can filter the documents to be displayed in the Overview screen.

By default the dialog offers the options as shown below:

Option: Search Yield Documents

Select Document Type

Article:

Cost Center/Store:

☐ With Sub Cost Centers

☒ Not Booked

☒ Open Document

☒ Assortment

☐ Booked Yield Documents

From:

To:

Article: filter for a specific main Yield Article
 Cost Center/Store: Filter for documents created/booked for a specific cost center
 With Sub Cost Centers: Include linked sub cost centers in search

Not Booked: Using this option the system will offer to show the following two document types

- Open Document: created, saved, but not booked documents
- Assortment: predefined Yield Assortments

Booked Documents: Using this option the system will show booked documents only

- From/To Date Range: Select the date range for the booked documents.

OVERVIEW:

The overview screen shows the key information to find the correct document. Based on the selection made in the filter dialog three types of documents are displayed:

Assortments: Predefined lists for reoccurring yield processes
Open Yield: Saved, but not yet booked documents
Booked: finished transactions

A	Yield	Date	Cost Center/Store	Status	Info	Article	Unit	Usage Group	Total QTY	Waste QTY	Yield Price/BU	Variance %	Add Item	Pricing
	Lamb Yield Assortment	29.02.2008		Assortment		Lamb, ea	Kilogram	Yield Loss		0.000			Yes	Set to Base Item Price
	Var Test	29.02.2008		Assortment		Lamb, ea	Kilogram	Yield Loss		0.000			No	Set to Base Item Price
	Y-2008-00012	29.02.2008	Main Kitchen	Open Yield	Lamb Butchery	Lamb, ea	Kilogram	Yield Loss	12.000	0.695	2.40	5.79%	Yes	Set to Base Item Price
	Y-2010-00005	18.05.2010	Main Kitchen	Open Yield	Lamb Butchery May 18th	Lamb, ea	Kilogram	Yield Loss	44.000	44.000	8.00	100.00%	Yes	Set to Base Item Price
	Y-2010-00006	18.05.2010	Main Kitchen	Open Yield		Lamb, ea	Kilogram	Yield Loss	10.000	10.000	8.00	100.00%	No	Set to Base Item Price
	Y-2010-00007	18.05.2010	Main Kitchen	Open Yield	Lamb Butchery 20100518	Lamb, ea	Kilogram	Yield Loss	44.000	2.895	8.00	6.56%	Yes	Set to Base Item Price

Columns:

Yield: Document name
 Date: Creation / Booking Date of the document
 Cost Center/Store: Cost Center used for Transaction
 Status: Document Status (**Assortment**, **Open Yield**, Booked)
 Info: Information (optional, entered in document)
 Article: Yield Article
 Unit: Base Unit for Yield Article
 Usage Group: Assigned Usage Group for Loss

Total QTY: Total Yield QTY
Waste QTY: Waste / Loss QTY
Yield Price/BU: Yield Price (of main Yield Article)
Variance: Variance between Total QTY and Actual QTY in %
Add Item: Possibility to add positions (Assortments)
Pricing: Used Pricing Method

EDIT YIELD:

This screen is the main booking application for Yield Transactions.

Upper Section:

Yield: Yield Document/Transaction Name

Left Area:

Article: Main Yield (raw) Article
Cost Center/Store: Transaction Cost Center
Unit: Base Unit of main Article
Usage Group: Usage Group for Loss
Date: Document Date
Add Item: Possibility to add positions (when using assortments)
Information: Document Information (optional)

Right Area:

QTY: Quantity to yield
Price / BU: Price of main Yield Article per BU
Estimated Yield Value: QTY * Price/BU
QTY Waste: Difference between Yield QTY and actual QTY
Variance: Difference in %
Actual Yield Value: Sum of Price Total from Detail grid
Pricing: Definition of pricing method to be used for positions
- Set to Base Item Price Article price (from selected cost center) will be used
- Set to Specific Value price can be defined manually
- Calculate as % of Base Price Price will be calculated based on the main Article

Data Grid:

Pos.:	Position number
Article:	Stock Article name
Unit:	Unit for Stock Article
Weight Factor:	Weight Factor from Article
QTY:	Yield QTY
Ideal %:	Ideal QTY in % (only when using Assortments)
Ideal QTY:	Ideal QTY in Unit (only when using Assortments)
Act %:	% QTY of total QTY
QTY / YBU:	QTY in BU of the main Article
Yield Base Unit:	BU of the main Article
Var. %:	Variance in % between Ideal QTY and actual QTY (only when using Assortments)
Price/Unit:	Price of yielded Article
Price Total:	Total value of yielded Article

Buttons/Functions:

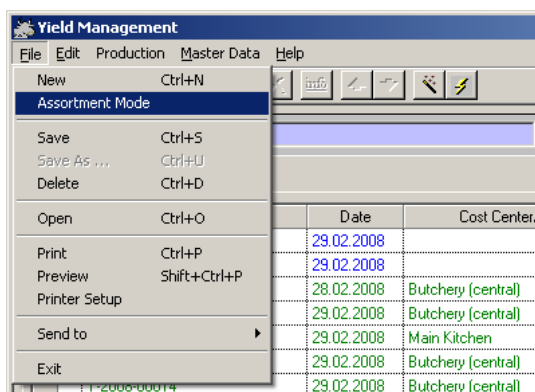
New Article:	Add new positions to the yield transaction
Delete Positions:	Delete positions from the current unbooked yield transaction
Reorganize Pos.:	Refresh of position numbers
Refresh Price:	Refresh Prices of yielded Articles
Book:	Booking Transaction

USING ASSORTMENTS:

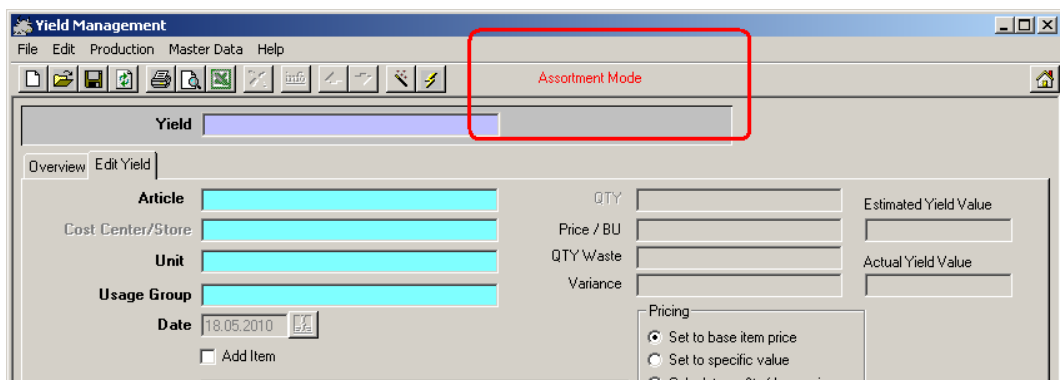
In environments using this module the yield transactions are usually reoccurring events. Therefore we recommend to create predefined lists -> "Assortments" for this. The use of assortments also allows a better evaluation of the yield transaction in regards to planned and actual yield quantities and values.

SETUP OF ASSORTMENTS:

Open the module "Yield Management" and go to the Overview screen. Here please open the "File" menu.



The second option offers to switch to the Assortment Mode.



The module shows this status/mode at the top of the application.

Now the Yield Assortment can be created.

As first step a clear name for the Yield Assortment has to be defined.



This name should give already a clear identification about the content of this assortment.

Now the header figures for the assortment can be defined:

- **Article:** Select here the main Yield (raw) Article which should be divided into the different Stock Articles. Here only articles having a weight base unit (e.g. Kilogram, Pound, etc.) can be selected. This is a logical restriction.
- **Unit:** Here the used weight base unit is displayed.
- **Usage Group:** Define the Usage Group which should be used for the variances. This Group must be created before in the Usage module. It could be one general group (as in the example here) or also more detailed (e.g. "Lamb Yield Loss").
- **Add Item:** This option controls if the user is allowed to add positions to the assortment while booking a yield transaction using this assortment.
- **Information:** This is the usual document text information field. It could be used for additional descriptions. We would recommend to leave this blank for assortments and use it for actual bookings only.
- **Pricing:** Select the pricing method (explained above) for the yield transaction based on this assortment

As next step the positions should be added. These are the articles which are yielded from the main article.

In the following example an entire piece of lamb will be divided into different stock articles.

Pos	Article	Unit	Weight Factor	Ideal %	Yield Base Unit
1	Lamb Saussages Ea	Each	0,050	25,00%	Kilogram
2	Lamb, Fillet	Kilogram	1,000	10,00%	Kilogram
3	Lamb, Chops	Kilogram	1,000	15,00%	Kilogram
4	Lamb, Crown	Kilogram	1,000	20,00%	Kilogram
5	Lamb, Rack	Kilogram	1,000	25,00%	Kilogram

Click on the button “New Article”:

<Item Group>: Pre-select any Item Group (optional)

Article: Select the Stock Article to be yielded out of the main Article

Unit: This could be either the base unit or the preferred store unit defined in the Article setup.

Weight Factor: Here the system shows the weight factor defined in the Article setup. For Articles defined with a weight base unit (e.g. Kilogram) this is always 1,000. For all other Articles using e.g. Liter or Each this must be setup properly and maybe adjusted here as any incorrect figure here will result in wrong yield figures.

Example: Create an Article like “Lamb Sausages” with the base unit “Each”. Per default the application fills the Weight Factor with 1,000. In this case every sausage would be calculated the factor of 1 to the weight base unit (e.g. Kilogram), means 1 kg per sausage. If the

weight of the sausage should be 50 grams, the weight factor needs to be adjusted to 0,050.

Now define a Preferred Store Unit "Pack 10ea" for this article.

Go back to the Yield Management. When adding the Lamb Sausage the user needs to check the weight factor depending on the used unit.

- If the Preferred Store Unit = Base Unit, this is offered here as only possibility. The weight factor should be correct since this is the same value as defined in the Article setup.
- If a Preferred Store Unit was defined in the Article setup, this will be offered here as default (Base Unit could be selected manually). But the Weight Factor could be incorrect. Here the user must check and eventually adjust the factor **manually**. This is not calculated automatically since the weight of this article in the used packing unit could be different to a single article (production losses, etc.)

- Ideal %: Define here the expected ideal % yield for this article (20% of the delivered Lamb should be Lamb Rack)

Other Functions:

- Delete Positions:
 - o Mark any record in the detail grid and click on this button. The record is marked for deletion now and will be removed at next saving.
- Reorganize Positions:
 - o By clicking this button the system will reset the position numbers.

BOOKING YIELD WITH ASSORTMENTS:

When using assortments the system allows easily to compare the actual yield vs. the ideal (expected) quantities to evaluate the efficiency of every yield transaction.

Pick the assortment from the overview list.

The screenshot shows the 'Yield Management' window with the 'Lamb Yield Assortment' selected. The interface includes fields for Article (Lamb, ea), Cost Center/Store, Unit (Kilogram), Usage Group (Yield Loss), and Date. It also has input fields for QTY (0,000), Price / BU, QTY Waste (0,000), and Variance. A 'Pricing' section offers options: 'Set to base item price' (selected), 'Set to specific value', and 'Calculate as % of base price'. Below these is an 'Information' text area. At the bottom is a table of predefined figures.

Pos	Article	Unit	Weight Factor	QTY	Ideal %	Ideal Qty	Act. %	QTY / YBU	Yield Base	Var. %	Price/ Unit	Price Total
1	Lamb Saussages Ea	Each	0,050	0,000	25,00%	0,000	0,00%	0,000	Kilogram	25,00%	0,00000	0,00000
2	Lamb, Fillet	Kilogram	1,000	0,000	10,00%	0,000	0,00%	0,000	Kilogram	10,00%	0,00000	0,00000
3	Lamb, Chops	Kilogram	1,000	0,000	15,00%	0,000	0,00%	0,000	Kilogram	15,00%	0,00000	0,00000
4	Lamb, Crown	Kilogram	1,000	0,000	20,00%	0,000	0,00%	0,000	Kilogram	20,00%	0,00000	0,00000
5	Lamb, Rack	Kilogram	1,000	0,000	25,00%	0,000	0,00%	0,000	Kilogram	25,00%	0,00000	0,00000

The system now shows all predefined figures.

The user now has to select...

- the Cost Center/Store
- the Document Date
 - o Once the date is entered the system will try to find the price of the main article.
 - If DailyTotals are activated: the system will use the average price valid at the document date in that cost center.
 - if DailyTotals are not activated: The system will show the current average price of the main article in the selected cost center.

The field "Information" could be used to add some notes or descriptions to this yield transaction.

As next step the user has to enter the QTY of the main article to be processed.

If the user tries to enter the yield quantities first, the system will show the following message:

The dialog box contains the text 'Please enter QTY greater then 0' and an 'OK' button.

Once the quantity was entered, the system calculates the Estimated Yield Value.

QTY	44,000	Estimated Yield Value	
Price / BU	7,82836		344,44784
QTY Waste	44,000	Actual Yield Value	
Variance		100,00%	0,00000

The offered price (see above) could be adjusted manually if required.
 Since until now no yield quantities are entered, the system shows the full QTY as waste and a variance of 100%. This is automatically recalculated once the quantities for the yielded articles are entered.

The pricing calculation is offered as defined in the assortment, but could be changed as required. This could be possible since e.g. the quality of the delivered goods requires a different calculation model.

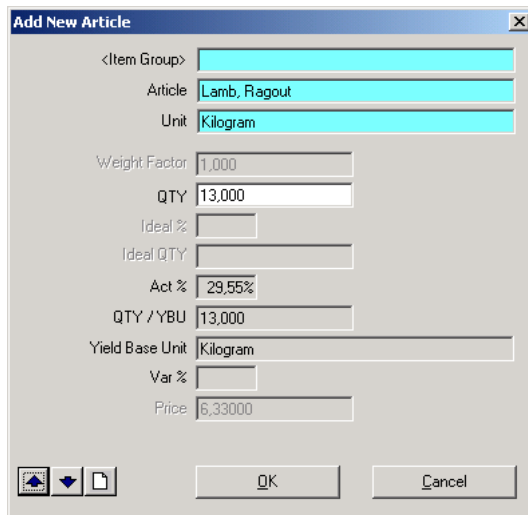
Now the user can enter the yield quantities per position.

Pos	Article	Unit	Weight Factor	QTY	Ideal %	Ideal Qty	Act. %	QTY / YBU	Yield Base	Var. %	Price/Unit	Price Total
✓ 1	Lamb Sausages Ea	Each	0,050	80,000	18,00%	158,400	9,09%	4,000	Kilogram	8,91%	0,10000	8,00000
✓ 2	Lamb, Fillet	Kilogram	1,000	5,500	10,00%	4,400	12,50%	5,500	Kilogram	-2,50%	12,35234	67,93787
✓ 3	Lamb, Chops	Kilogram	1,000	6,500	15,00%	5,600	14,77%	6,500	Kilogram	0,23%	8,83000	57,39500
✓ 4	Lamb, Crown	Kilogram	1,000	6,700	15,00%	6,600	15,23%	6,700	Kilogram	-0,23%	7,99764	53,58419
✓ 5	Lamb, Rack	Kilogram	1,000	5,120	12,00%	5,280	11,64%	5,120	Kilogram	0,36%	7,99764	40,94792
✓ 6	Lamb, Ragout	Kilogram	1,000	15,260	25,00%	11,000	34,68%	15,260	Kilogram	-9,68%	6,33000	96,59580

Here the system will check the maximum possible QTY:

Once all positions are entered the user can see the efficiency of the yield transactions.

Click on "New Article" (if this option is allowed in the used assortment):



Add New Article

<Item Group>

Article

Unit

Weight Factor

QTY

Ideal %

Ideal QTY

Act %

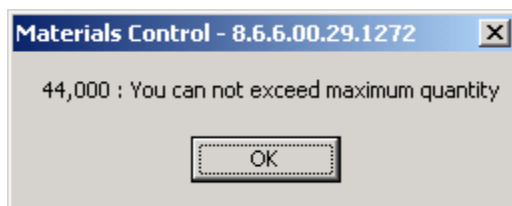
QTY / YBU

Yield Base Unit

Var %

Price

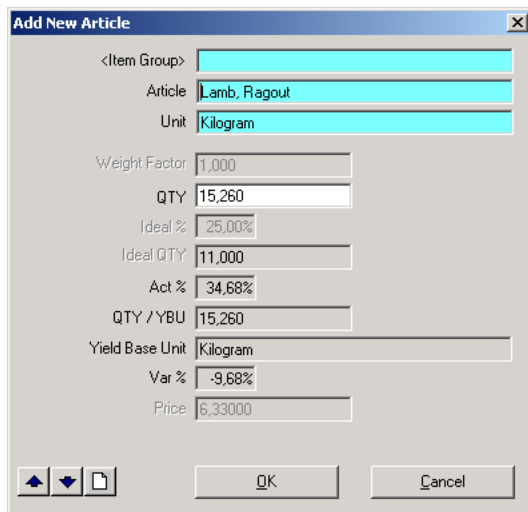
Select the article and the quantity. The system will now try to insert the new position. Here again the system will check the maximum possible QTY:



Materials Control - 8.6.6.00.29.1272

44,000 : You can not exceed maximum quantity

When double-clicking any record the system offers the detail dialog per position:



Add New Article

<Item Group>

Article

Unit

Weight Factor

QTY

Ideal %

Ideal QTY

Act %

QTY / YBU

Yield Base Unit

Var %

Price

It shows all relevant details for this record. Depending on the used pricing method the price per position can be changed here.

Click on "Book" to finalize the transaction.

Booking

Document Information

Yield: Y-2010-00009

Cost Center/Store: Main Kitchen

Unit: Kilogram

Usage Group: Yield Loss

Date: 18.05.2010

Details

QTY: 44,000

Waste: 0,920

Variance: 2,09%

Printing Options

☒ Print Document ☐ Printer ☒ Preview ☐ PDF File

☐ Don't show this Dialog again

Book Cancel

The system shows the usual booking dialog.

The print out shows all details as well:

CENTURA Report Builder - D:\Program Files\MC 600\qrp_eng\YIELD_01.QRP

File View Print

MICROS-FIDELIO DEMO (Jörg Trommeschläger) Systems Management SystemAdministrator

Yield Management 18.05.2010

Yield: Y-2010-00009

Article: Lamb, ea

Cost Center/Store: Main Kitchen

Unit: Kilogram

Usage Group: Yield Loss

Date: 18.05.2010

Origin QTY: 44,000 Kilogram

Yield QTY: 43,080 Kilogram

Waste: 0,920 Kilogram

Variance: 2,09%

Estimated Yield Value: 300,45

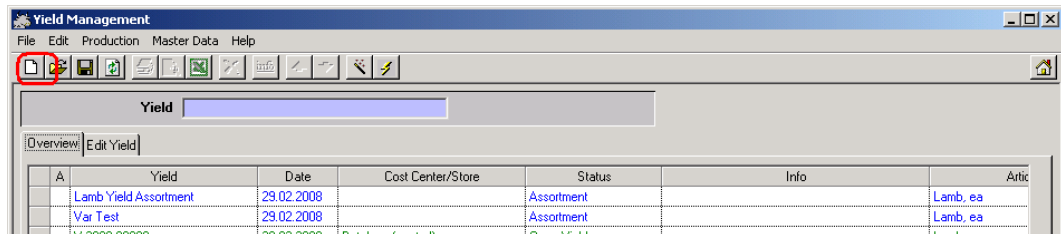
Actual Yield Value: 324,46

Pos	Article	Unit	Weight Factor	Ideal %	Ideal QTY	Act. %	Act. QTY	Variance	Price/Unit	Act. Yield Value
1	Lamb Saussages Ea	Each	0,050 Kilogram	18,00%	158,40	9,09%	80,00	-8,91%	0,10	8,00
2	Lamb, Filet	Kilogram	1,000 Kilogram	10,00%	4,40	12,50%	5,50	2,50%	12,35	67,94
3	Lamb, Chops	Kilogram	1,000 Kilogram	15,00%	6,60	14,77%	6,50	-0,23%	8,83	57,40
4	Lamb, Crown	Kilogram	1,000 Kilogram	15,00%	6,60	15,23%	6,70	0,23%	8,00	53,58
5	Lamb, Rack	Kilogram	1,000 Kilogram	12,00%	5,28	11,64%	5,12	-0,36%	8,00	40,95
6	Lamb, Ragout	Kilogram	1,000 Kilogram	25,00%	11,00	34,68%	15,26	9,68%	6,33	96,60

BOOKING YIELD W/O ASSORTMENTS:

The functionality here is very similar to the above explained, but this mode of course does not offer the comparison between ideal and actual figures.

Click the “New” icon in the toolbar of the overview:



The system will now open a new document template.

Article:

Cost Center/Store:

Unit:

Usage Group:

Date:

☒ Add Item

Information:

QTY:

Price / BU:

QTY Waste:

Variance:

Estimated Yield Value:

Actual Yield Value:

Pricing:

- ☒ Set to base item price
- ☐ Set to specific value
- ☐ Calculate as % of base price

Pos	Article	Unit	Weight Factor	QTY	Act. %	QTY / YBU	Yield Base Unit	Price/ Unit	Price Total

Since there are no predefined “ideal” figures available this screen has less columns.

Click on the button “New Position” to add a new article:

Add New Article

<Item Group>

Article

Unit

Weight Factor




QTY

Act %

QTY / YBU

Yield Base Unit

Price

Here the user now can select the article and enter the yield quantity. The dialog already shows the yield % QTY compared to the total QTY.

Click on “OK” to confirm the record and “Cancel” to close the dialog.

Yield Management

File Edit Production Master Data Help

Overview Edit Yield

Article: Lamb_ea **QTY**: 10.000 **Estimated Yield Value**:

Cost Center/Store: Main Kitchen **Price / BU**: 7.82836 **78,2836**

Unit: Kilogram **QTY Waste**: .200 **Actual Yield Value**:

Usage Group: Yield Loss **Variance**: 2.00% **62,03400**

Date: 18.05.2010 **L13 GAS**

☒ Add Item

Pricing

- ☒ Set to base item price
- ☐ Set to specific value
- ☐ Calculate as % of base price

Pos	Article	Unit	Weight Factor	QTY	Act. %	QTY / YBU	Yield Base Unit	Price/ Unit	Price Total
→ 1	Lamb, Ragout	Kilogram	1.000	9.800	98.00%	9.800	Kilogram	6.33000	62.03400

New Article Delete Positions Reorganize Pos. Refresh Price Book

The grid now shows all possible yield details except the comparison to the ideal figures. The “Book” button completes the transaction.

DISPLAY OF YIELD TRANSACTIONS:

These yield transactions can be reviewed in the analysis modules:

ARTICLE HISTORY BY DOCUMENT DATE:

This module is designed to the transactions of a single article. Here the user can see the purchases (Type: PU),, the yield transactions (Type: YIE Base) and the usage bookings (Type: USE ART), of the used main article (here "Lamb, ea"):

No.	Document Date	Doc. Type	SOH	QTY	COS Document	COS Document Total	Running Total	COS	COS SOH Total	To	From	Doc No.
1	11.05.2010	PU	21.000	63.000	7.50000	472.50000	472.50000	7.50000	157.50000	Main Kitchen	Supplier: Deutsche See	987564678
2	13.05.2010	YIE Base	-31.250	-52.250	7.50000	-391.87500	80.62500	7.50000	-234.27500	Main Kitchen		Y-2010-00012
3	13.05.2010	USE ART	-34.000	-2.750	7.50000	-20.62500	60.00000	7.50000	-255.00000	Usage Group: Yield Loss	Main Kitchen	USG1005-00026
4	14.05.2010	PU	65.000	100.000	7.50000	750.00000	810.00000	7.50000	495.00000	Main Kitchen	Supplier: Deutsche See	456789001
5	18.05.2010	PU	110.000	44.000	8.00000	362.00000	1.162.00000	7.68541	843.19510	Main Kitchen	Supplier: Deutsche See	768890
6	18.05.2010	PU	133.000	23.000	7.50000	172.50000	1.334.50000	7.68541	1.019.49953	Main Kitchen	Supplier: Deutsche See	5675767809
7	18.05.2010	YIE Base	89.500	-43.000	7.62036	-337.24575	397.25425	7.68541	685.27367	Main Kitchen		Y-2010-00009
8	18.05.2010	YIE Base	80.120	-8.800	7.82836	-76.71793	520.53632	7.68541	614.15265	Main Kitchen		Y-2010-00010
9	18.05.2010	YIE Base	70.320	-9.800	7.82836	-76.71793	843.88498	7.68541	530.07613	Main Kitchen		Y-2010-00011
10	18.05.2010	USE ART	69.400	-0.500	7.82836	-7.20009	836.61630	7.68541	531.57945	Usage Group: Yield Loss	Main Kitchen	USG1005-00023
11	18.05.2010	USE ART	69.200	-0.200	7.82836	-1.56567	835.05063	7.68541	530.44637	Usage Group: Yield Loss	Main Kitchen	USG1005-00024
12	18.05.2010	USE ART	69.000	-0.200	7.82836	-1.56567	833.48496	7.68541	528.91329	Usage Group: Yield Loss	Main Kitchen	USG1005-00025

BOOKING JOURNAL:

This module allows to show transactions of multiple articles, but with less details per article. Here the user can see also purchases (excluded in this selection for better visibility), the yield transactions of the main article (Type: YIE Base), the yield transactions of the yielded articles (Type: YIE Comp) as well as the loss bookings to the usage group (Type: USE ART).

Booking Date	Document Date	Document Number	Type	Cost Center/Store	Article No.	Article	QTY	Unit	Transfer Cost Center	Supplier	Supplier
18.05.2010	18.05.2010	Y-2010-00009	YIE Base	Main Kitchen	10500004	Lamb, ea	-43.000	Kilogram			
18.05.2010	18.05.2010	Y-2010-00009	YIE Comp	Main Kitchen	10500005	Lamb Saussages Ea	80.000	Each			
18.05.2010	18.05.2010	Y-2010-00009	YIE Comp	Main Kitchen	10500001	Lamb, Fillet	1.528	Carton 20 x 180g			
18.05.2010	18.05.2010	Y-2010-00009	YIE Comp	Main Kitchen	10500003	Lamb, Chops	6.500	Kilogram			
18.05.2010	18.05.2010	Y-2010-00009	YIE Comp	Main Kitchen	10500002	Lamb, Rack	6.700	Kilogram			
18.05.2010	18.05.2010	Y-2010-00009	YIE Comp	Main Kitchen	10500002	Lamb, Rack	5.120	Kilogram			
18.05.2010	18.05.2010	Y-2010-00009	YIE Comp	Main Kitchen	10500006	Lamb, Ragout	15.260	Kilogram			
18.05.2010	18.05.2010	USG1005-00023	USE ART	Main Kitchen	10500004	Lamb, ea	-0.920	Kilogram			
18.05.2010	18.05.2010	Y-2010-00010	YIE Base	Main Kitchen	10500004	Lamb, ea	-9.800	Kilogram			
18.05.2010	18.05.2010	Y-2010-00010	YIE Comp	Main Kitchen	10500006	Lamb, Ragout	9.800	Kilogram			
18.05.2010	18.05.2010	USG1005-00024	USE ART	Main Kitchen	10500004	Lamb, ea	-0.200	Kilogram			
18.05.2010	18.05.2010	Y-2010-00011	YIE Base	Main Kitchen	10500004	Lamb, ea	-9.800	Kilogram			
18.05.2010	18.05.2010	Y-2010-00011	YIE Comp	Main Kitchen	10500006	Lamb, Ragout	9.800	Kilogram			
18.05.2010	18.05.2010	USG1005-00025	USE ART	Main Kitchen	10500004	Lamb, ea	-0.200	Kilogram			
18.05.2010	13.05.2010	Y-2010-00012	YIE Base	Main Kitchen	10500004	Lamb, ea	-52.250	Kilogram			
18.05.2010	13.05.2010	Y-2010-00012	YIE Comp	Main Kitchen	10500005	Lamb Saussages Ea	198.000	Each			
18.05.2010	13.05.2010	Y-2010-00012	YIE Comp	Main Kitchen	10500001	Lamb, Fillet	1.528	Carton 20 x 180g			
18.05.2010	13.05.2010	Y-2010-00012	YIE Comp	Main Kitchen	10500003	Lamb, Chops	8.250	Kilogram			
18.05.2010	13.05.2010	Y-2010-00012	YIE Comp	Main Kitchen	10500002	Lamb, Rack	8.250	Kilogram			
18.05.2010	13.05.2010	Y-2010-00012	YIE Comp	Main Kitchen	10500002	Lamb, Rack	6.600	Kilogram			
18.05.2010	13.05.2010	Y-2010-00012	YIE Comp	Main Kitchen	10500006	Lamb, Ragout	13.750	Kilogram			
18.05.2010	13.05.2010	USG1005-00026	USE ART	Main Kitchen	10500004	Lamb, ea	-2.750	Kilogram			

(for a better visibility the purchases are excluded in this screenshot!)

USAGE STATISTICS:

Here the user can review the automated usage bookings for the loss figures to the defined usage group:

[illegible]